



A Land Bank loan at work

Once you've decided to make major improvements on rural property, ask your local Land Bank Association about long-term financing. Finding a better way to borrow is as important as finding a better way to farm.

Long-term IMPROVEMENT LOANS at reasonable cost.

Federal Land Bank Association Of Sonora

A. E. Prugel, Mgr.
Telephone 387-2777



TO CONDUCT SERVICE

The First Baptist Church, of which Rev. Gene Stark is pastor, will have charge the service this coming Sunday afternoon, Oct. 5th, at the Nursing Home. It will get under way at 3:30.



That day the Lord made a covenant with Abraham, saying: "Unto thy seed have I given this land."

Chevette.

Chevrolet's new kind of American car.



Chevette

**40 MPG HIGHWAY
28 MPG CITY
EPA RATING**

That's with the standard 1.4-litre engine and 4-speed manual transmission. The mileage you get, of course, will be strongly influenced by how and where you drive.

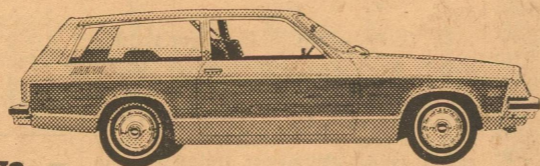
- Chevette is international in design and heritage, incorporating engineering concepts proved around the world.
- Its wheelbase is about the same as a VW Rabbit's.
- It has more front-seat head room than a Datsun B-210, more front-seat leg room than a Toyota Corolla.
- Its turning circle is one of the shortest in the world.

- It can carry cargo up to four feet wide.
- It is well insulated against noise.
- It is protected by 17 anti-corrosion methods.
- It is basically a metric car.
- It comes with a clear, simple self-service booklet.
- It has a standard 1.4-litre engine. A 1.6-litre engine is available (except Scooter).

Prices start at \$2899

2-seat Scooter (not shown) \$2899
Chevette Coupe (shown) \$3098
The Sport (not shown) \$3175
The Rally (not shown) \$3349
The Woody (not shown) \$3404
Manufacturer's Suggested Retail Prices including dealer new vehicle preparation charge. Destination charge, available equipment, state and local taxes are additional.

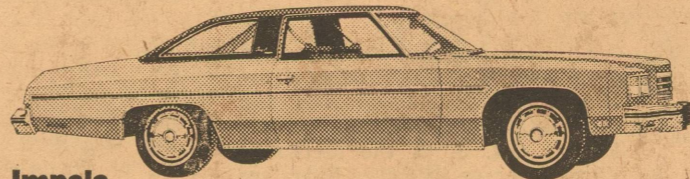
Other Chevrolet values for 1976.



Vega

Built to take it. Vega for 1976: An extensive anti-corrosion program. New hydraulic valve lifters, for quieter engine

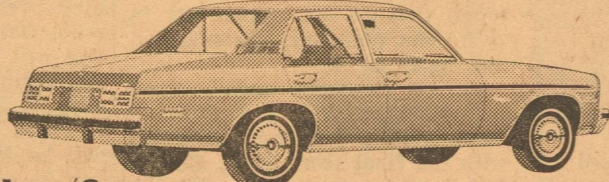
performance. A new torque-arm rear suspension. And Vega offers a tough Dura-Built 140-cu.-in. 4-cyl. engine guarantee.



Impala

One of America's most popular full-size cars. That's the result of giving America good value for the dollar. This year, the Impala series

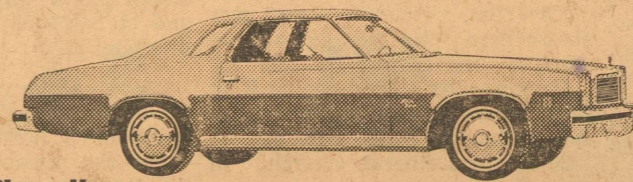
includes the new value of the thrifty Impala S—Chevrolet's lowest priced full-size car.



Nova/Concours

America's favorite compact car. Our basic compact, '76 Nova, makes even more sense than the 3 million Novas that preceded it. And

Concours, the brand-new model featured here, is our highly practical approach to compact luxury.



Chevelle

Enough car for practically anything. It offers room for six at a sensible price. This year, more than ever, its deft blending of mid-size

economies, plus room for the average family, makes Chevelle a size whose time has come.

There's much more to see at your Chevy dealer's. Caprice, Monza, Monte Carlo, Camaro, Corvette, Chevrolet wagons—something for everyone in 1976.

Chevrolet Come in Oct. 2.

SHUGART COUPON
Thursday, Oct. 9th

Western Auto 133 Main Street



**9 WALLET SIZE
COLOR PORTRAITS
99¢**

ASK About Our **FREE 8 x 10 OFFER** Extra Charge for GROUPS

Robert Massie Co.

Furniture — Carpet

WEST TEXAS' LARGEST HOME FURNISHING STORE

Whether yours is a small or a large budget, whether your need is one room, A houseful or one piece, Our management and our experienced sales personnel are anxious to serve you according to your wishes.

MAKE OUR STORE YOUR HEADQUARTERS WHEN SHOPPING IN SAN ANGELO

17 - 14 E. Twohig

Telephone 655-6721

County Ag. Agent's Column

By Jerry Swift

New Publication Aimed At Reducing Calf Losses

Cattlemen could prevent some calf losses at birth if they just know what steps to take to help the cow. Now a publication has been prepared by the Texas Agricultural Extension Service that will help cattlemen deal with calving problems.

The publication is titled, "Recognizing and Handling Calving Problems" and is authored by John R. Beverly, Extension animal reproduction specialist. It guides cattlemen through the calving process and both tells and shows them how to give assistance.

If a cow does not successfully give birth to a live calf, the total management and feed cost invested in her is lost. Research indicates that 80% of all calf deaths occur

at or near birth and that calving difficulty accounts for 75% of these. Furthermore, calving problems are most common in heifers giving birth to their first calves—more than half usually have calving problems.

Since the reproductive capability of a cow, that of conception, gestation and parturition, is by far the most important economic factor in cow-calf production, good management of the cow herd is of vital importance. And, if calving problems develop, cattlemen should be able to recognize these and provide assistance.

The new publication on calving problems should be of value to all cattle producers in Schleicher County. And, with the fall calving season approaching, the information it provides might be put to firsthand use. We invite all cattlemen to stop by the county Extension office for a copy of "Recognizing and Handling Calving Problems."

Screwworms Spread Out

During August screwworms were widely spread across Texas, from Cameron County on the south to

Wichita on the north; from Hudson on the west to Brazoria, Walker and Houston counties on the east. Cases were reported from 94 counties in Texas as well as Arizona and New Mexico.

Nearly half the 2,549 cases came from eight southernmost Texas counties where an unusually wet summer has led to great numbers of Gulf Coast ear ticks. Up to 75% of currently reported worm cases are coming from ear wounds of cattle in this region, which contains five of the seven counties recording over 100 screwworm outbreaks during the past month.

The 5,676 Texas screwworm cases confirmed by laboratory identification by the end of August is second only to 54,769 in 1972 by this date in the history of the USDA Screwworm Eradication Program, says Dr. James E. Novy, director of field operations.

To overwhelm native screwworm fly populations, millions of flies are raised in the APHIS insectary near Mission, sexually sterilized by brief exposure to cesium radiation, and released to mate with fertile wild screwworm flies.

The female screwworm fly usually mates only once in her lifetime. Any eggs she produces as the result of mating with a sterile male will not hatch. When enough sterile matings occur, eradication is achieved.

Mission Lab officials rely on laboratory identification of worm samples livestock owners collect from infested wounds to determine presence of native screwworm fly populations.

—Superase Bond—Success office

For
SHEEP AND GOAT SHEARING
Call
FELIPE BERNAL
SONORA, TEXAS
PHONE 387-3453

(Sep 18-25 Oc 2*)

OZONA WATER WELL SERVICES

Randy Upham Phone 392-2334

P. O. BOX 714, OZONA, TEXAS 76943

Submersible Pump Distributors
Pump & Windmill Repairs & Service

B & G FEED

Feed, mineral salt, livestock hauling, hay hauling. Pasture and liquid feed. Will be delivered or can be picked up.

Feeders will be furnished.

Eldorado salesman: Sam Carrell, 853-2219

GEORGE SCHWIENING

800 Glasscock, Sonora, Texas

Office Phone 387-3620

Res. Phone 387-2063

Phone 2619 for Complete Line of Exxon Products. Farm and Ranch Butane. All Business Appreciated.

Eldorado - Divide Petroleum Co.

Exxon Products — Raymon Mobley & Employees

Commemorative Spoons Honor Bi-Centennial

A new spoon was created to mark the 200th Anniversary and is an officially recognized Commemorative of the American Revolution Bi-Centennial Administration, authorized under Public Law 93-179. The spoon, the only so licensed at the present time, is produced under License No. 76-19-0514. It takes the form of an American 5-pointed star surrounded by continuous stripes which form a second star. This double star is symbolic of the two centuries which have passed since the American Revolution.

This is a most dignified product of the art of engraving and silversmiths. Each spoon is plated with twice the usual thickness of silver to the highest standard of silversmith's traditions. This spoon is an unusual opportunity for collectors to own a complete set of a superb collection.

This 4 1/2" demitasse spoon retails for only \$2.95 for silver plate and \$4.50 for gold plate. It comes gift boxed, singly, or in sets of 2, 3, 4, 5 and 12, mixed or matched.

Produced by Oneida Ltd., Silversmiths, exclusively for Commemorative Gifts Ltd., 323 Washington St., Ogdensburg, N.Y. 13669.

Phone. Area Code 315-393-2640.

DIVIDE CABLE CORPORATION

Please Use Following Telephone Numbers To Call For Service:

Eldorado, (direct line) 24 hour service -----853-2804

Sonora, 8:00 to 5:00 -----387-3344 or 387-3616

Everett Ogburn

It's Chuckwagon Time Again At The State Fair of Texas In Dallas

Dallas, Texas.—Chuckwagon cooking fans will again have their taste buds thrilled this year as the Chuckwagon rolls to a halt at the State Fair of Texas, Oct. 3-19.

The Chuckwagon, a kitchen on wheels, will dish up real Western vittles from recipes passed down by old sourdough cooks, to more than 2,000 people each day.

Such taste-tingling delights as "Texas Red" Chili, Cowpoke Beans, Son-of-a-Gun Stew, Black Night Barbecue Beef and Sunday Cobbler will grace the Marlboro Country menu.

With the Chuckwagon comes the Marlboro Western Heritage Museum, this year featuring original paintings and sculpture by four well-known contemporary Western artists: Joe Beeler, Jim Reynolds, Robert Shriver, and Bill Owen—all members of the Cowboy Artists of America.

The portable museum will also feature the award-winning short film, "The Last of the Wild Mustangs," narrated by Orson Welles.

Old sourdough Elmer "Teddy" Beer, of Marlboro Chuckwagon fame will be demonstrating authentic chuckwagon cooking under the guidance of trail boss Joe Nevitt. Elmer became involved with

chuckwagon cooking as a youth on the open range. He now owns a sizable cattle spread in Illinois. He maintains his interest in chuckwagon cooking, and travels each summer with the Chuckwagon, cooking in the open and spinning tales.

The Chuckwagon will be in a new location, across from the Women's Buildin.

42 Club Meets

Mrs. Virginia Griffin was hostess Thursday when she entertained the "42" Club in her home.

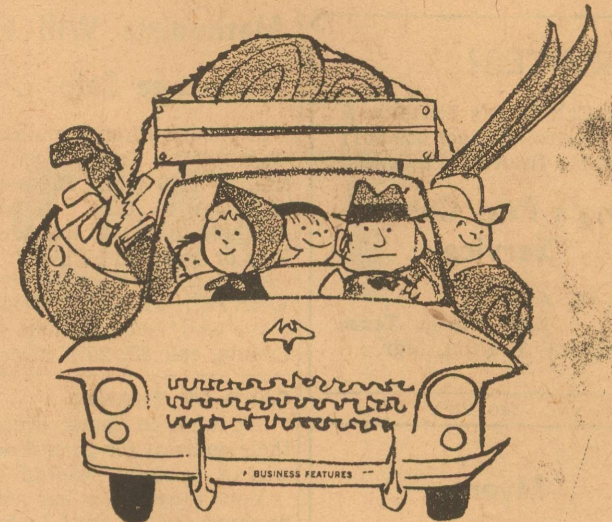
Those present were Bessie Doyle, Opal Parks, Maudie Bassinger, Jake Spencer, Rose Brannan, Zelma Henderson, Allie Cheatham.

Four guests: Natalie Stockton, Etta Ruth Dannheim, Lois Etheredge and Mary Hext.

The hostess served banana nut cake, fruit and coffee.

We all had fun together. The club will meet again Oct. 9th. Zelma Henderson will be the hostess at that time. —Rep.

Bessie Doyle spent several days in Menard recently, visiting her son Jerry Doyle and family.



A new car can be a lot of fun.

To finance one, see us.



The First National Bank

Of Eldorado

Eldorado Success Want Ads Get Results ! !

Thursday, Oct. 9th

9 99¢

KING SIZE WALLET CREATIVE COLOR PORTRAITS FOR ONLY

NO LIMIT

Extra Charge for GROUPS

GET PICTURES MADE OF GRANDPA, GRANDMA, DAD, MOM AND ALL THE LITTLE ONES AT THESE SAME LOW PRICES!

SHUGART COLOR PHOTOS

ASK About Our FREE 8 x 10 OFFER

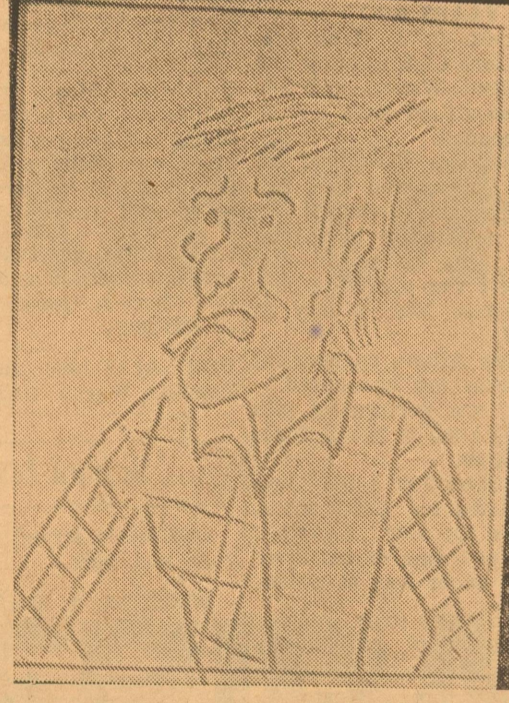
Western Auto Store
133 Main Street

WANTED

Alive

Reward

\$5000⁰⁰



YOU

Your Family, and Friends to Come to

Andy's Annual Roundup

at the First Presbyterian Church

Eldorado, Texas

SATURDAY, OCT. 4 — SUNDAY, OCT. 5 — AND MONDAY, OCT. 6 — AT 7:00 P. M.

NURSERY PROVIDED

and a Coffee Monday Morning 9:30-10:30

Don't Miss

Dr. Andrew Edington

JV & Jr. High Teams

- Oct. 2, Menard, Here.
- Oct. 9, Open.
- Oct. 16, Junction, There.
- Oct. 23, Wall, Here.
- Oct. 30, Mason, There.
- Nov. 6, Menard, There.
- Nov. 13, Open.

Game Times:

- 7th Grade -----5:00 p.m.
- 8th Grade -----6:00 p.m.
- JV -----7:30 p.m.



TEXAS ALMANACS at the Success

ROOFING

ALL TYPES ROOF REPAIR and quantity roofs.

KENT ELLIOTT ROOFING
Ph. 655-2800, San Angelo, Texas

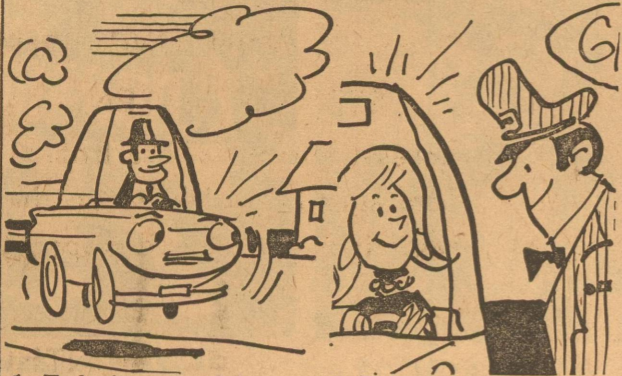
New 2 and 3 Bedroom Homes—

From 1,000 to 1700 square feet of floor space, built under city inspections. 1 1/2 or 2 full baths with ceramic tile showers and dressing tables. Large kitchen-family room combinations. Lots of cabinets and snack bar. Built-in dishwasher and range with hood. Utility rooms or areas. All gas or all electric. Central heating. Fully carpeted with window drapes installed. Completely finished and delivered to any place in West Texas \$12.75 per square foot. Can also brick all or part if desired and include refrigerated air all as an extra. We invite you to come and look at what we have to offer. We have been in this business for over 20 years and guarantee satisfaction.

Call Craig Hardegree at Burley Lumber Co.
San Angelo, Texas 655-3127

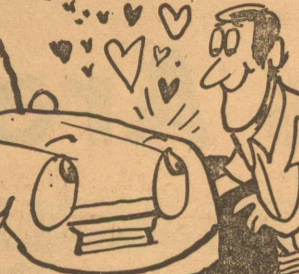
Quick Quiz! by Thompson

To keep your car running well all year round, it's important to check the cooling system. But do you know much about it? Why not take this quick quiz and find out?



1. Today's automobile engines run at temperatures (a) lower (b) higher (c) the same as engines designed before 1962.

2. In a recent survey it was shown that an average of (a) 25 percent (b) 35 percent (c) 45 percent of the 1,202 cars tested required cooling system service because the coolant was no longer fully effective.



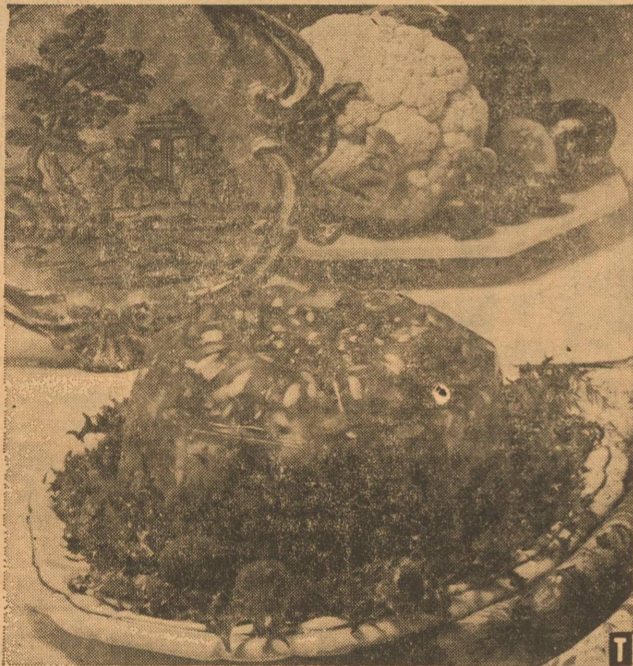
3. Many engineers recommend a (a) 25-75 percent (b) 50-50 percent (c) 75-25 percent solution of "Prestone II" Winter/Summer Concentrate and water for proper protection against boiling over, freezing up, and corrosion.



4. You should install a new radiator cap (a) every year (b) every two years (c) every three years.

Answers: 1. (b) Today's engines run hotter than those built before 1962. 2. (c) The survey conducted by Union Carbide and an independent research company, showed that 45 percent of the cars tested needed cooling system service. 3. (b) A 50-50 solution affords recommended protection against boiling, freeze-ups and corrosion. 4. (b) Experience shows that caps can fail to function properly after about two years.

LOW CALORIE VEGETABLE SALAD



Appetizing salads are tops on everyone's menu—not just the dieter's—all year round. Colorful cherry tomatoes, green pepper, cucumber, and crunchy cauliflowerrets are marinated in spicy low calorie Italian dressing. Unflavored gelatine then molds this mixture into a refreshing entree or side dish salad.

VEGETABLE SALAD MOLD ITALIANO

- 1 small cucumber, diced
- 12 cherry tomatoes, halved
- 1 cup diced green pepper
- 1 cup small cauliflowerrets
- 1/2 cup bottled low calorie Italian dressing
- 2 envelopes unflavored gelatine
- 2 cups cold water

In large bowl, toss vegetables with low calorie Italian dressing; marinate in refrigerator overnight.

In medium saucepan, sprinkle unflavored gelatine over 1/2 cup water; let stand until gelatine is moistened. Place over low heat; stir constantly until gelatine dissolves, about 5 minutes. Remove from heat, stir in remaining 1 1/2 cups water.

Stir gelatine into vegetable mixture; turn into 6-cup mold and chill until firm. Makes 8 servings. Approximately 45 calories per 3/4 cup serving.

TEXAS ALMANAC

1974-75

EDITION The Encyclopedia of Texas



Most used Texas Reference in the office, home or classroom. Recognized for more than a century as "THE AUTHORITY" on Texas. Covers History, Government, Agriculture, Business, Education, Weather and all Texas subject matter from A to Z. A compact reference book, the TEXAS ALMANAC is like having a whole library on Texas in a single volume.

ON SALE NOW AT NEWSSTANDS, BOOK STORES, DRUG STORES AND WHEREVER BOOKS ARE SOLD

On Sale Now At The Success Office

SUPPORT

THE

EAGLES

VS

SONORA

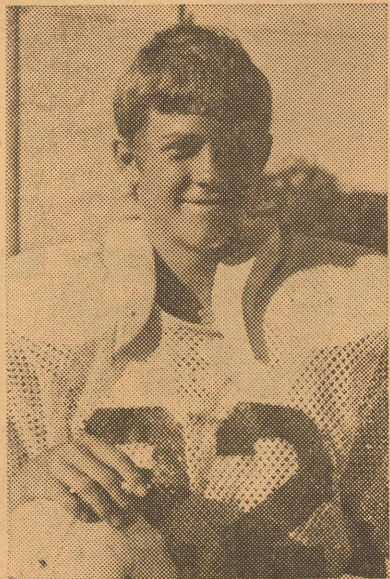
FRIDAY

NIGHT!

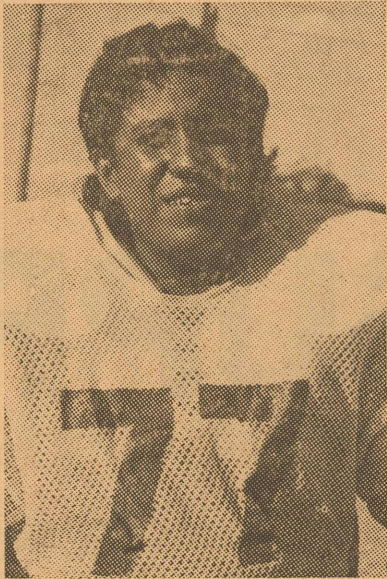
Contributed In The Public Interest By The Success



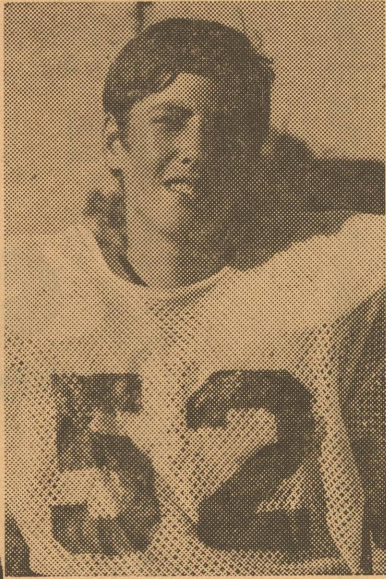
70-CHARLES BLAIR



15-JOHN BEN CAWLEY



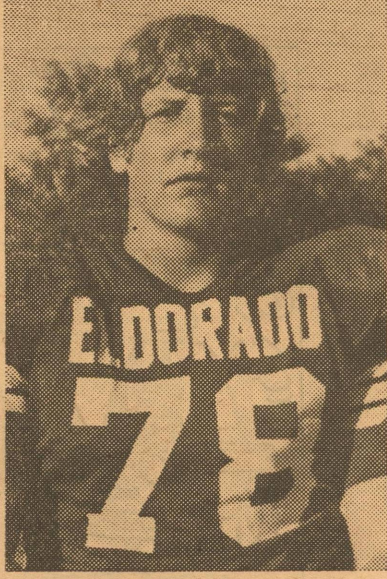
64-POMPOSO RODRIQUEZ



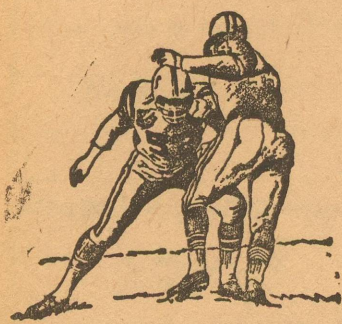
25-LYNN WHITAKER



JIM BOB BYRD



74-ZACK HOLSEY



All These Eagle Photos Are

Made Possible By These



Public - Spirited Advertisers !!



TRADE WITH THEM

B & B CAMPER COMPANY

Coy Bishop

MR. AND MRS. GLYNN EDMONDSON

Eldorado, Texas

DIVIDE CABLE CORPORATION

Everett Ogburn—Eldorado & Sonora

THE ELDORADO LIONS CLUB

Serving Schleicher County Since 1928

CECIL WESTERMAN DRUG

In Eldorado Phone 853-2226

LUM DAVIS FINA SERVICE

Lum & Fuddie Davis—Zane & Jan Miller

ELDORADO INSTRUMENT & CONTROLS

Bob Phillips—853-2506 853-2624

MIKESKA GIN

Kenith Homer, Mgr.

SOFGÉ'S GROCERY & MOTEL

Cramer & Mary Sofge

MITTEL TEXACO & CONSTRUCTION

Gail & Peggy Mittel & Employees

HEXT FOODS

Granvil Hext & Employees

YATES CLEANERS

D. T. Yates

MCCALLA'S DEPARTMENT STORE

Gene and Vernell McCalla

FOXWORTH-GALBRAITH LUMBER CO.

Eldorado, Texas

ELDORADO WOOL COMPANY

Your Purina Dealer

JERRY'S RADIO & T-V SERVICE

Jerry Jones — Phone 853-2314

SOUTHWEST TEXAS ELECTRIC CO-OP.

Inc. — Owned By Those It Serves

C. C. LEASE SERVICE CO.

John Meador & David Meador & Employees



5-MARK THORNTON



33-ERNESTO MARTINEZ



80-RONNIE HENSLEY



21-BILLY BOB HARLIN



72-BILL NIKOLAUK

Let's Go Eagles Of 1975! Beat:

SONORA

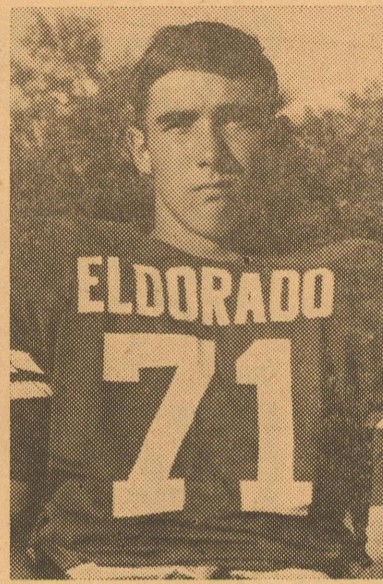


MIKE QIMBY
Head Coach

HERE ----- THIS FRIDAY NIGHT ----- GAME KICK OFF TIME WILL BE 8:00 P. M.



9—JOHN TACKER
Left End



71—RICKY GIBSON
Left Tackle



60—BARNEY McALPINE
Left Guard



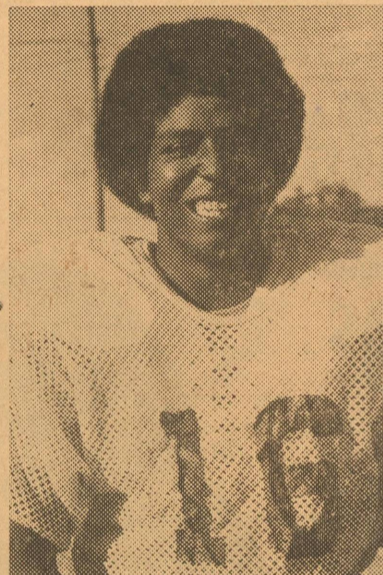
50—ROBERT PENA
Center



62—ADAN RODRIGUEZ
Right Guard



66—JAY HOLLEY
Right Tackle



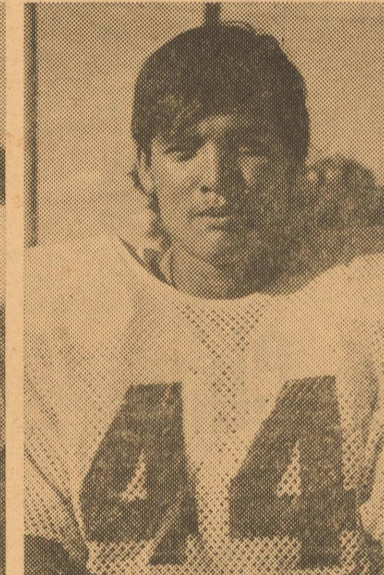
7—GEORGE FACTOR
Quarterback



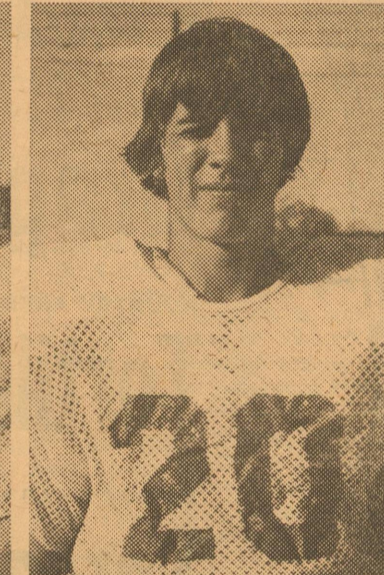
1—ALAN HALL
Left Wingback



3—ELIJIO RODRIGUEZ
Right Wingback



11—BEN MINOR
Fullback



90—BOBBY JARRETT
Right End

KENT'S AUTOMOTIVE & GARAGE
Phone 853-2733 — No. Angelo Hwy.

L. R. HANUSCH WATER WELL DRILLING
& Service — Phone 853-2686

LEE'S DRIVE-IN — BY THE SCHOOL
Winona Halbert

EL DORADO RESTAURANT
Jerroll Sanders — Prop.

MARY'S BEAUTY SHOP — Ph. 853-2132
Mary Hernandez

ELDORADO ANSWERING SERVICE
Barbara Jackson — 853-2135

THE FASHION BOUTIQUE
Lois Cummings

ANNA'S INN — SHORT ORDERS
Mexican Food — Phone 853-2143

JACK HALBERT, Jr. — MOBIL CONSIGNEE
Butane & Propane

H & H REC. HALL — SOUTH MAIN STREET
Robert Hibbitts

MCCORMICK'S DRIVE-IN GROCERY & STA.
Hollis & Bee McCormick

SCHRIER'S GULF STATION
Charles Schrier — Phone 853-2111

ELDORADO SHAMROCK SERVICE
Jackie & Marvin Cowart—853-9929

THE GREEN THUMB
For Your Pot Plant Needs — Frank & Claryce

THE ELDORADO SUCCESS
Printing—Advertising—News

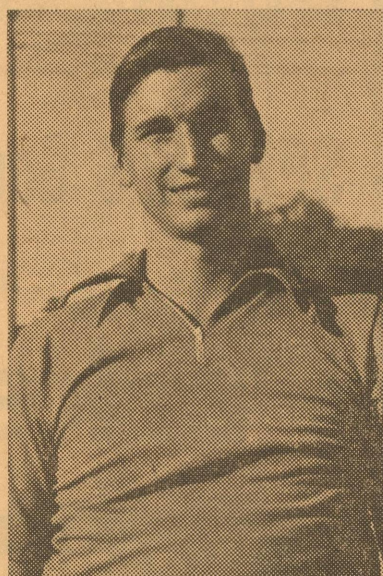
THIS AD SPACE FOR SALE
Call The Success At 853-2600

CLYDE CONSTRUCTION COMPANY
Pipeline Construction—Phone 853-2131

ELDORADO EAGLES 1975 FOOTBALL SCHEDULE

Date	Opponent	Place—Time
Sept. 5	Rankin 38	Eagles 15
Sept. 12	Ozona 61	Eagles 8
Sept. 19	Iraan 34	Eagles 6
Sept. 26	Winters 13	Eagles 8
Oct. 3	Sonora	Here, 8:00 P.M.
Oct. 10	Open Date	
*Oct. 17	Junction	Here, 7:30 P.M.
*Oct. 24	Wall	There, 7:30 P.M.
*Oct. 31	Mason	There, 7:30 P.M.
*Nov. 7	Menard	Here, 7:30 P.M.
*Nov. 14	Robert Lee	There, 7:30 P. M.

* District 9-A Games (Above Are Varsity Games)



LARRY MITCHEL
Coach



GARY TOLAR
Coach



KEN THOMAS
Coach



REYES ROBLEDO
Trainer

our LOW FOOD PRICES make shopping FUN!

FOOD BUYS for the BUDGETWISE



KIM TALL CANS
Dog Food 3 FOR 39¢

SUNBEAM SANDWICH 3 OUNCE
Cookies 3 FOR \$1

JERGENS BATH SIZE
Bath Soap 5 FOR \$1

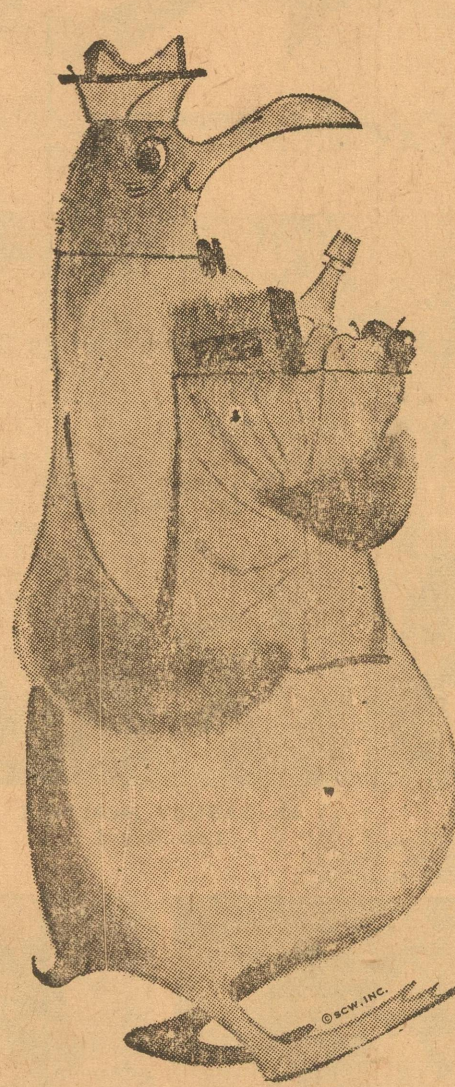
FRENCH'S INSTANT 16 OUNCE
Potatoes 89¢

HIDDEN VALLEY — All Varieties MIX 0.5 OUNCE
Salad Dressing 25¢

WELCH 24 OUNCE
Grape Juice 59¢

KOUNTRY FRESH 7 OUNCE
Tortilla Chip 39¢

SWIFT'S — All Varieties 7.5 OUNCE
Spreadables 59¢



FREEZER QUEEN 6 1/2 OUNCES
Salisbury Steak 59¢

FREEZER QUEEN 6 1/2 OUNCE
Sliced Beef 59¢

EGGO 11 OUNCE
WAFFLES 59¢

JENOS 13 OUNCE
PIZZAS 97¢

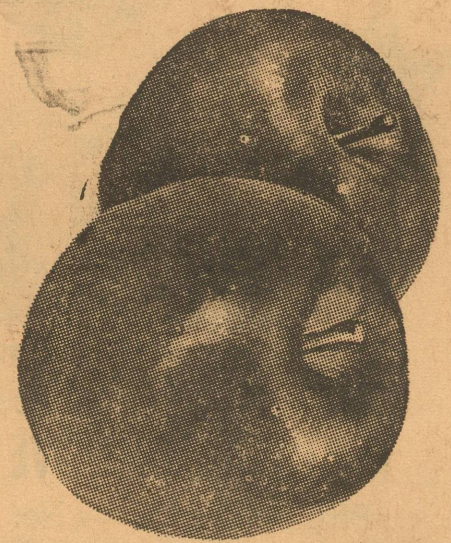
PEPPERIDGE FARM 22 OUNCE
Cobblers \$1.19

SARA LEE — PECAN 11 7/8 OUNCE
Coffee Cake \$1.39

WASHINGTON DELICIOUS POUND
APPLES 39¢

HAAS EACH
Avocados 29¢

FLAME POUND
Tokay Grapes 39¢



KRAFT'S POUND
Parkay 49¢

GERMAN DANKWORTH RING
Sausage 1.09

OSCAR MAYER 12 OUNCE
Bologna 97¢

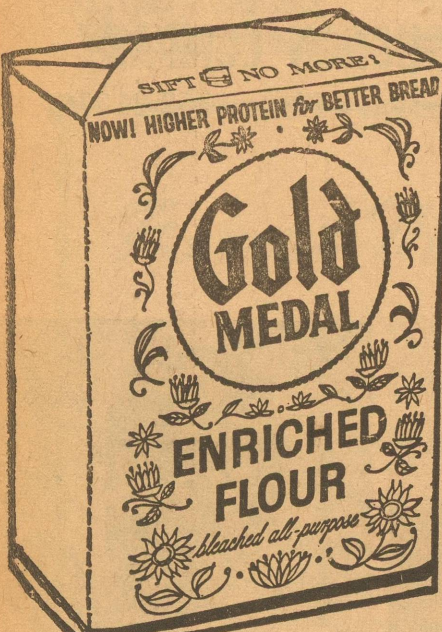


CHARMIN 4-ROLL PACK
Bathroom Tissue 69¢

RENUZIT — Wild Rose 7 OUNCE
Room Deodorant 49¢

ALUMINUM FOIL 12" x 25' ROLL
Reynolds Wrap 29¢

KIMBELL'S 49 OUNCE
Detergent 89¢



GOLD MEDAL 5-LB. BAG
Flour 89¢

DINTY MOORE 24 OUNCE
Beef Stew 89¢

FIRE SIDE POUND
Saltines 49¢

SPECIALS Good Thursday, Friday & Saturday
October 2nd, 3rd, & 4th

Parker Foods, Inc.

THIS WEEK ONLY
Van Camp PORK & BEANS 303 Cans 4 for \$1.00

We give S.A. GREEN STAMPS