



All Eyes Up! The EHS Eaglettes played heads up ball during their weekend tournament. They went on to romp Menard 42-23.

# Schleicher County LEADER

25¢

Vol. V Vol. 57

Eldorado, Texas (76936)

Schleicher County Leader Thursday, January 15, 1981

## Edmiston, Paxton Take Seats

During a regular meeting Monday the Schleicher County Commissioners Court listened to requests for money and equipment and discussed how to disperse county funds.

Newly elected commissioners, Billy Gene Edmiston of Precinct one and Prissy Paxton, precinct three,

sat in on their first official meeting and the first meeting for 1981, along with commissioners Holvey Enochs, David Meador, and County Judge Johnny Griffin. Edmiston and Paxton were sworn in Monday, January 5 in the judge's office.

Sheriff Orval Edmiston met with

the court to give a report on the new jail. The grant applied for through the Council of Governments was denied. Edmiston presented the court a report on the inventory for the new jail, which will come to approximately \$16,000. Bids for the equipment will be discussed at the

next meeting. Edmiston ask permission from the court to hire one jail employee immediately, to move into the living quarters at the existing jail until the new one is completed. The employee would be head jailer in the new facility. The court approved the hiring and the salary was left open for discussion.

Clay Burleson, county roads superintendent, met with the court requesting two new dump trucks and a steam cleaner. Bids for the trucks and cleaner will be discussed at the next meeting.

Billy Williams, representative from the newly formed Appraisal Office, discussed salary and retirement benefits for the Chief Appraiser with the commissioners. The

Billy Williams, representative from the newly formed Appraisal Office, discussed salary and retirement benefits for the Chief Appraiser with the commissioners. The Chief Appraiser has not yet been hired. There is controversy over whether the salary will come from state or county funds, with retirement benefits.

The yearly budget of \$1,500 for 1980 for the extension services, which included the 4-H Club, will be turned over to the extension agents to disperse throughout the year. In the past the commissioners court has handled the money and paid the bills for the departments.

By order of the court, all out of town expenses of county employees only will be paid for by the county. Expenses incurred by family or friends traveling with the county employee will not be paid.

Traveling expenses were raised by the court from 15 cents a mile to 20 cents a mile and traveler per diem from \$45 a day to \$55 a day.

A.G. McCormack, county treasurer reported although the 1980 annual report was not ready, the county ended 1980 in the black and in good sound condition. The report will be ready by the next meeting.

The 1981 Grievance Committee was chosen by the court, drawing names from the last grand jury. The names drawn were Helen Fay, H.G. (Buddy) White, Martha Lee Meador, David Lloyd, Freida Hanusch, James Page, and Thelma Childress. Letters will be sent to each person. The first four returned to the courthouse will serve.

The Commissioners Court would like to thank the Southwest Texas Electric Cooperative for taking down the Christmas lights at the courthouse.

The next meeting of the Commissioners Court will be held Monday, January 26 at 9 a.m.

## City Awards Cable Franchise, Ups Ante

The television cable franchise for Eldorado was renewed with Television Enterprises of San Angelo during the regular meeting of the Eldorado City Council Tuesday evening. The franchise was renewed for 15 years and the city ask for 3% gross receipts, over the past 2%.

A new gas rate was proposed by the city council. The new rate

proposed is \$1.50 per 1000 cubic feet of gas, with the minimum to remain the same of \$3.00 per 2000 cubic feet. The present rate slides from 1.19 down to 55 cents depending on how much is used. A public hearing is scheduled for Tuesday, January 20 at 7:30 p.m. in the Eldorado City Hall.

Justifications for the gas rate

increase are the cost of the new gas treatment plant, the cost of the emergency gas passed on to the city if used, and the cost of extra manpower to replace old gas lines in the city.

This new rate is still 40-50% lower than any rate in this area.

The council passed an ordinance to close a portion of the alley behind the First National Bank of Eldorado,

known as Block B of the original town site, and to modify the remaining portion to one way.

Television Enterprises has granted the city of Eldorado permission to use the weather channel 4 for emergency messages. Short blasts of the fire whistle will alert the city residents to turn to channel 4 for the messages. The weather gauges are

presently being repaired and should be in operation shortly.

The Railroad Commission's Annual report for 1980 is available to be read at the Eldorado City Hall. The report gives all gas utilities in the state of Texas and gives the community supplier's name, gas rate, number of customers, etc. Any one wishing to examine this report may do so at the city hall.

## Women's Division Entries Sought At Stock Show

We need your help to make this years Women's Division the very best ever. There are 10 entry categories. These are:

1. Jams, Jellies & Preserves
2. Pickles and Relishes
3. Hobbies and Crafts
4. Art
5. Needlework
6. Quilts and Afghans
7. Iced Cakes
8. Un-iced Cakes
9. Yeast breads-plain loaf
10. Yeast Breads-Fancy

Entries in Categories 1-6 should be turned in at the Show Barn on Thursday, January 15, between 1 and 5 p.m. They will be judged on Friday morning at 9 a.m. Entries in Categories 7-10 should be turned in Saturday, Jan. 17 by 9:30 a.m. They will be judged at 10 a.m. Please turn in a copy of your recipe with your entry. Mixes may not be used. Food will be judged on appearance and taste.

Rosettes will be awarded to the top 3 winners in each category. If you are not certain which

category an article should be entered in, please bring it our Thursday afternoon and the correct division will be determined. All articles entered must have been completed since January 1, 1980. There is now limit to the number of articles a person can enter. All exhibitors in the women's division must be 18 years of age or older. Men are invited to enter.

All entries may be picked up after lunch on Saturday. If you have any questions please call me.

## Stock Show Schedule

Program of Events  
Thursday, Jan. 15

1:00 - 5:00 p.m. - Women's entries accepted.

1:00 - 5:00 p.m. - Women's Entries Accepted.

6:00 p.m. - All calves in ties (rules states all calves in place)  
Friday, Jan. 16

9:00 - 12:00 a.m. - Judging Women's Entries in Divisions.

1:00 p.m. - All livestock in barn

1:00 - 3:00 p.m. - Weighing market lambs, hogs, shorn lambs, and calves in this order.

6:00 p.m. - Judging of Market Lambs

7:30 p.m. - Judging Swine

Saturday, Jan. 17

9:00 a.m. - Judging Shorn Lambs

9:30 a.m. - All Food Show Entries in.

10:15 a.m. - Judging of Food Show Entries.

12:00 Noon - Bar-B-Que Lunch

1:00 p.m. - Judging Breeding Cattle, Bulls & Heifers

1:30 p.m. Judging Steers

3:00 p.m. - Champion & Reserve Champion steers.

3:30 p.m. - Presentation of Awards

4:00 p.m. - Livestock premium sale.

5:00 p.m. - Food premium sale

6:00 p.m. - Chinese Auction

9:00 p.m. - Dance

## Financial Aid Available For College Students Much Left Unused Yearly

Most Students, regardless of scholastic achievement or financial need, can and do qualify for various forms and amounts of financial aid. The problem, according to Student College Aid, a nationwide computerized scholarship locator service, located at 3641 Deal Street, Houston, Texas, is that the students just don't know that they qualify. That is why last year alone one hundred thirty-five million dollars of student financial aid went unused.

Eight person years were spent developing this data based for Student College Aid. The data base contains \$500,000,000 worth of non-federal and non-state aid along with approximately 2 1/2 billion dollars worth of federal and state aid for undergraduate college students.

Student College Aid uses a computer to match students with available scholarships. The student fills

out a data form requesting information about religion, ethnic background, special interests, etc. This data is read into a large computer crammed with information about a quarter of a million possible sources of financial aid. This aid comes from unions, philanthropic organizations, corporations, colleges and other public and private organizations. The student then receives a computer print out listing up to 25 potential scholarships, grants or loans.

In fact, Student College Aid is so sure that it can find sources of funds for students ready to enter college or students in undergraduate college that it makes a money back guarantee. They guarantee to find at least five sources of financial aid for which the student is eligible to apply. Other wise, their payment is refunded along with any sources of funds

discovered for the student. Most students receive 10 to 15 listings valued at \$10,000 to \$15,000.

The computer print out that the student receives lists the names addresses of the donors, the amount and length of time of the awards, matching qualifications, etc. - everything the student needs to know in order to apply for the funds.

Students should allow themselves ample time to correspond with the donors of the awards according to Student College Aid. Different awards have different cut off dates. The important thing is to apply early. An applicant is never turned down for applying too early, but he is rejected for applying too late.

For further information contact Student College Aid, 3641 Deal Street, Houston, Texas 77025. Or Phone: (713) 668-7899 or 1-800-227-1617 Ext. 144.

## Sauer Animals Place At Odessa Stock Show

The Odessa Stock Show was an exciting event for the daughters of Duwain and Cynthia Sauer.

During the course of last week's events, Lynn Sauer had two of her show lambs place in the premium sale. They place 8th and 12th.

Melissa Sauer had two of her show lambs place in the premium sale also. Her lambs placed 15th and 23rd.

The sale took place Friday, Jan-

uary 9.

Mitzi Mittel also had a lamb to place in the finals.

Others from Eldorado who participated in the Sand Hills Hereford and Quarter Horse Show were Mia Kuikko, Dannette Dunagan, and Wendi Dunagan.

Good luck to everyone who will be showing livestock this weekend at the Schleicher County Stock Show.



This water color by R.A. Heichbeizer of Big Bear, California will be shown at Mertzson.

## Mertzson Bank Schedules Art Exhibit Jan. 14-16

The First National Bank of Mertzson will exhibit the works of eleven outstanding professional artists of the southwest. The art show and sale is scheduled for January fourteenth through January sixteenth, during normal banking hours. Approximately forty paintings and sculptures depicting our western heritage will be exhibited.

The artists exhibiting in the show include Garnet Buster and Ralph Wall of New Braunfels, Texas. R.A.

Heichberger of Big Bear, Californiz. Travis Keese, Alan Kinney, and Joe Russell of Kerrville. Edith and John Maskey of Comfort, Texas. Charles Sawyer of Blackwell. Herman Walker of Eldorado, and Lloyd Woodbury of Center Point, Texas.

Works accomplished in a wide range of media will be on hand including watercolors, oils, colored pencils, and bronzes.

The subject matter reflects the West of yesterday and today. Scenes

of Indian villages, Wildlife, and cowboys of the Southwest along with streets and people of Mexico abound throughout the exhibit.

While the theme remains Western in nature, the objective of the exhibit is to offer to the public an opportunity to see a variety of realistic art in differing media, subject matter, and technique. All work will be for sale and the public is cordially invited to attend.

# ASCS Offers Assistance

The Jan. 5 Farm and Ranch Newsletter contained some information which could be of value to Schleicher County ranchers and farmers.

January 31 is the final date to sign applications for incentive payments on shorn wool and unshorn lambs. Applicants are requested to bring sales receipts for wool and/or lambs that have not already been turned in when they sign up. Information also needed is the month of shearing, number of head shorn, unshorn lamb purchases, if any, and amount of freight charges, if any.

Change in 1981 NCA Requirements  
Compliance with the 1981 NCA, cross compliance and offsetting compliance will not be requirements of the 1981 wheat, feed grain and upland cotton programs.

NCA crop acreage planted in 1981 in excess of the 1981 NCA or the 1980 history acreage will not be used in determining a farm's NCA in future years. This means that if you report your NCA crop acreage by the applicable deadlines, you will be eligible for deficiency payments, low yield payments, and the loan programs. The final certification days for wheat, oats, and barley is May 1. The final certification date for cotton and grain sorghum is July 15.

1981 target prices are estimated to be as follows:  
cotton-68.5-75.5 cents/lb.  
grain sorghum-at least \$2.50/bu.  
barley-at least \$2.55/bu.  
corn-at least \$2.35/bu.  
wheat-at least \$3.81/bu.

### ACP

The ASCS office is still taking applications for conservation work to be done in 1981. You are urged to sign up now if you want to be considered for cost-share assistance.

According to the United States Department of Agriculture, here is the National 5-Day average price for major grains reported by Agricultural Marketing Service.

BARLEY-2.15 bu.  
CORN- 3/3 3.30 bu.  
Oats- 1/87 bu.  
Sorghum- 5.52 cwt.  
Wheat- 4.02 bu.

The weekly telephone report as of 12/24/80 shows farmers in Texas have the following quantities in reserve:

Barley-982 bu.  
Corn - 3,119,657 bu.  
Sorghum- 40,509 cwt.  
Wheat- 6,830,483 bu.

The Schleicher County ASCS Committee members are Mike Moore, Duwain Sauer, and Earl Lloyd. The County Executive Director is Ronald A. Mittel. The committee meets the first and third Mondays each month.

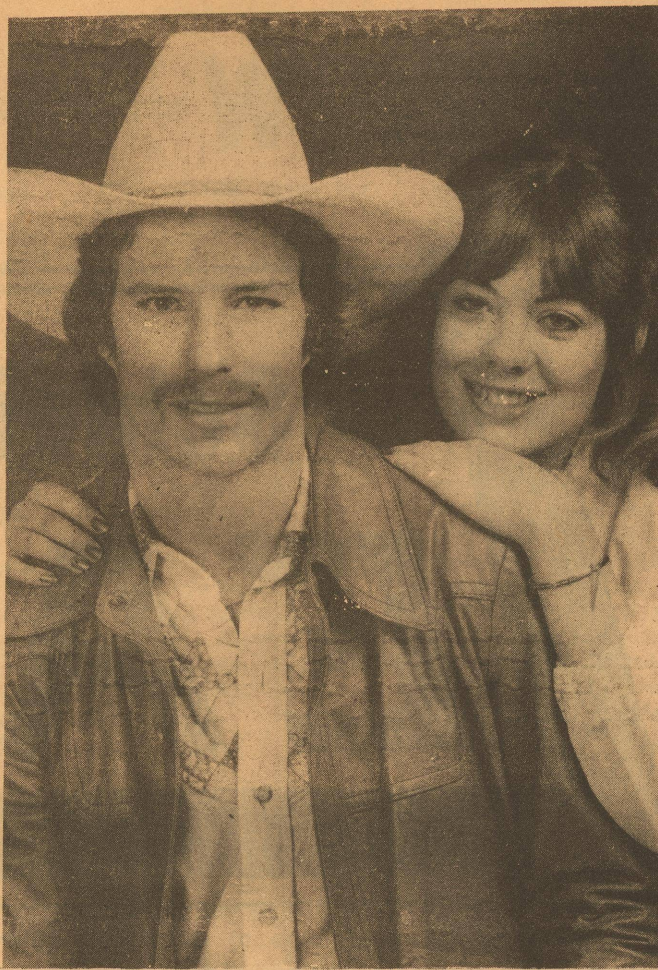
Today's modern farmer has many unique tax situations, and a free publication from the Internal Revenue Service can help answer the questions that arise from these situations.

IRS Publication 225, "Farmers Tax Guide," covers a wide range of subjects, such as soil sales, crop destruction, chicken purchases, casualty losses and share farming. Examples of how to prepare the Form 1040 and related schedules, and listings of important tax dates which affect farmer's throughout the year are also included. "Farmer's Tax Guide" is written in a clear, understandable style and can be a source of valuable information for today's farmer, according to the IRS. This handy reference can be ordered on the order form in the tax package, or by calling the IRS Tax Forms information number listed in the local telephone directory.

Producers who received payment through the ASCS office during the 1980 will receive Form CCC-182 through the mail.

This form is furnished to assist you in preparing your income tax return.

The reports will be mailed from Kansas City, Miss. during the last two weeks of January.



## Engagement

Mr. and Mrs. R.E. Corbell announce the engagement and approaching marriage of their daughter, Joy Corbell, to Forest Henderson, son of Mr. and Mrs. Sam Henderson, Sr. of Eldorado.

The bride is a 1980

graduate of Eldorado High School and has finished a semester at Southwestern University. The groom also attended Eldorado High School and Sul Ross University. The couple plans a March wedding.

## PHA Re-Appoints Members

Last Tuesday evening, Eldorado's Mayor Mr. Jimmy Doyle re-appointed two members to the Eldorado Housing Authority. With city secretary Carolyn Mayo looking on, Delia Pena and Danna Owens were sworn in by the Mayor.

Ann Griffin is the chief administrator of the program in Eldorado. The remainder of the Housing Authority's board were present for the ceremony.

## Future Eaglettes To Perform

The Dribbles of Eldorado's elementary school will perform during the intermission of the Eaglette varsity basketball game Tuesday, Jan. 20. The girls from grades

## Eldorado Receives Pat On The Back

Dear Editor:

Last weekend, I was passing through Eldorado, on the way to the deer lease. After returning home in Belton, late Sunday, I discovered that my check book and some other items were missing from my purse. I called all the places that we had made stops, with no success. January 6, 1981, I received my things in the mail, all intact. The Kwik Pantry and its employees are the ones that showed such food faith and

honesty as to return the items, which they found after I called Sunday. I would like to say The Kwik Pantry and their employees are an asset to the community.

Friendly gestures of this nature makes being so far from home, seem just a little bit closer. I look forward in visiting your town in the future.

Sincerely,  
Marilyn Karl  
2225 Herrington  
Belton, Tx.

## 84 Club

Lillian Mikaska was host for the 84 club in her home Jan. 6 those present were Opal Parks, Florence Hinton, Louise Logan Annie Speck and Bessie Doyle.

## Dual Silver Anniversary

A silver wedding Anniversary honoring two sisters, Claude Jessie Jenkins and Jackie Jo Ann Heffernan, was hosted by their children on Dec. 25. Brian and Linda Holsey, Dan and Nancy Jenkins, and Lori Heffernan gave the party. Brian and Linda also celebrated an anniversary on the 25th.

## Presbyterian Elders Installed

Ordination and installation for elders of the Presbyterian Church was held Sunday during the morning worship service. Ordained ruling elders and installed were Jim Cawley and Richard McCarron. Previously ordain-

ed elders who were installed were Marvin McAngus and Wilson Page.

A covered dish luncheon was held after the service at the church to honor the newly elected and retiring elders. Approximately 56 attended.

## Cotton Producer's Meeting

Jerry Swift, Schleicher County extension agent, will hold a meeting for all cotton producers this evening (Thursday) at 7:30 p.m. in the Lions Club Room of the Memorial Building.

The meeting will be on the future of Schleicher County Gin, next tax program and appraising. Refreshments will be furnished by Mikeska Gin.

## Duplicate Bridge

The Duplicate Bridge Club held a Membership Tournament in San Angelo last Thursday night with 12 tables of bridge players participating.

The winners from the Eldorado area club were

Helen and Jack Bebee winning first East-West and high overall.

Billie Porter and Mary Christian won third East-West and tied for fifth overall with Lue Kight and Marlene Evans, Sonora, who won third North-South.

## IRS Information

Eligible workers have until Tuesday, April 15, 1981, to make their 1980 contributions to their Individual Retirement Savings Arrangements (IRA's); however, if they file their 1980 income tax returns after April 15 on an extension, they have until the date they file their returns to make their contributions.

Since penalties are assessed for excessive contributions, this period for making contributions allows taxpayers to closely calculate the amount of the contribution, make the contribution, and still be able to deduct it from their 1980 taxable income, the IRS explains.

IRA's are taxpayer-initiated retirement plans set up by workers not covered by qualified pension or retirement plans where they are available. IRA's also are available to non-working spouses of eligible workers.

Many banks, insurance companies, credit unions, and other financial institutions can provide additional information on setting up and maintaining IRA's. In addition, the IRS has a free booklet, IRS Publication 590, "Tax Information on Individual Retirement Arrangements," which can be ordered by mail using the

order form in the tax package, or by calling the IRS number in the local telephone directory. If more convenient, it can also be picked up at most IRS offices.

Employees who have not received their Wage and Tax Statements (Form W-2) from their employers must still file their tax returns by April 15, the Internal Revenue Service advises.

To avoid delays in receiving the W-2, employees should furnish their employers with a current address, the IRS says. If employees do not receive the statement by February 2, they should first contact their employer. After February 15, 1981, the employee should ask for help by calling the IRS toll-free number listed in the telephone directory.

The IRS reminds taxpayers that they must have a W-2 form from every employer they worked for during the year. Even if an employee is unable to get a W-2 before the filing deadline of April 15, a timely return must be filed. Report all income and attach a statement explaining the tax computations for the missing wage and tax information, the IRS says.

## Catholic Women's Organization

The Catholic Womens Organization met at Our Lady of Guadalupe rectory January 7th Rev. Mark Woodruff welcomed all members.

New officers were elected for the following year: President; Holly Brane, Vice President; Anne Arispe, Secretary; Kim-et Nelson, and Treasurer; Carmilla Riedy.

New ideas were discussed and committees for each were organized.

Rev. Woodruff told the members of the trees to be delivered in February and the plans for landscaping the church property.

Holly Brane closed the meeting and lunch was served.

The next meeting will be February 4th at 7:30 in the Parish Hall.

## Home Front News

Fred Gillaspay celebrated his 82nd Birthday last week in the home of his son James Gillaspay. His wife Lee served dinner and followed up with birthday cake. Mr. Gillaspay is a patient here at the Schleicher County Nursing Home. Happy Birthday Fred.

Mrs. Bobby Sanders is in the Saint John's Hospital in San Angelo. She has had surgery and her husband reports she is doing fine and will be home shortly.

Jan Fuessel is in the Community Hospital in San Angelo. She has had surgery and is doing as well as

can be expected. Everyone misses you and hopes you will be home soon.

D.D. (Burro) Griffin is in the Schleicher County Medical Center recuperating from a heart attack. His condition has stabilized and we hope he will be out and about soon.

## CHURCH DIRECTORY

**CHURCH OF JESUS CHRIST OF LATTER DAY SAINTS**  
Bishop: Bryan Galloway  
San Angelo 658-4797  
2817 Christoval Rd.  
Joe Moran-Ozom-392-3453  
Girl Scout Building Corner of Water&Pecan in Sonora  
Sunday School 10 a.m.  
Priesthood 10 a.m.  
Relief Society 10 a.m.  
Sacrament Meeting 11 a.m.  
Visitors Welcome  
2nd & 4th Sundays Sonora  
1st & 3rd Sundays San Angelo.

**ST. MARY'S EPISCOPAL CHURCH**  
Rev. Lea Roy Aldwell  
Pelt St.&McWhorter Ave.  
387-2617 (Sonora, Tex.)  
Sunday Morning Worship and Holy Communion

**FIRST PRESBYTERIAN CHURCH**  
Rev. Ronald J. Sutto  
7 N. Cottonwood  
Sunday School 9:45 a.m.  
Morning Worship 11 a.m.  
Fellowship Time 10:30 a.m.  
Visitors Welcome

**FIRST BAPTIST CHURCH**  
Oak and Gillis  
Sunday School 9:45 a.m.  
Morning Worship 11 a.m.  
Adult Evening Bible Study  
Worship 7:00 p.m.  
Wed. Prayer Service 7:30

**OUR LADY OF GAUDALUPE CHURCH**  
Rev. Mark J. Woodruff  
Pastor 853-2663  
Saturday 7:00p.m.  
Sunday 8:00a.m.(Spanish)  
9:30a.m.(English)

**WESTSIDE CHURCH OF CHRIST**  
HWY. 277  
Sun.Morn.Serv. 10:30a.m.  
Sun.Eve.Serv. 6:00p.m.  
Wed. Eve. Serv. 7:30p.m.

**Primitive Baptist Church**  
Menard Hwy  
Elder Freddy Boen, Pastor  
Services each 2nd & 4th  
Sunday at 10:30a.m. and  
2:30p.m.  
Also on Saturday night  
Before 2 and 4th Sun.  
Meeting at 7:00p.m.

**PRIMERA IGLESIA BAUTISTA**  
Rev. E.L. Flores, Pastor  
EIPaso and Concho St.  
Sunday School 9:45 a.m.  
Morn. Worship 11:00 a.m.  
6-7 p.m. Training Union  
7-8 p.m. Evening Worship  
Wed. 3 p.m. Sunbeams  
7 p.m. Prayer Services

**FIRST CHRISTIAN CHURCH**  
Dale Lipsett, Minister  
Sunday School 10:15 a.m.  
Worship 11:00 a.m.  
Wed. Bible Study 7:00 p.m.  
853-2247

**UNITED PENTECOSTAL CHURCH**  
Rev. Walter Ford  
Hackberry St.  
Sunday School 10:00 a.m.  
Worship Service 11:00 a.m.  
Sun.Eve.Serv. 7:00 p.m.  
Wed.Eve.Serv. 7:30 p.m.

**ROCK CHURCH OF CHRIST**  
Dale Huff, Evangelist  
708 Lee St.  
Sunday Bible Class 10 a.m.  
Worship Service 11 a.m.  
Evening Worship 6 p.m.  
Wed.BibleClass 7:30 p.m.

**FIRST UNITED METHODIST CHURCH**  
Rev. John A. Robinson  
Hwy 277 across from Courthouse  
853-3010

853-3010  
Church School 9:50 a.m.  
Morn. Worship 10:50 a.m.  
Youth Fellowship 7:00 p.m.  
Wednesday:  
Young Adult Study 7:30  
All are welcome.

## From The Pastor's Pen

by Don Williford

Lottie Moon was born at Christmas time in the year 1840. She lived in Virginia, near the homes of President Thomas Jefferson and James Monroe. When Lottie got older, she began teaching school in a little town named Cartersville in Georgia. Lottie loved children, and she taught Sunday School at First Baptist in Cartersville. In fact, Lottie loved teaching about God so much that in Feb. 1873, she dedicated her life to be a missionary to China. She left for China in 1878.

The more people Lottie met, the more she noticed most of them never had enough to eat. She often gave her own food away. Her Chinese friends had never heard about Jesus. Only the women and children would listen to her. From the time Lottie gave her life as a missionary to China in 1878 to the time when the Chinese men finally asked her to explain the gospel, thirteen years had gone by. Lottie loved the Chinese so much, she only returned to the U.S. once in the 24 years she lived in China. Her love became so great that she began writing letters to the Southern Baptists in the states urging them to organize their Missionary Program.

She hoped that more people would give their money to help pay the cost of spreading the gospel in lands such as China. Lottie Moon had accomplished two goals by the time she died in 1912. She had been a good and faithful missionary to China, and had sparked a new and sustained commitment in the hearts of Southern Baptists for foreign missions. That's how the Lottie Moon Christmas Offering came into being. Please prayerfully consider what God would want you to give to foreign missions this Christmas season.

**Our Church Feature Is Sponsored By The Following Merchants Who Urge You To Attend The Church Of Your Choice This Week!**

<p><b>WESTERMAN DRUG</b> Cecil Westerman Would Like To Be Your Pharmacist 853-2226</p>	<p><b>SOUTHWEST TEXAS ELECTRIC CO-OP, INC.</b> Owned by Those We Serve Eldorado, Texas 853-2544</p>	<p><b>Holley House</b> "For the Unique and Creative" Eldorado, Texas 853-2763</p>
<p><b>EL DORADO RESTAURANT</b> Steaks-Seafood &amp; Mexican Foods Catering Service Available 853-2818</p>	<p><b>TREY TRUCKING</b> All Kinds Of Oilfield Trucking Eldorado, Texas 853-2186</p>	<p><b>HERSHEL'S FOODWAY OF SONORA</b>  <b>SONIC DRIVE-INN OF SONORA</b> Hwy. 277 North Sonora, Texas 387-5292</p>
<p><b>BUTLER SUPPLY COMPANY</b> Oilman's Friend East St. Eldorado, Texas Day 853-2503 Night 853-2004</p>	<p><b>COMMERCIAL RESTAURANT</b> Where Friends Meet To Eat Glasscock &amp; Plum Sonora, Texas 387-9928</p>	<p><b>THE WESTERN COMPANY</b> Pacesetters in the Oil &amp; Gas Industry Eldorado, Texas</p>
<p><b>FOOD CENTER</b> Herbert &amp; Lois Fields, Owners Les Robertson Manager Sonora, Texas 387-3438</p>	<p><b>R &amp; H WELL SERVICE, INC.</b> Complete Oilfield Service Eldorado, Texas 853-2003</p>	<p><b>Schleicher County Leader</b> Interested persons may submit original church features anytime. 853-2032</p>

## Schleicher County Leader

Published Weekly on Thursdays  
Second Class Postage Paid at Eldorado, Texas  
Phone 853-2032 P.O. Box 782, Eldorado Texas

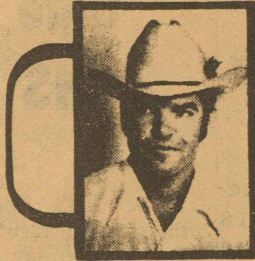
Any erroneous reflection upon the character or standing of any person or firm appearing in this publication will be gladly and promptly corrected upon the calling the attention of the management to the article in question.

DAVID FIELDER.....EDITOR  
SHIRLEY OVERSTREET...ADVERTISING MANAGER  
Display advertising open rate is \$1.41 per column inch. Classified rate is 10 cents per word, per insertion, \$2.00 minimum charge. Classified display is \$2.00 per column inch.

Notices of entertainment, where admission is charged, notices of events of a fund-raising nature, cards of thanks, resolutions of respect, submitted poetry, and all such matters NOT NEWS will be for at the normal advertising earned rates. Volume and frequency rates are available upon written request to the publisher or advertising sales manager.  
Yearly subscription rate is \$7.50 in county and 8.50 outside Schleicher County.

MEMBER 1980

TEXAS PRESS ASSOCIATION



## Jerry Lackey's Country Folk

When visiting the homeplace of the famous race horse, Chick Called Sue, one is suddenly confronted with the fact that there's nothing but famous broodmare material in this Aubrey Stokes remuda.

The beautiful two story home on a hill overlooking the Concho River a few miles drive from Stokes law office in downtown San Angelo is not set apart too far in comfort from the barn that houses the horses. "They are all my babies," smiles Stokes.

For him, "Girls" are among the finest in quarter horse racing a sport he defends with biblical fever.

As public relationsman and overseer of the West Texas Rehabilitation Center's Southwest Texas Region, I was called to the Stokes El Rancho Contento to receive papers for a yearling colt. Stokes has donated this colt "bred in the purple, from both the dam and the sire's side to WTRC." Registration application gives, Wes Texan, as the first choice for a name.

I expected Stokes to give some of the earnings from the colt to Cattlemen's Round-up for Crippled Children, a division of WTRC. Thus, I was overjoyed when he prepared a transfer certificate so that the funds from the sale of the horse will go to WTRC. And when he added: "I want that to go to the new building fund of Rehab-San Angelo to help the little crippled children," we were all beside ourselves.

This may seem like another tale of a proud horseman and his horses. Yct, it's a story told over and over again since the beginning of WTRC in 1953. Without the compassion of men and women across the Southwest the calibrator of Aubrey Stokes, there would not be a place of hope and beginning-again for 8,000 individuals every year.

The yearling foaled February 2, 1980 in a grandson of three Oh's that won the All American and sired many great horses that have been futurity finalists and winners including this colt's sire, Sinn Fein, who

has a speed index of 98. This stallion is the son of Watch Rebel Go who has a Registration of Merit in racing and a member of the Stokes broodmare band. Watch Rebel Go is the sister to Madam Betterfly who is a multiple stakes race qualifier in many races in Sunland Park, Ruidosa and Tucson, Arizona. She obtained her speed index of 101 winning at Tucson.

Watch Rebel Go's other half-sister is Fauna Dargo who is a stake winner with a speed index of 93. What this means is, that their dam, Watch Rebel Go, who has a Registration of merit in racing, is a winner Madam Betterfly with a speed index of 101 and Fauna Dargo who is a stakes winner with speed index of 93.

Stokes says that Rehab Colt has been nominated for the 1982 All American Futurity and the winner in that race will get \$1 million. "Prior to the sale, I plan to also nominate him for the Kindergarten which will be run in Los Alamitos, California," He Added.

## Hospital Auxiliary Plans A "Tacky Party"

The Schleicher County Hospital Auxiliary met Thursday, January 8.

Mrs. Tom Ratliff gave the opening prayer. Plans were made for a Patio Sale. The Patio Sale is to be held in March on the 17th or 24th, at the Memorial Building at 10:00 a.m. Mrs. Tom Ratliff is the chairman for this fund raising project.

Ruth Ella Dacy is the chairman of the Birthday Party of the Month to be

held on January 27 at 10:00 a.m. The guest of honor is Mr. Richard Cheatham who is celebrating his birthday this month.

This event is to be a Tacky Party which is always a lot of fun for everyone.

February 5 is the date set for the next Hospital Auxiliary meeting. The meeting will be held in the dining room of the hospital. A guest from the Cancer film to the group.

## Historical Society To Take Part In Pilgrimages

Texans in over 200 counties will gather at high noon on January 19th in pilgrimages to historic sites and official markers commemorating the roles of Texans in the Civil War.

January 19th has been designated by the Legislature of Texas Confederate Heroes Day, a time for a special observance honoring soldiers, civilians, and officials who distinguished themselves during this period of conflict.

Speeches, memorial services, wreath-layings, graves and marker decorations and other activities will be conducted at the locations of military and naval installations, manufacturing plants, scenes of battles and skirmishes and other significant sites. A number of these locations recognize activities of Federal Forces within the State.

An educational poster honoring the public service of 20 outstanding Texans in the Civil War will be displayed in schools, museums, and other prominent places.

This Heritage and Pilgrimage Day is one of ten to be sponsored annually by the Texas Heritage Project, a joint endeavor of the Texas Historical Foundation and the Texas Historical Commission. Local chapters of the United Daughters of the Confederacy, and the 254 County Historical Commissions are also sponsored.

Mrs. W.R. Knowles of Houston is coordinating the statewide activity.

Mrs. Margaret Frost is Schleicher County's Historical Commission chairman.

## 4-H Sponsors Pig-Prize

The 4-H Club will hold a drawing Saturday at 3:30 p.m. for a pig, donated by Henry Moore and Mike Moore. All proceeds from the tickets will be used to help finance 4-H activities.

Tickets may be purchased from any 4-H Club member or from the extension office at the courthouse.

Tickets are \$1.00 a peice or 6 for \$5.00. The person

who sells the most chances on the pig wins \$25.00 plus five free chances, and the third place salesman wins second high individual wins \$15.00 plus three free chances, and the third place salesman wins \$10.00 plus three free chances.

All tickets and money must be turned in by Saturday at 3 p.m. to Nancy Lester or Sherry Johnson, 4-H Club treasurer.

The pig will be processed and ready for the freezer.

## Mini-Spanish Lesson

Submitted by Paul Pena

Mini-Spanish Lesson Four [Leccion Cuatro lek-see-on koo-ah-troh]

English	Spanish
poet	poeta
prolem	problema
artist	artista
form	forma
list	lista
person	persona
music	musica
calm	calma or calmo
monument	monumento
color	color
cordial	cordial
class	classe
general	general
important	importante

Spanish is not a complete stranger. As you begin your study of the Spanish language, you will be pleased to learn that you already know, or can make a good guess at [the above words] the meaning of many Spanish words that you see for the first time. For there are many Spanish words which differ only slightly in spelling, often not at all, from corresponding English words with the same meaning. Here are some more of these similarities:

Words in which the Spanish ending--cion equals the English ending--tion

English	Spanish
conversation	conversacion
emotion	emocion
information	informacion
disposition	disposicion

there are many more

Words in the Spanish ending ad equals the English ending--y.

English	Spanish
popularity	popularidad
opportunity	oportunidad
quality	calidad
quantity	cantidad
city	ciudad
dignity	dignidad
formality	formalidad
velocity	velocidad
society	sociedad
facility	facilidad

there are others

submitted by Paul Pena

## Ten Commandments For Youth

I. Thou shalt be courteous and respectful of thy neighbor.

II. Thou shalt shut up thy mouth when another speaketh; that thy self-control and thy wisdom may be known to all within the gates.

III. Thou shalt give thanks in word and deed unto all that graciously help thee.

IV. Thou shalt not provoke thine elders to wrath, for they shall not fail to send thee away in haste to the house of thy father and thy mother.

V. Whatsoever thou messeth, thou shalt clean; and whatsoever thou taketh away, thou shalt return, that thy days may be long upon the earth.

VI. Do not press thy body greedily upon the refresh-

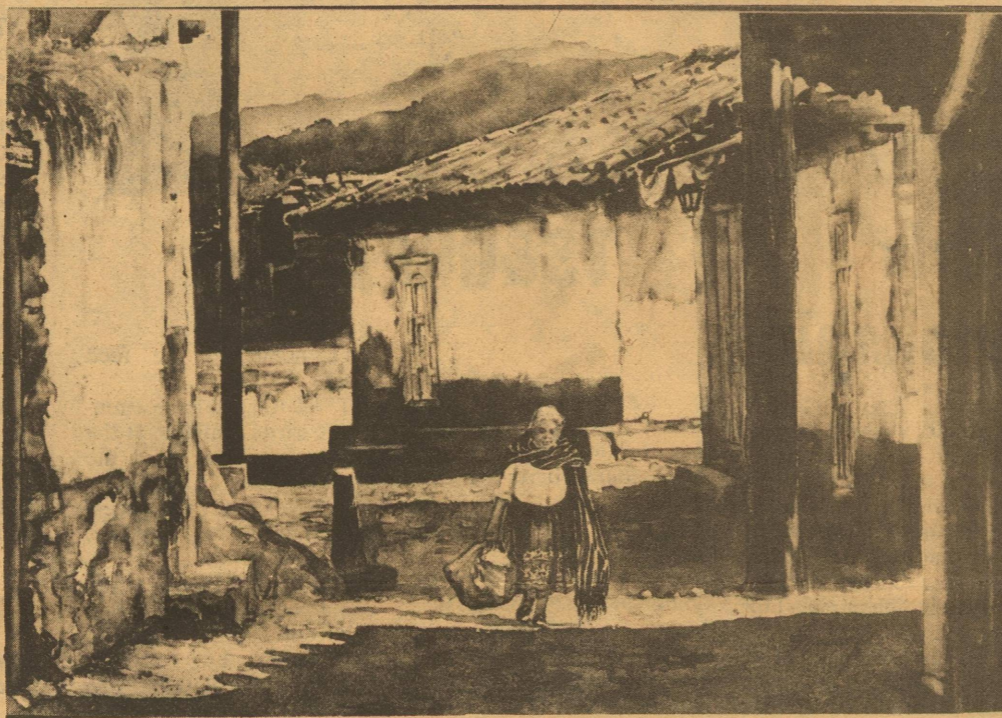
ment line lest thine chocolate cookies be smashed or thine fruit juice scattered abroad and thou goeth away in grief.

VII. Behold the ways of those about thee; shun evildoers; follow that which is right; and all generations shall rise up and call thee blessed.

VIII. Thou shalt call for thy chariot to fetch thee to thine dwelling place at the ninth hour that thy teachers may find rest for the morrow.

IX. Yea, in all thy comings and goings thou shalt be timely, peaceful, and joyful.

X. If thou comest with a heavy heart, no good shall befall thee; therefore, show a merry countenance and rejoice.



One of the Southwestern Artists to be featured at the Mertz Art Show will be Herman Walker of Eldorado. This watercolor is by Edith Maskey of Comfort.

## Menus

**Monday Jan. 19**  
German Style Sausage  
Creamed Potatoes  
Mixed Greens  
Apricot Halves  
White Cake/Icing

**Tuesday Jan. 20**  
Beef & Cheese Enchiladas  
Pinto Beans  
Lettuce & Tomato Salad  
Cornbread or Crackers  
Chocolate Pudding

**Wed. Jan. 21**  
Turkey-A-La-King  
Whole Kernel Corn  
Sliced Peaches  
Peanut Butter Cookies

**Thur. Jan. 22**  
Barbecued Chicken  
Potato Salad  
Ranch Style Beans  
Dill Pickle Strips  
Peach Cobbler

**Friday, Jan. 23**  
Sloppy Joes  
Potato Rounds  
Fruit Cup  
Rice Krispie Cookies

**Breakfast**  
**Mon. Jan. 19**  
Peaches  
Pancakes, Syrup

**Tues. Jan 20**  
Banana  
Choice of cereal

**Wedn. Jan. 21**  
Orange Juice  
Hot Biscuits-Sausage-Jelly

**Thur. Jan. 22**  
Grape Juice  
Buttered Rice-Toast

**Fri. Jan. 23**  
Pears  
Doughnuts

## DPS Records 90 Fatalities Over Holidays

At least 40 persons died on Texas highways during the New Year's holiday period, surpassing the Texas Department of Public Safety prediction that 37 travelers would die on state highways during the 4 1/2 days.

The count began at 6 p.m. Wednesday and concluded at midnight Sunday.

At least 50 persons died in traffic accidents during the long Christmas weekend, making a total of 90 fatalities for the two holiday weekends. DPS officials predicted 95 fatalities in Christmas and New Year's traffic accidents.

Most of the accidents during the New Year's weekend involved single car wrecks in which one

person died, the DPS said. Six pedestrians were killed in accidents, three of which involved hit-and-run drivers.

Fifteen accidents were 1-vehicle wrecks in which 15 persons were killed, a DPS spokesman said Monday. The department reported 34 accidents involving fatalities.

Throughout the holiday, DPS increased highway patrol service by pulling troopers from drivers license departments, motor vehicle inspection service and license and weight service divisions.

Troopers worked closely with local law enforcement officials to hold down speeding and to remove drunk drivers from the highways, the DPS said.

## "Texas Homes" To Feature Dedicated Stone

James King probably has done more during the past two decades to restore and preserve Texas' architectural heritage than any other person in the state.

With skill, dedication and pride of workmanship now associated only with craftsmen of long ago-qualified which seem all but lost in today's world-King has used his own hands to personally rebuild more than 1,000 historic stone structures in all parts of the state. From the desolate plains of far West Texas to the deep woods of East Texas, from the rolling North Texas prairie to the hill country of South Texas, King has left an indelible mark.

Formerly a resident of Fredericksburg, King is also intimately familiar with the construction of the "Sunday" houses, small stone structures with wide

porches used as week-end houses. Texas Homes magazine features James Kin in its January/February issue and follows his progress from boyhood growing up in the hamlet of Lorraine, west of Sweetwater. King learned the aged art of stonemasonry from his father, Elzie King, who had, in turn, picked up the craft as the son of an English immigrant in the boomtown of Eastland.

Don't miss the January/February issue of Texas Homes which spotlights not just buildings, but also faith in a set of values and a way of life that Texans should hope will not disappear.

Texas Homes is available on newsstands throughout Texas or by writing the Subscription Department, 1925 San Jacinto, Dallas, Texas 75201.

## 42 Club

Bessie Doyle and Etta Ruth Dannheim wer hostess for the 42 Jan. 8 club in the club room at the Memorial building. Those present were Jewel Van Dusen, Opal Parks, Zelma Hender-

son, Vila Finnigan, Jake Spencer, Lillian Mikaska, Maudie Bassinger, Annie Speck Florence Hinton, Virginia Griffin and the hostess Etta Ruth Dannheim, and Bessie Doyle.

## State Comptroller Sets FBI Onto Indian Smugglers

"There isn't any such thing as a tax-free cigarette unless you leave the country," Bullock said.

He said the Jenkins Act, a federal statute, requires interstate shippers of untaxed cigarettes to notify tax authorities of the name and addresses of persons who purchase cigarettes.

"We've been on the warpath with these Indians for several months about

providing the names of Texas customers as required by the federal law. They've been quieter than a totem pole about when the lists will be sent," Bullock said.

Texas cigarette taxes amount to \$1.85 a carton and if the taxes aren't paid voluntarily to the State Comptroller's Office the time of purchase there is a \$1.85 a carton penalty.

"The cigarettes are hard-

ly a bargain if you add in the tax and penalty," Bullock said, "and Texans should be wary of these alleged cheap cigarettes."

Bullock said if the FBI finds the shippers of mail order cigarettes in violation of the Jenkins Act they could be prosecuted in federal courts.

Cigarette taxes amounted to more than \$321 million in state revenue last year.

Left Over Christmas Items

50% off

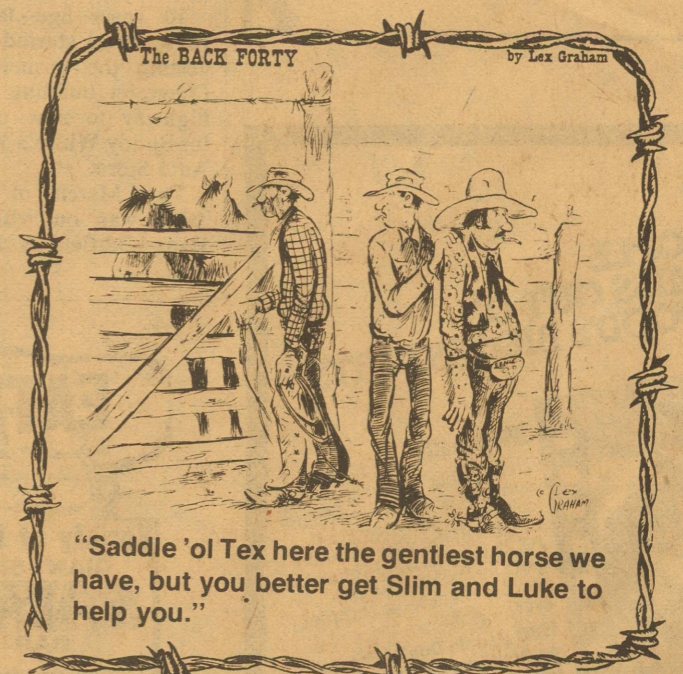
holley house

Eldorado

Hwy. 277

## The First National Bank of Eldorado

"Serving the complete Banking Needs of Eldorado and Schleicher County Since 1907"

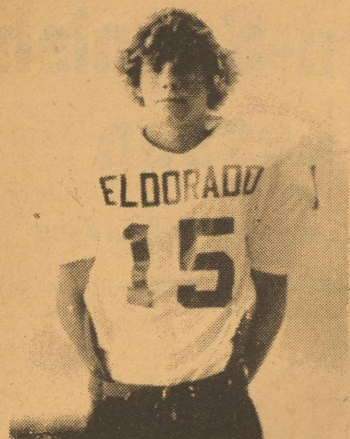


"Saddle 'ol Tex here the gentlest horse we have, but you better get Slim and Luke to help you."

Be sure you pick a gentle horse if you go on a vacation at a dude ranch. But let us help you make that vacation even more enjoyable with a low interest vacation loan.

DRIVE-UP BANKING

FDIC



**Keith McCormack, Sr.**  
ALL WEST TEXAS TEAM  
DEFENSIVE BACK

## McCormack Named To S-T Honor Roll

Senior Keith McCormack received another post season honor recently as he was named to the San Angelo Standard-Times' Class 2-A All West Texas football team. Keith was previously named to the All District team as a defensive back.

Keith is a well-rounded athlete and is now involved in EHS basketball under Coach Chalmers. He is among the top in scoring

for the Eagles so far this season.

Selections were made by the sports staff of the Standard Times. Twelve of the 24 players on the Class 2-A Team were from District 9-2A. Junction, Wall, Mason, and Ozona players were also honored. Mason was the only team in the district to place players on the "Super Team". Coach Don Abbott of Mason garnered Coach of the Year honors.

## J.V. Make Good Showing At Junction Tournament

The EHS Eagles claimed third place at the Junction J.V. Tournament last weekend. Somehow, Coach Craig Bessent managed a regular match against Sonora in the middle of his tournament games. The cagers lost that one, 44-47.

But, things started nicely at Junction. In first round action, Lawrence Brame scored 13 points to lead the Eagles past Ingram, 46-40. Floyd Fay and Andy Niblett both scored 8, while Griffin had 9.

In the regular matchup Friday, against Sonora, Griffin was the top scorer with 13 and Fay had 11. Pina and Harlan both added 8.

Anderson of Sonora was

too much for the Eagles as he gunned in 29 points.

Back at Junction, the J.V. found things tough against Ozona. The Lions dropped EHS, 44-34. Eldorado managed only two points in the first quarter. Niblett, Griffin, and Pina again led the scoring 10, 10, and 8 respectively.

The Eagles then faced Mason in the consolation game. Niblett was the only Eagle in double figures with 11. Griffin and Pina each added 6.

The J.V. overcame an 18-20 deficit at the half to chalk up the 37-34 third place finish.

The J.V. plays Reagan County Jan. 16, in Big Lake.

# Eaglettes Fall Short In Bid For Lions Club Championship

The annual Lions Club Tournament here last weekend provided the stage for a lot of West Texas basketball talent. And the Eldorado Eaglettes came close to reigning supreme as the final buzzer sounded. But, the unfavored girls from Bronte dashed the hometown hopes with a 35-28 lashing.

The tournament was well-manned by the Lions Club members. It drew teams from Mertzon, Menard, Ozona, McCamey, Marble Falls, Bronte, Sonora, and Junction.

In the first game, the Eaglettes, the hostesses for the event, had to come from behind for the 36-31 victory.

Lori Patton was the top scorer for the Eaglettes during the tournament. Against Mertzon she was high with 13. Junior Linda Gentry was second with 8. Freshman Laura Lozano pumped in 6. Dannette Dunagan had 4, while Margie Logan and Kara Homer added 2 and 3 respectively.

The Girls came back to completely blow Menard

off the court, 42-23. Second round action was held on Friday.

Gentry was the leading scorer in this one as she had 12 points, followed by Patton with 11. Junior Lori Whitaker added 8 and Kim Payne and Dunagan each added 4.

In third round action, the Eaglettes finally managed to beat Ozona. It was again Patton leading the way with 10 points. Payne and Homer scored 8 and Logan added 5.

The win over Ozona put the Eaglettes in the cham-

ampionship game against Bronte at 8:30 Saturday night.

The Eaglettes probably had more talent than the Bronte girls. However, things did not go right for Coach Larry Mitchel's bunch. Bronte simply cashed in on more opportunities than the Eaglettes.

The score was deadlocked 16-16 at the half. But a strong fourth quarter finish by Bronte dusted the home team.

Patton and Whitaker were the top scorers with 9 and 8 respectively. Logan poured

in 5 during the losing effort.

This Friday, the Eaglettes will travel to Big Lake along with the boys for three games.

Congratulations goes to the Lions Club for putting together a fine tournament. Eagle of the week: Sophomore Dannette Dunagan

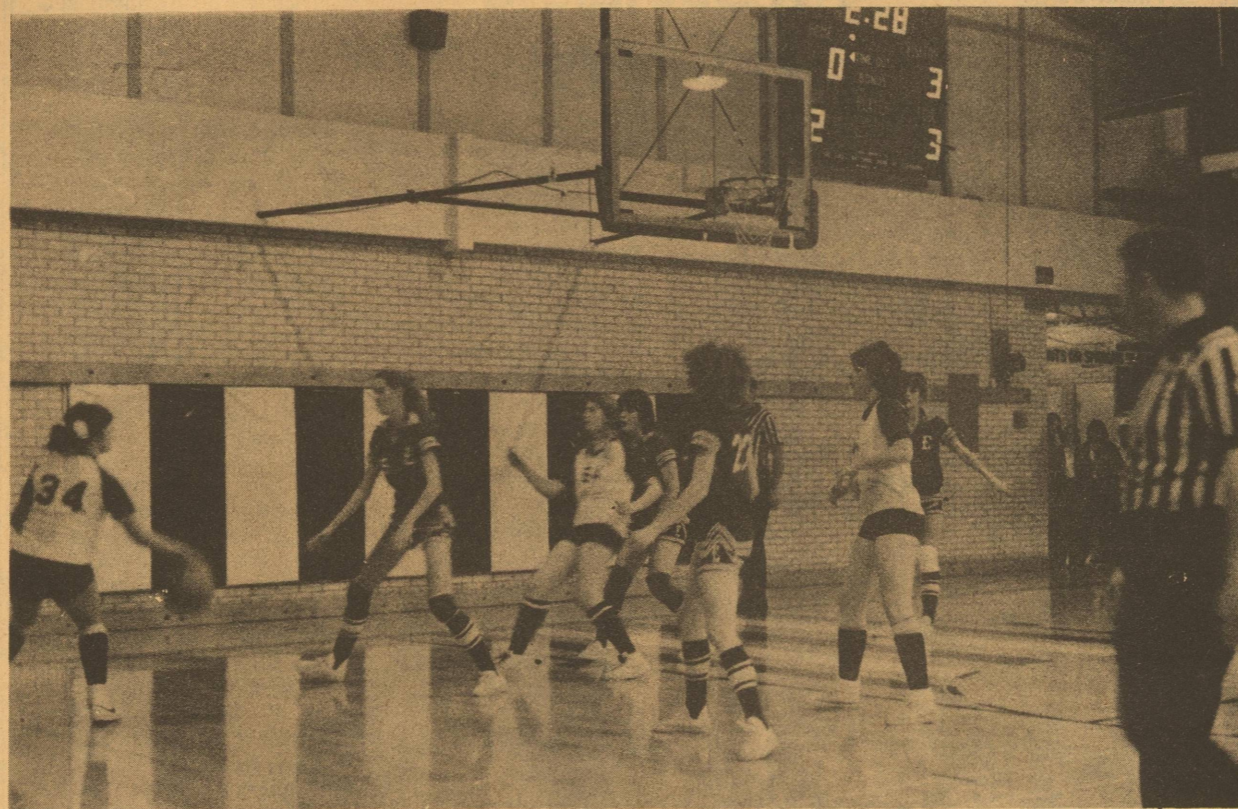
## Broncos Ride EHS

The EHS Eagles saw their season record drop to 2-4 last Friday night at Sonora. The Broncos handed the varsity a 42-33 loss.

Coach Chalmers was displeased with his cagers' performance. He attributed his team's poor shooting percentage to lack of concentration. In the first half, the Eagles had their chances to blow Sonora away. But, missed lay-ups and other opportunities to put them on the short end of the 20-16 halftime score.

Seniors Mike Griffith and Wesley Wilson were both in double figures for Coach Chalmers. Griffith led with 13, and Wilson had 10. Sophomore Greg Davidson added a sub-par 4.

The Eagles will try to get back on the right track tonight (Tuesday) against Menard, there.



Eaglettes in Action--Lori Whitaker, Kara Homer, Linda Gentry, and Lori Patton tighten up defenses in first-round action during the weekend Lions Club tourney at EHS gym.

## Jr. High Girls Claim Championship

The eighth grade girls captured the tournament championship at Sonora Jr. High Tournament last weekend. The young Eaglettes of Coach Teresa Baker managed wins over Sonora, then Ozona to capture the title.

Coach Winston Leifester's boys were also entered in the weekend tournament. They also posted a big win over Sonora, but fell to Big Lake 21-32.

The girls held Sonora to two points the entire second half to pull out a 20-18

first round victory. Stephanie Field led the scoring with 7 points. Jennifer Wiloughby and Kelly Leggett scored 5 and 4 respectively. Kara Garlitz and Rita Adame each added 2.

In their championship contest, the eighth grade claimed another squeaker with a 18-16 win over Ozona. Eldorado led 12-8 at intermission.

Della Heffernan was tops with 6 points in the title game. Michelle Walker and Field had 4, while Wiloughby and Adame added 2 apiece.

## TS&GRA News

What better way to relax as sheep and goat producers to start a new year than to host their out-of-state counterparts at the National Wool Growers association's annual convention.

That's just what we'll be doing Jan. 24-28 at the Marriott in San Antonio. It marks the first time in several years that those of us in Texas can attend a NWGA convention without traveling halfway across the country, and we at TS&GRA expect strong representation by the home folks. There's certainly plenty of incentive.

For one thing, our directors voted unanimously to consider the convention as our winter TS&GRA meeting. That means we don't have to spend all those bucks to conduct our own meeting and the drawing power of the NWGA provides a much more attractive agenda than we could work up on our own. Consider:

The keynote speaker will be Rep. Kika de la Garza, a lifelong friend of the Texas ranching industry and our next House Ag Committee chairman in Washington. Then there's our own 21st District Rep. Tom Loeffler, still a relatively new face in Washington but unquestionably a leader. He'll give us the low-down on the makeup of the new Congress and its legislative priorities.

The convention will also feature Federal Intermediate Credit Bank of Texas president Jack H. Barton, with an overview of financial affairs for sheep producers, and Kansas State University Ag economics professor Dr. Barry L. Flinchbaugh, who'll discuss "minority politics and livestock interests."

These speakers are in addition to the normal round of business sessions and always-informative committee meetings.

A rough schedule:  
Saturday, Jan. 24 -- The NWGA trustees meeting.  
Sunday -- ASPC executive committee meeting, NWGA board of directors and National Ram Committee meetings, followed by a get-acquainted party. Monday -- Committee meetings, luncheon featuring Rep. de la Garza; general session; convention site, resolutions review and nominating committee meetings; and Make It Yourself With Wool finals. Tuesday -- General session; business session; and reception, banquet and dance. Wednesday -- Board of Directors meeting. Thursday --

## Eagles Get Clawed

The Eldorado Eagles dropped their District 9-2A opener to Ozona, there, last week. The Eagles' record fell to 2-3 after five games.

Coach Chalmers was pleased with his teams performance regardless the outcome. Senior Keith McCormack was playing while seriously ill, but still managed to contribute 8 points. Mike Griffith made his return to the court after missing several weeks with a broken clavical. Under the circumstances, Griffith should have been sub-par. yet, the talented senior led Eldorado's scoring with 15 points. Both guys were 100

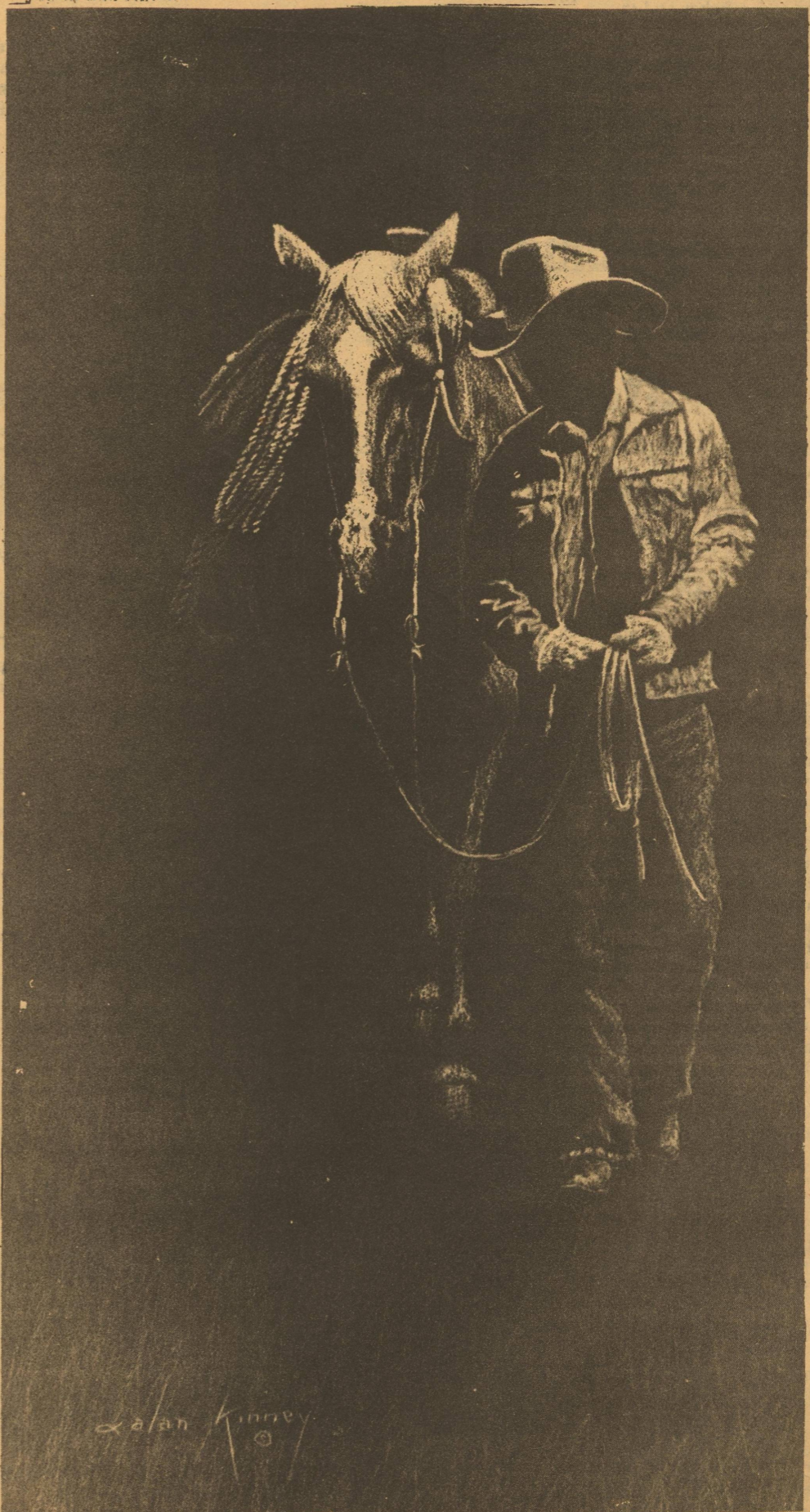
percent for last Friday night's game against Sonora.

The varsity was on top at the half, 23-21, but a big third quarter surge left them behind at game's end, 45-50.

The Eagles managed a dismal 33 percent shooting average from the floor against the Lions. Coach Chalmers cited this as the major factor in the loss.

Sophomore Greg Davidson was sure as ever with his 8 points. Senior Wesley Wilson added 9, while Joel Robledo and Eddie Montalvo were good for 3 and 2 respectively.

Mertzon Art Exhibit This cowboy was done in colored pencil by Alan Kinney of Kerrville.



## Reflections

5 years ago-Jan. 15, 1976...Lions Club seniors of the Week from the 1976 class included Derrick Adams, Charles Blair, and Carolyn Bland.

Joe Christian and T. R. Jones sought re-election as commissioners.

Funeral services were held for two long-time Schleicher County residents. Mrs. Nancy Alexander Montgomery, and Mrs. Earl (Ethel) Cathey, 80, were both buried in Eldorado cemetery.

10 years ago-Jan. 14, 1971...Work started on converting the former Eagle Chevrolet building on the highway to new quarters for Buddy White's Western Auto Store.

The March of Dimes drive was on with Mrs. Danny Barfield as chairperson.

Jackie Lynn Harris won the rifle given as prize by Foxworth-Galbraith at the close of the hunting season.

Carl Heaton was in charge of the Shamrock station. Mark Wallis, student in the second grade at Eldorado's elementary school, was injured and in the hospital after having his bicycle struck while riding south of the school. He was being treated in Shannon Hospital.

17 years ago-Jan. 16, 1964...Cliff Schooley showed his 3rd champion lamb at the annual stock show.

The Mothers March of Dimes was set, with Mrs. A.G. McCormack as chairperson.

Sam Oglesby was reported making gradual improvement in St. Lukes' Hospital in Houston.

Weatherly Kinser announced for commissioner of precinct 1.

James Holley was new in Eldorado living in the Ebba Finley house. Paul Page and Jimmy Powell were elected new directors of the First National Bank.

The Masonic Lodge set the date for its groundbreaking ceremony for the new temple.

25 years ago-Jan. 12, 1956...A Ground Observer post was organized with George Cales, Chief observer; Gus Love, assistant; James Williams, supervisor.

A daughter was born to Mr. and Mrs. Gerald Hartgraves.

Members of the Rock Church of Christ announced plans to erect a new building in the near future.

**EAT!**  
Variety of Foods  
GIANT SIZE  
**SALAD BAR**  
Be the Chef With Our "Bottomless Salad Bowl!"  
Buffet  
Every day  
11:30-2:00  
**Casa Arispe**

## Mary's Gifts

Silk Flowers-Gifts  
Crafts

R & H Trailer Park

853-2597

**HBO PEOPLE DON'T MISS OUT ON HOLLYWOOD'S BIGGEST HITS.**



### Meatballs

Here's what really happens at summer camp... food fights, color wars and zany good times. Off-the-wall counselor Bill Murray takes his bunkhouse gang through the funniest, most unpredictable summer ever.

HBO People Don't Miss Out on Anything Except Commercial Interruptions.



Television  
Enterprises, Inc.

387-3344 or Ent. 67540

# ELDORADO EAGLES & EAGLETES 1980-81 Basketball



**EAGLE DAIRY MART**  
Eaglette of the Week

853-2125  
John Callison-Owner

**Eagle Special**  
1 Egg  
1 Strip of Bacon  
2-(dollar size) Pancakes

**95¢**  
No Substitutes



Sophomore Dannette Dunagan



DATE	OPPONENT	PLACE	TIME	TEAMS					
				BOYS			GIRLS		
				V.	J.V.	FR.	V.	J.V.	FR.
Nov 15	Sonora	There	5:00	x			x	x	x
Nov 18	Rankin	Here	6:30				x	x	
Nov 21	Sonora	Here	5:00	SCRIMMAGE			x		x
Nov 25	Rankin	There	5:00	x	x		x		
Dec 2	Iraan	There	5:00	x			x	x	
Dec 4-8	Sonora Tourney						x		
Dec 5	Brady	There	5:00	x	x	x			
Dec 9	Wall	Here	6:00				x	x	
Dec 9	Ozona	There	5:30		x	x			
Dec 11-13	Ozona Tourney			x					
Dec 11-13	Iraan Tourney						x		
Dec 16	Junction	There	6:00				x	x	
Dec 16	Ozona	Here	5:30		x	x			
Jan 6	Ozona	Here	4:00	x	x		x	x	
Jan 8-10	Eldorado Tourney						x		
Jan 9	Sonora	There	5:00	x	x	x			
Jan 13	Menard	There	5:00	x			x	x	
Jan 16	Reagan Co.	There	4:00	x	x		x	x	
Jan 20	Mason	Here	5:00	x	x		x		
Jan 22-24	Eldorado J.V. Tourney						x		
Jan 27	Wall	There	4:00	x	x		x	x	
Jan 30	Junction	Here	4:00	x	x		x	x	
Feb 3	Ozona	There	5:00	x	x		x	x	
Feb 6	Menard	Here	5:00	x	x		x		
Feb 10	Reagan Co.	Here	4:00	x	x		x	x	
Feb 13	Mason	There	5:00	x			x	x	
Feb 20	Wall	Here	6:00	x	x				
Feb 24	Junction	There	6:00	x	x				

**Meador-Peters Insurance Agency**

**Faull Const.**

**C.C. Lease Service Co.**

**Butler Supply Co., Inc.**

**McCalla's Dept. Store**

**C.H. Poyner Construction Co.**

**Kent's Automotive**

**Sofge's**

**Quadra Corp. 853-3004**

**Jack Halbert, Jr. Butane, Propane & LPG**

**Eldorado Wool Co.**

**R & H Well Service, Inc.**

**Jerry's T.V. Service**

**L.R. Hanusch Water Well Drilling & Service**

**Southwest Texas Electric Co-op**

**Northern Natural Gas**

**holley house**

**For The Unique and Creative**

**Adobe Mini Mart**  
**Whitten's Liquid Feed**

**Eldorado Instrument and Controls Co.**

**MEADOR Land Company**

**Food Center**

**First National Bank of Eldorado**



# CLASSIFIED ADS

## For Sale

Adult 3 wheel bike, camp deep freeze, ice box, lawn mower, pans, iron bedstead pick up stock frame, antique Maytag wringer washer, Gargage to be moved and Butane Tanks. 853-3112

Gas heaters, tires and wheel bath tub, basin, portable rabbit and chicken pens, feeders, Misc. 853-3112

**For all Your small engines and chain saw repairs come see me at the corner of West & Carson Sts. in Eldorado. All your business is Appreciated.**

Thank You,  
Domingo Arebalo Jr.  
853-2146

## Specializing In

Instruments, Gauges, Meters & Controls.  
For Oil & Gas Industry and Industrial Plants Sales & Service on Oilfield and Industrial Instruments & Control

**Eldorado Instrument & Control Co. 24 Hour Service**  
Office 853-2506 Home 853-2624 Eldorado, Texas

## Business & Service Directory

**C H Poyner Const. Co.**  
General Oilfield Construction  
24 Hour Call 884-2454 Big Lake  
Call 853-3064 Eldorado

## House Painter

House Painting Inside and Out Blown or Acoustic Ceilings  
Felipe "Tito" Vargas  
Sonora 387-3205

## GC Lease Service Co., Inc.

Well Servicing-Water Hauling  
-Pump trucks 24 Hour Service  
Eldorado 853-2351 Sonora 387-3509

**INSURANCE**  
Fire, Windstorm, Auto and Casualty  
Call TOM RATLIFF 853-2636

## Tex-Sun Insulation

Residential - Commercial  
Free Estimates  
Farris Nixon 853-2996

## J.B. Beason

Remodeling Paint Contractor  
Painting Dry Wall Acoustic  
John or Pam 853-2428 or 853-2258

## KERBOW FUNERAL HOME

Serving Eldorado & Sonora  
Call 853-2636 or 387-2266 in Sonora

## Whitten Liquid Feed

Nutrene & Godbold Feeds 853-2944  
Steve Whitten, Manager Res: 853-2879

## THORP'S LAUN-DRY

Your Complete Fabric Care Center  
Laundry & Dry Cleaning  
Uniform Rental Linen Service  
We rent "Dust Control"  
Mops & Rugs  
For Home Pick-up on Mon. & Thurs.  
Call 387-2666 in Sonora

## Sofges

Hunting-Fishing-Trapping Licenses  
Cramer & Mary Sofge

Assume loan on 1980 Cameo Mobil Home, 28x60 3 bedrooms and 2-bath. Fully carpeted, with fireplace and County Kitchen, Utilitie room and central air and heat. Call 387-2688.

## Wanted

Want to buy a bicycle excisor. Call 853-2124

## Public Notice

### Notice of Public Hearing

Subject: Amendment #2 to ordinance #101-80 Gas rate increase

Notice is hereby given of Public Hearing for Amendment #2 to Ordinance #101-80 whereby the gas rate will be set at \$1.50 per 1000 cubic feet of gas sold by the City of Eldorado. Said Public Hearing will be held Tuesday, January 20, 1981, at 7:30 p.m. at the City Hall.

Carolyn Mayo  
City Secretary

Wed., January 14, 1981

9:00 a.m. Beach Party: Beach Blank Bingo. 1965 comedy drama. A beach gang, intrigued with sky diving, gets involved in a kidnapping, with the victim convinced it's all a publicity stunt. A mermaid leads rescuers to the scene. Frankie Avalon, Annette Funicello, Deborah Walley, Harvey Lembeck, Paul Lynde.

12:00 Noon TBS Theatre: St. Martin's Lane. 1940 drama. A sidewalk entertainer takes in a homeless waif and helps her become a star. Charles Laughton, Vivien Leigh, Rex Harrison  
7:00 p.m. The TBS Wednesday Night Movie: The Killers. 1964 suspense drama. After two hired assassins kill a teacher, they look into his past to find leads to a \$1,000,000 robbery in which he was believed to be involved. Lee Marvin, Angie Dickinson, John Cassavetes, Ronald Reagan.

11:45 p.m. Movie 17: Kisses for my President. 1964 comedy. When the first female president of the United States takes office, her husband, the 'First Lady' has a strange new life to adjust to. Fred MacMurray, Polly Bergen, Arlene Dahl, Jane Wyatt.  
2:10 a.m. Movie 17: Challenge of the Gladiators. 1964 adventure spectacular. Infamy and cruelty sweep Nero's Empire as his

mad Senator turns the country into a bloody arena over his lust for Nero's gold. Rock Stevens, Gloria Milland.

Thursday, January 15, 1981

10:00 a.m. Beach Party: How to Stuff a Wild Bikini. 1965 Comedy. A young man, spending his Navy reserve duty in Tahiti, calls upon a local witch doctor to keep an eye on his girl and divert any attention while he's gone. Annette Funicello, Dwayne Hickman, Brian Donlevy, Mickey Rooney.

12:00 Noon TBS Theatre: Lady For a Night. 1942 romance drama. A gambling boat lady marries the wrong man in order to attain a coveted social position. Joan Blondell, John Wayne, Ray Middleton, Phillip Merivale.  
7:00 p.m. The TBS Thursday Night Movie: How to Marry a Millionaire. 1953 comedy. Three models pool their money and rent a lavish apartment to wage a campaign to trap millionaire husbands. Lauren Bacall, Marilyn Monroe, Betty Grable.

10:30 p.m. Movie 17: From the Terrace. 1960 drama. One man's rise from poverty to wealth and position, and the dissolution of his marriage through misunderstanding and neglect. Paul Newman, Joanne Woodward.

1:35 a.m. Movie 17: The New Interns. 1964 drama. Fun, romance, drama and tragedy set in as a group of new interns are assigned to a large metropolitan hospital. Michael Callan, Barbara Eden, Stephanie Powers.

Friday, January 16, 1981

10:00 a.m. Beach Party: Muscle Beach Party. 1964 musical comedy. A wealthy contessa, interested in a handsome muscle-man, plans to finance a string of gymnasiums. When she switches her affections to a young surfer, the surfer's girlfriend gets jealous. Frankie Avalon, Annette Funicello, Don Rickles.

12:00 noon TBS Theatre: The Macomber Affair. 1947 drama. The tale of a safari in the lion country of Africa that is clouded with murder and violence. Based on the story by Ernest Hemingway. Gregory Peck, Robert Preston, Joan Bennett.

7:00 p.m. The TBS Friday Night Movie: Stanley. 1972 horror. A disturbed Vietnam veteran uses a rattlesnake to take out his personal revenge against mankind. Chris Robinson, Alex Rocco, Susan Carroll.  
12:15 a.m. Movie 17: Attack of the Moors. 1960 adventure spectacular. A Count captures the Moorish chief's daughter as a safeguard in bringing the Spanish royal children home. Wounded by a traitor who lets the girl escape, the Count is aided by the girl who loves him. Chelo Alonso, Rik Battaglia.

2:00 a.m. Movie 17: The Cobra. 1968 adventure drama. A Secret Service chief is dispatched to the Middle East to ferret out an opium syndicate headed by 'Cobra', which has been smuggling the drug into the U.S. Dana Andrews, Anita Ekberg, Peter Martell.

Saturday, January 17, 1981

Theatre: Montana. 1950 western. A sheep rancher is determined to move his herds into cattle country, but meets strong opposition from wealthy ranchers. Errol Flynn, Alexis Smith, James Brown.

9:00 a.m. Hollywood Classics: Prince Valiant. 1954 adventure. The golden age of Viking adventures comes to live, based on the comic strip. James Mason, Janet Leigh, Robert Wagner.  
11:00 a.m. TBS Theatre: Dracula's Castle. 1969 horror. A doctor and his wife, along with two henchmen, kidnap young village girls and hold them prisoner in the dungeon with the intent of drinking their blood. John Carradine.

1:00 p.m. TBS Theatre: The Siege of Syracuse. 1959 drama. Tina Louise.  
12:30 a.m. Olivia De Havilland Double Feature: Wings of the Navy. 1939 adventure drama. Naval action in the air during the late 1930's, and the story of a young man in love with his older brother's fiancée. Olivia de Havilland, John Payne, George Brent.  
2:15 a.m. Olivia De Havilland Double Feature: A Midsummer Night's Dream. 1935 classic comedy. William Shakespeare's delightful tale of a fairy king and queen who squabble over a founding, and a love mix-up between couples who get lost in the fairie's woods. James Cagney, Olivia de Havilland, Mickey Rooney, Dick Powell. Joe E. Brown.

Sunday, January 18, 1981

9:30 a.m. Academy Awards Theatre: Mister Roberts. 1955 comedy. The misadventures of a U.S. Navy cargo ship during World War II, and its beloved 2nd officer, who longs for combat. James Cagney, Jack Lemmon.  
12:00 noon TBS Theatre: The Garden of Allah. 1936 romance drama. An alluring Englishwoman in Algiers meets a man who attracts her. When she learns that he is a deserter from a trappist monastery, she renounces their love. Marlene Dietrich, Charles Boyer, Basil Rathbone.  
1:30 p.m. TBS Theatre: A Very Special Favor. 1965 comedy. A father in New York fears that his daughter, a spinster psychologist, has never had a real love live and begs a handsome

lawyer, who owes him a favor, to pursue her. Rock Hudson, Leslie Caron, Charles Boyer.  
3:30 p.m. TBS Theatre: Jack and The Beanstalk. 1952 comedy/fantasy. Costello while baby-sitting, falls asleep and dreams he's Jack, the boy who traded his mother's cow for magic beans that grew to the land of giants. Abbott and Costello, Buddy Baer, Dorothy Ford.  
1:15 a.m. Jack Carson Double Feature: My Dream is Yours. A girl singer falls for a feisty star, never noticing the press agent who loves her. Good songs and animated sequences with Bugs Bunny. Doris Day, Jack Carson, Lee Bowman, Eve Arden.

3:20 a.m. Jack Carson Double Feature: Larceny, Inc. 1942 adventure comedy. An ex-con buys a luggage store next to a bank's vault, hoping to dig his way in, but finds himself making money legitimately. Edward G. Robinson, Jane Wyman, Broderick Crawford, Jack Carson.

Monday, January 19, 1981

9:00 a.m. TBS Theatre: Flying Down to Rio. 1933 musical comedy. A romping tale set in South America about a girl who is loved by two men--and how she chooses between them. Dolores del Rio, Ginger Rogers, Fred Astaire.  
12:00 noon TBS Theatre: The Vanguished. 1953 western adventure. An ex-Confederated officer returns home to uncover the truth about the town's civil administrator. John Payne, Jan Sterling, Coleen Gray.  
11:00 p.m. Movie 17: Decision Before Dawn. 1952 adventure drama. A tense spy thriller about a young German war prisoner who returns to the Reich to work for American intelligence and sees clearly the collapse of his nation. Richard Basehart, Gey Merrill, Hildegard Kneff, Oskar Werner.  
1:30 a.m. Movie 17: Freud. 1963 drama. Based on the life of Sigmund Freud as a

young Viennese doctor who formulates new theories while studying with a doctor who had experimented in hypnosis. His experiments lead to the development of psychoanalysis. Montgomery Clift, Susanah York, Larry Parks.

Tuesday, January 20, 1981

9:00 a.m. TBS Theatre: The Gay Divorcee. 1934 musical comedy. When a love-sick dancer pursues a lady, she mistakes him for another man and issues a strange invitation. Fred Astaire, Ginger Rogers, Alice Brady.  
12:00 noon TBS Theatre: Odongo. 1956 adventure drama. A trapper and an attractive veterinarian search for a native boy in Africa, after the boy is accused of letting some animals loose. Macdonald Carey, Rhonda Fleming.

7:00 p.m. The TBS Tuesday Night Movie: Soldier of Fortune. 1953 adventure romance. A hard-drinking, two-fisted gun runner rescues a girl's husband, who is an American news girl's is an American news photographer imprisoned in Communist China. Clark Gable, Susan Hayward,

Michael Rennie.

10:30 p.m. Movie 17: Bright Leaf. 1950 drama. Driven from his home by a tobacco tycoon, a tenant farmer returns to wipe out the magnate's empire. Gary Cooper, Lauren Bacall, Jack Carson, Patricia Neal.  
12:45 a.m. Movie 17: Sincerely Yours. 1955 musical. Portrays the life and loves of a concert pianist who makes others happy while finding happiness for himself. Liberace, Joanne Dru, Dorothy Malone.  
3:10 a.m. Movie 17: Revenge of the Conqueror. 1960 adventure spectacular. The 17th Century son of a Gypsy queen loves a princess, but a jealous cousin turns the lover against each other. Burt Nelson, Wandissa Guida.

# WTBS Movie Schedule

**DATSUN**  
D&D IMPORTS  
653-2941 San Angelo

**Leggett Construction**  
Brush Control  
-Tanks Pits  
24 Hour Oil Field Service  
**Jeff Leggett**  
915-853-3081

**The Land Bank**  
Long-term farm real estate loans are available for much more than just buying land.  
See us:

Federal Land Bank Association of Sonora  
A.E. Prugel, Manager  
915-387-2777  
Sonora, Texas 76950

**Butler Supply Co., Inc.**  
853-2503  
East Street  
Your Complete Oilfield Store  
Trico Insert Pumps  
HINDERLITER WELLHEADS  
ALL SIZES TANKS STEEL & FIBERGLAS  
SEPERATORS HEATERS & PRODUCTION UNITS  
Night Phone 853-2884

DEMCO PROTO THORNHILL CRAVER OLMAN HEATH WHEATLEY

Wul ole hoss, I didn't specially care fer you or that calf, but I shore wish you'd bring that new rope back!"

## Loeffler Named To Post

House Republican Whip Trent Lott today announced the appointment of Congressman Tom Loeffler, R Texas, as Deputy House Republican Whip for the 97th Congress.

Lott said he chose Loeffler to become the number three-ranking member in the Whip organization because of his experience with White House congressional liaison and the executive branch as well as his work with the U.S. Senate.

"Tom Loeffler is one of the most experienced young Members of Congress," Lott said. "His friendship with Members on the Democratic side of the aisle will be invaluable as we go about trying to pass the Reagan legislative package."

"He is one of my closest advisers," Lott said. "He will be particularly helpful in budgetary matters, because of his membership on the Appropriations Committee and in energy and defense legislation because of his knowledge in those fields."

**Announcing...**  
**Robles Tire Service**  
We Fix Flats on the Job or Location  
24 Hour Service  
Call 853-3161  
**Esequil Robles**  
Owner  
South Main-Eldorado

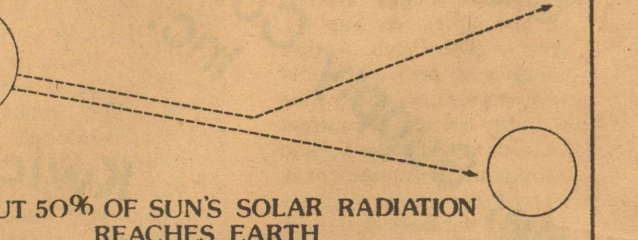
**SOLAR FACTS**  
by Robert E. Lewis

## A LOOK AT SOLAR ENERGY

Solar energy is the heat that comes from the sun. This energy is produced at the sun's core, which can be likened to a gigantic thermonuclear furnace. Every second this thermonuclear furnace converts more than 4 million tons of the sun's matter into energy. This energy is then radiated throughout the universe in the form of heat and light.

While our planet receives just a small portion of the sun's total energy output, we are unable to capture all of the solar energy that reaches the earth's atmosphere.

One-third of the sun's radiation is reflected back to space from the clouds and atmospheric dust. Another 10 to 15 percent is absorbed by the atmosphere's water vapor, carbon dioxide and ozone. That leaves us with approximately 50 percent of the total solar radiation available to this planet.



Even though the earth's surface captures only one-half of the available solar radiation, the potential of this energy source is astounding. If we could fully utilize all of the sunshine falling on the earth's surface during a single day, the entire world's energy needs could be satisfied for 15 years!

To better use the sunlight that is available to us requires concentrating the sun's rays. Although we often think of sunlight as being intensely bright and hot, the sun does not actually deliver much energy to any single spot at any particular moment. In addition, the amount of solar energy radiated to any one place on earth depends on the time of day, season, latitude and weather conditions.

Solar energy technology, then, is based on developing devices that can concentrate the sun's rays so they can be harnessed for domestic energy use.

In the United States, modern research on ways to use solar energy began during the 1930s. In 1954, scientists formed the Association of Applied Solar Energy to investigate methods of employing the sun's energy for domestic use.

By the 1960s, solar-energy homes were appearing around the country. And in 1974, following the fuel shortages and price escalations caused by the Arab Oil Embargo, Congress called for a vigorous solar energy research program to further develop this promising technology.

Today, the use of solar energy to heat our homes is a part of modern living. More than 40,000 homes around the country currently use solar energy systems to provide substantial portions of their heating needs. Some of these solar heating systems rely on hardware and mechanical equipment to collect and distribute heat (active systems). Others rely only on building's architectural design elements and its orientation toward the sun (passive systems).

By the year 2000, more than 20 million American homes and untold thousands of commercial buildings will be using solar energy systems to meet their energy needs.

In future columns, we will explore the various ways that solar energy is being used in our daily lives. This will include discussions of solar concepts, types of solar energy systems, new solar products and materials, legislative and community programs involving solar energy, and a look at some of the ways to convert a traditional home into a solar home.

In the meantime, you can learn more about harnessing solar energy by sending a stamped, self-addressed envelope to:

Robert E. Lewis, (#1-A) P.O. Box 3680,  
Grand Central Station, New York, N.Y. 10017