

# SCHLEICHER COUNTY LEADER

TEXAS PRESS ASSOCIATION

[U.S.P.S.] 342-470]

Eight Pages January 6, 1983 25 cents

Eldorado, Tex.

## Open Letter From City Mayor

[Editor's Note: Eldorado Mayor Bob Lester requested that this letter be ran in the Leader in an effort to further inform the citizens of the community of the upcoming bond election for the sewer processing plant.]

AN OPEN LETTER TO THE CITIZENS OF ELDORADO

In a special meeting on December 15, your City Council called an election to be held on January 15, 1983. At that election, you will be asked to vote on two separate propositions. PROPOSITION #1 will ask you whether the Council should be authorized to sell up to \$650,000 worth of bonds to finance the construction of a new sewer treatment plant; PROPOSITION #2 will ask whether the Council should be authorized to sell up to \$340,000 worth of additional bonds to finance the construction of additions and improvements to the gathering system.

The Council would like you to know the reasons for calling the election, and why your consideration of these issues is important:

PROPOSITION #1 on ballot - The present plant was built in 1938, designed to accommodate 900 to 1000 residents. We have been aware that our current plant has been overworked for several years now, because we have about twice as many people using it now as it was designed to handle. It poses a sanitation problem and possibly a health hazard. We have selected the least expensive of several options submitted by the engineering firm of Freese & Nichols (Austin).

PROPOSITION #2 on ballot - The Council is aware that not all residents now have sewer service. The area most in need of sewer service is the Christian Addition. There are also a few other residences and businesses without sewer services as well.

The Council is making every attempt to reduce the cost of these programs. We have applied for a federal grant to finance the improvements discussed in Proposition #2. We won't know until after February 1, at the earliest, whether we will get the grant or not. If we do get it, and if the voters have already approved Proposition #2, then we will not need to issue those bonds. If we don't get it, and the voters have turned Proposition #2 down, the extensions probably will not be built.

The State has programs which could help us to sell the bonds (after authorization by voters) at rates below generally current interest rates, which in turn would save tax money.

Obviously, using only tax monies to pay the bill is unfair to residents who do not have sewer service since they would be paying for services they don't receive. On the other hand, using only a sewer rate increase to pay for the bonds would result in a higher interest rate on the bonds, according to our financial advisors.

We hope to pay for the bonds with relatively small increases in both taxes and sewer service revenues.

Please realize that if Proposition #1 should fail, Proposition #2 can't be carried out, even if it passes. We cannot add more residences to a treatment plant which is already inadequate.

We hope that you will give these matters your careful consideration before you vote. This election involves a significant amount of

money for a city the size of Eldorado, but it also involves matters which are directly related to the well-being of all of the City's residents, both present and future. Whatever your personal conclusion may be, please vote on January 15.

Sincerely,

CITY OF ELDORADO  
/s/ Bob Lester  
Mayor for the City Council

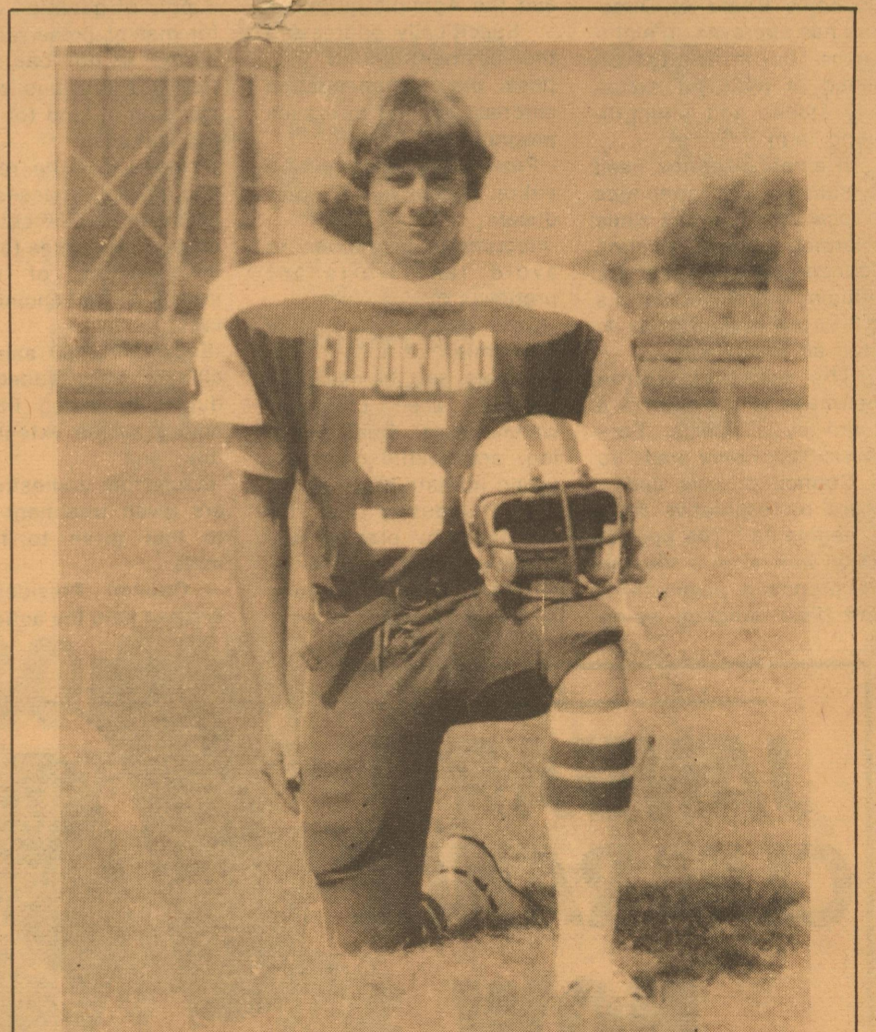
## The Irish Have Landed

Clive Johnston, formerly Letter-Kenny, Republic of Ireland, arrived in Eldorado this week to assume his duties as pastor of the First Baptist Church of Eldorado. Arriving with him were his wife, Sheila, and their three children: Neall, 7; Kerrie, 4; and Craig, 8 weeks. Johnston was minister of the Letter-Kenny Baptist Church for seven years. He spent six weeks this past summer working in the Eldorado church and was subsequently called as pastor.

A native of County Tyrone in Northern Ireland, he received his Certificate in Education at St. Paul's College, University of Bristol, Cheltenham, England. He received his

A native of County Tyrone in Northern Ireland, he received his Certificate in Education at St. Paul's College, University of Bristol, Cheltenham, England. He received his Missionary Certificate from the Irish Baptist College in Belfast, Northern Ireland. Pastor Johnston served in Malawi, Africa, as a government volunteer worker and also taught school in Strabane, Northern Ireland, before entering the ministry.

This Sunday, January 9, at 11:00 a.m., Johnston will preach his first sermon as pastor of the First Baptist Church. The church plans a high attendance day in Sunday School and a covered dish luncheon in honor of the occasion.



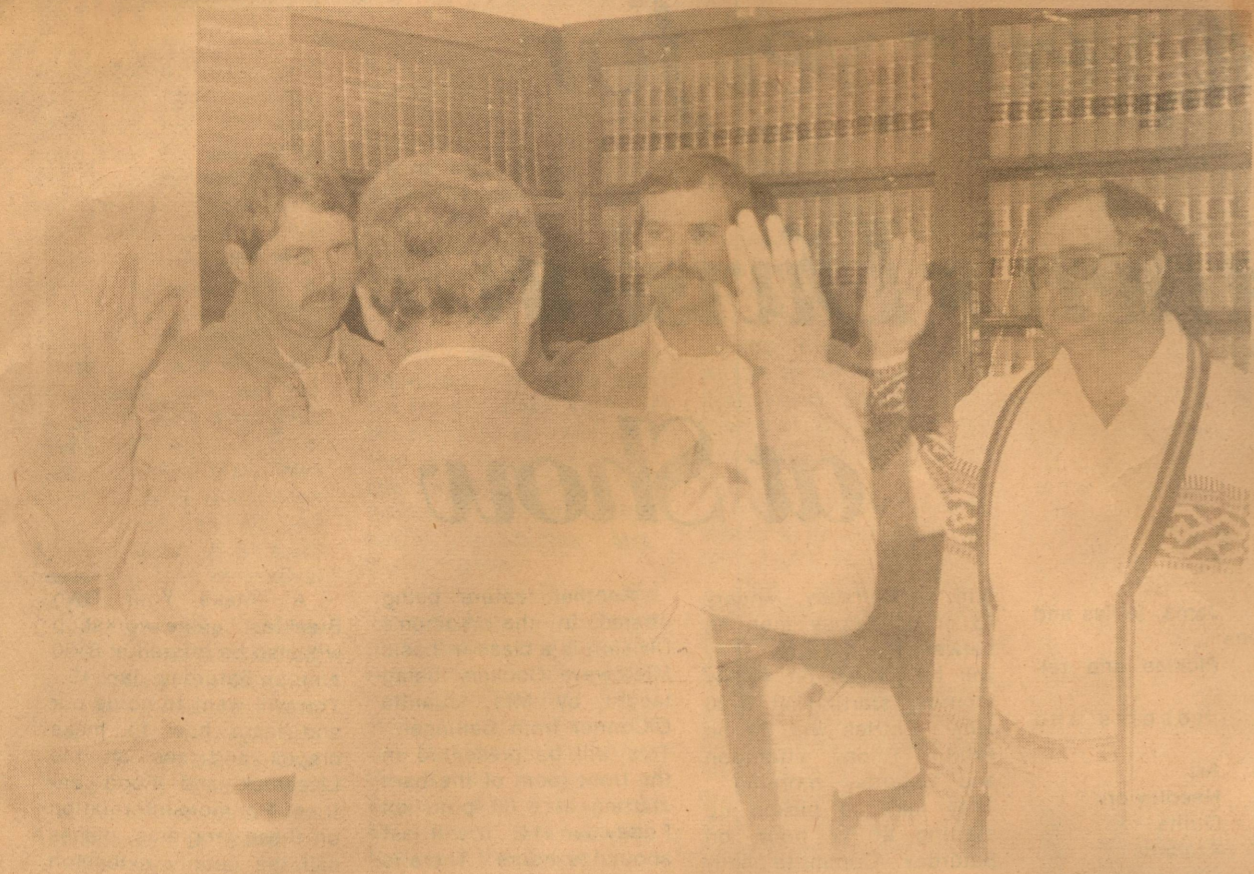
## Edmiston Picked

Gene Edmiston, senior at Eldorado High School, has been named to the 1982 San Angelo Standard Times Class AA All West Texas football team.

Edmiston, a two year letterman for the Eagles, was named to the honor squad as a punter. This is the second post season honor for Edmiston as he was also All District 9 AA first team selection. The 5'10", 160 pound senior punted 55 times this year for a mediocre 34.9 yard average. Amazingly, though, opposing punt returners averaged a mere 1 yard average per return.

"I feel the one yard average return against me was the reason I was selected, but that average is just a credit and reflection on the entire team," Edmiston said.

Punting was not the only area that Edmiston excelled in. He also caught seven passes for 101 yards and one touchdown out of his split-end position. He played defensive back where he tied for the team lead in interceptions, with Jeff Harlin, when he snagged four enemy passes and returned them for 51 yards and one touchdown. He was second in tackles with 26 unassisted and 38 assisted tackles for a total of 90.



Ross Whitten, Carrie Joy and Jack Turner officially take their places as County Commissioners.

## 6000. Dollars Now In Fireman's Coffers

The Schleicher County Volunteer Fire Department has wound up their membership drive with approximately \$6000 in donations. The department would like to thank all the people of Eldorado who gave their support in the Membership Drive. Although the drive has been reportedly finished, one challenge has been issued. J. L. Buchanan of Eldorado has donated \$50 and challenges any homeowner in

Eldorado to match his donation. The latest contributors to the drive are: Wendel Biggs, Griffin Oil Co., Bobbie Andres, Kerbow Funeral Home, J. B. Brame, Dana Ray Owens, E. N. Edmiston, Sarah R. Lipsett, Lloyd B. Johnson, John B. Hyde, Edwin M. Jackson, Jr., Jerry Jones, Mary Helen Stockton, Raymon Mobley, Billy Jack Reynolds, Leslie Bassinger, R. D. Johnson, C. E. Williams, Jack Wil-

liams, Damon Wagoner, Mrs. A. B. Ory, Jim Cawley, Ed Meador, The Western Company, Imogene M. Edmiston, Donna J. Garvin, Dee Jay Garvin, Dan McWhorter, C. J. Hahn, Mort L. Mertz, Jim Spurgers, Ronnie Mittel, McCalla's Dept. Store, Tom Enochs, Edgar Sauer, Earl Dean Clark, Winnie Griffin, Dixie Belk, Carol White, Meador Peters Agency, Sykes Ranch, and Orland Harris.



On the first day of 1983 a light snow fell in Schleicher County.

## YEAR ENDS IN WHITE

The year of 1982 was brought to a white, fluffy close Friday evening when Schleicher County was coated with a light layer of snow. Approximately one inch of the white stuff accumulated with heavier down fall in the northern portion of the county.

Saturday morning could be considered as a good omen for the new year and a reversal of the dry year of 1982.

By noon the southern portion of the county had been eradicated of snow my old Sol, with only slight patches remaining the following day.

The holiday traffic watch saw no major or fatal accidents in the county in spite of the incimate weather conditions.

## Bell Charged

Clifton J. Bell, age 29, resident of Eldorado has been charged with reckless driving, possession of an illegal weapon and possession of a controlled substance. Bell was apprehended Sunday at approximately 8:15 p.m. by the Schleicher County Sheriff's Office, after reports had been received by the Schleicher County Sheriff's Office of a 1977 Cadillac traveling at a high rate of speed southbound on hwy. 277.

Bell is now in the custody of Schleicher County awaiting possible other charges and bond. At the time of the arrest, Bell was out on a \$15,000 bond from Crockett County pertaining to another drug related charge. The arrest for Crockett County was on October 13, 1982 and was made by the Sheriff's Office here in Eldorado.





# Biggest year yet for Women's Division at Show

There will be a brand new exhibit room and 3 new categories in the Women's Division at the Schleicher County Livestock Show this year as well as a Microwave Cooking Class & Crepe Making Workshop. Two new divisions will be added for Youth and one for Adults. The new Youth Divisions are Youth Art and Youth Hobbies and Crafts. The new Adult Division is "Christmas Decorations". The entire list of entry categories for the Women's Division will be:

1. Jams, jellies and preserves
  2. Pickles and relishes
  3. Hobbies and Crafts
  4. Art
  5. Needlework
  6. Quilts
  7. Afghans
  8. Christmas Decorations
  9. Youth art
  10. Youth hobbies and crafts
- Entries in all categories need to be turned in at the new front room of the Show Barn between 1 and 6

p.m. on Thursday, January 13 or on Friday morning between 8 and 9 a.m. They will be judged on Friday morning starting at 9:30 a.m. Entries will be on exhibit Friday afternoon and Saturday morning. They may be picked up starting at 12 noon on Saturday. Committee chairmen working with the show include Christy Meador, Youth Division; Sherry Johnson, Canned Articles; Fay Watson, Art; Sherry Marin, Needlework, Quilts & Afghans; Janee Finley, Hobbies, Crafts & Christmas Decorations.

Another feature being offered in the Women's Division is a class in basic Microwave Cookery being taught by Mrs. Juanita O'Connor from Ballinger. This will be presented in the front room of the barn starting at 6:00 p.m. on Friday Jan. 14. It will last about 1 1/2 hours. There is no charge for this program.

A "Make Your Own Breakfast" crepe workshop will also be offered at 8:30 a.m. on Saturday, Jan. 15. You will want to come out and learn how to make crepes and see all the Livestock and Food entries. For more information on these programs, please call the county extension office at 853-2312.

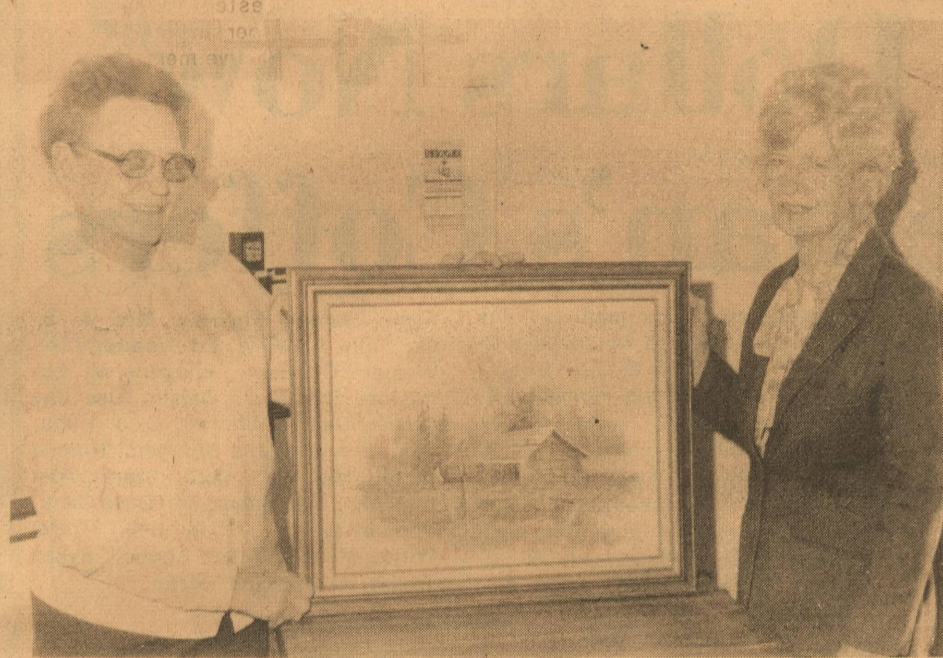
Sherry Johnson and Becky Sterling remind everyone that this year the Food Show will have a division for Pickles and Relishes and also a division for Jams, Jellies and Preserves.

**Call: 853-2547**

**To Place Your Ad**



A microwave program will be presented at 6 p.m. the 14th in the new room at the County Show area. Pictured are members of the Home Economics Club, Christy Meador, Sherry Martin and Sherry Lux.



Rosa Faught and Faye Watson display just some of the art that will be in the competition at the County Show.

## WHY RENT!!!

YOU CAN OWN YOUR HOME FOR LESS THAN YOU PAY RENT. INTEREST IS TAX DEDUCTIBLE  
**EXAMPLE: 2 BEDROOM FULLY FURNISHED-FREE DELIVERY & SET UP WITHIN 100 MILES.**  
**\$995 DOWN AND \$130<sup>00</sup> PER MONTH 15% A.P.R.**



### DISCOUNT HOMES of San Angelo, Inc.

2502 N. Bryant Blvd.  
 OFFICE: (915) 658-3760  
 OFFICE: (915) 658-3344  
 HOME PHONE  
 SAMMY ..... 655-5901  
 KEN ..... 944-3915  
 DON ..... 653-1648

## Eight Point

# Recommendation from Council

The National Cotton Council's Board of Directors has approved an eight-point recommendation aimed at reducing excessive stocks and strengthening farm income. It emphasizes the need to sustain the economies of local communities while enlarging upon existing Council policy calling for reducing carryover stocks to 3-1/2 to 4 million bales as soon as practicable. The recommendation was made to the Council's Board by a special Economic Task Force made up of Council officers and a Board representative from all segments. The special action was taken in view of the proposed payment-in-kind (PIK) program being

considered by Congress and the Administration. Specifically addressing the payment-in-kind proposal, the recommendation emphasized that any such program should:  
 - Provide adequate participation incentives to producers;  
 - Incorporate provisions to avoid landlord-tenant problems;  
 - Avoid destruction of the economies of local communities, and the essential ginning, seed crushing, warehousing, merchandising, and textile manufacturing infrastructure of the cotton industry and its suppliers, by placing reasonable limits on the amount of acreage that may be diverted in each county;

-Maintain an adequate supply of qualities needed for market preservation;  
 -Avoid using loan cotton from the previous crop as payment-in-kind for diverting acres;  
 -Provide that the research and promotion assessment be made on PIK cotton as on new crop sales to assist in reduction of excess stocks by enhancing markets;  
 -Expand PL-480 sales, including value-added products, by using PIK financing to the extent feasible; and  
 -Insure that domestic mills are given treatment equal to that given to foreign mills.  
 Council President Ed Breihan said the action has

been communicated to Agriculture Secretary John Block. He said the Council

strongly recommended that the PIK program and its provisions be announced

no later than the first week in January.

## JANUARY CLEARANCE

### NOW IN PROGRESS

# 25% to 50% OFF

**Super Sports Inc.**  
 "San Angelo's Winter Sports Headquarters"  
 Southwest Plaza 944-2014

## The Plant Store

1001 A.N. Crockett Sonora

IT'S

# Tree Planting Time!

The Plant Store has an excellent selection of hardy healthy trees ready for planting

- ★ Pecan Trees.....16<sup>95</sup>
- ★ Peach Trees.....7<sup>95</sup>
- ★ Pear Trees.....7<sup>95</sup>
- ★ Plum Trees.....7<sup>95</sup>
- ★ Apricot Trees.....7<sup>95</sup>
- ★ Fig Trees.....5<sup>95</sup>

Wide Variety...All Sizes

## House Plants 95¢ up

We've just received a large shipment of decorator clay pots. Select now to sort your particular decor!

"Dedicated to Beautification"

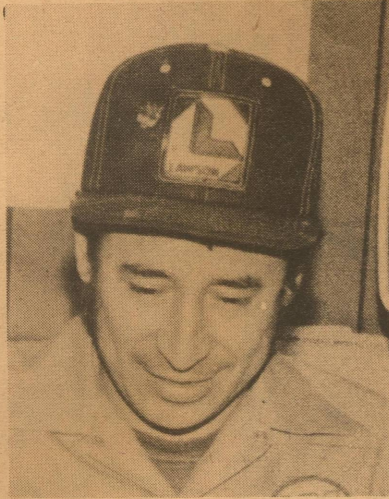


# The Leader Asks

What is your New Years Resolation



Milton Fitts: To do more for others.



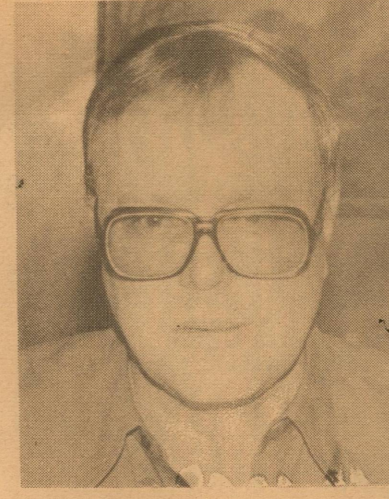
Sal Martinez: Make more money.



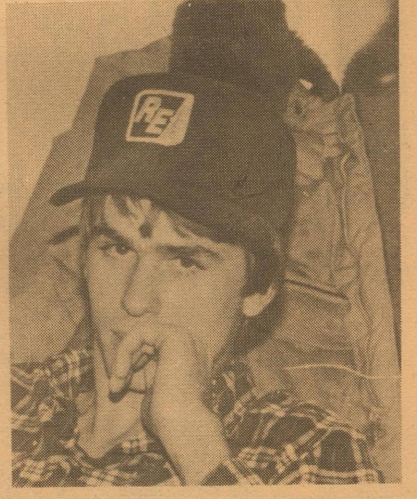
Lewis Tindall: Sell more revenue.



Lamar Hardee: A more fulfilling life for the coming year.



C. F. Dacy: To buy a new home.



Jed Edmiston: To get rich.

## Guard Against Pocket Pilferers

Jerry Swift, Schleicher County's Extension Agent says that its now time to consider cattle lice control. It's the time of year when the nation's cattlemen need

to put up their guard against a pest that annually pilfers their pocketbooks of \$100 million.

Lice are the culprits, and they begin to reproduce rapidly with the onset of cool weather. They reach peak populations in late winter and early spring. Uncontrolled, lice can soon infest a whole herd, because with cold weather, cattle ten to bunch up more and the pests can easily move from one animal to another. Heavy hair coats on animals during cold weather also afford protection for the parasites and allow increased reproduction.

Costs to the cattlemen both in control efforts and dramatic production losses-increase as lice populations build.

There are two types of lice - bloodsucking and biting - and both infest cattle. Sucking lice pierce the animals' skin and suck blood while biting lice feed on particles of hair, scale, scab and skin discharges.

Lice infestations irritate animals, causing itching, scratching and rubbing on fences or anything else available. This produces denuded areas, bruises and lacerations on the affected animal. Heavily infested animals will have an unthrifty appearance and will suffer weight reduction, decreased milk production, anemia or even death. Lice infested animals may also be more subject to respiratory diseases such as pneumonia. Heavy lice infestations often stunt calves. Undernourished cattle of any age usually have the heaviest infestation.

Some cattle appear to be physiologically more susceptible to lice than others and thus have higher pest populations. Such animals are called "chronics" or "carriers" and are usually instrumental in re-infesting the herd annually in spite of repeated insecticide treatments. Culling "carrier" animals is a helpful management practice in reducing lice problems.

Insecticide control of lice is not difficult to achieve but there are some problems. Most insecticides don't kill eggs;

therefore, retreatment is required in two to three weeks to prevent another buildup. However, if the initial treatment comes late enough in the season, there may not be enough time for lice to build to economic levels again before warm spring weather.

Spraying and dipping infested animals with proper insecticides is an effective means of controlling lice. However, control

measures are usually required when winter conditions are most harsh - a time when cold stress is a good possibility and respiratory diseases prevalent. Some of this problem can be prevented by treating animals on a day when they can be dry before sundown.

Pour-on and spot-on grubicides labeled for lice are effective and considerably reduce the problem of cold stress associated with dips and sprays. However, the possibility of

a host-parasite reaction is always a threat if the material is applied after the cut-off date for grub control.

Systemic grubicides labeled for lice control usually recommend a lower rate than that to control grubs, which would help reduce the host-parasite reaction is always a threat if the material is applied after the cut-off date for grub control.

No, we're not running e.t. brackets, just controlling traffic on Hwy. 277 last Friday when the lights went out.



### J S SWABBING SERVICE

JIM NANCE



Luther Creek Field Supervisor Ph. 387-3295

Box 571 Eldorado, Texas 76936

915/853-3207 915/853-3373

### Morgan Roofing and Remodeling

and Remodeling

- Free Estimates
- Tar Composition and Wood Roofs
- 15 Years Experience
- Referrals Furnished
- Quality Work
- No Job too Large or too Small

Phone

387-5604

Travis Morgan Box 91 Sonora

For the Best In Texas Bar -B- Que

Call Casa Arispe Bar -B- Que

Open every Tuesday thru Saturday 11:30 to 9:30

featuring

- ★ Bar-B-Que Brisket
- ★ Bar-B-Que Sandwiches

Plates to Go \$4.65

Brisket, Sausage, Potatoe salad, Beans, Cobblers

PHONE 853-2908

### Land Bank

#### Lowers Interest

Interest rates on Land Bank variable rate loans will be reduced to 11.25 percent on farm loans and 11.75 percent on farm-related business and rural residence loans, said Wade Mosely, president of the Federal Land Bank Association of Sonora.

These rates become effective January 1, 1983.

"The Land Bank's objective is to provide credit to Texas agriculture at the lowest possible cost, consistent with sound business practices," said Thomas H. Benson, president of the Federal Land Bank of Texas in Austin.

"For over two years the Bank's average cost of funds consistently has been higher than the loan rate," Benson continued. "However, for the past four months, we have begun to see a decline in bond costs.

"As a result of this decline, we are able to reduce the Bank's loan interest rate," he said. "We hope that the decline in bond interest rates will continue, allowing us to make further reductions in the loan rate."

The Federal Land Bank Association of Sonora makes long-term real estate loans on farm and rural residence property in the counties of Edward, Crockett, Schleicher and Sutton.

Schleicher County Leader U.S.P.S. 342-470 Published Every Thursday P.O. Box 782 210 Main St. Eldorado, Texas 76936 Finis Bratcher, Owner - Publisher

Second class postage paid at Eldorado, Tex. 76936. POSTMASTER: Send address changes to Schleicher County Leader, Box 782, Eldorado, Tex. 76936.

Any erroneous reflection upon the character or standing of any person or firm appearing in these columns will be gladly and promptly corrected upon calling the attention of the management to the article in question.

**PERRYS** Shop for Value, Quality and Big Savings!

**VISA** **JANUARY SALE** **M.C.**

<b>32-OZ WISK DETERGENT</b> 137	<b>2-IN PACKAGE PAPER TOWELS</b> 77¢ PKG.	<b>4-ROLL PKG. BATHROOM TISSUE</b> 88¢ PKG.	<b>1-GALLON CLOROX BLEACH</b> 93¢
<b>PLANTERS SNACKS</b> • Cheese Balls • Corn Chips YOUR CHOICE 77¢ CAN	<b>BATH SIZE SOAP</b> Safeguard BAR 38¢	<b>25-FEET ROLL ALUMINUM FOIL</b> Reg. 69¢ 48¢	<b>280-COUNT KLEENEX FACIAL TISSUES</b> BOX 99¢
<b>SELF ADHESIVE PHOTO ALBUM</b> 10-PAGE 127 EACH	<b>100% COTTON FLOUR SACK KITCHEN TOWELS</b> SUPER SIZE 77¢ EACH	<b>TERRY WASH CLOTHS</b> ASSORTED COLORS 24¢ EACH	<b>100-COUNT TABLET</b> YOUR CHOICE 2100
<b>BIC LIGHTER</b> FOR 299	<b>50-COUNT NO. 10 OF 75-100-COUNT NO 6 3/4 ENVELOPES</b> YOUR CHOICE 2100	<b>30x30 BABY RECEIVING BLANKETS</b> 100% Cotton • Comes in Rainbow Prints Zoo Prints • Stripes 2 IN 197 PKG	<b>Fabric Sale!</b> REDUCED! 1st Quality 45" Flatfold FABRIC REMNANTS Asst'd Prints & Solids 97¢ YD.
<b>1909 W. Beauregard</b>	<b>655-9171</b>	<b>REDUCED!</b> 1st Quality 60" Flatfold 100% Polyester Pongee & Interlock Asst'd Prints & Solids 127 YD.	<b>Buy 'em by the pair</b> TELL-A-TALE STORYBOOKS Special! PLUTO 2 BOOKS FOR 100

H.R. LITTLE'S

**January Spectacular**

**LOW PRICES**

**LARGE SELECTION**

+

**11.9% APR on all 1982 & 1983 Buicks**

**Interest Program ends March 31, 1983**

WOULDN'T YOU REALLY RATHER HAVE A BUICK FROM . . .

ASK FOR HAROLD GIFFORD RAY EATON TED HOOPER BILL HEMPHILL

**H. R. LITTLE**

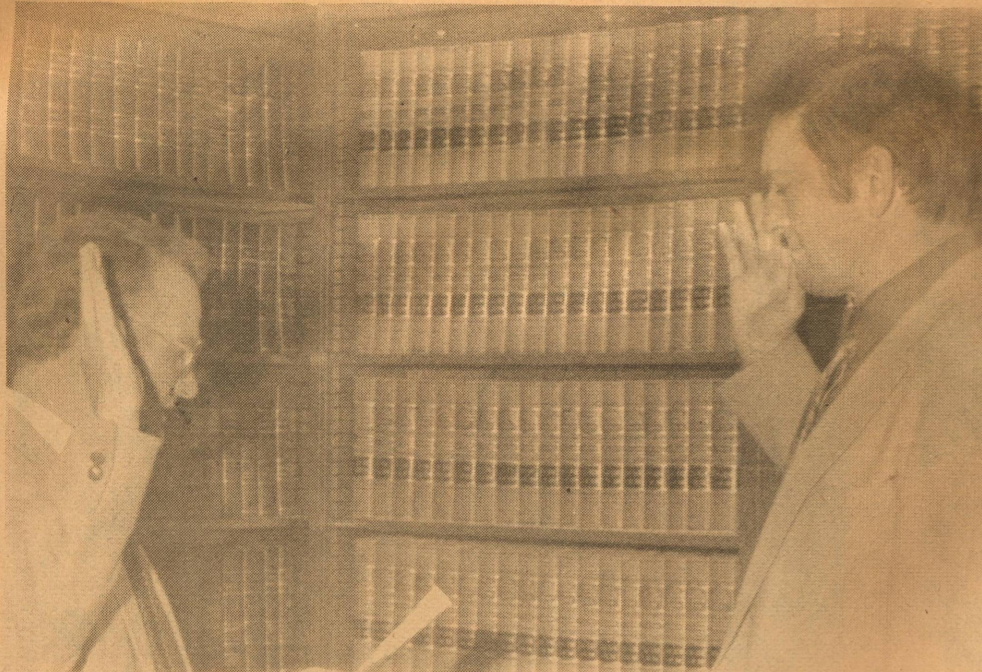
**Concho**

**BUICK-MERCEDES-GMC**

SAN ANGELO, TEXAS

We Offer GMAC Financing





Treasurer A. G. McCormick being sworn in.

## Brucellosis Free Herds Increases

The number of certified brucellosis free herds in Texas at the end of 1982 is almost three times higher than in 1981, Dr. John W. Holcombe, executive director, Texas Animal Health Commission, Austin, reports.

Figures from the TAHC reveal that as of the end of 1982 there are about 600 certified brucellosis free herds in Texas; this compares with 200 at the end of 1981. "It is likely that some time during the first half of 1983 Texas could have 1,000 certified brucellosis free herds," Dr. Holcombe said.

A livestock producer's best assurance for as much free movement of his cattle as possible within Texas or out-of-state is a certified brucellosis free herd.

"Most states accept brucellosis free cattle without additional testing. And we are seeing many other states increasing regulations relating to brucellosis on Texas cattle. Livestock producers in Texas are realizing a certified brucellosis free herd is a good management practice," Dr. Holcombe said.

A certified brucellosis free herd is available for

beef cattle producers, both registered and commercial, as well as dairymen.

For beef cattle, a complete herd blood test is needed. This involves two consecutive whole herd negative of all test eligible cattle. They must be tested not less than 10 months nor more than 14 months apart.

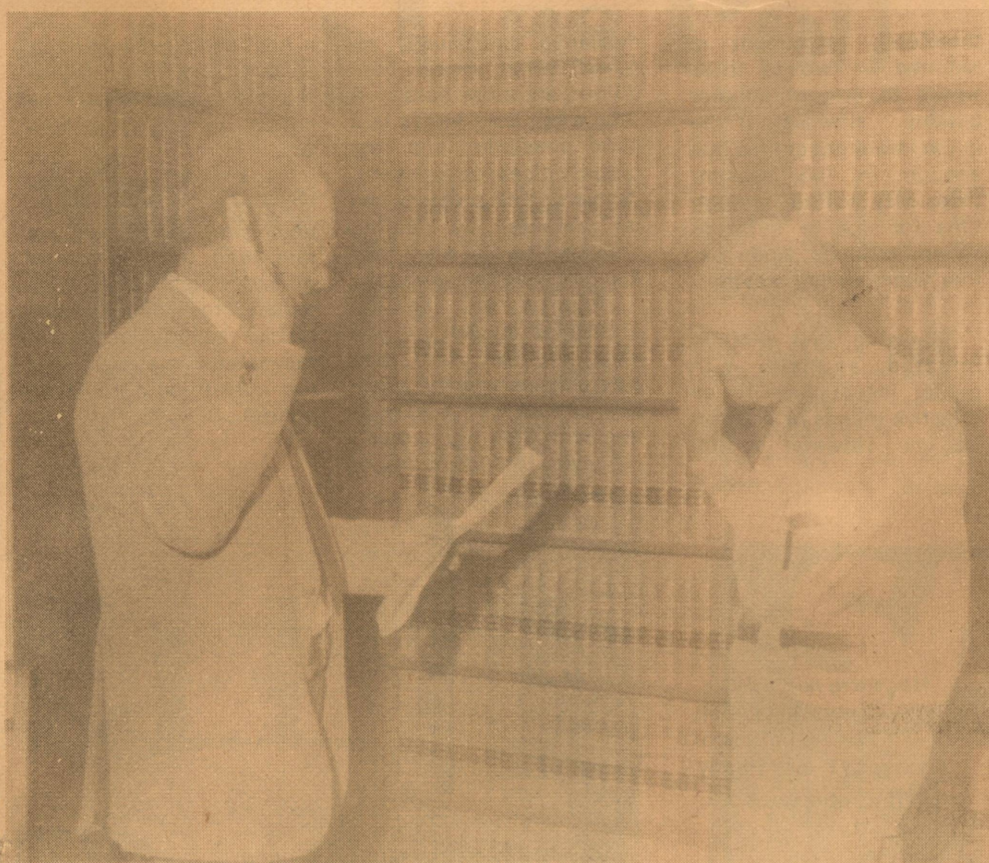
For dairy cattle, milk ring tests may be used. A minimum of three consecutive negative milk ring tests conducted at not less than 90 day intervals is needed. This is followed by a negative herd blood test conducted within 90 days after the last negative milk ring test.

Complete details may be obtained by contacting any area TAMC office. "Because we are getting so many inquiries about establishing certified brucellosis free herds, it will longer than it has in the past to complete the necessary paper work. We still urge any producer interested in a certified brucellosis free herd to contact his nearest TAHC office. It's a three step in the Texas brucellosis program," Dr. Holcombe explained.

County Judge John Griffin was sworn in Monday by County Clerk Helen Bebee.



Helen Bebee, County Clerk re-confirms her oath.



Justice of the Peace Frank Bradley takes his oath for another term in office.

## Agriculture Census Starts

The 1982 Census of Agriculture gets underway this week with the mailing of report forms to farmers and ranchers in the 50 states, the Commerce Department's Census Bureau announced today.

Farmers and ranchers are being asked to report on their agricultural operations during 1982 and to return the form by Feb. 15, 1983. The 1982 census is the nation's 22nd aari-

culture census in a series that started in 1840.

For the first time in a mail agriculture census report forms will reflect regional cropping patterns to make reporting easier.

Farm and ranch operators will be asked to report the acreage in their operations, form of ownership, type of organization, location of the place, use made of the land, and when their operations began. Other questions will cover livestock and poultry inventories and sales, amount of government crop loans, crop acreage, amount harvested, and value of crops and livestock sold.

About 20 percent of farmers and ranchers will receive a form with an additional page which has inquiries on: Selected production expenses, market value of land and buildings, machinery and equipment inventory and value, interest expenses and expenditures for petroleum and other energy sources.

Assistance in completing census forms is available locally from offices of the Cooperative Extension Service, Soil Conservation Service, Agriculture Stabilization and Conservation Service, Vocational Agriculture Teachers, Production Credit Associations, and Farmers Home Administration.

A file copy of the report form is provided which operators can complete and keep for their own records.

A time extension can be granted farmers who request it. Census results will be published for each state, and the nation. The first preliminary data will be released beginning in the fall of 1983.

The law which requires farmers and ranchers to report in the census also protects the privacy of their reports. Census report forms are confidential by law and they may be seen only by sworn Census employees and may be used only for statistical purposes. Even other government agencies cannot obtain or use the individual reports, and copies retained by the farmers are immune from the legal process.

Each report form will have a census file number

(CFN) printed on the address label. If a report is not received for each file number, the Census Bureau will send out Follow-up letters to all who have not responded.

Farmers and ranchers who have not received a form should request one from the Bureau of the Census, 1201 East 10th Street, Jeffersonville, Indiana 47133.

Due to being in the hospital, I want to apologize for any inconvenience to my customers and will continue to serve them to the best of my ability.

I want to thank everyone for their help. I am now open for business.

853-2983

**JOHNNIE'S BEAUTY SHOP**

### Insulation Is A Year 'Round Energy Saver

<p>January 1983</p> <p>S M T W T F S</p> <p>1 2 3 4 5 6 7 8 9 10 11 12 13 14 15 16 17 18 19 20 21 22 23 24 25 26 27 28 29 30 31</p>	<p>February 1983</p> <p>S M T W T F S</p> <p>1 2 3 4 5 6 7 8 9 10 11 12 13 14 15 16 17 18 19 20 21 22 23 24 25 26 27 28</p>	<p>March 1983</p> <p>S M T W T F S</p> <p>1 2 3 4 5 6 7 8 9 10 11 12 13 14 15 16 17 18 19 20 21 22 23 24 25 26 27 28 29 30 31</p>	<p>April 1983</p> <p>S M T W T F S</p> <p>1 2 3 4 5 6 7 8 9 10 11 12 13 14 15 16 17 18 19 20 21 22 23 24 25 26 27 28 29 30</p>
<p>May 1983</p> <p>S M T W T F S</p> <p>1 2 3 4 5 6 7 8 9 10 11 12 13 14 15 16 17 18 19 20 21 22 23 24 25 26 27 28 29 30 31</p>	<p>June 1983</p> <p>S M T W T F S</p> <p>1 2 3 4 5 6 7 8 9 10 11 12 13 14 15 16 17 18 19 20 21 22 23 24 25 26 27 28 29 30</p>	<p>July 1983</p> <p>S M T W T F S</p> <p>1 2 3 4 5 6 7 8 9 10 11 12 13 14 15 16 17 18 19 20 21 22 23 24 25 26 27 28 29 30 31</p>	<p>August 1983</p> <p>S M T W T F S</p> <p>1 2 3 4 5 6 7 8 9 10 11 12 13 14 15 16 17 18 19 20 21 22 23 24 25 26 27 28 29 30 31</p>
<p>September 1983</p> <p>S M T W T F S</p> <p>1 2 3 4 5 6 7 8 9 10 11 12 13 14 15 16 17 18 19 20 21 22 23 24 25 26 27 28 29 30</p>	<p>October 1983</p> <p>S M T W T F S</p> <p>1 2 3 4 5 6 7 8 9 10 11 12 13 14 15 16 17 18 19 20 21 22 23 24 25 26 27 28 29 30 31</p>	<p>November 1983</p> <p>S M T W T F S</p> <p>1 2 3 4 5 6 7 8 9 10 11 12 13 14 15 16 17 18 19 20 21 22 23 24 25 26 27 28 29 30</p>	<p>December 1983</p> <p>S M T W T F S</p> <p>1 2 3 4 5 6 7 8 9 10 11 12 13 14 15 16 17 18 19 20 21 22 23 24 25 26 27 28 29 30 31</p>

When your house is properly insulated you save on energy cost season after season, winter or summer. The difference in heating bills for a poorly insulated house and a well insulated one can be as much as 33% more a year — choose an insulation with recommended "R" value for this area. Proper insulation will help you to save on your energy bill all year round. Savings may vary due to type of construction, family size, or different energy usage habits.

**WEST TEXAS UTILITIES COMPANY**

**WTU**

A Member of The Central and South West System

Remember, WTU Supplies the Energy, but only You Can Use it Wisely!

**THORP'S**

**DRY CLEANERS and LAUNDRY**

UNIFORM RENTAL

DUST CONTROL MOPS AND MATS

212 S. Main 853-2900

**NL WELL SERVICE**

Well Servicing and water hauling

24 hour service

Pump Trucks

Eldorado 853-3243 Sonora 387-3509

**BUTLER SUPPLY COMPANY**

East St.

Day 853-2503

Your Complete Oil Field Store

**Fishers CARPET CLEANING**

- Commercial
- Residential

Senior Citizen's Discount Phone 853-2651 Vinyl Repair Upholstery Cleaning

**SHOP AT HOME USE THE BUSINESS REVIEW**

20 Years Experience

**Martinez Brothers**

Farm & Ranch Fence Building & Welding

835-3121 653-5679

**ELDORADO INSTRUMENT and CONTROL CO**

INSTRUMENTS\* GAUGES\* METERS\*

CONTROLS FOR OIL AND GAS INDUSTRY.

INDUSTRIAL PLANTS SALES AND SERVICE

ON OILFIELD AND INDUSTRIAL INSTRUMENTS AND CONTROL.

24 hour service

Office 853-2506 Home 853-2624

**HENDERSON WATER WELL WINDMILL and PUMP REPAIR**

Phone 853-3280

**FITTS-MILLER BUILDING**

Custom made storage buildings and greenhouses made to your order

Phone 853-2129 Phone 853-3073

**INSURANCE**

Fire Auto Windstorm Casualty

Call Tom Ratliff at 853-2636

**KERBOW FUNERAL HOME**

Serving Eldorado and Sonora

Ph. 853-2636 or 387-2266

**BRENDA'S House of Ceramics**

9-4:30 Monday thru Saturday

9 miles north west of Eldorado on Will Davis Road at the Roysters Ranch

**HEADQUARTER Barber Shop**

Kerry Sharp barber stylist

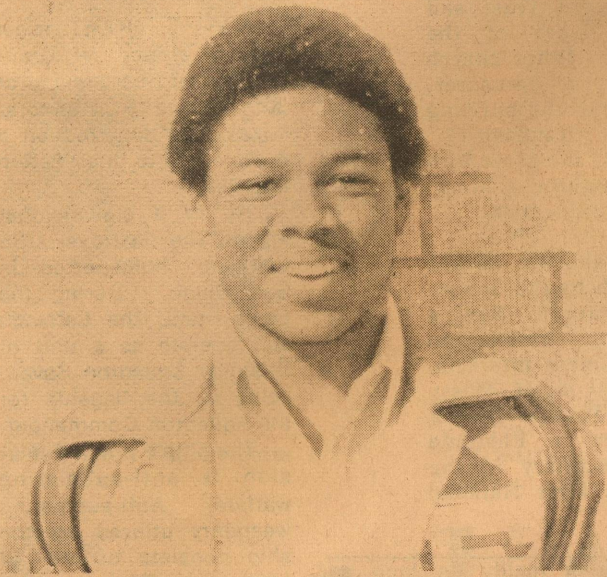
200 W. Murchison PH: 853-3048

10:00 to 6:00 Tue.-Friday Sat. 10:00 to 3:00



# SPORTS

## Coaches Honor Players



Ussery



Pina



Harlin



Cathey



Edmiston



Church

## Six Eagles On All District List

Six Eldorado High School football players have been named to the All District 9-AA football team.

Named to the first team this year were Jeff Harlin, Gene Edmiston, and John Church. Named to the second team were Douglass Ussery, Danny Pina, and Rickey Cathey.

Harlin, son of Bill Harlin of Big Spring and Linda Chandler of Christoval, was named 1st team defensive back. He intercepted four passes and returned them 40 yards to tie Gene Edmiston for team leadership. He also came up from his secondary spot to make 53 tackles. Besides playing defense, Jeff returned 18 punts for a 9.1 yard average. He returned

8 kickoffs for 176 yards and one touchdown. Harlin lead all Eagle receivers catching 13 passes for 330 yards and 4 touchdowns.

Edmiston, son of Jo Ann Edmiston of Eldorado, was named 1st team All District Punter. He averaged 34.9 yards on 55 punts. He also had 4 interceptions, caught seven passes for 101 yards, and made 90 tackles from his cornerback position. He was recently named to the San Angelo Standard Times 1982 All West Texas Football team.

Church, a 6'4", 240 pound junior, was named 1st team defensive tackle. He ended up the year with 20 unassisted and 32 assisted tackles for a total of

72. John anchored the defensive line, most of whom will return next year. Coach Johnny Clawson described John as aggressive and intimidating. "John really turned out to be an outstanding football player," Clawson added.

Ussery, son of Mr. and Mrs. Abbie Lee Ussery of Eldorado was named to the 2nd team as only a junior. He led all Eagle rushers with 701 yards on 129 attempts for a 5.4 yard average and also scored 8 touchdowns. He caught 2 passes for 14 yards and led the team in scoring with 48 points. Ussery also scored 14 tackles.

Pina, son of Mr. and Mrs. Domingo Pina, was a

2nd team selection at his linebacker slot. He led all tacklers from his linebacker position with 139 total tackles. That includes 43 unassisted tackles and 53 assisted tackles. Pina also rushed 44 times for 121 yards. He kicked ten extra point and one field goal. Pina blocked one kick and intercepted one pass.

Cathey, the son of Mr. and Mrs. Jim Cathey, turned out to be a great defensive end for the Eagles as he was named 2nd team defensive end. Cathey made 55 tackles this season while catching three passes for 44 yards. "Rickey was a very consistent, steady ball player for us this year. He did not make many mistakes," Clawson said.

## Eagles Travel To Reagan County

The Eldorado Eagles travel to Big Lake Thursday to the 52nd Annual Reagan County Invitational Basketball Tournament. The tournament will run through Saturday. Eldorado will face the tough task of defeating

Greenwood in their first game set for Thursday at noon. Greenwood, led by All-Stater Stuart Burleson, was defeated in the state finals last year. The Eagles starting lineup will consist of Ashley Niblett, Victor Gutierrez, Joe Barrera,

Danny Pina and James Woodward. Coach Richters said that Woodward or Luke Brame will be on Burleson to try to deny him the ball. "We'll try to fast break all we can," Richters said.

## Junior High Splits Games; Winning Streak Ends

The Eldorado Junior High basketball teams split four games with the Junction junior high Monday night in Junction.

Coach Larry Fatheree's seventh grade boys lost 21-15. This loss brings their record to 2-4 on the year. Craig Gutierrez had 6

points to lead the young Eagles.

The seventh grade girls rolled over the Junction girls by a 30-0 score. Coach Teresa Baker said that all the girls got to play and did a great job. The team is undefeated this year.

Eldorado slipped away with a victory in the eighth

grade boys game by a score of 16-15. "The kids rebounded well and moved the ball better than we have so far," Rick Singleton added. Martin Espinosa threw in 6 points to lead the cause.

A long winning streak came to a screeching halt when Coach Baker's eighth grade girls lost for the first time in two years. The final

score was 22-16. Karen Ussery scored 6 while Roseanne Adame followed with 5 points.

The eighth grade boys and girls will be at the Sonora Tournament, Friday and Saturday, Jan. 7th and 8th. The girls play at 4:00 p.m. while the boys follow at 5:15 p.m.

## Lions Tourney

### Eaglettes Defend Title

The Lions Club's Annual Eaglette Basketball Tournament featuring girls' varsity teams from the surrounding area will be held January 6, 7 and 8th in the EHS gym.

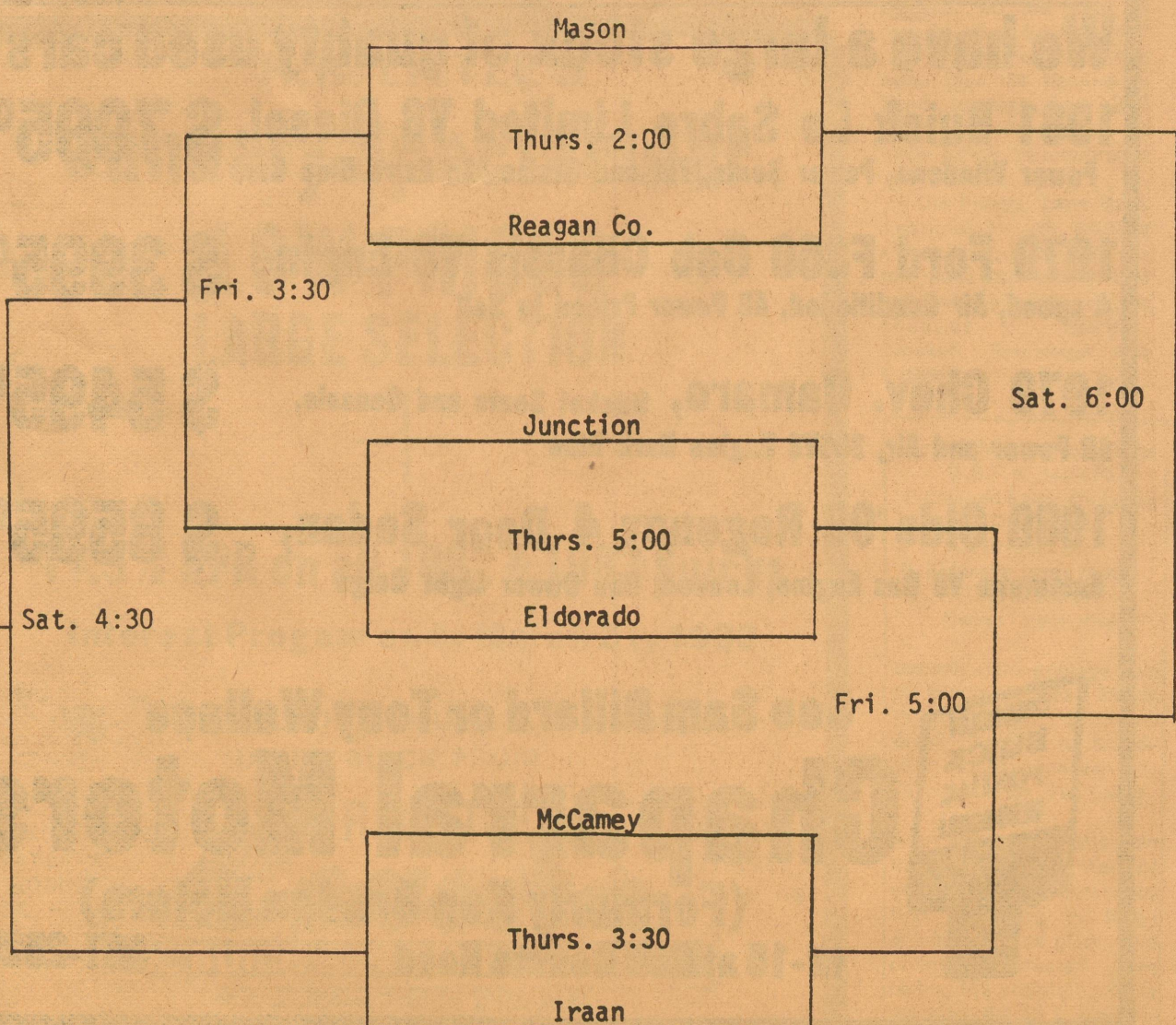
Teams from Junction, McCamey, Iraan, Mason

and Reagan County will play in the tournament along with their Eagle hosts.

This event is one of the major fund raisers for the Lions Club and provides some good clean family fun for Eldorado residents and their visitors. The tourna-

ment is well known for providing some excellent entertainment as these talented teams meet head on in exciting match-ups.

Admission for the tournament is \$1.50 for adults and \$.75 students.



**SECURITY** That's what you have when you have your account at First National. We have a strong capital position, and your account is insured by F.D.I.C. up to \$100,000.00 per depositor.

**EXPERIENCED** The personnel of First National Bank offer you the benefit of many years of experience in financial matters. We can help you solve your financial problems, and we welcome the opportunity to be of service to you.

**DEPENDABLE** We have served the financial needs of Eldorado, and Schleicher County since 1907, and we will be here when you need us.

**EXPANDING** We are anxious to provide even better facilities in order to offer you all the banking services you desire.

- DRIVE-IN BANKING

## THE FIRST NATIONAL BANK OF ELDORADO

'Serving Eldorado and Schleicher County Since 1907'

Each depositor insured to \$100,000

FEDERAL DEPOSIT INSURANCE CORPORATION





# Suzy Rosford retires from the First National Bank

Seaman  
Granger  
Transferred

The retirement of Mrs. Ken Rosford from the First National Bank effective January 31st, 1982, announced by Lea Roy Aldwell, President.

Mrs. Rosford, familiarly and affectionately known as "Suzy" has been employed at the First National Bank for more than 25 years.

Suzy was born in San Angelo, the daughter of Horace Linthicum, Eldorado and Katherine B. Davis, San Angelo. She graduated from Eldorado High and attended Texas Christian University at Fort Worth two years.

Suzy has been an employee of the First National Bank since 1957 and has worked in all the First National Bank departments.

In 1970 she was appointed to the

position of Assistant Cashier. In 1978 she was appointed to the position of Vice-President, and in 1981 she was promoted to the position of Senior Vice-President. She also serves as Secretary to the Board of Directors of the bank.

She is presently serving as co-treasurer of the Edwards Plateau Game & Wildlife Association. She is a past director of the Sonora Chamber of Commerce and held the office of treasurer for that organization. She is a past member treasurer of the Sonora Ladies Golf Auxiliary.

Also, she serves as assistant Secretary-Treasurer to the Sutton County Community Trust Fund co-owner and assistant manager of A&R Salt Water Disposal System and is past Secretary/Treasurer of

the Allison Educational Trust and was a charter member of the Presbyterian Church. Other church activities include past treasurer, elder and a member of the building committee of the church manse.

In youth activities, she served on the Scholarship Committee of Marketing & Distributive Education.

In October, 1980 she was named Citizen of the Month by the Sonora Chamber of Commerce. Suzy's future plans are to continue to pursue personal business interests, work part time for my sister, Prissy Paxton, owner of Paxton Tax & Bookkeeping Service in Eldorado and continue as secretary of the Board of Directors, First National Bank Sonora.

Navy Radioman Seaman Bobby W. Granger, son of Bob Granger of 301 Second St., Sonora, Texas, has departed on a deployment to the Western Pacific.

He is a crewmember aboard the destroyer USS Leftwich, homeported in San Diego. During the deployment, the Leftwich will operate as a unit of Destroyer Squadron Seven, acting as the flagship for the Squadron Commander.

The ship's primary mission is anti-submarine warfare. Anti-submarine weaponry utilized by the ship consists of MK 46 torpedoes which can be launched over the side, through hull mounted tubes or by anti-submarine rockets. Additional capabilities have been augmented by an embarked Helicopter Detachment, from Helicopter Anti-Submarine Squadron Light 35, Detachment Two, based at Naval Air Station North Island, San Diego.

The Leftwich is also armed with anti-air and anti-ship missiles and guns. The ship is 529 feet long and carries a crew of 330.

Port visits are expected to be made in the Philippines, Korea, Japan and Hong Kong.

## Quilts for Rehab

Every year for the past several years, Bill and Susan Hayes, "Doug" and "Julie" of the day-time drama, "Days of Our Lives" have auctioned quilts and afghans that have been donated for the West Texas Rehabilitation Center's annual benefit telecast.

But to date only about ten quilts have been donated for the January 8 telecast. Normally, close to 100 are donated, so

Rehab Center officials are making an urgent appeal for individuals and quilting clubs from all over the Southwest to send in a quilt or afghan for this year's show.

Donors are asked to call the West Texas Rehabilitation Center as soon as possible at 915-692-1633.

Each year, the quilt auction portion of the telecast raises in excess of

\$10,000 so it plays a big part in the overall fund raising event.

# School Gas Poll

(All Lunches Served with Bread, Milk & Butter)

Monday Jan. 10th

Meatloaf  
Creamed Potatoes  
Mixed Greens  
Sliced Beets  
Yellow Cake / Icing

Tuesday Jan. 11th

Beef Tacos with Cheese  
Pinto Beans  
Lettuce & Tomato Salad  
Cornbread  
Chocolate Pudding

Wednesday Jan. 12th

Hot Dogs with Chili  
Corn Chips  
Stuffed Celery  
Baked Beans  
Rice Krispie Cookies

Thursday Jan 13th

Turkey & Dressing  
Giblet Gravy  
Green Beans  
Cranberry Sauce  
Harvest Cake / Icing

Friday Jan. 14th

No School  
Teachers in Service  
Breakfast  
(½ pint milk with each breakfast)

Monday Jan 10th

Applesauce  
Bran Muffins

Tuesday Jan 11th

Prunes  
Hot Oatmeal-Toast

Wednesday Jan. 12th

Orange Juice  
Hot Biscuits-Bacon-Jelly

Thursday Jan. 13th

Apple Juice  
Cinnamon Toast

Friday Jan. 14th

No School  
Teachers in Service

Results of a pre-Christmas poll of Texas natural gas producers and royalty owners shows that an overwhelming 97 percent of respondents believe that changes in the laws governing the monopolistic transportation of natural gas would be beneficial to consumers and producers. The poll addressed the knotty problem of bitter consumer complaints about high natural gas prices. End users have no opportunity to shop for better prices while producers have inexpensive surplus gas not being transported by pipeline purchasers.

The survey was conducted by Lubbock independent Rex Fuller, Chairman of the National Energy Policy Committee of the 5400-member Texas Independent Producers and Royalty Owners association, (TIPRO).

"Pipeline companies have wrongly blamed producers for the huge increases in consumer prices for natural gas," Fuller commented. His letter to TIPRO members said, "The pipelines have created their own distress by negotiating high cost gas contracts with high take or pay obligations." He noted that the real culprit of higher gas prices is the increased cost of transportation and distribution which continues to escalate the price of natural gas to consumers.

Fuller asked TIPRO members to respond "for" or "against" to a proposed policy statement reading: "To assure that maximum competitive forces work in both the producing and consuming sectors of the gas industry, steps should be taken to review and seek change, as necessary, in laws and regulations to insure that pipelines, as a unique transportation system, do not preclude natural gas producers and consumers from having equal access to whatever market exists."

TIPRO president Harold E. "Gene" Wright, Gilmer, said, "The significance of Fuller's proposed position is that producers are finally fed up with being blamed for prices they have no control over. The pipeline companion, in attempting to shift blame from themselves, could create a Congressional steamroller which could destroy natural gas sales contracts, leaving consumers at the mercy of a pipeline monopoly which is guaranteed a profit regardless of who gets hurt."

Wright, who is also the immediate past Chairman of the Natural Gas Supply Association in Washington, quoted the recent testimony of NGSA President Nick Bush to the Senate Energy Committee. Commenting about reports of gas bills being doubled in a time of a natural gas surplus, Bush said the wellhead price of natural gas increased by only 39 cents mcf in the last 12 months while the average consumer is paying \$5.60 mcf. "It should be clear to all," he concluded, "that a 39 cent wellhead increase is in no way responsible for doubling anyone's \$5.50 gas bill."

Natural gas producer L. Frank Pitts, Dallas, TIPRO'S Chairman of the Board, said that, "The root

cause behind interstate pipeline problems and market disarray is bad legislation. The Fuel Use Act has denied natural gas to many industrial users, and has thus placed a heavier burden of transportation costs on the residential consumer. Pipelines should have to become common carriers."

Pitts confirmed. "Producers should be permitted to sell directly to consumers and distributors, and the gas pipelines required to make the deliveries, as is now done with oil pipelines or interstate trucks."

TIPRO attorney Scott Anderson agrees. "If the pipelines want to do away with 'take-or-pay' contracts, he said, "then they should be required to 'take-or-deliver'."

Julian Martin, Executive Vice President of TIPRO in Austin, reiterated the association's policy calling for complete decontrol of all natural gas and said, "Full decontrol can never

be a reality as long as producers and royalty owners can sell only to the pipelines. The results of Mr. Fuller's poll re-emphasizes the producer's contention that lower gas prices will come about only by opening up a true free market for natural gas," he said. "When producers can compete for the markets against other fuels and against each other, rather than being left at the mercy of a legal pipeline monopoly to decide whose gas is bought and sold, consumers everywhere will benefit," Martin said.

Introducing  
**NANCY LANDIS**  
Hair Stylist  
with  
**8 years**  
experience

Specializing in Men's & Woman's  
hair styling  
Accepting appointments  
from Wednesday thru Friday

Rene's  
PH. 853-2747 W. Gillis  
Eldorado

**GRIFFIN SERVICE CO**  
Derl Griffin - Owner

**ELECTRICAL**  
Commercial Residential  
&  
Industrial  
**PLUMBING & PIPING**  
Commercial & Residential  
**REFRIGERATION**  
&  
**AIR CONDITIONING**  
Commercial & Residential  
**TV & APPLIANCE**  
**REPAIR**  
853-3185  
**GENERAL**  
**CONSTRUCTION**  
Building Repair  
853-2458  
SERVING ELDORADO —  
SONORA OZONA  
Main St. Eldorado

The First Baptist Church is pleased to welcome Clive Johnston, our new pastor, and his family to Eldorado and to cordially invite all who will to join our worship and celebration on Sunday, January 9.

Sunday School 9:45 a.m.  
Morning Worship 11:00 a.m.  
Covered Dish Luncheon  
Evening Worship 7:00 p.m.

**SAVE NOW**  
**11.9%**  
ANNUAL PERCENTAGE RATE  
**FINANCING**

**For Immediate Delivery!**  
Now in stock at Chaparral Motors

**S-10 Blazer** in your choice of 2 or 4-wheel drive!

**We have a large stock of quality used cars!**

**1981 Buick Le Sabre Limited V8 Diesel, \$7995<sup>00</sup>**  
Power Windows, Power Seats, Tilt and Cruise An Extra Nice Car

**1979 Ford F350 Cab Chassis V8 Engine \$3995<sup>00</sup>**  
4 speed, Air Conditioned, All Power Priced to Sell

**1979 Chev. Camaro, Bucket Seats and Console, \$5495<sup>00</sup>**  
All Power and Air, 305V8 Engine Dark Blue

**1980 Olds '98 Regency 4 Door Sedan, \$8595<sup>00</sup>**  
Automatic V8 Gas Engine, Loaded, One Owner Light Beige

See Sam Dillard or Tony Wallace  
**Chaparral Motors**  
(Formerly Ken Braden Motors)  
IH-10 at Golf Course Road 387-2529



# Christmas Company

Visiting in the home of Mr. and Mrs. Glenn McDonald over the holidays were Mr. and Mrs. Roy Boyer from Uvalde, Mr. and Mrs. Bill Wade, Sonora. Also visiting from Sonora were Mr. and Mrs. John Wade and Johnna. Other visitors included Mr. and Mrs. Pat Wade and Joseph, Mr. and Mrs. Ernest Mahon from San Antonio, Mr. and Mrs. Jack Wade, Bud Wade of Eldorado, Mr. and Mrs. Wes Wade, Jessica and Jason of San Angelo and Mr. and Mrs. Dwight McDonald, Angie and Laci of Mineral Wells.

Mr. and Mrs. Charlie Niblett had as visitors over the holidays their daughter and son-in-law, Liz and Mark Lloyd, College Station, Nita and Dell Wilson, Dayla and Lane, and Cathy's mother, Mrs. Frances Freeman of Crane.

Mr. and Mrs. Gene Nixon and daughter Hanna Jane and son Asa from Marfa visited Gene's parents, Mr. and Mrs. E. H. Nixon. Mickey Nixon was

also home from college for the holidays.

Mr. and Mrs. Randy Crawford and Ross of Ozona and Mr. and Mrs. Steve Sample and Kelly met with Mrs. Delbert Edmiston and Mrs. Jerry Edmiston and family to exchange gifts Christmas Eve.

Mr. and Mrs. Jerry Edmiston and family visited the Ed Glass family at the home of Mr. and Mrs. Roy Fisher on Christmas Day and the next day the Edmiston family visited Nell's grandmother, Mrs. Willie Fisher.

Mr. August Roden and Yvonne were in Eldorado for several days visiting his daughters, Dorothy Dacy and Rita Meador. Mr. Roden recently retired from City Service Oil Co. They are former residents of Eldorado. Also visiting with Mr. Roden was Bradley Roden of San Antonio.

Mr. and Mrs. John Meador hosted a New Year's Eve party in their home before the New Year's Dance at the Me-

morial Building, about 10 couples attended.

Mr. and Mrs. Chad Thompson spent the holidays in Austin with Mr. and Mrs. James Hitt, Winnie Hitt and Mrs. Bertha Thompson.

Little Rusty Wells, grandson of Mr. and Mrs. Ray Standeford will be leaving the hospital in Austin to go home in the near future. Grandma and Grandpa Standeford are very happy Rusty is doing so well.

Carolyn Moya and sons visited in Kermit with their family over the holidays.

Don Garlitz is home from Ranger Junior College and will enroll in A.S.U. when classes resume.

Mr. and Mrs. Henry Holguin are the proud grandparents of a baby girl, Michelle Nicole Duncan. Michelle was born Dec. 20th in Odessa. Her parents are Pat and Vickie Duncan.

Mrs. Bessie Doyle had her family visiting during the Christmas holidays. Those present were Burnell and Bill Etheredge of Dallas, Jerry Heavite, Jonana and Will of Krese, Texas, Jackie Etheredge and Billy Hampton of Lubbock, Morrie, Mike and Jimmy Dan Doyle of San Angelo and Jimmy Doyle of Eldorado.



Last Friday hand signals from Sheriff's deputies helped control the traffic during the power failure. The electricity was knocked out temporarily because of a transformer fire.

## Lice Control

Pour-on and spot-on grubicides labeled for lice are effective and considerably reduce the problem of cold stress associated with dips and sprays. However, the possibility of a host-parasite reaction is always a threat if the material is applied after the cut-off date for grub control.

Systemic grubicides labeled for lice control usually recommend a lower rate than that to control grubs, which would help reduce the host-parasite reaction.

Use of nonsystemic dust applied by hand or in dustbags would eliminate the possibility of host-parasite reaction. But because of a lack of penetration of heavy hair coats, dusts do not provide as effective lice control as dips or sprays.

Self-treatment devices, backrubbers and dustbags, properly placed and maintained in a preventative program offer effective lice control. These devices should be placed and maintained in a preventative program offer effective lice control. These devices should be placed early in the fall prior to lice buildup in order that cattle will become accustomed to

using them. They should be placed in areas that cattle frequently use or placed in such a manner that cattle are forced to use them.

The spot-on formulation of chlorpyrifos is a new product that has been effective against lice. The product kills all stages of lice - eggs, nymphs and adults. One application is adequate for season-long control if the entire herd is treated and no untreated animals are later introduced into the herd.

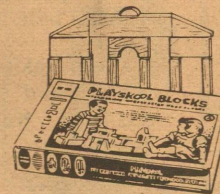
Only a small amount of chlorpyrifos is required, thus eliminating cold stress from soaking animals with sprays and dips. The insecticide is not a grubicide, so it can be used anytime without fear of a host-parasite reaction. However, this product is not labeled for dairy animals, bulls over 8 months, or pure bred exotic breeds.

It is cautioned that whichever lice control program is used, the cattleman should be certain to read label directions and pay particular attention to warnings, restrictions and pre-slaughter interval.

Additional information on control of lice and other external parasites of cattle is available in the publi-

cation, "Suggestions for Controlling External Parasites of Livestock and Poultry", at the county extension office.

## Gifts and Christmas Merchandise



for 2 Weeks

1/3 off

reg. price

At Westerman Drug

**"Your Complete Fireplace Center"**

**MAJESTIC**  
An American Standard Company

Sales - Service - Installation

Do-It-Yourself Or Professional Installation  
Wholesale & Retail  
Majestic Ready Built Wood Burning

- Gas Logs / Glass Doors / Stoves
- Fire Tool Sets & Accessories
- Custom Fireplaces Design & Construction
- Free Standing & Built-in

BUILT-IN AIR CIRCULATING FIREPLACES UP TO 40% EFFICIENCY

MAJESTIC

FREE ESTIMATES  
653-3140

HOUSE of FIREPLACES  
1121 South Chadbourne SAN ANGELO

MAJESTIC

## New Duncan Daughter

Mr. and Mrs. Pat Duncan of Odessa are the proud parents of a new daughter, Michelle Nicole. Little Miss Duncan was born December 20th at 11:16 a.m. in the Womens and Childrens Hospital in Odessa. Michelle weighed 4 lbs. and 11 oz. and measured 19 in. in length. Maternal grandparents are Mr. and Mrs. Henry Holguin of Eldorado and Paternal grandparents are Mr. and Mrs. R.C. Duncan of Andrews, Texas.

**Delco Freedom Batteries**

**59-40 month list \$55.40 your cost \$47.07**

**81-60 month list \$74.65 your cost \$63.47**

**89-60 month list \$73.00 your cost \$62.05**

**Kent's**  
Automotive  
712 N. Divide Eldorado  
853-2733

## Join these merchants in supporting the EAGLES

**Oakwood Mobile Homes**  
San Angelo

**Southwest Texas Electric Co-op**  
Eldorado

**Eldorado Woolen Mills**  
Eldorado

**Kwik Service & Supply**  
Eldorado

**Casa Arispe**  
Eldorado

**CH Poyner**  
Eldorado

**Cathy's**  
Eldorado

**Hanusch Water Well Drilling**  
Eldorado

**Jackson's Inspection Service**  
Eldorado

**Eldorado Wool Co.**  
Eldorado

**Thorp Laundry & Dry Cleaners**  
Eldorado

**Jack Halbert Butane**  
Eldorado

**Quadra**  
Eldorado

**Sew'n Sew**  
Eldorado

**Food Center**  
Sonora

**McCalla's Dept. Store**  
Eldorado

**Meador Land Co.**  
Eldorado

**Meador Peters Ins. Agency**  
Eldorado

**Headquarters Beauty Shop**  
Eldorado

**J S Swabbing**  
Eldorado

**Western Company**  
Eldorado

**Shaw's Motel**  
Eldorado

**Westerman Drug**  
Eldorado

Jan. 6, 7, 8	Eldorado	Here
Jan. 6, 7, 8	Reagan Co.	There
Jan. 11	Miles	There
Jan. 14	Reagan Co.	There
Jan. 18	Stanton	Here
Jan. 20, 22	Eldorado	Here
Jan. 21	McCamey	There
Jan. 25	Wall	There
Jan. 28	Miles	Here
Feb. 1	Reagan Co.	Here
Feb. 4	Stanton	There
Feb. 8	McCamey	Here
Feb. 11	Wall	Here



**GO EAGLES!**



# CLASSIFIED

## FOR SALE

For Sale: double wide mobile home on two lots. Each lot 60 x 120, fenced yard, front and back, storage shed, covered patio on front. Shown by appointment only. 853-2230. 52-1p

House for Sale: 101 Maple Contact Raymon Mobley, 853-2707. tfc-c

For Sale: '76 Celtic mobile home 14x72. Unfurnished except for range & dishwasher. Great condition \$10,500. Porches & underpinning included. Trailer house only. 853-2831. 49-52,1-4 p

For Sale: double wide mobile home on two lots. Each lot 60 x 120, fenced yard, front and back, storage shed, covered patio on front. Shown by appointment only. 853-2230. 52-1p

For Sale: Sofa \$100, in good condition. 853-2704 52,tfc-c

For Sale: 1981 14 x 46 Titan. Pay equity and assume loan. Will finance. Call 853-3142 or 853-2881. 1-tfc-c

For Sale: Wurlitzer Touchtone Fun Machine. \$250. Waltz, jazz, latin and swing beat. Also like new recliner with vibrator & heat \$100. Call 853-3080 after 5 p.m. tfc

For Sale: 1981 Breck mobile home. 14 x 64, excellent condition. Financing available. Call 853-2419. 1-4c

Lost: Sheltie dog. Black with tan & white markings. Collar has Universal City. Call 853-2124. 1-c

For Sale: AKC Boston Terrier puppies, 6 weeks old, wormed. 915-653-8609. 1-p

For Sale: 1979 14 x 60 Marshfield mobile home, 2 bedroom, 1 bath, stove, refrigerator, unfurnished. \$1397.02 down, \$169.01 per month. 853-2177. 51,1-5p

## FOR RENT

For Rent: 2 bedroom apt. on North St., unfurnished, 1 bath, bills paid except electric. Call 853-2032. 1-c

Acreage for lease to run sheep or cows. Rony Kerr 853-2493. 1-p

## MISC.

Babysitting Wanted: Christian lady will do babysitting in her home. Registered. Infants thru age 4. Day or night. 853-3167. 52-1c

Lost: Blue Heeler puppy, 8 wks. old, hair shaved on small area on back. Lost by Sofges. Reward. Call 3-3368. 1-tfc-c

We are taking in "dogie" lambs and goats. Call 853-3315, Kathy Meador. 1-2c

## CARD OF THANKS

I want to thank all of my customers, I've enjoyed working with you. Due to the economy I have to resign as a Fay Swafford dealer. I look forward to working with you all in the future.

Sincerely,  
Ann Hyde

## Duplicate Bridge December Results

Thursday, 2nd

The Christmas party was held, which was a Club Tournament, and 10 tables of players attended with 2 pair from the Eldorado club winning: Mary Christian and Jack Bebee, 1st; and Ina Lambert and He Bebee, 4th.

Winners the 9th

Zella Baker and Imogene Edmiston; and Melissa O'Harrow and Mary Christian, tied for 1st; and Tommie Farrell, Sonora and Tom Peaslee, Dallas, 2nd.

Winners the 16th

Winnie Helen and Tom Ratliff, 1st, Melissa O'Harrow and Mary Christian 2nd; and Evelyn Wimer and Helen Bebee, 3rd.

Winners the 23rd

Lunetta Morgan, Sonora and Jack Bebee 1st; Imogene Edmiston and Zella Baker, 2nd; and Candy Richards and Clay Porter, 3rd.

Winners the 30th

Winnie Helen and Tom Ratliff, 1st; Mary Christian and Evelyn Wimer, 2nd; and Ina Lambert and Candy Richards tied for 3rd with Julie Pollard, Sonora and Jacke Bebee.

## PUBLIC NOTICE

### PUBLIC NOTICE

In regular session, December 7, 1982, the City Council authorized the soliciting of bids for an oil & gas lease on those certain city owned lots described as follows:

- Lots 9 10, block F. O.T.
- SE 55' of Lots 3, 4 & 5, Block L, O.T.
- Lots 6-13, Block I, O.T.
- Lots 2a, 2b, 2c, Block 18, O.T.
- Lot 3b, Block 33, O.T.
- Lot 3, Block 37, O.T.
- Lot 8, Block 105, O.T.

Lease will provide for a minimum royalty of 18.75 percent and a one year primary term. Lease will stipulate that no drilling or producing operations will be conducted on any surface of any lot described in the lease. There will be

additional terms and conditions that will be incorporated in the lease by the city's attorney. Sealed bids must be in the office of the City Secretary no later than 3:00 p.m. January 10, 1983. Bids will be opened at the regular meeting of the City Council at 7:30 p.m., January 11, 1983.

City Secretary  
City of Eldorado  
P.O. Box 713  
Eldorado, Texas 76936  
50,51,1c  
2ts

## Business Services

Will do tax returns. 853-3142 or 853-2881. 1-tfc-c

Janie Murph proudly displays her entry in the County Project Show set for January 14th.



## Sheriff's Sale of Abandoned Vehicles

The following Vehicles will be sold at Public Auction to the highest bidder on January 26, 1983, 10:00 a.m. till 4:00 p.m. Anyone having an interest in the vehicles described below must come forward

and pay towing expenses, etc., to redeem vehicles. \*For more information contact the Schleicher County Sheriff's Department.

VEHICLE INFORMATION			LICENSE PLATE INFORMATION		
MAKE	YEAR	BODY STYLE	*VEHICLE IDENTIFICATION No.	NUMBER	STATE
Ford	71	T-Bird	1J84N114688	BBQ 125	Texas
Olds	76	98/2 dr	3X37T6M253101	BVU 661	Texas
Ford	72	2 dr	2A30F201715	BK 4216	Oklahoma
Olds	74	4 dr	3N69K4M124088	YFW 217	Texas
Olds	75	4 dr	358395X142568	XSG 516	Texas
Chevy	73	4 dr	1L69H3C138574	EXL 671	Texas
Pont	68	4 dr	23599R176818	ERC 97	Texas
Chevy	73	4 dr	1L89Y3C144893	EWY 468	Texas
Chevy	67	4 dr	164697R169816	DML 205	Texas
Ply	67	4 dr	PM43F74229829	ABR 884	Texas
Dodge	69	4 dr	DL4109D113815	AQJ 675	Texas
Chevy	72	4 dr	1M39H25100563	CDB 608	Texas
Lincoln	74	2 dr	4Y89A879644	WJY 162	Texas
Chevy	73	Pick-up	CCQ143F401770	JR 648	Texas
Ford	67	4 dr	7D54H111809	GNA 347	Texas
Ply	73	4 dr	PH11P3D205998	EZM 499	Texas
Ford	70	4 dr	OD54Y117012	CTM 204	Texas
Merc	69	4 dr	9B6K503263	DTY 819	Alabama
Ford	72	Pick-up	F10YKP81747	FL 2448	Texas
Ford	70	4 dr	OC53Y140218	BZN 884	Texas
GMC	69	Pick-up	CM20DSA18024	PQ 558	Texas
Chevy	64	2 dr	41467R173015	EXQ 781	Texas
Pont	70	2 dr	252370X123910	EYR 122	Texas
Ford	69	2 dr	9J52Y135318	BBY 482	Texas
Chevy	70	4 dr	CL43LOC167051	BDG 620	Texas

\*Vehicle Identification Number - Motor Number required on 1955 and Prior Models. Serial Number

Required On All 1956 and Later Year Models and All 1932 And Later Year Model Ford Products.

Eldorado, Schleicher County, Tx.  
Name of City or Town

ORVAL N. EDMISTON, SHERIFF  
Authorized Signature

Hey  
Pardner,  
Get your  
Gear  
by Shopping  
The  
Leaders  
Classifieds  
and it's a good way to  
sell your old riggin'  
too!

### Community Calender

The Historical Society  
1st Monday each month  
3:00 at Museum

Eldorado Lodge  
890 AF & AM  
Regular Meetings on 2nd Thursday Each month  
Visiting Brethern Welcome

Eastern Star  
140 O.E.S.  
Reg. Meeting 2nd Monday Each month  
Visiting Sisters Welcome

Beta Sigma Phi  
2nd & 4th Monday 7:30 p.m., Club Room Memorial Building

Eldorado Duplicate Bridge  
Every Thurs. 7:00 p.m. Memorial Building

Wednesday Bridge  
Every Wednesday  
Tuesday Bridge  
Every Tuesday  
In different homes

Women's Club  
Tuesday, Jan. 11  
Res. of Mrs. Evelyn Stigler

<b>FIRST BAPTIST CHURCH</b> Oak and Gillis Sunday School 9:45 a.m. Morning Worship 11:00 a.m. Adult Evening Bible Study Worship 7:00 p.m. Wed. Prayer Serv. 7:30	<b>FIRST PRESBYTERIAN CHURCH</b> Rev. Ronald J. Sutto 7 N. Cottonwood Sunday School 10:00 a.m. Fellowship Time 10:30 a.m. Morning Worship 11:00 a.m.
<b>FIRST UNITED METHODIST CHURCH</b> Rev. Fred Brown Hwy. 277 across from courthouse 853-2721 853-3030 Church School 9:50 a.m. Morn. Worship 10:50 a.m. Youth Fellowship 7:00 p.m. Wednesday Youth Adult Study 7:30	<b>CHURCH OF CHRIST</b> Rusty Kwast, Min. Mertzon Hwy. Sunday Service Bible Class 10:00 a.m. Assembly 11:00 a.m. and 6:00 p.m. Wed. Bible Class 7:30 p.m. Ladies Bible Class 10:00 a.m.
<b>CHURCH OF JESUS CHRIST OF LATTER DAY SAINTS</b> Bishop: Keith Knepp San Angelo 949-6894 2817 Christoval Rd. Priesthood 9:00 a.m. Primary 9:00 a.m. Relief Society 9:00 a.m. Sunday School 10:00 a.m. Sacrament meeting 11 a.m.	<b>UNITED PENECASTAL CHURCH</b> Rev. Walter Ford Hackberry St. Sunday School 10:00 a.m. Worship Serv. 11:00 a.m. Sun. Eve. Serv. 7:00 p.m. Wed. Eve. Serv. 7:30 p.m.

**EL DORADO RESTAURANT**  
Steaks- Seafood & Mexican Foods  
Catering Service Available  
853-2818

**BUTLER SUPPLY COMPANY**  
Day 853-2503 Night 853-2004  
East St. Eldorado, Texas

**SONIC DRIVE-IN OF SONORA**  
Hwy. 277 North Sonora, Texas

## ATTEND THE CHURCH OF YOUR CHOICE

Antioch Baptist Church Sunday School-10 a.m. Morning Worship Service 11:00 a.m.	No Sunday Night Service Everyone Welcome Located on Callender St.
<b>FIRST CHRISTIAN CHURCH</b> Dale Lipsett, Minister Sunday School 9:45 a.m. Morning Service 11:00 a.m. Evening Service 7:00 p.m. Wed. Bible Study 7:00 p.m. 853-3101	<b>OUR LADY OF GUADALUPE CATHOLIC CHURCH</b> Rev. Serran Braun, Pastor. Pastor 853-2663 Saturday 7:00 p.m. Sunday 8:00 a.m.-10:00 a.m. Sunday School 9:00 a.m.
<b>ST. MARY'S EPISCOPAL CHURCH</b> Rev. Lea Roy Aldwell Pelt St. & McWhorter Ave. 387-2617 Sonora, Tx. Sunday Morning Worship and Holy Communion	<b>WESTSIDE CHURCH OF CHRIST</b> Hwy. 277 Sun. Morn. Serv. 10:30 a.m. Sun. Eve. Serv. 6:00 p.m. Wed. Eve. Serv. 7:30 p.m. Mike Sokoff, Minister
<b>PRIMERA IGLÉSIA BAUTISTA</b> Rev. E. L. Flores, Pastor El Paso and Concho St. Sunday School 9:45 a.m. Morn. Worship 11 a.m. Training Union 6-7 p.m. Evening Worship 7-8 p.m. Sunbeamswed. 3 p.m. Prayer Service 7 p.m.	<b>PRIMITIVE BAPTIST CHURCH</b> West and Carson Elder Duane McCarty, Pastor Services each 2nd & 4th Sunday at 10:30 a.m. and 2:30 p.m. Also on Saturday night before 2nd Sunday meeting at 7:00 p.m.

**FOOD CENTER**  
Herbert & Lois Fields, Owners  
Les Robertson, Manager  
Sonora, Texas 387-3438

**SOUTHWEST TEXAS ELECTRIC CO-OP, INC.**  
OWNED BY THOSE WE SERVE  
853-2544 or 853-2546

**THE WESTERN COMPANY**  
Pacesetters in the Oil & Gas Industry  
Eldorado, Texas

**COMMERCIAL RESTAURANT**  
Where Friends Meet To Eat  
B Glasscock & Plum  
Sonora, Texas

**R & H WELL SERVICE**  
Compleat Oilfield Service  
Eldorado, Texas 853-2003

**TREY TRUCKING**  
All Kinds of Oilfield Trucking  
Eldorado, Texas 853-2186