

Bank Nears Three Mill In Assets

A good farming year was cited by Jo Edd Hill, President of the First National Bank of Eldorado, as being one of the primary reasons that the local financial institute had in achieving near \$30 million in assets as reflected on its current report of condition for the last quarter of 1982.

Hill went on to say that this particular area fared much better in agricultural production than did the nearby counterparts.

The bank itself apart from christening its new modern complex in the year of '82 experienced a consistent and steady growth throughout the year as other financial institutes in other areas of Texas experienced little or no growth patterns. The current total assets of the FNB are now at \$29,989,000.00 which Hill cites as being a 15 percent increase for the

past year. Total deposits currently stand at \$26,334,000.00 as opposed to the same quarter of the last year which tallied up to \$23,555,000.00, a 12 percent increase. The gains experienced by the bank in Eldorado can be attributed to the diversification of this locale as well as the effects of the oil and gas industry not being as devastating as they are in others.

When President Hill was asked for his projections of the upcoming year of 1983, he stated that he was eternally optimistic and that a good sound growth pattern was established for this area. The over all economics of the nation could have bearing on the local economy to a degree but right now, everything is coming up roses on top of the divide.

Tax Check To City Coffers

Last week State Comptroller Bob Bullock sent \$32 million to approximately 1000 cities as their share of the one percent city sales tax for January. "These payments were down 7.7 percent from last January," Bullock said.

Eldorado's and Schleicher County's check was down 56.63 percent this year at only \$3487.71 compared to

last January at \$8047.89. Don't worry folks, collections are down in every major city in the state except Austin. Sonora's check this month was only \$11,492, compared to nearly \$15,000 last year.

Nearby Menard's check was only down \$12 as they received \$1332 compared to last January's \$1344.

The Master Painter Old Man Winter



Not in use today....as we wait for more feasible weather.

White Stuff Ups Moisture Count

There was many a smiling face Friday morning with most of Schleicher County covered with soft three inch blanket of snow that deposited much needed moisture into the ground. Beginning Thursday .78 inch of moisture was recorded and followed up Friday with .55 inch bringing the official total for the year of 1983 to 2.36 inches. By Friday evening most

of the white stuff had reverted to its liquid state and was busy soaking into the ground. No school was missed and the front moved northeastward depositing approximately 8 inches of the fluffy stuff over Abilene. No major accidents were attributed to the incumbent conditions in the county and overall the pretty white display was deeply appreciated by the populace.



Foul weather makes for funny friends.

SCHLEICHER COUNTY LEADER

[U.S.P.S.] 342-470] Eight Pages

January 27, 1983 25 cents

Eldorado, Tex.

Five Percent Raise At Hospital

A five percent wage increase across the board was granted to hospital employees Monday night in the regularly scheduled session, the first of 1983. Following the reading of the minutes and reviewing the hospital's financial statement unanimously voted to appoint Frankie Short as election day judge for the elections of board members which will be held on April 2nd, with the filing date being set at March 8th. Three places will be opening on the board for a two year term each.

In other action, the hospital's trustees unanimously voted to join the Sonora Credit Bureau and began with a 100 name coupon book carrying a price tag of \$215. A ten dollar per month membership dues is also a requirement of the credit bureau.

The board also selected a proposal made by Ratliff Insurance agency for the hospital's insurance needs. The annual premium will be approximately \$5,870. The policy will cover the majority of the hospital's insurance needs. The board retired into executive session to discuss the positions proclamation and come to an agreement on blanket raises for the employees of the district.

Airport And Grass At County Court

At 9:10 Monday morning, the commissioners kicked off their second meeting of the month following the reading and approval of the minutes, the Schleicher County Commissioners Court entertained its first visitor of the day, John Nikolauk questioned the commissioners about the status of the Municipal Airport. He was told by the court that the issue of refurbishing the present airfield was a dead matter and was voted such by the previous court. Any hopes of accumulating more land near the present airfield had been quelled when the deal between land owner Jim West and the commissioners fell through. The grant money that had been set aside for this particular project had been withdrawn and expansion at the present location was voted a dead issue. County Judge Johnny Griffin told Nikolauk as well as the new commissioners that some discussion between the Sutton County Commissioners Court and its counterpart here in Eldorado had looked promising, the discussion pertained to a possibility of a regional airport located midway between Sonora and Eldorado. Griffin assured the listeners that funding would be more available for co-op type regional airport than it would be for a single city project. Apparently the Sutton County airfield has reached its growth limitations and is landlocked as is the one here in Eldorado. Griffin went on to tell Nikolauk that it would take approximately 3 to 5 years for a condemnation suit to be filed and fought against West for use of the property and that it would take approximately 3 years to be issued a grant and build the regional airport. It was also learned during this discussion that the TAC would fund 90 percent of the expense for a new airport with 10 percent retaining for local funding and that they would assist in maintenance to the tune 75 percent. The first phase of a proposed new airport would be acquiring the land with federal assistance, building the runway and finally, building the hangars. With the combination of the planes hangared at Sonora, those hangared at Eldorado and the planes that would be left at the proposed airport but now cannot find the proper facilities to be stationed locally would add up to quite a census for the use of a new airport. At present the airport here in Eldorado does not comply with any of the federal and state requirements for a municipal airport which places the county in a very hazardous position.

Another guest appeared before the commissioners with questions concern-

ing the airport on his mind. This visitor was Kyle McCormack, the corporate pilot for Trio, he questioned the court on the status of the Floyd West hangar, which at present is not being utilized by any aircraft. Judge Griffin assured Mr. McCormack that this particular matter was being given due attention and that action was being taken to insure that Floyd West would relinquish his control of this particular hangar or move it from the premises.

The court was informed that plans had already been made to resurface and seal coat the airport by this summer, which would hopefully eliminate the problem of loose gravel damaging airplanes' props.

The next visitor to the court was Gary Boyer representing National Chemsearch, he presented the court

with a product labeled Green Badge which he convinced the court would improve and beautify their lawn as well as cut down on their water bill. The court unanimously voted to purchase the chemical as well as its distributing mechanics referred to as a fertomatic, a 55 gallon drum of the lawn feeder was bought plus its distributing system. Roughly \$1500 was spent for beautification of the courthouse lawn.

Following the paying of the bills tradition and a review of the budget with County Treasurer A. G. McCormack, the board retired into executive session in order to confer with an attorney.

The only other action seen by the commissioners was to vote to advertise for bids on fencing a length of county road.

Youth Rodeo Gains Momentum

The 1983 Eldorado Youth Rodeo sponsored by the Schleicher County 4-H Club and the Beta Sigma Phi Sorority, has been staged for April 15 and 16. Action will begin Friday night at 7:30 at the Schleicher County Rodeo Arena.

There will be three age divisions this year including girls and boys 12 and under, girls and boys 13 thru 15, and girls and boys 16 thru 19. Six events will make up the 12 and under division which include Barrel Racing, Pole Bending, Flag Race, Break-Away Roping, Goat Tying, and Calf Riding. Entry fee for each of these events is ten dollars. Barrel Racing, Pole Bending, Flag Race, Girls Break-away Roping, Goat Tying, Tie-Down Calf Roping, and boys Steer riding make up the events in the 13 thru 15 division. Each entry fee is also ten dollars. The events in the 16 thru 19 division are the same as the 13 thru 15 division except that there will be boys Bull Riding instead of Steer Riding. The entry fee in Bull Riding will be \$20.

Joe Max Edmiston is this year's rodeo Superintendent while Johnny Mayo, Jr. is Arena Director. Sherry Lux is Rodeo Coordinator with Danny Dunagan as Gate Executive.

All entry blanks and fees, which need to be money orders or cashier's check must be postmarked no later than April 9, 1983. All entry blanks must be notarized. There will be no phone entries or set-up.

There will be one go-round this year with the top five in each event competing for top honors Saturday night. Trophy buckles with an approximate \$500 retail value will be awarded to the All-Around Boy and All-Around Girl. First place winners receive a \$250 belt buckle with 2nd and 3rd place winners receiving cash prizes. To vie for All-Around honors you must compete in at least 3 events and no more than 6 events. Entry blanks should be mailed to Prissy Paxton, Box 1798, Eldorado.



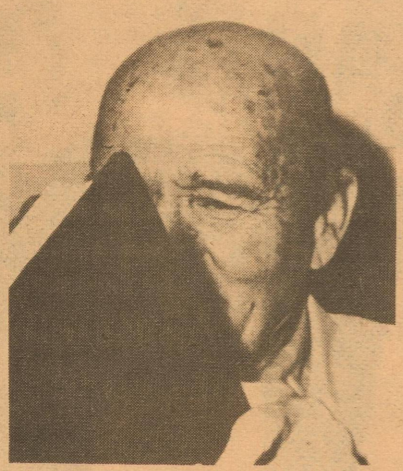
Kelli Mihecoby sells Girl Scout Cookies to Arana Howle.

The Leader Asks

What would be the most effective way to start a cleanup campaign in Eldorado



A. G. McCormack: If everyone would clean up their own property, it would certainly be a good start.



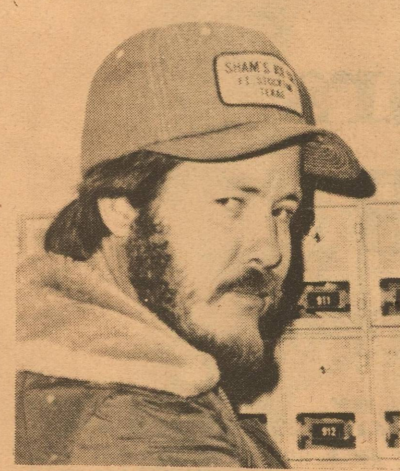
Pancho Bradley: Ask the county to furnish a truck or two to pick up and dump everyone's trash. Then start with a civic group and get as many people involved as possible.



Nancy Lester: The most important thing is for everyone to take personal pride in their own property.



Hyman Sauer: The most effective way is if you get a civic organization like the Jaycees or Lions Club to create enough community momentum to make a significant movement.



Robert Parker: If everyone would not litter that would help. Then the vacant lots should be the responsibility of the owner.



Ethel Doran: You could make posters around town and campaign.

Three New Pledges At Sorority

Xi Xi Chi chapter 4159 met January 24, 1983, at 7:30 p.m. in the Club Room. There were 13 members and 3 pledges present.

President Carolyn Mayo had a thank-you note from Patten for the scholarship the sorority awarded her last spring. At this time it was discussed placing a notice in the local paper and the school paper to let the seniors know the sorority will be accepting scholarship applications from not until the deadline of April 1, 1983.

With the decision to have a local Woman of the

Year, all members with a nomination was asked to have it turned in by February 14th. The names are to be written up with reasons why their nomination should be selected.

Members who are interested in enrolling someone in the Legacy chapter should have the enrollment forms ready to mail by the next meeting.

The cultural program "Fabulous Flicks and Theaters", was presented by Nelva Martin.

The business meeting was adjourned and refreshments were served by Lois Lively and Flora Hubble.

10% More To Reach Out And Touch Someone

San Angelo--The new intrastate long-distance rates approved Jan. 11 by the Public Utility Commission of Texas for Southwestern Bell apply to all customers placing intrastate long-distance calls. The rates were increased by 10 percent, effective Jan. 11.

E.O. Cambren, West Texas Division general manager for General Telephone, said Bell administers the tariffs which contain the rates approved by the commission.

'We are partners in the provision of long-distance services,' the manager

said. 'All intrastate long-distance revenues and expenses are placed in a pool administered by Bell. Bell then returns to the other telephone companies' expenses plus a return based upon each company's investment.'

The telephone company manager said that even

though General Telephone feels long-distance earnings are still not at the level they should be, the company is pleased the commission approved some increase to long distance rates.

The telephone company official said any increased

revenues General Telephone obtains from the new long-distance rates will ultimately help reduce the upward pressure on local basic service rates.

Other changes affecting General Telephone customers, predominately business customers, are increases in Wide Area Tele-

phone Service (WATS) and changes in charges for customers in General cities with a direct line to a Bell service area with an associated Bell telephone number.

Personal

Mrs. Elizabeth Goodwin, age 96, is in the Schleicher County Nursing Home, Room 103, after having been in the Schleicher County Medical Center and Angelo Community Hospital. She is the mother of Mrs. Nancy (Cashes) Taylor and Mrs. Blanche West.

STANDING KING O ROAN
G & M TRAINING CHRISTOVAL, TX.
CALL 915-896-2379 OR 915-658-7186
AFTER 6 P.M. WEEKDAYS

42 Club Meets

Mrs. Annie Speck was hostess Thursday when she entertained the 42 Club members in the Dairy Mart club room. It was an evening of fun enjoyed by Mildred Stanford, Natalie Stockton, Jake Spencer,

Zelma Henderson, Louise Logan, Opal Parks, Lillian Mikeska, Jewell Van Dusen, Lois Etheredge, Viola Finnigan, Bessie Doyle and the hostess. Afterwards refreshments were served to the members.

Gutenberg Bible Comes To UTA At Austin

Jan. 12--The University of Texas at Austin will share one of its greatest treasures - a copy of the rare Gutenberg Bible - with Angelo State University for a week beginning February 8.

The exhibit at Angelo State University's Houston Harte University Center is part of the University of Texas' Centennial observance and part of an 18 city tour that stretches from Jan. 6 to Dec. 26.

The exhibit at Angelo State will run from Tuesday, Feb. 8, through Monday, Feb. 14, in the art Gallery of the University Center.

The Bible, printed in Mainz, Germany, was completed about 1455 in some 180 copies which were then distributed to various royal or ecclesiastical libraries in Europe. From the annotations on the UT copy it is evident that at an early time it was in the possession of a monastery.

The Gutenberg Bible was purchased by UT in 1978 for \$2.4 million and is one of only five complete specimens in the United States. It is generally regarded as the greatest book in the world, being the first substantial work to be printed from movable type. The inventor of movable type was Johann Gutenberg.

Only the first volume (Genesis-Psalms) of the two-volume Bible will be exhibited.

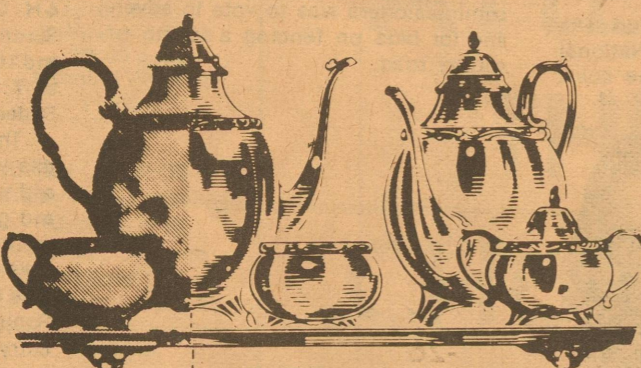
Included in the exhibit at Angelo State University will be a six-minute video tape which describes the Gutenberg, its history and significance. Also, informational display panels will guide patrons through the University Center to the exhibit.

In conjunction with the San Angelo Independent School District and Region XV Education Service Center, Angelo State University will provide programs and tours for elementary, junior high and high school classes during the period of exhibition. Lesson emphasizing the Bible's relation to the h

printing will be distributed to the participating schools. Public viewing of the Bible will be from 8 a.m. through 10 p.m., Tuesday

through Friday, from 9 a.m. to 10 p.m. on Saturday, 2p.m. to 10 p.m. on Sunday, and again from 8 a.m. to 10 p.m. on the following Monday.

ALL SILVER REPLATING REDUCED 25%
No charge for straightening*
DURING FEBRUARY ONLY



BEFORE AFTER
Make this YOUR Silver Investment for the Future!
Every Item Replated at Sale Prices

For Instance

Article	Reg. Price	Sale Price
Teapot	\$92.95	\$69.71
Creamer	48.95	36.71
Candlestick (per in.)	5.30	3.98
Sugar Bowl	52.95	39.71
Trays per sq. in.)	.42	.32

NEW! Full 25 Year Warranty on all silver replating.
ASK ABOUT FULL DETAILS

*REPAIR POLICY: FREE DENT REMOVAL and straightening on all items we silverplate
*ONLY \$19.95 FOR ANY KIND AND ALL ADDITIONAL REPAIRS, no matter how extensive, on any piece we silverplate. Includes soldering broken handles, legs, knobs, etc. (Only exceptions are for furnishing new parts.)

SALE ENDS FEBRUARY 28 BRING IN SILVER TODAY!

853-2645 **Cathy's** Eldorado

REPORT OF CONDITION

Consolidating domestic subsidiaries of the

First National Bank of Eldorado, Texas

In the state of Texas, at the close of business on Dec. 31, 1982 published in response to call made by Comptroller of the Currency, under title 12, United States Code, Section 161.

Charter number 8575 National Bank Region Number 11

Statement of Resources and Liabilities		Thousands of dollars
ASSETS	Cash and due from depository institutions	1,339
	U. S. Treasury securities	1,766
	Obligations of other U. S. Government agencies and corporations	3,248
	Obligations of States and political subdivisions in the United States	6,485
	All other securities	14
	Federal funds sold and securities purchased under agreements to resell	3,250
	Loans, Total (excluding unearned income)	12,239
	Less: Allowance for possible loan losses	106
	Loans, Net	12,133
	Lease financing receivables	0
	Bank premises, furniture and fixtures, and other assets representing bank premises	1,063
	Real estate owned other than bank premises	20
	All other assets	671
	TOTAL ASSETS	29,989
	LIABILITIES	Demand deposits of individuals, partnerships, and corporations
Time and savings deposits of individuals, partnerships, and corporations		17,572
Deposits of United States Government		32
Deposits of States and political subdivisions in the United States		2,978
All other deposits		0
Certified and officers' checks		118
Total Deposits		26,334
Total demand deposits		7,153
Total time and savings deposits		19,181
Federal funds purchased and securities sold under agreements to repurchase		0
Interest-bearing demand notes (note balances) issued to the U. S. Treasury and other liabilities for borrowed money		0
Mortgage indebtedness and liability for capitalized leases	0	
All other liabilities	432	
TOTAL LIABILITIES (excluding subordinated notes and debentures)	26,766	
Subordinated notes and debentures	0	

MEMORANDA		EQUITY CAPITAL
Preferred stock	No. shares outstanding	0 (par value) 0
Common stock	No. shares authorized	75
	No. shares outstanding	75 (par value) 75
Surplus		0
Undivided profits and reserve for contingencies and other capital reserves		2,773
TOTAL EQUITY CAPITAL		3,223
TOTAL LIABILITIES AND EQUITY CAPITAL		29,989
Amounts outstanding as of report date:		
Standby letters of credit, total		0
Time certificates of deposit in denominations of \$100,000 or more		3,303
Other time deposits in amounts of \$100,000 or more		409
Average for 30 calendar days (or calendar month) ending with report date:		
Total deposits		25,986

We, the undersigned directors attest the correctness of this statement of resources and liabilities. We declare that it has been examined by us, and to the best of our knowledge and belief is true and correct.

Frances Peters
Cashier

of the above-named bank do hereby declare that this Report of Condition is true and correct to the best of my knowledge and belief.

Directors: [Signatures]

1-21-83
Date

Garden Tips From Jerry

Schleicher County's Extension Agent, Jerry Swift has some garden tips for February.

1. Good time to check your home landscape for those heavy traffic areas where grass is difficult to maintain. Consider using some form of all-weather surface as concrete, flagstone, brick or railroad ties. Asphalt and gravel can also be used if confined with a good edging.

2. For those heavily shaded areas where grass won't grow, try a ground cover of living plants. English ivy is an excellent choice for shaded areas.

3. Use a durable edging material of brick, concrete block, cedar, redwood, steel or one of the new heavy duty plastic materials to separate the lawn area from shrub, ground cover or flower beds to reduce maintenance labor.

4. Check the credentials of any door-to-door salesman of garden or landscape service. If they have no permanent address or can offer no references, check their legitimacy with your local Chamber of Commerce or Better Business Bureau. Many self-styled tree surgeons can't tell one tree from another let alone know how to care for them.

5. Complete the bare-root planting of needed woody landscape plants this month.

6. Clearance sales of bare-root nursery stock will be available late this month. Check condition of canes, buds and roots. Much of the available material should be hauled to the dump rather than sold.

7. Don't delay selecting plants needed in the landscape as stocks in local nurseries are usually in their best condition at this time. Select plants only if needed. One can soon overplant the landscape if not careful. Balled-and-burlapped (B&B) and container-grown plants are usually easiest to handle for the beginning gardener. A root stimulator or starter solution may be used. Don't fertilize until after the newly planted plants start to grow.

8. When buying plants the biggest isn't always the best, especially when dealing with bare-rooted plants. The medium to small sizes (4 to 6 foot) usually become established faster and will become effective in the landscape much quicker than the large sizes.

9. With our mild water, a sudden freeze may damage many plants. Be in no hurry to prune until late February or early March. By then buds should be swelling and it will be easier to distinguish any damaged tissue.

10. Fertilize any construction damaged trees and shrubs late this month to help promote new growth and healing. Broadcast a fertilizer with a high nitrogen content beneath the branch spread of the plant and 3 to 6 feet beyond. Use at the same rate recommended for the

spring lawn application. Water in thoroughly.

11. Essential to provide adequate moisture to plants that may have sustained any damage. Supplemental irrigation should be provided during any dry period throughout the spring and summer.

12. This is a good time to select and plant any rose bushes you may need to replace those empty spots in your rose bed.

13. Prune roses during February. Use good pruning shears that will make clean cuts. Remove dead, dying and weak canes. Leave 4-8 healthy canes.

14. Extremely vigorous varieties, such as Radiance and Queen Elizabeth may be cut back to 12 to 15 inches from the ground, other varieties from 18 to 20 inches. Do not prune climbing roses in the same manner as bush roses since climbers produce flowers on the previous year's growth. Prune climbers after the first flush of spring bloom.

15. Don't prune spring flowering trees and shrubs such as spiraea azalea and flowering quince until after they finish blooming.

16. When pruning shrubs follow these steps:

a) Prune out any dead or

damaged branches first. b) Thin out by removing about 1/3 of the canes or stems at ground level removing the oldest canes only. c) Shape the rest of the plant but don't cut everything back to the same height.

17. Check soil moisture conditions around newly transplanted plants. Water only when needed, don't keep soil saturated.

18. Fertilize trees, shrubs, vines and lawns in late February or March.

19. Use 12 to 25 pounds of ammonium sulfate per 1000 square feet of area in the bed or root zone.

20. Fertilize fruit and nut trees this month using 1 1/2 pounds of ammonium sulfate per inch of trunk diameter.

21. Plant Dahlia tubers in late February and early March.

22. Plant Gladiolus corms, space planting dates at 2 week intervals to extend flowering season.

23. If nematodes were a problem last year, consider using Vapam according to instructions prior to planting vegetables and flowers.

24. Time to apply a dormant oil spray to pecan, peach and plum trees to control scale and psyllera. also effective for

cale on euonymus and other broad-leaved evergreens subject to scale injury. Follow instructions on container label carefully. Spray when temperatures are mild - under 75 degrees and no freeze predicted for at least 8 hours.

25. Check new plant growth for aphids. Control with Malathion, Diazinon or trithene.

26. Don't delay removing bag-worm pouches from choice evergreen, the eggs overwinter in the pouch and will be ready to go as soon as the weather warms up.

27. Be sure to read that pesticide label again before using any pesticide. You may have forgotten the details regarding its use since you used it the last time.

28. Last chance to get needed repairs for power gardening tools before the rush starts.

29. If you didn't repair and tune up the power garden equipment when you stored them for the winter, better get it done now before the repair shops become swamped.

30. Take time to clean and sharpen handtools if

you haven't done so already. Fertilize pansies again for continued flowering. Don't forget to water when needed.

31. The following flower seeds may be sown directly without protection in well prepared flower beds this month: nasturtiums, annual phlox, California poppies, coneflowers and larkspur. Petunia plants may be set out in sunny, well-drained locations with little chance of cold damage.

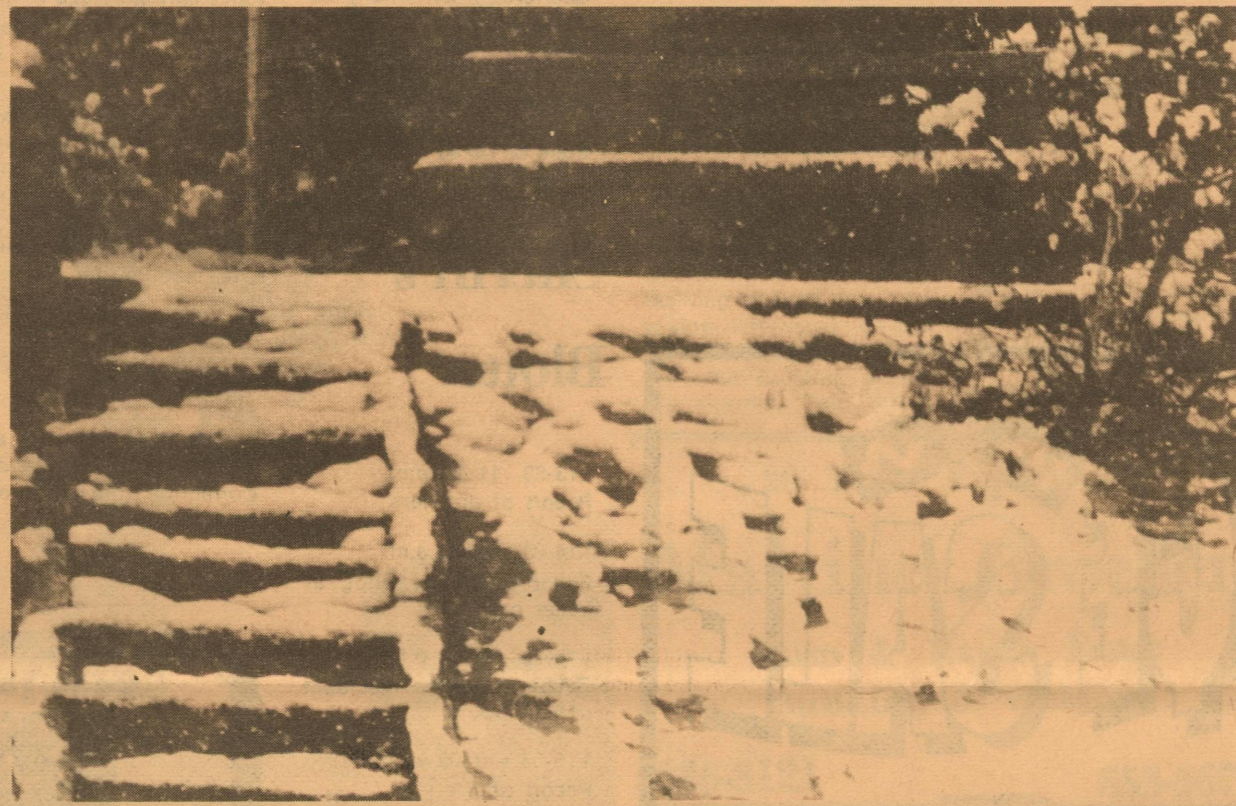
32. Tender plants may still need protection. Be prepared to cover if cold weather is forecast. Keep those boxes, blankets and other materials handy.

33. Water foliage plants as well as other containerized plants only when needed and not by the calendar.

34. A terrarium, potted plant, or cut flowers make excellent Valentine gifts for loved one or for someone who is shut-in and can't get out.

35. Enjoy a few weeks of relaxed preparations before the Spring Rush!

Six Mile Rest Stop on the Old San Angelo highway is covered in last week's snow flurry.



Brucellosis Regulations

Regulations encouraging vaccination for brucellosis control have gone into effect in Texas.

The regulations apply to cattle being shipped into Texas as well as cattle being moved intrastate.

The two-area program for Texas has become Class B and Class C, effective Jan. 12. The Class B area is comprised of 140 counties in the western half of the state, and the Class C area is composed of 114 counties in the eastern and coastal areas of Texas. These areas were previously known as the Class A control and Class B control areas, respectively.

New vaccination requirements for cattle four months of age or older must have been vaccinated before entering Texas with these exceptions: a.) Cattle from a certified free herd. b.) Cattle being shown in fairs or exhibitions. c.) Cattle from commuter herds. d.) Cattle for

slaughter or quarantine feedlot.

Female cattle four months of age or older born after Jan. 1, 1983 must have been vaccinated when moving from one area to another in Texas, while those born before that date can move within Texas without having been vaccinated.

Cattle born after Jan. 1, 1983 changing ownership within the C area must have two negative tests at least 60 days apart unless they have been officially vaccinated. Officially vaccinated heifers of dairy breeds under 20 months and beef breeds under 24 months which have not calved and are not pregnant are exempt from test.

Non-vaccinated female cattle entering either B or C area of Texas from a Class C state or area require two negative tests 60 days apart until July 1 of this year, after which all females will need to have been vaccinated.

Johnny Clawson Gets Degree

Jan. 7 - An Eldorado student at Angelo State University was among 183 students who completed degree requirements at the conclusion of the fall semester.

Johnny Warren Clawson

received a degree with a major in school administration.

Diplomas will be mailed to graduates. December graduates may, upon request, participate in spring commencement exercises slated for May 13.

Chapter meets January 10

Xi Xi Chi chapter X4159 met January 10, 1983 at 7:30 p.m. in the Club Room. Due to the illness of President Carolyn Mayo, Vice-President Sarah Yates led the meeting.

received a degree with a major in school administration. Diplomas will be mailed to graduates. December graduates may, upon request, participate in spring commencement exercises slated for May 13.

We discussed the start of our Legacy chapter. This is the enrollment of daughters, granddaughters, and nieces as future members of Beta Sigma Phi by present members. There is a contest to be held by International for these future members and their photographs are to be sent to the International Office by April 1, 1983.

Treasurer Debbie Baliew reported from the amounts that she deposi-

in conjunction with the February 14th meeting, there will be a salad supper and elect the Valentine Queen. The hostesses for the supper will be Nelva Martin, Barbara Jackson, Layla Cheatham, Betty Janusch, and Frieda Janusch.

Sherry Lux presented the cultural program. She had as her guest speaker, Nancy Lester, the home economist.

Refreshments were served by Teresa Poynor and Fayla Cheatham.

Community Calendar

The Historical Society
1st Monday each month
3:00 at Museum



Eldorado Lodge
890 AF & AM
Regular Meetings on
2nd Thursday
Each month
Visiting Brethren
Welcome



Eastern Star
140 O.E.S.
Reg. Meeting
2nd Monday
Each month
Visiting Sisters
Welcome

Beta Sigma Phi
2nd & 4th Monday 7:30
7:30 p.m., Club Room
Memorial Building

Eldorado Duplicate Bridge
Every Thurs. 7:00 p.m.
Memorial Building

Wednesday Bridge
Every Wednesday
Tuesday Bridge
Every Tuesday
In different homes

Schleicher County Rodeo Association
1st & 3rd Thursdays
7:30 p.m.
Old Jaycee Bldg.

Kountry Kousins
Square Dance Lessons
Every Wednesday
8:00 p.m.
Memorial Building

Fishers



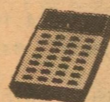
CARPET CLEANING

- Commercial
- Residential

Senior Citizen's Discount
Phone 853-2651

Vinyl Repair
Upholstery Cleaning

Qualified Income Tax Preparation



Call
Gloria Rodriguez

853-2816 Eldorado

NL WELL SERVICE

Well Servicing and water hauling
24 hour service
Pump Trucks

Eldorado 853-3243 Sonora 387-3509

Custom Sewing

Women's, Men's, & Children's
No alterations Please

Kathy S. Doty

853-2343 Eldorado

ELDORADO INSTRUMENT and CONTROL CO
INSTRUMENTS* GAUGES* METERS*
CONTROLS FOR OIL AND GAS INDUSTRY.

INDUSTRIAL PLANTS SALES AND SERVICE
ON OILFIELD AND INDUSTRIAL
INSTRUMENTS AND CONTROL.

24 hour service

Office 853-2506 Home 853-2624

THORP'S DRY CLEANERS and LAUNDRY

Uniform Rental
Dust Control Mops and Mats

212 S. Main 853-2900

KERBOW FUNERAL HOME

Serving
Eldorado
and Sonora

Ph. 853-2636 or 387-2266



Doug Yates, of Thorp's Dry Cleaning and Laundry, 212 S. Main, does your laundry the way you want it plus features uniform rental and dust control mops and mats.

Case Construction
General Carpenter Work
Custom Counter Tops
Remodeling Additions
Free Estimates

phone 853-2253

HENDERSON WATER WELL WINDMILL and PUMP REPAIR



Phone 853-3280

FITTS-MILLER BUILDING

Custom made storage buildings
and greenhouses made to
your order

Phone 853-2129 Phone 853-3073



INSURANCE
Fire Auto Windstorm
Casualty

Call Tom Ratliff
at 853-2636

BUTLER SUPPLY COMPANY

Your Complete
Oil Field Store



East St.

Day 853-2503

Prissy Paxton
Tax Preparation & State Tax Returns

I.R.S. tax forms prepared
Modern bookkeeping

Prissy Paxton
Rudd Road Open 9:00 - 5:00
Ph. 853-2650

HEADQUARTER Barber Shop

Kerry Sharp barber stylist

200 W. Murchison PH 853-3048

10:00 to 6:00 Tue.-Friday
Sat. 10:00 to 3:00



Not exactly Frosty the Snowman but these folks really put together a nifty ole' fellow.

Courthouse Records

Helen Bebee, County Clerk

DISTRICT COURT Cases Filed

Candice Sue Richards vs. Jerry Wayne Richards - Divorce

Discovery Mud Co. vs. Sina, Inc., A. R. Archer and Mike Butler - Suit on Account

Dominga Gonzales vs. Uber Gonzales - Divorce

State of Texas vs. Clifton Joshua Bell - Possession of controlled substance

State of Texas vs. Steve Flora - Felony theft

State of Texas vs. Randal Wayne Reid and Clifton Dukes Freeman - Burglary of a habitation

Judgements

State of Texas vs. Ray Ramos - Probated sentence

COUNTY COURT Cases Filed

State of Texas vs. Raul Lopez Guerrero - DWI

State of Texas vs. Raul Guerrero - Intentionally obstruct a person, to-wit a peace officer in effecting an arrest by using force against the peace officer.

State of Texas vs. Jay Carl Cash - DWI

Judgements:

State of Texas vs. Rickey Brinn Baker - Order amending conditions of probation

State of Texas vs. Morales Alberto Fuentes - DWI, Fined and probated sentence

State of Texas vs. Bobby Joe Smith - DWI, Fined and probated sentence

State of Texas vs. Jay Larry McShaw - DWI, Fined and probated sentence

State of Texas vs. Walter Powell, III. - DWI, Fined and probated sentence

State of Texas vs. Larry Dean Bach - Case dismissed

State of Texas vs. Horace Wayne Loper - Case returned to Justice of the Peace court

State of Texas vs. Horace Wayne Loper - Case returned to Justice of the Peace court

State of Texas vs. Monte Carl Clanton - Case returned to Justice of the Peace court

State of Texas vs. Monte Carl Clanton - Case returned to Justice of the Peace Court

An error was published last week in the court house records. It was cited that Walter Powell, Jr. being charged with DWI, this is incorrect the name should have read Walter Powell, II.

Warranty Deeds:

Barbara W. Clark to Kenneth L. Clark, 1/2 interest in and to 120 acres in Schleicher County, about 6 miles south from Eldorado, known as Central 120 Acres of S. pt. Survey 85 Blk A, Abst. 424, H. E. & W. T. Ry. Co.

W. S. Tomlinson, et us to Yolanda Perez, Lot 6, Blk J, Original Town, Eldorado

Hyman Sauer, et ux to Richard Sterling and Rebecca K. Sterling, .0568 acre of 14.845 acre tract of blk 62, Eldorado Townsite.

Rachel Fava to Pedro Estrada and Francisca Estrada, Lot 3 and S 1/2 of 2, Blk 5-A, Christian Add.

Dorothy Evans Tax Collector

New Car Registrations: None.

Comm. Scholarship

Junior and senior class high school students who are interested in applying for \$1000 college scholarships should request applications by March 15, 1983 from the Educational Communications Scholarship Foundation, 721 N. McKinley Road, Lake Forest, Illinois 60045. To receive an application, students should send a self-addressed, stamped envelope with a note stating their name, address, city, state and zip code and approximate grade point average. Fifty award winners will be selected on the basis of academic performance, involvement in extracurricular activities and need for financial aid.

Schleicher County Leader U.S.P.S. 342-470 Published Every Thursday P.O. Box 782 210 Main St. Eldorado, Texas 76936 Finis Bratcher, Owner - Publisher

Second class postage paid at Eldorado, Tex. 76936. POSTMASTER: Send address changes to Schleicher County Leader, Box 782, Eldorado, Tex. 76936.

Any erroneous reflection upon the character or standing of any person or firm appearing in these columns will be gladly and promptly corrected upon calling the attention of the management to the article in question.

Support

The March of Dimes

J S SWABBING SERVICE JIM NANCE

Box 571 Eldorado, Texas 76936
Luther Creek Field Supervisor Ph. 387-3295
915/853-3207 915/853-3373

Sheriff's

Blotter

1-13-83 11:20 p.m. Report of prowlers

1-14-83 11:05 a.m. Report of vicious dog in trailer park

1-15-83 10:57 p.m. Report of a minor accident on 277 South

1-16-83 10:05 a.m. Report of fire

1-16-83 12:23 a.m. Report of trailer house on fire

1-17-83 4:16 p.m. Report of excessive noise

1-18-83 3:53 p.m. Report of loose cattle on hwy. 190

1-18-83 9:54 p.m. Report of minor accident on Hwy. 190

1-19-83 5:15 p.m. Report of theft

1-19-83 7:40 p.m. Report of gas leak

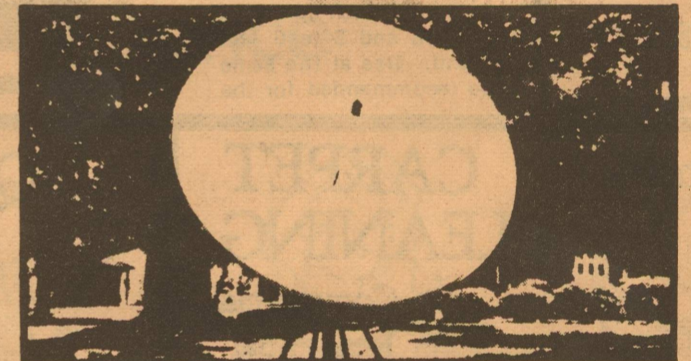
1-20-83 1:51 a.m. Report of car racing down street

1-20-83 9:00 p.m. Report of criminal mischief (vehicle left scene of accident)

Marriage Licenses:

Marilyn Denise Wester and Uvaldo Edward Hernandez (correction from last week's edition)

Does Your TV Get 70 Different Stations?



OUR STANDARD SYSTEM \$2,495.00

10' Fiberglass Parabolic Dish Tracking Polar Mount
120° LNA on Center Mount With Electronic Polarizer
Automation Techniques GLR 560 Receiver
Complete wire kit (125') with all connectors

OUR TOP OF THE LINE SYSTEM \$3,495.00

10' Fiberglass Parabolic Dish Motorized Tracking Mount With Digital Satellite Locator
120° Low Noise Amplifier, Center Mount
Chaparral Polarator
Automation Techniques GLR 560 Stereo Receiver With Remote Control
Complete wire kit (125') with all connectors

For information and FREE Demonstration: Earth Station Sales and Service

Arroyo Sound Center

2431 College Hills SAN ANGELO TEXAS 949-8407

After Inventory JANUARY CLEARANCE SALE

45" Flat Fold Dress Prints & Solids now 77¢ yd. Reg. .97 yd.

100% Polyester now \$1.99 yd. Reg. \$2.69 yd.

Bolt Fabrics One table of remnants now \$1.27 yd. Reg. \$1.59 yd.

Bolt Fabrics Gaberdean now \$1.99 yd. Reg. \$2.99 yd.

60" Flat Pognee & Intenlock 100% polyester now 97¢ yd. Reg. \$1.27 yd.

One Group of Bras 66¢

Plastic Close Hangers 79¢ 3 per pack

Ladies Night Gowns 1/2 price Reg. \$9.99 & 6.99

Double B brand Childrens Shirts 1/2 price Reg. \$6.49 & 3.99

House Shoes 1/2 price #640 Reg. \$5.99 #355 Reg. \$4.99 #4151 Reg. \$6.49

Straw Tote Bags 50¢

Little Girl Panties 66¢ Reg. 99 100% Satinnet by Skintees

New Arrival Ladies & Jr. Spring Blouses \$9.98

One Group group of Ladies Purses 25% off Reduced for Sale Reg. \$7.99

Perry's

853 - 2030

Eldorado

BIG SAVINGS ON

82 CLOSEOUTS



Chevy 1/2-Ton Pickup Long Bed Air Conditioned 3-Speed 6-Cylinder Power Steering 2 Tone Paint 194⁶⁶ Per Month Cash Sale Price \$7743.59, Down Payment including tax and title \$700.00, 48 months at \$194.46, A.P.R. 11.9%. Stock # x 1777



Chevy Chevette 4 Dr. Hatchback Diesel Engine Automatic Power Steering AM/FM Radio 187⁶⁴ Per Month Cash Sale Price \$7494.36, Down Payment including tax and title \$700.00, 48 months at \$187.64, A.P.R. 11.9%. Stock #E1519



See Sam Dillard or Tony Wallace Chaparral Motors (Formerly Ken Braden Motors) IH-10 at Golf Course Road 387-2529

School Menu

Monday Jan. 31st Fiestadas Pinto Beans Lettuce & Tomato Salad Iced Cupcakes	Breakfast Monday Jan. 31st Peaches Pancakes-Syrup
Tuesday Feb. 1st Spaghetti & Meatsauce Cream Style Corn Slice Peaches Chocolate Cookies	Monday Jan. 31st Peaches Pancakes-Syrup
Wednesday Feb. 2nd Thrifty Steaks & Gravy Creamed Potatoes Buttered Spinach Orance Congealed Salad Peach Cobbler	Tuesday Feb. 1st Grapefruit Juice Hot Biscuits-Sausage-Jelly
Thursday Feb. 3rd Barbecue-on-a-bun French Fries Ranch Style Beans Pickle Strips Gingerbread / Icing	Wednesday Feb. 2nd Prunes Buttered Rice-Toast
Friday Feb. 4th Turkey & Dressing Giblet Gravy Green Beans Cranberry Sauce Harvest Cake / Icing	Thursday Feb. 3rd Pears Doughnuts
	Friday Feb. 4th Apple Juice Cinnamon Toast



This little fellow is ready for a meal, wouldn't you agree?

A New Look At Pave Paws

By Mike Wilks

(Copied from the Wingspread)

The people of Eldorado are faced with a controversy: the Pave Paws System. As many of you know, the Blaylock Ranch is a candidate for the site of Pave Paws. And, if this ranch is chosen, that will mean more money for Eldorado, San Angelo, and of course, Mr. Blaylock.

Now a lot of people are for this, because it will supposedly help our economy, and it would also put our little town on the map. Of course, I doubt that there will be any need to build hotels to accommodate the tourists, but it would give us a sense of pride because we know we would be important to our national security.

Of course, some people don't want the system to be based here, simply because they think this would be the first place to be bombed in case of a nuclear attack by the Soviet Union.

I can certainly see how some people could be alarmed at this, I mean, let's face it, being blown to kingdom come is a little scary to think about.

But the way I figure, we would be way down the Russian's list for bombing, like about fourteenth.

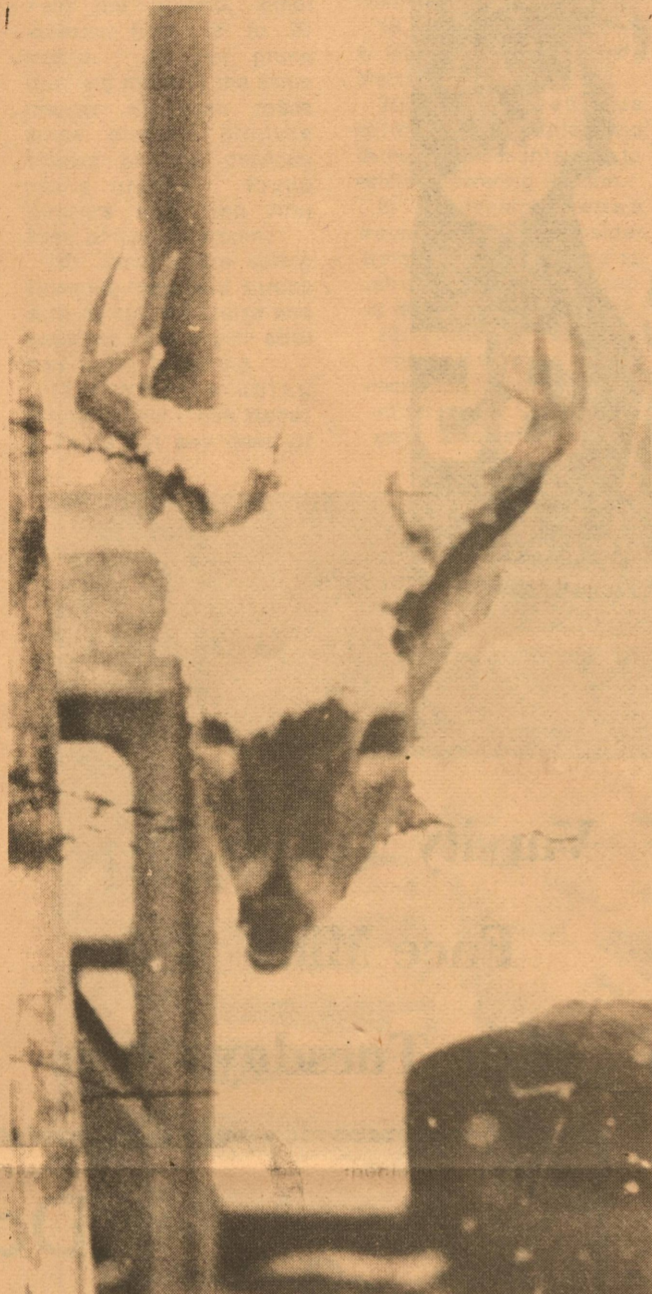
The first probable place on the Soviet's list is the training center for the U.S. Olympic hockey team. As you may recall, we beat them and took the gold medal in the 1980 winter games.

The next ten places would be the major ballet theaters of this country, the reason being that the Soviets are tired of their dancers defecting to the United States.

The twelfth place would most likely be Clint Eastwood's house, because he made them look like fools when he stole the Fire Fox from them. Boy that really made them mad!

Then the next place would be Tom Selleck's house. Like Eastwood, he has also made them look like fools, and gave them a bad guy image to boot.

So you see, there is nothing to worry about. Shoot, by the time they get to us, we will be launching our counterattack.



The rest of this buck high tailed it for cover when last week's snow storm blanketed Eldorado.

HAPPY HOLIDAY...
or birthday, anniversary, retirement; in fact, anytime!

Cathy's
853-2645

March Of Dimes Drive Kicks Off

The March of Dimes Youth March will be held February 5th with the kick-off starting at the Memorial Building at 9:30 a.m. All youths interested in the drive please meet at the Memorial Building Saturday morning Feb. 5th.

Refreshments will be served throughout the day.

Any adults wishing to help with the refreshments or the drive please contact Shirley Overstreet at 853-2180 or Lee Gillaspay at 853-2018.

20 Years Experience

Martinez Brothers

Farm & Ranch Fence Building & Welding

835-3121

653-5679

The Headquarters

Specializing in Men's and Women's Hair Styles

Special

Haircut & Style **\$10.00**
Reg. \$14.00

Good Jan. 27th thru Feb. 4th

Owner/Stylist **Carolyn Moya**
853-3048

Join these merchants in supporting the EAGLES

Oakwood Mobile Homes
San Angelo

Southwest Texas Electric Co-op
Eldorado

Kwik Service & Supply
Eldorado

Casa Arispe
Eldorado

CH Poynor
Eldorado

Cathy's
Eldorado

Hanusch Water Well Drilling
Eldorado

Jackson's Inspection Service
Eldorado

Shaw's Motel
Eldorado

Thorp Laundry & Dry Cleaners
Eldorado

Jack Halbert Butane
Eldorado

Quadra
Eldorado

Sew'n Sew
Eldorado

Food Center
Sanora

McCalla's Dept. Store
Eldorado



Meador Land Co.
Eldorado

Meador Peters Ins. Agency
Eldorado

Westerman Drug
Eldorado

J S Swabbing
Eldorado

Western Company
Eldorado

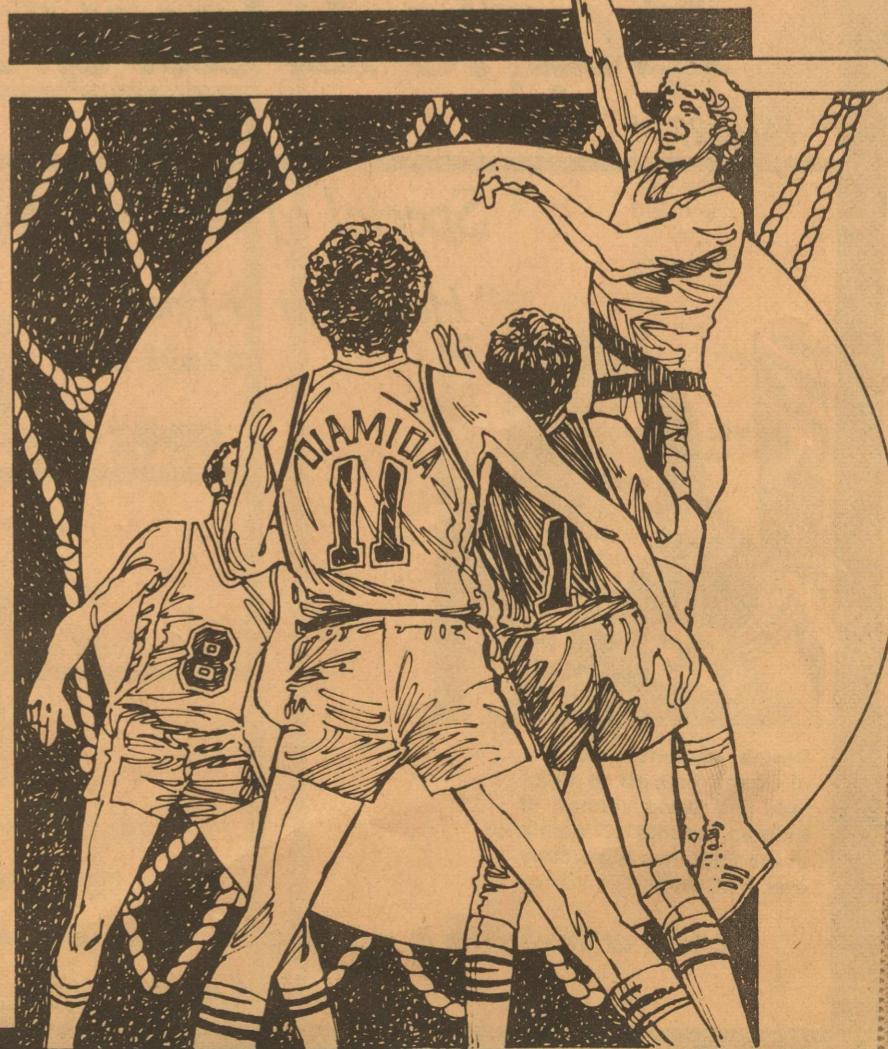
DISTRICT GAMES

Jan. 6,7,8
Jan. 6,7,8
Jan. 11
Jan. 14
Jan. 18
Jan. 20,22
Jan. 21
Jan. 25
Jan. 28
Feb. 1
Feb. 4
Feb. 8
Feb. 11

Eldorado Reagan Co. Miles Reagan Co. Stanton Eldorado McCamey Wall Miles Reagan Co. Stanton McCamey Wall

Here There There There Here Here There Here There Here

GO EAGLES!



SPORTS

Eaglettes Clinch Runnerup Spot

The Eldorado Eagles lost to the McCamey Badgers last Friday by a score of 61 - 54. The game was decided in the last minute as Eldorado was tied or within 2 points until McCamey got a couple of easy baskets and eased away to a seven point lead. John Church garnered high point honors with 12 points. Ashley Niblett had 11, Victor Gutierrez and Jamie Woodward 9, Joe Barrera 7, and Luke Brame had 6 to finish out scoring.

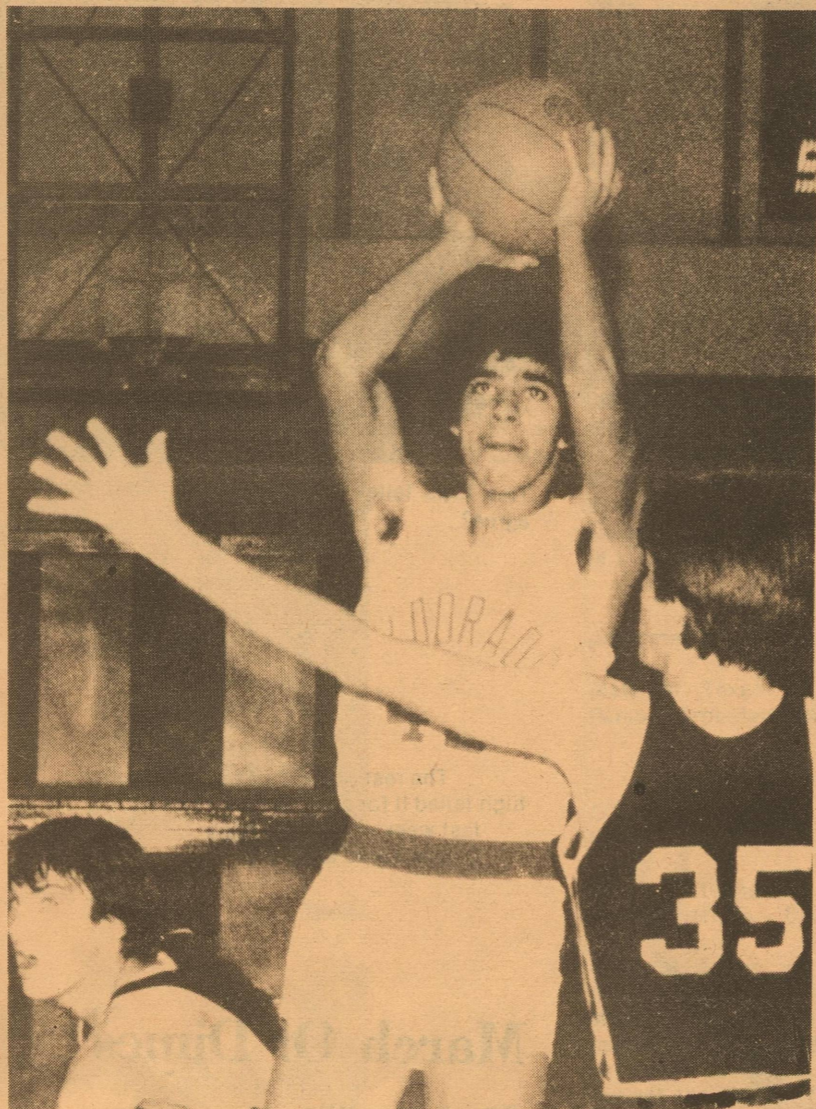
The Eaglettes clinched the runnerup spot for the first half of district with a 40 - 39 victory over McCamey. That means through a complicated process, the Eaglettes have a good chance of competing in bi-district action, on one condition - they continue to win. Davina Vannett scored 17 points, Laura Lozano 10, Stephanie Thomas 5, Margie Logan 2, Julie Cash 2, Amy Heald 2, and Gina Patton 2 finished the Eaglette scoring.

Varsity Roundball Teams Lose To

Wall Hawks

The Eldorado Eaglettes lost only their second district game Tuesday night at the hands of the Wall Hawks. The Lady Hawks outscored the Eaglettes 52 - 31 after being tied at the end of the first quarter 9 - 9. Eldorado's only other blemish also was against Wall. Davina Vannett picked up her third foul early in the second period as the Eaglettes fell

behind by seven at the half, 23 - 16. Coach Mitchell said, "We committed too many turnovers tonight. The girls now control their own destiny." The Eagles traveled to Wall also Tuesday night only to be defeated 87 - 46. The Eagles fell behind to a well coached Hawk squad 20 - 8 in the first quarter. The first half ended as the game was already decided at 50 - 13.



Junior Varsity Eaglettes Crowned Local Champions

Eldorado High School held its annual junior varsity tournament last weekend with the JV girls winning the championship and the JV boys being eliminated by Brady and Wall.

The Eaglettes beat McCamey in their first game 41 - 12. Jennifer Willoughby led scorers with 12 points. Stephanie Fields followed with 10.

Fields scored 24 points to lead the girls overall 44 - 35. Amy Sutto had 8 and Willoughby 6 to lead the Eaglettes.

The Eaglettes took the championship trophy in their third game by defeating Ozona 25 - 19. Willoughby and Fields again led scoring with 9 and 8 points respectively.

The junior varsity boys lost to Brady in their first

game 41 - 18. Jimmy Turbeville and Eric Cheat-ham led the Eagles with 5 points. Chris Woodward tres in 4 points. They then lost a close game to Wall 40 - 37. They had battled back from a 14 point deficit to lead but the victory slipped out of reach during the last minute. Mike Belman led scorers with 16 points.

Jimmy Turbeville puts in two points in the junior varsity's loss to Brady last weekend.

JV Splits Two Against Wall

The Eldorado Junior Varsity basketball teams split two games with Wall Tuesday night at Wall.

The junior varsity Eaglettes started the 4 game series off with Eldorado's only victory of the night by beating the Hawks

26 - 20. The junior varsity Eagles trailed by 10 points with a minute and thirty seconds left in the game only to rally within 2 points with 4 seconds remaining. The young Eagles tried in vain to get a shot off but failed as Wall won it at the buzzer 32 - 30.



Missy White passes to a team mate in last weekend's JV tourney.

Hayes Leads Cougars

The Christoval Cougars kept their district record unblemished (4-0) by upending Paint rock last Friday night, 62 - 42.

Led by Mark Hayes' 25 points, the Cougars took a 15 point advantage into the locker room at halftime.

Paint Rock never had a chance to rally back as

Christoval built their lead up to 20 points when the final buzzer sounded.

Also contributing points were Duke Douthit with 15 and Lee Westerman with 10.

The Christoval girls post a record of 3-1 and share the district lead with Irion County and Paint Rock.

Varsity Teams To Face Miles Here Tuesday

Morgan Roofing and Remodeling

- Free Estimates
- Tar Composition and Wood Roofs
- 15 Years Experience
- Referrals Furnished
- Quality Work
- No Job too Large or too Small

Phone **387-5604**

Travis Morgan
Box 91
Sonora

Square Dance Lessons

Enjoy The Fun With Your Friends!

Good Clean Fun

sponsored by the

Kountry Kousins Square Dance Club

February 2nd 8:00 P.M. Memorial Building

David Drake - Instructor

1st two lessons FREE

Please Come and Join Us!

Everyone Welcome!

Eagle Dairy Mart

Hwy. 277 S. Ph: 853-2125 Hrs: 5 a.m. - 8:00 p.m.

Special of the Week

Hamburger & Fries \$1.⁶⁵

Davina Vannett, daughter of Donna Vannett of Eldorado and David Vannett of Eldorado, scored 17 points in the Eaglettes big victory over McCamey.

Ashley Niblett, son of Mr. and Mrs. Charley Niblett, had 11 points against McCamey last Friday.

We take as much pride in supporting the Eagles as we do in serving quality meals & treats with all around courtesy.

Locals On A.S.U. Dean's Honor Roll

Jan. 7-Area students attending Angelo State University in San Angelo, are listed on the Dean's Honor Roll for the fall semester at the university.
Those listed on the 3.00 to

3.49 Honor Roll include Randy Glenn Morrison, a Health & Physical Ed. major, Lori L. Griffin, an Elementary Education major, Lou Ann Turner, an Elementary Education major, Nancy Alba Turbeville,

an Accounting major, Cherie Niblett Rodriguez, an Undecided major, Rita Gail Reeves, a Nursing major, Shelly Diane Squyres, an Accounting major, and Charles Robert

Bradley, an Undecided major.
Those Listed on the 3.50 to 4.00 Honor Roll include Cynthia Kay Cawley, an Accounting major, and Kim Chere Payne, an Undecided major.

You and Your

Liability Insurance

The Texas Department of Public Safety will continue to enforce the current mandatory liability insurance law as enacted by the last session of the Texas Legislature. A recent Attorney General's opinion stated that failure to carry, produce or provide proof in insurance is not an offense. However, the opinion does not require DPS policy to be changed. The offense contained in the law is "failure to maintain financial responsibility," i.e., failure to maintain liability insurance.

Colonel Jim Adams, DPS director, said "the statute requires motorists to furnish information concerning evidence of insurance to a police officer upon request. Failure to provide satisfactory information creates a rebuttable presumption under the statute that the motorist failed to maintain liability insurance. This presumption may be rebutted by presenting evidence to the judge that the motorist did in fact have insurance and the judge may dismiss the charge."

If the officer is not satisfied with the information provided, he can issue a citation. Adams said troopers will continue to issue citations when drivers are unable to furnish satisfactory information.

The Department of Public Safety issued rules when the law went into effect detailing examples of information which would be accepted as evidence of financial responsibility. The items include the insurance policy, insurance identification card, or other information which confirms to the satisfaction of the officer that the operator is in compliance with the law.

In an opinion dated May 14, 1982, the Attorney General upheld these rules as binding on all law enforcement officers of the state.

"If a person is unable to furnish the information requested by the officer, the officer may issue a citation

even though the individual claims to have the required insurance," Adams said.

Colonel Adams said the law has produced positive results, and has resulted in an increase in the number of Texans who presently carry liability insurance. "Before the law was pas-

sed, 74 per cent of the Texas motorists involved in vehicle accidents did have insurance. However, 1982 accident reports indicate that 91 percent of the drivers involved in vehicle accidents have obtained and maintain insurance," he said.

I.R.S. Answers

San Angelo, Tx. - "Although there is a new number to dial 1-800-424-1040 the service will be the same as in prior years," said Clint Caves, Director's Representative for the Internal Revenue Service San Angelo office in announcing the taxpayer assistance program for the 1983 filing period. "Taxpayers will be able to get answers to their tax questions, order forms and publications, get information regarding their accounts, and find out about the Volunteer Income Tax Assistance (VITA) site nearest their home from 8:00 a.m. to 4:30 p.m. each Monday through Friday."

Caves noted that, while the San Angelo office will not provide walk-in tax assistance, IRS will be working with community agencies this filing period to conduct a series of group self-help sessions. He also mentioned that IRS has produced two films - one on the short form, Form 1040EZ, and one on Form 1040 and Schedule A & B - which are available to schools and civic groups

beginning in February. The San Angelo office will maintain a limited selection of forms and publications, but Caves encourages taxpayers to use the order form contained within the tax package received in the mail. Certain post offices, and banks will stock individual returns

and local libraries will have a file of reproducible forms as well.

"Our VITA volunteers are attending training sessions right now and will be ready to do basic return preparation for low-income, handicapped, elderly and otherwise disadvantaged taxpayers by mid-

January," said Caves. Taxpayers may pick up a list of VITA sites and their schedules at the San Angelo office or may order a schedule through the toll-free service.

The Cutting Corner Bergina Sewing Center

OPEC Looks To Drop Prices

Many of the Oil Producing Exporting Countries, or OPEC* have called an emergency meeting to try to firm up the price of oil by sticking to firm production figures. If an agreement is not reached, some observers say the price of oil could be reduced by as much as four dollars a barrel. As a rule, when the price drops one dollar a barrel, it reduces the price of gasoline by 2 1/4 cents a gallon.

A price decrease of four dollars a barrel would save the U.S. about nine billion dollars on imported oil. But, it would also lower the income of countries such as Mexico, which is already in financial trouble. It would also mean less money for American producers to drill for oil, fewer jobs, weaker retail sales and less tax money going to governments from the city to the national level.

In other news, oil producers are urged to file a windfall profits tax refund if the Supreme Court de-

clines the tax is unconstitutional. The deadline for filing is February 28th. And, a ruling by the

Federal Energy Regulatory Commission will increase natural gas prices 2 1/4 percent. The money will go to producers to cover costs of

processing and transporting gas from the well to the pipeline company.

Introducing . . .

'KWIK SEW'

patterns to go with our sewing classes

- Lingerie
- Sew with stretch
- Tailoring
- Designer blue jeans
- Swim suit
- Beginning sewing
- Strip quilted vest

Other Classes Available . . .

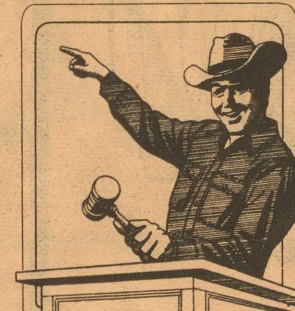
- Drapery
- Smocking
- Machine embroidery and monogramming

Register Now for classes beginning Feb. 7th

The Cutting Corner
 Bergina Sewing Center

942-9958
2 S. Fillmore In The Village (Behind Jackson's) Mon-Sat. 9:00-6:00

Call In A
Classified To
The Leader
It Can Only Pay!



H.R. LITTLE'S
January Spectacular
LOW PRICES
LARGE SELECTION

+

11.9% APR on all 1982 & 1983 Buicks
Interest Program ends March 31, 1983

WOULDN'T YOU REALLY RATHER
HAVE A BUICK FROM . . .

ASK FOR HAROLD GIFFORD
RAY EATON
TED HOOPER
BILL HEMPHILL

H. R. LITTLE
Concho
BUICK-MERCEDES-GMC
SAN ANGELO, TEXAS

We Offer
GMAC
Financing

1909 W. Beauregard 655-9171



Flora finally finds her new facilities at the P.O.

Red Wings
RED WING SHOES
McGalla's
Dept. Store
You've earned your Wings!

Letter To The Editor

Dear Editor:
Please print this letter of appreciation to the young people who participated in our local county stock show.
Having worked with 4-H for many years as an adult leader, I would like to express to the young exhibitors and the older ones how much I appreciated their sportsmanship at our local show. To you older ones I thank you for the concern for the smaller ones. I feel this is what makes the program work, and remember each of you are our future leaders of tomorrow.
Thank you for such a good show. If you are participating in other shows, Good Luck!

A Very Interested
Citizen of our Community

**TIRED of MOBILE HOME OR APARTMENT LIVING
YOUR NEW HOME IS READY**

SALE PRICE INCLUDES:

- Moving
- Foundation
- Central Heat & Air
- Septic Tank
- Water & Plumbing
- Hook-ups

SALE PRICE INCLUDES:

- Moving
- Foundation
- Central Heat & Air
- Septic Tank
- Water & Plumbing
- Hook-ups



3 BEDROOM HOMES STARTING \$35,500

11% LOW INTEREST RATES AVAILABLE
FOR 15 YEARS WITH FHA-VA
FINANCING.

12% RATES AVAILABLE
FOR 30 YEARS CONVENTIONAL
FINANCING.

MOST MODELS CONTAIN • CATHEDRAL CEILING • FIREPLACES
 • ISOLATED MASTER BEDROOM • QUALITY CARPETS • KENMORE APPLIANCES



READI BUILT HOMES
By BUILDERS SERVICE CO.
1700 NORTH PARK (RIVER) DRIVE SAN ANGELO, TX. 653-6965

SECURITY That's what you have when you have your account at First National. We have a strong capital position, and your account is insured by F.D.I.C. up to \$100,000.00 per depositor.

EXPERIENCED The personnel of First National Bank offer you the benefit of many years of experience in financial matters. We can help you solve your financial problems, and we welcome the opportunity to be of service to you.

DEPENDABLE We have served the financial needs of Eldorado, and Schleicher County since 1907, and we will be here when you need us.


EXPANDING We are anxious to provide even better facilities in order to offer you all the banking services you desire.

DRIVE-IN BANKING

THE FIRST NATIONAL BANK OF ELDORADO

"Serving Eldorado and Schleicher
County Since 1907"

Each depositor insured to \$100,000



FEDERAL DEPOSIT INSURANCE CORPORATION

CLASSIFIED

FOR SALE

For Sale: 3, 4-H show pigs ready to butcher. Take one or all at today's market price. Call 853-2808. 4-tfc-c

For Sale: Used refrigerators and ranges, some almost new. Used washers and dryers for less than you spend at the laundramat. 915-853-2825. 4-7c

For Sale: 1978 Ford Lariat - clean interior am!fm!8 trk. Call 853-2360. 4-c

For Sale: 1977 Glastron 18 ft. boat, model 898 inboard - outboard, 305 Chevy engine. Single axle trailer. 1976 14 x 50 mobile home, unfurnished, new carpet. 853-2327. 4-tfc-c

For Sale: 1975 Chevy Luv pickup, \$1000. 1976 Mazda RX 4 Sport \$2400. Call 853-2182. 4-p

For Sale: 1973 Pontiac Catalina - good motor and tires, clean, needs tuneup and body work. \$500. 853-2051. 4-5-c

House for Sale: 101 Maple Contact Raymon Mobley, 853-2707. tfc-c

For Sale: Wurlitzer Touchtone Fun Machine. \$250. Waltz, jazz, latin and swing beat. Also like new recliner with vibrator & heat \$100. Call 853-3080 after 5 p.m. tfc

For Sale: Take up payments \$110 per month. \$300 equity on 1981 Kawasaki 500 LTD motorcycle. Runs great 4,000 miles. Call 853-2136. 3-p-tfc

For Sale: 1979 14 x 60 Marshfield mobile home, 2 bedroom, 1 bath, stove refrigerator, unfurnished. \$1397.02 down, \$169.01 per month. 853-2177. 51,1-5p

For Sale: By owner, 3 bdr, 2 bath home in Glendale Addition. Large living area, dining room, utility room, sunny kitchen w/built-in range, central heat/air, fenced yard, storage building. \$45,000. (915) 853-3103 2-5c

For Sale: 1981 Breck mobile home. 14 x 64, excellent condition. Financing available. Call 853-2419. 1-4c

For Sale: 1 mile south from Court House, part of Zoreta (Sweet) Keeney Estate, consisting of rock residence, rent house, and approximately 10 acres of land with frontage on hwy. 277. offered exclusively by: MARTIN LEE ASSOCIATES, INC., SAN ANGELO, TEXAS 76903, 915-655-6989. George Abernathy, Local Rep. 853-2220. 3-c-tfc

Acreage For Sale: We have variety of types of land for sale - from flat grassland to live oak headers, designed for small acreage prospects (5 to 40 acres) all are within 6 miles of Eldorado. Lynn Meador Real Estate. Call 853-2808 4-5c

Business Services

Attention Pumpers: Experienced production secretary will keep your books. Reasonable rates charged by the well. Call 853-3246 after 5:00 p.m. 4-5-c

Income Tax Service; 902 Main, 853-2198. Frankie Schrier. 4-p

Professional Cake Decorating. If you have a drawing I can put it on a cake. Robbie Heald. 853-2941. 4-5-c

Will do tax returns, short forms \$7.00. 853-3142 or 853-2881. 1-tfc-c

Wanted Babysitting In My Home: I have 3 openings, infants to 3 years, registered. 853-2095 4,5-c

Wanted

Deer Lease Wanted: Call 713-658-1764 or evenings. 713-465-8789. 3-c-tfc

MISC.

Earn \$4.87 Hr. We need assistance in evaluating and responding to daily work reports submitted by our agents throughout the state. No experience necessary, paid to complete training. Work at home. For information send a self-addressed stamped envelope 9 1/2 inches long to AWGA, Dept. E, Box 49364, Atlanta, Ga. 30359. 4-p

Found: Near county barn, large black male dog. Appears to be part Labrador. Call Keith McCormack. 853-2243. 4-p

FOR RENT


For Rent: 3 bedroom duplex, brand new stove, \$200 deposit and \$350 a month. 1 blk behind Catholic Church. Del Rio and Pasea De Vaca St. Contact for further information Meme's Grocery, San Saba St. 47-tfc-c

For Help

With Ads

Call 853-2547

Hey
Partner,
Get your
Gear
by Shopping
The
Leaders
Classifieds
and it's a good way to
sell your old riggin'
too!



Copies
Copies
Copies
Copies
Copies

8¢

each

At The Leader
Letter
and
Legal Sizes

5 acre tracts for sale.
1.5 miles West of Eldorado
on Hwy. 190.
Only 6 more left.
Call Mike Mikeska owner/agent
944-8621 or 944-9369

Church Of Christ Sermon Outline

- "Standing Alone When Tempted"
Judges 13 - 16
- "Christianity has not been tried and found wanting. It has been found difficult, and not tried."
Becoming a Christian is not difficult, but victoriously walking day - by - day in the Spirit can be. All the theory gained in a sermon or in quiet study with God's Word, can lose its zest when we return to our noisy world and are faced with temptation. Our world system is motivated by four un-Godly pursuits: Fame, Fortune, Power and Pleasure. As a matter of preparation we ask ourselves: How will I handle inordinate pleasure when it winks in my direction?
- Samson's Example of Failure (Jud. 13-16)
 - Favorable life (13:1-25)
 - Birth Divinely announced (v. 3-5a)
 - Purpose clearly revealed (v. 5b)
 - Parents deeply spiritual (v.8-12)
 - Disciplined character belongs to the person who achieves balance by bringing all his faculties and powers under control. He resolutely faces his duty; governed by a sense of responsibility.
 - Deplorable life style (14:1-16:17)
 - His focus (14:1-3,7)
 - His leisure (14:10-15; 15:20; 16:1,4-5)
 - His friends (16:5-12)
 - His God (16:13-17)
 - Inevitable Condition (16:18-31)
 - Weakened
 - Enslaved
- Presented by the New Covenant Church in Eldorado. 853-2124
- By
Bro.
Rusty Kwast

FIRST BAPTIST CHURCH Oak and Gillis Sunday School 9:45 a.m. Morning Worship 11:00 a.m. Adult Evening Bible Study Worship 7:00 p.m. Wed. Prayer Serv. 7:30	FIRST PRESBYTERIAN CHURCH Rev. Ronald J. Sutto 7 N. Cottonwood Sunday School 10:00 a.m. Fellowship Time 10:30 a.m. Morning Worship 11:00 a.m.
FIRST UNITED METHODIST CHURCH Rev. Fred Brown Hwy. 277 across from courthouse 853-2721 853-3030 Church School 9:50 a.m. Morn. Worship 10:50 a.m. Youth Fellowship 7:00 p.m. Wednesday Youth Adult Study 7:30	CHURCH OF CHRIST Rusty Kwast, Minister Mertzon Hwy. Sunday Services Bible Class-10 a.m. Assembly-11 a.m. & 6 p.m. Wednesday Bible Class 7:30 p.m. Ladies Bible Class Thurs.-10 a.m. 853-2124
CHURCH OF JESUS CHRIST OF LATTER DAY SAINTS Bishop: Keith Knepp San Angelo 949-6894 2817 Christoval Rd. Priesthood 9:00 a.m. Primary 9:00 a.m. Relief Society 9:00 a.m. Sunday School 10:00 a.m. Sacrament meeting 11 a.m.	UNITED PENECONAL CHURCH Rev. Walter Ford Hackberry St. Sunday School 10:00 a.m. Worship Serv. 11:00 a.m. Sun. Eve. Serv. 7:00 p.m. Wed. Eve. Serv. 7:30 p.m.

ATTEND THE CHURCH OF YOUR CHOICE

Antioch Baptist Church Sunday School-10 a.m. Morning Worship Service 11:00 a.m.	No Sunday Night Service Everyone Welcome Located on Callender St.
FIRST CHRISTIAN CHURCH Dale Lipsett, Minister Sunday School 9:45 a.m. Morning Serv. 11:00 a.m. Evening Service 7:00 p.m. Wed. Bible Study 7:00 p.m. 853-3101	OUR LADY OF GUADALUPE CATHOLIC CHURCH Rev. Serran Braun, Pastor. Pastor 853-2663 Saturday 7:00 p.m. Sunday 8:00 a.m.-10:00 a.m. Sunday School 9:00 a.m.
ST. MARY'S EPISCOPAL CHURCH Rev. Lea Roy Aldwell Pelt St. & McWhorter Ave. 387-2617 Sonora, Tx. Sunday Morning Worship and Holy Communion	WESTSIDE CHURCH OF CHRIST Hwy. 277 Sun. Morn. Serv. 10:30 a.m. Sun. Eve. Serv. 6:00 p.m. Wed. Eve. Serv. 7:30 p.m. Mike Sokoff, Minister
PRIMERA IGLESIA BAUTISTA Rev. E. L. Flores, Pastor El Paso and Concho St. Sunday School 9:45 a.m. Morn. Worship 11:00 a.m. Training Union 6-7 p.m. Evening Worship 7-8 p.m. Sunbeamswed. 3 p.m. Prayer Service 7 p.m.	PRIMITIVE BAPTIST CHURCH West and Carson Elder Duane McCarty, Pastor Services each 2nd & 4th Sunday at 10:30 a.m. and 2:30 p.m. Also on Saturday night before 2nd Sunday meeting at 7:00 p.m.

EL DORADO RESTAURANT Steaks- Seafood & Mexican Foods Catering Service Available 853-2818
BUTLER SUPPLY COMPANY Day 853-2503 Night 853-2004 East St. Eldorado, Texas
SONIC DRIVE-IN OF SONORA Hwy. 277 North Sonora, Texas

FOOD CENTER Herbert & Lois Fields, Owners Les Robertson, Manager Sonora, Texas 387-3438
SOUTHWEST TEXAS ELECTRIC CO-OP, INC. OWNED BY THOSE WE SERVE 853-2544 or 853-2546
THE WESTERN COMPANY Pacesetters in the Oil & Gas Industry Eldorado, Texas

COMMERCIAL RESTAURANT Where Friends Meet To Eat B Glasscock & Plum Sonora, Texas
R & H WELL SERVICE Compleat Oilfield Service Eldorado, Texas 853-2003
TREY TRUCKING All Kinds of Oilfield Trucking Eldorado, Texas 853-2186

WE BUILD • SELL & DELIVER

CUSTOM HOMES



The very best construction at the lowest possible price.
SPECIALIZING IN HOME ADDITIONS AND REMODELING.

TOWN & COUNTRY

HOME BUILDERS OF SAN ANGELO
2920 North Bryant Blvd.
(915) 658-6053