

SCHLEICHER COUNTY LEADER

(U.S.P.S.) 342-470 Six Pages February 2, 1984 25 cents Eldorado, Tex.



Raul and Elosia Favila are the owners of Eldorado's newest convenience store, the Handy Mart on 277 N.

Convenience store re-opens

Eldorado has a new convenience store, the Handy Mart, located at 612 Divide. Raul and Elosia Favila are the new owners and operators of the establishment which opened Monday January 30th.

The Handy Mart will be your one-stop store offering gas, beer and full line of groceries.

Raul and Elosia will open each day at 6:00 am and will remain open until 10:00 pm.

The Favila's moved to Eldorado recently from Los Angeles, California where Raul retired after 20 years of employment with Sears. Raul and Elosia moved to Los Angeles from

Sonora. They have three children, all who reside in California and six grandchildren. Raul's parents, Jesus and Georgia Favila reside in Sonora and his uncle Juan Favila lives here in Eldorado.

Raul and Elosia invite everyone to drop by the Handy Mart to



Simon Thorball cycled his way through Eldorado on his around America tour this week.

One mother's fears

March 1, 1976, is a date Annette Jackson and her family will never forget. It was on that day that Annette's sixteen year old daughter, Kelly Elizabeth Engdahl died from Reye's Syndrome, although it was some months later that Annette was told exactly what Kelly died from.

Reye's Syndrome is a deadly disease that strikes young people usually between the ages of 5-15 and it works fast. Kelly's first symptom occurred on Friday night February 27th when she came home from work at the Eldorado Restaurant and told her mother that her skin was sore. The next morning she ran errands for her mother and sister and helped her step-dad, "Rooster" in the garden. After lunch she thought she had fever but non registered on the thermometer, another symptom of Reye's Syndrome, her body did not register a temperature although she did have fever. As a precaution Annette gave her aspirin. After supper she went to bed still not feeling really sick but not well either.

Sunday her symptoms increased. She, at different times, vomited once or twice, complained of a sore and raspy throat, became disoriented and weak when she went to the bathroom, complained of her head hurting, she also displayed personality changes. These changes weren't drastic but they were enough to cause Annette to be concerned that this wasn't just the "flu". Also, all these different symptoms each lasted no longer than 30 minutes.

Late Sunday night Kelly called her mother to come to her room, she wanted to tell her "Goodnight mom, sweet dreams. I love you." Those

were the last real words Kelly spoke.

Annette checked on Kelly Monday morning after she heard Kelly making a noise, like she was trying maybe to say something. She discovered Kelly in a fixed position, with her hands clasped together under her chin, her mouth was dry and parched and her eyes stared straight ahead with a glazed look. Upon trying to rouse her, Annette discovered that one side of Kelly's body was cold and the other side felt normal, although she was rigid.

Annette finally managed to load Kelly into the car, after failing to find anyone to help her and rushed her to the hospital here in Eldorado. After about 2 hours and numerous tests, the doctor sent Kelly on to San Angelo.

After about four hours of incessant tests and eleven doctors working feverishly over Kelly and doing everything they could possibly do, it was all over. Kelly died about 5:30 p.m. on Monday March 1, 1976, only three days after the first symptom appeared. The doctors told the Jacksons they honestly did not know what caused Kelly's death. It was months later that Annette was notified by the Atlanta National Center for Disease that Kelly died of Reye's Syndrome. As Annette was told Reye's Syndrome causes the body to attack itself. In Kelly's case her brain, liver, stomach and heart were all damaged beyond help.

Exactly what is Reye's Syndrome? According to the National Reye's Syndrome Foundation, "it is a collection of certain symptoms and signs rather than a specific disease. Its cause is unknown and there may

be multiple causes. It attacks primarily healthy children 18 and under although it has been reported in adults. Reye's Syndrome attacks both males and females in equal percentages. During recent years, 30-50 percent nationwide of the children who contact Reye's did not survive. Most survivors recover completely but some 10-25 percent have suffered minor to severe disabilities due to brain damage."

Since Reye's Syndrome often occurs after the onset of a viral illness such as the flu or chicken pox the Foundation states, "currently available epidemiological surveys raise the possibility of an association between aspirin and Reye's Syndrome. The reported studies and additional uncontrolled clinical experiences suggest that 1) Reye's Syndrome can occur in the absence of aspirin intake, 2) Reye's Syndrome is more likely to occur in patients receiving aspirin and 3) it is unclear whether aspirin causes the main illness or makes its course more severe."

As the flu season is upon us, it would be wise to watch for these signs in a young flu victim after the illness is supposedly over: vomiting; lethargy and unusual fatigue; behavior change characterized by combativeness, biting, thrashing, shrieking, unusual strength, bad language, disorientation, seizures; hyperventilation and coma.

As Annette told the Leader, "it's too late for Kelly but maybe my story can help save other children, that will make my loss easier to bear."

New Dr. at Center

Eldorado's Schleicher County Medical Center once again has two doctors on staff. The latest physician to join the center is Dr. Ernest J. Hermann, Jr.

Dr. Hermann comes here from Abilene. He is a member of the American College of Sports Medicine and the American College of Emergency Paramedics.

Dr. Hermann will be at the center Monday thru Friday from 9:00 am 5:00 pm and will rotate week-end duties with Dr. Shih.

Locals go to Ft. Worth

Eldorado is well represented at the Fat Stock Show in Ft. Worth this week. Area 4-H and FFA students traveled to Cowtown with their sponsors to compete in the big show.

Those attending the show are Jeffrey Hausenfluck, Amy Turner, Bill Cawley, Ashley Johnson, Gabe Schooley, Stan Meador, Chris Meador, Dusty Barton, Stephen Whitten, Clint Griffin, Wendi Dunagan Forrest Meador and Kelly Leggett.

The Leader will have the results and winnings of these participants in next week's edition.

Biker tours through

Young Englishman, Simon Thorball found himself in Eldorado this week and left our community with deep feelings in relationship to the hospitality he was shown during his short visit here.

Thorball began his estimated 10 to 12000 mile trip around America on December 26, and anticipates that he will be in Miami, Florida on March 1st and then back in Los Angeles in time for the Olympics. The 23-year old resident of London, England uses a hand made touring bike with 18 gears and averages about 60 miles per day. While in Eldorado, he ate lunch with Bob and Jo Parker, Monday and then began his journey around America via Junction.

Mayor explains

In view of the fact there has been much concern over the recent natural gas price charged by the City on your latest billing (December 15, 1983, thru January 15, 1984), let me clarify some rumors and facts.

Producer's Gas Company (the City of Eldorado's secondary or emergency gas supplier) is making no profit whatsoever on the gas they sell to the City of Eldorado. They are simply providing a much needed service to this community. When the supply pressure from Cities Service Company (City of Eldorado; Main Gas Supply) drops below 200 lbs pressure, Producer's gas automatically comes on to keep the supply constant to our customers. Due to the size of our system, the Public Utility Commission does not set rates as they do for much larger systems. The 5.50 charge per thousand is only a temporary rate. This amount is not added to the \$4.50 previous rate, but is a replacement rate for the usual \$4.50 rate. We hope to restore the old rate as soon as possible.

Breakdown of City Gas Charges:
\$1.88 per thousand (avg. price) when on Cities Service Gas. 1.50 per thousand cubic feet (salaries, repairs, meters, etc. out of Gas Utility Fund) .40 per thousand cubic feet (Certificate of Obligation payback for replacing city distribution lines).

\$3.78/mcf on Cities Service supply only with 0 percent loss.
\$3.70 per thousand cubic feet (avg. price) when on Producers Gas Co. 1.50 per thousand cubic feet (salaries, repairs, meters, etc. out of Gas Utility Fund) .40 per thousand cubic feet (Certificate of Obligation payback for replacing city distribution lines)

\$5.60/mcf on Producers Gas supply only with 0 percent loss.
Some loss is still attributed to meters and leakage. However, this loss has dropped from 43 percent to 28 percent with the installation of the new gas lines in our city. The city crews hope to eventually install all new meters/regulators (approximately \$100/customer).

During December we purchased 12,731 mcf (65 percent) from Cities Service at a cost of \$23,934 and 6935 mcf (35 percent) from Producers Gas for \$25,746.74. The bills from Cities Service and Producers for January must be taken into account for the next billing. If anyone is interested in obtaining written cost figures for 1983, these are available upon request from City Hall.

Breakdown of gas delivered from Cities Service page field and Producers Gas Co. to city of Eldorado since Jan. 1981 thru Dec. 1983.

Cities Service 1981 Total of 150,483 thousand cubic ft. 1982 total of 143,605 thousand cubic ft. 1983 total of 108,574 thousand cubic ft.

Producers 1981 total of 4,722 thousand cubic ft. 1982 total of 15,464 thousand cubic ft. 1983 total of 9,669 thousand cubic ft.

Many of you have been very understanding and expressed an appreciation for the gas. Many of you can remember the "old days" when we did not have enough gas and everyone got cold. Eldorado has never experienced such a cold spell as came December 18 and just recently left us. Thank you for bearing with us during this period.

Women's Health Day

The U.S. Air Force Clinic at Goodfellow AFB, near San Angelo, will sponsor a Women's Health Day, Feb. 4, for all dependent females of active duty and retired military personnel.

According to Captain Richard E. Willis, clinic Administrator, complete physical examinations will be given, and will include Pap smears, breast examinations, blood tests, glaucoma test and dental screening. Also, consumer health education programs on female health-related subjects will be presented throughout the day.

In order to complete the

physical on Women's Health Day, participants will be required to visit the clinic for initial screening prior to their appointment said Captain Willis. They will need to abstain from food and drink, except for water, from 7 pm the evening before the screening in order to be in a fasting state for the required tests. Medical history questionnaires will be completed and electrocardiograms will be performed on all patients over 40 years of age.

Appointments can be made by calling the Goodfellow USAF Clinic at area code 915-655-8984.

School Menu

Monday Feb. 6th

Beef & Bean Burritos
Spanish Rice
Cheese Strips
Lettuce & Tomato Salad
Iced Cupcakes

Tuesday Feb. 7th

Baked Ham
Blackeyed Peas
Candied Sweet Potatoes
Lime Jello
Marble Cake/Choc. Icing

Wednesday Feb. 8th

Beef Stew with Vegetables
Grilled Cheese Sandwiches
Sliced Peaches
Sugar Cookies

Thursday Feb. 9th

Fried Chicken & Gravy
Creamed Potatoes
Buttered Spinach
Carrot, Pineapple, Raisin Salad
Banana Nut Cake/Icing

Friday Feb. 10th

Hot Dogs with Chili
Corn Chips
Baked Beans
Stuffed Celery (Cheese)
Rice Krispie Cookies

Breakfast

Monday Feb. 6th
Grape Juice
Buttered Rice-Toast

Tuesday Feb. 7th

Pineapple Juice
Hot Biscuits-Sausage-Jelly

Wednesday Feb. 8th

Banana
Choice of Cereal

Thursday Feb. 9th

Orange Juice
Toast-Eggs-Jelly

Friday Feb. 10th

Apricot Halves
Pancakes-Syrup

S. S. News

Legislation passed in 1983 will make major changes in Social Security Medicare benefits payable to hospitals.

Starting October 1, 1983, a prospective payment system for Medicare hospital inpatient costs has taken effect.

Under prospective payment, Medicare payments for 467 hospital procedures, or diagnosis-related groups, will be paid based on a fixed amount established in advance by the Social Security Administration. This payment from Medicare will be considered full payment, and the hospitals are prohibited from charging beneficiaries more than the fixed amount combined with the deductible and their coinsurance.

This prospective payment system applies to all hospital who participate in Medicare except children's hospitals, rehabilitation hospitals, hospitals outside the United States, and psychiatric, long-term care hospitals.

Another provision of the prospective payment system specifies that non-physician services and items furnished by the hospitals to inpatients must be billed to Part A of Medicare, the hospital insurance. These items cannot be billed to Part B, the supplemental medical portion of Medicare.

This prospective pay-

ment system for Medicare will be phased in to hospital payments over the next three years.

In fiscal year, 1984, hospitals will be able to bill Medicare for twenty-five percent of the established rate specified by Social Security and seventy-five percent of the hospital's specified rate. In fiscal year 1985, the hospitals can bill Medicare for fifty percent of the Social Security established rate and fifty percent of their own specified rate. In fiscal year 1986, billing will be at seventy-five percent of the Social Security prospective payment and twenty-five percent of the hospital's specified rate. In 1987, hospitals will only be able to bill at the rates specified by the Social Security Administration.

The rate for each procedure, or diagnosis-related group, will be determined by national and regional averages based on hospitals' costs for each procedure. Adjustments will be made on these rates according to rural or urban locations, the mixtures of cases within the area and varying economic trends and wages within the area. Offsets and special considerations will also be given on an individual basis for unusually long-stay or expensive cases.

Decontrol ask

The Executive Committee of the Texas Independent Producers and Royalty Owners Association (TIPRO) has reaffirmed its support for federal legislation to decontrol natural gas.

The TIPRO panel approved the decontrol resolution during the association's Mid-winter Committees Meeting Thursday.

The resolution embraces support for principitro believes ought to be considered in a comprehensive decontrol bill. These principles include a deregulation schedule and elimination of restriction on the natural gas market.

Principles previously adopted by TIPRO - the sanctity of existing contracts and opposition of

legislative efforts to abrogate contracts - also were reaffirmed by the Executive Committee.

The TIPRO panel reserved the right to reassess the association's position on the federal gas decontrol legislation should the Congressional process indicate such a comprehensive measure is not politically possible.

The TIPRO Executive Committee also approved a motion to investigate the possibility of establishing a TIPRO-sponsored scholarship program. A report on that investigation likely will be presented to the TIPRO membership during the association's annual meeting June 10-12 in San Antonio.

Emergency loans available

Applications for disaster loans will be accepted by FmHA until February 29, 1984 for physical and production losses.

Emergency loans for farm and ranch operators are available through county offices of the Farmers Home Administration (FmHA), Ben T. Rucker Jr., FmHA county supervisor, said today.

Rucker asked that those who need farm credit as a result of damages and losses caused by drought occurring January 1, 1983, and continuing, make their needs known at the Farmers Home Administration office at: Box H, Eden, Tx 76837, Ph. (915) 869-3941.

FmHA loans covering

actual physical and production losses may be used to buy feed, seed, fertilizer, livestock, or to meet interest and depreciation payments on current real estate and chattel debts.

"Funds can be used for essential operating and living costs," Rucker said.

Those farmers and ranchers unable to borrow money elsewhere may be eligible for a loan at 5 percent and for those who can borrow elsewhere, the interest rate will be at 14 1/4 percent.

Rucker will be in the Schleicher County Courthouse the afternoon of February 9th, 1:30 to 3 pm

To be eligible for an emergency loan, an applicant must have suffered losses from the disaster.

MEMBER 1984

TEXAS PRESS ASSOCIATION

Schleicher County Leader
U.S.P.S. 342-470
Published Every Thursday
P.O. Box 790
210 Main St.
Eldorado, Texas 76936
Finis C. Bratcher
Owner-Publisher

Second class postage paid at Eldorado, Tex. 76936. POSTMASTER: Send address changes to Schleicher County Leader, Box 790, Eldorado, Tex. 76936.

Any erroneous reflection upon the character or standing of any person or firm appearing in these columns will be gladly and promptly corrected upon calling the attention of the management to the article in question. Attention Advertisers: It is the Leader's policy that all ads are proofed before publishing, any error not brought to our attention at that time, will not be a matter for correction on the Leader's behalf.

Hanson's
Income Tax
&
Bookkeeping
Service

400 Block N. St.
Eldorado 853-3050

Reasonable rates
Forms available

Eldorado Road Service

Caliche Road Building & Repair
Construction Pads - Top Soil & Sand
Fully Insured

Phone (915) 853-3310

Walter Powell, Jr.
Norm Sauer Steve Williams

Bridal Selections
for:
Shelly Cavaness
bride-elect of
Kenneth Phillips

Dee Dee Clark
bride-elect of
Philip Meyer

McCalla's Dept Store

Community Calendar

The Historical Society

1st Monday each month
3:00 p.m. at Museum

Eldorado Lodge

890 AF & AM
Reg. Meetings
2nd Thursday
Each month
Visiting Brethern
Welcome

Eastern Star

140 O.E.S.
2nd Monday
Each month
Visiting Sisters
Welcome

Beta Sigma Phi

2nd & 4th Monday
7:00 p.m., Club room
Memorial Building

Eldorado Women's Club

is hosting an International
Affairs program featuring
different countries on Feb.
14, 1984 in the Memorial
Bldg. at 7:00 p.m.
Reg. meetings
2nd Tuesday 2:30 p.m.
in different homes

Lion's Club

Every Weds. (Except 5th
Weds.) 12:05 p.m.
Eldorado Restaurant

Alcoholic Anonymous

Every Monday Night
8:00 p.m. Memorial Bldg.

Eldorado Duplicate Bridge

Every Thurs. 7:00 p.m.
Memorial Bldg.

Wednesday Bridge

Every Wednesday

Tuesday Bridge

Every Tuesday
In different homes

**Schleicher County
Rodeo Association**

1st & 3rd Thursday
7:30 Old Jaycee Bldg.

**Kountry Kousins
Square Dancing**

Practice- Every other Weds.
at 7:30 p.m.
Memorial Bldg.
Dances-1st Sat. of every
month. 8:00 p.m.
Memorial Bldg.

Changes in oil & gas depletion rulings

Oil and gas royalty owners have prevailed in a lengthy dispute with the Internal Revenue Service, the president of the Texas Independent Producers and Royalty Owners (TIPRO) said.

Bruce Anderson, a Houston independent oilman, applauded the Jan. 10 U.S. Supreme Court decision that held the IRS can not limit the tax deduction for depleted oil and gas resources to the value of the oil and gas actually produced in a given tax year.

"It shows the Supreme Court is willing to interpret the percentage depletion incentive in the way Congress intended," Anderson said. "Lawmakers intended to encourage the exploration and development of oil and gas lands."

The high court held in a 5-4 decision that independent holders of oil and gas

leases may take the depletion deduction for cash bonuses and advance royalty payments received in exchange for the right to explore for and produce these resources on their property.

Even if such bonuses and royalties are paid in advance of production, the court said they should be treated as income and therefore eligible for the depletion deduction authorized by Congress.

"Royalty owners have won a great victory in a long-running battle with the IRS," Anderson said.

He said royalty owners should review their tax situations in light of this decision.

"We expect that many will need to file amended returns for years in which they received advance royalties or bonuses," Anderson added.

The Supreme Court decision said that while

deductions may be taken for bonuses and royalties paid on future oil or gas production, those deduc-

tions would have to be repaid to the IRS if production is never obtained from a lease.

24 Hour Service Out of County & County Bond

Marjan Bonding Service
Marjan Bonding Service (A)
Criminal Bonds

Galen Moeller Marvin C. Hanz
Ernie Reynolds Bobby Reynolds
Sylvia Johnson
Attorneys In Fact Home 658-8668
San Angelo, Texas 76903 Home 658-3922
Big Lake 884-2501

"OPEN SUNDAY 1-5"

LIQUIDATION SALE

\$100 HOLDS ANY HOME

ON-THE-SPOT FINANCING

14 x 56 New Melody Was 14,995 Now 9,995
14 x 70 Cheif 2 Bdrm Was 17,995 Now 13,995
14 x 70 Commodore Was 18,995 Now 14,995
14 x 80 Remington 3 Bm Was 20,995 Now 16,995

Dozens to Choose From

DOUBLEWIDES 28 x 64 Was 39,995 Now 29,995

OVER THIRTY (30) MOBILE HOMES MUST BE SOLD

DISCOUNT HOMES OF SAN ANGELO

2502 N. Bryant (Hwy. 87) 658-3760
SAMMY FARMER'S PLACE 658-3344

Prices Exclude Delivery & Set Up

Now is the time
to build that new home, or to remodel
or add to the home you already have.

2 x 6 exterior walls - R28
all wood kitchen cabinets
insulated windows
plans available for any size home
insulated garages
references available
free estimates

All this and more for the
energy efficient home!

**Virgil
Wilson
Home
Builders**

944-8310
3001 Woodland Circle
San Angelo

Surprise Your Valentine With A...



COMPOSE YOUR OWN VALENTINE MESSAGE... IT'S EASY TO DO!!!

Enclosed Please Find My Special Prepaid...
Valentine Love Line!
Compose Your Own Message Below

NAME _____
ADDRESS _____
CITY _____ TOTAL WORDS IN MESSAGE _____ TOTAL AMT. ENCLOSED _____ AT 15¢ PER WORD _____

CLIP AND MAIL YOUR LOVE LINE
ALL ADS MUST BE PREPAID

ONLY 15¢ PER WORD

MAIL CHECK OR BRING AD TO

Schleicher County Leader

210 Main St. Box 790 Eldorado

February - only Advertising space

For Rent Call 853 - 2547

State Comptroller Bob Bullock said Monday Texas business operating outside state tax law will get a one-time-only, penalty-free chance in February to get right with the Comptroller's Office before Bullock lowers the boom in March. "We'll give them 29 days in February to get right with the law," Bullock said. "If they come in and wipe the slate clean, we won't charge them penalty and we won't file charges against them. If they wait until March or if they wait until we find them, they'll be too late."

Comptroller enforcement officers will begin using new procedures designed to more quickly identify and collect taxes from errant taxpayers in March. Under the law, the Comptroller can collect a 10 percent penalty and has the power to file criminal charges for unreported state taxes.

"We will only waive penalties and charges if the taxpayer comes forward voluntarily during February," Bullock said. "Chronic late filers, delinquent taxpayers and other taxpayers already under investigation or court prosecution don't qualify for this relief."

The February-only, no-penalty period is aimed at: A business operating with out a tax permit. A business (such as an out of state corporation) which owes Texas taxes even though a tax permit isn't required. A business not reporting taxes on a new activity added since it got its original tax permit. A business with a single tax permit, but more than one business location.

"The February period is for the business operating outside the tax law or beyond the limits of its tax permit. We want them to come out in the open, get a permit and start reporting taxes like most other Texas business people," the Comptroller said.

Information and assistance for taxpayers to take advantage of the one-month grace period will be provided by the Comptroller's field offices or by calling 1-800-252-5555 toll free from anywhere in Texas.

El Dorado Place Apts.
Ready to Move! Come see this beautiful NEW Complex

Washateria on Location
Central Heat/Air Drapes
All Electric Lots of Security Lights Paved Parking
Carpet Smoke Alarms Appliances

Min. Rent for 2 bedroom \$220.00 mon.
Min. Rent for 1 bedroom \$188.00 mon.

Call 853-3033- Complex Office Menard Hwy.

Evelyn Rogers, Manager
387-2815
Sonora

WTU to bring Vernon lower rates

Citizens of Vernon voted Saturday to sell their Municipal Electric System to West Texas Utilities Co. The transaction, scheduled for completion this spring pending approval of the Public Utility Commission of Texas, will add about 2,500 customers to the WTU

system, which already serves about half the city. Rising fuel costs, needed power plant and distribution improvements, and rising maintenance and operation costs were cited by the City Commission as reasons for the proposed sale.

Any alternatives to sell-

ing the system would have required rate increases and possible tax increases, city officials stated. The sale to WTU will bring lower electric rates in Vernon, because rates there are set by the city and are higher than standard rates WTU charges in other town.

Merry Makers meet

The Merry Makers Club met at the Eldorado Eagle Mart, on Thursday afternoon. Ten members were present and two guest - Mrs. Viola Finnigan and Mrs. Leon Stricklan.

Forty-two games were played. Refreshments were served by Mrs. Annie Speck, the hostess.

SAVE 80% ON HEATING COSTS!

WITH THE E-Z FIREPLACE INSERT

Hundreds of customers actually report saving 100% simply by turning off other sources of heat and burning their E-Z Insert. You can too. See our E-Z display. Get our comparison check list. It will help you choose your insert. Available now exclusively at:

Fireplace PLUS
PHONE 944-9181
Built-in Fireplaces
Freestanding Fireplaces
Thermomite Glass Doors
Accessories - Ceiling Fans
SALES SERVICE & INSTALLATION
1111 WESTLAND
SAN ANGELO, TEXAS 76901

One legged seagull

By Dale Lipssett

When I lived in Monterey, California, I used to go to the town wharf to take pictures of the boats. One day, I spotted a one-legged seagull there. He was standing jauntily on his good right leg atop a fence, head cocked to one side like Maurice Chevalier, watching the world go by. This seagull wasn't handicapped; he had grappled with his world and had come to terms with it. Without doctors, welfare, charity or a vast interlocking web of social services, this seagull was making his way against all the odds. He impressed me so much that I grabbed my camera and took his portrait. Later, I made the picture of him that hangs on my office wall. I don't know how many times just looking at that picture has stopped me from feeling sorry for myself and made me thankful for all that God has done for me. I believe that if that bird can make it then so can I.

pression—is the leading reason that mind altering drugs are prescribed in this country? Valium, Librium and scores of other drugs are dispensed like candy at the first hint of unhappiness. As a nation, we seem unable to cope with the routine trials of life without chemicals to make us happy and other chemicals to help us sleep. A major American industry derives its profits from controlling our minds.

Both the Bible and common sense tell us that there will be times in our lives when we operate at less than 100 percent efficiency. We know that there will be times when we will be troubled mentally and emotionally. Cheer up! Paul tells us that nothing lasts forever. He writes that nothing happens to us except that which is common to all men. Paul also tells us that God provides a way out of each trial. Did you every ask God to show you the way out of your troubles? Why not?

2 DAY SALE
We Are Overstocked.
We Must Sell 5 Homes This Weekend.
We have got them at giveaway prices this weekend only.
Saturday & Sunday
At
Twin River Mobile Homes
3 miles south of GAFB, on the old Christoval Hwy. at Loop 306
Phone 658-5583
We have 1 used 3-bedroom for only \$500 down

The First National Bank of Eldorado

Strong...

Secure...

Dependable...

Promoting the growth of Eldorado and Schleicher County with complete financial services provided by professional bankers.

Complete Banking Services

Member F.D.I.C.

<p>FIRST BAPTIST CHURCH Rev. Clive Johnston 853-2406 (res.) Oak and Gillis Sunday School 9:45 a.m. Morning Worship 11:00 a.m. Adult Evening Bible Study Worship 7:00 p.m. Wed. Prayer Service 7:30 p.m.</p>	<p>FIRST CHRISTIAN CHURCH Dale Lipssett, Minister Sunday School 9:45 a.m. Morning Service 11:00 a.m. Evening Service 7:00 p.m. Wed. Bible Study 7:00 p.m. 853-3101</p>	<p>UNITED PENECONSTAL CHURCH Rev. Walter Ford Hackberry St. Sunday School 10 a.m. Worship Serv. 11 a.m. Sun. Eve Serv. 7 p.m. Wed. Eve Serv. 7:30 p.m.</p>	<p>ANTIOCH BAPTIST CHURCH Sunday School-10 a.m. Morning Worship Service 11 a.m. No Sunday Night Service Everyone Welcome Located on Callender St.</p>	<p>ST. MARY'S EPISCOPAL CHURCH Rev. Lea Roy Aldwell Pelt St. & McWhorter Ave. Sonora, Tx. 387-2617 Sunday Morning Worship and Holy Communion</p>	<p>WESTSIDE CHURCH OF CHRIST Hwy. 277 Sun Morn. Serv. 10:30 a.m. Sun. Eve Serv. 6:00 p.m. Wed. Eve Serv. 7:30 p.m. Mike Sokoff, Minister</p>
<p>CHURCH OF CHRIST Rusty Kwast, Minister Mertzon Hwy. Sunday Services Bible Class-10 a.m. Assembly-11 a.m. & 6 p.m. Wednesday Services Ladies Bible Class 10 a.m. Bible Class 7:30 p.m.</p>	<p>FIRST PRESBYTERIAN CHURCH Rev. Ronald J. Sutto 7 N. Cottonwood Sunday School 10:00 a.m. Fellowship Time 10:30 a.m. Morning Worship 11:00 a.m.</p>	<p>CHURCH OF JESUS CHRIST OF LATTER DAY SAINTS Bishop: Keith Knepp San Angelo 949-6894 2817 Christoval Rd. Priesthood 9:00 a.m. Primary 9:00 a.m. Relief Society 9:00 a.m. Sunday School 10:00 a.m. Sacrament meeting 11 a.m.</p>	<p>FIRST UNITED METHODIST CHURCH Rev. Fred Brown Hwy. 277 across from courthouse 853-2721 853-3030 Church School 9:50 a.m. Morn. Worship 10:50 a.m. Youth Fellowship 7:00 p.m. Wednesday Youth Adult Study 7:30</p>	<p>PRIMITIVE BAPTIST CHURCH West and Carson Elder Duane McCarty Pastor Services each 2nd and 4th Sunday at 10:30 a.m. and 2:30 p.m. Also on Saturday night before 2nd Sunday Meeting at 7:00 p.m.</p>	<p>PRIMERA IGLESIA BAUTISTA Rev. Raul Tirado, Pastor El Paso and Concho St. Sunday School 9:45 a.m. Morn. Worship 11:00 a.m. Training Union 6-7 p.m. Evening Worship 7-8 p.m. Sings & Prays Wed. 3 p.m. Prayer Service 7 p.m.</p>
<p>OUR LADY OF GUADALUPE CATHOLIC CHURCH Father Bernard L. Gully 853-2663 Wed. 7:00 p.m. Friday 7:00 p.m. Sunday 8:30 a.m.</p>	<p>Attend the Church of your Choice</p>				<p>Iglesia Gethsemane Asamblea de Dios Rev. Nick Robledo Menard Hwy. Sunday School 9:45 Morning Worship 11:00 Evening Services 5:00 Wed. Prayer Services 7:00 Friday Services 7:00</p>

<p>El Dorado Restaurant Steaks, Seafood, & Mexican Foods Catering Service Available 853-2818</p>	<p>Food Center Herbert & Lois Fields, Owners Les Robertson, Manager Sonora, Texas 387-3438</p>	<p>Commercial Restaurant "Where Friends Meet To Eat" B Glasscock & Plum Sonora, Texas</p>
<p>Butler Supply Company Day 853-2503 Night 853-2004 East St. Eldorado, Texas</p>	<p>Southwest Texas Electric Co-op, Inc. "OWNED BY THOSE WE SERVE" 853-2544 853-2546</p>	<p>R & H Well Service Complete Oilfield Service 853-2003 Eldorado, Texas</p>
<p>Sonic Drive-In Hwy. 277 North Sonora, Texas</p>	<p>Western Company Pacesetters in Oil & Gas Industry Eldorado, Texas</p>	<p>Trey Trucking All kinds of oilfield trucking 853-2186</p>

Community News

By Evelyn Stigler

Mr. and Mrs. Elton McGinnes and Mr. and Mrs. Fred Case drove to the 42nd annual meeting of the National Rural Electric Co-Op in San Francisco last week.

On the way they stopped in Las Vegas, Nev. where they saw two shows, Susanne Summers and the Don Rickels Show. They drove on to Reno where they saw the Melissa Manchester Show which they enjoyed.

They drove on to San Francisco and toured the Muir Redwood Forest. On Sunday they attended a luncheon at Kathy's in China town where the People to People delegation met. It was a get together of the group with

whom the McGinnes' had gone to China over a year ago. It was like a family reunion to them.

On Monday they received word of the death of Mr. J.D. Strauss who was Director and president of Southwest Texas Electric Co-Op. The McGinnes flew home to attend his funeral and did not get to attend the National Meeting.

The Fred Case's stayed for the meeting along with the Directors from this area; Assistant Manager of Eldorado Co-Op and his wife, Mr. and Mrs. Sonny Turner, the Bill Brown's of Menard, the Jerry Johnson's of Sonora and the Tom Craigs, the Co-Op Lawyer from San Angelo.

They reported beautiful weather the whole trip

which helped them to enjoy San Francisco so much more than the last trip.

Bill Williams, in his pickup, collided with another pickup at the intersection of the light on Divide. Bill was taken to the hospital where he was x-rayed and found a broken collar bone and a rib. He is recuperating at home. His pickup was totaled.

A number of Eastern Star members of District 5 Section 2 attended a School of Instruction in San Angelo Thursday Jan. 26. It was conducted by the Worthy Grand Matron, Marjorie Johnson, Special District Deputy Grand Matron, Dorothy Howard

and Deputy Grand Matron, Lorene Reese.

There were about 85 in attendance. Jake Spencer from Eldorado was recognized as a fifty year member. Mrs. Makine Locklin sang during the program.

The ones attending from Eldorado were: Jake Spencer, Thelma Childers, Martha Godwin, Charlene Edmiston, Barbara Nichols, Cathy Niblett, Blanche West and Geneva Wade.

Jim Cawley is in Shannon Hospital with a heart problem but is much improved.

Members and guests of First Baptist Church enjoyed a musical program Sun-

day night Jan. 29th in the church. There was a solo by Lucille McWhorter, Sherry Belk, duets by Deanne and Michelle Walker, Renetta Robinson and Michelle Walker, a harmonica solo by Leon Stricklan, trio by Katie, Lindy and Jamie Hardy, Quartet by the Blaylocks, a French Horn duet by Mike and Michelle Marsh, an instrumental number by Mike Marsh, Jim Hardy and Michelle Marsh and a solo by Clive Johnston.

After the program three members were surprised with gifts presented to them for their service to the church in the musical field.

They were Sharon Brown, Mike Marsh and Evelyn Stigler.

Birth

Mr. and Mrs. Gary Hanusch are pleased to announce the Friday, Jan. 13th birth of their son, Gary Jr.

Born at 6:20 pm at Angelo Community Hos-

pital, he weighed 8 lb. 3 oz. and 20 1/4 inches.

Grandparents are Mr. and Mrs. Ernest Hanusch and Mr. and Mrs. Gus Willeke all of Eldorado, Great grandparents Mrs.

Pearl Fowler of San Angelo, Mrs. Walter Hanusch of Sulfur Springs, Mr. and Mrs. Nick Tauli of Pueblo Colorado, Mrs. A.J. Willeke of Odessa.

A gift of beauty from Merle Norman



The Beauty Bonus. Yours free with any \$8.50 purchase of Merle Norman cosmetics.

The Merle Norman Beauty Bonus. A collection of four essential Merle Norman cosmetics in a sampler size. Moisture Emulsion, Liquid Makeup, Creamy Flo-Matic Mascara and a regular size Lipstick. All yours as our gift especially for spring. But please hurry. An offer this good can't last long. This offer is good through March 15, 1984, while supplies last. One to a customer.

MERLE NORMAN
The Place for the Custom Face
387-2036
Sonora
405 Hwy. 277 North

WITH THIS COUPON

Memories treasured

To the Editor:
I have a treasure in my Cassette tapes. They are memories of my days in the nursing home and my Dear Mother; on them are voices of most all my friends in Eldorado. Some who have since gone on to be with the Lord. Tapes of the singing services of the different churches who came to the nursing home. On each one I can hear my mother's voice, either singing her Alto, which he sang beautifully or her talking to me. I hear the Bass voices of Darrel and Gene McCalla. I have one of Gene's Inspirational and soul winning prayers that surely win Souls to the Lord. Bess Andrews singing and playing the piano; her joy and pleasure. I owe what voice I have to her. Rance's dear voice comes in. Clemens Sauer and Ronnie Sauer and dear Lavita Brooks. I have all who sang. I can't begin to

name them all, but they are truly a pleasure. They bring back many wonderful memories of all they dear friends I worked with and under in the nursing home.

I will always love and appreciate everyone who

works there, most especially for taking such good care of my mother. I feel sure she would not have lived as long with out that care. May the Lord bless each and every one.
Lorina Wells

Tickets are on sale by the Student Council for dinner for 2 at John Zentner's for Valentine's. Only \$1⁰⁰

Proceeds - S. C. Regional & State Meets

Spirit Jackets - various sizes slightly irregular \$10⁰⁰ & \$16⁰⁰
High School Office

Proceeds - Jeannette Gibbs Hospital Fund

20% off
All flat fold fabric

3 days only

Perry's

Open 9 to 6
Mon. - Fri.

Prices good thru
Sat. Feb. 4, 1984

Eldorado store only

First National Bank of Eldorado
Eldorado

Patton Gulf
Eldorado

Adobe Mini Mart Western Company
Eldorado Eldorado

Southwest Texas Electric Co-op
Eldorado

Joe Max's Exxon
Eldorado

Halbert L.P.G. Butane
Eldorado

Eldorado Pharmacy
Eldorado

C. H. Poynor Const. Food Center
Eldorado Sonora

McCalla's Dept. Store Hext Foods
Eldorado Eldorado

L. R. Hanusch Waterwell Drilling Service
Eldorado

Eldorado Instrument & Controls Co.
Eldorado

Eldorado Wool Co. & Feed Store
Eldorado

B & H Maintenance & Const.
Eldorado



GO EAGLES!

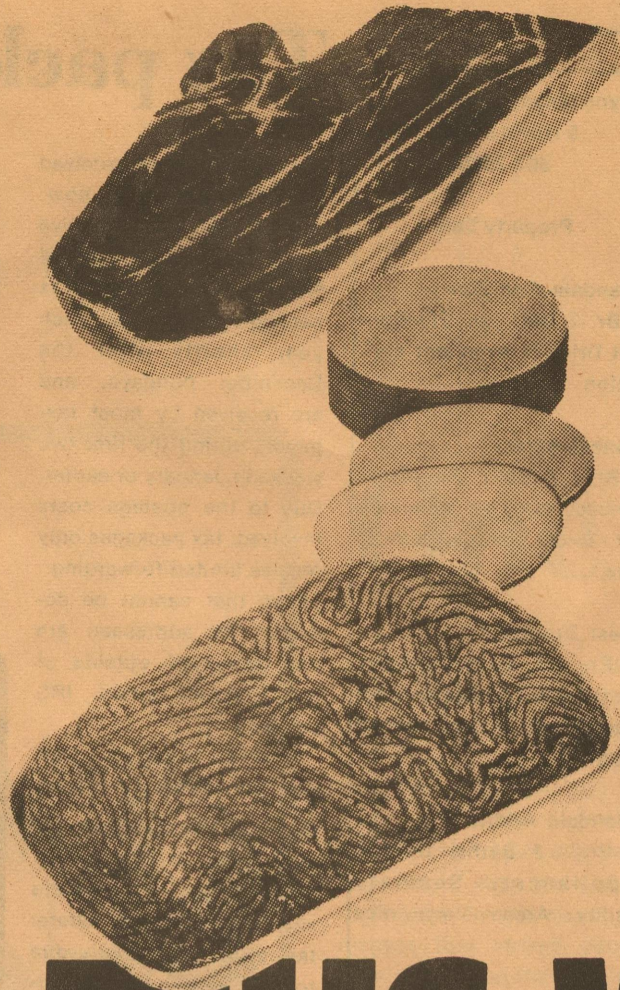
DATE	PLACE	OPP.	TIME	TEAM
Nov. 8	There	Robert Lee	4:00	g, b, G, & B
Nov. 15	Here	Menard	4:00	g, b, G, & B
Nov. 21				g, b, G, & B
Nov. 22	There	Sonora	5:00	F, b, & B (Boys)
Nov. 22	Here	Sonora	5:00	(girls) F, JV, & V
Nov. 29	Here	Ozona	4:00	g, b, G, & B
Dec. 1,2,3	Tournament	Sonora	T.B.A.	g, b, G, & B
Dec. 6	There	Sonora	5:00	(girls) F, JV* & V
Dec. 6	Here	Sonora	5:00	F, b, & B (Boys)
Dec. 8,9,10	Tournament	Ozona	T.B.A.	B
Dec. 8,9,10	Tournament	Iraan	T.B.A.	(girls) g & G
Dec. 13				b & B
DISTRICT GAMES*				
Dec. 13*	There	Wall	5:00	g & G
Jan. 5,6,7	Tournament	Eldorado	T.B.A.	G
Jan.5,6,7	Tournament	Reagan Co.	T.B.A.	B
Jan.10*	Here	Miles	5:00	g, G, & B
Jan. 13*	Here	Reagan Co.	4:00	g, b, G, & B
Jan. 17*	There	Stanton	6:30	G & B
Jan. 19-21	Here	Eldorado J.V.T.B.A. Tourn.		g & b
Jan. 20*	Here	McCamey	6:30	g, G, & B
Jan. 24*	Here	Wall	4:00	g, b, G, & B
Jan. 27*	There	Miles	5:00	b, G, & B
Jan. 31*	There	Reagan Co.	5:00	g, b, G, & B
Feb. 3*	Here	Stanton	6:30	G & B
Feb. 7*	There	McCamey	6:30	g, b, G, & B
Feb. 10*	There	Wall	6:00	b & B

R & H - Trey Trucks
Division of Norton Well Ser.
Eldorado

Kent's Automotive
Eldorado

These Merchants Support The Eagle Basketball Teams

- Chuck Roast**
U.S.D.A. Beef **\$149**
Lb.
- Chuck Steak**
U.S.D.A. Beef **\$169**
Lb.
- Arm Pot Roast**
U.S.D.A. Beef **\$159**
Lb.
- English Cut Roast**
U.S.D.A. Beef **\$179**
Lb.
- Short Ribs**
U.S.D.A. Beef **\$139**
Lb.



- Ground Beef**
U.S.D.A. Beef Lean **\$149**
Lb.
- Ground Beef**
U.S.D.A. Extra Lean **\$169**
Lb.
- Bologna**
Armour Star 12 Oz. Pkg. **\$139**
- Corn Dogs**
Woody's 6 Count Tray **\$139**
- Cheese**
Longhorn Random Weights **\$209**
Lb.

CUT FOOD BILLS WITH THESE SAVINGS!

- Cokes, 7Up, Sunkist Orange, Barq's Root Beer, Tab**
6 Pack 1/2 Liter Bottles **\$169**
2 Liter Bottle **\$129**
- Potato Chips**
Tom's 8 Oz. Bag **99¢**
- Microwave Popcorn**
Orville Redenbacher's 10 1/2 Oz. Box **\$169**
- Toilet Tissue**
Delsey 4 Roll Pack **99¢**
- Paper Towels**
Hi-Dri Jumbo Roll **59¢**
- Laundry Detergent**
Punch Family Size **\$429**
- Dishwashing Liquid**
Palmolive 22 Oz. Bottle **\$119**
- Bath Soap**
Irish Spring 2 Bars For **\$100**



- Furniture Polish**
Pledge 7 Oz. Aerosol **\$129**
- Bath Air Freshener**
Spinfresh Ass't. Fragrances **\$119**
- Cake Mixes**
Betty Crocker 18 1/2 Oz. Box **79¢**
- Snack Crackers**
Wheatbury 8 Oz. Box **99¢**
- Dog Food**
Mealtime 10 Lb. Bag **\$399**
- Beer**
Bud Light 12 Pack 12 Oz. Cans **\$499**
- Beer**
Schaeffer 6 Pack 12 Oz. Cans **\$169**
- French Fries**
Handy Cut 2 Lb. Bag **59¢**

Prices Effective Wed., Feb. 1 thru Tues., Feb. 7

Hershel's FOODWAY

Locally Owned and Operated
387-3708

We Accept
USDA
Food Stamps

**Last Week Winners
of \$25 Worth of Groceries**
Shala Cavaness
Joyce Noriega
Margaret Samaniego
Be Sure and Register Each Week

- Bananas**
Central American **3** Lbs. For **\$100**
- Navel Oranges**
California **39¢** Lb.
- Zucchini Squash**
Young and Tender **69¢** Lb.
- Yellow Onions**
Medium Size **3** Lbs. **\$100**



- Bell Peppers or Cucumbers**
MIX OR MATCH 4 For **88¢**
- Tomatoes**
Mexico Vine Ripe **59¢** Lb.
- Lettuce**
California Large Heads **2** For **88¢**
- Onion Plants**
Red, White or Yellow **49¢** Bunch

CLASSIFIED

Auto

FOR SALE: 1979 3/4 Ton Chevy Pickup, V-8, Automatic, air, tilt and cruise, 58,000 miles. good condition. 853-3065. 3,4,5,6-p

1976 CHEVETTE* Best offer - 4 cyl, 4 speed, runs good, body rough, 853-2927, eves. 2-tfc-c

FOR SALE: 1979 Ford LTD Landau - less than 36,000 miles - \$3200.00 853-3233 after 6:00 p.m. 5-6-p

1979 Oldsmobile 98, 4 door; electric seats, door locks, windows, 40-60 seats, tilt wheel, cruise; AM-FM stereo; 403 cu. in; extra clean, 60,000 miles, \$5600; Call 853-2137. 5-6-p

For Sale

HOUSE FOR SALE: 4 br., 3 bath, fenced in yard with storage building. 60,500 Call 853-2177. 4,5,6,7-p

FOR SALE: Dark wood coffee table, 4 ft. long, \$50 Call 853-2704. 2,3-A

75 ACRES OF LAND for sell on Toe Nail Trail. All fenced. water. mobile home hook-up and TV antenna. 853-3127. 3-tfc

FOR SALE: 1972 Tourite mobile home 2 bedroom, 1 bath completely unfurnished must be moved, in good condition. Call 853-2050 after 5 pm. See by appointment only. Selling for \$4500.00 4-tfc

8' x 8' Storage Bldg. All wood const. Metal roof. Call 3-2161 or 3-2129. 3-p

FOR SALE: guinas; 1 dozen chicken hens. 853-2785. 5-c

GREEN STUCCO HOUSE for sale on old Sonora Hwy. \$20,000 Call 853-3277 after 5:00 pm. 5-p

Misc.

SEWING FOR CHILDREN including simple alterations Call 853-3800 or come by mobile home across from hospital on Mertzon hwy. Call between 2 and 6 Mon. thru Fri. 2-tfc

LET ME MAKE that special cake for you this month. All occasions. Robbie Heald, 853-2941. 1,5,9,14-tfc

REGISTERED TO DO Babysitting in my home. Monday thru Friday, days and evenings. Saturday, optional, call 3-3154. 4,5-c

Friends of Rick and Lexie Hodnett are invited to Open House Sun. afternoon Feb. 5th, approximately 21 miles on Hwy 915. 4-5-c

FOR INFORMATION on Lady Love Aloe Vera Skin and Hair Care products contact Lisa Glasgow, 853-3230. 51-tfc

SINGING

First Christian Church, Feb. 3, 1984. Come join us 6:30, fellowship, refreshments. 4,5-p

Free

TWO POODLE PUPPIES to give away. Call 853-2176 or come by 412 N. Main. 5-p

Help Wanted

DEVIL'S RIVER NEWS in Sonora is now accepting applications for a reporter and or ad sells person. Must be able to write, spell and work with the public. Experience and typing skills are necessary. This job requires long hours and hard work. Apply in person at the Devil's River News, 220 NE Main in Sonora, Tuesday thru Friday. No phone calls excepted. 45nc

JOBS -OVERSEAS- Big money fast. \$20,000 to \$50,000 plus per year. Call 1-716-842-6000, Ext. 22325. 5-6-p

Wanted

JOBS WANTED: Concrete and asphalt cutting. Contact 387-6145 in Sonora no hauling! 5,6,7,8-c

Public Notice

Sealed proposals for contract mowing in various counties will be received at the State Department of Highways and Public Transportation; San Angelo, Texas, on the date and time indicated below; and then publicly opened and read.

February 28, 10:00 a.m. Contract #07B4HM102 Sutton Co.

Contract #07B84HM101 Runnels Co.

Contract #07B84HM105a Crockett Co.

Contract #07B84HM110 Val Verde Co.

Contract #07B84HM103 Concho Co.

February 28, 1984, 2:00 pm Contract #07B84HM107 Coke Co.

Contract #07B84HM108 Kinney Co.

Contract #07B84HM106 Tom Green Co.

Contract #07B84HM109 Edwards Co.

Contract #07B84HM104 Sterling Co.

Plans, specifications and proposals are available at the office of Dan. W. Gower, Assistant District Maintenance Engineer, San Angelo, Texas. Prebidder Conference for all contracts will be held at the State Department of Highways & Public Transportation, San Angelo, Texas on February 16, 1984 at 10:00 am

Usual Rights Reserved.

PUBLIC NOTICE

REVENUE SHARING

handicapped regulations

This notice is published pursuant to the requirements of Section 51.55 of the Revenue Sharing Regulations, as published in the Federal Register on October 17, 1983. Section 51.55 prohibits discrimination against qualified individuals because of their handicapped status.

Schleicher County, Eldorado, Texas advised the public, employees and job applicants that it does not discriminate on the basis of handicapped status in admission or access to, or treatment or employment in, its programs and activities.

Schleicher County has designated the following person as the contact to coordinate efforts to comply with this requirement. Inquiries should be directed to:

Johnny F. Griffin
County Judge
Courthouse
853-2766
hours: 9 am to 12, 1 to 5

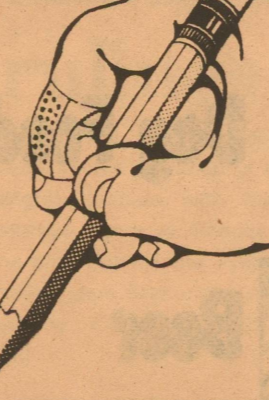
"BULLS FOR FIRST CALF HEIFERS"

Easy calving Angus bulls are born unassisted, out of first calf heifers - low birth weights.

Also limosine and maine - anjou cross bulls. \$800. Call Dr. J.W. Fields, 915-387-2481 - Day or 387-2754 - night. 4,5-c

MEDICAL DEDUCTIONS

Fees for doctors, hospital services, transportation for medical treatment, and medicines and drugs are deductible if you itemize your deductions. For 1983 you may only deduct medical expenses that are more than 5% of your adjusted gross income so be sure to check details in free IRS Publication 502 "Medical and Dental Expenses," available by using the handy order blank in your tax package.



A PUBLIC SERVICE MESSAGE FROM THE INTERNAL REVENUE SERVICE

Lynn Meador Real Estate

5 North Divide
853-2808

Property Sale

Glendale Addition- 3 Br.-2 Bath on Bluebonnet Drive in excellent condition.

Sunset Acres- 3 Br. - 2 Bath, Fireplace, fenced yard on spacious lot, 2 car garage, almost new.

West Brooks- 3 Br. - 1 Bath, recently remodeled, attractive older home, near school, fenced yard.

Glendale Addition- 3 Br. - 2 Baths, Built-in Appliances. Separate Utility Area, Very nice

East Warner- 3 Br. - 2 Bath, large Den, fenced yard, white brick home with garage.

Unimproved lots- City lots - Edgefield \$6,000 per lot, 2 acre tract in Edgefield \$9,000 per 2 ac. tract

FOR SALE: 240 acres 10 miles SW of Eldorado with 160 ac. cultivation, 3 water wells working, 100 pecan trees on drip irrigation, 1/2 minerals.

2 CITY LOTS, hookup for Mobile Home, near school, lots are 50 x 140 each, to sell as unit at \$7,000

Tax packages

If you haven't received your tax package by now, you probably won't receive one this year, the Internal Revenue Service says. Tax packages are mailed each year shortly after the December holidays, and are received by most taxpayers during the first two weeks in January or earlier. Due to the postage costs involved, tax packages only receive limited forwarding. Those that cannot be delivered as addressed are not forwarded outside of local carrier routes, IRS explains.

Some taxpayers wait well into February hoping that their tax packages will still arrive in the mail. Although tax packages are very helpful in filing federal tax returns, especially due to the computerized peeling

off address labels and coded envelopes they contain, these items are not absolutely necessary to file a return.

Taxpayers who do not receive tax return forms in the mail may obtain forms from many libraries, banks, post offices, IRS offices, or by calling the IRS at 742-2440 in Dallas, 335-1370 in Fort Worth, or 1-800-424-1040 elsewhere in Texas.

Red Wings
McCalla's Dept. Store
You've earned your Wings!

ANGELO HOUSE MOVERS
FOR YOUR HOUSE MOVING NEEDS
CALL
(915) 658-6053
DEAN ELKINS 949-3495
2920 North Bryant Blvd.
JOHNNY HIBBS 944-9232
San Angelo, TX.

Softball - Baseball Little League Show
Cafe Rio - Inn of the Conchos San Angelo, Tx.
Feb. 9 - 7:00PM
Circle Bar Truck Corral Ozona, Tx.
Feb. 13 - 7:00PM
TRIPLE B ATHLETICS & Silkscreening, Inc.

Win a Free Trip to Acapulco

in Pinocchio's Acapulco Sweepstakes.

Pinocchio's Pizza in San Angelo is celebrating its Grand Opening with a drawing for a free trip for two to Acapulco for four days and three nights. Winner must be age 21 or older. NO PURCHASE NECESSARY.

Winner will be announced during radio station KIXY-FM's live remote broadcast from Pinocchio's February 11, 1984. Details and Official Sweepstakes Rules are available at Pinocchio's Pizza in San Angelo.

HURRY - ENTER TODAY, and enjoy great tasting pizza, salads and sandwiches. Dine-in, carryout and DELIVERY.

Pinocchio's Pizza
Sunset Mall
Loop 306 and Southwest Blvd.
San Angelo
Call 942-6556
Hours: Sunday-Thursday, 11am-12am
Friday & Saturday, 11am-1am

Pinocchio's pizza
"where goodness comes to life"

"Cecil Westerman would like to be your Pharmacist"

Daily deliveries to Eldorado. 4:30 to 6:00 p.m. Monday thru Friday. Call 387-2541 Sonora or 853-2226 Eldorado

Westerman Drug
SONORA

MANY PLANS TO CHOOSE FROM

BEAUTIFUL ENERGY EFFICIENT READI-BILT MOVABLE HOMES TOWN & COUNTRY HOMEBUILDERS

2920 North Bryant 658-6053 San Angelo, TX.

1910 SQ. FT. 3 bedroom, brick w/double garage, rock fireplace, skylights, cathedral ceiling with fan, ash cabinets with raised panel door, ash paneling, range dish washer, compactor, ceramic tile baths, heating & cooling, energy efficient.

1880 SQ. FT. 3 bedrooms, double garage, masonite siding, rock fireplace, skylights, cathedral ceiling with fan, ash cabinets with raised panel door, ash paneling, range dish washer, compactor, ceramic tile baths, heating & cooling, energy efficient.

PRICE INCLUDES
• MOVING
• FOUNDATION
• SEPTIC TANK
• HOOK UPS

LOANS AVAILABLE VA-FHA-CONV.

OPEN MON.-FRI. SAT. 8 A.M.-5 P.M. 9 A.M.-5 P.M.

CUSTOM BUILT TO MEET YOUR NEEDS

HALBERT LPG, INC.
Propane-Gas-Diesel-Oil
Off. Ph. 853-2815
Bob Halbert Dan Halbert
Shamrock Station-Keith McCormick, Mgr.
Shamrock Station 853-2823
Hwy. 277 So. Eldorado, Texas 76936

Paxton Tax Service
2 miles East - Rudd Road
Monday thru Friday
Week - End Appointment
853 - 2650

GERMANIA FARM MUTUAL Insurance
Mrs. Sherry Lux
Rep. of Local Chapter 272
Box 613
Eldorado, Tx. 76936 915-853-2164

Brenda's House of Ceramics
Tues. - Sat. 1 p.m. - 6 p.m.
106 Chandler 853-3111

Kerbow Funeral Home
Serving Eldorado and Sonora
Phone 853-2636 or 387-2266

Insurance
Fire-Auto-Windstorm Casualty
Call Tom Ratliff 853-2636

Curtis Andrews has all the answers to those perplexing insurance questions you might have. Check with Curtis at Ratliff Insurance today.

NL Well Service Eldorado
Well servicing and water hauling, 24 hour service, pump trucks.
853-2331 853-2351

ELDORADO INSTRUMENT and CONTROL CO.
INSTRUMENTS-GAUGES-METERS
Controls for oil and gas industry. Industrial plants sales and service on oilfield and industrial instruments
24 HOUR SERVICE
Office 853-2506 Home 853-2624

C.H. Poynor Construction Co.
Complete Roustabout Service
Britt Poynor
Eldorado, Texas 853-3064

Thorn's Dry Cleaners and Laundry
Uniform rental - Dust control mops and mats
212 S. Main 853-2900

BUTLER SUPPLY
"Your complete oil field store."
East St.

HENDERSON
Water Well Windmill and Pump Repair
Phone 853-3280