

Bill Yung of WTSU fills area coaches' notebooks with football tips at the Golden Spread Football Coaches Clinic here Saturday. See story below.



# The McLean News

Serving McLean and the Area Since 1903

VOLUME 75 McLEAN, GRAY COUNTY, TEXAS THURSDAY, FEBRUARY 23, 1978 PRICE 15¢ NUMBER 8

## Editor's Notebook



Saturday's coaching clinic, conducted at the McLean High School auditorium, was a qualified success despite being on the heels of a snowstorm.

As late as Friday, Coach Bill Coward and other organizers were considering postponing the clinic until the spring because of uncertain road conditions. But they decided to go ahead with it, and the 42 coaches who were able to make it to McLean went away with a wealth of grid information and gave many 'thank you's' for the food and hospitality offered by people of McLean.

A good precedent was set, and prospects for another coaching clinic next year, hopefully with the weather cooperating, were enhanced by the beginning made this week. The food served by the Lions Club received compliments from practically all 42 of the hungry coaches who attended. Jim Hathaway, Jim Allison, and a few other Lions whipped up a delicious meal of fried mountain oysters, potatoes, and beans, with-cobbler supplied by local women. It was good eatin', and I know from first-hand knowledge.

###  
The icy conditions have caused numerous slips and falls. Two injuries which resulted  
See NOTEBOOK, Page 2

## Hospital Report

In McLean Hospital this week:  
James Daniels, Alan-reed  
James E. Smith  
Homer Wilson  
Dismissed since Feb. 14  
Buck Henley  
Tres Hess  
Riley Smith  
Ivory Allen, III  
Sadie Copprue, III  
Judy Morris  
Bertha Smith

## Howards, Parrs Move To Algeria

By LINDA HAYNES  
McLean News Staff

Algeria, a mysterious North African country probably best known to Americans from old French Foreign Legion movies, will be the home of two McLean couples next month. Mr. and Mrs. J. F. Howard and Mr. and Mrs. J. L. Parr have received final approval on their application to work for Sonatract.

Parr and Howard will be working in the first liquefied natural gas plant in the world located in the Arzew area of Algeria on the Mediterranean coast.

The 160-acre plant will liquefy natural gas piped in from the Sahara and load it on to super-tankers bound for the United States.

The 160-acre plant will liquefy natural gas piped in from the Sahara and load it on to super-tankers bound for the United States.

The games had been slated for last Tuesday, school officials were unable to make contact with anyone in Briscoe in time to reschedule the games. The University Interscholastic league puts a time limit on rescheduling games at the end of a season.

With the cancellation, the Tigers finished the season with a 7-21 record, 3-10 in district play. The Tigerettes ended the year at 10-19, 4-9 in district action.

See ALGERIA, Page 2

The couples will live in a fenced in, guarded compound with approximately 200 other Americans. Double-wide three bedroom furnished trailers (which are built in Childress and shipped to Algeria) will provide most of the comforts of home for the group. The compound will have tennis courts, a swimming pool, and a community center.

Oran, the closest large city, has more than 300,000 people with a culture heavily influenced by the long occupation of the French.

The women are most concerned about food preparation, since all water has to be boiled and so little American food is available. Mrs. Parr and Mrs. Howard will do most of their grocery shopping in open air markets where they will be able to buy fresh fruit and vegetables, horse meat and mutton. Since Algeria is an Arab country, no pork is sold. Also, most pre-packaged and canned foods found in American super markets are unavailable.

Although 7/8 of Algeria is covered by the Sahara Desert, the area where the Howards and Parrs will live is most like southern California with temperatures rarely over 105 degrees or under 25 degrees.

Parr and Howard will attend a five-day orientation meeting in El Paso next week and expect to leave for Algeria within two weeks after that. Both men are employees of El Paso Natural Gas who had an agreement with Sonatract to provide trained personnel for the plant.

The country, which is

See ALGERIA, Page 2



This eight-foot-tall snowman was built by the Rev. Z. A. Myers family and some neighborhood children at the height of last week's storm. (Staff Photo)

## Power Restored To McLean, Area

By LISA PATMAN  
McLean News Staff

Residents of McLean and the surrounding area were folding extra blankets and returning kerosene lanterns to storage this week as power was restored.

The last remaining rural customers without power were reconnected Tuesday.

Repair crews from Southwestern Public Service have been out in force for a week and a half replacing broken poles and repairing power lines. Repairmen were hampered in their efforts by ice on some roads, while at other

times they were mired in muddy fields.

Although there was no material shortage, miles of line had to be virtually rebuilt, creating further delay.

As late as Monday, crews endeavoring to repair the last few lines found themselves digging through four-to-five foot drifts caused by high winds and blowing snow.

Earlier, lines had been found buried under almost a foot of ice. Southwestern Public Service spokesmen expressed appreciation for their customers' patience and consideration.

## Tony Smitherman Attends Bergland Farm Conference

Tony Smitherman was one of approximately 100 farm leaders from Texas, Oklahoma, and New Mexico who met with Secretary of Agriculture Bob Bergland Tuesday in Amarillo at the Quality Inn.

In the meeting Bergland urged farmers to participate in the reserve and set-aside programs so that grain prices will increase. The government will pay 25¢ per bushel per year up to three years to farm-

ers who store their grain.

Bergland met after the meeting with about 15 members of the American Agriculture movement to discuss their problems and the current farm strike.

As Bergland left the meeting with the farm leaders, a few farmers standing outside the meeting room pelted the Secretary and other members of his party with snowballs and eggs. Bergland was escorted by

the Amarillo police to his car.

According to Smitherman, tractors surrounded the meeting area, but no further incidents were reported.

Smitherman is the Gray County Chairman of the Agriculture Stabilization Committee, director of the Gray County Farm Bureau, and a member of the Governor's Committee to Make Agriculture Number One in Texas.

## McLean's Golden Spread Coaching Clinic Termed Successful Despite Weather

The Golden Spread Coaching Clinic in McLean Saturday was hampered by hazardous roads, but those involved in organizing the event expect to have another one next year.

McLean coach Bill Coward called the clinic a success under the circumstances. He said 42 coaches registered at the event. About 150 had been expected, but the weather conditions were such that as late as Friday sponsors were

considering calling off the clinic.

Jess Stiles of Texas Tech, A. D. Shaver of Tahoka, and Gary Gaines of Denver City, three of six scheduled speakers were not able to attend. All three live in the South Plains area, which had just received heavy snowfall.

Scheduled lecturers Bill Yung of West Texas State, Don Beck of Perryton, and Preston Smith of Wheeler provided their listeners with what Coward termed valuable football information. Bob Keyes of Amarillo High School also spoke, as a substitute for Shaver.

## Two Seeking City Council Positions

Two persons have filed for positions on the city council which will be filled in an election April 1.

Miro Pagan has filed for re-election to his post on the city governing body. Boyd Lee Thompson also has filed. There are three spots open.

The terms of W. W. Boyd and W. C. Kennedy are expiring in addition to Pagan's term. Deadline for filing is 5 p.m. March 2.

## Smitherman, Suggs File For Re-Election

Tony Smitherman and June Suggs have filed for re-election to the McLean school board as their terms expire this year.

The deadline for filing for the two posts is 5 p.m. March 1. The election is scheduled for April 1.



West Texas State head football coach Bill Yung used the aisle to demonstrate players' stances and movements during his lecture on the fine points of the Buffaloes' offense Saturday at the McLean High School auditorium. Yung was one of the speakers at the first Golden Spread Football Coaches Clinic. (Staff Photo)

## Fred Story Revue Tonight

The McLean Lions Club will present the Fred Story Revue tonight in the high school auditorium at 7:30 p.m. The show was cancelled last week because of the electrical blackout. The performance will feature many famous magic tricks, including the 'Houdini Trunk.'

## McLean Weather

DAY	HIGH	LOW
Wed, 2/15	31	19
Thurs 2/16	30	9
Fri, 2/17	21	5
Sat, 2/18	30	11
Sun, 2/19	35	21
Mon, 2/20	30	10
Tues, 2/21	39	32

PRECIPITATION  
Thurs, 2/16 5 in. snow

BOYS BASKETBALL STANDINGS			GIRLS BASKETBALL STANDINGS		
TEAM	WON	LOST	TEAM	WON	LOST
Wheeler	14	0	Groom	14	1
Groom	9	5	Miami	13	2
Miami	8	6	Wheeler	10	4
Lefors	7	7	Mobeettie	7	6
Allison	5	9	McLean	4	9
Briscoe	4	9	Allison	4	10
McLean	3	10	Briscoe	3	10
Mobeettie	3	10	Lefors	0	14

BOYS SEASON			GIRLS SEASON		
Wheeler	22	6	Groom	28	6
Lefors	16	14	Miami	23	9
Groom	16	16	Mobeettie	20	11
Miami	13	15	Wheeler	17	12
Allison	12	18	McLean	10	19
Mobeettie	10	15	Briscoe	9	19
Briscoe	8	19	Allison	8	22
McLean	7	21	Lefors	3	26



NOTEBOOK

Continued From Page 1

from falls on the ice were those of Pat Bailey, who hurt her knee, and Beth Smitherman, who injured her hand.

###

Although the main highways have been relatively free of ice and snow the past few days, drivers still need to be extra cautious.

Spots of ice, sometimes difficult to see, remain even on the major roads, and many less frequently used streets and highways still are dangerous.

Local DPS trooper R.C. Parker made a good point the other day, giving a reminder that even though you might be pretty confident of your driving ability on treacherous roads, there's no way you ever can know for sure what the other guy is going to do.

In some of the foggy and icy conditions we've had lately, you never know when someone might slide into your vehicle before you even know they're around.

So drive defensively. And friendly.

###

Some of those who deserve credit for their effort during the winter conditions are the local men on the state and county highway crews. When you found the snow and ice scraped off the roads and driving easier than you might have expected, they are the people responsible -- and much of their work came at night or other inconvenient hours.

###

THE LURE OF THE MULTITUDES

To say "no" to the crowd, and mean it, is often difficult. Especially this is true if you are a young person. Verily, the multitude has a constraining call. And the call of a crowd is constantly sounding. "Come with us . . ." (Prov. 1:14).

CHURCH OF CHRIST 4th & Clarendon McLean, Texas

WHERE CHRIST IS KING AND A FRIENDLY WELCOME AWAITS ALL.

SUNDAY Bible classes: 10 a.m. Worship assembly: 10:50 a.m. Evening worship assembly: 8 p.m.

WEDNESDAY Adult Bible class: 10 a.m. Classes for all ages: 7:30 p.m.

The McLean News

MIKE and KAY HAYNES, publishers MIKE HAYNES, editor 210 North Main P.O. Box 11 (936) 779-2447 Published each Thursday at McLean, Gray County, Texas.

TEXAS PRESS MEMBER 1978 ASSOCIATION

A recent report again shows that crime doesn't pay. It seems that there was a mysterious siren which sounded and woke up many McLeanites about 3 a.m. on a recent morning. It wasn't a fire or a tornado, but an accidental "burglar alarm."

Someone -- a local peace officer believes some youngsters with nothing better to do stole James Throckmorton's pickup of the parking lot of a motel on the west side of town and proceeded to relieve it of its CB radio.

Before they could get it loose, the siren wailed and, apparently, the thieves bailed out of the pickup and disappeared into the cold night. They had hit the toggle switch that turns on Throckmorton's cow-calling device.

I received a letter from the Amarillo Genealogical Society the other day with a request for information on a Col. Tom Johnson who is supposed to have been a resident of McLean around the turn of the century.

Col. Johnson is believed to have been a well-to-do rancher and to have died after 1910 at or near McLean. If anyone knows anything about Col. Johnson, Mrs. H. A. Braun is anxious to get the information. You can write her at 623 East Noble Ave., Guthrie, Okla. 73044.

Footpattin' Revue Set For March 3 In Auditorium A two-hour professional stage show called the "Footpattin' Revue," with special lighting and sound effects, will be presented March 3 at 8 p.m. at the high school auditorium.

Lions Club Meets Monday The McLean Lions Club met Monday night at the Casper Smith building.

Mike Cotton, houseparent and counselor at Girlstown, U.S.A., located in White Face, gave a presentation regarding the three Girlstown centers in Texas. In addition to White Face, both Berger and Austin have Girlstown U.S.A. units. The McLean Lions Club, as part of Lions International, helps support this program which provides a home for wayward or destitute girls.

Dub Goad, who is Boss Lion at Wheeler, and his wife Ida were special guests of Lion Dorman Thomas.

ALGERIA Continued From Page 1 about 1/4 the size of the U.S., has a population of approximately 16,000,000 Arabic speaking people. Most of the natives are Arab or Berber Moslems. The area where the couples will live is close to Morocco and across a short stretch of the Mediterranean from Spain.

"Footpattin' Revue" Set For March 3 In Auditorium

A two-hour professional stage show called the "Footpattin' Revue," with special lighting and sound effects, will be presented March 3 at 8 p.m. at the high school auditorium.

The show, sponsored by Mothers Inc. to help pay for club projects, will feature Delbert Trew and "Trew's Crew." The band is an unusual blend of young and old musicians ranging in age from 22 to 76.

Each member of the band plays several instruments, including bass, drums, guitar, fiddle, piano, synthesizer, clarinet, harp, tenor and alto sax.

The program will include rock, country and popular music. The versatile group appears regularly at clubs, lodges, and rodeos throughout the Panhandle.

City Receives State Rebate

The City of McLean has been mailed a check of \$628.09 by the state comptroller's office for the February rebate of the one-cent city sales tax.

The city has received \$1,430.57 in sales tax rebates so far in 1978. The 1977 total to this date was \$1,344.17.

The February payment in 1977 was \$785.30. Checks totaling \$13.7 million were mailed to Texas cities and towns for their February payments this year.



Sheri Haynes of the Wayland Flying Queens guards Debbie Brock of Delta State last Thursday as the Queens beat Delta 82-67. Haynes is a former teammate of Brock. (Staff Photo)

Queens Rip Delta State, Longhorns

The Wayland Flying Queens last week impressively gained revenge for their loss to Delta State and also defeated the University of Texas to acquire momentum for the playoffs which begin this week.

In a showdown last Thursday at Plainview, the fired up Queens jumped to an early 20-8 lead over the defending national champions. After the 3rd-ranked Lady Statesmen pulled within 5 points in the second half, the No. 6 Queens refused to fold and finished strong to win 82-67.

Wayland had fallen to Delta State last week in Mississippi 73-67. Sheri Haynes of McLean scored 4 points in limited action at Plainview. She received a cut lip in a collision with the Lady Statesmen's 4'11" star Debbie Brock. Delta's record fell to 22-3.

Saturday night at the Wayland homecoming, the Queens smashed the Longhorns of Texas 81-66 to end the regular season with a 20-3 record. Haynes hit one basket in one attempt against UT, ranked No. 14 in the nation. Texas' season mark dropped to 18-6.

Wayland enters the state AIAW playoffs this week at Abilene and is scheduled to meet the Buffaloes of West Texas State in the first game at 9 a.m. Friday. Former McLean High School teammates Cindy Sherrod and Sheri Haynes will be competing against each other in the game.

WTSU Girls Lose To ENMU, Clarendon

The West Texas State women's basketball team lost a 74-68 decision to Eastern New Mexico University Monday night in Portales, N.M.

The Buffalo gals now are 11-21 for the season. ENMU raised its record to 11-6. Cindy Sherrod of McLean scored 14 points for WTSU, while Carol Vincent of Lefors, sister of Mrs. David Brown of McLean, totaled 4 points.

WTSU was beaten Saturday night 69-61 by the Clarendon College women. Sherrod tallied 4 points in that contest, while Vincent threw in 10 against her former teammates.

The Buffaloes are slated to face the nationally ranked Wayland Flying Queens in the state playoffs at Abilene this week. The game is scheduled for 9 a.m. Friday morning.

HOMEMAKER NEWS

By ELAINE HOUSTON County Extension Agent

FIBER IN THE DIET Home Demonstration Clubs have been having programs on fiber this month. There has been an increased interest in fiber since 1970 because reports of studies with large populations indicated that Americans and Western Europeans consumed less fiber than East Africans living in the Sahara and that they had higher incidence of several diseases than the Africans.

Fiber is necessary, but not magic. There have been misinterpretations of scientific data that have made people believe that increasing fiber in the diet will prevent heart attacks, cancer, obesity, and other ailments. There may be some relationship but scientists are working to determine the extent of the relationship.

Fiber helps prevent constipation and diverticulitis. All fibers absorb and hold water which has healthy effects especially on the colon or large intestine.

About 40 percent of all Americans over the age of 40 suffer from diverticular disease. Studies so far indicate that people on diets of equal calories, but high in fiber, have less diverticulosis than similar groups on low-fiber diets.

HUSBANDS-- TREAT YOUR WIFE

to a meal at the DIXIE RESTAURANT

Open 6 a.m. - 9 p.m. Mon. - Sat. 6 a.m. - 2 p.m. Sundays

Advertisement for Dixie Restaurant featuring a picture of a plate of food and text: Buffet Breakfast until 1 a.m. on Saturday Country Club dance nights

Advertisement for Dr. M.V. Cobb Chiropractor: Workmen's Compensation And Auto Injury Claims Ph. 256-2133 310 S. Main Shamrock, Texas

News from your County Agricultural Agent by IOE VAN ZANDT Texas A&M University Extension Service

FERTILIZATION AND CROP LEASE MEETING

A Crop meeting is scheduled for Tuesday, February 28, 7 p.m. in Pampa at the Courthouse Annex meeting room. The program will cover fertilization and farm management practices.

James Valentine, area Extension soil chemist, Lubbock, will discuss general crop fertilization for our crops grown in our area. His discussion will include both irrigated and dryland production.

Dr. Ray Sammons, area Extension economist - management, will discuss Farm Management Tips, which will include Equitable Crop-Share Leases. He will also talk about other management practices that might help farmers reduce expenses.

All farm operators are invited and encouraged to attend this informative meeting. CATTLE NEED MINERALS & PROTEIN

With the winter weather we have been encountering lately, cattlemen should pay particular attention to overall supplemental feeding of beef cattle.

Keep a good mineral out year-round and available on a free choice basis. Salt or trace mineralized salt are not enough to do a good job. A good mineral should have at least 8 to 12 percent phosphorus with a similar calcium content.

Steam-dried bone meal and a loose salt mixture (60-40) is one good practical method for supplying needed minerals.

Always feed enough protein for proper maintenance of rumen function and feed intake. When in doubt about the amount and type of supplement to feed with low quality forage, feed a dry, pregnant cow 0.4 pound of actual supplemental crude protein or the equivalent of 1 pound of a 40% protein supplement.

A lactating cow needs 0.8 pound of actual crude protein or the equivalent of 2 pounds of a 40% protein supplement.

Then use cow condition or fatness as a guide to additional feeding. Loss of weight suggests more energy from supplemental feeds is needed. The protein content can be decreased in proportion to the increased level of supplemental feeding.

Inject or feed vitamin DR. JACK L. ROSE OPTOMETRIST

121 Main Shamrock Phone 256-3203 Tues.: 9-6 Fri.: 2-5

"A" if in doubt. If ample forage is not available, then hay should be fed to furnish about 2.5 percent of an animal's body weight daily in roughage for maintenance programs.

SWINE BRUCELLOSIS REGULATIONS Swine producers in Gray County should be aware of USDA regulation changes involving interstate movements and indemnity provisions to fight swine brucellosis. Indemnity regulations became effective last December 23 and shipping regulations become effective March 23.

The new regulations require testing of sows and boars over six months old that are moved interstate for breeding purposes and identification of such animals moved interstate for slaughter purposes. The identification requirement will allow tracing of swine found infected at slaughter back to their herd of origin.

Indemnity regulations allow up to \$25 indemnity per head for pre-bred swine and \$10 per head for other breeding swine tested on farms and found infected. Known infected swine moving interstate must be identified as reactors and must move directly to slaughter or to markets to be sold for slaughter.

Testing requirements call for a negative blood test of breeding swine within brucellosis-free herd of area.

Sows and boars sold interstate for slaughter must be identified as to a herd of origin by an APHS (Animal and Plant Health Inspection Service)-approved tattoo applied to the back of each animal before it is mixed with other swine or moved interstate.

Approved identification tags can be used instead of the tattoo if this is requested in writing by state animal health officials. Provisions are also made for shipments from farms of origin to slaughter or to markets for sale to slaughter.

Miss McLean Pageant Set For Friday

Mothers, Inc. and Future Business Leaders of America are sponsoring the annual Miss McLean beauty pageant scheduled for Friday at 7:30 p.m. in the high school auditorium.

Thirty-five girls, sponsored by local merchants, will compete in the contest. Three out-of-town judges will choose 10 semi-finalists and three finalists.

Maridale Glass, a freshman at West Texas State University and last year's winner, will crown Miss McLean 1978. The winner will participate in the Miss Irish Rose contest and other beauty pageants during the year.

The master of ceremonies for the event will be Gene Gee, high school science teacher. Two other members of the McLean High School faculty, Ron Wright and Mike Lee, will provide entertainment.

The deadline for Texans to renew 1977 motor vehicle registrations by mail is March 1. The final date for affixing new validation stickers to existing plates is April 1 this year, as usual.

PENNINGTON Car Sales Welcomes Mike & Kay with a picture of a car

MACHINE OPERATORS NEEDED IMMEDIATELY APPLY AT MARIE FOUNDATIONS MCLEAN, TEXAS

WE WANT TO HELP with your FERTILIZER PROGRAM! Farmers, we understand your problems... and you can be sure we will work with you every way we can. NITROMITE FERTILIZER... there's none better. DIAMOND SHAMROCK BENTLEY'S FEED & FERTILIZER



# TIGER RAG

SPONSOR..... Virginia Holwick  
 CO-EDITORS..... Gina Layne & Jeree Boyd  
 REPORTERS..... Sam Haynes,  
 Brian Stokes, Ken Parker, Glenn Oldham, Becky  
 Bowen, Scott Raines, Steve Ellison, Tommy Eck,  
 Leslie Cunningham, LaDonna Keeton, Jimmy Carr.



## Some Farmers Must File IRS Return Early

Farmers may have to file their 1977 federal income tax return and pay any tax due by March 1, the Internal Revenue Service says.

Farmers who did not file a declaration of estimated federal individual income tax and pay the amount of estimated tax by Jan. 16 must file their 1977 tax return and pay all tax due to March 1 to avoid a penalty, according to the IRS.

## X's and O's

By BILL COWARD  
 Head Coach  
 McLean High School



I guess just about everyone has their electricity back by now. Those men from Southwestern Public Service have really worked hard to restore power to this area. When the power went out, they were out in the cold and snow, trying to fix broken lines. I feel we owe them our thanks and appreciation for being the type of people who care about their service and jobs enough to get out and brave the weather for us.

seconds. It was really good. Beta Sigma Phi was up there at 7:00 a.m. with coffee and doughnuts which we also enjoyed. A special group of young ladies worked very hard Saturday in registering the coaches. Robbie Turpen, Leisa Gabel, Tonue Hathaway, Jamie Trew, Dianne McAnear, Ann Skipper and Rosanna Eck, our cheerleaders, rolled out of bed very early to be there and greet the coaches as they came in the door. We gave packets to each coach that contained a copy of the McLean News, a note pad, and a pen. The note pads were furnished by the American National Bank and Dale Glass, Stewart Texaco, Puckett's Food Store and Bentley's Fertilizer Co. gave the pens. The McLean News also helped a great deal in making this clinic a big success. I would also like to thank Mr. Jefferson, Mr. Cummings, Coach Yakubovsky, and Coach Dorsett for their help. There are so many of you who have helped in one way or another and I wish I could get around to thanking you all personally. To you and the people and organizations mentioned above, thank you from the bottom of my heart.

The weather has hampered our track work-

outs thus far. We are hoping this sunshine will last a while and melt the snow around the track.

The wind has piled up drifts inside the fence at the football field and field house. Our first meet is scheduled for March 3 and that doesn't leave us much time to get ready.

This came from an Interscholastic League's newspaper. "Never trust a man who hates. He is giving you an emotional 'hot check.' He is spiritually bankrupt." And Proverbs 10, verse 12 says "Hatred stirs up strife, but love covers all transgressions."

## FBLA Chapter Participates In Convention

by Brian Stokes  
 Braving the snow and ice last Thursday, the McLean chapter of Future Business Leaders of America attended the District 16 meeting in Canyon at the West Texas State University Activity Center. The

chapter attended the general session where reports were given on the last year's state and national conventions, given by Natalie Morris. After a welcome by District Vice-President Gina Layne, Max Sherman, the president of

WTSU, spoke to the FBLA'ers as well as state FBLA chairperson, Teresa Palacio. The general session then broke up into various competitions. Steve Ellison placed first in the competition for Mr. FBLA. Melinda Hunt

placed second in Miss FBLA. Carolyn Bailey placed third in Typing II. Margie Bode and Lynda Daniels placed third in the poster event. In the election of district officers, Elaine Bentley was elected to the office of treasurer.

IRS Publications 225, "Farmer's Tax Guide," and 505, "Tax Withholding and Declaration of Estimated Tax," provide additional information and are available free at local IRS offices.

## Band To Compete In Solos, Ensembles

by Gina Layne  
 Fourteen members of the McLean Tiger Band will compete in the University Interscholastic League band orchestra solo and ensemble contest Saturday at the Fine Arts Building and Northern Hall of West Texas State University in Canyon.

a clarinet solo. Rhonda Woods will play a tenor saxophone solo and Gina Layne and Jamie Glass will play alto saxophone solos. They will join with Fobin Smith for a saxophone quartet.

JoAnn Durham will play a trumpet solo, while Trudy Stewart and Brad Melton will play trombone solos. These three will join with Sally Haynes in a brass quartet.

Cindy Glass will play a flute solo and will join with Missy Billingsley, Susie Billingsley and Ann Skipper in a flute quartet.

Brett Simmons will play a timpani solo.

## FCA Hears Miss McLean Pageant On Stage Friday Night

by Sam Haynes  
 The FCA and other students at McLean High School were invited to the Methodist Church Monday night to hear evangelist Jack Gray speak. The students were also served sloppy joes. After they ate they all sang songs and then Brother Gray spoke.

Friday, Feb. 24 at 7:00 p.m. the 1978 Miss McLean pageant will be held in the McLean High School auditorium. Thirty-five lovely young ladies will be entered in the contest. Each girl will walk across the stage wearing both street dress and formal wear (not at the same time).

which several local singers will furnish entertainment (or some facsimile thereof), the top ten beauties will be announced.

To top off this glorious evening of first-rate entertainment, Miss McLean 1978 will be announced and crowned by the reigning Miss McLean, Maridale Glass.

**Pictures Of Favorites, Athletes, Kindergarten Taken Wednesday**  
 by Tommy Eck  
 Wednesday was Blunck Studios day at McLean High School. Pictures taken were class favorites, basketball, track

Carolyn Bailey, sr. El Paso Natural Gas	Elaine Bentley, soph Bentley's	Becky Bowen, jr. McLean Cattle Co.	Jeree Boyd, sr. Marie Foundations	Susan Bradley, jr. Simpsons Mkt.	Teresa Bybee, sr. Joe's Shamrock	Stephanie Cambell Heading and Heeling
Lynda Daniels, sr. Windi Inn	Rozanna Eck, fr. Corinnes	Leisa Gabel, sr. McLean News	Sherry Glass, jr. McLean Gin	Rachel Glenn, jr. Puckett's Grocery	Tonue Hathaway, sr. Lamb's Flowers	Sally Haynes, soph. McLean Hardware
Brenda Heasley, sr. City of McLean	Teresa Hersdon, fr. Ridgeway Construction	Melinda Hunt, sr. McLean Tiger Athletic	Rita Jefferson, soph. Terry's Appliance	LaDonna Keeton, jr. Texaco Pete Millers	Tammy Killiam, fr. Dixie Motel and Rest.	Billie Lowery, sr. Parson's Drug
Diane McAnear, jr. American National Bank	Kelly Moore, jr. Johnnie Mertels	Natalie Morris, sr. Smitherman's Tax	Glenda Pharis, jr. Williams Appliance	Ann Skipper, soph Hambright's	Robin Smith, jr. Beta Sigma Phi	Tammy Smith, soph. El Grande Pet Foods
Beth Smitherman, soph. J.R. Glass Phillips 66	Robin Stubbs, soph. Mullanax Mens Wear	Jamie Trew, jr. Jane Simpson's Agency	Jill Trew, soph. Shirley's Beauty Shop	Judy Trew, soph. Windom's Auto Supply	Robbie Turpen, sr. Cowboy Drive-Inn	Rhonda Woods, fr. Pot-Pourri

MOTHERS INC. & FBLA  
 PRESENT

# MISS McLEAN BEAUTY PAGEANT

FRIDAY  
 FEBRUARY 24

7:00 p.m.

## HIGH SCHOOL AUDITORIUM

ADULTS \$2  
 STUDENTS \$1

### School Menus

- FRIDAY, FEB. 24  
 Hamburger Steak, brown gravy, French fries, hot rolls, butter and syrup.
- MONDAY, FEB. 27  
 Steak Fingers, gravy, mashed potatoes, spinach, hot bread, butter and jelly.
- TUESDAY, FEB. 28  
 Fish portions, cole slaw, French fries, bread, ice cream.
- WEDNESDAY, MARCH 1  
 Bar-B-Q weiners, mashed potatoes, English peas, hot rolls, butter and jelly.
- THURSDAY, MARCH 2  
 Soup, sandwiches, crackers, banana pudding.



**SUBSCRIBE TO**  
*The McLean News*

In Gray, Donley, Collingsworth and Wheeler Counties:  
1 Year \$6.25 6 Months \$3.35  
Outside Gray and the above named Counties:  
1 Year \$7.25 6 Months \$3.85

You can subscribe by mail by completing the form below and mailing with check or money order to:

**THE McLEAN NEWS**  
P. O. Box H  
McLEAN, TEXAS 79057

Name \_\_\_\_\_  
Address \_\_\_\_\_  
City \_\_\_\_\_ State \_\_\_\_\_  
Zip Code \_\_\_\_\_

The lawn mower was invented by Edwin Budding and patented in 1830.

**Pampa, McLean Hospital Board Decides To Turn Away Patients With Overdue Bills**

The board of managers of Highland General Hospital in Pampa and McLean Hospital adopted a policy last week of turning away patients who have delinquent hospital bills. The procedures, effective March 1, were approved pending minor changes. Emergency patients and those who qualify as indigent by application will be admitted, said board members. The turn-away policy, along with a strict collection of delinquent accounts and a required 40 percent deposit on a non-emergency patient's estimated total bill, were adopted in an effort to alleviate hospital financial problems. The turn-away policy

will require an admitting clerk at the hospitals to review all incoming patient admissions and determine if the patient has past-due balances on any inpatient or outpatient accounts for which he is legally responsible. If the patient has delinquent accounts and is not an emergency case such as a woman in labor or the victim of an automobile accident, he can be turned away if a past-due account is not paid. A patient will not be turned away, however, if a call to the physician determines that the admission is an emergency. In other action at the meeting, County Judge Don Hinton reported that

leasing of the hospitals is improbable at present because of governmental "red tape" and the difficulties of protecting the retirement benefits of hospital employees. Barry Breen, chief accountant, said excess revenues over expenses for Highland for January totaled \$44,186. Highland occupancy during January was 75 percent. The McLean hospital recorded a loss of \$394 during January, with an occupancy rate of 36 percent.

The board approved necessary capital expenditures totaling \$7,400.37 and the leasing of an automated blood counter for the McLean lab.

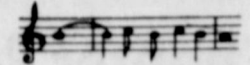
**Ellison Named District Mr. FBLA**

Steve Ellison, a McLean High School junior, was named district Mr. FBLA in competition last Thursday in Canyon. Members of the McLean chapter of FBLA attended the district convention on the West Texas State University campus. The local students' participation was cut short by the threat of slick roads. Scheduled to return at 6 p.m., the FBLA'ers started back to McLean in the early afternoon. Other MHS students who placed at the event were Melinda Hunt, second in Miss FBLA competition, Carolyn Bailey, third in Typing II, and Margie Bode and Lynda Daniels, third in the poster event. Elaine Bentley was elected to the office of district treasurer.

Religious 8-Track Stereo Tape

**A NEW DAY COMETH**  
Produced and Directed By  
**R.T. WOOD**

the Orchestra and chorus featuring  
**WELDON ALLARD** in concert



Available in McLean at:

Parsons Rexall Drug and  
Stewart's Religious Bookstore

When ordering by mail please send \$5.00 plus \$1 packaging and postage per tape to:  
R. T. Wood  
Rt. 2 Box 44 A-190  
Lake Tanglewood, Tex. 79101

**100 TOP STAMPS FREE**

WITH \$10.00 WORTH OF GROCERIES AT PUCKETT'S FOOD STORE



Specials good Thursday through Saturday, Feb. 23-25, 1978

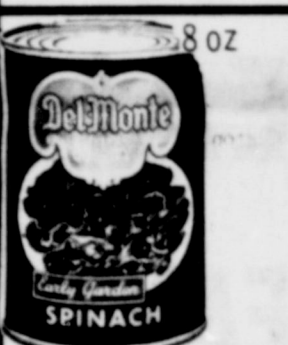
WE ARE YOUR TOP STAMP REDEMPTION CENTER  
NONE MORE VALUABLE



**JUICE** 65¢  
Texsun Grapefruit U. S. 46 oz. can

2 for 87¢

**TOWELS** 49¢  
Hi Dry large Roll



**TOMATOES** 93¢  
Kuners or Shurfine 303 can

3 for 77¢

**CORN** 59¢  
Keith's 20 oz.

**SUGAR** \$1.09  
Shurfine 5 lb. bag

**OLEO** 73¢  
Maxwell House 1 lb. can

**COFFEE** \$2.98  
Keebler Krisp Cream

**COOKIES** 89¢  
Del Monte 303 can

**Fruit Cocktail** 93¢  
Duncan Hines Angel Food

**CAKE MIX** 89¢  
Del Monte yellow whole kernel or cream style

**CORN** 77¢  
Del Monte

**PEAS** 83¢  
8 oz can

**TOP Quality**

**BACON** \$2.79  
Corn Kist 2 lb.

**CHEESE** \$1.09  
Kraft Half Moon Longhorn 10 oz.

**FRANKS** 73¢  
Armour All Meat 12 oz.

**2 for 95¢** 61¢  
Borden Creamed Cottage Cheese 12 oz pkg.

**Potatoes** 65¢  
US #2 White 10 lb. pkg.

**3 for \$1** \$1.69  
3 lb. can

**Crisco**  
8 oz.

**POTATOES** 89¢  
Keith Frozen Krinkle Cuts 2 lb. pkg

**COOL WHIP** 65¢  
9 oz crtn

**Bananas** 39¢  
2 for

**GRAPEFRUIT** \$1  
7 for

**CRACKERS** 69¢  
Nabisco 1 lb. box

**PRESERVES** 73¢  
Griffin Strawberry 18 oz jar

**CAKE MIX** 59¢  
Betty Crocker Layer

**MIRACLE WHIP** 98¢  
Kraft qt. jar

**FRITOS** 65¢  
Frito Lay Reg. 83¢ size

**CHEETOS** 65¢  
Frito Lay Reg. 83¢ size

**PIE FILLING** 89¢  
Thank You Cherry

**JUICE** 89¢  
Hunts Tomato 300 can





BILLY ORRICK and LEAH DAWSON

## Dawson-Orrick Vows To Be Read March 25 In Canyon

Mr. and Mrs. Forest Gene Dawson of El Paso announce the engagement and approaching marriage of their daughter Leah to Billy Orrick, son of Mr. and Mrs. George Orrick of McLean.

The wedding is scheduled for March 25 at 4 p.m. at Canyon United Methodist Church in Canyon.

Miss Dawson plans to graduate from West Texas State University in August. She is majoring in marine biology and minoring in nursing.

Orrick has a B.S. degree from Texas Tech University in microbiology and is employed by Cabot Corp. in Pampa.

The couple plans to live in Amarillo.

## Tax Assessors Must Comply With New Law

Attorney General John Hill has ruled that county tax assessors must comply with the new law requiring registration of Texas assessors.

The opinion had been raised that county assessors were exempt from the measure because they are elected officials. However, Hill turned down that view.

The opinion on the law (HB 67, article 7244b, V.T.C.S.) was sought by State Rep. Joe Wyatt Jr., chairman of the Committee on Ways and Means.

In the opinion, Hill said the legislature has the authority to prescribe qualifications for constitutional officers in instances where the constitution itself fails to list qualifications.

He said a county tax assessor-collector may be prosecuted for failure to register and that the registration of a county tax assessor-collector may be revoked for violation of rules of the Board for Tax Assessor Examiners.

## Lovett Memorial

Library Notes

ALL THINGS WISE AND WONDERFUL by James Herriot, St. Martin's Press, New York. By LISA PATMAN McLean News Staff

Humor, realism, sensitivity, earthiness; tragedy and comedy in the animal world; and people of all kinds--the buffoon, the pathetic, the courageous, and eccentric--James Herriot describes them all in his third book, "All Things Wise and Wonderful."

When "All Things Bright and Beautiful" was published three years ago, it became the number one best seller in the world. The first book, "All Creatures Great and Small," already had been enjoyed by millions of readers.

In this third book Herriot, a Yorkshire veterinarian, takes up where he left off. It is World War II and James has been inducted into the RAF. We see him at training camp under-

going grueling physical training, being subjected to a bungling dental officer affectionately known as "The Butcher," and climbing into the cockpit of a biplane to begin training as an RAF pilot. We also go back with him on trips of reverie to his Yorkshire practice as he recalls the Dales, the animals, and the Yorkshire people who so enriched his life. We meet his partner Siegfried, the witty Tristan who has a flair for the ridiculous, and the delightful Granville Bennett, who always seems larger than life. Herriot recalls his animals in many hilarious episodes--from a flatulent boxer to a beer-drinking sow.

All Herriot's books provide relaxing entertainment for the reader. Full of warmth and humor, they appeal to all ages.

This book is available at Lovett Memorial Library in McLean.



## Down Memory Lane

SIXTY YEARS AGO

Food calendar: Monday-Wheatless day, one meatless meal, Tuesday-Meatless day (including pork); one wheatless meal.

AD: The boys are "digging in" over there. Let's all "dig up" over here. Buy U.S.S. and Thrift stamps.

For sale: Some good heavy work horses, cheap. Also have a wagon and buggy. C. J. Cash. The News, one year for \$1.

"Everytime you lick a thrift stamp, you help lick the Kaiser."

AD: Red Cross Day: Every firm will give to the Red Cross a percent of their sales: Post Office Confectionary, McLean Auto Co., Elite Barber Shop, V. O. Cooke, Budy Hodges Mercantile Co., Palace Drug, T. J. Coffey, J. Lee Turner, McLean Hardware, John B. Vanoy Jewelry, Bundy & Biggers, Webster Restaurant, Russell and Son, Hotel O'Dell, Haynes-Mertel Grocery Co., Edwin Drug Co., Massey & McAdams, Mr. Barnes, Denson Motor Co. Keasler Produce House, Mrs. W. T. Wilson, W.P. Dial Elevator Co., Foster & Childress, McLean Shoe Store, Dr. Montgomery, Dr. Ballard, Johnson Hotel, Harris Brothers, McLean Telephone Exchange.

Serialized novel: The Bat by Mary Roberts Rinehart.

Milton Carpenter was in from the ranch Saturday.

Wanted: To buy Jersey heifer calves. Geo. W. Sitter.

Notice of election to move the county seat from Lefors to Pampa is to be 9th day of March.

Mrs. C. A. Cash of Peterson Creek was in town Saturday.

M System Grocery ad: 10 lbs. sugar, 69¢; 1 peck Irish potatoes, 37¢; pound box sliced bacon, 36¢; fresh sweet milk, per quart, 13¢.

FORTY YEARS AGO T. A. Landers, editor W. W. Boyd was in Texola, Okla., the first of the week.

President Roosevelt in a special message asked Congress to appropriate \$250,000,000 more for relief to supplement the billion and a half relief fund. He said this was necessary to care for three million persons thrown out of work during the last three months.

Fashion looks change as fast as a woman's mind and this year the look is as varied: a touch of the Thirties and the military, ruffles, short jackets, and waistlines belted for every figure, age, and personality.

The bolero vogue is sweeping through all fashiondom like wildfire. The bolero has leaped into the very foreground of the mode with such a flourish none can escape it and what's more no one with an eye to chic and charm will want to escape a fashion so flattering, so kind to waistlines, so make-

Mr. and Mrs. E. B. Dorsey and Mr. and Mrs. Les Suggs and Randy went fishing at Dead Lake, Oklahoma recently.

McLean high school and junior high athletes have left the basketball court for the track and are preparing for the first track meets of the 1978 season.

The high school girls will get the first taste of competition at the Panhandle Relays March 3.

The high school boys are scheduled to start their season March 11, also at Panhandle.

The junior high boys are entered in the March 10 meet at Lefors, while the junior high girls are slated to compete at Lefors March 11.

In Shamrock, Texas

# The Clothes Horse

211 North Main Phone 256-3214

Designed for the woman who wants the best that life and fashion has to offer. Sizes 4 to 16, sweater 34 to 42.



Jacquie Gillispie was crowned sweetheart of the local chapter of Beta Sigma Phi at the annual sweetheart banquet held Saturday night. Her escort was Joe Riley. (Staff Photo by Linda Haynes)

## Club Activities

The Beta Sigma Phi Valentine Banquet was Saturday night at the Casper Smith building.

Jacquie Gillispie was elected Valentine Queen by secret ballot. After being crowned by Nancy Billingsley, last year's queen, she received yellow roses, a pin and a charm.

Those attending the banquet were Bill and Sonie Heasley, Mike and Suzie Lee, Ron and Marie Cummings, Doyal and Nancy Billingsley, Jacquie Gillispie and Joe Riley, Bill and Billie Kingston, Bill and Sue Coward, Casper and Brenda Smith, Buddy and Brenda Dickinson, and Shirley Stokes. Special guests were Sam and Linda Haynes, and James and Barbara Coleman.

## McLean Briefs

Mrs. Joyce Russell of McLean has been named to Who's Who Among American Junior Colleges. She is a sophomore at Clarendon College, where she is majoring in elementary education. She is a 1967 graduate of Hereford High School.

Mr. and Mrs. Carroll Moore from Amarillo visited in the J. I. Martindale home Sunday.

Mrs. Luther Petty of Amarillo, formerly of McLean, was a guest recently in the home of her daughter and son-in-law, Mr. and Mrs. H.M. Billingsley in Amarillo, for a gathering of four generations. Present were her son, Herman L. Petty of Abilene and two of his daughters and families. They are Mr. and Mrs. Guy V. Ameron and children, Beth Ann and Nathan, of Fort Worth; and Mr. and Mrs. Eddie Arnold and daughter, Rebecca, of Greenville.

Alpha Xi Upsilon chapter of Beta Sigma Phi met Feb. 14 at Lovett Memorial Library.

Hostess Sonie Heasley gave a program on "Medicine" and showed a film on "Antibiotics." Shirley Stokes won the door prize at the meeting. Twelve members were present.

The Senior Citizens club of McLean will have a pot luck supper tonight at 6:30 p.m. at the Senior Citizens building.

The Pioneer Study Club met last Thursday at Lovett Memorial Library.

The program, "Treasure of Tutankhamen," was presented by Bonnie Fabian, who showed slides of the discovery of the tomb and its contents.

Shirley Stokes was selected to represent the Pioneer Study Club at the Council of Clubs.

Mary Louwer was hostess and served refreshments to Molly McDowell, Irene Pakan, Mary Lou Glass, Bonnie Fabian, Clara Hupp, Mary Emma Woods, Fayette Bell Barton, Edna Merrell, Doris McElroy, Mary Dwyer, Shirley Stokes, and guests Virginia Layne, Evelyn Pennington, and Martha Parker.

Mr. and Mrs. Terry Bidwell of Shamrock, Mr. and Mrs. Ronnie Rock of Canadian, and Mr. and Mrs. Kelly George of Fritch went skiing in Red River, N.M., last week.

Mrs. Lawrence Watson returned from a visit with her daughter LaVon Watson in Lubbock.

Mr. and Mrs. Carey Don Smith returned Tuesday from a short trip to Dallas.

**DON MILLER RADIATOR SERVICE**

"IS OUR BUSINESS" NOT A SIDELINE

- New & Rebuilt Radiators
- Gas Tanks & Heaters Repaired

376-6666  
412 S JEFFERSON  
AMARILLO, TEXAS

FREE MERCHANTS SHOW EACH SATURDAY - 2:00 PM SHOW TIME 7:30 PM ALL THE TIME!

SEND US YOUR NAME AND ADDRESS - WE'LL MAIL A CALENDAR TO YOU EACH MONTH.

FEB. 1978

WE PLAN TO SHOW THE BEST MOTION PICTURES AVAILABLE IN 1978!!

**ROGUE THEATRE**  
Wheeler, Texas 79096  
Richard Nall, Manager

SUN	MON	TUE	WED	THU	FRI	SAT
DOUBLE FEATURE THE STING AND REAR WINDOW	ROBINSON CRUSOE and the TIGER	DOUBLE FEATURE BUGS BUNNY SUPERSTAR	DOUBLE FEATURE THE CAR THAT EAT PEOPLE	DOUBLE FEATURE THE CAR THAT EAT PEOPLE	DOUBLE FEATURE THE CAR THAT EAT PEOPLE	DOUBLE FEATURE THE CAR THAT EAT PEOPLE
DOUBLE FEATURE THE GREAT PLANET EARTH ORSON WELLES	DOUBLE FEATURE THE CAR THAT EAT PEOPLE	DOUBLE FEATURE THE CAR THAT EAT PEOPLE	DOUBLE FEATURE THE CAR THAT EAT PEOPLE	DOUBLE FEATURE THE CAR THAT EAT PEOPLE	DOUBLE FEATURE THE CAR THAT EAT PEOPLE	DOUBLE FEATURE THE CAR THAT EAT PEOPLE

HENRY WINKLER SALLY FIELD Finding the one you love...  
**HEROES** is finding yourself.

**Blakemore**

FRESH PROTEIN FED CATFISH

"Dressed While You Wait"

**BLAKEMORE MOTOR CO. BUILDING**  
Phone 251-3287  
400 North Main Shamrock, Texas 79079

## Birthdays

FEBRUARY 24 Neal Shull James Curtis Reeves Lynn Allison Callahan Maggie Johnston

FEBRUARY 25 None

FEBRUARY 26 Clyde Willis Mrs. J. Stevens Richard Hall Mrs. Edgar Bailey Drucilla Ann Dwyer Beverly Word Delynn Weller Diane Baggerman

FEBRUARY 27 Mrs. Forrest Switzer Mrs. Howard Williams James Lloyd Todd Joe Graham Susan Simmons

FEBRUARY 28 Mrs. Keith Teeples Mrs. Phynelpha Rhoades Mrs. Harris Howard

FEBRUARY 29 Mrs. P. L. Ledgerwood Mrs. Pearl Mercer Mike Harkins

MARCH 1 Mrs. George Orrick Dennis Kevin Roan Jennifer Rose Hill Shane Coleman

MARCH 2 Rosie Lee Smith Sylvia Irene Smith Judy Lynn Watson Robin Lean Smith Mrs. Lillie Pickett



# Classified Ads

**Classified Ad Information**  
 Reader Ads 6¢ per word  
 (Minimum Charge \$1)  
 Display Classified \$1 per inch  
 Card of Thanks \$1  
 All ads cash, unless customer has an established account with The McLean News.  
 Deadline for Want Ads - 5 p.m. Tuesday  
 Phone 779-2447

**NICE TWO BEDROOM** house on one acre just outside city limits. Panned, carpeted, and cement cellar. For sale. 779-2166. 8-4tc

**FOR SALE:** Brick bldg, 25 x 115 ft. located 105 N. Main has complete beauty shop equipment plus some stock. Priced to sell. Boyd Meador, Real Estate Broker.

**FOR SALE:** 2 bedroom house, 611 N. Walnut, call 779-2358 after 4 pm. 8-4tc

**MODERN 3-Bedroom**, 1 1/2 bath, home on 5 or 20 acres, well, barns, adjoins city limits. Tate, 779-2793. 44-tfc

**TWO BEDROOM HOUSE**, attached garage utility room, floor furnace, new siding on pavement. 611 N. Walnut. After 4 p.m. call Marie McCracken, 779-3358. 5-4tc

**Wanted**  
 I need a lady for 3 or 4 mornings a week, not over 2 or 3 hours at a time. Light work. Customary pay. Mrs. Lela Alderson 779-2795 313 N. Main. 8-1c

**WANTED TO BUY:** Small, used customer counter for Lamb's Flower Shop. Ph. 779-2611. 7-3tc

**DOZER WORK**  
 MOTOR GRADER WORK  
 Ponds - Terraces - Fire Guards  
 Feed Roads - Landscaping  
 BRITT HATHAWAY  
 779-2585

I would like to lease grass land. J. Boyd Smith 779-2257. 6-4c

I am clearing a shelter belt. Anyone interested in cutting fence posts or firewood, contact Tommy Cole at 779-3177. 8-3tc

**SADDLE REPAIR**  
 CUSTOM SADDLES  
 TACK, LEATHER GOODS  
 Triangle-D  
 Custom Saddle Shop  
 806-779-2562  
 Box 563  
 McLean, Texas 79057  
 Closed Saturdays 5-4tc

**ALCOHOLIC Anonymous** and Alanons will meet each Thursday night at 8 p.m. at the V. F. W. Building at 218 Wheeler. For more information call 779-2484. 30-tfc

**CARDS OF THANKS**  
 I would like to take this opportunity to say thanks to all my friends that sent cards, flowers and made telephone calls while I was in the hospital. Your concern for me will surely be something I will always treasure.  
 Juanita Griffith

I would like to thank all the doctors, nurses, and the staff for their kindness during my stay in the hospital. Also, I would like to thank everyone who sent cards and visited me.  
 Bertha Smith

We sincerely appreciate the food, the flowers, the sympathy, and the kindness shown to us during the illness and passing of our loved one. We also thank the brethren of the Masonic Lodge in McLean for their part in the services.  
 J. E. Morrow Family

**BENTLEY'S**  
**FEED & FERTILIZER**  
**PURINA FEED**  
**FOR EVERY NEED**  
**SUP-R-LIX**  
**LIQUID**  
**SUPPLEMENT**  
**WE DELIVER**  
**779-2209**

**WANTED-Roofing and painting.** Coy Smith. 779-3137. 19-tfc

## Political Calendar

Political announcements appearing in this column are subject to the action of the Democratic primary May 2, 1978. All announcement fees must be paid in advance.

- JUSTICE OF THE PEACE PRECINCT 5**  
 Dorothy Beck Patterson  
 Carey Don Smith
- GRAY COUNTY TREASURER**  
 Jean Scott
- GRAY COUNTY CLERK**  
 Wanda Carter
- STATE REPRESENTATIVE 66TH LEGISLATIVE DIST.**  
 Glenn Conrad  
 Foster Whaley
- U.S. CONGRESS 13TH DIST.**  
 Jack Hightower
- 223RD DISTRICT JUDGE**  
 Judge Don Cain
- DISTRICT CLERK OF GRAY COUNTY**  
 Helen Sprinkle

It is impossible to adequately express to the good people of McLean our sincere appreciation for your every expression of love and concern in the loss of Pete.

For the many cards, letters, calls, flowers, food, memorials, prayers and thoughts expressed, we are most grateful.

Thank you for sharing in our grief.  
 The Family of Pete Fulbright

### Notice

The McLean Masonic Lodge regular meeting is the 2nd Thursday at 7:30. Practice nights are 1st and 3rd Tuesday at 7:30 p.m. 47-tfc

A significant number of Texans who can't hold a book do hold a job. These handicapped workers can receive books and magazines recorded on discs and tape from the Texas State Library. Call toll-free 1-800-252-9605 for more information.



## your national parks Right Around Home by ben moffett

Lyndon B. Johnson National Historic site is in the Hill country of central Texas. The green, rolling grasslands are outlined by spreading live oaks and junipers, better known to local folks as cedars.

parents and the open-range cattle industry of the American west; the second, 1872-1900, interprets the close of the open-range cattle industry in the Hill Country and the conversion of the frontier to a settled agriculture and stock cattle economy.

In spring, wild flowers add masses of color to the countryside, which molded the life of the 36th President of the United States. "It is impossible to live on this land without being a part of it, without being shaped by its qualities," President Johnson said of the Hill Country.

Living history abounds. Smell the food cooking on the open fireplace as meals are prepared in the 1860s log house.

Last year almost 400,000 visitors came to see this historic site which consists of two units--the Boyhood Home and the Johnson Settlement in Johnson City, Tex. and the LBJ Ranch, located some 15 miles away on Highway 290.

Talk to the chuckwagon cook as he prepares a meal for hungry cowboys. The chuckwagon is patterned after those that accompanied Kansas cattle drives.

The frontier heritage that shaped the life of Lyndon Johnson is recalled at the Johnson Settlement. Visitors, after a brief orientation, in the visitor center, walk across the street and take a guided tour through the former President's Boyhood Home.

Look at the Longhorn cattle pastured in a nearby field, illustrating the type of cattle the Johnsons were driving to Kansas in the 1867-1872 era.

On this 20-minute tour, you'll see the home President Johnson lived in from age five. Here are some of the symbols and images that helped structure his view of how the world ought to be.

National Park Service personnel, dressed in historic costume, are stationed in the area, doing the chores of another era. You can ask questions as you tour the historic John Bruckner Barn, the Sam Ealy Johnson Log House and a stone building that served, at various times, as a cooler, smokehouse and storehouse.

After touring the Boyhood Home and the other buildings in the area such as the washhouse, barn and outhouse, you're ready to begin participating in some Park Service "living history."

When you've finished soaking up the sounds, smells and sights of this historic area, which will take an hour or so, you can catch a wagon back to the Boyhood Home or walk back over a marked path. The distance is about a quarter mile.

Take a horse-drawn wagon ride to a nearby area where Lyndon Johnson's grandparents lived in the 1860s. Qualified mule skinner take you on the free ride to the settlement while chatting with you about the background of the Johnson Family.

After the tour of the Johnson City site, you're only half done. Take Highway 290 west and you are at LBJ State Park and the LBJ Ranch area. Another three hours are required to see this equally interesting spot on the Pedernales River, which will be taken up in another article.

Hop off the wagon at the Exhibit Center--a modern building constructed of native rock--and get a firm grip on the two time periods you'll be looking at. The first, 1867-1872, deals with the President's grand-

If you are planning to visit a National Park Service area on your vacation, write the agency at P.O. Box 728, Room P, Santa Fe, N.M. 87501. You'll be sent a free vacation planning guide that lists NPS areas within an easy drive of your home and charts the facilities and services available at each.

NORTHERN BATHROOM <b>TISSUE</b>	4 roll package	<b>73¢</b>
GLADIOLA <b>FLOUR</b>	5lb. bag	<b>79¢</b>
NESTLE CHOCOLATE DRINK <b>QUIK</b>	2 lb. can	<b>\$1.99</b>
CLEANSER BATHROOM STYLE <b>COMET</b>	4 cans pack	<b>69¢</b>
SKINNERS SHORT CUT <b>MACARONI</b>	12 oz.	<b>33¢</b>
PROCTOR & GAMBLE <b>TIDE</b>	giant box	<b>\$1.35</b>
LIQUID DETERGENT <b>JOY</b>	buy 48 oz. get 12 oz. free	<b>\$1.99</b>
LIQUID DETERGENT <b>ERA</b>	buy 64 oz. get 16 oz. free	<b>\$2.89</b>
PETER PAN <b>PEANUT BUTTER</b>	18 oz.	<b>99¢</b>
NABISCO 13 VARIETIES <b>SNACK ITEMS</b>	your choice box	<b>69¢</b>
MARYLAND CLUB <b>COFFEE</b>	lb. can	<b>\$2.89</b>
LITTLE FRISKIE DRY <b>CAT FOOD</b>	4 lb. bag	<b>\$1.89</b>
SHURFINE <b>SUGAR</b>	10 lb. bag	<b>\$2.29</b>

**QUALITY MEATS**

SHURFRESH THICK SLICED  
**BACON** 2 lb. pkg. **\$2.57**

SHURFRESH THIN SLICED  
**BACON** lb. pkg. **\$1.33**

**FRESH PRODUCE**

SOLID  
**LETTUCE** head **33¢**

**TOMATOES** EXTRA FANCY lb. **29¢**

U.S. NO. 1 RUSSET  
**POTATOES** 10 lb. bag **89¢**

Tendercrust Bread and Bakery Products  
**SPECIALS GOOD**  
 FRI. & SAT. FEB. 24 & 25

**SIMPSON'S** LOWEST EVERYDAY FOOD PRICES MARKET

SHURFRESH MILK FOR GOODNESS SAKE

**Smitherman Tax Service**  
 Bookkeeping & Tax Returns  
 FARM, RANCH, BUSINESS & INDIVIDUAL RETURNS  
 MON., WED., THURS. & FRIDAY 9:00 to 5:30  
 TUESDAYS 9:00 to 1:00  
 Evenings and Weekends By Appointment  
 Phone 779-2595 McLEAN, TEXAS