

John C. Haynes 1
Box 400
McLean Texas 79057

The McLean News

Serving McLean and the Area Since 1903

Volume 79 McLean, Gray County, Texas 79057 Thursday, January 14, 1982 Price 25¢ Number 1



from the distaff side
by Linda Haynes

There is no joy in Mudville or Dallas or the rest of the state of Texas this week. The Mighty Cowboys have struck out. What looked like an exciting Superbowl coming up has now taken on the hum-drum aspects of just another football game.

Is it possible there was a single television set in the state which was not tuned to the ill-fated game in San Francisco Sunday afternoon? And perhaps it was my imagination, but I swear I heard a collective groan from the whole state when Dwight Clark made that miraculous catch in the end zone to finish the Cowboys off.

But the Cowboys are still our heroes. Danny White is not quite the cool customer that Roger Staubach was, but coach Tom Landry is still the best. Have you heard the story making the rounds about our favorite coach?

"A pro-football player died and went to heaven, and on his first day there, St. Peter showed him around. Noticing that nobody was in the streets, the newcomer asked where everyone was. St. Peter replied, 'They're all down at the football game.'"

As the new arrival and St. Peter watched the game, the player was puzzled. "How come all the players have initials on their shirts instead of numbers?" he asked.

"We think that's less confusing than the numbers," St. Peter explained.

"Well, I understand the QB for quarterback, the T for tackle, the LB for linebacker... but who's the guy on the sideline with TL on his shirt?" the player asked.

"Shhh," St. Peter said, "that's our coach, God. He thinks he's Tom Landry!"

When I first moved to the Texas Panhandle, I heard the natives jokingly say that the only thing between us and the North Pole was a barbed wire fence. But if you went outside Sunday or Monday, you sure would have believed the story.

I don't mind a little cold, but that was ridiculous. The official low temperature in McLean Sunday was 1 degree!! Of course, we're really had such a mild winter, that we shouldn't gripe. The excessive cold has shown me one disadvantage of the weight loss I've had since July. Those 16 pounds were darned good insulation! (Wasn't that a sneaky way to brag about how well I've done at Weight Watchers?)

Ed and Carol Seiler came in the News office last week with the cutest bit of fluff I've ever seen. Carol assured me that the tiny furry ball was a full-grown Yorkshire Terrier male. (In fact the proud father of a new litter of puppies.) Full-grown, the dog weighs just about one pound. She also said they were sweet natured pups in addition to being so cute.

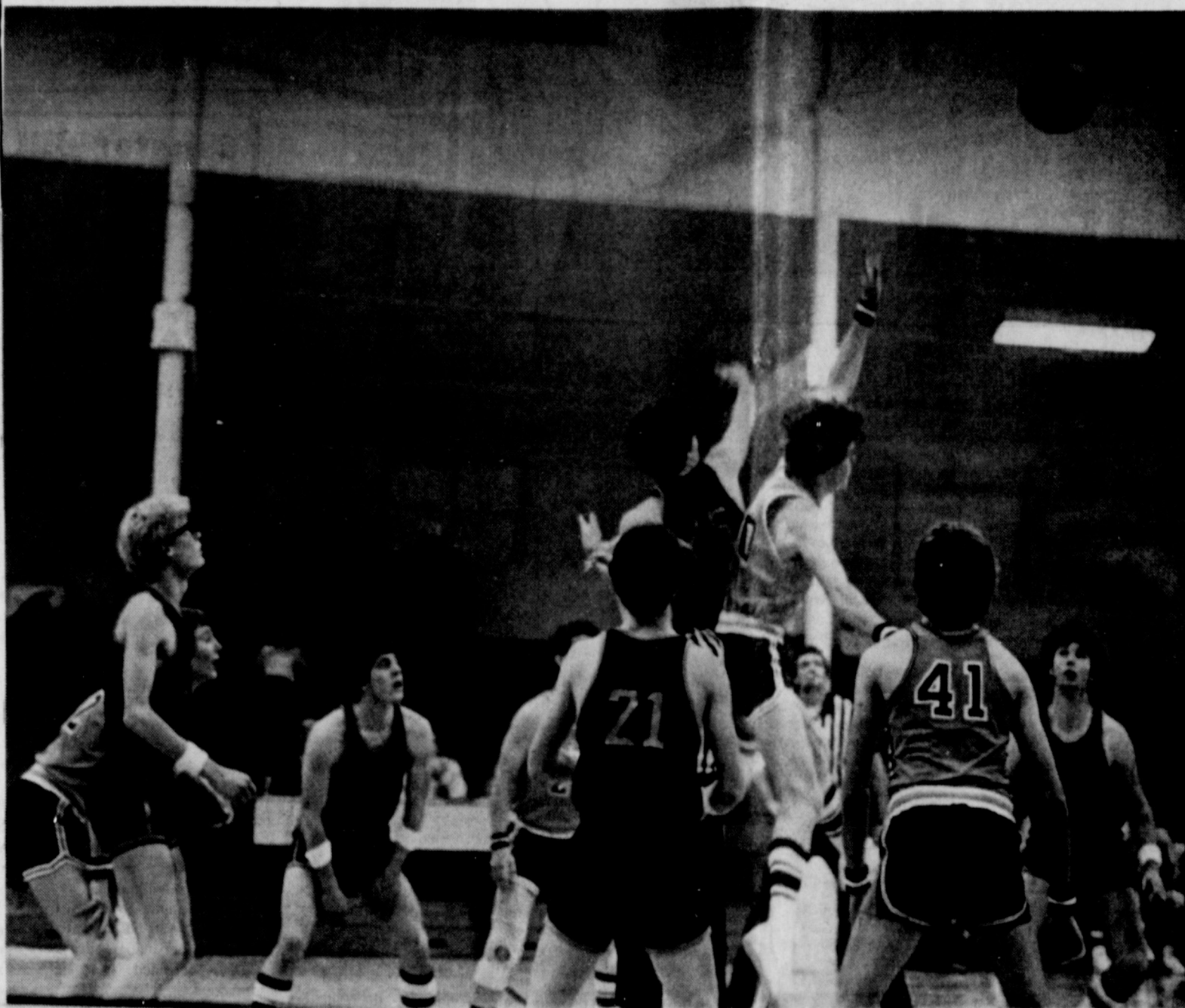
After seeing that little dog, I'm thinking about trading in the bothersome Beagles for something not quite so adventurous. Princess Belle Pepper, our young female, refuses to learn the etiquette of potty training, and thinks that my green carpet is just a

See DISTAFF, Page 2



Date	High	Low
1-5-82	65	38
1-6-82	55	27
1-7-82	30	12
1-8-82	52	18
1-9-82	57	25
1-10-82	11	1
1-11-82	25	1

1-7-82 light snow-no cover



JUMP BALL, OR slap-the-ball? A McLean Tiger and a Lefors Pirate each vie to keep the ball from each other. (Photo by Sally Haynes)

Down The Court

Tigerettes Play For Championship In Wellington Tournament

The McLean Tigers and Tigerettes played in the four-school high school tournament in Wellington last weekend, with the girls playing for the championship.

Both McLean teams opened tournament play against Lakeview Friday evening. In the girls game, McLean coasted to an easy 54-39 win, with Nora Gately leading the scoring with 14 points. Leslie Stewart and Maria Eck each scored 11, with Rhonda Herndon and Stacie Smith scoring 6 apiece. Susie Billingsley scored 4,

and Terri Glass scoring 2. In the boys game, Lakeview got the lead in the first quarter, and never relinquished it. First quarter play ended with a lop-sided score of 13 to 4 for Lakeview. McLean scored 10 to Lakeview's 13 in the second quarter, 15 to Lakeview's 14 in the third quarter, and 16 to Lakeview's 13 in the fourth quarter to end the game 53 to 35. Kevin Nicholson again led the scoring with 17 points. Bobby Sprinkles and Randall Wynn each scored 4, with Van Boucher, Theron Stubbs, Scott Stubbs, and Robert Swaner each scoring 2.

Appraisal Board Sworn In Friday

From The Pampa News
Five members of the 1982-1983 Gray County Tax Appraisal Board were sworn in Friday, at the first meeting of 1982, held at the Carver Educational Center located at 321 W. Albert Street.

Gray County Clerk Wanda Carter administered the oath of office to board members, R.D. "Jimmy" Wilkerson, W.E. Gething, Carl Kennedy, Lloyd Hunt, and Dr. Robert Lyle. The five board members had taken an earlier oath last year and had acted as an interim board through December 31.

Discussed at length was a presentation by Charles Rand, tax assessor collector for the Pampa Independent School District (PISD). He reviewed some of the duties and responsibilities of the appraisal district.

"We can either hire our own chief appraiser and establish our own independent tax appraisal office, which is what some of the counties do, or we can contract with an existing appraisal office. The single largest one in the county is the Pampa Independent School District of which Charles Rand is the tax assessor collector. He is a hired employee by the school board to provide this function," said County Judge Carl Kennedy, a board member.

The board decided to request a proposal from the Pampa school district to provide services to do the entire appraisal. PISD will be submitting a description of what they plan to do and what it is going to cost the county wide appraisal district to contract with them at the next tax appraisal board meeting.

The tax appraisal board will review the school district proposed contractual agreement sometime during the latter part of January. The meeting date has not been set at this time and will be announced later.

In Saturday's play, McLean's girls lost to Wellington 43 to 33 in the championship game. The two teams played 8-8 even ball in the first quarter, but Wellington outscored the Tigerettes 19 to 6 in an expensive second quarter. The Tigerettes were not able to get back on the scoring track in the third quarter, either, racking in only 4 points for the whole period. The Tigerettes found the basket again in the fourth quarter, outscoring Wellington 15 to 10, to end the game 43 to 33. Nora Gately scored 9 points, Susie Billingsley and Leslie Skipper each scored 8, and Maria Eck and Rhonda Herndon each scored 4 in the battle.



VICKIE WALLS
Vickie Walls Will Run For Clerk's Office

Mrs. Vickie Walls, Star Route 3, Pampa, has announced her candidacy for the seat of Gray County District Clerk.

Mrs. Walls is a native of Pampa and is running for the office on the Democratic ticket.

Her qualifications for the District Clerk position include serving the people of Gray County for the past four years. She worked in the Gray County Extension Service and in the office of the Gray County Judge. She feels that her past experience in serving the people has qualified her for this position of District Clerk.

Mrs. Walls is married to G.M. Walls, Jr. They are engaged in farming in Gray and Roberts counties. They have two children.

The primary election will be held on May 1st and the general election will be held in November. The deadline for candidates to file is February 1, 1982.

McLean's boys lost their Saturday game to Quanah 32 to 27, after leading 8 to 5 at the end of the first quarter, 22 to 12 at the end of the second quarter, and 25 to 18 at the end of the third quarter. Kevin Nicholson scored 8 points, Bobby Sprinkles and Randall Wynn each scored 4, Theron Stubbs scored 4, and Dudley Reynolds scored 3.

High School Students Named To Honor Roll

Students of McLean High School were listed on the honor roll for the third six weeks in a roll released this week by principal Ron Cummings.

Listed on the 90 and above roll were seniors Nora Gately, Terri Glass, Dudley Reynolds, Donna McAnear, Leslie Stewart, Theron Stubbs, and Missy Billingsley; sophomores Allen Patman, Dewayne Adamson, Don Bode, Darin Corley, Kevin McDowell, Tommy Milam, Bryan Smitherman; and

Honor Students For Junior High Announced

McLean Junior High students were listed this week on the honor roll for the third six weeks by principal Dorman Thomas.

Listed on the 90 and above roll were sixth graders Jeff Parker and Angie Reynolds; seventh graders Shawn Crockett, Angie Glass, Mark McCarty, Colleen Orrick, and Kim Wigenton; and eighth graders Melanie Billingsley, Wendy McDowell, Bob Patman and Lee Ann Tate.

Listed on the 80 and above

Elementary Roll Given

Principal Dorman Thomas announced the honor roll for the McLean Elementary School for the third six weeks.

Listed on the 90 and above roll were first graders Patsy Barker, Rhonda Glass, and Quillian Rutherford; second graders Cody Gabel, David Johnson, Destry Magee, Lisa McClellan, Tuffy Sanders, and Missy Young; fourth graders Laura McCarty and Deanna Sprinkles; and fifth graders Dollie Haynes, Misty Magee,

and Rhonda Herndon each scored 4 in the battle. McLean's boys lost their Saturday game to Quanah 32 to 27, after leading 8 to 5 at the end of the first quarter, 22 to 12 at the end of the second quarter, and 25 to 18 at the end of the third quarter. Kevin Nicholson scored 8 points, Bobby Sprinkles and Randall Wynn each scored 4, Theron Stubbs scored 4, and Dudley Reynolds scored 3.

On the 80 and above roll were seniors Cindy Glass, Carmel Moore, Billy Joe Skipper, Brenda Wilson, Susie Billingsley; juniors Kenny Acy, Debi Hutchison, Kevin Nicholson, Robin Skinner, Stacie Smith, and Teresa Woods; sophomores Roxie Littlefield, Doyle Lee, Gregg Mann, Terri Pipes, Scott Stubbs, Robert Swaner, and Maria Eck; and freshmen Billie Billingsley, Von Holwick, Scott Seiler, and Judy Stewart.

Following the discussion about insurance, the board set the trustee election for April 3. Two three-year terms will be open. Board members Howard Gipson and Lloyd Hunt are the two whose terms are expiring. Appointed as election judge was Roger McCracken, with Pat Durham, Sue Simmons, and Mary Powell as clerks. Judy Morris and Emma Jean Tate will serve as absentee clerks.

The board approved the junior-senior banquet at the Coronado Inn in Pampa April 16. High school principal Ron Cummings said that the students had had no problems going to Pampa since the policy was changed two years ago. Cummings also told the board that the Band Boosters were planning a two-day trip in late April to a concert at Lake Sandy at Carrollton. The

School Superintendent, Business Manager Contracts Renewed

Following a short executive session Monday night, the McLean school board of trustees gave school business manager Shirley Johnson a \$500 raise and a one-year contract, and extended superintendent Jim Rutherford's contract to a three-year contract and added \$500. Rutherford is now drawing \$4500 above the state schedule, and Mrs. Johnson receives \$3250 above state.

The executive session and contract approval came at the end of the session where board members discussed a variety of subjects. Mrs. Jane Simpson, the school's insurance agent, explained that the company she represents had reached no settlement yet on the school's claim for damages resulting from a lightning storm in September. Board members have already paid more than \$47,000 in repair bills for the damage. Mrs. Simpson explained that in a loss exceeding \$40,000, the company's officials in Dallas have to approve the payment. She said they would base their payment on the claim on a report from an independent engineer. The engineer has visited McLean but has not submitted his formal report to the company yet, she said. But from his oral report to her, she said that the company will probably refuse to pay for the plumbing or the painting which resulted from the plumbing.

"The engineer told me that he thought the plumbing damage was 'coincidental'... that's the word he used," Mrs. Simpson told the board. She said that the engineer said the pipes were old and rusted, which caused part of the damage.

"I'm sorry this has gone on so long," Mrs. Simpson told the board. "I've done everything I know to do to expedite payment, and I think you've been very patient."

Mrs. Simpson told the board "I do think this is a good company, but they've delayed too long."

Board president Jim Allison said "I think it's ridiculous that an engineer could say the lightning didn't shake those pipes loose when we had water everywhere the next morning." Rutherford told the board "We (he and Mrs. Simpson) have been riding these people in Lubbock and Amarillo... We just need more time. The company's going to have to meet with us before this is settled."

Rutherford said the plumbing and excavation costs amounted to about half the total bill so far. "We've got the school back in operation, but we haven't started any other repair yet," Rutherford said.

Mrs. Johnson told the board that they have already lost \$3700 in interest on a time-deposit that has been held out to pay the repair bills.

The board approved a motion that if settlement was not reached by Feb. 1, the board would seek legal action against the company. Board member Howard Gipson told Mrs. Simpson "We all sure appreciate your work. We know this delay is not your fault."

Following the discussion about insurance, the board set the trustee election for April 3. Two three-year terms will be open. Board members Howard Gipson and Lloyd Hunt are the two whose terms are expiring. Appointed as election judge was Roger McCracken, with Pat Durham, Sue Simmons, and Mary Powell as clerks. Judy Morris and Emma Jean Tate will serve as absentee clerks.

The board approved the junior-senior banquet at the Coronado Inn in Pampa April 16. High school principal Ron Cummings said that the students had had no problems going to Pampa since the policy was changed two years ago.

Cummings also told the board that the Band Boosters were planning a two-day trip in late April to a concert at Lake Sandy at Carrollton. The

organization has \$2,000 in a saving account which will pay expenses for the trip if the school will allow the group to take a large school bus. The board approved the request.

Lloyd Hunt, a school board member and a member of the Gray County Appraisal District board reported Monday night that the appraisal board had voted last week to contract with the Pampa school tax office for the county's tax business. Hunt said he was delegated to write a letter of proposal to Charlie Rand, the Pampa appraiser to ask for a proposal for the office. The county board will probably meet again before the end of the month.

Attending the meeting were Rutherford, Mrs. Johnson, Mrs. Simpson, Cummings, and board members Allison, Hunt, Gipson, James Hefley, Tony Smitherman, J.C. McAnear, and Darryel Herndon.

Band Students Attend Contest

Mrs. Frances Adamson took five McLean Junior High band students to All-Region tryouts Saturday at River Road High School in Amarillo, and although none made the honor band, they gained a great deal of contest experience. Mrs. Adamson said, "Our kids were playing AA high school music, and they just worked their hearts out," she said "but they were competing against kids from AA and AAA schools." She said that the band students did well in the contest, and gained some practical experience from their participation.

Attending the contest were Angie Glass, clarinet; Shawn Crockett, flute; David Adamson, coronet; Chet Bohlar, coronet; and Bob Patman, drums.

McLean Splits Games With Lefors

The McLean boys and girls split a pair of games with the visiting Lefors Pirates Thursday night in McLean when the girls won 48 to 28, and the boys lost 38 to 35.

Tigerette Nora Gately paced the McLean girls with 12 points, as Maria Eck scored 9, Leslie Stewart scored 10, Susie Billingsley scored 7, Rhonda Herndon and Terri Glass scored 4 each, and Stacie Smith scored 2. The host team jumped to an early lead in the first quarter, and led 26 to 14

See GAMES, Page 2



MARY CLARK
Mary Clark Announces For Clerk

Mary Clark is announcing her candidacy for the office of Gray County District Clerk.

Mrs. Clark, a native of Pampa, is running for the office on the Democratic ticket.

She has served as chief deputy for four years under the current district clerk, Mrs. Helen Sprinkles.

Reared in Pampa, she is a graduate of Pampa High School and has lived in Pampa for the last 35 years with her husband John. They have four children: Mike Clark of Pampa, Johnny Clark of Houston, Cheryl Flury of Amarillo, and Jackie Brogdon of Amarillo.

The Democratic primary is May 1, with the general election set for Nov. 2.

OPINIONS

VIEWS ARE WRITTEN BY LINDA HAYNES, UNLESS OTHERWISE NOTED - IF YOU HAVE AN OPINION ON ANY CURRENT SUBJECT WE WELCOME YOUR SIGNED LETTERS.

Adding Fuel To The Fire

Is it true that each person loves Reaganomics, until the budget-cutting blade nicks his little personal domain? If it is, then I stand guilty as accused.

Thanks to David Stockman, President Reagan, et al. beginning this week, The McLean News, along with all the other small-town weekly newspapers and others who hold second-class mailing permits, will be paying a whopping 50 percent increase in our mailing rates for out-of-the-county newspapers.

When I bought this newspaper in 1978, our average cost to mail the papers each week was \$16. Now, the cost will be \$40 every week, and that's a big jump in three years. Out-of-the-county papers cost 3.2 cents each to mail last week, but this Thursday's paper will be 6 cents each, just for mailing. In-county rates have increased from 3.4 cents per pound to 3.9 cents per pound, and from 1.8 cents per paper to 2.4 cents per paper.

All this means that my costs will go up drastically, and when the costs for this paper go up, only one thing can happen: the subscribers and the advertisers will have to pay more. And, as any elementary economics student can tell you, that is called the inflationary spiral.

I understand the fact that we are all caught in this squeeze, and I don't gripe too much when my groceries go up, or I have to pay more for the gasoline at the service station or this year's blouse costs 20% more than the same style last year. But something deep inside me screams "Foul!" when an agency of the government, which is so piously claims to be fighting inflation, dumps a load of gasoline on the inflationary fire by such a sweeping rate increase.

And have you noticed how quiet the increase has been? The public was forewarned about the 20 cent stamp for several weeks, but this rate increase has been an extremely well-kept secret.

This rate jump is just another in the long series of government actions, which will prove a point. It's easier to be out of power and complain about how the power structure is handling the problems, than it is to solve the problems. Reagan was going to stop inflation without high unemployment, remember? Read the papers lately? Reagan was vehemently opposed to draft registration.....until last week. Reagan's first job was to dismantle the Departments of Energy and Education, but.....

Regardless of which party is in, and which party is out, the results almost inevitably will be the same. That big, sleeping bureaucracy which really runs the country cannot be changed quickly, and certainly not by politicians making glib promises that they know are impossible to keep.

So next week, I'll pay \$40 to mail these papers, and next summer, you'll probably have to pay a dollar or more for your paper each year.



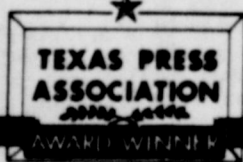
In the 1945 movie *To Have and Have Not* Lauren Bacall's singing voice was dubbed in by 14-year-old Andy Williams.

ON YOUR PAYROLL

SENATOR BILL SARPALIUS, P.O. Box 12068, Austin, Texas 78711 or P.O. Box 7926, Amarillo, Texas 79101, or call 512/475-3222.
 REPRESENTATIVE FOSTER WHALEY, Texas House of Representatives, P.O. Box 2910, Austin, Texas 78769.
 REPRESENTATIVE JACK HIGHTOWER, 13th District, Room 2348 Rayburn Building, Washington, D.C. 20515.
 SENATOR LLOYD M. BENTSEN, Room 240, Russell Building, Washington, D.C. 20510
 SENATOR JOHN TOWER, Room 142, Russell Building, Washington, D.C. 20510

The McLean News

USPS 336-260
 LINDA HAYNES,
 EDITOR AND PUBLISHER
 LISA PATMAN, ASSOCIATE EDITOR
 201 N. Main
 McLean, Texas 79057



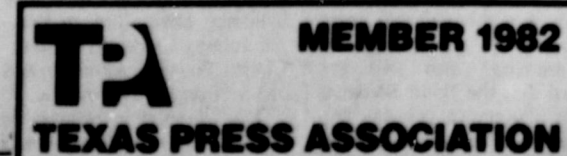
1981

McLean, Gray County, Texas
 Published each Thursday [except the last week in December]
 Second class postage paid at McLean, Texas 79057
 POSTMASTER: Send address changes to:
 THE McLEAN NEWS
 P.O. DRAWER H
 McLEAN, TEXAS 79057

SUBSCRIPTION RATES:
 \$10 per year in Gray County
 \$11 per year outside Gray County
 ADVERTISING RATES:
 \$1.50 Open Retail Rate
 \$1.75 per column inch National Rate

COLUMNISTS:
 Linda Haynes
 Lisa Patman
 Sam Haynes
 ADVERTISING MANAGER:
 Kathy Carter
 STRINGERS:
 Lavern Carter, McLean
 Lena Carter, Alanreed
 Helen Atkins, Lefors
 TYPESETTER:
 Connie Dwyer
 CIRCULATION AND PUBLICATION:
 Allen Patman
 Bob Patman

McLean, Texas
 Population 1183 (1970 Census)



by Barry McWilliams



DISTAFF

perfect piece of grass. She is still the snooziest dog I've ever known, peering into all the wastebaskets to check for hidden goodies. Like her father, Andrew Pepper, she really thinks she's human. She prefers to eat table scraps, and really likes to sleep on a human's bed. Many mornings I have awakened with something warm snuggling up to my back, only to discover a Beagle in my bed! Bleh!!!

And if she were not enough trouble, Andy is trying to set a new record for visits to the vet by a living dog. He has no sense whatsoever when it comes to attacking a dog, or two or three, that are five times his size. A few weeks ago he was tossed like a rag by a giant St. Bernard, and suffered several puncture wounds from that fray. Last week, according to a friend who observed the quarrel, he

watched two German Shepherds and the same St. Bernard as they were fighting. Now, a fight between dogs of that size is pretty evenly matched, but for some reason, old macho Andy watched a few minutes, and then bounded into the tumbling mass of growling dogs.

He now has a rather fetching looking scar by his right eye, and while it does make him look mysterious and handsome, (like a duelling scar on a Byronic hero's face,) he almost sacrificed an eye for that particular mark.

ROLL

Thomas Green, Daniel Harris, Tanner Hess, Clifford Immel, Chris Littlefield, Clay McCracken, Keith Robinson, Lee Erin Stubbs, Heidi Syfrett, and Shanna Warren; third graders Michael Acuna, Keith Garrison, Hollie Hauck, Francis Hickman, and Melissa

Thompson; fourth graders Donald Harris, Alicia Reynolds, Robert Sanderson, Jason Sheets, Danna Watson; and fifth graders Dale Barker, Deanna Billingsley, Skyla Bryant, Jerry Cathey, Tiffany Lopez, Grant Mann, Kara Tate, Kyle Woods, and Ronna Young.

Senator Lloyd Bentsen Watching Washington



There's been a lot of rhetoric about excessive government regulation out of Washington over the past two years—the phrase “regulatory reform” has cut through Congress and the media like a buzzsaw through bamboo.

Yet, little progress has been made in identifying the scope of the problem, much less in reducing the regulatory burden.

Five years ago I had the Joint Economic Committee do the first in-depth study of the costs of federal rules and paperwork. The report suggested that the cost of regulation to the U.S. economy was in excess of \$100 billion a year—and that was back in 1978. I then drew up proposals to control the regulatory process and make it more cost-effective.

Some of my ideas became law and others were included in a Carter Administration Executive Order that laid out new policy intended to reduce the amount of federal regulation. When I learned that this order did not apply to a host of independent federal agencies, such as the Federal Trade Commission, I prepared a bill requiring that these independent agencies, too, assess and reduce the economic burden of their regulations.

That proposal was adopted by President Reagan and now forms the heart of the new regulatory review mechanism at the Office of Management and Budget.

Recently I introduced legislation instructing all government agencies to reduce the burden federal regulations impose on farmers, ranchers and small business by 25 percent over the next two years.

One of two primary provisions in my bill requires the President to estimate the costs of all major rules and paperwork requirements which the federal government imposes on farmers, ranchers or small business. The President, under the bill, would collect the information annually and provide it in a report to Congress not later than January 31 of each year.

The second major provision in the bill requires the head of each federal agency to reduce the burden of its major regulations and its paperwork requirements on farmers, ranchers and small business by 25 percent over the next two years.

I'm not suggesting that all government regulations are evil or counterproductive. Many do necessary jobs and do them well. But the amount of federal regulation has grown far too rapidly over the past decade. The *Federal Register*, a compilation of all the rules, regulations and facts of the government, expanded from 20,000 pages in 1970 to 87,000 this year.

My 25 percent burden reduction gives federal agencies a clear and simple target and timetable for slashing regulations bedeviling farmers, ranchers and small business.

GAMES

at half-time.
 In varsity boys' action, McLean led at the end of the first quarter 9 to 8, but lost the lead 15 to 13 in the second quarter, and were never able to keep it again. Kevin Nicholson led the scoring with 20 points. Dudley

Reynolds, Van Boucher, and Bobby Sprinkles each scored 4, and Theron Stubbs scored 3.

The teams were scheduled to play Samnorwood at Samnorwood Tuesday night, but the results were too late for press time.

Oil And Gas Production Reporting Is Easier

AUSTIN, Tex., Dec. 29—Oil and gas operators in Texas will find their monthly production report to the Railroad Commission easier to do in the future thanks to simpler forms approved by Chairman Jim Nugent and Commissioners Mack Wallace and Buddy Temple.

The Commission's Oil and Gas Division has revised the production reporting forms to eliminate needless duplication, according to David Garlick, the division's Assistant Director for Planning and Administration.

"Under the present procedure," he said, "an operator who produces from both oil and gas wells must file four production reports with the Commission each month: the P-1, P-2, and P-1A & 2A (one form) with each for casinghead gas and gas well gas. Under our new procedure, the same operator would file only two reports: the P-1 and P-2."

Although the new forms will be ready in 1982, the planned start date for their use is not until January 1, 1983. Thus, the first report using the new forms will be for production during January, 1983. That production report is due to the Commission by February 28, 1983.

Before the new forms can be put into use, producers and operators across the state have to be introduced to the forms and understand how to use them. The Oil and Gas Division plans to explain the new forms at seminars throughout the state during 1982. While this education process is going on, the old forms will continue to be used.

Garlick said the P-1 and P-2

have been redesigned to include the information reported on the P-1A & 2A form. "In simplifying these reports, we have also reduced the substantial costs to operators associated with the reports," he added, "costs which include monthly preparation and filing time, postage, and records and retrieval time."

Texas' booming oil and gas industry has generated a tremendous amount of paperwork for the Commission, which regulates some 180,000 producing oil wells and 40,000 producing gas wells in the state. In an average month, more than 41,000 oil and gas production reporting forms are sent to the Commission, or more than half a million forms annually.

That total represents a 56 percent increase over 1950, and a similar increase is projected for 1982. The elimination of the P-1A & 2A form will cut more than 150,000 forms annually, which represents a 30 percent reduction and a savings to the Commission of \$25,000 a year.

The redesign of the P-1 and P-2 forms also makes filling them out easier and faster. Instructions on the back have been simplified. The Commission mailing address is printed on the form so it will show through the standard window envelope when folded. Shaded lines running across the face of the forms help operators keep words and numbers in alignment.

The P-2 form will be printed in yellow so Commission handlers can easily distinguish it from the P-1 (green ink on white paper).

DEATHS

BUELAH GREGG
 Buelah Gregg died Jan. 11 at her home in Bridgeport. The funeral was to have been Wednesday in Bridgeport. She was 84.
 Survivors include two children, Jack Gregg and Florene

Thomas; three grandchildren; five great-grandchildren; three brothers, Trav Armstrong of Santa Paula, Calif., Cat Armstrong and Pete Armstrong of Long Beach, Calif., and one sister, Lorena Bailey of McLean.



A four-eyed fish, the anableps, has eyes divided in two. When the fish swims just below the surface, the top half of each eye sees objects above the surface and the bottom half sees underwater objects.

LINES
 by
 LEM
 O'RICKK



The Cowboys once more bit the dust,
 Their well-oiled machine turned to rust;
 The Forty-Niners won,
 And Joe Montana's gun,
 The Pokes Super bubble did bust!

Senator Bill Sarpalius Reports



GASOHOL BECOMES A REALITY

AUSTIN -- On January 1, the new law we sponsored to give a tax break for Texas gasohol became a reality. Events in the world of agriculture this year show the law could not have come at a better time.

In a year of tremendous grain harvests, the price makes farming seem like it's just not worth it. We hope the gasohol industry will create a new market for grain products, and in turn stabilize the price of grain and allow farmers to make a profit for a change.

The gasohol bill gives gasohol a five cent a gallon tax credit. This should make gasohol competitive with unleaded gasoline, and entice people to buy it. Gasohol will be marketed under other names, such as super unleaded, in many markets.

Three gasohol plants for Texas already are on the drawing board. These plants will cost a total of \$200 million. Two are planned for the Panhandle with one in Dumas and one in Muleshoe. These are just the major plants. Many smaller plants are planned, and some already are operating. When we consider the added benefits of new investment, these two plants should be worth about \$600 million to the Panhandle's economy.

This money will come in the form of supply contracts for construction, construction jobs for workers

and engineers and jobs for people to run the plants.

In addition, there should be new markets for grain. The gasohol bill specifies that the gasohol be made from renewable resources. Now, that means grain, although other sources undoubtedly will appear in the future.

This bill puts Texas on an even basis with other states. Every state that surrounds Texas already had an exemption for gasohol -- now we have joined them.

Now the decision of where to put a gasohol plant in the Southwest United States will be made on the basis of merit, not on the basis of where the tax credits are.

Texans never have needed an unfair advantage. All we need is a fighting chance, and that's what the bill gives to the Texas gasohol industry -- a fighting chance.

We need your help in supporting the gasohol industry in this state. Buy gasohol. It's good for your cars and trucks, and good for the Texas farmer. As food becomes more and more important, we need to make sure our farmers stay in business long enough to see them through the bad times they have had recently.

We also need your help in shaping our future tax and energy policy for this state. Please write to Senator Bill Sarpalius, P.O. Box 12068, Austin, Texas 78711.



A squirrel may scrounge as much as twenty bushels of nuts and roots and seeds and put them in a number of caches scattered around his territory. However, squirrels have terrible memories and are often unable to find even a tenth of these caches later on.

Inflation - Fighting NEWS Facts About Progress

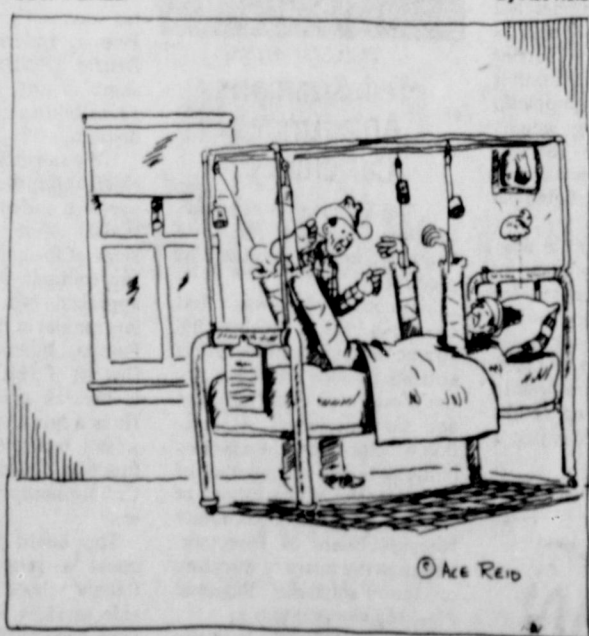
There's good news for Americans: according to the Bureau of Labor Statistics, the rate of inflationary price increases is stabilizing in several major American cities, and even decreasing somewhat in others. The greatest declines in the inflation rate are occurring in the energy field, where declines in prices on fuel oil and electricity have been measured for the sixth consecutive month.

Now an insurance company that ranks 20th among the 1,800 American life insurance companies is doing its part to contribute to the fight against inflation. Phoenix Mutual Life Insurance will be increasing the life insurance coverage on more than 350,000 of its policies with no increase in premium payments. Some of the coverage increases will be as high as 45 percent, with an average increase of about 15 percent.

These changes provide cost reductions to the company that are being passed directly along to its policyholders.

COW POKES

By Ace Reid



"Now Jake, you have got to start exercisin'...I've got you entered in the bronc ridin' in Denver!"

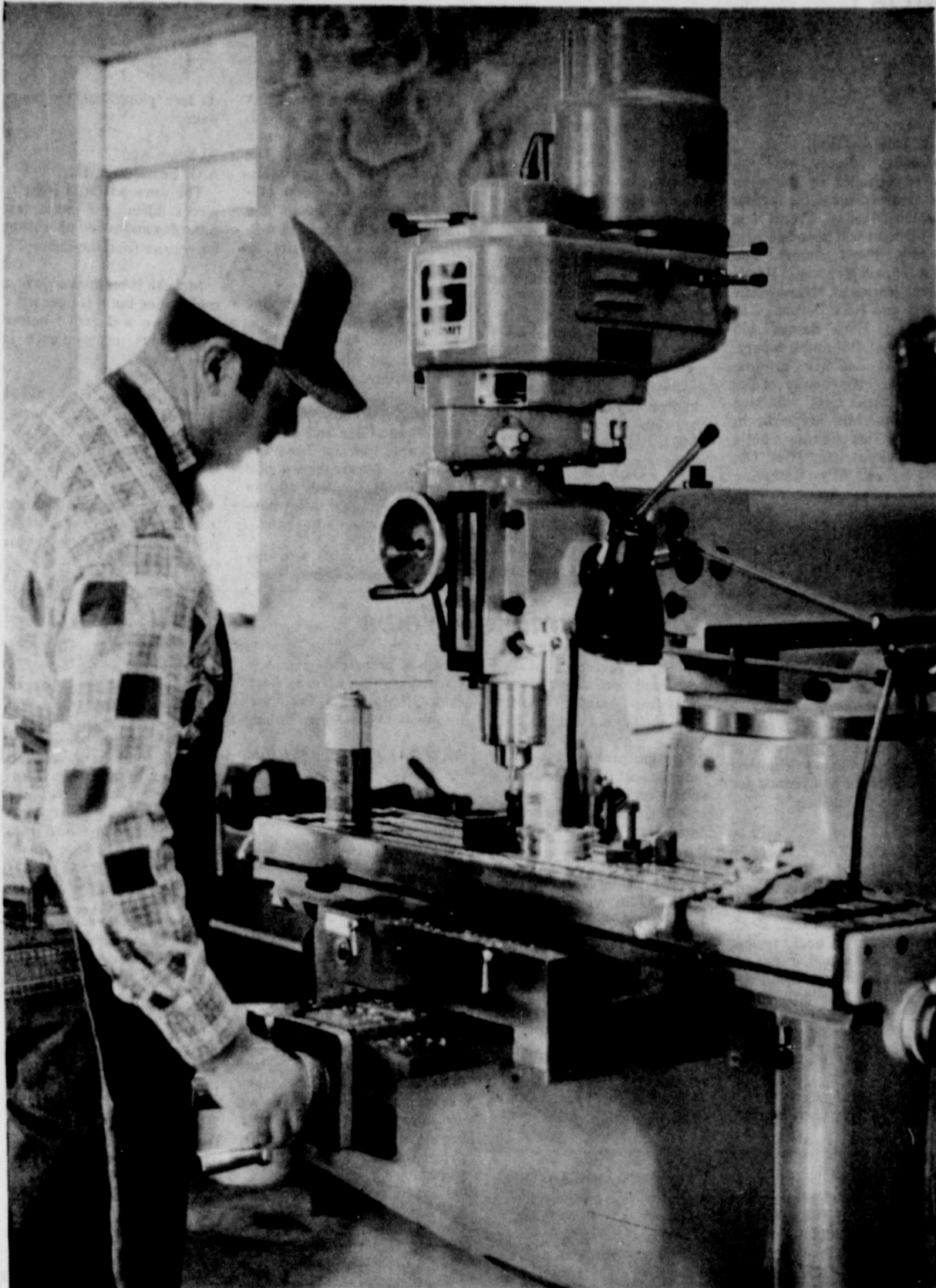
'COWPOKES' is brought to you by the friendly folks at the

American National Bank
 in McLean

779-2461
 201 N. Main
 McLean, Texas

member FDIC

Wilson's Machine Shop Opens For Business In McLean



Machinist At Work

DON WILSON, PROPRIETOR of Wilson's Machine and Welding Shop which opened in McLean last week, is shown at a large drill in his new shop. (Photo by Linda Haynes)

Although Don Wilson began working in his dad's machine shop in Pampa when he was only seven years old, the opening last week of Wilson's Machine and Welding Shop in McLean is the first time he has owned his own shop. The small, well-equipped job shop is located at 501 E. First in Hugh Gately's building.

Wilson will cater to the general trade, he said. His shop will be able to manufacture any kind of metal part. He expects a great deal of his business to come from the oil field, Wilson said, although Friday he was manufacturing replacement parts for windmills. "Any metal part that has to be ordered for replace-

ment usually costs a lot," he said. "We can manufacture the part here at a savings for our customers."

Wilson has one full-time employee now, Larry Christopher, but plans to add a part-time worker soon. "If the business grows as we are expecting, we will add other employees," Wilson said. He said that there was enough general business in McLean for right now. And if the oil production gets busier around McLean, his business should boom.

Wilson explained the machines in his shop. Three of them were shipped in from overseas. Wilson said that he

bought the machines and paid the freight on them for less money than he could buy comparable material in the United States. "And the machines are better made," he added, saying that the machines will hold a closer tolerance. A huge Summit lathe, made in Yugoslavia, will swing 27 inches. A milling machine, also Summit brand, was made in the Republic of China. It's a universal machine Wilson said, and will do almost any job necessary. The third large machine in the shop is a Summit radial drill made in China, which Wilson called a "general purpose" machine.

Wilson has spent the last few months as a teacher and inspector in a machine shop in Amarillo. He and his wife Paula live in Alanreed with their daughters Brenda, a senior at McLean High School, and Karen, a sophomore. For nine years, Wilson was the manager of Lake McClellan, but previous to that he had spent all his time working in a machine shop. Wilson said his dad owned the Grayco Machine Shop in Pampa for several years.

Wilson said that he hoped everyone would feel welcome to come by and see the new shop, and inquire about his work.

McLean Briefs

Lester Sitter, Susan and Scott of Denver, Colo. spent New Year's weekend with their grandparents, Mr. and Mrs. Evan Sitter.

Mr. and Mrs. Chris Moore and Brian Hogue of Woodward, Okla. visited recently with the Kenneth Hambricht family.

Mrs. Mary Powell spent the night with Mr. and Mrs. Don Powell in Canadian.

Clyde Richard Brown underwent surgery in St. Anthony's Hospital last Tuesday. Mr. and Mrs. Clyde Brown and Mrs. Mary Powell visited with him.

W.J. Carnes returned home from Shamrock where he had been a patient in the hospital. Mand Carnes are in Amarillo with their daughter Merla Faye and her family.

Mr. and Mrs. Jeff Railsback were in Dumas recently and spent the night with their son, George Railsback and his family, then they visited their daughter, Mrs. Margie Garner and her family in Amarillo.

Louise Johnson and Kathy Danner were in Pampa on business on Saturday.

Mr. and Mrs. Claude Lester visited in Lubbock with their daughter, Mrs. Ronnie Gooch and family and with other relatives.

Mrs. Kate Mac Donald returned home Monday from her nephews, Mr. and Mrs. Bill Morgan in Canadian. Before going to Bill's, 9 days ago, Kate had had a lengthy stay in Coronado Hospital in Pampa.

Mr. and Mrs. Allen Crawford of Amarillo and Mr. and Mrs. Kerry Anderson and children, Jessica and Nathan, visited during the weekend with their parents and grandparents, Mr. and Mrs. K.W. Hambricht.

Mrs. Loree Barker returned home following a three weeks visit in Seymour with Miss Ola Barker and other relatives and in Lubbock with Mrs. Anna Belle Lamb and other relatives.

Mr. and Mrs. Leroy Williams of Amarillo spent the night with Mr. and Mrs. Howard Williams and also visited with the E.L. Watson family.

Mr. and Mrs. R.J. Turner have been in Olton on business. They also visited their daughter, Mrs. Glenda Roundtree and family in Littlefield and their son, Gary Turner and family in Amarillo.

Mrs. Mary Powell has returned home from a visit in Richardson with Mr. and Mrs. Terry Letteer and in Dallas with Mr. and Mrs. Bob Coffee and children, Grant, Dustin and Jarrad and in Mesquite with Mr. and Mrs. Tommy Powell.

Sidney Kunkel returned home Friday from a months visit in California. He accompanied his son, Laverne and Faye Kunkel of Dumas and they visited another son, Glen Kunkel and his family and the Laverne Kunkel's son, Burl Kunkel and his family in Victorville.

Rev. and Mrs. Archie Cooper have returned from a trip to Sacramento, Calif. to visit their daughter, Mrs. Wynona Yates and children, Tracy and Carla.

Mr. and Mrs. Elmo Whaley visited their daughter, Mary Kesterson in Pampa Hospital on Monday.

Mrs. Lil Reynolds returned home Sunday after several days visiting in Wheeler.

Mr. and Mrs. Claude Lester and Mrs. Loree Barker were in Amarillo on business on Thursday.

Mrs. Jewell McCurley returned home Tuesday following a six weeks visit in Longview with her son, Weldon McCurley and her brother, Frank Dunn and their families.

Visiting recently with Mr. and Mrs. Ercy Cubine were their daughter, Mr. and Mrs. Neil Quattlebaum, and their grandchildren, Cindy, a student at Trinity University at San Antonio and Kaye, a student at West Texas University at Canyon.

Mr. and Mrs. Ted Glass visited Miss Margaret Glass in Shamrock General Hospital on Thursday.

S.A. Cousins underwent surgery in Coronado Community Hospital in Pampa on Monday.

Joe and Joe Kelly Clark of Lefors, Janet Smith and Stacey and Timothy Hess of Amarillo spent Sunday with Chick Wood and Lil Reynolds.

Bro. Joe Walker, Fern Boyd

and Dorothy Patterson visited with S.A. Cousins and Rose Steel in Pampa Hospital on Monday.

Mr. and Mrs. Ted Glass spent Saturday and Saturday night with Mr. and Mrs. A.N. Hardman in Amarillo.

Mr. and Mrs. Tommy Dutton and Nicky of Grandbury and Mr. and Mrs. Clifford Martindale and children of Pampa visited with Mrs. Minnie Erwin.

Mrs. George Terry, Mr. and Mrs. Bill Terry and Mr. and Mrs. Tom Glass, Allison and Garrett are in Colorado this week.

The Senior Citizens of McLean will host a blood pressure clinic Thursday, July 21, from 1 p.m. until 4 p.m. at the Young-At-Hearts building at 112 N. Main.

Mr. and Mrs. Machel Vogt and son Chad of Houston visited here during the Christmas holidays with Mr. Vogt's sister and husband, Mr. and Mrs. Cecil Reynolds and children, Lisa, Frances, Kerry, Frank, Mike, Dudley, and Mitch.

The Vogts also visited with his grandmother, Mrs. Lucille Cullison.

Miss Alice Hommel of Dall- as visited here during the Christmas holidays with her niece, Lucille Cullison. She also visited with her brothers and wives, Mr. and Mrs. Ollie Hommel of Alanreed, and with Mr. and Mrs. Frank Hommel and families of Clarendon, and with her sister, Mrs. Annie Smith, and with her niece and husband and family, Mr. and Mrs. Ray Howard Miller of Amarillo.

Grandparents are Mrs. Mary Dwyer of McLean, Bud Steel of McLean and Jackie Steel of Eufala, Okla. Great-grandmother is Mrs. Drucie Dwyer of McLean.

New Arrival

Mr. and Mrs. Dale Steel are the parents of a daughter, Lacey Lee, born Jan. 9 in Coronado Community Hospital in Pampa. She weighed 8 lbs., 10 oz. and was 21 inches long.

Grandparents are Mrs. Mary Dwyer of McLean, Bud Steel of McLean and Jackie Steel of Eufala, Okla. Great-grandmother is Mrs. Drucie Dwyer of McLean.

Mr. and Mrs. Ted Glass visited Miss Margaret Glass in Shamrock General Hospital on Thursday.

S.A. Cousins underwent surgery in Coronado Community Hospital in Pampa on Monday.

Joe and Joe Kelly Clark of Lefors, Janet Smith and Stacey and Timothy Hess of Amarillo spent Sunday with Chick Wood and Lil Reynolds.

Bro. Joe Walker, Fern Boyd

Mr. and Mrs. Leroy Williams of Amarillo spent the night with Mr. and Mrs. Howard Williams and also visited with the E.L. Watson family.

Mr. and Mrs. R.J. Turner have been in Olton on business. They also visited their daughter, Mrs. Glenda Roundtree and family in Littlefield and their son, Gary Turner and family in Amarillo.

Mrs. Mary Powell has returned home from a visit in Richardson with Mr. and Mrs. Terry Letteer and in Dallas with Mr. and Mrs. Bob Coffee and children, Grant, Dustin and Jarrad and in Mesquite with Mr. and Mrs. Tommy Powell.

Mr. and Mrs. R.J. Turner have been in Olton on business. They also visited their daughter, Mrs. Glenda Roundtree and family in Littlefield and their son, Gary Turner and family in Amarillo.

Mrs. Mary Powell has returned home from a visit in Richardson with Mr. and Mrs. Terry Letteer and in Dallas with Mr. and Mrs. Bob Coffee and children, Grant, Dustin and Jarrad and in Mesquite with Mr. and Mrs. Tommy Powell.

Mr. and Mrs. R.J. Turner have been in Olton on business. They also visited their daughter, Mrs. Glenda Roundtree and family in Littlefield and their son, Gary Turner and family in Amarillo.

Mrs. Mary Powell has returned home from a visit in Richardson with Mr. and Mrs. Terry Letteer and in Dallas with Mr. and Mrs. Bob Coffee and children, Grant, Dustin and Jarrad and in Mesquite with Mr. and Mrs. Tommy Powell.

Mr. and Mrs. R.J. Turner have been in Olton on business. They also visited their daughter, Mrs. Glenda Roundtree and family in Littlefield and their son, Gary Turner and family in Amarillo.

Mrs. Mary Powell has returned home from a visit in Richardson with Mr. and Mrs. Terry Letteer and in Dallas with Mr. and Mrs. Bob Coffee and children, Grant, Dustin and Jarrad and in Mesquite with Mr. and Mrs. Tommy Powell.



Cutting A Pipe

Pioneer Study Club Hears Program

The Pioneer Study Club met Jan. 7 at the home of Jacque Riley. Refreshments of hot punch, pound cake, cookies, ham and cheese bits, and nuts were served to the members as they arrived.

Clara Hupp presided at the business meeting. Roll call was answered with New Year's resolutions broken.

Mary Lou Glass used "Daughters of Eve" by Hobbs as the background for her discussion of Women of the Bible.

Attending were Bonnie Fabian, Mary Lou Glass, Kim Graham, Clara Hupp, Judy Orrick, Wanda Lamb, Eleanor McCarty, Pat Walker, Jacque Riley, and Ruth Magee.

WORKING ON ONE of the machines at Wilson's Machine and Welding is Larry Christopher. (Photo by Linda Haynes)

OUR CAR SILHOUETTE CALENDARS FOR 1982 ARE HERE. WE WOULD APPRECIATE OUR CUSTOMERS COMING BY AND PICKING THEIRS UP.

JANE SIMPSON INSURANCE AGENCY

Anniversary SALE

10-40% OFF

WE'RE CELEBRATING OUR FIRST ANNIVERSARY IN BUSINESS AND WE WANT TO THANK YOU FOR YOUR ENCOURAGEMENT AND SUPPORT...AND PURCHASES.

THE POTPOURRI SHOP

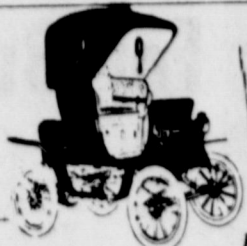
212 N. Main McLean, Texas

TIGER CUP SPECIAL!

FILLED WITH YOUR FAVORITE BEVERAGE

NOW ONLY 65¢!

GET YOURS WHILE SUPPLY LASTS!



DOWN MEMORY LANE

by Sam Haynes

From the files of The McLean News

10 Years Ago
E.M. Bailey, Ed.

The McLean Volunteer Fire Department answered a total of 64 calls during the year of 1971. They include 28 in Gray County, 6 in Wheeler, 3 in Donley County, 17 in the city limits and 10 false alarms and other runs.

Mr. and Mrs. Larry Williams of Denver, Colorado visited their parents the O.J. Tindall's and the Howard Williams over the holidays. They also visited in the Charles Williams' home here and with the Don Tindall family in Borger.

Doug Richards, a McLean High School graduate was among the December graduates at West Texas State University at Canyon. He re-

ceived the Bachelor of Business Administration degree. Doug is the son of Mr. and Mrs. John Richards of Dumas and grandson of Mr. and Mrs. Neville Back of McLean.

20 Years Ago
Jack Shelton, Ed.

Construction of a big new building to enlarge the facilities at Marie Foundations in McLean is expected to get underway as soon as the weather permits. Tom Greenwood, production superintendent at the local plant, announced that a contract had been awarded to John C. Jones of Clarendon to erect the new structure adjoining the present building on the east.

McLean and the entire Texas Panhandle remained in a bone-chilling deep-freeze today. Inaccurate thermometers

left the city without an official low reading for the two coldest nights of the winter. However, weather observer Pete Fulbright estimated that the mercury reached down to 3 degrees below zero Tuesday night and perhaps as low Wednesday.

Lee Welch, superintendent of McLean schools for the past two years, was presented another one-year contract by the board of education Monday night.

30 Years Ago
Lester Campbell, Ed.

Luther (Luke) Henley Wednesday authorized The News to announce his candidacy for re-election to the office of constable, Precinct No. 5, serving the McLean and Alameda areas. Henley is now

50 Years Ago
T.A. Landers, Ed.

County officers were allowed deputies by the commissioners court at the regular session Monday. Sheriff Lon L. Blanscet will have one paid deputy. Floyd Archer, and four unpaid deputies. Harris King, Raymond Harrah, Abe Davis and Nels Dodson. Tax Collector T.W. Barnes will have one full-time deputy, Jack Back, and five part-time deputies. Mrs. Louise Miller Dunn, district clerk, will have one deputy, Miss Marie Bastin County Clerk Charlie Thut's two deputies are Miss Ola Gregory and Miss Katherine Howell. Tax Assessor F.E. Leech will have one deputy.

Mr. and Mrs. Thelma McPherson and daughter of Amarillo are here visiting his parents, Mr. and Mrs. Bryan McPherson. Thelma has recently been discharged from the service.

Mr. and Mrs. Oba Kunkel and Vickie Sue, and Mrs. Bunia Kunkel attended the 25th wedding anniversary celebration of Mr. and Mrs. Carl Kunkel Sr. in Groom Sunday afternoon.

40 Years Ago
T.A. Landers, Ed.
No paper available for this date.

and sheriff's office loungers have not been using good aim at the county cuspidors in his office lately, so he has banned chewing in the office with some neatly lettered signs which read, "No tobacco chewing in this office. If you expect to rate a gentleman, you must not expectorate on the floor."

A few cases of scarlet fever have been reported at school and Sup. Boswell and the health authorities insist that children be kept at home if they show any signs of illness until it is known that they do not have a contagious disease.

60 Years Ago
M.L. Moody, Ed.
Miss Nona Cousins entertained a number of friends with a dinner party at her

home north of town Sunday. A bountiful dinner was served, after which the guests spent a very delightful afternoon. The following were present: Misses Laura Hill, Margaret Miller, Frankie Mae Upham and Lucille Stratton; Messrs. A.L. Baxter, L.M. Jones and R. Dunkle.

Dr. Montgomery reports the following births: Mr. and Mrs. J.C. Johnson, last Saturday, a girl; Mr. and Mrs. M.A. Nix, last Saturday, a girl.

News from Alanreed; Misses Thelma, Ellen and Bernice Hall were McLean visitors Saturday... We are indeed glad to see Rufus Kennedy able to enter school again, after having blood poison in his hand.

One other trouble with this country is that it spends more

on face paint than on mouse

70 Years Ago
A.G. Richardson, Ed.
The town windmill went to pieces during the storm last Saturday and is tied up waiting for repairs from the factory.

McLean is on the verge of a coal famine but it is believed a car or two will arrive before any serious inconvenience is experienced.

J.R.G. Bird has purchased the R.E. Dorsey farm north-east of town and will occupy same this year, having moved last week.

Billie Biggers suffered a bad freeze one day last week while going from town to his school at Peterson Creek.

Notes From Your County Agricultural Agent

by Joe Van Zandt

YELLOW WHEAT

Wheat farmers have been noticing some of their wheat fields turning yellow. Generally, these are dryland fields that have not been fertilized. That in itself is the first clue as to the cause, I believe.

There has been no real difference between irrigated and dryland fields for the most part this fall.

However, the shortage of soil nitrogen may not be the only cause. Earlier this fall considerable wheat on the South Plains was hit by leaf rust. Rust has also caused yellowing in some of our fields. With rust, the oldest leaves show the most damage. At first, there is a small yellow fleck on the leaf. The spore enlarges for a short time and becomes a round, rough spot beneath the leaf surface. Soon the bump becomes pale in color, then yellow, and breaks to release many golden yellow rust spores. The spores blow to other leaves and start the whole process again. It takes about twelve days under good conditions, which are mild temperatures and long periods of leaf wetness. Spores will not infect a dry leaf and they soon perish under extremely high or low temperatures.

As rust progresses, each generation is more damaging. Continual loss of leaves to rust is something like heavy grazing. The plant will survive with good moisture conditions but make little progress. It is a good idea to graze a rusted field so as to use the forage and reduce the production of rust spores.

Spores don't grow at low temperatures and many may freeze. The rust organism generally moves south to the San Antonio area to spend the winter in more favorable conditions. Then in the spring, it moves slowly northward. Usually we have very little trouble with leaf rust on wheat in the spring but this past year was an exception. Most plant pathologists blamed the problem on an unusually mild winter last season and timely spring moisture.

One solution for fall rust prevention is to delay planting as long as possible. Another is to use rust resistant varieties. Sturdy, Sage, Osage, and Newton have resistance to leaf rust built into their genes. They will have fewer rusted spots, and the pustules will be much smaller. If rust is the cause of your yellow, there isn't much the wheat farmer can do to prevent rust on this year's wheat.

Now, let's get back to discussing the possibility of a nitrogen deficiency as the main current cause of wheat yellowing. We have taken some good wheat crops off of our dryland fields in recent years. Generally speaking, we have made above average yields during the last three years; therefore, we have taken more nitrogen out of our soils than we usually expect. This coupled with the fact that we had an unusually wet fall which resulted in excellent, rapid growth of wheat. Also, some fields more or less become water-logged and had water standing on them for a few days. This has tended to use up available nitrogen at a

rate faster than what our dryland generally has available.

Now if we only knew if the spring would be as wet as the fall has been. That is the unknown factor that prevents us from knowing what to do. I recommend that where you have yellow fields of wheat that you collect a soil sample to have it analyzed and verify the available nitrogen present. If it is short on nitrogen, then you may want to top dress with a nitrogen fertilizer around March before or at the booting stage. I would guess about 20-30 pounds of actual nitrogen per acre. This would depend somewhat on the moisture prospects at that time.

CALL TOMI

Featured on "TOMI" as the new year gets under way will be discussions on the outlook for feed grains and pecans; farm issues; and a look at sheep, goat and cattle number and cattle on feed.

TOMI (Telephone Outlook and Market Information) pro-

vides producers with up-to-date information on a variety of subjects.

Recorded messages are prepared by Extension Service economists, using the latest available information.

By dialing 713/845-TOMI, anyone can get market and outlook information seven days a week, 24 hours a day.

Information scheduled to be available through TOMI during January is as follows:

- Jan. 16-18--Feed Grain Situation, Roland Smith
- Jan. 19-22--Cattle on Feed Analysis, Ed Uvacek
- Jan. 23-26--Peanut Situation, Johnny Feagan
- Jan. 27-29--Sheep and Goat Numbers, Ernie Davis
- Jan. 30-Feb. 1--Cattle Inventory, Ed Uvacek

TOMI can help you keep abreast of the latest happenings in various commodity markets and also provides other pertinent information designed to help you with both short- and long-range planning.

Quotable Quotes

Great things are done more through courage than through wisdom.

German Proverb
He who has health has hope; and he who has hope has everything.

Arab Proverb
To a friend one must close one eye. To keep him--two.

Norman Douglas
Ultimately the bond of all companionship, whether in marriage or in friendship, is conversation.

Oscar Wilde
They deem me mad because I will not sell my days for gold; and I deem them mad because they think my days have a price.

The more joy we have, the more nearly perfect we are.

Benedict de Spinza
He who asks a question is a fool for five minutes; he who does not ask a question remains a fool forever.

Chinese Proverb
The shy man usually finds that he has been shy without a

cause, and that, in practice, no one takes the slightest notice of him.

Robert Lynd
Thousands of people have enough talent to become famous. It is the need to use it which is lacking.

Katherine Butler Hathaway
The whisper of a pretty girl can be heard further than the roar of a lion.

Arab proverb
What an author likes to write most is his signature in the back of a check.

Brendan Francis
To know the good is to react against the bad. Indifference is the mark of deprivation.

Marya Mannes
The game of history is usually played by the best and the worst over the heads of the majority in the middle.

Eric Hoffer
An imaginary ailment is worse than a disease.

Hanan J. Ayalti

Tax Estimate Due

The fourth, and final, installment of estimated Federal tax payments on 1981 individual income is due by January 15, 1982, the Internal Revenue Service says.

This installment should be paid using declaration voucher No. 4 found in the Form 1040-ES package, "Declaration of Estimated Tax for Individuals."

Taxpayers whose anticipated income changed during 1981 may have to file an amended declaration. Space is provided in the estimated tax package to compute an amended estimate.

For more detailed information, the IRS publication 505, "Tax Withholding and Estimated Tax," is available free by calling the IRS forms/tax information number in the local telephone directory.

Hightower Visits Office

Vernon, Tex.--Congressman Jack Hightower of Texas and Congressman Dave McCurdy of Oklahoma inspected the Altus, Okla. Cotton Clipping Office of the Department of Agriculture and questioned officials there about problems in grading that have been experienced this year by cotton farmers. In the meeting in Altus Tuesday, both Congressmen expressed concern over the number of complaints over low grades and that comparisons by private graders have been averaging twenty dollars a bale higher.

The director of the Altus cotton clipping office, Wiley Cain, said that officials out of the Memphis, Tennessee office had complained that grades out of Altus were higher than they should be compared to cotton graded in other parts of the country.

Congressman Hightower stated, "The grading problem is compounded this year by the low, low prices of cotton. We both want farmers to receive a fair grade on their cotton. Farmers are at the mercy of the government graders. A difference of twenty dollars a bale could mean in business or going under. I have met already with officials of the Department of Agriculture in Washington, D.C. and I plan to visit the Memphis, Tennessee office to go over the problem as soon as possible."

You might say it is the "contest time of year." Why not get involved? For those of you who friends and family compliment as a great cook or for those of you who enjoying serving--there is a contest for each coming up soon.

TEXAS COWBELLES BEEF COOK-OFF

If you are 18 years of age and enjoy cooking with beef--enter the Cowbelles Beef Cook-Off. Any beef recipe using chuck, round, rump or fresh brisket in any form may be entered. The dish must

In The Kitchen

by Linda Haynes

Occasionally I run across a recipe that rapidly becomes a family favorite. This one has one unusual step in it, but it is very simple to make. Try this recipe, even if you don't normally like casseroles. I think you'll love it. It came to me from Tammy (Mrs. Steve) Carter, who says it is one of her family's favorites also.

CHICKEN FRIED RICE
In an electric skillet or wok, heat 2 T. oil. Saute 1/2 c. chopped onions and 1/2 cup chopped celery; brown lightly. Add one can sliced water chestnuts and 1 small can

sliced mushrooms, and 1 flat can of chicken or turkey. Cook together for a few minutes.

While the mixture cooks, prepare enough minute rice to equal two cups cooked rice. Reserve.

Scrape everything in skillet to one side of the skillet. Scramble an egg. Add the rice. Combine 1/2 cup water with 1/2 cup soy sauce. Pour over mixture. Put lid on skillet and let mixture cook slowly for a few minutes. Feeds many, many people depending on how hungry they are!

School Menu

- BREAKFAST**
Thursday Jan. 14: Creamed Beef on Toast, Juice Milk.
Friday Jan. 15: Cold Cereal, Toast, Juice, Milk.
Monday, Jan. 18: Hot Cereal, Biscuits, Jelly, Juice, Milk.
Tuesday, Jan. 19: Sausage, Gravy, Biscuits, Juice, Milk.
Wednesday, Jan. 20: Cinnamon Rolls, Juice, Milk.
- LUNCH**
Thursday Jan. 14: Tacos, salad, Ranch Style beans, Soppapillas, honey.
Friday, Jan. 15: Hot Steak Sandwich, gravy, salad, french fries, jello w/ fruit.

"All doors are open to courtesy." Thomas Fuller

TED SIMMONS CANDIDATE FOR GRAY COUNTY COMMISSIONER PRECINCT 4



I WOULD APPRECIATE
YOUR VOTE
IN THE
MAY 1
DEMOCRATIC PRIMARY

Political Advertisement Paid For By Ted Simmons

Homemaker News

Worth to prepare their dishes for judging at the Texas Beef Cook-Off March 4-5. For more information, contact my office.

NATURAL FIBERS FASHION REVIEW

The 11th Annual Natural Fibers Fashion Review is being planned for the 1982 Southwest Farm Show. The fashion contest and show will be held on March 6 in Ft. Worth. The contest is open to any homemaker from the Southwest Farm Show States of Texas, Oklahoma, and New Mexico who is involved in agricultural production or an agriculture-related business.

The fashion review is designed to promote the use of natural fibers produced in the Southwest and to emphasize excellence in garment construction and fashion in home sewing. Garments entered in the show must be made of a minimum of 50% cotton or 50% wool and/or mohair.

The competition will have four divisions: day wear, evening wear, mother and child, and former grand award winners. Prizes will be awarded to first, second, and third place winners in each division.

Entries must be submitted by February 19, 1982. Contest rules and entry blanks may be obtained from the County Extension Office.

HOW TO BE LAZY AND LOVE IT!

It's great to be lazy if you know how. It spares your heart, saves your energy, relaxes your mind--and you need not feel at all guilty about it if you confine your laziness to these approved ways, recommended by a psychologist:

1. Be too lazy to frown, fidget and worry.
2. Don't wear yourself out carrying the needless weights of grudges, prejudices, and envy.
3. Listen more than you talk, and see how much better you feel after almost any meeting.

or gathering.

4. Don't rush for a bargain that takes more out of you than it saves for your pocketbook.

5. Don't knock yourself out trying to park your car in a space too small for a scooter.

6. Don't bother to quarrel over small things--like a game.

7. Let the other fellow think he's right when it really doesn't matter.

8. Conserve your mental muscle for things that count, and never bother to wrestle with the inevitable, the impponderable, or the insignificant.

UPCOMING EVENTS
January 14-Extension Home-maker Club Officer Training-2:00 p.m., Courthouse Annex Meeting Room.
January 21-District TEHA Training Meeting-Mary Ellen Harvester Church of Christ.

THOUGHT FOR THE DAY

The art of being wise is the art of knowing what to overlook.

AUCTION

COMPLETE 126 BED HOSPITAL & KITCHEN
HIGHLAND GENERAL HOSPITAL
1224 N. HOBART
(Hobart & Kentucky)
PAMPA, TEXAS
TUESDAY-JANUARY 19
9:30 a.m.

Sale will begin promptly at 9:30 a.m. in the kitchen of the hospital:

COMPLETE KITCHEN

THE FOLLOWING WILL BE SOLD BEGINNING AT 1:00 p.m.:

- Surgical-Delivery-Xray-Laboratory-Recovery-3 Prefraxy Tables-Prefraxy Videx Collimators-Eureka Xray Tubes-Prefraxy Radiographic Timers-Kodak RPX-O-Matic-processor-Xray View Panels-Jewett Refrig. Blood Bank, Model 3950-Centrifuges-Culture Testers-International Regrig. Centrifuge-Coulter Counter-Coulter Hemoglobinometer-Contour Chair-Ames Microtome Cryostat-Castle Thermoic 60 Autoclave-Refrigerators-Photometers-2 Champagne Delivery Tables-G.E. Defibrillator-G.E. Patient Monitors-Surgical Lamps-Vacuum Pumps-Resusitator-Aspirator-Bennett Therapy Units-Panasonic Patient Monitors-Isolettes-LARGE INVENTORY OFFICE EQUIPMENT & FURNISHING

126 Hill-Rom Electrical Beds-Side Chairs-Straight Chairs-62 Baumanometer Blood Pressure Night Stands-Chests of Drawers-SPECIALS: Telem. Teleprinter, Model PRO2EX-Kohler Power Plant Generator-Air Compressors-Maintenance Equipment & Supplies-1973 Chev. C60 Dump Truck, 5 yd.-1968 Chev. C60 Dump Truck, 5 yd.- Air Force Surplus Port. Air Comp. mntd. on 4 wheel trailer.

HUNDREDS OF ITEMS TOO NUMEROUS TO LIST!
INSPECT: Sat., Jan. 16, 10:00 to 5:00, Mon., Jan. 18, 10:00 to 5:00.
TERMS: Cash or Cashier's Check. TxE-012-0275 For Brochure Contact:

Ernest St. Clair
AUCTIONEERS

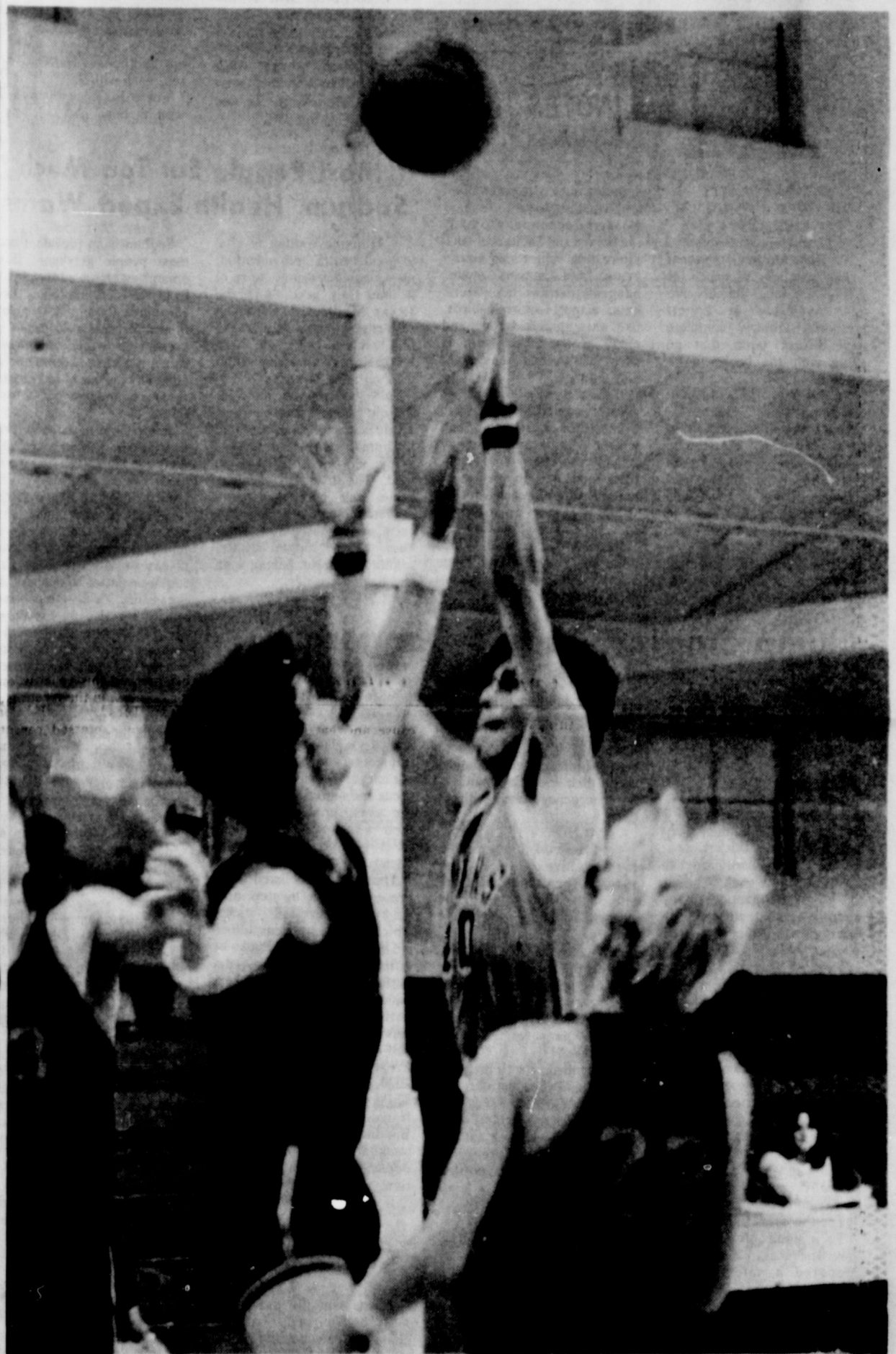
4101 WEST 34TH
AMARILLO, TEXAS 806-358-8111

Dr. Brock W. Lovett
CHIROPRACTOR
Specializing in the examination and treatment of spinal and nervous disorders.
256-2133
310 South Main
Shamrock, Texas
Tuesday & Friday
9 to 5

GO TIGERETTES & TIGERS!



LESLIE STEWART SHOOTs over the Lefors player last week in McLean. (Photo by Sally Haynes)



TIGER KEVIN NICHOLSON strains to shoot over this Pirate defender during the Lefors-McLean game last week. (Photo by Sally Haynes)

JOIN THESE BOOSTERS IN SUPPORTING THE McLEAN TIGERS BY ATTENDING THE GAMES:

- | | | |
|-------------------------|-------------------------|--------------------------|
| Magee Ranch | McLean Cattle Co., Inc. | William's Appliance |
| Hallums Backhoe Service | Windom's Auto Supply | B&B Electric |
| Haynes Triangle Ranch | Boyd Meador Real Estate | Terry's Appliances |
| Corinne's Style Shop | The Potpourri Gift Shop | Foshee's Texaco |
| Lamb's Flower Shop | Dairy Queen | The McLean News |
| Cowboy Drive Inn | American National Bank | Ted & Sue Simmons |
| Puckett's Grocery | Bentley's Fertilizer | Smitherman Farms |
| McLean Variety | The Jake Hess II Family | Barker Redi-Mix |
| Thomas Nursing Center | Denworth Line Camp | Wil-Mart |
| City of McLean | John Nash | McLean Atlas Plumbing |
| McLean Hardware | Texaco Wholesale | Mertel's Boot Shop |
| Brass RO Ranch | B&B Engine Service | McLean Veterinary Clinic |
| Jane Simpson Agency | Dixie Restaurant | Mr. & Mrs. F.J. Hess |



TIGERETTE NORA GATELY jumps for the ball during the LeJors game last week. [Photo by Sally Haynes]

Cubs Sweep To Easy Victory Over Groom

McLean's junior high basketball teams hosted Groom Monday night to two district games and a junior varsity game. In the opening action of the evening the two school's B teams boys played, with Groom beating McLean 29 to 9. Groom outscored McLean 10 to 2 in the first quarter, and easily held the lead for the rest of the game. Scoring for McLean were Andrew Harris with 3, Clint Herndon, Bob Patman, and Keith Christopher, each with 2.

In the girls' varsity game, McLean led 28 to 18 after falling behind 6-2 in the first quarter. The Cubettes began to catch up in the second quarter, with the half ending 14 to 10, but Groom outscored McLean 6 to 3 in the third quarter, and 8 to 5 in the final period. Scoring for McLean were Melanie Billingsley with 7, Wendy McDowell with 4, Lee Ann Tate with 3, and Jen Ann Rice and Tanya Cummings each with 2.

In the boys varsity game, McLean turned the tables on the visitors and jumped to a first-quarter lead of 10 to 2, and ended first half play with a score of 18 to 7. The game ended with the Cubs winning 39 to 23. Martin Gately continued his outstanding play, leading the Cubs with 22 points. David Adamson scored 12, Donnie Smith scored 3 and Jim Ridgway scored 2.

The Cubs and Cubettes will be playing in the McLean Junior High Tournament.

Cubettes, Cubs Win Pair From Miami

McLean's Cubs and Cubettes travelled to Miami Jan. 7 and brought home two district victories.

The Cubettes set the pattern in the first game of the evening when sharp-shooter Melanie Billingsley dropped in 20 points to lead the McLean quintet in their 42 to 18 victory. The first half of play was even between the two teams, with McLean leading 19 to 10 at the end of the second quarter, but McLean scored 16 points to Miami's 2 in the third quarter to ice the game. Others scoring were Jen Ann Rice with 13 points, Lee Ann Tate with 7, and Wendy McDowell with 2.

In the boys' game, a hot-headed Martin Gately sunk 23 points to lead the Cubs to their commanding victory of 46 to 12 over Miami. The Cubs jumped to an early 12 to 2 lead at the end of the first quarter, and the game was never in doubt from that point. McLean scored 27 points to Miami's 8 in the first half, and 19 to Miami's 4 in the second half for the win. Other scoring was from David Adamson with 10, Dominic Via with 5 and Kirk Anderson, Chet Bohlar, and Danie Smith, and Darren Johnson, each with 2.

Coach Joe Riley was pleased with his boys' play. "It was a

good ball game after the long Christmas vacation," Riley said.

Oil And Gas Discoveries Announced

AUSTIN, Tex., Jan. 6--Railroad Commission Chairman Jim Nugent announced that Texas operators reported 116 gas and 47 oil discoveries in December 1981.

One year ago, 74 gas and 56 oil discoveries were filed with the state's energy regulatory agency.

Gas discoveries in the twelfth month of the year included 29 in the Refugio area, 27 in deep South Texas, 15 in Southeast Texas, 11 in West Central Texas, eight in East Texas, seven in North Texas, and five in the Midland area, four in the San Antonio area, and three in the Panhandle area.

Oil discoveries included eight in the San Antonio area, seven in North Texas, six in Southeast Texas, five in West Central Texas, four each in East Texas and the San Antonio, Refugio and Lubbock areas, three in deep South Texas and two in the Midland area.

In December, operators reported 366 exploratory and field tests wound up as dry holes. New applications for permits to drill oil and gas tests totaled 3,382 in December compared with 3,556 in the same period of 1980.

Applications to drill, deepen, plug back and for service wells in December amounted to 3,636 against 3,825 a year earlier.

McLean Tournament Begins Today

Junior high basketball teams from five area schools will compete this weekend in an eight-team tournament at the McLean High School gymnasium with the first game scheduled for 11:30 Thursday (today).

Participating in the tourney are the Clarendon A teams, Clarendon B teams, Claude A teams, Claude B teams, McLean A teams, McLean B teams, Lakeview teams, and Hedley teams.

Thursday games will be as follows: Clarendon A vs. McLean B (girls) 11:30 a.m.; Clarendon A vs. McLean B (boys) 12:45 p.m.; Claude A vs. Lakeview (girls) 2 p.m.; Claude A vs. Lakeview (boys) 3:15 p.m.; Hedley vs. Claude B (girls) 4:30 p.m.; Hedley vs. Claude B (boys) 5:45 p.m.; Clarendon B vs. McLean (girls) 7 p.m.; Clarendon B vs. McLean A (girls) 8:15 p.m.

Games are scheduled for Friday at 11:30 a.m., 12:45 p.m., 2 p.m., 3:15 p.m., 4:30 p.m., 5:45 p.m., 7 p.m., and 8:45 p.m. and Saturday at 1 p.m., 2:30 p.m., 3:15 p.m., 5:30 p.m., 7 p.m., and 8:30 p.m.

CCC Loans To Have Lower Interest Rate

WASHINGTON, Jan. 5--Commodity Credit Corporation commodity loans disbursed in January will have a 12.25 percent interest rate, Everett Rank, executive vice president of the corporation, announced today.

The new rate, down from 14.5 percent, reflects the interest rate charged CCC by the U.S. Treasury in January, Rank said.

Rank also said that outstanding 1981-crop CCC loans will be adjusted to reduce the original 14.5 percent interest rate charge to 12.25 percent.

The 12.25 percent interest rate applies also to outstanding and new farm storage facility loans which are subject to the variable interest rate, Rank said.

Nursing Center News

Thomas Nursing Home welcomes Beulah Rippey home from the hospital.

Sunday, Br. Cooper from the Pentecostal Holiness Church was here to hold services.

Monday, we had 17 residents out for Bingo. Many thanks to our volunteers, Lena Bailey, Ginger Morilla and Vela Young.

Tuesday morning 11 residents attended crafts. They are making Valentine Heart pins to wear, out of beads, not only for themselves, but for all the residents of the Home. Our volunteers were Oleta Westbrook, Mary Lou Garrison and

Linda Syfrett from the Beta Sigma Phi. In the afternoon we celebrated Ethel Meador and Frank Solomon's birthdays. Our entertainment was furnished by Pauline Miller, Lois Myers and her two sons, Roger and Steven. Those helping serve were Ginger Morilla, Evalyn Burch and Cecil Fields.

Wednesday, members of the Pentecostal Church were here for Bible Study and returned Thursday for a Sing-A-Long. Also, Thursday, the residents resumed making their Valentine pins.

Friday, Martha Parker was here with her excellent movies.

ALANREED BRIEFS

On the sick list last week were Betty Finley, Shirley Armbrister, Jewel Warner and Marvin Rawlings.

The Glen Hallums' were in Austin during the weekend to attend funeral services. They returned by the way of Brownwood and visited Mr. Hallum's mother.

Pat Gray of Amarillo spent part of the holidays here with her parents, the P.M. Gibsons.

The Mel French's left for Vernon this week, where they will be for some time.

Marvin Rawlings was released from Pampa Hospital last week.

The Buddy Montgomerys of Lefors were here at her sister Pauline's this week.

The Alanreed Community Improvement Program met Jan. 9 in the school cafeteria with the usual covered dish supper. Bob Fish then presided in Glenn Hallum's absence. Marvin Rawlings was elected Vice Chairman as Don Horn had moved. Trash pickup was discussed as a later project. After the business session, games of dominoes and much visiting was enjoyed.

BIRTHDAYS

Jan. 15
Bobby Jack Massey
O.N. Patterson
Mrs. Noble Touchstone

Jan. 16
Steven Thacker

Jan. 17
Virginia Ann Hill
R.L. Brown
Billy Jack Bailey

Jan. 18
Mrs. J.A. Meador

Bill Rodgers
Mary Evelyn Knutson
Emmitt Dane Hill
Jan. 19
Don Alexander
Pat Vineyard Gray
Kevin Joe Robinson
Mrs. Joe Dwyer
Bryan Hendricks
Patsy Barker
Jan. 20
Myrtle Billingsley
Jan. 21
Terry Lee Vineyard

LIBRARY NOTES

by Sam Haynes

NOW YOU KNOW ABOUT STRANGE BEASTS

NOW YOU KNOW ANIMAL HOMES

Encyclopedia Britannica Educational Corporation

Two new sets of books for youngsters about animals, are now available at Lovett Memorial Library, complete with 8-track tapes that go along with the books to be studied.

"Now You Know About Strange Beasts" furnishes accurate and well-researched information on dinosaurs, animals of the ice age, monsters and myths, sharks, and strange animals of today, and will be an invaluable asset to boys and girls studying these particular subjects.

"Now You Know Animal Homes" is for younger children and with the use of

wonderful illustrations and simple and easy to understand language, presents them a wonderful opportunity to study the homes and habits of such interesting subjects as grizzly bears, bears, beavers, moles, badgers, earthworms, otters, bats, octopi, squirrel, birds, fish, ants, spiders, turtles, and many of the larger animals such as buffalo, kangaroo, and gorilla.

Both of these editors will be greatly enjoyed by youngsters from the lower grades up, and will be a great help in many school projects. The eight track tapes add an even more enlightening dimension to the study of these great books presented by the Encyclopedia Britannica Educational Corporation. You will find them both available at Lovett Memorial Library.

Most People Eat Too Much Sodium, Health Expert Warns

Although sodium is vital to good health and nutrition, most people consume more of it than they need. And the Texas Medical Association says restricting one's intake of this mineral element often requires more than just cutting back on salt.

Salt, the common name for sodium chloride, is the largest single contributor of sodium to the human diet but only one of many sources of sodium in food. The list also includes brine, salt pork, self-rising flour, and sodium compounds such as monosodium glutamate (MSG), sodium citrate, sodium saccharin, baking soda and baking powder.

Sodium is so prevalent that most people get more than enough--without adding salt--from the food and water they consume. Sodium is included in most processed foods and is present in water either because it occurs naturally or is added by the use of softeners in some community water systems.

The people most concerned are those on sodium-restricted diets for treatment of various heart, liver and kidney ailments, or for hypertension (high blood pressure). An estimated 23 million to 6 million people in the U.S. have diseases or disorders that may require control of sodium or potassium, a common salt substitute. Excess sodium in their diets can increase the volume of water in body tissues and bring about swelling or a condition called edema.

Sodium-conscious consumers should be wary of products labeled "salt free." They might not be sodium free. The U.S. Food and Drug Administration cites the case of a brand of potato chips that was being promoted as having no added salt. The agency found that an ounce of the chips contained 175 milligrams of sodium, a "significant amount for any consumer on a sodium-restricted diet." (A safe daily intake of sodium for a healthy adult is 1,100 to 3,300 milligrams.) The FDA has indicated that saying a product containing sodium is "salt free" is misleading.

Although ingredient lists on the labels of most products do not give the amount of sodium they contain, the U.S. Department of Agriculture has published a booklet with the average amount of sodium in 789 items.

For maximum eye safety, the Society advises everyone working with car batteries or standing nearby to wear protective goggles to keep battery fragments and chemicals out of the eyes. Should an accident occur and battery acid get into the eyes, immediately flush them with water continuously for 15 minutes. Then see a doctor.

The Society has listed these procedures, step by step, on a 4" by 8" yellow vinyl sticker which has a permanent adhesive backing. The sticker can be affixed to any clean, dry surface under the hood or kept inside the car's glove compartment. To obtain a sticker, send 25 cents and include a self-addressed envelope, to Prevent Blindness, P.O. Box 2020, Houston, TX 77019. TSPB is an affiliate of the National Society to Prevent Blindness, the nation's oldest voluntary health organization dedicated to sight conservation.

West Texans Can Still Order Seedlings

LUBBOCK--Some species have been sold out, but it is not too late for West Texans to purchase several varieties of windbreak tree seedlings from the Texas Forest Service.

The Service's West Texas Nursery in Lubbock still has two varieties of conifers and five types of hardwood seedlings available for the 1981-82 planting season, which ends in late March.

According to Bob Fewin, silviculturist at Lubbock, the conifer species still available are Austrian pine and ponderosa pine. These 6 to 12-inch pine seedlings are grown in individual dual cells, 30 cells to the Styrofoam container. A minimum order is 30, priced at \$30 per container (plus sales tax). They are sold by the container, or in multiples of 30. The containers are 12 inches wide by 14 inches long, by 8 inches deep, and several containers can be easily transported in the back seat of a car or pickup cab.

The hardwood seedling species still available include: green ash, honeylocust, bur oak, mulberry and Russian olive. The hardwoods are sold in minimum lots of 100 for \$20 (plus sales tax and shipping costs).

The West Texas Nursery grows windbreak seedlings for a 60-county High Plains and Panhandle area, north of Big Spring and west of Wichita Falls.

Fewin said the hardwoods may be shipped, but the containers in which the conifer seedlings are grown are not designed for shipping and these should be picked up at one of three distribution points.

Planters in a 20-county Panhandle area can pick up their orders in Amarillo on March 9. On March 11, residents of a 16-county South Plains area can pick up their seedlings in Big Spring, and on March 16, seedlings will be distributed in Lubbock to resident applicants from the 24 counties surrounding Lubbock.

The hardwood species are

Merchants Should Be Aware of Tax Change

AUSTIN, Tex.--State Comptroller Bob Bullock said Wednesday that about 1,000 Texas merchants need to be aware of new sales tax requirements on credit sales which go into effect January 1.

The new law affects merchants who make installment sales of taxable items, include the amount of sales tax due in the outstanding balance and keep their books on the "cash" basis of accounting. According to the new law, a part of the interest paid on the sales tax portion of credit sales will be taxable. This additional amount is to be reported and remitted when the regular sales tax return is filed.

If the interest on the sales tax and the unpaid balance are the same--and the rate is 18 percent or less--the state gets half the interest on the sales tax portion of the total amount being financed.

If the rate is more than 18 percent, the state gets all interest on the sales tax amount above 9 percent. For example, a merchant charging 20 percent interest on credit sales will remit 11 percent interest on the sales tax amount to the state, assuming the rate for the sales tax portion is the same as for the rest of the unpaid balance.

compare

All Vegetable Shortening Limit 1 with \$7.50 purchase
Crisco Shortening 3 lb. can \$1.78
Laundry Detergent 84 oz.
Tide Detergent \$2.99
Big Tate 16 oz.
Potatoes 79¢
Maxwell House Coffee
Coffee \$1.91
1 lb. All Grinds
Van Camp 16 oz.
Pork 'n Beans 3 for \$1.00
Kounty Kist Cut 16 oz.
Green Beans 3 for 89¢
White Swan
Hominy 3 for 89¢
White or Golden 14.5 oz.
Gladia Flour 5 lb.
Flour 89¢
Kleenex 200 ct.
Tissue 69¢
Kleenex Roll
Towels 2 for \$1.00
GIBSON'S MEAT
Owens Reg. Hot, Mild or Sage
Sausage \$1.49 1 lb.
2 lb. \$2.95
Boneless
SWISS Steak \$1.69 lb.
USDA Choice Beef
Cube Steaks \$2.49 lb.
USDA Choice Beef
NEW FIRST TIME IN MARKET INDIVIDUAL WRAPPED
Kraft Velveeta 12 oz. pkg.
Cheese Slices \$1.49
Sliced Beef
Liver 69¢ lb.
Plainsman 2 lb. Pkg.
Franks \$2.99 pack
Wrights 3 lb. Box
Bacon \$1.99 box
Fresh Frozen Fish Fillets
Fillet of Sole \$1.79 lb.

Ranch Style 15 oz.
Blackeye Peas 3 for \$1.00
Marina Bathroom Tissue 49¢
4 roll pkg.
White Swan Sugar \$1.17
5 lb. Bag
Sunshine Krispy Crackers 59¢
1 pkg.
Pillsbury Cake Mix 77¢
Asst. Flavors 18.5 oz.
Sunlight Dish 22 oz.
Detergent 97¢
Gebhardt No Beans 19 oz.
Chili 99¢
Carnation 16 oz.
Coffeemate \$1.37
County Fairy Red Spanish 12 oz.
Peanuts 99¢
Gibsons 1 1/2 loaf
Bread 2 for \$1.00
Whipped Topping Mix 5 oz.
Dream Whip \$1.19
Schilling Mixes Asst. Flavors
Party Dip 4 for \$1.00
PRODUCE
Baking Potatoes 5 lbs. for \$1.00
Yellow Onions 3 lbs. for \$1.00
Yellow Extra Fancy Squash 39¢ lb.
1 lb. Bag
Carrots 4 for \$1.00
Red Delicious 3 lb. Bag
Apples 79¢
4 lbs.
Bananas \$1.00

GENERIC FOODS
Gallon
Bleach 69¢
18 oz.
Peanut Butter \$1.19
7 oz.
Toothpaste 89¢
Filled 13 oz.
Milk 3 for \$1.00
250 ct.
Aspirin 89¢
FROZEN FOOD
Bordens Nutty Buddy or Ice Cream 6 pk.
Sandwiches 99¢
Mr. P's Pizza 79¢
Asst. Flavors 11.5 oz.
Van De Kamps Light Crisp Fish Fillet \$1.59 14 oz.
DAIRY
Bordens 1/2 gal.
Buttermilk \$1.09
Parkay 1 lb. qtrs.
Margarine 2 for \$1.00
White Swan Reg. or Sweetmilk 8 oz.
Biscuits 5 for \$1.00
STORE HOURS
MON - FRI 8-7
SAT. 8-8
SUN 9-6
SHAMROCK, TEXAS

CLASSIFIED ADS sure to get results

CLASSIFIED RATE
\$1.50 minimum
10 cents per word
CARD OF THANKS - \$2.00

All ads cash, unless customer has an established account with The McLean News. Deadline for Want Ads - Noon - Tuesday. Phone: 779-2447.

The McLean News cannot verify the financial potential of these advertisements. Readers are advised to approach any 'business opportunity' with reasonable caution.

FOR SALE

HESS-ALLISON

FOUR BEDROOM, TWO baths. Lots of Room. On Pampa Highway.

BEAUTIFUL THREE bedroom, three bath brick home. Large living room and den. Fenced yard in good location.

JUST LISTED - 2 bedroom home with paneled den.

LOVELY BRICK HOME on 4.75 acres. Three bedroom, two bath. Reasonably priced

JIM ALLISON REALTY
Ida Hess 779-2641
Jim Allison 779-2461
779-2915 779-2649

EXCELLENT HEGARI HAY. In stock \$2.25. Alanreed-779-3174 or 779-3122. 1-2c

ALL T-SHIRTS 20% off-one special group half price at the T-Shirt Shop in The Pot Pourri Shop. 2-2c

FOR SALE: CHEVY Luv Mikado. 4 cyl. 4 sp., 33,000 miles. New paint, new seats, good tires, runs good. Call 779-2312. 2-2p

FOR SALE: 640 acres good grass land. Close to McLean. Owner will finance at reasonable rate of interest. Also good 2 bedroom brick house - good location, priced at \$15,000. **BOYD MEADOR REAL ESTATE** 2-3c.

FOR SALE: A-frame, three bedroom. Furnished or unfurnished. ***

Three bedroom trailer house with 1 1/2 baths. 14 x 80 foot, furnished or unfurnished. ***

Small two-bedroom trailer house, furnished or unfurnished. ***

CALL DOROTHY MIDDLETON, 779-2674. 49-tfc

FOR SALE: 1968 x T 190 Ac tractor diesel; 1979 Massey Ferguson, Model 126 Square baler, wire tie. All equipment in good shape. Call 779-2930 46-tfc

GOOD COLOR TV for sale. Mrs. Lela Alderson. Call 779-2543. 49-tfc

THREE BEDROOM HOUSE for sale. Call 779-2396 or 779-2811. 33-tfc

PROFESSIONAL HOUSE CLEANING done. Very honest, dependable, reasonable rates. 779-2339. 256-3755 nights. 50-tfc

SPECIALS ON FRIDAYS: All the fish you can eat for \$3.99 (Includes french fries, coleslaw and hush puppies.) L & L Restaurant. 1-tfc

MOBILE HOME FOR SALE in McLean. 14x64, 2 bedrooms, 1 bath, luxurious woodwork, washer and dryer, skirting and porch, many extras. Equity and assume payments of \$255 at 15% interest. Will also sell 150 feet of 6 ft. high wood fence with two gates. \$450. Call Donnie at 915-535-2438. 2-tfc

GIGANTIC WHITE SALE now at Potpourri Shop. 2-4c

FOR SALE: TWO 302 Ford Engines, 1 with transmission, 454 Chevy Engine. Headache Rack for pickup. Call 779-2064. 2-2p

FOR SALE: ALL OCCASION decorated cakes. Call 779-2653 Nettie Bob Roberts, El Paso Camp. 2-2p

FOR RENT: SMALL two bedroom trailer house, furnished. Call 779-2674 or 779-2771. 49-tfc

FOR RENT: Furnished apartment with or without bills paid. 519 W. First. 45-tfc

FOR RENT: 3 Bedroom house-12 miles south of McLean. Call collect...Betty Taylor-(806-364-4621.) 42-tfc

FOR RENT: 3 BEDROOM house-12 miles south of McLean-Call Betty Taylor-806-364-4621. 42-c-tfc

LOST AND FOUND

LOST: BLUE VEST with car keys in pocket. If found, please turn in to The McLean News or call 779-2579. 2-1c

WANTED

WANTED: 1 LETTER "A" from a Pepsi Cola or Mountain Dew can. Willing to split 50-50. Contact Allen Patman at 779-2818. 2-1p

HELP WANTED

WANTED: AFTERNOON STUDENT help. Also full-time nurses aides. 7 to 3 or 3 to 11 shift. Apply in person. See Cathy Bailey at Thomas Nursing Center. 2-tfc.

HELP WANTED: THOMAS Nursing Center, inc. is now taking applications for a cook. Apply at nursing center. 42-tfc

HELP WANTED: APPLY in person at Wil Mart. 46-tfc

CARD OF THANKS

I wish to thank the kind ladies in the Methodist Sunday School classes for calling on me at Christmas time and bringing me a gift. Your kindness meant so much to me and brought me the "Christmas Spirit" and made my Christmas brighter. May God bless each of you with his richest and many blessings. Mrs. Lucille Cullison

BUSINESS

Call Jerry Cook at **ATLAS** Plumbing 779-2784 Water-Gas-Sewer

LOWDER STEAMWAY PROFESSIONAL CARPET CLEANING FREE ESTIMATES 274-6623 Carpet and Upholstery

WILL DO CARPENTER work, roofing, painting, ceramic tile, acoustic ceilings. Larry Christopher. 779-2206. 48-tfc

TIRED OF SEWING machine problems? See Peggy Dennis or Nancy O'Neal, Bernina Sewing Center, 1312 N. Hobart, Pampa. 665-7147 42-tfc

Open up a whole new world. You too can get first-rate television reception. Over 50 channels via satellite. Superior programming. For more information or home demonstration call 779-3110. 45-tfc

NEED CARPENTER WORK Done? Call Leland Myers 779-2734.

SADDLE AND BOOT REPAIR NEW AND USED SADDLES **McLEAN SADDLE CO.** 111 McCarty St, McLean, Texas 779-2339

NOTICES

CONSTRUCTION NOTICE
From: Wheeler - To: 1.0 Miles West of McLean on Highway No. 1H 40, covered by I-Id 40-1 (117) 141 in Gray County, will be received at the State Department of Highways and Public Transportation, Austin, until 9:00 A.M., February 10, 1982, and then publicly opened and read. THIS CONTRACT IS SUBJECT OF HTE WORK HOURS OF 1962, PL-87-581 AND IMPLEMENTING REGULATIONS. The state Department of Highways and Public Transportation, in accordance with the provisions of Title VI of the Civil Rights Act of 1964 (78 Stat. 252) and the Regulations of the U.S. Department of Transportation (15 C.F.R., Part 8), issued pursuant to such Act, hereby notifies all bidders that it will affirmatively insure that the contract entered into pursuant to this advertisement will be awarded to the lowest responsible bidder without discrimination on the ground of race, color, or national origin, and further that it will affirmatively insure that in any contract entered into pursuant to this advertisement, minority business enterprises will be afforded full opportunity to submit bids in response to this invitation and will not be discriminated against on the grounds of race,

color, or national origin in consideration for an award. Plans and specifications including minimum wage rates as provided by Law are available at the office of George J. Cannon, Resident Engineer, Amarillo, Texas and State Departments of Highways and Public Transportation, Austin. Usual rights reserved. 1-2c

MRS. ARLEY D. BENTLEY is the new distributor for the Amarillo papers. Phone 779-2569. 1-2p

MASONIC LODGE REGULAR MEETING second Thursday, 7:30 p.m. Practice nights First, Third, and Fourth Thursdays at 7:30 p.m.

TERRY'S ELECTRIC & APPLIANCES
509 N. Commerce
STEREOS SHARP BRAND
Westinghouse
LITON MICROWAVES
RCA TVS
MAYTAG THE DEPENDABILITY PEOPLE
Whirlpool APPLIANCES
A IRMOTOR W INDM ILLS & WATERPUMPS

The McLean News
BUSINESS DIRECTORY

<p>B & B ELECTRIC Parts & Service •ELECTRIC WORK •APPLIANCES •TV ANTENNAS •HEATING AND AIR CONDITIONING PHONE Loyd Bybee 779-2601 EMERGENCY 779-2517 2 BLKS NORTH OF I-40 ON PAMPA HWY I WILL APPRECIATE YOUR BUSINESS</p>	<p>BARKER REDI-MIX READY-MIX, CONCRETE BACK-HOE SERVICE AND FINISHING WORK PHONE 779-2703 OR 779-2869</p>	<p>LAMB FLOWER SHOP 779-2611 ASK ABOUT OUR REGULAR FRIDAY SPECIALS</p>
<p>Bug Baggers Pest Control Inc. TERMITE SPECIALISTS ... COMPLETE PEST CONTROL ... STATE LICENSED ... IN YOUR TOWN WEEKLY ... CALL COLLECT 655-0090 CANYON, TX</p>	<p>GERMANIA Farm Mutual Insurance REASONABLE SOUND INSURANCE PROTECTION FOR YOUR HOME AND OTHER PROPERTY DON WILSON 779-3174</p>	<p>DON MILLER RADIATOR SERVICE "Is Our Business" Not a Sideline •New & Rebuilt Radiators •Gas Tanks & Heaters Repaired 376-666 612 S. JEFFERSON AMARILLO, TEXAS</p>
<p>Got A White Elephant? Sell it in classified 779-2447</p>	<p>WATER WELL SERVICE SUBMERSIBLE PUMP SALES & SERVICE DAVID BROWN 806-779-2678 BOX 273 MCLEAN, TX 79057</p>	<p>PHILLIPS 66 J.R. GLASS OIL CO. 217 W. 1st 779-2181</p>
<p>NATIONAL AUTO SALVAGE 665-3222 or 665-3962 1 1/2 miles west of Pampa on Highway 60 Large selection of used auto parts We appreciate your business</p>	<p>Expert DRY CLEANERS BRING YOUR CLEANING WHEN YOU SHOP IN PAMPA PICK IT UP THE SAME DAY! One Hour Martinizing 1807 N. HOBART, 1824 W. FRANCIS PAMPA</p>	<p>Johnnie F. Mertel Boot Shop Tony Lama, Texas, Acme, Justin Leather Goods Shoe Repair phone 779-2161</p>
<p>McLEAN HARDWARE complete hardware line -DISHES-PAINT-TOOLS-GIFTS- 779-2591</p>	<p>GLENN HALLUM BACKHOE SERVICE Commercial or Individual Fully Insured Alanreed, Texas 779-3138</p>	<p>Foshee's Texaco Your full-service station Earnest & Maurine Foshee Owners 779-2621</p> <p>WE NOW HANDLE AMWAY PRODUCTS WAYNE AND KATHY CARTER 779-2152</p>

•Boots by Tony Lama
•Guns by Colt, Ruger, Smith & Wesson, Weatherby
•Hats by Bradford and American
•Tack
•Western Apparel the Whole Family

Complete Line Of Quality Brands Western Wear

"Complete Ranch Outfitters"
Where your Search Ends And Hospitality Begins.

119 S. Cuyler 669-3161 Pampa, Tx

Original arts & crafts

Texaco products and convenience store

Alanreed

For all your Purina Feeds:

BULK FEED BAG FEED BENTLEYS FERTILIZER

301 E. Foster McLean, Texas 779-2209

SUBSCRIBE TO The McLean News

IN-COUNTY RATE-\$10 per year
OUTSIDE GRAY COUNTY-\$11 per year
SPECIAL 9-MONTH STUDENT RATE-\$7
You can subscribe by mail by completing the form below and mailing with your check or money order to:

THE McLEAN NEWS
P.O. BOX H
MCLEAN, TX. 79057

NAME _____
ADDRESS _____
CITY _____ STATE _____
ZIP CODE _____

"Truth, when witty, is the wittiest of all things."
Julius Charles Hare

Loose Marbles
by Lisa Patman

"NOW TO BURY THE CRANE AND WE'LL HAVE PEOPLE WONDERING FOR AGES!"

If I found a bit depressed to you, Dear Reader, it's because the most important person in my life has left me. That's right, the love of my life, the person without whom I cannot live, has told me we're through. Oh, I'm trying to be brave as I wander through the house, gazing at the empty rooms. And I'm trying to convince myself it doesn't matter, that I'll get over it eventually, that just because I'm alone now doesn't mean I have to fall apart. But it still is painful, still hard to admit that things won't be the same, that I'll have to go it alone. Since my beloved has left me, I will have to face life on my own, will have to deal with the misery of solitude, will have to fight the great fight unaided. I will admit to you, Dear Reader, that although I'm putting up a pretty good front, that underneath the smiles and the I-don't-care's there is a part of me that wants to scream and cry and shout, "No! No! No! Please don't leave me! I can't bear to be without you!" I know, I know, I should never have given my heart so freely. I told myself that if I became too dependent I surely would be hurt, and I was right. Here I am, alone and devastated. Waaaaaa! My housekeeper quit!

If Employer Does Not Deduct Social Security, You Still Must Pay

In most jobs, the social security tax is taken from your payment automatically. But on some jobs, you should ask to be sure your pay is reported for social security.

If you work in someone's home-cooking, cleaning, doing yard work, or some other job-your cash wages count for social security if you earn \$50 or more from one person in a 3-month calendar quarter. Be sure the person you work for has your social security number and reports your pay.

Many employers will offer to pay only cash (no checks) and make no deductions from your pay. This is to the employer's advantage because he or she does not wish to pay the employer's share of social security taxes. It is unfair to the employee because the employee does not get credit for his earnings which earn quarters of coverage for social security protection.

It is important to remember that the exact amount of social security benefits you and your family would get depends on how much you earn. If your

earnings are not reported, you would get less social security or might not be insured with less than enough quarters of coverage.

Some places of business will offer to let you work for them

on a self-employed basis. If your work is supervised by the employer, you are an employee of the business, not self-employed. The employer must withhold social security

taxes from your pay and he must match your taxes with the same amount. Self-employed individuals must pay all their own social security at a higher rate.

If you work for someone in their home or at a business place, be sure your employer has your social security number and reports your pay.

If you need further information or assistance, please

contact us at 125 S. Gillespie, Pampa, Texas. Call toll-free 1-800-392-1603 for any Social Security information or toll free 1-800-442-2620 for Medicare information and help with medicare claims.

4-H CORNER

DATES
January 15 - 7 p.m.: Livestock Judging, Courthouse Annex.

AMARILLO STOCK SHOW
Thirteen Gray County 4-H members are preparing for the Amarillo Stock Show, January 19-23. The show will begin with barrows weighing in at 5 p.m., January 19 and conclude with the junior Livestock Auction Sale at 9:30 a.m., January 23.

Barrows and lambs will be judged in the Rex Baxter Building on the Tri-State Fairgrounds in Amarillo. Barrows will be judged beginning at 5 p.m., January 20 and at 8 a.m., January 21. Lamb judging will begin at noon January 21. Steers will be judged in the

coliseum beginning at 9 a.m. January 22.

Gray County 4-H members planning to attend the show include Christy George, Julia Graham, Ross Hinton, Robin Rohde, Sabrina Parker, Kerri Cross, Preston Cross, Tammy Greene, Mindy Romines, Sheila Romines, Tres Hess, Jimmy McPherson, and De-Ann Ingram.

TOP O' TEXAS JUNIOR LIVESTOCK SHOW
The Top O' Texas Junior Livestock Show will be held at the Clyde Carruth Livestock Pavilion in Pampa March 13-17. Gray County 4-H members

can obtain entry forms from the Gray County Extension Office. Entry fees are \$10.00 for each steer and \$7.00 for each barrow or lamb.

CAREER EXPLORATION
A 4-H Career Exploration

Bill Hobby Will Run For Reelection As Lieutenant Governor

AUSTIN-Lieutenant Governor Bill Hobby today took the final step in formalizing his candidacy for reelection by filing with the State Democratic Executive Committee in Austin. Hobby, who has served as Lieutenant Gov-

ernor for the past nine years, expressed his renewal of his commitment to do everything in his power to better the lot of all Texans and help give them an effective and responsible state government. Hobby said, "My goals for 1982 and beyond are to give priority to

and develop some plans for achieving your chosen field of work. If you would be interested in attending the project meetings, or have any questions, contact the County Extension Office at 669-7429.

increasing the excellence of education for our school children and college students; improving law enforcement and the criminal justice system; and, continuing to maintain a balanced budget for state government without new taxes."

"Don't part with your illusions. When they are gone you may still exist, but you have ceased to live." Mark Twain

QUITTING BUSINESS

EVERYTHING GOES!
COST AND BELOW!
ladies & childrens
ready-to-wear

TOWN & COUNTRY FASHION SHOP

EAST SIDE OF SQUARE
WELLINGTON, TEXAS 806-447-2925
BUILDING ALSO FOR SALE---806 E. Ave.



Puckett's
FOOD STORES
McLEAN, TEXAS

Food Specials

SAVE! SAVE! SAVE!
WITH GENERIC FOODS

Gold Medal
FLOUR
5 lb. bag
95¢

QUICK LUNCH INGREDIENTS

16 oz can DelMonte Whole
NEW POTATOES 2 - 89¢

Mile High 16 oz can
TOMATOES 2 - \$1

Shurfine 16 oz can
FRUIT COCKTAIL 2 - \$1

Recipe Sauce 15 1/2 oz can
SLOPPY JOE SAUCE 59¢

Campbells
CHICKEN NOODLE SOUP 3 - \$1

Shurfine
TOMATO SOUP 4 - \$1

Armours 12 oz can
TRETT \$1.25

Thrifty King Cut 15 1/2 oz. can
GREEN BEANS 4 - \$1

Family Size
CHEER
171 oz box
\$6.29 70¢ OFF



Generic 1 gallon
BLEACH 69¢

Generic 32 oz jar
CATSUP 85¢

Generic Golden 16 oz can
CORN 3 - \$1

Generic 25 lb. bag
DRY DOG FOOD \$2.98

Generic
MACARONI & CHEESE DINNERS
7 oz pkg
4 - \$1

Generic large roll
PAPER TOWELS 2 - \$1

Generic Sliced 16 oz can
PEACHES 2 - 93¢

Generic 32 oz jar
SALAD DRESSING 79¢

Generic 4 roll pack
TOILET TISSUE 65¢

King Size
JOY
32 oz
\$1.49 27¢ OFF



CRISCO
3 lb. can
\$2.15



BREAKFAST ITEMS

Shurfine Unsweetened 46 oz can
ORANGE JUICE 89¢

Shurfine Unsweetened 46 oz can
GRAPEFRUIT JUICE 79¢

Weichs 2 lb jar
GRAPE JELLY \$1.49

Maryland Club 1 lb. can
COFFEE \$1.79

Kraft Parkay 1 lb. qtrs.
MARGARINE 59¢

FROZEN FOODS

Shurfine 8 oz ctn
WHIPPED TOPPING 59¢

Shurfine Frozen
KRINKLE CUT POTATOES
2 lb bag **79¢**

Shurfine Frozen 14 oz box
DONUTS 89¢

SPECIAL- SPECIAL

12 oz can six pack
COKES \$1.69

MEAT

Owens **SAUSAGE**
1 - \$1.69 2 - \$3.37

Owens **CHILI \$1.79**

Wilson's **BACON 2 - \$2.98**

Generic **CHEESE \$1.29**

PRODUCE

California Navel
ORANGES 39¢

GRAPEFRUIT 6 - \$1

U.S. #2

WHITE POTATOES 20 lb. bag **\$1.99**

bunch
GREEN ONIONS 2 - 49¢

bunch

RADISHES 2 - 49¢

Specials Good

Jan. 14-Jan. 16, 1982

WE ARE YOUR
TOP STAMP
REDEMPTION CENTER



NONE MORE VALUABLE