

John C. Haynes 1  
Box 400  
McLean Texas 79057

# The McLean News

Serving McLean and the Area Since 1903

Volume 79 McLean, Gray County, Texas 79057 Thursday, December 16, 1982 Price 25¢ Number 50

from the distaff side



by Linda Haynes

The first annual Chamber of Commerce Christmas Bake-Off was a moderate success, despite a pesky three-hour snow storm which kept some of our contestants away. The participants and spectators who did fight the storm were treated to a sampling of 20 different Christmas desserts, which were really outstanding. Our two judges, a mother and daughter pair from White Deer, Joanna Warminski, the Gray County Extension agent, and her mother Proxie Warminski, were veteran judges. They have been judges numerous such events in the past, and they commented on the fine quality of entries.

As with all new projects, this undertaking had some flaws, but we learned several things to change when we try it again next year. We will have wider advance publicity, in the first place. Since the purpose of the contest is to encourage shopping in McLean, it is probably a good idea to advertise the contest in some of the area towns, and get their good cooks to come here. All the prize money is in "McLean Bucks" which can be redeemed at the businesses of members of the McLean Chamber of Commerce, so all the money certainly stays in McLean.

For those of you who missed sampling the goodies on hand at the contest, you can still get a chance. A small cookbook featuring all the 27 recipes entered in the contest is now on sale at the Potpourri, the McLean Variety, and The McLean News for \$1.25 per copy. We printed only a limited number, so be sure and get your copy soon. We are featuring the three winners in this week's paper, but to get the rest of the recipes, you'll have to buy the booklet.

I hope you have been doing your sit-ups, deep knee bends, and breathing exercises, getting in shape for the activities of the next two weeks. I'm not sure why we all feel so compelled to pile one activity on top of another the few days before Christmas each year, but it never seems to change. Between church activities and school activities, parties and family gatherings, there won't be a minute to waste.

Sometime during the See DISTAFF, Page 2

## McLEAN WEATHER

Date	High	Low
12-7-82	50	30
12-8-82	30	22
12-9-82	34	21
12-10-82	43	31
12-11-82	33	26
12-12-82	45	21
12-13-82	52	28

Precipitation for week .50 inch.

## McLean School's Finances Strong, Board Told By Auditor

"The financial condition of the school district is very strong," Dennis Cleaver, the school's auditor from Amarillo, told the McLean School Board Monday night during their regular meeting.

Cleaver presented the 1981-82 McLean Independent School District audit for the board's approval.

The audit shows that, as of Aug. 31, 1982, the school had no bonded indebtedness, and had no outstanding loans. The district's tax base for 1981, based on 100 percent evaluation, was \$57,539,386.

Business manager Shirley Johnson said that there was a chance that that figure

might be drastically reduced this year. "This amount includes cattle and farm implements, which we will no longer be able to tax," she said.

"If the oil and gas production stays down, the tax base might decrease by as much as \$10 million," she said.

The ratio of taxes collected for 1981 was 95 percent. "I talk to other auditors whose schools collect much less than 90 percent of their taxes. This ratio is really fantastic," Cleaver told the board.

Total cash revenues for the district were \$336,929.50 Mrs. Johnson said that that amount would operate the school district for about five

months. "That gives us enough to operate until the tax roll comes in in January without borrowing money, and paying interest," she said.

The value of the land,

buildings, and equipment (including the new administration/science building) is \$1,111,689.15.

The total budget was \$898,516.75.

Cleaver said that the amount of delinquent taxes was higher than usual, but Mrs. Johnson explained that she had one oil company which had not paid their taxes yet, pending litigation.

In other business, the board accepted a bid of \$113.13 from Martin Gately for an old Dodge bus.

Mrs. Jan Johnson, junior sponsor, asked the board for approval for having the Junior-Senior Banquet in Pampa, which the juniors have voted for. The board discussed the matter, and decided

to seek legal opinion concerning the board's liability for youngsters traveling in private cars to a school function. Board president Jim Allison told Mrs. Johnson that the board would have an answer for the class at the board's January meeting.

In discussing test reporting, Mrs. Johnson told the board that the school had received a letter from the Texas Education Agency stating that the results of the TABS (Texas Assessment of Basic Skills) test would be sent to the agency in

the future. The agency will also require the school to develop plans for those who fail the exit-level test.

Attending the meeting were board members Lloyd Hunt, J.C. McAnear, James Hefley, Joe Magee, Tony Smitherman, Jim Allison, and Darryl Herndon; business manager Shirley Johnson; principals Dorman Thomas and Ron Cummings; Jan Johnson; Dennis Cleaver; and Linda Haynes. Superintendent Jim Rutherford was absent because of an illness in the family.

**KIDS:**  
Address your Santa letters -  
Santa Claus  
Box H  
McLean, Tex. 79057

Mail today!

## Santa Claus To Arrive At 2 Saturday

Santa Claus will make his annual visit to McLean Saturday, Dec.

18 at 2 p.m. He will come to the downtown area on a McLean fire truck, and

will dispense candy, nuts, and fruits to all the children who come to see him.

## McLean Tiger Scott Stubbs Named To All-District Football Team



MHS JUNIOR SCOTT Stubbs is receiving congratulations from coach Joe Riley who informed

Stubbs that he had been named to the first team of the All-District football team. [Photo by Linda Haynes]

McLean junior lineman Scott Stubbs was named to the first team defense on the All-District team for Class I-A. Stubbs was the only member of the Tiger team to be named to the elite team. He was also named honorable mention guard on offense.

Only one other underclassman, Joe Martinez of Booker, a sophomore, was named first team All-District.

According to coach Joe Riley, the district's coaches changed the format of the All-District team this year, eliminating the second team. "We felt that this makes the honor all the more prestigious," Riley said.

Stubbs, the son of Becky Stubbs of McLean, and Bob Stubbs of Alanreed was named honorable mention on the All-District football team his sophomore year. He was a regional qualifier in track last year, also. The 6'1½", 155 lb. junior runs the quarter and the mile relay in track.

and participated in the broad jump.

Members of the All-District defense team are lineman Wade Willis of Wheeler, Scott Stubbs of McLean, Tim Bremmer of Booker, and Joe Martinez of Booker; ends Kyle Lynch of Phillips and Billy Westmoreland of Wheeler; linebackers Pablo de Santiago of Booker, Larry Moffitt of Phillips, and Todd Bourquin of Follett; secondary Gary Mills of Booker, Scott Wright of Wheeler, Monte Baskett of Lefors, Todd Brown of Claude and Christ Wiley of Follett; and punter Cody Allison of Lefors.

Members on the All-District offense team are center Russell Ives of Follett; guards Pablo de Santiago of Booker and Manson Porter of Wheeler; tackles Wade Willis of Wheeler and Joe Martinez of Booker; ends Kyle Lynch of Phillips, Billy Westmoreland of Wheeler, and Mike Mounsey of Booker; quarterback Galen Kunka of Follett and Greg Ammons of Booker; running backs Gary Mills of Booker, Scott Wright of Wheeler, and Todd Bourquin of Follett; and place-kicker Wade Willis of Wheeler.

## School To Present Christmas Musical Monday

The McLean schools will present two Christmas musical programs next week. Monday night beginning at 7 p.m., the first, second, third and fourth graders will present "Jimmy in Santa Land", and the high school band will present traditional Christmas songs. On Tuesday morning at 9:30 a.m., the beginner band (fifth grade) and the junior high band will perform in the gymnasium.

"Jimmy in Santaland" is directed by Mrs. Bobbi Stalls, Mrs. Maudene Rutherford, and Mrs. Jody Thomas. Cash Carpenter is Jimmy, Jimmy Cummings is dad, Jonathan Middleton is Tim, Sheva Seymour is Mary, Hollie Hauck is Ella, Melissa Thompson is the spirit of Christmas, and J.T. Haynes is Santa. The soldiers are Michael Barker, Will Shaw, Tanner Hess, Cody Gabel, and Tuffy Sanders. The clowns are Jeremy

Thomas, Daniel Fargis, David Johnson, Destry Magee, and Clav McCracken.

The teddy bears are Britten Shipman, Chris Littlefield, Jerrett Coleman, Quillian Rutherford, and Vance Coleman. The storybook dolls are Mindy Magee, Joetta Bailey, Melissa Darsey, Katicia Littlefield, and

Erin McCracken. The Dixiebell Dolls are Hollie Hefley, Lisa McClellan, Juliana Crockett, Lee Erin Stubbs, and Patsy Barker.

The high school band will play following the elementary program. The band, under the direction of Francis Adamson, will perform "Sounds of Christmas", "The

Twelve Days of Christmas", "Carol of the Drum", and "An Old English Christmas."

Tuesday morning, parents, grandparents, and friends are invited by Ms. Adamson to hear the beginner band and the junior high band. The beginner band will play "The Carnival of

Venice", "The Army Song", "Round", "Marine's March", "Jingle Bells," and "Silent Night."

The junior high band will perform "Two French Carols," "Silent Night," "It Came Upon A Midnight Clear," "Frosty the Snowman," and "Santa Claus is Coming to Town."

## Ice Storm Causes 10 Wrecks

An ice storm in the McLean area last week brought the town about .30 of moisture, but was a contributing factor in 10 wrecks over a two day period near the city, according to Department of Public Safety trooper Ron Shank.

The string of accidents began Wednesday morning at 4:30 a.m. when Nicanor Sifuentes of Los Angeles, Calif. lost control of his 1970 Chevrolet pickup on Interstate 40 4.4 miles west of Alan-

reed. The vehicle turned over one time and came to rest on its wheels in the right hand ditch. The driver was not injured.

At 6:30 a.m. Dec. 8, 6 miles east of McLean, Raymond E. Goodwin of Okla. City, Okla. driving a 1980 GMC cabover truck-tractor lost directional control on the icy road, and ran off the road on the right side. The truck overturned and came to rest in the right ditch. The driver was injured and taken to the

Shamrock Hospital by the McLean Ambulance Service.

At 10:31 Dec. 8, Jeffrey S. Knatt of Rankin, driving a 1969 Dodge Charger lost directional control, and slid into the median. A 1971 Datsun which he was towing came unhooked and overturned. The driver was not injured. This accident occurred 7.3 miles east of McLean.

At 10:37 Dec. 8, Ila Double of Woodstock, Ill.

driving a 1978 Oldsmobile Cutlass was pulling a trailer 7.3 miles east of McLean on I-40. She lost directional control, the trailer jackknifed, jerked the bumper off, and overturned coming to rest in the right hand ditch. The driver was not injured.

At 11:13 a.m., Dec. 8, 7.5 miles east of McLean on I-40, Ira Williams White, driving a 1972 Dodge van, lost direc-

See WRECKS, Page 2

## Church Activities For Christmas Week

### Christmas Cantata Is Sunday

The choir of First United Methodist Church in McLean, along with some members of the choir of First Baptist Church, will present a Christmas cantata, *The Nativity Song*, Sunday at 7 p.m. in the sanctuary of First United Methodist Church. The text of the

cantata was written by Edith Tillotson, and the music is by Roy E. Nolte.

Soloists are Jacquie Riley, Jan Roberts, Ida Hess, Lisa Patman, and John M. Haynes. Organist is Mrs. Joyce Haynes; pianist is Bryan Smitherman. The cantata is directed by Mrs. Bonnie Fabian.

### Assembly Youth Will Present 'Christmas in my Hometown'

The Assembly of God Church will celebrate Christmas Sunday night at 7:30 p.m. when the junior and senior high school classes will act out "Christmas in My Hometown." The nativity

scene will be pantomimed by the beginner and primary classes. Both groups will also present traditional Christmas music. The high school class will play a musical of "Silent Night."

### Baptists Plan Children's Program Sunday At 7 p.m.

The First Baptist Church of McLean will have a Christmas program at the church Sunday at 7 p.m. The child-

ren of the Sunday School department will present songs. Treats and refreshments will be served, and visit from Santa Claus is expected.

### Methodists Plan Activities

The First United Methodist Church is planning several activities for the Christmas season. The McLean church will have its annual Christmas party

and visit from Santa Claus Wednesday night at 7 p.m. at the church. On Christmas Eve, a communion service will be held from 5 p.m. to 7 p.m. See CHURCH, Page 2

# OPINIONS

VIEWS ARE WRITTEN BY LINDA HAYNES UNLESS OTHERWISE NOTED-IF YOU HAVE AN OPINION ON ANY CURRENT SUBJECT WE WELCOME YOUR SIGNED LETTERS.

## Christmas Surprise!

A new and distressing feature has been added to Christmas in the McLean area this year. Along with unexpected gifts, cheery Christmas greetings, and the traditional boxes of fruit, many families are receiving another kind of surprise through the mail...job termination notices.

With the continuing slump in the oil and gas industry, many firms are finding that it is necessary to lay off more and more workers, and several McLean and area families have been among those affected. Why the companies could not have chosen either an earlier time or a later time for this action is a mystery. To lose the security of a job is bad enough, but to have that job jerked from under you at Christmas time seems to make the situation even worse. However, the "bottom line", the margin of profit, is the primary concern of the big companies, so the workers have to go when they are no longer needed.

As time goes on, this "minor" recession looks more and more major, and those who live in our area of the country are beginning to feel the pinch along with the rest of the nation because of our strong dependence on the oil industry.

You may think that your income does not depend on the oil industry, but if you live in or around McLean you are affected. For one thing, the oil companies pay the lion's share of the taxes, and if they aren't here to pay them, then guess who gets the bill?

It is in our own best interest to work for a renewal and a regeneration of the business. Perhaps it is time now for us to call President Reagan's hand, and remind him of his campaign promise to do away with the windfall profits tax, and to deregulate the gas prices. If those things happen, then perhaps we will have a merrier Christmas in 1983.

## Class Has Christmas Party Dec. 11

The Mary Martha Sunday School class of the First Baptist Church held their Christmas Party in the Church Fellowship Hall on Saturday, Dec. 11 at 2:30 p.m.

Lilly Mae Williams, class teacher, was hostess and Bea Lester was co-hostess for the party.

The serving table was centered with a white lace cloth and centered with a Santa Claus and Mrs. Claus. Poinsettias and holly, and the birthday cake were also used.

The opening prayer was offered by Clara Maude Hupp.

Loree Barker, president, presided over the meeting and took care of class business.

Bonnie Bidwell was in charge of the fun and

quessing games.

Mary Lou Throckmorton brought the devotional.

The birthday girls were Essie Howard and Dood Turner.

A table was covered with a Christmas cloth and centered with a lighted ceramic Christmas tree and gifts were exchanged among the members present.

Refreshments of birthday cake, spiced tea, home made candy and nuts were served to Loree Barker, Essie Howard, Dood Turner, Lucille Cullison, Bonnie Bidwell, Gladys Smith, Mary Lou Throckmorton, Lenie Smith, Jessie Watson, Clara Maude Hupp, and hostesses Bea Lester, Lilly Mae Williams and a visitor Cindy Bruce.

WE CAN'T CUT ONE DOWN OURSELVES - WE DON'T BELIEVE IN VIOLENCE!



## DISTAFF

hurly-burly of this hectic season, I hope you take time to think about the different organizations in McLean that could use your help. These groups provide much-needed services the year around to different people in town, and inflation and the relatively poor economy have affected them as much as it has your pocket book.

If you would like to do something special to remember a loved one at this time of the year, how about a gift to the Alanreed-McLean Museum. This organization is the only one in existence which has as its sole purpose the preservation of the history of this area. The treasury of the museum is relatively empty, and they could use your help to pay their utilities to keep the place open.

Or how about a gift to the Young-At-Heart Club? This senior-citizens group provides a vital service to our town's older citizens. Since many of them are on fixed incomes, they can't always donate enough to keep the club going.

Or how about sharing some of your blessings with the McLean Ambulance Service? I don't need to tell you what a vital service this organization provides. It would be in your selfish best interest to see that the ambulance service has all the equipment it needs. It might save your life someday.

Don't let this season of generosity and good will pass without sharing something with these worthy organizations. Then, when Dec. 31 rolls around, and your conscience demands "What have you done for someone else this year?" You'll have an answer.

Kids, don't forget that your letters to Santa Claus must be in the McLean News office by tomorrow (Friday) so that they can be published in our Christmas edition next week. Either mail



In one year, hens in America lay enough eggs to encircle the globe 100 times.

your letters to Santa Claus, Box H, McLean, Tx. 79057, or bring them by the office at 210 N. Main.

## WRECKS

Continued From Page 1

tional control on the icy road, moved off the pavement into the median and overturned.

Thursday, Dec. 9, the wrecks began at 9:15 a.m. 8 miles east of Alanreed when Ronald H. Johnson of Pulaski, Tenn., driving a 1980 Kenworth conventional truck-tractor, moved to the right side of the highway and struck a 1979 Pontiac Trans Am which was parked on the side of the road. The driver of the Trans Am was Nicholas Hicks of Leesburg, Ind. There were no injuries.

At 10:15 a.m., 6.9 miles east of McLean, Glenna M. Hale of Anderson, Ind., lost directional control on the icy road, and moved to the right off the paved roadway into the ditch. The car rolled over onto its top and came to rest in the ditch. The injured woman was taken to Shamrock Hospital by the McLean Ambulance.

At 10:30 a.m., 4 miles north of McLean, Nathaniel Dean Smith of Pampa, driving an International truck-tractor, lost directional control and ran off the road on the west side. The truck stayed upright but the semi-trailer turned over. The driver was not injured.

At 10:47 a.m., 6.9 miles west of Alanreed, Kermit Rife of Lebanon, Tenn. lost control of his 1980 Peterbilt truck-tractor. The truck ran off the roadway to the right and landed on its side in a canyon. The driver was not injured.

At 1:41 p.m., Edward Sanders of McLean was driving a 1981 Ford Ranger three miles east of McLean on a Gray County dirt road when the vehicle ran off the roadway to the right and struck an embankment and overturned. The vehicle came to rest upside down in the right hand ditch. Sanders was taken to Shamrock Hospital by the McLean Ambulance.

## On Your Payroll

SENATOR BILL SARPALIUS, P.O. Box 12068, Austin, Texas 78711 or P.O. Box 7926, Amarillo, Texas 79101, or call 512/475-3222.

REPRESENTATIVE FOSTER WHALEY, Texas House of Representatives, P. O. Box 2910, Austin, Texas 78769.

REPRESENTATIVE JACK HIGHTOWER, 13th District, Room 2348 Rayburn Building, Washington, D.C. 20515.

SENATOR LLOYD M. BENTSEN, Room 240, Russell Building, Washington, D.C. 20510

SENATOR JOHN TOWER, Room 142, Russell Building, Washington, D.C. 20510

Continued From Page 1

Next week will be our final edition of The McLean News for 1982. We will take our annual va-

cation the next week, so don't expect to find a paper in your post office box Dec. 30! Publication will resume as usual the following week.

## Senator Bill Sarpalius Reports



### FAMILY VIOLENCE

AUSTIN - The number of reported cases of family violence in Texas has been increasing in the last few years. Many attribute this to the current economic conditions that have brought stress to all our homes. Regardless of the reason, this serious situation merits our attention and actions.

The following is a collection of statistics concerning family violence that we feel demonstrate the extent of the problem. One out of every two U.S. women will be beaten sometime during her married years. The FBI considers wife beating the most underreported crime in the country, with one beating every 15 seconds. In one half of spouse-abusing families, the children are battered as well. One out of every 10 older persons living with a family member is abused. The majority of people in Texas prisons and 60% of the men who batter come from violent homes.

Additionally, conservative estimates are that 87,000 Texans are subject to spouse abuse on at least a weekly basis (about 2% of that number are battered men). There are only 450 shelter spaces currently available in the State - this is over 7,000 persons in need for each space.

In response to this growing problem the Senate Human Resources Committee, upon which we serve, has conducted an interim study on the various family violence issues. Their recommendations and findings are now being finalized. There are a few of these recommendations that we have specific interest in, such as developing service models for rural areas, and public education and awareness programs.

There is a definite need for

extending the services provided by the 35 member family violence centers to the rural areas. Due to increasing demand at their urban locale and limited resources, these centers cannot engage in as much rural extension service as they would like or the outlying areas need.

What is suggested is that the Family Violence Program of the Texas Department of Human Resources (TDHR) develop and implement program models designed to improve delivery of services to isolated areas. Funding for this endeavor will come from the state funds appropriated for the Family Violence Program plus additional state, local, or private sources that are available.

Increased public education and awareness is needed to improve society's response to violence within families. This education could increase awareness of existing services, encourage people involved in spouse or elderly abuse to take steps to eliminate the violent behavior, and increase the reporting of such cases.

It is suggested that the TDHR pursue specific educational activities that will raise the public awareness as to family violence. This should include specialized educational programs designed for the people directly involved in violent family situations.

We feel that the people of Texas are our most valuable resource and therefore deserve any protection that this state could provide. We hope you feel the same. If you have any comments concerning the work of the Senate Human Resources Committee please write Senator Bill Sarpalius, P. O. Box 12068, Austin, Texas 78711.

## CHURCH

Continued From Page 1

p.m. The annual Christmas Eve family celebration at the Heald church will begin at that church at 7 p.m.

Sunday morning, the youth of the church will have charge of the service. The high school class will present a first-person speech by "Joseph", a special Little People's sermon, and traditional Christmas hymns interspersed with scripture readings.

Sunday night at 7 p.m. the church will be the setting for the annual Christmas cantata "The Nativity Song."

## SPORTS SHORTS

### BOWLING WITH THE BIG ONES

When does the average sports fan get a chance to play with a Bjorn Borg? Or tee off with a Jack Nicklaus? Or team up with a Reggie Jackson? The average bowler will have a "dream come true" with a chance to meet and actually compete with legendary stars of bowling and at the same time help build the latest sport shrine where the game's greats are honored.

LINES by LEM O'RICKK



The loud "Nuke" protestors aren't fair, Although they seem really to care; With countenance regal, They lambast the Eagle; And ignore the mean old Red Bear!

CHRISTMAS DECORATING CONTEST JUDGING: Tuesday evening Leave Your Lights On!!!!

## SUBSCRIBE TO

The McLean News

IN-COUNTY RATE-\$12 per year  
OUTSIDE GRAY COUNTY-\$14 per year  
SPECIAL 9-MONTH STUDENT RATE-\$9

You can subscribe by mail by completing the form below and mailing with your check or money order to:

THE McLEAN NEWS  
P.O. DRAWER H  
McLEAN, TX. 79057

NAME \_\_\_\_\_

ADDRESS \_\_\_\_\_

CITY \_\_\_\_\_

STATE \_\_\_\_\_ ZIP CODE \_\_\_\_\_

YOUNG AT HEART CLUB ACTIVITIES  
Quilting every Tuesday, with  
Pot Luck Dinner  
Everyone Welcome



COME ONE AND ALL TO GAMES:  
Thursday night and Saturday night  
and  
Daily Monday through Friday

Don't Miss Our Continuous  
WHITE ELEPHANT SALE

ALL THIS AND MORE  
AT McLEAN'S SENIOR CITIZENS  
BUILDING-112 E. Main



## COW POKES

By Ace Reid



"President Tuernal, how could I be \$300.00 overdrawn? I never did have that much money!"

"COWPOKES" is brought to you by the friendly folks at the  
**American National Bank In McLean**

779-2461  
201 N. Main  
McLean, Texas



**The McLean News**  
USPS 336-260  
LINDA HAYNES,  
EDITOR AND PUBLISHER  
LISA PATMAN, ASSOCIATE EDITOR  
201 N. Main P.O. Drawer H  
McLean, Texas 79057

**TEXAS PRESS ASSOCIATION**  
AWARD WINNER  
1982

McLean, Gray County, Texas  
Published each Thursday  
[except the last week in December]  
Second class postage paid at McLean, Texas 79057  
POSTMASTER: Send address changes to:  
THE McLEAN NEWS  
P.O. DRAWER H  
McLEAN, TEXAS 79057

SUBSCRIPTION RATES:  
\$12 per year in Gray County  
\$14 per year outside Gray County  
ADVERTISING RATES:  
\$2.00 per column inch National Rate  
\$1.85 per column inch Open Retail Rate

McLean, Texas  
Population 1183 [1970 Census]

**MEMBER 1982**  
**TEXAS PRESS ASSOCIATION**

# Area Ambulance Elects Slate Of Officers Recently

McLean Area Ambulance Association will have a new slate of officers beginning Jan. 1, 1983.

McLean's only Paramedic will serve as the group's president. He replaces Glen Curry, a charter member of the ambulance association.

Curry will aid Thomas by serving as Operations Supervisor during 1983. The position was created by an amendment to the bylaws of the organiza-

tion. "We felt the need for an experienced member to supervise all our operations, and Glen Curry is the most knowledgeable

in that area. He has been a dedicated member since the organization of the ambulance service," said Lisa Patman, who is retiring as secretary of

the group. She will be replaced by Lynda Syfrett. Mrs. Syfrett, and Darryel Herndon, who was elected vice-president for the coming year, are new members of the recently reorganized ambulance association. Herndon replaces Jake Hess II.

The officers were elected Dec. 9 at the regular meeting of the organization. The group also passed several bylaw changes, including one which lowers the age requirement to 18 for membership.



**GOLDIE'S PIZZA**  
113 N. Main McLean  
(Turn Left at the light)  
**OPEN 11-9 WEEKDAYS**  
**2-9 SUNDAY**  
WE HAVE TAKE-OUTS, TOO !!!  
779-8893

## Alanreed Briefs

Mr. and Mrs. James Armbrister shopped in Pampa on Sunday.

Visiting Mrs. Bert McKee Sunday were her sister-in-law Rub Bains and daughter and a friend from Memphis. Mrs. Bains is the widow of Roy McKee, brother to Bert. They were here when Mr. McKee expired at 3:30 p.m.

Margie Prestidge of Lefors was here on business Sunday.

Visiting Onie Gibson Sunday were Danny Lee and Terry Pettit of McLean. They were helping Onie lay a carpet. Doyle Lee also came.

The 4-H project of embroidery conducted by Polly Harrison has been tabled until after Christmas. We will take up crochet then, and all interested are advised to see Mrs. Harrington or Lena Carter.

Mr. and Mrs. Noble Fish visited with Jewel Warner recently and brought some very fine turnips they had grown.

The annual Christmas

party of the Alanreed Homemaker's club cancelled Wednesday due to the weather and the fact that Donna Branchi, the main guest, was unable to come over the terrible roads.

The Danny McLains

had daughter and husband and their brand new baby visiting last week.

Betty Finley returned to her home last week from the Shamrock hospital.

The Bert McKees

daughter, Margie, of Spearman visited with them Sunday.

Visiting Jewel Warner recently were Dwight Hightower and son Richard Wagner and Mildred Tanner of Okla.

City, Bob Dudley and son, Denver, Colo., Glenn Reynolds and Debbie Reece of Odessa. Peggy Eckroat and Gale Clark, Pampa, Peggy Leeder, Sharon and Mary Davis, Robert Holt and Ruth Cross of Norman, Okla.

## Services For Bobbie Simpson Tuesday

Bobbie Louvena Simpson, 71, died Sunday in Amarillo.

Services were Tuesday in First Baptist Church

with the Rev. Buell Wells, pastor, officiating.

Mrs. Simpson was born in Doans. She moved to McLean from

Kansas City, Mo., in 1927. She married Joe Simpson in 1934 in Erick, Okla. She was a member of the First Baptist Church.

Survivors include her husband; a son, Mike Simpson of Grand Prairie; five sisters, Ruth Johnson of Iowa Park, LaVada Reed of Amarillo, Geneva Mann of McLean, Joyce Wallace of Ukiah, Calif., and Jolene Rawls of Shamrock; three brothers, L.R. Blevins of Carmichael, Calif., Manuel Quarles of Dupont, Colo., and Mike Quarles of Wichita Falls; and three grandchildren.

## Mrs. Fabian Sets Recital

Mrs. Bonnie Fabian will present her piano and voice students in recital Wednesday afternoon at 3:45 in the Fellowship Hall of First United Methodist Church in McLean.

Performing in the recital will be Patsy Barker, Dana Watson, Heidi Syfrett, Lee Erin Stubbs, Debbie Cornett, Judy Kennedy, Angie Glass, Shawn Crockett, and Nova Cornett.

## Methodist Women Meet

The Susanna Group of the United Methodist Women met Dec. 14 at the church, for their quarterly birthday luncheon.

Katy Graham called the meeting to order and presided over a short

business session. Robbie Wilson gave a program on "The Importance of Bethlehem." The prayer before the meal was given by Beatrice Foster. Members attending were Marjorie Jones, Eva Peabody, Gene Longino, Beatrice Foster, Grace Glenn, Sophie Hutchison, Beulah Humphreys, Robbie Wilson and Katy Graham.

Guests were Ruth Magee, Mary Powell, Betty McCurley, Fern Boyd, Nancy Billingsley, Judy Orrick, Janet McCracken, and Erin and Moriah McCracken.

## Piano Students Plan Recital

Mrs. Ida Hess will present her piano and voice students in a Christmas recital Tuesday afternoon at 4 p.m. in the sanctuary of First United Methodist Church in McLean.

Performing in the recital will be Brandy Kay Melton, Dollie Lee Haynes, Shandee Ruth Rice, Tiffany Jean Lopez, Julianna Crockett, Misty Mae Magee, Kara Lynn Tate, Rhonda Glass, Darla McAnear, Holly Brook Hefley, Beck McCarty, and Heather Elizabeth Hess.

## Lucy Couch Buried Here

Graveside services for Lucy T. Couch, 92, were Tuesday in Hillcrest Cemetery with the Rev. Billy Wilson, pastor of First United Methodist Church, officiating.

Mrs. Couch, a former McLean resident, died Thursday in Sheridan, Wyo.

Survivors include a son, a daughter, a sister, six grandchildren, and three great-grandchildren.

Some books are to be tasted, others to be swallowed, and some few to be chewed and digested.

Bacon

When a man wants to murder a tiger he calls it sport; when a tiger wants to murder him he calls it ferocity.

Bernard Shaw

## McLEAN BRIEFS

Mrs. Jim Stevens and her daughter, Evelyn Blaylock of Amarillo, attended the performance of "The Nutcracker" in Amarillo Sunday.

Visiting Helen Black Sunday were her granddaughter and husband, Evan and Duane Smith, of Amarillo.

## Loose Marbles

by Lisa Patman

It was the night before Christmas, and all through the house, not a creature was stirring... except Old Mom, who was Trying to wrap the last Christmas presents, Looking for the scissors, Trying to find the Scotch tape, Cursing the turkey, Hating the cranberry sauce, Muttering ugly things about her spouse, who was snoring away and who hadn't bought her anything for Christmas, Kicking the cat, Cramming the junk into the stockings of the kids who hadn't picked up their dirty jeans since last Christmas, Dreading the January charge card bills, Wishing all those relatives wouldn't show up for Christmas dinner, Trying to find enough unchipped plates to feed them all, Despising the molting Christmas tree, Wishing Santa would go soak his head, Wondering why she had ever had children, Wishing she could check into the nearest home for the horribly insane, Screaming at the dog, Searching for the stupid hamster, Hoping that ten pounds would miraculously disappear from her hips, Wondering if she would ever get to go to sleep again, and in general, Thinking Scrooge wasn't such a bad fellow after all!

## McLean Briefs

Visiting with Onie Gibson Monday were her grandsons Kelly Vineyard of Idalou and Johnny Vineyard of Lubbock.

Visiting Corinne Trimble are her son and his wife, Mr. and Mrs. Norman Trimble, of Ashland, Kentucky.

Recent guests in the home of Mr. and Mrs. Evan Sitter were their children Spencer of Santa Fe, Mr. and Mrs. Bill Foster of Sherman and Mrs. Richard Dennis of Dallas.

Give your best Tiger or Tigerette a terrific TIGER BLANKET THROW this Christmas! We have them at The Potpourri!



## Family Gift Center

**TAKE 10% to 30% OFF your total purchase this Thursday, Friday, and Saturday!**

Select your purchases, then draw to see how much your discount will be!!!!  
You'll save from 10 to 10% on your total purchase!

Register from now until Dec. 24 for a drawing to win a Ronco Clean-Air Machine.

Be sure to check our in-store specials!

## The Potpourri Gift Shop

779-2251      212 N. Main, McLean



CROWNED LITTLE MISS and Master of Donley County Dec. 4 were Tommy Stamm, son of Joy Stamm of Clarendon and Tracy McKinney, daughter of Mr. and Mrs. Edward McKinney of Clarendon and granddaughter of Mr. and Mrs. Chester Bohler of McLean. The two were crowned in the annual contest sponsored by Alpha Upsilon Epsilon. [Photo Courtesy of Club]



**Mary Kay COSMETICS**

Linda Sue Meador  
Beauty Consultant  
Box 657      (806) 779-2102  
McLean, Texas 79057  
"Happiness Is Having A Mary Kay Facial"

## PROGRESSIVE HOLIDAY Sale

FRIDAY, DEC. 17 9-6  
and SATURDAY, DEC. 18 9-5

ALL ITEMS OVER \$5 <b>5% OFF</b>	ALL ITEMS OVER \$10 <b>10% OFF</b>
ALL ITEMS OVER \$15 <b>15% OFF</b>	ALL ITEMS OVER \$20 <b>20% OFF</b>
ALL CHRISTMAS FELT ORNAMENT KITS 40% OFF	ALL LATCH HOOK KITS 30% OFF
WHILE SUPPLY LASTS	"TIL CHRISTMAS!"

NEXT WEEK WE WILL BE OPEN MONDAY THROUGH THURSDAY 9-7. CHRISTMAS EVE WE WILL BE OPEN 9-7

## McLean Variety

207 N. Main      McLean TX      779-2681

## The JOY of CHRISTMAS


SLEEPWEAR  
LINGERIE  
STOCKINGS  
SOCKS  
SCARVES  
TIES

CASUAL WEAR  
SUITS  
PANTSUITS

JEWELRY  
HANDBAGS  
ROBES  
HOUSESHOES

COATS  
JACKETS  
VESTS  
JEANS

SLACKS  
SWEATERS  
BLOUSES  
SKIRTS  
DRESSES



WE HAVE BEAUTIFUL GIFTS FOR YOUR BEAUTIFUL LADY, AT

## CORINNE'S STYLE SHOP

115 W. First McLean 779-2341

# McLean Cooks Take Home Prize Money In Christmas Bake-Off

Contestants, judges, and spectators at the McLean Chamber of Commerce Christmas Bake-Off braved a sudden snow storm Saturday morning to sample 20 Christmas desserts. Winner of the first prize of \$150 in "McLean Bucks" was Lillian Reynolds with a Vanilla Wafer Cake. Second prize of \$100 went to Vola Gay Richards for a Tunnel of Fudge Cake. Third prize of \$75 went to Carolyn Coleman for a Zucchini Cake.

Other contestants were Jeanette Cornett, Bessie Barker, Margaret Coleman, Ida Hess, Anita Thompson, Lisa Patman, Nova Cornett, Billie Kingston, Laura Lynn Bonner, Kathy Carter, and Bertha Smith.

Judges in the contest were Joanna Warminski of White Deer, the Gray County Extension Agent, and Proxie Warminski of White Deer, the immediate past president of the Texas Extension Homemakers Association. The judges sampled each dish, and judged the desserts on texture, taste, and appearance.

A limited number of recipe booklets containing the 27 recipes in the contest is now on sale at the Potpourri, the McLean Variety, and The McLean News.

Following are the winning recipes:

## VANILLA WAFER CAKE

Lillian Reynolds  
2 sticks butter or margarine  
2 c. sugar  
6 eggs  
1/2 c. milk  
1 box (10 oz.) vanilla wafers, crushed fine  
1 (7 oz.) package flaked coconut (2 1/2 cups)  
1 c. finely chopped pecans

1 t. vanilla  
Cream butter until fluffy, add sugar gradually, creaming until light and fluffy.

Add eggs one at a time, beating well after each addition. Blend in remaining ingredients. Pour into well-greased and floured 10-inch tube pan. Bake at 325 degrees for one hour and 25 minutes or until cake tests done.

## TUNNEL OF FUDGE CAKE

V.G. Richards  
1 1/2 c. soft butter  
6 eggs  
1 1/2 c. sugar  
2 c. flour  
dry frosting mix (double dutch)  
2 c. chopped nuts

Beat butter at high speed until fluffy. Beat in eggs, one at a time. Gradually beat in sugar by hand until fluffy. Stir in flour, frosting mix, and nuts until blended. Bake in greased bundt or 10-inch tube pan at 350 degrees for 55 to 60 minutes, until top is dry and shiny. Cool in pan for 2 hours. NOTE: This frosting mix and nuts are essential for success. Cake has a soft fudgy interior.

## ZUCCHINI CAKE

Carolyn Coleman  
1 1/2 c. oil  
3 squash  
3 c. sugar  
4 eggs  
3 c. flour  
1 1/2 t. cinnamon  
1 t. soda  
1 t. salt  
2 t. baking powder

Add squash and oil; blend. Add sugar and eggs, then blend in dry ingredients. Pour batter into greased and floured bundt pan. Bake 70 minutes. Cool and dust with powdered sugar, or leave plain.



LILLIAN REYNOLDS COLLECTED \$150 in McLean Bucks as first-place winner of the first annual Chamber of Commerce Christmas Bake-Off last weekend in McLean. [Photo by Linda Haynes]



VOLA GAY RICHARDS was the second-place winner with a Tunnel of Fudge Cake in the McLean Chamber of Commerce Christmas Bake-Off last Saturday. [Photo by Linda Haynes]



CAROLYN COLEMAN WON third place in the Chamber of Commerce Christmas Bake-Off with her Zucchini Cake. [Photo by Linda Haynes]

## Tigers, Tigerettes Play In Abbreviated Samnorwood Tournament Last Weekend

Bad roads and snowy weather forced cancellation of the first day's play in the Samnorwood tournament, and caused officials to make the event a single-elimination tournament.

The Tigerettes jumped to a 16 to 4 lead against Allison in their first game of the tournament Friday. At half time McLean was sitting on a comfortable 38 to 11 lead, and coasted

to a 60 to 35 win. Scoring for McLean were Maria Eck with 20; Eva Anderson with 15; Melanie Billingsley with 8; Stacy Smith, Stefanie Houdyshell and Kristi Thompson, each with 4; Sherry McLean with 2 and Patricia Rodgers with 1.

Saturday the girls met Hedley, and although they led throughout the game, Hedley managed

to outscore the Tigerettes 18 to 12 in the final quarter to take the game 58 to 54. Scoring were Maria Eck with 14, Stacy Smith and Stefanie Houdyshell with 12, and Eva Anderson and Sharla Todd with 8.

In their final game, McLean lost to Wellington 52 to 35. Scoring were Eva Anderson with 18, Maria Eck with 8, Sharla Todd with 4, Sherry McLean with 3, and Stefanie Houdyshell with 3.

The Tigers went into the tournament hoping to at least repeat their consolation victory of last week, but the single-elimination format spelled their doom. They lost their first game in overtime by a single point to

Allison. Allison led throughout the exciting contest, by 12 to 5 at the end of the first quarter, 23 to 19 at the end of the second quarter, and 36 to 29 at the end of the third quarter. The Tigers held Allison to one point in the final period, while totting up 8, to end regulation play tied at 37 all.

McLean scored 3 points in the overtime, but Allison managed to score 4 and win the game.

Scoring for McLean were Robert Swaner with 12, Billy Bybee with 8, Randall Wynn with 8, Scott Stubbs with 5, David Adamson with 4, and DeWayne Adamson with 3.

We have a new selection of Bibles, including the New King James Version. At The Potpourri Gift Shop

## Bert McKee Services Held

Bert Lee McKee, 81, died Sunday.

Services were Wednesday in the Alanreed Baptist Church with Vernon Henderson officiating. He was assisted by the Rev. Billy Wilson of McLean United Methodist Church.

McKee was born in Hunt County. He moved to Alanreed from Canyon in 1930. He married Juanita Palmer in 1932 at

Erick, Okla. He was a retired farmer. He was a member of First United Methodist Church of McLean.

Survivors include his wife; a son, Billy McKee of Amarillo; a daughter, Margie Alford of Spearman; two sisters, Lucille Jenkins and Emery Hamblin, both of Clarendon; a brother, George McKee of Clarendon; three grandchildren and a great-grandchild.

## Cubs, Cubettes Lose To Lakeview Monday

The McLean Junior High Cubs and Cubettes travelled to Lakeview Monday night for two games. The host teams won both the contests.

The Lakeview Eaglettes led the Cub-

ettes 14 to 8 at halftime and maintained that lead throughout the game. The final score was 33 to 19.

Jem Ann Rice scored 8 points, Tanya Cummings scored 4, Angie Reynolds scored 3, and Angie Pur-

cell and Terrie Lee each scored 2.

The Eagles jumped to an early lead over the McLean Cubs, with the first quarter ending 9 to 2. The teams went to the dressing room at half time with the Cubs just three points behind 18 to 15.

The third quarter found the lead seeing between the two teams, but Lakeview scored 12 points to McLean's 7 in the final period of play to end the game at 34 to 28.

Scoring for McLean were Clint Herndon with 11, Keith Christopher with 6, Darren Johnson with 5, and McCarty, Watkins, and Anderson each with 2.

CHIROPRACTIC CENTER  
310 S. MAIN  
SHAMROCK, TX. 79057  
ADD YEARS TO YOUR LIFE  
AND LIFE TO YOUR YEARS.  
YOU DON'T HAVE TO LEARN TO LIVE  
WITH BACK PAIN.  
TRY CHIROPRACTIC, IT'S A NATURAL!  
DR. BILL DOEBLE  
CHIROPRACTOR  
806-256-2133

## VFW, Auxiliary Meet For Holiday Dinner Dec. 7

The Ladies Auxiliary and Post members of the Johnnie Windom VFW Post # 8565 met for a holiday dinner and held in the post home on Tuesday, Dec. 7, at 6:30 p.m. Turkey, dressing and all the trimmings were served.

Those present were Mr. and Mrs. Earl Brooks, Mr. and Mrs. Richard Everett, Mr. and

Mrs. John Byrd Guill, Mr. and Mrs. Jake Hess, Mr. and Mrs. Junior Windom, Mr. and Mrs. Garland Arbuckle, Mr. and Mrs. Howard Gipsen, Mr. and Mrs. Jim Bible, Mr. E.J. Windom, Sr., J.D. Back, Jake Bible, Joe Cook, Mary Dwyer, Lucille Cullison, Adell Walker, Betty Lopez, and Ginger Morilla.

FOR A TEXAS CHRISTMAS, SHOP AT JOHNIE F. MERTEL BOOT SHOP GIFT IDEAS  
Boot Jacks  
Name Belts  
Billfolds  
Raincoats  
Buckles  
Tack  
Boots by:  
Tony Lama  
Justin  
Texas  
Acme  
We appreciate Your Business.  
Johnnie & Colleen

At This Most Blessed Time,  
We Wish You  
A Joyous Christmas  
And  
Thank Each Of You For  
Your Gracious and Warm  
Welcome To McLean  
The Methodist Parsonage  
Family  
Bill, Dorothy, Angie and Kim

## Watches Make the Timeliest Gift Ideas

It was as far back as the 11th century in England that the custom of bringing families and friends together at Christmas began.

Another holiday tradition that has been observed for centuries is the exchanging of gifts. Among the timeliest of presents are watches, and the selection please most anyone on your Christmas list.

There's a multitude of styles to choose from—all sizes, all shapes, and all designed with fashion know-how. Some sport leather straps while others circle the wrist with bangles, expansion bands or integrated bracelets. Dials, adorned with Roman or Arabic numerals or hour markers, often display calendar windows and sweep-second hands.

Mechanisms are just as varied—ranging from wind-up mechanicals to no-wind automatics and battery-powered quartz. Timex has something for everyone, at a price that won't pinch your Yuletide budget.

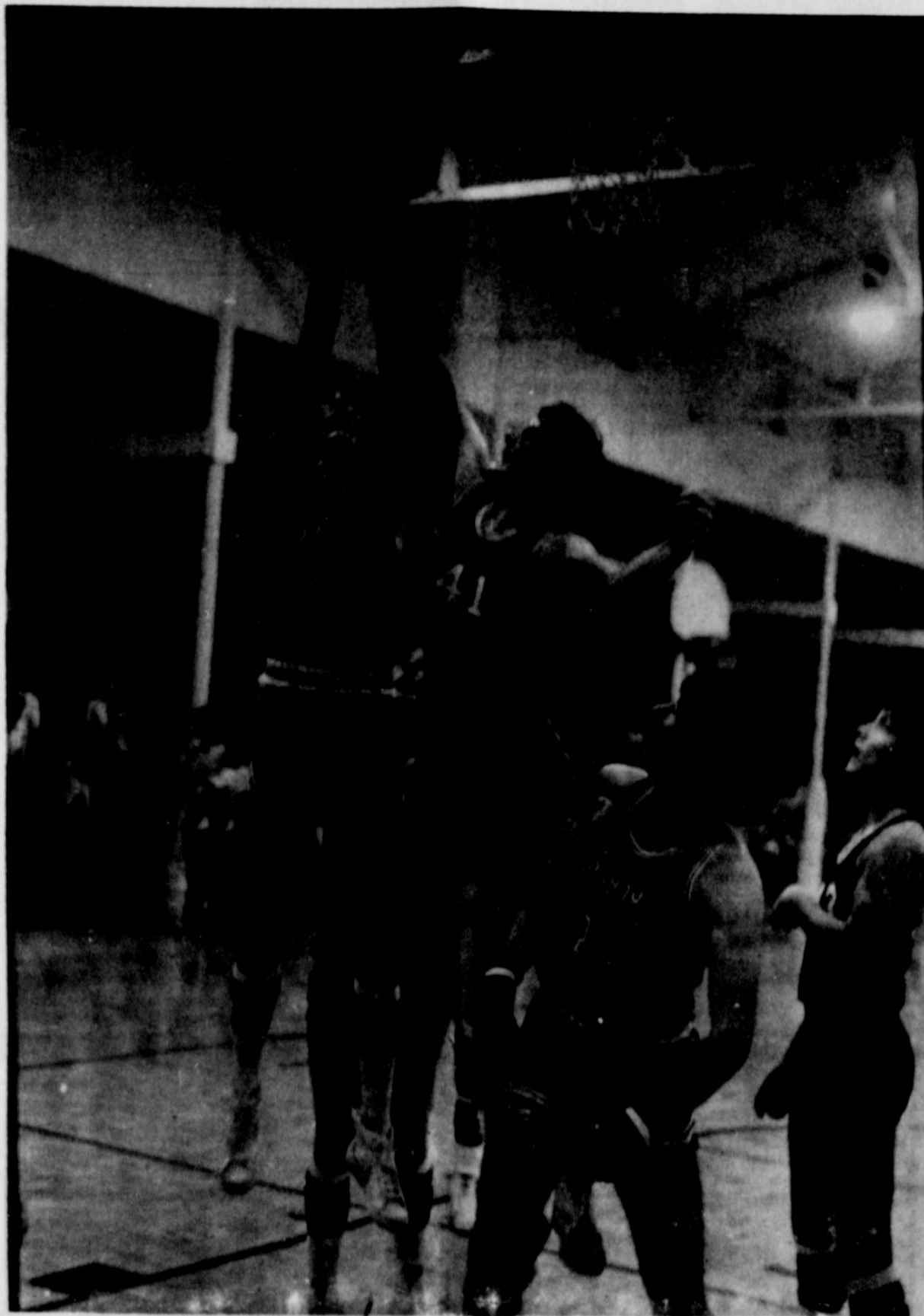
One thing's for sure—with watches on your Christmas list, you'll be receiving thanks for years to come.

While today, parties are not quite that elaborate—or that long—we continue to celebrate the holiday season with joyful get-togethers.

Parson's Drug  
117 N. Main McLean, Texas 779-2442  
FREE GIFT WRAPPING ON ITEMS OVER \$3!

Give A DUSTBUSTER to that Hard-to-Please name on your list. You'll find them at The Potpourri!

# basketball !



TIGER SCOTT STUBBS goes up for the basket during the McLean-Mobeetie game in McLean last week. [Photo by Linda Haynes]

## JOIN THESE TIGER BOOSTERS IN SUPPORTING THE McLEAN TIGERS BY ATTENDING THE GAMES:

**McLean Hardware**

**David Brown's  
Water Well Service**

**Parson's Rexall Drug**

**Judy's Atex**

**Corinne's Style Shop**

**Magee Ranch**

**Doctor Herefords**  
E. J. and Leta Mae Hess

**Hambright's  
Building Supply**

**Gately's Cafe,  
Gas, & Grocery**

**Terry's Electric**

**McLean Cattle  
Company, Inc.**

**Ted & Sue Simmons**

**B & B Turbine  
Engine Service**

Wayne, Sonie, Billy, and Vonda

**Curry's Processing**

**Denworth Line Camp**  
Johnny & Joyce Haynes

**Dairy Queen**

**McLean Atlas Plumbing**  
Jerry Don Cook

**Foshee's Texaco**

**American National Bank  
in McLean**

**Hallum's  
Backhoe Service**

**Martinez Ranch**

**Johnnie & Colleen  
Mertel Boot Shop**

**Jane Simpson  
Insurance Agency**

**Thomas Nursing Center**

**Cowboy Drive In**

**Bentley's Fertilizer**

**McLean Variety**

**L & P Chevron**

**Windom's  
Auto Supply**

**Haynes  
Triangle Ranch**  
Sam & Thacker Haynes

**Barker Redi-Mix**

**McLean Veterinary Clinic**

**Dixie Restaurant**

**Jerry Corbin Insurance**

**Puckett's Grocery**

**Lamb's Flower Shop**

**The Potpourri  
Gift Shop**

**Jake Hess II Family**

Jake, Ida, Tres, Tanner,  
and Heather

**City of McLean**

**The McLean News**  
Linda, Lisa, Sam and Kathy

**John Nash Texaco**

## News From Your Gray County Extension Agent by Joe VanZandt

### State Extension Conference

This week Extension Agents and Specialists from all over Texas will gather at Texas A&M University for our 1982 State Extension Conference. The theme for the conference is "Inspiring People for Programs."

During the five-day in-service conference, some 1,100 Texas Agricultural Extension Service professionals will attend three general sessions to hear national and state leaders discuss technology, advances, and take part in concurrent educational sessions and refresher courses to update their knowledge and skills.

The conference focuses on Extension's special role of providing informal education programs in agriculture, home economics, community development and 4-H and youth. It is designed to bring specialists and county Extension agents from all areas to the campus.

### Risk in Agriculture

When it comes to risk and uncertainty, farmers should be at the head of the line.

Managing a modern farm operation in today's complex and risky world is no easy task. Farmers face ever-changing conditions in the weather, market place and their total environment that make their business a gamble.

While farmers have always had to cope with various degrees or levels of risk, it's important for them to have a better understanding of the different sources of risk in the decision-making process.

**Production and yield risk:** Yields and production can vary greatly due to weather, diseases, insects, varieties, machinery, timing of practices and related factors.

**Market and price risk:** Prices paid for production inputs and received for farm products are affected by supply and demand conditions, trends, speculations, government programs, commodity cycles, seasonal variation and consumer demand.

**Business and financial risk:** Increased use of borrowed capital and larger capital investments have increased financial risk and put more pressure on maintaining an adequate cash flow.

**Technology and obsolescence risk:** Rapid development of new technology can make current production methods obsolete shortly after important investments are made. Thus there is a risk in adopting new technologies too late as well as too soon.

**Casualty loss risk:** Loss of assets due to fire, weather and theft can be devastating, especially in inflationary times.

**Social and legal risk:** Agriculture is subject to changing social attitudes that affect governmental laws and regulations dealing with such areas as environmental protection, use of certain chemicals, and land use planning.

**Human risk:** Farming is a hazardous occupation, and accidents and health problems can be critical to the survival of the operation, particu-

larly during crucial production periods. Dishonesty and undependability of business associates also can undermine an efficient operation.

### KEEPING HOLIDAY PLANTS HEALTHY

Here's hoping you're among the happy group whose Christmas decor is graced by a beautiful flowering plant. Let's take a look at several of the more popular Christmas flowers and how you'll want to care for them to prolong their beauty.

Poinsettias outrank all other Christmas plants combined in popularity. They are well adapted to indoor temperatures so long as they're out of hot or cold drafts. Put them near a bright window and aim at keeping the soil evenly moist, not wet or dry.

Poinsettias used to be pretty sensitive to a greenhouse environment to that of a home, with leaf and flower drop being a common problem. But now, with newer varieties you can just about plan on poinsettias on Valentine's Day if you care to keep them around that long.

You can cut the plant back after flowering and set it outside for the summer, but you'll have a real chore bringing it into flower again next Christmas. That's simply a job better left to the professionals.

Kalanchoes should be kept in a sunny window. This plant flowers when the days are short, consequently they are difficult to reflower in the home if carried over from another year. Lights used in the home provide long days and the plants fail to set flower buds. They do make excellent foliage plants once the flowers are faded, however. Just remove the flower stalk and use as a foliage plant.

Christmas cactus isn't a typical cactus. It requires as much water as any other houseplant, though it should not be overwatered. This is one plant that can be kept over to bloom again next Christmas. Keep it in a sunny window until danger of frost is past, then place it in a shady spot out of doors during the summer. Bring indoors before frost can damage it. Place in a cool room at night. Night temperatures must be below 75 degrees, or it will not bloom.

Cyclamen, or shooting stars, are old favorites. Their large showy flowers are red, pink, salmon or white and really resemble falling stars. Unfortunately though, the flowers fade and fall pretty fast at 72 degrees, so cyclamen has a pretty short flowering period in the home. If you have the opportunity, keep the plant at 55 degrees whenever possible. Again, avoid hot drafts and over-watering.

The key to coping with the uncertainties of agriculture is the risk-taking attitude of the farmer himself-how he views risks. If a farmer is

to be happy with his decisions, he needs to make them so as to be consistent with his attitudes regarding risk.

**Risk-taking attitudes**

mainly result from farming goals and objectives, financial ability to assume the risk involved, and size of the possible gains or losses involved

in the decision. There are risk takers, risk avoiders and risk neutral farmers. All have their own management

style and all can be successful. The main point is that a farmer needs to consider his attitude

about taking risk since it will influence his decision and give him a better feeling about them.

## GRAY COUNTY GARDENING

Azaleas should remain attractive 2-4 weeks in your home, particularly if you'll put them in at 55-60 degrees spot each

night and during the day when you're not around. They just don't prosper at normal home temperatures.

**Be careful to avoid hot**

drafts when you select a spot for your azalea, and, again be extremely careful of your watering practices. Most greenhouse

azaleas are grown in virtually 100 percent peat moss, and it's fairly easy to goof on the watering. Florist azaleas are not particularly well adapted

outside of East Texas so you may want to discard the plant once it's finished flowering. Plants brighten any

holiday decorations. With a little care, they can last longer after the toys are broken and the bills are paid.

## 4-H Corner

### 4-H Futures and Features

by Joanna Warminski  
**DATES:**  
December 13-18  
State Extension Agents Staff Conference-College Station.

### FOUR GRAY COUNTY YOUTH EARN TOP HONORS

Congratulations to Donna Eakin, Stacie McDonald, Kelley Harris, and Becky Reed. These four girls placed in the top four of their respective divisions at the District 1 4-H Food Show, Saturday, Dec. 4, in Dumas. All eight of the competing Gray County Youth matched their foods and nutrition "know how" against that of youth from surrounding counties.

Competing in four classes in the senior division were Sena Brainard, main dish-red ribbon; Renee Alexander, fruit and vegetable-blue ribbon; Donna Eakin, bread and cereal-blue ribbon; and Sherri McDonald, nutritious snacks and desserts-blue ribbon.

All the contestants in addition to ribbons received a cookbook, "Cooking Texan-the Panhandle Way." These cookbooks contain all the recipes of the 1981-82 District Food Show. If you would like a cookbook, the Extension office has a limited supply to sell for \$3 each.

District 4-H Food Show is sponsored by the Texas Agricultural Extension Service, Texas A&M University System, and the Morrison Milling Company of Denton, Texas.

### EXPLORING 4-H HOME ENVIRONMENT

Creating living spaces that make for happier, more comfortable and carefree living is exciting. The results should be both pleasing and practical. This is what 4-H Home Environment is all about.

There is no right way or wrong way to utilize one's living space. What is satisfactory for one may be less than pleasing or comfortable for the next. A 4-H'er should not feel ashamed or inhibited by his home surroundings. He should be helped to understand and accept them.

A Home Environment project does not need to cost a lot of money. Many learning experiences can be fostered that do not require the use of money: just lots of imagination and energy.

The project group may

focus on home furnishings, equipment or housing, or a combination of these. The Home Environment Program is sponsored by The Sperry and Hutchinson Company of New York. They provide medals of honor, expense-paid trips to National 4-H Congress and six educational scholarships of \$1,000 each. Call the Extension Office for more information about the Home Environment project.

### 4-H BOOSTS LEADERSHIP SKILLS

The best way to learn leadership is to lead. 4-H offers young people many opportunities to lead as well as to study leadership skills.

4-H'ers suggest five steps that can be taken to be a good leader:

1. Study the qualities of recognized good leaders. Observe their actions and techniques of leadership.
2. Study yourself, picking out your weak and strong points. Capitalize on strengths and minimize weaknesses.
3. Develop yourself as a good follower. You will learn that someone who cannot obey, cannot command.
4. Learn as much as you can about groups in general and what "makes them tick." Make sure you really understand your group.
5. Follow a definite plan of training and improvement in leadership.

Develop skills in communications, management and decision-making. Be prepared when the leadership opportunity

comes along. Effective leaders usually have a desire to achieve goals, to serve others and to leave things

better than they found them.

However, leadership is a function, something that is done; it is not just

a group of personality traits.

4-H offers leadership training as well as leadership in action. Get in on the action: join 4-H.

## Homemaker News

by Donna Brauchi

### TOYS FOR CHRISTMAS

Parents and teachers, as well as concerned grandparents or friends often seek help in knowing how to select toys for children. Buying children's toys for the upcoming holiday season is fun and important-but it may not be as easy as you might think.

As a guide in shopping, ask yourself if the toy is appropriate, safe and worth the cost. Know the child, what he's able to do and what he likes to do. This is the start to wise toy selection.

Choose toys that suit the child's size, age and developmental level. A toy must fit the child's interest and abilities-not your own-to be a good buy. Know what toys the child already owns and try to know what other relatives plan to give so you can avoid duplications.

### TOY SELECTION TIPS

1. Children develop through play. Select toys that are helpful in stimulating creativity, imagination, good relationships, or problem solving. Toys can also be used to develop positive,

wholesome attitudes toward persons of other ages, sex, race, or social-economic class.

2. Does the toy encourage violent play? If so, assess your values and choose toys accordingly.

3. Be sure and check the instructions for use of the toy to make sure they are clear and easy to follow. Also, be prepared to spend time in helping the child know how to use the toy properly. A really good toy can be used in several ways.

4. Toys should be well made. Consider the cost and frustration when a toy breaks. Children should not be blamed for inferior products or breakage with normal use.

5. Make sure the toy is safe. Read the label to determine what materials the toy is made from. Toys and their parts should be large enough so they cannot be swallowed by small children. Check to make sure the toy has no sharp points, exposed pins, sharp barbs, or nails that can injure a child. Avoid toys that could strangle a child

with ropes or loops that might wind around his neck. Reject toys that can puncture, stick or damage eyes. They include toys that shoot forward, arrows, air guns, and target pistols, and spring-loaded guns that fire various missiles. Make sure the toy is safe electrically and that it cannot shock. Reject really noisy toys which can damage hearing.

6. Is the toy worth the cost? Justify the price you pay by assuring yourself that the child will really use the toy. Also make sure the price of the toy reflects your values

concerning lifestyle.

7. Don't forget that books have a great gift potential for any age child. There is no easier way to promote values and understanding.

8. Finally-make sure your toy selection reflects you and your values. Don't be overly pressured by the "consumer's market."

Serious toy selection does take time and comparison shopping is essential. All in all, it is worth it because the child's safety and development could be affected by your choice. Happy toy shopping!

•Boots by Tony Lama  
•Guns by Colt, Ruger,  
Smith & Wesson, Weatherby  
•Hats by Bradford  
•and American  
•Tack  
•Western Apparel  
the Whole Family



Complete Line  
Of Quality Brands  
Western Wear

"Complete Ranch Outfitters"  
Where your Search Ends  
And Hospitality Begins

119 S. Cuyler 669-3161 Pampa, Tx

## Santa's Helper Suggestions

Christmas ornaments-  
-fresh arrangements  
-poinsettias from \$6 to \$60  
-corsages-silk arrangements

-fresh and  
permanent  
wreaths-  
-candles-

-memorial wreaths-  
-fresh and artificial greenery-

DISCOUNTS ON MANY CHRISTMAS ITEMS

### LAMB FLOWER SHOP

1009 N. Main 779-2611

**Let a Local Agent Help Handle Your Claims:**

**Hospitalization-Cancer  
Medicare Supplements-Burial**

**CALL  
Jerry Corbin 779-2002**

Decorate your Christmas table with beautiful Christmas glasses and candles from the Potpourri Gift Shop



TOY SOLDIERS MICHAEL Barker, Will Shaw, Tanner Hess, Cody Gabel, and Tuffy Sanders, practice their part of the upcoming school Christmas program. [Photo by Linda Haynes]



ONE OF THE highlights of the children's Christmas program at McLean High School next Monday will be a juggling act, practiced here by David Johnson and Destry Magee. Others in the clown act will be Jeremy Thomas, Daniel Harris, and Clay McCracken. [Photo by Linda Haynes]



DIXIEBELL DOLLS LISA McClellan, Juliana Crockett, Lee Erin Stubbs, and Patsy Barker practice their routine Monday as they prepare for the annual school Christmas program next week. [Photo by Linda Haynes]



MEMBERS OF THE Red Choir" [pictured left], and the "Green Choir" [pictured right] await their turn during a recent practice session. The youngsters are getting ready for the performance of Jimmy In Santaland, which is scheduled for Dec. 20 at 7 p.m. in McLean High School Auditorium. [Photo by Linda Haynes]



**NURSING CENTER NEWS**

Thelma Hopkins is in the hospital in Pampa. We wish her a speedy recovery. ...

Sunday, Gib Welch was here to sing and play his guitar during the noon hour. In the afternoon Bro. Wells of the Baptist Church was here to conduct services. ...

Monday morning the residents decorated the

Christmas tree. Cookies were furnished by Louise Turner and Isabelle Cousins. Ladies assisting were Ginger Morilla, Pauline Miller, and Betty Lowe.

In the afternoon residents playing Bingo were Buck Henley, Ruby Cook, Ruby Bidwell, Alma Fandal, Lula Sheegog, Annie Eudy, Leon Burch, Bill Shaffer, Lona Jones, and Hugh Tolleson. Those assisting were

Mildred Geisler, Juanita Smith, Bertha Smith and Ruby Boyd. ...

Tuesday residents making craft items were Alma Fandal, Drucie Dwyer, Hugh (Earl) Tolleson, Lona Jones, Kittie Hessey, Bob Ford, Leon Burch, and Lula Sheegog. Our helper was Jerry Corbin. ...

Wednesday and Thursday church services were cancelled due to bad

weather. ...

Thursday evening a baby shower was given in honor of Wilma Stuart. Hostesses were Tina Thomas, Paula Ciendennen, Nancy Burr, Laurie Sherman. Those attending were Neisie Christopher, Toots Henley, Lou Morris, Betty and Tiffany Lopez with special guests of the Home, Drucie Dwyer and Alma Fandal. ...

Friday, our lovely lady Martha Parker, was here with her movies.

We have a new shipment of APPLAUSE STUFFED TOYS ready for Christmas gift-giving. See them at the Potpourri Gift Shop

**DRINKING AND DRIVING CAN ADD UP.**

A message from this newspaper and the Troopers of the Texas Department of Public Safety.

Our special decoration for the Home this year is a Christmas tree and kissing ball ornament made with small communion cups, pins, se-

quins and beads. These were made by Drucie Dwyer. We would like to thank the Church of Christ members for their donation of the communion cups.

We are still in need of more jewelry for our Indian Dolls made by Alma Fandal. If you have any to donate please bring them to the Home.

ANNIE AND SANDY make super gifts for your special girl! We have them now at The Potpourri Shop

This Is A Sample Of A McLean News Special Christmas Card with Photo Price Begins at \$15.00

Merry Christmas From Chel See TU and The McLean News Staff

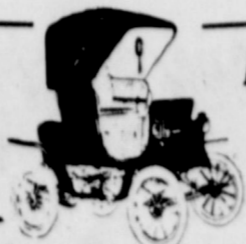
SUPER SUEDE & SHETLAND WOOL SPORTCOATS reg. \$100-\$110 **\$59.99**

Entire Stock Junior and Misses Coats save 25% to 35% reg. \$28 to \$250 **Sale \$19.99 to \$162.49**

**\$36.99** Regular \$40-\$43 Entire Stock Ladies SAS Comfort Shoes Glove leather uppers with thick unit and Kraton soles. British tan, navy or black. Sizes 5-11M and Narrow in most stores.

acme dingo DAY POST 25% off Entire Stock Boys & Mens Boots Boys Reg. \$20-\$42 SALE \$15-\$31.50 Men's Reg. \$63 to \$330 SALE \$47.25 to \$247.50

**Bealls** OPEN 'TIL 9 p.m. PAMPA MALL



## DOWN MEMORY LANE

### 10 YEARS AGO...

E.M. Bailey, Ed. Mr. and Mrs. Hupp of Boonesville, Ark., announce the birth of a daughter, Mitzi Renee, born Nov. 29th. The grandparents are Mr. and Mrs. Forrest Hupp of McLean, and Mr. and Mrs. B.D. Harrington of Shamrock.

and a Christmas gift exchange was held.

### 20 YEARS AGO...

Jack Shelton, Ed. Airman Apprentice John Stewart, son of Rev. and Mrs. J.B. Stewart, has been selected from among 2,300 other navy recruits for naval flight training. Stewart arrived in McLean last Thursday night from San Diego, Calif. where he recently completed basic training.

Mrs. Jack McClellan was hostess to a quilting club group Thursday with a pot luck dinner served at noon attended at Mesdames Verna Biggers, Marjorie Lisman, Juanita Smith, Safronia Pettit, Barbara Hambright, Nora Moore, Bertha Smith, Elizabeth Kunkel, Mary McClellan, and a guest, Mrs. Bernard McClellan. A kingsized quilt was nearly completed,

The Short Foundation established by Mrs. Alice Short Smith of McLean in memory of her parents, is currently providing financial assistance to nine students at West Texas State College in Canyon. Mrs. Smith, a 1928 graduate of West Texas, gave a dinner for the nine

students in the college cafeteria recently in order to become acquainted with the group.

Mrs. R.N. McCabe was honored with a dinner in the home of her daughter, Mrs. Jim Stevens, last Sunday. The occasion was the 86th birthday of Mrs. McCabe. Those attending were Mr. and Mrs. Ray McCabe, Mr. and Mrs. Adrian Hughes, and children, Kathy and Butch, and Mr. and Mrs. R.B. Jones of Amarillo; Mr. and Ms. Dee Jones of Tipton, Okla.; and from McLean, Mr. and Mrs. Melvin McCabe, and Robert, Mrs. Arthur Boyd, Larry and Jeree, Mrs. Jack Blaylock, Joyce and Billy Jack, Betty McDonald, R.N.

McCabe and Mr. and Ms. Jim Stevens and family.

Mrs. Carl Baker was appointed Monday night to conduct the annual school census in the McLean Independent School District. The appointment of Mrs. Baker came at the board of education's monthly business session.

30 YEARS AGO... Lester Campbell, Ed. Charles Bailey left Thursday for the Air Corps in San Antonio.

Army Pfc. Freddy J. Smith, son of Mr. and Mrs. Riley Smith of McLean, is attending an army signal radio school in Japan. Upon completion of the 10 weeks course, conducted by the

1st Cavalry Division, he will return to his unit as a radio operator. Smith, a graduate of McLean School, entered the army in April, 1951.

Mr. and Mrs. Clifford Allison and son Jim were Sunday visitors in Clarendon in the home of Mrs. J.L. Allison.

Mr. and Mrs. Bill Cash and son Don spent last weekend in Oklahoma City in the home of Mr. and Mrs. C.E. Bowerman.

40 YEARS AGO... No paper available for this date.

50 YEARS AGO... T.A. Landers, Ed.

Mrs. Witt Springer entertained the Tiger football team with a banquet

at the Springer home Wednesday evening and a theatre party at the American Theatre, which followed the banquet.

Commissioner and Mrs. M.N. Newman were in a car wreck last Friday evening with the result that the Newman car was badly damaged and Mrs. Newman suffered some bruises. Mr. Newman was rounding the outside curve on the highway about two miles west of town when he met a car driven by Dave Turner, with only one light, and in some way the drivers misjudged the distance between the cars, causing a collision.

The regional championship football game to be played by the McLean

Tigers and the Olney team will be staged Saturday afternoon at Wichita Falls. The Olney team beat the Brownfield team for bi-district honors last week with a lop-sided score, and is expected to give the Tigers some strong opposition.

The McLean Tigers defeated the Spearman Lynx at Pampa Friday 14-6 and thoroughly outplayed the Spearman boys throughout the game, leading in first downs 13-4. The two scores for the Tiger team were made by Crockett and Christian.

60 YEARS AGO... T.A. Landers, Ed.

Mrs. Cora Belew left Wednesday morning for her home at Venita, Okla., after having a visit with her friend, M.T.C. Gaunt.

Mrs. Pete Fulbright of Alanreed spent the week end with home folks in McLean. Mr. Fulbright accompanied her back to Alanreed.

The plan for the rabbit drives is pretty well worked out, and it is expected that everyone will co-operate in the drives and help make them a success. County Agent R.O. Kunkel pro-

mises enough fun to pay anyone to help and we all know that the basket dinner can be appreciated by most anyone. Let's all go and make a big day of the first drive.

News from Back... Jack McClellan and Jno. Dwyer were calling in our community Sunday.

Mr. and Mrs. Wib Fowler and children have moved back to McLean from Duncan, Okla.

70 YEARS AGO... A.G. Richardson, Ed.

For rent... Good five room house with out houses and well and windmill. Would like to lease for year... C.J. Cash.

The steam thrashers are running day and night part of the time this week getting the grain ready for shipment.

Adv... If you need a buddy, hack or surrey it will pay you to figure with Al and Bill. They will save you \$25.

### In The Kitchen

by Linda Haynes



Last year at Christmas time I bought a Rum Cake cookbook, and prepared some of the famous dessert. I thought it tasted terrible, but for those of you who are really down about the Christmas rush, you might want to try this version.

This recipe was supplied by a friend, who, for obvious reasons, wishes to remain anonymous!

#### RUM CAKE

Before you start, sample the rum and check for quality. Good, isn't it.

Now go ahead. Select a large mixing bowl, measuring cup, etc. and check the rum again for quality. It must be just right. Try it again.

With an electric beater, beat one cup of butter in a large fluffy bowl. Add one teaspoon of sugar and beat again. Meanwhile, make certain that

the rum is of best quality.

Add two large eggs and two cups of dried fruit and beat until very high. If fruit gets stuck in beater, pry it out with a screwdriver. Sample rum again, checking for consistency.

Next sift in three cups of baking powder and add a pinch of rum, one seas-

poon of toda and one cup of paper... or maybe salt. Anyway, don't fret just taste the rum again. Zoweee!!!!

Next sift in half a pint of lemon juice, fold in chopped buttermilk, add strained nuts. Sample rum again.

Now, one tablespoon brown sugar or whatever

color is around. Mix well.

Grease oven and turn on cake pan to 350 degrees. Now pour the whole mixture into the oven and...oops! Where didja put the mop???

On second thought and also third and fourth, forget the oven, forget the cake, check the rest of the rum and go to bed.

### MENUS

#### BREAKFASTS

Thursday, Dec. 16  
Egg McMuffin, Juice, Milk  
Friday, Dec. 17  
Cold cereal, Toast, Juice, Milk  
Monday, Dec. 20  
Pancakes, Butter, Syrup, Juice, Milk  
Tuesday, Dec. 21  
Creamed beef on toast, Juice, Milk  
Wednesday, Dec. 22  
Toast, Fruit, Juice, Milk

Thursday, Dec. 23  
Scrambled eggs, Toast, Juice, Milk

#### LUNCHES

Thursday, Dec. 16  
Bar-B-Q on Bun, Potato Salad, Baked Beans, Cherry Cream Pie  
Friday, Dec. 17  
Fish Portion, Cole Slaw, French Fries, Tartar Sauce, Bread, Fruit  
Monday, Dec. 20  
Chicken Pattie on Bun,

Lettuce, Tomatoes, French Fries, Strawberry Shortcake

Tuesday, Dec. 21  
Tacos, Salad, Beans, Sopapillas, Honey

Wednesday, Dec. 22  
Turkey & Dressing, Mashed Potatoes, Green Beans, Cranberry Sauce, Fruit Salad  
Thursday, Dec. 23  
Stew, Crackers, Peanut Butter Sandwiches, Chocolate Candy



## COWBOY DRIVE IN

for the best meal in town !!!

109 N. Cedar McLean, Texas 779-2315

ROYAL CHECKBOOK CALCULATORS... ONLY \$20.95 at the Potpourri!

## The McLean News BUSINESS DIRECTORY

<p><b>DON MILLER RADIATOR SERVICE</b></p> <p>"Is Our Business" Not a Sideline •New &amp; Rebuilt Radiators •Gas Tanks &amp; Heaters Repaired</p> <p>376-666 612 S. JEFFERSON AMARILLO, TEXAS</p>	<p><b>Foshee's Texaco</b></p> <p>Your full-service station Earnest &amp; Maurine Foshee Owners 779-2621</p> <p>McLEAN NEWS ADS HELP YOUR BUSINESS SALES. 779-2447</p>	<p><b>WATER WELL SERVICE</b></p> <p>SUBMERSIBLE PUMP SALES &amp; SERVICE</p> <p><b>DAVID BROWN</b></p> <p>806-779-2678 BOX 273</p> <p>MCLEAN, TX 79057</p>	<p><b>GERMANIA Farm Mutual Insurance</b></p> <p>REASONABLE SOUND INSURANCE PROTECTION FOR YOUR HOME AND OTHER PROPERTY</p> <p><b>DON WILSON 779-3174</b></p>	<p><b>NATIONAL AUTO SALVAGE</b></p> <p>665-3222 or 665-3962 1 1/2 miles west of Pampa on Highway 60 Large selection of used auto parts We appreciate your business</p> <p>CALL 779-2447 AND GET YOUR BUSINESS IN THE McLEAN NEWS BUSINESS DIRECTORY</p>	<p>DIANN DALTON'S <b>Country Cut BEAUTY SHOP</b></p> <p><b>779-2413</b></p> <p>Open Tuesday through Friday and Saturdays until noon</p> <p>1 mile south of McLean on FM 3143</p>
<p><b>BARKER REDI-MIX</b></p> <p>READY-MIX, CONCRETE BACK-HOE SERVICE AND FINISHING WORK PHONE</p> <p><b>779-2703 OR 779-2869</b></p>	<p><b>McLEAN HARDWARE</b></p> <p>complete hardware line</p> <p>-DISHES-PAINT- -TOOLS-GIFTS-</p> <p><b>779-2591</b></p>	<p><b>GLENN HALLUM BACKHOE SERVICE</b></p> <p>Commercial or Individual Fully Insured</p> <p>Alanreed, Texas</p> <p><b>779-3138</b></p>	<p>Johnnie F. Mertel <i>Boot Shop</i></p> <p>Tony Lama, Texas, Acme, Justin</p> <p>Leather Goods Shoe Repair</p> <p>phone 779-2161</p>	<p><b>Expert DRY CLEANERS</b></p> <p>BRING YOUR CLEANING WHEN YOU SHOP IN PAMPA PICK IT UP THE SAME DAY!</p> <p><b>One Hour Martinizing</b></p> <p>1807 N. HOBART 1824 W. FRANCIS PAMPA</p>	<p><b>LAMB FLOWER SHOP</b></p> <p>779-2611 ASK ABOUT OUR REGULAR FRIDAY SPECIALS</p>
<p><b>Bug Baggers Pest Control Inc.</b></p> <p>TERMITE SPECIALISTS COMPLETE PEST CONTROL STATE LICENSED IN YOUR TOWN WEEKLY CALL COLLECT 853-0090 CANYON, TX</p>	<p>For all your Purina Feeds:</p> <p><b>BULK FEED BAG FEED</b></p> <p><b>BENTLEYS FERTILIZER</b></p> <p>301 E. Foster McLean, Texas 779-2209</p>	<p><b>DALE'S SERVICE STATION</b></p> <p><b>PHILLIPS 66</b></p> <p>217 W. 1st McLean 779-2181</p> <p>779-2181</p> <p>YOUR AD HERE GIVES YOUR CUSTOMERS EASY ACCESSABILITY TO YOUR BUSINESS 779-2447</p>	<p>CLASSIFIEDS WORK WONDERS! CALL THE McLEAN NEWS 779-2447</p> <p>THE McLEAN NEWS IN COUNTY - \$12. OUT OF COUNTY - \$14. NINE MONTH STUDENT SUBSCRIPTION - \$9</p>	<p><b>B&amp;B ELECTRIC Parts &amp; Service</b></p> <p>•ELECTRIC WORK •APPLIANCES •TV ANTENNAS •HEATING AND •AIR CONDITIONING</p> <p><b>PHONE Loyd Bybee 779-2601</b></p> <p>EMERGENCY 779-2517 2 BLKS NORTH OF I-40 ON PAMPA HWY I WILL APPRECIATE YOUR BUSINESS</p>	



# CLASSIFIED ADS sure to get results

**CLASSIFIED RATE**  
\$2.00 minimum  
15 cents per word  
**CARD OF THANKS \$3**  
All ads cash, unless customer has an established account with The McLean News-Deadline for Want Ads-Noon-Tuesday. Phone 779-2447.

The McLean News cannot verify the financial potential of these advertisements. Readers are advised to approach any "business opportunity" with reasonable caution.

**HELP-WANTED**  
**THOMAS NURSING CENTER** is now accepting applications for Nurses Aids - all Shifts... Contact the Director of Nursing in person. 33-tfc

**TO GIVE AWAY**  
**FREE PUPPIES** - Cute, half Labrador retrievers. Males and females. Call 779-2538. 49-2p

**WANTED**  
**WANT TO BUY:** 1 or 2 sets of bunk beds. 9-3134. 49-3c

**DRINKING DRIVING DEATH**  
A Combination we CAN'T LIVE WITH!  
A message from this newspaper and the Treasurer of the Texas Department of Public Safety.

**INSIDE SALE: FURNITURE**, lots of childrens clothes, toys, dishes. End of N. Main, turn right, second house on left. Friday, Saturday and Sunday. Linda Watts. 49-2c

**FOR SALE**  
**NEED HOLIDAY COOKIES?** I can bake them for you. To place your order call Gina Gardner at 779-2878. 49-2c

**COME TO YESTER-YEAR Antiques** and see our collections of dolls--they're here just in time for Christmas. 49-3c

**YOU CAN HAVE your sweaters, shirts, handkerchiefs - any cloth item - monogrammed in one day!** Call 779-2229 or 779-2587 for more information. 45-7p

**WE WILL DELIVER Christmas Memorial Wreaths.** Lamb's Flower Shop. 48-1c

**CHRISTMAS SPECIAL OAK Firewood** for sale. \$95 a cord, \$70 cottonwood. Good 12-16 through 12-24. Wheeler Wood Yard. 826-3413 or 779-2253. 50-1p

**FOR SALE: STOVE, refrigerator, dresser with mirror and matching headboard and frame, 2 twin beds.** Call 779-2771 after 2 p.m. 49-2c

**LAMB'S FLOWER SHOP** has ornaments, greenery, everything you need for Christmas decorating. Come shop with us. 49-1c

**CANDLES SET A festive mood** -- and we've got them just in time for Christmas. Tapered candles, votive candles, column candles, scented candles. Lamb's Flower Shop. 49-1c

**RUBBER STAMPS ARE** an inexpensive way to bring more efficiency to your business operations. We will design stamps to your specifications. Fast Service. THE McLEAN NEWS. 46-tfc

**A PERFECT GIFT FOR CHRISTMAS:** custom-designed note pads and stationery. Let us design something special for each person on your gift list. THE McLEAN NEWS. 46-tfc

**WHAT'S CHRISTMAS WITHOUT Poinsettias?** We've got a terrific selection and will deliver - with prices starting at only \$6. Lamb's Flower Shop. 49-1c

**NOW IS A good time** to check your inventory of printed items. Need statements? tickets? stationery? envelopes? Call THE McLEAN NEWS for quick service on all types of printing. 46-tfc

**CHRISTMAS GIFT IDEAS FOR THE HOUSE:** Gifts that last! Garbage Disposal Front Door Light Fixture Storm Door, Sinks Cabinet Tops Fireplace Doors Storm Windows Carpet Hambricht's Building Supply 213 N. Main 779-2811

**WISH YOUR FRIENDS a Happy Holiday** with a special greeting in the Christmas edition of The McLean News. Special greetings with a picture of your grandchild, your family, your favorite pet begin at \$15. 46-6c

**YOU CAN ORDER a rubber stamp** for as low as \$2.50. Come by THE McLEAN NEWS. 46-tfc

**FOR SALE: 1 home entertainment stereo, 1-5 ft. pool table, 1 power pro pinball, 1-1978 Honda XL 75.** Call 779-2192 after 4:00 p.m. 49-3c

**GIFT ITEMS ARE a specialty** with us -- we've got fresh or silk Christmas corsages, potpourri, brass gift items -- and much, much more. Lamb's Flower Shop. 49-1c

**SANTA KNOWS DOLLS** are the perfect gift for Christmas and he's found his favorites at Yesterday Antiques. Come in and discover the fabulous world of dolls. 49-3c

**OUR FRESH GREENERY** will soon be in for Christmas wreaths, decorations, etc. Lamb's Flower Shop. 48-1c

**WE WILL DESIGN any type of business card** to your specifications. Prices begin at \$19.95 for 1,000 business cards. THE McLEAN NEWS. 46-tfc

**LET US DO your Christmas shopping** for you! Give each person on your list a new subscription or renew their subscription to THE McLEAN NEWS. We will send the recipient a gift card with your name on it. Cost is only \$12 in Gray County, and \$14 out of the county. 46-tfc

**DOLLS ARE A girls best friend**--and we've got the best of the line, including collector dolls from "Madame Alexander" and "Effanbee." These dolls are not only beautiful, they're a classic investment. Yesterday Antiques. 49-3c

**SHOP McLEAN FIRST** for all your printing needs - statements, tickets, envelopes, stationery, rubber stamps, business cards. We offer fast, efficient service at THE McLEAN NEWS. 46-tfc

**FOR RENT-3 bedroom house, partially furnished, 1 mile southwest of town.** Call 779-2595. 48-tfc

**FOR RENT: COMPLETELY FURNISHED** Three bedroom trailer house. 1 1/2 baths. \$250 month. Furnish own utilities. \$100 cleanup deposit. No small children. Call Dorothy Middleton at 779-2674. 27-tfc

**FURNISHED HOUSE** FOR rent. Call 779-2205. 49-tfc

**FOR RENT: BEDROOM** with private bath. Board, if desired. Call 779-2398. 49-tfc

**THREE BEDROOM HOUSE** for Rent. 779-2629. 40-tfc

**TWO BEDROOM HOUSE** for rent. 779-2629. 50-tfc

**MOBILE HOMES FOR SALE**

**FOR SALE: 14 x 80 trailer.** Three bedroom 1 1/2 bath, furnished or unfurnished. Call Dorothy Middleton at 779-2674. 12-tfc

**REAL ESTATE FOR SALE**

**Home on corner lot - super storage.** \$25,000.

**4 Bedroom Brick FHA Approved.**

**Three bedroom home on Main Street.** Double car garage.

**1031 acres at \$215.** Hall County.

**PIONEER REAL ESTATE**  
IDA HESS, BROKER 779-2641  
108 N. MAIN McLEAN, TEXAS

**FOR SALE- 4 bedroom, 2 bath home.** \$27,500. 779-2538. 46-tfc

**FOR SALE: TWO bedroom house - By Owner** 779-2666. 48-tfc

**JIM ALLISON REALTY**  
Farms, Ranches, Residential, Commercial, Oil and Gas  
**LARGE two bedroom brick on Main - Very Nice** 176 Acres - land near town. **SOLD**  
**TWO nice two bedroom - Good Locations** 160 Acres - live water, apple orchard, quail, dove, deer and turkey. **BEAUTIFUL** 189 Acres - Close in. Large two story three bedroom home. three irrigation wells. **COMMERCIAL property.** Store, station... Alanreed, on 140. 160 Acres Lovegrass on pavement - cross fenced. 779-2461 779-2649

**SERVICES**

**MECHANIC ON DUTY** Wt. High Performance. Carbs rebuilt, exhaust work, tune ups, nothing can't be fixed. North of Dairy Queen--last house on left. 50-4p

**AMWAY DISTRIBUTORS.** Aline Winegeart. 50-6p

**BUSINESS**  
Call Jerry Cook at ATLAS Plumbing 779-2784 Water-Gas-Sewer

**SADDLE AND BOOT REPAIR**  
HANDMADE SADDLES  
**McLEAN SADDLE CO.**  
111 McCarty St. McLean, Texas 779-2339

**LOWRANCE PLUMBING**  
Fast and reliable service  
Licensed 24-hour Service  
Call 779-2563 or 779-2065  
Serving McLean and surrounding areas

**CARD OF THANKS**  
The Bradley Kiser family wishes to thank the McLean people for their generous hospitality and love in the loss of our Dad and Grandad.  
The Roy Kiser and Walter Elliott families

**NOTICES**  
**MASONIC LODGE REGULAR MEETING** second Thursday, 7:30 p.m. Practice nights First, Third, and Fourth Thursdays at 7:30 p.m.

**1836-1845**  
Exerpts from newspapers of the Texas Republic  
1836-1845

**Arms Bill - Sir Robert Peel** has introduced a bill into the British Parliament which he styles "the Arms Bill" intended to disarm the population of Ireland. Under this law a man must obtain a license to possess any weapons and have them branded and registered, and any one is punishable if weapons are found on his person or in his house without this license and the official brands! This law would be scarcely less tyrannical in its operative than the odious edict of Santa Ana to disarm the citizens of Texas before the revolution. The Telegraph July 26, 1843

We learn by the Houston Morning Star of the 15th instant, that a corporation tax of five dollars a head has been laid upon all females over 21 years of age, who reside in that city. Tell it not in Boston--publish it not in the streets of Lowell--that in Texas, where nine-tenths of the inhabitants are bachelors, they are so ungentle as to tax ladies. We recommend that they should all immediately emigrate to Austin, where they will be more properly appreciated.

Texas Sentinel Austin February 26, 1840  
They are making quite an article of traffic out of "horned frogs" in Texas. So says the Galvestonian. A large number of frog-catchers are advertised for--smart chore for loafers who have been excluded from on common by the pointed picket fence. These vagrant frogs, when chopped up with a fair proportion of wolf and river rats, are said to make first rate Bolognese sausages. Colorado Gazette and Advertiser Matagorda January 19, 1840  
A Mr. W. McElroy

married a young girl in Paris, Ky. and soon afterwards ran away. The father of the girl advertises him and requests all Editors, "friendly to young unmarried girls, widows, and old maids", to copy the advertisement. Matagorda Bulletin Matagorda March 14, 1838  
DOCTOR PARROTT Again offers his professional services to the citizens of Texas. He can always be found at his residence, except when absent on professional business. Telegraph and Texas Register Columbia August 16, 1836

**SAVE NOW ON HOMEOWNERS INSURANCE!**  
TEXAS HOMEOWNERS INSURANCE RATES HAVE DECREASED SINCE SEPT. 1  
CHECK WITH US TO FIND OUT ABOUT THE SAVINGS!  
**JANE SIMPSON INSURANCE AGENCY**  
106-A N. Main, McLEAN, TEXAS 779-2447

## Producing more energy from less ... makes the difference.

Their discovery would shake the worlds of communication, medicine and defense, but Charles Townes and Arthur Schawlow knew only that they had discovered an entirely new source of light. They called it an "optical maser." Today we know it as the "laser."  
Their discovery was a light beam so concentrated it could produce power densities millions of times as intense as those on the surface of the sun -- a light source so dense, the energy produced was greater than the energy required to produce it.



Arthur Schawlow and Charles Townes

This principle of more energy from less applies to the High-Efficiency Add-On Heat Pump -- more units of heat than units of electricity needed to produce that heat. And while the Add-On Heat Pump works with your existing furnace to heat your home during the winter, the Add-On Heat Pump functions with the same efficiency to cool your home during warm weather.  
As partners, Townes and Schawlow made a significant difference in our world with their work on the laser. As partners you, Southwestern Public Service Company and the Add-On Heat Pump can make the difference managing electricity in your home. Call SPS to see what your savings could be.

**You and SPS, partners managing electricity, make the difference.**



**SOUTHWESTERN PUBLIC SERVICE COMPANY**



BAKE-OFF JUDGES Proxie Warminski, left, and Joanna Warminski sample all the dishes during the Chamber of Commerce Christmas Bake-Off Saturday. (Photo by Linda Haynes)



**LIBRARY NOTES**

by Sam Houston

**Every Room A Garden: How To Decorate Your Home With Plants**

By Alice Skelsey and Cecile Mooney  
Alice Skelsey and Cecile Mooney have spent over five years in the preparation of this very excellent book, which will no doubt be of invaluable assistance to anyone interested in raising any type of household plants.

Hundreds of exciting and inexpensive decorating ideas are packed

into this beautifully illustrated volume, including a full section on plant care and a special guide to over 160 different kinds of foliage which makes it easy for anyone to get a good start with this hobby which is ever increasing in popularity.

You may not be aware of such facts as that there are plants that need no light, those that need as much light as possible, tiny plants for tiny places, plants that fill a

room, climbing plants, hanging plants, leafy green plants, plants that are flowering eye-catchers and no doubt some plant that will fill exactly your need.

Read these educational pages and view the three hundred lovely illustrations and you will no doubt find something of interest and use for you and your house. "Every Room A Garden" is now available at Lovett Memorial Library.

**Sorority Has Surprise Party Dec. 12**

The Beta Sigma Phi Sorority was honored with a surprise "Come as You Are" Christmas Party, Dec. 12 in the home of Linda McAnear. Members were given no previous knowledge of the party, but were picked up at home and de-

livered to Mrs. McAnear's home for the party. The party was opened by a prayer given by Jacque Riley and presents were exchanged. Members also brought presents for the Green girls at Whiteface and a special friend, Lula

Sheegog. Hostesses Jan Layfield and Linda McAnear served refreshments to Lynda Syfrett, Jean Smith, Ann Turpen, Donna Hauck, Billie Kingston, Kathy Reynolds, Mary Lou Glass, Cheryl Smith, and Nancy Billingsley.

**Quotable Quotes**

There are many who dare not kill themselves for fear of what the neighbors will say.

Cyril Connolly  
Many people have their principles all bad and their practice all good.

C.E. Montague  
We must all hang together, else we shall all

hang separately.  
Benjamin Franklin  
Men are but children of a larger growth.

Dryden  
If you wish the sympathy of broad masses, then you must tell them the crudest and most stupid things.

Adolph Hitler  
If men knew how women pass the time

when they are alone, they'd never marry.

O. Henry  
Even a fool, when he holdeth his peace, is counted wise.

Proverbs XVII, 28  
I know no method to secure the repeal of bad or obnoxious laws so effective at their stringent execution.

U.S. Grant

**Birthdays**

DECEMBER 16  
Jackie Mercer  
Troy Wayne West  
Johnny Adams  
Shorty Burr

DECEMBER 17  
Mrs. Mary Lowder

DECEMBER 18  
Mrs. Ola Henderson  
Jerry Paul Rollison

DECEMBER 19  
Royce Blacker  
Mrs. Johnnie Mertel  
Martha Jo Bailey  
Wayne Carter

DECEMBER 20  
Candi Carpenter  
Mrs. Melvin Baker

DECEMBER 21  
Gary Ellison  
Jana Davis

DECEMBER 22  
Mrs. Billy D. Rice  
Conrad Cunningham  
Mike Darsey

happy 30th  
**WAYNEPOOH**

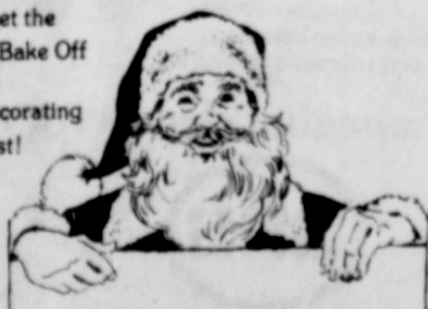
**LOVE, KRIS & CHARLIE & WIFEY**



Shop your **HOMETOWN Merchants**  
We Can Save You Time, Money and Gasoline

The McLean Chamber of Commerce

Don't Forget the Christmas Bake Off And The Decorating Contest!



**SHOP McLEAN!**



Shamrock, Texas

We Have Re-stocked For Christmas  
Little Butterball Turkeys, Smoked Turkeys, Turkey Breast, Smoked Turkey Breast, Armour's Boneless Turkeys, Honeysuckle White Turkey Roast, Baking Hens, Hormel Cure "81" Hams, Curemaster Hams, Wilson's "93" % Lean Hams Longhorn Old Fashioned Dry Cured Hams Wrapped For Christmas.

Butterball TURKEYS  
12 - 20 lbs. 98c lb.  
Hormels Best Pork COMBINATION PACK  
(2 Rib end cuts, 2 Loin end cuts, 6 center cuts) \$1.48 lb

Country Style PORK RIBS \$1.48 lb.

Center Cut PORK CHOPS Thick, Wafer or Regular \$1.98 lb.

Pork LOIN ROAST End Cut \$1.48 lb.

Pork LOIN ROAST Center Cut \$1.98 lb.

95% Lean Super Lean GROUND BEEF \$1.58 lb.

USDA Choice Beef Boneless Rolled ROAST \$1.78 lb.

Owens SAUSAGE Regular, Hot, Mild, Sage 1 lb. \$1.88 2 lb. \$3.75

Owens Smoked SAUSAGE 1 lb. pkg. \$1.88

White Swan Longhorn or Colby CHEESE 8 oz. pkg. \$1.08

Tyson's Chicken LIVERS 8 oz. pkg. 49c

CHILI BOWL Burrito or Enchilada Supreme \$1.29 pkg.

Wilson 93% lean Boneless HAMS \$2.58 Whole

Wilson's All Meat or Beef BOLOGNA \$1.58 1 lb. pkg.

Armour All Meat Jumbo FRANKS 1 lb. pkg. \$1.28

PRICES EFFECTIVE DEC 15 - DEC 24

STORE HOURS 8-8 Mon-Sat.



Blackburn Crystal White SYRUP 32 oz. 89c  
Gladiola All Purpose FLOUR 5 lb. 69c  
Hunts KETCHUP 44 oz. \$1.59  
Hunts Whole TOMATOES 14 1/2 oz. 2 for 89c

Hunts TOMATO SAUCE 8 oz. 4 for 89c  
Big Tate Instant POTATOES 16 oz. 79c  
Sather's Real Chocolate CHIPS 12 oz. \$1.19  
Baker's Chocolate Flavor CHIPS 12 oz. 89c  
Kraft MARSHMALLOW CREME 7 oz. 59c  
Sugary Sam Cut YAMS 29 oz. 77c  
Stokely PUMPKIN 16 oz. 35c  
Imperial Powdered or Brown SUGAR 2 lb. 89c  
Keebler Graham CRACKER CRUST 6 oz. 69c

Fleischmann YEAST 3 pak 2 for \$1  
Holland House Cream of COCONUT 16 oz. \$1.19  
Ocean Spray CRANBERRY SAUCE Whole or Jellied 16 oz. 59c  
V-8 Vegetable JUICE 6-pak - 6 oz. \$1.09  
Pine Action LYSOL 15 oz. 89c  
Lysol Disinfectant SPRAY Reg. or Scent II 12 oz. \$1.79  
Fab Laundry DETERGENT 49 oz. \$1.69  
Swanson Chicken BROTH 14 1/2 oz. 4 for \$1

Roman Meal BREAD 1 1/2 lb. loaf 89c  
Hunts Wesson OIL 48 oz. \$1.77  
Spillmate TOWELS Roll 59c  
Ruffles Potato CHIPS 1 lb. \$1.59  
Pet Evaporated MILK 13 oz. 2 for 89c  
Folgers COFFEE All Grinds - 1 lb. \$1.99  
Smucker's Grape JELLY 18 oz. 89c

Vlasic Sweet PICKLES 16 oz. 99c  
White Swan Fruit COCKTAIL 16 oz. 2 for \$1  
Bakers Angel Flake COCONUT 14 oz. 99c  
White Swan Whole Kernel or Cream Style CORN 17 oz. 3 for \$1

White Swan Leaf SPINACH 15 oz. 3 for \$1  
White Swan Whole POTATO 16 oz. 3 for \$1  
Fisher's Row Spanish PEANUTS 12 oz. 99c  
Comstock Apple Pie FILLING 21 oz. 99c  
Win You Cherry Pie FILLING 21 oz. 99c

Salada FUDGE MIX 4 min. 14 oz. \$1.59  
Jello GELATIN All Flavors 3 oz. 3 for 89c

Gladiola Yellow or White CORNBREAD MIX 6 oz. 5 for \$1

Friskies Fancy Feast CAT FOOD 3 oz. 4 for \$1

Lawry's Seasoned SALT 8 oz. 89c

White Swan Cut GREEN BEANS 16 oz. 3 for \$1

FROZEN FOOD Birdseye COOL WHIP 8 oz. 69c

Fields Pecan PIES 32 oz. \$2.79

Tater Boy Frozen FRENCH FRIES 46 oz. \$1.99

Pet Ritz Drop Dish PIE SHELL 2 ct. 79c

DAIRY Land o Lakes MARGARINE 1 lb. Qtrs. 2 for \$1

Borden's EGG NOG Qt. 99c

Borden's Whipping CREAM pt. 39c

Borden's SOUR CREAM or HALF & HALF 2 for \$1

Borden's Chocolate MILK Qt. 59c

Borden's Real BUTTER 1 lb. pkg. \$1.99

White Swan BISCUITS Buttermilk or Sweetmilk 8 oz. 3 for \$1

PRODUCE BANANAS 4 lbs for \$1

Red Delicious APPLES 3 lbs. for \$1

Navel ORANGES 3 lbs. for \$1

Ocean Spray Fresh CRANBERRIES 12 oz. 77c

Yellow ONIONS 10c lb.

YAMS 4 lbs. for \$1

Pascual CELERY Stalks 3 for \$1