



BAILEY COUNTY JOURNAL

"The Community of Opportunity-Where Water Makes the Difference"

Weather

	HIGH	LOW
Jan. 18	56	25
Jan. 17	40	25
Jan. 16	67	24
Jan. 15	61	23
Rainfall to date .30		

Vol. 11 No. 3

10 Pages

Published Every Sunday at Muleshoe, Bailey County, Texas 79347

10 CENTS

Sunday, January 19, 1975

Sunflower Contracts Made At Meeting

Disaster Payments Exceed Million Mark

Crowd Gathers At Sunflower Meeting

The Bailey County ASCS office reports that January 31, 1975 is the final date to file on 1974 disaster activity.

Most producers have completed the harvesting of their crops and those who believe that their production is low, because of a disaster or condition beyond their control, have filed and application for disaster credit.

Some producers have filed an application for disaster credit, but production evidence has not been submitted. The production evidence must be submitted be-

fore payment can be computed. Payments are being mailed to eligible producers weekly. To date, Bailey County producers have received \$1,799,073.00. Remember, January 31, 1975, is the final date to file on 1974 disaster activity.

January 29, 1975 is the final date to return peanut marketing cards to the ASCS office.

The ASCS office reminds producers to be sure to send in a report of the bales and warehouse weight of the 1974 cotton production as soon as possible. This could be holding up disaster payments.

John Fuston, director of the ASCS, reports that all programs administered by the ASCS are open to all persons without regard to race, color, sex, religion or national origin.



CLAYTON SWORN IN State Representative Bill W. Clayton was sworn in as the Speaker of the House of the 64th Legislature of Texas in Austin Tuesday afternoon. Clayton, a native of Springlake, has served this area as a representative for several years. Pictured swearing him in is District

Judge Pat Boone, Jr. of Littlefield who also serves this area. Clayton took the oath of office Tuesday afternoon following his election of 112 to 33 against Carl Parker of Jefferson County. (Photo by Joella Lovvorn).

A meeting on the growing of sunflowers in this area was sponsored in Muleshoe Thursday night by the Agriculture Committee of the Muleshoe Chamber of Commerce and Agriculture, Chairman of the committee is Harmon Elliott.

The meeting attracted a large crowd as there was standing room only at the council chambers in City Hall.

A representative from Growers Seed Association, Denver Ford, who is the area sales representative, presented a program on the growing of sunflowers. The interest in this program was real strong over the area.

Harmon Elliott, chairman of the committee, reported to the

Journal that there has been approximately 8,000 to 10,000 acres of sunflowers contracted in the Muleshoe area. At the present time, there are no contracts available. Hopefully, this will change, and if it does the Muleshoe Co-op Gins, managed by Earl Richards, will be in charge of handling the contracts.

The seed is all contracted with Plains Co-op Oil Mill in Lubbock at 15 cents per pound. The seeds will be used in making oil.

The purpose of the Agriculture Committee of the Chamber of Commerce is to be helpful to the area farmers in getting information on any agriculture aspects, holding any kind of meeting or program that any farmers think would be helpful to the community.

around
muleshoe
with the journal staff

Muleshoe State Bank, First National Bank, and Tri-County Savings and Loan Association will be closed Monday, January 20 in observance of Robert E. Lee's birthday.

Construction On U.S. 84 To Begin

Construction work consisting of Asphaltic Concrete Pavement overlays of U.S. Highway 84 from 7th Street in Farwell to the Bailey County Line will begin this week.

The traveling public is cautioned to watch for workmen and equipment in the construction area. One lane traffic will be required in the work area and will be speed zoned for 45 MPH.

Work is expected to be completed in this 10.2 mile section of U.S. Highway 84 in approximately three months by Cooper and Woodruff, Inc., Contractor of Amarillo.

Conservation District Has Election

The unofficial results of the 1975 election of the High Plains Underground Water Conservation District No. 1, held January 14, have been announced by the District's Lubbock office, Incumbent A. W. Goben of Farwell, Secretary-Treasurer of the five-member Board of Directors, was elected to a second two-year term.

Goben, representing Director's Precinct 3 which includes Bailey, Castro and Farmer Counties, defeated challenger Bob Anthony of Dimmitt.

Residents of Bailey County winning an unofficial four-year term on the District's County Committee are Marshall Head Muleshoe, and Harold Layton, Morton.

Also re-elected to the Board was Billy Wayne Sisson of Hereford. He begins his third term as Director representing Precinct 4 (Armstrong, Deaf Smith, Potter and Randall Counties).

The Board will meet on January 20 to canvass the votes and officially declare the winners.

Farmers Are Reminded Of Welding Course

Farmers and ranchers are reminded of the "Farm Arc Welding Short Course" to be held January 20-23 at 7:30 p.m. in the Muleshoe High School Vocational Agriculture Department.

Joel R. Barton, Jr., Farm Arc Welding Specialist with the Texas Education Agency and

Cont. on Page 3, col. 2

Emergency Loans Now Available From FHA

Farmers and ranchers in Bailey County who sustained production losses and physical losses caused by a sandstorm on June 8, 1974; drought from November 1, 1973 through August 1, 1974; hailstorms on August 8-14, 1974; and cool wet weather on September 12-24, 1974, may be eligible to receive an emergency loan from the Farmers Home Administration.

Those who have not received an emergency loan to assist them in recovering from their losses may apply for such a loan at the Farmers Home Administration county office at 115 E. Avenue D, Muleshoe, Texas before the close of business on February 10, 1975 for physical losses and September 15, 1975 for production losses.

These loan applications will be taken under the terms of a

new law enacted January 2, 1974. Individual examination will be made of each applicant to determine date of the disaster occurrence and emergency loan benefits for which the applicant is eligible.

Loans based on qualifying production losses may include funds to reimburse applicants for production expenses which went into damaged or destroyed crop and livestock enterprises, but not to produce new crops during 1975. Payment terms depend on the purposes for which the loan is used and the applicant's payment ability. No loan may exceed the actual loss sustained. The interest rate for these loans is five percent and there will be no principal cancellation. These loans must be secured by crops, livestock, farm machinery or real estate.

Chamber Banquet Tickets Now On Sale

John D. "Jack" Jackson, ground school instructor for American Airlines, Inc., Great Southwest Airport in Fort Worth, will be the speaker at the annual Muleshoe Chamber of Commerce and Agriculture Banquet this year.

The banquet will be held on Thursday, January 31, at 7:30 p.m. in the Muleshoe High School cafeteria. A steak dinner will be served this year.

Master of ceremonies for the banquet will be former Miss Texas, Miss Judy Mallett. She appeared in Muleshoe this past fall with the Larry Trider Show and was quite a hit with the local folks. She will also provide the entertainment for the evening.

Jackson has been with the American Airlines as an instructor for 14 years; the last seven years at the Flight Training Academy in Fort Worth. Prior to this he was an instructor in the American Airlines Technical Training Group at Tulsa, Oklahoma, for five years. He came to American Airlines from the Boeing Airplane Company where he was an instructor for over three years. In all - his instructor experience totals 23 years; having worked at his profession in the U.S. Air Force and in Civil Service prior to Boeing. He resides in Hurst, Texas with his wife, Donna, and three children.

Texans Invited To Inaugural Ceremonies

More than 90,000 invitations have been mailed to Texans in all sections of the State inviting them to take part in inaugural ceremonies marking the beginning of the first four-year terms for Governor Dolph Briscoe and Lieutenant Governor Bill Hobby, Governor Briscoe and Lieutenant Governor Hobby will take the oath of office at the State Capitol of Tuesday, January 21. Inaugural Day will begin with

Muleshoe Included In SPAG Grant

The City of Muleshoe has been included in a grant award to the South Plains Association of Governments by the Texas Criminal Justice Division. The \$11,273.00 grant will provide investigative equipment for 12 law enforcement agencies in the SPAG region. The Muleshoe Police Department will receive \$648.00 for the purchase of photographic and investigative equipment.

The 1975 Criminal Justice Plan for the South Plains Region pointed out that "some

departments have a small amount of photographic and investigative equipment, but it is either obsolete or insufficient for complete crime scene investigations."

The South Plains Association of Governments is serving as applicant and administrator of the technical equipment project. According to Truett Mayes, Executive Director, local agencies can qualify for funds through such a joint purchase, which they would otherwise not be able to obtain.

All in all, the banquet promises to be an entertaining evening for all. New officers and directors for the Chamber of Commerce will

Jury Here Tries One Civil Case This Week

Civil court was held in Bailey County this past week. Several cases were settled out of court and only one case was tried before the jury. The remaining cases were held over and will be tried at a later date.

Those cases settled out of court were Leon de Santiago versus Western Casualty and Surety Company and Jack Julian versus Woody Lambert, Max King and H.D. King.

Tried before the jury and Judge Pat Boone, Jr. on Wednesday and Thursday was the case of Ruby Willman vs. Claude Faubas, Texaco Inc. and Sam Fox for personal injuries from a fall on occupier's premises. In

be installed at the banquet and the outgoing officers and directors will be honored. The Employee of the Year will be named at the banquet as will be Conservation Farmer of the Year.

Tickets for the banquet are on sale at the Chamber office. They are also available from any member of the board of Blackwater Soil Conservation Service. Tickets are priced at \$7.00 per person.

If you wish to make reservations for tickets, call the Chamber office, 272-4248.

The jury ruled in favor of Mrs. Willman and she recovered damages from the plaintiff, Claude Faubas.

The other suits scheduled to be tried at this date will be tried at a later date.

Criminal cases have been set for March in court here.

Pep Homecoming Scheduled For January 25

The sixteenth annual Pep Ex-Student Homecoming will be held on Saturday, January 25, in the Pep Parish Hall.

Registration will begin at 5 p.m. The classes of '38, '48, '58 and '68 will be recognized and have their reunions at this time.

The banquet will begin at 6:30. The meal will consist of turkey, dressing and all the trimmings.

The fee for the registration and meal will be \$2.00. There will be a short business meeting followed by the coronation. Homecoming will close with a western dance starting at 8:30. Everyone is welcome to attend the festivities.

The fee for the registration and meal will be \$2.00. There will be a short business meeting followed by the coronation. Homecoming will close with a western dance starting at 8:30. Everyone is welcome to attend the festivities.

Adult Classes To Resume

Adult Education Classes, Levels I, II, III, and GED will resume Tuesday, January 14, in the Junior High School Building. Classes will meet each Tuesday and Thursday evening from 7 until 9:30 p.m.

Students previously registered are urged to attend, and new students may register at any time. Classes are offered in reading, social studies, science, English, literature and math. There is no registration fee and all books and materials are furnished free of charge.

Farmers Union Will Have Winter Retreat

A Mid-Winter Retreat and Leadership Training Session has been scheduled by Texas Farmers Union at the Plains Baptist Encampment on the White River near Floydada, January 24 and 25. Farm and ranch families from across the state will participate in the two day program designed to better acquaint the members with the farm organization's goals and objectives and to provide leadership skills training.

Dr. Weldon Barton, Director of Governmental Affairs, National Farmers Union, Washington, D.C., will lead off the program. Dr. Barton will hold a seminar on effective lobbying methods to prepare the members for the National Farmers Union Fly-in to Washington in late February.

The legislative Director, Robert Mullins of Waco, will discuss issues coming before the Texas Legislature and outline plans for the Texas Legislative Day in Austin in mid-February. The Austin Drive-in utilizes member-lobbyists to acquaint Texas Legislators with the Farmers Union State Legislative Program.

Victor Ray, Assistant to the President of National Farmers

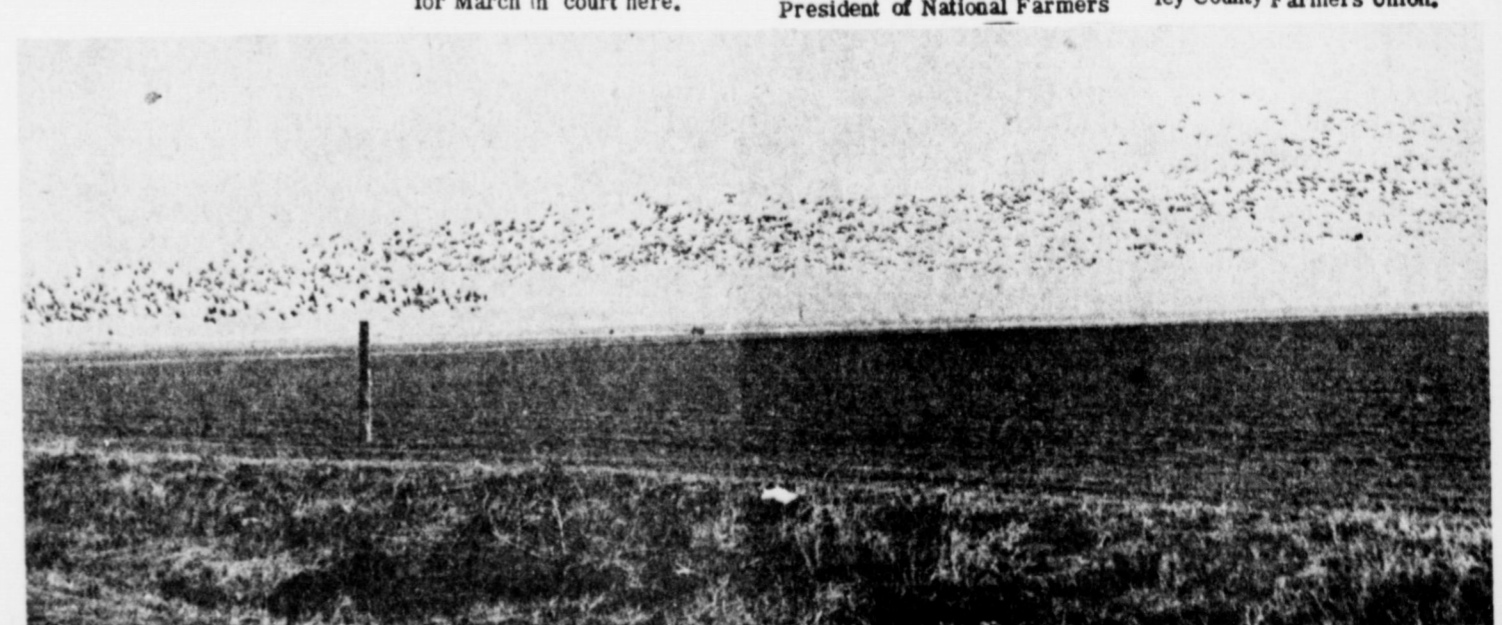
Union, Denver, Colorado, anationally recognized leader in the field of group dynamics and leadership training will be the coordinator and seminar leader for the training sessions. Ray has lead numerous Farmers

Union groups in training for leadership positions within the farm organization and community activities.

Keynote speaker for the Friday noon session will be H. M. Baggary, Editor and Publisher of the Tulsa Herald. Baggary will speak on the "Citizen's Role in Practical Politics." Baggary is recognized as one of Texas' leading political commentators.

Other TFU Leaders participating in the two-day seminar will be Texas Farmers Union President Jay Naman of Waco, and Mary Berg, Lubbock, TFU Youth and Education Director.

The training session and retreat is open to all members of Texas Farmers Union. The cost for the two days is \$30.00 per family or \$15.00 per individual which includes all meals and lodging. Reservations can be made through Nolan H. Harlan of Bala, President of Bailey County Farmers Union.



BIRDS FILL SKY Hundreds of Sandhill Cranes are pictured in this picture as they circle above a playalake in Bailey County. Literally thousands of these migrant birds are making their home in the Bailey County area this winter. These birds

migrate from their Canada breeding grounds to winter in this area every year. Many flocks of these birds can be found around grain fields all over the county.

STATE CAPITAL Highlights AND Sidelights

by Lyndell Williams
TEXAS PRESS ASSOCIATION

AUSTIN—The 64th Legislature whipped into action Tuesday (Jan. 14) faced with a heavy agenda which lawmakers must strain to complete by the June 2 adjournment deadline.

Blessed with a revenue surplus estimated at well over the \$1 billion mark, legislators may still have a hard time avoiding new taxes due to record spending demands.

Most costly proposals of all deal with overhauling the public school finance formula, regarded as a must job for the legislature this year.

Price tag on school finance reform ranges up to \$2.7 billion for the next two years. While a more-modest version probably will be adopted, any approach will take a big chunk of the available revenues.

Election of the new House speaker—Rep. Bill Clayton of Springlake—was the first major order of business for the session.

Only 30 new members took the oath of office in the

House, only four in the Senate.

Gov. Dolph Briscoe is pushing for \$394 million in emergency appropriations to raise state employees pay by 10 per cent immediately, provide stopgap school aid and increase retirement benefits.

Matters which legislators will wrangle over during the next 140 days include constitutional revision, creation of a public utilities commission, election law reform, launching a presidential primary, environmental matters, prison and hospital reforms and property tax overhaul.

COMMISSION SPURNED—A Senate consumer affairs sub-committee balked (on a two-to-one tie vote) at recommending a statewide public utility commission.

Sens. Betty Andujar of Fort Worth and Bill Meier of Euless voted against the

proposal, while Sens. Ron Clower of Garland and Lloyd Doggett of Austin supported it.

Clower and Doggett immediately pre-filed a bill to set up the commission, as Clower warned the committee vote demonstrates stormy days ahead in the legislature over the issue.

APPOINTMENTS—Governor Briscoe named State Rep. John H. Poerner of Hondo executive director of the Committee on Aging effective February 28.

Other recent appointments by Briscoe include Norman L. Utter of Corpus Christi as 214th district judge, Gerald Alton of Lufkin as 159th district attorney and Herman Smith of Hurst as chairman of a special advisory council on housing.

Dorothy Davidson was named to head the new

Texas Education Agency department of general education as an associate commissioner.

INQUIRY SET—Atty. Gen. John Hill announced he will ask District Judge James R. Meyers of Austin to convene a court of inquiry, probably next summer, into the 1974 Huntsville prison siege.

Hill delayed plans for the inquiry until after trials on criminal charges resulting from the July-August hostage seizure and shootout led by onetime narcotics kingpin Fred Gomez Carrasco.

One of Carrasco's confederates is set for trial next month, and trial of others accused of smuggling guns into the prison is expected to follow. Hill said judges strongly urged him not to call the court of inquiry until the trials have been completed.

The Attorney General said it is doubtful the probe can begin in Meyers' court before mid-summer.

Public Notice

By Order of the Commissioners Court, I am authorized to give public notice, and notice is hereby given, that it is the intention of the Court to grant a salary increase to all elected County and Precinct Officials, and to all appointed employees of the County, effective as of January 1, 1975. This is to be done by an official Order which the Court expects to pass while in regular session at the customary meeting place in the Courthouse in Muleshoe, January 31, 1975.

The Court believes that a salary increase is made necessary by the rapid rise in the cost of living, and the increasing difficulty of obtaining efficient and capable employees.

Therefore, it is the judgement of the Court that a 10% salary increase is reasonable, and is in harmony with cost of living increases. And it is the intention of the Court to make such an increase, effective as of January 1, 1975, by an Order to be passed January 31, 1975. The public is cordially invited to attend that meeting, and to be heard. Glen Williams County Judge Bailey County, Texas 3s-ltc

COURTS SPEAK—The Texas Supreme Court held parents of a Brewster County youth shot to death while allegedly stealing a battery from a car have a right to trial of a wrongful death suit against the man who killed him.

The Third Court of Civil Appeals held a woman whose only surviving son was killed in a Hays County car-train collision is entitled to \$15,850 damages. A jury verdict had held the 75-year-old woman should recover \$25,000.

Services Held Friday For Zamora Infant

Graveside funeral services for Joshua John Zamora, the infant son of Mr. and Mrs. Frank Zamora of Lazbuddie, were held at the Lazbuddie Cemetery Friday, January 17, at 10:30 a.m. Officiating was Rev. Jim Standridge, pastor of the Lazbuddie Baptist Church. He was born Tuesday and died a short time after birth at the Littlefield Hospital.

Survivors include the parents; grandparents, Mr. and Mrs. Richard Zamora of Socorro, N.M., and John R. Schmitt of Seelye, California; and one brother, Jeremy of the home.

REVISION PROPOSED—Two formal proposals for further efforts at constitutional revision have been prepared for legislative consideration.

Outgoing House Speaker Price Daniel Jr. announced a bill will be sponsored to provide for a 72-delegate constitutional convention to convene April 5, 1976.

Sen. Bill Patman of Garado, meanwhile, pre-filed in the Senate a joint resolution proposing the 15,631-word product of the ill-fated 1974 constitutional convention be submitted to voters. Patman said his proposal will save time and money.

The legislature sitting as a convention in 1974 failed by three votes to agree on a document for submission to voters.

The issue of revision is expected to be a subject of major debate in the legislature this year.

SALES TAXES REPORTED—Texas cities received more than \$62 million in municipal sales and use tax allocations for the last reported quarter.

Of the total, Houston received \$12.5 million, Dallas, \$7.8 million, San Antonio, \$3.9 million, Fort Worth \$2.6 million; and Austin and El Paso, \$1.9 million each during the quarter.

New Comptroller Bob Bullock resumed release of the data without charge to news media. The comptroller's office last year discontinued distribution of the reports.

WATER REPORTS ACCEPTED—Governor Briscoe accepted a short-range action program for guiding water development submitted him by a 32-member task force.

At the same time, he emphasized need to find a way to bring water to deficit areas from outside the state.

The program calls for \$1.7 billion worth of projects (many already under way) to meet Texas water needs and set priorities. It advises local management of ground water resources and endorses water importations for long-range needs.

Briscoe called on members of the task force to stay on the job and help implement the plan.

AG OPINIONS—Jurisdiction over minors 14-17 years old for fish and game law violations is in juvenile courts, Attorney General Hill held. Where minors are taken into court, they must be re-

leased promptly to parents on promise to bring them to court on request.

In another opinion, Hill said the State General Land Office may pay for operation and maintenance of its airplane and two automobiles from the travel item of the current appropriations act.

SHORT SNORTS

State and city sales taxes apply to gold and silver bullion purchased or delivered in Texas, Comptroller Bob Bullock held.

Texas wheat farmers may harvest a record crop of 117 million bushels in 1975, according to Texas Agriculture Commissioner John C. White.

Cigarette stamp revenues increased more than a million dollars—to \$20.8 million—last month over December 1973.

Wildcat oil drilling in-

creased by 42 wells in 1974 over 1973, but wildcat gas well drilling declined slightly.

Disaster designation has been requested for Castro, Floyd and Hale counties due to prolonged drought and adverse weather conditions.

BIBLE VERSE

"A thousand shall fall at thy side, and ten thousand at thy right hand, but it shall not come nigh thee."

1. Where is this verse found in the Bible?
2. Who made the promise?
3. To whom was protection pledged?
4. Where was their dwelling place?

Answers to Bible Verse

1. Psalm 91:7.
2. The author of the Psalm.
3. The godly.
4. The secret place of the most High (verse 1).



CHUCK WAGON BAKED BEANS

- 1/2 cup barbecue sauce
- 1/2 tsp. dry mustard
- 1 tsp. chili powder
- 1/2 tsp. garlic salt
- 1/2 cup butter
- 1 lb. dried navy beans
- 1 tart apple, chopped
- 1 small onion, chopped
- 1/2 lb. sliced salt pork
- 1/2 cup strained honey

Wash beans, cover with water and soak overnight. Cook slowly in salted water about 30 minutes, drain, saving cooking liquid. Put apple and onion in 2-quart bean pot; add half the beans and top with half salt pork. Add remaining beans. Mix honey, barbecue sauce, mustard, chili powder, garlic salt and butter with 2 1/2 cups cooking liquid; pour over beans. Top with remaining salt pork; cover. Bake in 375-degree oven 1 hour. Reduce heat to 275 and continue baking 5 hours. Add more bean liquid or hot water. During last half hour uncover. Yield: 6-8 servings.

For additional recipes write Commissioner John C. White, Texas Department of Agriculture, P.O. Box 12847, Austin, Tex. 78711.

ATTENTION MULESHOE AREA CATTLEMEN

.....In regard to dead stock removal.....
If you have had a problem with service..... whether in the feed yard or on the farm.....
Please give US a chance! Thank you.

Your local used cow dealer is muleshoe-bi-products
Phone-965-2903 Mobil Phone 965-2429

OPEN DAILY 9AM-8PM
CLOSED SUNDAY

GIBSON'S

WHERE YOU ALWAYS BUY THE BEST FOR LESS.

DISCOUNT CENTERS

1723 WEST AMERICAN BLVD

PRICES GOOD JAN. 20 THRU JAN. 22

CLIP THIS COUPON

COUPON GIBSON'S WITH THIS THIS COUPON

1.5 oz

BAN ROLL-ON 59¢

LIMIT ONE PER CUSTOMER

COUPON GOOD JAN. 20 - 27 #NAT-75A

CONTAC CAPSULES

10 CT REG. \$1.19

86¢

Toga Longs

LITTLE BOYS

WARM-UP JACKETS

OUR REG. \$3.99

\$2.99

TODDLER CREWS

CREW SOCKS

3 PER PACKAGE

REG. \$1.19 **79¢**

REG. \$1.29 **89¢**

REG. \$1.59 **99¢**

HOODED SHIRTS

OUR REG. \$5.09

\$3.99

DURA COLOR & LITTLE LAMB

ANKLETS

OUR REG. \$1.47

33¢

POLAROID

MODEL 420 LAND CAMERA

MODEL Land Camera

Least expensive deluxe camera. Gives big 3-1/4" x 4-1/4" color or black and white prints. Uses focused flash for perfect lighting.

OUR \$42.88

REG. \$59.97

without focus flash

CLARICON INTRUDER

MODEL 200 23 CHANNEL

MOBILE TRANSCIVER

POWER INPUT/OUTPUT: SW/3W

OUR REG. \$124.95

\$99.95

CHECK THE SAVINGS PLAN THAT IS RIGHT FOR YOU----

- * 5 1/4% - Passbook Account
- * 6 1/2% - 1 Year Certificate of Deposit (\$1,000 Min.)
- * 6 3/4% - 30 Month Cert. of Deposit (\$1,000 Min.)
- * 7 1/2% - 4 Years Cert. of Deposit (\$1,000 Min.)
- * Interest Compounded Daily
- * Substantial Loss Of Interest For Early Withdrawal

Now... You Can Come In And Discuss Your Money Problems Our Loan Programs Our Interest Rates On A Person-To-Person Basis In Our Local Office

304 Main Muleshoe, Texas

Come By And Register For **\$350.00** In **SILVER DOLLARS**

Drawing Will Be Held **FEBRUARY 10**

Tri-County SAVINGS AND LOAN ASSOCIATION

304 MAIN PH. 272-5527 MULESHOE, TEXAS

The Lieutenant Governor's Report

By Bill Hobby

1/10/75

I want to discuss some of the alternatives which will be faced by those who direct our various higher educational facilities as well as some of the issues which may be brought before the 64th Legislature.

Society has a responsibility to make post-secondary educational opportunities available to all citizens interested and capable of benefiting from them. Because of their greater ability to marshal the tremendous resources necessary for meeting this goal, the states have the greatest responsibility. Both constitutionally and historically, the states have been the major source of support for the educational establishment.

The situation today poses new and difficult challenges to the states. Among the major problems are: increasing costs, stable or decreasing enrollments of traditional college-age people, increased competition for students, new concern over student's access and choice, a broader range of post-secondary educational institutions, questions about innovation and more relevant instruction, changing student attitudes, increased interest in lifelong learning, institutional independence and accountability, more effective and efficient management and utilization of resources, and questions of who shall pay and how much.

Without effective cooperation, coordination and planning on state and institutional levels, including the active involvement of faculty, post-secondary education will face some hard times.

In developing our post-secondary educational system, we must take into account the needs of all our citizens. Institutions are faced with ever greater diversity in types of students in terms of age, educational preparation, ethnic and social background, motivation and interests. Such diversity underlines the

Texans...

Cont. from Page 1

have been meeting every Friday since 1964 for a devotional breakfast. Judge Otha F. Dent, chairman, will preside at the \$5-a-person breakfast.

Swearing-in ceremonies will be at high noon at the south entrance to the Capitol and will highlight inaugural activities. Texas Supreme Court Chief Justice Joe Greenhill will administer the oath to Governor Briscoe and Lieutenant Governor Hobby.

Following the swearing-in, all those present will have the opportunity to greet the Governor and Lieutenant Governor at a public reception in the Capitol rotunda from 1:00 to 3:00 p.m.

need for consideration, not only of differences in institutions and purposes, but of flexibility within institutions and programs to meet the various needs of the students.

In seeking diversification and flexibility, we must abolish the attitude that most is best. The answer to the educational needs of the Sixties was, too often, new institutions, more classrooms, more teachers. Today, especially in light of decreased enrollment projections, we must emphasize quality over quantity. We must take our institutions, our classrooms, our teachers and provide them with the resources they need to attain a special excellence.

Texas must not over-build, overstaff and overspend in higher education. To do so would seriously damage the quality of higher education we have worked so hard to develop. Enrollments have stabilized or declined in the senior colleges and universities in recent years. The birth rate has declined significantly in Texas—20% between 1957 and 1967—and, as these individuals reach college age, the enrollment pressures will decline still further. The State has provided enormous expenditures of money, talent, and effort for our existing universities. With increasing demands for tax funds and with the taxpayer becoming alarmed over the cost of education, post-secondary education may not be able to get enough funds to maintain quality and also expand at the rate we have seen in the past. Our people have always supported quality and must not be asked to accept a watered-down

Course...

Cont. from Page 1

Texas A&M University, will conduct the short course.

Subjects to be covered in the short course are: Basic arc welding, welding in all positions, types of electrodes, pipe cutting and welding in farm structures, and hardsurfacing farm equipment. Cost will be five dollars.

Further information may be obtained from Bill Bickel or Keith Bray, Ag. Teachers.

Bailey County Journal
 Published by Muleshoe Publishing Co., Inc.
 Every Sunday at 304 W. Second Box 449
 Muleshoe, Texas 79241
 Second class postage paid at Muleshoe, Texas
 Muleshoe, Texas, 79241.

TEXAS PRESS ASSOCIATION
 1975

L. R. Hall, President
 Jessica F. Hall, Sec.-Treas.
 L. R. Hall - Managing Editor
 Katie Buckler, News Reporter
 Debbie Kerr, Society Reporter
 Polly Cewal, Office
 Sherry Egan, Advertising

SUBSCRIPTIONS:
 The Muleshoe Journal and Bailey County Journal
 Bailey and surrounding Counties \$4.50
 The Muleshoe Journal and Bailey County Journal
 Everywhere in Texas \$6.00
 The Muleshoe Journal and Bailey County Journal
 Outside of Texas \$11.00
 Yearly by carrier \$4.50
 Monthly by carrier \$1.00
 Advertising rate card on application

version in years to come.

The 63rd Texas Senate is to be commended for its adoption of S.R. 209

which declared a moratorium on the creation or expansion of any public senior college

or university pending receipt of a study to be prepared by the Coordinating Board. This is an important first step toward proper and effective coordination of the growth of our system of higher education.

The varied conditions and trends that I have noted on student, state and institutional levels

obviously do not exhaust the forces at play in the post-secondary educational world at the present time. However, even this limited list helps to underline the fluid situation and the essential need for attention to post-secondary education and planning for its future.

Texas faces a timely obligation to revise its structure of post-secondary education and to develop substantive plans for the future. Our success in this endeavor, our success in maintaining a quality post-secondary education system depends, to a great extent on you. We need your help.

Best Of Press

Do They? Achievements are like trousers - they become threadbare if you rest on them.

-Sunshine Magazine.

Meaning What? If exercise eliminates fat, how in the world can a woman have a double chin?
 -Tribune, Chicago.

CHOP YOUR FOOD COSTS IN HALF

SPECIAL GOOD
 JAN. 19
 THRU
 JAN. 25



- RIB • ROUND • SIRLOIN
- STEAK** LB. **98¢**
- T-BONE
- STEAK** LB. **\$1.49**
- BONELESS SHOULDER
- ROAST** LB. **\$1.09**
- RANCH
- STEAK** LB. **89¢**
- CENTER CUT 7-BONE CHUCK

TRUTH IS
 WE'VE DONE SOME
 PRICE CHOPPIN'

GROUND **BEEF**
 100% ALL BEEF FAMILY PACK
69¢
 LB.

Farm-Fresh
PRODUCE

SHURFRESH SWEETMILK OR BUTTERMILK
BISCUITS \$1
 8 FOR 8 OZ CANS

- MEADOW LAKE QTRS.
OLEO LB 55¢
 MINUTE MAID 12 oz. can
ORANGE JUICE 49¢
 ORE IDA 2 LB BAG
TATOR TOTS 59¢

- BANQUET FROZEN ASSORTED
DINNERS 11 oz 45¢
 BANQUET FROZEN-APPLE-PEACH-CHERRY
PIES 20 oz 49¢
 GEBHART BACON
TAMALES 15 oz can 4/\$1

GOLDEN RIPE
BANANAS
 10¢
 LB

TEXAS RUBY RED
GRAPEFRUIT
 EACH 2 FOR 25¢

- SHURFINE CUT #303 CAN
GREEN BEANS 3/89¢
 WOLF BRAND-NO BEANS
CHILI 15 OZ CAN 79¢

CALIFORNIA SUNKIST
ORANGES
 23¢
 LB

MONEY SAVERS
 SHASTA ORANGE-ROOT BEER-GRAPE COLA
CAN DRINKS
 12 OZ. CANS 8 FOR \$1

WITH THIS COUPON
 1-pound Can of Maryland Club Coffee
89¢
 Without coupon \$1.15
 Limit one per customer
 COUPON EXPIRES 1-25-75

Pay-n-Save
 QUALITY AND SERVICE

Pepperoni Pizza

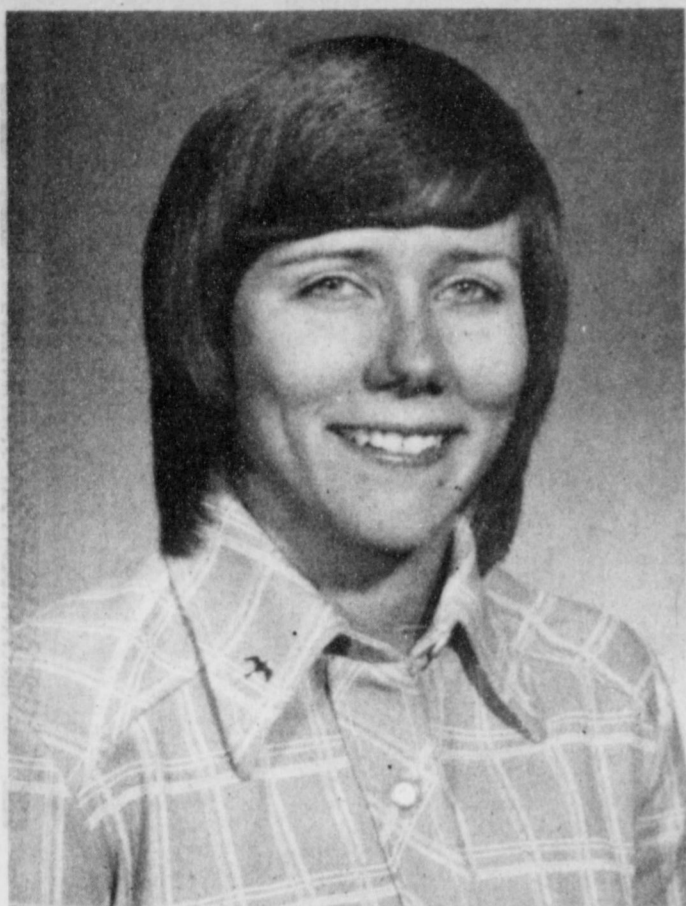
- DANTON
PEARS LB 23¢
 US #1 RUSSETS
POTATOES 10 lb. bag 79¢
 CELLO PAK
CARROTS 2/33¢

FOX
PIZZA
 CHEESE SAUSAGE AMBURGER PEPPERONI
59¢
 13 1/2 oz

BANQUET
POT PIES
 BEEF CHICKEN TURKEY
\$1
 8-oz.

RICKS RADIO & TV & APPLIANCES SALES & SERVICE
MAGNAVOX DEALER SERVICE
 ON ALL MAKES & BRANDS OF SETS INCLUDING TAPE DECKS 100% SERVICE
927-5388 GOODLAND, TEXAS

WE GIVE GUNN BROS STAMPS
 DOUBLE STAMPS WEDNESDAY WITH \$2.50 OR MORE PURCHASE
 WE REDEEM AND GIVE STAMPS ON FOOD STAMPS
 WE SELL TRAVELERS EXPRESS MONEY ORDERS, PAYROLL CHECKS CASHED
515 W. AMERICAN OPEN 8A.M. TILL 10pm
201 S. FIRST 8 A.M. TILL 10 P.M. 7 DAYS



COUPLE PLANS FEBRUARY WEDDING . . . Dr. and Mrs. B.R. Putman of Muleshoe announce the engagement and approaching marriage of their daughter, Jeanie, to David R. Wisian, son of Mr. and Mrs. Elroy E. Wisian of Springlake. The couple plan to be married February 28 in the home of the bride.

Three Way News
By Mrs. H.W. Garvin

Mrs. Beadie Powell spent the past week in Lubbock visiting Mrs. Dess Stafford.

Mr. and Mrs. George Tyson spent the weekend in Ft. Worth visiting their daughter the Wendell Price family and a son the Buck Tyson family.

Mr. and Mrs. Bud Huff attended the funeral of his grandmother in Tahoka Friday.

Mr. and Mrs. H. C. Toombs spent the weekend in Blytheville, Arkansas visiting their daughter, the Regy Self family.

Mrs. Bulah Toombs from Maple and a daughter, Mrs. Merlin Roberts from Morton were shopping in Lubbock Thursday.

Mr. and Mrs. Jack Furgeson spent Sunday in Jal N. M., visiting their daughter and family, the Jim Green's.

Mr. and Mrs. Carl Miller and daughter, Carolyn and Sherry Jones from Canyon spent the weekend visiting their parents.

George Tyson, John Tyson and Mr. and Mrs. H. W. Garvin received word Friday of the death of their brother, Jacob S. Tyson who died at El Campo Thursday after a long illness. Jacob Tyson was a veteran of World War I. He was buried Saturday with full Military honors at El Campo.

The community has had snow and very cold weather the past weekend.

Three Way basketball teams played at Bledsoe, Friday night with Three Way boys losing their game to Bledsoe and Three Way girls winning their game.

Study Club Holds Meeting

The Muleshoe Study Club met Thursday, January 9 at 4:00 p.m. in the Muleshoe State Bank Community Room with Mrs. John Agee as hostess. Mrs. G.L. Splawn conducted

OES Attends Friona Stated Meeting

Friona Chapter Number 990, Order of the Eastern Star, held their Stated meeting, Monday evening, January 13, in Masonic Hall of Friona.

Grand Officers introduced were: Mrs. Lillian McLellan, a member of Kidney Research and Cancer Committee; Lloyd Rector, a member of Brilliance Committee; Mrs. Bernard Robertson, Hereford, Chariman of Founders Day Committee; Bernard Robertson, Hereford, member of Masonic Brothers Committee; Mrs. Iona Stokes, member of Music Committee; and Wayne Williams, Muleshoe, member of Brilliance Committee, all of the Grand Chapter of Texas, O.E.S.

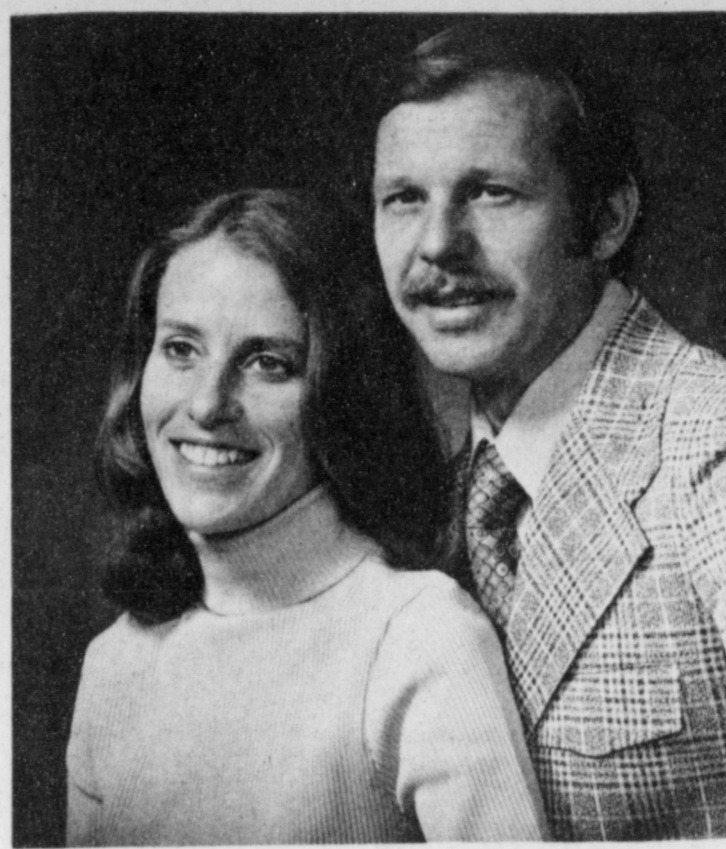
Others attending from Muleshoe were: Mrs. Wayne Williams; Mrs. J.H. Clay, Worthy Matron of Muleshoe, Chapter; Mrs. Darrell Nowell, Associate Matron; Mr. and Mrs. Bob Phillips; Mrs. Mary Farley; Mrs. Callie Smith and Ross Mick.

the meeting in the absence of President, Mrs. C.F. Partain. Mrs. T.L. Kent gave the prayer.

Mrs. Mildred Neely, Secretary read the minutes and called the roll with each member answering with her "favorite quilt pattern". Mrs. Sena Stevens gave an interesting program on "Early American Art". Mrs. Stevens and Mrs. Jewel Griffith had some very pretty quilts and other hand work on display.

Mrs. Joe Costen reported on the proposed ERA and what it constitutes if it is ratified.

Mrs. Agee served refreshments to Mrs. Joe Costen, Mrs. Lewis Embry, Mrs. Harold Griffiths, Mrs. Ed Johnson, Mrs. George Johnson, Mrs. T.L. Kent, Mrs. A.C. Neely, Mrs. Luther Pitts, Mrs. G.L. Splawn, Mrs. Elmo Stevens, Mrs. Doyle Turner, Mrs. Wilton Witherspoon and Mrs. T.R. White.



PLANS REVEALED . . . Mr. and Mrs. Kirk Pitts of Muleshoe announce the engagement and approaching marriage of their daughter, Lyna to John Hasandras, son of Mr. and Mrs. Nicholas Hasandras of Phoenix, Arizona. Lyna is a graduate of Texas Tech University in Home Economics. He is a graduate of Arizona State University, where he has completed BA and MA work in Geographic Education. They have recently returned from teaching positions in Sidney, Australia. The couple plan to be married February 1 in the First United Methodist Church.

Shannon Dawn Hodge

Mr. and Mrs. Jimmy Don Hodge of Muleshoe are the proud parents of a new baby girl born January 13 at 11:50 p.m. in the West Plains Memorial Hospital of Muleshoe. The baby weighed five pounds and 13 ounces and was named Shanna Dawn.

She is the couple's first child.

Sophia Espinoza

Mr. and Mrs. Jose Luis Espinoza of Bovina are the proud parents of a new baby girl born January 14 at 3:33 p.m. in the West Plains Memorial Hospital of Muleshoe. The baby weighed eight pounds and four ounces and was named Sophia Espinoza.

She is the couple's seventh child.

Carolyn Meshelle Redwine

Mr. and Mrs. Carrol Redwine are the proud parents of a new adopted baby girl born December 4, 1974. The baby weighed five pounds and 13 ounces and was named Carolyn Meshelle.

She is the couple's second child. Grandparents are Mr. and Mrs. M.T. Butts of Quana, Texas and Mr. and Mrs. J.C. Redwine of Lazbuddie. Great grandmother is Mrs. Minnie Redwine of Muleshoe.

Best Of Press

It's A Fact
If you look like your passport photo, you aren't well enough to travel.
-Blanketeer, Chatham, Mo.

Could Be
In the arctic region, the nights are six months long and sleeping pills probably are big as watermelons.
-Herald, Decatur, Ill.

Has A Point
A conceited person has one good point. He doesn't talk about other people.
-Grit.

Market Report

COLLEGE STATION--Beef prices show signs of fluctuating in coming weeks, and fryer chicken prices will increase immediately, but sugar prices indicate a downward trend, one forecaster says.

She's Mrs. Gwendolyn Clyatt, consumer marketing information specialist with the Texas Agricultural Extension Service, The Texas A&M University System.

"More grass-fed beef is now available, and the current beef supply is plentiful--however, there will likely be fluctuating prices in the coming week," the specialist said.

"Fryer chickens will probably show an immediate increase in price, though, because demand is usually heavier after holidays," she added.

Mrs. Clyatt, reporting a drop in sugar prices, pointed to a decrease in demand for sugar as one reason.

Pork supplies are starting a decline, and consumers can expect prices to increase at the retail level soon, the specialist noted.

Although eggs currently are priced at last year's level, they will show a substantial increase in price later in the year, she predicted.

At fruit counters, grapefruit and oranges are in peak supply with good quality.

"Fresh vegetables include plentiful supplies of dry beans, peas and potatoes. Dry bean and potato prices are down substantially from the 1973-74 crop year, as are dry onion prices."

Steady prices include those on broccoli, cabbage, lettuce, turnips and rutabagas.

CONSUMER WATCHWORDS: Food retailers may sell food below cost to attract customers. That's happening now at many egg counters--which makes eggs an "economical must" these days.

Thanks!
Sailor--Could I have special liberty to go shopping with my wife?
Officer--No.
Sailor--Thank you very much, sir.

Helping Children Become Independent

COLLEGE STATION--Many parents resolve to begin the new year by strengthening relationships with their children. But this takes more effort than just saying the words, according to one family life education specialist.

Rebekah Lodge Installs Officers

The Muleshoe Rebekah Lodge met Tuesday night in regular session and installed new officers for the incoming term.

Those elected were Noble Grand, Ronnie Loranice, Vice Grand, Buia Davenport; Secretary, Fern Davis; Treasurer, Junita Snow; Warden, Ona Berry; Conductor, June Davis; Chaplain, Nellie DeLoach; Musician, Nell Gatlin; Color Bearer, Junita Busby; Right Support to Noble Grand, Ruby Green; Left Support to Noble Grand, Lorane Quisenberry; Inside Guardian, Lucill Gross; Outside Guardian, Ina Wilemon; Right Support to Vice Grand, Pat Perish; Left Support to Vice Grand, Maud Robinson.

Most of the committees had to be carried over to the next meeting. After the business the group had a salad supper.

the Texas Agricultural Extension Service, The Texas A&M University System.

"Good relationships don't just happen--they must be nurtured," she reminded.

One of a parent's main responsibilities should be to help a child become independent so he'll be ready to leave home. Becoming a mature individual who can accept responsibility for his actions begins early, she pointed out.

"Parents encourage independence by providing opportunities for their children to learn how to behave in a variety of situations.

"Sometimes a child needs positive instructions to help him know what is appropriate behavior. Sincere praise for accomplishments promotes a feeling of self-confidence and a willingness to try something new," she said.

Parents help children learn to make their own decisions by discussing a situation and all possible alternatives. They promote an atmosphere which encourages an exchange of ideas and feelings by showing tolerance and respect for the young person's viewpoint--even when it differs from their own.

They teach cooperation through activities at home which help the child learn to get along with others," Miss Carrington explained.

Enochs H.D. Club Discusses

The Use Of A Blender

The Enochs H.D. Club met Tuesday, January 14 in the home of Mrs. Wilma Petree.

Mrs. Robin Taylor, Bailey County Extension Agent met with the club and gave a demonstration on the use of a blender. She passed out a leaflet with pointers on the use and care of the blender. She made several samples with a blender.

Those attending were Mrs. Iva Campbell, Mrs. Elnita Key, Mrs. Winnie Byars, Mrs. Zelma Fred, Mrs. Mammie Adams, Mrs. Lillian Fort, Mrs. Bonnie Long, Mrs. Robin Taylor and the hostess, Mrs. Wilma Petree.

Their next meeting will be held January 28 with Mrs. Win-

nie Byars giving the program over home safety.

Hobby Club Holds Meeting

The Muleshoe Hobby Club met Thursday, January 16 at 2:00 p.m. at the Muleshoe State Bank Community Room with Mrs. Allie Barbour as hostess. Eleven members were present. The hostess gift was drawn by Mrs. Dora Phipps.

Those who brought displays were: Mrs. Mabel Caldwell brought a spoon and jewelry of eye glass lens, gem stones, mason jar, and pepper and salt shakers. Mrs. Pitts brought a miniature form scene and needle holder. Mrs. Dora Phipps brought beaded camp and holders, windmill plaque, cap stationery, box kleenex. Mrs. Hallie Brisco brought a wool afghan. Mrs. Ruth Bass brought pillow tops and a tote bag. Mrs. Barbara Burton brought a hanger. Mrs. George Chambliss brought a crochet and a tissue cover. Mrs. Ethel Julian brought a needle point purse. Other members present were Mrs. Ola Pesch, Mrs. Allie Barbour and Mrs. Zula Carlyle.

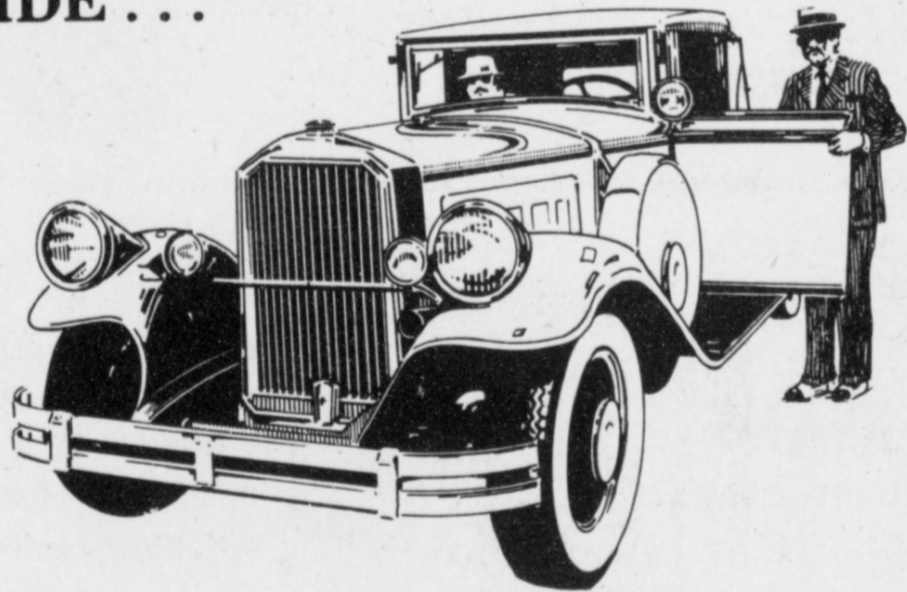
Fashion

One of the new skirts buttons down the front and has patch pockets. Buttons are decorative and are also used on the pockets.

Skirts are made with a variety of pleats or are fashioned on the A-line. Vests and sweaters top these skirts.

Belts are popular--some are narrow but others are wide, depending on the garment.

WE'D LIKE TO TAKE YOU FOR A RIDE . . .



... IN A NEW CAR!

So see us today about a new car loan. Our professional loan advisers can work out a plan of easy budget terms you'll like, at low bank interest rates. So if you're thinking of buying a new car, see us first for financing. We're the bank that likes to say, "Yes!"

BE SURE TO SEE US FIRST BEFORE YOU PURCHASE A NEW CAR!!

MULESHOE STATE BANK

101 W AMER. BLVD

272-4561

WE Will CUSTOM PROCESS YOUR BEEF TO YOUR SPECIFICATIONS



CALL OR COME IN TODAY!

CROW MEAT CO.

So. Hwy. 214

Friona, Texas

Phone 247-3333

January Clearance SALE!!

PLENTY OF PARKING BEHIND STORE WHERE THE WEST BEGINS FOR YOU.

TORRENCE'S WESTERN STORE

217 W. 7th



4-H STUDYING FOODS . . . Pictured above are the Muleshoe 4-Hers that met Tuesday, January 14 at the 16th and D. Church of Christ Fellowship Hall. They are studying the four basic foods and are starting to bake some foods.

4-Hers Study Foods

The Foods Project of the Muleshoe 4-H Club held its first meeting Tuesday, January 14 at the 16th and D. Church of Christ Fellowship Hall. Nineteen 4-Hers divided into three groups to study the four basic food groups and learn proper cooking skills. Working in the 'Food for Fun' Handbook were Lance Wenmohs, Trinidad Lopez, Jr., Kevin Howard, Jay Gleason and Mark Green. Working in the 'Exploring Foods the Picnic Way' were Staci Barnhill, Jacinda Gleason,

Lisa Bennett, Shelly Sain, Staci Schroeder, Berna Lopez and Marlea Cox. Those working in the 'Outdoor-Indoor Meals' were Julie Barnhill, Lori Leak, Tami Bratcher, Holly McGlaun, Beverly Copeland, Doyla High and Agness Lopez. Adult leaders assisting were Mrs. Spencer Tanksley, Mrs. Jerry Wenmohs, and Mrs. Jerry D. Gleason. Their next meeting will be held Tuesday, January 21 from 3:30 to 5:30 p.m.

West Plains Hospital Hospital Briefs

ADMITTANCE:
January 13; Mrs. Katie Crouch, Mrs. Lottie Bickel and Marvin Davenport
January 14; Chris Young, Mrs. Jacinto Bara and Mrs. Edd Harp
January 15; John R. Rogers, Herman Monroe Vinson, Shirley D. Walker, Mrs. D. Clements, Mrs. Curtis Walker, Mrs. Charles Ball, Mrs. Juarene Bovell and Eloy Cardenas
January 16; Mrs. Jess Bryant.

DISMISSALS:
January 13; Mrs. Don Teague, Henry Williams, and Horace Holt,
January 14; Mrs. Pablo Lira and daughter.
January 15; Katie Crouch, Chris Young, Altricia Hernandez, Marcus Puente, Robert L. Hobbs,
January 16; Joe S. Damron, Mrs. Joe S. Damron, Mrs. J. my Hodge and daughter.

TRANSFERRED:
January 14; Robert Wariner transferred to High Plains Baptist Hospital.
January 16; Mrs. Lou Hall transferred to Methodist Hospital in Lubbock.

TOPS Discuss Their Rules

TOPS Chapter Number 34 met Thursday, January 16 at 6:00pm, in the meeting room of the Bailey County Electric with 19 members weighing in. Mrs. Bobby Newman was named weekly queen. First runner-up was Mrs. Lewis Shafer. They had one renewal who is Mrs. Joe Baker and a new member who was Carlean Strout. They reported that two of their members were in the hospital and they are Mrs. Dee Clements and Mrs. Ed Harp. Also Mrs. J.D. Spurgeon, Mrs. Roy Clark and Evelyn Moore called in sick. No one received the money from the can-can jar because the person that drew the name hadn't lost weight. They discussed the rules of TOPS and concluded the night by ending the discussion. Their next meeting will be Thursday, January 23 in the meeting room of Bailey County Electric.

Nursing Home News by Myrtle Guinn

Mrs. Guinn's granddaughter, Cynthia Taylor of Friona and her fiancé, Jim Bishop of Farwell came Wednesday night to see me, Bishop is a Highway Patrolman.

Mrs. Edwards of Littlefield came on Friday morning to see her sister-in-law, Mrs. Emmanuel. She comes to visit her for an hour or two.

Mr. and Mrs. Hardy came one day recently as they do often, to see Dale's mother, Mrs. Fulcher. The Hardy's live at Sudan.

Mr. and Mrs. Kenneth Largent of Littlefield and Dr. McDaniels visited Mrs. McDaniels on Friday of last week.

Leon Lewis visited his mother Saturday morning. Mrs. Lewis was happy to see him as he has been home because of illness and hasn't been to see her for a few days.

Mrs. Laura Burdine of Lubbock and Mrs. Willie Welch of Dallas are here visiting their mother, Mrs. Chaney, Mrs. Pauline Tunnell also visits her mother who is having a birthday this week.

Mr. and Mrs. Leon Lewis came to see their mother, Mrs. Lewis on Monday.

Mrs. Newton's daughter of Whiteface is visiting her mother, and her daughter, Mrs. Lavada Lassiter. She also came in to see Mrs. Guinn on Monday morning.

Mr. and Mrs. Redfern of Truth or Consequences, N.M. came to see her sister, Mrs. Emmanuel on Monday afternoon while here.

Tuesday was Mrs. Chaney's birthday and her daughters brought her birthday gifts and a cake to help celebrate her birthday. Her daughters are Mrs. Laura Burdine and Mrs. Willie Welch.

Mrs. Penny Malone hosted a coffee for everyone in the home, Tuesday morning. The nurses and Auxiliary ladies were present, also.

Mrs. Inez Sanders and friend, Mrs. Winnie Byers of Morton, visited Inez's mother Monday and another daughter, Gladys Phillips of Needmore.

Odin Epperly brought his mother, Mrs. Millie Epperly a TV this morning. It has ear plugs so she can watch and hear without disturbing anyone else.

Mrs. Miller's daughter, Artie Faye O'Hare came for a short visit with her mother on Tuesday. She lives in Bovina.

Mrs. Duke's daughter and son-in-law, Mr. and Mrs. Blonde Ray came to see her the other day.

Ben Gilbreath's sister, Mr. and Mrs. T.L. Glasscock visited him Wednesday morning. Glasscock has been in the Methodist Hospital in Lubbock for eye surgery and is doing fine. We are glad to see them out again.

DeMolay Mothers Host Supper

The Muleshoe DeMolay Mother's club hosted a hot dog supper for the Muleshoe DeMolay's at the Muleshoe State Bank Community Room on Wednesday, January 8, 1975.

Some 25 boys attended from this area and eight mothers attended the meeting. Among special guests were Mrs. Jack Parr, State Mother's Club President of Odessa, and Mrs. Wyle Bullock of Lazbuddie, State Parliamentarian.

Henry Block has 17 reasons why you should come to us for income tax help.

Reason 1. We are income tax specialists. We ask the right questions. We dig for every honest deduction. We want to leave no stone unturned to make sure you pay the smallest legitimate tax.



224 WEST SECOND PHONE 272-3283 COME IN SOON

Dale Hamlett Speaks To Art Association

Dale Hamlett, from the Department of Art, ENMU, gave a painting demonstration using a pallet knife with acrylic, Tuesday, January 14 at the Art Association meeting held in the Muleshoe State Bank Community Room. Dr. Hamlett teaches color, design drawing, figure drawing and painting at ENMU. He has won many art awards including some firsts in drawings at the New Mexico State Fairs. He has won the Water Color Purchase Award at the fair, Prime Acrylic Awards and a first in watercolors in the International Show in France.

He has had many one-man shows and his paintings are in private collections over the United States.

Guests at the meeting were Mrs. Joe Roark, Mrs. Lloyd Franklin, Mrs. Harvey Barke, and Mrs. Jack Oria all from Clovis and Mrs. Elsie Powell from Lazbuddie. Members present were L.W. Chapman, Mrs. Gladys Dorsey, Mrs. Fred Beene, Mrs. Rheata

White, Mrs. Jack Lenderson, Mrs. Beryl Hicks, Mrs. C.E. Roark, Mrs. Dana Arnold, Mrs. Myrtle Steinbock, Mrs. Tice Hugg, Mrs. Velma Davis, Mrs. Arnold Gross Mrs. Lucy Lewis, Mrs. Jack Smith, Mrs. Wayland Ethridge, Mrs. Delbert Watson, Mrs. Jack Schuster, Mrs. Donnie Carpenter, Mrs. W.B. McMillian, Mrs. Joe Smallwood and guest artist, Dale Hamlett, Mrs. Jack Schusand Mrs. Wayland Ethridge were hostesses for the occasion.

GIRLS LOVE DOLLS
WASHINGTON--Little girls in the United States still love dolls so much that sales rose 22 per cent in the five years between 1967 and 1973, the Census Bureau reports.

30 in French-U.S. drug case sentenced.

Iran seeks nuclear-free Mideast.



DALE HAMLETT

U.S. East Germany nearer diplomatic ties. Yarborough first in Bristol 500 race.

LOUISA'S LETTER

Dear Louisa,
I am a mother with teenage children and the ideas they have frighten me as to the survival of our country and its people. Where in the world have these boys and girls got the idea that they can decide to live without rules? They seem to think that anything they do is right, if it seems right to them. And then they persuade themselves that what they do is right. We hear nothing but tolerance and appeasement from the judges, news media and parents. Don't you think it is time to go back to moral standards and respect for law, order and religion?
Mother-Vt.

they became corrupt and morally decadent. But I hope the pendulum is beginning to swing back from this era of crime and other evils. Many parents are responsible for their children's behavior but there are others who do the best they can but have their offspring influenced by bad associates or articles they read and X movies they see. If you have done your best, by example and precept, to rear good children, they will probably turn out well although they may have a struggle to do this. Continue to let them know you love them although you disagree with their ideas.
Louisa.

Address letters: Louisa, Box 532, Orangeburg, S.C. 29115

You are invited to a tea on our fiftieth Wedding Anniversary on Sunday, January nineteenth nineteen hundred and seventy-five from three until five o'clock in the afternoon at our home 214 West Seventh Street Muleshoe, Texas Mr. and Mrs. Harold Wyer NO GIFTS PLEASE

STATEMENT OF CONDITION AS OF DECEMBER 31, 1974

ASSETS	
MORTGAGE LOANS AND OTHER LIENS ON REAL ESTATE	17,801,243.99
ALL OTHER LOANS	582,074.76
REAL ESTATE OWNED AND IN JUDGMENT	41,366.86
LOANS AND CONTRACTS MADE TO FACILITATE SALE OF REAL ESTATE	133,120.36
CASH ON HAND AND IN BANKS	143,860.23
INVESTMENTS AND SECURITIES	5,070,204.22
FIXED ASSETS LESS DEPRECIATION	86,416.92
DEFERRED CHARGES AND OTHER ASSETS	212,044.56
TOTAL ASSETS	24,070,331.90
LIABILITIES & NET WORTH	
SAVINGS ACCOUNTS	22,218,821.30
ADVANCES FROM FEDERAL HOME LOAN BANKS	None
OTHER BORROWED MONEY	None
OTHER LIABILITIES	477,628.84
SPECIFIC RESERVES	15,000.64
GENERAL RESERVES	835,944.39
SURPLUS	522,936.73
TOTAL LIABILITIES AND NET WORTH	24,070,331.90

ALL ACCOUNTS INSURED UP TO \$40,000.00 BY AN AGENCY OF THE FEDERAL GOVERNMENT P.O. BOX 791 301 XIT DRIVE LITTLEFIELD FEDERAL SAVINGS AND LOAN ASSOCIATION PHONE 806 385-5197 LITTLEFIELD, TEXAS 79339



Wilson Appliance January CLEARANCE SALE! SALE ENDS JANUARY 25, 1975



17" DIAGONAL
The RAEBURN F3852L Decorator Compact styling. Light beige cabinet. Solid-State Super Video Flange Tuning System. ATG. \$378.00

19" DIAGONAL
The STUART F4025W Decorator Compact styling. Grained American Walnut color. Solid-State Super Video Range Tuning System. Chromatic One-Button Tuning. AFC. \$428.00

23" DIAGONAL
The BINGHAM F4541W Grained Kashmir color metal cabinet. Solid-State Super Gold Video Guard Tuning System. Chromatic One-Button Tuning. AFC. \$488.00

EVERY ZENITH SOLID-STATE CHROMACOLOR II TV SYSTEM FEATURES

- Brilliant Chromacolor picture tube
- 100% solid-state chassis
- Patented Power Sentry voltage regulator

Save BUILT IN DISHWASHERS AS LOW AS \$298.00

BUY BETTER. NOT CHEAPER. ENERGY SAVER DISHWASHERS. Cut electricity by 50% when you want to. Without sacrificing sanitization or convenience. Wide range of dishwasher models and types. All with KitchenAid reliability.

SPECIAL BONUS: Buy two KitchenAid appliances and save even more.

- KitchenAid Trash Compactors
- KitchenAid Stainless Steel Disposers
- KitchenAid Hot-water Dispensers

WILSON APPLIANCE
117 MAIN PHONE 272- 5531

THE SCIENTISTS TELL ME ...

By Robert L. Haney, Science Writer
The Texas Agricultural Experiment Station

Weed-Eating Bugs Offer Goathead Control

Scientists have come up with a new one-a-weed-eating bug that won't eat anything else. The weed is puncturevine (goathead to most Texans), and the insect is the puncturevine seed weevil. Besides goatheads, the weevil eats a close relative of goat-head called kallstroemia.

Scientists first observed the weevil feeding on goat-heads in India. After noting that it lived exclusively on goatheads, the insect was moved to Italy for additional observation. After more studies on the weevil's feeding habits, it was brought to the U. S. and later released.

The life cycle of this unusual insect begins when the

female weevil chews a small pit in the side of a young bur, deposits her egg and seals the pit with fecal cement. A small larva hatches and feeds on the inside of the bur. The fully grown grub transforms to a pupa and later to an adult which bores itself out of the seed. One, two or three weevils may complete their development within a single bur. The egg to adult cycle usually requires about 25 days. The lifespan of the overwintering adult is about 1 year. Adults will suck juice from puncturevine leaves and stems but do not cause appreciable damage to goathead plants by this type of feeding.

In August, 1962, N. E.

Daniels and A. F. Wiese, two Experiment Station scientists at the USDA Research Center at Bushland, obtained 250 of these "goathead weevils" from the Biological Control Section of the USDA in California. One-half were turned loose in a goathead patch at Big Spring and the others at Bushland. Those released at Big Spring survived over winter, but weevils were not found the next year at Bushland.

In 1963 at Big Spring, the first year after release, the weevils spread over an area with a 0.5 mile radius. In spots, up to 60 to 70 percent of the burrs were infested. During the fall of 1963, weevil-infested goatheads were spread on marked areas near Wellington and Amarillo. In 1964, farmers and researchers spread infested plants over the entire Panhandle and as far south as Midland. By the fall of 1966, the goathead weevil covered an area extending from Wheeler to

Lubbock and west to the New Mexico line.

The southern boundary of infestation extended from the New Mexico line east to Midland and northeast through Abilene to Vernon. Infestations varied from 40 to 98 percent of the burrs. The weevil had spread to most areas in Texas where goat-heads were a problem except in the Panhandle north of Lubbock.

The scientists observed that the adult weevils hibernate in weedy and trashy places from October until late May. In dry springs, weevils get off to a slow start because there isn't any food.

Since 1966, either weather conditions have been more favorable in the northern Panhandle or the weevils have become more cold tolerant. By 1974, this beneficial bug had spread northward to every county in the Panhandle. Infestations ranged from 40 to 80 percent. The weevil was found on goatheads as far south as Temple, Texas, west to Albuquerque, New Mexico, and throughout central Oklahoma. Other releases spread the weevil over most of the southwest part of the United States.

After observing this unusual insect for over 10 years, Daniels and Wiese state that "the weevil offers some promise of reducing but not eliminating goatheads." In areas where weevils infest over 90 percent of the burrs, enough seed escape to start a new crop. The scientists, however, are confident their efforts will reduce weed control costs in sorghum and cotton.

And it will reduce some of these weeds in cities and small towns. Thinning out goat-heads in alleys and vacant lots might save one or two patch jobs a year on bicycles. This obscure benefit alone might save Texans over \$100,000 a year. But there's no way to put a dollar value on the saving of pain to the bare feet of children and pets.

Chronic Alcoholic Seeks Geographic Escape From Problem

This article is part of a series on "The Progression of Alcoholism" produced by the Alcoholism Council of San Fernando Valley, Calif. The stories are made available locally by the Central Plains MH/MR Center.

The "geographic" is among unusual behavior that is peculiar to the person who suffers from the disease of alcoholism. This frantic flight from reality to escape what the problem drinker feels are people and places who "drive him to drink" usually comes during the early chronic state

of alcoholism.

It is as much a red-flare-signal among symptoms of this killer disease as are black-outs, sneaking drinks, gulping liquor, fortifying for parties by drinking in advance, solitary guzzling, morning drinks and other significant warnings covered in earlier articles in the Muleshoe Journal on such periods of this progressive disease as pre-alcoholism, problem drinking, acute stages and early chronic alcoholism.

Driven Away

Taking a geographic means that the alcoholic is impelled to move - to another state, city, part of town. It usually results from heaping quantities of self pity. The progression of the disease carries the alcoholic to great indifference for the feelings of others.

Deep within himself, he cringes from realizing he has driven others away.

No alcoholic can "go soft" (it's his nature not to) so he dotes on the monumental injustices he believes are heaped upon him by everyone he knows. He pictures himself as a paragon of virtue, patience and unselfishness.

He imagines rebuff, and lack of appreciation, "No wonder I drink too much. It's self-defense."

The next step is to see himself blameless for his problems. It's all because of the community, family, job, All are against him. He reasons that the thing to do is to escape,

to go where he is not known and can start all over again. He is sure he then can control his drinking. He is convinced that where he is now, people revel with pleasure seeing him bombed.

Learn of Abuse

The alcoholic reasons himself right out of town in an amazing number of times. For a short time, he usually stays sober-until he gets lonely.

7 Accidents Investigated In County

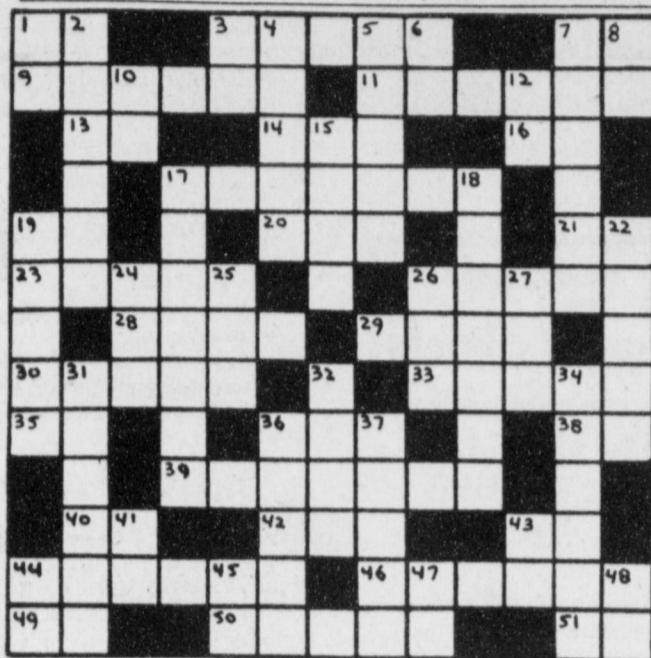
The Texas Highway Dept. investigated seven accidents on rural highways in Bailey County during the month of December, 1974, according to Sergeant Thurman Keffer, Highway Patrol supervisor of this area.

These crashes resulted in no persons killed and one persons injured.

The rural traffic accident summary for this county during the year of 1974 shows a total of 53 accidents resulting in three persons killed and 13 persons injured.

An optimist is very often one who doesn't have bills to pay.

CROSSWORD By A. C. Gordon



- ACROSS**
- 1 - Male nickname
 - 3 - Luster
 - 7 - Parent
 - 9 - Abdominal ma lady
 - 11 - Blood vessels
 - 13 - Sene's "yea"
 - 14 - Salt
 - 15 - Preposition
 - 17 - Incentive
 - 19 - Italian river
 - 20 - Theatric sign of a full house
 - 21 - Like
 - 23 - Concerning
 - 26 - Region
 - 28 - Male nickname
 - 29 - Distorter of facts
 - 30 - Order of architecture
 - 33 - Look of scorn
 - 35 - Bookkeeping entry (abb.)
 - 36 - American Medical Ass'n (abb.)
 - 38 - Preposition
 - 39 - Candidate for election
 - 40 - To proceed
 - 42 - Energy unit
 - 43 - Pronoun
 - 44 - A line of sentinels
 - 46 - Realm
 - 49 - Preposition
 - 50 - Reverse
 - 51 - Thoroughfare (abb.)
- DOWN**
- 1 - Exclamation
 - 2 - Demonstration
 - 3 - U. S. soldier
 - 4 - Endures
 - 5 - Round of applause
 - 6 - This
 - 7 - Demon
 - 8 - Like
 - 10 - Eastern U. S. state (abb.)
 - 12 - Preposition
 - 15 - Broadcaster
 - 17 - Refer to
 - 18 - Peculiar
 - 19 - Demoralizing terror
 - 22 - Austere
 - 24 - Age
 - 25 - Factual twitch
 - 26 - That thing is (contraction)
 - 27 - Have being
 - 31 - U. S. state
 - 32 - Arabian chief
 - 34 - Sea ducks
 - 36 - To improve
 - 37 - Fury
 - 41 - Either
 - 43 - Roman 1001
 - 44 - Roman 101
 - 45 - Old Anglican (abb.)
 - 47 - Pronoun
 - 48 - Latin "and"

THE FIRST NATIONAL BANK OF MULESHOE PAYS MAXIMUM INTEREST RATES

ALLOWED BY REGULATION

COMPOUNDED DAILY ON CERTIFICATES OF DEPOSIT

AND PASSBOOK SAVINGS

NET YIELD

PASSBOOK SAVINGS 5% **5.13%**
CERTIFICATES OF DEPOSIT

6 Months 5 1/2% **5.65%**
12 Months 6% **6.18%**
30 Months 6 1/2% **6.72%**
48 Months 7 1/4% **7.52%**

INVESTMENT CERTIFICATES

72 Months 7 1/2% **7.79%**

\$1,000.00 Minimum On Certificates Of Deposits & Investment Certificates, Early Withdrawal Penalty In Effect On Certificates Cashed Before Maturity.

PLEASE CHECK WITH US FOR ADDITIONAL INVESTMENTS

NOW EACH DEPOSITOR INSURED TO
\$40,000

Question: If an FDIC-insured bank fails, when and how will I get my deposit back?

Answer: If an FDIC-insured bank is closed and liquidated, FDIC will start to pay insured depositors up to the statutory limit within 10 days after the closing.

Question: How good is FDIC insurance?

Answer: Since it's creation in 1933, The FDIC has never failed to honor it's deposit insurance commitment. To date, in all failed banks insured by FDIC, over 99% of all deposits, insured and uninsured combined, have been paid or made available to their owners.

Question: Can I get more than \$40,000 insurance at the same bank?

Answer: Yes, if you hold accounts in different legal ownership capacities. For example, if you are married, you can have an account in your name insured up to \$40,000; your spouse can have an account in his or her name insured up to \$40,000 and you and your spouse can have a joint account insured up to \$40,000. If you hold several accounts in the same ownership capacity, however, the maximum insurance to which you are entitled is \$40,000-- even if the total amount in all of the accounts is more. The new law has not changed the rules -- only the dollar amount in insurance has been changed.

FIRST NATIONAL BANK

MULESHOE, MEMBER FDIC TEXAS

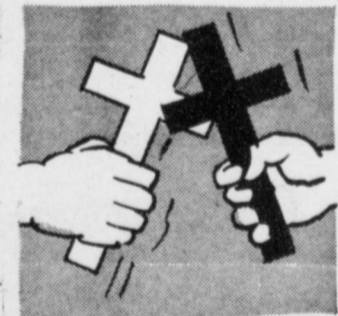
THE FAMILY LAWYER

Church Feud

Two factions of a church were locked in a bitter struggle over the powers of a controversial minister. Finally they took the issue to court for settlement.

But the judge refused to take sides. Calling attention to the constitutional separation of church and state, the judge said:

"Courts do not inquire into questions exclusively ecclesiastical. If the courts should deal with litigation of that nature, the whole subject of theology would have to be examined. Such a course would establish the courts as the final arbiter in every religious controversy."



This is the law's usual attitude toward religious disputes, declining to intrude into "things that are God's." However, the courts can and do take a hand in "things that are Caesar's."

For example, in one case a pastor had a disagreement with his church about the terms of his employment contract. A court had no hesitation in weighing the opposing arguments and in ruling (on strictly legal grounds) against the church.

Likewise, courts have dealt with such mundane matters as the ownership of church real estate or the administration of trust funds left to a church.

Furthermore, of course, churchmen are just as subject to the criminal law as any other citizen.

Thus: A minister, while denouncing sin in his sermon, described it in unusually vivid language. Outraged members of his congregation complained to the police, and the minister was duly haled into court on a charge of using obscene language in a public place.

Finding him guilty, the court commented:

"He has a right to propagate his religious views, but will not be permitted to commit a breach of the peace under the guise of preaching the gospel."

A public service feature of the American Bar Association and the State Bar of Texas. Written by Will Bernard.

Congress urged to standardize drug effects.

WANTED!

MOTHERS WHO NEED HOT WATER

One Call Does It...

WE SELL... WE SERVICE... WE INSTALL...
WE FINANCE... WE GUARANTEE...

ELECTRIC Water Heaters

ELECTRICITY IT DOES SO MUCH GOOD

Modern ELECTRIC Water Heating
FOR SO MANY PEOPLE

13-2 WE SELL 'EM - Call Us!



MULE'S TALE



Official Publication of Muleshoe High School Written and Edited by Students of the Muleshoe Schools

VOL. 9 No. 30

EDITOR STEVE VAN ZANDT

SUNDAY, JANUARY 19, 1975

Speech - Number One In West Texas

Speech Department Wins Sweepstakes

This past weekend the Speech Department competed in the Fourth Annual Dalhart XIT Speech Tournament. Fifteen Schools competed in the six-event tournament which included an experienced and a novice division.

Moore Named Outstanding Director

Kerry Moore, speech director at Muleshoe High School was named outstanding speech director at the fourth annual XIT Dalhart Speech Tournament, held this past weekend.

Individual and team results are as follows: Debate; Jana Oyler and John Dean second place, Zeb Payne and Rhetta Berry Third place; Duet Acting; Bill Durham and Tim Jinks second place, Tracy Burman and Larry Mills third; Poetry Interpretation; Morgan Pena first place and Janice Posey second, Prose Reading; Serry Washington first and Bill Durham second; Informative speaking; Ronnie Bullock first and Bill Wall third; and Persuasive speaking; Martin Nowlin, second, Bill Durham was selected as the tournaments "Best Actor" in duet acting.

Kerry Moore, MHS Speech Director, was recognized as the tournament's outstanding Speech Director. A beautiful plaque was presented to him.

LUNCH MENU

- MONDAY
 - Milk
 - Burritos
 - Bu. Peas
 - Creamed Potatoes
 - Cheese Sticks
 - Orange Juice
- TUESDAY
 - Milk
 - Juicy Burgers
 - Pickles
 - French Fries
 - Buns
 - Banana Pudding
- WEDNESDAY
 - Milk
 - Red Beans
 - Pickles - Onions
 - Bu. Spinach
 - Carrot Sticks
 - Corn Bread
 - Fruit Cup
- THURSDAY
 - Milk
 - Hot Dogs
 - Chili Sauce
 - Veg. Beef Soup
 - Crackers Peanut Butter
- FRIDAY
 - Milk
 - Turkey Dressing
 - Cranberry Sauce
 - Giblet Gravy
 - Green Beans
 - White Bread
 - Orange Juice

Freshman Basketball

This year the Freshman boys have showed a great deal of ability, determination, and desire. Their record for this season is 7 wins and 5 losses. They have 4 more regular games, and they are entered in the Dimmitt Tournament the 24th through the 26th of January. They will play Littlefield Monday night. After the tourney, they will meet Dimmitt Morton, and Levelland for their last games of the season.

Members of the Freshman team are Mark Washington, Dean Northcutt, Joel Nowlin, Brad Baker, Danny Wilson, Marcus Beversdorf, Billy Vinson, Mac Norman, Ricky Woodard, Robert Flores, Carl Patterson, Edwin Watson, Mike Silguero, Keith Seales, Martin Lopez, and David Stevens. Congratulations to these boys!!



KERRY MOORE

Basketball Homecoming Candidates Elected Here

The Students at M.H.S. are planning a "Beat Canyon" week for the Basketball Homecoming '75', which will be held Friday, January 24, 1975.

The basketball boys have chosen three girls to be candidates for the 1975 Homecoming Queen. The girls chosen are Ellen Shafer, Jonice Killough, and Belinda Throckmorton.

Ellen Shafer is the daughter of Mr. and Mrs. Lewis Wayne Shafer. She is a senior this year and plays guard for the Mulettes. Ellen is not only very active in basketball, but is also involved in student council and FTA and is co-editor of the "Muletale-Muletrain" journalism staff.

Jonice Killough is the daughter of Mr. and Mrs. M.G. Killough. She is a senior at M.H.S. and plays forward for the Mulettes. Jonice is in Art Club, Student Council, and FTA. She is Plow Girl for the Muleshoe FFA.

Belinda Throckmorton is the daughter of Mr. and Mrs. Lloyd D. Throckmorton. Belinda is also a senior and plays guard for the Mulettes. She is an active member of Art Club and FTA and is a member of the Student Council.

The varsity basketball girls elected Gary White, Dusty Davis, and Jeff Skipworth to be the candidates for the 1975 basketball Homecoming King.

Gary White is the son of Mr. and Mrs. Carl White of Friona. He is a senior on the Muleshoe Mule's basketball team. He is drum major of the Mighty M Band, and participates in Student Council.

Dusty Davis is the son of Mrs. Mary Davis. He is a senior and plays post for the Mules. Dusty is treasurer for Student Council and a member of FTA and Dusty Pages.

Jeff Skipworth is the son of Mr. and Mrs. Jimmy D. Skipworth. Jeff is a senior player for the Mules. Jeff is a member of FTA and Dusty Pages. The coronation for 1975 Basketball Homecoming King and

Queen will be held during half-time at the varsity boys game, Friday night against Canyon. The Junior Class will be selling Mums for the Basketball Homecoming during the next week.

Price of the Mums are \$5.00, \$8.00, and \$10.00, and orders are being taken by Perri Poyner, Jana Bruns, Cynthia Rogers, Donann Harmon, Teresa Hamilton, Sherrill Rasco, Janet Hopper, Joie Carpenter, Lana Waggoner, Darla Hunter, Marilyn Black, and D'Anne Clark or you may call 272-3136 or 965-2426 after 7:00 p.m.

The annual Homecoming Pep-rally will be held Friday at 2:45 p.m. All parents and exes are urged to attend.

Friday night will be full of excitement at the Muleshoe Jr. High Gym. The girls J.V. game will begin at 4:00 p.m., followed by the J.V. boys at 5:30. The varsity girls play at 6:30, followed by the varsity boys at

8:00. All teams will be playing Canyon.

Sweetheart Banquet Candidates Named

The Rose FHA chapter met Tuesday night at 7:00 p.m. in the Homemaking Department. Prisca Young presided over the meeting.

Candidates were nominated for the Sweetheart Banquet Coronation which will be held Saturday, February 8. Those nominated for queen were sophomores-Alma Leal and Nancy Ramm; juniors-Diana Vinson, Sherrill Rasco, and Mary Ann Gonzales; and seniors-Robbie Nesbitt, Lydia McGee, and Vicky Griffin. Those nominated for king were sophomores-Gary Gunter and Derrell Rasco; juniors-Dee Buckner, Jack Barber

and Keith Rempe; and seniors-Paul Harbin, Craig Baker and David Watson.

Candidates selected for this year's banquet were seniors-Robbie Nesbitt and Paul Harbin juniors-Keith Rempe and Diana Vinson, and sophomores-Gary Gunter and Nancy Ramm.

Committee reports were given by Vicky Griffin, Chairman of the Invitations Committee, Pam Vinson, Chairman of the Entertainment Committee, and Judy Dearing, Chairman of the Program Committee.

Daddy Date Night was also discussed and plans are being made.



ELLEN SHAFER



JEFF SKIPWORTH



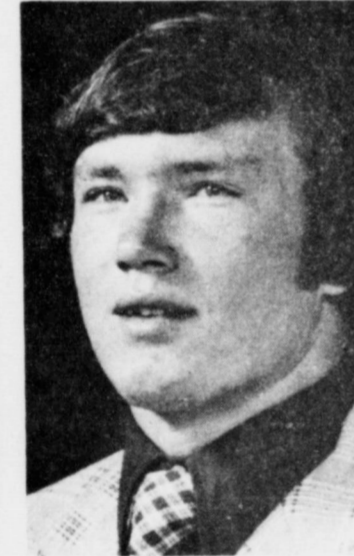
BELINDA THROCKMORTON



GARY WHITE



JONICE KILLOUGH



DUSTY DAVIS

Council Will Host Ping Pong Tourney

The Muleshoe High School Student Council met Tuesday, January 14, 1975 in Room 14. The prayer was led by Mike Bland, President.

The Council will hold a Ping-Pong Tournament starting Monday, January 20. There will be no charge. It will be held during orientation periods and lunch hours. There will be four divisions; student singles, student doubles, teacher singles, and teacher doubles.

Ribbons will be given to second place, third place, and

fourth place winners. First place winners will receive trophies.

M.H.S. students will be let out of class to see the finals.

The Student Council decided on having "Find the Basketball Day" on January 24, Basketball Homecoming Day. Council members will hide little envelopes with pictures of basketballs on them with icecream sundae coupons inside. If you are one of the lucky ones who finds a basketball, you may take it to the Dairy Queen and receive a free ice cream sundae.

At the Homecoming game, their will be sign-up papers on the counter with Seniors, Juniors, Sophomores, and Freshmen written on them. Students, whenever you come to the game, you need to be sure and sign up, and the class with the most students present will be given a coke party by the Student Council.

This is a special reminder to all Council officers and representatives to be sure and attend the Student Council meetings every Tuesday morning at 7:45 a.m. in Room 14.

Contentment is really just a matter of reducing your wants and desires.



FAITH FREE

Faith Free Named Choir Student

The High School Choir elected Faith Free, daughter of Mr. and Mrs. Bobby G. Free, as choir student of the month. She is pianist for the choir and has played for eight years. She also plays for the Richland Hills Baptist Church and teaches the nursery class there. Faith works at Damron Drug and is a member of HECE. She enjoys swimming, going to movies, playing the piano, crewel embroidery, listening to music, any kind of hand craft, drawing and especially enjoys being a Christian and trying to live for God. She is a senior this year and has great plans for the future.

Mike Glover Named Best of MHS

Michael Charles Glover has been selected by the Thespians of "Best of MHS" for this week. Mike is the son of Mr. and Mrs. Charles L. Glover. He is 17 years old and is a Senior at MHS. Mike is involved in Art.

When asked for his comment on Art, Mike replied "People express themselves many ways I have found that through painting and crafts I can express myself to the greatest".



MIKE GLOVER

Mulette Manuevers

The Mulettes played Roosevelt Thursday night at Roosevelt and won a close game 38-32. Lavern Carpenter, Diane Dale, and Belinda Throckmorton played outstanding defense for the Mulettes. Laverne had thirteen rebounds and Diane had six.

The Varsity and J.V. girls played Lockney at Muleshoe Tuesday night with the J.V. winning 50-45 and the Varsity winning 53-42. Laura Beene, Jana Bruns, and Jo Roming had an outstanding game for the J.V. team.

Sarah Patterson made 24 points; Cheryl Stovall, 16 points Jan Harlin 9 points, and Tanya Burton 4 points, for the Varsity team. Tanya Burton suffered an unfortunate knee injury in the game and will be out for an indefinite time.

The Mulettes play Dimmitt here Thursday night at 6:30 p.m. The J.V. girls play in the Littlefield Tournament, this weekend.

The Mulettes and the coaches would like to thank the Varsity Cheerleader for their support this season.

Getting someone else to do your work is the recipe for real "success."

An apology often follows an epic inward struggle and should always be accepted.

SEE THE



PLANO GRANDE
2 BLADE LAND PLANE
20 Ft. Model \$1,500.00
24 Ft. Model \$1,550.00

Contact Dwayne Winkles - 481-3612

WINKLES PLANO GRANDE INC.

1025 Ave. A

Farwell, Tx.

Sudan News

By Mrs. Wayne Doty

Paul Gordon of Louisville, Kentucky arrived home Tuesday to be with his parents, Mr. and Mrs. Waymon Gordon, during the loss of his grandmother, Mrs. Stella Thomas. He assisted with funeral services.

Mr. and Mrs. Glen Cardwell were in Lubbock, Thursday at Highland Hospital when his father, Hal Cardwell underwent surgery.

Marcell Murray of Shreveport, La. was here several days to be with her brother and wife Mr. and Mrs. Byron Lynn and Roby when Myrtle was in the Muleshoe Hospital. Mrs. Lynn

died Wednesday afternoon and the funeral services were held in Sudan First Baptist Church, Friday.

Mr. and Mrs. Tommy Laceywell and Blake visited during the holidays in Albuquerque, N. M. with her sister.

Mr. and Mrs. Ricky Murrell of Louisiana were recent visitors in the Frank Lane home.

Ray May underwent major surgery last week in the Methodist Hospital of Lubbock.

Mr. and Mrs. Wayne Doty, Mrs. Evah Doty and Mrs. J. C. Doty spent several days at the Methodist Hospital to be with Kelson Doty and family when he suffered a heart attack.

Mr. and Mrs. Mike Bellar and girls of Tyler were recent visi-

tors in the home of his parents, Mr. and Mrs. Waymon Bellar and Mary Ann.

Mr. and Mrs. Billy A. Gore, Rusty, Randy and Ginger spent the weekend following Christmas in the home of their son and daughter-in-law, Mr. and Mrs. Billy W. Gore of Midland.

Mr. and Mrs. Larry Hanna were weekend visitors in the home of his parents, Mr. and Mrs. Betty Hanna and Matt.

Mrs. Othell Chambers of Slaton visited during the weekend in the home of Mrs. Maude Alexander.

Returning to Austin last week where they attend the University were Dick and James Black. They had been visiting their parents, Mr. and Mrs. Richard Black, Susan and Sherry.

Mr. and Mrs. B. A. Beauchamp, Jr. and Derwin returned home recently from visiting their son and family, the Danny Beauchamp's of Astoria, Oregon. They made the trip by plane.

Kay Burge of Lubbock spent several days during the holiday in the home of her parents, Mr. and Mrs. Leon Warren and boys. Also visiting with the Warren's during the holidays was her mother, Mrs. Cotton Simpson of Stamford.

Mr. and Mrs. Jerry Ethridge and Kay Lynn of Dimmitt and Mr. and Mrs. Larry Schweppe of Carlisle visited their parents Mr. and Mrs. G.C. Churchman and Scott during the holidays.

Mrs. S. D. Hay visited recently with her daughter, Mr. and Mrs. W. Richarz of Moscow, Idaho.

Mr. and Mrs. Bill Poe, Raylene, Doylee and Brett were in Midland during the holidays to visit her mother, Mrs. Maggie Read and other family members.

Mr. and Mrs. Claude Kropp visited recently in Hereford with their children.

Linda Wells of Denver, Colorado spent several days during the holidays with her par-

ents, Mr. and Mrs. J.C. Wells. They all were in Lubbock on Christmas Day at the home of Mr. and Mrs. Claude Patton, Arlan and Lori where they met other family members.

Donald Keith Gage, son of Mr. and Mrs. Skinny Gage has returned to Memphis, Tennessee to Naval Aviation Support Equipment Technician School as Navy Airman Apprentice following a visit here with his parents and other relatives.

Stella Mae Thomas, 84, died last week and funeral services were held at First Baptist Church here on Wednesday. She was the mother of Letha Gordon.

Mrs. Dee Atis, David and Brenda were in Bovina at the home of a daughter and sister, Mr. and Mrs. Wayne Stone and children for Christmas Day. Also there was another daughter and sister, Mr. and Mrs. Carl Henderson and girls of Enochs.

Then there are those who like jokes—the other fel-

WHO KNOWS?

1. Name the environmental protection chief.
2. When was the prohibition amendment added to the Constitution?
3. What well known southern general was born January 20, 1807?
4. What type plane did the Air Force test recently?
5. William R. King was Vice President to which President?
6. What event took place on January 31, 1943, during World War II?
7. Name the largest lake in the world.
8. What is the area in square miles?
9. The convening Congress will be known as what Congress?
10. Name the capital of Belgium.

Answers To Who Knows

1. Russell E. Train.
2. January 16, 1920.
3. Robert E. Lee.
4. The B-1 intercontinental bomber.

5. Millard Fillmore.
 6. The Germans surrendered at Stalingrad.
 7. Caspian Sea between Asia and Europe.
 8. 143,500 square miles.
 9. The Ninety-fourth, first session.
 10. Brussels.
- Friendships are not the result of a rushing acquaintanceship.

Farm-facts
A Weekly Report Of Agri-Business News
Compiled From Sources Of The Texas Department of Agriculture
John C. White, Commissioner

The Same Sad Story... Texas Is First, Second, And Third... Cotton Marketing Still Dull... Census Forms In Mail.

It continues to be the same sad story for Texas farm prices and parity. As of the middle of December, parity stood (or slumped) to 73; this is down three points from November and off a whopping 17 points compared to a year ago.

All categories of livestock continue at levels well below parity. Crop prices, with the big exception of cotton, are above parity.

Wheat in Texas averaged \$4.62 per bushel; parity is \$4.21. Sorghum averaged \$5.34; parity is \$4.76. However, both wheat and sorghum were higher priced in November than in December, reflecting a general softness in grain markets.

Cotton averaged 32.7 cents per pound while parity stood at 76 cents per pound.

Hog prices are \$10 below parity; feeder cattle are virtually two-thirds under parity. Beef cattle prices are about half of parity. Hog prices a year ago were \$3 higher; feeder cattle prices were twice what they are now; and beef cattle prices were \$7 higher a year ago than now.

Milk averaged \$9.40 per 100 pounds while parity is \$11. Eggs at 70 cents a dozen as of the middle of December compared to 75 cents a dozen parity ratio.

Wool and mohair are also at prices considerably below parity.

TEXAS is the first, second and third in production of vegetables in 1974. Texas is first in the nation in harvested acreage for fresh market of cabbage, spinach, and watermelons.

It is second in harvested acreage of cantaloups, carrots, cucumbers, honeysuckles and onions.

It is third in harvested acreage, production and value of fresh market vegetables. Texas ranks behind California and Florida in this category.

Estimated production of 14 principal fresh market vegetables and melons for 1974 is 12 per cent less than 1973. And they had a total value of \$135 million. This is 26 per cent below a year ago. Leading crops in order of value were onions, watermelons, carrots, cabbage, and cantaloups.

COTTON marketing continues on the dull side. Markets throughout the state were reported more active, but producers were continuing to decline offers. Prices ranged from 20 to 34 cents per pound throughout the state.

Cotton planting is set to begin in February in the Rio Grande Valley, but the outlook for cotton continues bleak due to a recession in the general economy and a downturn in business in the textile industry.

Currently, the estimate for cotton production in the Valley is around 150,000 to 175,000 acres. This would be about 40 to 50 per cent less than in 1974. Similar cuts in production are expected throughout the state.

IF YOU FARM, you should have received it by now. It's time for the countdown on the 1974 census of agriculture. Census forms have been mailed by the Census Bureau, and you should likely have yours by now.

You are required to answer all questions that apply to your individual operation.

If you have any questions you should contact your county Agricultural Stabilization and Conservation Service office. That agency is equipped to give you the information you need to answer any of the questions on the census form.

Singleton-Ellis Funeral Home
24 Hour Ambulance Service
Ph. 272-4574 Muleshoe

An investment in Your Future

ATTEND CHURCH



"For where your treasure is, there will your heart be also"



What a Mess!

Sometimes the desire to run out the door and chuck it all is overpowering when we are confronted with the mess of an after-dinner table!

Sometimes, insight lets us see that our lives are quite a mess too. In fact, things seem such a jumble, that our reaction to this truth, if acknowledged, is, "What's the use?"

Well, of course, the only thing to do with the dishes is to take them to the sink, put them in hot water, and wash them with a good cleansing agent until they shine.

Less obvious, perhaps, is what to do with a messed-up life. We invite you to seek an answer in church this week. You are sure to find there the Power who will help you with your problems, a power who cares immeasurably for your soul.

"Casting all your care upon him, for he careth for you." I Peter 5:7

"And the crooked shall be made straight, and the rough places plain." Isaiah 40:4b.

EVERYONE IN THE CHURCH
THE CHURCH IN EVERYONE

The Church is God's appointed agency in this world for spreading the knowledge of His love for man and of His demand for man to respond to that love by loving his neighbor. Without this grounding in the love of God, no government or society or way of life will long persevere and the freedoms which we hold so dear will inevitably perish. Therefore, even from a selfish point of view, one should support the Church for the sake of the welfare of himself and his family. Beyond that, however, every person should uphold and participate in the Church because it tells the truth about man's life, death and destiny; the truth which alone will set him free to live as a child of God.

Coleman Adv. Ser.

- SPANISH BAPTIST MISSION
E. 3rd and Ave. E
John Jaquez, Pastor
- PROGRESS SECOND BAPTIST CHURCH
Arthur Hayes, Pastor
1st and 3rd Sundays
- MULESHOE BAPTIST CHURCH
8th Street & Ave. G
Rev. Bob Doad, Pastor
- ST. JOHN LUTHERAN
Lariat, Texas
Rev. Martin M. Platzer, Pastor
- FIRST BAPTIST CHURCH
220 W. Ave. E
Douglas DuBose, Pastor
- SPANISH ASSEMBLY OF GOD
East 6th and Ave. F
Rev. Hipolito Pecina
- ST. MATTHEW BAPTIST CHURCH
W. Third
E. McFarland, Pastor
- NORTHSIDE CHURCH OF CHRIST
117 E. Birch Street
- PROGRESS BAPTIST CHURCH
Progress, Texas
Murrell Johns, Pastor
- SIXTEENTH & D CHURCH OF CHRIST
Sunday - 10:30 a.m.
Evening - 6 p.m.
Wednesday - 8 p.m.
Ivan Woodard, Minister
- IMMACULATE CONCEPTION CATHOLIC CHURCH
Father Timothy Schwertner
Northeast of City in Morrison Edition
- MULESHOE CHURCH OF CHRIST
Clovis Highway
Royce Clay, Minister

- FIRST UNITED METHODIST CHURCH
MULESHOE-YL PARISH
C.B. Melton - Pastor
Russel Byard - Minister & Training
YL, Route 1, Muleshoe
507 West Second, Muleshoe
- ZION LEST PRIMITIVE BAPTIST CHURCH
207 E. Ave. G
Glen Williams, Elder
- PRIMITIVE BAPTIST CHURCH
621 S. First
Alton Richards, Elder
- FIRST CHRISTIAN CHURCH
180 W. Ave. G
Rev. Walker Barthol
Sunday School 9:45
Worship 11:00
- LATIN AMERICAN METHODIST MISSION
Ave. D & 5th Street
Esteban Lara, Pastor
- FIRST PRESBYTERIAN
Morton Highway
Edwin L. Manning, Pastor
Sunday Morning Service
- CHURCH OF THE NAZARENE
Ninth & Ave. C
- CALVARY BAPTIST CHURCH
1733 W. Ave. C
Charles Kenneth Harvey, Pastor
- TRINITY BAPTIST CHURCH
314 E. Ave. B
V.L. Huggins, Pastor
- MULESHOE ASSEMBLY OF GOD
517 S. First
H.D. Hunter, Pastor
- JEHOVAH'S WITNESS
Frona Highway
Boyd Lowery, Minister
- RICHLAND HILLS BAPTIST CHURCH
17th & West Ave. D
Gerald Pepper, Pastor

St. Clairs
110 Main

Spudnut Shop
328 Main 272-3542

First National Bank
"Home Owned"
224 South First

Bratcher Motor Supply
107 E. Avenue B.
272-4288

Dairy Queen
Margie Hawkins, Manager
272-3412

San Francisco Cafe
"Tortilla Factory"
121 Main Street, 272-3502

GIBSON'S DISCOUNT CENTER
1723 West American Blvd. 272-4306

Main Street Beauty Salon
115 Main 272-3448

Muleshoe Co-Op Gins
Toro Grain
Division of Olton Feed Yards, Inc.
Olton Texas

Whitt-Watts & Rempe Implement
"John Deere Dealers"
Muleshoe, Texas 272-4297

Howard I. Watson
Alfalfa - Hay
272-3552 272-4038

Muleshoe Motor Co.
West American Blvd.

West Planes Repair
Benger Air Park--Frona 247-3101

White's Cashway Grocery

"Where Friends Meet and Prices Talk" 402 Main

BEAVER'S FLOWERLAND

Fry & Cox
401 S. First

Western Drug
114 Main

SCHEDULE OF EVENTS

- MONDAY, JANUARY 20:
12 noon: Jaycees - XIT
7:30 p.m.: School Board
10:00 a.m. Commissioners Court, Court House.
 - TUESDAY, JANUARY 21:
7:30 p.m.: OES Masonic Hall
8:30 a.m.: City Council Meeting - City Hall.
 - WEDNESDAY, JANUARY 22:
7:30 p.m.: DeMolays, Masonic Hall.
 - THURSDAY, JANUARY 23:
6:00 p.m. TOPS, Bailey Co. Electric Meeting Room.
- Any upcoming community event for Schedule of Events please report it to the Journal office.

MULESHOE STATE BANK
MEMBER FDIC

Lazbuddie School Menu

- MONDAY
Western Burger
Sweet Relish
Buttered Corn
Green Salad
Banana Pudding
1/2 pt. Milk
- TUESDAY
Turkey & Dressing
Cranberry Sauce
Giblet Gravy
Green Beans
1/2 Orange
Sliced Bread
1/2 pt. Milk
- WEDNESDAY
Tuna Salad
English Peas
Buttered Potatoes
Spanish Spinach
Hot Rolls
Butter - Jelly
1/2 pt. Milk
- THURSDAY
Hamburgers
Sloppy Joes
Pickles - Lettuce
Peanut Butter Cookies
1/2 pt. Milk
- FRIDAY
Beef Burritos
Pinto Beans
Green Salad
Taco Sauce
Cornbread - Butter
Chocolate Cake
1/2 pt. Milk
Menu Subject to Change

TELEX Hearing Aids
Clovis Hearing Aid Center
Batteries & Molds. Free Tests.
Service All Makes.
416 Mitchell Phone 763-6900
Clovis, N.M.

WANTED ADS

OPEN RATES

1st insertion, per word - 9¢
2nd and add., per word - 6¢
NATIONAL RATES
1st insertion, per word - 11¢
2nd and add., per word - 7¢
Minimum Charge - 50¢
CARD OF THANKS - \$3.00
Classified Display \$1.25 per column inch.
Double Rate for Blind Ads -
DEADLINE FOR INSERTION
Noon Tuesday for Thursday
Noon Friday for Sunday
We **RESERVE THE**
Right to classify, revise or
reject any ad.
NOT RESPONSIBLE
For any error after ad has
run once.

PERSONALS

FOR YOUR Stanley Home Products, Jewel Broyles, call 965-2481.
1-16t-tfc

\$100 reward offered for information leading to conviction of anyone damaging Journal news paper stands.
21s-1-tfp

HELP WANTED

WANTED: Still taking applications for workers at Ailsup's 7-11.
3-46s-tfc

ACCEPTING Applications for R.N. at Plains Memorial Hospital at Dimmitt, Texas. Call 647-2191 and ask for Verle West, Administrator or A'Lian Bradley, Shift preference will be considered.
3-25s-tfc

WANTED: Typist must type 50 words per minute at least. Inquire in person at Journal.
21s-3-tfp

Home workers wanted in this area: No experience necessary. Stuffing and addressing envelopes (commission mailers). Earn sparetime money at home \$100.00 weekly possible. For details send a 10¢ stamp to N. Renodin, Rt. 1, Box 5AA, Atlanta, Mi. 49709
3-3s-ltp

Help wanted, Nursing home less than 2 years old. Good working conditions, top pay. Chance for advancement for right person. Graduate L.V.N.'s and R. N.'s needed at once, 7 a.m. to 3 p.m. relief shift; 3 p.m. to 11 p.m. Regular 11pm to 7 a.m. regular and relief. Apply in person to South Hills Manor 806-647-3117
3-3s-2tc

APARTMENTS FOR RENT

FRIONA APTS. now have available 1,2, and 3 bedroom. \$145.00. Call 247-3666 or come by 1300 Walnut Street, Friona. Sorry no pets.
5-24s-tfc

FOR RENT: 2 bedroom unfurnished apartment. Phone 272-4838, Smallwood Real Estate.
5-47s-tfc

REAL ESTATE FOR SALE

For sale: 2 bedroom, living room, bath, den, and kitchen, garage, utility room, fenced back yard. Phone 806-272-5564.
8-52t-tfc

For sale; brick home, 30 acres and equipment, 1 mile NW of Muleshoe, 2 bedrooms, 2 bath, large den with fireplace, double garage.
Call 806-272-3678.
8-15-tfc

FOR SALE BY OWNER: 216 acres 4 miles E. 1 North, 1/4 E. of Muleshoe. See Harlan Reese, 806-965-2760
8-3t-tfc

FOR SALE: 3/4 section - 6 miles east of Muleshoe 3-8" wells, 3 Gifford Hill irrig. systems, J. W. Newton, Murfee and Sons, Realton, Lubbock, Texas. Phone 806-765-8015.
8-2s-4tc

For sale by owner: 80 acres 6 miles N. E. of Muleshoe. Call June Buhrman 272-4794 or 955-2756 or Eugene Buhrman 272-4797.
8-53t-tfc

FOR SALE: 160 acres excellent land, lays perfect, 2 excellent 8" irrigation wells, 200' setting 1/2 mile underground pipe, natural gas on wells, 10 miles NE of Muleshoe, Ken Duncan call 806-965-2661.
8-2s-8tc

For sale or lease: 80 acres of land, 2 miles East, 1/2 mile south of Stegall, Call 806-765-9798, after 3 P.M.
8-2s-4tc

For sale by owner, 3 bedroom 2 bath house, attached garage, central heating and air conditioning; on 130'x70' lot. Call 806-965-2466.
8-2s-tfc

For Sale: 160 acres, irrigated farm, 1 mile north, 1/2 east of Springlake, Texas, 29% down, balance 10 year period. Call 806-373-7359.
8-2t-4tc

For sale: 20 acre farm, 2 miles on Clovis hwy, 1/2 mile west. Call 806-272-4177.
8-2s-tfc

For sale: 2 bedroom house close in. Call 806-272-3714 or see at 323 E. 3rd
8-3t-6tp

For sale: 60 acres, 1 mile NW of Muleshoe, 3 bedroom home, good 8" well, underground irrigation pipeline. Call 806-272-3732.
8-2s-tfc

For sale: house, Richland Hills area, 3 bedroom, brick, fireplace, 2 bath, double garage, automatic garage door, appointment only, 1907 W. Ave. H. Call 806-272-3430. Leon Wilson.
8-2s-8tc

For Sale: 1/2 section choice irrigated, Farm located at Lazbuddie, 3 8" wells, strong water, call nights 806-272-3848.
8-3s-tfc

For Sale: All electric homes, 3 bedrooms, 2 bath, double garage, refrigerated air.
HEATHINGTON LUMBER CO.
806-272-4513
8-3s-tfc

For Sale in Harvey addition. 2 bedroom house, livingroom, den, bath, kitchen, basement and garage. Also, lot on Birch Street. Call 806-272-3672 or 806-272-3184. Clara Coffman or Lois Witherspoon
8-3s-2tc

For Sale: 1 435 W. corn header; 4 row for 105 John Deere, \$2,000.00. Phone 806-272-3422.
10-2t-4tp

FOR SALE: Irrigation hoods, 42X48 \$19.50, 42X36 \$39.50. Call 806-272-4945.
10-50t-16tc

FOR SALE: Bailing wire, \$33.50 per roll. 16" well casing, 1/4 wall, new, \$12.50 per foot. Farwell Pipe & Iron, Farwell, Texas. Phone 806-481-3287.
10-46t-tfc

FOR SALE: 3/4" through 10" PVC plastic pipe & fittings. State Line Irrigation.
806-272-3450
10-47t-tfc

For Sale: 1973 1270 Case fully weighted cab, duals, power shift, 1280 hours. Call 806-272-4795 Ray Precure.
10-3s-tfc

FOR SALE OR TRADE

FOR SALE: 4 apartment complex, 300 block west 20th, good income, good tax possibilities. Phone 272-4284 after five 272-4491.
11-20t-tfc

HOUSEHOLD GOODS

For Sale in Muleshoe: Nearly new spinet piano. Concert approved. Tremendous Bargain. This is your chance to own a fine piano by just assuming payments, Write at once -
McFarland Music Co.
1401 West 3rd
Elk City, Okla. 73644
12-3t-2tp

Pianos, organs, band instruments, new and used. Professional repairs, sheet music, rentals, terms.
Phillips House Of Music
118 Main, Clovis, N.M. Phone 505-763-5041
12-34s-tfc

MISCELLANEOUS

BUSINESS OPPORTUNITIES
Hale Trailers with 20 years of popularity in this area has dealership available on it's complete line of stock and horse trailers; Small investment, good returns. Call 806-765-8956, Lubbock, Texas.
15-2t-6tc

For Sale: Fertilizer, Manure or compost manure. See or call Phipps & San Associate.
806-247-3404
15-1t-tfc

CUSTOM DEEPBREAKING
4166 International Baker, 5-bottom 38" disc plow with packer. Reasonable prices.
GAINES COUNTY CUSTOM DEEPBREAKING
Phone 915-758-5587.
15-2s-6tc

For Sale: **WHOLE FRESH MILK** \$1.50 per gallon.
80¢ per half gallon.
Deliver Mon., Wed., & Fri. Cows are T.B. and Bangs tested.
White's Dairy.
Star Route, Box 6.
Sudan, Texas. 79371.
15-2t-6tp

For sale or trade, 1969 3 bedroom 12'x64' Mobile home. Will take truck, pick-up or semi-trailer for equity. Phone 806-272-4411.
15-3t-6tp

Coming to Lubbock? T.V. need repair? Same day service on most sets in by noon. Bring pickup and save 10% on sales or service. Authorized Zenith Warranty Center.
Ray's T.V. and Appliance,
2825 34th, Lubbock 806-795-5566
15-3s-tfc

LAND FOR SALE: Approx. 320 acres, 11 1/2 miles west, 2 wells ready for circle sprinklers.
Approx. 277 acres 6 miles west, 2 wells and one circle sprinkler. Crop ready to graze now.
Approx. 191 acres, 2 wells, 4 side roll sprinklers. Crop ready to graze now. Call Harold or Max King 806-272-4541.
8-10s-stfc

LIVESTOCK
Calves 7 to 14 days old. Healthy and started on bottle. Free delivery of 10 or more. Call 214-223-5171 after 7 p.m.
16-28s-24tc

SEED AND FEED
For Sale: Stacks of Alfalfahay. \$50.00 per ton plus delivery. Cleo Whitmire. 806-227-4371. Sudan
17-3s-tfc

SPECIAL
Every Sunday
evening 5 To 9
Shrimp Dinner \$1.95
XIT STEAK HOUSE
YA'LL COME - AND
BRING A FRIEND

For rent: 80 acres hay; 80 acres row crop. Call Joe Costen 806-925-3336.
14-2s-tfc

For Sale: 1/4 section good land. Waters well, on natural gas, underground pipe. Phone day or night 806-272-3293.
E.E. Holland Real Estate,
113 W. Ave. D
8-50s-tfc

Several good tracts of land for sale. Some at 29% down. Good water.
8-37s-tfc

POOL REAL ESTATE
214 E. AMERICAN BLVD
PHONE 806-272-4716

ib Sudderth Realty
FOR SALE: 320 A Cryland, lays nearly perfect, beautiful wheat, N. W. of Bovina; 160 A irrigated, 5 miles N. W. of Sudan, 2 wells; 160 A irrigated, 3 miles S. E. of Farwell; 180 A touches Bovina city limits, 2 6" wells; 640 A 3 3" well, W. of Friona, 280 A farmland, balance in grassland; 320 A 3 wells, 5 miles S. E. of Farwell; 280 A, 5 wells, Well improved on highway, 5 miles W. of Muleshoe; 640 A, 4 wells, Carrol & feeding equipment, house & barn, near Friona, 170 A, 1 well, nearly perfect, near Bovina; 160 A irrigated, well improved, near Muleshoe; 726 A, 5 wells, 2 houses, 2 quonsets, Rhea Community; 245 A, 2 wells, sprinklers, W. of Muleshoe; 200 A irrigated, lays good, alfalfa & sprinklers, touches Farwell city limits.
Call 806-481-3288 or 505-763-5575, unit 5408.
8-48s-tfc

Public Notice

Notice to Contractors
Sealed bids addressed to the City of Muleshoe, Texas, will be received at the City Hall until 8:30 AM, February 18, 1970, and then publicly opened and read for furnishing all plant, labor, material and equipment, and performing all work required for seal coating approximately 67,000 square yards of city streets.
Bids shall be submitted in sealed envelopes upon the blank form of the proposal attached hereto and marked in the upper left hand corner.
All proposals shall be accompanied by a cashier's check or certified check upon a national or state bank in the amount of five (5%) percent of the total maximum bid price payable with out recourse to the City of a bid bond in the same amount from a reliable surety company, as a guarantee that bidder will enter into a contract and execute performance bond within ten days after notice of award of contract to him. The bid security must be enclosed in the same envelope with the bid. Bids, without check or bid bond will not be considered.
The successful bidder must furnish performance and payment bonds upon the forms which are attached hereto in the amount of 100% of the contract price from an approved surety company holding a permit from the State of Texas to act as surety or other surety or sureties acceptable to the Owner.
The right is reserved to reject any and all bids and to waive any informality in bids received.
Plans, specifications and bidding documents may be secured from the office of the City Manager or at the office of Bill R. McMorries & Associates, Inc., 6300 Canyon Dr., Amarillo, Texas 79109, on deposit of Twenty-five (\$25.00) Dollars per set which sum so deposited will be refunded, provided: (1) All documents are returned in good condition to Bill R. McMorries & Associates, Inc. not later than 48 hours prior to the time for receiving bids; or (2) The Contractor submits a bid and all documents are returned in good condition to Bill R. McMorries & Associates, Inc. not later than five days after the time that bids are received.
City of Muleshoe, Texas
By: Alex H. Williams,
Mayor

Card of Thanks

I want to express my appreciation for your expressing of kindness with such a lovely reception. The warm memory of friendships made in Muleshoe will be in my heart forever to

REAL ESTATE TOONS

BY K.K. KREBS

Bring In Your Listings If You Want ACTION For People With Money We Have An ATTRACTION.

Service Beyond The Contract
Phone 272-3191
210 So. 1st Muleshoe

Card of Thanks

I want to express my appreciation for your expressing of kindness with such a lovely reception. The warm memory of friendships made in Muleshoe will be in my heart forever to

BUILT-UP ASPHALT
COMPOSITION SHINGLING
LITTLEFIELD ROOFING
ROOFING SPECIALISTS
All Work Guaranteed
FOSHEE
Owner ph. 385-5680

All type roofing & building repair. FREE ESTIMATES.
Phone 806-272-3756
DON'S ROOFING CO.
15-32s-tfc

REAL ESTATE TOONS
BY K.K. KREBS

Bring In Your Listings If You Want ACTION For People With Money We Have An ATTRACTION.



Bring In Your Listings If You Want ACTION For People With Money We Have An ATTRACTION.

Service Beyond The Contract
Phone 272-3191
210 So. 1st Muleshoe

be charished in my future home. I will miss each of you.
Thelma Powell
15-3s-ltp

French farmers protest drop in prices.

Frank Robinson, Manager of the Cleveland Indians: "The only reason I'm the first black manager is that I was born black. I want to be judged by the play on the field."

MARTIN ROOFING
Roofing SPECIALISTS,
Asphalt and built-up roofs. Call collect for free estimates, 806-385-3507, Littlefield, Texas. All work guaranteed, 20 years local business.
15-50t-tfc

French farmers protest drop in prices.

Glen's BACKHOE SERVICE
806/272-3441
GLEN WATKINS

CALL AVI TO LEASE A VALLEY CENTER PIVOT IRRIGATION SYSTEM

LEASE A VALLEY FOR ONLY \$316⁸³ PER MONTH

When you really need service is when you find out what kind of dealer you bought a center pivot from. We think we can meet the test for your next system, because we've met the test from countless farmers in this area. That's why we've invested so much in trained service personnel and adequate parts inventories.

People choose Valley for plenty of reasons. One is darn good service.

AVI INC.

CLOVIS HWY 272-4266

How much does our free service mean to you?

SHOOK TIRE COMPANY GUARANTEES TO BALANCE AND ROTATE ALL NEW AUTOMOBILE AND PICKUP TIRES FREE, AS OFTEN AS NEEDED.

Usually About \$48.00

BASED ON AVERAGE OF "FAIR MARKET PRICES" OF BALANCING AND ROTATION SERVICES PROVIDED AT NO ADDITIONAL COST TO OUR CUSTOMERS DURING THE LIFE OF A SET OF TIRES

Now MICHELIN X STEEL RADIALS IN ALL SIZES

40,000 MILE WARRANTY:

For West Texas' Best Tire Buy...LOOK TO SHOOK

Shook Tire Co.

UN FIRST 272-3420

Bula News
By Mrs. John Blackman

Ole man winter really held his grip over the weather during the weekend. No real problems were caused, only the freezing of some water pipes. We were so sorry to hear of Mr. and Mrs. Billy Simpson and children in the Three-way community loosing their home and all contents from a fire Sunday morning.

WMU met Tuesday at 2:30 for their regular meeting with four ladies present. Vina Tugman was in charge of the lesson, with the lesson title 'Witnessing to French People'. Mrs. Richardson read the prayer calendar with Mrs. Pierce offering the opening prayer. Attending were Mrs. C.A. Williams, Mrs. P.R. Pierce, Miss Vina Tugman and Mrs. Rowena Richardson.

Rev. Eddie Riley is in Fort Worth this week attending the Baptist Evangelism Conference, held in the Convention center auditorium.

Mr. and Mrs. Jack Withrow took their daughter, Jackie back to her school at South Plains College Monday, her classes were to begin Tuesday. She is a sophomore student.

Mr. Lula Harlan was able to be transferred, Sunday from the Amherst Hospital to the Amherst Manor Rest Home. Mrs. Harlan has been very ill and both Mr. and Mrs. Nolan Harlan had spent the past week in Amherst, so they could be close to his mother.

Junior High, both boys and girls played Bledsoe, here, Monday night, our boys and girls won their game.

Tuesday evening the high school played Bledsoe, here, with girls winning their game and boys loosing.

John McCormack, school secretary, was in Lubbock Monday and Tuesday of this week attending a Public School Accounting Workshop.

Mr. and Mrs. J.D. Rowland visited Tuesday evening in Littlefield, with friends, Mr. and Mrs. Cecil Testerman.

The Dewitt Tillers attended the birthday party given Saturday evening for their grandson, John Hall, observing his fourth birthday.

Eddie Clawson returned Wednesday to his studies at San Marcos Junior College, classes were to start Thursday. He is a freshman student.

Mr. and Mrs. John Blackman drove to Fort Worth Saturday returning Tuesday. They visited with friends, Mr. and Mrs. Cecil Jones, also made a short visit Monday afternoon with Mr. and Mrs. W.T. Thomas, at Hurst.

Taxpayers Can Take Part In Campaign

Taxpayers preparing their 1974 federal income tax returns can again take part in the 1976 Presidential Election Campaign Fund by checking a box on the front of their Form 1040 or 1040 A, the Internal Revenue Service (IRS) said today.

Walter Perry, Director's Representative of the IRS for the Plainview area, said that more than 11 million of the approximately 81 million returns filed last year contained a campaign fund designation for 1973. Another six million of the returns had a retroactive designation for 1972.

The total amount designated on 1973 returns was about \$26 million, Perry said. With approximately \$4 million checked off in 1972, the campaign fund now totals about \$30 million.

Under legislation enacted by Congress in 1971, every taxpayer with a tax liability of \$1 or more may designate \$1 of his or her tax (\$2 on a joint return) each year to the 1976 campaign fund. All money thus earmarked goes into a general fund to be distributed among all eligible Presidential candidates.

Since participation in the campaign fund by a taxpayer neither increases his or her tax nor reduces any refund due, the IRS Director's Representative said, the taxpayer filing for a refund should not send cash or a check to pay for the designation.

WRONG AIRPORT
SALT LAKE CITY - A Frontier Airlines 727 carrying 97 passengers and a crew of five landed at the wrong airport which was four miles short of its destination.

On Wall Street
By Bob Hill
Lentz, Newton & Co.

Right at a time when the U.S. is striving to achieve some degree of energy independence, the electric utility industry is facing one of the most severe cutbacks in the history of this country. Higher fuel costs have forced a 55% average increase in electric power rates in 1974 and this has stiffened consumer resistance to any further rate increases. Meanwhile tax relief from Washington is slow and will provide only minor relief. Administration officials fear that as many as five or six electric utility companies will have to be taken over by state or city governments

during 1975. Electricity will assume more and more of the role in energy dependence over the next ten years. In order to handle the fast-growing demand for electricity, the nation's utilities have embarked on one of the most intensive construction programs in history. Even with the drag on power production caused by fuel conservation and high fuel prices, the electricity utility industry must add as much generation capacity over the next ten years as it has in the past, maybe even more. But, rising fuel costs and lagging rate increases

are causing the cancellation or postponement of over 50% of the electric capacity being constructed and on the drawing boards. Several utility companies have halted construction of partially built plants, regardless of the necessity of the additional generating capacity in the

next several years. Those plants cost a tremendous amount of money and take as long as ten years to construct. Also, years of power shortages could cause economic stagnation by crippling business booms and depress an otherwise healthy economy.

Electricity is the best way to distribute energy produced from coal, uranium, solar and geothermal sources. Electricity will take over much of transportation and space heating. The Federal Power Commission predicts more than half of all energy consumed by the users will be in the form of electricity by the year 2001, up from 25% in 1974.

The Sandhills Philosopher



Editor's note: The Sandhill Philosopher on his Johnson grass farm joins the battle against recession and inflation this week, in his own way. Dear editor:

Now as I understand it, there's sort of a race on between the Democratic Congress and Republican President Ford to see who can get credit for cutting taxes this year to fight the recession. Mr. Ford wants to give a 16 billion-dollar rebate to tax payers and Congress is working on a slightly different figure. Both would come to about a 10 per cent refund on your 1974 income tax.

In trying times like this the country needs complete har-

mony without partisan bickering and I have figured out a plan to achieve it.

You see, as everybody knows, not only do we have a recession but we also have inflation. It's a two-pronged problem and we ought to attack it on both prongs.

Therefore I have come up with a solution: let Mr. Ford give me a 10 per cent refund, and to keep peace and quiet in Washington let Congress give me one too.

I will then take Mr. Ford's refund and fight the recession by spending it as fast as I can. At the same time, I will take Congress' refund and sock it away in the bank to fight inflation.

There's no sense in doing things half-way. What have we gained if we whip inflation and wind up with more inflation, or if we whip inflation and wind up with a depression? As any economist will tell you we've got to spend and save at the same time to do the job, and two separate refunds are the answer.

However, there's no use being short-sighted about this. Too long have we depended on Washington to do everything. If two tax refunds from Washington will get the ball rolling in this two-pronged battle, think how still more momentum could be added on the local level.

Why don't Bailey County officials join in this recession-inflation fight and give me two tax refunds? What's the school hung on? The town? Why can't the state legislature in Austin get in on it too?

We've got to stop this nation of depending entirely on Washington. If two checks from up there will help, think how

much seven or eight from down here will help.
Yours faithfully,
J.A.

ONE MINUTE SPORTS QUIZ

1. Catfish Hunter recently signed with what pro baseball team?
2. Who was named by the AP as NFL Coach of the Year?
3. Name the winner of the Orange Bowl.
4. Who was the victor in the Rose Bowl?
5. Who was named coach of the Green Bay Packers?

Answers To Sports Quiz

1. New York Yankees.
2. Don Coryell, St. Louis Cardinals.
3. Notre Dame over Alabama, 13-11.
4. Southern Cal 18, Ohio State 17.
5. Bart Starr.

PIGGLY WIGGLY

OUR PRICING POLICY
We Will Not Increase the Price of Food Once Placed on our Shelves for Sale

Whip Inflation Now **WIN**

When we are forced to increase a price, items on our shelves marked at the lower price will be sold at the lower price.

We Redeem FEDERAL FOOD COUPONS

Prices Good Thru Jan. 22, 1975. We reserve the right to limit quantities. None sold to dealers.

Superb Valu-Trim Round Steak \$1.09

Superb Valu-Trim Chuck Steak 98¢

Superb Valu-Trim Rib Steak \$1.09

Choice Crisp Cabbage 10¢

Superb Valu-Trim Boneless Round Steak \$1.29

Superb Valu-Trim Tenderized Bottom Round Steak \$1.49

Superb Valu-Trim Rump Roast \$1.09

Superb Valu-Trim Arm Swiss Steak \$1.09

Superb Valu-Trim Family Pak Cube Steak \$1.69

Ground Beef 79¢

Superb Valu-Trim Sirloin Tip Steak \$1.59

Superb Valu-Trim Boneless Stew Meat \$1.29

Superb Valu-Trim Sirloin Steak \$1.09

Lean & Meaty Short Ribs 49¢

Superb Valu-Trim, Seven Bone Shoulder Roast 98¢

Ranch Style, Bulk Sliced Bacon \$1.09

Nutritious Crisp Carrots 1-Lb. Cello Bag 29¢

Add Color To Salads Red Onions Red, Ripe 1-Lb. 33¢

Salad Cello Pkg. Tomatoes 49¢

Eat The Tops Top! Green Onions 2 35¢

Great For Stuffing Bell Pepper 1-Lb. 79¢

Easy To Peel Juicy Tangerines 1-Lb. 25¢

Rome Or Red Delicious Apples 1-Bag 99¢

Juicy Texas Oranges 5-Lb. Bag 89¢

Juicy, Sweet California Navel Oranges 1-Lb. 19¢

Smooth As Silk Mellow Pears 1-Lb. 49¢

Boosts Flavors Of Other Foods Tangy Lemons 1-Lb. 49¢

Breakfast Treat Delicious Grapefruit 5-Lb. Bag 79¢

All Grinds, Coffee Folger's 89¢

Piggly Wiggly Grade A Med Eggs 59¢

Instant Folgers 10-oz. Jar \$2.29

General Mills Wheaties Cereal 18-oz. Box 89¢

Carol Ann Apple Butter 28-oz. Jar 77¢

"Mix or Match" Piggly Wiggly Fruit Cocktail or Cling Peaches 16-oz. Cans 3 \$1

Piggly Wiggly, Buttermilk Pancake Mix 2-Lb. Box 65¢

Piggly Wiggly Cinnamon Rolls "Mix or Match" Joan of Arc Golden Corn or Piggly Wiggly Cut 8-Ct. Can 39¢

Piggly Wiggly, Green Beans 16-oz. Cans 4 \$1

50¢ Off the purchase of one (1) 25-Lb. Bag Chuck Wagon, Dry

25¢ Off the purchase of three (3) 145 Sheet, 1-Ply Rolls Piggly Wiggly

25¢ Off the purchase of two (2) 11-oz. Boxes Piggly Wiggly Assorted Flavors Toaster Pastries

50¢ Off the purchase of one (1) Disposable Lighter

20¢ Off the purchase of one (1) Pkg. Tenda Made Chicken Fry Beef Fingers, Beef Patties or Pork Choppette

15¢ Off the purchase of a 5-Lb. Bag US No. 1 Russet Potatoes

20¢ Off the purchase of one (1) 16-oz. Jar Piggly Wiggly Coffee

20¢ Off the purchase of five (5) 8-oz. Cans Pillsbury Country Style or Butter-milk Biscuits

20¢ Off the purchase of one (1) 40-oz. Can Chef Boy-Ar-Dee Spaghetti With Meatballs or

20¢ Off the purchase of one (1) 100-Ct. Btl.

10¢ Off the purchase of one (1) 16-oz. Pkg. Frozen Booth Ocean Catfish or

20¢ Off the purchase of two (2) 12-oz. Cans Minute Maid 100% Pure Florida Frozen Orange Juice

20¢ Off the purchase of one (1) 16-oz. Jar Piggly Wiggly Creamer

20¢ Off the purchase of one (1) 8-oz. Jar Piggly Wiggly Biscuits

20¢ Off the purchase of one (1) 40-oz. Can Chef Boy-Ar-Dee Spaghetti With Meatballs or

20¢ Off the purchase of one (1) 100-Ct. Btl.

10¢ Off the purchase of one (1) 16-oz. Pkg. Frozen Booth Ocean Catfish or

20¢ Off the purchase of two (2) 12-oz. Cans Minute Maid 100% Pure Florida Frozen Orange Juice

STORE HOURS
8-10 DAILY
9-9 SUNDAY