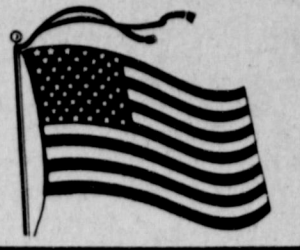


Weather

Table with weather data: August 7, August 6, August 5, Precip. to date 7.55"

BAILEY COUNTY JOURNAL

The Community of Opportunity-Where Water Makes the Difference



Volume 11, Number 32

18 Pages

Published Every Sunday at Muleshoe, Bailey County, Texas 79347

10 Cents

Sunday, August 8, 1976

CofC Annual Farm Tour Is Scheduled Thursday

Birdwell Farm, Ranch Target For This Year



Soil Conservation Celebrates Birthday

Charles L. Smith Jr., son of Mrs. C.L. Smith and the late C.L. Smith, is a candidate for graduation at McMurry College in Abilene. He is a 1973 graduate of Muleshoe High School.

He is due to receive a B.S. degree in Social Science at commencement exercises at 8 p.m. on Friday, August 13 in the Radford Memorial Student Life Center on the McMurry campus.

Benny Floyd of Muleshoe is in Room 121 at Highland Hospital in Lubbock. He is undergoing x-rays and tests for a back injury.

Mrs. Mickey (Ann) Sowder of the Stegall community smilingly reported one and one-half inches of rain a couple of nights ago. This was the first rain of any real measurable amount to fall at their home in some 10 months.

James Leslie West is a candidate for graduation from Troy State University at Troy, Alabama, where he will be presented a master's degree among the 723 candidates for graduation.

Kip Garth, son of Mr. and Mrs. D.T. Garth, has returned from a recent visit with David Macha, son of Mr. and Mrs. James Macha of Irving, and former Muleshoe residents.

Mr. and Mrs. A.M. Bradley and family of Dallas, visited his parents, Mr. and Mrs. A.M. Bradley of Muleshoe.

Mr. and Mrs. Dick Allison and sons, of Houston, are visiting this week in the home of his parents, Mr. and Mrs. Alvin Allison.

A federal law that has brought about a more stable agriculture, more dependable income and an improved quality of the environment in the Great Plains, is 20 years old this month. The Great Plains Conservation Act was signed into law by President Dwight D. Eisenhower on August 7, 1956. Under terms of the legislation since that time, more than 50,000 farmers and ranchers in 10 states have entered into long-term conservation contracts with the U.S. Department of Agriculture.

Members of the Blackwater Valley Soil and Water Conservation District Office in Muleshoe include Jerry Wenmohs, district conservationist; Kenneth Ferguson, soil conservationist; Bobby Ruthardt, conservation technician and Debbie Hunter, clerk.

Under the contracts, producers agree to carry out all needed conservation on every acre of their farm or ranch. This might include improving rangeland, installing minimum tillage farming systems, terracing, establishing windbreaks, strip cropping, or converting erosion-prone cropland to grass.

USDA's Soil Conservation provides technical assistance to producers in planning and installing needed conservation measures. SCS also shares in the cost of installing certain measures.

In 1969, Congress enacted a bill to extend the provision of the Program to December 31, 1981. The program is applicable in 123 counties in Texas, including Bailey County.

During the first 20 years of the program in Texas, there have been 14,696 Great Plains contracts planned and developed, covering more than 18 million acres. Major practices installed to date include range seeding, 1.2 million acres; terracing, 29,000 miles; brush management, 3.4 million acres; cropland converted to grass, 488,000 acres;

and rangeland improvement, seven million acres. In Bailey County, 314 landowners in Blackwater Valley Soil and Water Conservation District have signed contracts for aid during the 20 years this federal law has been in effect. Also, 155,244 acres have been improved in Bailey County under the program administered by the USDA's Soil Conservation Service.

County Farmers Place Fifth In Sunflowers

Bailey County farmers placed fifth in 1975 sunflower production with a crop of 11,771,000 pounds, Agriculture Commissioner John C. White reported. County farmers harvested 10,600 acres with an average yield of 1,110 pounds per acre.

Planting of sunflowers started in South Texas in late February and the stands made good early growth and crop prospects were excellent. The crop outlook was also outstanding for the High and Low Plains, but insect problems developed and production fell off. Stands which had appeared excellent in the field failed to measure up to expectations when harvested, and yield per acre declined considerably.

Late stands on the High Plains went through a period of cold, wet weather in September that delayed growth, and many of the fields failed to reach maturity with a corresponding loss in yield and quality.

Hale County led the state in production with 60,187,000 pounds. Complete figures on Texas field crops have been compiled in the "1975 Texas Field Crops Statistics." Copies may be obtained by writing Agriculture Commissioner John C. White, Texas Department of Agriculture, P.O. Box 12847, Austin, Texas 78711.

Slightly more than two years after the Farwell Development Company was organized, the Farwell Convalescent Center is ready for open house and dedication Sunday. Initially forming for the construction of the center, the Farwell Development Company took the project before the people and formed the Farwell Hospital District and voted to issue \$750,000 in bonds to build the center.

Members began working on acquiring land and necessary problems to work out the long awaited project. Construction began just east across the street from First Baptist Church on the six wing facility which is ready



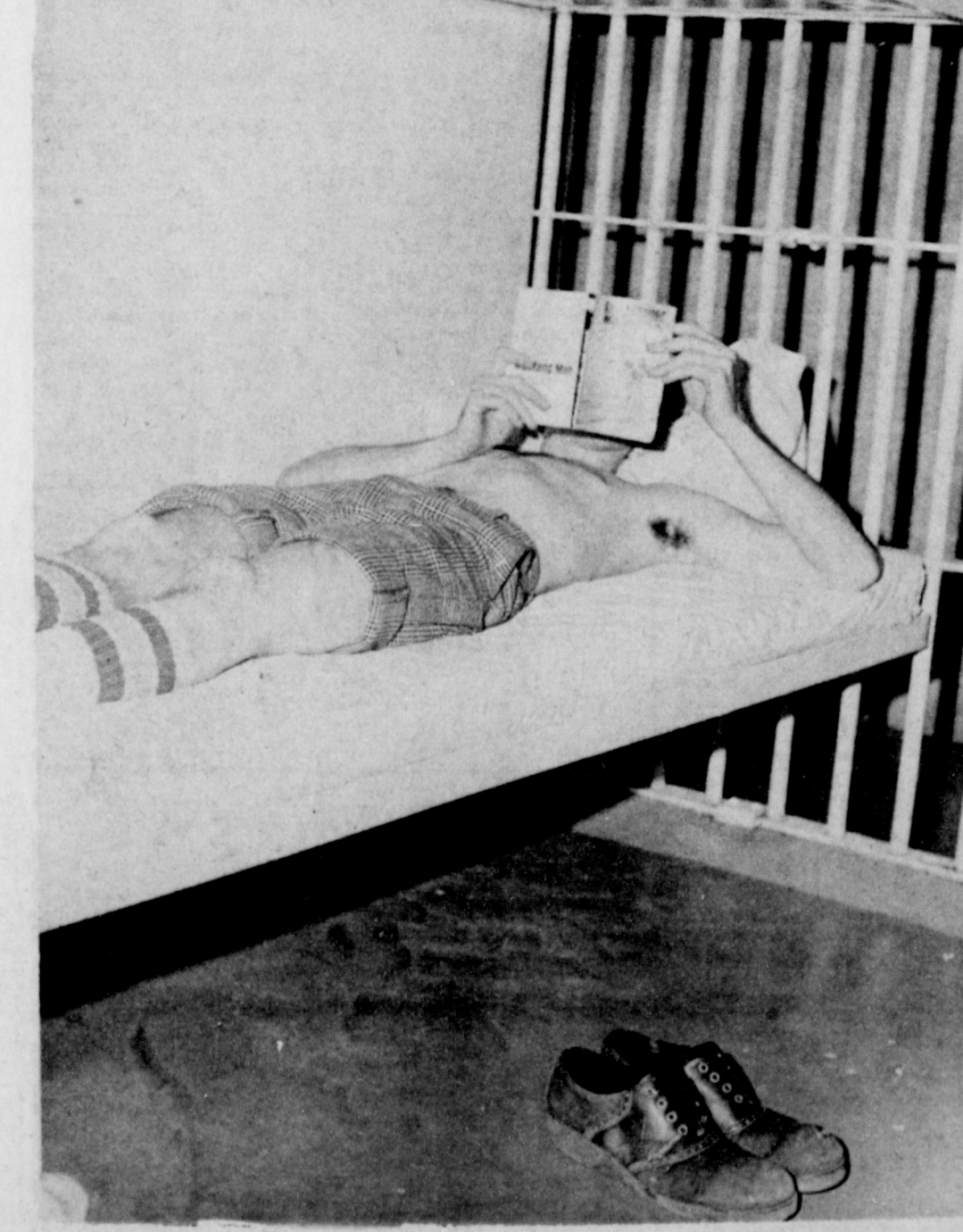
JAIL CLEAN-UP NEARS COMPLETION . . . Another inspection of the Bailey County Law Enforcement Center jail facility was conducted Friday afternoon, following completion of a renovation process instituted earlier in the week.

Farwell Convalescent Center Open House Slated Today

Open house will begin at 1:30 p.m., with the dedication scheduled for 3 p.m. Featured are 100 private and semi-private rooms with no more than two patients to a room. Only two persons will share a bathroom. Inside the new residents will have a choice of painted walls or wallpaper, and furnishings will include a chest of drawers, a closet and outlet for a cable tv. The sitting room will have a color tv, but patients are encouraged to bring a personal tv for their room if they desire, according to Dora Nitler of Friona, who is administrator of the facility.

Other personal items to make the home comfortable for new residents will be a favorite lamp, rocker, and pictures to put on their walls. A director will be employed to plan recreation and activities for the residents. And a physical therapy and 24-hour nurses' service will be available. An RN dietitian consultant will supervise the kitchen for eight hours a month and therapeutic diets will be available. A large dining hall is ready to serve the residents. Gracing the front entrance is a fireplace with logs to burn either

Con't on Page 2, Col. 4



CLEAN CELL AREA . . . A prisoner at the Bailey County Law Enforcement Center is shown on his clean bunk in a clean cell. Sparkling sheets and pillow cases and a shiny new paint job helped brighten up the cell area in the jail. All the cellblock received a 'face-lifting' this week in a clean-up, paint-up, fix-up in the jail area.

Drug Price Advertising Triggers Controversies

(From The Lubbock Avalanche-Journal.)

Editor's note: The controversial issue of whether pharmacies should be allowed to advertise prices for prescription drugs is explored in this three-part series. Today's story deals with legal aspects of the question.

BY JIM BUSBY Staff Writer One man's medicine is another man's headache. And so it is at this moment in the tumultuous world of prescription drug price advertising. What one faction celebrates as freedom of speech and the consumer's right to know, others mourn as the degradation of a profession, the unethical "pushing" of potentially dangerous drugs. Those are the opinions of some local and state-level spokesmen who, like the chain pharmacies that have instigated or provoked Texas court action, await the word: Will Texas businesses be allowed to advertise prescription drugs? Whether the advertising is allowed is moot in one respect: Those involved in the pharmacy business are not likely to change their views. And the battle lines are clear. Legal warfare flared most recently in Texas when a Dallas-based chain, Page Super Drug, ran full-page prescription drug advertisements in two Dallas newspapers.

That action followed a U.S. Supreme Court decision overturning a Virginia ban on prescription drug ads.

The legality of the Page ads was contested by the Texas State Board of Pharmacy, which sought an injunction restraining Page from advertising prescription drugs.

In denying that move, Dallas 116th District Court Judge James F. McCarthy called the Texas law restricting drug ads a violation of First Amendment freedom of expression.

"We went out on a legal limb when we did it," Houston Holmes, Page vice president and general counsel, said of the Page advertisements. "We just believe the consumer has the right to know the price of a product."

While Texas law prohibits the published advertisement of prescription drugs, each Texas pharmacist is required to post services offered by his pharmacy along with 100 of the most frequently prescribed drugs and their maximum prices at his pharmacy. Some contend the posting qualifies as advertising and there-

fore the Texas law is significantly different from the Texas State Board of Pharmacy (TSBP) appeal of the Page case.

"If we lose (the appeal)," Holmes said, "we'll take it to the Supreme Court of the United States."

"I think the court of civil appeals will affirm the trial court, and I think the Supreme Court (of Texas) will affirm the trial court..." he said.

Holmes said Page will "continue to advertise until the appeals court tells us differently."

We started it, and we're not going to stop until the case is resolved," he said. Holmes said he thinks the appeals court will "act pretty quickly on the case."

"It's a case that's pretty visible, and I think they will act on it expeditiously," he said.

In the meantime, the Federal Trade Commission (FTC) has postponed final reports on its proposed trade regulation rule, pending public input on why the Virginia case does not cover the FTC's intent to upset restrictive state drug ad laws.

In two earlier Texas cases, the state pharmacy board indicated it would consider sanctions against the Walgreen and Gibson companies. The two companies, in separate cases against the

TSBP, filed for injunctions to keep the board from enforcing the Texas pharmacy law.

The TSBP has the power -- and obligation -- to uphold Texas pharmacy laws and can impose sanctions, including reprimands, suspensions and revocations of pharmacy permits and licenses.

Walgreen Co. was granted an injunction and continues to display a price booklet listing over 1500 drugs and 10,000 drug prices.

Gibson's won its case in district court, but that case has been appealed by the pharmacy board. The Gibson's case followed a board objection to that company's reference to "discount" pharmacy and prescriptions.

The annual Agri-Business Farm Tour is scheduled to begin at 12:30 p.m. The annual tour is sponsored by the Agricultural Committee of the Muleshoe Chamber of Commerce, and will get underway from the Chamber of Commerce office.

A three to four hour tour will be made of Birdwell Farms in western Bailey County, according to Harmon Elliott, chairman of the agriculture committee.

He commented, "We conduct the tour each year as an opportunity for the businessman to become more familiar with our area farm and ranch operation area farm and ranch operations." Elliott encouraged each businessman who can spend

three to four hours away from his business to bring a farmer friend, and make the tour. Elliott added that the tour will begin at Birdwell Ranch headquarters and will cover a number of operations on the Farm and Ranch.

Of special interest will be three varieties of Love grass which is being tested and used for cattle pastures and grazing, along with the information that Birdwell grows and prepared 75 percent of all the feed they use.

Special topics of interest are they are running a test for Dow Chemical. Elliott said the test is a new chemical that will bind ammonia to the soil. The test is supposed to show it could save approximately 50 percent by using this one chemical, which is increasing yields.

Also to be discussed is the use of a 400 horsepower Steiger tractor pulling a 32 foot disc.

Added information about the tour is that Birdwell Farms and Ranch raise all of their own calves and conduct their entire feeding and cattle operation. To be toured is the feed mill where businessmen can see the processing of shell and rolled corn and information released by Elliott indicates that the Birdwell Farms and Feed operation contains some of just about every type of operation in the country.

Elliott added that refreshments will be served during the tour to the businessmen and agriculture specialists making the afternoon tour through Courtesy of the Muleshoe Chamber of Commerce.

He also said that although in past years, the tour has been conducted on an all day basis, it was decided to make the afternoon tour as many businessmen did not feel they could be away from their businesses for an entire day.

Three letters were mailed to Elliott following the recent farm tour by 74 Kentuckians in the area in July. They expressed their appreciation for Muleshoe

Con't on Page 2, Col. 3

SH214-US70 To Be Closed On Wednesday

The State Department of Highways and Public Transportation has announced that SH 214 - US 70 east of US 84 will be closed for approximately eight hours on Wednesday, August 11, to allow repairs to the Santa Fe Railroad crossing.

According to Loyd Killough of the local State Highway Department office in Muleshoe, the section to be closed will be from the Clovis highway (U.S. 84) to north of the railroad tracks. He said traffic will be routed on the nearest available city streets while work is in progress.

"We regret the inconvenience to the traveling public," said Killough, "and request that caution be exercised while the repairs are in progress."

Corn Disease Tour Slated Near Dimmitt

The George Sides farm at Dimmitt is the site of a corn disease demonstration tour Tuesday, August 17 at 1:30 p.m. for corn growers and other interested persons, according to County Extension Agent Spencer Tanksley.

A corn disease demonstration nursery was set up this year with 70 commercial hybrids in four-row plots one-half mile long for observation of disease development. Tanksley says that Dr. Robert W. Berry, area plant pathologist for the Texas Agricultural Extension Service in Lubbock, planted the nursery with the cooperation and help of George Sides and Castro County Extension Agent Charles Hottel.

"The most damaging disease has been head smut," Tanksley says. "In 1975, the field had 30 percent infection by head smut. In the same issue, an editorial Cont. on Page 2, Col. 6"

### Corn...

Cont. from Page 1  
 which resulted in a 30 percent yield loss below the long time average on the Sides farm.  
 "This year," Tanksley adds, "preliminary evaluations are showing wide differences in varietal response to head smut."  
 Tour guests also will be able to view the effects of corn rust which attacked all but one of the commercial hybrids. Tanksley says that with recent rains and dews, ideal rust conditions exist.  
 Maize dwarf mosaic virus,

another serious disease of corn, are also evident in the Sides farm demonstration although infections are not prevalent in most hybrids, Tanksley adds.  
 Corn growers and other interested in that increasingly important High Plains crop are urged to attend, Tanksley says. The tour will begin at the George Sides home seven miles west of Dimmitt on Highway 86.

**Barely**  
 We hear that this year's bathing suits are barely big enough to keep a girl from being tanned where she ought to be.

### Tour...

Cont. from Page 1  
 hospitality, complimented the way the Soil Conservation Service, Muleshoe Chamber of Commerce and Agriculture Committee of the Chamber of Commerce conducted the tour and the personal greeting on their arrival.  
 During the Kentucky tour, several varied operations were visited in Bailey County, with explanations made of the different operations.

The greatest force in chemistry is a pretty girl.  
 \*\*\*\*\*



**SOIL CONSERVATION PROJECT** . . . Approximately 400 miles of parallel terraces have been constructed in Bailey County with assistance through the Great Plains Conservation Program. Pictured here are some of the terracing processes used.

### Center...

Cont. from Page 1  
 wood or gas and the nurses' station is located where the full length of the halls may be checked without leaving the desk. Also featured is an emergency electrical system. In the event the electrical power fails, the emergency generator comes

on within seconds.  
 State inspection was approved last week, with HEW (Health, Education and Welfare) approval expected very shortly.  
 Other key staff members include Margaret Purcell, food service supervisor; Joyce Myers, LVN director of nurses and Jane Osgood, night supervisor of nurses.

### Drug...

Cont. from Page 1  
 entitled "And Why Not Advertise?" asks, "If posting means public exposure and knowledge, what's objectionable about 'posting' in the mass media?"  
 The editorial ends with another question: "A pharmacy can advertise gargles and pain killers - why not a prescription drug validated by medical science and prescribed by a physician and 'posted' by the retailer?"

### Best Of Press

**A Matter of Time**  
 The difference between a curve and a bulge is years.

-News Detroit.

**Unless**  
 All girls regret losing their youth—unless they can pick another one right away.

-U.S.S. Keystone.

**Secrets**  
 A secret is something which you find out by reading the gossip columns.

-Democrat, Paducah, Ky.

**True**  
 Stupid Steve says: "Minds are like parachutes: they won't work unless they're open."

-U.S.S. Minute Man.

**Why?**  
 Why be logical and reasonable, when it is a great deal easier and ever so much more fun to be emotional and prejudiced?

-Journal, Atlanta.

**Because?**  
 They call one of the nurses at the dispensary "Appendix," because only the doctors can take her out.

-The Tester.



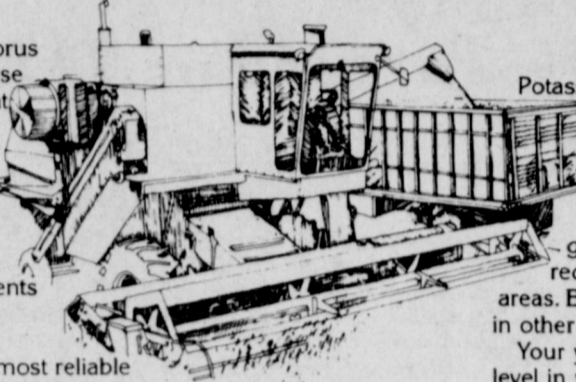
**RENOVATION PROCESS** . . . Work was going on late this week in a remodeling process at the Bailey County Law Enforcement Center. All the work is concentrated in the jail and identification areas, along with the jail kitchen.

### NPK means wheat.

Nitrogen, phosphorus and potassium—these are the elements that give your wheat its best chance to produce extra yield and profit.

An imbalance or shortage of one or more of these elements can limit yields and reduce profits.

A soil test is your most reliable way of knowing how much of each element your wheat land needs.



#### Potash

Potassium is essential to good yields of wheat. It imparts vigor and disease tolerance. It helps produce strong, stiff straw. Soil potassium levels are generally high in the hard, red winter wheat producing areas. But they vary considerably in other wheat growing areas.  
 Your yield goal and potassium level in your soil are the key factors in determining how much potash to apply. Here's a guide:

Wheat Yield Goal	Pounds of Potash (K <sub>2</sub> O) per acre when soil test level is:
40 Bu.	70 50 30 0
50 Bu.	80 60 40 20
60 Bu.	90 70 50 20

#### Turn to your Crop Care Professional

These suggestions for building better wheat yields and higher profits come to you from your Certified Crop Care dealer. He is prepared to give you professional advice and assistance. You'll find him where you see this sign.



#### Phosphorus

The phosphorus level in most soils is too low for optimum yields. This has been documented by extensive soil test data.

Take the guesswork out of your wheat program by getting soil samples and having them tested. As a general rule, most wheat soils need 50 to 80 pounds of P<sub>2</sub>O<sub>5</sub> for good yields.

Another consideration: When nitrogen and phosphorus are applied together, the phosphorus works harder than when applied alone. Nitrogen assists the wheat plant in taking up phosphorus—and this is especially important in early stages of growth.

Nitrogen Content Lbs./A.	Nitrogen increases uptake
40	Percentage of total phosphorus, in plant derived from fertilizer.
50	Phosphorus alone 9.2%
60	Same phosphorus applied with nitrogen 15.5%
70	

#### Nitrogen

An application of 80 pounds of actual N typically results in 15 extra bushels of wheat. At 1976 spring prices, 5 pounds of nitrogen cost about \$1.00, and will return one extra bushel of wheat. Figuring the wheat as low as \$3.00, this is a 3-for-1 return on an investment in nitrogen.

Wheat response to nitrogen is greater than with the other fertilizer elements. A good-yielding wheat crop pumps sizable amounts of nitrogen from the soil.

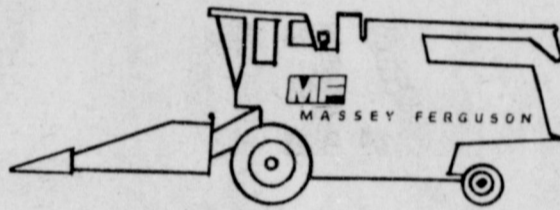
Wheat Bu./A.	In Grain	In Straw	Total Removal
40	50	20	70
50	58	23	81
60	75	25	100
70	88	28	116

\*wheat is pastured, add 30% to total removal.

## Western '66'

272-4556

### Attention... MR. FARMER



**DO YOU OWN A MASSEY FERGUSON CORN HEADER AND FARM ON 40" ROW CENTERS?**

Mills Machine, Inc., Muleshoe, Texas is now extending Massey Ferguson headers from 6-row 38" centers to 6-row 40" centers through the summer months.  
 We guarantee absolute alignment, neat workmanship and solid reinforcement on extensions.

Contact Marlin Mills

**MILLS MACHINE, INC.**  
 Friona Hiway — Phone 272-4771  
 MULESHOE, TEXAS

#### Bailey County Journal

Established March 21, 1963  
 Published by Muleshoe Publishing Co., Inc.  
 Every reader at 50¢ a copy, (Sun 60¢)  
**MEMBER TEXAS PRESS ASSOCIATION**  
 I. B. Hall—President  
 Jeanice P. Hall—Treasurer  
 C. W. Williams—Vice Editor  
 Linda Stumacher—Secretary  
 Polly Lewis—Office  
 Sherry Dean—Advertising  
 April 1976—Subscription List

## Anthony's C. R. ANTHONY CO.

OPEN 9 a.m. to 6 p.m.

# Grand Opening

LOCATED AT: 321 MAIN STREET  
 PHONE: 806-272-4451

**Men's Fashion WESTERN SHIRTS**

\$6.88 or 3 for \$18

**SPECIAL FEATURE GRAND OPENING SPECIAL BESTFORM BRA. IRREGULAR \$1.00**

**ROBES \$7.76**

by LORRAINE

**21" x 27" POLYESTER FILLED PILLOWS "DEBUT" 2 for \$7**

reg. \$4.99

**BIG SMITH DENIM SUPER BELLS JEANS \$9.88 or 3 for \$18**

BOOT JEAN, \$5.76 3 for \$15

**MUSHROOM SHOE \$1.97 or 3 for \$5**

**CANVAS EARTH SHOES \$4.22 or 3 pr. for \$12**

BLUE RED GREEN DENIM GOLD TAN reg. \$6.99

**BRUSHED DENIM \$1.37 yd. reg. \$2.59**

By "CONE" FALL COLORS

**AVOID EXCESS NITROGEN ON LAWNS**  
 Using too much nitrogen fertilizer on home lawns can cover up certain lawn problems such as weeds, diseases, insects or thatch buildup, says a turfgrass specialist for the Texas Agricultural Extension Service. Adding nitrogen also increases the water requirements of a lawn. Nitrogen applications at the rate of one pound per 1,000 square feet in the spring and two pounds per 1,000 square feet in the fall are sufficient on St. Augustine grass lawns. An additional application will be needed if grass clippings are removed. Bermudagrass lawns require about twice as much nitrogen as St. Augustine lawns, but application rates should not exceed one pound per 1,000 square feet.

Superstition is the weakness of the human mind; it is inherent in that mind; it has always been, and always will be.  
 -Frederick The Great.

**SUN, MON & TUES**

**RON HOWARD pops the clutch**

**EAT MY DUST!**

Gates open 8:45 p.m. ♦ **X. I. T.** ♦ Show Starts at 9:15  
**DRIVE-IN THEATRE**  
 MULESHOE, TEXAS

**Bula News**  
By  
**Mrs. J. Blackman**

Bula Baptist Church will be observing their 50th anniversary Sunday, August 22. A full day of activities have been planned, with lunch being served at the noon hour. Members and preachers of the Bula congregation are urged to attend.

July 26, through July 29, Rev. Eddie Riley, councilor for the Royal Ambassadors, took the boys to the Plains Baptist Assembly Camp at Floydada. Boys making the trip were Donald Black, Billy Tiller, Lewis Peacock, Bernie Davila and Timmy Roberts.

Mr. and Mrs. Cecil Jones drove to Amarillo Monday, where Jones was scheduled for his yearly checkup with his heart doctor.

Dusty Bogard recently returned home from the wheat harvest which took him through Texas, Kansas, Colorado and Wyoming. He had been working in the harvest fields for over two months.

A.P. Fred is a patient in the Lubbock Methodist Hospital for observation and medication. Further surgery may be necessary. Fred has spent much time for the past two years in the hospital.

Mrs. Pearl Walden had a nice weekend. Her son and wife, Mr. and Mrs. Lowell Walden of Earth, came and spend Saturday night with her. Sunday they drove to Lubbock, to the home of Mr. and Mrs. Clifford Walden in Lubbock, where other relatives joined them.

Others were Mr. and Mrs. Holman Dobbs and son, Don, from Baldwin Park, Calif.; Ronnie Walden, from Russellville, Arkansas; and Mrs. Buster Walden, Mr. and Mrs. M.D. Walden and Mrs. Goldie Nixon, all of Lubbock.

Mrs. Rowena Richardson accompanied her daughter and husband, Mr. and Mrs. Donald Grusendorf, of Plainview, to Oklahoma, Thursday. They visited in the home of Mrs. Richardson's brother, Mr. and Mrs. J.W. Tugman at Cache, and also with friends at Rush Springs. Mrs. Richardson's sister, Miss Viana Tugman, returned home with them Friday afternoon, after spending the past three weeks in Oklahoma visiting relatives.

The D.J. Cox and the Jerry Cox families enjoyed having visit with them over the weekend, their sisters and families, Mr. and Mrs. Bill McIntyre (former Shirley Cox) and their children, Stokes and Catherine; and Mr. and Mrs. Bob Sears (former Diana Cox) all from Dallas. Also, Miss Jolene Cox, of Lubbock, was with them Friday evening, when they met together for dinner and a visit in the D.J. Cox home. Saturday, they all met in the J.L. Cox home. Their mother, Mr. and Mrs. Harvy Whittenburg of Oklahoma Lane, was also with them.

Mrs. Marie Aaron of Carlsbad, N.M. came Tuesday to her mothers, Mrs. Pearl Waldens, for a visit of several days.

Jeff and Joey Carpenter of Muleshoe, are spending several days this week with their grandparents, Mr. and Mrs. P.R. Pierce.

Visiting this week in the home of Mrs. Lorilla Jones and her son, Wendell, is a granddaughter Patrice Shields of Lelia Lake and her friend Shell White, of Arlington.

Mrs. Nolan Harlan attended a layette shower given for her daughter, Mrs. Rodney Marshall in the home of Mrs. Fred Smith, in Whitharral, Tuesday afternoon. Mrs. Marshall is the former Ann Harlan of Bula.

Mr. and Mrs. J.C. Withrow had with them over the week-

end, two daughters and their families. Those attending were Mr. and Mrs. Jerry Smith and son, Steven from Smithfield; Mr. and Mrs. Joe Price and son, Timmy from Plains, and Miss Jackie Withrow, of Muleshoe.

Mrs. Tom Bogard drove to the home of her daughters, Mr. and Mrs. Ray Kennison of Olton, Saturday afternoon. They attended Olton's Historical Pageant, with her daughter, Mrs. Ray Kennison. The Kennison's two daughters, Kim and Dusty, were both in the pageant.

Miss Connie Richardson, daughter of Mr. and Mrs. John Richardson of Lovington, N.M. spent from Saturday afternoon until Monday, with her grandmother, Mrs. Rowena Richardson. Connie is a teacher in the Patagonia Arizona School. She has been attending school in Portales, N.M. this summer.

**Nursing Home News**  
by Myrtle Guinn

Mr. and Mrs. A.W. Holt of Durango, Colo. and their daughter, Kay and three boys were visiting their mother and grandmother, Myrtle Guinn, this week. Kay is visiting her parents. She lives in Virginia Beach, Va. They left for Durango, on Friday.

Mrs. Sybil Simpson of Clovis came Tuesday to see her mother, Mrs. Brown.

Mr. and Mrs. Head and Mrs. Wilterding came Tuesday to see Miss Dottie Wilterding, Walter Darnon and others. They played "42".

Mrs. Newton's daughter, Mrs. Lassater, of Whiteface came to see her on Monday. She is about the same and so is Mrs. Blackburn's mother, Mrs. Bray.

Mrs. Kersey visited us here on Sunday. We are always glad to have visitors.

Dr. McDaniel visits his wife each morning. She is about the same.

Louie Norwood visited his mother, Mrs. Nellie Norwood, on Monday.

Mrs. Erma Ray and Blondie come in each day to help her mother, Mrs. Duke with her meals.

Mrs. Artie Fay O'Hair came to see her mother, Mrs. Miller on Monday. Mrs. O'Hair lives in Bovina.

Mrs. Opal Taylor brought her mother a lunch, on Tuesday.

The Needmore singers came Sunday afternoon and sang for about an hour. We appreciated their coming.

Mrs. Martha Williams went home with her son, Roy, for the day, on Sunday.

There will be several going from here to the nursing hom, in Farwell when it opens. It is to open about the 15 of August.

Visitors are always welcome to each of us here.

Mrs. Inez Sanders of Morton and Mrs. Winnie Byars came to see their mother, Mrs. Hardin, Tuesday afternoon.

I read this little paragraph recently. When I did, it meant so much to me. It follows: "The Kingdom of God will never belong to anyone who is impure or greedy, when you follow your own wrong inclinations your lives will produce these evil results, impure thoughts, eagerness for lustful pleasures -- hatred and anger -- envy murder and drunkenness -- but in the lives God controlled are love, joy, peace, patience, kindness, gentleness, and self control." So let us put our faith and trust in God daily, for his guidance and our lives will be happier by having him in our daily lives.

Mr. and Mrs. John Blackman accompanied their daughter and husband, Mr. and Mrs. Dudley Cash, Darryl and Pattie, of Portales, N.M. to Fort Worth, Saturday. They returned home Tuesday. The Blackmans visited with friends, Mr. and Mrs. Cecil Jones.

While the Cashes visited with his brother, the Douglas Cash family, they also attended the wedding for his nephew, Charles Cash and Miss Sonja Renee Hickey. The wedding was held Saturday evening, at the Ridgela West Church of Christ

in Fort Worth. They also went to Six-Flags Monday.

Robert F. Bennett, Kansas Governor: "I don't believe Schweiker will sell very well in Kansas."

Gerald Soffen, Chief Viking Scientist: "I think we've got the elements necessary (for life). The question is, did it happen?"

The Board of Directors of Pioneer Corporation (formerly Pioneer Natural Gas Company), at their quarterly meeting today, declared a regular quarterly dividend of 30 cents per share to be paid September 2, to stockholders of record on August 19, 1976.

K.B. "Tex" Watson, Company President, reported to the directors that consolidated net income for the second quarter of 1976 amounted to \$10,299,523

or \$1.11 per share compared to \$5,986,805 or 67 cents per share for the same quarter of 1975. Watson pointed out that 1975 earnings per share are restated to reflect the 20 percent stock dividend distributed by Pioneer Corporation March 15, 1976.

In the first six months of 1976, the consolidated net income was \$21,307,470, or \$2.29 per share compared to \$12,573,719 or \$1.42 per share for the same period in 1975.

In making the announcement of the quarterly results, K.B. Watson, Company President, said that continued improvement in revenues from the production and sale of oil, condensate and other liquid hydrocarbons was a major contributing factor to the expanded earnings.

"Additional factors contributing to the improved earnings was the sale of some stockpiled inventory of uranium concen-

trate along with the change in uranium prices," Watson said. Uranium revenues for the first six months were \$7,728,492 compared to \$1,577,862 in 1975. The sale of current production for the six months would have produced approximately \$4 million of revenue.

Hearing aid rules proposed by FDA.

# YOU SAVE MORE

WITH OUR EVERYDAY LOW FOOD PRICES

## FINEST MEATS

**ROUND STEAKS 99¢**  
**RUMP ROAST 99¢**

**TENDERIZED STEAK \$1.49**

**KING SIZE TIDE DETERGENT \$1.09**

**BORDEN'S ORCHARD DRINK 59¢ each**

**DELI DELIGHTS**  
BROASTED CHICKEN \$2.89  
TACOS 3/\$1.00

**MAGIC BUTTON JAR FLATS 45¢**

**DR. PEPPER \$1.39**  
**WHOLE KERNAL CORN 3/89¢**  
**CATSUP 3/\$1.00**  
**TUNA 49¢**  
**FRUIT DRINKS 2/\$1.00**  
**FIDDLE FADDLE 49¢**

**Dairy SPECIALS**  
ONE HALF GAL. CTN. BORDEN'S **BUTTERMILK 69¢**

24 oz. BORDEN'S **COTTAGE CHEESE 89¢**  
8 oz. BORDEN'S **SOUR CREAM 43¢**  
8 oz. BORDEN'S **CHIP-N-DIP 43¢**

**NESTEA \$1.29**

**6 BOTTLE CTN COCA-COLA PLUS DEPOSIT \$1.39**

**COME TO PAY 'N' SAVE FOR YOUR WIC CARD PURCHASES**

**We Welcome USDA FOOD STAMP COUPONS**

**FARM FRESH TOMATOES 29¢**  
**POTATOES 69¢**  
**CANTALOUPE 15¢**  
**GREEN ONIONS 10¢**  
**BANANAS 15¢**

**FROZEN FOOD**  
6 oz. SHURFRESH **ORANGE JUICE 3/\$1.00**  
BIRDSEY 3 oz. **COOL WHIP 59¢**  
**PIZZA 79¢**

**Pay-n-Save**  
QUALITY AND SERVICE

WE GIVE GUNN BROS STAMPS  
DOUBLE STAMPS WEDNESDAY WITH \$2.50 OR MORE PURCHASE  
WE REDEEM AND GIVE STAMPS ON FOOD STAMPS  
WE SELL AFFILIATED MONEY ORDERS  
PAYROLL CHECKS CASHED

515 W. AMERICAN BLVD. OPEN 8 a.m. TO 10

**FARMERS**

Joint-Venture Sunflower Production Contracts are being offered to Sunflower Producers on the High Plains by a European Firm thru a Joint-Venture agreement with John F. Herzer & Associates of Lubbock.

Cash price to the producers shall be determined on the date of delivery of seed by using the combined price of Sunflower Oil and Sunflower Meal in Rotterdam.

The producer is guaranteed a base price of 5.09 cents per pound which is correlated to a combined Ex-Tank Sun Oil and CIF Sun-Meal price of \$747.00 per metric ton at Rotterdam. The Joint-Venture Contract offers the producer a \$5.00 per metric ton for each \$1.00 fluctuation up or down above the \$747.00 combined price of Sun Oil and Sun Meal.

This Joint-Venture Contract gives the High Plains Sunflower Producers who contract with John F. Herzer & Associates the assurance of a strong Local Market determined by the World Market demands for Sun Oil and Sun Meal based on the Rotterdam prices.

Producers interested in discussing Sunflower marketing through Joint-Venture Contracting or Direct Selling on an open market at harvest are asked to call 792-4418, or 747-0014, or 1-894-3598, JOHN F. HERZER & ASSOCIATES. "THE SUNFLOWER PEOPLE OF WEST TEXAS."

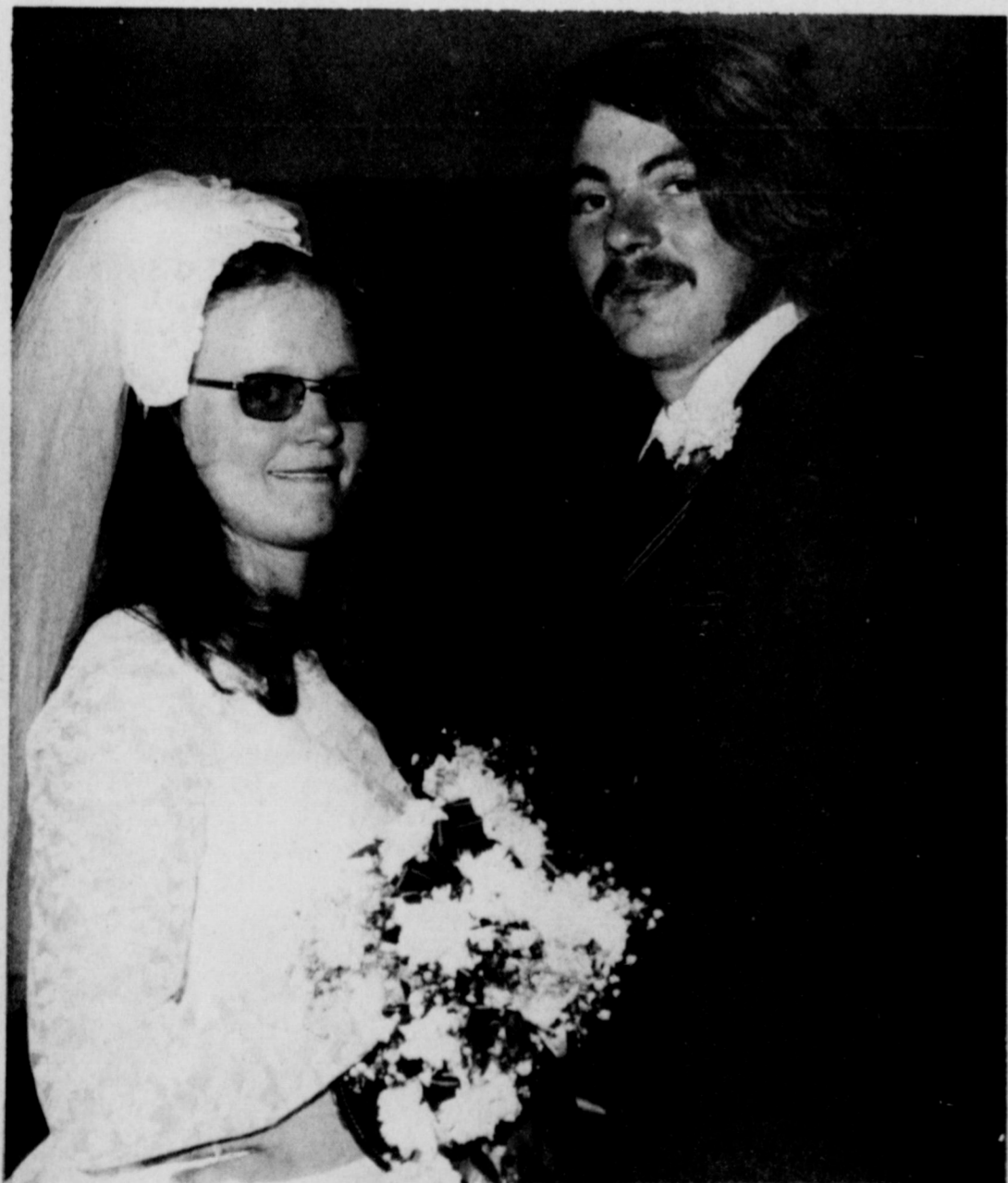
# Summer Weddings



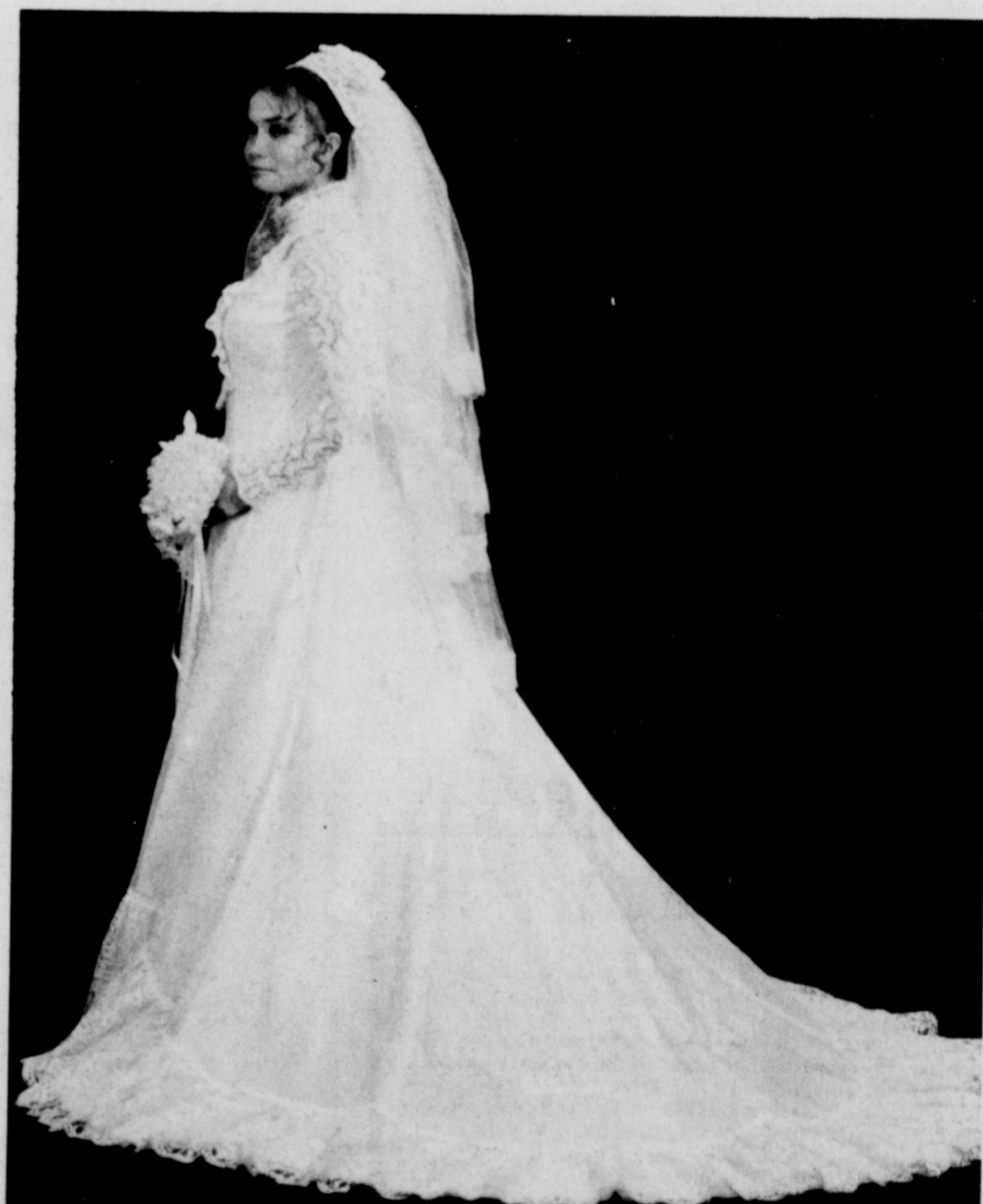
MRS. STAN MESSER



MRS. DAVID WAYNE BRAY



MR. AND MRS. PAUL GILBERT ROBINSON, JR.



MRS. DONALD GLEN (ELDER) GREEN





**CHILDREN HONOR PARENTS . . .** Mr. and Mrs. Ernest E. Martin will be honored by their children with a reception marking their 50th wedding anniversary from 2:00 to 5:00 p.m. Sunday, August 15, 1976, at the Muleshoe State Bank Community Room. The Martin children are Elizabeth McGuire of Woodson; Ravis Ishell, of Tahoka; Bill Martin, of Farwell; Imelda Howell, of Denton; Eune Martin, of Friona and Veran Davis of Woodson. The couple have 18 grandchildren and 10 great-grandchildren.

## Muleshoe OES Honors Founder, Dr. Morris

Mr. and Mrs. Elbert Nowell, Worthy Matron and Worthy Patron of Muleshoe Chapter No. 792, Order of the Eastern Star, presided at the stated meeting of the Chapter, Tuesday evening, August 3, in Masonic Hall. Routine business was transacted and a program was presented, honoring Dr. Rob Morris, the founder of the Eastern Star Organization.

Dr. Morris was born August 31, 1818, near Boston, Massachusetts, and each year his birthday is observed, during the month of August, by all Eastern Star Chapters.

Mrs. Linda Nowell, Junior Past Matron, gave a report on her year as Worthy Matron of the Chapter. The retiring Secretary's report was also given. The Worthy Matron announced her Friendship Night will be October 9, at 7:30 p.m. At that time, she will observe the 50 anniversary of Muleshoe Chapter. The Charter was granted October 28, 1926. The first Worthy Matron was Mrs. Mabel Milligan; the first Worthy Patron was the late R.J. Klump. Judge Klump served 20 years as Worthy Patron.

One Charter member, Mrs. Gladys Gupton, of Kingsland, formerly of Muleshoe, is still

active in the Chapter. The Worthy Matron displayed some pictures of her installation, that were taken by Mike Jones, the official photographer, who is a student at W.T.S.U., Canyon. Mike is the son of Mr. and Mrs. Owen Jones.

Refreshment hostesses were Mrs. Frank Hinson and Mrs. Glenn Lust.

## Hobby Club Shows Arts

Muleshoe Hobby Club met Thursday, August 5, at the Muleshoe State Bank Community Room. Hostess was Mrs. Charlie Phipps in place of Mrs. C.W. Briscoe, who is in the hospital at the present time.

Those members bringing arts and crafts to show were Mrs. Mabel Caldwell, old cast iron coffee pot and potato masher; Mrs. Ruth Bass, a crewel emb. picture and Mrs. Caldwell had a pillow.

Others attending were Mrs. Allie Barbour, Mrs. Mae Loyd, Mrs. Dora Phillips, Mrs. Levina Pitts, Mrs. Ola Epperly, Mrs. Verna Dement, Mrs. Myrtle Chambless.

The hostess gift was drawn by Mrs. Dement. The next meeting will be held August 19, with Mrs. Epperly as hostess.

## Club President Shows Slides

The Friendship Club held their regular business and social meeting Thursday, August 5, in the home of Mrs. F.W. Watts. Mrs. Watts and Mrs. W.T. Andrews were hostesses for the meeting. There were 16 members and four guests attending.

Mrs. George Johnson had as her guest, her sister-in-law, Mrs. Gardner of Houston; Mrs. Griffiths had her granddaughter, Marcia Rudd; and others were Mrs. Roy Whitt and daughter, Beth.

Refreshment plates were served.

## Firemen's Auxiliary Has First Meeting

Muleshoe Firemen Auxiliary met and held their first official meeting on August 2, at 8:00 p.m., at the fire station. The auxiliary consists of firemen's wives. It was formed in July.

They elected officers for the auxiliary. They are President Mrs. Danny McNeil; Vice President Mrs. Billy Don Williams; Secretary-Treasurer Mrs. Jack Dunham and Reporter Mrs. Odell Rasco.

Meeting will be held every first Monday night of each month at the fire station at 8:00 p.m. They are to have a salad supper September 13.

## Library News

**By Anne Camp**

Highest Readers in the '76 Summer Reading Program were honored at the library Wednesday morning. Receiving recognition in the three age groups were: second and third grades, Zanna Huckaby, first place, 90 books; Lee Bartley, second place, 86 books; and Manuela Valdez, honorable mention, 75 books.

The fourth and fifth grades had a three way tie for first place. They were Deana Tedrod, Ramon Valdez and Sherri Bessire, tied for first with 75 books; Kristi Spies took second place with 55 and Chandra Engelking received honorable mention with 40 books.

Sixth grade and up were Martina Valdez first place, 95 books, over-all winner; Sammy Gonzales, second place, 80 books and Abbye Kenney, honorable mention with 70 books.

Books with a historical theme were presented all first place winners, by Librarian Anne Camp and Recognition certificates were given to all. This year a beautiful U.S. flag was presented to the three highest overall in the reading club program. These flags were given by Fry and Cox to encourage young people to read, and to be patriotic. Receiving flags were: Martina Valdez, Zanna Huckaby and Lee Bartley.

Boys and girls attending watched two films in the basement of the library, and were served refreshments to close out the program.

The librarian wishes to thank staff members Cammie Waggoner, Linda Lopez, and Shirley Burris, also for their help - the friends of the library and Fry and Cox.

## Tops Club Begins New Contest

TOPS held their regular business session August 5, with Mrs. Dan Vinson acting as leader in the absence of Mrs. J.O. Parker. Mrs. Dee Clements read the minutes of the previous meeting in the absence of the regular secretary, Mrs. Owen Jones.

They will begin a new contest next week. Mrs. Harold DeLoach received the cancan. Queen for the week was Mrs. Jeff Peeler; first runner-up was Mrs. Dale Griswold and second was Mrs. J.M. Hefner.

Monthly queen was Mrs. J.J. McDonald, first runner up was Mrs. Clara Crane and second runner up was Mrs. J.M. Hefner.

KOPS recognition went to Mae

Province. The meeting was closed with an article read from the Muleshoe Journal, entitled "Conditioning Children To Be Obese". Mrs. Jeff Peeler received a birthday gift from her secret pal. It was a handbag. Everyone was dismissed.

## Fashion

Short hair styles are popular this summer. While many youngsters still wear long hair the majority of older girls either have a sculptured short hair style or one, cut short and curled.



## The Kitchen Almanac

What's the difference between herbs and spices? Herbs are leaves and sometimes the flowers of aromatic plants grown in temperate zones. Spices, on the other hand, come from aromatic plants grown in the tropics. How 'bout that??

Worth noting from USDA home economists: the syrup packed with canned fruit may be used in gelatin salads or desserts without adding too much sweetness. The next time you need more ice cube trays, try using those plastic egg cartons. Each carton - when cut in half - makes two trays. (Be sure to wash the trays first.)

But you didn't know: the white edible portion of cauliflower is called "curd". Cauliflower, incidentally, is available during every month of the year. Parsley can be a valuable addition to your diet (vitamin A). Consider it a food and not just a garnish.

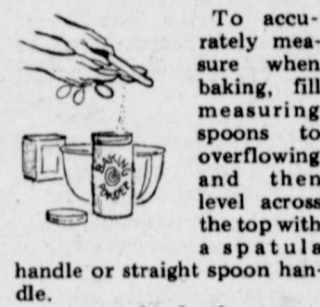
In colonial times, each community had its own pigs which were relied upon to dispose of garbage that was thrown out and accumulated in the streets. (Dogs and other pets helped with the disposal of the garbage, too.)

Now some 200 years later with the development of the modern food waste disposer and the home trash compactor, perhaps one of the oldest domestic problems - that of household waste - has finally been reduced to practically nothing. This from researchers at KitchenAid, one of the nation's leading appliance authorities.

(In this "self-cleaning" age of children, ovens and the like, did you know that a good disposer is also self-cleaning?)

To accurately measure when baking, fill measuring spoons to overflowing and then level across the top with a spatula handle or straight spoon handle.

Send your "kitchen hints" to Harry G. Clark, (512), 173 W. Madison St., Chicago, IL 60602.



Send your "kitchen hints" to Harry G. Clark, (512), 173 W. Madison St., Chicago, IL 60602.

## Mrs. Garza Receives Honors

Jane Gutierrez Garza, daughter of Mr. and Mrs. Juan Gutierrez, is an August candidate for a Master of Arts in Bilingual and Bicultural Education from Texas A & I University in Kingsville.

Mrs. Garza is a 1968 graduate of Muleshoe High School and a 1972 graduate of West Texas State University in Canyon.

While she was at A & I, she was awarded a certificate for completion of all requirements of the two year institute for personnel of Migrant Project Schools in Bilingual and Bicultural Education by Texas Education Agency. She is also among the first 100 graduates with a degree in Bilingual Bicultural Education in the state.

## You can BANK on It!

Bill Loyd, President Muleshoe State Bank

Working for someone without a retirement plan can create a special feeling of insecurity... anytime you start thinking about retirement.

Consider the Individual Retirement Account (IRA), a method you can use to build a tax-sheltered retirement fund. All it takes is 15% of your income or \$1,500, whichever is less, in cash. And all contributions, within the limits set by law, serve as a direct reduction of your gross taxable income, too. The amount is taxed only when withdrawals begin.

Say you invest \$1,500 annually for 20 years at an interest rate of 5 1/4%. You end up with \$54,478 while putting in only \$30,000. And in 30 years you get \$112,339, putting in only \$45,000. Not a bad return on your money.

Look into IRA. It's worth its weight in fishing poles anytime.

**GIBSON'S DISCOUNT CENTER**  
PRICES GOOD AUG. 9-11

**HEALTH & BEAUTY AIDS**

**4-Way Nasal Spray**  
Reg. 5 OZ. 69¢  
Bl. 13 OZ. Aerosol

**Right Guard Deodorant**  
1 23

**Smoke Alert Smoke Detector**  
U. L. listed, solid state, ionization type detector. Gives you the earliest possible warning of fire. Loud 85 decibel alarm horn can wake people sleeping soundly behind closed doors. Easy to install. 1 Yr. warranty.

No. SA76R REG. 39.97 **29.99**

**Bayer Childs Aspirin**  
36's **23¢**

**Bee Plastic Water Jug**  
Bee Plastic, no. 0559. New jug with magi-spout lid. Yellow or apricot.

**2.57**  
REG. 3.99

**Gibson Twin II Razor Blades**  
5's **67¢**

**Pyrex 3-Piece Bowl Set**  
Mixing bowls in 3 sizes. Choice of gold or green colors. No. 300.

REG. 5.59 **3.99**

**Flicker Ladies Shaver**  
**97¢**

**Vinyl Adhesive**  
4 Yard roll of decorative self-adhesive vinyl. Carlin Inc. REG. 1.99 **99¢**

**Cobb's FINAL MARK DOWN STARTS MON. AUG. 9th**

<b>Ladies Dresses</b> Great savings on these. Values to \$82.00 <b>PRICED FROM \$8.00 to \$30.00</b>	<b>Men's Leisure Suits</b> Small group left. Broken sizes. Values to \$55.00 <b>PRICED \$15.00 each</b>
<b>Ladies Sports Wear</b> Stock up on these terrific bargains. Values to \$48.00 <b>PRICED FROM \$2.00 to \$15.00</b>	<b>Men's Shirts</b> Groups consists of Sport & Dress style shirts. Values to \$22.00 <b>PRICED FROM \$2.00 to \$8.00</b>
<b>Ladies Pant Suits</b> Shop early! For best selection. Values to \$90.00 <b>PRICED FROM \$10.00 to \$35.00</b>	<b>Men's Casual Pants</b> Group of broken sizes. Values to \$20.00 <b>PRICED FROM \$5.00 to \$8.00</b>
<b>Ladies Shoes</b> Good selection of styles, Broken sizes. Values to \$29.00 <b>PRICED FROM \$1.00 to \$10.00</b>	<b>Men's Shoes</b> Ideal for back-to-school <b>One Group \$7.00</b> <b>One Group \$10.00</b>
<b>Girl's Dresses</b> Spring & Summer styles. Broken sizes. Values to \$30.00 <b>PRICED FROM \$3.00 to \$10.00</b>	<b>Boy's Shirts</b> Shop early for best selection. Values to \$12.00 <b>PRICED FROM \$1.00 to \$4.00</b>
<b>Girl's Sports Wear</b> Great to start back-to-school. Values to \$14.00 <b>PRICED FROM \$1.00 to \$5.00</b>	<b>Boy's Dress Clothes</b> Broken sizes. Values to \$34.00 <b>PRICED FROM \$5.00 to \$12.00</b>
<b>Boy's Pants</b> Great bargains for back-to-school. Values to \$15.00 <b>PRICED FROM \$3.00 to \$5.00</b>	<b>Cobb's</b>









## South Plain Fair Changes Ticket System

A unique, money-saving ticket-selling system will be unveiled on the midway at the 59th annual Panhandle South Plains Fair here September 25 - October 2.

Dubbed "the universal ticket system", it will be used for all rides and shows on the million dollar midway operated by Gene Ledel Shows, Inc. of Fort Worth.

The plan is expected to have a

"streamlining effect" on the midway operation, according to Steve L. Lewis, general manager of the fair. "Bargain coupon books" will be sold.

No longer will tickets be available at each of the rides and shows. Instead, eight to 10 central ticket booths will be set up on the midway, dispensing single coupons for 25 cents each; booklets with 20 coupons for \$4; or 40 coupons for \$7.

Two or more of the coupons will be presented at the rides or shows.

Lewis said purchase of the 20-coupon books represented a saving of \$1 over single coupons, while the purchase of the 40-coupon books represented a saving of \$3 over singles. Coupons cost only 17½ cents each in the 40-coupon book and 20 cents each in the 20-coupon book.

"The more tickets you buy, the cheaper they are", Lewis added. He also noted that the universal ticket system would eliminate the long lines at each of the rides or shows.

The red, white and blue central ticket booths will be located throughout the midway. Cash will not be accepted at any ride or show.

Lewis said the system proved satisfactory at the State Fair of Texas in Dallas last fall and it also has been pioneered at other major expositions, including two

in Canada. Ledel used it successfully at the Fort Worth Fat Stock Show and Exposition earlier this year and has been using it on all dates since then.

None of the coupons may be presented at food concessions or games of skill, Lewis said.

The fair manager also pointed out that arrangements are being completed to bring a free attraction to the outdoor area of Fair Park.

In addition, an all-star lineup has been signed for Fair Park Coliseum during the "Festival 76" edition of the exposition.

The ninth annual fiddlers' contest will launch the eight-day run, followed by:

--Charley Pride, September 26;

--Freddy Fender and Barbara Mandrell, September 27-28;

--Charlie Rich, September 29 - 30;

--Neil Sedaka, October 1-2.

Shows will be presented at 5:30 p.m. and 8:30 p.m. daily. Tickets, priced at \$4, \$5 and \$6, may

be obtained at the fair office or by mail. Written requests to the fair association, Box 208, Lubbock, 79408, should include a self-addressed, stamped envelope.

## Maid Of Cotton Application Are Being Sought

Robert McKinsey, Chairman of the Lubbock Chamber of Commerce Maid of Cotton Committee, announced today the dates for this year's selection. The Maid of Cotton application should be filled out and returned to the Lubbock Chamber of Commerce no later than 5 p.m., September 10, with the actual selection of the Maid being held October 1 and 2.

McKinsey stated any interested girl between the ages of 19 and 23 that has never been married, born in a cotton producing area, and is 5 feet 5 inches tall or taller may contact the Lubbock Chamber of Commerce for an application.

## Courthouse News

### MARRIAGES

Edwin Duane Carter, of Whiteface to Lanita Carol Woolam, of Morton.

Jimmie C. Smith, of Earth to Margaret Washington, of Earth. William Fredrick Good, of Clovis, N.M. to Petty Lee McGowan, of Springlake.

David Wayne Bray, to Shelby Elaine James, both of Muleshoe.

Evan Charles Hamilton, of Dimmitt to Mary Kathleen Jennings, of Muleshoe.

Luther Lunce, Jr. to Esther Laswell, both of Muleshoe.

Luis Ortiz to Rafaela Marinez, both of Muleshoe.

**DIVORCES**  
Candace Virginia Sims and Joe Bob Sims.

Jess Monroe Pruitt and Ruby Leo Pruitt.

**WARANTY DEEDS**  
R.L. Scott, et ux to C.A.

Watson, et al Tract No. one Scott Acres, a subdivision of a part of the SW/4 of Section No. 33, Block X.

Garry Morris, et ux to Murray Lemmons et ux all of Lot No. Eight, Block No. Three, Lenau Subdivision to the City of Muleshoe.

Alva Douglass Sparks, et al to H.A. Douglass et ux, all of NE/4 of Section No. 32, Block Y.

Katie Crouch to Doris Scott, et al, all of Lots No. 20, and 21, Block No. 43, Original Town of Muleshoe.

Melvin Dayton Berry, et ux to Lester Harvey Kirkland, et ux, all of Lot No. Three and the Westerly half of Lot No. Two, Block No. 15, Country Club addition.

Jack D. Young, et al to Gordon H. Green, et ux a 69.672 acre tract of land out of the northeast corner of Section 76, Block Y.

H.D. Hunter, Jr., et ux to Gaylon Black, et ux a tract of land containing 30 acres out of the southwest corner of the NW/4 of Section 39, Block X.

Jack D. Young, et al to Irrigation Inc. a three acre tract

of land out of the Northwest ¼ of Section 21, Block Y.

King Bros. Grain & Seed Co. Inc. to Western Sprinklers a 1.777 acre tract of land out of the northwest ¼ of Section 33, Block Y.

Jack D. Young, et al to Blackwater Agriculture Association, a two acre tract of land out of the northwest ¼ of Section No. 21, Block Y.

H.R. Scarbrough et ux to Billy Don Williams, all of Lot No. Five, Block No. One, Mock Addition.

Walter Mondale, Democratic vice presidential candidate:

"We're going to have a government that obeys the law, a government that's open."

**TO BUY AIRCRAFT**  
OTTAWA, CANADA--The Canadian government signed a billion-dollar contract to buy 18 Orion aircraft from Lockheed Aircraft Corp., a government source reports.

**TELEX.**

**HEARING AIDS**

**CLOVIS HEARING AID CENTER**

★ Batteries ★ Molds ★ Free Hearing Tests

**SERVICE ALL MAKES**

403 E. 14th Clovis, N.M. Ph. 763-6900

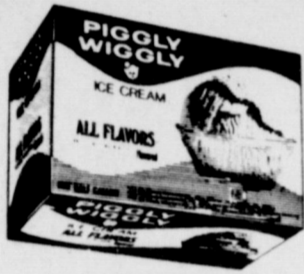


# Piggly Wiggly LOW PRICES

Prices good thru August 11, 1976. We reserve the right to limit quantities. None sold to dealers.



Piggly Wiggly Welcomes Food Stamp Customers



Piggly Wiggly

**ICE CREAM**

**89¢**

1/2 Gal. Ctn.

Piggly Wiggly **Liquid Bleach** 1/2 Gal. Btl. **29¢**

Carol Ann **Salad Dressing** Qt. Jar **49¢**

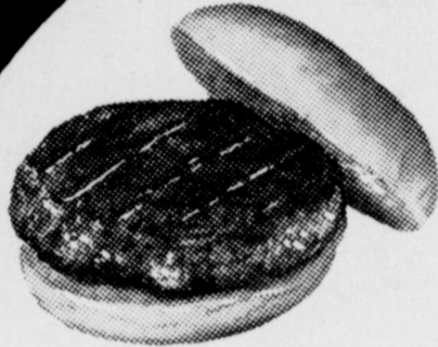
All Flavors **Wagner Drinks** Qt. Btl. **29¢**

All Varieties Except Ham, Frozen

**MORTON'S DINNERS**

**49¢**

11 oz. Pkg.



Fresh 3 Lbs. or More

**GROUND BEEF**

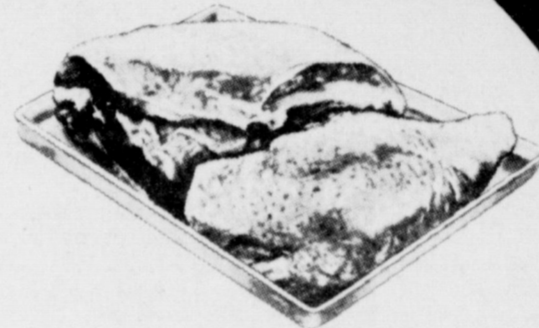
**78¢**

Lb.

Banquet **Chicken Livers** One (1) Lb. Cup **89¢**

Farmer Jones or Piggly Wiggly **Tasty Franks** 12 oz. Pkg. **89¢**

Heavy Aged Beef, Blade Cut **Chuck Roast** Lb. **78¢**



Fresh Cut Leg Quarters or

**FRYER BREAST** Quarters

**59¢**

Lb.

Farmer Jones', Dry Cure, Shank, or Butt Portion Cry-o-vac for Flavor **Smoked Hams** Lb. **\$1.39**

Farmer Jones **Roll Sausage** One (1) Lb. **\$1.29** Two (2) Lb. **\$2.57**

"Each of these advertised items is required to be readily available for sale at or below the advertised price in each store, except as specifically noted in this ad."



Pure Vegetable

**PIGGLY WIGGLY SHORTENING**

**89¢**

3-Lb. Can

Piggly Wiggly **Fresh Butter** 1-Lb. Ctn. **\$1.19**

Kounty Kist, Whole Kernel Vacuum Packed **Golden Corn** 12-oz. Cans **5 \$1**

Skin Care Cream **Rose Milk** 8-oz. Btl. **\$1.13**

Piggly Wiggly Grade A

**FRESH MEDIUM**

**65¢**

Doz.



Fresh Field-ripe

**Sweet Corn** 10 for **\$1**

Stuffed Celery Tonight? **Celery Hearts** Pkg. **79¢**



Great With Ice Cream

**Sweet Cantaloupe** Lb. **15¢**

Summer Salad Time All Leaf **Lettuces** Ea. **39¢**

# 1976 GIRLS SOFTBALL

## Little Deers



Back Row, (l to r) Coach Mrs. Jimmy Copley, Kim Wilson, Alicia Daniel & Coach Mrs. Lyndon Huckaby Front Row, Janette Sudduth, Zanna Huckaby, Deborah Pugh, Lenore Daniel, Susan Whatley, Karen Durbin, & Renee Copley Not Pictures: Sandra Agundis, Jessie Holmes & Jackie Kutzli

Photo by Shafer's Photo

Presented By:  
**BRATCHER  
MOTOR  
SUPPLY**



## Dandelions



Back Row, (l to r) Coach Lela Ann Smith, Dana Smith, Staci Vandiver, Beth Harmon, Denise Peterson, & Brenda Flowers Front Row (l to r) Betty LaBaugh, Stacy Smith, Lori Ellis, Brenda Ellis & Vana Pruitt

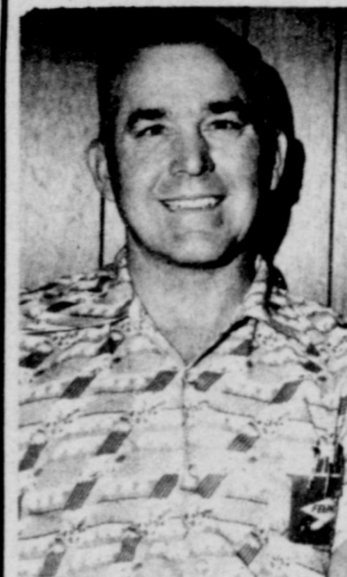
Photo by Shafer's Photo



B / Sports  
**MULESHOE JOURNAL**

Sunday August 8, 1976

# 1976



**CHARLES BRATCHER**  
President,  
Babe Ruth



**EUGENE HOWARD**  
President,  
Little League



## BOYS MINOR, MAJOR, & BABE RUTH LEAGUES PLUS GIRLS SOFTBALL TEAMS

Muleshoe Little League has completed another successful season, and wishes to thank all who contributed time and money so that the boys and girls of the area could have an opportunity to play little league baseball. Due to a series of unfortunate events, Muleshoe Little League finished the 1976 season with a financial deficit and had to put out a call for donations. More than \$700 was needed, and it came almost immediately. The officials of Muleshoe Little League wish to thank who contributed, with a special note of appreciation to Muleshoe V.F.W. Post 8570, who donated \$250.00, in addition to sponsoring a team, buying a set of uniforms for their team, and donating a bicentennial flag for the opening day ceremonies. Other donations were received from Fry & Cox Inc., Radio Station KMUL, Mohawk Auto Parts, Bratcher Motor Supply, Lazbuddie Pump & Machine, Paul Poynor, Eugene Hawkins, Janie Moraw, Mrs. T.M. Slemmons, Freda Foss, First National Bank, Muleshoe State Bank, Western Drug, Western 66 Company, Tri-County Savings & Loan and the Fair Store.

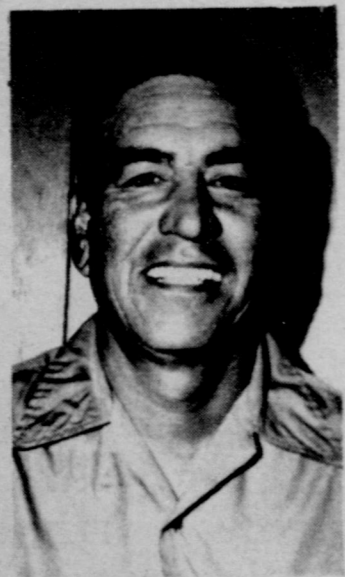
Thanks are also in order for the business firms and organizations which sponsored teams. They are as follows: Muleshoe Motor Company, Production Credit Assn., Cashway Grocery, Pay & Save Foods, First National Bank, Muleshoe State Bank, Tri-County Savings & Loan Assn., Muleshoe Lions Club, Muleshoe Jaycees, Muleshoe Kiwanis Club, V.F.W. Post 8570, Muleshoe Cooperative Gins, Muleshoe Rotary Club, and the following Lazbuddie businesses: Clay's Corner Gin, Tide Fertilizer, Ag-Air Inc., Clay's Corner Grocery, Lazbuddie Farmer's Supply, Sherley-Anderson Elevator, Treider Electric, Lazbuddie Chemicals, Maritt Grocery, Lazbuddie Grain, Lazbuddie Pump & Machine, and Lazbuddie Garage and Supply. Without the support of these fine merchants, businessmen and civic organizations, it would not be possible for Muleshoe Little League to continue its program. Thanks are also due to Bob Stovall Printing, who furnished the schedule cards, and to Poynor's White's Auto for furnishing the equipment at cost.



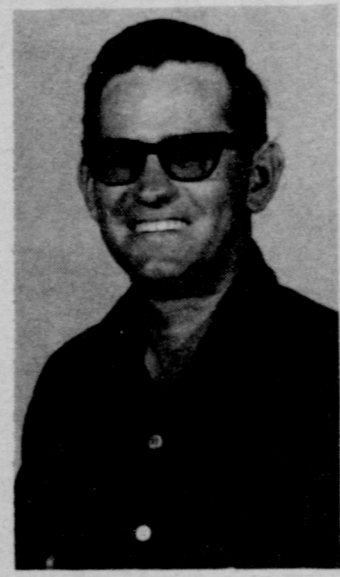
The Muleshoe Journal, Staff would like to take this time to express their thanks and appreciation to Mr. Eugene Howard for the time he spent helping identify the players.



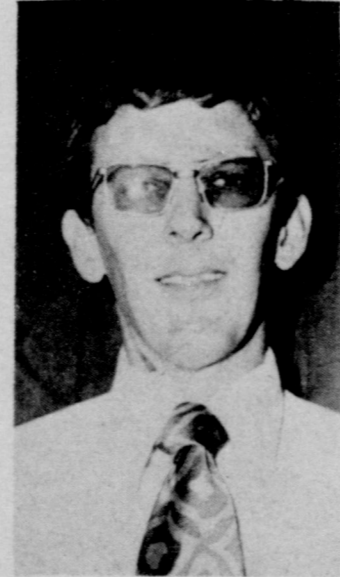
# 1976 OFFICERS



**Jacinta Bara**  
Babe Ruth, Vice Pres



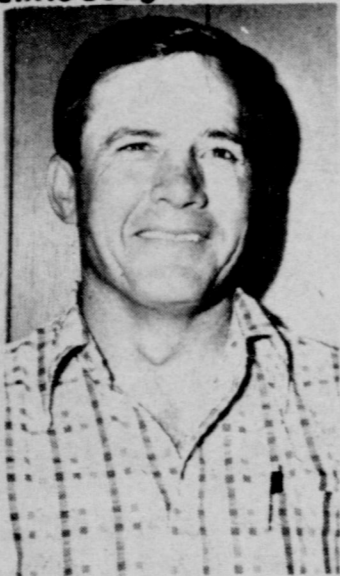
**R.G. Bennett, III**  
Little League Vice Pres



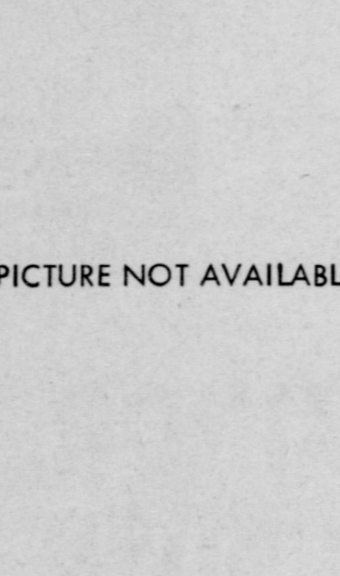
**Dave Sudduth**  
Babe Ruth Secretary



**Nonnie Howard**  
Players Agent, Little League



**Wayne Crittenden**  
Players Agent, Babe Ruth



PICTURE NOT AVAILABLE.

**Jo Ella Flowers**  
Little League Secretary-Treasurer

# 1976 MINOR LEAGUE

U-Bars

Presented By:

**JOHN'S  
CUSTOM  
MILL**



Photo by  
Shafer's Photo

Not Pictured  
Thurman Coleman,  
Sidney Lewis,  
Marilyn Lewis,



Back row (l to r) Coach Ben Yeager, Michael Barrett, Theresa Coleman, Tracy Tunnel, John Isaac  
Front row Ray Vinson, Willie Coleman, Bratt King, Wade King, Joe Bob Newman, Sherry Ellis, Jeff  
Vinson, Brandon Cox, Loy Triana, Joe Alfaro, Todd Bessire, Wesley Hanks, Dwain Hutton, Coach Travis Bessire.

# 1976 GIRLS SOFTBALL

Greenbugs

Presented By:  
**WESTERN  
"66"  
COMPANY**



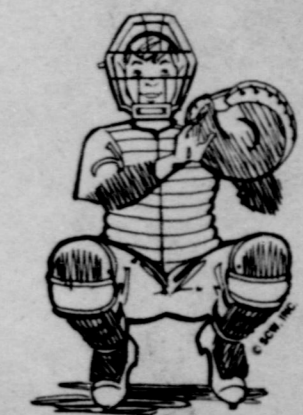
Back Row, Coach Linda Sinnacher, Missy Baldwin, Beatrice Renea, Sheila Swanson,  
Jody Burgess, Michelle Logsdon, Hither Merritt, Tina Seismore Tina Oliveraz  
& Coach Mrs. Tommy Seismore  
Photo by Shafer's Photo

Patriots

Presented By:  
**COMBINATION  
MOTORS**



Back row, Left to Right Coach Elaine Parker, Rachelle Hardage, Melissa Wilbanks, Susie Pierce,  
Kelly Pena, Misty Prater, & Coach Carolyn Harris  
Front Row, Sharla Morrison, Jayna Harris, Cindy Shumake, Casey Hendrick, Teresa Shumake  
& Torie Hunt Not Pictured: Donna Hawkins, Abigail Soto & Paula Snell  
Photo by Shafer's Photo



# 1976 BABE RUTH

## Eagles



Presented By:  
**WATSON  
 ALFALFA  
 &  
 WILSON  
 APPLIANCES**



Back Row (l to r) Coach Ronnie Jones, Jeep Shanks, Roland Perez, Keith Hawkins, Coach Bob Graves, Jerry Reyna, Zeke Pesina & Coach Mike Richardson 2nd. Row, Terry Burton, Sam Whalin, Victor Leal, & Dean Estep Front Row, Felix Norman, Gary Cox, Domingo Ramos, George Acosta, & George Vela

Photo by Shafer's Photo

## Cats

Presented By:  
**POYNORS  
 &  
 ST. CLAIRS**



Back Row, (l to r) Dickie Sudduth, Mike Dale, Ignacio Agundis, Raymond Cabrera, Wayne Ware, Reynaldo Rojas, & Coach Fred Bara Front Row, Coach Jacinto Bara, Gilbert Dominquez, Ray Martinez, Jimmy Ware, Greg Williams & Raymond Guillen

Photo by Shafer's Photo

# 1976 MINOR LEAGUE

## Ginners

Presented By:  
**MULESHOE  
 CO-OP  
 GINS**



Back row, (l to r) Coaches: Buddy Embry, Darrell Embry, & Gary Shipman 2nd row, Sammy Wilson, Shawn Shipman, Robert Orozco, Shawn Gist, David Navajar, & Michael Angely Front row, Roy Desman, Eloy Flores, John Farley, Michael Harris, Tony Herachio & Diana Reymos

Photo by Shafer's Photo

## Dollar Bills



Back Row, (l to r) Coaches: John Agee & Eugene Shaw, Alan Finney, Lance Free, Lee Free, Trent Hysinger, Jerry Gleason, Jason Scoggins, Donny Berry, Darin Shaw, & Jay Stovall Front Row, Sandy Reyna, Manuel Daniel, Shane Carter, Robert Nowlin, John Agee, Ronald Briggs, Preston Scoggin, Terry Graves & Cynthia Reyna Sponsored by the Muleshoe State Bank.



Photo by Shafer's Photo

# 1976 MINOR LEAGUE

## Veterans

Presented By:  
**VFW**  
**POST 8570**



Back Row, (l to r) Coach Terry Fields, Dusty Puckett, Graviel Martinez, Joe Don Fabela, Michael Isaac, Denise Wilson & Coach Mike Roberts Front Row, Todd Jones, Eddie Perez, Dennis Ruthardt, Keith Smith, Robert Hobbs & Danny Seales

Photo by Shafer's Photo



## Sluggers

Presented By:  
**WHITES**  
**CASHWAY**  
**GROCERY**



Coach: Charles Ball Back Row: Michelle Berry, Alex Trevino, Chris Hernandez, Tony Tojos, Esidoro Trevino, Steve Eubanks, Denis Snell, & Jimmy Holmes Front Row, Beatrice Garcia, Virginia Garcia, Hector Flores, jr., Francisco Ybarra, Armando Ontivaros, Kevin Manasco, Hector Hernandez, & Albert Luera Not Pictured: Ronnie Logsdon, Scott Stroud, Mitch Black, Derick Magby, Curtis Snell, & Steven Griswold

Photo by Shafer's Photo



# 1976 BABE RUTH

## K-Bars

Presented By:  
**SHERLEY-**  
**ANDERSON**  
**-LAZBUDDIE**  
**ELEVATOR**



Back Row, (l to r) Monty Hysinger & Coach Roque Flores 2nd row, Coach Robert Orozco, Albert Ontiveros, Pat Orozco, Cecil Chavez, Larry Norman, Steve Orozco, & Gilbert Lopez. Front Row, Johnny Maddox, Jamie Chancy, Rudy Orozco, Eddie Alverodo, & Abberto Orozco

Photo by Shafer's Photo



## COLTS

Presented By:  
**FEDERAL**  
**LAND**  
**BANK**  
**&**  
**DARI DELITE**



Back row, Coach Mike Bland, Brent Burrows, Curtis Elder, & Mike Henry Front Row, Alvaro Ontiveros, Jessie Silguero, Dave Poynor, Mark Harmon, Ricky Luero, Brad Poynor, Lupe Rosales, Greg Harrison, Joel Bratcher & Kirby Brantley

Photo by Shafer's Photo



# 1976 MAJOR LEAGUE

Lions



Presented By:  
LAZBUDDIE  
GARAGE  
& SUPPLY



Back Row, (l to r) Coach Alex Garcia, Lee Murphy, Willie Coleman, Yolanda Orozco, Jessie Beversdorf, Chris Kirvin, Joe Lucra & Coach Joe Orozco Front Row, Michael Foss, Hector Orozco, Rene Garcia, Ricky Lopez, Paul Silguero, Lynn Moore, & Mike Pugh Sponsored by the Muleshoe Lions Club. Photo by Shafer's Photo

# 1976 BABE RUTH

PILOTS

Presented By:  
FARMERS  
SPRAYING  
SERVICE



Back Row: (l to r) Coaches: Jim Shafer & Randy Clayton 2nd Row William Orozco, Terry Shafer, Mark Northcutt, & Rudy Toscanco Front Row, Cody Crittenden, Bobby Perez, Robert Reynero, & Richard Orozco Not Pictured: Jimmy Berry, Billy Durben, Robert Gonzales & Mike Northcutt Photo by Shafer's Photo

# 1976 MINOR LEAGUE

Lazbuddie Shorthorns



Presented By:  
LAZBUDDIE  
FARMERS  
SUPPLY



Back Row, (l to r) Coaches: Darrell Mason & Phil Brockman 2nd Row, Tony Waddell, Danny Shecker, Shawn Mason, Frank Jeske & Stephen Schilling Front Row, Paul Stanley, Juan Galevez, Bryan Houston, Guy Brockman & Shane Mason, Not Pictured, David Shecker Photo by Shafer's Photo

Lazbuddie Lions

Presented By:  
BAILEY  
COUNTY  
ELECTRIC  
CO-OPERATIVE  
ASSOCIATION



Back Row, (l to r) Coaches: Eddie Matthews, Melvin Morris & Darrell Jennings 2nd Row, Julian Ovaldie, Frankie Garcia, Lee Scott, Noey Gonzales, Jeff Standrige & Shannon Weaver front row, Kevin Fugua, Mario Gomez, Shani Smith, Shawn Richards & Todd Ellis Photo by Shafer's Photo



# 1976 MINOR LEAGUE

**Bears**

Presented By:  
**FIRST NATIONAL BANK**



Back Row, Coaches: R.G. Bennett, III & Don Dillard  
2nd row, Eddie Garcia, Joe Cazarez, Rickey Rasco, Terry Baker, Jana Grumbells, Chuck Bartholf, Bradley Bickel, David Vela, Mark Molten & Micael Lopez Front row: Sonny Bennett, Justin Helton, Gloria Chavez, Michael Martinez, Lisa Bennett, Shannon Dillard, Joey Soto, Joey Chancy, & Lupe Rejino  
Photo by Shafer's Photo



# 1976 MAJOR LEAGUE

**Sox**



Photo by Shafer's Photo



Back Row, Coach Jim Joung, Jose Ybarra, Scott Campbell, Eugene Porras, Eddie Flowers, Michael Pesina, & Arthur Recio, & Coach Tim Campbell Front Row, Sammy Gonzales, Jay Gleason, Freddie Vela, Craig Hunt, Bat Boy, Greg Young, Lincoln Snell, Keith Williams, & John Davis

Sponsored by  
the Muleshoe Jaycees.

# 1976 MAJOR LEAGUE

**Fire Balls**

Presented By:  
**PROTEIN PROCESSORS & PLAINS AUTO PARTS**



Back row (l to r) Coach Dwight Lewellen, Tommy Carlson, Casey Wilson, Randal Stevens, Kevin Harris, Gig Harris, Ronnie Swanson, Scott Calvert, Perry Whalin, Front row (l to r) Polly Harrison, Shelley Sain, Melanie Blackwell, Sherry Howard, Chad Williams, Rudy Pena, Sergio Leal, George Ranero, Coach Ron Swanson.

Photo by Shafer's Photo



**Mustangs**

Presented By:  
**MULESHOE MOTOR CO. & BEAVERS FLOWERLAND**



Back Row, Coach Butch Vandiver, Perry Flowers, Joe Neel, Jeff Meeks, David Pruitt, Kevin Howard & Coach Jarrell Pruitt Front Row, Michael Neel, Roby Wilson, Clyde Bever, Lorenzo Kirvin, Tyrri Vandiver, Chad Williams & Ronnie Angely

Photo by Shafer's Photo





# 1976 MAJOR LEAGUE

## Cardinals



Presented By:

**NORTH  
LAZBUDDIE  
GIN**



Back Row, Left to Right  
Coach Edward Orozco, Danny Mendoza, Tommy Sexton, Benny Gomez, Juan Pacheco, Arnold Ontiveros, Eddie Black, Israel Reyna  
Front Row, Bat Boy, Johnny Orozco, Kevin Petterson, Ismail Orozco, Sammy Martinez, Robert Gonzales, Tim Sain, Pedro Gomez, & Tony Luna

Photo by Shafer's Photo

## Lazbuddie

Presented By:

**FOSTER  
FERTILIZER**



Back Row, Left to Right, Mgr. Elvis Powell, Keihm Smith, Dennis Steinbock, Mike Windham, Charleston Steinbock & Coach Claude Gregory  
2nd Row, Quinton Mimms, Appalonio Ganchez, Johnny McDonald, Mickey Powell  
Seated, Stephan Moore, David Lust, Andy Rogers, Todd Gregory, Russell Windham  
Not Pictured; Coach Scotty Windham

Photo by Shafer's Photo

# 1976 MAJOR LEAGUE

## Longhorns

Presented By:

**TIDE  
PRODUCTS  
INC.**



Back Row Evaristo Sanchez, Bart Elliott, Ariel Sanchez, Mark Lust, Joe Gonzales, Jeff Jesko, Terry Jesko & Coach Roanald Elliott  
front row, Jimmy Garcia, Evaristo Sanchez, jr., Danny Powell, Joe Dan Tarter, Terry Steinbock, Kerry Winders & Martin Mendoza

Photo by Shafer's Photo

## Savors

Presented By:

**TRI-COUNTY  
SAVINGS  
&  
LOAN**



Back row, Left to right, Coach Keith Turner, Eusebio Reamos, Reul Garcia, Emilio Sandoval, Reuben Fabela, Johnny Campos, & Coach Terry Gunter  
front row, Jessie Navejar, Rene Sandaval, Harry Sandaval, Ernestina Olivares, Hector Garcia & Reuben T Reyna

Photo by Shafer's Photo

# 1976 FINAL

Team	MAJOR LEAGUE	Sponsor
1. Savers		Tri-County S&L
2. Longhorns		Lazbuddie Business
3. Sox		Muleshoe Jaycees
4. Mustangs		Muleshoe Motor Co.
5. K-Bars		Muleshoe Kiwanis
6. Lions		Muleshoe Lions Club
7. Veterans		V.F.W. Post 8570
8. Cardinals		Muleshoe Rotary Club

## MINOR LEAGUE

1. Lazbuddie Lions	Lazbuddie Businesses
2. Dollar Bills	Muleshoe State Bank
3. Short horns	Lazbuddie Businesses
4. Bears	First National Bank
5. U-Bars	Production Credit
6. Sluggers	Whites Cashway
7. Fireballs	Pay & Save Foods
8. Ginners	Muleshoe Co-op Gins

## GIRLS SOFTBALL

Little Deeres	Whitt, Watts, & Rempe Bratcher Motor
Dandelions	Baker Farm Supply
Patriots	Combination Motors
Green bugs	Western "66" Co.

# STANDINGS

## Overall Record

12 Wins 2 Losses  
 11 Wins 3 Losses  
 8 Wins 6 Losses  
 7 Wins 6 Losses  
 6 Wins 8 Losses  
 4 Wins 9 Losses  
 4 Wins 10 Losses  
 3 Wins 11 Losses

13 Wins 1 Loss

4 Wins 10 Losses

4 Wins 10 Losses

3 Wins 10 Losses

2 Wins 11 Losses

9 Wins 5 Losses

5 Wins 1 Loss

4 Wins 2 Losses

3 Wins 3 Losses

0 Wins 6 Losses

## 1976 Allstars

**Major League  
Champions**  
Savers

**Minors  
-Champions-**  
Lazbuddie Lions

## 1976 Muleshoe All star Team :

Ruben Fabela  
 Rubero Reyna  
 Raul Garcia  
 Rene Sandoval  
 Ariel Sanchez  
 Terry Steinback  
 Martin Mendoza  
 Eugene Porras  
 Sammy Gonzales  
 Kevin Howard  
 Monty Hysinger  
 Steve Orozco  
 Lynn Moore  
 Rudy Orozco  
 Michael Isaac

## 1976 Allstar Coaches

Terry Gunter  
 Tim Campbell