

Your Name
In This Paper
Is Important to Us

The McLean News

--- McLean ---
The Town
Of Big-Hearted People

Vol. 46.

McLean, Gray County, Texas, Thursday, September 22, 1949.

No. 38.

Tigers to Play 'Hawks' Phillips Friday

McLean Tigers will meet the powerful and speedy Blackhaws on the Phillips gridiron Friday night. The game will start at 8 o'clock.

Coach Chesty Walker of Phillips is basing his team this year on a strong offense. He has two very fast backs, Moore and Eldridge, plus a heavier-than-usual line. However, the Blackhaws' line has been scored on three times, once by Panhandle and twice by Wellington. The Hawks won 33-14 over Wellington, with the Skyrocks continuously threatening with their deadly passing attack. The Phillips pass defense was poor against Wellington, with the Rockets completing 16 of 22 tosses in that game.

McLean's offense thus far has been led by the power running of L. M. Watson, junior, who has been serving as quarterback in the Panhandle game, Bobby (Continued on back page)

Memphis Cyclone Still in First Place In Godsoe Ratings

The Memphis Cyclone retained hold on first place in weekly ratings of Class A grid teams of the Panhandle and South Plains by Frank A. Godsoe Jr., Amarillo News sports writer.

Still in second place were the Phillips Blackhaws.

The top 15 (actually 16 since two teams were rated in fourth place) are as follows:

1. Memphis Cyclone; 2. Phillips Blackhaws; 3. Dalhart Wolves; 4. Wellington Skyrocks; 5. Littlefield Wildcats; 6. Hereford Whitefaces; 7. Lockney Longhorns; 7. Floydada Whirlwinds; 8. Shamrock Irish; 9. Lefors Pirates; 10. Ralls Jackrabbits; 11. Canyon Eagles; 12. Sundown Roughnecks; 13. Aberrathy Antelopes; 14. Muleshoe Mules; 15. Clarendon Broncs.

Fire Prevention Week Program Being Planned

The McLean Lions Club will cooperate with the McLean schools in observing a county-wide Fire Prevention Week program, it was decided at the regular meeting of the club Tuesday noon.

In past years, the Lions Club has sponsored a fire poster contest in the Grade Schools with the cooperation of the McLean Fire Department. This year, the contests are to be enlarged, with prizes to be offered in some type of high school competition.

Working on the project is the safety committee of the Lions Club, headed by Clifford Allison. He will work with Logan Cummings, school superintendent, who is a member of the Gray County educational committee of the county-wide fire prevention program.

The National Fire Prevention Week will be observed October 9-15. Cummings attended a meeting of the educational committee in Pampa during the past week-end, and all schools of the county agreed to participate in the program.

Grade School students in McLean will again prepare posters, warning against carelessness in dealing with fires and displaying the possible damages which fire can bring.

In addition to prizes to be awarded by the Lions Club, the Pampa chamber of commerce will furnish some prize money. Carl Jones, manager of the Cicero Smith Lumber company, also has offered prize money, to be used in whatever manner the Lions committee sees fit.

Actual Work on Gym-Auditorium Underway as Ground Is Levelled

Two 1st Bales Of Cotton Are Ginned Here

The first bale of cotton from the McLean area is now in—and, as a matter of record, the first two bales are in.

T. G. Richardson and Buck Breeding are the owners of the first cotton from the area. Richardson brought in a portion of a bale last Tuesday, and it was ginned Wednesday. He brought in some more cotton to fill out the bale, but the cotton was too wet to gin. Then Breeding brought in a full bale and it was ginned before the remainder of that Richardson brought in.

So the premium money—which was being collected this week—will be divided evenly between the two farmers.

Ginning was done free of charge for both bales by the Paymaster, G. L. H. Earthman, manager. The cotton was bought by the gin at 30 cents a pound, about three cents more than the prevailing market price.

The cotton was good, Earthman stated, both bales grading strict middling 7/8.

In general, the cotton in the area has opened slowly, due to the damp weather, but both Earthman and S. R. Jones, manager of the McLean Gin, expect several bales in before the week end—providing, of course, the sun continues to shine daily.

WANTED: BLOOD

W. C. Shull, well-known resident of McLean, is undergoing treatment at the Groom hospital, and is badly in need of blood.

In a telephone conversation with The News Wednesday, Shull stated that he would take his first blood transfusion in a short time, and that he would need several other transfusions.

He asked that The News run an article requesting those willing to sell him sufficient blood for his needed transfusions to get in touch with Mrs. Shull or the Groom hospital. His blood is Type O.

Shull stated that his illness is due to a general run-down physical and mental condition, and that the blood transfusions are being given him as emergency measures.

Work Expected To Be Finished In 3-5 Months

Work on the new gymnasium-auditorium building, to be constructed in the southeast corner of the east half of the City Park, has finally been started.

The new building project has been delayed for one reason or another for about two months. Bonds for the building were approved by voters last April.

The contract for the construction of the building was signed by the city mayor, Harris King, and the contractor, L. K. Stout of Pampa, Monday of last week. Stout was in McLean Saturday to actually start work on the project, and leveling of the ground was begun Tuesday.

Stout estimates that between three and five months will be required for completion of the structure. Final contract figure on doing the work was \$59,348.67, although this does not allow credit for the use of the various used materials which the city has on hand from the surplus gym torn down at Pampa. This credit will probably amount to some figure between \$5,000 and \$12,000.

The building is to be 88 feet and four inches wide; and 129 feet and 3 1/2 inches long. It will have two shower rooms for boys and two for girls, and will also include a public rest room.

Stout's contract does not call for the construction of bleachers or any other type of seats. Just how these will be built is not yet known. The city had only \$50,000 originally to spend on the building, and part of that was used in tearing down the surplus building at Pampa. Credit for this used material will not make up the difference. For that reason, no money is expected to be available from the city for the construction of seats.

Teachers, Lionism Can Work For Better Citizens, Says Cryer

Working out how teaching in public schools and Lions Club can be coordinated to make citizens of the future, C. A. Cryer, governor of International District 27-1, and local Lions and other members of the McLean school faculty, at a Ladies' Table luncheon at the American Legion last Thursday night.

Mr. Cryer, former superintendent of McLean schools, and now head of the Berger schools, told the school teachers and Lions club members in building better citizens, and that it is up to both the children to attend to the delinquency, as well as the older people, is causal lack of education.

He was introduced by Boyd McLean, deputy district manager, who stated that he had a number of years to the opportunity of introducing the Lions district program was opened with the singing of "America," led by Miller, followed by the pledge flag led by Lester Dyart. The program was given by Rev. (Continued on back page)

Shamrock Lions Charter Night Next Tuesday

The new Shamrock Lions Club will receive its charter next Tuesday night when the charter program is held in the American Legion Hall at Shamrock beginning at 7:30 o'clock.

The charter for the new club will be presented by C. A. Cryer of Berger, former superintendent of the McLean schools and now governor of Lions International District 27-1. Cryer is now superintendent of the Berger schools.

Organization of the new Shamrock Club is being sponsored by the McLean Lions Club. The organizational meeting was held about six weeks ago, when W. B. Smith was chosen as the first president of the group. He, and the other officers, will serve until next July 1.

Dr. J. H. Kritzler, president of the local club, will preside at the meeting next Tuesday night. Emory Crockett, program chairman of the McLean club, will be in charge of arrangements for the evening's program, which will, of course, include the charter night address by Governor Cryer.

A delegation of approximately 25 Lions and Lionesses from McLean plan to attend the meeting thereby aiding the new organization in beginning as actively as possible.

BIRTHDAYS

Sept. 25—Sally Ann Ledbetter, Mrs. Lucille Gaines, Vernon Kinard.

Sept. 26—Mrs. M. W. Banta, Mrs. Marvis Godfrey.

Sept. 27—Mrs. I. D. Shaw, Francis Pettit.

Sept. 28—Mrs. Sidney Kunkel, Mrs. W. E. Rainwater, Mrs. C. E. Hunt, Mary Oakley Snyder, Lois Roan, Mrs. C. S. Doolen, Robert Carol Hill.

Sept. 29—C. S. Rice, Kenneth Carter, Mrs. Karl Ernst.

Sept. 30—Mrs. H. C. Rippey, Mrs. A. B. Turner, Mrs. Tom Royal.

Oct. 1—George Colebank, Jack Bailey, J. D. Davenport, Mrs. T. E. Crisp, Mrs. A. B. Christian.

Cotton Workers May Be Needed

Cotton harvest is causing some concern in many areas of the state, according to L. P. Fort, local manager of the Texas Employment Commission.

More specific information can be had at the office of the TEC, 206 N. Russell, Pampa. This information would deal with counties where shortages exist. Wages and yield can be given fairly accurately.

In the local areas there has been no demand thus far, but due to difficulty in the earlier crop regions, the possible supply of local help is worth watching. Fort concluded.

Mrs. Webb Wins 'Okla. Guarantee' Definition Contest

"How does it feel to win a prize? Just fine! Just fine!" So says Mrs. B. L. Webb, who recently won a contest sponsored by the Frank Hall company of Amarillo.

Mrs. Webb entered the contest which required the giving of the best definition of an "Oklahoma Guarantee." Her definition was awarded first place.

Just what Mrs. Webb's definition of an "Oklahoma Guarantee" was we didn't find out, but we do know she received \$25 for her winning entry.

Mrs. Boyett Back Home From Europe

Mrs. Boyett returned to McLean Friday from Europe, and we asked her to write us an article concerning her trip. Since her last visit from Germany—and she didn't want people to think she got stuck there—she couldn't do so, and here is that (Continued on back page)

damaged during the war. The House of Parliament is a huge and beautiful building on the Thames River, but one section was badly damaged on the inside—now under repair.

We went to Westminster Abbey (church) in the evening, in time for the benediction—a lot of pomp and formality.

The inside of the church, with its high altar, coronation chair, statesmen's desks, musicians' alcove, poets' corner with the graves, and monuments of many poets, and the wax figures of many famous people buried there, is at least different to other churches.

St. Paul's Church, also Episcopal, or Church of England, is classed among the largest churches of the world.

We visited Eton College, second oldest college in England, not much for looks, but outstanding for faculty.

Windsor Castle, the summer home of the royalty, is open to tourists in the reception and guest rooms. This has a valuable collection of china, furniture, tapestries, armors, and paintings by Rembrandt, Van Dyck, and Rubens. (Continued on back page)

McLean Tigers Defeat Panhandle by Score of 19 to 7

In their annual clash with the Panhandle Panthers at Panhandle, McLean Tigers defeated them by a score of 19 to 7.

For on that first play from scrimmage, the Tigers only got a glimpse of that flash of Light as he scampered from the Panhandle 20 yard line through a hole in the initial defense, dodged the remaining would-be tacklers, and went racing the 80 yards to pay dirt. Then the same gridster, D. Light, booted the ball through the uprights and the score was 7-0 with the game only a few seconds old.

But from there on until late in the game, the tilt was all McLean's.

Incidentally, the Tigers came out on the long end of a 19-7 score, with L. M. Watson accounting for 13 points and Benny Cooper for 6.

The statistics show that the yards gained pushing were in favor of Panhandle. But take away

that 80-yard dash by Light, and the one other 44-yard gain by the same fleet individual, and the statistics are highly in favor of the Tigers.

The Tigers struck in the first quarter, not long after the Panthers had scored on Light's run, again in the second, and again in the third. The fourth quarter mostly belonged to the Panthers, who held the Tigers to a net gain of only 13 yards in that period.

The Panthers sported a couple of get-rough guards, B. Adcock and D. D. Homen, who continually throughout the game were consistent tacklers. The pair of guards were in on almost every defensive play.

McLean's two guards, Johnny Vineyard (who served in the backfield for a few plays), and David McPherson, both played good games, as did tackles Cliff Cal-

ahan and Marvin Henderson. Once again, Carl Cox at end displayed his ability, and the other end, Vic Shelton, showed up much better.

The backfield standouts for McLean were Watson and Benny Bruner, with Benny Cooper coming for his share of the glory this week. Bruner showed much more speed and maneuvering ability than in the previous two games, and Cooper displayed some hard running, particularly on through center and guard plays. Watson, of course, continued his spectacular playing.

The scoring was as follows: Watson kicked off to the Panthers to open the game, the ball going over the goal line and being brought out to the 20. On that first play, Light slipped through right guard, evaded the second defense of the Tigers, and raced that 80 yards to the marker.

Light's kick was perfect, and the score was 7-0.

Then it was McLean's turn. J. Naylor fluked the kick-off to Cox, who missed the ball, and Panhandle covered the ball (kick-offs are free balls after they travel 10 yards) on the McLean 46. On the next play, Vineyard recovered Light's fumble on the Panhandle 47.

Watson picked up three yards, and Bruner went through left guard for five more. Watson circled right end to the 24, and Bruner crashed through left guard for another yard. On the next play, Watson once more started for the right end, cut back to his left and waded through his tacklers across the goal. He made the kick good, and the score was 7-7.

There was no more scoring in the first period. About the mid-

Residents Said No—So the Kramers Grew Figs Anyway

Somebody told Mr. and Mrs. E. H. Kramer that they would never gather any figs off their fig trees when they were first planted.

But Mr. and Mrs. Kramer planted the trees anyway.

Now the figs are showing up. The largest yet gathered measured five and one-half inches in circumference, and many others were nearly that large. The trees are not yet more than five feet tall.

The only trouble is this: The figs have to be gathered before they fully ripen—seems that some of the younger generation have located the trees and gobble them up as soon as they are ripe.

By the Way

BY HELEN ELACK

An amusing story told recently concerning an incident that happened a long time ago on the Wilson side of Wilson Boyd's family is worth passing on. The Wilson brothers and sisters had gathered from far and near for a reunion, with a number of the families spending the night in one particular home. At a late hour the families went to their respective rooms and prepared to retire—the older members carefully placing their store teeth in glasses of water. It was at this point that someone began telling a tale in which they all became interested—and, one by one they left their rooms to listen in. This was the moment the youngsters in the house had been waiting for. They went from room to room, and made a quick exchange (Continued on back page)

McLean	Panhandle
First Downs	10
Yards Gained	218
Rushing	218
Yards Lost	24
Rushing	24
Yards Gained	0
Passing	0
Net Yds. Gained	194
Passes Comp.	0 of 0
Passes Intercept.	1
Pen. Rec'd.	5 for 45.1
Punts	2
Punt Aver.	28
Rec. Oppon. Pun.	3
Scoring: McLean 19 (Watson 13, Cooper 6); Panhandle 7 (Light)	

Frigidaire Has New Ranges And Washers

A new and complete line of electrical household ranges with many new features and a new model automatic washer are being introduced by Frigidaire Division, General Motors Corporation, it was announced this week by the McLean Electric company, Frigidaire dealer, Howard Williams, manager, recently returned from a district meeting in Fort Worth.

"Production of the new products, styled by Raymond Loewy, is well under way in the company's huge Dayton, Ohio, plants," Williams said.

"Among the many new features incorporated into the new range models," Williams stated, "are new surface units which cook faster and use less current, switch knobs which are easier to read and are mounted in front for easy use without reaching across hot utensils, and big utensil drawers which move almost noiselessly on triple nylon rollers."

"Other features include a full width fluorescent lamp which literally 'floods' the entire cooking top with light and is mounted on an attractive higher back panel that protects walls from splashing; and a new time signal that rings after any set interval up to 60 minutes. Automatic controls for ovens and deepwell cookers are also included, and all surfaces inside and out are finished in lifetime porcelain for long life and easy cleaning."

Williams was also enthusiastic about the new model automatic washer which features live-water action and rapid dry spin. Live-water action is an entirely new and exclusive principle of washing clothes cleaner, automatically. Rapid dry spin removes water from clothes so efficiently that many may be ironed immediately without further drying.

The new washer also incorporates a new underwater suds distributor that releases soap under water and only after it has been transformed into active suds. It is the only automatic washer finished inside and out in lifetime porcelain.

Williams stated he will soon announce a special showing of the new ranges and automatic washer as well as the broad Frigidaire refrigerator line and other Frigidaire household products.

Puett With McLean Food

Burl Puett of Wellington, who has been employed there in the Modern Market, has joined the staff of the McLean Food Store, Lafe Smallwood, owner, said this week.

Puett worked in McLean in 1940 for the City Food Store, owned at that time by John Cooper, owner of Cooper's Foods. For the past few years he has been with the Modern Market stores in Pampa and Wellington. He is a native of Shamrock.

Mrs. Puett and their two-year-old son Don have already moved to McLean. She will be remembered by many residents here as the former Margaret Kramer, daughter of Mr. and Mrs. E. H. Kramer of McLean.

Friendship Night Is Held by Local Rainbow Chapter

The McLean Rainbow Assembly held Friendship Night at the Masonic Hall Monday, September 19. Invitations were sent to assemblies at Shamrock, Pampa, Amarillo, and White Deer.

Two distinguished guests were present for the occasion: Mrs. Edythe England, grand visitor in the Texas Order of Rainbow Girls, from Amarillo, and Miss Mary Jo Steward, grand representative from Montana.

Waneta Hupp, worthy advisor of the McLean assembly, graciously introduced the guests from the visiting assemblies.

Following the initiation service for June Stubbiefield, Shirley Allison, and Betty Jo Patterson, a short program was given in keeping with friendship.

Refreshments were served to about 80 by the members of the advisory board.

Mrs. Albert Bailey Reviews Book for Pioneer Study Club

The Pioneer Study Club met Thursday afternoon, September 15, in the home of Mrs. Carl Jones. The group was entertained with a book review given by Mrs. Albert Bailey of Estelline. Mrs. Bailey reviewed Paul Wellman's book, "The Chain."

Mrs. Bob Thomas and Mrs. Roger Powers presided at the refreshment table which was laid with an ecru cloth and decorated with a center arrangement of bronze dahlias. Lime sherbet and cake squares were served to 21 members and guests.

Those present were Mesdames H. W. Finley, C. R. Griffith, F. J. Hupp, Bill Day, Dee Coleman, Miro Paskan, Jim Back, June Woods, W. E. Bogan, Clyde Magee, Jesse Coleman, J. B. Hembree, H. E. Franks, Earl Stubbiefield, John F. Mead, Tommy Hulsey, Thomas, Powers, Jones, and Bailey, and Miss Bonnie Jean Smith.

Alice Ruth Wood Honored at Party On 3rd Birthday

Mrs. Bettye Wood entertained last Wednesday afternoon with a party in honor of her daughter, Alice Ruth's third birthday. The party was given in the home of Mrs. Troy Corbin.

Ice cream and cake were served to the following children and grown-ups: Donna Fay Wiginton, Lynda Tindall, Freddie Patterson, Jim Guy Hall, Sharon and Lance McClellan, Donna Joyce Boyd, Joe Don Evans, Troy Don Corbin, Shirley Ann and Alice Ruth Wood.

Mesdames Jiggs Hinton, Fred Patterson, H. C. Hill, Granville Boyd, Elton Johnston, J. P. Alexander, James McClellan, Ollie Tindall, and Troy Corbin.

Mr. and Mrs. Boyd Meador were guests Sunday of Mr. and Mrs. C. M. Herrington of Borger.

Mr. and Mrs. Leo Gibson returned last week from a vacation trip to Dodge City, Kans., and other points.

Mrs. W. C. Simpson underwent a major operation at the Worley hospital in Pampa last Friday.

Society

Mrs. F. H. Bourland Program Leader At Ladies Auxiliary

The Ladies Auxiliary of the First Presbyterian Church met Tuesday in the church parlor, with Mrs. F. H. Bourland as leader of the annual prayer retreat. The theme was "All God's Children." The meeting was closed with the Mizpah benediction.

Present were Mesdames C. E. Cooke, Mittie Paschal, J. B. Hembree, Haskell Smith, George MacDonald, Mattie Graham, J. P. Alexander, Cort Meyers, Marvin Wells, Travis Stokes, Jess Kemp, F. H. Bourland, K. E. Windom, F. E. Hambricht, C. O. Goodman, and visitors, Mrs. I. H. Sonnenburg, Mrs. D. W. Frye, and Mrs. Tom Brown of Shamrock, and Mrs. Heydon Hensley of Memphis.

Guild Members Attend Meeting At Pampa Church

Members of the Wesleyan Guild from the Methodist church in McLean, along with members from the guilds in Memphis, LeFors, and Miami, were guests Monday night of the Guild organization of the First Methodist Church in Pampa.

Mrs. Sam Cook of Pampa spoke on the fundamentals of the Wesleyan Guild.

Those attending from McLean were Mesdames Laverne Carter, Mabel Bizzell, Georgia Beasley, Patty Denton, Vernene Day, Maybelle Nash, Ruth Magee, and W. B. Hicks.

Mrs. Clinton Ritter Named Honoree At Kitchen Shower

Mrs. Clinton Ritter, recent bride, was honored at a kitchen shower Saturday afternoon in the home of Miss Pat Lowary.

Miss Marsalee Windom received the guests and Miss Lowary secured names for the guest book.

An arrangement of fall flowers decorated the serving table where Mrs. Bill Reeves served coffee and cake.

Miss Gerry Florey presented the gifts. Those present and sending gifts were Misses LaJune Chilton, Effie Lou Carpenter, Bonnie Willis, LaVetta Gunn, Sue and Audrey Young, Jo Ann Grigsby, LaWanda and Darlene Shadid, Eula Mae Scales, Marsalee Windom, Gerry Florey, Pat Lowary, and Mrs. Bill Ferguson, Mrs. Bill Reeves, and the guest of honor.

Members of Choir Of Baptist Church Name Officers

Members of the choir of the First Baptist Church of McLean have organized with Amos Baker as director; Miss Bonnie Willis, pianist; Miss Jeanne Pharis, president; Miss Melba Miller, vice president; Miss Oma Bell McPherson, secretary; and Frank Simpson, treasurer.

Some of the members enjoyed a banquet in the basement of the church Thursday night. The long table was laid with white linen cloths bordered with blue, and centered with a bouquet of red,

yellow and white roses from Mrs. Joe Willis' yard. Place cards were green mint cups with names of guests written on musical notes. The meal was opened with the singing of the Doxology led by Mr. Baker.

Those seated at the table were Mr. and Mrs. Luther Petty and grandson, Vernon Kennedy; Mr. and Mrs. R. L. McDonald, Mesdames Guy D. Pharis, Bob Thomas, Joe Willis, W. J. Jones, Misses Mildred Holloway, Marlene Ledgerwood, Jeanne Pharis, Bonnie Willis, Melba Miller, Oma Bell McPherson, Norma Watson, and Messrs. Baker, Dick Grigsby, Don Marshall, and Frank Simpson.

Choir practice is held on Wednesday and Thursday nights of each week.

W. M. S. of Baptist Church Meets For Mission Study

The Elizabeth Pool circle of the Baptist W. M. S. met Tuesday for mission study, competing for the book, "Stewardship in the Life of Women." The chapters include, "The Woman with a Message," "The Stewardship of the Gospel," was taught by Mrs. R. A. Young.

Committee chairmen announced by the president, Mrs. R. L. McDonald, for the coming year, were: Stewardship, Mrs. Luther Petty; benevolences, Mrs. Leroy Williams; community missions, Mrs. Leo Gibson; program and literature, Mrs. E. L. Price; industrial, Mrs. Frank Reeves; Bible study, Mrs. H. W. Finley; mission study, Mrs. R. A. Young; social, Mrs. John Cooper; and publicity, Mrs. E. L. Price.

Those present were Mesdames Young, McDonald, E. L. Price, Boyd Reeves, E. L. Minix, Wib Fowler, R. L. Appling, T. A. Langham, Guy D. Pharis, Homer Abbott, George Colebank, Bunia Kunkel, W. J. Jones, Joe Willis, and Luther Petty.

The State Week of Prayer program will be observed Monday and Tuesday at 2:30 o'clock, at the prayer meeting hour Wednesday night, and Friday afternoon at 2:30. Thursday will be skipped on account of the annual associational meeting at Quail. The regular industrial day meeting Tuesday will also be omitted.

Rev. Clayton Day, Amos Baker, and Mr. and Mrs. Luther Petty and grandson, Vernon Kennedy, attended the North Fork monthly workers conference at the Loco Baptist church recently.

STATE OF TEXAS COUNTY OF GRAY TO THOSE INDEBTED TO OR HOLDING CLAIMS OF MRS. JOHN T. GULLEDGE, DECEASED

The undersigned, having heretofore been duly appointed independent Executor of the Estate of Mrs. John T. Gullede, deceased, late of Gray County, Texas, hereby notifies all persons indebted to said estate to come forward and make settlement thereof, and those having claims against said estate to present them to him within the time provided by law, at his residence in McLean, Gray County, Texas, where he receives his mail. Dated and signed this 6 day of September, 1949.

F. H. Bourland, Independent Executor of the Estate of Mrs. John T. Gullede, Deceased.

ATHLETES FOOT GERM AMAZING RESULTS IN ONE HOUR
By using TE-OL, a STRONG penetrating fungicide, you REACH imbedded germs to kill ON CONTACT. You EPSEL this quick-drying liquid take hold INSTANTLY. NOW, you must be pleased or your 35c back from any drug-gist. Today at POWERS DRUGS.

CLIFFET CLEANERS
• Experienced
• Latest Equipment
• Work Guaranteed
• Fully Insured
• Pick-Up, Delivery
Phone 22

Law Offices of Clifford Braly Thomas C. Braly
Combs-Worley Bldg.
Pampa, Texas

BUTANE
Is Inexpensive
Easy to Use . . . Convenient
See Us for Details
Consumers Supply
Glass and Dwyer

LENTZ'S FLOWERS
for every occasion
Corsages . . . Weddings . . . Funerals . . . Banquets
Receptions . . . Church . . . School Parties
Home Arrangements
"There're Always Flowers at Lentz's"
Phone 226, McLean

BIG IN BETTER FOODS

GRAHAM CRACKERS	
2 lb box	49c
GINGER SNAPS	
big 2 lb package	49c
PurAsnow FLOUR 25 lb. \$1.59	
COFFEE That Finer Blend White Swan 1 lb can	49c
PEACHES White Swan in heavy syrup sliced or halves No. 2 1/2 can	27c
FRESH BLACK-EYED PEAS	
You can't can them at this price No. 2 (We Eat Brand) 10c	
CORN Mayfield No. 2 can	2 for 25c
SYRUP quart bottle 53c	OXYDOL, DUZ
HOMINY No. 2 can 10c	TIDE your choice 25c
SORGHUM 1/2 gal. 79c	NOLA Soap Flakes large box 19c
CIGARETTES carton \$1.71	The Perfect Deodorant Soap
	DIAL bar 19c
	WRAP WAX PAPER 19c Guaranteed to please large 125 ft. roll
MEATS	
BEEF RIBS lb 37c	PORK CHOPS lb 59c
SALT BACON lb 29c	BEEF CHOPS lb 59c
FRANKS skinless lb 39c	BACON Korn King sliced lb 53c

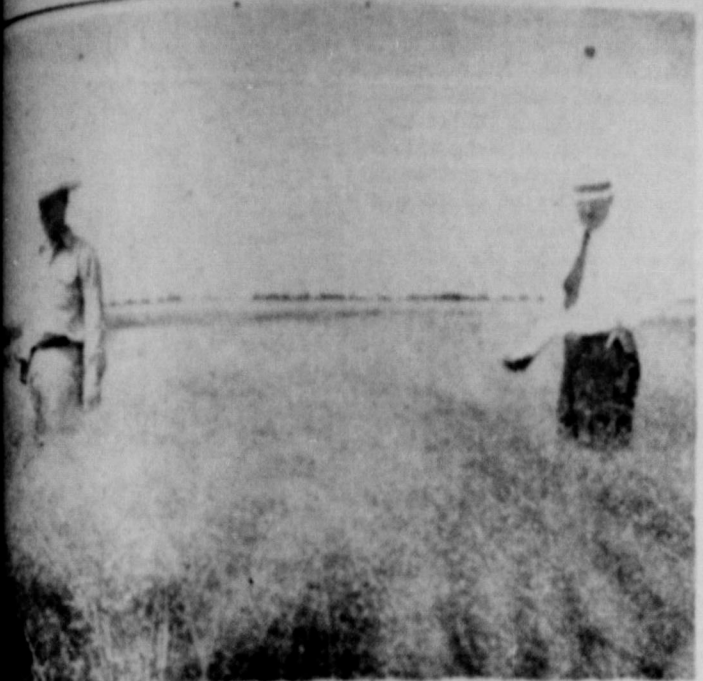
McLean Food Store
Lafe Smallwood Phone 139

ENTER

FORD'S \$100,000 CAR-SAFETY CONTEST

Win One of 700 Valuable Prizes
DRIVE IN TODAY FOR YOUR FREE SAFETY CHECK-UP AND ENTRY BLANK

DYSART MOTOR CO.



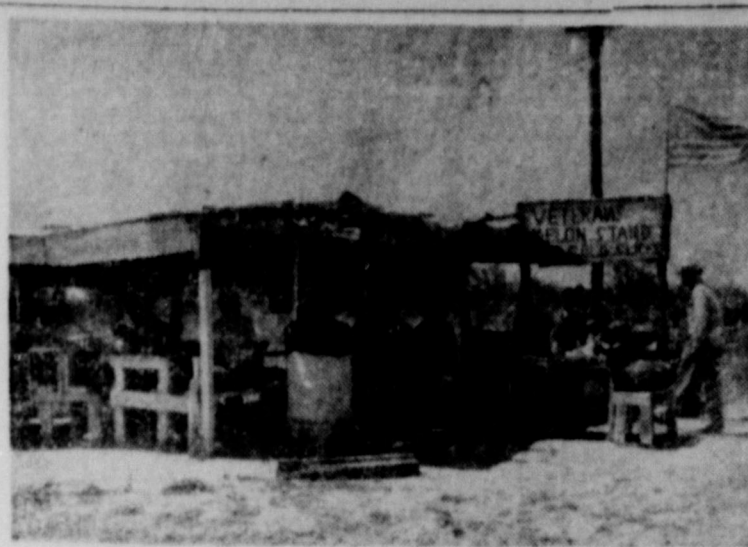
EVERETT, right, and Quentin Williams of Pampa, district SCS conservationist, examine a grass crop on Peb's Williams has been directing the grass experimental projects on the farm for the past four years. (Picture courtesy Amarillo Times.)



THIS FIELD of weeping love grass on Kid McCoy's farm, east of McLean, with his home in the background, is in its second year of growth. Mrs. McCoy objected at first to plowing up the weeds and brush on this plot for "fear the blowy sand would cover her home." She knows now that this sand has really been "tied down" by the grass. (Picture courtesy Amarillo Times.)



CLARENCE VOYLES of McLean bought this Jersey cow back in 1945 for \$90. Since Clarence has a house in town and only about an acre of ground, he put only one-quarter of an acre in weeping love grass last April to be used as a pasture for this cow. This grass is now her "roughage." The Voyles get four to five gallons of milk a day from the cow. They have two children to feed, but they also sell milk. They sold a calf from this cow this year for \$67.50. Incidentally, last year's calf brought \$85 while the one the year before brought \$35. The Voyles plan to add some more ground to the grass "pasture" for this Jersey. It takes her about 10 days now to eat over the quarter acre which she is taken off of for a week and then put back. Another quarter acre of the grass will provide a place for her to eat while this plot is "resting and growing out again." (Picture courtesy Amarillo Times.)



THIS VETERANS watermelon stand is located about a mile east of McLean on Highway 66. It is just one of the several which have enjoyed good business in the same community this summer. The melons are grown on farms in the vicinity. "Finer melons were never raised anywhere and they taste better than any you can buy any other place," declare McLean citizens. (Picture courtesy Amarillo Times.)

PERSONALS

Mrs. White George of Altus, Okla., visited in the home of her daughter, Mrs. Joe Bidwell, recently.

Chester Gollightly left Wednesday for Lubbock, where he will be a junior student in Texas Tech.

Miss Sally Calloway of St. Petersburg, Fla., is here for an extended visit with her sister, Mrs. Joe Beasley.

Mrs. L. E. Cunningham left Saturday for a week's visit with her nephew, B. Simmons of Channing.

Mrs. V. H. Ogle of Gruver was a visitor Sunday in the home of Mr. and Mrs. Dolph Burrows. She was accompanied home for a two-day visit by Mrs. Burrows and Mrs. Ernest Burrows and baby.

Use Your Credit at Shedrick Jewelry

John W. Cooper accompanied Clay Cooper and Ernest Johnson of Canyon to Knoxville, Tenn., last week on business.

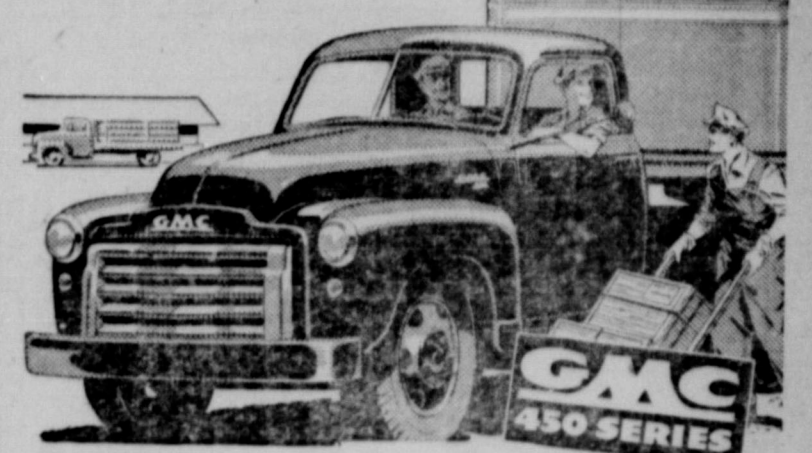
Mrs. Corinne Trimble was in Oklahoma City Sunday on business.

Mrs. J. B. Tanner arrived Saturday from Gainesville for an extended visit in the home of her sister, Mrs. C. S. Rice. She was accompanied by Mr. and Mrs. Porter Wilson of Fort Worth, who returned to their home Sunday.



McLean Lions Club
Tuesday, 12:05
Lions Hall - Visitors Welcome

Biggest Money's Worth IN THE 2½-TON TRUCK FIELD



In a GMC 450 you get a combination of value features outstanding in the entire 2½-ton field... at a list price lower than seven of the eight competing makes in that field.

You get GMC's exclusive Bumper Bar grille... a GMC-built engine with rifle-drilled connecting rods, Tocco-hardened crankshaft, airplane-type main bearings... a big, husky chassis with 10.1 section modulus frame, recirculating ball bearing steering, 8.25/20 tires... a roomy, comfortable, modern cab with a score of safety and driving ease conveniences.

GMC 450s are available in conventional and C.O.E. types, straight trucks and truck-tractors, in weight ratings from 19,000 to 37,000 pounds. Put them on your job... save when you buy... profit when you drive!

HIBLER TRUCK AND IMPLEMENT CO.

Highway 66

Many Griffith of Los Angeles, Thursday with his parents. Mr. Griffith spent from Saturday until and Mrs. C. R. Griffith.

Announcing the Removal Of My Office

From Clarendon, Texas, to

1063 Cornado Circle (North Main) Borger, Texas

DR. GEORGE SHADID, D. D. S.

Phone 2440

Rabies Hard To Eradicate

The Texas State Department of Health during the first seven months of this year has a record of the examination of 3,709 animal heads for rabies and of this number almost one-fourth were found positive, according to Dr. Geo. W. Cox, state health officer.

Rabies is transmitted to man through a bite or having a cut exposed to the saliva of a rabid animal. If a person is bitten, the offending animal should be penned, if possible, for a period of at least ten days. If the animal is in the infective stage, he will die within this time. This does not mean that he may not be in the non-infectious or incubative stage and develop rabies later. All dogs bitten by a rabid animal should be confined six months. If it is necessary to kill the animal, this should be done in such a manner that the brain is not destroyed.

When sending a head to the state laboratory it should be put in a container, sealed and packed in ice to prevent decomposition.

Dr. Cox said that rabies is a hard disease to eradicate, but that it could be done if all owners would have their dogs vaccinated each year and eliminate all stray dogs. If you have a dog, get him vaccinated the same as you have your children immunized against diphtheria and smallpox.

Rabies is commonly supposed to be a disease of warm weather, but it is more prevalent during the spring and fall because the dogs congregate and move about more; therefore, the chance of exposure is greater during this time. It is true that more dogs are killed during the summer months, but the percentage of rabies is low.

Mr. and Mrs. Bob Ayers of Memphis and Mrs. J. R. Ayers of Clarendon were guests Sunday of Mr. and Mrs. Felix Jones.

ALL KINDS OF INSURANCE FIRE AUTOMOBILE SOUTHLAND LIFE T. N. Holloway Phone 38

Dr. Joel M. Gooch Optometrist

200 S. Wall Ph. 123 Shamrock, Texas Please Phone for Appointments



Cut Yourself a Slice of these Savings

Savings

We happened on to some good buys, and we're passing these savings along to you. So come on to Roy's this week-end—and then make our store your daily shopping stop.

Aunt Jemima MEAL

10 lb. bag 61c

12. oz can TREET 39c

Crushed Pineapple

No. 2 can 27c

Salad Wafer CRACKERS

2 lb. box 43c

Lady Grace

Hair Oil

3 oz. bottle 9c

Reagon's

Tomatoes

No. 2 can 11c

Sno Top or Fortress

Toilet Tissue

roll 7½c

MEAT DEPT

Skinless Franks 35c

Beef Rib Stew Meat lb. 29c

Meadowlake Oleo lb. 27c

Armour's Star LARD

3 lb carton 53c

Cut Rite WAX PAPER each 23c

FOOD SAVINGS

Empson's

Kraut tall can 10c

Mayfield

Corn No. 2 can 11c

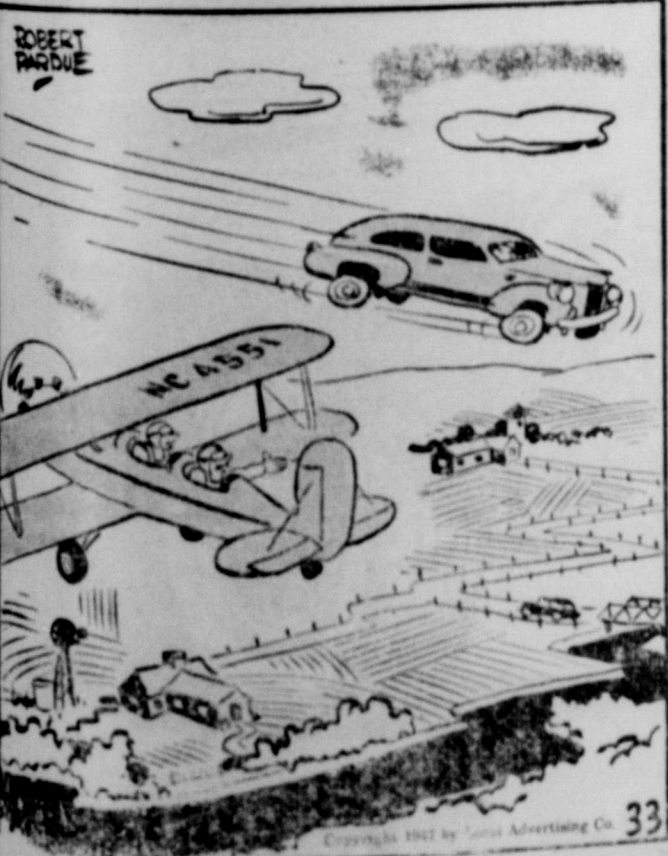
American Beauty

Tomato or Vegetable SOUP can 9c

Highest Prices Paid for Fresh Eggs

Roy's Food Market

Roy Kiser "Prices Are Born Here—Raised Elsewhere" Phone 6



"That guy must have let DYSART MOTOR CO. work on his car."

Like Flying--

that's what you'll say about your car after an overhaul job by our staff mechanics. There's wear and tear on your car every time it's driven, so have it checked often. And don't forget to—

Enter Ford's Safety Contest!

Dysart Motor Co.

THE McLEAN NEWS

Published Every Thursday by
MONTGOMERY, CAMPBELL, AND MONTGOMERY
210 Main Street Phone 47

Lester Campbell Editor-Manager
Eunice Stratton Shop Foreman

Entered at the post office at McLean, Texas, as second-class matter under Act of March, 1879.

SUBSCRIPTION RATES
One Year (Gray and surrounding counties) \$2.00
One Year (to all other U. S. points) \$2.50

ADVERTISING RATES (Display)
National Advertising, per column inch 42
Local Advertising, per column inch 35
(Classified rates listed with classified ads)

NOTICE TO PUBLIC

Any erroneous reflection upon the character, standing or reputation of any person, firm or corporation, which may appear in the columns of this paper, will be gladly corrected upon due notice being given to the editor personally at the office at 210 Main St., McLean, Texas. The McLean News does not knowingly accept false or fraudulent advertising of an objectionable nature. Each advertisement in its columns is printed with full confidence in the presentation made. Readers will confer a favor if they will promptly report any failure on the part of the advertiser to make good any misrepresentation in our advertisements.



SOMETHING GOOD

IT IS EXTREMELY gratifying to see the work being done toward conservation of land in this area which will build a future not only for the farmers but for all of us.

Some limelight has been thrown on this work during the past few weeks and months, and particularly so in the last two or three weeks. That publicity is good, not just for McLean, or Pampa, or Shamrock, or Alanreed, but for the entire area. For a long, long time the community of Hereford and the rest of Deaf Smith County, for example, has received much publicity from the growing qualities of its soil. That publicity has had much to do with the growth of Hereford, and with the progress of the area in general.

The latest publicity has come McLean area's way via the Amarillo Times, in the magazine supplement being edited by one Zeke Brown. In last Sunday's edition, Zeke gave considerable publicity to the grasses being grown in the McLean area. A number of area men were mentioned in connection with the stories, including Peb Everett, Kid McCoy, and others. Altogether it was a fine tribute to the "pioneering spirit" of these men who have tried grasses on poor land—and made it pay.

That such practices are receiving recognition is evidenced by the visit of the group of 30 farmers from the Paducah area to the local area. These farmers saw what can be done with various grasses, and were pleased with what they saw.

With such response from outsiders, it is very likely that many local farmers and land-owners on property with poor production quality at the present time will follow suit. That is the hope of those interested in conservation.

The success of conservation in this area—which in reality is still in a stage of infancy—is largely due to the efforts of the district soil conservationist, Quentin Williams, and the county agent, Ralph Thomas, both of whom have their offices in Pampa. Here are two men who devote as much of their time as possible to the south part of their territory. They are looking ahead. They are to be commended highly for their work thus far, and for the work they will do in the future.

GENERATOR EXCHANGE

For General Motors, Ford, and Chrysler Products

Rod Bearings for All Fords

90% Coverage on Oil Filters for All Tractors and Cars

I Can Save You Money on the Above Products

HARRIS KING

MANGER to the CROSS

Holy Bible

Jesus saw a man named Matthew, sitting at the receipt of custom: And said unto him, follow me. And he arose and followed him.

Mat. 9:9.

ARRANGED AND SPONSORED FOR THE PUBLIC BY
CLABORN-WOMACK
FUNERAL HOME
PHONE 94 McLEAN, TEXAS P. O. BOX 247
To meet your confidence, call your funeral director.

Send volume of these famous scenes mailed free to all upon request

He'll Be Back for More Later! by Ding Darling



Give Him a Little Time and the Socialist Fox Will Get the Rest, Too

LES TALK BY LESTER

Against my better judgment, I am stacking my neck way out and breaking my rule and predicting the outcome of this week's football games. This time I will predict only two victories for District 2-A teams, those for Memphis and Lefors. I hope I am wrong on the other four, and right on those two.

Please don't make it too hard on me when I miss them all. If you desire to do so, I will be glad to print your predictions any time and leave mine out. After all, one guess is as good as another.

Naturally, these predictions are based on cool calculations. After spending hours and hours weighing line against line, backfield against backfield, home team against visitors, past performances of each of the two teams involved, I hardly see how I can miss. Unfortunately, however, the main basis of these predictions is guess work.

Anyway, laugh now and later, too, over these predictions:

Phillips 26, McLean 7. This prediction is based mainly on the comparative scores of the two teams against the common foe, Panhandle. I hate to say McLean will lose, but I'm afraid I have no choice in this one.

Dalhart 19, Shamrock 13. Dalhart has one of the better teams in the Panhandle area. Shamrock—last year's and also this year's "advance state champions"—indicated that they can be beaten when Lockney wrapped up that first victory.

Memphis 33, Dumas 6. The Cyclone is hot this year—already two victories. Dumas hasn't fared so well, but should be good enough to sneak one over after the Cyclone starts using substitutes.

Mangum, Okla., 14, Wellington 7. The Mangum boys, although I haven't heard of it anywhere, will probably outweigh the Sky-rockets, but Wellington's McCutchen should be able to pass for one touchdown.

Lefors 44, Canadian 0. Lefors proved they have "it" again this season—if they want to show it—when they whipped the strong White Deer Bucks 33-7 last week. Canadian has a good Class B team, but not good enough for Lefors.

Perryton 14, Clarendon 0. Perryton is gradually warming up and should be able to overcome the Broncs without too much

trouble. The Rangers will probably be in full stride when we meet them.

If you will notice, I am predicting only two victories for District 2-A teams, those for Memphis and Lefors. I hope I am wrong on the other four, and right on those two.

Please don't make it too hard on me when I miss them all. If you desire to do so, I will be glad to print your predictions any time and leave mine out. After all, one guess is as good as another.

A week or so ago, I had the pleasure of attending a regional meeting of the Panhandle Press Association in Borger. We had an interesting educational program, etc., and two good meals.

But the thing I remember most vividly was the tour through the Phillips Plains Butadiene plant, and the U. S. Rubber company plant.

Both plants are owned by the federal government, and were constructed during the war to aid in taking care of our needs—and great needs at that—for synthetic rubber. Had it not been for these and other similar plants, the war might have had a different outcome.

The butadiene plant is valued at \$38,000,000, and the rubber plant at \$9,000,000. Both are operated by companies on a management fee basis.

Butadiene is a highly inflammable and explosive gas, clear in color. When kept under a 50 or 60 pound pressure it becomes a colorless liquid. The Phillips plant receives butane gas from its plant at the town of Phillips, and processes the butane. First two hydrogen atoms are taken from the butane, making it into butyl. Then two more atoms are knocked out and butadiene is the result. To give you some idea of how much butane is required to make butadiene, I will repeat this fact told to us: the butane is piped to the plant in a 24-inch line, and then when it is finally made into butadiene, it is piped to the rubber plant in a two-inch line.

Rubber is about 75 per cent by weight butadiene—that is, synthetic rubber is.

The butadiene is piped directly to the U. S. rubber plant. There it is mixed with styrene, another inflammable gas in liquid form which is shipped from South Texas to Borger. In addition, soap is used in the mixture, as are two or three other agents which I can't remember the name of.

After this mixture has been stirred in large vats until 60 per cent of the butadiene is activated, the surplus butadiene and styrene is taken out by a vacuum process. Then a solution of salt and sulphuric acid is mixed in to coagulate the rubber. If black rubber is desired—the plant makes both black and natural-colored rubber—carbon black is added.

The coagulation causes the rubber to come out in small pellets, called crum. It is then compressed into 90-pound bales and shipped to one of the many rubber plants over the nation to be made into tires, and other rubber commodities. Finished rubber products are not made at Borger.

We went through the cold rubber section of the plant. You have been hearing a great deal lately about cold rubber. It's supposed to give 30 per cent more wear. The difference in cold rubber and ordinary rubber is simply this: ordinary rubber is made by mixing the butadiene, styrene, soap and other agents at a temperature of about 120 degrees; cold rubber is made by mixing these ingredients at 41 degrees. Both kinds are made at the Borger plant.

Don't know that you were particularly interested in this. In the rubber plants, the vats are so fixed that you can actually see the rubber being made. In the butadiene plant, there is such a maze of pipes, valves, engine rooms, etc., that you can't tell much about what is going on. In other words, you can't actually

see the hydrogen atoms being removed.

The plants are now open to the public—they were closed during the war. They enjoy having visitors. Next time you are up the way, take a few hours off and go through the plants. They furnish very nice and friendly guides. As a matter of fact, Borger is quite friendly all the way round.

NOTICE TO CREDITORS OF THE ESTATE OF BRUCE BULL DECEASED.

Notice is hereby given the original letters of administration upon the Estate of Bruce Bull, deceased, have been granted to me, the undersigned, by the County Court of Gray County, Texas. All persons having claims against the estate are hereby requested to present the same to me within the time prescribed by law.

My residence and Post Office address is Lefors, Texas.
R. V. Bull, Administrator of the Estate of Bruce Bull, deceased.
35-4c



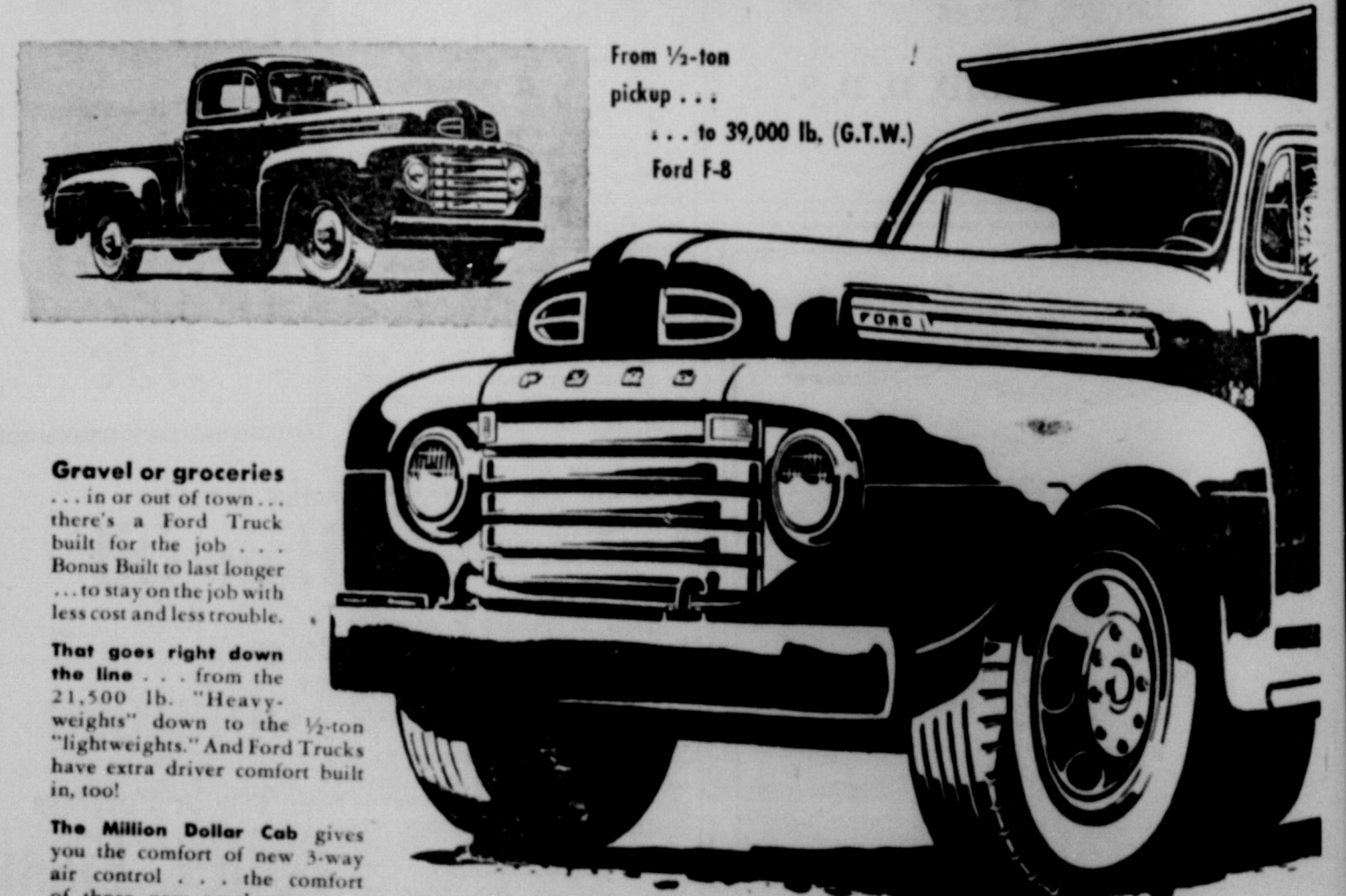
... the combination our customers receive. Bring your winter clothes here for cleaning and pressing before wear ... your summer clothes for moth-proofing before storage.

Eye Opening Special!

Bentley Cleaners

Fred Phone 9 Marion

OVER 150 CHAMPS TO CHOOSE FROM



From 1/2-ton pickup ...
... to 39,000 lb. (G.T.W.)
Ford F-8

Gravel or groceries

... in or out of town ... there's a Ford Truck built for the job ... Bonus Built to last longer ... to stay on the job with less cost and less trouble.

That goes right down the line

... from the 21,500 lb. "Heavyweights" down to the 1/2-ton "lightweights." And Ford Trucks have extra driver comfort built in, too!

The Million Dollar Cab

gives you the comfort of new 3-way air control ... the comfort of those new coach-type seats with extra head, leg, and elbow room ... the comfort of that Level Action cab suspension.

What's more, Ford offers three economical top-performing engines

—the 145-h.p. V-8, 100-h.p. V-8, and 95-h.p. Six ... engines you can count on! Ford also offers extra heavy duty 2-speed or single-speed axles ... 5-speed transmissions ... and, on the F-8, 16-in. by 5-in. double cylinder rear brakes. Take your choice of Champs!

- ★ Three big truck engines!
- ★ Million Dollar Cab!
- ★ Two new 145-h.p. Big Jobs!
- ★ Over 150 models!
- ★ They're all Bonus Built!

Come in and see 'em!

FORD TRUCKS LAST LONGER DYSART MOTOR CO.

Mobil TIRES

for Longer Wear

The High Compression Tread gives you miles of extra wear and greater protection against skidding. Every high quality feature has been incorporated in Mobil Tires. Materials have been carefully selected and skilfully constructed to give Mobil Tires long life and safe running.

Guaranteed by the Makers of Mobil Oil and Mobilgas

Magnolia Service Service
Andy Watkins

DOG ODDITIES

By Harry Miller, Director, GAINES DOG RESEARCH CENTER



PUPPIES OF THE BIG-DOG BREEDS WILL OFTEN POINT EARLY AT THE AGE OF THREE MONTHS



IT WAS BELIEVED TO HAVE BEEN THE OWNER OF A MALTESE DOG GIVEN HIM BY PUBLIUS, GOVERNOR OF MALTA (MALTA) FOR HEALING HIS DYING FATHER

THE CHEYENNE INDIANS USED DOGS AS "BEASTS OF BURDEN"

© 1949, Gaines Dog Research Center, N. Y. C.

Good Posture For Children Very Important

Correct posture in school children, and adults as well, is necessary to proper physical and mental development, says a warning from the Texas State Department of Health. "Good posture is a sign of self respect and plays an important part in winning the respect of others," said Dr. Geo. W. Cox, state health officer.

"Many of the ills of childhood and the deformities of adult life have their beginning in poor posture acquired during childhood," he said, "and it is particularly important that the child's posture conform to nature's dictates. Most children are born in good physical condition and yet examination of large groups of school children shows a high percent to be suffering from poor posture. Malnutrition and fatigue are productive of poor posture. These lessen the size of the chest and decrease the lung capacity. Abdominal organs may also be pushed out of natural position which may seriously interfere with their action. These conditions must be corrected before the body is able to attain normal weight and nutritional standards.

"School children who have poor posture are said often to average lower in attendance and in school mental and physical activities than those who have good postures. A child may be forced to hold his body in an unnatural position by a desk that is too high or too low. Desks and work tables should be just high enough to allow the feet to rest on the floor and the forearms and hands to rest upon the tops without the shoulders being hunched up.

"Begin early in life to teach your children to stand straight and sit straight for health and self-confidence, and they should grow into strong, well-built men and women."

News About—SOCIAL SECURITY

Beginning next Thursday, Floyd J. Ellington, field representative of the Amarillo office of the Social Security Administration, will visit McLean on the second and fourth Thursday of each month instead of Wednesday. Anyone desiring information on social security should write the Amarillo office and the representative will contact you on his next trip.

The Federal social security program, which applies to workers in industry and commerce, provides for the payment of monthly benefits when the qualified employee reaches 65 and retires, for eligible members of the worker's family, and for the survivors of insured workers who die at any age.

When an insured worker dies and there is no one qualified to receive monthly benefits, a lump-sum payment may be made.

Use Your Credit at Shidrick Jewelry

Mrs. Jesse J. Cobb of Dallas visited from Wednesday until Monday with Mrs. S. A. Cobb and Mr. and Mrs. R. L. Appling.

W. W. Shadid accompanied his daughter LaWanda to Denton Sunday. LaWanda will be a student in N. T. S. C. this year.

Mr. and Mrs. Guy Hibler left Saturday for Chicago and Detroit on business. They plan to go through the Pontiac division of General Motors while in Detroit.

Tweed-Duet



Any resemblance between this girl's outfit and her beau's sport togs is purely deliberate—for sentimental as well as practical reasons. The odd jacket is a distaff version of his favorite wool tweed, and the skirt, of similar material, will keep in fashion stride with his slacks. She chose the jacket from a gray, green or brick assortment—for about \$18—and the skirt, in black spiked with red checks or green with gold, was hers for about \$11. This Tilly Schanzer ensemble is from four pages of "I wear Fabrics like his" in the August issue of Good Housekeeping magazine.

Mr. and Mrs. A. L. Jones were visitors in Groom Friday.

COURTESY

The NICEST courtesy you can show your guests is to have their visits mentioned in this newspaper. The nicest courtesy you can show your friends is to let them learn of your visit through these pages whenever you go away. The publisher will consider it a courtesy whenever you give us an item of any kind.

CARD OF THANKS

We wish to take this means of expressing our sincere gratitude for the words of sympathy and acts of kindness extended to us during our bereavement. May God be with you in your time of need as our prayer.

Mrs. D. R. Rice and Children



Upstairs . . . downstairs . . . all through the house . . . your entire family enjoys the benefits of good lighting! More than just lamps to dispel darkness, Certified Lamps help make a house a home . . . set the mood for gracious living.

Sight-saving Certified Lamps furnish plenty of light . . . control the quality of lighting through the patent-protected reflector bowl . . . distribute light in correct proportion . . . eliminate glaring, spotty or insufficiently lighted areas.

For reading, studying, relaxing . . . any seeing task . . . Look for the Certified Lamp Tag before you buy! It's your assurance of the best possible lighting for Seeing and for Decorative Effect!

New "HYMNS OF THE WORLD" each Sunday at 12:45 P.M. on YOUR PUBLIC SERVICE COMPANY NETWORK

SOUTHWESTERN PUBLIC SERVICE COMPANY
25 YEARS OF GOOD CITIZENSHIP AND PUBLIC SERVICE

Zulus Play Host to U. S. Sailors



Zulus in Africa give crew members of the cruiser USS Huntington and the destroyer USS Douglas H. Fox a lesson in basket weaving. With but a short four-day sojourn in Durban, South Africa, thirty U. S. Navy camera enthusiasts and adventurers made a tour into the interior to visit African tribes. Even the depths of the Dark Continent are no stranger to the contact of America established through the calls of U. S. Naval vessels to African ports.

Uncle Sam Says



JOIN TODAY for SECURITY TOMORROW

PAYROLL SAVINGS

If it's money worries that make you act peculiar, like on the day before pay day when your pockets are empty, here's YOUR OPPORTUNITY to get on the sunny side of life. Save the simple, trouble-free way—with U. S. Savings Bonds Automatic savings through the Payroll Savings Plan where you work, or, if self-employed, the Bond a-Month Plan where you bank, is a sure cure for the between pay day "bee-hive-jeesies." And—your money GROWS—\$4 for every \$3 you invest, in ten short years.

U. S. Treasury Department



Very good, comrade professor—now if we could only duplicate the State Fair of Texas!

Mrs. J. E. Weeks is visiting in home of her daughter, Mrs. R. Sanders.

Mrs. Virgil Reagor of Amarillo spent Thursday with her parents, Mr. and Mrs. T. A. Landers.

Fairbanks Morse Products

We now have available a complete line of Fairbanks Morse products—

Windmills, jet pumps, deep well pressure pumps, pump jacks, electric and gas powered, gasoline powered lawn mowers, garden tractors, light plants, irrigation pumps.

Everything for the water well.

Tate's Welding Shop
Phone 1600F112 Rt. 1, McLean, Texas



Free AIR

What once was lack of chivalry is now known as equality.

MUD

It messes up the new-washed car.

It keeps the golfer over par.

It spatters out from road to curb.

Evoking walkers' choicest verbs.

It sticks to shoes, and with each stride Comes off upon the rugs inside.

Then, when it dries, as dry it must.

It troubles us again as dust.

When your car is muddy, drive it in to our station for a thorough clean-up job. If it is dusty—although it should be muddy after this damp weather—we have been having—then we can clean that off for you. In other words, if your car is dirty, bring it to the . . .

Chevron Gas Station
Odell Mantooth

FIRST LINE

600x16 Tire and Tube----\$14.00
650x16 Tire and Tube----\$16.50

Permanent Anti-Freeze
\$3.50 per gal.

Gas----21c per gal.

Bybee Station

East Side of Town

Here's what's underneath Advance-Design value



You're looking at the "backbone" of a Chevrolet Advance-Design truck . . . the source of Chevrolet's massive strength and durability. Run your eyes over that rugged frame and those sturdy springs. Here's the rock-solid foundation that keeps Chevrolet trucks hauling at peak efficiency mile after mile, year after year! Add Chevrolet's power-packed Valve-in-Head engine, Synchro-Mesh transmission and Hypoid rear axle, and you've a combination that's built for the load . . . powered for the pull! Come see these great trucks today!

Featuring VALVE-IN-HEAD ENGINES—Greater power per gallon, lower cost per load • DIAPHRAGM SPRING CLUTCH—Smooth engagement • SYNCHRO-MESH TRANSMISSIONS—Quick, smooth shifting • HYPOID REAR AXLES—5 times stronger than spiral bevel type • DOUBLE-ARTICULATED BRAKES—Complete driver control • WIDE-BASE WHEELS—Increased tire mileage • ADVANCE-DESIGN STYLING—With the cab that "Breathes" • BALL-TYPE STEERING—Easier handling • UNIT-DESIGN BODIES—Precision built.

PREFERRED BY MORE USERS THAN THE NEXT TWO MAKES COMBINED!

ADVANCE-DESIGN **CHEVROLET** TRUCKS

Cooke Chevrolet Co. McLean, Texas

Grass Program Beneficial to Worn-Out, Blowy Land

By ZEKE BROWN
Amarillo Times Farm Editor



PEB EVERETT, McLean pioneer barber and hair-cutter, is now pioneering in grass seeding on an old farm a mile east of the city. In fact, what was a worn-out farm a few years ago now has become a valuable pasture land with a modern home on it. (Picture courtesy Amarillo Times).

Gray County has 12,000 acres of blowy sand that should be put back in grass, and Wheeler County has at least 40,000 acres now used for crops that should revert to pasture land.

It was Quentin Williams talking. He is district conservationist for the Soil Conservation Service, with offices in the court house at Pampa. He is a close student of problems affecting the soils on the east side of the Texas Panhandle. Not only is he a good student, but he is a practical man on the job.

A few days ago the writer checked into Mr. Williams' office at Pampa and went with him to McLean, where there are many farms that have the "blow" sand.

In a barber shop in McLean we met Perry (Peb) Everett who knows an awful lot about the hair-cutting profession. We were soon to learn, before the day was over, that Peb Everett also knows something about grasses that will build up the sandy soil, and that he is learning a lot more fast, with Quentin Williams as his tutor and instructor.

For Peb Everett bought an 80-acre sandy-land farm, which is about a mile east of town, about eight years ago. He looked at the worn-out soil. It was piled in great hummocks. There were also deep ditches here and there over the field that had probably been cultivated half a century. The house was run down also. Mrs. Everett looked askance at the new "home." Then both went to work. The home has been modernized and is now one of the best places around McLean. Plenty of barns have also been built. Peb then turned attention to crops for his farm.

"In fact, I planted cane, kaffir, maize, and a little cotton at first, but what I raised wouldn't pay the gasoline bill for the tractor," Everett explained. "Then I called on the SCS for help. Then we planted the weeping love grass. By the fourth year, this grass choked out all of the weeds, cockle burs, and even the Johnson grass."

Everett bought only 83 acres at first, paying \$1,050 for the farm. He added 40 more acres later at a cost of \$10 per acre. The 40 acres are on the north side of an east-west road, while the 83 acres and the home are on the south side of the same road.

"I planted Indian, Canada, weeping love, switch, and sand love grasses on the 40-acre plot the first year and so little of it showed up at the end of that year my neighbors advised me to plow all of it up and start over," says the barber. "This is the third growing season on that 40 acres and the weeds are about all choked out now and the neighbors are now convinced the program is a good one and they are starting grass programs of their own."



CHARLIE CARPENTER and Quentin Williams examine some of the mixture of grasses being grown on 40 acres of land north of the original farm that Everett bought. The mixture here includes Indian, Canada rye, weeping love, switch, and sand love grasses. This is the third growing season for this plot although the neighbors advised Peb to plow it up at the end of the first season because it was very skimpy then. (Picture courtesy Amarillo Times.)

Quentin Williams has really been a "partner" in this Peb Everett grass program since he has advised the barber every step of the way. In fact, Mr. Williams often spends hours on the Everett farm and the results of the grass program are now the talk of the countryside.

Peb Everett was born 18 miles south of McLean and has lived in that area most of his 52 years. He has been barbering in McLean since 1912, 30 years in one location.

This month, Williams and Ev-

erett are "experimenting" some more. Everett has leased 70 acres, adjacent to the farm, from the city, and is planting some of it to a mixture of grasses. He is running a herd of 50 cattle on 50 acres of the older grass plots and he has several barns filled with weeping love grass hay that he will feed to his cattle this winter. He has just harvested some wild rye grass for seed. He has been selling grass seed for several years, getting a dollar a pound for some of it. In fact, he has harvested several thousand pounds of seed.

"Just think, one usually runs 35 head of cattle to a whole section of pasture," Williams said. "Everett is running 50 head on 50 acres of this weeping love grass. Yet some folks still wonder if good grass pays off."



CHARLIE Carpenter, McLean Hereford breeder and rancher, is examining some of the fine grass on the farm of Dusan Pakan in the Pakan community in Wheeler County, about nine miles east of McLean. Dusan Pakan is chairman of the Wheeler

County Conservation district board of supervisors. He harvested \$35 an acre of Indian grass seed last year, the fourth summer of this crop. It should produce three tons of hay per acre this year, says Quentin Williams. (Picture courtesy Amarillo Times.)

German mercenary troops employed by the British during the Revolution were called Hessians.

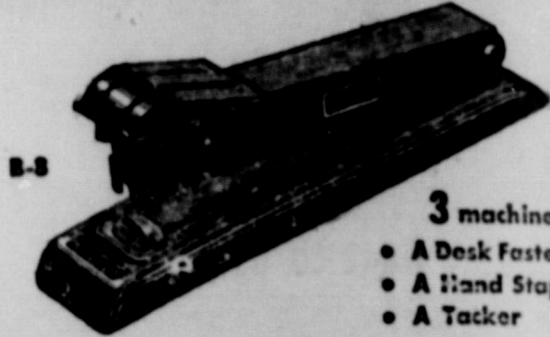
GENERAL INSURANCE

AND

REAL ESTATE BOYD MEADOR

Phone 44

For School and College BOSTITCH Personal Stapler



3 machines in 1
• A Desk Fastener
• A Hand Stapler
• A Tacker

Every Student should have one

- ATTACH PAPERS SECURELY;
- FASTEN BOOK COVERINGS;
- BIND THEMES INTO COVERS;
- TACK UP PICTURES AND BANNERS;
- SEAL LUNCH BAGS;
- FOR HUNDREDS OF EVERY-DAY USES.

Easy to use on desk or in the hand. Compact to carry in bag or pocket. Built by Bostitch for years of use. A really good stapler.

The McLean News

WHY THE MISSOURI PACIFIC RAILROAD STRIKE?

Over twenty years ago, the Congress of the United States passed the Railway Labor Act. It was hailed by union leaders as a model for the settlement of labor disputes.

efficiently or economically if the leaders of the unions ignore agreements or laws.

Provisions of the Law which are Disregarded

There are five ways under the Railway Labor Act to settle disputes over the meaning of contracts:

- 1—Decision by National Railroad Adjustment Board.
- 2—Decision by System Adjustment Board for the specific railroad.
- 3—Decision by arbitration.
- 4—Decision by neutral referee.
- 5—Decision by courts.

The Missouri Pacific Railroad has been and is entirely willing to have these disputes settled in accordance with the requirements of the Railway Labor Act. Regardless of this fact, the union leaders have shut down that railroad.

Innocent Bystanders Suffer Losses and Hardships

There are about 5,000 engineers, firemen, conductors and trainmen on the Missouri Pacific. They are known as "operating" employees, and are the most highly paid of all employees on the nation's railroads, but their strike action has resulted in the loss of work to 22,500 other employees of the Missouri Pacific. In addition, they have imposed great inconvenience and hardship upon the public and the communities served by that railroad.

The Railway Labor Act was designed to protect the public against just such interruptions of commerce.

If these men will not comply with the provisions of the law for the settlement of such disputes, then all thinking Americans must face the question, "What is the next step?"

President Truman's Board Condemns Strike

There is an established legal method for handling disputes involving existing written contracts—just as there is such a method of settling any contract dispute which you may have in your daily life.

The President of the United States appointed a Fact Finding Board to investigate and adjust the Missouri Pacific dispute. This Board reported, in part, as follows:

"... It is with a deep sense of regret that we are obliged to report the failure of our mission. It seems inconceivable to us that a coercive strike should occur on one of the nation's major transportation systems, with all of the losses and hardships that would follow, in view of the fact that the Railway Labor Act provides an orderly, efficient and complete remedy for the fair and just settlement of the matters in dispute. Grievances of the character here under discussion are so numerous and of such frequent occurrence on all railroads that the general adoption of the policy pursued by the organizations in this case would soon result in the complete nullification of the Railway Labor Act..."

Obviously the railroads cannot be run

THE LEADERS of the Brotherhood of Locomotive Engineers, Brotherhood of Locomotive Firemen and Enginemen, Order of Railway Conductors, and the Brotherhood of Railroad Trainmen on the Missouri Pacific Railroad have refused to avail themselves of the peaceful means provided by this Act for settling their disputes. They insist that they be the sole umpire of their own disputes over the meaning of contracts.

There is no Need for Strikes

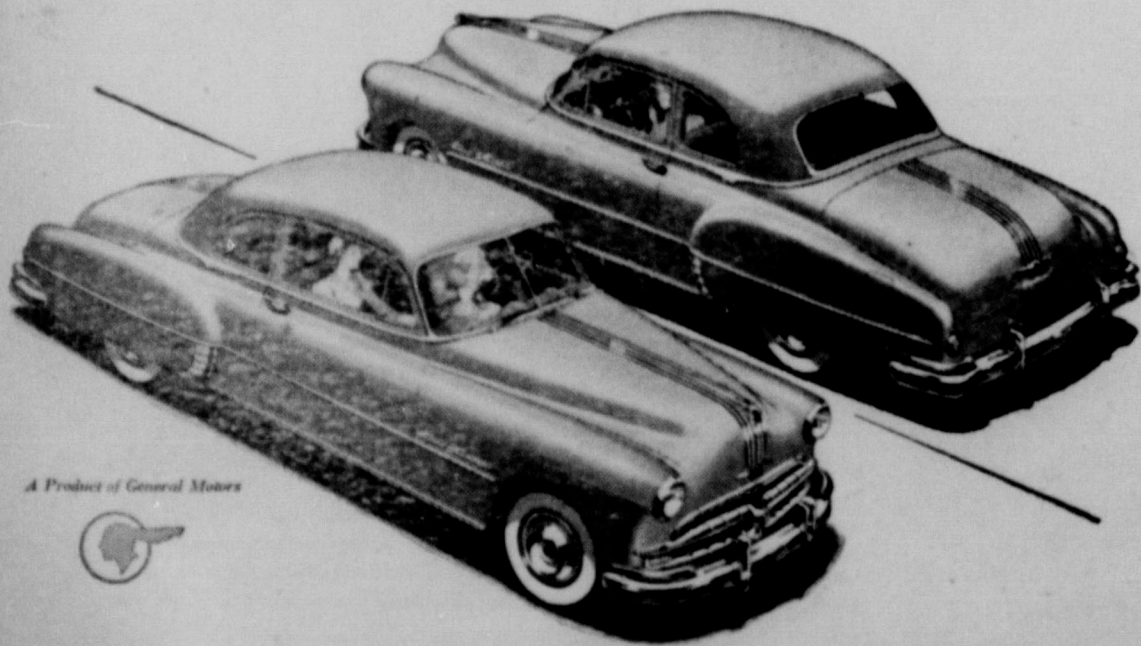
With all of the available methods for the interpretation of contracts, there is no need for a strike or even a threat of a strike, but the leaders of these railroad unions have ignored the ordinary procedures established by law and insist upon imposing their own interpretations of their contracts by means of a strike.

The wheels have stopped rolling on the Missouri Pacific. They may stop rolling on other railroads at any time. Recently the Wabash Railroad was forced to discontinue operation for several days under similar circumstances.

What are These Strikes About?

These strikes and strike threats are not about wage rates or hours. They result from disputes over the meaning of existing contracts. They cover claims for a full day's pay for less than a day's work, or for payments for services performed by others who were fully paid for the work done.

You ought to be driving a '49 **PONTIAC**



Distinguished by a Beauty All Its Own!

There's an unmistakable stamp of distinction about the new Pontiac. It's a beauty from the front and from the rear!

Wherever you see its "Silver Streak" styling—in city traffic, on the highway, or silhouetted at the curb—you know immediately that it's a Pontiac and something very special among automobiles.

Pontiac's performance is equally unmistakable—thanks to Pontiac's great power plants, the straight eight or six, and to the amazing convenience of GM Hydra-Matic Drive.*

And remember, Pontiac is still the lowest priced straight eight in America!

Why not come in soon and get the whole Pontiac story?



SAFE-T-NEW DRIVER VIEW! Pontiac's wide, optically curved windshield, plus wider windows and slimmer pillars all around, gives you a new driving horizon.

*Hydra-Matic Drive optional at extra cost.

Hibler Truck and Implement Co.

On Highway 66



Panhandle Sports..In Cartoon

COACH OF THE DALHART WOLVES
 Named as one of the trickiest in High Plains Class A FOOTBALL — opened the 1949 season in typical fashion with a 14-0 surprise victory over Littlefield's Wildcats

WOLVES Gene SUNDERMAN

WE'RE PACKING A WALLOP IN DISTRICT 3A THIS YEAR

DALHART WOLVES

and

Bill CESSNUM
 SUNDERMAN'S DELUXE PUNTER AND BREAKAWAY RUNNER, SOPHOMORE FULL BACK, 165 lbs.

ALL-STATE? Charles RADFORD
 QUANAH'S 180 POUND GUARD and Candidate for CLASS AA Honors

and

DON LEACH
 McLEAN'S CAGE COACH produced GIRLS DISTRICT WINNERS LAST YEAR

He is assistant to AL DUNCAN head coach.

ODD TEAM NAMES IN OUR PANHANDLE
SPEARMAN LYNX

Mr. IT'S Cold Outside? EVERY YEAR EVENT and I'M LUCKY IF THEY EVEN OPEN THE CAN WHO WILL IT BE IN '49?

TAYLOR
 Pampa's 16 lb CENTER STANDOUT

COLORFUL ATHLETES IN THE PANHANDLE AREA

Tigers Take Panhandle 19-7

(Continued from page 1)

le of the second period, the Panthers got on the march, and made it to the McLean 29. From there D. Howard attempted a pass, only to see it intercepted by the Tigers' Carl Cox on the 19.

Runs by Watson, Bruner, Cooper, and Charles Bailey took the all downfield in three first downs to the Panhandle 31. Bailey then lost six yards, but a penalty on Panhandle for a personal foul placed the ball on the Panthers' 22. Cooper made it to the 10-yard stripe on the next play.

Then with less than a minute to play before the half ended, the Tigers picked up speed in calling their plays. Bruner drove through left guard to the one, and Vineyard then tried to hurdle the line for the marker but fell short by inches. From there Watson threw himself into the defense and over for the marker. Watson's kick was no good and the score was 13-7.

At the half, the McLean band went on the field, formed an outline of an automobile and played "In My Merry Old-mobile,"

and then turned toward the McLean fans and formed the letter "M." The Panhandle band came on the field, first forming the letter "P" and then the letter "M."

To open the third quarter of play, the Tigers took the kickoff from Naylor on the McLean 30, with Watson returning to the 44. Watson carried twice, getting to the Panhandle 43. Bruner picked up four. Watson made no gain, and then Bruner went to the 32 on one play and the 29 on the next. Watson carried to the 27, and then Bruner to the 20. Vineyard made it to the 17, but a 15-yard holding penalty on McLean moved the ball back to the 32, and then Cooper went to the 17. From there Watson made it to the 5 for a first down. Bruner carried through left guard to the three. Cooper crashed through center to the one, and then center again and over. Watson's kick was blocked and the score was 19-7.

Shortly after that, the officials stopped the game to fill a hole on the field. The hole appeared

to be several inches deep and had been covered with a piece of metal.

In the fourth period, the Panthers hogged most of the show, getting once to the 17-yard line before losing on downs. After getting the ball on that marker, the Tiger had time for three plays before the game ended.

Mr. and Mrs. G. F. Baker Jr. and two sons of Pampa spent Friday and Saturday visiting with his parents, Mr. and Mrs. G. F. Baker.

Guests of Mrs. J. P. Alexander this week are Mr. and Mrs. Paul Powers and daughters of Vallejo Calif. Guests last week were Mr. and Mrs. O. R. Alexander of Albuquerque, N. M., and Mr. and Mrs. Donald Lindsay of Dallas.

Mr. and Mrs. F. H. Bourland spent last week in Tulla with Mr. and Mrs. Laurence Bourland and family.

Wes Langham, who is employed in Amarillo, visited over the week-end with his parents here.

Attending the J. W. McBrayer funeral services in White Deer last Saturday were Mrs. Mattie Graham, Mrs. Jack Hindman, Rob Hindman, and Marvin Hindman.

Mrs. Mattie Graham is visiting in Canadian and Higgins this week.

Mr. and Mrs. W. J. Hanner returned last week from a trip to Decatur, Ala., where they visited relatives. They were accompanied by two of Mrs. Hanner's sisters from Wichita Falls.

M. D. BENTLEY

REAL ESTATE
 and INSURANCE

205A Main McLean, Texas

S. G. ROBINSON

Attorney-at-Law

Office in
 Holloway Insurance Building



FALL FESTIVAL

Rake In The BIG VALUES

Slated for good Eating

Hunt's **CATSUP** 2 for 29c

Hunt's **SPINACH** 2 tall tins 23c

Red Sour Pitted **CHERRIES** No. 2 can 29c

Brimfull Pink **SALMON** tall tin 49c

Fall officially begins Friday, but even now the raking season has started. We're "falling" in line by offering you these outstanding fall food values, designed to overcome the pitfalls of an over-balanced budget.

Wilson's Advance 3 lb

COMPOUND 49c

Values Galore

SUGAR

 10 lb 89c

BANANAS

 Nice Yellow Ripe lb 10c

Pantry Provisions

Log Cabin **SYRUP** large can 99c

Hunt's Tomato **SAUCE** 2 8-oz. cans 13c

Mug of Peanut **BUTTER** 12 oz. 35c

Sunny Skimmed **MILK** 3 for 25c

Quality Meats

STEAK Sirloin lb 59c

BEEF ROAST lb 45c

BUTTER Borden's Mistletoe lb 69c

FurAsnow **FLOUR** 25 lb \$1.49

Cooper's FOODS

The Biggest Little Store in the Panhandle

Personals

See Jones and Mrs. Sophie...
 Wilson Jr. was in Hereford...
 Mr. and Mrs. Elton Johnston Jr. of Lubbock visited Saturday and Sunday with Mr. and Mrs. W. E. Johnston and Mrs. J. P. Alexander.

Mr. and Mrs. Dannie Roan and Ceph Bryant of Pampa were Sunday guests of Mrs. Lady M. Bryant.

Use Your Credit at Shedrick Jewelry

Mr. and Mrs. Loren Spencer and children of Monahans spent the week-end with Mrs. Ethel Spencer.

Mr. and Mrs. Granville Boyd and Donna Joyce spent the week-end in Phillips with Mr. and Mrs. Mabry McMahan.

You Buy Blankets in July? Will You Buy Christmas Cards in September? See Our Samples of Beautiful Cards NOW. The McLean News

WANT-ADS

RATES

CLASSIFIED INFORMATION
 Minimum Charge.....35c
 Per word, first insertion.....2c
 Following insertions.....1c
 Display rate in classified section, per inch.....60c
 All ads cash with order, unless customer has an established account with The News.
 — Telephone 47 —

FOR SALE

Levis \$3.49 pair at Mertel's Store. 6-tfc

Wallpaper Bargain! Buy one roll—get one like it free. Cicero Smith Lumber Co. 1c

Luzier's Cosmetics. Mrs. Eula Fay Stokes. 33-tfc

PIANO FOR SALE

A repossessed Spinnet piano to be sold immediately in this community for balance due on contract. For details write Clark-Shaw Music Store, 204 N. Main, Garden City, Kans. 37-3c

For Sale At HIBLER TRUCK AND IMPLEMENT CO.

Two good used pick-ups, Chevrolet and Dodge, both bargains. Used Plymouth coupe. International truck parts. Farmall tractor parts. McCormick-Deering mower parts. McCormick-Deering grain binder parts. McCormick-Deering corn binder parts.

We have plenty of International binder twine—\$11.95 per bale. 35-tfc

For Sale—27 Dandee grain loader, flexible spouts, straight spouts, and Mormon board. Tires ready to go anywhere. Any reasonable offer will be considered. See at Paymaster Gin. 36-tfc

See the new line of hand-painted ties and broadcloth mufflers for men. Special on 9x-Cel-Cis cleansing cream during September. Have skin freshener, sachets, cake make-up, and rouge in Ex-Cel-Cis now. Margaret's Gift Shop. 37-tfc

Wallpaper Bargain! Buy one roll—get one like it free. Cicero Smith Lumber Co. 1c

Fertilizer for sale! In addition to our warehouse stock of meal, cake, chicken feeds and dairy feeds, we have stocked fertilizer. Any business appreciated. McLean Gin, S. R. Jones, Mgr. 37-tfc

For Sale—Good, clean seed wheat, Early Triumph, \$2 per bushel. H. E. Franks. 1c

For Sale—Used gas heater, dresser, and ice box. J. C. Cooper, in Andrews Apartments. 1p

For Sale—Used Remington Standard typewriter. Old model, but still will do a good job for someone who does not use a typewriter continuously. A good buy at \$30. The McLean News.

For Sale or Trade—Five room house and three lots. L. J. Peden, Phone 206 J. 36-tfc

For Sale—Boys Hawthorne bicycle—almost new. See Mrs. Black at News office. 1p

Seed rye for sale, \$1.50 per bushel. Ray Gossett, Kellerville. 38-2p

Two good used table-top cook stoves, cheap. Callahan's, Phone 184. 1c

For Sale—3-room house with bath, and 4 lots, on North Main Street. Also two-wheel trailer. C. E. Henley. 38-2p

For Sale—Fresh milk cow. Bryan McPherson. 1p

Andrews and Johnson Equipment Co. Your International Harvester Dealer

For Sale: Binder twine, \$11.75 per bale. Two 1-row power driven binders. One 2-row binder, power driven. One 53-R combine, 5-ft. Used 1948 Chevrolet 1-ton truck. 1941 5-passenger coupe Oldsmobile, with radio and heater. Slick. 1c

FOR RENT

Storage space for rent. Mertel's Store. 10-tfc

For Rent—3-room furnished apartment. Harris King. 37-tfc

LOST

Lost—Bay saddle horse, branded with running M on left shoulder. Notify George Orrick at Powers Drug. 1c

MISCELLANEOUS

Expert local and long distance moving. For more information, call Bruce and Sons, Phone 934, Pampa. Agents North American Van Lines, serving the nation. 14-tfc

For general hauling, one waying, or sowing, see Bob Massey or son. Phone 109 W. 38-4p

Will organize a class in ceramic art. If interested, see or call Mrs. Andy Goodwin at Cubine Apts., or Phone 146 M. 1p

Wallpaper Bargain! Buy one roll—get one like it free. Cicero Smith Lumber Co. 1c

Custom combining and row binding. See L. O. Groves on the old Waters place, Rt. 1, Box 4, McLean. 38-3p

See Arthur Erwin about a hospital policy. 38-2c

Johnnie F. Mertel Shoe Shop—Cotton sacks, knee pads, boots, shoes, belts, and shoe repair. 38-3p

MALE HELP WANTED

Large Midwestern Feed Company

Needs Salesmen in the following county:

Gray

Good pay—Work route system—Hospitalization—Group Insurance—Social Security—Training given.

Must have car.

Ages 25-50
 Sales experience and farm background helpful.

Write Box D, McLean, Texas

Mrs. Boyett—

(Continued from page 1)

ena. This is not so elaborate a come castles which we visited out more interesting because it is today and the other yesterday. Our trip to Edinburgh was short, but we thought quite worthwhile. The Princess Street, which they say is the prettiest shopping street in the world; the huge castle and fortress built high on a rocky cliff overlooking the city; the Holyrood house, formerly the residence of Scottish royalty and now a resort for English royalty, is small as compared with others, and not so elaborate, but to an outsider much more sensible; the cantilever bridge across the Forth River, which they call the eighth wonder of the world; and the Scottish National War Memorial within the castle grounds, erected by Scots from all over the world in memory of Scots killed in World War I—these along with many others make a very unique city.

We passed the church where John Knox stood on the gallery and defied the Catholic religion. His home nearby is now a museum and gift shop. We asked about the religion of Edinburgh and the driver immediately replied, "Presbyterian."

The Edinburgh Music Festival, which is becoming quite noted, was in session while we were there. We attended one concert given by Paris Symphony Orchestra and conducted by Walter Bruno of Vienna.

Our trip home on the Queen Mary seemed short and restful and the welcome extended us by the Statue of Liberty in New York harbor at sunrise September 12 is never to be forgotten.

Going through customs at New York was not bad at all except the long waiting in line. The customs officials who examined my luggage said I should be honest, as I am from Texas!

The trip to Europe was interesting and educational, but now I am happy to be home and working again.

Thanks to McLean News for printing the lengthy letters, and to some of the subscribers for reading them.

Yours,
 Willie Boyett.

DOG ODDITIES

By Harry Miller, Director, GAINES DOG RESEARCH CENTER



THE DOG-LOVING NAWAB - SAHEB OF JUNAGADH SPENT 100,000 RUPEES ON A PARTY IN HONOR OF HIS FAVORITE AIREDALE

ON A STILL NIGHT A DOG CAN DETECT A PROWLER BY SCENT OR HEARING AT 400 YARDS



COLDWOOD MICHAEL, A GOLDEN RETRIEVER, HAS MADE THIRTEEN PERFECT SCORES IN DOG OBEDIENCE TRAINING COMPETITIONS

© 1948, Gaines Dog Research Center, N. Y. C.

NEWS FROM KELLEVILLE

Mrs. Dorothy Felkner and daughter of Stinnett are visiting in the home of Mrs. Felkner's brother, Lewis F. McDonald.

Mr. and Mrs. Kenneth Bruton and Lee spent the week-end with their parents, Mr. and Mrs. H. M. Roth of McLean, and Mr. and Mrs. J. M. Bruton.

Mrs. Jack Harris and Mary, and Mrs. Edwin Owen and Gail made a business trip to Pampa Monday.

There was a community party at the Baptist church Thursday night, honoring the R. L. Higdon family, who will move to Oklahoma soon. Gifts were received and refreshments of cake, coffee, and cocoa were served to a large number of friends. The Higdon family have been residents of this community for a number of years and they will be greatly missed.

Eugene Smart, Joe Bruton, and Walter Foster of Shamrock went fishing at Lake Lugert last week-end. They aren't saying much about their luck.

Mr. and Mrs. L. A. Richardson went to Albany over the week-end.

Mr. and Mrs. Bob Cecil of Los Angeles, Calif., visited their niece, Mrs. Jack Harris, over the week-end.

The W. M. U. met at the Baptist church Tuesday afternoon for Royal Service. Devotional was given by Mrs. Brent Chapman. Those on program were Mesdames Elmer Immel, J. B. Brown, A. A. Nicholas, Joe Harris, Lewis McDonald, Jack Harris, Jack Boyd, Ollie McPherson, and Jake Jones. There was a discussion about the counselor course, which will be taught by Mrs. R. L. Appling of McLean Tuesday and Thursday nights of this week at 7 o'clock.

Reports about the sick of the community:

Mrs. R. M. Holley is in the Pampa hospital for treatment.

Mrs. Boydston is very poorly.

A. A. Simpson, Mrs. West's father, is in the Worley Hospital in a very weak condition.

Mr. Kiser's father, at Alanreed, is very low.

Tigers—

(Continued from page 1)

Bruner demonstrated his abilities as a runner, as did Benny Cooper. The Tigers tried no passes in the Panhandle game, although Watson did fade back on one occasion but was trapped before he could rid himself of the ball. Whether Coach Al Duncan will spring some new pass plays is not known, although it is probable he will. Thus far, the Tigers have passed only sparingly, but they may find it very necessary against the Phillip team.

A large delegation of McLean fans is expected to follow the Tigers to Phillips. Many of these fans believe Phillips will go far this season in the state playoffs, and will take this opportunity of seeing the Hawks in action. A chartered bus will carry some fans—tickets for the bus are on sale at Powers Drug.

However, these fans could be pleased with the results, for the Tigers have a fair chance at winning. If the two fast backs of Phillips can be halted, the Tigers may come out on top. So far, the Phillip offense has been sparked with long runs by the speedy backs, and the Tiger line may be able to stop up the gaps needed for these backs.

Yours,
 Willie Boyett.

Merino is a fine-wool sheep.

Pampa Queen Winner to Get Trip to Kansas

Girls from McLean and vicinity have a chance at being the Top o' Texas contestant at American Royal, Kansas City, Mo. in October.

Young women between 18 and 25, inclusive, not previously married, have been invited to compete in a contest sponsored by the Pampa chamber of commerce and the Top o' Texas Fair association. The contest will be held September 27 at 8:30 o'clock in the Junior High School auditorium at Pampa.

Corsages and hair-dos, if desired, will be furnished entrants by two Pampa business firms. Winner of the Pampa contest will be the Top o' Texas official entry in the world-famed American Royal October 13. The winner's trip will be financed by the American Royal, and she will have a chaperon. She will be known as Miss Top o' Texas. Glenda Joyce Smith is representing the McLean Lions Club in

the contest.

Girls 16 and 17 years of age will have a contest, too. Although she will not go to Kansas City, Princess Top o' Texas will get a handsome diamond-studded wrist watch for her victory on the same evening. All girls of the same age group are eligible in this area. Contest judges will come from outside the entry area.

Mr. and Mrs. Joe Graham and son and Mrs. R. M. Gibson visited relatives in Enoch over the week-end. Mrs. Gibson remained for a longer visit.

Mr. and Mrs. George Skinner of Borger visited Tuesday in the W. W. Boyd home.

Pfc. Kenneth Gibson of Wichita Falls spent from Saturday until Tuesday with his parents, Mr. and Mrs. Leo Gibson.

C. J. Cash and Harry Franks were in Amarillo on business Friday.

Mrs. A. B. Wood, who has been seriously ill for a week, is slightly improved.

Mrs. E. M. Gibson of Artesia, Calif., visited in the home of her

daughter and son, Mrs. Joe Graham and family, and Joe Gibson and family, last week.

Howard Williams was in Fort Worth Monday to attend a meeting of Frigidaire dealers.

Mr. and Mrs. A. A. Williams of Wheeler visited Friday with Mr. and Mrs. Cecil Callahan.

Mr. and Mrs. Cecil Callahan and Cliff spent Sunday with Mrs. Margaret Callahan of Childress.

Mr. and Mrs. C. M. Carpenter and Mrs. H. W. Finley, accompanied by Sue and Kay Finley, visited the children's parents, Dr. and Mrs. Charles Finley of Littlefield, Tuesday.

Mr. and Mrs. J. B. Kibler of Oklahoma City spent the week-end with their mothers, Mrs. R. Kibler and Mrs. J. T. Glass.

Mr. and Mrs. Jim Stevens and family were in Big Spring last week visiting relatives.

Guests of Mr. and Mrs. Everett Hall Saturday night and Sunday were Mr. and Mrs. A. E. Vines and Mrs. Sally Downing of Amarillo.



Pure Cane

SUGAR

10 lb. sack

87c

Folger's

COFFEE

1 lb. can

47c

2 lb. can

94c

CHECK THESE SPECIALS!

Hershey's 5c CANDY BARS 3 for 10c

Dash DOG FOOD can 12c

Del Monte CATSUP 14 oz. bottle 19c

Miracle Whip SALAD DRESSING quart 59c

SPECIALS FOR

Fri. & Sat.



CHOICE MEATS

BACON SQUARES lb 31c

All Brands Plain OLEO lb 28c

All Meat BOLOGNA lb 39c

We Reserve the Right to Limit Quantities

PUCKETT'S

GROCERY & MARKET