

The McLean News

Promoting the Interests of McLean, Southern Gray County and Surrounding Communities

Price 10c

Volume 67

McLean, Gray County, Texas 79057, Thursday, July 9, 1970

Number 28

State Capital News

Due-ribbon insurance study committee has recommended forcing Texas' compulsory liability coverage and a careful study of allegations that garages more for policy-covered.

Port went to Gov. Preston prior to the State Insurance Board hearing July 14-15 discussion of insurance commission investment income in the state-making formula. It is indicated that the effect of the formula change also is backed by the committee he named last week after an auto policy rate was recommended.

Observers think motorists in for another increase in premiums after the main 17 rate hearing, regardless of whether the Board decides that investments should be in the base.

Committee, headed by Gov. Price Daniel, not that North Carolina rates to be consistently low, though it also has mandatory liability coverage, Massachusetts and New York, other mandatory auto liability insurance have higher rates.

Committee recommended the Legislature look into stopping "excessive charges made on repairs of automobiles" which, in turn, is escalating rates year year.

Insurance industry is expected to ask new increases as high as 20 per cent at the hearing. It may ask Daniel's committee to examine the Board's recommendation, as they in 1969 (when rate adjustment was 9.9 per cent upward and 11.4 as originally intended by the Board), the majority of the committee is cool toward going into more extended hearings those required by their last year.

Important part of state government may be going underground if a building Commission proposal is approved, in new budget requests, laid out plan for a 100-square-foot, \$2.5 million underground addition to the building, providing of space for legislators. Enrollment would be in a new depression to the west of present historic structure.

Two objectives will be served by this activity: one, to acquaint more people in the Texas, New Mexico, Oklahoma and Kansas area with the work being accomplished at Girlstown in Berger, and secondly, to offer any financial assistance to be gained from the meet to further the work at Girlstown.

July 13, Date of Registration At Phillips College

Registration for the second six weeks of summer school at Frank Phillips College, Berger, will be conducted in the James W. Dillard Library, from 5:00 p.m. to 8:00 p.m. on July 13.

The last day and time to register for a class during the second summer term is 8:00 p.m., Thursday, July 16. The entire registration procedure, including the payment of tuition and fees, must be completed by that time.

Friday, July 17, is the last day for admitting a student to a class for the second six weeks of summer school.

Hospital Auxiliary Meeting Is Called For Tuesday

A meeting of the McLean Hospital Auxiliary has been called for 4:00 p.m. Tuesday, July 14 at the McLean Hospital. Please bring your petitions and reports or letters to congressman Bob Price.

national Business Machines Corporation on data-processing equipment is constitutional, since there is no obligation to spend money beyond revenues available at the time the debt is due.

Legislators left to Commission Court determination as to whether office space should be furnished by the county for its home demonstration agent and county farm agent. In the absence of contractual obligation, says the AG, the Court isn't required to provide offices but has authorization to do so.

State Railroad Commission granted Pioneer Natural Gas Co. serving 61 West Texas communities, a new rate of 32 cents per 1,000 cubic feet on its gas. That amounts to four cents of the 6.43 cent increase the company requested.

Rate is still subject to approval by individual city governing bodies before it finally goes into effect.

Secretary of State Martin Dies Jr. announced that his office is forfeiting charters of 10,907 corporations for failure to pay state franchise taxes.

Figure, said Dies, is almost double last year's and indicates to him "this is a barometer reflecting general economic decline throughout the nation."

Institute of Texan Cultures has published the first three of 20 booklets on ethnic groups which settled in Texas: "Indian Texans," "Norwegian Texans," and "German Texans."

Parachute Meet Planned On Behalf Of Girlstown

An invitational parachute meet is being planned for July 18-19 at Perry Lefors Field in Pampa, in behalf of Girlstown USA, of Berger, Texas. This two-day meet is being sponsored by friends of Girlstown in cooperation with various civic organizations throughout a four-state area.

Sky-diving clubs from as far away as Orange, Massachusetts, and Colorado Springs, Colorado, have been invited to participate in this event, and more than one hundred sky-divers are expected to be present. A total of \$1000.00 in prize money and twenty-six trophies will be awarded in the two-day meet.

Two objectives will be served by this activity: one, to acquaint more people in the Texas, New Mexico, Oklahoma and Kansas area with the work being accomplished at Girlstown in Berger, and secondly, to offer any financial assistance to be gained from the meet to further the work at Girlstown.

Old Timers Club To Meet July 10

The Old Timers Club will meet Friday July 10th at 12:00 noon in the Lovett Memorial Library in Pampa. All who have lived in the Panhandle area 50 years or more are urged to come and bring a covered dish for the luncheon.

Come enjoy colored slides of the South America by Mrs. Ruth Servell.

John C. Roth, 56 Funeral Services Held Tuesday

Funeral services for John C. Roth, 56, of Amarillo, were held at 2 p.m. Tuesday in Schooler-Gordon Colonial Chapel, Amarillo, with entombment in Llano Mausoleum in Amarillo.

Mr. Roth, son of Henry Roth of McLean, died Sunday in the Veterans Hospital, Amarillo. He was born in Webb City, Ark., in 1913, and had lived in Amarillo since 1949. He was married to Pauline Hurd in 1946 in Wichita Falls. He was a veteran of World War II, was a member of the Baptist Church, and had been employed as a truck driver since 1952.

Survivors are his widow, four sisters, Mrs. Letha Cunningham of Corpus Christi, Mrs. Frankie Leasure of Ft. Smith, Ark., and Mrs. Betty Wicker and Mrs. Sybil Holland, both of Shamrock; two brothers, Bill of Dallas and J. D. of Pampa; one stepbrother, Vernon King of McLean, and his father and stepmother, Mr. and Mrs. Henry Roth of McLean.

Jan Coleman To Attend W. T. S. U. Music Camp

Jan Coleman, 16, of McLean, is enrolled in the 18th annual West Texas State Music Camp July 12-24.

The camp, on the campus of West Texas State University, has enrolled a record 1,070 talented musicians from six states and eighty-six Texas towns.

Miss Coleman, daughter of Mr. and Mrs. J. O. Coleman, plays clarinet and is a junior at McLean High School.

Lola Pechacek, 55 Native Of McLean Buried Monday

Funeral services for Mrs. Lola Pechacek, 55, who died early Thursday in her home, were held at 10 a.m. Friday in Tucumcari, N.M.

Loyd Burch, minister of the Sixth Street Church of Christ, officiated. Further services and burial were held Monday in Oklahoma City.

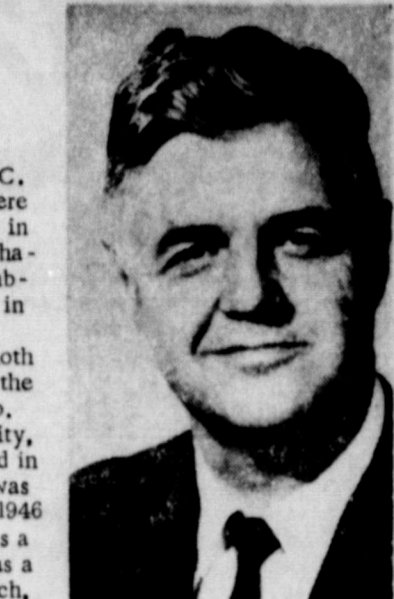
A native of McLean, Mrs. Pechacek had been a Tucumcari resident for six years. She had moved there from Oklahoma City, where she had served as secretary to the general manager of General Mills, Oklahoma District.

Survivors include her husband Charles, of the home, a brother, W. P. of Midwest City, Okla.; and three sisters, Mrs. John DeYoung of Tipton, Okla., Mrs. Alleathe Gettys and Mrs. W. L. Russell, both of Oklahoma City.

Jaycees To Sell U. S. Flags

All patriotic citizens interested in purchasing U. S. flags for home display please contact Casper Smith of the McLean Jaycees.

Old Timers Club To Meet July 10



Biologist Promoted

Bill Nailon, veteran Corps of Engineer biologist for the Tulsa District, has been promoted to southwest division chief and is to be transferred to Dallas.

Nailon, a long time supporter of the Tulsa Anglers Club and active worker in promoting fishing for Tulsa youth, has been with the Tulsa district for 23 years. He served as president of the club in 1968, and served on the executive council of the Oklahoma Academy of Science.

During World War II, Nailon served in New Guinea and the Philippines with a medical laboratory group. The military organization discovered a new mosquito, the Culex Nailoni, named for Nailon.

Nailon, who resides with his wife and two children at 3438 E. 57th Place, Tulsa, is the son-in-law of Mr. and Mrs. Victor Cliett of McLean.

NEWS from County Agricultural Agents Texas A. & M. College Extension Service

At 3:00 p.m. today (Wednesday, July 7) I am meeting with a representative from the ASC committee and the Farm Home Adm. for the purpose of requesting that Gray County be declared a drought disaster area. At this time I'm not sure what benefits could be derived from such a declaration.

In my opinion the first half of 1970 has been as dry as the first half of any year in the 1950's. Some areas have had little or no effective moisture in 1970 in Gray County.

There is probably less dryland cotton and grain sorghum up to a stand now than has ever been recorded. Stands under irrigation are poor and the milo just hasn't got off to a good start. Many farmers have not plowed wheat stubble. There are no weeds in the wheat stubble. Therefore little reason to plow. This paints a pretty dismal picture but some good always come from the bad. For a number of wet years we had a tremendous green bug build up. It takes a hair curling drought to break the cycle of many of the insects species. Maybe this is one of the beneficial aspects of the drought.

FARM PROGRAM To date I do not have any information as to what is transpiring on the legislative front in relation to the farm program which is due to expire this year.

CATTLE SLAUGHTER The May Livestock slaughter report shows for the first time in many months a decline of one percent in beef cattle slaughtered during May. Total beef production was up due to the fact that the average weight was up twenty four pounds per head as compared to a year earlier. We think the June report will show a further drop in average weight and total numbers slaughtered.

Excessivespeed was the major factor in 1969's tragic highway record. More than 56,000 persons were killed last year, and more than 4,700,000 injured.

Farmers Receive Program Benefits

Farmers who have contributed to stabilizing markets for food and fiber and to the conservation of soil and water resources by taking part in the 1970 wheat, feed grain and cotton programs are receiving their program payments earlier this year than ever before, according to Miss Evelyn Mason, Executive Director Gray County ASCS.

The first batch of payments were made beginning on July 1, 1970. Additional payments will be continued as rapidly as farmers certify compliance with program requirements and as fast as individual farm records can be processed and checks returned to ASCS county offices for distribution to farmers. Because of the excellent cooperation between farmers and their local ASCS offices, 50% of the farmers will receive their payments in July. Most payments should be completed by mid-August, if farmers who signed up will complete the necessary certification indicating that they have complied with all of the program provisions.

Farm program payments help maintain a balance between supply and demand. Both farmers and consumers benefit by the balance. Agricultural productivity almost doubled in the past 20 years, but farmers' markets take only about a third of this increase. This means we need new markets. Farm programs help us hold down farm production and maintain farm income until new markets are developed and old ones expanded. High surpluses are costly in tax dollars and are wasteful of food and fiber. Farm programs help farmers make adjustments in their individual farming operations that in the long run will result in more farm income from the marketplace and less from the public treasury.

Since farmers are \$50-billion-a-year purchasers of goods and services produced in our cities and rural towns, the workers and business firms in cities and towns benefit from farm programs, too.

Farm programs also make important contributions to conservation of natural resources and help fight pollution. Acres that are diverted and of crop production under farm programs are put to conserving uses such as the growing of grass and trees. Such practices conserve soil and water, provide habitat for wildlife and small game, help prevent pollution of our streams from sediments and agricultural chemicals or waste products, and reduce air pollution caused by blowing dust.

When a farmer takes land out of production and puts it to a soil and water conserving use, he gives up the value of the production he normally would have received as income. At the same time, the farmer pays taxes on land removed from production even though that land produces not crops. Program payments are designed to compensate him for these voluntary contributions towards a more stable farm economy and a better environment.

In recent years, the U.S. Department of Agriculture had advanced partial payments to farmers during the spring sign-up period for the feed grain program only. The balance of the feed grain payment, and cotton and wheat payments were generally made starting in the late July and continuing through August September or later.

Because of budget restraints, partial payments could not be made this year; however, the Department made a commitment to make final payments earlier and this has been done.

By Evelyn Mason

Richard Campbell of Texas Tech University, a defensive end, played recently in the Coach's All-American Football Game in Lubbock's Joon Stadium. He became the third Red Raider to play in the game.

Campbell, of Matorado, is the brother of Mrs. Jim Allison of McLean.

Injury Accidents Not So Humorous

One recent visitor to a Texas State park fell from a tree from which he was plucking pine cones.

At another park, a young motorcyclist collided with a deer, causing injury to both parties.

McLEAN HOSPITAL NEEDS YOUR LETTERS

McLean and the area need to act at once if McLean is to keep our hospital on the approved list for "Medicare". The loss of which would change the hospital into "clinic aid station," as far as Medicare is concerned.

"Medicare" is placing hospitals in the same position as the government has led the farmers. It would be nearly impossible to operate the hospital without the Medicare patients. Medicare patients can only use "Medicare Approved" hospitals.

The McLean Hospital Auxiliary is leading the effort to get your support to ask Congress and Congressman Bob Price to extend to our hospital more time to secure the additional special help (around-the-clock) to meet the standards required.

Write your Congressman today, inform him of the importance of keeping the hospital for the people of the area and to the people traveling on I-40, who use the hospital facilities quite often.

Your letters have influence, write now to: Bob Price, 507 Cannon, House Office Building, Washington, D. C.

Mrs. Alice Reese Funeral Services Held At Berger

Funeral services for Mrs. Alice B. Reese, 64, of Navajo, Arizona, who died Sunday in a Phoenix hospital were held at 10:00 a.m. Thursday (today) in Minton's Memorial Chapel, Berger.

Rev. David Thomas, pastor of St. Luke's Presbyterian Church in Amarillo, officiated. Burial was in Sunset Memorial Park in Stinnett. A native of Alanreed, Mrs. Reese had lived in Navajo for 25 years. She was a member of the Presbyterian church.

Survivors include her husband, J. J.; a son, Jimmy of the home; three sisters, Mrs. W. A. Frier of Canyon, Mrs. George Orrick of McLean and Mrs. Don M. Brown of Pampa; a brother, Drew Word of McLean and seven grandchildren.

Resident's Brother Is Buried In New Mexico

Funeral services for George W. Burdine, 73, of Melrose, N.M., who passed away Thursday, June 25 in a Clovis Hospital, were held Monday, June 29 in the First Baptist Church at Melrose by Rev. Fred Porter. Burial was in a Clovis cemetery.

Mr. Burdine, a native of Farmersville, had lived in Melrose for 37 years. He was a retired laundryman and a veteran of World War I. Burdine was the brother of Mrs. Ruth Bidwell of McLean.

Other survivors are his wife, Adelle; two sons, Douglas of Truth or Consequences, N.M. and George K. of Columbus, Neb.; two daughters, Mrs. J. E. Rhodes of Fair Oaks, Calif. and Mrs. G. R. Buck of Texas; two brothers, Walter of Amarillo and L. J. of Rice; two sisters other than Mrs. Bidwell, Mrs. W. W. Williams of Amarillo and Mrs. W. H. Clay of Hedley; 13 grandchildren and two great-grandchildren.

G. I. Bill Has 4th Anniversary

June marks the fourth of the anniversary of the current GI Bill education and training program, and the Veterans Administration has examined its tally sheet.

According to Jack Coker, Director of the Waco Veterans Administration Regional Office, 1,652,537 veterans and 132,695 servicemen trained under the GI Bill.

Area Food Program Begins In Gray Co.

A commodity food program for a three-county area will go into effect recently in Pampa in compliance with a federal court order issued six months ago in Dallas.

Lester Woods, supervisor of the Texas Department of Public Welfare in Gray, Roberts, and Wheeler Counties said the program is the result of a federal court order directing all counties in Texas to distribute food to low income families.

Woods said the 800 persons now on welfare will automatically be notified by their case workers when to pick up the food.

Persons not receiving public welfare may apply for the surplus food by contacting Mrs. Sue Holder, commodity supervisor, at 322 S. Cuyler St., Pampa, or interviews will be held at the McLean City Hall, Monday, July 13th from 9-12 a.m. and from 1-4 p.m.

Woods said the distribution of food to persons not on welfare would depend on income and size of family.

Butter, cheese, flour, farina, canned meats and vegetables, rolled oats, powdered milk, and egg mix are among the items to be distributed to needy families each month.

Woods said the program was initiated after a federal district court in Dallas ordered all counties to participate in the program six months ago.

Previously, Texas counties could provide such a program at county expense. Woods said the option was up to the county and 50 counties, including Gray, chose not to participate in such a program.

County Judge Sherman Lanning Jr. said Gray County did not elect the commodity program because \$30,000 a year was budgeted to provide food for needy families.

"If a family needed food, we authorized a grocery order," Lanning said. "If the need was there, we continued to provide food for two or three months or longer."

Under the new program Lanning said, the county will maintain the \$30,000 welfare program.

Lanning said a commodity program, under the federal plan, would have required Gray County to employ a distributor and investigator, provide storage and refrigeration, and make trips to Amarillo or Lubbock to pick up the food.

Under the federal order, federal money will help pay for additional employees, and the U. S. Department of Agriculture will provide the food.

Woods said county home demonstration agents would hold classes on the proper preparation of the food. Classes will be scheduled when convenient, but will probably be on a continuing basis.

Woods said there is a definite need for such a program in Gray County.

"We have a limited amount of money for each welfare program," he said. "More and more people are being added to the welfare rolls, causing money used for welfare to become tighter."

Woods said an old couple, over 65 years of age, could receive as much as \$174 per month in welfare assistance. A mother with three children receives only \$148 per month under a separate program.

"Another cause of the relatively low payments," said Woods, "is that people moving into the state can go on welfare the day they get here. Under old laws, they had to reside in assistance."

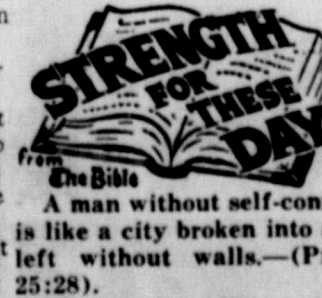
Mrs. Holder will supervise the distribution of the commodities. Woods said persons having questions about eligibility may contact her at the Cuyler street address.

Citizens For School Improvement To Meet Tuesday

The Citizens for School Improvement group will meet Tuesday, July 14 at 8:30 p.m. at the McLean Country Club.

All interested persons are invited to attend.

Miss Judy Saunders of McLean was a patient in the Groom Hospital recently.



A man without self-control is like a city broken into and left without walls.—(Prov. 25:28).

When we are disturbed by events or conditions around us, we should be patient and poised. We should hold our emotions in check, and take a positive constructive attitude.

With this self control we can think through any situation, and with divine assistance come upon the right and just solution.

McLean News, McLean, Texas, July 9, 1970 Page 2
S. C. S. NEWS
 by Mickey L. Black
 The Progress on the Red Deer Creek Watershed Project is coming along real well. The project is being co-sponsored by the Soil and Water Conservation Districts and the Commissioners Courts of Gray, Roberts and

DR. MARION N. ROBERTS
OPTOMETRIST
 PAMPA, TEXAS
 1112 W. Kingsmill |
 Telephone 669-3333

Hemphill Counties. The Red Deer Creek Watershed heads about five miles west of Pampa in Gray County, flows northeastward through Roberts County and enters the Canadian River at Canadian in Hemphill County. The total drainage area is about 206,300 acres of 322 square miles.
 The Steering Committee of the Gray County portion of the Red Deer Creek Watershed met Tuesday night, June 23, and reviewed the progress of the watershed. The Steering Committee members are Robert Sailor, John Spearman, Sam Bowers, Vernon Watkins and W. B. Jackson. Also, present at the meeting were the following Soil Conservation Service personnel: J. M. Woodson, Work Plan Staff Leader, and Travis Walden, Civil Engineer of Waco and Mic-

It's Happening In West Texas This Month—

- JULY—**
 1-Aug. 31—Canyon—"TEXAS"—Paul Green's Historical Musical-Drama in Pioneer Amphitheatre at Palo Duro.
 8-11-Coleman—Coleman Rodeo.
 9-11-Earth—Earth Rodeo.
 9-11-Ranger—Annual Ranger Open Rodeo.
 11-Stanton—37th Annual Old Settlers' Reunion.
 15-18-Snyder—Annual Scurry County Rodeo.
 16-18-Tulia—Tulia Annual Picnic Celebration, Rodeo & Old Timers' Reunion.
 17-18-Mason—Annual Rodeo.
 18-Burnet—4-H Youth Show.
 20-Spearman—Rolling Plains Mule Train to Raton, New Mexico.
 23-25-Brownwood—Annual Brown County Rodeo.
 30-Aug. 1-Burnet—Burnet County Fair & Rodeo.

key Black, District Conservationist from Pampa.
 At this time, six floodwater retarding structures are being considered for the Gray County portion of the watershed. Woodson reported that his survey crew had completed the preliminary survey on 21 structures in the entire watershed and 9 of these had been surveyed in detail.
 Woodson said, at present, it appears that funds will allow for the construction of 16 to 20 floodwater retarding structures if the final work plan is approved. The preliminary work plan should be completed in September 1970, if all work goes according to schedule. The final work plan should be ready to be presented to Congress for congressional approval some time in 1971.
 The Red Deer Creek Watershed project is still in the planning stages and nothing has been finalized to this date.

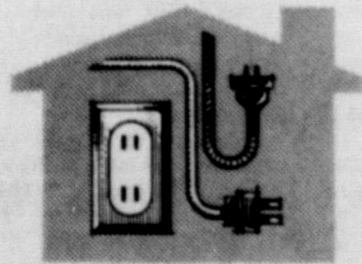
BIRTHDAYS

- JULY 10**
 Emma Lou Carpenter
 Kay Hallum
JULY 11
 Mrs. Dora Sanders
JULY 12
 Mrs. Jack McClellan
 Jerry Cecil Hill
JULY 13
 Mrs. Johnny Haynes
 Ronnie Smith
 Dennis Cobb
JULY 14
 Mrs. Erven Alderson
 Eddy Jay Windom
 Cindy Brooks
JULY 15
 Mrs. R. T. Dickinson
 Mrs. Earl Stubblefield
 Wayne McIlroy
 Joan Webb
 Mrs. Frank Golightly
JULY 16
 Mrs. Jack West

Thursday, July 16
8 99¢
 KING SIZE WALLET CREATIVE COLOR PORTRAITS FOR ONLY

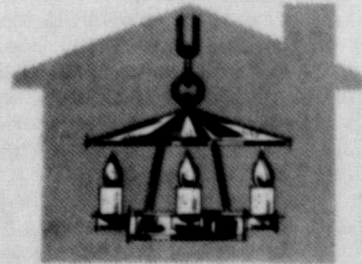
 PHOTO HOURS 9 A.M. TO CLOSING
 NO LIMIT
 GET PICTURES MADE OF GRANDPA, GRANDMA, DAD, MOM AND ALL THE LITTLE ONES AT THESE SAME LOW PRICES!
SHUGART COLOR PHOTOS
WILLIAMS APPLIANCE
 218 N. MAIN

Your house should be as good -



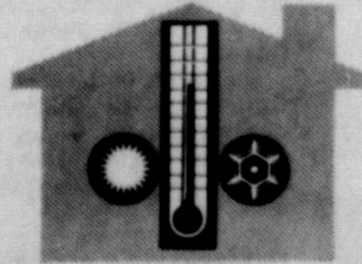
ADEQUATE WIRING

Somebody once figured out that the average automobile has more wiring than the average house, for its size. Your car is adequately wired to serve the many purposes needed. And, so should your house.



LIGHTING

The same person figured out, too, that the average car has more special purpose lights for convenience, safety, and beauty than a house. But, for the same reasons, shouldn't your house have the right kind of lighting, too?



COMFORTS

And, how about comforts...heaters, radios, air conditioners, convenience switches, power steering, power brakes, tape recorders, electric windows, and lots more. Does your home measure up to your automobile? It should, because you probably spend more time there.

When you're building a house...make it a home... make it as good as your automobile...make it a total electric, gold medalion!



P.S. Lots of electric power in our area. No worry about shortages. Use it...enjoy it!

Shurfine **'INDEPENDENTS' SHOPPERS' SHOWDOWN SPECIAL!**
 SALE CLOSING SATURDAY (SOME ITEMS SOLD OUT)

SHURFINE TUNA 3 6 OZ. CANS **\$1**
SHURFINE TOMATO SAUCE 10 8 OZ. CANS **\$1**
SHURFINE TOMATOES 5 303 CANS **\$1**
SHURFINE CATSUP 3 20 OZ. BTL. **\$1**
SHURFINE VIENNA SAUSAGE 4 4 OZ. CANS **89¢**
SHURFINE APPLE BUTTER 3 28 OZ. JARS
SHURFINE APPLESAUCE 5 303 CANS
SHURFINE ASPARAGUS ALL GREEN CUT SPEARS 3 300 CANS
SHURFINE CHERRIES R S P 4 303 CANS
SHURFINE EVAPORATED CANNED MILK 6 14 OZ. CANS
SHURFINE FROZEN ORANGE JUICE 6 OZ. 6 FOR \$

SOFLIN TISSUES BATH ROOM 10 ROLL PKG. **89¢**
Shurfine FLOUR 5 LB. PAPER BAG **39¢**
SHURFINE MUSTARD 16 OZ. 2 FOR **39¢**
SHURFINE EARLY HARVEST SWEET PEAS 5 303 CANS **\$1**
SHURFINE VAC PAC REGULAR or DRIP COFFEE 1 LB. CAN **79¢**
KENTUCKY WONDER GREEN BEANS LB. 25
LONG GREEN CUCUMBERS LB. 15
SANTA ROSA PLUMS LB. 19
NEW POTATOES 2 LB. BAG 23

SHURFINE DRINKS ORANGE OR GRAPE 4 46 OZ. CANS **\$1**
SHURFINE CORN GOLDEN WHOLE KERNEL or CREAM STYLE 6 303 CANS **\$1**
SHURFINE BISCUITS SHURFRESH BUTTERMILK or SWEETMILK 12 8 OZ. CANS **\$1**
SHURFINE FACIAL TISSUES 200 CT. BOX 5 FOR \$
SHURFINE BLACK EYES FRESH SHELLLED 6 300 CANS
SHURFINE FRUIT COCKTAIL 4 303 CANS
SHURFINE SHORTENING 3 LB. CAN **75¢**

SOFLIN NAPKINS 200 COUNT 2 PKGS **59¢**
SHURFINE FROZEN LEMONADE 10 6 OZ. CANS **\$1**
DETERGENT ENERGY POWDERED 49 OZ. BOX **59¢**
Shurfine WHOLE SWEET PICKLES 2 22 OZ. JARS **\$1**
SHURFINE SALAD DRESSING 32 OZ. **43¢**

WILSON ALL MEAT BOLOGNA LB. **49¢**
WILSON CERTIFIED FRANKS 12 OZ. PKG. **49¢**

Shurfine BEETS CUT 7 303 CANS
VIKING ALUMINUM 12x25 ROLL FOIL 2 **49¢**
SALAD OIL 24 OZ. BTL. 49¢
Shurfine SPINACH 6 303 CANS
SHURFINE POP ASSORTED CANNED 11 12 OZ. CANS

SHURFINE CAKE MIX DEVILS FOOD, WHITE, SPICE or YELLOW 4 18 1/2 OZ. BOXES **\$1**
SHURFRESH SALTINE CRACKERS 2 16 OZ. BOXES **49¢**

SHURFINE WHOLE IRISH POTATOES 7 303 CANS **\$1**
SHURFRESH QUARTERS MARGARINE 5 1 LB. PKGS. **\$1**

SHURFINE FRESH PAK CUCUMBER CHIPS 3 16 OZ. JARS **\$1**

SHURFINE PORK & BEANS 8 300 CANS **\$1**
SHURFINE PICKLES 3 16 OZ. JARS **\$1**
SHURFINE MARKET LOWEST EVERYDAY FOOD PRICES
Specials Good June thru July 11, 1970
 Store Hours: 8 a.m. to 6 p.m.
DOUBLE GUNN BROS. STAMPS EVERY WEDNESDAY
 With Purchase of \$2.50 or More (Excluding Cigarettes)

THE McLEAN NEWS

Established 1904
Zip Code 75057

Phone 779-2447

P. O. Box H

Published every Thursday McLean, Gray County, Texas

E. M. BAILEY
DEBORAH BAILEY

PUBLISHER
EDITOR

Entered as second-class mail matter at the Post Office in McLean, Texas, under the act of Congress of March 3, 1879.

SUBSCRIPTION RATES PER YEAR

Gray, Carson, Donley, Wheeler, Roberts, Collingsworth Counties \$3.00
In other Texas Counties and Out of State \$4.00

Soil Conservation Service News

By Earl D. Lewis
I talked to Curtis Schaffer, Lake McClellan Road, District Director of the Gray County Soil and Water Conservation District, Wednesday, June 10, he said wheat harvest was in full swing. He said the summer fallow dryland wheat on his son's place was making about 20 bu. per acre with just slight hail damage. He said his wheat had more hail damage and would make somewhat less, probably around 12 bushels per acre. With good management of the wheat residues, dust blowing on these areas can almost be eliminated. Tillage operations should leave the residues tucked into the soil or under cut Curtis agrees that Dust Storms



WEDDING GIFT REGISTRY
For Shower Gift Service
Call 779-2351
Veral Lynn Gift Shop
Free Gift Wrap & Delivery

"A Going Church for a Coming Lord"

First Baptist Church

209 East First

Sunday School 9:45 a.m.
Morning Worship 10:50 a.m.
Evening Worship 7:30 p.m.
Wednesday
Hour of Power 7:30 p.m.

NURSERY PROVIDED FOR ALL SERVICES



D. L. CRADDOCK, Pastor

Trout Reunion Is Held At McClellan Lake

A Trout reunion was held at McClellan Lake June 26, 27 and 28. This was the ninth reunion held and there was 88 attended.

Those attending from Amarillo were Mr. and Mrs. Wesley Trout, Don and David, Mrs. Bonnie Johnson, Mike, Randy and Kari, Mrs. Barbara Teeple, Kari, Todd and David, Mr. and Mrs. Mimmy Adams and Stacy. From Canyon were Mr. and Mrs. Ray Bible, Peggie, Rhonda, Danny, Maria, Dale and Max.

From Lubbock were Mr. and Mrs. Ray Richardson, Bobby, Kenneth, Carey. From Pampa, Mr. and Mrs. James Smith, Mike David and Brion, Mr. and Mrs. James Fulton, Steven, Kenny, Doug and Kevin, Mr. Charles and Mr. Ike Shipman. From Borger, Mr. and Mrs. Cecil Ferguson, Rae Lynn and Ronnie.

From Lefors, Mr. and Mrs. Johnnie Taylor, Linda, Shelia and Darla, Mr. and Mrs. Jessie Cooper, Robert, Casey and Clayton, Mr. Royce Crutcher, Mr. and Mrs. Alan Crutcher, Jimmy, Lajuana, Pamela and Roger, Mr. and Mrs. B. F. Calloway, Steve, Phyllis, Dale, Ricky, Rocky and Sharon from Texarkana, Ark.

Those from McLean were Mr. and Mrs. Everett Smith, Mr. and Mrs. Buddie Holloway, Debra, Mrs. Susie Trout, Mr. and Mrs. Jack Matthews, Mr. and Mrs. Don Smith, Cindy and Lisa, Mr. and Mrs. Bill Kingston Jr., Joel, Jeff and Amber, Mr. and Mrs. G. R. Richardson, Mrs. Geneva Kingston.

Visitors were Joe Don Elkins of Lefors; Miss Patricia Cartwright of Canyon; Mr. and Mrs. A. C. Free of Canyon.

The largest number of volumes at any college or university library, according to the U.S. Office of Education, is 8,999,511 at the University of California. Following in second and third place respectively are Harvard University, with 7,600,357 books, and Yale with 4,995,398.

Your stomach contains more than 5,000,000 glands.

All E Bonds Earn Interest-None Has Reached Maturity

"All outstanding E Bonds are still drawing interest regardless of age - none has reached 'final' maturity," Rex Brack, Senior Vice President, Branniff International, and volunteer state chairman, said.

Brack made the statement because of wide public misunderstanding of terms and conditions of U.S. Saving Bonds.

"E Bonds now being issued have a maturity of 5 years, 10 months, with an automatic 10 year extension. 'Older E Bonds' - with original maturities ranging from 7 to 10 years - have been granted one or more 10 year extensions so no E Bond has reached 'final' maturity and they continue to earn interest."

Brack said the current rate is 5 percent, at maturity. Yield is 4.01 percent the first year thereafter, 5.20 percent to maturity. Older bonds earn at the new 5 percent rate, beginning with the first semi-annual interest period starting on or after June 1, 1969, if held to maturity.

"Many holders of older Bonds don't realize how their value has appreciated," Brack said. "For example, a \$100 Bond bought for \$75 in July 1941, is now worth \$191.64."

"A prime feature of Savings Bonds is their tax advantages. Interest is exempt from all state or local income or personal property taxes. It is subject to Federal income tax, but the tax may be deferred until Bonds are cashed, making possible creation of 'Tax-Break' retirement and tax-free education funds."

Mary Glass Is Derby Town Tops 3 Months Queen

By Lucille Tucker, Reporter

The Derby Town Tops Club met on Monday at 7 p.m. for their weekly meeting with 14 members present. Cheryl Smith co-leader was in charge of the business meeting, Mary Bybee, secretary gave the report of the previous meeting. Ann Smith, treasurer took care of the financial business and led the social program with games and those winning received prizes. The games were enjoyed by all.

Gladys Smith received the fruit basket for a 2 1/2 pound weight loss for the week and was the weekly queen. The club had a 9 1/2 pound weight loss.

Mary Lou Glass is the monthly queen and the three month queen for the largest weight loss. She also received the money tree and the money from two contests that the club had.

Mrs. Viola Glass was second runner up for the monthly queen. Members gaining weight made a pledge to lose the next week and set a consequence for their self if they gain.

Plans were made for a salad supper to be held at the next weekly meeting on Monday, July 13th in the home of Gladys Smith. All club members are urged to be present and new members will be welcome to come and join the club.

Mrs. Roy Glenn and son, Clifton of Jackson, Ark. returned home Friday after spending sometime at the bedside of her mother, Mrs. Lona Jones, in the hospital.

Trout Reunion Is Held At McClellan Lake

Trout Reunion Is Held At McClellan Lake

Trout Reunion Is Held At McClellan Lake

Trout Reunion Is Held At McClellan Lake

Trout Reunion Is Held At McClellan Lake

Trout Reunion Is Held At McClellan Lake

Trout Reunion Is Held At McClellan Lake

Trout Reunion Is Held At McClellan Lake

Trout Reunion Is Held At McClellan Lake

Trout Reunion Is Held At McClellan Lake

Trout Reunion Is Held At McClellan Lake

Trout Reunion Is Held At McClellan Lake

Trout Reunion Is Held At McClellan Lake

Trout Reunion Is Held At McClellan Lake

Trout Reunion Is Held At McClellan Lake

Trout Reunion Is Held At McClellan Lake

Trout Reunion Is Held At McClellan Lake

Trout Reunion Is Held At McClellan Lake

Trout Reunion Is Held At McClellan Lake

Trout Reunion Is Held At McClellan Lake

Trout Reunion Is Held At McClellan Lake

Trout Reunion Is Held At McClellan Lake

Trout Reunion Is Held At McClellan Lake

Trout Reunion Is Held At McClellan Lake

Trout Reunion Is Held At McClellan Lake

Trout Reunion Is Held At McClellan Lake

Trout Reunion Is Held At McClellan Lake

Trout Reunion Is Held At McClellan Lake

Trout Reunion Is Held At McClellan Lake

Trout Reunion Is Held At McClellan Lake

Trout Reunion Is Held At McClellan Lake

Trout Reunion Is Held At McClellan Lake

Trout Reunion Is Held At McClellan Lake

Trout Reunion Is Held At McClellan Lake

Trout Reunion Is Held At McClellan Lake

Trout Reunion Is Held At McClellan Lake

Trout Reunion Is Held At McClellan Lake

Trout Reunion Is Held At McClellan Lake

Trout Reunion Is Held At McClellan Lake

Trout Reunion Is Held At McClellan Lake

Trout Reunion Is Held At McClellan Lake

McLean Lodge 889, A.F. and A.M. Regular meeting second Thursday each month -- 7:30 p.m. All members urged to attend Practice first and third Tuesday nights each month.

McLean Lodge 889, A.F. and A.M. Regular meeting second Thursday each month -- 7:30 p.m. All members urged to attend Practice first and third Tuesday nights each month.

McLean Lodge 889, A.F. and A.M. Regular meeting second Thursday each month -- 7:30 p.m. All members urged to attend Practice first and third Tuesday nights each month.

McLean Lodge 889, A.F. and A.M. Regular meeting second Thursday each month -- 7:30 p.m. All members urged to attend Practice first and third Tuesday nights each month.

McLean Lodge 889, A.F. and A.M. Regular meeting second Thursday each month -- 7:30 p.m. All members urged to attend Practice first and third Tuesday nights each month.

McLean Lodge 889, A.F. and A.M. Regular meeting second Thursday each month -- 7:30 p.m. All members urged to attend Practice first and third Tuesday nights each month.

McLean Lodge 889, A.F. and A.M. Regular meeting second Thursday each month -- 7:30 p.m. All members urged to attend Practice first and third Tuesday nights each month.

McLean Lodge 889, A.F. and A.M. Regular meeting second Thursday each month -- 7:30 p.m. All members urged to attend Practice first and third Tuesday nights each month.

McLean Lodge 889, A.F. and A.M. Regular meeting second Thursday each month -- 7:30 p.m. All members urged to attend Practice first and third Tuesday nights each month.

McLean Lodge 889, A.F. and A.M. Regular meeting second Thursday each month -- 7:30 p.m. All members urged to attend Practice first and third Tuesday nights each month.

McLean Lodge 889, A.F. and A.M. Regular meeting second Thursday each month -- 7:30 p.m. All members urged to attend Practice first and third Tuesday nights each month.

McLean Lodge 889, A.F. and A.M. Regular meeting second Thursday each month -- 7:30 p.m. All members urged to attend Practice first and third Tuesday nights each month.

McLean Lodge 889, A.F. and A.M. Regular meeting second Thursday each month -- 7:30 p.m. All members urged to attend Practice first and third Tuesday nights each month.

McLean Lodge 889, A.F. and A.M. Regular meeting second Thursday each month -- 7:30 p.m. All members urged to attend Practice first and third Tuesday nights each month.

McLean Lodge 889, A.F. and A.M. Regular meeting second Thursday each month -- 7:30 p.m. All members urged to attend Practice first and third Tuesday nights each month.

McLean Lodge 889, A.F. and A.M. Regular meeting second Thursday each month -- 7:30 p.m. All members urged to attend Practice first and third Tuesday nights each month.

McLean Lodge 889, A.F. and A.M. Regular meeting second Thursday each month -- 7:30 p.m. All members urged to attend Practice first and third Tuesday nights each month.

McLean Lodge 889, A.F. and A.M. Regular meeting second Thursday each month -- 7:30 p.m. All members urged to attend Practice first and third Tuesday nights each month.

McLean Lodge 889, A.F. and A.M. Regular meeting second Thursday each month -- 7:30 p.m. All members urged to attend Practice first and third Tuesday nights each month.

McLean Lodge 889, A.F. and A.M. Regular meeting second Thursday each month -- 7:30 p.m. All members urged to attend Practice first and third Tuesday nights each month.

McLean Lodge 889, A.F. and A.M. Regular meeting second Thursday each month -- 7:30 p.m. All members urged to attend Practice first and third Tuesday nights each month.

McLean Lodge 889, A.F. and A.M. Regular meeting second Thursday each month -- 7:30 p.m. All members urged to attend Practice first and third Tuesday nights each month.

McLean Lodge 889, A.F. and A.M. Regular meeting second Thursday each month -- 7:30 p.m. All members urged to attend Practice first and third Tuesday nights each month.

McLean Lodge 889, A.F. and A.M. Regular meeting second Thursday each month -- 7:30 p.m. All members urged to attend Practice first and third Tuesday nights each month.

McLean Lodge 889, A.F. and A.M. Regular meeting second Thursday each month -- 7:30 p.m. All members urged to attend Practice first and third Tuesday nights each month.

McLean Lodge 889, A.F. and A.M. Regular meeting second Thursday each month -- 7:30 p.m. All members urged to attend Practice first and third Tuesday nights each month.

McLean Lodge 889, A.F. and A.M. Regular meeting second Thursday each month -- 7:30 p.m. All members urged to attend Practice first and third Tuesday nights each month.

McLean Lodge 889, A.F. and A.M. Regular meeting second Thursday each month -- 7:30 p.m. All members urged to attend Practice first and third Tuesday nights each month.

McLean Lodge 889, A.F. and A.M. Regular meeting second Thursday each month -- 7:30 p.m. All members urged to attend Practice first and third Tuesday nights each month.

McLean Lodge 889, A.F. and A.M. Regular meeting second Thursday each month -- 7:30 p.m. All members urged to attend Practice first and third Tuesday nights each month.

FOR SALE-Walk in refrigerated box, 82" x 92" x 88", in good condition. Plenty of cooling capacity. Excellent for small grocery, flower shop, or for farm or ranch. Cure own meat, store fruit and vegetables. George Jones, 779-2690, 415 W. Second, McLean. 28-4c

CLEARANCE SALE: 20% OFF-Ladies and girls summer dresses, shorts, tops, pants. 50% OFF- Swimsuits, pumes, miscellaneous clothing. Veral Lynn Gift Shop. 27-1c.

HOUSE FOR SALE, 710 N. Rowe. Call 779-2877. 49-tfc

HAVE GOOD BUY IN 12 X 60, 2 bedroom furnished mobil home. Small down payment. See Jim Hathaway at Masters Cleaners. 19-tfc

GOOD summer apples for sale, 6 miles south of Alanreed, on the F.B. Carter farm. 28-1c

FOR SALE-1 group extra good round dining tables; 1 antique round oak table, extra nice. O. J. Milham, 779-2815. 28-1c

WANTED CARTER's Hay Hauling, Call 779-2095 or 779-2914. 25-4c

WANTED TO RENT-Ten to Fourty acres pasture for horses. Sept. 1, 1970. Box 132, West Fork, Ark. 72774. 28-3p

MISCELLANEOUS I also send my special thanks to all the ones calling my mother and asking about my health and wishing me well and those helping her in other ways.

Another special thanks to the Mary Martha Sunday School class and other members of the First Baptist Church and the Methodist Church, also to the members of the Derby Town Top Club for their continued prayers, gifts, cards, letters and notes to me.

Also my sincere thanks to Dr. A. C. Woods for sending me to John Sealy Hospital before my illness became so serious.

I never really completely understood the true meaning of Christ's commandment to us saying, "Love thy brother as thy self" and "Be ye kind one to another" until since I've been ill and many have been so kind and helpful to me.

Each of you will never know how much your prayer and kindness have meant to me and helped me through my illness. May God bless each of you with his richest blessing for always.

Lucille Tucker

Clarence Pierce was patient in Groom Memorial Hospital last week.

CARD OF THANKS

We wish to thank everyone for the gifts, cards and visits that made our golden wedding anniversary celebration so wonderful. Josh & Mae Chilton

Brooks Family Have Reunion

The family of the late J. E. Brooks of Merkel, met with friends in the home of E. E. Brooks over the Fourth of July holiday for their annual reunion.

Those attending were Mr. and Mrs. Ralph Moore, Mr. and Mrs. Henry Ellerbee and Mary Ann, all from Denver, Colo.; Mr. and Mrs. Leonard Cassidy of Merkel; Mr. and Mrs. James Cassidy and Len of Odessa, Mr. and Mrs. Carlton Brooks and Kay, Abilene; Mr. and Mrs. Odell Dickerson and David, Trent; Mr. and Mrs. Jerry Dickerson, Sweetwater, Mr. and Mrs. Walter Ellerbee, Shamrock; Mr. and Mrs. Winfred Buckingham, Twitty; Mrs. Laura Eddleman, Randy and Linda from Vega; Mr. and Mrs. Earl Brooks, Cindy, Denny, and Eddy.

Number Of Veterans With RH Insurance Policies Growing

A growing number of disabled veterans have obtained "RH" life insurance policies issued by the Veterans Administration.

Administrator of Veterans Affairs Donald E. Johnson said a comparison of statistics for the first four months of this year with those for the same period last year reveals the number almost doubled.

A total of 6,942 RH policies with a combined value of \$65.5 million were issued during the first four months of this year. Last year, the figures were 3,801 policies worth nearly \$35 million Johnson said.

He added that RH is the only government veterans' life insurance open to new issues, and described it as a valuable, low-cost insurance which provides adequate coverage for veterans with service-connected disabilities.

Regulations require that applications for RH insurance be made within one year of the veteran's notification from VA of his service-connected disability.

The Veterans Administration expects some eight million out-patient visits in fiscal year 1971.

McLean Lodge 889, A.F. and A.M. Regular meeting second Thursday each month -- 7:30 p.m. All members urged to attend Practice first and third Tuesday nights each month.

McLean Lodge 889, A.F. and A.M. Regular meeting second Thursday each month -- 7:30 p.m. All members urged to attend Practice first and third Tuesday nights each month.

McLean Lodge 889, A.F. and A.M. Regular meeting second Thursday each month -- 7:30 p.m. All members urged to attend Practice first and third Tuesday nights each month.

McLean Lodge 889, A.F. and A.M. Regular meeting second Thursday each month -- 7:30 p.m. All members urged to attend Practice first and third Tuesday nights each month.

McLean Lodge 889, A.F. and A.M. Regular meeting second Thursday each month -- 7:30 p.m. All members urged to attend Practice first and third Tuesday nights each month.

McLean Lodge 889, A.F. and A.M. Regular meeting second Thursday each month -- 7:30 p.m. All members urged to attend Practice first and third Tuesday nights each month.

McLean Lodge 889, A.F. and A.M. Regular meeting second Thursday each month -- 7:30 p.m. All members urged to attend Practice first and third Tuesday nights each month.

McLean Lodge 889, A.F. and A.M. Regular meeting second Thursday each month -- 7:30 p.m. All members urged to attend Practice first and third Tuesday nights each month.

McLean Lodge 889, A.F. and A.M. Regular meeting second Thursday each month -- 7:30 p.m. All members urged to attend Practice first and third Tuesday nights each month.

McLean Lodge 889, A.F. and A.M. Regular meeting second Thursday each month -- 7:30 p.m. All members urged to attend Practice first and third Tuesday nights each month.

McLean Lodge 889, A.F. and A.M. Regular meeting second Thursday each month -- 7:30 p.m. All members urged to attend Practice first and third Tuesday nights each month.

McLean Lodge 889, A.F. and A.M. Regular meeting second Thursday each month -- 7:30 p.m. All members urged to attend Practice first and third Tuesday nights each month.

McLean Lodge 889, A.F. and A.M. Regular meeting second Thursday each month -- 7:30 p.m. All members urged to attend Practice first and third Tuesday nights each month.

McLean Lodge 889, A.F. and A.M. Regular meeting second Thursday each month -- 7:30 p.m. All members urged to attend Practice first and third Tuesday nights each month.

McLean Lodge 889, A.F. and A.M. Regular meeting second Thursday each month -- 7:30 p.m. All members urged to attend Practice first and third Tuesday nights each month.

McLean Lodge 889, A.F. and A.M. Regular meeting second Thursday each month -- 7:30 p.m. All members urged to attend Practice first and third Tuesday nights each month.

McLean Lodge 889, A.F. and A.M. Regular meeting second Thursday each month -- 7:30 p.m. All members urged to attend Practice first and third Tuesday nights each month.

McLean Lodge 889, A.F. and A.M. Regular meeting second Thursday each month -- 7:30 p.m. All members urged to attend Practice first and third Tuesday nights each month.

CLASSIFIED ADS

CLASSIFIED

Telephone 779-2447
Advertising Rates
Insertion 4c per word
Classified per inch 85c
per insertion 50c
unless customer has classified account with the News.

FOR RENT

Nice 2 bedroom home. Good storm celling furnished. 779-2751. 26-tfc

FOR SALE

2 bedroom home. See us or call 779-2768. 28-tfc

WANTED

CARTER's Hay Hauling, Call 779-2095 or 779-2914. 25-4c

MISCELLANEOUS

UPHOLSTERY - 30 years experience. One's Upholstery Rt. 1, Box 59a. Phone 779-2992 McLean 79057 tfc

MASTERS CLEANERS

McLean, Texas
Pickup and Delivery
Phone GR 9-2141

BARBERS READY TO SERVE YOU

BOB'S & CARL'S BARBER SHOP
For First Class Hair Cuts, Shaves
Shampoos, Tonics and Facials.

Tell us.
We'll
listen.

We're here to help when you have questions or problems concerning your telephone service. Just tell us what you want.
Our courteous service representatives in your business office pride themselves on being alert to your communication needs. When you talk, they listen.
Go ahead. Call us. You'll find a waiting ear, an understanding attitude, and you'll get action!
We may be the only phone company in town, but we try not to act like it.



Southwestern Bell

McLEAN HOSPITAL NEEDS YOUR HELP

The McLean Hospital Auxiliary asks your "HELP" in keeping our hospital "Medicare Approval" in force for our McLean Hospital. Stop and think how it could effect each individual if we should lose this, the results could be the closing of this important care for everyone.
We urge you to write Congressman Bob Price, 507 Cannon, House Office Building, Washington D. C., informing him what the hospital means to you. The more letters he receives, the more influence his office can have.
Call Auxiliary members and we will be happy to mail the letters for you.
Call 779-2453, 779-2758, or 779-2268

STATEMENT OF CONDITION AMERICAN NATIONAL BANK IN McLEAN, TEXAS AT THE CLOSE OF BUSINESS JUNE 30, 1970

Table with 2 columns: RESOURCES and LIABILITIES. Resources include Loans and Discounts (\$1,503,641.90), Banking House (15,708.50), Furniture and Fixtures (11,101.36), Stock in Federal Reserve Bank (6,000.00), U.S. Bonds and Other Obligations Guaranteed by U.S. Government (\$402,537.85), Other Marketable Bonds (\$1,167,481.75), Cash on Hand and Due from Banks (\$646,561.10). Liabilities include CAPITAL STOCK (\$100,000.00), SURPLUS (100,000.00), UNDIVIDED PROFITS & RESERVES (235,893.78), DEPOSITS (3,317,138.68). Total: \$3,753,032.46

OFFICERS AND DIRECTORS
Clifford Allison, President
J. Alfred McMurtry, Vice President
James S. Allison, Vice President
T. Elmo Whaley, Vice Pres. & Cashier
Fern Boyd, Assistant Cashier
Milton Carpenter, J. O. Coleman

News From ALAN REED

By MRS. CECIL CARTER

Visiting F. B. Carter Sunday were Mr. and Mrs. Eddie Carter and Kevin of Hiwassee, Ark., Mr. and Mrs. F. L. Dalton and Danny and Mrs. O. K. Lee of McLean and Mrs. Cecil Carter.

Mrs. M. B. Trout was accompanied to First Baptist Church Sunday by her two granddaughters from Pampa. Also visiting at church was Patricia McCurley, granddaughter of the H. A. Bullock's and Mr. and Mrs. Ed Carter and Kevin of Arkansas and Danny Dalton of McLean.

Mr. and Mrs. L. H. Earthman were in Lubbock for a medical check up for Mr. Earthman.

Visiting in the evening service at First Baptist Church was Mr. and Mrs. Grimes of Mobeetie. Mrs. Grimes is a long-time friend of the former Gwendolyn Darnell.

Mr. and Mrs. M. B. Smith of Pampa visited the Warner Phillips Sunday evening.

Mr. and Mrs. O. W. Stapp spent the holiday in Amarillo with the Paul Averitts.

Mrs. Robert Bruce and Mrs. Cecil Carter were in Pampa on Friday and visited with the Jerry Carters.

The Marvin Halls have had their daughter Beth and family of Nebraska visiting recently.

The J. D. Harrisons had his sister and husband visiting last week.

Visiting with Mrs. Cecil Carter Thursday was Mr. and Mrs. Stover of Clovis, N.M.

The Richard Sitlington were a way last weekend to pick up their sons who had been visiting with their grandparents.

Mr. and Mrs. Robert Bruce attended the Clarendon 4th of July celebration and barbecue Saturday.

Mr. and Mrs. G. L. Simmons and family were in Clarendon on Saturday for the July 4th celebration.

Mr. and Mrs. Hartley Davis were in Pampa on Monday.

Mr. and Mrs. Lavelle Vineyard of Pampa visited the P. M. Gibsons Sunday.

Mr. Vernon Goldston, Julie and Steve of Dallas visited with Mr. and Mrs. L. T. Goldston Tuesday and Wednesday.

Visiting with Mr. and Mrs. L. T. Goldston over the weekend were Mr. and Mrs. Fred Goldston, Judy and Linda and Mr. and Mrs. Harless McMahon of Lubbock, Jerry Goldston of Plainview, Mr. and Mrs. Jim Goldston, Jim Bob and Client of Memphis and Mr. and Mrs. Jess Mann of Hedley.

Boat Crashes Up In Texas

The President of the Texas Safety Association says boating accidents in Texas are becoming a problem of major concern. Dallas attorney George William Perry said, "Texas now ranks second in the nation in the number of fatalities that occur as the result of boating accidents. Only California has a worse record."

The leader of the statewide safety group said the during 1969 alone, the Water Safety Services Division of the Texas Parks and Wildlife Department recorded nearly a quarter of a million pleasure boats have been registered in Texas this year.

Perry stated that the three summer months were the most dangerous time of the year for boating, but also stressed that most weekends are also high hazard periods.

Through May 1 of this year, there were 88 boating accidents on Texas waterways in which 27 persons lost their lives.

Perry said the loss of life from boating accidents could be reduced dramatically if Texans would follow a few simple rules of safety while afloat.

SEARCH IS ON--

Nominations are due by September 1 for Texas Rural Minister of the Year. Nominations and supporting material should be sent to Reagna Brown, Extension sociologist, Texas A&M University, College Station.

Visiting the E. M. Baileys Thursday were Mr. and Mrs. L. C. Bailey, Levi, Charlene and Brent of Pampa.

ODIS' Electric Service
Electrical Needs For Your

— FREE ESTIMATES —
Day - Telephone - Night
GR 9-2652 GR 9-3084

Medicare Approval In Jeopardy

The McLean Hospital was informed recently that unless they acquired three more registered nurses before September 1, 1970, it would lose its "Medicare Approval". This means if this should happen people entitled to medicare in-patient hospital benefits could no longer receive these benefits in this hospital. This decision is the result of the Social Security Administration deciding to enforce the statutory requirements of Medicare regulations. In the past they have been lenient. Around the clock nursing care by L.V.N.'s administration is no longer acceptable. The hospital administration has made all efforts to acquire the necessary personnel to maintain a facility to accommodate the people of this community and is continually doing so, but has had little success. Now it must call on help from the community to unite all efforts to solve the problem. In doing so each citizen should ask himself "what does the McLean Hospital mean to me and my community?"

Everyone should check their long list of acquaintances and try to recall someone who is a registered nurse. Try to think of jobs that can be offered to the husband of a registered nurse. Consider training registered nurses through scholarships. Write your congressman Bob Price, 507 Cannon, House

Office Building, Washington, D.C.

It is believed if everyone puts forth a sincere effort we can solve our immediate need and keep our hospital.

Bearded Iris Suggested For Color

For brilliant colors in those sunny exposed areas of the yard, Everett E. Janne, Texas A&M University landscape horticulturist, suggests bearded iris.

These plants need plenty of sunshine, and that southern exposure with good air circulation is just the place to produce a colorful array of flowers if the bed is properly prepared, Janne said.

"Because of the rainbow of colors available, iris can be used in almost any shaped bed or area that has ample sun," he noted. "They make excellent plants to use in those odd shaped corners or borders."

Now is the time to start thinking of planting these slender stalked beauties, and by making selections early, there will be a better variety of colors and sizes to choose from, Janne said.

"Actually the time to transplant iris is in late July and early August, but if at all possible start preparing the beds now, as this will allow the soil to settle before the plants are set in the ground," Janne explained. "The

beds should be dug up and soil is heavy or contains a lot of clay, add well-rotted manure, clay, add well-rotted manure, sawdust, or peat moss to improve drainage.

"Iris must have well drained soil to prevent root or stem rot." Fertilize with a complete fertilizer, such as 8-8-8 or 10-10-10, at the rate of one pound per 100 square feet and mix thoroughly into the soil to a depth of at least eight to 10 inches so there is no danger of burning the new plants, Janne said.

"After the bed settles, you will be ready to plant the rhizomes in late July through August," he said. "Set the rhizomes one to two feet apart with the top just below the surface and the leafy end pointing in the direction you want them to spread.

"On slopes set the rhizomes with the growing leaf-end facing uphill and water the bed to settle the soil and as an aid to initiate growth."

Be careful thereafter to NOT overwater until the plants are actively growing, Janne noted.

"Overcrowded beds or clumps should be lifted and divided right after they bloom," Janne said.

"Use a sharp knife to divide the rhizomes, discarding the older woody center of the clump. "Plant only the healthy sections with a good fan of leaves." When transplanting, the leaves may be cut back to six inches for convenient handling, otherwise, don't remove leaves until they die back, he said.

FAT CHILDREN ARE NOT FUNNY

Most mothers are convinced they understand the inner feelings of their children very well. Do they? Do you?

Take fat children, especially those of pre-teen age. Do you think they're jollier than their skinny brothers and sisters; always cheerful and good for a joke, especially about themselves and being overweight?

Chances are, say child psychologists, there's an entirely different child hidden within the obesity. On careful study, Mom may discover that the fat child is really an unhappy, frustrated and resentful youngster. Behind the jokes and laughter, the child may be miserable at real or fancied social rejection and jealous of slim athletic children.

A basic rule about children is their desire to conform, to be like the others. But how can an outside kid, who needs special clothes and is clumsy because of obesity, conform? Here are some basic things a mother can do to help her overweight child, and get her reward in a slimmer, happier youngster.

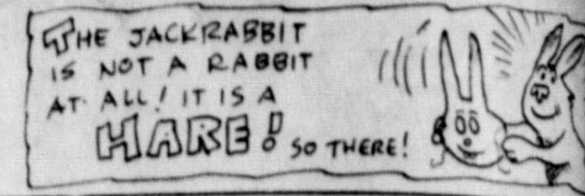
1. Consult your family physician about the child's general health and carry out a weight-reduction program under his supervision.

2. Serve smaller portions at meals, reducing the quantities gradually. A drastic reduction

may cause the child to cheat between meals.



- Eliminate between-meal snacks and sweet desserts.
- Although most children do not retain too much sodium (salt) and fluid in their bodies, if your doctor finds it is a problem with your child—chances are he will recommend Co-Salt, the salt substitute most widely used in stores. Although it tastes and looks like real salt.
- Do not nag or embarrass an overweight child about his weight. He may react compulsively overeat as a defiance.



DR. JACK L. ROSE
OPTOMETRIST
Tues. 9 a.m. - 5 p.m. Fri. 2 p.m. - 5 p.m.
For Appointment Call BL 6-2701
507 N. WALL. SHAMBOCK, TEXAS

FRANK PHILLIPS COLLEGE

Borger, Texas

We have not computerized our students

We have not depersonalized our classes



Fall Registration Aug. 26th & 27th

LONG ON
LANES
MARDI-GRAS 1/2 GALLON
ICE CREAM

39¢

LOW PRICES

39¢

TISSUE TOWELS

LIQUID KING SIZE
IVORY 79¢

BETTY CROCKER
BOSTON CREAM
PIES 39¢

NORTHERN
BATHROOM
4 ROLL PACK
39¢
2 ROLL PACK
39¢

V. B. BRAND 303 SIZE
APPLE SAUCE 7 FOR \$1

BAKE-RITE
SHORTENING 3 LB. CAN
65¢

CANTALOUPE
3 FOR \$1

WAGNERS
ORANGE DRINK QUART 3 FOR 79¢

Duckett's
FOOD STORES
McLEAN, TEXAS

Specials Good Friday and Saturday, July 10, 11, 1970

VALUES GALORE
MARYLAND CLUB

COFFEE
POUND
89¢

LIPTON INSTANT
TEA 3 OZ. JAR
99¢

SUNRAY
BACON
2 LB. PKG. \$1.49

KIMBELLS 40 OZ. JAR
APPLE BUTTER 49¢

PEARS
HUNTS 300 SIZE 4 FOR \$1

FRUIT COCKTAIL
HUNTS 300 SIZE 3 FOR 79¢

KIMBELLS
HAMBURGER SLICED DILL
PICKLES QUART 39¢

WE ARE YOUR TOP STAMP REDEMPTION CENTER

