

# The McLean News

Serving McLean and the Area Since 1903

Price 10¢

Volume 69

McLean, Gray County, Texas, Thursday, September 21, 1972

Number 38

## School Consolidation Vote Saturday

### McLean Loses To Pirates, Open This Week

The Tigers will have weeks to get ready for next game, which will be with Groom here on September 29.

The team came out on the end of the 19-12 at Lefors last Friday night in the second game of the season, but most of the fans were proud of the team performed. Trew recovered a fumble in the end zone of the first quarter to give the first points in the game with the score at 6-0 in McLean's favor.

Dwight Keith kept the score in the quarter making the 6-6.

Randy Mason loose on a 52 yard down run to put the lead in the last quarter, but a try for two points failed.

Mack Dunn caught and pass to tie up the game once again and converted successfully to give Lefors their win of the season. In two weeks to practice and work together they believe they will see a better game and a victory for the McLean.

**FOOTBALL SCHEDULE**  
8 McLean at Shamrock  
15 McLean at Lefors  
29 Groom at McLean  
6 McLean at Turkey  
13 Memphis at McLean  
20 Claude at McLean  
27 McLean at Silverton  
3 McLean at Clarendon  
10 Wheeler at McLean  
17 McLean at Wellington

### High Cubs Meet White Deer

The High Cubs will meet this Thursday night at 6 p.m. here at McLean.

They will meet the White Deer team in battle tonight. They would appreciate their coming out and supporting them.

### 3 Chevrolets On Display

Mr. and Mrs. Ted Simons extend an invitation to the residents of this area to see the 1973 Chevrolets on display. Where there you may register for the door prize to be given away.

### Assembly Of God To Show Movie 'To Russia with Love'

This gripping motion picture speaks to the heart. Many of the shots were filmed inside Russia and give eloquent testimony to the fact that hunger for the Word of God is very real in that land of multiple closed churches. It graphically portrays life today for many thousands of Christians in the communist third of the world.

Secret arrangements were made in advance for an English-speaking Russian Christian to rendezvous with a U-E photographer on a visit to Russia. The two met quietly at the appointed hour, and for the next few weeks our cameramen captured a revealing glimpse of the underground church at worship. He found himself deeply moved by what he

saw. The closed churches, the status of Christians living under Communism. TO RUSSIA WITH LOVE

faithfully records all this. "This film was one of the most difficult projects we've ever undertaken."

L. Joe Bass, Founder/President of Underground Evangelism, declares, "We sent a professional photographer with minimum equipment into Russia to obtain the necessary shots, for the sight of much professional camera equipment would be enough to put the KGB on a foreign photographer's trail 24 hours of every day. Our man was able to lose himself among the vast crowd of tourists in Moscow and go on his way unchallenged and unmolested. The result was some of the finest behind-the-scenes shots we have ever seen."

Shown also is Underground Evangelism's Bible press in western Europe where tens of thousands of pocket-sized "smuggling" Bibles and a great variety of other Christian literature are printed for distribution inside the Iron Curtain.

An actual border crossing which helps portray Underground Evangelism's wide-scale, Bible-smuggling ministry, is also seen.

During the first part of the film, the voice of Stephan Bankov, young Christian lay pastor whose escape to the West with his wife and two children is dramatized in the film, is heard speaking in Bulgarian. English overtones are those of our narrator.

The public is cordially invited to view this exciting and informative film to be shown at the Assembly of God Church 7:30 p.m. Tuesday, Sept. 26th.

### Wellington Pastor To Speak At Local Baptist Church

An all church fellowship dinner will be held at First Baptist Church this Friday evening at 7 o'clock. All families of the church and their friends are invited. Coffee, tea and table service will be provided. Each family is requested to bring enough food for themselves and one or two guests. After the evening meal everyone will go to the auditorium for "Sunday School Launch Night." Officers and teachers serving for the 1972-73 church year will be recognized. Major calendar events for the new year will be presented. Sunday school goals and objectives for 1972-73 will be discussed.

Ted Savage, pastor of First Baptist Church, Wellington, will be inspirational speaker. Mr. Savage and his family spent several years serving as a missionary with the Foreign Mission Board of the Southern Baptist Convention.

### Mrs. Mabel Wilson Former Resident Buried In Hereford

Services for a longtime school teacher and native of McLean, Mrs. Mabel Wilson, 70, of Hereford, were held at 1:30 p.m. on Sept. 7 in the First United Methodist Church in Hereford, of which she was a member.

Rev. W.A. Appling, pastor of the Hereford Church, officiated. Burial was in a Hereford Cemetery.

Mrs. Wilson died on Tuesday, Sept. 5 at Mayo Clinic in Rochester, Minn., after an illness of two weeks.

She was born on the U.V. Ranch at McLean, moved to Hereford in 1922 to teach school. She married Bob Wilson in 1925. He died in 1966.

Mrs. Wilson resumed her teaching career in the early 1960's. Her parents, Mr. and Mrs. F.M. Faulkner, moved from McLean and to Canyon in 1919 so their children could attend college. Mrs. Wilson, earned a master of education from WTSU, was a member of National Retired Teachers American Association and the American Association of Retired Persons.

Survivors include a son, Richard F. Wilson of Amarillo; a daughter, Mrs. Kenneth K. Clark of Tulsa; two brothers, Harry Faulkner of Amarillo and Rhea Faulkner of Camp Verde, Ariz.; four sisters, Mrs. Winnie Steele of Albuquerque, N. M., Mrs. C.H. Smith of

### Mothers Inc. Plan Halloween Carnival

Interest in the newly organized Mothers, Inc. is growing as shown in a special meeting held September 18th. Plans for a Halloween Carnival and Queen Coronation are in full swing with the proceeds going toward the air conditioning of both school buildings.

We are urging all mothers in our community to join this group and help make it a successful endeavor, said Mrs. Sam Haynes, President. We are in need of more workers and members are now and encourage your participation in getting ready for this festival. She asks that you contact Mrs. Jerry Henley if you wish to join before their next meeting, October 2nd.

It is the consensus of this group that our children are in need of a place to go on this special night and we as parents need to put our efforts behind it.

### Baptist Church To Observe Promotion Day

Next Sunday morning will be a glad time for many children and youth at First Baptist Church. Many will promote from one department to another. To recognize this development in the lives of members "Promotion Certificates" will be presented. Those promoting will be presented to the new department and the fall quarter Sunday school lesson material will be distributed.

All Sunday school members are urged to be present for this special occasion.

### Circle B Meat Co. To Hold Open House

Open house will be held at the new home of the Circle B Meat Company in Groom from 2 to 5 p.m., Sunday, Sept. 24, and the public is invited to attend.

The Circle B Meat Company, formerly the Homen Meat Company, has just completed construction of its new headquarters located one block north on Interstate 40 on the west side of the City limits of Groom. The plant occupies an acreage on Farm Road No. 295 at its junction with First Street.

Austin, Mrs. Ulric Lea of Knox City, and Mrs. Amy F. Van Coot of Venice, Fla.; and two grandchildren.

Residents of McLean and Alanreed will go to the polls Saturday to decide whether we want to consolidate the two school districts, Alanreed School, which presently has 17 students in all, teaches only elementary grades. High School students presently go to McLean.

McLean school officials pointed out that consolidation would benefit both districts, since McLean is but 8 miles from Alanreed. McLean officials point out that with both schools merged together, a bigger budget would allow a broader and modern curriculum. They point out that transition of the students would be at a minimum, since high school students (their brothers and sisters) already are going to McLean.

Taxpayers in the Alanreed districts, the oil companies, ranchers and land owners have urged consolidation because they feel taxes are too high and are being wasted in the Alanreed district. Alanreed has proposed a 25% tax increase.

Many untruths and exaggerations have been circulated about the proposed consolidation. McLean school officials, concerned about these stories, called a meeting last Thursday night with the McLean School Board, the Alanreed School Board and the oil companies involved. Many interested citizens from Alanreed and McLean attended the meeting. The meeting was called in an effort to clear up questions about the proposed consolidation, and to set the record straight.

McLean school board members who were present for the meeting included Howard Gibson, Creed Lamt Gerald Tate, Bob Sherrod, James Ellison and Leslie Darsey.

Alanreed board members were Richard Sitlington, Robert Bruce, J.C. Gilbreath and Phillip Gibson and Curg Hill.

Sam Gayton, McLean superintendent of schools, pointed out that a rumor has been circulated that "McLean School board members had offered oil companies a special tax rate if this encouraged consolidation and were successful in getting it." He asked each oil company if they had ever been offered a special rate, and each replied "No."

Mr. Gayton also referred to a charge that the consolidation was part of a "Master Plan" to consolidate several schools. Gayton denied this charge, and asked each individual board member if he had knowledge of a "master plan." Each board member answered "No." To a charge that McLean

board members had influenced a McLean bank not to loan money to the Alanreed district, Mr. Gayton asked each board member if he had influenced a bank. Each board member replied "No."

The Alanreed School district has said that it does not tax personal property such as automobiles, etc. Supt. Gayton reminded Alanreed Supt. Finley that the law says these "items must be taxed." And the oil companies said they would see that they were placed on the tax roll regardless of the consolidation outcome.

A representative from Phillips 66 Oil Co. indicated that his company might go to court before paying school taxes if the Alanreed district is not consolidated. He said that Alanreed taxes would have to continue going up because oil valuation would continue to go down. The representative also pointed out that the Alanreed oil was on an assessed ratio of 46.9 percent. Alanreed taxes all other property at 33 1/3 percent. He also said this was in violation of state statutes if not corrected.

Mr. Gayton said that we are not planning a new building, our building is far from being condemned. He said that the 2 districts together can have one of the finest educational systems in the Panhandle without new buildings. Mr. Gipson told about the new windows and doors that have been installed and that windows for the front were ordered for the high school. He said that the building was structurally sound. Mr. Darsey said that we were planning more improvement in the future, and Mr. Sherrod stated that we had not borrowed any money on what we had already done.

Mr. Gayton explained that in the event the school district voted to consolidate all teaching contracts would be honored. And there would be places of service for all the persons employed by the Alanreed schools.

(Continued On Page 3)

### Senior Citizens To Get Together

The Young At Heart Club will have a meeting Tuesday, Sept. 26 at 7 p.m. at the Casper Smith Building.

This is a newly organized club and they invite any senior citizen that is interested to come.

Mrs. S.B. Kiser suffered an injury to her arm recently when she fell.

# SAVE FOOD DOLLARS

(IT'S THE TOTAL FOOD BILL THAT COUNTS)

**SUGAR** IMPERIAL PURE CANE **10** LB. BAG **\$129**

KRAFT SALAD DRESSING  
**MIRACLE WHIP** QUART **59**

APRIL SHOWER  
**DUSTING POWDER** **89¢**

WILSONS ALL MEAT 12 OZ. PKG.  
**FRANKS** **59¢**

HI" C" **FRUIT DRINK**  
ORANGE-LEMON-  
LIME- STRAWBERRY **3** FOR \$  
46 OZ. CAN

NEW SHIPMENT  
**KNIT FABRICS**  
NEW Lower Prices

WILSON TENDER MADE  
**HAMS**  
FULLY COOKED **\$119**  
2 to 3 LBS. POUND

**COCA-COLA** \$  
28 OZ. BOTTLES **4** FOR

MC\*2 LIQUID  
DISHWASHING 22 OZ.  
**DETERGENT** **29¢**

CENTRAL AMERICAN  
**BANANAS** 2 **25¢**  
LBS.

SHURFRESH  
100% PURE CORN OIL LB. **39**

KRAFT MINIATURE  
**MARSHMALLOW**  
10 1/2 OZ. **23¢** 6 1/4 OZ. **15¢**

TEXAS BELL  
**PEPPERS** LB. **19¢**

SOFLIN DISPOSABLE  
**DIAPERS**  
DAYTIME OVERNIGHT

KRAFT  
CHEESE WHIZ  
**SPREAD** 8 OZ. JAR **59¢**

CALIFORNIA  
**CUCUMBERS** LB. **15¢**

BOX OF 30 **\$139** BOX OF 12 **79**

VAN CAMP  
**VIENNA SAUSAGE** **4** FOR \$

Simpson's Market

WITH THIS COUPON  
1-pound Can of Maryland Club Coffee **79¢**  
Without coupon **93¢**

Cash value .20¢ Limit one per customer  
COUPON EXPIRES 9-29-72



BORDENS ROUND CARTON  
**ICE CREAM** 1/2 GAL. **79**

GLADIOLA  
**CORN BREAD MIX** PKG. **10**

SHURFRESH MILK FOR GOODNESS SAKE



LOWEST EVERYDAY FOOD PRICES

# SIMPSON'S

MARKET

Tendercrust Bread and Bakery Products

SPECIALS GOOD

Friday & Saturday, Sept.



edition of the 2 1/2 hour live stage musical extravaganza, "Disney on Parade" opening Tuesday, Oct. 3 at the Amarillo Coliseum for 8 performances.

"Disney on Parade" is presented by Nawal Productions, a partnership of NBC Enterprises and Walt Disney Productions.

Seen and enjoyed by millions around the world, Mickey steps from the cartoon film to the arena floor live to lead over 100 Disney costumed characters through a major production numbers.

True to his star status, Mickey is the first of many acts in "Disney on Parade." He turns conductor to lead his own band.

Naturally, this isn't just any band, but a Disney band. Seven costumed instruments, each over 12-foot tall march on stage to play themselves and set the pace for a performance of fantasy and fun.

Mickey's old pal, Donald Duck, never did like to be second and attempts to take away the spotlight himself.

The squawking duck goes to some length in his attempt to prove he is the world's greatest xylophone player.

Utilizing new techniques in traveling show production "Disney on Parade" encompasses the elements of live choreography, motion pictures, sound effects, music, unique lighting methods, a specially designed mobile staging area and the classic art of the magician. The result is a parade of Disney stars and stories never seen before in any medium of entertainment.

It's a fitting tribute to Mickey Mouse to be named the star of the show for it was his popularity which helped launch the vast Disney world of entertainment.

Fame-international fame came to Mickey at a very early age. In 1930, just two years after his creation, a Mickey Mouse cartoon was selected by a German jury as one of the 10 best pictures of the year. In 1931, Louella Parsons declared, "Mickey Mouse has a bigger screen following than nine-tenths of the

stars on Hollywood," the London reporter disclosed that Queen Mary listed Mickey as one of her favorites; Madam Tussaud included him in her famous wax museum and a headline proclaimed, "Outstanding Personality in Germany Today, Mickey Mouse, Dominates Leipzig Toy Fair."

In the year 1932, Disney was awarded his first Oscar for the creation of Mickey Mouse. The following year several publications honored him; so did the Motion Picture Academy:

Cuba and Argentina national art academies honored him; the citizens of Isle of Man sent Walt Disney a Manx cat for creating Mickey; Mahomet Zahir Kahn, potentate of Hyderabad, declared Mickey Mouse to be the most popular of all American films stars among his people and Walt Disney was selected to appear in Britain's "Who Who" as the creator of Mickey Mouse.

The latest testimony to his sustaining public acce-

ptance is the current fashion of wearing a Mickey Mouse watch, especially one of the vintage models. U.S. Time Corporation has renewed the marketing of the watch and has found it difficult to keep the stores stocked with enough to answer the demand.

Almost too numerous to count: awards, gifts, plaques, scrolls, honors and tributes have continued to pour in over the years and there seemingly is no end in sight.

"He who gets too big for his britches will be exposed in the end." — Lee R. Call, Star Valley (Wyo.) Independent.

Mr. Roy Cullison, Jr., visited on September 9, with his sisters and families Mr. and Mrs. Dean Cluck, and family of Gruver and Mr. and Mrs. Everett Greene and family of Spearman. He also attended the Barbecue and festivities held on the D.G. Cluck Ranch on Sept. 9th.

## School Tax Guides

(Continued From Page 1)

Taxes on land and cattle for the three districts are as follows: (you can figure your own taxes) 1972 Tax schedule. Taxes are figured on a 40% rate of assessment of market value, with a tax rate of \$1.50.

	Mkt. Value	Tax Val.	Per Acre
Grass land	\$35	\$14	.21
Farm land	\$45	\$18	.27
Irr. Land	\$60	\$24	.36
Farm land	\$45	\$18	.27
Irr. Land	\$60	\$24	.36
Cattle	\$100	\$40	.60
Yearlings	\$65	\$26	.99

Alanreed Independent School District 1972 Tax Schedule including the 25% tax increase for an assessed rate of 33 1/3% and a tax rate of \$1.65.

	Tax Value	Tax per Acre
Grassland	12.50	.21
Farmland	15.60	.26
Cows	62.50	1.03
Yearlings	31.25	.51

Irr. Wells	3" Wells	4" Wells	5" Wells
	\$12.50	\$13.40	\$22.37
			\$1875.00
			\$30.94

An average townsite, including house, garage, (or trailer house) and other improvements has a tax value of approximately \$1800.00 depending on age of house, etc. (Townsite is 2 or 3 lots or more)

1972 tax information includes: 25% increase in valuations. When broken down, it is as follows:

Grassland went from \$10.00 per acre to \$12.50 per acre tax value making a 25% increase in tax value.

Cows went from \$50.00 per head to \$62.50 tax value, making a 25% increase in tax value.

Tax rate went from \$1.60 to \$1.65, making a 3% increase in tax rate.

Clarendon Independent School District 1972 tax schedule. According to the administration of Clarendon ISD, this schedule is representative of their tax basis for 1972. It is figured on a 33 1/3% rate of assessment of market value, with a tax rate of \$1.90.

	Mkt. Value	Tax Val.	Tax per acre
#1 Farmland	\$150	\$50	.95
#2 "	\$105	\$35	.665
#3 "	\$90	\$20	.38
#1 Grassland	\$45	\$15	.285
#2 "	\$36	\$12	.228
#3 "	\$24	\$8	.152
#4 "	\$18	\$6	.114

# It's 1973, and Chevrolet roofs are opening, seats are swiveling, bumpers are retracting, hatches are flipping up.

Did you ever have so much to talk about that you didn't know what to say first?

We're happy to report that's us for 1973. But since everything must begin somewhere...



Isn't it romantic?

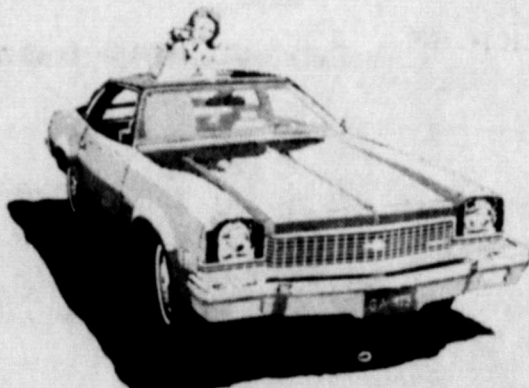
You see that rectangle beaming at you from above? That's a moonroof. Not to be confused with a sunroof. (Although many people will undoubtedly be caught using it like one.) A power roof is available on Chevelle and Monte Carlo; a manual one on Nova.

Bumpers are exciting?

This year's are something to get

stirred up about. One of our new bumpers, for example, is built around twin hydraulic cylinders. So on minor impact, the whole system retracts to cushion the shock.

It's standard on all big Chevrolet, Chevelle and Monte Carlo



New Malibu Colonnade Hardtop Coupe.

models. Nineteen different models to choose from.



New Nova Hatchback Coupe.

Look what we hatched

You know us for our little Vega Hatchback. Now dependable Nova has one. Which literally makes it half trunk with the backseat down. It's a feature as practical as Nova itself.



We've been thinking about your legs

One of the few things people asked us to improve in our popular Chevelle was leg room in the backseat. Well, your knees will be pleased with the '73s. There's almost 3 1/2 more inches in the sedans.

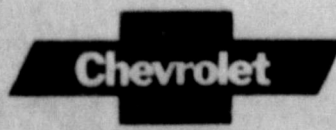
So what else is new

Naturally this is only a taste of what's new for '73.

Among other things, we're introducing larger gas tanks for longer cruising range, a new Exhaust Gas Recirculation system, a hatchback for wagons, and a highly refined flow-through power ventilation system.

Plus a reading light for front seat passengers, improved suspension systems, engines that give you performance combined with gas economy, reclining seats and scores of dramatic styling changes.

We invite you to see it all at your Chevrolet dealer's.



Building a better way to see the U.S.A.



(Above) Caprice Coupe. Our new uppermost Chevrolet. Its luxury, comfort and quiet ride rival the most expensive cars you can buy.

(Below) Monte Carlo S Coupe, America's newest road car. With the handling of the finest European cars, and the looks and comfort of an American car.

## Band Boosters To Meet Monday Night

The Band Boosters will have their first meeting of this school year Monday, Sept. 25th at 7:30 p.m. in the Band Hall.

All parents of students in Beginner band, junior high band and high school band are urged to attend. Jerry Janza, director, is making plans for a trip this year for the high school band along with the usual junior high band picnic and band banquet at the end of the school year as well as presenting the senior members their jackets free.

Everyone is invited to come and get together, have a cup of coffee discuss any questions concerning band and get the year off to a good start.

Industry files one billion federal reports each year.

### Baptist WMS Have Week Of Prayer

The Baptist Women Society began their State Mission Week of Prayer program with Monday's program. The theme was "Christ is for Now and All People" being led by Mrs. Herman Bell in her home in the afternoon.

The calendar of prayer was read, which included the names of Missionaries having birthdays that day with prayer by Mrs. Bell. "Sweet Hour of Prayer" was played by Mrs. Frank Howard, who later gave the devotional. Mrs. Truitt Stewart rendered a solo "More so Much More." "Mission Seventies Advance" was given by Mrs. Keith Carter and Mrs. Jim Stevens. Mrs. Walter Miller spoke on "Care and Share."

Mrs. Brent Chapman read a newspaper clipping of Dr. Ways and Mrs. Bob Duniven told those present about the Valley Baptist Academy. Closing remarks by Mrs. Bell with groups formed to pray for various missionaries.

Those present at Monday's meeting was the pastor, Rev. Herman Bell, Mesdame Herman Bell, Essie Glenn, Leo Gibson, Keith Carter, and little daughter Holly, Bill Pettit, Truitt Stewart, Walter Miller, Bob Duniven, A. C. Wood and mother Mrs. Dickens, Jim Stevens, Garland Ramsey, Frank Howard, Brent Chapman, and Luther Petty.

The program on Tuesday was in the home of Mrs. A. C. Wood with her being the leader.

The day's subject was "Christ is for now - Sanctifying." Sweet Hour of Prayer was read by Mrs. Herman Bell, with Mrs. Brent Chapman leading in prayer. Mrs. Frank Howard again gave the devotional. "River Road Ministry" was spoken to by Mrs. Wood who stressed sanctifying and also told of the "Galveston Bay Area. Mrs. C. R. Dickens, of

Burkburnett, a visitor told of the agricultural program and then told of scholarships. Mrs. Leo Gibson spoke on "WMU Mission Effort" and for closing hands were joined and prayer spoken for various needs.

Those present were Mesdames Leo Gibson, Bertha Smith, James Morrow, Essie Glenn, C. R. Dickens, Herman Bell, Brent Chapman, Frank Howard, Luther Petty, and the hostess, and the pastor Rev. Bell.

Mrs. Luther Petty returned home Friday night after spending nearly two weeks in the home of her son, Herman Petty at Abilene. She was accompanied home by Mr. and Mrs. Petty who spent the night with her. While there she visited Mr. and Mrs. Miller and Mr. and Mrs. Lewis Goodwin at Roby and nearby also at Bangs with Mrs. Fleeta Little, Clarence Traweck and Mrs. R. O. Cunningham. Mrs. Cunningham is still in a nursing home, very alert but yet not able to talk.

### Cullison's Attend Girlstown At Borger Festivities At Gruver To Have Open House

Mr. and Mrs. W. R. Cullison visited on Sept. 9th, with Mr. Cullison's daughters, Grandchildren and families. They were Mr. and Mrs. Dean Cluck and children, Teresa and Monte of Gruver and Mr. and Mrs. Everett Greene, Mr. and Mrs. Eldon Vernon and daughters, Shannon and Tania of Spearman.

The Cullisons, the Clucks, and the Greenes attended a large Barbecue dinner, program and festivities held on September, 9th, on the D. G. Cluck (formerly Durwood) ranch on the beautiful cold water creek. The barbecue, program and festivities was given and sponsored by Mrs. Edna Cluck, Dean and Bob Cluck and Donnie Thoreson owners of the D. G. C. Feeders Inc., of the Gruver area, about 300 invited guests attended the affair, including Texas Congressman, Bob Price and Senator, John Tower. They spoke to the guest during the program.

A number of prizes were given including a pair of cowboy boots and suits during the program. The prizes were furnished by business companies from Gruver and Amarillo and some other towns in the area.

The highlight of the program was the 2 hour of music furnished by Earl Richardson and his band from Nashville, Tenn. The music was very enjoyable. The band is associated with the Nashville and Grand ole Opra Music of Nashville, Tenn.

Earl Richardson and his band members visited in the Dean Cluck home after the barbecue and festivities were over. Mr. Richardson appeared as a guest star on the Nashville music program on Saturday, Sept. 16, on Channel 2, at 5 p.m.

Girlstown, U.S.A., Borger Branch, is celebrating their tenth anniversary in this area with a program, barbecue, and an open house for visitors at their campus four miles east of Borger on State Highway 152, Saturday September 23, 1972. The program from 2p.m. to 3 p.m. will include a singing by a Girlstown Quintet, the crowning of a New Miss Girlstown, and special recognition for those who have helped promote Girlstown, and the Open House Celebration. Also, Mr. Marshall Cooper, Executive Director of Girlstown, U.S.A., will be on hand to dedicate a new building to Mr. F. C. ("Blackie") Spence of Borger. The Kiwanis Club will present

money they have raised for paying on the new building. The barbecue from 3 p.m. to 8 p.m. is being prepared by Sutphen's and sponsored by the Borger Evening Lions Club with help from all area Lions Club. Tickets are available from any Lions Club member or at Girlstown. Door prizes will be given away every hour to some lucky person registering to visit Girlstown. Only registration is required to be eligible for the door prizes. Girlstown invites everyone to come out and see accomplishments made during the past ten year.

\$3.25 BILLION--Texas' cash receipts from sales of crops and livestock during the last year totalled \$3.25 billion, Texas Agriculture Commissioner John C. W. reported.

Wayland... almost... private... 22... last y... final res... all stands

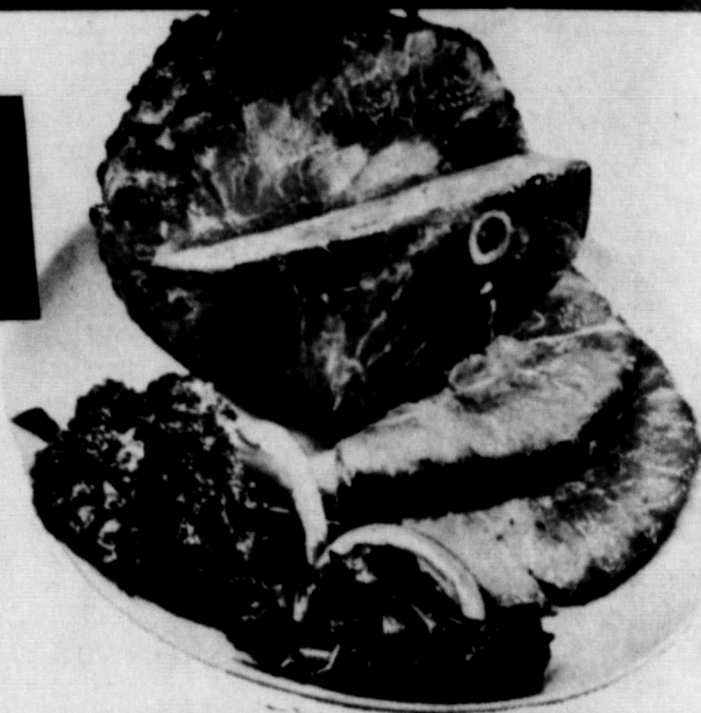
CUDAHY MINI

# HAM

SUPER TRIMMED

POUND

## \$1.49



CUDAHY

1 LB. PKG

## SAUSAGE 69¢



### 3

LB. CAN

### 85¢

IMPERIAL

Pure Cane SUGAR

EXTRA FINE granulated

# SUGAR

10 LB. BAG

## \$1.29



## TOWELS

### 3 FOR \$1

LEMON 14 OZ. CAN

## PLEDGE \$1.29

MEADS



## BREAD

Good-N-Fresh

### 3 1 1/2 LB. loaves

# Duckett's

FOOD STORES  
MCLEAN, TEXAS

Specials Good Friday and Saturday, September 22, 23, 1972



**Dr. Jack L. Rose**  
OPTOMETRIST

OFFICE HOURS Tuesday 9-5 Fri. 2-5  
Ph. 256-3206 Shamrock 121 N. Main

### Wayland College Sets Enrollment Record

Wayland Baptist College set a new all-time record enrollment for the fall and accomplished an almost unbelievable feat for any college, especially a private one. Wayland led a 22 percent increase over last year. Final registration for the fall stands at 932 compared

with 761 last fall. The previous record was set in 1965 when the final total was 780. Though final geographical breakdowns are not complete there are at least 31 states and 6 foreign countries represented in the present student body. Of the 932 students, around 700 are from Texas. New Mexico contributes 95 students to the total, Oklahoma 22 and Colorado

38. Eight students from California, six from Alaska and five from Indiana. There are four students from Montana and Ohio, and three from Illinois, Kentucky, Missouri and New York. States contributing two students each include Arizona, Idaho, Iowa, Louisiana, Michigan, Oregon and Wyoming. States listed by only one student as home include Alabama, Arkansas,

Georgia, Hawaii, Nebraska, Nevada, North Carolina, North Dakota, South Dakota, Washington and Wisconsin. Foreign countries listed include Africa, Israel, Japan, Lebanon, Nigeria and Canal Zone. An estimated 233, 615 major criminal offenses occurred January-June this year--an overall rate of 4, 173 per 100, 000 population.

### Study Club Have All Day Meeting

The Alanreed Twentieth Century Study Club began the fall season meeting at the home of Mrs. Barbara Hambright Sept. 14 for an all day meeting. A delicious salad dinner was served at the noon hour. The president, Mrs. Lucy Goldston opened the afternoon session with the reading of the club collect, led by Marjorie Fish. Minutes of the previous meeting were read and approved. The roll call was answered with what the person had accomplished this summer which added up to many and varied things. Mrs. Lucy Goldston gave a talk on her trip to Disney World in Florida and other highlights of her trip which was very interesting. Mrs. Marjorie Groves installed the officers for 1972-73.

Present for the meeting was Mesdames Vela Corcoran, Mary Groves, Viola Glass, Myrt McCoy, Iona Glass, Barbara Hambright, Leta Hambright, Ada Simmons, Judy Easton, Marjorie Fish, Lucy Goldston, Laura Cupell, of Hereford. Visitors for the lunch were Mr. Frank Hambright, Tony Hambright, Gene Hambright and Raymond Glass.

### 26 Accidents Reported In Gray Co. In Aug.

The Texas Highway Patrol investigated 36 accidents on rural highways in Gray County during the month of August, according to Sergeant J. L. Dalrymple, Highway Patrol supervisor of this area. These crashes resulted in two persons killed and 25 persons injured.

The rural traffic accident summary for this county during the first eight months of 1972 shows a total of 160 accidents, resulting in six persons killed, and 77 persons injured.

Region 5 of the Texas Department of Public Safety shows a total in August, 1972 of 593 accidents resulting in persons killed and 359 persons injured as compared to the same month in 1971 with 581 accidents resulting in 25 persons killed and 400 persons injured. This was 12 more accidents, three more fatalities and 41 less injured in 1972, at the same period of time.

The veteran officer remind you that as the world grows in population, so grows the congestion upon our Texas Highways. Drive friendly, the Texas way!

The 28 deaths for the month of August 1972 occurred in the following counties: Castro, four; Palo Pinto, three; Lubbock, Carson, Deaf Smith, and Gray, two each; Clay, Cochran, Hale, Haskell, Lamb, Lynn, Montague, Parker, Stonewall, Wichita, Wise, Yoakum and Briscoe, one each.

### HOSPITAL NOTES

#### ADMITTED

Vouncia Winegeart  
Mattie Back  
Delbert Trew  
Ella Cubine  
Beatrice Tedder  
Jim Hathaway  
Jake Hess  
Mary Perry  
Dora Mae Bailey

#### DISMISSED

Walter Foster  
Mary McCracken

### THE MISSUS



**TODAY'S CHUCKLE:** A grumpy husband told yours truly, "There's nothing new about frozen foods—I've been eating cold suppers for years."

"It's been exactly nineteen years, three months and two days since you last said you loved me!"

### A GRIPPING MOTION PICTURE!

**Russia With Love**

THEY CROSS DANGEROUS COMMUNIST BORDERS TO DELIVER BIBLES!

see Christians who risk their lives to smuggle Bibles into Russia

see suspense-filled Iron Curtain border crossing (filmed by long distance cameras)

see Russian believers worshiping in an "underground" meeting

see their joy as Bibles arrive

see life in Russia today—meet its people

A full color motion picture produced by Underground Evangelism

Tues., Sept 26 at 7:30

Assembly of God Church  
4th & Main McLean, Texas

VALUABLE COUPON

5 Lb. **GOLD MEDAL FLOUR**

WITH COUPON **55¢** WITHOUT COUPON **62¢**

Expires 9-23-72  
At Puckett's Food Store

VALUABLE COUPON

**Borden's Cottage Cheese**

2 LB. **65¢**

PLAINS **ICE CREAM**

HALF GAL. **69¢**

SCHILLINGS **BLACK PEPPER**

4 OZ. CAN **59¢**

STRONGHEART **GOOD**

10 FOR **\$1**

**PEPPERS** HALVES 2 1/2 CAN **3 FOR \$1**

WICHES 15 OZ. PKG. **49¢**

**AMUTTER** **69¢**

**TOMATOES** KUNERS 1 LB. CAN **4 FOR \$1**

**PARKAY** 1 LB. **\$1**

**3** QUARTERS

PUCKETT'S FOOD

WITH THIS COUPON 1-pound Can of Maryland Club Coffee **75¢**

Without coupon 90¢

Cash value 1-20¢ Limit one per customer

COUPON EXPIRES 9-23-72 # 43

**BANANAS** LB. **10¢**

NO. 1 RUSSETS **69¢**

potatoes 10 LB. BAG.

**POTATOES** 2 LBS. **25¢**

WE ARE YOUR TOP STAMP REDEMPTION CENTER

**TOP**

NONE MORE VALUABLE

## Questions and Answers Of Interest About McLean Schools

In order to provide the taxpayers of McLean Independent School District with all of the information possible and to answer any questions which the taxpayers may have, a new "taxpayer and school" channel of communications has been opened. If any taxpayers have any questions about the school, i.e. band program, athletic program, FFA, FHA, the curriculum, the rules and regulations, boosters' clubs, mothers' clubs, school buildings, the tax structure, or any other area not mentioned please send your question to the Superintendent of Schools, and we will attempt to answer your questions. You do not have to sign your name, but you may sign your name if you desire to do so.

Your questions and the answers to your questions will be printed in the McLean news for you and other taxpayers to read.

Questions that are libelous, malicious, defamatory, or injurious to any person's character will not be answered.

Some of the questions that have already been received by the Superintendent of Schools are as follows:

**Question:** Has the McLean High School Building even been condemned by the Texas Education Agency?

**Answer:** No. If you like you may call the Texas Education Agency at (512) 475-2407, and they will tell you that there is no record of McLean High School ever having been condemned.

**Question:** Does the McLean Board of Education plan on building a new school building?

**Answer:** No. Only the majority of the voters in the school district are the ones who decide yes, to build a new building or not to build a new building.

**Question:** Did the school board raise taxes in 1972?

**Answer:** No! In order to raise taxes the equalization board would have to raise the percentage of the tax value of your taxable items or the majority of the people would have to vote to raise the tax rate. Neither of these things has been done for 1972. If your taxes are higher for 1972, it is because you own more taxable items than you did on January 1, 1971. If your taxes are less in 1972 than they were in 1971 it is because you own less taxable items on January 1, 1972 or your personal property such as cars, truck pickups, trailers, etc. is worth less because they are a year older.

**Question:** How much did the school pay for the new doors and windows in the high school building?

**Answer:** Windows; classroom windows cost \$329.93

each; stairwell windows cost \$255.99 each; restroom windows cost \$244.93 each for a total of \$4059.14. Doors: front doors cost \$812.93; back doors cost \$476.20 each; end doors cost \$569.08 each for a total cost for doors of \$2893.49. The Board of Education has voted to replace the remaining wooden windows in the high school building and to put doors leading to the fire escapes. The total cost for the remaining windows and doors is \$8499.00. The Board of Education has not made any decision regarding the auditorium windows. At the present time there is not enough funds in the budget to replace the auditorium windows.

Sam Gayton  
Superintendent of  
Schools

## News From ALAN REED

By Mrs. P. M. Gibson  
Mrs. Grace Windom accompanied by Nola Crisp of McLean, Jerry Ware of Bovina and Corda Beatty of Heford visited last week, several points in Arkansas. They also visited Mozelle and Perry Hall at Winslow, Ark. and in Missouri. They reported that Mrs. Hall has a good business there and is very busy and happy.

Mrs. Faye Oakley reports that Olin Stapp is better but still on the mend.

Bill and Sue Crisp visited at Lockney  
at Lockney over the weekend with Pat and David and the grandchildren. They met Bobby Bills sister at the airport in Amarillo and brought her to his parents, the Enloe Crisp.

Mr. and Mrs. Mug Castleberry went to their daughter, Bobby to visit Mug's cousin around Jacksboro last week, and they reported having a good time.

Visiting the Olin Stapp over the weekend was their daughter, Sandra and Jimmy Dewobber, and his brother, Mr. and Mrs. Johnny Dewobber and Steve of Jacksboro.

Lena Carter spent Thursday night visiting the Jerry Carters of Pampa.

Mrs. Faye Oakley suffered a very bad cut on the fore finger of her right hand. She was taken to the clinic in McLean Monday afternoon, where about nine or ten stitches were needed to close the wound.

Mr. and Mrs. Olin Stapp made a business trip to Amarillo Tuesday.

Mrs. Faye Oakley and Olin Gibson made a business trip to McLean Tuesday.

A person with a handicap often overcomes it by being superior in another way.

# NEWS

\*\*\* County \*\*\*  
Agricultural Agent  
Texas A. & M. College  
Extension Service

By FOSTER WHALEY

### WHEAT PASTURE

Much of Gray County's 1973 wheat crop is now up and waning. A good rain would result in excellent pasture conditions in a short time. A Panhandle wide rain would add much to the already heavy demand for light weight calves. There is still many dry spots over the county. Many of the farmers from these dry spots areas are waiting until it rains or until after October 1st. The last 10 day has caused many irrigation farmers to switch from pre-irrigating wheat back to their milo.

### WEEPING LOVE GRASS

There is a renewed interest in weeping love grass that has created much inquiry from Gray County residents. In my opinion, more pounds of beef per acre can be produced with weeping love grass than any other permanent grass. I also believe there is little difference in the palatability of any of the varieties in spite of the promotion of certain newer varieties. I have an excellent publication put out by the Noble Foundation that has some of the best information you've ever seen in print. I'd be happy to send you a copy on request.

PRAIRIE DOGS & COYOTES  
Both of the above seemed to be on the increase. For many years the Federal Gov. had an excellent program in affect to control these pest of the range land. Most of you have heard of the restrictions placed on poisons. This has been caused by pressure from The environmentalist group. Most of the decisions caused by the environmental craze have been made on the basis of emotions with little or no thought being given to the economics of the situation. Prairie dogs can be controlled with a careful application of gasoline or drip gasoline. There are a few local contractors that will eradicate your prairie dogs through the use of a gas.

Coyotes are another story. Trappers scattered this over the Panhandle are seriously handicapped by recent orders banning the use of certain chemicals. Maybe when the coyote becomes rampant

## SCHOOL MENUS

MONDAY, SEPT. 25  
Hamburgers  
Mustard-Ma yonna ise  
Pickle-Onions-Tomatoes  
Lettuce Potato Chips  
Milk Fruit Cocktail

TUESDAY, SEPT. 26  
Steak Fingers  
Broccoli  
Cooked Carrots  
Hot Rolls Butter  
Milk Honey

WEDNESDAY, SEPT. 27  
White Beans  
Mixed Greens Onions  
Cornbread Butter  
Cheese Sticks  
Milk pricots

THURSDAY, SEPT. 28  
Tuna Salad  
Hominy Cole Slaw  
Bread Butter  
Milk Chocolate Cake

FRIDAY, SEPT. 29  
Fried Chicken  
Mashed Potatoes and Gravy  
Green Beans  
Bread Butter  
Milk Ice Cream

MENUS SUBJECT TO CHANGE  
BASED ON ORDER & SUPPLIES

You are more efficient when you deliberately forget what is unimportant, according to Hans Selye of the University of Montreal.  
enough people will wise up and make their voice heard.

## THE MCLEAN NEWS

Established 1905  
210 N. Main 779-2447  
Published every Thursday  
at McLean, Gray County,  
Texas 79057.  
Second Class Postage paid  
at McLean.

E. M. Bailey Publisher  
Deloris Bailey Editor  
Subscriptions rates: \$4.50  
per year in Gray and neighboring counties; \$5.50 per  
year elsewhere.



"Uncle Sam gets most of our funds, so Washington, D.C. should be named 'Fund City.'"

### DR. MARION N. ROBERTS

OPTOMETRIST

Pampa, Texas

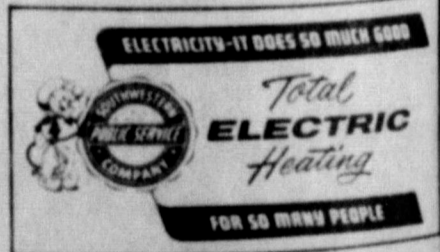
112 W. Kingsmill

Telephone 669-333

The most convincing presentation for electric heating is the free operating cost estimate we offer our customers. Just facts. It will prove how you can heat electrically for little more than you're paying now. Sound too good to be true, especially with the advantages you get with electric heating? Let us prove it to your satisfaction. Thousands of our customers already have. And, they've switched. Call us for a "wise-up" estimate. It's free. And it's a real eye-opener.

# electric heating estimate

an eye-opener for:



# Our best seller

## REVIVAL PENTECOSTAL HOLINESS CHURCH Sept. 17 thru 24

Rev. Robert Brown, Evangelist

Pastor, First Pentecostal Holiness Church Amarillo, Texas

Rev. Forest Lawson, Pastor

SPECIAL SINGING EACH NIGHT

for **FAST ACTION** use the

**CLASSIFIED**

Telephone 779-3447

**Classified Advertising Rates**  
 First Insertion 4c per word  
 Additional Insertions 3c per word (Same Copy)  
 Minimum per Insertion 50c  
 Display Classified, per Inch 85c  
 All ads cash, unless customer has established account with the McLean News.

**FOR RENT**

FOR RENT—two bedroom house, living room carpeted on Donley street, 779-2569. 33-tfc

FOR RENT—Furnished apartment Panel and carpeting, Massey Apartments, 779-2768 19-tfc

**FOR SALE**

FOR SALE—Travelers checks—safe—insured if lost, American National Bank in McLean, 7-tfc

NICE apples for sale six miles south Alanreed on the F.B. Carter farm. If convenient come after 6 or on Saturday or Sunday. 31-tfc

FOR SALE—66 Bel Air Chevrolet, J. L. Allen. 37-2c

FOR SALE—Apples, yellow delicious, wine sap and other varieties, 3 1/2 miles south of Alanreed on farm road 291, Hommel's Orchard. 34-tfc

WHEAT seed for sale. See Bernard McClellan. 36-3c

FOR SALE  
 1972 Cessna 172 Skyhawk  
 1966 Cessna 150 green and white with green interior.  
 1969 Comanche PA-24-180, brown and white.  
 1973 Cessna 172 Skyhawk.  
 For more information Contact:

FOR Plane Rental, Flight Instruction, Fuel, Sales, Plane Service and Inspection Contact:  
 Pampa Aircraft, Inc.  
 Rt. 1 Box 63  
 Phone 806-665-2141  
 37-1c

**MISCELLANEOUS**

FOR better cleaning, to keep colors gleaming, use Blue Lustré carpet cleaner. Rent electric shampooer \$1. McLean Hardware. 38-1c

NOW AVAILABLE—Plenty of new large and small Safe Deposit Boxes. Low annual rental rates—\$4.50 to \$6.00 per year. PROTECT YOUR VALUABLES, American National Bank. 38-tfc

SAVE 20% on Franciscan Earthenware and casual crystal at Vera Lynn Gift Shop. Sale ends Sept. 30. 38-2c

FURNITURE of all kind repaired. D. L. Jones, Rt. 1 McLean, 779-2992. 36-tfc

SAFE, SOUND, SATISFACTORY—Accommodating. Appreciate your business. American National Bank in McLean. Deposit Insurance Corporation. etc

**MISCELLANEOUS**

ONE machine, stitches real good—\$9.95; One Singer. Take over payments—5 payments of \$5 a month; Necchi, like new—6 payments remaining; C clean and oil this month only—\$1.50; Service all makes of sewing machines. Necchi Authorized Dealer, Pampa Sewing Circle, 304 W. Foster, 669-9331, Pampa, 35-4c



McLEAN LODGES 889, A.F. and A.M. Regular meeting second Thursday each month—7:30 p.m. All members urged to attend. Practice first and third Tuesday nights each month.

Monuments—Markers—Graves covers, Curbing, anything in Memorial Line Prompt delivery best material, and workmanship. Fort Granite and Marble Co. Pampa, Texas ph. 665-5622 Ill. S. Hobart St.

**LEGAL PUBLICATION**

CONTRACTORS' NOTICE OF TEXAS HIGHWAY CONSTRUCTION Sealed proposals for constructing 9.616 miles of Gra., Str., Lime Trt, Subgr, Flex. Base, Asph. Stab. Base & ACP From SH 70 Near Jericho To 2.0 Miles East of Groom on Highway No. IH 40, covered by 140-(39)114 Row & I 40-1(84)115 in Gray & Donley Counties, will be received at the Highway Department, Austin, until 9:00 A.M., September 28, 1972, and then publicly opened and read. THIS CONTRACT IS SUBJECT TO THE WORK HOURS ACT OF 1962, PL-87-581 AND IMPLEMENTING REGULATIONS The State Highway Department, in accordance with the provisions of Title VI of the Civil Rights Act of 1964 (78 Stat. 252) and the Regulations of the U.S. Department of Transportation (15 C.F.R., Part 8), issued pursuant to such Act, hereby notifies all bidders that it will affirmatively insure that the contract entered into pursuant to this advertisement will be awarded to the lowest responsible bidder without discrimination on the ground of race, color, or national origin in consideration for an award. Plans and specifications including minimum wage rates as provided by Law are available at the office of T. R. Kelley, Resident Engineer, Pampa, Texas and Texas Highway Department, Austin Usual rights reserved. 37-c

**CARD OF THANKS**

We would like to express our thanks for all the beautiful flowers, cards, letters, gifts, prayers and thoughtful deeds extended Mark and us during Marks hospitalization. We are very grateful to the Texas Highway Patrol, our local law officers, the McLean Fire Dept. and McLean Hospital & Ambulance service and everyone who helped with Mark until we could join him in Amarillo. Ted, Sue & Mark Simmons

**Local Ladies Help Organize A Cowbelles Club**

A meeting was held Sept. 14 at Furr's Cafeteria in Pampa, to organize a CowBelles organization for this region. Mrs. Betty Carrothers (State President) and Mrs. Mary Gibson (State Secretary & treas.) of Hereford came to help organize the group.

CowBelles are women who work towards the promoting of beef, educating the public, and serving in anyway they can to make Americans more aware of our great product.

There were 25 ladies attending the organizational meeting. The name "Top o' Texas CowBelles" was decided on as the name for this area. Towns represented were Pampa, Canadian, Hedley, and McLean.

The new officers are: President—Mrs. Leta Mae Hess of McLean, 1st. Vice President—Mrs. Jeanne Schoenhalls of Canadian, 2nd Vice President—Mrs. Ruth Spearman of Pampa, Secretary & Treasurer—Mrs. Bert Darsey of McLean, Reporters: Mrs. Pat Rogers—Canadian, Mrs. Jimmie McConnell of Pampa Mrs. Linda Payne of Hedley, and Mrs. Dixie Jo Crockett of McLean, Beef Promotion Chairman—Mrs. Janice Thorn of Canadian, and Fathers Day Beef Promotion Chairman—Mrs. Ida Hess of McLean.

CowBelles are in 38 of our states. Texas being the largest Beef producing state did not have a CowBelles organization. This year the National CowBelles Convention will be held in San Antonio. Anyone interested in joining CowBelles please come to the next meeting Oct. 12 at 12:00 at Furr's Cafeteria in Pampa.

If you own life insurance, you own stock in American business corporations.

**WANTED**

WANTED LADY to stay six-nights a week with my mother, she is able to care for her self. Call or see Mrs. W.R. Cullison, 779-2196, 611 N. Gray St. 38-1c

**LOST & FOUND**

Mrs. Fidelle Stubbs lost three keys in keyholder near postoffice about Sept. 8th. 779-2829. 38-1p

**Muriel Moore Is Tops Weekly Queen**

By Lucille Cullison, Reporter  
 The Derby Town Tops Club met in the home of Mrs. Cheryl Smith for their regular meeting on Monday at 6:30 p.m.

Cheryl Smith, leader weighed in the members and recorded the weight chart and called the roll with the members answering with their weight loss or gain. Cheryl presided over the meeting and there were diet discussions among the members.

The club members had a 7 lb. weight loss and one pound gain. Muriel Moore is the weekly queen with a 4 1/2 lb. weight loss and she received the fruit basket.

On Monday, September, 25 at 6:30 p.m. the club members will meet at Cheryl Smiths home for their regular meeting and a "Diet Salad Supper". All members remember to a "Diet Salad."

The "Team Contest," will close and the winning team will receive the nice gifts brought by each club member.

Present for the meeting were Cheryl Smith, Pearl Dickinson, Nola Crisp, Gladys Smith, Viola Glass, Muriel Moore, Lucille Cullison, and Lucille Glass came and weighed in.

The Welcome Matt is always out to any new members.

**Acteen's Are Considered Great**

Acteen's had a meeting last Monday night, September 18. Acteen's meet at the First Baptist Church on Monday nights. At 6:00 p.m. till 7:30 p.m. Acteen's are for girls 7th grade through 12th grade.

We study about missions and other interesting things.

The officers of Acteen's are: President—Maridale Glass, Study Leader—Jerec Boyd, Activity Leader—Melinda Hunt, Group Captain—Brenda Heasley and Jodette Swamer, Reporter—Teresa Cheatham.

**CUSTOM MADE PICTURE FRAMES**

**MAT BOARD**  
 For Painting or Mounting

Carl's Cabinet & Frame Shop  
 802 N. Gray 779-2528

**Coyote Increase Is Headache To Farmers**

By Max Hatter, Wheeler Co. Agent

For several years the Wheeler County Commissioner's Court has helped assist farmers and ranchers in their efforts to check the increase in the number of coyotes. The court has always maintained a supply of "Coyote Getters" that were made available to farmers and ranchers experiencing losses of cattle or crops to coyotes. In spite of the efforts of ranchers the coyote numbers have been steadily increasing and continue to be a threat to the livestock business.

A recent law, passed by the Federal Government, now presents the use of these poisons to control coyotes or other predatory animals. As of this date, once the present supply of "Coyote Bombs" is exhausted, the farmers and ranchers will only have trapping and shooting available to him.

Trapping and shooting are about the only means at present left to control the coyote. The coyote, perhaps the most cunning of God's creatures, is difficult to trap. In fact in a day when the Bald Eagle is facing extinction, the coyote is increasing in numbers despite the infringement of superhighways, closely built urban housing, atom bombs, air to air missiles, and mobile homes.

How do you feel?

It's our opinion that the coyote will never be eradicated—he's too smart. The only motive the farmer had was to control the buildup of numbers that threatened his calf crop. As far as subsidy for losses, we feel that determining losses without involving wholesale graft and corruption depending upon the honesty of the producer would be difficult.

**Smith Reunion Held In McLean**

A Smith reunion was held Sunday, Sept. 17 in the Casper Smith building.

Those attending were Mr. and Mrs. Lonnie Smith and Edd Smith of Mangum, Okla.; Alton Smith of Plainview; Mr. and Mrs. Bruce Smith and family, Teresa, Alivin, Rita, Darryle and Linda of Skellytown Ruby Smith; Mr. and Mrs. Oliver Wischkaepper and Mark, all of Shamrock; Mrs. Clara Smith and Douglas Smith of Pampa; Mr. and Mrs. Lloyd Smith of Alpaugh, Calif.; Mr. and Mrs. William Bradley, Donald and Suzanne of Texola, Okla.; Mr. and Mrs. Johnny Anders and Teresa, and Mr. and Mrs. Bob Robertson, all of Amarillo; Mr. and Mrs. Tom Pierce of Turkey.

Attending from McLean were: Mr. and Mrs. John Anders, Mr. and Mrs. Cecil Green and children, Ronnie, Janet, Brenda and Tony Bailey, Debbie, Vera, Faye and Huey Green, Mr. and Mrs. Casper Smith and children, Robin, Tammy and Rodney.

**Quilting Club Meet In Street Home**

A quilting was held at the home of Beatrice Street Thursday with a delicious pot luck dinner.

Those present were Mary Ellen McClellan, Thelma Stevens, Buelah Humphrey, Essie Glenn, Juanita Smith, Ola Henderson, Cuba Collier, Nora Clawson, Bertha Smith, Nora Moore, Elizabeth Kunkel, Eula Morrow, Marzee Lisman, Jo Blaylock, Velma Willis, Lelia Roberts and dinner guests Jesse Roberts and the hostess.

One quilt was finished.

We all profit from profit.

**McLEAN**  
**SHOPS CLUB**  
**SHOPS Caravan**  
 OCT. 3, 1972  
 ALL BE LOCATED  
 of Western Public Service Office  
 WILL BE USED FOR  
 Student Scholarships  
 QUALITY ROOMS  
 HOUSES  
**DURABLE DOOR MATS**  
 CARAVAN SALES For THE BLIND FORT WORTH, TEXAS  
**EVERY HOME WILL BE CANVASSED** PRODUCTS MADE BY THE BLIND



DISNEY CLASSIC — "Pinocchio" and his friend Jiminy Cricket, are just two of the 100 Disney characters in eight big acts that "come to life" in the all-new and different edition of "Disney On Parade," the 2 1/2-hour live stage musical appearing for the first time in Amarillo at the Coliseum, Tuesday, Oct. 3-Sunday, Oct. 8.

### "Disney On Parade" Presents New Concept In Live Entertainment At Amarillo Coliseum Oct. 3-8

"Disney On Parade", the 2 1/2-hour live stage musical featuring Mickey Mouse and scores of other Disney characters, will appear for the first time in Amarillo at the Coliseum, Tuesday, Oct. 3-Sunday, Oct. 8.

Performances are scheduled for Tuesday and Wednesday, 7:00 p.m.; Thursday and Friday at 7:30 p.m.; Saturday at 2 p.m. and 7:30 p.m. and Sunday at 2 p.m. and 6 p.m. Tickets prices are \$3.00, \$4.00 and \$5.00 with children 12 years and under \$1.00 off all performances.

The show brings all of the great Disney creations together for the first time in one unique show. Through the blending of all of the elements of live production, sound effects, motion pictures, magic, music and special lighting, "Disney On Parade" recreates Disney masterpieces live in a new

Famous Disney creations "come to life" on the world's largest portable arena floor—singing, dancing and performing in 12 spectacularly costumed production numbers including "Snow White and the Seven Dwarfs," "Pinocchio," "Fantasia," "Mickey's Band Concert," "Goofy and the Love Bug," and many more.

Colorful settings ranging from "Pinocchio's" Italian Street Carnival to "Snow White and the Seven Dwarfs" house transform the arena into a world of fantasy.

"The intention in creating the show," says Michel Grillix, executive in charge of production, "was to use the same creative imagination the Disney experts have used on film to create a 'living' touring show based not only on great Disney classics, but adding new twists to some of their older themes.

The characters from "Snow White and the Seven Dwarfs," "Pinocchio," and "Fantasia," join Mickey Mouse, Pluto, Goofy, Donald Duck, and many more.

Music goes all the way from Country-Western in the "Farmyard Bash" production with dancing chickens, eggs, rooster, fox and scarecrow, to "Fantasia's" famous "Nutcracker Suite."

A wholly new entertainment medium requires revo-

lutionary staging. To that end, a completely portable stage (135 feet long and 56 feet wide) was designed, along with a mammoth proscenium at one end of the floor depicting the castle from the famous Magic Kingdom. The castle alone has 10 magic openings and doors through which the entire "Disney On Parade" cast can flood the floor in seconds.

### Texas Press Women To Have Covention

The 80th annual convention of Texas Press Women will be held Friday, Oct. 27 through Sunday, Oct. 29 at the Highlander Inn, Burnet, Texas, some 55 miles northwest of Austin.

An outstanding program will be presented to the 200-plus statewide membership featuring noted educators in the field of mass communications, as well as recognized professionals in newsprint and broadcast media.

The Texas Organization, an affiliate of the National Federation of Press Women, is the oldest professional women writers' association in the state. Founded in 1893 through the initial efforts of Mrs. A. H. Mohl of the Houston Post, it was officially chartered on May 10, 1893 at the Windsor Hotel, Dallas with forty women newswriters as founding members.

Attending from McLean and the Panhandle area will Mrs. Vera F. Bach, Mrs. Frankie Stanley of Shamrock and Mrs. Violetta Mahood of Perryton.

Mr. and Mrs. Lloyd Smith have returned to their home in Alpaugh, Calif., after spending a week with relatives in McLean and Shamrock.

Mr. and Mrs. Mike Cahoon and children, Eddie and Cissy of Eureka, Mo., visited in the home of her parents, Mr. and Mrs. John Anders.

## DOWN MEMORY LANE

### 10 YEARS AGO

Winless in two contests this season, the McLean Tigers will leave home Friday night to face the Groen Tigers in a game scheduled for 8 p.m.

Mrs. Charles McCurley honored her children, Nocona and Tina, with a birthday party at the City Park on Thursday afternoon, Sept. 13.

A surprise birthday supper was given Tuesday evening for J. B. Brown in the Jack Boyd home at Kellerville.

### 20 YEARS AGO

The McLean Methodist Church, born in the minds of pioneer settlers of this area and made a reality even before the town was officially organized, will observe its golden anniversary with an observance Sunday, October 12, Rev. C. M. Parmenter, pastor, has announced.

The Back School was the gathering place September 10th for members of the Holloway softball club, their families, and fans, as they enjoyed a steak supper.

Mrs. Dale Cliff, who was

### Miss Darlene West before

her recent marriage, was named honoree at a miscellaneous shower Thursday afternoon at the home of Mrs. George Terry.

The McLean Tigers, with the opening game loss to Stinnett still ringing in their ears, were preparing this week to meet the Price College Cardinals on Duncan Field in McLean.

### 30 YEARS AGO

The McLean Tigers won their first game of the season from the Canadian Wildcats last Friday night with a score of 6 to 0.

According to Supt. Carl Chaudoin of the McLean schools the WPA gardens are producing more than laborers can be had to gather the produce.

### 40 YEARS AGO

Married, Saturday, Sept. 17, 1932, at Sayre, Okla., Miss Ernestine Braxton and Mr. Jesse Lonieha, the Justice of Peace performed the ceremony.

McLean Home demonstration club members won prizes at the Amarillo Tri-State fair in session this week.

The McLean Poultry team under the direction of Dr. A. S. Tampke, high school vocational director, won the silver loving cup at the Amarillo fair this week, for the second time in the past four years, out scoring their nearest competitor by 94 points.

The City Drug Store has a unique window display showing a common water faucet, suspended from a light wire and not connected to anything else, yet flowing water continuously, being a perfect optical illusion that has attracted a lot of attention.

The peppiest pep squad that has ever been in McLean was organized in the high school auditorium on last Friday. The leaders elected were Ruth Hess and Woodrow Wilkerson.

### 50 YEARS AGO

S. R. Jones has a 12 1/2 months old Poland China gilt of the Liberator strain that farrowed 12 pigs last week.

A. L. Hibler, who lives at the south edge of town, went to Hereford last week and brought back 647 head of sheep.

A number of McLean business men have bought the McLean Gin.

### 60 YEARS AGO

The Wheeler County

## POLITICAL ANNOUNCEMENT

The McLean News has been authorized to present the names of the following candidates for office, subject to the action of the Gray County general election on November 7, 1972.

FOR STATE REPRESENTATIVE 66TH DISTRICT

REPUBLICAN PRIMARY: Tom Christian  
DEMOCRATIC PRIMARY: Phil Cates  
FOR U. S. REPRESENTATIVE (13th district) Graham Purcell

Districts Singing Convention, which convened in this city Friday of last week, was only a partial success by reason of the fact that the weather was very disagreeable during the entire time it was in session, having rained every day.

Rev. Goodwin wishes us to announce that he will preach at the Baptist Church Sunday morning and evening.

Jack Hindman and family have moved in from the ranch and will make this their home. Jack having taken charge of the meat market again.

# "Call Station-to-Station and Save."



"I make out your phone bill each month, so when it comes to Long Distance costs, I know what I'm talking about. Take it from me, call station-to-station and save. Look at this typical example and see what I mean."

Station-to-Station	Person-to-Person	Savings
\$1.25	\$3.10	\$1.85

By calling station-to-station, this is what you save on a three-minute call to New York made between 8 a.m. and 5 p.m., Monday through Friday. All non-coin station calls, charged to the phone from which they are made, go through at the same low rate charged for One-Plus calls in cities having direct dialing capability.



## Southwestern Bell