

WEATHER

August 2	95	64	.40
August 3	92	66	.00
August 4	99	68	.00
August 5	101	70	Tr.

BAILEY COUNTY JOURNAL

'The Community Of Opportunity-Where Water Makes The Difference'



Vol. 28, No. 31

12 PAGES TODAY

Published Every Sunday At Muleshoe, Bailey County, Texas 79347

20¢ SUNDAY, AUGUST 6, 1989

Ambulance Stays Under County Control

around Muleshoe

Free eyescreening for glaucoma and cataracts will be conducted Wednesday, August 9, 9 a.m.-12 noon at the office of Dr. Jerry Redwine, 111 E. Third St., Muleshoe.

The eyescreening is a community service provided by Dr. Redwine, optometrist and Dr. Dik F. Cheung, ophthalmologist, Clovis, N.M.

For further information, call 272-4705.

Pvt. John A. Killingsworth has completed a combat engineer course at the U. S. Army Training Center at Fort Leonard Wood, Mo.

During the course, students were trained in the techniques of road and bridge building, camouflage and demolition. They also received instruction in combat squad tactics as well as in the use of infantry weapons.

The son of William C. Killingsworth, Muleshoe and Dee Ledwick, Duncan, Okla., Pvt. Killingsworth is a 1988 graduate of Muleshoe High School.

Pvt. Mark S. Henderson, son of Melody A. Hebert of Boys Ranch, TX and Floyd L. Henderson, Earth, has completed basic training at Fort Jackson, S.C.

During the training, students received instruction in drill and ceremonies, weapons, map reading, tactics, military courtesy, military justice, first aid, and Army history and traditions.

He is a 1987 graduate of Boys Ranch High School.

Larry King of GTE called *The Journal* Thursday morning to advise that Muleshoe had been 'isolated' as far as long distance telephone calls were concerned, for awhile early Thursday morning.

He said the Texas Department of Highways and Transportation accident cut the toll cable about five miles from Muleshoe alongside Highway 84 at approximately 7:45 a.m. Thursday.

GTE was notified around 8 a.m. and had long distance service operational again by 9:30 a.m. the same morning.

Larry Combest To Visit Muleshoe Rotary, Tuesday

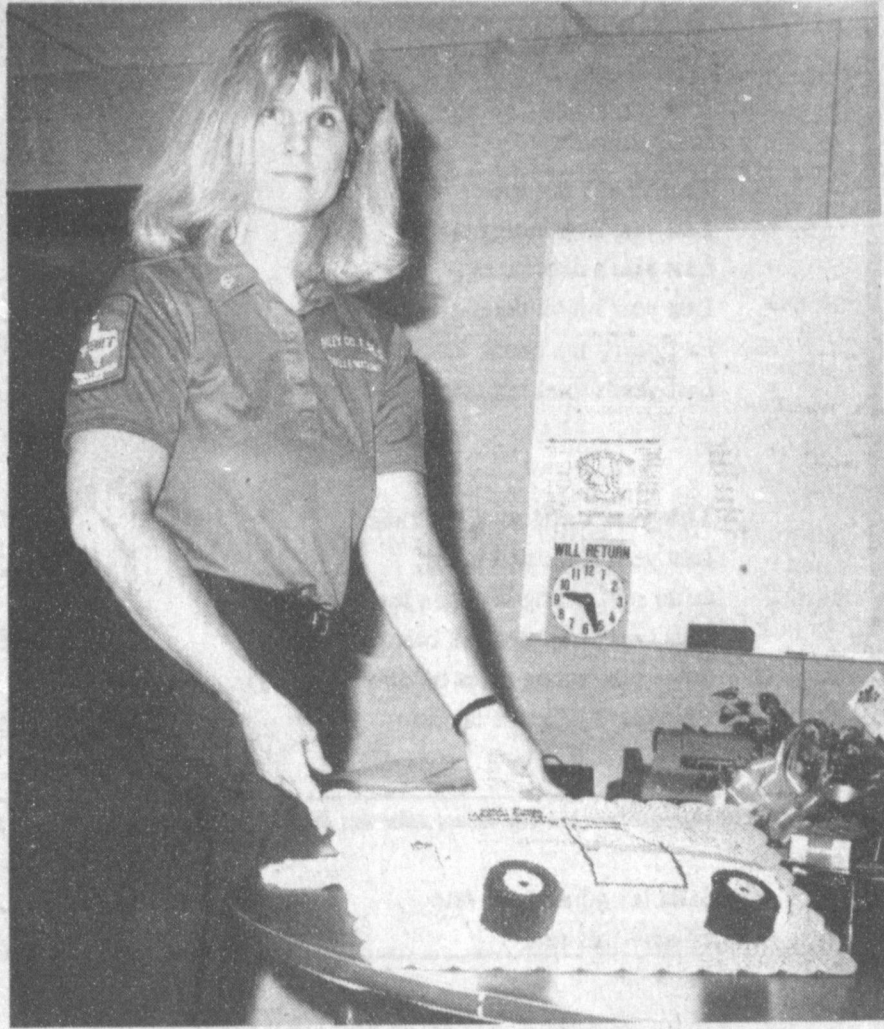
Six town hall meetings, two news conferences, an agriculture field hearing and tours of several industries through the 19th Congressional District are scheduled when U. S. Representative Larry Combest (R-Texas), returns to West Texas for a two-week district work trip in August.

Combest will also address several civic and community groups during his 11-day swing through the district.

Combest will conduct two news conferences during his trip to the district. He has scheduled meetings with the news media in Lubbock on Monday, August 7 at 2 p.m. and in Odessa on Tuesday, August 15 at 10 a.m.

Among the subjects to be discussed are several major pieces of legislation in Congress, including the savings and loan bill, catastrophic health care and 1989 agriculture disaster relief legislation.

On Tuesday, August 8, Representative Combest will be in Muleshoe. He will address the Muleshoe Rotary Club at noon, then tour Bamert Grass Seed Farm at 2 p.m. the same day.



EMS DIRECTOR HONORED--Richelle Watkins, who resigned from her position as director of the Bailey County EMS to return to fulltime nursing, was honored with a surprise 'come and go' reception on Friday, July 28. Focus of the decorations was a cake shaped, and decorated to look 'exactly' like a local ambulance. She was also feted with a dinner at Leal's in the evening by her EMS co-workers. (Journal Photo)

Local Hospital Now Medicare Certified

It's now official! The Muleshoe Area Medical Center (formerly West Plains Medical Center), now operated by the Muleshoe Area Hospital District (MAHD) has just been approved as a provider hospital under the federally sponsored Medicare-Medicaid programs for all citizens.

This announcement was made Wednesday night at the MAHD meeting at the hospital by John Chisholm, administrator.

Relieved department heads attended the meeting, and were highly commended by Chisholm and by Tim Campbell, president of MAHD.

Effective date and time for the Medicare-Medicaid coverage was 6:30 p.m. on Tuesday, August 1, following an intensive two-day inspection by a team representing the federally-funded program.

At the same time, Chisholm informed the board members present, Campbell, Neal Caswell and Darrell Jennings, that certain requirements must be met within the next 30-45 days in order to ensure continued coverage.

The board unanimously voted for the expenditure of funds necessary to complete the requirements.

Although the entire hospital and nursing home had spent long, hard hours preparing for the Medicare-Medicaid survey, they really did not expect to pass the inspection at this time.

Many of their hours and efforts were donated in an effort to assure local hospital availability, especially for the Muleshoe area's older citizens.

Since the hospital re-opened nearly two years ago, it was not Medicare-Medicaid certified, and those patients had to go to out-of-town hospitals for treatments that could have easily been done here had the hospital had the proper certification.

However, when the former West Plains Medical Center board elected to re-open the hospital, it was strictly a 'shoe-string' operation, and funds were never available to provide repairs and renovations that would meet the very strict federal requirements.

CEO Chisholm also asked the board to approve an interim

budget, as required by the federal inspectors. According to the budget, an annual loss of \$323,788 is expected, mostly in 'bad debts.' Chisholm explained that the bad debt figure is based on the projected nine or 9.6 patients expected to be in the hospital each day.

He also explained that the budget is only an 'interim' budget, and will be revised from time to time, as with any new operation.

Also approved were By-Laws for the Muleshoe Area Hospital District, also on an interim basis. One minor change requested by Chisholm was a review for the CEO (himself at this time) twice a year instead of one time a year. "If I'm doing something wrong, I don't want to have to wait a year to find out about it," he said.

Although a list for capital equipment expenditures was presented, it was taken to be studied, and no action is expected in that area for some time in the future.

The administrator noted that monies from the Bailey County Indigent Health Care fund had been deposited for MAHD. Chisholm told board members that the \$37,448.39 was residual money left from the last fiscal year. He also said a half time employee, familiar with indigent health care, had been employed to check out requests for use of the funds.

Parmer County will also be contributing an amount to the fund for the portion of Parmer County included in the Muleshoe Area Hospital District.

It was reported that reworking of the By-Laws for the medical staff is currently underway, and will be presented for board approval in the near future. Also, Chisholm is providing FHA with some requested items, including architectural drawings, which are also being provided for the Texas Department of Health.

A discussion was held on the possibility of moving the hospital and nursing home laundry to another building in the hospital complex, but no action was taken, as this will be considered at the next meeting.

Presented was a letter from the Carelink helicopter, now the

Cont. Page 6, Col. 4

Twin Brothers Are Approved For Transplant

Several days after Jared and Derreck Bleeker were born to Lucas and Sandy Bleeker of Keller, they became critically ill.

Born February 1, 1988 in Fort Worth, they were flown by helicopter to Children's Medical Center in Dallas where they were admitted to intensive care.

There, they were diagnosed as being victims of ornithine transcarbamylase deficiency. Their parents learned that the prognosis for this particular disease is usually death.

Their father, Lucas, grew up in Muleshoe. He is the son of Vernon and Mary Nell Bleeker, who left immediately for the Dallas hospital.

The parents were told that nationwide, there are fewer than 100 diagnosed cases of OTC deficiency, which is failure of the liver to produce the enzyme to control ammonia levels in the blood.

Initially, their parents were told they would not live beyond the age of two years, and the family immediately started seeking alternatives. At the time, the twins were spending most of their time hospitalized.

The Bleekers sought help from their insurance company, Kaiser Foundation Health Plan of Texas, who turned them down, citing that Kaiser would not pay an estimated \$500,000 for twin liver transplants and the estimated \$25,000 cost of annual post-operative care. According to their father, Lucas, Kaiser said the high levels of ammonia had left

Cont. Page 6, Col. 3

MHS English Teacher Writes, Publishes Book

Pat Watson, who for the past five years, has been teaching English in Muleshoe High School, has written and published a new book, for the teaching of creative writing.

Her first publication is titled *'The Write Path to Creative Expression.'* and the cover was designed by Hellen Adrian, art teacher at MHS. The book was printed by Bob Stovall Printing of Muleshoe.

She commented, "When I began teaching creative writing at MHS five years ago, I did not have a textbook and found very little available in the book stores for teaching creative writing for secondary students.

"I began to develop a program that I think is successful and decided to put my ideas together into a teaching syllabus (book). The program has grown from ten or eleven students the first year to thirty-three last year."

Mrs. Watson said the book contains teaching units, ideas, and suggestions for use in the creative writing classroom or in other language arts classes. Each unit plan includes a stated objective, an approximate time schedule, and the process by which it is taught.

She added, "Each unit is correlated with the Essential Elements as stated by the Texas Education Agency. Units include visual imagery, descriptive writing, narrative writing, expository writing, persuasive writing, interview ideas, personality profile, characterization, advertising campaign, poetry, interpretive writing, reflex writing, point of view, children's story, comparison/contrast, and a variety of short story ideas."

The English teacher also added, "An example of student

work by students in Muleshoe High School is included with many of the units; in addition, I have included a section of

work by students in Muleshoe High School is included with many of the units; in addition, I have included a section of

work by students in Muleshoe High School is included with many of the units; in addition, I have included a section of

work by students in Muleshoe High School is included with many of the units; in addition, I have included a section of

work by students in Muleshoe High School is included with many of the units; in addition, I have included a section of

work by students in Muleshoe High School is included with many of the units; in addition, I have included a section of

work by students in Muleshoe High School is included with many of the units; in addition, I have included a section of

Cont. Page 6, Col. 1

was to provide the best ambulance service possible.

"We don't fire everybody when we go into any city," he said. "We would utilize the people already here."

Shaheen added, "If I came in here, you wouldn't see a change in service. This community is not suffering, you have an excellent service here. I don't want to downgrade any of the service you already have. We just can't afford to for rural areas."

He said he would expect a subsidy of some \$96,000 from the county, along with an ambulance or ambulances, and equipment for the ambulances.

He said a new ambulance currently costs nearly \$60,000 and just a cardiac monitor, such as one of the Bailey County EMS ambulances is equipped, now costs around \$10,000.

Shaheen was asked a number of questions about operating what is considered to be a "losing" business, and how he expected to make a profit. Asking most of the questions was local businessman and member of the Muleshoe Area Industrial Foundation Board, Bob Stovall.

Stovall asked how he said he would only expect to clear \$1,000 to \$1,500 each month. "I wouldn't consider putting a business in Levelland without expecting a good return."

Shaheen said his projected budget would be within some \$5-\$6,000 of what the commissioners currently have in the proposed 1990 budget for the county.

After fielding several more questions from people in the courtroom, Shaheen concluded his presentation.

John Chisholm started out by thanking the voters for their overwhelming mandamus on the hospital.

He then said he had several informational items to present for consideration.

He praised the current Bailey County EMS and said "This system can compete with Care Flight in Houston or Life Flight of Dallas, and I am familiar with both. The Bailey County EMS can compete with the best."

"You already have a fine system (emergency service), and

Cont. Page 6, Col. 1



PRESENTING-THE 'WRITE' PATH TO CREATIVE EXPRESSION--Pat Watson, English teacher at Muleshoe High School, proudly shows off her new teaching book on creative writing. It will be on display in a Lubbock bookstore, and Mrs. Watson will be presenting a workshop in Lubbock in the near future. (Journal Photo)

Farm, Ranch Planning Needs To Be Discussed

Whole farm or ranch planning, financial management and record keeping are important components of continued financial success even when times are good.

Many producers resort to these tools when feeling pressured from sources outside their farm or ranch business, but it is important to know this information at all times, says an agricultural economist with the Texas Agricultural Extension Service.

The Extension Service, in cooperation with the Department of Continuing Education at South Plains College, is offering an intensive workshop to help farmers and ranchers learn more about these management techniques. The course will be offered Aug. 15-17 on the South Plains College Campus.

The course will teach participants to add a financial management perspective to a physical production plan, said Dr. Jackie Smith, Extension Service agricultural economist. The Texas A&M Whole Farm Analysis and

Record Management (TAMWFARM), a spreadsheet program developed by the Extension Service, will be used. TAMWFARM calculates cash flow, net worth, income statements and financial ratio analysis on a 12-month projected basis.

The projected financial plan will be prepared from crop and livestock budgets that can be changed to reflect your farm's situation. This information can be used in a production plan in loan applications and to help you make business management decisions, Smith said.

The course will begin at 1 p.m. Aug. 15 and conclude at 4 p.m. Aug. 17. Evening sessions are scheduled for both Tuesday and Wednesday night. The course will be taught by Extension economists.

Registration will be \$125 for each participant. This will include four meals, refreshments, a copy of the TAMWFARM templates and a course notebook. The course will be limited to 20 participants to ensure ample assistance for each

participant.

More information can be obtained by contacting your local county extension agent, or from Smith at the Texas A&M Research and Extension Center at Lubbock, telephone (806) 746-6101.

Money Talk

By Charles B. Carlson, CFA
Dow Theory Forecasts, Inc.

Statistics from the Commerce Department indicate the U.S. continues to be a popular spot for foreign investors. Foreigners spent a record \$65 billion to buy or set up U.S. businesses last year. This was two thirds greater than in 1987.

The Commerce Department cites such factors as advanced technology, political stability, and increased profitability in the U.S. due to the strong economy as reasons for the increased investment.

Another factor is the dollar's depreciation versus most major foreign currencies, which makes investment in this country cheaper for foreign concerns. Though most people think Japan as the major overseas investor in this country, it was British investors who invested the most money in U.S. businesses, some \$21.5 billion. Japanese investors chipped in with \$14.2 billion.

The recent strength of the dollar could curtail investments. However, it's likely that the heady pace of foreign investment will continue.



TAKIN' THE FAST WAY AROUND--Holding on for dear life, these two young girls are thoroughly enjoying one of the rides at the carnival in Muleshoe during the past week. It is sponsored here each year by the Muleshoe Chamber of Commerce and Agriculture. (Journal Photo)

Bailey County Journal USPS 040-200
Established March 31, 1963. Published by Muleshoe Publishing Co., Inc. Every Sunday at 304 W. Second, Box 649, Muleshoe, TX 79347. Second Class Postage paid at Muleshoe, TX 79347.

Member 1989
TPA TEXAS PRESS ASSOCIATION

L. R. Hall, Publisher
Sammye Hall, Vice President/Controller
Cora Williams, News
Everett Harris, Society
Holly Millage, Advertising
Dora Toscano, Classified.

SUBSCRIPTIONS
Muleshoe Journal and Bailey County Journal
Bailey and surrounding counties
Muleshoe Journal and Bailey County Journal
Elsewhere in Texas \$14.25
Muleshoe Journal and Bailey County Journal
Outside Texas, \$16.50
Yearly by Carrier \$12.50

Advertising Rate Card on Application
Advertisers should check their ad the first day of insertion. The Journal will not be liable for failure to publish an ad or for a typographical error or errors in publication except to the extent of the cost of the ad for the first day insertion. Adjustment for errors will be limited to the cost of that portion of the ad where the error occurred.

Welcome To Muleshoe



BUD LOGAN

This week we want to welcome Bud and Blanca Logan to Muleshoe. Bud is the new Director of Engineering at the Muleshoe Area Medical Center and Health Care Center. Logan comes to Muleshoe from Lubbock where he was associated with the West Texas Hospital. Bud and Blanca have one daughter, Irene, age 11, who will be a 6th grader at Watson Jr. High. As hobbies, Bud enjoys stock cars and motorcycles. Blanca enjoys flowers. The Logan's are Catholics. We would like to extend a "Big Hearty" Welcome to Muleshoe to this fine family.

Journal Photo

James Crane Tire Co.

GOODYEAR

322 N. 1st

272-4594

Henry Insurance Agency

111 W. Ave. B.

272-4581

Damron Rexall Drug

308 Main

272-4210

1989 Property Tax Rates in City of Muleshoe

This notice concerns 1989 property tax rates for City of Muleshoe. It presents information about three tax rates. Last year's tax rate is the actual rate the taxing unit used to determine property taxes last year. This year's effective tax rate would impose the same total taxes as last year if you compare properties taxed in both years. This year's rollback tax rate is the highest tax rate the taxing unit can set before taxpayers can start tax rollback procedures. In each case these rates are found by dividing the total amount of taxes by the tax base (the total value of taxable property) with adjustments as required by state law. The rates are given per \$100 of property value.

Last year's tax rate:	
Last year's operating taxes	\$ 505,736
+ Last year's debt taxes	\$ -0-
= Last year's total taxes	\$ 505,736
+ Last year's tax base	\$ 88,000,000
= Last year's total tax rate	\$.5747 /\$100

This year's effective tax rate:	
Last year's adjusted taxes (after subtracting taxes on lost property)	\$ 505,719
+ This year's adjusted tax base (after subtracting taxes on new property)	\$ 87,556,025
= This year's effective tax rate	\$.5775 /\$100

A city that adopted the additional sales tax in a 1989 election must include the following lines:

- Sales tax adjustment rate	\$ N/A /\$100
= Effective tax rate	\$ N/A /\$100

x 1.03 = maximum rate unless unit publishes notices and holds bearing	\$.5948 /\$100
---	-----------------

This year's rollback tax rate:	
Last year's adjusted operating taxes (after subtracting taxes on lost property)	\$ 505,719
+ This year's adjusted tax base	\$ 87,556,025
= This year's effective operating rate	\$.5775 /\$100
x 1.08 = this year's maximum operating rate	\$.6237 /\$100
+ This year's debt rate	\$ -0- /\$100
= This year's rollback rate	\$.6237 /\$100

A city that imposes the additional sales tax must include these lines, regardless of when it held the election:

- Sales tax adjustment rate	\$ N/A /\$100
= Rollback tax rate	\$ N/A /\$100

SCHEDULE A: Unencumbered Fund Balances

The following balances will probably be left in the unit's property tax accounts at the end of the fiscal year. These balances are not encumbered by a corresponding debt obligation.

Type of Property Tax Fund	Balance
Unencumbered Funds	-0-

SCHEDULE B: 19 N/A Debts Service

The unit plans to pay the following amounts for long-term debts that are secured by property taxes. These amounts will be paid from property tax revenues (or additional sales tax revenues, if applicable).

Description of Debt	Principal or Contract Payment to be Paid	Interest to be Paid	Other Amounts to be Paid	Total Payment
Total required for 19 <u> </u> debt service			N/A	
- Amount (if any) paid from funds listed in Schedule A			N/A	
- Excess collections last year			N/A	
= Total to be paid from taxes in 19 <u> </u>			N/A	
+ Amount added in anticipation that the unit will collect only <u> </u> % of its taxes in 19 <u> </u>			N/A	
= Total Debt Service Levy			N/A	

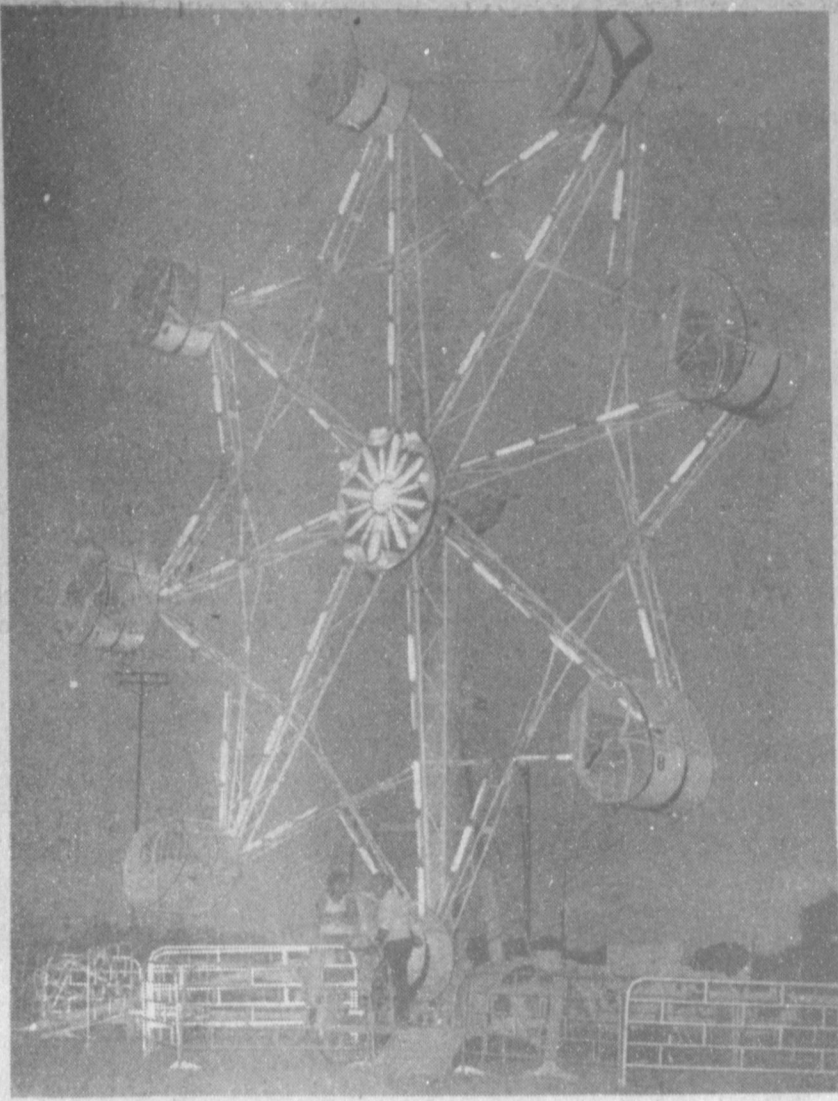
SCHEDULE C: Expected Revenue from Additional Sales Tax

(For counties and cities with additional 1/2 cent sales tax)

In calculating its effective and rollback tax rates, the unit estimated that it will receive \$ N/A in additional sales and use tax revenues.

This notice contains a summary of actual effective and rollback tax rate calculations. You can inspect a copy of the full calculations at 104 E Ave C.

Name of person preparing this notice Carl S. Gilbreath
Title Chief Administrator
Date prepared 7-26-89



NIGHT LIGHTS--Against a darkening sky, the lights on the ferris wheel lighted up the area during the past week, as the annual Muleshoe Chamber of Commerce and Agriculture-sponsored carnival was in town. (Journal Photo)

Walk

This is the time of the year for vacations. The idea is to get away from routine work, to change the pace, and rest.

Interestingly, rest is often equated with doing nothing. Many of us think of rest as lying in bed, sleeping long hours and taking little physical exercise.

Yet experts advise us to get exercise. For most people, a better vacation would result from reasonable physical exertion.

One of the finest forms recommended is simple enough--walking. In Europe people plan and anticipate walking vacations with great care.

In the United States, where just about everyone rides everywhere in an automobile, this is not equally fashionable.

There are U.S. vacation spots where hiking and walking, amid beautiful scenery, can be found. More Americans should enjoy them.

**1989
Property Tax Rates in
Bailey County**

This notice concerns 1989 property tax rates for Bailey County. It presents information about three tax rates. Last year's tax rate is the actual rate the taxing unit used to determine property taxes last year. This year's effective tax rate would impose the same total taxes as last year if you compare properties taxed in both years. This year's rollback tax rate is the highest tax rate the taxing unit can set before taxpayers can start tax rollback procedures. In each case these rates are found by dividing the total amount of taxes by the tax base (the total value of taxable property) with adjustments as required by state law. The rates are given per \$100 of property value.

	General Fund	Farm to Market/ Flood Control Fund	Special Road/ Bridge Fund
Last year's tax rate:			
Last year's operating taxes	\$ 696,087	\$ 147,949	\$ N/A
Last year's debt taxes	\$ -0-	\$ -0-	\$ N/A
Last year's total taxes	\$ 696,087	\$ 147,949	\$ N/A
Last year's tax base	\$ 232,029,000	\$ 227,613,846	\$ N/A
Last year's total tax rate	\$.30 /\$100	\$.0650 /\$100	\$ N/A /\$100
This year's effective tax rate:			
Last year's adjusted taxes (after subtracting taxes on lost property)	\$ 693,665	\$ 147,424	\$ N/A
This year's adjusted tax base (after subtracting taxes on new property)	\$ 232,060,030	\$ 227,660,030	\$ N/A
This year's effective tax rate for each fund	\$.2989 /\$100	\$.0647 /\$100	\$ N/A /\$100

A county that adopted the additional sales tax in a 1989 election must include the following lines:

Sales tax adjustment rate	\$ N/A /\$100
Effective tax rate	\$ N/A /\$100

x 1.03 = maximum rate unless unit publishes notices and holds hearing	\$.3745 /\$100		
This year's rollback tax rate:			
Last year's adjusted operating taxes (after subtracting taxes on lost property)	\$ 799,517	\$ 147,424	\$ N/A
This year's adjusted tax base	\$ 232,060,030	\$ 227,660,030	\$ N/A
This year's effective operating rate	\$.3445 /\$100	\$.0647 /\$100	\$ N/A /\$100
x 1.08 = this year's maximum operating rate	\$.3720 /\$100	\$.0698 /\$100	\$ N/A /\$100
This year's debt rate	\$ -0- /\$100	\$ -0- /\$100	\$ N/A /\$100
This year's rollback rate for each fund	\$.3720 /\$100	\$.0698 /\$100	\$ N/A /\$100
This year's rollback rate	\$.4418 /\$100		

A county that imposes the additional sales tax must include these lines, regardless of when it held the election:

Sales tax adjustment rate	\$.0447 /\$100
Rollback tax rate	\$.3971 /\$100

SCHEDULE A: Unencumbered Fund Balances

The following balances will probably be left in the unit's property tax accounts at the end of the fiscal year. These balances are not encumbered by a corresponding debt obligation.

Type of Property Tax Fund - Unencumbered Funds	Balance
General Fund	490,000
Farm-Market Road	576,000

SCHEDULE B: 19 N/A Debts Service

The unit plans to pay the following amounts for long-term debts that are secured by property taxes. These amounts will be paid from property tax revenues (or additional sales tax revenues, if applicable).

Description of Debt	Principal or Contract Payment to be Paid	Interest to be Paid	Other Amounts to be Paid	Total Payment
Total required for 19 <u> </u> debt service			N/A	
- Amount (if any) paid from funds listed in Schedule A			N/A	
- Excess collections last year			N/A	
= Total to be paid from taxes in 19 <u> </u>			N/A	
+ Amount added in anticipation that the unit will collect only <u> </u> % of its taxes in 19 <u> </u>			N/A	
= Total Debt Service Levy			N/A	

SCHEDULE C: Expected Revenue from Additional Sales Tax

(For counties and cities with additional 1/2 cent sales tax)

In calculating its effective and rollback tax rates, the unit estimated that it will receive \$ 105,850 in additional sales and use tax revenues.

This notice contains a summary of actual effective and rollback tax rate calculations. You can inspect a copy of the full calculations at 104 E Ave C.

Name of person preparing this notice Carl S. Gilbreath
 Title Chief Administrator
 Date prepared 7-26-89

**Generic Drugs May Not
Work For Everyone**

Pharmacists often tell consumers they can save money with generic substitutions of prescribed drugs. Although this is often true, not all generic substitutions are therapeutically equivalent to prescribed brand-name drugs, says the Texas Medical Association.

As a patient, you have a right to receive the medication best suited to your individual needs. The key to success is being an informed consumer.

When a physician prescribes a drug for you, more is involved than the designation of a drug most likely to prove effective for your condition. Your physician has an ethical duty to ensure high quality drugs will be dispensed to you. The benefits of his/her knowledge are lessened if you receive drugs of lower quality.

A generic drug, identified by its chemical name, usually costs less than a brand-name drug, which often has development and advertising costs associated with it. The law provides that prescriptions specify whether the drug by "dispensed as written," in which case a brand-name drug will be dispensed, or if selection of a generic substitution is permitted. Some drugs cannot be

generically dispensed. If you have a question about the drugs prescribed to you or their cost, discuss the matter with your physician. No generic drug may be available for a brand name prescribed, or the law may prohibit generic dispensing of that particular medication. Your physician also may believe the generic equivalent of the drug is not as effective as the brand name. In this case, your physician is fulfilling his duty to ensure the highest quality medical care for you.

Remember, Texas Medical Association says you have the right to receive the medication best suited to your individual needs.

The Texas Medical Association is a professional organization of more than 29,000 physician and medical student members. It is based in Austin and has 116 component county medical societies around the state. The Association represents 80 percent of the state's physicians, and its goal is to improve the health of Texans through the professional and personal development of members.

Shop Muleshoe First!

NEW MEXICO'S HISTORICAL OUTDOOR DRAMA

BILLY the KID

"Exciting new changes to be seen this third year!" - Dr. J. Richard Watts, New Director from Eastern New Mexico University

CAPROCK AMPHITHEATRE

19 Miles South San Jon, New Mexico
 30 Southeast Tucuman, NM
 55 North of Clovis, NM
 100 West of Amarillo, Texas
 (Exit 368 off I-40 at San Jon)

Thurs., Fri., Sat. Nights 8-15
JUNE 22 - AUG. 26

Ticket Prices:
 Children under 12 FREE
 Teens 12 through 17 - \$3
 Adults 18 - 64 - \$6
 Seniors (65 & older) - \$5
 Members of a group of 15 or more - \$5

Cattle Call BBQ available starting at 6:30 pm
 Adult \$5, Kids under 12 - \$3.50

NEW MEXICO-USA
 (505) 576-2455 for Res. or Info
 (After Hours) 576-8111
 P.O. Box 337, San Jon, New Mexico 88434
 Evenings can be "top" - bring a "wrap"



JOHN DEERE TOYS--JUST LIKE THE REAL THING, ONLY SMALLER!
 THE LARGEST SELECTION OF FARM TOYS IN THE AREA, AND MORE ON ORDER.

CHECK THESE PRICES ON A FEW OF THE ITEMS WE HAVE IN STOCK:

- 503DD-UTILITY TRACTOR W/LOADER--\$20.25
- 510EO-FORAGE WAGON--\$11.20
- 541DD-ROWCROP TRACTOR--\$17.75
- 509EO-FORAGE HARVESTER--\$11.20
- 525DD-6 BOTTOM PLOW--\$11.20
- 539DD-MODEL "A" TRACTOR--\$10.75
- 5508CO-4WD TRACTOR--\$28.98
- 5533EO-PARTS EXPRESS TRUCK--\$14.75
- 583DD-CENTERFOLD DISK--\$15.98
- 587FO-TRACTOR W/LOADER--\$3.85

AT DENT & CO., YOU CAN TRADE YOUR OLD TOYS IN ON NEW TOYS. TRADE-IN ALLOWANCES MAY VARY DEPENDING ON AGE AND CONDITION.

YOU CAN TRADE ANY FARM TRACTOR, IMPLEMENT, TRUCK, OR CONSTRUCTION TOY, REGARDLESS OF BRAND OR CONDITION.

DENT & CO.

2800 W. Amer. Blvd.

Muleshoe

272-4296

Creative Living

by Sheryl Borden

Information on delicious and nutritious recipes, built-in appliances, and making and decorating coats will be featured topics on "Creative Living" on Tuesday, August 8 at 12 noon and on Saturday, August 12 at 2 p.m. (All times are Mountain.)

Health-conscious Americans are striving to eat foods that are low in calories, sodium and fats, and high in energy-giving complex carbohydrates. Health spas take advantage of using potatoes to fill the bill in all of these areas. Marie Rama represents the Idaho Potato Commission in Boise, ID, and will share some delicious and nutritious recipes from famous spas around the country that can be enjoyed at home.

Jill Absher, with Creative Kitchen Designs in Birmingham, AL, will discuss built-in appliances and some of the new products on the market in the area of refrigerators, cooktops and wall ovens. Jill will also discuss the trend toward the European look and tell how some American manufacturers are producing European look-alikes.

Paulette Durfee, owner of Coat Craze in Shelley, ID, will demonstrate how to make your one-of-a-kind coat even more special by decorating or embellishing it.

On Tuesday, August 8 at 9:30 p.m. and repeated on Thursday, August 10 at 12 noon, "Creative Living" will present information on a new breadmaking machine,

stuffed toys to stitch and stuff and recycling.

Connie Moyers will demonstrate a very unique breadmaking machine called the Automatic Bread Maker which mixes, kneads and bakes the bread all in the same unit. Connie is the Marketing Home Economist with Southwestern Public Service Co., in Clovis, N.M.

Jeanne Bakelar represents the Pro-Environmental Packaging Council, Inc. in Sparta, New Jersey. Jeanne is recognized across the country as an expert in the field of recycling and solid waste disposal and has taken her crusade into the supermarket.

The flashback segment will feature Jean Benson who will demonstrate several stuffed toys you make yourself. Jean has authored a Farm Journal Craft Book called *Stuffed Toys to Stitch and Stuff* and has her own business called "Critic Crafts" in Pasco, WA.

"Creative Living" is produced and hosted by Sheryl Borden. The show is carried on more than 100 PBS stations in the United States, Canada, Guam and Puerto Rico and is distributed by Pacific Mountain Network, Denver, Co. Viewers can request copies of printed materials offered on the show by calling on KENW-TV's toll-free telephone lines between 8 a.m. and 5 p.m. In New Mexico, the number is 1-800-432-2361, out-of-state: 1-800-545-2359 and Portales and Roosevelt County: 562-2112.

DUTCH POTATO SALAD

2 medium Idaho potatoes
1 tablespoon olive oil
1 teaspoon Dijon-style mustard
¼ teaspoon pepper
½ cup thinly sliced scallions
2 cup diced green bell pepper
½ cup low fat yogurt
1 tablespoon red wine vinegar
½ tablespoon red wine vinegar
½ teaspoon caraway seeds
2 tablespoons chopped parsley

Pare potatoes; cut into large chunks. Place in medium saucepan with 1" water. Cover. Bring to a boil; reduce heat, simmer 20-25 minutes or until potatoes are tender. Drain thoroughly. Cool. Slice ¼" thick. In small bowl combine yogurt, oil, vinegar, mustard, caraway seeds and pepper; mix well. Stir in green pepper, scallions and parsley. Combine dressing and potatoes; toss gently to coat. Cover. Let stand at room temperature 1 hour. Serve on cabbage or radicchio leaves.

QUICK TOPPINGS FOR BAKED POTATO

- Sour cream with sesame seeds and scallions
- Buttery sauteed onion with caraway seeds
- Juliennes of ham with lemon mustard sauce
- Leftover chicken chunks marinated in soy sauce, vinegar and minced fresh ginger



MARRIAGE ANNOUNCED—Christie Creamer and Dennis Snell would like to announce their marriage. They were married at 9:15 p.m. July 7, in the Calvary Baptist Church. Parents of the bride are Mr. and Mrs. Jim Barker of Jonesboro, Ark. and Forest Creamer of Amarillo. Snell is the son of Mr. and Mrs. Gene Snell of Muleshoe.

(Guest Photo)

Tops Club

TOPS Club chapter no. 34 met at 6:30 p.m. Thursday, August 3 in the Heritage Thrift Shop. Laverne James, leader, called the meeting to order. The TOPS pledge was recited and the fellowship song sung. Mrs. James led the group in prayer.

Evelene Harris called the roll with 14 members answering with the amount they had lost or gained. Minutes of the previous meeting were read by Betty Jo Davis, and they were approved as read. Ruth Clements gave a treasurer's report.

IN FASHION

Are you a bit tired of your early spring clothes in pastels and deeper toned colors? It's too early to choose fall colors but an in-between-season's change can be exciting.

Natural colors are quite versatile with the right combinations. A khaki 3-piece silk suit (jacket, skirt and pants), a silk cream blouse, and earthy toned jewelry are flattering in the office or at social engagements.

Long, full skirts, in rich tobacco tone, with a change of accessories are always a good buy. Add contrasting cummerbunds and an ivory silk blouse for a striking combination perfect for the in-between-season.

Jonessa Jennings

Receives Scholarship

Jonessa Jennings, daughter of Derrell and Glenda Jennings of Lazbuddie, was selected to receive the Girl's Scholarship awarded by the Texas Six-Man Coaches Association. Each member of the all star teams that participated in the games in Stephenville July 21 and 22 were asked to submit an application for scholarship. The selections were based on GPA, athletic achievement, extracurricular activity, and community involvement.

Jonessa Jennings and Brian Glover of Lazbuddie and Scott Sudderth of Bovina left Tuesday, Aug. 1 for Sydney, Australia as part of a group of Athletes with International Sports Exchange. The three will be members of the basketball teams for ISE, and they look forward to playing teams and meeting other athletes "down under."

This is an annual event, as ISE

organizes trips to other countries and invites boys and girls to go and participate in their particular sport. They also have ample opportunity to see the sights and do some of the usual "tourist things" while they are there.

An added bonus this year is a two and half day stopover in Honolulu on the way home.



JONESSA JENNINGS

A pretty girl need not rush into matrimony.



SUMMER SWEEP OF SAVINGS

All Summer Merchandise

50% Off

Includes Summer Accessories & Jewelry

Lookin' Good

206 Main Muleshoe 272-5062

Bake-Less Bake

Sale To Benefit

Nursing Home

The Jennyslippers, Associate Members of the Muleshoe Chamber of Commerce and Agriculture are sponsoring a "Bake-Less Bake Sale" to benefit the Muleshoe Nursing Home residents. Last year they were able to buy new drapes for the day room and had the kitchenette papered, painted and had the cabinets redone. This gave a "new face" to the resident's home.

A new ice machine is needed. The old one is worn out. Cari Ann Kidd says, "This old machine makes water instead of ice." The Jennyslippers had a "Bake-Less Bake Sale" in the early spring, and they wish to thank everyone who participated, and since the hospital and nursing home is secured, they hope that everyone will help them help the nursing home residents. They were short of their goal for the ice machine.

You are asked to mail your contributions to: Jennyslippers, PO Box 153, Muleshoe, Texas 79347.

Committee members are Nancy Kidd and Kathy Franks.

CUT OUT THIS SYMBOL AND SAVE

QUAKER STATE® MEANS QUALITY

AFFIX THIS SYMBOL TO THE REFUND CERTIFICATE AVAILABLE IN STORE TO GET YOUR BONUS REFUND!



QUAKER STATE®

MOTOR OIL SALE!

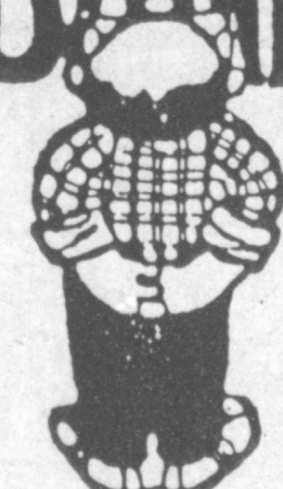
99¢

per qt.

P O Y N O R ' S


103 Main  Muleshoe  272-4552

LOOKING FOR A BANK?



Look at us.....

We're a sound, friendly bank offering courteous service, financial guidance and a fair return on your investment. You'll like the way we do business...



202 S. 1st Member F.D.I.C. 272-1515



FIRST ANNIVERSARY—Richard and Dora Toscano are celebrating their first anniversary today, Sunday, with their son, Joshua. The day will also be spent visiting with family and friends. (Guest Photo)

Nursing Home News
By: Joy Stancell

Recent visitors of Ruby Malone were: Helen, her cousin Patsy Ann Payne of Plainview, Ruth, Vi Lindsey, Doris, Mary, Barbara, Jerry, Kim and Kayla Kimbrough, Ruby Garner, Curtis, Lavon Cory and Cali Hunt, Winnie Berry, Juanita Jarman and J.E. Embry.

Eric Smith was visited by his daughter, Patricia Thatcher of Portales Tuesday and Friday, his niece, Marylin Gardner of Portales, Georgia Stephens of Shreveport, Louisiana.

Effie Smith was visited by her niece, Dortha Joyner of Lubbock Sunday.

Rachel Snider was honored with a birthday party Thursday by the staff and employees of the nursing home and hospital. Lona Embry assisted.

We thank everyone who participated in our birthday card

project for Edith Bruns 100th birthday. She received well over 100 cards.

Effie Smith, Mamie Askew, Patsy Franklin, Thelma Stearns, Emma Schuster and Beryl Hollis along with Joyilene Costen, Clara Lou Jones and Joy Stancell attended the Crusade Tuesday night at the Foot Ball Field. We wish to express our appreciation to Rev. and Mrs. Mike Doyle, Brother Dennis and Awilda Hayes, Janell Turner and many others who helped us and

helped us feel very special.

We were so pleased to have Lona Embry here Tuesday. She has been unable to come due to health problem.

The Gospel Notes Quartet sang for the residents Sunday afternoon.

We were pleased to have Mac Wilterding and Oline Cox to come Thursday and help sing for our birthday party.



GARDEN SPOT OF THE WEEK—C.E. Fox, who lives at 1709 West Ave. D, proudly shows off his dahlias, which the Jennyslipper Judges selected as the "Garden Spot of the Week. If you would like to nominate a special garden spot in Muleshoe for this honor, call the Muleshoe Chamber of Commerce before noon on Wednesday.

(Journal Photo)

MICROWAVE TIPS

Working housewives can cook pot roasts in a microwave, but it isn't a quick process.

Several recipes call for cooking pot roasts six to eight hours. But that time is extended if one uses frozen meat.

Thus if one is working eight hours a day, a pot roast with frozen meat can be put on automatic simmer in the morning at seven and be ready at five or six that afternoon.

Automatic-simmer time for a frozen pot roast is up to eleven hours--for a six to eight serving roast.

One uses consomme (2 10 1/2 ounce cans) in the dish, which also contains vegetables and potatoes, with a temperature probe at the bottom of the liquid. It's all covered with plastic wrap, loosely. A 4 to 5 lb. roast will simmer 9 to 11 hours. Remember to arrange vegetables around the edges of the dish.

An orator isn't always a thinker.

Hobby Club

Muleshoe Hobby Club met Thursday, Aug. 3 at 2 p.m. at the Senior Citizens Complex with eight members present.

Mattie Benton was hostess for the day and Laura Mae Stancell won the hostess gift.

Those present were Glenda Morris, Blanche Awbrey, Frances Bruns, Laura Mae Stancell, Myrtle Chambless, Mattie Benton, Hazel Reader, and Sammie Ethridge.

The next meeting will be on August 17 at the Senior Citizens Complex at 2 p.m. Glenda Morris will be the hostess.

Why?
History repeats itself, as everybody knows. But why does it have to do it so fast?
—Star, Minneapolis, Minn.

Advice is usually expensive, one way or the other.

Season CLOSEOUT SALE!

Men's Short Sleeve Shirts **50% off** Men's Long Sleeve Shirts **10% off**

All Straw Hats **50% off**

Men's Suits and Sport Coats
One Group **50% off**

Ladies Spring & Summer Wear
50% to 75% off

More New Fall Fashions for Men & Women

Rip's
IN TEXICO
314 Wheeler
482-3363

OPEN 8:00 a.m. - 6:30 p.m. C.S.T.
We Accept:

Muleshoe LIONS CLUB

Quality Blind Made Products

Annual Broom & Mop Sale!!

Muleshoe State Bank Parking Lot
Wednesday - August 9, 1989
Starts at 8:30 a.m.

Contact:
Jim Watson --272-3077

Quality Cleaning Products for Home, Business, or Industry

Caravan Sales For The Blind

BENTLEY'S MULESHOE

QUITTING BUSINESS!

All Regular Priced Merchandise NOW REDUCED EVEN MORE

SAVE **40% OFF!**

ALL OTHER MERCHANDISE UP TO **75% OFF!**

STOCK UP NOW FOR SCHOOL!

Bentley's
Smart Fashion

Open Mon.-Sat. 9-6

Personal Checks
All Sales Final - No Layaways
110 S. MAIN ST. MULESHOE, TX. PHONE 272-4119
No Approvals - No Holds

County Ambulance

Cont. From Page 1

with the approval of Medicare, the ambulance will be much busier.

He spoke of attempts to recruit two new doctors for Muleshoe, one a general or family practitioner, and the second a surgeon. "This will cause an increase in the ambulance service," he noted. Chisholm also talked about the closing of the Amherst hospital in July, and the possibility of the closing of the Morton and Friona hospitals. Both are very 'shaky' at this time, he noted.

He talked about what may happen to the former South Plains Hospital building at Morton, adding, "What happens at Amherst and Morton will affect Muleshoe. We already know the interest in the Lazbuddie area for increased services. And, the ambulance service at Sudan will have to make a decision as to whether or not to take patients to Littlefield or bring them to Muleshoe."

Chisholm also talked about other areas he expects to increase the importance of both the hospital and ambulance service for Muleshoe and this area.

Upon being questioned, he also said he has never had a complaint at any time about the local EMS since he has been in Muleshoe.

Book...

Cont. From Page 1

student work at the end of the syllabus."

The objective of creative writing is to guide the student as he learns to express himself in a variety of literary genres, she added. Before he can learn to write creatively, however, he must be able to hear, to feel, to touch, to see, and to think and wonder.

"The unit plans in this syllabus are designed to challenge the student in these areas and to help him impart these attributes via written expression," she said. "I want my students to learn to express themselves through writing and to become more proficient in their writing skills and more confident in their creative ability," said Mrs. Watson.

She said she has lived in the Muleshoe area for almost 35 years, is married to W. T. Watson, who is a farmer, and their three sons, David, Ed, and Clifford, all graduated from Muleshoe High School.

She is a graduate of Eastern New Mexico University, Portales, N.M. and taught third grade for one semester before becoming a sixth grade reading teacher for ten years.

Mrs. Watson will be present with a display of her books at the Sentinel Bookstore in Lubbock on Saturday, August 12 and will be giving a workshop on creative writing at the bookstore on September 16, 10 a.m.-12 noon.

Former County Judge Gordon H. Green presented a brief history of the ambulance service, telling about the contract which was signed where the city would fund the fire department and the county would provide ambulance service.

He said the county provided a subsidy to Ellis Funeral Home for a year or two, then Frank Ellis notified the county commission he was relinquishing the ambulance service to the county.

"The county has never been enthusiastic about running an ambulance service," said the former judge, "So we paid a subsidy to the hospital to operate it. Then, after a year or two, the West Plains Medical Center Board leased the hospital to Westworld. It wasn't a total loss with Westworld, though," he added. "They constructed a nice ambulance building and purchased a nice, large ambulance, costing some \$45,000 at the time. The same ambulance would cost in the neighborhood of \$60,000 today."

After a couple of years, around September, 1986, Westworld notified commissioners court they could not operate the ambulance anymore. "We decided since it looked like the hospital would be closing, we probably had better go to the ALS (Advanced Life Support) system, as we needed the best we could afford with not hospital. We funded the ambulance service at a higher level than usual."

He then added, "I am skeptical about an outside service, just because of the history of outside ambulance services." Judge Green then added a criteria by which an outside service should be considered, including a five year operation history, proven financial stability and prove they could provide a saving in funds for the county.

Also speaking before the lunch break was Mike DeLoach of the Lamb County EMS. Other comments were made by Jim Fitzgerald, who operates the ambulance service at Morton.

Immediately after re-convening at 1:30, Bailey County Judge Jim Watson said the commissioners were going into executive session, citing a section of Vernon Statutes "To consider sensitive matters."

Reconvening in open court at 2:11 p.m., a motion was made for Bailey County to continue to operate the ambulance service, and to hire a paramedic director to replace the EMT director. Judge Watson said they would take resumes, and the decision on a new employee would be made on September 11.

Stovall commented that the local operation should be able to work as economically as anyone else.

Richelle Watkins, who just resigned as director of the service to return to fulltime nursing asked the commissioners why they had never come to her and spoke of any problems, and

said, "I have done the best I could. I have always thought of myself as a care giver. Communications would be a big help in the future. If you have a problem, you need to let the director know. Communications or the lack of communications seem to be the big problem right now. If we aren't told what we're doing wrong, we just keep doing the same thing."

Commissioner R. L. Scott said "It was never our intention to cut the service to one ambulance," and Commissioner Joey Kindle commented, "we also never had any intention to cut the level of service now being offered."

With no further business, the court adjourned.

Twins...

Cont. From Page 1

the twins brain damaged and retarded, and the operations were experimental.

Late last week, after Lucas and Sandy Bleeker filed a law suit against the Kaiser Foundation Health Plan of Texas, the insurance company finally did agree to pay the costs.

In the meantime Mrs. Bleeker had borrowed her parents' motor home, and took her four year old son, Cade, and the twins on the 1,100 mile drive to Wyler's Hospital in Chicago.

Doctors at the Chicago hospital said the twins were viable candidates for the surgery which would involve dividing an adult liver between the twins.

Also in the meantime, the very high ammonia levels in the twins continued to damage their brain.

The Bleekers were planning to return to the Chicago hospital as soon as possible. Although the twins are having seizures, they are on the special low protein diet required, and the entire family is praying the twins can hold on until the transplant can be done.

Mary Nell Bleeker told Cleta Williams of *The Journal* on Sunday night that she and her husband were going back to Keller on Monday to await the outcome of the possible transplants which will give the twins, Jared and Derrick, a chance to live.

Donations to help allay travel and medical expenses are still being accepted. Twin Oaks Baptist Church of Keller has set up a fund. Donations can be sent to the Bleeker Twins Fund, Keller State Bank, Box 483 Keller, TX 76248.

GOLDEN GLEAMS

One lie will destroy a whole reputation for integrity.
-Baltazar Gracian.

Breaking of an oath, and lying is but a kind of self-denying.
-Samuel Butler.

A man had rather have a hundred lies told of him than one truth which he does not wish to be told.
-Samuel Johnson.

The man who fears no truths has nothing to fear from lies.
-Thomas Jefferson.

Congressman Discusses Medicare Coverage

There's been some good news and some bad news recently concerning the Medicare Catastrophic Coverage Act of 1988. First, the good news: The House Ways and Means Committee has recommended that changes be made to this unfair law which may appear to reduce the costly discriminatory surtax which senior citizens have to pay. Now for the bad news: The changes will not cut costs at all, and actually threaten to reduce one of the most popular and needed benefits enjoyed by older Americans.

Let me stress that I am encouraged to see that my colleagues, some of whom said they would never change their minds about catastrophic coverage, are listening to the outcry from senior citizens concerning the unfairness of this measure. When I voted against this law in 1988, I was one of a very small minority which opposed what many touted as the best coverage available for senior citizens.

Ever since the law was enacted, however, millions of older Americans have revolted against the mandatory surtax which they are forced to pay in order to receive these so-called benefits. Because throngs of senior citizens have risen up in arms over the tax, members of Congress who originally stood behind the law are now calling for reform or repeal.

The particular reform proposed by the Ways and Means Committee calls for cutting the surtax in half and making

catastrophic health coverage optional. In making the coverage optional, however, the Committee has tied the benefit and its surtax with Part B of Medicare coverage, one of the most popular and needed aspects of insurance for the elderly. Unless they pay the high tax for what is often repetitive catastrophic health care coverage, senior citizens lose benefits involving payment of physician services.

This is not the change that a majority of the senior citizens want to see, and I join them in calling for cuts in the premium payment with no Part B strings attached. Instead of reducing or eliminating payments, the federal government is attempting to blackmail older Americans into paying an unjust and discriminatory tax. Just as in the case of the original law, this proposed change in payment plans is not going to be accepted by the millions of older Americans which it affects.

I continue to stand by a decision that the catastrophic health care law should be scrapped, and Congress should start from scratch and enact true catastrophic health care legislation which provides some real help and does not threaten the health or life savings of senior citizens. There are too many defects in the current law to make effective changes, and I have cosponsored legislation which would repeal the catastrophic health care measure and enable Congress to begin at

square one and write a new law which would be both fair and beneficial to older Americans across the country.

BIBLE VERSE

"Blessed is the man that walketh not in the counsel of the ungodly, nor standeth in the way of sinners, nor sitteth in the seat of the scornful."

1. Where would you find this verse?
2. In what way was this verse used by the Jews?
3. Who was its author?
4. When was it thought to be written?

Answers:

1. Psalm 1:1.
2. In the synagogue service and in the family circle.
3. Presumably David, but the Psalms had a number of authors.
4. Between the time of Moses and the Babylonian exile.

Cash Reward
Up To \$1,000
For Information!
Call
Bailey County
Crime Line
272-HELP

SONIC Tuesday Nite
5 p.m. to close

FAMILY SPECIAL!
Burgers Half-Price!
BUY TWO, FOUR OR MORE!



272-3998
1633 W. American
Muleshoe, Texas

Talk About Dependability!

Here's what Dual Fuel Heat Pump owners say:

"I've never done anything to my heat pump except change the filters."
Reford Burrows
Dimmitt, TX

"It does what they said it would do. It's warm in the winter and cool in the summer."
Dewey Moore
Muleshoe, TX

"I've had no maintenance problems at all with my heat pump."
Bob McClelland
Tucumcari, NM



Dual Fuel Heat Pump

People Who Own 'Em Love 'Em.

Maybe that's why the number of people who own 'em is growing so fast.

CUT OUT THIS SYMBOL AND SAVE

QUAKER STATE® MEANS QUALITY

AFFIX THIS SYMBOL TO THE REFUND CERTIFICATE AVAILABLE IN STORE TO GET YOUR BONUS REFUND!

QUAKER STATE®

MOTOR OIL SALE!

99¢ per qt.

P O Y N O R S

103 Main Muleshoe 272-4552



Courthouse News

COUNTY COURT

Rogelio Hernandez, DWLS, \$200 Fine, 72 Hours Jail
Rogelio Hernandez, DWI second offense, \$600 Fine, 60 Days Jail

Henry Carrion, Possession of Alcoholic Beverage in Dry Area, \$1,000, 30 Days Jail
Manuel Rivas-Hernandez, DWI, \$300 Fine, 30 Days Jail
Manuel Rivas-Hernandez, Work Release.

WARRANTY DEEDS

T.L. Timmons to Leo Chavez and wife, Olga Chavez--143.75 acres of land out of Section Number (7), and Section Number (8), Block "Y", WD&FW Johnson's Subdivision No. 2, in Bailey County, Texas.

Jon Karl Vogel to William Charles Vogel--All of my undivided interest in the estate of Dorothy Welborn Vogel in all that certain lot, tract or parcel of land situated in Gregg County, out of the Luke Dickard 485 acre tract in the David Hill Survey.

Diamond Shamrock Refining and Marketing Company to Blackwater Agricultural Association, Inc.--3.0 acres of land, more or less, out of the (NW/4) of Section Number (21), Block "Y", WD&FW Johnson Sub-division No. 2, Bailey County, Texas.

Lela Gatlin to Tiwana Ellis--

All of Lots (26), (27) and (28); the Southerly (20) feet of lot (15), and a figure in the shape of a trapezoid out of the Easterly part of Lot (1), in the Gatlin Addition to the Town of Muleshoe, Bailey County, Texas.

Lela Gatlin to Gary Stelzeg--An undivided one eighth interest in and to; All of Lots (26), (27) and (28); and the Southerly (20) feet of lot (15); and a figure in the shape of a trapezoid out of the Easterly part of Lot (1), in the Gatlin Addition to the Town of Muleshoe, Bailey County, Texas.

Lela Gatlin to Bobby Stelzig--All of Lots (26), (27), and (28); the Southerly (20) feet of lot (15), and a figure in the shape of a trapezoid out of the Easterly part of Lot (1), in the Gatlin Addition to the Town of Muleshoe, Bailey County, Texas.

Lela Gatlin to Vickie Stelzig Small--All of Lots (26), (27), and (28); the Southerly (20) feet of lot (15); and a figure in the shape of a trapezoid out of the Easterly part of Lot (1), in the Gatlin Addition to the Town of Muleshoe, Bailey County, Texas.

Lela Gatlin to Ricky Stelzig--All of Lots (26), (27), and (28); the Southerly (20) feet of lot (15); and a figure in the shape of a trapezoid out of the Easterly part of Lot (1), in the Gatlin Addition to the Town of Muleshoe, Bailey County, Texas.

Myrtle Carter to Jesse Ray Carter and Mildred Harrison--TRACT I: All of Labor 12, League 177, Montley County School Lands, Bailey County, Texas;

TRACT 2: All of Labors 19, 21, and 22, of League 178 Montley County School Lands; TRACT 3: A part of Labor No. 20, League 178, Montley County School Lands, Bailey County, Texas.

Charles Dunn and Jonette Walker to Archibald C. McColl, III--All of the (SW/4) of Section Number (32), Block C, Melvin, Blum and Blum Survey, Bailey County, Texas.

Edward Northcutt and wife, Evelyn M. Northcutt to Jesus Ernesto Bustillos, Jr. and wife, Raquel Bustillos--All of the (S 20') of Lot number (9), and all of Lots (10), (11), and (12) in Block Number 9, Original Town of Muleshoe, Bailey County, Texas.

Neal Caswell and wife, Norma Caswell to C.L. McCurry--Labor No. 10, League 202, of the Roberts County School Land Survey in Bailey County, Texas.

DISTRICT COURT

Bailey County Appraisal District VS Gage, Eddie Bob IND/DBA Muleshoe Home Center, Order of Dismissal

Federal Land Bank of Texas VS Walter B. Little, Judgment

Margarito Hernandez and wife, Eulalia Hernandez and Ynes Aleman and wife, Eva Aleman VS Emileo Valencia, Order of Dismissal

B.R. Olivas and M.M. Olivas, DV

DISTRICT COURT

CORRECTION

Bailey County Appraisal District vs Arnold Price, Jr., Order of Dismissal.

Enochs News

by: Mrs. J.D. Bayless

Mr. and Mrs. Bulford Peterson were in Lubbock Monday to be with his sister, Mrs. Faye Montgomery of Idalou as she had heart surgery Monday. She had three by-passes.

Mr. and Mrs. Shorty McCall received word they were great-grandparents. Mr. and Mrs. Rick Walker of Eager, AZ are the parents of a daughter. She weighed six pounds and 11 ounces. Her name is Taysha LaDawn. She has a brother, Trinity.

Grandparents are Mr. and Mrs. Robert George of Lubbock and Mr. and Mrs. Onnie Walker of Eager, AZ.

J.E. Keith and Mr. and Mrs. Harold Layton moved David and Pamela McDaniel to Houston Friday. David is taking treatments there for cancer.

Tom Coffman of Lockney formerly of Three Way was boosting a tractor to start it Saturday and it was in gear which caused his death. Funeral services were Monday at 11 a.m. at the First Baptist Church in Lockney July 31. He is a nephew of Mrs. Ellen Bayless.

Mrs. Dolores (McCall) Mosser

of Slaton finished the summer classes teaching history at the Junior College at Snyder Friday, July 28.

Mr. and Mrs. Moris Peterson and Stephanie and Steven of Hillsboro have spent the week visiting his parents, Mr. and Mrs. Buford Peterson and to be with his aunt, Mrs. Faye Montgomery, as she under went surgery.

Mrs. Myrtle Finley of Odessa came Sunday afternoon and spent the night with her mother, Mrs. Ellen Bayless, and they attended the funeral service of Tom Coffman Monday at Lockney.

Visiting in the home of Mrs. Winnie Byars during the week-

end was Mr. and Mrs. Rndy Robinson of Whitharel. We wish to welcome Debby and Glen Quick and family to our community. They also visited with them.

Mrs. Winnie Byars and Mrs. Ellen Bayless attended the 50th year celebration of the Morton Tribune Friday, July 28th at Morton.

The farmers are very busy irrigating and working in their crops and the women are canning and freezing vegetables and wishing for rain.

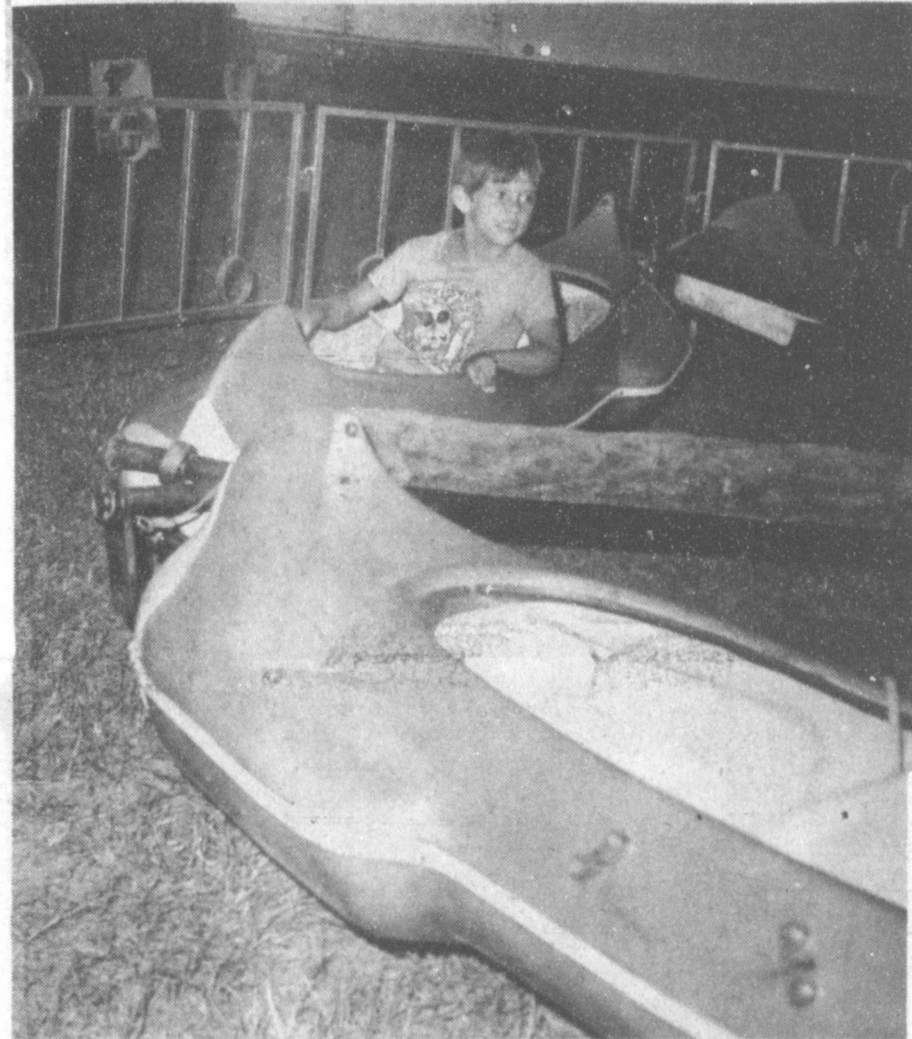
Mr. and Mrs. Buford Peterson received word another sister, Mrs. Eloise McRay is to have knee surgery Wednesday.

Do you know you can try a hearing aid risk-free for 30 days?

You need not risk a dime on a hearing aid unless you're convinced it's the right thing for you. We give you a full 30 days to decide how well you'll enjoy hearing with a custom fit Beltone hearing aid. If you're not satisfied with it for any reason, simply return it and we'll refund the full cost of the hearing aid.

At Beltone, we're in business to help people hear better. Call us for an appointment now!

Friday, Aug. 11, 1989
10 a.m.-12
Beltone® Bailey Co. Coliseum
Better Hearing Through Professional Care 272-4114
Free Hearing Test



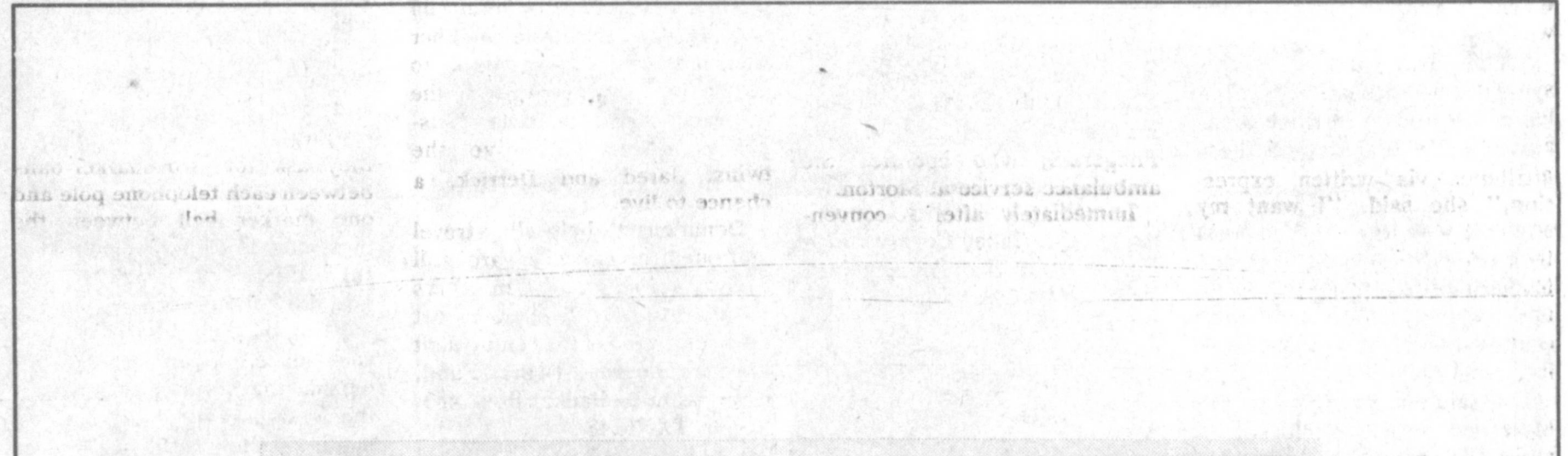
A BUMPY RIDE--This young man seems oblivious to the fact that he is receiving a rather 'bumpy' canoe ride, as he goes round and round at the Muleshoe Chamber of Commerce and Agriculture-sponsored carnival in Muleshoe this week. (Journal Photo)

Dr. A.R. Ploudre
Optometrist

*Family Vision Care *Contact Lenses
*Texas Medicaid

(505) 762-2951 1515 Gidding St., Clovis

Hours: Monday through Friday 8:00 a.m. to 12 noon 1-5 p.m.
Saturday, 8 a.m.-12 noon



C. J. HENDERSON 129
6204 BROOKHOLLOW
GREENSPOINT, TEXAS 76022

Pay to the order of _____ \$ _____ Dollars

Sunbelt Savings FSB

For _____

⑆ 43101740⑆ 06691222⑆ 09266

Things they never told you about a heat pump.

Fact #14 and #15

A heat pump will not cool your home as well as a high-efficiency air conditioner.

A heat pump will not warm your home as well as a natural gas furnace.

If a heat pump won't cool you as well as an air conditioner, and won't warm you as well as a natural gas furnace, just who does a heat pump benefit?

ENERGAS
Heat Pump

To get no-service-charge checking, just sign here.

At Sunbelt, you have two ways to get a checking account with no monthly service charge.

No monthly service charges until 1990: Just so you'll try Sunbelt's simple, affordable checking accounts, we'd like you to take advantage of our special offer. Open a checking account before September 30, and pay no monthly service charges in 1989.

No monthly service charges after 1990: Stay with us after this special offer expires and you'll see that Sunbelt makes it easy to continue to avoid monthly service charges.

For example: Open your account with only \$100. Stay above the \$250 minimum balance on regular checking or \$500 on interest checking with cancelled checks held in safekeeping, and you pay no monthly service charges. Go under the minimum, and you won't get hit with some unreasonable fee. Just \$3 or \$5 a month.

Because we believe a checking account should be a simple thing. Deposit money. Write checks. No "per check" charges. And no shocking service charges.

It's a simple offer, straight across the board, from Sunbelt Savings, the uncomplicated banking bank.

Sunbelt Savings FSB
No Excuses. Answers.

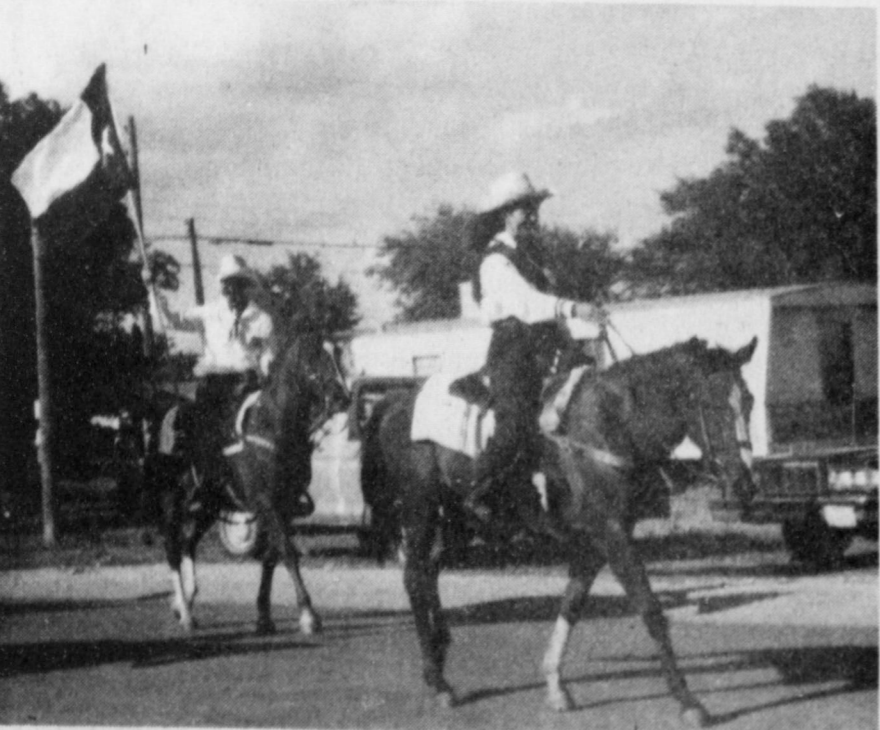
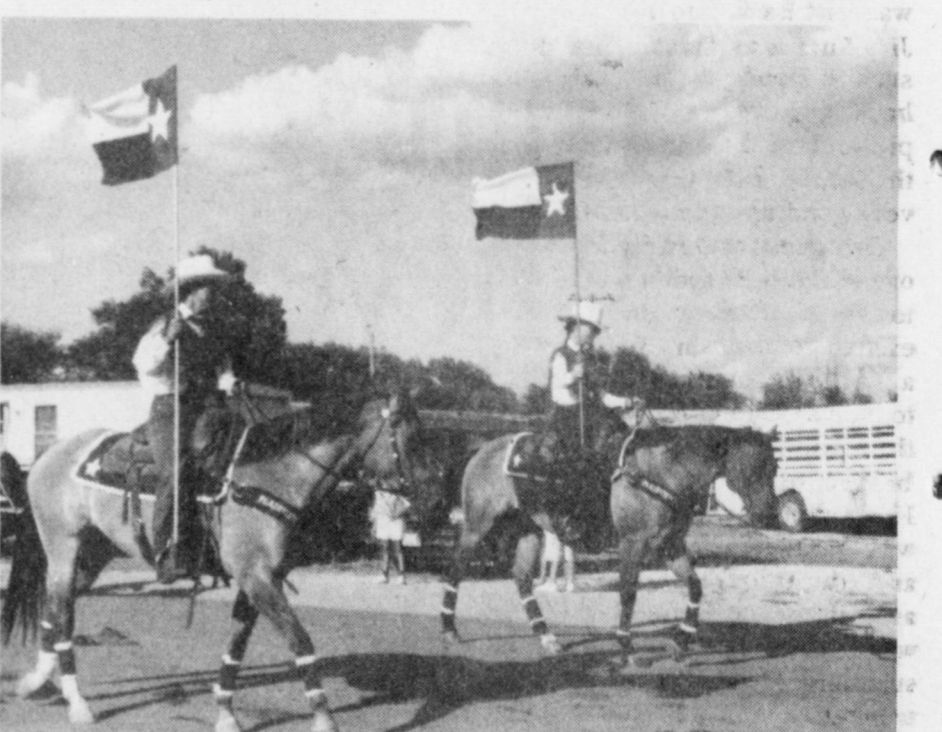
Muleshoe, 304 Main St., 272-5527

Member FSLIC

Scenes From The 45th Annual Earth Rodeo Days



Photos Courtesy - Earth Weekly News



**Willie Strong
Funeral Services
Held Saturday**

Funeral services for Willie Strong, 83, were held at 2 p.m. Saturday, Aug. 5 in Ellis Funeral Home Chapel of the Chimes with the Rev. V.L. Huggins, retired Baptist minister from Plainview, officiating.

Masonic Graveside services were conducted in Bailey County Memorial Park with burial under the direction of Ellis Funeral Home. Strong died at 11:48 a.m. Thursday in the Methodist Hospital in Lubbock.

Born June 15, 1906, in Pyriton,

**Ruby Yeary
Graveside
Services Held**

Graveside services for Ruby Nell Yeary, 87, of Lubbock were held at 2 p.m. Thursday in Wellington's Fair View Cemetery with Elder Glenn Williams of the Primitive Baptist Church in Muleshoe, officiating.

Burial was under the direction of Sanders Funeral Home. She died at 11:15 a.m. Monday in St. Mary's Hospital following a lengthy illness.

Born in Childress, she lived in Floydada for 33 years before moving to Lubbock in 1984. Her husband, Easley Yeary, died in November 1983. She was a member of the Primitive Baptist Church.

Survivors include a daughter, Peggy Foust of Lubbock; a grandchild; four great grandchildren; four brothers, Jerry Phipps of Muleshoe, J.D. Phipps of Earth, Dudlie Phipps of Wellington, and Charlie Phipps of Friona; and two sisters, Augusta Aaron of Houston and Julia Emmert of Shamrock.

4-H Youth Talks

About Summer Trip

By: R. A. Bradley

Fourteen Kiwanians, a guest and one honorary member, greeted a beautiful Friday morning at the Old Corral. Jon Keith Turner was the only Honorary member present. We guess all of the others are on vacation or off to some kind of summer camp.

Not long until school starts again.

President, Keith Turner called the meeting to order, Reggie Johnson led the club in the pledge to the flag and the invocation was given by R.A. Bradley.

Kevin Harris, Keeper of the Friendship Coin, is still under the weather. Kevin hurry up and get well. (Just found out that Kevin was put back into the hospital.) Jim Lutz was thanked for doing such a good job in cooking the hamburgers at the Kiwanis picnic last Tuesday evening at the Mule Putt Golf Course. A very good time was had by all.

Our guest was Holly Huckaby, one of the 4-H students who went to North Dakota on the 4-H exchange program. Holly showed a slide presentation of their trip to North Dakota. While they were there and their trip home. I believe that Holly said there were 11 students and four sponsors who went. It was very enjoyable and educational for our 4-H kids as well as the 4-H students who will be coming to Muleshoe next summer. We are looking forward to meeting the 4-H students and sponsors from North Dakota. Our life style and country side is much different from North Dakota. Holly had to cut her slide presentation short to fit into our time period. Holly it was a great program and we thank you for getting up early to let us enjoy your trip. I am sure you told the people in North Dakota how great we are here in Muleshoe. Thanks

Again.

GRAIN PRICES
FEED CORN.... 4.32
WCY.... 5.29
RCY... 4.75
WHITE FOOD CORN... 6.00
MILO.... 3.76
SOYBEANS.... 5.38
WHEAT.... 3.63
105%
Prices effective August 11, 1989
MARKETS COURTESY OF
FARMERS CO-OP
ELEVATORS
Muleshoe, Texas
272-4335

Alabama, he had been a resident of Muleshoe since 1949. He was a auto mechanic and a member of the Masonic Lodge. He married Jewell Byrd on Oct. 6, 1936, in Tucumcari, N.M.

Edith Crawford Services Held At Springlake

Funeral services for Edith Crawford, 80, of Springlake were held at 3 p.m. Thursday, August 3 in the Springlake Church of Christ with Morgan Sturgess, a retired minister from Tulia, and Ken Miller of Searcy, Ark., officiating.

Burial was in Springlake Cemetery under the direction of Parsons-Ellis Funeral Home of Earth. Mrs. Crawford died at 3:35 a.m. Tuesday in Lamb Health Care Center at Littlefield. Born Sept. 17, 1908, in Oklahoma, she moved to Springlake in 1925, from Hamlin, TX. She was a homemaker and a member of the Springlake Church of Christ. She married

Survivors include his wife, Jewell; a sister, Claudia Nichols of Carlsbad, N.M.; a brother, Jesse Strong of Marysville, Calif.; and several nieces and nephews.

Floyd Crawford on Dec. 23, 1930, in Clovis, N.M.

Survivors include her husband, Floyd; two sons, Gene Crawford of Alvin, TX and Dale Crawford of Tucson, Ariz.; two daughters, Rita Foreman of Andrews and Floydell Delay of Newnan, Georgia; two sisters, Zella Huckabee of Levelland and Loy Dean Wortham of Freemont, CA; five half-sisters, Lena Mae Pickle of Athens, Velma Trammell of Vernon, Hazel Stow of Lubbock, Ellie Banock of Breckenridge, and Vanita Haynes of Burkburnett; two half-brothers, Clovis Odom and J.D. Odom, both of Vernon.

**Mrs Ada Evett
Buried At
Springlake**

Funeral services for Mrs. Ada Rudd Evitt, 82, of Clovis, N.M. were held at 10 a.m. Thursday, Aug. 3 in Steed-Todd Chapel with Gary Bodine and Curtis Tabor officiating.

**Patients In
West Plains
Medical Center**

AUGUST 1-3
TUESDAY
Oscar Torres, Peggy Dent, Tripp Townsend, Debbie Galvan and Kevin Harris
WEDNESDAY
Peggy Dent, Cora Duncan, Gloria Rivera and Kevin Harris
THURSDAY
Cora Duncan and Gloria Rivera

Burial was at 3 p.m. (Daylight Time) in Springlake Cemetery under the direction of Steed-Todd Funeral Home. Mrs. Evitt died Tuesday, Aug. 1 at High Plains Hospital in Clovis, N.M.

Born April 11, 1907, in Vernon, TX, she had been a resident of Clovis since 1965, moving there from Springlake and Earth where she had lived for 32 years. She was a member of the 16 and Pile Church of Christ at Clovis, N.M. and the Senior Citizens.

Survivors include a son,

William O. Rudd of Muleshoe; a daughter, Myrta Carter of Clovis; three brothers, Leonard Sherbert of Houston, Joe Sherbert of Tylor and Travis Sherbert of San Antonio; a sister, LaVerne Hunt of Pearland; six grandchildren; and 11 great grandchildren.

**West Plains
Medical Center
272-4524**

FREE HEARING TESTS FOR SENIOR CITIZENS

MEET AT WESTERN DRUG — MULESHOE
114 MAIN
Wednesday, August 9, 1989
COME BY OR CALL 272-3106 9:30 a.m. - 10:30 a.m.
10 DAYS FREE TRIAL 12 BRANDS TO CHOOSE FROM
SATISFACTION GUARANTEED

Sponsored by
**LIVINGSTON
HEARING AID
CENTER**

1903 19TH
LUBBOCK, TX
79401
806/762-2951

606 B QUINCY
PLAINVIEW, TX
79072
806/293-8874

**Immaculate Conception
Catholic Church**

Father Patrick Maher
Northeast of City

First Baptist Church

220 West Ave. E.
Barry Bradley, Pastor

**Emmanuel Baptist
Church**

Iglesia Bautista Emmanuel
107 East Third
Isaias Cardenas, Pastor

Trinity Baptist Church

314 E. Ave. B.
Rev. Dale Berry

**Circle Back
Baptist Church**

INTERSECTION FM 3397 & FM
298
946-3676

Calvary Baptist Church

1733 W. Ave. C.
Rev. Rick Michael

**Muleshoe Baptist
Church**

8th and Ave. G.
Bob Dodd, Pastor

**Progress Baptist
Church**

Charles Fist, Pastor
Progress, Texas

**Richland Hills
Baptist Church**

17th and West Ave. D.
Allen Petersen, Pastor

**St. Matthews
Baptist Church**

Corner of West Boston
West Birch
M.S. Brown, Pastor

**Progress Second
Baptist Church**

1st and 3rd Sunday
Rev. Arthur Hayes

The Community Church

Morton Hwy
Mort Cross, Pastor
272-5992

Church Of The Nazarene

9th and Ave. C.
Dennis Hayes, Pastor

**Put on the Full
Armour**

"Wherefore take unto you the whole armour of God" ...

In Paul's letter to the Ephesians, he makes a comparison of the children of God and warriors. He says that our loins should be girt about with truth, and having on the breastplate of righteousness. He makes many more comparisons that exhort us to a proper life. Another thing that Paul urges is that we gather together and worship the Lord. No part of our armour is greater than regular church attendance. Much strength for the week is derived from worshiping with others.

Complete your suit of armour ... attend church this week.



The Church is God's appointed agency in this world for spreading the knowledge of His love for man and of His demand for man to respond to that love by loving his neighbor. Without this grounding in the love of God, no government or society or way of life will long persevere and the freedoms which we hold so dear will inevitably perish. Therefore, even from a selfish point of view, one should support the Church for the sake of the welfare of himself and his family. Beyond that, however, every person should uphold and participate in the Church because it tells the truth about man's life, death and destiny; the truth which alone will set him free to live as a child of God.



Coleman Adm. Ser.

**Lazbuddie Methodist
Church**

965-2121
Larry Reid Farris, Pastor

St. John Luthern

Sunday School and Bible
Classes 9:30 a.m.
Church Services 10:30 a.m.
Rev. Mac Bearss, Pastor

Templo Calvario

507 South Main
Sunday 10:00 a.m.
Sunday Evening 7:00 p.m.
Evangelistic Services
J.L. Soto, Pastor
El Divino Salvador
Methodist Church
5th and Ave. D.
Jose M. Fernandez, Pastor
965-2932

Jehovah Witness

Friona Hwy.
Boyd Lowery, Pastor

**United Pentacostal
Lighthouse Church**

207 East Ave. G.
Rev. J.A. Torres

**Truth Tabernacle
Pentecostal Church**

200 E. Ithaca & Fir
Pastor: Les James
272-3391

**Longview Baptist
Church**

965-3413
B.C. Stonecipher, Pastor
Primera Iglesia
Bautista
223 E. Ave. B.
Roy Martinez, Pastor

**Lariat Church
Of Christ**

Sunday School 10:00 a.m.
Worship 11:00 & 6:00 p.m.
Wednesday Services 7:00 p.m.
Sam Billingsley, Minister

**Muleshoe Church
Of Christ**

Clovis Hwy.
Bret McCasland, Minister
16th & Ave. D.
Church Of Christ
Sunday 10:30 a.m.
Evening 6:00 p.m.
Wednesday 8:00 p.m.

**First Assembly
Of God**

Rev. David C. McCune
9:45 Sunday School
11:00 Morning Worship
6:30 Evening Services
7:30 Mid-Week Services
272-3984

**Spanish Assembly
Of God**

East 6th and Ave. F.
Mike Doyle, Pastor

**First United
Methodist Church**

507 W. 2nd Street
Richard Edwards, Pastor

1st Baptist Church

Lazbuddie, Tx. 965-2126
Gary Wilcox, Pastor

**Primitive Baptist
Church**

621 South First
Elder Cleveland Bass, Pastor

**Lazbuddie Church
Of Christ**

202 W. Ave. B.

**New Covenant
Church**

Plainview Hwy.
Sunday 10:00 a.m.
Wednesday 7:00 p.m.
Jimmy Lowe, Pastor

Western Drug 114 Main 272-3106			Dairy Queen 1204 W. Amer. Blvd. 272-3412
Little Gulf 202 W. Amer. Blvd. 272-4918	Ana's House of Beauty 109 W. Ave. B. 272-4152	American Valley, Inc. Hwy. 84 W. 272-4266	Robert D. Green, Inc. 2400 W. Amer. Blvd. 272-4588
Fry & Cox, Inc. 401 S. First 272-4511	Bob Stovall Printing 221 E. Ave. B. 272-3373	James Roy Meat Market 506 W. Amer. Blvd. 272-4361	Lookin' Good 206 Main 272-5052
Main Street Beauty Salon 115 Main 272-3448	1st Bank Member F.D.I.C. 202 South First 272-4515	Bratcher Motor Supply 107 E. Ave. B. 272-4288	5-Area Telephone Co-Op 302 Uvalde 272-5533
Irrigation Pumps & Power W. Hwy. 84 272-4483	Farmers Co-Op Elevators 113 N. 1st 272-4335	Bentley's 110 Main 272-4119	Richland Hills Texaco 1914 W. Ave. B. 272-4875

18. Legals

18. Legals

18. Legals

18. Legals

REAL ESTATE AUCTION
8,000 ACRES, more or less
BAILEY COUNTY FARM LAND
TUESDAY SEPTEMBER 5, 1989
PROPERTY OWNED BY: TEDDY C. SCOTT and PAMELA D. SCOTT

LEGAL

All of Section No. 55, Block A, Melvin, Blum & Blum Survey, Bailey County, Texas containing 673.1 acres, more or less;

All of Section No. 66, Block A, Melvin, Blum & Blum Survey, Bailey County, Texas containing 656.3 acres, more or less

All of Section No. 79, Block A, Melvin, Blum & Blum Survey, Bailey County, Texas, containing 656.3 acres, more or less.

All of Section No. 89, Block A, Melvin, Blum & Blum Survey, Bailey County, Texas, containing 656.3 acres, more or less

All of Section No. 90, Block A, Melvin, Blum & Blum Survey, Bailey County, Texas, containing 656.3 acres, more or less.

All of Section No. 91, Block A, Melvin, Blum & Blum Survey, Bailey County, Texas, containing 656.3 acres, more or less

All of Section No. 92, Block A, Melvin, Blum & Blum Survey, Bailey County, Texas, containing 656.3 acres, more or less.

All of Section No. 65, Block A, Melvin, Blum & Blum Survey, Bailey County, Texas, containing 656.3 acres, more or less.

All of Section No. 64, Block A, Melvin, Blum & Blum Survey, Bailey County, Texas, containing 656.3 acres, more or less

All of Section No. 78, Block A, Melvin, Blum & Blum Survey, Bailey County, Texas, containing 656.3 acres, more or less

All of Section No. 77, Block A, Melvin, Blum & Blum Survey, Bailey County, Texas, containing 656.3 acres, more or less

The West 398.19 acres of Sections No. 67, 80 and 93 (3² 398.19=1,195.57 acres total), and being that portion lying West of the Centerline of FM 1731 (sometimes referred to as FM 746), all lying in Block A, Melvin, Blum & Blum Survey, Bailey County, Texas.

The South 228.17 acres of Section No. 3 and the part of Section No. 4 (being 173.1 acres) lying West of the Centerline of FM 1731 (sometimes referred to as FM 746), both in Block O, Thomas H. Jones Survey, Bailey County, Texas.

LOCATION OF AUCTION: BAILEY COUNTY COURTHOUSE, MULESHOE, TEXAS at the East door facing State Hwy.

214

TERMS: THE REAL ESTATE WILL BE SOLD FOR CASH TO THE HIGHEST BIDDER. SOLD SUBJECT TO ALL TAXES DUE THEREON.
TITLE: TITLE WILL BE CONVEYED BY SUBSTITUTE TRUSTEE'S DEED.

SPECIAL NOTICE: This sale is being made without covenant or warranty, expressed or implied, as to title, possession or encumbrances, to satisfy an indebtedness. Please have your attorney or title company inspect title before sale.

CONTACT:
BOBBY FLETCHER AUCTIONEER
BOX 609
WOLFFORTH, TX 79382
806/866-4201

F20-32s-5tcs

20. Public Hearing

PUBLIC HEARING
CITY OF MULESHOE
TEXAS COMMUNITY
DEVELOPMENT
PROGRAM

City of Muleshoe is planning to file an application for a Community Development fund grant from the Community Development Block Grant (CDBG) Program administered by the Texas Department of Commerce (TDOC) Texas Community Development Program (TCDP).

A public hearing concerning the proposed grant application will be held at 5:00 p.m., Wednesday, August 16, 1989 at City Council Chambers, City Hall, Muleshoe, Texas. The purpose of this public hearing will be to discuss the specific details of the community development application which the City will be submitting to TDOC.

All citizens are encouraged to attend this public hearing and present their views on the City's community

development project needs. Written comments will be accepted by the City up until the time that the City's application is submitted to TDOC.

For further information about the TCDP application process, contact Dave Marr, City Manager at (806) 272-4528. Handicapped individuals who might have difficulty in attending this public hearing should contact the City Hall to arrange assistance.

SMILES

Howler
Teacher--What is a flood?
Pupil--it's a river that's too big for its bridges.

Immunization Required For School

With the new school year just around the corner, the Texas Medical Association encourages parents to check their child's immunization records. Although outbreaks and epidemics of killer diseases like polio and diphtheria don't pose the threat they once did, infectious diseases can still spread among us.

Children are not born immune to infectious diseases; they must be immunized against them. More than any other preventive health-care practice, immunizations begun in childhood and kept up to date save money, misery, and lives.

In Texas, proof of vaccinations for six communicable diseases--polio, tetanus, measles, rubella (German measles), mumps, and diphtheria--is required by law for all children registering for day-care or public school. In addition, pertussis, or whooping cough, vaccine is required for children less than five years old in day-care and public school. The Texas Medical Association recommends the pertussis vaccine be extended for children through age six.

Because of vaccinations, only two cases of diphtheria and one fatal case of polio have been reported in Texas in the past 10 years. However, some preventable diseases persist because parents allow the original vaccinations to expire without getting the necessary follow-up booster shots. In 1988, the Texas Department of Health recorded outbreaks of measles, mumps, rubella, pertussis, and tetanus. About 3,000 cases of measles were reported during an epidemic in Texas in late 1988 and early 1989. Victims of these diseases included unimmunized children, as well as adults who had allowed their immunizations to lapse.

Parents should follow their physician's advice in scheduling the necessary vaccinations and boosters and in keeping accurate records for each child. Parents who are not sure if their children's vaccinations are current should update their records now, to be ready for the upcoming school year.

The Texas Medical Association reminds you to immunize your child. Although outbreaks of vaccine-preventable diseases are now less frequent in Texas, the diseases can still spread among us.

The Texas Medical Association is a professional organization of more than 29,000 physician and medical student members. It is based in Austin and has 116 component county medical societies around the state. The Association represents 80 percent of the state's physicians, and its goal is to improve the health of Texans through the

professional and personal development of members.

Who Knows?

1. What is a mountebank?
2. The Korean War ended on July 27, of what year?
3. In weather signals, what does the white flag indicate?
4. Which two states brought the number of stars on the U.S. flag to 48?
5. The 1818 flag had how many stars?

Answers:

1. A quack; a boastful pretender.
2. 1953.
3. Either clear or fair weather.
4. New Mexico and Arizona, in 1912.
5. Twenty stars representing the number of U.S. states.

Muleshoe Area Health Care Center

Assuring Quality Care for the Elderly

Now Hiring For The Following Positions:
RN - Director of Nurses
LVN Educational Director / In-Service Coordinator

Send resumes to or contact
Muleshoe Area Health Care Center
106 W. Ave. H
Muleshoe, TX. 79347
(806) 272- 3861 ext 104

WANTED



DULL KNIVES

KITCHEN, FILET AND

HUNTING KNIVES

SHARPENED BY

Fry & Cox, Inc.

1st 2 Knives FREE

thereafter each additional knife \$1.

Personnel With Professional Machine

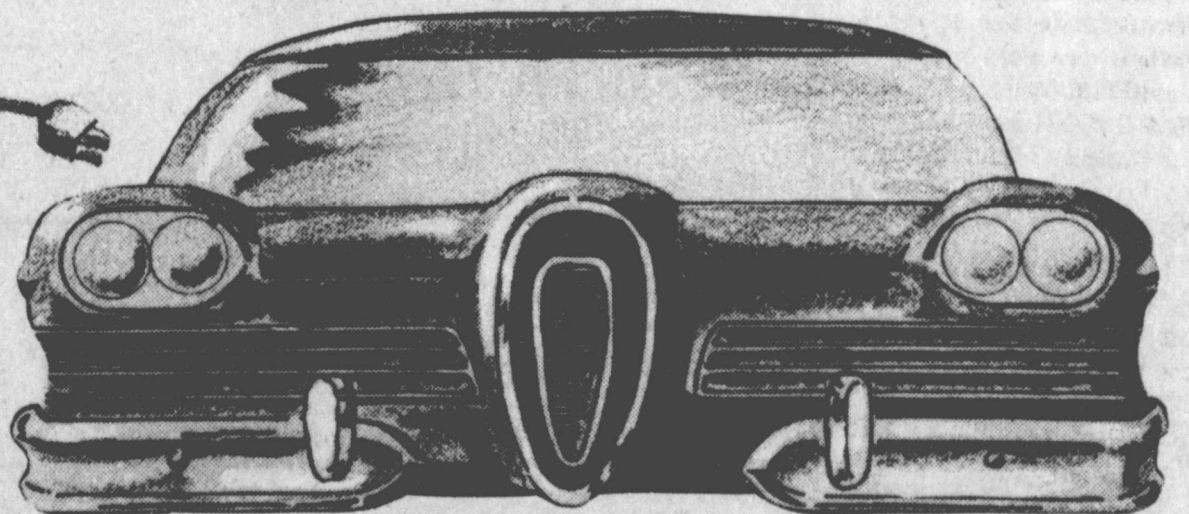
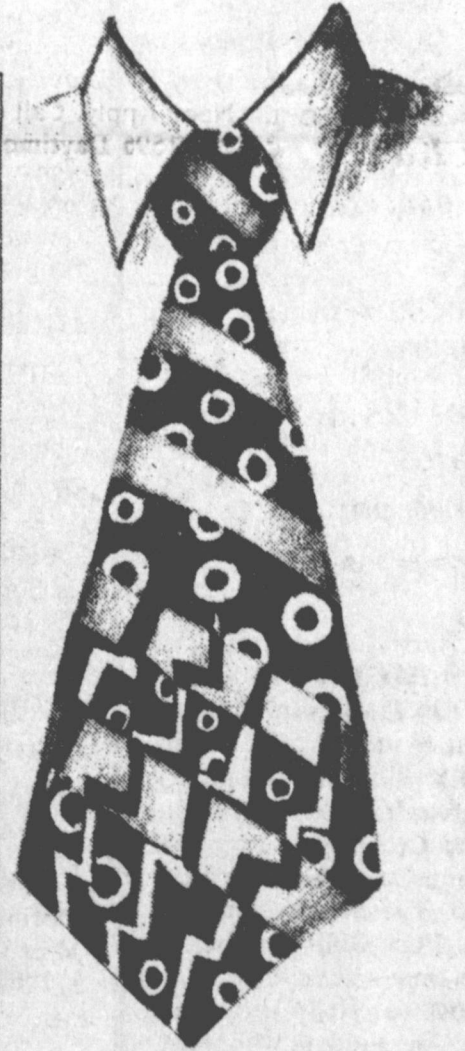
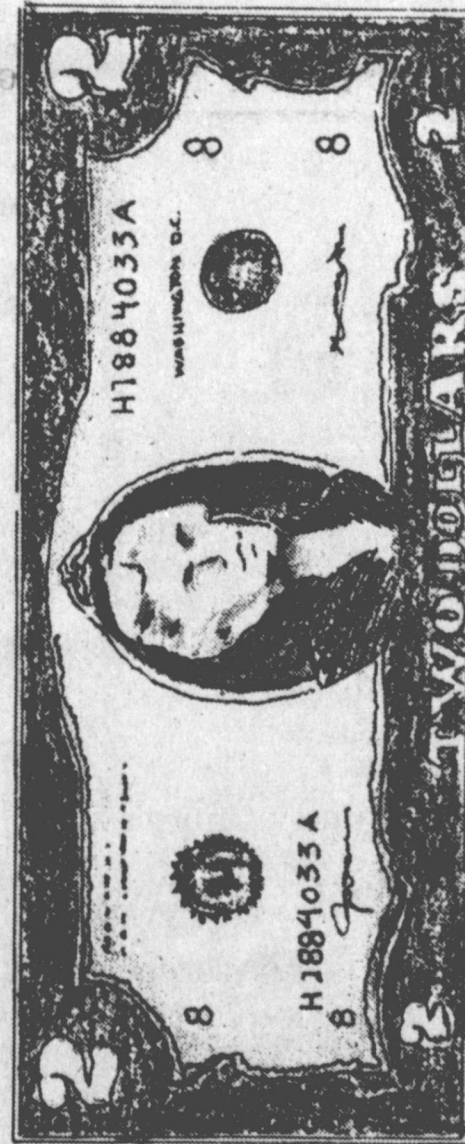
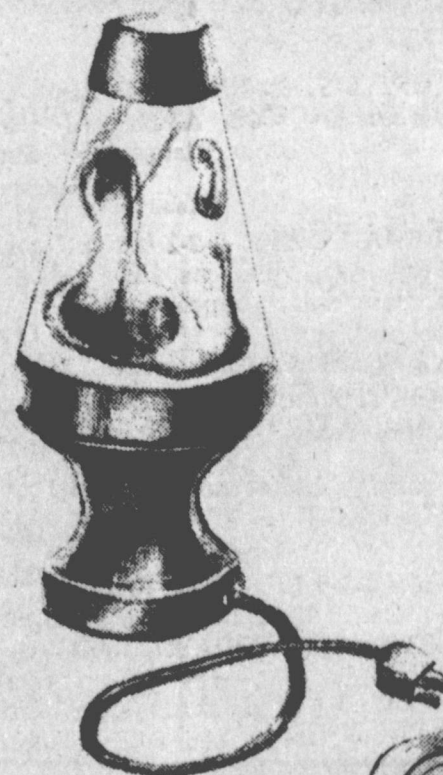
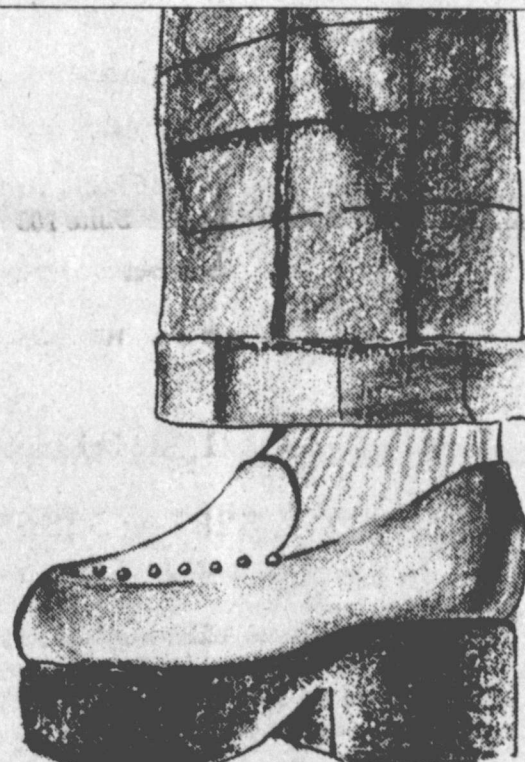
This machine will 1) Grind out nicks. 2) Bevel the blade and 3) Hone the edge.

All Brands & Sizes Accepted
No Serrated Edges Please.

Fry & Cox, Inc.

401 S. 1st

272-4511



They all seemed like good ideas at the time.

Sure, there's a lot of nostalgia in some of these items. But the solid basics always work.

It's true in home appliances, too. Your natural gas furnace may not be the latest fad, but it has steadily and dependably kept your family warm and comfortable all these years.

Fads and gadgets may come and go. But some ideas, like natural gas heating, just can't be improved on.



ENERGAS

Don't mess with your furnace

Energy Company

