

THE MIDLAND REPORTER

AND GAZETTE EXAMINER

VOLUME XXXI

MIDLAND, TEXAS, FRIDAY, SEPTEMBER 16, 1927

NUMBER 71

TONIGHT WILL BE LAST OF LECTURES BY H. W. STANLEY

BUSINESS MEN AND CLERKS URGED TO TAKE ADVANTAGE OF LAST OPPORTUNITY TO HEAR BUSINESS EXPERT

Tonight will be Midland people's last opportunity to hear Henry Stanley, who is in Midland under the auspices of the Midland Chamber of Commerce to conduct a Merchants' Institute. Mr. Stanley was sent to Midland through courtesy of the El Paso Chamber.

Two men from Big Spring who know of Mr. Stanley's fame as a business expert, drove 40 miles to Midland last night to hear him. The two Big Spring men were about one-sixth of the entire audience.

He will speak tonight on "Opening and Closing the Sale" and on "Budgetary Control in Retail Store Management." People in the cities more than 100 times bigger than Midland think enough of Mr. Stanley's ability to pay him \$600 a week to conduct the same kind of classes they are getting free here. In some cities those who hear him pay \$30 each for the course.

His audience in Midland are said by a few interested in better merchandising in Midland to have been humilatingly small, only a few successful business men and a few sales people who admit they don't know it all yet and are still ambitious to learn, having attended the talks.

SIDEWALKS NEEDED FOR MAIL DELIVERY

CITIZENS CAN HASTEN FREE DELIVERY BY BUILDING WALKS

More sidewalks must be built before Midland can get free mail delivery, according to a statement made this week by Mrs. Mary S. Ray, postmistress of Midland.

In addition to requirements whereby street signs and house numbers must be installed, sidewalks are necessary to obtain mail delivery service.

There is a scarcity of sidewalks in the greater portion of Midland's residential section which is appalling, and citizens are called upon to consider this great need if they desire free mail delivery.

A school teacher who walked to the south ward school each day last year made the statement that her shoe bill for the school term was \$75.00.

Scarcity of sidewalks will hold back a town, and the building of sidewalks is as important, if not more so, as paving the streets.

The building of walks rests entirely with the property owners. Sidewalks enhance the value of property and are a source of much beauty to a place.

The Reporter would welcome a campaign in Midland for the building of sidewalks in the residential section.

Not To Employ Publicity Man

Directors of the Midland Chamber of Commerce met in called session Thursday to consider a publicity proposal from an out-of-town newspaper writer. Lack of finances influenced the directors to take no action toward employment of the man.

Grading Finished On Five Magnolia Tanks

Grading has been completed for 5 of the new storage tanks for the Magnolia Company. No announcement has been made as to how many will be constructed.

M. F. Worstell, foreman of the United Iron Works, is in Midland to take charge of the tank building. He will move his family here from Wichita Falls next week.

Army Trucks Passed Through Thursday

A battery of motorized field artillery passed through Midland yesterday afternoon, composed of picked men from the First Artillery Brigade, headed for Marfa to participate in the military maneuvers.

Equipment carried on the trucks included a rolling kitchen, ammunition, guns and tractors, and was transported by 51 trucks.

Miss Revice Brumley left yesterday for Denton, where she attends C. I. A.

HIGH SCHOOL TO HAVE ORCHESTRA

D. H. STARLING WILL DIRECT MUSICAL ORGANIZATION

With about twenty members and pieces already listed, a High School Orchestra has been organized, under the direction of D. H. Starling, principal of the junior high school.

Mr. Starling who plays three or four instruments himself, has had considerable experience in directing school orchestras. The majority of the members are already good musicians, and Mr. Starling predicts that within six weeks Midland will have as good a high school orchestra as there is in the state.

The Midland public schools have always led in the work that is done along with school work, and these students are to be congratulated on organizing their orchestra.

Upton County Gets More Locations

Champlin Drilling Co. has made a location in Upton County for its No. 2 John F. Lane, 330 feet north and west of the south east corner of the southwest corner of section 3, G. C. & S. F. survey.

Texas Co. No. 4 J. M. Perry is to be 330 feet south and 2,310 feet east of the northwest corner of section 3, Dixie Oil Company No. 30 A. S. Burleson is 4,950 feet south and 990 ft. west of the northwest corner of section 2 John Nidever survey.

Locations Made In Crane County

Recent locations in Crane County include Landreth Production Company's No. 16 State, 200 feet south and 330 feet east of the southwest corner of section 48 block 30, University land, on the Jax M. Cowden survey No. 10, block J. C.

Magnolia Petroleum Company's No. 11 University-O'Keefe is 2,310 feet south and 990 feet east of the northwest corner of section 38 block 30.

Abilene Preparing For Lindbergh Visit

Great preparations are being made for the visit of Col. Chas. A. Lindbergh in Abilene on September 26, at which time the people of West Texas will have an opportunity to see the noted aviator for two hours.

Midland's official representatives who have been invited to attend the celebration are Miss Pearl Wimberley, Mayor B. Frank Haag, C. C. Watson editor of the Midland Daily Telegram, and T. Paul Barron, editor of the Midland Reporter.

Every town in West Texas has been invited to participate in the celebration, and Abilene people have announced that they will "stand back" and let the visitors have the space to see the famous man.

BUILDING GUARDS ON SOUTH PLAINS ROAD

FARMERS NORTH OF HERE WANT TO BRING COTTON TO MIDLAND GINS

Five cattle guards are being built by the Midland Chamber of Commerce to serve the farmers of the South Plains School community on their road to Midland. Work on the guards will start the latter part of this week or the first of next.

Messrs. O'Neal and Goodman, prominent farmers north of Midland wish to have their cotton ginned here and expect to do most of their trading here after guards are put in. They now have to open five gates, and travel a rough road. The farmers themselves propose to repair the road leading to Midland.

TO OPEN BLOCK ON TEXAS AVENUE

WILL GIVE MUCH AID TO CONGESTION OF TRAFFIC.

Traffic is expected to be turned in on Texas Avenue on the block in front of Rockwell Bros. & Co., tomorrow, according to Clem Daughtry, city marshal.

When this block is opened, traffic congestion will be relieved considerably, and motorists may turn the corner on Texas and Loraine, at the county jail.

Traffic conditions are good, considering the fact that some of the streets are still closed, Marshal Daughtry says, and this Texas Avenue block will eliminate U-turns.

Acres Sold In Church-Field Pool

The sale of eighty acres comprising the west half of the northwest quarter of section 47, block 30, University land in Crane County, by the Eastland Oil Co. and Collet of Fort Worth to the Reno Oil Co. of Sisterville, West Virginia, was reported in Fort Worth this week; the deal having been made subject to approval of title.

Up to September 10, the lease had produced 1,500,000 barrels of oil, and 700,000 were in storage, the stored oil to be bought by the purchasers at 60 cents per barrel. Eight wells are on the lease.

Stanley Invites Midland People To Visit El Paso

H. W. Stanley of the El Paso Chamber of Commerce invites Midland people to be in El Paso for the visit of Col. Lindbergh's famous aviator.

He states that the Colonel will spend a whole day there.

Weather Gives Hope Of Moisture

Although Midland people do not make weather predictions, many of them are hopeful on account of the fact that good clouds appear each day, and an occasional light shower or sprinkle falls. Ranchmen in some sections report the range getting somewhat dry, while others state that grass is still green. A fair shower fell Tuesday between Odessa and Crane, and that section of the country is reported to be looking fine.

Grand Jury In Session Today

The grand jury convened again today, after having been off duty since Saturday. The official report of the grand jury has not yet been turned in.

Gaines County Test Is Standardizing

Westheimer and Daube's No. 1 Birge-Forbes, sec. 308 Terrell County school land, in Gaines County, is standardizing at 3,900 feet.

WADLEY-WILSON GETS HOTEL LINEN CONTRACT

BIG CONTRACT LET TO LOCAL FIRM WEDNESDAY FOR NEW HOTEL

Another big end of the equipment for the new Scharbauer Hotel has been kept at home. Wadley-Wilson Company was the successful bidder yesterday for the linens for this institution.

The sale includes sheets, pillow cases, blankets, quilts, bed spreads, bath mats, towels and other equipment, and will amount to a total of about 9,000 pieces.

The name of the Scharbauer will be woven into each separate piece of material. The quality of the equipment is declared by Addison Wadley to be the best, and he states that no hotel in the country will have finer linens.

This contract speaks well for two local concerns. Mr. Scharbauer is trying to let every contract go to the local people where they are in position to meet outside bids, and Wadley-Wilson Company met the competition which was here from Fort Worth, Dallas, El Paso and other cities.

WHITE WAY TURNED ON WEDNESDAY NIGHT

MIDLAND ENTERS CITY CLASS WITH STREET LIGHTS IN USE

Midland now resembles the best of cities, and it is one of the best, since the street lights were put in use Wednesday night. The standards have been put up for several days, but failure of one of the lamps to arrive delayed the turning on of lights.

The "White Way" adds greatly to the appearance of the city as well as to assist traffic.

The lamps are ornamental, so that even in the day time they are a source of beauty.

With the completion of the pavement in the principal business section the turning on of the street lights, and with the many new store fronts that have been recently added, Midland has taken on the appearance of a real city.

Grand Champion Bull Goes To Stockyards

The famous Hereford bull, Hector, twice a grand champion of the Southwestern Exposition at Fort Worth, was shipped out last Saturday to the Fort Worth stock market by his owner, B. N. Aycock. The bull is now about 11 years old and has outlived his years of usefulness, although his reputation still stands, and will long be remembered as having kept Midland in the foreground as a center of the world's best Hereford cattle.

Scarborough Well Is Still Fishing

Roxana-Llano No. 1 Scarborough, section 1, block C122, Winkler County, is still engaged in fishing after the hole caved in on top of the tools.

This well has been watched with great interest for months. The salt was topped at 1,115 feet; the hole was full of water at 1,321; ten inch casing was set at 1,570 feet; the first pay was topped at 2,990; the second was topped at 3,124-28; the well swabbed for 115 barrels on July 17; total depth 3,447, sulphur water being encountered; the hole was then plugged back to 3,347 and the pipe raised to 2,975. The well was shot from 3,120 to 3,300 with 200 quarts, then the cave in happened.

MORRISONS IN ARIZONA

Mr. and Mrs. C. G. Morrison are spending a vacation in Flagstaff, Arizona, and "Billy" writes to have his Reporter sent there so he can keep up with Midland.

W. F. Hatcher of El Paso visited W. H. Spaulding and wife here yesterday, going on today to see his son who is attending Baylor University at Waco.

MAGNOLIA TO BUILD TRUNK LINE FROM MIDLAND TO DE LEON SOON

REPORT RELEASED FROM FORT WORTH INDICATES THAT FOURTH TRUNK LINE FOR WEST TEXAS FIELDS WILL BE IN OPERATION BEFORE JAN. 1

Plans for the construction of a pipe line from Midland to De Leon by the Magnolia Petroleum Company were announced in the Fort Worth Star Telegram today, the information having been given out in that city yesterday morning. The complete story, taken from the Star Telegram follows:

MIDLAND COUNTY RURAL TEACHERS ORGANIZED

MRS. RUSSELL JONES WAS ELECTED PRESIDENT SEPTEMBER 9

The Midland County Rural Teachers met Sept. 9 in the high school building for the purpose of organization. J. W. Minor of the Warfield school was asked to preside and tell of the benefits of such organization.

Election of officers was called for and Mrs. Russell Jones of the Stokes school was elected president and J. W. Minor was elected secretary. The name of the organization is to be The Midland County Rural Teachers Association. The purpose is to bring the rural teachers into closer relationship and for the exchange of ideas and plans in regard to rural school activities and to devise a means of improving conditions and solving the problems with which rural teachers come in contact. All rural teachers were present and there was a hundred per cent enrollment. Several interesting talks were made as how to obtain and use the circulating library which is furnished by the State University falls to the schools. A very enthusiastic discussion was had in regard to the Interscholastic League work. All schools voted to join the league and Judge M. R. Hill was asked to get the necessary information in regard to enrolling and paying the fees.

It was decided that each teacher would make an effort to enlist the efforts of patrons in each respective community towards effecting a Parent Teachers organization in connection with each school.

It was further decided that each teacher should take up the matter of having the trustees classify each school so that State aid may be granted. The association is to meet once with each rural school in the County. The next meeting to be with Stokes school of which Mrs. Russell Jones is principal.

The meeting was characterized with enthusiasm and interest and it is predicted that much good will result. Col. Judge Hill said he was highly pleased with the way the teachers are taking hold of school affairs and he promised his help and cooperation. J. W. Minor, Secretary.

Girl Sign Painter Made Vacation Money

Annie Bird Spaulding, daughter of Mr. and Mrs. Marvin Spaulding, holds what is believed to be a record for youthful sign painters.

Having won first prize in a poster contest for the seventh grade in the Lubbock public schools last year, she decided to try her luck painting a sign for her father's business at Crane this summer.

The work was so attractive that she got orders from the chamber of commerce there and from other business men for sign work.

Annie Bird is only thirteen years old and is in the eighth grade at Lubbock High School this year.

To Spud Soon On Seth Campbell Test

Rotary drilling tools are being moved to the location for the Liner Drilling Company's test on the Seth Campbell ranch in Winkler County, in the northeast corner of section 2 block B-5.

Survey for an eight inch pipe line from Midland to De Leon, which will give the Edwards Plateau-Trans-Pecos area its fourth trunk pipe line connection, is under way by Magnolia Petroleum Company.

The line will be of eight inch welded and pipe has already been ordered. It is expected to have the line in operation between Dec. 1 and Jan. 1.

Information to this effect was confirmed Thursday morning by B. H. Stephens of Dallas, vice president and general manager, in answer to a long distance query.

20,000 Barrels Capacity
The new line will have a carrying capacity of about 20,000 barrels daily. When the Humble line from McCamey goes into operation on Oct. 1 the area will have three trunk lines with a carrying capacity of about 110,000 barrels daily, 80,000 in two Humble lines and 30,000 for the Gulf's line.

Magnolia will increase this to about 130,000 barrels.

An additional 10,900 barrels of outlet is provided by the Humble's topping plant at McCamey, which gives an outlet of 140,000 barrels. This will be increased to more than 150,000 barrels daily by the Illinois Pipe Line (corporate associate of Mid-Kansas Oil and Gas Company) with a line to tank farm at Del Rio.

Plans of this company call for eventual extension from Del Rio to tidewater near Corpus Christi.

Transcontinental is understood to be considering construction of a line in the Spring from the Pecos pool, where it is an operating partner of the Mid-Kansas, to Sanderson on the Southern Pacific, with probability of further extension to the Gulf, probably near Corpus Christi. These plans it is understood, largely depend on the further performance of the Yates pool, availability of pipe line and prices prevailing for the oil in the pool.

Potential Output

This pipe line capacity will account for present production of the area, but will be far under the potential production as figured by all observers. In addition to the pipe line capacity enumerating several pipe lines which operate to railroad loading racks are in operation. However, trunk pipe line transportation from a field usually puts a crimp in railroad shipments, which command a comparatively prohibitive rate. The ultimate building of the Magnolia line has been discussed for months, and its construction was considered only a matter of time. However, its construction is believed to have been hastened by recent cuts of crude prices in the district.

Cut Seen as Factor

This confirms belief expressed by operators at the time that the latest cuts would tend to correct the situation which brought them about by hastening other pipe line construction.

At the levels the crude prices have reached in the district, and with the large amount of production in sight concerns doing business on a national and international scale could no longer afford to keep out and meet competitive conditions made possible by those prices.

Magnolia is now constructing a line from the University pool in Crane County to its Midland tank farm where the new trunk line terminus will be. This is expected to give sufficient capacity to move the production in that pool now going into storage for lack of pipe line connections, Magnolia's own production will account for only a fraction of the capacity of the line.

Herman Spaulding is here today from Crane.

THE MIDLAND REPORTER
 "And Gazette-Examiner"
 Subscription price in Midland, Martin, Howard, Andrews, Ector, Upton, Reagan and Glasscock Counties \$2.50 per year.
 All other localities, \$3.00 per year.
 Published Every Tuesday and Friday

Official Newspaper and Advertising Medium for Midland and Surrounding Territory.

Entered at the postoffice at Midland Texas, as second class matter, under act of March 6, 1879.

T. PAUL BARRON,
 Editor-Owner
A. E. HORST,
 Advertising Manager

ADVERTISING RATES
 Display advertising rates on application. Classified rate, 5c per line, minimum charge 25c. Local readers rate, 10c per line.

Any erroneous reflection upon the character, standing or reputation of any person, firm or corporation which may occur in the columns of The Reporter will be gladly corrected upon being brought to the attention of the firm.

MIDLAND CAN DO IT

Under the heading "Why Not Shoot At The Stars?" an editorial appeared in the Tulsa World Tuesday which describes how Tulsa grew from a small town to a city. Midland has made some good strides in that direction and might well emulate the example of Tulsa in "tackling anything." The editorial follows:
 Tulsa has attained its present primacy by undertaking big things and putting them through. When Tulsa first gave heed to ambition's urge it was a small place known at all not many leagues distant. Its need was for publicity. So that first transcontinental special was arranged and, at almost prohibitive cost, it embarked upon an undertaking that must always be characterized as its first step upward.

Then other similar undertakings and accomplishments followed, culminating in a water project that startled the whole continent. When that was carried through one heard the question everywhere, "Is there anything that town won't tackle?" The answer has not yet been supplied in satisfactory form. There is nothing promising its own advancement that Tulsa has failed to tackle up to the present time. But will it, one of these days, refuse to neglect to embrace a great opportunity? Time will tell.

ADVERTISING CITIES

Cities that have carried on extensive advertising campaigns have had results that made the amount spent for advertising negligible.

Corpus Christ, El Paso, Mineral Wells, Dallas, Houston and possibly a few other Texas cities have spent huge sums for advertising, and have had an influx of the right kind of people that were treated directly to this advertising campaign.

The advertising takes the form usually of paid ads in newspapers and magazines or trade publications of general circulation. A coupon is attached to the ad, which when returned will bring the interested party a copy of the official booklet describing the city. This booklet has been prepared carefully and tells in as brief a manner as possible everything about the city that the interested party wants to know.

Pictures are used to good advantage giving a graphic story of the city to all who want to learn about it.

Such an advertising plan is being considered in Midland at present, and would be of great benefit to the city. It would not be necessary to spend as much as the larger cities spend for advertising, but a few thousand dollars over a period of months would mean much in bringing to Midland new citizens, tourist and people who would contribute to the wealth of the community.

KEEP THE SOIL FERTILE

By P. G. Holden, Field Director, Agricultural Extension Department, International Harvester Co.

Any system of farming that does not include a crop rotation is not safe farming. It is not profitable farming.

When we plant the same land to the same crop year after year, we continually rob the soil of its fertility, invite soil erosion, encourage plant diseases, and insect pests.

In the cotton belt, in the wheat belt, and in the corn belt there are thousands of farms that are less productive than they were a generation ago. Hundreds of these farms, ruined by the loss of fertility and by soil erosion, have been abandoned.

The corn root worm, which causes a loss of more than a hundred million dollars annually, is the result of plant-

ing the same fields with corn year after year. Many other insect pests can be eradicated by crop rotation.

Nearly every plant disease increases in activity, when the same crop is planted year after year. If these diseases do not have the same host plant for two years in succession, they are unable to gain headway.

In adopting a system of rotation, the following things must be considered:

Climate condition
 Soil condition
 The relation which the various crops bear to each other.

Legume crops—red clover, sweet clover, cowpeas, soy beans etc, should be rotated with grain crops. Legume crops improve the texture of the soil, add humus and nitrogen prevent erosion, insure larger yields from crops that follow them.

It is not often that one crop farming pays for even a short period. It never pays in the long run. There is but one safe system—crop rotation and diversification.

Do not raise just cotton or grain alone. Grow legumes. Plow the stubble under. Raise livestock. Put the manure back on the land. Sell your grain crops in the form of beef, pork, and dairy products.

Poverty is the inevitable heritage of the farmer who practices the one-crop system year after year, and hauls his crop to market. He robs his soil, robs himself and robs his children, who must farm the land after he is gone.

Home Furniture Co. Makes Sales Record

The Home Furniture Company reports that they have sold more Carrola portable phonographs than any other store in West Texas, according to statistics compiled by the phonograph company. The Home Furniture Co. has had a phenomenal sale of phonographs and records since the formal opening of the store on March 1, according to W. R. Upham, manager.

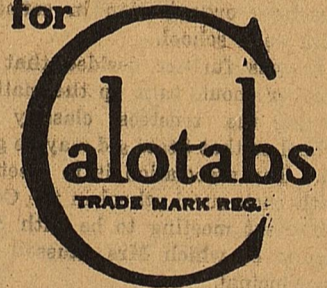
METHODIST CHURCH

Sunday School 9:45.
 Morning Worship 11 a. m.
 League 7 p. m.
 Evening Service 8 p. m.

The coming Sabbath will be observed in this church as "strangers day". Every new-comer to Midland as well as others are cordially invited to attend this church Sunday. We will discuss Midland yesterday today and tomorrow.

In the evening we will discuss "optimism". We once belonged to such a club. Can a man be religious and not be an Optimistic nature.
 T. G. Rorie Jr., Pastor.

Next time you buy calomel ask for



The thoroughly purified and refined calomel combined with assistant and corrective agents. Nausealess—Safe—Sure

CHOICE RESIDENCE

LOTS

On Highway

And One Block North and South of Highway

\$275 to \$750

Nice 5-Room Cottage One Block East of South Main Street

JULIAN ESTES

Second Floor Court House, Midland Texas

FALL

THIS STORE'S preparation for Fall is fast nearing completion and here is assembled by far the Largest and most Complete Stock of Good Merchandise West Texas has ever known.

Every Department is Complete and we invite your attention to the unusual large number of Nationally known lines of Merchandise that this Store features exclusively.

In the Ready Department You Will Find

- CO-ED DRESSES
- MARY ELIZABETH FROCKS
- LAVINE DRESSES
- PEGGY PAIGE DRESSES
- PRINTZESS COATS
- STERLING COATS
- MORRIS HAFT COATS
- KNOX HATS
- BLOSSOM HATS
- FASHION HATS
- HARBEL HATS

In the Shoe Department is such Nationally Known Shoes as

- PEACOCK SHOES
- Johansens Arch Support Shoes
- BROWN BUILT SHOES
- Buster Brown School Shoes
- STACY ADAMS MENS SHOES
- PACKARD MENS SHOES
- Brown Built Young Mens Shoes
- Buster Brown School Shoes

The Men's Wear Department is One Hundred Percent Good Merchandise

- CLOTHCRAFT CLOTHING
- SOCIETY BRAND CLOTHING
- IMPERIAL SHIRTS
- Manhattan Pajamas, Courtley Clothes
- POOL SHIRTS
- SHOBEL HATS
- STETSON HATS
- BORSILANO HATS

- POOLS WORK CLOTHING
- INTERWOVEN SOX
- CHENEY NECKWEAR
- MUNGING UNDERWEAR
- HICOCK BELTS
- HANSEN GLOVES
- BRADLEY SWEATERS
- Tom Sawyer Boys Wear

And Throughout the Store You Will Find Merchandise of the Highest Quality

- MODART CORSETS
- H & W BRASSIERS
- Marshall Field Piece Goods
- Colonial Sunfast Draperies
- Bradley Sweaters
- Munging Underwear
- Kayser Hosiery
- and dozens of other Nationally known lines of Merchandise

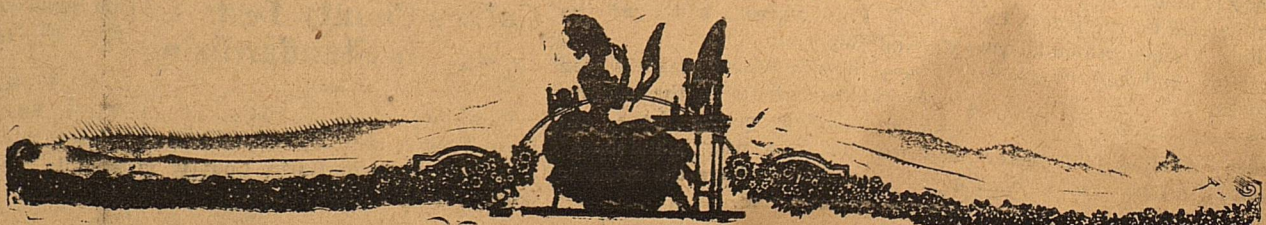
Don't Overlook the Economy Basement

For here you will find good merchandise priced surprisingly low not only in such staples as Sheets, Sheeting, Outing, Tickings, Ginghams, Sateens etc, but in Ladies, Childrens and Misses Hats. Wash Dresses, Silk Dresses, Woolen Dresses, House Shoes, Underwear etc.

A trip to the Bargain Basement will be a revelation to you as to how far your money will go. Its cash of course.

This Store Invites You to See The New Fall Merchandise and Asks Only an Opportunity to Serve You at a Saving.

Wadley-Wilson Co.
 Midland's Department Store



SOMETHING TO THINK ABOUT

By F. A. WALKER

PICKING FLAWS

EVER since the world began and the serpent convinced Eve that the Garden arrangements were not at all what they should be, criticism has been one of the most popular activities of the human mind.

Did you ever notice how many "It's" there are in the world? Criticism.

It is the "It's" that make it so popular. Listen to a habitual critic, a well-developed fault-finder. Every one of his criticisms begins with "I think" or "I believe" or "I see," and then follows his opinion, fully and freely expressed.

Criticism, when the critic knows what he is talking about and delivers his opinion in a constructive and helpful way, is well worth while. When it is offered without a basis of information and experience and without a service of betterment it is harmful and worse than useless.

Too often the critic measures the learning and wisdom of others by the yardstick of his own ignorance or prejudice.

One of the greatest statues carved by Michelangelo was the colossal "Young David," which he cut from a block of marble which another sculptor had rejected some forty years before.

This statue of David and his superlative figure of Moses are the greatest statues since the days of Praxiteles and worthy to rank with the best Greece produced.

When Michelangelo had finished "David" he asked some of his artist friends to view it, among them Soderini, of little talent and soon forgotten. Vasari, who was a great admirer of Michelangelo and whose stories of the art world at that period are interesting reading, tells the anecdote of Soderini's criticism as follows:

"When he saw the statue it pleased him much, but he said to Michelangelo, who was engaged in retouching it, that he thought the nose was too thick. Michelangelo, seeing that Soderini was below the statue, and could not see it truly, to satisfy him went up on the scaffold, taking with him a chisel and a little marble and made believe as if working, letting a little dust fall from his hand as he did so, but not at any time touching the nose of the figure. Then looking down at Soderini he said: 'Look at it now.'

"It pleases me much better," said Soderini, "you have given it life."

"So," says Vasari, "Michelangelo came down, pitying those who make a show of understanding matters about which they really know nothing."

Do not think that because a man accepts your criticism he really thinks your judgment better than his. He accepts it, perhaps, because you are his boss or because he would rather endure your wrong judgment than to waste his time in argument.

Disraeli, earl of Beaconsfield, who had his full share of criticism, said: "It is much easier to be critical than to be correct."

Socrates, when he was told by the Delphic oracle that he was the wisest man in all Greece, which was undoubtedly true, replied: "It is because that I alone of all the Greeks know that I know nothing."

To criticize the which you yourself cannot equal is impudence. Measure yourself before you estimate others.

There is no surer way to prove your ignorance and establish your littleness than to devote your life to the criticism of those whose efforts and accomplishments are beyond the capacity of your own endeavors.

(© by McClure Newspaper Syndicate.)

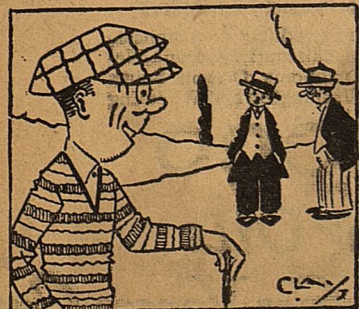
KITTENS BECOME CATS



"She's as winsome and as playful as a kitten."

"Don't forget she'll grow up."

MUST TAKE ITS COURSE



First Link—He's golf crazy.

Second Link—Let him alone—It's a disease that has to take its course.

HUNTING DISTRICTS IN TEXAS CHANGED

New boundaries of hunting districts in Texas are made by an amendment to the regulations under the migratory-bird treaty act, approved by the President on September 6 according to an announcement of the Biological Survey of the United States Department of Agriculture. The changes were made to harmonize the Federal regulations and the State law. This amendment has the effect of prescribing an open season on mourning doves from September 1 to December 15, and on waterfowl (except wood ducks and swans), coot, gallinules, and Wilson snipe or jacksnipe from October 16 to January 31 in that portion of Texas lying west and north of a line beginning on the Rio Grande River directly west of the town of Del Rio, Texas; thence east to the town of Del Rio; thence easterly following the center of the main track of the Southern Pacific Railroad through the towns of Spofford, Uvalde, and Hondo; thence to the point where the Southern Pacific Railroad crosses the International & Great Northern Railroad at or near San Antonio; thence following the center of the track of the I. & G. N. R. R. in an easterly direction to the point in the city of Austin where it joins Congress Avenue, near the I. & G. N. R. R. depot; thence across said Congress Avenue to the center of the main track of the Houston & Texas Central Railroad where the track joins Congress Avenue at or near the H. & T. C. R. R.; thence following the center line of the track of the H. & T. C. R. R. in an easterly direction through the towns of Elgin, Giddings, and Brenham, to the point where the railroad crosses the Brazos River; thence with the center of Brazos River in a general northerly direction to the point on the river where the Beaumont Branch of the Santa Fe Railway crosses it; thence with the center of the track of the Santa Fe Railroad in an easterly direction through the towns of Navasota, Montgomery, and Conroe to the point at or near Cleveland where this railroad crosses the Houston East and West Railroad; thence with the center of the H. E. & W. T. R. R. track to the point where it strikes the Louisiana line.

In that part of Texas lying south and east of the above designated boundary line, the seasons on mourning doves are from November 1 to December 31, and on waterfowl (excepting wood ducks and swans), coot, gallinules, and Wilson snipe or jacksnipe from November 1 to January 31.

The change in the regulations has been made to provide sportsmen in a portion of eastern Texas an opportunity for mourning-dove shooting, a privilege that was denied them by reason of the conflict between Federal and State district boundaries resulting from recent State legislation.

Mrs. Ben Allen and daughter, Shirley, and Mrs. Herman Spaulding and son, Barron, returned yesterday evening from a two week's visit in Lubbock.

NOTICE OF SALE OF REAL ESTATE UNDER ORDER OF SALE

THE STATE OF TEXAS, COUNTY OF MIDLAND.

Whereas, by virtue of an order of sale issued out of the District Court of Deaf Smith County, Texas, dated September 2, 1927, and upon a judgment rendered in said court on August 17th, 1927, in favor of Charles Donald and a personal judgment against W. W. Brunson, and judgment foreclosing a trust deed lien against the other defendants, The Dorsey Printing Company, a corporation, and Charles Brown, No. 1617 on the docket of said court, and to me as sheriff directed, commanding me to seize and sell the below described lands as under execution, I did on the 3rd day of September A. D. 1927 levy upon the following described tracts of land lying and being situated in Midland County, Texas, and as follows:

| Sec. | Block | Township | Certificate | Grantee | Acres |
|------|-------|----------|-------------|------------|-------|
| 32 | 41 | 3-south | 3443 | T&P Ry. Co | 658 |
| 28 | 41 | " | 3441 | " | 656 |
| 20 | 41 | " | 3437 | " | 654 |
| 22 | 41 | " | 3438 | " | 655 |
| 44 | 41 | " | 3439 | " | 662.5 |
| 30 | 41 | " | 3442 | " | 656 |
| 18 | 41 | " | 3436 | " | 654.5 |
| 16 | 41 | " | 3435 | " | 653.5 |
| 10 | 41 | " | 3432 | " | 650 |
| 3 | 41 | 2-south | 8331 | T. A. Ward | 80 |
| 24 | 42 | 3-south | 4152 | " | 656.5 |
| 9 | 41 | " | 3432 | " | 640 |
| 15 | 41 | " | 3435 | " | 640 |
| 19 | 41 | " | 3437 | " | 640 |
| 17 | 41 | " | 3436 | " | 640 |
| 21 | 41 | " | 3438 | " | 640 |
| 29 | 41 | " | 3442 | " | 640 |

Said judgment in favor of said Charles Donald is in the sum of \$43,862.68, and of said sum the sum of \$28,438, with 10 per cent interest from August 17th, 1927, is secured by trust deed lien on the above described lands. The sum of \$7,440.21 with 9 per cent interest from said August 17th, is secured by trust deed lien on the following lands situated in Midland County, Texas,

| Sec. | Block | Township | Grantee |
|------|-------|----------|-----------------|
| 41 | 41 | 2-south | T&P Ry. Company |
| 42 | 41 | " | " |
| 4 | 41 | 3-south | " |
| 5 | 41 | " | " |
| 6 | 41 | " | " |

And on the first Tuesday in October, 1927, the same being the fourth (4th) day of said month, between the hours of ten (10) o'clock a.m. and four (4) o'clock p. m., on said day, at the Court House door of Midland County, I will offer for sale and sell at public auction for cash, to the highest bidder, all of the right, title and interest of the said W. W. Brunson, The Dorsey Printing Company and Charles Brown in and to said lands and property. Dated at Midland, Texas, this 3 day of September A. D. 1927.

A. C. Francis, Sheriff, Midland County, Texas. 69-3t

Russell & Son Get \$74.75 Cotton Bonus

B. F. Stanley, who circulated a list to get up the annual bonus for the first bale of cotton, turned in to J. M. Russell and Sons, who had the 1st bale ginned last Friday night, the attractive sum of \$74.75.

Those who donated to the fund included the following: Midland Drug, T. E. Bizzell (producer of last year's first bale), H. L. Atkins, Texas Co., First National Bank, Sparks and Barron, Hyatt, Mims and Floyd, Everybody's Store, Patrick Hill, City Bakery, Kuykendall Motor Co., Haley Hotel, Leon Goodman, Howe and Allen, M System Store, John Andrews, Hasen Co., S. Weinstein, R. D. Scruggs, L. & L. Cigar Store, Minute Inn Cafe, Ben Stanley, Midland Mercantile, J. O. Nobles, B. Frank Haag, A. B. Coleman, L. L. Butler, Midland National Bank, W. S. Hill and Sons, City Drug Store, West Texas Dry Goods Co., Haas Bros, Rockwell Bros & Co., Popular Variety Store, Wadley Wilson Co., White House, W. E. Wallace, Llano Hotel, H. A. Jesse, George W. Glass, Home Furniture Company, Burton Lingo Company, Higginbotham Bartlett Co., T. R. Prideaux Lumber Co., Midland Baking Co., T. A. Tirado Jr., W. G. Klebold, M. L. Mitchell, Smith and Stevens, Skaggs and Greenhill, Collins Bros., Barrow Furniture Co., Winter Haynie Hardware Co., Harris, M. D. Johnson, Cowden Motor Company, David M. Ellis, Midland Hardware Co., Moran DeArmond and Moran, W. E. Ryan, Midland Reporter, Mrs. W. H. Williams, Chas. C. Watson.

Miss Ruth Blakeney will leave for Waco, where she will be a senior in Baylor University.

Al Cowden has returned to the Tech College at Lubbock for the school year.

BUILDERS

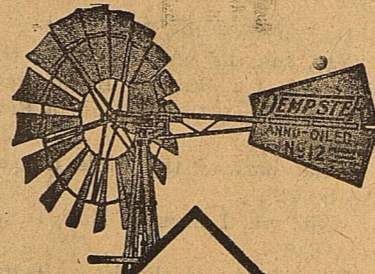


Consult Burton Lingo when you want builders' material, or want figures on any kind of building. We are prepared to serve you.

Burton-Lingo Company

IT DRIVES OUT WORMS

The surest sign of worms in children is paleness, lack of interest in play, fretfulness, variable appetite, picking at the nose and sudden starting in sleep. When these symptoms appear it is time to give White's Cream Vermifuge. A few doses drives out the worms and puts the little one on the road to health again. White's Cream Vermifuge has a record of fifty years of successful use. Price 35c. Sold by Midland Drug Store FOR SALE OR TRADE—Up to date



EXTRA YEARS OF SERVICE

The Dempster No. 12 Annu-Oiled Windmill is supreme in construction and supreme in results. Even the lightest winds put it into smooth action and it is built to outlast any mill made.

This Dempster is the only mill having both Machine Cut Gears and Timken Bearings. It requires oiling but once a year and has a dozen other features that deserve your attention. Write us today for full details of why there are "extra years of service" in the Dempster No. 12.

Dempster Mill Mfg. Co. Amarillo, Texas



No. 12 ANNU-OILED WINDMILL

Brick Apartment House in Abilene's semi-business district. One block from City Hall, adjoins Baptist Church, on North Second Street, which is one of Abilene's best business streets. This is a modern well built brick apartment house, containing 4 five room apartments, each with all modern conveniences. Now renting for \$230.00 per month. Fast increasing in value. In direct line with Abilene's business growth. It is a strictly business investment now bringing more than \$2700.00 per year. Owner will sell at a bargain price on easy terms or will trade for western ranch lands. D. M. Oldham Jr., (Owner) Abilene Texas.

School Enrollment Continues To Gain

The enrollment in the Midland Public Schools continues to gain, and new students are being added at the rate of four or five per day. Something like 815 students have been enrolled this week, and the number is expected to be increased daily.

Edward Britton of Quitman was a visitor to Midland yesterday. He was formerly connected with the Midland Abstract Company.

Bert F. Weekley and wife are back in Midland after spending several weeks in the east.

There is--- REAL JOY

In dining at a cafe where the food is good, where the service is prompt and courteous; where the prices are reasonable. Try the Crystal for your next meal.

Crystal Cafe

Across Street from Post Office TOM FLOOD, Prop. MIDLAND

Prices For Saturday, Sept. 17

Sugar, pure cane, 5 lbs 10 lbs. 25 lbs. 35c 69c \$1.71

Irish Potatoes, 5 lbs. 14c

Cocoanut, White Swan 1-4 lb. 1-2 lb. 11c 21c

Corn, No. 2 cans White Swan 2 for 25c

Mixed Candy, lb. 11c

SALT, two lbs. free runner 7c

Cabbage, lb. 3 1-2c

Pork and Beans, Libbies No. 2 cans 3 for 25c

H. J. JELL, all flavors, 3 for 25c

Half or Whole Skinned Ham, 28c

Chuck Roast of Baby Beef, 20c

Sliced Bacon in pound rolls, 35c

M SYSTEM
Saves For The Nation
MIDLAND, TEXAS

THE ALL-TEXAS DINNER WILL BE GREAT FEATURE OF PRESS DAY AT TEXAS STATE FAIR



The "Special Days" announced for the State Fair of Texas this year are as follows:
 Saturday, Oct. 8—Opening Day.
 Sunday, Oct. 9—All-Church Day.
 Monday, Oct. 10—Press Day, Agricultural Exhibitors' Day, All-Texas Dinner, honoring Newspaper Men and exhibitors in Agricultural Department.
 Tuesday, Oct. 11—Dallas Day, Red Men's Day.
 Friday, Oct. 14—Children's Day.
 Saturday, Oct. 15—Traveling Men's Day, All-College Day.
 Sunday, Oct. 16—Spanish War Veterans' Day.
 Monday, Oct. 17—Dairy Day.
 Wednesday, Oct. 19—Kentucky Day.
 Thursday, Oct. 20—Academy Day.
 Friday, Oct. 21—R. O. T. C. Day.
 Saturday, Oct. 22—University of Missouri Day, American Bankers' Day.
 Sunday, Oct. 23—Fraternity Day, American Legion Day, Closing Day.

Other "Special Days" will be announced later.
 The All-Texas dinner, which is to be one of the features of Press Day, Monday, October 10, will be a banquet at which everything served at the tables—and there will be an astonishing variety of foods—will be a Texas product. Each article of food served will be of the very best prize-winning products, in fact, gathered for this purpose from every part of the state. This will include every variety of fine meats, chickens, fruits, vegetables, preserves, jellies, pastry, ice creams, sherbets and so on down the line—the best that Texas raises—the whole making a bill of fare that to print which would take about two columns in an average newspaper. The guests at this dinner will be the newspaper men and their wives and families, exhibitors in the Agricultural and Livestock Departments and county agents. It is to be an annual affair hereafter.



CALLIN' THE HOGS

Texas has just as talented hog-callers as there are in the world. Perhaps if we were to have an opportunity to put our champion up against the champions of the states in the effort east we would win hands down.
 Trouble is we don't know just who is the champion of Texas.

That difficulty will disappear, however, because a hog-calling contest is "on the state" of the State Fair of Texas this fall. Besides the money prize for the winners, there will be a gold medal for the champion.

Applications to enter this contest, which will be the first to be held in Texas, are coming in already and strange to say, the very first entry was a "city fellow," Bob Pool, one of the assistant managers of the Adolphus Hotel at Dallas. But Bob is nationally proud of the fact that he was brought up on a farm in Milam County, where, as he says in his application, "the hogs roamed about in perfect freedom and had to be called at feeding time."

Pool says he may need to "rehearse" a little, but that by the time the fair opens he will be in shape to offer competition to any and all comers from the state of Texas.

The "points" which the judges will take into consideration in determining the winner will be: Individuality, expression of caller, volume, distance, tone, persuasiveness and effectiveness. Entry blanks and prize list for this contest may be had by addressing Roy Rupard, Secretary of the State Fair of Texas, Dallas, Texas.

WALTER BURTON SAYS
 Walter Burton, known to every poultry man in America as the superintendent of the Poultry Department of the State Fair of Texas, has a message for his Texas friends. He asks us to say this:

"Boys, take my word for it, the State Fair this fall will be so much better in every way than ever before that I am urging you, with all the earnestness that I can command, to begin right now to get your birds in condition for the greatest poultry show you ever saw!"

No matter what your past experience has been, be sure to show this fall. If you have been winning, don't be content to rest upon your laurels. A win this fall will mean more than ever before.

If you have not been entirely successful, try again next October. Begin to look your flock over at once. Pick out the likeliest birds and get them in shape. You may win a higher prize than last year.

And if you never have shown, don't miss this chance. Get into the game when it will mean the most to you."

Fragrant Memories
 Youth is the time to build years of helpful, friendly, neighborly acts. This time, the world will enjoy the fragrance of lovable personalities as age goes down the western slope of life. A fragrance, too, that will linger after we have passed to the great beyond.—Grit.

Mother's Cook Book

Every occupation lifts itself with the enlarging life of him who practices it. The occupation that will not do that no man really has a right to occupy himself about.

SEASONABLE IDEAS

Mushroom Catsup.
 Gather fresh mushrooms and pack them in alternate layers of salt in a stone jar. Let stand for twenty-four hours. Chop fine after standing and mix well. Let stand for two more days, then drain. Place the strained liquid in a kettle and bring to the boiling point and boil three minutes. To every four cupfuls of the liquid add one cupful of good vinegar (elder vinegar is best). Add one tablespoonful of cayenne pepper, three of all-spice, two of ginger, one of cloves and one-half of mace. Boil until reduced to half the amount, then bottle and seal while hot.

Pickled Onions.
 Pour boiling water over small white pickling onions to loosen the skins. Peel them, soak in strong brine twenty-four hours. Wash and place in a preserving kettle and cover with one part skimmed milk and two parts water. Boil gently for ten minutes. Drain, wash again and pour into bottles. Fill with hot spiced vinegar. Seal in the usual manner. The milk keeps the onions from turning yellow. It is said.

Scrambled Eggs With Corn.
 Take one cupful of freshly grated corn, one cupful of milk, one tablespoonful of finely minced green pepper, one tablespoonful of butter and one-half teaspoonful of salt. Put the corn, pepper and half of the milk in a saucepan and cook five minutes. Beat the eggs and add the rest of the milk, add to the corn and cook slowly until set. Add butter and salt if needed and serve on slices of buttered toast.

Ginger Punch.
 Chop three-fourths of a pound of canton ginger, add one-quart of water, one cupful of sugar and boil twenty minutes. Cool and add three tablespoonfuls of ginger sirup, three-fourths of a cupful of orange juice, one-half cupful of lemon juice and large pieces of ice. Stir until well chilled and add one quart of apollinaris water.

Scrambled Eggs With Corn.
 Take one cupful of freshly grated corn, one cupful of milk, one tablespoonful of finely minced green pepper, one tablespoonful of butter and one-half teaspoonful of salt. Put the corn, pepper and half of the milk in a saucepan and cook five minutes. Beat the eggs and add the rest of the milk, add to the corn and cook slowly until set. Add butter and salt if needed and serve on slices of buttered toast.

Ginger Punch.
 Chop three-fourths of a pound of canton ginger, add one-quart of water, one cupful of sugar and boil twenty minutes. Cool and add three tablespoonfuls of ginger sirup, three-fourths of a cupful of orange juice, one-half cupful of lemon juice and large pieces of ice. Stir until well chilled and add one quart of apollinaris water.

Ginger Punch.
 Chop three-fourths of a pound of canton ginger, add one-quart of water, one cupful of sugar and boil twenty minutes. Cool and add three tablespoonfuls of ginger sirup, three-fourths of a cupful of orange juice, one-half cupful of lemon juice and large pieces of ice. Stir until well chilled and add one quart of apollinaris water.

Missie Maxwell
 (© 1927, Western Newspaper Union.)



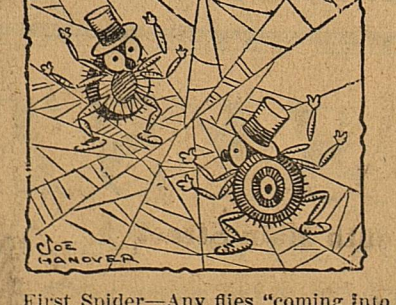
"I hear men in Paris are wearing dark brown evening clothes," says Reno Ritzl. "Over here dark brown is a matter of taste."

UP IN FIELDING



"I didn't think that very literary girl would do such a thing as play baseball."
 "What makes you think she does?"
 "She said she was up in fielding."

WISE FLIES



First Spider—Any flies "coming into your parlor just now?"
 Second Spider—Nope. They're rough "to fly" to be fooled!

ORDINATION OF A NEGRO PREACHER

In one of the Southern states a negro who felt that he had been called to preach the gospel applied for admission to the ministry, submitting himself to examination.

The examination proceeded as follows:

"Can you read, Sam?"
 "No, suh."

"Can you write?"
 "No, suh, I can't write, suh, but my wife is a pretty good writer, suh."

"Do you know the Bible?"
 "Yas, suh, I's pretty good in the Bible, suh, I knows my Bible from lid to lid, from Generations to Revolutions."

"What part of the Bible do you like best?"
 "Well, suh, I likes de New Testament best."

"What books of the New Testament do you like best?"
 "The book of de parables, suh."

"Which one of the parables?"
 "Why, lawsee, suh, I likes de parable of the Good Samaritan."

"Well, tell me the parable of the Good Samaritan."

"Well suh, I will, suh. Once upon a time a man went from Jerusalem to Jerico and fell among thieves and thorns and grew up and choked that man, and he went on and didn't have any money, and he met the Queen of Sheba, and she gave that man, yes, suh, she gave him a thousand talents and a hundred changes of raiment, and he got in a chariot and drove furiously, and while he was driving under a tree, his hair caught among the limbs, and he hung there many days and nights and the ravens brought him food to eat and water to drink, and that night while he was hanging there asleep, his wife came along and cut off his hair, and he fell on stony ground, and it rained forty days and forty nights, and he hid himself in a cave. And he met a man, who said, "Come in and have supper with me," and he said, "I've married a wife and can't come." So the man went out in the highways and byways and compelled him to come in and have supper with him. And he went on to Jerusalem and sitting high up in a window was Jezebel, and when she saw him she laughed, and they threw her down, and he said, "Throw her down some more," and they throwed her down seventy and seven times, and of the fragments they picked up twelve baskets. Now, whose wife do you think she gwine be in the day of judgment?"

The ministers sat silent for a few minutes. Finally one among them said, "Breddern, dese am' thoughtful deliberations our brother has propounded us wid, I recommend dat

he be accepted unanimously, 'case he sho knows de Bible from kiver to kiver."

—B. Y. P. U. Magazine.

he be accepted unanimously, 'case he sho knows de Bible from kiver to kiver."

—B. Y. P. U. Magazine.

J. V. Hobbs and daughter, Mary, went to Odessa Tuesday, Mary went to see about getting her a class to teach this year.

FUNERAL HELD FOR LAUNDRY EMPLOYEE

Funeral services were held yesterday afternoon for W. F. Campbell who died here Wednesday night. Mr. Campbell was 51 years old and had been in the employ of the Midland Laundry Company for two or three months before becoming ill a month ago.

The Rev. George F. Brown officiated in the funeral ceremony, the body being laid to rest in the local cemetery. His brother, J. O. Campbell, of Midland, and a sister in New Mexico survive him.

John Pliska Jr. states that he will not attend college this year, but will work a year in his father's business going then to take a course in electrical and mechanical engineering. John graduated from Midland High School last year.

Plant 12 Miles East on T. & P. Railway Midland, Texas

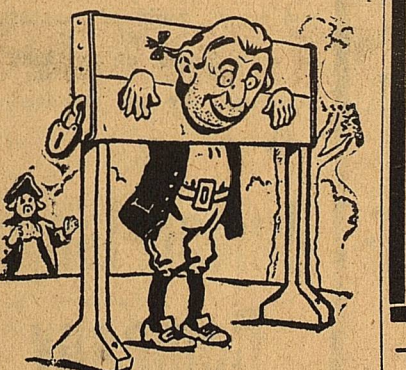
CRUSHED STONE

To meet the most exacting requirements.

No order too large or too small.

Flint Rock Co.

O. L. RIFNER, General Manager
 P. O. Box 383
 Odessa, Texas



GOOD JUDGMENT. Here-

...duty is something that the average man believes in until his son commences to make a jackass of himself, for he is apt to spend two-thirds of his life hesitating and the other third repenting. Inheriting real cash means grasping this opportunity. Our batteries represent a distinct saving with the additional advantage of satisfactory service plus utmost efficiency.

Nobles Motor Company
 Midland, Texas

CLASSIFIED ADS

For board and room call 269. 71-1tp

FOR SALE—Brown Horse about 11 or 12 years old. Branded CY on left hip. Clem Daughtry, City Marshall. 71-11

FOR SALE—Three lots in High School Addition, Block 25 lots 1, 2, 3. Address R. Q. Edguell, Crane, Texas Box 33. Must be cash. 71-3t

FOR SALE OR TRADE—Improved 320 acre farm near good school, good community, will trade for place in or near Midland or will sell teams, tools etc, and rent to right party. See or write Troy N. Eiland, Midland, Texas. 71-2tp

LOST—Filling Station account book. Return to Reporter Office. 71-1tp

LOST—Large black leather hand bag, containing only a few toilet articles. Thought to have been left in the Hancock Cafe. Reward for return to Reporter Office. 70-

FOR SALE—Reo Speed Wagon, Reo Speed Wagon and Warner Trailer, both in good condition. Originally cost \$1800, for quick sale \$600. Call at Cowden Motor Company. 70-2t

FOR SALE—Block 75 West End Addition. Write or wire Dewillo Semeran 2134 Beachwood Terrace, Hollywood, California. 69-4tp

FOR SALE—Five jersey cows with calves, for sale or trade 320 acres close in. R. L. Porter. Box 342. 66 2 months pd.

Wanted to buy—A good Jersey butter cow, or good jersey heifer. L. L. Stringer. 70-2tp

Want to buy second hand furniture for cash. Must be bargain. Write box 1222. 70-2tp

FOR SALE—City Property. Will sell in single lots or blocks. Sparks and Barron, Phone 79. 16-1f

Mrs. Ed Benedict and Mrs. Dick Midkiff are in town from their ranches south of here.

Mr. and Mrs. W. E. Smith and family, of Big Spring, are visiting J. G. Arnett and family today. Mr. Smith is Mrs. Arnett's brother.

Mrs. G. R. Brumley and niece were here yesterday from Seminole.

C. W. Tate was here yesterday from Odessa.

John Speed of Andrews is here today on business, and to visit his son J. M. Speed and family.

Hassen Co.
8-Eight-8
Fall Opening Days

HUNDREDS of items selected for Special Selling at prices that mean *Dollars* in your pocket.

200 Ladies Dresses
 at Big Reduction in prices.

Ladies \$6.50 Hats at **\$4.85**

Many items from our piece goods section.

20 Percent Reduction
 on our Big Stock of Hand-Made Linens.

VISIT OUR STORE DURING THESE DAYS

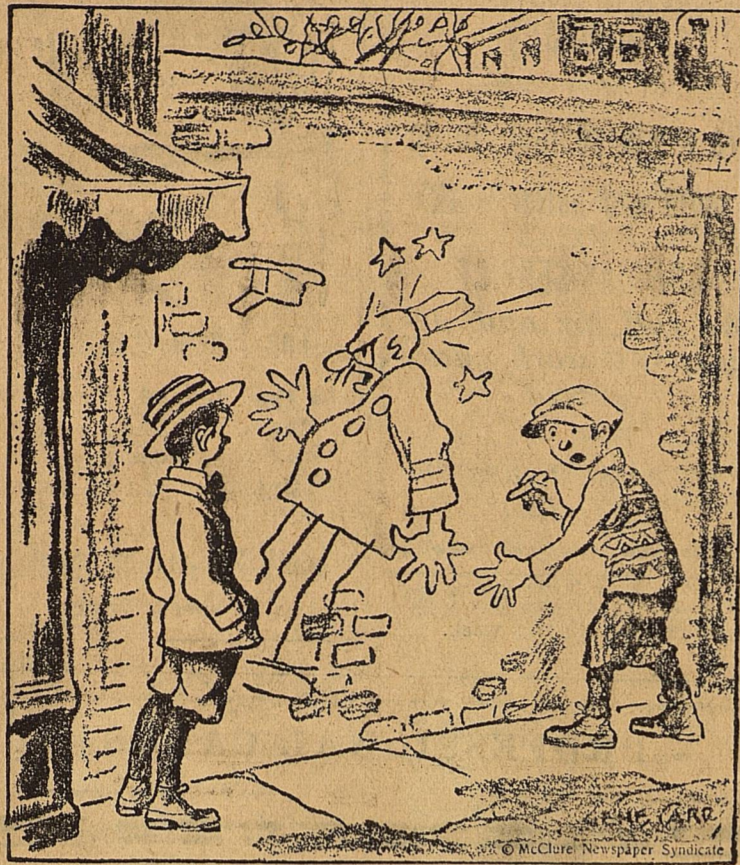
Are you using the right oil?

YOUR car's life can be prolonged by using the right kind of oil. On the other hand, it will be materially shortened if you use the wrong kind. Conoco Motor Oil is made to meet specific requirements. For instance, there's one grade of Conoco Motor Oil made especially for your car. You'll find it listed on Conoco chart. Use the proper grade of Conoco and forget your lubrication worries.

CONTINENTAL OIL COMPANY
 Producers, Refiners and Marketers
 of high-grade petroleum products in Arkansas, Colorado, Idaho, Kansas, Missouri, Montana, Nebraska, New Mexico, Oklahoma, Oregon, South Dakota, Texas, Utah, Washington and Wyoming

CONOCO
 REG. U. S. PAT. OFF.
 Motor Oils
Extra Life for Your Car
 AND BE SURE TO USE CONOCO GASOLINE packed with extra miles

JUST HUMANS
By GENE CARR



"AW, THAT'S OLD STUFF!"
"WOT Y'MEAN, OLD STUFF! I JUST DONE IT!"

Cow Goes Shopping

A man who owned a feed and grain store in Folkestone, England, while taking his breakfast the other day heard a commotion in the shop.

He hastened to the front to greet these early customers, and found to his surprise that a cow had taken his place behind the counter, and was calmly breakfasting out of one of the corn-bins. By her side was an agitated woman, who explained that the cow had chased her into the shop from the street.

Rather amused than irritated, the man let the cow finish her breakfast, meanwhile fetching a halter, with which he led her quietly back to her master when she had finished.

Insects Like People

Modern entomologists are now classifying insects according to the same types as those used for classification of human beings. The "asthenic" individual with the lean and hungry look may be found among insects as among people. The chunky, round "pynic" type is found among beetles, bugs and moths, while grasshoppers, mosquitoes, walking sticks and dragon flies are "asthenic." The intermediate types dominate among these creatures as among humans, and this group is designated as "athletic." Hygeia Magazine.

Degrees of Latitude

Points on the same meridians of longitude are farther apart at the equator than at any point north or south. This can be readily seen by consulting a globe, for the meridians converge upon the North and South poles, the distance between them at these points being zero. This has been proved by actual measurement of degrees. It is found that the length of a degree of latitude is greatest at the equator, decreasing gradually toward the North and South poles.

Seth Campbell and family are here today from Kermit.

Marvin Spaulding passed through Midland today from Wink, going to see his family in Lubbock.

NOTICE!
Pagoda Pool
will be closed after
Sunday, Sept. 18
Enjoy the Season's Last
Swim

Mrs. J. H. Epley is here from Abilene, spending several days with Mr. Epley and their sons, J. Homer Epley and Bill Epley.

John Castleberry of Florey visited the Reporter office yesterday.

M. O. Means and Cole Means, of Valentine, were here yesterday receiving the 400 cows they bought from the Scharbauer Cattle Company.

In order to get the best be sure your bread wrapper reads City Bakery Midland. 71-1t

Mrs. Chas. A. Bell of the Chas. A. Bell Dry Goods Company in Pyote, is in Midland today preparing her little daughter, Vivian to go to Dallas where she will attend the Oak Cliff School this year.

Radney Ellison enjoyed a visit from his father and mother last week. The Ellisons live in Mount Calm.

Mrs. E. R. Thomas and sons, Thelbert and Lewis left this week for Austin where all three will attend the State University.

Mrs. Paul Young accompanied her daughter Miss Retta Young and Ruth Norwood to Fort Worth where they enter T. W. C. for the coming year. Miss Norwood will be at home in the "Ann Wagner" Hall and Miss Young will be in "Dan Wagner" Hall. Mrs. Young returned yesterday.

Mrs. Paul Young returned yesterday from Fort Worth, having accompanied her daughter, Miss Retta Young, who is entering T. W. C.

J. H. Murphy is now in El Paso with his daughter, Miss Vernon Hill, who is teaching in the public schools there.

Mrs. R. E. Estes and sons will leave tomorrow in the car to take Miss Evelyn Estes to Denton to School. The family will stop in Fort Worth and visit over the week end. Miss Katherine Means will accompany the Estes family as far as Abilene where she will enter Simmons University.

Tom Patterson of Everybody's store has returned from a few days trip vacationing in Lubbock.

Why Order Christmas Cards from out of town? Our samples are already here. See them at The Reporter office. 7t

**Good Revival
At Valley View**

The meeting that is in progress at the Valley View School house south-east of town is being well attended. Bro. Mason is bringing some might lasting sermons that are full of the Spirit of Christ, and is being successful.

A special service for this community will be in the form of a program Sunday evening just before the preaching hour. The Greenwood B. Y. P. U. has been asked to give their weekly program there. Everyone has an invitation to attend any and all of these services.

K. E. Nutt is here today from the High Lonesome Ranch near Lovington, and reports range conditions good out that way.

If you believe in Midland buy bread made at The City Bakery. 71-1t

**Breckenridge Man
In Midland Today**

L. C. Eastland, secretary-manager of the Breckenridge Building and Loan Association, was in Midland to day on business, and he states that Breckenridge business men are getting alarmed on account of the number of their people who are moving here.

He says Midland is regarded as one of the leading cities of West Texas among Breckenridge business men.

Mrs. Lige Davis and Miss Georgia Kirk Davis have gone to Denton where Miss Georgia Kirk will resume her work in the North Texas State Teachers College.

Chan C. Mason and wife are spending the week end in Dallas.

H. A. Corrigan made a business trip to Kermit today.

E. P. Cowden and Guy Cowden are in from the ranch today.

Spread Your
Values
All Over Town!

There's just one way in which your story can reach practically every buyer in the town and county:—through the advertising columns of the Midland Reporter.

This is the era of selling by the printed word, and no business can survive the stress of modern competition without advertising. So tell them—sell them—through

The Midland Reporter

CHRYSLER
Four Great Cars in Four Great Markets
"52" "62" "72" "80"

These greater values are the unmistakable results of Chrysler's unique policy and plan of Standardized Quality in design and manufacture.

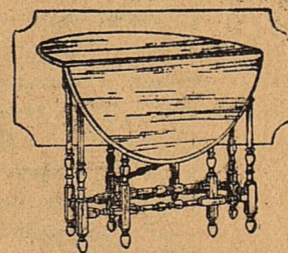
Through Standardized Quality each Chrysler clearly is the beneficiary of all the pioneering in design, exceptional skill in engineering, precision in manufacturing and vast resources concentrated in the development and building of all other Chrysler models.

And each Chrysler owner thus benefits because Chrysler Standardized Quality continues daily to produce unapproached values in automobile building.

Kuykendall Motor Company
Midland, Texas

New this week
a wonderful showing of
Floor Lamps
Smoking Sets
Magazine Pockets
End Tables
and various models of the
Perfection Portable Phonograph

Surprisingly beautiful are the new lamps, smoking sets, magazine pockets, and end tables, with their many-hued colorings, their dainty yet durable artistry. And such a variety to choose from! Come in within the next few days, while the stock is complete—let us show them to you.



And while you are here we would be glad to demonstrate the PERFECTION PORTABLE PHONOGRAPH, a truly remarkable little instrument, with a moderate price range from—

\$25.00 to \$35.00

Barrow Furniture Company

Funeral Directors

East Side South Main Street

Midland, Texas

WE ARE NOT SATISFIED WITH A SALE UNLESS YOU ARE

Aileen Pringle



Aileen Pringle, the motion picture star, is considered one of the best-dressed women of the screen. "Adapt the style to yourself instead of yourself to the style," says she, "and you will be among the best-dressed women, too."

For Meditation

By LEONARD A. BARRETT

TRIPLE LEVEL OF LIFE

THE stone is dead. It cannot communicate with anything that surrounds it. It has no correspondence. A stalled automobile is on a dead level. Its intrinsic value has not decreased; but its horse power is nil. An automaton is on the dead level. The flowers are on a higher level. They make contact with a larger world of correspondence. They derive benefit from the sun, rain and soil. Such contacts are necessary for their development. The bird lives a still larger life because it has a larger correspondence. Nature has provided it with a larger area of communication. Put the bird into a vacuum and immediately it goes back to the dead level, because its nerve of correspondence has been broken.

The stone on the dead level is acted upon from without. The bird on the living level possesses from within its power of communication. You may succeed in teaching a dog a trick, but the trick dies with the dog. He cannot teach it to another dog. The living level is circumscribed by very definite limitations.

The aspiring level knows no such limitations. The aspiring level is the realms of ideals, purposes, burning ambitions. This innate desire to aspire has been denied to all creation but man. He possesses intelligence, the brute only instinct. Emerson wrote, "Man, thou art a palace of sight and sound, carrying in thy senses the sights and mornings, the summers and winters, carrying in thy brain the geometry of the city of God, and in thy breast all the bowers of love and all the realms of right and wrong."

On the aspiring level, purposes should be high enough to give a constructive value to life and deep enough to guarantee a very real satisfaction—for, "The hand can never execute anything higher than the character can inspire."

(© 1927, Western Newspaper Union.)

THE YOUNG LADY ACROSS THE WAY



The young lady across the way says she sees letters of credit advertised for persons thinking of going abroad and if they can't afford to pay cash she should think they'd better stay at home.

(© by McClure Newspaper Syndicate.)

Waterloo Repeated

Hobbs—I understand Tom and his wife just had their first quarrel. Was it serious?
Dobbs—Very. He gave in and thus established a precedent.

Expects 2,000 Bales Of Cotton In County

J. H. Dean of the Williams and Dean Gin Company, predicts that there will be about 2,000 bales of cotton produced in Midland County this season.

He expects a few bales to be ready for ginning next week, but states that very little will be likely to come in before October 1.

Two thousand bales at the present price will bring the farmers a good return for their crop, Mr. Dean states.

Work Progressing On Brick Buildings

Construction on the new brick building being built by Mrs. Lillie Cowden on Main Street, and the New "M" store building of Terry Elkin's on Texas Avenue is progressing rapidly, and the two structures will soon be ready for occupancy.

Miss Evelyn Scarborough will return to the Tech College this year. She is expecting the school to have a great year.

Mrs. Sarah Furman, of Morgantown, West Virginia, is in Midland visiting her daughter, Mrs. W. S. Blodgett.

Mr. Wagstaff, an attorney of Ranger, visited Midland yesterday. He stated that he was considering locating here. Mr. Wagstaff has been a leader in Boy Scout work in Ranger.

D. E. Bishop and Mr. Bandy of Colorado were in Midland on business yesterday afternoon.

NOTHING LIKE IT ON EARTH

The new treatment for torn flesh, cuts, wounds, sores or lacerations that is doing such wonderful work in flesh healing is the Bozorone liquid and powder combination treatment. The liquid Bozorone is a powerful antiseptic that purifies the wound of all poisonous and infectious germs, while the Bozorone powder is the great healer. There is nothing like it on earth for speed, safety and efficiency. Price (liquid) 30c, 60c and \$1.20. Powder 30c and 60c. Sold by Midland Drug Store

Means Receiving Scharbauer Cows

M. O. Means was here yesterday from Valentine, receiving 400 head of cows which Means Bros. bought from the Scharbauer Cattle Company. The cows were loaded at the Midland stock pens and shipped yesterday. The Means boys have bought a number of cattle from the Scharbauer Cattle Co. during the past few months. They have first class stock, and are adding to the herd from the well known Midland cattle company. The calves off of these cows were shipped by the charbauers to Fort Worth markets earlier this week.

Midland Dentists Attend Convention

Drs. L. B. Pemberton, K. H. Campbell and D. K. Ratliff, the three dentists of Midland, are in Amarillo this week to attend the convention of the West Texas Dental Society. Dr. Pemberton left Wednesday, and Drs. Campbell and Ratliff left yesterday. The convention meets Friday and Saturday, and a big attendance is expected from all sections of West Texas and the Panhandle.

CALIFORNIA MAN PRAISED MIDLAND

A tourist who passed through Midland yesterday morning, going from Orange County, California, to Hot Springs, Arkansas, stopped and got several copies of The Reporter in order to read about Midland.

He stated that he was greatly impressed with the type of homes that have been built in Midland, and that Midland was the first place he had seen since leaving his home State where the buildings were so beautiful. He expects to tarry longer on his return trip.

CAVERN VISITORS OVER 2,400 FOR MONTH THUS FAR

In the Tuesday issue of the Carlsbad Current-Argus, it was stated that already this month, 2,400 visitors had been registered at the Carlsbad Cavern. On last Sunday, there were 307 although the number has dropped off since last month.

H. G. Duman who has been operating the Midland Art Studio for Mrs. W. E. Wallace during the past few months, left yesterday for Weatherford and states that he will probably locate in Dallas soon.



Jesse James had reformed, but he must feel a touch of chargin at the ease and frequency with which our modern bandits make away with sums greater than his wildest dreams. We can't stop the robberies but we can stop your losses. Registered mail insurance is becoming increasingly popular with banks trust companies and bond houses. The rate, combined with the required government registration is considerably cheaper than the express rate and there is no limit placed on the value of the package.

The Registered Mail Policy insures against the loss of currency, securities, etc. from any cause whatsoever.

This is but one of many kinds of insurance written by this agency.

Telephone or call

SPARKS & BARRON Insurance and Abstracts

Phone 79

Midland

Texas

Midland Mattress Company

On Illinois Avenue

We are in position to do more and better work

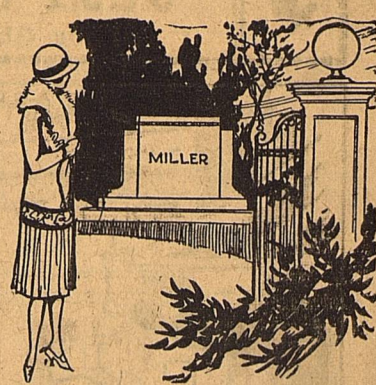
ONE DAY SERVICE

We call for and deliver. All work guaranteed

Phone 476

"We make it easy for You to Lie"

Ell Evans of Abilene has been in Midland on business this week.



The Finest Memorials

In the Midland Cemetery Were Finished in Our Shops Designs and prices on request.

South-Plains Monument Co
Lubbock, Texas

PROFESSIONAL CARDS

David M. Ellis, D. C.

PALMER GRADUATE

Three Year Course

Phone Res. 246—Office 164

N. Main St. on Pavement

Public Stenographer Notary Public

Located first door east Llano Hotel entrance. Phones, office 55, residence 35 and I will call at your office for dictation.
Mrs. M. W. Stanton

Crane County Abstract Co.

Complete Abstracts Crane Co. Odessa and Crane, Texas
Better Be Sure Than Sorry

Announcing the opening of my PIANO STUDIO

Monday, September 19
Clifford Christine Heath
Phone 444

J. S. ATKINS

Attorney At Law
Office Over Midland Mercantile
Midland, Texas

USE GOOD MILK

Your Dairy Business Will Be Appreciated. Also have good milk cows for sale at all times. Our cows are tubercular tested by a State Veterinarian.
JOHN WADDELL

C. D. ADAMS

Electrical Contractor
Phone—36 Midland, Texas

T. D. Kimbrough

Attorney At-Law
Oil Exchange Building
Midland, Texas

PERCY MCGHEE

Architect & Engineer
Write or wire me if I can be of service to you.
113 Edson Ave.
El Paso, Texas

ODESSA ABSTRACT CO.

SPARKS AND BARRON
ODESSA and MIDLAND
Complete Abstract of Title to Ector and Crane counties

Highway Service Station

Magnolia Gas & Oil
Three Mile Road Service
L. E. Robinson
Phone 388

LLANO BARBER SHOP

M. D. JOHNSON
Proprietor
Courteous Expert Workmen
Sanitary Specialties
Beauty Parlor in Balcony
Phone 273

Adding Machine paper, 15c per roll, 2 for 25c at Reporter Office.

Edw. A. Nolan

Architect
Oil Exchange Bldg.
Midland, Texas

DR. D. K. RATLIFF

Dentist
Office Over City Drug Store
Phone 149 Midland, Texas
Res. Phone 288

B. W. FLOYD

Land and Livestock
Cheapest good land in Texas
Oil Leases and Royalties, Breeder of Polled Herefords. Office over City Drug Store
PHONE 190

Real Estate

WILSON BROTHERS
Leases & Royalties
Andrews, Texas

FOR YOUR NEXT HAIRCUT, SHAVE OR SHAMPOO

Come to the JONES & JOHNSON Barber Shop
Across Street From Post Office

DR. L. B. PEMBERTON

DENTIST
Suite 210, Llano Hotel
Office Phone 492 Residence Phone 384
Midland, Texas

DR. A. L. CANTRELL D. C.

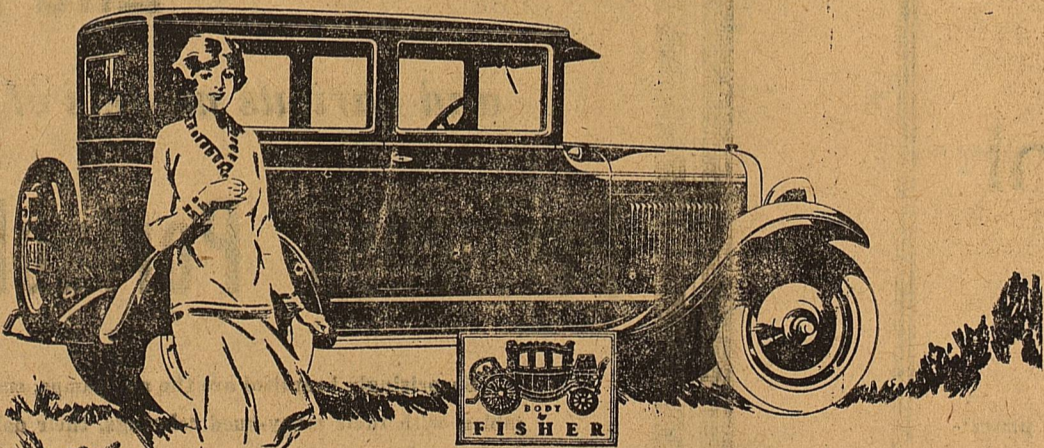
CHIROPRACTOR
(Formerly with Grogan Wells Sanitarium, Sweetwater)
Office 2nd door north of Burton Lingo.

Select yours first—Christmas Card samples on display at The Reporter office.



for Economical Transportation

Only Chevrolet offers Bodies by Fisher at such low prices



No other car in the low price field offers bodies by Fisher, with all the comfort, charm and elegance that the Fisher name assures.

Come in—and make your own inspection of Chevrolet coachwork. Note the smartness of its Duco colors... the grace of its full-crown, one-piece fenders... deep, restful seats... the fashionable durable upholstery... the finely modeled Ternstedt hardware... the patented Fisher VV windshield... and the complete modern appointments. Go for a drive—and you will learn that Chevrolet's performance is, in every way, as amazing as its outstanding beauty!

The COACH \$595

- The Touring or Roadster \$525
- The Coupe \$625
- The 4-Door Sedan \$695
- The Sport Cabriolet \$715
- The Imperial Landau \$745
- 1/2-Ton Truck \$395 (Chassis only)
- 1-Ton Truck \$495 (Chassis only)

All prices f.o.b. Flint, Michigan
Check Chevrolet Delivered Prices
They include the lowest handling and financing charges available.

Nobles Motor Co.
Midland, Texas

QUALITY AT LOW COST

Cooking Chats with 6 Famous Cooks

(Courtesy of the Domestic Science Department, Perfection Stove Company)

FIVE DESSERTS FROM OLD NEW ENGLAND

(Editor's Note: This is one of a series of unusual cooking articles running exclusively in this paper.)
Sweets belong in the daily food quota. And what more logical than that they be served as desserts? Almost every lunch and dinner is better when topped off with dessert. But never serve a heavy, rich dessert with a hearty meal. Light, easily digested desserts—fluffs or custards—are the rightful accompaniments of such meals.



MISS LUCY G. ALLEN

Miss Lucy G. Allen, principal of the Boston School of Cookery, and author of several cook-books, gives tested recipes for five pleasing desserts.

Pineapple Fluff

To one-half cup of juice from canned pineapple add one well-beaten egg, one dessert spoon of sugar mixed with one-half table spoon of cornstarch. Cook till thick in a double boiler, or in a saucepan over hot water, stirring constantly. When thickened, remove from stove and add one cupful of pineapple cubes cut from slices of canned pineapple. When cool enough, fold in gently one-third cup of heavy cream beaten stiff with an egg-beater and flavored with one-eighth teaspoon of vanilla. Place in sherbet glasses or in a large glass dish, if preferred, and chill. This amount will serve six persons.

For a Lighter Meal

Baked Indian pudding makes a filling addition to light salad-and-soup meals.

Mix six tablespoonfuls of corn meal with three tablespoonfuls of flour and dilute with one-half cup of milk. Add this to one pint of scalded milk and cook until thickened. In a bowl break one egg and beat slightly, add one-half cup of molasses, one-third cup of molasses, one-half teaspoon of salt and one cup of cold milk.

Add this mixture to the hot mixture, add another cup of cold milk and pour into pudding dish. Dot over with tiny lumps of butter and bake in a slow oven for three hours or more. Sweet apples or pears sliced and added last, using two or three of either, make a pleasing addition. Serve with cream or with butter.

A woman can always use shelves in the kitchen. One up-to-date oil stove has a handy base shelf which can be used to hold utensils.

Cracker Plum Pudding

Just about as hearty as the baked Indian pudding is cracker plum pudding.

Roll quite fine eight cooking crackers, add five cups of milk, one-fourth teaspoon of salt, two-thirds cup of sugar and four eggs slightly beaten. Add three-fourths cup of seeded raisins, flavor with a few gratings of nutmeg.

Place in buttered pudding dish, over the top scatter two tablespoonfuls of butter in small pieces, and bake in a moderate oven about two hours. Serve with or without sauce.



Delightful Bread Pudding

No one will ever object to eating chocolate bread pudding. It just touches the spot when one's sweet tooth is aching. And, better yet, from the cook's point of view, it uses up stale bread.

Scald one pint of milk, add one cup of stale bread crumbs which have been rubbed through a sieve, and set aside to cool slightly. Beat one egg slightly, add one-third cup of sugar, one-eighth teaspoon of salt and add to scalded milk.

Melt over hot water one square (one ounce) of cooking chocolate, stir to a smooth paste with three tablespoonfuls of boiling water and add to mixture.

Pour into a buttered pudding dish, set dish in a pan of hot water and bake in a moderate oven. It will take about one hour. Serve with either cream or a hard sauce.



Apple Pan Dowdy

Inexpensive and quickly made. These are two of the virtues of old-fashioned apple pan dowdy.

Pare five or six large apples, cut in eighths and put into an aluminum saucepan. Add three tablespoonfuls water, one quarter cup of sugar, one teaspoonful grated nutmeg, or one-half teaspoonful cinnamon if preferred.

Cover and cook about five minutes. Mix thoroughly $\frac{1}{2}$ cup bread flour, three teaspoonfuls baking powder and one-half teaspoonful salt. Cut in with knife two teaspoonfuls butter, then add one-half cup of milk, stirring with knife. Handle as little as possible and spread the dough over the apples. Cover closely, place on an asbestos mat over the flame and cook until done without lifting cover, for about one-half hour. Invert pudding upon serving dish and serve with sugar and cream or the following sauce:

Foamy Sauce: Beat very stiff the white of one egg and then beat in $\frac{1}{4}$ cup of powdered sugar; transfer egg beater to yolk of one egg and beat until thick and light-colored, then beat in $\frac{1}{4}$ cup of powdered sugar. Cut out and fold mixtures together, beat in two tablespoonfuls hot cream or top milk and flavor with vanilla.

All of these desserts are simple and easily made according to Miss Allen's tested recipes.

For cleanliness. And freedom from smoke and odor. That's why some oil stoves have long chimneys. The extra length of the chimney insures complete combustion of the oil.

Lea County, N. M. To Get A New Test

Location for a deep test in Lea Co., N. M. has been made, known as Boredages-Jennie Hughes No. 1, and will be in the center of the south half of section 27-19-39, southeast of Lovington, and four miles from the Texas line. Equipment and material, including a new steel derrick, is being moved to the location by the Conrad Kersey Drilling Company.

Top Price Paid For Cattle On The Kansas City Market

What is regarded as the top price paid for cattle since the Fall of 1925 was paid in Kansas City a few days ago when sixteen head of steers averaging 1431 pounds sold for \$14.45 per pound, or \$207.10 per head.

Cattle prices have recently come to the front.

Furniture Co. Head Visits Store Here

A. B. Barrow of Abilene president of the Barrow Furniture Company, was a Midland visitor yesterday, conferring with A. D. Martin, manager of the Midland store. Mr. Barrow is well pleased with the business accorded the local store, according to Mr. Martin, and also said that business in the whole chain of Barrow stores was above the average for this time of year.

New Locations In Crane And Upton

The Humble has made a location for its No. 12 University in Crane County, 2,310 feet from the south line and 1,650 feet from the west line of section 38 block 30, Crane County.

Tidal Oil Company has made a location for its No. 1 on what is called its J. lease, 200 feet from the south line and 330 feet from the west line of section 48, block 30.

In Upton County, the Texas and Pacific Coal and Oil Company has made a location for its No. 1 Burlington, 330 feet from the north and east lines of section 2, John Nidever survey.

Foster Brown will leave soon for Abilene to become a student in Simmons University.

"Ben-Hur" Embodies Glory Of Rome

Imperial Grandeur and Athletic Prowess of the Romans Pictured in Film.

"Ben-Hur" the \$4,000,000 picture which will be presented at the Palace Theatre beginning Oct. 3 portrays the glory of the ancient Romans with a magnitude and magnificence unequalled by any previous spectacle of stage or screen.

The Romans excelled in war, athletic prowess and speed contests on the chariot race course. In the first named, "Ben-Hur" shows a great sea battle off Nisenum, in which more than a hundred Greek and Roman ships are engaged. The Romans defeat the Greeks, but not without the loss of the head trireme to the piratical Greeks who ram and board the ship, kill the crew, then set fire to the disabled sinking craft. This is the most terrifying action ever shown in a picture.

For racetrack thrills, nothing can compare with the great Chariot Race scene. In the Roman mode of chariot course was built with half mile laps, and this was surrounded by a Circus Maximus with a seating capacity of 100,000 spectators, the whole guarded by great gladiatorial figures in the heroic style of sculpture and ornamental with Roman eagles, warriors and amazons by the artists Carmelo Barbara and Carlos Romanelli.

48 Steeds in Race

Twelve quadrigas of four horse chariots enter the race which is seven times around the course. Midway there is a wreck, in which several of the teams, drivers and chariots are piled upon one another. It is Ben Hur and Messala's race-duel toward the finish. Messala's wheel is torn off, he is smashed beneath his chariot and his team. The other goes on to win amid the plaudits of the vast crowd.

The grandeur and accuracy of the above scenes—as well as one of the entire story in its faithful depiction of Roman triumphs, Roman legionaries and Roman civilization—are due to the fact that Marcus Loew, the famous head of the Loew theatres and of the Metro-Goldwyn-Mayer film concern which produced the picture, sent the entire company, the technical staff and the directors to Italy which is the source of information as well as the locale of that period of civilization. Operations were carried on for two years, and have been described from time to time in the news

dispatches from Italy. Returning about a year ago, Fred Niblo the director in chief, and the company completed their work at Culver City Cal., a few miles out of Los Angeles.

DALLAS STEERS TO PLAY IN BIG SPRING SEPT. 18

Baseball fans are promised a real treat on Sunday, Sept. 18 as the Dallas Steers on a barnstorming tour of West Texas will stop over in Big Spring for a game with the T. & P. team.

It goes without saying that the game will be worth seeing and the home team will be able to make the Steers get up and hustle if they win the game.

It was necessary to guarantee the visiting team \$200 in order to secure the game, so it will be necessary to increase the price of admission to the game.

Tickets are now on sale at the Chocolate Shoppe and the Palace of Sweets and fans are urged to purchase tickets early so the guarantee may be assured.

The T. & P. Team has given the fans a run for their money and it has not cost anyone very much. Other cities have had to raise thousands of dollars by donations in order to maintain a baseball team.

You can show your appreciation of the baseball team's effort to please you the past season by purchasing a ticket or two to the big game Sunday, Sept. 18.

Tell others about this game. Be sure to attend. Better still, purchase a ticket today.

—Big Spring Herald.

Paving Under Way On Texas Avenue East Of Main Street

Paving work is now under way on Texas Avenue, beginning at the Burton Lingo corner on Main Street, and going east to the Highway.

Much of the pavement on that street going toward the high school has been completed, and is now covered with dirt until it seasons.

Carson P. Harben Of Press Ass'n Dies In Dallas

Carson P. Harben, assistant secretary of the Texas Press Association, and son of Sam P. Harben, secretary, passed away in a Dallas sanitarium Tuesday night, according to news articles in daily papers.

Young Harben was well known to the members of the Press association and his death will bring sorrow to all who have known him.

The Reporter joins in extending sympathy to his father and mother.

Mrs. C. S. Yarbro of Big Spring was here yesterday on business.

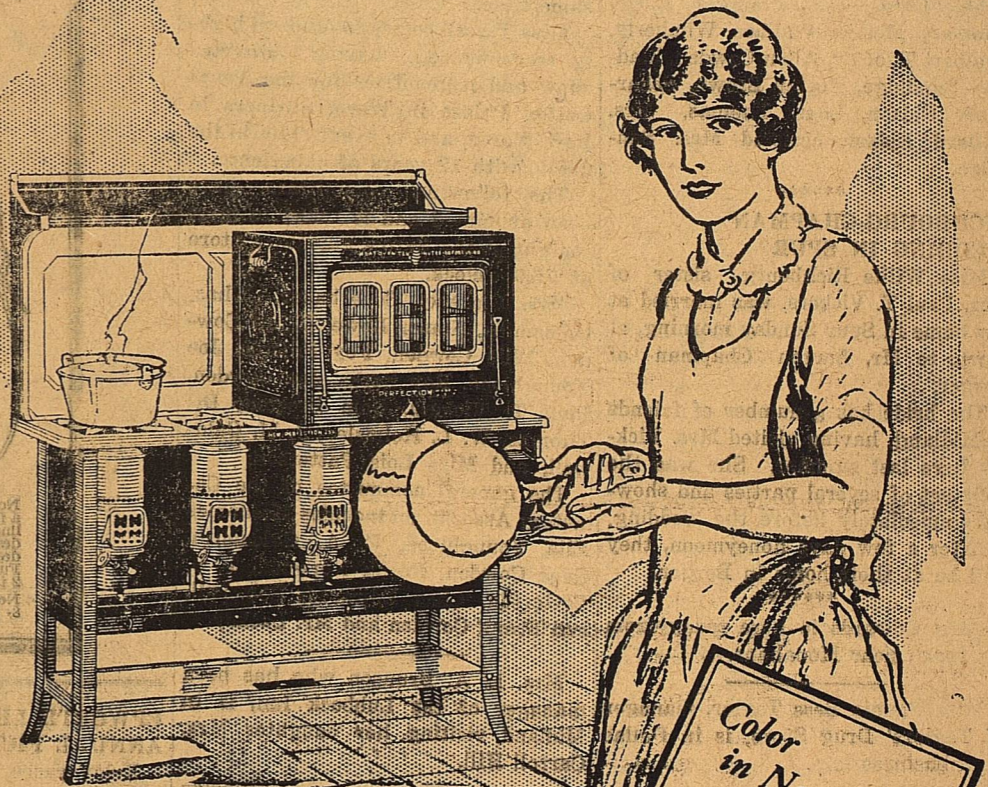
New B. Y. P. U. At Panther Draw

On last Sunday afternoon another Senior B. Y. P. U. was added to the Big Spring Associational B. Y. P. U. conference. The East Third St. Union of Big Spring with the associational president went to The Panther Draw school house fifteen miles south of Big Spring for the purpose of rendering a program and assist in the organization of union at that place. The young people left from the Church in Big Spring immediately after the morning service going by way of Bro. Hart Phillips where a lovely lunch prepared by Mrs. Phillips and sandwiches carried by the unionites was spread under the trees and enjoyed in picnic style.

Rev. Sam Horton called the meeting to order and after the devotional Alfred Anglen was in charge of a short program with the following taking part; Misses Lillie Cardwell, Flora Milstead, Pauline Morrison, Bill Arnett, Alton and M. H. Morrison Bill Arnett president of the associational B. Y. P. U. acted as moderator in the organization and election of officers for the new union, explaining briefly the duties of each officer. Johnnie J. Phillips, Jr. was elected as president.

After the close of the meeting watermelon and ice cream was enjoyed by all.

Clean heat



No black kettles
to scour!

How much pleasanter cooking is, when there are no black pots and pans to scour afterward! Every woman who cooks with a Perfection Oil Stove is spared that horrid nuisance.

There is never a speck of soot. For in the long chimneys, every drop of oil is completely burned before the heat reaches the cooking.

Perfection flames stay at the height you set them, so you need never fear they will "creep up" and make the kitchen sooty.

Soot, as you know, is half-burned kerosene — just wasted heat. With Perfections you have real fuel economy, as all the oil is changed into cooking heat. They burn only kerosene, the safe household fuel.

Miss Allen says—

"Utensil bottoms are free from soot when cooking is done on the Perfection Stove."

Miss Lucy G. ALLEN
Principal, Boston
School of Cookery.

With Perfection you will have wonderful cooking results, and your utensils will stay shiny as new. See the newest Perfections at any dealer's—1 to 5 burner sizes. Priced from \$7.25 to \$130.

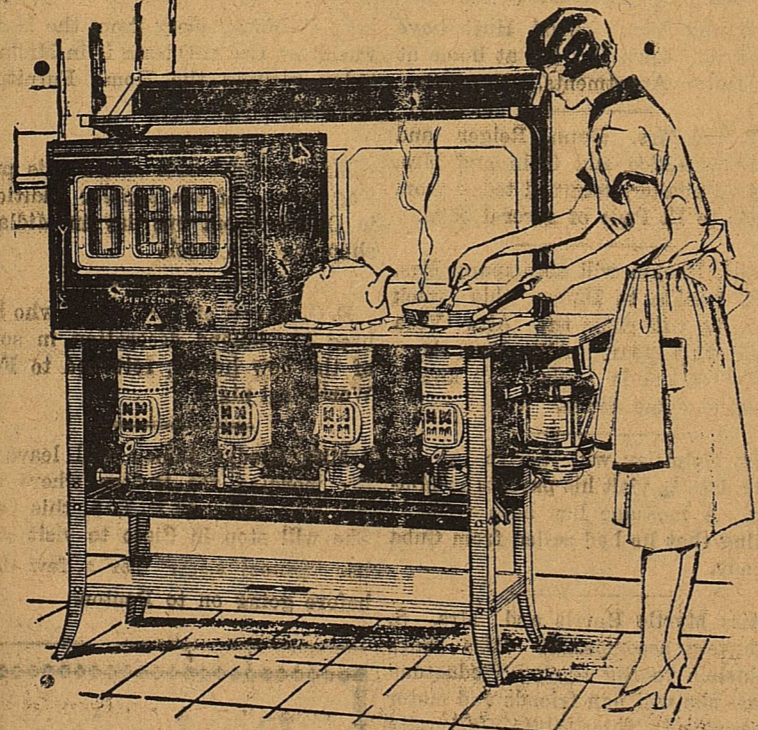
PERFECTION STOVE COMPANY
Dallas Branch—825 Trunk Ave.

PERFECTION Oil Stoves & Ovens

WARNING: Use only genuine Perfection wicks on Perfection Stoves. They are stamped with red triangles. Others will cause trouble.

No smoke, soot or odor with Perfection long chimney burners.

PERFECTION Oil Cook Stoves and Ovens



New Colors Porcelain Tops

Come and see the newest Perfections—gray porcelain enameled cooking tops; gray legs, and satin black body finish. One of these attractive complete outfits—gray stove, white porcelain enameled cabinet, white trimmed oven—will brighten your kitchen and lighten your work.

No waiting! No watching! Real cooking heat strikes the cooking utensil the instant you light the long chimney burner, and there's no smoke, soot or odor. Endorsed by the foremost cooking experts of the country, and used by three out of five of the world's oil stove users.

Barrow Furniture Co.
Winter-Haynie Hwd. Co.

Society

MISS JOHNSON HONOREE AT DINNER PARTY

Mesdames Stacey Allen and Joe Caldwell Jr., entertained with three course dinner in the home of the former honoring the birthday of their sister, Miss Alta Mae Johnson.

The color theme of yellow and pink was carried out in center piece of yellow garden flowers with pink streamers. Plate favors were pink jelly bean dolls and pink cups were filled with salted peanuts.

The delightful dinner consisted of fruit cock tail, fried chicken, creamed potatoes, french peas, olives, pickles, tomato salad, and iced tea; strawberry ice cream, and yellow and pink dinner mints.

Those to enjoy the party were Misses Alta Mae Johnson, honoree, Misses Jeanette Waddell, Lucile Cole, Eulalia Beacham; Messrs Marvin Stanton, Bobby Orsborne, Butler Hurley, and Everett Klebold.

COLLEGE STUDENTS HONORED AT PARTY

The home of Mr. and Mrs. G. T. Sandidge was open to a number of the college students and other guests on last Tuesday evening. The party was given in honor of the students who are leaving soon for college.

The rooms of the Sandidge home were made beautiful with cut flowers and ferns.

Entertainment for the evening consisted of many different college pranks the recollection of college days.

Refreshments were served to Misses Alice Summerhill, Georgia Kirk Davis, Pearl Wimberly, Dorothy Ratliff, Bobbie Reed, Emily Flanigan, Lucile Thomas; Messrs Wallace Wimberly, Thalbert Thomas, Allen Cowden, Madison Sandidge, Foster Brown, Scharbauer Eidson, Louis Thomas. Mrs. Millard Eidson assisted Mrs. Sandidge.

RICHBOURG-CHAPMAN WEDDING IN SPUR

Miss Willie Richbourg, sister of Mrs. Paul T. Vickers, was married at her home in Spur Sunday morning, at dawn, to Mr. Barron Chapman of Borger.

The bride has a number of friends in Midland, having visited Mrs. Vickers here last summer. She was the recipient of several parties and showers immediately before the wedding.

After a few days honeymoon, they will be at their home in Borger.

Chas Edwards is here today from his ranch near Monahans.

Miss Fannie Bess Taylor, manager of Taylors' Drug Store, is in Dallas on a business trip.

MRS. CHAS. GOLDSMITH TO HEAD P. T. A.

Mrs. C. M. Goldsmith has been elected to succeed Mrs. Addison Wadley as president of the Parent-Teachers Association for the coming year. The P. T. A. held its first regular meeting of the year last Tuesday afternoon at 3:15 o'clock at the High School.

A good crowd was in attendance and much interest manifested. Mrs. Addison Wadley briefly reviewed last year's work and then presided during the election of officers for the coming year.

Mrs. Chas. Goldsmith was elected president; Mrs. Elliott Cowden, first vice president; Mrs. G. T. Sandidge second vice president, and Mrs. John Edwards, third vice president; with Mrs. John M. Speed, secretary and treasurer.

With this line up of officers and the good crowd in attendance, the coming year looks most promising.

Among other business matters brought up for discussion, a reception was discussed for the teachers.

A good live working P. T. A. means better schools and Midland stands for better schools.

CEMETERY ASSOCIATION SPONSORS MIDLAND EXTRAVAGANZA

Miss Terrell, widely known director of follies and big time whirlwind shows, is in Midland and will stage the Midland Follies using 200 men and women and children in the cast.

The Cemetery Association in Midland will sponsor the show and every one in Midland is asked to co-operate in this most worthy cause.

The show will be two hours of whirlwind follies, fashioned after the Broadway follies of New York. It will be elaborate costumed and lighter. There will be no responses to encores and no waits. One scene carries seven upright pianos all playing at the same time.

Miss Terrell comes to Midland highly recommended, having directed show and pageant for the Texas Cotton Palace in Waco, Shriners in Fort Worth, and in every state in the union, with 12 years of experience.

The following committees have been appointed and is asked to meet tonight at the Barow Furniture Store at 7:30 o'clock.

Mrs. Clarence Scharbauer, Chas. Goldsmith, Homer Rowe, Elliott Cowden, Ellis Cowden, Foy Proctor, Joe Youngblood, Roy Parks, Jax Cowden, Paul T. Vickers, Sam Preston, D. Thomas, W. L. Holmsley, J. M. Caldwell, and Miss Lois Patterson.

The general committee of the Cemetery Association includes Mesdames Ella Youngblood, C. A. Goldsmith, Gene Cowden, Frank Norwood, T. S. Patterson, Chas Edwards, Bob Hill, and Frank Cowden and Mr. Lackey.

Mrs. L. A. Brunson who has been manager of the Lubbock Inn, is in Midland visiting her daughter Mrs. Carroll Hill.

"A Thing of Beauty Is a Joy Forever"

And especially does this quotation apply to the furnishings that go into your home—for it has also been said that "home is where the heart is." Make your heart glad by letting us show you our wide variety of—

- GIFT GOODS
- GLASSWARE
- FLOOR COVERINGS
- VICTROLAS
- String Instruments
- NESCO, STOVES

HOME FURNITURE CO.

W. R. Upham, Mgr.

Victrolas Records Gift Goods

EPWORTH LEAGUE ANNUAL PICNIC

Relay races, sack races and potato races are to be some of the attractions of the big picnic to be staged tonight at the Baptist Church lawn. Every member of the Baptist church is cordially invited to attend this affair and enjoy the fun and entertainment. Its all free.

Among the shoppers in Midland this week were Mrs. Allen Kadili of Stanton, Mrs. W. O. Berry of Stanton, Mrs. Patterson of Odessa; Mesdames S. B. Ford and G. L. Wilkie of Big Spring, Mrs. Gilbert Graves and Mrs. Doctor Moffett of Stanton.

Miss Henrietta Schwarzberg who has been visiting her sister Mrs. Albert Haas in Midland, left this week for Austin where she will enter State University this year. Miss Schwarzberg's home is in Alexandria, La.

Thomas Reeves of Lake Juna Luska, N. C., who has been visiting his aunt, Mrs. W. V. Coman, left this week for Charleston, S. C., where he will enter the Citadel Military College for his junior year.

Mr. and Mrs. T. R. Wilson and son of Odessa visited in Midland this week.

Mrs. S. R. Weaver and little daughter, Rebecca Rea, are in Midland the guests of Mrs. L. A. Arrington this week.

Miss Bonnie Bellamy, daughter of Eli Bellamy, left this morning for her home in Englewood, Cal., where she will be in school.

Mrs. D. G. Bishop of Big Spring and her daughter, Miss Bishop, were in Midland this week making arrangements for Miss Bishop to take advance courses and teachers training courses in Expression and Dramatic Art work with Mrs. Paul T. Vickers. Miss Bishop attended S. M. U. in Dallas, and Woodrow School of Expression last year. She will come to Midland every Saturday morning for her work.

Mr. and Mrs. Donald Hutt have moved into town and are at home at the Denton Apartments.

Mr. and Mrs. Dunn Reiger and children, Adilee and Ollin and Mrs. E. M. Whitaker, returned today from a visit to El Paso of several days.

F. E. Rankin will accompany Mrs. F. E. Rankin to Dallas this week where he will enter the Alta Vera school this year. Alta Vera is a private school in Dallas well known throughout the south.

Bill Holmsley will arrive at an early date to visit his parents in Midland. A message has been received stating that he had sailed from Cuba already.

Miss Myrtle Harris and Mrs. S. Weinstein accompanied Miss Sara Weinstein to Big Spring Wednesday where she will join friends and motor to Austin to enter State University this fall.

Mrs. T. K. Hall and son have returned from New York where they spent the summer vacationing and visiting.

Mrs. Ralph Bucy and son Ralph Bucy, accompanied Mrs. Lige Davis and her daughter, Miss Georgia Kirk Davis, to Fort Worth where they will visit a few days before going on to Denton where Miss Davis will enter Denton Normal. Mrs. Bucy and son will return to Midland in a few days.

Mrs. Simmons and little son arrived yesterday to be with Mr. Simmons who is connected with the "M" System store here at present. Mr. Simmons will be with the M System in Odessa as soon as it is completed.

Mr. and Mrs. Guy Green have as their guests this week Mr. and Mrs. S. A. Thompson.

John P. Butler, formerly of Littlefield, has moved to Midland and is now connected with the First National Bank.

R. C. Montgomery from the Home Furniture Co. in Odessa is in Midland today visiting the Home Furniture store here.

Mrs. Quinn whose husband is putting on one of the popular additions in Odessa spent one day in Midland shopping this week.

E. G. Turner of Fort Worth who has been in Midland decorating in some of the new homes, returned to Fort Worth last night.

Miss Gladys Inman will leave in the morning for Denton where she will be a senior in C. I. A. this year. She will stop in Cisco to visit with her "School sister" for a few days before going on to Denton.

Mrs. Pendleton of San Antonio is here today on business. She went over to Odessa where she owns some property.

Mrs. B. S. Britton and daughter, Betty were here yesterday from Odessa. They have just returned from a trip to Dallas.

Brooks Tingle, with Sparks and Barron, is in Odessa this week, looking after business with the abstract plant there.

Miss Angles Moran went to El Paso this week to enter the International Business College this fall.

Miss Jesse Mae Estes will remain in California this fall and visit with Mr. and Mrs. Dickey.

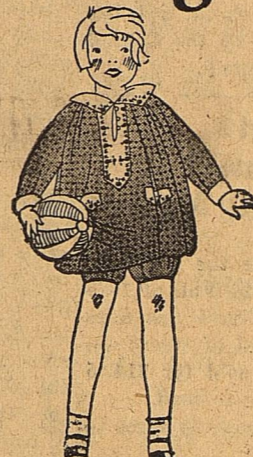
A fashion Show of Autumn Modes for the "Youngest Generation"



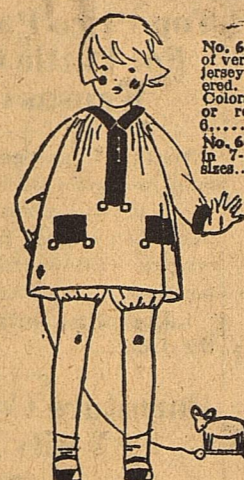
No. 6614—Bloomer dress of finest print fast color, hand smocked and hand embroidered on collar, cuffs, and pocket. In color combination of lines and dots—red and green, navy and blue, orange and brown, and red and blue—Sizes 2 to 6. \$3.95
No. 6615—Same model in 7, 8 and 10-year sizes. \$4.95



No. 6723—Bloomer dress of fine all-wool challis with white dots. The white trimmings are adorned with hand embroidery in fast colors. A most desirable lightweight fabric. Colors, red, blue or green. Sizes 2 to 6. \$3.95



No. 6566—Bloomer dress of fine all-wool challis with white dots. The white trimmings are adorned with hand embroidery in fast colors. A most desirable lightweight fabric. Colors, red, blue or green. Sizes 2 to 6. \$3.95



No. 6676—Bloomer dress of very fine French spun jersey. Hand embroidered. Full length sleeves. Colors, open, tan, green or red. Sizes 2 to 6. \$5.50
No. 6677—Same model in 7, 8 and 10-year sizes. \$6.95



No. 6728—Bloomer dress of smooth pattern, fast-color saffron, trimmed with hand embroidery. Colors, blue, red, gold or green. Sizes 2 to 6. \$2.95
No. 6729—Same model in 7, 8 and 10-year sizes. \$3.95



No. 6668—Bloomer dress of excellent quality print. Polka dot on pin stripe. Hand embroidered. Colors, blue, red or green. Sizes 2 to 6. \$1.95
No. 6669—Same model in 7, 8 and 10-year sizes. \$2.95



No. 6626—Bloomer dress of the quality medium weight fabric with contrasting colors. Colors, blue, red or green. Sizes 2 to 6. \$2.95
No. 6627—Same model in 7, 8 and 10-year sizes. \$3.95

You are cordially invited to inspect our latest offerings of

L'Aiglon Children's Frocks

THE designs which the "youngest generation" of Paris, New York and the other European and American capitals of fashion are wearing this fall are well represented in L'Aignons.

The L'Aignon designers take this youngest generation as seriously as do the exclusive modistes who create the vogues for "miss" and "madame". And in our opinion these L'Aignon designers have never produced anything lovelier than their children's modes for this autumn.

We have for your selection pretty frocks for every occasion from the school and play to the spiffiest parties—and all made with that attention to durability for which L'Aignon garments are famous.

Our offerings run the gamut of materials from the finest domestic and foreign looms. Most of them are hand embroidered; many are hand smocked.

As to prices—when you have seen the values we have to offer you will agree that the prices are—to say the least—"most attractive".

EVERYBODY'S STORE

The Store of Individuality

Midland,

Texas

Exclusive Headquarters for Blue Jay School Supplies

Tablets

Pencils

Erasers

Pen and Ink

Crayons

Paste, Etc.

Taylor's Drug Store

"YOUR DRUGGIST IS YOUR BEST FRIEND"

THE MIDLAND REPORTER

AND GAZETTE EXAMINER

VOLUME XXXI

MIDLAND, TEXAS, FRIDAY, SEPTEMBER 16, 1927

NUMBER 71

Belvedere Sales Campaign Starts

BUILDING RECORD IN MIDLAND HAS BEEN RAPID DURING THE FIRST PART OF THIS YEAR

ALMOST 200 NEW RESIDENCES AND ABOUT TWENTY-FIVE NEW BUSINESS HOUSES, ALL OF SUBSTANTIAL CONSTRUCTION RECENTLY BUILT HERE

Midland's building record since February has been remarkable and has led all cities of West Texas, quality of construction considered.

Approximately 200 new residences have been built or are now under construction, giving to Midland one of the most attractive residential districts of any town in Texas. These homes, most of which have been built by the occupants, range from the best type of frame construction to \$20,000 brick houses, and they have been built with especial care to the architectural appearance.

Visitors to Midland are at once impressed by the beauty of the homes.

Besides the building in the residential section, Midland has had about twenty-five handsome, substantial brick business houses built. Many of these are one story mercantile buildings, but included in the list is the six story Thomas Office Building, now nearing completion, and the six story Scharbauer Hotel which is under construction.

Gaps in the business section, which were an eyesore to the town for years, are now covered with new brick buildings, with attractive store fronts on the newly paved streets.

Midland has become one of the most attractive small cities in the state.

Leonard Proctor of McCamey was in Midland Wednesday on Buick business.

Mrs. C. S. Hereford is back at work at the county clerk's office, after spending the summer at Georgetown.

Turner Sues On Pecos County Land

The case of Fred Turner vs. A. N. Lea et al, in which the plaintiff seeks to prove a vacancy which will permit him to file on land in Pecos County will come up for trial at Fort Stockton Monday, September 19.

Turner recently secured a decree from the district court there requiring the county surveyor to survey the land. Reports from Pecos County are said to indicate that Mr. Turner, who lives in Midland, has a good chance at winning the case. The acreage lies in the oil producing belt of Pecos County.

Gulf Gets Well In Yates Area

Gulf Production Company's No. 1 Thompson, the first producer of the Yates pool to be brought in east of the river, flowed at the rate of 750 barrels per hour Tuesday afternoon before being pinched, from a total depth of 980 feet.

J. Morris Carter and wife returned early Wednesday morning from Dallas, having spent the last few weeks in San Antonio and Dallas.

New floor covering is being installed at the county clerk's office, and the "force" is working in the corridor.

Harry Hicks was here Wednesday from Odessa, on business.

Pavement Cleaned By New Sweeper

Paved streets in Midland are now being kept clean with a new combination sprinkler and sweeper, the new piece of machinery having been purchased by the city and installed this week.

The sweeper is horse drawn, and the sprinkler throws a stream ahead of the sweeping, keeping down the dust.

Law Prohibits Dumping Rubbish Near Public Road

Attention of the public is called by County Judge M. R. Hill and County Attorney J. S. Atkins to the State law known as Senate Bill No. 103, prohibiting the dumping of trash, rubbish, refuse, debris or dead animals within 300 yards of any public road.

That this law is being violated in Midland County may be seen by driving along any public road, and the county officials state that the law is going to be enforced.

Midland County people are warned to be on the lookout for such violations, and are asked to cooperate with the county officials in the enforcement of the law.

E. B. Kimberlin and H. G. Greenman were in Midland yesterday from San Angelo, on business with T. L. Griffin, manager of the Men's store Inc.

NEW ADDITION HAS EXPERIENCED REMARKABLE GROWTH IN FEW MONTHS

BELVEDERE COURT, HIGH SCHOOL ADDITION, DEVELOPED BY LILE INVESTMENT COMPANY, LAUNCHING SALE UNDER DIRECTION OF AL G. FIELDS.

Formal opening of sales on lots in Belvedere Court, High School Addition, will be held tomorrow under the direction of Al G. Fields, formerly of Childress and San Angelo.

Streets have been graded and worked, all lots have been cleared, an office has been erected on the grounds, and everything is in readiness for a sales campaign which is expected to use only a short time in transferring the ownership of the remaining ninety five lots to prospective home builders.

Twenty one houses have already been built, or are nearing completion, in the addition; and all of them are occupied by the owners.

Six or seven houses are scheduled to start construction within the next few weeks, according to developers of the addition, the lots having already been sold.

Beautiful Location

The addition is beautifully located with respect to the city. Only a few blocks from the high school and the north ward school it is conveniently located. Good streets lead directly to the Bankhead Highway which is paved with asphalt.

On the east is a newly settled section of the city, with a number of new residences in what is commonly called north Midland.

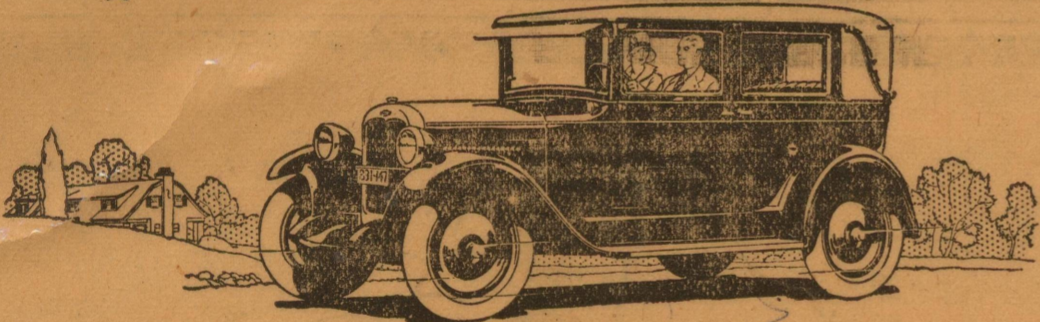
On the south lies the beautiful west end addition, with a great number of handsome new residences.

In the High School Addition, or Belvedere Court, there are over 20 handsome homes, ranging from attractive frame structures to tile or brick houses.

The type of architecture, although varied, harmonizes beautifully with the addition.

On the north of the addition is the Midland Country Club, with its beautifully sloping golf course, and its \$10,000 club house well under construction.

(Continued on last page)



Drive Out to Belvedere Court

in

The Imperial Landau

The "Body by Fisher" is of special design and is finished in ultra smart colors of genuine Duco. Oblong windows, a low roofline and brilliantly nicked windshield frame and landau bars emphasize its stylish, dashing appearance.

You owe it to your self to see this masterpiece of craftsmanship and value—to see how it combines all the advantages of Chevrolet's advanced engineering and proved design . . . smoothness, snap and high speed roadability . . . unflinching dependability, finger tip steering and restful comfort.

Come in today—and go for a ride in this finest of all Chevrolets!

Nobles Motor Company

Congratulations

Developers of Belvedere Court

—your faith in Midland was well founded . . .

We're proud to have furnished the hardware that went into the building and furniture for the decoration of so many of the beautiful homes now found in this desirable addition.

Midland Hardware and Furniture Company

Furnishers of Home Comfort
25 Years Of Faith In Midland

TO INVESTIGATE ALL ADVERTISING SCHEMES

VIGILANCE COMMITTEE IS APPOINTED BY THE CHAMBER OF COMMERCE

Fake advertisers will have hard sailing in Midland henceforth if all merchants and professional men of Midland will cooperate with the vigilance committee named Tuesday by W. R. Chancellor, president of the Midland Chamber of Commerce, and unanimously approved by the directors. The committee includes executive officers of the chamber and the Rev. T. O. Rorie. Advisory members who will not, however, have a vote, are A. E. Horst and E. Cohen.

Business men of Midland are asked to refer all advertising schemes, other than the usual legitimate kinds, such as newspaper, direct-by-mail, bill board and other standard kinds, to this vigilance committee. All collection agents for various charities can also be referred to this committee.

It is pointed out that if Midland business men will refuse to advertise in these unusual mediums without written approval of the Chamber of Commerce vigilance committee, and will decline to give money to out-of-town charity collection agents, who do not have this written approval, they can save hundreds of dollars every year. This committee has functioned in the past and saved Midland merchants many dollars.

To make the committee's work a success, business men should be unanimous in their cooperation, it is pointed out. The work of this committee will also save embarrassment in some worthless medium, thereby practically forcing his competition to advertise.

Midland has recently been flooded with worthless advertising schemes, such as oil directories, road information cards, and envelope schemes. The Vigilance committee proposes to take the blame usually heaped on the heads of merchants by fake advertisers who can't put their schemes across.

WE PLEDGE TO GIVE SMILING SERVICE

Whether you want a penny box of matches, or a twenty dollar toilet set, we are at your service. Try us out.

Elite Confectionery
W. S. Hill & Sons

SALES OF CATTLE ARE ON INCREASE

CONSIDERABLE ACTIVITY REPORTED IN MIDLAND AND VICINITY

With good prices being paid for all classes of cattle trading in Midland and the surrounding country has been active during the past few days. Steers and calves have been the principal classes of cattle changing hands, although some cows are included.

W. C. Driver and Edd Cowden, operating under the firm of Driver and Cowden, bought 150 head of heifer yearlings from Hugh King, of Jal N. M.

C. M. Baum of Indianola, Ill. bought from Scharbauer & Eidson 300 steer yearlings, and from Roy Parks 200 head of steer calves.

Foy Proctor of Midland bought from W. H. Cowden & Co. 350 head of steer and heifer calves, and 200 head of steer and heifer yearlings.

Proctor bought from John Haley 170 head of steer and heifer calves.

Bill Wyche bought all of the cows and calves of W. M. Schrock.

Edwards and Hightower bought 550 head of steer yearlings from Scharbauer & Eidson.

Scharbauer and Eidson bought the entire calf crop of Edwards Bros.; also 31 head of steer yearlings from Chas Witcher of Odessa.

J. P. Rankin and A. P. Hill bought 288 head of two year old steers from Ad Harvick of Ozona, 145 yearling and two year old steers from Fayette Mayes of Big Lake, 250 head of yearling steers from Sim Weatherby of Big Lake, and 100 head of steer yearlings from Cap Yates of Rankin.

Cap Yates has sold his entire calf crop to John F. Lane of Rankin.

Livestock Exchange Buys

The Livestock Exchange of Midland has bought several strings of calves in eastern New Mexico, as well as in the Midland country, during the past few days. This firm bought from Ulys Dalmont of Tatum, N. M., 900 steer calves and 400 heifer calves; from D. Jones of Tatum,

300 steer calves; from Evans Bros. of Lovington, 150 steer calves; from the Circle Bar Ranch of McClellan and Ellwood, thirty miles northwest of Midland 1700 head of mixed calves; from W. M. Pyle of Midland 600 steer and heifer calves off the H. ranch; from Anderson Bros. of Lovington, 600 steer calves; from White and Murphy of Seminole 500 steer calves.

Mabee and Pyle of Midland bought from W. H. Underwood 100 steer calves; the Scharbauer Cattle Co. sold and shipped Thursday 400 head of dry cows to Means Bros. of Valentine; Lloyd Mooney of Tulsa bought from the McElroy Ranch Co. 850 head of yearling and two year old steers; W. W. Brunson sold to Wick-off of Woodward, Oklahoma, 1,000 yearling steers, the steers having

been bought recently from Chas. Goedeke of Pecos; and W. W. Brunson sold 300 head of dry cows to E. W. Nicodemus of Ft. Worth.

Judge Chas. Gibbs has been here this week from San Angelo, looking after court matters.

Mr. and Mrs. J. T. Bruton, of Havana, Cuba are visiting his sisters, Mrs. W. L. Holmsley and Miss Lucile Bruton for a few days.

Scharbauer Eidson is leaving for Lubbock, where he will enter the Tech College. Scharbauer graduated from Midland High last spring.

Adding Machine paper, 15c per roll, 2 for 25c at Reporter Office.

Anything you want in spectacles from \$1.00 up at Inmans.

Mexicans Observing Dies Y Seis Holiday

Mexicans of Midland are observing the Mexican national holiday, El Dies Y Seis de Septiembre, and plans are under way for big speeches, dances and all that it takes for a celebration tonight and tomorrow.

Along with the Mexicans flags, the local Mexicans always have carried the American flag, and their speeches portray their loyalty to America, even though they celebrate the holidays of the old country.

Henry Thomas made a trip to Grand Falls and points southwest of here a few days ago.

Bill Wyche was in from the ranch yesterday, transacting business.

Belvedere Court
A Good Place to Live

City Drug Store
A Good Place to Trade

When you need anything carried in a reliable Drug Store, let the City Drug serve you.

City Drug Store

TELEPHONE 33
THE REXALL STORE

A Telephone Wire---

Connects us with Belvedere Court... placing the residents in that modern addition in a position to get prompt service on their tailor work. All they have to do is call

150

Harry Tolbert

Cleaning—Pressing

Gents Furnishings

Dwelling Loans

Our companies have unlimited funds available to loan on improved city property, either homesteads or rental property. Commitments gladly furnished on contemplated improvements or construction, loan closed and funds paid out on completion. Small monthly payments with liberal prepayment privileges.

HYATT, MIMS & FLOYD

Abstracts of title—General Insurance and Loans.

"Our Service is Better"

Do Your Trading At

HAAS BROTHERS

"Your Popular Price Store"

Boys School Pants

GOOD LOOKING LONGIES in new colors and patterns, featured at popular prices—

\$1.95, \$2.50, \$3.95, to \$4.95

FAST COLOR SUITS for only \$1.00

GOOD CAPS adjustable sizes priced at only \$1.25 and \$1.00

LONG WEARING OXFORDS, Black and Tan, only \$3.95

Boys' socks in all sizes and fancy colors, priced 50c and 25c

WE CAN OUTFIT your girl too for school. New Slippers, Hats, Hosiery, Bloouses, Dresses etc, featured at POPULAR PRICES.



BUILD THIS FALL

The rapid development being made in Belvedere Court shows sincere faith in the future of Midland. Show your faith, as well as making a wise investment, by building this fall. We would be glad to be of service to you.

Higginbotham Bartlett Company

LUMBER AND BUILDERS HARDWARE
A Friendly Store

The First National Bank

CONGRATULATES THE DEVELOPERS OF

BELVEDERE COURT

This splendid addition is an asset to Midland—a great step forward in the progress of our city.

First National Bank

"The Bank of personal Service"—for over 36 years

Capital and Surplus \$200,000

YOU CAN DO IT!

All Set Men!



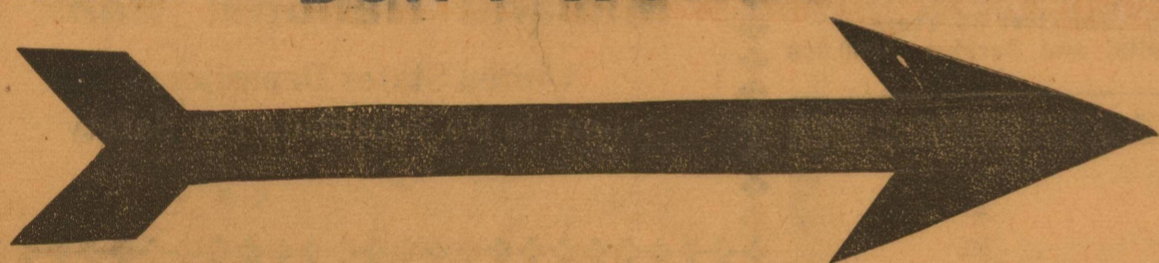
for this opportunity in the
New Restricted Addition---

BELVEDERE COURT

High School Addition

.. Open SATURDAY, at 12 O'clock Noon ..

DON'T WORRY



BUY A LOT IN BELVEDERE COURT

BELVEDERE COURT High School Addition is located in the trend of Midland's best residence section. It is the proper distance away from the business section, away from noise, dust and dirt.

Will Midland have a population of 15,000 or 20,000 in 1930? You know Midland's future. Why waste time and printers ink telling you about it.

50 ft. LOTS PRICED FROM \$300 to \$550

70 and 75 ft. Lots Priced from \$650 to \$750

Terms:--10 Per Cent Cash and \$10.00 Per Month

TEN PER CENT DISCOUNT FOR ALL CASH

NO INTEREST

until the first of January, 1928, and then only 8 per cent. We pay taxes for 1927.

There are no notes to sign.

We furnish abstract with each lot.

You can pay for your lot as fast as you like. Five per cent discount will be allowed at any time on all cash paid in on lot in excess of amount due for current month.

When you buy a lot on terms, deed and abstract will be placed in escrow in the Midland National Bank where you can make your payments. When fully paid, they will give you your deed and abstract. When you are sick, no payments are required for the first eight weeks of sickness.

OPPORTUNITY

BELVEDERE COURT High School Addition is the most beautiful spot in Midland to build your home.

Remember, it is the last desirable, close in block of acreage in the city of Midland. Values are bound to increase. It has a future, its location demands it. It is the trend of the city's best development. It's where the better homes will be built.

Restrictions are worth more than the price asked for lots. A home in Belvedere Court will be worth more than one in the older part of the city. Its surroundings will be new.

Midland has reached a size where its people are thinking of better homes and their surroundings. The people who are and will continue to move to Midland will locate in the new restricted neighborhood.

Lots in Belvedere Court

High School Addition are at their lowest prices now—and it is a matter of getting in on the ground floor now on property that is sure to increase in value with the sure growth of Midland.

More money has been made on the turning over of real estate investments than ever was made in taking oil or gold from land.

It is the adventurous spirit that makes men seek fortunes in mining and oil business but is the conservative investor who prefers to put his dollars in real estate and grow rich in the sane, natural increase of land values, based on sound prospects, commercial and residential trend.

This opportunity is offered you in Belvedere Court High School Addition.

There will be a red tag on each lot giving price and terms. Go out Saturday at noon and pull the tag on the lot you want and bring it to our office on the ground or to room 316 Llano Hotel.

Lile Investment Company

T. R. LOGAN, Trustee

Room 316 Llano Hotel

See your real estate agent and let him help you select your choice. Salesmen on the grounds every day until dark.

WANTED: A MAN

By EVELYN GAGE BROWNE

WANTED—A man who likes to work.
And who can find things to do without his needing a manager's help. And several assistants, too.

A man who gets to work on time. And who doesn't endanger the rest. By being the first one to rush away—But all day long does his best.

A man who listens to what he is told. Then does that thing just right; Who puts his heart and soul in his job. And hustles with all his might.

A man who never pities himself. For having to pitch in and dig. But who is determined to just "make good"
And be worthy of being BIG.

A man who always tells the truth. And looks you straight in the eye. A man you can bank on every time. To scorn deceit and a lie.

A man who gives you service-plus. And whose work is A Number One. Who never kicks at "overtime" When his regular work is done.

A man who works for vastly more Than so many dollars a day. Who is ready for rapid promotion, too. Whenever it comes his way.

WANTED, such a man to get to the top
And sit in the President's chair;
If interested, apply any time
To just anyone, anywhere!
(Copyright.)

WHEN I WAS TWENTY-ONE

By JOSEPH KAYE

At 21—"Uncle" Joe Cannon Began His Legal Struggles.

AT TWENTY-ONE I was a law student and was admitted to the bar a year. In Shelbyville, Ind., where I was practicing, I waited a whole year for a client who never came so I went to Tuscola, Ill.—because that was as far as my money would carry me on the railroad.—Joseph G. Cannon. "Uncle Joe," as Mr. Cannon is popularly known, was

coroner for the Twenty-seventh Judicial district of Illinois when he was only twenty-five and from then on until some years ago he had been in public office, becoming one of the famous political leaders in the country during his incumbency as speaker of the house.

(© by McClure Newspaper Syndicate.)

Do You Know

...??... That: ...??...

"HOBSON'S CHOICE" is a phrase denoting a choice without an alternative?

Hobson's Choice, so called in reference to the practice of Tobias Hobson. It is said that he was the first man in England to hire out hack horses. When a customer made his appearance, it was his practice to lead him into the stable and show his goodly array of beasts. The customer, however, was obliged to take the horse next to the door so that every one should be served alike, or according to his chance. Thereafter it became a byword to say, "Hobson's Choice" when what ought to have been one's choice was in reality forced upon one.—Anna S. Turnquist.

(© 1927; by Western Newspaper Union.)

Rested Him

"See here, sir," cried the irate patron, "I want to complain about the waiter—"

"I'm glad to hear it," interrupted the proprietor of the restaurant.

"Yes; it's a relief to hear a complaint that isn't about the food.—Boston Post.

What Does Your Child Want to Know

Answered by BARBARA BOURJAILY



WHY DOES CREAM RISE TO THE TOP OF THE MILK?

Cream is the fat part of the milk. And rises for this cause. That light things rise whenever they can. Obeying nature's laws.
(Copyright.)

Texas' Deepest Well Heads Oil

Prospects of commercial production from the third oil bearing horizon in Reagan county have been enhanced by a 200 barrel flow Thursday, by Texon Oil and Land Company's No. 1 B University, Texas' deepest well.

The flow developed after the well had been shut in for two weeks at a depth of 6,578 feet. Preparations now are underway to straight ream the 5 3-16 inch casing to the bottom, after which the test may be carried deeper. Should production then fail to materialize, the hole will be plugged back and shot. The oil was struck at 6,270 feet. It tests 38.4 gravity.

No. 1B University produced around 100,000 barrels of oil from the 2,400 and 2,900 foot levels before deepened. It is the second location south of the Orient railroad, and is about the center of the east line of the boundary between the Texon and Big Lake oil companies' properties, known as "The Golden Lane." No. 1 B is in the extreme northeast corner of the southeast quarter of section 1, block 2. It recently had been switched to electric power.

Texon production in the field is running around 6,200 barrels daily.
—San Angelo Standard.

Barrow Brings In New Motor Hearse

A new Studebaker Hearse has been put in service by the Barrow Furniture Company, supplementing the motor equipment already in use. This magnificent new machine was brought out of Dallas Tuesday by A. D. Martin, manager of the Midland house.

Governor Moody To Address Tech School

LUBBOCK, Tex., Sept. 14.—If I were a Freshman will be the subject of Governor Dan Moody's address to Tech. College Sunday afternoon, September 18th at 3:30. The public generally has been invited to attend and it is expected that the Tech gymnasium which seats 4,000 will be filled to capacity.

W. W. Estill visited her parents Mr. and Mrs. S. M. Halley, at Kermit this week.

S. R. McKinney, mayor of Odessa, was in Midland yesterday on business.

Baptist Sunday School Picnic To Be Held Tonight

The annual picnic of the Baptist Sunday School will be held tonight, and all members and prospective members are invited to be at the Baptist Church lawn at seven o'clock.

A feature of the entertainment will be a sac race between D. H. Starling and Clarence Ligon. There will be no charges for this exciting race.

Mrs. N. W. Bigham will have charge of the young people Mrs. J. E. Hill the intermediates, Clint Myrick and Miss Nell Nolan the juniors, Mrs. Tom Jones the primary department.

Elliott Barron is in charge of the races, and all who wish to enter are urged to see him.

Mrs. George F. Brown will greet the new people in her graceful manner.

Musical numbers are promised, according to Mrs. G. T. Sandidge, who is in charge of the arrangements. Ukelele and banjo music will be heard Mrs. Paul T. Vickers will give readings.

All who attend the picnic are promised a great time.

A Correction

In a recent issue of The Reporter, an article appeared telling of the sale of the heifer and steer calves of the herd of Mrs. Sid Kyle near Pecos, the calves bringing \$37.50 per head. An offer of \$92.50 was made for the cows and calves.

In a later issue, after an interview with local cattle men, The Reporter carried a story to the effect that these calves were from cows sold to Mrs. Kyle by Midland men.

R. F. Kelton, association inspector of Pecos, writes The Reporter that the cattle involved in the sale and in the offer were native Kyle cattle and did not include the Midland cattle. He added, however, that the cattle bought from Midland were "a fine bunch of cows and calves."

The Reporter cheerfully makes this correction.

J. G. Arnett made a business trip to Big Spring Wednesday.

Lloyd Mooney, formerly of Midland but now of Tulsa, was here this week on business. He received some cattle which he recently bought from the McElroy Ranch Company.

Everetts Funeral Was Held Tuesday

The funeral of Jasper F. Everetts, who died in Pyote Monday morning, was held in Midland Tuesday afternoon, and the body was laid to rest in Fairview Cemetery.

A long procession of friends and relatives accompanied the remains from the funeral parlors of the Barrow Furniture Company to the cemetery, and beautiful flowers were sent to decorate the grave.

The Rev. R. O. Wilson, pastor of

the First Church of Christ conducted the funeral service.

J. Wiley Taylor of Best was a business visitor to Midland yesterday.

J. B. Richbourg of Spur arrived yesterday to visit his daughter, Mrs. Paul T. Vickers.

W. J. Sparks is spending a few days at the C. Ranch with Andrew Fasken.

Who's Who TODAY



Howard W. Gore

"Most hard cash is in soft hands."

Cooperation is a much used term; but is not overworked.

It means team work.

We want your cooperation;

We need it and will appreciate it.

You may expect our cooperation in every worthy, legitimate transaction. Come in and talk your problems over with us.

First National Bank

"The Bank of Personal Service" For Over 36 Years
Capital and Surplus \$200,000

Moving--Packing--Storing

NOT HIGHER
JUST BETTER

FLOOD & DAUGHTRY Transfer Company

PHONE 216
WOOD and COAL

Banking and Irrigation . . .

In a way, banking may be likened to irrigated farming, credits like stored waters.

One would not irrigate land unless it was productive land, and had been properly prepared. And the cost of the irrigation waters would be counted into the cost of production.

Credit is much the same. In your bank, you have the reservoir of stored credits. Fertile prepared fields of enterprise will yield a profitable return. As needed, this bank is prepared to meet the sound financial requirements of its community, and always glad to serve.

Midland National Bank

United States Depository
"There Is No Substitute For Safety"

San Angelo FAIR

(All West Texas Exposition)

SEPTEMBER 19 to 24

5—Big Days—5
—Glorious Nights—6

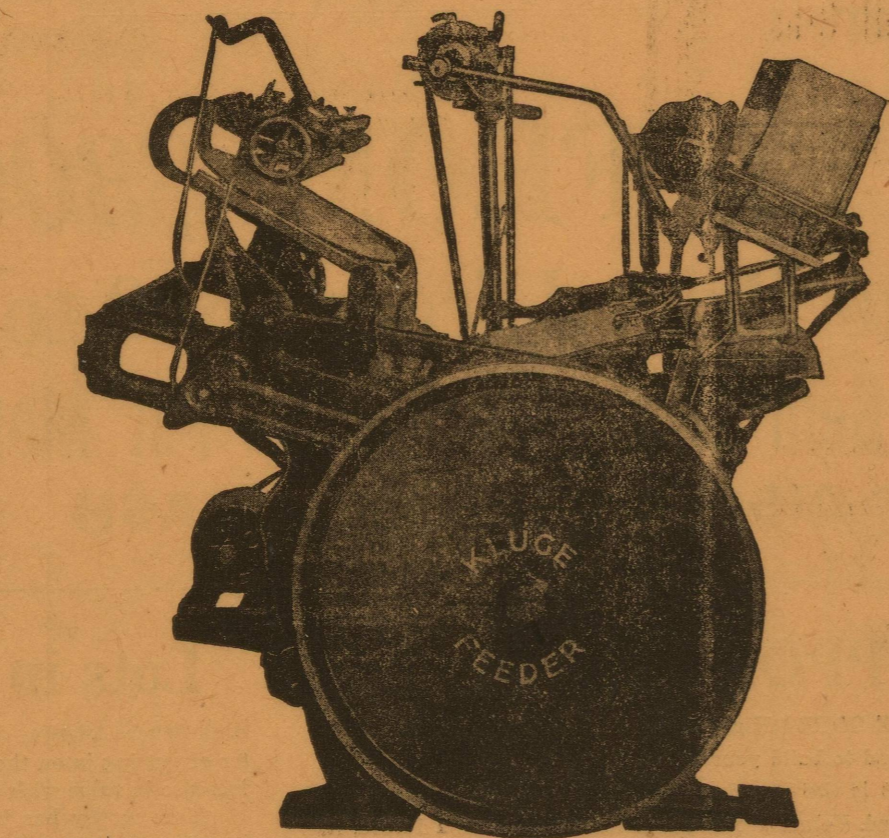
\$4100 HORSE RACES. The fastest track in Texas. The highest talent in the South.

Ernie Young's Revue: Those Dizzy Dazzling Girly Girls!
THE SUPER NIGHT SHOW ATTRACTION

Exhibits: Annual Show of the Sheep and Goat Raisers' Association of Texas, and other exhibits.

THE SHOW WINDOW OF WEST TEXAS

Other Attractions and Amusements Too Numerous to Mention!



SPEED ART QUALITY

Buyers of printing often want speed in production; they usually want an artistic make-up; and every shrewd buyer insists on quality of material and workmanship.

With its ever increasing facilities for high class commercial printing

The Midland Reporter

Solicits Your Business



Ship your live stock to us —we will do good work for you.

The leading Commission Co. on the Fort Worth Market.

DAGGETT KEEN COMMISSION CO.
"We're Our Own Salesman"
PROMPT EFFICIENT DEPENDABLE
Established 1909
Fort Worth Texas
Represented at Northern Markets

**Williams To Get
In Car Of Tires**

The Williams Auto Supply, wholesale and retail dealers in Racine tires, will have in a car load to replenish their stock in a few days, according to Vic Schroeder, manager. He reports a good business at the Midland house.

**Wallace Wimberley
Off To Simmons U.**

Wallace Wimberley left today for Abilene, where he is to resume his work in Simmons University. Wallace is making a fine record in piano, and will go to Boston later on to specialize in accompaniment work. He is a son of Mr. and Mrs. W. W. Wimberley of Midland.

**Football Team
Looking Good
In Practice**

The boys look good in uniforms, working out for the hard season that is ahead of them. A good number of high school sports are going out for practice, under the able and efficient coaching of Coaches Shiflett and Searcy, each afternoon. Lynch (Dad) King captain, for the second year, Henry Paddock, Wilton Orson and the Whitmires are among the ones that have been seen on the grid, iron for Midland before, and with new recruits it looks like it is going to be a winning team this fall.

The coaches as well as the boys, are anxious to get in shape as fast as possible in order to begin the grinding. And they are looking forward to the playing of the first game with the determination of a win for "Old Midland Hi."

Watch every paper for information as to where the games will be played and when. And at all times lend your hand in helping put over a successful season, by transporting the teams to their scheduled appointments.

**Holzgraf Buys
Fine Jersey Cows**

Chas. Holzgraf has just had three Island bred Jersey cows shipped to him by express, and now has them on his place adjoining the city. He states that they cost him a fancy price, but are some of the best he could buy, and will produce fifty lbs. of milk per day. Midland County needs good dairy cows, and this is a forward move on Mr. Holzgraf's part. The jerseys were bought from Cleburne.

**Seeks Improvement
Express And Mail
Service Thru Here**

H. W. Stanley, who is conducting a merchants institute in Midland this week, is also advocating improvement of express and mail service over the T. & P. seeking to have same carried on the Sunshine Special, or else to have the train which stops at Sweetwater come on West to El Paso.

He points out that one express train a day from Sweetwater to El Paso does not give sufficient service to shippers or receivers on the line.

Mr. Stanley is connected with the El Paso Chamber of Commerce. He spent the first part of the week in Big Spring, and it is reported that the business men there were much in favor of his proposed plan.

**Reaches For Letter
And Car Overturns**

S. R. McKinney had a narrow escape from injury and his car suffered some damage yesterday morning when he was driving from Odessa to Midland. About a mile this side of his old place near Warfield, he reached to the back seat to get a letter and his car ran off of the highway grade, turning over on its side.

The windshield and one door glass broke, the bows in the top were sprung, and considerable grease was thrown on the upholstery, but the car stood the shock excellently. It was a Buick sedan, and was brought to the Scruggs Buick Co. for attention. Mr. McKinney escaped unhurt.

**Third Floor Work
Started On Hotel**

Construction of wooden forms for the concrete frame work has started on the new Scharbauer Hotel, following the completion of the concrete work on both the first and second floors.

The work is progressing rapidly, with crews working night and day, even though the floor space is 100 by 140 feet. The building will be much larger in dimensions than the average hotel of the same number of stories.

Lois Cantelou, superintendent of the City Water Department, returned from a business trip to Coleman Tuesday.



In the fields, on the uplands, in the marshes

WARY and mighty fast on the get-a-way, out of range in a flash, but squeeze the trigger, and it's "fetch, boy, fetch."

Peters shells are fast, snappy, game getting shells, without disturbing recoil.

A correct charge of powder and shot loaded under uniform pressure means uniform shooting. High quality of felt wadding controls the powder gases assuring full patterns at lightning speed. The water-tite bevel crimp keeps the shell dry and prevents jamming in wet weather.

Use Peters Shells this season and improve your shooting. There are four brands—"High Velocity" for extreme long range and hard hitting; "Target" for superior results at the traps and in the field; and "Victor," a high quality smokeless shell at a lower price. Then there's "Referee," a clean shooting, Semi-Smokeless load at the price of black powder.

**PETERS
AMMUNITION**

12-Gauge Pump Guns Rented for \$1.00 a Day

Winter-Haynie Hdw. Co.

PHONE 84

South Main Street

Midland, Texas

**Hereford Sale
At Sweetwater**

SWEETWATER, Tex., Sept. 11.—38 head of choice registered cattle are to be sold during the Midwest Exposition here October 7, when the annual fall sale of the Texas Hereford Association is held.

It is to be one of the best sales the association has ever held here, according to Walter L. Boothe, sale manager, both in the number of offerings and the quality. The 31 bulls and 7 cows to be sold are from some of the best herds of Texas, all with good blood lines and many of the choicest Anxiety strain.

ST. LOUIS Post Dispatch, New York Times, Star Telegram, El Paso Herald, Midland Reporter, and good magazines at the Elite. 55-52

**First Football
Game October 30**

Midland High School's first football game of the season will be with the Colorado team on October 30. The local boys are showing up fine in practice, and are expected to make a good showing against the Wolves. Colorado is playing Ranger, at Ranger, today.

John F. Epley of Stanton was a business visitor to Midland Wednesday.

**FAITH in
Midland...**

The splendid addition to Midland, Belvedere Court, is proof of faith in Midland.

We are proud to have furnished much of the building material used in this addition.

**Rockwell Bros.
Lumber Co.**

In Midland Since 1900

**The Midland National
Bank**



—Is endeavoring to keep a pace ahead of the development of Midland... that our service and accommodations may be above reproach.

—As Midland grows, the Midland National grows.



Midland National Bank

"There is no Substitute for Safety"
United States Depository

Llano Hotel

Midland, Texas

**Where Do
You Buy
Your Dry
Goods**

If you have traded once at the West Texas Dry Goods Co., you know you are always welcome, and it is likely that you are continuing to give it a good share of your business.

If you have never visited our store, accept this cordial invitation to come to see us, and we believe you will say "The West Texas Dry Goods Co. is a better place to buy good Dry Goods."

**West Texas
Dry Goods
Co.**

A. P. Baker, Mgr.
Midland, Texas

**Many Home
Owners**

in Belvedere Court are protected from fire by insurance obtained through Sparks & Barron—the Insurance and Abstract Company that has rendered twenty-five years satisfactory service in Midland and the surrounding trade territory.

**Sparks & Barron
Insurance & Abstracts**

Phone 79

Midland, - - Texas

Belvedere Court

HIGH SCHOOL ADDITION

The Beautiful Restricted Addition to Midland

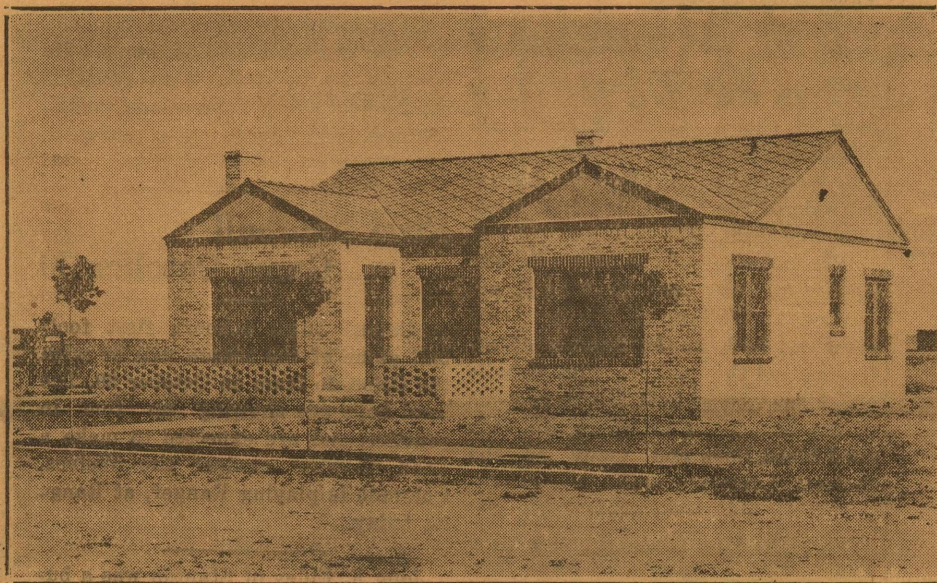
BELVEDERE COURT was thrown open in April of this year, and since that time has enjoyed one of the most substantial growths ever accorded a city addition. Eighteen homes have been built or are under construction.

EVERY ONE of these homes is occupied by a HOME 'OWNER.... not a rented home in the addition. The building program for Fall is greater than ever and those home seekers of Midland who want to live in a Beautiful Restricted Substantial neighborhood, are investigating BELVEDERE COURT.

City Water

Street Lights

Phone Service

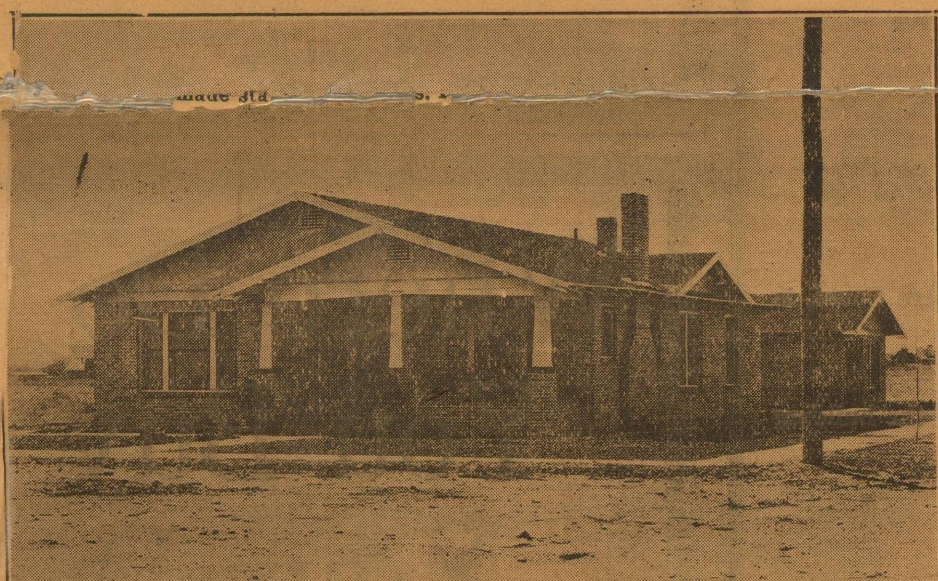


Restricted

Near High School

Near Country Club

HOME COMFORT
Purchased by Porter Rankin Rancher
Capitalist, Oil Operator



Home built for Jack Kuykendall, owner of the
Kuykendall Motor Co., Chrysler dealers.



Home Built For Fred Middleton, owner of the
Middleton Tailor Shop

Look for the Red Tag on All Unsold Lots

All unsold lots will be tagged. On this tag will be written the price of the lots, terms, and conditions of sale. Drive out to Belvedere Court with your wife or sweetheart and choose your lot.

.....

After you select the lot of your choice, take the tag from the stake and bring it to the Sales Office of the Lile Investment Company on the grounds or Room 316 Llano Hotel

Lile Investment Co.

ROOM 316 LLANO HOTEL
T. R. LOGAN, Trustee

Gertrude Olmsted



Gertrude Olmsted, the "movie" star, who has been seen to the satisfaction of thousands of admirers in countless motion pictures, has been in theatricals practically all her life. During her earlier days she participated in school theatricals, and was preparing to attend a dramatic school when she was induced to enter a beauty contest she won. Later she was offered a contract by a motion picture producer, and her success is known to all.

For Meditation

By LEONARD A. BARRETT

DETACHMENT

RUSKIN wrote, "If you cut one square inch out of any of Turner's skies, you have an insight into the infinite; but if you stand at a distance of an inch from any of Turner's skies, you will find you have only daubs of paint." Daily struggles with a very real world bear the same testimony. Studying problems in a mood of calm detachment has saved many a mistake. When you are impelled to write a letter, your best wisdom tells you not to write; write it anyway, but do not mail it. Separate yourself from the harassing conditions involved. Look at the problem from a distance; and tomorrow you will throw the letter into the waste basket and be the better for it. Frequently a problem seems unsolvable because we are too near it. This nearness makes it impossible for us to study it from an all-around point of view. Acting upon the impulse of the moment many times results disastrously. Problems somehow have a way of suggesting their own solutions. In these days when we are trying to live 24 hours in 12, it seems necessary that time be taken for one to become acquainted with himself. An inventory of our own sources of strength and weakness may surprise us. He is a wise man who knows his own limitations. If every day we could see our inner selves reflected in a mirror we would learn some important lessons. Moments of detachment spent in becoming acquainted with one's self are never spent in vain. In a life of seventy years, a man sleeps twenty-three years, works twenty years and plays twenty-seven years. The efficiency of the twenty years of work depends upon the way we spend the other fifty years. If some of this time is given to hours of detachment when we see visions and dream dreams, hours in which ideals are born and ambition kindles the fires of enthusiasm, then we shall have gone a long way toward reaching our goal in life. Mountain tops are not inhabited. We climb them for the benefit of the point of view. So with hours of detachment in a daily life of toil and strain.

(©, 1927, by Western Newspaper Union.)

THE YOUNG LADY ACROSS THE WAY



The young lady across the way says her little brother has gone to the hospital to have his tonsils and adenoids removed.

We Apologize!

We take it all back. We can't say we didn't mean it for we did, that is at the time, and our attitude was almost acrimonious. We did, at least by implication, accuse every one in authority in Midland and with neglect in the matter of street signs and house numbering, but now to our delight and discomfiture we find that there are at least three signs on street corners. That indicates that our very efficient departments are making a beginning in creating a cosmopolitan atmosphere in Midland that will effectually circumvent our antagonism's toward the absence of these very essential methods of directing those of us who are desirous of reaching a predetermined destination without the aid and advice of our oldest inhabitant's. True, there are only three signs in place, but three are three more than none, still that is an indication that others will follow, and then, what a relief! No more blind man's bluff; no more button, button, who's got the button; no more aimless wandering's out on the prairie. Home every night right on the dot. Gone is the old excuse of going seven blocks out of our way and having to be lead home by the sheriff. What a delight to invent new reasons for ringing the door bell at 3 a. m. It really will act as mental stimulus and we thank the town's authorities for the splendid evidence of ability in moving us into a class comparable with a city of 15,000 people. We offer them our apology and we do so with great pride, even in our abjectiveness—if there is such a word—and extend to them our congratulations in its most sincere form for their efforts to index this town for the benefit of the wandering candidate who is desirous of reaching home in a commendable short time and distance—and condition. We are going right up to see those signs and will report later their location in order that our world may have an opportunity of viewing the handiwork of the directors of our municipal destinies. Our delight is unbounded even in another way, and that is in the unobtrusiveness of the whole thing, its modesty, if you please: why they never said a word about it which is refreshingly contrary to procedure and precedent, but went right ahead and did that thing we've been babbling about so long. We claim no credit for it in any way. They deserve it all. —LATER We take it all back, again: every dod-blasted word of it. We went up to where the fellow told us the signs are. There they were, regular signs too. One read: WELCOME, COWBOYS REUNION, September 6, 7, and 8. Another read: MIDLAND VS. BIG SPRING The other:

PIGS CONTINUE TO SHOW BIG GAINS

Midland County club pigs continue to show remarkable gains according to county agent Atkins, who weighed the pigs Monday. The three pound daily gain for a period of fifteen days which was recorded for a Poland-China pig belonging to Marvin Bryant, was exceeded for the twenty days ending Monday when the weighing indicated a three and one fourth pound daily gain for the same pig. This pig weighed 105 lbs. at the beginning of the feeding period, and after 35 days feeding weighed 215 lbs. A litter mate of this pig weighs 99 lbs., and has had ordinary care. Another Poland China belonging to Troy McGee, made a daily gain of two and one half pounds for the period and the total average daily gain for all club pigs was 2.25 lbs.

Miss Ida Mae Houston has returned home from an extended visit at Corpus Christi and Robstown. She was accompanied home by Mr. and Mrs. H. C. Cardwell who will spend several days with their parents.

Mr. and Mrs. H. Cliff Cardwell and Ida Mae Houston were Lubbock visitors last week end.

John Y. Francis of Odessa was a business visitor here Wednesday.

Will P. Edwards was here Wednesday from Big Spring, on business.

J. B. Birge and wife were here from Lamesa Wednesday.

WIDLEY-WATSON CO. Cash for the Cheapest We can lick the guy that told us about those signs, the best day he ever saw, an' we're goin' to do it yet. Makin' a monkey out of us! Deidrick Van Pelt Jr.

SHOW CARDS

Commercial Advertising Gill Bros. Signs Rockwell Bros. Lbr. Co.

McCamey Girl Is Buried Today

The eight year old daughter of Mr. and Mrs. Russell of McCamey, who died after being struck by an automobile there Saturday, is being laid to rest here this afternoon at two o'clock. Girl members of Mrs. Kelso Adam's Sunday School class are acting as pall bearers. The Russells came to McCamey from Cross Plains having originally lived in Cleveland, Ohio.

Albert Crowley Here Wednesday

Albert Crowley, of Breckenridge, was in Midland Wednesday, leaving Thursday morning, visiting his father R. E. Crowley, and his brother, C. W. Crowley and family. Albert had not been to Midland for some time, and was greatly surprised at the growth and development of the city.

Mr. and Mrs. J. P. Inman and family went to Alpine Sunday. Thomas remained there to enter school at the Sul Ross College, where he gets his degree this year.

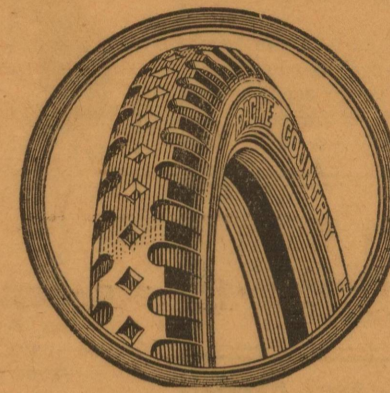
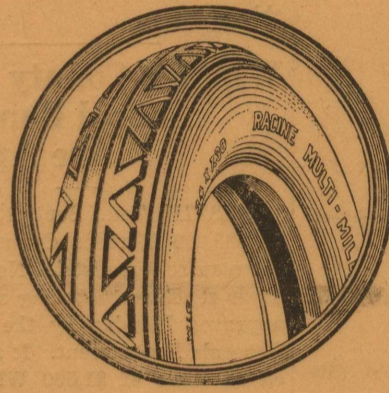
Inman will give you the benefit of his knowledge of optics in selecting a pair of low priced glasses. People in Chicago can't do this. If

A Little Advice

as to the best plumbing installation for your particular needs might be helpful. We would be glad to be of assistance to you.

HOWE & ALLEN
Licensed and Bonded Plumbers

Phone 232 Midland, Texas



ANNOUNCEMENT

—Williams Auto Supply, herewith announces that from date hereof our business is put on a strictly volume basis, and that the best of prices anywhere are now available right here in Midland.

—The tire and tube business has undergone quite a change during the last six months and for examples shall quote that there are now chain stores handling tires and tubes exclusively and big concerns, department stores etc, have also entered this field, selling tires and tubes on a close margin.

—Of course it is a matter of fact that any business is making a legitimate profit. However, with a big volume of sales, the margin of discount to the retailer is larger (due to purchasing power) and can afford to sell with a smaller margin.

—Further, if the tire and tube one is selling is a standard of quality these tires sold will sell more. Then the additional advantage of a lower price will sell it even moreso. So why pay high prices merely because of "habits."

—We are operating a factory warehouse under the Racine Rubber Co., Inc. and our shipments come direct from them. This gives us the best of all advantages in price. It gives us the latest and fresh stock. Our Tire & Tubes being standard they are fully warranted. And should our tire call for an adjustment, this is done at once, here, and you need not wait to have it sent into the factory or so, as is customary. So with every advantage possible we say:

BUY YOUR TIRES AND TUBES FROM

Factory Warehouse Direct

—Racine Multi-Mile Quality Sells itself. They are time proven and you will readily find enthused users in passenger and truck sizes among individuals, contractors, trucking concerns, oil companies etc.

—We have a complete stock of all passenger cars and truck sizes tires and tubes, so whatever you need we can furnish you with it.

Specials

—Every week shall have one size tire that will sell at absolute Confidential Dealer's Net List and until Sept. 25th, 1927 we are selling our 30x3 1-2 Heavy Duty Truck type 6 ply Extra size Cord Clincher Tire for \$12.50, also suitable for passenger cars. This tire has been selling for \$16.50 and similar tires in other makes are now selling for as high as \$18.75.

—We are quoting a few sizes and prices of regular stock and prices—

Klinger Cords And Balloon Cords

| | |
|-----------------------|--------|
| 30x3 Cl | \$5.80 |
| 30x3 1-2 Cl. Regular | \$6.75 |
| 30x3 1-2 Cl. Oversize | \$7.45 |
| 29x4.40 Balloon | \$8.35 |

Country Road Cord

| | |
|----------|---------|
| 31x4 | \$12.70 |
| 32x4 | \$14.05 |
| 33x4 | \$14.50 |
| 32x4 1-2 | \$18.90 |
| 33x4 1-2 | \$19.75 |

RACINE MULTI-MILE BALLOONS

| | |
|-----------------------|---------|
| 30x3 1-2 Cl. Regular | \$ 7.95 |
| 30x3 1-2 Cl. Oversize | \$ 9.65 |
| 32x4 S. S. | \$15.95 |
| 33x4 S. S. | \$16.80 |
| 32x4 1-2 S. S. | \$21.75 |
| 33x4 1-2 S. S. | \$22.55 |
| 33x5 S. S. | \$29.55 |

RACINE MULTI-MILE CORDS

| | |
|-----------|---------|
| 29 x 4.40 | \$10.65 |
| 29 x 4.75 | \$13.35 |
| 30 x 5.25 | \$17.55 |
| 31 x 5.25 | \$18.10 |
| 30 x 5.77 | \$20.65 |
| 33 x 6.00 | \$21.90 |

We invite you to see our stock and prices, and we trust that you will accept our invitation. Should you decide on a tire or so we will gladly mount same for you and change as you wish.

WILLIAMS AUTO SUPPLY

VIC SCHROEDER, Mgr.

Phone 454

Corner Main & Texas Ave.

Midland, Texas

This coupon and 25c entitle the undersigned to one 35c can of Acme Quality Enamel-Note, any color, and a special 20c Paint Brush.

Name _____
Address _____

SPECIAL OFFER To acquaint you with Acme Quality, we are making a special offer for a short time only.

55¢ Value for 25¢

By your house shall they know you

Paint can make your house an asset. Neglect paint, and your home becomes an eyesore, as well as a lowered investment. The paint you use should be chosen wisely, else you'll lose both time and money. Not only should the colors be beautiful, but the paint quality must be durable.

ACME QUALITY Paint and Varnish

For more than 40 years Acme Quality Products have been the choice of those who insist on the best. We can guarantee their lasting satisfaction. Let us figure on the job for you.

T. R. Prideaux Lumber Co.



When Your Ship Comes In

By EVELYN GAGE BROWNE

YOU'VE heard folks say—"I'll just do that
When my ship comes in some day"—
Then they sit around and watch and wait
While time is slipping away.

But how can a ship come sailing in
With all we care most about—
If we haven't worked and done our best
To send a dream ship out?

If we haven't had a certain goal
And kept the goal in view,
Believing in it and in our power
To make our dream come true?

We haven't any right to expect
That somebody else—or fate,
Is going to do our work for us
While we sit down and wait.

We can't get anything worth the while
Or that we'll be proud to win,
Unless we pitch in and do our part
To make that ship come in.

For only by giving the best you have
Will your highest dreams come true,
And for every ship you're sending out
A ship will "come in" for you.

(Copyright.)

WHEN I WAS TWENTY-ONE

By JOSEPH KAYE

At Twenty-one—Avery Hopwood Achieved a Miracle.

AT THIS time I was in the University of Michigan and I came across an article which the late Louis Defoe, dramatic critic of the New York World, had written for our college magazine, pointing out the golden rewards which might possibly await such of them as turned to playwrighting. I was particularly interested in his account of how Clyde Fitch had, by way of his pen, so to speak, created for himself town houses and automobiles and country places with peacocks and swimming pools. I didn't care much for the peacocks, but my soul did yearn for the swimming pools—with a country house or two attached.

So I took to playwrighting. I hit upon a theme for a comedy—the influence of clothes upon feminine morals—but it was not until after my graduation that I found time to write this, my first play, "Clothes." I evolved it in Cleveland, typed six copies of it and descended upon New York.

I left the six copies with six different managers. Four weeks later I heard from one of these managerial firms—Wagenhale & Kemper—who accepted the piece and paid me advance royalty upon it. I later revised the play with the assistance of Channing Pollock and it was successfully produced with Miss Grace George in the leading role.—Avery Hopwood.

TODAY.—Mr. Hopwood beats Clyde Fitch from the point of view of earnings. He is renowned as one who is the greatest benefactor of the government in the matter of income tax of any playwright in the country. Mr. Hopwood's heavy money began to roll in when he started writing the so-called "bedroom farces" for Al Woods, the producer, but the golden—or is it greenback?—climax was reached with his co-authorship with Mrs. Rinehart in "The Bat." Mr. Hopwood is also famed as master technician of playwrighting.

(© by McClure Newspaper Syndicate.)

SAWS

By Viola Brothers Shore

FOR THE GOOSE—

HER that flirts and runs away might have to flirt another day.

You always bump into a bruised elbow, a friend you had a fight with and the tailor, when you owe him a bill.

If you got a lotta dealin's with wolves, it's good to be seen out once in a while with a lion.

FOR THE GANDER—

There's three kinds of wives—the mother type—the mistress type, and the more-like-a-pals.

And a guy that marries a girl that ain't all three, is leavin' an unprotected flank along which some other jane can hit like an ambitious cyclone.

Two people that's interested in the same life work might quarrel. But two that finds the same things funny has got a fair chance of stickin' together.

(Copyright.)

Sure Fire

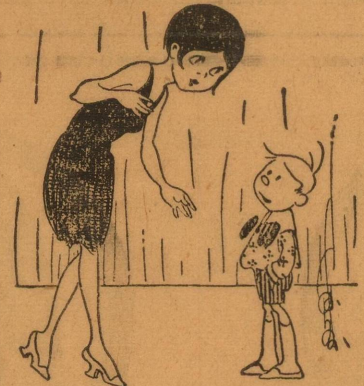
Several hundred feet of wife were attached to the device and it is believed this was the mechanism used to wreck his home.—Florida Times-Union.

NEW PICK UP



He—My new car has a wonderful "pick up."
She—Yeh! I saw you with a strange girl today.

SAD CASE OF LOVE



Sister—Do you love me more than anyone else, Bobbie?
Bobbie—Sure.
Sister—Then go out when Tom calls tonight.
Bobbie—Then you don't love me as much as I love you.

CHANGED HER MIND



Miss Gassaway (highly informed and talkative)—As I have tried to convince you before, Mrs. Blank, man never descended from a dumb animal.
Mrs. Blank—I used to think he did, Miss Gassaway, but I've changed my belief since I met you.

NOT LIKELY NOTICED



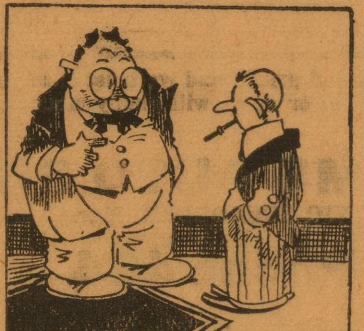
Reggie—By Jove, I simply laughed my head off.
Miss Sharpe—Well, don't say anything about it and nobody will suspect you've had such an accident, Mr. Sapp.

SOFT JOB



"What does he do?"
"He's employed as traveling companion to Reggie Capp."
"Soft job."

DOUBTING HIS JUDGMENT



Sire—Remember, my son, in all your dealings honesty is the best policy.
Son—But, dad, have you tried it enough to be sure?

(Continued from first page)

struction. A drive which winds around the golf course adds to the beauty of that part of the city.

On the west is a tract of land which has recently had an undivided three fourths interest sold by its owner, W. R. Chancellor, to four Breckenridge business men. Mr. Chancellor was the original developer of the High School Addition, having laid it out and had the streets staked off.

The Life Investment Company bought the tract a few months ago, and although Mr. Life has never conducted a sales campaign, he has sold practically half of the lots in private deals, so that the tract is now offered to the public in the form of an established residential section, with every a home a new and attractive one, and with good streets and conveniences.

Mr. Fields, who has just completed selling a large addition in San Angelo, in connection with Mr. Dorrance of that city, states that he has never seen a more attractive addition than the High School or Belvedere Court, and that he expects the sale to be over in a very short while on account of the fact that only half of it is available.

Winkler County School Bonds Are Approved

AUSTIN, Tex., Sept. 13.—An issue of \$85,000 Winkler County bonds of common school district No. 1, bearing 6 per cent and maturing serially, was approved Monday by the Attorney General's Department. It also approved an issue of \$1,500 Wheel County common school district bonds of District No. 23, bearing five per cent and maturing serially.

John T. Cross of Odessa transacted business in Midland Wednesday.

Prosperity Special Train To El Paso

A special excursion train will be operated by the T. and P. Railway Co. leaving Midland on the night of September 30, arriving in El Paso early the next morning.

Returning, it will leave El Paso on Sunday night, arriving here early Monday morning.

L. B. Sandoloski, assistant general passenger agent of the T. and P. was here from Dallas Wednesday in the interest of the excursion. He states that the fare will be \$8.50 round trip from Midland. Diner, pullmans and the regular conveniences will be carried.

Southwestern To Furnish Stock For Convention Program

John Gorman, salesman in this territory for the Southwestern Paper Company of Fort Worth, has volunteered to furnish the stock for printing the programs for the fall convention of the West Texas Press Association, which is held in Lamesa next month.

The programs are to be printed by the Midland Reporter and will be mailed out by W. E. Reid of the Colorado Record, J. L. Martin of the Snyder Times-Signal paying the postage; all being done without cost to the association. The organization has no dues.

Bill Ross made a business trip to Crane Wednesday.

If your merchant doesn't supply you with City Bakery Bread call us and get the best. City Bakery.

R. T. Waddell transacted business here Wednesday, from Odessa.

"Notice The Lighting Equipment"

All Modern Improvements

may mean anything. But when it includes adequate electric wiring it means just what it says. Let us help you make your home modern.

BLACK ELECTRIC COMPANY

"Anything Electrical" Phone 438
C. of C. Bldg.

Finance Your Home

WITH THE

MUTUAL BUILDING & LOAN ASSOCIATION
Easy monthly payment—includes interest and principal.

\$1000.00 pays back \$14.30 per month
\$2000.00 pays back \$28.60 per month

We loan to build, remodel, buy or re-finance homes.
See our representative,

A. HARRY ANDERSON

OIL EXCHANGE BLDG. MIDLAND, TEXAS

ANNOUNCEMENT

The six story Thomas Office building will be ready for occupancy on November 1st. Reservations for office space are being contracted now. Information regarding floor plans and terms will be gladly furnished on request.

JNO. B. THOMAS

P. H. Williams Sells Well In Crockett Co.

P. H. Williams of Big Lake, and owner of business property in Midland, has sold his producing oil well and 244 acres lease in Crockett Co. to the Cushing Refining and Gasoline Co. of Oklahoma, the consideration being \$250,000 cash and \$250,000 in oil.

The 244 acres are located in section 53, block BB, EL & RR survey. The well is the P. H. Williams and family No. 1 Powell.

The No. 2, 510 feet west, is expected to be brought in any day.

To Make Map To Use On Advertising

W. A. Yeager, W. T. Winter and Paul Young were named a committee of the Chamber of Commerce to devise a graphic map advertising plan to be used in all outgoing mail from Midland, sent by merchants who will use it.

This committee was named Tuesday at the regular meeting of the board of directors of the organization, and the plan was proposed by Mr. Yeager.

Lumber for all Purposes

We are prepared to furnish building material of all kinds. Estimates cheerfully furnished.

ROCKWELL BROS. & CO.
PHONE 48

HAVE YOUR FURNITURE REFINISHED

We have up-to-date equipment for FURNITURE FINISHING

and UPHOLSTERING

Authorized Duco Painting and Top Work
Quality Auto Shop
Across Street from Palace Theater

EXPRESSION

Public Speaking Dramatic Art Physical Education

ALL FORMS OF THE SPOKEN WORD
Special training for children under school age

MISS LEONA McCORMICK, TEACHER

CURRY METHOD

Classes to begin September 19th. Studios convenient to schools

TELEPHONE NO. 271

Poultry Raisers NOTICE!!

The Midland Hatchery will commence operation of its big 12,000-egg incubator, Monday, Sept. 19.

All those who desire trays please call and have your name placed on a tray before this date.

Midland Hatchery

Skaggs and Greenhill Props.