

PAGE ONE

A QUICK READ OF THE NEWS

Two file for City Council

Two more candidates filed this week for a seat on the Muleshoe City Council for May 1 election.

Jerry Hicks will run against Rich Magby for the District 3 seat currently held by Larry Kirk. Sharon Grant filed to run for the District 4 seat currently held by Eugene "Peanut" Hawkins.

In the Muleshoe Independent School District board election, incumbents Cindy Purdy and Nick Bamert have filed for re-election.

The Muleshoe Area Hospital District has two board positions up for election: Place 2, held by Tim "Buck" Campbell and Place 4, held by Phil Kent.

The deadline for filing in all local elections is March 17.

Banquet tickets on sale

Tickets for the 47th annual Muleshoe Chamber of Commerce & Agriculture's banquet go on sale Monday.

Tickets for the all-you-can-eat steak and shrimp dinner plus entertainment by Fidlin' Frenchie Burke are \$50 and can be purchased from 9 a.m. to 2 p.m. weekdays at the chamber office, 218 Main St., or from a chamber board member.

For more information, call chamber director Pam McCaul at 272-4248.

MEETINGS

Bailey County Commissioners Court — 10 a.m., Monday Bailey County Courthouse. Agenda items include considering appointments to Bailey County Child Welfare Board, discussing possible collaborative projects between county and city with city manager Rick L. Hanna, considering passing a resolution concerning agriculture problems in Texas, accepting letter of resignation from county judge secretary Rhonda Fennell.

MISD Board of Trustees — 7 p.m., Monday, business office, 514 W. Ave. G. Agenda items include recognizing Dillman Elementary School for its selection into the Texas Successful School Award System, discussing a five-year facilities plan, submitting ballots for Trustees for Region 17 Educational Service Center, plus department and business reports.



Drawing date: Wednesday, March 3, 1999
Winning numbers: 05-06-07-13-20-33
Estimated jackpot: \$30 million
Winners: Two
Next drawing: Saturday, March 6, 1999
Estimated jackpot: \$4 million

On this date in history

March 8 — The Russian Revolution begins with street rioting in St. Petersburg (1917).
March 9 — The first patent for false teeth is issued to Charles Graham of New York (1822).
March 10 — Alexander Graham Bell transmits the first clear and distinct telephone message (1876).

LOCAL WEATHER

	High	low	Pre.
Tuesday	60	29	—
Wednesday	67	24	—
Thursday	79	36	—
Prec to date	1.1 inches		

EXTENDED FORECAST

Windy and cooler Sunday and Monday. Highs in the lower 50s. Sunny and warmer Tuesday with a high of 63. Turning partly cloudy Wednesday with a high of 68.

Managing Editor Rick White can be reached at 272-4536 or ctyankee@fivearea.com

Missed your paper? Call paper carrier Melissa Flores at 272-6719 or the Journal during normal business hours.

EARLY SPRING



JOURNAL PHOTO BY RICK WHITE

Unseasonably warm weather has trees and flowers blooming ahead of schedule. Temperatures soared into the 70s this week, but are expected to drop to 50 by Monday.

Lawmakers backing boll weevil plan

By PATTI DRIVER
 Journal staff writer

The Texas Senate Tuesday passed a bill authorizing the state to share some of the cost of boll weevil eradication.

The Senate last month also approved an emergency appropriations bill that includes \$25 million to help cover the spraying costs in three existing eradication zones for fiscal year 1999.

According to Zack Brady of Sen. Robert Duncan's office, both bills are awaiting approval by the House.

"These bills are expected to be passed by April. After they are passed, some of the \$25 million will be used to help share start-up expenses in new eradication zones," he said.

The boll weevil money is competing against tax cuts, teacher salaries and child protective services according to Sen. Bill Ratliff (R-Mount Pleasant), chairman of the finance committee.

Sen. Duncan (R-Lubbock), the bill's sponsor and member of the Senate Finance Committee, is also urging the committee to include \$50 million in the Texas Department of Agriculture's budget to help with the assessments for boll weevil eradication during 2000-2001.

There are presently seven zones voting on approval of the eradication program. Five of those zones are in the Panhandle and Permian Basin areas of the state.

The Northwest Plains zone, which includes Bailey, Lamb, Parmer, Castro, and Deaf Smith Counties, is holding a referendum vote this week. The ballots must be postmarked and returned by March 12.

Roger Haldenby, vice president of operations, Plains Cotton Growers, Inc., doesn't believe that these bills will have an effect on the voting.

"I hope the outcome of the referendum votes

see **WEEVILS** on page 3

State official addresses local teacher's association

By PATTI DRIVER
 Journal staff writer

The head of a state educators group addressed Muleshoe teachers about key issues before the state legislature Thursday afternoon at the high school.

Sue Barker, president of the Texas Classroom Teachers Association, spoke about current bills that directly affect state educators.

According to Muleshoe High School English teacher Alice Liles, who was recently elected statewide chair of the

Legislative Committee of TCTA, Barker's main purpose for the visit was to spearhead a letter writing campaign to state officials.

Barker, a teacher from Whitesboro, talked about some of the more than 2,000 bills before the legislature this year. The topic well in the forefront is a social promotion bill sponsored by Sen. Teel Bivins of Amarillo.

Another topic of concern is the use of some of the budget surplus toward teacher salary increases or a statewide ben-

efits program.

Both Liles and Barker stressed the importance of letting state lawmakers know that educators and anyone affected by education is interested in their actions in Austin.

Stamped postcards and a list of state lawmakers were handed out to those who attended.

"Get your spouse, kids, neighbors, in-laws and anyone else you can think of to write to these people," Barker said. "It's important to let them know we are concerned."



Texas Classroom Teachers Association president Sue Barker spoke in Muleshoe Thursday

DeShazo students join in toasting Texas independence

More than 100 fourth-grade students from DeShazo Elementary School visited the Bailey County Courthouse Tuesday to celebrate Texas Independence Day.

The Jennyslippers, women associates of the Chamber of Commerce, hosted the annual "Toast to Texas" with several city and county employees taking part in the event.

The students have been studying Texas history in their social studies classes. After being welcomed by Ruby Green, president of the Jennyslippers, they joined Nelda Merriott, chairman of the Toast to Texas, in a prayer.

Everyone present raised their glasses of water and joined Bailey County treasurer Donna Kirk in a Toast to Texas.



DeShazo students take part in a Texas Independence at the courthouse

After the posting of the colors by Muleshoe Chief of Police Don Carter and Bailey County Sheriff Coy Plott, all recited the Pledge of Allegiance

and the Pledge to the Texas Flag. Sharon Plott lead the group in sing-

see **TOAST** on page 3

La Nina cycle puts new twist on tornado season

Last year's El Niño brought a variety of weather-related woes, but this year's La Nina may stir up double trouble during the tornado season for Indiana, Arkansas, Mississippi and the western parts of Kentucky and Tennessee.

Purdue University Professor Ernest Agee says those areas may expect twice as many tornadoes as last year. The report is based on research by graduate student Suzanne

see **TORNADO** on page 3

AROUND MULESHOE

Muleshoe booster club meeting

The Muleshoe Athletic Booster Club will meet at 7:30 p.m. on Monday, March 8 in the science room at Muleshoe High School. The topics to be discussed include the past basketball season, a junior high track meet, and a varsity baseball tournament. Contact Bruce Barrett at 272-3815 or Delton Wilhite at 272-4411 for further information.

Gospel talent to be showcased

The First Assembly of God will be holding a local gospel talent showcase at 2 p.m. on Sunday, March 14 at the church on 521 South First in Muleshoe.

Those interested in participating should call First Assembly at 272-3017 by Tuesday, March 9. Groups and individuals are welcome.

Luncheon set for Thursday

The 16th and D Church of Christ will be hosting the Second Thursday Soup and Sandwich Luncheon at noon on Thursday, March 11 at the Fellowship hall in the church. This month's program will feature Curtis Shelburne. He will be sharing some of his selections from his Focus on Faith newspaper column. The menu includes Mexican pile-on and homemade pie.

The originally scheduled program on Alzheimer's has been rescheduled for May 13.

WJHS choir holding concert

Watson Junior High School will be holding a concert at 7:30 p.m. on Monday, March 8 in the Muleshoe High School auditorium. Admission for the 30-minute concert is free.

MULESHOE

High School & Junior high Monday

Breakfast — Breakfast taco, fruit or juice, and milk.

Lunch — Hot ham & cheese sandwich, lettuce, tomatoes, french fries, applesauce, and milk.

Tuesday

Breakfast — Breakfast on a stick, fruit or juice, and milk.

Lunch — Foot long chili dog, tator tots, baked beans, cherry cobbler, and milk.

Wednesday

Breakfast — Biscuit w/gravy, fruit or juice, and milk.

Lunch — Chicken tetrazzini, corn, mixed fruit, hot roll, and milk.

Thursday

Breakfast — Cinnamon toast, fruit or juice, and milk.

Lunch — Corn dog, vegetable soup, cinnamon roll, pineapple tidbits, and milk.

Friday

Breakfast — French toast sticks, fruit or juice, and milk.

Lunch — Fish fillet, macaroni &

School menus

FOR WEEK OF MARCH 8-12

cheese, english peas, hot roll, and milk.

Dillman & DeShazo Monday

Breakfast — Breakfast taco, fruit or juice, and milk.

Lunch — Hot ham & cheese sandwich, lettuce, tomatoes, french fries, applesauce, and milk.

Tuesday

Breakfast — Breakfast on a stick, fruit or juice, and milk.

Lunch — Hot dog, tator tots, baked beans, cherry cobbler, and milk.

Wednesday

Breakfast — Biscuit w/gravy, fruit or juice, and milk.

Lunch — Chicken tetrazzini, corn, mixed fruit, hot roll, and milk.

Thursday

Breakfast — Cinnamon toast, fruit or juice, and milk.

Lunch — Corn dog, vegetable soup, cinnamon roll, pineapple tidbits, and

Local group holds talent show

The Teen Leadership Organization Council of Muleshoe High School will be sponsoring a talent show at 7 p.m. on Thursday, April 8 at the high school auditorium.

Tickets will be available at the door. For more information, contact Ms. McElroy at 272-7303 or Chris Garcia at 272-5765.

Clovis CC to host spring 'mini-term'

Registration for spring mini-term classes at Clovis Community College will be held March 10-17, from 8 a.m. to 4:30 p.m. (MST) in the CCC Admissions Office.

The mini-term classes are scheduled for March 15-May 14 and will be held at CCC and Cannon AFB.

Courses offered at CCC include QuickBooks for Beginners; Student Success; Aviation Maintenance-Power Plant; Business Math; Using Personal Computers; Windows Fundamentals; Internet Fundamentals; Lifeguard Training and Individual Health and Conditioning.

Classes offered at Cannon AFB include Intro to Applications Software; Public Speaking; English Composition and Research; Survey of American History; Physics II & Lab; Child Psychology and the New Testament.

For more information, contact the CCC Admissions Office at (505) 769-4027.

The deadline for items to appear in *Around Muleshoe* is 5 p.m. Monday for Thursday's edition and 5 p.m. Thursday for Sunday's edition. Items can be mailed (PO Box 449), called in (272-4536) or faxed (272-3567).

PK-1 steak patty, mashed potatoes, green beans, carrots, fruit, salad, jello, and milk.

Friday

Lunch — Manager's special.

THREE WAY Monday

Breakfast — Sausage w/toast or assorted cereals, graham crackers, juice, and milk.

Lunch — Fish w/tartar sauce, creamy cole slaw, ranch style beans, bread sticks, peaches, and milk.

Tuesday

Breakfast — Waffles w/syrup & scrambled eggs or assorted cereals, graham crackers, juice, and milk.

Lunch — Tamales, spanish rice, refried beans, green salad, fruit cup, and milk.

Wednesday

Breakfast — Breakfast sticks or assorted cereals, graham crackers, juice, and milk.

Lunch — Steak fingers, mashed potatoes, green beans, wheat rolls, cherry crisp and milk.

Thursday

Breakfast — Blueberry muffin & ham or assorted cereals, graham crackers, juice, and milk.

Lunch — Stuffed baked potato, carrots, broccoli, soft pretzel, fruit cobbler, and milk.

Friday

Breakfast — Sausage w/biscuit or assorted cereals, graham crackers, juice and milk.

Lunch — Hamburger, french fries, lettuce, tomatoes, pickles, carrot and celery sticks, orange quarters and milk.

CRP GRASSES

Specializing in Native Grass Seed since 1951!

- Buffalograss
 - Sideoats
 - Bluestems
 - Switchgrass
- and many others!

We produce our own seed and pay most freight.

Straight from our farm to you!

1-800-262-9892

806-272-5506
BAMERT SEED CO.
Muleshoe, Texas
bamseed@fivearea.com

May the warm winds of heaven blow softly on your face
May God's spirit bless those who shared Curly's last race.
Your prayers, the food, the beautiful flowers
Were so comforting to us in our grieving hours.
Your donations of blood will continue to give
Others who struggle a chance to live.
Curly's love of kids and the animals they show
That is where money given to the memorial will go.
To all who knew and loved him so dear
Your friendship and love have been shown very clear.
The memorial service so beautifully done
Curly, rest in peace — Your last race — You won!

Thank you,
The Family of Cecil "Curly" Mardis

HOSPITAL ADMISSIONS

Muleshoe Area Medical Center reported admitting the following patients:

Feb. 25 — Jessie Arnold, Fannie Black, Brittney Cabrera, Elmo Owen, Margaret Pointer, Ellis Sterling, Baby Vega, Maria Vega, Terri Neighly, Baby Neighly.

Feb. 26 — Filemon Antillon, Jessie Arnold, Fannie Black, Brittney Cabrera, Agnes Chatman, Baby Neighly, Terri Neighly, Elmo Owen, Margaret Pointer, Ricardo Soto, Joe Stanford, Ellis Sterling, Nima Bryant, Joel Favela, Vanell Phipps.

Feb. 27 — Filemon Antillon, Jessie Arnold, Nima Bryant, Agnes Chatman, Ina Creamer, Joel Favela, Vanell Phipps, Margaret Pointer, Ricardo Soto, Ellis Sterling.

Feb. 28 — Filemon Antillon, Jessie Arnold, Nima Bryant, Agnes Chatman, Ina Creamer, Joel Favela, Vanell Phipps, Margaret Pointer, Ricardo Soto, Ellis Sterling.

March 1 — Filemon Antillon, Jessie Arnold, Nima Bryant, Agnes Chatman, Ina Creamer, Vanell Phipps, Margaret Pointer, Ellis Sterling.

March 2 — Filemon Antillon,

Jessie Arnold, Joyce Byrd, Agnes Chatman, Monica Hunt, Vanell Phipps, Girl Rubalcaba, Ellis Sterling, Ileah Gauna, Thomas Withrow.

March 3 — Jessie Arnold, Ileah Gauna, Monica Hunt, Summer Johnson, Elmo Owen, Girl Rubalcaba, Ellis Sterling, Thomas Withrow, Hubert Kidd, Rebecca Feagley.

March 4 — Jessie Arnold, Henley Brown, Rebecca Feagley, Ileah Gauna, Summer Johnson, Hubert Kidd, Ellis Sterling, Thomas Withrow.

BIRTHS

SHILO NEIGHLY

Terri Neighly of Clovis, N.M. announces the birth of a daughter, Shilo Destiny Neighly.

She was born at 9:47 a.m. on

Feb. 25, 1999 at Muleshoe Area Medical Center. She weighed 7 lbs.

Grandparents are David and Andra Gradner of Clovis, N.M. and Terry Neighly of Dallas.

Funcare Daycare
"Come join the fun!"

Special care for
INFANTS & UP
7:30 a.m. to 5:30 p.m.
Monday-Friday
All meals provided.

Contact
Angela Lutz
705 W. Ave. J
Muleshoe
272-5891
Call or come by any time!
Trained Child Care Provider
First Aid & CPR certified

Bailey County Journal USPS 040-200
Established March 31, 1963. Published by Triple S Publishing, Inc.
Every Sunday at 304 W. Second. Box 449, Muleshoe, TX 79347.
Second Class Postage paid at Muleshoe, TX.
POSTMASTER: Send address changes to the Bailey County Journal, P.O. Box 449, Muleshoe, TX 79347.

We are qualified members of:
Panhandle Press Association, National Newspaper Association,
West Texas Press Association and Texas Press Association

WEST TEXAS PRESS ASSOCIATION

PPA
Panhandle Press Association

TA MEMBER 1999
TEXAS PRESS ASSOCIATION

Scot Stinnett, Publisher
Lisa Stinnett, Vice-President/Comptroller
Rick White, Editor
Mari Guadaluca, Classifieds
Leah Bell, Advertising

© 1990

SUBSCRIPTIONS: Muleshoe Journal and Bailey County Journal
By Carrier Yearly - \$22.00
Bailey County — by mail - \$24.00
Elsewhere - \$26.00
Advertising Rate Cards on Application

Advertisers should check their ad the first day of insertion. The Journals will not be liable for failure to publish an ad or for a typographical error or errors in publications except to the extent of the cost of the ad for the first day of insertion. Adjustment for errors will be limited to the cost of that portion of the ad where the error occurred.



Is your current home respiratory provider striking out?

Choose a new company. It's your right.





ACCREDITED BY
Joint Commission
On Accreditation of Healthcare Organizations



National Home Health Care

1200 West 21st Street
Clovis, New Mexico 88101

To schedule a visit with our service representative call 1.800.842.8278

Boll weevil eradication ballots due on March 12

AUSTIN — Agriculture Commissioner Susan Combs reminds cotton producers voting in the Northwest Plains Boll Weevil Eradication Zone referendum that their ballots must be postmarked by Friday, March 12, to be counted.

Results of the referendum will determine whether or not to establish a boll weevil eradication program in the five-county Northwest Plains zone and will set a maximum assessment.

Eligible voters in the Northwest Plains Boll Weevil Eradication Zone should have received an official ballot by mail. A postage-paid return envelope was included.

Producers in the zone who planted cotton in 1998, but did not receive a ballot, should immediately contact the Texas Department of Agriculture at (512) 463-7593 or 1-800-TELL-TDA (1-800-835-5832).

To officially establish a boll weevil eradication program in the Northwest Plains zone and set an assessment, the proposition must be approved by a two-thirds vote in the March 12 referendum or those voting in favor must farm more than 50 percent of the zone's acreage.

In addition to deciding if an eradication program should begin in the zone, voters will elect a board member from the Northwest Plains zone to serve on the statewide board of directors for the Texas Boll Weevil Eradication Foundation Inc. TDA received one nomination for this position before the Feb. 10 filing deadline.

The name of John Saylor of Bailey County will appear on the ballot as a board candidate. Saylor is a cotton producer who has farmed in Bailey county since 1979. Saylor currently serves as the Commissioner-appointed director for the Northwest Plains zone.

The Northwest Plains Boll Weevil Eradication Zone consists of approximately 500,000 acres in five counties: Bailey, Castro, Deaf Smith, Lamb, and Parmer.



Texas twosome

Glenda Jennings and Billy Bob the cowboy puppet entertained DeShazo students Thursday during a "Toast to Texas" ceremony at the courthouse.

TORNADO

from page 1

Zurn-Birkhimer, who compared geographical variations in tornadoes for El Niño and La Nina years during an 81-year period.

Her findings show more tornadoes in the central and southern plains and the Gulf Coast during strong El Niño years, with a shift to more tornadoes in the lower Midwest, the Ohio and Tennessee valley and the mid-Atlantic region during La Nina years.

"That means that this year's La Nina event is likely to increase tornado activity in Mississippi, Arkansas, western Tennessee, western Kentucky and Indiana," Agee says. "In fact, these areas might expect twice as many tornadoes as last year, when they were at a lower

risk of tornado activity due to the strong El Niño."

La Nina, which means "the little girl" is characterized by unusually cold ocean temperatures in the eastern tropical Pacific, as compared to El Niño which is characterized by unusually warm temperatures in the same waters.

"There has to be a threshold of heat and moisture to build severe thunderstorms," Zurn Birkhimer says. "If the atmosphere's too dry or too cold, you just can't get large dynamical cloud systems like the supercell storms. When the jet stream is farther north, as it is in a La Nina event, you have a better chance of achieving these kinds of temperatures and dew points."

— Farm Bureau

WEEVIL

from page 1

will affect legislation," said Haldenby. "Maybe the legislature will see that the farmers are serious about this program and will pass the appropriate bills to help the farmers eliminate the boll weevil."

John Saylor, Texas Boll Weevil Eradication Foundation board of directors representative for the Northwest Plains zone, is waiting for the out-

come of these bills.

"Some of the money would be used in this zone if our program is approved," Saylor said. "It would lower the assessments to the farmer if not in the first year, then in the following years of the program," he added.

The projected maximum assessment for the NWP zone is \$5 per acre of dryland cotton and \$12 per acre of irrigated cotton.

TOAST

from page 1

ing the state song "Texas, Our Texas" and "Don't Fence Me In".

Sheriff Plott introduced Bailey County's first female deputy Eileen Ciampoli, who told the students they can become anything they want to be if they work hard enough.

Muleshoe Chamber of Commerce director Pam McCaul talked briefly to the students about how the Chamber promotes Texas and particularly Muleshoe.

Glenda Jennings from Lazbuddie brought her cowboy puppet friend Billy Bob who entertained the crowd with the songs "God Blessed Texas" and "If You're Gonna Play in Texas".

Merriott then quizzed the students on Texas history and facts they have been learning. Everyone was invited to enjoy refreshments offered by the Jennyslippers after the program.

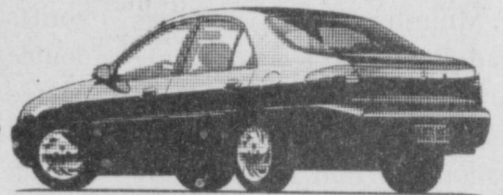
MULESHOE MOTOR CO.

1999 Ranger XLT
Automatic Air Conditioning
\$176 Down*
\$176/mo.



New 1998 Mercury Tracer
\$2,000 Cash In Your Pocket

OR
We'll Make Your Payments Until November 1999



p.s. Hurry...offer ends soon!!

*Plus T.T. & L.; 36 Month FMCC RCO; 12,000 miles/year MSRP \$16,270; 0.25% final balloon 6,833.40. W.A.C.

1225 West American Blvd. • 272-4251 • 1-800-432-7617

Muleshoe Sports — Too HOT To Handle!

LUV homes
¡Se Habla Español!



3300 N. Prince
Clovis, NM 88101
505-762-1211
1-800-306-1211

SUPERCENTER

NO BULL!

Come and Visit with us!

**You Gotta See These New Homes!!!
Join Us for the Fun!**

Free Popcorn!
Fun!!!

• Specials This Weekend Only! • Open House All Weekend!

ALL APPLICATIONS FOR CREDIT WILL BE ACCEPTED.

Balloons for the kids!!

ALL YOU NEED IS LUV



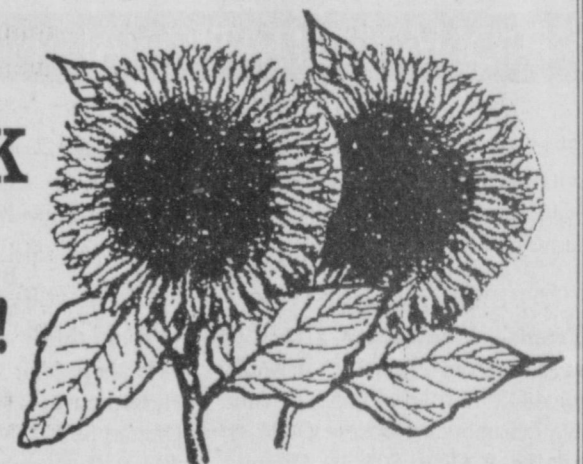
NO BULL!

\$\$\$\$\$ **ATTENTION GROWERS** \$\$\$\$\$

NEED A PROFITABLE ALTERNATIVE TO CURRENT CROPS AND PRICES???



CHECK THIS OUT!!!



EXCELLENT CONTRACT PRICES FOR CONFECTIONARY SUNFLOWER

ARE NOW AVAILABLE!! ACRES ARE LIMITED!!

FOR MORE INFORMATION CONTACT:
KELLY GREEN SEEDS, INC.
FARWELL, TEXAS
1-800-547-7333

WE OFFER:

- PLANTING SEED
- LOCAL DELIVERY POINT
- QUICK PAYMENT IN COOPERATION WITH RED RIVER COMMODITIES
- YEARS OF EXPERIENCE



RED RIVER COMMODITIES, INC.
212 NE Loop 289, Lubbock, Texas 79403
806-763-9747 • FAX 806-763-0330 or 806-763-9740

"We Grow For You"



Every Day Is Your Lucky Day!

LOANS

\$100 to \$446

ALL APPLICATIONS ACCEPTED
Ask for Norma or Yolanda

Open:

Mon. thru Thurs.—9 am to 5 pm
Fri.—9 am to 6 pm

Continental Credit

206 South Main Street Muleshoe, TX
272-3673

Read It First In The Journal!

MHS program back on track

Increased numbers have teams thinking about district crowns

The Muleshoe High School track facility was swarming with activity Thursday, a welcome change for the once-proud program.

Muleshoe's track numbers had dropped to a depressingly low number in recent years. But thanks to a mandatory participation program instituted by athletic director David Wood, more than 90 athletes are participating this year.

Bolstered by better numbers and a handful of standouts, both girls coach John Irwin and boys coach Flint Bigham believe their teams will be competitive in every meet this season.

"Coach (David) Wood stresses the importance of participation and that's a big step in the right direction," said Irwin, who was part of the highly-successful Clovis, N.M. girls program for a decade before coming to Muleshoe two years ago. "We have to patient. But we have some talent and I think we're going to be real competitive before the end of the season."

More than 40 girls are out

this year compared to just eight in 1998.

Junior Stacy Locker, a two-time state qualifier in the 800 meters, will be among the favorites in every meet. She also doubles in the 1600 and is expected to anchor the Lady Mules' 1600-meter relay team.

Other Lady Mules to watch include junior Bobbie Benham and sophomore Olivia Alacon in the 200 and 400, sophomore Tommie Hernandez in the discus, junior Lindsey Field in the high jump and freshman sprinter Britni Gartin.

Irwin also believes sophomore Megan Tipps and freshman Amanda Bell and Jessica Carpenter can help by the end of the season.

Muleshoe finished seventh last week at the Randall Relays and the junior varsity was third.

The strength of the Mules is depth, with more than 50 members on the team.

"For the first time since I've been here, we can field a complete team on both the varsity and junior varsity and be competitive in every event," Bigham



Teamwork

Stacy Locker (left) and Bobbie Benham work on their handoffs Thursday during a Muleshoe track practice. Muleshoe ran at the Whirlwind Relays Saturday in Floydada

said.

Leading the way is senior jumper Russell Byers and freshman distance runner Kyle Atwood.

Other Mules to watch are senior sprinters Greg Pena and Gilbert Vela, senior Matt

Turney in the discus, sophomore Brandon Broyles in the pole vault and sophomore Danny Ramirez in the hurdles.

Bigham said even with an upgraded schedule he expects the Mules to be competitive.

"The big thing is the kids

have to learn to step up to the level of the competition," Bigham said.

Muleshoe finished seventh last week at the Randall Relays. The JV boys finished fourth.

MHS ran at the Whirlwind Relays Saturday in Floydada.

PLAYOFF PAIRINGS

UIL STATE TOURNAMENT

Frank Irwin Center in Austin

Class 1A semifinals

Thursday

Valley View 61, Borden County 56

Vega 66, Moulton 55

Class 3A semifinals

Winnsboro 72, Shallowater 44

Lufkin Hudson 47, Wimberley 37

Class 4A semifinals

Canyon 52, Bay City 42

Dallas Lincoln 51, SA Sam Houston 44

Friday

Hughes Springs (28-2) vs Celina

(28-7)

Salado (29-7) vs Farwell (27-8)

Class 5A

Mansfield (36-0) vs Dallas Adams

(25-9)

Corpus Christi Carroll (33-6) vs

Sugar Land Dulles (24-12)

Saturday

Championships

Class 1A

Vega (24-12) vs Valley View (36-

2)

Class 2A

Hughes Springs-Celina winner vs

Farwell-Salado winner

Class 3A

Winnsboro (39-2) vs Lufkin

Hudson (35-2)

Class 4A

Canyon (37-0) vs Dallas Lincoln

(29-0)

Class 5A

Mansfield-Dallas Adams winner vs

Corpus Christi Carroll-Sugar Land

Dulles winner

BOYS

Region I-3A

at Lubbock Memorial Coliseum

Friday

Littlefield (T2) (24-10) vs Waco La

Vega (W8) (25-4)

Seminole (W3) (33-3) vs Childress

(W5) (23-7)

Saturday

Littlefield-La Vega Waco winner

vs Seminole-Childress winner

1999 MULE CLASSIC

The following is the schedule for the 1999 Mule Classic baseball tournament March 11-13 at the city baseball field.

March 11-13

Thursday

Game 1 — Dimmitt vs Seminole, 9

a.m.

Game 2 — Kermit vs Denver City,

11:30 a.m.

Game 3 — Lubbock Christian vs

Crame, 2 p.m.

Game 4 — Portales vs Abernathy,

4 p.m.

Game 5 — Muleshoe vs Tulia, 7

p.m.

Friday

Game 6 — Game 1 loser vs Game

2 loser, 9 a.m.

Game 7 — Game 4 loser vs Game

5 loser, 11:30 a.m.

Game 8 — Game 4 winner vs Game

5 winner, 2 p.m.

Game 9 — Game 1 winner vs Game

2, 4:30 p.m.

Game 10 — Game 10 winner vs

Game 8 winner

Saturday

Game 11 — Game 3 loser vs Game

6 winner, 10:30 a.m.

Game 12 — Game 11 loser vs

Game 10 loser, 3:30 p.m.

Game 13 — Game 6 loser vs Game

7 loser, 8 a.m.

Game 14 — Game 8 loser vs Game

9 loser, 1 p.m.

Consolation championship

Game 15 — Game 7 winner vs

Game 11 winner, 6 p.m.

Championship

Game 16 — Game 9 winner vs

Game 10 winner, 8:30 p.m.

FRIONA INVITATIONAL

GIRLS

FRIONA — Results from the Friona Invitational golf tournament played Wednesday and Thursday at Friona Country Club:

GIRLS

(Wednesday)

Team — 1. Friona 414, 2. Canyon 421, 3. Sanford-Fritch 423, 4. Muleshoe 444, 5. Littlefield 453, 6. Tulia 469, 7. Lubbock Roosevelt 484, 8. Hart 497, 9. Olton 505, 10. Dimmitt 533.

Individual — 1. Goldie Harrelson, Friona, 82; 2. Leslie Mullens, Sanford-Fritch, 90; 3. Nikki Sutton, Muleshoe, 93.

Muleshoe — Rendi Hodge 108,

Tarrah Bell 113, Candace Hutto 130.

Friona — Jamie Siagle 106,

Lindsey Buske 110, Tania Hand 117,

J'Mae Randolph 134.

Canyon — Mak Berry 97, Amy

Senter 102, Callie Parker 108,

Meghan Hart 114, Ashley Duck 124.

Sanford-Fritch — Sarah Welch

105, April Bryan 110, Virginia

Douglass 118, Nicole Schoenhals

144.

Littlefield — Jennifer Reese 99,

Meghan Cowen 107, Cheganna Allen

116, Natalie Gray 131, Serena Henley

137.

Tulia — Caroline Combest 100,

Trisha Kleman 113, Angie Zunica

123, Leticia Garza 133.

Roosevelt — Kari Laymon 115,

Tammi Jo Runyon 120, Carly

Buxkemper 124, Nicole Blocker 125,

Kerri Knight 145.

Hart — Valerie Key 146, Nikki

Burress 119, Denise Morales 126,

Ashley Law 136, Ysa Rodriguez 148.

Olton — Ashley Anderson 117,

Joni Robertson 118, Dusty Griffin

132, Megan Buncel 138, Kristen Lyle

143.

Dimmitt — Morgan Hazel 122,

Kylie Webb 133, Sally Stahl 138,

Crystal Garcia 140, Sandra Daniels

140.

BOYS

(Thursday)

Team totals — 1. Bovina 348, 2.

Petersburg 355, 3. Muleshoe 365, 4.

Hereford frosh 366, 5. Olton 385, 6.

Dalhart 390, 7. Morton 398, 8. Hart

403, 9. Roosevelt 405, 10. Dimmitt

406, 11. Adrian 415, 12. Friona 432,

13. Amherst 438, 14. Whiteface 438.

Individual — 1. (tie) Tyson Kerby,

Bovina, and Ryan Hodge, Muleshoe,

84; 3. Andrew Pool, Morton 85; 4.

Eric Shufflebryer, Bovina, 86.

Muleshoe — Jordan Pool 92,

Moises Garcia 94, Kyle Atwood 94,

Kole Magby 99.

Bovina — Josh Quintana 90,

Cameron Charles 93, Blake Clements

88.

Petersburg — Daniel Martinez 87,

John Collins 90, Rodney Leon 95,

Gabe Crabb 86, Randal Burnam 92.

Hereford frosh — Matt Northcut

90, Wesley Reinart 104, Barry

Kreighauser 102, Drew Dennison

87, Stefan Freimel 87.

Olton — Bobby Givens 87, Derek

Robertson 95, Tommy Seawright

111, Jason David 102, Brady Thom-

as 111.

Morton — Geoff Abbe 90, Dustin

Silhan 102, Michael Johnson 121,

Eric Abbe 135.

Hart — Jared Aven 86, Chris

George 95, T.R. George 92, Shane

McClain 129.

Roosevelt — Cole Bynum 98, Clay

Phoenix 102, Brady Ruiz 108,

Herman Sanchez 111, Jeremy

Campbell 97.

Dimmitt — Brent Josselett 92,

Tanner Self 108, Jace Weaver 114,

Cody Laurent 103, Deacon Buckley

103.

Adrian — Joe Burns 94, Felix

Rangell 105, Jason Hale 110, Ryan

Schoenberger 110, Matt Briggs 106.

Friona — Justin Grimsley 108,

Barry Proctor 94, Dale Williams 110,

Trevor Field 117, A.J. Carrasco 111.

Amherst — Jarred Rackley 96,

Brian Chandler 113, Hunter Shelley

115, Aaron Miller 114, Rowdy

Shelley 122.

Whiteface — Kyle Igo 86, Lance

Davidson 106, Dusty Ruthardt 111,

Kurt Taylor 125.

BROWNFIELD TOURNAMENT

Thursday

First round

Abernathy 175 20 15 9 1

Muleshoe 410 10 6 3 4

(Game ended by two-hour time limit)

Moore, Gardner (1), Mendoza (3)

and Mendoza; Pyle, Barrett (2) and

Kerby, Mason (2). WP — Gardner.

LP — Pyle. 2B — Abernathy,

Gardner, Wright; Muleshoe,

Gonzales. HR — Abernathy,

Mendoza.

Lamesa 5, Crane 1

Lovington, N.M. 10, Roosevelt 3

Brownfield 11, Plains 5

Friday

Consolation semifinals

Muleshoe vs Crane

Roosevelt vs Plains

Championship semifinals

Lamesa vs Abernathy

Lovington vs Brownfield






ENTER TODAY!
The Muleshoe Journal's
5th Annual
Cutest Baby Contest

Enter any child **born in 1998** who is special to you—
children, grandchildren, nieces, nephews, friends, etc.

Winner Will Receive a
\$50 Savings Bond For
Being Selected 1998's
Cutest Baby!

Kaitlin Hope Foster
1997 Cutest Baby Contest Winner

This year's contestants will appear in the Easter (April 11th) issue of the Bailey County Journal. A panel of unbiased judges will pick the most attractive picture to be the 1998 Cutest Baby. All baby pictures will be printed. Babies need not be born in this area. Bring your favorite child's photo along with \$10 to the Muleshoe Journal office at 304 W. 2nd St., Monday-Friday between 8:30 a.m. and 5 p.m. or mail the coupon below with your child's photo and \$10 to Cutest Baby 1998, c/o Muleshoe Journal, P.O. Box 449, Muleshoe, Texas 79347. You may pick up your baby's picture during office hours after Monday, April 12, 1999. Arrangements must be

Possible titles for barnyard bestsellers



BAXTER BLACK
ON THE EDGE OF COMMON SENSE

In one of Gary Cundall's cartoons he shows dogs in the library reading from selected titles such as, Bones Are All The Good Ones Gone?, Does the Dog Catcher Sleep? and other good dog books.

Such clever animal behavior insight leads me to consider what books one might find on the Barns & Stable Bestseller List. I looked. Livestock are heavily into selfhelp books.

- Herefords are from Venus — Angus are from Mars
An example of prehistoric rivalry
- Chicken Soup for Freshly Weaned Ruminant's Soul
Heart wrenching stories of leaving home
- The Holstein Prophecy
Bovine angels inspire milkers to greater production
- The Joy of Artificial Insemination
Do the best you can with what you've got
- The 7 Habits of Highly Effective Porcines
How to organize your own pig pen
- Co-Dependent No More: Breaking the Herd Habit
Earn millions without leaving your stall
- The 9 Steps to Parasitic Freedom

- Say good-bye to lice
 - The Goat That Listens To Horses
Memoirs of a race track psychologist
 - One Day My Sole Just Opened Up
The tale of one cow's battle with footrot
 - Protein Power
Eat urea and like it
 - Don't Sweat the Small Stuff
Shetlands improve their selfesteem
 - Cook Right for Your Type
Rumen vs. Stomach vs. Gizzard
 - Into Thin Air
Where your methane and money go
- And lest you think ungulates don't read for fun, I offer these last titles.
- The Sheep Whisperer
 - The Cow From Snowy River
 - A Power Line Runs Through It
 - Feedlots of Madison County
 - The Dairy of Ann Frank

Texas farmers will feel sting from loss of bees

COLLEGE STATION — About 90 percent of the wild honey bees have died and managed hives have declined by 50 percent — signaling trouble for Texas produce and wildflowers this spring.

The disappearance of honey bees — the major pollinator of flowering plants — could greatly reduce production of some 90 Texas crops causing economic losses and shortages of fruits and vegetables, industry officials say.

But a cooperative effort by state and federal agencies joined by local beekeepers and commodity groups hopes to turn the situation around with research and education. They've written a Texas Agricultural Experiment Station Honey Bee Protection and Management Initiative calling for \$1.4 million over the next two years from the Texas Legislature.

"The goal of the program is

to ensure that the goods and services provided by the activities of honey bees are protected and enhanced for the benefit of Texas citizens and our agriculture enterprise," said Dr. Ray Frisbie, head of Texas A&M University's entomology department.

Honeybees have died off in Texas — as well as much of the rest of the nation due to an invasion of varroa mites, a tiny species that feeds on the blood of honey bees. That deadly parasite comes on the heels of an infestation in 1984 of tracheal mites followed by the invasion of Africanized honey bees and the dumping of Chinese honey on the U.S. market. "As a result of these events, the number of commercial resident honey bee colonies has dropped in Texas from about 200,000 in 1985 to less than 100,000 today," Frisbie explained.

Control of the mites in hives

managed by beekeepers has proven difficult, according to Dr. Rodney Holloway, Texas Agricultural Extension Service pesticide assessment specialist.

The scientists and beekeepers seeking the initiative say research is needed to find ways to control the mites, the single most important problem facing beekeepers.

"The value of pollination of these cultivated crops by managed colonies of bees is estimated to be \$487 million," said Dr. John Thomas, Texas Beekeepers Association executive secretary.

In addition to commercial crops, researchers say that wild honey bees are vital to nature because the pollination of flowering plants provides food and habitat for wildlife and vegetative cover for forests and rangeland. Many home garden fruits and vegetables require pollination to produce as well.

Clinton asked to examine ag clusters

Nearly two dozen senators have asked President Clinton to launch a full examination of concentration within agriculture.

The senators sent a letter to Clinton on Monday stating, "While thousands of farmers are being forced out of agriculture due to collapsed commodity prices, many of our nation's food processors are posting exceptional returns and record profits."

Agricultural commodity markets, particularly in livestock, have become tilted against the producer and are failing to provide effective competitive returns," the letter said.

The Department of Agriculture predicted low

farm prices this year. U.S. farm exports are projected at \$49 billion, compared with last year's \$53.6 billion.

"It is important that Congress have a clear picture regarding the impacts of the rapid increase in market concentration in agriculture and what steps may need to be taken," the letter said. The coalition of senators asked for a full examination of concentration in the next six months.

Concerns about concentration heightened in November when Cargill Inc. of Minneapolis, the nation's No. 1 grain company, announced plans to buy second-ranked Continental Grain Co.

Wildfire warning issued for High Plains

AUSTIN — An extreme wildfire danger warning issued last week by the Texas Forest Service for the High Plains region continues, as dry, windy weather persist and wildfire activity picks up.

Vegetation is brown, dry and growing increasingly fire-prone, say fire prevention and assessment teams personnel assigned by the state forestry agency to this region. The risk has grown great enough that the Texas Forest Service has mobilized additional firefighting resources to the region to be able to assist area fire departments with fire response.

"The likelihood is growing that some areas may experience multiple wildfires or very large fires," says Les Rogers,

regional fire coordinator with the Texas Forest Service in Canyon. "We are just now entering the normally windy month of March and April when the danger of fast-spreading wildland fires normally increases.

Pre-positioning firefighting resources helped minimize wildfire losses last year during the record fire siege, and our agency has again acted to get supplementary firefighting resources into a high fire danger area prior to a major outbreak of wildfires."

Many of the wildfires that have occurred in the region recently have been due to carelessness, according to Todd Nightingale, a member of the Texas Forest Service fire prevention team in Canyon.

FSA notes

The Bailey County Farm Service Agency reminds farmers of the following programs and deadlines:

- The 1998 Disaster Assistance program will accept applications until March, 12, 1999. Producers are eligible for compensation for losses suffered in 1998 or losses in any three or more crop years between 1994 and 1998. The higher of the two payments will be received.

- Producers can still request loan deficiency payments. Loan availability dates are: wheat, barley and oats through March 31, and corn, sorghum and cotton through May 31.

- The Environmental Quality Incentive Program is designed to assist producers with conservation problems. The contracts with this program are five to ten years long with cost shares up to 75 percent of the expense. Interested producers should call the Bailey County FSA office or NRCS office for more information.

- The final date to certify small grains is May 15. The last date to discontinue grazing on crops that will be harvested for grain is March 15. The FSA encourages producers to certify all crops.

- Applications for emergency loans will be taken until March 23, 1999.

Positions open on Three Way ISD board

Two positions on the Three Way Independent School District Board of Trustees will be decided in the May 1 election.

The positions are currently held by Jarrol Layton and Jack Reeves.

Applications may be obtained at the Three Way ISD business office, which is open

from 8 a.m. to 4 p.m. The deadline for a place on the ballot for the election is March 17.

Applications for early voting can be obtained by contacting Beverly Turney at (806) 927-5531.

Polls will be open from 7 a.m. to 7 p.m. on May 1.

1411 W. American Blvd.
Muleshoe, Texas
272-5581

Church's Chicken

NEW CRISPY FISH
reg. french fries, cole slaw & 2 hushpuppies
\$2.99 plus tax

WE STILL HAVE CATFISH!
4 PIECE W/REG. FRIES IS \$4.59
5 PIECE W/REG. FRIES & COLE SLAW IS \$5.19

6 PC. DARK
Legs & Thighs
2 family sides.....
\$6.49
(msd. add just \$1.50)

12 PC. DARK
Legs & Thighs
2 family sides.....
\$10.98
(msd. add just \$3.50)

Join us in saying
"Congratulations"
Harvey Alfaro

Crew Member of the Month for February 1999

"Harvey, we appreciate your hard work, dedication and the great attitude you bring to work each day."
-McDonald's Team

McDonald's of Muleshoe
1315 W. American Blvd.
272-3333

WESTERN

800-957-2438 or 806-247-2701 • Grand Ave. at Hwy. 60 • Friona

NEW VEHICLES

<p>98 CHEVY CAMARO</p> <p>MSRP \$20,641.00 REBATE -750.00 YEAR END -750.00 WESTERN DISCOUNT -1900.00</p> <p>LOOK AT THE SAVINGS!</p> <p>SALE PRICE \$17,241</p>	<p>98 OLDS CUTLASS</p> <p>MSRP \$20,198.00 REBATE -1250.00 YEAR END -250.00 WESTERN DISCOUNT -1728.00</p> <p>LOOK AT THE SAVINGS!</p> <p>SALE PRICE \$16,970</p>
--	---

PRE-OWNED VEHICLES

<p>97 CHEVY Z-71 EXT. CAB</p> <p>• Power Windows & Locks • 5.7 V8 • AM/FM Cassette/CD</p> <p>Compare with other ads \$16,995</p>	<p>94 CHEVY S-10 EXTENDED CAB</p> <p>\$6,995</p>
--	--

WESTERN CHEVROLET - OLDS

CATCH MULE MANIA!

NATIVE GRASSES, INC.

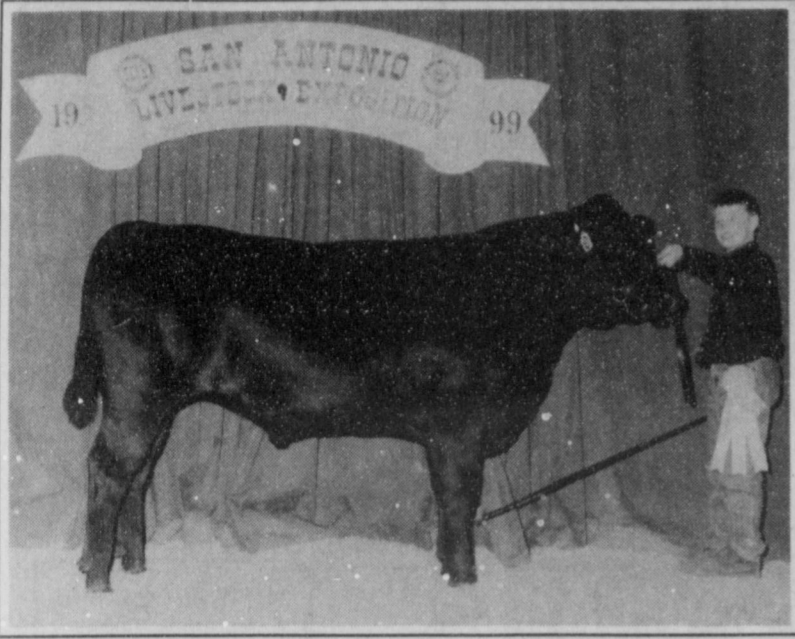
Experts in the sowing and harvesting of native grasses of the Great Plains and of the Southwest

- Specializing in native American grasses of the Great Plains and the Southwest
- Most native grass seeds available at wholesale prices with turnkey jobs.
- All work done in compliance with Government specifications

Please Call:
Darwin Simmacher
505-762-7817
FAX 505-763-9115
Email simmacher@3lefties.com

Or
Vince Simmacher
806-946-3461
FAX 806-946-3604

References provided upon request



(left) Reserve champion

Brady Black of Muleshoe exhibited the reserve breed champion AOB steer, Muscles, Feb. 18 at the San Antonio Livestock Exposition. Black has been showing steers for three years.

(right) Reserve champion Chianina

Ky Kennedy of Muleshoe exhibited the reserve breed champion Chianina steer Feb. 18 at the San Antonio Livestock Exposition. Kennedy, 17, has been showing steers for nine years and plans to attend West Texas A&M when he graduates.

Organization searching for on-the-go grannies

The search is on to find the world's best grandma.

The Washington Apple Commission announced the official beginning of its annual Search for Granny Smith - a nationwide hunt to find the perfect grandmother to promote the state's famous green fruit.

"We're looking for on-the-go grannies," said Jim Thomas, search coordinator for the commission. "Someone who personifies the healthful attributes of our apples."

Thomas said a successful candidate should meet the following guidelines: Be sweet to the core and have good moral fiber. Be hand-picked by chil-

dren, grandchildren, spouse or friends. Have beauty that's more than skin deep, and just the right amount of maturity. Have "a-peel."

Those wishing to nominate a noteworthy grandma should write, in 100 words or less, why the nominee should be considered and enclose a non-returnable photo. Nominations should be sent to Granny Smith, P.O. Box 18, Wenatchee, WA 98807, and received no later than April 2, 1999.

"Nominees don't need to have the last name 'Smith,' and the photos sent to us, like our Granny Smith apples, should be in good taste," Thomas said. Last year's winner was 58-

year-old Joan Phillips of Plano, Texas, an avid community volunteer, fitness enthusiast and grandmother of three. Phillips was selected out of thousands of entries from across the United States and Canada to be the official "spokesgranny" for Washington's apple growers. She's been busy.

"It's been a great year," Phillips said. "I've traveled quite a bit making TV and public appearances. Getting to meet so many people and seeing so much of the country has been a tremendous experience."

Twenty grandmothers, and the person who nominated each of them, will be chosen to participate in "Granny Finale,"

held in May at the Washington State Apple Blossom Festival in Wenatchee, Wash.

The winner will be featured on grocery store posters and will make promotional appearances in the upcoming year.

"We have another crop of high quality Granny Smiths this year, so we need an even bigger crop of granny nominees," Thomas said. "The search has really turned into something special. We give people a chance to tell us why grandmothers are a special part of their lives.

"From the nominations we've received, it seems many grannies have traded in their rocking chairs for tennis shoes."

HONOR ROLL

Muleshoe High School Semester Two Cycle One

9th Grade — Ricardo Aburto, Arzola Blanca, Megan Barrett, Laura Bonds, A.J. Buhrman, Elizabeth Castorena, Carmen Flores, Britni Gartin, Kayla Glover, Lorie Herington, Olimpica Hernandez, Rendi Hodge, Denisse Lopez, Matthew Lopez, Ashley May, Suzanne Messenger, Brandon Mount, Jennifer Rempe, Lincoln Riley, Laura Wood, Zacarias Yanis.

10th Grade — Adrienne Ashford, Letti Barrera, Brandon Broyles, Melissa Flores, Tommie Hernandez, Stephanie Kirk, Luis Pacheco, Aubrey Ruthardt, Bryce Thomason, Megan Tipps, Travis Tunnell, Amanda Villegas, Joshua Williams.

11th Grade — James Barrett, Kamal Bhakta, Clint Black, Randall Bohler, Devin Carpenter, Audra Clarkson, Rosario Flores, Blake Gartin, Chris Gatewood, Phillip Hardt, Ryan Hodge, Leonard Joyner, April Kelley, Stacy Locker, Mitchell Mason, John McClanahan, Ronnie Orozco, Eric Posadas, Tyson Purdy, Kristi Villalobos.

12th Grade — Amber Bruns, Amanda Carpenter, Larhonda Copley, Robin Cowart, Nathan Keller, Cambri Lewis, Joseph Mata, Lizeth Mendoza, Amanda Messenger, Kellie Morris, Bobby Padilla, Ashley Pool, Larkin Price, Alyssa Saylor, Nichole Sutton, Lindy Underwood, Erin Wilhite, Melissa Williams, Ellen Wood.

ON PUBLIC TV *March 6th — 21st*

Festival '99

If PBS doesn't do it who will? And we can't do it without your support.

GREAT PERFORMANCES

"Andrew Lloyd Webber 50th Birthday Celebration."
Sunday, March 7th at 8:10 p.m.

Donny Osmond and Elaine Paige are among the stars who salute Andrew Lloyd Webber, composer of Cats, Phantom of the Opera, Evita and a string of other hits.

VIKKI CARR: MEMORIES, MEMORIAS
Monday, March 8th at 8:00 p.m.

Celebrate Mexican and Latin-American music of the 1940s and '50s. Host and featured artist Vikki Carr takes the audience on a special musical journey back to this golden era with guest performers Cuban-born trumpet player Arturo Sandoval, Pepe Aguilar and Jack Jones. They perform songs in English and Spanish.

JOHN TESH— ONE WORLD
Monday, March 8th at 9:30 p.m.

Accomplished musician and entertainer, John Tesh travels the globe to embrace and celebrate diverse musical cultures and styles - from Native American to Irish, Spanish to Italian, classical to pop.

Television Worth Watching! **kenw3**
EASTERN NEW MEXICO UNIVERSITY
PORTALES, NM

BLUE BOOK™ OFFICIAL GUIDE SINCE 1926



BENDER'S ANNUAL NO DICKER STICKER SALE!

**All Used Cars Priced At Wholesale Or Below!
Hurry In For The Greatest Bargains Of The Year!**

Due to the Fantastic Response to our No Dicker Sale we have...

EXTENDED

the Sale through March 13th

Get A No Hassle Deal!

Over 350 New Cars, Trucks & Vans

Over 300 Used Cars, Trucks & Vans

Purchase- Just Like The Dealer!

All Trades Accepted!

BENDER

Family of Dealerships

You're going to like our family!

**CHEVROLET • OLDSMOBILE
CADILLAC**
2500 MABRY DRIVE
(505) 763-4465

**HONDA
NISSAN**
3000 MABRY DRIVE
(505) 762-3701

**CHRYSLER • PLYMOUTH
DODGE**
3400 MABRY DRIVE
(505) 762-4511

BAILEY COUNTY DEVOTIONAL PAGE

BRUCE, INC.
HEATING & AIR CONDITIONING
Hwy. 214 North Muleshoe 272-5114

DAMRON DRUG, INC.
308 Main St. 272-4210
Muleshoe, TX

SAIN IRRIGATION & MACHINES
Complete Pump Service
W. American Blvd. 272-4397
Walt Sain Muleshoe, TX 272-4148

MULESHOE PEA & BEAN, INC.
RR 2 Box 297 272-5589
Muleshoe, TX

NEEDMORE Co-op Gin Company
946-3361 • Sudan, TX

Henry Insurance Agency, Inc.
"Serving You Since 1964"
111 West Avenue B 272-4581
Muleshoe, TX

MULESHOE MOTOR CO.
1225 W. American Blvd. 272-4251

WES-TEX FEED YARDS, INC.
Custom Cattle Feeding
272-7555 Muleshoe, TX

TINO'S
104 W. American Blvd.
272-7528 • Muleshoe, TX
Daily Specials Owners: Tino & Linda Campoya

FARWELL CONVALESCENT CENTER
"In-Christ's Love, Everyone Is Someone Special"
305 5th St.
481-9027 • FARWELL, TX

"THE FIVE AREA TELEPHONE COOPERATIVE ORGANIZATION"
West Plains Telecommunications Co.
Five Area Systems, Inc., Plateau Cellular Network
Five Area Long Distance - Five Area Internet
302 Uvalde Muleshoe, USA (806) 272-5533

AMERICAN VALLEY INC.
West Hiway 84 272-4266 Muleshoe

FIRST TEXAS FLBA MULESHOE
"Serving Panner & Bailey Counties"
272-3010 • Fax 272-5388
316 Main • P.O. Box 424 • Muleshoe, TX

McCormick Seeds, Inc.
400 East Ash • Muleshoe, Texas
272-3156
A complete line of field seeds

HIGGINBOTHAM-BARTLETT Co.
215 Main Muleshoe
272-3351 FAX 272-6860
Bruce Hartline-Mgr.

Lowe's MARKETPLACE
401 W. American Blvd. 515 W. American Blvd.
Muleshoe 272-4585 Muleshoe 272-4406

MULESHOE FEED BARN
311 W. American Blvd. HI-PRO
Muleshoe, TX 272-5626

For in that he himself hath suffered being tempted, he is able to succour them that are tempted.
-Hebrews 2:18

MULESHOE AREA HEALTHCARE Center
"Committed to Caring"
106 W. Ave. H Muleshoe 272-7578

IRRIGATION PUMPS & POWER
ZIMMATIC CENTER-PIVOTS
W. Hwy. 84 272-4483

Facts About The BIBLE BY JOHN LEHTI

IN THE KING'S NAME

THE ANCIENT KINGS, AS SUCH, WERE VARIED. NEBUCHADNEZZAR OF BABYLON AND ARTAXERXES THE PERSIAN WERE EACH "KINGS OVER KINGS" (EZRA 7:12; DAN. 2:37; II KINGS 24:17). HOWEVER, THE USUAL MONARCH OFTEN RULED ONLY ONE CITY, SOME OF THEM BEING LESS THAN THE SIZE OF A SMALL VILLAGE BY TODAY'S STANDARDS. A MAN BECAME KING OF A NATION OR CITY EITHER BY APPOINTMENT, BY ONE WHO WAS HIGHER IN AUTHORITY (I SAM. 9:16, 16:1, 13; II KINGS 23:30), OR BY THE POPULAR DEMAND OF THE PEOPLE (I SAM. 18:8; II SAM. 5:1-3; I KINGS 12:20; II KINGS 23:30) OR BY USURPING A THRONE, OR BY INHERITANCE. THE RESTRAINTS UPON A KING WERE THE FEAR OF GOD AND MAN. THE POPULAR WILL COULD NOT BE IGNORED! HOWEVER, THE KINGS DID LEAD A SHELTERED AND LUXURIOUS LIFE. IN VIEW OF THE ROYAL DUTIES REQUIRED OF THEM, BOTH PHYSICAL AND MENTAL, THE MORAL REQUIREMENTS DEMANDED A HIGH MEASURE OF INTEGRITY TO RULE WELL. MANY OF THE ATTRIBUTES AND ACCOMPLISHMENTS ATTRIBUTED TO NUMEROUS RULERS WERE REALLY CARRIED OUT BY A DESIGNATED SURROGATE, WHO DID THE ACTUAL STORMING OF THE BATTLEMENT WALL, OR CHARGED FEARLESSLY INTO AN ENEMY'S CAMP... "ALL IN THE KING'S NAME!" WHILE A KING REMAINED IN THE LUXURIOUS TRAPPINGS OF HIS PALACE... HIS APPOINTED SURROGATE, MANY MILES AWAY, MIGHT BE WEARILY APPROACHING A BATTLE WHERE HE IS DESTINED TO BRING... "HONOR TO THE KING'S NAME!"



136 SAVE THIS FOR YOUR SUNDAY SCHOOL SCRAPBOOK

This devotional & directory is made possible by these businesses who encourage all of us to attend worship services.

ASSEMBLY OF GOD
FIRST ASSEMBLY OF GOD
521 South First Street • 272-3017
Jack Stone, Min. • 272-3984
S.S. 9:45 am, W.S. 11 am & 6:30 pm, Wed. 7:30 pm
EL BUEN PASTOR
415 E. Ave. F • Pastor Felix Cadena
S.S. 9:45 am, W.S. 11 am & 6 pm; Wed. 7 pm

BAPTIST CALVARY BAPTIST
1733 W. Ave. C. Rev. Jeff Coffman
CIRCLE BACK BAPTIST
Intersection FM 3397 & FM 298
Jessie Shaver, Min • 946-3676
FIRST BAPTIST
220 West Ave. E., Stacey Conner, Min.
FIRST BAPTIST
Lazbuddie • 965-2126
PRIMERA IGLESIA BAUTISTA
223 E. Ave. E. Rev. Greg Guzman
PRIMITIVE BAPTIST
621 South First, Elder Cleveland Bass, Min.
PROGRESS BAPTIST
Progress, TX
PROGRESS SECOND BAPTIST
Arthur Hays, Min.
1st & 3rd Sundays
RICHLAND HILLS BAPTIST
17th & West Ave. D, George Malis, Pastor
ST. MATTHEWS BAPTIST
Corner of W. Boston & W. Birch
Floyd R. Monroe, Min.
THREE WAY BAPTIST
927-5467
TRINITY BAPTIST
314 E. Ave. B, Robert Brown, Min.

CATHOLIC IMMACULATE CONCEPTION CATHOLIC CHURCH
805 E. Hickory, Father Joseph Agustine
CHARISMATIC EPISCOPAL ST. CLEMENTS
1536 W. American Blvd. • 272-5954
Father Sergio Leal
Sun. W.S. 10:30 am

CHRISTIAN THE CHRISTIAN CENTER
Morton Hwy. • 272-5105
Reydon Stanford, Min.

CHURCH OF CHRIST LARIAT CHURCH OF CHRIST
Sam Billingsley, Min.
S.S. 10 a.m.; W.S. 11 a.m. & 6 p.m., Wed. 7 p.m.
LAZBUDDIE CHURCH OF CHRIST
Nathan Crawford, Min.
S.S. 9:30 am; W.S. 10:20 am & 5 pm; Wed. 7 pm
MULESHOE CHURCH OF CHRIST
22nd & W. American Blvd.
Harry Riggs, Min.
Albert Garcia, Min. (Spanish service)
S.S. 9:30 am; W.S. 10:20 am & 6 pm; Wed. 7:30 pm
16th & AVE. D CHURCH OF CHRIST
Curtis Shelburne, Min. • 272-4619
S.S. 10:30 am & 1:30 pm; Wed. 7:00 pm

LUTHERAN ST. JOHN LUTHERAN
Lariat, TX-David Symm, Min.
S.S. 10:30 am; W.S. 9:30 am
METHODIST FIRST UNITED METHODIST HISPANIC MINISTRIES
E. 5th and E. Ave. D
Pastor Benito Cavazos
FIRST UNITED METHODIST
507 W. 2nd St.
Pastor Brad Reeves
LAZBUDDIE METHODIST
965-2121
EL DEVINO SALVADOR
814 W. Ave. C, Muleshoe, TX
Guadalupe Ballinas, Min.

NAZARENE NEW VISION CHURCH OF THE NAZARENE
814 W. Ave. C • 272-3622
Hugh Hayes, Interim-S.S. 10 & 11 am; W.S. 7 pm
PENTECOSTAL UNITED PENTECOSTAL LIGHTHOUSE
207 East Ave. G • 1-800-454-6051
Pastor McKibben, S.S. 10 am
Thursday, Bible Study 7 pm
INTER DENOMINATIONAL NEW COVENANT
Plainview Hwy. Jimmy Low, Min.
Steve Claybrook, Assoc. Pastor
W.S. 10 am; Wed. 7 pm

Muleshoe Area Medical Center "Your Hospital"
708 S. First St. • 272-4524
Muleshoe, TX

BAILEY COUNTY ELECTRIC COOPERATIVE ASSN.
Muleshoe — 272-4504 Morton — 266-8600

minsa southwest corporation
P.O. Box 484 272-5545
Muleshoe, TX
FAX (806) 272-5135 (800) 852-8291

CHURCH OF CHRIST LARIAT CHURCH OF CHRIST
Sam Billingsley, Min.
S.S. 10 a.m.; W.S. 11 a.m. & 6 p.m., Wed. 7 p.m.
LAZBUDDIE CHURCH OF CHRIST
Nathan Crawford, Min.
S.S. 9:30 am; W.S. 10:20 am & 5 pm; Wed. 7 pm
MULESHOE CHURCH OF CHRIST
22nd & W. American Blvd.
Harry Riggs, Min.
Albert Garcia, Min. (Spanish service)
S.S. 9:30 am; W.S. 10:20 am & 6 pm; Wed. 7:30 pm
16th & AVE. D CHURCH OF CHRIST
Curtis Shelburne, Min. • 272-4619
S.S. 10:30 am & 1:30 pm; Wed. 7:00 pm

LUTHERAN ST. JOHN LUTHERAN
Lariat, TX-David Symm, Min.
S.S. 10:30 am; W.S. 9:30 am
METHODIST FIRST UNITED METHODIST HISPANIC MINISTRIES
E. 5th and E. Ave. D
Pastor Benito Cavazos
FIRST UNITED METHODIST
507 W. 2nd St.
Pastor Brad Reeves
LAZBUDDIE METHODIST
965-2121
EL DEVINO SALVADOR
814 W. Ave. C, Muleshoe, TX
Guadalupe Ballinas, Min.

NAZARENE NEW VISION CHURCH OF THE NAZARENE
814 W. Ave. C • 272-3622
Hugh Hayes, Interim-S.S. 10 & 11 am; W.S. 7 pm
PENTECOSTAL UNITED PENTECOSTAL LIGHTHOUSE
207 East Ave. G • 1-800-454-6051
Pastor McKibben, S.S. 10 am
Thursday, Bible Study 7 pm
INTER DENOMINATIONAL NEW COVENANT
Plainview Hwy. Jimmy Low, Min.
Steve Claybrook, Assoc. Pastor
W.S. 10 am; Wed. 7 pm

PACO FEED YARD, INC.
Commercial Cattle Feeders
P.O. Box 956 265-3281
Frona, TX
Feller Hughes-Mgr.

TEXAS FARM BUREAU INSURANCE CO.
1612 W. American Blvd. • 272-4567 • Muleshoe
FARM BUREAU INSURANCE
FARMS RANCHES RESIDENTIAL COMMERCIAL
Nieman Realty
116 East Avenue C Muleshoe • 272-5285
George & Dianne Nieman

WESTERN DRUG
114 Main 272-3106 Muleshoe
Springlake Potatoes, Inc.
P.O. Box 280 • Springlake, TX
262-5542
1ST BANK MEMBER FDIC
202 South First 272-4515
WINKLES TRUCKS, INC.
Box 757 (806) 247-2724
Frona, TX

PINNACLE THERAPY SERVICES
Speech/Language, Physical & Occupational Therapies
305 5th St. • Farwell, TX • (806) 481-CARE
1315 W. American Blvd.
272-3333
Muleshoe, TX
MULESHOE LIVESTOCK AUCTION
Muleshoe, TX • Sale Every Saturday
Clayton Myers • 272-4201
BAILEY GIN COMPANY, INC.
946-3397 • Sudan, TX
Peanut Hawkins, MGR
SHERLEY-ANDERSON LAZBUDDIE ELEVATOR
965-2922 Lazbuddie, TX

Leal's Tortilla Factory, Inc.
"Serving West Texas since 1957"
107 E. Ash 272-5772 Muleshoe, TX
MAPLE COOP GIN
927-5501
Maple, Texas
JAMES CRANE TIRE CO., INC.
107 Main 272-4594
Mike Hahn Muleshoe, TX
TERRA DISTRIBUTION
Hwy. 84 • 272-4203
Muleshoe, Texas
Bruce Bruns - Mgr.
churchs CHICKEN
1411 American Blvd.
272-5581
Muleshoe, Tx.
10% Discount for Senior Citizens
HEREFORD FEED INGREDIENTS, INC.
232 Main St. • Muleshoe, Tx.
272-5871
DAVID R. TIPPS — Representative
Dairy Queen
1201 W. American Blvd. meet me at DQ
272-3412 Muleshoe
WEST CAMP GIN, INC.
Better Ginning & Courteous Service
Route 2 Box 1000 • 925-6681
James Shepard / Phyllis Shepard Muleshoe, TX

WESTERN DRUG
114 Main 272-3106 Muleshoe

Springlake Potatoes, Inc.
P.O. Box 280 • Springlake, TX
262-5542

1ST BANK MEMBER FDIC
202 South First 272-4515

WINKLES TRUCKS, INC.
Box 757 (806) 247-2724
Frona, TX

PINNACLE THERAPY SERVICES
Speech/Language, Physical & Occupational Therapies
305 5th St. • Farwell, TX • (806) 481-CARE

1315 W. American Blvd.
272-3333
Muleshoe, TX
McDonald's

MULESHOE LIVESTOCK AUCTION
Muleshoe, TX • Sale Every Saturday
Clayton Myers • 272-4201

BAILEY GIN COMPANY, INC.
946-3397 • Sudan, TX
Peanut Hawkins, MGR

SHERLEY-ANDERSON LAZBUDDIE ELEVATOR
965-2922 Lazbuddie, TX

Leal's Tortilla Factory, Inc.
"Serving West Texas since 1957"
107 E. Ash 272-5772 Muleshoe, TX

MAPLE COOP GIN
927-5501
Maple, Texas

JAMES CRANE TIRE CO., INC.
107 Main 272-4594
Mike Hahn Muleshoe, TX

TERRA DISTRIBUTION
Hwy. 84 • 272-4203
Muleshoe, Texas
Bruce Bruns - Mgr.

churchs CHICKEN
1411 American Blvd.
272-5581
Muleshoe, Tx.
10% Discount for Senior Citizens

HEREFORD FEED INGREDIENTS, INC.
232 Main St. • Muleshoe, Tx.
272-5871
DAVID R. TIPPS — Representative

Dairy Queen
1201 W. American Blvd. meet me at DQ
272-3412 Muleshoe

WEST CAMP GIN, INC.
Better Ginning & Courteous Service
Route 2 Box 1000 • 925-6681
James Shepard / Phyllis Shepard Muleshoe, TX

Shipman's Body Shop
Auto Painting • Wrecker Service • Free Estimates
Tractor Glass & Windshields
410 N. 1st Muleshoe, TX
272-4408 FAX 272-3366

Two locations to serve you
1900 W. American Blvd. 107 E. American Blvd.
272-5337 272-3978
Muleshoe, TX **Town & Country**

Decorators Floral & Gifts
616 South First 272-4340
Muleshoe, TX

OBITUARIES

CHARLES D. JULIAN

Charles D. Julian, 72, of Grand Prairie, Texas died Saturday, Feb. 27, 1999.

Services were held March 1 at Donnelly Colonial Funeral Home in Grand Prairie.

He was born on Jan. 11, 1927 in Marlow, Okla. and married Mary Scarbrough in 1948.

Mr. Julian attended school in Muleshoe and Lazbuddie. He served in the U.S. Navy during World War II and the Korean War. He worked for the Texas Alcohol Beverage Commission and later served as a constable in Tarrant County. He was active in youth sports and worked with underprivileged children.

He is survived by his wife; a daughter, Sherri Rainey of Grand Prairie; two sons, Mark Julian of Phoenix, Ariz. and Jeff Julian of Mt. Pleasant, Texas; his mother-in-law, Mrs. A.E. Scarbrough of Muleshoe; and numerous nieces and nephews, including Betty Freeman of Muleshoe, Connie Barnes of Lazbuddie and Eddie Wilt of Lubbock.

RONNIE LUNA

Ronnie Luna, 34, of Littlefield died Wednesday, March 3, 1999 at University Medical Center in Lubbock.

A rosary was said on Friday at Ellis Funeral Home Chapel in Muleshoe with Francis Del Toro officiating. A funeral mass was held Saturday at Immaculate Conception Church in Muleshoe with Father Joseph Augustine officiating. Burial was held in Muleshoe Memorial Park Cemetery under the direction of Ellis Funeral Home of Muleshoe.

Mr. Luna was born July 8, 1964 in Muleshoe. He moved to Littlefield from Muleshoe in 1998. He was a brick layer and a member of the Immaculate Conception Catholic Church of

Muleshoe.

He is survived by his mother, Carolyn Gonzales of Littlefield; a son, Matthew Luna of Muleshoe; four sisters, Sue Ann Fitzgerald of Garland, Texas, Jackie De La Garza of Lubbock, and Elizabeth and Amanda Gonzales, both of Littlefield; and a brother, Tony Luna Jr. of England.

The family requests memorials be made to Immaculate Conception Catholic Church, 805 E. Hickory, Rt. 3 Box 247, Muleshoe, Texas, 79347.

PEGGY JOYCE SOWDER

SUDAN — Peggy Joyce Sowder, 66, died Wednesday, March 3, 1999 at Lamb Healthcare Center in Littlefield after a lengthy illness.

A church service was held Friday at the First Baptist Church in Sudan with Rev. Cliff Hargrove, pastor, officiating and Mike Sowder assisting. Burial was held in Littlefield Memorial Park under the direction of Hammons Funeral Home of Littlefield.

Pall bearers were Charles Heffington, Dewitt Tiller, Ronnie Fisher, Wayne Salsberry, Alvis Collins, Cliff Cook, and Robert Hooten.

Mrs. Sowder was born Aug. 31, 1932 in Milam County, Texas. She married Bill Sowder on Aug. 14, 1949 in Bailey County. They moved to Littlefield from Bula in 1982. Aside from being the "Best Nana", Peggy spent many hours getting the highest cotton price for every farmer she dealt with. She worked as a bookkeeper and cotton buyer for the Bula Gin and was a former member of the Bula Baptist Church.

She is survived by her husband, Bill Sowder of Littlefield; two sons, Terry Sowder of Enochs, and Jerry Sowder of Bula; two daughters, Joyce

Risinger of Knox City, Texas, and Rhea Lyn Newton of Ralls, Texas; two brothers, Kenneth Campbell of Edmonson, Texas, and Lynn Campbell of Harmony Community, Texas; five sisters, Estelle Waldrop and Geneva Wassom, both of Andrews, Texas, Glorice Pirkle of Plainview, Nina Edwards and Doris Mulkey, both of Roswell, N.M.; eight grandchildren; and three great grandchildren.

The family requests memorials be made to the Littlefield EMS or to the Sudan fire department.

BILL R. CLARK

Bill R. Clark, 72, of Lubbock died Wednesday, March 3, 1999 at University Medical Center in Lubbock.

A church service was held Saturday at the First United Methodist Church in Dimmitt with Revs. Rusty Dickerson of the First United Methodist Church in Dimmitt, Vernon O'Kelly of Amarillo, and Jesse Hodge of the First United Methodist Church in Levelland officiating. Burial was held in Westlawn Memorial Park Cemetery in Dimmitt under the direction of Foske, Lilley, McGill Funeral Home of Dimmitt.

Mr. Clark was born on Nov. 9, 1926 in Chillicothe, Texas. He married Joyce Burch in Davidson, Okla. She preceded him in death in Oct. 1969. He then married Deanne Haggard Harris on Jan. 16, 1971 in Lubbock.

Mr. Clark moved to Lubbock from Dimmitt in Jan. 1998. He was a resident of Dimmitt for 27 years after moving from Lubbock in 1971. He attended school in King High and graduated high school from Chillicothe. He was a graduate of Texas A&M University with a bachelor degree in Agricul-

tural Economics. He served in the U.S. Navy as a radar operator on the USS Marquette in WWII. He was discharged in 1946.

He was awarded Citizen of the Year in Hale Center in 1967. He was a member of the Methodist church since 1971. He was also a member of the Lions Club and Masonic Lodge. He was a manager of the Hale Center Wheat Growers for 12 years. He worked with West Texas Feed Mill in Roscoe, Texas in 1968. In 1970, he worked with Houston Bank for Cooperatives in Lubbock. He became manager and CEO of Dimmitt Agriculture Industries in 1971. He served in the position until he retired in 1993. He continued to work as a consultant to DAI until 1998.

He was a past chairman of the Administrative board of the First United Methodist Church in Dimmitt. He was awarded the Cooperator of the year in 1982. He was elected to the Board of the Plains Memorial Hospital in Dimmitt in May of 1994 and served as secretary for one year. He was then elected president in 1995 until his retirement in 1998.

He is survived by his wife, Deanne; two sons, Greg Clark of Sanger, Texas, and Jimmy Harris and his wife Kathy of Arlington; a daughter, Tonya Brewer and husband Kirk of Wilmete, Ill.; three sisters, Jo Ann Zastoupil of Richardson, Texas, Doris Jones of Greenville, Texas and Lorraine Maynor of Wichita Falls; four brothers, Sidney Clark of Big Springs, Texas, Wayne Clark of Oklahoma City, Sterling Clark of Quanah, Texas, and Gerald Clark of Beaumont, Texas; and six grandchildren, Adam Brewer, Adrian Brewer, Evan Brewer, Ian Harris, Kay

Harris and Zak Harris. He was preceded in death by a son, Ray Clark in Nov. of 1955.

The family suggests memorials be made to the music department of the First United Methodist Church of Dimmitt or Levelland, the Southwest Cancer Center of UMC Hospital in Lubbock, or the American Heart Association, South Plains Region, 3403 73rd Street, Suite #1, Lubbock, Texas, 79423.

B&B Agritech

GRASS SEED & DRILLING
Custom Farming
 Aer*Way Plows
 Kem Bales (806) 272-5400
 Cell # (806) 946-7255
 Doug Bales (806) 272-4419
 P.O. Box 104 • Muleshoe, TX

THANKS
 for reading the
Muleshoe Journal!

The family of Fernando Mora would like to give their sincere thanks to everyone who called, visited, brought food, sent cards or flowers, said a prayer or simply had us in your thoughts during the illness and death of our husband, father and grandfather.
A special thank you to RN Shelly Rice of Hospice Care from Dimmitt, Texas.
Maria Mora and Family

Being Together Is a Broadening Experience

This week I share a column from my brother Gene in Amarillo.

Back in the turbulent 60's when white Americans had to face up to their racial sins, one of the most disturbing books I read was *The Luminous Darkness*, by black author and university chaplain, Dr. Howard Thurman.

In the tiny southern town he grew up in, Dr. Thurman's parents

Thurman says that the little dog who had barked so ferociously for so long panicked!

It's amazing what can happen when traditional fences come down, even for a day. Dr. Thurman was writing about racial fences of prejudice and segregation, but his parable also is pregnant with truth about the theological fences that separate members of Christ's Body.

Some of us have been yapping at one another across denominational fences for a long time. Many of God's best truths and blessings never can be ours if we insist on staying comfortably sequestered on our side of the fence.

The Bible tells us in Ephesians 2:14 that Jesus died to make peace and to break down what the apostle Paul called "the dividing wall of hostility." Jesus came to remove the fences that separate his people.

C. S. Lewis wrote somewhere that dogs and cats should be raised together because "it broadens them so." He's right.

Black and whites should be raised together.

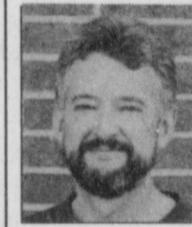
Males and females should be raised together.

Longhairs and rednecks should be raised together.

Catholics and Protestants, Baptists and Methodists, Lutherans and Church of Christ folks, Presbyterian people and the rest of the Christian community should often be together.

It broadens us so!

Curtis Shelburne is minister of the 16th & D Church of Christ in Muleshoe.



Focus On Faith
 Curtis Shelburne

owned a house with a small front yard and a white picket fence.

Every day when the Western Union boy rode by on his bicycle, Dr. Thurman's little black dog would meet the boy at one corner of that fence and yap at him all the way to the other corner, sounding like he would tear the boy limb from limb if he could just get to him. The boy and the dog repeated this ritual every day for years.

Then one night, incredibly for this part of the south, it snowed. Deep. That morning when the Western Union boy came trudging through the drifts, Dr. Thurman's dog bounded out to bark at him, but before the mutt knew it, he was up and over the fence atop the drifted snow. For the first time, with no barrier between them, he stood face to face with his foe. And Dr.

doing well. Patsy Chance's Aunt Alice fell 3 times.

Noble Grand June gave a short program on the objectives and purpose of the Rebekah Lodge. Tickets for the raffle on May 6 are on sale for a donation of one (1) dollar each or six for five dollars. Each member is asked to make an item to go with the quilt which is the main item of this raffle.

TOPS NEWS

TOPS #34 weekly and monthly report were given during the March 4 meeting at the Church of Christ on American Boulevard. Fourteen members attended the meeting.

In the weekly report, Lucille Harp and Polly Otwell tied for best loser. First runner up was Alene Bryant. Evelene Harris and Janie Hughes tied for second runner up. Evelene Harris was best loser for the month. Tying for the second runner up were Teresa Stone and Polly Otwell. Jewel Peeler was the best K.O.P.S. loser.

It was also announced that Lucille Harp was first place winner in division four. Cheryl de Graffenreid placed first in division three. Officers were elected at the meeting and Laverne James will continue to be the leader. Polly Otwell will serve as the new co-leader. Janie Hughes was elected secretary and Ruth Clements was elected treasurer. The new card chairman is Lucille Harp and Joline Franklin will continue

Those that weren't able to make it to lodge this week were missed. Hope to see you next week. With no further business the lodge was closed by Acting Vice Grand Thursie Reid with the Rebekah Creed and 2 verses of the song An Evening Prayer. Refreshments were served after lodge by Alene Bryant and Joyline Costen.

as reporter of TOPS news. Installation of officers will be at our March 11 meeting, where Neomi Sanchez will install the officers.

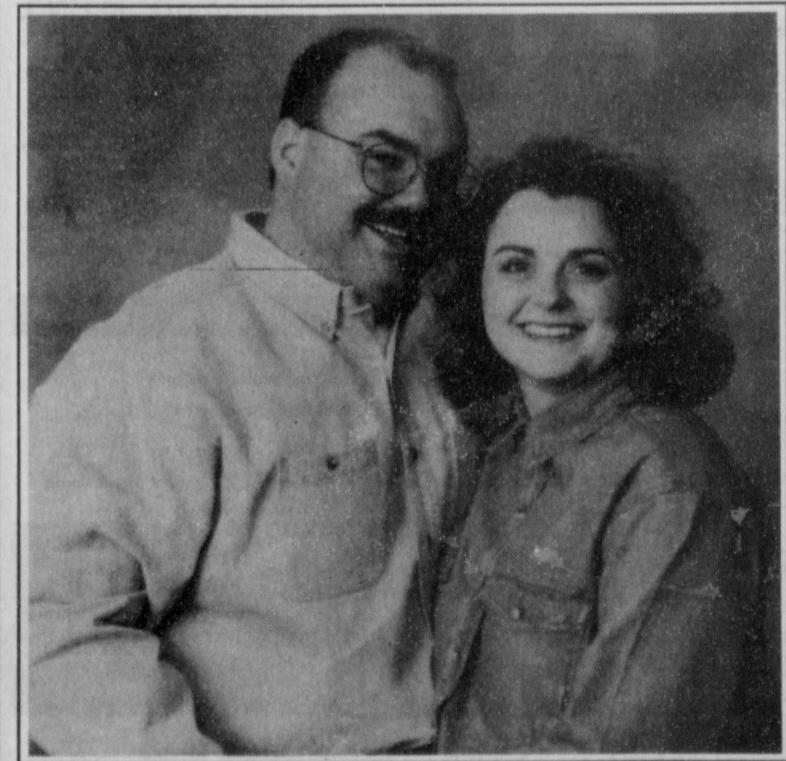
REBEKAH NEWS

Noble Grand June Green called the Muleshoe Rebekah Lodge #114 to order at 7:30 p.m. The opening prayer was given by Ruby Green. Patsy Chance called the roll with 8 members answering. The minutes of the previous meeting were read. Fi-

nancial report was given by Joyline Costen.

It was reported the Mr. Bill Taylor is not doing well. Velma Howell will have eye surgery Wednesday in Clovis. Thursie Reid's nephew, Garry Tombs is ill again. Clara Lou Jones is not

ENGAGEMENT



Jackson — Holmans

Mr. and Mrs. Tony Holmans of Muleshoe announce the engagement and approaching marriage of their daughter Michele, to Dan Jackson, son of Mr. and Mrs. Max Jackson of Slaton. Michele graduated from Muleshoe High School in 1991 and Lubbock Christian University in 1995. She is employed by Dr. Gladys Whitten DMD PC as a surgical assistant/financial coordinator. Dan is a 1987 graduate of Lubbock Cooper High School and a 1993 graduate of Lubbock Christian University. He is employed by Swisher Co-op Gin in Kress, Texas as a General Manager. The couple will marry at 7 p.m. on May 29 at Monterey Church of Christ in Lubbock.

BERKELEY

RELIABILITY IN AG IRRIGATION

Have "Sand In Your Water"? Do Your Submersible Pumps Have Brass Bearings? BERKELEY Submersibles incorporate "ION" hardened shafts with Rubber Bearings throughout, allowing SAND to wash through the Pump, and NOT become "Sandpaper" to your pump's shaft, destroying the life of your pump & motor.

It's Your Money!

Contact Wilson Drilling Co. at 806.272.5521

ENGAGEMENT



Holt — Reves

Roxanne Renee Reves of Farwell, and Michael Paul Holt of Amarillo announce their engagement. Roxanne is the daughter of Jerry and Linda Reves of Decatur, Texas. Michael is the son of Ronnie and Sue Holt of Muleshoe. Roxanne is a graduate of Lake Highlands in Dallas and a May candidate for graduation from ENMU in Portales, N.M. with a degree in elementary education. Michael is a graduate of Muleshoe High School and Texas Tech University. He is employed by United Supermarkets in Amarillo. The couple will marry June 5 at the First Baptist Church in Muleshoe and will make their home in Amarillo.

NURSING HOME NEWS

Friday afternoon the Joy Choir from the First Baptist Church came for a Gospel sing-a-long. Several of the members lead favorite songs of the group that included Joe Shafer, director of the youth at First Baptist. Special guests at the singing were Wanda Kemp at the piano and Anna B. Lane and Michelle Standard. Refreshments were served following the singing.

Saturday afternoon Melvin and Wanda Kittrell and Harold and Mary Jo Burge directed the bingo games. Clark baked and brought his famous oatmeal cookies. Each Sunday morning the Muleshoe Church of Christ directs the Communion Service. Buster Kittrell taught Bible Study on Sunday morning. The Progress Baptist Church came Sunday afternoon for Church services.

Congratulations to Winnie Orcutt on the birth of a new grandson. Our sincere sympathy goes to Grace Scarbrough on the death of her son-in-law.

Glenda Jennings and Jackie Scoggins entertained with music, songs, and puppets Wednesday afternoon. Billie Bob (#1 puppet) sang songs that he sang at the "Toast to Texas" ceremony on Tuesday. Florence Harvey received many good wishes visits and gifts on her birthday Wednesday, March 3.

Happy March Birthday to Andy Hernandez born March 6, 1924; Florence Harvey born March 3, 1911; Irene Splawn born March 19, 1912; Nettie Quesenberry born March 7, 1903; Otilie Wisian born March 15, 1905; and Dovie Matthews born March 30, 1904. The March Birthday party is sched-

uled for Thursday, March 25 at 3 p.m. The Lazbuddie Young Homemakers will host a St. Patrick's Day party on Friday, March 19 at 3 p.m.

Bobby Quesenberry, Nettie's son from San Antonio, is visiting. She was also visited by Jack and Anna B. Lane; Michelle Standard; Christin and Tiffani; Mrs. Damron and Joe Embry. Beverly Wagon, Claudine Embry, Mary Jo Burge, and Dorothy Turner came Tuesday for the Beauty Shop Social. Rosie Martin went with her son and daughter-in-law, Mr. and Mrs. Bill Martin to the doctor in Lubbock on Tuesday. Berta Combs dined with her mother Elzia Darland Tuesday at noon in the Care Center.

Buster and Wanda Kittrell and Harold and Mary Jo Burge served coffee, juice and donuts to the residents Wednesday morning. Harold and Buster directed the around the table discussion. Steve Claybrook

ministered to us through the scriptures and his word during devotional time. Loyce Killingsworth and Buster directed the sing - spiration, and Jim Claunch and Ruby Garner joined us.

The Snitker Brothers will enter-

tain Friday, March 12 at 3 p.m. Velta Fyie, Joe Embry, Stacy Conner, and Tuni Benham visited the Care Center this week. Betty Ramage brought quarters for the bingo games on Saturday. The Muleshoe A.A.R.P made a donation to the Care Center.

Come Check Our Rates!

WE HAVE MONTHLY AUTO INSURANCE

Delton E. Wilhite & Associates
INSURANCE AND FINANCIAL SERVICES

1631 West American Blvd. • 272-3652 or 272-5988

Happy 5th Birthday
to our Little Sugar Plum Fairy

We love you Harley! Mom & Manuel

Journal Classifieds

STOP & SHOP

Deadlines are 5 p.m. Monday and Thursday

Call 272-4536

Deadlines are 5 p.m. Monday and Thursday

LEGAL

Three Way Independent School District is accepting bids for a 42 to 48 passenger activity bus. Bids will be received until 4 p.m. Thursday, March 11, 1999, at the Office of the Superintendent. Three Way I.S.D., P.O. Box 60, Maple, Tx. 79344. All bids will be opened during the regular meeting of the Board of Trustees of Three Way I.S.D. beginning at 8p.m. on Thursday, March 11, 1999. Bids may include a trade-in value for a 1975 GMC 41 passenger Scenic Cruiser. This vehicle may be seen at Three Way I.S.D. during normal business hours between 8 a.m and 4 p.m. Additional information concerning this bid may be obtained from William L. Hood, Superintendent, Three Way I.S.D., at the above address or by phone at (806) 927-5531. The Board of Trustees of Three Way I.S.D. reserves the right to accept or reject any and/or all bids. Published in the Bailey County Journal, Feb. 28, and March 7, 1999.

BUILDING MATERIAL

Steel Building in Original Crate. 40x24 was \$5,880 now \$2,969. Jim 1-800-292-0111. 10s-2tch

FOR SALE

Farm Land FOR SALE

Approximately 560 acres on Bailey/Lamb county line. Two irrigated quarters with 2 Valley pivots and 4 wells, 215.4 acres CRP. Separate 80 acre tract improved grassland. \$199,000.00. Financing available to qualified buyers.

Contact: **Jay Messenger**
Muleshoe State Bank
(806) 272-4561

1 Refrigerator in good working condition. \$100
Call 272-5732

FOR RENT

Ruidoso Condo
3 Bedroom 3 Bath
Sleeps 8
Call Debbie at
(806) 285-3053

Storage Rooms Available \$25-\$30
Call Ted Barnhill 272-4903

House at 1603 Ave. B. \$350 per month. Call 272-3711. 9s-4tch

Smile

HELP WANTED

Leal's Restaurant is now taking applications for wait staff, full or part-time. Apply in person. ttc

Weekend RN 54-bed Medicaid approved nursing home. Competitive salary, excellent benefits. Contact Terri Brown, Director of Nursing, at Muleshoe Area HealthCare Center, 106 West Ave. H, Muleshoe Tx. 79347, (806) 272-7578. 10s-3tch

HOMES

HADLEY HOMES, INC.

Family Owned Raymond & Sherry Hadley
Se Habla Espanol
(505) 763-1788 or 1-888-316-6111
4100 Mabry Drive Clovis, NM
Fax (505) 763-0698
Sales Reps: Bowie Howard & Anna Loyola

HUNTING LEASE

Three responsible hunters are looking for Mule Deer lease. Please call Mark at (361) 758-2800. 9s-stfc

STRAYED

Six (6) 350-550 wt. mixed-breed heifers and steers. Mill-iron seven brand on right hip; notch in tip of right or left ear. Missing since Feb. 19, in the Stegall Area. Call (806) 946-3617.

REAL ESTATE

3 BEDROOM 2 BATH & 2 CAR GARAGE HOME
ON CORNER LOT!
400 SWITH IN SUDAN.
GOOD NEIGHBORHOOD
CALL 933-44912

2-1-1 Home with floor furnace, fenced yd., storage building. Call 272-4084. 8s-9tpd

2 bedroom home, west 9th street. Call 272-3962 or 272-3976. 9s-4tch

Brick 3-2-1, fans, fireplace and strom cellar. Located in Earth, Tx. Low down payment and payments as low as \$231.75 a month. Call (806) 562-3961 or (806) 272-5865. 9s-2mo.

SERVICE

HENDERSON SERVICE CO.

MAJOR APPLIANCE & MINOR HOME REPAIRS
272-4450

James F. Hayes & Co.

AGRICULTURAL REAL ESTATE SERVICES

- 320 Acres with exceptional 3 or 4 bedroom home. Large barn, 2 center pivot systems, and 1/2 mile road to above farm. HOUSE, BARN & TRACTOR CAN BE SOLD SEPARATELY.
- 181 Acres, Bailey County, Center pivot, 2 wells, fronts U.S. Highway 84. Joins 320 acre tract above.
- 160 acres of Bailey County SOLD on Pavement.
- 160 Acres - South of Muleshoe, Bailey County. Late Model Sprinkler. Good water, 2 1/2" good, small house and barn.
- 880 Acres in Parmer County North of Clays Corner. Good soil, 5 wells. Good 3 bedroom 2 bath home.

Vic Coker, Agent
310 Main St. Suite 103 Muleshoe
Office 272-3100 Home 965-2468
WHEN LAND INVOLVES COWS AND PLOWS

AUCTIONS

Monday, March 8, 1999 - - - - SALE TIME 9:37 a.m.

Location: Amherst, Texas 3 1/2 miles East on FM Hwy 37, then 5 miles North on FM Hwy 2579; or from Littlefield, Texas 6 miles North on US Hwy 385, then 2 1/2 miles West on FM Hwy 37, then 5 miles North on FM 2479; or from Springlake, Texas 9 miles south on US Hwy 385, then 3 miles West on CR 172, then 1 mile South on FM Hwy 2479.

Phil Bourland - - Owner

We have quit farming a moved to another area of the state and will sell the following at Public Auction. For more information call Cruce & Fletcher Auctioneers (806) 296-5050 or (806) 866-4201.

- TRACTORS
- IRRIGATION
- FARM EQUIPMENT
- COTTON & HAY EQUIPMENT
- TRACTOR & TOOL MAKEUPS
- SPRAYERS, TANKS, TRAILERS
- NON CLASSIFIED

Cruce & Fletcher
Auctioneers and Real Estate Brokers
James G. Cruce Plainview, Tx. (806) 296-5050 Lic # 6704
Bobby Fletcher Wolfforth, Tx. (806) 866-4201 Lic # 7131
PO Box 609 - WOLFFORTH, LUBBOCK COUNTY, TEXAS 79382

WANTED

Graze out pasture 272-3061. 10s-4tch

VEHICLE

1995 Ford F250 XLT, 4x4 regular cab, HD Off Road, AT, AC, 55K miles, ext. warranty. Must see, call 946-3432. ttc

Read the Classifieds!

Nieman Realty

116 E. Ave. C • George Nieman, Broker • 272-5285 or 272-5286

- RICHLAND HILLS — PARK RIDGE**
- We have several single and multi-family lots in this area!!!
 - NICE 3 bdrm. 2 bath w/3 car detached garage/workshop-storage, Elec. Heat Pump, built-ins, FP, 2,380' lv. area, auto. splkr., fenced yd., MORE!!! RH-2
 - NICE 3-2-2 Brick, Cent. A&H, built-ins, FP, approx. 2100' lv. area, storage, fenced yd., MORE!!! RH-1
- HIGHLAND - HARVEY AREA**
- 3-1-1 carport Home, wall furnace heat, evap. air, large yd., MORE!!! \$20's!!!!
 - 3-2-2 Brick, Cent. A&H, built-ins, gas log FP, fenced yd., stor. bldg., MORE!!! Price Reduced!! HL-5
 - 2-1-1 carport home, wall furnace heat, evap. air, DW, 5 fans, cov. patio, gas grill, fenced yd., MAKE OFFER!!!
 - 3-2-2 Brick Home, corner lot, wall furnace heat, Cent. Evap. Air, fenced yd., stor. bldgs. MORE!!! HL-4
 - NICE 2-2-1 + 1 Carport Brick, 2,000 + living area, Cent. A&H, built-ins, fans, den w/WB stove, enclosed heated pool, corner lot, fenced yd., MORE!!! \$80's!! HL-1
- LENAU - COUNTRY CLUB AREA**
- PRICE REDUCED 2-1-1 Carport Home, wall furnace, nice carpet, storm shelter, stor. bldg., fenced yd. \$19K!!! CC-3
 - 2-1-1 Home, floor furnace, win. ref. air, fenced yd, stor. bldg., \$18,500 !! L-1
 - 3-2-2 Carport Mobile Home, Cent. A&H, built-ins, nice yd., pecan & fruit trees!!! \$16K!!
- COMMERCIAL**
- Six Unit Apartment Complex (4-2bdrm. & 2-1bdrm. units)!!!
 - 100' x 140' tract, approx. 7,400' business & warehouse building on American Blvd., PRICED TO SELL!!!
 - Established Business: Land, Bldg. & Equip., \$75K!!
 - 56' x 140' tract, approx. 4700' bldg., \$35K!!!
 - NICE R.V. STORAGE, 14' X 40' metal bldg. 12' doors, 50X140 corner lot!
 - SNACK SHACK - Lot, Buildings, furniture & fixtures!!!
- HIGH SCHOOL**
- Nice 3-2-2 Brick, built-ins, heat pump, 5 fans, nice carpet, stor. bldg., fenced yd., MORE!!! \$60's!!! HS-3
- RURAL**
- PRICE REDUCED- NICE 3-2 home, 40 acre tract, Geo. Heat Pump, built-ins, 5" irrig. well, Hi-Press. lines, sprinkler pipe, barn, pens, tractor & equip!!! \$69K!!!
 - W. of SUDAN-NICE 3-3-2 Brick Home, 5 acre tract on Hwy. 298, Cent. Air & Heat, built-ins, large Quonset Barn, MORE!!! \$95K!!!
 - 5 Acre tract on pavement close to town!
 - Approx. 108 acres on Hwy. 70, approx. 2100' office area, 16,900' of commercial bldg. w/loading dock, 3,400' warehouse!!! 2,800' runway!!
 - LONGVIEW - GOOD Dryland Labor, fully allotted, planted in wheat & hoes with sale until 3-1-99. \$225.00 per acre. 152.8 acres, 15hp & 20hp. sub., Lockwood splkr., 85 acres seed brasses & 35 acres wheat. \$475.00 per acre.
- 2-2-2 BRICK, Cent. A&H, built-ins, corner lot, approx. 1800' lv. area! !! PRICE REDUCED! MAKE OFFER!!! HS-4**
- 3-1-2-1 Home on corner lot, fenced yd., storage bldg., MORE!!! \$20's!!! HS-9**
- NEWLY REMODELED 3-1-1 Home, cent. A & H, new carpet & vinyl, fenced yd., MORE!!! \$30's!!! HS-2**
- VERY NICE 3-1-1 Brick, Heat pump, DW, nice carpets, fenced yd., MORE!!! \$30's!!! HS-1**
- NICE 2-1-1 Brick, Heat Pump, nice carpets, well insulated, storm windows & doors. \$30's!!! HS6**
- VERY NICE 3-1-1 Home, nice carpets and vinyl, heat pump, fans, fenced yd., stor. bldgs., MORE!!! \$30's!!! HS-5**
- PRICE REDUCED!!! 3-2-1 Brick, Heat Pump, built-ins, fans, screened porch!!! \$30's!!! HS-7**
- JUST LISTED- 2-1-2 CP Home, corner lot, metal siding, storm win. & doors, stor. bldg. \$20K!!! HS-8**
- 1-14' x 60' and 1-12' x 40' Mobile Home on a 98' x 75' lot, both have cent. heat, evap. air, stove, & ref., cov. patios, fenced yd.!!! \$20K!!!**
- 3-2-2 Home, corner lot, floor furnace heat, Cent. Air, auto. splkr., stor. bldg., fenced yd., MORE!!! \$50's!!! HS-10**
- PRICE REDUCED !!! 3-1-1 Brick, Cent. heat, evap. air, fans, fenced yd. HS - 12**

AD RATES

READER ADS — 15 words or less cost \$4.50 the first time your ad runs and \$4.15 the second time and thereafter the same ad runs. 16 words or more cost \$.30 per word each time your ad runs and \$.26 per word the second time and thereafter the same ad runs.

DISPLAY CLASSIFIED ADS — \$5.53 per column inch each time your ad runs.

Shurfine... Winter Sale

PRICES EFFECTIVE MARCH 3-9, 1999

MEAT

Preferred Trim Boneless Beef Top Round Roast	lb.	\$1²⁹
Tender Stir Fry Beef	lb.	\$2⁵⁹
Fresh Ground Round	lb.	\$1⁸⁹
Preferred Trim Boneless Beef Top Round Steak	lb.	\$1⁴⁹
Tenderized Beef Cube Steak	lb.	\$2³⁹
Farm Raised Raw Catfish Fillets	lb.	\$2⁹⁹
Pilgrim's Pride Small Pack Leg Quarters	lb.	49¢
Pilgrim's Pride Jumbo Pack Leg Quarters	lb.	39¢
Preferred Trim Boneless Beef Rib-Eye Steak	lb.	\$4⁴⁹
Fresh Pork Spare Ribs	lb.	\$1⁴⁹
Shurfine Jumbo Meat Wieners	1 lb. pkg	69¢
Shurfine Reg./Polish Bun Length Smoked Sausage	12 oz. pkg	89¢
Shurfine Quality Sliced Bacon	1 lb. pkg	\$1⁶⁹
Shurfine Quality Stack Pack Bacon	1.5 lb. pkg	\$2⁴⁹
Shurfine Meat Bologna	1 lb. pkg	99¢
Shurfine Sliced • Meat Bologna • Cooked Salami • P&P Loaf Luncheon Meat	6 oz. pkg	59¢
Shurfine Cooked Ham	6 oz. pkg	\$1⁴⁹
Shurfine Chopped Ham	6 oz. pkg	\$1¹⁹
Shurfine Reg. or Polish Smoked Sausage	1 lb. pkg	\$1⁴⁹
Shurfine Cocktail Smokies	14 oz. pkg	\$1⁶⁹
Shurfine Breakfast Link Sausage	11 oz. pkg	89¢
Shurfine • Ham • Beef • Turkey • Corned Beef • Chicken Thin Sliced Meats	2.5 oz. pkg	39¢
Shurfine Corn Flakes	12 oz. box	89¢
Shurfine Instant Coffee	2 oz. jar	99¢
Shurfine Aluminum Standard Foil	25 sq. ft. roll	69¢
Shurfine Sandwich Bags	80 ct. box	65¢
Shurfine Assorted Microwave Popcorn	3 ct. pk	99¢
Shurfine Louisiana Hot Sauce	3 oz. btls	3/99¢
Shurfine Spaghetti, Spaghetti Rings w/ Meatballs or Regular/Mini Beef Ravioli	15 oz. can	75¢
Shurfine Lentil Beans	1 lb. bag	2/89¢
All Types Pepsi-Cola	12 pk.-12 oz. cans	2/\$5
All Types Pepsi-Cola	6 pk.-24 oz. btls	2/\$5

PRODUCE

Cello Wrapped Iceberg Lettuce	hd.	69¢
Red Ripe Roma Tomatoes	10/\$1	
Sweet Juicy Cantaloupe	lb.	49¢
Garden Fresh Crisp Broccoli	ea.	79¢
Red Ripe California Strawberries	baskets	2/\$3
Fresh Tropical Mangos	ea.	59¢
Crisp Cello Carrots	1 lb. bags	3/\$1
Red Seedless Grapes	lb.	\$1²⁹
Washington Extra Fancy Red Delicious Apples	3 lb. bags	2/\$3
Shurfine Long Grain Rice	2 lb. bag	75¢
Shurfine Grape Jelly	32 oz. jar	75¢
Shurfine Canola or Vegetable Oil	32 oz. btl	\$1²⁹
Shurfine Assorted Potato Chips or Pretzels	6-10 oz. bag	69¢
Shurfine Liquid Bleach	gal. jug	75¢
Shurfine Assorted or Decorated 2 Ply Paper Towels	reg. rolls	2/89¢
Gravy or Chunk Style Shurfine Dog Food	20 lb. bag	\$3⁹⁹
Shurfine Fresh Scent/Summer Breeze Sheets Fabric Softener	40 ct. pkg	99¢
42 Use Regular or 33 Use w/Bleach Shurfine Ultra 2 Laundry Detergent	your choice	\$2⁹⁹
Shurfine White Bath Tissue	4 roll pkg	69¢
Shurfine White Facial Tissue	175 ct. box	99¢
Western Family Firelogs	3 lb. log	79¢
Western Family Firelogs	6 ct. case	\$3⁹⁹
Shurfine Regular Assorted Ration Dog Food	13 oz. can	29¢
Shurfine Assorted Paper Napkins	120 ct. pkg	89¢
Shurfine Squeeze Tomato Ketchup	28 oz. btl	99¢
Shurfine Select Group Salad Dressings	8 oz. btl	99¢
Shurfine Select Group Pickles	32 oz. jar	\$1⁸⁹
Shurfine Assorted Cranberry Blends	48 oz. btls	2/\$3
Reg. or Tuna Flavor Shurfine Moist Cat Food	12 oz. box	75¢
Shurfine Assorted Dog Biscuits	4 lb. bags	2/\$5
Shurfine Select Group Gravy, Seasoning or Sloppy Joe Seasoning Mixes	875-2.15 oz. pouches	4/\$1
Refreshing All Sport	32 oz.	99¢

FROZEN & DAIRY

Shurfine Regular Assorted Ice Cream	1/2 gal. squares	2/\$3
Shurfine Pimento Cheese Spread	7 oz. tub	\$1¹⁹
Shurfine Pimento Cheese Spread	12 oz. tub	\$1⁷⁹
Delicious Corn Dogs	27 oz. pkg	\$2⁴⁹
Shurfine Corn Dogs	1 lb. pkgs	2/\$3
Shurfine Ham or Chicken Salad	7 oz. pkg	\$1¹⁹
Shurfine 16 oz. Tub A Change For The Butter	Buy One, Get One	FREE
French Onion or Green Chili Shurfine Dips	half pint	69¢
Shurfine Chilled Orange Juice	gal. jugs	2/\$5
Sm/Bm/Butter Flavor-Shurfine Texas Style Biscuits	12 oz. cans	2/\$1
Shurfine IWS American Singles	12 oz. pkg	\$1⁹⁹
Shurfine Citrus Punch	64 oz. btl	75¢
Shurfine Cottage Cheese	24 oz. ctn	\$1⁹⁹
Shurfine Cinnamon Rolls or Orange Danish	12.4-13.9 oz. can	\$1³⁹
Shurfine Shredded • Cheddar • Mozzarella • Cheddar Jack Cheese	8 oz. pkg	\$1⁸⁹
Shurfine Chocolate Milk	1/2 gal. btl	\$1²⁹
Shurfine Regular or w/Pulp Orange Juice	12 oz. can	69¢
Shurfine Fried Chicken	25 oz. boxes	2/\$5
Shurfine Whole IQF Strawberries	16 oz. pkg	\$1⁴⁹
Shurfine Tater Tots	32 oz. pkg	99¢
Shurfine Mini Corn on the Cob	8 ear pkg	\$1³⁹
Shurfine Fudge Bars	6 ct. pack	95¢
Shurfine Potato Curis or Crunchy Seasoned Fries	32 oz. pkg	2/\$3
Shurfine Reg. or Country Hash Browns	24 oz. box/bag	\$1²⁹
Shurfine Chopped/Cut Leaf Spinach	16 oz. pkg	99¢
Select Group Shurfine • California • Oriental • Mediterranean • Broc. & Cauliflower • Stew Vegetables Vegetable Blends	16 oz. pkg	99¢
Shurfine Real Chocolate Chips	12 oz. pkg	\$1²⁹
Shurfine Regular, Lite or Fat Free Coffee Creamer	16 oz. jar	99¢
Shurfine Brownie Mix	21.5 oz. box	\$1⁰⁹
Shurfine Blueberry Muffin Mix	13 oz. box	\$1²⁹
Shurfine Corn Oil	32 oz. btl	\$1⁴⁹
Shurfine Whole Oysters	8 oz. can	\$1⁶⁹
Shurfine Elbo Mac or Long Spaghetti Pastas	12 oz. pkgs	2/89¢
Shurfine Assorted Creme Sandwich Cookies	20 oz. pkg	\$1²⁹
Shurfine Pinto Beans	4 lb. bags	2/\$3

HEALTH & BEAUTY

Western Family Isopropyl Alcohol or Hydrogen Peroxide	16 oz. btls	4/\$1
Western Family Cotton Swabs	300 ct. pkg	99¢
Western Family Petroleum Jelly	3.75 oz. jar	99¢
Western Family Vitamin B Complex	100 ct. btl	\$2⁴⁹
Western Family 500 MG Vitamin C	100 ct. btl	\$1⁹⁹
Western Family Assorted Flavors Cough Drops	30-40 ct. pkg	75¢
Western Family Asstd. Nighttime/Daytime Cold Medicine	6 oz. btl	\$1⁹⁹
Western Family Reg. or Maximum Strength Bis-mate	8 oz. btl	\$1⁹⁹
Western Family Reg./Mint Milk of Magnesia	12 oz. btl	\$1⁹⁹
Western Family Natural/w/Aloe Baby Wipes	80 ct. pkg	2/\$3
36 ct. Small • 26 ct. Medium • 20 ct. Large • 18 ct. Ex-Large Shurfine Ultra Thins Diapers	18-36 ct. pkg	\$3⁹⁹
Western Family Baby Shampoo	15 oz. btl	99¢
Western Family • 16 oz. Lotion • 14 oz. Oil • 15 oz. Powder Baby Products	your choice	2/\$3
Oil or Water Pack Chunk Light Shurfine Tuna	6 oz. can	39¢
Shurfine Tomato Sauce	8 oz. cans	7/\$1
22 Varieties Shurfine • Mexican Style Chili Beans • Pinto Beans • Dark Red Kidney Beans • Reg./No Salt Cut Green Beans • French Sliced Green Beans • Whole Kernel Crisp 'N Sweet Corn • Reg./No Salt Whole Kernel/Reg. Cream Style Golden Corn • Whole Sweet Golden Corn • Sliced/Diced Carrots • White/Golden Hominy • Mixed Vegetables • Sauerkraut • Whole New/Sliced Potatoes • Whole Peeled/Diced or No Salt Tomatoes Vegetables	12-15.5 oz. cans	3/\$1
Shurfine Granulated Sugar	4 lb. bag	\$1¹⁹
Shurfine All Purpose Flour	5 lb. bag	75¢
Shurfine All Purpose Flour	25 lb. bag	\$3²⁵
15 oz. Fruit Rings • 14 oz. Magic Stars • 13.5 oz. Crispy Rice Shurfine Cereals	your choice	2/\$3
Shurfine Reg. Strawberry or Asstd. Frosted Toaster Tarts	11 oz. box	99¢
Shurfine Regular Assorted Spring Water	50.7 oz. btls	2/\$1
Western Family Coffee Filters	100 ct. pkgs	2/\$1
Regular Elect. Perk or Drip Shurfine Coffee	39 oz. can	\$3⁹⁹
Shurfine Assorted Dinners Mac & Cheese	7.25 oz. boxes	5/\$1
Shurfine Chunky or Creamy Peanut Butter	18 oz. jar	99¢
Assorted Varieties Shurfine Soda Pop	3 liter btl	79¢
Shurfine Tomato Soup	10.75 oz. can	39¢
Shurfine Regular/Fat Free/Unsalted Crackers	15-16 oz. box	79¢
Shurfine Select Varieties Spaghetti Sauce	26.5 oz. can	75¢
Shurfine Plastic Wrap	100 ft. roll	99¢
Shurfine Tall Kitchen Bags	30 ct. box	\$1⁹⁹

Each Week you may purchase the 5 piece plate setting for only \$3.99 with each \$10.00 minimum purchase.
Affiliated Foods, Inc. presents Chrome Stainless Steel Flatware!

At participating stores only.

GRANADA GOURMET COLLECTION

5-Piece Place Setting

\$3.99

With Two Patterns To Choose From

with each \$10.00 purchase
Reg. Price \$6.99

We are giving you the opportunity to purchase a flatware set to suit your household at a fraction of the regular cost! Each week different completer pieces will be featured at a special feature price with coupon so you may round out your flatware collection. Lifetime Warranty, High Quality Shine, Made in Spain, Dishwasher Safe.

REDEEM YOUR VALUABLE COUPONS! Anytime Between Jan. 31-Mar. 27, 1999

WESTERN MONEY
UNION TRANSFERSM
"The fastest way to send money"

Lowe's
MARKETPLACE

401 W. American Blvd.
Muleshoe 272-4585



515 W.
American Blvd.
Muleshoe
272-4406

WE RESERVE THE RIGHT
TO LIMIT QUANTITIES
IN TEXAS

WEEK 5
LASAGNA / PASTRY SERVER
\$3.99
WITH \$3.00 OFF COUPON.
REG. PRICE \$6.99
W/\$10.00 PURCHASE
ONLY AT PARTICIPATING AFFILIATED FOODS MEMBER STORES. ONE COUPON PER COMPLETE PIECE.