

Irish Shillelagh Lynx

Hansford Library
120 Main
Spearman, Tx 79081

Coach Don Mullins and the football team faced a new Shamrock, Irish team on Friday night at the High School Stadium. The team that everyone, including the Lynx, beat easily last year, came out here Friday night and quickly served notice they were not the same team. The Irish scored two touchdowns in the first quarter and two more in the second quarter to beat the hometown Lynx twenty-four to zero.

The game started with the Lynx kicking off to the visiting Irish. The Irish got the ball on their own forty after a short kick by the Lynx. In their first offensive play the Irish looked less than impressive, as the quarter back almost threw an interception across the middle of the field. The second play from scrimmage for the Irish began a series of six running plays and two passing plays that lead to the Irish's first touch down.

The running for the Irish was split between number ten, Tracy Smith and number one Ruben Garza. Smith had one run, of about twenty yards, on the third play to keep the drive alive. Garza ran the last four yards to punch the ball into the Lynx end zone for the score.

The Irish failed in their point after attempt which left the score six to zero. Only about one and a half minutes had elapsed off the clock.

After the Irish kickoff the Lynx started their first offensive series on their own thirty yard line. They moved the ball on the ground

steadily for the first three plays, gaining a first down. A ten yard penalty cause them to lose the momentum, and they were forced to punt.

The Irish punt returner was tackled on his own thirty-five but a personal foul penalty added fifteen more yards, to move the ball up near the fifty yard line.

Starting at the fifty the Irish again put together a drive ending in a touch down. It started with two runs by Smith of ten and twenty yards and ended with Garza carrying the ball in from the fifteen yard line. With only two minutes and thirty seconds left on the clock, the Lynx are down twelve to nothing. The Irish missed the point after attempt, so the score stayed the same through the first quarter.

The second quarter was a repeat of the first. The Lynx would move the ball a little on offense but in the end would have to punt. On defense the Lynx could not seem to figure out how to stop Smith and Garza. The two Irish running backs combined for two more Irish touchdowns in the second half.

The half ended on a positive note for the Lynx, as they managed to move the ball from their own twenty to the Irish fifteen in the last minute and half of the quarter. The quarter ended with the Lynx quarter back, Edward Mayfield, completing two fifteen yard passes in a row.

Despite the score of twenty-four

to zero the Lynx showed no signs of giving up in the second half. They played the Irish dead even during this entire half.

The half started well for the Lynx with a twenty three yard run by number 22, Scott Wilkerson. The drive stalled on the next series of plays and the Lynx team was forced to punt.

The Irish started their first second quarter offensive series from their own twenty seven yard line. A penetrating defensive line, resulting in a sack of the quarter

back, and a penalty accounted for the loss of twenty yards.

The whole second half went pretty much the same way, with each team playing defense well enough to keep their opponent from moving the ball and scoring.

As you might can tell from the game discription the Lynx seem to get better as the game went on. They put a stop to the running attack of Smith and Garza on defense, and managed to make some yards on offense. As coach Mullins said at the end of this game, "Were going to get better!"



LYNX defense (dark jerseys) hold Irish scoreless inside the 20 during the second half of Friday nights football game.



The Hansford Plainsman

25¢
Per Copy

6 Pages

Volume 19, No. 45

YOUR HOMETOWN NEWSPAPER

Sunday, September 10, 1989

Centennial Series Finale . . .

Hansford Then & Now

by Jean Ann Behney

Does a picture speak a thousand words? It would take many more than that thousand words to summarize one hundred years of Hansford County history, so as a "finale" of sorts to our weeks of decade-by-decade Centennial Series articles, we are happy to present a few "Then and Now" looks at the past and the present of what early Pioneer J. H. Gruver called "God's Country."

The "then" pictures appear on the left in each pair and our recent photograph of the same site, the "now," on the right.

The only church building in Old Hansford was the Methodist Church. The first photograph here is of a Hansford County "Sunday School Convention" and the one person we were able to identify is A. E. Townsend, who stands at the far right with an upraised hand. Townsend was the Sunday School Superintendent of the Methodist Church in Old Hansford and was probably the organizer of the group picture being taken. We do not have a date for this picture, but we believe it must have been taken around 1917 or 1918. The Methodist Church was built in

1916, moved to Spearman in 1919 and then sold to the First Christian Church in Gruver in 1949. Today this same structure can be found in the Harris Addition in Gruver. (Photo on right) Despite its missing bell tower and its use as a machine shop, it is easily recognizable by its vestibule and three narrow windows.

Back in Old Hansford, the only clue to its previous location is found in the foundation stones among the wild grasses. These outline the vestibule and part of the main building.

The Turkey Track Ranch house (better known to older residents as the McKay place), located on Highway 136 just north of the Palo Duro Feedlot on a hill overlooking North Palo Duro Creek, was built sometime prior to 1886. The original structure was doubled in size and the long porch added later. The old photo on the left was not dated, but the size of the elm trees in the photo taken this week (on the right) gives an idea of how old the first photo is. Guy McKay owned the property in the late 1880s and although he used the

MK Bar as his cattle brand, the Turkey Track Brand painted on the front of this stone house remains. The stones for the house were quarried only a mile away.

McKay, readers may recall, installed the first telephone in Hansford County, stringing lines along the tops of his barbed wire fences. According to Melyn Johnson of Gruver, who researched the house for a newspaper article a year ago, McKay also introduced alfalfa to the county.

The ranch changed hands several times, with Tom Coble buying it in 1911. Coble later revived the Turkey Track Brand, as Johnson's article reports, and the family of Katherine Coble Whittenburg still owns the ranch. It is presently leased to Wes Whitaker.

I am indebted to Melyn Johnson and her Gruver Statesman article on the Turkey Track Ranch house for much of the information I have included here.

Hansford County's first permanent structure was called Zulu Stockade. Erected by the Cator

See Hansford Page 3

A Reporter's Final View

by Jean Ann Behney

In some ways, it was a relief to finish the Centennial Series this week. After all, writing these history articles was a lot like having a term paper due every Thursday at noon. My children will no longer wake up to the sounds of the word processor and my husband won't have to stumble over all the old bound newspaper volumes to get into our room. I won't have to telephone anyone to beg for an interview or bury myself in research materials at every spare moment.

On the other hand, now I'll need an excuse to drop by to visit with some of the best people in the county who have been so helpful all these months. And I will honestly miss seeing the sun come up in the wee hours of Thursday mornings during my weekly deadline race.

Writing this Centennial Series was a learning experience, complete with the requisite highs and lows and in-betweens that come with any long-term commitment.

I'll never forget the thrill I felt when I came across familiar names in old, old newspapers or

spy a strangely familiar face in a yellowed photograph. There is little excitement that compares with hearing a 90-year-old blithely describe her days in a Panhandle dugout or seeing a tall, strong farmer in his eighties close his eyes with pleasure as he recalls the smell and taste of the orange he found in his Christmas stocking over 75 years ago.

There were moments when I, an admitted "City Gal" only recently come to the county, sensed a oneness with Hansford history--pushing the hair out of my face to look into the wind as I stood silently on the site of Old Hansford...driving across bumpy country roads on a perfectly cloudless spring day en route to yet another interview...dreamily gazing at remembrances--a small toy elephant made of iron, a boy's grade school report card--from a pioneer's childhood.

The past was very close to me at those times and made me appreciate fully its importance and its continuing effect on today and tomorrow.

Then there were those instances when I wanted to scream in

frustration. The funniest (in retrospect!) of these happened one early Thursday morning in May. I had been typing frantically since 4 a.m. at the computer in our gloomy living room. My forgotten cup of tea had long since grown stone cold and pages and pages of notes and opened books covered the floor at my feet in a sea of words. The sun had presented itself gloriously some time earlier, but I hadn't had a spare minute to take a look at the day it brought. Time was running out, as I expected the imminent arrival of some children I'd promised to babysit.

With at least two paragraphs to go, I was writing as fast as my stiff fingers would type on the computer keyboard. At the exact moment I triumphantly dashed off my final sentence, the doorbell rang. "I'll print that story as soon as I let in the kids," I thought, and getting up blearily from my chair. I turned to walk to the door... STEPPING ON THE ELECTRICAL CORD to the computer as I did so. With an innocent

See View Page 3



Hansford County "Sunday School Convention" at the Methodist Church in 1917 or 1918.



The old Methodist Church building now being used as a machine shop in Gruver.

Among the Neighbors

by Helan Fisher

Dillon and Jared Hohertz of Canadian have manfully accepted their new responsibilities in the advice and guidance of a brand new little sister.

Samantha Michele was born to Jeff and Cheryl Hohertz on August 28 and she weighed 7 lb, 1 oz.

Grandparents are Marve and Bob Hohertz, Spearman, and Dr. and Mrs. John Albracht, Amarillo. There is only one great grandparent-Mrs. Eula Pearl Petree of Canadian.

Marve stayed with the family in Canadian from Tuesday until Sunday.

Norma and Buddy Paine of Ralls, Texas, spent the past weekend with her parents, Ernest and Louise Archer.

Bernard and Sharon Dossett of Amarillo visited here over the weekend with his parents, Mr. and Mrs. Lawrence Dossett and her parents, Mr. and Mrs. William Whitford.

Christy Hunt and daughter, Michele, of Lubbock also spent the weekend here with grandparents, the Lawrence Dossetts.

Residents of Hansford Manor had a very interesting afternoon one day this week when they were taken on a tour of the Palo Duro Dam. Jody Harnish and Linda Lujan drove the van, with passengers David Stewart, Sam Miller, Will Douglas, Phoebe Fox, Albert Latham, Mary Johnson, Nina Evans and Willie Cash all enjoying the drive.

One of the supervisors of the dam site was kind enough to drive the van all over the premises and explain in detail the activities.

The Manor held the August birthday observance on August 25. The Prairie Garden Florists furnished corsages and flowers and Coy Bennett of Perryton provided entertainment. He had a vast repertoire of musical numbers on his harmonica.

Members of the auxiliary who furnished the refreshments and hosted the occasion were Adalyn Barnes, Jo Larson, Ora Lee Blackburn, Verita Mays, Mary Ann Ayres, and Dorothy Lusby.

Those having birthdays during August were: Ward Spivey, Susie Sursa, Lula Baggerly, Gertrude Martin, and Luthera Dixon.

New residents are Frank Mas-sad and Viola Leshner. Mrs. Leshner is the mother of Susie Hand and is from Oklahoma. O.V. and Nova Lee Walker of Gruver are tempor-

ary residents.

Denise and Roy Harbour announce the arrival of a son on Sept. 1. Dane Madison was born at High Plains Baptist Hospital in Amarillo and weighed 8 lb, 9 oz. He joins a three year old sister, Macy. Grandparents are Monty and Marie Harbour and Buddy and Nell Benton, all of Spearman. Mrs. Pauline Winger of Gruver is the only great grandparent.

Mr. and Mrs. Monty Black, Darla and Brian, returned from a two-week vacation just in time for the beginning of school.

They first drove to Sedalia, Missouri where the Missouri State Fair was being held. Brian, 8, showed a barrow and placed 10th out of 51 exhibitors. This certainly is worthy of mention since it is the first time Brian has shown and he competed with adults, not other children. In addition both Darla and Brian showed gilts, with Brian placing 9th and Darla placing 13th. Considering the huge number of pigs being exhibited, any placing was admirable.

After the pigs were sold, the Blacks toured many points of interest in Kansas City. Including the famous Zoo and the stadium where both the Royals and Chiefs compete.

After a fun trip to Wonder World, similar to Six Flags, they went on to Plattsburg, near Kansas City and visited relatives.

Later at Springfield riding through the fantastic Caverns and the Bass Pro Shop was exciting for them. In the Pro Shop, a sporting goods store where there is actually a water fall and a stream with live fish, there are also real animals and fish that have been stuffed.

Near Springfield at the Wilderness Safari they saw over 2000 wild and exotic animals and birds, uncaged.

Later they enjoyed Silver Dollar City, but unfortunately, the train ride around Silver Dollar City and over Table Rock Lake and the tour of the Marvel Caverns had been cancelled due to severe weather.

At Dripson and environs they visited relatives before concluding their 2600 mile trip.

A point of special interest in the early part of their vacation, at Mountain View, near Kansas City, they visited friends who used to live in Spearman. Kent and Donna Depee and Marty and Chad send greetings to all their old friends in Spearman.



MR. AND MRS. ARCHER

Mr. and Mrs. Carl Archer celebrated their 50th wedding anniversary with a dinner for their family and close friends recently at the Berger Country Club. The event was hosted by the children and grandchildren of the couple. Archer married the former Peggy Garrett on Aug. 22, 1939, at Liberal, Kan. They have lived in Spearman for 50 years. Archer is the owner of Speartex Grain and is involved in oil and gas and farming and ranching. Mrs. Archer is involved in the family business and is a homemaker. The couple belongs to the First Baptist Church of Spearman. Mrs. Archer is an honorary member of the Rho Rho chapter of Beta Sigma Phi. Children of the couple are Mary Frances and Perry Dixon of Spearman and Carla and Tommy Gumfory of Gruver. The couple have six grandchildren and two great-grandchildren.

Artists Invited To Enter Show

Area artists are invited to participate in the 7th annual Ochiltree County Art Association Show which is being held September 20th thru September 24th at the Ochiltree County EXPO Center. Entry divisions include: abstracts, acrylics, mixed media, oils, pastels, watercolors, drawings, weavings, wood carvings, sculpture, stained glass, amateur photography and non-alien art.

set-up day, with the judging taking place on Thursday, Sept. 21st, Friday, Saturday, and Sunday, the show will be open for public viewing. Ribbons will be

awarded to 1st, 2nd, and 3rd places in each category as well as cash prizes being given to the best of each division, best of youth entry, artists' choice, best of show and participating artists' choice award.

The Hansford Plainsman

Your Hometown Newspaper
Spearman, Tx. 79081

USPS 2346-6000

213 Main, Box 458, 659-3434

Published Weekly at
213 Main, Spearman, Texas

Owned and Operated by:

Texas Independent Newspapers, Inc.
19906 Encino Grove, San Antonio, Tx 78259

Second class postage paid at Spearman, Texas 79081.

Any erroneous reflection upon the character of any person or firm appearing in these pages will be gladly and promptly corrected upon being brought to the attention of the management.

PUBLISHER - ROBERT M. HULETT

Subscription Rate: Spearman, adjoining counties, combination with the Spearman Reporter, \$19.95; non-adjoining counties, \$24.95 annually.

Postmaster: Send address changes to Hansford Plainsman Box 458, Spearman, Tx. 79081.

The publisher reserves the right to revise or reject at its option any advertisement which it deems objectionable, either in subject or phraseology, or which it may deem detrimental to its business.



Hometown News

College News

Richard Allison, son of Dick Allison of Spearman, graduated Aug. 11 from Texas State Technical Institute with a certificate in professional truck operations.

Clinton Goodman of Spearman recently was named to Texas State Technical Institute's honor roll in automotive technology for the summer quarter.

Church of Christ Mails Free

The Spearman Church of Christ has announced it will be mailing free issues of Church UpReach Magazine to nearly a thousand homes in and around Spearman during the month of September, according to John Scott, minister of the congregation.

Magazines

Church UpReach Magazine is a well known national publication. It has gained much recognition for its concept of inspiring and self-help articles. The magazine contains informative articles and stories on coping with personal,

spiritual, and family problems.

The content of Church UpReach is totally editorial, with no paid advertising. It is geared to help readers with their emotional and spiritual well-being.

The list of contributing writers contains familiar names such as Randy Becton, Paul Faulkner, and Sandra Woodruff Milholland. Recent issues have included titles such as "Starting Over", "Finding Companionship", and "Everybody Has Scars".

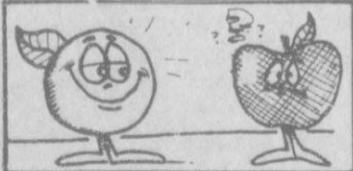
"We want to be a positive force in our community", said John Scott, minister of the Spearman Church of Christ. "We feel that this magazine will really be a wonderful way to help people in our community and to show them that we are a church who cares."

This special issue of Church UpReach contains information about the Spearman Church of Christ. The articles focus on marriage and the family.

If you would like a free one year subscription to UpReach magazine, please write to the Church of Christ, P.O. Box 475, Spearman.



The children of Mrs. Ofelia Rivas De Reyes, mother of Rev. Romeo Reyes, Pastor of Primera Mission Bautista Spearman Texas, celebrated their mother's 89th birthday on Sept. 2. Her grandsons Arturo and Hiram Reyes presided and preached in the thanksgiving service. Music was also presented by her children, grandchildren and great grandchildren.



Fresh, unpeeled peaches supply 40 percent fewer calories than apples, almost twice as much vitamin C and more vitamin A.

We are so appreciative of everyone's concern and interest extended during my surgery and recovery.

It is very heartwarming to know that so many people were thinking of me and my family.

Your messages of encouragement and best wishes were surely valued.

To Dr. Juan Viola: We commend your professional judgement and awareness of the immediate problem with insistence for further evaluations.

Thank you so much,
R.L. & Kaye McFarlin

Bridal Shower

Honoring:

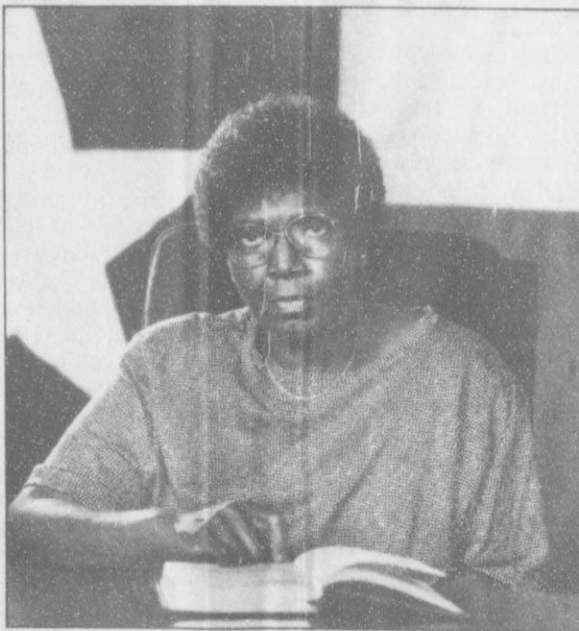
Theresa Guthrie,
Bride of Brad Guthrie

Saturday, Sept. 16
2:30 - 4:00 p.m.

First Baptist Church
Fellowship Hall

Given by: Hostesses

Gift selections: Sacks
Chalor's



Texans Respond To Illiteracy

"Texas is in trouble.

One third of the adults in Texas today lack the reading and writing skills necessary to function in the modern workplace.

Without the participation of these 3.3 million Texans, Texas cannot keep up with today's technological advances or compete for tomorrow's more specialized jobs.

Unless we act now to overcome this devastating situation, Texas will be left behind."

—Barbara Jordan

Literacy Volunteers of America-Texas Responds To Illiteracy

To address the growing crisis of illiteracy in Texas today, Literacy Volunteers of America has established a state office in Austin, and LVA-Texas' staff and volunteers are working hard to improve reading, writing and English speaking skills throughout the Lone Star state.

These efforts are important, but they are not enough.

Texas needs your help.

You Can Respond To Illiteracy in Texas

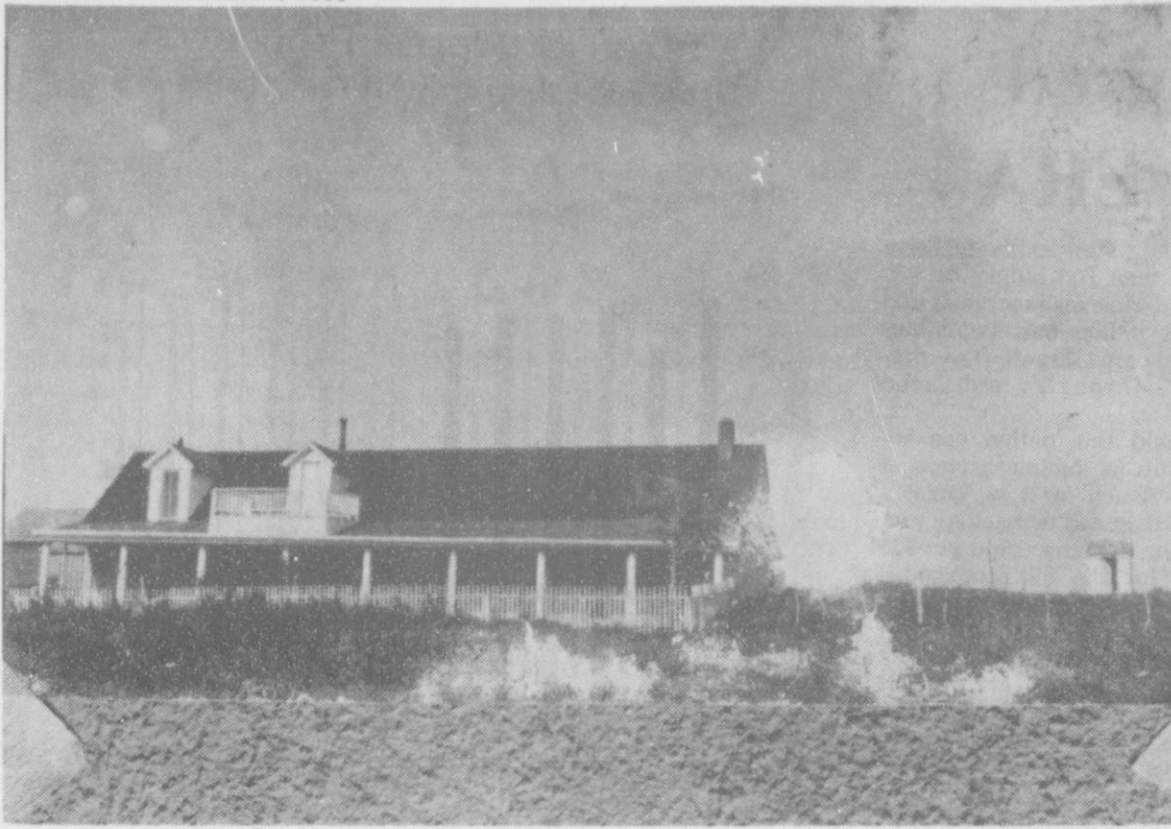
Join Barbara Jordan and other Texans in the fight for a more literate Texas by calling Literacy Volunteers of America-Texas at 512-440-7121 to find out how you can help.

Call now. Our future won't wait!



Literacy Volunteers
of America ★ Texas

4029 Capital of Texas Highway South Suite 217
Austin, Texas 78704 (512) 440-7121



The Turkey Track Ranch House [better known as the McKay place] as it looked then.



The Turkey Track Ranch house as it looks now.

View From Page 1

"think," the plug came out of the wall socket and my nine typed pages of computer-written, composed-in-my-head story... disappeared. Irretrievably. Forever.

With eight pre-school children running around my house, I managed to re-write those pages by noon and, completely wilted, deliver them to my editor. And you know, the re-write was really better than that first draft! But, oh...the wasted energy!

I haven't begun to run out of steam for future stories on Hansfordites and county happenings. A history series needs to have a definite starting and finishing point, however, and it is time to type THE END. History doesn't end, of course, and I didn't begin to cover it all up until now, but the Centennial Series is over.

I wish to thank the Chamber of Commerce for requesting me to write the Centennial Series and the owner and editor of the

Hansford Plainsman and Gruver Statesman for publishing my articles. My appreciation is also given to my own dear family, who cheerfully tolerated pancakes for supper and a sleepy mother and wife on Thursdays for all these past months.

I wish to dedicate the entire series to Hansford County's pioneers of the early days and their descendants. They are the ones who made the history here in Hansford County. They did not think of themselves as history-makers, because they thought they were simply going about living life in an emerging frontier, but every time they plowed a field or gave birth to a child, they were creating a past which we all should cherish as something as beautiful as it is unique.

Hansford County is 100 years young. Armed with the pride of its past, both the struggles and the glories, it is time to move on.

Hansford From Page 1

brothers, probably in 1875, the building later served as Hansford County's first post office. The ranch was located on the Palo Duro Creek and the stockade was built of cottonwood poles hauled from Moore's Creek.

The W. B. Hart family later bought the historic structure and its surrounding ranchlands, then the Clayton McRae place. Haden Hart and his bride lived in the old post office initially, then built a small home. Haden's daughter, Dorthy Hart Hudson of Gruver, provided the background information for this photograph. The couple in the center (bearded man with black hat and woman in white dress) are her grandparents, Walter and Margaret Hart. The Beck family is also pictured. Nellie Hart, Dorthy's aunt, is the second woman from the left, behind Walter Hart. This photograph was probably taken in the latter days of Zulu Stockade's existence.

A Note of Thanks
The old photographs we have used for this "Then and Now" Centennial feature were kindly donated by Gene and Frances Cudd of Spearman. Frances obtained the photographs from her brother and sister-in-law, Willis and Nelda Sheets.

MS Educational Program Set For Amarillo

The Panhandle Chapter of the National Multiple Sclerosis Society will hold its annual educational program for people with MS and their families, physicians, nurses, and allied health personnel, and all others interested in learning about MS.

The program will be held on Saturday, Sept. 23, at the Amarillo Garden Center, 1400 Streit Drive, Amarillo, in the Amarillo Medical Center Complex. The program will begin at 8:45 a.m.

The main speaker will be Dr.

Andrew Goodman, a professor at the University of Rochester Medical School and a clinical neurologist on the staff of the MS Center at the Univ. of Rochester. He will discuss the latest research and the most recent methods of diagnosis and treatment of the disease.

The Saturday program will be held in conjunction with the annual meeting of the Panhandle chapter on Friday, Sept. 22, also at the Amarillo Garden Center. The reception begins at 6:45 p.m. Dinner will be served at 7:15 p.m.

Once again this year there will be no charge for dinner for persons with MS who are registered with the chapter. The cost for all others will be \$10.00

All those attending the annual meeting and symposium should register by Sept. 18.

For reservations or more information, contact Fredricka Gens at the MS office, 1416 West 8th, Amarillo, Texas 79101 or call (806) 372-4429.

Bulls Wins Top Awards

Patti Bulls of Farnsworth, daughter of Marina Gaunder of Spearman, won a number of awards including Best of Class during the recent High Plains Association Arts and Crafts Show in Amarillo.

All of the seven pieces she entered placed either first or second in their respective classes, with five pieces winning first or Best of Class, and two placing second.

Her Best of Show piece, selected by the judges, was a vase decorated with dancing Kachinas.

Bulls, a self-taught artist, has been painting ceramics for some 15 years. For three years she has been teaching a class of senior citizens which meets on Wednesdays.



THANK YOU

We wish to thank everyone for the many expressions of love and concern in the recent death of our husband and father, L.M. Womble. We appreciate the efforts of the Emergency Medical Technicians and Dr. Behney. Also, a special thanks to the Presbyterian and Methodist women. We greatly appreciate all of your kindnesses in our recent loss.

The L.M. Womble Family

EAT, DRINK, AND BE BURIED.

OUR GIFT TO YOU... Up Reach
A Magazine For Better Living

We will be mailing UpReach Magazine into area homes very shortly. This magazine is a well-known publication which has gained much recognition for its inspiring articles.

We feel this magazine will be a wonderful gift to our community, and we hope you'll enjoy receiving it. To make certain that you are on our mailing list, please contact us at the number listed below.

Please feel free to visit our Bible classes or worship services!

CHURCH OF CHRIST
121 S. Haney - P.O. Box 475 659-3098 Worship - 10:35 a.m. 6:00 p.m.

HANSFORD HOSPITAL PHARMACY

Is Now Open To Serve Your Prescription Needs With Our Helpful Staff:



Jim Miller, Registered Pharmacist

Vicki Stewart, Pharmacy Technician

Hours: Monday - Friday 9 a.m. - 6 p.m. Saturday 9 a.m. - 1 p.m.

Telephone 659-2226

Free Home Delivery

After Hours Service: 659-2647

Hometown Service

Competitive Prices

Oil, Gas Production Down in Texas

Oil and gas well production was down statewide in June, according to figures released by the Texas Railroad Commission, and unfortunately, Hansford County is listed as one of the poorest-producing counties in the area.

Total gas production in Hansford County was 3,056,409 mcf (thousand cubic feet) in June; and total oil production was 35,124 barrels.

In comparison, Lipscomb County produced 3.7 million mcf of gas in the month of June and 96,868 barrels of oil. Ochiltree County was the source for 3.1 million mcf of gas and over 128,000 barrels of oil. One of the area's big producers for June seemed to be Moore County, with production figures of 6.5 million mcf for gas and 54,647 bbls. for oil.

Statewide, Railroad Commission Chairman Kent Hance announced that Texas oil and gas wells produced 443,694,396 mcf of gas in June, compared to the May gas production total of 465,218,919 mcf. June production was down 0.63 percent compared to June 1988's production of 446,550,233 mcf.

The state's top producing counties, rank ordered by preliminary June production were: Webb, 23,086,981 mcf; Zapata,

23,084,399 mcf; Pecos, 15,828,913 mcf; Hidalgo, 13,833,887 mcf; Panola, 12,057,518 mcf; McMullen, 8,977,914 mcf; Hemphill, 8,654,116 mcf; Crockett, 6,473,740 mcf; Nueces, 6,389,277 mcf; and Matagorda, 6,062,667 mcf.

Texas gas production in June came from 189,247 oil wells and 46,783 gas wells. Texas crude oil production averaged 1,765,657 barrels daily in June, according to preliminary figures released by Hance.

This figure compares with preliminary May production of 1,782,043 barrels daily. Final production reports for May indicated average production at 1,800,997 barrels daily.

Hance said the preliminary Texas oil production figure for June is 52,969,721 barrels, down from 55,243,324 barrels in May.

According to Hance the state's top producing counties, rank ordered by preliminary June production were: Gaines, 3,502,397 barrels; Ector, 3,104,104 bbls.; Andrews, 3,044,147 bbls.; Yoakum, 2,843,015 bbls.; Hockley, 2,596,834 bbls.; Pecos, 2,560,023 bbls.; Gregg, 2,458,061 bbls.; Crane, 1,513,566 bbls.; Scurry, 1,326,473 bbls.; and Kent, 961,163 bbls.

Oil Industry Poised To Enter New "ERA"

Railroad Commissioner James E. (Jim) Nugent said recently the oil industry in Texas is poised to enter a new "ERA" in crude production, the Enhanced Recovery Age. But he said a national energy policy which focuses on tax incentives for enhanced oil recovery projects holds the key to unlocking the state's remaining crude oil reserves.

Speaking at the dedication of a Chevron project which will use carbon dioxide to help sweep hard-to-get oil from North Ward Estes field near here, Nugent said Texas' Permian Basin is now the world leader in enhanced oil recovery using carbon dioxide injection.

"Using a high-technology mix of carbon dioxide and water injection, Chevron expects to recover an additional 65 million barrels of oil and 32 billion cubic feet of natural gas from this field," Nugent said. "Projects like this represent the oil future of Texas and the nation. Industry has proven it can develop the technology. Now it's up to government to provide the economic climate to help them get the job done."

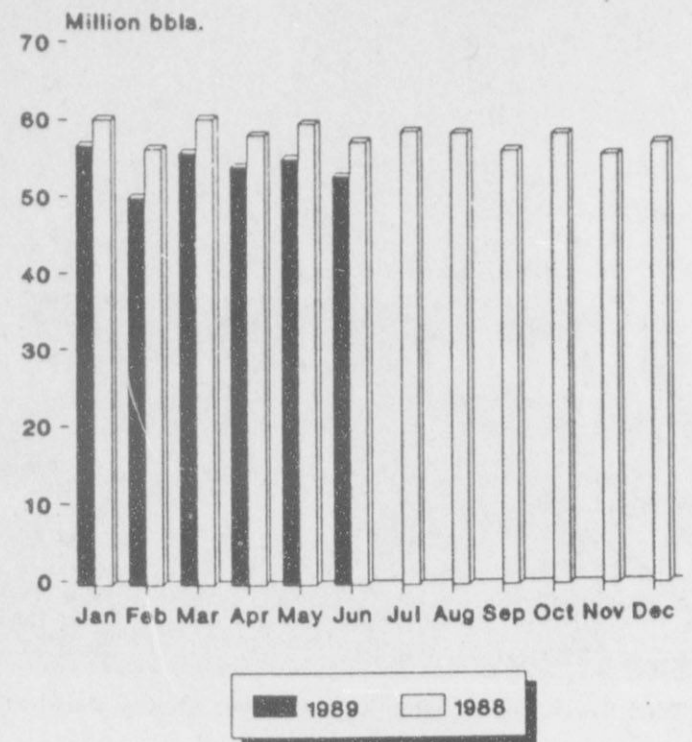
Nugent said Texas now has more than 4,200 enhanced oil recovery projects which pump 54 percent of all oil produced in the state. The U.S. Department of

Energy and others estimate there are more than 100 billion barrels still locked in Texas reservoirs and some 341 billion barrels nationwide that are targets for production through enhanced recovery.

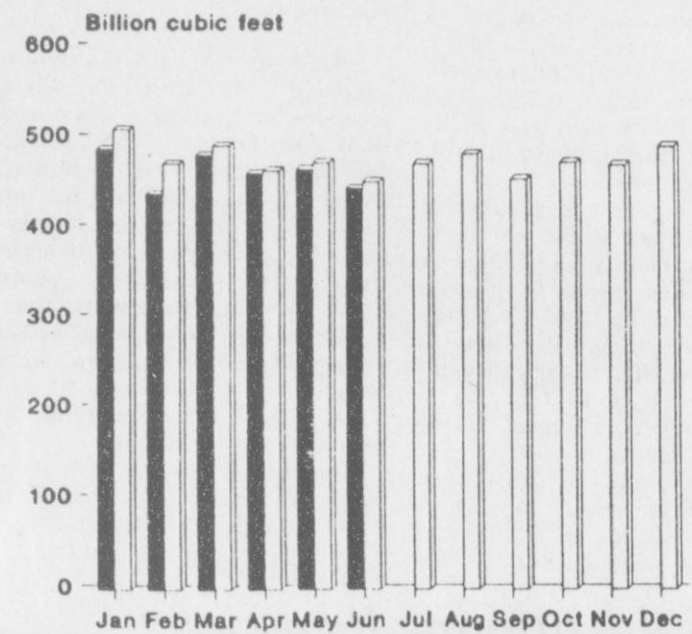
"I'm told this nation can recover some 62 billion barrels of that oil - much of it in Texas - through advanced technology projects, if the industry could get \$25 a barrel for the oil produced," Nugent said. "That's where a national energy policy comes in. The industry must have tax relief for enhanced oil recovery projects such as this Chevron project. And Congress and the administration must have the vision to see that such tax incentives are a vital investment in the nation's energy security."

Nugent said enhanced oil recovery projects can help reduce the nation's dangerous, growing dependency on oil from abroad. "We're hooked on foreign oil, and that puts our suppliers in the driver's seat," he said. "They can reduce supply and increase prices or flood the world with crude and drop the bottom out of prices. Either way, we're hurt. They know it and they've done it. Chevron is committing some \$75 million to this enhanced recovery project, quite an act of faith considering the foot-dragging on energy policy we've seen in Washington so far this decade. It's time we backed them and the rest of the domestic oil and gas industry with economic incentives to develop the substantial reserves that remain in our own back yard," Nugent said.

Texas Crude Oil Production Statewide Monthly Totals, 1988-89



Texas Natural Gas Production Monthly, 1988 and 1989



DID YOU KNOW?

- It's now possible to buy small amounts of stock in a corporation and pay no commission.
- Making a regular investment

like this over time will not only save commission money, it's considered by investment experts to be one of the soundest ways to accumulate stock.

Crop Production Report Available

By Satellite

The Chicago Board of Trade (CBOT) will offer analysis of the U.S. Department of Agriculture (USDA) crop production report by live satellite broadcast on September 12.

In the CBOT program, three grain analysts will offer their opinions on the significance of the production figures and respond to questions from the press.

As many farmers own satellite antennas, the CBOT is making details of the broadcast public so they may watch or tape the program for viewing at their convenience.

The broadcast will start at 3:30 p.m. (Central Daylight Time), Tuesday, September 12. It will be transmitted via Westar IV, Transponder 6D [Channel 11], Audio 6.2 and 6.8 Mhz.

Borrowers Invited To Meeting

Hansford County farmers with loans from the Farmers Home Administration are invited to a meeting on Sept. 19 on how FmHA's computer program is used in considering loan servicing options such as rescheduling and write-downs. FmHA County Supervisor Mike Heck said today.

The meeting will be at 1:00 p.m. at the Texas Agricultural Research and Extension Center, 6500 Amarillo Blvd, West, Amarillo.

Heck said the meeting is particularly important for FmHA borrowers behind in their payments and those having difficulty with their loans.

"We will go over all the options available to those borrowers and explain how to go about finding one that will keep them in operation," Heck said. "We will be putting emphasis on the Debt and Loan Restructuring (DALRS) computer program that was developed just for this purpose."

Heck said DALRS does many mathematical calculations quickly and in a number of combinations in helping in the analysis of farm financial plans.

"If a restructuring plan exists that will keep the borrower on the farm, DALRS will find that plan, and that plan will minimize the cost of debt restructuring," he said.

DALRS was developed as a tool to help debt restructuring authorized by the Agricultural Credit Act of 1987. FmHA farm borrowers who are behind in their payments should, by all means, try to attend this meeting.

County Unemployment Rate One Of Lowest In State

Hansford County had one of the lower July unemployment rates in the state of Texas, according to figures released by the Texas Employment Commission. The July unemployment rate in Hansford County stood at 5.1 percent of the labor force, said TEC figures.

A total labor force of 3,948 persons is available in Hansford County. Of that number 3,745 persons are employed and 203 do not have jobs.

Statewide, "It's good news and bad news again," according to Commissioner Mary Scott Nabers at the Texas Employment Commission. "The state's July employment rate was posted at another disappointing level," Nabers said, "but more Texans worked than last month and the trust fund from which benefits are paid is healthier than it has been in most ten years."

Approximately 614,500 unemployed Texans sought work in July and that pushed the state's unemployment rate up according to the office of Commissioner Nabers. "The rate in July was 7.3 percent, up from 7.1 percent for June 1989 and while it is not unusual for unemployment to be relatively high in July," Nabers said, "the somewhat surprising fact is that this rate is up considerable from the 6.6 percent rate recorded in July of last year."

The Statewide rate began creeping up again for the first time in June and the July rate posts yet another increase while the national rate is decreasing. An estimated 11,000 nonfarm salaried jobs were deleted between June and July in Texas and 27,000

additional workers joined the ranks of those seeking work.

"What appears to be happening," Nabers said, "is that in spite of the fact that we are gaining jobs in the state, we are not gaining fast enough to keep up with the demand. People are entering the labor force faster than jobs are being created."

Of interest is the recent national report showing Texas as a state where a large number of the unemployed do not seek unemployment benefits. Payouts from the insurance program are currently averaging approximately \$2,700,000 a day Nabers says. "However, the trust fund from which benefit payments are drawn is very healthy-better than it has been in the past ten years," she added.

Unemployment rates rose in almost every area of the state. Corpus Christi, however, posted a decline for the month and Bryan-College Station again received the state's lowest rate - 5.1 percent. Amarillo, at 5.8 percent, and Fort Worth-Arlington and San Angelo, each with 6.0 percent, also came in with low rates.

Highest statewide rates were recorded in: McAllen-Edinburg-Mission, where the July rate was 16.3 percent; Brownsville-Harlingen, at 12.8 percent; Laredo, with a 11.9 percent rate; El Paso, with a 11.0 percent rate and Beaumont-Port Arthur at 9.8 percent.

Total employment in July for Texas was estimated to be 7,813,200. That number is up from the 7,745,200 individuals that were in employment last month but is down slightly from last year's total employment of 7,888,900.

GRAND OPENING

ATTIC ANTIQUES

411 DAVIS
SPEARMAN, TEXAS

Saturday, September 16th
10 A.M. - 6 P.M.

REGISTER FOR DOOR PRIZES

Store Hours: Tues. - Sat.
10 A.M. - 6 P.M.

NOTICE OF VOTE ON TAX RATE

The Hansford County Commissioners' Court conducted a public hearing on a proposal to increase your property taxes by 5.47 percent on September 7, 1989 at 10:00 a.m..

A public meeting to vote on the tax rate will be held on September 13, 1989 at 10:00 a.m. at the Hansford County Courthouse, Spearman, Texas.

Classifieds

For Sale

SEED WHEAT FOR SALE: 2nd year from registered Sioux land. Cleaned and length graded. Test Weight 61 lbs. Germination 96% Call: 375-2343-Canadian Area. S44S-7T

HOUSE FOR SALE: Reduced 3 Bdr. 1 1/4 bath setting on 3 lots. Has out buildings, cellar on corner lot room for trailer houses. Call: 659-3425 after 5:00 or see at 217 N. Hoskins. S44S-8tc

FOR SALE: 1982 Chevette, 4 door and hatchback, good tires 93,500 miles. Automatic. \$900. or best offer. Call 659-3434. RTN

IRRIGATION MOTORS FOR SALE: 2 V-12 GMCs, 1 454 Chevrolet, and 1 413 Chrysler. For more information contact: Bill at B&D Industrial Automotive, 300 West 1st. Dumas, TX. 79029 or call: Daytime 806-935-3900 and Nightly 806-935-3121. S44S-8tc

FOR SALE: 1982 Chevrolet Cavalier 4 door Sedan. Automatic transmission 85,000 miles. \$500 or best offer. Call 659-3434 RTN

FOR SALE: Seed Wheat, Tam 101, Tam 105, Tam 108, Tam 200 and Russian Beardless. Call: V.B. Morris 806-733-2203 S38-RTN

HOUSE FOR SALE 4 Bedroom 1 3/4 bath 2 Car Garage, Fireplace Remodeled, New Carpet, 1119 Archer. Call: Sue Gerardy - 659-5196 or 733-5101. S 37 - RTN 1tp

FOR SALE: 3 bedroom, 2 bath home. Sunken living room, parquet floors, fireplace, covered patio, 2 car garage, sprinkler system, 2193 sq. ft. living space, excellent location. Call 659-3587 or 659-5022. S33-RTN

FOR SALE 3 bedroom, 2 bath home Fireplace, large living area, drapes, mini-blinds, completely remodeled and large deck patio. Nice neighborhood. 1110 S. Barkley. Call 659-3800 S36rtn

FOR SALE: 1 Metal Building and Property 35' x 50' - 1 Large Cinder Block Building and Property 3000 sq ft. Contact: First State Bank, Box 247, Spearman 659-5565. S29-RTN

USED AUTO PARTS FOR SALE: Located 4 miles west of Hooker, Ok. on highway 54. **Muss Cat Auto Salvage.** (405) 652-2400. S10-rtn

FOR SALE: 30 ft. Flex King Rod Weeder - like new - always shedded. Also, 12 ft. mayrath drill loader, battery operated, always shedded. Call 435-2798. S44-4tp

FOR SALE: 3 Bedroom, 2 bath mobile home on 2 lots with fenced yard. If interested call 659-5012 after 5:00. S44-3tp

FOR SALE: Sedan Grass Hay. Round or Square Bails. Call V.B. Morris at 733-2203. S45-7tc

PIANO FOR SALE
WANTED: Responsible party to take on small monthly payments on piano. See Locally. Call: Manager at 800-635-7611 anytime

S-45-S-6tc

REPO PIANOS FOR SALE - 1 Console & 1 Spinnet - Low Monthly Payments Available - Can See Locally - Phone 316-624-8422 - Brier & Hale Music Liberal, Ks. S45S-2tc

NOTICE
Wallace Monument Co.
Monuments, Curbing,
Grave Covers
Local Representative
LEONARD JAMESON
Spearman, Texas
35e-rtn

Help Wanted

SALES OPPORTUNITY

For local person in the **SPEARMAN** area to represent our National Lubrication company. A Full-Time sales position High commissions. Opportunity for advancement. Knowledge of farm and/or industrial equipment helpful Product training when hired. For interview Call: 1-800-999-4712 or send resume to

HYDROTEX -- Dept 2852-1
P.O. Box 560843
Dallas, TX 75356

RARE OPPORTUNITY

Regional Manager
National company now is expanding its operation into this area. \$48,000 possible 1st year. Equal opportunity. We offer protected exclusive territory. At company expense, you will be flown to home office for orientation. Must have \$2,900 (accredited) cash deposit secured by inventory. Call: **American Products**

Howard Miller

1-800-633-0902

GOVERNMENT JOBS! Now hiring in your area. Both skilled and unskilled. For a current list of jobs and application, call 1-615-383-2627
Ext. P 498
S-45-2tp

Work Wanted

WORK WANTED: I clean office buildings four days a week for \$250.00 a week and I clean carpets once a year in them. Call Connie Holmes after 3:00 p.m. at 659-3015. S45-2t

WORK WANTED: I clean houses three days a week for \$150.00 a week. I clean everything and once a year I clean the carpet in your house. Call: Connie Holmes at 659-3051 after 3:00 p.m. S45-2t

WORK WANTED: I would like to clean your house once a week for \$6.00 an hour. I will clean everything. References available. Call Audra at 659-3858. S45-S-1tp

Miscellaneous

LONELY? NEED A DATE?

Meet that special someone today!

Call **DATETIME** (405) 366-6335

S44S-8tc

Sutphen's Bar-B-Que

We would love to feed Spearman football teams, bands and fans coming through Borger. All you can eat "Help Yourself Buffet" (1 meat \$4.00 - 2 meats \$4.75) We'll stay open late and You're Welcome!

S41S-12c

Kitten to give away. Call 659-3039 S45S-1tp

OSGOOD MONUMENT CO.

Amarillo, Texas
Dealers of Rock of Ages Granite, as well as all colored granites, marble and bronze memorials.

represented by
BOXWELL BROS.
FUNERAL HOME

519 S. Evans
659-3802

Services

JUNE KELP

is joining

Boyd's Beauty Salon

on Wednesdays, Thursdays, and

Fridays. 659-3017.

S45-2tp

For Rent

HOUSE FOR RENT: 307 12th. Brick, 3 bedroom, 1 bath. Available Sept. 1. Call 659-3809. S44-1tc RTN

HOUSE FOR RENT: 3 Bd. 2 bath home fenced yard. Carpet. Applications being taken Call: Allen Alfred at 659-3034. S434S-1tc RTN

TRAILER SPACE FOR RENT: in Spearman, \$50 a month Call: 435-5080

S43S-RTN

FOR RENT: 14 x 80 mobile home. 3 Bdrm., 2 Bath in Spearman. \$250.00 a month. Call 435-5080. S40S- 4tc (Sun. only)

Legal Notices

NOTICE

Ray Dean Coates doing business as "D.C. Savings and Trust," fictitious business name. 1421 Gruver Hwy. Spearman, Texas 79081. S45S-1tc

Business Opportunity

AVON PRODUCTS
NO TERRITORY REQUIRED
\$5 INVESTMENT
FREE KIT - FREE GIFT
CALL 806-373-AVON
S44 1tc RTN (Sunday only)

Chautauqua Run Race Results Posted

Russell Edwards of White Deer posted a 17:41.4 to win the first place trophy in the 5K division of the fourth annual Chautauqua Run for the United Way, sponsored by Coronado Hospital. In the one mile Fun Run, Lynn Diercks of Perryton, and 18-year-old runner, posted a time of 5:53.5 to take first place. Entry fees from the run, totaling \$570, were donated to the United Way of Pampa, according to hospital officials. Coronado Hospital gives each entry a free t-shirt, and provides the medals and trophies in each division.

Chris Hansen of Pampa with a 17:53.6 took second place and Joseph Ewanowsky of Amarillo with an 18:12.8 took third place in the 5K. Nine-year-old Kevin Velez of Pampa ran the mile in 6:18 to take second place in that event, and Michelle Whitson of Pampa posted a time of 6:32.8 to take third place overall.

Other winners in the 5K included: Men's Division: 18 and under, Alberto Carrillo of Amarillo, first, Edward Barrett of White Deer, second, and Jimmy Price, Amarillo, third; 19-29, Richard North, Spearman, first, David Haesle, Lewisville, second, and Phillip Miser, third; 30-34, Russell Edwards, first, Joseph Ewanowski, Amarillo, second, Jack Burchfield, of Amarillo,

third; 35-39, Chris Hansen, Pampa, first, Johnny McNabb, Amarillo, second, Monty Elkins, Pampa, third; 40-44, Donnie Bennett, Pampa, first, Jack McCavit, Pampa, second, and Francis Kludt, Pampa, third; 45-49, Mike Lopez, Pampa, first, Billy Wittingham, Pampa, second, and Jerry Peurifoy, Pampa, third; and 50 and over, Harold Richey, Amarillo, first, Robert Steger, Pampa, second, and Calvin Lacy, Pampa, third.

In 5K Women's Division, the winners, all from Panhandle, were Brenda Robinson, first in the 30-34 division; June Hoffman, first in the 35-39 division; Sandra Humphrey, first in the 45-49 division, and Ruth Parker, first in the 50 and over division.

In the Fun Run, winners included, in the men's division, 12 and under, John Kaddatz, Pampa, first; 13-18, Duane Coffey, Miami, and Tim McCavit, Pampa, tie for first; 19-29, Dennis Morgan, Pampa, first; 30-39, Rob Martin, Pampa, first; and 40-49, Gary Gortmaker, White Deer, first. In the women's division, winners were, 12 and under, Nicole Griffith, Pampa, first; 13-18, Holly Snider, Pampa, first; 19-29 division, Renae Hess, Pampa, first; 30-39 division, Susan Coffey, Miami, first; 40-49 division, Donna Bennet, Pampa, first; and 50 and over, Ruth Steger, Pampa, first.



Assistant Fire Chief Dale Moyer [under the hood] inspects the damage done by a fire to the white station wagon owned by Bud Jackson. Also investigating the incident are fireman James Noble [back of car], Police Officer Johnny Clayton, and fireman Buddy Hopper. Jackson stated he had just had the engine inspected for gas leaks before stopping at the corner of W. 7th and highway 207 on Thursday afternoon.

New Law Provides Penalty For Possessing Milk Cases

Those colorful milk cases used by dairies to deliver milk to stores and restaurants are handy containers. They are great to store things in the garage or truck. College students love them for shelving in dormitories or apartments.

But using them or even possessing them is now illegal and can mean a big fine when convicted.

Governor Bill Clements signed legislation on June 14, which becomes effective on September 1, stating that any person who is illegally in possession of a milk case or cases shall, upon conviction, be sentenced to pay a fine

not exceeding \$300 for each case. This fine also applies to removing the name of the dairy from the case.

However, there is a "grace period" of 60 days...that runs to November 1... to permit those who have cases in their possession to return them without penalty. That means cases may be returned to stores that sell the milk from the dairy named on the case, or to the dairy plant itself, without any fine. After November 1, legal action will be taken.

Why was this law passed?? "The case loss in Texas and across the nation is "tremendous", according to Glenn Brown, President of the Dairy Products

Institute of Texas. The State of Texas had a loss last year amounting to over 7 million dollars. This not only affects the dairies but ultimately raises the price of milk to consumers. "The industry regrets that this action had to be taken", said the dairy spokesman, "but the costs are prohibitive and keep increasing year after year."

This same legislation also provides an identical penalty for the illegal use of grocery shopping carts, bread trays, laundry carts and egg baskets. These industries also lose large numbers of this expensive equipment which is also reflected in prices to the consumer. The 60 day grace period also applies to the return of these items.

Texans To Pay Less Taxes

State Comptroller Bob Bullock said Friday that Texans will pay \$523 million less in state taxes during the next biennium since the 71st Texas Legislature let three temporary state tax measures expire.

"Our economy has recovered to the point that the Legislature didn't have to extend these taxes to bring in revenue to pay the state's bills. And frankly, I believe that most taxpayers needed the break," Bullock said.

One of the temporary measures, a yearly \$110 professional occupation fee, will expire on August 31, according to Bullock. The fee is paid by professionals such as attorneys, veterinarians, doctors, engineers and architects.

A temporary increase in the state's franchise tax rate is set to expire in 1990, when the tax rate will drop from \$6.70 per \$1000 taxable capital and surplus back to \$5.25 per \$1000 taxable capital and surplus. The minimum fran-

chise tax paid by corporations will also return to \$68 a year from the temporary minimum rate of \$150 a year.

A temporary 20 percent insurance surtax, which was added to insurance occupation tax, expired at the end of 1988, Bullock said. Insurance companies in Texas pay the tax yearly based on their gross premium receipts. The tax rate varies, depending on how much of the company's premium receipts are invested back into Texas.

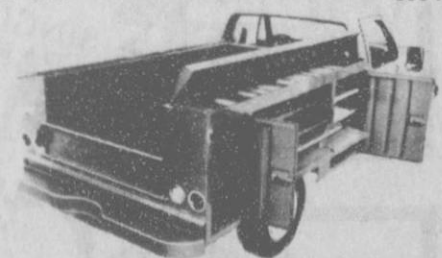
Bullock said these temporary tax increases brought in \$584 million during the 1988-89 biennial revenue period and would have contributed an additional \$523 million during the 1990-91 biennium.

The Legislature approved the temporary revenue measures in 1987 in an attempt to help Texas meet its budget during the state's financial collapse in the mid-1980's.

AMERICAN EQUIPMENT & TRAILER, Inc.

610 N. Grand
Amarillo, Texas
806-383-8831

3707 Quirt
Lubbock, Texas
806-747-2991



Truck Equipment

Dump Bodies
Utility Bodies
Grain Bodies
Van Bodies
Stake Bodies
Tailgate Loaders
Cranes
Winches

Trailers

Wilson Cattle
Wilson Grain
Wilson Platforms
Clement Dump
Great Dane Reefers
Dry Freight Trailers

For Over 35 Years

"Service Is Our Business"

stop using words that hurt.

Start using words that help.

For helpful information, write: National Committee for Prevention of Child Abuse, Box 2864E, Chicago, IL 60690.

UNITED Supermarket

DOUBLE SEALS ON WEDNESDAY

IT TAKES 24 SEALS TO FILL A SAVER FOLDER
ONE SEAL ISSUED FOR EVERY \$5 EXCLUDING BEER, WINE AND TOBACCO PRODUCTS



PRICES GOOD THROUGH SEPT. 16TH IN PERRYTON ONLY

UNITED QUALITY, IT'S A MUST!

American Heart Association
Food Festival
SEPTEMBER 10-16
It's a week that could change your life.

Grocery



PACE PICANTE SAUCE
ASST. 16 OZ.
\$1.19



MRS. BAIRD'S SPLIT TOP BREAD
WHITE OR WHEAT 24 OZ.
.89



FRANCO AMERICAN SPAGHETTI & MEATBALLS
• SPAGHETTIOS WITH MEATBALLS
14.75 OZ.
.79



UNITED SUGAR
5 LB. BAG
\$1.69
EQUALLY LOW CALORIE SWEETNER
50 CT.



COKES
3 LITER
\$1.39
NABISCO COOKIES
• CHIPS AHJOY REG.
• CHEWY CHIPS AHJOY
• STRIPED CHIPS AHJOY
15.5 18 OZ. **\$1.99**



SKIPPY PEANUT BUTTER
SMOOTH OR CRUNCHY
30c OFF LABEL
\$1.49
18 OZ.



CAMPBELL'S
• CHICKEN WITH RICE
• CHICKEN AND STARS
.39
10.75 OZ.

POST ALPHA BITS
15 OZ. **\$2.29**

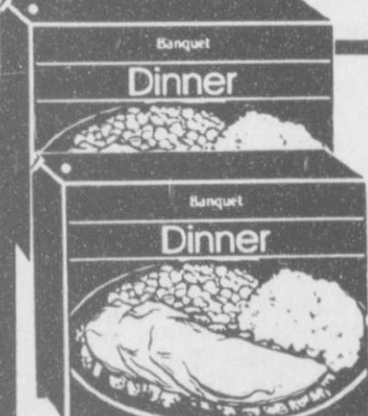
NICE 'N SOFT BATH TISSUE
4 ROLL **.99**

CHEER DETERGENT
'2 OFF LABEL 147 OZ. **\$5.89**

Dairy

UNITED HOMO MILK
\$1.79
GAL.

Frozen



BANQUET DINNERS
EXCEPT HAM OR BEEF
.99

TOTINOS PIZZAS
ASST. 10 OZ. **.99**

Produce



LONG CRISP CELERY
3 STALKS **\$1**

DOLE BANANAS
3 LBS. **\$1**

Meat



QUANTITY RIGHTS RESERVED • NO SALES TO DEALERS
UNITED TRU TENDR OR USDA CHOICE SUPER VALU PAK ROUND STEAK
CENTER CUT
\$1.58
LB.
SINGLE PAK **\$1.68**
LB.



UNITED TRU TENDR OR USDA CHOICE RUMP ROAST
BONE-IN
\$1.58
LB.
BONELESS RUMP ROAST **\$1.78**
LB.



UNITED TRU TENDR OR USDA CHOICE BONELESS SIRLOIN TIP ROAST
\$2.48
LB.



SUPER VALU PAK EXTRA LEAN GROUND BEEF
\$1.68
LB.
REG PAK **\$1.78**
LB.



COOK'S WHOLE SMOKED PICNICS
.79
LB.
SLICED PICNICS **.89**
LB.