

Schedule In Fair Book . . .

# County Fair Entry, Exhibit Deadlines Near

by Jean Ann Behney

With the 1989 Hansford County Fair only a week and a half away, entrants are urged to be finishing their craft, sewing and art projects and those planning to exhibit everything from produce to antiques should be deciding what items they will enter.

This year the fair will take place in Gruver at three locations. The main non-animal exhibits will be set up in the Gruver Elementary School gym. The lamb and steer show and petting zoo will be located in the nearby agriculture barn, and the annual fair Variety Show will be housed in the Gruver High School Auditorium.

The fair will open Thursday, September 28 at 3 p.m. for five hours for registering of all non-perishable exhibits. The following day, from 9 to 11 a.m., perishable exhibits will be accepted. Judging of all exhibits will take place between 11 a.m. and 3 p.m. Friday and then the elementary gym will be opened to the general public from 4 to 7 p.m. for viewing.

The main events of the fair, from the Dog Show and Lamb and Steer Show to the Variety Show and post-fair dance, will take place Saturday, September 30. The special roping event, to be put on by the Gruver 4-H Rodeo Club with Allen McCloy, will follow on

Sunday, October 1 at 2 p.m. in the Gruver Roping Arena.

All fair events and their scheduled times and places are specifically outlined in the Fair Book, currently available at Gruver and Spearman banks and various businesses in both towns and Morse. The Fair Book also outlines the fair's general rules and specific guidelines for entries in all 13 departments. Fair Books are available free to the public.

As part of this newspaper's county fair publicity, interviews are being conducted with superintendents of the various departments. This week, the departments covered include Antiques, Art, Clothing, Food Preservation, Needlework, and Horticulture. The departments of Baked Goods, Agriculture, Tole Painting, Photography, Flowers and more information about the shows and entertainment slated will be published in next week's paper.

Helen Boyd, superintendant of the Antiques department of the county fair, believes "Antiques have a fascination for many people because ours is a push-button society and we are intrigued by relics of the past, such as butter churns." Categories for entries in Antiques range from cut glass and china to jewelry, guns, dolls and toys and buttons.

The only restriction, according to Boyd, is the antique's size. "We'll be displaying them in cases, so while a churn or iron would fit, Grandma's rocking chair wouldn't!" she explains.

Boyd reports that most of the people entering antiques came by the items through inheritance, which makes that object all the more meaningful. "This year there won't be any dust," she reminds exhibitors, "because we won't be in the county barn, so I am hoping even more people will be encouraged to enter their antiques."

Doris Armes is excited about the artwork she will be in charge of exhibiting at the county fair. "The Art department can include oil paintings, watercolors and pastels as well as pen and ink drawings and sculpture," she says. There is a section for youth entries and one for adult entries. The youth section is divided into age categories and the adult section is divided into beginning and advanced categories.

"I especially want to encourage the youth to enter their work. Participation in the county fair might very well be what takes a child forward in art," Armes comments. She adds that there is

quite a lot of interest in art at the fair from year to year, both in entering work and in viewing others' work.

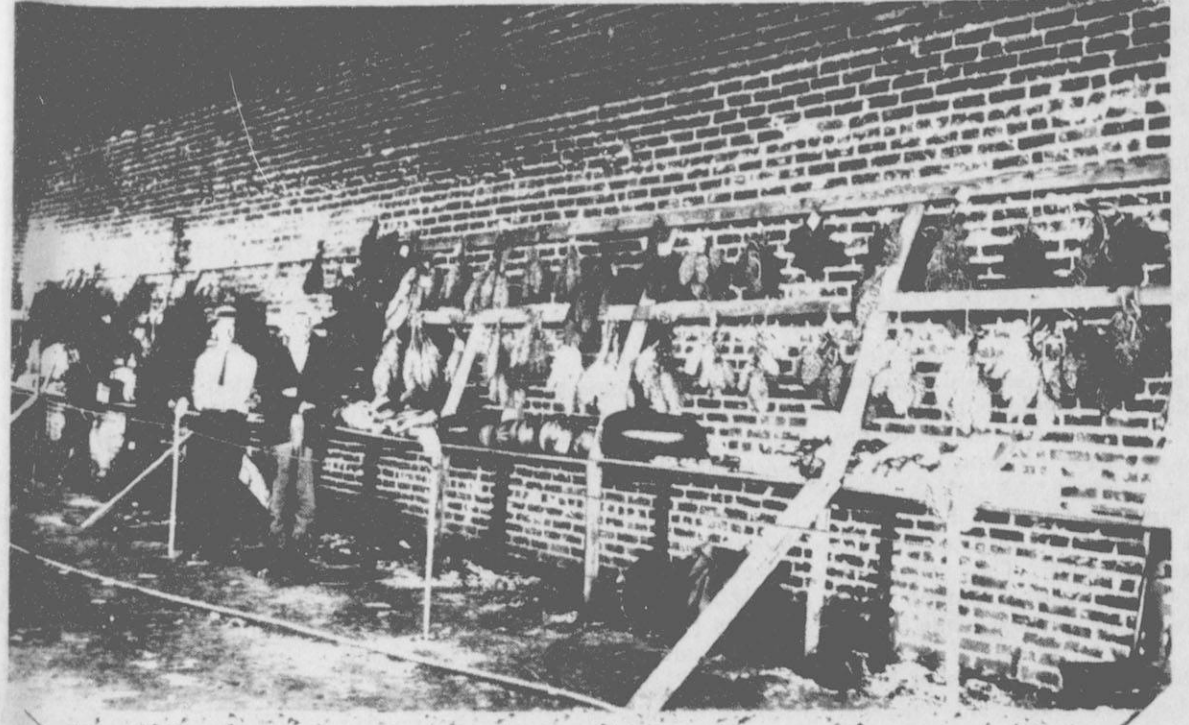
Dresses are probably the most popular items entered in the fair's

Clothing department, according to superintendant Loretto Cook, but there are categories for all kinds of women's, men's and children's garments.

Cook believes that there are

"all kinds of talented people out there who haven't been exhibiting in the past" and wishes to encourage them to do so this year.

See Fair Page 5



This photo of agricultural exhibits at the 1923 Hansford County Fair was loaned by Mrs. Gene Cudd of Spearman. If you know the gentlemen, please call the newspaper office.

## Spearman School Board Meets

Spearman ISD trustees approved changes in the Middle School handbook and agreed to begin a Gifted and Talented program in the high school at their regular monthly meeting.

Additions to the Spearman Junior High School Handbook include entries under Boys Grooming, Visitors and Student Conduct. Changes to the handbook cover boys' hair length and the wearing of earrings by male students; visiting students in classrooms; and students with disciplinary problems representing the school in extracurricular activities.

Dwayne Mitchell will head up the new G/T program at Spearman High School, beginning with writing a curriculum which is to be ready for the 1990-91 school year. In an exhibit supplied to the school board, Mitchell states, "A G/T program is an enrichment program for exceptional students. These exceptional students are 5 to 15 percent of the student body. At SHS this will be approximately 12 to 20 students."

According to Mitchell, the program is required to consist of 150 minutes of instruction per week. He suggested to the board that a TEA-approved curriculum be written so that Spearman High School students can receive credit for G/T. He also suggested that the course be offered at a "zero hour," 7:20-8:10 a.m., so that it supplements the regular curriculum.

Mitchell explained in his exhibit that he has attended in-service

training for his assignment as G/T teacher. The board, upon giving approval to Mitchell as G/T teacher, also approved a salary increase to compensate him for his additional responsibilities.

Approval was given to the purchase of a 1990 Chevrolet Suburban for the Spearman ISD, and the board also approved the observation calendar and Career Ladder Policies. The elementary and junior high principals, along with the superintendent, will serve as appraisers for the 1989-90 school year.

In other business, the board approved minutes of previous meetings, approved bills for payment and voted to change the meeting time for the monthly board meeting starting in November 1989. Meeting times will be changed to 7:00 a.m. through February 1990.

Just before adjournment, the board conducted an executive session to discuss personnel matters, but no action was taken.

Attending the meeting were board members Phillip Renner, president; Charles Shieldknight, vice president; Joe Clement, secretary; and Don Townsen, Mike Garnett, Carolyn Gressett and Tom Latta, members. School officials present included Mr. Butler, superintendent; Allen Alford, business manager; Mr. Olsen, junior high principal; and Mr. Gage, elementary principal. Others at the meeting included Mr. Mitchell, Cheryl Jarvis and Wynette Mullins, CTA representatives.

The Hansford  
**Plainsman**

25¢  
Per Copy  
6 Pages

Volume 19, No. 46

YOUR HOMETOWN NEWSPAPER

Sunday, September 17, 1989

WEATHER			
DAY	HIGH	LOW	PRECIP.
Sun.	76	51	0
Mon.	59	51	1.25
Tues.	55	47	1.25
Wed.	47	42	.79
Thurs.	69	39	.02

### Precinct Judges Appointed

Election judges were appointed for nine precincts at Monday's meeting of the Commissioners' Court of Hansford County. Appointees and their respective precincts include Precinct 1, Kim Brock, with Adalyn Barnes, alternate; Precinct 2, Wanda Wagner, with Vera Lanning, alternate; Precinct 3, Fay Dahl with June Barkley, alternate; Precinct 4, Brenda Hart, with Charlotte Bergin, alternate; Precinct 5, J.L. Brock, with Colleen Schafer, alternate; Precinct 6, Harry Stumpf, with Charles Newcomb, alternate; Precinct 7, Burton Olson, with Steve Stedje, alternate; Precinct 8, Muriel Boyd, with Johnny Lee, alternate; and Precinct 9, Betty Womble, with Glenda Johnson, alternate.

Commissioners held a public meeting to discuss application for a Texas Community Development Program (TCDP) grant. No member of the public appeared to protest or to support application for a grant. Commissioners adopted a resolution approving the submission of an application.

Commissioners also decided to set the Home Economist's travel allowance at the regular rate of 21 cents per mile, with a minimum allowance of \$70 per month beginning Oct. 1, 1989. The vote was unanimous to accept a bid from MD Physicians and Associates, Inc. in the amount of \$10,429 per month for county health insurances.

In other business, salaries for the Sheriff's dispatchers was set, a road easement for Diamond Shamrock was approved; and approval was given to a resolution to provisions of Texas Department of Highways and Transportation Minute Order to Construct Extension of FM 3214.

Approval was given to minutes of the last meeting; the treasurer's report and investments; and payment of claims.

## EMS System Saves Lives

H & S EMS, serving Hansford County and Spearman, currently has 10 full-time volunteers on the service. Three of these members are certified as Paramedics by the State of Texas. They are Michelle Davis, Karon Hampton, and Jeff Lackey. Working as EMT/Special Skills are Mark Hood, Kevin Russell, and David Nickels. Mark and Kevin are currently attending classes to receive their Paramedic certifications. Juanita Pierce and Brenda Hoover are certified as EMTs, and Nikki Lozano and Bambi Torres are Red Cross First Aid certified. Nikki and Bambi are currently enrolled in the EMT class being taught by Michelle Davis at this time.

The members of H & S EMS have a combined total of 42 years service in EMS, and as a group, have spent in excess of 7,000 hours in classrooms, learning the art of emergency medical treatment.

Through 9-13-89, H & S EMS has answered 124 calls, for a total of 1080 manhours. The time and energy was have devoted to EMS is not for monetary gain. We are proud of the service we provide, and are willing to spend the time to be able to provide the best possible care we can to our patients.

Emergency medical services are something we may take for granted as citizens. But the certified individuals working and volunteering as EMS technicians are dedicated and skilled practitioners of prehospital emergency medicine.

H & S EMS gratefully accepts donations and memorials. These funds are used solely for the training of EMS personnel, and for the purchases of equipment used by H & S EMS. Gifts should be made payable to H & S EMS, and can be given to any of the above mentioned persons, or mailed to P.O. BOX 37, Spearman, Texas 79081.

When a Texas resident picks up the phone and calls for emergency medical help, that citizen can be sure that the certified emergency medical services personnel who answer the call have met state and national standards for EMS training.

In Texas, four levels of EMS personnel certification exist. This certification and licensing is conducted by the Texas Department of Health, Bureau of Emergency Management through the Emergency Medical Services Act of

1983. The minimum level of training required for certification is the forty-hour Emergency Care attendant (ECA) course. Of the 23,720 certified EMS personnel working for EMS providers in the state in July 1989, 5770 of them are ECAs. The Emergency Medical Services Act of 1983, Article 44470, defines an ECA as one who can "provide emergency prehospital care by providing initial aid that promotes comfort and avoids aggravation of an injury or illness." Skills that ECAs are trained to use on an emergency call include cardiopulmonary resuscitation, bandaging and splinting, administration of oxygen, airway maintenance, and control of bleeding. About 25% of the state's 1,194 firms are staffed primarily by ECAs.

Although ECA is the minimum level of certification required by state law, many cities and counties have opted for higher standards. The Emergency Medical Technician (EMT) receives a mini-

mum of 120 hours of training in a Texas Department of Health approved course and in addition to classroom training must complete emergency department clinicals and emergency ambulance run experience. The EMT also provides basic life support and the skills performed by the EMT in emergency lifesaving situations are similar to those performed by ECAs. EMT training and certification is a prerequisite for the two advanced levels of training -- EMT/Special Skills and EMT/Paramedic. 11,848 of the 23,720 EMS personnel working for providers are EMTs.

Advanced emergency medical care skills are performed by EMT/Special Skills and EMT/Paramedics. Training courses for EMT/Special Skills must be at least 160 hours in length, in addition to basic EMT training, while EMT/Paramedic courses are at least 400 hours, in addition

See EMS Page 5



Acceptable



Unacceptable

Due to changes in styles of dress for young ladies, Spearman I.S.D. will now allow the wearing of walking shorts during the warm weather months of spring and early fall. Pictured are examples of acceptable and unacceptable lengths. The school officials ask that parents abide with these requests, otherwise the wearing of walking shorts will be discontinued. This change in the dress code pertains to only the girls.

City of Spearman

PROCLAMATION

"EMERGENCY MEDICAL SERVICES WEEK IN TEXAS"  
SEPTEMBER 17 - 23, 1989

TO THE CITIZENS OF SPEARMAN, TEXAS:

WHEREAS, Governor William P. Clements, Jr. is honoring individuals who give emergency medical care in Texas by setting aside September 17 - 23 as "Emergency Medical Services Week,"

WHEREAS, During EMS Week Texas Department of Health and local EMS groups will sponsor activities to educate Texans about EMS. Knowing how to call EMS, and what to do in the first few minutes of an emergency can be the difference between life and death. When you call EMS, you should stay on the line until the dispatcher tells you to hang up the phone. In many cases EMS is on the way while you are still talking to the EMS dispatcher. You should turn on your porch light and have someone wait by the road to direct the EMS crew.

WHEREAS, There are over 40,000 certified EMS persons in Texas. The training these individuals receive, the certification process, and their work in the field is closely monitored by the Bureau of Emergency Management and the Public Health Region offices across the state. Texas EMS is a leader in the nation in Emergency Medical Service.

WHEREAS, Texas ambulances make over a million calls each year. State law requires that each vehicle be licensed by the Texas Department of Health and that the ambulance be staffed by two persons certified in EMS.

NOW, THEREFORE, I, BOB PEARSON, Mayor of the City of Spearman, by virtue of the authority vested in me, do hereby proclaim September 17 - 23 as

"EMERGENCY MEDICAL SERVICES WEEK"

for the City of Spearman, Texas, and encourage all citizens to support our local H & S Emergency Medical Service and participate in their planned activities to educate Spearman citizens about EMS.

IN WITNESS WHEREOF, I have hereunto set my hand and caused to be affixed the great seal of the City of Spearman, Texas.

DATED this Thirteenth day of September, Nineteen Hundred and Eighty-nine.

MAYOR BOB PEARSON



## Among The Neighbors

by Helen Fisher

Ora Lee Blackburn spent several days last week in Crowell with Gertrude Jones. They were very busy preparing silk flowers for the wedding of Gertrude's granddaughter, Nicole Parris. She is to be married in Dallas during the early part of October.

Ora Lee is pleased to report that Gertrude is in some better health and good spirits and send greetings to her Spearman friends, promising to come for a visit.

Thea Beck returned Friday from more than a week in Lubbock. She was filling in for vacationers at the Lubbock Southwest Cancer Center.

Thea, a 1987 graduate of Amarillo College as an associate in applied science, is a radiation therapist with a specialty of linear accelerator. Needless to say husband Edward and the children were ready for her return.

Charles and Joanne Eaton are back after four days at Green Ridge, Missouri. They attended the Ulmer family reunion and visited other relatives while there.

The many old friends of Mrs. Gladys Riddle are glad that she

has returned to Spearman to make her permanent home.

Mrs. Riddle left in 1983 and lived near a daughter in Denver for several years, then in Ulysses, Kan. near her son.

She states that she has always considered Spearman to be home and has many memories of her life here.

Adding to her welcome is that of her granddaughter, Kimberly Branstetter and Mr. and Mrs. Bill Branstetter.

Mrs. Riddle is living at 217 South Barkley and is a member of the Baptist church.

John and Lucile Allen are in the last stages of moving to Guymon where they will be living from now on.

The Allens express regret at leaving Spearman but feel that John's poor health necessitates being near their daughter.

Lucile's brothers and sisters gathered on Saturday at the home of Helen Fisher for a buffet and plenty of advice and best wishes for them.

Their new address will be: Central Plains Village, #8, Guymon, Okla.

## Theatre Group Formed

by Jean Ann Behney

The wheels were set in motion Tuesday night, September 12, for the formation of a new theatre group in Hansford County. The group, as yet unnamed, will operate under the auspices of the Spearman Chamber of Commerce and two dramatic presentations are already tentatively slated.

Linda Butt, who heads the theatre group, presided at Tuesday evening's meeting at the Spearman Chamber of Commerce Office. She announced plans for a November 17 and 18, 1989, presentation of a Hansford "centennial pageant." The pageant, which will take the form of a narration interspersed with acted-out historical scenes, screen images, dynamic music and storytelling by local people, will be open to all county residents who wish to audition for parts.

Auditions for parts in the pageant/drama will be Monday, October 2, 1989 at 7 p.m. at the Hansford Activity Center. Butt emphasized that participants need not have professional stage acting experience. "This will be the kind of show with something for everyone, regardless of his or her previous acting experience," she said. "There will be small and large speaking parts, walk-on parts, a main narrator, and dance parts." She added that dozens of volunteers will be needed for help with staging, sets, props, costumes, and script, make-up, publicity, lighting and tickets.

At this first theatre group meeting, Butt was asked by those in attendance to be the pageant's director. Jean Ann Behney was put in charge of the script, along with Karen Goodman, and Carolyn Hicks of Gruver volunteered to help with costumes. KRDF's Dwayne Smith will head up the stage sets committee, while Spearman Reporter publisher Mike Hulett volunteered to take charge of publicity and to offer technical staging advice. Laquita Evans has offered to type the script.

All committees involved in this

pageant's production are open to volunteers, who can express their interest by telephoning Cora Queener at the Spearman Chamber of Commerce (659-5555), Linda Butt (659-2189) or Mike Hulett at the newspaper (659-3434).

The group attending Tuesday night's meeting also decided to have a read-through of the preliminary script on Tuesday, September 26 at 7 p.m. at the Chamber office. Those interested in auditioning for parts will be doing "cold readings" of selected scenes the following Monday, October 2. Part assignments will be announced the same evening as the auditions and the show's first rehearsal will be Thursday, October 5 at 7 p.m.

Tentative rehearsals are scheduled for Tuesday and Thursday evenings at 7 p.m. The location of the rehearsals will be announced later. The performances of this yet-unnamed pageant will take place in the Spearman High School Auditorium on Friday, November 17 and Saturday, November 18 at 7 p.m. There will be a ticket fee and all monies in excess of production expenses will go to the Spearman Chamber of Commerce, which is underwriting the theatre group.

The new theatre group also resolved to present a comic melodrama in the spring of 1989. Tentative plans are for this second play to be performed in Gruver, possibly at the high school auditorium there.

"This theatre group is something I am very excited about and it will involve all kinds of people in a fun and meaningful community-wide event," Butt said. "It will take a lot of hard work to get the November pageant off the drawing board, but we can do it! The county has an enormous amount of talent and creative drive."

Those in attendance at the theatre group's initial meeting included: Cora Queener, Linda Butt, Stan Cobb, Mike Hulett, Carolyn Hicks, Dwayne Smith, Karen Goodman, and Jean Ann Behney.

## Rafferty Family Holds Reunion

Sixty-three descendants of Ed and Agatha Rafferty, representing five generations, attended the recent fifth semi-annual family reunion, held in Palo Duro Canyon and in Gruver.

Accommodations for the reunion were provided by Ceta Canyon Methodist camp.

The first day's activities were highlighted by a trip up the Palo Duro Canyon to enjoy the outdoor stage production "Texas." The following day, activities were held at the Rafferty Place near Gruver.

Ed Rafferty Jr. and Agatha Rafferty hosted a barbecue dinner at the Ed Rafferty home. Family members, along with 26 friends and neighbors, enjoyed an afternoon of games, conversation and

hiking. Family members from California, Oklahoma, Florida and New Jersey joined their Texas relatives in reacquainting themselves with the area which was settled by their forefathers over 98 years ago.



## Chamber Chatter

by Cora Queener

The Retail Merchant Association of the Spearman Chamber of Commerce recently sponsored local business consultations from the Panhandle Small Business Center. Mr. Don Taylor PSBC Director visited with five business owners during private, free consultations. Mr. Taylor is available for other interested business owners who desire a consultation. Call the Chamber office for more information.

The Board of Directors of the Chamber are selling raffle tickets for a FREE color 13" tv set. Prices are 1 for \$2.00 or 3 for \$5.00. Proceeds benefit the Chamber.

You wanted it-you got it! GARY P. NUNN & THE SONS OF THE BUNKHOUSE are coming back to Spearman (well, close anyway). They will be performing during the Hansford County Fair on Saturday night, 9:00 p.m., at the Sparks Bros. Hangar (2 miles south of Gruver, at the Municipal Airport, white hanger at far north end).

Wednesday, Sept. 20th at 12:00 NOON at J.J.'s Restaurant will be Women's Division of the Chamber. Any interested woman is invited to attend.

MOONLIGHT MADNESS IS COMING - but when will it be? Watch the newspaper!

STYLE SHOW IS COMING in November!!!!

RIBBON CUTTINGS-NEW BUSINESS

Henson Chiropractic 410 S. Davis Wed., Sept. 20, 1:15 p.m.

Attic Antiques 411 Davis Rita & Hazel Lesly, Owners Tues., Sept. 19, 5 p.m.

Spearman School Dedication/Ribbon Cutting Spearman Elementary School (at far South Door) Tues., Sept. 19 at 7 p.m.

## PTA Sets Meeting

On Monday, Sept. 25, at 7:00 p.m., the Spearman Parent and Teacher Association will have its first meeting for the 1989-90 school year.

Co-Presidents Kim and Stephanie Brock encourage parent and teacher attendance and participation for the coming year.

The program for Monday night will be an informative one for parents with children enrolled in

grades K - 8.

Mrs. Paula Butler, Media Center coordinator, will discuss the purpose of the Media Center (library) and the skills to be taught during library class time.

Mrs. Wynnette Mullins, APT teacher for the junior high and elementary students, will discuss Advanced Pupil Training for grades 1 - 8.

## Pageant Announced

"There she is, Miss America," sang Bert Parks. We all pick our favorite contestant to win and we all love to watch the pageant and what little girl doesn't secretly yearn to be Miss America one day. And I am willing to bet that my desire to be Miss America is still shared by millions of little girls all over the United States. Recently 90,000 young women entered the Miss American Pageant in September, 1988 and I cannot even imagine the number of little girls throughout the United States who were sitting at home watching the pageant dreaming about when they would be old enough to enter. Many young ladies and men win enough cash scholarship, etc to pay for expenses at college.

Sunday, October 8 KIDS OF AMERICA, a Dallas based national pageant organization will be presenting a preliminary competition at the Perryton Jr. High School Auditorium, 500 So. Eaton, Perryton, Texas. A little girl's or boy's dream can come true on a local level. Our national winners were from small cities from all over the United States. Kids of America truly believes in their youth oriented with a family base program and they offer a program that teaches children to believe in themselves, to attempt to reach a goal and responsibility. This competition offers your "KID" the opportunity to not only win the preliminary title, trophy, crown, savings bond etc. but also the opportunity to win cash prizes, trips, fur coats, wardrobe etc at the national competition in Dallas.

Boys and Girls ages 0-47 mos compete separately for the title of Beautiful Baby where they are judged on personality, grooming and alertness. They also can compete for the title of GLAMOUR OR HANDSOME and for the title of PLAYWEAR. They are presented on stage with their chaperone (mom, dad, etc) and the four age divisions for the BABY are: 0-11mos, 12-23mos, 24-35mos, 36-47mos. In the age divisions of 4-18 yrs - Girls can compete in Beauty, Talent, Glamour and Photogenic (all separate competitions) and boys can compete in Talent, Handsome and Photogenic. Age divisions are 4-7yrs, 8-11yrs, 12-14yrs, 15-18yrs. PHOTOGENIC competition for both the baby and older age divisions are judged by agencies in the print and media print in the Dallas area and photographs can be amateur or professional quality and you will receive your photographs back either through the mail, if you choose not to participate in any other event, or at the competition. Kids of America is a member of the Better Business Bureau and we urge to ask for names of children who have competed in other competitions in your area. Our program is very health oriented, family oriented, and upbeat, and who knows, this may be where your child begins their dream walk towards being Miss America...

For an application or for more information please call (214) 328-5437 or local phone numbers are (806) 435-5746 or 658-4497. No registration taken at the door and the deadline for pre-registering is Saturday, September 30th.

OCTOBER 7-8

CALL FOR APPLICATION (214) 494-4299

(806) 435-5746 658-4497

ENTRY TO NATIONALS TROPHIES CROWN SAVINGS BOND

- BEAUTIFUL BABY PLAYWEAR GLAMOUR \*HANDSOME Boys and Girls 1 MONTH-47 MONTHS 14 Age Groups
- BEAUTY \* TALENT AGES 4-18 YEARS 14 Age Groups
- PHOTOGENIC (Boys & Girls ages 0-18 yrs.)

The Hansford Plainsman  
Your Hometown Newspaper  
USPS 2346-6000 Spearman, Tx. 79091  
213 Main, Box 458, 659-3434  
Published Weekly at 213 Main, Spearman, Texas

Owned and Operated by:  
Texas Independent Newspapers, Inc.  
19906 Encino Grove, San Antonio, Tx 78259  
Second class postage paid at Spearman, Texas 79081.  
Any erroneous reflection upon the character of any person or firm appearing in these pages will be gladly and promptly corrected upon being brought to the attention of the management.  
PUBLISHER - ROBERT M. HULETT

Subscription Rate: Spearman, adjoining counties, combination with the Spearman Reporter, \$19.95; non-adjoining counties, \$24.95 annually.  
Postmaster: Send address changes to Hansford Plainsman Box 458, Spearman, Tx. 79081.  
The publisher reserves the right to revise or reject at its option any advertisement which it deems objectionable, either in subject or phraseology, or which it may deem detrimental to its business.

## EMT Classes Scheduled

EMT Class space is still available. Michele Davis, instructor, allowed interested persons to enroll in the EMT Class until Tuesday, September 19. After that date, the class will be closed.

EMT classes are scheduled to begin Sept. 12 and will continue on Tuesday and Thursday evenings until Dec. 14, according to instructors Michele Davis and Jeff Lackey.

Classes will be held at the fire station, 513 Hazlewood, from 6:00 to 10:00 p.m. for a total of 100 classroom hours of instruction. Cost for EMT instruction is \$50.00, which includes registration and books.

Cost of classes can be recovered through volunteering for the Hansford and Spearman Emergency Medical Service. EMTs who volunteer for the H&S EMS will be reimbursed by the City of

Spearman. Classes will cover medical emergencies such as heart attacks and CPR, care of diabetics, special care for stroke victims and how to care for persons suffering from seizures.

Instruction will also cover trauma related injuries such as those from falls, car accidents, heat and cold and drownings. Prospective EMTs will learn bandaging and splinting, how to check patients' vital signs and also airway management.

After receiving the 100 classroom hours of instruction, LMTs can be certified by the Texas Department of Health with 24 additional hours of service to Northwest Texas Hospital in Amarillo and three ambulance runs as an observer.

More information may be obtained by contacting Michele Davis at 659-3411.

## Club News

The Stationmaster's House Museum committee members accepted offers of assistance from Boy Scouts and Girls Scouts at their recent meeting.

Boy Scouts offered to do some painting for the museum, and their offer was gladly accepted by committee members. In addition, Girl Scouts from Spearman and Gruver will plant a wildflower garden.

It was announced that the museum will hang a plaque in honor of longtime Spearman resident, Mrs. Jessie Tompkins, on her 105th birthday.

The Pipkin family has donated Mrs. Knox Pipkin's wedding dress and "going-away" dress to the museum. The wedding dress, made by Mrs. Pipkin's mother, is 74 years old but has had "loving care," according to museum committee members, and is in excellent condition. The dresses will be on display within two weeks.

Museum committee members

have announced they will sponsor an Antique, Gun and Coin Show and Sale on Saturday and Sunday, October 7 and 8. This project will help to pay for a ramp at the museum, for increased accessibility to handicapped persons. Committee members noted they welcome any donations to their project. They also invite anyone interested in renting a table at the show and sale to contact one of the committee members.

Recent memorials have been made to the museum by Mr. and Mrs. Brad Beedy and Mr. and Mrs. J.D. Wilbanks in memory of Sena Bell Burrows; by Mr. and Mrs. B.J. Hawkins in memory of F.A. Shapley; by Mr. and Mrs. Gus Renner in memory of Jim Kate Garrett; and by Mr. and Mrs. Pope Gibner in memory of Dr. and Mrs. G.P. Gibner.

Those present at the recent meeting included Gus and Clementine Renner, Irvin and Helen Boyd, Ruby Jo Wilbanks and Juanita Pierce.

Tone Up For Less

\$10 Off Our Regular Prices!

12 Sessions For \$83.46  
24 Sessions For \$154.08  
Unlimited Sessions For \$58.85 per month

Special MEN ONLY Sessions  
Mondays, 5 - 7 p.m.

Hours: Monday - Friday 8 a.m. - 5 p.m.  
Or By Appointment

717 W. 7th Spearman 659-2238



Senator  
Lloyd Bentsen

## Watching Washington



Despite years of promised improvements, the U.S. trade deficit is still running at over \$100 billion a year.

Since 1980 our trade deficits have totaled \$800 billion. Those deficits have been financed by borrowing from abroad and have caused America to become the largest international debtor in the history of the world. In 1980 we were the world's largest creditor nation. Today our debt exceeds the combined international debt of all Latin America.

Financing this debt has pushed U.S. interest rates far above those of our major competitors. For example, the U.S. prime interest rate is 10.5 percent compared with 4.75 percent in Japan. That means higher mortgage costs, less investment, lower productivity and slower growth here than abroad. For American workers, it means fewer jobs created.

We must set a national goal to wipe out the trade deficit and produce a trade surplus in five years. It's a reasonable goal that can be achieved.

To wipe out the deficit, we first need a clear and concise national trade policy. Far too many countries unfairly close their markets to our products. Our trade policy must firmly state to those countries—you have access to our markets, in turn, we must have the same access to your markets.

As Chairman of the Senate Finance Committee, that oversees trade issues, I worked hard to get last year's landmark trade laws enacted. Now we must work to ensure this new trade law is fully implemented, so that American workers will get the full opportunity they deserve.

There are other steps we should take to eliminate our trade surplus and make America more competitive.

First, our education system must be shored up. When U.S. high school seniors competed with students from 13 other countries, we finished near the bottom. Education reform is critical to U.S. competitiveness.

Next, we need reform in American management. Many managers are so focused on the next quarter's bottom line that they are often afraid to make the long-term investments necessary to develop a product. In contrast, foreign companies will invest in new technologies even if a payoff is well down the road.

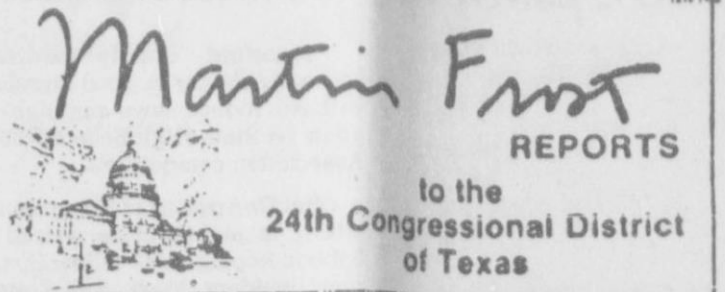
We must also emphasize research and development. I intend to push for extension of the R&D tax credit that is expiring this year. When business is willing to invest capital, our government should be there to back them up.

Finally, we must reduce the budget deficit as well as increase savings and investment. Just paying the interest on the federal deficit costs \$150 billion a year. And the deficit soaks up half of our savings—savings vitally needed to finance productive investment and create jobs.

But even if we eliminate the federal deficit, we must also take other steps to encourage Americans to save. Americans save only three cents of every GNP dollar, while our Japanese competitors save 18.6 cents. If every American put \$10 more in the bank each week we would increase our savings rate by 50 percent overnight.

Taking these steps will move us miles toward replacing our trade deficit with a surplus. And a trade surplus is a sure recipe for lower interest rates, greater investment, and faster income growth—in short, a healthier and more competitive economy, and greater opportunity for all Americans.

CONGRESSMAN



by Congressman Martin Frost

It would be hard to conceive of a circumstance in the United States where a candidate for President, the Attorney General, members of the Supreme Court, and other elected officials would be murdered by drug dealers without the Nation mobilizing its entire strength to bring the assassins to justice and to eliminate the sources of drugs.

The scenario described here has happened in Colombia, a nation in South America. The population of that nation appears to be justly irate; however, a solution is not readily recognizable.

Drug trafficking in the world relies on a readily available source of drugs and a readily available market for drugs. Today, the world has both. Colombia provides 80% of our nation's illegal drugs, and the U.S. consumes over \$100 billion of such drugs annually.

The Colombian government appears to be pointing a finger at the United States and saying "Clean up the demand, and the supply will go away."

The U.S. government appears to be pointing a finger at Colombia and saying "Clean up the supply, and the demand will go away."

To any rational person, both remedies must be applied for there to be a cure. The Colombians must take every step to

destroy the drug crops at their source, including the spraying of plants and military operations to search out drug dealers wherever they may hide.

The U.S., on the other hand, must spend whatever is necessary to eradicate illegal drugs from our streets, our schools, our colleges, and elsewhere in our communities. To date, the Regan and Bush Administrations have failed to request enough funds to be serious about solving the drug problem.

Both nations are seeing bodies in the streets. In Colombia they are the bodies of public officials; in America they are the bodies of young people who have so senselessly become addicted to drugs and who have crossed drug dealers in one way or another.

In the past year in this column, I have described the severe financial strains on the U.S. Coast Guard, where the primary burden of drug interdiction rests. In the President's last budget proposal, again this agency is dreadfully underfunded. Many other examples could be given.

It is past the time when we must commit the total resources of this nation to eliminating the supply of illegal drugs into this country. Until we are totally serious about our problems, we cannot be surprised by the same resistance in other nations.

## County's Sales Tax Rebates Increase

Hansford County received a total of \$17,704.48 in returned city sales taxes this month, according to information from State Comptroller Bob Bullock.

City sales tax receipts for Hansford County were up 16.57 percent from the same period last year, when the county received \$15,187.55. Total receipts from business in Hansford County this year have been \$175,847.29, as compared with 1988 receipts of \$162,525.01. This represents an increase of 8.2 percent over last year.

The City of Spearman's business picked up, with a total of \$14,622.44 in city sales taxes received this month as compared with September 1988's receipts of \$11,395.82. So far in 1989, Spearman has received \$141,751.29 in returned city sales taxes, as compared with year-to-date receipts of \$127,925.34 through September, 1988.

Business activity in Gruver slowed, however, with returned city sales taxes totaling \$3,082.04 this month and last year's September returns totaling \$3,791.73. This represents a decrease of 18.72 percent. Year-to-

date figures for the City of Gruver total \$34,096.00 for this year as compared with receipts of \$34,599.67 during the same period in 1988, a decrease of 1.46 percent.

Statewide, State Comptroller Bob Bullock said that sales tax allocation payments to 888 cities and towns totaled \$72.5 million this month, an increase of 6.8 percent over payments sent during September 1988. "This has been a banner year for a lot of local governments that count on sales tax rebates for revenue," Bullock said.

Bullock said that year-to-date allocations to cities have also continued to grow and are 9.4 percent higher than last year's payments through September. Cities can have a local tax rate of either one or one and one-half percent, Bullock said.

A total of 92 counties received payments of \$7 million this month, compared to \$6.3 million last year. September's checks represent taxes collected by monthly filers in July and reported to the Comptroller's office by August 21, Bullock said.

## Rep. Waterfield To Host Resource Day

Representative Dick Waterfield will be hosting a "Northern Panhandle Resource Day," Friday, September 29, 1989 at Frank Phillips College in Berger.

The day-long seminar is designed to educate and inform people in the 88th district about available economic development programs.

Representative Waterfield organized the seminar in response to increased concern for assistance and information aimed at difficulties in rural economic development.

Among the state agencies to be

represented are the Texas Department of Agriculture, the Texas Department of Commerce, the Texas Agricultural Extension Service, the Council of Governments, and the Small Business Development Center.

These groups will provide answers to specific community or business questions. Assistance based on individual goals and guidelines to help reach those goals are the major objectives.

Panhandle communities will send representatives to the seminar in an effort to promote economic progress.

## New Law Helps Disabled Drivers

As of September 1, service stations that offer full-service refueling must pump gasoline and diesel for disabled drivers, upon request, at the self-service price. Stations that have only self-service pumps are not affected by the new law, passed during this year's regular legislative session.

To receive refueling service at the self-service price, a driver must display a disabled persons insignia, validation sticker, identification card, or license plates issued by the highway department.

The new law allows Class C misdemeanor charges to be filed against a station manager who does not establish a policy providing refueling service for the disabled driver. Similar charges can be filed against an individual employee who is acting against station policy and refuses to provide this service when requested.

The law will be enforced by the attorney general or a local prosecuting attorney.

Congressman  
Bill Sarpalius  
Reports to the  
13th District



### TREATMENT MUST BE PART OF DRUG WAR

WASHINGTON — Based on what is being said by government officials these days, one might assume smashing the South American drug cartels is the key to winning the War on Drugs. Break those drug rings, and the war is over. We win. Right?

Unfortunately, the solution isn't quite that simple. Oh, breaking the cartels would be a good thing; putting drug lords out of business always is. But, by itself, stopping known supplies of drugs won't win us the war.

The demand for drugs, you see, won't go away just because one source of drugs is eliminated. In fact, smashing the known cartels in the short run would make addicts' demands more acute. Supplies would be scarce, and desperate addicts would pay anything for a hit or fix of their favorite product. Prices would rise, and crime almost certainly would rise as well.

Therein lies the basic flaw in our nation's drug policy. We tend to focus on only one facet of the drug problem at a time. This month, the spotlight is on the drug supply. We cannot seem to remember that the drug business in one respect is like any other business; it is driven by supply and demand. Those two forces are deeply intertwined, never to be separated.

Supply never will be eliminated as long as there is demand. Existing supplies can be eradicated, but if there is a customer willing to pay a premium price, some innovative dealer will take huge risks and find a way to supply the customer.

Similarly, demand will not be eliminated as long as a ready supply of drugs is available. If drugs are too easy to obtain, the task facing recovering addicts becomes almost impossible, and the lure for potential new addicts becomes all the more difficult to resist. Anyone who took high school economics can grasp these concepts.

Put another way, drug abuse is like a two-headed monster. Both heads must be severed to kill the beast. Cut one head, and the monster will live and grow a new head to replace the one lost.

Clearly, we are moving in the right direction with regard to the first head, which is supply. Our initiatives in South America have caused problems for the powerful drug lords there, and interdiction efforts along our own borders yield increasingly positive results.

But what of the monster's second head? There, our efforts still are sorely lagging. As recently as last year, nine out of every 10 addicts voluntarily seeking treatment were turned away because there simply weren't enough treatment facilities available.

To Congress' and the administration's credit, they began to reverse the trend in 1986 with the passage of an omnibus bill to combat drug and alcohol abuse. That bill led to an increase in substance abuse treatment funding from less than \$500 million in Fiscal Year 1987 to \$643.2 million in FY 1988 and \$806 million in the current fiscal year. The House has voted to keep funding at the same level for FY 90.

More importantly, the FY 1989 bill appropriated \$75 million specifically to help reduce the waiting lines at substance abuse treatment centers, and Congress hopes to appropriate another \$25 million for that purpose in FY 1990. We need more, but in tough budget times, this will do for a start.

Just as important as money, though, is perception. The perception right now is that our government is concentrating solely on stopping the supply of drugs coming into this country and spending little or no time contemplating what we must do to reduce demand. There is reason to be concerned that our drug policy is not balanced.

The time has come for the president, his drug policy advisor and Congress to put that needed balance into the program.

If you have any questions, comments or suggestions regarding the nation's drug policy, please contact us at 1223 Longworth House Office Building, Washington, D.C. 20515.

## Ask Bob Bullock

Editor's note: Bob Bullock, Texas Comptroller of Public Accounts, answers questions from taxpayers in his monthly column, "Ask Bob Bullock." If you have a question about state taxes, write to Bob Bullock, Comptroller of Public Accounts, Austin, Texas, 78774, or call 1-800-252-5555 toll-free.

Dear Bob Bullock,

Our office has raised money to buy playground equipment for a nearby elementary school. We are on a tight budget, and it would help if we didn't have to pay sales tax on the equipment. What do the rules say?

G.S. Austin

Dear G.S.,

When you buy something to donate to a public school, you may give the seller an exemption certificate instead of paying the sales tax. The exemption also applies to donations made to local, state and federal agencies, and to religious, charitable and educational organizations.

Be sure to include the name of the school or organization on the exemption certificate.

To get an exemption certificate form, call our toll-free number listed at the beginning of this column or stop by one of the 30 Comptroller field offices.

Dear Bob Bullock,

I'm a diabetic. When I recently bought some home glucose monitoring strips from my neighborhood pharmacy, I was charged sales tax. Shouldn't the strips be tax-free items?

W.H. Richardson

Dear W.H.,

Glucose monitoring strips are not taxable when sold with a doctor's prescription. Give your pharmacist your prescription next time you buy the strips, and you won't be charged sales tax.

Dear Bob Bullock,

As a calligrapher, I sell fine, skilled handwriting. Sometimes I supply all the materials and other

times my customers supply their own paper. Is my service taxable?

T.D. Midland

Dear T.D.,

Yes, your calligraphy service is taxable. You should collect tax on the amount you charge for the finished product. You may give your suppliers a resale certificate when you buy paper and ink that will be part of the document sold to customers. But you should pay sales tax on any other tools or equipment you use in your business.

To receive a resale certificate form, call our toll-free number or visit an area Comptroller field office.

Dear Bob Bullock,

I ordered books from a book club based in New York and was charged Texas sales tax. Do I have to pay it? If so, how do I know the club will send the tax money to Texas?

B.W. Corpus Christi

Dear B.W.,

Because you are a Texas resident, you are responsible for paying sales tax on books ordered from out-of-state companies. Many out-of-state mail order companies collect and remit Texas sales tax. If you're unsure about whether the company has a Texas tax number, call Tax Assistance at our toll-free number.



When choosing a mechanic, look for the blue and white ASE sign near the shop entrance.

HAVE YOUR HEARING TESTED BY A PROFESSIONALLY TRAINED BELTONE HEARING AID SPECIALIST TODAY!



Charlene Blalock

Come To:  
Hansford Manor  
707 S. Roland  
Spearman, Texas

Thursday  
September 21  
10:00 a.m. to  
12:00 noon

**Beltone**  
Better Hearing Through Professional Care

FREE HEARING TESTS

OUR GIFT TO YOU...  
**Up Reach**  
A Magazine For Better Living



We will be mailing Up Reach Magazine into area homes very shortly. This magazine is a well-known publication which has gained much recognition for its inspiring articles.

We feel this magazine will be a wonderful gift to our community, and we hope you'll enjoy receiving it. To make certain that you are on our mailing list, please contact us at the number listed below.

Please feel free to visit our Bible classes or worship services!

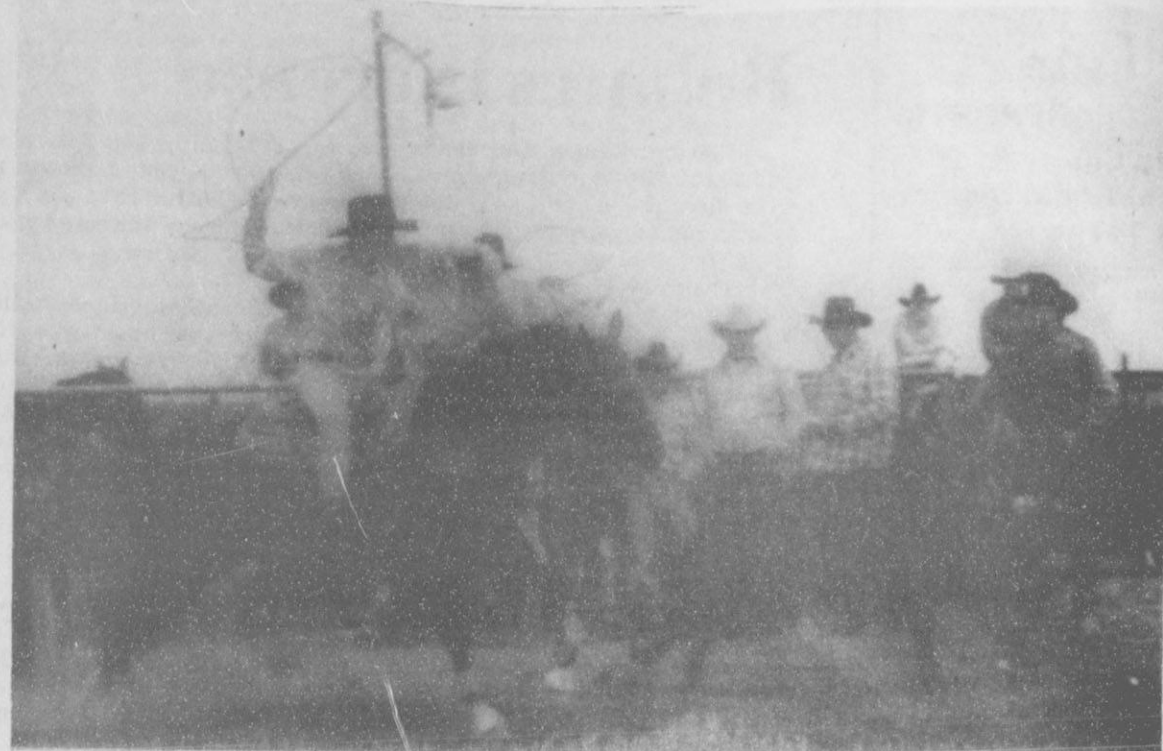
CHURCH OF CHRIST

121 S. Haney - P.O. Box 475  
659-3098

Worship - 10:35 a.m.  
6:00 p.m.



# Tri State High School Rodeo Association Competitors' Standings Announced



Mark Eakin gets ready to throw the heeler rope in the team roping event at the Spearman High School Tri State Rodeo.



Clint DeArmond prepares to enter the starting shoot for one of his runs in the team roping event, at the Spearman High School Tri State Rodeo.

Hansford County cowboys and cowgirls are in good standing with two rodeos down and eight to go in Tri State High School Rodeo Association competition.

Clint DeArmond of Spearman is sitting in eighth place overall in Ribbon Roping, with fellow Spearman resident Mark Eakin right behind, in ninth place.

Eakin occupies 15th place in the overall Team Roping standings, and Marty McCloy of Gruver is in fourth place in Calf Roping.

On the girls' side, two Gruver cowgirls have a lot to be happy about. Kelly McCloy is sitting in ninth place overall in Barrel Racing, and Leslie Morton occupies second place overall in both Breakaway Roping and in Pole Bending.

As a further reward for her outstanding performances, Morton is in first place position for the Rookie Girl title.

## PUBLIC NOTICE BRIEF EXPLANATORY STATEMENTS OF PROPOSED CONSTITUTIONAL AMENDMENTS SPECIAL ELECTION NOVEMBER 7, 1989

### PROPOSITION NO. 1 ON THE BALLOT

House Joint Resolution 102 proposes a constitutional amendment that would increase the salary of members of the legislature to one-fourth of the Governor's salary and increase the salary of the Lieutenant Governor and the Speaker of the House of Representatives to one-half of the Governor's salary. The annual salary of members of the legislature, the Lieutenant Governor, and the Speaker of the House of Representatives is currently \$7,200. Under this provision, the annual salary of the Lieutenant Governor and the Speaker would be \$46,716, and the annual salary of members of the legislature would be \$23,358, based on the Governor's current annual salary of \$93,432. The increase for the Speaker and the members of the legislature would take effect when the legislature convenes for its regular session in January 1991. The increase for the Lieutenant Governor would take effect when the term of that office begins in 1991. The salary increase for the Lieutenant Governor would not make members of the legislature ineligible to run for the office of Lieutenant Governor.

The proposed amendment will appear on the ballot as follows: "The constitutional amendment to limit the salary of the lieutenant governor and the speaker of the house of representatives to not more than one-half of the governor's salary and to limit the salary of a member of the legislature to not more than one-fourth of the governor's salary."

### PROPOSITION NO. 2 ON THE BALLOT

Senate Joint Resolution 5 proposes a constitutional amendment that would authorize the Texas Water Development Board to issue an additional \$500 million of Texas water development bonds. The additional bonds are to be used as follows: \$250 million of the bonds are to be used for water supply loans and facilities acquisition; \$200 million of the bonds are to be used for water quality enhancement projects; and \$50 million of the bonds are to be used for flood control. The legislature may provide that \$100 million be used for subsidized loans and grants to economically distressed areas of the state for water and wastewater facilities.

The proposed amendment will appear on the ballot as follows: "The constitutional amendment to authorize the issuance of an additional \$500 million of Texas water development bonds for water supply, water quality, and flood control purposes."

### PROPOSITION NO. 3 ON THE BALLOT

House Joint Resolution 51 proposes a constitutional amendment that would authorize the legislature to provide for the issuance of general obligation bonds to provide money to establish a Texas agricultural fund, a rural microenterprise development fund, a Texas product development fund, and a Texas small business incubator fund in the state treasury. The Texas agricultural fund would be used to provide financial assistance to develop, increase, improve, or expand the production, processing, marketing, or export of crops or products grown or produced in Texas by Texas agricultural businesses. The rural microenterprise development fund would be used to stimulate the creation and expansion of small businesses in rural areas. The Texas product development fund would be used to aid in the development and production of new or improved products in this state. The Texas small business incubator fund would be used to stimulate the development of small businesses in the State.

The principal amount of bonds outstanding at one time could not exceed \$25 million for the Texas agricultural fund and \$5 million for the rural microenterprise develop-

ment fund. The financial assistance offered by both funds could include loan guarantees, insurance, co-insurance, loans, and indirect loans or purchases or acceptances of assignments of loans or other obligations. To carry out the Texas product development fund, the legislature could authorize loans, loan guarantees, and equity investments, and the issuance of up to \$25 million of general obligation bonds for initial funding. To carry out the Texas small business incubator fund, the legislature could authorize loans and grants of money, and the issuance of up to \$20 million of general obligation bonds for initial funding.

Bonds authorized under this amendment would be paid out of the first money coming into the treasury in each fiscal year that is not otherwise appropriated by the constitution, less any amount in any interest and sinking account at the end of the preceding fiscal year that is pledged to payment of the bonds or interest.

The proposed amendment will appear on the ballot as follows: "The constitutional amendment authorizing the legislature to provide for the recovery and further development of the state's economy, with goals of increasing job opportunities and other benefits for Texas residents, through state financing of the development and production of Texas products and businesses."

### PROPOSITION NO. 4 ON THE BALLOT

House Joint Resolution 13 proposes a constitutional amendment that would authorize the legislature, by general law, to exempt from ad valorem taxes property owned by nonprofit veterans organizations that are chartered or incorporated by the United States Congress.

The proposed amendment will appear on the ballot as follows: "The constitutional amendment to authorize the legislature to exempt property of nonprofit veterans organizations from ad valorem taxation."

### PROPOSITION NO. 5 ON THE BALLOT

Senate Joint Resolution 11 proposes a constitutional amendment that would provide an exemption from ad valorem taxation for goods, wares, merchandise, other tangible personal property (including aircraft), and ores (other than oil, gas, and petroleum products) if the property is acquired in or imported into the state and is destined to be forwarded out of the state, regardless of whether the intention to forward the property existed when the property was acquired or imported into the state, if it remains in Texas for 175 days or less for assembly, storage, manufacture, processing, or fabrication. The proposed amendment would authorize the governing body of a county, municipality, school district, or junior college district to prevent the exemption of this tangible personal property from taxation by taking official action before April 1, 1990. A county, municipality, school district, or junior college district could rescind a decision to tax the property, in which case the exemption would become effective in the year of the rescission and the property could not thereafter be taxed.

The proposed amendment will appear on the ballot as follows: "The constitutional amendment promoting economic growth, job creation, and fair tax treatment for Texans who export goods to other states and nations by restoring and allowing, on a local option basis, an ad valorem tax exemption for certain personal property that is in Texas only temporarily for the purpose of assembling, storing, manufacturing, processing or fabricating."

### PROPOSITION NO. 6 ON THE BALLOT

House Joint Resolution 4 proposes a constitutional amendment that

would enable the legislature to provide, by general or special law, that members of a hospital district board may serve terms not to exceed four years. Currently, hospital district board members' terms are two years.

The proposed amendment will appear on the ballot as follows: "Authorizing the members of a hospital district governing board to serve four-year terms."

### PROPOSITION NO. 7 ON THE BALLOT

House Joint Resolution 40 proposes a constitutional amendment that would change the format of the oath of office for officeholders in this state. All elected and appointed officers would be required to take an oath or affirmation swearing to faithfully execute the duties of office and to preserve, protect, and defend the constitution and laws of the State and the United States. In addition, each elected and appointed officer would be required to sign a sworn statement that he or she had not paid, offered, or promised anything of value for a vote or to secure appointment to an office, as applicable. The written, sworn statement would be filed with the secretary of state. The information in the statement is currently contained in the oaths of office taken by elected and appointed officials.

The proposed amendment will appear on the ballot as follows: "The constitutional amendment to require that a member of the legislature, the secretary of state, and an elected or appointed officer, before assuming office, sign a written oath stating that the member, the secretary of state, or the officer did not engage in bribery to obtain the office."

### PROPOSITION NO. 8 ON THE BALLOT

Senate Joint Resolution 24 proposes a constitutional amendment that would allow the legislature to authorize the issuance of up to \$400 million in general obligation bonds. The proceeds of the bonds could be used to acquire, construct, or equip new corrections institutions, mental health and mental retardation institutions, youth corrections institutions, and statewide law enforcement facilities and to repair and renovate existing facilities of those institutions. The bonds would constitute a general obligation of the state. The bonds and interest on the bonds would be paid from the first money coming into the treasury that is not otherwise appropriated by the constitution, less any amount in a sinking fund at the end of the preceding fiscal year that is pledged to payment of the bonds or interest.

The proposed amendment will appear on the ballot as follows: "The constitutional amendment authorizing the issuance of general obligation bonds for projects relating to facilities of corrections institutions, youth corrections institutions, and mental health and mental retardation institutions and for the expansion of statewide law enforcement facilities."

### PROPOSITION NO. 9 ON THE BALLOT

House Joint Resolution 101 proposes a constitutional amendment that would authorize the legislature to pass laws to organize and combine state agencies that perform criminal justice functions. The legislature could combine into one or more agencies all agencies that have authority over the confinement and supervision of convicted criminals, that set standards for or distribute state funds to political subdivisions with authority over the confinement and supervision of convicted criminals, and that gather information about criminal justice administration. Agencies that could be combined would include the Texas Department of Corrections, the Board of Pardons and Paroles, and the Texas Adult Probation Commission. The amendment would also authorize the legislature to pass laws authorizing the appointment of members of more than one department of government to serve on the governing body.

The proposed amendment will appear on the ballot as follows: "The constitutional amendment authorizing the legislature to organize and combine various state agencies that perform criminal justice functions."

### PROPOSITION NO. 10 ON THE BALLOT

Senate Joint Resolution 4 proposes a constitutional amendment that would authorize the legislature to enact laws requiring or permitting judges to advise juries that a defendant convicted of a criminal offense can receive credit for good conduct that results in a shorter prison term and that eligibility for parole or mandatory supervision can also affect the length of time a convicted criminal serves in prison.

The proposed amendment will appear on the ballot as follows: "The constitutional amendment authorizing the legislature to require or permit courts to inform juries about the effect of good conduct time and eligibility for parole or mandatory supervision on the period of incarceration served by a defendant convicted of a criminal offense."

### PROPOSITION NO. 11 ON THE BALLOT

House Joint Resolution 102 proposes a constitutional amendment that would increase the per diem of members of the Legislature. The amount of per diem allowed during a calendar year would be equal to the maximum amount allowed for federal income tax purposes as of January 1 of that same year as a deduction for living expenses incurred by a state legislator. The per diem of \$30 would increase to \$81, which is the current maximum living expense deduction.

The proposed amendment will appear on the ballot as follows: "The constitutional amendment to set the amount of per diem received by a member of the legislature at the amount allowed for federal income tax purposes as a deduction for living expenses incurred by a state legislator in connection with official business."

### PROPOSITION NO. 12 ON THE BALLOT

Senate Joint Resolution 53 proposes a constitutional amendment that would authorize the legislature to provide for the use of the permanent school fund and the income from the permanent school fund to guarantee bonds issued by the state for the purpose of providing loans or purchasing the bonds of school districts to acquire, construct, renovate, or improve instructional facilities. If the permanent school fund were required to make payment as a result of its guarantee of bonds issued by the state, the fund would have to be reimbursed immediately from the state treasury. The amount of bonds guaranteed by the permanent school fund could not exceed \$750 million unless a higher amount was authorized by a two-thirds vote of both houses of the legislature. If a school district were to become delinquent on a loan, the amount of the delinquency would be offset against other aid to which the district was entitled.

The proposed amendment will appear on the ballot as follows: "The constitutional amendment to provide for using the permanent school fund and its income to guarantee bonds issued by the state for the purpose of aiding school districts."

### PROPOSITION NO. 13 ON THE BALLOT

House Joint Resolution 9 proposes a constitutional amendment that would provide a bill of rights for crime victims. This constitutional amendment would give crime victims the right to be treated with fairness and respect and to be reasonably protected from the defendant. In his request, the crime victim would have the right to notification of court proceedings, the right to be present at all public court proceedings unless a court determines that the victim's testimony would be affected by hearing other testimony, the right to confer with a representative of the prosecutor's office, the right to restitution, and the right to information about the conviction, sentence, imprisonment, and release of the defendant. The legislature would be authorized to enact laws to define the term "victim," to enforce the rights of crime victims, and to provide that certain public officers and agencies are not liable for a failure to protect a victim's rights.

The proposed amendment will appear on the ballot as follows: "The constitutional amendment

providing a bill of rights for crime victims."

### PROPOSITION NO. 14 ON THE BALLOT

Senate Joint Resolution 71 proposes a constitutional amendment that would require the district attorney in Fort Bend County to be elected and serve terms at the same times as criminal district attorneys in the state. Currently, criminal district attorneys are elected in gubernatorial election years and district attorneys are elected in presidential election years.

The proposed amendment will appear on the ballot as follows: "The constitutional amendment requiring a district attorney serving in Fort Bend County to be elected and serve a term in the manner provided by general law for criminal district attorneys."

### PROPOSITION NO. 15 ON THE BALLOT

House Joint Resolution 32 proposes a constitutional amendment that would authorize the legislature, by general law, to permit charitable raffles conducted by qualified nonprofit organizations. The amendment would require that the raffles be conducted, promoted, and administered only by members of the qualified nonprofit organizations and that the proceeds from the sale of raffle tickets must be spent for the charitable purposes of the organizations.

The proposed amendment will appear on the ballot as follows: "The constitutional amendment authorizing the legislature to permit and regulate raffles conducted by certain nonprofit organizations for charitable purposes."

### PROPOSITION NO. 16 ON THE BALLOT

Senate Joint Resolution 34 proposes a constitutional amendment allowing the legislature to pass general laws authorizing the creation of hospital districts upon approval of a majority of the qualified voters of the district. The amendment would also permit the legislature to authorize the creation of hospital districts by general or special law in counties with populations of 75,000 or less and to authorize the commissioners courts of such counties to levy ad valorem taxes and issue general obligation bonds for the support and maintenance of such districts.

The proposed amendment will appear on the ballot as follows: "The constitutional amendment granting to the people the right to decide whether to create and maintain hospital districts to protect the public well-being in a manner independent of the legislature."

### PROPOSITION NO. 17 ON THE BALLOT

House Joint Resolution 33 proposes a constitutional amendment that would allow the legislature, by general law, to authorize the use of public money to provide local fire departments and other public fire-fighting organizations loans or other financial assistance to purchase fire-fighting equipment and to aid in complying with federal and state law. The legislature would also be allowed to authorize the use of public money for scholarships and grants to educate and train members of these organizations. Part of the money could be used for administrative costs of this program. The legislature would provide for the terms and conditions of all such scholarships, grants, loans, and other financial assistance.

The proposed amendment will appear on the ballot as follows: "The constitutional amendment authorizing the state to provide scholarships, grants, loans, and other financial assistance to local fire departments and other public fire-fighting organizations to purchase fire-fighting equipment, to aid in providing necessary equipment and facilities to comply with federal and state law, and to educate and train their members."

### PROPOSITION NO. 18 ON THE BALLOT

Senate Joint Resolution 44 proposes a constitutional amendment that would repeal subsection (e) of Article III, Section 50-d of the constitution. Article III, Section 50-d currently allows the Texas Water Development Board to issue and sell Texas agricultural water conserva-

tion bonds in an amount not to exceed \$200 million, if two-thirds of the members of each house of the legislature approve. Under subsection (e), this authority will expire in November, 1989. Repeal of subsection (e) by passage of this amendment would continue in effect the authority to issue and sell the bonds.

The proposed amendment will appear on the ballot as follows: "The constitutional amendment to eliminate certain time limitations relating to the issuance of Texas agricultural water conservation bonds."

### PROPOSITION NO. 19 ON THE BALLOT

Senate Joint Resolution 59 proposes a constitutional amendment that would allow local governments to invest their funds as authorized by the legislature. Currently, the constitutional prohibition against a grant of public money to an individual, association, or corporation or against becoming a stockholder in a corporation, association, or company prevents local governments from making some kinds of investments. This proposed amendment would allow local governments to make any investments authorized by the legislature.

The proposed amendment will appear on the ballot as follows: "The constitutional amendment to authorize local governments to invest their funds as provided by law."

### PROPOSITION NO. 20 ON THE BALLOT

Senate Joint Resolution 16 proposes a constitutional amendment which, if passed, would abolish the office of county surveyor in Cass, Ector, Garza, Smith, Bexar, Harris, and Webb Counties. A majority of the voters in an affected county must vote in favor of this proposed amendment before the office is abolished in that county. If the office of county surveyor is abolished in any of these counties, the powers, duties, and functions of the office are transferred to a county officer or employee designated by the commissioners court of the county in which the office is abolished.

The proposed amendment will appear on the ballot as follows: "The constitutional amendment to abolish the office of county surveyor in Cass, Ector, Garza, Smith, Bexar, Harris, and Webb Counties."

### PROPOSITION NO. 21 ON THE BALLOT

Senate Joint Resolution 74 proposes a constitutional amendment that would authorize the legislature to enact laws authorizing the Texas Higher Education Coordinating Board or its successor to provide for, issue, and sell an additional \$75 million in general obligation bonds as college savings bonds. The form, terms, and denominations of the bonds would be prescribed by law. The interest rate and installments would be prescribed by the Texas Higher Education Coordinating Board or its successor. The maximum net effective interest rate would be set by law. Proceeds from the sale of the bonds would be credited to the Texas opportunity plan fund, which is used to make loans to students to attend institutions of higher education in Texas. The bonds and interest on the bonds would be payable from the first money coming into the treasury in each fiscal year that is not already appropriated by the constitution, less the amount remaining in the sinking fund at the close of the prior fiscal year.

The proposed amendment will appear on the ballot as follows: "The constitutional amendment providing for the issuance of general obligation bonds as college savings bonds to provide educational loans to students and to encourage the public to save for a college education."

Estos son los informes explicatorios sobre las enmiendas propuestas a la constitución que aparecerán en la boleta el día 7 de noviembre de 1989. Si usted no ha recibido una copia de los informes en español, podrá obtener una gratis por llamar al 1/800/252/8683 o por escribir al Secretario de Estado, P.O. Box 12060, Austin, Texas 78711.



# CLASSIFIEDS

## For Sale

**FOR SALE:** Sedan Grass Hay. Round or Square Bails. Call V.B. Morris at 733-2203. S45-7tc

**SEED WHEAT FOR SALE:** 2nd year from registered Sioux land. Cleaned and length graded. Test Weight 61 lbs. Germination 96%. Call: 375-2343-Canadian Area. S44S-7T

**HOUSE FOR SALE:** Reduced 3 Bdr. 1 1/4 bath setting on 3 lots. Has out buildings, cellar on corner lot room for trailer houses. Call: 659-3425 after 5:00 or see at 217 N. Hoskins. S44S-8tc

**PIANO FOR SALE**  
WANTED: Responsible party to take on small monthly payments on piano. See Locally. Call: Manager at 800-635-7611 anytime S-45-S-6tc

**IRRIGATION MOTORS FOR SALE:** 2 V-12 GMCs, 1 454 Chevrolet, and 1 413 Chrysler. For more information contact: Bill at B&D Industrial Automotive, 300 West 1st, Dumas, TX. 79029 or call: Daytime 806-935-3900 and Nightly 806-935-3121. S44S-8tc

**FOR SALE:** Seed Wheat, Tam 101, Tam 105, Tam 108, Tam 200 and Russian Beardless. Call: V.B. Morris 806-733-2203 S38-RTN

**HOUSE FOR SALE 4 Bedroom** 1 1/4 bath 2 Car Garage, Fireplace Remodeled, New Carpet. 1119 Archer. Call: Sue Gerardy - 659-5196 or 733-5101. S 37 - RTN 1tp

**FOR SALE:** 3 bedroom, 2 bath home. Sunken living room, parquet floors, fireplace, covered patio, 2 car garage, sprinkler system, 2193 sq. ft. living space, excellent location. Call 659-3587 or 659-5022. S33-RTN

**FOR SALE 3 bedroom, 2 bath** home Fireplace, large living area, drapes, mini-blinds, completely remodeled and large deck patio. Nice neighborhood. 1110 S. Barkley. Call 659-3800 S36rtn

**FOR SALE:** 1 Metal Building and Property 35' x 50' - 1 Large Cinder Block Building and Property 3000 sq ft. Contact: First State Bank, Box 247, Spearman 659-5565. S29-RTN

**USED AUTO PARTS FOR SALE:** Located 4 miles west of Hooker, Ok. on highway 54. **Muss Cat Auto Salvage.** (405) 652-2400. S10-rtn

**SEED WHEAT - Chisholm, TAM 101, Century.** Registered and certified. Don Oblander, Okeene, Okla. 405-822-4792. (except Saturdays.) S46-5tc

**EQUIPMENT FOR SALE:** Can be seen at Baker & Taylor Drilling Co. Yard. Come by and look around. S46S-2tp

**FOR SALE:** Remington model 7 223, with scope - new set of dies, empty cases. Call 659-3846 after 6 p.m. S46S-2tc

## Business Opportunity

**AVON PRODUCTS**  
NO TERRITORY REQUIRED  
\$5 INVESTMENT  
FREE KIT - FREE GIFT  
CALL 806-373-AVON  
S44 1tc RTN (Sunday only)

## Help Wanted

**WANTED:** Mill Maintenance Man at Caprock #1, Gruver, Texas. Skill required in welding and mechanics. Salary negotiable depending on experience. Call 733-5043. S46S-2tc

## Services

**INSULATE NOW!** Save on Heating and Cooling Bills. Walls, Attics, New or Old Homes, Metal Buildings and Shops. Call Forest 806-659-2111 for appointment and FREE Estimate. Factory Trained Installer. S46-27tp

## For Rent

**HOUSE FOR RENT:** 307 12th. Brick, 3 bedroom, 1 bath. Available Sept. 1. Call 659-3809. S44-1tc RTN

**HOUSE FOR RENT:** 3 Bdr. 2 bath home fenced yard. Carpet. Applications being taken Call: Allen Alfred at 659-3034. S434S-1tc RTN

**TRAILER SPACE FOR RENT:** in Spearman, \$50 a month Call: 435-5080 S43S-RTN

**HOUSE FOR RENT in Spearman.** 3 bedroom 2 bath fenced backyard. Central heat and air. Call 878-2909. S46-2tc

## TAMU To Survey Area Residents About Consumer Purchases

A telephone survey of residents in an eight-county area of the Texas Panhandle began Saturday, Sept. 9, and will continue for three weeks to determine what local businesses can do to better service economy.

The survey is part of a project funded by the Kellogg Foundation and initiated by the Texas Agricultural Extension Service of the Texas A&M University System to assist in developing a comprehensive economic development plan for the counties of Dallam, Sherman, Hartley, Moore, Ochiltree, Lipscomb, Hansford and Hutchinson.

"In order to assist community leaders in developing a strategic plan, we first have to determine how the retail, service and agricultural sectors of the local economy are performing," said Extension Economist Ronald D. Knutson.

Knutson and Dennis U. Fisher, an Extension business development specialist, are coordinating the Panhandle economic development project in cooperation with local leaders and the Texas Bankers Association.

According to Knutson, available data suggest that the eight Panhandle counties are losing substantial consumer purchases to other counties within and outside of Texas. The survey will reveal the extent to which local businesses are servicing the local area and what local businesses can do to better service the local economy.

Survey participants will be selected by a random digit dialing system and asked where they purchased various items, why they chose those locations, where they are employed, what improvements need to be made in local businesses and what new businesses or services are needed in the area.

The project coordinators urged local residents who are called to cooperate in the survey as a means of improving local business activity, employment and the ease of shopping locally.

Community residents should contact Knutson's office at 409-845-5913 if they have questions concerning the telephone survey, the Kellogg project or the development of a long-range development plan for the area.

**OSGOOD MONUMENT CO.**  
Amarillo, Texas  
Dealers of Rock of Ages Granite, as well as all colored granites, marble and bronze memorials.  
represented by  
**BOXWELL BROS. FUNERAL HOME**  
519 S. Evans  
659-3802

## Miscellaneous

I would like to contact the individual that bought the saddle at a garage sale of Martha Batton's held at 112 S. Townsend in the spring of 1984. Any information about this, please call 806-659-3441. S46-4tp

**Sutphen's Bar-B-Que**  
We would love to feed Spearman football teams, bands and fans coming through Berger. All you can eat "Help Yourself Buffet" (1 meat \$4.00 - 2 meats \$4.75) We'll stay open late and You're Welcome! S41S-12c

I buy old quilts and quilt tops Call 733-2129. S46S-9tc

**WANTED:** To buy older coke machines. Call collect with model number for my offer. 316-624-2431 S46S-4tp

**LONELY? NEED A DATE?**  
Meet that special someone today!  
Call DATETIME (405) 366-6335 S44S-8tc

Count on the Classifieds to Do the Job

# Oil & Gas Report

## Intentions to Drill

**MOORE (PANHANDLE)** Richmond Petroleum, Inc., J.T. Sneed (160 ac) Sec. 53, 6-T, T&NO, PD 3600' (2651 N. Harwood, Suite 360, Dallas, TX 75201) for the following wells:

#1, 467' from North & East line of Sec. 13.5 mi S-SE from Dumas.  
#2, 467' from North & 1401' from East line of Sec. 13.5 mi S-SE from Dumas.

#3, 1320' from North & 2173' from East line of Sec. 13.6 mi S-SE from Dumas.

**MOORE (PANHANDLE & PANHANDLE Red Cave)** Richmond Petroleum, Inc., #1 J.T. Sneed (160 ac) 1980' from North & 2173' from West line, Sec. 26, 6-T, T&NO, 14.35 mi SE from Dumas PD 3800'.

**MOORE (PANHANDLE & PANHANDLE Red Cave)** Richmond Petroleum, Inc., G. Thompson (160 ac) Sec. 19, 44, H&TC, PD 3800', for the following wells:

#1, 467' from North & 2173' from West line of Sec. 11.3 mi S-SE from Dumas.

#2, 467' from North & West line of Sec. 11.2 mi S-SE from Dumas.

**MOORE (PANHANDLE & PANHANDLE Red Cave)** Richmond Petroleum, Inc., #1 G. Thompson (160 ac) 2173' from South & 934' from East line, Sec. 20, 44, H&TC, 11.2 mi S-SE from Dumas, PD 3800'.

**MOORE (PANHANDLE & PANHANDLE Red Cave)** Richmond Petroleum, Inc., T. Thompson, Jr., et al (320 ac) Sec. 26, 44, H&TC, PD 3800', for the following wells:

#1, 467' from North & West line of Sec. 9 mi south from Dumas.

#2, 467' from South & East line of Sec. 9.8 mi south from Dumas.

**MOORE (WEST PANHANDLE)** APX Corp., #1-36A Brown (650 ac) 330' from South & East line, Sec. 36, 6-T, T&NO, 15 mi SE from Dumas, PD 3175' (One Leadership Square, Suite 1400, Okla. City, OK 73102)

**MOORE (WEST PANHANDLE)** APX Corp., #1-49 Sneed (652 ac) 990' from North & 1650' from West line, Sec. 49, 6-T, T&NO, 18

**NOTICE**  
Wallace Monument Co. Monuments, Curbing, Grave Covers  
Local Representative  
**LEONARD JAMESON**  
Spearman, Texas  
35s-rtn

## SPEARMAN HIGH SCHOOL MENU SEPT. 18 - SEPT. 22

**MONDAY**  
PORK FRITTER  
1/2 BAKED POTATO  
SALAD BAR  
HOT ROLLS/BUTTER  
1/2 ORANGE MILK  
**TUESDAY**  
PIZZA BURGER  
FRIES  
SALAD BAR  
BANANA BREAD SQUARES MILK

**WEDNESDAY**  
BURRITOS  
CORN ON COB  
SALAD BAR  
PEACH COBBLER JUICE MILK

**THURSDAY**  
GRILLED CHEESE SANDWICH  
BEEF STEW  
SALAD BAR  
FRUIT PUNCH MILK

**FRIDAY**  
HAM SLICE  
FLORENTINE MIX  
SALAD BAR  
MANDRINE ORANGE JELLO  
HOT ROLL/PEANUT BUTTER BLEND MILK

## SPEARMAN JR. HIGH/ ELEMENTARY MENU SEPT. 18 - SEPT. 22

**MONDAY**  
PORK FRITTER  
CHEESE STICKS  
1/2 BAKED POTATO  
BUTTERED CARROTS-PEAS  
HOT ROLLS/BUTTER  
1/2 ORANGE

**MONDAY**  
PORK FRITTER  
CHEESE STICKS  
1/2 BAKED POTATO  
BUTTERED CARROTS-PEAS  
HOT ROLLS/BUTTER  
1/2 ORANGE

**MILK TUESDAY**  
PIZZA BURGER  
FRIES  
PASTA SALAD  
GARDEN SALAD  
BANANA BREAD SQUARES MILK  
**WEDNESDAY**  
BURRITOS  
CORN ON COB  
PINTO BEANS  
PEACH COBBLER JUICE MILK

**THURSDAY**  
GRILLED CHEESE SANDWICH  
BEEF STEW  
BRAEDED OKRA  
FRUIT PUNCH MILK  
**FRIDAY**  
HAM SLICE  
SWEET POTATOES  
FLORENTINE MIX  
MANDRINE ORANGE JELLO  
HOT ROLL/PEANUT BUTTER BLEND MILK

## EMS From Page 1

to the previous two classes. The EMT/Special Skills, in addition to basic skills possessed by the ECA and EMT, is also competent to initiate intravenous therapy and endotracheal or esophageal intubation. The Paramedic can additionally perform cardiac defibrillation and drug therapy. To perform at the advanced levels, the Special Skills and Paramedic must be under medical supervision, either by radio or standing medical protocols. There are 6,102 individuals in Texas certified at the two advanced levels and serving with EMS firms.

The decisions of level of care, type of organization and funding are all made at the local level. The state does not mandate a level higher than ECA and basic life support; nor does the state require a city or county to fund, support, or organize an EMS service. No state funds are available for EMS service beyond very limited funds for training. Federal funds have in the past been available for training and equipment and may again be available if trauma legislation sponsored by Senators Kennedy

and Cranston is successful.

The profile of EMS in Texas has changed dramatically over the last twenty years. We have seen funeral homes leave the EMS industry and hospitals, cities, and counties have increased their involvement in the provision of emergency medical care. In many locations EMS is viewed as the third city service, right next to police protection and fire control. In other areas, EMS is part of a city or county's public health effort and is organized with the hospital. Some jurisdictions contract with private providers for EMS service. Limited funding is an obstacle for many communities and volunteer EMS personnel take up the slack in some areas. Volunteer services also take many forms. Some volunteer services receive city or county funding for equipment purchases, while many do not and must rely on fundraising and donations.

Twenty years ago, only an eight hour first-aid course was required to staff an ambulance. Today, 80% of the EMS personnel in our state are certified above the minimum ECA level.

## Fair From Page 1

reminding everyone that the elementary gym in Gruver will be a nice place to display the clothing. She also cautions that items such as applied sweatshirts and stuffed pillows will go into the crafts department this year, since clothing limits itself to clothing construction.

As a hint to prospective entrants, Cook adds that the judges typically turn a garment inside-out to check evenness of seams and that a garment should be cleaned and pressed before it is entered.

**Food Preservation** is making a modest comeback in this area, reports the superintendent of this fair department, Shirley Burton. She believes this is due to the increasing expense of store-bought foods and a new public awareness of the many additives and artificial ingredients added to them. "When you do home canning, you know exactly what you're getting in your foods," she comments.

Most of the entrants in this department have canned or otherwise preserved their own gardens' produce, says Burton, although purchased foods which are later preserved are also eligible. Jellies, pickles, tomatoes, corn and beans are among the popular foods entered, but there are dozens of categories and all are listed in the Fair Book under "Food Preservation."

Julie Ortega and Joan Farr will be overseeing the Needlework department at this year's county

fair. Entrants are divided into one of three categories: Youth (school age), Senior Citizens and those in between!

"This was a popular department at last year's fair," comments Ortega, adding that "A lot of people have the misconception that their work isn't good enough to enter, and that just isn't true!" The various divisions of Needlework, which are outlined in the Fair Book, include everything from counted cross stitch to latchwork.

Ortega notes that counted cross stitch and quilting are perennial favorites among entrants.

Danny Howell, superintendent of the Horticulture Division, says "It's been a real good year for gardening because of all the moisture we've had here in the county." He anticipates a good number of entries in this division, which is divided into Fruits and Vegetables, as a result.

Specific instructions for exhibition of fruits and vegetables are outlined in the Fair Book, says Howell, and he urges anyone who is hesitating to enter in this division at the 1989 Hansford County Fair.



The longest winter in the solar system is 21 years long and occurs on the south polar regions of Uranus. The temperature then is estimated to be minus 362 degrees Fahrenheit.

**Hansford County's Wheel Alignment Headquarters**  
Hunter Computerized Wheel Alignment & Wheel Balancing System

- Enjoy Smoother Ride
- Improve Handling
- Extended Tire Life

**Mr. Goodwrench**  
**GILLASPIE**  
AUTO & TRUCK CENTER, INC.  
CHRYSLER, PLYMOUTH, DODGE  
Highway 207 South, P.O. Box 127 (208) 666-2541  
SPEARMAN, TEXAS 79081

**GM QUALITY SERVICE PARTS**

**Precision Sweep Airseeding**  
Can I Help? Tough Weeds Planting Behind Milo Out-of-way Locations  
Need to get it done NOW.  
One Pass & You're Planted  
**Bob Williams**  
435-4865



# UNITED

## ★ Supermarket ★

**Valuable Coupon**  
 Worth \$2.00 Off  
 your purchase of \$10.00 or  
 more, excluding tobacco products  
 Good at United in Perryton

**PLEASEING YOU PLEASES US.**

PRICES GOOD THRU SEPT. 23RD  
 IN PERRYTON ONLY  
 DOUBLE COUPONS THURSDAY



**COKES**  
 OR  
**7-UP**  
 3 LITER  
**\$1.39**



**KEEBLER COOKIES**  
 •E.L. FUDGE •FUDGE STICK •GRASSHOPPER •DELUXE GRAHAMS •FUDGE STRIPES  
 9.5-12.5 OZ.  
**\$1.19**



**KRUNCHERS POTATO CHIPS**  
 ASST.  
 7 OZ.  
**.99**



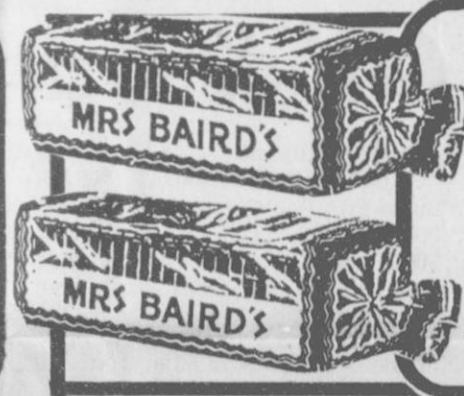
**KRAFT MIRACLE WHIP**  
 ASST.  
**\$1.69**  
 32 OZ.



**PREMIUM CRACKERS**  
 ASST.  
**.99**  
 16 OZ.



**MAZOLA CORN OIL**  
**\$2.99**  
 64 OZ.



**MRS. BAIRD'S WHITE BREAD**  
 EXTRA THIN OR LARGE  
**.79**  
 1 1/2 LB. LOAF

**SKINNER**  
 •LONG SPAGHETTI •THIN SPAGHETTI •SHORT CUT ELBO MACARONI 12 OZ.  
**2 \$1**  
 FOR

**BOUNTY TOWELS**  
 JUMBO ROLL  
**.79**

**WHITE CLOUD BATH TISSUE**  
 4 ROLL ASST.  
**\$1.09**

**Dairy**  
**PLAINS HOMO MILK**  
**.89**  
 1/2 GAL.

**Frozen**  
**Minute Maid ORANGE JUICE**  
 100% PURE  
 ASST.  
 10-12 OZ.  
**\$1.19**

**COOL WHIP**  
 REG. OR EXTRA CREAMY  
**.89**  
 8 OZ.

**Produce**  
**HASS AVOCADOS**  
**2 \$1**  
 FOR

**RED RIPE ROMA TOMATOES**  
**2 \$1**  
 LBS.

**Meat**  
**COOK'S SMOKED HAMS**  
 SHANK PORTION  
**.98**  
 L.B.



**GOOCH GERMAN SAUSAGE**  
 REG. OR MESQUITE  
**.98**  
 12 OZ. PKG.



**JIMMY DEAN PORK SAUSAGE**  
 •REG. •HOT •MILD •SAGE  
**\$3.28**  
 2 L.B.



**UNITED TRU TENDR OR USDA CHOICE SUPER VALU PAK CENTER CUT SIRLOIN STEAK**  
**\$1.98**  
 L.B.



**UNITED TRU TENDR OR USDA CHOICE SUPER VALU PAK T-BONE STEAK**  
**\$2.98**  
 L.B.

QUANTITY RIGHTS RESERVED • NO SALES TO DEALERS