

Local libraries prepare for 1989, the year of the young reader

by Jean Ann Behney

The year 1989 has been proclaimed The Year of the Young Reader by the Library of Congress, and Nov. 15, 1989 will be National Young Reader's Day.

The Library of Congress is the national library of the United States located in Washington D.C. This library was established in 1800 and its director is appointed by our nation's President. The library offers diverse materials including the world's most extensive collections in many areas, including music, law and American history. Each year, the Library of Congress targets a particular group in its proclamation, and this year it is children. "The Library of Congress is a resource for public libraries everywhere," said Art Bort, reference assistant at Amarillo Central Library, who provided this information to the *Spearman Reporter*.

Children in Spearman have the use of two libraries, both the one in their school and the Hansford County Library on Main Street. elementary, junior high and high school buildings each house a library for student use. There is an interlibrary loan system, so books travel among the four libraries.

"The Panhandle has a push for excellence in its libraries," high school librarian Bobbie Burchfield said in praise of local facilities.

"This area is very library-oriented. Our philosophy is not just to provide information to young people, but to help them stay involved with libraries all their lives," she added.

Educators claim that it is never too early for a parent to read aloud to a child. According to the author of an article found in the *Encyclopedia Americana* under "Children's Literature," literature can help a child grow both emotionally and intellectually and it contributes to a child's reaching out to new experiences and new worlds.

A child who reads books, said Hansford County librarian Rita Curtis, can go places that he or she would otherwise never "visit," as well as see the familiar with new eyes. She said she hopes that early exposure to books will make a child develop a love of reading and all it offers.

Spearman's libraries have dozens of award-winning children's books. The Newbery Award, named for John Newbery, an English publisher and bookseller who specialized in children's literature is awarded each year to the very best new children's book, usually fiction. Newbery award-winning volumes all have a silver medallion pasted to their front covers engraved with the words, "For the most distinguished contri-

but ion to American literature for children."

The Hansford County Library has Newbery winners from as long ago as the 1940's, so many parents and grandparents will recognize Newberry titles from their own childhoods, such as *Johnny Tramm* (1944), *Island of the Blue Dolphins* (1961), and *Roll of Thunder, Hear My Cry* (1977).

Last year's Newbery award went to *Lincoln: A Photobiography*, a biography of Abraham Lincoln with plenty of photographs and the runner-up Newbery was a story about a boy stranded in the wilderness after a plane crash, called *Hatchet*.

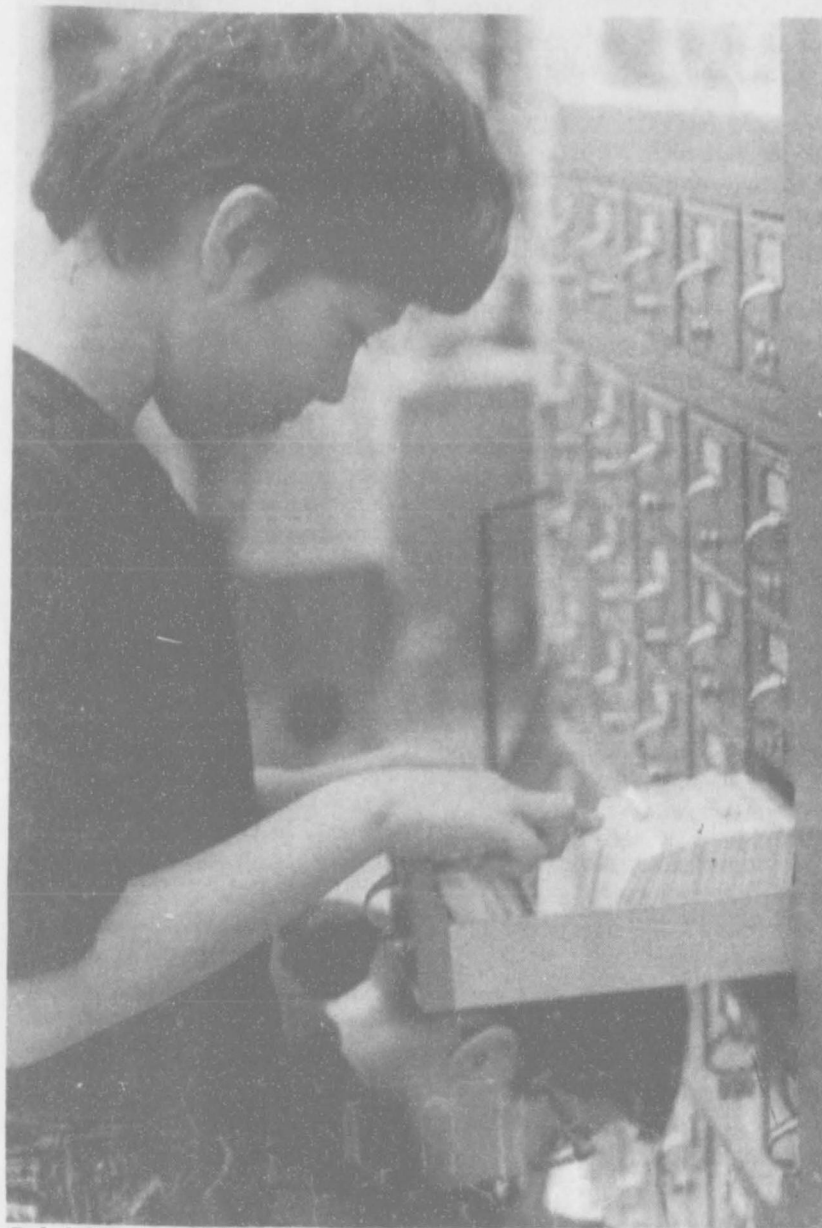
The Caldecott Medal is awarded each year by the American Library Association to "the most distinguished American picture book for children." (Randolph Caldecott was a famous English illustrator of children's books who lived in the mid-to-late 1800's.) These books are also identifiable by a cover medallion.

Past winners which may be well-remembered by adult readers and are to be found in Hansford County Library include McCluskey's sepia-toned illustrations in *Make Way For Ducklings* (1942), and Sendak's comical monsters, *Where the Wild Things Are* (1978). The 1988 Caldecott award went to a book for very

young children titled *Owl Moon*, in which the drawings are all awash with mysterious moonlight.

Texas has its own award to give new books, called The Bluebonnet Award. Librarian Curtis marks the books which have been so honored with a small sticker on the front cover. Each year libraries in Texas choose recently published books they consider outstanding and list them for school libraries and teachers, who then encourage students to read them and vote for the one they (the students) consider to be the best. The Spearman Schools have participated in the Bluebonnet Award selection in recent years. The 1988 winner (chosen from the 1987 list) is a novel for fourth and fifth graders called *Christmas Ghost*, and the runner-up was a nonfiction book, *Coco's Kitten*. (The Hansford County Library's copy of *Coco's Kitten*, by the way, is dogeared by love and constant circulation. It is a book with text and photographs about the true story of a zoo's gorilla who "adopted" a pet kitten, and it is absolutely charming!) The 1989 winner of the Bluebonnet Award will be announced in April, said Curtis, at the Texas Library Association conference in Houston.

Children in Spearman have their
see LIBRARIES, p.2



Gabriel Rodriguez is looking through the card catalog at the junior high library, trying to locate the book he wants to read.

Certification required to get 1989 commodities

Certification and re-certification of those eligible to receive surplus commodities must be done this month in order to meet requirements for the different programs, reports the Hansford County Judge's office.

While certification and re-certification can be accomplished in any given month, January is the official reporting period and those who wait until later will find themselves waiting for the commodities as well.

"Certifying in another month will cause a definite waiting time," notes Donna Yarbrough, County Judge's secretary.

Eligibility is based on gross income, unless self-employed or farming, which is based on net income, and on size of household and residency.

Income which must be counted includes regular wages or salary, social security benefits -- including medicare premiums;

Veteran's benefits, worker's compensation; regular insurance payments, military allotments, child support payments;

Self-employment income less

business expense, regular monthly cash contributions or allowances that help the household meet its usual living expenses;

Unemployment compensation; income from rental property and interest that is received regularly -- monthly, quarterly or yearly.

Recipients of Aid to Families with Dependent Children (AFDC), food stamps, Medical Assistance Only (MAO), or Supplemental Security Income (SSI) are automatically eligible upon proof of receipt.

Food stamp identification cards are not proof since they are not dated. However, a letter from the Department of Human Resources stating that food stamps are to be received is proof.

Applicants must apply in the county of their residence and must provide proof of identity, residency and income.

In Hansford County, certification is made at the County Judge's office in the Hansford County Courthouse. Office hours are Monday through Friday from 8:30 a.m. to 5 p.m.

Jr. high gets certificate of achievement

Spearman Junior High principal, Richard Olsen, recently received a certificate of achievement from the State Board of Education. The certificate was awarded in recognition of exceptional achievement of the Spearman junior high campus on all sections of the Texas Educational Assessment of Minimum Skills test in 1987-88.

To receive the exceptional achievement award 90 percent or more students must master all TEAMS tests taken in the school for the 1987-88 school year.

The State Board of Education also sent a letter to the SJHS commending the caliber of student performance and the effective leadership. The letter was signed by the Commissioner of Education, W.N. Kirby and Chairman of the State Board of Education, Jon Brumley.



The Lopez family - back row [l-r] Kathy Campbell, [front row] Allison Kirby and Joseph Campbell. [The Theresa Lopez, Francis Kirby, Michael Minton, Sumner family was not available for the photo.]

Father of Spearman woman receives Prisoner of War medal in Canadian

Editor's Note: The following article is being reprinted with permission of *The Canadian Record*.

Y.C. Lopez, father of Spearman resident, Anita (Mrs. Dwight) Sumner, and grandfather of Shane, Liz, and Missie Sumner, is making a remarkable recovery at home from brain surgery performed last June. He was presented with a Prisoner of War medal Tuesday which he earned forty-four years ago in France when he was taken prisoner by the German Army.

Major Charles Kessie, U.S. Army Reserve, presented the medal, which was only recently authorized by the Army, in a quiet private ceremony at the Lopez home.

Corporal Y.C. Lopez, of Canadian, Tx., was a machine gunner in the 315th Infantry Regiment, 79th Division, in France in the fall of 1944 when he was taken prisoner in the action leading up to the Battle of the Bulge. He was taken prisoner by the Germans at Stasbourg, France, on October 3, 1944, and was a prisoner of war at Moose-berg Stalag 7-A in Germany until he was released in April 1945.

When asked about how Mr. Lopez was treated in the war, Anita

said, "It was not a pleasant experience. Dad will not talk about it, except on a rare occasion. It was a subject we just never brought up."

Mr. Lopez did relate to his family that he was without shoes when imprisoned. He found an old pair of wooden shoes, which he wore while in prison. His only other means of

protection was an old raincoat. His wife, Theresa, thought the prisoners had their shoes taken from them to hinder running away.

For his action with the 79th Division, he was awarded the Bronze Star medal and the Purple Heart. He holds a Combat Infantryman's badge.

But the Prisoner of War Medal is a new one. It was authorized by Congress last Spring for any person who served honorably as a Prisoner of War after April 15, 1917.

"Your medal recognizes the special service and sacrifice you have given for this Country," Secretary of the Army John O. Marsh Jr. wrote in awarding the medal.

"The front of the medal is an eagle, symbol of the United States and the American spirit," Secre-

tary Marsh writes. "Although surrounded by barbed wire and bayonet points, it symbolizes the hope that upholds the spirit of the prisoner of war. On the reverse, below the words 'Awarded to' is a space for engraving your name, and below this is an inscription naming the purpose of the award: 'For honorable service while a prisoner of war.' The shield is from the Coat of Arms of the United States of America."

The medal was designed by the United States Army's Institute of Heraldry. Designs were solicited from the military services, veterans organizations and private citizens, and over 300 proposals were submitted. A Joint Service Panel reviewed all of the proposals and selected the design submitted by Jay C. Morris, a civilian employee of the Department of the Army.

The public law authorizing the Prisoner of War Medal specifies that the medal shall be accorded a position of precedence in relation to other awards and decorations immediately following decorations awarded for individual heroism, meritorious achievement or service, and before any other service medal, campaign medal or service ribbon authorized to be displayed.

Palo Duro River Authority schedules open meeting Tuesday

The Palo Duro River Authority will meet in regular session on Tuesday, Jan. 10 at 2 p.m. in the meeting room of the Palo Duro River Authority, located at 511 S.W. 11th St. in Spearman. The

purpose of the meeting is to discuss and act upon regular business matters.

The meeting will include an oath of office for reappointed board members and election of officers.

There will also be a discussion of a park fund for the new Palo Duro Dam site.

The meeting will close with general discussion of the project. This meeting is open to the public.



The pride of Hansford County, the Spearman Lynxettes, most are pictured here after winning the Canadian tournament. They are [l-r] Kyla Nelson, Heather Murrell. The Lynxettes also beat the Sanford-Fritch varsity girls 70 to 44 last Tuesday. Joy Gafford, Krista Kirkland, Vonda Benson, and Londee Bradley. Not pictured are Laci Lasater and Michelle Cook, Carly Shieldknight, Ginger Pearson.

Hansford Health Shelf



COMMON COLDS -- COMMON QUESTIONS

QUESTION? What is the usual number of common colds caught by an individual in a year?

ANSWER - The average frequency of cold symptom episodes is four to six per year in adults. The frequency is higher in children below the age of six.

QUESTION What causes colds?

ANSWER - Colds are caused by tiny organisms called viruses. These organisms are too small to be seen by an ordinary light microscope, but can be photographed by electron microscopes. Rhinoviruses are the major class of virus organisms to cause common colds. These viruses can infect the cells forming the inner-lining of the nasal and oral passages.

The cells of nasal passages are

damaged and killed by the infection. Inflammation of these passages results as the body mounts a response to the infection. The inflammation stimulates mucus production and swelling of the nasal passages, which causes the "runny nose" and nasal congestion. Cough can develop when the inflammation involves the larynx (voice box) and trachea (wind-pipe).

QUESTION How do we catch colds?

ANSWER - This was studied by Elliot C. Dick, professor of Preventive Medicine at the University of Wisconsin Medical School. Dr. Dick set out to discover if cold viruses were transmitted through the air or by hand-to-hand contact.

Several volunteers with colds were made to play poker with several healthy volunteers. The healthy volunteers were dressed in surgical gowns and wore protective gloves to protect their hands from the contaminated cards and poker chips. In addition, special braces were applied to their arms to prevent them from rubbing their eyes or noses with their contaminated gloves. The hypothesis in this experiment was that only air-borne transmission of viruses by cough or sneeze would cause colds in this special circumstance. Roughly 1/2 the healthy volunteers developed colds.

In a second experiment, Dr. Dick had 12 healthy volunteers play poker with the contaminated cards,



DR. LAURENCE W. BEHNEY began practicing family medicine in Spearman on Aug. 1, 1988. He received his undergraduate degree (B.S. honors in chemistry) at Indiana University in 1980. He is a 1984 graduate of Indiana University School of Medicine in Indianapolis, Ind. His three years of post-degree training were completed through the Family Medicine Residency Program at the Oklahoma Health Sciences Center in Oklahoma City, Okla. He became board certified in Family Medicine in September of 1987.

Prior to his move to Spearman, Dr. Behney practiced medicine in Platte City, Mo. and Duncan, Lawton, and Chickasha, Okla. His greatest interests in medicine are in the areas of preventive medicine and patient education.

Dr. Behney's professional memberships include the American Medical Association, the Texas Medical Association, the Top O' Texas (Panhandle medical society), and the American Academy of Family Practitioners. He and his wife, Jean Ann, have two pre-schoolers and a toddler.

chips, chairs, and tables used by players with colds. These players were made to play with newly contaminated card decks hourly from players in another room with colds. Not one of these 12 people caught a cold.

These experiments support the hypothesis that cold viruses are transmitted by coughs or sneezes. People with colds might protect their family from their cold by wearing a mask over the nose and mouth.

Woolley named to honor society

Spearman resident, Glenna Sue Sloan Woolley, a senior elementary education major at West Texas State University was recently inducted to the Alpha Chi honor society of the university.

In order to be inducted into the society, a student must have a minimum grade point average of 3.50 and rank in the top 10 percent of the junior or senior class. 76 new members were inducted for the semester.

LIBRARIES, from p.1

favorite books, too. According to Betty Uptergrove, who is the library aide at the elementary school. "We can't keep *Tales of a Fourth Grade Nothing* or *Superfudge* on the shelves. They are checked out constantly!" She commented that the children are very excited about coming to the library and when more than a week goes by before they are there because of interruptions by vacation, they start asking "When is my class coming back to the library again?"

The elementary school library has a staff of parent volunteers, headed by Pat Cudd, said Uptergrove. These volunteers include Peggy Varnon, Debbie Clements, Becky Beedy, Candy Boxwell, Lyn Woolley, Theresa Kirk, Karen Schnell, Lyna Renner, Gail Smith, Beverly Antalek and Judy Hutchison.

Claudine Hardy, library aide at the Jr. High School, said the most commonly asked question is "Do you know a good book I can read?" She reported that the students like being shown possibilities. Hardy often reads a short portion aloud from particular books to help students decide what to choose. "The girls are really into mysteries this year and fiction in general," she commented. "Boys like non-fiction books about airplanes and animals."

High school students' preferences in reading seem to change from year to year, Burchfield said. "Some like historical fiction, while others prefer science fiction or romances. Different groups each year have different interests," she said.

Curtis has the main library divided into three sections for young people. The "early reading" section has the picture books and beginning reading selections, and is easily identifiable by the small table and chairs. "Dr. Seuss is big, but not quite as popular as it used to be," she said in reference to what is constantly circulating among her littles readers. "The easy readers and board books about Sam (Sam's Lamp, Sam's Cookie) are very popular. When asked for her personal favorites, Curtis mentioned *The Very Hungry Caterpillar* and *Blueberries for Sal*."

This is the most utilized area of the entire library and, Curtis said, "I love the books in this section. Parents and teachers are doing a good job of encouraging children to enjoy books, because they are in here checking them out all the time." The hardest job as a librarian is purchasing books. Curtis comments, "What becomes a favorite will sometimes be unpredictable and not all the award winners are as good as other award winners."

One section over from the easy reading area is the "junior" section, which has books for elementary school students from roughly fourth through sixth grade. One of the most commonly asked questions asked of Curtis, "Where are the dinosaur books?" is answered when she directs children to this section. Other popular books here include the *Value Tales* series of biographies with cartoon-like illustrations, and Nancy Drew books. (Yes, Nancy Drew is still big!) One of the books Curtis recommends in the junior area is *Sarah Plain and Tall*.

A third section of the library, with books for readers from sixth grade and up, is the "young adult" section. "In this section, paperbacks really move more than anything," Curtis commented. Of course, readers this age are often borrowing adult fiction books as well." She recently read and enjoyed a new trilogy of science volume of which is titled *Night Pool*.

Libraries will attempt "to spark a reading habit" in young people in this 1989 Year of the Young

The Hansford Plainsman

Your Hometown Newspaper
Spearman, Tx. 79091

USPS 2345-6000
213 Main, Box 458, 659-3434
Published Weekly at
213 Main, Spearman, Texas

Panhandle Press Association
1988 Award Winner

Owned and Operated by:
Texas Independent Newspapers, Inc.
19906 Encino Grove, San Antonio, Tx 78259
Second class postage paid at Spearman, Texas 79081.

Any erroneous reflection upon the character of any person or firm appearing in these pages will be gladly and promptly corrected upon being brought to the attention of the management.

PUBLISHER - Karen Goodman

Subscription Rate: Spearman, adjoining counties, combination with the **Spearman Reporter**, \$19.95; non-adjoining counties, \$24.95 annually.

Postmaster: Send address changes to **Hansford Plainsman** Box 458, Spearman, Tx. 79081.

The publisher reserves the right to revise or reject at its option any advertisement which it deems objectionable, either in subject or phraseology, or which it may deem detrimental to its business.

You Are Invited To a
Bridal Shower honoring
Rhonda (Stumpf) Baker
Saturday, January 14
from 3:00 to 4:30 p.m.
Fellowship Hall
First Christian Church
Given by Hostesses

FEET HURT ?
DR. PATRICK CRAWFORD
Podiatrist (Foot Specialist)
PROVIDING THE MOST UP-TO-DATE TREATMENT
FOR ALL TYPES OF FOOT DISORDERS
INCLUDING:

Arch Pain	Hammertoes
Bunions	Heel Pain
Calluses	Nail Problems
Corns	Sports Injuries
Flat Feet	Work Injuries

Amarillo Foot Clinic 2913 S. Georgia St.
Offices also in Borger and Pampa
For Appointment Call Collect (806) 358-7363

The New LARVACIDE AIR-JET SYSTEM
Treats Farm Bins From the Outside
Treating Time One Minute

YOU MEAN YOU DID THIS IN ONE MINUTE? YOUR GRAIN HAD INSECTS AND...WHEW!! A MUSTY ODOR, NOW YOU HAVE ELIMINATED ALL YOUR PROBLEMS! HOW?

I USED LARVACIDE IN PLASTIC BOTTLES WITH THE NEW DISPENSER CAP. IT IS FAST AND EASY TO USE, ... AND GIVES THE BEST RESULTS I HAVE EVER HAD TREATING MY FARM BIN!

Farm Bins — Now No Problem! How?

By simply lowering the Larvacide bottle in a basket into the bin, the bottle will empty in less than one minute, giving your bin a total treatment.

Farm Bins require Larvacide for the following reasons:

1. It is the ONLY fumigant that will penetrate to the bottom of the bin.
2. It is the ONLY fumigant that eliminates mold and bacteria which cause your grain to sour, become musty, or heat.
3. Kills all stages of insects and penetrates the kernel — killing the egg.
4. Safe — Non-explosive — leaves no residue.

What more could you ask for?
Available at the following dealers:

Darrouzett Co-op Association
Darrouzett, TX

Larvacide is a restricted use Pesticide

Reader, according to the Library of Congress' *Information Bulletin*, through special programs and activities. The Hansford County Public Library will begin its winter story-time for four- and five-year-olds in February. The Spearman Schools will participate in the "Book It" program, a national reading incentive program. National Young Reader's Day, initiated by Pizza Hut, will be celebrated on Nov. 15, 1989, and for this day, "Book It" participants will be recognized for their reading accomplishments. Teachers can submit ideas for celebrating reading day and if their suggestions are selected by the Pizza Hut sponsors, that individual will receive reading incentive items for themselves and their students.

Gruver man gains MRA in real estate

Ronald C. Blassingame of Gruver, has been awarded the professional real estate appraisal designation Master Residential Appraiser, (MRA), by the National Association of Master Appraisers, according to Dr. Marvin T. Deane, the National President.

The MRA designation was conferred after completion of the educational requirements; passing written examinations; and meeting established criteria for qualification. Requirements also include preparation of actual demonstration appraisals.

The National Association of Master Appraisers designates those members of the real estate profession who have attained a high degree of excellence in the art and science of real estate appraisal. It also encourages specialized education in real estate appraisal through cooperating schools, to provide the industry with fundamental courses, educational seminars and workshops.

SS representative in Hansford County

A representative of the Pampa Social Security office will be in Spearman on Jan. 12 at the Hansford County Courthouse. From 10 to 11:30 a.m. this representative will assist individuals with any Social Security matters.

Activity Center News

The Hansford Activity Center is offering exercise programs that may be useful to some New Year's resolutions about fitness.

Among the classes offered are those taught by Wanda Archer. She is certified by the National Y.M.C.A. and the National Dance Exercise Instructors' Training Association. She also has a current C.P.R. card and eight years experience teaching.

She offers various classes in the evenings Monday through Friday. Some are just for women and some are coed. All classes may be done low to moderate impact and students are encouraged to go at their own pace.

Call Wanda Archer or the Hansford Activity Center at 659-2591 for more information.

You Are Invited To a
Bridal Shower honoring
Mrs. David Keating
(nee Becky Byers)
Saturday, January 14
2:00 to 3:30 p.m.
Hospitality Room
First State Bank
Given by Hostesses
Selections at ChaLor's

DANCE
Uncle Ed's Audio Philo
(Sound System & Lights Show)
Saturday, January 14th
(Old Crawford Imp. Building)
8:30 p.m. - 1:00 a.m.
\$5.00 A Person - 21 yrs. and up
(for more information call . . . 659-3328)

BREAST CANCER DETECTION UNIT
available to area women!

WEDNESDAY, JANUARY 11, 1989
TIME: 9:00 a.m. to 7:00 p.m.
OCHILTREE GENERAL HOSPITAL
PERRYTON, TEXAS

for appointment

435-3606
EXT. 121

According to the American Cancer Society, one out of ten women will develop breast cancer during her lifetime. It is currently estimated that over 37,000 women will die each year as a result of breast cancer.

Ninety percent of breast cancers are diagnosed by women or their physicians finding a lump in the breast. Women who are diagnosed with an ominous lump large enough to be easily felt have a 50% chance of five year survival rate. A woman who is diagnosed as having breast cancer by mammography before the lump is felt has a 97% five year survival rate and a 90% ten year survival rate.

AMI's breast cancer screening unit will be at Ochiltree General Hospital January 11, 1989, from 9:00 a.m. to 7:00 p.m. The complete cost is only \$55.00 which includes the Radiologist fee and is payable at the unit at the time of service.

A mammogram can detect a cancer this small • even before it is felt. Have a mammogram done today!!

advertising . . . do better in
classifieds

CALL:
(806)
659-3434.

For Sale

FOR SALE: Coffee table and two matching end tables. Excellent quality and condition. \$150. Call Holly Simpson at 659-2052 after 6 p.m.
S10 2tp

FOR SALE: 82 280ZX Turbo 5-sp Datsun. Loaded. One owner-like new. 659-5213 evenings.
S10 2tp

USED AUTO PARTS FOR SALE: Located 4 miles west of Hooker, Ok. on highway 54. Muss Cat Auto Salvage. (405)652-2400.
S10-rtm

HOUSE FOR SALE: 2 Bedroom, 207 Haney Call 659-2892.
S02S-rtm

FOR SALE OR LEASE: Office building for sale or lease. Owner will finance. Call 659-5051 before 5 p.m. and 659-2719 after 5 p.m.
S05S-rtm

FOR SALE: 2 sections of grassland in Hansford County 10 miles Southwest of Gruver. Mineral rights-not included. Call after 5 p.m. (806) 358-2127 or (806) 352-6656.
S10 4tp

GRASS FOR SALE: 2 sections of Western Lipscomb County native grass. Located on pavement, well watered and good fences. Sell individually or as a unit. Alternative financing available to qualified buyers. Contact Ken Burton, High Plains FLBA, Perryton, Tex. 806-435-4319.
S51-rtm

FOR SALE: 50' X 150' private mobile home lot. Good location. \$2500, or best offer. Call 659-5116 after 6 p.m.
S10 2tp

FOR SALE: Hay Grazer and Red Top Cane. Round bales. Call 659-2786 or 659-3816.
S10S 2tp

FOR SALE: 14 x 70 Mobile Home. Almost new carpet and tile and ceiling fans. Asking \$4500. Call 659-3117 after 5 p.m.
S10S-7tp

Work Wanted

WORK WANTED: Will clean houses, offices and businesses. Call June or Juanita Tucker at 659-3061 or 659-2950.
S10-4tp

WORK WANTED: Experienced Farm Hand with knowledge in cattle, irrigation, and all types of equipment. Will relocate. Call (806) 857-3536 or 274-2111 and ask for Gail.
S10-2tp

BABYSITTING: Will do babysitting in my home. Comfortable atmosphere, reasonable rates. For more information call 659-5279
S10 1tp

Miscellaneous

MITCHELL GARAGE DOOR REPAIR & INSTALLATION: Residential and commercial. Also will install electric openers. Experienced. Call after 5 p.m. 323-8210 or 435-3033. s10-rtm

CONTACT ME ABOUT THE VITAL 18 LIQUID DIET PLAN. THIS IS A PURE, WHOLE FOOD. CALL 659-2189 today.
S10S (Sun only) 4tp

EARN TO \$500 WEEKLY...FROM YOUR HOME. For Free details send S.A.S.E. to: Southlake Adv. Inc., P.O. Box 429, Dept. 1211, Griffith, Indiana 46319
S06 11 tp

"ATTENTION - HIRING! Government jobs - your area. Many immediate openings without waiting list or test. \$17,840 - \$69,485. Call 1-602-838-8885 EXT. R4514."
S10-1tp

NOTICE
Wallace Monument Co.
Monuments, Curbing,
Grave Covers
Local Representative
LEONARD JAMESON
Spearman, Texas

Jr. High High School Lunch Menu

- JR. HIGH-ELEMENTARY MENU**
JAN. 9 - JAN. 13
MONDAY
PIZZA
ROTINI SAUCE
COMBINATION SALAD
PEACHES
MILK
TUESDAY
STEW/CRACKERS
GRILLED CHEESE SANDWICH
BUTTERED CORN
PEARS
MILK
WEDNESDAY
FRITO PIE
BUTTERED POTATOES
MIXED FRUIT
CINNAMON ROLL
MILK
THURSDAY
STEAK FINGERS
MASHED POTATOES/GRAVY
GREEN BEANS/BACON
HOT ROLLS
PEANUT BUTTER BLEND
MILK
FRIDAY
CHARCO-BURGER
FRIES
LETTUCE/TOMATO
PICKLE/ONION
COOKIE
MILK

- HIGH SCHOOL MENU**
JAN. 9 - JAN. 13
MONDAY
PIZZA
ROTINI SAUCE
SALAD BAR
PEACHES
MILK
TUESDAY
STEW/CRACKERS
GRILLED CHEESE SANDWICH
SALAD BAR
PEARS
MILK
WEDNESDAY
CHARCO-BURGER
FRIES
SALAD BAR
COOKIE
MILK
THURSDAY
CAFETERIA CLOSED
SEMESTER TEST
FRIDAY
CAFETERIA CLOSED
SEMESTER TEST

Help Wanted

HELP WANTED: Need someone to care for 91 year old man for one 24-hour shift each week. Contact David at 733-2347.
S10S-rtm

NOTICE TO ALL PERSONS HAVING CLAIMS AGAINST THE ESTATE OF BEULAH DOW WINKLER-DECEASED

Notice is hereby given that original Letters Testamentary for the Estate of BEULAH DOW WINKLER were issued on September 17, 1988 in Cause No. 1895 pending in the County Court of Hansford County, Texas, to: JAMES M. WINKLER
The residence of such Executor is Hansford County, Texas. The post office address is:
% James M. Winkler
Route 6, Box 424
Burlison, Texas 76038

All persons having claims against this Estate which is currently being administered are required to present them within the time and in the manner prescribed by law.
DATED the 5th day of January, 1989.
Billy Britt Jarvis

NOTICE TO ALL PERSONS HAVING CLAIMS AGAINST THE ESTATE OF CLIFFORD BROWN, DECEASED

Notice is hereby given that original Letters Testamentary for the Estate of CLIFFORD BROWN were issued on December 5, 1988 in Cause No. 1910 pending in the County Court of Hansford County, Texas, to:
FRANCES E. WILLIAMS
The residence of such Executrix is Hansford County, Texas. The post office address is:
% Frances E. Williams
P.O. Box 155
Spearman, Texas 79081

All persons having claims against this Estate which is currently being administered are required to present them within the time and in the manner prescribed by law.
DATED the 5th day of January, 1989.
Billy Britt Jarvis

NOTICE TO ALL PERSONS HAVING CLAIMS AGAINST THE ESTATE OF TONY HENRY DECEASED

Notice is hereby given that original Letters Testamentary for the Estate of Tony Henry were issued on the 19 day of December, 1988, in Cause No. 1912, pending in the County Court of Hansford County, Texas, to Ray Etter. The Residence and Post Office Address of such executor is Box 634, Gruver, Texas 79040. All persons having claims against this estate which is currently being administered are required to present them within the time and in the manner prescribed by law.
DATED this 19 day of December, 1988.
John L. Hutchison
Attorney for the Estate
S10S-1tc

In 1949, Elizabeth Blackwell was the first American woman to become a doctor.

Sale of U.S. bonds nearly reaches goal \$350 million

Sales of United States Savings Bonds in Texas amounted to \$21,871,073 during September 1988 for a total of \$305,278,022 for fiscal year 1988. This October 1987-September 1988 figure represents 87.2% of the assigned goal of \$350 million. T.J. Morrow, District Director for the U.S. Savings Bonds Division in Texas, announced recently.
Sales of Series EE Bonds amounted to \$73,670 during the October 1987-September 1988 period in Hansford County.
Nationally, total sales for fiscal 1988 amounted to \$7,264 million. The amount outstanding in U.S. Savings Bonds as of September 30, 1988 reached \$107.78 billion, a gain of 9% over fiscal 1987.

New TASP tests students' deficiencies

It's a much misunderstood, often confused acronym for the Texas Assessment Skills Program. It has been the subject of much attention by Texas educators for more than a year, and will become a common term for the state's college students when statewide testing of incoming freshman begins in Fall 1989.

Mandated by the Texas Legislature, TASP is a statewide college program designed to improve the quality of Texas college graduates by identifying deficiencies in basic educational skills, then helping remedy those deficiencies through special, developmental college courses.

Eventually all students entering Texas colleges will be required to pass TASP tests in reading, writing and math skill areas before advancing to upper-division courses.

While all colleges in Texas are working hard to implement the TASP test and follow-up with compensatory courses for students needing remedial help, it is safe to say that no segment of Texas higher education is as prepared for this newest challenge than are its 49 community college districts. Compensatory instruction has been a part of the community college mission since the beginning of the movement, and most community colleges have tested entering students for years.

Certainly local community colleges will need help from the Texas Legislature, which mandated TASP, if students in these large numbers are to be served. But no segment of higher education is as ready to successfully tackle this challenging mandate than are community colleges, which now enroll 64 percent of all Texas college freshmen and sophomores and 73 percent of all first-time Texas college students.

Assessment testing is good for Texas. It ensures that Texas will have a well-educated, productive work force for years to come. And it helps people: people who perhaps would never reach their lifelong dreams without first confronting their learning deficiencies and mastering them.

Educated citizens build a strong society. Building a better world - one mind at a time - is the mission of Texas colleges, and no one understands that mission any better than do the Panhandle area community colleges.

Club News

Town and Country Extension Homemakers met January 3, in the home of Delinda McLaughlin.

Meeting was called to order by President Darrie Francis. Roll call was answered by six members to "Who is your oldest relative." Carma read the previous minutes and they were approved. Birthdays and anniversaries were read.

Annetta McIver reported on the Bingo night at the Hansford Manor Jan. 24 and 31.

Janie Kunselman reported on the treasury. Members filled out year books. The meeting was adjourned and refreshments were served.

Those who attended were Darrie Francis, Annetta McIver, Jeanie Laughlin, Janie Kunselman, Delinda McLaughlin, and Carma Dorton.



Janet [Wygant] Sheppard

Wygant - Sheppard Wed

Janet Elaine Wygant and Rory Sheppard were united in marriage on Jan. 7 at St. Stephen's United Methodist Church of Amarillo. The ceremony was performed by the Reverend Scott Latham.

The bride is the daughter of Mr. and Mrs. Lewis Wygant of Amarillo. The groom is the son of Mr. and Mrs. Bert Sheppard of Spearman.

Matron of Honor for the ceremony was Teri Hollis of Perryton. Bride's maids were Judy Dunn of Lawton, Okla. and Toby Tucker of Amarillo.

Best man was Clint Cope of Claude. Groomsmen were Tim

Bagwell of Claude and Pat Tucker of Amarillo.

Ushers for the occasion were Bill Bandy of Panhandle and Paul Tubbs of Bastrop. Flower girl was Lindsey Smith, niece of the groom and ring bearer was Skip Lesly, nephew of the groom.

The bride is a senior at West Texas State University majoring in Special Education. She is a member of Zeta Tau Alpha and Student Council for Exceptional Children. The groom is employed by Western Merchandisers as Microsystems Coordinator. The couple will reside in Amarillo.

Among the Neighbors

by HELEN FISHER

Winnie Carol and Dee Allen returned the first of the week from more than two weeks at their place in Red River.

A number of relatives and friends shared the holidays with them at different times.

While neither Winnie or Dee ski, they found the snowmobiling exhilarating. They were pleased to have O.C. and Louise Holt, neighbors at Red River, to join their other guests on Christmas day.

Ina Martin entertained Tim and Junior Johnson on New Years Day. They are from Vici, Okla., and friends of many years. Others in her home on that day were Charles Lynn, Mrs. Martin, and Ty.

Jo and Marcus Larson are back after spending five days in San Antonio, and then a week in Houston. Both their children live in Houston. Marcia and Jim Wood live on one side, and Richard and Pat Larson on the other.

Carrie Marie Berry observed the Christmas and New Years Holidays by spending some time in three different places.

She rode to Clovis with Verna Gail Keim, who spent Christmas with her son and his family.

She visited with her son, Mike, and other relatives in Ft. Worth and also her granddaughters in Odessa.

James L. Spivey of Oklahoma City is spending several days in the home of J.L. and Juanita Pierce.

James and J.L. are cousins.

There have been no recent sightings of the much publicized moose lately. However, Johnny Patterson expresses surprise at the number of mule deer coming to his place for water. Johnny, who lives on the edge of the breaks, counted 28 deer on a recent morning, watering at his tanks. He says his duties go untended as he and his wife both enjoy watching them, it is sure more interesting than watching the traffic whizzing by in Houston where he lived previously.

Her two years in the army behind her, Rosa Pierce is starting a new career. Rosa has been visiting her parents, the J.L. Pierces, since her discharge December 15. She was a Field Medic in the Army.

Rosa has accepted employment in Chesapeake, VA. in the Civil Service. She also plans to enroll in college.

Both the legislature and Congress reconvene this week for the new sessions. Does Jimmy the Greek give odds on the number of measures that will be turned out?

After each session, the members proudly proclaim how many more laws they have passed-ranging from 600 to 1000. They, nor any one else, could possibly know what the laws deal with-but two things for sure--each and every one of them will cost the tax payers more money-and each and every one of them will restrict individual freedom!.

Busy week ahead for high school students

Next week is a very busy week for Spearman High School students. District play begins for the Lynx and Lynettes. The Lynx will travel to Boy's Ranch on Tuesday to take on the roughriders in the district-opener.

Students will also be studying extra-hard next week. This week will be the last week of the semester, and semester tests will be given on Thursday and Friday.

Friday, January 13, the Lynx and Lynettes will play Stratford. The J.V. teams will begin at 5 p.m. This is basketball homecoming, and everyone is encouraged to attend the crowning of the king and

queen between the varsity girls and boys games. Also on Friday night, the SHS Cheerleaders will be sponsoring a "Build-your-own-potatoe - and - create - a - sundae" supper in the elementary cafeteria. Tickets are \$4. for adults and \$2. for children under 6 years. They will be serving from 5 to 7 p.m. Tickets can be bought in advance from any high school cheerleader or at the door.

After the homecoming ball-games Friday night, the cheerleaders will also be sponsoring a homecoming dance. The dance will begin at 10 p.m. and will last until 2 a.m. The cost will be \$5. for couples and \$3. for singles.

L & M Body Works
1501 Hwy. 15
659-2775
Tailpipes-\$29.95
Mufflers-\$39.95
Most Duals-\$160.00 complete

OSGOOD MONUMENT CO.
Amarillo, Texas
Dealers of Rock of Ages Granite, as well as all colored granites, marble and bronze memorials.
represented by
BOXWELL BROS. FUNERAL HOME
519 S. Evans
659-3802

A lot of Teenagers are dying for a drink
Texas Department of Public Safety
State Department of Highways and Public Transportation

WE GIVE S&H GREEN SEALS EVERYDAY • ONE SEAL ISSUED FOR EVERY \$5 EXCLUDING TOBACCO PRODUCTS

DOUBLE SEALS ON WEDNESDAY



UNITED Supermarket

the personal touch

Grocery



WOLF CHILI NO BEANS
19 OZ. **.99**



NABISCO CRACKERS
1 LB. PKG. **.79**



JIMMY DEAN PORK SAUSAGE
REG. • HOT • MILD • SAGE
2 LB. **\$2.98**
1 LB. PKG. \$1.49

KIDS 8 YEARS AND UNDER REGISTER FOR FREE

JIMMY DEAN TOY TRUCK TO BE GIVEN AWAY SAT., JAN. 21, 1989 NO PURCHASE NECESSARY

PEPSI ASSORTED 6-12 OZ. CANS
\$1.59
3 LITER ASST. **\$1.19**

CHICKEN OF THE SEA TUNA IN WATER OR OIL
6.5 OZ. **.59**

LIPTON FAMILY TEA BAGS
24 CT. **\$1.49**

UNITED PREMIUM QUALITY WHITE BREAD
1 1/2 LB. LOAF **2 \$1** FOR

CASSEROLE PINTO BEANS
2 LB. **.89**

FINE FARE FLOUR
5 LB. BAG **.69**

AMERICAN BEAUTY • LONG SPAGHETTI • ELBO RONI • THIN SPAGHETTI
10 OZ. **2 \$1** FOR

SMUCKERS PRESERVES PEACH OR APRICOT 18 OZ. **\$1.39**

HUNT'S SPAGHETTI SAUCE ASST. 27.5 OZ. **.89**

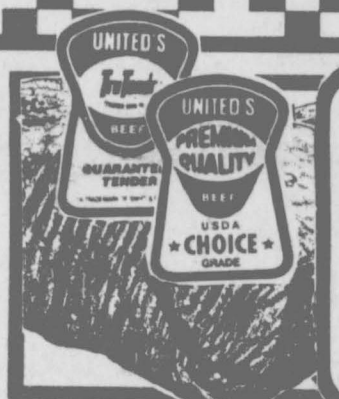
Meat

THESE PRICES GOOD THRU JAN. 14 IN PERRYTON ONLY
DOUBLE COUPONS UP TO AND INCLUDING \$1.00 ON THURSDAY



UNITED TRU TENDR OR USDA CHOICE BONELESS TENDERIZED BOTTOM ROUND STEAK
LB. **\$1.88**

FINE FARE AMERICAN SINGLES
12 OZ. PKG. **\$1.38**



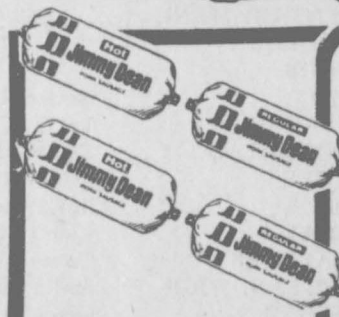
UNITED TRU TENDR OR USDA CHOICE BONELESS RUMP ROAST
LB. **\$1.78**



OSCAR MAYER BUN LENGTH MEAT WIENERS
16 OZ. PKG. **\$1.58**

GOOCH GERMAN SAUSAGE
12 OZ. PKG. **\$1.18**

UNITED TRU TENDR OR USDA CHOICE BONELESS EYE OF ROUND ROAST
LB. **\$2.68**



JIMMY DEAN PORK SAUSAGE
REG. • HOT • MILD • SAGE
LB. **\$1.49**

Produce

WIC CARDS ACCEPTED
FOOD STAMPS WELCOME

NO SALES TO DEALERS • QUANTITY RIGHTS RESERVED



WASHINGTON RED DELICIOUS APPLES JUMBO SIZE
LB. **.59**



WASHINGTON D'ANJOU PEARS
LB. **.59**



NEW CROP MINNEOLA TANGERINES
LB. **.59**

Frozen

TONY'S PIZ ZAS 15.3 TO 17.5 OZ. **3 \$5** FOR

UNITED PREMIUM QUALITY ICE CREAM ROUND CARTON ASST. 1/2 GAL. **\$1.69**

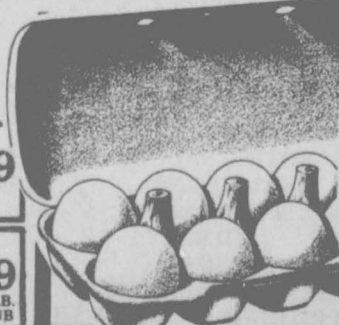


SWANSON PRE FRIED CHICKEN
2 LB. **\$2.59**

Dairy

UNITED HOMO MILK **\$1.89** GAL.

FINE FARE LIGHT SPREAD MARGARINE **\$1.19** 3 LB. TUB



UNITED PREMIUM QUALITY GRADE A EXTRA LARGE EGGS
DOZ. **.69**

Health & Beauty



VO5 SHAMPOO OR CONDITIONER
15 OZ. **.89**



SCOT TOWELS JUMBO ROLL
.59



FAB DETERGENT 40¢ OFF LABEL
42 OZ. **\$1.49**