

As you can see my space is very limited this week. That's probably a good thing, because my mind is very limited this week. After a hurried trip to Houston this past weekend for a wedding, I'm tired. We attended the wedding of our nephew Doug and his new bride, Natalie. It was absolutely beautiful. I pray they will be blessed with a lifetime of happy years together.

Morgan was one of the flower girls. Of course, she was just as cute as she could be. When we arrived back in Lubbock, on Sunday, we celebrated her fourth birthday at Chucky Cheese Pizza. Little brother, Judson, had a good time. He was glad everybody was home, he loved the pizza, games and toys and he even got a present, too.

My nephew, Sean, celebrated his 19th birthday the day before, on May 26. Happy birthday, Sean. With the

arrival of Sean 19 years ago, I became an Aunt for the first time, so he's pretty special to me. He's the one who gave me my Aunt name of Sissy, which I am still referred to by nieces, nephews.

If you missed the Memorial Day Muster on Monday, you missed a wonderful program. It was very touching. I would like to use these last few lines of my space this week to say "Thank You" to our Veterans. As I sat and listened to Mr. Crowley's moving speech that morning, I imagined what it must have been like for young boys, most probably the age of Sean or younger, to lie in mud, with a loaded gun, and know that with their next movement they may have to take someone's life, or worse yet, lose their own. I imagined the fear they must have felt. My heartfelt appreciation and respect goes to our Veterans.

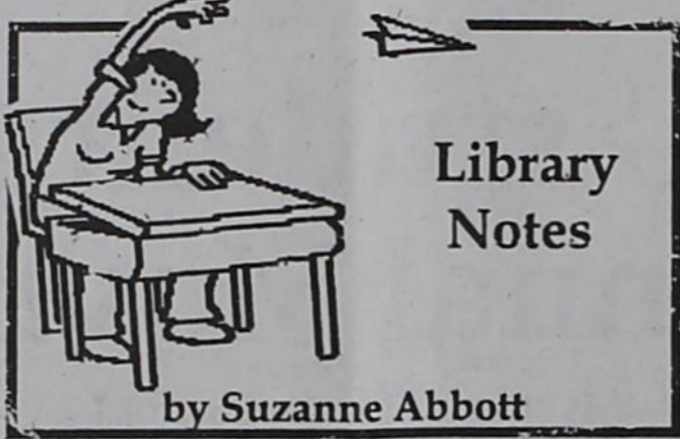
Note of Thanks

We want to express our appreciation to all the wonderful people who supported us during Joan's illness and after she was called home to the Lord. Your many kindnesses have helped make our loss more bearable. God bless you all.

The family of Joan Green Lawrence

We want to thank everyone who called, sent get well messages, cards, balloon gifts, and food. Your prayers and visits to the hospital and at home meant so much to E.A. May God bless each of you.

E.A. and Dorothy Day



Summer Reading Program at the Library will begin tomorrow, June 1. Kids reading for prizes can check out books tomorrow and they will count toward putting their names in the drawing for the grand prizes. Kids in grades K-2 are in one group and kids in grades 3-6 are in another. Come in and register today.

The Motley County Library lost another good friend last week. Joan Lawrence, a genealogist and historian, had donated many historical and genealogical materials to the Library. She was an expert on the Civil War and she was always willing to answer questions about that period of our history. We will miss her greatly.

We thank Marihelen Wason for

donating three new best sellers to the library. We have Jude Deveraux's newest, *The Summerhouse*. Also, we have Sandra Brown's *Unspeakable* and Mary Higgins Clark's *On the Street Where You Live*. Also new to the Library is the latest "Prey" book by John Sandford. This one is called *Chosen Prey*.

We had a lively book discussion last week. Marisue Potts and Freida Burns did a wonderful job of presenting information and of asking questions to make the readers think about *The Poisonwood Bible*. *On Bear Mountain* will be our next book for discussion and that will take place in mid July. We will set a date later. Patricia Green and I will lead this discussion.

Kim Jenschke; Vice President, Tina Brooks; Secretary, Tammy Simpson and Reporter, Jennifer Adams.

PTO

from page 1

for a very important organization. The officers would like to thank everyone for their hard work and patience, and encourage everyone to help make the coming year even better.

2000-01 officers are President,

WORD of GOD

"I can do all things through Christ which strengtheneth me."

— Philippians 4:13



MOTHER'S HELPER CHRISTIAN PRE-SCHOOL, CLASS OF 2001: Pictured above left to right (back) Mrs. Judy Crowley, Seth Baxter, Barrett Bland, Haden Davey, Logan Ferguson, Walker Carson, Jared Stephens, Cody Farley; (next row) Meagan Ford, Cassidy Turner, Marcus Ortiz, Wesley Bishop, Haley Wheeler, Kennedee Buchanan, Shelby Shannon, Tyler Campbell, Korbyn Simpson, Kaitlyn Price; (next row) Shelby Elliott, Katie Barton, Bryant Taylor, Natalie Jameson, Mattie Brooks, Caleb Clary, Ty Adams; (front) Michael Martin, Macie Marshall, Kaylee Woolsey, Joshua Martin, Addie Guerrero, Hannah Mason, Meagan Jameson, Gage Renfro. Not pictured is Gunnar Luckett. The end of year program will be held Thursday, May 31, at 7:30 p.m. at the Matador Church of Christ.

Pivots & Divots

by Geneva

TUESDAY SCRAMBLE Goodson. May 22

First, with a score of 31, were Ken Marshall, Alfred Barton, Louise Barton, and Gene Brannon.

Second, with a score of 32, were Buzz Thacker, LaVoe Thacker, and Roy Grundy. Rob Francis got closest to pin on #6, 12' 2".

Others playing were Tempie Francis, Geneva Wilson, Robert Osborn, Olivia Osborn and Jake

LADIES PLAYDAY May 24

18 hole players were Louise Barton, Vida Elkins, Olivia Barton, Leona Terry and Geneva Wilson. Geneva won low net.

9 hole players were Mary Lou Williams, Tempie Francis, Marihelen Wason, Nell Berryman, and Mary Jones. No ball was given.

4-H Camp set for June 19

The 2001 Eight County 4-H Camp has been set for Tuesday, June 19, at the Roaring Springs Community Center, beginning at 10:00 a.m.

This educational activity is for all 4-H members. This year's workshop will include leadership, craft, and recreation activities. Cost will be \$7.00 for all day, or \$4.00 for those only wanting to attend supper and the dance.

Camp participants should bring a swimsuit, towel, tennis shoes, and

signed Participation Release form.

The concession stand will probably not be open. After cleaning up the campground the group will go the Community Center for supper followed by a dance. The dance will be over at 9:30 p.m.

Please make sure to RSVP by turning in participation agreement/medical release forms to the Extension Office by June 8. This RSVP is important so that food can be ordered. Two meals will be supplied.

NOW OPEN!
MIDWAY DRIVE-IN
 FRIDAY, SATURDAY & SUNDAY, June 1, 2 & 3
SHREK
 Rated PG
 Drive-in and Concession open at 8:00 p.m.
 Show begins at Dark
 Adults - \$4.00 12 & under - \$2.00
 For more information call 806-423-1166

10th Annual
Roaring Springs Ranch
ARTS & CRAFTS SHOW
 In the Pro Shop at the Golf Course
SATURDAY, JUNE 9, 9:00 - 2:00
 OPEN TO THE PUBLIC
 CALL 348-7292 FOR MORE INFORMATION

Two-Day Art Workshop
 by Paul Milosevich
 of Lubbock & Santa Fe
JUNE 9 & 10 ~ ROARING SPRINGS COM. CENTER
 1 Session - Landscapes 1 Session - Portraits
 \$40 per day
 Call Ken or Dinah Young, 806-348-7330 for more info.
 FRIDAY NIGHT RECEPTION, 7:00 - 9:00 p.m.
 Book Signing, Posters, Prints & Paintings
 Sponsored by the Roaring Springs Community Volunteers

"It's My Own Business!" ...Really?

"Who is God to tell me what to do?" He is your Creator, the Sustainer of all life. He is "above all, through all, and in you all." (Ephesians 4:6). "He gives to all life, and breath, and all things." (Acts 17:25). It is "in Him that we live, and move, and hang our being." (Acts 17:28). The God who spoke the cosmos into existence surely has both right and authority to command His creation.

You may "do as you good and well please," but you will one day "appear before the judgement seat of Christ" to give account for the things done in the body. (2 Corinthians 5:10). The day is coming when you will be judged, along with everyone else, "in righteousness," and "with every secret thing." (Acts 17:31; Ecclesiastes 12:14). While in this life you may, in the strictest sense, do as you please (God forces no one to do His will against their own), but keep this fact in mind - "whatsoever a man sows, that shall he also reap." (Galatians 6:7).

But "It's my own business what I do with my life!" Not necessarily. What you do affects God, Christ, the church, your friends and your family. Paul understood and stressed this truth when he wrote, "For none of us lives to himself, and no man dies to himself." (Romans 14:7).

Are you living responsibly before God?

Roaring Springs Church of Christ
 Michael G. Crowley, Sr.
 Radio Programs K-96FM
 Bible Study - 10 a.m. Worship - 9 a.m.

Mother's Day Special
Continues...
 because Mom is special everyday!
 All Women's Apparel
 Buy one
 get one Free!
New to You
 Downtown Matador

Calico Treasures
Decorator's Studio
 Antiques ~ Collectibles ~ Gifts Interior Design Department

Lots of
New Arrivals!
 Wood and
 Vertical Blinds
60% off

Corner of Hwy. 70 & Eubank St., Matador ~ 806-347-2003

Looking for a brand new do?
 A new set of Nails, too?

Call Tina at
Sizzer Shak
 940-937-3769 - Childress, Tx
 TUESDAY - FRIDAY ~ APPOINTMENTS ON TIME!

Need a new Summer outfit?
 Beautiful clothes for every occasion!

Custom Sewing & Alterations

Some Items on Clearance!
 Petticoat Junction
 Devonne Dillard
 Hwy. 70 & Junct. 1050 - Roaring Springs

Classic Cars and Live Band Saturday!

OLD MILL
TRADE DAYS

• 500 Vendors • 5th & Hwy 207, Post, Texas
June 1, 2 & 3
 www.omtd.com (806) 495-3529
 Where the Fun Begins!

Memorial Day Speech

from page 1

the living, rather to be dedicated to the unfinished work which they who fought have thus far so nobly advanced. It is rather for us to be dedicated to the great task remaining before us — that from the honored dead we take increased devotion to that cause for which they gave the last full measure of devotion — that we highly resolve that the dead shall not have died in vain, that this nation under God shall yet enjoy freedom, and that government of the people, by the people, for the people, shall not perish from the earth."

RS City Council

from page 1

Darla Gwinn attended the council meeting to discuss using the gym in the High School building for the purpose of gymnastics, and possibly for Little Dribblers to practice basketball. The council agreed for the gym to be used for this purpose.

Council discussed the roof on the Depot. The roof is leaking and in bad need of repair. Mayor Thacker will look in to finding the same kind of tile that was originally used on the roof.

Corky Marshall was appointed to serve as Mayor Pro Tem.

HALE'S SEMI-ANNUAL SHOE SALE

ALL Women's Sandals..... 20% off
ALL Men's Shoes 20% off
ALL Tony Lama Boots \$30 off
ALL Kid's Shoes ... 20% to 50% off

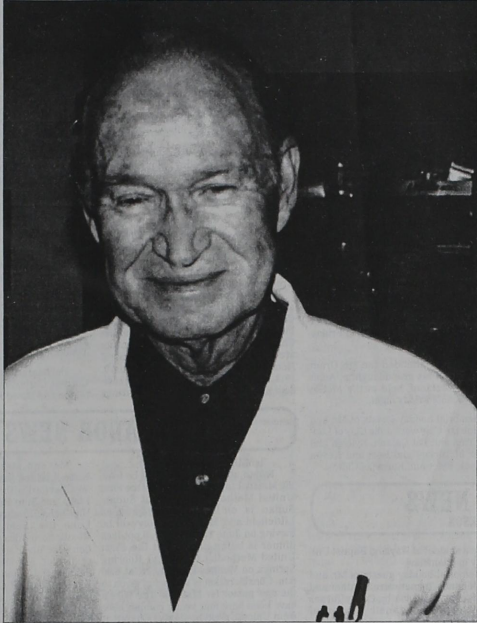
ALL Athletic Shoes
NIKE - ADIDAS - K-SWISS.....20% to 50% OFF

COME IN NOW WHILE THE SELECTION IS GOOD!

HALE'S DEPARTMENT STORE
 112 E. CALIFORNIA, FLOYDADA, 983-2388

THANKS FOR THE MEMORIES

DR. PAT



Dr. Pat Williams at the Motley County Clinic



Dr. Pat & Mary Lou Williams

Good luck on
your retirement

Thank you for your
many years of care
at the
Motley County Clinic!

Best Wishes!

You will be missed!



Dr. Pat making music with his Saxophone.

Motley County Library

Lowe's Pay-N-Save

First Ag Credit, PCA

Matador Implement

New To You

Kathy's

L&T Flowers

CapRock Telephone

Graham Supply

Thacker Jewelry

First State Bank

Higginbotham-Bartlett

Mane Place

Preferred Choice

Motley County
Commissioners Court

Motley County Tribune

CSR PolyPipe

Meredith Construction
Gas & Supply

Matador Floral
Designs by Vickie

Seigler Funeral Home



Farm and Ranch News



Cotton  **News**
from Plains Cotton Growers, Inc.

County Agent's Report



by Lonnie Jensechke - Motley County Extension Agent

8/20 CUT-OFF DATE FOR EM LOAN APPLICATIONS

Last week Plains Cotton Growers officials noted the possibility of producers becoming eligible for USDA Emergency Loans through implementation of overlooked Quality Adjustment Factors during the EM loan application process.

As a follow up to that report some questions regarding the window of opportunity to begin the EM loan application process have been asked by growers.

According to the regulations, growers have nine months from date of the County Disaster declaration to apply for an Emergency loan.

Going over a listing of disaster declarations and the deadlines for application indicate that all of the High Plains counties served by PCG fall under the same Disaster declaration and have a common application deadline for producers seeking loans.

The deadline for loan applications to be initiated is August 20, 2001. This date reflects the end of a period nine

months after the initial declaration was made.

For purposes of eligibility the losses reported must have caused or contributed to as a result of the named disaster, primarily noted as drought and excessive heat.

On a related note, growers who plan to apply for benefits under the second phase of the 2000 Crop Disaster Program, which may be announced very soon, would have to offset any amount received through that program when establishing their EM loan amount.

With several months to go before the end of the application period, some growers may want to wait to see how much additional assistance they receive through the CDP's second phase before completing the EM loan application process.

Proceeds from the CDP program offset the amount a growers can qualify for through the EM loan program and would be directly applied against any EM loan the growers has in place, if received after the loan is executed.

GROUND BEETLES

Large numbers of ground beetles belonging to the genus Calosoma are feeding on the larvae and moths. The larval stage as well as the adult ground beetles can be found feeding on mesquite cutworms at the base of mesquite trees. At night the adult ground beetles migrate to lights where they feed on moths and other insects. As the sun comes up they move into homes and businesses. Changing to yellow outside lights will help reduce the numbers of moths and beetles. As the moth numbers decrease during the next few weeks so will the numbers of ground beetles.

TEXAS BEEF QUALITY PRODUCER PROGRAM

There will be a Texas Beef Quality Producer Program June 14, in Vernon, at the Wilbarger County Auditorium from 9:00 a.m. to 4:00 p.m. Registration beginning at 8:30 a.m.

This program is an expansion of previous Beef Quality Assurance educational efforts which will give Texas cow-calf producers and stock operators, and their employees, the opportunity to get in-depth BQA training related to beef safety, beef quality and the relationship between beef production and the environment.

Topics to be covered include injection site management, residue avoidance, foreign object avoidance, record keeping, breeding and genetic selection, processing/cattle handling, nutrition, culling management, forage management, pesticide use, water quality and much more.

What you take home: Two general CEU's for your pesticide License, Comprehensive handbook of information to help you manage cattle for the kind of beef you want YOUR kids to eat, Truck Decal to display your commitment to Beef Quality Assurance and a Completion certificate to verify your training in BQA.

Please RSVP with TSCRA at 1-800-242-7820 ext. 192, by June 7.

DEPRECIATION, COWS DO IT TOO

Most people think the biggest cost in keeping a cow is land, feed, or maybe labor. But the biggest cost can be something we often don't think about, depreciation. Cows depreciate, just like pickups or hay balers.

How much they depreciate depends on their initial value and what they're worth when culled. Cows put into the herd at the peak of a price cycle can easily depreciate more than \$150 a year. Put in at the bottom this can be less than \$50 a year. To minimize depreciation, keep or buy fewer replacements when they're high. Then, maximize salvage value by putting weight on thin cows, marketing during seasonal highs, and breeding so you can sell bred cows which might not fit your calving season but could work well for somebody else.

PARTICLE FILM TECHNOLOGY USED ON PLANTS

Vegetable, cotton and citrus trees in the Rio Grande Valley could soon be covered in white. The white film is not a late snowfall. It is a new method growers use to protect their crops from insects and plant diseases. This new and cheaper method of managing pests is being tested on South Texas crops. Producers spray a white coating on plants that repels insects and diseases. The method is called particle film technology, and it leaves plants looking as if a light snow has fallen. It's been used successfully for a few years on fruit trees in the north, and the same technology has shown excellent results on Valley crops. Rain washes the coating off but winds are no problem because there is an adhesive agent in the mix.

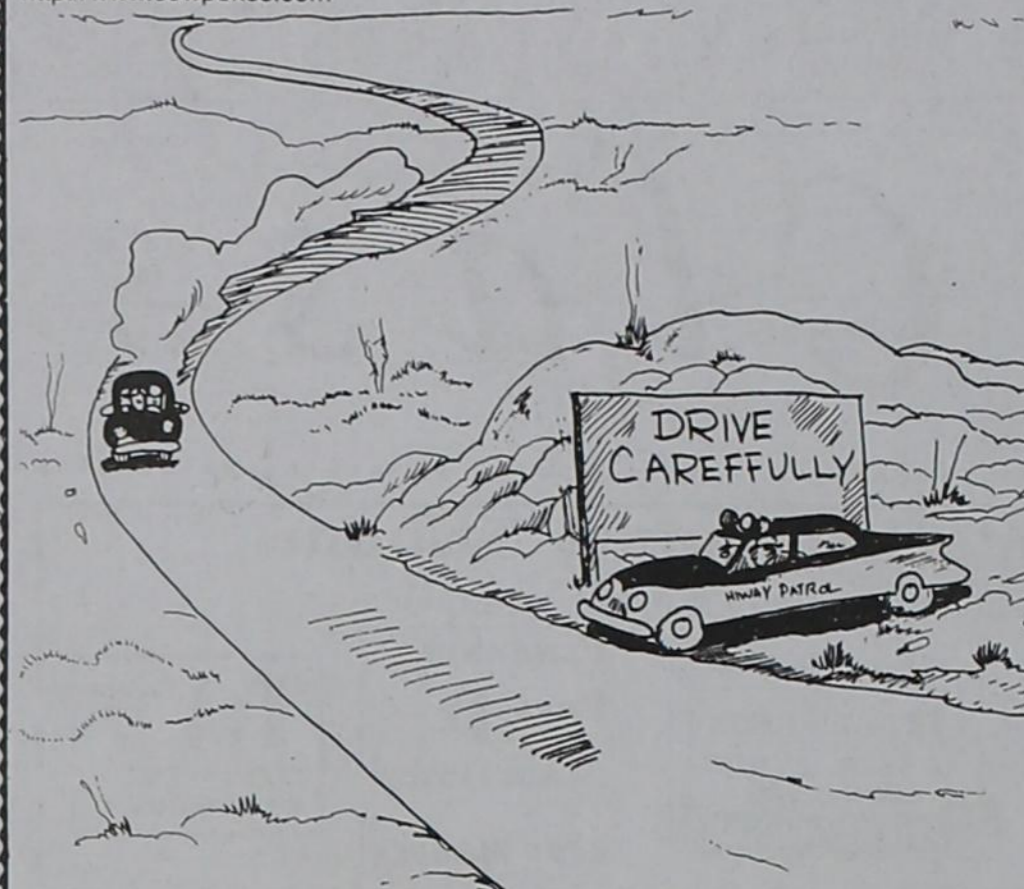
POSSIBLE CONSUMER EFFECTS FROM FOOT-AND-MOUTH

Consumers are worried about foot-and-mouth disease outbreaks. Many people don't work in the agricultural industry and have limited contact with farming. These consumers have expressed concern about how this crisis could affect their families. Konrad Eugster is the executive director of the Texas Veterinary Medical Diagnostic Laboratory. He says there is no health risk linked to eating beef from animals infected with foot-and-mouth disease. The price of beef in supermarkets is not likely to go up and beef shortages should not occur. The real concern is the effect the disease could have on the agricultural industry in the United States. If an outbreak occurs, other countries would stop importing meat products from our nation. The bigger risk is how the devastation of the agricultural industry could impact the whole economy.

COW POKES®

By Ace Reid

http://www.cowpokes.com



"Now you kin cock her back Jake, all the highway boys are sittin' back there at that truck stop drinkin' coffee!"

This feature sponsored by the First State Bank

Matador Your "Hometown" Bank Member FDIC

MEREDITH CONSTRUCTION

New Construction
Remodeling, Painting & Electrical Work
Complete turn-key work
Concrete Work and All Types of Roofing

(806) 348-7218 348-7528 348-7516

Thank you for reading the Motley County Tribune

Trees & Plants have arrived!



Higginbotham-Bartlett

Matador - 806-347-2445

Smart businesses advertise in the MOTLEY COUNTY TRIBUNE
For prices and information call 347-2400

Out of Warranty Appliance Repair of all kinds!



— Summer Special —
Let me service your
Air Conditioning Window Units
\$38.95 for first unit
and \$16.95 for each additional unit
Call for Details
806-348-7933 or 806-269-7933

BEST LITTLE CAR LOT IN TEXAS!

Arvis Davis

Paducah, Texas

1996 Ranger Super Cab V6, Automatic, Miles in the 50s, Extra Nice	2000 Toyota Corolla VE 4 Door, Automatic, Low Mileage, Car
1991 Ford Crown Vic 49K Miles, Like a New One!!	2000 Chevy Lumina Loaded with Options, Emerald Color, Low Miles
1999 Suburbans 2WD, Cloth 1 In Stock Both-one owner units	1995 Chevrolet Suburban Low Miles, White Color, Loaded, New set of Tires
1997 Chevrolet Suburban LT Trim, Buckets, All the options, white/blue leather buckets	2000 Malibus Low Miles, 2 to choose from
2000 Grand Prix Red Program Car, Loaded, Miles in the 30s	1997 Chev Ext Cab 4X4 Leather, Loaded, Buckets, Windows, Locks, One Owner
1998 Chev 3/4 Reg Cab 4X4 One Owner Vehicle, H.D. Trailing, Power Windows, Locks	2000 Grand AM 4 Door Silver Program Car, Miles in the 30s
1997 2WD Crew Cab Almost new tires, windows, locks, Nice Truck!!!	2000 RED MONTE CARLO LS ONE OWNER! 25K MILES, BEAUTIFUL CAR!!!!

806-492-3663

HOURS: 8:30 A.M. - 6 P.M.

"MONDAY THRU SATURDAY"

CITY OF CORPUS FLEET MAINTENANCE AUCTION

SATURDAY, JUNE 9TH, 2001 - 10AM - 5352 AYERS ST. CORPUS CHRISTI, TX

VIEW: June 8, 10am-5pm; Sale Day 8-10am Auction Starts at 10am 6% Buyers Premium

SELLING: CARS, PICKUPS, (3) SM. DOZERS, BRUSH TRUCKS, LOADERS, CREW TRUCKS, BATWING SHREDDERS, TRACTORS, FIRETRUCK, AMBULANCE, SM. HORIZONTAL BORING MACHINE, BACKHOES, WELDING MACHINES, PUMP, DITCHERS, CASE 560 TRENCHER/BACKHOE, DUMP TRUCKS, AIR COMPRESSORS, GRAD-ALL G3WD-E, LIMB SHREDDERS, POL. CRUISERS AND MORE! FOR INFORMATION:

JOHN SISK AUCTIONEERS #7425 - PETTUS, TX PH: 361-375-2395
ON THE WEB: WWW.SISKAUCTION.COM

Think Texas

by Agriculture Commissioner SUSAN COMBS

It's common knowledge that flowers make people happy. But a recent study adds scientific foundation to this notion, finding that flowers give people an overall emotional sense of well-being and life satisfaction and trigger positive social behaviors.

This means Texans must be some pretty happy folks; Texas is third in the nation in florists' sales. But what would make them even happier is if we could buy flowers grown in Texas, rather than looking outside our borders. It's unfortunate, but currently Texas imports nearly 99 percent of its cut flowers. Buying from Texas supports growers across the state and helps keep jobs and dollars here rather than sending them to California or even overseas. It also means locally grown flowers last longer because they don't spend days in transportation.

That's why we need to put our heads together and come up with ways to make this sector thrive. Texas already has a booming horticulture industry as the third-largest producer in the nation, but cut flowers make up only a small portion of that figure. The Texas Department of Agriculture is publishing a cut flower resource guide, has given matching funds for floriculture promotions and has helped fund research grants, but more can be done.

Nationwide floriculture and environmental horticulture is the fastest growing segment of U.S. agriculture, increasing \$500 million in grower cash receipts annually. With only about a dozen growers in Texas, there is definitely room for growth and Texas farmers need to tap into that potential.

Higginbotham-Bartlett

We now have Hi-Pro Feeds



Godbold Feeds

Angle Iron, Flat Metal, 4x4 Tubing, C-Purlin

Exide Batteries

— Appliances —

Washers & Dryers, Stoves, Freezers, Microwaves
TV's, VCR's, & Stereos



FARM & RANCH SUPPLIES
PORT-A-HUT HOG RAISING SYSTEMS
STORAGE BUILDINGS

RENTALS: Chop Saw • Roto-Rooter • Ditch Witch • Roto Tiller
Tandem Trailer • Welder • Steam Cleaner

STORE HOURS: 7:00 A.M. - 5:00 P.M. MONDAY - FRIDAY & 7-12 SATURDAY
FREE LOCAL DELIVERY
FOR YOUR CONVENIENCE AFTER HOURS CALL
DONNIE, 347-2889

The Classifieds

Motley County Tribune
 Carla M. Meador - Publisher & Editor

PANHANDLE PRESS ASSOCIATION
 2000 MEMBER

TEXAS PRESS ASSOCIATION
 AWARD WINNER

MEMBER 2000
 TEXAS PRESS ASSOCIATION

The Motley County Tribune, (ISSN: 0897-4322), purchased on September 3, 1996, is published weekly each Thursday, except Christmas week, at Matador, Texas. The office is located at 724 Dundee, telephone number, 806/347-2400. Periodical-class postage paid at Matador, Texas. Postmaster: Send address changes to Motley County Tribune, P.O. Box 490, Matador, Texas 79244. NOTICE: Any erroneous reflection upon the character, firm, or corporation, which may appear in the columns of the Motley County Tribune will gladly be corrected upon being brought to the attention of the Publisher. Only signed letters to the Editor will be considered for publication. PUBLICATION NO.: 333770. SUBSCRIPTION RATES: Motley County - \$21.00; All others, \$22.00. P.O. Box 490, Matador, TX 79244

Notice

PUBLIC NOTICE is given that a Hearing will be conducted June 4, 2001, at 7:30 p.m., by the City of Roaring Springs, in the Community Center. The hearing is to receive comments about the City's proposed project to create a visitors center by rehabilitating the old Depot. Comments may be received orally or in writing. All those attending may speak to state their support or opposition to the project. The hearing will be conducted by City officers and the statements will be recorded and available for review at the June 11, 2001 City Council Meeting. Facilities are ADA. For further information, you may contact the City Secretary at 806-348-7231, City Hall.

1tc-22

FOR SALE

FOR SALE: Roaring Springs Ranch Club membership - best offer. (806) 347-2200.

2 - 8X25 X 20 USED TIRES; 2 - 900 x 20 tires; used car and trailer wheels; 2 - Deerborne stoves; electric cash register; Frigidaire refrigerator; 4 speed truck transmission; truck and pickup seats. 347-2823.

VEHICLES

MUST SELL: 1997 Dodge 1/2 ton 4x4. Reg. Cab, V-8, Auto, 44,000 miles. Affordable monthly payments. Call Larry, 1-877-983-3761, WWW.FLOYDADAFORDMERCURY.COM.

1tc-22

JUNE SUBSCRIPTIONS DUE

Motley County - \$21.00
 All Others - \$22.00
 (If over 60 receive \$1.00 discount)

MOTLEY COUNTY

Matador:
 Gerry Jones
 Douglas Campbell
 Michael G. Crowley, Sr.
 JoEtta Bumgardner
 Craig Turner
 Motley County Chamber of Commerce
 Juanita Cooper
 Jim Stockton
 Monte Wike

Roaring Springs:
 Cleo Watson
 Bennie Dillard
 Joseph House

Flomot:
 B. Ann Cloyd
 Ronald Clay

ELSEWHERE

Rob Everett, Floydada
 Grace Shelton, Lockney
 Donnie Jenkins, Levelland
 Rosemary Anderson, Seminole
 Tom Yeates, Lubbock
 Oma Sue Helms, Lubbock
 Jerri Ann Booe, Lubbock
 Bill Seale, Snyder
 Bert Ezzell, Abilene
 Neal Haralson, Garland
 Betty Mullins, Arlington
 Louis Shorter, Mansfield
 Pepper Nichols, Wichita Falls
 Herman Ellithorp, Harker Heights
 Genell Dewbre Riley, San Angelo
 John Hanesworth, San Antonio
 J.D. Bray, Kingsland
 Paul Barton, Austin
 Stanley Kingery, Austin
 Kay Smallwood, LaPryor
 Glenda Martin, Dumas
 Buddy Allen, Pampa
 Unger Mem. Library, Plainview
 Bernice Boyd, Amarillo
 Billie Clifton, Amarillo
 John Fish, Linden, TN
 Gary Campbell, Kansas City, MO
 Dale Dollins, Duke, OK
 Carl Thompson, Hurricane, UT
 Jean Tuller, Cherry Valley, CA
 Kobbi Blair, Salem, OR
 Cap. Newberry, Dallas, OR

Wanted

WANTED: Hunting Lease around Spur, Dickens or Matador. Good reliable group of guys. Have good references if needed. Please call 806-798-1930 or 806-352-7865.

Help Wanted

CROSBYTON NURSING AND REHA3 is accepting applications for RN's, LVN's and CNA's. Please apply at 222 N. Farmer, Crosbyton, or call 675-2342.

HWY. 70 ASSOC. TO MEET
 Sandy Baker of Llano Estacado Tourism will meet with the Hwy. 70 Association, June 7, at 7:30 p.m. in the Roaring Springs Community Center. Ms. Baker will speak on tourism and other aspects of Economic Development. All those interested are invited and urged to attend.

MUST SELL: 1998 Pontiac Sunfire, 37,000 miles. Bright red, great on gas. Affordable monthly payments. Call Joe, 1-877-983-3761, WWW.FLOYDADAFORDMERCURY.COM

PETS

FREE TO GOOD HOME: Only one left! 10-week-old female Border Collie mix puppy. Very good natured and smart. Call 347-2400 or 347-2246 after 7 p.m. or 347-2412.

POTTS COMPOSITES, INC. is now accepting applications for shop assistant. Position requires dedicated, responsible, mechanically inclined person for on-the-job training in plastic molding. Hourly pay. Floydada/Matador area. 806/983-3311.

BIRTHDAY CALENDAR CHANGES
 If anyone has any changes or additions to the Birthday/Activity Calendar, please call Jim or Judy Cooper at 806-347-2338 or 347-2852.

MUST SELL: 2000 Ford Windstar, 9,000 miles. Practically new. Affordable monthly payments. Call Joe, 1-877-983-3761, WWW.FLOYDADAFORDMERCURY.COM

Real Estate

HOUSE FOR SALE: 2 Br. Stone House on large lot near school. Cen. Air & Heat. \$29,000.00. 1702 Main, 1-800-521-3177.

GARAGE SALE

GARAGE SALE: Stand-up mirror, clothes, crafts and much more. Kyle Moore's house, Saturday, June 2, 8:00 a.m. til 2:00 p.m.

SUMMER WEIGH DOWN PROGRAM TO BEGIN
 A Summer Weigh Down Workshop will begin Thursday, June 14, at 5:00 p.m. in the Matador First Baptist Church. The program is a Christian weight loss program based on principles from the Bible. For more information contact Lana Copp at 347-2425.

MUST SELL: 1998 Mercury Grand Marquis, 57,000 miles. Priced right. Affordable monthly payments. Call Joe, 1-877-983-3761, WWW.FLOYDADAFORDMERCURY.COM

FOR SALE: Lake Horner, 1 or 2 memberships; 2 trailers enclosed with breezeway. 652-2589 or 652-1448.

GARAGE SALE: Friday & Saturday, June 1 & 2, 9:00 a.m. - ? at the home of Terry Simpson, 1225 Main. Chairs, beds, entertainment center, coffee table, end tables, and more furniture.

PUBLIC NOTICE
 To the farmer or individual who borrowed to my brother a radiator after hitting a deer near Matador in the last 6 months. He would have returned it - but passed away. Please call and identify vehicle or person. I need to hear from you, 580-242-5914.

Specialities

COMMERCIAL, RESIDENTIAL, Farm and Ranch Repair, Remodeling and Construction. Steel Siding. General Finish Carpentry, Custom Cabinets, Custom Furniture, Electrical, Ceramic Tile, Decks, Roofing, Metal Buildings. Free Estimates. Call B.H. Smith Contracting, (806) 492-2339, Paducah.

BOEDEKER COMMUNICATIONS CELLULARONE
 Authorized Dealer
 806-346-7590

4 WEEK ART WORKSHOP
 by Francine Braselton of Paducah

Watercolor for Students & Adults
 Monday, June 4, 11, 18 & 25
 10 a.m - 12 p.m., Students 3 - 6 p.m., Adults

Thursday, June 7, 14, 21, & 28
 6 - 9 p.m., Adults

\$20 per class. Call in Advance. Classes Limited
 806-492-2218

Business Review

Do most types of Welding Jobs
 Stock Trailer Repair
 (lights, brakes, etc.)

Parks Welding Shop
 348-7243 - Roaring Springs

Open 7:00 - 5:30, Monday - Friday
 Saturday, 8:00 - noon

GERMANIA INSURANCE & LEE'S INSURANCE AGENCY
 A PROUD PAST WITH A SOLID FUTURE

TURKEY	FLOMOT
ERNIE LEE	RUTH LEE
423-1020	469-5370

"SERVING PEOPLE LIKE YOU SINCE 1975"

Motley County Abstract Company
 Ph: 806-492-3573 Fax: 806-492-3574
 P.O. Drawer I, Paducah, Tx 79248

Complete Abstracts and Title Insurance for all of Motley County

Nelda Hightower, Owner
 Kay Heatly, Manager
 W.H. (Bill) Heatly, Attorney

Document Preparation and Closing Services

Payne Pharmacy
 200 S. Main - Floydada, TX 79235
 Ph: 983-5111 or 1-800-345-7961
 Denise Payne, R.Ph.

M-F, 8:30-6:00; Sat., 8:30-2:00
 We will be happy to mail your prescriptions!

AUTHORIZED AGENT OF CAPROCK CELLULAR

Gillespie Communications
 James Gillespie - (806) 347-2208
 Land Mobile Radio Sales & Service

Did you take **Fen-Phen?**

If you took any of the combination of diet drugs known as Fen-Phen you should know that it may not be too late to opt-out of the nationwide class action case and pursue a lawsuit against the drug companies individually. Call Us For More Information Concerning Your Legal Rights and Eligibility for Echocardiographic Testing.

David P. Willis - Willis Law Firm
 3333 One Houston Center Houston, Texas 77010
 1 (800) 883-9858 or (713) 654-4040
 Mr. Willis is likely to associate with other Attorneys in the handling of these cases.

★ **COOKING**
 ★ **HEATING**
 ★ **WATER HEATING**
 ★ **MOTOR FUEL**

MEREDITH Gas & Supply
 24-Hour Service
 Propane tanks & Supplies

PROPANE
 ENERGY FOR THE LIFE YOU LIVE
 Roaring Springs (806) 348-7332

SHAKLEE PRODUCTS
 Peggy Probasco
 983-5246 or 800-536-5246

Call Day or Night
 For Propane & Electrical Service

Marshall Bros.

806-347-2290

Propane  Electric

THIS SPACE AVAILABLE FOR A SMALL MONTHLY FEE

Call
 347-2400
 for details

DON'S MUFFLER SHOP
 210 W. Calif. - Floydada
 FREE ESTIMATES
 1-877-212-8222

THANK YOU FOR READING THE MOTLEY COUNTY TRIBUNE

Higginbotham-Bartlett now has Mini-Storage
 10' x 15'
 Matador - 806-347-2445

NEW IN MATADOR! KEN'S RV PARK
 20, 30 & 50 amp plugs available
 347-2290

To advertise in this Business Review, call 347-2400.

FRED THAYER & DIANNE WASHINGTON
 Certified Public Accountants
 710 Bailey - Matador - 347-2636
 Open Monday - Friday, 9:00 - 5:00

Need a perfect gift?
 A subscription to the Motley County Tribune!