



Matador Tribune



Voice of the Foothill Country

2ND YEAR

Tribune, Matador, Motley County, Texas, THURSDAY, OCTOBER 12, 1978

ISSUE NO. 30

A Second Glance

By Leon Watson

It seems like just the other day when I said goodbye to friends and relatives as they left to go home after their holiday visits. Now, the holidays are almost here again. It just goes to show me how quickly time is passing and how short a time there is between the last goodbye and the next hello.

+++

Cotton Incorporated in Memphis, Tennessee, passed along a true story which was kind of sad. It happened somewhere in the Cotton Belt last year. A cotton grower went into a department store to watch women shopping for men's shirts. The women would pick up and look at 100 per cent cotton shirts, lay them down and move over to the polyester shirts. They would buy a 65 per cent polyester or dacron and cotton blend.

After three hours of observation, the farmer identified himself and asked a woman, "How can you live in a cotton town and buy polyester shirts?" And the woman replied, "I don't care if we sell cotton, or if we don't sell cotton. I am not going to iron my husband's shirts."

Fortunately, they make a cotton shirt these days that is 60 per cent cotton (for comfort) and 40 per cent synthetic (for easy care).

Last year, it was reported during the Farmer's Strike, that a lady said, "What do we need farmers for? We can get anything we want in the grocery store."

+++

There are two kinds of house plants, either of which can make your home look and feel livelier, and lovelier: plain greenleaved and variegated, or flowering plants. The former are often easier to grow; the latter, often more of a pleasure to show.

+++

By all means, save your old copies of the Tribune. We have just learned that an avacoco will ripen faster if you wrap it in newspaper for a few days.

+++

P.S. - I have been asked to get a list of all the Democrats who voted in favor of giving the Panama Canal away. Any help in getting this list will be appreciated.

Motley County Mavericks Win Over Spur 40 -- 20

By Kim Campbell

Last Thursday the Motley Mavericks played Spur here and beat the Bull Pups 40-20. The Jr. High team is now 2-0.

Playing well on the offensive line for the Mavericks were Roy Thompson, Victor Hull, J. D. Russell, Bill Luckett, and Randy Ho-Gland.

In the backfield Tim Shannon, Darrell Moore, Brent Campbell, Terry Simpson, Clicky Sims and Shawn Bearden did a good job

of running with the ball. Two other offensive players who did well were James Halford, and Robert Potts.

The defense was led by Victor Hull, Terry Simpson, Shawn Bearden, Craig Turner and Coke Barton.

Thursday Oct. 12 the Mavericks will play Valley here beginning at 4:00 and then will be followed immediately by Motley County Junior Varsity game with Valley.

ROUNDUP

LIONS TO SPONSOR CARAVAN

Matador Lions Club will sponsor a caravan to Claude Friday. The caravan will leave Matador at 5 p.m. from the South side of the Courthouse.

Most of the local businesses will close early in order to go with the caravan.

+++

ETERNAS CLUB TO SPONSOR COSTUME CONTEST

The Eternas Jr. Study Club will sponsor a Halloween Costume contest for two year old, through and including Kindergarten at the Community Halloween Carnival, October 31, at 6 p.m.

+++

4-H AWARDS BANQUET TO BE MONDAY

The annual Motley County 4-H Awards Banquet will be held in the Motley County School Gymnasium on Monday night October 16, starting at 7 p.m.

+++

TIME CHANGED FOR JR. HIGH FOOTBALL GAME

The Motley County Mavericks will play at 4 p.m. Thursday instead of 5 p.m. on Burleson Field here in Matador.

+++

SINGING CONVENTION TO MEET SUNDAY

The oldest organization in the county, The Motley County Singing Convention, will hold their semi-annual meeting Sunday October 15 at 2 p.m. in the Assembly of God Church at Roaring Springs. Everyone is invited to attend stated W. L. Craft, president.



ENJOYING THE GAME -- Shawn Cox and Lisa Jones found a way to keep warm during the Matador-Jayton game Friday night. Shawn is the daughter of Mr. and Mrs. Ronnie Cox and Lisa is the daughter of Mr. and Mrs. Jerry Jones.

Matador Fire Dept. To Hold Barbecue

The Matador Volunteer Fire Department will hold their annual Barbecue October 28th at the VFW building. Barbecue chicken and beef will be served starting at 7:00 p.m. The barbecue is held each year for department members and their families and citizens who have helped the Fire Department during the past year.

Tickets are now on sale for a chance to win a 12 ga. Remington Model 870 shotgun that will be given away at the Barbecue. Tickets can be purchased from any member or at C. R.'s Conoco. The price of the tickets is \$1.00 each and you do not have to be present to win. A smoke detector will be given as a door prize to persons who attend the barbecue as special guests.

All proceeds from the shotgun tickets and smoke alarm sales will be used by the Matador VFD to purchase additional equipment that is very much needed by the Department.

Football Contest Winners Announced

Six contestants missed only one game in this weeks football contest. However, that was not good enough for any of them to reach first place. Amilio Aguilar got all the games right and won the first prize of five dollars.

By way of the tie-breaker, Pat Green received the second place award of three dollars and Alan Bingham was third for two dollars.

Others missing only one game were James Bearden, Nell Brotherton, Roy Smith and Shawn Bearden.

Missing two games this week were Dee Dee Durham, Barbara Durham, Jesse Perkins, Billie Durham, Leslie Jameson, Neal Haralson, and Max Barton.

With three wrong guesses were Jan Hart, Kelly Odell, Jo An Durham, Clay Jameson, Beverly Darsey, and Joe Freeman.

Those who missed four were Roy Thompson, Bud Brinsfield and Charles Cammack. Judy Renfro and Coke Barton both missed five.

Still leading in the race for the grand prize is James Bearden with 34 points. Alan Bingham, Clay Jameson, and Max Barton each have 30. Neal Haralson has 29.

Motley Matadors Shut Out 12--0

By Willy Palmer

The Jayton Jaybirds came to town Friday night and walked away with a 12-0 victory over the improved Motley County Matadors. Running back Robert Segura proved to be the asset for the Jaybirds as he tallied 184 yards rushing against the tough Matador defense.

As the Matadors picked up only 6 first downs, they were obviously forced to rely on the punt to put Jayton in poor field position. Their dependence was justified as punter Mike Green punted 8 times for a 42 yard average. Mike also had a 70 yard kick for the night to help out the Matadors.

The Matador secondary proved capable of handling their job as Jayton attempted the pass 6 times with not one single completion. Robert Parker, Mark Wason, Julian Zabielski, and Lester Campbell all were outstanding in the defensive backfield. Randy Meredith provided a large amount of the pressure against Jaybird quarterbacks from his defensive end position.

On offense Wason again was a leader as he caught all 5 passes thrown to him for 40 yards. This was especially important since most were received during clutch situations. Quarterback Parker threw 6 completions out of 16 attempts for the night and had one interception.

The Matadors open district play this Friday night at 7:30 against the Claude Mustangs in Claude. This is Claude's first year in Class B play. Everyone is urged to attend and cheer their team to it first district victory.

Homecoming Planed By Exes

By Lila Meador

Motley County Homecoming activities for ex-students and ex-teachers will get underway with registration, coffee and visiting at the school starting at 1:30 p.m. Friday, October 20, according to Dixie Barton Campbell, president of the Ex-Students and Ex-Teachers association.

The High School Pep Club will conduct a pep rally at 2:45 in the gymnasium, and from 5:30 to 7:00 p.m. a benefit supper will be served in the school cafeteria, sponsored by the Young Adult Class of the United Methodist Church. The proceeds will go to the church building fund. The class will also serve pie and coffee following the football game to further benefit the building fund.

The Motley County Matadors will meet the Happy Cowboys on Burleson Field at 7:30 for the Homecoming football game.

Pre-game activities will begin at 7:10 and will include Invocation; the National Anthem; crowning of a football

sweetheart, and the school songs of Motley High School and Happy High School.

Registration for Homecoming will continue Saturday, Oct. 21, starting at 9:30 a.m. with coffee and doughnuts. Visiting and class reunions will be in progress during the morning.

Annual business meeting is scheduled to start at 3:00 p.m. at which time the association will select a Homecoming Queen, and a new slate of officers. The program following is planned as a surprise feature, with no advance announcement regarding the theme.

A barbecue supper will be served from 6 to 8 p.m. in the school cafeteria and tickets will be available at the door, \$3.00 for adults and \$1.00 for children under 8 years of age.

The Homecoming dance will begin at 9 p.m. at the VFW Building with music by the Tiny Lynn band.

Banquet Has Halloween Theme

The annual Mother-Daughter banquet sponsored by the Eternas Junior Study Club was held October 3 at 7:30 p.m. in the Motley County School Gymnasium. The Halloween theme to the banquet was depicted by ghosts and pumpkins filled with favors on the orange and white covered tables. A witch and her brewing pot decorated the stage.

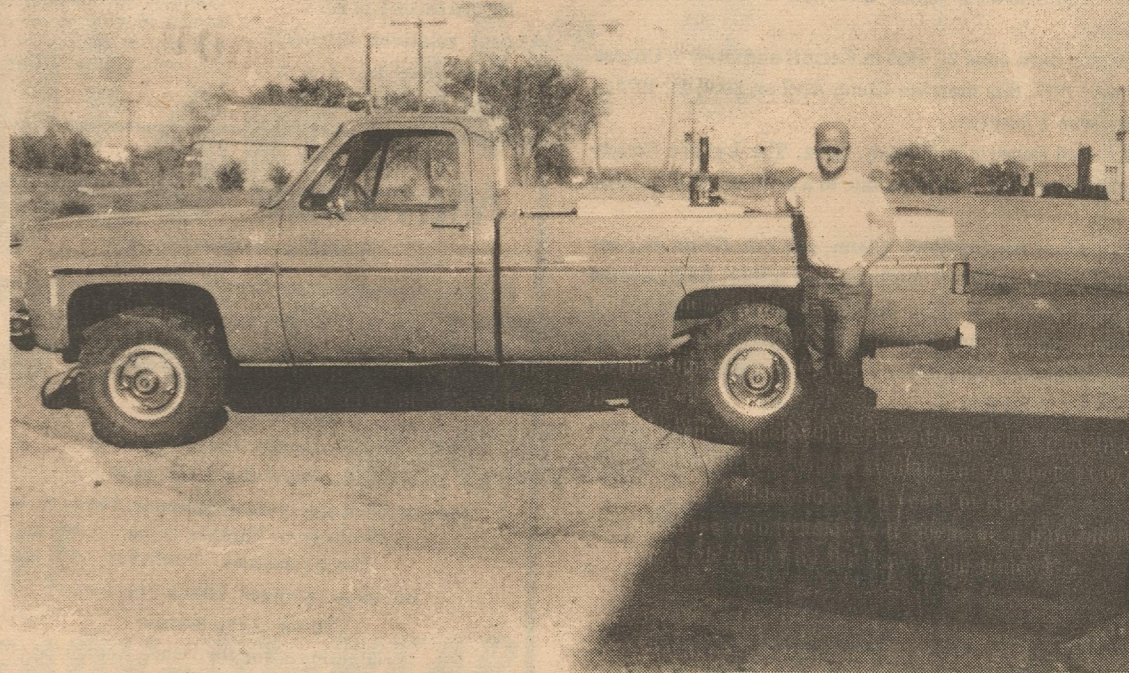
Mrs. Philip Hilton gave the invocation before the mothers and daughters entered the gymnasium. Turkey and dressing with all the trimmings comprised the menu for the buffet dinner.

Mrs. Larry Hoyle, president of Eternas Junior Study Club and mistress of ceremonies, welcomed the mothers and daughters. Mrs. Hoyle introduced this years' mother and daughter, Mrs. Ted Green and her daughter Sharla. Mrs. Green presented a special welcome to the daughters and the response was given by Sharla. Mrs. Hoyle introduced the program which was provided by Jan

Higginbotham (a former Matador High graduate), Judy Smith, Vicki Smith, and Steve Williams, all of Plainview. The girls were former members of the Spirit of America Singers from Wayland Baptist College. The program opened with everyone singing a song of greetings to the tune of "Hello Dolly". Jan chose volunteers from the daughters for a skit using the letters MOTHER, to tell the meaning of a mother.

The entertainers gave a skit about the development of a girl from the baby to adult stage. Throughout the skit they sang songs coordinated with the different stages. The group then sang a medley of religious songs such as "Oh How I Love Jesus" and "Amazing Grace". Jan concluded the program with "Were You There?".

The benediction was given by Mrs. Carter Luckett.



ONE TOUGH PICKUP -- Kenneth Marshall won first place in the pickup pull division of the West Texas Tractor Pull Finals in Lubbock this week. His 4-wheel drive Chevrolet pulled 30,000 pounds a distance of 294 feet. The pickup has a 400 engine, is

stock, with Armstrong True-track tires. He says there is no real money in "pickup pulling", and he only does it for fun and sport. This makes his third first place. (Tribune Photo)

P.T.A. To Discuss Halloween Carnival

First regular meeting of the Motley County P.T.A. will be held next Tuesday, October 17 at 7:00 p.m. in the Motley County school cafeteria.

Since the first organizational meeting in September a definite

need for the P.T.A. has been established through the students asking for the assistance of the P.T.A. and parents suggesting programs that could be implemented to assist the school and the youth of the community. Our local P.T.A. is a self governing unit that plans its programs and activities to meet the needs of children and youth in our own community so a suggestion box will be placed in the lobby during the meeting. All parents and faculty members are urged to turn in suggestions to aid the program committee in planning programs that will be of interest to the majority of the members and to plan projects that will benefit the school and youth.

Items for discussion will be the P.T.A. involvement in the Community Halloween Carnival, Homecoming Dance for the high school students, and a social following the last home football game.

A program will be presented by one of the faculty members to acquaint the parents with a special program that is offered within our school curriculum. Refreshments will be served by the Roaring Springs P.T.A. members.

Motley County Winners In Floyd Horse Show

Motley County winners in the Floyd County Quarter Horse Show held at Lockney on Sept. 17th, were as follows:

Viola Stinson, Flomot: Dusty Sonoita Bar, 1975 stallion, 2nd. Star Brother Bar, 1976 gelding, 1st place.

Debbie Clay, Flomot: Fleta De Othoe, Junior Western Pleasure, 6th place.

Princess Skaggs, Matador: Dix Danny, 1st Senior Youth Barrel Racing, and 1st, Senior Youth Pole Bending.

**WE
SELL & FEATURE
ONLY QUALITY
DOMESTIC AMERICAN
GROWN BEEF,
PORK & POULTRY**

COUNTRY PRIDE ROASTING OR
Stewing Hens

69¢
LB. 4-6 LB. AVG.

WRIGHT'S HICKORY SMOKED SLAB

Sliced Bacon

\$1.29
LB.



U.S.D.A. GRADE "A" COUNTRY PRIDE

Whole Fryers

55¢
LB.

PAN READY
Cut-Up
Fryers
LB. **65¢**

FRYER
Split Breasts LB. **\$1.19**

OSCAR MAYER
Sliced Bacon 1 LB. PKG. **\$1.79**

FRESH CHICKEN
Livers LB. **69¢**

OSCAR MAYER WEINERS OR
Franks Reg./Beef/Jumbo 1 LB. PKG. **\$1.49**

OSCAR MAYER SLICED
Bologna Reg./Beef/Thick 8 OZ. PKG. **89¢**

OSCAR MAYER
Smokie Links 12 OZ. PKG. **\$1.59**

OSCAR MAYER SLICED LUNCHEON
Meats Salami/Liver Cheese/P&P/Spiced Luncheon 8 OZ. PKG. **99¢**

BLUE LABEL DOG FOOD
Ken-L-Ration
6 15 1/2 OZ. CANS **\$1.29**

Autumn Food Harvest

GRANULATED
Shurfine Sugar 5 LB. BAG **99¢**

DISH DETERGENT
Ivory Liquid WITH COUPON 32 OZ. BTL. **99¢**

CENTRAL AMERICAN
Bananas 4 **\$1**
LBS.

WASH. GOLDEN DELICIOUS **Apples** 3 LBS. **\$1**
ALL PURPOSE RUSSET **Potatoes** 10 LB. BAG **89¢**

TEXAS GREEN **Cabbage** LB. **15¢**
COLORADO YELLOW SWEET **Onions** 2 LBS. **25¢**

VALUABLE COUPON
DISH DETERGENT **Ivory Liquid** 32 OZ. BTL. **99¢**
ONE COUPON PER CUSTOMER
COUPON EXPIRES OCT. 14, 1978
Venture FOODS

Grocery Specials

DEL MONTE
Tomato Catsup 32 OZ. JUG **59¢**

DR. PEPPER 6 Pack 32 Oz. **\$1.49**
Regular PLUS DEPOSIT

KRAFT Grape Jelly 2 LB. JAR **99¢**

KRAFT DELUXE Dinner Macaroni & Cheese 14 OZ. BOX **79¢**

DEL MONTE WK GOLDEN **Corn** 3 17 OZ. CANS **\$1**

KRAFT REAL Mayonnaise 32 OZ. JAR **\$1.39**

SCHILLING **Black Pepper** 4 OZ. CAN **99¢**

DOG FOOD BURGERS Reg./Cheese/Liver **Ken-L-Ration** 36 OZ. PKG. **\$1.19**

STAY FREE **Maxi Pads** 12 CT. BOX **89¢**

GLAD **Sandwich Bags** 80 CT. PKG. **49¢**

GLAD **Trash Bags** 10 CT. PKG. **\$1.19**

GLAD HEAVY WEIGHT **Trash Bags** 8 CT. PKG. **\$1.39**

ENRICHED ALL PURPOSE
Gladiola Flour 5 LB. BAG **69¢**

MRS. SMITH PUMPKIN
Custard Pie 26 OZ. PKG. **99¢**

BIRDSEYE
Cool-Whip 9 OZ. BOWL **59¢**

KRAFT Velveeta 1 LB. BOX **\$1.29**

SQUEEZE PARKAY
Margarine 1 LB. PKG. **79¢**

PHILADELPHIA CREAM P/B
Cheese 3 3 OZ. PKGS. **89¢**

CHICKEN NOODLE
Campbell Soup 4 NO. 1 CANS **89¢**

AUNT JEMIMA
Pancake Mix 2 LB. BOX **69¢**
AUNT JEMIMA Syrup 24 OZ. BTL. **\$1.19**

GLACIER BEVERAGE WARE All Items On Sale Now!

Health And Beauty Aids

PETROLEUM JELLY
Vaseline 12 OZ. BTL. **\$1.29**

AGREE Gentle/Reg./Oily
Shampoo 8 OZ. BTL. **\$1.29**

BAYER CHILDREN'S
Aspirin 36 CT. BTL. **39¢**

AGREE Reg./Oily/Ex Body
Creme Rinse 8 OZ. BTL. **\$1.19**

AFFILIATE
WE RESERVE THE RIGHT TO LIMIT PRICES EFFECTIVE Thurs., Fri., & Sat.
Billy's Grocery
Venture FOODS

MAILBOX

Dear Betty,
Please find check enclosed for \$6.00.

I must complement all of you for the improvement of the Matador Tribune. Some one has really taken hold up there, and we are so proud. The quality of this weeks paper was the best, since Mrs. Meador sold out we thought.

Thanks very much, and we hope to see all of you Homecoming.

Sue Courtney
Madill, Okla.

+++
Matador Tribune
Matador, Texas
Dear Diana, Leon, Mary and Betty:
Just a note to thank you for the coverage you gave Gary on the release of his album. It and the ad have resulted in very good sales locally and I have mailed albums to

Tribune readers in at least a dozen states.

Thanks again
Forrest Campbell

907 18th Street
Anacortes, Wa. 98221
October 6, 1978

Matador Tribune
1001 Main Street
Drawer Q

Matador, Texas 79244

Dear Mr. Freedman:
Enclosed you will find a six dollar check for one years renewal for my subscription. I haven't received a notice. But I know it is due. I have neglected sending it in sooner.

Thank you for continuing to send it to me.
I look forward every week to reading about the "old timers" and "new timers".

Yours Truly,
Lena Brockenbush

A WEDDING MEASURE



A wedding is a measured event. Brides are measured for their gowns, the first home is measured for carpeting, furniture, draperies and even the traditional march to the altar is measured. So is her cake.

Wedding Day Cake is a measure of love which combines the best of three dessert worlds—layer cake, ice cream and frozen whipped topping. The topping appropriately enough, is now available in a handy quart reusable measuring cup, complete with handle. Easy to use, easy to store and easy to measure your kitchen successes.

WEDDING DAY CAKE

- 3 pints ice cream, any flavor, softened
- 1 container (9 oz.) Birds Eye Cool Whip non-dairy whipped topping, thawed
- 1 cooled baked 8-inch yellow cake layer

Spread ice cream evenly in an 8-inch layer pan which has been lined with plastic wrap. Freeze until firm. Split cake layer in half horizontally to make 2 layers. Unmold ice cream onto 1 layer on serving plate; top with second layer. Quickly frost sides and top with about 2 cups of the whipped topping. Using remaining whipped topping in a pastry bag, decorate top and bottom edges of cake with flowers, rosettes, shell, or reverse border, as desired. Store in freezer until ready to serve. Let stand at room temperature for 10 minutes before cutting. Makes 8 to 10 servings.

Note: Return cake to freezer at intervals while decorating to keep ice cream firm.

About Local People

ATTEND GAME

Mr. and Mrs. Bill McCaghren spent the week end in Palestine with their daughter and family, Rev. and Mrs. Darwin Scott and daughter, Gayla. Saturday, the group attended the A&M-Texas Tech football game in College Station and visited the Scott's son, Ray, who is a junior at A&M. Highlights of the game included performances by the A&M band, marching cadets and the cavalry unit. Mr. and Mrs. J. L. Woodruff accompanied the McCaghrens to Palestine, where their daughter, Mrs. R. M. Dailey met them and accompanied them to her home in Grapeland for a visit.

RELATIVES ATTEND MORRISON RITES
Local relatives attended funeral services at 3 p.m. Wednesday in Spur for Mrs.

Maude Morrison, 94, a longtime Dickens County resident, whose father helped organize Dickens County and was the county's first treasurer.

The former Maude Garner, Mrs. Morrison died at 4:30 p.m. Sunday in Presbyterian Hospital in Kaufman after a lengthy illness. She was born near Jacksboro and moved to Dickens County in 1898.

She was a niece of the late D. C. Keith, and attending the funeral were Mr. and Mrs. Charlie Keith, Miss Mary Keith, Mrs. Alan Bingham, Mr. and Mrs. Keith Patton and M. S. Patton.

Energy Saving Tips

You can save energy in your laundry by keeping the lint screen in your dryer clean. It will dry more clothes faster if you remove the lint after each load.

Matador Tribune

Thursday, October 12, 1978

Published weekly except first Thursday after Christmas

By Tribune Publishing Co., 1001 Main Street.

Drawer Q - Matador, Texas 79244

Issue No. 30

Subscription Price:

Motley County, One Year: \$5.00

Elsewhere, One Year: \$6.00

2nd Class Postage Paid at Matador, Texas 79244

Publication Number 333700

Kay Freedman - Publisher

Business Manager: Diana Freedman

Editor: Leon Watson

Production Manager: Mary Renfro

Office Manager: Betty Luckett

DEATHS

Clyde Stone Rites Held At Turkey

Services for Clyde Stone, 36, of 4310 54th St. in Lubbock, formerly of Turkey, were at 3 p.m. Tuesday in the First Baptist Church with the Rev. David Hartman, pastor of First Baptist Church in Meadow, and the Rev. Melvin Clinton of the Turkey church, officiating.

Burial followed in Dreamland Cemetery under supervision of Seigler Funeral Home.

Stone had suffered a heart attack about 10:30 a.m. Sunday at a friend's house in Quitaque and died about noon Sunday on arrival at Plainview's Central Plains Regional Hospital.

The Quitaque native had attended Turkey schools and was graduated from Turkey High School in 1960. He had attended mortuary college in Dallas and was a licensed funeral director. Stone had worked in funeral homes at Plainview, Turkey, Crosbyton and Friona.

Stone, who was employed as a construction inspector for Pioneer Natural Gas Co., had lived in Lubbock for the past 11 years. He was a member of the Quaker Avenue Baptist Church in Lubbock.

Survivors include his wife, Nelda; two daughters, Belinda and Mistie, both of the home; his parents, Mr. and Mrs. Leroy Stone of Turkey; a brother, Jay of El Paso; and his grandmother, Mrs. Sam Stone of Lubbock.

Services Held For Connie Abel

Services for Connie Jan Abel, 23, were held at 10 a.m. last Thursday in Beacon Baptist Church in Odessa with burial in Sunset Memorial Gardens under direction of Hubbard-Kelly Funeral Home.

Mrs. Abel was born June 21, 1955 in Kermit and lived in Odessa from 1961 until 1977. She married Glenn Abel on Sept. 21, 1974 in Odessa. She was a Baptist.

Mrs. Abel died Sunday in Poteau, Okla. The LeFlore County medical examiner ruled death was due to a self inflicted gunshot wound.

Survivors include her husband, Glenn; one son, Glenn Jr.; her mother, Mrs. Donna Hollon of Midland; her father, Ray Carman of Greece; three sisters; Mrs. John (Dimple Ann) Tatum of Odessa; Kay Carmen and Shanna Carmen from Greece; her paternal grandmother, Mrs. Choc Carmen of Surprise, Ariz. (a former Matador resident).

M.C. Arts and Crafts Club Has October Meeting

Motley County Arts and Crafts Club met October 2 in the Woodruff Building. Mrs. Anna B. Cloyd, vice president presided over a lengthy business meeting during the morning session.

Mrs. Barbara Jameson presented the program at 1:30 p.m. She demonstrated picture framing techniques. Questions and answers followed.

Others present were Winifred Lee, Leola McKelvey, Carol Ann Turner, Cheryl Bynum, Marion Burt, Hortense Goodwin, Audrey Price, Susan Jameson, Lorene Lancaster, Francine Green,

Christine Gilbert, Trula Martin and Erma Washington, a new member.

Milo Season Is Here

We Store Grain

Barbara Berry

or

Pearl Palmer

Phone

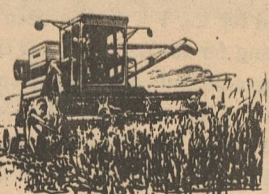
348--2791

or

348--2101

Your Business Is Appreciated

Roaring Springs Elevator



The Di-Gel Difference
Anti-Gas medicine
Di-Gel adds to its soothing Antacids.

Di-Gel.
The Anti-Gas Antacid.



JUNIOR HIGH CHEERLEADERS are filled with spirit as the Motley County Mavericks win over Spur 40-20 last Thursday night. Shown are cheerleaders Traci Green, Melea Taylor and Vivian Sims.
Photo by Gerald Garst

Social Security Tips

By Janis Sherrod
S. S. Representative

Question: My 90-year-old grandmother lives with me. She's in good physical health, but her mental condition has deteriorated over the past year. I really don't think she's capable of managing her own money any more. Can arrangements be made for her social security checks to be sent to me?

Answer: If an older person becomes unable to manage his or her own funds, arrangements can be made to send the person's social security checks to a representative payee. The representative payee can be a relative or other person who takes care of the beneficiary. Contact any social security office and the people there can give you detailed information.

For further information regarding Social Security benefits please contact the Social Security office, 1401-B West 5th Street, Plainview, telephone 293-4371.



By Mrs. Dan Gerber

At seven or eight months, many babies are ready for Junior Baby Foods.

These varieties have slightly more texture than the beginning strained ones. They encourage baby to chew and are a transition to regular table foods. And, they are larger jars to keep up with a growing child's increased appetite and need for food.

Most of your baby's favorite strained foods are available in the junior line. I would suggest you try these first. Later, try Toddler Meals - casserole combinations that cater to the maturing tastes of older babies and toddlers.



The first bank run by women was founded in 1974 in New York City. Called the First Women's Bank and Trust Company, it has a woman president.

DENTURE WEARERS

A major advancement
CUSHION GRIP
DENTURE ADHESIVE
one application holds comfortably up to 4 days

\$SAVE AS YOU \$SHOP

...FOOD VALUES WITH YOUR BUDGET IN MIND!

DIET OR REG.	SMOKED WRIGHT		
Dr. Pepper	HAM	POUND	Whole \$1.19
32 OZ. 6 PK.	WATER ADDED		1/2 \$1.29
\$1.49			
PLUS DEPOSIT	WEIGHT WATCHERS! TURBOT		
	Halibut Fillet	POUND	\$1.39
	T-Bone Steak	POUND	\$2.39

FINAL WEEK!!
Crystal Glacier
Beverageware
All Items On Sale
29c

HORMEL
Little Sizzlers 12 OZ. PKG. \$1.09
KRAFT TWO POUND BOX
Velveeta Cheese \$2.39

SHURFINE SALTINE
Crackers 16 OZ. BOXES 2 FOR \$1.00

CHICKEN OF SEA CHUNK
Tuna 69c
FLAT CAN
WEEKLY **PRODUCE** SPECIALS

SWIFT JEWELL
Shortening 42 OZ. CAN \$1.29

INSTANT TEA
Nestea 3 OZ. JAR \$1.89

CELLO
Carrots ONE LB. PKGS. 2 FOR 49c

BAKER RUSSET
Potatoes POUND 19c

RED DELICIOUS
Apples POUND 39c

Tide GIANT BOX \$1.39
DETERGENT

DEL MONTE
Tomato Juice 46 OZ. CAN 59c

GLADOLIA YELLOW OR WHITE
Corn Bread Mix 5 FOR \$1.00

Ranch Style Beans 23 OZ. CAN 49c

SHURFINE HALVES BARTLETT
Pears 16 OZ. CAN 49c

SHURFINE GRANULATED
Sugar 5 POUND BAG 99c

PLUS S&H GREEN STAMPS

NORTHERN
Napkins 59c
140 CT. PKG.

Sut's Spot Cash Gro.

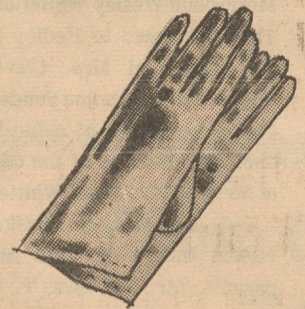
Home of Courteous Service - Tastiest Meats
Values Good Thur. - Fri. - Sat.
We Reserve The Right To Limit Shop For Our Unadvertised Specials

HOURS
DAILY 8:00 - 6:00
SATURDAY 8:00 - 6:30

Ronnie's STOREWIDE CLEARANCE

ALL ITEMS REDUCED

20% OFF



PLUS

ALL Ladies Ready-To-Wear
25% OFF

*It's Kick-Off
Time!*



Ronnie's

Fall Opening KICK-OFF

25% OFF

ALL LADIES READY-TO-WEAR

DRESSES



PANTS

SWEATERS

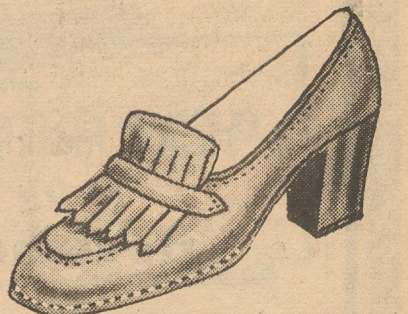


BLOUSES

SPORTS
WEAR



Shop Now For Christmas While Selections
And Reduced Prices Are Here



Whiteflat News

By Mrs. Early Jameson

Mr. and Mrs. Tom Shelton of Houston visited Mrs. Ralph Stapleton Saturday.

Mr. and Mrs. Stuart Dixon attended to business in San Antonio last Monday and Tuesday.

Visitors Sunday in the home of Mrs. W. R. Tilson were Mr. and Mrs. Ray Zabielski of Roaring Springs and Mrs. Stella Tilson of Matador.

Skeet Jameson accompanied his mother, Mrs. Beulah Jameson, to Lubbock, Friday for a medical check up. She returned to Plainview where she will visit this week in the home of her son and wife, Mrs. Jodie Jameson. Mr. and Mrs. Skeet Jameson visited during the week in Plainview with the family.

Visiting Mr. and Mrs. Morris Stephens Saturday and Sunday were Mr. and Mrs. David Hudgins of Lakeview.

Week end visitors of Mr. and Mrs. Stuart Dixon were Mr. and Mrs. Grady Acket of Stamford.

Mrs. Clifford Martin of Matador visited Mrs. W. R. Tilson, Friday.

Visitors of Mrs. Ralph Stapleton, Thursday were Miss Mary Keith, Mrs. Fern

Henderson and Mrs. Ernest Fisher of Matador.

Mr. and Mrs. Armando Berreta and Lori Jane of Hereford were week end visitors of her family, Mr. and Mrs. Jess Zarate and children.

Mr. and Mrs. Marvin Stephens of Tulia visited Mr. and Mrs. Morris Stephens, Sunday.

Visitors in the home of Mr. and Mrs. Vernon Higginbotham, Sunday were Jan Higginbotham and Weaver McClure of Plainview and Mrs. Kyle McWilliams, Lori and Jeremy of Flomot.

Mrs. Janice Dixon and Spencer visited in Lakeview, Friday with Mrs. Mildred Morris and Wesley Whitefield. They continued to Hedley to visit Mr. and Mrs. Cleve Tooke. En route home Sunday, they were guests at a family birthday luncheon in the home of Mr. and Mrs. Paul Whitten.

Ted Jennings of Haskell visited this week with his parents, Mr. and Mrs. T. W. Jennings. Other visitors during the week were J. Don Finch of Roaring Springs, George Seigler of Northfield and Bill Flowers of Aspermont.

Visiting Mrs. Ralph Stapleton, Sunday were Mrs. Janell Standfer Bourland of Canyon, and Mr. and Mrs. Dave Standfer and Mrs. Howard Standfer of Plainview.

Mr. and Mrs. Ranz Jenkins of Lubbock visited Mrs. Malcolm Jameson and Melba, Sunday.

Mrs. Ruth Wood of Houston and Mrs. Laverna Sams of Lockney visited Mr. and Mrs. Johnny Turner and Heather Ann, Sunday and Monday.

WEEK END VISITORS

Sp.4 Mary Lou Zarate, a physical therapist in the Womens' Army Corps, stationed at Fort Sam Houston in San Antonio, visited during the week end with her family, Mr. and Mrs. Jess Zarate and children. Miss Zarate was met at the Lubbock Airport, Friday and returned by plane to San Antonio, Monday night.

HOME FROM HOSPITAL

Bill Smith returned home by ambulance, Tuesday from Big Spring where he was a patient in the Veterans' Hospital.



IN THE ROUGH

by hazel

There were 8 players in this tournament - Lucretia, Loys, Louise, Frances, Tommy, Winifred, Kathryn and Hazel. Qualifying round was played Thursday, Louise was medalist (83).

Bracket play was set up and on Friday Louise and Kathryn (8-7); Loys and Frances (4-2); Lucretia and Hazel (6-5); Tommy and Winifred (7-5). In Saturday's play Championship Flight - Louise and Lucretia, 1-up. Consolation - Kathryn and Hazel, a 2-up. In Cry-Baby Flight - Frances, Loys and Tommy played with Loys winning (93).

Addenda

After each days play we enjoyed late lunch at El Matador. Laverna joined us on Saturday. She is in Texline with Dax while David is in New York with Sharlene following her surgery. Laverna and Dax come in on week ends. Also Nell and Leona, Geneva and Nelda ate lunch with us.

Leona and Nell followed play on Saturday and kept scores. Pairings were very evenly matched on Sunday

mothers and babies

LITTLE KNOWN FACTS

Most babies learn to walk between 12 and 15 months, though it is not uncommon for one to start as young as nine months or as old as a year and a half or more.

It is normal for a newborn baby's weight to decrease in the first five days by as much as a pound. After ten to fourteen days, the birth weight is usually regained.

Infants are more sensitive than adults to heat and cold because their sensors are closer to the surface of their skins.

Don't leave layette shopping for too late in your pregnancy. You may feel too tired to look around to find exactly what you want.

To get some good ideas about what's available for mothers and babies, get a free catalog from Mothercare-By-Mail, P.O. 228, Parsippany, New Jersey 07054.



By Cynthia Lee
Consumer Relations Dept.
Texize Chemicals Co.

HOW TO LIVE WITH A DIRT MACHINE

Harried mothers all agree that most children seem to attract dirt like magnets. If your children induce the majority of your cleaning problems, these suggestions may help you prevent, live with, or even rise above them.

One of the greatest dirt problems suffered by mothers of children of all ages is "tracked-in" dirt left on floors throughout the house. To remove left-behind footprints and grime, as well as many common household germs, from washable floors use a solution of Pine Power® disinfectant cleaner and water to clean, disinfect and deodorize all at the same time.

If your school-age children are fledgling young artists, set up a creative-work center to encourage their creativity. Insist on water soluble paint and make sure the work center has washable surfaces that can "take it."

The early teen years bring on a whole new set of problems, which mostly take place in the bathroom. At this age, boys and girls alike will leave behind a residue of cosmetic "beautifiers" on mirrors, countertops, towels and sink. If you haven't already done so, it's a good time to give explicit instructions on leaving the bathroom tidy and useable for other family members.

RETURN FROM RUIDOSO

Mr. and Mrs. Robin Darsey recently returned from a trip to Ruidoso, N.M., where they played golf at the Inn of the Mountain Gods on the Mesalero Apache Reservation. While in Ruidoso they visited Mrs. Darsey's great-uncle Mr. and Mrs. Vernon Goodwin. They also visited with other vacationers to Ruidoso: Mr. and Mrs. E. H. Boedeker of Lubbock, Mr. and Mrs. Neal Pipkin, Lisa, and Scott of Lubbock, and Mr. and Mrs. Bill Pipkin of Matador. On Saturday they attended the Aspencade parade in Ruidoso. Returning home on Sunday, they visited with Mr. and Mrs. Andy Green in Lubbock.

UMW Meets

The United Methodist Women met on Wednesday, October 4th at 3:00 p.m. in the Educational Building Sanctuary. Mrs. Mary McMahan, president, presided and conducted a short business meeting.

The U.M.W. voted to sponsor a bake sale on Saturday, November 18th, the Saturday before Thanksgiving.

Mrs. Opal Pipkin, chairman of Christian Global Concerns started a study on missions, "The Caribbean Crescent". Mrs. Pipkin introduced the study with the reading of a beautiful song, "Right Hand of God", accompanied on the piano by Mrs. Josephine Hamilton. A short devotional

and prayer was given by Mrs. Pipkin on "All God's Children".

The lesson was taken from the books: Strand of Pearls, and New Missions for a New People. An interesting and informative lesson on the historical and cultural backgrounds of the peoples of the Caribbean was presented to the group by Mrs. Pipkin. The U.M.W. invites all the Methodist women to attend this study during the month of October. Mrs. Hamilton closed the meeting with prayer.

Others present besides those mentioned above were: Mesdames: Rita Groves, Lucy Ford, Vivian Jacobs, Ethel Payne, and Viola Keith.

Family Food Budget

S.T.R.E.T.C.H.E.R.S

KEN-L ration
DOG FOOD
6 15½ OZ. CANS **\$1**

AUNT JEMIMA
PANCAKE MIX
2 LB. BOX **69¢**

KEN-L ration
REG/CHEESE/LIVER
BURGERS
36 OZ. PKG. **\$1.19**

AUNT JEMIMA
SYRUP
24 OZ. BTL. **\$1.19**

LET'S HEAR A BIG, LOUD CHEER ...

RCA

New 1979 Television SALE

The Fairhaven Model GC680

RCA Award
GOLD KEY
Winning Dealer

SAVE 41.95
SMART, CONTEMPORARY STYLE CONSOLE with XtendedLife Chassis

regular 629.95
\$588

- Automatic color control and fleshtone correction
- Designed for low power consumption - uses only 89 watts
- Electronic varactor tuning
- Automatic fine tuning

SAVE 21.95
COLOR TV with XtendedLife Chassis

regular 419.95
\$398

- Brilliant color performance
- Uses only 60 watts of power
- Built-in energy efficiency
- Automatic fine tuning

COMPACT COLOR TV
Ideal for second set

regular 288
\$288

COLOR TV with XtendedLife Chassis

regular 419.95
\$398

\$729.95

SAVE \$50

RCA is making television better and better

Household Supply Co.

Form 64p (State) (6-77) PUBLISHER'S COPY State Bank No. 219

Consolidated Report of Condition of "The First State Bank" of Matador in the State of Texas and Domestic Subsidiaries at the close of business on September 30, 1978.

BALANCE SHEET		ASSETS			Sch.	Item	Col.	Mil.	Thou.
1. Cash and due from banks	C	7					1	347	1
2. U.S. Treasury securities	B	1	E					333	2
3. Obligations of other U.S. Government agencies and corporations	B	2	E					-0-	3
4. Obligations of States and political subdivisions	B	3	E					86.0	4
5. Other bonds, notes, and debentures	B	4	E					-0-	5
6. Corporate stock								12	6
7. Trading account securities								-0-	7
8. Federal funds sold and securities purchased under agreements to resell	D	4						200	8
9. a. Loans, Total (excluding unearned income)	A	10				4 509			9a
b. Less: Reserve for possible loan losses						121			b
c. Loans, Net							4 388		c
10. Direct lease financing								-0-	10
11. Bank premises, furniture and fixtures, and other assets representing bank premises								49	11
12. Real estate owned other than bank premises								-0-	12
13. Investments in unconsolidated subsidiaries and associated companies								-0-	13
14. Customers' liability to this bank on acceptances outstanding								-0-	14
15. Other assets	G	7						-0-	15
16. TOTAL ASSETS (sum of items 1 thru 15)							7 189		16
		LIABILITIES			Sch.	Item	Col.		
17. Demand deposits of individuals, partnerships, and corporations	F	1f	A				5 791		17
18. Time and savings deposits of individuals, partnerships, and corporations	F	1f	B+C				-0-		18
19. Deposits of United States Government	F	2	A+B+C				14		19
20. Deposits of States and political subdivisions	F	3	A+B+C				401		20
21. Deposits of foreign governments and official institutions	F	4	A+B+C				-0-		21
22. Deposits of commercial banks	F	5+6	A+B+C				-0-		22
23. Certified and officers' checks	F	7	A				-0-		23
24. TOTAL DEPOSITS (sum of items 17 thru 23)							6 206		24
a. Total demand deposits	F	8	A			6 115			a
b. Total time and savings deposits	F	8	B+C			91			b
25. Federal funds purchased and securities sold under agreements to repurchase	E	4					-0-		25
26. Other liabilities for borrowed money							-0-		26
27. Mortgage indebtedness							-0-		27
28. Acceptances executed by or for account of this bank and outstanding							-0-		28
29. Other liabilities	H	9					15		29
30. TOTAL LIABILITIES (excluding subordinated notes and debentures)							6 221		30
31. Subordinated notes and debentures							-0-		31

EQUITY CAPITAL				
32. Preferred stock	a. No. shares outstanding	-0-	(Par value)	-0-
33. Common stock	a. No. shares authorized	2,000.00		200
	b. No. shares outstanding	2,000	(Par value)	200
34. Surplus				568
35. Undivided profits				200
36. Reserve for contingencies and other capital reserves				-0-
37. TOTAL EQUITY CAPITAL (sum of items 32 thru 36)				968
38. TOTAL LIABILITIES AND EQUITY CAPITAL (sum of items 30, 31, and 37)				7 189

MEMORANDA			
1. Average for 30 calendar days ending with call date:			
a. Cash and due from banks (corresponds to item 1 above)		983	1a
b. Federal funds sold and securities purchased under agreements to resell (corresponds to item 8 above)		200	b
c. Total loans (corresponds to item 9a above)		4 490	c
d. Time deposits of \$100,000 or more (corresponds to Memoranda items 3a plus 3b below)		-0-	d
e. Total deposits (corresponds to item 24 above)		6 002	e
f. Federal funds purchased and securities sold under agreements to repurchase (corresponds to item 25 above)		-0-	f
g. Other liabilities for borrowed money (corresponds to item 26 above)		-0-	g
2. Standby letters of credit outstanding (as of call date)		-0-	2
3. Time deposits of \$100,000 or more (as of call date):			
a. Time certificates of deposit in denominations of \$100,000 or more		-0-	3a
b. Other time deposits in amounts of \$100,000 or more		-0-	b

I, Frank Price - Vice Pres & Cashier, of the above-named bank, do solemnly (SWEAR AFFIRM) that this report of condition is true and correct, to the best of my knowledge and belief.

Correct - Attest: *Frank Price*

John D. ... Directors.

State of Texas, County of Motley, Sworn to and subscribed before me this day of October, 1978.

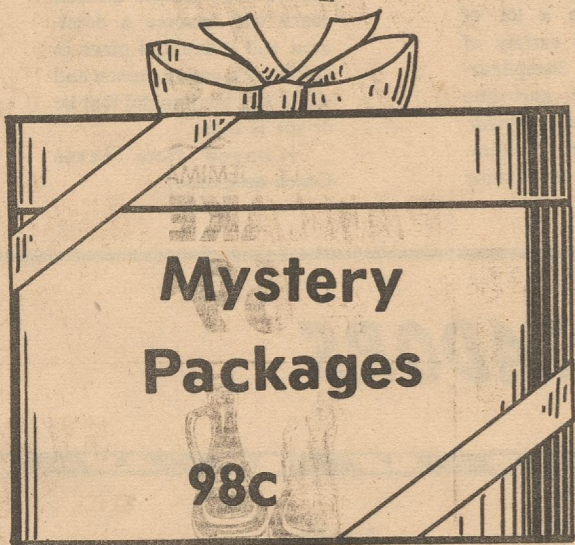
and I hereby certify that I am not an officer or director of this bank. My commission expires 7-26-1981. *Betty Luckett*, Notary Public.

ANNIVERSARY SALE

BOB STANLEY PHARMACY



Matador



Mystery Packages
98c

ONE GROUP
Brand Name Watches
VALUES TO \$95.00 EXCLUDING TIMEX
CLOSEOUT **\$15.95**

Costume Jewelry
1/2 Price

Ear Rings
One Group
33c Per Pair

ONE GROUP
Comb & Brush Sets
79c

SWISS MISS
Hot Chocolate
49c

ANNIVERSARY SALE PRICES
Good Thru Monday Oct. 16

FREE COFFEE and DONUTS

MONDAY OCT. 16,

Also Free Ballpoint Pens On Monday

No Layaways or Gift Wrapping On Sale Merchandise

Photo Cubes
REG. 98c
79c

Photo Albums
\$1.69
REG. \$2.95

GAF Color Film
126 SIZE
69c

Flashlight Batteries
SIZE AA, C, D
4 Batteries for \$1.00

Glassware

25% Off Reg. Price

Beverage Tumblers

PKG. OF 8 - 12 OZ.

33c

Sesame Snacks
69c

Master Chef The Donut Bakery
\$23.95 REG. \$32.95

Register for Polaroid Minute Maker Camera Kit To Be Given Away at 5:00 p.m. Monday October 16

You may register one time each day Thurs., Fri., Sat., and Mon.

Must be 18 years or older

Bargain Table

Come in and see items and prices

12 CUP COFFEE MAKER

Norelco Dial A Brew
\$32.95

\$48.95 list

3 OZ.
Nestea
\$1.89

Sport Socks
REG. \$1.59
98c

Knee-Hi Hose
3 PAIR PKG.
99c

Stationery
1/3 Off

Handiwrap
69c
250 SQ. FT. PKG.

High School Coaches Deserve Recognition For Their Part In Molding Character, Lives, Of Young People

The world of sports has reached a significance in the day-to-day lives of every American that we would be remiss if there was no special recognition of this group of men and women.

And Friday, October 6, 1978, just happens to be that day - National Coaches' Day.

It is difficult to emphasize enough just how important high school coaches, as well as those on the college level, have come to be in our lives. For like it or not, the coach's job often assumes importance in the lives of the young people of this country that no other single occupation can match.

But perhaps the coach's job is more difficult on the high school level than at any other. Unlike the colleges the high school coach does not have the opportunity to go out and recruit. He, or she, has to make do with the athletes on hand, and often there are simply not enough good ones to go around to

have a winning season year after year.

So the high school coach struggles, doing his best to mold a team from a group of individuals with a singleness of purpose. The coach is not always successful. Yet if he or she is the kind of dedicated individual they must be, they will persevere and continue trying to get the most out of a sometimes mediocre group of athletes while waiting for another good group to come along.

Meanwhile, the coach must endure a lot of things while he waits for the better athletes to begin developing and thrust the team back into the prominence it once enjoyed. The coach must endure abuse from parents, from fans, and sometimes from the media. And all the while nothing is going to change until there is the raw material with which to work that will allow the coach to produce the kind of product everyone wants, even de-

mands.

Funny thing about coaching. Everyone wants a winner and nobody is willing to wait for one. To the man on the street, the fans in the stands, it is as simple as adding water, and you have instant success. Little do most people realize how many endless repetitions a coach and his players must go through just to get the execution honed. Run it again...run it again, run it again...and yet again, again and again.

And then on Friday nights, Tuesday or Thursday, whenever it is the team plays, the coach puts his livelihood on the line. Those young people are expected to go out and run every play, throw every pass, make every block, get every kick, turn every double play, just as if they had been born doing it. And it simply is not that way. A coach can work hours and hours on a play, on execution, teaching steps,

procedures, demanding repetitions, helping on technique and then for some reason or another come game time and nothing works. That's just a part of it. That's part of coaching.

There is also an educational process that takes place in sports. Learning situations are created. Team sports, especially team sports, is no longer a place for the slow-witted, the indecisive, the hesitant. And fortunately, this educational process sometimes does not occur in the classroom but on the practice field or in the gym. And the answer is really very simple - there is often a lack of the right kind of motivation.

It is also interesting that a coach can teach his or her athletes things that again maybe should have been learned in the classroom but were not, things like competitiveness, pride, sense of

accomplishment. And if a coach is successful, or even not successful in one of those off periods, he or she will spend every bit as much preparation time as the class room teacher.

As a matter of fact, the coach will spend more time in preparation than the average teacher. He spends a lot of his weekends, Saturdays as well as Sundays, looking at game films from the previous game and spending yet more time in studying game films of the team coming up. In short, the well-prepared coach will spend anywhere from 50 to 100 hours, sometimes more, just getting prepared for one game.

So, actually a coach is a lot of things to a lot of people, wears a variety of hats - educator, disciplinarian, father-figure, part-time doctor, nutritionist, psychologist, motivator, a hero. And yes, he is even some times a bum.

Friday, then, is the day in the year when we make a special effort to remember a special individual, or individuals, who through their efforts will have a hand in helping prepare our young people for what lies ahead of them. Their function, their importance, is sometimes almost immeasurable. Many of our leaders of today and many of those of tomorrow, will succeed because of athletics and the influence their coach has had upon them.

Maybe a coach has more influence than he should have, more than the teacher, or parents. But in the sports-oriented society in which we find ourselves it is often a fact of life that the athletic coach will assume a dominant and influential place in the life of a young person and we should be thankful that he or she is there.

[Clipped from Texas Coach magazine]

Flomot News

By Mrs. Earlyne Jameson

Mr. and Mrs. Larry Bynum, Kani and Bart attended the South Plains Fair and the Texas Tech and University of Texas football game in Lubbock last week end. They also visited Mr. and Mrs. Leldon Bynum.

Mrs. Arnold Johnson and Mrs. D. M. "Ikie" Gilbert were in Roaring Springs last Monday where Mrs. Gilbert conducted art craft classes.

Mary Ellen Barton and Viola Stinson attended to business in Floydada, Tuesday.

Mr. and Mrs. L. E. Shorter and their son and granddaughter, Louis Shorter and Salina of Matador left Friday to visit this week in Madill, Oklahoma with B. L. Shorter and other relatives.

Mr. and Mrs. Orville Cobb of Quitaque and Mr. and Mrs. D. M. "Ikie" Gilbert attended the OS Ranch annual steer roping and art exhibit in Post last Sunday.

Tommy Merrett of Morton and Miss Kelli Youngblood of Lamesa, students at Texas Tech in Lubbock, visited Mary Ellen Barton and Viola Stinson, Sunday.

Mrs. George Calvert and son, Donnie of Quitaque and Mrs. Viola Calvert enjoyed the day in Plainview, Saturday.

Mr. and Mrs. Joe Degan and Mr. and Mrs. Howard Rogers and Donnie were guests of Mr. and Mrs. Stanley Degan, Shawna and Shay at a Fish Fry Supper in Kalgary, Friday night.

Mrs. Clois Shorter, Christi and Keri and Mrs. Joe Ike Clay and Julie met Mrs. Don Ewing and Clay of Vega in Amarillo, Monday where they enjoyed the day.

Mr. and Mrs. C. W. Starkey were accompanied by Mr. and Mrs. Homer Cypert of Lubbock to Wynnewood, Oklahoma, Saturday to visit relatives this week.

Mrs. Orville Cobb of Quitaque, Mrs. Ronald Clay and Mrs. D. M. "Ikie" Gilbert enjoyed the entertainment in Tulia, Friday night.

Mr. and Mrs. Larry Bynum and children visited in Roaring Springs, Sunday with Mr. and Mrs. Foy Moore.

Mrs. Viola Calvert visited in Matador Friday afternoon with Mrs. George Birchfield. She met her son and family, Mr. and Mrs. George Calvert and Donnie of Quitaque there Friday night and attended the Matador vs Jayton football

game.

Mr. and Mrs. Richard Rhodes and Ricky of Midland visited Thursday until Saturday with Mr. and Mrs. L. E. Shorter and Mr. and Mrs. Clois Shorter and daughters.

Mr. and Mrs. Orville Cobb of Quitaque visited Mr. and Mrs. D. M. "Ikie" Gilbert, Sunday.

Mrs. Joe Farley, Amanda and Eric and Mrs. Larry Bynum, Kani and Bart were in Plainview, Tuesday where Kani attended dancing classes.

Mr. and Mrs. L. D. Bilberry were accompanied to Lubbock, Tuesday by their daughter, Mrs. Doris Dickinson of Lubbock, where Mr. Bilberry received medical treatment. They visited in Snyder from Tuesday night until Thursday with Mrs. Winnie Twilla, Mrs. Jean Richardson, Mr. and Mrs. Wendel Cave and Mr. and Mrs. Rue Gabiean. En route home they visited in Floydada with Mr. and Mrs. John Speer.

RECENT VACATION

Mr. and Mrs. Howard Rogers and Donnie and her sister and family, Mr. and Mrs. Elmo Nall and Ollie of Amarillo returned home recently from a vacation in Raton, New Mexico.

FISHING TRIP

Orville Cobb of Quitaque, Ronald Clay and D. M. "Ikie" Gilbert were in Bridgeport from Monday through Wednesday where they enjoyed fishing at Lake Hubbard.

ATTEND AMERICAN AGRICULTURE MEETING

Mr. and Mrs. Butch Hughes, Mr. and Mrs. Billy Shannon and Mr. and Mrs. Glen D. Tiffin attended an American Agriculture Movement meeting held at the Municipal Coliseum in Lubbock, Saturday night.

The meeting was a kickoff Rally for the Associations' fall and winter campaigns. A program, following a Chili Supper and musical entertainment, featured guest speakers from Georgia, Colorado, South Dakota and Texas. They had American Agriculture Movement members attending from Colorado, Kansas, New Mexico, Oklahoma and from throughout Texas.

SUPPORT THE M.C. MATADORS



3 BIG PRIZES WEEKLY

Grand Prize
2 Free Tickets
To The Cotton Bowl Classic

Football Contest

NOTHING TO BUY
NO OBLIGATION

CONTEST RULES

1. Circle the teams you predict to win on the official entry blank. Be sure to include your name and address. There is no age limit.
2. Fill in the score you think will be final in this weeks Matador game. This will be used as a tie breaker only.
3. Deposit your entry in Contest boxes at the sponsoring firms listed on the left, or bring or mail it to the Matador Tribune, Box Q Matador, Texas. Entries must be received or postmarked before 3 p.m. Friday before the listed games are to be played.
4. Decision of the judges will be final. The contest is open to everyone except Tribune Employees and their families.
5. Prize money will be paid weekly by the Matador Tribune. Contest Results will be published weekly.

SPONSORED BY

First State Bank	The Dugout Barbara Jameson
Billie Dean's Drive In Billie Dean and Joe Smith	Thacker Supply
Billy's Grocery Billy Wason	C. R.'s Conoco Station C. R. & Sis Davis
Spot Cash Grocery Sut Braselton	Matador Motor & Impl. Mike Hoyle
Pete Williams Texaco Pete Williams	Matador Variety Vivian Jacobs
Jo-Barb Dee Barber Shop Bill Durham	Bob Stanley Pharmacy Bob & James Stanley
Cooper Oil Company J. B. & Jean Cooper	El Matador Travel Center Jean and Grady Phillips

Dr. O. R. McIntosh

Optometrist

316 South Main St. Phone 983-3460

Floydada, Texas

OFFICIAL ENTRY FORM

Philadelphia at Dallas	Claude at Nazareth
San Diego at Detroit	Roby at Jayton
Valley at Silverton	Ind. State at WTSU
Quanah at Paducah	Texas Tech at Rice
Floydada at Lockney	Arkansas at Texas

TIE-BREAKER (Guess Final Score)

Motley County Happy

Name

Address

City State Zip

NEWS FROM MOTLEY COUNTY SCHOOL

Motley County Brand

Carla Hart: Editor
 Willy Palmer: Sports Editor
 Shannon Jameson: Sr. Class Editor
 Grace Timmons: Sponsor

Motley Junior Varsity Loses To Spur

By Gwen Calvert
 The Motley County Jr. Varsity met head-on with the Spur Bulldogs Thursday to face another defeat 32-18. Motley fought to hold back

the Bulldogs' offensive attack, but their strategy failed, and the Bulldogs penetrated the Motley defensive line to take a win over the Matadors. Dwight Campbell and Wes-

ley Stafford both did outstanding jobs on both offense and defense for the Matadors. They showed just a small portion of the great strength, determination, and athletic ability of this young team. Stafford made one touchdown, for the Matadors and Campbell made two TDs.

The young team, consisting of mostly Freshmen and Sopomores, hasn't given up yet. With sheer effort, they will strive to be a great group of football players in the near future.

Coach Larry Dearen said, "Coach James and I were both pleased with the effort the boys put out."

Motley Coaches Honored On National Coaches Day

By Pam Francis
 The four Motley County coaches were honored last Friday, Oct. 6, on National Coaches' Day. They are Ronnie Bradshaw, Danny James, Larry Dearen and Larry Neighbors.

Turner gave each of them a little box of millionaires. To add icing to the cupcakes, Mrs. Timmons wrote a poem about the coaches with a bit of confidential information shared about each one and read it aloud during the pep rally.

The coaches proudly wore a boutonniere given to them early in the day. They were recognized and presented a jar of cookies, made by the Freshmen girls, at the pep rally. The cheerleaders presented the cookies along with cupcakes made by Deidra Clifton and Nova Dale

The minute the pep rally was over, all four coaches sprinted quickly to their cars or houses with their booty safely tucked under their arms so they wouldn't have to share it with the hungry students.

STUDENTS SPIRIT FIRES UP PEP RALLY

By Debbie Phillips
 Students at M.C.H.S. really had spirit going last Friday

Oct. 6. The day was filled with chants between classes, which led to a fired-up Pep Rally. The yells and chants were filled with excitement.

School Menu

Monday, October 16

BREAKFAST
 Fruit, Cereal, 1/2 pt. Milk
LUNCH
 Corn Dog with mustard, New Potatoes, Spinach, Cake, 1/2 pt. Milk.

Tuesday, October 17

BREAKFAST
 Bacon, Eggs, Toast, 1/2 pt. Milk
LUNCH
 Pinto Beans with Meat, Turnip Greens, Potatoes, Cornbread, Jello, 1/2 pt. Milk.

Wednesday, October 18

BREAKFAST
 Rice, Toast, Butter, Juice, 1/2 pt. Milk
LUNCH
 Hamburgers with Lettuce, Tomatoes, Pickles, Onions, French Fries, Pudding, 1/2 pt. Milk.

Thursday, October 19

BREAKFAST
 Banana, Cornflakes, 1/2 pt. Milk
LUNCH
 Beef Taco, Cheese, Baked Beans, Tossed Salad, Cobbler, 1/2 pt. Milk.

Friday, October 20

BREAKFAST
 Juice, Cereal, 1/2 pt. Milk
LUNCH
 Barbequed Turkey, Potato Salad, Green Beans, Hot Roll, Butter, Syrup, 1/2 pt. Milk.

Friday, October 20

BREAKFAST
 Juice, Cereal, 1/2 pt. Milk
LUNCH
 Barbequed Turkey, Potato Salad, Green Beans, Hot Roll, Butter, Syrup, 1/2 pt. Milk.

Team members Julian Zabielski and DeWayne Walker told what they thought about the game to be played. Other speeches given backing the Matadors were by Coach Larry Neighbors and Pep Club member Pam Francis.

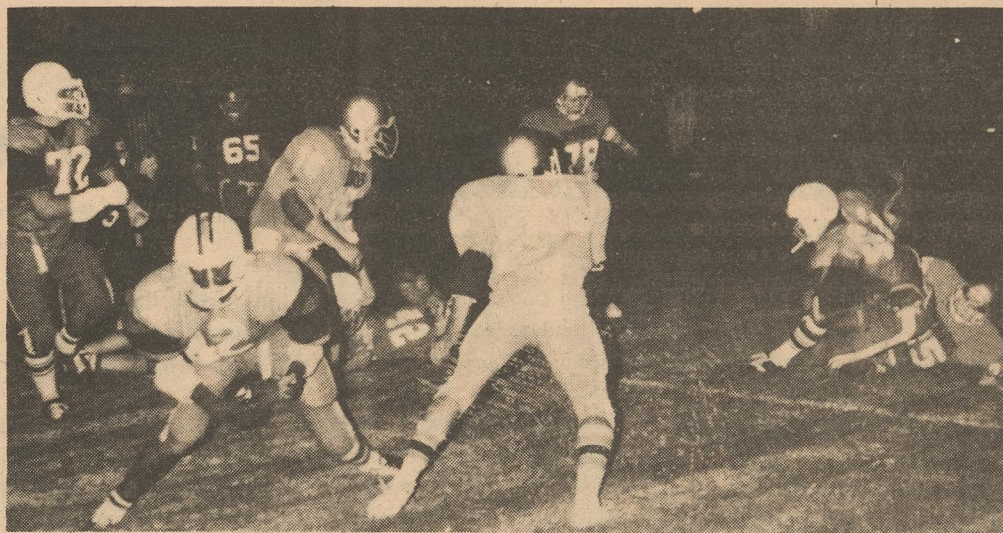
Mrs. Timmons surprised us with a speech about the coaches and told a few things she's heard about them. At this time they were presented cupcakes and cookies. A Spirit Award was given to two people who really led the students in Spirit throughout the day. They were Rebecca Finch and Glouris Sims.

The London underground is the world's largest subway system. It covers a distance of 252 miles.



The Arctic tern flies about 11,000 miles migrating from the Arctic Circle to Antarctica twice a year, making it the bird with the longest migratory flight.

"Time is the greatest innovator." Francis Bacon



NO GAIN - Matador defenders push off Jayton blockers and catch this Jaybird running back in his own backfield. The Matadors played tough Friday night but failed to put points on the board and lost the game 12-0
 Photo by Gerald Garst

letters from exes

Former Preacher's Kid Writes From Georgia

A former preacher's kid may have been partially responsible for the collapse of the Methodist church building, according to a letter received by Hazel Walton Donovan, secretary of the Ex-Students and Teachers Association. His, and other letters received the past week follow:

+++
 Hazel: - The only price that hasn't changed in 50-odd

years is the amount of the dues of the Matador Ex-Students Assn! I'm glad to contribute to it.

I was in Abilene recently to attend the funeral of my brother-in-law, H. E. Strickland (married my only sister, Suzanne) and was told by someone that the church (First Methodist) in Matador had "Collapsed." Is this true? I may have been partly responsible, as I practiced on the clarinet three hours on hours because Mother and dad (Rev. Jno. E. Eldridge) couldn't stand it at home - next door.

I retired from practice of Radiology (after some 42 years) on Dec. 31, 1975, but continue to have more to do than I can keep up with!

Regards to any and all who may remember me as the preacher's kid in the class of 1924, F. G. Eldridge, M.D. 2307 Riverhill, Valdosta, Ga. 31601.

+++
 Dear Hazel: - We hope to be there for Homecoming, but cannot tell for sure, just now. Best wishes for a wonderful Homecoming, and our gratitude to you for doing such a good job as secretary and treasurer. Sincerely, Johnnie Groves Howell, Amarillo.

"Sorry I won't be able to attend this year - maybe next year!" is a note from Bill Eggleston of Rt. 1, Box 75A, Emmet, Ark. 71835.

+++
 From Dr. Nancy Traweek Barrow of Galveston, Texas: "Dear Hazel and Friends - I received the notice about Homecoming. Sorry, but again I won't be able to make it this year (I'm on call that week end). Hopefully my family and I can come some other year.

I never told all of you how much I appreciated your invitation to me to sing at last year's homecoming festivities. I hope I can take you up on that offer sometime!

Here's my dollar. See you one of these years!! Bob, Nancy, Bryce and Laura Barrow.

+++
 Hello Hazel - Our plans are to be there for Homecoming. It's a lot of work for you all to keep this going every year - but I know I speak for hundreds of Exes - Thanks a lot!

I notice you have lost Geraldine Lebow's address, so am sending it along with other names you may not have. Sure hope to see you there. Elvis and Bessie Belle Lebow,

FACTS & FIGURES

Candy is dandy, but we aren't eating any more of it - or sugar - than we did 50 years ago.

In 1927, the average American consumed about 100 pounds of sugar (sucrose) per year, and just under 15 pounds of candy. Last year, each of us ate 95.7 pounds of sugar, and 15.4 pounds of candy. And the 50-year average has stayed in that range.

Actually, we don't even eat that much! These figures from the U.S.D.A. are based on how much sugar disappears after it's produced. About 20 of every 100 pounds aren't actually eaten, but are used for non-food industrial purposes, are lost or wasted, or spoil before use.

For anyone worried about diet - the candy we eat represents only 1% of the total 1,500 to 1,600 pounds of food eaten by the average American each year. Our sugar intake is about 6% of that, or 17% of our total caloric consumption, which is considered safe and acceptable by most authorities.

Plainview District FFA Holds First Meeting

The Plainview District FFA Chapter held its first meeting September 20, 1978 at Plainview High School. The new business transacted was the election of the new district officers for the year 1978-79. Daryl Burkenfield, from Nazareth, was elected President; Todd Hamilton, from Tulia, was elected Vice-President; Jim McKenzie, from Abernathy, was elected Secretary; Mike Ford, from Lockney, was elected Treasurer; and Brent Grabbe,

from Silverton, was elected Reporter; and Charles Cammack, from Motley County, was elected Sentinel. The District Advisor is David Bownes, from Nazareth. The election of the new district officers was carried on by last year's District Secretary, Kyle Inglis, and the District Advisor Gerald Kelly. Each young man who ran for an office should be recognized for their efforts and deep belief in the Future Farmers of America.

THOUSANDS OF YOUR NEIGHBORS EARN AN EXTRA INCOME WITH US.

All across America, thousands of Army Reservists serve their country 16 hours a month, while they earn a good steady extra income right in their own communities. Call your local unit for details. It's listed in the white pages under "U.S. Government"



THE ARMY RESERVE. PART OF WHAT YOU EARN IS PRIDE.

Walter Jones Barbeque

Saturday, October 14
 5:30 p.m. to 8:00 p.m.

AMERICAN LEGION BUILDING

Matador

Tickets Available At Door

Take Outs Available

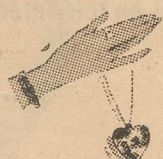
Frances' Thrift Shop

Welcomes all thrifty shoppers to shop second-hand for everything from apparel to household goods.



Decorative Lamps, Ashtrays, Vases,

A few Flower Arrangements,
 A Few Dishes
 Fresh Supply of Used Patterns and Magazines,
 Jewelry, Handbags,
 Some Good Tablecloths
 and MORE



MAIN STREET HERE IN MATADOR

BILL CLEMENTS WILL CUT TAXES AND GOVERNMENT SPENDING

Texas was built by men with the vision to look ahead and the grit to get things done. Bill Clements is the man to keep this tradition alive for the future of Texas.

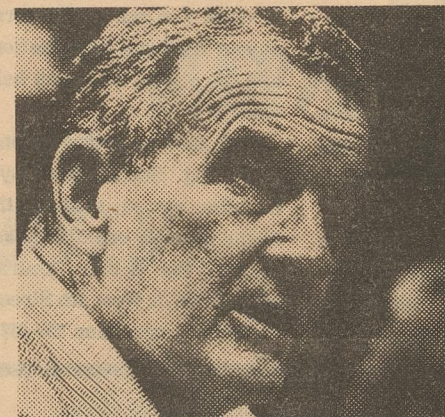
Bill Clements will bring a strong, fresh and tough approach to our government in Austin. He is a businessman, not a politician. Bill Clements started with nothing and built a successful, worldwide company with hard work and the skill to manage men and money. And now Bill Clements wants to preserve the future of our state and he wants the working people of Texas to have the same opportunities he had.

With his proposed "Taxpayers' Bill of Rights," Bill Clements is committed to protecting Texans from excessive taxation and runaway government spending. He is pledged to cutting taxes and returning that money directly to the taxpayers.

As former Chairman of the Southern Methodist University Board of Governors, Bill Clements knows how to make education in Texas the best in the Nation. He's for discipline in the classroom and "back to basics" quality education.

As the son and grandson of farmers, Bill Clements knows the frustrations that an indifferent government can cause people who make their living off the land. He will use the strength of the State Government to fight burdensome Federal restrictions.

"I believe that Texas has always had more promise than problems,



but the balance is more delicate each year. We need to get to work now."

BILL CLEMENTS A GREAT GOVERNOR FOR TEXAS

Paid political advertisement by the Bill Clements for Governor Campaign Committee, Tom B. Rhodes, Treasurer, 1901 N. Akard, Dallas, Texas.

Representative for
MONUMENTS and CURBING
 Seigler
 Funeral Home
 Telephone 20-3225

ANBESOL® KILLS MOUTH PAIN ON CONTACT
 Denture pain, toothache, cold sores, teething pain, relieved for hours.
 When minor mouth pain strikes use Anbesol the pain killer. Anbesol, with three anesthetics, soothes irritated nerve endings, soothes pain. Helps prevent infection too. Use as directed for hours of relief.

Tax Relief Amendment Important To Agriculture

Agriculture in this county has a lot at stake in the November 7th vote on the tax relief amendment, according to Harold Campbell of Matador, president of the Motley County Farm Bureau. "The tax relief amendment provides for limiting the tax value of agricultural land to its productive value," Campbell said.

This is a protective measure not only for the present, but also for the future, he explained.

"Inflationary pressures and revenue requirements could increase our land taxes several times what they are now," Campbell said.

"But, this amendment if approved and implemented, would put a limit on taxes," he said. "Our farmers would not be forced off the land now or in the future because productivity would be the limiting factor."

The county Farm Bureau president said that although the property tax was intended as a general tax on all property and all wealth, it has become primarily a tax on real estate.

"Farmers and ranchers necessarily own and use more real estate than other types of businesses, and therefore pay an unfair share of the property tax," Campbell said. We're not seeking favors, just fairness, he added.

The county Farm leader said that a measure passed by the Legislature during the special called session would reimburse school districts for all or part of revenue lost due to reductions from homestead exemptions or agricultural land valuations. Some \$450 million was appropriated for the next two years, enough to offset reductions, he said.

This means we would be using surplus from the state's general revenue fund for making up this difference to schools," Campbell said.

The farm leader said that groups which need tax relief the most would benefit from the tax amendment. In addition to farmers and ranchers, these include homeowners, the elderly and disabled persons, he said.

In addition to these groups, all taxpayers and the general public have a stake in passage of the amendment, he said.

"First, there is a limitation making it more difficult for the Legislature to pass excessive increases in spending," he said. "Also, the

gruth-in-tax provision insures more citizen involvement in local government. In addition, there is the exemption on household goods and personal effects. Finally, the amendment says property tax appraisal and enforcement must originate in the county and not be transferred to Austin."

This may be our last opportunity to correct tax inequities and make needed reform, the county farm leader said.

"Let's send a message to Austin that we will not stand for unlimited taxation and spending," he said.

"That's why we're urging a 'YES' vote on Tuesday, November 7, for the proposed tax relief amendment. Texans are long overdue for a tax break."

Submitted by the Motley County Farm Bureau
If anyone would like to obtain bumper stickers, brochures or posters pertaining to this Tax Relief Amendment, please come by the local office.

Advanced System Installed To Provide Better Service

"During the past two weeks General Telephone customers have experienced difficulties in placing long distance calls," J. H. Davis, Memphis division manager, said.

General's South Plains and Panhandle communities' long distance service switches through Southwestern Bell's Lubbock office, which had a major conversion to a computerized toll switching

system October 1.

The advanced technological system, designed to provide faster and more reliable long distance service did have some bugs during the first few weeks. "When these problems are corrected, long distance service should be better than ever and Southwestern Bell apologizes for the inconvenience to General Telephone customers," Davis said.

Amalie Program To Benefit Sports

High school football is the ring of sports in Texas - more than 1,000 schools participate, with thousands of players, coaches and fans taking part.

And, under terms of a unique, first-of-its-kind program this season, 21 Texas high schools will receive cash donations totaling \$6,000 for their athletic departments.

For Motley County to be eligible, football fans must enter the school's name in the Texas-wide program, which began October 9.

The top award is \$1,000 donated in the name of the winning fan to the high school athletic department of his or her choice. The fan receives a \$1,000 gift certificate good for sporting goods of his or her choice.

Twenty second prizes of \$250 each will also go to high school athletic departments chosen by winning fans.

"We know how popular Texas high school football is," explained Rob Buckalew, promotions manager for Amalie Refining Company of Dallas, sponsor of the sweepstakes. "Texas has more high schools playing football than any other state," he said. "Its estimated that approximately 57,000 youngsters participate in high school football statewide. To emphasize Amalie's interest in this great program, and to offer high school football fans a chance to support the local team in a meaningful financial way, we originated this promotion for the first time this year."

No purchase is necessary, Buckalew explained. "All a football fan has to do is fill in an entry blank, available from a participating mailie retailer in your community, and mail it in. The program runs from October 9 to November 3. Winning fans and high schools will be notified by December 15. Winning fans also receive a year's supply of Amalie motor oil."

The more entries made in a high school's name, the greater the opportunity for the high school to receive a cash award.

"Special point-of-purchase materials will be displayed at Amalie retailers so that local fans will know where entry blanks are available," Buckalew said. "To our knowledge, high school football fans have never before had the opportunity to make a substantial contribution to their favorite high school's sports program in this way. With the tremendous support that high school football in Texas enjoys we feel sure that there will be substantial support from students, players and coaches as well as the hundreds of thousands of high school fans across the state."

Buckalew said Amalie expected to receive entries from throughout the state, including all high school football classifications - 4A, 3A, 2A and B.

Amalie has created the program to involve Amalie distributors, distributor salesmen and retailers in their community's high school football activities. The 21 donations to high schools will be made by local amalie retailers, it was explained.

During the promotion, retailers will feature special prices on Amalie oil. Amalie introduced football-related promotions to Texas motor oil sales in 1976.

"We also feel that the \$1,000 sporting goods gift certificate offered as the grand prize to the winning fan is ideal because Texans are so sports oriented," Buckalew explained.

Entry forms are available from participating Amalie retailers in each community.

IMPORTANT NEWS FOR BACKACHE SUFFERERS!

MOMENTUM® Tablets are 50% stronger than Doan's.
Before you take Doan's Pills for muscular backache, remember this: MOMENTUM Tablets are 50% stronger than Doan's. That means MOMENTUM gives you 50% more pain reliever per dose to relieve backache.
To reduce pain, soothe inflammation so muscles loosen—you can move more freely in minutes! There's no stronger backache medication you can buy without a prescription than MOMENTUM Tablets. Take only as directed.

Dance

COUNTRY AND WESTERN MUSIC

Sweet Country

Best in the Southwest

AMERICAN LEGION BUILDING

Matador

Saturday, October 14

9:00 to 12:00 p.m.

Tickets Available at the Door

Levi's

Regular, Pre-Shrunk, Sta-Prest, Flares, Saddleman, Bell Bottom

... Complete line in stock at ...

Ronnie's

County Agent Says

By Will Pallmeyer
County Extension Agent

Seed collecting gardeners can increase the shelf life of their seed through proper storage.

While it is tempting to save leftover seed or seed collected from plants, especially if stored in a warm place, old seed often has a lower germination rate and reduced vigor. After air drying, store seed in a refrigerator or cool basement (35 to 50 degrees F.) in tightly sealed containers.

Many of the seeds collected from improved varieties are hybrids and will seldom come true. The offspring may have little or no resemblance to the parent plant.

If you remember those unsightly weeds and grasses that emerged in your lawn last winter, now is the time to take action to prevent a similar situation this year.

Winter weeds begin to germinate as the temperature drops in Oct. or Nov. Weed seedlings emerge from Nov. through Jan., but remain small and often don't become obvious until Jan. or Feb.

A number of herbicides will control winter weeds if applied before weed seeds begin to germinate. Pre-emergence herbicides must be applied in early Oct.

Balan, Betasaa, Pre-San and Daethal are all available in granular forms and will give good weed control if applied correctly. Drop type applicators are better than spinner types because of uniformity of coverage and ease of calibration.

All of these herbicides are available mixed with fertilizer, but these mixtures must be used with care. Areas that need fertilization, such as flower beds and gardens can be damaged by the herbicide, depending on what is growing there or what will be planted later. Proper application rates

are more important when applying a herbicide than when fertilizer only is applied.

Two other effective pre-emergence herbicides are atrazine and simazine, but these are labelled for use only in fertilizer mixtures. Never apply fertilizers containing a trazine or simazine near young trees or ornamentals or injury may occur.

Unless there is rain soon after herbicide application, the lawn should be watered thoroughly to carry the herbicide down into the soil to contact weed seeds.

Before using any herbicide, check the label for the exact rate and specific weeds and grasses to be controlled as well as precautions for use.

Plant shade trees and vines on the south and west sides of your home to provide protection against summer sun and to let in natural light in the winter.

DEFOLIATING YOUR COTTON?
Lee's Can Furnish The Acid And You Apply It Or We Can Have It Flown On For You.

Let Us Know Your Needs

Now Booking and Delivering Range Cubes Purina And Top Flight

Mills Are Running Two Weeks Behind Now -- So Plan Ahead

Lee's Feed & Seed Roaring Springs

Floydada Livestock Sales

John McCandless, Owner

Home Phone 806-347-2845

Don McCandless, Manager

Phone 806-983-2153

SALE EVERY WEDNESDAY

10:00 a.m.

We Appreciate Your Business

HAD ENOUGH?

GIVE 'EM HALE

FOR A CHANGE!



IF YOU HAVE HAD ENOUGH OF

- ★ "CHEAP FOOD" Policies That Are Bankrupting Our Farmers
- ★ Give Aways Like The Panama Canal
- ★ State Department Interference In Africa
- ★ The Undue Influence Organized Labor Exerts On Our Government At All Levels.
- ★ "Big Brother" Government That Restricts Personal Responsibility And Initiative.

NOW LOOK AT WHAT THEY ARE TRYING TO DO

That same government wants to give Washington, D.C., - a CITY OF BUREAUCRATS, two Senators and Congressional Representation. The residents of Washington D. C. should be allowed to vote for US Senators in their State of Maryland, and elect Congressmen in proportion to population, as in other states.

Our State Legislature will be voting on this proposed constitutional amendment— Elect me your State Representative and I will vote NO on this amendment and will work unceasingly for its defeat!

Elect BILL HALE Your State Representative

pd. political adv., Bill Hale Campaign, Fred Thayer, Treas. 108 E. Calif. St., Floydada, Tex. 79235

Windbreak Seedlings Now On Sale

Applications for Windbreak Seedlings have been received by Extension Agent Bill Pallmeyer, who states that orders are filled on a first come, first served basis, with all orders due by Feb. 12, 1979.

Prices are \$10.00 per hundred for American Plum, Green Ash, Honeylocust, Mulberry, Osage Orange and Shumard Oak. Austrian Pine and Ponderosa Pine are \$30.00 per hundred.

Hardwoods must be ordered in multiples of 50 of any one species, with minimum order being 100. These will be shipped from the middle of February to the middle of March. Confirms must be for a minimum of 30 and in multiples of 30, and as they are in containers, must be picked up in Lubbock at the Texas Agricultural Experiment Station.

Social Security Tips

By Janis Sherrod
S. S. Representative

Question: Every month, I have to stand in line at the bank for 20 or 30 minutes to deposit my social security check. Can I arrange to have my monthly check deposited directly into my checking account?

Answer: Yes. You can have your monthly benefit deposited directly into a checking or savings account at the

financial organization of your choice. All you need to do is complete a direct deposit form SF-1199. You can get the form at your financial organization, and the people there can help you fill it out.

For further information regarding Social Security benefits please contact the Social Security benefits please contact the Social Security office, 1401-B West 5th Street, Mataview, telephone 293-4371.

MINI-BUS SCHEDULE

9:00 a.m. to 5:00 p.m.

Monday Standby or Demand Response

Tuesday -- Flomot and Northfield

Wednesday , Roaring Springs

Thursday , Matador

Friday, Local Day in Matador

FOR APPOINTMENT
Call 347-2881

