

Veterinary Hospital to have Grand Opening

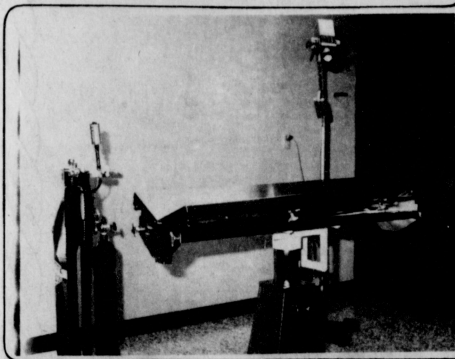
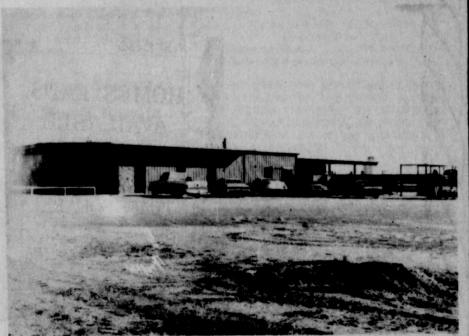
The Hansford County Veterinary Hospital in Spearman has announced that their Grand Opening will be held Sunday, October 23, between 2 p.m. and 5 p.m. Tom Latta and Glenn Blodgett are the two veterinarians who have built this new hospital. Helping them will be Cynthia Floyd, Office Manager, and Danny Dear, general helper.

The Hospital is the finished product of two years of study, investigation and travel. Dr. Latta and Dr. Blodgett attended a veterinary conference at Ohio St. University and traveled all over Texas and Oklahoma exam-

ining other facilities. The Hansford County Veterinary Hospital has the latest in Veterinary equipment including complete horse surgery facilities, small animal surgery and care facilities, equipment for administering anesthesia, observation kennels, pens for larger animals, a padded horse stall, etc.

The office hours will be from 8:30-12:00 noon and from 1:00-5:00 p.m. Mondays thru Fridays; and from 8:30-12:00 noon on Saturdays. The phone number is 659-2100. The Grand Opening will be from 2-5 p.m. Sunday, Oct. 23. Everyone is invited to come.

The new Hansford Veterinary Hospital is enclosed in a beautiful new building with pens on the outside for larger animals and observation kennels on the inside for smaller animals. This Hospital has been equipped with the latest in animal surgery facilities and also is equipped for horse surgery.



Tax Rebate Checks Mailed

Tax rebate checks totaling \$24.8 million have been mailed out to 880 Texas cities as their October share of the city sales tax with Spearman receiving one for \$3,698.79. It has been announced by State Comptroller Bob Bullock. Gruber did not receive a check, according to the release from Bullock's office.

The check for Spearman is more than the \$3,432.83 net payment received for the same period last year. Including the October check, Spearman has received \$74,402.87 compared to the \$72,950.67 received for the same period last year.

Gruber, although not receiving a check, has received \$17,219.75 so far this year which is slightly less than the \$17,231.37 received over the same period of time last year. Bullock in the Oct. 14 announcement noted that city sales tax rebates are running a healthy 20.8 per cent over last year.

Bullock said that cities having the optional one per cent city sales tax received a total of \$288.5 million to date this year, compared to \$238.8 million for the same period last year.

This is a pretty good indication of the strength of the Texas economy, and from an economic standpoint, things couldn't look better for the state," Bullock said.

Houston received a check for \$5.3 million for the month, bringing its total for the year to \$58.2 million, a 17 per cent increase over last year.

Sales tax rebates are up a whopping 26 per cent in Dallas with the city receiving a check for \$2 million for October, bringing its year-to-date total to \$35.3 million.

San Antonio received a check for \$1.4 million, bringing its total for the year to \$17.4 million, a 16 per cent increase. Fort Worth received \$1 million for a total of \$12.3 million for the year, a 23 per cent increase.

Mexican Dinner

The Sacred Heart Church will sponsor their annual Mexican Dinner October 23 from 12 noon to 5:00 p.m.

Tickets are to be sold \$2.75, adults; \$1.50 children's and under six years of age, free. It will be held at the Sacred Heart Parish Hall. Everyone is invited to come!

Union Church Revival



The Union Church has planned a revival beginning Sunday Morning October 30 and running through Nov. 10.

Billy Joe and Sharon Daugherty will be the ministers. They have a burden to share the victorious Christian life with the body of Christ. They have ministered in teaching seminars, revivals, camps, and retreats. Billy Joe preaches and teaches God's word to adults as well as youth. Sharon ministers in song as a soloist in addition to songleading. Both are personally committed to Jesus Christ and the Kingdom of God.

Billy Joe is a 1974 graduate of Oral Roberts University. He majored in Christian education. He served as a summer youth director in Methodist churches in Arkansas. During his senior

year he worked as an educational assistant with a Tulsa church. For the past year and a half he has served as Youth Minister and Christian Education Director in Sheridan Assembly Christian Center of Tulsa.

Sharon is a 1976 graduate of Oral Roberts University. She majored in music education with an emphasis in voice. While attending O.R.U. she sang in the touring choir, chamber singers, and the concert choir. She has worked with youth groups and choirs in various churches. For the past year and a half she has directed a youth choir and taught Sunday school in Sheridan Assembly Christian Center of Tulsa.

Pastor Archie Burress and congregation invite a cordial invitation for all to attend.



VOLUME 68, NO. 49

The Spearman Reporter

THE SPEARMAN REPORTER, SPEARMAN, TEXAS 79081

THURSDAY, OCTOBER 20, 1977

Spiritual Crusade Set

A Spiritual Renewal Crusade will be held Oct. 25 thru 28th at the Hansford County Showbarn. The services will be held each evening at 7:30 p.m. All denominations are welcome.

Corrie Joubert, President of Lighthouse Ministries, a Ministry based in Sand Springs, Okla. will be the speaker. This ministry has placed tens of thousands of pieces of Christian literature in the form of Bibles, tapes and teaching correspondence courses into 14 countries, including North America and Israel at no cost.

Brother Corrie is a man called by God to preach the whole truth. That God is Alive today and can set you free from

sickness, financial problems and bondage. Before Corrie was called to the Ministry he was a world renowned Frozen Food Scientist. He obtained this position by letting the Lord have complete control of his life and his work. Problems that could not be solved began to work out and advancement was forthcoming. Corrie can tell you the way because he has been at both ends.

You will not want to miss a single night of his crusade. Anyone wishing to offer their services in this crusade as ushers and counselors may contact Ed Freeman, John Trindle, Jack McWhirter, Harold Greves or God's Corner.

Be sure and back the Lynx at Boys Ranch Friday night. The Lynx have taken over un-disputed first place in the district race.... Go Lynx, Beat Boys Ranch

Markets

Wheat	\$2.22
Milo	\$2.95
Corn	\$1.88

Local girl sawed in half

One of the most famous of all magic illusions, SAWING A WOMAN IN HALF will be presented during the Fred Story Revue. Ms. Teresa Hargis of Spearman has volunteered to be sawed in half on stage during the Story Revue. You will not want to miss this thrilling experience. Will she survive this terrifying ordeal? You will be able to Judge for yourself when The Story Revue unfolds its many mysteries on Tuesday, November 15 at the High School Auditorium. The program is being sponsored by the Spearman Chamber of Commerce and the tickets are on sale by club members.

The Story Revue is Family entertainment for all ages, which is hard to find this day and time. Many touring shows cater to adults but not the Story Revue. The Story's take pride in clean wholesome entertainment for the entire Family.

Thrill to a cage full of live doves that vanish in a twinkling of an eye. The enchanting "Temple of Invisibility" direct from India. Gorgeous hand crafted mysteries from the Orient. You will not believe the many fantastic happenings that will occur during the performance.

Special scenery, stage sets and costume blend with the specially created musical background to create one of the finest and most exciting programs on the road today. Plan to be among the thousands that have witnessed this famous stage revenue and be transported into the realm of the unbelievable.

Hospital News

Patients in Hansford Hospital are Evelyn Burch, Carrie Ellis, Nancy Jones, Coy Kingsley, Juanita Terro and daughter, Brenda Glassey and daughter, Florence Wheeler, Marie Ortiz and son, Becky Etheredge, Kaye Garrison and daughter, Vila Townsend, Alta Morse, Rae Sanders, Lytia Mason, Vicki Henderson, and Hank Garrel.

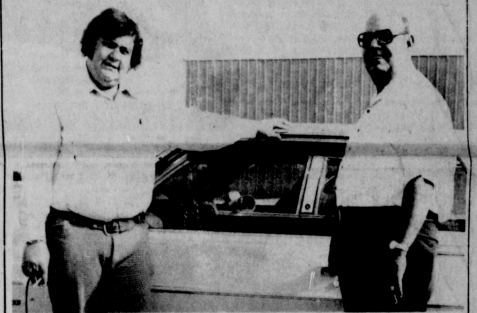
Dismissed were Leslie Montgomery, Dempsey Spann, Elz Mathews, Julian Villarreal, A.N. Weant, Catholene Gorman and Floyd Close.

Local officials at TML Meeting

Several city and county officials are attending Texas Municipal League Convention currently in progress in San Antonio, Texas.

They include County Judge Johnnie Lee, Mayor Ralph Blodgett, City Manager Mark Neff and members of the City and County Commissioners Court and City Council.

C of C Breakfast Set



WHOOOOOO IS THE HALLOWEEN QUEEN... YOUUUU will find out at the FALL Chamber of Commerce BREAKFAST which will be held Thursday, October 20, at 6:30 a.m. in the County Show Barn in Spearman. Students from the High School Music Department will provide entertainment along with the mystery guest... GAMES, Cash Money and a fun time will be had at the Breakfast, plus good food. SOOOOOOO COME TO THE CHAMBER BREAKFAST AND see WHOOOOOOO the Halloween Queen is....

The drawing for the DALLAS COWBOY TRIP FOR TWO will also be held at the Chamber Breakfast, SOOOOOO Buy your \$1.00 Donation Ticket now and maybe you will be the lucky winner of a Trip for Two to see the Dallas Cowboys and the Detroit Lions... You will also win TWO tickets on Brauff International and will be guests of the Villa Inn in Irving, Texas. COME TO THE BREAKFAST! The breakfast is being sponsored by Hergert Pontiac-Buick.

Lynx Gridiron competition remains tough

The Dalhart-Spearman game turned out to be everything it was stacked up to be. Both teams displayed great defenses as the game continued to remain scoreless until the 4th quarter, and as is attributed to by the fact that Spearman only gained 12 first downs and Dalhart was held to just 9. Spearman and Dalhart were also close in a couple of other stats.

The Lynx punted 4 times and the Wolves punted 5 times. Spearman's punt average was 36.0 yards and Dalhart's punt average was 36.1 yards-pretty close. That's where the similarities ended. The Lynx controlled and moved the ball, outstrung the Wolves with 196 yards while Dalhart only gained 66 yards on the ground. When it was all over the Lynx had 220 yards of offense while they only had 127.

It was an impressively hard-hitting, clean game. The Lynx were penalized 7 times for 70 yards while Dalhart committed only 3 infractions for 10 yards. We lost one fumble; they lost 3.

The Lynx backs were all pretty close in the yards they gained on the ground. Sellers rushed 16 times for 74 yards, Bodey went 16 times for 59 yards, and Newton carried the ball 17 times for 58 yards. On the ground it appeared to be a well balanced offense. Sellers, Bodey and Newton were the Lynx just keeping

until they finally got what they wanted while the tremendous Lynx defense kept stopping the Wolves.

In the scoring department Sellers and Bodey both ran in for touchdowns and Zane Newton was perfect on extra point kicks being 2 for 2.

The Spearman Reporter would like to take this opportunity to congratulate Coach Sherwood, his staff, and each man on the Lynx team on a job done tremendously well. We would also like to congratulate a fire-up Dalhart team for a good clean football effort. The Dalhart coaches certainly have nothing to be ashamed of.

The Lynx traveled to wild country this Thursday to do battle with the Ranchers at Boys Ranch. Spearman has Dalhart out of the way, but that doesn't mean that things will get any easier. The Roughriders always have a physical team and coming off of a win over Dalhart won't make them an easier foe. If anything they'll be tougher. Spearman will be going into that contest undefeated in season and district play. Boys Ranch is 4-2-0 on the season having lost to Sanford-Fritch and to Vega in non-district contests. They are in district competition with a defeat over River Road last week 35-6.

Kick-off time will be at 7:30, Friday night at Boys Ranch. Luck to you, "Big Bunch"!!!

Lions Broom Sale Today

The Lion's Club annual broom sale will held Thursday, October 20 at the Post Office, beginning at 7 a.m. and ending at 6 p.m. This is one of the most important projects of the year for the Lions, and is a joint venture between the club and the Light-house For The Blind of Texas.

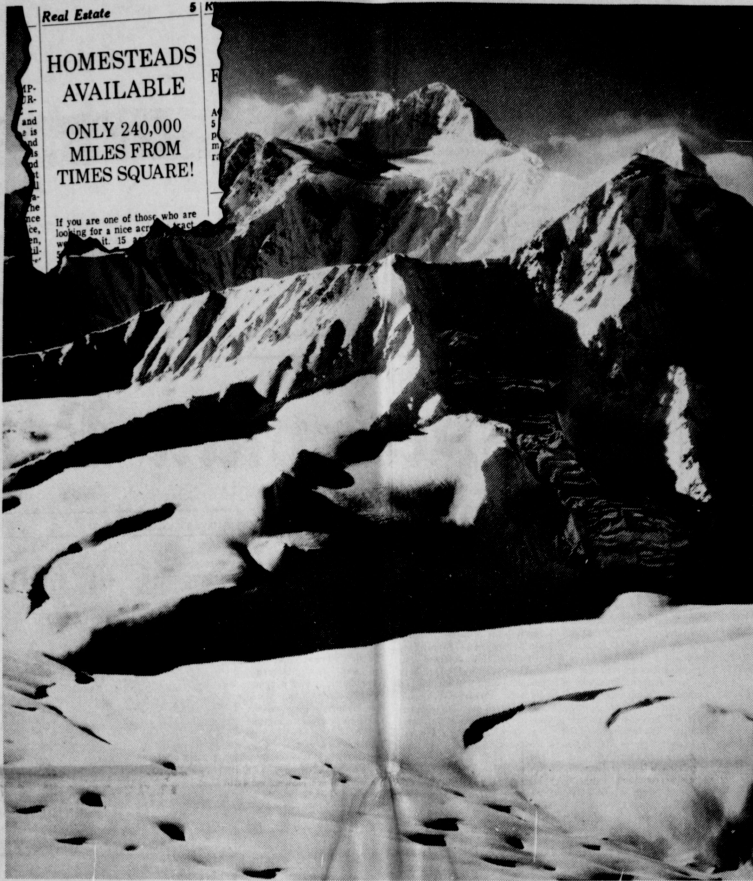
In addition to the all day sale Thursday at the Post Office, Lions will begin working assigned streets at 5 p.m. to sell the products to those who are unable to buy at the downtown location. Lions are also scheduled to canvas businesses during the day.

Be sure and buy some of these supplies and help the Lions Club and the Texas Blind Workmen. All proceeds from the Lions share of the sale will go to buying eyeglasses for needy children.

Halloween-around the corner!



It won't be long until the ghosts and the goblins are about knocking on front doors demanding treats which will protect the homeowner from some kind of dellemma in the form of a trick. Sandy's Beauty Shop has adorned the front of her shop appropriately.





Plenty of cheap land for hardy pioneer families. Would you like to be among the first to stake out a claim? Free transportation in the fastest, most modern vehicle an added inducement. Bring your own air and water.


Not interested! That's just as well—we're talking about the moon.

Far more, we need earnest men and women eager to explore the earth's spiritual frontiers . . . people who will seek courageously for Christian answers to the complicated problems progress has created . . . families trying to enrich their homes and their world with faith and love.

The Church is the homestead of such pioneers. Its grasp encompasses heaven and earth . . . from the throne of God to the depths of a little child's soul.

It cannot fathom the mysteries of outer space. But it will reveal to any man the Center of this universe.

	Sunday Acts 15:14-17	Monday II Samuel 7:8-16	Tuesday Psalms 2:1-12	Wednesday Psalms 89:3, 28-37	Thursday Ezekiel 34:23-31	Friday Zechariah 14:1-9	Saturday Acts 1:6-7	Saturday Revelation 19:11-16
								

<p>Equity Elevators 659-2420 104 Collard Spearman, Texas</p>	<p>Speartex Grain Co. 659-3711 514 Collard Spearman, Texas</p>	<p>Consumer Sales Co. 421 W. Kenneth Ave. Spearman, Texas</p>	<p>Jr. Lusby "Cat" 659-3766 W. Gruver Hwy. Spearman, Texas</p>
	<p>Gruver Statesman</p>	<p>See you in church this Sunday The Spearman Reporter</p>	<p>Your office supply Headquarters Hansford Plainsman</p>

WANT ADS

Boxwell Bros. Funeral Home and Flower Shop
 FUNERAL HOME - 659-3802
 FLOWER SHOP - 659-2212

Hansford County Planned Parenthood
 28 S. Haney
 Spearman 659-2483
 Mon. - Fri.
 8 a.m. to 12 noon
 305-rt

SERVICES

HANSFORD LODGE
 No. 1040
 A.F. & A.M.
 Stated Communications
 2nd & 4th Mondays
 7:30 P.M.
 Visitors Welcome
 Ceril Baton, W.M.
 Jerry E. Gee, Sec'y.

KIRBY SALES & SERVICE of Spearman. 912 S. Bernice. 659-2797. 30-rt

PORTABLE DISC ROLLING
DAVID MCINTYRE
 659-3752
 319 South Endcott.
 Spearman, Texas 79081
 145-rt

SPECIAL \$7.00 PER DAY EVERY DAY Sept. thru Oct. for Steam Rinsencru Rug Shampooer
 Call Gordon's Drug 659-2141 or after 7 p.m. & Sundays call Freddie Largent 659-3437 42-rt

YOUR LOCAL USED COW DEALER, SPEARMAN BI-PRODUCTS. Seven days a week dead stock removal. Please call as soon as possible. 659-3544. 8-rt

SERVICES: Plus cleaned, wet or dry. Dragline or loader. Also, door, grader, carry-all services. LeRoy Mitchell, 806-733-2384, Guver, Texas, 79040. 9-rt

There will be an AA meeting every Friday evening at 8:30 at the Home Demonstration Building, 305 North Bernice. The Almon group will meet at the same time, same building, in the back room. For further information call 659-3181. 11-rt

WANTED: Water hauling, call Jack Kemper after 5, 659-3475. 45-rt
 For all types roofing, building or remodeling—call 659-2118. 49-16p

NOTICE

The Xi Zeta Sorority announced that they are selling stadium bags. They are \$15 apiece. If you would like to purchase one of these stadium bags contact Glenda Guthrie at 3424 or Verma Strawn at 3374.

Anyone interested in being a member of a home demonstration club in the evening is asked to call the agent's office at 659-2030.

Real Estate For Sale

320 acres improved irrigation. Goodwell area. 2 wells, underground pipe-poseession, some minerals. 5500 acre. Springs Real Estate, Guyton. Phone 405-336-7211 or 405-888-4214. 475-9p

Beautiful four bedroom home, four miles north of Spearman, three acres, three baths, Call Batman Realty, Dumas, Texas 806-935-5038. 445-7c

120 acres at OPTIMA RESERVE, Springs Real Estate, Guyton. 405-336-2811 or 405-888-4214. 45-9c

FOR SALE: 3 bedroom home, corner lot, garage, life-time siding, and basement under garage. 204 South Barkley. Phone 3016, or contact Pat or Rita Underwood. 485-rt

FOR SALE: Brick home at 404 South Drexler, 4 bedrooms, 3 baths. Large basement, carpeted, upstairs—all cedar-lined closet, upstairs—2,600 sq. ft. plus 1 double car attached garage and 1 single car garage with storage. Call 659-3188 or 659-3173. 45-rt

Mayfield Real Estate
 John Mayfield - Broker
 Ruby Lutz - Salesperson
 659-2188

Two bedrooms, 2 bathrooms, single garage, carpet, drapes, central heat and air, fenced yard, 211 S. Bernice. 49-4c

Vintage Mobile Home, 72 x 14, 3 bedroom, 2 bath, furniture, to be moved. 49-4c

Commercial building on Highway 207 on 186 front foot lot. 49-4c

2 1/2 acres or 5 acres, restricted home sites, available for building now. Located on Highway 15. 49-4c

3 bedroom, 1 bath, 2nd story solar, on 3 lots, 220 3rd Ave. 49-4c

1 bedroom, fenced backyard, 521 S. Archer. 49-4c

In Farnsworth, 3 bedroom, 1 bath, screened-in porch, central heat, redecorated inside, ft. plus 1 double car attached garage, carpet, drapes, wood burning fireplace, built-in kitchen, central air and heat, well insulated, 8 x 20 ft. storm cellar, 5 acres of land. 49-4c

1963 trailer house, 2 bedroom, 1 1/2 baths, furniture, 56' x 10', \$3,500. Call for appointment. 49-4c

FOR SALE: 4 unit apartment house, excellent return on low investment. Emmett R. Sanders, Realtor. 659-2516, nights, 659-2601. 485-rt

FOR SALE: Good older 3 bedroom home, carpets, fenced yard, carport, tool house. For low, price and other details call Emmett R. Sanders, Realtor. 659-2516, nights 659-2601. 485-rt

FOR SALE: House with 2 bedrooms plus den, fully carpeted, storage in back. Good condition - good price. Phone 659-3354 after 2:30. 47-8p

Miscellaneous FOR SALE

FOR SALE: 202 Chevy motor with natural gas carburetor, radiator, and Murphy panel. Ready to go. 733-2426, Gruver. 49-3c

FOR SALE: 1972 Olds 442. Call Lynn Sheets 733-2196. 49-4c

FOR SALE: Bedroom suite, complete with mattress and springs. Swivel rocker with foot stool, 2 blonde end tables. 659-2680. 49-4c

FOR SALE: Stationary Exercise Bicycle. In excellent condition. Call 659-3038 or ask for Sandy, 659-3434. 49-4c

FOR SALE: Trampoline. Call 659-3551. 485-4c

YARD SALE: Friday and Saturday, Oct. 21st and 22nd, 10 a.m. to 6 p.m. both days, 221 South Bernice. 485-2c

GARAGE SALE: October 19, 20, & 21, 9 til 6. 1110 Linn Drive. 40 years accumulation of junk. 485-2c

FOR SALE: 14' X 80' 1975 Trailer home. Call 659-2883. After 5 p.m. 485-rt

FOR SALE: 1971 Olds 98 in good condition. Power windows and seats. Michelin tires, AM/FM Stereo Tape Player. 659-2271. 465-6c

GARAGE SALE: Friday and Saturday, Oct. 21 & 22, 8:30 to 6 p.m., 14 S. Haney, Dorothy Groves. Antiques, trunks, tape painting, toys, games, bicycles, new family Bibles, office equipment, clothing and furniture. 49-1c

WANTED

WE BUY good used 10 Ft. and 12 Ft. or older 14 Ft. house trailers. Please call Panhandle Mobile Homes in Amarillo 376-8092 or 383-1372. 475-4c

WANT to harvest milo in this area. Three big machines, 24 ft. cut. Call collect W.R. Fisk, Texhoma, Okla. 73949, phone 405-423-7013. 46-8c

FOR RENT

FOR RENT: Two Bedroom Trailer. Call Manager, 659-3551, LBL Trailer Spaces. 485-rt

FOR RENT: Small 2 bedroom trailer. Call 2770 or 3017. 49-3c

ED WHEELER REAL ESTATE

Homes - Farms Commercial

Large lot with nice two bedroom home in front, nice one bedroom house in the back. Double garage with efficiency in the rear. One year rental one bedroom house paid at time of sale. 49-4c

28 Hazelwood, 3 bedroom, single bath, frame, nice livable house, priced to sell. 49-4c

1009 S. Drexler, 2 story, 4 bedroom, 2 bath, fenced yard, carpeted. 49-4c

160 acres dry land, Ochiltree County. 49-4c

107 Endcott, Two bedroom nice stucco, single bath, detached garage, fenced. 49-4c

Avenue C, West of Hoskins, nice 2 bedroom trailer house. 49-4c

Ed Wheeler 659-2613, Office
 Jerry Gee 659-2951, Home
 47-rt 659-3664

Help Wanted

WANTED: Equipment Operators and men to train for equipment are now being hired by BJ-Hughes Inc. for placement in Perryton, Texas. 40-rt

WANTED: Mechanics. Preventive maintenance on bulk equipment and pumping equipment. For further information call 435-4054 or apply at 21 N. Industrial Road. Long term employment, company benefits and advancement opportunities. 40-rt

STRAYED
 From home six miles southwest of Spearman—half-grown Irish Setter. R. C. Porter, 659-2015. 485-rt

LEGAL NOTICE

AUCTION SALE
 DATE: Tuesday, November 1, 1977
 TIME: 2:00 P.M.
 PLACE: Ochiltree County Courthouse, Perryton, Texas
DESCRIPTION OF COLLATERAL: Lot 6, Block 6, Original Town of Perryton (21 South Birch). Real estate is improved with a 1 bedroom, 1 bath frame house, with a cellar, and estimated to be 900 sq. ft.; also another frame house with 2 bedrooms, 1 bath, estimated to be 1100 sq. ft., frame construction. Both houses are thought to be in the neighborhood of 30-40 years old. Business known as Panhandle Weatherstripping.
TERMS: Cash to the highest bidder, subject to any and all taxes.
INSPECTION: Prior to sale date by contacting Don Townsen, First National Bank, P. O. Box 929, Perryton, Texas 79070, (806) 435-3676.
FOR MORE INFORMATION: Contact F. T. Ford, Jr., Small Business Administration, 1205 Texas Avenue, Lubbock, Texas 79401, (806) 762-7471. 49-2c

FOR SALE: 1971 Olds 98 in good condition. Power windows and seats. Michelin tires, AM/FM Stereo Tape Player. 659-2271. 465-6c

During the PIONEER HARVEST VICTORY CELEBRATION

Plan for Profit

... with **PIONEER BRAND SEEDS**

Again this year PIONEER® brand corn and sorghum and certified Lanark and Lockett cotton varieties from Pioneer turned in great yields. Your Pioneer dealer is celebrating! And he's eager to help you Plan for Profit in '78 with the right seed for your needs. See your Pioneer BI-Bred dealer today, and get in on these exciting bonuses...

FREE CAP for Yield Reports.
 Each farmer who makes an accurate yield report on his Pioneer crop will receive a good-looking gabardine cap. Warm ear flaps keep out winter's wind.

FREE JACKET for Early Orders.
 Place your seed order now and get this sturdy, permanent pressed jacket. Rich green color coordinates with free cap for yield reports.

Energy Efficiency Ratio

...what does it mean?

EER 6.5, EER 7.5, EER 9.5, EER 6.0, EER 8.0, EER 5.0

In much the same way that miles per gallon indicates how economically an auto operates, the Energy Efficiency Ratio indicates how economically heat pumps or air conditioning equipment operate. The EER tells you how much cooling or heating you receive in relation to the amount of electricity the unit uses. The higher the EER, the less electricity is required to get the job done. If the EER is not indicated on the sales tag, ask your dealer or contractor about it. Or... you can compute it yourself with this simple formula:

$$\frac{\text{BTU}}{\text{Wattage}} = \text{EER} \quad (\text{for example: } \frac{24,000 \text{ BTU}}{3,000 \text{ Watts}} = 8.0 \text{ EER})$$

EER's presently range from as low as 5 to near 12. We recommend at least 7.5. Remember, the higher the EER, the less electricity is required. A unit with a high EER can cost more initially, but the savings you realize in operating costs could be well worth the investment. For more information on the importance of the Energy Efficiency Ratio, give us a call.

COMMUNITY PUBLIC SERVICE
 Your Electric Light & Power Company

Sears is taking bids on a 1967 half ton Ford truck w/hydraulic lift. Sealed bids must be mailed by Oct. 31, Sears, Drawer T, Andrews, Tex. 79714. 485-3c

Card of Thanks
 I would like to thank my friends for the cards, flowers, visits, while I was in Hansford Hospital.
 Your kindness will always be remembered.
 Mrs. Walter Wilmetth

Scholarship program announced

Friends of Animals, Inc., a New York-based national human conservation organization, today announced a scholarship program for university students. The program is aimed at focusing interest on the relationship of humans to other life forms as well as inducing student concern for the work of Congress. Annual scholarship awards in the aggregate amount of \$8,000 will be given those students who submit the finest essays in support of federal legislative campaign to end human exploitation of animals. The 1977-78 essay contest will center on the Williams-Long bill in the Congress which would ban the interstate shipment of fur from any state or nation which has not banned the leg-hold trap, the device used to catch and hold fur-bearers such as raccoon, bobcat, coyote and other animals wanted by the fur industry.

The scholarship program was made possible by a grant from Regina Bauer Frankenberg, a director of FOA and president of its Washington lobby, the Committee for Human Legislation, Inc. Miss Frankenberg's motivation for the grant, she said, was the "engender concern for the environment and non-humans in young people." She noted that "new technology provides alternatives to exploitation of animals for food, material, sport and scientific research." "And," Miss Frankenberg continues, "we want to encourage the young people who will be in charge of a new world which includes the earth and animals in its ethical scheme to expedite the transition through rational and philosophical influence on the people and the Congress."

The scholarship awards will be made to students, undergraduate or graduate, majoring in the fields of philosophy, journalism, law, economics, theology, and/or political science. Official entry blanks are available by writing: The Regina Bauer Frankenberg Scholarship Committee, Friends of Animals Inc., 11 West 60th Street, New York, NY 10023.

Social Security
Ref Schedule

A field representative of the Social Security Administration will be in Spearman at the courthouse on Thursdays from 10 to 11:30 a.m. on October 13, 27; November 10, 17 and December 8 and 22.

He will help you on any matter relating to social security, supplemental security income or Medicare.

You may also obtain service by going to the Social Security Office at 1541 North Hobart Street, Pampa, or by telephoning 669-3381 (area code 806) between the hours of 9 a.m. and 4-45 p.m. Monday thru Friday (except national holidays).

A representative is available to explain the provisions of the Social Security Act and answer questions at meetings of farm groups, unions, and other interested organizations. There are no charges for any of these services of the Social Security Administration.

New Food Stamp Program Hearing Set

There's a new Food Stamp Program in the making, and the Department of Agriculture want your ideas on how to make it work.

U.S.D.A. will hold a public hearing on the new Food Stamp Program Oct. 18 in Dallas, Texas. Anyone with an interest in food stamps is invited to attend. U.S.D.A. especially wants to find out how to make the new food stamp program more responsive.

For more information on the hearing, call U.S.D.A. toll-free at 800-492-9720.

TEXAS PRESS
 MEMBER 1977 ASSOCIATION

PUBLICATION NO. 509660

SPEARMAN, TEXAS 79081
 Box 458 659-3434
 Published Weekly at 213 Main Street
 Spearman, Texas 79081
 Owner-Publisher.....William M. Miller
 Second Class postage paid at Spearman, Texas

ANY ERRONEOUS REFLECTION UPON THE CHARACTER OF ANY PERSON OR FIRM APPEARING ON THESE COLUMNS WILL BE GLADLY AND PROMPTLY CORRECTED UPON BEING BROUGHT TO THE ATTENTION OF THE MANAGEMENT.

SUBSCRIPTION RATE: Hansford, adjoining counties, combination with the Hansford Plainsman, \$10.40.
 Other points, \$14.40.

FOR THE ULTIMATE IN STORM DOORS CUSTOM BUILT, DESIGNED, AND IN COLORS TO FIT YOUR HOME.....

CONTACT
HOWARD MOYER AT ONLY ALUMINUM INDUSTRIES
 405-336-6966 or 338-6170
 P. O. BOX 471
 GUYTON, OKLAHOMA 73942

Fire-Ettes Selling Planners

The Spearman Volunteer Fire-Ettes are selling Personal Planners for you by the home demonstration club members.

The planners are on sale for \$2.95. In order to buy one, contact: Mrs. Kathy Slater - 659-2844, Mrs. Vicki Bullard - 659-3319, or Mrs. JoDeil Tigrett - 659-2668.

E.K. Snider will be at BAKER HOTEL in Spearman, for SECOND TUESDAY NIGHT EACH MONTH, with extra day or more as required to see Customers with Questions about Insurance. Ask about my EKS-BMA CHILD LIFE INSURANCE SPECIAL! Easier to buy and keep for GRANDKIDS, than it was for their OWN CHILDREN. As sure as SUN UP to BE NEEDED ONE TIME!! BOUGHT YOUNG, EASY TO OWN!
 465-rt

New District alignments announced

Perryton will join District 1AA

The Texas University Interscholastic League announced their alignment figures for the next two years. (This alignment determines which Class Conference various participating state schools will compete in for district play. The UIL meets every two years to make this adjustment. School enrollments are figured on average attendance over a period of the previous two years.) School enrollments in general have been increasing steadily over that last ten years, necessitating the rise in the enrollment number allowed for the various state school classes. The cut-off points for next year and the year after follow with the current cut-off points in parenthesis: up to and including 129 students

for Class B (124), from 130 to 254 students for Class A (125-239), from 255 to 579 students for Class AA, (240-549), from 580 to 1259 students for Class AAA (550-1220), and 1260 students and up for Class AAAA (1220 and up).

The realignment has affected the Lynx District in two ways. Pahrulake will drop to a Class A school and has been put into District 2-A. The largest effect on our District will come from Perryton's drop from District 1-AAA TO District 1-AA. We will be competing with Perryton in our district at least for the next two years. We contacted Spearman Schools Superintendent, Mr. Cunningham and he replied that in 1978 he will be adding competition to our district play in the sports program. Spearman had tentatively planned to play Perryton in non-district football for the next two years, anyway, and that Perryton had tentatively agreed to do so.

When we contacted Athletic Director and Spearman Head Coach Greg Sherwood his reply was brief and right to the point. "They'll make things tough." The Reporter went one step further and asked him (Coach Sherwood), if he thought that Perryton would be as good in football next year after graduating Brad Beck who is a senior this year. Coach Sherwood informed us that Perryton would probably always field a good football team. They have the largest enrollment in our district providing them with numbers for their sports programs and added that their last year's "B" team was undefeated and that their "B" team this year has just lost one game. District 1-AA will be tougher than ever. FROM: U.I.L. Athletic Office

3-AA Dimmitt, Friona, Littlefield, Morton, Muleshoe, Olton.
4-AA Abilene, Floydada, Idalou, Lockney, Tulla.
5-AA Denver City; Lubbock; Cooper; Roosevelt; Post; Seminole; Slaton; Tahoka; Frenship (Wolfforth).
6-AA Wylie (Abilene), Anson, Ballinger, Coahoma, Colorado City, Merkel, Stamford, Teters.
7-AA Crane, Kermit, Ozona, Sonora.
8-AA Alpine, Canutillo, Fabens, Van Horn.
9-AA Brady, Breckenridge, Cisco, Clyde, Coleman, Comanche, Eastland.
10-AA Bowie, Bridgeport, Decatur, Jacksboro, Northwest (Justin).
11-AA Alamo, Alvarado, Cedar Hill, Lake Worth (Fort Worth), Joshua, Kennedale, Midlothian, Springtown.
12-AA Allen, Ferris, Forney, Kaufman, Lake Dallas, Red Oak, Wylie, Frisco.
13-AA Canton, Rains (Emory), Grand Saline, Kemp, Mabank, Malakoff, Quitman, Wylie Point.
14-AA Brownsboro, Lindale, Mineola, West Rusk (New London), Quitman, Van, White Oak, Whitehouse.
15-AA Clarksville, Commerce, Mount Vernon, Prairiland (Pattersonville), North Lamar (Powderly), Winstonsboro.
16-AA DeKalb, Hooks, Hughes Springs, Jefferson, Linden-Kildare (Linden), New Boston, Pewitt (Omaha), Pittsburg.
17-AA Hemphill, Kirbyville, Newton, San Augustine, Shelbyville, Warren, Woodville.
18-AA Anahuac, Buna, Hamshire-Fannett (Hamshire), Kountze, Orangefield, Austin (Port Arthur), Hardin-Jefferson (Sour Lake), East Chambers (Winnie).
19-AA Tarkington (Cleveland), Coldspring-Oakhurst (Coldspring), Hardin, Huffman, Barber's Hill (Mount Belver), Splendoria, Willis.
20-AA Rice (Altair), Bellville, Royal (Brookshire), Columbus,

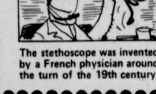
Sherwood Says

Hempstead, Magnolia, Sealy, Weller.
21-AA Corrigan-Camden (Corrigan), Crockett, Diboll, Fairfield, Westwood (Palestine), Rusk, Teague.
22-AA Groesbeck; Hillsboro; McGregor; Meña; Waco; LaVega, Robinson; West.
23-AA Caldwell, Camerson, Hearn, Madisonville, Rockdale, Rosebud (Rosebud).
24-AA Burnet, Dripping Springs, Llano, Manor, Marble Falls, Plugerville.
25-AA TSD (Austin), Elgin, Giddings, LaGrange, Luling, Smithville, Weimar.
26-AA Bloomington, Boiling, Edna, Needville, Palacios, Van Vleet.
27-AA Bandera, Boerne, Hays (Kyle), Smithson Valley (New Braunfels), Cole (San Antonio), Randolph (University City).
28-AA Medina Valley (Castroville), Cotulla, Crystal City, Devine, Hondo, Pearsall, Poteet, Somersett.
29-AA Floresville, Goliad, Hallettsville, Karnes City, Kennedy, Yoakum.
30-AA Arkansas Pass, Bishop, George West, Ingleside, Mathis, Odem, Refugio, Taft.
31-AA Benavides, Freer, Hebronville, Premont, San Diego, Zapata.
32-AA Hidalgo, LaFeria, Los Fresnos, Lyford, Sharyland (Mission), Port Isabel, Rio Hondo, Santa Rosa.



It was a great ballgame from the standpoint of both teams. We had a good effort from the whole Lynx team; hitting, line

play and down-field blocking. I am also pleased with our ability to control and move the football. We have great respect for Dalhart and their coaching staff. Our biggest challenge will be our ability to come back from a game like last week's and go down to Boys Ranch to play another good game.



GET A PART-TIME JOB WITH REGULAR RAISES.

You'll start making about \$50 for one weekend a month in the Army Reserve. And promotions and raises come regularly. If you do a good job, Call your local unit for details. It's listed in the white pages of the phone book under "U.S. Government."



THE ARMY RESERVE PART OF WHAT YOU EARN IS PRIDE.

"There is always room at the top." Daniel Webster

GAME NUMBER SEVEN

R ight up to the kickoff,
E very word had been spoken;
J oyous in the end,
E ven the spell was broken.
C lose was the game,
T ied up after three;

T he Lynx broke it open,
H ow sweet it was to see.
E normous was the crowd,
R oaring and screaming for more;
O ur visitors even yelled,
U ntil the Angry Purple scored.
G oing to old Tascosa,
H eadlines for the week;

R oughriders are always tough,
I t's not a game for the meek.
D efeat those Ranchers,
E arn the seventh big win;
R emain alone at the top,
S per your good luck to you! mon.

The cut off points for 1978 are:
Up to 129 Conference B
130 to 254 Conference A
255 to 579 Conference AA
580 to 1259 Conference AAA
1260 and Up Conference AAAA

1978 Tentative Football List
U.I.L. Participating Schools
Conference AA
District 1AA River Road (Amarillo), Canadian, Dalhart, Perryton, Spearman, Boys Ranch.
2-AA Childress, Electra, Henrietta, Oney, Seymour.

You are cordially invited to the
OPEN HOUSE
of the new
HANSFORD COUNTY VETERINARY HOSPITAL
on Sunday, October twenty-third
nineteen hundred and seventy-seven
from two until five o'clock

SPEARMAN, TEXAS
806-650-2700

GLENN BLODGETT, D.V.M.
TOM LATTA, D.V.M.

NOTICE OF ELECTION (AVISO DE ELECCION)

To the Registered Voters of the County of Hansford, Texas
(A los Votantes Registrados del Condado de Hansford, Texas)

Notice is hereby given that the polling places listed below will be open from 7:00 A.M. until 7:00 P.M., TUESDAY, NOVEMBER 8, 1977

for voting in the ELECTION TO FILL VACANCY IN STATE SENATORIAL DISTRICT 31 and the CONSTITUTIONAL AMENDMENT ELECTION for the purpose of submitting seven proposed constitutional amendments.

(Notifíquese por la presente que los sitios de votación indicados abajo se abrirán desde las 7:00 A.M. hasta las 7:00 P.M., MARTES EL 8 de NOVIEMBRE de 1977)

(por votar en la ELECCION PARA OCUPAR EL VACANTE EN EL DISTRITO SENADOR 31 y PARA ENMENDAR LA ELECCION CONSTITUCIONAL con el proposito de someter siete enmiendas propuestas a la constitución.)

John E. Chen
By (Por)

LOCATIONS OF POLLING PLACES.
(Direcciones de los sitios de votación.)

Precinct #1 County Courthouse
Distrito numero Tribunal de justicia del condado

Precinct #2 Renner Ranch
Distrito numero El Rancho de los Renner

Precinct #3 Gruver Elevator
Distrito numero El elevador de Gruver

Precinct #4 Gruver County Agricultural Building
Distrito numero Gruver El edificio de agricola del condado

Precinct #5 Spearman County Agriculture Building
Distrito numero Spearman El edificio de agricola del condado

Precinct #6 Spearman High School
Distrito numero La escuela secundaria de Spearman

Precinct #7 Oslo Church
Distrito numero La iglesia de Oslo

Precinct #8 Absentee Voting Place, Courthouse
Distrito numero El lugar para votar si va a estar ausente esedia, El tribunal de justicia de condado, La oficina del archivero del condado,

Precinct #9 Morse Community Building
Distrito numero El edificio de comunidad de Morse

Winners Circle

AC PLUGS 66¢*

1974 & 1976 INDY 500 WINNER

AC Delco (*Limit 8 plugs per customer)

GET THE SAME LOW PRICE ON SPARK PLUGS WITH A TUNE-UP AT PARTICIPATING CARQUEST SERVICE STATIONS AND GARAGES. LOOK FOR THE CARQUEST BANNER.

CHALLENGER 10-PIECE SOCKET SET
SPECIAL \$8.54

AUTO COOLANT SAVING SYSTEM
ONLY \$2.99⁶⁰⁰

GO-JO HOME HAND CLEANER/DISPENSER
NOW \$1.99 #1212

KAR CHECK TIMING LIGHTS
ONLY \$19.99 #2009

THE PLACE FOR COOLANT IS IN YOUR CAR
Gates

Check our special prices now on Gates Belts and Hoses.

Prices may vary at CARQUEST Auto Parts Stores and participating dealers thru November 6, 1977.

HI-PLAINS AUTO SUPPLY, INC.

118 N. MAIN SPEARMAN
PHONE: 659-2506

WE KNOW WHAT YOU MEAN WHEN YOU'RE TALKING PARTS.

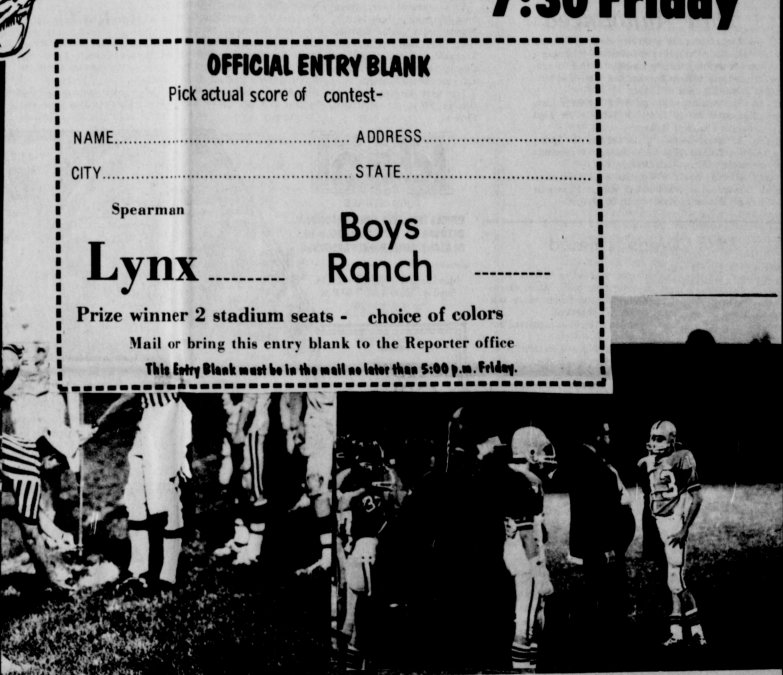
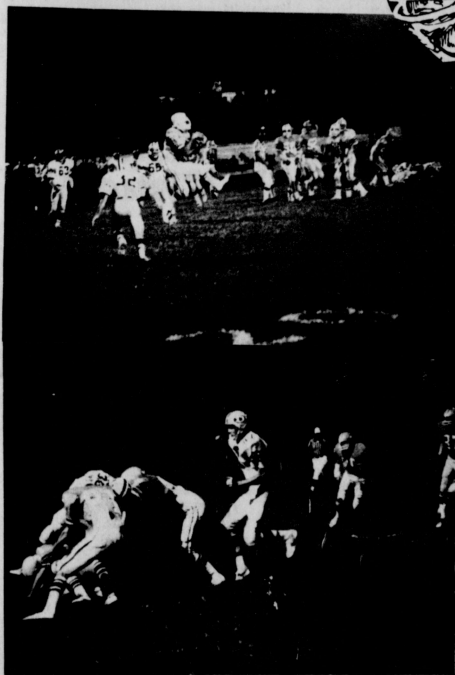
SPEARMAN LYNX

Football Contest

FOOTBALL



Spearman vs. Boys Ranch At Boys Ranch 7:30 Friday



OFFICIAL ENTRY BLANK
Pick actual score of contest-

NAME..... ADDRESS.....
CITY..... STATE.....

Spearman
Lynx **Boys Ranch**

Prize winner 2 stadium seats - choice of colors
Mail or bring this entry blank to the Reporter office
This Entry Blank must be in the mail no later than 5:00 p.m. Friday.

TG&Y

A-1 Automotive & Irrigation Serv. Inc.
GRUVER HWY. 659-3724
"Our Work Is Exhausting"

Anthony Electric
PLAINS SHOPPING CENTER
659-2441

Booster Ag Chem Inc.
700 COUNTRY ROAD

L. E. Thomas
at **B**

Hansford Implement Co.
659-2712

Lil' Lynx Shoppe
312 MAIN
659-2608

Ag-Air Dusters & Sprayers Inc.

Speartex Grain Co.
514 Collard
659-3711

P. A. Lyon Ins. Agency
222 Main
659-2516

Equity Elevator
104 Collard
659-2420

Consumers Sales Co.
421 W. KENNETH AV.
659-2012



December Wedding Date Announced

The announcement is being made by Mr. and Mrs. Alvie Burkhalter of Dalhart of the engagement and approaching marriage of their daughter, Alexa, to Bart Thoreson, son of Mr. and Mrs. Donnie Thoreson of Groves. The wedding date has been set for Friday, December 30, 1977, at 7:30 P.M. in the First Baptist Church of Dalhart. The bride-elect was graduated this past Spring from Dalhart High School and is presently attending Texas Tech University. Her fiancé is a 1974 graduate of Gruver High School and is a Senior this year at Panhandle State University at Goodwell, Oklahoma.

Miss Owens Is Feted

Miss Vickie Marie Owens was honored with a bridal shower on October 13 from 7 to 9 p.m. at the B & B Farm Industries Friendship Room. She is the bride-elect of Frank Miller. Hostesses for the shower were Mmes.: Evelyn Kinglesley, Evelyn Mackie, Lola Reynolds, Pat Harris, Elina Batson and Lynda Owens. The table was laid with a blue cloth and overlaid with a white lace cloth. The centerpiece was

blue and white flowers in a crystal cut bowl. Sheet cakes, mixed nuts, butter mints and punch was served. Miss Ten Witt registered the guests. Special guests included Mrs. Mae Owens, mother of the honoree; Mrs. Lena Maye Jones, grandmother; and the prospective groom's mother, Mrs. Betty Witt, all of Spearman.

Child abuse seminar held

"Child Abuse Knows no boundaries" as some 70 people learned Monday evening, October 17 at the Spearman High School auditorium, according to Hansford County Extension Agent, Peggy Marrs. Beth Byrum, social worker from the Department of Human Resources in Borger, gave a slide presentation on the cause

and effects of child abuse and neglect. Following the slides she discussed why parents abuse their children and why citizens in every community should "get involved." If child abuse or neglect is suspected, The Department of Human Resources has a toll free number to call in reporting child abuse and a center in Perryton which can also be contacted. It is listed in the yellow pages.

UMW Meets

Susannah Wesley Circle of the UMW met Wednesday, October 12 at the Methodist Church in the church parlor with President Judy Martin presiding over the business meeting. They were reminded of the Christmas and the box in the church concerning the Methodist Mission Home.

They will be responsible for the meeting of the senior citizens of the Golden Spread Circle Meeting in November. Officers were elected for the upcoming year of '78. They are: Chairman, Connie Steger; Vice Chairman, Jackie Pearson; Secretary-Treasurer, Patty Hudson; and Courtships, Judy Martin.

The program committee will meet October 19 at 11:00 a.m. The program was given by Mrs. Judy Nelson, a Bible lesson of Mark. Those present were members, Mesdames: Judy Martin, Wanda Eakin, Jackie Pearson, Grace Lyon, Judy Nelson, Patty Sheppard, Karen Countiss, Connie Steger, Patty Hudson and guest Susan Pearson.

The next meeting will be October 19 at the Methodist Church. The program committee will meet October 19 at 11:00 a.m. The program was given by Mrs. Judy Nelson, a Bible lesson of Mark. Those present were members, Mesdames: Judy Martin, Wanda Eakin, Jackie Pearson, Grace Lyon, Judy Nelson, Patty Sheppard, Karen Countiss, Connie Steger, Patty Hudson and guest Susan Pearson.

Rebekah Lodge Meets

Spearman Rebekah Lodge #290 met in regular session Thursday, October 13 with the following officers in their chairs: Noble Grand, Dorothy Quinn Pro Tem; Vice Grand, Ruth Caro Pro Tem; Secretary, Margaret Eller; Treasurer, Mona Slater; Inside Guardian, Inez Holland; Warden, Dorothy Longley; Conductor, Juanita Bofford; Chaplain, Mae Shaull and Right Support to Noble Grand, Rose Cummings.

Chaplain Mae Shaull gave the opening prayer. Secretary Margaret Eller read the roll call, and minutes of the last meeting were approved as read. The bills were read and referred to be paid.

Thelma Kenney was reported ill and is in a hospital in Abilene, and Mona Slater reported her mother-in-law living in Wichita, Kansas as being ill. The Lodge will have a "Garage Sale" on Friday and Saturday, October 21st and 22nd. This sale will be at the Lodge Hall.

District Deputy President Mona Slater will hold a school of instruction for three Lodges of this District, which are Spearman, Perryton, and Canadian. This school is to be decided at the next meeting.

Three members were installed in the following chairs: Noble Grand, Dorothy Quinn; Vice Grand, Margaret Eller; Secretary, Inez Holland. Installing the officers were Mona Slater, Rose Cummings, Dorothy Longley and Ruth Caro. The Lodge sang "Happy Birthday" to Noble Grand Dorothy Quinn.

Juanita Bofford will bring refreshments at the next meeting. There being no further business, Chaplain Mae Shaull gave the closing prayer.

The next meeting will be October 27 at 7:30 p.m.

Bridge Club

The Saturday Night Bridge Club met October 13 in the home of Mr. and Mrs. Chalmers Porter. High score was won by Mrs. Sybil Miller and Troy Sloan and low score by Mrs. Virginia Cates

and James Cunningham. For the 'tacky party' the ladies wore the 'oldest' dress they could find and the men wore shirts without buttons, one sock, and one shoe!

Stew and corn bread were enjoyed by members. Messrs. and Mesdames: Troy Sloan, Pat Cates, Chalmers Porter, Billy Miller, Garland Head and guests Mr. and Mrs. James Cunningham.

The next meeting will be set at a later date.

Girl Scout Leaders Meet

Girl Scout Leaders' Neighborhood Meeting met Friday, October 14 at the Girl Scout House. Members present were Mesdames: Tim Welch, Bill Gaiter, Kenneth Evans, Mary Ann Moore, Junior Hansen, Tom Jarvis, Marilyn Groves, Raymond Flores and Miss Sandra Bowar and Field Advisor from Guyan of the Yucca Council Mrs. Jo Biddle.

Mrs. Groves and Mrs. Moore are the new leaders of the 24 1st year Brownies. Nut Chairman, Mrs. Tom Jarvis, listed the varieties of nuts that will be on sale by the Girl Scouts. They are: Spanish nuts, mixed nuts, peanut brittle and dry roast peanuts.

The Girl Scouts will have a 'ring toss' at the Carnival Booth at the County Barn. They will be there from 6 to 11:30 p.m. on October 29. The next meeting will be November 11 at 9:00 a.m. at the Girl Scout House.

You are cordially invited to attend

a bridal shower honoring

Julie Ann Sanders

bride-elect of Raymond Kurk Adams

on October 22, 1977

2:30 - 4:00 p.m.

B&B Farm Industries

Hostesses: Mmes.

Crickett Giles
Betty Porter
Mary Brock
Dorothy Faye Baggerly
Ruth Ann Jones
Anita Garnett
Ruby McCullough

Peggy Archer
Colleen Shaefer
Kathleen Sutton
Sybil Miller
Bernice Brown
Dorothy Chevalier
Jenny Massad
Buena Lyon

485-2tc

Items Needed

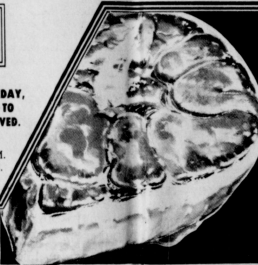
Dorothy Quinn is again collecting items for a ward at the State Hospital at Wichita Falls. Items needed are lipsticks and more lipsticks, all kinds of face creams, hand creams, cosmetics of all kinds, jewelry, combs, brushes, colognes, perfumes, after shave lotion, all kinds of night clothes, under garments, dusters, robes, coats, shoes (low heels) clothes, house shoes, sweaters.

This is getting close to the twentieth year to do this, the people of Spearman and the area have responded well. One more thing so the patients can have candy, and fruit at Holiday Time depending on their diets.

Ideal

FOOD STORES
PRICES EFFECTIVE THRU SATURDAY,
OCTOBER 22, 1977. NONE SOLD TO
DEALERS. LIMIT RIGHTS RESERVED.

Mon.-Sat. - 8:00 A.M. - 9:00 P.M.
Sunday - 10:00 A.M. - 7:00 P.M.



U.S.D.A. CHOICE BUTCHER BLOCK BEEF
**Boneless
Steak**
Bottom Round

\$1.29
LB.

U.S.D.A. CHOICE BUTCHER BLOCK BEEF
**Chuck
Roast**
BLADE CUTS...BEEF CHUCK

69¢
LB.

ROOD
SKINLESS
FRANKS
MEAT ON BEEF
59¢
12-oz. PKG.

ROOD ALL NATURAL
Sliced Bologna..... 1 1/2 LBS. \$1.99
ROOD ROAST AND NATURAL
Luncheon Meats..... 12-oz. PKG. \$1.79
ROOD ROAST AND NATURAL
Luncheon Meats..... 12-oz. PKG. \$1.49

U.S.D.A. CHOICE BUTCHER BLOCK BEEF
BONE ROUND
Boneless Round Roast..... 12-oz. PKG. \$1.29
U.S.D.A. CHOICE BUTCHER BLOCK BEEF
CUBE STEAKS..... 12-oz. PKG. \$1.49

U.S.D.A. CHOICE BUTCHER BLOCK BEEF
TRIM CUT
80% CHUCK
Chuck Steaks..... 12-oz. PKG. \$1.89
HUNT'S BRAND
1 1/2 LBS.
Ground Chuck..... 12-oz. PKG. \$1.99

Hudson® Vitamin's Happy Times sale and sweepstakes!

Save up to 30%



on 21 HUDSON PRODUCTS!

Here are just a few examples:
VITAMIN C 500 mg. with Rose Hips 100 Tablets High potency natural Vitamin C. Reg. Price \$3.99 Sale Price \$2.79
ADVITE-M 10 Tablets free with purchases of 100 High Potency vitamin and mineral formula equivalent to Theragram-M. \$4.19 \$3.00
CEEBEVIN 100 Capsules Water Soluble B-Complex with C. Equivalent to Alitbee with C. \$3.99 \$3.19
E-KAPS 200 I.U. 100 Capsules 100% natural Alpha Tocopheryl Acetate. \$4.29 \$3.99

OVER 4,000 SWEEPSTAKE PRIZES!
PLUS A GUARANTEED WINNER
FROM OUR STORE!

NATIONAL GRAND PRIZE
• Sony Television Portable TV with Video Projector and 8" Beam Tube Screen
• Electronic Game Table
• Sony Stereo
• Electronic Audio Cassette
• 1000 Times Photo Album
2 SECOND PRIZES
• Sony Television Portable TV with Video Projector and 8" Beam Tube Screen
• 1000 Times Photo Album
10 THIRDS PRIZES
• Sony Television Portable TV with Video Projector and 8" Beam Tube Screen
• 1000 Times Photo Album
10 FOURTH PRIZES
• Sony Television Portable TV with Video Projector and 8" Beam Tube Screen
• 1000 Times Photo Album
OFFER ENDS
DECEMBER 31, 1977. VOID WHERE PROHIBITED BY LAW.

FILL OUT A FREE ENTRY FORM IN OUR STORE!

Prescription Specialist
Spearman Drug Company
The **Pharmacy** Store
220 MAIN SPEARMAN, TEXAS 79081
PHONE 659-2226
Gruver 733-2021

KICO ETERNA
ALUMINUM COOKWARE
HEAVY DUTY
ON SALE THIS WEEK:
1 1/2 Quart Covered
Sauce Pan..... **\$5.99**

VALUABLE COUPON
THIS COUPON GOOD FOR...
40¢ Off
ON 2-LB. CAN...
ALL GRINDS
FOLGER'S COFFEE
LIMIT-1 WITH THIS COUPON
PLEASE. GOOD ONLY AT YOUR
IDEAL FOOD STORE.
EXPIRES 10-23-77.

HEALTH & BEAUTY AIDS...
TOOTHPASTE
GLEEM
5-oz. TUBE **79¢**
HEAD AND SHOULDERS
Lotion Shampoo **97¢**
4-oz. BTL.
BRIT
Anti-Perfume Deodorant
7-oz. CAN
Splash on Lotion
3 1/2-oz. BTL. **1.43**

MEADOWDALE... ALL FLAVORS
Ice Cream
1/2 GAL. CTR. **86¢**

CRISCO SHORTENING
3-LB. CAN **\$1.68**
CLING PEACHES
DEL MONTE... HALVES OR SLICED 29-oz. CAN **52¢**

TOMATO JUICE
HUNT'S 46-oz. CANS **2 \$1.00**
GOLDEN CORN
KOUNTY KIST 13-oz. CANS **4 89¢**

HUNT'S 15-oz. CAN **38¢**
Fruit Cocktail
TEXSON 46-oz. CAN **56¢**
Grapefruit Juice

LINDY 16-oz. CANS **86¢**
Garden Peas
DEL MONTE 15-oz. CAN **28¢**
Garden Spinach

FROZEN FOODS
PATIO Mexican Dinners
ALL VARIETIES
12-oz. PACKAGE **44¢**

FRESH DAIRY
PILLSBURY COUNTRY STYLE OR BUTTERFLAX 8-oz. **59¢**
Biscuits 5 CANS
BARKRAFT 1/2-PINT CTR. **39¢**
Whipping Cream
HYVE PARK 1% 1/2 GALL. **\$1.33**
Lo-Fat Milk
MRS. SMITH'S GOLDEN DELUXE Apple Pie..... 4-oz. **\$1.69**
MEADOWDALE Tomplin's Tators 2 PKG. **99¢**
CAMELOT 16-oz. **39¢**
Broccoli Spans..... PKG.

SHOP IDEAL...WHERE THERE'S MORE VALUE IN STORE

Top O' Texas District Meeting Held Here



The above ladies are the Top O Texas District officers of the Texas Federation of Women's Clubs. They are: Mrs. Bill Reed, Mrs. Fred McDaniel, Mrs. Bill Griffin, Mrs. Vester Smith, and Mrs. Harry Youngblood.

Three Spearman Texas Federation of Women's Clubs hosted the 17th annual Fall Board Meeting Oct. 11 with 109 women registering. Host Clubs were Spearman Study Club, Twentieth Century Club and the newly formed junior club, Servitors of Spearman.

Mrs. Bill Reed, Stratford, Top of Texas District President, conducted the meeting that was held at First United Methodist Church. Assisting during the meeting were Mrs. Harry Youngblood, Lefors, First Vice-President and Mrs. Yester Smith, Higgins, Second Vice-President.

Mrs. Coy Palmer was general chairman. Entertainment was provided by a Choral Group from Spearman High School and was directed by Travis Angel. Mrs. Roger Odgaard and Mrs. Richard Kirk gave the presentation of Consumer Concerns and the morning Arts presentation. Highlights of the Departmental Workshop included one feature from each department, Conservation, Education, Home Life, Public Affairs, International Affairs, Arts, and Texas Heritage.



These ladies representing the clubs hosting the annual meeting. They are: Mrs. Grog Sherwood, Mrs. Terry Slaughter, Mrs. Coy Palmer, Mrs. John Brown, and Mrs. Terry Delozier.

Albates Flint Quarry was the subject of Mrs. Linda Turner, Borger, with Mrs. E. R. Bell, Stratford, speaking on Leadership Development. Mrs. Roger Odgaard and Mrs. Richard Kirk gave the presentation of Consumer Concerns and the morning Arts presentation. Highlights of the Departmental Workshop included one feature from each department, Conservation, Education, Home Life, Public Affairs, International Affairs, Arts, and Texas Heritage.

A Crime Detection skit with Mrs. Wood Craig, Sunny; Mrs. Larry Cross, Pampa; and Mrs. Edward Jones, Dalhart was given. Mrs. Ralph Randall, Panhandle, spoke on the joys and sorrows encountered when establishing a county museum. Gristown, a State TFWC project, had a craft table at the meeting and took orders for gifts. These are made by the girls and money is used for their "extras" that are not provided otherwise.

Mrs. Jim Taylor, Stratford, Fashions for Fun, provided a mini-fashion show with models, Mrs. Johnny Brannon and Mrs. Barry Smith, Stratford and Mrs. J. P. Smith, Dalhart. The district is striving to provide a sewing machine for W. D. Anderson Clinic. Mrs. W. C. Surratt, Panhandle, is district chairman. A membership workshop was led by Mrs. Bill Griffin, Borger, Third Vice-President. Mrs. O. H. Finch, Jr., Dalhart, spoke briefly on Texas Federation of Women's Clubs Historical Foundation through which the state hopes to clear clubhouse indebtedness. Mrs. Jim Chandler, Dalhart, Junior Director, conducted a junior session during the afternoon.

Annual Art Show Scheduled

The Dahlia Flower Club has scheduled its 8th annual show of arts, crafts, and antiques for November 5 and 6. The show and silver tea will be held in Hanstford Library Saturday, Nov. 5th from 1 p.m. to 5 p.m. and Sunday, Nov. 6th from 1 p.m. to 5 p.m. This will be an excellent opportunity for artists, craftsmen, antique and other collectors to show their hand work and collections. People of the surrounding area are urged to bring their displays. Rules for the show are listed as follows: All rules of the Library concerning the use of the building will be observed. One of these rules is that the Library is to receive 10% of the proceeds of any article sold. All sales will be strictly between the buyer and the seller with the library clerk to collect the 10% of the sale. Every division committee will put restrictions on the number of exhibits by a dealer, depending on the room available. Each exhibitor is to furnish his or her bridge table or other accessories, and set up his or her exhibit. No charge will be made for showing. All articles are to be registered by the division entry committee. Make duplicate copies of all articles, one to give the entry committee, and one to keep. All exhibits must be in place by 11 a.m. Saturday, Nov. 5 and must be removed by 6 p.m. Sunday, Nov. 6. Displays may be set up Friday afternoon from 2 to 6, or Saturday morning from 9 to 1. The Dahlia Flower Club will not be responsible for any article lost or broken, but extreme care will be in their handling. Hollie Riley is president of the club.

Our Heritage of Faith notes from Faith Lutheran Church

In the history of the Christian Church there have been many reformations. But the reformation that can be considered the most important is the one that began 460 years ago when Dr. Martin Luther nailed his 95 theses to the door of the church in his town. This act moved men to reexamine the teachings and practices of the church of their day. It is this reformation that began with Martin Luther and to that period that most Protestant Churches can trace back their heritage.

In celebration of that Reformation and in celebration of the grace which God has given us through that Reformation, Faith Lutheran is having a special celebration. On Sunday October 30 at 7:30 p.m. Faith will have a brief Reformation service highlighted with the celebration of Holy Communion. We will also be having some special music for that service. Before the service there will be a salad and desert pot luck with each family bringing their own sandwiches. Oslo Lutheran has also been invited to join us. Faith is also having a special study each Wednesday at 7:30 on the teachings of the Christian faith. Reformation should not be a past event in the history of the Church, but it should be a continual reality within the life of the Church and in the lives of the individuals who make up the church. This study is intended to provide an opportunity for the participants to study and to reexamine their faith and life. To all such events the public is invited. If you do not have a regular church home we invite you to come and worship with us. Besides the events already mentioned, regular morning worship is at 9:30 with Sunday School following at 10:35.

Epsilon Zeta Has Luncheon

Preceptor Epsilon Zeta Chapter of Beta Sigma Phi met Thursday, October 13 at Martin's Steak Garden at noon for a dutch treat luncheon. President Marva Hobertz presided over the business meeting. Mrs. Evonna Davis was elected 'Valentine Queen'. Delicious refreshments were enjoyed by members. Mesdames: Ann Archer, Dottie Beedy, Karen Countess, Evonna Davis, Pat Dear, Linda Davis, Pat Donnell, Helen Etter, JoEllie Jones, Judd Jones, Mary Garnett, Lois Gisher, Marva Hobertz, Barbara McClellan, Altha Townsend and honorary members Jana Meek and Deta Blodgett.

Courtesy Honors Bride-Elect

Miss Mary Kay Stubblefield of Canyon, bride-elect of David Harbour, was honored with a bridal shower October 15 from 2:30 to 4 p.m. at 1115 Linn Drive, Spearman. Hostesses were Mesdames: Doyle Jackson, Wallace Berner, Elvira Martin, W. C. Jackson, Chalmers Porter, Albert Clark, Sonny Patterson, Joe Trayler, and M. D. McLaughlin.

Arts & Crafts Guild News

Arts and Crafts Guild met Friday, October 14 in the home of Mrs. P. A. Lyon, Sr. Delicious refreshments were enjoyed by members. Mesdames: Sada Hoskins, Ned Turner, W. L. Russell, Pope Gisher, Nolan Holt, Clay Gisher and Kiff White, Sr. The next meeting will be October 21 in the home of Mrs. Joe Trayler.

HD Club News

Spearman Home Demonstration Club met Friday, October 14 at the home of Mrs. Viola Hutton acting as hostess. Meeting opened with Altha Groves giving the devotional, "Purpose of Home Demonstration Clubs". Roll Call was answered by giving suggestions for the 'Year Book'.

Shriners To Meet Thursday

The Hansford County Shrine Club regular meeting will be held Thursday, October 20 at 2 p.m. at Martin's Steak Garden. S.E. Hudson, president, Loyall Turner, Vice President, Carel Baston, Secretary & Treasurer cordially invite all Shriners to be present at this meeting which will be the beginning of fall activities. The minutes of the previous meeting were read and approved. Mrs. Viola Hutton served delicious refreshments to members. Mesdames: B. J. Garnett, H. D. Reed, W. H. Tarbox and Altha Groves. The next meeting will be set at a later date.

FRESH...PORK SHOULDER PICNIC

Pork Roast
6 TO 8-LB. AVERAGE... WHOLE
59¢
LB.
ARM ROAST .79¢

Pork Steaks 99¢
LITTLE SIZZLERS .99¢

Pork Sausage 69¢
SLICED BACON \$1.49

SMOKED SLAB CUT 99¢
SLICED BACON \$1.49

'100 WINNERS RONALD JACK KING
PLAINVIEW, TEXAS
EFFIE M. TRIBBEY
EMO, OKLA.

YOU CAN WIN UP TO \$1,000 CASH!

PICK UP YOUR CARDS AND TICKETS NOW AT IDEAL.

WHEEL NO.	WHEEL	WHEEL NO.	WHEEL	WHEEL NO.	WHEEL
1	25	10	148200	1	1511
2	25	10	148200	1	1511
3	25	10	148200	1	1511
4	25	10	148200	1	1511
5	25	10	148200	1	1511
6	25	10	148200	1	1511
7	25	10	148200	1	1511
8	25	10	148200	1	1511
9	25	10	148200	1	1511
10	25	10	148200	1	1511

KRAFT REAL MAYONNAISE \$1.09
32-OZ. JAR

Northern BATH TISSUE 78¢
4-ROLL PACKAGE

all BLEACH, BORAX AND BRIGHTENERS POWDERED DETERGENT \$3.48
10-LB. BOX

Liquid DETERGENT \$1.99
64-OZ. JUG

Marshmallows 35¢
10 1/2-OZ. PKG.

Coffee Mate \$1.74
22-OZ. JAR

Dish Detergent 86¢
34-OZ. BOX

Paper Towels 54¢
JUMBO ROLL

Chow Mein \$1.49
34-OZ. BOX

Chow Mein Noodles \$1.67
16-OZ. BOX

Soy Sauce \$1.41
16-OZ. BOTTLE

Delicious Apples \$1.00
4 LBS.

Jonathan Apples \$1.00
5 LBS.

Calmeria Grapes 59¢
CALIFORNIA LB.

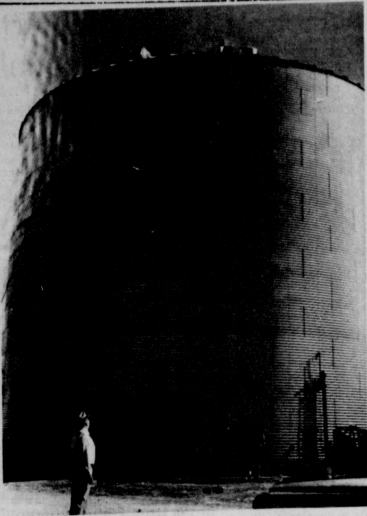
Florida Tangelos \$1.00
4 LBS.

Bordo Dates 89¢
16-OZ. PKG.

Yellow Onions 25¢
2 LBS.

SHOP IDEAL FOR SUPERLATIVE SAVINGS, 7 DAYS A WEEK...WE WELCOME FOOD STAMP CUSTOMERS.

FOR YOU!.....



Carl Archer views one of the new steel storage tanks erected at Spartex Grain, in Spearman. The local form is one of the largest in the state, and Archer plans even more expansion in the future.

phone Co. conducted the Seminar. A followup meeting with the Team Members will be held in November. This will be a simulated prospect meeting. L. E. Thomas is Chairman of this committee.

A HANSFORD ROUNDUP MEETING will be held Tuesday, October 25, at 7:30 p.m. in the Chamber of Commerce office. The main purpose of this meeting is to elect officers for 1978 and start planning next year's ROUNDUP....

THE FRED STORY SHOW will be in Spearman Tuesday, November 15, at the High School Auditorium. This is a Good Clean Family Show. We will have more on this later.

CONGRATULATIONS to Brad and Dottie Beedy on the beautiful new furniture store. If you have not visited them at their new location please do so soon. Ribbon cutting was held Friday with Mayor Blodgett, Brad and Dottie, and Jerry Geo. officially opening the new facility. Rev. Oglesby of the First United Methodist Church gave the invocation.

Welcome new members... J.G.'s, Excel Chevrolet, Callaway's House of Flowers, and North Plains International.... These new businesses are working together with us to help Build a Bigger and Better Spearman....

REMEMBER THE BREAKFAST...THURSDAY, OCTOBER 20, 6:30 A.M., COUNTY BARN....

...and educator all wrapped in one. Sen. Russell Long (D-La), Chairman of the Senate Finance Committee.

YOUR CHAMBER maintains an up to the minute library of publications designed to assist you in every possible way. In addition to City Directories, phone books, Industrial reference material and many current magazines and periodicals, we have the Congressional Handbook, with your Congressman's committee and other information to help you. Call us at 659-3330 or come by the Chamber Office at our new office 303 Main....

A community Calendar is being prepared at the Chamber Office. Please call when you are planning an event. 659-3330. She and her husband Mark have just recently moved to Spearman from Cedebury, Wisconsin. Mark is the new assistant Pastor at the Faith Lutheran Church.

Businessman, Superman Today's businessman must have the genius of an Einstein, the memory of an elephant, and the education of a lawyer, scientist, and educator all wrapped in one.

The Texas Industrial Commission held an Industrial Sales Team Training Seminar at the B & B Farm Industries Building recently. Homer Tucker, Senior Community Development Consultant, Texas Industrial Commission and Wayne Frank, Assistant Government Affairs Manager with General Tele-

Chamber Chatter

The first **BREAKFAST** of the Fall season will be held **THURSDAY, OCTOBER 20**, at the County Show Barn.... The Chamber Board Members will be cooking the breakfast and they will begin serving at 6:30 a.m. Plan to be present. Cash prizes will be given and **THE MYSTERY SINGER....** Come to the breakfast and find out who **WHOoooo** this **MYSTERY SINGER** is.... You will be in for a treat and surprise.... The Spearman High Music Department will provide entertainment also. They have a great program lined up for us. The drawing for the **TRIP FOR TWO** to the **DALLAS COWBOYS GAME** will also be held.... **GAMES.... CASH PRIZES....** will all be part of the breakfast sponsored by **HERBERT PONTIAC BULLOCK GMC.** We are also planning on Coach Greg Sherwood and the Angry Purple being at the breakfast.... We will know by **MONDAY.** Won't you be surprised??? to find out who the **Mystery Singer** is??? **BOB BULLOCK, STATE**

COMPTROLLER HAS PROVIDED this office with several copies of a very helpful and informative booklet "Your New Business and the Texas Sales Tax". Come by for your copy as long as they last.

The Retail Merchants Committee met Tuesday, October 11, at the Chamber office to make plans for the Christmas Program. Final plans will be made Tuesday, October 13, at 10:00 a.m. in the Chamber Office.

CLAUDIA ZIEMER is the new secretary for the Chamber of Commerce.... We invite you to stop by and meet Claudia.... She and her husband Mark have just recently moved to Spearman from Cedebury, Wisconsin. Mark is the new assistant Pastor at the Faith Lutheran Church.

Businessman, Superman Today's businessman must have the genius of an Einstein, the memory of an elephant, and the education of a lawyer, scientist, and educator all wrapped in one.

United Presbyterian Church News

Women of the Palo Duro Union Presbyterian will bring their Area 1 Fall Rally on Thursday, October 20 at the First Presbyterian Church of Spearman from 9:30 a.m. to 2:00 p.m.

There is a Sunday Church School class for everyone every Sunday at 9:45 a.m. with an interesting, well-prepared Bible lesson.

"Gratitude" will be the subject of Pastor Edward D. Freeman's sermon at the service of the worship of God on Sunday, October 23 at 11:00 a.m.

The annual congregational meeting will be held on Sunday, October 23, following the morning church worship service. This will be followed by a family covered-dish dinner.

Pastor Ed Freeman will be chaplain at Hansford County Hospital the week of October 23-29. He will also lead the Daily Devotions Program on KBMF-FM at 10:35 a.m. Monday through Friday October 24-28.

The Session will meet on Wednesday, October 26 at 8:00 p.m. Presbyterian Men will have their monthly prayer breakfast on Thursday, October 27 at 6:30 a.m.

China Show & Silver Tea At Pampa

The public is invited to a China Show and Silver Tea at the Library in Pampa, Texas on Oct. 23, 1977 from 1 to 5 p.m.

The members of the Golden Spread Arts Club will exhibit painted china. There will be no admission charged.

The Golden Spread Porcelain Arts Club was organized in 1976 and has a membership of 45 ladies from 8 counties.

Three ladies from Hansford Co. are charter members: Mrs. Deta Blodgett, Mrs. M. W. Lackey and Mrs. Garrett Allen. Mrs. Bill Hutton is an honorary member.

Bowling News

Wed. Morning Glories 10-12-77

Team	W	L
Whites Auto	16	8
York Electric	15	9
1st State Bank	14	10
J.G.'s	12	12
Bunkhouse	11	13
McClellan Welding	11	13
Team 85	10	14
Gordons Drug	7	17
High Ind. Game		
Pat Hamilton	211	
Beth Baker	178	
Debbie Crouch	166	
High Ind. Series		
Pat Hamilton	512	
Beth Baker	514	
Brenda Russel	471	
High Team Game		
Whites Auto	468	
1st State Bank	466	
Whites Auto	453	
High Team Series		
Whites Auto	1354	
1st State Bank	1308	
J.G.'s	1227	

Citizens of Tomorrow



Eddie [2 1/2] Child of Mr. & Mrs. Danny Herrington Lance [6] & Landou [2] Children of Mr. & Mrs. David Swan Tye [3] Child of Mr. & Mrs. Darr Hergert

COMPLIMENTS OF WOLTZ STUDIO

USDA To Work With States On Stamp Program

"The most far-reaching reforms of the food stamp program since its enactment in 1964 are contained in the new Food Stamp Act of 1977. The U.S. Department of Agriculture (USDA) Carol Tucker Foreman announced this morning, and the Department of Agriculture is committed to implementing this law as quickly as possible consistent with sound program administration.

"The transition from the old law to the new is a major undertaking for USDA and the states," she continued. "The Department is conducting a series of public hearings in urban and rural sites around the country during October to seek public thinking on the development of the new program rules. We will then issue proposed regulations for public comment. After careful analysis of these comments, final regulations will be issued and detailed operating instructions will be provided to the states," she explained. "Throughout this process, we want to work closely with the states to help them prepare for the new program. They must retrain their staff, arrange to meet new administrative requirements, re-program computers, and prepare for a massive conversion of their caseloads to new eligibility and benefit standards.

Tax Collections Best Ever

State Comptroller Bob Bullock said Monday that two of his smallest divisions -- Motor Vehicle Sales Tax and Inheritance Tax -- chalked up their best fiscal year ending August 31.

The Motor Vehicle Sales Tax Division collected \$328 million in motor vehicle sales and rental taxes during the past fiscal year, an average of \$23.4 million for each of the division's 14 employees.

"That's a pretty impressive record -- in anybody's book," Bullock said.

The Comptroller's Inheritance Tax Division, with a staff of 47, collected \$66.5 million during the past fiscal year, an increase of 14 percent over the

preceding year. Bullock said the Inheritance Tax Division also processed over 120,000 pieces of mail and conducted estate audits and examinations that produced an additional \$8.2 million in revenue.

"And all this time Inheritance Tax Division employees also were devoting hundreds of hours to the Howard Hughes case, the largest estate audit ever undertaken by this office," Bullock said.

Bullock announced earlier that his department set a record in tax collections during the past fiscal year, funneling some \$4.195 billion into the state treasury. This was the first time in Texas' history that tax collections hit the \$4 billion mark.

"We will be making a special effort to inform low-income households of the new eligibility requirements," Foreman stressed. "Of households of the new eligibility requirements." Foreman stressed. "Of particular concern to us are those persons -- such as the elderly and rural poor -- who have not participated in the program in the past because they lacked the cash to buy their food stamps or because program services were not accessible to them. By eliminating the purchase requirement, streamlining program administration and increasing program accessibility, we hope to reach many of the poorer families in this country with benefits for the first time," she explained. "Implementing the new law is a complex process that will require the close cooperation of federal, state and local agencies. We are confident that by working closely together, we can make the transition smoothly," she added.



See it now!



You'll never have to miss the good things on TV again.

See what you've been missing! SelectaVision records any program (even while you're asleep or away) -- plays back on any TV. See (and hear) yourself on TV! SelectaVision has two optional black-and-white TV cameras, each with built-in microphone.

Records up to 4 hours on a single cassette!

Come in now for a special showing!

Spearman Electronics Center

313 MAIN SPEARMAN 659-3858

Colorado Continental Firewood Company

is now in your vicinity with your winter supply of

Ponderosa Firewood

This wood is all 2 and 3 years old, dry and ready for you to use. The wood is state checked and approved.

Hurry and order now before you see snow; so be prepared. We will deliver.

Put in your order by calling....

303/789-5321

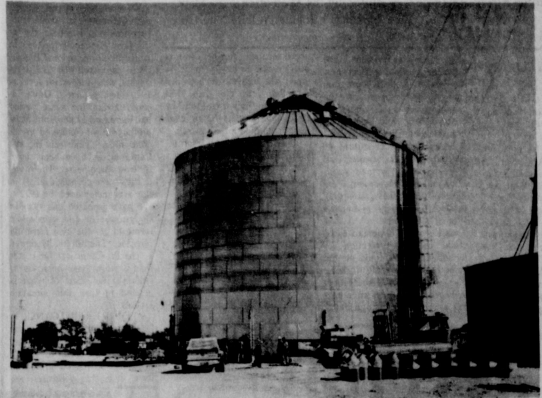
You never know when you will be left out in the cold with no gas.

- ★ 1 Cord \$100⁰⁰
- ★ 1/2 Cord \$ 65⁰⁰
- ★ 1/3 Cord \$ 40⁰⁰



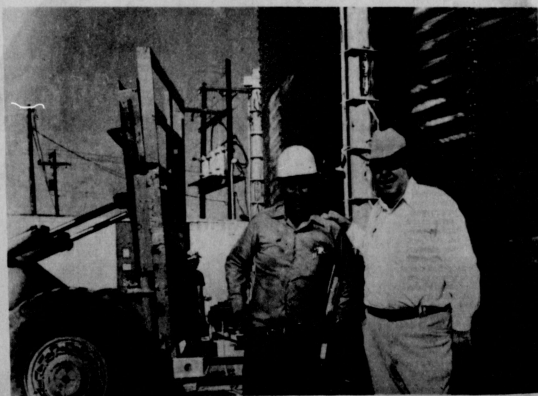
IT'S
HARVEST TIME

WE ARE READY TO
SERVE YOU
DURING THE
1977 HARVEST



WE ARE PROUD TO ANNOUNCE THE COMPLETION OF
ANOTHER LARGE BUTLER STORAGE STEEL GRAIN TANK.

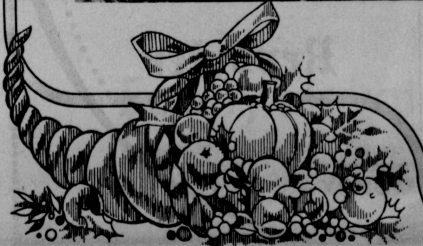
OUR TOTAL STORAGE NOW EXCEEDS
2,000,000 BUSHELS



WE ARE HERE TO SERVE
YOU THIS HARVEST

**SPEARTEX
GRAIN CO.**

GRUVER HIWAY PHONE 659-3711
SPEARMAN, TEXAS





Last week the 1st and 2nd graders at the elementary school had an opportunity to examine a real fire truck, supplied by the Spearman Fire Dept. Each student was given a "Junior Fire Marshal" fireman's hat. The hats were donated by P. A. Lyon Insurance.

Hightower Highlights

ENERGY

Time is growing short for this season of Congress. The Senate is still laboring with the President's Energy package. I would not venture to guess what will happen when the House and Senate sit down to work out the differences in the legislation. The differences are vast at this time.

I believe that the energy issue will become more difficult each year and that the Congress must take the necessary steps to promote conservation, more efficient uses of our natural resources, less dependence on imported oil and gas, and full development of our domestic resources. I regret that the energy bill does not do these things. We cannot afford to quit trying.

ECONOMIC CRISIS

As a member of the Agriculture Committee my major concern this year has been declining farm commodity prices. In April the Congressional Budget office estimated that 1977 farm income was at the same level as 1970 farm income. Other income during the same period had increased 24 percent. Farm products have continued to decline in price since that report. Cattle prices have been down for over three years. The result is the worst economic crisis in the farm sector since the 1930's. We have reported this story in Congress over and over while trying to get the best farm bill possible. The bill finally signed by the President was far better than it might have been, but it still falls far short of what is needed to turn this situation around.

FOOD GRAIN LOANS

The Secretary gave me assurances last week that something will be done to enable producers with feed grains on loan that the contracts are

expiring soon to keep their grain under contract until the resale program is available. I have also been working to get the Department to allow corn on loan to be moved to terminal elevators. In many cases our country elevators are going into harvest with a portion of their storage tied up with old-crop corn on loan. Our problems here, as is the case with the wheat grazing, we are the only ones complaining. The corn state Congressmen from Iowa and Illinois are not concerned because much of their use of corn there is on their own farms.

DEFICIENCY PAYMENT

Wheat farmers are now assured of the full 65 cent deficiency payment for the 1977 crop. The deficiency payment is determined by the difference in the target price (\$2.90) and the higher of either the loan (\$2.25) or the average domestic market price for the five month period from June through October. The price has stayed so low it is now impossible for the average price to go over the loan level of \$2.25.

I have received assurances from Secretary Bergland and others in the Department that they will begin to process these payments as quickly as possible of the economic crisis our farmers face.

THE CRUCIAL CRUNCH

The most crucial problem our agricultural producers face today is credit. We have seen more farm sales this year than I can remember. It is estimated over 3,000 forced farm sales have been held in Texas this year. Federal agencies like the Federal Reserve and United States Department of Agriculture report that as a result of low farm commodity prices country bank deposits are very low. Increasing land values are the one major factor keeping many of our producers in business. Those renting their land or those going into this cycle with heavy mortgages to start with are often in deep trouble.

This week I have asked the



(PHOTO COURTESY OF C&B STUDIOS)

This photo was taken by Cricket Giles when she and Bill made a trip to Washington D.C., to visit relatives. Is your dog a country or a city dog?

Social Security

Although social security touches the lives of everybody in one way or another, there are some aspects of the program that have special meaning to women. These features are discussed in a booklet called "A Woman's Guide to Social Security" which is available at your nearest social security office.

The booklet is interesting and informative in that it focuses on how social security treats women in their various roles—as mothers, widows, divorcees, single, or married. A special publication for women was first published in 1964, and the present guide represents the

latest of several revisions. The different versions reflect how the social security program changes in response to the changing needs of women as breadwinners and heads of households in their own right.

Today women constitute 40 percent of the total workers and 47 percent of all women work. They make up 24 percent of all heads of households, according to the Department of Labor's Women's Bureau.

As a worker, a woman earns social security protection for herself and her family on the same basis as a male worker. She gets benefits if she retires or becomes disabled after having worked long enough under

social security. Her dependents also may be entitled to benefits when she retires or becomes disabled. If she dies, her widower and minor children, or dependent parents 62 or over may be eligible for payments.

If you need further information, please contact the Pampa Social Security Office, 1541 North Hobart, phone 669-3381 (area code 806).

Notice

Anyone interested in being a member of a home demonstration club in the evening is asked to call the agent's office at 659-2030.

OPEN 24 HOURS

ALLSUP'S
CONVENIENCE STORES

SAVE

GIANT SIZE **BOLD** DETERGENT **69¢**

HOT DOGS WITH CHILI **39¢**

WILSON FRANKS 12 OZ. PKG. **59¢**

BORDEN'S COTTAGE CHEESE 12 OZ. CTN. **49¢**

BROWN 'N SERVE SAUSAGE LINKS 8 OZ. PKG. **39¢**

BORDEN'S PURE ORANGE JUICE **49¢** QT.

CAPS EACH **\$1.00**

ROXEY DOG FOOD **7 FOR \$1**

ELVIS TAPES 8 TRACK **\$3.99** SPECIAL OFFER ONLY

BORDEN'S ICE CREAM **\$1.19** 1/2 GAL. HD. CTN.

PRICES GOOD OCT. 20-21-22, 77

76 America's 200th • 76 Mansford County's 100th

The score is 45,000 to 600... yes the three Mansford county newspapers print approximately 45,000 words per week about Mansford folks. All other newspapers in the Golden Spread combined print about 600 words per week about Mansford folks... We are proud of the score, 45,000 to 600... but most of all we are proud of our advertisers who make all of this possible, and those who call on us for their printing and office supplies...

Thanks, from all of us
659-3434

WE PRINT

- TAGS
- BADGES
- BLOTTERS
- PLACARDS
- CIRCULARS
- FILE HEADS
- PRICE LISTS
- STATEMENTS
- MENU CARDS
- MEMO BLANKS
- LETTER HEADS
- LAUNDRY LISTS
- YEETING CARDS
- MENU BOULETS
- AT HOME CARDS
- RECEPTION CARDS
- AUDITOR'S REPORT
- UNCLAIMED BELLS
- AUCTION SALE BILLS
- WEDDING INVITATIONS
- BY LAWS & CONSTITUTIONS
- FINANCIAL STATEMENTS
- ROCKETS
- POSTERS, ALL SIZES
- ADMISSION TICKETS
- STORE SALE BILLS
- GREETING CARDS
- COMMERCIAL LABELS
- FUNERAL CARDS
- WEDDING CARDS
- BREWING TAPES
- MEAL TICKETS
- SCORE CARDS
- INVITATIONS
- POST CARDS
- FLYERS/LETS
- PROGRAMS
- VOUCHERS
- BOOKLETS
- QUOTERS
- DRAFTS
- BILLS

OFFICE SUPPLIES

From paper clips to the latest in office furniture...

The Spearman Reporter

IN FACT - WE PRINT EVERYTHING BUT - MONEY -

WE'RE SWEEPING THE TOWN

This Thursday

During the Lion's Club Annual

Broom and Mop Sale

WE'LL BE SELLING BROOMS, MOPS, BRUSHES, IRONING BOARD COVERS,
TOWELS, DISH CLOTHS AND MANY OTHER TOP QUALITY HOUSEHOLD ITEMS.

All manufactured by Texas Blind Workmen in Texas Lighthouse.

All proceeds will be used to --

BUY EYEGLASSES FOR NEEDY CHILDREN

The Caravan Truck will be located at the Post Office

Homes and Businesses will be canvassed

White House Lumber Co.

306 Davis 659-2818

North Plains International Inc.

Hwy 207 659-2421

First State Bank

30 SW Court 659-2526

Speartex Grain Co.

514 COLLARD 659-3711

Equity Elevator

104 COLLARD 659-2420

Tucker Water Well Service

1100 W 7th 659-3013

Interested In Joining The Cadet Troop

Any 7th, 8th, or 9th Grade Girls that are interested in joining the Cadet Troop are asked to pick up entry blanks at after 5:00 p.m. at the Spearman Reporter or at the Principal's Office of their school.

They are asked to be at the Girl Scout House October 20 at 5:00 p.m. If you have any questions, please contact Sandy Bowar at 659-3028 or 659-3434.

Name _____ Age _____
 Street Address _____
 City _____ State _____ Zip Code _____
 Phone _____
 School _____ Grade _____

PLEASE COME TO THE GIRL SCOUT HOUSE, OCTOBER 20, 1977 AT 5:00 P.M. OR CONTACT SANDY BOWAR AT 659-3028 OR 659-3434 IF YOU ARE INTERESTED.
 For 7, 8, and 9th graders.

15 Choir Members make Region

On Oct. 15 at Berger High School, trouts for the Region I Choir were held. Region I covers all of the schools in the Texas Panhandle from Tulsa north. There are 16 people in each section with 12 coming from Class AAA and AAAA and 4 coming from the Class B, Class A, and Class AA schools. Spearman placed 19 students in the All-Region Choir which is the largest number of people placed in the choir by a B, A, or AA school. Those were 1 Soprano, Debbie Greene, Jo-Nell Comegys, and Sherry Greene; 10 Sopranos, Shelly Howard, Sabre McCoy, Kelly Harper, and Kelly Ryant; 1 Alto, Elaine Reimer and Linda

Lewis; 11 Alto, Kelly Shaver, Tamera Scroggs, and Denise Ware; 1 Tenor, James Pierce and Ruben Vera; 1 Tenor, Sison Gibner; Baritone, Edward McIntyre and Kelly Davis; and Bass, Jay Comegys and Lynn Vernon.

"Christmas In October"

A special program "Christmas in October" will be held in Pampa on Tuesday October 25 from 9:30 a.m. - 2:30 p.m. in the Heritage Room - M.K. Brown Auditorium. The show, tell and sell of gift ideas includes crochets, macramé, ornaments, floral arrangements and more. It is being sponsored by the Cultural Arts Committee - Gray County Home Demonstration Council.

Everyone is invited to attend this come and go program. There will be Christmas gift ideas for everyone. Door prizes will be given throughout the day. Admission will be \$1.00 to cover room expenses.

The doors will be open from 9:30 - 2:30 p.m. to view displays from local merchants and all county home demonstration clubs. Three special programs will begin at 10:00 and feature demonstrations on quick sewing ideas for Christmas gift giving, machine embroidery and Christmas decorations to make. Demonstrations will be given by Stretch & Sew Bernina and Sherman County Home Demonstration Club.

Patterns will be available for many of the ideas. Ladies will be available to give instructions for articles displayed. Make your plans to join us for this special program. For further details contact the County Extension Office.

Banking Amendment Discussed

The proposed amendment to the Texas Constitution to permit the legislature to authorize state and national banks to exercise banking privileges by use of electronic devices or machines located at such places as may be provided by law was explained by Jim Shirley, assistant vice president of the First State Bank in Spearman, during the luncheon meeting Monday of the Spearman Rotary Club.

The proposed amendment will be voted on Nov. 8 and is slated to be Number Six on the ballot. In addition, the proposal also would authorize the sharing of such electronic devices or machines among banks on a reasonable nondiscriminatory basis.

Shirley explained that this is not branch banking but authorization for the use of electronic devices for all banking transactions.

He noted as an example an individual in a large shopping center in a large city having to drive many miles to the bank for funds for a purchase and then returning to the store to complete the purchase where, if electronic funds transfer for banking privileges had been available, the trip to and from the bank would not have been necessary.

What is Mental Health

I mentioned last week in our article that this column would deal with the topic of Mental Health. At this point, I think it is important to attempt to define the term "Mental Health". This is a concept not easily defined due to its constantly changing nature. For example, in the early 1800's, the term "mentally healthy" could have been used to describe those individuals who were fortunate enough to have their basic needs, such as shelter and food, met.

Today, there are relatively few of us who lack the fulfillment of these basic needs. However, as these primary needs are met other needs come to the forefront. The need for self esteem become the focus of our attention. We begin to look within our family and within ourselves and to our friends to fulfill these needs.

In a constantly changing such as ours, it becomes increasingly important to adapt to change. As the demands upon us change and societal values change, we must be able to incorporate these new concepts into our own personhood.

By incorporation of these concepts, I do not necessarily mean to accept them. However, I do feel it is important to face these changes rather than deny

their existence. The mentally healthy person can now be defined as a person who (1) has his basic needs met, (2) is content with the relationships within his family and beyond, (3) is relatively content with himself and (4) is flexible enough to deal with change openly. The mentally healthy person, then, is able to find some sort of working arrangement between personal and environmental demands. The mentally healthy person is not free from anxiety, frustration, depression, etc. The major difference is the mentally healthy person is constantly evaluating himself and his surroundings and is able to deal effectively with these feelings. A desire for personal growth is the cornerstone of good mental health.

1978 Community Calendar Begun

The Chamber of Commerce now has a 1978 Community Calendar in the office. Please call and let them know of your special event; there will not be conflicts in upcoming events.

THE SHOW MEET ON OCTOBER 20, 1977 AT 5:00 P.M. AT THE GIRL SCOUT HOUSE.

Save On Tune-Ups at Carquest Stores



Georgia McLeod and Essie Burkhardt just returned from a special cooking school in Denver, Colorado. Both of these charming ladies are employed at Martin's Steak Garden. The two learned the latest "secret" methods of preparing food and pastries.



In parts of Europe it was believed that a good way to treat gout was to tie a knot in a young fir tree twig.

Form 64 (State) (6-77)
 Consolidated Report of Condition of **FIRST STATE BANK** (Legal title of bank)
 of **Spearman**, **Hansford**, **Texas**, **79081**, and Domestic Subsidiaries
 (City) (State) (Zip Code)
 at the close of business on **September 30, 1977**, State Bank No. **1107**
 Federal Reserve District No. **11**

BALANCE SHEET		ASSETS			Sch.	Item	Col.	Mill.	Thou.	
1.	Cash and due from banks	C	7					3	833	
2.	U.S. Treasury securities	B	1	E				1	200	
3.	Obligations of other U.S. governmental agencies and corporations	B	2	E				2	141	
4.	Obligations of States and political subdivisions	B	3	E				5	484	
5.	Other bonds, notes, and debentures	B	4	E					None	
6.	Corporate stock								None	
7.	Trading account securities								None	
8.	Federal funds sold and securities purchased under agreements to resell	D	4						None	
9.	a. Loans, Total (excluding unearned income)	A	10					12	823	
	b. Less: Reserve for possible loan losses								302	
	c. Loans, Net							12	521	
10.	Direct lease financing								None	
11.	Bank premises, furniture and fixtures, and other assets representing bank premises								251	
12.	Real estate owned other than bank premises								None	
13.	Investments in unconsolidated subsidiaries and associated companies								None	
14.	Customers' liability to this bank on acceptances outstanding								None	
15.	Other assets	G	7						086	
16.	TOTAL ASSETS (sum of items 1 thru 15)							25	522	
		LIABILITIES			Sch.	Item	Col.	Mill.	Thou.	
17.	Demand deposits of individuals, partnerships, and corporations	F	17	A				9	366	
18.	Time and savings deposits of individuals, partnerships, and corporations	F	1f	B+C				1	646	
19.	Deposits of United States Government	F	2	A+B+C					041	
20.	Deposits of States and political subdivisions	F	3	A+B+C					1	
21.	Deposits of foreign governments and official institutions	F	4	A+B+C					445	
22.	Deposits of commercial banks	F	5	A+B+C					None	
23.	Certified and officers' checks	F	5+6	A+B+C					001	
24.	TOTAL DEPOSITS (sum of items 17 thru 23)	F	7	A					227	
	a. Total demand deposits	F	8	A					22	
	b. Total time and savings deposits	F	8	B+C					726	
25.	Federal funds purchased and securities sold under agreements to repurchase	E	4						None	
26.	Other liabilities for borrowed money								None	
27.	Mortgage indebtedness								None	
28.	Acceptances executed by or for account of this bank and outstanding								None	
29.	Other liabilities	H	9						151	
30.	TOTAL LIABILITIES (excluding subordinated notes and debentures)								22	
31.	Subordinated notes and debentures								877	
		EQUITY CAPITAL								None
32.	Preferred stock	a.	No. shares outstanding	None	(Par value)				None	
	Common stock	a.	No. shares authorized	100,000					500	
		b.	No. shares outstanding	100,000	(Par value)				500	
34.	Surplus								645	
35.	Undivided profits								1	
36.	Reserve for contingencies and other capital reserves								2	
37.	TOTAL EQUITY CAPITAL (sum of items 32 thru 36)								2	
38.	TOTAL LIABILITIES AND EQUITY CAPITAL (sum of items 30, 31, and 37)								25	
		MEMORANDA								
1.	Average for 30 calendar days ending with call date:								3	
	a. Cash and due from banks (corresponds to item 1 above)								732	
	b. Federal funds sold and securities purchased under agreements to resell (corresponds to item 8 above)								None	
	c. Total loans (corresponds to item 9a above)								12	
	d. Time deposits of \$100,000 or more (corresponds to Memoranda items 3a plus 3b below)								891	
	e. Total deposits (corresponds to item 24 above)								22	
	f. Federal funds purchased and securities sold under agreements to repurchase (corresponds to item 25 above)								None	
	g. Other liabilities for borrowed money (corresponds to item 26 above)								None	
2.	Standby letters of credit outstanding (as of call date):								None	
	a. Time deposits of \$100,000 or more (as of call date):								1	
	b. Time certificates of deposit in denominations of \$100,000 or more								647	
	c. Other time deposits in amounts of \$100,000 or more								244	

I, **Freeman Barkley**, Vice Pres. & Cashier, of the above-named bank do solemnly (SWEAR) (AFFIRM) that this report of condition is true and correct, to the best of my knowledge and belief.
 (including the information on the reverse side hereof)
 Correct—Attest: **Freeman Barkley** (Signature of officer authorized to sign report)
C.A. Gibner, **Lynn Hart**, **Gene Cudd** } Directors.
 State of **Texas**, County of **Hansford**,
 Sworn to and subscribed before me this **12th** day of **October**, 1977.
 and I hereby certify that I am not an officer or director of this bank.
 My commission expires **8-31-78** **Felma B. Evans**, Notary Public.



Tim Assiter Maximum Economical Yield.

Production cost per bushel is decreased and profit per bushel is increased by higher yields from fertilizer. Question: How much fertilizer is adequate economically?

Once we decide to grow a crop like corn, for example, the main variable cost is fertilizer. Other main costs remain about the same—seed, chemicals, harvesting, taxes, tillage, interest, labor, buildings, and land. Water, too, cost about the same, because producers are going to water for maximum plant performance.

To realize the greatest return from other cost or investments, we should add enough fertilizer to produce close to the maximum economic yield. There is another way to put it—profits are the most or losses are the least at the point where added cost equal added returns.

Despite lower grain prices for 1978, fertilizer and water will be the highest return input we use in today's agriculture. Therefore, acreage cuts to better utilize water and fertilizer, and raise almost the same amount of crop makes sense.



B. and B. Farm Ind., Inc.



Peggy's Pointers

Homeowners can insulate their unfinished attics with a few tools, the correct amount of insulating material, strict safety precautions and several easy preparation steps.

TOOLS - Necessary tools are temporary lighting, temporary flooring (such as 1X12' boards or plywood laid across ceiling joists), duct or masking tape (2" wide), a heavy duty staple gun and staples or a hammer and tacks, and heavy duty shears or linoleum knife to cut the insulating materials.

MATERIALS - Insulation is available in batts, blankets or loose fill - and it's important to know which ones include a vapor (moisture) barrier or which ones need it.

Batts and blankets are made of glass fiber, rock wool, or cellulose-and loose fill is generally made of rock wool, glass fiber, and cellulose fiber.

Batts are generally 15" or 23" wide precut in 4' or 8' lengths. Blankets 15" or 23" wide, in long rolls, can be cut by the installer. They are compressed and will expand when wrappers are removed. Loose fill comes in bags.

When selecting insulation, consider composition, fire safety, moisture resistance, odor, corrosiveness, thermal performance (or R-value), cost, and installation forms and methods.

If you choose batts and blankets, but the width that will fit snugly within the joist spacing. A vapor (moisture) barrier prevents most of the moisture in the house from getting into the insulation and reducing its effectiveness.

Between home laundry, cooking and bathing, about 18 gallons (68 liters) or water vapor can be produced each week.

For un-insulated attics, select batt or blanket insulation with an attached vapor (moisture) barrier - or if you select loose fill insulation, a vapor (moisture) barrier or heavy polyethylene sheeting (4-mil or 6-mil thick) is necessary.

If the attic already has some insulation - and you are simply adding to it, no additional vapor (moisture) barrier is necessary. However, if batt or blanket insulation with an attached vapor (moisture) barrier is all you buy for the new job, its barrier should be slashed approximately every six to twelve inches.

The slash in the new layer of insulation prevents moisture from being trapped in the first layer of insulation.

HOW TO MEASURE MATERIAL AMOUNTS

To determine the amount of vapor barrier material and insulation material to buy, you don't even have to go into the attic. Just follow these two steps:

Step 1. Measure the area of the first floor of your house-not counting garage, porch and other unheated areas. The first floor area will be the same as the attic area.

If it is a rectangle, measure length and width in feet (to the nearest foot) and multiply Length X Width equals Area. If it is a combination, break it down into rectangles; find the area of each one, then add the area to get the total.

Step 2. Figure the estimated insulation area by multiplying 9 times the total attic area (90 percent of the total area). In other words: 0 X Total attic area equals estimated amount of insulation material (and vapor barrier material needed).

SAFETY PRECAUTIONS

Do nothing until you have carefully read these safety rules:

1. Provide good lighting. 2. Lay boards or plywood sheets down over tops of joists or trusses to form a walkway - the ceiling below won't support your weight. 3. Be careful of roofing nails protruding through roof sheathing. 4. If you use glass fiber or rock wool wear gloves and breathing mask, and keep the material wrapped until you are ready to put it in place.

5. Work when temperature in attic can be tolerated - winter, nights, cool weather.

PREPARATION STEPS - After installing temporary lighting and temporary flooring, check for leaks and make necessary repairs. Also, seal all places where pipes or wires penetrate the attic floor.

After collecting necessary tools and materials and following safety precautions and preparatory steps, it is a fairly simple job to insulate an unfinished attic.

2. LOOSE FILL - If you are using loose fill, install baffles made of cardboard at the inside of the eave vents so that insulation will not block flow of air from vents into the attic. Be sure insulation extends out far enough to cover the top plate.

Poor in loose insulation between joists. Use a board or garden rake to level it. Fill all nooks and crannies but do not cover recessed light fixtures or exhaust fans.

BATTS OR BLANKETS - Lay blankets or batts between joist or trusses - if blankets are used, cut long runs first to conserve material, using leffovers for shorter spaces. Slide insulation over wiring wherever possible.

Cut ends of batts or blankets in to fit snugly around cross bracing. Cut the next batt in a similar way to allow ends to butt together tightly.

3. The space between chimney and wood framing should be filled with non-combustible material, preferably unfaced batts or blankets. Also, the National Electric Code requires that insu-

lation be kept three inches away from light fixtures.

ADDING TO EXISTING INSULATION - If your attic requires a second layer of insulation, place batts or blankets at right angles to the joists (across the joists).

If the batts you are using have a vapor (moisture) barrier, either remove it or slash it to prevent moisture from being trapped between the insulation layers. Loose fill insulation can be used on top of a first layer of batts or blankets.

Training

Workshop Set

A training workshop for certification of commercial and non-commercial agricultural applicators of pesticides has been scheduled for November 9 and 10 at the Texas Tech Regional Academic Health Center, 1400 Wallace Blvd., Amarillo, Texas.

The first session of the workshop will be a part of the official certification process, which is conducted by the Extension Service to train commercial and noncommercial applicators in categories of health related pest control. These are vector control, and rodent control.

The first session of the workshop will include general subject matter applicable to all categories of commercial and noncommercial applicators. Sessions that follow will deal with category specific subject matter.

A certification examination is to be conducted November 10 by the Texas Department of Health Resources at the same location. Persons planning to attend the workshop must preregister by writing to Carl D. Patrick, Texas Agricultural Extension Service, 6500 Amarillo Blvd., West, Amarillo, Texas 79106, indicating their interest to participate in the workshop. Details will be provided by return mail along with study materials.

Church youth plan Walk-A-Thon

The First Assembly of God Church youth will be having a Walk-A-Thon on Nov. 5th. The Walk-A-Thon will begin in Spearman and hopefully end at K-Bo's in Perryton. All monies raised in the Walk-A-Thon will go toward reaching one thousand dollars (\$1000.00) for missions.

Each year the youth of First Assembly of God set a goal for missions, in a Speed-The-Light youth rally in the month of March. Speed-The-Light monies provide cars, planes, printing presses, public address systems, bicycles, and many other needs that Missionaries have on the field.

If you would be interested in investing in the work of God, and could sponsor a walker, please call 659-2295 for further information.

"The Show Must Go On"

"The Show Must Go On"

SEEDS FROM THE SOWER

By Michael A. Guido, Metter, Georgia

After wasting all his money on liquor and lust, a prodigal came home to God. "Fool," cried an old friend, "there's no God."

"Don't be crazy," he replied. "In God's estimate, you're a fool. The Bible says, 'The fool hath said in his heart, There is no God.'"

The fool "fool" implies moral difficulty, not intellectual. Don't be hazy. Acquaint yourself with God. Read the Bible through. There are only sixty-six books with 1,189 chapters.

Monday through Saturday and five on Sunday, you can read the Bible in one

and our price problem will continue. "I hope every wheat farmer and cattleman concerned about this prohibition will write the Department of Agriculture before November 14 and explain why producers need this option," said Hightower. "I intend to again express to the Secretary the dire need for this provision."

Comments on any section of the proposed regulations should be addressed to the Director, Production Adjustment Division, ASCS, P.O. Box 2415, Washington, D.C. 20013. The regulations will not go into effect until after this 30 day period.

Hightower urged producers to talk to local A.S.C.S. offices for details on the proposed regulations.

Hightower Asks For Letters

WASHINGTON, D.C. (October 14) - Congressman Jack Hightower today expressed disappointment in a provision of the Agricultural Stabilization and Conservation Service regulations that prohibits grazing of diverted wheat acreage.

The regulations were published Friday in the FEDERAL REGISTER. The Congressman stated, "The financial pressures on producers mandates this land be grazed. The income derived from grazing and harvesting that 20 percent as compared to the income from deficiency payments on the 80 percent will push producers out of the program."

Hightower went on to point out that if producers are not in the program they will not take any acres out of production

and our price problem will continue. "I hope every wheat farmer and cattleman concerned about this prohibition will write the Department of Agriculture before November 14 and explain why producers need this option," said Hightower. "I intend to again express to the Secretary the dire need for this provision."

Comments on any section of the proposed regulations should be addressed to the Director, Production Adjustment Division, ASCS, P.O. Box 2415, Washington, D.C. 20013. The regulations will not go into effect until after this 30 day period.

Hightower urged producers to talk to local A.S.C.S. offices for details on the proposed regulations.

HD Clubs Selling Pecans

Any of the home demonstration club members can pick up the pecans that they will sell for the coming holiday season at the Home Demonstration Office at the Hansford County Courthouse.

Anyone that is interested in buying pecans can contact any home demonstration club member or Miss Peggy Marrs at the County Extension Office.

Spearman Spiritual Renewal Crusade

JESUS IS LORD

- Discover The Key To Your Healing
Your Success
Family Relationship
Finance & Business
The Fruits & Gifts
With Farmer Expert in Frozen Food Science



Corrie Joubert

HE GRACE LING

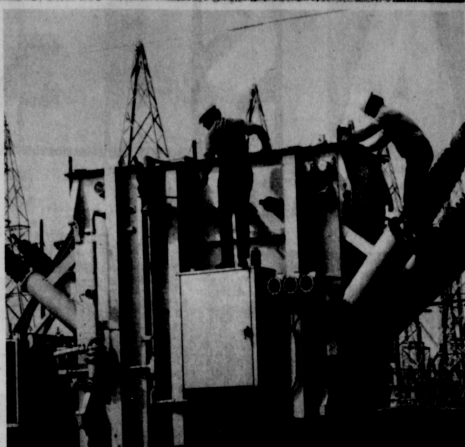
Four Unforgettable Nights

You will always remember

OCT. 25th, 26th, 27th & 28th

7:30 P.M.

Hansford County Showbarn



Shades of the spage age--equipment used during temporary service recently at the Gruver-Spearman Power Plant being loaded for transporting to a new destination. This is one of the few mobile units which can be used for temporary service.

Pampa A.K.C. Fall Field Trial Set

The Top-O-Texas Brittany club will hold its annual A.K.C. Licensed Fall Field Trial, October 29-30 at the Haynes Ranch located 16 miles Southeast of Pampa, Texas. All Stakes are open to Brittany Spaniels only.

Trials for Registered Brittanys will be Open All Age; Open Derby; Amateur All-Age; Open Limited All-Age and Open Puppy. Entry applications for the Field Trial should be mailed to Mrs. Sara Leverich, 1824 Christine Street, Pampa, Texas. Entries close promptly at 8 p.m., October 26.

The judges for the Trial are: Earl Mathis, Amarillo, Texas; Jimmy James, Cyril Oklahoma; Travis Fulwood, Sweetwater, Texas; and Charles Barber, Odessa, Texas.

Thursday night the "B" team will host the Boys Ranch "B". The action is scheduled to begin at 6:30.

The 7th Grade team and the undefeated 8th Grade team will venture to Boys Ranch for this weeks football contest. Kick-off time will be 5:00, Thursday.

Field Trial Marshals will be Denice Roach; De Nix; J.E. Leverich; Dr. L.J. Zachry and Bud Higginbotham. Jim Leverich is president of the club and invited visitors to attend the trial.

The Varsity Lynx travel to Boys Ranch (4-2-0, season: 1-0, district) for their second district game of the year. Kick-off will be at 7:30, Friday night, there.

The world's best municipal and college libraries wouldn't be complete, many think, without a new directory with important information about 2,000 companies that can help young people find jobs in the communications field. It's the 1977 edition of "O'Dwyer's Directory of Corporate Communications," available for \$60 from J. R. O'Dwyer Co., Inc., 271 Madison Avenue, New York, N.Y. 10016.

4 Lynx teams play Ranchers

(CHECK NEW TIMES AND DATES!) TWO SHOWS FRI.-SAT. 7:00 P.M. AND 9:00 P.M.

ONE SHOW SUN.-MON.-TUES. -WED.-THURS. 7:30 P.M.

NEXT ATTRACTION

HANSFORD COUNTY'S ENTERTAINMENT CENTER

LYRIC THEATRE

PHONE 659-2812

WALT DISNEY PRODUCTIONS THE RESCUERS. A Tale of Two Critters. POLICIAS MEXICANAS. EL MEJOR REGALO. SUNDAY MATINEE 2 P.M., OCTOBER 23.

WALT DISNEY PRODUCTIONS A Tale of Two Critters. POLICIAS MEXICANAS. EL MEJOR REGALO. SUNDAY MATINEE 2 P.M., OCTOBER 23.

AISLES OF SAVINGS

DEL HAVEN 16 OZ. **5 CANS \$1**

RANCH STYLE 15 OZ. **4 CANS \$1**



GROUND BEEF
GOOD QUALITY FAMILY PACK L.B. **68c**
"LEAN" CHOICE L.B. **88c**
PREMIUM QUALITY L.B. **98c**
"EXTRA LEAN" QUALITY



FINE FARE MEAT OR BEEF **BOLOGNA**
OR COOKED SALAMI
12 OZ. PKG. **89c**

"UNITED'S TRU-TENDR BEEF"
STEAK CUBED WASTE FREE BEEF L.B. **\$1.68**
STEW BONELESS "EXTRA LEAN" CUBES OF BEEF L.B. **\$1.09**



HORMEL'S LITTLE **SIZZERS**
12 OZ. PKG. **98c**



WHITE SWAN WHOLE **TOMATOES**
15 OZ. **3 CANS \$1**

MIXED PARTS FRYERS
*2 BREAST QTRS. *2 WINGS
*2 LEG QTRS. *1 BACK
*3 NECKS AND GIBLETS
L.B. **39c**



BONELESS SHOULDER ROAST
WASTE FREE BEEF
L.B. **\$1.09**



CHUCK ROAST
BLADE CUTS OF BEEF
L.B. **68c**

BEANS ALMA 6 14 OZ. CANS **\$1**
SAUCE *ONION *MUSHROOM 28 OZ. **69c**
TUNA CARNATION 6 5 1/2 OZ. CAN **59c**
CHOCOLATE SAUCE LIBBY'S TOMATO MIX 12 OZ. **99c**
SAUCE 6 8 OZ. CANS **\$1**

FINE FARE **BEETS** 16-OZ. **3/89c**

WASH. GOLDEN DELICIOUS **APPLES** EXTRA FANCY 3 **\$1**
NO. 2 COLO. RUSSET 10 LB. BAG **89c**
POTATOES
FLA. WHOLE EAR **CORN** 8 FOR **\$1**
CALIF. BELL **PEPPER** 3 PODS **39c**
MEDIUM YELLOW **ONIONS** 3 LBS. **39c**

GLADIOLA FLOUR
5 LB. BAG **49c**

OUR DARLING GOLDEN CORN
WHOLE KERNEL OR CREAM
17 OZ. CANS **\$1**

FOLGER NEW FLAKED **COFFEE**
13 OZ. CAN **\$2.59**

NABISCO PREMIUM **CRACKERS**
1 LB. BOX **49c**
PETER PAN PEANUT BUTTER
SMOOTH OR CRUNCHY 18 OZ. JAR **79c**

FINE FARE 7 1/2 OZ. BOX **MACARONI & CHEESE DINNERS** **20c**

FINE FARE 3 LB. CAN **SHORTENING** **\$1.18**

SOLID **OLEO** 4 1 LB. CRTNS. **\$1**
BALLARD SWEETMILK OR BUTTERMILK **BISCUITS** 2 8 OZ. CRTNS. **29c**
BELL WHIPPING **CREAM** 8 OZ. CRTN. OR 16 OZ. HALF & HALF **39c**

PUREX **BLEACH** GALLON JUG **69c**
CORONEY DELTA BATH **TISSUE** 6 ROLL PACK **98c**
FINE FARE 10 1/2 OZ. CAN **SOUP** **5/\$1**
ELLIS **TAMALES** 3 15 OZ. CANS **\$1**

MORTON'S FROZEN MINI DONUTS 10 OZ. PKG. **59c**
KITCHEN TREAT **POT PIES** *BEEF *CHICKEN *TURKEY 6 OZ. PIES **\$1**

"HEALTH & BEAUTY AIDS"
SUAVE BRAND SHAMPOO 16 OZ. **89c**
CREME RINSE 16 OZ. **89c**
ROLL-ON DEODORANT 3 OZ. **89c**

WE RESERVE THE RIGHT TO LIMIT QUANTITIES
U PRICES GOOD THRU OCT. 22ND
UNITED SUPER MARKETS
PERRYTON, TEXAS