



# BAILEY COUNTY JOURNAL

'The Community of Opportunity-Where Water Makes the Difference'

20¢

## WEATHER

June 13	60	66
June 14	62	60
June 15	71	64
June 16	81	63

Vol. 22, Number 24

12 Pages Today

Published Every Sunday at Muleshoe, Bailey County, Texas 79347

Sunday June 17, 1984

# Young Crops Benefit From Local, Area Rain

## Around Muleshoe

The Lazbuddie cheerleaders will be working at the Sonic on Saturday, June 23. They will be working to raise money for camp and cheerleading suits.

Bring the children, urge the cheerleaders, because the Longhorn mascot will be there.

For the 1984-85 season, the cheerleaders are Chandra Engelking, Wendy Jarman, Melissa Sanchez, Traci Elliott, Cathy Schacher, Kristine Miller and mascot, Cheryl Holt.

Steve James Robert, football stand-out from Three Way High School has signed with the Lobos of Sul Ross University at Alpine. Head football coach Ronald Mays expects Roberts to join the squad in August.

Roberts, a 5-8, 195 pound fullback, lineback and nose-guard, was team captain for Three Way in 1983. He is the son of the Ima Lee Roberts of Maple.

Army First Sergeant Gordon R. Graves, son of John A. and Mayfair Graves of Sudan, participated in Ocean Venture 84, a com-

## Muleshoe Mule

### Run Scheduled On July 4th

A part of the annual July 4th Celebration on Wednesday, July 4, in Muleshoe will include the Annual Muleshoe Mule Run.

Sponsored by the Muleshoe Chamber of Commerce and Agriculture, the event is headed up by John Medina.

Sign-up is at 7 a.m. and at 8 a.m. sharp, the runners will get off to a running start in front of KMUL Radio on West Eighth Street. Included will be a two mile run as well as a 10-K run.

Entries are being accepted from ages 14 and under to 50 and over, and all ages in between in both male and female categories. Entry fee is \$5 per person prior to July 1 and \$7 after that date and on the day of the race.

Mail your pre-entry to the Muleshoe CoC at 218 West Second Street, Muleshoe, Tx. 79347, or call 806-272-3487 for more information.

Each entry will receive a Muleshoe Mule Run T-shirt and awards will be given for first through third places in each category.



COUNTY ROAD UNDER WATER--Approximately eight miles west of Muleshoe on FM1760 a county dirt road is now a lake following two nights of rain in the western part of Bailey County. Most of the heavier rain was concentrated in that area and to the northeastern section of the county.

## Seven New Teachers Hired

Seven new teachers have been hired for the 1984-85 school year for the Muleshoe Independent School System. They were hired during a meeting of the board members for the school Monday night.

Cheryl Smith was employed for high school and Terri Fortenberry and Ethel Allison were employed for DeShazo Elementary School. New high school teachers will include Mary Jones, Jody Lyle, Diana Harrison and Jane Raines.

Two current teachers received a change of assignment within the system.

Mrs. Gayla Gear was promoted to the position of counselor. She will replace Rosalind Stapleton as Federal Programs counselor for Dillman, DeShazo and Junior High School.

Mrs. Rosalind Stapleton was promoted to the position of Diagnostician replacing Frank Guenther, who resigned his position earlier in the year.

In other action, board members heard informational reports on an update to the attendance and membership for the 1983-84. It was pointed out to board members that the enrollment and Average Daily Attendance had been higher than predicted by the administration. This is a positive factor in planning

for the future, says H. John Fuller, the school superintendent, and means that state revenues will be close to the anticipated level.

Board members were also informed that the new building on the Dillman campus is nearing completion and that all of the summer maintenance projects were going ahead as planned.

Other information was that due to the legislative special session, budget planning sessions would be held later than usual this summer, in late July or early August.

Members did approve the 1984-85 athletic budget, which is down slightly from last year's figures. Approved was \$57,425, down from the \$57,481 last year.

A financial report was given to the trustees by Assistant Superintendent Tom Jinks. Trustees voted to approve payment of cur-

## Kristi Spies, Hollywood, To Compete At Tulsa

Quarter horse enthusiast Kristi Spies will be competing at the thirteenth Annual American Junior Quarter Horse Association World Championship Show and Convention in Tulsa,

Oklahoma August 4-11. Kristi is among the 1,300 young people, 18 and under, selected to participate in the show. She won first in the Texas Junior Quarter Horse Association in reining and third in the state in the Working Cow Horse division. At this time, she is ranked fourth in the nation in reining.

She will compete with her registered American Quarter Horse, Hollywood Junior, a 9 year old dun gelding, in the reining and working cow horse classes at the show.

The top ten youth in the nation in each of the 28 events, as well as two entries per event from each state junior associations will compete for awards valued at almost \$40,000.

Winners of the 28 classes will receive a trophy belt buckle bearing the inscription "World Champion."

State delegates will meet in various committee sessions to conduct the business of the AJQHA, the largest youth horse association in the world, during the AJQHA Convention slated for Sunday. Additionally, the 1984-1985 AJQHA national officers will be elected to represent the 10,000 plus members of

Con't Page 6, Col. 1



KRISTI SPIES AND HOLLYWOOD JUNIOR--After winning first in Texas in reining recently, Kristi Spies, the 17 year old daughter of Mr. and Mrs. Ronnie Spies is currently ranked fourth in the nation in that event. She will be competing in Oklahoma in the American Junior Quarter Horse Association World Championship Show and Convention on August 4-11. She will also compete in the cow horse class.

## Meals On Wheels Program Starts Here Next Friday

Due to the efforts of several dedicated local citizens, the Meals on Wheels program for the disabled and elderly is expected to be officially launched in Muleshoe on Friday, June 22.

Glen Williams, who is the local coordinator for the Aging Services program at Muleshoe said the hospital is ready to start preparing the meals, the finances are assured and 14 people have been signed up initially, to start receiving the meals at noon five days a week.

Volunteers will be delivering the meals, as routes have been mapped out to assure getting the meals to the recipients while still warm. The hospital is preparing the meals according to the needs of the person receiving the meal.

Williams said contributions to the Meals on Wheels program are still being accepted, even though they do have enough to begin the program. He said some people are making one-time donations, some are having drafts drawn on their bank accounts and others have pledged continuing funds to help with the program for the elderly and disabled.

Meals on Wheels has incorporated and will be considering their by-laws at the next board meeting, according to Williams.

Many communities have the Meals on Wheels program.

## September Fair Plans Underway

A date has been set, and everything is well underway for the annual Bailey County West Plains Fair in Muleshoe, according to Spencer Tanksley, Bailey County Extension Agent. He said entries will be accepted from Bailey, Farmer, Lamb and Cochran counties for the three day fair in September.

September 6-8 the fair will be held at the Bailey County Coliseum, sponsored jointly by the Extension office, Muleshoe Rotary Club and the Bailey County Commissioners Court.

Tanksley said the same type schedule will be followed for the fair this year, as for the fair during the past several years. Entries will be checked into the fair on September 6, followed by the judging on the morning of September 7. In the afternoon on the 7th, the doors will be opened to the general public. The fair will also be conducted for the general public on Saturday, September 8.

At this time, the fair catalog is being compiled and will be available to potential exhibitors within the next two weeks. Persons who have exhibited for the past two years will automatically be mailed a catalog. Other persons wishing to have a fair catalog may contact the Bailey County Extension office at 806/272-4583 for a catalog to be mailed.

Entry classifications will be agriculture, horticulture, textiles, arts and crafts, culinary, canning and preserving and fine arts. Persons wishing to exhibit other items not classified above may contact the Extension office for the proper division.

Again this year, door prizes will be given. Drawings will be held for at least \$500 in cash, said Tanksley.

Con't Page 6, Col. 1

## Little To No Hail Damage Reported

"Generally, most areas in Bailey County received from one half inch to two inches of moisture, according to Bailey County Extension Agent Spencer Tanksley on Friday morning.

He was referring to the rain which fell throughout the area during the past week, and although most areas received some moisture, it appeared to range from the one half inch to over four inches.

Most farmers were getting into their fields with sandfighting equipment as soon as they could, but were praising the rain as being

valued at "thousands of dollars."

Floyd Davis, who lives west of Coyote Lake on the Arch, N. M. highway said he had received varying amounts on his land, from one and one half to two inches, with no hail.

On 1760, Mrs. Robert Hunt said they received two inches, with a very light amount of small hail on Tuesday night. No crop damage was reported on the Hunt farm.

"The rain was just what we ordered," she said. "We feel the rain was worth thousands of dollars."

At Circleback, Mrs. Jerry Damron said they had received .3 on one farm and .8 on another farm.

Mrs. Damron said they had not received enough moisture as yet, "but, every little bit helps."

North of Maple on the Reuel Kirby farm, they received from one half to one and one half inches of rain, with no hail.

Rudolph Moraw, who resides one mile south, and one half mile west of Needmore said he had received approximately one half inch of rain, and was well pleased with the moisture he had received on his very dry farm land.

At Bula, Bennie Clauch reported 1.2 inches of rain. "Crops are up here," said Clauch, "and the rain fell just right."

Around the Lazbuddie area, Lazbuddie Grain said they had received one and one half inches at the grain facility, but the total amount ranged from that to more than four inches north of the grain elevator and two inches to the south of the elevator.

Tanksley said the cotton received showers at the right time, but said some of the places which received very light rain would need additional moisture in week to ten days.

Some irrigators could shut off their wells right now, but the corn, which is already stressed, needs to be irrigated, according to Tanksley, who said the area is rapidly losing the sub-soil moisture which had built up.

Tanksley said the moisture had come at exactly the right time to help the dry-land farmer, but additional moisture will be needed to get the crop going.

Cont. Page 6, Col. 7



NEW STORE FORMALLY OPENED--Local businesses were well represented Wednesday morning when a ribbon cutting ceremony was conducted for the new Ben Franklin Store on West American Blvd. The new store is owned and operated by Jerry and Kay Hailey, and is open six days a week for the convenience of local shoppers.

# The Olympic Torch Bearer Comes Through Muleshoe Today At 11:30 A. M.



## Creative Woman

By Sheryl Borden

On June 19 and 23, viewers of "The Creative Woman" show will learn about weight control through behavior modification and cooking with dry beans, peas and lentils. Carolyn Ruiz is a counselor with Mental Health Resources, Inc. in Clovis-Portales and she will discuss how weight control can be changed through a change in a person's attitude or behavior.

Agnes Palmer, Extension Home Economist from Aztec will discuss the importance of cooking with dry beans, peas and lentils. She'll talk about the different types of legumes available, why we should use legumes in our family meals, cooking methods available, and how to combine beans with other foods to make a complete protein.

On June 21 and 24, viewers can learn to sew silk and silk-like fabrics, how to use rice salads in their meals, and some travel tips. Sewing with Silks - Part I will be presented by well-known sewing expert,

Susan Pletsch, with Palmer / Pletsch Associates in Portland, Oregon. The two-part series will be completed next week. Ms. Pletsch will discuss buying, Pre-washing and rinsing and drying the fabric, interfacings, recommended for the sheer fabrics, and show garments made in various styles from silks and silk-like fabrics.

Diane Duncan, home economist with The Rice Council in Houston suggests we let a tasty rice salad come to our rescue, whether we're cooking for family or friends or need to carry a dish to another function. Rice not only saves money, but is easy to prepare and satisfying, too. Ms. Duncan will prepare two rice salads on the show.

Did you know that women take more than 30-million business trips a year by air alone? Beginning this week, "The Creative Woman" show will feature a five-part series on the traveling business woman. Featuring the fashion, travel and beauty editors of Glamour Magazine, it will carry tips, trends and facts about the business woman on the go. Maybe it will help you if you are planning a business or pleasure trip of your own.

"The Creative Woman" is produced and hosted by Sheryl Borden. The show airs at 12 noon on Tuesday and Thursday, at 2:00 pm on Saturday and at 5:00 pm on Sunday on KENW-TV.

### ONE MINUTE SPORTS QUIZ

1. James Worthy plays pro basketball for what team?
2. Who won the Kemper Open Golf Tournament?
3. Who won the LPGA Championship?
4. Who is coaching the 1984 Olympic basketball team?
5. Name the oldest active NBA player.

### Answers To Sports Quiz

1. L.A. Lakers.
2. Greg Norman.
3. Patty Sheehan.
4. Bobby Knight.
5. Kareem Abdul-Jabbar, 37.



**\$100 SHOPPING SPREE**--Muleshoe Varsity Cheerleaders, Laurey Grant, was on hand Friday afternoon at Pay and Save Grocery when Lori Williams drew Brenda Black's name as the lucky winner of a \$100 Shopping Spree at Pay And Save. This drawing was sponsored by the Varsity Cheerleaders.

### Soil scientist studies sprinkler efficiency

COLLEGE STATION — With much of Texas suffering through an unusual drought, homeowners who are struggling to keep their lawns green may be wasting much of the water they are putting on their grass.

A soil scientist with the Texas Agricultural Experiment Station, part of The Texas A&M University System, says much of the water applied to

lawns never hits the ground but is lost to the atmosphere. Charles Wendt said his research suggests that more than half of the water applied to lawns is lost because of evaporation and inefficient sprinklers.

Wendt tested six models of commercially available lawn sprinklers and found each lacking in efficiency when evaluated by the water flow rate, evenness of distribution, evaporation loss and wind susceptibility.

### Enochs News

By:  
Mrs. J.D. Bayless

Stanley Snitker visited his parents, Mr. and Mrs. Clifford Snitker. Wednesday his mother was in the West Plains Medical Center in Muleshoe and spent the night with his dad.

Mrs. Robert George and Mr. and Mrs. Steve Mosser, Kim Kerry Jay and Kelly and their friend Andra Johnson all of Lubbock met at the home of their parents, Mr. and Mrs. E.N. McCall Friday and honored their dad with a early Fathers Day dinner.

We express our Sympathy to Mrs. Chester Petree and family in the loss their loved one Chester who passed away Tuesday June 5, at St. Marys Hospital in Lubbock following a massive Heart attack.

The Co-op elevator received their first loads of wheat Thursday June 7th, harvested off of the Elwood Autry farm, the harvest is in full swing now.

A grandson of Mr. and Mrs. Edd Autry, Wesley Autry of Pep, New Mexico spent Monday night with them.

Mrs. Winnie Byars and Mrs. Ella Hopper drove to Roaring Springs the first of

the week and visited Mrs. Alene Byars and Mrs. Byars sister, Mr. and Mrs. Travis Payne.

Dinner guests in the home of Mr. and Mrs. Jarrol Layton Sunday was her parents, Mr. and Mrs. Leon Dupler of Andrews.

Mrs. Orene Hall of Anaheim, Calif. came Tuesday for a visit with relatives, Mr. and Mrs. J.E. Layton.

Visiting in the home of Mr. and Mrs. J.D. Bayless Thursday till Saturday was their daughter, Mr. and Mrs. Joe Dale Doak and daughter, Stefanie of Garland, Texas.

Visiting Mr. and Mrs. Dale Nichols Monday and Tuesday was their grandchildren Kristen and Landon of Muleshoe.

There was a large crowd attending the Farmers Co-op Enochs and Morton Gins meeting and supper at the Cochran County Activity Building at Morton, Texas Saturday evening there were 309 plates served at the supper, door prizes were giving following the meeting.

Our sympathy goes out to Mrs. Andrew Petree of Levelland and her son and family in the loss of her husband who died Friday night.

Guests in the home of Mr. and Mrs. Dale Nichols the past week was her sister,

the M.L. Bunns of Amarillo and, aunt Mr. and Mrs. Al Foreman of Lake Hauasu, Arizona.

Mrs. Clara Williamson of Lubbock came Monday to visit her sister, Mrs. Wilma

Petree. \*\*\*\*\*  
Mr. and Mrs. J. E. Layton drove to Wellman Sunday to visit her sister, Mrs. Olata Burris and pick up Mrs. Orene Hall to come back and visit with them.

**TOOL VALUE OF THE MONTH**

3-Pc. Plier Set  
Incl. 6 & 8 in. slip-joint, 10 in. groove-joint pliers. Comfortable vinyl grips. 8955

**549**

Quantities Limited

**VALUE OF THE MONTH**

**Kingsford Charcoal**

20 lb Bag \$4<sup>99</sup>

10 lb Bag \$2<sup>49</sup>

Quantities Limited

**Fry & Cox, Inc.** 272-4511  
401 S. First

### Rebekah Lodge

Muleshoe Rebekah Lodge No. 114 met in regular session Tuesday night with Sandi Robinson, acting Noble Grand; Patsy Chance acting Vice Grand; Fern Davis, secretary; Adele Tomkins, treasurer; and Thursie Reid, chaplain. Opal Talley presented the American Flag and Mildred Kendrick the Rebekah Flag.

Routine business was discussed after which the Rebekah Degree was conferred on Viona Mitchel. Muleshoe Lodge will go to Hereford Tuesday, June 19 for a District Meeting conducted by the president of the Rebekah Assembly of Texas, who will be making her official visit to District 5. Members will leave the Lodge Hall at 5:45 p.m. on the 19th, and go in a group to Hereford.

Come In And

# Stock Your FREEZER Today



Ribeyes.....lb. \$4<sup>65</sup>

Fillets.....lb. \$4<sup>65</sup>

T-Bones.....lb. \$2<sup>69</sup>

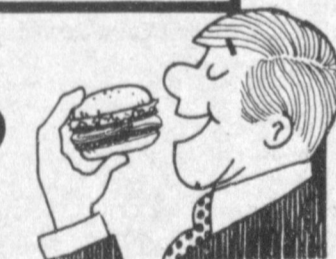
Club Steak.....lb. \$2<sup>29</sup>

Tenderized, No Fat  
Round Steak.....lb. \$2<sup>59</sup>

Hamburger Patties.....lb. \$1<sup>19</sup>

Hamburger.....lb. \$1<sup>15</sup>

All Hamburger Meat & Patties  
Guaranteed 80% Lean or Better!  
No Box Trim - Made Fresh Daily!



1/2 Beef.....lb. \$1<sup>15</sup>

Hind Quarter \$1<sup>35</sup> lb.

Front Quarter.....lb. 99<sup>c</sup>

Cut To Your Exact Specification

Pork Ribs.....lb. \$1<sup>33</sup>

Pork Chops.....lb. \$1<sup>43</sup>

Larry's Dry Cured Hams.....lb. \$1<sup>39</sup>

Larry's 100% Pork Sausage.....lb. \$1<sup>50</sup>

Let Us Do Your Custom Butchering  
Call 272-4703, & Let Big Boy's Boys Cater Your Next Party.

## Winkler Meat Co.

401 MAIN 272-4703

Celebrating 9 Years In Business!  
(And They Said He Wouldn't Last 6 Months)



Seedtec

Attention Sunflower Growers  
Why Not Plant The Best?

In 1983 Tests At Clovis:

Under irrigation, SeedTec Hybrid Sunflowers ranked number 1, 2, 3, 4 and 5 out of 15 hybrids tested in both yield per acre and pounds of oil per acre.

Under dryland conditions, SeedTec ranked number 1, 2, and 3 in both yield per acre and pounds of oil per acre.

SeedTec Hybrids ranked number 1 and 2 in yield on average for both irrigated and dryland.

At Tucumcari\* in 1983, SeedTec ranked number 1 for yield and oil in dryland and number 1 average yield for both dryland and limited irrigation.

On average under four environments; full irrigation, limited irrigation and dryland at Clovis and Tucumcari, SeedTec Hybrids ranked number 1, 2 and 3 in yield per acre and number 1, 2, 3 and 4 in pounds of oil per acre.

\*New Mexico has the most extensive Sunflower data available for this area. Complete reports available on request.

Seedtec

See These SeedTec Dealers For Your Supply of SeedTec Hybrid Sunflowers:

- Castro County Grain Co. 806-647-3347
- Frona Wheat Growers 806-247-3211
- Muleshoe Coop Gin 806-272-4794
- Maverick Industries 806-276-5217
- Elroy Arthro 806-258-7781
- Arrow Sales 806-364-2811
- Bartley Weavers 806-998-4717
- Gene Smith 806-965-2138
- Earl Forester 806-828-6044
- Troy White 806-265-3381

Or Call 806-364-1424 Hereford, Texas  
© 1983 SeedTec International, Inc.



## Creative Woman

By Sheryl Borden

On June 19 and 23, viewers of "The Creative Woman" show will learn about weight control through behavior modification and cooking with dry beans, peas and lentils. Carolyn Ruiz is a counselor with Mental Health Resources, Inc. in Clovis-Portales and she will discuss how weight control can be changed through a change in a person's attitude or behavior.

Agnes Palmer, Extension Home Economist from Aztec will discuss the importance of cooking with dry beans, peas and lentils. She'll talk about the different types of legumes available, why we should use legumes in our family meals, cooking methods available, and how to combine beans with other foods to make a complete protein.

On June 21 and 24, viewers can learn to sew silk and silk-like fabrics, how to use rice salads in their meals, and some travel tips. Sewing with Silks - Part I will be presented by well-known sewing expert,

Susan Pletsch, with Palmer / Pletsch Associates in Portland, Oregon. The two-part series will be completed next week. Ms. Pletsch will discuss buying, pre-washing and rinsing and drying the fabric, interfacing, recommended for the sheer fabrics, and show garments made in various styles from silks and silk-like fabrics.

Diane Duncan, home economist with The Rice Council in Houston suggests we let a tasty rice salad come to our rescue, whether we're cooking for family or friends or need to carry a dish to another function. Rice not only saves money, but is easy to prepare and satisfying, too. Ms. Duncan will prepare two rice salads on the show.

Did you know that women take more than 30-million business trips a year by air alone? Beginning this week, "The Creative Woman" show will feature a five-part series on the traveling business woman. Featuring the fashion, travel and beauty editors of Glamour Magazine, it will carry tips, trends and facts about the business woman on the go. Maybe it will help you if you are planning a business or pleasure trip of your own.

"The Creative Woman" is produced and hosted by Sheryl Borden. The show airs at 12 noon on Tuesday and Thursday, at 2:00 pm on Saturday and at 5:00 pm on Sunday on KENW-TV.

### ONE MINUTE SPORTS QUIZ

1. James Worthy plays pro basketball for what team?
2. Who won the Kemper Open Golf Tournament?
3. Who won the LPGA Championship?
4. Who is coaching the 1984 Olympic basketball team?
5. Name the oldest active NBA player.

### Answers To Sports Quiz

1. L.A. Lakers.
2. Greg Norman.
3. Patty Sheehan.
4. Bobby Knight.
5. Kareem Abdul-Jabbar, 37.



**\$100 SHOPPING SPREE**—Muleshoe Varsity Cheerleaders, Laurey Grant, was on hand Friday afternoon at Pay and Save Grocery when Lori Williams drew Brenda Black's name as the lucky winner of a \$100 Shopping Spree at Pay And Save. This drawing was sponsored by the Varsity Cheerleaders.

### Soil scientist studies sprinkler efficiency

**COLLEGE STATION**—With much of Texas suffering through an unusual drought, homeowners who are struggling to keep their lawns green may be wasting much of the water they are putting on their grass.

A soil scientist with the Texas Agricultural Experiment Station, part of The Texas A&M University System, says much of the water applied to

lawns never hits the ground but is lost to the atmosphere. Charles Wendt said his research suggests that more than half of the water applied to lawns is lost because of evaporation and inefficient sprinklers.

Wendt tested six models of commercially available lawn sprinklers and found each lacking in efficiency when evaluated by the water flow rate, evenness of distribution, evaporation loss and wind susceptibility.

### Enochs News

By:

Mrs. J.D. Bayless

Stanley Snitker visited his parents, Mr. and Mrs. Clifford Snitker. Wednesday his mother was in the West Plains Medical Center in Muleshoe and spent the night with his dad.

Mrs. Robert George and Mr. and Mrs. Steve Mosser, Kim Kerry Jay and Kelly and their friend Andra Johnson all of Lubbock met at the home of their parents, Mr. and Mrs. E.N. McCall Friday and honored their dad with a early Fathers Day dinner.

We express our Sympathy to Mrs. Chester Petree and family in the loss their loved one Chester who passed away Tuesday June 5, at St. Marys Hospital in Lubbock following a massive Heart attack.

The Co-op elevator received their first loads of wheat Thursday June 7th, harvested off of the Elwood Autry farm, the harvest is in full swing now.

A grandson of Mr. and Mrs. Edd Autry, Wesley Autry of Pep, New Mexico spent Monday night with them.

Mrs. Winnie Byars and Mrs. Ella Hopper drove to Roaring Springs the first of

the week and visited Mrs. Alene Byars and Mrs. Byars sister, Mr. and Mrs. Travis Payne.

Dinner guests in the home of Mr. and Mrs. Jarrol Layton Sunday was her parents, Mr. and Mrs. Leon Dupler of Andrews.

Mrs. Orene Hall of Anaheim, Calif. came Tuesday for a visit with relatives, Mr. and Mrs. J.E. Layton.

Visiting in the home of Mr. and Mrs. J.D. Bayless Thursday till Saturday was their daughter, Mr. and Mrs. Joe Dale Doak and daughter, Stefanie of Garland, Texas.

Visiting Mr. and Mrs. Dale Nichols Monday and Tuesday was their grandchildren Kristen and Landon of Muleshoe.

There was a large crowd attending the Farmers Co-op Enochs and Morton Gins meeting and supper at the Cochran County Activity Building at Morton, Texas Saturday evening there were 309 plates served at the supper, door prizes were giving following the meeting.

Our sympathy goes out to Mrs. Andrew Petree of Levelland and her son and family in the loss of her husband who died Friday night.

Guests in the home of Mr. and Mrs. Dale Nichols the past week was her sister,

the M.L. Bunn of Amarillo and, aunt Mr. and Mrs. Al Foreman of Lake Hauasu, Arizona.

Mrs. Clara Williamson of Lubbock came Monday to visit her sister, Mrs. Wilma

Petree.

Mr. and Mrs. J. E. Layton drove to Wellman Sunday to visit her sister, Mrs. Olata Burris and pick up Mrs. Orene Hall to come back and visit with them.

**TOOL VALUE OF THE MONTH**

**5.49**

3-Pc. Plier Set  
incl. 6 & 8 in. slip-joint 10-in. groove-joint pliers. Comfortable vinyl grips. 8955

Quantities Limited

**VALUE OF THE MONTH**

**Kingsford Charcoal**

20 lb Bag \$4.99

10 lb Bag \$2.49

Quantities Limited

**Fry & Cox, Inc.**

401 S. First 272-4511

### Rebekah Lodge

Muleshoe Rebekah Lodge No. 114 met in regular session Tuesday night with Sandi Robinson, acting Noble Grand; Patsy Chance acting Vice Grand; Fern Davis, secretary; Adele Tomkins, treasurer; and Thursie Reid, chaplain. Opal Talley presented the American Flag and Mildred Kendrick the Rebekah Flag. Routine business was discussed after which the Rebekah Degree was conferred on Viona Mitchel.

Muleshoe Lodge will go to Hereford Tuesday, June 19 for a District Meeting conducted by the president of the Rebekah Assembly of Texas, who will be making her official visit to District 5. Members will leave the Lodge Hall at 5:45 p.m. on the 19th, and go in a group to Hereford.

## Come In And Stock Your FREEZER Today



**Ribeyes**.....lb. \$4<sup>65</sup>

**Filletts**.....lb. \$4<sup>65</sup>

**T-Bones**.....lb. \$2<sup>69</sup>

**Club Steak**.....lb. \$2<sup>29</sup>

Tenderized, No Fat

**Round Steak**.....lb. \$2<sup>59</sup>

**Hamburger Patties**.....lb. \$1<sup>19</sup>

**Hamburger**.....lb. \$1<sup>15</sup>

All Hamburger Meat & Patties  
Guaranteed 80% Lean or Better!  
No Box Trim - Made Fresh Daily!



**1/2 Beef**.....lb. \$1<sup>15</sup>

**Hind Quarter**.....lb. \$1<sup>35</sup>

**Front Quarter**.....lb. 99<sup>c</sup>

Cut To Your Exact Specification

**Pork Ribs**.....lb. \$1<sup>33</sup>

**Pork Chops**.....lb. \$1<sup>43</sup>

Larry's Dry Cured  
**Hams**.....lb. \$1<sup>39</sup>

Larry's 100%  
**Pork Sausage**.....lb. \$1<sup>50</sup>

Let Us Do Your Custom Butchering  
Call 272-4703, & Let Big Boy's Boys Cater Your Next Party.

## Winkler Meat Co.

401 MAIN

272-4703

Celebrating 9 Years In Business!

(And They Said He Wouldn't Last 6 Months)



### Sunflowers

## SeedTec

### Attention Sunflower Growers Why Not Plant The Best?

In 1983 Tests At Clovis:\*

Under Irrigation, SeedTec Hybrid Sunflowers ranked number 1, 2, 3, 4 and 5 out of 15 hybrids tested in both yield per acre and pounds of oil per acre.

Under dryland conditions, SeedTec ranked number 1, 2, and 3 in both yield per acre and pounds of oil per acre.

SeedTec Hybrids ranked number 1 and 2 in yield on average for both irrigated and dryland.

At Tucumcari\* in 1983, SeedTec ranked number 1 for yield and oil in dryland and number 1 average yield for both dryland and limited irrigation.

On average under four environments; full irrigation, limited irrigation and dryland at Clovis and Tucumcari, SeedTec Hybrids ranked number 1, 2 and 3 in yield per acre and number 1, 2, 3 and 4 in pounds of oil per acre.

\*New Mexico has the most extensive Sunflower data available for this area. Complete reports available on request.

## SeedTec

See These SeedTec Dealers For Your Supply of SeedTec Hybrid Sunflowers:

- Castro County Grain Co. 806-647-3347
- Friona Wheat Growers 806-247-3211
- Muleshoe Coop Gino 806-272-4794
- Maverick Industries 806-276-5217
- Elroy Arthor 806-258-7781
- Arrow Sales 806-364-2811
- Bartley-Weaver 806-998-4717
- Gene Smith 806-965-2138
- Earl Forester 806-828-6044
- Troy White 806-265-3381

Or Call 806-364-1424 Hereford, Texas  
© 1983 SeedTec International, Inc.



## Baby Shower Honors Janie Rodriguez, Son

Janie Rodriguez and son, Paul were honored with a baby shower Tuesday, June 12 at 3 p.m. at the New Covenant Church. Guests were greeted by the honoree and registered by Berna Hurtado.

Jamie Kiser served cook-

ies and punch from crystal appointments. The serving table was covered with a lace cloth with a blue underlay and accented with an arrangement of blue silk flowers in a blue baby carriage. The honoree's corsage consisted of white daisies with blue accents.

Special guest was Mary Espinoza, mother of the honoree.

The hostesses gift was a baby book. Hostesses for the occasion included: Brenda Lackey, Barbara Mills, Julia Hurtado and Zona Gatewood.



LATEST ARRIVALS

### Library News By Ann Camp

#### John Paul Guzman

Mr. and Mrs. Herminio of Bovina are the proud parents of a son born at 6:29 p.m. June 11 at West Plains Medical Center.

The young man weighed eight pounds 15 ounces and has been named John Paul. He has one sister, Drusilla Michelle, one year of age.

Grandparents are Javier and Mary Robledo of Bovina and Arceion Guzman of Mexico.

#### Jennifer Leigh Ann Young

Mr. and Mrs. Johnny Young are the proud parents of a daughter, Jennifer Leigh Ann, born at 7:48 p.m. June 12 in West Plains Medical Center.

Jennifer Leigh Ann weighed six pounds and 13 ounces. She is the first child for the couple.

Grandparents are Mr. and Mrs. R.L. Bryan and Mr. and Mrs. John Young, Jr. all of Tulsa.

Great grandparents are Mr. and Mrs. Bob Goowin.

#### Maricella Stevie Valencia

Mr. and Mrs. Roque Valencia are the proud parents of a daughter born at 12:33 p.m. June 10 in West Plains Medical Center.

The young lady weighed six pounds and 15 ounces and has been named Maricella Stevie. The couple have three other children, Patricia, 10 years; Gabriel, eight years; and Marcos, five years of age.

Grandparents are Don and Cecilia Ortiz of Las Vegas, N.M. and Emilio and Hortencia Valencia of Muleshoe.

A good crowd of 76 were on hand for the Wednesday morning program at the library, a part of the Summer Reading Club, (Magic-Mysteries).

Chief of Police Les Irvin gave an interesting and informative short talk on methods the police use in solving a mystery or crime.

He showed a blown-up picture of fingerprints to show how they study distinguishing lines and swirls, also discussed handprints, blood-samples, hair samples, and other material found at the scene of a crime. This was followed by a question and answer period.

Two short movies were also shown- The Sorcerer's Apprentice, and Mickey's Trailer, both Walt Disney features.

The kids also got to guess "What's in the Mystery," Bag and guessed at the very first clue! Every week this will be a feature on the program.

The Library now has 22 programs for the computer, most of which are games that increase skills in reading, math, spelling and typing. The computer is available to all ages, but it would probably be better to call and reserve it for a time slot, as it is in use so much of the time. There is no charge, this is another free service of Muleshoe Public Library. Some of the older kids have already learned to program it, and print-out their programs.

Any old place I hang my hat is home, sweet home to me.  
-American Saying.

### Bridal Selections

For  
Jan Whitt  
Bride Elect of Kelly Kuehler  
Sherri Kinard  
Bride Elect of Shane Claunch

### Antiques & Junk

109 S. 1st 272-5275



JANIE RODRIGUEZ AND PAUL

## Young Homemakers Hold Fingerprinting Clinic

The Lazbuddie Young Homemakers recently held a fingerprinting clinic for the children in the community whose parents wished to have an accurate set of fingerprints of their child.

"Parmer County's Chief Deputy, Jerry Atchley, gave his time to help the Lazbuddie Young Homemakers with this project. There was an overwhelming response from the parents requesting that their child be fingerprinted. Deputy Achley spent three days in Lazbuddie on this project" said a spokesman for the group.

One of the Lazbuddie Young Homemakers was quoted as saying, "We appreciate so much the many long hours that

Deputy Atchley put in as he painstakingly fingerprinted each of the many children who came through the clinic. We are also grateful for the Lazbuddie School's willing assistance."

The Lazbuddie Young Homemakers organized the fingerprinting clinic as a community service with children from pre-school through sixth grade being allowed to participate in the clinic with their parents permission.

Deputy Atchley took an accurate set of prints of each finger and the right palm of each child. Only one copy of each child's prints was made and these print records were given to the parents to keep. These fingerprint records can be used in identifying a missing child.

Young Homemaker vice-president, Debbie Magby, was chairman for the clinic. Other members include: Lana Copp, Marca Morris, Joann McDonald, Reta Mimms, Janice Bradshaw, Cindy Cargile, Debbie Weir, Janette Thorn, Debra Redwine, Debbie Smith, Marleen Bennett, Ellen Gallman, Mandi Seaton, Vickie Burch, and advisor, Cassandra Cargile.

### TOPS Club

Muleshoe T.O.P.S. chapter No. 34 met Thursday, June 7 in the meeting room of Bailey County Electric with 10 members present.

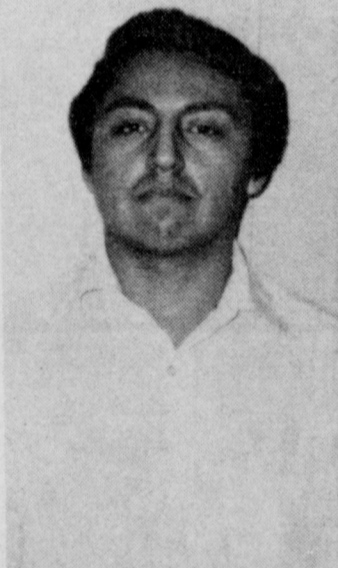
Clara Lou Jones, leader called the meeting to order. The T.O.P.S. pledge was recited and the fellowship song sung. Aurora Mata, secretary, read the minutes of the previous meeting, they were approved. Ruth Clements gave a financial report.

Aurora Mata was named weekly best loser. First runner up was Laverne James and Clara Lou Jones was second runner up.

Best loser for the month was Ernestine Steinbock with Hazel Nowell first runner up and Rose Sain, second.

Jewell Peeler presented a contest which will start tonight Thursday and continue through July 26.

Ernestine Steinbock presented a program on hands. The meeting was closed with the singing of the good-night song.



RAYMOND ESPINOZA

### Sudan Youth Accepted In USAF Academy

Raymond Espinoza, a 1984 graduate of Sudan High School, has received official notification of his appointment to the United States Air Force Academy in Colorado Springs, Colo.

It was reported that after receiving a nomination from Senator Lloyd Bentsen of Houston, Raymond spent several suspense filled months filling out forms, going through medical examinations, and taking physical fitness tests before he was officially accepted.

He will be leaving the first week in July for Basic Cadet Training.

Espinoza said "I am very excited about the appointment and am looking forward to going."

\*\*\*\*\*

Camel's-hair brushes are not made of camel's hair. They were invented by a man named Camel.

## Hospital Auxiliary Receives Pins, Bars

The Muleshoe Hospital and Nursing Home Auxiliary met Monday night, June 10 at the Ave. D. Church of Christ for their annual awards dinner.

Thirteen members received either a pin or a bar in recognition of the hours of volunteer service that each had contributed this year. For the First 500 hours of volunteer service, the member receives a pin, thereafter, a bar is received which also represents 500 hours of volunteer service.

Those members receiving a pin were Ruth Clements, Laverne James, Nell Magby, and Juarec Smallwood. Members receiving a bar were Marie Bradley, Skeet Bradshaw, Clara Crain, Sammie Ethridge, Dorothy Green, Clara Lou Jones, Faye Poyner, Betty Ramage, and Beth Watson.

Clara Lou Jones, president of the Auxiliary, displayed a plaque presented to the Auxiliary by

The meal was catered by D. J.'s Home Cookin'. After dinner and awards, members had an opportunity to reminisce while looking at their newly completed scrapbook.

Members present were: Flo Jones, Sammie Ethridge, Ruth Clements, Betty Johnson, Clara Lou Jones, Rue Kimbrough, Johnnie Kimbrough, Berta Myszondt, Betty Ramage, Clara Belle Crain, Skeet Bradshaw, Laverne James, Dorothy Green, Nell Magby, Beth Watson, Ruth Williams, Faye Poyner, Mildred Redwine, Marie Bradley and Paula McMeans. Also present was Elizabeth Hardin who is a Volunteer to the Volunteers.

The Texas Association, Directors of Volunteer Services for "significant contribution to quality patient care through volunteerism in the hospital and community".



TAMBLE LEANNA TARLTON

### WMU Weekly Meeting

WMU of the Trinity Baptist Church met Tuesday, June 12 at the church for Bible study. They also read the Royal Service. Eva Ashford led the opening prayer.

Those present included Clara Coffman, Pearl Dunlap, Eva Ashford and Wenona Spears. Ms. Coffman dismissed the group with a prayer.



"The Star Spangled Banner" bore another name when it was first published in 1814—it was called "The Defense of Fort McHenry."

## Miss Tarlton To Appear In Summer Rep 84

Tamble LeAnna Tarlton, daughter of James and Linda Tarlton and granddaughter of Mr. and Mrs. Henry Landers of Muleshoe and Mr. and Mrs. Pete Tarlton of Maple, will be appearing in the Lubbock Summer Rep. 84 at the Lubbock Civic Center.

She will be in West Side Story on June 15, 16, 22 and 23, and in the Boys From Syracuse on June 19, 30, July 6 and 7.

Miss Tarlton will be entering Texas Tech as a freshman in the fall. She is a January graduate of Coronado High School. There she participated in the Honor Chorus and ensemble, National Honor Society, Thespian Drama Society, Hugin Literary Magazine, French and German Club, Tri-Hi-Y, and Student Council.

She was selected Who's Who in American High Schools, semi finalist in National Association of Teachers of Singing Tri State Competition and other UIL vocal honors.

Miss Tarlton received the Hugh Paik Vocal Scholarship for \$2,000 and qualifies for the \$200 Deans Scholarship Award. She will be majoring in vocal music.

She also appeared in H.S. Pinafore and Anything Goes in Summer Rep. 83.



FINGERPRINTING CLINIC--Parmer County Chief Deputy, Jerry Atchley, fingerprinting Brett Thomas, son of Mr. and Mrs. Randy Thomas, during the fingerprinting clinic at Lazbuddie recently.

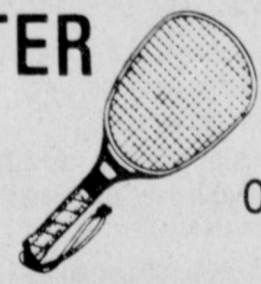
### 'The Fingertip World Of Classifieds' Call 272-4536

**RANDGEAR** We Can Save You Money...  
Come In Today And Check With Butch or R. O. Before You Buy  
20 Hp. to 750 Hp.  
**Randolph Gearhead**  
Now Available At  
**Leo's Blacksmith & Machine**  
310 W. American Blvd. 272-4418

# NOW OPEN

## THE FITNESS CENTER

FEATURING  
**Nautilus**  
& RACQUETBALL



"Changing The Shape Of Muleshoe"

## COME ON IN AND SHAPE UP FOR SUMMER!

- ★ PROFESSIONAL EXERCISE INSTRUCTOR
- ★ COMPLETE LINE OF NAUTILUS EQUIPMENT
- ★ OLYMPIC FREE WEIGHTS ★ EXERCISE CLASSES
- ★ 4 RACQUETBALL COURTS ★ THERAPEUTIC WHIRLPOOL
- ★ BODY BUILDING & RESHAPING
- ★ FREE NURSERY ★ WET SAUNA
- ★ AND MUCH MORE

1420 No. Prince  
Clovis, NM  
762-3775

Come In And Have Fun, And Get Healthy Too!

Also Register For The FREE TRIP TO MAZATLAN, MEXICO (no purchase required)  
DRAWING JUNE 15



On June 17th  
Members Of The  
"Over The Hill Gang"  
Would Like To  
Welcome Their  
Newest Member.

(Gift Suggestions:  
Geritol, Vitamins,  
Walking Cane, Glasses etc.)

Happy 40th Birthday T.S.





**UNITED IN MARRIAGE**—Miss Laurie Ann Young became the bride of Clayton Collins Shaw at 8 p.m. (today) Sunday, June 17 in Westminster Presbyterian Church in Oklahoma City, Ok. Vows were read by Dr. Michael David Anderson. Parents of the couple are Vickie Young LeCrone of Oklahoma City, John Young of Muleshoe and Mr. and Mrs. Marvin Shaw of Norman, Okla. Honor attendants include: Denise Young, Juli Webster, Melissa Adkins, Nancy Giger, Stephanie Adkins, and Dana LeCrone, all of Oklahoma City, and Tyree Stevens of Muleshoe. Grooms attendants included: Brad Connery of Austin, Russell Young, Steve Jackson, Gian Boohntekul, Greg Fairchild and Damon Baker, all of Oklahoma City. Miss Young attended Central State University. Shaw also attended Central State University and is the owner of Audio Dimensions. Following a wedding trip to Manzanillo, Mexico and French Quarter of New Orleans, La., the couple will make their home in Oklahoma City.

## Baby Shower Honors Mrs. Copp, Daughter

Miss Kayla Sherrell Copp, infant daughter of Mr. and Mrs. Rick Copp of Lazbuddie, was honored with a shower on Friday, May 4, in the Lazbuddie School Homemaking room.

Guests were greeted by Kayla Sherrell, dressed in a red, white, and blue sailor dress, and her mother, Lana Copp. Lana's corsage was made of a pring bouquet of silk flowers.

Special guests were Kayla Sherrell's great-grandmother, Mrs. Dollie Cantrell; her step-grand-

mother, Mrs. Edna Duke of Floydada; her aunt, Mrs. Julie Duke, and her cousins, Justin and Randi Duke of Plainview.

Fruit breads and lime sherbet punch were served to the guests. The pink-covered serving table was decorated with stork paperware, a crystal punch bowl, and crystal trays of breads. The centerpiece was a pink-dressed Effanbee baby doll sitting on a bed of multi-colored silk flowers and greenery. The doll was a gift to Kayla from one of the hostesses.

The hostesses gave individual gifts. Hostesses for the occasion were: Janice Bradshaw, Debbie Magby, Debra Redwine, Cindy Harris, Cassandra Cargile, Vickie Burch, Reta Mimms, and Billy Mason.

### Brenda Flowers Enters Miss Teen Pageant

Brenda Flowers, daughter of Mr. and Mrs. Tom Flowers will be among the candidates competing for the title of Miss Teen of Texas to be held in Austin June 15-17.

Miss Teen of Texas will receive a \$1,000.00 scholarship as well as a host of merchandise awards and will join the title holders of the remaining 49 states in an all expense paid trip to the National Miss Teen of America Pageant.

Miss Teen of America will receive nearly \$20,000.00 in awards, including a \$15,000.00 scholarship to the college or university of her choice.

Prior to arriving in Austin, the candidates are all judged on scholastic record, service and achievement to school and community, and personal development.

While at the Miss Teen Texas Pageant, all candidates take a written test designed to measure their general awareness of the world around them. A panel of judges will also score the girls in the areas of personality and poise and appearance in formal wear.

The Pageant Finals will be held at 4:30 p.m. on Sunday, June 17 at the Berger Center located at 3200 Jones Road in Austin. Pageant headquarters will be at the Austin Hyatt-Regency.

The American Heart Association is the official charity of the Miss Teen of Texas Pageant. Candidates are currently raising pledges and donations in the form of a Scavenger Hunt. The official Host group of the Pageant are the Austin Jaycee Women.

Miss Flowers will be sponsored in the Pageant by the Muleshoe Kiwanis Club.

### Selina Gonzales Attends Twirling Camp

Selina Katrin Gonzalez, daughter of Mrs. Ana Gonzalez participated last week in the Brownwood Christian Twirling Camp. She received a first place trophy in Solo competition, third place medal in Modeling, third place medal in Basic Strutting and received a trophy for the best camper in her dorm.

She is also one of the five girls who will represent Muleshoe in the Cinderella Scholarship pageant next week at Texas Womens University in Denton.

Miss Gonzalez is the current Cinderella Miss of the South Plains Division. Her sponsors are Robert Green, Inc., Violas Mexican Food, Immaculate Conception Catholic Church, San Francisco Cafe, Summit Savings, Muleshoe Floral, Pay and Save, Leas Mexican Food, Western Drug, Muleshoe Supermarket, Mr. and Mrs. Ray Anzaldua and Ana's House of Beauty.



**ENGAGEMENT ANNOUNCED**—Mrs. Bertie Purcell wishes to announce the engagement and approaching marriage of her daughter, Miss Debbie Purcell to Edward Beauchamp, son of Mr. and Mrs. Gerald Beauchamp of Lubbock. Miss Purcell is also the daughter of the late Junior Purcell. Vows will be exchanged at 7:30 p.m. June 22 in St. Lukes Methodist Church in Lubbock. The bride-elect is a 1976, graduate of Muleshoe High School and a 1980 graduate of Texas Tech. She has taught in the Arlington School District for four years. Beauchamp is a 1975, graduate of Monterrey High School in Lubbock and also a 1982, graduate of Texas Tech. He is currently employed by Tercso, Inc. as a mechanical engineer.

### Tommy Galt's Return Home To Goodland

Mr. and Mrs. Tommy Galt returned home Saturday following a one month visit in Baytown, visiting with their daughter, Dr. and Mrs. Clarence Albus and three grandchildren.

While there they watched seven Little League Baseball games in which their grandson, Matthew, played. They also saw him receive the "Best Hustler Award."

They were also present for the dance recital in which their granddaughter, Rachel, participated on Friday, June 8.



RACHEL ALBUS

**College Career**  
Freshman—Just who do you think you are anyway? Conceited Coed—I am a woman. Nature's noblest piece of architecture. And you?  
Freshman—Me, I am a building inspector.

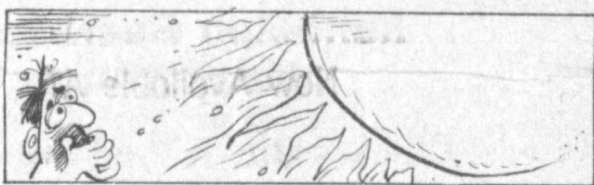


BRENDA FLOWERS

**Generous**  
He—May I have the next dance?  
She—Sure. I don't want it.

**A Suggestion**  
A lot of motorists could afford to be a little more superstitious—believe in signs, you know.

**Classified Ads Are The Link Between Buyer And Seller**  
Call. 272-4536



At its center, the sun has a density of over a hundred times that of water, and a temperature of 10-20 million C.



SELINA KATRIN GONZALEZ

Classified Ads Call 272-4536

**Now Open Lees Fruit Stand**  
(Located At Progress)

**They Have:**

- Watermelons
- Texas Cantalopes
- Tomatoes
- Colorado Potatoes

**Adrian Photography**

218 West 2nd 272-3487

**Picture Perfect Baby Contest**

2 Categories: Birth TO 18 Months  
18 Months To 4 Years

**Deadline For Entering:**  
June 30, 1984

Call Today For An Application  
Public Judging Sponsoring Judges

Latrells - Poyorns - Delton E. Wilhite, Associates - Something Special  
- First National Bank - Cliff Frame & Gallery, Sudan -  
Muleshoe State Bank - Doll Cottage, Farwell - Citizens State Bank, Earth  
Chick - N - Dock

# Summer SIZZLERS

Spring and Summer LINGERIE

Ladies Summer PYKETTE COORDINATES 20% OFF

Large Group Ladies Summer Fashions 20 to 50% off

Ladies FASHION STRETCH JEANS 13.88

1/3 off PLAYTEX BRAS

20% off ENTIRE STOCK BALI BRAS

1/3 off Danskin LEOTARD and TIGHTS 1/2 Price

## Fabric CLEARANCE

Group 1.....97¢ yd  
Group 2.....1.37 yd  
Group 3.....1.77 yd  
Group 4.....2.77 yd

See All Our New Fabrics!  
All Spring and Summer Fabrics Reduced

# ANTHONY'S

**Bailey County Journal** (USPS 009-200)  
Established March 21, 1963. Published by Muleshoe Publishing Co., Inc. Every Sunday at 10:00 AM. Second Class. Postage paid at Muleshoe, Texas. 75847. Second Class Postage paid at Muleshoe, Texas 75847.

**MEMBER 1984**  
TEXAS PRESS ASSOCIATION

**MEMBER 1984**  
I. B. Hall President  
James W. Wood Vice President  
Clayton W. Wood Secretary  
F. L. Harris Treasurer  
H. L. H. Advertising  
1000 North Loop West, Dallas, Texas 75202

**SUBSCRIPTIONS**  
Muleshoe Journal and Bailey County Journal \$11.00  
Bailey County Journal and Bailey County Journal \$11.00  
Muleshoe Journal and Bailey County Journal \$11.00  
Muleshoe Journal and Bailey County Journal \$11.00  
Muleshoe Journal and Bailey County Journal \$11.00  
Muleshoe Journal and Bailey County Journal \$11.00



# July 4th Entertainment

## -- Something For Everyone

Food, entertainment and fireworks will be putting the finishing touch on an exciting day in Muleshoc on July 4th.

From 6 to 8 p.m. on July 4th, the Muleshoc 4-H Club will be serving a barbecue supper with all the trimmings at the Avenue D City Park, according to Nelda Merriott, chairman of the evening's entertainment. Assisted by Toni Eagle, the two have lined up both an entertaining and a fun-filled evening at the park.

Called The Jamboree, it will begin at 6 p.m., along with the barbecue with the Church of Christ Quartet. Members of the group include R.A. Bradley, bass; Jacque Baker, tenor; Duane Lloyd, lead and Jenean Gable, alto.

They will be followed at 6:30 p.m. by an outstanding group from Sudan. They will be recognized as the Espinoza family from Sudan, who help entertain each year during the Jerry Lewis Telethon at the Civic Center.

Chubby Ray and the Comancheros includes Chubby Ray of Sudan, who sings, plays the fiddle and guitar; James Espinoza of Muleshoc, who sings the lead, and plays the rhythm guitar; Raymond Espinoza, Jr., lead guitar and rhythm guitar and Frankie Espinoza who sings and is the drummer.

Unusual entertainment will follow at 7:30 p.m., when the Sudan Entertainers take the stage. They are students from Sudan Junior and High School, who will include Thea Mathis, who sings spirituals; Kevin King with Michael Jackson impersonations and three young men who are break dancers. If you have not

seen break dancing, the fluidity of movement, combined with other components, make break dancing really unusual to watch.

A local group, Cliff Allen on the rhythm guitar and

**Nursing Home News**  
By Joyce Stancell

Alva Shofner's great grand daughter from Okla. is here visiting.

Effie Smith spent Sun. at her home visiting with her niece that she hadn't seen in five years. Other family members dropped by for a visit.

Margaret Beard was visited Tues. by her brother and sister-in-law.

Clara Weaver is going to be out visiting in her home for several days. She left Fri. eve.

Cordelia Cochran attended church services at the Muleshoc Church of Christ Sun. morning and eve. She stayed for the ice cream supper that followed the Sun. night service. She states that those ladies really know how to make chocolate ice cream.

We would like to wish all the Father's a Happy Fathers Day.

Our thanks to Marilyn Wilson for bringing cookies to the Nursing Home Tues. We appreciate this kindness so much.

Virgie Mason baked a big delicious banana nut cake and brought it for the residents Tues.

Bro. Huggins, Mrs. Coffman and Judy came Fri. afternoon to share a Devotional with the residents. They are members of the Trinity Bapt. Church.

June Gore came Fri. morning to have a Ceramic classes for the residents. They did beautiful wall plaques in pastels.

The Muleshoc Singers came Sunday afternoon to sing to the residents.

Alma Henley spent Sun. night and Mon. in the home of her daughter Cleo & Stanley. She states that she really enjoyed the visit and the good food.

Cleo Bellar went out with her husband for a visit Sun.

Mrs. Whisenhunts family from out of town were here visiting over the weekend.

Lois Ethridge was visited by her brother, Mr. Bruce Sladen & her sister Mrs. Dunbar.

singing; John Fried on the fiddle and Weldon Petty at the fiddle and singing will provide the entertainment from 8:15-9 p.m.

At 9 p.m. leading up to the 10 p.m. fireworks will be the everpopular Anchor Brothers, a gospel singing group from Sudan.

The gospel singing group will be singing many of the numbers from their albums, as well as some songs they have written themselves. They are becoming well known throughout the country at this time.

Reydon Stanford is the lead singer and pianist; Kenneth Richards is vocalist and plays the bass guitar; Dean Richards is a vocalist and the drummer; W. T. Watson of Muleshoc plays the steel guitar and Jerry Howard of Levelland plays lead guitar.

At 10 p.m. the lights at the park will be extinguished and the fireworks will be set off by members of the Muleshoc Fire Department.

There will be a charge for the barbecue, but all the other entertainment will be at no charge.

### Muleshoc...

Cont. From Page 1

bined exercise held in the Caribbean, the Gulf of Mexico, Straits of Florida, Atlantic Ocean and the southwestern United States.

Graves is an artillery operations supervisor with the 82nd Airborne Division at Fort Bragg, N.C.

More than 2,200 students at Texas tech University qualified for the president's and dean's honor rolls in the university's six colleges during the 1983 fall semester.

To make the President's Honor List, a student must earn a perfect 4.0 (A) grade-point average while enrolled in 12 or more semester hours of classwork.

Named to the president's list were Tommy L. Wheeler and Stacey Campbell.

For the Dean's Honor List, a student must finish 12 or more semester hours with a grade-point average of 3.5 or above.

Students named to the dean's honor list include Cynthia Phillips, Rebecca J. Turner, Laura Latimer and Karol DeSautell.

### Professor predicts grocery store/bank

COLLEGE STATION — Americans may soon find themselves opening checking and savings accounts at the neighborhood grocery store, predicts a Texas A&M University finance professor.

Dr. Peter S. Rose said Texas is one of the states targeted for an experiment by two prominent supermarket chains to offer financial services at their stores.

With the deregulation of financial industries, competition will be greater than in virtually any other American industry, Rose said.

"Traditional barriers between one financial institution and another are breaking down and the traditional separations between financial and nonfinancial business are also blurred as services proliferate," he said.



THIS IS NO SNAKE IN THE GRASS--Even the snakes have enjoyed the rains during the past week, as evidenced by this snake photographed as he (or she) went for a swim in a full bar ditch west of Muleshoc on FM1760.

### ATPE Calls For Consolidation Study

The Association of Texas Professional Educators (ATPE) has again called for a study to be made on the subject of school district consolidation. ATPE representatives delivered letters to the chairman of the House and Senate Education Committees today.

ATPE Executive Director Mike Morrow stated, "The issue of consolidation must receive attention. So many issues of importance to quality education are being discussed by our lawmakers that it is imperative that the request for this study not get 'lost in the shuffle' of this Special Session."

According to Morrow, the association first proposed the study to the Select Committee on Public Education in testimony presented in February by ATPE president Sam Reed.

With the implementation of curriculum reforms passed into law by the last legislature, the Select Committee agreed with ATPE that more and more school districts with low student enrollments will be forced to look consolidation to meet the increased academic demands required of the schools. However, the issues of community pride, loss of jobs, and the need for new facilities must be considered.

Morrow cited the Select Committee report, which incorporated much of ATPE's recommendation for the study, as setting forth the following considerations: Which districts are candidates for change and which would benefit?

What is a logical district size considering educational needs as well as efficiency, curriculum requirements, the accreditation process, the need for Community elementary schools, new funding formulas, etc.?

What factors impact on the local community such as political issues, infringement on local control, the effect on employment, the need for new facilities, etc.?

What is the effect of differential tax rates?

What factors other than size affect educational effectiveness?

The Select Committee recommended that the Texas Texas A&M prof says yesterday's trash is tomorrow's history

COLLEGE STATION — To most people garbage is, well, garbage. But to one Texas A&M University historian it is more than yesterday's chicken bones.

For Dr. Martin Melosi, garbage — or refuse as it is more respectfully known — is an urban problem on par with crime and unemployment.

Melosi, who doesn't mind being called the "garbage historian," has extensively researched the history of how we have created and disposed of waste in this country and has authored two books on the subject: "Garbage in the Cities" and "Pollution and Reform in American Cities."

He believes one of the best ways to find out what the future of garbage is in this country is to study what the refuse problem has meant in the past and how city fathers and others have coped with it.

Disposal methods — incineration, open dumping, land-filling, and pyrolysis — are increasingly unable to keep up with the proliferation of waste products.

"As in all previous eras of human existence, the refuse problem is not about to disappear," Melosi said. "It has only changed in form and magnitude."

### Farm...

Cont. From Page 1

operated as sole proprietorships represented 88 percent of the total.

In 1982, the average age of farm operators was 48.5 years. The proportion of operators reporting farming as their principal occupation decreased from 81 to 74 percent over the four year period.

In 1978, 354 farms were reported to be irrigated farms, for an acreage of 124,500. This decreased to 288 farms and 111,194 acres by 1982.

Most of the farms operators in the county are in the 45 to 54 year age group with 107 in this group reported in 1978 and 106 in 1982. In 1982, only 25 farmers were reported to be under 25 years of age.

Nine females were reported their major crop to be the county in 1982.

In 1982, 82 farms reported their major crop to be corn, 240 farms produced grain sorghum, 210 farms had wheat, 136 farms had cotton, 43 farms produced soybeans, five farms had peanuts, 18 farms produced alfalfa and other hay and 11 farms produced vegetables.

### Texas A&M prof finds high tech influences agricultural ethics

COLLEGE STATION — "High tech" has come to the farm, and with it have come

### Rain...

Cont. From Page 1

"Right now, we need hot sunny days to get the cotton started," said Tanksley.

Unless the cool days continue for several more days, most of the cotton is expected to come through the rain without any seedling disease, calculated the county agent.

In Muleshoc, the official amount of rain recorded was .54, however, the local rain gauges showed amounts of from .72 to just over one inch of rain.

On Saturday morning, at presstime, very heavy rain was falling in the Clovis area, with more flooding reported around the state line. Rain was expected to continue through Sunday before the weather started clearing on Monday and through the week.

changes that, when fully realized, could shake this country to its foundation, says a Texas A&M University philosopher.

Dr. Paul Thompson, who developed a new course in agricultural ethics, says those changes require re-evaluation of agriculture by both the general public and farmers themselves.

"Agriculture is just as high tech as any part of society," said Thompson. "It sort of changed without people noticing it."

Agriculturalists today must be concerned with issues like cultivation practices vs. the soil erosion they cause, genetic manipulation of crops characteristics and the pros and cons of herbicides and pesticides, he said.

"What we need is to educate future agriculturalists in a way that doesn't turn out narrowly focused problem-solvers but individuals with broad understanding in a number of areas," Thompson said.

Just One Salesman—"What kind of car would you like, madam, four, six or eight cylinders?" Customer -- "Couldn't I just begin with one?"

### Fair...

Cont. From Page 1

"We hope to have a couple of new things this year," added the Extension agent. "Tentatively planned will be entertainment for the afternoon or evening, plus a small carnival with rides for the children."

He said people planning to enter items in the fair need to start getting it in their mind, and begin preparations for the September fair.

### Spies...

Cont. From Page 1

AJQHA. Approximately 40 teams are expected to participate in Friday's judging contest open to 4-H, FFA and AJQHA judging teams.

A variety of social activities are scheduled for the eight days, including a clinic, barbecue and dance, and an evening at a water recreation park.

Kristi is the 17 year old daughter of Mr. and Mrs. Ronnie Spies of Muleshoc and is a senior at Muleshoc High School.

**Ellis Funeral Home**  
Pre-Need Funeral Plans  
Supervised By Texas Department Of Banking  
Price Frozen At Time Of Purchase

WE OFFER THE HIGHEST QUALITY SYSTEMS AT THE LOWEST PRICES IN WEST TEXAS

### COMPLETE 8 FOOT SYSTEM

STARTING AT  
**\$995**

[Tax & Installation Not Included]



## SATELLITE SYSTEMS

385-5734 • 246-7746

SALES • SERVICE • INSTALLATION • FINANCING

**Don's Backhoe Service**  
965-2370

Introducing the GRUBSTAKE II with stairwell entrance. Installs inside, outside, under wood or concrete floors. Constructed of F.D.A. approved material - Water Proof - Dust Proof - Termite and Bug Proof. Installs completely in one day. Proven strength-fiberglass. Carpet and battery powered light! Shelving available.

Price Through June **\$2,695<sup>00</sup>** Within 25 Miles

## LARGE PIZZA, MEDIUM PRICE!

The next time you're at a Pizza Hut restaurant, enjoy a large pizza for the price of a medium with the same number of toppings. Choose your favorite, including Pizza Hut Pan Pizza, and any toppings on the menu. It's our way of saying we like seeing you. Bring some friends or family so we can hear them say "Ooohh," "Aaahh" and "Mmmm" too.

Large for the price of medium!

Order any large pizza and pay the price of a medium pizza. This offer is limited to one pizza per party. Offer good at participating Pizza Hut restaurants.

Price good only when ordering. Not valid in combination with any other offer. © 1984 Pizza Hut, Inc. All rights reserved. (See Pizza Hut for food and hours.)

# JOHN DEERE SAVINGS PLANS

## TRACTORS THAT ARE INTEREST FREE UNTIL 1985... AND OTHER INTERESTING DEALS

Get a good deal on the best equipment. Plus...

Model**	Cash Rebate in lieu of Waiver on Tractors		
	During May	During June	During July
40-hp 1250	\$500	\$425	\$350
45-hp 2150	550	500	425
50-hp 2255**	550	475	400
55-hp 2350	675	600	500
65-hp 2550	800	675	575
75-hp 2750	900	775	650
85-hp 2950	1075	925	800
100-hp 4050	1600	1375	1150
120-hp 4250	1725	1500	1275
140-hp 4450	1850	1600	1350
165-hp 4650	2225	1925	1650
190-hp 4850	2500	2175	1825
185-hp 8450 4WD	2875	2500	2100
235-hp 8650 4WD	3500	3050	2575
300-hp 8850 4WD	4375	3800	3225

\*Availability of John Deere financing subject to approval of credit. These offers may be withdrawn at any time.  
\*\*A similar financing rebate offer applies to any 40 Series Tractors remaining in inventory. Ask for details.  
\*\*\*This model is not available for sale in Nebraska.

**Tractors.** Finance any new tractor listed at right with John Deere and no interest will be charged until January 1, 1985.\* Or you can take a cash rebate in lieu of the waiver as shown at right.

**Cotton Pickers and Strippers.** Get your new cotton harvester and financing from John Deere and no interest will be charged until 1984 harvest season.\* Or take a cash rebate in lieu of waiver.

**Combines.** Finance any new Titan combine with John Deere and pay no interest until harvest season 1984.\* Or you can take a cash rebate in lieu of the waiver. See us for details.

**Tillage Tools.** Special discounts end May 31! Get 5 percent off the base price of any new John Deere moldboard plow. Get 10 percent off the base price of most other primary tillage tools.

**Hay and Forage Equipment.** Pick a new John Deere mo/co, SP windrower, baler, or PTO forage harvester and pay no finance charge until September 1, 1984.\* Plus Pick-A-Team double cash rebates on selected John Deere tools. Ask for details.

**DENT-REMPE**  
Sales - Service  
(806) 272-4296 Muleshoc, Texas 1516 W. American Blvd



**EDITORIAL**

**Senate & 1984**

The direction the nation takes in the next four years will be determined as much by congressional elections in November as by the presidential election. Assuming, as polls indicate now, that President Reagan will be reelected, then the numbers on Capitol Hill become all important.

To have a chance of getting his policies enacted, Mr. Reagan needs control of at least one house. Republicans control the present Senate 55-45. The House is controlled by Democrats 268-166 (1 vacancy).

Republican chances to gain a majority in the House are slim, because there are too many districts automatically Democrat-in metropolitan areas with high minority populations, or in areas of the South where there is no 2-party system. (Traditionally, Jews, Blacks and Hispanics vote for Democrats.)

Realistic Republican hopes, then, are for recapture of the 26 seats in the House lost in 1982 congressional elections. This would give President Reagan a fighting chance to enact his policies-utilizing moderate or conservative southern Democrats who often side with him on economic issues.

In the Senate, Democrats hope to win the needed six seats, but few think that likely if Mr. Reagan wins, because the president on the ballot will help G.O.P. senate candidates. His help may be vital to Senator Thad Cochran in Mississippi, Charles Percy in Illinois, Jesse Helms in North Carolina (who pulled ahead in the latest polls), Phil Gramm in Texas, Elliot Richardson (if the nominee) in Massachusetts, Roger Jepsen in Iowa, Rudy Boschwitz in Minnesota, and others.

On the night of November 6, then, if Republicans gain about 25 House seats and maintain control of the Senate, they have won the congressional battle. If Democrats retain the House by anything like their present majority, and gain six seats in the Senate, they have won.

**June 15**

One of the most romantic, significant events in the history of the western world is observed on the 15th, Magna Carta Day. On the 15th in 1215, the knights and barons of England forced the King to sign a document containing forty-eight demands.

This event is important to all who believe in democracy. It was the foundation stone on which most of the liberties of people have been built in the centuries since--in western countries.

Actually, King Henry had agreed to many of the provisions of Magna Carta in 1100 but subsequent kings disregarded his policy and only when King John a hundred and fifteen years later was forced to sign Magna Carta did these freedoms become firmly established.

Magna Carta demands were primarily demands concerning the rights of the upper class. But also included in the concessions were far-reaching guarantees of the liberty and rights of all men.

After this epic event, it was more than five hundred years before the American Declaration of Independence more firmly established the rights of all citizens.

**NEWS NOTES**

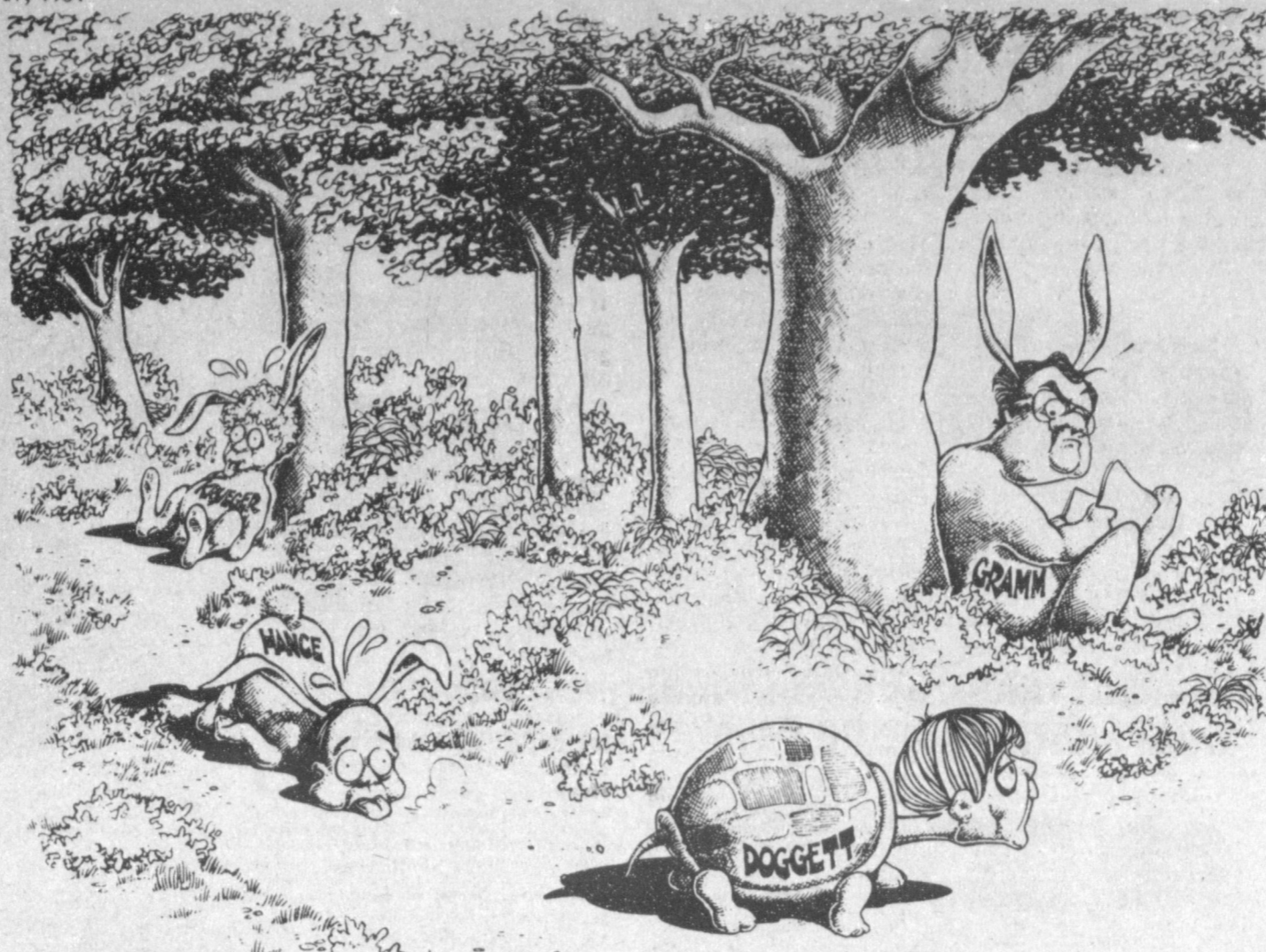
**SALES INCREASE**  
NEW YORK -- Music lovers are increasingly buying more cassettes of their favorite artists than LPs, according to a new record industry survey.

**LASER TREATMENT**  
SAN FRANCISCO -- A beam of light from a laser decreased muscle rigidity, increased the flexibility and strength of paralyzed limbs and even helped some quadriplegics to walk, a scientist at the Walker Pain Institute in Los Angeles report.

Recent flooding most costly in Oklahoma history.

**MS. LIBERTY**  
SEMINOLE, FLA. -- 839 students at Bauder Elementary School held a walkathon and raised \$11,700, more than any other school in the nation, to help restore the Statue of Liberty.

**SPECIAL BREED**  
FORT COLLINS, COLO. -- The "American Sport Horse," a new breed, blends the quickness and athletic ability of the American thoroughbred and the leaping talents of European warm bloods, a broad category of jumping horse that dominates international competition.



**BEN SARGENT**  
© 1984 The Media Research Institute

**NEWS REPORT FROM WASHINGTON**

**O'Neill & Fair Play- Mafia Tactics- Baker As Contrast- Poor Precedent-**

WASHINGTON, D.C.-- Because the Democratic leadership knows it will likely retain control of the House, with its city machine votes and southern districts still "in the bag," Speaker Tip O'Neill is trampling on the rights of

the minority. There's not much fear Republicans will take over and be able to retaliate in kind. The House has been Democratic all but two years for decades. This long reign has tempted Democrats to abuse what have been traditional minority rights.

**Father's Day**

American fathers make more money than those of most nations and give or help give their families a high living standard.

But in spite of such plenty, American families are not much of an example to the world as to permanence, child behavior, teen behavior, etc.

Why so many American fathers have abdicated their role as the rock of stability, security and authority in the home, is a question.

Most wives want a husband they can respect, look to for help and guidance in maintaining discipline in the home.

Too many aren't getting enough of that from American fathers and husbands today.

Thus on the 17th, in remembering millions of hard-working, deserving and loving fathers in 1984, it isn't inappropriate to remember, too, the crime and drug scene in too many families without paternal authority and discipline.

O'Neill's arrogant use of his power has infuriated Republican members. Probably the sorest point is the abuse of the traditional membership ratio on committees.

In this past Congress, when the Democrat edge over Republicans was just 5 to 4, O'Neill saw to it that the ratio on the two key committees -- Rules and Ways and Means--was 2 to 1. It is that way again in this Congress, with its 3-2 ratio.

Ways and Means writes tax legislation. Rules makes the ground rules that govern chamber procedure for all bills brought to the floor, and for debate on the floor and the handling of amendments.

O'Neill also abuses the patronage privilege. Republicans are given only a few of the hundreds of jobs handed out. And some Democrat jobs are nothing but make-work.

One example consists of dozens of elevator operators on automatic elevators (where one need only push a button). All these make-work jobs belong to the Speaker.

In recent days, too, O'Neill has manipulated the use of television cameras to put minority members in a bad light. He ordered camera crewmen to show the empty House when a G.O.P. member (from Pennsylvania) was speaking. That has never been allowed.

Minority members had begun to use the only time they had to voice objections to procedure and legislation --special order time at the end of a House session--to make their voice heard.

Without informing Democrats, O'Neill changed the rule in an effort to embarrass this minority group in front of its C-SPAN audience.

Meanwhile, the handling of minority rights by Republicans in the Senate is in direct contrast. Majority Leader Howard Baker, perhaps reflecting his southern gentleman background, is scrupulously fair in distributing patronage jobs and committee assignments on proportional bases.

It's the big-city machine or mafia ethic versus that of the founding father, in a nutshell.

**EXERCISE & AGING**  
NEW YORK -- New evidence suggests stress makes certain muscles in older people age faster by affecting a chemical in the nervous system and that exercise slows the deterioration, according to University of Wisconsin physiologist Dean O. Smith.

A good name is rather to be chosen than great riches. -Proverbs 22:1.

**WASHINGTON NOTES**

**CURB WAR**

Three former CIA directors agreed that the Reagan administration must press Saudi Arabia to take the lead in curbing escalation of the Persian Gulf war.

**ATTACK VICTIMS**

Victims of assaults by family members are nearly twice as likely to be attacked again if the police do not arrest the attacker, according to a federally funded experimental study released recently.

**QUACKS & ELDERLY**

Ailing old folks squander \$10 billion a year on worthless cures such as horse warts mixed with sour milk or green-lipped mussel extract that keep them from seeking vital treatment, a House panel said recently.

**INCREASE IN NUMBER**

America's elderly population is growing twice as fast as America as a whole, the Census Bureau said recently, and seven states now have more than 1 million people 65 or older, compared with four in 1970.

**SLOWER RECOVERY**

In the latest evidence that the economic recovery is slowing, the Department of Commerce said recently that its index of leading indicators gained a modest 0.5 percent in April, while new orders for manufactured goods took their steepest plunge in four years.

It is a heavy burden to bear a name that is too famous. -Voltaire.

MCI also cuts long distance phone rates.

**CAPITOL UPDATE**

John Tower  
U.S. SENATOR FOR TEXAS  
WASHINGTON, D.C. 20510



When the United States instituted an income tax in 1913, the entire Form 1040 covered two pages, including income, individual deductions and business deductions. Instructions covered one page.

Today, a person entering the field of tax counseling would need 33 feet of shelf space just to hold the tax code and related material.

The result is that the American people are frustrated, confused and angry about their taxes, and with good reason. Our system fails to meet any of the three basic standards which we should apply to our tax code -- fairness, simplicity and economic efficiency.

We too often have used our tax code to promote social and economic goals. Many of these goals are worthwhile, but we have put so many of them into our tax laws that often individuals and businesses make decisions not on a sound economic basis, but for tax avoidance purposes. Additionally, tax rates are a lot higher than they would otherwise need to be in order to make up for exempted income.

But while everyone agrees that our current system is little short of awful, and reform is needed urgently, few agree on the means for reform. One person's loophole is another's necessary exemption.

One approach which has been suggested is the flat tax rate. Under this system, we would eliminate all deductions and do away with the progressive nature of the tax system. Everyone would pay the same, lower, tax rate. This idea has some appeal, but I do not believe the American people are prepared either to give up all of their deductions or to shift the tax burden proportionately away from the upper income levels.

Modified flat-rate tax system proposals would maintain some exemptions, such as that for home mortgage interest, and preserve the current distribution of the tax burden with a simplified progressive tax structure. The difficulty with these proposals is in determining which exemptions and credits are essential and should be maintained, and which should be eliminated.

Other proposals under consideration would tax consumed income but exempt savings or impose a national sales tax.

The Administration is studying all of these concepts and others in an attempt to design a system which would be more fair, more efficient and more understandable. We must vigorously pursue this goal, however difficult it may be to reach and however many political pitfalls stand in our way.

The American people have a right to expect that we do this, and they will demand that we do nothing less.

**STINGERS SENT**

Four-hundred short-range Stinger anti-aircraft missiles and a KC-10 military tanker plane were sent to Saudi Arabia to help the old kingdom defend shipping in the Persian Gulf, administration sources said recently.

**NEW SCANNER**

BOSTON -- A new device that combines a CAT scanner with an electron microscope allows scientists to produce the first three-dimensional pictures of living cells and opens a new window on the secret processes of life.

**Go For The Gold**

First Federal, Like The Olympics, Is A Tradition. We Have Been Serving Eastern New Mexico And West Texas For Fifty Years. To Celebrate Our

**50th Anniversary**

Register Now For A Drawing Of

**Free Olympic Gold Coins**

- One Olympic Gold Coin Given At Each Of Our 3 Locations
- Grand Prize Of A Double Eagle Gold Coin
- To Be Given Away July 10, 1984

**Olympic Coins May Be Purchased At Any Location**

**SUPPORT THE HOME TEAM.**

Buy An Olympic Coin.

**GO FOR THE GOLD**

**FIRST FEDERAL**  
Savings & Loan Association of Clovis

NAME \_\_\_\_\_

ADDRESS \_\_\_\_\_

CITY, STATE \_\_\_\_\_

PHONE \_\_\_\_\_

"Need not be present to win"

Fill Out This Form And Bring It In To Any Of Our 3 Locations. You Will Have A Chance To Win An Olympic Coin.

**FIRST FEDERAL**  
Savings & Loan Association of Clovis

Clovis • Portales

FSLIC

Equal Opportunity Lender

**"In 1984, I intend to plant 110 acres of cotton, and I intend to use Burst on every acre!"**



-Larry Stokes  
Plainview, TX

Burst® Yield Booster™ is here — and High Plains cotton farming will never be the same again! Burst is a plant bioregulator which promotes increased yields of lint and seed through hormone activity. What kinds of yield increases? We asked Burst user Larry Stokes:

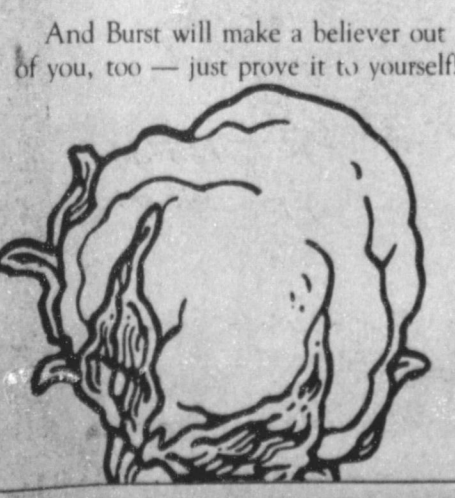
"In 1983, I treated cotton with Burst at 1/2 pint per acre at about ten to 15 percent bloom stage. The test plot was treated exactly the same as the rest of the field — watered the same, plowed the same and harvested completely separate from the Burst-treated and ginned completely separate. My Burst-treated cotton yielded approximately 80 pounds more lint per acre than the check plot. The root system of the Burst cotton was noticeably better, and the fruiting of the Burst cotton was somewhat closer together."

Your Burst Authorized Distributor is ready to show you how to significantly increase your yields through Crop Physiology Management (CPM)™ and the use of Burst Yield Booster!

Western 66 Co.  
Muleshoe  
272-4556



Burst AgriTech, Inc.  
Overland Park, KS 66202  
(913) 262-2444





**Jewell Glenn**

**Services Held**

**Friday**

Services for Jewell A. Glenn, 78 were held at 2 p.m. Friday, June 15 in the Trinity Baptist Church with the Rev. V.L. Huggins, pastor, officiating.

Burial was in Muleshoe Cemetery under the direction of Ellis Funeral Home. Mrs. Glenn died at 1:30 p.m. Tuesday in Muleshoe Nursing Home.

A native of Eastland, Mrs. Glenn was born March 13, 1906, and moved to Muleshoe in 1964, from

**Former Area**

**Woman Dies**

**At Hereford**

Services for Viola B. Treider, 80, of Hereford were held at 10 a.m. Friday, June 15 in the Community Church with Dorman Duggan officiating.

Graveside services were held at noon Friday at the Friona Cemetery with Dorman Duggan officiating. Burial was under the direction of Rix Funeral Directors of Hereford.

Mrs. Trieder died at 5:25 p.m. Wednesday at Deaf Smith General Hospital following a lengthy illness.

She was born in Harvey, N.D. and married George Treider in May of 1925. He died in 1966. She was a retired school teacher, having taught in Friona and Lazbuddie. She was a member of Community Church and the American Association of Retired Persons. She moved to Hereford two years ago from Friona.

Survivors include two daughters, Karen Zinser of Hereford and Phyllis Bagley of Amarillo; one son, Dale of Albuquerque, N.M.; one brother, Ruben Gischier of Eugene, Ore.; two sisters, Constance Walker of Los Gatos, Calif. and Luella Maurer of Denver, Colo.; nine grandchildren; and four great grandchildren.

Wheeler. She was a housewife and a member of the Muleshoe Trinity Baptist Church. She married Oliver G. Glenn Feb. 8, 1964, in Littlefield.

Survivors include her husband, Oliver; one daughter, Mrs. Faye Gipson of Stinnett; two sisters, Mrs. Leona Glenn of Hereford and Mrs. Anne Walters of Cleburne; one brother, B.F. Crossland of Clarendon; four grandchildren; and six great grandchildren.

**West Plains Medical Center Report**

PATIENTS IN WEST PLAINS MEDICAL CENTER, INC.

June 12--Ruby Alexander, Ethel Askew, Laura Henderson, Erminia Martinez, Jesse Pruitt, A.J. Commons, Juanita Lumbrera, Iris Dement, Shelli Carpenter, Martha Guzman --- Baby Boy Guzman, John Wellborn, Frank Lee, Rosemary Pool, Allie Browning, Flois Totten, and Georgia Valencia---Baby Girl Valencia.

June 13--Ruby Alexander, Ethel Askew, Frank Lee, Laura Henderson, Erminia Martinez, Mona Groves, Jeanette St. Clair, Jesse Pruitt, A.J. Commons, Juanita Lumbrera, Barbara Young---Baby Girl Young, Ted Barnhill, Martha Guzman---Baby Boy Guzman, Rosemary Pool, Allie Browning, Flois Totten, and John Wellborn.

June 14--Ruby Alexander, Callie Dyck, Ethel Askew, Erminia Martinez, Mona Groves, Ted Barnhill, Janette St. Clair, Jesse Pruitt, A.J. Commons, Juanita Lumbrera, Barbara Young---Baby Girl Young, Martha Guzman---Baby Boy Guzman, Rosemary Pool, Allie Browning, Frankie Williams, and John Wellborn.

**Want Ads Pay**  
**Call 272-4536**

**Sudan News**  
by Evelyn Ritchie

Alyson Bingham, daughter of Mr. and Mrs. Sam Bingham of Lubbock, visited this week with her grandparents, Mr. and Mrs. L. D. Fields.

Charls Ann Williams was in Quanah the first of the week to join her husband, John who went there to assist his dad in harvesting.

Mrs. Claudia Cooke has been released from the Methodist Hospital and is recuperating at home.

Mr. and Mrs. Larry Schweppe, Larry Dean and Kyle of Gillispie, Illinois, arrived this week to visit her parents, Mr. and Mrs. G.C. Churchman. Others joining them were their other children, Mr. and Mrs. Jerry Ethridge, Kay Lynn and Joe of Hereford and Mr. and Mrs. Scott Churchman, Scott and Penny of Muleshoe.

Mrs. Ruth Baker has returned home from visiting her daughter, Kay McColum and boys in Dickenson.

Mrs. Vicky Bowery and children of Eunice, N.M. has been here visiting her mother, Mrs. Frances Gardner and Bill. Bill was released last week from the Methodist Hospital following surgery there last Wednesday.

Mrs. Sherry Capers, Rebecca and Annette of Cadiz, Ohio arrived Tuesday to visit her parents, Mr. and Mrs. B.A. Beauchamp and Derwin.

Mr. and Mrs. Dewayne Phillips, and children were in Morton Sunday evening to join family members and friends celebrate the 25th anniversary of his sister, Mr. and Mrs. Darwin McBe.

Weekend visitors with Mrs. Earlene Kropp were her son, Mr. and Mrs. John Kropp and children of Hereford and Mrs. Tom Word of Lockney.

Mr. and Mrs. Jim Kirkland, Brent and Krista have returned from vacationing in Las Vegas, Nev.; Disneyland, Sea World, San Diego Zoo, Tiajuana, Mexico and other points of interest.

Dr. Delbert Serratt visited Sunday with his mother, Mrs. Louzelle Serratt and brought the morning worship message at the FBC in the absence of pastor, Rev. Truman Johnson who took several of the youth to Gloriaeta. Serratt was voted on as the interim pastor for the church until a full time pastor has been accepted.

Mr. and Mrs. Adrian Martin and Kyle Martin were in Lubbock Sunday to attend graduation exercises for Dr. Mark Lane, son of Mr. and Mrs. Frank Lane. He graduated from Texas Tech Health Science Center School of Medicine with exercises being held in the University Center Theatre.

Mrs. Dorma Ann Prokop and girls of Garland arrived Tuesday to visit their parents, Mr. and Mrs. Dorman Chester, grandmother, Mrs. Annie Chester and other family members.

Mr. and Mrs. Ralph Granger of Brownfield visited during the weekend with her mother, Mrs. Josephine Fisher and Missy and Mr. and Mrs. Mike Fisher and family.

Mr. and Mrs. Mike Smith, the new coach and his wife who recently moved to Sudan, are vacationing this week in Taos, N.M. with his parents.

Mr. and Mrs. R.B. Knox attended a family reunion in Seymour during the weekend.

Rhoda Minyard has returned from Houston where she visited her daughter, Mr. and Mrs. Ron Millikin.

Mrs. Gary Gatewood and Julia Ann have returned home from the Amherst Hospital.

Mr. and Mrs. Kevin Humphreys, Kris and Kasie vacationed this week at Lake Brownwood.

Mr. and Mrs. Mike Fisher and children returned home last week from San Angelo where they visited her parents, Mr. and Mrs. William Jackson. They accompanied the Girls Little Dribblers to Dalhart on Thursday.

Among those from Sudan who were in Dalhart during the Little Dribblers National games when the Sudan girls played were Mr. and Mrs. Mike Fisher, Josephine Fisher, Mr. and Mrs. Rodney Maxfield, Connie Fisher and her grandmother from Mobeetie, Janelle Hargrove and her mother of Kress, Susan Donnell and Loretta Ried and Jill.

Missy Fisher is in Plainview this week and next where she is and will be helping at Basketball Camp at Wayland Baptist. Amber Donnell, Tanya Fisher and possibly Mandy Davis and others plan to attend the camp.

Mr. and Mrs. Matt Nix were in Abilene during the weekend to attend a convention there.

Melanie Baccus, daughter of Mr. and Mrs. Jim Baccus of Spring, arrived Wednesday to visit her grandparents, Mr. and Mrs. Jack Engram. Her mother, Eloise arrived Thursday for a visit with them and other family members.

Mr. and Mrs. Jack Engram were in Lubbock Thursday evening to attend graduation exercises when their grandson, Todd Engram graduated from Coronado High, Sunday during the weekend to visit their daughter, Mr. and Mrs. Dawson Popejoy and help observe the birthday of their daughter.

Randy Wiseman and Sheribob Taylor are among

**Courthouse News**

**WARRANTY DEEDS**  
Joe L. Smallwood to Frank E. Maestas and wife, Lupe Maestas--All of Lot (4), Block (6), Lakeside Addition to the Town of Muleshoe, Bailey County, Texas.

Fern Gilbreath to Ben Gramling--All of Lot Number (9), Block Number (3), Lenau Subdivision to the City of Muleshoe, Bailey County, Texas.

**MARRIAGE LICENSE**  
William Franklin Smith and Penny Lee England, Muleshoe.

Juan Manuel Camarillo and Mary Lou Franco, Muleshoe.

Johnny Gregory Rivas, Texico and Elva Margarita Lozano, Muleshoe.

**COUNTY COURT**  
Lewis Cole DWI 30 days jail, \$250 fine  
Juan Garcia DWI 72 hours jail, \$250 fine

**DISTRICT COURT**  
Onas Dewayne Haney and Pamela Lambert Haney, DV  
Kathy Gloria and Guadalupe Garcia, DV

**NEW VEHICLES**  
R. Quentin Wills, 1984 Ford 4 dr, Muleshoe Mtr. Co., Inc.

Frank H. Ellis III, 1984 Ford 4 dr, Muleshoe Mtr. Co., Inc.

Gene Campbell, 1984 Ford Hse Car, Muleshoe Mtr. Co., Inc.

college students who are home for the summer months.

Mr. and Mrs. Bill King of Batson, Ark. visited one day last week with her aunt and uncle, Mr. and Mrs. George Collins.

Shelley Gore, a student of Texas A&M, is involved in their Academic Co-op Program. This program combines college studies with supervised work experience in your chosen field of study. Shelley is taking two of her co-op work terms this summer and fall by working in Lubbock at the Texas A&M Agricultural Experiment Station in Cotton Breeding. She is the daughter of Mr. and Mrs. James Gore.

Joy Logan has been visiting in Amarillo with her daughter, Mr. and Mrs. Roy Hunter and children.

Charlie Smith, son of Mr. and Mrs. Steve Smith vacationed last week in Louisiana with his uncle, Mr. and Mrs. Mike Smith and boys.

Curtis Knox of Dimmitt has been visiting his grandparents, Mr. and Mrs. R.B. Knox and Margaret Williams and family.

Mr. and Mrs. Bob Summer have been gone on wheat harvest these past several days but have returned home.

Doyle Baccus was taken by ambulance to the Methodist Hospital one day last week.

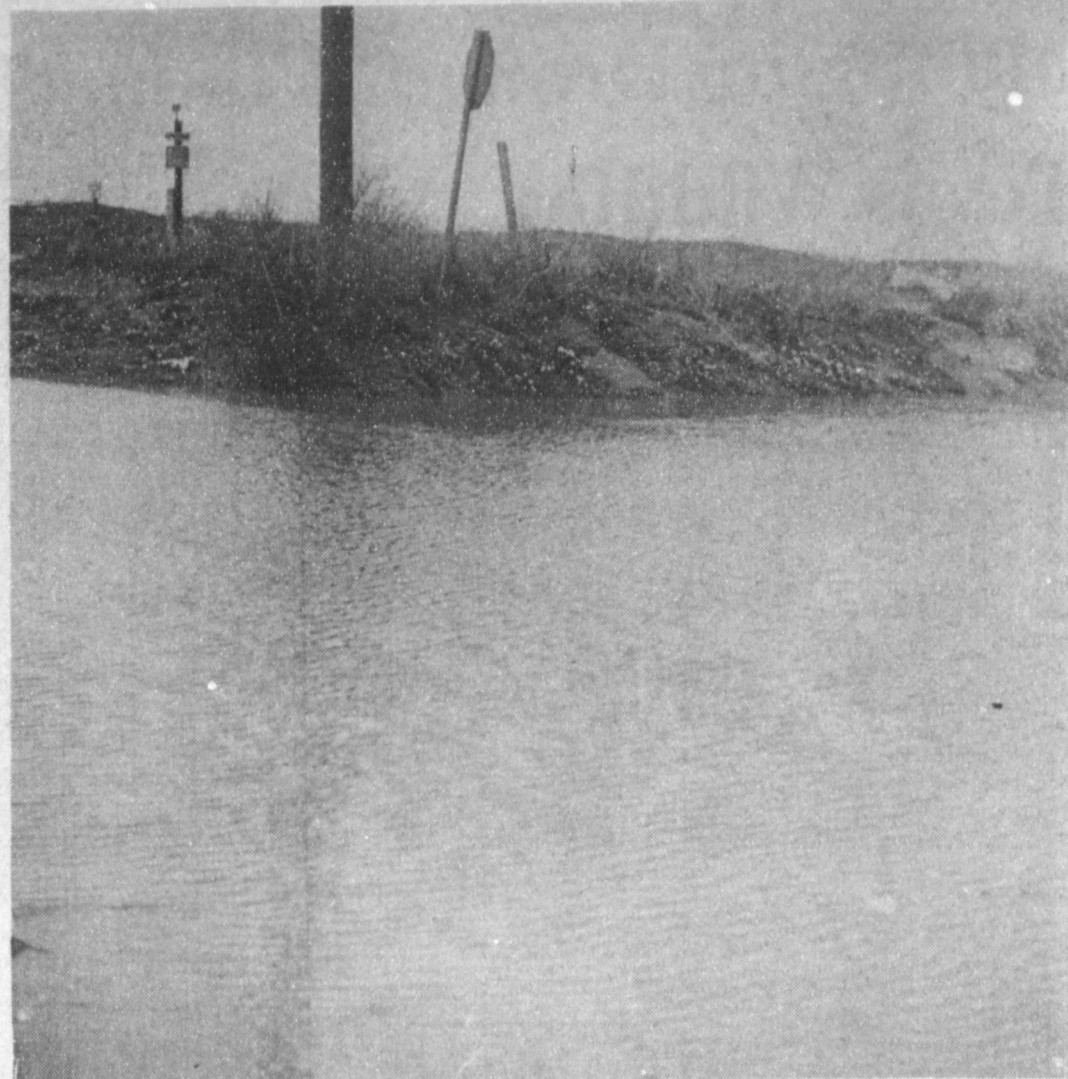
Mr. and Mrs. Van Seymour and family plan to move in the near future to Marble Falls. They will be missed in Sudan.

Mr. and Mrs. Sam Miller have returned from vacationing in Oklahoma with her parents. Brodie and Jeremy returned home with them following a visit with their grandparents there the past two weeks.

Mr. and Mrs. Clay Harrison have moved to Lubbock to make their home.

Jimmy Williams of Quanah visited last week with his mother, Mrs. John Williams and grandmother, Mrs. Estelle Lowe and aunt and uncle visiting from Calif.

Mr. and Mrs. Robert DeLoach, Shawni, Chip and Cody have returned home from vacationing last week in Hawaii. They visited



A NEW AND TEMPORARY LAKE--West of Muleshoe, heavy rains during the past week have left several roads in the form of temporary lakes, as heavy runoff have turned the roads into impassable lakes for the time being. Farmers decided the inconvenience of having the roads flooded is very small coming on the heels of a long drought in this area.

Oahu and Maui.

Nearly 300 lose life during Memorial Day holidays. Jesse Jackson takes campaign to Mexico.

**PROWL herbicide**

**CULTI-SPRAY™**

for grain sorghum and field corn

PROWL Gives You More Versatility On Grain Sorghum, Corn

We're Giving Away A 870 Pump Remington Shotgun



Call Us For Details

272-4203



Riverside Terra

W. HWY 84



CYANAMID Agricultural Division Wayne, New Jersey 07470

ROBERT D. GREEN, INC.  
2400 W. AMERICAN BLVD. -- MULESHOE, TEXAS 79347  
-- HOME OF THE GREEN MACHINES --  
TERRY YELL SALESMAN  
BUS. PH. 306 272-4588 HOME PH. 305 762-2772 806 272-4948

**48" CLOSE TO CEILING**

★ 3 spd. fan mounted pull chain with option for wall control

★ Reversible for summer or winter use.  
★ Copper wound capacitor type motor.  
★ Light Kit optional

★ Hi-Lo lubricating double sealed ball bearing.

**\$89.95**

\$199.00 value

**Now Only**

**Fans & Fancies**

1609 Prince

762-5704

**Sunflower Contracts**



Now Contracting At Top Prices! Planting Seed Also Available.

Call: 272-4231 or 272-3968

**Texas Sesame**  
RailRoad St.



# Managing Drought-Plagued Texas Wildlife

Drought planning principles for wildlife actually boil down to range management principles.

Ecologically, there are a given number of plants to support a given number of animals, livestock and wildlife. Since plant populations are down during dry periods, it follows that livestock and wildlife numbers also need to be adjusted in dry periods.

This is the philosophy of Dr. Dwight Guynn, wildlife specialist with the Texas Agricultural Extension Service, headquartered at Uvalde.

He emphasizes that it is much easier to quickly adjust the stocking rates of livestock than those of wildlife.

"With wildlife, landowners or ranch managers can only reduce wildlife numbers legally during the fall hunting season by allowing hunting. As the hunting season approaches, the owners and managers need to conduct wildlife censuses to be able to predict what the wildlife numbers will be in the next year. The fall harvest is planned around those numbers to keep the wildlife population in balance with the food supply," Guynn explains.

During drought, ranchers also may reduce some of the numbers of livestock which compete with wildlife for forage and browse. For example, cattle are not as competitive as sheep or goats; and sheep are not as competitive for the same food supply as goats, he adds. This information may provide some guidance in times of drought, Guynn explains.

## Supplemental Wildlife Feed

To provide supplemental feed for wildlife can be a very expensive practice for landowners cannot control the number of deer and other animals that come to the feeding area. On small ranches, the animals that come to feed will likely include many from his own land, as well as others from surrounding pastures owned by other people. On larger land areas, this problem is not as acute, he emphasizes. Due to the expense and the lack of control over numbers of animals fed, the most practical method of management is maintaining wildlife numbers at or below what the range will support.

While a number of feed supplements for wildlife are on the market, it is well to remember that energy as well as protein sources are needed by deer. Further-

more, deer require natural protein rather than urea, Guynn reminds.

Many feed mills will work with landowners to prepare rations for deer, but one complete ration in the form of deer pellets has been used by the Texas Parks and Wildlife Department in white-tail deer research studies on the Kerr Wildlife Management area near Kerrville. The 16 percent crude protein pellets are in 3/16 inch cube form.

Ingredients for the deer pellets should include these approximate percentages: 20 percent peanut hulls; 5 percent corn meals; 5 percent dehydrated alfalfa; 22 percent ground milo; 15 percent cottonseed meal; 10 percent soybean meal; 5 percent maxonex; 2.5 per-

cent mineral mix; 0.5 percent vitamins/trace minerals; and 40 grams of aeromycin per ton.

The mineral should contain adequate calcium and phosphorus to supply the ration with 0.64 percent calcium and 0.56 percent phosphorus, the specialist adds.

Current Wildlife outlook "Optimistic"

The current status of wildlife is still optimistic, due to some continuing showers and small greenups during the spring months, Guynn says.

If rainfall is received soon, antler development in deer will not be seriously affected. If the dry season continues without relief, antler development in bucks will be somewhat less than normal, but even so, there will be some large bucks, he adds.

Presently, does are in the latter stages of pregnancy and are entering a critical nutritional stress period; however, good rains could turn around the nutritional status for does and their fawns.

If rains are not received through the fall season, forages for large game will be reduced and landowners and game managers should look to the possibility of reducing overall animal numbers. Instead of reducing deer harvests, it is important to consider increasing the harvest so that numbers can be more in keeping with forage, and food availability, Guynn says.

"The idea is to carry a lesser number of healthy animals through to the next season, so that they can reproduce under more normal food conditions. This can best be realized with fewer overall numbers, however," Guynn says.

A certain amount of wildlife die-offs occur as food supplies decrease. The idea of increasing harvests is to let hunters take excess animals before die-offs occur.

Game Bird Production  
If rains begin and continue into June, there could be good game bird production and an essentially normal season, Guynn says. If, on the other hand, rainfall is not received by the end of June, low game bird production can be expected, he adds.

Guynn points out that turkey and quail normally have both a high reproductive rate as well as a high mortality rate for the young. "Whether or not we have a good supply of birds this fall during the hunting season will depend on the spring's reproduction by the birds. Spring droughts are

especially hard on game bird reproduction, and there is a direct correlation between dry spring seasons and low gamebird production," he says.

"Thus, unless we begin to receive sufficient rainfall before the end of June, we can expect to have lowered game bird production this year. Rains which come after that time may be too late to reverse the trend toward lowered production," Guynn explains.

## Pee Wee League Season Opener

The Sudan Pee Wee baseball season opened June 6th with the hometown Astros and Mets battling to a 20-13 Astro win.

After a slow paced first inning, the Mets were on top 1-0 but at the top of the 2nd the Astro bats came alive posting 6 runs while the defense held the Mets to 5 runs giving the Astros a one-run lead.

The third inning was the key to the Astro victory as the Tamplin sluggers tallied 8 runs and held the Mets to one Marcus Weaver homer.

In the fourth inning the Astros padded their score by 6 more runs and a determined Met team staged an inspired 6 run rally making the final score Astros 20-Mets 13.

The winning pitcher was Britton Roberts while Jarrod Fisher picked up the loss.

In the RBI column for the Astros, Brad Hanna, Everett Williams and Britton Roberts led with 3 each; Toby Berryhill and Rhondra Tamplin had 2 each; Tim Williams, Chad King, Russel Peterson and Michelle Weaver picked up one each.

For the Mets, Randy Gregg led with 3; followed by Gerald Weaver with 2 and Marcus Weaver with 2; Micheal Phillips, Lee Ray, Jacob Fisher, Benny Baker, Roger Huey and Jarrod Fisher each one.

Jacob Fisher and Marcus Weaver both hit home runs during the game.

Thomas Thomson, bank economist in San Francisco: "It's better to have a sustained recovery rather than a boom-bust situation."

## 13. PROPERTY FOR LEASE

FOR RENT - Old Chevrolet building. 3600+ sq. ft. of office space, 10,000+ sq. ft. warehouse. Can be rented separately. See Roy Whitt Phone 272-3058. w13-23s-tfc

5 Irrigated farms For Sale Terms. Call 272-5035. g11-20t-tfc

## 15. MISC.

HOME REPAIRS. F.M. Saldana Construction Licensed and bonded plumber. Specialize in cement, carpenter work, remodeling, painting, acoustical ceilings. 272-4955. 15-16s-tfc

Bruce & Matthews Inc. Refrigeration & Electrical Contractor's, Heating, Cooling, Appliance service. 424 N. First, 272-5114. 15-44t-tfc

Trailer Space for Rent 272-3006. g15-21s-tfc

## 17. SEED & FEED

ATTENTION FARMERS---- Coyote Lake Feed Yard is now buying barley. Call 806-946-3321. c17-25s-3tc

## 18. LEGAL NOTICE

NOTICE FOR BIDS  
The Bailey County Commissioner's Court will receive bids until 10 a.m., Friday, June 29, 1984, for the purchase of a New Motor Grader.

The specifications for bidding for the said motor grader are available in the office of the County Judge of Bailey County, Texas. Gordon H. Green Bailey County Judge b18-24t-1tc

# Economist OP Outlines Issues Of 1985 Farm Bill

Texas and U.S. farmers face three basic issues as they decide their stand on the 1985 farm bill, says an economist with the Texas Agricultural Extension Service, Texas A&M University System.

Dr. Bill Black identifies these issues as follows:

Do farmers want to rely on government payments or market rewards for income? To what extent are farmers committed to the export market?

Do farmers want to maintain the middle-sized family farm?

"Those who want to rely on government payments for their income will support high target prices," says Black. "But high target prices stimulate production, so these farmers must also accept tighter production controls through acreage diversions. In addition, they would support farmer-owned reserves."

On the other hand, farmers who want to rely on market rewards for pay should support lower loan rates so that commercial sales to foreign buyers can continue. In this situation, prices would control production while expanded crop

insurance would protect against natural disasters, Black points out.

"Many farmers believe expanded agricultural exports can resurrect this country's faltering agricultural economy," Black says. "If they are sincerely interested in the export market, they can't have deep-cutting production controls and high loan rates. After all, you can't sell from an empty wagon."

Black also notes that a two-price plan may encourage export trade, where foreign sales would move out lower prices than prevail in the domestic market. Farmers who are not committed to the export market will support strict production controls and high loan rates, he adds.

"Perhaps the most critical choice farmers face in the mid '80s has to do with the medium-sized family farmer," contends Black. "This is the traditional full-time farmer who relies on farm product sales for his income. He has little or no outside income and depends on his family for labor. He has suffered from recent hard times in agriculture."

Programs that will keep the middle-sized family farmer in business are strict payment limitations, limited government loans to family farmers, mandatory production controls, marketing quotas, elimination of the cash-tax accounting sys-

tem and progressive taxation by farm size. These ideas have been talked about for a long time, says the economist.

"Two things will kill the middle-sized family farmer—unlimited income subsidies and payments geared to production," says Black. "These programs help big producers the most."

## Mammoth bones may date back to 10,000 B.C.

COLLEGE STATION — Bones from a mammoth that may have roamed the Brazos River bottom as long ago as 10,000 B.C. were broken and scattered, perhaps by early human hunters, say Texas A&M University anthropologists.

Fine scratches on the mammoth's ribs and leg bone, possibly made by stone butchering tools, are now undergoing further analysis with an electron microscope, said physical anthropologist Dr. Gentry Steele. The bones are also being radiocarbon dated.

When Steele, research archaeologist Dr. David Carlson and 30 students excavated the site on the Brazos River last summer, the animal's shoulder blade and three ribs were found lying inside the long curves of its two tusks — a very unusual position for a natural death.

## Engineers working on test to find chemicals in water

COLLEGE STATION — A test for measuring potential formation of carcinogenic substances called trihalomethanes — a group of chemicals — in drinking water is being developed by Texas A&M University environmental engineers.

Trihalomethanes (THMs) form when chlorine, the most common disinfectant used in Texas water supplies, is added to water containing organics, said Dr. Bill Batchelor of the Department of Civil Engineering. Disinfectants are added to drinking water to kill organisms that could cause disease.

No one knows what levels of THMs are safe to consume, said Batchelor, who has worked on methods to reduce THMs.

"It takes sophisticated equipment to measure THMs," he said, "and many small to medium plants don't have this equipment or the trained personnel to operate it."

Batchelor and a team of graduate students are finalizing an easy, quick test that can be performed on conventional testing equipment by water treatment personnel.

Take away my good name and take away my life.

John Ray.

## 9. AUTOMOBILES FOR SALE

Gov't surplus Cars & Trucks under \$100. Now available in your area. Call 1-(619)-569-0241. 24 hrs. t9-24t-3tpt

For Sale Sierra Classic 1983 diesel pickup Red & Silver. Loaded, 18,000 miles perfect shape. Looks & runs like a new one. Phone 946-3664 and 272-5667. f9-23t-tfc

For Sale-1970 Ford, 4 dr, power steering, 302 engine, radio, air and heater. Call 272-4343 after 6 p.m. 9-25s-tfc

For Sale-'76 Dodge, 3/4 ton pick-up. Automatic power and air. With cabover camper with gas stove and refrig. Call 272-4475 h9-25s-3tc

## 10. FARM EQUIP. FOR SALE

For Sale- 230 ft. setting Peerless Pump. 4 stage 700 gal. Peerless Bowls in good shape. Phone 272-5035 m10-25s-1mc

FOR SALE: Avenger 3 Wheel Hoe Hands with spray tanks attached. Call First National Bank. 272-4515. 10-21t-tfc

## 8. REAL ESTATE FOR SALE

IF YOU WANT IT SOLD

AMERICAN VALLEY INVESTMENTS  
REAL ESTATE

272-4266

ROY WHITT HOME PHONE 806/272-3058

WEST HWAY 84 MULESHOE, TEXAS 79347

SEE ROY WHITT FOR YOUR REAL ESTATE NEEDS

A&M Hi-Protein Dog Food

50 lb. Bag \$10<sup>59</sup>

For Sale- Coachman Motor Home. Call 257-3997. m11-25s-4tp

Apache Pool Camper Trailer- zip add on room. Sleep 6 to 8. See at 808 W. 7th. m11-25s-2tc

TRU-TEST PAINTS PAINTING HELP SPOKEN HERE.

BY Bonnie Blaire TRU-TEST COLOR CONSULTANT

Dear Bonnie,  
With one less roomer in my home, I am left with a spare bedroom that I would like to make into a guest room. However, I do not want to redo it in neutral colors and I do not know what color would be equally pleasing for both sexes. Any suggestions?

Ann M.

Dear Ann,  
While green may not be everyone's favorite color, it is a dominant color in nature and most people are comfortable with it. You may wish to use the new popular jade greens in a monochromatic color scheme. Create a focal point in the room by painting one wall in a mid-pastel green jade, and the other walls in a lighter tint of the same hue. If you seek a little, you can find an area rug that combines many shades of green, including a jade and perhaps some warm wood tones. Toss some pillows on a plain bedspread in colors of light to dark jade, black and (are you ready) violet. A subtle, but positive emphasis, would be to mat colorful pictures with thin, black innermatting.

Bonnie

Fry & Cox, Inc.  
401 S. First: 272-4511

PROWL herbicide

CULTI-SPRAY™

for grain sorghum and field corn

Mr. and Mrs. Farmer

Win: A 19" Zenith Color Remote Control T.V.

How: Purchase Prowl

For Lay By To Be Eligible

Where: Tide Products  
Clays Corner 965-2330

See Us For More Information

CYANAMID Agricultural Division Wayne, New Jersey 07470

"Burst made a believer out of me!"

—Dennis Cowen Amherst, TX

High Plains cotton growers are discovering that Burst® Yield Booster™ greatly increases cotton yields! First tests of Burst in this area, conducted in 1983, were impressive — just ask Dennis Cowen!

"On one field, Burst increased my lint production by 135 pounds per acre and seed production by 327 pounds per acre. That amounted to an overall increase in money of \$100 per acre where I treated with Burst! The cotton I treated was planted June 12th, and I wasn't really expecting to make half a bale out of it. But it ended up making a bale where I treated it with Burst. I plan on putting Burst on all of my crops this year."

Your Burst Authorized Distributor is fully trained in the use of Burst Yield Booster, and is ready to help you get better cotton yields this season!

Western 66 Co. Muleshoe 272-4556

BURST YIELD BOOSTER™

Burst AgriTech, Inc. Overland Park, KS 66202 (913) 262-2444



# CLASSIFIED ADS



## DEADLINE FOR CLASSIFIED ADS IS TUESDAYS AND FRIDAYS 11:00 A.M.

**CLASSIFIED RATES**  
1st Insertion Per Word...\$15  
Minimum Charge...\$2.30  
2nd Insertion Per Word...\$13  
Minimum Charge...\$2.00  
CARD OF THANKS Per Word...\$20  
CLASSIFIED DISPLAY \$1.70...per column inch  
BLIND AD RATES 50% more  
DEADLINES 11 a.m. Tues for Thurs.  
11 a.m. Fri. for Sun.  
WE RESERVE THE RIGHT TO CLASSIFY REVISE OR REJECT ANY AD.  
NOT RESPONSIBLE FOR ANY ERROR AFTER AD HAS RUN ONCE.

### 1. PERSONALS

Custom Baling & Stacking. 3 balers, 3 trucks. Ask for Leo Chavez 272-4768. c1-19t-fc

Openings in registered daycare \$6.00 per day Call 272-3222. z1-21t-fc

Get your car clean & waxed inside & out. Call 272-3795. p1-24s-stfc

Will do painting or yard work. Competitive rates by the hour or by the job. For free estimates call Bill at 272-4398. If no answer call after 5 p.m. m1-24s-3tc

Licensed summer Daycare. drop ins welcomed. Dianne Allison 272-3304. al-24t-2tc

Offices for rent. 302 W. 2nd Call 272-3107. ml-22t-fc

Tired of unsightly roaches? K&B Roach Control. We will eliminate your roach problem. Residential only. No smelly sprays. 272-4323. 9 to 4, Mon. thru Fri. Reasonable rates, no contracts to sign. Home owned and operated. m1-25s-3tc

Creative Circle offers you free needle craft classes plus the opportunity to earn free kits. Call 272-5070. 11-25s-4tc

CLOTHING STORE \$16,900 BRIDAL SHOP \$18,500 OWN AND OPERATE YOUR OWN STORE. National corporation seeking store owners for new locations in this area. One time fee includes buying trip, beginning inventory, store fixtures, supplies, location assistance, financial planning and more. For more information and a free brochure call Mr. Waters 501-568-5125. b1-25s-1tp

**BETTER THAN A GARAGE SALE...**  
"Too Good To Be Through"  
Thats the name of our new consignment shop. Opening soon. Bring your good used clothes and furniture and let us sell them for you. Call 247-2827 or 247-2323 to make an appointment. Lets all work together to help fight inflation. Too Good To Be Through 617 Main Friona, Texas. n1-25s-2tc

**WATKINS**  
Those famous Watkins products you remember: Vanilla, Cinnamon, Liniment, Spices and Herbs, are available at your door. Just give me a call.  
Thersia Davis  
806 W. 7th St.  
Muleshoe, Texas 79347  
Ph: 272-3467  
d1-24s-3tsc

**CONCERNED** about someone's drinking **HELP IS AVAILABLE** through Al-Anon  
Call 227-2350 or 965-2870 or come to visit Tuesday nights. 8:00 p.m. at 1116 W. American Boulevard, Muleshoe.

### 3. HELP WANTED

Want to hire Lady to serve as nursery attendant at Calvary Baptist Church. Call 272-4017 for interview. c3-24t-2tc

**PROCESS MAIL AT HOME** \$75.00 per hundred! No Experience! Part or full time. Start immediately. Details - send - self - addressed stamped envelope to C.R.I. 5288, P.O. Box 3149, Stuart, FL 334.95. c3-23t-4tp

**TELEPHONE SURVEY WORKERS** needed part time to update the Muleshoe City Directory. Work at home. Send name, address & telephone number in your handwriting to: Muleshoe Survey, 2108 Redbud, Odessa, Tx. 79761. j3-17t-fc

**GOVERNMENT JOBS** - Thousands of Vacancies must be filled immediately. \$17,634 to \$50,112. call 716-842-6000, ext. 36336. u3-24s-2tsp

Needed Electrician or good Helper to train. Ronald Ashford Electrical 272-3454 or 965-2223. a3-24t-2tc

Wanted-Full time inside sales clerk. Interview by appointment. Phone 272-5278. i3-25s-2tc

Lazbuddie I.S.D. - cafeteria manager position - salary negotiable-prefer some previous experience with planning menus and ordering food supplies-call 965-2156 or 965-2157 between 8 a.m. and 4 p.m. Monday - Friday. l3-25s-2tc

Experienced farm worker wanted. Top wages paid. 965-2259 or 272-3257. t3-25s-tfc

### 4. HOUSES FOR RENT

Ruidoso Chalet 4 bedroom for rent by day, weekend, or weekly. Call 505-257-2622. Owner Dr. Albertson. a4-18s-10tsc

### 8. REAL ESTATE FOR SALE

House for sale- 316 W. Ave J. 2250 sq. ft., 3 bdrm, 2 bath, 2 car garage, covered patio, large lot close to high school. Phone 965-2240 during day or 272-3839 evenings. w8-24s-6tc

**BY OWNER:** Home for Sale 3-2-2 Brick, fireplace, fenced in back yard, New Well. Located less than two miles from town on Highway. For more information call (409) 764-1092 from 6:00 p.m. to 9:00 p.m. m8-24t-4tp

House For Sale 3 bdrm, 1 bath, 1 car garage newly carpeted & painted. Call 272-4803 a8-25t-tfc

House For Sale- Lenau Addition, 2 bdrm, 1 bath, 1 car garage, fenced yard. Newly painted inside and out. Note is assumable at 9% interest. Call 272-5136 c8-25s-3tp

## AMERICAN VALLEY INVESTMENTS REALTORS

**NEW LISTING**---3 Bedroom, 1 Bath Brick Home with Single Car Garage. Fenced Backyard. 2 Years Old. ---

**ATTENTION TEXAS VETERANS**-Own your own home or farm. 5 % down. Low interest. 40-year loans!! ---

**LOVELY, BETTER-THAN-NEW-HOME** - 3 Bedroom, 2 Bath Home in Country Club Addition, Fireplace, Slanted Beamed Ceiling, Skylight, stained Glass. Lots of Storage, Gamedroom, Matching Storage Building, Much, Much more... Assumable loan!!! h-12

**BEAUTIFUL CUSTOM BUILT** - 3 Bdrm home in Richland Hills. Stunning floor plan, fireplace, jacuzzi, 2 courtyards, sprinkler system, stereo sound system, humidifier. Well built quality home with many extras. b4-45

**JUST ON THE MARKET** - 3 bdrm. 2 full bath, 2 car carport, lots of storage, located on 1 acre. h-42

**JUST LISTED** - 3 bdrm., 1 1/2 bath, 1 car garage, strom cellar, good location. h-41

**NEAT CLEAN**...2 Bedroom, 1 Bath, 1 Car Garage in Lenau Addition. Extra room built on behind garage. Storm windows and doors. Nearly new roof. In good condition. h-36

**LOW 30's** - 3 Bedroom, 1 Bath Home with Carport in Lenau Addition. In Good Condition and just painted. h-39

**SPACIOUS FAMILY HOME**...Nice 3 Bedroom 13/4 bath, double car garage, brick home. Lots of storage. Well-kept Mid 40's. h-4

**COUNTRY HOME**...Beautiful 3 Bedroom, 1 3/4 Bath, 2 Car Garage. Located on 15 Acres West of City planted in Alfalfa. Barns, Corrals. Lots of Extras. h-8

**BIG PRICE REDUCTION ON COUNTRY HOME** - 3 Bedroom, 1 3/4 Bath, Double car garage located on one acre. Cellar, Fruit trees and grapevines. h-43

**BUILDER SAYS SELL NOW** --- 3 Bedroom 1 3/4 Bath, 2 car garage, Fireplace, Cathedral Beamed Den. h-26

**STARTER HOME** --- 1 Bedroom home for only \$7,500.00. New Carpet and wall heater. h-37

**PRICE REDUCED--READY TO SELL!** - Nice 2 Bedroom, 1 Bath, Single-car Garage. Well-Insulated. New Roof. Storm Doors and Windows. h-19

.160 Acres in Lazbuddie Area. 2-8" Irrigation Wells. Good Land in Good Area. f-4

**NEW LISTING**---3 Bedroom, 1 Bath home with large fenced backyard. h-34

280 Acres in Lazbuddie Area--- Electric Valley Sprinkler-- 2 Siderolls 1-8" Well, 1-6" Well, 3/4 Mile Underground PVC, 1/4 Minerals, 25 hp. Lake Pump, 32 Acres of Improved Grasses. PRICED TO SELL!! f-6

**LOVELY CORNER LOT**---Extra Nice 3 Bedroom--13/4 Bath, Carport, Isolated Master Bedroom. Carpet new. Lots of Storage. Good Location. h-5

**GOOD RENT PROPERTY**---2 Bedroom and 1 Bedroom Homes. In Good Condition. \$22,500.00. h-1

80 Acres in YL Community, 1-6" Well---30 Hp. Elec. Motor. 1/2 Mile Underground Pipe Domestic Well. Some Minerals. f-3

160 Acres in Lazbuddie Area. Good Water. Priced to Sell. f-15

**LARGE BUILDING** in Back for Workshop, Storage, or Hobbie. 3 Bedroom, 1 Bath Home in Lenau Addition. h-7

**4 BEDROOM** - 2 Bath, Large Living Room, Dining Room. Fireplace. h-3

**GOOD STARTER HOME** -- 1 Bedroom Home. Priced at only \$9,500.00. h-11

**MOBILE HOME**--2 Bedroom, 1 Bath. Partially Furnished 12 x 64. \$9,500.00. h-13

**2 BEDROOM** -- Home at only \$15,000.00. h-10

272-4266

Thursie Reid-272-5318  
Roy Whitt-272-3058  
Darrell Matthews-965-2127  
Karen Harris-272-5183  
Joy Whitt-272-3058  
Lucille Harp-272-4693  
Rex Harris--Broker  
Max Crim-965-2742

8-25s-stfc

**By OWNER**- Over 1800 Sq. Ft. of Living area. 3 Bedroom; 2 Bath; Living Room; Large Den; Garage & Storage; Carport; Workshop with Garage; Cinderblock Fence; Storm Cellar. Good Location & Priced to Sell. Phone 272-4324 / (272-4281 for Jeri) w8-24t-fc

**For Sale By Owner** - 2100 sq. ft., 3 bdrm, 1 1/2 bath, new formica counter tops, built in cooking, dishwasher, ceiling fans, 2 store houses. Quite neighborhood. Priced in the 40's. Call 272-3304 for appointment. a8-24s-tfc

**For Sale** - 2 BR - Bath, double carport, fenced back yard, storage Bldg. Corner lot Close to School. Phone - 272-5266. 8-23s-tfc

House to be moved: 1 Bedroom, 1 Bath, approx. 900 Sq. ft. \$4750, 272-3157 or 272-4832. 8-34s-4tp

**FOR SALE BY OWNER:** 3-2-2 Four years old, Parkridge Addition. Call 925-6654. b8-24t-fc

**TOWN and COUNTRY**  
Real Estate  
John W. Smith  
Broker  
806-272-4307  
903 W. 7th  
Muleshoe, Tx. 79347  
t8-16s-tfc

**J.B. SUDDERTH REALTY, INC**  
Drawer 887  
Farwell, Tx. 79325  
Ph. 806-481-3288

160 Acre on Hwy. N.W. of Muleshoe, 2 wells, Excellent Financing. Priced for Immediate Sale.

80 acres, 2 wells, 1 electric motor, wheat crop grows. West of Muleshoe on highway, Owner says sell.

480 Acres .rigated with Circle Sprinklers, lays good, on highway-West of Muleshoe. Owner says sell!

320 acres. 3-8 inch wells, 2 electric circle sprinklers approx. 200 ft. to water. approx. 200 ft. of water. Owner says sell immediately. Bargain farm in Pleasant Valley area. 8-23s-tfc

**SMALL WOOD REAL ESTATE**  
232 Main  
272-4838

3 B.R. Brick, 2 Bath, 2 Car garage, 2 Storage Bldg. Central heat Refrigerated air, Fireplace, Electric Garage door openers, fenced Back Yard Good Location, Priced to Sell.

3 bedroom, 2 bath, brick, 2 car garage, fireplace, gas refrigerated air, fenced back yard. 8-23s-tfc

**BINGHAM & NIEMAN REALTY**  
116 F. Ave. C  
272-5285---272-5286  
WE CAN HELP OUR BUYERS WITH 9 7/8% A.R.M. INTEREST RATES ON 30 YEAR LOANS!!!!!!

**RICHLAND HILLS**  
JUST LISTED-3-2-2 Brick home, built-ins (range oven-microwave, kitchen center, dwshr., disposal, trsh. cmpctr., toaster, can opener, stero system), wet bar, Jacuzzi Whirlpool, atrium, basement, Cent. A&H, & loads of other extras... \*\*\*\*\*

JUST LISTED-4-1 3/4-1 Brick, Cent. Heat & Evap. Air duct in hall, built-ins, completely repainted interior & exterior trim, gas grill & more!!!!!! \*\*\*\*\*

3-1 3/4-2 carport Brick, Cent. A&H, built-ins, gas log fireplace, fenced yard, & PRICED TO SELL..... \*\*\*\*\*

3-2+2 carport Brick, Cent. A&H, built-ins, 2 fireplaces, nice den & lv. area, & freshly painted interior..... \*\*\*\*\*

3-1 3/4 Brick, Cent. heat, Evap. Air, fireplace, fenced yard. Very neat & nice!!!!!! \*\*\*\*\*

3-2-2 Brick, Cent. A&H, built-ins, fireplace, utility, fenced yard, storage bldg., & much more. Mid 60's..... \*\*\*\*\*

3-1 3/4-2 Brick, built-in A&H, fireplace, fenced yard, & a corner lot!! \*\*\*\*\*

**LENAU AD**  
2-1-1 home, wall furnace, window evap. air, fenced yard!!!!!! \*\*\*\*\*

3-1 3/4-1 carport home, Cent. heat, nice carpet, fenced yard, & more. \$30's... \*\*\*\*\*

2-1-1 home, Cent. heat, lots of storage, fenced yard, fruit trees. \$23,500!!!!!! \*\*\*\*\*

**PRICE REDUCED-**3-1-1 carport home, corner lot, earthen carpets, fenced yard, large rooms, very nice.... \*\*\*\*\*

3-1-1 home on corner lot, Cent. heat, Evap. air, fenced yard. Let's Look Today!!!!!! \*\*\*\*\*

3-1 3/4-1+1 carport Brick, built-ins, new wallpaper, paint, & carpet less than yrs. old, utility, & large storage. Mid 40's.... \*\*\*\*\*

**EDGE OF TOWN**-3-1 3/4-2 home on 1/2 acre, wall furnace, nice carpet, ceiling fans, & more. \$37,500!!!!!! \*\*\*\*\*

3-2 3/4 home on corner lot, Cent. A&H, built-ins, 2 fireplaces, approx. 3,000 sq. ft. of lv. area, new carpet, large gamedroom, auto. sprinkler sys. Mid 50's.... \*\*\*\*\*

**ENJOY COUNTRY LIVING** in this 3-1 3/4-2 home on 1 acre, Cent. A&H, built-ins, nice large patio, fenced yard, storm shelter, & fruit trees.... \*\*\*\*\*

**JUST LISTED-** 2-1 home on corner lot, living room, den, & close to schools!!!!!! \*\*\*\*\*

3-1 3/4-1 carpo **IN COUNTRY** A&H, built-ins, storage area, fenced yard on corner lot!!!!!! \*\*\*\*\*

2-1 home on 1 acre, built-ins, nice carpet, on pavement close to town..... \*\*\*\*\*

2-1-1 hom on corner lot, freshly painted interior, includes furniture & other items. One Block To School..... \*\*\*\*\*

2-1 home, floor furnace, nice carpet, \$20,000!!!!!! \*\*\*\*\*

*Henry Realty*

111 W. Ave. B  
Muleshoe  
272-4581

3 Bedroom - 1 Bath - 1 car garage in Lenau Addition. ---

800 Acres West of Muleshoe on HWY Excellent Improvements. Priced Right to Sell. Owner Financing. ---

38 Acres West of Muleshoe, 6 Inch Well, Sideroll, All Wheat. ---

One Acre Sites for Home Construction. 3 Miles of Muleshoe on HWY, 3 lots remain. ---

Completely remodeled 2-bedroom home. Ideal first home, must see to appreciate. Nice location with F.H.A. loan. ---

320 acres with Large beautiful 3-bedroom, 3-bath, 3-car garage, spacious gamedroom, central heating and air, under ground sprinkler for yard. 30' X 50' shop building. 5-wells ---

38-acres, Northwest edge of Muleshoe, Terms-- good water ---

Apartment complex, mobile home park, vacant land for expansion. Terms available. 8-23t-tfc

**FOR YOUR WANT ADS CALL 272-4536**

**JIMMIE CRAWFORD**  
Real Estate & Ins  
1725 W. Ave. E.  
Muleshoe, Texas  
Phone 272-3666

3-1 Brick in Lenau With Tile fence and garden. New Exterior Paint.

3-1 1/2-2 Brick in Lenau Addition. Price reduced.

3-2 Brick W/carport in Richland Hills. Very nice.

2-1-1 in Lenau Addition. Close to downtown.

2-1 with utility on 6th St. Consider Lease-Purchase.

2 labors dryland west of Enochs. 1/3 minerals. 336 acres in cultivation. 8-19s-stfc

**KREBBS REAL ESTATE**  
1004 W 6th,  
Telephone 272-3191  
Appraisals

We Specialize in farms and ranches.

k8-24s-tfc

**Classified Advertising Brings Great Results**  
Call 272-4536

JUST LISTED-3-1-3/4-1 Brick, Cent. heat, window evap. air, nice carpet, gas grill. Very nice & priced to sell. Approx. 4 yrs. old. 40' s!!!!!!

JUST LISTED-3-1 home, built-ins, fireplace, Double wall furnace, fenced yard, close to hospital. \$20,000!!!!!!

2-1-1 home, new roof, freshly painted inside & out. Very nice. \$19,500.... \*\*\*\*\*

3-1 3/4 home on corner lot close to schools, floor furnace, Evap. air, built-ins, fenced yard, storage bldg.!!!!!! \*\*\*\*\*

3-1 3/4-2 home on corner lot, Cent. A&H, built-ins, covered patio, gas grill, fenced yard. Very nice & only \$39,500!!!!!! \*\*\*\*\*

3-2-1+1 carport home, built-ins, Cent. heat, fireplace, fenced yard. Mid 40's.... \*\*\*\*\*

EXTRA NICE 2-1+1 carport home, new paint, countertop, fenced yard, & storage bldg. \$1 \*\*\*\*\*

CLOVIS HWY-3-1 home & 2-1 home (rented) on approx. 4.4 acres. fenced & has sprinkler sys. \$42,500..... \*\*\*\*\*

2-1 3/4 Mobile home + 2 carport, built-ins, cable TV, large barn & corrals on approx. 2 acres on pavement close to town!!!!!! \*\*\*\*\*

2-1 1/2 home on 5.7 acres close to town on pavement.... \*\*\*\*\*

4-1 home on 5.3 acres. 5 hp. sub. pump, tractor & equip, barn, & more. 40's.... \*\*\*\*\*

**BUILDING** on 2 lots, approx. 2350 sq. ft., paved parking..... \*\*\*\*\*

**FARMS**  
JUST LISTED - 120 Acres, good 6" well, good farm, close to town. \$700.00 per acre.

2-1 home... on 32 acres, 6" well, close to town on pavement, fully alloted.... \*\*\*\*\*

Nice 2-1 home on 20 acres, 20 hp. sub. pump, domestic well, large barn & corrals, 1/4 mile sprinkler pipe, & more. \$42,500..... \*\*\*\*\*

1062 acres, 3 wells, 2 circles, large metal barn, 9% Owner financing..... \*\*\*\*\*

80 acres, close to town, 6" well, undergrd. tile. \*\*\*\*\*

40 acres, 8" well, undergrd. line, & sideroll sprinkler.... \*\*\*\*\*

2-160 acre tracts on pavement, fully alloted, Valley Sprinklers. Priced to Sell..... \*\*\*\*\*

We have numerous other farms, commercial property, & lots listed. Contact us for details on these and other listings.

**"WE APPRECIATE YOUR BUSINESS"**  
GEORGE NIEMAN\* BROKER  
DIANNE NIEMAN\* BROKER

8-25s-stfc