

First Pre-med Day Discloses Preparation

Approximately 100 area high school students flocked to the campus this morning for Pre-med Day. The event is sponsored jointly by Tech Pre-med Club and Alpha Epsilon Delta, pre-med honorary.

The first of its kind in the Southwest, Pre-med Day was planned to give the prospective medical student an idea of his future training and what it means to be a Doctor of medicine according to David Steinman, chairman of the event.

A tour of the Methodist Hospital, various displays, speeches by professional men and a banquet at 6:30 p.m. in the Union Ballroom will be the featured events for the day.

After registration at 9 a.m., the

students will attend a convocation in the Ballroom. Tech President E. N. Jones and Donnell Echols, Student Council president, will welcome the group.

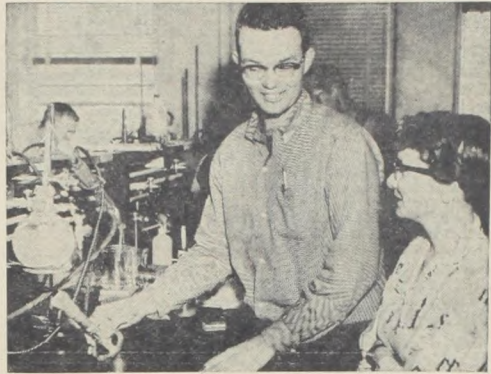
They will then hear an address by Dr. Joe Dennis, chemistry department, and Dr. Warren G. Harding, registrar at Galveston Medical School.

The afternoon speeches by Dr. John Vanatta, Southwestern Medical School, and Dr. Harding will be on "The Specialities in Medicine," "History in Medical Advancements" and "What Is Looked for by the Medical School in Prospective Medical Students."

A preceptor — senior medical student — from Galveston, will speak on "The Life of a Medical Student."

Displays will include organic distillation, qualitative unknowns, an insect collection, dissection of a cat, exhibits from histology, and many of the instruments used by medical students.

Miss Margaret Stuart is Pre-med Club sponsor and Jim Carter, president, Alpha Epsilon Delta members working on plans include David Steinman, over-all chairman and Karen Williams and Aretta Jennings, assistant chairmen; Claude Betty, display; James Coggins, publicity; Bruce Foust, registration; Nancy Wilton, programs; Dr. Jesse Sealey Alpha Epsilon Delta sponsor.



JAMES COGGINS and Aretta Jennings inspect one of the displays to be shown at Pre-med Day today. Coggins and Miss Jennings are committee chairmen of the event sponsored by the Pre-med Club and Alpha Epsilon Delta, medical honorary fraternity. One hundred prospective medical students are expected to attend the all-day session. (Staff photo)

Edwards Is Lecture Speaker

The 13 series of Willson Lectures will begin Monday at 9 a.m. in the Tech Union Ballroom. Speaker will be Dr. K Morgan Edwards — his theme, "Living in Four Dimensions."

Dr. Edwards, who has degrees from Lebanon Valley College, Drew Theological Seminary and University of Southern California, is minister of the First Methodist Church, Pasadena, Calif., a church with membership of 3,500.

"HORIZONTAL PUSH" is Dr. Edwards' topic for Monday's lecture. Invocation will be given by the Rev. Cecil Matthews, Methodist Student Center, Pres. E. N. Jones will introduce the speaker.

DR. EDWARDS will speak at 6:30 p.m. in the Baptist Student Union at 6:30 p.m. Monday. There will be a bull session for Men's Dorms 5, 6, 7 and 8 in Dorm 6 at 10 p.m.

"Vertical Reach" is Tuesday's topic at 9 a.m., again in the Union. Invocation will be given by the Rev. Davis M. H. Richmond, Presbyterian Student Center and Dr. Gerald W. Thomas, agriculture dean, will introduce the speaker.

PERSONAL conferences are scheduled from 2 to 3 p.m. in Dean J. G. Allen's office. At 5:45 p.m. Edwards will make an appearance on KDUB TV. Bull sessions are set at 10 p.m. for Drane, Horn and Knapp in Horn.

Dr. Edwards' topic for Wednesday will be "Depth Perception." Lecture begins at 10 a.m. The Rev. Louis Cobbs, Baptist Student Center director, will give the invocation.

Dr. Edwards will be introduced by Dr. A. W. Young, Student Religious Council sponsor.

KTTC SETS MONDAY MEET

KTTC, campus radio station, will have its first organizational meeting Monday at 6:30 p.m. in the Speech Building.

A schedule of broadcasting hours and who will work them will be set up, and staff openings in news and engineering broadcasting will be filled.

AUNTIE MAME

by JOLENE CAFFEE

Patrick Dennis' howling comedy, "Auntie Mame," was a howling success with Lubbockites last night at opening night in the Lubbock Municipal Auditorium.

FIRST NIGHT reactions of the sell-out crowd indicated equal success for the remaining two performances: a matinee at 3 p.m. and 8 tonight. Tickets for the attraction are on sale in the Auditorium lobby, or can be obtained at the door.

Due to the brilliant acting of Miss Sylvia Sidney as Auntie Mame, the play surpassed all expectations to register as a real hit with the audience. Miss Sidney was delightful in her portrayal of a lovable lunatic. Auntie charged with rearing a nephew in this hectic world, is thrown into many situations which cause humor. Miss Sidney gave a rare performance.

MARK O'DANIELS as Beaugard Jackson Pickett Burnside was refreshing, and Winford as Vera Charles gave Miss Sidney the strongest supporting role.

ACC Student Wins First in Dinner Talk

A speech "dedicated to those who have paid the supreme sacrifice — tuition" won Paul Watson, Abilene Christian College, first place in after dinner speaking contest at the banquet last night.

This was the first final round in Texas Tech's 25th Invitational Forensic Festival which began yesterday.

TOP HONORS in the discussion

group classification went to Kansas State and, in second place, Hutchinson Junior College.

Eight participants in the discussion groups receiving certificates were Jim Young and Leland Cole, Hutchinson Junior College; Bob Sunderland, Southwestern State College; Allan Isabell and Larry Black, ACC; Carl Austermler and Dan Hahn, Kansas State; and Jerry Wheeler, Tech.

THIS YEAR'S festival is the largest that has been sponsored by Tech's speech department. There are contests in debate, poetry reading, extemporaneous speaking and after dinner speaking.

The last preliminary debate round is at 8 this morning. Quarter-finals in debate will begin at 9:50 a.m. and semifinals at 11 a.m. Finals are scheduled from 1 p.m. to 2:10 p.m. in the Speech Building auditorium.

"RESOLVED THAT the further development of nuclear weapons should be prohibited by international agreement," will be the debate subject.

Debates are 48 minutes with eight minute constructive speeches and four minute rebuttals. All teams debate five rounds. Debate trophies will be presented at 2:30 this afternoon.

FINALS AND awarding of trophies in extemporaneous speaking and poetry reading is at 10 a.m. today.

Contest judges are Tech faculty members and coaches from schools attending the festival.

Among the schools attending the festival, Abilene Christian College has the largest representation with 10 debate teams and Kansas State traveled the greatest distance.

Deadline Is Wednesday

Deadline for allocation requests from the matriculation fees has been extended to 5 p.m. Wednesday.

Student organizations interested in financial aid and which have not applied may still do so.

Application forms are available in the Student Council Office. Each group should include its activities, income and purpose on the request form.

Seven applications have been turned in to date.

A Howling Success

Teresa Savior as Agnes Gooch scored the biggest hit of the supporting actors with her unusual portrayal of Mame's secretary.

The play itself tends to be somewhat of a one-woman show as Miss Sidney appears in 18 different costumes designed by Travis Barton.

One of these is a rather bizarre affair which was a source of great amusement to the audience.

The lavish costumes and dazzling sets designed by Oliver Smith helped carry the play in spots where the humor wore thin.

Funniest moment in the play occurred when Mame was unwillingly drafted to join a fox hunt. Being quite an unaccomplished horsewoman, she turns the hunt into a calamity.

EDWARD SPENCE as the nephew, caused the audience to roar when he compared a girl's IQ to a dead flashlight battery.

Other sources of humor are when Mame becomes a switchboard operator at the firm of Goodman, Gutterman, Applewhite, Whitcomb, and Black. She ends up with the most confused board in history. As a would be actress, she succeeds only in turning the

play into an impossible farce. As a salesgirl at Macy's, she has the most involved salesbook in existence.

The play is held together with happenings in the life of Mame Beekman between 1928-1946. Mame encounters unusual difficulties in rearing her nephew. Although she is an unorthodox parent, she obtains results.

THE DEPRESSION finds the fun-loving aunt in the midst of the New York social swing. After stocks take a nose dive, Mame is broke and forced to change her pattern of life.

She is always in love with living and encourages those around her to live life to its fullest. She marries a southerner and tours the world only to have her marriage dissolved on a lonely iceberg.

AFTER THE death of her husband, she is back to her old way of life again. She engages herself in writing a book about the people she knows. At this point her nephew becomes involved in an impossible situation, and Mame throws an unbelievable party to dynamite his marriage plans.

Welcome to Tech's First Pre-med Day

★ Campus ★

NURSES TALENTS VARIED

The versatile nursing students at Methodist Hospital School of Nursing are in for two years of English, chemistry and zoology at Tech, in addition to classes at the hospital.

At the end of three years of study, which includes three months at The University of Texas Medical School, they receive diplomas.

These students make time for extra curricular activities, choosing a Halloween King and Queen each year. Money counts as votes and the class raising the largest amount of money elects their King and Queen.

Thursday night, the pre-clini-

cals, first year students, staged a talent contest and comic style show in the hospital cafeteria.

The contest, based on a psychiatric patient's dream, featured ballet and tap numbers by one of the students sisters, a trumpet solo, a French singer, and a humorous reading.

Contest winner was the trumpet soloist, Jimmy Reynolds, a BA major from Lubbock Christian College. The style show bursar-squashed faculty members of the Nursing School.

A Halloween carnival in the hospital cafeteria, October 31, will be the next project.

TIME IS NEAR

Freshmen cheerleader elections will be held Nov. 2 in the Rec. Hall at 2 p.m.

Petitions must be turned in to the Student Council office by 1 p.m. Oct. 28.

Candidates will have a 5 p.m. meeting in administration 260, Oct. 31.

At the meeting all candidates will be divided into groups for the Nov. 2 try-outs.

Don't Flip Your Top

Don't throw away that empty cigarette package — it might contain a Hi-Fi record player.

Silly statement? No, a new contest, sponsored by Philip Morris Inc., is now in motion on the Texas Tech campus.

The contest offers a Hi-Fi set and an album to the fraternity, sorority or other organization which saves the most flip-top boxes or soft packs of Marlboro, Philip Morris or Parliament.

The contest will close midnight Dec. 1, according to Arthur Mayhew, campus representative.

Delta Gamma won a Hi-Fi in a similar contest last fall. A tape recorder was given away last spring.

Each year, Philip Morris Inc. gives \$250 to be spent in sponsoring some sort of competition on campus which will promote a closer relationship between the student body and Philip Morris.

Portrait Exhibit Shows Variation

A potpourri of portraits is being featured through Thursday on the second floor of the South Plains Museum.

Around the rotunda fifteen portraits, contemporary in creation, can be seen. "Portraits of New York," an art firm, assembled them.

In the main art gallery, a miscellany of fifty-two South Plains portraits is on display.

The entire portrait exhibit might well be titled "variety in form, medium, and subject matter," for each is given

a full workout here. Form varies so greatly from artist to artist that it would be impossible to point out the variations, one by one.

Viewers will find that some artists have attempted to give insight into the personality by making use of dramatic backgrounds while other artists have resorted to less elaborate methods.

While the New York exhibit is concerned mainly with portraits of recent vintage, the South Plains group has items ranging in time from 1869 to 1958, and the form varies accordingly.

Fusha Fairies, Mischiefs Brighten Campus Grounds

Spectacular arrangements of 5,000 chrysanthemums beautify the Texas Tech campus this fall, testifying to almost a year's work by the horticultural department.

Elo J. Urbanovsky, assisted by E. W. Zukauckas, and R. H. Ruckler, horticultural professors planned the landscapes and supervised the planting by the care and maintenance department.

Looking onto the campus from downtown, a line of yellow borders the Broadway entrance, leading to the brilliant Memorial Cir-

cle display. Beds of Gold Lode mums stretch 20 feet along West, Sneed, and Weeks halls.

East of the Circle, are rows of Fushia Fairy mums, Gold Lode and White Ostosa varieties decorate the Museum oval.

One thousand Bright Forecasts enclose the Tramp Circle, and Alegro and Mischief are the pink blooms encircling the Broadway entrance cedars.

Competing the beds of mums is a row beside the textile Engineering building.

Plans have been made for the spring and summer flower displays, and the target date for maximum bloom is commencement.

In the spring Tech will glow with five to six thousand Sioux Red pansies. The color scheme will continue into the summer with 20,000 red flowers. Ten thousand petunias and 4,000 geraniums will be set against a background of ornamental grass and white periwinkles.

Research on 250 varieties of chrysanthemums, and other annuals and perennials in process at the green house and in the test plots.



BOWL

The finest in equipment and atmosphere.

MAKE A DATE SOON!
Perfect choice for an evening's fun — a refreshing, relaxing game at our up-to-the-minute alleys.

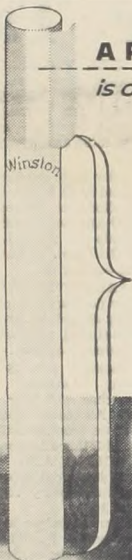
4020 Avenue Q SH 4-5535

Lubbock Bowling Club

Ben Brown

"Chris" Christensen

A PURE WHITE MODERN FILTER
is only the beginning of a WINSTON



It's what's up front that counts



Winston puts its **FILTER-BLEND** up front... fine, flavorful tobaccos, specially processed for filter smoking



B. J. Reynolds Tob. Co., Winston-Salem, N.C.

WINSTON TASTES GOOD LIKE A CIGARETTE SHOULD!

Classified Ads

LOST & FOUND: Reward — Gold ring with Blue stone. Gold is engraved. Of great sentimental value. Jo Ann Cunningham, 133 Weeks or Lost & Found in Student Union.

Ironing — Dress Making and Alterations — First Class Sewing & Ironing — All work guaranteed — If you are particular call PO-3-1858.

TO TECH STUDENT: Quiet, newly decorated bedroom. 2121 10th. Call PO 2-1035 after 6:00 p.m.

DR. O. EARL HILDRETH
Optometrist
Visual Analysis 2421-B Broadway
Visual Training Phone PO2-4828
Vision Related to Reading
CONTACT LENSES

Hey!! — Tech Students!
Free Theatre Tickets!
ABE'S Drive in Grocery
"More Than Just a Grocery Store!"
101 COLLEGE AVENUE
(Next Door Arnett-Benson Theatre)
OPEN
7 A.M. TO 11 P.M. — Everyday
Groceries — Sundries — Drugs
SPECIAL! FREE!
2 Driven Theatre Passes With
Every Purchase of \$2.00
or More!!

Round About

Thirty Tech men have pledged Alpha Phi Omega national service fraternity group of former boys.

under the direction of Sneed, Pledge Trainer.

NEWEST A PHIO
Adkins, Lubbock; West Premont; Jesse Beard; Bill Benner; Lubbock; Blazi; Lubbock; Brook Dallas; Boyce Brice; John Cole, Dumas.

Dan Dail, Pampa; Riquenz, Sundown; Milton, Miami Fla.; Curtis Worth; Earle Hamilton; Leo Lavender, Mineola; Kenneth Lausing, Lubbock; Malcolm, Dallas.

Others include Don-ton; Dale Miller, Boynton; Dale Farmington, Nelson, Dallas; Tony Bill Bandle, Huntsville; Sulphur Springs, Dallas.

Also Andy Scott, Mack Thies, Houston; Thompson, Artesia; Unger, Fort Worth; Port Arthur, and Jamie Bowie.

PHI GAMMA NU, brotherhood, recently announced names of its twelve new members.

Accepted into the Greek letter organization Virginia Cooper, Arlington Ward, Houston; Margarita Amarillo; Barbara Be-rook; Mildred Thompson; and Glyda Doggett, Wisconsin.

Others wearing the Phi Nu pledge ribbon are K Lubbock; Jamie Stevie; Sharon Thomas, Lubbock; Burnett, Lubbock; Mart Coahoma, and Winn She-bow.

NEWLY INITIATED
Breedlove, Lubbock; Ge-anan, Lubbock; Albert Hobbs, New Mexico, and erson, Lubbock.

The new pledges, I Paduech; Bobby Jack-bock; David Hoffman; Tommy Ingle, Corpus Frank Washburn, Ke-join the group in celebra-pa Kappa Psi's twentieth sary this year.

TUXEDO
RENT THEM FROM
Costume Studio
COSTUMES FOR OCCASIONS

Wigs—Mustaches—N-2422A-Bdwy. PO

STUDENTS

Coin Operated
LAUNDRY
Wash 20c
DRY 20c
ALSO
• Finishing
• Dry Cleaning
—One Day Service
TALCO
LAUNDRY
2416 Main PO

Round About

Thirty Tech men have recently pledged Alpha Phi Omega, national service fraternity. This group of former Boy Scouts will be under the direction of Joe Sneed, Pledge Trainer.

NEWEST A PHIS are Jerry Adkins, Lubbock; Wesley Barnett, Premont; Jesse Beard, Lufkin; Bill Benner, Lubbock; Charles Blazi, Lubbock; Brooks Bradley, Dallas; Boyce Brice, Sherman; John Cole, Dumas.

Dan Dail, Pampa; Rudy Dominguez, Sundown; Milt Feldman, Miami Fla.; Curtis Firkins, Fort Worth; Earle Hamilton, Lubbock; Leo Lavender, Mineral Wells; Kenneth Leusing, Lubbock; Dennis Malcolm, Dallas.

Others include Don Mason, Oton; Dale Miller, Borger; Edward Neil, Farmington, N.M.; Jack Nelson, Dallas; Tony Nolan, Paris; Bill Randle, Huntsville; Billy Ray, Sulphur Springs; Bill Riley, Dallas.

Also Andy Scott, San Angelo; Mack Thies, Houston; Danny Ray Thompson, Artesia, N.M.; John Unger, Fort Worth; Tom Wiltzen, Port Arthur, and James Zetzche, Bowie.

★ ★ ★

PHI GAMMA NU, business sorority, recently announced the names of its twelve new pledges.

Accepted into the honorary Greek letter organization were; Virginia Cooper, Arlington; Joyce Ward, Houston; Margaret Ritter, Amarillo; Barbara Bell, Shamrock; Mildred Thompson, Richardson; and Glyda Doggett, Milwaukee, Wisconsin.

Others wearing the Phi Gamma Nu pledge ribbon are Kay Sharp, Lubbock; Jamie Stevie, Lubbock; Sharon Thomas, Lubbock; Celia Burnett, Lubbock; Martha Camp, Coahoma, and Winn Sherril, Lubbock.

★ ★ ★

Six initiates and five pledges were recently taken by Kappa Kappa Psi, honorary band fraternity.

NEWLY INITIATED are Dean Breedlove, Lubbock; George Buchanan, Lubbock; Albert Roberts, Hobbs, New Mexico, and Bill Robertson, Lubbock.

The new pledges, Don Cross, Paducah; Bobby Jack Hill, Lubbock; David Hoffman, Weslaco; Tommy Ingle, Corpus Christi and Frank Washburn, Kerens, will join the group in celebrating Kappa Kappa Psi's twentieth anniversary this year.

Lombardo - Canadians To Star In Musical

The Guy Lombardo Show will present "the sweetest music this side of heaven" November 3 in the Lubbock Municipal Auditorium.

Sponsored by the Lubbock Junior Chamber of Commerce, the show will feature the famed violinists Kenney Gardner, Bill Flanagan and Cliff Gross in addition to the Lombardo Trio, the Twin Pianos and comedienne Phil Marquin.

Featuring music and variety acts that appeal to the whole family, Lombardo and his "Royal Canadians" have for years been voted among the most popular orchestras in the nation in official polls among editors and the general public.

Lombardo is so highly regarded in musical circles that a critic once remarked that he could sell millions of records and play to overflow crowds in auditoriums and night clubs with only himself, two violins and two pianos.

Lombardo is not content with being a top-rate bandleader, however. He is also an excellent producer of musical extravaganzas, his production of "Showboat" at

Jones Beach is receiving the highest praise of the critics. He is also prominent as a restaurateur, sportsman and oil man.

Lombardo was born in Ontario, Canada, and began to study music very early, forming a four-piece band consisting of himself as violinist, Carmen and Lebert Lombardo and Fred Kreitzer. All four are still members of today's Royal Canadians. As Lombardo grew older the band expanded and began to achieve success in Canada.

His success in Canada was responsible for his first American job — at an Elk's Convention in Cleveland, Ohio. His success was so phenomenal that the Royal Canadians decided to remain in the United States.

Lombardo then began to play for radio programs in Cleveland. The band gained fame rapidly and soon it was playing in Cleveland's plush "Music Box." The Royal Canadians went next to the Granada Cafe in Chicago from where radio networks carried their music coast-to-coast. It was in Chicago that Lombardo's music was termed "The sweetest music this side of heaven."



VIRGINIA COOPER
White Rose Princess

Sigma Nus Honor Coed

Virginia Cooper, sophomore secretarial major from Arlington, has been named Sigma Nu White Rose Princess for October.

A member of Kappa Kappa Gamma, Miss Cooper was presented a bouquet of white roses by Sigma Nu president Lewis Stone, at a dance honoring visiting dads after the game Saturday.

Miss Cooper will be a candidate for White Rose Princess of the year, to be selected this spring.



it's
HALLOWEEN PARTY TIME!

YOU WILL WANT TO BE READY FOR THIS SPECIAL DAY WITH



Snowwhite Bakeries

304 COLLEGE

PO 3-9102

QUALITY

SHIRTS

We hand finish them to perfection. Just the way you like them... 25c

PANTS

Let us launder your ivy leagues to "like new" freshness and good looks. Per pair, only... 40c

FLUFF DRY

Take advantage of our fluff dry service on sheets, underwear and socks. Only... 12c per pound

HUB LAUNDRY

FIRST IN QUALITY

2107 19th Cash and Carry Discount PO 5-7871

SERVICE



Jantzen

sportswear for sportsmen

the professional look in soft lambswool

Ken Venturi is wearing the great new Jantzen luxury lambswool bell-sleeve sweater — the sweater designed specifically for solid comfort and colorful good looks.

This is the "professional" sweater — the sweater that will make the week-end golfer look like a well-dressed pro. The "Inverness" golf cardigan in many fashion colors S-M-L-XL 13.95.

Bray's

CAMPUS TOGGERY

• TUXEDOS •

RENT THEM FROM

Costume Studio

COSTUMES FOR ALL OCCASIONS

Wigs—Mustaches—Novelties
2422A-Bdwy. PO 3-2388

STUDENTS

Coin Operated LAUNDRY

Wash 20c

DRY 20c

ALSO

- Finishing
- Dry Cleaning

—One Day Service—

TALCO

LAUNDRY

2416 Main PO 3-8811

iation

here. Form varies from artist to artist and it is impossible to have variations, one by

find that some artists attempt to give their personality by making dramatic backgrounds artists have resorted to water methods.

New York exhibit mainly with port-vintage, the South has items ranging from 1869 to 1938, and is accordingly.

chiefs

Grounds

Beds of Gold Lode 120 feet along West Weeks halls.

Circle, are rows of mums. Gold Lode stosa varieties decorum oval.

Bright Forecasts Tramp Circle, and Altschick are the pinning the Broadway

the beds of mums is the textile Engineer-

been made for the summer flower display target date for room is commencing

ing Tech will glow six thousand Sox

The color scheme into the summer ed flowers. Ten thousand 4,000 geraniums

against a background of grass and white

on 250 varieties of mums, and other annuals in process in house and in the

press Making and Al-First Class Sewing & all work guaranteed—particular call PO-

STUDENT: Quiet, rated bedroom. 2121 PO 2-1035 after 6:00

EARL HILDRETH
Optometrist
2411-B Broadway
Phone 522-4222
Related to Reading
FACT LENSES

Tech Students!
Theatre Tickets!
S Drive in
Grocery
Just a Grocery Store!
COLLEGE AVENUE
(Armed Forces Theatre)
OPEN
11 P.M. — Everyday
Special FREE!
Theatre Passes With
Purchase of \$2.00
or More!

TOREADOR

THE TEXAS TECHNOLOGICAL COLLEGE

Editorial Page

Grade Probation Slips Up On One

SCHOLASTIC PROBATION is a subject often discussed among students, but in these discussions there seems to be a lack of concrete knowledge of what it actually is and what it means.

Before getting immediately into this subject it would be well to determine when a student is making satisfactory progress. This is true when he is carrying an approved schedule, is not on probation, is failing no courses, and in both the present semester and his over-all average to date has a one-point grade average.

★ ★ ★ ★

To avoid being placed on probation, a student registered for nine or more semester hours must pass in at least nine hours and make at least three grade points during a semester.

If registered for less than nine hours, the student must pass in all of his courses and make at least three grade points.

In event of withdrawal before the end of the semester, the number of semester hours carried with a passing grade will be the basis for determining whether the student is to be placed on probation.

A student who fails to attain the above minimum levels shall be placed on probation not later than 20 days after the end of the semester in which the deficiency develops.

He will then drop courses in excess of a total load of approximately 12 hours, and make any other adjustments expressed or implied in the material below.

★ ★ ★ ★

When on probation, the student may not register for more than four courses, approximately 12 hours, except upon the approval of his academic dean.

Also, in order to allow more time for his studies, he is not permitted to represent Tech in any inter-collegiate contest, hold any collegiate office or elective collegiate position during his period of probation, and he is required to attend all classes for which he is registered without fail except when prevented by illness.

Lack of interest in his studies as evidenced by unnecessary absences or by unsatisfactory grades will result in his being dropped from school.

The student may, while on probation, transfer from one school to another only by mutual agreement of the deans concerned.

★ ★ ★ ★

The probation status may not be removed during the semester. A student who withdraws from college while on probation is under the same status when he returns.

The requirements for removing probation in semester hours and grade points made are the following: if a student is in his second semester, he must pass nine hours and three grade points; third or fourth semester, nine hours and six grade points; fifth or sixth semester, nine hours and nine grade points; and seventh or following semester, nine hours and 12 grade points.

Also, probation will be removed if the following conditions are met. The student must pass a minimum of 17 hours in the combination of the spring semester and summer session.

In addition, the student must earn the total number of grade points required for his two semesters as indicated in the above material.

★ ★ ★ ★

For example, a student in his fourth semester in the spring must earn the equivalent of six grade points for the spring semester, plus nine for the summer session or a total of 15 grade points during the spring semester and summer session combined.

Scholastic probation is a thing to be aware of because a person can get in that status very easily if he isn't careful. Read and study the regulations set forth here so as to be informed if the situation arises.

The Spastic

a. m.

After careful consideration and much thought, we have decided that Texas Tech doesn't need to concentrate its efforts on extending its graduate program; it doesn't need to worry about the parking problem; and it shouldn't spend its time mulling over the bowling alleys in the Union.

What Tech needs is not a good five cent cigar, but to put it frankly, more GIRLS!

(We have enjoyed the pleasure (or should we say mistake) of attending another college, a college in which the boy-girl ration is almost the reverse of Tech.

Ahh, what joys the weekend used to hold when we knew that we could wait until Thursday morning to get a date for Friday and/or Saturday. And the girls weren't mooses either. (We've never been able to pass for Rock Hudson, although we've been referred to as Rock Head before.)

And whose blame is this, this tragic situation at Tech which tends to demoralize the incoming freshman—and us? We could blame the administration, but they get blamed for everything from leaky sinks in Doak to picking student's pockets (via the auditor's office), so we'll blame somebody else.

Actually, the blame must rest on, alas, the Tech boys themselves.

What is the first thing that a bewildered freshman girl sees when she arrives at Drane, Horn or Knapp at the beginning of the fall semester? Right. Hordes of upperclassmen who stand around with tongues visible, clasping and unclasping hot little hands and all eager to aid one of the neophytes to her room. (We finally got into the hidden recesses of Drane by carrying an empty box around.

From the moment the freshman girl hits the campus, she is besieged with phone calls, lounge buzzes and hidden messages written on gum wrappers.

A girl who has about as much personality as a lamp post is called and cajoled. All too soon she wakes up to the new power her sex has at Tech and whammo—she becomes the cool, calculating creature we shall now call, "A Tech Girl."

Things reach such a ridiculous state during a girl's stay at Tech that she may turn down as many as two or three dates for the weekend, because they only called two weeks ahead of time.

However, sometimes a strange lull sets in upon "A Tech Girl" in her sophomore year. This is called the sophomore slump and melts the hard core somewhat and one may be able to swing a date by calling just one week in advance.

This period, however, doesn't last long and before the end of her sophomore year, she has usually found some young man willing to cater to her whims.

This may sound like sour grapes; we wish we could say it wasn't. We are just disappointed. We are just used to a girl who is a girl, not an idol.



"UP HERE NOW MISS BREWSTER — IT SEEMED MORE PRACTICAL TO SEAT THE CLASS ALPHABETICALLY."

From Other Colleges

Enrichment Plans Made at Grinnell

A move to lighten faculty education is advocated by Howard R. Bowen, president of Grinnell College, Grinnell, Ia.

THE PROGRAM would include the use of occasional, carefully planned formal lectures in which all the students in a course, or several courses, would be gathered together in one room in lieu of class meetings.

"Such lectures would have the purpose of stimulating interest, tying together the loose ends, and relating the subject to the larger field of knowledge," Bowen said. "The only requirement would be that certain periods be set aside when all students could meet, and each lecture be scheduled in advance."

THE NEXT point of the program would be broader reading and less dependence on textbooks.

"Students should be directly exposed to the great minds rather than to pale synthesizers of ideas," Bowen said.

For this section of the program to work at Grinnell College a

more adequate library would be required, according to Bowen.

THE THIRD POINT of the program is more independent study on the part of the student. Finally, students would be expected to take fewer courses, because much of the superficiality of the present system would be cut out.

Begun on a limited basis in the 1956-57 term, the program has met reasonable success, according to Bowen.

★ ★ ★

HIGHER education's equivalent to the four-minute mile — the two-year Ph.D. — will be accomplished more frequently as the result of a program for specially-qualified chemistry majors to begin this year at Columbia College.

Like the four-minute mile, the Ph.D in four years of college and two years of post-graduate work has been achieved heretofore — but with perhaps equal infrequency and with sacrifice of the traditional elements of a liberal education.

TOREADOR

Member The Associated Press	
Member The Associated Collegiate Press	
EDITOR	Ben McCarly
BUSINESS MANAGER	Roy Lemons
MANAGING EDITOR	James Hamm
NEWS EDITOR	Tommy Schmidt
CAMPUS EDITOR	Merium Jackson
SPORTS EDITOR	Bill Dean
ASST. SPORTS EDITOR	Ron Calhoun
SATURDAY COPY EDITOR	Mary Atchison
HEAD PHOTOGRAPHER	Joe Spears
ASST. DIR. OF STUDENT PUBLICATIONS	Phil Orman

THE TOREADOR, official student newspaper of Texas Technological College, Lubbock, Texas, is regularly published each Tuesday, Thursday and Saturday morning during the two long terms, excepting holidays, by students of the College as an expression of student news and opinion only.

The TOREADOR is financed by a student matriculation fee, advertising and subscriptions. Letters to the editor represent the views of their writers and not necessarily those of the TOREADOR. Letter must be signed, but may be published without signatures in justifiable instances. The views of the TOREADOR are in no way to be construed as necessarily those of the administration.

Entered as second class matter at the Post Office in Lubbock, Texas, under the act of March 3, 1879.

Tech C



Tech Campus Features Girls and Flowers



Plans rinnell

equate library would be according to Bowen. **HIRD POINT** of the pro- more independent study art of the student. Final- ists would be expected to or courses, because much periciality of the present ould be cut out. on a limited basis in the term, the program has onable success, accord-

education's equivalent four-minute mile — the Ph.D. — will be accom- more frequently as the a program for specialty- chemistry majors to be- ear at Columbia College. e four-minute mile, the our years of college and s of post-graduate work achieved heretofore — perhaps equal infrequ- with sacrifice of the tra- elements of a liberal ed-

OR

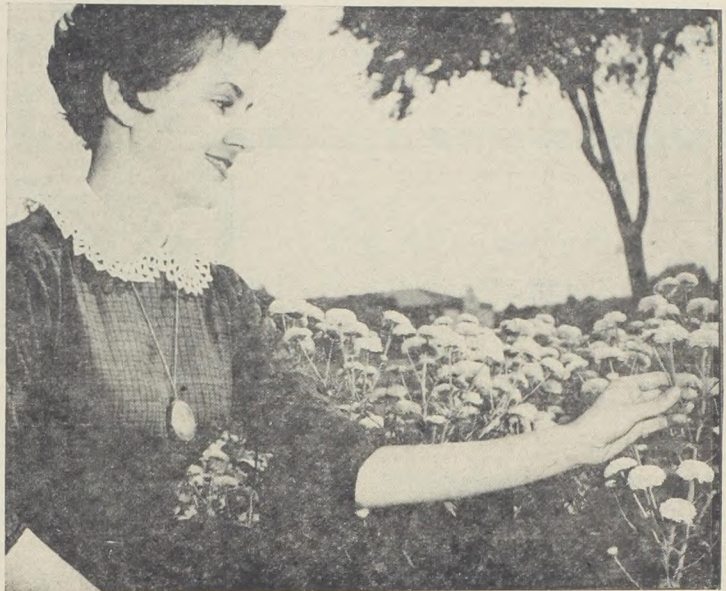
- Press
giate Press
- Ben McCarty
 - Roy Lemons
 - James Hamm
 - Tommy Schmidt
 - Merium Jackson
 - Bill Dean
 - Ron Calhoun
 - Mary Atchison
 - Joe Spears
 - Phil Orman

Texas Technological College, Lab- Thursday and Saturday morning ists of the College as an ex- matriculation fee, advertising at the views of their stu- ter must be signed, but not in The views of the **TORREADOR** e administration.

ce in Lubbock, Texas, under the



★ ★ ★
JANIE NORRIS



ANN FURSMAN



ANN DENNY



PAULA SHAW

Army in Fight for Lambert Trophy

by JACK CLARY
 Associated Press Sports Writer
 Saturday is a day unlike any other day so far during the 1958 college football season. Here, among other things, is what's going to happen:

1. A Lambert Trophy winner all but formally chosen.
2. A big step taken in picking

the Ivy League, Big Ten, Skyline Southern and Southwest conferences' champions.

3. Some highly ranked teams forced to prove just how good they really are.

The Lambert Trophy, emblematic of Eastern supremacy, goes on the line at Pittsburgh where Army, the nation's top team,

meets Pitt in a game televised regionally in the East.

The Cadets, with a 4-0 record, will have to play without fullback Harry Walters and with a highly curtailed Pete Dawkins, the star halfback with a charley horse. The Panthers, 4-1, are in good physical shape.

Ohio State No. 2 with a 2-0 Big Ten record, and 4-0 overall, meets powerful Wisconsin, 1-1 in conference play. Then to the West, unbeaten Northwestern No. 8 2-0 in the Big Ten plays Iowa No. 7, also 2-0. Ohio State and Northwestern are paired for the following week.

In the East, the same situation exists. Harvard 1-1 and Dartmouth 2-0 in the Ivy League play each other, while Princeton travels to Cornell where there respective 2-0 records will be tested. Princeton and Dartmouth, who meet in their last game Nov. 22, are expected to decide the title then.

West of the Mississippi, Wyoming 3-0 plays New Mexico 2-0 with the winner the probable Skyline Conference titlist.

Texas No. 4 plays Rice in the

Southwest Conference. Rice is 2-0, Texas 1-0 in conference play, while idle Texas Christian No. 16 is also 2-0. The winner of the Texas-Rice game could begin looking toward the Cotton Bowl.

Heading Home, Hamm "Pics" on Tulsa Frosh

Texas Tech's freshmen will seek their second win in a game with the University of Tulsa frosh Saturday afternoon in Tulsa.

THE PICADORS opened with a 21-6 triumph over the North Texas Eaglets. This game will have a special interest for Coach Hamm since he played guard for Tulsa in 1950-52.

Heading the attack is fullback Don Jester of Austin, who net-

ted 94 yards against North Texas. Guiding the split-T attack will be John "Soapy" Sudbury of Amarillo and all-state Billy Ryan of Seymour.

FOUR OKLAHOMA boys will be in the Tech lineup: halfback Jim Tatum of Tulsa, halfback Larry Arnhart of Hobart, guards Kelly Mitchell of Hobart and Tim Hicks of Marietta.

Probable starters for the Picadors are ends Jerry Elbert of Wellington, 200; and Archie English, 200 of Seminole; or Charles Rice, 195, of Paris; tackles Pat Holmes, 235, of Del Rio; and Larry Mullins, 195, of Snyder; guards Eugene Guffey, 205, of Wichita Falls; and Mitchell, 195; Center John Hast, 200, of Lockney; quarterback Sudbury, 155; halfback Dickie Polson, 185, of Amarillo; and fullback Jester, 190.

END JIM PERRY of Abilene is expected to miss the contest because of a shoulder injury.

WELCOME TEXANS
FROM

Parisian Cleaners

Fine Cleaning At
A Fair Price

2305 4th PO 3-3194

Miss Shari Vick Selected As
Miss THERMO-JAC of Lubbock for 1958-59

from *Coe's*



Shari is the daughter of Curtis L. Vick of 708 Smith St., in Cleburne, Texas. She is a Junior in Texas Tech and is majoring in Sociology. Shari is a member of Zeta Tau Alpha Sorority, Sociology Club Secretary, Student Union Committee Member, and a member of A.W.S. Shari will go to Dallas to model for Thermo-Jac in their show room in the near future.

GIANT TARTANS

by
THERMO-JAC



Exciting, new giant-tartan woven plaids... tailored trim and tapered to Thermo-Jac's famous fit! In four beautiful giant tartans... red plaid with white stripe; red with blue; blue with white; or blue with red. Snug fitted waist, front zip. Coin pocket and flapped back pockets. Machine washable.

SIZES 7 THROUGH 15.

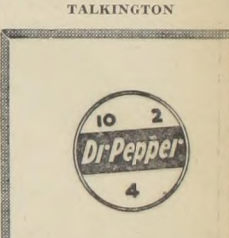
GIANT TARTAN TAPERS \$7.98
 GIANT TARTAN JAMAICAS \$5.98

Coe's

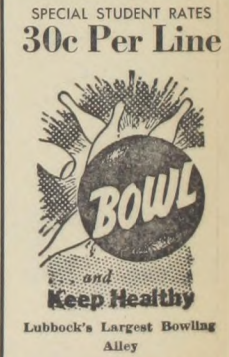
1215 AVENUE K



TALKINGTON



SPECIAL STUDENT RATES
30c Per Line



Lubbock's Largest Bowling Alley

Q. C. BOWL

for reservations
 7301 College SH4-8451

Ou

Tonight in Houston the... decided when the Texas... line against the upcom... Darrell Royal's charg... ing an SWC crown back... a Rice victory might give... push they need to win their... Both these teams are s... are one of the favorites in th... at this point has pushed the... far beyond earlier expectatio... The Owls were rated in... season and after taking som... They routed Arkansas and... once lead.
 This one will bear worth

The ole average is drop... football season. Going in th... a 69%. Last week it was 16... TEXAS VS. RICE. This o... Steers, Texas.
 SHU VS. GEORGIA TECH... have to pick up for this one... BAYLOR VS. A&M: This... prising Bears will be ready... ARKANSAS VS. MISSISSI... Mississippi.
 GAMES:
 Arizona State over Detroit... Army over Pittsburgh... Miami over Boston College... Fresno over California... Tennessee over Cornell... Kentucky State over Illinois... Tulsa over Kansas... Oklahoma over Kansas State... Alabama over Maryland... Navy over Penn... Texas Western over N. Mexic...

Fan Increase In Grid Gam

COLLEGE football alread... shown an attendance incre... 333 per cent this season... it may go even higher bef... bowl teams are determine... Only in the Big Ten, Big... Missouri Valley and So... conferences has there been... crease.
 THE AVERAGE attend... college games during the... half of the 1958 season is...

SPECIALIZED SEW...
 Tailored Western Sh...
 Dress Making & Altera...
 Also Leathercraft - Bel...
 Billfolds
TOMMIE FLOWERS
 2110 6th PO 3-

SPORT CENTE

1612 - 13th PO 5-666
 Complete Athletic ar...
 Sports Equipment

SPECIAL STUDENT RATE
CAR WASH
\$1.25
 With Tech I.D. or Fee Slip



MINI-MAN
 AUTOMATIC CAR WASH
 Wayne D. Beebe, Owner
 PO-32641
 1510 Ave

Outlook

By BILL DEAN

Tonight in Houston the Southwest Conference title could well be decided when the Texas Longhorns put their undefeated record on the line against the upcoming Rice Owls.

Darrell Royal's charges could take a decided step toward bringing an SWC crown back to Austin with a win. On the other hand, a Rice victory might give the already surprisingly tough Owls the push they need to win their second straight title.

Both these teams are surprises. It is no surprise that the Steers are one of the favorites in the conference but their undefeated record at this point has pushed them to a ranking of No. 4 in the nation—far beyond earlier expectations.

The Owls were rated in the second division at the start of the season and after taking some early lumps have come on in fine style. They routed Arkansas and upset SMU last week to take the conference lead.

This one will bear worth watching.

The ole average is dropping a bit as we enter the sixth week of football season. Going in the second half we have 71 out of 103 for a 69%. Last week it was 16 out of 26 for 61%.

TEXAS VS. RICE: This one is at Houston but I will go with the Steers, Texas.

SMU VS. GEORGIA TECH: The sputtering Mustang attack will have to pick up for this one, Tech.

BAYLOR VS. A&M: This is Homecoming at Waco and the Surprising Bears will be ready, Baylor.

ARKANSAS VS. MISSISSIPPI: The winless Hogs remain that way, Mississippi.

OTHERS:

Arizona State over Detroit
 Army over Pittsburgh
 Miami over Boston College
 Oregon over California
 Princeton over Cornell
 Kentucky State over Illinois
 Tulane over Kansas
 Oklahoma over Kansas State
 Auburn over Maryland
 Navy over Penn
 Texas Western over N. Mexico A&M



LEO YOUNG, Tulane End.

Intramural Scoreboard

THURSDAY'S RESULTS

Roman Rushers 19 — Church of Christ 0
 Dorm No. 7, 1 — Bledsoe Hall 0
 Gordon Hall 19 — Sneed Hall 0
 Dorm No. 6, 21 — Dorm No. 8, 0
 Dorm No. 5, 8 — West Hall 7

SUNDAY'S SCHEDULE

Following games begin at 2 p.m.
 ATO vs Sigma Nu (G-1)
 Delta Tau Delta vs Fijis (G-2)
 Phi Psi vs Kappa Sigma (R-1)
 SAE vs Pikes (R-2)
 Sigma Chi vs Phi Deltas (D-5)
 Following games begin at 3:30 p.m.
 DSF vs Tech Vets (G-1)
 Roman Rushers vs Big II (G-2)

We have deep sympathy for brides who must acknowledge 87 presents, because we know what a task it is to write notes of thanks for three birthday presents.

GET SATISFYING FLAVOR...
 So friendly to your taste!

No flat "filtered-out" flavor!
 No dry "smoked-out" taste!



You can light either end!

Fan Increase In Grid Games

COLLEGE football already has shown an attendance increase of 3.33 per cent this season, and it may go even higher before the bowl teams are determined.

Only in the Big Ten, Big Eight, Missouri Valley and Southern conferences has there been a decrease.

THE AVERAGE attendance at college games during the first half of the 1958 season is 25,063.

SPECIALIZED SEWING
 Tailored Western Shirts
 Dress Making & Alterations
 Also Leathercraft - Belts & Billfolds
TOMMIE FLOWERS
 2110 6th PO 3-2430

SPORT CENTER

1612 - 13th PO 5-6645

Complete Athletic and Sports Equipment

SPECIAL STUDENT RATE

CAR WASH
\$1.25

With Tech I.D. or Fee Slip



MINIT-MAN
 AUTOMATIC CAR WASH

Wayne D. Beebe, Owner
 PO-32641 1510 Ave. L

See how Pall Mall's famous length of fine tobacco travels and gentles the smoke —makes it mild— but does not filter out that satisfying flavor!

HERE'S WHY SMOKE "TRAVELED" THROUGH FINE TOBACCO TASTES BEST



1 You get Pall Mall's famous length of the finest tobaccos money can buy. 2 Pall Mall's famous length travels and gentles the smoke naturally. 3 Travels it over, under, around and through Pall Mall's fine tobaccos!

Outstanding...and they are Mild!

Product of The American Tobacco Company—"Tobacco is our middle name"

ophy

Conference Rice is 2-0 in conference play. Texas Christian No. 16. The winner of the game could head toward the Cotton Bowl.

Hamm a Frosh

us against North Texas. The split-T attack will be the key. Sudbury of Amarillo-state Billy Ryan of

OKLAHOMA boys will Tech lineup: halfback Jim of Tulsa, halfback Hart of Hobart, guards

chell of Hobart and Tim Marietta.

le starters for the Pleas Jerry Elbert of n, 200, and Archie Eric of Seminole; or Charles of Paris; tackles Pat 25, of Del Rio; and Lar-

s, 195, of Snyder; guards Guffey, 205, of Wichita d Mitchell, 195; Center t, 200, of Lockney; quar-

Sudbury, 155; halfback Olson, 185, of Amarillo; ack Jester, 190.

IM PERRY of Abilene is to miss the contest be-



TALKINGTON



SPECIAL STUDENT RATES

Per Line



book's Largest Bowling Alley

C. BOWL

for reservations College SH4-8451

STUDYING TOO HARD?

Then Take A
Break With A
FREE SHAKE

(SEE COUPON BELOW)



It's **FUN**
to **EAT** at
Char-King!

Corner
QUAKER AVE.
and
BROWNFIELD HIWAY

Delicious Foods

CHAR-KING'S wide variety of taste delights are prepared in an atmosphere of spotless cleanliness, with ultra-modern equipment.

Microphone Service

Enter from Quaker, park under the canopy. Consult the menu, order by your individual microphone. When your number is called, drive to the service window, then park and eat where you wish.

DRIVE-UP RESTAURANT

ME NU

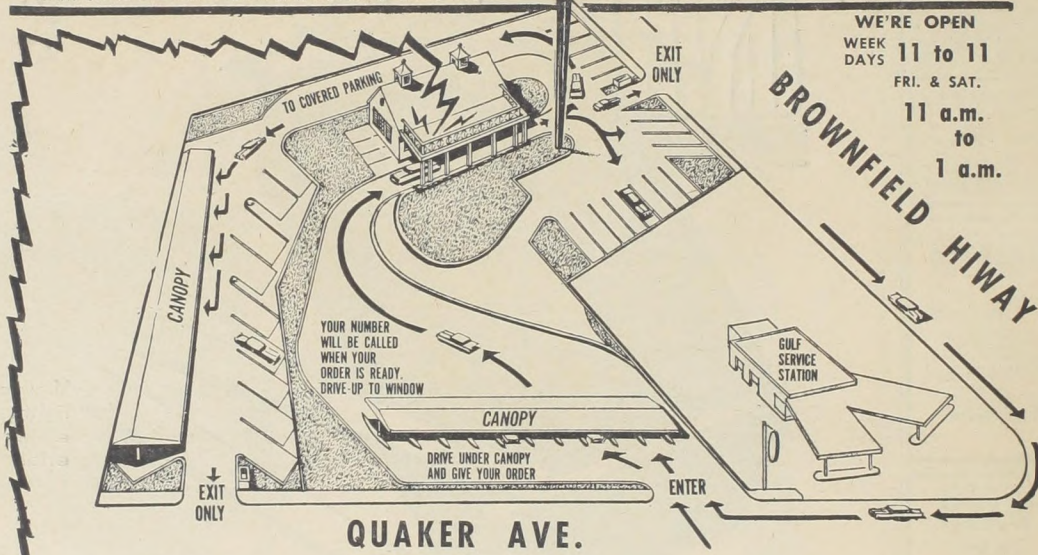
CHAR-KING . . . 2 big patties ground beef, cheese, tartar sauce, garnish to suit!

CHAR-BURGER . . . 2 big patties ground beef, Hickory sauce, garnish, charcoal-broiled to tangy perfection!

CHAR-BURGER, with CHEESE — HAMBURGER.
CHEESEBURGER . . . CHILIBURGER . . . CHAR-PUPPY
CHILI-PUPPY . . . TOASTED CHEESE . . . CHAR-B-O
HAM SANDWICH...BACON and TOMATO SANDWICH

PIZZA, Large or Small
French Fried POTATOES, ONION RINGS
FRIED PIES — Apple, Peach, Apricot (Dee-lish!)
MALTS . . . SHAKES . . . SOFT DRINKS
COFFEE . . . TEA . . . MILK
SUNDAES . . . BANANA SPLIT . . . DONUTS

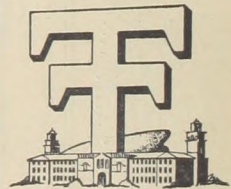
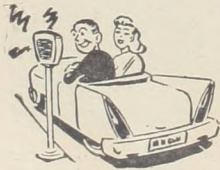
WE'RE OPEN
WEEK DAYS **11 to 11**
FRI. & SAT.
11 a.m.
to
1 a.m.



CLIP AND SAVE

THIS COUPON GOOD FOR A
Free Milk Shake

with each
CHAR-KING OR CHAR-BURGER
MONDAY OR TUESDAY ONLY
Oct. 27 & 28



"We're just 3½ minutes
from the campus out
Brownfield Hi-Way"