

Swim Pool

A&M 4. Tech Time -  
Bill Chamberlin, Bob McRay, Boney, Ted Scherer, 3. A&M 4. Tech Time -  
and backstroke - 1. SMU Perry, Jody Grant, Steve and Don Woodward, 2. A&M 4. Tech Time -  
and medley - 1. Texas Ed Word, Atkinson, Jeff Hel-SMU 3. Tech 4. A&M 1:50.2  
and distance medley free-1. SMU (Bill Chamberlin, Barry Grant), Texas 4. Tech Time - 10:39  
- 1. SMU - 300.5 points  
Percival 105.4, Guy Mar-5, Joe Slaton 103.6, 2. A&M 3. Texas 4. Tech High-1 - Caltell, Texas, 123.4  
and freestyle relay - 1. (George Smith, Willmore, Holter), 2. SMU 3. A&M Time - 3:35.6  
and breast and butterfly SMU (Chamberlin, McCasner, Scherer), 2. Texas 3. Tech Time - 4:18.4  
and backstroke - 1. SMU McGary, Grant, Don and, (Muholland), 2. Texas 4. A&M Time - 4:14.5  
and medley - 1. Texas Word, Heller, Dovel, 2. SMU 4. Tech Time - 4:

# Good Showing Made at Game

Tech students turned out en masse for the nationally televised basketball game between Tech and Missouri after school had been officially dismissed for the Christmas holidays.

The entire student section was filled with enthusiastic Techs who gave a good representation of themselves to the national TV audience.

Not only did they cheer the Tech team on, but also applauded the Missouri team when they were introduced. This was indeed a good gesture.

Throughout the game the Coliseum was filled with cheers and applause for a fine performance, as well as for individual players as they came off the court.

One disappointing note was the fact that the TV cameras were on the west side, and not on the east side as was planned earlier. It was not made clear why the change was made, but it was supposedly because they could not get a proper platform arrangement on the east side.

Although this might have caused some lack of effectiveness, reports from people who watched the game on television indicate that the entire TV performance was very impressive.

The important factor was that Tech won the game. This was accomplished not only by good playing on the part of the team, but by good support from the fans.

Everyone who had a part in making this TV debut a success is to be congratulated. This performance helped Tech immeasurably. If the Raiders continue to get this kind of support, there is no stopping them.

# Committee Elects Two Varsity Show Officials

The Varsity Show Advisory Board Committee, meeting two days before classes let out for Christmas holidays, started the operations which will be climaxed by the 1959 Varsity Show next spring.

**THE COMMITTEE** selected Claude Rogers, Mineola senior, to produce the 1959 show and Johnny Gilbert, Amarillo senior, to direct it. The positions of business, stage, house and light managers, choreographer, publicity director and set designer are still open.

In another important action,

the committee named tomorrow as the deadline for handing in student-written scripts. Scripts should be turned in to the program council office in the Tech Union.

**THE ADVISORY BOARD** is comprised of Nelson Longley, Union director; Linda Bunger, Student Council representative; Mack Robertson, Union Program Council member and Jim Thompson, president of the Tech Union Program Council and chairman of the Varsity Show Advisory Board.

## PICK YER PICKS' NOW

It's "January Clearance" time at the La Ventura Office. Billy Ellis, annual editor, asked Tuesday that individuals who had pictures in the 1957-58 annual to come to the second floor of the journalism building and pick them up. Otherwise, they will be eventually destroyed.

## WITH URRUTIA

# Will Rule Ease Off?

HAVANA, Cuba (AP) - Provisional President Manuel Urrutia arrived in Havana late Monday, raising the prospect that martial law in Havana province and a prospective curfew for the capital would be lifted quickly.

**URRUTIA LANDED** at Havana's International Airport after a flight from Camaguey province.

He arrived at the height of a confused situation that pitted Fidel Castro's rebel forces against a group of young revolutionary zealots who had occupied the presidential palace.

**CASTRO'S MEN** so far were resorting to persuasion. Apparently they were meeting with success, for the splinter group of revolutionaries left the palace on orders from their leaders rather than embarrass Urrutia's struggling young regime.

# FOREADOR

THE TEXAS TECHNOLOGICAL COLLEGE

Vol. 34 Lubbock, Texas, Tuesday, January 6, 1959 No. 39

# Ike Gives Congress New Defense Budget

WASHINGTON (AP) - The Eisenhower administration sketched out a \$40,900,000,000 defense budget Monday for leaders of the new Congress.

The reaction to the spending plans was less than enthusiastic. Some key Democrats challenged the space and missile financing as too small.

**NOR DID** Republican congressional leaders organize any cheering section as they marched out of a 2 1/2-hour conference with President Eisenhower.

There was no sign that the Soviet Union's blasting of a satellite toward orbit around the sun would result in any immediate monetary shot in the arm for the American space program.

**RATHER** indications developed that the heavily Democratic Congress conveying Wednesday may write its own ticket in the months ahead on funds for defense and allied operations. Eisenhower's figure is up only 100 millions over the current budget.

Sen. Lyndon Johnson (D-Tex.), the majority leader, said that "it is my judgment that we should be going farther, faster in our military preparations and in our space program."

**AND I DO FEEL** deeply concerned and hope that we will aggressively expedite these programs as soon as possible, particularly with our planes and missiles."

House Speaker Sam Rayburn, another Texas Democrat, said that "we'll decide what to do" after Eisenhower presents his State of the Union and budget message to Congress.

**AS TO WHETHER** the administration will step up space spending, Rayburn told newsmen: "They acted like they were moving as fast as they know how."

Sen. Everett M. Dirksen (R-Ill.) said, however, that his guess is that there will be "a rather substantial sum" for space development, and that "there will be a speedup in every field," including that of sending a manned rocket to the moon.

Sen. Lyndon Johnson (D-Tex.), the majority leader, said that "it is my judgment that we should be going farther, faster in our military preparations and in our space program."

**AND I DO FEEL** deeply concerned and hope that we will aggressively expedite these programs as soon as possible, particularly with our planes and missiles."

House Speaker Sam Rayburn, another Texas Democrat, said that "we'll decide what to do" after Eisenhower presents his State of the Union and budget message to Congress.

AS TO WHETHER the administration will step up space spending, Rayburn told newsmen: "They acted like they were moving as fast as they know how."

Sen. Everett M. Dirksen (R-Ill.) said, however, that his guess is that there will be "a rather substantial sum" for space development, and that "there will be a speedup in every field," including that of sending a manned rocket to the moon.

Sen. Lyndon Johnson (D-Tex.), the majority leader, said that "it is my judgment that we should be going farther, faster in our military preparations and in our space program."

**AND I DO FEEL** deeply concerned and hope that we will aggressively expedite these programs as soon as possible, particularly with our planes and missiles."

House Speaker Sam Rayburn, another Texas Democrat, said that "we'll decide what to do" after Eisenhower presents his State of the Union and budget message to Congress.

AS TO WHETHER the administration will step up space spending, Rayburn told newsmen: "They acted like they were moving as fast as they know how."

Sen. Everett M. Dirksen (R-Ill.) said, however, that his guess is that there will be "a rather substantial sum" for space development, and that "there will be a speedup in every field," including that of sending a manned rocket to the moon.

Sen. Lyndon Johnson (D-Tex.), the majority leader, said that "it is my judgment that we should be going farther, faster in our military preparations and in our space program."

**AND I DO FEEL** deeply concerned and hope that we will aggressively expedite these programs as soon as possible, particularly with our planes and missiles."

House Speaker Sam Rayburn, another Texas Democrat, said that "we'll decide what to do" after Eisenhower presents his State of the Union and budget message to Congress.

AS TO WHETHER the administration will step up space spending, Rayburn told newsmen: "They acted like they were moving as fast as they know how."

Sen. Everett M. Dirksen (R-Ill.) said, however, that his guess is that there will be "a rather substantial sum" for space development, and that "there will be a speedup in every field," including that of sending a manned rocket to the moon.

Sen. Lyndon Johnson (D-Tex.), the majority leader, said that "it is my judgment that we should be going farther, faster in our military preparations and in our space program."

**AND I DO FEEL** deeply concerned and hope that we will aggressively expedite these programs as soon as possible, particularly with our planes and missiles."

Sen. Lyndon Johnson (D-Tex.), the majority leader, said that "it is my judgment that we should be going farther, faster in our military preparations and in our space program."

**AND I DO FEEL** deeply concerned and hope that we will aggressively expedite these programs as soon as possible, particularly with our planes and missiles."

House Speaker Sam Rayburn, another Texas Democrat, said that "we'll decide what to do" after Eisenhower presents his State of the Union and budget message to Congress.

AS TO WHETHER the administration will step up space spending, Rayburn told newsmen: "They acted like they were moving as fast as they know how."

Sen. Everett M. Dirksen (R-Ill.) said, however, that his guess is that there will be "a rather substantial sum" for space development, and that "there will be a speedup in every field," including that of sending a manned rocket to the moon.

Sen. Lyndon Johnson (D-Tex.), the majority leader, said that "it is my judgment that we should be going farther, faster in our military preparations and in our space program."

**AND I DO FEEL** deeply concerned and hope that we will aggressively expedite these programs as soon as possible, particularly with our planes and missiles."

House Speaker Sam Rayburn, another Texas Democrat, said that "we'll decide what to do" after Eisenhower presents his State of the Union and budget message to Congress.

AS TO WHETHER the administration will step up space spending, Rayburn told newsmen: "They acted like they were moving as fast as they know how."

Sen. Everett M. Dirksen (R-Ill.) said, however, that his guess is that there will be "a rather substantial sum" for space development, and that "there will be a speedup in every field," including that of sending a manned rocket to the moon.

Sen. Lyndon Johnson (D-Tex.), the majority leader, said that "it is my judgment that we should be going farther, faster in our military preparations and in our space program."

**AND I DO FEEL** deeply concerned and hope that we will aggressively expedite these programs as soon as possible, particularly with our planes and missiles."

House Speaker Sam Rayburn, another Texas Democrat, said that "we'll decide what to do" after Eisenhower presents his State of the Union and budget message to Congress.

AS TO WHETHER the administration will step up space spending, Rayburn told newsmen: "They acted like they were moving as fast as they know how."

Sen. Everett M. Dirksen (R-Ill.) said, however, that his guess is that there will be "a rather substantial sum" for space development, and that "there will be a speedup in every field," including that of sending a manned rocket to the moon.

Sen. Lyndon Johnson (D-Tex.), the majority leader, said that "it is my judgment that we should be going farther, faster in our military preparations and in our space program."

**AND I DO FEEL** deeply concerned and hope that we will aggressively expedite these programs as soon as possible, particularly with our planes and missiles."

# Horns Lock At Meeting

AUSTIN (AP) - Texas' firemen and policemen and the Texas Municipal League locked horns Monday for another all-out legislative feud.

The Texas Fire Fighters Assn. and the Texas Municipal Police Assn. riddled league-sponsored legislative programs with criticism at a so-called joint peace meeting.

**THE LEAGUE** then slashed out at a statewide plan to provide maximum work hours and overtime pay for firemen and policemen.

"I know we are not going to resolve anything here," Jack Bostick of Fort Worth, secretary-treasurer of the Fire Fighters, said. "If anything we are about as far apart as the poles and you can't get any farther apart."

**THE EXECUTIVE** board of the municipal league meets again Tuesday to hear recommendations from the league's personnel subcommittee which clashed with the firemen and policemen Monday.

The board is expected to announce a definite stand on a proposal revising present operation of the firemen-policemen's pension fund.

**AT MONDAY'S** meeting firemen-policemen spokesmen from Fort Worth, Dallas, Houston, Marshall, Waco, Amarillo, Sweetwater, Abilene, San Antonio, El Paso, Austin, Brownsville, Corpus Christi and Denison opposed league plans to revise municipal civil service statutes affecting firemen and policemen and the pension plan.

# Workshop Features 'The Great Divorce'

"The Great Divorce" will be featured at the Interdenominational Church Workshop Friday and Saturday.

**THE RELIGIOUS** drama will be presented in St. John's Methodist Church at 8 p.m. Friday.

Written by C. S. Lewis, the play takes the form of a bus trip to the borders of Heaven, where it is discovered that there can never be a marriage between Heaven and Hell—only an eternal separation.

**THE PLAY** will be performed by the Bishop's Company cast, which has played in 42 states and Canada. In addition to performing at colleges and universities throughout the nation, the company has played at the Second Assembly of the World Council of Churches.

The Workshop is sponsored by the Disciples' Christian Fellowship, Wesley Foundation, Presbyterian Student Fellowship and the Canterbury Club.

**EVERYONE** is invited to attend the play Friday night and the workshop Saturday, from 9-12 a.m. at the Wesley Foundation, 2420 15th St. The workshop will be under the leadership of the Bishop's Company.

# Techsan Is Killed

John Wesley Beard, a 21-year-old senior student at Tech, was killed Thursday, Jan. 1, in a wreck on the 4th St. freeway. This was the first traffic fatality in the South Plains area of the year.

**FUNERAL** services were held 3 p.m. Saturday in the Ford Memorial Chapel of the First Baptist Church by Dr. J. Ralph Grant and Rev. James Bolding, assistant pastor. Burial was in the City of Lubbock cemetery.

# An Open Letter From Circle K...

Mr. and Miss Texas Techsan: On behalf of the many hundreds of kids who might not have had a merry Christmas, Circle K International wishes to extend their appreciation to each of you that contributed time, effort and toys to the successful Toys for Tots Drive just before the holidays.

Thousands of toys were donated through dances, club meetings, and individual effort.

To the award winner for turning in the greatest number of toys, the Pi Kappa Alpha's are given a special note of appreciation for the some 1300 toys that they alone turned in.

The Circle K, a men's service organization is proud to be associated with the Tech student body for the aid given in this worthy cause. All we can say to each of you in this humble way is — thanks!



from Coach and all the boys AT

SHOP THE CAMPUS



# Editor, Brownfield Citizens Find Holidays Not So Jolly

by BEN McCARTY  
Monday night immediately after the Christmas holidays began, there was more activity in the city of Brownfield than usual. College students were home, and high school students were running around since there wasn't any school the next day.

ABOUT 10:30 P.M. people on the streets noticed a huge fire on the southern outskirts of town, and many hurried to the vicinity of the blaze.  
After arriving, most of them, like myself, found that there had been a collision between a pickup and a butane transport truck, and that the driver of the truck was still in the blazing tractor of the butane transport. The tank portion of the transport was burning from both ends.

THE CROWD of over 500 had gathered close to the blaze to watch the firemen at work on the tractor portion. In a few moments a fireman approached and told everyone to back up, because the tank might explode.  
The crowd retreated about 20 or 30 yards before a tremendous explosion rocked the entire city of Brownfield.

MOST OF THE people were knocked flat as a flash of orange heat quickly spread throughout the immediate area.

Screams of pain, agony and fear were heard, as people were seen running with their clothes and hair on fire. Shoes were scattered over the area where people

were either knocked or ran out of them.

FRIENDS WERE checking with friends to ascertain the extent of injuries. Almost everyone was burned to some extent, and many were injured by flying debris.

Immediately there was a mass exodus to the hospital. Many, not realizing the seriousness of their injuries, went home, but later decided they needed professional help. The hospital was treating patients until after midnight.

MY BROTHER, his fiancée and I were among those who went home, and then decided to go to the hospital.

When we arrived at the hospital nurses treated our burns (my right hand was about all that was burned) and gave up penicillin, tetanus and hypo shots.

THE SCENE at the hospital was one that will be hard to forget. Faces were completely blackened from burns, many persons had all the hair burned off their head, the majority of them had their hands burned, and, worst of all, some patients had received burns over all of the back and shoulders.

Weeping relatives were turned back at the hospital doors because there was no room for them inside. Approximately 160 persons were treated that night for injuries.

I WAS LUCKY, as were many other people. We are all thankful to be alive and will not be around at the fire when another butane

truck ignites.  
The very, very bad part of the explosion was the death of four men—the truck driver, two volunteer firemen and another man who was attempting to reduce the danger of an explosion. Three widows and nine children were left.

## West Urges Fire Care

"The program of testing, recharging, and replacement of extinguishers and fire hose as well as installation of additional equipment is now being completed on the Tech campus" according to Col. C. T. West, chairman of the Fire Prevention Committee.

Stressing the importance of fire prevention and safety, Col. West emphasized that the prevention of most fires result by being ready and equipped to meet the situation. He further explained that there were three types of fires:

CLASS A, which includes paper, wood, cloth and general combustible fires requiring cooling and quenching can be extinguished by soda and acid, foam and water.

CLASS B, which is burning liquids such as gasoline, oils, grease or paint, can be put out by either carbon dioxide, or foam. Soda and acid, or water will only tend to spread the flames.

CLASS C, which include electrical fires in motors, switches, appliances, etc., will also be extinguished by carbon dioxide or foam, but the use of soda and acid or water will be dangerous to use because of the electricity and the conduction of it.

Fires in America take a tragic toll of about 32,000 lives every year and injure approximately 40,000 others, most of whom are disfigured for life.

MEMBERS OF THE Fire Prevention Committee include Dean Lewis N. Jones, Dean of Men; Mr. Robert Mason, fire marshal for the Tech Campus; Miss Shirley Schulz, director of food service, and Mr. Jack Thompson, assistant comptroller, as well as Col. West.

## SHORTHAND IN 6 WEEKS

Typing Optional  
Famous Speedwriting System. Uses ABC's. No Signs. No Symbols. No Machines. For Business and Civil Service. Classes now starting. D.A.Y. & E.E. Low Cost. Schools in Principal Cities. Come, Observe, Speak to Our Pupils.

Speedwriting  
DRAUGHON'S COLLEGE  
1414 Texas Ave.

# ★ Campus ★

## Modern Fashion Premiere Presents New Creations

Newest creations of the modern fashion world will be displayed in Lubbock when the national premiere of women's spring fashions comes to Texas Tech Jan. 27.

Sponsored by Tech's School of Home Economics, Vogue Patterns and other national fashion firms, the premiere will be in Lubbock's Municipal Auditorium and will announce Vogue's new spring patterns.

The presentation will be supplemented with the various steps in the birth of a new fashion—design, the chemistry of dyes and the preparation of new fabric textures in looms.

"All the fabrics are representative of the finest in design, fiber, construction and color," said Dr. Gene Sheldon, head of Tech's clothing and textiles department.

A collection of colors featuring greens, reds and blues in a wide range of values and intensities will highlight the fashion show. Vivid prints and subtle color combinations will be shown also.

Fabrics are being selected for round-the-clock activities. Modeled will be appropriate apparel for activities ranging from leisurely breakfasts to gardening, afternoon shopping, meetings, luncheons and teas.

Attire for evening affairs—both formal and informal—will be pre-

ented and the show will be climaxed with garments for a bridal party.

Fashion highlights of the show will include suits of cotton tweeds; matching skirt and jacket outfits which fit themselves into a basic wardrobe; and a coat with a weatherized finish to make it wearable rain or shine.

The show designers have to keep this in mind—the Lubbock presentation will be just the first in the nation; and the settings must be made transportable and adaptable to various sized stages so that they can travel with the show as it tours the nation later.

## Faculty Club Plans Meeting

The monthly meeting of the Faculty Women's Club will be in the lounge of Drane Hall Wednesday at 3 o'clock.

SPECIAL STAFFS, including library, museum, infirmary, air and military science, are invited to attend.

According to Chairman Mrs. W. C. Holden, "The program will be very enjoyable and we hope everyone will attend."

# TOREADOR

Member The Associated Press  
Member The Associated Collegiate Press

EDITOR	Ben McCarty
BUSINESS MANAGER	Don Ledwig
MANAGING EDITOR	James Hamm
NEWS EDITOR	Tommy Schmidt
CAMPUS EDITOR	Merium Jackson
SPORTS EDITOR	Bill Dean
ASST. SPORTS EDITOR	Ron Calhoun
TUESDAY COPY EDITOR	Lee Sullenger
HEAD PHOTOGRAPHER	Joe Spears
ASST. DIR. OF STUDENT PUBLICATIONS	Phil Orman

The TOREADOR, official student newspaper of Texas Technological College, Lubbock, Texas, is regularly published each Tuesday, Thursday and Saturday morning during the two long terms, excepting holidays, by students of the College as an expression of student news and opinion only.

The TOREADOR is financed by a student matriculation fee, advertising and subscriptions. Letters to the editor represent the views of their writers and not necessarily those of the TOREADOR. Letter must be signed, but may be published without signatures in justifiable instances. The views of the TOREADOR are in no way to be construed as necessarily those of the administration.

Entered as second class matter at the Post Office in Lubbock, Texas, under the act of March 3, 1916.

Men's Hand Made Cowboy Boots  
LARGEST SELECTION IN U.S.A. \$16.95 UP  
HUBER Boot & Western Store  
OPPOSITE POST OFFICE ON BROADWAY

a quick review and TO THE POINT  
USE LITTLEFIELD COLLEGE OUTLINES

History, Europe, 1300-1848, Albracht-Cornia 1.50	Accounting, Cost, An Introduction, Burton 1.50
History, Europe, After 1815, Albracht-Cornia 1.50	Accounting, Elem., Maxwell and McMichael 1.25
History, Far East, Bates 1.25	Advertising, Principles and Practice, Dept. 1.50
History, Medieval, Hoffman and Flynn 505 1.50	Algebra, College, Feinstein and Murphy 1.75
Insurance, General Principles, Allan 1.50	Anatomy, Human, Atlas, Evans 1.75
Literature, American, Smith 1.75	Biology, General, Winaker 1.50
Literature, American, Dictionary, Richards 505 1.50	Business Organization, McNaughton 1.25
Literature, English, Vol. I, Smith 1.75	Calculus, Peterson and Gossler 1.75
Literature, English, Vol. II, Smith 1.75	Chemistry, Elementary, King 1.50
Marketing, Shultz 1.50	Chemistry, General, Dunbar 505 1.50
Mathematics Tables, Log, Trig, et. al. 1.00	Citizenship, Essential Tools for Good 1.50
Money and Banking, Lindholm 1.25	Constitution, Leading Cases, Bartholomew 1.75
Philosophy, Bentley 505 1.50	Constitutions, Modern, Meier 1.95
Philosophy, Dictionary of, Rones 505 1.95	Corporate Finance, Principles and Practice 1.50
Philosophy, Living Schools of, Rones 505 1.95	Credits and Collections, Steiner and Kane 1.00
Political Science, Huzar and Stevenson 1.25	Documents, Basic American, Huzar and L. 1.75
Psychology, Abnormal, Drake 505 1.50	Economic History of U.S., Kammerer 505 1.50
Psychology, Abnormal, R'd'gs, Crow and Crow 1.95	Economics, Principles and Problems, Mured 1.75
Psychology, Educ., R'd'gs, Crow and Crow 1.75	Education, Philosophy of, Dewey 505 1.50
Psychology, Modern, Hartman 1.50	English Essentials, Nelson 1.25
Religion, Living Schools of, Fern 505 1.95	Fiction, Modern World, Brewster and Buriall 1.25
Retail Merchandising, Doubman 1.50	Foreign Policy, American, Loagdon 505 1.50
Shakespeare's Plays, Synopsis, Magill 1.25	Government, American, Posty 1.75
Sociology, An Intro., Roysck and Warren 1.50	Government, American Dict., Tallman 505 1.75
Sociology, Dictionary of, Fairchild 505 1.75	Government, U.S. (Visual), Wilman 505 1.50
Statistical Presentation, Myers .75	Grammar, American Dict., Whiting 505 1.50
Thermodynamics, Engineering, Warner 1.50	History, American Dict., Martin 505 2.50
Thesis, Prep. Typed, Billiet 1.75	History, Amer. to 1865, McKee 505 1.50
Thesis Writing, Albaugh 1.00	History, Amer. Since 1865, McKee 505 1.50
Western Civilization, Readings, Hughes 1.25	History, American, Before 1877, Billington 1.50
Word Origins, Dictionary of, Shipley 505 1.75	History, American, After 1865, Billington 1.50
	History, Ancient, Bon 505 1.50

Texas Tech College BOOKSTORE "ON THE CAMPUS"

ANNOUNCING  
The Grand Opening of the  
**TECH**  
T.V. - RADIO - HIFI  
Repair Service

OWNED AND OPERATED BY TECH STUDENTS  
Carl Cloninger E. E. Bob Lee E.E.  
George H. Alexander E.E.

CALL SH 4-3889 OR SH 4-9355  
Guaranteed Work  
RATES WITH THE STUDENT IN MIND

Use  
**Toreador Classified**

• TUXEDOS •  
RENT THEM FROM  
**Costume Studio**  
COSTUMES FOR ALL OCCASIONS

Wigs—Mustaches—Novelties  
2422A-Bdwy. PO 3-2388

**Out**  
By BILL  
Tonight the Raiders host the... must win to get back in step... performance in Arkansas.  
Saturday the Raiders were... caught on, then went flat again... which seemed more than fair. It... had passes and cold shooting.  
And if it doesn't improve to... the conference. The Bears are no... ment in Houston Baylor lost to... and Arkansas, 60-57. Then they... were lucky to get out with a two... Saturday they lost to TCU 72-62.  
Baylor is led by captain Gene... player, who seems to keep this team... of help from forward Carroll D... of the most improved players in...  
And of course, there's Charley... most action but he can always be... to giants Jerry Walsh and Bobby T...  
It should be a good one toning... their work cut out.  
The Southwest Conference is... find ever staged. Under the able... Director Bill Whitmore and th... thing went off smoothly and ev...  
Texas Tech didn't exactly dazz... did manage to win two games. Th... ever—the 72-62 win over Arkansas... second half comeback to catch the H...  
Texas A&M was the big sur... one. The Ags had a fine team... would handle the Raiders and TCU... call came against another tourna...  
Both the Aggies and the Owl... aggressive play. They will both ha... fence race.  
The crowds were good. The or... new record for the afternoon on... of the final game, the largest crowd... the Raider-Ags tilt which was the... between A&M and TCU drew about...  
Tech was not without its sup... came down from Lubbock and in... the support of the crowd.  
More about the tourney later.  
Analyzing the conference ra... winner will probably lose as ma... of what I saw here's how I thi...  
1. TCU — The Frogs looked l... they have the best team in the lea... Kriebner, who is tough to stop. He... ment player hands down. Guards... not spectacular, are better than a... capable of scoring in double figur... ward Ron Stevenson. Stevenson... Houston. He is capable of great th... wind up on top.  
2. TEXAS A&M — The Aggie... guard Neil Swisher, who was all... together. Forward Archie Carroll... while center Jim McMichael is muc... college transfer Wilmer Cox will... think the Aggies can take TCU w... are down. It will be close though.  
3. RICE AND TEXAS TECH... the pan but they looked great. The... A&M and they could just have eas... most performers, center Tommy Ro... the Owls shine. The other guard... Bob Higgins and Steve Galloway... Priston are proven performers. I... overall strength to go all the way.  
The Raiders just didn't look... year. With the exception of Chak... was all over the court in every... The potential is there but it mu...  
4. ARKANSAS AND SMU... championship last year but the P... boys miss Fred Grim. Both teams... every game. But I don't think eith... Rankin is a capable guard while... experience. Center Jay Carpenter... old veterans and form the bulwar... SMU had fabulous Max Williams... Wilbur Marsh at center and all-to... while Carter Creech at forward... though he is a starter for the first... a lot of action and should defin...  
5. BAYLOR — The Golden... finish much higher. They will be... especially at Waco. They will ha... Gene McCarty can't do it all.

**PORTWOOD**  
NOW IN ENLARG...  
BETTER SERVICE  
Tune up  
Lights & Generator  
Brakes  
1108 AVE. X



# Outlook

By BILL DEAN

Tonight the Raiders host the Baylor Bears of Bill Henderson and must win to get back in step after Saturday's lack-lustre performance in Arkansas.

Saturday the Raiders were flat in the first part of the game, caught on, then went flat again. It certainly wasn't officiating, which seemed more than fair. It was too much traveling, too many bad passes and cold shooting.

And if it doesn't improve tonight Tech could easily be 0-2 in the conference. The Bears are no push-overs. At the SWC Tournament in Houston Baylor lost two heart-breakers to TCU, 62-55, and Arkansas, 60-57. Then they bombed Texas 75-54. The Raiders were lucky to get out with a two-point 59-57 win over the Steers. Saturday they lost to TCU 72-62.

Baylor is led by captain Gene McCarley, a superb basketball player who seems to keep this team glued together. He receives plenty of help from forward Carroll Dawson and center John Moore, one of the most improved players in the conference.

And of course, there's Charley Pack. Pack didn't see much tournament action but he can always be counted on. In Houston he yielded to guards Jerry Walsh and Bobby Turner.

It should be a good one tonight with the Raiders really having their work cut out.

★ ★ ★

The Southwest Conference Tournament in Houston was the finest ever staged. Under the able direction of Rice Sports Publicity Director Bill Whitmore and the tournament committee everything went off smoothly and everyone was well pleased.

Texas Tech didn't exactly dazzle the spectators but the Raiders did manage to win two games. They only looked good in one however — the 72-62 win over Arkansas. And even then it took a one-point second half comeback to catch the Hogs.

Texas A&M was the big surprise of the entire meet. Everyone knew the Ags had a fine team. But no one dreamed that they would handle the Raiders and TCU with such ease. Their closest call came against another tournament surprise, Rice, 60-59.

Both the Aggies and the Owls displayed balanced attacks and aggressive play. They will both have to be reckoned with in the conference race.

The crowds were good. The opening game crowd of 4,200 set a new record for the afternoon on opening day. With the exception of the final game, the largest crowd of the affair, 6,200, turned out for the Raider-Ag tilt which was the last one on opening day. The final between A&M and TCU drew about 6,300.

Tech was not without its support. Between 200 and 300 fans came down from Lubbock and the Raiders generally seemed to have the support of the crowd.

More about the tourney later.

★ ★ ★

Analyzing the conference race is a tough chore. I think the winner will probably lose as many as five games. On the basis of what I saw here's how I think things will wind up:

1. TCU — The Frogs looked bad against the Aggies but I think they have the best team in the league. They have the big man, H. E. Kirchner, who is tough to stop. He was voted the outstanding tournament player hands down. Guards Ken King and Ken Brunson, while not spectacular, are better than average. Forward Derrill Nippert is capable of scoring in double figures any given night. The key is forward Ron Stevenson. Stevenson, All-SWC last year, looked bad in Houston. He is capable of great things. If he comes through TCU will wind up on top.

2. TEXAS A&M — the Aggies displayed good balance. Led by guard Neil Swisher, who was all-tournament, this team works well together. Forwards Archie Carroll and Wayne Lawrence are rugged, while center Jim McNichol is much improved over last year. Junior-college transfer Wilmer Cox will be a great asset at guard. I don't think the Aggies can take TCU with such ease again when the chips are down. It will be close though.

3. RICE AND TEXAS TECH — the Owls may be just a flash in the pan but they looked great. Their only loss was the one-pointer to A&M and they could just have easily come out on top. Two all-tournament performers, center Tommy Robitaille and guard Dale Ball made the Owls shine. The other guard spot is between E. Jay Melvain, Bob Higgins and Steve Galloway. Forward Gary Griffin and W. A. Preston are proven performers. I don't think the Owls have enough over-all strength to go all the way.

The Raiders just didn't look like the contender they were last year. With the exception of Charley Lynch, Tech looked bad. Lynch was all over the court in every game playing his typical good ball. The potential is there but it must come to the surface. So far it hasn't.

5. ARKANSAS AND SMU — These two teams tied for the championship last year but the Ponies lost Rick Herrscher and the Hogs miss Fred Grim. Both teams are young and should improve with every game. But I don't think either can go all the way. Hog Tommy Rankin is a capable guard while his counterpart Pat Foster, needs experience. Center Jay Carpenter and forward Harry Thompson are old veterans and form the bulwark of the attack. The other forward, Clyde Rhoden someday will be an SWC great — but not this year. SMU had fabulous Max Williams and Kim Nash at guards, veteran Wilbur Marsh at center and all-tournament player Bobby James and rookie Carter Creech at forwards. Creech will be a big surprise even though he is a starter for the first time. Steve Strange will also see a lot of action and should definitely help.

7. BAYLOR — The Golden Bears just don't have enough to finish much higher. They will be tough in every game though — especially at Waco. They will have their more brilliant days, but Gene McCarley can't do it all.

## PORTWOOD GARAGE

NOW IN ENLARGED QUARTERS TO BETTER SERVICE YOUR CAR

Tune up Brakes Front end alignment  
Lights & Generator Wheel Balancing  
1108 AVE. X PO 3-3151

# Staggering Raiders Host Bears Tonight

by BILL DEAN

Texas Tech's Red Raiders, battling to get back on their feet, entertain the Baylor Bears tonight in the Lubbock Municipal Coliseum at 8 p.m.

In a preliminary contest the Tech freshmen will battle Wayland College at 6 p.m.

THE RAIDERS and the Bears both lost their opening conference games Saturday. Baylor lost in Waco to pre-season favorite TCU 72-62 while the Raiders lost to Arkansas 61-57 in Fayetteville before a regional television audience.

Baylor's loss was expected; Tech's was not.

The Bears, under Bill Henderson, has compiled a season mark of 4-6. They were picked for no better than seventh before the race began.

CAPTAIN GENE MCCARLEY is the sparkplug of this team that can give anyone a lot of trouble, even in defeat.

McCarley, 6-5 senior from Pasadena, is a dangerous set shot artist and a real hustler. He's joined at forward by a promising 6-5 junior, Carroll Dawson, who is also deadleady from the corner.

Rounding out the rest of the Bear starting five are Bob Turner (6-3) and Jerry Walsh (5-11) at guards and John Moore (6-8) at center. Moore is one of the most improved players in the conference.

AND OF COURSE there's 5-9

8 TEXAS — This was absolutely the poorest team in the tournament. They fight and scrap but they don't have the horses. They should be much tougher, however, when Jay Arnette gets back in the line-up. Arnette had the virus at Houston. This is a young team. Only starting senior guard Bobby Puryear has much experience besides Arnette. Albert Almanza shows great promise at forward and while center Wayne Clark looks like Icabod Crane, he too might develop.

atomic powered Charley Pack who will no doubt see a good deal of action at the guard slot. Pack is a crowd favorite all over the conference for his hustle and antics.

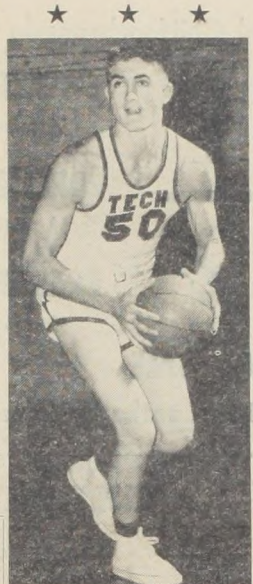
Coach Polk Robison will probably go along with his usual line-up of Gerald Myers (5-11) and Charley Lynch (6-2) at guards, Leon Hill (6-6) and Gene Arrington (6-4) at forwards and Pat Noakes (6-

9) or Harold Hudgens (6-9) at center.

This is the Raider's first outing at home in conference play and their first appearance since their Dec. 20 win over Missouri on national television.

SINCE THEN TECH won two out of three in the Southwest Conference Tournament at Houston, winning from Texas and Arkansas while losing to A&M.

The Raiders haven't lived up to pre-season expectations in the past few weeks, posting a 7-4 mark. They haven't looked really sharp since the Missouri win.



CHARLEY LYNCH

### Classified Ads

Child Care. My Home, 2 years or over, 2404 - 10th. Call PO 3-2797 after 5.

Male Tech student needs companion to Europe this summer. If interested, write Europe Trip 3710-21 Lubbock. Include name, age, countries you want to visit. The trip will take app. 3 months.

### SPORT CENTER

1612 - 13th PO 5-6645

Complete Athletic and Sports Equipment

--- it's time to save!

SAVE AT.....

BROWN'S VARSITY

MIDWINTER

SALE



Brown's VARSITY SHOP  
ACROSS FROM THE CAMPUS



SPECIAL STUDENT RATES  
30c Per Line



Lubbock's Largest Bowling Alley

Q. C. BOWL

for reservations  
7301 College SH4-8451

us ★

Premiere

ations

the show will be...

highlights of the show...

designers have to...

ty Club

s Meeting

monthly meeting of the...

L STAFFS, including...

ing to Chairman Mrs. W.

Ben McCarly

Don Ludwig

James Hamon

Tommy Schmidt

Merium Jackson

Bill Dean

Ron Calhoun

Lee Sullenger

Joe Spears

ONS - Phil Orman

Use

reador

ssified

UXEDOS •

NT THEM FROM

time

Studio

STUMES FOR ALL

OCCASIONS

Mustaches - Novelties

Edwy. PO 3-2388



*Bray's*

# CLEARANCE SALE

## — FOR WOMEN —

SKIRTS - Wool, Chiffon, brocade

<b>SLACKS</b> ½ price	1 — 2	<b>SWEATERS</b> ½ price
<b>TORADORS</b> ½ price		<b>DRESSES</b> ½ price
<b>BLOUSES</b> ½ price		<b>BRASSIERS</b> ½ price

**PRICE SALE**

BELTS - entire stock Leather & Velvet

### ROBES

12.95 Values ..... 6.98  
14.95 Values ..... 7.98  
17.95 Values ..... 9.98  
19.95 Values ..... 12.98  
22.95 Values ..... 13.98  
25.00 Values ..... 14.98

**DRESSES**  
Values to 49.95  
7.95

### KNIT DRESSES

Group values 29.95 to 59.95

**½ Price**

**GROUP**  
39.95 Values ..... 24.95  
45.00 Values ..... 29.95  
49.95 Values ..... 34.95  
55.00 Values ..... 39.95

NO REFUNDS

### SHORT COATS

Group Values 39.95  
to 98.50  
½ PRICE

NEW SPRING SHORTIES  
Values 29.95 to 59.95

**20% OFF**

**JEWELRY**  
Values 1.00 to 2.00  
½ Price

### COATS

59.95 Values ..... 39.95  
69.95 Values ..... 45.00  
89.95 Values ..... 59.95  
99.50 Values ..... 65.00  
149.95 Values ..... 95.00  
159.95 Values ..... 99.50  
189.95 Values ..... 119.00

NO EXCHANGES

LADIES SPORTSWEAR

2418 Broadway

PO 5-6244

## — FOR MEN —

### SPORT COATS

ONE GROUP

29.95 Values ..... 18.95  
32.50 Values ..... 20.50  
35.00 Values ..... 21.95  
37.50 Values ..... 23.50  
39.95 Values ..... 24.95  
45.00 Values ..... 27.95

### SUITS

55.00 Values ..... 33.95  
60.00 Values ..... 36.95  
65.00 Values ..... 39.95  
70.00 Values ..... 42.95

**SWEATERS**  
1/3 OFF

### CAR COATS

17.95 Values ..... 10.80  
21.95 Values ..... 13.20  
29.95 Values ..... 17.95  
39.95 Values ..... 23.95

### JACKETS

Suede, Washable and Dry  
CLEANABLE

24.95 Values ..... 13.95  
27.50 Values ..... 14.95  
Leather  
29.95 Values ..... 14.95  
35.00 Values ..... 20.95  
Nylon Reversible  
13.95 Values ..... 7.95

ALL SALES FINAL

### SLACKS

Pleated & National Models

12.95 Values ..... 9.10  
13.95 Values ..... 9.80  
14.95 Values ..... 10.50  
15.95 Values ..... 11.20  
16.95 Values ..... 11.90  
17.95 Values ..... 12.60  
18.95 Values ..... 13.30

### SHOES

ONE GROUP

13.95 Values ..... 11.20  
14.95 Values ..... 12.00  
15.95 Values ..... 12.80  
16.95 Values ..... 13.60

**SHOES**  
One Group  
½ PRICE

### SOCKS

1.00 Values ..... 59  
1.25 Values ..... 75  
1.50 Values ..... 90  
1.95 Values ..... 1.20

**TIES**  
2.50 Values ..... 1.25

### SPORT SHIRTS

4.95 Values ..... 2.99  
5.95 Values ..... 3.60  
6.95 Values ..... 4.20  
7.95 Values ..... 4.80  
8.95 Values ..... 5.40  
9.95 Values ..... 6.00

Minimum Charge  
on  
ALTERATIONS

CAMPUS TOGGERY

2422 Broadway

PO2-3501

*Bray's*