

WEATHER

Sept. 26 81 39
Sept. 27 80 48
Sept. 28 83 44

BAILEY COUNTY JOURNAL

'The Community Of Opportunity Where Water Makes The Difference'

The Foreman Company
Box 68
Monmouth, Ill. 61462



© 1990

Volume 30, No. 41

Published Every Sunday At Muleshoe, Bailey County, Texas 79347

Member
TEXAS PRESS
ASSOCIATION

20¢ SUNDAY, SEPTEMBER 29, 1991

Public Meeting Tuesday On Proposed Prison



BUSINESS OF THE MONTH---Bob Stovall Printing was recognized as business of the month by the Muleshoe Chamber of Commerce and Agriculture. Pictured are: Mary Ann Ramirez, Eva Nell Stovall, Kid Castleberry, Lonnie Adrian, Robert Montgomery, Chamber President, George Nieman, Carolyn Johnson, Chamber Manager and Randy Lewis. (Journal Photo)

around Muleshoe

Church on the Rock, located at West 19th & Loop 289, will be hosting a fall conference, "Local Church '91", on Sunday, September 29 through Wednesday, October 2. The speakers for this conference: Morris Sheats, Doug Lambert, and Ray Hughes, will bring prophetic, motivational, and inspirational messages. The conference schedule is as follows:
Sunday September 29
10:00 a.m. & 6:00 p.m.
Monday September 30
1:00 p.m. & 7:00 p.m.
Tuesday October 1
1:00 p.m. & 7:00 p.m.
Wednesday October 2
7:00 p.m.

If you desire face-to-face information about Social Security, Medicare, or Supplemental Security Income, you may contact a representative of the Lubbock Social Security office on Oct. 8, Nov. 12 or Dec. 10 from 9:30 to 11 a.m. at the Bailey County Court House, 300 South First, Muleshoe.

Muleshoe Independent School District invites all parents of children age birth through fifth grade to attend an Active Parenting Seminar. The seminar will be held in the Dillman Elementary cafeteria on Wednesday, October 2. Coffee will be served at 9:15 a.m. This is followed by an hour long program. The title of this seminar is "The Power of Encouragement," and will be presented by Rosemary DePalma and Mary Ann Dropps.

The Bailey County Commissioners Court will meet in SPECIAL SESSION in the Bailey County Courthouse, Monday, September 30, 1991.

The meeting will begin at 10:00 a.m., and will continue until all business is concluded, with the following items on the agenda:

1. Approve the minutes of the previous meeting.
2. Review, approve and order payment of County bills.
3. Consider Budget Amendment No. 10 to FY 1991 Budget.
4. Authorize County Judge to advertise for bids to renovate jail.
5. Discuss Resource Conservation and Development for the County.
6. Hugh Young to discuss the Veterans Memorial Monument.
7. Consider waiving six month probation period as to salary only on Curtis Preston.

Cont. Page 6, Col. 1

Blackwater Valley Election Slated

An election of a soil and water conservation district director to serve in Zone three on the Blackwater Valley Soil and Water Conservation District is scheduled for October 10, 1991 at the Needmore Community Center announced Ernest Ramm, chairman of the board.

The elections will be held at 12:00 noon. There will be a program on use of Prep and cotton harvest aid chemicals. A meal will be served.

State law decrees that to be eligible to vote in a soil and water conservation district director election, a person must own agricultural land within the district where the election is being held. The person must also live in a county all or any part of which is in the district and the voter must be 18 years old.

Legal qualifications state that a candidate for the office of a soil and water conservation district director must own land in the zone he represents, be 18 years of age and be actively

engaged in farming or ranching.

He must also live in a county all or part of which is in the district. Soil and water conservation district directors serve four-year terms of office.

Zone three of the district in the following area include: Baileyboro, Longview, Coyote Lake, Stegall and most of the area West to the State Line. The South boundary is 2 miles South of Stegall.

Current members of the board of directors of the Blackwater Valley SWCD are Johnny Furguson, Chairman, Maple; Bennie Claunch, Secretary, Bula; Nick Bamert, member, Muleshoe; and J. L. Dale, member, Needmore.

The purpose of the Blackwater Valley SWCD, with headquarters in Muleshoe is to promote sound soil and water conservation programs on agricultural lands within the district and to serve as a voice for farmers, ranchers and local community entities on conservation matters.

Cont. Page 6, Col. 2

Upland Cotton On Leading Edge Of Textile Industry

Cotton Board Chairman William H. McCoy, Jr., in his address at the Cotton Board's 25th annual meeting, said "The successful referendum forever changes the course of history for the U.S. cotton industry."

Since the uniform funding referendum for the Cotton Research and Promotion Program passed this year, "the Cotton Board is in a better position to provide Cotton Incorporated with the necessary tools to keep Upland cotton on the leading edge of the textile industry," said McCoy, an Oswego, S.C., cotton producer.

During the meeting, the Cotton Board adopted a 1992 budget of \$42.3 million for Cotton Incorporated's research and promotion activities. The Board recommended the \$42.3 million budget to the Secretary of Agriculture for approval. The 1992 budget recommendation reflects a 48% increase of funds from the previous year's level, generated from the uniform funding program which eliminated producer refunds and initiated an assessment on imported raw cotton and cotton products.

Also, the Board recommended lowering the Cotton Research and Promotion assessment rate to \$1 plus five-tenths of one percent of the sale price of each bale. The current rate is \$1 dollar plus six-tenths of one

percent.

The lowered rate, if approved by the Secretary of Agriculture, will be effective for crop years beginning with 1992 and running through 1994 to allow continuity of funding. Beginning with the 1995-96 crop year, the Cotton Board currently plans for the assessment rate to automatically revert to the current rate. However, the situation and attempts to balance the programs monetary needs with the costs born by the producers, and now importers, who fund its activities.

In additional business, the Board elected new officers for 1992: chairman, W.A. Baxter,

Dermott, Ark; vice-chairman, Keith Streety, Levelland, Texas; treasurer, David L. Burns, Laurel Hill, N.C.; and secretary Fredrick A Wegis, Buttonwillow, Calif.

The Muleshoe Area Industrial Foundation has a major project underway. This group of enthusiastic businessmen are working to secure a minimum/medium security prison facility in Bailey County. This past week, the Board of Directors for the Muleshoe Chamber of Commerce and Agriculture voted unanimously to give full support to this project.

The Muleshoe Area Industrial Foundation has announced a public meeting to be held in the Muleshoe High School Auditorium Tuesday, October 1, at 7 p.m. William Barry, Director of Management Services with the Texas Department of Corrections will offer a program on the proposed corrections facilities for Bailey County.

Barry serves on the state selection committee for corrections facilities in the State of Texas. Therefore, it is extremely important that there be a large number of people in attendance at this meeting. The amount of community support for this proposed corrections

facility is one of the criteria considered by the committee.

The purpose of this meeting is to provide information regarding the type of facility to be constructed, the site selection process, and to answer any questions that you might have regarding the facility.

A typical facility would provide 1,000 to 2,250 beds. The unit would provide employment for 300 to 800 people in jobs ranging in description from clerical to correctional officers and unit administrators. Annual payroll for the facility would range from over \$6 million to about \$17 million. Salaries would range from \$12,000 to \$37,000 annually.

Snyder, Childress, and Lamesa have all three recently secured a prison through this proposal process. These towns now boast of an increased housing market, increased retail sales, lower unemployment, an increased tax base, and a stabilized hospital. (Healthcare is a major area where local resources are utilized.) The

strength this prison could bring to our local economy is obvious.

Jay Messenger, Project Chairman of the Muleshoe Area Industrial Foundation told the Journal that the Industrial Foundation has received very strong support for a Muleshoe area correction facility. The Foundation has met with the Chamber of Commerce, Jenny-slippers, MAC, Civic Clubs and held a public meeting at the Catholic Church to inform people about what this industry can do for our area. It is great to see how our community is pulling together on this project.

Cont. Page 6, Col. 3

Hospital To File On Past Due Accounts

The Muleshoe Area Hospital District board of directors met in its regular session Thursday, September 26 at 7 p.m. in the dining room of the Muleshoe Area Medical Center. First, a financial report was read.

Some bad debts and accounts were charged off. Some past due accounts will go to small claims court and district court. The board is serious about collecting past due accounts. "The hospital is not a free hospital," Administrator Richard Murphy commented. "We are collecting for outpatient services as well."

The board appointed three women to be trustees for memorial funds. They are Betty Ramage, Lona Embry and Joyeline Costen.

It also voted to renew the present Blue Cross-Blue Shield insurance plan after investigating many other types. The hospital district also leased the ambulance building to Bailey County for a one year period.

The 1991-92 budget was approved. It is \$4,500,000.00. A report on med net satellite continuous education with Texas Tech was given. It was announced that it is in place and being used.

Sandhill Crane Expected Soon At Refuge

Soon the clamoring chorus of sandhill crane calls may once again be heard at the Muleshoe National Wildlife Refuge and throughout the South Plains.

The first crane sightings for the season normally occur at the refuge towards the last of September. Numbers continue

Cont. Page 6, Col. 4

Lubbock Cooper Eases Past Muleshoe 12-7

What appeared to be an almost upsetting game for the Cooper Pirates, turned out to be one for the Muleshoe Mules as they were defeated by the Pirates by a score of 12-7.

With the Cooper Pirates taking the opening kick-off they were able to take advantage of the situation as Kippy Craddock for the Cooper Pirates raced into the endzone with 9:57 left in the quarter. The extra point by Ryan Phillips was declared no good.

The Mules not letting the Pirates out do them, Marvin Lewis for the Mules added six points for the Muleshoe Mules with 6:17 showing on the clock. The extra point by David Quintana was good.

It took the Cooper Pirates five plays to make it into the endzone, while it took the Mules eight plays before they crossed the goal line.

With 4:56 showing on the clock, the Pirates were forced to punt the ball away to the Mules. The Mules took possession of the ball at 4:47 left in the first quarter.

The Mules were able to move the ball upfield and gain a few yards before they were hit with their first penalty of the game for offsidess.

After a few more plays the Mules were hit with another penalty this time for an illegal block. With that the first quarter ended with the Mules leading the Cooper Pirates by a score of 7-6.

The Mules still in possession of the ball when the second quarter started were able to make only one play before they punted the ball to the Cooper Pirates with just seconds into the second quarter. The pirates unable to move the ball upfield punted the ball back to the Mules at 10:27 in the second quarter.

The Mules in possession of ball were intercepted at 8:21 by Ryan Phillips with the ball intended for Arturo Ruiz of the Muleshoe Mules.

The Pirates not able to have control of the ball for very long fumbled the ball which was recovered by Mule, David Quintana at 8:12 in the quarter.

The Mules were able to have control of the ball for a few plays, tried to further their lead with a field goal attempt by Michael Hardwick.

At 4:40 in the second quarter, the Cooper Pirates once again took possession of the ball able to rake up some yardage against the Mules before they were faced with a flag for offsidess which was declined.

Three plays later saw the Mules take a timeout before they were again faced with a penalty, this time for holding.

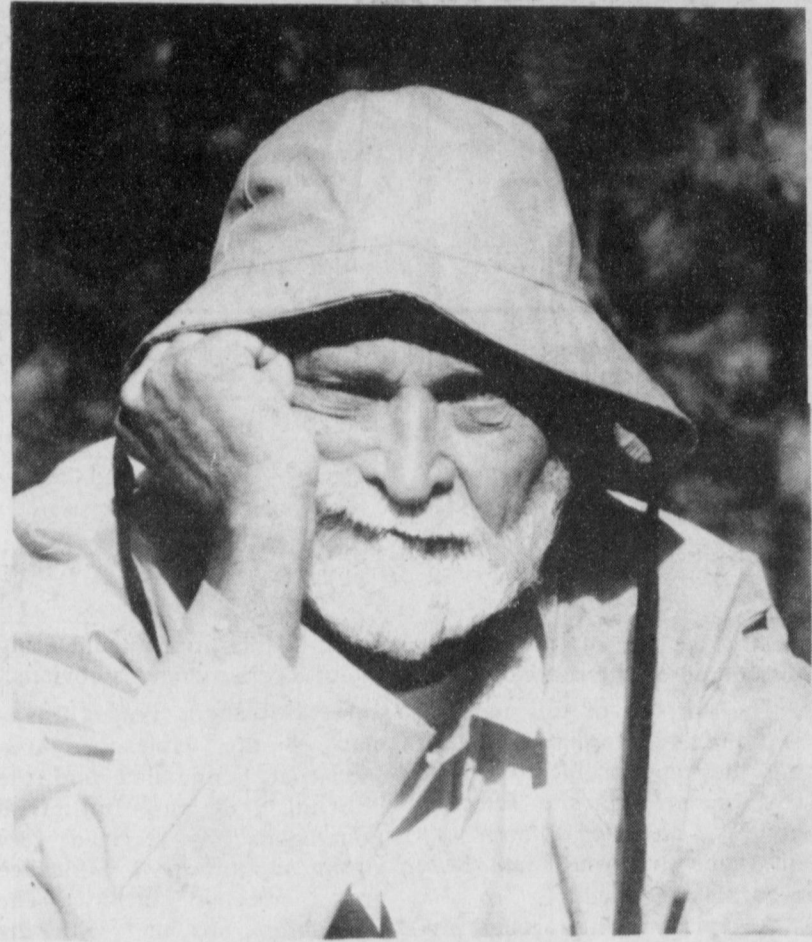
The Pirates had control of the ball until :50 seconds left in the quarter when they fumbled and was recovered by Mule, Michael Hardwick.

The Mules again in control of the ball were only able to carry

Cont. Page 6, Col. 5



EMPLOYEE OF THE MONTH---Donna Black, of the Muleshoe State Bank, was recognized as the Employee of the Month by the Muleshoe Chamber of Commerce and Agriculture. Shown here are (Front Row L-R) Mary Ann Ramirez, Donna Black, Robert Montgomery, Chamber President, Carolyn Johnson, Chamber Manager, Harvey Bass and George Nieman. (Back row L-R) Lonnie Adrian, Kid Castleberry, David Tipps and Randy Lewis. (Journal Photo)



NOAH NOW--will be presented at the First United Methodist Church Fellowship Hall, 507 W. 2nd in Muleshoe on Saturday, October 5 at 7 p.m. Noah Now! is a new one-man multi-media production created and performed by Ralph Stone. It is a probing look at vital global issues through the eyes of the patriarch, Noah. The production has consistently stimulated thought through the wide appeal of Noah, and the play's direct approach to environmental problems confronting our time. (Guest Photo)

Homebound Program Explained

The Muleshoe Independent School District provides comprehensive education services for all children living in the district. These services include homebound services, and they are provided through Special Education.

The purpose of the homebound program is to provide a continuation of the educational instruction for pupils who, because of serious illness, accidents, and other justifiable conditions, are unable to attend a regular or special classroom. A homebound teacher is available to a student who is sick or injured and unable to attend school four weeks or longer. A doctor's statement is required for eligibility. The homebound teacher works with the student four hours per week and helps the student continue his or her

education while recovering. This service cannot be provided when the pupil is homebound because of communicable disease.

The homebound teacher, in addition to teaching duties, serves as a liaison between the pupil and the teacher(s). Assignments are made by the classroom teacher(s), who also prepares tests. The homebound teacher works with the student and then returns the completed work to the school. Evaluation of work, preparation of report cards, and recording on permanent records are done by the classroom teacher.

For additional information and or referrals, contact the Special Education office in the Muleshoe High School building, Herb Parks, Director, telephone 272-5239.

Senior Citizens News

By Olive Cox, Secretary

On Monday, September 23 the Muleshoe Senior Citizens met at the Old Depot for their regular covered dish luncheon. The invocation was given by Rev. Stacy. There were 27 present, 22 members and 5 visitors. We all enjoyed the good food and fellowship. Odesa Shanks, program chairman, introduced the visitors. Rosilee Myers, from Jayton, Texas. She was visiting Zida Mae Block, her niece and Rev. Stacy, pastor of the First Baptist Church, Muleshoe and his wife Debbie and two children Charissa and Timothy. Rev. Stacy was our guest speaker. He spoke about the Trials of Life from James, Chapter 1, verse 2. "My Brethren, Count it all joy when you fall into divers temptations. We appreciated the good message.

Katie Roubinek, president, had charge of the business meeting. The previous minutes were read and approved. The birthday song was sung to Mae Wilterding, Louise Roark and Dorothy Browning.

Get well cards were sent to Helen Pruitt, Sherman Inman and Eva Ashford.

The meeting was closed with prayer by Floyd Grimsley.

Beta Sigma Phi Meets

The XI Omicron XI chapter of Beta Sigma Phi met September 17 in the home of Ginger Caldwell. Members present included Cindy Barrett, Jacque Boutell, Ann Mount, Annette Bonds, Pam Atwood, Nancy Barrier, Gayla Gear and Diana Harrison. Also present were members Eileen Morton, Barbara Mutschler, Liz Tipps, Susan Wedel and Dawn Williams.

A business meeting was held. Ann Mount then presented a program on a "do-it-yourself wardrobe consultation." The program was informative and useful.

Retired Teachers Association News

The Muleshoe Area Retired Teachers Association met Friday, September 20 at the 16th and Ave. D. Church of Christ Friendship Room for a covered dish luncheon and business meeting.

Wilma Smith, vice-president, presided over the short business meeting and Winona Dudgeon gave a report on cholesterol and its effect on your health.

A new member, Ann Oylar, was welcomed into the organization. Other members present were Letha Patterson, Margie Moore, Wilma Smith, Winona Dudgeon, Ethel Allison, Katherine Sanders, Mary B. Obenaus and Josephine Mitchell.

The next meeting will be October 18 in the same place with Carol Delaney, R.N., bringing the program on Home Health Care.

The Area XVII Retired Teachers Convention will be in Levelland this year on October 29.

Ballet Lubbock Guild Hosts Benefit

The Ballet Lubbock Guild presents "An Afternoon at Willoughby's" on Sunday, October 6 from 1 to 5 p.m. to benefit Ballet Lubbock's 1991-92 season. Tickets are \$10 per person and are tax deductible. Visit Willoughby's new Christmas Corner before its official opening and pick out the latest in Christmas ornaments, collectibles, books and music. Refreshments by Celebrity will be offered and the Texas Tech Music Department is providing entertainment.

Featured items are the Lynn Haney Collection of Santas and Collectible Characters and his "Father Christmas" will be given as a door prize at the end of the afternoon. Willoughby and Company is located at 2211 University.



JENNYSLIPPERS AWARD--for Garden Spot of the Week goes to Sam and Elaine Damron, 1815 W. Ave. G. The award is made for the home's landscaping beauty and expert garden care. (Journal Photo)

Tops Club

By Marian Wilson

TOPS Chapter No. 34 met at 6:30 Thursday September 26 at the Girl Scout Hut. Leader Laverne James called the meeting to order. The TOPS pledge was recited and the fellowship song sung. Mrs. James led the group in a prayer.

Betty Jo Davis, weight recorder, called the roll with 17 members answering with the amount they had lost or gained. Minutes of the previous meeting were read by Aurora Mata, secretary, and they were approved as read.

Marian Wilson was named best loser for the week. Runners-up included: Zana Kelly, first; and Molly Davis, second runner-up.

The club sent get well cards to Dee Clements and Evelene Harris. Lucille Harp received a gift out of the Birthday Box, Joy Harp and Laverne James had wedding anniversaries and received a gift from their S.P.'s.

Next week will be Fruit night and awards night. The meeting was adjourned with the good-night song.

Art Show Entry Rules

The Muleshoe Art Association announces its 1991 Art Show to be October 7 to 15th in the Muleshoe State Bank Community Room. Entries will be accepted Monday, October 7 between the hours of 10 a.m. and 3:30 p.m. We regret that only members may enter because of limited space, but non-members may join and pay the \$15 dues.

Entry fee is \$5 per painting. Each artist is limited to 3 paintings. Entries must be original and done without supervision.

The show will be judged October 8 by Kay Houston. The winners will be on display in the Muleshoe State Bank until Tuesday, October 15. They must be picked up before 3 p.m. on the 15th. Those not winning should be picked up before 5 p.m. October 9. Awards will be given in 3 categories, oil, watercolor and pastel.

Paintings must be wired for hanging, with a card attached stating the artist's name, address, media and price. Entries not available for purchase awards must be so labeled; and entries not available for sale must be designated.

This Is Your Last Chance For Those Outdoor Cookouts!



1/2 Beef

\$1.44 lb.

Cut & Wrapped To Your Specifications



Pork Loins

(By The Loin)

\$1.69 lb.

K.C. Strips

By The Loin

\$3.99 lb.

Cut & Wrapped To Your Specifications

Larry's Homemade

Breakfast

Sausage

6 lb. Box Sliced

\$1.50 lb.

We Will Process

Your Wild

Game!

Larry's Own

German Sausage

\$2.09 lb.

Winkler Meat Co.

401 Main

Muleshoe

272-4703

STATEMENT OF NONDISCRIMINATION

Bailey County Electric Cooperative Association is the recipient of Federal financial assistance from the Rural Electrification Administration, an agency of the U.S. Department of Agriculture, and is subject to the provisions of Title VI of the Civil Rights Act of 1964, as amended, Section 504 of the Rehabilitation Act of 1973, as amended, the Age Discrimination Act of 1975, as amended, and the rules and regulations of the U.S. Department of Agriculture which provide that no person in the United States on the basis of race, color, national origin, age, or handicap shall be excluded from participation in, admission or access to, denied the benefits of, or otherwise be subjected to discrimination under any of this organization's programs or activities.

The person responsible for coordinating this organization's nondiscrimination compliance efforts is Billie Graves, Office Manager. An individual, or specific class of individuals, who feels that this organization has subjected them to discrimination may obtain further information about the statutes and regulations listed above from and/or file a written complaint with this organization; or the Secretary, U.S. Department of Agriculture, Washington, D.C. 20250; the Administrator, Rural Electrification Administration, Washington, D.C. 20250. Complaints must be filed within 180 days after the alleged discrimination. Confidentiality will be maintained to the extent possible.

Bailey County Electric Cooperative Association

305 E. Ave. B.

272-4504

Creative Living

by: Sheryl Borden

Information on creative table settings and selecting a professional hair stylist will be the featured topics on "Creative Living" on Tuesday, October 1 at 12 noon and Saturday, October 5 at 2 p.m. (All times are mountain. "Creative Living" airs on public broadcasting station, KENW-TV, from Eastern New Mexico University.

Deborah Durham, creative consultant to JC Penney Home, will show how to go from casual to formal with basic festaware, adding and subtracting flatware, table linens and other items. Ms. Durham lives and works in New York City.

Bryant Renfro, professional hair stylist and spokesperson for Ogilvie Hair Products, will explain when to "do it yourself" and when it is time to call a professional hair stylist. Renfro owns and operates his own hair salon in New York City.

"Creative Living" will not be seen on Tuesday, October 1 at 9:30 p.m. because of special programming, but will return to its regularly scheduled time on October 8.

On Thursday, October 3 at 12 noon, "Creative Living" will present information on decorating projects for children's rooms, pattern blending and preparing after school snacks.

Deborah Durham, representative of Wamsutta-Pacific Home Products, will demonstrate and explain how to make 3 easy projects for children's rooms. These include a toy hamper, a puppet show theater, and a teepee bed tent. Ms. Durham is from New York City.

Susan McWilliam, interior decorator with Trans Designs in Albuquerque, N.M., will talk about the do's and don't's of pattern blending in decorating. Some of the newest colors, textures and patterns that are being used in today's decorating plans will also be featured.

Tracy Moxon-Morey, freelance home economist in Wind-

sor, Colorado, will demonstrate some delightful "fix-it-fast" after school snacks that kids can even make themselves.

"Creative Living" is produced and hosted by Sheryl Borden. The show is carried on more than 100 PBS stations in the United States, Canada, Guam and Puerto Rico and is distributed by Pacific Mountain Network, Denver, Colorado. Viewers can request copies of materials offered on the show by sending one 29 cent stamp for each handout requested. Send the stamps, along with your name, address and booklets requested to: "Creative Living" Requests, KENW-TV Station 52, Eastern New Mexico University, Portales, N.M. 88130.

CARROT SANDWICHES

Shred 1 small carrot. For sandwich filling, measure one third cup chunk-style peanut butter and 1 tablespoon orange marmalade. Add to shredded carrot and mix together. Spread mixture on 1 slice toasted or plain raisin-cinnamon bread. You can add coconut, raisins, or other dried fruit or marmalade.

PEANUT BUTTER ROLLS

Spread 2 tablespoons of peanut butter over 6-7 inch flour tortilla. Top with 1 tablespoon of apple butter, orange marmalade, or any jam or jelly. Sprinkle with 1 tablespoon of chopped apple. Roll up tortilla.

CHOCOLATE CHIPPERS

For each cookie sandwich, place a small scoop of ice cream, any kind, on the flat side of 1 cookie, any kind. Top with a second cookie. Wrap in plastic wrap, seal with tape and freeze.

Rebekah Lodge

By Reporter Pat Langfitt

Muleshoe's Rebekah Lodge No. 114 met September 17. Refreshment committee was Lucille Harp and Adele Tompkins. Joyline Costen, Noble Grand, opened lodge. Mickey Montgomery gave the opening prayer.

Patsy Chance, Lodge Deputy, was Acting Deputy District President and appointed Ruby Green as Deputy Marshall and Ina Wilemon as Deputy Chaplain to install Lucille Harp in the office of Outside Guardian.

A nice note was read from Juanita Busby's daughter. A \$50 donation was to be given to the Law Enforcement for the video fund.

The Rebekahs met again September 22. Lodge was called to order by acting Noble Grand Mary Ann Ramirez. A note was read from the Hereford Rebekah Lodge inviting us to help celebrate their 89th anniversary on October 11 at 7:30 p.m.

Mary Ann stated that tickets are ready for the quilt raffle and the Thanksgiving dinner. A reminder was given that the proceeds for the quilt will help send David Ramirez and Stacey Langfitt on the United Nations tour next summer. This will be a rewarding and educational experience for these two Muleshoe High students.

Patsy Chance, Lodge Deputy, gave school of instructions on the qualifications of District Deputy President as this is Muleshoe's time to have the District Deputy President.

Discussion was held on telephoning for pledges for the American Heart Association on October 14.

Lodge will meet at 8 p.m. Tuesday, October 1, so that members can attend the community meeting regarding the prison. Be there!

Cold War's end means end of Army's VII Corps.



SEPTEMBER BIRTHDAYS--celebrated at the Muleshoe Area Healthcare Center are those of (left to right): Stella Morgan, September 28, 1899; Wilmoth Clements, September 10, 1913 and J. Carlos Reyna, September 10, 1906. Not pictured are: Homer Milsap, September 18, 1908; and Joe Weaks, September 23, 1896. The birthday party host was the Needmore Community Club. Entertainment was provided by Mr. and Mrs. J. C. Shanks of the Needmore Club. Flowers were by Creations by Helen. (Journal Photo)



Aaron Bailin Albertson

Richard and Devera Albertson announce the birth of a son born Thursday, September 19 at 9:08 a.m. in the Muleshoe Area Medical Center. He weighed 6 lbs., 5 oz. and was 19 and a half inches long.

Grandparents are Mr. and Mrs. C.W. Albertson of New Gulf, Texas and Mr. and Mrs. Wayne Rhodes of Friona.

Great grandparents are Mrs. Margaret Albertson of St. Petersburg, Florida, Mrs. Pauline Haygood of Wharton, Mrs. Lois Austin of Orcutt, California and Mrs. Maybrian Rhodes of Friona.

Jared Daniel Skipworth

Jeff and Diane Skipworth announce the birth of a son, Jared Daniel. He was born at 12:31 p.m. September 10 at Methodist Hospital in Lubbock. He weighed 9 lbs, 1 oz and was 20 inches long.

He has two brothers, Jeffre, age 8 and Jameson, age 3.

His grandparents are Sharon and Lewis Dale and Beth and Jimmy Skipworth, all of Muleshoe. His maternal great grandmother is Vada Alexander of Amarillo.

New poultry testing for salmonella to begin.

Security Council split on Iraqi oil sale.

 For Your
 Mary Kay Cosmetics
 Josie Flowers
 272-3865
 8 a.m. - 12 noon
 8 after 6 p.m.

WASHINGTON NOTES

New Bills To Foll Counterfeiters

The government is printing millions of subtly changed \$100 bills in an effort to prevent counterfeiters from duplicating C-notes with advanced, state-of-the-art color copiers.

Bailey County Journal
 Established March 31, 1963. Published by Muleshoe Publishing Co., Inc. Every Sunday at 304 W. Second, Box 449, Muleshoe, Tx. 79347. Second Class Postage paid at Muleshoe, Tx. 79347. USPS 040-200

MEMBER 1991
TEXAS PRESS ASSOCIATION

L.B. Hall, Publisher
 Sammie Hall, Vice-President/Controller
 Evelyn Harris, News
 Joyce Adams, Society
 Holly Milligan, Advertising
 Diana Bermea, Classified

Muleshoe Journal and Bailey County Journal
 Bailey and surrounding counties
 Muleshoe Journal and Bailey County Journal
 Elsewhere in Texas \$14.75
 Muleshoe Journal and Bailey County Journal
 Outside Texas, \$16.50
 Yearly By Carrier \$12.50

Advertising Rate Card on Application
 Advertisers should check their ad the first day of insertion. The Journals will not be liable for failure to publish an ad or for a typographical error or error in publication except to the extent of the cost of the ad for the first day of insertion. Adjustment for errors will be limited to the cost of that portion of the ad where the error occurred.



COOP Farmers Cooperative Elevator Association of Levelland

Has Leased The
 Enochs Facility
 Formerly Operated By
 Farmer's Cooperative
 Elevators of Muleshoe!

The Enochs Facility Is Now Under
 Farmer's Coop of Levelland
 U.S.D.A. License & Bond.

We Would Like To Invite All Previous Patrons
 & Customers of Farmer's Cooperative Elevators of
 Muleshoe To Consider Delivering Grain To Our
 Leased Facility in Enochs, Where Prices Will Be
 Competitive And We Will Strive To Give Good
 Service.

We Appreciate All Business, Old & New!!
 Deryl L. Cole, General Manager

Main Office
 Levelland
 894-8505

Enochs Phone Number
 927-5541

URGENT MEETING SUPPORT PRISON FACILITY

YOU ARE URGENTLY NEEDED TO ATTEND A
 PUBLIC MEETING TO GIVE POSITIVE SUPPORT
 FOR LOCATING A MINIMUM/MEDIUM SECURITY
 PRISON FACILITY IN BAILEY COUNTY. A
 1000 BED PRISON FACILITY WOULD CREATE
 ABOUT 300 NEW JOBS AND BRING A PAYROLL
 OF AT LEAST 6 MILLION DOLLARS INTO
 OUR COMMUNITY!

COMMUNITY SUPPORT IS MANDATORY!

**TUESDAY OCT. 1
 7:00 P.M.**

MHS AUDITORIUM

SPONSORED BY:

BOARD OF DIRECTORS

MULESHOE CHAMBER OF

MAC
 (Muleshoe Activities
 Committe)

**COMMERCE
 &
 AGRICULTURE**

**MULESHOE
 JENNYSLIPPERS**

SHUR SAVING

FALL HARVEST SALE

Congratulations To **Espinoza** For Winning
 \$100⁰⁰ Shopping Spree
 From Thriftway



SHURSAVING DINNER
MACARONI & CHEESE
 7 OZ. BOX
6 FOR 89¢



ALL PURPOSE
SHURSAVING FLOUR
 25 LB. BAG
\$2.89
 SHURSAVING ALL PURPOSE FLOUR
 5 LB. BAG **69¢**



SHURFINE FROZEN
ORANGE JUICE
 16 OZ. CAN
99¢

SHURSAVING QUARTERS MARGARINE 3 1 LB. BOXES 89¢
 SHURFINE WHIPPED TOPPING 12 OZ. TUB 99¢
 SHURSAVING SHOESTRING POTATOES 20 OZ. BAG 49¢
 SHURFINE CUT BROCC/CR. CUT CRT. 16 OZ. BAG 99¢
 SHURFINE PEAS & CARROTS 16 OZ. BAG \$1.19
 SHURFINE CAULIFLOWER 16 OZ. BAG \$1.19
 SHURFINE FUDGE BOMB JR. 12 PAK. BOX \$1.19



U.S. NO. 1 RUSSET
POTATOES
 10 LB. BAG
99¢

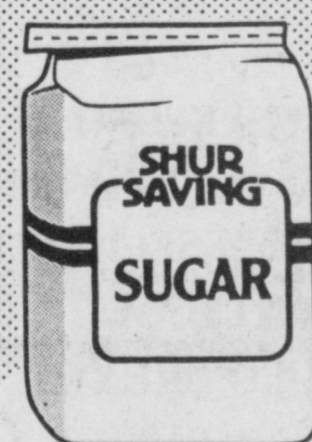
NEW CROP WASHINGTON RED OR GOLDEN DELICIOUS
APPLES
 3 LB. BAG
99¢

NEW CROP RUBY RED GRAPEFRUIT 3 FOR 99¢
 FRESH GREEN CABBAGE 4 LBS. 99¢
 DOLE CARROTS 3 1LB. BAGS 99¢
 GARDEN FRESH BROCCOLI EACH 79¢
 GARDEN FRESH SNO WHITE CAULIFLOWER EACH 79¢
 NEW CROP PORTALES ROASTED PEANUTS 1 LB. BAG 99¢



SHURSAVING CUT GREEN BEANS, CREAM STYLE OR WHOLE KERNEL
GOLDEN CORN
 15.5 TO 16 OZ. CAN
3 FOR 89¢

REG. ELEC PERK/DRIP/BRICK BAG
SHURSAVING COFFEE
 13 OZ. BAG
\$1.19



GRANULATED
SHURSAVING SUGAR
 4 LB. BAG
\$1.19



SHURSAVING
PAPER TOWELS
 JUMBO ROLL
3 FOR 99¢

SHURSAVING
SALTINE CRACKERS

SHURSAVING REGULAR/RIPPLED
POTATO CHIPS

SHURSAVING PLAIN/CHEESE
NACHO CHIPS

- SHURSAVING LIQUID BLEACH 1 GAL. BTL. 79¢
- SHURSAVING APPLE JUICE 64 OZ. BTL. \$1.79
- SHURSAVING ASSORTED SODA POP 2 LTR. BTL. 59¢
- SHURSAVING CATSUP 32 OZ. BTL. 89¢
- SHURSAVING ELBO GOLDEN OR WHITE HOMINY 3 15 OZ. CANS 89¢
- SHURSAVING SWEET PEAS 2 17 OZ. CANS 89¢
- SHURSAVING WHOLE PEELED TOMATOES 2 16 OZ. CANS 89¢
- SHURSAVING FRUIT MIX/PEAR HLVIYC SLICED PEACHES 16 OZ. CAN 69¢
- SHURSAVING RATION DOG FOOD BEEF/CKN/LVR 5 15 OZ. CANS 99¢
- SHURSAVING ELBO MAC/LONG SPAGHETTI 2 LB. BAG 89¢
- SHURSAVING LAUNDRY DETERGENT 10 LB. PAIL \$3.69
- SHURSAVING AUTO DISH DETERGENT 50 OZ. BOX \$1.69

- SHURSAVING FABRIC SOFTENER SHEETS 40 CT. BOX \$1.49
- SHURSAVING LEMON OR PINK DISH LIQUID 32 OZ. BTL. 99¢
- SHURSAVING SQUEEZE CHOCOLATE SYRUP 24 OZ. BTL. \$1.19
- SHURSAVING HOT COCOA MIX 10 PAK. BOX 99¢
- SHURSAVING COFFEE CREAMER 22 OZ. 1.29
- SHURSAVING YEL/WHT/DVL FOOD CAKE MIX 16.5 OZ. POUCH 59¢
- SHURSAVING FUDGE OR WHITE FROSTING MIX 13.5 OZ. POUCH 69¢
- SHURSAVING PANCAKE MIX 32 OZ. BOX 89¢
- SHURSAVING PANCAKE SYRUP 32 OZ. BTL. 99¢
- SHURSAVING TEA BAGS 100 CT. 99¢
- SHURSAVING CRUNCHY OR CREAMY PEANUT BUTTER 18 OZ. JAR \$1.69
- SHURSAVING HB. SLI/FR. PACK KOSH. DILL PICKLES 32 OZ. JAR 99¢

- SHURSAVING MUSTARD 24 OZ. 69¢
- SHURSAVING IOD/PLAIN SALT 3 26 OZ. CTNS. 89¢
- SHURSAVING MEX. CHILI BEANS/PINTO BEANS 2 15 OZ. CANS 89¢
- SHURSAVING BLACKEYE PEAS 2 15 OZ. CANS 79¢

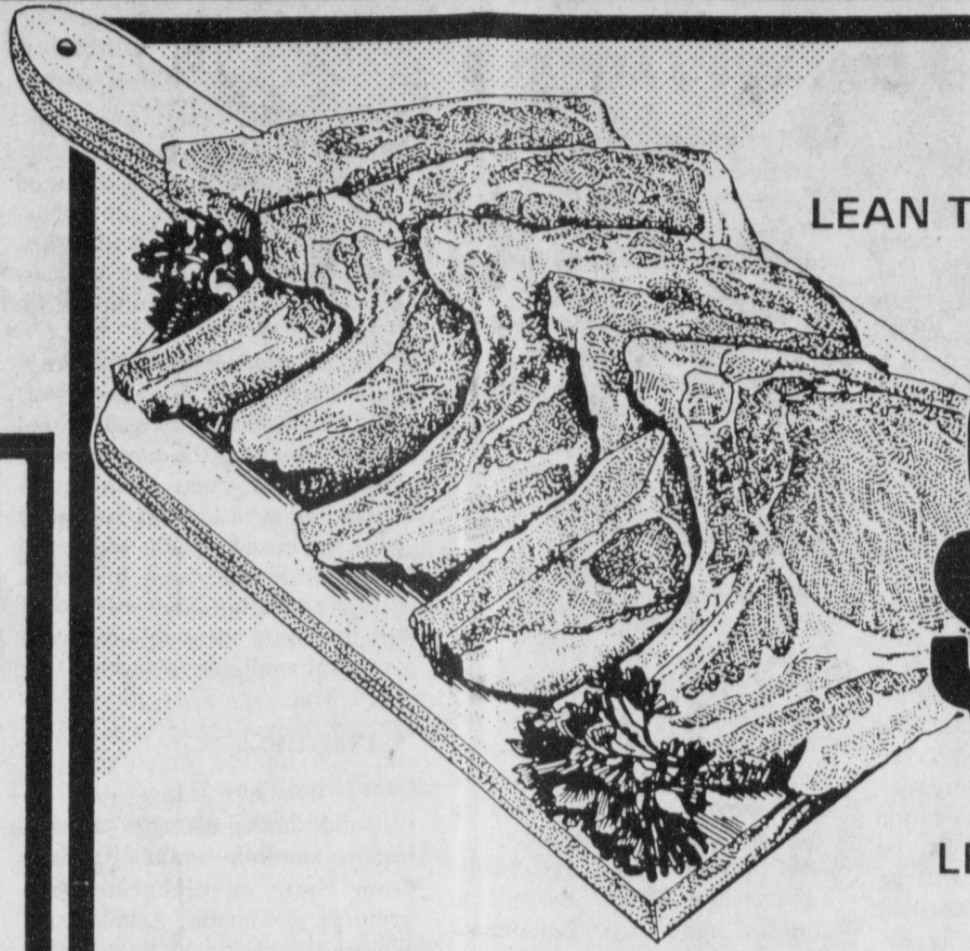


401 W. Amer. Blvd. Muleshoe

To Barbara
Winning A
...ing Spree
...iftway!



All Types
COCA-COLA
3 Liter
\$1.59



LEAN TRIM 9 TO 11 ASSORTED

**PORK
CHOPS**
\$1.49
LB.

SHURFINE FROZEN
ORANGE JUICE
16 OZ. CAN

99¢



SHURFINE ASSORTED
ICE MILK
½ GALLON

99¢

1 LB. BOXES

89¢

12 OZ. TUB

99¢

2 OZ. BAG

49¢

16 OZ. BAG

99¢

16 OZ. BAG

\$1.29

16 OZ. BAG

\$1.69

12 PAK. BOX

SHURFINE HALFMOON
CHEDDAR CHEESE 8 OZ. PKG. **\$1.29**
SHURSAVING
AMERICAN SLICES 10.2 OZ. 16 SLICE **99¢**
SHURFINE
CRESCENT ROLLS 8 OZ. CAN **99¢**
SHURFINE
BREAD STICKS 11 OZ. CAN **99¢**
SHURFINE ORANGE DANISH/
CINNAMON ROLLS 9.5 TO 11 OZ. **\$1.19**
SHURFINE FRENCH
ONION DIP 8 OZ. CUP **59¢**

JT.

R

L

SHURSAVING
SALAD DRESSING

32 OZ. JAR

89¢

AN
¢

9



SHURSAVING
TOMATO SAUCE
8 OZ. CAN

6 FOR 89¢

SHURSAVING FULLY COOKED
BONELESS WHOLE
HAMS
\$1.79
LB.

HALF HAMS
\$1.89
LB.



SHURFINE QUALITY MEAT

BOLOGNA

12 OZ. PKG.

99¢

LOTS OF MEAT, COUNTRY STYLE

PORK RIBS

LB.

\$1.59

LEAN TRIM CENTER CUT

PORK CHOPS

LB.

\$1.99

SIRLOIN CUT

PORK LOIN ROAST

LB.

\$1.69

SHURFINE QUALITY

MEAT WIENERS

12 OZ. PKG.

79¢

R.G. WITH T.V.P.

BEEF PATTIES

5 LB. BOX

\$3.99

SHURFINE QUALITY

SLICED BACON

1 LB. PKG.

\$1.39

JUMBO PACK FRESH FRYER

DRUMSTICKS

LB.

68¢

JUMBO PACK FRESH FRYER

THIGHS

LB.

68¢

R.G. WITH T.V.P.

BEEF PATTIES

10 LB. BOX

\$7.79

49¢

1 LB. BOX

R/RIPPLES

\$1.29

1 LB. BAG

CHEESE

\$1.99

3 LB. BAG



SHURSAVING
BATH TISSUE
4 ROLL PKG

59¢



SHURSAVING CHUNK

DOG FOOD
25 LB. BAG

\$2.89

SHURSAVING FILLED

EVAPORATED MILK

12 OZ. CAN

FOR

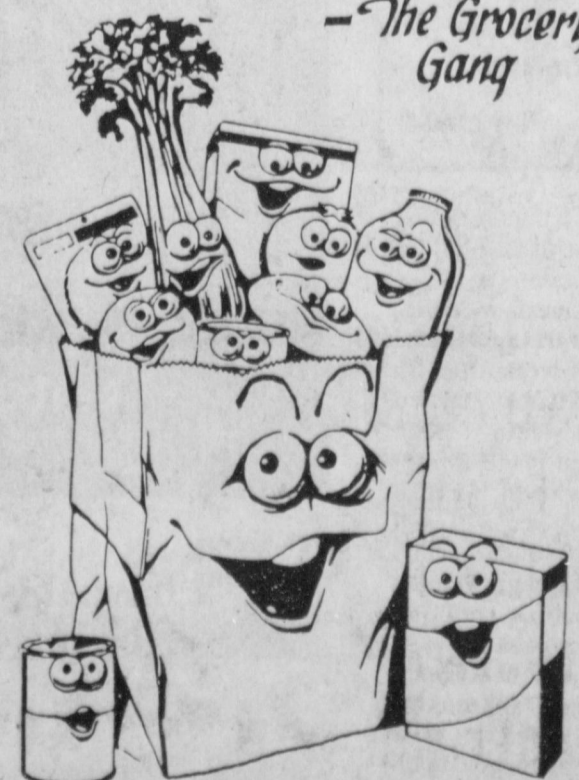
3 89¢

SHURSAVING SLI. CARROTS/
SPINACH 2 14 TO 16 OZ. **89¢**
SHURSAVING PL/MT/MSHRM.
SPAGHETTI SAUCE 30 OZ. JAR **89¢**
SHURSAVING CRAN. JCE. CKTL/
CRANAPPLE DRINK 64 OZ. BTL. **\$1.99**
LONG GRAIN
SHURSAVING RICE 4 LB. BAG **\$1.39**
QUICK/OLD FASHION
SHURSAVING OATS 42 OZ. BOX **\$1.69**

WESTERN FAMILY
BABY WIPES 160 CT. **\$2.59**
SHURSAVING
PLASTIC WRAP 200 FT. ROLL **\$1.19**
SHURSAVING TALL
KITCHEN BAGS 15 CT. BOX **99¢**
SHURSAVING
SANDWICH BAGS 150 CT. BOX **69¢**
SHURSAVING
CORN FLAKES 18 OZ. BOX **99¢**
WESTERN FAMILY ASST. ULTIMATE
WEIGHT LOSS 14 OZ. CAN **\$2.99**
WESTERN FAMILY ASST.
TOOTH PASTE 6.4 OZ. TUBE **99¢**
WESTERN FAMILY REGULAR OR MINT
ANTI-PLAQUE RINSE 16 OZ. BTL. **\$1.69**
WESTERN FAMILY 12 HOUR
NASAL SPRAY 1 OZ. BTL. **\$1.99**
WESTERN FAMILY
NON-ASPIRIN TABLETS 100 CT. BTL. **\$1.89**
WESTERN FAMILY
EYE DROPS ½ OZ. BTL. **\$1.69**

Our Best!
to you!

-The Grocery Gang



AT AFFILIATED
FOODS INC.
MEMBER STORE

WE ACCEPT FOOD STAMPS...
WE RESERVE THE RIGHT TO LIMIT

PRICES EFFECTIVE
SEPT. 29-OCT. 5, 1991

272-4585

Hair Explains Re-Districting

Rick Hair, president of Map Resources, Inc. of Austin met with the M.I.S.D. Board of Trustees Monday night and explained the re-districting process. "We are re-districting 68 counties in Texas," Hair said. "In 1990 all districts were divided into census blocks. Bailey County has approximately 700 census blocks. In the city of Muleshoe the census blocks pretty well goes along with the city blocks but in the county they are much larger," Hair continued.

M.I.S.D. has five districts with the ideal number of people in each district being 1,279. Hair explained that the districts were out of balance. There is a 34.56 percent variation between the largest district and the smallest. He stated that they

Muleshoe...

Cont. from Page 1

8. Approve the tax roll.
9. Approve soil conservation worksheets.
10. Approve hiring of new Coliseum Manager and discuss duties of supervisor.

Muleshoe High School will be administering the Texas Assessment of Academic Skills Test on October 8, 9, and 10. Students in the 9th and 11th grades and any 12th graders needing to retest will be involved in this test administration. The test will include reading, writing, and mathematics. Students that are absent on any test day are not allowed, because of Texas Education Agency regulations, to make-up the test.

Students, if at all possible, need to be in school on the designated testing days. Students that are well rested and eat breakfast generally achieve better test results. Parents are encouraged to discuss the importance of these tests with their children and help Muleshoe High School teachers and administrators provide the students with optimum testing conditions.

The Junior Class recently met and elected their 91-92 class officers. They are: Mandy Shipman, President; Kristin Chitwood, Vice-President; Stacie Harris, Secretary; Angie King, Reporter; Chris Dominguez, Student Council Representative. They are now working to make money to honor their Seniors with the Junior/Senior banquet. Their main money making project is the mum sale. Your support of this project would be greatly appreciated. See any Junior for more information.

The Lazbuddie Senior Class will be sponsoring The PreGame Homecoming Supper Friday, October 4, preceding the Lazbuddie-Jesus Chapel game. The meal will consist of Spaghetti with all the trimmings including homemade pie. Serving will begin at 5:30 until 7:00 and then immediately following the game. Take-out plates will be available. Tickets will be \$5 for adults and \$3 for children 10 & under.

Athletic Boosters Update

The Muleshoe Athletic Boosters met Tues. at 7:30 p.m. at the high school cafeteria. They had a short business meeting, then Coach Stewart announced the player of the week, Ramiro Alarcon. Coach Stewart showed highlights of last weeks football game while other made Junior Varsity and freshman football buttons. The buttons will sell for \$3.00 each. If you need one of these buttons contact Marsha Watkins for football or Jan Crawford for cross-country.

The boosters will meet again next Tues. night at 7:30 p.m. at the high school cafeteria. The cross-country teams will be introduced at this time, so if you're a cross-country fan or parent be sure to be there.

need to be brought down to about 10 percent.

"Districts 2,3 and 5 looks pretty good and probably should be left alone," said Hair. Hair will bring alternate plans, that will be good for 10 years, in two weeks for the board members to approve or reject.

Cindy Purdy, president, called the regular meeting to order followed by the invocation and recognition of visitors. Minutes of the previous meeting were approved as read.

The board members approved the Interlocal Agreement with County Education, District 5; a contract with Bailey County Appraisal District; and the textbook committee for 1991-92.

Ms. Elizabeth Watson reported on the Basic Adult Education program which will begin on October 1. The classes will be held on Tuesday and Thursday nights. Adult education is designed to provide educational

Blackwater...

Cont. from Page 1

The district board of directors coordinates the conservation efforts of various local, state and federal agencies and other organizations and has authority to enter into working agreements with these governmental agencies and private concerns to carry out its purposes.

All conservation programs managed by the district are of a voluntary nature to the landowner or operator or other potential users of the SWCD's programs.



BIG CATCH--(L. to R.) Dee Brown, Myron Pool II, Jay Feagley and Sam Damron are shown above with catfish caught last weekend at Amistad Lake, Del Rio, Texas. Reportedly, the group caught over 200 catfish. (Guest Photo)

opportunities for adults, age 18 and above.

Adult education in Texas is "Texas' Largest Dropout Recovery System". Adult education began in 1966 and celebrated its 25th year of service on March 5, 1991.

Last year 218,747 persons were served in literacy, ESL, ABE, GED, and other classes. This figure does not include the more than 300,000 adult aliens funded under ALIAG. Adult education comprises almost 7,000 part-time, full-time and volunteer teachers and supervisors.

The average expenditure per adult student last year was \$70.29. Less than 0.2 percent of state funds for education are spent to help adults compete in this highly technical world.

At present funding levels, adult programs will be able to address about five percent of the current need. As costs have increased, the demands on adult programs have also continued to grow. Yet, funding has remained level for the past ten years.

Chamber...

Cont. from Page 1

Our "Bouquet of the Week"-- Who is more deserving than the Muleshoe Area Industrial Foundation? Our special rose in that bouquet goes to Jay Messenger, project chairman and spokesperson for the foundation. Jay, you and all of the Industrial Foundation members are doing an outstanding job in informing the public and promoting the long range project!

The Texas Association for Continuing Adult Education contains almost 5,000 teachers, students, and supervisors committed to adult programs.

Classroom space is obtained from public schools, churches, libraries, businesses and charities. In Muleshoe the classes are held at Watson Junior High School.

Texas produces 80,000 dropouts each year. Eighteen percent of adult Texans quit school before finishing the ninth grade. Each dropout class costs Texas \$17.2 billion in lost tax revenues and increased costs of social services during their lifetimes. Adult education may very well be the only dropout recovery program available to them.

Cranes...

Cont. from Page 1

to build during October as the lesser sandhill cranes return from their northern nesting grounds in Canada, Alaska, and Siberia.

Refuge crane populations numbering in the thousands usually peak at the refuge in mid-November or early December.

Although five subspecies of sandhill cranes exist the lesser sandhill cranes are by far the most abundant in North America.

Not all hunters are out for game.

Mules...

Cont. from Page 1
the ball for two plays before the first half.

At halftime, the score stood with the Muleshoe Mules leading the Cooper Pirates by a score of 7-6.

With the third quarter beginning the Pirates took control of the ball first racing upfield for some more yards.

With a few more plays under the Pirates belt, they were forced to punt the ball away at 10:36 in the quarter.

The Mules were forced to punt the ball back to the Pirates having control of the ball until 9:34 showing on the clock. At this time the Pirates were not able to capitalize the ball fumbled it at 9:34 in the quarter. The fumble was recovered by Muleshoe David Quintana.

At 9:28, the Mules again had control of the ball for a few plays before having to punt the ball away to the Cooper Pirates at 7:50 in the quarter.

With the Pirates in control of the ball, they were again forced to punt the ball back to the Mules with 6:18 showing on the clock. The punting kick was by Kippy Craddock.

At 6:14 in the game, The Mules were able to move the ball upfield gaining more yards before having to punt the ball away at 4:22 in the quarter.

The Cooper Pirates were able to hang on to the ball for an

extended period of time in the last part of the third quarter.

At 1:21 in the quarter, the Pirates were able to make it into the endzone once again. The touchdown was good with the two point conversion attempt failing.

With the Mules in control of the ball once again, they were unable to move the ball upfield further, before fumbling the ball at 1:11 left in the quarter. The football was recovered by Pirate Ryan Phillips.

The Cooper Pirates were not able to have control of the ball for very long. With :30 seconds left in the quarter, Pedro Nunez intercepted a Pirate pass with the third quarter ending in that matter.

The score stood Muleshoe 7, Lubbock Cooper Pirates 6.

The Mules not able to do anything with the ball, punted the ball back to the Cooper Pirates with 10:17 showing on the clock.

With the Cooper Pirates taking possession of the ball at 9:39 left in the quarter. They were unable to move the ball downfield until the Mules were hit with an offside penalty.

The Pirates were able to hang on to the ball until 4:33 left in the quarter before having to punt the ball back to the Mules. The Mules had possession of the ball until 3:32 left in the quarter, when they were intercepted by the Pirates.

The game ended with the Lubbock Cooper Pirates defeating the Muleshoe Mules 12-7.

TREE CLEARANCE SALE

All Trees In Stock Are Marked Down

30 to 50% Off

- | | |
|---------------------|-----------------------|
| Globe Willow | Cottonless Cottonwood |
| Golden Nectar Plum | Purple Plum |
| Flowering Crabapple | Shumard Oak |
| Sycamore | Ranger Peach |

PLUS MANY MORE

Fall Flowers and Bulbs are now in stock

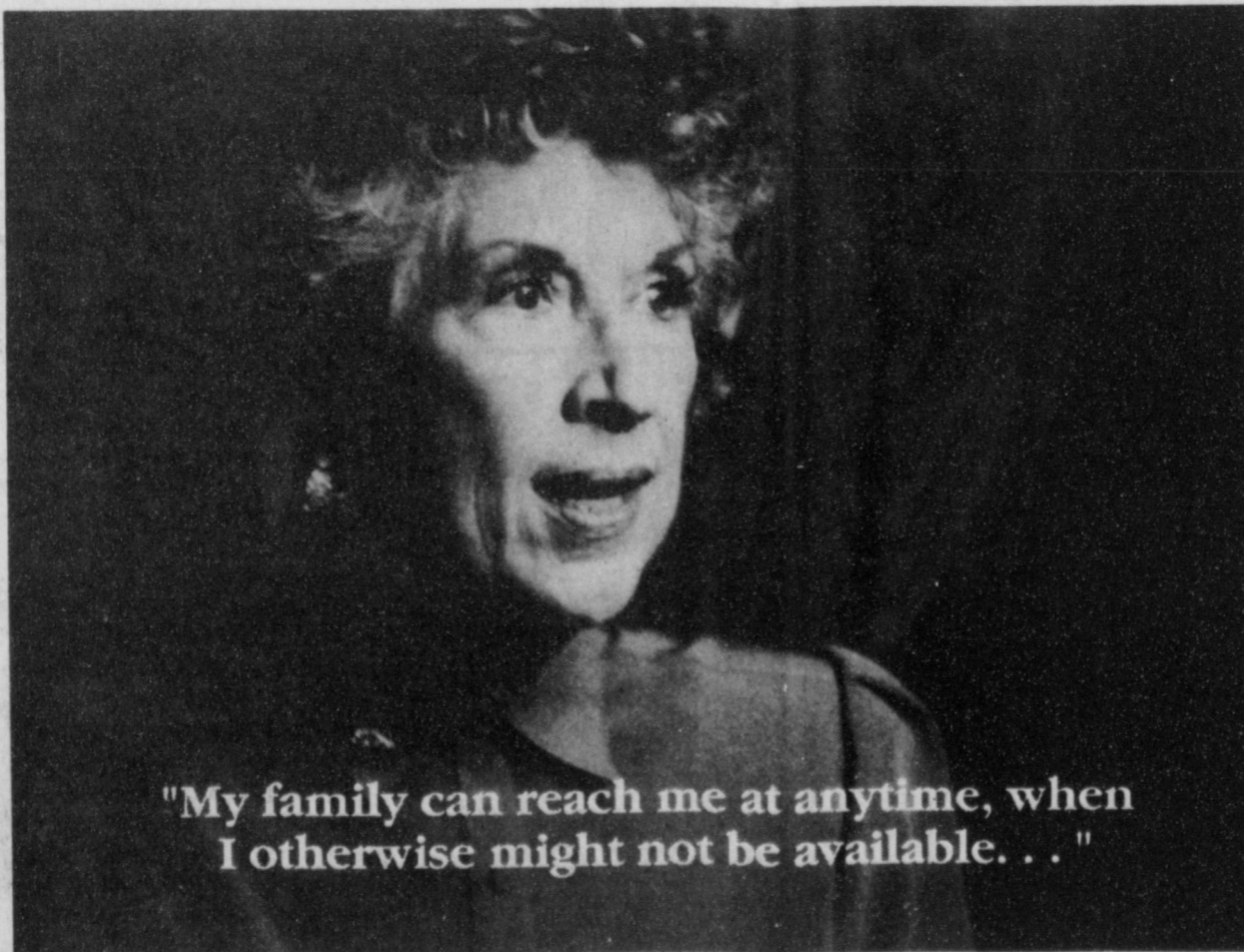
- | | | |
|-------------|-----------|-------|
| Pansy | Hyacinths | Viola |
| Dianthus | Tulips | |
| Garden Mums | Daffodils | |

New Fall Hours: Mon.-Fri. 9 a.m. - 6 p.m. Sat. 8 a.m. - 12 Noon

Kristy's Plants

710 E. Amer. Blvd.

272-5536



"My family can reach me at anytime, when I otherwise might not be available..."

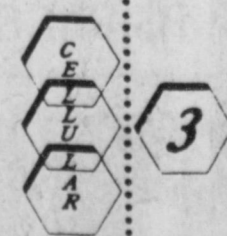
"I have this wonderful feeling, that if they want me - need me - I'm there, and I like that very much."

Theone Rogers is a real estate agent at Coldwell-Banker Real Estate in Roswell, New Mexico. Her story is one of many, conveying the advantages of cellular communications.

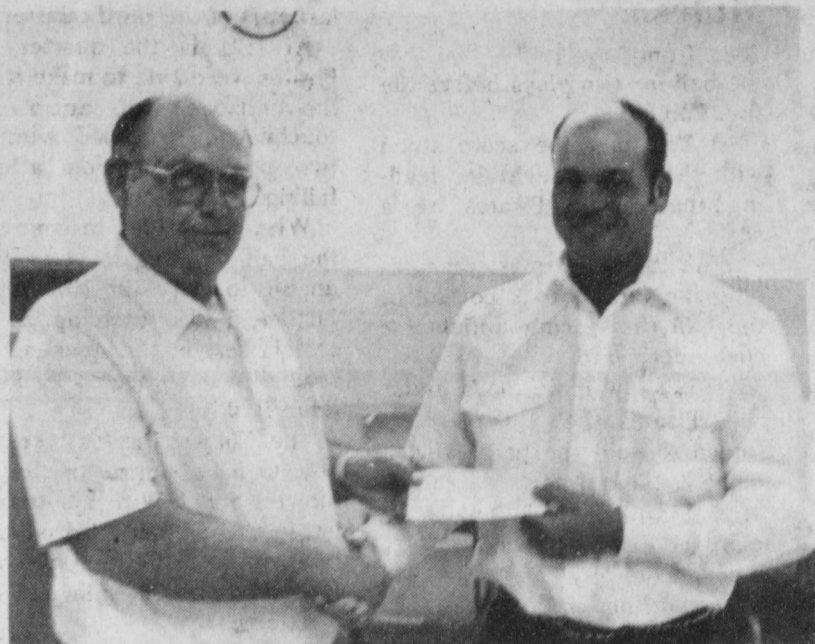
Cellular 3 is providing cellular communications to your area. You are "always in touch" from virtually anywhere you happen to be.

Your business associates, family, and friends will thank you for always being close by.

"Always in touch with Cellular 3"



Muleshoe
5 Area Telephone Coop.
272-5533



GARY TOOMBS RECOGNIZED AT ANNUAL MEETING—Allen Smyer, president of the Bailey County Farm Bureau, presented Gary Toombs a certificate and check to cover expenses at the Fire School that Gary attended this past summer. Toombs was sponsored by the local Farm Bureau chapter. (Journal Photo)

Kiwanis News



Muleshoe's Kiwanis Club met September 27 at the Dairy Queen for breakfast. Fifteen Kiwanians, two honorary Kiwanians, 3 guests and Sweetheart Tiffany Angeley were present. Our honorary Kiwanians were Robby Clapp and Jon Keith Turner. Our guest this morning were Stacey Langfitt, Dee Dee Morris and Jerri Savuto. Jerri was our program.

It was real good to see Sweetheart Tiffany this morning. Did you ever stop and think what a commitment this is for a beautiful young lady like Tiffany. She has to get up early Friday mornings to be at Kiwanis by 6:30-then to school all day and then to a football game as a cheerleader and work as hard as the football team does and ten get home late on Friday night. If we could just get our Mules to work as hard as our Cheerleaders. Well, work real hard Mules and do a good job. Tiffany, welcome to the Kiwanis Club. You are truly a sweetheart to a bunch of guys and one ole man.

President Glen Morris called the meeting to order. Tom Bowen led the club in the pledge to our flag and Lyndon Huckaby gave the invocation. Scott Churchman who was absent this morning (at the Fair) asked Glen to pass on the friendship coin. Glen stated that we would just start Tiffany off right and gave her the friendship coin. Tiffany, you have to keep up with that "valuable" coin and try to find a friend by next Friday.

Randy Lewis introduced our program this morning. Randy had promised her that if she would get up this early and give our program that he would go to church with her. Jerri who would do anything to get someone to come to church.

This is true because Jerri, who is a nurse at our local hospital has spent 9 years as a missionary in Nigeria. Jerri told about some of her experiences and fond memories she has about Nigeria. She told about having to shop for all of the missionaries over there. She might need only ten items but would have to go maybe to about 16 places to obtain these. Jerri told about a young man about 30 years old who was her driver, interpreter and became a very close friend. This young man, as most of the people there, could not read. Jerri told of teaching him to read English so that someday he could read the Bible.

She started off with children's books and as he learned to read them Jerri would give him the book to take home. Then Jerri bought him a bible and when he came over for his next lesson, she told him they would start reading out of the Bible and that Bible was his very own. Jerri stated that his eyes got big and with trembling hands, he picked the Bible up and held it to his heart.

How many of us have ever felt so proud, and that the Bible was so wonderful that we would cherish it and hold it to our heart. Maybe we need to stop and smell the flowers and take lessons. I liked the way that Jerri said the importance of learning to read and reading the Bible. This young man said that if someone told you about the Bible it went into your ear. But when you read the Bible, (and I assume out loud) that it came out your mouth and went into your ear and fell into your

heart. We send young people to school to learn to read and write and we take so much for granted. To be able to read is precious. Jerri, thank you so much for getting up early and bringing such a wonderful program.

Our installation banquet has been put back one week to October 8. All Kiwanians and wives be there and let Glen

Morris know. If you haven't been to Kiwanis lately, be there and we will introduce you to

J.O. (Ugly Legs) Parker. This is a title he has never had before. Tiffany, you and the other

cheerleaders, work hard, get the Mules excited and win against Cooper High tonight, Go, Mules.

Patients In Muleshoe Area Medical Center

SEPTEMBER 24

Armando Gallegos, Troy Thomas, Connie Nigh, Gloria Casanova, Maria Diaz, Vance Wagon, Conner Burford, Norene Thomas, Kay Vanleer
SEPTEMBER 25

Armando Gallegos, Troy Thomas, Connie Nigh, Gloria Casanova, Maria Diaz, David Beller, Evelene Harris, Vance Wagon, Tommy Guerra, Conner Burford, Norene Thomas, Kay Vanleer, Juanita Cardenas, Maria Calderon, b. boy Bernal
SEPTEMBER 26

Armando Gallegos, Troy Thomas, Connie Nigh, Gloria Casanova, Maria Diaz, David Beller, Evelene Harris, Vance Wagon, Tommy Guerra, Conner Burford, Norene Thomas, Kay Vanleer, Juanita Cardenas, Maria Calderon, B.Boy Bernal

SPC Schedules Nursing Entrance Exams

Pre-entrance tests for the associate degree nursing program's January class at South Plains College will be given Sept. 28, Oct. 4 and Oct. 8.

The tests will be open to prospective freshmen and those wishing advanced placement, such as advanced vocational nurses, noted Marla Cottenor, R.N., chairperson of the allied health department and director of the ADN program.

A \$10 pre-paid registration fee is required.

Test location will be the Student Assistance Center on the third floor of the library building. Exam times are 10 a.m.-3 p.m. Sept. 28, noon-4:00 p.m. Oct. 4 and 9 a.m.-2 p.m. Oct. 8.

For more information, contact the SPC guidance and counseling officer or nursing department at 894-9611, ext. 366 or 391.

Dimmitt Agri Industries, Inc. Leases Clay's Corner Facility From Farmers Cooperative Elevator Of Muleshoe, Inc.

We are happy to announce the lease has been signed and the facilities are now licensed under Dimmitt Agri Industries, Inc.'s license and bond.

The facility is fully staffed and ready to receive your grain.

Call us for Markets and Market Opportunities.

The Dimmitt Marketing Staff consisting of Bill Clark, Bill Gregory, and Bryce Garrett will be glad to

discuss our Marketing System with you.



For Further Information
Phone

647-2141-Dimmitt

or

965-2994-Clays Corner

Bar-B-Que Chicken or Beef SANDWICH 99¢
PRICES EFFECTIVE SEPT. 29-OCT. 5, 1991

ALL VARIETIES COCA-COLA 6 pk 12 oz. cans \$2.09

MELLO CRISP SLICED BACON 1 LB. PKG. 99¢

ALLSUP'S SANDWICH BREAD 1 1/2 LB. LOAF 2 \$1 FOR

ALLSUP'S ASSORTED FLAVORS ICE CREAM 1/2 GALLON \$1.49

BRAWNY PAPER TOWELS JUMBO ROLL 79¢

Folger's COFFEE 13 oz. \$1.99

ALLSUP'S CORN DOGS 2 89¢ FOR

FILL WITH OUR DELICIOUS COFFEE ALLSUP'S COFFEE MUG 12 OZ. INSULATED \$1.29

FRITO-LAY DORITOS CHIPS REG. 99¢ 89¢

SAUSAGE & BISCUIT EACH 69¢
ALL VEGETABLE SHORTENING CRISCO 3 LB. CAN \$1.99
DELICIOUS APPLE CHANGA EACH 59¢

RUSSET POTATOES 10 LB. BAG 89¢

Charmin TOILET TISSUE 4 roll pk. \$1.29

Shurfine Dry DOG FOOD 25 lb. bag \$4.99

318 W. Amer. Blvd. 272-4862 Muleshoe

Mary Splawn

Funeral Services

To Be Held Monday

Funeral services for Mary Bernice Splawn, 78, of Muleshoe will be at 11 a.m. Monday in Richland Hills Baptist Church with the Rev. Terry Taylor, pastor, officiating.

Burial will be in Muleshoe Memorial Park under direction of Ellis Funeral Home.

She died at 10:06 a.m. Friday in St. Mary of the Plains Hospital following a lengthy illness.

She was born in Jester. She moved to Muleshoe in 1941 from Levelland. She married Glen L. Splawn on February 27, 1932, in Clovis, N.M. She was a member of the Richland Hills Baptist Church where she

taught Sunday school. She was president of the Women's Missionary Association and the Muleshoe Study Club. She was a homemaker.

Survivors include her husband; a son, Benny of Amarillo; a daughter, Marquita Adamson of Muleshoe; two sisters, Aline Locke of Muleshoe and Lucille Yearly of Levelland; a brother, Roy Whittenburg of Levelland; three grandchildren; and two great-grandchildren.

The family suggests memorials to the American Diabetes Association.

Sununu's Flights

President Bush has finally clipped the wings of his frequent-flying chief of staff, John Sununu, by restricting his ability to use military jets for personal and political travel.

Top Ten Songs For The Week

1. Brand New Man by Brooks & Dunn
2. Down at the Twist & Shout by Mary Chapin Carpenter
3. Down To My Last Teardrop by Tanya Tucker
4. Where Are You Now by Clint Black
5. Leap of Faith by Lionel Cartwright
6. Your Love is a Miracle by Mark Chesnutt
7. Rodeo by Garth Brooks
8. Since I Don't Have You by Ronnie Milsap
9. Small Town Saturday Night by Hal Ketchum
10. I Thought It Was You by Doug Stone

TEXAS ARTISTS: Tanya Tucker, Clint Black, Mark Chesnutt

TV TIPS
Texas Stars on TNN
Gary P. Nunn on Texas Connection Oct. 5

Holly Dunn & Charlie Pride on Church St. Station Oct. 12
Kenny Rogers Hosts Nashville Now on Oct 14

Willie Nelson, Kris Kristofferson & Jerry Jeff Walker on Texas Connection Oct. 19
BIRTHDAY BOOK

Tanya Tucker, Born Oct. 10, 1958
Gene Watson, Born Oct. 11, 1958

CONCERT CALENDAR
Clint Black/Odessa, Oct. 5, Lubbock Oct. 6
George Strait/San Antonio on Oct. 5

George Jones/Ft. Worth on Oct. 12
TEXAS TRADITIONS STATE

FAIR OF TEXAS/OCT. 1-20 DALLAS
Heart of Texas Fair in Waco on Oct 1-6

NEWS
Now you can call our toll free

number 1-800-832-4960 for free membership & full information about the Country Music Assn. of Texas;; Call us today!!!

NOTES, COMMENT

Not every person who makes money is a real success.

This is the time of year to check your fire insurance.

Life's hardest task: living each day by the Golden Rule.

Bailey County Clerk's Office New Office Hours Effective September 30, 1991

8:00 a.m. to 12:00 noon

1:00 p.m. to 3:00 p.m.

(Due to Reduced Staff)

Governor Encourages Wildlife Conservation

Governor Ann Richards has proclaimed Sept. 28 Hunting and Fishing Day in Texas in accordance with National Hunting & Fishing Day on the same date.

In an official memorandum dated Aug. 29, the governor, an avid hunter, wrote:

"Conserving our state's natural and wildlife resources is one of the most important responsibilities we have to this and future generations of Texans.

"For over 100 years, sportspeople have been in the forefront of the conservation movement. Not content with merely vocalizing their support, hunters and anglers have advocated and supported conservation legislation and wildlife management programs, and they have requested special fees and taxes on their equipment which help pay for wildlife management and other conservation programs.

"These sportspeople have helped found the conservation movement, supporting laws to stop uncontrolled exploitation of wildlife and helping establish game and fish laws and management practices.

Senator Phil Gramm Reports

The Senate on Monday night approved legislation to spend \$185.9 million for military construction projects in Texas.

U.S. Sen. Phil Gramm, who managed the massive bill with U.S. Sen. James Sasser, D-Tenn., called passage of the bill "a milestone for Texas, particularly in a time of base closures and military cutbacks which have not spared our state."

Gramm noted that the legislation "provides important new funding for such diverse projects as building an entirely new Brooke Army Medical Center, including the Army's world-renowned burn treatment unit, to restating the Senate's support for the future construction of a logistics center at the Red River Army Depot."

The Military Construction Appropriations Bill passed on a voice vote.

The legislation contains \$37 million for the next phase of constructing a replacement BAMC in San Antonio and \$39 million for the Red River Army Depot's proposed supply and distribution mission under the Defense Logistics Agency.

Other Texas military construction projects funded by the bill include these:

\$31.5 million for a new automated firing range, a maintenance facility and barracks modernization at Fort Hood in Central Texas.

\$13.9 million for dormitories and a weapons support center at Kelly Air Force Base in San Antonio.

\$16.6 million for expansion of a medical training facility, land acquisition for a runway and a flight training facility at Sheppard AFB in Wichita Falls.

\$3.5 million to replace the Dallas Naval Air Station's medical and dental care facility.

\$3.4 million to build an engineering analysis facility at the Corpus Christi Army Depot.

Immaculate Conception Catholic Church

Father Patrick Maher
Northeast of City

First Baptist Church

220 West Ave. E.
Pastor: Stacey Conner

Emmanuel Baptist Church

Iglesia Bautista Emmanuel
107 East Third
Isaias Cardenas, Pastor

Trinity Baptist Church

314 E. Ave. B.
Rev. Dale Berry

Circle Back Baptist Church

Intersection FM 3397 & FM 298
Rev. Jessie Shaver
946-3676

Calvary Baptist Church

1733 W. Ave. C.
Rev. Rick Michael

Church of Compassion

605 W. 8th
Jimmy Williams
272-5624

Progress Baptist Church

Jeffery Lee
Progress, Texas

Richland Hills Baptist Church

17th and West Ave. D.
Rev. Terry Taylor

St. Matthews Baptist Church

Corner of West Boston & West Birch
M.S. Brown, Pastor

Progress Second Baptist Church

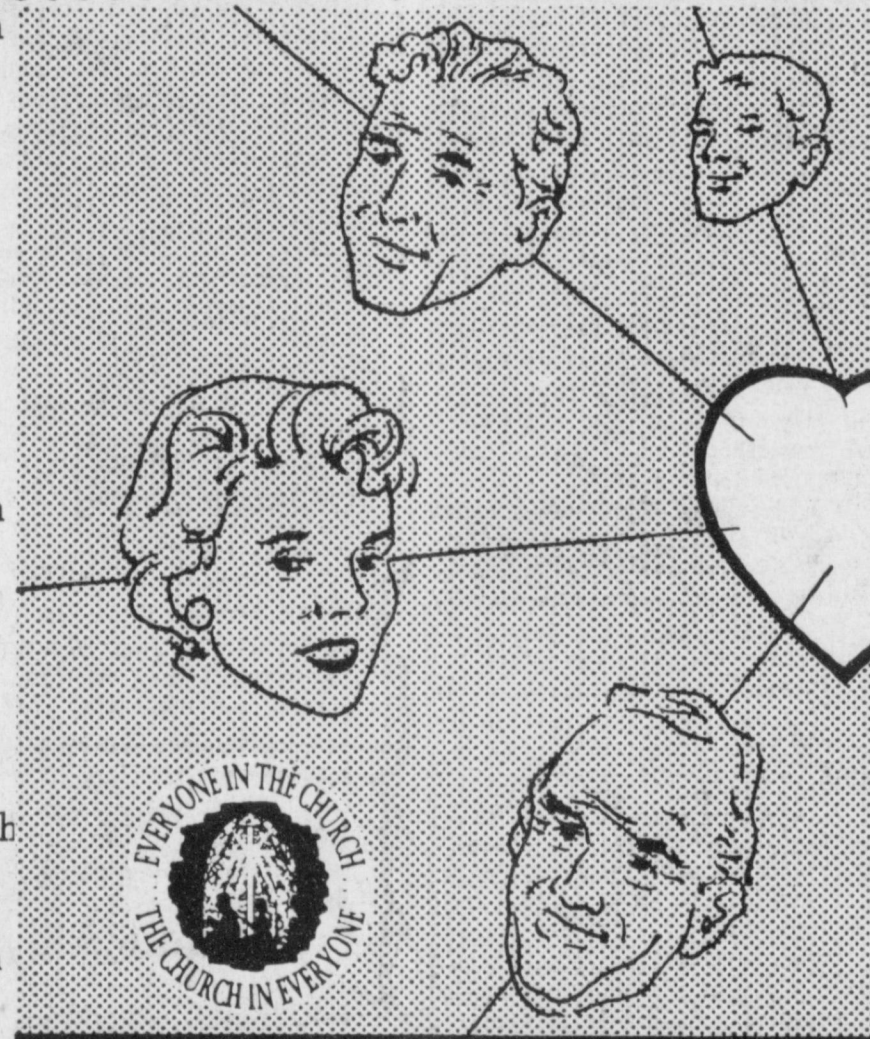
1st and 3rd Sunday
Rev. Arthur Hayes

Primitive Baptist Church

621 South First
Elder Cleveland Bass, Pastor

1st Baptist Church

Lazbuddie, Tx.
Gary Wilcox, Pastor
965-2126



GOD LOOKS ON THE HEART

The Church is God's appointed agency in this world for spreading the knowledge of His love for man and of His demand for man to respond to that love by loving his neighbor. Without this grounding in the love of God, no government or society or way of life will long persevere and the freedoms which we hold so dear will inevitably perish. Therefore, even from a selfish point of view, one should support the Church for the sake of the welfare of himself and his family. Beyond that, however, every person should uphold and participate in the Church because it tells the truth about man's life, death, and destiny; the truth which alone will set him free to live as a child of God.

Man's first reactions to another is based on outward appearances, and only time will help him to know the heart of another. God knows, immediately, every attitude of the heart, whether it is good or bad.

"Blessed are the pure in heart: for they shall see God."

There are many rewards for those that follow the Lord. "Let the heart of them rejoice that seek the Lord."

Coleman Adv. Serv.

Primera Iglesia Bautista

223 E. Ave. B.
Roy Martinez, Pastor

Lariat Church Of Christ

Sunday School 10:00 a.m.
Worship 11:00 & 6:00 p.m.
Wednesday Services 7:00 p.m.
Sam Billingsley, Minister

Muleshoe Church Of Christ

Cloviss Hwy
Bret McCasland, Minister

16th & Ave. D. Church Of Christ

Sunday 10:30 a.m.
Evening 6:00 p.m.
Wednesday 7:30 p.m.
Curtis Shelburne, Minister

Lazbuddie Church Of Christ

Minister, Keith Courmier
Sunday School 9:30 a.m.
Morning Services 10:20 a.m.
Evening Services 5:00 p.m.
Wednesday Night 7:00 p.m.

First Assembly Of God

Rev. G. Dean Reid, Pastor
Sunday School 9:45 a.m.
Morning Worship 11:00 a.m.
Evening Services 6:30 p.m.
Mid-Week Services 7:30 p.m.
272-3984

Spanish Assembly Of God

East 6th and Ave. F.
Mike Doyle, Pastor

First United Methodist Church

507 W. 2nd Street
Richard Edwards, Pastor

El Divino Salvador Methodist Church

5th and E. Ave. D.
Jose M. Fernandez, Pastor

United Pentacostal Lighthouse Church

207 East Ave. G.
Rev. N.W. Thompson
272-3258

The Christian Center

Morton Hwy
272-5992

St. John Lutheran

Sunday School and Bible Classes 9:30 a.m.
Church Services 10:30 a.m.
Rev. Mac Bearss, Pastor

Jehovah Witness

Friona Hwy
Jack Tiffin, Minister
Warren Meeks, Minister

Lazbuddie Methodist Church

965-2121
Doug Chapman, Pastor

New Covenant Church

Plainview Hwy
Sunday 10:00 a.m.
Wednesday 7:00 p.m.
Jimmy Lowe, Pastor

Templo Calvario

507 South Main
Sunday 10:00 a.m.
Sunday Evening 7:00 p.m.
Evangelistic Services
J.L. Soto, Pastor

New Vision

Church of the Nazarene

814 W. Ave. C.
272-3622
Pastor, David R. McIntire

Attend The Church Of Your Choice!

Decorator's Floral & Gifts 616 S. 1st 272-4340	W.T. Services, Inc. 319 E. Amer. Blvd. 272-4888	American Valley Inc. W. Hwy. 84 272-4266	Combination Motor & Salvage 272-4458
Western Drug 114 Main 272-3106	Bob Stovall Printing 221 E. Ave. B. 272-3373	James Roy Meat Market 506 W. Amer. Blvd. 272-4361	Lookin' Good 206 Main 272-5052
Dairy Queen 1204 W. Amer. Blvd. 272-3412	First Bank Member F.D. I. C. 202 South First 272-4515	Bratcher Motor Supply 107 E. Ave. B. 272-4288	5-Area Telephone Co-Op 302 Uvalde 272-5533
Irrigation Pumps & Power W. Hwy. 84 272-4483	Bailey County Farm Bureau 1612 W. Amer. Blvd. 272-4567	Viola's Restaurant 2002 W. Amer. Blvd. 272-3838	Richland Hills Texaco 1914 W. Amer. Blvd. 272-4875

CLASSIFIEDS 272-4536

CLASSIFIED RATES

15 Words & Under Minimum Charge \$2.30 Thereafter \$2.00
16 Words & Over 1st Insertion 15 cents per word 2nd Insertion 13 cents per word

CLASSIFIED DISPLAY RATES \$1.75 Per Column Inch

DEADLINES 12 noon Tues. For Thursday Paper 12 noon Friday For Sunday Paper

To receive the reduce rate after the first insertion ad must run continuously.

We reserve the right to classify, revise, or reject any ad. We are not responsible for any error after ad has run once.

1. Personals

CONCERNED About Someone's Drinking? HELP IS AVAILABLE through Al-Anon Call 272-2350 or 965-2870 or come to visit Tuesday and Thursday nights, 8:00 p.m. & through AA call 965-2870 or come visit Tuesday nights, 8:00 at 620 W. 2nd, Muleshoe.

REWARD OFFERED

\$100 for the return of the permit book and papers taken from Wayne Copley's 1985 International truck. Taken between 9:00 p.m. September 26 and 7:30 a.m. September 27. 272-3697. C1-39s-4tc

3. Help Wanted

South Plains Head Start Program in Levelland is needing a Home Based teacher for the Muleshoe area. Must have GED or HS Diploma + 5 years exp. with Pre-K children, or BA Degree in Early Childhood Development + 3 yrs. exp., or BA or BS + 2 or less yrs. exp. Must have own transportation. Last day to pick up applications will be Wed., Oct. 2, 1991. For more information please call Donny Carrasco at 894-2207. S3-39s-1tc(ts)

SLEEPING GIANT AWAKES

Revolutionary new concept in pain management. 16 year old international Health and Wellness Corporation will open in this area to qualified distributors. Please send resume & brief cover letter describing past marketing experience. Nominal investment required. Director of Personnel: Department R. Box 6446 Lubbock, Texas 79413

3. Help Wanted

WANTED: Part-time Sales Clerk. Apply in Person - Muleshoe Fina-102 W. Amer. Blvd. M3-39s-2tc

NEEDED Assistant Manager 40-50 hrs. weekly. Neat in appearance. Must be mature and responsible. Good personality. Apply in person to Stacy Davis at Pizza Hut in Muleshoe. P3-39t-2tc

Earn some extra money for Christmas. Set your own hours. Free kit and training. No delivery, no collecting! Also booking parties for home decor, gifts and decorations. Call DeAnna at 385-6155. B3-39s-1tc(ts)

4. Houses For Rent

HOUSE IN COUNTRY FOR RENT 3-4 bedrooms, 3 baths, den with fireplace, double garage, approx. 2,000 sq. ft. Call 806-435-5578 or 806-965-2758 after 6 p.m. M4-36t-8tc

11. For Sale Or Trade

New Christmas Ceramics By Geneva Lemons Now Showing at Stitches n Stuff 124 W. Ave. B L11-38s-tfc

PIANO FOR SALE Wanted: Responsible party to take on small monthly payments on piano. See locally. Call Manager at 800-635-7611. M11-37t-6tc

15. Misc.

ROOFING Call Collect [505] 762-8335 **TEEL ROOFING** A division of Paul Teel Cons't Co. Clovis, N.M. Referrals in Muleshoe & Elsewhere **PLEASE CALL FOR FREE ESTIMATE!!**

FOR RENT: Large Self Storage rooms with 24 hour a day access. Call J & J Self Storage at 272-4307. S15-37t-tfc

STORAGE!

Rooms Available For Storage \$25.00-\$30.00 Per Month **Ted Barnhill 272-4903**

Exactly That "Pa," said the boy, looking up from his book, "what does a man's better half mean?" "Usually, my son," replied the father from behind the evening paper, "she means exactly what she says."

15. Misc.

True Value HARDWARE VALUE OF THE MONTH
FREE 12000 bags 30-40 lbs. 80-Pk. 33-Gal.
YARD & TRASH BAGS 677
Fry & Cox 401 S. 1st 272-4511 MULESHOE

Who can remember the old religious camp meetings?

we are proud to present...
THE ALL NEW LITTLEFIELD MANOR APARTMENTS
1500 S. Wicker Littlefield, Texas (505) 385-4709
Elderly Complex Central Heat and Air Fully Carpeted On Site Laundry Facilities Water and Trash Pickup Paid
RENTS BASED ON INCOME STARTING AT \$0 TO QUALIFIED APPLICANTS
EQUAL HOUSING OPPORTUNITY UNITS EQUIPPED FOR THE HANDICAPPED

8. Real Estate

20. Public Notice

NOTICE TO CREDITORS Notice is hereby given that original Letters Testamentary for the Estate of JEAN M. COLE, Deceased, were issued on September 23, 1991, in Docket No. 1889, pending in the Probate Court of Bailey County, Texas, to: VIRGINIA M. WYER. The residence of the Independent Executrix is in Muleshoe, Bailey County, Texas and the post office address is: VIRGINIA M. WYER c/o Michael R. Caldwell 113 West Avenue D.

15. Misc.

20. Public Notice

Muleshoe, Texas 79347
All persons having claims against this Estate which is currently being administered are required to present them within the time and in the manner prescribed by law.
DATED the 23rd day of September, 1991.
Michael R. Caldwell Attorney for the Estate C18-39s-1tc
Experience Experience is knowing a lot of things you shouldn't do. -Gazette, Sabula, Ia.

15. Misc.

Earn money, win prizes, get big discounts, meet new people and have fun. For 105 years women have been getting all of this from being Avon Representatives. Isn't it time you gave us a try? Call 272-5607

8. Real Estate

FOR SALE 2 bedroom house, fenced back yard, plumbed for washer/dryer, 205 Birch. Call Mary Edmiston 272-4196 e8-38s-4tp

TEXAS
It's Like A Whole Other Country.
CALL US the Classifieds 272-4536
Read the Classifieds

20. Public Notice

NOTICE IT HAS COME TO THE ATTENTION OF THE POLICE DEPARTMENT AND THE SHERIFF'S OFFICE THAT CERTAIN AGENCIES ARE SOLICITING DONATION IN MULESHOE IN THE NAME OF THE LAW ENFORCEMENT. NEITHER THE MULESHOE POLICE DEPARTMENT NOR THE BAILEY COUNTY SHERIFF'S OFFICE ENDORSE ANY OUTSIDE FUND RAISING ACTIVITY CONNECTED WITH LAW ENFORCEMENT OTHER THAN THE NATIONAL CHILD SAFETY COUNCIL AND THE SHERIFF'S ASSOCIATION OF TEXAS. NO OTHER AGENCY HAS CLEARED ANY FUND RAISING ACTIVITY WITH US AND WE DO NOT RECOMMEND DONATIONS TO ANY OTHER AGENCY. IF ANYONE HAS ANY QUESTIONS, PLEASE CONTACT CHIEF WAYNE HOLMES

AT 272-4569 OR SHERIFF JERRY HICKS AT 272-4268. H20-39s-1tc



SMILES
It is? "Sadie, what is a gentleman?" "A gentleman is a man you don't know very well."

Bright Boy "Now boys," said the teacher, "I want you to bear in mind that the affix 'stan' means 'the place of.'" Thus we have Afghanistan, the place of Afghans. Can anyone give me another example?
Nobody seemed eager to do so until little Jim my said proudly: "Yes, sir, I can: Umbrellastan the place for umbrella!"

Too Far Smith was proud of his golf, and that morning he had brought his mother-in-law along to watch him play. "I'm particularly eager to make a long drive just now," he said to his friend. "That's my mother-in-law over there and I....." "Don't be a fool," snapped the other. "You'll never hit her at that distance."

8. Real Estate

JO ANN CHESTER REALTY
806-227-2368
87 Oak Creek Mobile Home. Like new-half price. 1600 sq. ft. 3 Bedroom; 2 Bath.

8. Real Estate

NO DOWN PAYMENTS

New homes. 2 new loan programs. Gold Leaf Homes. 1-800-989-1445. G8-34s-11tc

FARM FOR SALE

160 acres: two wells, circle sprinkler. 1833 sq. ft. home. 2000 sq. ft. insulated barn-call (806) 225-6325. 8-37t-8tp

HOUSE FOR SALE

3-1-1 with fenced yard and storage building at 1424 W. Ave. C-272-5234. S8-39s-6tc

HCR REAL ESTATE

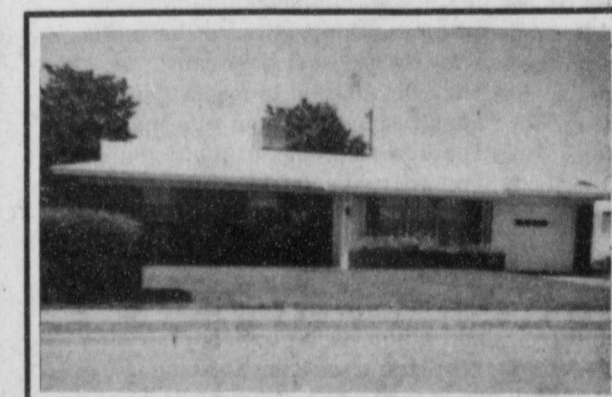
For Sale: 3 bdr., 1 Bath, Double Car Garage. **Thursie Reid 272-5318**

For Sale By Owner:

Quiet country living with unbelievable amenities. 3-2-2, Central A & H, 2 living areas, Den with cathedral wood plank ceiling, skylights, rock fireplace, barn, workshop, oversized garage, orchard, satellite dish. Home with 4 acres or with 149 irrigated acres. South of Muleshoe. Phone 946-3440. E8-37t-tfc

BAILEY COUNTY IRRIGATED LAND FOR SALE

With irrigation equipment. Fall wheat planted. Owner will finance. 385-4487 day 385-5613 night



Brick, 2 Bedroom, 1 Bath, 1 Car garage. Central heat. Evaporative cooler, Stove and Refrigerator. Fenced back yard. Storage building. Will sell for the F.H.A. appraisal price of \$25,100. Can buy with furniture or without.

Smallwood Real Estate

Brick-3 Bedroom, 1 1/2 Bath, Kitchen, Dining Area, Living Room, Central Heat and Refrigerated Air. 1 Car Garage. 232 Mann 272-4838

Bingham & Nieman Realty 272-5286

116 E. Ave. C. George Nieman, Broker 272-5285

- RICHLAND HILLS**
PRICE REDUCED-IMMACULATE 3-2-2 Brick, Cent. A&H, built-ins, newly remodeled kitchen, FP, sunken lv. area w/cathedral ceiling, ceiling fans, earthtone carpets, storage !!!!!!!!!!!!!
- 3-3-2 Brick, Cent. A&H, built-ins, FP, Spklr. sys., storage-wkshp., fenced yd., much more!!!!!!
- PRICED REDUCED-ASSUMABLE LOAN** 9 1/2 A.P.R.-3-2-2 Brick, Cent. A&H, built-ins, FP, fans, workshop-storage, fenced yd. Make Offer
- 3-3-1CP HOME, Cent. A&H, built-ins, FP, spacious lv. area, loads of closets & storage, cov. patio, fenced yd., 2 st. bldgs.!!!!!!
- 3-2-2 Brick, Heat pump, FP built-ins, fenced yd. Much More. \$30's!!!!
- NICE RESIDENTIAL LOTS/ \$5,000 UP...**
Nice-3-2-1 Home, built-ins, heat pump, fans, storm windows, & doors, workshop-storage, fenced yd., & more. \$30's !!!!!!!!!
- NICE 3-3-2 Brick, Heat Pump, built-ins, FP, gameroom, sunroom, finished basement, 2,800+ sq. ft. of lv. area, fenced yd. & more. \$80's!!!!**
- PARKRIDGE-IMMACULATE** 3-2-2 Brick, Heat Pump, built-ins, FP, nice finished basement, cov. patio, insul. & wired st.-workshop, fenced yd. GREAT VIEW!!!!
- 3-3 Bdrm. Brick Homes-FmHA financing to qualified Buyers, Priced to Sell!!!!
- HIGH SCHOOL**
2-1 Home, nicely remodeled kitchen & den, Cent., heat, fenced yd., large garage-shop. \$20's!!!!!!!!
- HIGHLAND AREA**
3-2-1 Brick, Cent. A&H, built-in, FP, Fenced yd. 2100+ lv. area, fenced yd., & st. bldg. MAKE OFFER!!!!!!
- 3-2-1 Home, wall furnace, window evap. fenced yd. \$20's!!!!
- Nice 3-1-1, heat pump, nice carpets, fenced yd. Much More. \$30's Price Reduced LENAUA ADD.
- 3-2-1 + 2CP HOME, storm windows & doors, built-ins, fans, MUCH MORE!!!!
- 3-1 Home, Corner lot, wall furn., fenced yd. \$20's
- Nice 4-2-2 Carport Home, Cent. A&H, built-ins, FP, Cent. Vac., Office, Sewing area, fenced yard. \$30's
- 3-2-1 CP, heat pump, heated pool, fenced yd. storage bldg., \$30's!!!!!!!!
- JUST LISTED-3-2-1 Brick, Cent. heat, built-ins, ceiling fans, fenced yd. \$29,900 "as is"!!!!**
- JUST LISTED-3-1 1/2-1 Home, Cent. heat, evap. air, nice carpets, cov. patio, fenced yd. st. bldg!!!!**
- 2-2-2 Brick, Cent., A&H, built-ins, FP, spklr. sys., fenced yd. Price Reduced!!!!
- VERY NICE 3-2-2 Brick, 3,000+ sq. ft. of lv. area incl. nice finished basement, built-ins, geothermal A&H energy-eff., loads of closet & storage, on 7.86 acres, fence, stock tank, sideroll, & many more amenities, close to town.**
- 3-2-3 Carport Home on 11 ac. edge of town, Cent. A&H, built-ins, cellar, barns & corral. MAKE OFFER
- 3-2-2 carport Brick on 2 acres at edge of town, possible owner financing. \$40,000!!!!
- NICE 3-2-1 Home on 1 acre close to town, Cent. Heat, Evap. Air, Nice Carpets, Remodeled. \$30's!!!!**
- NICE 3-2-2 Brick on 1 ac. tract on hwy. close to town, Cent. A&H, built-ins, fenced yd. & more!!! Make Offer.**
- RESTAURANT BLDG., LAND., Equipment-A GOOD BUY!!!!!!**
- GYMNASTICS STUDIO-BLDG., & Equipment-PRICED TO SELL!!!!!!**
- COMMERCIAL TRACT 175'x100' (HWY 70 & 84, RR spur access, approx. 1200 sq. ft. bldg. PRICED TO SELL!!!!**
- 320 acres good dryland, good allotments, Three-way area. \$250 per acre!!!!!!

Land Owners Encouraged To Cap Abandoned Wells

Nobody knows just how many water wells have been drilled since large-scale irrigation began on the Texas High Plains in the late 1930's.

More than 47,000 irrigation, municipal and industrial water well drilling permits have been issued by the High Plains Underground Water Conservation District No. 1 since 1951.

Many wells have been abandoned, the pump removed and the opening at the top of the casing left uncovered.

Often hidden by weeds, these open holes pose a threat to human life. Unfortunately, many folks seem to believe that no one would go near an uncovered casing. They also believe that no one would disturb the 55-gallon drum, piece of plywood, barbed wire, sheet metal, used tires, chemical container or whatever was nearby that was thrown across the casing to cover it. That's what makes these "attractive nuisances" the "death traps" that they are!

During the past decade, there have been three separate incidents involving a child falling into an open, abandoned well in the West Texas area. Luckily, all three were rescued unharmed.

In addition to the dangers they pose to human and animal life, these abandoned well openings can provide a direct conduit for contaminants to enter the ground water stored in the Ogallala Formation. Also, rainfall runoff can carry pollutants into open wells without casing and pump bases.

Open holes also provide tempting disposal sites for paints, motor oil and other unwanted substances. Once ground water in an aquifer is contaminated, it is extremely difficult to return it to a state where it is suitable for human and livestock use.

During the 27-year period from 1951 to 1978, the Water District had been involved in the capping or closure of 336 open holes within its service area. The High Plains Water

District Board of Directors were well aware of the dangers associated with these unused or abandoned wells and decided that a concentrated effort was needed to close them.

Since then, members of the District's Agricultural and Technical Divisions have been watching for open holes as they conduct their normal field activities.

Whenever a well permit indicates that the well is being drilled to replace an abandoned well, field personnel check to make sure that the abandoned well is properly capped or destroyed.

Once an improperly covered well is located, the District works with the Landowner/operator to see that the well is properly capped in accordance with State Law and Water District rules.

Depending upon the landowner/operator's planned future use of the well, the District will recommend that the well either be temporarily capped with a weighted plug, permanently plugged with either cement or bentonite mud, or completely destroyed. District staff follow up each open hole report to make sure that the landowner has gotten the well closed.

More than 1,200 open,

abandoned wells have been located and properly closed since 1978 as a result of the District's notification program. Undoubtedly, hundreds of these open wells were closed by conscientious landowners, while many others have been closed as a result of reminders from the local press of the dangers associated with open, abandoned wells.

Additional information regarding the proper capping of abandoned wells is available by contacting the High Plains Underground Water Conservation District No. 1, 2930 Avenue Q, Lubbock, Texas 79405, or by calling (806) 762-0181.

Nursing home News

by: Joy Stancell

We are happy to report that Thelma Stearns and S. W. Inman returned to the Health-care Center this week after being hospitalized.

Thursday morning David McIntire, assisted by Clara Lou Jones conducted our weekly devotional.

Thursday afternoon Grace Scarbrough, Mr. and Mrs. Mullins and Retha Knowles came to play Skip-Bo and dominoes. Also joining us for games were Johnnie and Rue Kimbrough and Tennie McCormick. Grace Scarbrough made and brought rice krispie squares for refreshments.

Friday afternoon Rev. and Mrs. Reid and Phil from the Assembly of God came for a time of praise and devotion.

CALL
Mark Mort...
109 S. 1st Muleshoe
272-7519

HEALTH INSURANCE

State Farm
Mutual Automobile
Insurance Company
Home Office
Bloomington, Illinois

Lazbuddie Menu

September 30-October 4
MONDAY BREAKFAST
Cereal, Toast, Milk, Juice
LUNCH
Pizza, onion Rings, Pears, Milk
TUESDAY BREAKFAST
Scrambled Eggs, Toast, Milk, Juice
LUNCH
Baked Potatoes, Ham & Cheese, Hot Rolls, Corn on Cob, Peach Cobbler, Milk
WEDNESDAY BREAKFAST
Biscuits & Gravy, Bacon, Milk, Juice
LUNCH
Fried Chicken, Potatoes & Gravy, Hot Roll, Banana Pudding, Milk
THURSDAY BREAKFAST
Cream of Wheat, Cinnamon Toast, Milk, Juice
LUNCH
Stew, Corn Bread, Salad, Fruit Cocktail, Milk
FRIDAY BREAKFAST
Cinnamon Rolls, Milk, Juice
LUNCH
Hamburgers, French Fries, Pineapple, Milk
SALAD BAR IS SERVED DAILY

Muleshoe Menu

September 30-October 4
MONDAY BREAKFAST
Milk, Cereal, Toast, Fruit
LUNCH
Milk, Pizza, Mixed Veg., Pickles, Fruit
TUESDAY BREAKFAST
Milk, Cheese Toast, Fruit
LUNCH
Milk, Hamburgers, Lettuce & Tomato, Pickles & Onions, French Fries, Cookies
WEDNESDAY BREAKFAST
Milk, Toast, Jelly, Hash Browns, Orange Juice
LUNCH
Milk, Chicken Pot Pie, Spinach, Cheese Stick, Fruit
THURSDAY BREAKFAST
Milk, French Toast, Syrup, Sausage, Fruit
LUNCH
Milk, Frito Pie, Beans, Salad, Corn Bread, Fruit
FRIDAY BREAKFAST
Milk, Breakfast Corn Dog, Fruit
LUNCH
Milk, Burritos, Corn, Salad, Crackers, Fruit

Cotton Crop Should Be in Demand

By Steve Hill

Although still dependent on the weather, the 1991 Texas cotton crop is expected to produce a record harvest-and to sell well on world markets hungry for cotton.

"Over the last few months, domestic demand has held up extremely well, and it looks like the world market will do likewise," said Dr. Carl Anderson, a cotton-marketing economist with the Texas Agricultural Extension Service at Texas A&M University.

"That's good news, because we're looking at a fairly large crop. This is a payoff for long years of research to improve Texas cotton quality."

Improved harvesting and milling techniques have made it easier to provide a higher-quality cotton in the state, he said. For instance, milling can now remove more stalks, stems and leaves from harvested cotton without harming quality, and washing and dyeing techniques have improved the color of Texas cotton.

According to monthly U.S. Department of Agriculture estimates released September 12, total Texas production would equal some 6.2 million bales--slightly more than the record 6.04 million bales harvested in 1949.

However, there is at least one major difference between those two years. In 1949, that production came from a total planting of 11.5 million acres, compared to 6.5 million acres in 1991, Anderson said.

"That's a pretty big increase in average yield per acre, and you've got to have that because the cost of production has

increased so much," Anderson said.

At last report, some 6 million acres of those planted would be harvested in Texas, he said. Much of the lost acreage was in the Lubbock area of the Southern High Plains, where sand, hail and dry weather early in the season set crops back, he said.

The coastal region, Brazos River bottoms and the area just south of Waco have had exceptionally good crops, he said. "Out here in the Brazos bottoms, they can push that to 4 bales an acre," he noted.

Total U.S. production should equal between 17.6 and 18 million bales, with much of that variance depending on insect and weather-plagued crops in the western half of Texas, Anderson said.

Weather must be hot and dry enough to be considered ideal for that area to make a good crop, he said.

Total U.S. use--including both milling and exports--is expected to be close to 16.0 million bales, he said.

Texas, with approximately 35 percent of the U.S. crop, produces more cotton than any other state. The United States is the second-largest producer of cotton in the world, behind only China.

However, China has suffered severe flooding problems this year and is not allowing outsiders to view its crop, so it remains a "wild card" in the world market, Anderson said.

In the 1990-91 year through August 1 used to determine world cotton statistics, the U.S. produced an estimated 15.5 million bales, while China produced 20.7 million bales. The Soviet Union produced 12

million.

Anderson said total world production, according to the International Cotton Advisory Committee, was expected to be 92 million bales for the 1991-92 season. World consumption was expected to be 89 million in that same period, increasing by some 2.5 million bales over the previous year.

Anderson said consumption had been expected to remain steady during the current season, but instead followed the pattern of the previous 10 years. Consumption has increased steadily by some 2 million bales per year since then, he said.

Serta SALE

ALL SIZES ONE PRICE

We have the Serta in the size you want during this special offer. Even Perfect Sleeper® is on sale. Hurry in today!

FIRST TIME EVER AT THIS LOW, LOW PRICE!

Sertapedic Limited

\$109⁹⁵ Each Piece

QUEEN KING

Serta Perfect Sleeper® Limited **\$159⁹⁵** Twin, Full, Queen, King each piece Sold in Sets Only

Serta Perfect Sleeper® Gold Medal Pillow Top **\$249⁹⁵** Twin, Full, Queen, King each piece Sold in Sets Only

"I want my Serta!"

He's Only A Boy

He's only just a boy you know.
He means a lot to me.
I did not raise my son dear fan,
For you to call him names.
He may not be a super-star.
It's just a high school game.
So please don't criticize those boys down there.
They do the best they can.
They never tried to lose a game,
They're boys and you're a man.
The game belongs to them you see,
You are just a guest.
They deserve encouragement.
They need the very best.
If you have nothing nice to say,
Please leave the boys alone
and if you have no manners,
Why don't you stay at home.
So please don't criticize the boys down there.
Each one's his parent's son.
Win or lose or tie, you see,
To us they're "NUMBER ONE".

Anonymous

When prominent members of our community put our children down, it hurts everyone. Let us come together and celebrate the efforts of our youth in what ever they deem important, whether it is sports, music, drama or academics. If our children have the support of the adults of the community, we will all be winners.

The Muleshoe Athletic Booster Club

"Your Quality Furniture Store"

Use our terms, your Visa or MasterCard

CALTON FURNITURE

507 E. 2nd

359-1442

Sold in Sets Only