

WEATHER

November 14 59 46
November 15 68 39
November 16 45 36 .67

BAILEY COUNTY JOURNAL

'The Community Of Opportunity-Where Water Makes The Difference'

The Foreman Company
Box 68
Meyersdale, Ill. 61462



© 1990

Volume 30, No. 48

Published Every Sunday At Muleshoe, Bailey County, Texas 79347

Member
TEXAS PRESS
ASSOCIATION

20^c SUNDAY, NOVEMBER 17, 1991

Lazbuddie Longhorns Win Bi-District

around muleshoe

In Thursday's Muleshoe Journal we incorrectly listed Jerry Hicks as the third place winner in the Football Contest, it should have been Keith Hicks.

The Youth Group at Richland Hills Baptist Church will sponsor Satan's and Occult Practices presented by Sgt. Ron Baker of New Mexico State Police at 7:30 p.m. Monday at the church.

A GED high school equivalence exam for persons without a high school diploma will be given Nov. 6-7 and Dec. 4-5 at South Plains College.

The two-part test will be given from 9 a.m. to 1:30 p.m. each day in the Student Assistance Center on the third floor of the library building. Fee is \$30.

For more information, contact the SPC guidance and counseling office at 894-9611, ext 368.

Dillman Elementary School needs clothes donated in sizes ranging from 4-10. If you have any useable clothes to donate contact Liz Tipps, school nurse.

James and Phyllis Shepard have recently taken over ownership and management of the West Camp Gin. On Wednesday, November 13, representatives from the Chamber of Commerce formally opened the new business with a ribbon cutting ceremony at 2 p.m.

First, Robert Montgomery, president of the Chamber, presented Shepard with a "First Dollar of Profit" award. Then,

Arts And Crafts

Bazaar Scheduled December 6-7

The Moonlight Extension Homemakers Club will hold their 13th annual Arts and Crafts Bazaar Friday, Dec. 6 from 11 a.m. to 7 p.m. and Dec. 7 from 10 a.m. to 5 p.m. in the Bailey County Civic Center.

Approximately 50 booths will be filled with all types of items for your Christmas shopping.

The Jennyslippers will be serving a barbecue lunch on Friday and will provide a concession booth both days of the event.

After the parade, Santa will be at the bazaar to visit with the boys and girls.

Exhibitors from all over Texas and New Mexico will be exhibiting in the bazaar.



WEST CAMP GIN--was formally opened with a ribbon cutting held November 13 by the Muleshoe Chamber of Commerce and Agriculture. Those participating in the ceremony were (not in order): Carolyn Johnson, Ronald Ashford, Donna Shaw, employee of the gin, James and Phyllis Shepard, owner-managers of the gin, Harvey Bass, David Tipps, George Nieman, Kid Castleberry and Robert Montgomery. (Journal Photo)

ASCS Gives Update On 1991 Farm Program

The following information was released Nov. 12 by Danny Noble of the ASCS Office.

1992 FARM PROGRAM

The 1992, acreage reduction program signup for Feed Grains, Wheat, and Cotton will be Feb. 10, 1992 through April 17, 1992. These dates could be delayed depending on when Congressional action is completed on pending technical corrections to existing agricultural laws.

The Secretary of Agriculture announced a five percent acreage reduction for the 1992 crops of Barley, Wheat, Corn, Grain Sorghum and a 10 percent acreage reduction for upland cotton. No acreage reduction will be required for oats. Further details of the 1992 Farm Program will be announced later.

LOAN DEFICIENCY

Dr. Cowart Presents Rotary Program

The Muleshoe chapter of Rotary met in its regular session at the Bailey County Civic Center Tuesday, Nov. 12 with about 55 attending. Bret McCasland presided. A report was

Casland presided. A report was given on the recent Punt, Pass and Kick contest.

Seven visitors were introduced. The Polio Plus drawing

PAYMENT (LDP)
Cotton loan deficiency payments are available for those interested in not placing their cotton in the CCC Loan program.

(1) LDP's are available through May 31, 1992.

(2) Lien waivers are not required for LDP's.

(3) Research and Promotion Fee will be calculated by multiplying the total LDP amount by .6 of 1 percent (.006) and deducting it from the total LDP amount.

(4) Upland Cotton that has been ginned is eligible for LDP. Producers and cotton must meet the same eligibility requirements that are used for a regular Upland CCC Cotton A. Any portion of production on which LDP's is not requested is eligible for loan.

(5) The documents to be

turnished on warehouse stored bales are acceptable warehouse receipts, acceptable class cards, and the bale listing sheet from the gin. For non-warehouse stored bales, furnish acceptable class cards, gin tags, and the Cont. Page 6, Col. 1

Mule-Plex Production Names Committees

Members of the Mule-Plex Production Co., Inc. met Thursday night at First Bank with Phil Kent, president, presiding over the meeting.

A field trip to see the Nutcracker in Lubbock is planned for December 14. Tickets will be available for \$20 each. This will include the bus trip and a ticket to the Nutcracker. Tickets will be available to the public after Mule-Plex members have had a chance to purchase their tickets.

A discussion was held concerning the possibility of having an all day historical celebration. This would be along the lines of what the Ranch and Heritage Center has each year in Lubbock. There would be demonstrations of many kinds, and entertainment all during the day. A committee consisting of Pat Prater, Ted Barnhill, Darla Rhodes, Gladys Black, Betty Jo Beaty and Tom Crane was appointed to gather more information concerning the possibility of this event.

Several committees were appointed for the 1992 year including the following:

Open House

Scheduled At

Elementary Schools

Neal Dillman Elementary and Mary DeShazo Elementary Schools will host open house in the respective buildings on Tuesday, November 19.

Helen Grigsby, principal of Dillman Elementary, invites parents and patrons to visit during the hours of 6 and 7 p.m. Barbara Finney, principal of Mary DeShazo Elementary, invites people to visit during the hours of 6:30 and 8 p.m.

Parents and all interested persons are welcome to visit all the schools at anytime, but this is a special week to recognize "Schools and Communities-Partners for a Strong America."

Longhorns Defeat

Meadow Broncos 32-7

It was a cold wet night, with a light mist falling, as the Lazbuddie Longhorns and the Meadow Broncos took to the field Friday night in bi-district football play offs.

The Longhorns stood 9-1 and the Broncos 5-4 for the season. Lazbuddie's only loss this season was to Silverton last week, 42-12. Meadow lost their first three games and four of five before turning their season around during their District 4-A play.

Mario Zamora, third string quarterback started the play for Lazbuddie. Quarterbacks Paul Williams and Brett Thomas had injuries in previous games.

Meadow kicked off to Lazbuddie and Kirk Jesko returned the ball to the 12 yard line where the Longhorns put it into play. After picking up a few yards the Longhorns were unable to get a first down and had to punt the ball to the Broncos.

The Broncos quarterback Larry Liles picked up two yards before being tackled by Williams on the 27 yard line. The Broncos tumbled the ball and the Longhorns recovered on their own 24 yard line. Kirk Jesko picked up 11 yards on the

next play moving the ball down to Meadow's 38 yard line. With 5:07 left in the quarter, Jesko broke tackles, reversed the field two times and made it into the endzone for a 38 yard touchdown. The extra point failed and at the end of the first quarter Lazbuddie led 6-0.

The Meadow Broncos put the ball into action on their own 28 yard line. After about 32 yards picked up and having a penalty called against them, the Broncos lost the ball to Lazbuddie on downs.

Con't Page 6, Col. 4

Muleshoe To Hold

Holiday Activities

December 6-7

The Christmas parade this year will be at 10 a.m. Saturday, Dec. 7. "The Spirit of Christmas" will be this year's theme. Cash awards will be given to the top three winners in the float divisions. Entries for the parade have been mailed out to businesses and organizations. They may also be obtained from the Chamber of Commerce and Agriculture Office.

The highlight of the parade, of course, will be Santa Claus. This year, the jolly old fellow will ride down Main Street in his very own sleigh and will bring with him his very own elves.

The Jennyslippers will hold their annual Barbecue luncheon on Friday, Dec. 6 at the Bailey County Coliseum. The Moonlight Homemakers Club will sponsor their annual Bazaar Friday and Saturday also at the Bailey County Coliseum. Approximately 50 exhibitors are expected to show Christmas crafts, quilts, ceramics, Christmas jewelry, and sportswear.

Shoppers are encouraged to come and spend the day. In addition to the bazaar, twelve local merchants will be holding special sales and events throughout their stores and will stay open until 11 p.m. for another Moonlight Madness Sale. Those merchants participating on Saturday night, Dec. 7 are: Harvey Bass Appliance, Ben Franklin, Anthony's, Fry & Cox True Value, A&M Farm Supply, Lookin' Good, Wilson Appliance, Joe's Boot Shop and Country Junction, Muleshoe Motor Company, Main Street Beauty Shop, Poynor's and Perry's.

The public is encouraged to be a part of Muleshoe's "Spirit of Christmas" on the weekend of December 6 and 7.



CANADIAN FISHING EXPEDITION--Dr. Barry Cowart, left, made a slide presentation at Rotary Club Tuesday. It concerned a Canadian fishing expedition he had recently completed. Cowart was introduced to the group by Bret McCasland, right. (Journal Photo)



ONE VEHICLE ACCIDENT--Michael Dewayne Darnell of Dimmitt was seriously injured at about 12:05 a.m. Friday, when the car he was driving failed to negotiate a curve at the Co-Op Gin and Odessa-T Intersection. The vehicle skidded into the embankment. Darnell was first transferred to Muleshoe Area Medical Center and was transferred by ambulance to University Medical Center in Lubbock at approximately 2 a.m. (Journal Photo)

Kiwanis News



By R.A. Bradley

Twelve Kiwanians, three honorary Kiwanians, one guest and Sweetheart Tiffany Angeley met Friday morning for breakfast at the Dairy Queen. Honorary members present were Staci Langfitt, Robby Clapp, and Dee "Meaness" Morris. Our one guest was Ryan Clapp. Ryan has been busy with football, but now maybe he can be at Kiwanis more often. Ryan we sure do like to have you with us.

Larry Parker called the meeting to order. Our lovely Sweetheart Tiffany Angeley led the club in the pledge to the flag. Jim Lutz gave the invocation. Jim Lutz has had the friendship coin and decided that any one who was a volunteer fireman and worked for Bailey County Electric needed a friend so he gave the friendship coin to J.O. Parker.

Herb and Staci Langfitt was our program. Herb and Staci showed the club some card tricks. The first trick was to have Dee "Meaness" Morris pick a card and then Herb had to guess it. Herb then asked Keith Turner to give him an envelope that he had and Dee opened it and said that it wasn't her card. Herb stated that trick sure didn't go right. Herb, when you are using someone who is as onery and mean as Dee is, no trick can go right. Herb tried another trick with Ryan Clapp and it seems this trick didn't go right. Herb and Staci then had another trick with some blank cards, with Staci's coaching, Herb rubbed the cards real hard and the numbers and faces appeared on the cards. Staci, Herb, thanks for a good program. With the Judd's mother and daughter team just starting up. We now have a father and daughter team just starting. Herb stated that he should have insisted that Saddam Insane come and do the program.

It was reported that our Vice President, Randy Lewis was suppose to be present this morning with his wife and another woman. Randy, what happened. His wife probably found out about the other woman.

With 40 more days until Christmas and Santa checking his list of naughty and nice, Santa here is a list of no shows at Kiwanis, Oscar Hernandez, Lyndon Huckaby, Reggie Johnson, Chad Johnson, Randy

Lewis, Lonnie Merriott, Robert Montgomery, Merlyn Neel, Hugh Young, Mickey Merriott and Jon Keith Turner. This really looks like a list for the 11 most wanted on the post office wall. Santa be sure and check this list.

Open Letter To Muleshoe Mules Football Team

We want you to know that your efforts this season have not gone unnoticed. We admired you more every week, as you came to the field to do a job against all odds.

You banded together and encouraged each other to do your best. You never pointed fingers, you never placed blame. You were preceptive to the good examples set by your coaches. When the cheering stopped you cheered each other on. You showed courage and character far beyond your years. You are our heroes. It may take years for you to realize that you are winners in a far more important game. The game of Life.

The Muleshoe Athletic Booster Club.

It is not the CRITIC who counts, not the man who points out how the strong man stumbled, or where the doer of deeds could have done them better.

The credit belongs to the man who is actually in the area; whose face is marred by dust and sweat and blood; who strives valiantly; who errs and comes short again and again; who knows the great enthusiasms the great devotions, and spends himself in a worthy cause; who, at the best, knows in the end the triumph of high achievement; and who, at the worst, if he fails, at least fails while daring greatly, so that his place shall never be with those cold and timid souls who know neither victory nor defeat.

Theodore Roosevelt

Letter To The Editor

Editor
Muleshoe Journal/
Bailey County Journal
Muleshoe, Texas
Dear Evelyn,

Muleshoe has the opportunity, now that Amendment #4 has passed, to bring a TDCJ facility here. I believe this would be a very beneficial addition to our local economy.

I spoke with an official of the Snyder Chamber of Commerce two weeks ago. I asked him what benefits Snyder has seen since a 1000 bed unit opened up there 18 months ago. He said the benefits come gradually. A correctional facility is not an instant "cure-all" and should not be promoted as such. The influx of an estimated 600 to 1000 people, spending some 3 1/2 million dollars in salary, buying and renting property, buying retail goods, joining the churches and civic organizations, are just a few of the real benefits that Snyder has seen and Muleshoe could see.

The Snyder Chamber official went on to tell me that the city has seen at least a 15% increase in its sales tax rebate. There has been no effect on property taxes also. He stated that, if nothing else, property values and taxes have stabilized

and the market values of property have stopped falling.

These are the possibilities, we as residents of Muleshoe, could see. But to see any of the possibilities come about, the people of Muleshoe are going to have to work hard to develop a proposal that will bring a facility here.

I think our city is very fortunate to have the Muleshoe Industrial Foundation taking the initiative to work up a proposal. With 110 communities around Texas bidding for some 20 facilities, this isn't going to be easy.

I would like to encourage your readers to contact someone on the MAIF board to find out what can be done to help prepare the proposal. A letter writing campaign to the media, our state legislatures, TDCJ officials, etc., could be of some help. In short, I would like to encourage our community to get involved in trying to bring a correctional facility here.

Sincerely,
Chuck Smith

The Hard Way

Cook: Where have you been all morning?

Messcook: Filling salt shakers, like you told me.

Cook: All that time?

Messcook: Well, it ain't easy pouring salt through them little holes!

Three Way News

by: Mrs. H.W. Garvin

Mr. and Mrs. Obie Standard, the daughter of Mr. and Mrs. Jack Lane moved back home from California this week. Glad to have you back.

Three Way Football team played Cotton Center here Friday night, winning the Homecoming game. A meal was served before and after the game.

Homecoming King and queen Friday night were Efrain Guillen and Cynthia Bennett.

Visiting in the home of Mr.

and Mrs. Bobby Kindle over the weekend was Stacy Kindle and Mrs. Totsie Lemons from Roswell.

Nancy Wittner's sister-in-law Laquita Emerson was admitted to Lubbock General Hospital for treatment.

Mrs. H. W. Garvin was admitted to the Methodist Hospital in Lubbock Tuesday night. Kay Kindle went with her.

Kay Kindle and Mary Kindle went Thursday to Lubbock on business, and went by to see Mrs. H. W. Garvin in the hospital.

Mr. and Mrs. Bill Dolle and Darla had her family over to celebrate her mother's birthday Saturday.

JEWELRY & WATCH REPAIR

FASTER SERVICE

- RING SIZING 2 DAY SERVICE
- PEARL RESTRINGING
- STONE SETTING

• NECK CHAINS REPAIRED • JEWELRY APPRAISED FOR INSURANCE



Credit Terms

312 Main 762-9376



YOUR FUTURE LOOKS GOOD WITH IRA.

Today could be very special for you. If you make it a point to plan for a very special day in your future . . . retirement. We can help make your retirement more rewarding, more financially secure with a tax-sheltered Individual Retirement Account (IRA).

An IRA is a high-yield savings plan to which you make annual tax-deductible contributions. All annual contributions and interest earned are tax-deferred until retirement, at which time you will probably be in a lower tax bracket. Imagine the nest egg waiting for you . . .

Take a good look at our IRA plans today. You'll find your future never looked so good.

Good for You
SM
AND MULESHOE TOO!

MULESHOE STATE BANK

MEMBER FDIC

101 West American Blvd. Phone 806/272-4561
MULESHOE, TEXAS 79347



**Cash Rewards
Up To \$1,000
For Information!**

**Call
Bailey County
Crime Line
272-HELP**

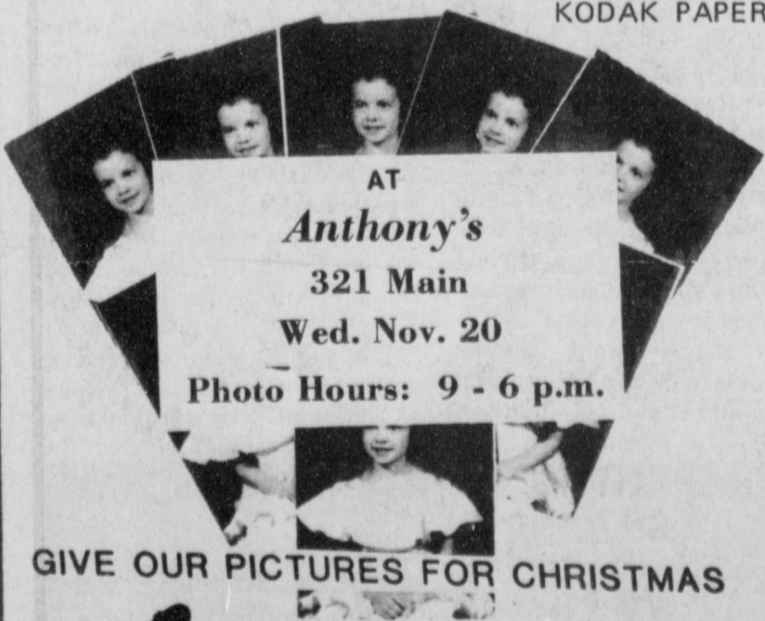
1- 10x13 (Wall Photo)
1- 8x10
2- 5x7
2- 3x5
16- King Size Wallets
8- Regular Size Wallets

30
Color
Photos

99¢ Deposit
\$10.00 Due at
Pick up
(plus tax)

\$10.99

WE USE
KODAK PAPER



AT
Anthony's
321 Main
Wed. Nov. 20

Photo Hours: 9 - 6 p.m.

GIVE OUR PICTURES FOR CHRISTMAS



Shugart's
inc.®

Group charge
99¢ per person

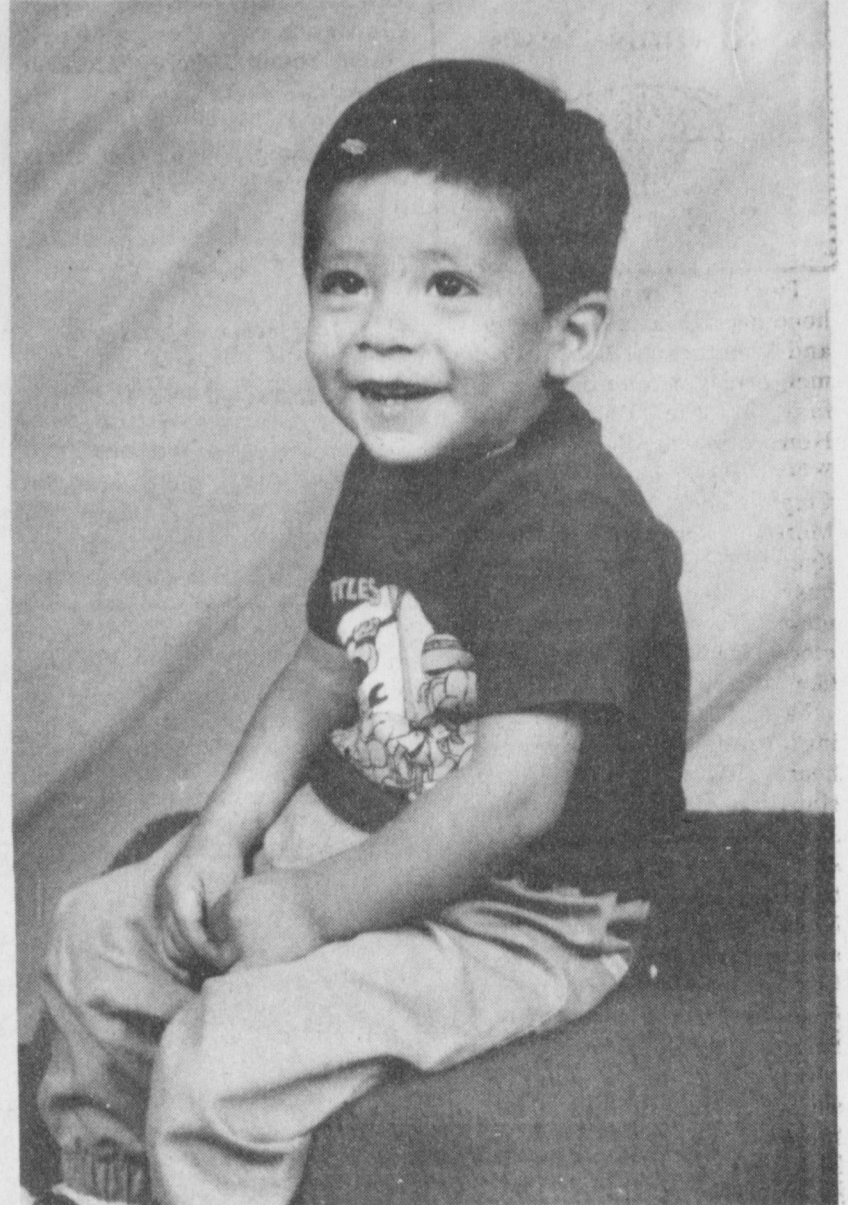
Kodak
PAPER
FOR CREATIVE COLOR PORTRAITS



BOARDING THE BUS FOR AUSTIN--is Julie Gilleland, member of the MHS Cross Country track team. The team left Muleshoe Thursday morning, November 14 at 8:30 a.m. for state competition in Georgetown. The girls' and boys' teams competed. About 150 parents, faculty, band members, cheerleaders and students were present Thursday morning for the send off. (Journal Photo)



ENGAGEMENT ANNOUNCED--Mr. and Mrs. Jerry Engelking of Lazbuddie announce the engagement and approaching marriage of their daughter, Brittni LaShell, to Monty Bryan Black, son of Mr. and Mrs. Gaylon Black of Muleshoe. The couple will exchange vows December 21 at 7 p.m. at the Lazbuddie Methodist Church. Brittni, a 1991 graduate of Lazbuddie High School, is currently attending Clovis Community College. Monty is an employee of Lazbuddie Feeders. (Guest Photo)



BABY PAGEANT ENTRANT--Patrick Ryan Orozco, the son of Della and Balty Orozco is running in the West Area Baby Pageant. It will be held at the Holiday Inn in Lubbock November 24.

Miss Texas Farm Bureau To Be Crowned

A Miss Texas Farm Bureau will be crowned, and talent find and free enterprise speech winner will be chosen at the 58th annual TFB meeting in Lubbock December 1-4.

The youth activities will take place on December 1 at the Lubbock Memorial Civic Center. Keynote speakers and the regular convention activities of special conferences and delegate voting will follow from December 2-4.

The Miss TFB and Talent Find winners will receive a \$2,000 scholarship. The runner-up will get a \$1,500 scholarship. Each district winner will get a \$600 scholarship.

The free Enterprise Speech winner gets the largest scholarship--\$4,000. The runner-up receives a \$2,500 scholarship. Each of four finalists will get a \$1,500 scholarship. Each district winner is assured of a \$1,000 scholarship.

For an ice cream cake akin to those fancy versions from your local ice cream shop, nestle a layer of softened peppermint ice cream between two layers of pound cake. Frost with sweetened whipped cream and decorate with crushed peppermint candies.

Olton Homemakers Set Show

The annual Sandhills Arts and Crafts Show, sponsored by the Olton Young Homemakers has been scheduled for Saturday, November 30. The event will take place in the school lunch room, located at 8th and Ave. G in Olton, Texas. Hours for the show will be from 9 a.m. to 5 p.m., with a special visit from Santa Claus and Mrs. Claus from 1 p.m. until 3 p.m. Children are invited to come see Santa and have their picture taken.

There will be a wide variety of crafts this year ranging from hand decorated sweatshirts, button covers, ceramics to woodwork and jewelry. There are still a few booths available, if you are interested, please

contact Tina Hardcastle, P.O. Box 465, Olton, Texas 79064 or call 806-285-2485 or 806-285-7760.

Pizza Hut serves 200 million pounds of cheese each year, making the chain the highest volume user of Mozzarella cheese. Supplying that volume requires the milk production of 180,000 cows!

McDonald's requires the milk production of more than 115,000 cows to satisfy the demand for the 160 million pounds of cheese it uses every year for sandwiches, burgers and breakfast items.

318 W. Amer. Blvd.
272-4862

PRICES EFFECTIVE NOVEMBER 17-23, 1991

SAUSAGE, EGG & BISCUIT EACH		HOT FOODS MENU	
89¢	RED DELICIOUS APPLES 3 LB. BAG	99¢	9 PIECE BOX CHICKEN \$4.99
\$1.29		\$3.99	BEEF & CHEESE CHIMICHANGA \$1.19
		\$3.99	(MEAD) CORN DOG 69¢
		79¢	DELICIOUS HAMBURGER 59¢
		99¢	WILSON HOT LINKS 99¢
		\$1.19	SAUSAGE ON A STICK \$1.59
		79¢	SAUSAGE & BISCUIT 79¢
		\$1.59	SAUSAGE, EGG & BISCUIT \$1.09
		\$1.49	SAUTEYEA SAUSAGE \$1.09
		\$1.99	4 COUNT STEAK FINGERS \$1.00
			CHECK OUR WEEKLY SPECIALS

Gardetto's 6 oz. pkg. Snackems 99¢

YOUNG HENS SHURFINE TURKEY 10 TO 14 LB. 59¢ LB.

Frito-Lay Cheetos REG. 99¢ 89¢

Hormel Little Sizzlers 12 OZ. PKG. 89¢

16 oz. pkg. Mello Crisp Bacon 99¢

Barbara Dee's Cookie & Cream 16 oz. pkg. assorted flavors Cookies \$1.39

Shurfine 4 lb. bag Sugar \$1.69

ALL TYPES PEPSI-COLA
2 liter **99¢**

DECKER CHOPPED HAM
10 OZ. ZIPLOCK PKG. **\$1.39**

Thank You
A Special Thanks To ALL The Businesses Who Made The "Fall Festival" A Big Success!!!

Muleshoe Elementary P.T.A.

- | | |
|--|--|
| <ul style="list-style-type: none"> A&M Farm & Ranch Supply Anthons Ben Franklin Damron Drug Dent & Co. Fry & Cox True Value Gulf Wholesale Stitches & Stuff Mohawk Auto Parts Linda's Kitchen Five Area Telephone Cooperative Inc. Joe's Boot Shop Feature Attractions Patio Beauty Shop Something Special J&G Bargain Center Harvey Bass Appliance Latrells Glenna's Beauty Retreat Poynors Main Street Beauty Shop Sanitary Barber Shop Family Hair Salon Chubby's Beauty Shop Connie's Place Ana's House Of Beauty Shear Shack The Fair Store Wiedebush & Company Western Drug Wilson Appliance Trophies & More Creations By Helen Decorators Floral & Gifts Williams Bros. Office Supply Perrys Brothers Higginbotham Bartlett Lookin Good Bob Stovall Printing | <ul style="list-style-type: none"> El Huasteco Bratcher Motor Co. Adrain Photography Art Loft Viola's Pizza Hut Serv-All Thriftway Dairy Queen Bobo Insurance Muleshoe State Bank First Bank Muleshoe Journal Spudnut Shop West Texas Ranger Channel 6 James Roy's Meat Market Dr. Bonds Winkler Meat Co. Allsup's Town & Country # 72 Morrison Oil Co. Alex Tire Co. El Jacalito Leal's Restaurant Muleshoe Trade Center Pay-N-Save Sonic Drive In Bigam Nieman Realty Bailey County Farm Bureau Terry Field Insurance Valley Grain Products Town & County # 134 Delton Wilhite Insurance Churchs Fried Chicken Muleshoe Country Club Immaculate Conception Catholic Church Mission Cable Honey Comb Beauty Shop C&H Equipment |
|--|--|



Charles Weldon Williams
Shannon and Dayna Williams announce the birth of a son, Charles Weldon Williams. He was born at the Muleshoe Area Medical Center at 4:07 p.m. October 31. The baby boy weighed 8 lbs., 12 oz. and was 21 inches long. Grandparents are Charles and Margaret Hamilton of Muleshoe and paternal grandparents are Glen and Glenda Stevens, also of Muleshoe. Great grandparents are Mr. and Mrs. Claude McDowell of Kress, Mrs. Theda Bloxom of Friona and Mrs. Bertha Stevens of Muleshoe. Maternal grandparents are Mr. and Mrs. R.O. Morgan of Lubbock and Mrs. Louisa Hamilton of Voorhees, New Jersey. Shannon is a specialist in the U.S. Army stationed in Pirmasens, Germany. He plans to come home December 12 and he and his wife and new son will return to Germany January 8.

Bailey County Journal
Established March 11, 1961. Published by Muleshoe Publishing Co., Inc. Four Seasons at 804 W. Second, Box 449, Muleshoe, TX 79064. Second Class Postage paid at Muleshoe, TX 79064.

MEMBER 1991
TEXAS PRESS ASSOCIATION

J. B. Hall, Publisher
Summer Hall, Vice President/Comptroller
F. W. Harris, Sec'y
J. C. Adams, Sec'y
H. M. Adams, Advertising
H. M. Adams, Classified

SUBSCRIPTIONS
Muleshoe Journal and Baby's Choice Journal \$1.00 per copy
Baby's Choice Journal \$1.00 per copy
Muleshoe Journal and Baby's Choice Journal \$1.00 per copy
Baby's Choice Journal \$1.00 per copy



ELSIE MCMILLAN

Elsie McMillan Named Artist Of The Month

Artist of the month is Elsie McMillan of Earth. She created a design for the cancellation stamp and it was approved by the Postmaster General in Washington, D. C. She depicted a windmill in downtown Earth.

Her street scene of Earth will be part of this year's "Earth Day" for the Texas Sesquicentennial. McMillan was also invited to show paintings in the Texas Sesquicentennial art show.

McMillan is a Texas native who grew up in Roaring Springs. She has been painting since 1969. The artist studied at West Texas College and Texas Tech University. Her instructors have been Lonnie Mason, Jan Herring, Ben Konis, Ann Templeton and Ramon Froman. Her watercolor instructors were Dr. Clarence Kincaid, Tom Nostesline, Naomi Brotherton and Dr. Emilio Caballero.

Among her favorite subjects are windmills, cottonwood trees and mesquite. In addition to a Best of Show award for watercolor at Ruidoso, N.M., McMillan has received many first and second place honors. She won the Public Opinion Award two consecutive years at the Muleshoe Art Show.

McMillan's oil paintings have been exhibited on the circuit at Lubbock and at art festivals in Santa Fe and Red River, N.M.

The artist is a charter member of the Ruidoso Art Association and also belongs to the West Texas Watercolor Association, Lubbock Art Association and Muleshoe Art Association.

In the Muleshoe Art Association, she served as vice president for four years, program chairman for three years, workshop chairman for a year and on the annual art show for ten years.

Tops Club

TOPS chapter No. 34 met at 6 p.m. Thursday, November 14 at the Girl Scout Hut. Leader Laverne James called the meeting to order. The TOPS pledge was recited and the fellowship song sung. Mrs. James led the group in a prayer.

Betty Jo Davis, weight recorder, called the roll with 21 members answering with the amount they had lost or gained. Minutes of the previous meeting were read by Aurora Mata, secretary, and they were approved as read.

Evelene Harris was best loser for the week. Runners-up included: Carolyn Stansell, first; and Retha Knowles, second.

Tommie Fulcher is a new member to TOPS. Thursday night TOPS also had a visitor Wanda Mayfield.

Wayne Holmes gave a very interesting talk on Drug Abuse.

The meeting was adjourned with the good night song.

Dairy products usually account for about 10 percent of the typical family's food purchases.

Creative Living

by: Sheryl Borden

Information on shortening sweatshirts, the importance of setting goals, and convection/microwave recipes will be the featured topics on "Creative Living" on Tuesday, November 19 at 12 noon and Saturday, November 23 at 2 p.m. (All times are Mountain.) "Creative Living" airs on public broadcasting station, KENW-TV, from Eastern New Mexico University.

Mary Mulari, owner of Mary's Fashions in Aurora, Minnesota, will show three different ways to shorten sweatshirts. These techniques also work well for altering children's sweatshirts.

Susanne Trubey, director & owner of SST Consulting Firm, will talk about ways to create and expand our personal and professional lives by setting realistic goals. Ms. Trubey works in Norman, OK.

Karen Linson, representative of Sharp Electronics Corp., is going to demonstrate using a rotisserie convection/microwave oven for those times when it is easy enough for everyday, but good enough for gourmet. Ms.

Linson is from Mahwah, New Jersey.

On Tuesday, November 19 at 9:30 p.m. and on Thursday, November 21 at 12 noon "Creative Living" will present information on gift ideas made from paper shopping bags and quick desserts.

The good old paper shopping bag is one of the most "usable reusable" of packaging items. Owen Edwards, author and representative of the American Paper Institute, will share some very clever and unique gift ideas made from paper shopping bags. Edwards is from New York City.

Jane Hunton, owner of Mamma Bear's Kitchen, will demonstrate three desserts that are very impressive, but take little time or effort to prepare. Ms. Hunton and her family live in Portales, N.M.

"Creative Living" is produced and hosted by Sheryl Borden. The show is carried on more than 100 PBS stations in the United States, Canada, Guam and Puerto Rico and is distributed by Pacific Mountain Network, Denver, CO. Viewers can request copies of materials offered on the show by sending one 29 cent stamp for each handout requested. Send the stamps, along with your name, address and booklets requested to: "Creative Living" Requests, KENW-TV Station 52, Eastern New Mexico University, Portales, N.M. 88130.

Christian Athletes

Express Thanks

The Fellowship of Christian Athletes of Muleshoe would like to express thanks to all of the churches who have allowed us to have breakfast and fellowship with one another for the past ten weeks. All of the breakfasts were absolutely delicious. FCA members appreciate all of the work put into these breakfasts to make them possible.

Add to the Christmas spirit with a "ready-when-you-are" dessert. Roll scoops of chocolate ice cream in crushed peppermint candies or roll eggnog ice cream in crushed peanut brittle. Store scoops in freezer and serve as needed.

For Your
Mary Kay Cosmetics
Josie Flowers
272-3865
8 a.m. - 12 noon
& after 6 p.m.

SCAC News

The Student Community Action Club met October 21 at the home of Jill Noble. The meeting was opened by Galin Latham and the prayer was said by Jill Noble. One of SCAC's two guest speakers was introduced by Tiffany Angeley. She introduced Larry Rasco, who is the current president of the Athletic Boosters Club. Rasco was nominated for this honor because of his great sense of pride for his town and his willingness to make it better. Rasco then spoke to the group on what he thought made a good community. He was presented a boutonniere from SCAC for being our SCAC Citizen of the Month.

Next, SCAC members surprised sponsor Jean Allison with being chosen also as SCAC Citizen of the Month. Mrs. Allison was selected for her endless support and helpfulness throughout the years. Mrs. Allison then spoke on what makes a good community. Mrs. Allison was then presented a corsage.

The business meeting was then conducted. Courtney Graves read last meeting minutes, and the Treasurer's report was given by Lashelle Scoggin. Mr. Gulley then reported on the Celebrity Auction which will be a money making project for SCAC. Names were then assigned to certain members of the group. Each member was to have contacted their celebrity by October 28. Afterwards, they were to tell Mr. Gulley or Mrs. Allison.

Next, Mickey Trussell was elected temporary Parliamentarian. SCAC's next speaker was nominated and elected. It was decided to hold next month's meeting in the home of Mickey Trussell on November 18. The December meeting will be held at Audree Anzaldua's home and the January meeting is to be held at Shea Wilbank's home. The meeting was adjourned and refreshments were served.



ANNIVERSARY CELEBRATED-Mr. and Mrs. F. L. (Jackie) Brown will celebrate their 50th wedding anniversary with a reception from 2 to 4 p.m. today at the Depot. Hosts are their children, Judy Anderson, San Diego, Calif., Wayne and Sandy Peterson, Muleshoe, and Tommy and Jody Whatley, New Boston. Brown and the former Pearl Marie Splawn were married November 15, 1941 in Clovis, N.M. They have eight grandchildren and seven great grandchildren.

Many tales start with:
"Well, they tell me..."
Faith in one's self is
the foundation of
success.

Going Out Of Business Sale Continues

50% TO 75%

STOREWIDE!

- | | |
|-----------------|------------------|
| SUITS | TIES |
| SPORTS COATS | BELTS |
| DRESS SHIRTS | SPORT SHIRTS |
| TALL MAN SHIRTS | SOCKS |
| DRESS PANTS | JOCKEY UNDERWEAR |
| SUNGLASSES | COLOGNE |
| COATS | ROBES |
| SWEATERS | PAJAMAS |
| BRIEF CASES | LUGGAGE |
| WATCHES | WALLETS |

EVERYTHING GOES!

BOB'S M
R. shop

502 Main, Clovis

Happy Birthday

Mom

(Myrtle Creamer)

Love,
your children

Thanksgiving Special

At The Patio Beauty Shop

Regular Perms \$25

Good November 19-23

Call Sharon Or Michelle

272-5383

No Design Perms Please

FESTIVE

FREE DEMONSTRATION

- ☆ New appliances
- ☆ New recipes
- ☆ Party ideas

FOODS '91

Presented by:



E. KAY DAVIS
SPS Home Economist

Tuesday, November 19
7:00 p.m.

Bailey County Coliseum

2201 West American Blvd. — Muleshoe

Electricity — efficient use makes for a wise choice!

Sponsored by SPS & Bailey Co. Extension Service.



SOUTHWESTERN PUBLIC SERVICE COMPANY

51947 9 91 930.1



Eating Vegetables Helps Reduce Risk Of Cancer

Drs. Frank Dainello and Al B. Wagner and Extension Vegetable Crops Specialist and Extension Food Technologist, respectively. Both are with the Texas Agricultural Extension Service's department of Horticultural Sciences, Texas A&M University.

We all can remember sitting at the dinner table requesting permission to be excused only to be denied by mom with the reply, "not until you eat all of your vegetables, they're good for you." Well, almost daily, the scientific community is presenting new data which confirms what mothers have known for a long time, vegetables are good for you!

In addition to being a good source of Vitamin A and C, minerals and dietary fiber, numerous studies have been reported which indicate that eating many types of vegetables may reduce the risk of certain cancers and/or heart attacks. Scientists are now developing a better understanding of how plants store compounds that may block the body's synthesis of a carcinogen or decrease cholesterol levels in blood (The Packer, September 7).

Cruciferous vegetables (broccoli, cabbage, cauliflower, kale, brussels sprouts) have been found to contain high levels of indole-3-carbinol, a chemical which reduces breast cancer (Produce News).

Vegetables high in beta carotene, a substance which can be converted into vitamin A, have been shown to reduce the risk of lung, throat and bladder cancers. Vegetables such as sweet potatoes, carrots, and broccoli are excellent sources of beta carotene. Researchers now believe that a cup of broccoli eaten every other day could contain enough of these substances to prevent cancerous growths. Beta carotene has also been reported to reduce the incidence of heart attacks through its role in reducing cholesterol levels in the blood (The Packer, November 17).

New research with onions indicate that red and yellow types contain high levels of quercetin, the most biologically

active and common dietary flavonols. Quercetin has the ability to inhibit tumor-promoting activities of many carcinogens as well as to reduce the carcinogenic activities of several cooked food mutagens. In addition to these characteristics, quercetin seems to enhance the activity of other anticancer agents in preventing cancer cells from proliferating (The Illinois Vegetable Farmer's Letter, Vol. 10, No. 2).

Surveys of certain ethnic groups who regularly consume

large quantities of onions and its relatives; garlic, leeks and scallions, point out that these people are less prone to stomach cancer than people who eat only small amounts of these vegetables (Produce News).

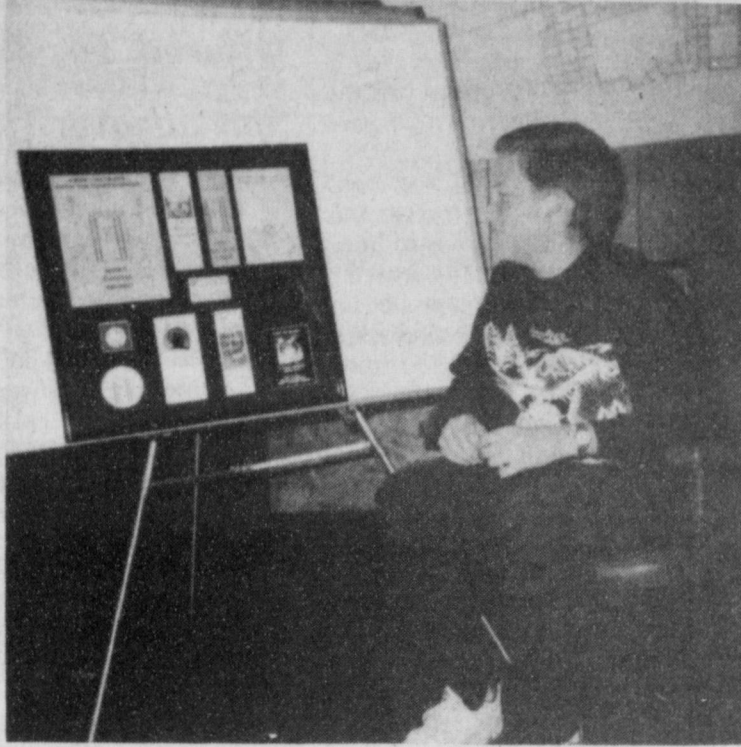
Frequent use of onions in the diet also have the added benefit of reduced blood pressure, cholesterol level, and incidence of serious blood clotting problems. Similar findings have been presented for celery.

Don't forget, mom was right, eat all of your veggies and eat

them everyday. They're good for you!

Substitute eggnog for the milk in some of your favorite holiday recipes. For example, hot cocoa made with eggnog warms from the inside out. Top with sweetened whipped cream. Drizzle with some grenadine syrup. Delicious.

For every dollar a consumer spends purchasing milk, the dairy farmer gets fewer than 40 cents.



LEADERSHIP MULESHOE--member Mickey Trussell views educational materials on juvenile crime following the group's monthly program. (Guest Photo)

Leadership Muleshoe Meets

Leadership Muleshoe met Wednesday, November 6 at the Council Chambers of City Hall. President Jody Field called the meeting to order. The members adopted "Learning Today To Be Leaders Tomorrow" as their official motto. They also approved the acceptance of a creed that was written by members April Watkins and Patricia DeToro.

Adult leaders in each area of study selected from the Chamber membership were announced. They are: Law Enforcement, Sid Felan; Education, Bill Moore; Agriculture, Danny Noble; Democracy, Mayor Darrell Turner; Emergency/Medical, Terry Hutto; Religion, Richard Edwards; Social/Cultural, Carol Cox; Heritage, Nelda Merriott; Industry/Retail, Howard Watson; Personal Development, Lavenia Garlington.

The group planned a get acquainted reception for members, adult leaders, and parents to be held Sunday afternoon, November 24 at the Bailey County Coliseum.

Carolyn Johnson, Chamber Manager and Advisor to the organization, presented a program to the members titled, "Juvenile Law Versus Adult Law". The program was designed to educate the youth on the differences between juveniles

and adults in relation to Texas laws. Johnson explained the differences in charges of CHINS (Children in Need of Supervision), Misdemeanors and felonies. She also talked about penalties for juvenile crime and explained the juvenile justice process from arrest to Texas Youth Commission. Mrs. Johnson also shared personal experiences with the group from her previous work with juveniles in Texas detention centers.

An assortment of cheeses can make the perfect holiday gift. It's easy, too, because with an imaginative container, you can forget about the wrapping altogether. Here are some ideas for starters: a wire basket, a lunch box or a handy, good-looking refrigerator container.

For a rich, buttery rum-raisin sauce that's delicious over ice cream, pound cake or fruit cake, stir 1 cup of firmly packed brown sugar, 2 tablespoons of corn syrup and 1/4 cup of whipping cream into 1/3 cup of melted butter. Bring just to boiling. Let cool and stir in 2 tablespoons of rum and 2 tablespoons of raisins.

4-H Food Show

Results

Ten Bailey County 4-H'ers participated in the Bailey County 4-H Food Show Saturday, November 9 at the Three Way Schools. These 4-H'ers were judged on the dish that they prepared, nutrition information, and a day's menu that they planned.

Those participating, their categories and awards are as follows:

Lauren Foote, Junior 1 Nutritious Snacks and Desserts, blue award.

Rebecca Robertson, Junior 1 Nutritious Snacks and Desserts, blue award.

April Webb, Junior 1 Nutritious Snacks and Desserts, blue award.

Robin Tooley, Junior 1 Main Dish, blue award.

Joshua Tooley, Junior 2 Fruits and Vegetables, blue award.

Jonathan Bennett, Junior 2 Nutritious Snacks and Desserts, blue award.

Joshua Robinson, Junior 2 Nutritious Snacks and Desserts, blue award.

Melissa Toombs, Senior Fruits and Vegetables, blue award.

Marianne Toombs, Senior Nutritious Snacks and Desserts, blue award.

Lauren Foote, Robin Tooley, Joshua Tooley, Jonathan Bennett, Melissa Toombs and Marianne Toombs qualified for the District 4-H Food Show in Levelland, Texas on November 23 by placing first in their respective categories.

The 4-H Food Show is the culmination of the foods and nutrition project that has been ongoing for the past several months in the county.

Congratulations to the winners and thanks to all of the leaders for assisting with the foods projects.

Dorothy's

Ladies Apparel

Dorothy's November Sale
Starts Friday, November 15th
Save up to 50% off
Ladies don't miss this great buy!!!

New Shipment
Sportswear, Jumpsuits, Sweaters, Dresses,
Jewelry, Handbags & Belts

Gabriel Shopping Center
1511 W. 5th St. 1-806-296-2135 Plainview, Tx.

We Have
Gift
Certificates
Available!

Order Your
Christmas Meat
Gifts Today!



Let Us Smoke Your
Holiday Turkey!

1/2 Beef
\$1.49 lb.
Locally raised grain fed
Cut & Wrapped To Your Specifications

Dry Cured
**Bone-In
Hams**
\$2.49 lb.

New York Strip
Steaks
By The Loin
\$3.99

Whole
Pork Loins
\$1.69 lb.
Cut & Wrapped To
Your Specifications

**Boneless
Hams**
\$2.79 lb.

Larry's
Breakfast Sausage
2 lb. stick
\$3.00 lb.

Winkler Meat Co.

401 Main Let Us Cater Your Next Party!! 272-4703

PUBLIC SALE NOTICE

Monday

ONE DAY ONLY

Nov. 18

NEW UNCLAIMED SCHOOL SEWING MACHINES WITH THE PROFESSIONAL SERGING STITCH.

NECCHI EDUCATION DEPARTMENT placed orders in anticipation of large school sales. Due to budget cuts these sales were unclaimed. These machines must be sold! All machines offered are the most modern machines in Necchi line. These heavy duty machines are MADE OF METAL and sew on all fabrics. LEVIS, CANVAS, UPHOLSTERY, NYLON, STRETCH, VINYL, SILK, EVEN SEWS ON LEATHER! THESE MACHINES ARE NEW WITH A 25-YEAR WARRANTY. With the new 199-2 Necchi Machine, you just set the color code and see magic happen: Straight sewing, zigzag, buttonholes, (any size), invisible blind hem, monogram satin stitch embroider, applique, sews on buttons and snaps, top stitch, elastic stitch, PROFESSIONAL SERGING STITCH, SPECIAL SWEAT-SHIRT APPLIQUE, all of this and more without the need of old-fashioned cams or programmers. Your checks are welcome and lay-aways available. All models come cabinet ready.

Your Price With This Ad

Without this ad \$529

\$ 217



Perry's

303 Main 272-4620

Demonstrations 9 to 5

**Factory
Demonstrators
Will Be
On Hand.**

ASCS Update

Cont. from Page 1

bale listing sheet from the gin.
 (6) For producers who have their cotton contracted and will lose title when the cotton is ginned, must sign the CCC-Cotton AA prior to ginning and furnish a complete bale listing from the gin by no later than the first Friday after the CCC-Cotton AA is signed. No LDP payment will be made until the acceptable class cards are received in the County Office but no later than MAY 31, 1992.
 (7) The LDP rate for each bale of cotton shall be equal to the difference between the national average loan rate as adjusted for premiums and discounts, strength, and location differential AND the higher of (a) the loan level determined for such bales multiplied by 70 percent of 1991 and subsequent years crops OR (b) the Adjusted

World Price (AWP), adjusted for premiums, discounts, strength, course count, and location differential, in effect on the day CCC-Cotton AA is approved in item (6) above. That is; the bales covered by the filed CCC-Cotton AA are those bales ginned from the date the CCC-Cotton AA is filed, including the date filed, through the Thursday immediately following the date filed. If the CCC-Cotton AA are those bales ginned from the date the CCC-Cotton AA is filed, including the date filed, through the Thursday immediately following the date filed. If the CCC-Cotton AA was filed on Thursday is covered by the CCC-Cotton AA. The new CCC-Cotton AA must be filed on Friday for any bales ginned on Friday.

Rotary...

Cont. from Page 1

bearing animals. Native Canadians are allowed to fish year round.
 "The wake was like glass," Cowart said. Cowart's group caught 46 fish the second day and about 50 the third day. "Pike are a good fighting fish," Cowart said.
 He noted that the lake where they fished was 200 miles long. The lake is also noted for its lake trout which grow to enormous sizes. Cowart found the accommodations and hospitality in that part of Canada tremendous.
 The veterinarian answered several questions from the Rotary Club members while showing lures that he used to catch the pike. He commented that there was a 15-17 pound test line on the tackle that he used.

Mule-Plex...

Cont. from Page 1

having a Community Christmas Program. They felt that this would be a very worthwhile project, but would need to be started in June or July. Therefore, the club will consider this again next summer.
 Moore reported that he is considering a cutting from "Greater Tuna" for the summer theater. Moore says it is a "rip roaring comedy that was written by local people from Springlake-Earth and Crosbyton, and is about this part of the country". If you have ever had a desire to perform on stage, this could be your opportunity. Start planning now to audition next spring.
 Mule-Plex has lots of exciting things going, and anyone who has an interest in any of these activities is encouraged to become a member, you may contact Phil Kent at 272-4515, Pat Prater at 272-4561 or any member of Mule-Plex for more information.

(8) To be eligible for LDP's, the producers MUST have possession of the cotton.
 For further details about LDP's, please contact this office.

SEED COTTON LOANS

If you are interested in obtaining a seed cotton loan, be sure to check with the gin about the insurance requirements and etc.. The moduals must meet the insurance requirements to be eligible for loan. Please feel free to contact this office for further information on seed cotton loans.

CHANGE IN COTTON LOAN EQUITY

In the previous years, producers was allowed to market their equity in cotton to a buyer and execute a CCC-813 form is obsolete for the 1991 crop year; the new form, CCC-605, gives the buyer who exercises an option to purchase a producer's cotton the authority only to sign on behalf of the producer in regard to the cotton loan. The major change is that the producer continues to maintain the liability for the cotton. The producer is responsible for all principal, interest, and any storage charges due CCC if the loan is forfeited or extended. Producers should discuss this change with the cotton buyer.

FARM STORED LOANS

Producers are reminded that you will be subject to penalties applicable to unauthorized removal or disposition of CCC if loan collateral is moved or disposed of without prior county office approval.

COMMITTEE ELECTION

Ballots will be mailed November 22, 1991, to eligible voters in LAA-1 (Community A). The final date to return voted ballots is Dec. 2, 1991. Please vote for the farmer of your choice and return it to this office.

"NL" PAYMENTS FOR 1990

There will be no 1990 "NL" payments for 1990 Corn and

Grain Sorghum due to the 12 month National Market Average being above the National Loan rate. No additional deficiency.

CRP PAYMENTS

As of this date, we have made all CRP annual rental payments that could be made. If you should have received a payment and did not please contact this office.

CONSERVATION PLANS

If you have bought, leased, or crop shared a new farm or ranch, or are thinking about doing so, you need to check with SCS about the Conservation Plan on that farm or ranch. This is very important because the Conservation Plan was formulated with the previous operator or owner, and stays with the land regardless of the operator or owner.

INTEREST RATE

The loan interest rate for November is 5.375 percent.

WOOL AND MOHAIR

January 31, 1992, is the final date for filing your 1991 wool and mohair sales documents for the incentive program.

Senator Phil Gramm Reports

U.S. Sen. Phil Gramm is asking that the EPA upgrade its Gulf of Mexico program, name a director quickly and double the funding available for cleaning up the Gulf.

"The Gulf of Mexico is a treasure which belongs to all Texans, from Brownsville to Beaumont to the Panhandle, and I mean to keep it clean and healthy so that the next generation can enjoy our beaches and rely on the wealth that the Gulf provides for us every year," Gramm said.

Currently, the Gulf program is budgeted for \$6.4 million a year, but Gramm asked at a meeting with EPA Administrator William Reilly that the agency boost that to \$13 million.

"Cleaning up the Gulf, and then protecting it from further pollution, is a high priority for Texas and the nation," Gramm said.

Recently, Gramm introduced legislation naming 1992 "The Year of the Gulf" and providing \$100 million over five years to pay for the EPA's Gulf-related projects.

The grant program proposed by Gramm would help Texas and the other four Gulf states protect the Gulf against such threats as plastics dumping, oil spills, medical waste disposal and coastal erosion.

Lazbuddie Longhorns

Cont. from Page 1

Lazbuddie put the ball into action on their own 20 yard line and flags were down, with holding being called against the Longhorns for a 10 yard penalty. On the next play, flags were down with off sides being called against the Broncos.

With 1:19 left in the half, Williams broke two tackles went out to the outside and into the endzone for a touch down. Williams made a one point conversion.

At half time the score was Lazbuddie 13, Meadow 0.

Meadow had control of the ball in the opening play of the third quarter. The Broncos ran into a little trouble and had to

turn the ball over to the Longhorns on their own 29 yard line.

Lazbuddie fumbled the ball, but was able to recover it and moved it out to the 39 yard line.

With 5:19 left in the quarter Lazbuddie scored again on an eight yard run. Once again the kick was no good, and the third quarter ended Longhorns 19, Broncos 0.

With 2:35 left in the quarter the Longhorns took over on the Broncos 23 yard line, after the Broncos were unable to move the ball. Lazbuddie fumbled the ball and the Broncos recovered on their own 33 yard line.

Meadow made their only score of the game on a one yard run with :44 seconds left in the third quarter. The point after was good and the score was 19-7, Lazbuddie.

Lazbuddie continued the methodical offensive attack through the final quarter of the game.

Jesko shouldered the Longhorn load, running 14 yards for a touchdown with 40 seconds left in the third quarter. Eric Williams hit Cozby with the conversion pass, making the score 26-7, Lazbuddie.

Jesko garnered the final points of the game when he bulled one yard for a touchdown with 5:42 left in the fourth quarter, giving the Longhorns a 32-7 victory.

Lazbuddie's next game will be the Guthrie Jaguars.

Who Knows?

1. Name the 34th U.S. president.
2. Name the U.S. manned spacecraft that made the first live telecast.
3. When did "The Adventures of Ozzie and Harriet" debut on CBS radio?
4. Who succeeded Spiro T. Agnew as vice president?
5. Who was known as Washington's "Happy Warrior"?

Answers:

1. President Dwight Eisenhower.
2. Apollo Seven, in 1968.
3. In 1944.
4. Gerald R. Ford.
5. Senator Hubert Humphrey.

The pleasure of criticism deprives us of that of being deeply moved by beautiful things.

-Jean De La Bruyere.

Advanced Course Offered To

Spreadsheet Users

Farmers and ranchers who are advanced spreadsheet users will want to sign up for a special course, Lotus 1-2-3 Macros, which will be offered at the Texas A&M University System Computer Training and Education Center in Halfway. This one-day course will be presented Nov. 18 by the Texas Agricultural Extension Service, Extension agricultural economist and veteran Lotus user Jackie Smith, will conduct the course.

This course is intended for the experienced Lotus user who is ready to learn how to utilize macros to automate Lotus spreadsheets. It will include an introduction to macros, review of range names and the development of keyboard and command macros. Participants will begin by building very simple macros, but will progress to more advanced applications. Participants need not have previously developed macros, but must have a fair knowledge of the basic Lotus commands to fully utilize this course.

Training will be from 9 a.m. until 4 p.m. Registration will be \$50, which will include lunch and educational materials. Registration will be limited to 14 to ensure hands-on participation. Couples are encouraged to attend, and if sharing a computer will pay only one registration fee.

The computer training center is located 14 miles west of Plainview on U.S. Hwy. 70. For more information, or to register, call Jackie Smith at the Texas A&M Agricultural Research and Extension Center in Lubbock, telephone (806) 746-6101.

Muleshoe...

Cont. from Page 1

Montgomery, assisted by several chamber representatives cut the symbolic ribbon.

The Shepards took ownership from Jerry and Faye Beasley and are natives of this area. James was raised in the gin business. He managed a co-op gin in Wellington for 12 years prior to assuming the owner-manager role at the gin in West Camp.

Shepard says he has had "a gin office full of farmers everyday" and he is looking forward to a successful managership at the gin. His wife Phyllis serves as bookkeeper. The Shepards have five sons including a set of triplets.

Good Gobble!

It's Turkey Time!!

We Will Be Serving Our

Thanksgiving Buffet

Thursday, Nov. 21

11 a.m.-4 p.m.

Turkey, Dressing & All The Trimmings

Includes Salad Bar, Pumpkin or Pecan Pie

All You Can Eat **\$6²⁵**

We Will Be Closed Thanksgiving Day

Connie's Place

121 S. Main Muleshoe 272-3126

\$19 FALL SPECIAL

\$SAVE
\$SAVE

WATER HEATER SPECIAL



\$139⁹⁵

30 Gal. Natural Gas

— ALSO AVAILABLE —
30-40 gallon natural gas and propane water heaters.



Warm Morning
15,000 BTU
Heater
\$189⁹⁵

FREE!

Propane Regulator



FREE!

Bailey County Propane

1/4 mile North on Friona Hiway
272-4678 or 272-3319
Muleshoe, Texas

KEEP FULL SERVICE
In Business Since 1948

Competitive Propane Prices!

Randy Morris,
Manager

Three Way Menu

November 18-22, 1991

MONDAY BREAKFAST
Biscuit, Gravy, Juice, Milk
LUNCH
Beef Stew, Cheese, Carrot Sticks, Cornbread, Milk, Cake

TUESDAY

Muleshoe Menu

November 18-22, 1991

MONDAY BREAKFAST
Milk, Cereal, Toast, Fruit
LUNCH
Milk, Steak & Gravy, Creamed Potatoes, Green Beans, Hot Rolls

TUESDAY BREAKFAST

Milk, Toast, Jelly, Sausage, Fruit

LUNCH

Milk, Hamburgers, Lettuce, Tomato, Pickles & Onions, French Fries, Cobbler

WEDNESDAY BREAKFAST

Milk, Toast, Rice, Fruit
LUNCH
Milk, Pigs in a Blanket, Whole Potatoes, Blackeyed Peas

THURSDAY BREAKFAST

Milk, Cereal, Toast, Fruit
LUNCH
Milk, Frito Pie, Beans, Salad, Cornbread, Fruit

FRIDAY BREAKFAST

Milk, Peanutbutter Whip, Toast, Fruit

LUNCH

Milk, Turkey & Dressing, Giblet Gravy, Green Beans, Creamed Potatoes, Hot Rolls, Fruit

BREAKFAST
Pancakes, Juice, Milk
LUNCH
Chicken Patties w/Gravy, Whipped, Potatoes, Corn, Hot Rolls, Milk, Apricots

WEDNESDAY BREAKFAST
Cereal, Fruit, Juice, Milk
LUNCH
Cheese Burgers, Lettuce, Tomatoes, French Fries, Milk, Ice Cream

THURSDAY BREAKFAST
Eggs, Ham, Juice, Hot Bread, Milk

LUNCH
Pinto Beans, Fried Squash, Macaroni/Cheese, Cornbread, Milk, Peach Cobbler

FRIDAY BREAKFAST
Biscuit, Sausage, Juice, Milk
LUNCH
Taco, Salad, Chili Beans, Milk, Cookies

Patients in Muleshoe Area Medical Center

NOVEMBER 12

Patsy Franklin, Lloyd Davenport, Blanche Lenderson, Lachelle Morris, Frances Purdy, Eva Roberts, Maria Romo, Westin Price, Nea Gonzales, Rafael Franco

NOVEMBER 13

Patsy Franklin, Lloyd Davenport, Lachelle Morris, Blanche Lenderson, Frances Purdy, Eva Roberts, Maria Romo, I.M. Lambert, Nea Gonzales, Vance Wagnon, Rafael Franco, Maria Diaz

NOVEMBER 14

Patsy Franklin, Lloyd Davenport, Lachelle Morris, Blanche Lenderson, Frances Purdy, Eva Roberts, Maria Romo, I.M. Lambert, Nea Gonzales, Vance Wagnon, Rafael Franco, Maria Diaz

Lazbuddie Menu

November 18-21, 1991

MONDAY BREAKFAST
Cereal, Toast, Milk, Juice
LUNCH
Pizza, Okra, Pears, Milk

TUESDAY BREAKFAST
Pancakes, Milk, Juice
LUNCH
Meatloaf, AuGratin Potatoes, Carrots, Fruit Cocktail, Milk

WEDNESDAY BREAKFAST
Biscuits & Gravy, Sausage, Milk, Juice
LUNCH
Baked Potato, Corn on Cob, Hot Roll, Cherry Cobbler, Milk

THURSDAY BREAKFAST
Cream of Wheat, Cinnamon Toast, Milk, Juice
LUNCH
Turkey & Dressing, Potatoes & Gravy, Green Beans, Hot Roll, Milk

NO SALAD BAR

FRIDAY BREAKFAST
Cinnamon Rolls, Milk, Juice
LUNCH
Hamburgers, French Fies, Peaches, Milk

SALAD BAR SERVED DAILY EXCEPT THURSDAY

The Reason

"My clothes didn't look so good this morning. The boy left them on the floor."
"Didn't pick them up for you?"
"He couldn't: I was in them."

Athletic Booster News

The Muleshoe Athletic Boosters gathered Thursday at 7 p.m. at the ASC office for a basketball organizational meeting. The following dates were set for meetings during basketball to be at 7 p.m. at the high school cafeteria: Thursday, November 21-honor freshman teams; Tuesday, December 17-honor junior high teams; Thursday, January 9, regular meeting; Thursday, January 23-honor junior varsity teams; Thursday, February 6-honor varsity teams.

It was decided that a money making project was needed to supply the basketball needs.

The project will be a bake sale, at the home games against Olton, November 26 at the junior high gym. All basketball parents are asked to please participate.

Signs for the halls were made and programs were made to be handed out at "Meet the Mules" Friday night at 7 p.m., November 15 at the junior high gym.

children Sunday afternoon and the grandchildren Coby and Cassie came home with them for a visit.

Enochs News

by: Mrs. J.D. Bayless

Mrs. Paula Foley worked her first day at the Co-op Gin Monday, November 4.

Mrs. Lilye Snitker was admitted to the hospital in Littlefield Friday afternoon where she is still a patient. Get well real soon.

Mr. and Mrs. Goldman Stroud visited their daughter Mr. and Mrs. Craig Kirby and

Our sick folks in Methodist Hospital are Loyd Pollard. He is in rehab now. Margie Peterson had been dismissed and was at her daughter's Kay Abney and family and had to be admitted to the hospital again and her husband Buford is still in the hospital. Mrs. Eldred Coffman, my sister-in-law was dismissed Saturday. She is proud to be home.

Courthouse News

MARRIAGE LICENSES

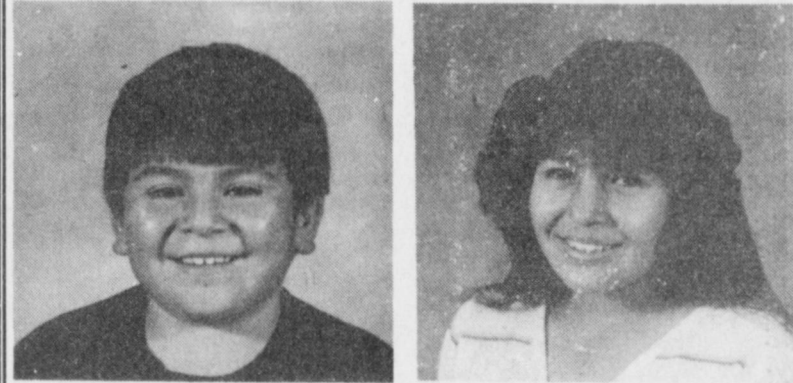
Jack Charles Stovall, Jr.-Muleshoe to Darla Earlene Valdez-Muleshoe

WARRANTY DEEDS

Morris L. Sheats and Billy L. Sheats to Amy Birdwell and husband Britt Birdwell-all of the West Half (W/2) of the East Half (1/2) of Section 88, Block A, Melvin Blum and Blum Survey, Abstract No. 021, Bailey County, Texas.

HEALTH INSURANCE
CALL Mark Morton 109 S. 1st Muleshoe 272-7519
State Farm Mutual Automobile Insurance Company Home Office Bloomington, Illinois

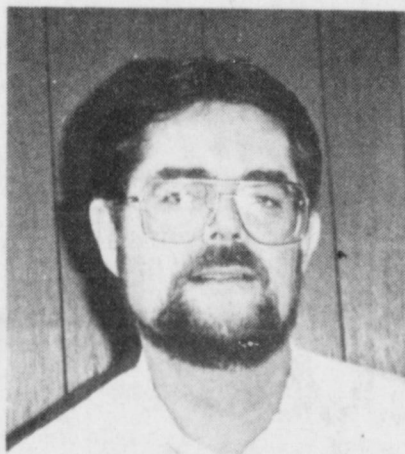
Today, November 17th, 1969 & 1981, Mary Louisa & Ronnie Orozco were born to Robert & Dolores Orozco.



These two bundles of joys turned 22 & 10 yrs. old respectively. Happy Birthday you two!

CLEAR CONNECTIONS

"Excellent people, doing excellent work!"



Paul Rinehart
Central Office Supervisor

At GTE, our residential repair service is so good, we're willing to guarantee it.

From now on, if we don't have your phone line fixed by the time we promise, we'll give you credit for one full month's local service charges.* Even if we're only one minute late.

In order to make a guarantee this good GTE has invested millions not only in state of the art telecommunications, but also in our people. And we think both are the best in the business. So if for some reason, our repair service doesn't measure up, please tell us.

Any of our GTE employees would be more than happy to honor this guarantee.

It only takes about a minute.



THE POWER IS ON

This ad covers local phone charges, monthly charges and any additional charges for Smart Call-Service, 1-800 numbers and extra directory listings.



AN OPEN LETTER TO THE PUBLIC:

We are pleased to formally announce the official change of our name to:

COYOTE LAKE FEEDYARD, INC.
formerly Birdwell Cattle Feeders, Inc.
dba Coyote Lake Feedyard

Our address is still the same: Route 5, Box 720 Muleshoe, Texas 79347-9805

Our telephone numbers are still the same: Office: 806/946-3321 FAX: 806/946-3329 Mobile: 806/946-7205

Our controlling stockholders are: E. W. Williams, Jr. Chairman President Harold P. (Bo) Brown, Jr.

Our management team consists of the following individuals:
Lee Britting Executive Vice President & General Manager
Ray Bates Assistant General Manager
Bob Raef, CPA Controller and Office Manager

We are a quality commercial cattle feeding organization with strong financial backing. We offer our customers quality service provided by our experienced management team. Our services include, but are not limited to, Growing Cattle, Feeding Cattle and Pasturing Cattle. Our ration prices and pasture rates are competitive within the industry. Financing is available to qualified customers. Coyote Lake Feedyard, Inc. is a custom feeding operation and is active in joint venture feeding. We utilize the services and expertise of local veterinarians and nutritionists. Buyers from area meat packers are in contact with us daily.

We invite all of our customers and friends to tour our modern facilities located 18 miles southwest of Muleshoe at the intersection of FM 1731 and FM 746.

Sincerely,

Lee Britting
Lee Britting,
General Manager

ROUTE 5, BOX 720 • MULESHOE, TEXAS 79347 • OFFICE: 806 / 946-3321 • FAX: 806 / 946-3329

Give Thanks Over Totally Texas Dinner

By Rick Perry, Texas Commissioner of Agriculture

The Pilgrims who commemorated their first harvest at Plymouth Colony in 1621 sat down to three days of feasting. They gave thanks, not only for their new store of food, but also for surviving a long harsh year on foreign soil.

Historians tell us that the first Thanksgiving table was graced with native North American dishes as well as food nurtured from precious seed the Pilgrims had brought from England. Their table was laden with game, seafood and bounty from the fields--pumpkins, leeks, carrots, cornbread, turnips and berries. No one seems to know for sure if turkey was on the

menu, but by the next officially recorded Thanksgiving, in July 1623, it had been added.

Though almost 370 years have passed since that first Thanksgiving, Americans still pause every autumn to celebrate the importance of harvest and to give thanks for this country's abundance of food. We Texans, in particular, can count our blessings for the food on our Thanksgiving tables because, in all likelihood, a great deal of it was raised here at home.

It is possible, in fact, to enjoy a "Totally Texas" Thanksgiving at which every dish on the table is made from foods raised and processed by Lone Star agricultural producers. Agriculture is an \$11.2 billion annual business in Texas. Our farmers and

ranchers raise nearly every kind of crop and livestock produced in the United States.

Farming and ranching is our state's second largest industry. And, while the majority of citizens live in cities and suburbs today, our roots reach back to rural communities where farming still is a way a life.

Fall is an especially abundant season in Texas. Our largest commercial vegetable harvest is under way in the Rio Grande Valley and South Texas, sending truckloads of fresh produce to market. The East Texas sweet potato crop is in packing sheds. Pork producers report plentiful supplies of ham. And, Texas processors supply ample quantities of Texas smoked turkeys and turkey breasts. Consumers can even decorate their tables with Indian corn and gourds raised on the High

Plains.

But that's not all. Consumers who prefer a less traditional Thanksgiving meal will find plenty of Texas-raised foods to choose from--everything from venison, quail and rabbit sausage to gourmet cheeses, specialty herbs and award-winning wines.

More than 800 food processing and beverage companies market their products through the Texas Department of Agriculture's "Taste of Texas" program which promotes products ranging from relishes to low-cholesterol buffalo meat. These products, which bear the red, white and blue "Taste of Texas" logo, are sold in supermarkets throughout the state.

This great diversity of Texas products makes a "Totally Texas" Thanksgiving menu totally possible, a meal that family and guests will savor for months.

In this spirit, our suggestion for a "Totally Texas" Thanks-

giving includes: Baked Lone Star Ham or Roasted Texas Turkey Breast, Butternut Squash Pudding, Crunchy Broccoli and Cauliflower Salad, Whole Wheat Rolls, Sweet Potato Pie with Pecan Crunch Topping, Texas Chardonnay and Texas Sparkling Wines.

BIBLE VERSE



Ye will surely say unto me this proverb, Physician, heal thyself.

1. Who made the above statement?
2. To whom was he speaking?
3. Upon what occasion?
4. Where may this verse be found?

Answers:

1. Jesus.
2. The people in his hometown of Nazareth.
3. His first visit to Nazareth after inaugurating his ministry.
4. Luke 4:23A.



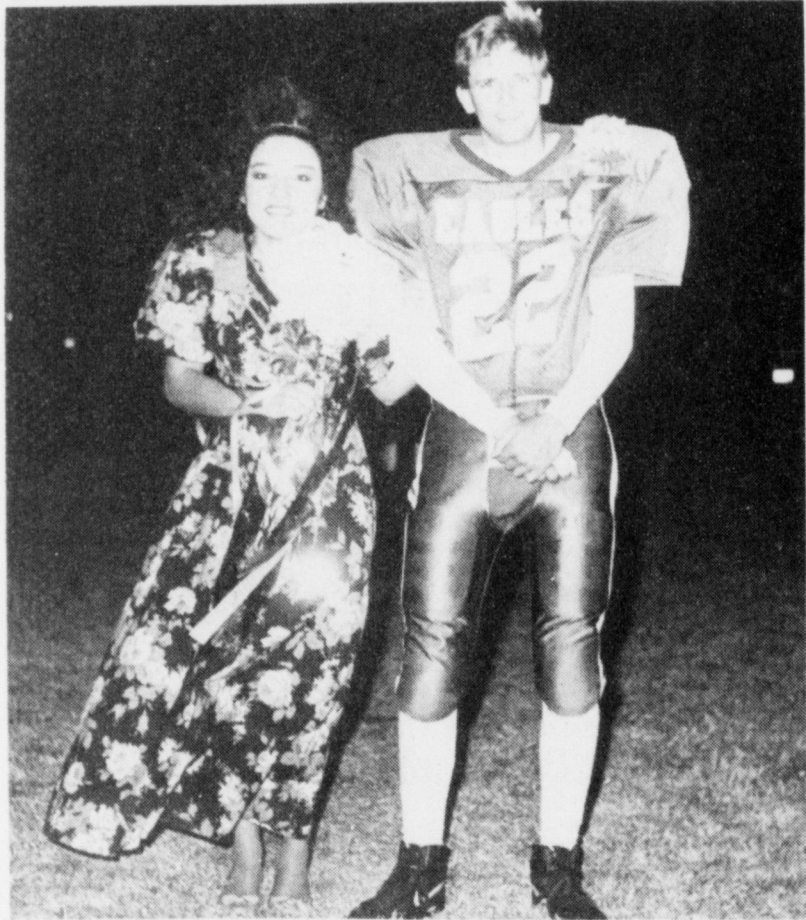
ONE MINUTE SPORTS QUIZ

By Christian Thorlund

1. When did Buster Douglas lose his heavyweight boxing title?
2. How many times did Douglas defend his title?
3. In what conference (sports) is Miami University?
4. What college football team was rated number one at the end of October, 1990?

Answers:

1. Douglas, at 246 pounds, was K.O.'d by Evander Holyfield Oct. 25, 1990.
2. The Holyfield fight was his 1st defense.
3. Miami has joined the Big East Conference.
4. U. of Virginia.



HOMECOMING KING & QUEEN CONTESTANTS--Melissa Guillen and Mike Smith were both king and queen contestants at Three Way High School last week. The homecoming queen was crowned during halftime activities of the Three Way Eagles and Cotton Center Elks game last Friday night. Miss Cynthia Bennett and Efrain Guillen were crown 1991 Homecoming King & Queen. (Journal Photo)



HOMECOMING QUEEN & KING CONTESTANTS--Denise Duarte and Larry Robertson were two of the contestants vying for the title of Homecoming King & Queen during halftime activities at Three Way. Miss Cynthia Bennett and Efrain Guillen were crowned Homecoming King & Queen for 1991. (Journal Photo)



1990-1991 HOMECOMING QUEEN & KING--Carrie Kindle 1990-91 Three Way Homecoming Queen was on hand to crown the new 1991 Homecoming Queen during halftime activities. Cynthia Bennett was chosen as this year's Homecoming Queen. Escorting Ms. Kindle was Marc Tucker. (Journal Photo)



1990 HOMECOMING KING & QUEEN CONTESTANTS--Roxanne Rodriguez and Wade Smith both participated during halftime activities at Three Way during the Cotton Center-Three Way game last Friday night. Three Way defeated the Cotton Center Elks by a score of 68-45. (Journal Photo)

Nursing home News

by: Joy Stancell

Saturday Laverne James and Mrs. Clements came to play Bingo with the residents.

Clara Lou Jones and Sonya Williams had a special program to honor all veterans, especially those in the Healthcare Center. Joe Weeks attended the breakfast at the Legion Hall.

Sunday afternoon the Muleshoe Singers came to sing gospel songs with the residents.

Tuesday afternoon Lula Maye Shanks, Bonnie Green, Linda Low, Beth Watson, Olive Cox came to shampoo and set the ladies' hair. Mandy Edwards gave manicures.

Wednesday morning Melvin Griffin hosted Men's coffee time.

The Needmore Community Club will host the November birthday party Thursday, December 2 at 3:15 p.m. We invite you to come and join us.

Retha Knowles visited the Nursing Home Monday and played games with the residents.

David McIntire conducted a memorial service for Helen Pruitt and Jack Knowles Thursday. He was assisted by Clara Lou Jones and Lona Embry.

Lona Embry hosted a home-made biscuit and bake party for the residents Wednesday morning.

Friday afternoon Alda Odom baked and served fresh out of the oven banana bread to the residents and staff.

The Spudnut Shop brought spudnuts to treat the residents and staff Wednesday afternoon.

Ask the Land Bank about...

money to buy land or improve your farm.

Farmers today are looking at ways to increase their productivity...buying or improving land...building or remodeling facilities.

Whatever way you choose to grow, the Federal Land Bank can provide long-term credit to help.

So when you're looking to buy or build, stop in and talk to the long-term farm credit specialist at your Federal Land Bank Association.

Federal Land Bank Of Muleshoe



THE LAND BANK

316 Main 272-3010



Muleshoe Pheasant Club



Here's what the MULESHOE PHEASANT CLUB offers you!

**Remember!! Double Daily Limit!
4 Birds Per Day Guaranteed!**

Cost For This Hunt Is \$200.00 Per Day, Per Hunter

You may reserve your hunting date by remitting only 1/2 (\$100.00) per day, per hunter!! Act Now!! **Limited Number Of Hunters**
Deposits Are Non-Refundable

Name _____
Address _____
Telephone _____
Number Of Hunters _____
Date (s) Desire To Hunt _____
Second Choice _____

We also have Incredibly Delicious Smoked Pheasant For Sale!

Great For Special Occasions!
Ideal Gifts for the Impossible to buy for:
Favorite Aunts Mother-in-laws Grandmothers, etc.

Checks should be made payable to.

Muleshoe Pheasant Club

Texas Hunting Licenses Available For Out-Of-State Residents At A Nominal Fee. (\$25.00 -- 5 Day Permit)

You May Obtain Additional Information Or Pre-Register By Completing The Form And Return.

Special Season by State Permit Beginning Nov. 15

Group Rates For 15 Or More Hunters!

LIMITED NUMBER OF HUNTERS ALLOWED.

Call now for more information:

Walter B. "Jack" Little

Home: 806-272-4805
(or leave message for call back)

Mobile: 806-272-4086
1-800-548-7738

or write to:
P.O. Box 525
Muleshoe, TX 79347



**Brenda Branch
Funeral Services**

To Be Held Monday

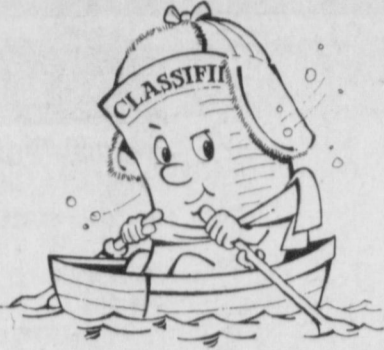
Funeral services for Brenda Cooley Branch, 28, of Midland will be at 1 p.m. Monday in Ellis Funeral Home with the Revs. James Whitaker and Darrell Estill officiating.

Burial will be in Fairview Cemetery. Mrs. Branch died Wednesday in Midland.

She was born in Lubbock and had lived in New Home and Maple. She married Joey Branch on September 15, 1990, in Midland. She graduated from Three Way High School and the University of Texas of the Permian Basin. She was a veteran of the U.S. Army. She was a member of Living Way Foursquare Church, where she

had been employed.

Survivors include her husband; a daughter, Teagie Branch of Midland; her parents, Mr. and Mrs. Burl Cooley of Big Spring; a brother, Shawn Cooley of Big Spring; a sister, Renee Lytle of Fort Collins, Colo. and her paternal grandmother, Izora Cooley of Big Spring.



Read The Classifieds!

**Report From
State Senator
Teel Bivins**

As the Justice Department completes its review of redistricting proposals, state Sen. Teel Bivins (R-Amarillo) is urging the department to reject congressional and state plans passed by the legislature.

"The Justice Department is reviewing these plans for compliance with the Voting Rights Act and overall fairness. Now is the time to contact the department about plans to dilute the political influence of West Texas," Bivins said.

In a letter to acting U.S. Attorney General William Barr, the senator said: "Both plans

are designed solely to protect Democratic incumbents--period. As a result, traditional communities of interest are sacrificed on the altar of political expediency."

The congressional redistricting plan splits the city of Amarillo by putting Randall County in the 19th district and Potter County in the 13th district, while splitting Midland between the 19th, 21st, and 23rd districts. State senatorial district plans put Midland in the 31st district with Amarillo, while putting nearby Panhandle counties in the 30th district.

"Interestingly, the legislature's Democratic plans pack Republicans into one West Texas district, diluting their influence in other districts," Bivins said. "This is the result of deliberate political gerrymandering."

The U.S. Supreme Court has directed that communities should be preserved whenever possible in the redistricting process, Bivins said. Instead, the legislature split more than

130 Texas cities. A plan presented by Bivins split fewer than half as many communities.

There is usually a brighter side to any bleak situation.

Thank You
The family of Ida Ruth Holt wishes to thank those who eased the pain and helped mourned the loss of our Mother. The sharing of food, the beautiful flowers, the words of comfort were greatly appreciated.
The Robert Holt Family
The Carolyn Harmon Family

**Allen Wray Smith
Funeral Services
Held Saturday**

Funeral services for Allen Wray Smith, 54, of Earth were held at 2 p.m. Saturday in Earth Church of Christ with Denny Sneed, minister, officiating.

Burial was in Earth Memorial Cemetery under direction of Parsons-Ellis Funeral Home.

He died at 11:45 a.m. Wednesday in Littlefield's Lamb Health Care Center after a brief illness.

He was born in Girard and had lived in Plainview before moving to Earth in 1968. He married Theresa Burgess on January 10, 1953, in Lubbock. He was a service manager with Wood-Jordan, Inc. and the IHC/Case Implement Co. He was a member of the Earth City Council and a former member of the Earth Lions Club. He was a member of the Church of Christ.

Survivors include his wife; three sons, Charles of Littlefield, Johnny of Earth and Michael of Gulfport, Miss.; a daughter, Lydia Brock of Lubbock; five brothers, Jerry of Richardson, Bill of Ruidoso, N.M., Martel of Lubbock, Merle of Sweetwater and Granville of Los Angeles, Calif.; five sisters, Mozell Hairgrove and Laura Akin, both of Lubbock, Montez Rogers of Abernathy, Barbara Locke of Denison and Mae Meador of Houston; six grandchildren and a great-grandchild.

The family suggests memorials to the American Lung Association of Texas, P.O. Box 27170, Austin 78755-2170.

**Ioma Mae Shearer
Funeral Services
Held Today**

Funeral services for Ioma Mae Shearer, 66, will be held today at 2:30 p.m. in the Third and Kilgore Church of Christ in Portales, N.M., with the Dan Rouse and Jack Self, officiating.

Burial will be in the Portales Cemetery. Shearer died in the early morning Friday, November 15 in Roosevelt General Hospital.

Born January 13, 1925 in Odell, she moved with her family when 3 years of age from Odell to Circleback. She graduated from Sudan High School. Her family then lived in Arch, N.M., Circleback and Friona. She moved to a farm west of Portales in 1957 and lived there until 1987 when she moved to Portales.

She was a homemaker and a member of the Third and Kilgore Church of Christ. She married Doyle Shearer on March 14, 1946 in Plains.

Survivors include her husband, Doyle Shearer of the home; one daughter, Billie Shearer of Portales; five sons, Jimmie Shearer, Dickie Shearer, Jerry Shearer, Larry Shearer, all of Portales; and Dennis Shearer of Hobbs, N.M.; her mother, Altha Turner of Muleshoe; one brother, Richard Turner of Muleshoe; one sister, Mary Wise of Avondale, Arizona and nine grandchildren. She was preceded in death by a daughter, Betty Shearer and by her father.

The family suggests memorials to the Christian Children's Home.

**Immaculate Conception
Catholic Church**
Father Patrick Maher
Northeast of City

First Baptist Church
220 West Ave. E.
Pastor: Stacey Conner

**Emmanuel Baptist
Church**
Iglesia Bautista Emmanuel
107 East Third
Isaias Cardenas, Pastor

Trinity Baptist Church
314 E. Ave. B.
Rev. Dale Berry

**Circle Back
Baptist Church**
Intersection FM 3397 &
FM 298
Rev. Jessie Shaver
946-3676

Calvary Baptist Church
1733 W. Ave. C.
Rev. Rick Michael

Church of Compassion
605 W. 8th
Jimmy Williams
272-5624

**Progress Baptist
Church**
Jeffery Lee
Progress, Texas

**Richland Hills
Baptist Church**
17th and West Ave. D
Rev. Terry Taylor

**St. Matthews
Baptist Church**
Corner of West Boston
& West Birch
M.S. Brown, Pastor

**Progress Second
Baptist Church**
1st and 3rd Sunday
Rev. Arthur Hayes

**Primitive Baptist
Church**
621 South First
Elder Cleveland Bass, Pastor

1st Baptist Church
Lazbuddie, Tx.
Gary Wilcox, Pastor
965-2126

FUN... AND WORK

To receive pleasure we must put out some effort. The building of a sled, or pulling it afterward is work, but all of these things add up to a wonderful time. The same holds true with the Lord, those who serve him receive the greatest pleasure.

"Serve the Lord with gladness... enter his courts with praise."

EVERYONE IN THE CHURCH
THE CHURCH IN EVERYONE

The Church is God's appointed agency in this world for spreading the knowledge of His love for man and of His demand for man to respond to that love by loving his neighbor. Without this grounding in the love of God, no government or society or way of life will long persevere and the freedoms which we hold so dear will inevitably perish. Therefore, even from a selfish point of view, one should support the Church for the sake of the welfare of himself and his family. Beyond that, however, every person should uphold and participate in the Church because it tells the truth about man's life, death and destiny; the truth which alone will set him free to live as a child of God.

© Coleman Adv.

The Christian Center
Morton Hwy
272-5992

St. John Luthern
Sunday School and Bible
Classes 9:30 a.m.
Church Services 10:30 a.m.
Rev. Mac Bearss, Pastor

Jehovah Witness
Friona Hwy
Jack Tiffin, Minister
Warren Meeks, Minister

**Lazbuddie Methodist
Church**
965-2121
Doug Chapman, Pastor

New Covenant Church
Plainview Hwy
Sunday 10:00 a.m.
Wednesday 7:00 p.m.
Jimmy Lowe, Pastor

Templo Calvario
507 South Main
Sunday 10:00 a.m.
Sunday Evening 7:00 p.m.
Evangelistic Services
J.L. Soto, Pastor

**New Vision
Church of the Nazarene**
814 W. Ave. C.
272-3622
Pastor, David R. McIntire

**Primera Iglesia
Bautista**
223 E. Ave. B.
Roy Martinez, Pastor

**Lariat Church
Of Christ**
Sunday School 10:00 a.m.
Worship 11:00 & 6:00 p.m.
Wednesday Services 7:00 p.m.
Sam Billingsley, Minister

**Muleshoe Church
Of Christ**
Clovis Hwy
Bret McCasland, Minister

**16th & Ave. D.
Church Of Christ**
Sunday 10:30 a.m.
Evening 6:00 p.m.
Wednesday 7:30 p.m.
Curtis Shelburne, Minister

**Lazbuddie Church
Of Christ**
Minister, Keith Courmier
Sunday School 9:30 a.m.
Morning Services 10:20 a.m.
Evening Services 5:00 p.m.
Wednesday Night 7:00 p.m.

**First Assembly
Of God**
Rev. G. Dean Reid, Pastor
Sunday School 9:45 a.m.
Morning Worship 11:00 a.m.
Evening Services 6:30 p.m.
Mid-Week Services 7:30 p.m.
272-3984

**Spanish Assembly
Of God**
East 6th and Ave. F.
Mike Doyle, Pastor

**First United
Methodist Church**
507 W. 2nd Street
Richard Edwards, Pastor

**El Divino Salvador
Methodist Church**
5th and E. Ave. D.
Jose M. Fernandez, Pastor

**United Pentacostal
Lighthouse Church**
207 East Ave. G.
Rev. N.W. Thompson
272-3258

Attend The Church Of Your Choice!

Western Drug 114 Main 272-3106	Serv-All Thriftway 401 W. Amer. Blvd. 272-4585	American Valley, Inc. W. Hwy 84 272-4266	Dairy Queen 1204 W. Amer. Blvd. 272-3412
Richland Hills Texaco 1914 W. Amer. Blvd. 272-4875	Combination Motor & Salvage 272-4458	Decorator's Floral & Gifts 616 S. 1st 272-4340	Viola's Restaurant 2002 W. Amer. Blvd. 272-3838
Bob Stovall Printing 221 E. Ave. B. 272-3373	W.T. Services, Inc. 319 E. Amer. Blvd. 272-4888	Bratcher Motor Supply 107 E. Ave. B. 272-4288	Bobo Insurance 108 E. Ave. C. 272-4264
Irrigation Pumps & Power West Hwy 84 272-4483	Wes-Tex Feed Yards, Inc. 272-7555	Bailey County Farm Bureau 1612 W. Amer. Blvd. 272-4567	5-Area Telephone Cooperative, Inc 302 Uvalde 272-5533

CLASSIFIEDS 272-4536

CLASSIFIED RATES
 15 Words & Under Minimum Charge \$2.30
 Thereafter \$2.00
 16 Words & Over 1st Insertion 15 cents per word
 2nd Insertion 13 cents per word
CLASSIFIED DISPLAY RATES
 \$1.75 Per Column Inch
DEADLINES
 12 noon Tues. For Thursday Paper
 12 noon Friday For Sunday Paper
 To receive the reduce rate after the first insertbn ad must run continuously.
 We reserve the right to classify, revise, or reject any ad. We are not responsible for any error after ad has run once.

1. Personals
CONCERNED
 About Someone's Drinking?
HELP IS AVAILABLE
 through Al-Anon
 Call 272-2350 or 965-2870 or come to visit Tuesday and Thursday nights, 8:00 p.m. & through AA call 965-2870 or come visit Tuesday nights, 8:00 at 620 W. 2nd, Muleshoe.

The Micro-Diet Works!
 Safe - Easy - Delicious - Affordable. Call Independent Micro Diet Advisor
 1-800-725-1777
 TI-46s-2tc

3. Help Wanted
TRUCK DRIVER NEEDED
 Driver for 18 wheeler hauling cottonseed from Sudan to Lubbock. Commercial License and Good Record required. Call 946-3461 or 946-3402. Ask for Tona.
 S3-46t-2tc

KUWAIT, SAUDI WORKERS NEEDED
 \$35.00 & up per hour. Tax Free. Both skilled & unskilled. For info. Call 615-779-5505 Ext. K-1104.
 3-44t-4tp(T)
 Lady to stay with older man. Phone 272-5487. Call between 9-11 in the morning.
 3-46s-3tp

Train for Your FUTURE
 U.S. DEPARTMENT OF LABOR, VOCATIONAL/ TECHNICAL training in your choice of 25 trades, FREE TUITION, including GED and Texas Drivers Ed. Health and Dental care provided, spending allowance, savings account, child care assistance and clothing allowances while you train. Men and Women, ages 16 through 21. Daily transportation furnished for day-student program. Graduate Placement assistance. Call today to see if you qualify.
1-800-733-JOBS EOE

5. Apts. For Rent
 Apartments For Rent Good location, 1 or 2 bedroom, furnished or unfurnished. water paid. 272-7575 P5-43s-tfc
NICE 1 Bedroom Unfurnished Apartment. Call 272-3107. M8-45t-tfc

11. For Sale Or Trade
FIREWOOD
 For Sale
 Pinon, Cedar, Juniper, Oak
 Amherst Grain & Fertilizer 246-3612
 A11-43t-tfc

FOR SALE
 Fan-tailed guppies.
 Call 272-3607
 D11-45s-8tc

TRADE:
 Perfect retirement place near Ruidoso, New Mexico, near Bonito and Alto Lakes, three bedroom house, guest house, barn with mill. About 25 acres, 8 acres cultivated. Cherry and apple trees, on hiway. Trade for irrigated farm, CRP, or grass. Write to HC 67, Box 75-Nogal, N.M. 88341 or 505-354-2413.
 F-44t-6tc

One Complete Set Craftsman 3/4 Drive Socket and Box
 One 9 ft. Big Ox Blade

One John Deere Black Remote Cylinder
 806-227-2251
 11-46t-2tp

One 1970 Ford pickup. Clean and running
 Phone 806-227-2251
 11-46t-2tp

40 Round Bales of Millett Hay. Priced To Sell! 272-3100 or 965-2468
 C11-46s-2tc

Adorable AKC miniature Dachshund pup for sale. Call 965-2699
 W11-46s-4tc

Read The Classifieds!

3. Help Wanted
*** POSTAL JOBS * MULESHOE AREA**
 \$23,700 per year plus benefits. Postal carriers, sorters, clerks. For an application and exam information, call 1-219-736-9807, Ext. P-8265. 8 am to 8 pm, 7 days.
 C3-46s-2tp

18. Legals

CONTRACTOR'S NOTICE OF TEXAS HIGHWAY MAINTENANCE WORK
 Sealed proposals for Mowing in the following counties, their contract numbers and bid opening date and time are listed as follows:
BID OPENING DATE IS MONDAY, NOVEMBER 25, 1991,

Loop 289	052XXM1015	9:00 AM
Lub. SE Cnty	052XXM1006	9:20 AM
Hockley Cnty	052XXM1005	9:40 AM
Lynn Cnty	152XXM1013	10:00 AM
Floyd Cnty	052XXM1003	10:40 AM
Parmer Cnty	052XXM1001	11:00 AM
Castro Cnty	052XXM1002	11:20 AM
Cochran Cnty	052XXM1007	11:40 AM
Yoakum Cnty	052XXM1009	1:20 PM
Garza Cnty	052XXM1011	1:40 PM
Crosby Cnty	052XXM1012	2:00 PM
*U.S. 84 SE	052XXM1016	2:20 PM
*U.S., 84 NW	052XXM1014	2:40 PM

will be received at the Texas Department of Transportation, 135 Slaton Road, Lubbock, Texas 79408-0771, until bid times indicated and then publicly opened and read.
 A list reflecting the highways and limits along with applicable specifications relative to these Contracts is available for inspection at the office of:
 Mr. Woody Marcy, Dist. Roadway Supv. V
 135 Slaton Road
 Lubbock, Texas 79408-0771

All prospective bidders are encouraged to attend the pre-bidder's conference which will be held at the Texas Department of Transportation's District Office Training Center at: 135 Slaton Road Lubbock, TX at 10:00 AM on Monday, November 18, 1991.
 Usual rights reserved.

8. Real Estate



Carpooling and using mass transportation will help save almost four million gallons of gas a day.

It really is this easy. That's why President Bush hopes that, together, we can make America more fuel independent.

DO YOUR PART. DRIVE SMART.
 The United States Department of Energy

FARMS & RANCHES FOR SALE

PARMER COUNTY LET'S LOOK!
 At this choice 567 acres. Strong water area, four 8 inch pumps, 12 tower sprinkler, balance U.G. pipe. Nice help house, good allotments--Owner financed. Consider dividing. **Owner Serious.**
 SCOTT LAND COMPANY-Ben G. Scott
 DIMMITT, TEXAS 79027-806-647-4375
DAY OR NIGHT

8. Real Estate

Drinking & Driving
 Drunken driving is considered the nation's most serious highway safety problem by a plurality of Americans, according to a survey commissioned by Mothers Against Drunk Driving.
FOR SALE: Approx. 6 Acres on the highway, just outside of city limits. 272-4975 W8-45t-tfc
FOR SALE: Approx. 17 Acres on Clovis Highway with well and high pressure line 272-4975 W8-45t-tfc

8. Real Estate

HIGHLAND AREA
 3-2-1 Brick, Cent. A&H, built-ins, FP, Fenced yd. 2100+ lv. area, fenced yd., & st. bldg. **MAKE OFFER!!!!!!**
 3-2-1 Home, wall furnace, window evap. fenced yd. \$20's!!!
 Nice 3-1-1, heat pump, nice carpets, fenced yd. Much More. \$30's Price Reduced **LENAU ADD.**
 3-2-1 + 2CP HOME, storm windows & doors, built-ins, fans, **MUCH MORE!!!!**
 Nice 4-2-2 Carport Home, Cent. A&H, built-ins, FP, Cent. Vac., Office, Sewing area, fenced yard. \$30's
 3-2-1 CP, heat pump, heated pool, fenced yd. storage bldg., \$30's!!!!!!
NICE REMODELED 3-2-1 Brick, Cent. heat, built-ins, MUCH MORE. \$30's!!!!
JUST LISTED-3-1/2-1 Home, Cent. heat, evap. air, nice carpets, cov. patio, fenced yd. st. bldg.!!!!!!
 2-2-2 Brick, Cent., A&H, built-ins, FP, spktr. sys., fenced yd. Price Reduced!!!
VERY NICE 3-2-2 Brick, 3,000+ sq. ft. of lv. area incl. nice finished basement, built-ins, geothermal A&H energy-eff., loads of closet & storage, on 7.86 acrea, fence, stock tank, sideroll, & many more amenities, close to town
 3-2-3 Carport Home on 11 ac. edge of town, Cent. A&H, built-ins, cellar, barns & corral. **MAKE OFFER**
 3-2-2 carport Brick on 2 acres at edge of town, possible owner financing. \$40,000!!!
NICE 3-2-1 Home on 1 acre close to town, Cent. Heat, Evap. Air, Nice Carpets, Remodeled. \$30's!!!!
NICE 3-2-2 Brick on 1 ac. tract on hwy. close to town, Cent. A&H, built-ins, fenced yd. & more!! Make Offer.
RESTAURANT BLDG., LAND., & Equipment-A GOOD BUY!!!!!!
GYMNASTICS STUDIO-BLDG., & Equipment-PRICED TO SELL!!!!!!
COMMERCIAL TRACT 175'x100' (HWY 70 & 84, RR spur acces, approx. 1200 sq. ft. bldg. PRICED TO SELL!!!!
 320 acres good dryland, good allotments, Three-Way area. \$250 per acre!!!!!!
PLEASANT VALLEY-141 ac., 8" well, tile, 3-3-1 Brick large shop-barn!!!!
 354 ac. S. of city, good allot. & yields!!!!

8. Real Estate

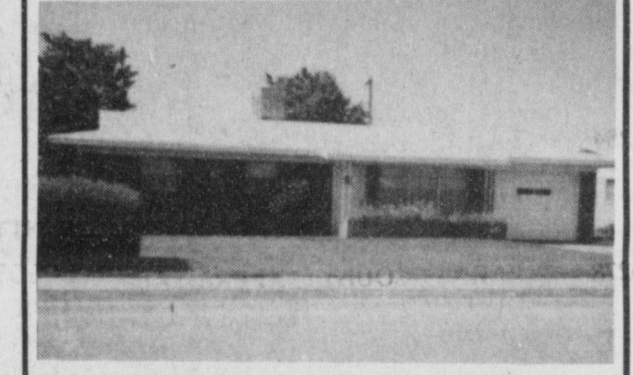
HOUSE FOR SALE:
 Nice 3-1-1 with fenced yard, central heat. 1424 W. Ave. C. 272-5234.
 98-45s-tfc

FARM FOR SALE
 1281 acres, eight irrigation wells, good water, underground lines, 900 acre grain base, home, steel barn, pipe corrals, price reduced, owner finance part. 10 miles north of Hereford. (409)543-5636.
 H8-43s-8tc

HCR REAL ESTATE REDUCED
 3 Bedroom, 2 bath and carport. Beauty Shop in the rear.
Thursie Reid 272-5318

BAILEY COUNTY IRRIGATED LAND FOR SALE
 With irrigation equipment. Fall wheat planted. Owner will finance.
 385-4487 day
 385-5613 night

JO ANN CHESTER REALTY 806-227-2368
87 Oak Creek Mobile Home.
 Like new-half price. 1600 sq. ft. 3 Bd;2 Ba.
177 Acres Irrigated farm N of Sudan



Brick, 2 Bedroom, 1 Bath, 1 Car garage. Central heat, Evaporative cooler, Stove and Refrigerator. Fenced back yard, Storage building. Will sell for the F.H.A. appraisal price of \$25,100. Can buy with furniture or without.

Brick-3 Bedroom, 1 1/2 Bath, Kitchen, Dining Area, Living Room, Central Heat and Refrigerated Air. 1 Car Garage.
 2 Bedroom, living room, large kitchen, 1 bath. New paint inside, new carpet. \$1,000.00 down; \$203.00 per month.

Smallwood Real Estate
 272-4838 232 Main

James F. Hayes & Co.
 Agricultural Real Estate Sales & State Certified Appraisals
 Vic Coker, Agent

114 Acres - East of Muleshoe on HWY 84. Alloted, Sideroll Sprinkler, Seller Motivated, Priced to sell.

2 LABORS - On pavement West of Needmore, Fully Alloted. Good Dryland.

400 ACRES - Pleasant Valley - 1 Center Pivot 3 years old, 3 Wells, lots of underground pipe. Good Water, Good Soil. Small Home. *A Very Good Buy*

480 ACRES - West of Clays Corner, 3 Sprinklers, on pavement, Good Water, Small House, Good Opportunity.

160 ACRES - West Camp Area - 2 Wells, 1 Sprinkler Lays Perfect, Small House.

80 ACRES - in Lamb County near Bailey County line. Good Area, Seller Motivated.

1 Section of Dryland-North of Stegall. All in cultivation. Priced for immediate sale.

160 ACRES - South of Dodd. Excellent Water, Center Pivot Sprinkler, Owner anxious to sell.

Phone 272-3100 Home 965-2468
310 Main Street, Suite 103
Muleshoe, Texas

CLASSIFIEDS 272-4536

18. Legals

18. Legals

18. Legals

NOTICE OF SHERIFFS SALE
THE STATE OF TEXAS

COUNTY OF BAILEY

By virtue of an Order of Sale issued out of the Honorable 287TH Judicial District Court of BAILEY County, on the 8th day of November by the Clerk thereof, in the case(s) styled as follows:

Cause No.	Styling	Legal Description
6205	BAILEY COUNTY APPRAISAL DISTRICT V. LINDY L. CHANCEY	2. PT OF SECTION 37, BLOCK Y, W.D. & F.W. JOHNSON, 5.53 ACRES, BAILEY COUNTY, TEXAS.
6209	BAILEY COUNTY APPRAISAL DISTRICT V. ELMER DAVIS IND/DBA DAVIS CESSPOOL SERVICE	3. LOTS 4, BLOCK 3, HIGHLAND ADDITION TO THE CITY OF MULESHOE, BAILEY COUNTY, TEXAS.
6252	BAILEY COUNTY APPRAISAL DISTRICT V. LUCY S. CUNNINGHAM	4. LOT 3, BLOCK 3, HIGHLAND ADDITION TO THE CITY OF MULESHOE, BAILEY COUNTY, TEXAS.
6253	BAILEY COUNTY APPRAISAL DISTRICT V. J.M. GAY	5. LOT 12, BLOCK 4, ORIGINAL TOWN ADDITION TO THE CITY OF BULA, BAILEY COUNTY, TEXAS.
6254	BAILEY COUNTY APPRAISAL DISTRICT V. MRS. J. Y. ROBERTS	6. LOTS 3,4,5, AND 6, BLOCK 4, ORIGINAL TOWN ADDITION TO THE CITY OF BULA, BAILEY COUNTY, TEXAS.
6278	BAILEY COUNTY APPRAISAL DISTRICT V. LEE ALLER LYONS	7. LOTS 7,11,12, BLOCK 2, ORIGINAL TOWN OF BULA, BAILEY COUNTY, TEXAS.
6279	BAILEY COUNTY APPRAISAL DISTRICT V. GRAND LODGE NO. 388	8. LOT 6, BLOCK 3, ORIGINAL TOWN OF BULA, BAILEY COUNTY, TEXAS.
		9. LOT 9, BLOCK 1, ORIGINAL TOWN ADDITION TO THE CITY OF MAPLE BAILEY COUNTY, TEXAS.
		10. LOTS 17, (LOTS 17,18) BLOCK 1, NORTHWEST ADDITION TO THE CITY OF MULESHOE, BAILEY COUNTY, TEXAS.
		11. LOT 38, BLOCK 2, NORTHWEST ADDITION TO THE CITY OF MULESHOE, BAILEY COUNTY, TEXAS.

and to me, as Sheriff, directed and delivered, I will proceed to sell, at 10:00 O'clock A.M. on the 3RD DAY OF DECEMBER, 1991 which is the first Tuesday of said month, at the EAST door of the Courthouse of BAILEY County, in the City of MULESHOE, Texas.

Levied on the 8TH day of November as the property of said defendants,

to satisfy the judgment rendered in the above styled and numbered cause, together with interest, at 10 per cent, per annum, and all costs of suit in favor of each jurisdiction.

GIVEN UNDER MY HAND
THIS 8 DAY OF Nov., 1991

Jerry N. Hicks
SHERIFF, BAILEY COUNTY,
TEXAS

BY _____ DEPUTY
S18-45s-3tc(S)

20. Public Notice

NOTICE OF BIDS

The Bailey County Commissioners Court will receive bids until 10:00AM, November 25, 1991, for the purchase of one new automobile to be used by the Sheriff's Office. Bids must be received by the County Judge no later than the above time. They will be opened at 10:30AM on November 25, 1991. The specifications for this automobile may be picked up at the Sheriff's Office during business hours.

Bailey County will offer in trade a 1988 Ford Crown Victoria LTD, which may be examined by contacting the Sheriff.

All bids shall reflect the gross sales price of the new automobile, the allowance for the trade of the 1988 Ford, and the net amount of the bid.

The Commissioners Court reserves the right to reject any or all bids and to waive formalities. Marilyn Cox County Judge 18-45s-3tc(S)

Expect little and you will spare yourself disappointments.

Time to Vacate
"You say your mother-in-law threw a chair at you?" said the magistrate.
"Yes, sir."
"And then your wife threw a table at you."
"Yes, sir."
"And what made you leave the house?"
"I saw my daughter looking thoughtfully at

20. Public Notice

NOTICE TO ALL PERSONS HAVING CLAIMS AGAINST THE ESTATE OF MARY B. SPLAWN, DECEASED

Notice is hereby given that original Letters Testamentary for the Estate of Mary B. Splawn, were issued on October 21, 1991 in Cause No. 1895, pending in the County Court of Bailey County, Texas, to: Glenn Leroy Splawn.

The residence of Glenn Leroy Splawn is Bailey County, Texas and the post office address is:

Glenn Leroy Splawn
Aldridge, Aycock,
Atkinson & Hamar
P.C.
P.O. Box 286
Farwell, Texas 79325

ALDRIDGE,
AYCOCK,
ACTKINSON &
HAMAR, P.C.
P.O. Box 286
Farwell, Texas 79325
Telephone No.
806/481-3361
By Charles F. Aycock
Attorneys for
the Estate

NOTES, COMMENT

Was the new outfit really worth the money?
No argument is answered by an epithet.
The best friends are those who seek nothing.

CLOVIS LIVESTOCK AUCTION, INC.

P.O. Box 187 — 504 South Hull

Clovis, NM 88101

505-762-4422

2249 head of cattle were sold Wednesday, November 13, for 173 consignors, on a real active market with excellent buyer participation. The demand was good on steers and heifers and moderate on cows and bulls. Demand on bredcows and pairs were strong on youth and moderation on aged cows.

REPRESENTATIVE SALES

STEERS

Caswell Cattle Co.	Muleshoe	88	Mix	493	92.60
Meredith & Moss	Melrose	40	Mix	600	83.25
Wayne Palla	Clovis	21	Hol	332	85.00
M.R. Coombes	Hobbs	20	Mix	443	100.50
Barry Lambirth	Elida	19	Mix	590	82.00
Louie Erramouspe	Clovis	18	Mix	732	80.25
Glen Kyle	Santa Rosa	11	Bik	743	80.90
Bud Wilson	Las Vegas	8	Mix	312	112.50
Dan Younger	Melrose	7	Bik/Wf	864	75.50
Ollie Moore	San Jon	6	Mix	345	112.00
K. C. Cattle, Co.	Santa Rosa	5	Mix	435	105.50
Paul Montano	Portales	5	Hol	366	82.50
Travis Gossett	Portales	4	Bik/Wf	600	86.00
Marcos Ortega	Anton Chico	4	Mix	306	116.00
George Pettigrew	Grady	4	Bik/Wf	414	108.50
W.R. Cattle, Co.	Midland	3	Mix	402	110.00
Willie Beggs	Pep	2	Bik/Wf	375	112.00
Daniel Chavez	Newkirk	2	Red	445	99.00
Kenneth Craig	Elida	2	Wf	490	85.50
Stuart Ingle	Portales	2	Char X	618	83.00
Chek Rippee	Floyd	2	Mix	500	94.50
Earl Sullivan	Laloma	2	Red	375	111.00
E. J. Gossett	Portales	1	Char	430	103.00
Ronnie Knapp	Tucumcari	1	Bik	720	80.75
W. J. Patton	Clovis	1	Bik	695	81.50
Mike Ratke	Farwell	1	Red/Wf	700	82.50
Phil Sanchez	Santa Rosa	1	Red	670	81.75
Marietta Sullivan	Laloma	1	Red/Mf	685	82.00

PAIRS

Nelson Rector	Floyd	1	Red	820.00
Manuel Sisneros	Santa Rosa	1	Bik/Wf	655.00
Oakley Stevenson	Bovina	1	Red	790.00
Louie Ulibarri Jr.	Santa Rosa	1	Brin	725.00

BRED COWS

T & W Cattle, Co.	Los Lunas	6	Mix	650.00
CPS Cattle, Co.	Tucumcari	5	Mix	645.00
G & J Cattle, Co.	Bovina	2	Bik	630.00
Micah Thomas	Portales	1	Bik	635.00
Ronnie Eaton	Clovis	1	Wf	630.00
Jack Greathouse	Portales	1	Bik	615.00
Larry Moberly	Melrose	1	Char	605.00

HEIFERS

Noel Rippee	Floyd	10	Mix	421	94.00
M & M Cattle, Co.	Melrose	10	Bik/Wf	408	96.00
B. J. Moore	Elida	5	Mix	367	104.00
Clarence Bell	Clovis	4	Bik	360	101.00
O. W. Shoemaker	Cuervo	3	Mix	1050	64.50
Winford Barnett	Pastura	2	Bik/Wf	380	101.00
Robert Garcia	Portales	2	Bik	475	87.00
Prewett Cattle, Co.	Rogers	2	Bik	475	89.50

COWS

M. B. Mejer	Sapello	3	Wf	1120	46.75
Palla Dairy	Clovis	3	Hol	1410	45.90
Chappell Spade Ranch	Tucumcari	2	Mix	1038	47.75
William Hall	Logan	2	Wf	1023	44.00
Terry Dairy	Portales	2	Hol	1540	45.20
Bettis & Stovall Ranch	Santa Rosa	1	Red/Mf	825	47.00
C & H Cattle, Co.	Clovis	1	Char	1025	48.00
Don Hise	Yeso	1	Bik/Wf	890	46.00
Hampton Ranch	Logan	1	Wf	1150	46.25
George Jones	Friona	1	Wf	1105	43.75
D. M. Lucero	Santa Rosa	1	Wf	940	44.50
Leo Moon	McAlister	1	Red	1385	47.75
May Cattle, Co.	Elida	1	Wf	935	44.25
Mitchell Dairy	Portales	1	Hol	1260	46.00
Greg Nash	St. Vrain	1	Bik/Wf	1000	45.00
S & V Dairy	Portales	1	Hol	1569	43.00
Triple E Dairy	Portales	1	Hol	1385	44.00
S & S Cattle, Co.	Deming	1	Wf	990	47.00

BULLS

Bob Austin	Melrose	1	Red/Wf	1645	61.50
Cibola Ranch	Ft. Sumner	1	Red	1770	63.50
Ima Farms, Inc.	Cuervo	1	Red	1115	62.00
Jim Stroud	Pep	1	Red	1930	60.75
Maxine Wilhoit	Portales	1	Shihrn	1825	62.75

Thank you for making Wednesday's sale another success — If there is anyway we may serve you in the future — please let us know. By informing us of your consignments early — we can better advertise them for you.

Wayne Kinman
Mkt. Rep.
H: 762-9236
O: 762-4422

Charlie Rogers
Cattle Sale Mgr.
H: 762-0811
O: 762-4422

Rustin Rowley
Horse Sale Mgr.
H: 763-7959
O: 762-4422

15. Misc.

FOR RENT: Large Self Storage rooms with 24 hour a day access. Call J & J Self Storage at 272-4307. S15-44s-tfc

Blue '79 Chevy Shortbed For Sale—Great Condition! New paint job and new tires and rims! For more information call 925-6723 after 5:00 p.m.

15. Misc.

STORAGE!

Rooms Available For Storage \$25.00-\$30.00 Per Month

Ted Barnhill
272-4903

15. Misc.

LOOK

The playground Sports Cards in Stock

Upper Deck FB & BB Pacific, Score, Topps Pro Set and More Buy, Sell, or Trade

300 N. Elm
Earth, Texas
257-2273

Now accepting consignments for the



Special Cow Sale Saturday, Dec. 14

Clovis Livestock Auction

Expecting 2,000 Cattle

Early Consignments Include

- 200 Fancy Horned Hereford Heifers - Open - O.C.V.
- 135 Nice Brangus Heifers - Open - O.C.V.
- 60 Black WF Heifers - Open
- 50 Beefmaster Cross Heifers - Open
- 400 Nice Springer Heifers - Begin calving in February. Includes Brangus, Black WF, Brahama Cross, Angus.
- 490 Young Springer Cows - Brangus, Hereford, Black WF and Crossbred.
- Black and Black WF Cows -
- 120 Older Springer Cows -

Call Charlie, Wayne or Rustin For More Information Or To Consign Cattle (505)762-4422

People Read

The Classifieds

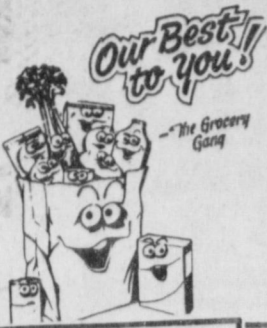
-Call Us Today!

-272-4536

Ann's Catering & Cakes

Will have a booth at the Christmas Bazaar December 6 and 7. See our Ginger Bread Houses, eatable party favors and crafts. A PHOTOGRAPHER AND SANTA WILL BE THERE FOR PICTURES!

2-4x6 pictures \$5.50



THANKSGIVING DAY

BUDGET TRIMMERS



<p>CORN KING BONELESS FULLY COOKED WHOLE HAM 5 TO 7 LB. AVG. \$1.79 LB.</p> <p>HALF HAM LB. \$1.89</p>		<p>TURKEY BREAST 5 TO 6 LB. AVG. \$1.49 LB.</p>		<p>U.S.D.A. GRADE A FINEST QUALITY, SELF-BASTING W/ TENDER TIMER</p> <p>SHURFINE TURKEYS</p> <p>16 TO 22 LB. AVG.</p> <p>48¢ LB.</p>
--	--	---	--	--

Your Friendly Thriftway/La Tienda Stores have Butterball Turkeys/ Honeysuckle Turkeys, all sizes Shurfine Turkeys, Capons, Geese, Ducks, Cornish Hens and many more items to satisfy your Holiday needs!

<p>ASSORTED IN JUICE</p>	<p>SHURFINE WK/ CS GOLDEN CORN OR FANCY CUT</p>	<p>BAKER'S REAL SEMI-SWEET</p>	<p>PURE CANE</p>	<p>SHURFINE GRADE A</p>
<p>DEL MONTE PINEAPPLE</p> <p>15 OZ. CAN</p> <p>59¢</p>	<p>GREEN BEANS</p> <p>16-17 OZ. CANS</p> <p>3 FOR \$1</p>	<p>CHOCOLATE CHIPS</p> <p>12 OZ. BAG</p> <p>99¢</p>	<p>IMPERIAL SUGAR</p> <p>4 LB. BAG</p> <p>\$1.49</p>	<p>LARGE EGGS</p> <p>DOZEN</p> <p>68¢</p>

<p>12 CT. PKG. BROWN & SERVE</p> <p>PARTYFLAKE ROLLS</p>	<p>BUY ONE GET ONE FREE</p> <p>BETTY CROCKER ASSD. R.T.S. FROSTING 16 OZ. CAN</p> <p>\$1.29</p>	<p>18 OZ. BOX BETTY CROCKER ASSORTED</p> <p>SUPERMOIST CAKE MIX</p> <p>79¢</p>	<p>REG/ LITE COFFEE CREAMER 16 OZ. JAR</p> <p>COFFEEMATE</p> <p>\$2.49</p>	<p>36-39 OZ. CAN ASSORTED</p> <p>HILLS BROS. COFFEE</p> <p>\$3.99</p>
---	---	--	--	---

<p>SUGARY SAM CUT YAMS 29 OZ. CAN</p> <p>99¢</p>	<p>ANGEL FLAKE BAKER'S COCONUT 14 OZ. BAG</p> <p>\$1.39</p>	<p>OCEAN SPRAY CRANBERRIES 12 OZ. PKG.</p> <p>99¢</p>	<p>GOLDEN RIPE</p> <p>BANANAS</p> <p>5 \$1 LBS.</p>	<p>VIVA ASSD. PAPER TOWELS REG. ROLL</p> <p>69¢</p>	<p>COTTONELLE BATH TISSUE 4 ROLL PKG.</p> <p>79¢</p>
<p>BROWN/ POWDERED IMPERIAL SUGAR 2 LB. BAG</p> <p>\$1.09</p>	<p>LIBBY PUMPKIN 16 OZ. CAN</p> <p>69¢</p>	<p>FRESH SWEET POTATOES LB. 39¢</p> <p>RED/ GOLDEN DELICIOUS APPLES 3 LB. BAG \$1.29</p> <p>GARDEN FRESH BROCCOLI LB. 79¢</p> <p>YELLOW ONIONS 4 LBS. \$1.00</p>	<p>FRESH CRISP CELERY LARGE STALKS</p> <p>3 \$1 FOR</p>	<p>KLEENEX DINNER NAPKINS 45 CT. BOX</p> <p>\$1.19</p>	<p>ASSD. LAUNDRY DET. ULTRA TIDE 70-80 OZ. BOX</p> <p>\$4.69</p>

<p>PUMPKIN/ MINCE BANQUET PIES 20 OZ. BOX</p> <p>\$1.29</p>	<p>ASSORTED TOPPING COOL-WHIP 8 OZ. TUB</p> <p>89¢</p>	<p>PET-RITZ 9" PIE CRUST SHELLS 2 CT. PKG.</p> <p>99¢</p>	<p>MINUTE MAID ASSORTED ORANGE JUICE 96 OZ. BTL.</p> <p>\$3.59</p>	<p>KRAFT PHILADELPHIA REG./ LIGHT CREAM CHEESE 8 OZ. BOX</p> <p>99¢</p>	<p>MARGARINE QTRS. PARKAY 16 OZ. BOXES</p> <p>2 \$1 FOR</p>	<p>ORIGINAL ALKA-SELTZER 36 CT. BOX</p> <p>\$2.99</p>	<p>INTENSIVE CARE LOTION ASSD. VASELINE 10 OZ. BTL.</p> <p>\$2.49</p>	<p>ASSORTED TOOTHPASTE AQUA FRESH 4.3-4.6 OZ. PUMP</p> <p>\$1.79</p>
--	---	--	---	--	--	--	--	---

OCEAN SPRAY CRANBERRY SAUCE 16 OZ. CAN

79¢

thriftway

401 W. Amer. Blvd. Muleshoe 272-4585

AT AFFILIATED FOODS INC.
MEMBER STORE

WE ACCEPT FOOD STAMPS... WE RESERVE THE RIGHT TO LIMIT

PRICES EFFECTIVE NOVEMBER 17-30, 1991

ALL TYPES COCA-COLA 2 LITER BTL.

89¢