

Campus Hosts Annual Forensic Festival

Students from four states will meet with a verbal clash during Texas Tech's annual fall Forensic Festival Friday and Saturday.

Individual events, scheduled to last two rounds, are extemporaneous speaking, poetry reading and after dinner speaking. In these events, each school may enter two persons. In the poetry reading division, each student will be given a time limit of four to seven minutes to read a poem of his own selection.

National and international affairs will be the topics for the extemporaneous speeches. After drawing three topics, each contestant will choose one and will be given a preparation time of 15 minutes. After dinner speeches may not exceed six minutes.

Discussion events will be three rounds and will be preceded by a round table and six rounds of debates for all teams.

The debate topic for this year is Resolved: "That the United States Should Adopt a Program of Com-

pulsory Health Insurance for All Citizens." The topic for group discussion is "What Should be the Role of the Federal Government in the Regulation of Mass Media of Communication?"

Schools may enter as many debate teams as desired. Both sides of the question must be debated, with constructive speeches to last eight minutes and rebuttal speeches of four minutes.

Contestants in the discussion event will be assigned to a group and will retain membership in that group for all three rounds of discussion. Leaders will be appointed for the first round and will be elected by the group for each following round, each of which is 45 minutes long.

The first round will deal with the analysis of the problem. Round two is concerned with the causes of the problem and round three will discuss the testing and establishing of possible and preferred solutions.

Certificates of Awards will be given to all contestants receiving superior or excellent rating in each division.

Speaking Friday morning at 9 a.m. in the Speech Auditorium on the subject of mass media will be Charles Guy, editor of the *Avalanche-Journal*, and W. D. (Dub) Rogers, president of the West Texas Television Network.

At the luncheon at 12 p.m. in the Tech Union, Dr. Vernon T. Clover, professor of economics, will speak on "Compulsory Health Insurance From a Consumer's Point of View". Dr. Fred P. Kallina, director of the college medical service, will discuss "Compulsory Health Insurance From a Doctor's Point of View."

Schools entered in the festival are Texas Western, Frank Phillips of Borger, Lubbock Christian College, West Texas State, St. Mary's of San Antonio, Hardin-Simmons University, University of New Mexico, Amarillo Junior College, Odessa Junior College and Abilene Christian College.

Tickets for the luncheon and dinner are on sale in the Speech Building for \$1 for the luncheon and \$1.50 for the dinner.



Vol. 36

Lubbock, Texas, Thursday, Oct. 27, 1960

No. 20

around
the
world

With The Associated Press

Vandenberg AFB . . .

VANDEBURG AIR FORCE BASE, Calif. (AP)—The Air Force lofted skyward Wednesday a new and bigger satellite vehicle, expected to become a workhorse of the space program. But something went wrong, and instead of roaring into orbit, it plunged into the Pacific.

Apparently, a spokesman said, the towering rocket's first and second stages failed to separate. Thus the second-stage engine never fired. Its kick is supposed to push the moonlet into orbit.

San Salvador . . .

SAN SALVADOR, El Salvador (AP)—A six-man Junta seized power Wednesday from President Jose Maria Lemus and sent him fleeing to neighboring Guatemala.

The capital and the hinterlands of this smallest country in the Americas were reported calm after the lightning military coup.

Dallas . . .

DALLAS (AP)—Do you have a couple on your Christmas list for whom it is "utterly impossible" to buy a gift?

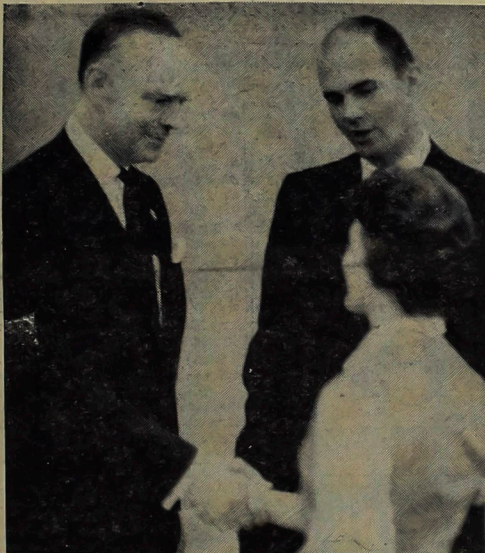
Try "his and her airplanes," suggests the new Christmas gift catalogue just release by Neiman Marcus, the Dallas specialty store.

His is a 7-place Beechcraft Super G18 priced at \$149,000. Hers is a 4-place Beechcraft Bonanza, priced at \$27,000.

Leopoldville . . .

LEOPOLDVILLE, the Congo (P)—The United Nations cracked down Wednesday on Col. Joseph Mobutu here and on Katanga President Moise Tshombe in Elisabethville, resisting violence in the one place and the threat of violence in the other.

The U.N. command ordered Mobutu's rampaging Congolese soldiers to clear out of this terrorized capital and stay in their barracks. Mobutu agreed to the demand and promised to help remove all barriers, civil and military, impeding smooth U.N. headquarters there.



AIR FORCE SECRETARY GREETES A TECH COED . . . while Bill Dean looks on after the Convocation

AT CONVOCATION

Sharp Points To Strength Of Military

The retaliatory power of the United States is equal to that of any other country in the world, and she need fear no other country, Dudley C. Sharp, secretary of the Air Force, told Texas Tech students and faculty at the All-College Convocation Wednesday morning.

Sharp listed two ways to survive nationally, "to keep our armed might so strong that our enemy will be deterred from striking and to develop better foreign relations." In other remarks he reviewed for his audience the new weapons in the U.S. arsenal, including the Titan, ICBM Minute Man and intercontinental ballistic missiles.

Since 1953, the United States has produced two very reliable and accurate missiles—the Atlas and the Thor, he related. At present, Sharp commented that of the 28 satellites sent into orbit by the U.S., eight are still in orbit and transmitting valuable scientific information as compared with the Soviets only having two of their eight satellites up—neither of which is transmitting information.

Sharp also commented that the American people must not stumble into World War III. Many mistakes, he said, were made at the conclusion of World War II and these very mistakes, mainly the division of Berlin, may start the next war.

He also expressed the opinion that there is no war deterrent gap in our country and that the U.S. has the materials which give adequate protection to this country.

He said that this country, in addition to more than 1,000 bombers maintained in a status of alert, has both a growing supply of Polaris missiles for Naval use and medium range ballistic missiles maintained in England.

Entry Deadline Arrives In Beauty, Beast Contest

Tech's annual Beauty and Beast contest, usually held in the spring, is being held in conjunction with Dad's Day weekend this year.

Beauty nominees must be submitted by male organizations and Beasts must be nominated by female organizations. The entry fee is \$5 and must be submitted by Friday to Alpha Phi Omega, sponsoring fraternity. Pictures of the contest candidates should be included.

Balloting will be in the Tech Union Nov. 2-4 on a penny-a-vote basis. Winners will be announced at the Beauty and Beast Dance in the Union Ballroom, 8:30-11:30, Nov. 4. A chart will be at the voting booth to show election progress.

Organizations sponsoring winning contestants will receive bronze plaques and winners will receive individual awards.

Proceeds from the contest last year were used to clear remaining debt on the Southwest Conference Circle and to pay for the four signboards at the campus entrances.

Voting Comes Early For Tech Students

Voting time will come early on the Texas Tech campus.

Nov. 2 marks the day when a mock presidential election, co-sponsored by Alpha Phi Omega, men's service fraternity, and The Toreador, gives Texas Tech students the opportunity to cast ballots for their presidential choices.

Both sponsoring organizations are emphasizing that the mock election is to be entirely sponsored, participated in and supervised by students of Tech, with no outside intervention being allowed.

In addition to the regular campus election rules of the Student Council, specific regulations to be enforced in the election are:

- 1) No printed literature such as handbills and pamphlets will be allowed in the election campaigning, although buttons, signs, posters and bumper stickers may be used;
 - 2) All ballots will be counted in the Hutchinson Conference Room of the Journalism Bldg. Representatives from both the Young Democrats and Young Republicans will be present during the counting as observers only;
 - 3) Campaigning will be prohibited in specified areas around the polling places during election day, with the specific distance prohibited to be decided by Phil Howard, Alpha Phi Omega member and election chairman. Alpha Phi Omega members will clear these areas of all campaign material previous to the election day.
 - 4) Both Young Democrat and Young Republican groups will be required to account for expenses of their campaigning following the election.
- Ballot boxes will not be placed in dormitories, but will be in East Engineering, Ad and C&O buildings and the Tech Union.

Pep Rally Set For 'Burning'

Freshmen will have an opportunity to rid themselves of their "slime caps" forever at the pep rally for the Tech-Rice game scheduled for 7:30 p.m. Thursday at the Saddle Tramp Southwest Conference Circle.

Wayne Davis, freshman class president, has asked that all freshmen bring their beanies to the rally to throw into the bonfire to celebrate the Red Raider Homecoming victory over S.M.U.

Speaker at the rally will be Ken Talkington, 1959 Raider co-captain and this year's assistant frosh coach.

The freshman football team will be introduced by Coach Beatie Feathers and a skit with a Halloween theme will be presented by members of the Tech Union. Gifts will be presented to members of the Raider team.

Tech Group Plans European Journey

Scotland, Holland, Switzerland, Monaco, Spain, England and France are but a few of the countries which will be visited this summer on a 62-day tour of Europe sponsored by the English dept. under the leadership of Mrs. Alan Strout, English instructor.

If the student so desires, he may do extra work on the trip and earn six hours of English credit. Or, he may just go for two months of fun and travel.

The tour is tentatively scheduled to begin June 10, 1961, as the group sails from New York enroute for London. The other countries which will be visited on this tour are Wales, Germany, Austria, Italy, Andorra and Canada, as the trip ends in Montreal.

The ship on which the students sail will be occupied by students from all over the United States on similar tours. Free activities on the boat will include forums lead by students concerning problems and situations they may meet in Europe, language classes in almost any language the student could desire, movies, sports and many other forms of entertainment.

Those interested should contact Mrs. Alan Strout in the English department. Reservations should be made and the \$200 registration fee paid before Christmas, if possible. The overall cost of the trip will be \$1179 if transportation is by boat and \$1287 if by air.

This price includes tickets to four theaters, the Pitlochry Festival in the Scotch highlands, the Shakespeare Memorial Theatre in Stratford, the Old Vic Theatre in London and the Caracalla Opera in the ruins outside of Rome.

Also included on the itinerary are visits to Edinburgh and Gretna Green, a steamer trip down the Rhine, two days in Venice, a day in Monte Carlo, an opportunity to attend a bull fight in Barcelona, three days in Paris and the return home via the St. Lawrence Seaway, ending the tour in Montreal.



DAD'S DAY AROUND THE CORNER
... Joyce Woody (left) and Charlena Chandler remind Tech students to invite their fathers to Dad's Day activities planned for the Tech-Tulane game on Nov. 5.

ESTHERS BEAUTY SALON

2414 - 14th - Across from girls dorms - PO 5-5322

Offers Budget Priced - Quality Work

FOUR OPERATORS

Nadyne Testerman
Helen Shewell

Joe Garcia
Esther Adams, Owner

Armistead' Vision-Reading Center

Speed Reading & Visual Training For Adults
1613 Av. Q PO2-8769

Dr Pepper

HOWARD 1961 SUMMER STUDY TOURS

ORIGINAL STUDENT TOUR TO THE PACIFIC

13th Annual Year

HAWAII UNIVERSITY SUMMER SESSION
6 UNIVERSITY CREDITS AVAILABLE
63 DAYS \$549 Plus \$9 Tax
JUNE 7 - AUG. 8 ONLY

Earn up to 6 credits at University of Hawaii summer session while enjoying full summer of fun and sun at Waikiki. Tour price includes: Outbound by ship, return to West Coast by jet airplane, campus dormitory accommodations, and most extensive itinerary of parties, dinners, entertainment, sightseeing, sailing, beach activities, plus all necessary tour services. Roundtrip steamship and apartment residence at Waikiki available at adjusted tour rate.

JAPAN HAWAII STUDY TOUR
9 UNIVERSITY CREDITS AVAILABLE
82 Days . . . ONLY \$1892

Hawaii program above combined with 21 days on Japan field study course of 3 university credits. Japan tour includes roundtrip jet travel from West Coast, and all first class and deluxe services ashore—very best hotels, all meals, tips and sightseeing, plus extensive parties, special dinners, entertainment, and social events as well as all necessary tour services.

ORIENT STUDY TOUR
OFFICIAL COLLEGE PROGRAM OFFERING UNIVERSITY CREDIT
Classes Aboard Ship and Ashore

HAWAII JAPAN FORMOSA PHILIPPINES HONG KONG
66 DAYS
ONLY **\$1892**

Earn 6 university credits while enjoying the Orient. All inclusive price covers five countries, roundtrip steamship, and all first class services ashore—very best hotels, all meals, sightseeing, inland sea cruise, tips and most extensive schedule of parties, special dinners, entertainment, social events, plus all necessary tour services. Arranged by J. D. Howard who visits the Orient as many as three times a year.

CHOICE OF COURSES — ALL FIELD STUDIES
Humanities 3 units
Social Sciences 3 units
Oriental Art 3 units
Oriental Art Appreciation . . . 3 units

APPLY:
MRS. C. C. TURNER
HOWARD TOURS - TEXAS
At Delann's - Opposite SMU Campus
6207 Hillcrest - Dallas 5, Texas
Telephone LAkeside 6-2470

Math Society Issues

Men interested in joining Kappa Mu Epsilon, honorary math fraternity, are asked to pick up application blanks in Ad. 301 They must be returned by Nov. 9.

Requirements for membership are a 2.0 overall and 2.5 overall in math, including at least one junior course.

Ah! 'Tis a pleasure to be a society editor . . . totally and completely UNinvolved in the battle currently raging on the political scene that has swept other Toreador editors into its midst.

Things are tranquil on the social scene . . . but not dull . . . and my mail this week was free from blasts from disgruntled readers. So, here is another roundup of this week's social activities and/or the social score on the Tech campus.

THE REC. HALL will be the scene of a square dance today from 7 to 8:30 p.m. A professional caller, Elton Terrell, will call the dances.

Other activities planned for today are the Junior Council party for transfers set for 6:30 p.m. in the Tech Union and the Home Ec. Club awards banquet in the Tech Union Ballroom at 6 p.m.

Two events are scheduled to begin at 7:30 p.m. today: the Eta Kappa Nu graduate study program in the Tech Union and the Tech-Rice pep rally on the Saddle Tramp Southwest Conference Circle.

THE INTER - FRATERNITY COUNCIL workshop will begin in the Tech Union at 1 p.m. Friday and continue through Saturday afternoon.

Pi Beta Phi pledges have scheduled a car wash from 8 a.m. to 5 p.m. Saturday at Ben Sharpley's Mobile station on College across from Bledsoe Hall.

Another Pi Phi activity, the annual all - college "Ivy League Dance" is planned for Nov. 4 at 8 p.m. in the Rec. Hall. The dance will have an election day theme and featured in the decorations will be pictures of the Republican and Democratic presidential nominees.

THETA SIGMA PHI'S annual Club Scarlett will be Nov. 12 at 8 p.m. in the Rec. Hall. Tech's Most Handsome Man will be selected at this mock nightclub event.

THREE GIRLS pledged during Open Rush received Alpha Phi pledge pins Wednesday night at the Alpha Phi lodge. They are Billie Moser, Electra; Lela Lynn Boyd, Houston; and Sandra Henderson, Childress.

MEMOS.

COSMOPOLITAN CLUB

The Cosmopolitan Club will meet at 7:30 p.m. today in the meeting room of the West Texas Museum. On the program will be a panel discussion on Latin America.

BAPTIST STUDENT CENTER
The Baptist Student Center will have an open house from 3 to 5 p.m. Sunday to announce the new additions to the center.

A program is scheduled for 4 p.m.

Special Tech Rates

Suits50
Pants25
Shirts25
Sweaters40
Skirts40
Dresses65 and up

MARCY CLEANERS AT.

Town and Country 121 North College
PO 3-8162 Frontier Stamps PO 5-6056

TECHNIQUE STRESSED

Clinic Aids Defective

by WANDA McCLURE
Toreador Staff Writer

Going to school may be a drag to some people but going to Tech is really delightful — especially to pre-schoolers.

These pre-schoolers and other enrollees attend the Speech Therapy Clinic on campus every Tuesday and Thursday.

One youngster boasted to his neighborhood playmate, "I can go to Tech and you can't!"

According to Alma Helen Lindell, director of Tech's Speech Therapy department, it is this pride in "going to Tech" that the majority of the children who come to the center take, and which is a large factor in their recovery as they cooperate eagerly with the instructors.

The clinic program, which is open to all age groups, now has 52 enrolled, most of these being pre-school age. And this schedule is not yet complete.

Thought to be the oldest of its kind in Texas, Tech's therapy department celebrated its silver anniversary last year.

Operated on a contribution basis, clinic hours are from 2 to 5 p.m. on Tuesdays and Thursdays. Classes are instructed by students who usually begin full time lab work before or during their second speech therapy course. They generally take their first speech therapy course the second semester of their sophomore year and by graduation time the majority of the students have had three years of practical clinical experience.

Students receive credits according to their number of hours in lab instruction. Before beginning full time work, they observe and then assist.

The therapy department director reports that there has been a gradual increase in the number of speech therapy students over the years. Presently, 25 to 35 consider themselves majors in the field. The Speech Pathology Club, the speech therapy organization on campus, boasts a membership of 25 this semester.

Miss Lindell says that most of the students who marry before receiving their degrees usually continue with their therapy work, probably because of the nature of

the work and its being associated closely with family problems.

Anything that will stimulate speech is used by the instructors, playing the best motivation for the pre-school age group according to the clinical director. One persevering child remarked, "She calls it games, but it's really work!"

Records are used frequently with small children who have speech defects. One technique employed is to place a circular mirror in the center of a record. As the record spins, a train is reflected in the mirror from the record. The child imitates the sounds on the records and is occupied by watching the train in the mirror as it seems to be moving.

Lab sessions are conducted from thirty minutes to an hour depending on the patient. Most of the problems result from language defects, and not from physical defects, Miss Lindell reports.

Although the clinic labs are occupied predominantly by small children, its services are available to all ages. The oldest patient of the speech therapy center is a 71-year-old man who is trying to re-establish his speech after losing it following a stroke last year.

Tech students who have speech problems such as articulation or rhythm difficulties are encouraged to take advantage of the services offered by this department. Miss Lindell is especially interested in organizing a group who have rhythm problems such as stuttering or accelerated speech.

Students who are instructing full time this semester are Kurt von Osinski, Amarillo; Patsy White, Fort Worth; Linda Updike, Phillips; Marsha Fields, Vernon; Donna Hill, Lubbock; Jane Crockett, Dallas; and T. W. Moss, graduate student.

Observing are Susan Craig of Houston and Beth O'Quinn, San Antonio.

Council Workshop Releases Week-end Events Schedule

John Stokes, publicity chairman for the Interfraternity Council Workshop has released the schedule for this weekend and it is as follows:

Friday

12 noon Lunch with fraternity presidents and Dean Whitehead in the Anniversary Room of the Tech Union.

2-5 p.m. Thirty minute conferences with each fraternity.

7 p.m. Smoker for all pledges and pledge trainers (no other members, please).

Saturday

9 a.m. Conference with case study chairman from each fraternity —Room B, Tech Union.

9:30-11:30 a.m. Continuation of individual fraternity conferences.

12 noon Dean's Luncheon for Deans Phillips, Sterner, Allen, Jones, Whitehead and Troxel.

1 p.m. Opening session of workshops. For all delegates in Chemistry 101.

1:45 p.m. Case Discussion Groups.

2:30 p.m. Case Summary Discus-

sion—all delegates in Chem. 101.

3:30 p.m. Topic Area Groups

Group A—Ad Bldg. 268—Rushing—John Stokes, chairman.

Group B—Ad Bldg 265—Pledging—Jim Patterson, chairman.

Group C—Ad Bldg 264—Scholarship—Dane Jones, chairman.

Group D—Ad Bldg 271—Fiances—Mike Montgomery, chairman.

Group E—Ad Bldg 260—Chapter Leadership—Jim Fox, chairman.

Group F—Ad Bldg 168—Chapter Advisors and Sponsors—Dean Jones, chairman.

Group G—Ad Bldg 172—Chapter Alumni

4:30 p.m. IFC and Panhellenic Meeting—Union Ballroom Lounge.

6:30 p.m. IFC and Panhellenic Awards Banquet—First Methodist Church Banquet Hall.

8:30-11:30 p.m. Greek Dance—Student Union Ballroom—All fraternity and sorority members and pledges.

Speaker and leader of workshops will be Dean Darrell Troxel dean of fraternity affairs at Oklahoma State University.

More Interest Needed In New Social Group

Fifteen persons have indicated an interest in forming a new social fraternity at Tech, James Whitehead, assistant dean of Student Life, announced today.

He said that 45 or 50 persons are needed before a new group can be formed. He added that it is

hoped that the group can be formed this semester in order for it to compete in spring rush.

He noted that the fraternity to be added has not yet been decided upon but that the decision will be made after it has been determined whether or not there is a sufficient number of persons interested.

Dean Whitehead said that Sigma Chi, which came on the Tech campus in 1955 and Delta Tau Delta, which came on in 1957, both took about a year to be installed.

"If a new group is formed now, a national can be petitioned in the spring," he said.

Interested persons are asked to sign up in the office of the Dean of Student Life before noon Saturday. A meeting is scheduled for 4:30 p.m. Monday in Ad. 260 at which James G. Allen, Dean of Student Life, will speak on the fraternity system.

Youth to Meet Here Saturday

Over 260 West Texas High School boys and girls will flock to the Tech campus Saturday for an all-day YMCA Youth and Government pre-legislative meet.

HI-Y and Tri-HI-Y delegates from Lubbock, Midland, Odessa, Plainview, Amarillo, Pampa and Borger will receive practical experience in legislative procedures. Legislative bills which the students have drafted, will be presented, debated, and acted upon, similar to the proceedings in the Texas Legislative Committees.

A House of Representatives session will be held in the afternoon to give the delegates experience in officiating and debating bills on the floor. The session will be followed by the election of officers for the model legislature scheduled in Austin in December.

The officers to be elected are a governor nominee, sergeant-at-arms of the House, and Senate chaplain. These and other officers elected at the five pre-legislative conferences throughout Texas will officiate at the model legislature.

A speech on "Youth and Political Responsibility," by George Gilkerson, district attorney, will climax the day's activities.

This is the 14th year for Youth and Government, sponsored by the YMCA in Texas, Miss Ruth Cowart, government instructor at Tech, is the chairman of the conference.

Banquet Planned In Union Today

The Home Economics Awards Banquet is slated for today at 6 p.m. in the Tech Union Ballroom.

Dean Willa V. Tinsley, Dean of Home Economics, will give an award to the outstanding sophomore home economics student and donors and recipients of scholarships will be recognized.

TECH BEAUTY SALON

Call PO 5-5245
2419—Main

Take Time to Remember



It's Fun to Send a Laugh

with **GIBSON Studio Cards**

See our wide selection

Texas Tech College
BOOKSTORE IN THE CAMPUS

TECH ADS

Would like to keep children. Infants preferred, for teachers or students. Good references and experience. Call Mrs. Felicia Stahl, PO3-1068, -519 25th.

FOR SALE—1959 Indian Motorcycle, \$350. Call John Unger, 258 Sneed Hall.

Experienced seamstress and filter. Formal and weddings a specialty. Call SH4-2672 2425 26th.

Garage bedroom with private bath, \$25 per month. Ideal for student. 2105 16th; Call PO2-2327.

Nice corner room for rent, adjoins bath. Outside entrance. Near cafe. Call PO2-1836 or see at 2405 Main.

FOR RENT—nice garage apartment. Walking distance to college. See at 2704 21st. Phone SM4-3708; after 4 call PO2-8634.

Will buy old model airplane motors in any condition. The older the better. Call Jean Edwards SW9-2434.

HELP WANTED Tech wives. Make \$2 on each sale by telephone in your own home. Come by 2846 34th St. for interview.

Lost L. D. Card. If found please return to Thomas H. Clifford 2319 Main. Call PO2-1148.

Graduating Senior has a small business for sale. Established candy vending machine route. Will sell machines and route. Call SW5-2422 after 1:00.

Do you need a part time job? Call Men's 7 Room 210.

A reward is offered for the return of a gold ring with nine turquoise stones, lost by Elaine Bowron during Registration. She can be reached at SW9-2032.

Lost—Diamond dinner ring. Call Jan Patillo Knapp Hall PO5-9343.

FOR RENT Small, one room efficiency apt. furnished. \$40 with bills paid. New. Call SH4-3783 or see at 2806 21st.

THE LIGHT TOUCH



WITH **PORTAGE shoes for men**

NEW **PORTAGE Comfo-Tred CONSTRUCTION**



Soft, smooth, and sheared of every extra ounce... that's extra-flexible new Comfo-Tred construction... the light way to make men's shoes. \$14.95

THE RUGGED LOOK



by **STYLE-MART CLOTHES**
Special in the Tech Tradition

the SPORT COAT for you...

Lustrous imported mohair and fine wool make a striking combination that will cause heads to turn your way. Select yours from our group of rich grays, blues and browns.

\$35.00

Brown's

VARSITY SHOP

so what else is new...

by carolyn jenkins

Last week's column was devoted to a few words to the Independents, so today we'll be writing mainly to greeks, specifically about what's new with fraternity and sorority houses.

In April, 1959, the Texas Tech Interfraternity Housing Corporation made a purchase of 25 acres of land for the 10 fraternities and 10 sororities on campus at that time.

Each group paid \$3,000 for a plot of this land, totaling \$75,000, under the impression that permanent lodges would be built with the intention of adding housing accommodations some time in the future.

Now students have been asking lately, on hearing talk of new residence halls, what action has been taken toward getting houses instead of lodges.

As the situation stands, these 20 groups have paid for or partly paid for their section of land. (And since some are wondering just what land they are buying, they can find it by going west out 19th St. to Quaker, turning right and going three more blocks. The land begins at 16th St. and Quaker and ends at the pink stucco house on the north end.)

On Nov. 14 (the date set at purchase time by the corporation) a vote may be taken to request installation of utilities and paving of the area.

Three-fourths of the 20 groups must request these improvements before they may be started. Then each group must deposit one-twentieth of the cost of the improvements.

So the next logical move is to install utilities as soon as they can be paid for. Then the road will be paved, literally, for construction of lodges. From lodges to houses later might not be such a large step.

However, some of the greek groups do not want to commit themselves unless they are assured of houses.

We agree that now is the time to act in the interest of houses, with the influx of students to Tech and need for accommodations.

But the go-ahead must come from the Board of Directors. And the question stands that if the Board would approve actual houses, could the fraternities and sororities dig up the cash and get the loans to build them any time soon?

Chances are they would be in a better position now to concentrate on a lower financial goal. The acquisition of a large and neat egg to build a house will undoubtedly take years and years.

So why not be putting that money in on a permanent lodge instead of on rented property in town for the next 10 years and using that land for something more than a cotton field.

The foundation on these lodges could be adequate for a house and furniture placed in the lodge could be permanent.

The greek groups need to decide at this time which wagon they want on. If they want to hold out for houses, fraternities and sororities will be scattered all over Lubbock for many years, and the time has come when rented lodges are ceasing to fill the needs of many groups in size and facilities.

Any step that can be made now toward actual building, we think, would at least be a step. And houses might come much sooner this way than if we sit in our rocking chairs and wait—not that we have anything against rocking chairs. In fact, we'd like to see one in a lodge out there on Quaker.

TOREADOR

Member The Associated Press
Member The Associated Collegiate Press

EDITOR, Ralph W. Carpenter
MANAGING EDITOR, Preston Maynard NEWS EDITOR, Carolyn Jenkins
SPORTS EDITOR, Lynn Buckingham
SPORTS EDITOR, Billy Patton
COPY EDITOR, Katy Hunter
BUSINESS MANAGER, Larry Bridges
HEAD PHOTOGRAPHER, Travis Harrell

The Toreador, official student newspaper of Texas Technological College, Lubbock, Texas, is regularly published each Tuesday, Thursday, and Saturday morning during the two long terms, excepting holidays, by students of the College as an expression of campus news and student opinion only. The Toreador is financed by a student services fee, advertising, and subscriptions. Letters to the editor and columns represent the views of their writers and not necessarily those of the Toreador. Letters must be signed. The views of the Toreador are in no way to be construed as necessarily those of the administration.
Entered as second class matter at the Post Office in Lubbock, Texas, under the act of March 3, 1879.

How Texas Votes

Election May Answer Question

"So goes Texas Tech, so goes Texas." These words have not yet been used by the great news media of the country but after the students here cast their votes in Texas Tech's November 2 mock presidential election this quote might well be used as some sort of indication.

The Toreador and Alpha Phi Omega, men's service fraternity, who are jointly sponsoring the operation hope that the outcome will indicate that Tech students are interested in the current campaign to the extent that they will examine each candidate's platform and policies, and then vote accordingly. They do not want the votes to be cast on a popularity basis, or (this is for the girls) on a basis of good looks.

The real purpose behind the mock election is to stimulate political thinking on the campus and also to settle the Argument of the Day, namely, do Techsians think Dick Nixon or Jack Kennedy is best fitted to lead our country administratively for the next four years.

These mock elections have been tried at various colleges and universities and have met great success in voter turnouts and student campaigning. The Young Republicans and Young Democrats on the Tech campus will organize meetings and workers to promote the vote of their respective candidates.

No off-campus group will be allowed to take part in the campaigning and the vote will be extended to all Tech students, regardless of age, so the election will be strictly a Texas Tech affair.

Even though the results of the mock election will not directly affect the real presidential election, the opportunity to take part in campaigning and voting for a presidential candidate is one that shouldn't be missed by future citizens.

So dig into the issues and platforms which pertain to the presidential campaign and talk them over with your political friends and political enemies. Let's make the mock election a success in voter turnout and let the final vote really indicate that the student has backgrounded himself before he votes.

Who knows? "So goes Texas Tech, so goes Texas," might turn out to be a reality come November 8. Better yet—"So goes Texas Tech, so goes the nation."

RON CALHOUN
Editorial Assistant

The Toreador Mail Call...

Dear Editor,

I think that all of us at Tech owe a vote of thanks to the people of Lubbock for making this last weekend a very successful Homecoming.

Particularly I would like to say how much we appreciate the lighting arrangement in the Great Plains Life Building to form a very large Double T. This could be seen for miles and served as a reminder to everyone in the area that Tech is getting bigger and better every year.

So to those responsible for this and the many other fine things that the citizens of Lubbock did this last weekend goes a big heartfelt "Thanks." Certainly we appreciate their support whether it is during Homecoming or any other time of year.

Don Zimmerman
Tech Senior

Dear Editor:

About Tech's Insurance plan: We think it's great and protects its members with more hospitalization coverage per dollar than any other policy we have encountered.

But what about the great number of married students for which the policy was not designed? What about options which would cover the wife, husband, children, or maternity benefits?

For instance, my wife and I are put in the position of having to go elsewhere for our insurance, even though we are both students at Tech. Even after much shopping around, our premiums are over eleven times what the student policy costs and offer very few more benefits. And aren't close to one third of the students at Tech married and with similar needs.

We wish to extend thanks to the Toreador, the Student Council, and the administration for supporting and making possible the present insurance program. Furthermore we recommend to any single student that he take advantage of its benefits.

At the same time, we ask for an additional policy or some options with the present policy that would be designed to cover the needs of the married students at Tech.

Very truly yours,
Mr. and Mrs. Tom Shamburger

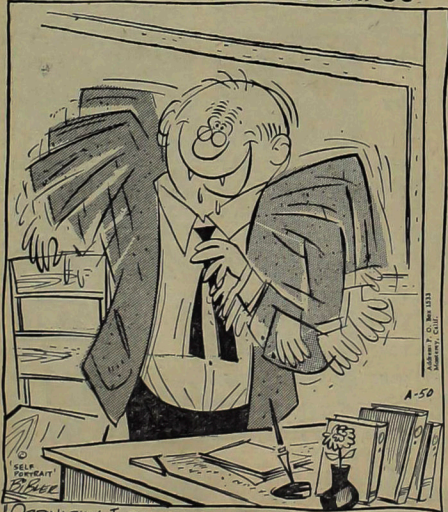
(Editor's Note: The Toreador was glad to hear from you both. I talked this matter over with Wm. Nixon Holmes who is in charge of the student insurance plan at Tech. According to Holmes, this situation is now being looked into. Several proposals have been presented to Holmes and each one is being weighed carefully, he said. However, a plan of this nature, according to Holmes, could not go into effect until next semester. Thanks again.)

Dear Editor,

Bibler must have been imbibing when he drew the "Little Man On Campus" cartoon published in Thursday's Toreador. If the cartoonist was not intoxicated, then his beatnik was really "way out"—so far out, in fact, that he was in a whole new system in which one progresses from the bottom of a page to the top while taking notes. This beatnik is what I would consider a real rebel against convention!

Observantly yours,
Sandra Cox

LITTLE MAN ON CAMPUS



"ORDINARILY I REFUSE TO ACCEPT STUDENTS THIS LATE IN THE TERM—HOWEVER, IN YOUR CASE, MISS LA TOUR"

WUS Seeks Help On Tech Campus

By **CLAUDETTE McINNIS**
Toreador Staff Writer

Tech students can help in supplying material assistance to needy students and teachers throughout the world by joining the World University Service fund raising campaign, beginning Nov. 1.

The fight against poverty, disease, ignorance and despair is the task of World University Service in the international community of students and professors.

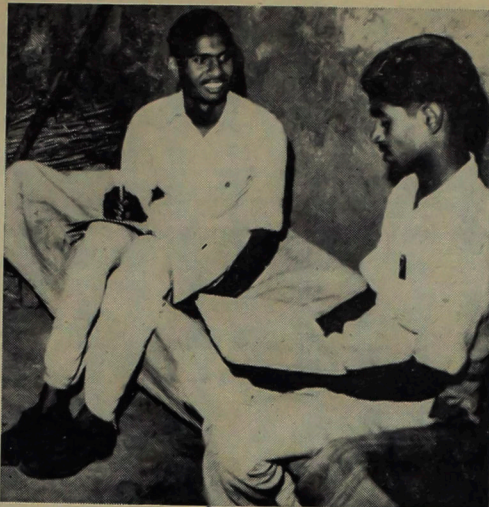
Principal actions of WUS are in the fields of student lodging and living, student health, and individual and emergency aid, including refugee services.

World University Service is the direct descendant of a relief organization set up in Europe after World War I. It has now spread throughout the world. The work of its 41 National Committees is coordinated at the international level by the General Assembly with headquarters and permanent staff in Geneva.

In the United States the anticipated contribution for 1960-61 is \$1,250,000. This will be from the university community, foundations and friends. Loans and scholarships totalling \$99,590 will be granted through WUS to Hungarian and Chinese refugee students, and over \$654,900 in partial and full scholarships will be provided by American universities through WUS solicitation.

The five day fund raising campaign at Tech will include an Inter-Fraternity Council shoe shine stand in the Tech Union from 8 a.m. until noon each day, and a girl's carwash Nov. 2-3 sponsored by Panhellenic. The carwash will be at the St. John's Methodist Church parking lot. The Tech Stage Band will have a concert in the Tech Union Nov. 3 from 11 a.m. to noon.

Each dormitory will have a fund-raising campaign within the dorm. Awards will be given to the men's and women's dormitory raising the most money.



STUDENTS AROUND THE WORLD GET AID FROM WUS ... an organization fighting poverty and disease

BA Names New Dean

John H. Reese, assistant professor of finance at Tech, was named assistant dean of Tech's School of Business Administration, Saturday.

His appointment was approved by the Board of Directors after recommendation by Dr. George Heather, business administration dean.

Reese joined the Tech faculty in 1957 as an instructor in business law, real estate law, and oil and gas law. Before coming to Tech he served from January, 1955 to September, 1957 as a lieutenant in the Judge Advocate General Corps at Fort Monmouth, N.J., and Fort Hood, Tex.

He is a graduate of Colorado City High School. He attended Southern Methodist University, earning a Bachelor of Business Administration degree and his law degree from SMU Law School in 1954.

ROTC Honor Cadets Await Presentation By Goodwin

President R. C. Goodwin will designate 13 Army and 6 Air Force ROTC students as Distinguished Military Students at a combined Army-Air Force Parade and Review at 4 p.m. Thursday.

These senior students have consistently maintained outstanding grades in their major, Military and Air Science subjects, and leadership training.

Designation as a Distinguished Student is similar to departmental honors in other courses. A Distinguished ROTC Student may also apply for and receive a Regular Army or Air Force Commission upon graduation.

The 13 Army students are Gordon R. Brown, Harold L. Conway, Lawrence M. DeHay, George B. Gibson, Robert G. Honts, Richard L. Howard, Robert P. Hutto, Alan D. Lewis, Donald B. McMurray, Richard D. Phelps, William L. Smith, Edward L. Wills and Thomas L. Walker.

The six Air Force students are Robert N. Alexander, Bruce R. Haass, Dennis H. Jones, Waldemar K. Kerbel, Edward L. Plumlee, and Bufford B. Watson.

The public is invited to attend the ceremonies, but in case of bad weather the presentation will be made in the Agricultural Engineering Auditorium and audience is limited to junior and senior students only.

Weinke Enters Maid Contest

Joan Weinke, Tech sophomore from Lubbock, is the first entry in the Maid of Cotton Contest, to be Nov. 21 and 22.

The deadline for entries in the contest is 12 midnight, Nov. 8. Girls must be between the ages of 19 and 25, at least 5 ft. 5 in. tall, single and must not wear glasses. She must have been born in a cotton producing state and have her home residence in one of the South Plains counties.

ENTRY FORMS, obtained from the Dean of Student Life, along with a glossy photograph must be submitted to the Lubbock Chamber of Commerce.

The winner will receive a \$1000 cotton wardrobe and an all expense paid trip to the National Contest in Memphis, Tenn.

The Maid of Cotton contestants will be presented by their escorts at the Fifth Annual Maid of Cotton Ball, Nov. 21, at the Lubbock Country Club. Playing for this ball will be Johnny Long, billed as "Young America's Favorite".

JUDGES FOR THE CONTEST are T. D. Truluck, vice president of Cotton Blossom Corporation; I. W. Briscoe, president of the Texas Cotton Association; J. B. Kyser, manager of Graniteville Co., Augusta, Georgia; W. Gordon McCabe Jr., a director of the New Orleans Cotton Exchange; and Mrs. Paul Austin, owner and director of Irma Austin School of Modeling and Self-Improvement.

Dept. Sponsors Short Course

Tech's department of dairy industry will sponsor a short course for the dairy industry Nov. 7 and 8. Authorities from Michigan, Georgia, Minnesota and Tech will speak.

Registration will begin in the Agriculture Bldg. 230 at 8:30 a.m. Monday, November 7.

Featured in the program will be speeches on "Marketing Dairy Products in a Changing America" and "What's Ahead in Dairying." There will also be speeches on formulation of mix and procedures for soft-serve ice cream and consumer acceptance of chocolate ice cream, creativity in business leadership, bulk handling of milk, problems of rancidity in dairy products and the use of stainless steel for the dairy industry.

The course will also include panel discussions on problems in producing quality milk on the farm; selection, installation and care of dairy plant equipment; advertising and marketing milk and ice cream; milk and ice cream manufacture and cleaning, sanitation and care of dairy farm equipment and tank trucks.

Dr. J. Davis Armistead
OPTOMETRIST

Contact Lenses—Visual Analysis
1613 Av. Q PO2-8769

THE FANTASTIC
LIONEL HAMPTON
and his international orchestra and revue
FAIR PARK COLISEUM, NOV. 3, 8 p.m. - 1 a.m.
Tickets on Sale at Wayne's Record Shops
\$2.50 — PRESALE \$3.00 — AT DOOR

deluxe edition of your favorite classic ...

Deluxe Classic
NEOLITE SOLES

Only the finest, richest, full grain suedes are good enough for this hand-crafted moccasin, made with old-world pride and care. See how elegant it makes you look...how cherished it makes you feel. \$10.95

Margaret's
Margaret's

TRIGGER FOR AN AVALANCHE!

• Rangers Bob and Joe, on snow patrol in a new area, have taken a short cut in their race to camp before an approaching blizzard...

RIGHT ACROSS OUR PATH! THE ONE GULLY WE DIDN'T KNOW ABOUT!

IT'LL TAKE HOURS TO GO AROUND THE BOTTOM—AND UP ABOVE, THAT SNOW LEDGE WOULD AVALANCHE AT A LOUD NOISE!

THAT'S AN IDEA!

YA-HO!

CRACK!

THERE YOU ARE—SNOW FROM RIM TO RIM! SAFE AS A SIDEWALK, FOR A MAN ON SKIS!

GOES TO SHOW YOU CAN'T STOP A MAN WHO THINKS FOR HIMSELF!

Note: When an "avalanche slope" is in delicate balance, the slightest vibration in the air, such as Bob's shout, will cause it to let go.

I SEE BY YOUR VICEROY YOU THINK FOR YOURSELF ABOUT CIGARETTES, TOO

THE RIGHT TASTE BECAUSE
Viceroy's got it... at both ends

GOT THE FILTER... GOT THE BLEND!

VICEROY'S GOT IT... AT BOTH ENDS! GOT THE FILTER, GOT THE BLEND!

VICEROY Filter Tip CIGARETTES

© 1960, BROWN & WILLIAMSON TOBACCO CORP.

Rugby Comes To Lubbock

Fraternity athletic managers have been invited to a meeting tonight to test the possibility of introducing a new sport to the area of the Southwest.

Leonard Ehrler of the Lubbock Park and Recreation Department

will conduct a meeting tonight on the organization of rugby teams to compete in Lubbock.

THE MEETING is scheduled for 7 p.m. in the Men's Gym, and anyone with any experience in the playing of rugby is invited to at-

tend in an effort to get the game started in this area.

Rugby is a contact sport much like football, and was in fact football's father. Over 200 colleges are now playing rugby inter-scholastically, and last year's

championship match between Stamford and Darmouth was televised nationally.

EHRLER SAYS the city of Lubbock is interested in initiating the sport, and will sponsor a league to begin competition perhaps this winter. Not much equipment is required, since players wear only shorts, jerseys and football shoes, and the field is quite similar to a football field.

Long-range plans call for the possible formation of a team from Texas Tech to compete with other colleges on road trips through the Southwest.

RUGBY is described as fine spectator sport, and Ehrler says that if and when a league gets started, the fans will get full indoctrination into the rules of the contest.

"We'll have a public address system," says Ehrler, "to describe the game as it goes, plus literature which we'll hand out to the spectators."

ONE OF THE interesting spec-

tator aspects of the game is that there are no time outs during the 40-minute halves. Should a player be injured, the team continues without him or until he revives.

Although not as rugged as football, the game involves a great deal of contact since the ball carrier is tackled by the defensive team. However, unlike football, the ball carrier must release the ball when tackled and moreover does not have the aid of blocking by his team mates. There is no interference of any kind for the runner, although he may pass or kick the ball for an advantage much as in football.

THE OBJECT of the game is to keep the ball in possession and cross the opponents' goal.

A number of students at Tech have played rugby, especially foreign students from European countries or Australia where the game enjoys great popularity.

COOLIDGE HUNT

Soph Leads Way

"Hunt roams for 122 yards against Mustangs."

That was how the headlines read after last Saturday's Tech-Southern Methodist game.

And with this yardage, Coolidge Hunt moved into undisputed first place as Southwest Conference leading ground gainer with 359 yards on 81 carries. His six game average is 4.4 yard per carry.

HIS PERFORMANCE was further commended by United Press International news service as he received honorable mention as UPI back of the week against the

Mustangs. Hunt is the first Tech back of this season to be commended by the UPI.

"I just like to run with the ball," Hunt declared in the dressing room after Saturday's gridiron clash.

THE BIG FULLBACK, who was outstanding last year on the Picadors, moved into the starting position this year ahead of junior George Fraser and sophomore Charles Harrison who wild-cards for him in the defensive unit.

Hunt, a native of Lubbock, began his football career in the Lubbock school system as a second grader.

A THREE-YEAR letterman at Tom S. Lubbock High School, Hunt ran from end position until his senior year when his coach,

Buddy Brothers, moved him to the fullback slot he now plays.

"I didn't think I would ever be able to make the switch," Hunt said. "The other backs made fun of me for awhile, but this only helped my determination to make a go of it."

AND HE DID make it, being named to the 4A All-State team in his last year of high school ball and his first year at fullback.

The 6-2, 205-pound wizard of Tech's offensive ground game signed a letter of intent with Tech before graduating from high school, but later announced that he would attend Oklahoma University.

But says Hunt, "When it came time to decide for sure, I figured I would be better off in the long run to play before homefolks."



KEM a handful of *Fashion*

"Decor" in Kem Cards

Young and exciting, modern as tomorrow—"Decor" by KEM gives your card parties a smart new fashion air. And of course it has the famous Kem quality features: tough, lustrous plastic assures long, long wear; washes clean with soap and water.

In vibrant chords of green and brown, for bridge and canasta. Double-Deck \$7.95. Come see our complete selection of patterns in famous Kem Plastic Playing Cards.



BOOK & STATIONERY CENTER

1103 College PO 5-5775

You're Invited to ... Dava Jo's Beauty Salon

- ★ Jo Simmons } Formerly With
- ★ Margie Cypet } Town and Country
- ★ Ann Richards
- ★ Zora Lawaince

This Coupon Worth \$5.00 on first hair set.

PO 5-9201 1403 College

Have a real cigarette—have a CAMEL



For real taste, nothing like a Camel!

Orin Murray

FIELD SURVEY ENGINEER, GLEN CANYON DAM, ARIZONA

The best tobacco makes the best smoke!

R. J. REYNOLDS TOBACCO COMPANY, WINSTON-SALEM, N. C.

Coors Lead Intramurals In Bowling

The Coors from Gaston Hall lead interfraternity bowling after the third week, but only on the basis of total pins, since they share a 6-3 won-lost standing with Pi Kappa Alpha.

The Coors boast a 6726 pin total to the Pikes' 6064.

Oddly enough, the third place Carpenter Hall team is carrying a total of 6809 pins, more than either the first or second place teams, but has managed only a 5-4 match record.

High game in the league has been a 225 by George Robertson of the Coors, and the entire league is carrying an average of 140 per man.

Plans are being made to expand the eight-team league to a 24-team league next semester, and league backers are also speculating on the possibility of taking a team to represent Tech to the Southwest Conference tournament at Texas A&M.

THE STANDINGS

Team	Pct.
Coors	.667
Pi Kappa Alpha	.667
Carpenter Hall	.555
Split Eights	.555
Phi Delta Theta	.555
Sigma Chi	.555
Sigma Alpha Epsilon	.444

Holub Draws New Applause

A new honor befell E. J. Holub this week, in the form of tribute from the Sportsmanship Committee at Baylor University.

The committee honored Holub for going to the Baylor dressing room after the Tech-Baylor game Oct. 15 and congratulating the Bear players.

According to Pat Miller, editor of the Baylor student newspaper, this was the first time in history that any opposing player has made a gesture of this nature.

Miller sent the report to the Tech Student Assn.

TINY'S

RED RAIDER CAFE
★ 24 hr. Service ★
Food you enjoy and quick service with a smile.
"Orders to Go"
PO 2-9906
1217-COLLEGE

IN FROSH TILT

Pics Meet USAF

A couple of former Abilene High Eagles will face each other across the line of scrimmage as Texas Tech and U. S. Air Force Academy freshmen tangle in Jones Stadium here at 2 p.m. Saturday.

Ex-Eagles in action will be end David Parks for Beattie Feathers' Picadors and guard Raymond Thomas for the Air Force team. Four other Texans will be in the visitors' lineup, including end John Self of Lamesa, center Robert Abbott of Dallas, halfback Harvey Wallender of Tyler, and fullback James Hinkel of Cotulla.

Another person whom Texas Tech fans may recognize is the Airmen's coach, Capt. Roy L. Anderson. Jr. Anderson participated in football and track at University of New Mexico, captaining the 1946 Lobo grid team the Red Raiders met.

Coach Feathers, whose Picadors won their only game to date 34-27 from University of Arkansas, will name his starters from the following:

Split ends—Parks and Jimmy Hacker of Bowie, tight ends—Don Burch of Levelland and David Potter of Dallas.

Weak side tackles—Dennis Watkins of McCamey and Roger Munn of Denver City, strong side tackles—Jimmy Webster of Wichita Falls and Gary Davis of Dallas.

Weak side guards—Dave Brumell of Albuquerque and Jimmy Wells of Dumas, strong side guards—Albert Swening of Lubbock Monterey and Bill Shaha of Dumas.

Centers—Ronnie Wassom of Lubbock Monterey and Weldon

Brown of Denver City. Quarterbacks—Doug Cannon of Levelland and Dick Hayes of Snyder.

Split backs—Charles Lipsley of Cisco and Bill Worley of Midland, halfbacks—David Rankin of Midland and Dick Turner of Wichita Falls.

Fullbacks—H. L. Daniels of Marshall and Dickie Rogers of Breckenridge.

Guard Bev Herndon of Sweetwater and fullback Gordon Beam-guard of Borger will miss the game with injuries.

Reserved seats cost \$1.50.

QUICK - KICKS!

... and slow curves

by Billy Patton

We haven't handed out the roses yet for last Saturday's morale-building victory over Southern Methodist, but you know what? There just aren't enough to go around.

When those Red Raiders come onto the field for the second half and really opened up to play football, we all saw that tremendous potential become a reality. We saw football like we knew the Raiders could play ever since the West Texas game.

— QK —

One thing we liked especially well. For the most noticeable item this year, the Big Red loosened up, shook off a tension that had seemed to grip them all season, and turned out free-wheeling football.

Individually, Coolidge Hunt was certainly a shining light in the victory, grinding his way to an undisputed lead in conference rushing. As a sophomore he plays like a veteran, and by the time he gets this season and one more under his belt, Tech should have another great one on its hands.

— QK —

And that line? Well, the Raider backs could tell you something about that. Outweighed man for man, generally speaking, the men in red shirts attacked like savages on the warpath and simply outclassed the Mustang forward wall, with emphasis on the "class".

Jere Don Mohon, small for a SWC guard at 180 pounds but built like a young tank, stuck in there like he was a tree with long roots and a fence around it, and then there was Pete Peterson, all 250 lbs. of him. Peterson dealt out misery to Mustang centers all afternoon and rumor has it they were watching him even when he was on the bench, just to make sure he was staying there.

— QK —

Big Richard Stafford, a junior tackle who hasn't played a great deal this year, came in for his share of glory, too. On one play, Stafford converted his discus-throwing arm to a Mustang-throwing arm and slammed an SMU back to earth with a one-handed tackle for a substantial loss.

Don Waygood played high jumper to snare a pass for good yardage with one of the spectacular catches he's noted for, and the best word for ever-rugged E. J. Holub was omnipresent. He was here and there at the same time, and on one punt return, he was down under the ball, fell victim to a beautiful body block, got up and chased the play some 40 yards just to be there when the tackle was made.

And the victory bells DID ring out.

— QK —

Now we have some crystal-gazing to do. Last week ended in another tie, even though we had picked three games at variance. We were pretty proud of our average, though, at 85% each.

This, incidentally, is National Red Raider Upset Week, when the football world pays tribute to Texas Tech for knocking off the probable SWC champion.

Patton	Carpenter
TECH	TECH
Ark.	Ark.
Baylor	Baylor
Iowa	Iowa
Texas	Texas
Oklahoma	Colorado
Houston	Houston
Wyoming	Wyoming
Tulane	Tulane
Navy	Navy

TEXAS TECH vs. RICE
Texas A&M vs. Arkansas
Baylor vs. TCU
Iowa vs. Kansas
Texas vs. SMU
Oklahoma vs. Colorado
Houston vs. North Texas
Wyoming vs. Utah
Tulane vs. Wm. & Mary
Navy vs. Notre Dame



BRUISER FROM BELTON — Bobby Cline has been doing yeoman service in the Red Raider line this season, and is expected to be one of the Big Red's mightiest bulwarks against the mighty Rice Owls this weekend. Cline stands 6-1 and weighs 235 lbs.

Phi Deltas Smash Fiji's To Hold League Lead

Phi Delta Theta rolled on undefeated in intramural football in fraternity league play Wednesday afternoon, smashing Phi Gamma Delta 20-2 to maintain undisputed possession of the league lead.

Pi Kappa Alpha captured a second-place tie by downing a strong Kappa Sigma team 6-0 while the co-holder of the number two spot, Sigma Alpha Epsilon, rolled over Delta Tau Delta 14-0.

ALPHA TAU OMEGA came up with a 1-0 overtime victory against Phi Kappa Psi and Sigma Nu edged Sigma Chi 12-6 in the remaining league action.

In the dormitory league Tuesday, Sneed Hall marched to its fourth win without a defeat in upholding its rank as number one in the league. Sneed mastered Gaston 24-0 to hold the top spot.

WELLS HALL took over second place with a 25-0 romp over Gordon and Thompson smacked Bledsoe 7-0.

Action resumes today in the in-

dependent league, where BSU took over the lead Monday with a win over Church of Christ Bible Chair. BSU meets the Hornets and the Bible Chair takes on the Azures.

Fraternity and dorm teams don't get back into action until next Sunday, when the leaders in each league face members of the lower echelons percentagewise. Phi Delta Theta throws its undefeated slate at Delta Tau Delta (1-4), and Sneed Hall takes on Thompson Hall (1-2).

SPECIAL HALLOWEEN MOVIE

"Horrors of Dracula"

FRIDAY, OCTOBER 28th
7:00 p.m.

UNION BALLROOM

Sponsored by Tech Union

Intramural Events Draw Interest

The official weigh-in for All College Weightlifting Tournament is scheduled for 6:30 p.m. Tuesday, in the Men's Gym. Actual lifting will start at 7:15 p.m. with the lower weight divisions competing first. The tournament is under the direction of Buddy Gray and will be in the weightlifting area.

All those entered in intramural wrestling are required to attend a Wrestling Clinic at 9 p.m. Thursday in the Men's Gym. The wrestling tournament itself will be at 7 p.m., Nov. 14.

GET ON YOUR MARK
with a **FAIRGATE**
STRAIGHT EDGE RULE
FOR **ACCURACY!**

THE EDGE THAT IS REALLY STRAIGHT!

STRAIGHT-EDGE RULES	KNOB RULES
12" - \$1.35	12" - \$1.60
18" - 1.00	15" - 1.00
24" - 1.25	
30" - 1.85	

HARD ALUMINUM
NON-RUST
STRONG
LIGHT
LEGIBLE

GET SET TO SQUARE QUICKLY WITH A FAIRGATE SQUARE OR GRADUATE T-SQUARE

L-SQUARES	T-SQUARES
12x6" - \$1.25	12" - \$1.10
14x24" - \$3.60	15" - \$1.50
T-SQUARES	18" - \$2.00
8 1/2" - \$1.75	24" - \$2.85

If your dealer does not handle quality Fairgate products, contact:

THE FAIRGATE RULE CO.
COLD SPRING 8, N.Y.

Fall & Winter Lesson Rates

★ Private Instruction

5 hours \$21.50

★ Class Instruction

5 hours \$7.50

THE PUSH
taught exclusively at

ARTHUR

1617 College Ave.

MURRAY

Dial PO 3-8236

A. W and Jean Brookes,
Licensees

DINE OUT AT . . .

The Seafood Shop of Lubbock

Homemade Pies

Dinner \$1.00

Complete meal can be taken out or eaten here.

"We serve the choicest of Seafoods from the Gulf coast."

3040-34th

Pho. SH7-1636

NCAA Puts Probation On Kansas

By JACK STEVENSON
Associated Press Sports Writer
SAN FRANCISCO (AP)—The NCAA Wednesday slapped a two-year athletic probation on the University of Kansas, charging that boosters bought an automobile for Wilt "The Stilt" Chamberlain and illegally recruited three football players.

The NCAA did not specifically name Chamberlain, an All America basketball center, but A.C. Dutch Lonberg, director of athletics at Kansas, confirmed he was the player involved.

The K. U. basketball team must continue on probation the full two years, starting immediately. The football team will be on probation one year. Only those two squads are involved. The ruling does not include the track and field team which has won the national collegiate championship the past two years.

Wednesday's action came after four football players who had been figured on in Southwest Conference schools, enrolled instead at Kansas.

Under terms of the Kansas probation, the basketball team for two years is not eligible to participate in the national collegiate basketball championship or any of the invitational and similar basketball events which cooperate with the NCAA.

Fish Will Elect '60 Cheerleaders

Hey Fish!!! Football season is underway and freshman cheerleader elections are around the corner.

Students may pick up registration forms, after paying the \$5.50 filing fee, outside the Student Council office Friday from 8 a.m. to 5 p.m., according to Gary Milburn, freshman election committee chairman.

After paying the filing fee, the students will receive experience sheets to be filled out and returned to the Student Council office Monday.

Elections are set for 6:30 p.m. Nov. 3 in the Agriculture Engineering Bldg. Auditorium.

Recruiters Seek Navy Officers

The Officer Programs Team from the United States Navy Recruiting Station in Albuquerque, will be at Tech in the Student Union Building Oct. 31-Nov. 4.

Students To Apply For Educ. Course

Students wishing to take Education 431-2 next spring should apply in Ad. 254 by Monday, announced Morris S. Wallace, education department head.

This is the student teaching course, and the early application deadline is to facilitate checking grade point averages of applicants.

Dr. C. Earl Hildreth
OPTOMETRIST

Announces removal of his offices to
2307 Broadway
PO 2-4828

DOMS LTD

Presents Shoes By



THESE ARE SOME OF THE MANY STYLES WE HAVE TO CHOOSE FROM. OTHER STYLES BY FORTUNE FROM 9.95. CLARK OF ENGLAND DESERT BOOTS - 12.95.



\$15.95
CALF-SKIN LOAFERS
Black • Brown • Burnt Olive



\$21.95
Fully leather lined LOAFER - made from Norwegian Calf
Black or Brown



Plain toe
Shell Cordovan
Black and Brown
\$29.95



Cherry Cordovan
Black Saddle
\$27.95

OPEN A CHARGE ACCOUNT

DOMS LTD

