

Santa Anna News

"He Profits Most Who Serves Best"

Single Copy 25 Cents

Volume 103 No. 49

Thursday, December 8, 1988

Chamber Of Commerce Mexican Dinner And Tour Of Homes Sunday

The Santa Anna Chamber of Commerce will be serving an authentic Mexican Dinner Sunday at the Lions Club. The price is to be \$5 for adults and \$2.50 for children under 12.

The menu will include homemade tacos, tamales, enchiladas, rice, refried beans, and a praline for dessert.

A tour of homes will take place

from 2 - 4. The admission to the tour will be \$3.00 per person.

You must sign up for the tour of homes at the Lions Club building. No one will be admitted to any of the homes without the proper identification to be obtained at the Lions Club.

Homes to be visited are two historic old landmarks of Santa Anna, the charming residence of Lonella Roesch known to many as the old Kelley homestead; and the Jasper McClellan home, which is the former grand old home of the Ford Barnes family. The third is the lovely, almost new, country home of the Joe Ed Wise family.

Community Choir Christmas Cantata Sunday Evening At United Presbyterian Church

The Community Choir Christmas cantata will be presented Sunday, December 11, at the United Presbyterian Church. The musical program will begin at 6:00 p.m.

Patrick Hosch of First Baptist Church is director of the cantata, "Carol of Christmas," by John Peterson. Many of the traditional Christmas carols are featured in the music, which will make it a favorite for most people. Lera Guthrie is organist and Sandra Guthrie is pianist. Monte Guthrie II is narrator.

Soloists are Cathy Ellis and

Pauline Armstrong. Ensembles include a duet by Mark Taylor and Gail Horner and a trio by Patrick Hosch, Marty Donham and Dickie Homer.

Approximately 30 singers from the First Baptist, United Presbyterian, First United Methodist and Seventh-Day Adventist churches are singing in the program that is an annual presentation to people in the Santa Anna area.

Everyone in the community is invited to attend the program Sunday evening.

Council Agenda Listed

The Santa Anna City Council will meet in regular session tonight (Thursday) at 7:00 at the Mountain City Community Center. Following is the agenda for the meeting:

- 1) Call to order.
- 2) Reading of last month's minutes.
- 3) City Audit ending March 1988 - Watson Collier.
- 4) Executive session
Municipal Court Judge
Employee evaluations
Employee bonuses
- 5) Accounts payable
- 6) Adjourn



SANTA CLAUS VISITED THE NEWS OFFICE

last Friday to ask us to be sure to let the children of the community know he wants to receive a letter from each one telling him what they would like for Christmas this year. Letters may be addressed to Santa Claus in care of the Postmaster. School children may turn their letters in to their teachers who in turn will see that they are sent to Santa Clause. Letters should be in Santa's hands by the end of this week or no later than Tuesday, December 13, so he will have time to answer them before Christmas.

Christmas Opening Winners

A large crowd turned out for the annual Christmas season opening in downtown Santa Anna last Friday to watch the parade, eat pancakes with the Lions Club in support of the library, visit the businesses all decorated for Christmas and to listen for their names to be drawn for the Santa Anna Dollars given away as the parade finished.

Winning the four groups of 25 Santa Anna Dollars were: Jerry Phillips, Debbie Dean, Othal Warnock, and Bessie Parish.

Winners in the parade with floats that were to carry out the theme of "Family Style Christmas" were: first place, \$75, Delta Omicron Sorority of ESA; second place, \$50, Volunteer Fire Department Aux.; and third place, \$25, Bill Garrett (Funtier Day).

In the decorated window contest, the Eastern Star took the first place prize of \$35 for their window at the Masonic Hall. Second place, \$25, went to the Fire Department for the window just west of Western Auto and third place, \$5, went to the Self Culture club for the window decorations at the proposed new library site just west of Phillips drug.

Prizes given by Delta Omicron for decorated cars carrying Christmas pageant entries, went to the jeep decorated with stuffed animals and Chrystal and Jennifer Pelton and Shyler Farley. Second

continued on page 2

Get News In Early For Next Week's Edition

The Editor has a week of vacation yet to take before the end of the year and suddenly realized it is time to do so! The staff will be working short-handed and would appreciate your getting your news in as soon as possible so as to avoid any last minute rush to meet deadlines.

We appreciate your cooperation.

PARTNERS IN ACADEMIC EXCELLENCE CONDUCTING ANNUAL MEMBERSHIP DRIVE

December has been designated as the month for a membership drive for the "Partners in Academic Excellence" awards program for local high school students. Businesses and individuals are being contacted to become members of the program. To become a member, a business may join by purchasing a \$20 membership and an individual membership may be purchased for \$10. Scott Patterson, Dickie Horner, Gary Absher and Mrs. Earl Simmons have been named as contact persons for the membership drive. You are invited to see one of these persons to become a member of a very worthwhile organization. Membership fees are used to defray the cost of the awards. Names of members are placed in the trophy case at the high school, so the students may be aware of those individuals and businesses who are in support of their efforts.

The recent visit by the state accreditation team brought many favorable comments from the team members concerning the Partners in Excellence program and commended the school officials for taking this means to award the students.

Fifteen persons were in attendance when the Partners in Excellence sponsoring group gathered for a luncheon meeting last Thursday at the high school home economics building. Attending were Rev. Claude Davison, Rev. Jasper McClellan, Bill Martin, Dickie Horner, Gary Absher, Roberta Tomlinson, Polly Warnock, Eddie Hartman, Joe Ed Wise, Terry McIver, Scott Patterson, Frank Gray, Gerald Brister, Rob Cheaney and Sharyl Fuller.

High school principal Frank Gray spoke to the group and brought them up to date on the awards that have been presented and the financial status of the organization as well as telling them how appreciative the students are of the program.

The organization was formed in March of last year to formulate an awards system for academic excellence in the Santa Anna schools similar to those given for athletic prowess.

At the end of each six weeks grading period, the students having achieved an A in the high the freshman, sophomore, junior and senior classes, are awarded a gold certificate noting their achievement.

Boosters To Sponsor Tourney Next Weekend

The Santa Anna Athletic Booster Club will meet Thursday, December 8, in the varsity lounge at Perry Gymnasium to discuss plans for the upcoming Santa Anna Varsity Basketball Tournament.

Parents will be called on to help in the concession stand. The tournament is a project of the Booster

Club and all parents and fans will be needed to help make it a success and to raise funds for the benefit of the athletic program of the Santa Anna Schools.

Teams to be involved in the tournament will include Santa Anna, Blanket, May and Rising Star.

Another Burglary Rockwood P.O. Reward Offered For Information

The Rockwood Post Office was broken into again on the night of December 4 (Sunday) and about \$24 in cash was taken.

It had been about a month since a similar occurrence happened on November 7.

A Postal Inspector from Fort Worth was in the Santa Anna News Office Tuesday to inform us of the burglary and to advise us they are conducting an extensive investigation. This time the intruder used a pry bar to pry open the lobby door and to remove the locks from the filing cabinets where the

money was kept. Fingerprints were found and are being processed.

Postal inspector R.E. Bartlett pointed out that burglary of a post office is a federal offense and punishable by a maximum of 5 years in prison for each offense.

A reward is being offered for information leading to arrest. If you have information you believe might be helpful, contact Postal Inspector R.E. Bartlett, P.O. Box 162929, Fort Worth, TX 76161. Telephone 817-625-3411 or contact Marty Baker at the Coleman County Sheriff's Department.

maintained either an A average or a B average throughout high school, will receive a letter jacket during their senior year. In compliance with UIL rules, the jacket will be given only to the deserving students who have not received a letter

jacket in any other activity. If the student already has been awarded a jacket in another activity, he or she will be given an academic letter, signifying academic excellence, to place on their jacket.



Fire Under Investigation

An investigation is continuing into the fire which took place at Uncle Arthur's convenient store early Sunday morning. The Santa Anna Volunteer Fire Department was called by a nearby resident who spotted the flames at about 4:15 a.m. The picture, taken

Monday afternoon, shows some of the damage caused by the fire which seemed to start in the ceiling area of what was a game room and completely destroyed that area of the store. Extensive damage was done to the rest of the building which was just undergoing repairs

from a previous electrical fire about three weeks ago.

Owners Marty and Terri Warnock had planned to re-open the business in a matter of days after repairs were completed.

D
E
C
8
8
8

City Employee On Call This Weekend

Rusty Wells, City Superintendent, may be reached at 348-3681. The city crew member on call this weekend is Greg Lane. He does not have a phone but may be reached by calling Rusty Wells.

Watch the Santa Anna News each week for the city employee on call in case of an emergency during the weekend.

The Santa Anna News Office is Closed On Wednesday

SANTA ANNA NEWS
214 N. 2 ND.
SANTA ANNA, TEXAS
(915) 348-3545
(USPS 481540)

The Santa Anna News is published every Thursday at Santa Anna, Texas 76878 and entered as second class mail under the Act of Congress of March 2, 1879.

SUBSCRIPTION PRICE: Coleman County and all other areas in the state of Texas...\$11.95.

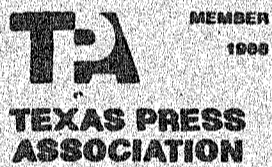
CLASSIFIED RATES: \$1.50 for the first 15 words; five cents per word thereafter per week for personal items. Rates for business advertising are charged by the agate inch at the rate of 25 cents per agate inch.

POSTMASTER: Send change of address to: Santa Anna News P.O. Box 399 Santa Anna, Texas 76878

POLLY WARNOCK
Managing Editor

TANDY HOWARD
Advertising Manager

BETTY KEY
Bookkeeper-Circulation



Doyle Bachman

WINGATE - Services for Doyle Bachman, 60, were held at 10:30 a.m. last Wednesday, Nov. 30 at St. John's Lutheran Church with the Rev. Steve Byrne officiating. Burial followed in Lutheran Cemetery under the direction of Winters Funeral Home. He died Monday, Nov. 28, at a San Angelo hospital.

Born in Comanche, he was a U.S. Army veteran, a farmer and a rancher. For the past ten years he worked in road construction. He was a member of the St. John's Lutheran Church.

Area survivors include a sister, Ann Owen of Santa Anna.

Grace Lou Henderson

Grace Lou Henderson, 69, of Santa Anna died in a San Angelo hospital, Friday, December 2, 1988.

Born November 1, 1919 in Rains County, she had lived in Santa Anna the past five years.

Funeral services were Monday, December 5 at Johnson Funeral Home in San Angelo with burial in Lawn Haven Memorial Gardens of San Angelo.

She is survived by three sons and daughters-in-law, Gary and Marjorie Arp of Santa Anna, Donald and Shirley Arp of San Angelo, and Mike and Cindy Arp of San Antonio; one daughter, Sue Williams of Virginia; her mother, Molly Trumble of Virginia; one brother, James Trumble of Harper; 16 grandchildren; and 6 great grandchildren.

Community Calendar

THURSDAY, DECEMBER 8
City Council

FRIDAY, DECEMBER 9
SAHS at Gustine

SUNDAY, DECEMBER 11
C of C Mexican Dinner
Tour of Homes

Community Choir Christmas Cantata - Presbyterian Church

MONDAY, DECEMBER 12
Delta Omicron
Camp Fire Girls
Boy Scouts
SA Jr. High at Panther Creek

TUESDAY, DECEMBER 13
Lions Club
Cub Scouts
SAHS vs Eula, here

WEDNESDAY, DECEMBER 14
Self Culture Club

THURSDAY, DECEMBER 15
Masonic Lodge
SAHS Tournament
Christmas party at Rockwood

FRIDAY, DECEMBER 16
SAHS Tournament

SATURDAY, DECEMBER 17
SAHS Tournament

Friendship Luncheon

Contributed by Ethel Williams
The Rev. John Stanislav was present at the luncheon last Thursday and said the table grace.

Doris Griffin had worked over what was left from the Thanksgiving turkey and made a very delectable dish. Desserts were not plentiful. Everyone agreed they had plenty in their home Thanksgiving gatherings.

The Frank McCarys are still bringing luscious vine ripened tomatoes from their summer garden.

Everyone is welcome to this down home fun time. Come and join the good time and also have a good meal. The group meets each Thursday noon at the Mountain City Community Center.

Birthdays and Anniversaries

THURSDAY, DECEMBER 8
Kevin Fellers
Shelly Gray
Michael Salazar

FRIDAY, DECEMBER 9
Bill Garrett
Kay Gray
Dan Hoover
Benjy Allison

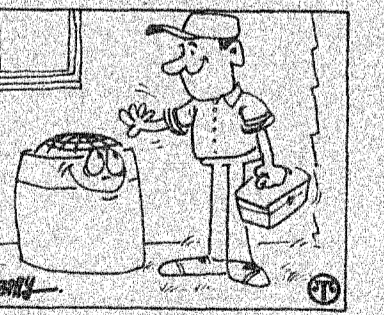
SATURDAY, DECEMBER 10
Gale Brock
Matt Stark
Dude Watson

SUNDAY, DECEMBER 11
Richard Homer
Amanda Lishka
Jimmy Row
Elwaybe Taylor
Shirley Taylor

MONDAY, DECEMBER 12
Mrs. E.O. Rider
Becky Matthews
Cindy Wristen

TUESDAY, DECEMBER 13
Ron Warnock
Judy Hartman
Scott Valdez
Vicki Aldridge
Mr. & Mrs. Frank Reed

WEDNESDAY, DECEMBER 14
Selina Cook



In 1987, American homes and businesses purchased a record number of heat pumps—900,000. This was 3.9 percent more than in 1986.

Here's a surprising fact: despite its name, a heat pump provides summer cooling as well as winter heating. Another fact that may warm up your interest even more—on electric heating bills, heat pumps can mean savings of 30 to 60 percent because they use 30 to 60 percent less energy to supply the same heat as an electric furnace.

Santa Anna Funeral Home
Wallis At N. Lee
Box 129
Santa Anna, Texas 76878
915-348-3153

Thoughts From Our Pastors

Rev. John Howze

Full Gospel Fellowship Pentecostal Church Of God

COUNSEL OR ADVICE

Where do we get our advice; from the world and its elements, or from God? Counsel is the means we use to make our decisions in life, whether right or wrong. The important thing is not to get advice, but where we get it. The reason so many are going the wrong way is that they seek the advice of those going the wrong way. Wrong associates will lead us to Hell. Jesus said the Blind would lead the blind and both would fall into the ditch.

We find, too often, the counsel of the world is just the opposite of what we need. I've made wrong decisions by listening to those who appeared to know; but never made a wrong one when asking God for advice, while studying His word.

The Bible contains many examples of counsel both good and bad. In David's day, Ahithophel was a very good counselor. The Bible said his counsel was the counsel of God. He wasn't just talking, but knew what he was talking about.

Without counsel, purposes are disappointed, but in the multitude of counselors they are established. Proverbs 15:22. We must admit we don't know everything. Asking advice of those who do, helps us to receive what we need.

The counsel of the old is often the counsel of the wise: by wise experience. Rehoboam, Solomon's son, had counsel of both the old and the young, but accepted that of the young to his own hurt. 1 Kings 12:13.

People spend more time in front of the television today, exposing themselves to all the ungodly thing that are promoted, often accepting without considering it's good or bad. To be wise is to be able to tell the difference in and a lie. Jesus said, "I am the truth," St. John 14:6. "And ye shall know the truth and the truth shall make you free," St. John 8:32.

We have the power of choice. We can choose the good or bad, to have good is to receive the truth and reject a lie. God's word reveals both.

We become what we feed our minds on, whether on good wholesome things, or rotten corrupts things. The bible says, "there is a way that seems right unto man but the end of them is death." Jesus said, "I and come that ye might have life and have it more abundantly." Blessed is the man that walks not in the counsel of the ungodly but his delight is in the law of the Lord, and in his law doth he meditate day and night," Psalm 1:1-2. God's counsel reigns, let it be yours.

Around & About

Believe it or not!

This crazy weather we have been having is the talk everywhere you go and nature seems to be playing some tricks on us.

Mrs. Nowlin Myers was in the news office to report there is a pear tree in full bloom at their place a couple of miles or so north of the mountains.

Poinsettia in bloom.

A lovely old poinsettia is in bloom in the yard of the Jasper McClellan home. (The former Ford Barnes home). No one knows for sure how long the plant has been there but it is reported that many years ago, the Barnes used it for the setting for a picture used on a Christmas card.

Mr. and Mrs. David Karthouser of Fort Worth, their son James and family of Kerrville, spent Thanksgiving with Mrs. T.J. McCaughan in Santa Anna. Mrs. McCaughan took a trip with the Karthousers to Kansas City to visit the David S. Karthousers. She reports although they had some snow earlier, the weather was very pleasant.

Shower Fetes Debbie Forsyth

A pantry shower was held on Saturday, December 3 from 2-4 in the home of Virginia (Mrs. David) Zirkle for Debbie Forsyth and Danny Wheatley in honor of their approaching marriage on December 26, 1988.

The table centerpiece was an antique bowl with various flowers in shades of blue. The refreshments were sandwiches, cake, cookies, tortilla roll, cheese roll, and dip. Punch and coffee were also served.

Over 40 guests were in attendance. Serving in the house party were Jean McClellan, Adrian Price, and Gayle Stewardson.

Winners

Continued from page 1

place went to the auto on which Sabrina Martin and Irwin Loyd were riding and the third place was the auto of Sandi Watson and Mitchell Guthrie.

heating. Another fact that may warm up your interest even more—on electric heating bills, heat pumps can mean savings of 30 to 60 percent because they use 30 to 60 percent less energy to supply the same heat as an electric furnace.

Reed Memorial Co. Limited
Monuments of Distinction
Ft. Worth Hwy.
Brownwood, Texas
Box 265 Ph. 646-7625
Sylvia Herring- Local Rep.

Library Notes
Check It Out

Editor's note: The funds raised at the pancake Fiesta last Friday were dedicated toward the relocating of the library. Members of the Self Culture Club, in support of the library project, worked with the Lions Club in the annual project. A member of the Self Culture Club and the Library Board has turned in this report of the affair.

Contributed

Everyone is needed to produce a successful fundraising event. People from 95 years of age, Mrs. Mae Blue, who helped with ticket sales to new born Kaitlin Paige Barkley who brought her parents and grandparents. All made the Lions Club pancake day a success.

With less than 20 active members, the Lions were able to cook enough ham and pancakes to satisfy all. Sixteen Self Culture Club members assisted Ken Bowker at the ticket stand and in the serving of food. The serving job was much more than they could handle so Boy Scouts and their leaders came to the rescue. Nicki Donham and Tex Wright had prepared their members well. James Rendon, Artie Michon, Josh Daniel, Michael Donham, and Tony Abernathy were willing, happy and thoughtful workers from Troup and Den #230.

Willard Allen was only one of several loyal friends of the library who helped all day anywhere needed.

Pat DeWitt, Lions Club Sweetheart, entertained with Christmas music at the piano. Some of the school children enjoyed singing along. Oh! and that brings up another group: teachers who accompanied the children to the pancake fiesta.

About 50 people actually worked that day. This does not include people who made early ticket sales, created signs, printed tickets, shopped for food or did the clean-up.

None of this work would mean a thing without customers. Over 400 of you came out on Friday. Several even remembered to donate books.

Your age doesn't matter, 4-year-old Jennifer Pelton drew a ticket to help. The Scouts were young but over half the workers were senior citizens. Excellent health isn't necessary. Four of the workers have had major surgery recently and several have serious problems. It only takes the desire to help. Everyone can take a part in raising money to relocate the library. Call and volunteer your services.

pumpkin bars, tidbits, and fruit punch, during the social hour to those present. Tables were decorated for in a Thanksgiving motif.

Members present other than those mentioned above were Dorothy Watson, Laura Carpenter, Mildred Galloway, Pauline Eubank, Hettie Scarborough, Nandell Stiles, Lucille Dean, Martha Thompson, and Carmilla Baugh.

Coyita Bowker Presents Nitia Daniell Program

The Nitia Daniell Circle of the First United Methodist Church met in the annex of the church November 28, 1988. The meeting was called to order and an Upper Room devotional was given by Margaret Crews.

After a short business meeting, Coyita Bowker presented the program entitled, "A World Sisterhood". She read several New Testament scriptures. Taking the part of a news anchor woman, she presented facts and asked members of the group to relate the work women in different parts of the world. Jacqueline Davison and Margaret Crews served refreshments of

Junior Rodeo Association Names Queen & Officials

The Coleman County Junior Rodeo Association met recently at the Breeder-Feeder building to elect officers, directors and to name the new 1989 rodeo queen.

New directors to serve for the 1989 rodeo are Gregg Harris, Darrell Turner, Leigh Ann Alexander, Archie Jameson, Tera Alexander, Todd Harris, Stephanie Copley, Marcie McDonald, Chad Garrett, and Misti Hubbard.

Officers for the Junior Association are Gregg Harris, President, Darrell Turner, Vice President, Leigh Ann Alexander, Secretary, and Archie Jameson, Jr. Arena Director.

Tera Alexander, 15-year-old daughter of Donna Alexander and Roy Alexander, was elected queen for the 1989 rodeo. Tera is a sophomore at Coleman High School.

New officers for the senior directors are: Marlie Watson, President, Hurby Hubbard, Vice President, Kay Hubbard, Secretary, Debby Bodenchuk, Treasurer, and Rusty Ryan, Sr. Arena Directors. Other directors for the seniors members are Buck McGonagil, Eddie Odum, Ray Villarreal, Bobby Carl Fenton and Max Jameson.



TERA ALEXANDER

Bangs Medical Clinic
Dr. Charles Hall
Osteopathic Physician & Surgeon
Accepting New Patients
Family Practice, X-Ray, Electrocardiogram, Laboratory Services
Phone: 915-752-6521
Bangs, Texas

State Prop



Ballinger

Concho C

Final relocat

Bowing to strong area residents and officials, Texas Hioners announced have agreed to re Market Road 2134-the Stacy Dam Res



According to a rep week, the Leaves a istry has expande this fall. According Groves, coordinator due principally t community awarenity support. Gro while some impro economy is eviden serious economic i especially for those u underemployed.

November was breaking records at Fishes Ministry, l man, but serving th The food pantry tr

A Mount Viewpoi

By Polly Warno

Teach Safety Skateboards
According to a re area newspaper, th munity of one c weary of their custi battle skateboard walks in front of l and has asked the pass an ordinance b gerous skateboards the city.

Only last Friday Anna, an incident h of one of the downt that could have bo trous. An older o proaching the entri when a youngster c came zooming by a gentleman off bal happened to be near as he began to fall avert a possible brok

In checking with we find that Santa A dinance that forbids the sidewalks of i might be well if p their children about well as the fact that legal to use them on

One of the most d in the city for such area of the post off writer has, on sev seen accidents almc tween skateboards ai older citizens and ev old!

So parents, pleas where your children skateboards and ple to use them in a safe ate manner wherever

TEXAS FR SPOKEN

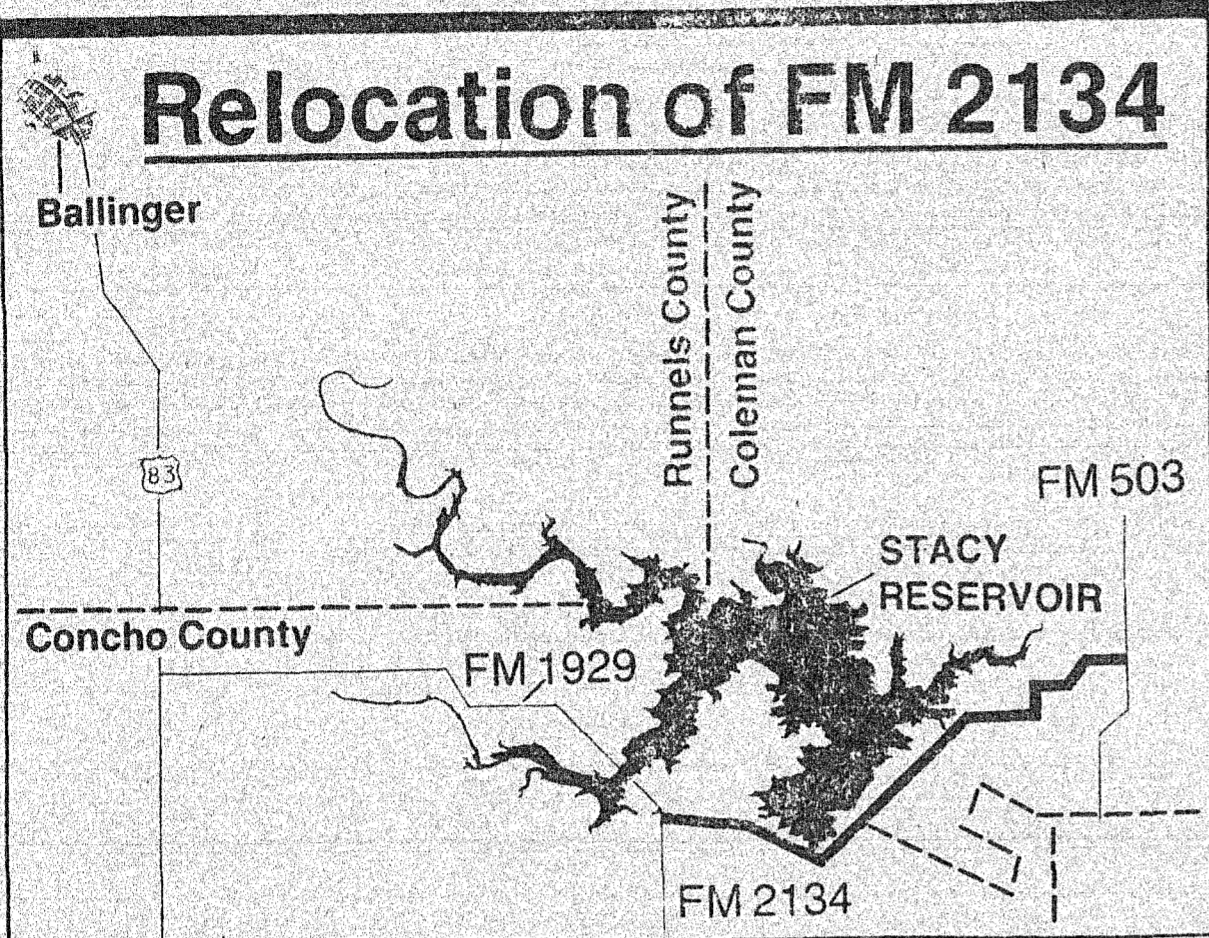
COWPOKES By Ace Reid

"You'd think the County Commissioners would have made a curve in this road jst to break the monotony!"

Santa Anna National Bank
Deposits Insured By FDIC Up To \$100,000
Ask About Our Interest-bearing Checking Accounts \$1,000 Minimum
Pass Book Savings Certificates of Deposit

Substantial Interest Penalty Is Required For Early Withdrawal

State Approves Road Project Proposed By County Officials



Raymond Stotzer. "The original proposal would not have served the lake."

The three highway commissioners agreed unanimously to put \$2,868,000 of state money into the project to allow the revised plan to go through.

The Colorado River Municipal Water District, which is building the dam on the Colorado River, will pay the rest of the estimated \$4,068,000 total relocation costs.

The remainder is the \$1.2 million the district originally agreed to pay as the total price of the road under the first plan.

The new route was proposed by area residents and Coleman County officials during public hearings on the road project. They argue that the cheaper but longer route would not be used.

The relocation is necessary because the old FM 2134 will inundated by lake waters.

The new plans calls for the relocation to extend from another-to-be relocated road, FM 1929 in Concho County, to FM 503 in Coleman County. That's a distance of 13.3 miles and means the road will run close around the southeastern part of the reservoir and right below the dam.

"Local landowners and the driving public in that area took exception to the original proposal," Roger Welsh, highway department deputy director, told the three commissioners.

Commissioner says putting the additional money into the project makes sense since the original proposed road would not have properly served the public's needs.

"We were about to build a road, just to build a road," he said, "one that would get about ten cars a day on it."



LAST YEAR'S DELTA OMICRON CHRISTMAS PAGEANT WINNERS were on hand last Sunday afternoon to pass the crowns along to this year's winners. Mr. Christmas and Miss Christmas of last year were, from the back, Dan Benton and Amy Sauveur; Junior Mr. and Miss Christmas were Tom Guthrie and Shamey Brand; Little Mr. and Miss Christmas, Aaron Guthrie and Kristen Keeney; and at the bottom, Belle and Beau, Irwin Loyd and Sabrina Martin. Watch next week's Santa Anna News for this year's contestants.

Final relocation site for Farm-to-Market Road 2134 (solid black line).

Bowing to strong pressures from area residents and Coleman County officials, Texas Highway commissioners announced last week they have agreed to relocate Farm-to-Market Road 2134 directly south of the Stacy Dam Reservoir.

The decision overturns an original plan to locate the road farther south. The old plan would have meant a shorter, cheaper new road that tied in with the existing roads, but would also have required a longer route for motorists around

the reservoir. "The original proposal would also not have provided access to the lake. "This is going to be a tourist attraction out in that area," said Highway Department director,



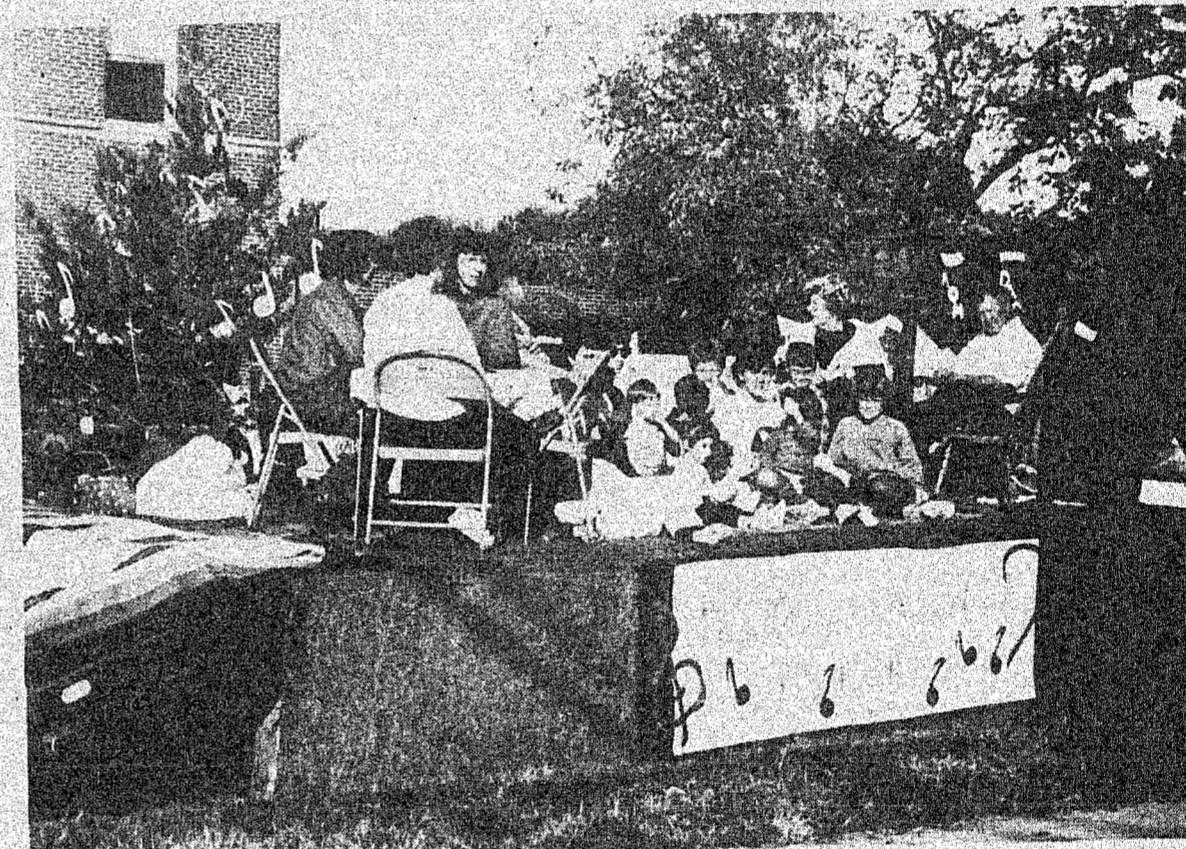
NOVEMBER RECORD BREAKING MONTH FOR LOAVES & FISHES

According to a report received last week, the Loaves and Fishes Ministry has expanded significantly this fall. According to the Grantland Groves, coordinator, this growth is due principally to two factors: community awareness and community support. Groves states that while some improvement of the economy is evident, nevertheless, serious economic need persists... especially for those unemployed and underemployed.

Monthly distribution to households were the most numerous to date, with 262 households receiving food distributions in November - compared to the previous high of 256 distributions last month. Of this number were 31 households receiving food from the food pantry for the first time. There were 499 meals served on Tuesdays and Thursdays of November with the

exception of Thanksgiving day. Making an average of 62 people sharing in the meals prepared by the Loaves and Fishes Kitchen. The previous daily high average was 55 in April.

The Loaves and Fishes Kitchen welcomes the contribution of deer meat and wild turkey for use in its meals. Jeff's Meat and Pritchard Classic Meat & Processing, deer processors in Coleman, have both offered assistance in processing deer meat at no cost to the program. If you would like to contribute a field-dressed deer, contact Graham Bevel at 625-3782.



A Mountainside Viewpoint

By Polly Warnock

Teach Safety With Skateboards

According to a recent article in an area newspaper, the business community of one city has grown weary of their customers having to battle skateboarders on the sidewalks in front of local businesses and has asked the city council to pass an ordinance banning the dangerous skateboards on sidewalks of the city.

Only last Friday, here in Santa Anna, an incident happened in front of one of the downtown businesses that could have been very disastrous. An older couple was approaching the entrance to a shop when a youngster on a skateboard came zooming by and knocked the gentleman off balance. Someone happened to be near by to catch him as he began to fall and helped to avert a possible broken bone.

In checking with a city official we find that Santa Anna has an ordinance that forbids skateboards on the sidewalks of the city and it might be well if parents caution their children about the hazards as well as the fact that it is simply illegal to use them on the sidewalks.

One of the most dangerous places in the city for such play is in the area of the post office, where this writer has, on several occasions, seen accidents almost happen between skateboards and some of our older citizens and even some not so old!

So parents, please be aware of where your children are using their skateboards and please teach them to use them in a safe and considerate manner wherever they use them.

Report Shows County Sales Up 2nd Quarter

According to a report from the office of State Comptroller Bob Bullock last week, gross sales in Coleman County during the second quarter of this year were well above the same period of last year.

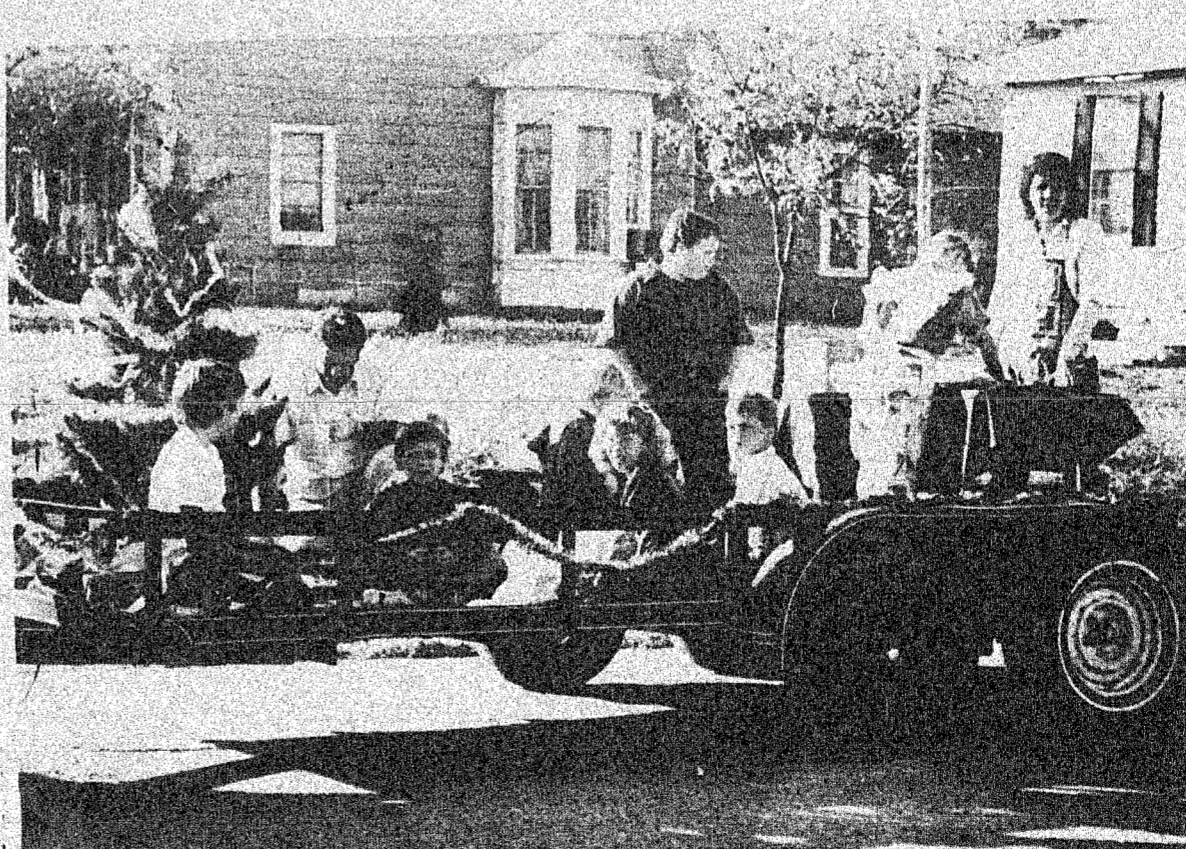
The report covered industries and the retail trade division. Gross sales for the County's industries for the second quarter were up 13.1% over last year and gross sales for retail outlets were up 19.2% over the same period for the previous year. There were 237 industries reporting in Coleman County and the gross sales for the quarter were \$17,757,425 for the second quarter as compared to \$15,697,313 for the same period in 1987. Use tax purchases in the second quarter totaled \$25,309 and the amount of sales subject to the state sales and use tax

totalled \$6,298,428.

In the retail trade division, there were 150 outlets reporting a gross sales for the quarter of \$10,677,959, which was well above the total for the same period of last year, \$8,955,626. Use Tax purchases were \$4,036. Amount subject to the state sales and use tax in the retail division was \$4,935,786.

Reporting outlet represent the number of individual business locations with a sales and use tax permit who filed a return. gross sales represent the total amount of all sales, leases, and rentals of tangible personal property and all labor and service charges made during the reporting period.

First place Christmas Parade float was "Musical Christmas At Home" entered by Delta Omicron Sorority of ESA.



Second place in the float division went to The Santa Anna Fire Dept. Aux. for their entry depicting a family preparing their home for Christmas.

Did You Know?

- That women are the fastest growing prison population?
- That pets can have heart transplants?
- That people still raise barns the old-fashioned way?
- That China has progressed faster in the past ten years than in its entire history?



Making A List... And Checking It Twice

Texas Coalition for Safety Belts

TEXAS FRIENDLY SPOKEN HERE



Mountaineers Win Four Over Rising Star And Compete In Zephyr Tournament

SAHS Boys 82, R. Star 40

The Mountaineer basketball teams took four games from Rising Star last Tuesday night here in Cullin Perry Gymnasium.

The SAHS boys, coached by Jerry Magin won their third of the season against just one loss as they caged the Wildcats from Rising Star, 82-40. The Mountaineers moved to a quick lead and finished the first quarter with 22-10 and went on to dominate the rest of the game.

Herbert Jackson led the scoring attack and finished the evening with 8-7-23. James Hartman got into the scoring with 5-2-13 and Reece McIver 4-0-9 with one three pointer included. Dennis Absher shot in the double figures with 4-2-10, Bobby DeLeon 3-1-7, Scotty Anderson 3-

0-6, Buddy Hardin 2-1-5, Gary Keas 2-0-4, Alonzo Hernandez 2-0-4, and Sammy Ramirez 0-1-1.

The Mountaineers now have a 3-1 record and Rising Star is 0-3.

Junior Varsity Boys 48, Rising Star 19

Mike Taylor led the JV boys in scoring by shooting 6-0-12 for the game as they beat the Rising Star JV 48-19. Bradley Wise contributed 3-2-8 to the win and Lonnie Kirven 4-0-8, Salvador Perez 3-0-6, Chris Simmons 2-0-4, Dan Benton 2-0-4, Alex Frausto 1-0-2, Jason Dean 1-0-2, Grady McIver 1-0-2. The Mountaineer JV is now 1-1 for the season.

Coach Magin comments that both the varsity squad and the JV are continuing to improve and will keep working hard during the non-district part of the season in order to be ready for district competition which starts in mid-January.

SAHS Lady Mountaineers 47, Rising Star 42

The Lady Mountaineers, coached by Gerald Brister, had a little tougher time of it than the boys but held on to defeat the Rising Star girls 47-42 to even their record at 2-2 along with Rising Star who also is at 2-2 for the season.

Sisters Kristi Morrow and Tammi Morrow led the ladies putting the points on the board. Sophomore Kristi finished with 8-2-18 and senior Tammi with 7-1-15. Delia DeLeon hit the basket for 3-8 which included two three

pointers. Sylvia Castillo contributed 1-1-3, Teresa Frausto 1-0-2 and Shannon Brown finished the evening with 0-1-1 and a bruised arm after a hard fall.

Coach Brister commented that Kristi Morrow had a very good game, 18 points and 12 rebounds. He added that the defense is playing excellent ball and is the key to their success at the present time. Tammi Morrow has left the team for personal reasons and Sherry Michon has moved to the varsity squad.

Lady Mountaineer JV 24, Rising Star 22

The Lady Mountaineer JV edged by Rising Star 24-22 to bring their record to 2-1. Leading the JV girls in scoring was Sherry Michon with 5-1-12. Others getting in the scoring column were Patricia Frausto 3-0-6, Martha Frausto, Nora Castillo and Belinda Deal with 1-0-2 each.

Mountaineers & Ladies In Zephyr Tournament

Girl's Action

In the first round of the Zephyr tournament last weekend, the SAHS Lady Mountaineers bowed to the Zephyr host team, 48-37. According to Coach Gerald Brister, "We couldn't find the basket. We hit only 14 of 79 shots attempted."

Shannon Brown led the Santa Anna ladies in shooting with 11 points on the board. Kristi Morrow accounted for 8 points as did Delia DeLeon, Maria Moreno 3, Sylvia Castillo 2, Eva Frausto 2, Sherry Michon 2, and Laura Frausto 1.

The Santa Anna girl's JV squad took a sound licking from a powerful Gustine varsity team that ended up winning the tournament championship. In the 92-8 loss Belinda Deal led the ladies with 4 points and Patricia Frausto and Martha Frausto had 2 each.

In the second round of play the outcome was a little more pleasant for the JV girls as they lost to the Sidney varsity team, 32-25. Deal again led in scoring with 12 points, followed by M. Frausto 7, Missy Bryce 4, and P. Frausto 2.

In the second round of tournament action the SAHS varsity girls beat the Zephyr JV 46-23 to gain entry to the consolation round. In the win over the Zephyr JV Moreno scored 12 points, K. Morrow 10, Brown 8, E. Frausto 6, Castillo 5, G. Frausto 2 and Michon 2.

The Santa Anna Lady Mountaineers won the consolation trophy with a 59-24 win over Sidney. Shannon Brown was Santa Anna's top shooter in that win with 16 points on the board. Moreno accounted for 9, Castillo 6, L. Frausto 5, Michon 5, DeLeon 4,

Morrow 4, E. Frausto 4, G. Frausto 4, and T. Frausto 2.

Boy's Action

The Santa Anna Boys won their first game of the tournament 82-43 over Gorman JV. Reece McIver led the attack with 21 points, followed by Herbert Jackson with 11, James Hartman and Bobby DeLeon with 10 each, Scott Anderson 8, Sammy Ramirez, Bradley Wise and Dennis Absher with 6 each, Gary Keas 4.

In game 2 the Mountaineers were defeated by Gorman varsity team 66-59. McIver again led in scoring with 17 points, Anderson 15, DeLeon 8, Jackson 8, Keas 8,

Hartman 6, Perez 3, and Absher 2.

Game three saw the Mountaineers bowing to Sidney in a tough fought 69-68 loss. By not scoring in the first quarter, the Mountaineers were unable to pull ahead although they stayed with the pack in the remainder of the game. Hartman and McIver had 15 points each, Jackson 12, DeLeon 10, Perez 9, Absher 6 and Keas 2.

The JV boys lost their first tournament game to Gustine varsity by a score of 89-57. Mike Taylor was top scorer with 12 points, Alex Frausto 11, Perez 8, G. McIver 6, Dean, Dixon and Benton 3 each and Kirven 2.

In the second matchup for the JV squad, they were defeated by the Priddy varsity 71-41.

Citizen Of The Week



Freda Vasquez, a freshman at Santa Anna High School was named Citizen of the Week during the school assembly on Monday morning.

"Freda has been very helpful in the library", stated Sybil Eubank, school librarian. She takes the initiative to get things done when the need arises. Freda has worked hard to overcome a language barrier and is most willing to learn new things.

Santa Anna High school is proud to recognize Freda Vasquez as Citizen of the Week.

Freda is the daughter of Mrs. Herlinds Vasquez.

SANTA ANNA MOUNTAINEER BASKETBALL 1988-89



December 9
Gustine There 5:00
JV Girls
V Girls & Boys

December 13
Eula Here 6:30
V Girls & Boys

We Support
the Mountaineers!

Santa Anna News

Coleman County Telephone
Coop

Tomlinson Feed & Seed

H & H Food Mart

Santa Anna National Bank



School Menu

MONDAY
BREAKFAST: Cereal, juice and milk.
LUNCH: Homemade pizza, buttered corn, tossed salad with dressing, ice cream, milk.

TUESDAY
BREAKFAST: Donuts, Juice, Milk.
LUNCH: Meat and cheese nachos with pepper, Mexican salad, Spanish rice, refried beans, cherry cobbler, cornbread, milk.

WEDNESDAY
BREAKFAST: Cinnamon toast, juice, milk.
LUNCH: Stew, Cheese sticks, carrot and celery sticks, apples, crackers, milk.

THURSDAY
BREAKFAST: Cheese rolls, juice and milk.
LUNCH: Fried chicken, gravy, cream potatoes, pea salad, jello with fruit, hot rolls, milk.

FRIDAY
BREAKFAST: Cereal, applesauce, milk.
LUNCH: Chili dogs with cheese, tator tots with catsup, tomato wedge, brownies, milk.



Make Safety Belts
Part of Your Routine

Santa Anna High School 1988-89 Basketball Schedule

DATE	OPPONENT	PLACE	TIME	TEAMS
11-15	EDEN	THERE	4:00	JV BOYS, GIRLS V GIRLS, BOYS
11-18	RISING STAR	THERE	4:00	JV BOYS, GIRLS V GIRLS, BOYS
11-22	BLANKET	HERE	4:00	JV BOYS, GIRLS V GIRLS, BOYS
11-29	RISING STAR	HERE	4:00	JV BOYS, GIRLS V GIRLS, BOYS
12-1-3	ZEPHYR TOURNEY	THERE		V GIRLS, BOYS
12-6	EULA	THERE	6:30	V GIRLS, BOYS
12-9	GUSTINE	THERE	5:00	JV GIRLS V GIRLS, BOYS
12-13	EULA	HERE	6:30	V GIRLS, BOYS
12-15-17	S. A. TOURNEY	HERE		
1-3	BAIRD	HERE	4:00	JV BOYS, GIRLS V GIRLS, BOYS
1-6	BLANKET	THERE	4:00	JV BOYS, GIRLS V GIRLS, BOYS
1-10	BAIRD	THERE	4:00	JV BOYS, GIRLS V BOYS, GIRLS
1-13-14	S.A. JV TOURNEY	HERE		JUNIOR VARSITY
1-17	*NOVICE	THERE	TBA	TBA
1-20	*BROOKESMITH	THERE	6:30	V BOYS & GIRLS
1-27	*PANTHER CREEK	THERE	6:30	V BOYS & GIRLS
1-31	*BROOKESMITH	HERE	6:30	V BOYS & GIRLS
2-3	*NOVICE	HERE	6:30	V BOYS & GIRLS
2-7	*PANTHER CREEK	HERE	6:30	V BOYS & GIRLS

* DISTRICT GAMES

BOYS BASKETBALL COACH- JERRY MAGIN
GIRLS BASKETBALL COACH- GERALD BRISTER

Jr. High Basketball Schedule

DATE	OPPONENT	PLACE	TIME	TEAMS
11-21	Brookesmith	Here	6:00	Boys & Girls
11-28	Offen	There	6:00	Boys & Girls
12-5				
12-12	Panther Creek	There	6:00	Boys & Girls
12-19	Novice	There	6:00	Boys & Girls
1-5	Brookesmith	There	6:00	Boys & Girls
1-9	Offen	Here	6:00	Boys & Girls
1-23				
1-30	Panther Creek	Here	6:00	Boys & Girls
2-2-4	Panther Creek Tourney	There		Boys & Girls
2-6	Novice	Here	6:00	Boys & Girls

Dates for SAJHS Tourney will be determined at a later date.

Girls Coach - Marsha Pool
Boys Coach - Dean Bass

Texas A&M researcher finds school counselors need suicide training

COLLEGE STATION — High school counselors have a weakness in identifying suicidal behavior in students, research at Texas A&M University reveals.

After a student he was counseling committed suicide, Brooke Pitcock, a high school counselor in Texas for almost nine years and a Texas A&M doctoral student, was prompted to find out how many counselors recognized the warning signs of suicide.

"The increase in adolescent suicide in the last 25 years is startling and counselors often have the first opportunity to observe suicidal indicators in their students," said Pitcock.

"The research showed that counselors are deficient in recognizing the warning signs of suicide and that many of the counselors said they feared working with suicidal adolescents because they felt they were inadequately prepared."

Simmons, Perez and Taylor led scoring with 11 each, 3 each for Bryce and Dean, and 2 for Benton.



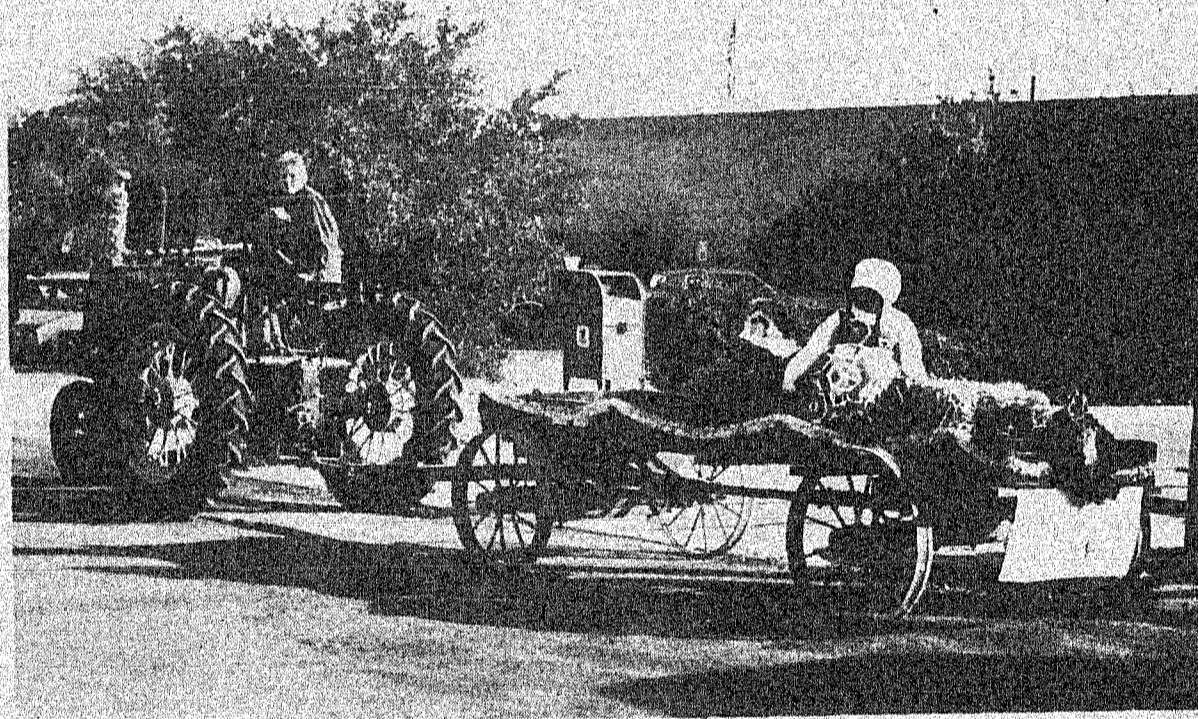
Rachel Phillips, Rhett Guthrie and Kit Horne Of West Texas Utilities

Local 4-H Members Honored

Two local 4-H members were honored during the Annual District 74-H Gold Star Banquet. Site for the November 28th banquet was Angelo State University's Houston Harte Ballroom. The honorees were Rhett Guthrie and Rachel Phillips both of the Coleman County Senior 4-H Club. Rhett is the son of Monte and Sandra Guthrie and Rachel is the daughter of Jerry and Priscilla Phillips, all of Santa Anna. Twenty-six honorees from the 17 county district received the coveted Gold Star Pin, symbolic of the highest county 4-H honor awarded by the Texas Agricultural Extension Service. Honorees are selected by a local Committee on the basis of personal development, leadership, achievement in 4-H projects and activities and contributions to the overall county 4-H program. Rhett's major project area has been in sheep. Rachel has been active in the Clothing project. Keynote speaker was Dr. Don Shaw. Shaw addressed the assembly challenging youth to take advantage of the opportunities in their life. He pointed out the youth can choose their life takes or let others choose it for them. The honor banquet was sponsored by the Texas Agricultural Extension Service and West Texas Utilities.



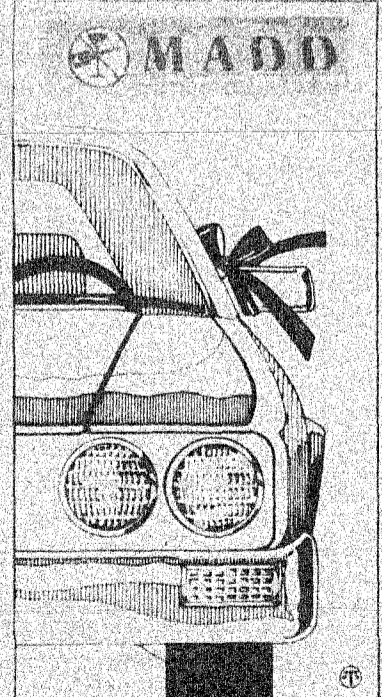
America's first compulsory education law was passed in 1647 in Massachusetts.



Third place float in the Christmas parade "Christmas on the Farm" was entered by Bill Garrett. His daughter Cynthia drives the tractor.

Mothers Against Drunk Driving Urge "Tie On One For Safety"

A simple red ribbon tied to your vehicle door (or other visible location) can mean more than the most beautifully iced gingerbread house or the most exquisitely wrapped gift this holiday season. Mothers Against Drunk Driving (MADD) is asking everyone to tie a red ribbon to their left vehicle door handle (or any other visible location of their vehicle) to serve as a reminder to anyone entering the vehicle not to drink and drive. The red ribbon also serves as a sign that the vehicle owner has chosen to "tie one on for safety" and join MADD in its hope for a safe and sober holiday season. Actress Connie Sellecca is the campaign's national spokesperson for the second year. The Southland Corporation is the national sponsor. Nearly 6,000 of Southland's 7-Eleven stores will distribute red ribbons during the holiday season. The sobering fact is that nearly 24,000 people are killed and over 500,000 people are injured each year in alcohol-related traffic crashes. This simple red ribbon—beginning with more than one million distributed in 1986 to more than ten million in 1987—has become a meaningful tradition that's here to stay. Join the millions of citizens helping to change the meaning of "tie on one" by tying a red ribbon onto your vehicle as a symbol of your commitment to make this a safe and happy holiday season for your family, friends and country.



Mothers Against Drunk Driving is asking Americans to tie red ribbons onto their cars and join in the hope for a less violent holiday season.



Place-Kickers

So far this season, we've seen a lot of games decided in the closing seconds by the success of place-kickers. When that happens a kicker is sure to end up either a hero or a scapegoat. A kicker shouldn't get all the blame when he fails, after all he's depending on the holder, center and blockers to make sure his job is done right. But I do believe that place-kickers deserve anything they get for doing that job. Here's why. A quarterback may throw two interceptions in a game, but he has another 35 times to make up for it. A running back like Eric Dickerson may fumble the ball once or twice; but he still has another 25 carries to make up for the fumbles. Even a fumble that stops a drive will be forgotten if a back has 200 yards at the end of the game. But a place-kicker may have only one chance per game to go out on the field and make that field goal or extra point. If he's lucky, he'll have two or three opportunities. But they are still judged on their ability to be perfect every time they walk out on the field. And it's not easy. There's an awful lot of pressure on these guys who, a lot of times, have the game hinging on their 30- or 50-yard field goal in front of 70,000 screaming fans. Often to add to the pressure, the opposing team will call a time-out and make the kicker think about the kick a while longer. Kickers sometimes seem left out from the rest of the team because they're always practicing by themselves and are never involved in team scrimmages. But football teams need these people like baseball teams need relief pitchers. And like relief pitchers, they are expected to come in and do something good. Sure it's hard for the rest of a team to drive yard by yard down the field, only to have a kicker trot on and miss a chip-shot kick. That particularly infuriated my old coach with the Bears, the great George Halas. I remember one time he called our kicker something that can't be repeated in a newspaper after he missed the ball entirely on an easy kick. It cost us the game. But that's an extreme case where the blame was the kicker's entirely. Most of the time, professional kickers will make the kick if everybody is doing their job right. And let's face it, what's more exciting than winning a game on a long field goal just as time runs out? **ll**

Gale Sayers is considered one of the greatest running backs of all time. The former Chicago Bear is a member of the National Football League's Hall of Fame. 1988 PM Editorial Services

Name Change For FFA

The word "farmers" has been taken out of the official name of the youth organization previously called Future Farmers of America, now known simply as "the FFA". In addition, the youth education program will be known nationally as agricultural education rather than vocational agriculture, but in Texas will be called agricultural science and technology, said Dr. Herman Brown of A & M's Agricultural Education Department.

YOU: A MODEL?

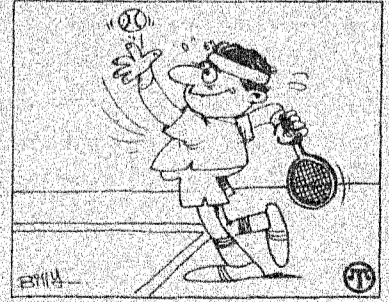
Have you ever been told you could be a model?—or do you know you just have what it takes?—then you can be the next winner of a \$10,000 modeling contract to model one leading sportswear company's fashions.



Gitano, the sportswear manufacturer, has announced its third nationwide search for a young, spirited teen between the ages of 14 and 19 to become the new 1988 Gitano Girl. John Amodeo, director of advertising and marketing for Gitano, says, "we're looking for a girl with self-confidence and a unique fashion attitude and style. The ability to express her individuality, spirit and personality through fashion will make her the new Gitano Girl." Contestants will be judged by a panel of experts in the fashion industry. The judges will select 15 finalists who will be the company's guests for a weekend in New York. The winner will be announced at the Gitano fall fashion presentation. So, if you think you've got what it takes—take the first step and write to Gitano for your official entry form for the 1989 Gitano Model Search: Gitano Model Search, P.O. Box 2207, Young America, MN 55399-2207. Entries close February 25, 1989.

Tennis Tips

The Serve: Helpful pointers on how to improve your game from the experts at Jeep/Eagle, sponsors of the \$677,500 Eagle Tournament of Champions.



Noted for his big serve is tennis champion Ivan Lendl.

The net result of a good serve will be a big improvement in your game. Remember, at the start of the serve, point your racket toward the net and place one foot comfortably behind the other. As you toss the ball into the air, start your backswing. Move the racket back until it is pointing toward the ground. As you bring it up to meet the ball, make sure your arm is fully extended and the ball slightly in front of you when racket and ball meet. It's very important to end the stroke with a strong follow-through. Since the serve is such a big part of the game, practicing this stroke can help give you a winning edge.

High School Honor Roll Second Six Weeks

Seniors

All A, 90 and Above

- Rhonda Fleeman
James Hartman
Rachel Phillips
Laurie Powers

All B, 80 and Above

- Dennis Absher
Jenny Benton
Marcie Bruce
Christy Casey
Holly Hoffman
Reece McIver
Tammi Morrow
Jackie Smith

Sophomores

All A, 90 and Above

- Alex Frausto
Jaffrey Hartman
Chris Simmons

All B, 80 and Above

- Charles Dixon
Zane Keeney
Casey Moore
Glenda Taylor

Freshmen

All A, 90 AND ABOVE

None

All B, 80 and Above

- Troy Abernathy
Jason Dean
Grady Clay McIver
Deborah Michon
Tommy Williford

Juniors

All A, 90 and Above

- Scotty Anderson
Missi Cook
Robert Duss
Rhett Guthrie
Shera Lewis
Michael Powers

All B, 80 and Above

- Toby Absher
Bobby DeLeon
Laura Frausto
Kathy Hudson
Gary Keas
Mary Mata
Jeff Morris
LeeAnn Musick
Jodi Watson



Junior High & Elementary Honor Roll 2nd Six Weeks

8th Grade

All A's
Lori Castillo
Jeannie Patterson

A Average
Brandi Horner

No Grade Below B
Adel DeLeon
Rusty Fleeman
Betsy McIver

6th Grade

All A's
None

A Average
Misty Bradley
David Diaz
Jamie Ellis
Manuel Frausto
Tom Guthrie

No Grade Below B
Jerry Day
Jennifer Morris
Ester Patino
Chanda Simmons

4th Grade

All A's
Tim Abernathy
Chris Cheaney
Briana Horner

A Average
Ami Beal
Devin Cook
Kathy Cooper
Janni Day

No Grade Below B
Rachael Gurrero
Chris Lewis
Darbi Neff
Rosa Suarez
Scott Watson

7th Grade

All A's
Christi Beal
Amy Boyet
Mitchell Guthrie
Kyra Neff
Becky Simmons

A Average
Shelly Carter
Jefflyn Hudson
Darla Jones
Karen Lewis
Sandi Watson

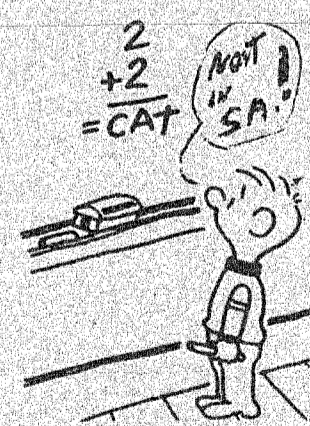
No Grade Below B
Elisha Blanton
Bryce Ellis
Lana Harvey

5th Grade

All A's
Dwana Snipes

A Average
Ben Diaz
Donna Freeman
Elsa Garza
Bobby Malacer
Brandi Martin
Sally McIver
Melonic Smith

No Grade Below B
Barbara Ford
David Herrod
Amber Huggins
Lee Keeney
William Loyd
Melissa Stark
Rachel Vyvjala



First Coleman National Bank
All Types of Savings Accounts
Member F.D.I.C.
"Always Willing - Always Prepared"
Your Good Neighbor Bank
You Can Bank Anytime
When You Bank By Mail
We Sponsor The News Each Day
At 12:30 Over KSTA

Walker Funeral Home
Pre-Arranged Funerals
Phone 625-4103
Coleman, Texas

DECEMBER 8 1988

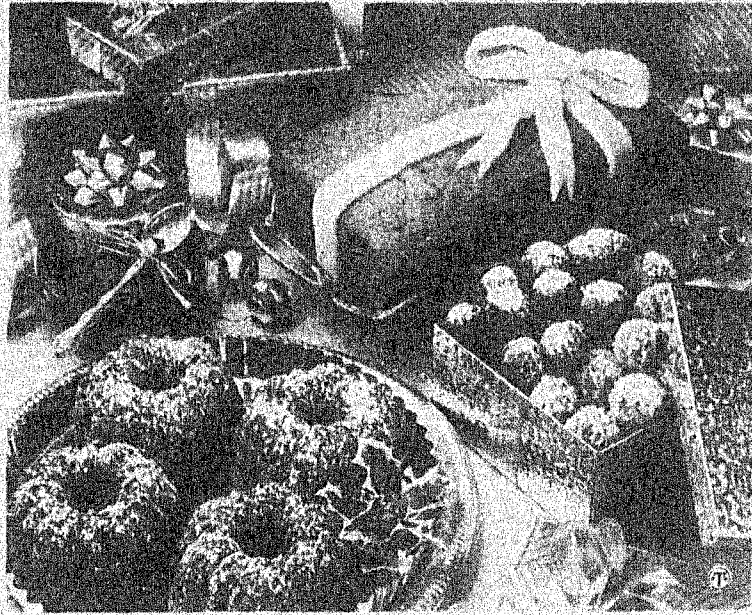
FESTIVE, ELEGANT HOLIDAY FOOD GIFTS

The holidays are a special time for letting good friends and neighbors know you care. This year, make them one of these festive yuletide food gifts.

Summer's fresh fruit might be long gone but it's never too late to make Autumn Jam. Ready-to-use pumpkin pie mix makes this jam convenient to prepare. Another attractive food gift is Nut and Pumpkin Poundcake. This scrumptious dessert loaf features a festive edible "ribbon".

Rich Chocolate Pumpkin Truffles and Holiday Almond Treats are scrumptious little sweets, perfect for yuletide indulgences. Both are easy to make and should be prepared ahead to allow the flavors to blend to the fullest.

What would the holidays be without fruitcakes? Make unique Holiday Pumpkin Mince-meat Fruitcakes by preparing them in mini-bundt pans and dusting with powdered sugar.



Heat to full rolling boil, stirring constantly. Continue boiling for 1 minute, stirring frequently. Skim off foam, if necessary. Pour into prepared jars.

Holiday Pumpkin Mince-meat Fruitcakes
(Makes 18 mini-bundts)
2 eggs, lightly beaten
3 1/4 cups (30-ounce can) LIBBY'S Pumpkin Pie Mix
2 packages (17 ounces each) date bread mix
3 cups candied cherries, halved
2 cups walnuts or pecans, coarsely chopped
1 cup mincemeat
1 cup golden raisins

In large bowl, beat eggs and pumpkin pie mix together. Blend in date bread mix. Stir in cherries, walnuts, mincemeat, and raisins. Spoon into generously greased mini-bundts, filling 3/4 full. Bake in preheated 325°F oven for 40 to 45 minutes or until toothpick comes out clean. Cool 10 minutes; remove from pan to cooling rack.

Nut and Pumpkin Poundcake
(Makes 1 large loaf)
1 3/4 cups all-purpose flour
1/2 cup pecans, finely chopped or ground

1 1/2 teaspoons ground cinnamon
1 teaspoon baking soda
1/2 teaspoon salt
1/2 teaspoon ground mace
1/4 teaspoon ground nutmeg
1 cup butter, softened
3/4 cup granulated sugar
1/2 cup packed light brown sugar
3 eggs
1 cup LIBBY'S Solid Pack Pumpkin
Marzipan Bow

In medium bowl, combine flour, pecans, cinnamon, baking soda, salt, mace, and nutmeg; set aside. In large mixer bowl, cream butter, granulated and brown sugars. Add eggs; beat until light and fluffy. Mix in pumpkin and dry ingredients; beat well. Pour into greased and floured 5 x 9-inch loaf dish. Bake in preheated 325°F oven for approximately 1 hour 15 minutes, or until toothpick comes out clean. Cool in pan 10 minutes; turn onto wire rack to cool completely.

Marzipan Bow On board lightly dusted with powdered sugar, roll out one 7-ounce package marzipan or almond paste into rectangle 4-inches wide, 20-inches long, and 1/16-inch thick. Cut into four 1/2-inch wide strips. Arrange two strips over bread to create tied package effect. Create ribbon bow ends by cutting two 5-inch lengths. Attach at point where marzipan ribbons cross; press to hold. Make bow by creating two ribbon loops; pinch center. Add bow where ribbons cross; press to hold.

Autumn Jam
(Makes 6 cups)
3 1/4 cups (30-ounce can) LIBBY'S Pumpkin Pie Mix
1/2 cup lemon juice
2 teaspoons ground ginger
1 package (1 3/4 ounces) dry fruit pectin
4 1/2 cups sugar

In large saucepan combine pie mix, lemon juice, ginger, and pectin. Heat to boiling, stirring constantly. Add sugar.

Rich Chocolate Pumpkin Truffles
(Makes 4 dozen)
2 1/2 cups crushed vanilla wafers
1 cup ground almonds, toasted
3/4 cup sifted powdered sugar, divided
2 teaspoons ground cinnamon
1 cup (6 ounces) chocolate pieces, melted
1/2 cup LIBBY'S Solid Pack Pumpkin
1/3 cup coffee liqueur or apple juice

In medium bowl, combine vanilla wafer crumbs, ground almonds, 1/2 cup powdered sugar, and cinnamon. Blend in melted chocolate, pumpkin, and coffee liqueur. Form into 1-inch balls. Refrigerate. Dust with remaining 1/4 cup powdered sugar just before serving.

Holiday Almond Treats
(Makes 4 dozen)
2 1/2 cups crushed vanilla wafers
1 3/4 cups ground almonds, toasted, divided
1/2 cup sifted powdered sugar
1/2 teaspoon ground cinnamon
1 cup LIBBY'S Pumpkin Pie Mix
1/3 cup almond liqueur or apple juice

In medium bowl, blend vanilla wafer crumbs, 1 cup ground almonds, powdered sugar, add cinnamon. Stir in pumpkin pie mix and almond liqueur. Form into 1-inch balls. Roll in remaining 3/4 cup ground almonds. Refrigerate.

Holiday Gift Ideas

Homemade Holiday Gifts: Easy to Make, Fun to Receive



Holiday gifts become holiday treasures when the gifts are created by you. Making your own holiday gifts does not have to be difficult or expensive. In fact, with a little creativity and the "right package," you'll easily capture the Christmas spirit.

Here are a few ideas to make your holiday gifts the merriest of all:

• Use votives for more than candles. Fill them with red and green M & Ms, or other small holiday candies, and you've got a perfect gift for a child.

• Fill an ice bucket, such as Libbey Glass Winterland Ice Bucket, with ice and a bottle of wine. Surround the wine bottle with pine sprigs and secure them with a bright red bow.

• Include stemware and a platter of cheese and fruit. Coordinate with the ice bucket by using matching Goblets and Server, and you have the ideal gift for your favorite couple or family!

• Present homebaked goodies in special holiday containers, such as Libbey's Food Storage Jars, Crystal Pine Trees, Crystal Snow-

men or Crystal Bells. When filled with layers of red and green candies, or homemade cookies, these make thoughtful—and tasty—gifts.

Decorative platters, are also perfect for presenting traditional holiday baked goods—and they make wonderful keepsakes!

• Decorate your cakes especially for the holidays. Use Christmas stencils and sift powdered sugar through the stencils onto icing, and add green and red sprinkles. Served on an attractive platter, this makes a perfect hostess gift.

• Make fruits more festive than ever. Dip strawberries first in white chocolate, then in dark chocolate. The strawberries' green tops and red color give them a festive look, and when presented in Libbey's Holly & Berries Bowl, these sweets become a nice party favor or gift for a neighbor.

• If you don't have time to bake, fill holiday containers with Christmas-scented potpourri.

• Make a batch of eggnog or hot buttered rum special by including your own recipe and a set of Christmas mugs.

Christmas Traditions Around the World



A white-gowned "Lucia" of Sweden celebrates the return of light after the darkest time of year.

One of the most heart-warming ways Christmas is celebrated around the world is Santa Lucia's Feast in snowy Sweden.

Row 1 about December 13, all of Sweden sings a special song about Santa Lucia. In the early morning hours, white-gowned young "Lucias" crowned with candles appear in restaurants, offices, schools and factories surrounded by their attendants draped in white. Behind them are "star boys," young men in white wizard's hats covered with silver stars. The lovely vigil begins the festive holiday season in Sweden and celebrates the return of light after the longest night of the year.

Many travellers find Sweden is at its most charming during the holiday season. Along with the lovely Santa Lucia tradition and lasting through Knut's Day on January 14

HOLIDAY SAFETY SENSE

Deck the halls with yuletide safety sense! The Christmas season offers great joy to children who anticipate the big day, but even the holiday of gift-giving can be marred by unforeseen mishaps in the home.

"Each year children are injured by dangerous toys, and families lose their homes due to fires that could have been prevented," says Donna Higgins, a home economist and director of Del Monte Kitchens. "But Christmas doesn't have to be a dangerous time, and adults who incorporate safety into their planning can reduce the risks."

Here are some tips from Punchy, the ambassador for Del Monte's Hawaiian Punch Fruit Punch, to make your home holiday safe:

• When purchasing toys for children, be certain they are appropriate for the child. Careful shopping will detect a toy that is obviously unsafe, but what is finer for some children might be dangerous to others. For example, avoid small toys an infant might choke on.

• Purchase only a fresh Christmas tree and keep it watered to reduce the chance of fire. Only turn on tree lights when you are at home, and check lights annually to be sure the wires are not frayed or damaged in other ways.

• When decorating the house, keep ornaments out of the reach of small children who might cut themselves on glass or other materials.

• Don't place the Christmas tree too close to a fire, where the heat may cause the tree to ignite.

• Remind children to be careful of outdoor traffic during the holidays. Motorists unaccustomed to children playing near the street may present a danger.

• When entertaining family and friends, be sure children avoid alcoholic beverages. Alcohol is dangerous to small children, who may want to sample from the adult punch bowl. The solution: Have an alternative holiday punch for children, but be sure it looks different from the adult variety.

Pink Holiday Punch
1 can (46 fl. oz.) HAWAIIAN PUNCH Fruit Punch, Fruit Juicy Red, chilled
1 can (6 fl. oz.) frozen pink lemonade concentrate, thawed
1 bt. (32 fl. oz.) ginger ale, chilled
Ice cubes
In large pitcher or punch bowl, combine punch and lemonade concentrate; mix well. Just before serving, add ginger ale and ice. Pour or ladle into tall glasses. Garnish with lemon slices, if desired.
Approximately 8 servings (12 oz. each)

when the end of the season is celebrated, Sweden offers holiday visitors a variety of special Christmas foods such as saffron-flavored rolls formed into traditional patterns, gingerbread cookies and a fortified mulled wine, laced with raisins and almonds and called "Glogg."



• A fireplace adds an extra dimension during the holidays, but before the season begins, check to ensure the fireplace is in good working condition. Never leave a fire burning, and be sure to place a screen barrier between the fire and the rest of the room. Teach children to avoid playing near the fireplace where they may fall and injure themselves.

America Has Much For Which To Give Thanks

When America's families sit down at the dinner table this holiday season to reflect on the year's blessings and look forward to the challenges of the new year, they might take some time to consider how fortunate they really are.

"Even in difficult and uncertain times, we Americans enjoy many advantages that allow us to help the poor overseas," says Philip Johnston, executive director of CARE, the international relief and development organization.

"If you ever doubt that, all you have to do is compare what is on the table around which your family will gather this holiday season with the food on the plates of families in the Third World," he says.

The typical American family will feast on a holiday turkey or roast, complete with Mom's favorite stuffing or gravy, sweet potatoes, cranberry sauce, fresh bread, salads, and desserts. They will quench their thirst with milk, juice, coffee, tea, or other beverages.

In flood-ravaged Bangladesh, lucky families will share a CARE package that contains some rice and lentils, a handful of biscuits, and molasses. They will drink polluted river water treated with purification tablets. Many families will have even less.

In war-torn Mozambique, refugees driven off their farmland by terrorist attacks will eat leaves and roots while they wait for relief shipments to reach them.

"According to government statistics, the average American family living in an urban area can expect to spend about \$100 a week for its groceries," Johnston explains. "That's what many Third World families earn in an entire year," he says. "For \$100, CARE can provide enough food to keep 100 families in Bangladesh from starving."

Relief officials say 1988 was an especially tough year on the poor overseas. Record floods, drought, earthquakes, hurricanes, infestations of locusts and a variety of other natural and man-made disasters in dozens of countries through-

Trickham News

By Mrs. O.R. Boenicke

Sunday School was held at 10:00 in Trickham Union Church. Reverend Clifford Nelson, a Baptist minister, preached at 11:00 a.m. Reverend Nelson's wife attended church with him.

I attended church in Trickham and after church I ate dinner with Natalie and Rankin McIver. We watched the cowboys play football and they were beaten by just a field goal this time.

Mary Bible and Pauline Eubanks of Santa Anna visited with me Monday evening.

Howell Martin has been sick for some time. All family members of Betty and Felton Martin's visited Gertrude and Howell Martin during this past week. Lou Vaughn and Florence Stearns visited the Martins Saturday and LaVerne McClatchey visited Sunday morning.

Joyce and Ray Kirk celebrated Thanksgiving in Des Arc, Arkansas with Ray's mother, Lucille Midgett. They spent two nights with Ray's family and one night in Marvell, Arkansas with Joyce's brother, J.W. Robertson, and his family. They enjoyed their scenic trip and seeing relatives. Saturday night, Joyce enjoyed being with 21 of her high school classmates at a thirty-year class reunion of Clarendon High School in Clarendon, Arkansas.

Joyce and Tona Kirk visited with Lou Vaughn Friday evening of this week.

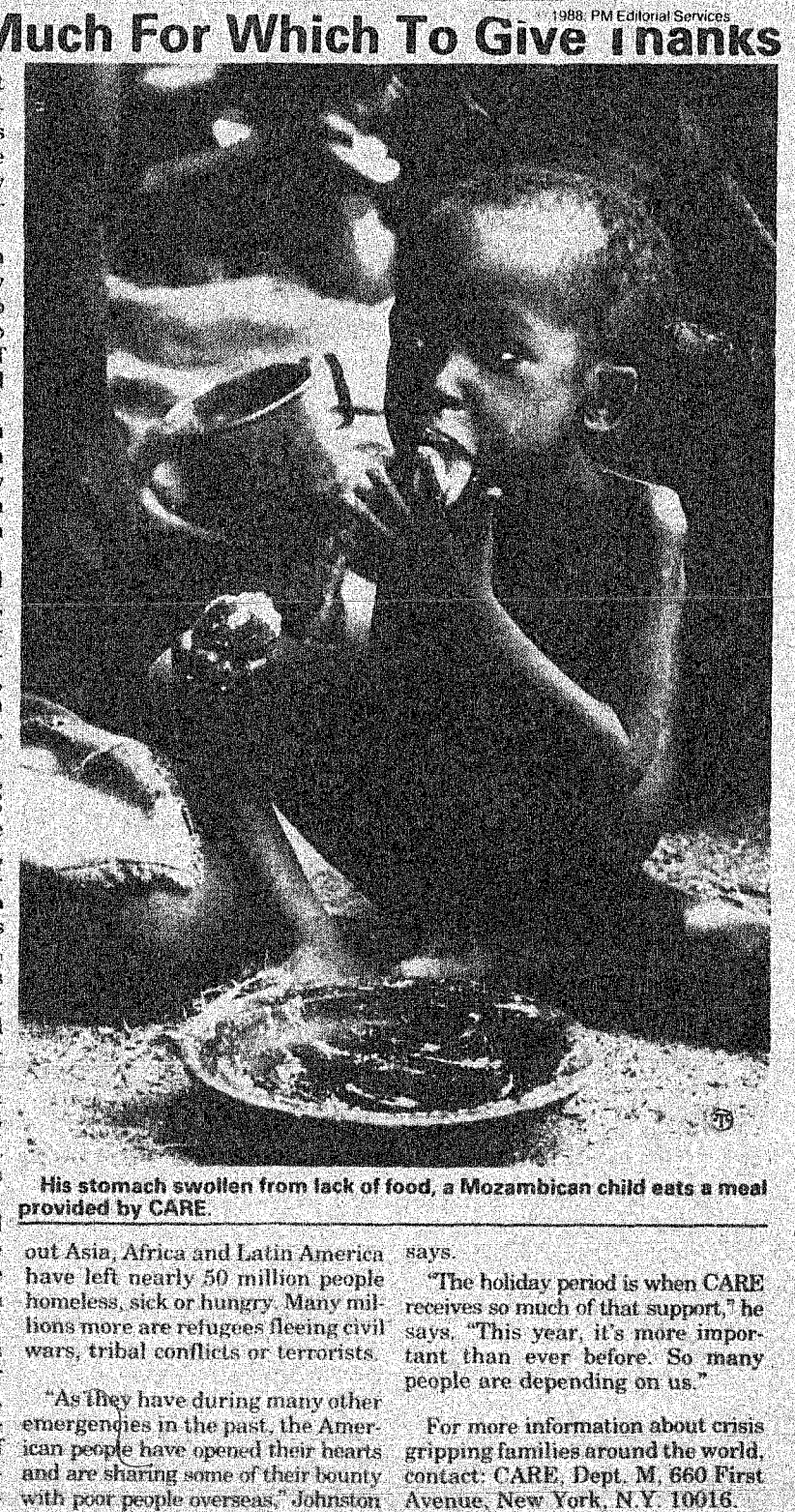
The Trickham Quilting Club met Tuesday afternoon and finished Russic James' quilt. Quilters were Sug Stearns, Russic James, Edna Laughlin, Daisy McClatchey, Geneva McIver, and Lou Vaughn. Visitors were Margaret Barton of Trickham and Ruth and Marvin Smith of San Angelo. The club will not quilt another quilt until after the first of the year. A Christmas party is planned for December 13 at 2:00 p.m. in the Community Center.

The Trickham 84-party was held at the Community Center Thursday at 5:30 p.m. Goldie and George Haynes were party host and hostess for twenty-four players all of whom had a good time.

Ruth and Wayne Whitely of San Angelo spent the day Tuesday with Leona and Hilburn Henderson, Leona Henderson, Sug Stearns and Winnie Haynes visited Daisy McClatchey Sunday evening.

Natalie and Rankin McIver and Mildred and J.R. Reeves attended "The Best of Beef Banquet" in Austin, Texas Friday evening and returned on Trickham Saturday.

Maureen, Keith, and Kelley Bilbrey of Waco visited Margaret and Warren Barton in Trickham Saturday afternoon. Saturday evening the Barton's attended a birthday celebration in Mullin for Margaret's twin sons, Keith Bilbrey of Waco and Karl Bilbrey of Goldthwaite.



His stomach swollen from lack of food, a Mozambican child eats a meal provided by CARE.

out Asia, Africa and Latin America have left nearly 50 million people homeless, sick or hungry. Many millions more are refugees fleeing civil wars, tribal conflicts or terrorists.

"As they have during many other emergencies in the past, the American people have opened their hearts and are sharing some of their bounty with poor people overseas," Johnston

says. "The holiday period is when CARE receives so much of that support," he says. "This year, it's more important than ever before. So many people are depending on us."

For more information about crisis gripping families around the world, contact: CARE, Dept. M, 860 First Avenue, New York, N.Y. 10016.

Wanda Wallene Needham, Creek, Tina W. Wood, Lorene Holt, Carol Cop Rose Ann Coj and gospel son large number o day afternoon.

Twenty eight and their teacher Betty Coffee and students Friday. Christmas program resident a Christmas made as they everyone a Merry residents are so with the student to have them home. The students.

Del Funderb Maxine Douglas conducted a Bible afternoon.

Bro. Charles conducted the Sunday afternoon preached the number of residents.

Every body Monday afternoon tables of player Lucile Wylie, Herman Estes, I. visitor Helen C this a fun time.

We appreciate apers Dokie Ble ing home.

Betty McClur bag of scraps to with.

We extend Nancy Menges brother.

Sympathy is family of Jesus Thursday Dec. Coleman Saturday missed by the members.

We are so and Lillie Box a this time. We better soon an home.

The Flowers t ily shared with beautiful. They TV room and ev their beauty.

LIVING CENT Preston Cude Clark and Clew Myrtle Robert Darwin Lovelad Minnie Greer Jones, Ora Ma Webb.

Thelma White Stena Mitchell

Marie Hill, Be Day.

Red Cupps Duwayne Will Edd Saverance.

NURSING HO Frances Hill Lemah Horton, I Cleo Canady Rogers, Chai Mitchell.

Millard Thov visit from Lucil Elizabeth Edg Doris Aderholt.

Thelma Bolli Velma Dieteri Martha Bolling Ora Caldwell Charles and Jean and Marshall C derburg, Maxin Wylie.

Dona Estes v Day, Louise t Estes.

C.D. Bruce v Guthrie, Marg Simmons, Bar Thomas and D Bolton, Imoger Karyn and Laine Henry Good Henry Jr. and M Herbert McC his wife Kate M Annie Mac Hi Elsie Smith, Jane Shirley Hintner, Jimmie McGr Grace McGr mings.

Nancy Meng Nancy Conner Dorothy Alsobc Marie Hill v Parker, Julian W

CLASSIFIEDS 15 WORDS \$1.50

Call 348-3545

Ranger Park Inn

By Annie May Brimer

Wanda Wallace, Jim Boyle, Allene Needham, Neal Smith, Gladys Creek, Tina Whittington, Virginia Wood, Lorene Wynn, Doris Aderholt, Carol Copeland, Lisa Leonard, Rose Ann Copeland sang hymns and gospel songs for an hour to a large number of residents on Tuesday afternoon.

Twenty eight fifth grade students and their teachers Susan Snipes and Betty Coffee entertained the residents Friday Morning with a Christmas program. They gave each resident a Christmas Card they made as they visited and wished everyone a Merry Christmas. The residents are so happy to be friends with the students. It is wonderful to have them visit the nursing home. The students make beautiful cards.

Del Funderburg, Glenn Moore, Maxine Douglas and Lena Howard conducted a Bible study Saturday afternoon.

Bro. Charles and Stena Mitchell conducted the first Sunday service Sunday afternoon. Bro Charles preached the message to a large number of residents.

Every body enjoyed playing 42 Monday afternoon. There were four tables of players, Wilmoth Russell, Lucile Wylie, Peggy Johnson, Herman Estes, Lorie Williford and a visitor Helen Gregg helped make this a fun time.

We appreciate the nice bag of diapers Dokie Bledsoe gave the nursing home.

Betty McClure brought the nicest bag of scraps for the ladies to work with.

We extend our sympathy to Nancy Menges for the loss of her brother.

Sympathy is extended to the family of Jesus Dela Rosa. He died Thursday Dec. 1 and was buried in Coleman Saturday Dec. 3. He will be missed by the residents and staff members.

We are so sorry Lorena Pepper and Lillie Box are in the hospital at this time. We hope they will be better soon and can come back home.

The Flowers the Dela Rosa family shared with the residents are beautiful. They sure decorated the TV room and everyone is enjoying their beauty.

LIVING CENTER
Preston Cude visitors were Ernest Clark and Clew Cude.

Myrtle Robertson visitors were Darwin Lovelady, Doris Starnes.

Minnie Greer visitors were Mae Jones, Ora Mae Cullins, Alma Webb.

Thelma Whitehead visitors were Stena Mitchell, Opal Maples, Marie Hill, Bessie Parish, Galdys Day.

Red Cupps visitors were Duwayne Williams, John Tucker, Edd Saverance.

NURSING HOME
Frances Horton visitors were Leman Horton, Lera Guthrie.

Cleo Canady visitors were Doris Rogers, Charles and Stena Mitchell.

Millard Thomason received a visit from Lucile Smith.

Elizabeth Edgerton was visited by Doris Aderholt.

Thelma Bollinger visitors were Velma Dieterich, Charles and Martha Bollinger.

Ora Caldwell visitors were Charles and Jean Caldwell, Mavice and Marshall Campbell, Del Funderburg, Maxine Douglas, Lucile Wylie.

Dona Estes visitors were Betty Day, Louise McClellan, Bruce Estes.

C.D. Bruce visitors were Billie Guthrie, Margaret and Chanda Simmons, Barbara Kingsbery, Thomas and Della Wriston, Sam Bolton, Imogene Powers, Bruce, Karyn and Lane Kingsbery.

Henry Goodwin visitors were Henry Jr. and Merle Goodwin.

Herbert McCarty was visited by his wife Kate McCarty.

Annie Mae Hintner visitors were Elsie Smith, Jane Beard, Bernard and Shirley Hintner.

Jimmie McGregor visitors were Grace McGregor, Donna Cummings.

Nancy Menges visitors were Nancy Conner, Ann Spencer, Dorothy Alsbrook.

Marie Hill visitors were Ruby Parker, Julian Whitley.

Lillie Knotts visitors were Ita and Jack Todd.

Martin Wallace visitors were Bill Parish, Joe Wallace, Vernon Wallace, Bessie Parish.

David Bullock visitors were Tommy and Marie Clark, Otho and Oneta Bullock, Millford and Essie Bullock, Edith Bullock, Beulah and Leon Morgan-Fredna Horton, Wesley and Kate Kile, Darlena and Dale Wright, Frank and Eula McCary, Jim Bullock, Ben Taylor.

Mae Tyson visitors were Kink Taylor, Ben Taylor.

Lillie Box visitors were Marshall and Mavice Campbell.

Lena Ingram visitors were May Jones, Mr and Mrs Perry Bourland, Era Lee Hanke, Joe Hanke, Imogene and Michael Powers, Donna Cummings.

Faye Casey was visited by Jane Beard.

Christine Sanders visitors were Myrl Rankin, Nancy Hewitt, Bernice and Harace Snedegar, Peggy Johnson.

Mary Fo Lovell visitors were Wanda Wallace, Sharon and Joe Watson, Dorothy Watson and Angie, Velma Dieterich.

Sam and Myrtle Estes visitors were Lena Howard, Louise McClellan, Betty Day, John Tucker, Herman Estes.

Boyd McClure visitors were Harry Crews, Ed Saverance, John Tucker, Wayne and Betty McClure.

Corrine Story visitors were K.G. Story, Dorothy Waddell, Maggie Robinet.

Allene Barnett visitors were Billie and Monte Guthrie, Carie Keeney, Avis Vaughan, Lou Vaughan, Opal Barnett, Ruth Locke, Sam Bolton, Della and Thomas Wristen.

Onnie Eden visitors were Marian Kennedy, Harry and Margaret Crews, Velma Dieterich, "Sing" Downey.

Pearl Arnold visitors were Louise and Bill Smedley, Fannie Gilbert, Jane Beard, Bobbie Guthrie, Viloa Hull, Lea Luschen, Lucile Smith.

Opal Maples visitors were Virgie Wood, Allene Needham, Lorene Wynn, Billie Simona, Rachel Aiken, Betty Aikens, Oneta Bullock, Robert and Kim Simons, Michale and Jerry Ray Simons, Sadie Simons, Jeanie and Nieves Guerrero, Ron Thompson, Ben Taylor.

Jimmie Sue Hulett visitors were Jane Beard, Elsie Smith, Orabeth Melver.

Estelle Todd visitors were Elsie Smith, Jane Beard, Helen Todd, Ben Taylor.

Vela Plante visitors were Mr. and Mrs. Perry Bourland, Donna Cummings, Claudine Keeney.

Madra Gilmore visitors were Bessie Parish, Barbara Kingsbery, Mrs. Joe Harvey, Lucile Smith, Sam Bolton, Thomas Wristen, Margaret and Harry Crews, Mary West, Doris Mathis, Claudine Keeney, Wilmoth Russell, Herman Estes, and Lucile Wylie.

Bula Fleming visitors were Fannie Gilbert, Mr. and Mrs. Perry Bourland, Elsie Smith, Jane Beard, Charlie Fleming, Lena Howard, Claudine Keeney, Margie Fleming.

Jim Dixon visitors were John Tucker and Ed Saverance.

Yule Trees Grown In Texas

Consumers should find an ample supply of Texas-grown Christmas trees at local markets this Christmas season. Extension Forester Michael Walterscheidt says about 650,000 trees produced in Texas will be marked this year. The estimated value of the crop to tree farmers of the Lone Star State is about \$8 million.

Diabetes And You

Healthy Holiday Eating

Holiday time needn't be a time of denial for the 11 million people with diabetes in the United States. Now, instead of feeling left out, people with this chronic disease can enjoy being at the holiday table with help from the *American Diabetes Association Holiday Cookbook*. Here's a healthful and tasty sample from the cookbook.

APRICOT DRESSING FOR STUFFING

- 1 cup dried apricots, snipped (measure before snipping)
- 1-1/2 cups water, chicken, or turkey stock
- 1 cup chopped celery
- 1/4 cup chopped walnuts or pine nuts
- 12 slices whole wheat or white bread, dried or toasted, cut into small cubes
- 1. Bring the apricots and water (or stock) just to a boil in a saucepan. Let stand for 10 minutes.
- 2. Add the celery, nuts and bread. Toss lightly to moisten the bread and blend ingredients.
- 3. Spoon into an oiled baking dish with a cover. Bake in a 350-degree oven for about 40 minutes.
- 4. Remove cover for the last 10 minutes of baking to brown the top. (Makes 12 servings)
- One serving (1/12 dressing)—1 starch/bread exchange, 1/2 fat exchange, and 1/2 fruit exchange; 118 calories; 22 gm carbohydrate, 4 gm protein, 3 gm fat, 0 mg cholesterol, 127 mg sodium, 215 mg potassium.

Card of Thanks

THANK YOU
To all who came to the pancake supper, all who participated in the quilt fundraiser, a wonderful lady who donated the quilt, Lions Club members, Boy Scouts and their leaders, Bank personnel, those who donated books, and to loyal friends.
—Library Board Members
L4p

We wish to thank everyone for the prayers, visits, cards, flowers, and other expressions of love and kindness during the illness and at the death of our loved one. A special thanks to Jimmy and Dorothy Eisenhower and staff of Santa Anna Funeral Home for all their comfort and support; to the Rev. James Ford for the beautiful message; and Ms. Nell Thate and Ms. Ruby DeSha for their beautiful musical offering to the service.
May God richly bless each of you, is our prayer.
The family of Mary (Leonard) Shields
\$49c

Garage Sales
5 FAMILY GARAGE SALE
Toys, baby clothes, kitchen ware, lots of misc.
Thurs., Fri. & Sat., Dec. 8, 9 & 10, 8:00 a.m.
3rd brick house east of gin on Brownwood Hwy.
149c

Garage Sales
DAYS BED, white & brass
Camel back Complete with pop-up, 2 orthopedic mattresses. Never used. Still in boxes. Must sell. \$300
(Abilene) 1-572-3710
\$49-0-p

Garage Sales
DAYS BED, white & brass
Camel back Complete with pop-up, 2 orthopedic mattresses. Never used. Still in boxes. Must sell. \$300
(Abilene) 1-572-3710
\$49-0-p

Garage Sales
DAYS BED, white & brass
Camel back Complete with pop-up, 2 orthopedic mattresses. Never used. Still in boxes. Must sell. \$300
(Abilene) 1-572-3710
\$49-0-p

Garage Sales
DAYS BED, white & brass
Camel back Complete with pop-up, 2 orthopedic mattresses. Never used. Still in boxes. Must sell. \$300
(Abilene) 1-572-3710
\$49-0-p

Garage Sales
DAYS BED, white & brass
Camel back Complete with pop-up, 2 orthopedic mattresses. Never used. Still in boxes. Must sell. \$300
(Abilene) 1-572-3710
\$49-0-p

Garage Sales
DAYS BED, white & brass
Camel back Complete with pop-up, 2 orthopedic mattresses. Never used. Still in boxes. Must sell. \$300
(Abilene) 1-572-3710
\$49-0-p

Garage Sales
DAYS BED, white & brass
Camel back Complete with pop-up, 2 orthopedic mattresses. Never used. Still in boxes. Must sell. \$300
(Abilene) 1-572-3710
\$49-0-p

Garage Sales
DAYS BED, white & brass
Camel back Complete with pop-up, 2 orthopedic mattresses. Never used. Still in boxes. Must sell. \$300
(Abilene) 1-572-3710
\$49-0-p

Garage Sales
DAYS BED, white & brass
Camel back Complete with pop-up, 2 orthopedic mattresses. Never used. Still in boxes. Must sell. \$300
(Abilene) 1-572-3710
\$49-0-p

Garage Sales
DAYS BED, white & brass
Camel back Complete with pop-up, 2 orthopedic mattresses. Never used. Still in boxes. Must sell. \$300
(Abilene) 1-572-3710
\$49-0-p

Garage Sales
DAYS BED, white & brass
Camel back Complete with pop-up, 2 orthopedic mattresses. Never used. Still in boxes. Must sell. \$300
(Abilene) 1-572-3710
\$49-0-p

Garage Sales
DAYS BED, white & brass
Camel back Complete with pop-up, 2 orthopedic mattresses. Never used. Still in boxes. Must sell. \$300
(Abilene) 1-572-3710
\$49-0-p

Garage Sales
DAYS BED, white & brass
Camel back Complete with pop-up, 2 orthopedic mattresses. Never used. Still in boxes. Must sell. \$300
(Abilene) 1-572-3710
\$49-0-p

Garage Sales
DAYS BED, white & brass
Camel back Complete with pop-up, 2 orthopedic mattresses. Never used. Still in boxes. Must sell. \$300
(Abilene) 1-572-3710
\$49-0-p

Garage Sales
DAYS BED, white & brass
Camel back Complete with pop-up, 2 orthopedic mattresses. Never used. Still in boxes. Must sell. \$300
(Abilene) 1-572-3710
\$49-0-p

Garage Sales
DAYS BED, white & brass
Camel back Complete with pop-up, 2 orthopedic mattresses. Never used. Still in boxes. Must sell. \$300
(Abilene) 1-572-3710
\$49-0-p

Garage Sales
DAYS BED, white & brass
Camel back Complete with pop-up, 2 orthopedic mattresses. Never used. Still in boxes. Must sell. \$300
(Abilene) 1-572-3710
\$49-0-p

Garage Sales
DAYS BED, white & brass
Camel back Complete with pop-up, 2 orthopedic mattresses. Never used. Still in boxes. Must sell. \$300
(Abilene) 1-572-3710
\$49-0-p

Garage Sales
DAYS BED, white & brass
Camel back Complete with pop-up, 2 orthopedic mattresses. Never used. Still in boxes. Must sell. \$300
(Abilene) 1-572-3710
\$49-0-p

Garage Sales
DAYS BED, white & brass
Camel back Complete with pop-up, 2 orthopedic mattresses. Never used. Still in boxes. Must sell. \$300
(Abilene) 1-572-3710
\$49-0-p

Garage Sales
DAYS BED, white & brass
Camel back Complete with pop-up, 2 orthopedic mattresses. Never used. Still in boxes. Must sell. \$300
(Abilene) 1-572-3710
\$49-0-p

Garage Sales
DAYS BED, white & brass
Camel back Complete with pop-up, 2 orthopedic mattresses. Never used. Still in boxes. Must sell. \$300
(Abilene) 1-572-3710
\$49-0-p

Garage Sales
DAYS BED, white & brass
Camel back Complete with pop-up, 2 orthopedic mattresses. Never used. Still in boxes. Must sell. \$300
(Abilene) 1-572-3710
\$49-0-p

Garage Sales
DAYS BED, white & brass
Camel back Complete with pop-up, 2 orthopedic mattresses. Never used. Still in boxes. Must sell. \$300
(Abilene) 1-572-3710
\$49-0-p

Garage Sales
DAYS BED, white & brass
Camel back Complete with pop-up, 2 orthopedic mattresses. Never used. Still in boxes. Must sell. \$300
(Abilene) 1-572-3710
\$49-0-p

Garage Sales
DAYS BED, white & brass
Camel back Complete with pop-up, 2 orthopedic mattresses. Never used. Still in boxes. Must sell. \$300
(Abilene) 1-572-3710
\$49-0-p

Garage Sales
DAYS BED, white & brass
Camel back Complete with pop-up, 2 orthopedic mattresses. Never used. Still in boxes. Must sell. \$300
(Abilene) 1-572-3710
\$49-0-p

Garage Sales
DAYS BED, white & brass
Camel back Complete with pop-up, 2 orthopedic mattresses. Never used. Still in boxes. Must sell. \$300
(Abilene) 1-572-3710
\$49-0-p

Garage Sales
DAYS BED, white & brass
Camel back Complete with pop-up, 2 orthopedic mattresses. Never used. Still in boxes. Must sell. \$300
(Abilene) 1-572-3710
\$49-0-p

Garage Sales
DAYS BED, white & brass
Camel back Complete with pop-up, 2 orthopedic mattresses. Never used. Still in boxes. Must sell. \$300
(Abilene) 1-572-3710
\$49-0-p

Garage Sales
DAYS BED, white & brass
Camel back Complete with pop-up, 2 orthopedic mattresses. Never used. Still in boxes. Must sell. \$300
(Abilene) 1-572-3710
\$49-0-p

Garage Sales
DAYS BED, white & brass
Camel back Complete with pop-up, 2 orthopedic mattresses. Never used. Still in boxes. Must sell. \$300
(Abilene) 1-572-3710
\$49-0-p

Garage Sales
DAYS BED, white & brass
Camel back Complete with pop-up, 2 orthopedic mattresses. Never used. Still in boxes. Must sell. \$300
(Abilene) 1-572-3710
\$49-0-p

Garage Sales
DAYS BED, white & brass
Camel back Complete with pop-up, 2 orthopedic mattresses. Never used. Still in boxes. Must sell. \$300
(Abilene) 1-572-3710
\$49-0-p

Garage Sales
DAYS BED, white & brass
Camel back Complete with pop-up, 2 orthopedic mattresses. Never used. Still in boxes. Must sell. \$300
(Abilene) 1-572-3710
\$49-0-p

Garage Sales
DAYS BED, white & brass
Camel back Complete with pop-up, 2 orthopedic mattresses. Never used. Still in boxes. Must sell. \$300
(Abilene) 1-572-3710
\$49-0-p

Garage Sales
DAYS BED, white & brass
Camel back Complete with pop-up, 2 orthopedic mattresses. Never used. Still in boxes. Must sell. \$300
(Abilene) 1-572-3710
\$49-0-p

Garage Sales
DAYS BED, white & brass
Camel back Complete with pop-up, 2 orthopedic mattresses. Never used. Still in boxes. Must sell. \$300
(Abilene) 1-572-3710
\$49-0-p

Garage Sales
DAYS BED, white & brass
Camel back Complete with pop-up, 2 orthopedic mattresses. Never used. Still in boxes. Must sell. \$300
(Abilene) 1-572-3710
\$49-0-p

Garage Sales
DAYS BED, white & brass
Camel back Complete with pop-up, 2 orthopedic mattresses. Never used. Still in boxes. Must sell. \$300
(Abilene) 1-572-3710
\$49-0-p

Garage Sales
DAYS BED, white & brass
Camel back Complete with pop-up, 2 orthopedic mattresses. Never used. Still in boxes. Must sell. \$300
(Abilene) 1-572-3710
\$49-0-p

Garage Sales
DAYS BED, white & brass
Camel back Complete with pop-up, 2 orthopedic mattresses. Never used. Still in boxes. Must sell. \$300
(Abilene) 1-572-3710
\$49-0-p

Garage Sales
DAYS BED, white & brass
Camel back Complete with pop-up, 2 orthopedic mattresses. Never used. Still in boxes. Must sell. \$300
(Abilene) 1-572-3710
\$49-0-p

Garage Sales
DAYS BED, white & brass
Camel back Complete with pop-up, 2 orthopedic mattresses. Never used. Still in boxes. Must sell. \$300
(Abilene) 1-572-3710
\$49-0-p

Garage Sales
DAYS BED, white & brass
Camel back Complete with pop-up, 2 orthopedic mattresses. Never used. Still in boxes. Must sell. \$300
(Abilene) 1-572-3710
\$49-0-p

Garage Sales
DAYS BED, white & brass
Camel back Complete with pop-up, 2 orthopedic mattresses. Never used. Still in boxes. Must sell. \$300
(Abilene) 1-572-3710
\$49-0-p

Garage Sales
DAYS BED, white & brass
Camel back Complete with pop-up, 2 orthopedic mattresses. Never used. Still in boxes. Must sell. \$300
(Abilene) 1-572-3710
\$49-0-p

Garage Sales
DAYS BED, white & brass
Camel back Complete with pop-up, 2 orthopedic mattresses. Never used. Still in boxes. Must sell. \$300
(Abilene) 1-572-3710
\$49-0-p

Garage Sales
DAYS BED, white & brass
Camel back Complete with pop-up, 2 orthopedic mattresses. Never used. Still in boxes. Must sell. \$300
(Abilene) 1-572-3710
\$49-0-p

Garage Sales
DAYS BED, white & brass
Camel back Complete with pop-up, 2 orthopedic mattresses. Never used. Still in boxes. Must sell. \$300
(Abilene) 1-572-3710
\$49-0-p

Garage Sales
DAYS BED, white & brass
Camel back Complete with pop-up, 2 orthopedic mattresses. Never used. Still in boxes. Must sell. \$300
(Abilene) 1-572-3710
\$49-0-p

Garage Sales
DAYS BED, white & brass
Camel back Complete with pop-up, 2 orthopedic mattresses. Never used. Still in boxes. Must sell. \$300
(Abilene) 1-572-3710
\$49-0-p

Garage Sales
DAYS BED, white & brass
Camel back Complete with pop-up, 2 orthopedic mattresses. Never used. Still in boxes. Must sell. \$300
(Abilene) 1-572-3710
\$49-0-p

Garage Sales
DAYS BED, white & brass
Camel back Complete with pop-up, 2 orthopedic mattresses. Never used. Still in boxes. Must sell. \$300
(Abilene) 1-572-3710
\$49-0-p

Garage Sales
DAYS BED, white & brass
Camel back Complete with pop-up, 2 orthopedic mattresses. Never used. Still in boxes. Must sell. \$300
(Abilene) 1-572-3710
\$49-0-p

Garage Sales
DAYS BED, white & brass
Camel back Complete with pop-up, 2 orthopedic mattresses. Never used. Still in boxes. Must sell. \$300
(Abilene) 1-572-3710
\$49-0-p

Garage Sales
DAYS BED, white & brass
Camel back Complete with pop-up, 2 orthopedic mattresses. Never used. Still in boxes. Must sell. \$300
(Abilene) 1-572-3710
\$49-0-p

Garage Sales
DAYS BED, white & brass
Camel back Complete with pop-up, 2 orthopedic mattresses. Never used. Still in boxes. Must sell. \$300
(Abilene) 1-572-3710
\$49-0-p

Services

All Types of backhoe work. Septic tanks, water lines, lots cleared, also clean up work. Free estimates. 785-4423
F48p

MOUNTAINEER PLUMBING
Repair and new work. Electric sewer and sink machine. Call anytime. Days 348-3193; Nights 348-3645 or 752-7636
13 p

GARY STARK ROOFING
All kinds. Free estimates. Call 348-3804. if

GARY STARK ELECTRIC & PLUMBING
Electric sewer and drain cleaning. Day or night. 348-3804 if

Merchandise

BRASS BED, QUEEN SIZE
Complete with firm orthopedic mattress set. Never used. Still in boxes. Must sell. \$285 cash.
(Abilene) 1-572-3710
\$48-0-p

DAYS BED, white & brass
Camel back Complete with pop-up, 2 orthopedic mattresses. Never used. Still in boxes. Must sell. \$300
(Abilene) 1-572-3710
\$49-0-p

DAYS BED, white & brass
Camel back Complete with pop-up, 2 orthopedic mattresses. Never used. Still in boxes. Must sell. \$300
(Abilene) 1-572-3710
\$49-0-p

DAYS BED, white & brass
Camel back Complete with pop-up, 2 orthopedic mattresses. Never used. Still in boxes. Must sell. \$300
(Abilene) 1-572-3710
\$49-0-p

DAYS BED, white & brass
Camel back Complete with pop-up, 2 orthopedic mattresses. Never used. Still in boxes. Must sell. \$300
(Abilene) 1-572-3710
\$49-0-p

DAYS BED, white & brass
Camel back Complete with pop-up, 2 orthopedic mattresses. Never used. Still in boxes. Must sell. \$300
(Abilene) 1-572-3710
\$49-0-p

DAYS BED, white & brass
Camel back Complete with pop-up, 2 orthopedic mattresses. Never used. Still in boxes. Must sell. \$300
(Abilene) 1-572-3710
\$49-0-p

DAYS BED,

Whon News

By Mrs. Tom Rutherford

I attended the wedding ceremony for my grand daughter, Tonna Rutherford and Joey Fraser Saturday afternoon at 4 p.m. in the First Methodist Church in Bangs. A nice crowd of close friends and relatives was present. Was a very pretty wedding and a very precious wedding to the family. A reception was held in the Church Annex following the wedding. They will be in this part of the country this week. Joey has to report back for duty December 11 and Tonna back on her job December 12. We all certainly wish the young couple "The Best". They reside in Lubbock.

Mrs Darwin Lovelady was in Brownwood on Wednesday and took her sister Mrs Elva McDaniel home from the Brownwood Community Hospital and reports she is feeling very well. But will have surgery later. At this time don't know just when.

Mrs Floyd Morris, Mrs Jamie Lee Morris and daughter Lejac and Janet Morris were in Brady Sunday and visited with Mrs Morris sister Ola Bell Morris and son T.K. and also with Mr and Mrs Rocky Morris.

Mr Leon Carter was in Brownwood with his sister Lorene Black Sunday.

Mrs Inogene Fitzpatrick was back in the Whon Post Office today Monday, following being out of office for some 2 weeks due to illness. Marcy Otis is the assistant Post Master and has served well.

Mr and Mrs Elec Cooper of Rockwood visited with Mr and Mrs Darwin Lovelady Sunday. Also Doris Stearnes of Brownwood and Mrs Myrtle Roberson of the Ranger Park Nursing home visited during the day.

Mr and Mrs Cleber and Patricia Massey of Abilene were on the ranch here during the weekend.

Mrs Floyd Morris was in Coleman Monday and while there visited with her brother, Mr and Mrs William Perkins. They are each feeling better of late.

May McFarlin attended the Pantry Shower for her grandson Danny and future bride Debbie in the home of Virginia Zirkle Saturday afternoon.

Norman Floyd Morris of Brownwood visited with his uncle, Mr and

Mrs Floyd Morris Saturday. Bryan Griffin of the Gouldbusk area visited with his sister, Mr and Mrs Amon Otis and Yancy on Thursday and was supper guest.

Jeffery Morris and friend Kenneth Drisy of Santa Anna were with Jeffery grandparents Mr and Mrs Floyd Morris over the week end.

Mr Douglas Avant of Brady and his mother Mrs Pearl Avant of Santa Anna spent Tuesday on the Avant farm here. Douglas was out on Monday before and also visited his mother in Santa Anna Saturday.

Mr and Mrs Amon Otis and Jody Payne and Carrie Row of Gouldbusk area went out to eat in Coleman Saturday night and later visited with her parents, Mr and Mrs Leon and Billie Griffin and brought little Yancy home following entertaining his grandparents for a while.

Mrs Floyd Morris visited with Mrs Pearl Avant in Santa Anna Friday afternoon.

Mrs Maye McFarlin and Mrs Birdie Miller of Santa Anna were in Coleman Friday afternoon.

Mr and Mrs Darwin Lovelady visited with their children Mr and Mrs Randel Lovelady and girls in Brownwood several times during the past week.

Mr and Mrs Amon Otis and Yancy had Sunday Dinner with her parents, Mr and Mrs Leon and Billie Griffin in the Gouldbusk area and Sunday afternoon Amon attended and participated in the roping in Santa Anna.

Betty Bearden of Brownwood visited Monday afternoon with Mr and Mrs Darwin Lovelady.

Death has made its appearance again with some of my relatives. Mrs Maud Shields (my Aunt) was notified Saturday morning of the sudden death of her niece Joyce (French) ????. Joyce was the daughter of the late Wylie French and Minnie (Shields) French. Wylie was Maud Shields father and Minnie my fathers sister. Joyce and most of the family and her mother lives in Texas City. Members of Maud Shields family call Texas City Sunday. Joyce sister, a brother and one of her sons had not been located, some were on vacation. I do not know when burial service will be. Death was very sudden at the age of 53. Burial will be in Texas City.

How To Enjoy The Holidays? Get A Head Start On Holiday Baking!



1/2 cup (4 ounces) glaze whole green cherries, chopped
1/2 cup black walnuts, chopped

The magic six weeks that extend from Thanksgiving through the New Year are the busiest—and most fun—weeks of the year! Between shopping, decorating the house, holiday parties and general seasonal chaos, don't forget to find time for everyone's favorite holiday tradition—baking!

What better way to get into the yuletide spirit than by filling your home with the tempting aromas of heartwarming, heavenly baked goods? Take time now to bake ahead and indulge in the goodies you and your family love most. Remember to prepare enough for holiday guests, drop-in neighbors and open house visitors!

This year why not combine the flavors of the season in a delicious homemade *Glaze Black Walnut Bread*? Brimming with flavorful glaze fruit, black walnuts, brown sugar and buttermilk, this delicious bread is a wonderful addition to holiday breakfasts, brunches or dessert trays. *Glaze Black Walnut Bread* can be prepared in advance and, wrapped in plastic wrap and aluminum foil, frozen for up to six months.

Start your holidays off right by baking ahead this season. Then sit back, relax and enjoy all the holiday planning, celebration (and goodies!) with family and friends!

Combine flour, sugar, baking powder, soda and salt in medium bowl. Add butter, buttermilk and eggs; beat at low speed until ingredients are blended. Beat at medium speed 30 seconds. Stir in glaze cherries and walnuts, pour batter into greased 9 x 5 x 3-inch loaf pan. Bake in preheated 350-degree oven until toothpick inserted in center comes out clean, about 1 hour. Remove bread from pan immediately; cool on wire rack. Makes 1 loaf.

Glaze Black Walnut Bread

- 2 1/2 cups all-purpose flour
- 3/4 cup packed light brown sugar
- 2 teaspoons baking powder
- 1/2 teaspoon baking soda
- 1/4 teaspoon salt
- 1/4 cup butter or margarine, softened
- 1 1/4 cups buttermilk
- 2 eggs
- 1/2 cup (4 ounces) glaze whole red cherries, chopped



Christmas Seals A Holiday Tradition

A familiar holiday tradition—Christmas Seals—from the American Lung Association—was born in 1907 with the sale of the first 3,000 Seals to combat tuberculosis. Today Christmas Seals are mailed to millions of households nationwide. Donations to this year's Christmas Seal featuring *Candy Claus**, Santa's daughter, will help support the American Lung Association's research and public health education programs to prevent, cure and control all lung disease.

Huggins visited. Mrs. Amanda Perry visited with James Perry and girls Sunday afternoon. She had lunch with Lorie Perry.

Rockwood News

By Mrs. John Hunter

The Extension Homemakers and the Quilting Club will have a joint Christmas party Thursday, December 15, at the Community Center, at 2:00 p.m. Everyone is asked to bring a Christmas "goodie" and a gift to exchange. Everyone is invited. Y'all come!

Wayne and Minnie Bray visited with daughter, Debbie Smith in Austin, Friday and Saturday, visiting in San Angelo Sunday with Kim and Billy Bloom.

Mrs. Mary Emerson had a telephone visit Friday with Mrs. Dennis Ray Gleaton of Early, folks coming by were Rose and Elec Cooper and the Junior Brusenhans.

Rose and Elec Cooper took a camper trip to Lake Procter for Wednesday night and on to Hico, camping in the park and visiting the David Cooper family and on home Friday. The Denny Densmans of Brady were by Saturday afternoon. Rose and Elec visited in Santa Anna Sunday with the Darwin Loveladays.

The Dick Deals visited in Coleman Thursday with her sister Norcene Winstead at Holiday Hill, back by Santa Anna visiting the Joe C. Deal family. Joe was fishing Friday night and caught a big yellow cat.

Mrs. Deal reports the Baptist congregation had a visiting preacher Sunday, The Rev. James Robinson. He was accompanied by Mr. Clark.

Junior Brusenhan went to Brady Saturday, visiting Mr. and Mrs. Bailey Hull and Freddie Polk. Mrs. Emerson spent Friday and again Sunday with the Brusenhans and Dick Deal and Rolan were by visiting Junior.

Mr. and Mrs. R.J. Pederson of San Angelo visited Marcus Johnson Monday. Marty Avants visited

Thursday and Sunday visitors were Bill Gustavus and afternoon visitors were Roland and Bettie Duus.

Tuesday afternoon the Bill Bryans visited in Brownwood with Jane Wise and Fac Hodges. The Bryans went to Possum Kingdom Lake Friday where they joined Judy

Bryan Sadie and Wilma Williams were shopping in Brownwood Monday and visited Jane Wise. Mr. and Mrs. P.L. Ulstad of Brady spent Sunday with the Bryans.

Claudia Rutherford joined Mrs. Bob Rutherford and girls in Santa Anna spending the weekend in San Angelo with Billie Eckels and Jennifer Rutherford. They attended a baby shower for Kim Bloom and visited the old historical Fort Concho, enjoying all of the interesting Christmas displays.

Pobbie Ellis visited Saturday afternoon with Wilma Williams. Sadie Bryan and Wilma were in Brownwood shopping Monday.

Joe and Faye Wise spent the weekend in El Paso where they joined Mr and Mrs Mark Wise, Trevor and Adriane of Tucson, Ariz. Korky Wise of Vernon spent Friday with his parents.



The PVA Spinal Cord Research Foundation (SCRF) funds research grants and fellowships for scientists working toward the cure and improved care for persons with spinal cord damage. Federal employees now have the opportunity to make contributions to SCRF thanks to its new relationship with the Combined Federal Campaign (CFC) program.

Cleveland News

By Carol Herring

C.E. and Vera Wise have had as visitors this past week Coy Cavitt of Brownwood and Emmitt and Shane Simmons.

Carmilla Baugh was in Bangs on Wednesday to visit her mother Mrs. Mae Flores at the Twilight Nursing Home. Week-end visitors with Dick and Carmilla have been Mr. and Mrs. Joe Bible of Stephenville and Mr. and Mrs. Kelly Frist and children of San Angelo.

Rachael and Clara Cupps were visited by Juanita Naron late one evening.

Cecil and Nona Bell Ellis had lunch with Jerry and Cathy Ellis on Thursday. Jerry visited on Friday and Cecil and Nona Bell visited Grace during the week.

Visitors with Charlie and Thelma Fleming this past week have been Darrell Cupps, Roger Sikes, Bubba Tomme and Leona Henderson.

Cassey and Evaline Herring have been to the Coleman Hospital several times this past week to check on Cassey's Aunt Iow Herring. They took Ethalene Stewart with them.

Visiting with Adolph and Doris Kelly was C.E. Wise one day during the week. On Sunday Lena B. and Travis Smith of San Angelo visited.

Bill and Eppie Lowry were visited by their daughter-in-law, Diane Lowry of Plano, who came to pick her mother up.

Mrs. Velda Mills enjoyed a visit with her daughter and son-in-law, Mr. and Mrs. Jerry Templin, of Beaumont. Other visitors have included Byrdie Miller, Opal Lankford, Mildred Carmack, Ruby Hartman, Pete and Iona Moore and May McFarland.

John and Juanita Naron had as guests in their home this week-end Angie and Krista Naron.

Pete and Iona Moore spent Thanksgiving in Hurst with their daughter and her family, Pat and Mel Pollack and children. They also visited with Terry Moore. They left on Wednesday and returned home on Sunday.

Mrs. Lora Russell visited her daughter and family, Lois and

Willie Havner in Bangs on Sunday.

Coy and Myra Brooke were visited by Mrs. Lorene Beeler on Saturday night. Sunday they visited in Coleman with Myra's sister, Mrs. Frances Densman and Mrs. Payne Henderson at the Holiday Hill Nursing Home. Coy visited with Sidney Sackett on Sunday morning.

Lee Ray Huggins celebrated his birthday on Sunday although he did not say how m - a - n - y he was celebrating. Actually, he celebrated for three days and Lee Ray had a chocolate cake each day!! Lee Ray and Syble started on Friday when they joined Lee Ray's twin sister and her husband, Leta Fay and Joe Elliott, of Brady at Mildred Carmack's for lunch and cake. On Saturday Cathy Shields and children Holli, Christopher and Staci came over and brought him another cake. Sunday Phil, Gwen, Dana and Adam Huggins of Coleman, two of Gwen's nieces, Tiffany and Teddy Hambricht, daughters of Viki and Mark Hambricht and David Huggins came to celebrate! And, of course, another cake was enjoyed!! WOW! Lee Ray had better watch his waistline after all that cake!

Mrs. Winnie Haynes was visited by Clara Cupps on Thursday evening. Sunday Winnie, Sug Stearns and Leona Henderson visited with Daisy McClatchy.

Mrs. Byrdie Miller went and visited with Letha Martin on Sunday. Also she visited with Audrey Wright.

Hardin Phillips was visited by Billy Williams on Tuesday. He visited with the Homans Saturday night. Sunday afternoon Syble

Henderson Funeral Home

"People Who Care"

Offering At Your Request

Pre-Arranged Funerals
 Funeral Insurance & Counseling
 Ambulance Service

Coleman 625-2121

Santa Anna 348-3131

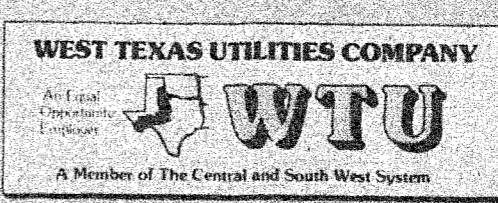
Make All Your Holiday Memories Lasting Ones



...by following these safety tips from West Texas Utilities.

- Use a wooden ladder or a metal one with rubber-tipped legs when installing outdoor lights. Be sure to stand on a dry surface.
- Use heat-resistant cords with grounding plugs, and be careful not to overload too many lights or appliances on one circuit.
- Use a water-filled stand for live trees and check the water level daily.
- Be sure to discard strands of lights with frayed wiring and replace burned out bulbs BEFORE you decorate!
- Never leave your Christmas tree lights unattended. Unplug them when you go to bed or leave the house.
- Make sure paper ornaments or tinsel do not touch light bulbs.

Pick up a Free 1988 Holiday Delights Christmas Cookbook at your WTU Local Office.



Remember REDDY Supplies the energy—but only YOU can use it wisely!

ANN
 ADOPT
 wish to s
 with nev
 Legal ar
 anytime.
 BOTTLE
 gallon.
 containe
 WANTED
 Also will
 ty. Call
 ST
 AN
 Mon. M
 Thurs
 (all y
 Fri Sirl
 LL
 (All yc
 We wis
 Thanksg
 ing plar
 Curtis G
 6 a.m.
 1009 E. C

1 1
 BAR
 PIN
 PIN
 POT
 BAR
 8 H