

Another Candidate For
Legislative Race

See Page 3

000766 01/01/93
SOUTHWEST MICRO PUBLISHING
INC.
2427 E. YANNELL DR.
EL PASO, TX 79903

Local & County
Livestock Show Results

Page 1 & Inside

BEST AVAILABLE COPY

Santa Anna News

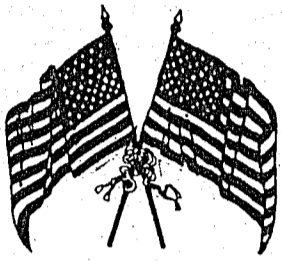
"He Profits Most Who Serves Best"

Single Copy 25 Cents

Volume 106 No. 3

Thursday, January 17, 1991

spotlight



Remember Our Military In Persian Gulf Area

Pvt. Johnnie Kirven, Army
PFC Jacky Duquette, Army
Lt. Col. Bill Home, Marines
SGT. Jerry Malaer, Army
LCPL Vernon Valdez, Marines
SGT John Key Williams,
Army Reserves
E5 Terry Taylor, Army (in
Germany awaiting deployment)

If you know of others,
please notify the Santa
Anna News.

Please See Page 2 for
addresses.



CONNIE CULPEPPER WILLIAMS

On National Deans List

Connie Williams, the former
Connie Culpepper, graduate of
Santa Anna High School, has
been named to the 1990 edition
of National Dean's List for
College and University Students.
Currently employed as
probation officer in Anson
County, Connie graduated last
spring from McMurry College in
Abilene.

Connie is the daughter of
Jean Culpepper and the late
Lacy Culpepper.



PVT. RUBEN FRAUSTO Graduates Army Training Course

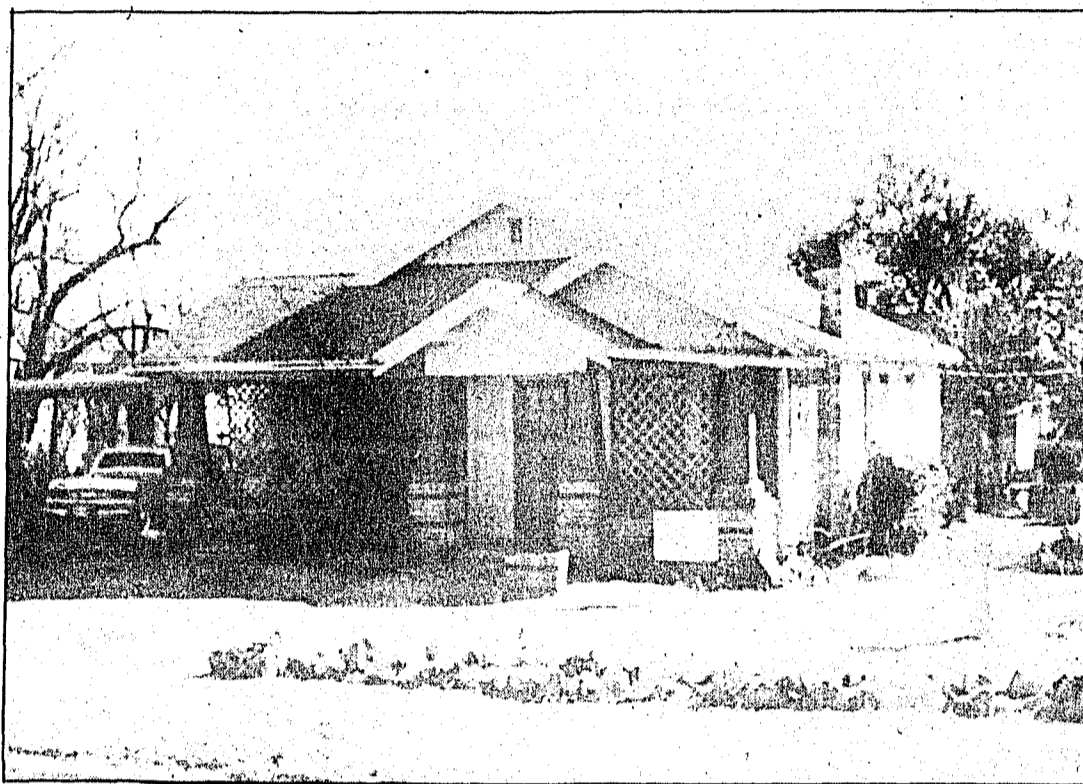
Pvt. Ruben Frausto has
graduated from the combat sig-
naler course at Ft. Gordon,
Augusta, Georgia.

The course provided instruction
on field wire construction,
troubleshooting field wire
lines, operation field type
switchboard and frequency
modulated (FM) radio commu-
nications and systems in com-
bat and combat service support.

He is the son of Joe M. and
Magdalena Frausto of Santa
Anna. The soldier is a 1990
graduate of Santa Anna High
School.

Well Said

I intend to pray fervently for
peace, realizing that peace often
requires sacrifice. — A Man
on the street being interviewed
for recent TV broadcast.

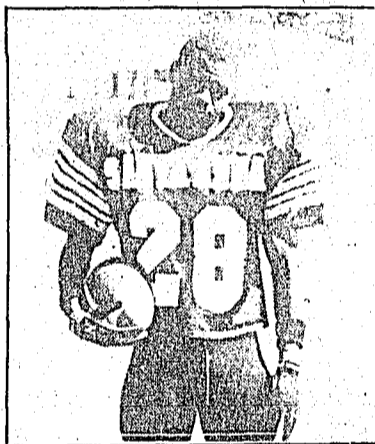


Santa Anna Pride Of The Month

The Santa Anna Pride of the Month honor belongs to Virgil and Marie Lancaster. Located at 1207 Ave. B, the yard is a prime example of pride, care, and time spent in improving one's surroundings. The couple has done much in revamping the landscape after purchasing the property a few years ago and neighbors feel the hard work has paid off in neighborhood improvement. "Pride of the Month" is selected each month by a committee appointed by the Chamber of Commerce.

Photo By Polly Warnock

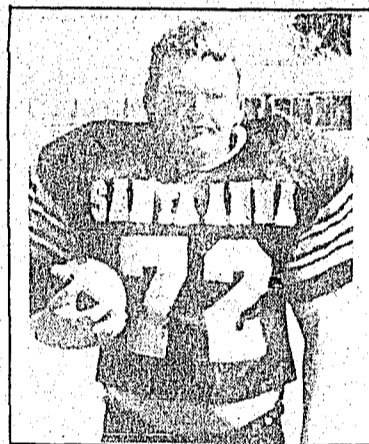
Three Mountaineers Get More Football Honors, Coach Permenter Lauded



HERBERT JACKSON



SCOT VALDEZ



CHARLIE MORRIS

Three Mountaineers were recently
named to the All-West Texas
Football team as chosen by the San
Angelo Standard Times. Running
back/linebacker Herbert Jackson,
Scott Valdez, linebacker, and
Charlie Morris, offensive lineman
and were picked for the Class A
team. Jackson who had previously
been named to the All-State Team,
was chosen for a spot on the
Standard Times "Super Team"
which includes athletes from
schools of all classifications.

Herbert received yet another
honor over the past weekend when
he was named to the Abilene
Reporter News 1990 All-Area
Football Team which includes
members from all classes of
schools in the area.

Herbert was among eight Class A
players to make the 30 man squad.

Although Grady West of DeLeon
was chosen the coach to be hon-
ored, Reporter News sports writer
Bill Hart, tapped other coaches that
he said could have just as well been
chosen for the honor. Among those
was Coach Mike Permenter of

Santa Anna. "In his first year at
Santa Anna his Mountaineers were
rolling full speed until a tragedy
took the lives of two of his top
players. The team rebounded from

that to finish second in the district
and gave Garden City all it wanted
in Class A regional playoffs," said
Hart. Garden City, state ranked,
played two more weeks.

Willie Nelson Benefit Saturday At Opera House

Dub Franklin is spearheading a
local benefit to help entertainer
Willie Nelson with his current tax
problems with the IRS. Franklin,

owner of the Opera House
Restaurant, is sponsoring Willie
Nelson Day, Saturday, January 19.
Being planned is a pancake supper
and auction, with all proceeds from
both events to go toward Nelson's
tax bill. The events will begin at
5:00 p.m. at the Opera House.

Celebrities to be on hand will
include Jalapeno Sam and sculptor
Dale Stewart of Cisco who sculpted
a bronze bust of Nelson several
years ago. Stewart is a Coleman
County native and is well
established as an artist. Others to be

on hand are Angela Stamps, Bryan
James, Tommy Gunn, and Sam
Lewis, who has organized benefits
for Nelson in San Angelo.

Master of ceremonies will be
country/western artist Steve Austin
who will be accompanied by his
wife, Annie. By the time that day
rolls around there are expected to be
other celebrities lend their time and
talents to the cause.

All area musicians are invited to
participate in the benefit and anyone
having items to donate to the
auction may contact Dub Franklin
at the Opera House, 348-3191.

Franklin emphasizes there will be
no alcoholic beverages allowed on
the premises.

Economist Believes Local People Have Best Ideas

Economic Development Meetings, Monday & Tuesday

According to Dr. Stebbins the
strategic planning procedure requires
the two meetings. The first meeting
uses a nominal group process to
list participant's ideas about im-
proving the economy and selects
top ranked ideas for further consid-
eration. The audience is divided into
small discussion groups for this
purpose.

"Everyone seems to enjoy the
group discussions," he says. "It's a
very democratic way to give every-
one an equal chance to have their
ideas considered and an equal vote
when ranking the ideas," says Steb-
bins.

The purpose of the second meet-
ing is to allow people to select

which economic development
projects they want to work on, convert
their ideas to workable goals and
write an action plan to accomplish
the goals.

According to Dana Poer of the
Coleman County Extension Office,
who is helping to coordinate the
meetings, Dr. Stebbins has con-
ducted "Let's Get Started" with
people in a large number of com-
munities. He feels the main ingre-
dient that has made the procedure so
effective is that every community
has had some very excellent people

who really want to work on eco-
nomic development. Ms. Poer re-
lates that Dr. Stebbins feels his
main role is to create an environ-
ment that helps people get orga-
nized and "then get out of the way
so they can go to work."

Be sure to make plans to be at
First Baptist Church Christian Life
Center Monday evening at 7:30 for
the first important meeting and then
again Tuesday for the second ses-
sion. Each meeting is expected to
last about two hours.

An economist with experience

Wise Sweeps Lamb Show Here & County

Nathan Wise of Santa Anna made
a clean sweep of both the local and
county livestock shows in the lamb
division over the weekend. In the
local show Saturday he came away
with all Grand Champion trophies,
as one was named in each lamb
class.

At the county show in Coleman
He showed the Grand Champion
market lamb as well as the Reserve.
Then he topped it all off by also
walking away with the coveted
Senior Showmanship Award at the
county show.

Julie Dean of Santa Anna was
awarded the Senior Swine
Showmanship trophy at the County
show in Coleman. She and several
other Santa Anna youngsters placed
high in several divisions of the hog
show in Coleman. See inside for
detailed judging in the county
show.

Melonic Smith of Santa Anna
showed the Reserve Grand
Champion in the county rabbit
show.

The warm weather brought out a
large crowd to watch as Santa Anna
youngsters paraded their show
animals in front of the judges last
Saturday at the local school show
barn in the annual Santa Anna
Livestock Show.

Two sophomores stole the hog
show as Julie Dean garnered the

Grand Champion Trophy with her
middle-weight hog and Cynthia
Patterson took the Reserve
Champion honors with a middle-
lightweight. Showmanship awards
went to Cheree Halmon in the
senior division and to Ryan Keeney
in the junior division.

In the local lamb show Nathan
Wise came away with all Grand
Champion trophies as one was
named for each class. Chris
Cheaney, Tom Guthrie and cousin
Mitchell Guthrie shared honors for
Reserve Champions in various
classes of lambs.

MEDIUM WOOL: Nathan Wise,
Grand Champion; Chris Cheaney,
Reserve.

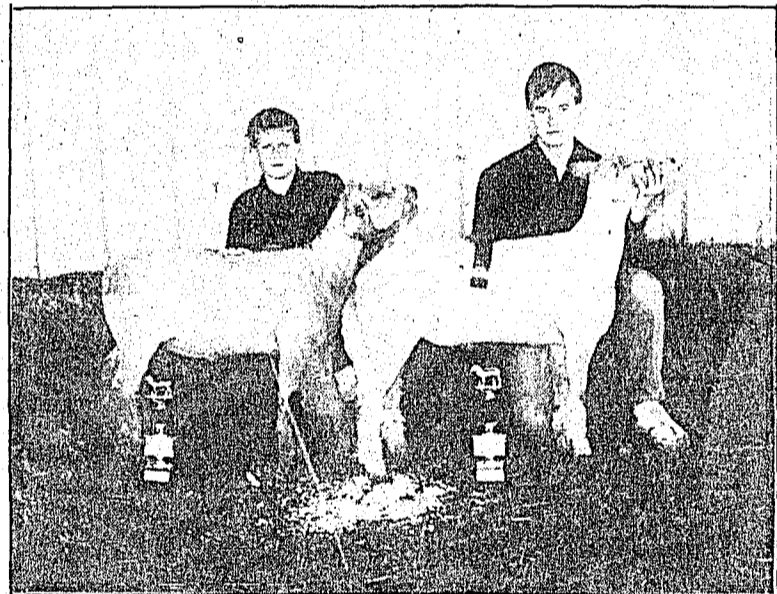
SOUTH DOWNS: Nathan Wise,
Grand Champion; Chris Cheaney,
Reserve.

FINEWOOLS: Nathan Wise,
Grand Champion; Tom Guthrie,
Reserve.

CROSS BREED: Nathan Wise,
Grand Champion; Mitchell Guthrie,
Reserve.

RABBITS: Melonic Smith and
Brandi Martin took Grand
Champion and Reserve Champion,
respectively, in the rabbit showing.

See Page 5 for detailed judging
results of the Santa Anna Livestock
Show and the county show.



Nathan Wise, at right, showed the Grand Champion lambs in all divisions at Santa Anna Livestock show Saturday & made a clean sweep at the county show. Chris Cheaney showed the Reserve Champion in the medium wool and southdown classes at the local show. Photo by Polly Warnock



Julie Dean showed the Grand Champion in the Santa Anna Livestock Show swine division with her York pig and was awarded the Senior Showmanship award at the county show. Photo by Polly Warnock

input. The meetings will be held at
First Baptist Church Christian Life
Center Monday and Tuesday
evenings, January 21 and 22, with
both sessions beginning at 7:30
p.m. The project has been dubbed
"Let's Get Started" and will need
participation from other citizens of
the community as well as business
and civic leaders. Everyone
interested in seeing Santa Anna
move forward economically is
encouraged to attend.

Dr. Don Stebbins, an economist
with Texas Agricultural Extension
Service made the opening comment
above when explaining a strategic

CONTINUED PAGE 3

J
A
N

1
7

9
1

REACH For the Stars During Heartland Mall's

January 17, 18 & 19

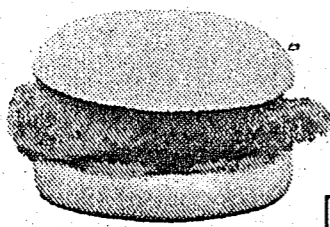
A HOT IDEA FOR JANUARY!

With hot savings, too.



ALL YOU CAN EAT!

CHICK-FIL-A SANDWICHES \$1.69 EACH
PURCHASE ALL THE CHICK-FIL-A SANDWICHES YOU CAN EAT FOR \$1.29 EACH WITH THIS COUPON. Coupon not good with any other offer. One coupon per person per visit. Expires 1/19/91



Closed Sundays
Heartland Mall

of CFAs



CHICK-FIL-A SANDWICH, REGULAR ORDER OF WAFFLE POTATO FRIES™ AND A 14-OZ. DRINK FOR ONLY \$3.19!



WITH THIS COUPON. Coupon not good with any other offer. One coupon per person per visit. Expires 1/19/91

Closed Sundays
Heartland Mall



SIDEWALK SALE!
Buy 2 Get 3rd FREE!
January 17, 18 & 19
Buy 2 Fall Markdown Items
Get 3rd Item FREE!
(3rd item must be of equal value or less)

LEATHER SKIRTS, PANTS

49⁹⁰ To 99⁹⁰
Reg. \$56 to \$150

SWEATERS

19⁹⁰ To 69⁹⁰
Reg. \$26 to \$100

JOG SUITS

39⁹⁰ To 49⁹⁰
Reg. \$46 to \$68

SPORTSWEAR

19⁹⁰ To 79⁹⁰
Reg. \$26 to \$98

DRESSES, ROMPERS

44⁹⁰ To 99⁹⁰
Reg. \$98 to \$200

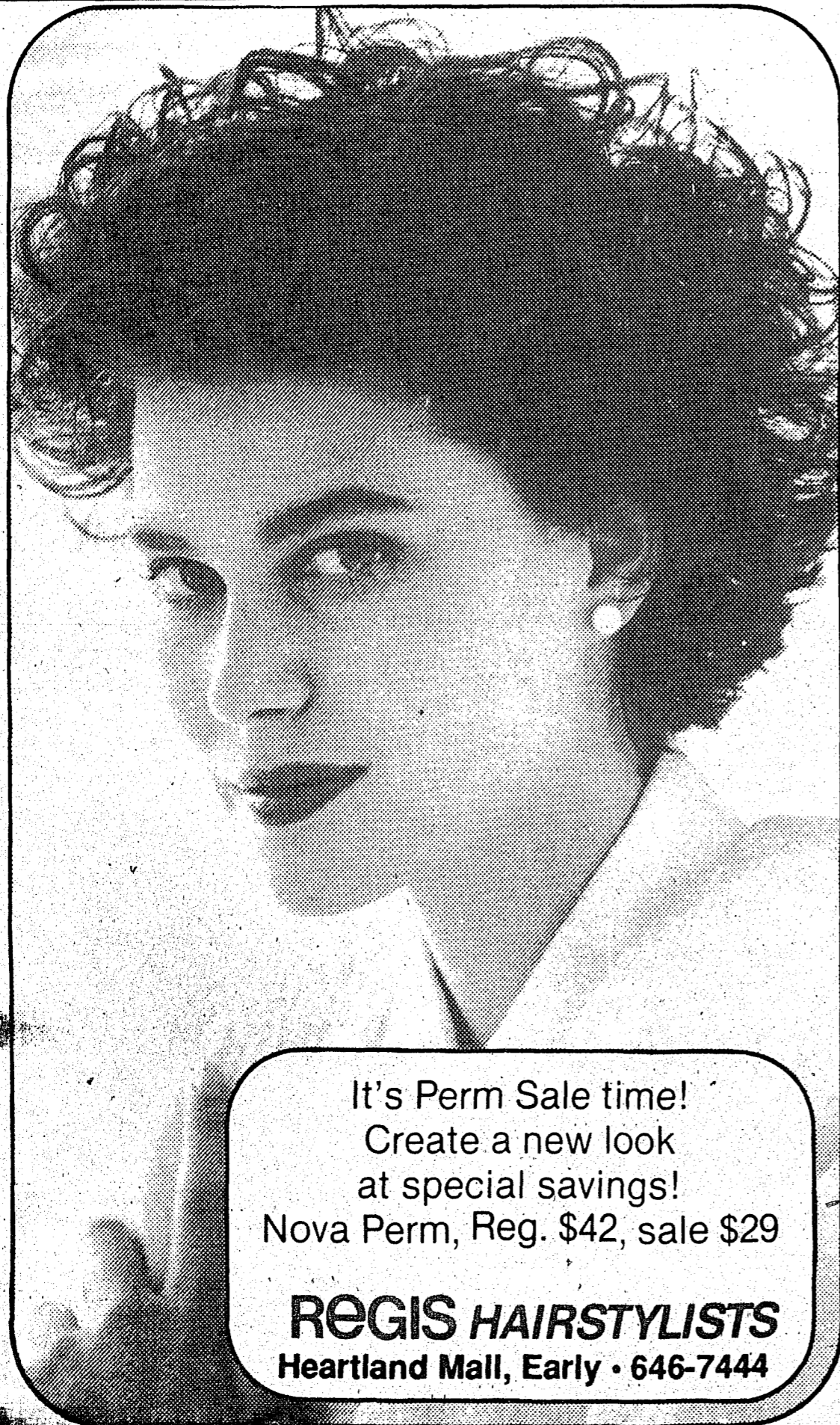
COATS, JACKETS

24⁹⁰ To 149⁹⁰
Reg. \$138 to \$180

Visa • Discover • MasterCard
Welcome



Mon-Sat: 10 a.m. - 6 p.m.
Sun: 1 p.m. - 5 p.m.
Heartland Mall • Early, Texas



It's Perm Sale time!
Create a new look
at special savings!
Nova Perm, Reg. \$42, sale \$29

REGIS HAIRSTYLISTS
Heartland Mall, Early • 646-7444

Mall Walk Sale at Athletic Supply in Heartland Mall

Reebok Thunder Jam \$44.99 Reg. 56.99	LA Gear Hi Top \$44.99 Reg. 69.99	Converse Majic \$44.99 Reg. 69.99
Avia 1360 Cross Trainer \$44.99 Reg. 63.99	Asics Ladies Gel 110 \$44.99 Reg. 60.99	Reebok Reverse Jam \$49.95 Reg. 69.99
Reebok Newport Classic \$34.99 Reg. 46.99	TAG Celtic Hi Top \$19.00 Reg. 42.99	LA Gear 3/4 Basketball \$39.99 Reg. 65.99
Converse Star Wave Hi Top \$39.99 Reg. 58.99	Puma Suede Soccer \$19.00 Reg. 42.95	Avia 742 \$29.99 Reg. 42.99
Russell Sweats X-Small & Small Only \$10		
College Sweatshirts selected styles only \$13-15		
Selected Clothing Marked Down		

Winter Mall Walk Sale



The Winners Of Heartland Mall's Baked Goods Contest

Cakes

Laurie Bailey of Brownwood

Dirt Cake

1 1/2 lb. Oreo Cookies
1 c. powdered sugar
1/2 c. butter, softened
12 oz. cream cheese, softened
3/4 c. milk
2 small packages instant vanilla pudding
8 oz. cool whip

Freeze Oreos. Use blender or food processor to crush Oreos until it resembles potting soil. Set aside. Cream powdered sugar, butter and cream cheese. Mix milk and puddings according to package directions. Combine cream cheese mixture with pudding. Add Cool Whip.

Wash a clay flower pot. Cover drain hole with plastic wrap, layer Oreos and pudding, beginning and ending with Oreos. About 2 hours before serving, put in refrigerator to soften. Freeze any left overs. Garnish with flowers. Serve with a small scoop.

Pies

Nancy Burnett of Bangs

Raisin Pie

Mix raisins and water and boil in saucepan for 5 minutes. Blend brown sugar, cornstarch, cinnamon and salt. Add to hot raisins, cooking and stirring until mixture is clear. Remove from heat, add vinegar and butter. Cool slightly, turn into pastry lined pan. Top with vented crust. Seal edges of crust with water and trim. Crimp edges and bake at 425 degrees for 30 to 35 minutes.

Pecan Pies

Winnie Payne of Brownwood

Pecan Pie

Combine 3/4 c. white sugar, 1/4 tsp. salt, 1 c. white/Karo syrup, (no substitute) in a medium sized mixing bowl. Mix well. Add 1/2 c. melted butter or margarine or butter and margarine mixed. In a small bowl, heat 3 large eggs until well mixed but not foamy. Add to the syrup mixture, mixing well. Beat until well blended. Add 1/2 tsp. vanilla and 1 heaping cup of chopped pecans. Mix together well. Pour into an unbaked pie crust and bake until set and pastry is nicely browned in a 375 degree oven. Place pie in center of oven if possible. Bake about 40 to 50 minutes. The center should be very slightly soft in center when done to keep it from being too dry.

Pie Crust

Makes 3 small or 2 large crusts
3 c. flour, 1 tsp. salt, 2 tsp. sugar, mix in a bowl. Add 1 c. Crisco; cut with a pastry blender until size of large peas. Beat 1 egg until blended well. Pour into a cup and add cold water to make 1/2 cup. Stir into flour mixture until begins to gather into a ball. Use a fork for this. Divide into as many crusts as needed. Roll between 2 sheets of waxed paper for easy handling or try lightly floured board. Remove top paper and shape to fit pie pan. Trim edge and crimp as desired.

Fruit/Nut Bread

Brenda Bailey of Brownwood

Pantry Pumpkin Bread

3/4 c. shortening
2 1/4 c. sugar
4 eggs
2 c. canned pumpkin
3 1/2 c. flour
1/2 tsp. baking powder
2 tsp. soda
1 1/2 tsp. salt
1 tsp. cinnamon
1 tsp. cloves

Cream shortening and sugar in bowl. Beat in eggs, pumpkin and 3/4 c. water. Add combined dry ingredients, mix well. Fill 8 greased wide mouth pint jars 1/2 full. Bake at 325 degrees for 45 to 55 minutes. Cut excess bread from top of jar and top with sterilized lid, sealing tightly; cool. Store on pantry shelf or give as gifts. Yields 16 servings.

Pralines

Sandra Edgar of Brownwood

Pecan Pralines

Cook to softball stage (236 degrees), 1 c. brown sugar, 3 Tbsp. corn syrup, 1/4 c. cream, 1/2 c. water and 2 tsp. vanilla.

Remove from heat and cool at room temperature. Add 1 1/2 c. pecans stirring until candy holds shape. Drop on wax paper before candy gets too hard.

Brownies

Carol Watts of Blanket

Brownies

Melt together over hot water: 2 squares (2 oz.) unsweetened chocolate, 1/2 c. shortening. Beat in: 1 c. sugar and 2 eggs. Sift together and stir in: 3/4 c. flour, 1/2 tsp. baking powder, 1/2 tsp. salt.

Mix in: 1/2 cup nuts. Spread in well greased 8" square pan. Bake in 350 degree oven for 30 to 35 minutes until top has dull crust. Cool slightly, then cut into squares. Makes 16, 2 inch squares.

Christmas Cookies

Carolyn Warren of Brownwood

Peanut Sitting Pretties

Makes about 2 dozen
1/2 c. butter or margarine
1/4 c. firmly packed brown sugar
1 egg, separated
1 c. all purpose flour
1/4 tsp. salt
Finely chopped nuts
1 can vanilla creamy-type frosting
M&M peanut chocolate candies

Blend butter and sugar in a bowl stir in egg yolk and vanilla. Sift flour and salt into bowl; mix well. Chill 1 hour. Roll into 1-inch balls.

Dip into slightly beaten egg white. Roll in nuts. Place 1-inch apart on cookie sheet.

Bake in moderate oven (350 degrees) for 5 minutes. Press thumb gently in center of each; bake 5 minutes longer. Cool. Fill with frosting, garnish with M&M peanut chocolate candies.

Super Sidewalk Sale

COMPACT DISCS \$1 to \$7.99 THOUSANDS TO CHOOSE FROM!

CASSETTES 4 for \$10 AN INCREDIBLE SELECTION!

LP's VIDEO - MOVIES! MUSIC VIDEOS AND MORE!

50¢ to \$2

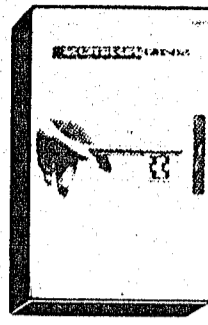
SAVE 20 to 50%

THE COUNTRY'S LARGEST SELECTION OF HOME ENTERTAINMENT!

PRICES GOOD FOR ONE WEEK. EARN FREE GIFTS WITH CAMELOT REPEAT PERFORMANCE AND SAVE AGAIN FOR OTHERS.

CAMELOT music

Heartland Mall 643-4455



SCORPIONS Crazy World Polygram



WILSON PHILLIPS SR.

CASSETTE \$6.88 each

COMPACT DISC \$10.88 each



FREE

16 oz. Drink

with purchase of Regular Corn Dog
Good Through 10/26/91

Heartland Mall • Early

Not Good with any coupon or special

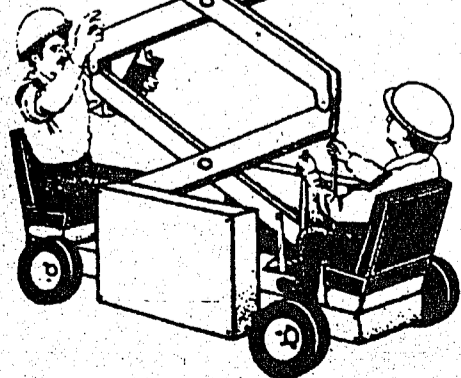
JCPENNEY'S

Heartland Mall's Mallwalk Sale

Famous Brand Merchandise

Priced To Give You A Lift!

Hundreds of Bargains 3 Big Days To Save!



January 17, 18 & 19

REACH

For The Stars

On January 17, 18 & 19

Winter Mallwalk Sale

Reach for the Brightest Values As Heartland Mall Has Scanned The Universe For A Galaxy Of Savings!

Register for a chance to WIN 1 year of Movie Passes Quantity (24)
Rules & Regulations at hopper.

HEARTLAND MALL

JCPenney • K-mart • Bealls 300 Early Blvd., Early, Texas
Owned/Operated by CBL Associates, Inc.

JAN 17 1991



Ryan Keen was chosen for the Junior Showmanship Award in the swine show and Cheree Halmon received the Senior Showmanship Award.

Photo by Polly Warnock



Cynthia Patterson showed a cross pig to capture the Reserve Champion ribbon in the swine show.

Photo by Polly Warnock



Christi Beal took the Reserve Champion ribbon in the clothing division with a pair of pants she had made; Brandi Martin received Grand Champion ribbon in the crafts with her wreath; and Leanda Kellar was given the Grand Champion ribbon for her jumper.

Photo by Polly Warnock



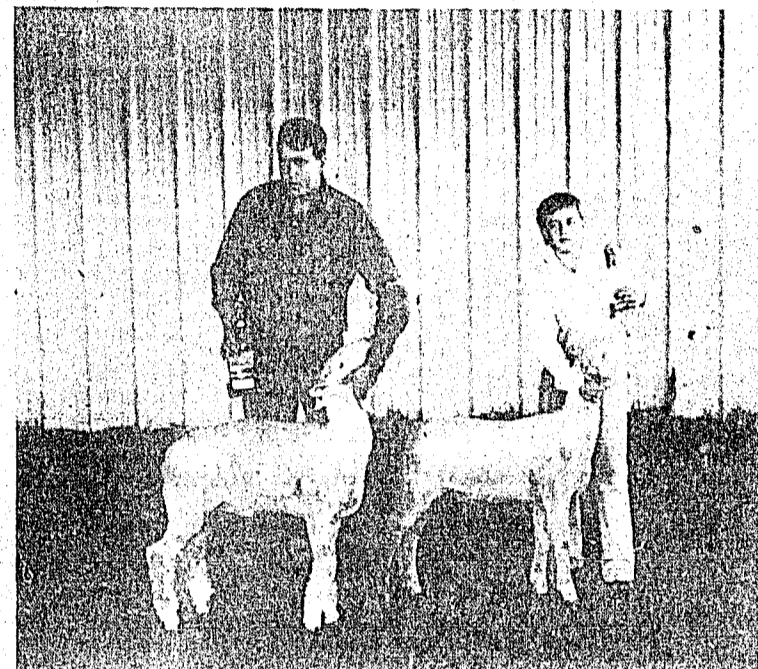
Mitch Guthrie was awarded the Reserve Champion Ribbon for his crossbred lamb in the local show Saturday. Nathan Wise showed the Grand Champion lamb in that division as in all others.

Photo by Polly Warnock



Melonie Smith showed the Grand Champions pen of rabbits and Brandi Martin took Reserve Champion.

Photo by Polly Warnock



Westley Dockery received the Senior Showmanship Award in the lamb show and the Junior Showmanship Award went to Tom Guthrie.

Photo by Polly Warnock

Market Swine Division
 Lightweight Hampshires — 1. Julie Dean; 2. William Loyd; 3. Candé Daniel. Mediumweight Hampshires — 1. Amagda Lawrence; 2. Chris Bryce; 3. Jason Dean. Heavyweight Hampshires — 1. Danny Barnett; 2. Chanda Simmons; 3. Nancy Ponce. Champion Hampshire — Julie Dean, Santa Anna FFA, lightweight. Reserve Champion Hampshire — William Loyd, Santa Anna FFA, lightweight. Lightweight Durocs — 1. Kevin Hale; 2. Melan Luker; 3. Amanda Lawrence. Mediumweight Durocs — 1. Josh Hale; 2. Seth Luker; 3. Cody Cavanaugh. Heavyweight Durocs — 1. Logan McDonald; 2. Knickia Papasans; 3. William Loyd. Champion Duroc — Logan McDonald, Coleman 4-H, heavyweight. Reserve Champion Duroc — Knickia Papasans, Panther Creek FFA, heavyweight. Lightweight Other Pure Breeds — 1. Greg Loyd; 2. Josh Daniel; 3. Missy Bryce. Mediumweight Other Pure Breeds — 1. Kristi Thweatt; 2. Shawn Kerr; 3. Chanda Simmons. Heavyweight Other Pure Breeds — 1. Ricky Smith; 2. Julie Dean; 3. Kayla Hale. Champion Other Pure Breeds — Ricky Smith, Coleman FFA, heavyweight. Reserve Champion Other Pure Breeds — Kristi Thweatt, Panther Creek FFA, mediumweight. Lightweight crossbreds — 1. Cynthia Patterson; 2. Josh Hale; 3. William Loyd. Mediumweight crossbreds — 1.2. Wes Howell; 3. Michelle Norris. Heavyweight crossbreds — 1. Amanda Lawrence; 2. Monty Bouldin; 3. Ricky Smith. Champion Crossbred — Wes Howell, Coleman Junior FFA, mediumweight. Reserve Champion Crossbred — Cynthia Patterson, lightweight crossbred. **GRAND CHAMPION MARKET HOG** — Wes Howell, Coleman Junior FFA, mediumweight crossbred. Reserve Champion Market Hog — Ricky Smith, Coleman FFA, heavyweight Yorkshire. Junior Swine Showmanship — Amanda Lawrence, Panther Creek Junior FFA. Senior Swine Showmanship — Julie Dean, Santa Anna FFA.

Rabbit Division
 Rabbits — 1. Mandi Hubbard, Panther Creek 4-H; 2. Melonie Smith, Panther Creek 4-H; 3. Misti Hubbard, Panther Creek 4-H. **GRAND CHAMPION RABBIT** — Mandi Hubbard, Panther Creek 4-H. Reserve Grand Champion Rabbit — Melonie Smith, Santa Anna 4-H.

Beef Cattle Division
Market Steers
 Angus — 1. Brent Hemphill; 2. Melissa Rankin; 3. Cole Dodson.
 Champion Angus — Brent Hemphill.
 Reserve Champion Angus — Melissa Rankin.
 Lightweight Herefords — 1. Melissa Rankin; 2. Scott Hunter; 3. Lanham Horne.
 Mediumweight Herefords — 1. Lanham Horne; 2. Shay Connolly; 3. Lanham Horne.
 Heavyweight Herefords — 1. Candice Henderson; 2. Rob Edington; 3. Cole Dodson.
 Champion Hereford — Candice Henderson, heavyweight.
 Reserve Champion Hereford — Rob Edington, heavyweight.
 Lightweight Polled Herefords — 1. Kristen Turner; 2. Heath Hemphill; 3. Kristen Turner.
 Heavyweight Polled Herefords — 1. Cole Dodson; 2.3. Candice Henderson.
 Champion Polled Hereford — Cole Dodson, heavyweight.
 Reserve Champion Polled Hereford — Kristen Turner, lightweight.
 County-bred English — 1. Roby Edington; 2. Candice Henderson; 3. Cole Dodson.
 Lightweight Brangus — 1. Matt Turner; 2. Jim Bob Edington; 3. Stephen Watson.
 Heavyweight Brangus — 1. Jim Bob Edington; 2. Melissa Rankin.
 Champion Brangus — Matt Turner, lightweight.
 Reserve Champion Brangus — Jim Bob Edington, heavyweight.
 County-bred American cross — 1. Jim Bob Edington; 2. Melissa Rankin; 3. Stephen Watson.

Lightweight all other breeds — 1. Payton Mayes; 2. Rodney Henderson; 3. Scott Hunter.
 Light mediumweight all other breeds — 1. Tish Taylor; 2. Payton Mayes; 3. Rodney Henderson.
 Medium heavyweight all other breeds — 1. Jim Bob Edington; 2. Heath Hemphill; 3. Rodney Henderson.
 Heavyweight all other breeds — 1. Brent Hemphill; 2.3. Rob Edington.
 Champion All Other Breeds — Jim Bob Edington, mediumweight.
 Reserve Champion all other breeds — Heath Hemphill, heavyweight.
 County-bred all other breeds — 1. Rodney Henderson; 2. Heath Hemphill.

Tom Guthrie showed the Reserve Grand Champion in finewool lambs at the local show and Nathan Wise the Grand Champion.

Photo by Polly Warnock

GRAND CHAMPION MARKET STEER — Jim Bob Edington, Maine-Anjou.
 Reserve Grand Champion Market Steer — Heath Hemphill, Maine-Anjou.
 Group of 3 Steers — 1. Brent and Heath Hemphill; 2. Rodney and Candice Henderson; 3. Matt and Kristen Turner.
 Junior Market Steer Showmanship — Payton Mayes.
 Senior Market Steer Showmanship — Cole Dodson.
 Heifers — 1. Matthew Mayes.
 Champion Heifer — Matthew Mayes.

All livestock show and food & craft pictures you see here are from the Santa Anna show held on Saturday.

Walker Funeral Home
 Pre-Arranged Funerals
 Phone 625-4103
 Coleman, Texas

Santa Anna Automotive
 803 Ave. B • 348-3833
 We Repair All Makes Foreign & Domestic
 All Work Guaranteed
 Mon. - Fri.: 8 to 5
 Open Saturday

TOUGH DECISIONS for TEXAS!

Who is going to protect our interests in making decisions concerning...
 The LOCAL ECONOMY? PROPERTY TAXES?
 HIGH SCHOOL DROPOUTS? SCHOOL FINANCE?
 INSURANCE? PRISON REFORM?
 RE-DISTRICTING? LOBBYIST INFLUENCE?
 And many other vital issues?

Ben and his wife (Anne) live and work in West-Central Texas. They have raised six children. Sudderth knows the problems facing Texas and he is prepared to make the Tough Decisions that will provide this District with QUALIFIED representation!



We need a **TOUGH DECISION MAKER!**

Ben Doyle SUDDERTH

CANDIDATE FOR STATE REPRESENTATIVE--65th DISTRICT
 (Brown, Coleman, Comanche, Eastland, McCulloch, and Runnels Counties)
ASKING FOR YOUR VOTE!

Paid for by the Committee to Elect Ben Sudderth, Anne Sudderth, Treasurer

Underwood's
 Take Out Coupons
 Clip And Save This Week

CHICKEN FRY & FIXINGS FOR 2
 2 Giant Chicken Fried Steaks
 1/2 Pint Mashed Potatoes
 1/2 Pint Cream Gravy
 1/2 Pint Red Beans
 1/2 Pint Cole Slaw
 4 Hot Rolls (Offer Good thru Jan. 22, 1991)
\$ 5.99

CHICKEN FRY & FIXINGS FOR 4
 4 Giant Chicken Fried Steaks
 1 Pint Mashed Potatoes
 1 Pint Cream Gravy
 1 Pint Red Beans
 1 Pint Cole Slaw
 8 Hot Rolls (Offer Good thru Jan. 22, 1991)
\$ 10.99

This Week's Special
ALL YOU CAN EAT BREAKFAST
\$2.79
 Breakfast includes all the fresh, scrambled eggs you can eat, bacon, sausage, breakfast steak, hash browns, home made breakfast biscuits & gravy.
 Offer expires Sunday, January 20, 1991
Grandy's
 Breakfast Served from 6:30 to 11 a.m.
 108 Early Blvd. • 643-6197

DIVORCE \$78
 covers most uncontested situations—children, property, debts, —one signature divorce, missing spouse, etc. (pro se)
 CALL TOLL FREE 1-800-547-9900 (8 am to 9 pm)
BUDGET DIVORCE
 122 Spanish Village, Suite 604, Dallas, Texas

CINEMA 1 & 2
 838 W. COMMERCE, BROWNSWOOD, TX 842-2513
Lionheart
 VAN DAMME
 COMING SOON: "HARSH JUSTICE: THE SMOKE OF FIRE"
HOME ALONE
 MACAULY KULIK
 LIMITED CAPACITY
MOVIES 4
 HEARTLAND MALL, BROWNSWOOD, TX 842-2641
 GIFT CERTIFICATES ON SALE NOW AT BOX OFFICE
edward scissorhands
 JACOB NICOLSON
 COMING SOON: "Flight of the Intruder"
True Man and a Little Lady
 WENDY FISHER
Kinderzeggler COP
 ALL SHOWS 12:00 PM, 2:00 PM, 7:00 PM, 9:00 PM
LOOK WHO'S TALKING TOO
 ALL PACINO
 LIMITED CAPACITY

J
A
N
1
7
9
1

MCCOY'S

BUILDING SUPPLY CENTERS

LOCK IN EXTRA ENERGY SAVINGS

Fiberglas Insulation Sale!

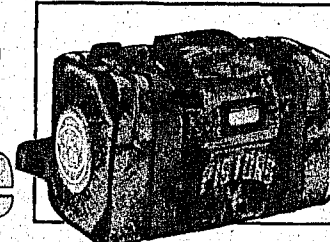
FREE!

per roll	15" wide	23" wide
R-11	10⁹⁹ Sale	16⁸⁹ Sale
R-19	9⁷⁹ Sale	14⁹⁹ Sale

• When you buy 10 rolls or more of R-19 or higher R-Value insulation receive this NBA travel bag absolutely FREE!. See store for details. Add \$3.50 for Postage & Handling



\$39⁹⁵
Value



OWN & COME FIBERGLAS



1/2" CDX

- All plywood is grade marked by the APA for quality
- Exterior glue

5.99

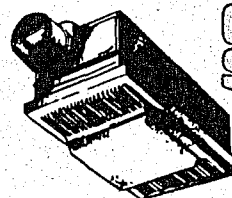


7/16" OSB

- All OSB panels are grade marked by the APA for quality
- Exterior glue

4.79

Nautilus Bath/Heater/Fan

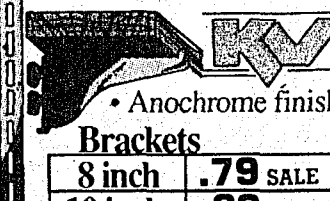


On Sale

- 1300 watt fan -forced heater
- Do-it-yourself installation
- Convenient single unit
- 70CFM
- Model N655

59.99

Shelf Brackets & Wall Standards



- Anochrome finish

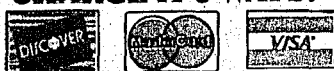
Brackets

8 inch	.79 SALE
10 inch	.89 SALE
12 inch	.99 SALE

Standards

3 foot	1.49 SALE
4 foot	1.99 SALE

CHARGE IT 3 WAYS!

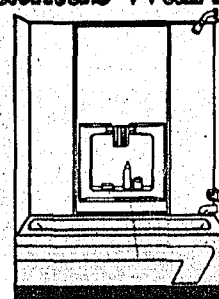


STORE HOURS:

Mon-Fri - 7:30am - 6:00pm
Saturday - 7:30am - 5:00pm
CLOSED ON SUNDAY

PRICES IN THIS CATALOG ARE GOOD
JANUARY 14TH THRU
FEBRUARY 2ND

Bathtub Wall Kit



allura
BY PLASKOLITE

- White finish

49.99 On Sale

8' Counter Top



- Choose from a variety of patterns and colors
- Full 3/4" thick-compare
- Easy installation-comes ready to install

34.95

Roofing And Supplies

Shingles

- Durable fiberglass mat construction
 - Class "A" fire rating
- All shingles not stocked at all stores

OWENS CORNING
FIBERGLAS



CLASSIC®

Strong fiberglass shingles are made 3 tab style for optimum weather resistance

20 yr. warranty

18.99 Per 100 sq. ft.

Warranty based on pro-rated replacement costs-labor included



Roofing Felt

- #15 or #30 weight

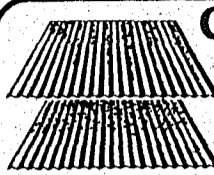
7.99 roll

OWENS CORNING
FIBERGLAS

Roll Roofing

- White or brown, approx. 100 sq. ft.

11.99 roll



Corrugated Iron

8 foot 10 foot 12 foot

5.59 6.99 8.49

- 26" wide • Made In USA • G-90 galvanized steel
- Corrugated iron not stocked at all locations, please call

Corrugated Fiberglass Panels

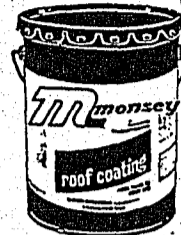
- Choose from white, green or clear
- Heavyweight also available in brown



sequentia

26" wide	Heavy Wt.	Commercial
8'	8.49	10.99
10'	10.69	13.99
12'	11.79	16.99

Roof Coatings



Plastic Roof Cement

One Gallon	Five Gallon
2.59	10.59

Fibered Roof Coating

One Gallon	Five Gallon
2.79	10.99

Cold Process/Lap Cement

One Gallon	Five Gallon
2.79	10.99

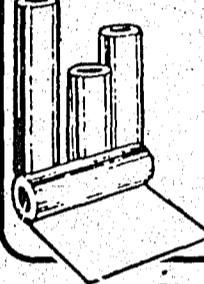
Alum. Mobile Home Coating

One Gallon	Five Gallon
6.99	31.79

White Mobile Home Coating

One Gallon	Five Gallon
9.99	47.88

Galvanized Roll Flashing



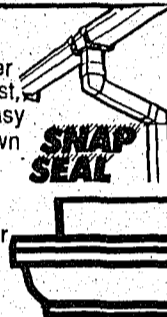
	8"	10"	12"	16"	20"	24"
10'	2.89	3.59	4.29	5.69	7.49	N/A
25'	6.99	8.99	10.99	13.99	17.99	17.99

Vinyl Gutter

Quality vinyl gutter never needs paint. It won't rust, rot, dent or corrode. Easy to install. White or Brown

Galvanized Gutter

Sturdy galvanized gutter is easy to install. We also stock a complete line of fittings



10 ft. Lengths	
Gutter	Downspout
3.77	5.99
10 ft. Lengths	
Gutter	Downspout
3.29	3.99

Farm And Ranch

All Products are
Made in the USA



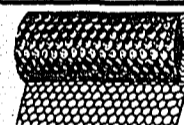
Treated Fence Post

• Pressure treated at 40CCA for ground contact

2" x 6 1/2ft.	3" x 6 1/2ft.	4" x 6 1/2ft.	4 1/2" x 8ft.
.99	1.89	2.89	4.49
6" x 8ft.	5" x 10ft.	5" x 12ft.	6" x 18ft.
8.99	9.99	11.99	23.79

Lifetime
Warranty

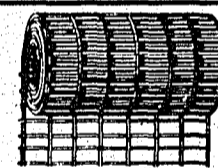
All posts not stocked at all locations - Call for availability FP2



Poultry Netting

50ft roll • Made in USA

24"	36"	48"
9.79	12.99	16.59



Welded Wire

50 ft. long • 2"x4" mesh

48" tall	60" tall
16.99	20.99



Stock Panel

- 52" high
- Galvanized
- 16 foot long

13.50

Field Fence

Made In
USA

Red Brand woven field fence is easy to erect and stretch.



Ht.	Gauge	Spacing	Length	Price
39"	12 1/2	6"	330'	69.95
47"	12 1/2	6"	330'	77.95

Electric Fence



Sure-Shock Charger

- Positive shocking power for up to 6 miles
- Fused plug for protection
- SS-505FP

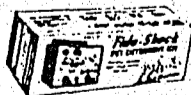
18.99

Fido-Shock Kit

• Contains all you need to build a fence to deter small animals & dogs

39.99

SS-750RPA



Steel T-Post

- Heavy duty, silver top
- Comes with 5 clips

6 foot	6 1/2 foot
1.99	2.25

Farm Gates

- 52" high
- Galvanized

4'	10'	12'	14'	16'
17.95	36.95	39.95	44.95	52.95

Come-A-Long

- 2 ton strength

28.44

Barbed Wire

- 1320 Lin. ft. (1/4 mile)
- Made in America



Red Brand

12 1/2 gauge
2 Point

Meets ASTM A121

33.49

Tuf-Mac

12 1/2 gauge
2 Point

Meets ASTM A121

29.95

Gaucha

15 1/2 gauge
2 Point

21.88

MCCOY'S
BUILDING SUPPLY CENTERS

Gypsum Products

4' x 8' Gypsum Wallboard



1/2" Thick	5/8" Fire Rated
Call for Price	3.19

All Purpose Premix Joint Compound



5 gallon pail	62 lb. COMPARE	7.99
4 gallon carton		4.69
1 gallon pail		3.79



Ceiling Texture

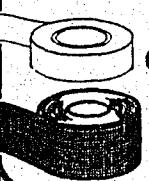
40 pound bag	Spray on	7.39
2 gallon pail	Roll on	7.99



PVA Wall Primer

- Dries in minutes
- Water clean-up
- Bridges cracks

1250



Gypsum Tape & Nails

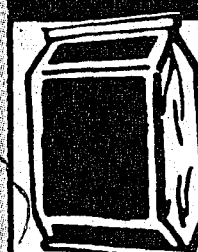
Paper (250 ft.)	1.39
Fiberglass (Self Adhesive)	4.59
Sheetrock nails (a lb.)	79¢

Nails Made in U.S.A.

Bright Nails Most at	Vinyl Coated Sinkers Nails Most at	Galvanized Hot Dipped Most at	Galvanized Roofing Nails
39¢ per pound	44¢ per pound	65¢ per pound	59¢ per pound

RED BRAND Get a lower price on nails when you buy a 50 lb. box. Call for price.

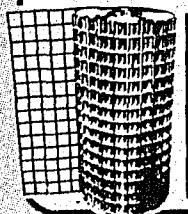
Concrete Products



Concrete Mix 80 lb.	Mortar Mix 80 lb.	Sand 70 lb.	All Purpose
2.29	2.49	1.99	
Portland Cement - 94 lb.		Call for Price	
Masonry Cement - 70 lb.			

Reinforcing Mesh

Meets ASTM-A-185
5'x150'-750 sq. ft.



10 gauge	35.95
6 gauge	72.95

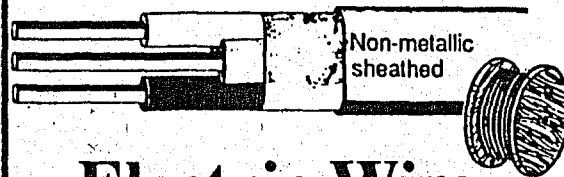
Reinforcing Bars

3/8" x 20 ft. long	1.65
1/2" x 20 ft. long	2.59
5/8" x 20 ft. long	3.99
3/8" x 10 ft. long	1.09

Poly-Film

• 20' x 100'
• 6 mil-Black
47.99

Electrical Products



Non-metallic sheathed

125 Amp Load Centers

• Can use 100 master main for lesser service



Electric Wire

Wire priced by the foot will cost less if bought in full roll quantities

Indoor Romex		THW Stranded	
14/2 WG 250'	23.95	6 per foot	24¢
12/2 WG 250'	31.95	4 per foot	38¢
10/2 WG 250'	59.95	2 per foot	59¢
8/2 WG per foot	67¢	Underground	
6/2 WG per foot	95¢	2/0 per foot	1.15

	Indoor	Outdoor
Four Space	11.95	21.95
Six Space	17.95	23.95
Eight Space	24.95	35.95
Twelve Space	31.95	49.95

200 Amp Load Centers

Indoor w/out master main	69.95
Indoor with master main	129.95
Outdoor with master main	149.95

Breakers

Single Pole	1" wide-20 or 30 amp	4.69
	1/2" wide-15,20, or 30 amp	4.49
Double Pole	1/2"-20,30,40,50 amp	9.99
	1"-30,40,50,60amp	

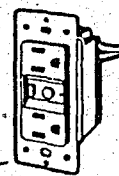
Ground Fault Receptacle

• White or Ivory

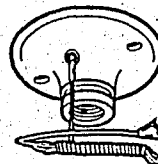
8.99

802-6599-W

LEVITON



Porcelain Receptacle with pull chain



011-29816-C

LEVITON

1.89

Duplex Receptacles

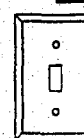
Ivory or White **44¢**
Brown **55¢**

Quiet Switches

Ivory or White **59¢**
Brown **69¢**

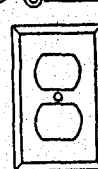
Switch Plate

• Your choice of Ivory or White **19¢**



Receptacle Plate

• Your choice of Ivory or White **19¢**



LEVITON

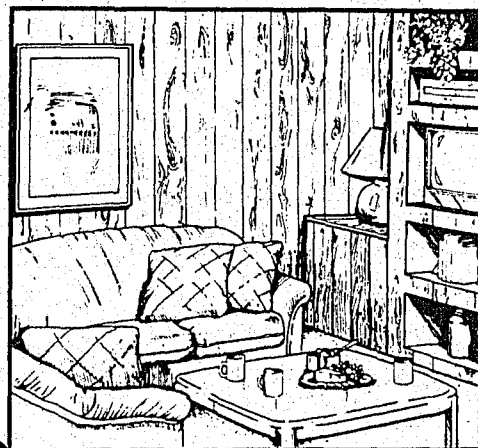
Paneling by



• 4' x 8' sheets

Plywood Panels Inc.

• Add elegance to your home with the real rich wood look of paneling.



Lariat Birch	8.99
Frosted Oak or Willow	12.99
Ash Blush	11.50
Lace Brocade	13.50

MCGOY'S
BUILDING SUPPLY CENTERS

OWENS-CORNING
FIBERGLAS

Sale

Hoop it up with your own team travel bag !!

FREE



When you buy 10 or more rolls of R-19 or better Owens-Corning pink fiberglass by March 3, 1991. Postage and handling not included.

All insulation sold in 94" batts (except R-30 which comes in 16" x 48" and 24" x 48" batts). All have a Kraft paper moisture barrier. The higher the R value, the greater the insulation.

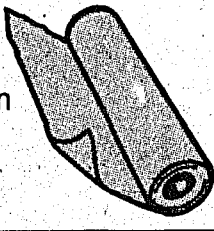
		15" Wide R-30 Is 16" wide	23" Wide R-30 Is 24" wide
3 1/2" Thick R-11	12 1/2° per sq. ft.	10.99 88.12 sq. ft. roll	16.89 135.12 sq. ft. roll
6" Thick R-19	20° per sq. ft.	9.79 48.96 sq. ft. roll	14.99 75.07 sq. ft. roll
9 1/2" Thick R-30	33° per sq. ft.	19.36 58.67 sq. ft. roll	26.40 80 sq. ft. roll



Clear Plastic Film

- 3 mil thickness
- 10' x 20' roll
- Great as garden underlayment

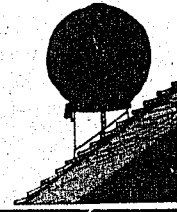
2.99



Turbine Vent Cover

- Drawstring close
- Plastic
- Tight fit-keeps out drafts

1.59



Water Heater Overcoat

- Fits either 30 or 40 gallon heaters
- For gas or electric
- R-Value 6.7

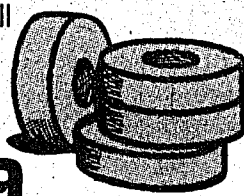
7.88



Insulated Pipe Wrap

- 3" x 15' roll
- Aluminum faced
- 2" thick

1.79



Red Devil

Caulks

Red Devil



Standard Quality Latex Caulk

69¢



Tub & Tile Caulk

1.49



Polycel One Foam Sealant

- Seals cracks and holes in door and window frames to keep out drafts
- 12oz. can

3.99

6' Rigid Pipe Insulation

HALSTEAD

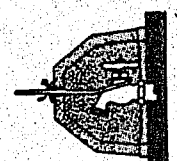
3/8" Wall Thickness
For 3/4" copper, 3/4" CPVC,
1/2" PVC, and 1/2" galvanized

1.19

3/8" Wall Thickness
For 1" copper, 3/4" PVC,
and 3/4" galvanized

1.39

Faucet Covers



1.99

"Original Formula" Silicone Caulk

- White, bath white & bronze
- 10.1oz

Clear-2.99

3.29

"Silicone II" Silicone Caulk

- Clear and white
- 10.1oz

4.59



Kitchen Kompact



American Cabinet, Inc.
MADE IN U.S.A.

Wall

30" High	Unfinished	Chadwood
12W	12" 18.95	37.95
15W	15" 24.95	49.95
18W	18" 28.95	53.95
24W	24" 36.95	61.95

Base

12B	12" 29.95	59.95
15B	15" 35.95	74.95
18B	18" 39.95	77.95
24B	24" 49.95	86.95

Kitchen Cabinets

**CHOOSE FROM:
Chadwood Oak
Finished Cabinets**

Features include: Brass hinges and door pulls. Durable family proof finish and adjustable wall shelves.

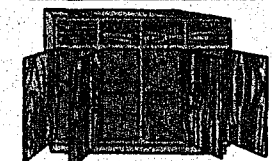
**OR TRY:
Unfinished
Kitchen Cabinets**

These cabinets have real Birch fronts and come ready to stain, varnish and install.



Refrigerator Cabinet

	Unfinished	Chadwood
•15" high	30" 31.95	52.95
	36" 36.95	56.95



Sink Base Unit

60SB	60" 89.95	159.95
------	------------------	---------------

Pre-Formed Countertops

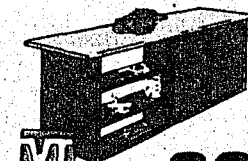
- Available in Butcher Block Planked Village Oak or Almond
- Full 3/4" thick COMPARE!



	6 foot	8 foot	10 foot	12 foot
Straight	25.95	34.95	43.95	51.95
Miter	31.95	40.95	49.95	NA

**Peninsula/
Bar Top**

- 8' x 27" straight (top only)



36⁹⁵

WILSONART

Plastic Laminate

- Wide selection of patterns
- Compare quality!



2'x8'	13.99
3'x8'	21.77
4'x8'	28.77



Contact Cement

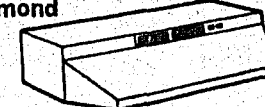
- Bonds laminate, trim and moulding permanently

9.99 GAL.

30" Range Hoods by RANGAIRE

In White or Almond

- Ductless**
- 2 speed motor
 - Charcoal filter
 - Enclosed light



H-833 **31.88**

Convertible

- Enclosed light
- Motor speed control
- Duct or Ductless



H-939 **59.95**

MCCOY'S
BUILDING SUPPLY CENTERS

ets
OM:
ak
inets
s hinges
le family
able

nets
eal Birch
to stain,

abinet
Chadwood
52.95
56.95

Unit
159.95

la/
pp

36⁹⁵

ement
trim and
nently

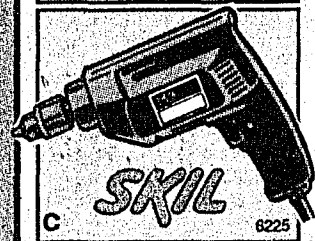
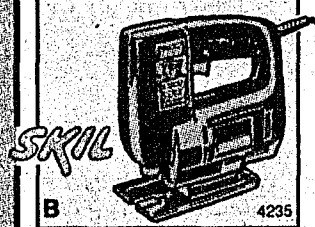
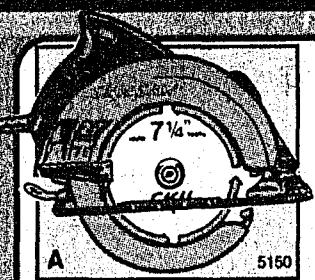
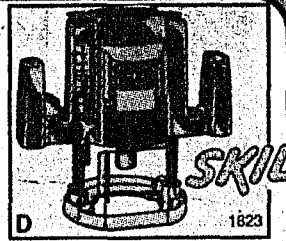
GAL.

RE

9.95

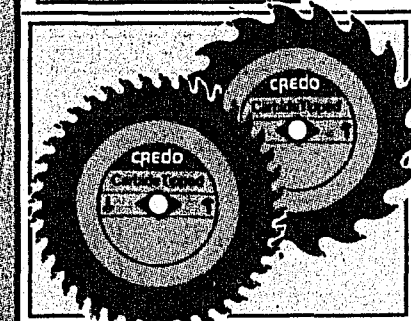
Tools

SKIL



- A Circular Saw** **54.95**
 - 7 1/4"
 - 2 1/8 h.p. high torque motor
- B Jig Saw** **43.95**
 - Variable speed
 - 1/3 h.p., 3.0 amp
- C 3/8" Vari-Speed Drill** **39.95**
 - 1/3 h.p. 3.0 amp
 - Forward or reverse
 - Built in chuck key storage
- D Router** **79.95**
 - All ball bearing construction
 - 1 1/2 h.p.
 - Adjustable depth stop

credo Saw blades



- 18 Tooth Combo** **5.99**
 - Carbide blades
 - 11623
- 40 Tooth Plywood** **14.99**
 - Carbide blades
 - 12300

Single Bit Axe **11.49**
 • 3 1/2 lb. forged head
 • Great for cord wood chopping



Double Bit Axe **13.99**
 • 3 1/2 lb. forged head
 • 36" hickory handle
 • Two cutting surfaces



Double Faced Sledge **10.99**
 • 8 lb. sledge
 • 36" handle



Bow Saw **6.77**
 • 24" peg tooth blade
 • Tubular steel blade
 • Rust resistant baked enamel



Work Gloves
 Leather Palm **2.99** 4100
 Brown Jersey **1.19** 508
 Hob Nobb Jersey **2.29** 302



Lighting Products

NITE-WATCH **19.99**
 • Timing and sensitivity adjustment
 • Scares off unwanted intruders
 (Bulbs not included) MS-41

SECURITY FLOOD-LITE **12.88**
 • Control photo cell for dusk to dawn use only
 (Bulbs not included)

SECURITY LITE **29.99**
 • Automatic Dusk-to-Dawn photo control
 • Energy saving 175 watt mercury vapor lamp
 NH-1204M

QUARTZ-LITE **12.88**
 • Brighter than three 150 watt floods
 • 300 watt Halogen light
 EQ-300-WL

Lightcraft

1. Ceiling mount White light fixture **4.59**
 • Uses 2, 60 watt bulbs (Bulbs not included) 7223
2. Black porch light fixture **4.59**
 • Uses 1, 60 watt bulb (Bulb not included) 3263

RANGAIRE

- 48" Double tube strip light fixture (2-40 watt tubes) **19.99**
 (Tubes not included) S240HR
- 24" White light fixture with wrap around shade (2-20 watt tubes) **24.99**
 (Tubes not included) TLW-220LT
- 48" Double tube, white finish, shop light w/ plug in cord (2-40 watt tubes) **12.99**
 (Tubes not included) ESL-240

Soft White Bulbs **1.88**
 (4 Packs of either 60, 75, or 100 watt bulbs)

SYLVANIA Light Bulbs

- 150 Watt Floods **3.59**
- 4' Workshop Tubes **1.19**

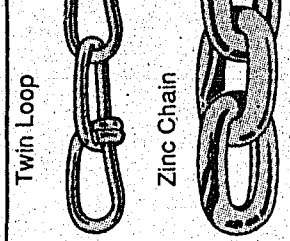
MCCOY'S Paints

- Interior Wall & Trim Enamel**
- 1 gallon Semi-Gloss **9.99**
- Interior Wall or Ceiling**
- 1 gallon Flat **7.99**
- Outside House & Trim**
- 1 gallon Flat **9.99**
- 1 gallon Semi-Gloss **10.99**



McCoy's paints are manufactured by Olympic/Lucite

PEERLESS Chain



#3 Twin Loop	22c a ft.
2/0 Twin Loop	29c a ft.
3/16" Zinc Chain	59c a ft.
1/4" Zinc Chain	79c a ft.
5/16" Zinc Chain	1.09 a ft.
3/8" Zinc Chain	1.49 a ft.

McCoy's also carries these fine chain accessories.

Shelving Accessories



Sale

	Anochrome	White
Shelf Brackets		
8"	.79	.89
10"	.89	.99
12"	.99	1.09
Shelf Standards		
36"	1.49	1.69
48"	1.99	2.19
72"	2.79	3.29

MCCOY'S
BUILDING SUPPLY CENTERS

Doors and Accessories

MCCOY'S
BUILDING SUPPLY CENTERS



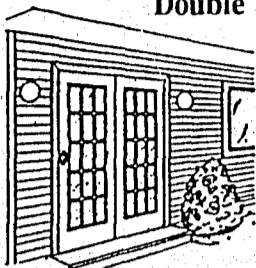
Steel Door Units

- Pre-hung in wood jamb
- 24 gauge steel
- R-15 value
- Built in door sweeps

CASTLEGATE

	32"	36"
6 Panel	10995	11995
9 Pane	15995	16995
Frosted Window	NA	19995

Patio Doors Double



- 24 gauge steel
- 6 ft. wide
- Pre-hung

39995



Storm Doors

- Pre-hung
- 32" or 36"

JHS

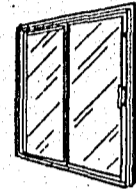
Mill Finish

49.95

Bronze or White

79.95

Sliding Doors



Aluminum

159.95

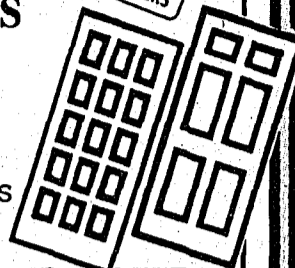
Brnz/Insulated

219.95

Wood Doors

NORTHWOOD

- Surfaces free from defects and blemishes
- 1/2" raised panels
- Douglas Fir



	32"	36"
6 Panel	95.95	99.95
15 Pane	114.95	117.95

Economy Steel Door

- Flush slab design
- Ready to install

32"	79.95	36"	79.95
-----	-------	-----	-------

Wood Air Flow Door

- Screened window for air flow
- Ready to install
- 1 3/8" thick

95.95

Wood Screen Door

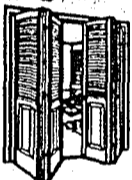
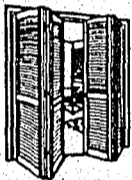
- All wood
- 6' 8" tall

32"	32.95	36"	34.95
-----	-------	-----	-------

AWC

Bi-Fold Doors

- Track and hardware incl.
- Jamb not included



	Plain Mahogany	Paint Grade Louver	Stain Grade Louver	Louver Panel
2 door 24"	19.95	22.95	34.95	39.95
2 door 30"	21.95	26.95	37.95	46.95
2 door 32"	23.95	27.95	38.95	47.95
2 door 36"	24.95	29.95	41.95	48.95
4 door 48"	37.95	45.90	65.95	78.95
4 door 60"	43.90	53.90	75.90	93.90
4 door 72"	49.90	59.90	83.90	97.90



Interior Doors

- Hollow core Mahogany

	24"	30"	32"	36"
Slab	13.99	14.99	15.99	16.99
Pre-hung w/jamb	29.95	32.95	33.95	35.95

Exterior Doors

Made In America

	32"	36"
Hollow Core Flush	20.95	21.95
Solid Core Flush	29.95	32.95

Windows and Supplies



250 Series Double Pane

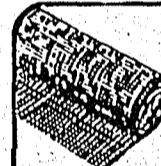
Divided Pane Bronze		Bronze 1/1 Pane	
24"x 36"	49.95	24"x 28"	39.95
24"x 60"	69.95	24"x 36"	46.95
32"x 36"	59.95	24"x 60"	64.95
32"x 48"	53.95	32"x 36"	55.95
32"x 52"	74.95	32"x 48"	53.95
32"x 60"	77.95	32"x 52"	66.95
36"x 36"	65.95	32"x 60"	69.95
36"x 48"	75.95	36"x 36"	59.95
36"x 52"	76.95	36"x 48"	67.95
36"x 60"	79.95	36"x 52"	69.95
36"x 72"	89.95	36"x 60"	75.95
* discontinued		36"x 72"	86.95



200 Series Aluminum Single Hung with Half-Screen

24"x 28"	22.95	32"x 60"	43.95
24"x 36"	25.95	36"x 36"	34.95
24"x 60"	39.95	36"x 48"	41.95
32"x 36"	32.95	36"x 52"	42.95
32"x 48"	38.95	36"x 60"	45.95
32"x 52"	39.95		

JHS BUILDING PRODUCTS, INC.



Screen Wire

- 7' roll may vary to 6' 4"

Fiberglass

	7 ft.	25 ft.
30"	2.59	7.99
36"	2.99	9.77
48"	3.99	12.77

Aluminum

	7 ft.	25 ft.
24"	3.49	10.99
30"	4.39	13.88
36"	5.29	16.77
48"	6.99	21.99

Hanover Wire Cloth

300 Series Mill Finish Slider with Half Screen

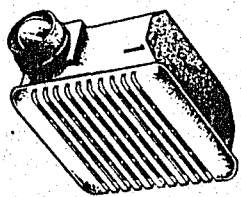
36"x 36"	34.95
48"x 36"	39.95
72"x 36"	49.95

MCCOY'S
BUILDING SUPPLY CENTERS

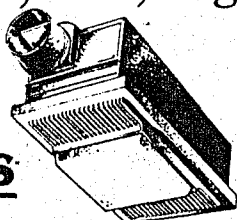
Plumbing Products

KIRK HILL INC.

Bath Vent Fan Heater, Fan, Light



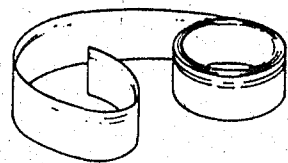
Nautilus



- Removes damaging moisture
- Quiet, powerful fan
- Matte white grille
- Quiet, powerful fan
- 1300 watt heater
- Switch included
- Matt white grille

10.99
Sale
N688

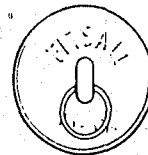
59.99
Sale
N655



Tub & Wall Cove Trim

• 3/4" x 132"

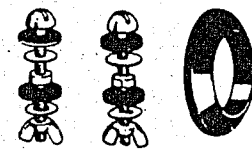
2.59
Sale
S-38A



Fit-All Tub Stopper

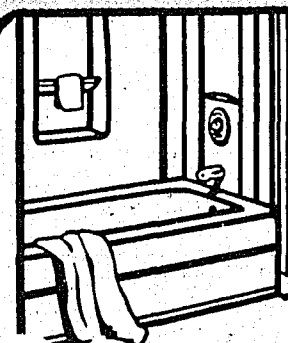
• Includes chain

79¢
Sale
S-62AC



Tank-Bowl Assembly Kit

2.19
Sale
B-19



Tub / Shower Unit

- Durable fiberglass construction
- Built-in towel bar and soap dish
- Left or right hand drain
- White or Almond

GlasTec 199.95

Shower Stall

- Recessed soap dish
- Includes drain.

GlasTec	32" wide	36" wide
	32" deep	34" deep
	White	Almond
	179.95	199.95
	189.95	209.95

Tub Enclosures

- 5' wide
- Tempered safety glass

Satin Finish 58SP	49.95
Silver Finish 58H	74.95

Shower Doors

- Available in 2 sizes.

Hammered Glass	
32"	59.95
36"	59.95
Etched Glass	
36" only	89.95

Steel Bathtub

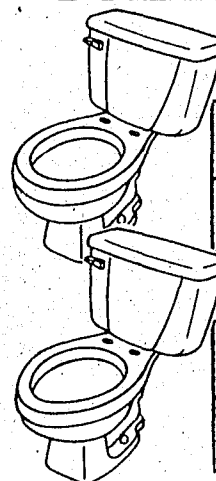
- Right or left hand drain

White	Bone
85.95	89.95

CRANE

American Made Commodes

CRANE PLUMBING



Standard

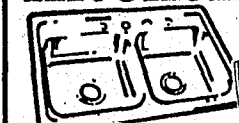
White	49.95
Bone	65.95

Elongated

White	67.95
Bone	79.95

Kitchen Sinks

- Stainless Steel
- Made in the USA



FEDERAL

6" Deep Good	• Satin Finish • 9.5 Gallon cap • 22 ga #47404	29.95
7" Deep Better	• High Lustre finish • 11.5 Gallon cap • 20 ga #3404	49.95
7" Deep	• Mirror Finish • 11.5 Gallon cap • 20 ga #MFV3322	79.95
8" Deep Best	• Radiant Polish • 14 Gallon cap • 20 ga #58404	79.95

Bar Sink

- Includes faucet and strainer
- 5 1/2" deep



42.95

Bath Sinks

China Wall Hung

- White only
- 19" x 17"



24.95

19" Round

	White	Bone
China	39.95	49.95
Porcelain	21.95	NA

- PVC 19" Round
- Choose from white or bone



16.95

Water Heaters

Why are water heaters costing so much these days? New government regulations require all heaters to be more energy efficient than before. While a new water heater will cost more now, its lower operating cost will save you lots of money later.

WARRANTY GUIDE

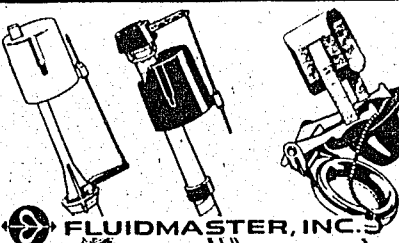
ENERGY EFFICIENT

Better - 5yr on tank / 1yr on parts
Foam insulation

SELF SERVICING

Best - 8yr on tank leakage
5yr on parts/self cleaning
Foam insulation
Armado Incoloy element on elec. models

B - 30 gal./240v - Better	159.95
D - 40 gal./240v - Better	169.95
E - 40 gal./240v - Best	199.95
G - 50 gal./240v - Best	229.95
L - 20 gal./120v	144.95
P - 30 gal. - Better	149.95
I - 30 gal. - Best	219.95
R - 40 gal. - Better	159.95
K - 40 gal. - Best	239.95
S - 30 gal. - Better	219.95
N - 40 gal. - Best	299.95

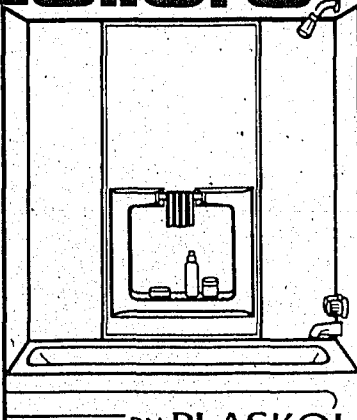


FLUIDMASTER, INC.

Ballcock Better 4.29 **Ballcock Best 5.99** **Flusher Fixer 4.49**

200A 400A 555

allura Bathtub Wall Kit



Surround yourself in elegant beauty!

- Comes with 5, easy to install pieces
- Great looking high gloss finish
- Resists mildew, and cleans with a damp cloth
- Choose from white or bone
- High impact plastic

Sale
TW85-130 Bone **59.95**
TW85-440 White **49.99**

BY PLASKOLITE

MCCOY'S
BUILDING SUPPLY CENTERS

Lumber

•McCoy's carries only top quality lumber products
•We invite you to compare before you buy

To insure your best selection:
No Returns on Lumber Products

Treated Wood
Saves Trees!

Treated Pine Lumber



LIFETIME WARRANTY

•.40 CCA pressure treated for ground contact

	7 ft.	8 ft.	10 ft.	12 ft.	14 ft.	16 ft.
2x4 #2 or better		1.77	2.39	2.89		4.19
2x6 #2 Super		2.89	3.39	4.19	4.79	6.49
2x6 #1 Deck		3.49	4.19	4.99	5.69	7.29
2x8 #1		4.59		6.79		9.49
2x10 #1				8.29		12.29
2x12 #1		7.39		10.79		14.99
4x4	3.29	3.59	6.49	7.39		
4x6				11.99		15.99

	6 ft.	8 ft.	10 ft.	12 ft.	14 ft.	16 ft.
1x6 #2 Rough one side	1.39	2.19	2.49	2.79	3.29	4.39
1x4 #1		1.89	2.39			
1x6 #1		3.49	4.39			



Louisiana-Pacific



Premium Studs

•2" x 4" stud grade •Southern Pine

Better Precut to 92 5/8" Southern Pine	Temple Purple Precut to 92 5/8" Southern Pine	Full 8' long Southern Pine	Precut To 92 5/8" Whitewood
1.29	1.37	1.33	1.59

Framing Lumber



•Grade marked #2 or better
•Southern Pine

	8 ft.	10 ft.	12 ft.	14 ft.	16 ft.	18 ft.	20 ft.
2x4	1.33	1.85	2.25	2.59	2.99		
2x6	2.25	2.79	3.39	3.89	4.49	4.99	5.59
2x8	2.99	3.79	4.59	5.29	5.99		
2x10	3.99	4.99	5.99		7.99		
2x12	4.99	6.49	7.79		9.99		
1x4 #2	.96	1.20	1.44	1.68	1.92		

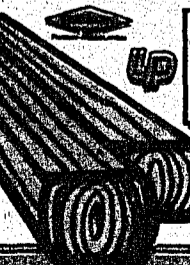
Fencing Pickets



1" x 6" x 6 Foot Dog-Ear

#2 grade Cedar	1.44
Treated Pine	1.09

8' Landscape Timbers



Compare Quality!
Look for the stamp
.40 CCA Treated for ground contact

269

Boards

#1 Grade So. Pine Boards

	8 ft.	10 ft.	
1x2 Furring Strips			
White Pine 8' - 65¢	1x4 1.88	2.10	
Ponderosa Pine 10' - 89¢	1x6 2.96	3.70	
	6 ft.	8 ft.	10 ft.
1x10 #2	3.36	4.48	5.60
1x12 #3	2.82	3.76	4.70

Cedar Boards

•Mother Nature's original treated wood
•High quality appearance grade

	1x2	1x4	1x6
8 ft.	1.39	1.79	2.79
10 ft.	1.69	2.39	3.89

Panel Products



Our plywood is all agency grade marked

Plywood



Louisiana-Pacific
TEMPLE-INLAND

4'x8'	1/4"	3/8"	1/2"	5/8"	3/4"
BC Banded one side	8.79	6.99	9.59	12.89	12.99
CD Unstamped		5.29	5.99	8.39	9.99
OSB Waterwood	4.49		4.79 7/16" thick		9.99

Treated Plywood



•40 CCA

1/2" CD	3/4" BC
9.79	16.49

STURD-I-FLOOR Tongue & Groove

•3/4" Thick



11.29

Particle Board

•3/4" Thick •49" x 97" •Industrial grade

8.49

TEMPLE-INLAND

Cabinet Plywood

•3/4" •One piece face

Birch

29.95

Plywood Siding

•4x8 Sheets •Ruf-textured finish



3/8" 4" centers or no groove with square edge (soffit)

8.79

5/8" 4" or 8" centers

11.99

Hardboard Siding



•7/16" x 4x8' sheets
•Primed and textured
•25 year limited warranty

10.99

Rigid Foam Sheathing

•Foil both sides •R-3.6
•1/2" x 4x8' sheets

6.29

Asphalt Sheathing

•1/2" x 4x8' sheets
•Coated on all sides and edges
•R-1.23

3.89

Treated Lattice Panels

•.40 CCA pressure treated for ground contact
•5/8" thick—COMPARE!

2' x 8'	4' x 8'
5.88	9.88

12" Lap Siding

•Primed hardboard •7/16" thick

	Smooth	Textured
12 ft.*	4.29	4.49
16 ft.	5.69	5.99

*As available •25 yr limited warranty

PRICE POLICY—It's McCoy's policy to offer the lowest possible price on all products, not just "leader" items. HOW DO YOU PAY?—McCoy's will accept cash, personal checks, Discover, Visa and MasterCard Credit Cards. DELIVERY service is available at a modest charge. Check your nearest McCoy's for area and rates. C.O.D. available. RETURNED MERCHANDISE—Merchandise returned must be in resalable condition and accompanied by a cash register receipt. NO RETURNS ON LUMBER PRODUCTS. RAINCHECKS—A raincheck will be issued upon request for out of stock merchandise. WE RESERVE THE RIGHT TO CORRECT THE PRICING ERRORS.

BROWNWOOD

1777 South
McCoy's

643-2638

Barbara Blackburn-Kerr

Also stop our stores in Atlanta and San Antonio

SUPER SAVERS

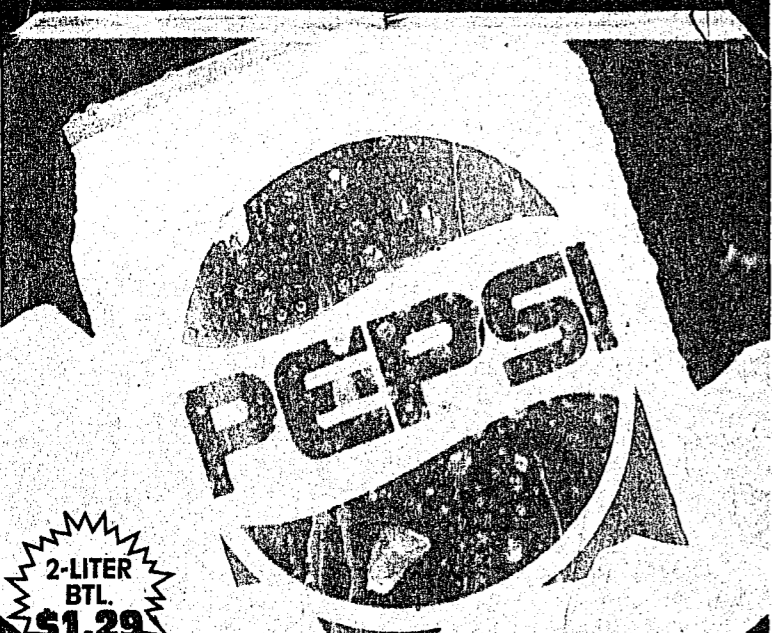


9 To 11-Lb. Average Weight,
Contains 50% Center Chops & 50% End Chops

Assorted Pork Chops

\$1.19
LB.

P1-261



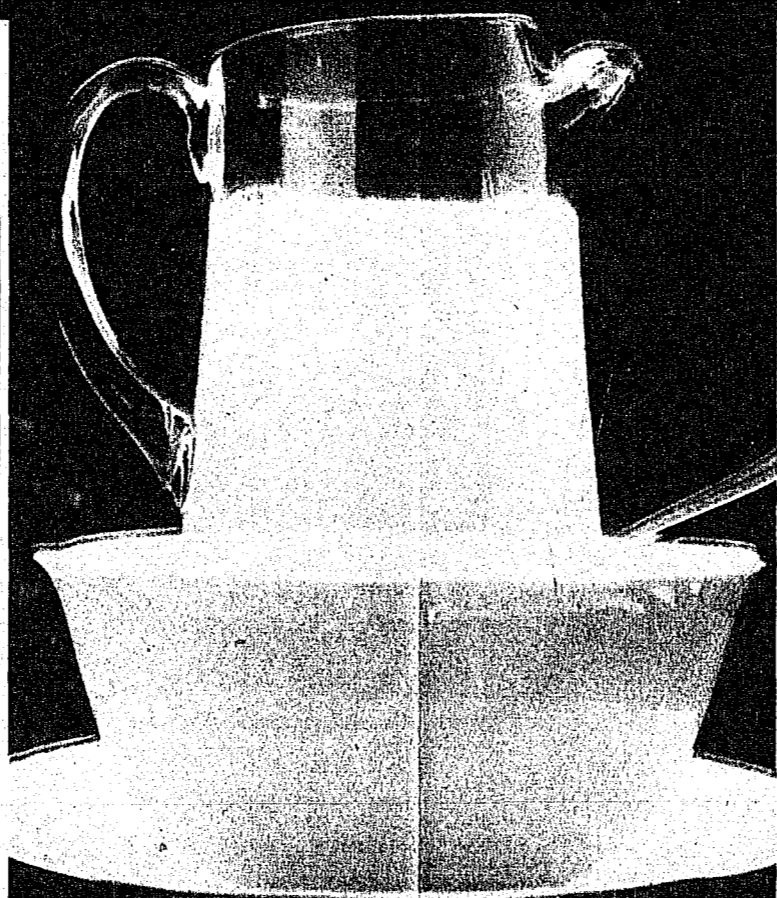
2-LITER
BTL.
\$1.29

(12-Oz. Cans) Mountain Dew, Reg. Or
Diet Slice, Regular Or Caffeine Free Diet Pepsi Or

Pepsi Cola

2 \$5
TWELVE
PACKS

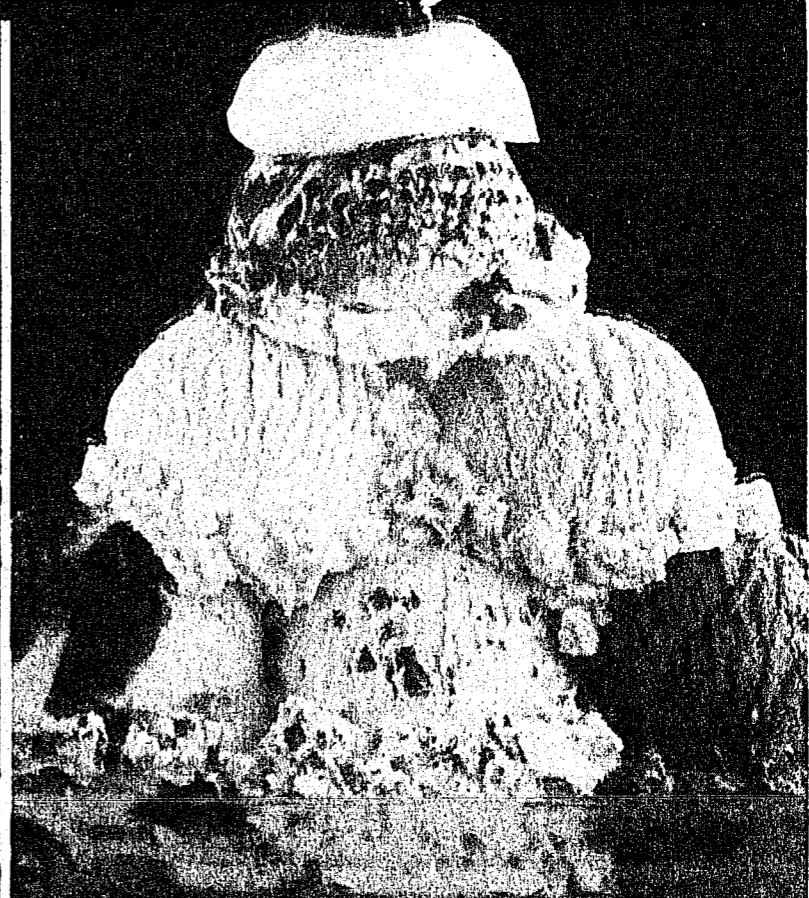
LIMIT FOUR WITH \$10.00 ADDITIONAL PURCHASE



Kroger 3.25% Milkfat

Homogenized Milk

\$1.79
GALLON



Diet Blue Bell, Blue Bell, Extra Light, Blue Bell,
Frozen Yogurt, Brown, Silver Or Gold Rim

Blue Bell

2 \$5
1/2-GAL.
CTNS.

Plus . . . **DOUBLE MFRS.' COUPONS***

DOUBLE UP TO 50%
COUPONS. SEE STORE
FOR DETAILS

This Ad Valid: January 16 17 18 19 20 21 22 OPEN 24 HOURS

Copyright 1991, The Kroger Co. We reserve the right to limit quantities.

J
A
N

1
7

9
1

Ragu Homestyle Plain, Meat Or Mushroom

Spaghetti Sauce

32-OZ. JAR

99¢

SAVE 80¢ PER JAR

Regular Or Hot No Beans

Hormel Chili

15-OZ. CAN

88¢

SAVE 71¢ PER CAN

P2-261

Elbow Macaroni, Cut Macaroni, Or

Skinner Spaghetti

99¢

24-OZ. PKG.

Everyone's Favorite

Oreo Cookies

2 \$5

20-OZ. BAGS

Nabisco

Premium Saltines

79¢

16-OZ. BOX

Great In Banana Pudding

Nabisco Nilla Wafers

12-OZ. BOX

\$1.99

Assorted Flavors Regular Or Diet

Big K Soft Drinks

3-LITER BTL.

88¢

Great With Crackers

Kroger Rat Trap Cheddar Cheese

LB.

\$1.99

Frozen Kroger

Orange Juice

79¢

12-OZ. CAN

Wydiv, Inc. Reg. Or Light

Keystone Beer

\$9.39

24 12-OZ. CANS

Frozen 12"

Tombstone Pizza

2 \$7

18 TO 20.5-OZ. PKGS.

Delicatessen

Chicken Breast, Bli-Mar Turkey Breast, Virginia Baked Ham Or Lean

Roast Beef

\$3.99

LB.



The Deli

Any Single Topping Single Crust

Deli Pizza

2 \$6

FOR

Half Or Whole Stick Springdale Farm All Beef

Summer Sausage

\$2.99

LB.

12-Ct. Hard Rolls, 6-Ct. Kaiser Rolls Or

Sub Buns

99¢

4-CT. PKG.

Colby Cheese Or Wilson

Cooked Ham

\$2.99

LB.

Coconut, Chocolate Or Lemon

Creme Pies

\$2.99


EA.



Kroger
Apple Juice
64-OZ. BTL.

99¢

SAVE \$1.20 PER BTL.



Shedd's
Country Crock Spread
3-LB. TUB

\$1.39

SAVE \$1.10 PER TUB

P3-DIV.

\$1.50 Off Label
Clorox Detergent
168-OZ. BOX

\$5.99



Kroger
Cottage Cheese
24-OZ. CTN.

\$1.49



Kroger Individually Wrapped
Sliced Cheese Food
16-OZ. PKG.

\$1.88

Everyday Low Prescription Prices In The Kroger Pharmacy

Amoxicillin 250mg	30-Ct.	\$806
Amoxicillin 500mg	30-Ct.	\$1043
Amoxicillin 125mg	80cc	\$358
Amoxicillin 125mg	150cc	\$497
Amoxicillin 250mg	80cc	\$583

AVAILABLE IN STORES WITH PHARMACIES

Assorted Colors Bath Tissue
Nice 'N Soft
4-ROLL PKG.

88¢



Dog Food
Purina Mainstay
20-LB. BAG

\$5.99

30% MORE FREE
Ultra Slim-Fast
30% More Free Bonus Pack! Strawberry, French Vanilla, Or Chocolate Royale

SALE PRICE **\$4.88**
LESS MAIL-IN REBATE **-\$2.00**
SEE STORE FOR REBATE DETAILS

\$2.88

FINAL COST

Assorted Varieties Of Pump
ClairMist Hairspray
8-OZ. BTL.

99¢

Great For Parties! Reese's Miniatures, York Mints, Hershey Miniatures, Kisses With Almonds Or
Hershey Kisses
14-OZ. BAGS

2 \$5

99% FREE-FREE!
Tidy Cat 3
Cat Litter
25-LB. BAG

SAVE \$2.00!

\$3.49

5-Pk. Tumbler, 2-Pk. Ice Tray, Crystalline Butter Dish, Salt/Pepper Shakers, 5/8 Qt. Food Storage, 2-Qt. Refrigerator Bottle Or 1-Qt.
Food Storage Container*
YOUR CHOICE

\$1.00

10-Pc. Measuring Cup Set, Hand Grater, 4-Pc. Nylon Tools, Cutlery Tray, Kitchen Scissors/Shears, Sewing Thread Or Assorted
Wood Hangers*
YOUR CHOICE

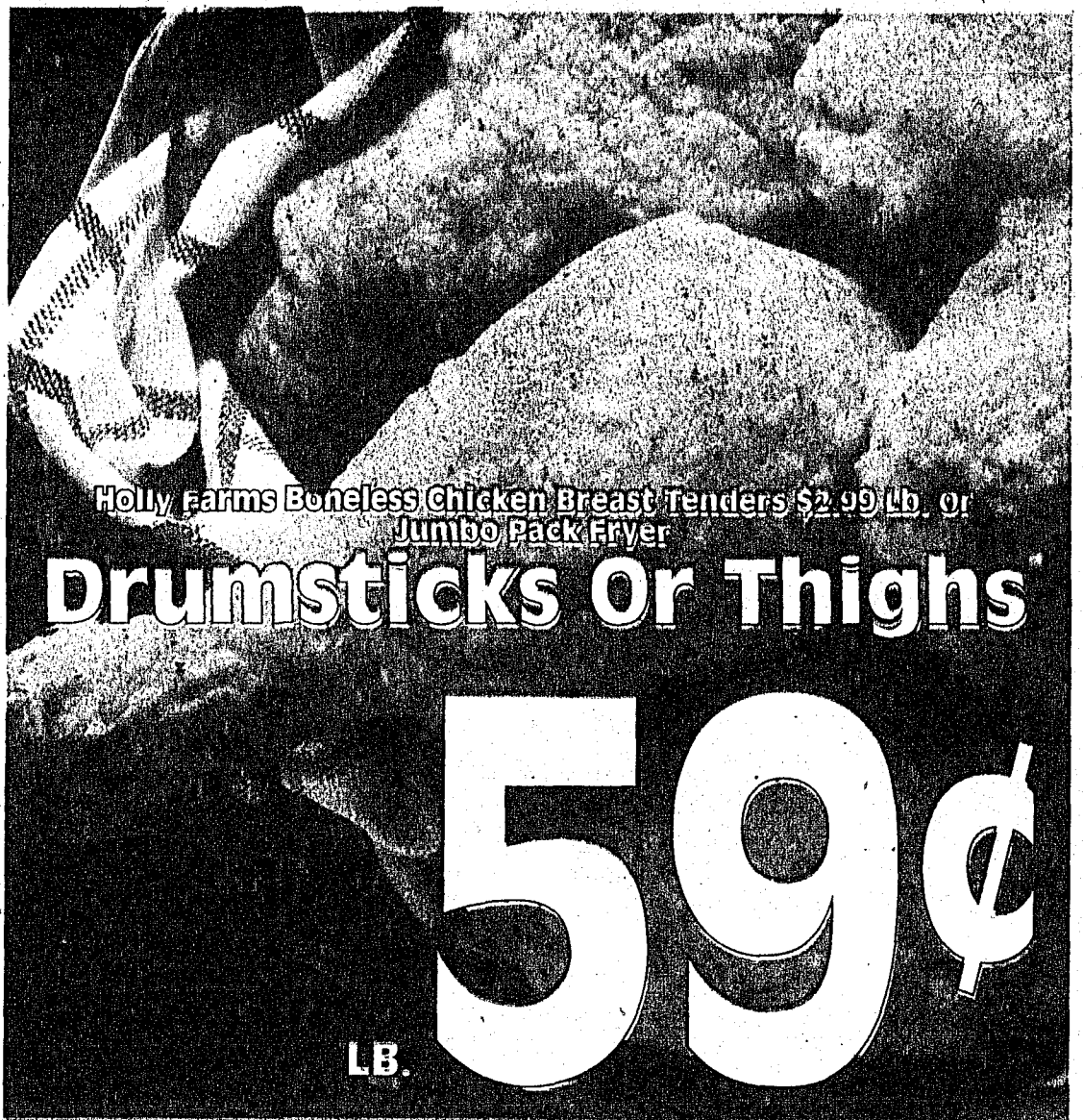
\$2.00

*AVAILABLE WHILE SUPPLIES LAST

J
A
N
1
7
9
1



USDA Choice Boneless
Chuck Roast
\$1.59
LB.



Holly Farms Boneless Chicken Breast Tenders \$2.99/lb. Or
Jumbo Pack Fryer
Drumsticks Or Thighs
59¢
LB.

Eckrich Meat Or Polska
Smoked Sausage
\$1.99
LB.

USDA Inspected Center Loin Pork
Chops \$2.39 Or Country Style
Pork Ribs
\$1.39
LB.

USDA Select Beef
Boneless Strip Steaks LB. **\$2.99**
Meat Or Beef Jumbo
Eckrich Wieners
\$1.49
1-LB. PKG.

Kroger Whole Hog Hot Or Mild
Pork Sausage 1-LB. ROLL **\$1.59**
Kornland Whole Boneless Ham \$1.99 Lb.
Or 93% Lean Or 93% Lean Hawaiian
Wilson Half Ham
\$1.99
LB.

From Our Seafood Shoppe
Catfish Fillets \$2.99 Per Lb. Or USDC Inspected Farm Raised
2 To 4-Lb. Avg. Wt. USDC Inspected Farm Raised Whole

Whole Catfish **\$1.69** LB.
Kroger Fish Sticks 8-OZ. PKG. **99¢**

King Salmon **\$3.99** LB.

Large Cooked **Cocktail Shrimp** 14-OZ. BAG **\$9.99**

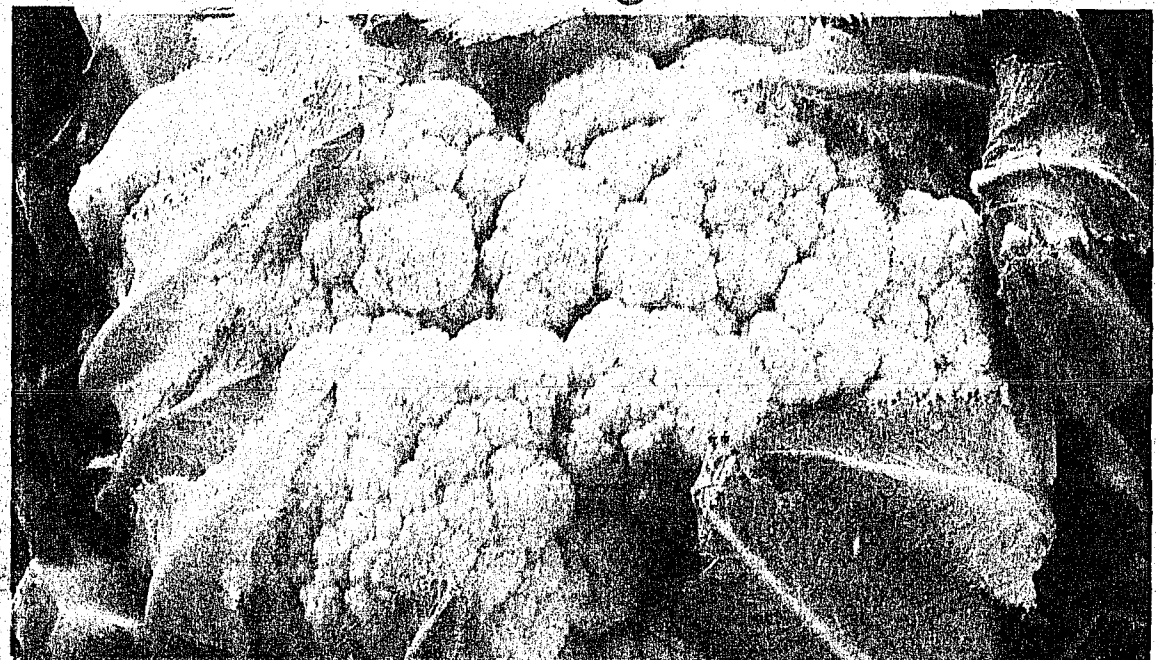
Kroger Lite Tuna Noodle Or **Cod AuGratin Entrees** 9-OZ. PKG. **\$1.99**

USDC Inspected **Whole Flounder** LB. **\$2.99**

USDC Inspected 60 To 70 Count **White Shrimp** LB. **\$3.49**

Market Break On Cauliflower
Snowwhite California Cauliflower

99¢
EACH



From Our Floral Shoppe... AVAILABLE IN STORES WITH FLORAL SHOPPES
Beautiful Hyacinth, Daffodil, Crocus Or
Potted Tulip
\$2.99
4" POT
Frequent Flower Bouquets... EA. **\$3.99**

Sweet **Ripe Peaches** **99¢** LB.
Thompson **Seedless Grapes** LB. **\$1.99**

Bulk **Snowwhite Mushrooms** **\$1.99** LB.
All Varieties **Washington State Apples** LB. **79¢**

Need Cooking Tips . . . How Much To Prepare For A Party . . . How To Spice Up Your Recipe . . . Or Make It Go Further?
CALL OUR CONSUMER PRODUCT INFORMATION LINE 1-800-632-6900