

Santa Anna News

"He Profits Most Who Serves Best"

One Section — 8 Pages

Mail Bag

BY THE EDITOR

YOU CAN'T AFFORD TO WAIT

No time — costs too much — later on — are all excuses for postponing active support of the Clean Up-Paint Up-Fix Up campaign.

Unfortunately, one time is not as good as another for repainting and repairing. Neglect now can mean more extensive damage with ever-increasing renovation costs.

Your home is one of your greatest assets. Keep it that way. During the Clean Up-Paint Up-Fix Up campaign, check your home thoroughly, inside and out, for defects. Where necessary, paint and make repairs. By spending a little now, you will be saving much in the future on your most important investment — your home.

ANSWER QUESTIONNAIRE

Last week most of the eligible voters of the 21st Congressional District received a questionnaire from Congressman O. C. Fisher. The questionnaire covered most of the primary questions that will come before the legislative branch of the government during the present session of Congress.

We urge each of you to study each question very carefully, and answer them the way you see fit. Congressman Fisher bases a lot of his actions in Congress on the answers he receives to questions such as the ones he is asking in the questionnaire. It is important to us as a district and to the nation that the representatives know your exact feelings on many of the topics.

One important question that appeared on the questionnaire concerned Federal Aid to public schools. An editorial that appeared in the Dallas News on February 6, 1960, answers that question. We quote the editorial:

Every parent in America ought to sit down this morning and, by wire or letter, beg their Washington representatives in both the House and Senate to kill federal aid to education.

If you want your local schools to remain in the hands of local people whom you know and trust, then let Congress and the President know about it.

The Senate Friday approved \$1,833,000,000 for school buildings and teachers' salaries. This bill specifies that control of your public schools shall remain in local hands.

But don't let that promise fool you. Listen, instead, to Sen. Harry Byrd of Virginia who warned that "pious words" from federal-aiders will never convince him that federal control will not be coming soon. Byrd has seen all kinds of federal aid become federal control. There is no separating the two. Bless Byrd.

Of all forms of Washington help, this is the most dangerous. If federal money is poured into your school system, then Washington will dictate the terms of acceptance.

There is already a plan to force mixing of the races in any school that accepts this money. There is a plan to force adoption of textbooks, which the Federal Government says adopt, in any school that accepts this money.

Do you want the control of your children's futures in the hands of federal bureaus, many of them staffed with pro-Communist employees?

Texas will get the biggest share of this \$1,833,000,000. Our allotment is 62 million dollars. That's a temptation to every community with a dilapidated school building. It's a temptation to every schoolteacher trying to live on \$350 a month.

Don't fall for it. This is the culmination of a long fight by socialist planners to put control of education into federal hands. Federal aid to education began years ago with school lunches. Little by little that aid has grown. Now we have the ultimate — outright subsidy of teachers and construction.

Oh, yes, Washington "piously" assures, as Senator Byrd says, that you will keep control. But the design is well known. Once the precedent is set for aid, control comes next. You can't stop it then. The time to stop it is now — by wire, by post card, by letter.

We trust and pray that President Eisenhower, should the aid bill pass both houses, will veto it. You, as parents, have time to resist. Resist now, with all your strength.

VOTER VOICES SOUND LOUDER THAN LOBBIES

After passage of a new labor law in the last session of Congress, Opinion Research Corporation compared its provisions against polls of what people wanted in a new labor law.

High School Honor Roll

Roy B. Mathews, principal of the Santa Anna High School, announces the following students as being on the honor roll for the fourth six weeks period:

Seniors
Sandra Fowler, Frances Biggs, Naoma Henderson, LaVelle Haynes, Dixie Deal, Reta Jane Ing, Eddie Hartman, Sonja Dunn, Travis Buse and Kenneth Harris.

Juniors
LaQuinn Cooper, Don McCullough, Bob Markland, Mary Rehm, Dixie Jo Baugh, Jane Horne, Janice Smith and Weldon Haynes.

Sophomores
Sue Garrett, Juanell Mercer, Sharon Stiles, Don Rutherford, Louise Cooper, Bettie Straughan, Mary Ford and Linda Sudderth.

Freshmen
Jerrell Elliott, Sherman Stearnes, Clayton Jackson, Pete Simmons, Karol Sue Pittard, Jo Ann Wallace, Larry Wardlow, Dona Walker and Tommy Stewardson.

W. J. McClure Runs Into High School Building

W. J. McClure was admitted to the Santa Anna Hospital, apparently in serious condition, after running his pick up into the high school building about 10:00 a. m. Wednesday. Dr. J. P. Rehngren said he apparently suffered some broken ribs, a slight head injury and other cuts and bruises.

Apparently Mr. McClure suffered a light stroke at his home before coming to town. He later suffered another one in the Vinson Grocery. Refusing an offer to take him home, he got into his pick up and started home. He ran over the curb in front of the high school and made a slight curve to the left and hit the school building just about the middle of the typing room. No apparent damage was done to the building, but the pick up was damaged heavily. He was taken to the hospital in a Hosh Ambulance.

As it happened no school children were on the school ground at the time and no cars were parked in the immediate area where he went over the curb.

The accident is being investigated by Deputy Sheriff Bud Simmons.

Jane Campbell To Open Beauty Shop Monday

Mrs. Jane Campbell announces this week she will open the former Stephens Beauty Shop under the name of Jane's Beauty Shop, on Monday, March 14. The location is on North 2nd Street, just north of the former office of Dr. L. O. Garrett.

Mrs. Campbell is a graduate of a Brownwood Beauty College and for the past several months has been working in another local shop.

She invites all former patrons of the Stephens Beauty Shop, as well as her present patrons, to visit her in the new location. She will also continue to handle the same line of cosmetics.

Army Recruiter to Be Here on 2nd and 4th Thursdays

M/Sgt. Leonard M. Evans, U. S. Army Recruiting Sergeant, announces his schedule has been changed, and that he will be at the Santa Anna Post Office each Second and Fourth Thursdays from 12:00 noon to 1:00 p. m.

He will be glad to interview prospective Regular Army enlistees during this time.

The comparison showed that a majority of U. S. citizens, including union members, had wanted legislative controls as strong or stronger on each point covered by the bill.

ORC concluded that Congress passed the bill in response to the avalanche of mail received from the public and in spite of the strong opposition of lobbyists in Washington.

"One of the plainest lessons from this experience," said ORC, "is that political action begins at home. Lobbyists are hard put to make their point, against the articulate voice of the voters in the grass roots."

3 Men Seek Two Places on Local School Board

A last minute filing last Wednesday evening developed a contest in the race for two places on the Board of Trustees of the Santa Anna Independent School District. O. H. Watson, filed his name with Supt. Cullen N. Perry just minutes before the deadline.

Watson was an unsuccessful candidate for the School Board last year. He received 77 of the 174 votes cast. Watson is a stock farmer and rancher and lives south of Santa Anna.

The other two candidates are William (Bill) Brown of the Buffalo Community, who has served on the board for almost five years, and Grady McIver of the Trickham Community, who is seeking his first term on the board.

The election will be held the first Saturday in April, which is April 2. Polling place will be at the Fire Station in the City Hall. Election Judge will be Roy Stockard, assisted by Miss Jettie Kirkpatrick and Mrs. W. V. Priddy.

Car License Plate Sales Rather Slow

The sale of auto registration plates is going rather slow, according to a report early this week from Mrs. Billie Guthrie, operating a sub-station in Santa Anna. Mrs. Guthrie said they have sold only 117 passenger car plates since the first of February. Only 12 commercial and 21 farm plates have been sold during that time. This report does not include any plates sold from any station in Coleman.

Last year about 600 passenger plates, 50 commercial plates and 65 farm plates were sold through the local sub-station.

New license plates must be on all vehicles by Friday, April 1. If the same number of plates are to be sold through the local sub-station during the remaining time, there will have to be a considerable increase in the daily sales, or there will be some long waiting lines near the end of the month.

You are urged to get your new license plates as soon as possible.

Ward School Honor Roll

James A. Harris, principal of the Santa Anna Elementary School, announces the following students as being on the honor roll for the fourth six weeks period, just ended.

Fourth Grade
Carolyn Rowe, Dickie Horner, Mike England, Kippy Clifton and Roy Joe Harvey.

Fifth Grade
Donnie Campbell, Marty Donham, Carlton Watson, Norma Jo Eubank, Barrett Markland, Leanna Pollock, Jean Robinson, Vikki Warren and Susanna Hays.

Sixth Grade
Eugene Davenport, Lois Ann Simmons, Roger Beard, Gary Rider, Mary Haynes, Anita Ellis and Pam Garritt.

Seventh Grade
Barbara Baucom, Lawanda Horner, Karen McClusky, Patricia White, Les Guthrie and Joal Rehngren.

Eighth Grade
Donnie Neff, Freddie Cullins, Jerry Ellis, Frances Davenport, Karen Jones, Glen Gilbreath and Earla Buse.

Nikki York Has Heart Surgery

Nikki York, 7-year-old son of Mr. and Mrs. J. E. York of Trickham, underwent a very delicate heart operation in the Texas Children's Hospital in Houston on February 15. Young Nikki has been released from the hospital and the family is back at home now. His condition is reported to be good.

This condition was discovered in November last year and preparations for the operation have been underway since. Nikki is a First Grader in the Santa Anna School, but will likely not get to return to school this year. Mrs. York said he would likely be ready to begin school again in the fall.

Carbon paper and sales pads at the News office.

Now is Good Time to Join Cemetery Assn.

Spring will be here soon! There is some prospect that the cold, wet weather we have had for the past several weeks will soon be gone, and Spring will be in the air. And with all the hard winter weather, when Spring does arrive, things are really going to grow.

That includes the weeds and unwanted grasses in the Santa Anna Cemetery. And for a very small fee, everyone can have their cemetery property cared for by a competent caretaker.

For only \$1.00 per month you can join the Santa Anna Cemetery Association, and when you join you are assured your lot in the cemetery will be cared for. It will be worked regularly, all the unwanted grasses and weeds will be kept off your lot and you will be proud of the manner in which it is kept.

Just think! This can be done for much less than it costs you to have your home premises cared for. It's almost unbelievable that the care the cemetery is receiving can be had for the small sum of only \$1.00 per month from members.

Now is a good time to contact Mrs. W. B. Griffin, secretary and treasurer of the association, and get your membership started.

JP Court Has 41 Cases in Feb.

W. Earl Irick Sr., Justice of the Peace, reports a total of 41 cases were completed in his court during the month of February. Total fines collected amounted to \$864.50.

Speeding was the big offending factor in the cases, with 24 persons either pleading guilty or being convicted. Included in the remainder of the cases were four for no operator's license, two for racing, two for passing in a no passing zone and one each on such violations as no Railroad Permit, faked bill for a Railroad Permit, over-length, over weight, no mud flaps and a variety of other violations.

Band to be Honored With Family Night

A Family Night program has been set for Thursday, March 31 at 7:00 p. m. in the Elementary School Cafeteria, to honor all the band students of the Santa Anna Schools. All families connected with the band and others who are interested in the band, are invited to participate in the program.

Each family is to bring enough food for your group. The food will all be grouped together and served buffet style. Last year about 200 persons attended a similar program.

This year an effort is being made to secure an outstanding program for the event, other than a part of the school program. However, if no program is available, local talent will be used to provide the program.

The Stage Band is to be used as a part of the program, and it is hoped an outstanding speaker will be secured.

Bailey Lumber Co. Robbed Sat. Night

Entry was made to the Bailey Lumber Co. Saturday night by breaking out a glass in the door and releasing the night latch, by an unknown person or persons. The only thing that was missing was a few pennies from the cash drawer. Very little damage resulted to the building.

One night last week the cold drink box at Autrey's Service Station was broken into. This robbery was solved in Abilene over the weekend with the arrest of two students from the Abilene area.

The Saturday night robbery is being investigated by the Sheriff's Office.

Similar robberies happened in Coleman and Goldthwaite the same night.

During recent weeks there has been a tremendous increase in the number of break-ins throughout the Central Texas area.

All Teacher Contracts Extended 1 Year

The Board of Trustees of the Santa Anna Independent School Board extended the contracts of all the local teaching staff one year, at their regular meeting Tuesday evening, March 3. Routine business was also taken care of during the meeting.

The motion to extend all contracts was made by Oscar Boenickel and seconded by J. W. McClellan.

Supt. Cullen N. Perry's contract was extended to July 1, 1963; Roy B. Mathews' and James A. Harris' contracts were extended to June 15, 1962; and each of the following teachers' contracts were extended to June 1, 1961:

Margaret Crews, A. D. Donham, Ruth Dodson, Mattie Beth Dayenport, Maud Harris, Nadean Harris, Gertrude Martin, Ruth Odum, Leta Parker, Martha Perry, Beulah Sparkman, Myrtle Taylor, Doris Beard, Avis Hays, Douglas McArthur, James A. Mallow, Page Mays, A. D. Pettit and R. C. Smith.

The board reserved the right to make faculty adjustments should the average daily attendance decrease enough to warrant.

Band Boosters To Have Bake Sale Saturday

The Santa Anna Band Boosters will have a Bake Sale Saturday, March 12, at Piggly Wiggly and Hosh Grocery. The sale will begin at 9:00 a. m. Proceeds from the sale will be used to help finish paying off the new band uniforms.

All members of the organization are requested to bring a cake, two pies or a \$1.00 bill to the sale.

Water District Tax Election to Be Held Mar. 26

An election will be held at the Community House in Trickham Saturday, March 26, for the purpose of establishing an Ad Valorem tax rate for the Coleman County Water Control and Improvement District No. 1. This district includes all the land area from the east edge of Santa Anna to Buffalo, then to the county line and south to the southeast corner of the county, then west to Whon and back to the starting point.

The proposed rate is 30 cents on the \$100.00 valuation, based on the State and county renditions.

The polls will be open from 8:00 a. m. to 7:00 p. m. All qualified voters, who are property owners in the district are urged to vote. Bond Featherston has been named Election Judge.

Several months ago the district voted 51 to 3 to limit the tax rate to not over 5 cents per acre. The tax asked for by the directors in this election will amount to an average of 2 1/2 cents per acre, with the most any property owner will pay being 3 cents per acre, or 60 percent of the maximum tax the directors could ask for.

And this tax will only be collected for the length of time it takes to pay the expenses of the WCID in acquiring all the easements for the ten proposed flood retarding dams in the Mukewater watershed. Estimates as to how long the tax will be collected run from two to five years.

All the money the district needs is to pay the actual expenses of getting the project under construction, such as paying costs of easements, moving pipe lines, and condemnation suits that apparently are going to be forced on the district. After the dams are completed, the county will take care of any maintenance needed on the projects.

All the eligible voters in the district are urged to study the proposal and vote your convictions. If there is some part you do not understand, you are urged to contact any of the directors, or Marvin Daniel at the Soil Conservation Office in Coleman.

Men who are loud and noisy seldom are a howling success.

Nevada was the thirty-sixth state admitted to the union.

Lions Club Mop & Broom Sale Set

The Santa Anna Lions Club will hold their Mop and Broom sale on Thursday, March 17. Plans call for a truck load of household items to be parked on the street near the bank all day, and a house-to-house canvass to be made during the afternoon hours.

Merchandise that will be sold all comes from the Texas Lighthouse of the Blind. All the products are made by blind persons employed by the concern. This is a project sponsored by the Lions Clubs of Texas and most every club in the state sponsors a sale sometime during the year. Locally, a sale is sponsored each two years.

Items to be sold and their prices are as follows:

Dish Cloths (5 per pkg.)	1.00
Ironing Board Cover	1.50
Ironing Board Pad	1.50
Damp-N-Iron Bag	.75
Pot Holder	.25
Dust Cloth	.25
Lint Brush	1.00
Skirt Hanger	1.00
Lawn-Rake	1.75
Litter Bag	.50
Warehouse Mop	1.50
Rayon House Mop	1.00
Toy Mop	.50
14 Inch Dust Mop	2.00
24 oz. Mop Head	1.50
Dish Mop	.25
Warehouse Broom	2.00
House Broom	1.75
Toy Broom	.50
Whisk Broom	.75
Double Duty Broom	3.00
Rubber Door Mat No. 1	2.00
Rubber Door Mat No. 2	2.75
Rubber Door Mat No. 3	4.50
Garage Brush, 18-inch	3.00
Garage Brush, 24-inch	4.00
Floor Brush, 18-inch	4.25
Floor Brush, 24-inch	5.25
Special Plastic Garage Brush	
Oil and Grease Resistant	
18-inch Brush	4.50
24-inch Brush	6.00
Special Order Rubber Mat	
Per Square Foot	.90

You are invited to keep the above list and when a member of the Lions Club calls on you, check the items you would like and he will get them for you. If there is any of the above items you would like to inspect before purchasing, the Lions Club member will be glad to show them to you.

Because of the large number of items, the members making the house-to-house canvass will not be able to carry all the items with them. However, all the items will be available if you let the member know you want them.

The club has been divided into five groups and each group will work one of the zones the town has been divided into.

The Lions Club will get 50 percent of their sales. The money will go to the Lions Club Activity Fund, to be used in various ways the club helps charity work in the town. Your cooperation in the sale is earnestly solicited.

Mrs. Kenneth Knowles and daughter, Mrs. Gene Guarilla, of Arlington, Va., are here visiting their mother and grandmother, Mrs. T. R. Sealy.

Happy Birthday

"Happy Birthday" to all who have birthdays during the next week. Below are listed the birthdays we have this week:

- MARCH 11
W. H. (Bill) Thate
Peggy Jo McClintire
 - MARCH 12
Jimmy Eubank
 - MARCH 13
John David Morris
Jane Horne
 - MARCH 14
Mrs. E. E. McClintock
Mrs. Inez Buse
Earl Irick Jr.
O. M. Jackson
Sandra Pricer
Doyle Price, Brownwood
 - MARCH 15
Joe Swindell
Melvin Lamb
A. L. Hill
 - MARCH 16
Henry P. Leverett
 - MARCH 17
Mrs. Bill Pritchard, Post
Doyle Wright
- Would you like for your name to be published on your birthday? If so, please be sure to let us know when it is. Next week we will publish names of those having birthdays between March 18th and March 24th.

Straight Talk

by Tomie Anderson

Several years ago a subscriber wrote me: "Your daddy should have pecked you on the head with a pick-handle when you were a baby. On second thought, I believe he did."
For the first time, I began to wonder if he did, too—after I viewed first-hand our foreign aid-foreign trade program.

Somebody's "teched" in the head or this incredulous insanity we call "PL-480" and most other foreign aid programs would have had their heads pinched off in infancy.

I came back from the 16-day development trip with Secretary Benson desperately and despairingly asking "Why is our government deliberately helping the enemy?" Our leaders seem more determined than ever to give away our goods, our know-how, our equipment and supplies to the Socialists and Communists. Our foreign employees are deliberately trading to lose. Of course, I am a 16-day expert and could, like some junketing congressmen, be badly wrong. But I didn't stay there—Yugoslavia, Poland, Germany, Russia, Finland, Sweden and Norway—long enough to find any of our employees (except Mr. Benson) who are "trading for America's interests and trying to 'sell' the American way of life: capitalism, freedom. I couldn't be sure which of our employees were unquestionably on our side. Most are one-world Socialists, judging by their conversations and, more important, by their actions.

The American Government Vs. The American People
Your government is deliber-

ately destroying your foreign markets. Why? Because we are dominated by people who are de-internationalists; by people who are dynamically indifferent to everything except their own pay-checks; by people who put political expediency above principle; and by people who are traitors.

The "sale" of our surplus agricultural commodities for foreign currencies, which we then turn around and "lend" back to the foreign friend and enemy is:

- (1) A fantastic fraud fooling the American people.
- (2) A mesmerized means of giving more jobs to more bureaucrats.
- (3) A perpetual pump-primer, insuring continued and constant over-production.
- (4) A one-world, socialistic level-off-everybody plan bordering on treason.

The multi-billion dollar dumping schemes make our farm problem worse, subsidize our enemies, destroy our markets, and alienate our friends.

Some nations are now giving special export subsidies to their own farmers. Thus we'll soon get to know what it means to be on the receiving end of a dumping program.

"Food for Peace" is a great slogan. Food and peace—an unbeatable team, to which every thinking man, plant or animal, whether he thinks for himself or not, is expected to give lip-service. Our internationalist leaders have hood-winked many Americans into thinking we can buy peace piece-meal, with handouts to friend and enemy. Let's look at the score: While Uncle Sucker was handing out your substance and seed corn to the world without end, the Communists were taking the world. Your leaders, while mouthing "mutual security" and "food for peace," have transferred a large portion of our sovereignty to the Communist-dominated United States, spent us into insolvency, and left us subject to surrender and slavery. Fifteen years ago we were stronger than the world combined. Since then our leaders have defaulted sputnik and spudnik, Cottonik and cornik, and cashnik. Our leaders and their faceless underlings, internationalists first and Americans second, have denied you the right to produce while exporting that right to your foreign competitor. We are a generous people. Sending free food, fiber, equipment and know-how to the hungry people of the world doubtless gives many warm-hearted Americans great satisfaction. They don't realize that our "food for peace" food is not given to the people. We give it to

the governments which in turn sell it to the people. Thus we subsidize Socialist and Communist governments, help them succeed and help keep their leaders in power.

The value of our agricultural exports has averaged around four billion dollars a year for the past three fiscal years. But there's a catch to it. Our bureaucrats neglect to point out that 35% of this foreign "trade" was in the government give-away and lent-with-no-pay program. Only 65% of the total represented sales for dollars, and a lot of that was actually subsidized sale of price-supported commodities.

In spite of our government, we are still the world's largest exporter of food and fiber. In 1958, the American farmer supplied 18% of the total volume of all the farm products similar to those produced in the United States entering into world trade. We are shipping about half as much cotton overseas as we produce, and 40% as much rice and wheat. Approximately one-third of our tobacco, soybeans, and fallow go abroad. And one-sixth of our lard, one-tenth of our fruit, production, and great amounts of dairy and poultry products. If we should lose all of our foreign markets, it is estimated that 50 million acres of our crop land would have to be "Soil Banked," or our surpluses would get even more astronomical.

Freedom From Government

We should force our government to let our farmers trade for themselves. Farmer to farmer, instead of government to government (Farm Bureau's and National Cotton Council's foreign trade offices are forward steps in that direction.) How can our farmers trade through private channels, selling for dollars, when our government is operating against them, dumping surpluses? Under our "PL-480" our government "sells" our surpluses for foreign currency in that country in various ways: "sells" for dollars, on the cuff; or gives the stuff away by selling it for payment in their money and then giving the money back to them. Our foreign give-aways and the increasing competition from foreign farmers (which our government encourages in every way) threaten our future foreign sales and the existence of a free agriculture in America. American farmers, if allowed to, could recover and keep most of their world markets.

American farm production must be returned to a basis on which it can regain its lost world markets, without government subsidy. American farmers don't need protection from competition to survive. They need protection from their own government.

Reprinted from March 1960 issue of Farm and Ranch Magazine, Nashville, Tennessee.

Smog was no problem with the electric cars that were popular at the turn of the century. But World Book Encyclopedia reports that the cars lost favor because their batteries had to be recharged after they had traveled about 100 miles.

WAC Offers the Job That Has Everything

The United States Army offers America's finest young women the job that has everything. You don't need experience, the WAC will train you, and train you well, for a job that is suited to you and your abilities. If you do have experience or a special skill, such as typing, shorthand, bookkeeping and so on, the Army can and will gladly use it and quickly put you on an appropriate job.

Today the Women's Army Corps is an indispensable part of the Regular Army, a fitting tribute to its valuable roll in the military phase of our national life.

Outstanding young women, who have an eye for the future, are being selected to fill this roll. Those who wish to share the proud tradition of the Army and take part in writing the history of tomorrow in the WAC may do so by contacting their local Army Recruiter, or writing M/Sgt. Annabelle Pace, WAC Recruiter, 900 North Third, Abilene, Texas.

TAX-MAN SAM SEZ:

One of the things the tax folks are perturbed about is tips. Some folks forget to include their tips and a few just plain don't want to pay taxes on tips. When the tax folks get to looking it pays to have them look at somebody

else. Don't forget to put in your tips.

There is no law requiring Justices of the Supreme Court to be lawyers.



WATCH REPAIR

Prompt Service, Sensible Prices!

Whatever ails your watch, we'll repair it with expert precision; have your watch ready when promised.



EARLE SMITH'S
COLEMAN'S BEST WATCH REPAIR SERVICE
Coleman Texas

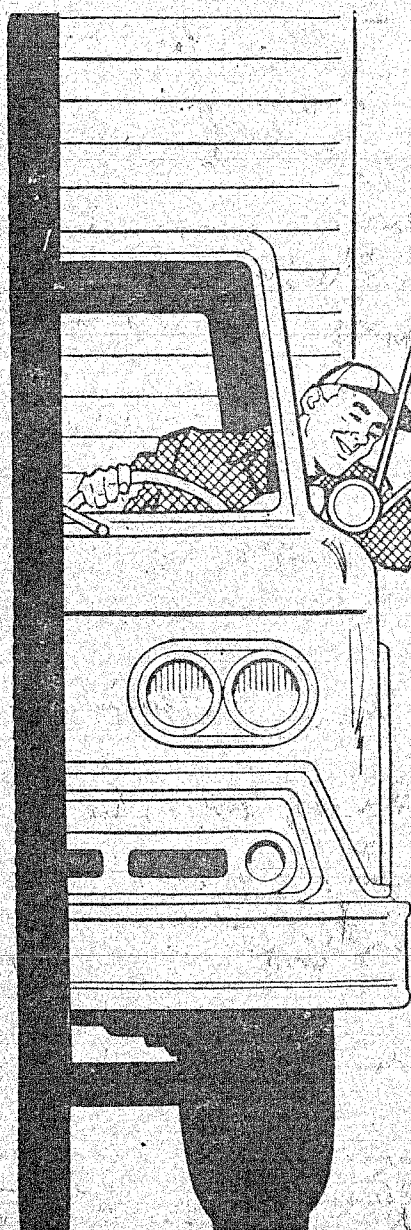
SAVE 'EM!

EXPERT SHOE REPAIR SERVICE BOOTS
Made to Your Specification Guaranteed To Fit
TOMLINSON
BOOT & SHOE SHOP
Coleman, Texas

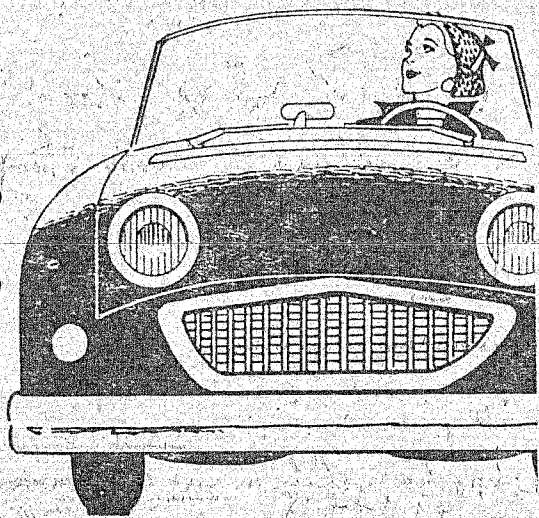
BE SURE YOU GET
Morgan Meat Co.
TENDER TOP GRADE **MEATS**
At Your Favorite Meat Counter In The Santa Anna Markets
If You Have Fat Calves To Sell See
C. O. MORGAN, JR. AT
MORGAN MEAT CO.
106 Hollywood Coleman, Texas

Here's A Good Value

For less than 3¢ the average family served by WTU can cook a complete meal the modern electric way... and enjoy the cleanliness and convenience of Electric Living.



"Who owns the electric company?"



"Here's who—"

The answer is that thousands of people own it. People like you, people who invest money in the electric company and help it grow. They become an investor... this is the reason we are known as an investor-owned company.

It is a good question—especially since surveys show a lot of our own customers don't know the answer.

This electric company is not owned by the city. It is not owned by the state. It is not owned by any kind of government agency or co-op. It is owned by investors.

This is one of the reasons why we can give you the best possible service and just about the best bargain you can buy.

West Texas Utilities Company
an investor owned company

12
9 3 6
AROUND THE CLOCK EVERYWHERE - WE SERVE
STEVENS
FUNERAL HOME
400 W. Pecan, Coleman Phone 2121

WHEN YOU BUY A NEW CAR

...finance it at lowest cost

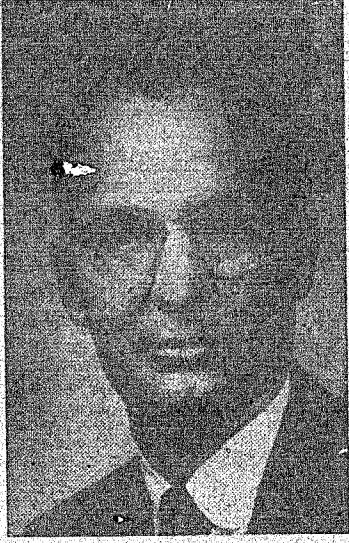
Compare... and see for yourself. When you're buying that new... or late-model used... car... you'll save when you finance it through this bank... because bank rates are lower. We give you fast service, too, so you can start enjoying your car, sooner. See us for full details.

MONTHLY PAYMENTS ARRANGED TO SUIT YOUR CONVENIENCE

You pay as you drive... you pay less with a low cost bank Auto Loan... and you pay in easy installments arranged to fit your income.

YOUR FRIENDLY
SANTA ANNA NATIONAL BANK
Member F.D.I.C. and Federal Reserve System

Dibrell Makes Statement to District Voters



JOE DIBRELL

To: Fellow Citizens and Voters of Brown, Coleman and McCulloch Counties:

It is my conviction that any attorney seeking the important judicial office of District Judge should very candidly inform his friends and fellow citizens as to his desires, aspirations and qualifications. When I announced as a candidate in the Democratic primaries for Judge of the 35th Judicial District, I was aware that other capable men were seeking the office. I also recognized the fact that we have been most fortunate through the years to have had the services of capable and conscientious lawyer-citizens to serve as our District Judge. I sincerely believe that I possess the necessary qualifications to serve you capably and fairly.

Many of you remember me as a candidate for District Attorney two years ago. I again, intend to meet and visit with as many of you as possible during the next few months. I would appreciate your comments and questions concerning my candidacy for District Judge. I hope that we may become better acquainted in order that you may satisfy your-

BOBBY'S



Phone 70

OPTOMETRIST

Dr. E. H. Henning, Jr.



117 Commercial Ave. Coleman, Texas Phone 8944

OFFICE HOURS
9:00 A. M. to 5:00 P. M.
SATURDAYS, 9 to 12

Medicine Chest Check Up Advisable During Clean Up Time

Make certain your medicine cabinet is a health aid and not a hazard by checking it now, at Clean Up-Paint Up-Fix Up time.

First of all, throw away old medicine particularly prescription-type. Age, even a few months, adversely affects medicines plus a new illness, through having similar symptoms, may be entirely different from the previous one. All external poisonous medicines should be checked for plainly-marked labels and placed on the top shelf, away from inquisitive tiny fingers. Don't guess the contents of bottles without labels. For safety's sake throw them away.

After old medications are disposed of, check that the cabinet contains basic necessities for first-aid treatment for minor accidents and illnesses. Minimum requirements are a clinical

thermometer, aromatic spirits of ammonia, cotton, sterile bandages, adhesive bandages, antiseptic, burn ointment, rubbing alcohol, medicine dropper, adhesive tape and tweezers.

As an adjunct to your first aid supplies, have the phone-numbers of your doctor and ambulance service by each phone and a copy pasted inside the medicine chest door.

Let Clean Up-Paint Up-Fix Up promote your health by checking up and cleaning up so that you will be prepared should an emergency arise. In that event your medicine chest will be a help and not a hindrance.

Santa Fe Files \$2 Million Suit in California Crash

The Santa Fe Railway Company filed suit today in a Kern County, California Superior Court for damages amounting to \$2,000,000 against the Oglesby Brothers Trucking Company of Bakersfield, as the result of a collision Tuesday of this week involving the Santa Fe's San Francisco Chief seven miles northwest of Bakersfield.

In its suit, Santa Fe alleges negligence in the operation of a tank truck and trailer, laden with 7,500 gallons of oil which was driven in front of the East-bound train without stopping.

Ernest S. Marsh, president of the Santa Fe Railway, Chicago, said, "Investigation of the collision and tank truck explosion disclosed that the truck, without stopping, was driven onto the track in front of the approaching train. This was a violation of the California Motor Vehicle Code which requires oil tank trucks to stop not less than 10 feet nor more than 50 feet from railroad tracks and further requires that the oil truck must remain standing while any train is moving toward the crossing."

Marsh further pointed out that the train approached the crossing in broad daylight with whistle blowing and bell ringing, and that the crossing is protected in accordance with prescribed standards. He said that the train was running on schedule, the weather was clear and visibility was unobstructed. The amount asked is estimated to cover loss of, or damage to its locomotive and train, trackage and signal and communication facilities.

In the interest of future public safety Marsh today wired California Governor Edmund G. Brown as follows:

"We in the Santa Fe are saddened by the tragic collision between our San Francisco Chief and an oil tank truck-trailer with its regrettable loss of life and human suffering. We have been deeply concerned about the lack of adequate legislative restrictions on such large volume transportation over the high-ways of dangerous explosives and inflammables and failure of such operators to observe laws relating to stops and other necessary precautions which obviously were not heeded in the Bakersfield accident. We urge you to use your good efforts toward remedying these circumstances and want you to know that all railroad people stand ready to help public officials adopt measures designed to minimize or eliminate these hazards to employees, passengers and to public safety on the arteries of traffic. Your cooperation and interest in this matter of major and mutual concern is earnestly solicited."

Paint rollers are exceedingly popular because they allow the amateur painter to work more quickly. Available in various sizes and different sleeve materials, you'll find one to suit every purpose.

1960 Deductions of Estimated Tax

Withholding tax on wages fails to keep many taxpayers paid up with Uncle Sam — Hence Form 1040-ES.

According to V. W. Newman, of Internal Revenue Service, Brownwood, the law requires every citizen or resident of the U. S. A. to file a Declaration of Estimated Income Tax, Form 1040-ES, and to make quarterly payments in advance of filing their annual income tax return.

Taxpayers who must estimate fall into two groups. The first group are those whose total income can reasonably be expected to consist of wages subject to withholding and not more than \$100 of other income and to exceed:

1. \$10,000 in the case of a taxpayer in the special head of a household class, or a widow or widower entitled to special tax rates.

2. \$5,000 for other single taxpayers.

3. \$5,000 for a married individual not entitled to file a joint return.

4. \$5,000 for a married individual entitled to file a joint return, where the combined income of husband and wife will exceed \$10,000.

The second group consists of taxpayers whose total income can reasonably be expected to include more than \$100 not subject to withholding, and to exceed the sum of the following:

1. \$600 for each of the taxpayer's exemptions.

2. Plus \$400.

IRS mails Form 1040-ES, as far as is practicable, to each person who may need it. Others required to file should obtain the form from any IRS office in time to file by April 15, 1960. Farmers may postpone filing their 1960

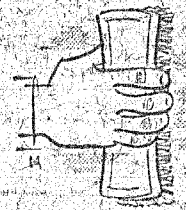
declarations until January 15, 1961.

Mr. Newman, reminds taxpayers of the importance of estimating their tax carefully. "There's an additional charge imposed by law for underpayment of any installment of estimated tax," he said.

There's a free document, No. 5111, on "Declaration of Estima-

ted Tax," available at the IRS office, Brownwood, Texas.

If your dining room opens directly from the living room and is plainly visible from it, color harmony within the two rooms is important. A good idea is to pick up one of the colors used in the living room as the predominating dining room color.



SPRING CLEAN-UP

Clean Up - Paint Up - Fix Up

During the Annual Spring Clean Up

And Stop Here and Let Us Give Your Car A Complete Cleaning and Refill With

Premier Gasoline

And Top Quality Motor Oil.

We Handle All Brands of the Best Motor Oils.

Premier Service Station

Luther McCrary, Operator Phone 78



GUARANTEE

1. Guaranteed against all road hazards, including impact breaks, cuts, blow-outs, etc.
2. Guaranteed for tread life against defects in materials and workmanship.
3. Guaranteed to give you satisfaction.

NEVER BEFORE SUCH LOW PRICES ON STAR NYLON TIRES!

Star METEOR \$1188

BLACK TUBE TYPE 6.70 X 15 . . . PLUS TAX AND RECAPABLE TIRE

100% DUPONT NYLON CORD

Star Meteor Meteor greater strength, safety, and durability. RESIST IMPACT DAMAGE adds greater resistance to blow-outs. RESIST FLEX FATIGUE for greater safety and protection. RESIST HEAT DAMAGE makes tires run lighter and cooler. RESIST MOISTURE DAMAGE even with cracks or breaks. Star Meteor adds no damage nylon cord.

Here is the opportunity of the year. New Nylon Star Meteor tires at amazingly low introductory prices. This offer won't last long . . . come in right away!

- ★ FREE INSTALLATION
- ★ EASY BUDGET TERMS

Parker Auto

Announcing...

The Opening of the Former Stephens Beauty Shop Under New Management.

Jane's Beauty Shop

Will Open for Business Monday, March 14. We Will Appreciate the Patronage of Former Customers and Invite All Present Customers to Visit Us in Our New Location.

A CORDIAL WELCOME IS EXTENDED TO ALL

We Will Continue to Use and Sell the Well Known Merle Norman Line of Cosmetics.

Telephone 381 For Appointment

Jane Campbell

Owner and Operator

We Have The Largest Stock Of New Cars and Trucks In Coleman County

For The TRADE Of A LIFETIME

VISIT

Berry's Ford Sales

415 Commercial

Phone 7791

Coleman, Texas

Santa Anna News ESTABLISHED 1936 JOHN C. GREGG Editor and Publisher PUBLISHED EVERY FRIDAY AT SANTA ANNA, COLEMAN COUNTY, TEXAS MARCH 11, 1960

SUBSCRIPTION RATES IN COLEMAN COUNTY 1 Year \$2.00 6 Months \$1.25 OUTSIDE COLEMAN COUNTY 1 Year in Texas \$3.00 6 Months in Texas \$1.75 1 Year outside Texas \$4.00 6 Months outside Texas \$2.25 1 Year outside U. S. A. \$5.00

The Publisher is not responsible for copy omissions, typographical errors, that may occur further than to correct it in the next issue. All advertising orders are accepted on this basis only.

Second Class postage paid at Santa Anna, Texas. Advertising Rates on Request.

TEXAS PRESS ASSOCIATION Member 1960

CLASSIFIED ADS Minimum Charge 40c Weekly

ANNOUNCEMENTS

Mountain Meeting Lodge No. 661 AF&AM will meet on Third Thursday each month at 7:30 p. m. Visitors are welcome. Coy Brooke, W. M., Earl Hardy, Sec. 2&3M

FOR SALE OR TRADE

FOR RENT-RAVE: One 4-room house for rent; a fine house for sale; a nice farm for sale. We have calls for farms. Listing wanted. Check with me, M. L. (Rat) Guthrie. 111c

Stamp pads at the Santa Anna News office.

FOR SALE: Good used refrigerators, automatic washers, wringer washers, clothes dryers and gas cook stoves. Terms to suit YOU. Geo. D. Rhone Co., Coleman Texas. 481c

FOR SALE: Portable barbecue, clothes line posts, electric fence posts, farm feeders, and gates Jones Wrecking Yard. 231c

Typewriter paper at the Santa Anna News.

FOR SALE: Several used TVs in good condition. Geo. D. Rhone Co., Coleman Texas. 481c

FOR SALE: EGGS - EGGS, 20c Dozen. Griffin Turkey Farm. 41c

FOR SALE: Living room suit. V. I. Dean. 11p

FOR SALE: Hale Manufacturing Co. Stock Trailers. All types and sizes. Most reasonable prices in West Texas. Also several used trailers. James T. Dockery, phone 187, Box 241. 101c

Stamp pads at the Santa Anna News office.

COMPLETE COMODE UNIT, brand new, \$19.95. Special buy, a new quantity of plumbing supplies, very low price. Quality Paint, Government specifications, low price. Swap and Trade on guns, new and used. Licensed for sale of Fire Arms. Reg's Trading Post, 108 East Live Oak, Coleman. 32c

FOR SALE: My home at the corner of North First Street and Avenue A. Mrs. Kate Garrett Shore, 207 Booker, phone Milton 3-2355, Brownwood, Texas. 31c

FOR SALE: Nice 3-bedroom house one block from post office. Beautiful yard. Priced right. Call Red 120 or 75. 41c

MISCELLANEOUS

FOR FREE demonstration on making plastic flowers, visit Brown's Plastic Flower Shop, 1008 Wallis, Santa Anna. 8-11p.

HOWARD'S HYDRALIC SALES & SERVICE - Jacks bought, sold and repaired. Phone MA 9-3127, Rockwood, Texas. 511c

WANTED - TO BUY

WANTED: All kinds of sacks, burlap or cotton feed bags. Top market prices. Coleman Bag & Burlap Co., phone 27, Santa Anna. 41c

CARD OF THANKS

We wish to express our sincere appreciation to friends and neighbors for your cards, letters and expressions during the time our son was in a Houston Hospital. Mr. and Mrs. J. E. York. 11p

NOTICE OF ELECTION FOR THE PURPOSE OF FIXING THE AD VALOREM TAX RATE OF THE COLEMAN COUNTY WATER CONTROL AND IMPROVEMENT DISTRICT NUMBER ONE. THE STATE OF TEXAS, COUNTY OF COLEMAN. TO THE RESIDENT QUALIFIED TAX PAYING VOTERS OF THE COLEMAN COUNTY WATER CONTROL AND IMPROVEMENT DISTRICT NO. ONE, IN COLEMAN COUNTY, TEXAS.

TAKE NOTICE that an election will be held in The Coleman County Water Control and Improvement District No. One on the 26th day of March, 1960, at the Office Building and Community House in the town of Trickleham in said District in Coleman County, Texas, for the purpose of voting to fix and establish the Ad Valorem Tax Rate as stated in the following proposition:

FOR THE PROPOSITION: THAT THE AD VALOREM TAX RATE FOR THE COLEMAN WATER CONTROL AND IMPROVEMENT DISTRICT NO. ONE BE SET AT \$0.30 PER \$100.00 TAX VALUATION ON ALL PROPERTY IN THE DISTRICT.

Said election being called by Order of the Directors of the Coleman County Water Control and Improvement District No. One, of Coleman County, Texas. Said Order dated the 12th day of February, 1960. Said polls to open at 8:00 o'clock A. M. and close at 7:00 o'clock P. M. The Judge of election shall be Bond Featherston.

E. R. CUPPS, President, Board of Directors of Coleman County Water Control and Improvement District No. One.

J. H. MARTIN, Secretary, Board of Directors of Coleman County Water Control and Improvement District No. One. 8-11c

Political Announcements

The Santa Anna News has been authorized to announce the candidacy of the following persons for elective offices, subject to action of the Democratic Primaries in May and June, 1960:

FOR STATE REPRESENTATIVE 7TH DISTRICT J. W. (Bill) Moore of Ballinger

A. J. Bishop Jr. of Winters

FOR DISTRICT JUDGE 35TH JUDICIAL DISTRICT William O. Breedlove of Brown County

Mark Callaway of Brown County

Joe Dibrell of Coleman County

FOR DISTRICT ATTORNEY 35TH JUDICIAL DISTRICT Gordon Griffin, Jr. of Brown County (Re-election)

FOR COUNTY SHERIFF H. F. Fenton, Jr. (Re-election)

Elroy B. Kilgore

A. F. Barnett

W. J. Smith

Walter L. Gipson

FOR COUNTY TAX ASSESSOR-COLLECTOR John Skelton (Re-election)

FOR COUNTY ATTORNEY Wallace E. Dingus

NOTICE TO CANDIDATES

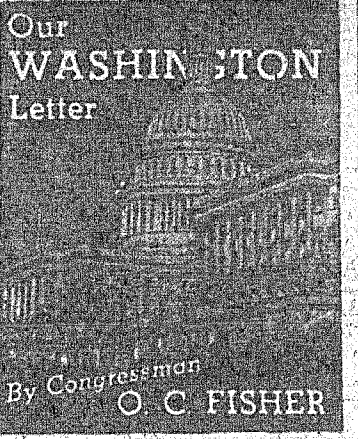
All candidates for public office who have authorized their announcements in The Santa Anna News have until the week of March 28 to submit their statement to the public.

DISTRICT CONVENTION OF CHRISTIAN CHURCHES SUNDAY AFTERNOON

Regular services will be held at the First Christian Church Sunday morning. In the afternoon and for the night services, members of the church are asked to attend the District Convention, to be held at the Christian Retreat on Lake Brownwood.

Close out on one lot Cotton Plisse Lingerie. Ladies Shop.

Mr. and Mrs. J. B. Weathers were in San Angelo Sunday visiting relatives.



A BALANCED BUDGET, less government spending and more local responsibility in solving problems, highlighted the first hundred questionnaires that have been returned. Most of these came from Brownwood, a few from others, since the first opinion polls went to them.

A Brownwood teacher wrote: "Stay within the proposed budget and lower it. Less gifts, grants, etc. to cities, States, etc."

"I urge you to oppose any expansion of Federal Aid to education. This is the most dangerous act facing us on the local level," wrote a Bronte farmer.

A retired Brownwood businessman quipped: "David Brinkley said Congress was going to do something about the birds around the Supreme Court building. I think it would be better to take the roof off of the building and leave the birds alone."

A Brownwood moritician commented: "I'm a believer in keeping the government in the hands of the people rather than centralized Federal control."

From Rowena a stock farmer writes: "I think the small family type farmer should have as much representation as industry or labor. He is caught in high cost and low income squeeze."

"I have voted against the Education Aid program as I do not believe that people can send money to Washington and then expect to get more than 50 percent of it back. Therefore, I think each State or community in the U. S. should take care of its educational policies." This is the view of a Brownwood Engineer and former School Board member.

A Superintendent of Schools in Bandera County writes: "I believe education should be handled on a State and local basis, though I know the great need for help."

A Medina rancher likes the idea of the questionnaire. "I just wish that you could send them out more often, as we the public don't voice our opinion as often as we should."

OPEN HOUSE TEA TO HONOR NEW-BORN HENNER SON

An Open House Tea will be held in the W. B. Griffin home Wednesday, March 16 between the hours of 4 to 6 p. m. The tea is in honor of the new-born son, Chancellor Charles Henner, born to Dr. and Mrs. Charles M. Henner recently.

All friends of the Henners are invited to attend during the hours.

Mrs. Payne Henderson spent Sunday in Breckenridge, visiting her father and brother, H. L. and J. E. Oldman.

Film on Census To be on KCTV Thursday, Mar. 17

A film "Census Sixty" will be shown on KCTV, San Angelo, Channel 8, on Thursday, March 17 from 5:00 to 5:30 p. m. Everyone who can get the station is urged to watch the film.

2ND SUNDAY SINGING AT CHRISTIAN CHURCH

The regular Second Sunday Singing will be held in the First Christian Church Sunday, March 13, from 2 to 4 p. m. Everyone is invited to attend.

WASHINGTON AND "SMALL BUSINESS" BY C. WILSON HARDER

As usual this Congressional session also has before it the so-called farm problem.

The figures are somewhat staggering. It is estimated by mid-year, the U. S. taxpayers will have \$10 billion invested in price-supported crops. The country now has government-owned wheat stored every which way, even in surplus, ship hold's sufficient to last a full nation a full two years even if not another kernel of wheat was produced during that time. The storage costs on wheat alone are running \$1 1/2 million a day. In just the time taken to read this column, over \$4,000 has been run up on wheat storage costs.

Yet, there is substantial wonder as to whether or not this entire situation can validly be called a "farm problem."

There is no question costs of farm products to consumers have been steadily on the rise. Yet, whereas in 1947 farmer received 51 cents out of the consumer's dollar, by 1959 that share had dropped to 38 cents.

It seems more than significant that during these years growth of monopolies in both food processing and distribution made greatest gains.

Now, as has been brought out by the few cases which the Federal Trade Commission has had forced upon them, despite FTC's almost exclusive interest as to who pays who to play "Fork n' roll" records on radio.

Hospital News

The following patients have been admitted or dismissed from the Santa Anna Hospital, as indicated:

Admitted: A. B. Little, city; Mrs. Lola Woodward, city; Joe Salazar, city; Mrs. Elia Perez, Coleman; Mrs. W. L. Johnson, Coleman; Albert DeLeon, city; Lucien Vaughn, Coleman; Beth Gardner, Coleman; Mrs. J. D. Slayton, Coleman.

Dismissed: Mrs. Frances Smith, Coleman; R. L. Stevens, Coleman; Mrs. C. D. Gray, city; Mrs. W. C. Scott, city; Mrs. Max Wristen and baby, Abilene.

W. B. Watson, city; A. B. Little; Mrs. Lola Woodward; Joe Salazar; Mrs. Elia Perez and baby; Mrs. W. L. Johnson; Albert DeLeon.

Births: Emma Lamar is the name given the daughter born to Mr. and Mrs. R. J. Perez March 2. The baby weighed 8 pounds, 10 ounces.

Still Patients: Mrs. C. M. Hermer, city; Beth Gardner; Mrs. J. D. Slayton; Lucien Vaughn; Mrs. G. R. McClure, Coleman; Mrs. Mary Gore, city.

NIWOT NEWS

BY THE NIWOT KIDS

Mr. and Mrs. Kenneth Herring and baby visited Tuesday night with Mr. and Mrs. Alton Benge and Timmy.

Mrs. Silas Wagner was a dinner guest with Mr. and Mrs. John Perry Sunday.

Mr. and Mrs. James Perry, Mr. Robert Perry and Miss Dixie Deal attended the Louisiana Hayride in Brownwood, Saturday night. Brenda visited with her grandparents, Mr. and Mrs. John Perry, while they were in Brownwood.

Mr. and Mrs. Clark Miller and Mrs. Silas Wagner were visiting in Dallas and Irving last weekend, with Mr. S. C. Wagner and family and Mrs. Rex Baker and family.

Mrs. Charlie Avants, Lynn and David visited last Monday with Mrs. Alton Benge and Timmy.

Mrs. Dick Baugh and girls and Mrs. John Perry and Robert were shopping in Brownwood last Saturday.

Mr. and Mrs. Alton Benge and Timmy were Sunday night supper guests with Mr. and Mrs. Joe Wallace and family.

ROCKWOOD WMS HAS REGULAR MEETING

A St. Patrick's Day theme was carried out when Mrs. Dick Deal and Mrs. A. L. King entertained the Women's Missionary Society of the Rockwood Baptist Church, at the Community Center, Monday afternoon. Mrs. Deal directed recreation.

Refreshments of white iced cake squares decorated with green, shamrocks and green punch were served to Mmes. Jack Cooper, Carl Buttry, Lee Miller, M. D. Bryan, Lee McMillan, Junior Brusenhan, Henry Smith, Bill Bryan, Bill Stewart, Rodney Dean, Lawrence Brusenhan, Matt Estes, Curtis Bryan, F. E. McCreary, Evan Wise, Hilton Wise, the hostesses and Leann and Serena Bryan, Rocky and Linda Dean and Judy and Jodie Bryan.

Close out on one lot Cotton Plisse Lingerie. Ladies Shop.

Living today is a game of robbing Peter to pay Paul in order to make it possible to stand pat.

LOOK Fresh Pork SALE At Harvey's LEAN CENTER CUT PORK CHOPS lb. .39 PURE PORK - HOME MADE SAUSAGE 4 lbs. \$1 FRESH PORK ROAST lb. .29 FRESH PORK RIBS lb. .29 FRESH HAM lb. .39 FRESH PORK - SLICED Shoulder lb. .35 LIGHT CRUST FLOUR 10-lb. Bag .69 WHITE SWAN 3 Lb. Can Shortening .59 KIMBELL'S Limit 10 Cans BISCUITS Can 5¢ BARBECUE Beef - Pork - Chicken COOKED DAILY Fresh Home Made Pies and Cakes Cooked Daily By Mrs. Jewell Ray Double FRONTIER STAMPS On Wednesday With \$2.50 or More Purchase. HARVEY'S GROCERY PHONE 30 WE DELIVER NO DELIVERY AFTER 5:00 O'CLOCK

Clean Up-Paint Up-Fix Up

Concentrate on Color

All of us have our own ideas for the makings of the happiest world... health, peace, prosperity. But have you ever considered what would constitute the dullest world? Well, imagine living in a world without color — picture how your surroundings would look in black and white. No beautiful greens and yellows, or violets and blues or brilliant reds — just black and white for everything. What could possibly make life duller?

Color is the spice of existence. It adds more pleasure to daily living than any other single factor. Today people are more color conscious than ever before. Cars, telephones, appliances — even paper napkins — are in bright colors because of popular demand.

One of the foremost uses of color is in the home. A home's decor reflects the personal taste of its owner, so it's natural that all of us want our homes to look their very best. And since Spring is the time most folks begin sprucing up, I thought color usage in the home would be a timely topic. Those of you about to repaint a room or the entire house may find the suggestions interesting and helpful.

The right choice of colors can do wonders for your home. You know that certain colors flatter you more than others. Well, the same thing applies to your house. There's a technique of using paint colors that will make your home and its furnishings appear to the best possible advantage. It's known as paint styling.

Paint styling enables you to create various illusions of size and shape by using certain colors. This is possible because colors can deceive the eye. Light colors make things seem larger, while darker shades make things seem smaller.

Employing this knowledge of color usage, you can make a minimum sized room look larger if you paint it in a light color. And a large, barn-like room will seem cozier painted in a dark shade.

Then there's the matter of the warm colors — the reds, oranges, yellows, and yellow-greens. These colors seem to advance toward you and convey the feeling of warmth. Blues, violets,

Mr. and Mrs. Johnson are at home at Rockwood.

MRS. RICHARD SMITH HOSTS 20TH CENTURY CLUB ON FRIDAY

Mrs. Richard Smith was hostess to the 20th Century Club, when it met in her home Friday, March 4, at 2:00 p. m. Seven members and one visitor was present.

The president, Mrs. Clifford Stephenson, presided at a short business meeting, when plans for the coming months were discussed.

Mrs. W. P. Aldridge was appointed chairman of a committee to plan a display of the club quilt, and also to sell tickets for the quilt. Each member of the club was also appointed on the committee.

The next meeting of the club will be with Mrs. Stephenson on Friday, March 18, and will be an all-day meeting and quilting. A covered dish luncheon will be served. All members are urged to attend and bring a guest.

The hostess served a delicious refreshment plate to those present.

Nitia Daniell Circle Studies Luke's Portrait of Christ

The Bible study, "Luke's Portrait of Christ" was started Tuesday, March 9, at 7:00 p. m. when the Nitia Daniell Circle of the First Methodist Church met in the home of Mrs. Avis Hays.

The group sang, "Fair Lord Jesus," followed with a prayer by Mrs. Lillian Herndon. The introduction to the course was also given by Mrs. Herndon, who is teaching the study.

Others taking part in the first study were: "Luke's Purpose in Writing His Gospel," by Mrs. Eva Nell Benge; "Music in Luke," by Mrs. Lucille Dean; "Birth and Early Childhood of Christ," by Mrs. Mildred Galloway; "The Gospel According to 31 Women," by Mrs. Frances Elliott; and "Loving One's Neighbors," by Mrs. Dorothy Watson.

The study will continue for the next three Tuesday nights at the church.

Following a brief business meeting, refreshments were served to the above-mentioned. Pauline Eubank, Mmes. Hettie Scarbrough, Wilma Welch, Lo-leaf Curry, Emma House, and Kathy Hays.

blue-greens and blue-grays are the cool colors, which seem to retreat from you and make things seem cooler.

Perhaps your rooms present no size problem, but you're not quite satisfied with the shape of one or more of them. Can paint styling improve a room's shape? The answer is a definite yes.

Let's suppose your living room is long and narrow. You can make it appear wider by painting each of the end walls a darker color than the remaining walls and ceiling. On the other hand, a room that's square and rather uninteresting in shape can be improved by featuring one wall in a different color than the other three. This provides a focal point of interest. If you have a fireplace in the room, the decorative color interest is best used on the fireplace wall.

Do you feel that ceilings in your home are too high? Color can remedy this situation for you, too. Ceilings will appear much lower when you paint them a darker shade than the side walls.

When you're choosing a room's color scheme, it's wise to consider the amount of light the room receives. Lighter tints reflect more light, while darker shades absorb it. Very dark colors are best used only in well lighted rooms.

Here's more you can achieve using the method of paint styling: you can emphasize a room's good features and minimize any bad features. How do you emphasize a good feature? Surround it with an area of a different color. The contrast in color will attract the eye and make the good feature outstanding. Let's say that the window's and doors in your living room are well proportioned and well placed. You'd like to emphasize this fact, so you can paint the woodwork light if the wall surfaces are dark — or — paint the woodwork dark if your walls are light.

However, if the doors and windows are ill-proportioned and badly placed and you want to camouflage them, paint them the same color as the walls. The defect will be much less noticeable. Here, you are minimizing a bad feature.

You can see that by using the right colors, you can make your home look its very best. Simply by using a paint brush you can succeed where the architect may have failed. All surfaces will be colored so that they contribute the greatest amount of beauty and utility to your home. Use imagination when you plan your color scheme — be fashionable and select the season's newest shades — but be clever at the same time — keep in mind the easy technique of paint and work magic with color.

Apply Early For Retirement Insurance

Retiring workers were advised to call on the Social Security Administration two or three months before the date of retirement by R. R. Tuley, Jr., District Manager of the Abilene office.

"Early application will enable us to attend to the necessary details and get that first monthly benefit check out on time," he said.

"Claims for the retirement and family insurance payments require some action before they can be certified to the Treasury Department for payment," according to Tuley. "By filing early, payment can usually be made when first due."

An applicant should bring some evidence of age (not necessarily a birth certificate) and an earnings statement showing the amount of his wages in the last year. The self-employed person should furnish a copy of his latest income tax return.

No appointment is necessary to file a claim. The Abilene office of the Social Security Administration is located at 203 Fannin at N. 2nd. The office is open Monday through Friday from 9:00 a. m. to 5:00 p. m. Residents of area towns who find it too inconvenient to come to the office, in Abilene should consult the schedule at their local post office for date and place a representative will be in their vicinity.

Mr. and Mrs. Barney Lewellen and their daughter and family, Mr. and Mrs. Bill Merryman and boys of Coleman, attended the Coleman-Friona basketball game in Lubbock Saturday, then went on to Plains, Texas, to visit Mr. and Mrs. Tommy McDonald and family.

Mrs. Eugene Medlin and son of Odessa, spent last week with her parents, Mr. and Mrs. Jim Harris.

The chief executive of all federal prisons is the Attorney General.

Socrates was often referred to as the "henpecked philosopher."

Clois Cullins

Jerry Sparks Vows Exchanged

Marriage vows were exchanged Sunday, March 6, at 3:00 p. m. in the First Baptist Church by Miss Clois Cullins, daughter of Mr. and Mrs. Alfred Cullins, and Jerry Sparks, son of Mr. and Mrs. Jim Sparks of Avoca. The Rev. Ted Cotton, pastor of the First Baptist Church in Coleman, read the double ring ceremony.

The altar of the church was centered with an arrangement of white stock, pink carnations and Boston fern, flanked on either side by seven branched candelabra. Candle lighters were Freddie Cullins, brother of the bride, and Clyde Kelley Jr.

Wedding music was played by Mrs. Nona Woodruff, church organist. She accompanied Miss Carole Campbell, who sang "Because" and Mrs. James Mallow, who sang "O Promise Me." Given in marriage by her father, the bride wore a ballerina length gown of lace over white cotton satin. The gown was styled with a fitted bodice and bouffant skirt. The bodice was covered with tiny seed pearls. Long sleeves tapered to petal points over the wrists.

The bride's waist-length veil of lace was attached to a headpiece of iridescent sequins. She carried a bouquet of white carnations with lace leaves, and tiny pearlized hearts tied in a lover's knot atop a white Bible, which was a gift from the Young Women's Auxiliary of the First Baptist Church.

Mrs. Maurice Gassiot, sister of the bride, was matron of honor. The bridesmaid was Miss Ruth Radle. They wore identical dresses of pink cotton satin. The dresses were styled with fitted bodices and bouffant skirts. They wore white accessories and carried bouquets of pink and white carnations.

Flower girls were Vonnie Cullins, Becky Ralston and Janie Gassiot, all nieces of the bride. They wore dresses of pink cotton satin, identical with those of the attendants.

Ring bearer was Charles Sparks, nephew of the groom. Jimmy Summers served as best man. Don Harkey was groomsman.

Ushers were Edmond Cullins, brother of the bride, and Maurice Gassiot, brother-in-law of the bride.

As a closing prayer, Mrs. Mallow sang, "O Perfect Love," accompanied by Mrs. Woodruff at the organ.

A reception was held immediately following the wedding in the church annex. Miss Velda Cullins, sister of the bride, presided at the register.

Those in the house party were Mrs. Elmer Ralston, Mrs. Edmond Cullins, Mrs. Maurice Gassiot, Misses Sonja Dunn, Reta Ing, Carolyn Bates and Darlene Mercer.

The bride is a 1959 graduate of Santa Anna High School and has been employed in the office of the Santa Anna Tile Co. The groom is a 1958 graduate of Avoca High School and is presently employed as assistant manager of Perry Bros. in Gatesville, where the couple will make their home.

The couple left on a short wedding trip to the Longhorn Caverns immediately after the reception.

Leap Year Birthday Party Honors Miss Bettie Blue

The Lula Verner Wesley Sunday School class of the First Methodist Church honored Miss Bettie Blue with a surprise birthday party in the home of Misses Elsie Lee and Ruby Harper, on her birthday, Monday, February 29.

Sixteen members of the class were present, along with four visitors. The visitors were Mrs. Kenneth Knowles and Elizabeth of Arlington, Va., and Mrs. Oran Henderson and Orabeth of Snyder.

A "This Is Your Life" theme was carried but as the entertainment part of the party. Refreshments of hot spiced punch and cake squares were served.

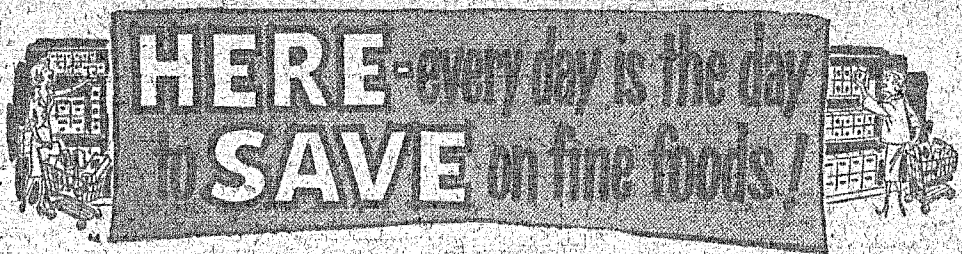
Miss Blue was the teacher of this class for a number of years.

Course in Flower Arrangements to be Presented in Coleman

Mrs. Irene Haddox of Dallas, nationally known flower show judge and member of Nationally Accredited Flower Show Judges, will hold a class of instructions on flower arranging at the Coleman National Guard Armory Friday, April 1, from 1:00 to 5:00 p. m. She is being sponsored by the two garden clubs in Coleman, the Town and County Garden Club and the Coleman Garden Club.

Mrs. Haddox has traveled through 21 countries of the world in her quest for knowledge on flowers. The public is invited to attend the class of instruction. A small fee is to be charged.

Mr. and Mrs. Jim Harris are in Houston this week, where Mr. Harris will undergo major surgery.



SPECIALS FOR FRIDAY AND SATURDAY

BISCUITS Puffin	3 Cans	25c
MARGARINE Our Value	lb.	15c
CORN OUR VALUE, CREAM STYLE GOLDEN, 303 CAN	2 for	29c
PURPLE PLUMS OUR VALUE LGE. 2 1/2 CAN	Only	25c
TOMATOES OUR VALUE 303 CAN	2 for	25c
PEANUT BUTTER SWIFT'S - 16-OZ. REFRIGERATED JAR		45c
DETERGENT OUR VALUE, NEW GIANT SIZE	Only	59c
POTATOES Idaho, 10-lb. Cello Bag		49c
SUPREME - CREME Sandwich Cookies 2 Lbs. .55	NABISCO CRACKERS	Lb. .27
CARROTS 1-lb. Cello Bag	2 for	15c
LUNCHEON MEAT Becker's, 12-oz. Can		39c
MELLORINE Gandy's 1/2 Gal.		35c
HAMBURGERS Fresh And Lean	lb.	35c
ROUND STEAK	lb.	85c

HOSCH GROCERY

PHONE 56

2 Million Vehicles To be Inspected Before Deadline

Col. Homer Garrison, Jr., director of the Texas Department of Public Safety, said today that more than two-million motor vehicles remain to be inspected before the April 15 deadline. He urged all Texas motorists to obtain their new inspection stickers at an early date.

Garrison reported that more than 4,300,000 will be inspected in Texas this year. To date only about half that number have gone through inspection lines at some 4,400 inspection stations located throughout the state.

The DPS director pointed out that inspection stations cannot inspect vehicles during wet, rainy weather, a condition normally prevailing during late winter and early spring. To make sure every vehicle owner is able to obtain his 1960 inspection sticker in time, Garrison suggested that plans be made now to visit an inspection station, before inspection lines grow long.

Bad Weather Affects Public Schools Week

Bad weather most of last week caused a large number of local folks to miss getting to visit the local schools during Public Schools Week. However, a good crowd was in attendance at the musical program on Thursday night. A good crowd was also present at the Chili Supper on Friday night.

Tuesday of last week the schools did not operate because of the roads being iced over, and most of the week severe cold kept most people at home.

A number of parents visited in the elementary school, but visitors in the high school were few.

Navy Band to Be at HPC Monday, April 4

Advance tickets went on sale this week at Howard Payne College for the three performances of the United States Navy Band scheduled at the college April 4.

The performances are scheduled for 1:30, 3 and 7 p. m. in Mims Auditorium, on the opening day of Howard Payne's fifth annual Democracy - in - Action Week.

The evening concert will be a part of the opening night session, which also will include an address by George Marchian, Owner of the Omar Khayyam

restaurants in California, and a nationally - honored American patriot, Mardikian also will address Howard Payne students at their 10 a. m. chapel period earlier the same day.

All seats for the evening program will be reserved. Admission for that program will be \$2 and \$1.50 for the lower floor and \$1.50 and \$1 for the balcony.

Matinee performances are designed especially for school children of the Brownwood area. Tickets for the matinees will be 50 cents for students and \$1 for adults.

E. N. Eisey, head of the HPC division of music, and Ed Cain, band director, will visit schools of the area, beginning late this week, to tell students about the concerts of the Navy Band in Brownwood.

Tickets for the matinee performances can be obtained by writing E. N. Eisey, Chairman of Music, Howard Payne College, Brownwood, Texas. Checks must accompany ticket orders.

For the two matinee performances, Eisey said, "we will be able to provide 1,078 seats for school children and their sponsors to hear the Navy Band. No matinee shows and orders for tickets will be filled on a first come, first served basis."

Tickets for the evening program will be available at the business office at Howard Payne. Reservations will be accepted for the evening performance. They may be made by writing the college business office, or by tele-

Quarterback Club Honors Athletes

All the athletes in both local schools were honored at the Quarterback Club Chili Supper Friday evening, March 4, at the close of Public Schools Week. An estimated 300 persons attended.

Bennie Williams, head coach and athletic director at Howard Payne College, was the principal speaker for the evening. He addressed most of his remarks directly to the honor guests, then showed a film of the Howard Payne Homecoming football game.

Each coach in the schools had their athletes to stand for all to see. Outstanding in the athletic department of the school during the year have been the girls basketball team in the high school, and the junior high school football team.

Mrs. Geraldine Thomas of Abilene came Sunday afternoon for a visit with her grandmother, Mrs. W. A. Featherston. Mrs. Featherston, not being at home, Mrs. Thomas visited Mrs. Ann Kulp and Mrs. A. L. Oger. She will leave for a weeks visit with her mother in California this week. While there, Mrs. Thomas plans to attend the wedding of a niece, a daughter of Mr. and Mrs. Murrell Spence.

Louisiana is the only state whose laws are not based on English common law.

You'all Come

Friends of Dr. and Mrs. Charles M. Henner are invited to attend an Open House Tea in the W. B. Griffin home, on the Brady Highway — Wednesday, March 16, between the hours of 4:00 and 6:00 p. m.

The tea is in honor of their new-born son, Chancellor Charles.

Rockwood News

By MRS. JOHN C. HUNTER

The Rev. Ray Elliott, pastor, preached at the Methodist Church Sunday morning.

C. F. Nevans was a business visitor in San Angelo Thursday.

Mr. and Mrs. Harry Epps of Corpus Christi visited in the John Hunter home briefly Thursday afternoon. Mrs. Harold Straughan and Betty were Sunday afternoon callers, and Mrs. M. D. Bryan visited Monday afternoon.

Mrs. Bill Bryan and Serena and Mrs. Curtis Bryan and LeAnn were business visitors in San Saba last Wednesday.

Mr. and Mrs. Bob Nixon of Valera were Thursday dinner guests with Mr. and Mrs. Leffel Estes and family. Taylor Boatright of Coleman was a Friday dinner guest.

Mr. and Mrs. Bob Mabley and Gregg of Odessa spent the weekend with Mrs. Kate McVain and other relatives.

Mr. and Mrs. Tom Bryan went to San Angelo Sunday to visit a few days with their daughter, Mrs. E. D. Black and family.

Mr. and Mrs. Cecil Richardson and family of Crystal City visited Wednesday to Sunday with Mr. and Mrs. M. A. Richardson.

Mrs. Veoma Jackson and Janice of Abilene, Brenda and Nancy Williams of Barstow, were Saturday night guests with Mr. and Mrs. Jack McSwane and Stanley.

Sunday guests in the McSwane home were Mr. and Mrs. C. H. Mosley and Mr. and Mrs. Tom Clark of San Angelo and Mr. and Mrs. Joe Glassbrenner of Mason.

Go Roller Skating

Open Every Night
Monday Thru Saturday
7:00 p. m. To 9:00 p. m.

Sunday Afternoon
2 To 4 p. m.
Free Skate On Birthday

**THOMPSON
ROLLER RINK**
COLEMAN, TEXAS
LOCATED AT AIRPORT

**ARTISTIC
MEMORIALS**



Authorized Manufacturer Of
Barre Guild Granite
Georgia Granite
Winnsboro Granite
And Marble Memorials

SEE

Horace Slate

Phone 9-3121 — Coleman
Representative For

Coleman Monument Works

W. A. Finlay, Owner
1301 East 9th St.
Coleman, Texas

**JIFFY
CAR
WASH**

**Wristen's Texaco
Service Station**

The occasion was Mrs. Mosley's birthday.

Mr. and Mrs. J. A. Hunter visited last Saturday with Mr. and Mrs. J. A. Hunter near Coleman. A. A. Hunter of Kermit was also a guest.

Melvin Avants and Billy Matt McIntire visited Saturday with Don Hunter. The Hunters spent last Wednesday with Mr. and Mrs. Tommy Briscoe. Lana and Randy at Waldrip, to celebrate Randy's birthday.

Garland McSwane of Abilene was with his parents, Mr. and Mrs. Aubrey McSwane, for the weekend. Other Sunday guests were Mr. and Mrs. Roy Williams and family of Barstow, Mabel Williams of Coleman, Mrs. Veoma Jackson, Janice and Mrs. Don Parks and Rae Lynn of Abilene, Mr. and Mrs. B. L. Parks and Mr. and Mrs. Milford Harris of Santa Anna, Kathy Trotter of Pecos, Mr. and Mrs. Bob Mabley and Gregg of Odessa, and Mrs. Rosa Belle Hellman.

G. T. England of Houston is spending a couple of weeks with the James and Johnny Stewards.

Mr. and Mrs. Olin Horton, Johnny Wayne and Denise of Midland and Mr. and Mrs. J. E. Porter of Utopia were weekend guests with Mr. and Mrs. Johnny Steward.

Billy Maness of Brownwood spent Saturday with Mr. and Mrs. Uless Maness. Other callers were the Bob Mableys and John Hunter.

Betty Straughan and Louise Cooper attended the FHA Area Meeting at Tarleton State College in Stephenville, Friday and Saturday.

Leroy Casey, Mrs. Elton Halmon, Jerry Carl and Lana Kay of San Angelo visited with Mr. and Mrs. Carl Buttry Sunday afternoon.

The Home Demonstration Club will meet at the Community Center, Wednesday at 2 p. m. March 16. Mrs. Jack Cooper will be hostess of the meeting.

Sunday callers in the Uless Maness home were Mrs. Roy Blackwell and nephews, Mike and John Watt and Mr. and Mrs. Boss Estes.

Mrs. Kate McVain and Mrs. Mena Shuford visited with Mrs. Bob Johnson in Coleman Monday afternoon.

Sunday evening guests in the Harold Straughan home were Mr. and Mrs. Marcus Johnson, Jerry and Nikki and Mr. and Mrs. Aubrey McSwane.

Louise Cooper visited Monday evening with Betty Straughan. Sunday guests in the M. D. Bryan home were Mr. and Mrs. Sealy Bryan and family of Coleman, Mr. and Mrs. Floyd Smith and family of Santa Anna and Mrs. L. L. Bryan and Kenneth.

Mr. and Mrs. Dick Deal visited Saturday in Melvin with Mrs. Deal's sister, Mrs. Tim Siler and family.

Mr. and Mrs. Nick Buse and Earla of Santa Anna were Sunday guests in the Deal home.

Mrs. George Rutherford visited last Friday afternoon with Mrs. F. E. McCreary. Sunday afternoon Mrs. McCreary and Mrs. Lon Gray visited with Mrs. Charlie McCarrell, and Mrs. Goldie Milberger.

Reed Steward of Lohn was a Sunday guest with Mr. and Mrs. Bob Steward.

Mr. and Mrs. Hal Haines visited last week with Mr. and Mrs. Hyatt Moore. They had been in New Jersey about three months, while Mr. Haines attended school. They are now at home in Austin.

Mr. and Mrs. Lonzo Moore of Brady, Edwin Fowler of Coleman, Mr. and Mrs. Roy Williams, Mrs. Veoma Jackson and Janice were Sunday visitors in the Hy-

Shields News

By Mrs. E. S. Jones

Mr. and Mrs. Oscar Williams of Gonzales visited Friday with Mr. and Mrs. Grady Williams, Donna and Johnny.

Carolyn Carpenter, Sandra Fowler, Joan Wallace, Karen Jones, Leland and Gary Williams, members of the Santa Anna High School Band, were in Brady Saturday to participate in a contest. Santa Anna won first in concert, Class A and were awarded a trophy. Glen Gilbreath was unable to go as he was sick.

Mr. and Mrs. Geo. Cobb went to Goldthwaite Sunday afternoon and visited with Mr. and Mrs. Arthur Doose of Goldthwaite patients in the Goldthwaite Hospital.

Thursday Mr. and Mrs. H. L. McWhirter of Waco were guests of Mr. and Mrs. Dan Wheatly.

Mr. and Mrs. Noble Carpenter and family attended the band concert at Brady Saturday. Their daughter, Chrystene, a member of the McMurry Band, accompanied them home and returned to Abilene Sunday afternoon.

Mr. and Mrs. Cap Holder and children of McCamey spent Friday night with the Audrey Eppler family and Kenneth Dye of Abilene was a Saturday night guest.

Anna Kay McClure, Linda and Melba Lawrence, Dolores Crosby, Gloria Bryson and Polly Simonton, members of the Moezelle F. H. A., were in Stephenville, Friday afternoon and Saturday attending the annual area meeting. Mrs. H. C. McClure accompanied the girls and the group spent Friday night with her mother, Mrs. Mabel Byers and an aunt Mrs. Bryan.

Mr. and Mrs. Tom Stewardson, Tommy and Ann, a student at ACC in Abilene, spent the weekend in Odessa with Mr. and Mrs. Leon Slusher and Stevie.

Mrs. Floyd Shelton and boys, Mike and Randy, visited Saturday and Sunday night with Mr. and Mrs. Edgar Shelton.

Mr. and Mrs. Roy Williams and children of Barstow spent the weekend with relatives here and in Rockwood.

Mrs. O. C. Yancy is caring for her little niece, Mary Dehman, whose mother is in a Big Springs hospital. Weekend guests in the Yancy home were Mr. and Mrs. O. C. Yancy and three daughters, Mrs. Mildred Hunter and four children of Fort Worth, Mr. and Mrs. Edward Densman and two children of Priddy, Mr. and Mrs. Walter Yancy of Rockwood and Brenda Densman of Santa Anna.

M/Sgt. and Mrs. W. C. Spencer and family of Dyess AFB, Abilene, spent the weekend with her parents, Mr. and Mrs. Tom Mills.

Mrs. Allen Pierce and daughter, Paula Sue, and Mrs. Ralph Brisbin and sons, David and Dwight, of Austin, are visiting their parents, Mr. and Mrs. J. W. McClellan.

Mr. and Mrs. O. L. Cheaney and Mrs. Kenneth Knowles attended funeral services in San Angelo Sunday afternoon for Mr. Albert Shaw.

Close out on one lot Cotton Pique Lingerie, Ladies Shop, at Moore home.

Mr. and Mrs. Wayne Townsend and family of Abilene visited Sunday with Mr. and Mrs. Thomas Switzer and family.

The Rev. Dean Morrison, pastor, filled the pulpit at the Baptist Church Sunday. He and his family were dinner guests of Mr. and Mrs. Rodney Dean and family.

Close out on one lot Cotton Pique Lingerie, Ladies Shop, at Moore home.

Mr. and Mrs. Wayne Townsend and family of Abilene visited Sunday with Mr. and Mrs. Thomas Switzer and family.

The Rev. Dean Morrison, pastor, filled the pulpit at the Baptist Church Sunday. He and his family were dinner guests of Mr. and Mrs. Rodney Dean and family.

Close out on one lot Cotton Pique Lingerie, Ladies Shop, at Moore home.

Mr. and Mrs. Wayne Townsend and family of Abilene visited Sunday with Mr. and Mrs. Thomas Switzer and family.

The Rev. Dean Morrison, pastor, filled the pulpit at the Baptist Church Sunday. He and his family were dinner guests of Mr. and Mrs. Rodney Dean and family.

Close out on one lot Cotton Pique Lingerie, Ladies Shop, at Moore home.

Mr. and Mrs. Wayne Townsend and family of Abilene visited Sunday with Mr. and Mrs. Thomas Switzer and family.

The Rev. Dean Morrison, pastor, filled the pulpit at the Baptist Church Sunday. He and his family were dinner guests of Mr. and Mrs. Rodney Dean and family.

Close out on one lot Cotton Pique Lingerie, Ladies Shop, at Moore home.

Mr. and Mrs. Wayne Townsend and family of Abilene visited Sunday with Mr. and Mrs. Thomas Switzer and family.

The Rev. Dean Morrison, pastor, filled the pulpit at the Baptist Church Sunday. He and his family were dinner guests of Mr. and Mrs. Rodney Dean and family.

Close out on one lot Cotton Pique Lingerie, Ladies Shop, at Moore home.

Mr. and Mrs. Wayne Townsend and family of Abilene visited Sunday with Mr. and Mrs. Thomas Switzer and family.

The Rev. Dean Morrison, pastor, filled the pulpit at the Baptist Church Sunday. He and his family were dinner guests of Mr. and Mrs. Rodney Dean and family.

Close out on one lot Cotton Pique Lingerie, Ladies Shop, at Moore home.

Mr. and Mrs. Wayne Townsend and family of Abilene visited Sunday with Mr. and Mrs. Thomas Switzer and family.

The Rev. Dean Morrison, pastor, filled the pulpit at the Baptist Church Sunday. He and his family were dinner guests of Mr. and Mrs. Rodney Dean and family.

Close out on one lot Cotton Pique Lingerie, Ladies Shop, at Moore home.

Mr. and Mrs. Wayne Townsend and family of Abilene visited Sunday with Mr. and Mrs. Thomas Switzer and family.

The Rev. Dean Morrison, pastor, filled the pulpit at the Baptist Church Sunday. He and his family were dinner guests of Mr. and Mrs. Rodney Dean and family.

Close out on one lot Cotton Pique Lingerie, Ladies Shop, at Moore home.

TEXAS EGG LAW WORKS

March is National Egg Month, and is as good a time as any to make note of the outstanding success achieved in the operation and enforcement of the Texas Egg law.

Within the short span of a little more than two years since it became effective, the Texas Egg Law has come to be accepted as one of the bulwarks of their business by producers, wholesalers, dealers and retailers alike. As the licensing and enforcement agency, the Texas Department of Agriculture was able to develop a program of education and explanation which was credited largely with bringing about this acceptance.

As enacted by the 55th Legislature in 1957, the Texas Egg Law was aimed at preventing eggs of poor quality or unfit for human consumption from reaching our consumers. For many years Texas had been a dumping ground for poor quality eggs which failed to meet prescribed standards and could not be sold in the states where they were produced. This not only brought poor quality eggs from other states into the homes of Texas consumers but also acted to depress the price of premium eggs produced in Texas.

Rules and regulations promulgated by the Texas Commissioner of Agriculture under authority of the Texas Egg Law prescribed the standards of weight and grade, along with methods for determining the quality of eggs offered for sale, and these various grades must be plainly marked on each package of eggs offered for sale.

Widespread physical inspection is accomplished through field inspectors who work out of the six District field offices of the Texas Department of Agriculture. Weekly reports are filed by each inspector as to the number of lots of eggs inspected, along with the results of the inspection.

The general acceptance of the new law is reflected in the reports covering the last fiscal year of its operation. In that year, 19,444 lots of eggs were inspected, amounting to 1,346,311 dozen eggs. Out of this huge quantity, only 610 lots were found to be in violation of the Texas Egg Law, 89 by retailers offering the eggs for sale and 521 by the wholesaler or dealer who had graded and cartoned the eggs. This was a ratio of violations amounting to only three percent of the eggs inspected.

HUMAN — ANIMAL DISEASES TO BE STUDIED

Diseases in nature transmissible to humans will come under two days of intense technical scrutiny March 17-18 in the auditorium of the State Department of Health.

The unique affair will bring to Austin a battalion of scientific intelligence from around the nation to try to unravel some of the knotty problems associated with animal-to-man diseases.

Whon News

By MRS. TOM RUTHERFORD

Mrs. Earl Cozart received an announcement of the wedding of Mr. Wayne Blackwell, son of Mr. and Mrs. Woodrow Blackwell of Dallas. Wayne was born to Mr. and Mrs. Blackwell while they were living in the Whon Community. Wayne and his wife will live in Lubbock, where they are employed.

Mr. and Mrs. Douglas Avants and children of Brady and Mr. and Mrs. James Avants and children of Santa Anna were Sunday guests of the men's parents, Mr. and Mrs. Aaron Avants.

Mr. and Mrs. Roy Clifton and Pat and Mr. and Mrs. Lambert Abernathy, all of Millersview, were Sunday guests with their children, Mr. and Mrs. Lee Abernathy, Linda and Rickey.

Mr. and Mrs. Earl Cozart were Sunday guests with Mr. and Mrs. Babe Gardiner.

Mr. and Mrs. Ray Switzer of Texas City, Mr. and Mrs. O. C. Yancy and children of Fort Worth, also a sister of Mr. Walter Yancy and her family from Fort Worth, were weekend guests in the home of Mr. and Mrs. Walter Yancy, Sandra and David.

Mr. and Mrs. Rex Turney and children of Santa Anna, Mr. and Mrs. Thomas Switzer and children of Rockwood were Sunday night visitors of Mr. and Mrs. Bert Turney.

Mr. and Mrs. Earl Cozart visited her mother, Mrs. Bob Johnson in Coleman Friday afternoon. We are glad Mrs. Johnson is feeling fine.

We had several children in our community out of school last week with the flu. Sandra Yancy was still unable to attend school Monday.

Mr. and Mrs. Tom Bradley of Fife visited with Mr. and Mrs. Earl Cozart Monday afternoon.

Robert Fulton was a portrait painter before he became an inventor.

Iceland's Parliament is called the Althing.

said to be among the most challenging fields of modern public health investigation.

This is the tenth consecutive year the highly regarded scientific event has been held. It is sponsored by the department, the Texas Animal Disease Commission, the University of Texas, Texas A and M College, and Baylor University School of Medicine.

Robert Fulton was a portrait painter before he became an inventor.

Iceland's Parliament is called the Althing.

said to be among the most challenging fields of modern public health investigation.

This is the tenth consecutive year the highly regarded scientific event has been held. It is sponsored by the department, the Texas Animal Disease Commission, the University of Texas, Texas A and M College, and Baylor University School of Medicine.

Robert Fulton was a portrait painter before he became an inventor.

Iceland's Parliament is called the Althing.

said to be among the most challenging fields of modern public health investigation.

This is the tenth consecutive year the highly regarded scientific event has been held. It is sponsored by the department, the Texas Animal Disease Commission, the University of Texas, Texas A and M College, and Baylor University School of Medicine.

Robert Fulton was a portrait painter before he became an inventor.

Iceland's Parliament is called the Althing.

Take Time Out To Meet Your Game Wardens

Austin — "It is unfortunate that some persons never meet a game warden until they are involved in some difficulty," writes H. D. Dodgen, executive secretary of the Texas Game and Fish Commission, in an editorial entitled "His Work — Our Wealth," in the February issue of the agency's official publication. "It is just as unfortunate that so many persons never get to meet a game warden at all."

"Basically," writes Dodgen, "the wardens job was created to enforce game laws passed by your legislature. This still is a very important part of their daily chores. Now, however, he has another part of the job which he likes. He has become a disciple of the great outdoors. He is a walking encyclopedia of information on how to hunt and fish, and where. He must know the multiplicity of laws that govern the ownership, control, and harvest of wildlife."

"Your game warden is your neighbor. He wants to take part in your civic club activities; he will pass the collection plate in your church, or serve as a scout master, or provide motion pictures and talks for the garden club and the P. T. A. on the subject of conservation or wildlife appreciation."

"He will be one of the first on hand to fight a forest fire or to search for the lost or drowned," he continues.

"Your game warden is not perfect nor is he a saint," concluded the executive. "But he is a dedicated man who is doing his best at his job, and with your help he'll do it better. Get acquainted with him."

When you're applying paint with a roller, always begin away from the wet edge and work towards it.

When you're applying paint with a roller, always begin away from the wet edge and work towards it.

When you're applying paint with a roller, always begin away from the wet edge and work towards it.

When you're applying paint with a roller, always begin away from the wet edge and work towards it.

When you're applying paint with a roller, always begin away from the wet edge and work towards it.

When you're applying paint with a roller, always begin away from the wet edge and work towards it.

When you're applying paint with a roller, always begin away from the wet edge and work towards it.

When you're applying paint with a roller, always begin away from the wet edge and work towards it.

When you're applying paint with a roller, always begin away from the wet edge and work towards it.

When you're applying paint with a roller, always begin away from the wet edge and work towards it.

When you're applying paint with a roller, always begin away from the wet edge and work towards it.

When you're applying paint with a roller, always begin away from the wet edge and work towards it.

When you're applying paint with a roller, always begin away from the wet edge and work towards it.

When you're applying paint with a roller, always begin away from the wet edge and work towards it.

When you're applying paint with a roller, always begin away from the wet edge and work towards it.

When you're applying paint with a roller, always begin away from the wet edge and work towards it.

When you're applying paint with a roller, always begin away from the wet edge and work towards it.

When you're applying paint with a roller, always begin away from the wet edge and work towards it.

When you're applying paint with a roller, always begin away from the wet edge and work towards it.

When you're applying paint with a roller, always begin away from the wet edge and work towards it.

When you're applying paint with a roller, always begin away from the wet edge and work towards it.

When you're applying paint with a roller, always begin away from the wet edge and work towards it.

When you're applying paint with a roller, always begin away from the wet edge and work towards it.

When you're applying paint with a roller, always begin away from the wet edge and work towards it.

When you're applying paint with a roller, always begin away from the wet edge and work towards it.

When you're applying paint with a roller, always begin away from the wet edge and work towards it.

When you're applying paint with a roller, always begin away from the wet edge and work towards it.

When you're applying paint with a roller, always begin away from the wet edge and work towards it.

When you're applying paint with a roller, always begin away from the wet edge and work towards it.

When you're applying paint with a roller, always begin away from the wet edge and work towards it.

When you're applying paint with a roller, always begin away from the wet edge and work towards it.

When you're applying paint with a roller, always begin away from the wet edge and work towards it.

When you're applying paint with a roller, always begin away from the wet edge and work towards it.

When you're applying paint with a roller, always begin away from the wet edge and work towards it.

BETTER-BRAKES... BUICK '60



BRAKES-HATE HEAT!

Buick's fin-cooled Aluminum Drums get rid of heat quicker so you're safer!

Brakes generate their own worst enemy—terrible heat. Excessive heat is bad because it may cause brakes to lose part of their effectiveness. So the faster you can dissipate it, the better off you are.

Buick gets rid of heat faster by using fin-cooled brake drums. On the front wheels, where most of the braking is done, the drums are aluminum. They cost more to make but they shrug off heat much faster than drums made of ordinary

metal. Buick is the only American car that makes them standard, at no extra cost, because you will be safer with them.

Best time to buy a Buick '60 is now because you will get top dollar on your old car and have a wide selection of colors and body styles from which to choose. You can own a quality Buick for less than you might think, and your Buick Dealer can arrange terms to suit your budget.

TAKE A TURN IN A TURBINE DRIVE BUICK '60

SEE YOUR LOCAL AUTHORIZED QUALITY BUICK DEALER NOW...

DAUGHERTY-PRICE PONTIAC-BUICK

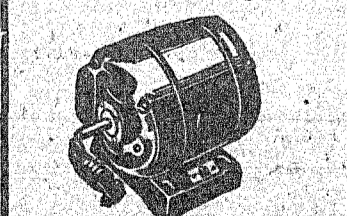
401 Commercial Ave.
Coleman, Texas

Weath McCulloch, Sec.-Treas.
Bettie McCulloch, Mgr.

**Standard
Abstract Co.**

City & County Maps For Sale
405 Bank Bldg Coleman

**Electrical Motor
And Refrigeration
SERVICE**



We Repair and Rewind Electrical Motors Of All Kinds And Give You Prompt, Expert Service On Refrigeration.

**BOZEMAN
ELECTRIC SHOP**

Coleman, Texas
Service Calls 6281
Night Calls 7399

POLITICAL CALENDAR FOR MARCH

Following is a list of political dates for the remainder of March that are important to citizens and those seeking political offices. Other dates will be published later:

- March 10 — On or before March 10 of each year tax collector shall make a statement to county clerk showing how many poll tax receipts have been issued, etc.
- March 10 — Not less than three days prior to State Executive meeting, State Chairman notifies all members of committee and state candidates of time and place of meeting.
- March 14 — County Executive Committee meets on second Monday in March and determines hour and place of precinct conventions.
- March 14 — County Executive Committee shall decide the hour and place at which the county convention shall be held on the first Saturday after primary election day.
- March 14 — State Executive Committee shall decide upon the hour and place of State Convention to be held on the third Tuesday in September.
- March 14 — State Executive Committee directs State Chairman to certify names of state candidates to all County Chairmen.
- March 14 — State Executive Committee shall decide upon the place for the Committee to meet on the second Tuesday following the day of the first primary.
- March 21 — County Executive Committee shall meet on the third Monday in March preceding each general primary and determine by lot the order of candidates' names on ballot.
- March 21 — County Executive Committee at this meeting or at a meeting 20 days before election if absentee ballots (in counties using voting machines) are to be counted by special canvassing board.
- March 21 — County Executive Committee meets to receive certificates showing names of state and district candidates.
- March 28 — On the fourth Monday in March the Primary Committee meets to make up ballot for first primary.
- March 31 — Before April 1, Tax Collector shall deliver to Election Board certified list of voters.

State Capital NEWS

Austin — Texas adults by the thousands are going back to school this year.

Their object: to learn what nuclear warfare could mean to the country and what they can do to better their chances of surviving it.

Texas Education Agency and the State Division of Defense and Disaster Relief are co-sponsors of the civil defense-adult education program. Since the program got under way late last year, 2,816 persons over the state have taken the free 12-hour course. Another 1,295 persons are attending 66 classes now in progress, and 150 new classes are due to begin this month.

Classes are held at public schools and taught by public school and junior college teachers who have been trained and certified by TEA's civil defense staff.

Seven new teacher training workshops are scheduled within the next few weeks. Eventual goal is to have civil defense classes in or near every Texas community.

Course material ranges from study of the effects of a nuclear bomb and probable capabilities of hostile powers to step-by-step instructions for personal survival preparedness.

Persons interested in having the course in their community may contact their local school superintendent or write Civil Defense Education Director, Texas Education Agency, Austin.

NO SESSION BEFORE PRIMARY

Gov. Price Daniel said he will not call a special legislative session to raise teacher pay before May 7 — the first primary date.

Conferences with lawmakers have convinced him, said the governor, that there is no hope of a successful session during the coming eight weeks.

However, the governor said he may call a session after the May 7 primary or submit the school improvement program as an emergency measure at the 1961 regular session. If he waits until 1961, Daniel said he would recommend an increased program to make up for money lost by delay.

Many observances have noted that a special session after the first primary election would pose many problems. As much as 25 to 30 percent of the House could be made up of "lame ducks" — per-

sons retiring from office or defeated at the polls. Incumbent legislators with run-off races would not want to leave their home districts to come to Austin.

Teachers would prefer to have the matter submitted at a special session. Regular session rules require that the budget be provided for before new spending can be considered. Last year approval of the budget was just about the last thing before adjournment.

ACCIDENT STUDY

A new study indicates that motor vehicles and heart attacks or similar difficulties were involved in more than half of Texas' fatal industrial accidents in the last fiscal year.

Industrial Accident Board reported on an analysis of 23,000 accident claims. In the group studied, it found that fatal accidents were most often connected with motor vehicles, 28 percent; heart disease, 26 percent; slips and falls, 10 percent; striking or being struck by an object, 7 percent.

Altogether, in the last fiscal year, the Board processed claims resulting from 195,000 non-fatal accidents and 497 deaths.

Annual cost of industrial accidents is estimated at \$500,000,000 a year. Board plans to make an accident analysis every year to gain information for planning improvement programs.

UTILITY PAYMENTS AVAILABLE

Cities and private utility companies can now get reimbursement for money spent moving utility lines to make way for new interstate highways.

State Highway Commission said it is now ready to begin making payments under a law that was held constitutional by the State Supreme Court earlier

this year.

Cost of the utility moving, as well as construction costs for the interstate system, comes 90 percent from federal funds, 10 percent from state funds.

GRIBBLE PATHS CONTESTED

Whether a person owning grazing rights in a state park area can bar the public from riding horseback in that area is at issue before the Supreme Court.

High court is to hear arguments March 30 stemming from a dispute over use of the Davis Mountains State Park.

Trial court upheld the right of the grazing lease holders to lock out horseback riders while the lease is in effect. Court of Civil Appeals held that riders should be kept out at least nine months of the year.

State contends that if a public park is locked, it is no longer as good as a public park and that any lease is predicated on this assumption.

BOMB LAW ATTACKED

A law prohibiting possession of a bomb or conspiracy to bring about a bombing is under attack in a case before the Court of Criminal Appeals.

Defendant in the case is accused of having masterminded a bombing of the premises of a non-striking employee of a Dallas industrial plant during a union walk-out. Two persons who were convicted of having thrown the bomb in the victim's driveway said they were carrying out the defendant's instructions.

Attorney for the defendant called "dangerous" a law that makes it a felony to possess items from which a bomb could

be made.

CRIME TOLL MOUNTS

An average day in Texas sees 3 murders, 3 rapes, 7 robberies, 32 aggravated assaults, 43 automobiles stolen, 266 thefts other than automobiles and 125 burglaries.

This is the end result of a crime increase that in the past ten years has brought a 79.2 jump in crime while the population increased only 24.4 percent.

Department of Public Safety announced that in all categories, crime in 1959 was up 3.9 percent from the previous year. Largest gain was in aggravated assault — up 22 percent. Only robbery showed a decline.

Attend church regularly.

DR. A. M. FISCHER
CHIROPRACTOR

Phone 2421—615 Commercial
Coleman, Texas

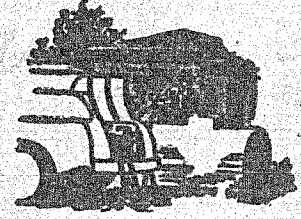
WYLIE'S
FLOWERS
PHONE
96

USE

BOTTLED
GAS

- Clean and Safe
- Best For Heating
- Higher BTU Rating
- Best For Cooking
- Approved By Architects
- No Mess
- No Fuss

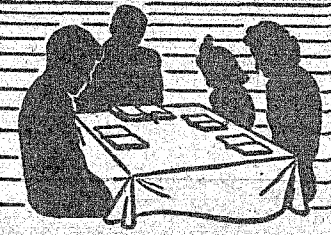
PHONE 9-3551
Night Phone 4599



Prompt Delivery
Coleman
Butane Gas Co.

Today's MEDITATION

from
The World's Most Widely Used
Devootional Guide



The Upper Room
© THE UPPER ROOM, NASHVILLE, TENNESSEE

Read John 19:25-30.
Jesus knowing that all things were now accomplished, that the scripture might be fulfilled, saith, I thirst. (John 19:28.)

We rightly think that the salvation of man means above all the salvation of his soul.

Christ is also the saviour of the body. He Himself had a body. When He lived in the flesh, He knew what it meant to be tired. He became hungry and thirsty. His words "I thirst" were not of little significance, but a part of His sacrifice for us.

We need not think, then, that the things we need for our bodies are sinful. It is not sinful to enjoy our meals. We may drink when thirsty. When we are tired, it is no sin to sleep.

However, we need not be, we must not be slaves to our bodies. If our spirits are being ruled over by our bodies, it is necessary to fight bravely against that tyranny. We have to subdue the power of our bodies, as Jesus subdued His when He lived in the flesh.

PRAYER:
O God, I thank Thee for saving me, that I am Thine. May I remember that my body is the temple of the Holy Spirit. When the hour of my departure out of this world comes, let me with joy be clothed with a spiritual body, without spot or wrinkle. In the blessed Saviour's name. Amen.

THOUGHT FOR THE DAY
Christ redeems my life from destruction and makes my body a temple of the living God.
— Toivo Rajamaa (Finland)

DON'T GAMBLE YOUR LIFE

AGAINST YOUR CAR'S
MECHANICAL CONDITION

Unless You Are a Skilled Mechanic,
Don't Rely on Yourself to Check Your Car.

Drive in Here and Let Us Give Your Car a Complete

Winter Check-Up

- Réline Brakes
- Adjust Lights
- Check Batteries & Spark Plugs
- Check Muffler and Tail Pipes

We go over your car and motor and replace any worn parts and return your car in first class condition to guarantee safe driving.

Mathews Motor Co.
L. K. Wardlow, Mechanic

DON'T Register That OLD CAR

When You Can Register
A New Car For As Low As

\$65¹⁵
Per Month
Insurance Included

Come In Today And Let Us Show You How!

Morris Chevrolet
Coleman, Texas

Band Receives Trophy at Brady Festival

The Santa Anna Mountain Band attended the Heart of Texas Band Festival in Brady the past Saturday and brought home the first place trophy for Concert Playing in the Class A Division. Schools competing in the division with Santa Anna were Mason, Llano and Thomas Edison Junior High of San Antonio.

The band festival differs from Interscholastic League competition in that the bands compete against each other rather than against a "standard". Judges give a written constructive criticism sheet following the performance.

Some of the comments received from the judges were: "Generally the balance and sonority of the band is very good and there is evidence of fine training."

"We know money is a problem, but add more instruments such as oboe, bassoon, alto clarinets, bass clarinets and French horns as soon as possible."

"Good style, good sound. Add more instruments when you can for balance. Cornets play very clean. Could use more bottom parts and a little less top. More flute. Be careful with balance. Nice work."

Judges were band directors from Snyder, Kermit and Abilene Christian College. Chaperons going with the band were Mr. and Mrs. Add Walker, Mrs. B. A. Parker, Mrs. Calvin Campbell, Mrs. Richard Horner, Mrs. Jack Mobley and Mrs. Milton House.

On Tuesday of this week, the Stage Band went to Mozeille to furnish entertainment for the annual Mozeille Livestock Show.

Saturday, March 12, the following band members will go to Comanche to participate in the Second All-District Band: Dixie Baugh, Sandra Fowler, Dixie Deal, Glen Gilbreath, Donnie Neff, Darlene Mercer and Freddie Cullins. These students were selected as members of the All-District Band last fall.

Cole-Anna

Drive-In Theatre

THURSDAY, MARCH 10

RITA HAYWORTH in

"The Story on Page One"

FRIDAY & SATURDAY

MARCH 11 and 12

LEE PATTERSON in

"Jack the Ripper"

—PLUS—

"The Woman Eater"

SUNDAY - MONDAY

AND TUESDAY

MARCH 13-14-15

ROBERT STACK in

"The Last Voyage"

WEDNESDAY & THURSDAY

MARCH 16-17

PAT BOONE in

"Journey to the Center of the Earth"

OAK

Drive-In Theatre

THURSDAY - FRIDAY

AND SATURDAY

MARCH 10-11-12

MICHAEL GOUGH in

"Horrors of the Black Museum"

—PLUS—

RICHARD LYON in

"The Headless Ghost"

SUNDAY - MONDAY

AND TUESDAY

MARCH 13-14-15

JOAN CRAWFORD in

"The Best of Everything"

—PLUS—

GARY COOPER in

"They Came to Cordura"

SANTA ANNA Piggly Wiggly

GLADIOLA

FLOUR 25 Pound Bag **\$1.69**

STEELE'S — 300 Cans

HOMINY 3 Cans **.19**

KIM TOILET

TISSUE 4 Rolls **.25**

KIMBELL'S

WASHING POWDER Giant Size **.59**

PURE

LARD 3-lb. Carton **.39**

BETTY CROCKER or PUFFIN

BISCUITS 3 Cans **.25**

WILSON OR DECKER'S

OLEOMARGARINE lb. **.15**

PURE

HONEY ½ Gal. **.89**

MIXED COUNTRY

EGGS Dozen **.25**

VANILLA — 270 Count Pkg.

WAFERS Only **.39**

JUMBO — Chocolate or Vanilla

PIES Pkg. of 12 **.49**

MELLORINE Gandy's - ½ Gal. **.35**

LEATHER GLOVES ½ Price Sale Pair **\$1.25**

PURPLE PLUMS Big 2½ Can In Heavy Syrup Only **.29**

Cashmere Bouquet — Hair Brush FREE

SOAP 3 Bath Bars **.49**

Crest — Pair Utility Scissors FREE

TOOTH PASTE Economy Size **.69**

Gleem — Clothes Brush FREE

TOOTH PASTE Economy Size **.69**

Ipana — Four Combs FREE

TOOTH PASTE Regular Size **.53**

Woodbury — Reg. \$1.00 Value

LOTION Only **.50**

Fitch — Hair Dressing Tonic FREE

SHAMPOO Regular 84c Value **.69**

More Fed Baby Beef On Our Block This Week

CLUB STEAK lb. **.69**

ROUND STEAK lb. **.89**

SIRLOIN STEAK lb. **.79**

T-BONE STEAK lb. **.79**

7-BONE

CHUCK ROAST lb. **.45**

FRESH BEEF

LIVER Pound **.39**

HAMS Swift's Ready-Cooked Whole or Cut 1 Time lb. **.49**

ARMOUR'S

SLICED BACON lb. **.29**

HOT

BARBECUE lb. **.59**

HOME DRESSED — Don't Overlook This Special!

HENS Pound **.33**