

Your  
Hometown  
Newspaper  
Since 1886

# Santa Anna News

"He Profits Most Who Serves Best"

News Stand Price

Volume 113 Number 16

Thursday, April 16, 1998



## Local Children Participate In CrossWalk '98

Members of the G.A.s and R.A.s of the First Baptist Church led a march, CrossWalk '98, to the park on the mountain where Easter services are held each year. Other children in the community were invited to join in. The two smaller crosses were carried by the children on their walk from the church and put in place on the hill near the large cross. Some of the children who participated along with the sponsors are pictured above.

## Local Man In Dallas Hospital Following Shooting Incident

According to family members, Lee Keeney, 19, is resting comfortably in Parkland Hospital, Dallas, where he is being treated for injuries from what is believed to be a self-inflicted gunshot that took place last Thursday evening at a residence on the Whon Road south of Santa Anna where he was visiting. According to Deputy James Morris, the incident remains under investigation by Coleman County Sheriff's Department.

Keeney was initially taken by air ambulance to an Abilene hospital and doctors there transferred him to Parkland Hospital, Dallas. He was

placed in the Critical Care unit at Parkland but is now in the Stable Care unit.

Lee is scheduled for the first of many reconstructive surgeries this coming Monday to begin correcting severe facial injuries.

According to Santa Anna school counselor, Montie Guthrie, speaking in assembly on Monday, an account has been set up at Santa Anna National Bank and at First Coleman National Bank to help defray the cost of Keeney's medical expenses. Various school groups have planned fundraisers to help out. For more information, contact

Gail Loyd, Amanda or Gayla Lishka.

Friends and acquaintances are encouraged to send cards and letters to the following address: Lee Keeney, C/O Glenda Keeney, Studio Plus of Dallas, Dallas Market Center, 2979 North Stemmons Freeway, Dallas, TX 75247-6170.

The son of Roy Dean and Glenda Keeney, Lee graduated from SAHS in the spring of 1996.

## Trickham Cemetery Association To Hold 50th Annual Meeting Sunday

Plans are underway for the 50th annual Trickham Cemetery Association to be held April 19.

Rev. Jesse Ray Haynes of Fairfield (one of our hometown boys) will be the Memorial Day speaker. The service will begin at 11 a.m. in the Trickham Union Church. Special singing by Sherrill (James) McIlvain. A short business meeting will begin at 11:45 a.m. Major item on the agenda will be the election of a president and one director. Terms of James Ford and Leona Henderson will expire this year.

Luncheon will follow in the community center furnished by each family attending. All members and everyone in the community are invited to attend the meeting and take part in the organization.

Trickham Cemetery Association officers include James Ford, president; Sherrill McIlvain, vice president; Terry McIver and Leona Henderson, board members and Verna Bolton, secretary-treasurer.

## Chamber Looking For Softball Teams For Funtier Day Tournament

A men's softball tournament will be held Saturday, May 15 and Sunday, May 16 during Santa Anna's annual Funtier Day.

Entry fee will be \$100.00. The first place team will receive a traveling trophy and team members will each be awarded a baseball cap.

Second and third places will receive T-shirts.

For more information contact the Santa Anna Chamber of Commerce at 915-348-3535 or Rita Harris at 915-348-3666.

## Little Dribblers Awards Ceremony To Be Held Thursday Evening

The Santa Anna Little Dribblers Awards Ceremony will be held Thursday evening, April 16 at 7 p.m. in Perry Gym.

All third, fourth, fifth and sixth grade Little Dribblers, their parents and family are invited to attend the ceremony and hot dog supper.

All Little Dribblers should wear their uniforms.

## Kindergarten And Pre-K Registration To be Held Next Mon. Through Fri.

Registration for Kindergarten and Pre-K for the school year 1998-1999 will be held the week of April 20-23. Registration will be held in the elementary office from 9 a.m. to 3 p.m. each day.

To be eligible for Pre-Kindergarten you must be four years old before September 1, unable to speak or comprehend the English language and educationally disadvantaged, or homeless as defined by federal law.

To be eligible for Kindergarten you must be over 5 years old by September 1.

For Pre-K and Kindergarten registration please bring a birth certificate, social security card and immunization record. All immunizations need to be up to date.

## City-Wide Cleanup To Be Held Saturday

A city-wide cleanup will be held Saturday morning according to City Superintendent Doug Watson.

City employees and council members will be cleaning up the downtown area and residents are being encouraged to clean up their own area and part of town.

Citizens can haul their trash to a BFI truck which will be located in the city yard from 8 a.m. until 12 noon.

If everyone will do their part, the cleanup will be a success on that day and we can be proud of how Santa Anna looks.

## Petition Being Circulated Requesting Election For Sale Of Alcoholic Beverages

Coleman County Clerk JoAnn Hale told county commissioners on Monday that a petition is being circulated in Santa Anna for the legal sale of alcoholic beverages within the city limits.

The first petition with ten signatures was returned requesting a petition to call an election.

The election code states that 35 percent of the registered voters in the city limits must sign the petition for an election to be called and it must be returned within 30 days.

A total of 240 signatures will be required for the city to hold an election. If this number or more signatures are certified by Coleman County Tax-Assessor Collector Donna Seymore, commissioners will be asked to approve the liquor sales election.

## Bake Sale Sat. To Raise Money For Keeney Family Expenses

Girls in the senior class at Santa Anna High School will hold a bake sale on Saturday morning beginning at 9 a.m. at Holt's General Store. Money raised will be used to help the Keeney family with expenses of staying in Dallas with Lee.

Those wishing to donate items may leave them at Holt's on Friday or by 9 a.m. Saturday.

To have an item picked up call Kathy Holt or Cam DeLeon at 348-3220 or 348-3373.

\*\*\*\*\*

We live in the present, we dream of the future, but we learn eternal truths from the past.

## Montie Guthrie Elected Chairman Of County Democratic Party During County Convention

The Democratic Party Convention met on Saturday, March 28 in the District Courtroom in the Coleman County Courthouse.

Montie Guthrie, III was elected as

chairman of the county democrats.

Two delegates from Coleman County will attend the State Democratic Party Convention in San Antonio on June 26-27.

The group discussed ways in

which to help local and area candidates in the November general election. The group will be planning a meet-the-candidates campaign kick-off for Labor Day in the Coleman City Park.

## Chamber of Commerce Breakfast Break Thursday

April 16, at Wagners Plants & Things on Brady Hwy. 7:00 to 8:30 a.m.

## Cleveland Cemetery Association To Meet April 26

The Cleveland Cemetery Association will meet on Saturday, April 26 at 10 a.m. in the Cleveland Methodist Church.

Everyone is invited to come take part in the business meeting and enjoy visiting with those attending.



## Eight Santa Anna Youth Advance To Regional Finals In Hoop Challenge USA

On Feb. 27, 1998, 38 Santa Anna Elementary and Junior High students participated in Hoop Challenge USA, a basketball shooting contest in which students shoot basketballs from specified spots on the gym floor for points. Students who score enough points are awarded medals and advance to a regional semi-final. Of these 38 shooters, 17 advanced to semi-finals in Early with nine advancing to the regional finals on April 18, also to be held in Early. Local students who advanced are front row, T. J. Johnson, Jessilee Bliss and Justin Johnson; middle row, Kayla Blisard, Logan Lacy and Rudy Enriquez; and back row, Bryan Fellers and Jeremy McGee.



## Santa Anna National Bank Supports Coleman County Welfare Board Child Abuse Awareness Month

The Santa Anna National Bank is supporting the Coleman County Child Welfare Board and Child Abuse Awareness Month by purchasing T-Shirts for its employees. Sandra Stith, a member of the Coleman County Welfare Board is pictured receiving a check from bank employees Delisa Coyle, Pat Smith, Betty Roberts and Barbara Hubbard. April has been designated Child Abuse Awareness by the State of Texas. Money raised will be used to help purchase toys at Christmas for foster children, school supplies for these children, clothing allowances, training for caseworkers and educating the community about child care. All money will be kept in the county. T-shirts may be purchased from Sandra Stith by calling the elementary school at 348-3138.

Santa Anna — A Town Of Friendly People

Including  
Frankie McCarthy

A  
P  
R  
1  
6  
1  
9  
9  
8

**Obituaries**

**Earnestine Stark**

Earnestine Stark, 82, of Bangs, died Thursday, April 9, 1998 at the Brownwood Regional Medical Center.

Funeral services were held Tuesday, April 14, 1998 at 2 p.m. in the Heartland Funeral Home Chapel. Robert L. Stumph officiated with burial following in the Bangs Cemetery under the direction of Heartland Funeral Home of Early.

She was born Oct. 12, 1915 in Port Lavaca to the late J. M. and Effie Chitty Brown. She was a school teacher for several years and also worked in nursing. She has been a resident of Bangs since 1985 and was a Seventh-Day Adventist.

Survivors include her husband, W. Andrew Stark of Santa Anna; three sisters, Berniece Murrell of Hatfield, Ark., Vivian Lowell of Ore. and Ruth Blackwell of Tatum; two grandchildren; and two great-grandchildren.

She was preceded in death by a son, Robert Stark, a brother John Brown and her parents.

Memorials may be made to the Texas Conference of Seventh-Day Adventist, P. O. Box 800, Alvarado, Texas 76009.

**Santa Anna Cemetery Memorials**

The Santa Anna Cemetery Association has received the following memorials:

In memory of Pete Moore from Raymond and Doris Cupps, the family of Doug Moore, Sr., Mr. and Mrs. Richard Hodges and Jackie Ginsberg;

In memory of Mack Baucum from Reba Jongena;

In memory of Billy Diaz from Lorene Rice; and

In memory of C. L. Horne from Mrs. Lynn Horner.

**Ora Stacy**

Ora (Mrs. Joe) Stacy, 89, of Trickham, died Saturday, April 11, 1998 at 10:40 a.m. at the Ranger Park Inn Nursing Home in Santa Anna.

Services were held Tuesday, April 14, 1998 at 11 a.m. at the Trickham Union Church with Rev. James C. Gilbert and Rev. James Ford officiating. Burial followed at the Trickham Cemetery directed by the Henderson Funeral Home of Santa Anna.

She was born in Brown County on Oct. 22, 1908 to the late Ollie Jess and Dollie Cora McClatchy Martin. She was a lifetime resident of Coleman and Brown counties where she graduated from Santa Anna High School and then attended Texas Tech University.

She married Joe M. Stacy in Trickham on June 12, 1930 and they have celebrated over sixty-seven years of marriage.

She was a member of the Trickham Presbyterian Church and Trickham Quilting Club and was a homemaker.

Survivors include her husband; a daughter and son-in-law, Zonell and Bill Hultz of Grand Prairie; a son, Martin Stacy of Cleburne; three grandsons, Rick Hultz and Roy Hultz, both of Irving and David Hultz of Houston; and a great-granddaughter, Rachel Hultz of Woodland.

Pallbearers were Randy Barkemeyer, John Dockery, Clarence Ford, Garner McClatchy, Pat McClatchy and Buck Means.

**Neil Matassa**

Neil Matassa, 17, of Austin, died unexpectedly Monday, April 6, 1998 while protecting his mother, sister and a close friend.

Services were held Wednesday, April 8, 1998 at 1 p.m. at the Harrell Funeral Home Chapel in Austin. Private burial was held in the Whon Cemetery under the direction of Stevens Funeral Home of Coleman.

He was born May 13, 1980.

Survivors include his mother, Jan Matassa of Austin; a sister, Jennifer Matassa of Austin; grandparents, Leonard and Virginia Matassa; a step-grandmother, Dorothy Buckley; and several aunts, uncles, cousins and many friends.

A local survivor is great-uncle Rex Turney of Santa Anna.

**Johnnie Freeman**

Johnnie D. Freeman, 71, of Bangs, died Tuesday, April 7, 1998 at 9:45 p.m. in Sept. & White Hospital in Temple.

Services were held Thursday, April 9, 1998 at 11 a.m. in the Bangs First Baptist Church with Rev. Jimmy Allen officiating. Burial followed in the Bangs Cemetery.

She was born July 21, 1926 in Whon to the late John and Velma Vardeman Page. She lived most of her life in Bangs.

She married Sherman Freeman June 9, 1944 in Brownwood.

She was a retired beautician and worked for a number of years at Shaw's TV. She was a member of Bangs First Baptist Church.

Survivors include her husband; a son and daughter-in-law, Bill and Pat Freeman of Brownwood; a sister, Wanda Loyd of Brownwood; a grandson, Shawn Freeman of Brownwood; a niece and four nephews.

**Check It Out**  
By Alice Anna Spillman

Did you notice the Easter basket on the round table? Nell Myers always creates something special for the library and friends to enjoy.

Sylvia Herring sent the remaining records of the Woodman of the World. She purchased these when Phillips Drug closed. The Woodman met over the drug store. These are in very fragile condition. The library will keep them as best we can. They could be used to prove that some person lived here during a certain time. Thank you Sylvia for caring enough to preserve community history.

Lonella Roesch is another friend who cares about the community. She has been donating a subscription to the Santa Anna News. She asks that we keep these so people can use them in the future. Thank you Lonella.

Remember that the library has the Santa Anna News, The Abilene Reporter-News Sunday edition, The Coleman Democrat-Voice and The Wall Street Journal. Please feel free to drop in and enjoy any of these.

The Self Culture Club honors deceased members or their close family by contributing a book to the library. Recently the library received in memory of Mrs. Mae blue a book called Holy Humor Cal and Rose Somra wrote this and it was published by Guideposts.

More Holy Humor is the second book written by the same couple. This is in memory of Mr. George Bell.

These books were written because the Lord loves a cheerful Christian. The stories are about church leaders and members of all ages.

Amanda Ellerbe hasn't been around to see us much lately. She's working but when she comes it's bearing gifts. The last sack had romance, historic fiction paperbacks and magazines: HomeLife, Soap Opera Digest and Consumer Digest along with a book How to Clean About Anything.

Carmilla Baugh brings such nice books. This latest is very special The Inheritance Louisa May Alcott. This is believed to be the first book, written when Alcott was 17 years old. It was never published until now. For those of us who read Little Women, Little Men or Jo's Boys. This is a treat. Did you know that Alcott wrote thrillers?

Did you see the TV show The Staircase? I looked it up and the chapel and staircase still exist. In 1873 the Sisters of Loretto built a new stone chapel. It did not have a staircase and a strange man did ap-

**Thank You**  
Many thanks for the love and comfort shown to me during the death of my brother, C.T. (Pete) Moore.  
Also for the cards and food.  
**Edd & Ruby Hartman**

**REED MEMORIAL CO. LIMITED**  
Monuments of Distinction  
Fl. Worth Hwy. Brownwood, Tx.  
Phone (915) 646-7825  
Sylvia Herring—Local Rep.  
Phone 348-3481

**'Round & About**

Luke and Glenda Pricer and Lorette Curry visited cousins Cecil and Ahioree Penn in Cisco Tuesday. They also went to Weatherford and visited Osler and Ada Lois (Newman) Williamson and to Fort Worth to visit an aunt, Mrs. Esther (Gober) Williamson for several days. They came back by Baird and enjoyed the arts and crafts there.

Out of town guests for the Pricer's 50th wedding anniversary in Abilene on March 28 were Harvey Curry of Brownwood; Lorette Curry, Dick and Virginia Powell, Chris Allen, Mr. and Mrs. Clovis Billings, Carla and Beth, Mamie Pricer, Nell Hart, and Sandra Bruton, all of Coleman; Mr. and Mrs. Troy Jones, Veona Fields of Pasadena; Vada Huguley of El Paso; Mr. and Mrs. John Williams and Brandon of Woodville; Mr. and Mrs. Wayne Pricer of Fort Worth; Eulala Pricer and Foy Pricer, Mr. and Mrs. Gary Fennerty, Michelle and Trent, all of Lubbock; Mr. and Mrs. John Pricer of Crawford; Mr. and Mrs. Osler Williamson of Weatherford; Frances Vaughn and Maida Locus of Stephenville and their children, Randell, Cindy, Scott and Deana from Wichita Falls and Gaylon and Laurie and Amy Pricer of Lewisville. There were 150 who registered.

Visiting and spending time during the Easter weekend with Dale and Carol Herring and Casey Wade were Jeff and Charlotte Herring, Summer and Jade of Slaton; Pete Herring and Pam Thompson of Lake Brownwood; and Derek Little and Kristina Funderberg of Brownwood.

Eddie and Mary Ann Hartman visited with their son and family, Mike and Donna Hartman and Travis Saturday.

Spending the weekend with Stanley and Judy Hartman were Terry and Robin Mach, Brittany and Jordan of Midlothian and Stephanie and Hannah Hartman of Duncanville.

Americans for Customary Weights and Measures, a group opposed to the use of the metric system in the United States, was assigned a fitting post office box: 5280, the number of feet in a mile.

**Birthdays & Anniversaries**

**APRIL 17**  
Robert Barton, Jr.  
Aurelia Brown  
Betty Gay Brown  
Wendy Morris  
Jeff Simmons  
Debra Smiley  
Mr & Mrs. J. T. Avants\*

**APRIL 18**  
Ayana (Pinkie) Black  
Jaryd Salazar  
Steve Voss

**APRIL 19**  
Mr & Mrs Mike Efrid\*

**APRIL 20**  
Bobby Benton  
Adel DeLeon  
Erwin Loyd  
Angie Voss  
Dwayne Warnock

**APRIL 21**  
Cody Martin  
Gene Watts (Poppy)

**APRIL 22**  
Tommy Davis  
Jordan Adidas Guerrero  
David Horner  
E. J. Rutherford  
Dwight Zirkle

**APRIL 23**  
Gary Boss  
Clint Troy Easley  
Bill Smith

Jeremy Hartman of Austin and Jeffrey Hartman of Pflugerville visited during the weekend with Edd and Ruby Hartman.

Stac Walker of Early was a brief visitor Monday afternoon with his grandparents, the Hartmans.

D. H. Moore of San Antonio visited late Monday afternoon with the Edd Hartmans. Stan and Judy Hartman also visited with the Hartmans and D. H.

Sandra Walker of Early was a visitor Tuesday morning.

**HENDERSON FUNERAL HOME**  
Donnie & Christina Henderson  
*"People Who Care"*  
SANTA ANNA 348-3131  
COLEMAN 625-2121

**COW POKES** By Ace Reid  
<http://www.cowpokes.com>  
  
"Yep, the same ol' story...they're born in the spring, mortgaged in the summer and fed in the winter."

**Santa Anna National Bank**  
*"Make Our Bank Your Bank"*  
Agriculture and Livestock Loans  
Business and Industrial Loans  
Personal and Monthly Installment Loans  
NOW Checking Accounts, Checking Savings, CDs  
**915-348-3108**  
**348-3109**  
**FOR YOUR CONVENIENCE**  
WE HAVE A DIRECT LINE TO BOOKKEEPING  
FOR YOUR SAVINGS & CHECKING ACCOUNT NEEDS  
**915-348-3115**  
MEMBER FDIC

11-1141 Notice of Election (2/92)  
Prescribed by Secretary of State  
Sections 4.004, 83.010, 85.004, 85.007, V.T.C.A., Election Code

Hart Forms & Services, Inc. - Austin

**NOTICE OF Trustee ELECTION (AVISO DE ELECCION Patronato)**

To the Registered Voters of Santa Anna, Texas:  
(A los votantes registrados del Santa Anna, Texas):

Notice is hereby given that the polling places listed below will be open from 7:00 a.m. to 7:00 p.m., on May 2, 1998 for voting in a Trustee election, to Elect 3 trustees.

(Notifíquese, por las presente, que las casillas electorales citadas abajo se abrirán desde las 7:00 a.m. hasta las 7:00 p.m. el 2 de Mayo de 19 98 para votar en la Elección para escargo tres miembros del patronato de la escuela.)

LOCATION(S) OF POLLING PLACES (DIRECCIONES) DE LAS CASILLAS ELECTORALES:  
Santa Anna I.S.D. Administration Bldg.

Early voting by personal appearance will be conducted each weekday (La votación en adelantada en persona se llevará a cabo de lunes a viernes en)  
Santa Anna I.S.D. Administration Bldg.  
(location) (sitio)

between the hours of 8:00 a.m. and 4:00 p.m. beginning on April 15, 1998 (date)  
entre las 8 de la mañana y las 4 de la tarde empezando el 15 de abril, 1998 (fecha)

and ending on April 28, 1998 (date)  
(terminando el 28 de abril 1998) (fecha)

Additional early voting will be held at the same location as follows: (La votación en adelantada además se llevará a cabo en el mismo sitio de tal manera):

Date (Fecha)	Hours (Horas)
n/a	

Applications for ballot by mail shall be mailed to: (Las solicitudes para boletas que se votarán en ausencia por correo deberán enviarse a:)

Judy Hartman  
(Name of Early Voting Clerk) (Nombre del Secretario de la Votación En Adelantada)  
Santa Anna I.S.D. - P.O. Box 99  
(Address) (Dirección)  
Santa Anna, TX 76878  
(City) (Ciudad) (Zip Code) (Zona Postal)

Recommended but not required

Applications for ballots by mail must be received no later than the close of business on (Las solicitudes para boletas que se votarán en ausencia por correo deberán recibirse para el fin de las horas de negocio el)  
April 24, 1998 (date) (fecha)

Issued this the 10th day of February, 1998  
(Entiada este día 10 de February, 1998.)

*Judy Hartman*  
Signature of Presiding Officer (Firma del Oficial que Preside)

### Bobby Benton To Be Honored With Birthday Reception

A reception to honor Bobby Fuller Benton on her 70th birthday will be held Sunday, April 19 from 3 to 5 p.m. at the Community Center in the High Rise Apartment in downtown Santa Anna.

All friends and relatives are invited to drop by and help Bobby celebrate this happy occasion.

Bobby requests no gifts please; your presence will be a special gift.

### Dear Editor

I need to take this opportunity to thank many people for helping Coleman County practice democracy last month. In the primary election this past March 12, more than fifty citizens stepped up to work a long, sometimes boring, sometimes frantic day. These are the election judges, alternate judges, clerks and counters. And believe me, they don't do it for the money. They are paid minimum wage to do a job that calls for fairness, attention to detail, and patience. All citizens owe them thanks for their service.

I owe them an apology. When I accepted the job of Democratic Party County Chairman, I had no idea of the complexity of the job. If I knew I was responsible for holding this primary election, I must have had temporary amnesia. I won't forget again. I have learned many hard lessons in the past three months. The worst is that the state of Texas holds all the trump cards. When I sent in the preliminary cost estimate for the primary, I did not know that the Secretary of State's office would not send the entire estimate. A large chunk is held out-one-fourth! I also didn't know that the entire bill for the printing of the ballots doesn't have to be paid on the first billing. As a result, at this moment I don't have enough to pay those who worked—and they deserve their money. I have sent the State the final cost, asking for the remainder of the money. I can't get a straight answer as to when it will come. All I can tell those workers is that I will do my dead-level best not to get in this situation again.

And for those who are tempted to jump over to the other side because they haven't been paid—just remember which party is running the Secretary of State's office! All Democrats know everything will straighten out once we elect Gary Mauro as Governor. Texas will stand tall again!

Respectfully,  
Montie Guthrie III  
Coleman County Democratic Party Chairman

\*\*\*\*\*  
The secret of life is that it is God-given.  
The Lord God formed the man...and breathed into his nostrils the breath of life, and the man became a living being.  
Genesis 2:7

### Trickham Tidbits

By Anna York

Rev. Mike Efrid, the Methodist pastor, brought a good Easter message Sunday morning at church. His scripture was taken from Mark cp. 16, vs. 1, the title being "Jesus is Alive Forever More."

Phillip and Cindy Cozart and daughter Kellye of Round Rock spent Friday night and Saturday with their parents Reba and Elvis attended the Easter sunrise service and breakfast at Santa Anna.

Recent visitors with Lorene Rice in Santa Anna were Billy Jo and Johnny Parish from Tucuman, New Mexico.

Royce and Wanda McIver and Terry and Helen McIver met Doyno and Wanda Lou McIver of San Angelo at Tammy's in Santa Anna on Friday evening for a fish dinner and visiting. Britt McIver of Buffalo Gap visited his parents Royce and Wanda briefly Saturday.

Pete McClatchy visited one day with his sister Leona Henderson and Sunday Leona and Novella Stearns had lunch in Coleman with Donnie and Chris Henderson and Candice.

Sunday dinner guests of Laverne and Talmadge McClatchy were Jeannie and Fred Drienhofer and Nicholas of the Brownwood lake. Merrilee McClatchy, Bob Anderson and Mrs. Gertrude Martin.

Ray and Bobbie Dean had their Easter dinner Saturday. Those that were there were James and Dinah Barrilliaux and girls, Valerie, Monica

### Delta Omicron To Sell Tickets For Spending Spree; Money To Be Used For Senior Scholarship

Delta Omicron Sorority of Santa Anna met Monday, April 13, at the Coleman County Telephone Cooperative office with Dorothy Harris as hostess. Bernidine Watson, president, called the meeting to order with the opening ritual.

Communications, treasurer's report and a report from officer's were given. Members were given raffle tickets to be sold. The winner will receive a \$100.00 spending spree with the ticket sale proceeds going toward a scholarship for a Santa Anna High School graduating senior.

The calendar committee is working on next year's community calendar. Anyone wishing to add or change names on the calendar should call Pat Vance at 785-4221 or any of the Sorority members.

Installation of officers will be held on Sunday, April 26 in the home of Gayle Stewardson.

Bernidine Watson gave the education program "Let's Get Country--The Season to Reap, Let's Get Motivated--You can if You Think You Can".

Members attending were Coyita Bowker, Dorothy Harris, Peggy Hensley, Patty Musick, Pat Vance, Susie Voss, Bernidine Watson and Debbie Wheatley.

Meeting was adjourned with closing ritual.

and Sabrina of Duncanville, Marie and Bear Warwick and family and Casey Dean and son Jared of Cedar Hill and Kit Dean of Comanche and Wyndham.

Reba Cozart and Cindy Cozart visited Friday with Annie Lou Vaughn. Her Saturday dinner guests were JoAnna Smith and her mother Mary Ola Woods of Terrell and Bangs. Sunday those that had lunch with her were John and Earlene Dockery and Reba and Elvis Cozart.

Janice and Delbert snow and family had their Easter dinner and get-together Saturday for relatives and friends. Those that went from here were Felton and Bettie Martin and Mrs. Gertrude Martin.

Donnie and Sherry York of Ozona spent the day on Friday with Nikki and I. They spent two days in San Antonio last week where they attended the library convention and met Dan Rather who was a guest there.

Ervin Ray Wells of Coleman visited one day last week with his Aunt Vera Bolton and her husband Arvil, Saturday Betty Sharp of Bangs visited and Sunday visitors were R. C. and Ann Stearns of Cross Cut, Alice Wells, Barbara Kirkpatrick and daughter Amber of Coleman, Charlie Ray Fleming of Alice and Florence Stearns.

Rankin and Natalie McIver visited in Brownwood Sunday afternoon with her daughter Darla and Vance Gibson.

Word was received here Saturday of the death of Ora (Mrs. Joe) Stacy of the Ranger Park Nursing Home formerly of Trickham. Services are pending at this time, we were sorry to hear this and her family has my sympathy.

To those of you who are interested, don't forget next Sunday will be the day for the cemetery association meeting.

### Cleveland Chats

By Clara Cupps

The wind is still blowing, getting pretty dry.

Carmilla Baugh went to see Ruth Hibbits Saturday. She had Sunday dinner with Lonnie and Nancy Lowry and children. She attended the Cupps reunion Saturday.

Junior and Lillian Henderson visited Margie Fleming Thursday morning.

Lou Pierce dropped by Bobbie Guthrie's Thursday and they went shopping in Coleman.

Those visited John and Juanita Naron over the Easter holidays were Jennifer and David Phemister of Austin, Jody and Angie Naron and Chrysta. Doris Kelly and girls dropped by and visited a while Saturday.

The Doyle Wrights visited in Abilene with the Bill Gibbons and their daughter Debra Coulson Saturday and visited at the Cupps Reunion Sunday. Pat and Alys hid the Easter eggs for Sarah Saturday night.

Charlie Ray and Marie Fleming of Alice and Margie Molden spent the weekend with Thelma Fleming, Randy, Ann and Sam Sikes and Frandio of Palestine visited Friday

night. Laverne Evans and Winnie Haynes had Sunday dinner with the Dana Evans family.

Jim Lane of Kingwood, near Houston, spent the weekend with his mother Mrs. Winnie Lane. Others

were Dr. Ward and Pat Lane of Dallas and Danny and Sally Lane and Margaret of Coleman.

Charlie Avant went to get Mrs. Ruth Hibbits for Sunday dinner while Kathleen fixed dinner. She said Ruth enjoyed it very much. Kathleen went up Wednesday to visit and said she was doing pretty good.


LaDell Morris said her mother is still doing pretty good and she spent most the day with her Saturday.

We had the Cupps Reunion this past week. They said was over one hundred there both days. Wind did blow Saturday but Sunday wasn't so bad. Those visiting the R. W. Cupps, over the weekend were Jolinda and Russell Carnes and children and Carolyn and Ernie Covey of Georgetown.

Anita Jarvis of Johnson City came in the middle of the week to be with

her folks. Tammy came in for the weekend. Bryce and Jamie Ellis were home this week from ASU. Russell Williams and Frank Williams came Sunday at noon to spend a while with Ovella, will return Monday to Fort Worth. Hope all you had a nice Easter.

**COUNTYWIDE INSURANCE AGENCY**



**PAUL SKELTON - AGENT**

**HOMEOWNERS WORKER'S COMPENSATION FIRE AUTO LIFE & HEALTH INSURANCE LIABILITY BONDS**

If It's Affordable.... We'll Insure It

## Thank You!

The Santa Anna Chamber of Commerce would also like to thank those volunteers who provided the support and hard work which resulted in a very enjoyable and tasty evening! The following individuals are to be appreciated for all of their hard work:

#### DECORATIONS:

- Wanda Bible
- Wanda Daniel
- Karen Morris
- Barbara Simmons
- Kathy Simmons
- Kelly Simmons
- Michael Simmons
- Marty Watts
- Rebecca Watts
- Beth Worley

#### BANQUET VOLUNTEERS:

- Dana Chambliss
- Jerry Chambliss
- Rob Cheaney
- Ronnie Daniel
- Felicia Ellerbe
- Chris Jamison
- Karen Morris
- Cynthia Philpot
- Kathy Simmons
- Donna Topme
- Lynn Wagner

17-4140 Notice of Election (2/92)  
Prescribed by Secretary of State  
Sections 4.004, 83.010, 85.004, 85.007, V.T.C.A., Election Code

Hart Forms & Services, Inc.—Austin

**NOTICE OF City ELECTION**  
(AVISO DE ELECCION city)

To the Registered Voters of Santa Anna, Texas:  
(A las votantes registrados del Santa Anna Texas)

Notice is hereby given that the polling places listed below will be open from 7:00 a.m. to 7:00 p.m., on May 2, 1998, for voting in a city election, to elect 3 councilman.

(Notifíquese, por las presentes, que las casillas electorales situadas abajo se abrirán desde las 7:00 a.m. hasta las 7:00 p.m. el 2 de MAYO de 1998 para votar en la Elección para tres city concejal.)

LOCATION(S) OF POLLING PLACES  
(DIRECCIONES) DE LAS CASILLAS ELECTORALES

Mountain City Community Center

Early voting by personal appearance will be conducted each weekday at  
(La votación en adelantada en persona se llevará a cabo de lunes a viernes en)

City Hall ayuntamiento  
(location) (sitio)

between the hours of 8 a.m. and 5 p.m. beginning on April 15, 1998 (date)  
(entre las 8 de la mañana y las 5 de la tarde empezando el 15 de abril de 1998 (fecha)

and ending on April 28, 1998 (date)  
(y terminando el 28 de abril de 1998 (fecha)

Additional early voting will be held at the same location as follows:  
(La votación en adelantada además se llevará a cabo en el mismo sitio de tal manera:)

Date (Fecha) Hours (Horas)

Applications for ballot by mail shall be mailed to:  
(Las solicitudes para boletas que se votarán en ausencia por correo deberán enviarse a:)

Alys Pelton  
(Name of Early Voting Clerk) (Nombre del Secretario de la Voicación En Adelantada)

P. O. Box 249  
(Address) (Dirección)

Santa Anna, Texas 76878  
(City) (Ciudad) (Zip Code) (Zona Postal)

Recommended but not required

Applications for ballots by mail must be received no later than the close of business on  
(Las solicitudes para boletas que se votarán en ausencia por correo deberán recibirse para el fin de las horas de negocio el)

April 24, 1998 (date) (fecha)

Issued this the 17th day of February, 1998.  
(Emitted este día de 17 de February, 1998.)

*Alys Pelton*  
Signature of Presiding Officer (Firma del Oficial que Preside)

1- 10x13 (Wall Photo) **30** Color Photos **99¢ Deposit \$12.00 Due at Pick up (plus tax)**

1- 8x10  
2- 5x7  
2- 3x5

16- King Size Wallets  
8- Regular Size Wallets

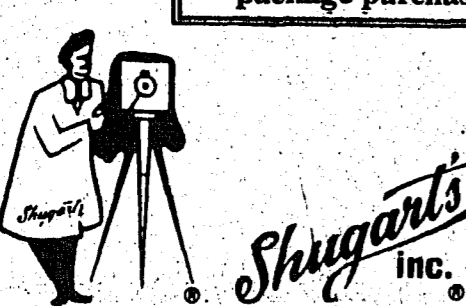
\$12.99

AT  
**HOLT'S GENERAL STORE**  
820 WALLIS  
SANTA ANNA

MONDAY, APRIL 27  
PHOTO HOURS 10-1; 2-6

Group charge  
99¢ per person

During this promotion  
you will receive  
**4 FREE 3X5's**  
with each \$12.99  
package purchased.



Dairy Queen

3 MIN OR FREE SUNDAY

You've enjoyed our 3-minute service lunchtime 11-2  
Now, it's extended to 3-minute service 6-8 pm  
Get your order in 3 minutes or you get a FREE sundae

APR 16 1998

News For And About Santa Anna Mountaineers



# Santa Anna Junior High Track



Members of this year's Santa Anna girls junior high track team are front row, Crystal Isbell, Shala Guthrie, Heather Bradley, Jennifer Pelton and Julie Garza; and middle row, Jamie Ellerbe, Sabrina Martin, Alicia Ellis and Heather Sims and back row, Coach Anna Bozarth.

## Tennis Team Brings Home Wins

The Santa Anna tennis team was in Breckenridge last weekend. Individual results were:  
 Josh Daniel, 4th singles;  
 Chris Boyet and Brent Beal, 3rd doubles; and  
 Jennifer Johnson and Buffy Martin, 2nd doubles.

## Track Teams Take Part In Cross Plains Relays

The Santa Anna High School and Junior High School track teams

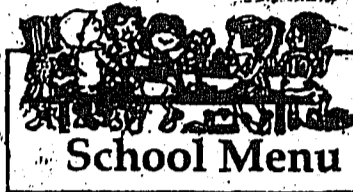
were in Cross Plains last Thursday for the Cross Plains Relays.

Individual results were:  
**HIGH SCHOOL:**  
 Amanda Lishka, 1st, shot put  
 Mackenzie Johnson, 4th 200m and 6th 100m;  
 Brent Beal, 5th high hurdles and 6th intermediate hurdles;  
 Edgar Mullins, 6th high hurdles  
**JUNIOR HIGH:**  
 1600m relay team, 5th, Seth Salazar, Thomas Hopson, Trista Tomme and Clay Hubbard  
 Julie Garza: 2nd, 400m relay and

### SHARE A DREAM WITH A GERMAN STUDENT

They are interested in art, painting, drawing, swimming, and history. They have their own spending money and medical insurance. Other Scandinavian, European, South American and Asian students also available. Arriving in August. Call today 1-800-SIBLING or visit our website at [www.sibling.org](http://www.sibling.org)

American Intercultural Student Exchange is a nonprofit tax exempt educational program.



**School Menu**  
**MONDAY, APRIL 20**  
 Breakfast: Cinnamon rolls  
 Lunch: Corn dogs, pinto beans, potato salad and mustard  
**TUESDAY, APRIL 21**  
 Breakfast: Breakfast muffins  
 Lunch: Burritos w/chili and cheese, whole kernel corn, toss salad w/dressing, picante sauce and peppers  
**WEDNESDAY, APRIL 22**  
 Breakfast: Biscuits, sausage gravy and jelly  
 Lunch: Chicken nuggets, whipped potatoes, english pea salad, gravy, catsup and honey  
**THURSDAY, APRIL 23**  
 Breakfast: Cream of wheat, toast and jelly  
 Lunch: Hamburger w/cheese, french fries, lettuce, tomato and pickle, spice cake, mayo or mustard and catsup

3rd, 800m relay;  
 Heather Sims: 2nd, 400m relay and 4th 100m;  
 Jamie Ellerbe: 2nd, 400m relay, 3rd 800m relay and 4th triple jump;  
 Alicia Ellis: 2nd 400m relay, 3rd, 800 m relay, 2nd 200m and 6th long jump;  
 Jennifer Pelton: 3rd 800m relay and 5th 100m hurdles;  
 Heather Bradley: 4th 800m  
 Shala Guthrie: 6th discus.

## New Immunization Requirements For Students Entering School In The Fall

Effective Aug. 1, 1998, three (3) doses of Hepatitis B are required for all students age 5 years and older who are born on or after Sept. 2, 1992. The kindergarten class of school year 1998-1999 will be affected as well as pre-K students as they reach five years of age.

Santa Anna ISD's policy regarding Tuberculosis Testing is as follows:  
 All students entering District schools for the first time in any

grade shall provide evidence of having received a tuberculosis skin test within the previous two years. In addition, all students in grade 7 shall be required to provide evidence of having received a tuberculosis skin test within the previous two years.

Parents of Pre-K or K are responsible for seeing that all immunizations are current under state law before enrolling in the Santa Anna ISD.

## A Big Thank You!

The SAHS Junior Class and Sponsors say "Thank You" to the following businesses and friends who made donations for their Junior-Senior Prom:

- American Tire & Service
- Berry's Ace Hardware
- Cellular One
- City Cleaners
- Coleman County Broadcasting
- Coleman County State Bank
- Coleman Veterinary Clinic
- Coleman County Telephone Coop
- Coleman County Telephone Coop
- Earle Smith Jewelry
- Jimmy and Felicia Ellerbe
- First Coleman National Bank
- Montle and Sandra Guthrie
- Hall's Grocery
- Harold R. Skelton
- Hensley Family Health Clinic

- J M Western Wear
- Kemper Real Estate
- Outreach Health Services
- Owl Drug Store
- Page One (Charles King)
- Pearce Veterinary Clinic
- Pepsi/7-Up
- David and Judy Powell
- Santa Anna News
- Santa Anna Booster Club
- Santa Anna National Bank
- Section Hand Steak House
- Southwest Airgas
- Subway - Brownwood
- Underwood's Cafeteria

"The donations we received helped us achieve our goal of making our Prom a drug and alcohol free enjoyable event. We thank you for your donations and for your caring and support. We also extend a very special "thank-you" to our parents for their help in decorating and providing food."



THE SAHS JUNIOR CLASS

Dan Goodman, sponsor; Christy Isenhower, sponsor; Tim Ingram, Chris Powell, Jesse Goodman, Junior Padilla, Maria Ellerbe, Dusty McCrary, Chris Boyet, Randa Watts, Jeremy Tomme, Jennifer Johnson, Adam Garza, David Coyle, Zachary Lawhon, Michael Kirven, Jason Wagner and Mark Burress, sponsor. Not pictured Clay Crossley, Constance Gallaher and Rhonda Williamson.

# ALLSUP'S ALWAYS Low Prices

ALLWAYS OPEN • ALLWAYS FAST

The Grocery Store for People on the GO!!!

<p><b>MONEY SAVING COUPON</b></p> <p><b>Red Baron Supreme Pizza Pouch</b> With Coupon</p> <p><b>59¢ EACH</b></p> <p>April 12 till 25, 1998</p> <p>CLIP AND SAVE</p> <p>Coupon good at all Allsup's locations. Offer expires APRIL 25, 1998</p> <p>Santa Anna News</p>	<p><b>MONEY SAVING COUPON</b></p> <p><b>Allsup's Whole or 1% Light Milk</b> With Coupon</p> <p><b>25¢ OFF GALLON</b></p> <p>April 12 till 25, 1998</p> <p>CLIP AND SAVE</p> <p>Coupon good at all Allsup's locations. Offer expires APRIL 25, 1998</p> <p>Santa Anna News</p>
---	---

<p><b>Coca-Cola CLASSIC</b></p> <p><b>\$1.69</b></p> <p>3 LTR. BTLs.</p>	<p><b>\$1.99</b></p> <p>6 PK. CANS</p>
<p><b>SHURFINE Charcoal</b></p> <p>10 LB. BAG</p> <p><b>\$1.99</b></p>	

<p>ALLSUP'S</p> <p><b>Bag Ice</b></p> <p>8 LB. BAG</p> <p><b>\$1.19</b></p>	<p>SHURFINE CHARCOAL STARTER</p> <p><b>\$1.79</b> qt.</p>	<p>ALLSUP'S SANDWICH BREAD</p> <p><b>2/1.29</b></p>	<p>SOLO PARTY CUPS</p> <p>16 oz. 20 ct.</p> <p><b>99¢</b></p>	<p>ALLSUP'S MOTOR OIL</p> <p>30W/40</p> <p><b>99¢</b> qt.</p>
<p>CHECK YOUR FRIENDLY ALLSUP'S STORE FOR ADDITIONAL MARKDOWN SPECIALS!</p> <p>#126--Santa Anna</p> <p>PRICES EFFECTIVE April 16-29, 1998 OFFER GOOD WHILE SUPPLIES LAST</p>				

**WALKER FUNERAL HOME**

Pre-Arranged Funerals

Phone 625-4103

Coleman, Texas

**Hollywood Theaters**

BROWNWOOD EARLY

300 Early Dr. • 915-643-3661

Major League: Back to the Minors (PG13)  
 Fri, Mon-Thurs 4:45 7:15 9:45  
 Sat/Sun 2:10 4:45 7:15 9:45

Object of my Affection (R)  
 Fri, Mon-Thurs 4:50 7:20 9:40  
 Sat/Sun 2:15 4:50 7:20 9:40

Lost in Space (PG13)  
 Fri, Mon-Thurs 4:30 7:10 9:50  
 Sat/Sun 1:15 4:30 7:10 9:50

Species II (R)  
 Fri, Mon-Thurs 5:20 7:30 9:40  
 Sat/Sun 1:00 3:10 5:20 7:30 9:40

Schedule Starts Friday

**Margaret Hensley MSN, RNCS**  
 Family Nurse Practitioner

Family Health Care Clinic

106 N. 2nd Santa Anna

OPEN MON. thru THURS. 8:30 a.m. - 5:00 p.m. 348-3566

Donald Pope M.D., Medical Director

Salute the day with peaceful thoughts and peace will fill your heart. Begin the day with joyful soul, and joy will be your part. — Frank B. Whitney

**FBC**

**SUNDAY MORNING "Is He For Real?"**

**SUNDAY EVENING Evangelism Rally**

7:00 p.m.

Sunday School - 9:30 a.m.  
 Morning Worship - 10:45 a.m.  
 Evening Worship - 6:00 p.m.

An alternative Children's Church (ages infant to 10 yrs.) on Sunday evenings - a separate worship designed for children.

**First Baptist Church**

**Marty Reed, Pastor**

915-348-3725

# Thank You

The Santa Anna Chamber of Commerce is taking this opportunity to send a special thanks to those businesses who made the 1998 Chamber Banquet a success. The following businesses donated supplies and/or door prizes:

Bratton's Cedar Dub's Opera House & Excel Telecommunications Hall's Country Grocery Holt's General Store Home Video Outlet Mountain City Mercantile & Rainbow Signs Santa Anna News	Sharon's Beauty Shop Simmons Feed and Seed Wagner's Plants & Things Web Access Western Auto West Texas Utilities Wood 'n' Clay
---	--

Please let them know you appreciate their support by visiting their businesses.

DP Six  
 Trip become  
 comin  
 Depart  
 tends li  
 Licel  
 the nev  
 reduce  
 "Eve  
 censes  
 be goo  
 four,"  
 Dudley  
 Hot  
 Free  
 On  
 Call  
 about  
 cases  
 Immun  
 a toll-f  
 Ameri  
 Assoc  
 Centers  
 Preve  
 Immun  
 Hotli  
 questic  
 chicken  
 haemoj  
 (Hib),  
 measles  
 disease,  
 whoppi  
 Service  
 232-252  
 0233 f  
 Eastern  
 Friday.  
 The h  
 who sh  
 be imm  
 cines a  
 free pub  
 Accor  
 fourth o  
 not beer  
 childho  
 assume t  
 no longe  
 such as  
 as they  
 Stuart, h  
 immuniz  
 the decli  
 parents s  
 immuniz  
 cur."  
 The in  
 answers  
 mended v  
 and adult



PRICES EFFECTIVE APRIL 16 - 21

**Values  
In Every  
Aisle**

# Hall's Grocery

Second & Santa Fe • Santa Anna, Texas • 348-3177

OPEN  
8:00 A.M. - 7:00 P.M.  
MON. - SAT.  
CLOSED SUNDAY

**AF** AFFILIATED  
FOODS INC.  
MEMBER STORES

LONE STAR  
And W.I.C.  
WELCOME

BY THE BUNCH

GREEN ONIONS.....4/\$1

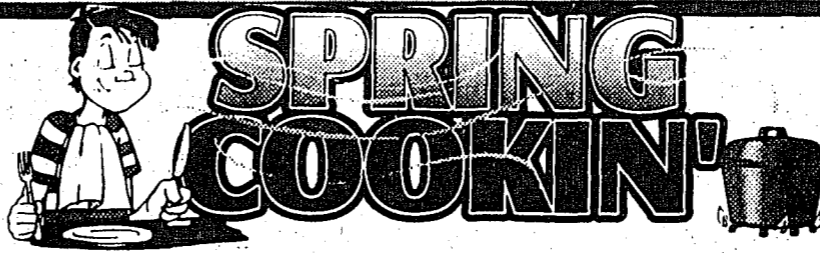
10 LB BAG

RUSSET POTATOES...99¢

TEXAS SWEET

YELLOW ONIONS 2 LBS \$1

JALAPENOS.....79¢ LB

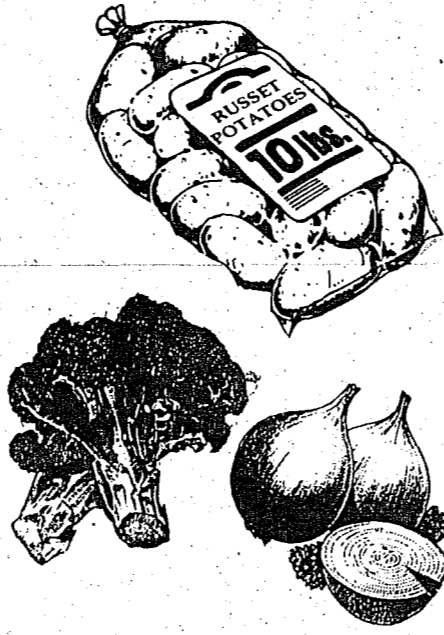


HASS AVOCADOS....3/\$1

ROMA TOMATOES...8/\$1

FRESH BROCCOLI 79¢ LB

FRESH CORN.....3/\$1



**FROZEN FOODS**

BANQUET 7 OZ  
POT PIES  
2/1.00

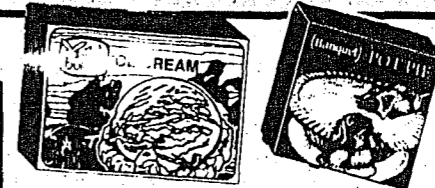
ASSORTED  
BANQUET 10 OZ  
DINNERS  
1.29

ASSORTED FLAVORS

BLUE BUNNY  
ICE CREAM

1/2 GAL SQUARE CARTON

2/5.00



BONELESS  
RUMP  
ROAST  
1.39 LB

BONELESS  
BOTTOM  
ROUND  
STEAK  
1.59 LB

TENDERIZED  
CUBE  
STEAK  
2.39 LB

ASSORTED  
PORK  
CHOPS  
1.39 LB

CENTER CUT  
PORK  
CHOPS  
1.99 LB

COUNTRY STYLE  
PORK  
RIBS  
1.59 LB

BONELESS  
CENTER CUT  
PORK  
CHOPS  
2.99 LB

BAR-S MEAT FRANKS....12 oz 59¢  
BAR-S MEAT BOLOGNA 16 oz 99¢  
BAR-S CHOPPED HAM 10 oz 1.39  
BAR-S COOKED HAM.....10 oz 1.89

**TYLENOL**  
30 CT. CHILD TABLETS  
REG., GRAPE, BUBBLE GUM  
**2.89**  
**VISINE**  
5 OZ. EYE DROPS  
**3.39**  
**WESTERN FAMILY**  
1 OZ NASAL SPRAY  
**1.99**

PILGRIMS PRIDE FAMILY PACK  
FRYER BREAST.....1.19 LB

SHURFINE 11 OZ PKG  
PORK SAUSAGE LINKS...79¢

ANGEL SOFT 4 ROLL PACK  
BATHROOM TISSUE.....99¢

VAN CAMP 15 OZ  
PORK & BEANS.....3/\$1

HUNTS 18 OZ  
BAR-B-Q SAUCE.....69¢

SHURFINE INSTANT LIGHT 8 LB BAG  
CHARCOAL.....2.59

IMPERIAL 4 LB BAG  
SUGAR.....1.59

48 OZ BOTTLE  
WESSON OIL.....1.89

CHICKEN OF THE SEA 6 OZ  
TUNA.....59¢

SHURFINE 10 CT.  
LAWN & LEAF BAGS.....1.79

REYNOLDS  
COLOR PLASTIC WRAP...2.49

DOVE 2 BAR PKG  
BEAUTY BAR.....2.19

PURINA MAINSTAY 17 LB BAG  
DOG FOOD.....4.99

PURINA 3.5 LB.  
ALLEY CAT.....1.79

GENERAL MILLS BASIC 4; TOTAL;  
HONEY FROSTED WHEATIES  
CEREAL.....2/\$5

BETTY CROCKER STIR & BAKE  
BROWNIE/CAKE MIX ...99¢

CHICKEN NOODLE 10 OZ  
CAMPBELL SOUP.....69¢

HUNTS 26 OZ  
SPAGHETTI SAUCE.....99¢

HORMEL 3 OZ CAN  
POTTED MEAT.....3/89¢

HORMEL 5 OZ CAN  
VIENNA SAUSAGE.....2/89¢

LOG CABIN 24 OZ  
SYRUP.....2.79

SHURFINE 16 OZ  
PICANTE SAUCE.....1.19

**DAIRY SPECIALS**

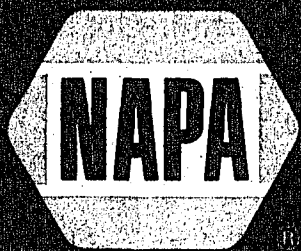
BLUE BONNET SPREAD.....48 OZ 1.19  
TROPICANA ORANGE JUICE.....64 OZ 1.79  
BORDENS BUTTERMILK.....1/2 GAL 1.49  
BORDENS CHOCOLATE MILK.....1/2 GAL 1.49  
BORDENS COTTAGE CHEESE.....24 OZ 2.59  
SHURFINE  
CHEDDAR OR COLBY CHEESE.....16 OZ 2.79



SHURFINE 12 OZ PKG.  
MACARONI or SPAGHETTI...2/89¢

3-Pk  
Mul  
Too  
HER  
ENG  
ALPI  
#899

9



# AUTO PARTS



**ENTER!  
YOU  
COULD  
WIN!**

## THOUSANDS OF FIRST PRIZES

Guaranteed One Local Winner In Every Participating Store!  
(Retail Value \$100 Each)

### First-Prize Fishing Packages Include:

- Daiwa reel and 6-section, full-size, graphite rod
- Spool of 6-lb. line
- Reel oiler
- Two YO-ZURI lures
- Compact tackle box — All-in-one durable carrying case that fits conveniently in the trunk or under the seat of a car or truck.

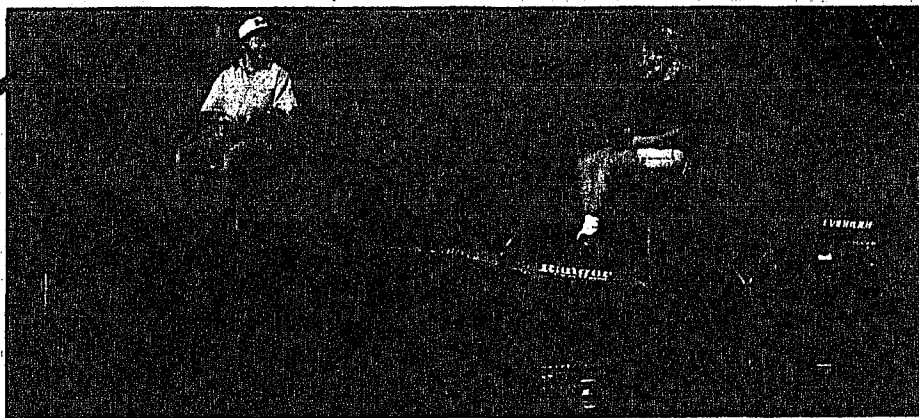


## 8 GRAND PRIZES

Winners will be chosen from eight regional drawings held across the country.  
**Eight Grand-Prize Winners Chosen Nationally!**  
(One per region)  
(Retail Value \$18,000 Each)

### Grand-Prize Fish-'N-Play Packages Include:

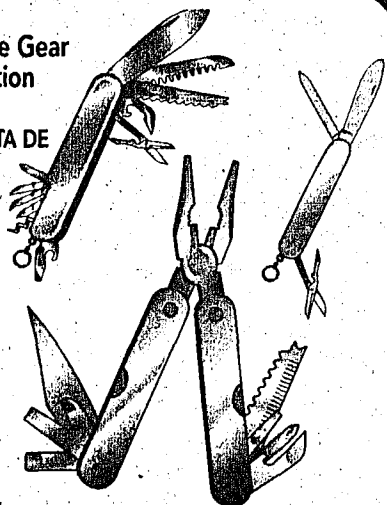
- 17' Ranger R73 Fish-'N-Play Boat
- Trailer
- Evinrude Intruder 115-HP Outboard Motor w/Ficht Fuel Injection
- Trolling Motor
- Electronics
- Safe Boating Package



No purchase necessary. Open to U.S. residents 18 or older. Void where prohibited. Entries must be received by 4/30/98. See participating NAPA AUTO PARTS Store for Official Rules, by which entrants are bound.

3-Pc. Alpine Gear  
Multi-Function  
Tool Kit  
HERRAMIENTA DE  
ENGRANAJE  
ALPINE  
#899-1982

**9<sup>99</sup>**



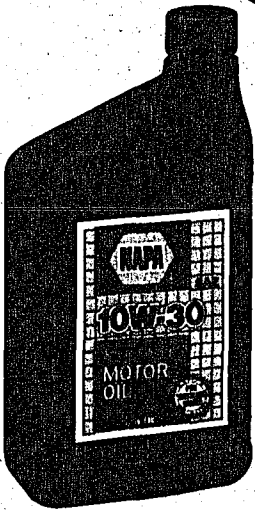
NAPA Motor Oil  
ACEITE DE MOTOR NAPA

- 5W30 • 10W30
- 10W40 • 20W50
- SAE 30 • SAE 40

Sale Price ..... .84  
Less Mail-in  
Rebate ..... -.25  
After Mail-in Rebate

**59¢**  
/Qt.

Rebate limit: 12 qts.



NAPA Car Clean-Up  
PRODUCTOS CUIDADOS  
PARA AUTO NAPA

- Tar & Bug Remover (13 oz.) #2510
- Car Wash (9 oz.) #2602
- Liquid Car Wash (16 oz.) #3216
- Carpet & Upholstery Cleaner (14 oz.) #3700
- Tire Shine (11 oz.) #4200

Your Choice!

**1<sup>69</sup>**



AS ADVERTISED ON TV!

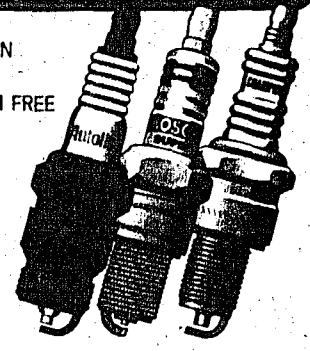


# PARTS

## WE'VE GOT YOUR PLUG!

BRAND	BUJÍAS	SALE PRICE	AFTER MAIL-IN REBATE(S)
Autolite Resistor		99¢	Buy 3, Get 1 FREE
Bosch Super		99¢	74¢
Bosch Platinum		1.84	1.59
Champion Resistor (Top 24 #s)		1.09	79¢
Champion E-Z Start Small Engine		2.49	
Champion Premium Gold		2.49	1.09
Champion Truck		2.49	1.09

See store for details on rebates.



## NAPA Lawn & Garden Tractor Batteries

BATERÍAS PARA EL CÉSPED Y EL JARDIN NAPA

165 CCA's at 0° F. #8221  
 Sale Price ..... 17.99  
 Less Mail-in Rebate..... -2.00  
 After Mail-in Rebate

# 15<sup>99</sup>

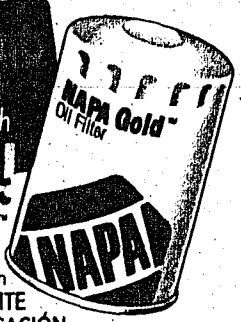
w/EXCH.

Heavy Duty 235 CCA's at 0° F.  
 #8223, 8224 ..... 19.99 w/EXCH.  
 After \$2.00 Mail-in Rebate!



**NAPA**  
 This card's worth **GOLD!**  
**FREE NAPA Gold™**  
 Oil Filter  
 w/NAPACARD Application  
**GRATIS FILTRO DE ACEITE**  
**NAPA GOLD con APLICACIÓN**  
**NAPACARD.**

Apply for the NAPACARD today and get a FREE NAPA Gold Oil Filter (light duty car and light truck filters only)

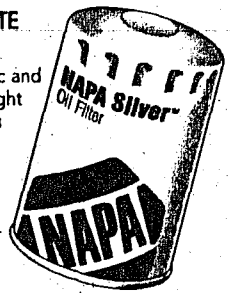


## NAPA Silver™ Oil Filters

FILTRO DE ACEITE NAPA SILVER

For most domestic and import cars and light trucks. #21036, 21088

As Low As **1<sup>99</sup>**  
 To 3.99



## FREE Champion Resistor Spark Plugs!

With Purchase of Any NAPA Belden Pro-Line Wire Set  
 Mail-in offer. See store for details.



## FREE Work Gloves

With Purchase of any NAPA FHP or FHP-W Belt  
 Limit: One pair of gloves per customer while supplies last.



## NAPA Echlin New Fuel Injectors

INYECTORES DE COMBUSTIBLE ECHLIN

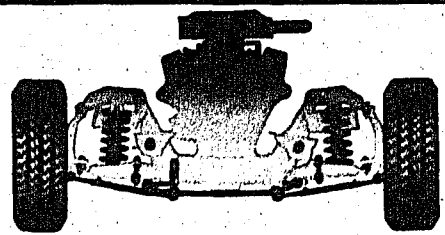
#2-18536, 2-18278

As Low As **38<sup>99</sup>**  
 To 294.00  
 Each



## MASTER RIDE

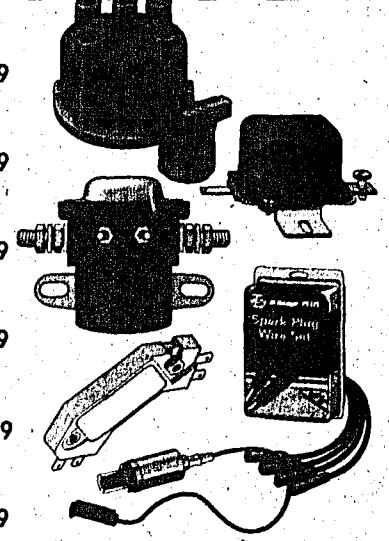
PARTES DE CHASIS MASTER RIDE Chassis Parts



Tie Rod Ends #E5401L, D5905	As Low As <b>8<sup>99</sup></b>	To 89.99
Ball Joints #10195, 10445	As Low As <b>12<sup>99</sup></b>	To 59.99
Idler Arms #18634, 18749	As Low As <b>16<sup>99</sup></b>	To 51.49

## MILEAGE PLUS

Cap & Rotor Kits #EPK2045B, RRK2105B	As Low As <b>5<sup>69</sup></b>	To 19.99
Solenoids #ST825B, ST805B	As Low As <b>6<sup>49</sup></b>	To 23.99
Voltage Regulators #VR325B, VR5595B	As Low As <b>9<sup>99</sup></b>	To 34.99
Ignition Wire Sets #780000, 780428	As Low As <b>9<sup>99</sup></b>	To 69.99
Electronic Control Modules #TP455B, TP4045B	As Low As <b>19<sup>99</sup></b>	To 99.99
Oxygen Sensors #OS1015B, OS2025B	As Low As <b>22<sup>99</sup></b>	To 44.99



## NASCAR Air Fresheners

AMBIENTADORES NAPA  
 Dale Earnhardt #899-2135  
 Jeff Gordon #899-2136  
 Rusty Wallace #899-2137  
 Mark Martin #899-2138  
 Dale Jarrett #899-2139

Your Choice!

# 1<sup>99</sup>

Each



## '98 NAPA Almanac of Stock Car Racing

ALMANAQUE DE CARRERAS DE STOCK-CAR

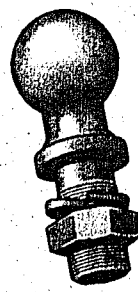
#ASC98  
**7<sup>95</sup>**

A Must for Race Fans!

## Chrome Trailer Balls

BOLAS PARA REMOLQUE

(1-7/8") #755-1013  
**6<sup>99</sup>**



(2") #755-1015 ..... 7.49

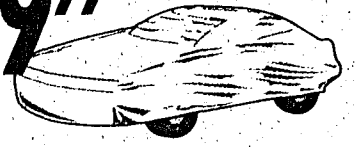
## Budge Lite Semi-Custom Car Covers

CUBIERTAS PARA AUTO

(Large — Fits Up to 16' 8") #730-3986  
 (X-Large — Fits Up to 19') #730-3987

Your Choice!

# 29<sup>99</sup>



## LIGHTING/SAFETY

PRODUCTOS ALUMBRADOS

Mini-Marker Lamp (Red) #1507D, (Amber) #1507AD	Your Choice!	<b>1<sup>99</sup></b>
2-Bulb Sealed Marker Lamp (Red) #1900D, (Amber) #1900AD	Your Choice!	<b>2<sup>99</sup></b>
Emergency Warning Triangle #799D		<b>6<sup>99</sup></b>



## Super-Bright Portable Halogen Spotlight

REFLECTOR HALÓGENO PORTÁTIL

(1.5 Million Candlepower)  
 #895-1005

# 14<sup>99</sup>

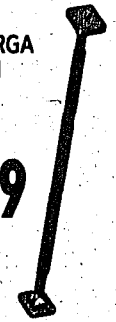


## Truck Bed Adjustable Cargo Bar

BARRA DE CARGA PARA CAMIÓN

(45" to 70")  
 #807-1010

# 17<sup>99</sup>



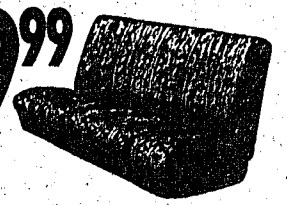
## Truck Multicolor Seat Covers

CUBIERTOS DE ASIENTOS PARA CAMIÓN

(Bench) #730-3825, (Bucket) #730-3826

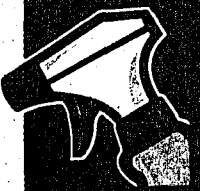
Your Choice!

# 19<sup>99</sup>



Meg Paste Liqui  
 You  
 4  
 Meg Paste Liqui  
 We (Hall  
 2  
 Wa #760-  
 9  
 Was "Tin & Cl  
 Long-Flood LÁMPA  
 Lasts 4 normal (150-W  
 Your  
 3  
 Dispc Mech GUAN MECÁ  
 #899-401  
 3





# CHEMICALS

## WAXES/CERAS

**Meguiar's Cleaner/Wax**  
Paste (14 oz.) #A1214  
Liquid (16 oz.) #A1216

Your Choice!

**4<sup>99</sup>**

Meguiar's Gold Class Wax  
Paste (14 oz.) #G7014  
Liquid (16 oz.) #G7016.....Your Choice! 8.99

**Zymol Premium Polish**  
Paste (14 oz.) #Z-501  
Liquid (16 oz.) #Z-503

Your Choice!

**16<sup>49</sup>**

## CAR WASH & ACCESSORIES/LAVA AUTOS

**Westley's Car Wash**  
(Half Gallon) #WC107G

**2<sup>99</sup>**

**Wash Sponge**  
#760-1151

**99¢**

Wash Mitt #760-1128 ..... 1.49  
"Time to Shine" Bucket  
& Cleaning Products #899-1698..... 6.99

**ZIP Wax Car Wash**  
(16 oz.) #T-75

**2<sup>49</sup>**

(Half Gallon) #T-79 .....4.49

**Scott Shop Towels on a Roll**  
#75130

**1<sup>79</sup>**

Additional \$1.00  
Mail-in Rebate  
Available on  
2-Roll  
Purchase.  
Car Dry Towels #75840 ..... 2.59  
Shop Rags #78500 ..... 5.19

## PROTECTANTS/PROTECTORES

**Formula 2001 Protectant**  
(8 oz.) #F-96

**2<sup>49</sup>**

(16 oz.) #F-97.....4.69

**Armor All Protectant**  
Bonus Size  
(10 oz.) #10010

**2<sup>99</sup>**

## ADDITIVES/CLEANERS/LUBRICANTS/ADITIVOS Y LIMPIADORES

**WD-40**  
Bonus Size  
(13.5 oz.) #10023

**2<sup>29</sup>**

**Brakleen**  
Brake Parts  
Cleaner  
(19 oz.) #765-1314

**1<sup>99</sup>**

**Castrol Super Clean**  
(24 oz.) #721

**2<sup>99</sup>**

Additional \$1.50  
Mail-in  
Rebate  
Available!  
Super Clean  
(1 gal.) #723 ..... 7.99  
Additional \$2.00 Mail-in  
Rebate Available.

**Gunk**  
Engine Brite (16 oz.) #EB-1  
or Foamy Engine Brite  
(18 oz.) #FEB-1  
Your Choice!

**1<sup>49</sup>**

**STP**  
Engine Stop Leak (14 oz.) #ST1012  
Smoke Treatment (15 oz.) #ST1013  
Super Concentrated Gas Treatment or  
Fuel Injector Cleaner (12 oz.) #ST2040, ST2075

Your  
Choice!  
**2 For 5<sup>00</sup>**

**Long-Life Outdoor  
Flood Lamps**  
LÁMPARAS DE FOCO

Lasts 4,000 hours — twice the life of a  
normal flood lamp. Medium base.  
(150-Watt) #782-7103, (75-Watt) #782-7104

Your Choice!

**3<sup>99</sup>**  
Each

**Lever-Type  
Hand Grease Gun**  
PISTOLA  
ENGRASADOR  
#715-1241

**8<sup>99</sup>**

**1,000-Pc. Cable Tie  
Assortment**  
w/FREE Canister  
LATA APRETADORES  
#899-1983

**9<sup>99</sup>**

**Disposable Latex  
Mechanic's Gloves**  
GUANTES PARA  
MECÁNICO  
#899-4014

**3<sup>99</sup>**

/24-Pack

**Leather-Palm  
Work Gloves 2-Pack**  
GUANTES DE CUERO  
PARA TRABAJO  
#899-4012

**5<sup>99</sup>**

**NAPA EVERCRAFT™  
Mini-Screwdriver Set**  
JUEGO DE DESTORNILLADORES  
PEQUEÑOS  
#775-0503

**2<sup>99</sup>**

# TOOLS & EQUIPMENT

## PROFESSIONAL SERIES

JUEGOS DE ENCAJES

**NAPA  
Professional  
1/4" Dr. 39-Pc.  
Socket Set**  
(Std. and Deep  
Sockets) #6539P

**49<sup>99</sup>**

**NAPA  
Professional  
3/8" Dr. 56-Pc.  
Socket Set**  
(Std. and Deep  
Sockets) #6556P

**79<sup>99</sup>**

## MOTOR OIL/ACEITE DE MOTOR

**Mobil 1 Synthetic Motor Oil**

• 5W30 • 10W30 • 15W50

Sale Price..... 3.99

Less Mail-in  
Rebate..... .50

After Mail-in Rebate

**3<sup>49</sup>**  
/Qt.

Case purchase of 6 qts.  
required to obtain rebate.

**Castrol GTX**

Motor Oil

• 5W30 • 10W30

• 10W40 • 20W50

Maximum  
Protection  
Against Viscosity  
and Thermal  
Breakdown

**1<sup>29</sup>**  
/Qt.

**Quaker State**

Motor Oil

• 5W30 • 10W30

• 10W40 • 20W50

• SAE 30

**1<sup>29</sup>**  
/Qt.

## WHEEL & TIRE CARE/PROTECTOR DE LLANTAS

**Castrol Super Clean**  
All-Wheel Cleaner  
(24 oz.) #730

**3<sup>99</sup>**

Additional \$1.50  
Mail-in  
Rebate  
Available!  
Foam Wheel Cleaner  
(22 oz.) #740 ..... 2.99  
Additional \$1.50 Mail-in  
Rebate Available.

**Black Magic**

Tire Wet  
(23 oz.) #BM23

**3<sup>99</sup>**

Bleche-Wite  
Tire Cleaner  
(1 qt.) #555 ..... 2.39

**STP Son of a Gun**

Protectant  
w/FREE  
Tire Care  
#ST6534TC

**5<sup>99</sup>**

**Prestone**

Dot 3 Brake Fluid (12 oz.) #AS400  
or Power Steering Fluid (12 oz.) #AS260

Sale Price..... 1.00

Less Mail-in

Rebate..... 1.00

Your Choice!  
After Mail-in Rebate

# FREE

Car Covers

3986

987

Covers

S

30-3826

# NAPA AUTO PARTS

WE KEEP AMERICA RUNNING.

Share in NASCAR History with NAPA's Exclusive Legends of NASCAR Heritage Series  
SERIE HERENCIA DE COLECCIONABLES TROQUELADOS DE LEYENDAS DE NASCAR

During 1998, NAPA will commemorate the 50th Anniversary of NASCAR with 6 die-cast collectables. Each reflects special moments of NASCAR history, beginning with ...

Buddy Baker. 1980 Olds 442

#BB1980OLDS



Exclusively produced by Action Performance Products.

Hurry in to NAPA for this collectable of the winning car in the 1980 Daytona 500!

29<sup>99</sup>



NAPA NASCAR Select  
84 Month Battery  
BATERÍA CON DURACIÓN DE 84 MESES NASCAR SELECT  
Up to 770 CCA's rated at 0° F.  
The only official battery of NASCAR!  
#8424, 8442, 8426/70

As Low As

69<sup>99</sup>

w/EXCH.

## CORDLESS DRILL BLOWOUT

¡Liquidación de TALADROS INALÁMBRICOS!  
Enjoy Low Close-Out Prices!

Plus, Save An Additional \$10.00 More by Mail!

DRILL KIT	ORIGINAL PRICE	CLOSE-OUT PRICE	AFTER MAIL-IN REBATE
4.8-Volt #775-1000	57.49	29.99	19.99
7.2-Volt #775-1001	104.00	49.99	39.99
7.2-Volt w/Light #775-1011	124.00	59.99	49.99
9.6-Volt #775-1002	134.99	69.99	59.99
12-Volt #775-1003	174.00	89.99	79.99

While supplies last.



AS LOW AS \$19<sup>99</sup> AFTER REBATE

Autolite Resistor Spark Plugs  
BUJÍAS AUTOLITE

99¢ Each  
BUY 3 GET 2 FREE

Or, Buy 6, Get 2 FREE!  
Mail-in offer. See store for details.



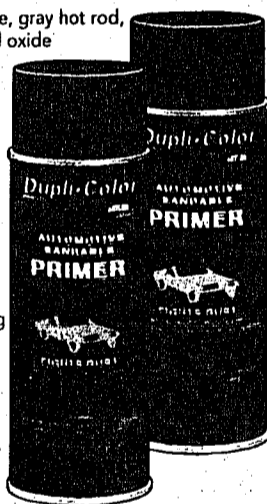
Dupli-Color Automotive Sandable Primers  
APRESTOS DUPLICOLOR

Choose rust, white, gray hot rod, black hot rod, red oxide or gray sealer.  
(12 oz.)  
#DAP1687, 89, 92, 94, 98, 99

Your Choice!

2<sup>99</sup>

Truck Bed Coating (Black)  
#TR250 ..... 5.99



4-Pc. Carpeted Floor Mat Sets  
JUEGO DE TAPETES ALFROMBRADOS (4 PIEZAS)  
Choose blue, black, gray or red.  
#823-2490, 91, 92, 93

Your Choice!

7<sup>99</sup>



2-1/2 Gal. Plastic Gas Can  
LATAS DE PLÁSTICO PARA GASOLINA (2-1/2 GALONES)  
#817-4005

2<sup>99</sup>



ACT NOW! SALE PRICES GOOD THROUGH APRIL 30, 1998, OR WHILE SUPPLIES LAST!

# NAPA AUTO PARTS

**BONHAM**  
2011 N. Center  
903-583-7924

**COPPELL**  
924 S. Beltline  
214-462-8776

**DALLAS**  
1301 W. Davis  
214-948-7534

**DENISON**  
401 W. Crawford  
903-465-8282

**DENTON**  
1005 Dallas Dr.  
817-383-6272

**ENNIS**  
213-214 W. Ave.  
214-878-3871

**GRAPEVINE**  
1301 W. Northwest Hwy.  
817-481-8666

**GROESBECK**  
116 N. Ellis St.  
817-729-2165

**GUN BARRELL CITY**  
218 N. Gun Barrel Lane  
903-887-5205

**HILLSBORO**  
201 Corsicana Hwy.  
817-582-7422

**KELLER**  
116 W. Price St.  
817-431-2533

**KILLEEN**  
1209 Fort Hood St.  
817-526-0506

**LANCASTER**  
1480 N. Beckley Rd.  
214-224-8273

**MCKINNEY**  
210 A W. University  
214-562-6272

**ROANOKE**  
608 N. Pine St.  
817-430-8954

**SHERMAN**  
1616 Hwy. 75 N.  
903-893-4628

**TEMPLE**  
1503 W. Ave. "M"  
817-778-6781

**WAXAHACHIE**  
209 W. Main  
214-938-9900

CALL TOLL-FREE 1-800-LET-NAPA FOR THE NAPA STORE IN YOUR AREA.

17B-3



IF AN ITEM IS NOT AVAILABLE FOR PURCHASE DUE TO UNFORESEEN REASONS, WE WILL GLADLY ISSUE A RAIN CHECK, ON REQUEST, FOR THE MERCHANDISE TO BE PURCHASED AT THE SALE PRICE WHENEVER AVAILABLE. PRINTED IN THE U.S.A. © 1998 NATIONAL AUTOMOTIVE PARTS ASSOCIATION. ERRORS IN PRICES, DESCRIPTIONS AND/OR ILLUSTRATIONS ARE NOT THE RESPONSIBILITY OF NAPA.



Apply Today!

# BROOKSHIRE'S Eggciting Easter Sale

APR 16 1998



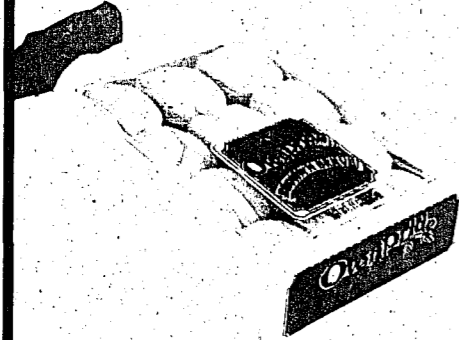
**Easter Lily**  
With a pot cover  
6" Pot

**7<sup>98</sup>**



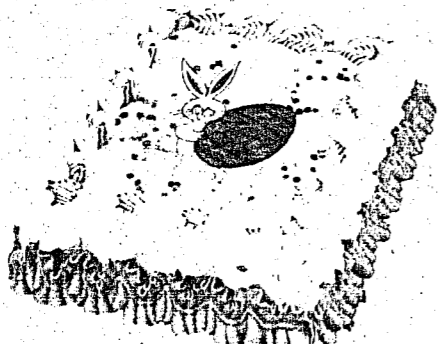
**Betty Crocker  
Cake Mix**  
Super Moist  
18 oz to 18.25 oz Box

**69¢**  
Assorted Layer Varieties



**Brown 'n Serve  
Dinner Rolls**  
Oven Pride  
11 oz/12 Ct Pkgs

**2/\$1**



**Decorated  
Easter Cake**  
From the Tasty Bakery  
1/8 Sheet Cake

**3<sup>99</sup>**

Available at all stores

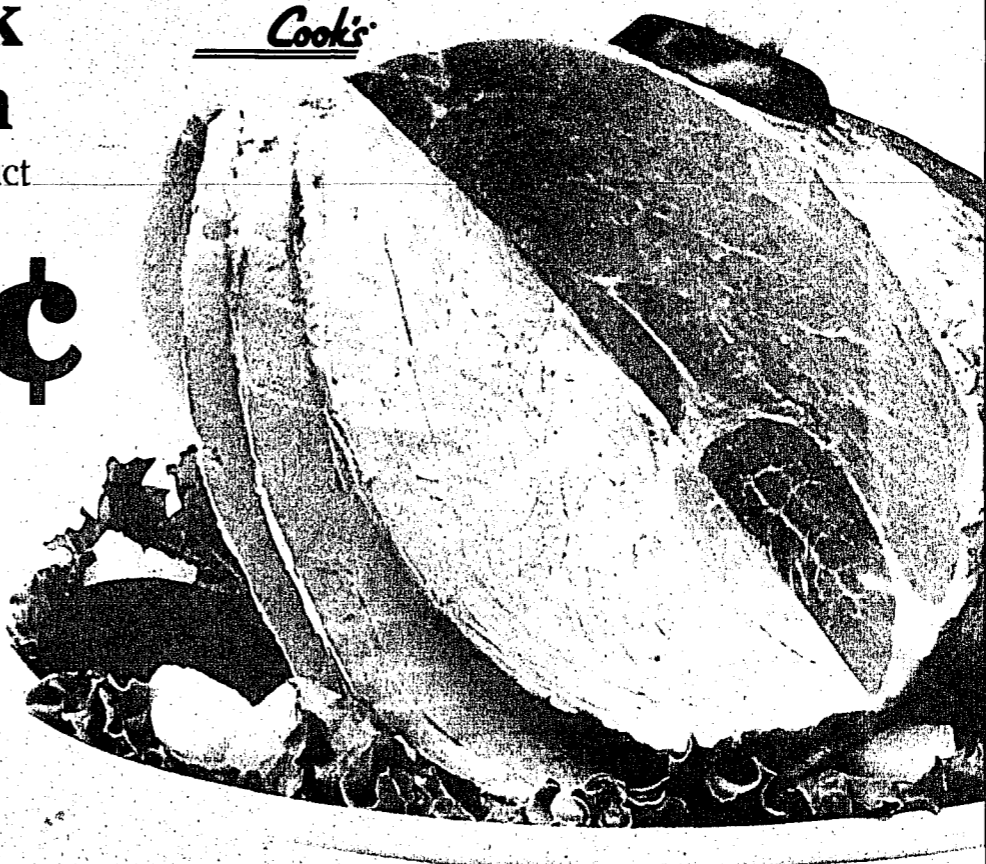
**CLOSED EASTER SUNDAY. SHOP EARLY!**  
WE WILL BE CLOSED, SO OUR EMPLOYEES MAY SPEND TIME WITH FAMILY AND FRIENDS.

**Cook's Shank  
Portion Ham**

Super Trim Ham & Water Product

**68¢**  
Lb

Limit Two portions total with a \$10  
or more additional purchase.  
All others regular price.  
Butt Half...Lb 1.08



11 oz to 15.25 oz Cans

**Del Monte  
Vegetables .....**

**5/\$2**

Reg. or No Salt Cut Green Beans, French Green Beans, Whole Kernel or Cream Style Golden Corn, Leaf Spinach, or Sweet Peas.  
Or Reg. Summer Crisp Corn, Sliced Beets, Chopped Spinach, Whole or Sliced New Potatoes or Carrots.  
Limit Ten cans total at sale price. All others regular price.



Granulated - 4 Lb Bag

**C&H  
Sugar .....**

**69¢**

Limit One bag with a \$10 or more additional purchase. All others regular price.

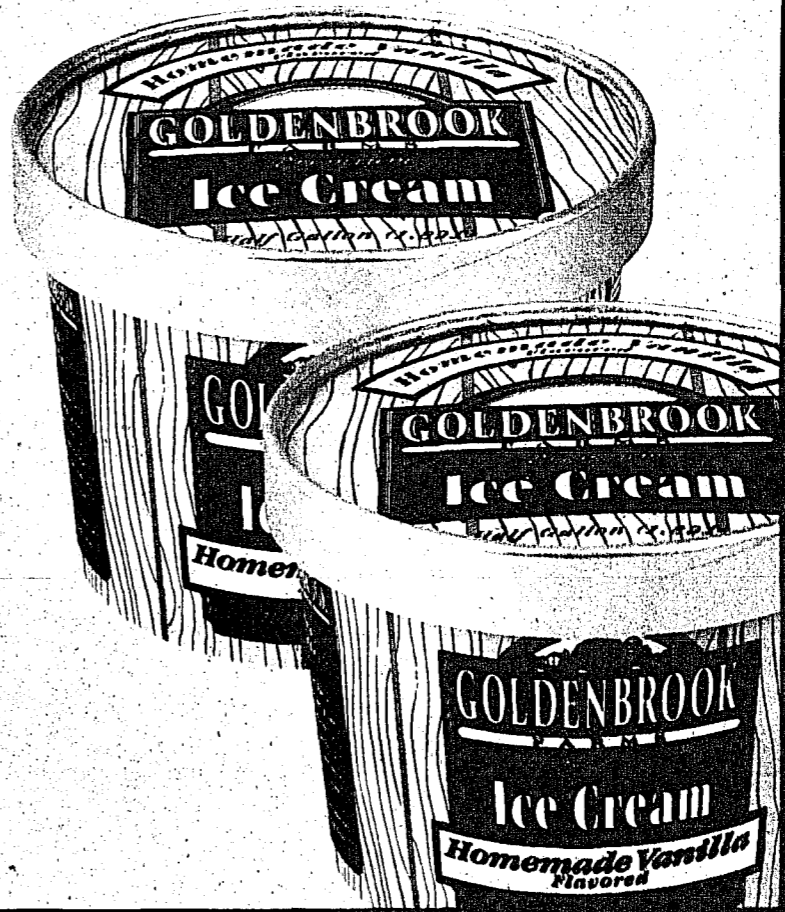
**Goldenbrook Farms  
Premium Ice Cream**

1/2 Gallon Round Ctn

**1<sup>99</sup>**

Assorted Varieties or Sherbet  
Limit Two 1/2 gallons at sale price.  
All others regular price.

Nabisco Comet Cups - 12 Ct Box...1.49



These Prices Good:  
April S M T W T F S S M T 1998  
8 9 10 11 13 14

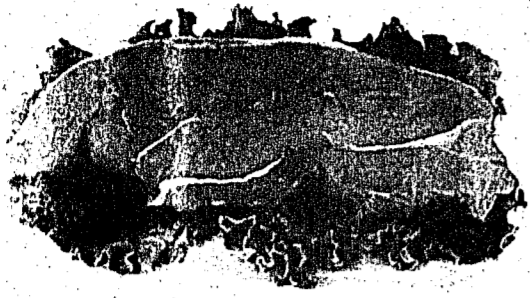
For Questions Or Comments Call Toll Free  
1-888-WE-RESPOND  
(1-888-937-7769)



Credit Cards Accepted At Most Locations

# BROOKSHIRE'S

Top Quality Meats Guaranteed



**Boneless Arm Roast**  
USDA Select American Beef

Lb **1<sup>58</sup>**



**Boneless Rib-Eye Steak**  
USDA Select American Beef

Lb **4<sup>99</sup>**



**Sunday House Smoked Turkey**

8 Lb to 12 Lb Avg

Lb **1<sup>28</sup>**



**Hormel Cure 81 Boneless Ham**  
Whole or Halves

Lb **2<sup>99</sup>**

**Jimmy Dean Pork Sausage**  
Regular, Hot, Special Recipe, Maple Or Extra Mild - 16 oz Roll

**2<sup>19</sup>**

Light Sausage Turkey & Pork 12 oz Roll - \$2.19  
Regular or Hot 32 oz Roll \$4.35



**Bryan Smoked Sausage**  
Traditional Regular Meat, Cajun, Kielbasa or Regular Smoky Hollow - 16 oz Pkg

**1<sup>99</sup>**

Traditional Light Meat, Beef Or Smoky Hollow Beef Or Bun Size Meat 16 oz Pkg 1.99

**Tony's Pizza Italian Style Crust**  
Assorted Varieties - 14.4 oz to 16.6 oz Ctns

**2/\$5**



**Hormel Black Label - Thin Sliced - 16 oz Pkg Sliced Bacon**

**1<sup>79</sup>**

**Whole Smoked Picnics**..... Lb

**78<sup>c</sup>**

Peppercorn or Teriyaki Hormel Seasoned **Boneless Pork Tenderloins**... Lb

**3<sup>99</sup>**

Also Mesquite Barbecue or Lemon Garlic Pork Loin Fillets or Peppercorn or Teriyaki Pork Chops



**Standing Rib Roast**

USDA Select American Beef Large End - 6th & 7th Ribs

Lb **3<sup>49</sup>**

Small End 1st Thru 5th Ribs...Lb 4.49

Regular or Thin Sliced **Oscar Mayer - 12 oz Pkg Meat Bologna**.....

**1<sup>79</sup>**

**USDA Choice American Lamb Leg of Lamb**..... Lb

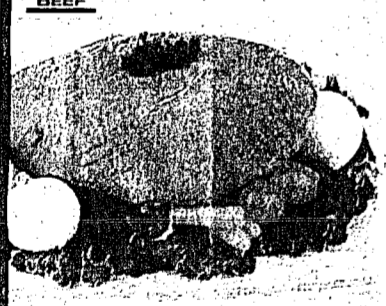
**2<sup>98</sup>**

**Bryan "Family Recipe" Spiral Sliced Ham Halves**... Lb

**2<sup>79</sup>**

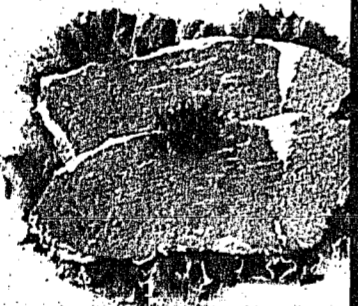
**"Certified Angus Beef"™**

Clearly a Matter of Taste™



**Boneless Rump Roast**  
USDA Choice Certified Angus Beef™

Lb **2<sup>29</sup>**



**Boneless Bottom Round Steak**  
USDA Choice Certified Angus Beef™ Tenderized

Lb **2<sup>49</sup>**

USDA Choice Certified Angus Beef™ **T-Bone Steak**..... Lb

**5<sup>99</sup>**

USDA Choice Certified Angus Beef™ **Beef Cutlets**..... Lb

**3<sup>29</sup>**

32 oz Pkgs Light & Dark Mix or White

**Jennie-O's Turkey Pan Roast**.....

**2/\$5**



**Honeysuckle White Fresh Turkey**  
USDA Grade A 10 Lbs and Up Average

Lb **79<sup>c</sup>**

MANUFACTURER'S COUPON / EXPIRATION DATE 4/30/98 GOOD ONLY AT BROOKSHIRE'S RVO100

**SAVE \$1.00**

**Honeysuckle White Fresh or Frozen Whole Turkey**

402995  
42205 00076



NOT TO BE DOUBLED OR TRIPLED

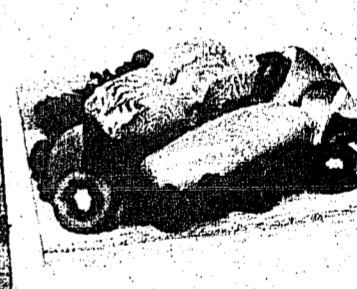
**Seafood**

Catch Of The Week Available At All Stores  
Ask About Having Your Seafood Steamed Free - Not Available At All Stores



**Orange Roughy Fillets**  
USDC Government Inspected

Lb **4<sup>98</sup>**  
Previously Frozen



**Shark Fillets**  
Fresh, Never Frozen

Lb **3<sup>49</sup>**

Snow Crab **Clusters**..... Lb

**3<sup>99</sup>**  
Previously Frozen

Singleton - 50 Ct/12 oz Pkg **Cooked Shrimp**.....

**6<sup>99</sup>**

Quantity Rights Reserved  
**Budweiser Beer**  
Or Bud Light  
12 Pack/12 oz Non-Returnable Bottles

**6<sup>99</sup>**

These Items Available Only At Stores With Beer & Wine Displays

**Busch Beer**  
Or Busch Light  
12 Pack/12 oz Non-Returnable Bottles

**5<sup>29</sup>**

**Hy-Top 35MM Film**  
200 ISO  
24 Exposure  
**2/\$5**



Good Cook Deluxe Aluminum **Ice Cream Scoop**..... **2<sup>99</sup>**

Wells Lamont - Boys or Mens - Pair **Brown Jersey Gloves**... **1<sup>19</sup>**

**General Purpose Masking Tape**  
National Tape  
.75" x 60 Yd Roll  
**69<sup>c</sup>**  
Film Wrapped

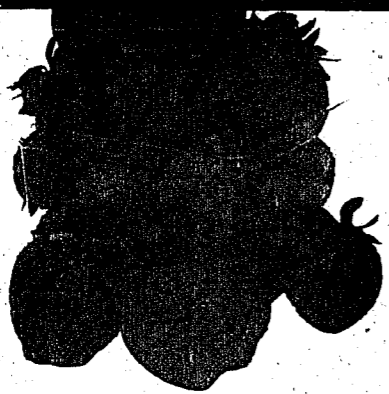


All photography, clerical, printing and typographical errors are subject to correction.

None Sold to Dealers

# BROOKSHIRE'S

Friendly Customer Service Guaranteed



**California Strawberries**  
One cup whole berries has 45 calories  
1 Lb Pkg

**1.79**

Countess Dessert Cups - 4 Ct Pkg...69¢  
Marie's Strawberry Glaze - 14 oz Jar...1.69



**1/4 Flat California Strawberries**  
One cup whole berries has 45 calories  
1/4 Flat

**4.99**

1/2 Flat...9.95

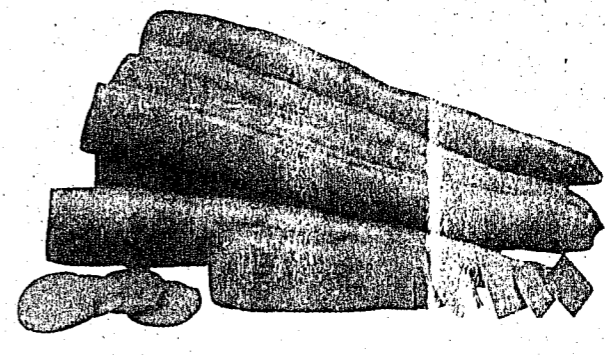


**California Fresh Green Broccoli**

POUND

**69¢**

One cup fresh contains 40 calories



**Dole Fresh Carrots**

Cello Wrapped  
1 Lb Pkg

**39¢**

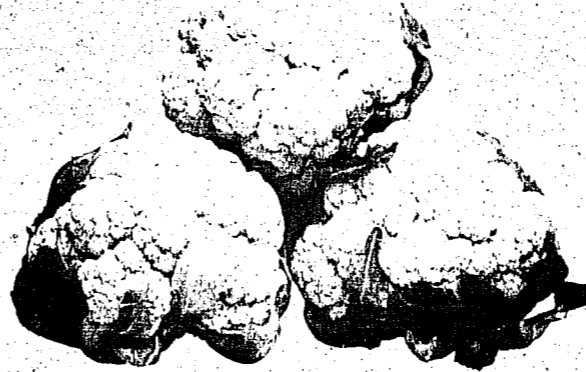
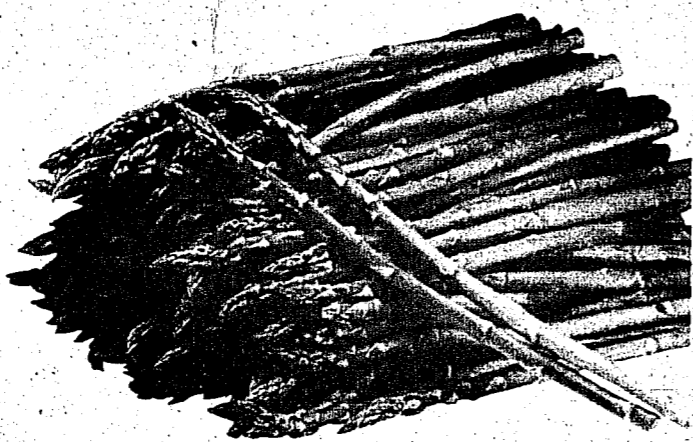
Contain 43 calories per cup

**Fresh Green Asparagus**

POUND

**1.99**

Low in sodium



**Dole Fresh Cauliflower**

Cello Wrapped  
Each

**1.49**

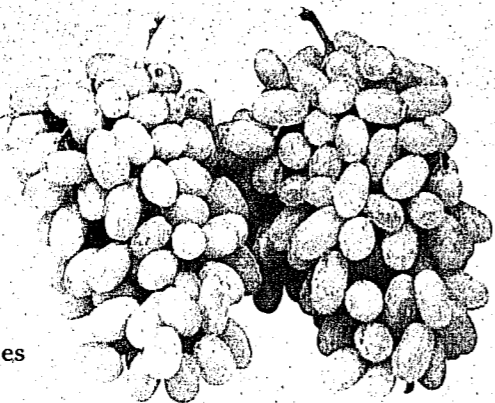
Contains 25 Calories Per Cup, Raw

**Seedless Grapes**

Red or Green  
POUND

**1.59**

1/2 Cup yields only 67 calories

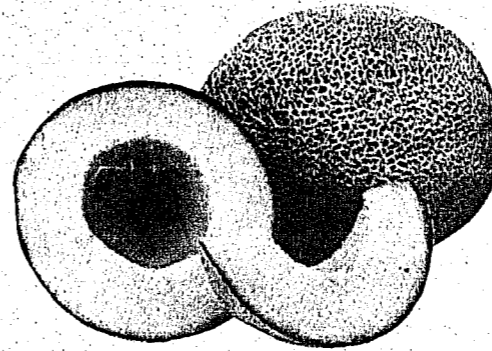


Fresh Green  
**Cabbage** ..... POUND **39¢**

Rich Source Of Vitamin C

Texas Rio Star - 5 Lb Bag  
**Grapefruit** ..... **1.99**

1/2 Medium Size has only 46 calories



**Vine Ripened Cantaloupe**

POUND

**69¢**

Provide fiber

## Easter Fun

At Brookshire's, you will find everything needed to fill Easter baskets. While quantities last...Not available at all stores.



**Dudley's Egg Coloring Kit**

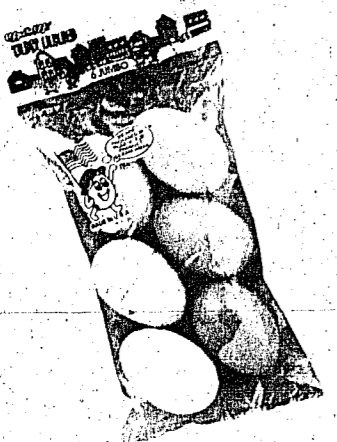
**Easter Grass**  
Assorted Colors

**Marshmallow Eggs**  
In A Crate

**Easter Baskets**  
Assorted Shapes & Sizes

**Easter Plush Bunnies**

**Plastic Easter Eggs**  
Assorted Pastel & Neon Colors

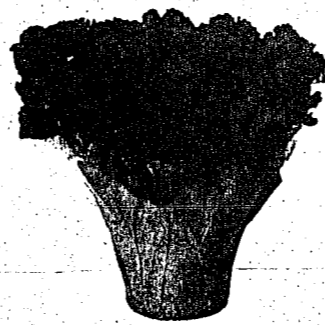


## Floral

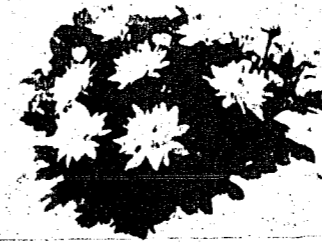
Floral Items Available Only In Stores With Floral Shoppes While Quantities and Varieties Last.  
In Louisiana Fresh Cut Flowers Available Only In Stores With Licensed Florist.



**Easter Lily**  
With a pot cover  
6" Pot  
**7.98**



**Beautiful Azaleas**  
With a pot cover  
6" Pot  
**15.98**



**Assorted Mums**  
With a pot cover  
6" Pot  
**8.98**



**Assorted Spring Tulips**  
With a pot cover  
6" Pot  
**7.98**

Double Cymbidium - Each  
**Orchid Corsage**.. **4.98**

Each  
**Easter Planter** **10.98**  
Ceramic Bunny or Egghouse with lvy

4" Pot  
**Cyclamen** ..... **5.98**  
With a pot cover

Multi-bloom - 6" Pot  
**Hydrangea** ..... **13.98**  
With pot cover

Easter Treats  
**Bouquet**.....Each **4.98**  
Assorted spring flowers in Easter egg decorated sleeve

Quantity Rights Reserved

All photography, clerical, printing and typographical errors are subject to correction.

None Sold to Dealers

**Mother's Day DRAWING COLORING CONTEST**



**For Children 10 Years & Younger**

Pick Up entry forms at checkstands. Entry Deadline 3 p.m. Saturday, May 2, 1998.  
Prizes to be awarded to all 1st, 2nd and 3rd Place winners in three age categories:  
5 And Under • 6 To 7 Years • 8 To 10 Years  
See store for details



**Sail in to Brookshire's for Tall Ships of the World.**

Great Gift Idea! Start your own collection!  
Individually Hand-crafted Replicas  
Presented by Heritage Mint, Ltd.  
Offer ends April 28.

9" Tall Ships \$6.99 ea.  
13" Tall Ships \$9.99 ea.  
15 1/2" Tall Ships \$14.99 ea.  
17 1/2" Tall Ships \$19.99 ea.

A  
P  
R  
1  
6  
1  
9  
9  
8

# BROOKSHIRE'S

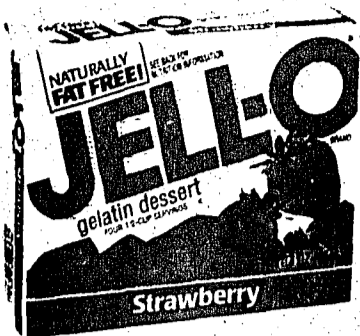
Variety and Value Guaranteed



**Maxwell House  
Coffee**  
Assorted Varieties  
11 oz to 13 oz Cans

**2/\$5**

Assorted Flavors  
Does not include Decaffeinated



**Jell-O  
Gelatin**

Assorted Flavors Regular 3 oz Boxes  
Or Sugar Free .3 oz Boxes

**3/119**

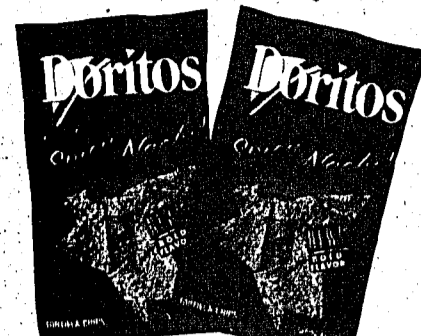
Jell-O Pudding Mix - Regular, Instant or Instant Fat Free 3 oz to 4 oz Boxes  
Or .8 oz to 1.5 oz Boxes Instant Sugar Free - Assorted Varieties - 2/\$1



**Viva  
Paper Towels**

Kleenex  
55 Ct Roll

**69¢**



**Frito-Lay  
Doritos**

Assorted Varieties  
12.5 oz to 14.5 oz Bags

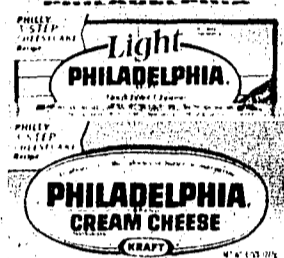
**2/\$5**

Does not include baked varieties

**Philadelphia  
Cream Cheese**  
Kraft  
8 oz Ctn

**99¢**

Regular or Light



**Stove Top  
Stuffing Mix**  
Assorted Varieties  
6 oz Box

**119**



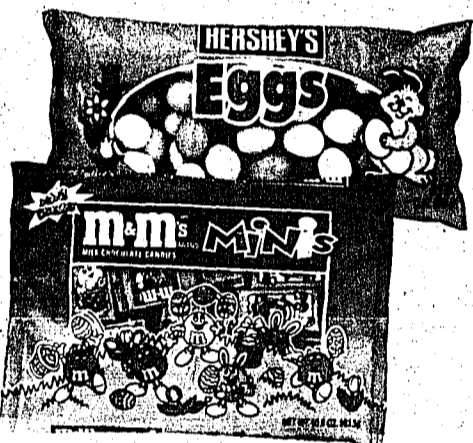
**LeSueur Small  
Sweet Peas**  
Regular or 50% Less Sodium  
15 oz Can

**69¢**

**Bush's  
Baked Beans**  
Original, Homestyle or With Onions  
28 oz Can

**99¢**

Or Bold & Spicy



5 oz to 16 oz Pkgs  
Easter  
Candy.....  
M&M/Mars or Hershey - Assorted Varieties  
Miniatures, Fun Size or Snack Size

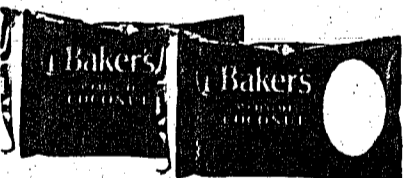
**2/\$4**



**Keebler 9"  
Ready Crust**  
Graham Cracker  
6 oz Pie Crust

**99¢**

Regular, Chocolate, Butter  
Or Reduced Fat



**Baker's  
Coconut  
Angel Flake**  
14 oz Bag

**169**



**Post Cereal  
Honey-Comb**  
14.5 oz Box

**2/\$4**

Or 18 oz Box Golden Crisp:  
15.5 oz Banana Nut Crunch;  
13 oz Cranberry Almond Crunch;  
Or 16 oz Great Grains Raisins, Dates & Pecans



**Minute  
Rice**

14 oz Box

**159**



**Gold Medal  
Flour**

Bread, All Purpose, Unbleached  
Or Self Rising - 5 Lb Bag

**89¢**

**Kraft  
Handi Snack Gels**

14 oz Ctn  
**79¢**

Orange, Cherry or Strawberry



**Canned  
Coca-Cola  
Or Diet Coke**

12 Pack/12 oz Cans  
**2/\$5**

2 Liter Bottle  
**99¢**

## Photofinishing



**\$2.99**  
24 or 36 Exp, 3.5" x 5"  
Single Prints Only  
12 Exposure Only \$1.99

**Film Developing**  
Color Print Film Only

**Double Prints**  
**\$4.99**  
24 Exposure  
Double 3.5" x 5" or  
Single Super Size 4" x 6" Prints  
36 Exposure Double 3.5" x 5" Prints  
or Single Super Size 4" x 6" Only \$6.99  
Color Print Film Only

Good on original (unprocessed) full frame 35mm, 110 or 126 color print film only, C-41 processing. Not valid with any other offer. No coupon necessary to redeem offer. Offer Good April 8-21, 1998. Offer excludes one hour and Advanced Photo System Film processing.

Quantity Rights Reserved

All photography, clerical, printing and typographical errors are subject to correction.

None Sold to Dealers

4 Ct/3.5 oz Ctn - Assorted Varieties  
**Adding Cups..... 99¢**  
Fat Free Chocolate Pudding Cup

20 oz Can  
**Apple..... 99¢**  
Diced or Chunks In Juice

Baker's Flavored Baking - 12 oz Bag  
**Chocolate Chips..... 139**

Kraft - 16 oz Jar  
**Cheez Whiz..... 299**  
Plain, Light or Medium Salsa Con Queso

### Budget Buys

Dole - 15.2 oz Can  
**Tropical Fruit Salad 89¢**

Sliced  
**Beef Liver..... 99¢**

Previously Frozen  
**Beef Tripe..... 49¢**

Plantation  
**Turkey Drumsticks.. 79¢**

USDA Select American Beef  
**Boneless Arm Steak..... 179**

**Dryer  
Diapers**  
Medium, Large or Extra Large  
18 Ct, 24 Ct or 30 Ct  
**49¢**  
Unisex

# BROOKSHIRE'S

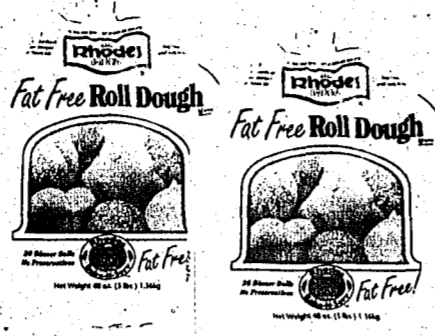
Top Quality Products Guaranteed



**Green Giant Vegetables**  
Sweet Peas, Cut Green Beans, Niblets Corn  
Or Mixed Vegetables - 16 oz Bag

**99¢**

Frozen



**Rhodes Roll Dough**  
Frozen  
48 oz Pkgs

**2/\$5**

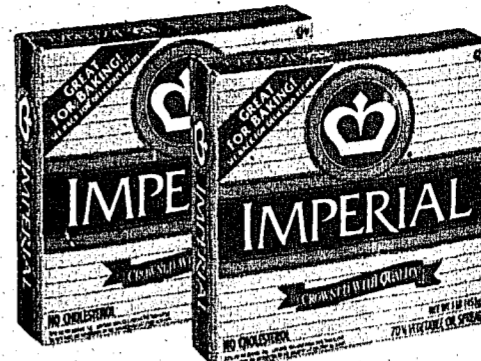
Texas White or Wheat, White Dinner or Fat Free White,  
33 oz Bag Giant Cinnamon Rolls or 34 oz Bag Orange Rolls with Icing



**Mrs. Smith's Special Recipe Pie**  
Frozen  
49 oz Ctn

**4<sup>79</sup>**

Cherry Berry, Peach, Apple or Cherry



**Imperial Quarters**

1 Lb Box

**59¢**

**Kraft Velveeta**  
Regular or Light  
32 oz Box

**3<sup>99</sup>**



**Healthy Choice Meals**  
Dinner/Entrees  
Assorted Varieties  
9.6 oz to 13.4 oz Boxes

**2/\$4**

Frozen



**Kraft Grated Parmesan Cheese**

8 oz Can

**3<sup>19</sup>**

Regular, Free or Plus Garlic Herb

**Shedd's Spread Country Crock Quarters**

1 Lb Boxes

**3/\$2**



**Glad Plastic Cling Wrap**

12" X 200' Roll

**1<sup>99</sup>**



## Complete Pharmacy

Items Available At All Stores  
Convenient One-Stop Shopping With Everyday Competitive Prices!  
Full Service Pharmacy Not Available In All Stores Check Yellow Pages For A Location Near You.



**Finesse Hair Care**

Shampoo or Conditioner  
Assorted Varieties - 15 oz Bottle

**2<sup>89</sup>**



**Colgate Total Toothpaste**

6 oz Tube

**2<sup>39</sup>**

7 oz Can - Regular or Unscented Extra Hold  
**Finesse Hairspray**

Also 7 oz Can Ex-Control Mousse or 7 oz Bottle Regular Spritz

**2<sup>19</sup>**

15 ml Bottle

**Afrin Nasal Spray**

Or Sinus Nasal Spray - .5 oz Bottle

**3<sup>99</sup>**



**Chinet Plates**

10 3/8" White Dinner Plates  
Or Compartment Plates - 15 Ct Pkg

**1<sup>99</sup>**

25 Ct Lunch Plate  
Or 12-5/8X10 Platter - 12 Ct Pkg



**Palmolive Automatic Dishwasher Gel**

Lemon  
85 oz Bottle

**2<sup>99</sup>**



**Hefty OneZip Quart Storage or Freezer Bags**

Value Pack - Freezer Bags - 30 Ct  
Or Storage Bags - 40 Ct Boxes

**2<sup>49</sup>**

Or 30 Ct Gallon Storage



**Hefty Dinner Plates**

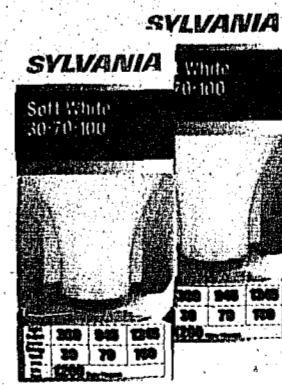
8 7/8 Inch  
50 Ct Pkg

**1<sup>39</sup>**

**Reynolds Aluminum Foil**

Giant Wrap  
12" X 200'

**4<sup>99</sup>**



**Sylvania 3-Way Light Bulbs**

Soft White - 30/100  
Or 50/150 - Each

**1<sup>49</sup>**

Halogen Flood - 90W...\$3.99

Quantity Rights Reserved

All photography, clerical, printing and typographical errors are subject to correction.

None Sold to Dealers

**Drypers Diapers**

Medium, Large or Extra Large  
18 Ct, to 24 Ct Pkg

**4<sup>39</sup>**

Unisex



## Baby Care

Enfamil - Powder  
16 oz Can - Regular or With Iron  
**Baby Formula**.....

**10<sup>89</sup>**



**Chubs Baby Wipes**

80 Ct Pkg

**2<sup>99</sup>**

**Angel Soft Bathroom Tissue**

Double Rolls - White  
4 Roll Pkg/560 Ct Roll

**2<sup>19</sup>**



## Value Pack

Jimmy Dean - 25.6 oz to 27.2 oz Pkg

**Sausage & Biscuits**..

**4<sup>99</sup>**

Assorted Varieties

Jimmy Dean - 28 oz Pkg

**Flapsticks**.....

**4<sup>99</sup>**



**Kingsford Charcoal Lighter Fluid**

32 oz Can

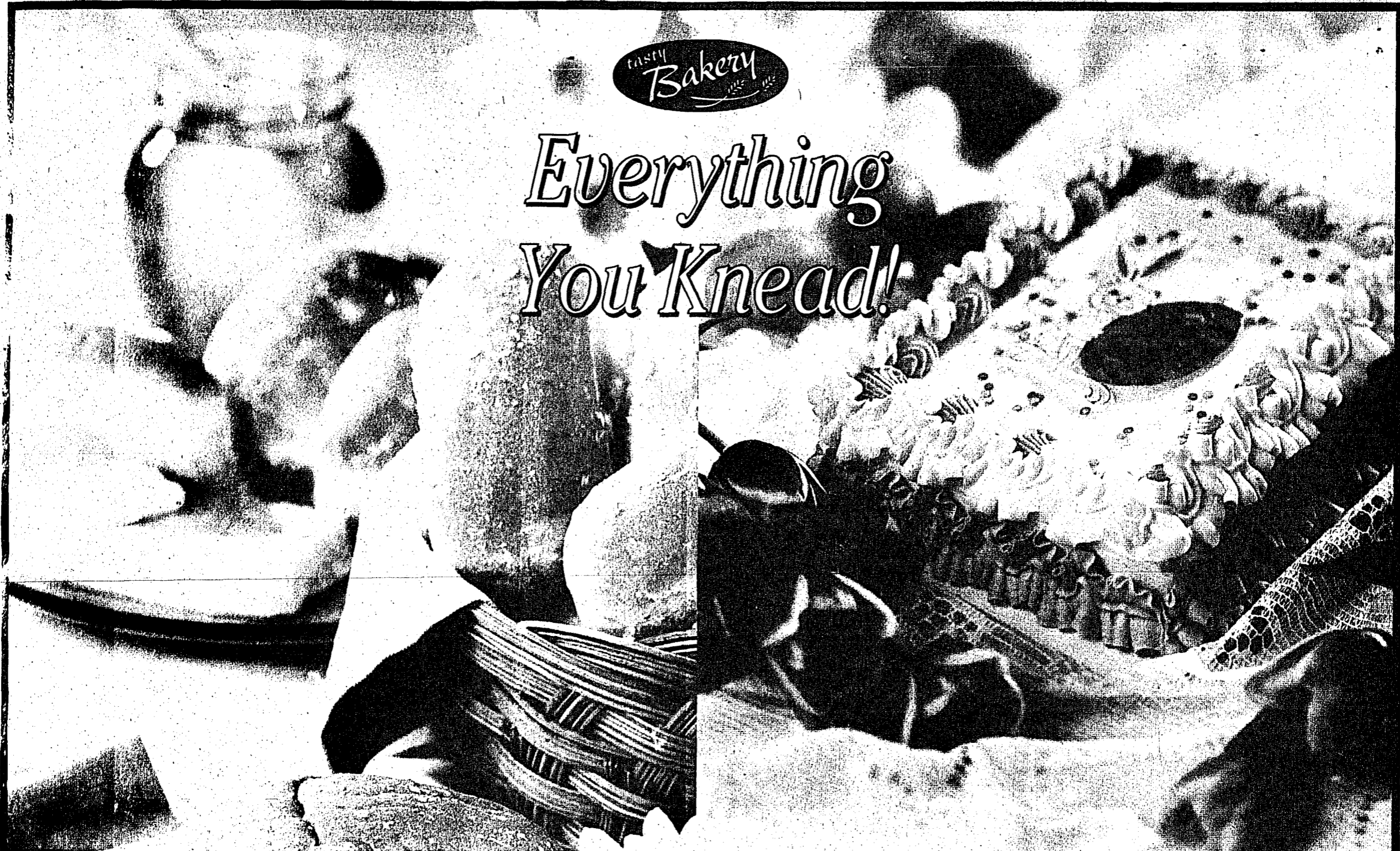
**2<sup>49</sup>**

A  
P  
R  
1  
6  
1  
9  
9  
8

# BROOKSHIRE'S



Everything  
You Knead!



12 Ct Pkg  
**Heat-N-Serve  
Potato Dinner Rolls....**

**1.79**

Available at all stores

1/8 Sheet  
**Easter  
Decorated Cake .....**

**3.99**

Available at all stores

Easter Colored Egg Shaped - 18 Ct Pkg  
**Sugar Cookies.....**

**2.99**

Available at all stores

Easter - 12 Ct Pkg  
**Decorated Cupcakes**

**4.99**

Available at all stores

**Easter Colored  
Iced Coconut Cake**

2 Layer  
**6.99**

Available at all stores

10" in a container  
**Angel Food Cake.....**

**2.99**

Available at all stores

Assorted - Each  
**Meringue Pies.....**

**3.49**

Chocolate, Lemon or Coconut  
Available only at stores with a Tasty Bakery

Quantity Rights Reserved

All photography, clerical, printing and typographical errors are subject to correction.

None Sold to Dealers

### Delicious Deli

*Deli Items Available Only At Stores With A Deli  
Hot Deli Items Available Only At Stores With A Hot Deli*

**Kretschmar Black Forest Ham**  
Or Maple or Brown Sugar

**3.99**  
Lb

**Bryan Deli Classics Lite Roast Beef**  
97% Fat Free

**3.99**  
Lb

**Brookshire's Whole Chicken**  
Herb Roasted or Hickory Smoked

**3.99**  
Each

**Brookshire's Gourmet Potato Salad**  
Regular or Mustard

**1.19**  
1 Lb Ctn

**Turkey Dinner**  
(Serves 10-12 people) Cooked 8-10 Lb  
Avg Sunday House Honey Baked Turkey;  
4 Lb Ctn Prater's Cornbread Dressing  
and 1 qt Prater's Giblet Gravy - Each

**9.99**

**Deluxe Turkey Dinner** ..... Each **12.99**  
Cooked 8-10 Lb Avg Sunday House Honey Baked Turkey; 4 Lb Ctn Prater's  
Cornbread Dressing; 1 qt Ctn Prater's Giblet Gravy; Baked Pecan Pie (Thaw & Serve)  
and 12 Ct Pkg Brown'n Serve Dinner Rolls

**Ham Dinner**  
(Serves 10-12 people) 6-8 Lb Avg Bryan Bottle-In  
Spiral Sliced Ham; 2 Lb Ctn Green Bean  
Casserole; 2 Lb Ctn Sweet Potato Casserole;  
Baked Pecan Pie (Thaw & Serve) and 12 Ct Pkg  
Brown'n Serve Dinner Rolls - Each

**14.99**

### Holiday Deli Dinners

*Spend more time with your family by choosing a prepared holiday dinner from our deli. Just thaw, heat and serve. While supplies last*

Quantity Rights Reserved

All photography, clerical, printing and typographical errors are subject to correction.

None Sold to Dealers

MANUFACTURERS'  
**DOUBLE COUPONS**  
ON COUPONS UP TO & INCLUDING 50¢ IN VALUE - SEE STORE FOR DETAILS

These Savings Good Six Days: Wed., Apr. 8 Thru Tues., Apr. 14, 1998

Commerce, TX	Groesbeck, TX	Hillsboro, TX
Kaufman, TX	Longview, TX	Marshall, TX
Terrell, TX	Gladewater, TX	Kilgore, TX
Palestine, TX		

### Save On McCormick

**50% OFF**  
**McCormick Gourmet Items**  
*Assorted Varieties & Sizes  
Sale not good on all items*

McCormick - 1 oz Bottle  
**Vanilla Extract..... 2.38**  
2 oz Bottle . \$2.99

McCormick - Assorted Colors - 4 Pack/1 oz Box  
**Food Coloring..... 2.58**  
1 oz Bottle - Green, Red or Yellow .1.69

Quantity Rights Reserved

All photography, clerical, printing and typographical errors are subject to correction.

None Sold to Dealers