

# SANTA ANNA NEWS

"He Profits Most Who Serves Best"

VOLUME LXVI

SANTA ANNA, COLEMAN COUNTY, TEXAS, FRIDAY, SEPTEMBER 7, 1951

NUMBER 36

## Hilburn Henderson Gets \$460.00 For First Bale Cotton

Hilburn Henderson, a farmer in the Cross Roads community, south of Santa Anna, Saturday received about \$460.00 in premiums and for his 515 pound bale of cotton. Mr. Henderson stated he gathered the cotton from about 20 acres of land, but that he did not expect to make very many more bales from his cotton crop.

The cotton was graded strict middlin, 7/8 staple. This was Mr. Henderson's first time to raise a first bale.

The cotton was sold at auction Saturday morning and the Santa Anna Co-op Gin bought it for 50 cents per pound. The bale was ginned by the Co-op Gin Wednesday afternoon.

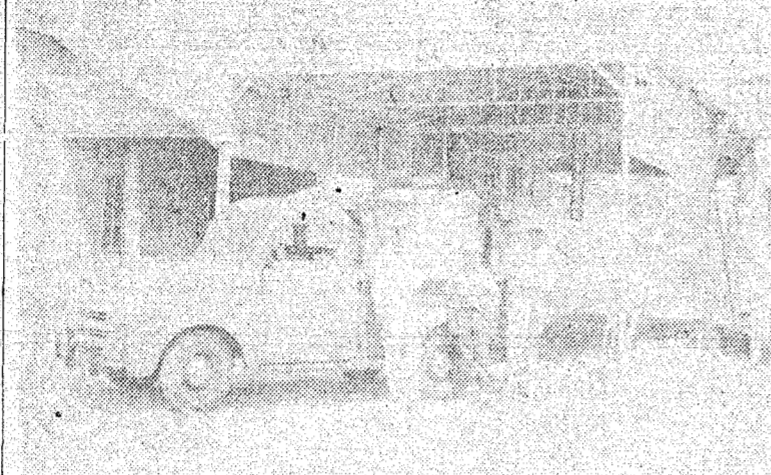
Coleman got the first bale for the county last week, when Mr. John T. Monroe ginned a bale there on Tuesday. His bale weighed 418 pounds and sold for 40 cents. He received \$81.00 in premium money for the honor of raising the first bale in the county. He got approximately \$290.00 overall.

Premium money made up in Santa Anna amounted to \$175.25, with the following merchants contributing:

Santa Anna Co-op Gin, Santa Anna National Bank, Piggy Wiggly, W. B. Griffin, Santa Anna Hardware Co., Phillips Drug, Hosch Bros., Harvey Grocery, South Texas Lumber Co., Banner Dairies, Gandy's Creamery, Ed Jones, Snider Service Station, Goodgion Lumber Co., Loyd Burris Dry Goods, Ladies Shop, Blue Hardware Co., Speck's Barber Shop, Overby Tailor Shop, Service Cafe, Joe Matthews, Hunter Grocery, Santa Anna News.

Corner Drug, Purdy Mercantile Co., Western Auto, Parker Tailor Shop, Howard Barber Shop, L. A. Welch Garage, B. A. Parker, Burton-Lingo Co., Humble Service Station, Payne's Variety, Sam H. Collier, Lois Henderson, Santa Anna Telephone Co., C. F. Campbell, Pieratt Grocery, Bland Grocery, O. A. Etheredge, West Texas Utilities Co., Arrow Mills, Inc., W. A. Standly, Vernon Campbell, Turner Drug Store, Dr. L. O. Garrett, and Guthrie and Wise.

Stamp pads at the Santa Anna News office.



—Polaroid One-Minute Photo by The News  
NEW EQUIPMENT at the Santa Anna Cooperative Gin includes a new set of 50-foot Howe Scales that will increase production by cutting weighing time between bales. The scales are so arranged that a suction pipe works over them also.

Other new equipment includes a new 230 horsepower engine, and a new Air-Line Cleaner that will be beneficial to the grade of cotton after it is ginned. In the past 14 months over \$20,000 in new equipment has been added to the gin.

Seen in the picture, from left to right, are: R. R. Terry, manager of the gin; Ben Wilhelm and L. M. Weathers, employees.

The cotton on the pickup is the Hilburn Henderson bale that was the first for the Santa Anna territory. Another picture taken in front of the Santa Anna National Bank did not get back from the engravers in time to be published this week. It showed Mr. Terry giving Mr. Henderson a check for his cotton. The Co-op Gin purchased the 515 pound bale for 50 cents per pound.

## Salvation Army Drive In Progress

Miss Ruby Harper, chairman of the Salvation Army in Santa Anna, announces that the annual drive is underway, and that her committees are carrying out the program as outlined. She stated that although the quota set was only \$300, last year they raised about \$500 and that she hopes to more than double the quota this year.

At a committee meeting Wednesday morning Miss Harper asked that two people be appointed to advise and counsel with her on the spending of the Salvation Army funds here. Hardy Blue and John C. Gregg were appointed on the committee and both have agreed to serve in this capacity.

It is feared that more calls will be made for funds from the Salvation Army this year than ever before, and you are asked to be as liberal as possible when asked to contribute to the Salvation Army.

Protect our forest resources.

## Directors Elected At Co-op Gin Meeting Mon. Nite

Pierre Rowe and T. N. Evans were re-elected directors of the Santa Anna Cooperative Gin at the annual membership meeting Monday night of this week. Approximately 400 members and their families were present.

Officers of the Gin are: President, Ozro Eubank; Vice President, Garland N. Powell; and Secretary, William R. Brown. The other directors are Emzy Brown and Howard W. Norris.

Ice cold watermelon was served to all present and a summary of the remodeling work completed on the gin was given in the reports.

## Again We Say Thanks

After spending eight days in the Hendrick Memorial Hospital at Abilene, undergoing surgery and other repairs, we are delighted to again be at home. We fear we have not sufficient words to express our gratitude to those of you who thought of us, sent reminders in the form of cards, letters and personal messages, but from a heart with a deep sense of appreciation, we say to all: Thank You.

Among our visitors during the week end were: Dr. and Mrs. Loyed R. Simmons and children of Fort Worth; Burton Gregg of San Antonio; Mr. and Mrs. J. B. Jones and children of Bishop; and Mrs. Aleene Gregg of Brownwood. Several local friends have also called.

J. J. Gregg

## County Farm Bureau Meeting Thursday Night

The annual membership meeting of the Coleman County Farm Bureau will be held at the Rodeo Grounds in Coleman Thursday night, September 6, at 7:00 p. m. All members are urged to attend.

During the business session the election of directors for the coming year will be held. The program for the evening will consist of talks by Marvin Carte; W. A. (Doc) Ruhmann, farm editor at Radio Station WBAP, Fort Worth; and the Coleman County Chorus Contest.

A barbecue luncheon will be served.

## Earl Hardy Praised By Postoffice

Earl Hardy, Commissioner of Precinct 2, Coleman County, has recently completed a job that has given him praise from the local postoffice and from the Rural mail carriers.

Several months ago Mr. Hardy started repairing and painting all the mail boxes and their posts in his precinct. This job has been completed and not only does it improve the looks of the roads in the precinct, but helps considerably in enabling the mail carriers to give better service to the customers on their routes.

Postoffice rural routes in Precinct 2 run out of the Santa Anna Postoffice, and from Bangs, Rockwood, Coleman and Gould-busk. Mr. Hardy has repaired the ones that needed it and painted every post and box in the precinct without any cost to the owners. He also stenciled their names on the boxes.

Mr. Hardy has spent a lot of time in getting these mail boxes in top condition, and those who shoot guns at and mistreat mail boxes in other ways should refrain from doing this. Mistreatment of rural mail boxes is a Federal offense, even though the owners are responsible for them. Incidentally, if you live in Precinct 2 and on one of the rural routes, if you have not personally thanked Mr. Hardy for the time and effort he has put in on your mail box, we are sure he would appreciate your telling him so.

## Mrs. A. L. Oder's Sister Dies In San Antonio Tues.

A telegram from Mrs. A. L. Oder, who has been staying with her sister in San Antonio for the last several months, states that her sister, Mrs. H. C. Miller, died Tuesday night. Funeral services will be held Thursday, September 6, at 3:00 p. m. at the Alamo Funeral Home in San Antonio.

## Helen Soward Resigns Position

Miss Helen Soward, advertising manager of the Santa Anna News for the past twelve months, resigned her position last week. Miss Soward has gone back to her home in Comanche to help care for her mother, who has been ill for sometime.

We have an opening for some alert person who would be interested in learning a profession that is worthwhile, and from which a livelihood can be earned. We would be glad to discuss our proposition with you if you are at least a high school graduate and realize the necessity of earning a livelihood. You must also be active enough to be able to do considerable walking, have a nice personality, and be considerate of other people.

## Driver's License To Double In Cost Friday, Sept. 7

Austin, Sept. 1. (Spl) — A. F. Temple, Chief of the Driver's License Division of the Texas Department of Public Safety, reminded today that the fee for Texas Operator's and Commercial Operator's license will be doubled effective September 7, 1951.

The increase which was authorized by the 52nd Legislature sets the new price of the Operator's License at \$1.00 and the Commercial License at \$2.00. Fee for Chauffeurs Licenses will remain at \$3.00. The Operator's permit will remain valid for a period of two years, while the Commercial and Chauffeurs will continue to be issued for one year periods.

## 32 Boys Expected Out For Training

Coach D. W. McBride said this week that he expects about 32 boys to be out for football training before the end of this week. Between 15 and 20 boys made most of the drills last week, but now that school has started, it will be easier for some of the boys who live out of town to make the drills. Some of the boys have also been away at National Guard Camp, and returned home Sunday.

The coach stated that his primary offensive formation would be the Winged "T", and that he would also make use of the Single Wing formation.

At the end of the school year last season prospects were good for the approaching season. At graduation time there was at least one letter man returning

## Cpl. C. W. Autrey Returns To U.S.A.

Cpl. C. W. Autrey landed in San Francisco, Calif., Wednesday, August 29, after a stay of 9½ months in Korea. He expects to get his discharge from the service within a few days and return to his home and family here.

Cpl. Autrey, husband of Mrs. Patsy Autrey and son of Mr. and Mrs. Carl Autrey, was connected with his father in the operation of a service station when he was called back in military service.

Coach McBride expects his team to be in top physical condition in time for the first game with Rochelle on September 14 on the home field.

## Santa Anna Fire Record

Figures recently released by the State Firemen's and Fire Marshal's Association, Austin, Texas, reveal the fire records for Santa Anna since 1918.

According to Olin Gulberson, Secretary, we have a fine record and our citizens should be proud of it. The statement shows what a tremendous business investment the fire department is to our city.

YEAR	PREMIUMS	LOSSES	CREDIT	PENALTY
1918	\$ 7,454.61	\$ 143.00		
1919	9,882.66	26.50		
1920	6,513.43	1,265.95		
1921	11,066.70	2,917.92		15%
1922	12,713.74	75.65		15%
1923	14,085.06	5,329.45		15%
1924	15,610.74	3,495.01		15%
1925	16,564.84	7,464.26		15%
1926	17,758.65	20,330.62		12%
1927	17,523.42			
1928	20,712.80	12,045.37		3%
1929	21,984.05	2,192.83		
1930	17,547.24	8,953.48		15%
1931	13,928.82	8,908.96		12%
1932	12,496.46	18,258.50		12%
1933	12,783.14	8,841.80		12%
1934	15,787.74	341.49		15%
1935	11,693.85			3%
1936	11,036.06	12,340.94		
1937	10,220.63	12,498.00		5%
1938	9,012.47	6,559.00		
1939	8,040.55	8,707.00		
1940	8,368.09	10,214.00		15%
1941	8,429.79	8,721.27		15%
1942	8,251.14	808.00		15%
1943	8,417.97	4,883.00		15%
1944	8,821.81	22,990.00		15%
1945	10,648.72	13.00		15%
1946	12,455.52	1,994.20		15%
1947	11,378.61	2,502.00		5%
1948	12,798.57	8,470.00		5%
1949	14,084.87	15,308.32		5%
1950	11,921.00	696.00		5%
Totals	\$409,993.76	\$217,294.92		
1951				5%

## To the American People...

Probably never before has there been so much at stake in the preservation of the freedom which we have enjoyed since the birth of our republic. All of us that possibly can do so should participate in its defense and this we can do by regularly purchasing Defense Bonds, thereby maintaining a strong economy essential to our free way of life.

Faithfully yours,

G. C. Marshall

AN OPEN LETTER to the people of the United States of America from General George C. Marshall appeals to every American to purchase Defense Bonds regularly.



# Health Talks

Prepared by the Texas Medical Association

If you should put yourself on a 1500-calorie diet, aimed at taking off about two pounds a week over a two or three month period, you should spend a definite amount of your calories every day for meat, poultry, fish and

eggs. Since calories are unfamiliar to reckon with for most people, they can be translated into a budget diet of \$1.50, making 10 calories equal to one penny. And 470 calories or 47 cents would be the daily allotment for meat.

Since most people eat an egg a day, you can count on spending 7 cents at the start for that egg, leaving 40 cents for the rest of

your meat program. If you eat three small strips of bacon, or two large ones, with your egg, you can knock off another 10 cents, and leave the breakfast table with only 30 calorie cents left for dinner and supper.

If roast chicken is on the menu for dinner, three thin slices of that chicken will take up 19 cents. One slice of chuck roast will cost 15 cents, one slice of rump roast will cost 17 cents and one slice of rib roast will cost 14 cents. If you do without that bacon for breakfast, eating just the egg, then you have that extra 10 cents to spend on a second slice of that beef roast you're having for dinner.

You can usually have your bacon if a lamb chop is in the dinner menu because that piece of lamb will cost only 10 of your budgeted pennies. A slice of roast leg of lamb will cost 17 cents and you can really cash in on lamb shoulder roast, getting 4 slices for only 29 cents.

Pork is about the highest of the meat cuts when you are reckoning by "calorie pennies". A slice of fresh ham will cost 34 cents and a slice of smoked ham adds another 4 cents to a total 38 cents. A loin pork chop nicks the budget for 29 cents and five little old spareribs tip the budget way over to the tune of 42 cents. Link sausage are next to bacon, the cheapest of the pork items, roasting 18 cents for three links.

Besides roasts, beef items run like this:

1 piece corned beef, 10 cents; four slices dried beef, 11 cents; one hamburger patty, 15 cents; one loin steak, 29 cents; one piece round steak, 22 cents; three pieces soup meat, 19 cents; and three pieces stew meat, 33 cents.

Veal chop, medium-sized, will run about 11 cents with veal cutlet costing 25 cents, roast leg of veal about 12 cents a slice and veal stew meat about 11 cents for two slices.

Chicken, as mentioned before, is cheap but duck is high, costing 32 cents for three slices as compared with 19 cents for three

slices of chicken; turkey runs 13 cents per slice.

Fish and shellfish are pretty cheap when the meat budget calls for quick economy. You can get about 5 oysters for 6 cents, half a cup of shrimp for 11 cents, and half a cup of canned crab meat for 7 cents. Canned tuna runs real high, 23 cents per half cup.

Bass, codfish, perch, pickerel and pike run 10 cents per average portion, which is a piece about the size of a package of cigarettes. Haddock, fresh or smoked, will be 7 or 9 cents, and halibut will cost about 12 cents, whitefish 14 cents, and flounder 16 cents for that same size portion.

There's still more meat to choose from, however, in the variety meats and meat mixtures. Bologna costs 10 cents per slice but the hot dog or frankfurter sausage runs only 8 cents, a slice of liver sausage and a slice of luncheon meat are also only 8 cents each.

Beef brains are 13 cents for two pieces, beef heart is 9 cents for two slices, beef kidney is 17 cents per half cup, and a piece of fried liver is 13 cents; calf liver, however, is 12 cents for two pieces. Beef sweetbreads and beef tongue run 18 cents for three-fourths cup of steamed sweetbreads, and 10 cents for four slices of boiled tongue.

So you don't have to stick to lamb chops or omit any meat you really crave when you're on a reducing diet, you just have to realize that the daily meat tally must not exceed 47 "cents" so that if you want ham real bad, that one slice will cost you practically your whole meat allowance for the day.

## Local Entries In State Jersey Club Show

Sulphur Springs. — Two hundred twenty of Texas finest Jersey cattle are being groomed for exhibit at the Sixth Official Texas Jersey Cattle Club Show and Sale to open in Sulphur Springs on September 3, according to Show Superintendent Lecman Teetes. The week-long show will be climaxed with the annual Jersey sale at 1:00 p. m. Friday, September 7.

The show catalog lists 145 entries in the Senior Division representing 36 Jersey herds from all parts of the State. Fifty-five Four-H and F. A. A. members have entered 75 animals in the Junior Show. The animals will

compete for over \$3,000 in premium money.

Coleman County will be represented in the State Show in the Senior Division by animals entered by Felton Martin, Box 82, Trickham and Rex T. Gerrett Route 2, Santa Anna.

Sulphur Springs Show officials have extended a cordial invitation to Coleman County dairymen and other interested persons to attend the show.

Mrs. C. A. Kilmer returned home last week from California, where she had been since early May, visiting with her daughters, Mrs. Bertha Spence and Mrs. Robert Flores; her sister, Mrs. Lena Cupps, and other relatives.



"I start my pullets on Arrow Chick Starter, follow with Arrow Gro Mash, then put them on Arrow Egg Mash. This formula works like a charm," says Mr. Heitzel. Try this proven plan on your flock. And, when your hens get to the laying stage, you'll find Arrow Egg Mash will do the job you want. It's precisely balanced to eliminate waste. It helps produce big eggs economically.

See us for your supply.

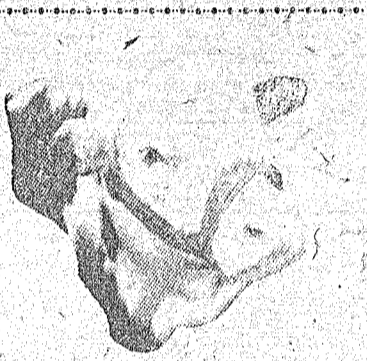
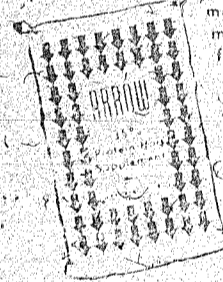


We Carry the Full Line of Arrow Feeds

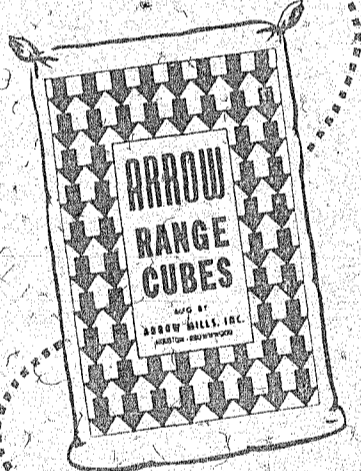


FOR FAST GAINS FEED ARROW 35% Protein Hog Supplement

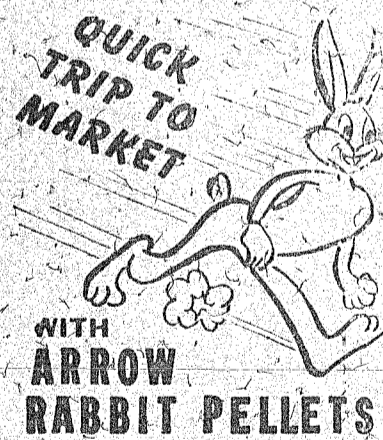
Feed Arrow 35% Protein Hog Supplement as a supplement to grains in fattening and finishing hogs for market. This tested feed contains necessary ingredients for fast growth. This means more hog profits. Get your supply today.



BEEF CATTLE THRIVE ON

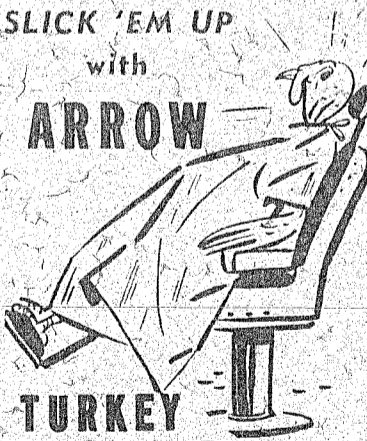
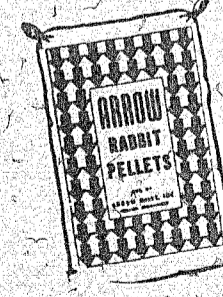


the perfectly balanced supplementary ration.



QUICK TRIP TO MARKET WITH ARROW RABBIT PELLETS

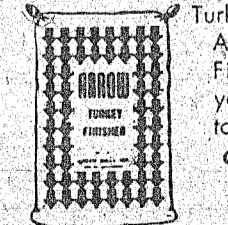
There's money in raising rabbits — but only when you raise 'em right and quick. Get the help you need from Arrow Rabbit Pellets. Balanced with every vital nutrient. Drop by for your supply. We carry the full line of ARROW FEEDS.



SLICK 'EM UP with ARROW

TURKEY FINISHER!

A month or two before you pack your turkeys off to market, slick them up with Arrow Turkey Finisher. Arrow Turkey Finisher puts your birds in top shape! Come in today for Arrow Turkey Feeds



## Howell

COLEMAN, TEXAS

Friday and Saturday SEPTEMBER 7 and 8

Ronald Reagan and Rhoda Fleming

—IN— "Last Outpost" TWO COLOR CARTOONS

SEPTEMBER 8 Big Midnight Show

Jan Frazee and Kirby Grant

—IN— "Rhythm Inn" Comedy and Color Cartoon

Sunday & Monday SEPTEMBER 9 and 10

John Wayne and Robert Ryan

—IN— "Flying Leathernecks" Color Cartoon - Latest News

Tuesday & Wednesday SEPTEMBER 11 and 12

Lizabeth Scott and Edmond O'Brien

—IN— "Two Of A Kind" Comedy and Color Cartoon

Thursday SEPTEMBER 13

Jon Hall and Marie Windsor

—IN— "Hurricane Island" Comedy and Color Cartoon

**Dr. A. J. Black**  
OPTOMETRIST  
Office Bldg. - Suite 303-4  
Coleman, Texas  
Eyes Examined  
Glasses Scientifically Fitted  
OFFICE HOURS  
9:00 - 12:00 and 1:00 - 5:30  
Evenings By Appointment  
Phone 7651

# Beat The Drought!

**SPECIAL PRICES**  
On  
**GARDEN HOSE**  
And  
**LAWN SPRINKLERS**  
**20% DISCOUNT**  
Many To Choose From  
**25 and 50 Ft. Hose**  
**Parker Auto Supply**  
Member Community Chamber of Commerce

"THE FRIENDLY BANK"

# "MUST" FOR A College Education

Your Bank Book

Yes! Created a bit at a time, like growing pearl, your bankbook soon becomes an "open sesame" to the land of your dreams.

Maintain it faithfully, make regular deposits each week, and there is your children's college education waiting for them. Or if you will, the capital you needed for beginning a successful business of your own.

But remember this . . . you must begin now before your opportunity has hastened past you. So, come in today and begin building a successful tomorrow!

"A good place to borrow"  
"A good place to deposit"

## Santa Anna National Bank

Santa Anna, Texas

# Arrow Mills, Inc.

George Hipp, Mgr. WE DELIVER  
PHONE 383 Member Community Chamber of Commerce



### Terry D. Bilbrey Awarded Bronze Star Recently

Pfc. Terry D. Bilbrey, member of Headquarters Company of the 3rd Infantry Division of the United States Army, now stationed in Korea, was recently presented with the Bronze Star Medal for successfully locating enemy concealed positions and reporting them to headquarters. His citation reads:

"During the period 5 March to 12 March, 1951, the Intelligence and Reconnaissance Platoon, while occupying frontline positions along the south bank of the Han River, was given the task of locating concealed enemy fortifications. Strategy called for sniper teams operating away from the main body which could draw fire and reveal these positions. Without concern for personal safety, Private Bilbrey and another man immediately volunteered for this duty. During the daylight hours of the next five days these men carried out their instructions successfully, killing 8 and wounding 17 before Private Bilbrey was injured and forced to return for treatment. Refusing to be relieved, he short-

ly resumed the mission and by continually exposing himself drew much enemy fire which allowed the plotting of the foe's installations. Having this knowledge, artillery was placed on the enemy with excellent results, definitely reducing their defensive strength. Private Bilbrey's heroic and aggressive actions reflect great credit upon himself and the military service."

### Mrs. R. D. Kirkpatrick Buried Last Thurs.

Funeral services were held at the Cumberland Presbyterian Church Thursday, August 30, for Mrs. R. D. Kirkpatrick, who died on Monday after an illness of several months. The Rev. J. W. Burgett of Denton officiated, assisted by Rev. M. L. Womack and Rev. E. H. Wylie.

Burial was in the family plot in the Santa Anna Cemetery, by the side of her husband, who preceded her in death in 1922.

Survivors are: three daughters, Misses Jettie and Dora Kirkpatrick of Santa Anna and Mrs. Della Minshew of California; one son, R. D. Kirkpatrick of Zephyr; seven grandchildren, 12 great grandchildren and a niece, Mrs. C. L. Darden of Abilene.

Out of town relatives and friends who were here for the funeral services were: R. D. Kirkpatrick and family of Zephyr; Mrs. Della Minshew, Mrs. J. L. Sandusky and W. E. Bartlett of

# SERVING 2 GREAT NATIONS

<b>FLOUR</b> Red & White 25 Pound Sack	<b>1.97</b>	<b>Cocktail</b> Fruit, R&W 2 1/2 Can	<b>39c</b>
<b>Crustene</b> 100% vegetable shortening, 3 lb. ctn	<b>83c</b>	<b>Pineapple</b> Crushed, R&W No. 2 Can	<b>29c</b>
<b>Spinach</b> R&W, fancy No. 2 Can	<b>17c</b>	<b>CORN</b> Fancy cream-style, R&W Golden, No. 303 Can	<b>18c</b>
<b>Corned Beef</b> Red & White 12 oz. can	<b>46c</b>	<b>PEAS</b> Tiny No. 2 Sieve, R&W Extra fancy, 303 can	<b>27c</b>
<b>MEAL</b> Aunt Jemima, fancy white, 5 lb. sack	<b>45c</b>	<b>Apple Butter</b> R&W 28 oz. jar	<b>26c</b>
<b>Margarine</b> Sun Spun, made from 100% vegetable oil 1 1/4s, colored, 1 pound	<b>27c</b>	<b>Sauce</b> Cranberry, R&W, strained, No. 300 can	<b>23c</b>
<b>Sardines</b> American, in oil Regular can, 3 for	<b>25c</b>	<b>Sauce</b> Barbecue, Franks, hot style, 6 oz. bottle	<b>18c</b>
<b>Bacon</b> Dexter Sliced, Pound	<b>48c</b>	<b>Tomatoes</b> Firm pinks Carton	<b>19c</b>
<b>Liver Loaf</b> Star, Pound	<b>59c</b>	<b>Cantaloupes</b> Texas grown, Pound	<b>6c</b>
<b>Ground Beef</b> Fresh, Pound	<b>59c</b>	<b>Lemons</b> Sun Kist, Pound	<b>15c</b>
<b>Steak</b> Fancy Seven, Pound	<b>69c</b>	<b>Bananas</b> Golden ripe, Pound	<b>12 1/2c</b>
<b>Pork Steak</b> Pound	<b>59c</b>	<b>Onions</b> Spanish sweets, Pound	<b>5c</b>

Hunter Bros.—Pho. 48

Hosch Gro.—Pho. 56

## For Service That Tops Them All

### Drive In To See Us Today!

We Try To Please You In Everything We Do For Your Car.

# GULF GAS and OIL

Expert Service      Expert Lubrication

Friendliest Service In Town

## BLOSSOM and JEWEL'S GULF SERVICE STATION

### Asthma Hay Fever

Why suffer when something will help you? After your symptoms have been diagnosed as Asthma or Hay Fever you owe it to yourself to investigate.

So easy to use. Just inhale mist-like vapor. For results use only as directed.

#### ASTHMA NEFRIN

If you are a user of AsthmaNefrin, please bring in your nebulizer for free inspection and servicing.

## Phillips Drug

## for better sight... get better light!

Thousands of young eyes are going back to school this week—precious eyes that must be guarded. They deserve the best of modern lighting—the newest in scientifically engineered lamps—proper planning and placing of fixtures so as to make studying easier. The representatives of our home lighting service will be glad to make a free survey of your home lighting needs. Don't delay! Be sure of better sight—with better light!

### West Texas Utilities Company

### Coleman County In Disaster Area From Drought

From The Office of Senator Tom Connally, Washington, D. C., Washington, August 21—Nine West Central Texas counties have been designated a disaster area because of the prolonged drought, the Agriculture Department notified Senator Tom Connally today.

The counties are Comanche, Brown, Coleman, Fannin, Concho, McCulloch, Mills, San Saba, and Menard.

The designation as a disaster area means that farmers in these counties can apply for loans from the Farmers Home Administration to carry on their operations.

Subscribe for The News.

the August 1 deadline on 9,555 machines.

Stapling machines and punches at the News office

# OAK

## DRIVE-IN THEATRE

STARTING TIME — 7:45 — Abilene Hi-Way—Coleman TELEPHONE 92614

**Friday & Saturday**  
SEPTEMBER 7 and 8  
VAUGHN MONROE  
—IN—  
"Singing Guns"  
IN TRUCOLOR

**Sunday & Monday**  
SEPTEMBER 9 and 10  
Joan Fontaine - Joseph Cotten  
—IN—  
"September Affair"  
TUESDAY  
SEPTEMBER 11  
YVONNE DeCARLO  
—IN—  
"Desert Hawk"  
IN TECHNICOLOR

**Wednesday-Thursday**  
SEPTEMBER 12 and 13  
DEAN STOCKWELL  
—IN—  
"The Happy Years"  
● 2 Color Cartoons  
On Each Program

—ON THE STAGE—  
Each Sunday At 7:30 P. M. Tom DeArmon and His Melody Five

## USE GLADIOLA FOR FINE BAKING

Smart Home Makers Seek Economy and Quality When Buying Groceries. You'll Find Both On Our Well Stocked Shelves. Visit Us Today!

### GEDERGREEN FROZEN FRESH

MEATS — FRUITS — VEGETABLES

## Bland Grocery

ON ROCKWOOD HIGHWAY Phone 70  
Ernest Bland



**The Santa Anna News**  
ESTABLISHED 1886

J. J. GREGG  
Owner and Publisher  
JOHN C. GREGG  
Editor and Business Manager

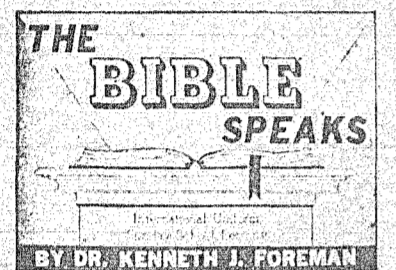
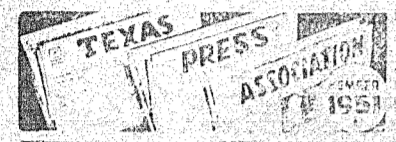
PUBLISHED EVERY FRIDAY  
AT SANTA ANNA, COLEMAN  
COUNTY, TEXAS

**SUBSCRIPTION RATES**  
In Coleman County 1 year \$1.50  
In Coleman County 6 mos. \$1.00  
1 year in Texas \$2.00  
6 months in Texas \$1.25  
1 year outside Texas \$2.50  
6 months outside Texas \$1.60  
1 year outside U. S. \$3.00

The publisher is not responsible for copy omissions, typographical errors that may occur further than to correct it in the next issue. All advertising orders are accepted on this basis only.

Entered at the Post Office at Santa Anna, Texas, as second class mail matter under the Act of Congress of March 3, 1879.

Advertising Rates on Request



SCRIPTURE: Matthew 18:15-20; Acts 4:31-37; Philippians 1:27-2:11; 1 John 3:14-21.  
DEVOTIONAL READING: 1 John 4:7-21.

**Why Is the Church?**  
Lesson for September 9, 1951

WHAT use is the church? What difference would it make if it were disbanded?

A woman bought a vacuum cleaner on trial, but after using it a while she decided it wasn't any better than an old-fashioned carpet-sweeper and she sent for the man to take it away. When he came around, he discovered that she really did not know how to use the thing. All the attachments were still in the box; she had never found out what they were good for and so she never realized how useful a "vac" can be.

It is something like that with the church. It has many uses which are seldom discovered.

**Tell the Church**  
THE main and most important feature of the church is that it is a fellowship. This should be far more, far deeper, than a mere label.

One rarely-used function of the church was suggested by Jesus. In a quarrel, he said, the first thing to do is to settle it between yourselves. If that will not do, then take a few people with you and see if a small group can reach agreement. If not then "tell the church."

Probably the average congregation today, as a whole, would be a poor judge of quarrels. But suppose some church tried the experiment of forming a kind of consultation-group, made up of the wisest and most Christian persons in it; and suppose members of the church who had differences which would ordinarily be taken into court, were encouraged to consult those counselors for help—wouldn't some quarrels, that now reach the courts, never get that far?

**Common Treasury**  
SOME weeks ago it was suggested here that in some communities the church sees to it that no member of the church goes without a job. It is also a fact that in some congregations either a committee of the officers, or the minister, is entrusted with a fund, sometimes called the Deacons' Fund and sometimes the Emergency Fund, to be used in taking care of real financial emergencies, for the benefit of the members.

Sometimes it is used as a revolving loan fund, sometimes as outright gifts. No detailed accounting is made, because it is important that no publicity be given to the needy cases; hence those who administer the funds have to be persons who can be fully trusted.

The "needy cases" may not be

**Wanted By F.B.I.**



SIDNEY STEINBERG, Assistant National Labor Secretary of the Communist Party, USA, was indicted by a Federal Grand Jury at New York City on June 20, 1951, on a charge of conspiracy to advocate the violent overthrow of the government, is being sought as a fugitive from justice by the Federal Bureau of Investigation. The FBI has requested the citizens of the country and the law enforcement agencies to assist in locating Steinberg. His description is as follows:

Age 36; born September 16, 1914, Otelos Kaundas, Lithuania; height 5' 6"; weight, 157 pounds; build, medium; hair, brown; eyes, blue; complexion, fair; race, white; nationality, American.

Steinberg, who used the name Sid Steinberg in connection with Communist Party work, resided at Jackson Heights, Long Island, New York, prior to his disappearance. From April, 1930, to September, 1932, he resided in Worcester, Mass., and prior to resuming his duties as a full time functionary of the Communist Party, Steinberg worked as a meat cutter in New York and New Jersey. He attended grammar and high school in Lithuania and was naturalized in March, 1938, in New York City. He has been in the Communist Party since about 1936 and was at one time an organizer in New Jersey. He also held other offices in the Communist Party in Camden County, New Jersey, and in 1945 became Chairman of the New Jersey State Communist Party. His parents, two sisters and three brothers, reside at Worcester, Mass. Steinberg claimed at one time that he had a heart murmur.

Any person having information which may assist in locating Sidney Steinberg is requested to immediately notify the nearest FBI office.

Adding machine paper at the Santa Anna News office.

charity cases in the usual sense. The point is that a church can be a fellowship so close that a person in physical or financial need would think of it as a source of help just as quickly as he would think of his own family. It is his family.

**Making Love Real**

THE fact is, if there had not been real fellowship in the church all these centuries, it would not have lasted as it has. No outfit can run on and on for centuries if all it does is to provide jobs for a few jobholders.

No, there has been real family fellowship in the church. It does not always come out in official actions of church boards, but the thing is there: Preachers talk about love, and Sunday school lessons mention it. But this is not all. There are enough persons in the church making love real, (see Moffatt's translation of I John 3:18), to more than justify the church's existence.

A poor woman who was in the grip of the drink habit had a Christian woman friend. This friend said to her, "When you feel the craving coming on, even if it's in the middle of the night, call me and I'll come right down and we'll fight it through and pray it through together."

That was what did it. Not the sermons, not the books on temperance, but the fellowship of a woman who would get up in the middle of the night to help her friend through a desperate struggle.

Happy is the person who finds a church where there are people like that. For that is what Christian fellowship is: making the other person's cause and troubles your own.

(Copyright 1951 by the Division of Christian Education, National Council of the Churches of Christ in the United States of America. Selected by WTV Features.)

**THE AMERICAN WAY**



**Economic Blights**

We can order a rubber stamp for you at the News Office.

**Whom News**  
Mrs. Tom Rutherford

Mr. and Mrs. Earl Cozart spent the week end and Labor Day with Mr. and Mrs. Joe Will Fowler and son in Austin.

Mr. and Mrs. J. T. Adkins, Dumpy Rutherford and Rex Turney were shopping in San Angelo Saturday.

Mr. and Mrs. Tom Rutherford and son, Thomas Ray, went to Abilene Thursday, to make arrangements for Thomas Ray to enter Draughan's Business College, where he returned Sunday afternoon and enrolled Monday.

Mr. and Mrs. Don Gray of Brownwood, spent Labor Day with her parents, Mr. and Mrs. Henry Smith.

Friends of Mr. Zack Kemp will be sorry to hear he is in a Snyder Hospital, where he was taken when both knee-cups were broken in a car wreck last week. He is reported doing very well. His daughter, Mr. and Mrs. Warren Gill are at his bedside.

Yonnie Adkins spent Saturday night with Patsy June Rutherford.

Pfc. Fern Bengé, from Shepard Field Air Base, Wichita Falls, spent the week end and Labor Day with his parents, Mr. and Mrs. Charles Bengé.

Mr. and Mrs. Jack Black of Brownwood, Bert Carter of Gateville, spent Labor Day with Mr. and Mrs. Jim Carter and Leon.

Mr. and Mrs. Charles Bengé and children attended a family reunion at the Brady Park Sunday. The reunion was of Dr. Bert Cheatham's mother's family.

Mr. and Mrs. Henry Smith visited in the Tom Rutherford home Friday night.

Mr. and Mrs. James Oliver and boys had as week end guests both her parents, his parents and a brother of James, all who live at Mineola.

Mr. and Mrs. Darwin Lovelady of Garland, Texas, spent Labor Day with his parents, Mr. and Mrs. Oscar Lovelady.

Mr. and Mrs. Johnny Gamble of Santa Anna, spent the week end with their daughter, Mr. and Mrs. Allyn Gill. Mrs. Gamble was here last week and remained for this week.

Mrs. Bill Bryan and daughter, Frances, are in Louisiana, visiting Sgt. Bill Bryan.

Mr. and Mrs. Henry Smith attended morning services in the Coleman Nazarene Church and were dinner guests of Mr. and Mrs. Buster Wynn and boys.

Mr. and Mrs. Ben Smith visited their daughter, Mr. and Mrs. J. S. Martin in Coleman Saturday.

Mr. and Mrs. Charles Bengé went to Brady Hospital Monday night to be with Mrs. Bengé's sister, Mrs. Floyd Franks, who underwent surgery there Monday.

Mr. and Mrs. Ben Smith had their grand daughters, Longenia and Linda Kay Smith of Brownwood with them several days last week.

Mr. and Mrs. Dick Deal have been at the bedside of Dick's sis-

ter, Mrs. Clyde Lovelady, who underwent surgery in Hendricks Memorial Hospital in Abilene last week.

**First Baptist Church News**

The following men have been elected to lead the First Baptist Church in its program of work for the ensuing year: Artie Irby, Sunday School Superintendent; Aubrey Brewer, Training Union Director; and Julian Whitley, Brotherhood President.

These men were presented by the Nominating Committee and elected Sunday morning, Sept. 2, at the regular church services. These will take office the first of October with the other officers and teachers which shall be elected in the near future.

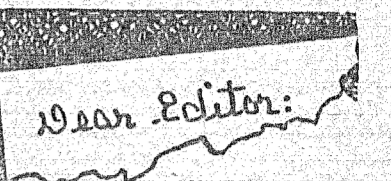
The Woman's Missionary Union at its regular meeting Monday, Sept. 3, selected Mrs. H. C. Wigger as their president for the year. This action will be presented to the church for its approval.

The pastor, Rev. Harry C. Wigger, baptized four people last Sunday evening and two are awaiting baptism. Two were received by letter. There have been a total of 16 additions to the church during the past three weeks.

The pastor and members of the church would like to take this means of saying thank you to all the people of the community who attended the Revival and in numerous ways helped to make it the success that it was. A cordial welcome is given to the public to attend the regular services of the church.

You're likely to get shocked when you step on anybody who is a live wire.

Carbon paper and sales pad at the News office.



... the letters start. Then many readers of THE CHRISTIAN SCIENCE MONITOR tell the Editor how much they enjoy this daily world-wide newspaper, with such comments as:

"The Monitor is the most carefully edited newspaper in the U. S. . . ."  
"Valuable aid in teaching . . ."  
"News that is complete and fair . . ."  
"The Monitor surely is a reader's necessity . . ."

You, too, will find the Monitor informative, with complete world news . . . and as necessary as your HOME TOWN paper.

Use this coupon for a Special Introductory subscription — 3 MONTHS FOR ONLY \$3.

The Christian Science Monitor, One, Norway St., Boston 15, Mass., U. S. A. Please send me an introductory subscription to The Christian Science Monitor — 75 issues. I enclose \$3.

(name) \_\_\_\_\_  
(address) \_\_\_\_\_  
(city) \_\_\_\_\_ (zone) \_\_\_\_\_ (state) \_\_\_\_\_  
PB9

**"45"**

If Your Club Meets  
Phone 45 immediately. We will be glad to publish any club news you have for publication.

If You Have Visitors  
Phone 45 without delay and let us know who your guests are, where they are from, etc.

If You Want To Buy Or Sell  
Phone 45 and use the Want-Ad column. Want-Ads in the News get results.

Or if you would rather write your own articles concerning your club meetings, or visitors, and then submit them for publication, you may do so—but remember that promptness is a necessity—the sooner we get your club meetings, visitors, etc., the better chance they will have of getting in that weeks paper.

**Promptness A Necessity**

**The Santa Anna News**



### Garden Club To Have Breakfast Friday Morning

The Mountain City Garden Club will have their annual breakfast Friday morning, Sept. 7, at 9:30 a. m. at the Service Cafe. Guest speaker for the occasion will be Mrs. Terry B. Sanders, Jr., daughter of Mr. and Mrs. Ford Barnes.

Flower arrangements will be by Mrs. Sam H. Collier, Mrs. Maggie Culver and Mrs. J. R. Gipson. Mrs. Gipson will also give the invocation.

Roll call will discuss the topic, "The most beautiful garden I have seen this summer".

Mrs. Harry C. Wigger will render a solo.

### Buffet Luncheon Honors Guests

A buffet luncheon was served at the home of Mrs. W. M. Bell last Sunday, at the noon hour in honor of guests spending the week with her.

Visitors were: her brother and wife, Mr. and Mrs. George O. Green of Lafayette, Ind., formerly of Santa Anna; Mr. and Mrs. Dan Wheatley; Mr. and Mrs. W. W. Roser of Bangs; Mr. and Mrs. E. M. Hickman; and Mr. Otis Foamy of Cross Cut.

After the luncheon all attended a singing at Cross Roads.

### Home Dem Club To Meet Friday

The Home Demonstration Club will meet with Mrs. W. A. Standley Friday, September 7, at 2:30 p. m. The program will be on "England — the customs, people and government".

### Rockwood News

By Mrs. John C. Hunter

The series of revival services closed Sunday evening at the Church of Christ. There was good attendance and every one received a spiritual blessing. Bro. Jones, of Bangs, was guest speaker.

Mr. and Mrs. J. P. Hodges, Jr., Wanda and James, and Mr. and Mrs. Bill Bryan, Patricia and Judy have just returned from 8 days touring Colorado and New Mexico, seeing all points of interest.

Mr. and Mrs. Uless Maness and Mr. and Mrs. Billy Maness visited relatives in San Angelo last Tuesday.

Mr. and Mrs. Jack Johnson and Cynthia, of Baytown, visited with Mr. and Mrs. R. E. Johnson Saturday to Monday.

Mr. and Mrs. J. C. Hunter were in Abilene last Tuesday visiting with Mr. and Mrs. J. F. Maxey and Lowell.

Mr. R. W. Nevans is making an extended visit in the Hunter home.

Mr. and Mrs. John W. Mitchell and Cotton McIlvain of Dallas, spent the week end fishing on the river.

Mr. and Mrs. Aubrey Mobley of Lake Charles, La., visited with Mr. and Mrs. Uless Maness Friday to Sunday. They, with Mr. and Mrs. Maness, and Mr. and Mrs. Bob Mobley of San Angelo, were in Brownwood Sunday attending a family reunion at the Riverside Park.

Misses Colleen and Kelley Wise of Fort Worth, spent the week end with home folks.

Mr. and Mrs. Bill Mueller and Mr. and Mrs. Eddie Valicek of San Antonio, were week end guests of Mr. and Mrs. Evan Wise.

Mr. and Mrs. Bobby Halmon of San Angelo, spent the Labor Day holidays with Mr. and Mrs. Carl Buttrey. All of them attending the Dublin Rodeo Saturday night.

Mr. and Mrs. Hawley Green of San Angelo, were also Sunday and Monday guests in the Buttrey home.

Miss Lizzie Fowler of Coleman and Mrs. Jessie Fowler of Shield, and Mrs. Hyatt Moore were Tuesday luncheon guests with Mr. and Mrs. Sam Estes and Raymond.

Mr. and Mrs. Roger Dudley of Sheffield and Mrs. Loyce Phenix of Wichita Falls, were Sunday guests with Mr. and Mrs. M. A. Richardson.

Mrs. Gussie Wise and Miss Billie of San Angelo, visited with relatives Saturday to Monday. Miss Billie, who has been a student in Trinity University in San Antonio, during the summer, will teach in the Lake View school system.

Mrs. Milford Harris of Santa Anna, and Mr. and Mrs. Dan Mills and family of Coleman, spent Sunday in the A. N. McSwane home.

Mrs. R. C. Arnold of Midwest City, Okla., was a week end guest of her parents, Mr. and Mrs. A. L. King. They, with Mr. and Mrs. Willie King of Coleman, and Mr. and Mrs. James W. King of Lubbock, visited Sunday with Mr. and Mrs. J. C. King.

Mrs. Ora Caldwell returned home Friday, after visiting with her children in Houston.

Pete Cooper is home after visiting with his sister in South Dakota.

Mr. and Mrs. Ray Gardner and family of Coleman, spent Sunday night with Mr. and Mrs. John Kemp. Beth and Jo Ann remained to visit this week. Also spending the week in the Kemp home are Jane, Nita, Bob and Jim Traylor.

Mr. and Mrs. Andrew McCarroll of Santa Anna and Mrs. Ola Mae Johnson and son of Fort Worth spent last Thursday with Mr. and Mrs. Charley McCarroll and Mrs. Goldie Milburger.

Mr. and Mrs. Jack Williams and daughter, Terry of Pine Bluff, Ark., were Sunday guests with Dr. and Mrs. W. G. Williams and family.

The Rockwood Elementary School opened Monday with Mr. M. B. Williams and Mrs. John Taylor teachers and Mrs. Jack Bostick in charge of the lunch room.

Bryan Hodges of San Angelo, spent the holidays with home folks.

Mr. and Mrs. J. P. Hodges, Jr., Bryan, Wanda and James and Mr. and Mrs. T. A. Hodges and Ricky, spent Sunday in Santa Anna, with Mr. and Mrs. J. P. Hodges, Sr.

Mrs. E. C. Simon of Lampasas, is spending the week with Mr. and Mrs. Jack Bostick. Mr. and Mrs. Leo Simon and Mr. and Mrs. T. H. Simon and family, Harvey Simon and children, Clifford Canales, Judge John Tom Higgins, all of Lampasas, spent the week end in the Bostick home.

Mr. and Mrs. Jack Bostick were in San Saba Saturday evening to attend the wedding of Leo Simon and Miss Myrtle Jurney.

Pvt. Clinton Estes of San Antonio, spent Saturday to Tuesday with his parents; Mr. and Mrs. Drury Estes.

Mrs. Joyce Estes of Houston is also a guest in the Estes home.

Mr. Jack Bostick has received word that his son, Alvin, has landed in Japan and will go on to Korea after four days.

Mr. and Mrs. Raymond Steward of San Angelo, spent Sunday and Monday with Mr. and Mrs. Ray Steward and family.

Mr. and Mrs. L. V. Hillyer and Billy, of San Angelo, were Sunday guests with the Stewards. Mr. and Mrs. R. S. Fondren were also Sunday guests.

Mr. and Mrs. J. D. Ashmore of Eldorado, and Mrs. Ethel McCreary are spending the week in Fort Worth, with relatives.

### Trickham News

By Mrs. Buck Mitchell

Rev. Jimmy Flynn, a Baptist pastor, held services here last Sunday. He was substituting for Rev. Hugh Newsom, who was off in a revival.

Miss Lois Haynes of Abilene, visited her parents, Mr. and Mrs. Ferd Haynes over the week end.

Mr. and Mrs. Gid Mathews and two grandchildren of Brownsville, returned home Saturday after spending about a week with relatives here.

Misses Peggy Ford, Lea and Betty Mitchell attended the Methodist Youth Revival conducted in Brownwood last Tuesday night.

Regret to report Mrs. Lewis Burney isn't doing so well. She is under treatment of a doctor in San Angelo. We hope for her a speedy recovery.

Mr. and Mrs. Joe Paulson and two children of Fort Worth spent the week end with his sister, Mrs. Key Bradley and family.

Mrs. Zona Stacy has returned home after spending a few days with her son and family, Noah Stacy of Santa Anna. She also visited with her sister-in-law, Mrs. Sammie Harris of Gouldsburg.

Visitors with Mrs. Stacy Sunday were: M/Sgt. Owen T. Stacy and family of San Angelo; Mr. and Mrs. Bob Sullivan of San Angelo and Mr. and Mrs. Walter Stacy.

The children of this community started to school Monday, Sept. 3. Mr. A. H. Dean is the bus driver again this year.

Visitors in the Oscar Boenicke home Sunday were: Misses Emeilia and Sophie Wiscki and Martha Gies all of San Antonio, Mr. and Mrs. Floyd Eoff and Miss Pauline Boenicke of Brownwood.

Mr. and Mrs. Walter Stacy had some of their children visit them over the week end. M/Sgt. Owen T. Stacy and family of San Angelo and Mr. and Mrs. Bob Sullivan of San Antonio.

Visitors in the C. L. Brien home over the week end were: Mr. and Mrs. N. M. Stewart of Wicent, Texas; Mr. and Mrs. Ernest Stewart and family of Sutton; and Mr. and Mrs. William Stewart and family of Abilene.

Mrs. H. O. Danow of Fairbanks, Texas and Mr. and Mrs. Arch Hargraves of Tomball, spent the

week end with Mrs. T. H. Vernon. Also Mr. and Mrs. L. H. Carter of Santa Anna, visited with Mrs. Vernon.

Visitors with Mr. and Mrs. Buck Mitchell during the past week were: Mr. and Mrs. J. V. Cabral of Corpus Christi, Mr. and Mrs. R. B. Hamilton and two boys of Taft, Mrs. Fred White of Sinton, Bill Griffin of near Santa Anna, and Bill Mitchell of Fort Worth.

Miss Mary Catherine Fellers of Fort Worth, is spending this week with her parents, Mr. and Mrs. S. M. Fellers.

Mrs. Rankin Melver is the teacher for the Mukewater school, which began yesterday, Monday, Sept. 3.

### Cleveland News

By Mrs. M. F. Blanton

Mr. and Mrs. Duane Williams went back to Pecos Monday. Mrs. Williams and son had been visiting here three weeks.

Mrs. Hugh Phillips and Mrs. Ervin Myers and daughter returned Monday to California after a two weeks visit with Mrs. C. T. Moore and family.

Mr. and Mrs. J. E. Williams spent Sunday with Mr. and Mrs. Westley Williams.

Mr. and Mrs. William Anderson and Kay visited from Saturday to Monday with Mr. and Mrs. M. F. Blanton.

Mr. and Mrs. Virgil Lancaster Mrs. M. F. Blanton and Ann attended the Fall Festival in Coleman Thursday night.

Mr. Jack Neve and family of San Antonio, spent Saturday night with his sister and family, Mr. and Mrs. Drisco Woods.

Mr. and Mrs. Edwin Cox and boys visited Saturday and Sunday near Waco, with Edwin's mother and dad, Mr. and Mrs. Cox.

Mr. and Mrs. Lonnie Knutson and family of Brooksmith, visited Saturday with Mr. and Mrs. Drisco Woods.

Mrs. R. W. Cupps who has been in the hospital is doing fine. We hope she is soon out and well again.

Mr. and Mrs. S. E. Blanton and sons, Mr. and Mrs. Duane Williams and son, Mr. and Mrs. William Anderson and Kay and M.

F. Blanton and Nora Blanton and Ann, spent Sunday and Monday on the river fishing. Lots of fun and lots of fish.

Mr. and Mrs. Virgil Lancaster visited Saturday night with Mr.

and Mrs. Sid Blanton.

Women who really know how to raise children are too busy to tell.

**RED CHAIN VITA-RANGE NUGGETS**

For Balancing Range Forage

**BIGGER CALF CROPS**

**COWS GIVE MORE MILK**

**CUT DOWN TROUBLE AT CALVING TIME**

**NUGGETS REDUCE FEED WASTE**

**SAVE FEEDING LABOR**

**CAN BE FED ON-GROUND OR IN FEEDERS**

RED CHAIN Vita-Range Nuggets provide the extra proteins, vitamins, and minerals needed to make up for the lack of these nutritional factors in range forage. No single protein supplement can provide all these nutritional factors in ample amounts.

RED CHAIN Vita-Range Nuggets are popular with ranchers because they keep the breeding herd in good condition at all times. The dependable Vitamin A in Vita-Range Nuggets will help you cut down calving trouble and will help you get a bigger and better calf crop.

**START FEEDING VITA-RANGE NUGGETS — EARLY!**

**Griffin Hatchery**

# Grade "A" HELPS MAKE "A" Grades



## A Sound Mind Needs A Sound Body... And Milk Builds Strong, Sturdy Youngsters.

Boost Them To The Top Of The Class -- Give Them Plenty Of Pure Milk.

At Your Favorite Store

# Banner Dairies

Phone 888

**THRIFTY!**

**BARGAIN IN INDIAN HEAD LINENE**

Sanforized — 36 Inch — Fast Colors

Wash It! Tub It! Rub It!

**GUARANTEED**

**Special 79c Yard**

**LOYD BURRIS DRY GOODS**



**CLASSIFIED ADS.**

**FOR RENT:** Furnished apartment. Couple only. Kathryn Baxter. 11p

**FOR RENT:** 2 room and bath apartment. Frigidaire and bills paid. Mrs. Fred Turner. 1c

**FOR SALE OR TRADE:** 5 rooms and bath frame stucco near high school. Immediate possession. Pat Hosh. 241c

**FOR SALE:** Some nice lots in Bangs at moderate prices. See F. T. Adams. Real Estate, Bangs, Texas. 34-36p

**FOR SALE:** 4 room box house, cheap. To be moved. See H. O. Norris. Liberty Community. 35-38p

**FOR SALE:** 6 foot General Electric refrigerator. Perfect condition. \$50.00. George Hipp. 35-38p

**L. A. WELCH GARAGE**  
For Better Auto Repair  
PHONE 112

**FOR SALE:** New three room house to be moved. Price only \$1000. Joe's Lumber Yard, Comanche, Texas. 201c

**FOR SALE:** 5 room and bath house. Completely remodeled on the inside. Steel cabinets, new bath room fixtures and water heater. Located on Santa Fe Ave. Immediate possession. Contact Santa Anna Hardware Co. 22 1/2c

**FOR SALE:** Large barn to be moved. Ross Kelley. 361c

**FOR SALE:** 180 acres. 70 good farm land, 8-room modern house, like new. Plenty of good water. Several out buildings. Nice orchard. A bargain. McMillan place, 1 1/2 miles north-east of Lometa on paved road. Box 322, Lometa, Texas. 36p

**HELP WANTED—MEN**

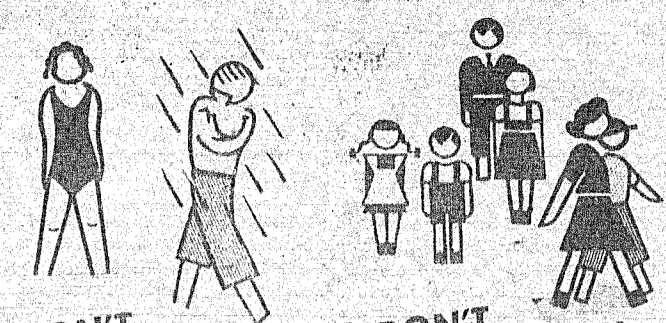
**LINEMEN and Groundmen** needed. Good wages. Work near here and north of Abilene. State experience in application. Hi-Line Service Corp., P. O. Box 142, Brownwood, Texas; or see L. L. Flowers, Parker Hotel, Balfinger, Texas; after 2 p. m. 36-37c

**MISCELLANEOUS**

**MAKE OLD FLOORS** look like new—Rent our high-speed floor sander and edger—Low rates. Santa Anna Hardware Co. 15-22c

**SEE ADVERTISER**—Guarantee if you wish to buy, sell or trade anything. At your service. 241c

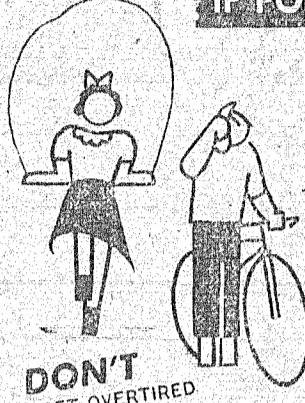
**Kill Athletes' Loam**—"F. L. Best Seller" Says Phillips Drug. Here's the Reason: The cream grows deep. You must reach it to kill it. F. L. contains 90% alcohol. Penetrates. Reaches more deeply. Your 40c back from any druggist if not pleased **IN ONE HOUR.**



**DON'T GET CHILLED**

**DON'T MIX WITH NEW GROUPS**

**IF POLIO COMES**



**DON'T GET OVERTIRED**



**DON'T HAVE MOUTH OR THROAT OPERATIONS**

**RECOMMENDED BY THE NATIONAL FOUNDATION FOR INFANTILE PARALYSIS**

These are precautions recommended by the National Foundation for Infantile Paralysis when polio is around. Also, wash hands before eating and be on the alert for such symptoms as feverishness, sore throat, headache, upset stomach or sore muscles. They may—or may not—mean polio. If the disease does strike, call your doctor promptly, follow his advice. Your local National Foundation chapter will provide needed assistance.

**REAL ESTATE**

**WANTED:** Listing on all types Real Estate. Jim Harris. 77c

**CARD OF THANKS**

We wish to express our sincere appreciation to our friends and neighbors for your thoughtfulness and words of sympathy during the illness and death of our loved one.

May God bless each of you.  
The family of Mrs. R. D. Kirkpatrick. 1c

The family of Mrs. Ollie P. Weaver deeply appreciates the kindness and help extended to them during their recent bereavement. 36c

**LOST AND FOUND**

**LOST:** From my place. 6-weeks old black puppy. Tom King's-bery. 36p

**LEGAL NOTICES**

**AN ORDINANCE FIXING SEWERAGE RATES IN THE CITY OF SANTA ANNA, TEXAS.**

BE IT ORDAINED BY THE ALDERMEN OF THE CITY OF SANTA ANNA, TEXAS: That the sewerage rate per commode used in residence houses in the City of Santa Anna, Texas, be and the same is hereby set at seventy-five cents (\$0.75) per month and the sewerage rate per commode used in all other structures in the City of Santa Anna, Texas, be and the same is hereby set at one dollar and twenty-five cents (\$1.25) per month.

This rate shall take effect on the 15th day of September, 1951, and the same shall be payable in cash.

APPROVED: C. E. Flint  
Mayor Pro-tem of the City of

Santa Anna, Texas.  
ATTEST:  
Rosa Mae Bass  
Secretary of the City of Santa Anna, Texas. 36-36c

**Sub-District Farm Bureau Meeting At Cisco Monday**

County Farm Bureau leaders from this area will gather in Cisco on Monday, September 10, for a sub-district meeting. This is one of 24 such sessions being conducted throughout the State by the Texas Farm Bureau Federation during September. In attendance will be Marvin Carter, Federation Organization Director, and O. R. Long, Field Representative, American Farm Bureau Federation.

Raymond McElrath of Coleman, State Director for this district will preside. The all-day meeting will be held in the Victor Hotel at Cisco beginning at 10:00 a. m.

Purpose of the sub-district conference is to give officials of the State organization an opportunity to confer with county leaders on present day issues affecting agriculture. Mr. Long will discuss the organization's program of work this year and the responsibilities of local leaders. Mr. Carter will present the enrollment plan which has been developed by the State organization and recommended to counties for use in their annual membership drive scheduled for the week of October 11-18.

In their reports to county leaders and members, the Federation representatives will discuss the movement led by the Texas Farm Bureau which resulted in the passage of a natural resources

tax this year to help defray expenses of State government. The Texas Farm Bureau's successful campaign which saved the rural road program for another two years will also be reviewed. Leaders will be told of the Farm Bureau's intensive program to curb price controls, its efforts to control inflation, work of the organization in the Poage labor bill which will provide alien labor on the farms of Texas during the harvest season. J. Walter Hammond, President of Texas Farm Bureau Federation, is at present urging Texas congressmen to devote effort to eliminate red tape in processing of Mexican Nationals which is causing delay in making labor available to farmers.

150 leaders from this area are expected to attend.

**Two Year Practical Ag. Course at Tarleton**

The two-year agriculture course at Tarleton State College in Stephenville has had enthusiastic endorsement by the state agriculture press. The Ft. Worth Star Telegram, the Dallas Morning News, the Houston Chronicle, the Progressive Farmer, the Southwestern Crop and Stock, and the Farm and Ranch have all carried stories on the school's new agriculture course, which is designed to "Keep the Farm Boy on the Farm and the Farm in the Family."

A recent bulletin issued by Tarleton on results of the first two years of the course is evidence of success. Eighty-five per cent of the first graduates are now farming and ranching with their parents. They are all pleased with their two years at Tarleton, according to recent interviews.

The school, a junior college member of the Texas A & M College System, is well equipped to offer this course. It has 708 acres of farms for laboratories, a new \$325,000 agriculture building, a \$68,000 creamery-milking barn nearing completion, and a dozen highly trained men to give the students individual training.

Tarleton State College with this course is turning out much needed rural leaders.

**Scarlet Fever Is Menace To Children**

"Scarlet fever still continues to be a menace to children," said Dr. Geo. W. Cox, State Health Officer, in discussing diseases common to children. "Many cases are slight, but they may infect

others who may become seriously ill. It is treacherous and undesirable, and the only good thing about it is that if one can avoid it until grown, the chances of never getting it are excellent.

"Scarlet fever is spread by the transfer of the infection in the discharges of nose and throat, ears, or abscesses of persons ill with the disease and those who are carriers of the infection. The handling of articles soiled by the patient may cause the disease.

"Children under ten years of age are usually susceptible to scarlet fever. Children become suddenly ill with fever, sore throat, vomiting and showing a fine red rash, should have medical attention and be immediately

quarantined to prevent the spread of this disease. The appearance of scarlet fever in the home should be immediately followed by a rigid quarantine for at least three weeks. The public should be warned against exposing young children to those exhibiting acute catarrhal symptoms of any kind. Take no chances—be on the safe side."

Mrs. Clifford Stephenson and Albert Dean attended the Stephenson reunion in Fort Worth Sunday. They also visited in Cisco and Dallas. Mrs. Elsie Glassey, a sister, returned home with them.

Stop soil erosion—stop erosion.

**HOME IMPROVEMENT LOANS**

Money is available on easy terms for repairing and remodeling. Both labor and materials can be included in the loan. We have quality materials and can recommend reliable workmen. Call us for complete details.

**BURTON-LINGO COMPANY**

SANTA ANNA, TEXAS PHONE 100



**Your Brakes HAVE SUFFERED MUCH WEAR From Hot Summer Driving, when car speeds are higher and overheating common. Don't take a chance on having them fail you in an emergency! Drive in now for a complete check-up and inspection. All adjustments, major or minor, at reasonable prices.**

**L. A. WELCH GARAGE**

Member Community Chamber of Commerce

**New Equipment**

Has been added to our gin during the summer months which will enable us to give you better ginning service.

We have added a new 50-foot set of Howe Scales, which gives us two complete scale units that will enable us to increase our production several bales per day. We have also added a new 230 horsepower engine and a new Air-Line Cleaner, which will help give you a better grade of cotton.

We are completely equipped to take care of all your ginning in the least time possible.

**For More Efficient and Faster Ginning Service Gin With**

**Santa Anna Co-Op. Gin**

R. R. TERRY, Manager

**Keep up with HOME TOWN NEWS at College!**

**College Special!**

**NINE MONTH SUBSCRIPTION To The Santa Anna News \$1.00 To College Students Only**

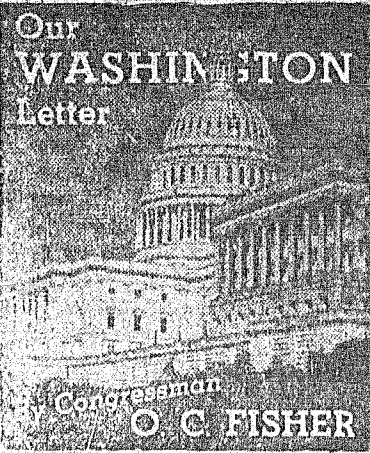
**We Offer Service That Pleases**

Sometimes it's hard to please everybody, but we try. If you buy one gallon of gas, or ten, or if you just want your tires checked - you always get the same courteous, efficient service - plus all those

**Good Gulf Products ROAD SERVICE**  
C. R. (Ray)

**Owen Service Station**  
PHONE 75  
Member Community Chamber of Commerce





With the House in informal recess until September 12 to enable the Senate to catch up with accumulated bills previously acted upon by the House, House members are occupied with committee work and visits home by some who are able to find the time. I will be able to spend a few days in the district, beginning with a visit to Brownwood on Labor Day where an annual celebration will take place.

The big West Texas Wool and Mohair Festival, to be held in Kerrville on October 3, 4, 5 and 6, is attracting widespread interest this year, according to reports. One big show will feature mohair and wool garments with the styling and needlework of youthful contestants from the ranches and farms of Texas being shown at their best. Mrs. John V. Saul, of Bandera, Publicity Chairman for the event, reminds that entries must be in not later than Sept. 15.

With the synthetics on the march these days, here's another chance to promote and dramatize the quality and looks that only the natural fibers can provide. To be able to enter the contest a girl must cut and sew and fit her own dress without actual help from anyone else. Entries should be sent to Mrs. W. B. Wilson, 1510 West Ave. J., in San Angelo.

Visiting in Washington last week was Mr. Clyde Wood, Senior Clerk in Charge at the Brownwood postoffice. While here he visited with his daughter and son-in-law, Mr. and Mrs. Ellis W. Evans and family. The latter has been with the Federal Power Commission for 10 years and now holds a very responsible position with that agency.

Other recent visitors have included Clyde Northington and John B. Langford of Lampasas; Capt. Robert C. Lee, Capt. Clark Farar, Mr. and Mrs. Merton West and daughters, Ann and Sue, all of San Angelo; W. Lee Watson of Brownwood, and Scott Bower and County Judge Galloway of Coleman.

"Hold your confederate money, the South will rise again!" In that spirit, the Confederate flags are seen a lot in Washington and environs these days. Even the House Page Boys, who live in a house across the street from my office window, have a large Confederate flag on display. Every-

body seemed to enjoy the fun except one Louis A. Salmon of Lynn, Mass., who protested the display of the Southern banner at the VFW convention at New York last week. "The Confederate flag", he said, "went out of existence at the end of the Civil War. This fad is dangerous."

But the State Commander from Alabama retorted: "If you try to drive the Confederate flag from this organization, you're driving the South out. We of the South are proud of our flag. 'Yankee Doodle' is played and we never objected."

Novelty shops in Washington say the publicity has increased business for them. The craze seems to be nation-wide. A student in Troy, N. Y. wanted two of the banners so badly he sent a local novelty a check for \$2.50. Actually the small flags sell for 59 cents each.

A man in South Dakota sent a check for two large banners. A woman in Elkhorn Wis., wrote that she obtained the store's address from Senator Byrd.

One Washington distributor reports "they're selling like hot cakes". One store here sold 10,000 of them the past year. Another Washington dealer reports: "I've sold more in the last nine months than in the last 15 years".

There's a difference of opinion about where the fad started, but it got a lot of attention when the Dixiecrats marched out of the 1948 Democratic Convention, waving the Confederate banners. Then when Charlie Justice came to play football for the Washington Redskins the Tar Heel supporters brought more than 400 flags to wave at the games where he played.

And so it goes. One Southern writer reasons that it's all a spontaneous outburst of an ideal, not confined to the South. "It stands for local self-government", he maintains. "It stands for a cause — and that cause is the right of the individual to carve out his own destiny and not have it planned for him by a central bureaucracy; that cause is the right of the local government to determine what is best for its people and not have this question decided by a far-removed agency."

It is as hard for a rich man to enter heaven as it is for a poor man to live on earth.

A bowlegged man can always be thankful he wasn't born a girl.

Subscribe for The News.

### PTA Organizes Monday Morning

The local Parent-Teachers Association met in the lunch room Monday morning, following the opening exercises of the school system. Plans for the year were discussed with all committee members being present along with all the officers.

Officers for the ensuing year are: President, Mrs. Paul Pembroke; Vice President, Mrs. Milton House; Secretary, Mrs. James A. Harris; and Treasurer, Mrs. Clyde Haynes.

Committee members are: Program, Mrs. A. D. Donham, Jr., Mrs. Roscoe Hosh, and Mrs. J. A. Dunn; Finance, Mrs. Otis Bivins, Mrs. Clyde Haynes, Mrs. Vernon Herring, Mrs. H. W. Foster, Mrs. Norval Wylie and Mrs. Grady McIver; Publicity, Mrs. John Gregg and Mrs. Raymond Greaves; Hospitality, Mrs. R. K. Green, Mrs. Jim Lovelady, Mrs. Harry Wigger, Mrs. L. A. McClellan, Mrs. Jack Mobley and Mrs. Noah Stacy.

Plans were made for the first regular meeting to be held Sept. 18, at 8:00 p. m. in the high school auditorium, when they will have their annual Family night program, with refreshments being served after the meeting.

### Attend Baptist State Meeting

The mid-year Baptist evangelistic conference was held at Dallas September 4.

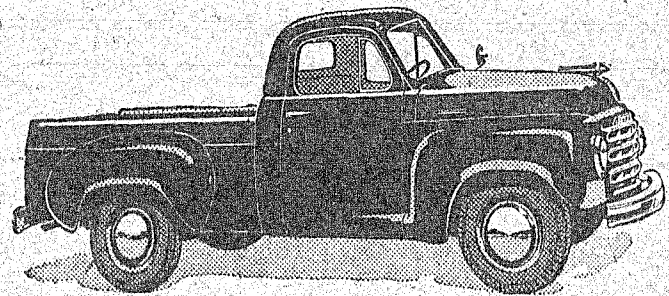
Louis Newman, Glynn McClure, Artie Irby, Julian Whitley and Rev. Harry C. Wigger attended from Santa Anna.

**Expert Vulcanizing**

On All Passenger Car Tires

Work Guaranteed

**Parker Auto Supply**



**Reduce On Operating Cost**

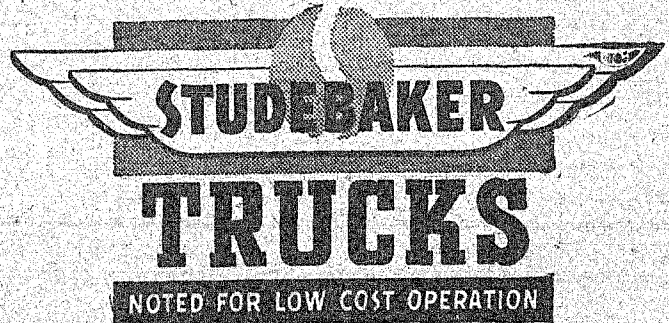
**SAVE ON REPAIRS**

**With A Husky STUDEBAKER PICK-UP**

**Doing Your Hauling**

Engineered right - built right - priced right - every Studebaker Pick-Up is a stand out in plus-value feature.

Stop in and check up on a Studebaker Pick-Up right away. Convincing recommendations from satisfied owners.



**Blackerby Motors**

Elm & Concho

Coleman

The evangelistic conference was held in conjunction with the quarterly meeting of the Executive Board of the Texas Baptist General Convention. Rev. Wigger stated that reports showed progress being made in the campaign to win 250,000 souls to Christ in 1951 to Texas Baptists.

The Board created a loan agency to give new Baptist churches help to build where they are unable to put up sufficient collateral for commercial loans. Mr. Newman is a member of the Board.

The Sunday school, Woman's Missionary Union, Brotherhood, and Training Union Departments of the churches are being asked to put forth extra effort to help win the 250,000 before the end of 1951. Sunday, September 16, was set as a day of prayer and teaching on soul-winning.

William Fleming of Fort Worth, president of the General Convention, is the originator of the 250,000-member drive. Mr. Fleming is an oil executive and an outstanding Baptist layman, devoting much of his time, energy and ability to the church work.

Mr. and Mrs. Carl Walker and children have returned from

**DR. A. M. FISCHER**  
CHIROPRACTOR  
Phone: Office 2421  
State Bank Bldg. Coleman

near Long Beach, Calif., where they spent the summer. Mr. Walker is the Sixth Grade teacher in the local Elementary school. They will live in the same place they did last year, in Mrs. A. E. Campbell's rent house.

Mr. and Mrs. G. W. Richardson visited his parents, G. P. Richardson, Sunday. They were on their way to Abilene, where they will make their home for the present, helping to take care of her mother, Mrs. P. H. Williams.

Mrs. Stafford Baxter returned to her home here last week from Lido Isle, Calif., where she spent the summer.

Many a man thinks he has an open mind when it's merely vacant.

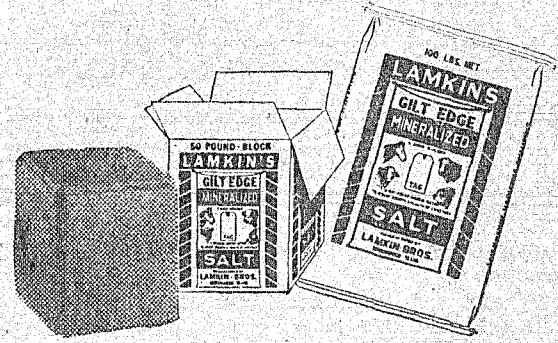
ATTEND CHURCH SUNDAY

**A1**

*None Better*

Coleman, Texas

To Be Well Groomed  
Clean Them Often



— FOR SALE BY —  
**Arrow Mills, Inc.**

# RUMMAGE SALE!

- Odds and Ends From The M & W Furniture Store  
At The Old Location On East Pecan Street
- SEVERAL GOOD USED SEWING MACHINES
- One Very Good "One-Minute" Washing Machine
- Several Odd Iron and Wood Bedsteads
- A Few Good Oil Cook Stoves
- Several Gas Heaters — Some in Very Good Condition
- Several Good Mattresses
- SEVERAL EXTRA GOOD DINETTE SETS
- You'll Want One Of These
- A Few Good Used Living Room Suites
- ONE LARGE MAHOGANY DESK
- LOTS OF ODD CHAIRS
- TWO VERY NICE BUFFETS
- Lots of Nice Used Tables — An Assortment of Sizes
- ONE CHILD'S SAND BOX — ONE HALF BED
- Several Good Dressers With Plenty of Drawer Space
- Three Leather Divans — Good Condition
- ONE OLD FASHIONED PHONOGRAPH  
It Would Make A Lovely Record Holder
- A Few Oil Heaters — In Very Good Condition
- A Few Odd Cabinets — Plenty of Shelves
- A FEW NEW LAWN MOWERS

- Several Gas Cook Stoves In Fair Condition
- One Display Counter — One Large Library Table
- Several Odd Divans — Some In Excellent Condition
- A Few Remnants Of NEW Linoleum Of All Kinds

These Pieces Must Go At Some Price - Any Of These Items You Need, You Can't Afford To Miss!

**McHorse Furniture Store**

W. C. (Bill) McHorse Coleman, Texas

Formerly M & W Furniture Store

**DEAD ANIMALS**  
*Un-Skinned*

REMOVED free

Call Collect

**BROWNWOOD 9494**

**BROWNWOOD Rendering Co.**

**NOTICE!**

I am sharpening and Repairing Lawn Mowers, Welding Water Heaters, Sharpening Scissors, Knives, etc, at my home — 404 Gross Street, Coleman.

**Bob Leavell**



# Oil Activities IN COLEMAN COUNTY

Operator is drilling below 3,000 feet at Miami Operating Co., Inc. No. 1 D. A. Parker, Section 26, Block 2, T&NO Survey, wildcat, two miles southwest of Novice. Proposed depth is 3,950 feet.

M. D. Plaisted, A. L. Plaisted & Ben Krawiecki, Waterdown, S. D., will drill the No. 1 H. M. May as a wildcat two miles southeast of Glen Cove.

Located 2,257 feet from the south and 2,315 feet from the east lines of T&NO Survey 1, it will be two miles southeast of recently opened Jennings Sand production.

Proposed depth is 3,600 feet with rotary.

Gilchrist Drilling Co. No. 1 P. Galloway is to be an offset in the Glen Cove area, 330 feet from the south and west lines of the 20-acre lease and 330 feet from the south and approximately 1,300 feet from the east lines of T&NO Survey 10. It is also slated for 3,600 feet with rotary.

Yeaman Drilling Co. No. 1 E. C. Coursey is to be a 3,300-foot rotary test four miles east of Coleman. It will be located 300 feet from the north and west lines of W. Savage Survey.

W. O. Fortenberry & C. L. Richardson No. 2 T. E. McDonald will be a wildcat two and one-half miles west of Santa Anna, 150 feet from the north and east lines of the lease and approximately 3,148 feet from the north lines of W. H. Bynum Survey 272. Slated depth is 1,990 feet with rotary.

Gilchrist Drilling Co. et al, have completed the No. 1 Charles L. Scott as a one-half mile extension to newly opened Jennings Sand production in the Glen Cove area with a gauge of 742.32 barrels of oil per day.

The oil, of 41 Gravity, flowed through 1/2-inch choke with 450 pounds in the casing. Flowing tubing pressure was 200 pounds.

Production was from the open hole in the Jennings section at 3,361-76 feet. Gas-oil ratio was 300-1.

The well is a half mile north of the discovery—the Luling Oil & Gas Co. No. 1 Whittington—which was completed for a potential of 422 barrels of oil a day.

Miami Operating Co. No. 1 T. J. Allen is to be a wildcat two miles south of Valera.

Location is 330 feet from the north and 990 feet from the east lines of Section 64, Block 1 Gilchrist Survey. Proposed depth is 4,000 feet with rotary.

Nash Dowdle of Midland is to start operations by September 7 at his No. 1 T. M. Hays, which is to be a 1,200-foot cable tool wild-

cat in southeast Coleman County. The prospector will be 11 miles southeast of Santa Anna and 4,000 feet from east and 1,500 feet from south lines of Section 92, Bonds & Sanders Survey.

It is to try for production in the Jennings Sand pay. The venture is one and one-half miles south of the Jennings field which produces from the sand to which the Dowdle wildcat is projected.

W. J. Murray & W. M. Smith No. 1 J. G. Wilson has been spotted as a wildcat 14 miles west of Coleman.

Slated for 3,000 feet with rotary, it will be 330 feet from the south and east lines of the west-half in Section 10, T&NO Survey.

An offset to the Jennings Sand discovery in the Glen Cove area has been completed. The new producer is Luling Oil & Gas Co. No. 2 I. G. Whittington, Section 11, T&NO Survey.

No. 2 Whittington had a daily potential of 71.69 barrels of 44.2 gravity oil. Oil flowed through 18-64 choke with 425 pounds on casing and 105 pounds in tubing, with production from 64 perforations at 3,357-65 feet. Operator set casing at 3,365 feet, total depth. Gas-oil ratio was 1,513-1.

In the Coleman County regular field, two miles west of Santa Anna, Rogers & Hartt of Wichita Falls, have staked an offset location as their No. 1 Mrs. Della Alexander.

Slated for 1,935 feet with rotary, it will be 150 feet from the north and west lines of a 80-acre lease in W. Doran Survey 666.

Lone Star Producing Co. of Dallas has staked an offset location in the Santa Anna Gas Field. It will be the firm's No. 2 W. J. Richmond.

Drill site is seven miles northeast of Santa Anna, 850 feet from the north and 5,169 feet from the east lines of Moses Little Survey 40 and 549 feet west of the Brown County line. Contract depth is 2,500 feet with rotary.

Brannon & Murray have plugged two projects in the county.

No. 2 Mrs. E. Banister, J. Scott Survey 665, offset three miles northwest of Santa Anna, was plugged at 1,913 feet.

Plugged at 2,138 feet was the No. 1 L. L. Shield Estate offset four miles southeast of Coleman in GH&H Survey.

United North and South Development Co. No. 1-C R. R. Browning is to be a wildcat two and one-half miles north of the Glen Cove area.

Proposed depth is 4,000 feet with rotary for the project located 330 feet from the south and 2,040 feet from the east lines of Section 14, H. N. Smith Survey.

### OIL AND GAS LEASES

Lloyd Evans et ux to H. H. Scott, \$10. 7 acres out of the NE corner of 20 acres out of T&NO RR Co. Sec. No. 10.

W. D. Smith et ux to Tri-M Production Co., \$10. Blocks Nos. 2, 3, 13, & 16 out of the Subd. of San Augustine University Sur. No. 519, containing 654 acres.

Ernest T. H. Barsch to Frank Lewis, \$10. 75 acres out of the Burnett Co. School Land Sur. No. 703.

J. P. Lesueur to G. L. Howse, \$10. 122.35 acres out of the Burnett CSL Sur. No. 703, Blk. 12.

L. S. West et ux to G. L. Howse, \$10. 116.5 acres out of the Brooks and Burleson Sur. 13 and 276.25 acres out of the O. N. Vaughn Sur. No. 14.

J. F. Henderson, et ux to G. L. Howse, \$10. NE 1/4 of Sec. No. 35, BBB&C Ry. Co. Sur.

George Pauley et ux to G. L. Howse, \$10. E 1/2 of the SW 1/4 of the BBB&C Ry. Co. Secs. 38&39.

A. J. Morrison et ux to G. L. Howse, \$10. 331 acres out of the BBB&C Ry. Co. Sur. No. 39 and NE corner of Burnett CSL Sur. No. 703.

L. S. West et ux to G. L. Howse \$10. 262.9 acres out of the BBB & S Ry. Co. Sec. No. 35 and Sec. No. 37 and R. H. Walker Pre-emption Sur. No. 113.

A. W. Simpson to M. T. Allsop \$10. 136 1/2 acres out of the B. Robb Sur. No. 6.

Mrs. Lula Lynch to M. T. Allsop \$10. 136 1/2 acres out of the B. Robb Sur. No. 6.

Roy S. Kilgore et ux to Hubert Stokes, \$10. 169.5 acres out of the

ETRR Co. Sec. No. 107, Blk. No. 3. W. Helm to Frank W. Burger, \$10. 150 acres out of the T&NO RR Co. Sec. No. 9.

Rose L. Brame to Frank W. Burger, \$10. 160 acres out of the NW 1/4 of T&NORR Co. Sec. No. 9.

Terry G. Smith et ux to Frank W. Burger, \$10. 160 acres out of the NW 1/4 of T&NORR Co. Sec. No. 9.

Dellah Franck et ux to Frank W. Burger, \$10. 160 acres out of the NW 1/4 of T&NO Ry. Co. Sec. No. 9.

John E. Emerson et ux to Frank W. Burger, \$10. 160 acres out of the SW 1/4 of T&NO Ry. Co. Sec. No. 9.

David J. Smyth to Frank W. Burger, \$10. 160 acres out of the NW 1/4 of T&NO Ry. Co. Sec. No. 9.

W. F. Galloway et al, to Gilchrist Drilling Co. \$10. 31.6 acres out of the J. H. Gibson Sur. 15.

Donald A. Coursey et al, to G. L. Howse, \$10. 168.91 acres out of the Richard Young Sur. No. 677 and H&GNRR Co. Sec. No. 1.

Geo. Pauley et al, to G. L. Howse \$10. NW 1/4 of Sec. No. 37 of the BBB&C Ry. Co. Sur. containing 160 acres.

L. S. West et ux to G. L. Howse \$10. 287.1 acres out of the BBB&C Ry. Co. Sur. No. 40.

Lon H. Love et ux to G. L. Howse, \$10. 285.3 acres out of the SE part of Sec. No. 40 BBB&C Ry. Co. Sur.

E. C. Coursey et ux to G. L. Howse, \$10. 6.8 acres out of the O. N. Vaughn Sur. No. 31 and 137.7 acres out of the Richard Young Sur. No. 677 and 181.6 acres out of the Brooks and Burleson 1/2 of Sec. No. 13.

Joe C. Barnes et ux to Nathan Donsky, \$10. West 158 acres out of the B. Alderata Sur. No. 273.

Cleve Bell Crenshaw et vir to M. T. Allsop et al, \$10. N 1/2 of the SW 1/4 of the Thos. Burnham Sur. No. 96.

Glen Edington et al to Homer E. Ogden et al, \$10. 640 acres out of the GH&H Ry. Co. Sec. No. 14 Blk. 2.

Joe Bailey Smith et ux to Homer E. Ogden et al, \$10. 309.3 acres out of the GH&H RR Co. Sec. No. 12.

### City Announces

### Rate Increase

### On Sewer Outlets

The City Aldermen announce this week that an increase of 25 cents in the sewer rate for Santa Anna will go into effect September 15.

The new rate will be 75 cents per commode in the residential area and \$1.25 in all other structures, which includes the business district, service stations, etc.

Dick Bass, City Manager, stated that this rate applies to every place of residence or business in Santa Anna, and that where two or more commodes are in use, the rate applies to each commode. In other words, in the residential area in homes that have one commode, the rate will be 75 cents, with two commodes the rate will be \$1.50, etc.

The sewer rate will be added to the water bill each month, the same as has been the policy in the past.

### Lt. Col Gregg To

### Arrive Home Soon

Mr. and Mrs. J. J. Gregg received word recently that their son, Lt. Col. J. J. Gregg, Jr., was on the way home and that he was expected to arrive here next week.

Lt. Col Gregg received the following Commendation from the Korean Army as he departed for the United States:

To: Lt. Col Joseph J. Gregg, Jr. Adjutant General's Corps (Infantry), United States Army, United States Military Advisory Group to the Republic of Korea.

Upon the occasion of your departure from Korea as well as the Adjutant General's Office for the United States of America, I wish to take this opportunity to commend you for an outstanding performance of military duty as the Senior Advisor to the Adjutant General's Office of the Korean Army since your assignment up to the present time.

You distinguished yourself of eminently meritorious service to the Republic of Korea in the position of grave responsibility during the period from 1 August 1950 to 21 August 1951. Your display of aggressive leadership, initiative and sound planning advances in maintaining a high standard of proficiency and executing administrative function in the Ad-

jutant General's Office was of great assistance in the administrative operations of the Korean Army and contributed in a high degree to the success of the United Nations Campaign against the Communists aggressor. Despite extreme difficulties your resourcefulness and professional knowledge of military science has always served as an inspiration and comfort to the officers and men who worked with you and proved yourself of inestimable value in the efficient oper-

ation of the office. The brilliant merits you rendered during your tour in Korea will be forever recorded in the History of the Republic of Korea and engraved in the minds and hearts of the Korean officers and men. I extend my personal appreciation to you for splendid service and wish your success and happiness in the future.

Lee Chong Chan  
Major General, Korean Army  
Chief of Staff

Mr. and Mrs. O. T. Stacy and Jane visited relatives Sunday in Trickham and Santa Anna.

Kathryn Baxter left Tuesday for Waco, where she will teach this year.

"The Grand Old Man of the Air Force" M/Sgt. Host W. "Pop" Little, is now serving his 43rd year in active duty. This is believed to be the longest active duty of any non-commissioned officer in the Air Force.



**PIGGLY WIGGLY**

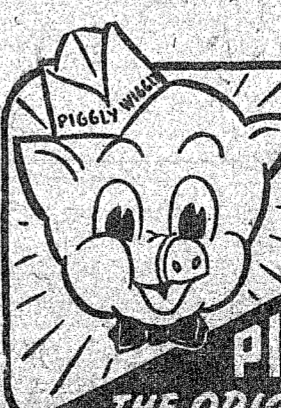
THE SIGN OF FRIENDLINESS AND GOOD GROCERY GOODS

<p>MRS. TUCKER'S <b>Shortening</b> 3 Lb. Ctn. <b>79c</b></p> <p>HEART'S DELIGHT <b>Grape Fruit Juice</b> 46 Oz. Can <b>25c</b></p> <div style="text-align: center;">  </div> <p>SEVEN <b>Steak, lb.</b> .69</p> <p>SLICED - LEAN <b>Bacon, lb.</b> .43</p> <p>READY TO EAT <b>Picnics, lb.</b> .53</p>	<p style="text-align: center;"><i>Value Parade of CANNED, PACKAGED BOTTLED GOODS!</i></p> <p style="text-align: center;"><b>New Pack Canned Goods</b></p> <p style="text-align: center;"><b>Now Here!</b></p> <div style="text-align: center;">  </div>
---	--

## Hey, Kiddies!

Next Monday, September 10th, Is The Date. FREE BALL and BAT To The One Who Brings Us The Most Wheaties Box Tops!!

<p><b>WHEATIES, Large Pkg.</b> .23</p> <p>COOKS IN 7 MINUTES <b>KRAFT DINNERS, 2 Pkgs.</b> .29</p> <div style="text-align: center;">  <p><i>We've Everything for SALADS!</i></p> </div> <p>THOMPSON SEEDLESS <b>GRAPES, 2 lbs.</b> .25</p> <p>PASCAL <b>CELERY, Stalk</b> .15</p>	<p>FOAM KIST <b>TUNA, Can</b> .23</p> <p>SUNSHINE KRISPY <b>CRACKERS, lb. box</b> .29</p> <p>TENDER KRISP <b>LETTUCE, Head</b> .13</p> <p>SUNKIST <b>LEMONS, lb.</b> .15</p> <p>CALIFORNIA WHITE <b>POTATOES, lb.</b> .06</p>
--	---



**"FIRST SINCE 1916"**

**PIGGLY WIGGLY**

THE ORIGINAL SELF SERVICE

<p>EVAPORATED <b>Apples or Apricots Package</b> .49</p> <p>CHEWING GUM ALL BRAND <b>3 For</b> .10</p> <p>Coca Cola - Dr. Pepper 7 Up <b>Carton</b> .19</p>	
--	--

## Queen Theatre

**Friday & Saturday**  
SEPTEMBER 7 and 8

Robert Mitchem - Barbara Hale

—IN—  
"West of the Pecos"

**Sunday & Monday**  
SEPTEMBER 9 and 10

Ginger Rogers - Jack Carson

—IN—  
"The Groom  
Wore Spurs"

**Tuesday & Wednesday**  
SEPTEMBER 11 and 12

Joel McCrea - Dean Stockwell

—IN—  
"Cattle Drive"

IN TECHNICOLOR

**Thursday**

SEPTEMBER 13

Ray Milland - Nancy Davis

—IN—  
"Night Into Morning"