

THE STATE LINE TRIBUNE

"OFFICIAL PUBLICATION OF PARMER COUNTY"

NUMBER 50

SIXTY-FIRST YEAR

10 CENTS

First Time For Girl - -

LaShawn Sheets Awarded Full Basketball Scholarship

LaShawn Sheets, pert, vivacious brunette, has made sports history in Farwell High School. For the first time a full

basketball scholarship has been awarded to a girl.

Jack Williams, high school principal, stated that to his knowledge this is a first. "I used to be girl's coach," Williams said, "and I had lots of great players, but back then they just didn't give full scholarship to girls."

Winning a full basketball scholarship to Weatherford Junior College has become a fitting climax for Miss Sheets to a high school basketball career filled with records made, broken and awards won.

LaShawn made all-district three out of our of her high school years. She won letters in her sophomore, junior and senior years. She also made the all-tournament teams in 1972 and 1973.

In 1973 she was awarded the Chamber of Commerce Award for "Most Outstanding Athlete," and a trophy for being the "Most Outstanding Forward."

This past spring she was chosen to play in the Third Annual Panhandle Girls High School All-Star basketball game. The game was played in Amarillo's Civic Center Coliseum, on March 24. Gayle Nicholas, girl's basketball coach at Farwell, stated that it was at this time LaShawn was scouted by college coaches and she feels it was because of this exposure she was offered the scholarship which she accepted to Weatherford Junior College in Weatherford, Tex., plus one to J.F.K. Junior College at Wahoo, Neb.

Records broken by LaShawn in 1973 include: "Most Points in One Game" in which she scored 44 points to break the record made by Jackie Gast in 1966; "Highest Field Goal Percentage in One Season", which was 40 percent to break the record of 38 percent set by

Debbie Chandler in 1969.

She scored the "Most Points in One Season", 610 to break the record of 544 set by Jackie Gast in 1967; made the "Most Free Throws in One Season", 260 to break the record set by Ellen Herington of 210 in 1969; and made the "Highest Free Throw Per Cent in One Season" by making 73 percent to break her own record of 70 percent in 1971.

She scored 28 "Free Throws

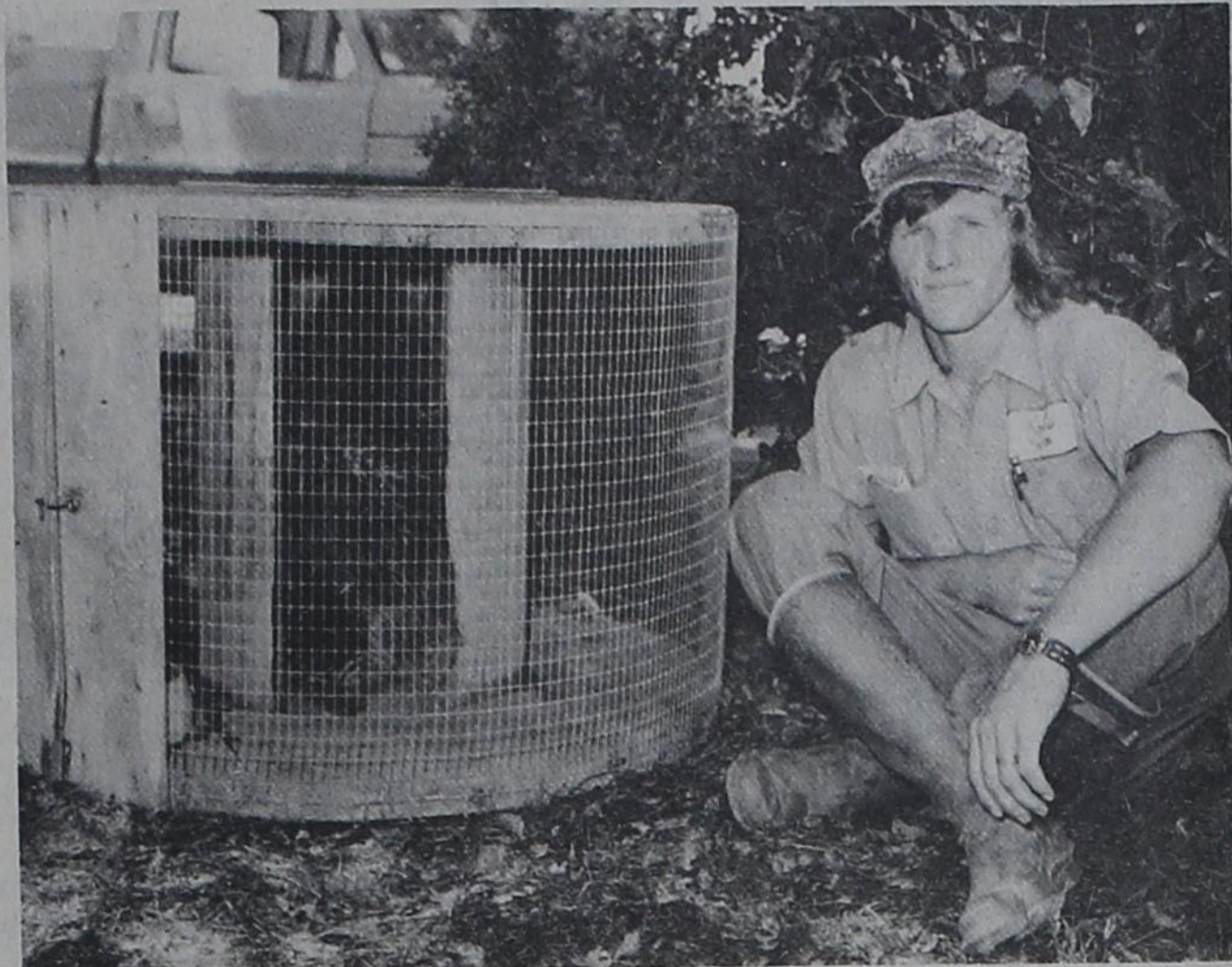
in one Game" to break the record of 16 made by Ellen Herington in 1968; and made the "Highest Points Average" of 1973 with 19.6.

Coach Gail Nicholas is justifiably proud of her star and states, "I believe she has a good chance of going a long way in her sports career."

LaShawn is scheduled to leave for Weatherford Tuesday, Sept. 4, to begin her college days.



WINS FULL SCHOLARSHIP - Signing her contract for a full basketball scholarship is LaShawn Sheets, seated, daughter of Mr. and Mrs. Harry Sheets of Farwell. Pictured with her coach, Gayle Nicholas, LaShawn has made sports history at Farwell High School by becoming the first young lady to be awarded a full basketball scholarship. She will leave for Weatherford, Texas, Junior College Sept. 4.



A PRICKLY PROBLEM - Mack McFarland sits beside a cage containing a well hidden porcupine. Mr. Porky was captured in the McFarland yard in Farwell early Monday morning. Mack says that whoever lost the prickly pet can have him back by calling the McFarland home - soon. A porcupine of this size is not often seen in this area, let alone being a city dweller.

Study OKs Project - -

Nursing Home Feasible For Farwell Community

The Hospital and/or Nursing Home Feasibility Study done by Charles L. Monnot, Jr. and Associates of Oklahoma City was presented to the Farwell Chamber of Commerce this week. Several months ago the Chamber authorized the Oklahoma company to conduct a study to determine the need and the practicability of a Hospital or a Nursing Home being built in Farwell.

The results of the study indicate that a hospital complex is not practical at this time for Farwell. The report cites the area hospitals with their current low rate of bed capacity as one reason for discouraging the hospital idea.

However, the report says that a nursing home for the town would be feasible and financially self-supporting. In its comprehensive written report, the Company says that in its analysis of the data regarding nursing homes in our area it becomes obvious that there is a definite need for another nursing home.

The report lists these factors as leading to this conclusion: (a) All surrounding Nursing Homes are virtually full with waiting lists. (b) A Nursing Home can be operated with the physicians in the area. (c) Such a facility in Farwell would be able to take advantage of the diversity between the New Mexico and Texas welfare laws. (d) There is adequate population in the service area to support a new home. (e) Farwell and Clovis are growing vital communities with a strong economic base. (f) Such a facility would be economically practical.

The report continues with the recommendation that a 60-bed facility be built because this is the minimum economical size to obtain the most from the size staff necessary to run a Home. Also, the report says

that the facility should be built to the skilled nursing home standards so that it could be operated for any of the three types of care. However, it says, it would appear that an ICF-3 Home should be operated at this time.

Texas has three classifications of Nursing Homes: (1) ICT-2 requiring no nursing staff, (2) ICF-3 requiring an LVN on duty 16 hours per day and (3) skilled nursing home requiring a RN 40 hours per week and a LVN (or RN)

around the clock.

The report also recommends that a new doctors clinic be built in conjunction and as a part of the new Nursing Home as this would maximize the utilization of the local physician's time.

In regard to the ownership and financing, the report lists several options; such as, it could be a private institution, or City owned, or some type of trust arrangement could be worked out. Financing would also offer several options, but

probably the cheapest route would be general obligation bonds, according to the report. The Small Business Administration or other mortgage type arrangements are also possibilities.

In support of its conclusions, the 46-page bound report has many charts showing factors such as population, distance, other area facilities, use of these facilities and governmental reports taken from the Department of Health, Education and Welfare records.

★ Wolverine 'Clean Up' Game Slated

Friday, Aug. 31, has been selected as the day for Texico's Wolverines to "clean up" during a clash with the Lazbuddie Longhorns. Play is scheduled to begin at 4 p.m. CDT in Wolverine Stadium.

Admission for students will be a bar of soap with all proceeds being donated to Wolverine team members for use in the showers.

Football Fever - -

Contest Starts Next Week

It's that time again! As the chill of autumn air approaches, comes the greatest fever of all Americans - FOOTBALL FEVER! To add to the excitement, the State Line Tribune will begin its fifteenth annual area Merchant's Football Contest on Sept. 7 when both Farwell and Texico varsity squads play their first games of the season.

The contest will run for 12 weeks ending Friday, Nov. 23, during which hundreds will be trying to win the grand prizes and the weekly prizes. Rules of the game will be the same as previous years.

Ten games are listed in the Tribune each week. Entrants must circle or otherwise indicate their choice of winner for each game. A Game of the Week will be listed on the entry blank, which entrants must guess the score of this game in order to determine the weekly winners in case of a tie.

Texico - -

Band Boosters Slate Meeting

Texico Band Boosters scheduled a meeting for Thursday, Aug. 30. The group was to meet at 8:30 p.m. in the high school cafeteria.

Election of officers was on the agenda, reported Howard Whitener, president. He also said that some band calendars were still available and could be obtained at the school.



NEW FACE AND VOICE FOR NEWS - Tribune, Sue Kirkland speaking! has been the cheery message heard when persons have called the office of the State Line Tribune this week. Mrs. Kirkland began duties this week in the news gathering department. She will also assist in the many other phases of the newspaper office. For all club and civic reports and society news, Sue will appreciate your calls as she is here to help you.

Morgan Billington Dies In Veteran's Hospital

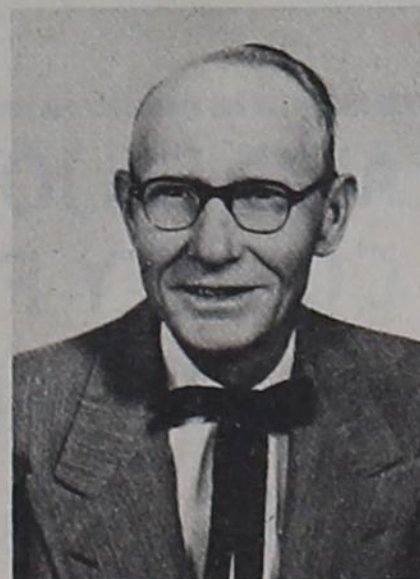
W. Morgan Billington, 63, of Texico died Tuesday, Aug. 28, in the Veteran's Hospital in Albuquerque, following a long illness. Mr. Billington was born Nov. 11, 1909, in Eric, Okla.

Services were to be Thursday at 2 p.m. MDT at First Baptist Church in Texico, with Rev. John Summers officiating assisted by Rev. Cliff Ennen. Burial was to be in Texico Cemetery. Steed-Todd Funeral Home was in charge.

Pallbearers were to be W. D. Howard, Johnnie Chappell, Bill Boling, Melvin Venable, Frank Jones and Silas Jones.

Mr. Billington was a retired water superintendent. He was a member of the Texico Baptist Church and a member of American Legion Post No. 25.

Survivors are his wife, Ophelia; one son, Bill of San Antonio; one daughter, Jill Armstrong of Canyon; a granddaughter, Michelle Dee Armstrong; sisters, Inez Montgomery and Juanita Mussetti, both of California; brothers, Sterlyn of Farwell, Victor of Lubbock and Jim of Phoenix, Ariz.; and numerous nieces and nephews.



MORGAN BILLINGTON

Watermelon Feed - Scrimmage Is Tonight

Farwell Booster Club will sponsor a watermelon feed for Steer fans and team members after tonight's scrimmage.

The Steers will scrimmage Morton tonight (Friday) in Steer Stadium at 8 o'clock. Everyone is urged to turn out and support the team and enjoy watermelon.

It is also time to sign up for Booster Club membership this year, say club officers. The membership dues go to finance the filming of all Farwell Steer football games and for the purchase of some blazers and jackets for all athletes, both boys and girls.

PURELY PERSONAL

by John

Last week the Panhandle of Texas was hot. Many communities set all time thermometer reading marks on these dates in August. Also a glance at Brother True's big weather map each evening showed that many other parts of the country were likewise sweltering in late summer heat.

We mention this because really at the 100 or so degrees registered in these parts, it wasn't unbearable. We are prepared for heat out here and can cope with it handily. Not so in other parts of the world where even temperatures in the 80s are looked upon as hot.

Our daughter-in-law Judy enclosed a clipping from their Glasgow, Scotland, newspaper in her last letter to the home folks. We would like to pass it along as an example of misery elsewhere. We out here are usually luckier than we think.

"THE BIG 'SIZZLE' GOES ON" is the story heading in the Glasgow news. The article continues: "Glasgow was having another 'sizzler' today as the temperature again climbed steadily toward the 80 degree mark. And weathermen were confidently predicting that the 'scorcher' could last for several more days. The heat has already caused trouble at some factories with workers walking out because of the high temperatures."

But the high temperatures were being compounded by another woe for the thirsty Scots because the story continues: "The blistering sun has also worsened the big beer shortage. More than 100 deliverymen at the Scottish and Newcastle Breweries depot, Port Dundas, Glasgow, are on strike over a manning dispute."

"Draught stocks are running dry in at least 40 pubs and hotels in the Glasgow area and many are likely to reach drought levels soon."

Aye laddie, 'tis wussern ye ken, with 80 degrees and no brew in bonnie Scotland.

The professional football pre-season games are beginning to look like a re-run of some of last fall's games. The Cowboys are again gallantly snatching defeat from the jaws of victory. The return to last year's form was not what my last issue of the Bob Lilly Report said that they were going to do this year. Well, most column writers are wind bags anyway. Present company excluded, of course.

Read an article where it is estimated that all the cows in the country were belching 50,000,000 pounds of noxious gas into the atmosphere each day and thereby polluting the atmosphere. It was a good "put on" with just enough truth to make an impression on some of our over-educated dumbheads in Washington. We wonder when the next Select Senate Committee will be formed to belch noxious gases on the airways in pursuit of air pollution by our prospective beef steak supply. Such action would be "par for the course" in foggy bottom.

The reduced size of many of the country's metropolitan newspapers is being laid to the severe paper shortage. The reduced size of the Tribune the last several weeks can be attributed to lack of help in the editorial department. Hopefully we will solve our woman-power crisis and can resume a larger weekly effort.

However, do not discount the effects of the paper problem on the country's press. Fortunately, the papers in the Golden Spread have not been faced with shortages of newsprint as yet but we are expecting that possibility by late winter.

Our advise: don't throw away your old newspapers, you may need them later on for more mundane paper uses.



Second-class postage paid at Farwell, Texas 79325. Published every Friday.

SUBSCRIPTION RATES - Farmer and adjoining counties, \$4.50 per year; elsewhere, \$6.00 per year. Payable in advance.

John Getz, Editor and Publisher

Texico Classes Elect 1973-1974 Officers

Texico students elected class officers and Student Council representatives during class meetings conducted this week.

Senior class officers chosen are Curtis Lindley, president; Duane Kelley, vice-president; Diane Luce, secretary; Cindy Cain, treasurer; Regina Kelley, reporter; and Starla Doshier, parliamentarian. Student Council representatives elected are Duane Kelley and Marticia Rogers.

Junior class officers are Roy Hagler, president; Elaine Kelley, vice-president; Beverly Duncan, secretary; Max Winkles, treasurer; and Roger Pace, parliamentarian. Student Council representatives are Charlotte Smith, Carol Eshleman and Freda Leavell.

Sophomore officers are Rusty Rucker, president; Tommy Galvan, vice-president; Gia Crooks, secretary; Sheila Hall, treasurer; and Sharon Lindley, parliamentarian. Student

Council representatives are Vicki Snodgrass and Cheri Tharp.

Freshman officers are Debra Stephens, president; Richard Hadley, vice-president; and Chris Eshleman, secretary-treasurer. Student Council representatives are Kim Harrington and Mark Howard.

Eighth grade officers are Terry Rucker, president; Karen Hadley, vice-president; and Steve Turner, secretary. Student Council representative is Ricky Smith, and David Newcomb is alternate.

Seventh grade officers are Sheryl Day, president; Elizabeth Rojas, vice-president; and Toyne Harrington, secretary-treasurer. Student Council representative is Karen Harrison. School enrollment from last week is unchanged in high school, and elementary school reports four new students.

Texico Schools will not have classes Monday, Sept. 3, which is Labor Day.



SUSAN SNODGRASS, on her horse, Blue, was among the 450 youngsters competing in the National Finals Rodeo in Odessa recently. Susan, daughter of Mr. and Mrs. Roy Snodgrass of Texico, competed in the pole and flag events and finished sixth in the pole event.

'Battle Of The Bands' - -

Rock Groups To Perform At Hereford's Jubilee

Four popular groups will create six solid hours of rock music on the night of Aug. 31 at a "Battle of the Bands" in Hereford.

Featured bands in the concert will be "Black Water Draw", "Fresco", "Salty Dog" and "Badge". These rock groups were nominated by area disc jockeys as the best groups from their region.

Each of the four bands will stage an hour's concert beginning at 7 p.m. at the Deaf Smith County Bull Barn. The winning band will then be announced during intermission and the selected group will entertain the crowd until 1 a.m. Saturday.

Tickets for the marathon concert will be \$2 each and may be purchased at the door the night of the performance. The "battle" is being sponsored by the Hereford Texas Diamond Jubilee Celebration.

WHAT'S COOKING AT FARWELL SCHOOL

MONDAY--Fish crispies, tartar sauce, peas, carrot salad, creamed potatoes, peach cobbler, bread and milk.

TUESDAY--Vegetable stew, crackers, pimento cheese sandwich, plain gelatin, peanut butter cookies and milk.

WEDNESDAY--Porkets and gravy, mashed potatoes, buttered corn, chilled tomatoes, graham crackers supreme, pears, bread and milk.

THURSDAY -- Hamburgers with relishes, cheese slices, potato chips, strawberry shortcake and milk.

FRIDAY -- Fried chicken, creamed potatoes with gravy, green beans, lettuce and tomato salad, peaches, bread and milk.



U.S. Supreme Court Justices do not have to be lawyers.

At Steer Stadium - -

School Board Will Sell Parking Spaces

Farwell School Board has decided to sell parking spaces at Steer Stadium for all varsity, junior varsity and junior high football games again this season.

These parking permits will be sold at the superintendent's office on Tuesday, Sept. 4, at 10 a.m. Prices for the permits will be \$10. This will reserve all purchasers a parking space inside the football field. No one will be allowed to park inside the field without a permit.

and 7:30 CST. The first home game for the junior varsity and the junior high teams will be on Sept. 6 at 5:30 p.m. with Friona.

Ticket gates will open at 7 p.m. CDT and 6:30 CST. Prices will be \$1.50 for adults and 50 cents for students.

School Cafeteria - -

Booster Club Sets Meeting

Farwell Booster Club will have its first meeting of this season Tuesday, Sept. 4, in the school cafeteria at 8 p.m.

The meeting is open to the public and both men and women are invited to attend. Membership dues for the new year are now payable, and new memberships are needed.

The Booster Club films all Farwell Steer football games and then views each at the next meeting following the game.

Numbered tickets will be issued and this number will correspond to numbers on the fences designating the parking spaces. Consideration will be given to those people who, because of health conditions, need a place to park, according to W. M. Roberts, superintendent. Spaces not sold on Sept. 4 will remain on sale until the Seagraves game, Sept. 28.

The first home game for the varsity will be Sept. 28 with Seagraves. This will be the homecoming game. Game times will be at 8 p.m. CDT



Nicholas Appert was awarded a prize of 12,000 francs by Napoleon for his invention of canning.

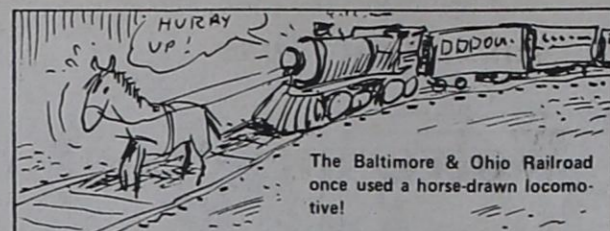
Sherwood Mortuary

Ph. 762-4435
At Any Time

920 Main St.
Clovis, N.M.

James E. Hass

MEMBER OF
NFDA & NMFDA



SMALL ENOUGH TO KNOW YOU LARGE ENOUGH TO SERVE YOU

4 SEASONS RV CENTER, INC.

'We Give You More'

AUTHORIZED DEALER FOR HOLIDAY RAMBLER, PROWLER AND WINNIEBAGO

LOCATED ON U.S. 60 - 84, 2 MILES WEST OF CLOVIS, N.M.

"KOA - KAMPGROUNDS"

CARL AND JUDY CARTER

763-4650

P.O. DRAWER M CLOVIS, N.M. 88101

IRRIGATION SUPPLIES

★ TOOL BAR RIGS

★ NICHOLS SWEEPS

AND A LOT OF OTHER STUFF FOR FARMERS

AT

OKLAHOMA LANE FARM SUPPLY

WELCOME NEIGHBOR THE CURRY COUNTY FAIR IN CLOVIS SEPT.

Have you a good fair entry? We welcome entries in all divisions except junior. Try our new photography division this year, or the leathercraft, foods, canning, baking, needlecraft, fruits and vegetables, field crops, gems and minerals, cultural arts, flower snow, clothing.

Be sure and visit our Home-Arts Building and see the various demonstrations that will be going on all during the fair, especially the cookie bake-off on Friday, Sept. 7, from 3 to 7 p.m.

SPECIAL—\$5.00 award for the biggest watermelon biggest pumpkin tallest corn stalk.

BRING THE FAMILY AND ENJOY THE GREATER CURRY COUNTY FAIR FAIRGROUNDS, CLOVIS N.M. SEPTEMBER 5th. thru 9th.

ATTENTION FARMERS!

Attend The Pioneer Crop Information Field Day.

THURS. AUG. 30

Marlon Inman Field
8 Mi. N.W. Of Muleshoe
On U S 84 -Sorghum Plot

FRI. AUG. 31.

Tom Ware Field - - 7 1/2 Mi.
West Bovina On Fm 2290
Corn Plot

FROM 2-5 pm. EACH DAY
REFRESHMENTS SPONSORED
BY PIONEER HYBRID CO. AND
YOUR LOCAL PIONEER DEALER.



TURNER'S

E.O.M. SALE

WOMEN'S DRESSES **70% off**
JR's - Petite - Misses

1-GROUP SPORT SWEAR **70% off**

KNIT PANTS **888**
WAIST 30-38

MEN'S SHORT SLEEVE SHIRTS **2⁰⁰**
Broken sizes

TOWELS	REG	SALE
Asst. Colors	2.50	BATH 1.88
	1.50	HAND 1.13
	.75	WASH .59

BLANKETS Val. to \$12⁰⁰ **20% OFF**

Ladies Shoes Broken Sizes **\$2⁰⁰**

OTHER CLEARANCE REDUCTIONS

FREE PARKING IN REAR



Hagerman First Game - -

Wolverines 'Lookin' Good' In Pre-Season Scrimmage

by Domingo Rojas

The Texco Wolverine football squad looked very good Saturday afternoon, Aug. 25, when it scrimmaged the Tatum Coyotes at Tatum, N.M. Both teams were scoreless in the game.

According to Coach Bucky Walters, the Wolverines performed very well. He also commented that the defense was "looking very tough for this early part of the season." Walters said the Wolverine defensive line held the Coyotes back in their territory during most of the game and commended the linebackers "who played real good football."

Coach Walters said that the offensive backs were moving the ball very well and they showed a great deal of speed. Some of the sophomores are looking very impressive, according to Coach Walters.

In listing 1973-74 players, Walters commented that Senior Randy Harrison will probably be the starting quarterback but will be out of action for a while because he suffered injuries to his foot in a motor scooter accident.

The Wolverine Senior roster and coach's comments also includes:

Eugene Wallace - will make a good offensive guard and defensive linebacker.

Craig Chumley - will be the offensive center and defensive linebacker.

M. H. Askew - will be the offensive tight end and defensive down end.

Curtis Lindley - will start at halfback and defensive middle safety. Lindley will also help out Harrison in the quarterback slot.

Jeff Brown - a tough defensive down guard and a strong offensive tackle.

Raymond Cantu - will be playing his second season of football and is a tough offensive guard or tackle and a defensive end.

Dwayne Kelley - will be one of the offensive guards and will also be playing left down end on defense.

JUNIORS

Jimmy Ortiz - will be a speedy split end and defensive linebacker.

Roger Pace - a big and tough offensive tackle and also a defensive down guard.

Steve Harrington - will make a good tight end who can catch the ball very well and is a good runner.

Kevin Stanley - will be one of the defensive down ends.

Albert Galvan - will be working on the defensive as safety.

James Steward - a quick offensive halfback who can run very well. He will also work on the defense as safety.

Sammy West - a tough offensive fullback and defensive down guard.

Ernest Woods - will be working as offensive guard and defensive end.

SOPHOMORES

Tommy Galvan - will be an offensive halfback and defensive safety.

Spencer Turner - will be one of the ends on offense and down end on defense.

Tony Summers - will make a big defensive tackle.

Ronnie Ruiz - will be playing offensive guard and also de-

fensive down guard. Eddie Taylor - will be an offensive tackle.

Mike Leatherwood - will be a defensive guard.

Robbie Bradley - will be an offensive center.

Ricky Gonzales - will be one of the defensive safeties.

Rusty Rucker - will be a defensive deep safety and offensive halfback.

Coach Walters, who expects to see a fine season with the Wolverines, said the Wolverines hit hard against the Coyotes and are working out real hard during the practice sessions.

Walters also stated that the season opener is going to be one of the "tough ones" as the

Wolverines meet the Hagerman Bobcats Friday, Sept. 7, at 8:30 p.m. CDT on Bobcat territory. Coach Walters said the Bobcats have a very fine team with a lot of returning lettermen. They also have a back who is a very fine sprinter. According to Walters, the Bobcats are also under a new coach, Barry Coffman. "Our club's main asset is our speed in the offense and good strength in the defensive line and linebackers," added Walters.

The Wolverines are scheduled to scrimmage the Lazzbuddie Longhorns Friday, Aug. 31, at 4 p.m. in Wolverine Stadium to further prepare for their clash with Hagerman.

Short Agenda, Long Meeting - -

Council Discusses Drainage & Meters

Farwell City Commission sat for its regular fourth Monday of the month meeting at the City Hall August 27 at 5:15 p.m. Members present for the meeting were Mayor Gil Patschke and Commissioners Fred Chandler and Jim Berry. Also present were City Attorney Charles Aycok, City Clerk Janie Bowery and V. C. Venable and Dee Hammit from the city water department.

The Commission took up the matter of old business first and reviewed names for membership on the Planning and Zoning Commission. After considering a list of suggested individuals, Mayor Patschke agreed to contact these persons and get their consent to serve on this board.

Bob Lydick, engineer for the proposed paving program, then presented his proposal to create a drainage way running east of the City and thence north under US Highway 70-84 to the City property on the other side of the railroad tracks.

Following the drainage presentation, Lydick told the Council that the cost to the City for paving with curb and guttering the intersections in the proposed paving areas would be between \$13,000 and \$14,000. The Commission accepted this along with a 10 per cent participation in the balance of the paving program costs.

The Council then took up the matter of supplying water outside of the city limits. After

a lengthy discussion it was decided that the City would furnish water provided the applicant paid the full costs of the meter plus installation and connection charges along with a meter deposit.

The question of pay raises for City employees was tabled for further study by the Council members.

Appearing at the end of the meeting, Albert Johnson commended the Commission on the weed cutting campaign and also asked that the dog ordinance continue to be enforced.

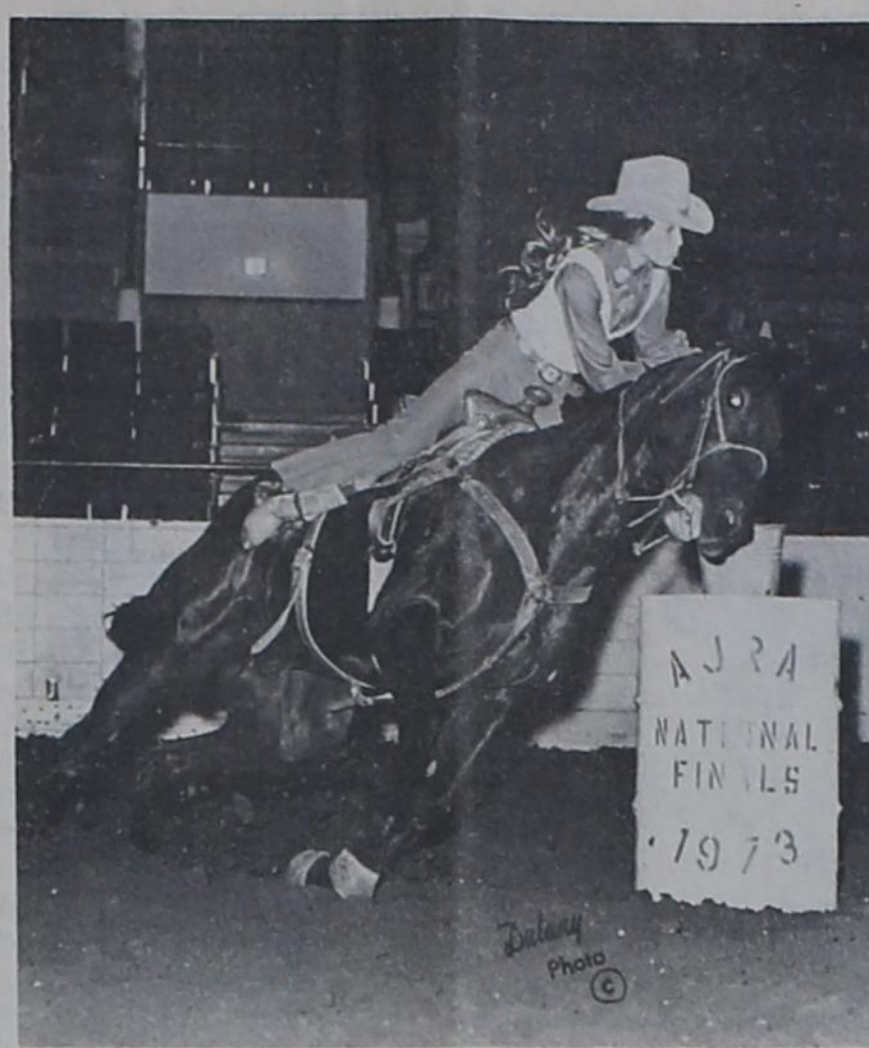
The Commission will next meet on Monday, Sept. 10, and persons wishing to appear before the City Council must get on the official agenda at the clerk's office before 5 p.m. the previous Friday.

Help! Support Pep Rallies

All football fans are urged to come out and root the Farwell Steers onward at the pep rallies prior to each game.

The rallies will be in the high school gymnasium each Friday from 3 to 3:25 p.m., except for games that require school being dismissed early. At that time the pep rallies will be held one hour earlier.

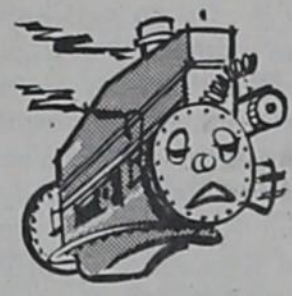
The Steers need fan support and this is a great way of backing them, say Steer boosters.



COMPETES IN FINALS - Lori Norton of Farwell is shown on her horse Midnight as she competed in the barrel racing event during the AJRA National Finals Rodeo in Odessa, Aug. 15-18. Lori competed in barrels, flags and poles, and finished seventh in poles. She was accompanied by her parents, Mr. and Mrs. Darrell Norton.



WANTED!



SLUGGISH ENGINES

Pep-up that engine now. See us for the expert tune-up you need.

Karl's Auto Clinic

Smokey And Fred
481-3687 Farwell

Steers Defeat White Deer In 'Real Fine Scrimmage'

"Both the Varsity and Jr. Varsity made mental mistakes as usual for early season play," according to Coach Toby Booth, but the Farwell Steers played a "real fine scrimmage as far as hitting" against White Deer in pre-season play Friday, Aug. 24, at Friona.

In commenting on the Steers performance during Friday's action, Coach Booth said the backs looked fine. The Steer line issued a better effort and looked quick while linebackers Kevin Hardage and Gene Christian "looked good". According to Booth, Barry Goldsmith and Jesse Cantu "did a good job in the line" for the Steers.

Two of the outstanding plays during competition occurred when Carl Kirkland scored on a 70-yard pass play and Mike

Woods broke clear of White Deer's defense and scored on a 65-yard run.

In summarizing action by the Steers during the pre-season clash, Booth stated "the defense looked much improved and our offense was fair."

In B team competition, Booth commented that the boys "looked outstanding." In commenting on individual players, the coach said quarterback Mike Goetsch "looked

better" and Gerald Hardage looked good on defense. He also stated that Joe Haseloff looked good and Brad Jones had good hands at catching the ball.

Both the Steers Varsity and Jr. Varsity have been scheduled to battle Morton in another pre-season scrimmage Friday, Aug. 31, at 8 p.m. in Steer Stadium in preparation for their first official game of the season against Friona Sept. 7.

STEED
A Name Of Service For 65 Years
STEED - TODD
Funeral Home
Prince And Manana Ph. 763-5541

budget minded?

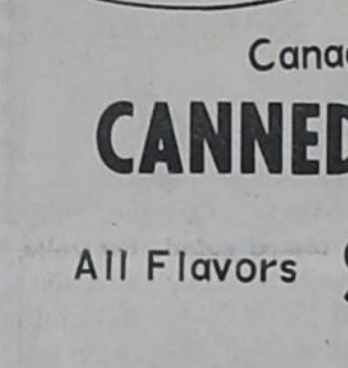
SAVE DURING OUR FOOD SALE



Shurfine

Reg. or Electric-Perk

COFFEE Lb. **79¢**



Canada Dry
CANNED POP

All Flavors \$2.50 Case



Chicken Of The Sea Light

TUNA

6 1/2 Oz. **59¢**



Shurfine
CANNED MILK
5/\$1.00

3-Minute
INSTANT OATMEAL
18 Oz. Pkg. **39¢**



LONGHORN CHEESE
Pkg. **59¢**

RA-CORN
BACON
Lb. **99¢**



LETTUCE
Lb. **29¢**

WESSON OIL
24 Oz. Bottle **69¢**



Victor
ALUMINUM FOIL 25¢
Roll



LIQUID JOY
Giant Size **49¢**

Allsup's 7-11

HOT BAR-B-Q DAILY

DONUTS

ICEES

POPCORN

MONEY ORDERS

CUBED ICE

COUNTY REVENUE SHARING SPENDING

THIS REPORT TO BE RETURNED TO

THE GOVERNMENT OF
FARMER COUNTY

DEPARTMENT OF THE TREASURY
OFFICE OF REVENUE SHARING
1900 PENNSYLVANIA AVE. N.W.
WASHINGTON, D.C. 20226

HAS USED ITS REVENUE SHARING PAYMENT
FOR THE PERIOD BEGINNING

JAN 1, 1973 ENDING JUN 30, 1973

IN THE FOLLOWING MANNER BASED UPON A

TOTAL PAYMENT OF \$112,104

ACCOUNT NO.

44 1-185 185

FARMER COUNTY
COUNTY JUDGE
FARWELL TEXAS

79325

(L) DEBT How has the availability of revenue sharing funds affected the borrowing requirements of your jurisdiction?

AVOIDED DEBT INCREASE NO EFFECT
 LESSENER DEBT INCREASE TOO SOON TO PREDICT EFFECT

(M) TAXES In which of the following manners did the availability of Revenue Sharing Funds affect the tax levels of your jurisdiction? Check as many as apply.

ENABLED REDUCING THE RATE OF A MAJOR TAX REDUCED AMOUNT OF RATE INCREASE OF A MAJOR TAX
 PREVENTED INCREASE IN RATE OF A MAJOR TAX NO EFFECT ON TAX LEVELS
 PREVENTED ENACTING A NEW MAJOR TAX TOO SOON TO PREDICT EFFECT

PRIORITY EXPENDITURE CATEGORIES (A)	ACTUAL EXPENDITURES (B)	PERCENT USED FOR MAINTENANCE OF EXISTING SERVICES (C)	PERCENT USED FOR NEW OR IMPROVED SERVICES (D)	PURPOSE (E)	PERCENT USED FOR			
					EQUIPMENT (F)	CONSTRUCTION (G)	LAND ACQUISITION (H)	DEBT RETIREMENT (I)
1. PUBLIC SAFETY	\$	%	%	10. MULTI-PURPOSE AND GENERAL GOVT	\$	%	%	%
2. ENVIRONMENTAL PROTECTION	\$	%	%	11. EDUCATION	\$	%	%	%
3. PUBLIC TRANSPORTATION	\$	%	%	12. HEALTH	\$	%	%	%
4. HEALTH	\$ 2,798,50	%	100	13. TRANSPORTATION	\$	%	%	%
5. RECREATION	\$	%	%	14. SOCIAL DEVELOPMENT	\$	%	%	%
6. LIBRARIES	\$ 3,727,75	100	%	15. HOUSING & COMMUNITY DEVELOPMENT	\$	%	%	%
7. SOCIAL SERVICES FOR AGED & POOR	\$	%	%	16. ECONOMIC DEVELOPMENT	\$	%	%	%
8. FINANCIAL ADMINISTRATION	\$	%	%	17. ENVIRONMENTAL CONSERVATION	\$	%	%	%
9. TOTAL CAPITAL EXPENDITURES	\$ 6,526,25			18. PUBLIC SAFETY	\$	%	%	%
				19. RECREATION	\$	%	%	%
				20. OTHER/Specify	\$	%	%	%
				21. OTHER/Specify	\$	%	%	%
				22. OTHER/Specify	\$	%	%	%
				23. TOTAL ACTUAL CAPITAL EXPENDITURES	\$			

(N) CERTIFICATION (Please Read Instruction #1)
The news media have been advised that a complete copy of this report has been published in a local newspaper of general circulation. I have records documenting the contents of this report and they are open for public and news media scrutiny.

Additionally, I certify that I am the chief executive officer and, with respect to the entitlement funds reported herein, I certify that they have not been used in violation of either the priority expenditure requirement (Section 103) or the matching funds prohibition (Section 104) of the Act.

(O) TRUST FUND REPORT

Revenue Sharing Funds Received
Thru June 30, 1973 \$ 112,104.00

Interest Earned \$ 112,104.00

Total Funds Available \$ 6,526.25

Amount Expended \$ 105,577.75

Signature of Chief Executive Officer
Archie I. Tarter, Farmer County Judge

Name of Print "Release Point"
State Line Tribune

Name of Newspaper
State Line Tribune

Date Published
8-31-73

THIS REPORT TO BE RETURNED TO THE DEPT. OF THE TREASURY

JOHNNY



WATFORD

In the presence of the camp owner and two counselors, parents were signing the necessary documents to send their boy to camp for the first time. Watching all this was the younger brother, who finally looked up with tears in his eyes and asked his father, "Why are we selling Jimmy?"

"DOC"
Stewart Inc.
Mabry Dr. - Clovis

Reba Hart, Jack A. Kirkland Vows Exchanged In Abilene

Reba Hart, daughter of Mr. and Mrs. Richard Hart of Abilene, became the bride of Jack Allan Kirkland, son of Mr. and Mrs. Jack Kirkland of Farwell, July 27 in the Pioneer Drive Baptist Church of Abilene.

Rev. Jack Riddlehoover performed the doubling vows before a background of arched candelabra holding votive candles and adorned with emerald greenery.

Cary Marsh of Farwell and Calvin Leach of Abilene were candlelighters.

Musical selections of the bride and groom were sung by Barry Owens and Nancy Merrill of Abilene and were accompanied by Mrs. Mary Cornelison at the organ and Tona Morgan at the piano.

Upon her approach to the altar, the bride, given in

marriage by Cloyce Bragg, a long time friend, honored her mother with a long stemmed yellow rose and a kiss. Following the wedding vows, the couple lit the unity candle and knelt in prayer as Barry Owens sang the "Lord's Prayer." At the conclusion of the ceremony the bridegroom's mother also received a rose and a kiss.

The bride wore a traditional gown of white silk organza designed with a high necked lace bodice and long bishop sleeves. The full skirt was designed with three tiers of silk organza with Venetian lace bordering each tier. Her veil of silk illusion extended into a long chapel train and was carried by Mark Bragg of Abilene. She carried a bouquet of yellow and white daisies and white carnations.

Ramona Hart of Abilene attended her sister as maid of honor. Bridesmaids were Leigh Ann Kirkland of Farwell, Karen Bragg and Carla Hunter both of Abilene. All wore identical gowns featuring yellow and white lace empire bodices with high necklines and long full sleeves. The skirts were yellow chiffon over satin. They wore large yellow picture hats and carried bouquets of yellow and white daisies.

Rene Hart, sister of the bride, was flower girl. She was attired the same as the bridesmaids and carried a basket of daisy petals.

Carl Kirkland of Farwell served his brother as best man. Groomsmen were Terry Craft of Farwell, Brad Jordan of Clovis and Clint Deeds of Lubbock. Ushers were David Bragg and Rick Thane of Abilene.

For her daughter's wedding, Mrs. Hart wore a gown of red polyester crepe featuring a high neckline and long skirt with a wide belt at the waist, and matching accessories.

The groom's mother wore a long yellow gown of sheer polyester over taffeta designed with a high neck and long sleeves and a full pleated skirt with matching accessories. Both mothers wore corsages of yellow and white daisies.

Guests were registered by Debra Wardlaw of Farwell.

The wedding reception was in the church fellowship hall. The table was laid with white lace over yellow satin, centered with tall white candles and bouquets of the bridesmaids. The three-tiered wedding cake was trimmed in yellow and white daisies. Tall columns separated the top tier and a



MR. AND MRS. JACK ALLAN KIRKLAND

miniature bride and groom figurine was inserted in the middle. Yellow fruit punch, mints and nuts were served with the cake. Serving at the reception table were Debra Wardlaw, and Sonja Foster and Pam Hunter, both of Abilene. Hostess were Mrs. C. E. Bently and Mrs. John Hunter, both of Abilene.

For a wedding trip to Dallas, Mrs. Kirkland wore a brown and white checked pantsuit and white accessories.

The couple is at home at 1243 Sayles in Abilene. Mrs. Kirkland is a 1972 graduate of

Abilene High School. She attended Hardin-Simmons University and is employed at Timex Corp. Kirkland is a 1972 graduate of Farwell High School and is attending Hardin-Simmons.

Out-of-town guests included Mrs. A. W. Green of Clovis, maternal grandmother of the groom, Rise Green of Clovis, Mr. and Mrs. Robert Vinton and daughters, Carol, Vicki, and Robin of Farwell, Mr. and Mrs. Bill Kirkland and sons, Lee and Kenneth of Amarillo, and Gary Kirkland of Shallowater, aunts and cousins of the bridegroom.

Mr. and Mrs. Jack Kirkland hosted the rehearsal dinner at the Golden Stagecoach Inn in Abilene.

Norton Attends Hardin-Simmons

Ray Norton, son of Mr. and Mrs. Darrell Norton of Farwell, left Friday, Aug. 24, for Abilene where he will be attending Hardin-Simmons University this year.

Mrs. Norton accompanied her son on the trip and enjoyed the campus and Abilene. She returned home Saturday.

Visit Quickels

Mr. and Mrs. F. M. Sanders of Omaha, Neb., visited in the home of Mr. and Mrs. Wilfred Quickel of Farwell recently. Sanders is a foster brother to Quickel.

MADERY'S FLOWERLAND

Phone 763-3465

LONGER LASTING FLOWERS

... for ALL Occasions

Your F.T.D. Florist

1021 MAIN

CARL'S



SERVICE STATION

Carl Matthews, Mgr.

All Brands Oil
Wash & Lube

Tire Service
Accessories

Batteries

Filters

Good Service

25 Yrs.

Experience

Ph. 481-9082

500 Ave. A - Farwell

Debra Sue Baldrige Weds Monty Bilberry

Debra Sue Baldrige, Portales, formerly of Texico, and Monty John Bilberry, Portales, solemnized wedding vows Saturday, Aug. 18, at First Baptist Church in Portales.

Dr. R. Y. Bradford, Executive Secretary of New Mexico Baptist Convention, from Albuquerque, a long time friend and former pastor of the bridegroom, officiated at the double ring ceremony, assisted by the church pastor, Bro. Bob Stalcup.

Mr. and Mrs. W. F. Miller, Jr., Portales, and Mr. and Mrs. Ed L. Baldrige, Amarillo, are parents of the bride and Mrs. and Mrs. Ted Bilberry, Portales, are parents of the groom.

Debra was escorted down the aisle by her father as far as his pew, where he kissed her, then took his seat by his wife, Norene Baldrige. Debra proceeded alone to where her step-father, W. F. Miller, Jr., and her mother, Bettie Miller, were seated and kissed each of them in appreciation for the home they had made for her. The waiting bridegroom then took her hand and together they turned and stepped up to the altar.

The altar setting was illuminated with the soft glow of 59 tall white tapers plus those of a five-branch brass candelabrum on the piano. The half-moon and two spiral brass candelabra were decorated with multi-colored arrangements of yellow and white gladioli, chrysanthemums in shades of yellow and gold and dahlias in varying sizes which carried out the bride's choice of multi-floral coloring. Free-flowing satin bows and streamers tied each arrangement to its appropriate candelabrum. Similar arrangements were used on two seven-tiered, black, wrought iron spiral candelabra.

A gold cupid held a two-foot union candle which was entwined with staphanotis and pearls. Two sunset arrangements containing Fuji chrysanthemums, gladioli, chrysanthemums, carnations and baby's breath stood in the foreground on either side of the altar.

The bride's candle-light formal gown was designed with an A-line skirt of peau de soie bordered with wide appliques of scalloped Alencon lace. The bodice of the gown, fashioned with a Victorian neckline, was of English net with floral appliques in Alencon lace and long rows of tiny buttons covered in peau de soie from the wrist openings. A sleeveless coat with a cut-in chapel length train was worn over the gown. It was of English net and had scallops of Alencon lace appliques encircling all edges and similar appliques of Alencon lace flowers in varying sizes were scattered over the entire train. A coil of Alencon lace held the finger-tip veil of silk illusion.

The bride carried a bouquet of French colonial design of baby's breath chrysanthemums, daisies, gladioli and pink roses. A single apricot-colored rose centered the bouquet. Encircling the blooms was a ruff of French lace from which emerged six white French lace streamers, each tied in a love knot.

For something old, the bride wore an amethyst lavalier which her maternal grandfather, N.D. Gerber, had given to his fiance, Sadie Elliot, in 1917 before their marriage. The bride's mother and her older sister had also worn the lavalier at their weddings. She also wore an initial ring which her Grandmother Gerber had worn as a girl. Both grandparents are now deceased. Her paternal grand-

mother, Mrs. Monite Baldrige,

gave her an heirloom handkerchief to carry which is handed down in the family of her deceased paternal grandfather, T. E. Baldrige. Her wedding ensemble served as something new. For something borrowed, she wore a garter which her sister, Mrs. George Davis, had worn at her wedding. Something blue was another garter with lace matching that on her dress. Coins minted in the years of the couple's births were in her shoe.

Kathy Harris served as maid of honor and Mrs. Larry Luce as matron of honor. They were attired in floor-length gowns of multi-colored sheer floral nylon over beige satin. Both were styled with high rolled collars and short puffed sleeves. Mrs. Luce's gown was gathered in at the waist by an apricot colored velvet ribbon sash. Miss Harris wore hers in a flowing style. Each wore a wide brimmed white crocheted straw picture hat with a band, home tie, and long flowing streamers of the same material as their dresses. Each carried a natural straw basket containing a multi-colored bouquet of roses, chrysanthemums, dahlias, carnations and daisies.

Radene Gushwa provided nuptial music on the piano, playing the theme from "Love Story" while the altar candles were lighted preceding the ceremony and the entrance of the mothers. She accompanied the vocalist, Mrs. Rita Hallford.

Mrs. Richard Don Baldrige, Clovis, sister-in-law of the bride, served the cake and Mrs. Dennis Widener, Portales, poured the punch.

For their wedding trip to points of interest in New Mexico, the bride chose a dress of dacron double-knit in colors of red, white and blue with matching accessories. Her corsage was of red roses and white carnations with a bow of French lace ribbon.

Mr. and Mrs. Bilberry will make their home in Portales where he is a senior at ENMU, majoring in Ag-Business and minoring in accounting. She is a sophomore, majoring in

nursing.

The bridegroom's brother, Don Wayne Bilberry of Stanley, N. M., served as best man while Jesse E. Ford, Clovis, attended as groomsman. Another brother, Ted Bilberry, Jr., Greeley, Colo., and Mark Smith, Portales, served as candlelighters. These two and Billy Heineken, Portales, nephew of the bridegroom, served as ushers.

At the completion of the ceremony, the bride stopped and kissed her new parents-in-law.

For her daughter's wedding, Mrs. Miller chose a pale pink polyester dress styled with a rolled collar, Princess lines to the low waisted beltline and a box pleated skirt. The bridegroom's mother wore a pink double knit with gold paisley overlay. It was styled with an A-line skirt and long sleeves. Both mothers wore white accessories and white corsages of carnations and gladioli.

Dianne Rust registered the wedding guests at a table covered with white lace over mint green.

A reception followed in the fellowship hall of the church. Hostesses were Mmes. L. M. Schumpert, Leo Fenton, Joe Lovorn, J. L. Harris, Roy Perkins, Evelyn Miller and Winifred White. Debbie and Cheryl Fenton were junior hostesses.

The reception table was covered with a lacy, white, crocheted cloth over a sheer white and silver cloth with metallic threads. It was centered with a footed brass bowl containing a tall floral arrangement. Lime green sherbet in a crystal punch bowl on a tall stand was on one end of the table. The other held the wedding cake which was of Lady Windemere design. White laced stands held the traditional three tiers but the base tier had four extra heart-shaped layers which were on revolving tier plates extending from the center base. Each of the seven layers, was iced in white with white lattice work overlaid and draped in garlands of white and apricot which shaded into yellows. Accents of apricot rosebuds were interspersed.



MRS. MONTY BILBERRY

CONTACT BRIDGE CLASSES

Fall classes begin September 10. Beginner and Intermediate, Daytime and Evening, Popular Goren and American Standard Point County System.

MRS. S. A. TORGESON

American Bridge Teacher's Assn.

3200 Sheldon Clovis Phone 763-9649

LABOR DAY ONLY SPECIAL

HOURS 8 am to 6 pm

Bedroom	Reg.	Sale	Dinettes	Reg.	Sale
3 pc. Spanish	579 ⁰⁰	499 ⁰⁰	5 pc. Modern	199 ⁹⁵	162 ⁰⁰
3 pc. Spanish	605 ⁰⁰	499 ⁰⁰	7 pc. Black	120 ⁹⁰	91 ⁷⁵
3 pc. Mediterrean	468 ⁰⁰	407 ⁰⁰	7 pc. Green	131 ⁹⁰	99 ⁹⁷

Living Room

2 pc. Green Velvet	Reg. 227 ⁸⁰	Sale 179 ⁹⁵	2 pc. Early American	Reg. 339 ⁸⁰	Sale 229 ⁰⁰
2 pc. Brown Tweed	234 ⁹⁵	179 ⁹⁵			

MERRILL'S GENERAL STORE 101 Pile Clovis

New For Fall

100% Polyester Washable



1. Black/Rust
2. Navy/Green

Nelly Don

BANKAMERICA

Use Our Lay-A-Way

Master Charge

THE FASHION SHOP

6th and Main

Clovis

Ph. 763-5431



Looking Forward To A Wedding?

May We Show You Our
Complete Line Of Socially
Correct And Thermographed
Wedding Announcements.

- ★ Announcements
- ★ Accessories
- ★ Invitations

A Complete Line Of
Stationery For All
Social Occasions.

Regency - Chase - Coronet - McPhersons

"A Complete Price Selection"

A Gallery Of America's Finest Business And Professional

Stationery Including Business And Personal Cards

STATE LINE TRIBUNE

FARWELL



Melody Roberts, Gene Sheets Wed In Double Ring Ceremony

Melody Ann Roberts, daughter of Mr. and Mrs. Bill Roberts of Farwell, became the bride of Martin Eugene (Gene) Sheets, son of Mr. and Mrs. Harry Sheets, also of Farwell, August 10 at Farwell Church of Christ.

Dewey Fogerson of Dora, N.M., former minister of the church, led the couple in the double ring ceremony before an altar centered with a 15-branch candelabrum holding white tapers and flanked by spiral candelabra. Emerald greenery and potted palms completed the altar setting.

The bride, given in marriage by her father, wore a white formal length gown of polyester and cotton with small flopped dots. The gown featured a wide ruffle at the scoop neckline edged with white lace, and long sleeves gathered at the wrist. The empire waist was accented with wide lace and a deep ruffle at the hem was bordered with lace. Her hat was trimmed with fresh pink rosebuds and baby's breath. She carried a colonial bouquet of pink rosebuds and baby's breath.

Following wedding tradition, she wore pennies in her shoes minted in the years of the

couple's births. For something old, she wore her grandmother's ring, something new was her dress, something borrowed was diamond earrings belonging to her sister Beverly, and something blue was her garter.

Providing music for the wedding were J. R. Sewell, Doug Harriman, James Hobbs and Greg Meeks who sang "The Look of Love" and "Let It Be Me".

Sheri Roberts, sister of the bride, was maid of honor. Bridesmaids were Beverly Roberts, sister of the bride, LaShawn Sheets, sister of the bridegroom, and Marsha Graham of Clovis.

The attendants wore floor length pink and white checked dresses, with scoop necklines and short puffed sleeves. Wide flounces at the bottom were accented with rosebud trim at the empire waistline and the flounce. They each carried white baskets filled with pom-pom daisies.

Harry Sheets served his son as best man. Groomsmen were Kyle Sheets, brother of the bridegroom, Fred Ewing of Abilene and Dennis Ensor, Abilene.

Ushers were Kirt Martin and Gary Erwin, both of Farwell, and candlelighters were Robin Roberts, brother of the bride, and Josh Ensor, Farwell. Ringbearers were Quay Gregory, Farwell, and Darrell Martin, Clovis.

The mother of the bride chose a floor length pale blue faille shirtdress and wore a corsage of white sweet peas.

The bridegroom's mother was attired in a floor length orchid polyester dress, accented with white. She also wore a corsage of white sweet peas.

A reception followed the wedding in the Fellowship Hall of the church. The table was covered with a polyester lace cloth centered with a nosegay of pink checked flowers. A four-tiered, petal shaped cake was topped with fresh pink rosebuds and baby's breath. Pink lemonade punch and nuts were also served.

Serving from the table were Susan Lowe of Canyon, Janice Elrod of Lubbock and Jana Cox of Cuyahoga, Tex. Mrs. Cox also registered the guests. Hostesses for the reception were Mrs. Dewey Fogerson, Mrs. D. Smith Day and Mrs. Albert Martin. Floating hostesses were Deann Day, Sheryl Day, Dixie Martin, Tawnya Phillips and Sheryl Phillips. A rehearsal dinner was hosted by the bridegroom's

parents on the night before the wedding at the Holiday Inn in Clovis.

For a wedding trip to points of interest in New Mexico, the bride was attired in a brown and white checked gingham dress accented with white eyelet lace. She wore the corsage lifted from the bridal bouquet.

The bride has attended Lubbock Christian College and Abilene Christian College. The groom has attended Christian College of the Southwest and Abilene Christian College. Both will continue their education at ACC.

The couple is now at home at Happy Time Apartments in Abilene.

Bookmobile Schedule

Thursday, Sept. 6 - Okla. Lane, 9:00-10:00; Rhea Community, 10:45-11:45; Friona #1, 1:00-1:30; Black, 1:45-2:45.
Friday, Sept. 7 - Hub, 9:00-9:55; White's Elevator, 10:00-11:00; Lazbuddie, 12:00-1:00; Clay's Corner, 1:15-2:15.
Saturday, Sept. 8 - Farwell, 8:55-11:50; Friona #II, 1:00-4:00.



"Being put on a pedestal has disadvantages which you're apt to discover the time you fail to watch your step."

Hugh Edwardses Entertain Guests

Spending two weeks recently in the home of Mr. and Mrs. Hugh Edwardses of Farwell was their granddaughter, Kippi Edwardses, from Phoenix, Ariz.

Also visiting recently were Mr. and Mrs. Josh Johnson and children, Lance and Tonnie, of Amarillo; and Mrs. Madeline Spurlin and children, Randy and Nina, of Olton.

Present for recent patio dinners hosted by the Edwardses were Mr. and Mrs. Andy Sutter, Mr. and Mrs. Albert Terry, Mr. and Mrs. Andy Andrews, Mr. and Mrs. Bill Thomas and Mrs. Fronie Buxton, all of Clovis.



LABOR DAY

Marriage Licenses Issued

Marriage licenses issued this past week from Parmer County clerk's office went to:

Troy Wayne White and Veveca Lafern Welch; Frank Saiz and Mary Castillo; James Clarence Cooper and Tressia Lanelle Hobbs; Also, Gilbert Wayne Knapp and Generosa M. Gutierrez; and Paul W. McClure and Barbara M. Burgess.

To Market

Mrs. Bernice Norton of Farwell was in Dallas recently attending a Holiday Market for fall and winter clothes, and jewelry for festive occasions.



MR. AND MRS. GENE SHEETS

Okla. Lane 4-H Forms Junior Leader Group

Oklahoma Lane 4-H Club met Sunday, Aug. 26, at St. John's Lutheran Parish Hall. A nominating committee was formed consisting of Bruce Kaltwasser, Billy and Mary Lou Roberts, Linda and Cheryl Gohlke, Scotty Gilliam and John Johnson.

Plans were discussed with Jana Pronger, Parmer County Extension Agent, and Mrs. Hubert Gohlke about forming a Junior Leader Group. The group will meet at 7:30 p.m. on

Wall Family Reunion Set

Members of the Wall family will have a reunion Sunday, Sept. 2, with a basket dinner at 1 p.m. MDT at the Hillcrest Park in Clovis.

Hosting the event will be Mr. and Mrs. J. E. Wall, Mr. and Mrs. Floyd Wall, Mr. and Mrs. Owen Wall and Mr. and Mrs. Charlie Wall, all pioneers of Curry County.

All friends and relatives are invited to attend the fellowship.

To Ruidoso

Spending the weekend at their home in Ruidoso were Mr. and Mrs. Joe Helton of Texico. Accompanying them for the weekend were Mrs. Helton's mother, Mrs. J. E. Whatley of Amarillo, and their son and wife, Mr. and Mrs. Hal Helton of Clovis.

Mrs. Whatley arrived in Texico last Wednesday to visit the Heltons and returned to Amarillo Monday morning.

Relatives Visit

Visiting in the home of Mr. and Mrs. E. L. Farmer of Texico over the weekend were his sister and husband, Mr. and Mrs. H. T. Wicker of Amarillo, and his brother and wife, Mr. and Mrs. Jim Farmer of Lakeport, Calif.

The couples arrived Friday afternoon and left on Sunday.

the fourth Monday of each month beginning in September. There will be entertainment, career films or guest speakers at the meetings.

All Senior 4-H members in the Oklahoma Lane 4-H Club are invited and encouraged to attend these meetings.

Brother Here

Visiting in the home of Mr. and Mrs. Joel White and family of Farwell was his brother and family, Mr. and Mrs. Wilbert White and children of Covina, Calif.

The California family, former residents of Farwell, visited here on Wednesday before going on to Amarillo to visit other relatives.



FOUR GENERATIONS - Pictured during a recent visit to California with Rufus Carter of Farwell are his granddaughter, Mrs. Ralph (Darlene) Van Houser, sitting on Carter's lap, and standing from left, his daughter, Mrs. Gene (Dona) McClure, and his great-grandson, Greg Van Houser, all of Tulare, Calif., making the four generations. Also pictured is a great-granddaughter, Karen Rush, also of Tulare.

Wedding Reminder

Everyone is reminded of the wedding of Tanya Lynn Cherry and James Chadwick at 7 p.m. Friday, Aug. 31, at First Baptist Church in Farwell.

Parents of the couple are Mrs. Lucille Cherry of Muleshoe and Mr. and Mrs. W. O. Chadwick of Farwell.

Friends and relatives are invited to the wedding and reception to follow.

To Midland

Teresa Quickel, daughter of Mr. and Mrs. Wilfred Quickel of Farwell, has returned to Midland after spending the summer with her parents. Miss Quickel teaches second grade at a Midland elementary school.

Rufus Carter Returns From California Trip

Rufus Carter of Farwell returned Tuesday, Aug. 21, from a two-week visit in California.

He traveled to the west coast by plane where he stayed with his daughter and husband, Mr. and Mrs. Gene McClure, in Tulare, Calif.

Also visiting with Carter during his stay were his granddaughters and families, Mr. and Mrs. Ralph Van Houser and son Greg and daughter Vickie and Mr. and Mrs. Loren Rush and daughters Karen and Angela and son Dale, all of Tulare.

LOO-MIXERS



OL' HENRY PECK AINT VERY MUSICAL - 'TWO' HIS WIFE'S GOT HIM PLAYIN' SECOND FIDDLE.

TRI-CO FEED CO.

Featuring

LOOMIX

LIQUID FEEDS

481-3339 - FARWELL

Bowl For Health's Sake FALL LEAGUES NOW FORMING

Juniors

Mixed

Men's

Ladies - Night & Coffee

Call **AZTEC BOWL**

Ph. 762-4535-Clovis

Coordinates For Fall

Mr. Fine - Preception - Pandora

Textured And Knit Polyester

Matching Purses And Jewelry

See The
Delicious Burgundy.

Lucille's smart shop

Hill Top Plaza
Clovis

Use Our
Lay-A-Way
BankAmericard
master charge

Consumer Scene

Phosphates, Ecology And The Consumer

For years the American homemaker has been bombarded with detergent advertising promising her sheets whiter than white and colors rivaling the rainbow.

For the most part, the detergents were able to live up to these promises. Modern synthetic detergents have relied heavily on phosphates to achieve these high performance levels.

Now the era of "really clean" clothes appears to be in jeopardy as local restrictions on the sale of phosphates in detergents go into effect in many areas of the country.

Some feel that use of phosphate-free detergents will slow down the eutrophication of many of our rivers and lakes, but it also promises a more difficult washday for the consumer. And "ring around the collar," that spectre of scrupulous homemakers, may once again be a commonplace complaint.

How will the phosphate ban affect us? The General Electric and Hotpoint Consumers Institute, after thoroughly testing non-phosphate detergents, offers a discouraging report.

As a general rule, the GE home economists say, you may find your washing results less effective than with the regular phosphate detergents to which you've become accustomed, particularly with synthetic fabrics and hard water.

In relatively soft water, GE laboratory observations indicate non-phosphates will generally clean cottons as well as phosphate detergents. However, some non-phosphates are more difficult to dissolve and are not recommended for use in cold wa-

ter. Clothes like polyester/cottons and Permanent Press fabrics may not wash well with non-phosphate detergents — with repeated washings they may become dingy and grey.

In hard water areas, the use of phosphate-free detergents may result in increased fabric harshness—towels, for example, will feel stiff and rough to touch, and clothes will become dull and dingy with time as they are repeatedly washed. Fabric wear also may be noticeably increased.

A white, powdery residue also may appear, especially on dark colored items, and bright colors may spot fade as a result of direct contact with non-phosphate detergents.

Your automatic washer could be affected as well as your clothes. Parts exposed to the wash solution will develop a scale-like buildup which in time can impair the washer's action by plugging up various small openings in the wash system that are essential to proper performance.

What can you do about it? GE recommends that if you live in a hard water area where phosphate detergents are banned, you may wish to consider installing a water-softening system.

Most important, though, is to follow the manufacturer's recommendations on how to use their non-phosphate detergents, and to follow sound washing procedures. With the advent of phosphate-free detergents, proper washing habits are now more important than at any time in the recent history of home laundering.

Courthouse Notes

Instruments-Warranty Deeds filed in County Clerk's office week ending August 22, 1973.
 WD - U.S.A. - Loy Wayne Spears - Lot 24, Eastview Add., OT Bovina.
 WD - Ruben T. Taylor - Steve A. Taylor - W 70' Lots 5, 6, Blk. 5, OT Friona.
 WD - Prentice L. Mills - Lloyd W. Chadwick - Lots 13, 14, 15, 16, Blk. 33, Farwell.
 WD - U.S.A. - Wayne Foster - Lot 9, Eastview Add., Bovina.
 WD - U.S.A. - J. B. Sudderth - Lot 12, Eastview Add., Bovina.
 WD - J. B. Sudderth - Wayne Foster - Lot 12, Eastview Add., Bovina.
 WD - Robert Ewing Caldwell, et al - Charles F. Hall - Lots 4, 5, Blk. 65, Bovina.
 WD - Brooks Davis - Virgil A. Neal - North part of Sec. 21, T7S, R2E.
 WD - Billy Wayne Wilkerson - Cleo I. Thomas - Lots 1, 2, & 3, Blk. 31, OT Bovina.
 WD - U.S.A. - Arlin L. Hartzog - Lt. 7, Eastview Add., a replat of Lots 102, 103, 106 & 107, OT Bovina.
 WD - Gary L. Martin, et ux - James I. Steed Jr. et ux - Lot 26, Eastview Add., Bovina.
 WD - High Plains Dev. Co. - J. T. Stone - Lot 25, exc. N 1' plus S 2' Lot 24, Blk. 6, Lakeview Add., Friona.

WANT ADS PH. 481-3681

CLASSIFIED & LEGAL RATES:
 First insertion, per word - 8c
 Second and additional insertions - 6c
 Minimum charge - \$1.25 on cash order, \$1.50 on account
 Card of Thanks - Same as classified word rate, minimum charge - \$1.25
 Double rate for blind ads
 Classified Display - \$1.50 per col. inch

DEADLINE FOR INSERTION
 Friday's State Line Tribune - 10 a.m. Wednesday

The Tribune reserves the right to classify, revise or reject any classified ad.

Check advertisement and report any error immediately. The Tribune is not responsible for error after ad has already run once.

LEGAL

NOTICE TO BIDDERS OF CITY'S INTENTION TO LET CONTRACT OR CONTRACTS FOR ADDITIONS TO CITY'S WATERWORKS SYSTEM

SEALED PROPOSALS addressed to the Mayor and City Commission of the City of Farwell, Texas, will be received at the office of the City Clerk, City Hall, 101 Ave. A, Farwell, Texas, until 5:00 p.m., the 10th day of September, 1973, for furnishing all labor, materials, and equipment and performing all work required for making improvements to the City's Waterworks System as follows:

Installation of Ten (10) inch Class 150 AC waterline or Eight (8) inch Class 150 AC waterline and Six (6) inch Class 150 AC Waterline plus Fireplugs, fittings and One (1) 500 GPM Booster pump with concrete block house, wiring and connections complete

all in accordance with specifications and plans approved by the City Commission on file in the office of the City Clerk, and at such time and place all such proposals will be publicly opened and read.

PLANS AND SPECIFICATIONS may be examined without charge in the office of the City Clerk, City Hall, 101 Ave. A, Farwell, Texas.

The City reserves the right to reject any or all bids and to award the contract or contracts to that bidder or bidders, who in the opinion of the City Commission, offers the proposal to the best interest of the City.

Gil Patschke
 Mayor,
 City of Farwell, Texas

Attest:
 Mamie Jane Bowery
 Clerk, City of Farwell, Texas

Published in State Line Tribune Aug. 31, 1973.

HELP WANTED - Good typist, proficient in spelling and grammar, as trainee in latest typesetting equipment.

Apply State Line Tribune, 404 Third St., Farwell, Ph. 481-3681 days, or 481-9123 nights.

FOUND - Black poodle. Call 481-9046. 50-1tc

GARAGE SALE - Vacuum cleaner, lawn furniture, tools and miscellaneous. Saturday only, 9 a.m. to 9 p.m. 116 San Andres, Texico. 50-1tc

SAVE MONEY
 On Vaccines, Antibiotics, Instruments and other livestock supplies.
AFFILIATED SUPPLY INC.
 1005 Ave. A Farwell, Texas
 Ph. 481-9234

Boyd's Complete Brake And Bear Front End Service
 TIRE TRUING, WHEEL BALANCING AND OVER-LOAD SPRINGS, MONRO-MATIC SHOCKS, DRUM TURNING, BRAKE DRUMS, BRAKE SHOE EXCH, POWER BRAKES, ELECTRIC BRAKES INSTALLED.

BankAmericard and master charge Welcome

BOYD'S BRAKE SHOP
 2 Blks. off Main St. Leave Car Here and Do Your Shopping
 1-ttfc

NEED A HOME LOAN?

SEE **FIRST FEDERAL**

FIRST FEDERAL SAVINGS

AND LOAN ASSOCIATION

801 Pile St. 762-4417
 Clovis, New Mexico

FOR SALE - Student alto saxophone by Conn. Good condition. James Wilbanks, 501 Fifth, Farwell. Ph. 481-3833. 49-2tc

MOBILE HOME FOR SALE
 PH. 482-3237

FOR SALE - Job Printing. Can do all kinds. Quality Work. State Line Tribune, 404 Third St., Farwell, Ph. 481-3681. 2-ttfc

FOR SALE - A 10 ft. pickup camper with jacks mounted on side, in good condition. J. T. Jones, 806/225-4955. 49-4tp

All pictures taken by the staff of the State Line Tribune for use in the paper are available to anyone desiring them at a cost of 50 cents each.

AVAILABLE for rent about Sept. 15. 2 bedroom apartments in Farwell, unfurnished. Built-ins, carpet, carport. Contact Nance Construction Co., Clovis, Ph. 762-2292. 49-ttfc

J.B. SUDDERTH REALTY

904 Third Street Box 627
 Farwell, Texas
 Ph. 481-3288 or 505/763-5575 Unit 5408

WE NEED FARM LISTINGS NOW

NEED A FARM LOAN? CALL US.

2 bdrm., 1 bath with basement storage room in commercial area with 6 extra large lots. Possibilities - mobile home sites or commercial location, on highway.

160 a. irrigated east of Lariat elevator, 2 miles.

Good quarter (1/4) and half (1/2) dryland, north of Bovina.

3 bdrm., 1 bath near church. Newly painted inside, new vinyl floor covering in bath and kitchen.

Brick, extra nice and clean, 3 bdrm., 3 bath, excellent location, with garage, beautiful yard and fenced backyard.

3 bdrm., 1 bath with garage in Bovina.

3 bdrm., 2 bath with garage and fenced backyard.

2 bdrm., 1 bath with garage, excellent location.

Nice 3 bdrm., 3 bath in Bovina, new carpet and carport.

240 A irrigated northeast of Bovina. Small down payment.

160 A. irrigated, one mile north of Muleshoe on highway. Has 2 wells.

Good half (1/2) section of dryland, N.W. of Bovina.

300 A. some irrigated farmland, some grass, southeast of Farwell.

928 A. (irrigated farmland & native grass) southeast of Farwell.

Small tracts: 1-10 A, 1-20 A, 1-44 A, all on Hiway near Lariat.

Several good business locations; With railroad access on Amarillo Hiway.

3 bdrm., 3 bath brick, excellent location, lots of extras.

3 bdrm., 2 bath, large living-dining-kitchen area, playroom, new cabinets, in Bovina. Good location.

LEARN TO SKATE. BUY A SKATING RING IN FARWELL.

Large steel commercial bldg. with 15 A. Caliche-topped fenced yard with railroad access.

We have one, two and three-bedroom houses in good locations.

★ WE NEED LISTINGS NOW ★
 "Sales and Loans Are Our Serv"

USED EQUIPMENT

- 1 - 1962 JD 2010 Tractor LP
- 1 - 1963 JD 4010 Tractor Dsl.
- 1 - 1967 JD 4020 Tractor Dsl.
- 2 - 1964 Model 95 Combines, 20 Ft. Head, W/Reels, Clean Machine
- 1 - Used Roll-Guard For JD Tractor
- 1 - Used Big Ox Chisel Plow
- 1 - Double Tool Bar 5 Row Lister With Hyd. Markers
- 1 - Used 16-10 JD Grain Drill
- 1 - Used Grain Cart
- 2 Sets Used 34" Dual Wheels For JD Tractors
- 2 - 1969 JD 95 Combines W/Cabs, Air Hydro Drive
- 1 - Used Shredders "WE TRADE"

CAL JORDAN IMPLEMENTS

PH. 763-5517
 201 S. Walnut-Clovis, N.M.

TWO MINUTES WITH THE BIBLE

BY CORNELIUS R. STAM, PRES.
 BEREAN BIBLE SOCIETY
 CHICAGO, ILLINOIS 60635

THE CROSS AND THE CHRISTIAN

Nothing will prove so helpful to a Christian in overcoming sin as an appreciation of Christ's death for sin at Calvary. The Bible teaches that:

1. The cross stands between the believer and his SINS; the wrong things he does, or is prone to do, in thought, word and deed.

"And you, that were once alienated and enemies in your mind by wicked works, yet now hath He reconciled, in the body of His flesh, through death, to present you holy and unblameable and unreprouvable in His sight" (Col. 1:21,22).

"Christ died for our sins according to the Scriptures" (I Cor. 15:3).

"Who His own self bare our sins in His own body on the tree" (I Pet. 2:24).

2. The cross stands between the believer and his SIN. It is not only men's sins that keep them out of heaven, but their sin; not merely what they have done, but what they are and would do; not merely their deeds, but their nature. But Christ's death took care of this too.

"... by one man sin entered into the world, and death by

CLOVIS SHOPPING DIRECTORY

STEREO AUCTION SALES
 Thurs. 7:30 P.M.
MENNELL'S AUCTION
 2021 E. 2nd - 762-2581

FABRIC MART TYPEWRITER ADDING MACHINE REPAIR
 GOODMAN OFFICE SUPPLY
 1212 Main - Dial 763-5589

CROWN ELECTRIC CO.
 Electric Motor Sales & Serv.
 Browning Power Trans. Eq.
 2nd and Oak
 Clovis, N. Mex.

Stork Shop
 Infants and Maternity Wear
 1312 Main 763-7145

ROTHWELL BODY SHOP
 1814 West 7th (Behind Chief's Automotive) Clovis, N.M.
 CALL 763-3530 For Free Estimate On ALL AUTO BODY REPAIR & REPAINTING ALSO GLASS WORK

Duffys
 PROMPT DEVELOPING SERVICE - ALL SIZES FILM - LARGE SELECTION PHOTO ACCESSORIES.
 PH. 763-3834

TELEX HEARING AIDS
CLOVIS HEARING AID CENTER
 ★ Batteries ★ Molds ★ Free Hearing Tests ★ SERVICE ALL MAKES

416 Mitchell Ph. 763-6900

FARWELL HARDWARE
ZENITH
 305 Ave. A 481-3286

JOHNSON ABSTRACT COMPANY
 481-3878
 203 Ave. C - Box 88 Farwell, Texas

MM MINNEAPOLIS-MOLINE.
 World's Finest Tractors
FARWELL EQUIP. CO.
 Phone - 481-3212

W & J AUCTION
 108 Pile St. Pho. PO 8-7311
SALE EVERY TUES.
 James Priest & Associates, Auctioneers

TEXACO INC.
 Woodrow Lovelace

ROSE DRUG & GIFT SHOP
 Prescriptions a Specialty 481-3281

ALDRIDGE INSURANCE AGENCY
 "AUTO-FIRE-CASUALTY"
 4023rd Ph. 481-3361

CAPITOL FOODS
Shurline

HUGHES INSURANCE AGENCY
 General Insurance
 509 Ave. A. 481-3671

STATE LINE OFFICE SUPPLY
 Ph. 481-9235
 105 3rd - Farwell
IMPORTANT DOCUMENTS COPIED FREE

The CITIZENS BANK
 Texico Branch
 Complete Bank Service
 Member FDIC

TEXACO INC.
 Woodrow Lovelace

OKLAHOMA LANE FARM SUPPLY AND GIN
 "Where Your Business Is Appreciated"

Mid-West Video
 Ph. 763-4411
 Ch. 2 Lubbock 13 CBS
 Ch. 3 Roswell 8 NBC
 Ch. 4 Clovis 12 CBS
 Ch. 5 Amarillo 7 ABC
 Ch. 6 Amarillo 4 NBC

HUGHES INSURANCE AGENCY
 General Insurance
 509 Ave. A. 481-3671

SHERLEY-ANDERSON-PITMAN, INC.

The CITIZENS BANK
 Texico Branch
 Complete Bank Service
 Member FDIC

HOLIDAY The Family Store
 5th & Ave. A 481-9070

WATTS Machine and Pump
 Layne Bowler Pumps and Repair-Gearhead Repair
 Ph. 481-3239-Farwell, Tex.

Religious Music All Day Sunday On KZOL
 1570 On Your Dial

Farwell First Baptist Church
 Cliff Ennen - Pastor
 Sunday School - 10 a.m.
 Morning Worship - 11 a.m.
 Evening Worship - 7 p.m.

Oklahoma Lane Baptist Church
 Robert J. Roberts - Pastor
 Sunday School - 10 a.m.
 Morning Worship - 11:00 a.m.
 Evening Worship - 7 p.m.

Lariat Church of Christ
 Sunday School - 10 a.m.
 Morning Worship - 11 a.m.
 Evening Worship - 6 p.m.

United Pentecostal Church
 E. R. Lanham - Pastor
 Sunday School - 10 a.m.
 Morning Worship - 11:00 a.m.
 Evening Worship - 7:30 p.m.

Pleasant Hill Baptist Church
 Tommy Farmer - Pastor
 Sunday School - 9:30 a.m. (MDT)
 Morning Worship - 10:30 a.m. (MDT)
 Evening Worship - 7 p.m. (MDT)

Calvary Baptist Church
 Lynn Ezell - Pastor
 Sunday School - 10 a.m.
 Morning Worship - 11 a.m.
 Evening Worship - 7 p.m.

St. Joseph's Catholic Church
 Chrysostom Partee - Priest
 Confession - Sunday, 9:30 a.m.
 Sunday Mass - 10 a.m.
 Christian Doctrine after Mass

Hamlin Memorial Methodist Church
 W. T. Perry - Pastor
 Church School - 10 a.m.
 Morning Worship - 11 a.m.
 Evening Worship - 7:15 p.m.

Farwell Church of Christ
 James Wilbanks - Minister
 Sunday School - 10 a.m.
 Morning Worship - 10:50 a.m.
 Evening Worship - 6 p.m.

Texico First Baptist Church
 John Summers - Pastor
 Sunday School - 10 a.m.
 Morning Worship - 11 a.m.
 Evening Worship - 7:30 p.m.

Oklahoma Lane Methodist Church
 Oran D. Smith - Pastor
 Sunday School - 10 a.m.
 Morning Worship - 11 a.m.
 Evening Worship - 7 p.m.

St. John's Lutheran Church
 Martin M. Platzer - Pastor
 Sunday School - 9:30 a.m.
 Morning Worship - 10:30 a.m.

Assembly of God
 Grady Goff - Pastor
 Sunday School - 10 a.m.
 Morning Worship - 11 a.m.
 Evening Worship - 7:30 p.m.

West Camp Baptist Church
 Glenn Harlin - Pastor
 Sunday School - 10 a.m.
 Morning Worship - 11 a.m.
 Evening Worship - 7 p.m.



At Home In Farmer County

By Jana Pronger
County HD Agent

After a summer of shorts and T-shirts, children and mothers are thinking about new school clothing.

Before shopping, take an inventory of clothing the child has on hand. Examine these garments carefully, note their condition, and sort them. Usually, some are still wearable, others need minor repairs and some should be discarded.

Next measure each child. This way purchases can be made by size—not age. Over the summer months, a child can grow one or two inches in height or width.

When shopping for school clothes, take full advantage of sales—but don't go 'overboard.'

Purchase only enough for the first two to three months of school. That way, the child won't outgrow them before he wears them.

Spreading clothing purchases has another advantage—most children are happier with new things periodically rather than all at once. Often building a small basic wardrobe around the child's favorite color is the answer. This way, items can be mixed and matched.

Several factors influence how much clothing is needed. These include the number of children in a family, their ages, and how often the homemaker does the family laundry. As a rule, girls need more clothes than boys—but boys' clothing is more expensive.

When purchasing school clothing, consider durability, price and care requirements. For items receiving the most wear, buy the best quality the family can afford. School clothes and shoes must withstand wear longer than a party dress—which is worn only a few times.

Read all labels and hangtags to determine care requirements. Remember—dry cleaning adds to the initial purchase price—and hand washing take time. Follow instructions for best results—and best return on money invested.

Also consider fashion trends. For example, classic looks—with plaids a major element—are "big" for fall. Highlighting the girls' scene are cuffed pants, stretch bodyshirts, pleated or flared skirts, sweaters and jumpers. These items offer unlimited possibilities for the popular layered look.

Jean styling remains the top favorite for boy's fashions. Jeans come in a wide range of

fabrics. Denim and corduroy lead the "pack", followed by knits and stretch wovens. Highly patterned shirts complement solid pants.

Also watch for knit sport shirts, cotton, polyester and blends, denim work shirts, western shirts and lumberjack plaids.

Another thing!—Only if the shoe fits, wear it—and keep a constant check on it when a child's foot is involved. Fit, not durability, is the most important consideration when buying children's shoes.

Many adult foot ills can be traced to out-grown, hand-me-down and incorrectly shaped shoes that forced pliable, young feet out of shape. On a visit to the shoe store, children will look for shoes similar to those their friends wear. They also like shiny new shoes that attract attention.

When you find shoes the child likes, have him walk around the store in them. A correctly fitted shoe doesn't have to be broken in—either it fits, or it doesn't.

Check shoe length. Have the child stand so his feet are supporting the weight of his body. Press the end of his shoe with your thumb. There should be one-half to three-fourths inch between his longest toe and the end of his shoe.

Emphasize fit rather than durability, most children out-grow shoes before they wear them out, because their feet grow so rapidly. A child's feet can grow as much as three sizes in just a few months.

Examine your child's feet and shoes regularly to be sure shoes fit properly and haven't been outgrown. Children don't always know when they out-grow shoes. Because young feet are soft and pliable, children can force their feet into shoes that are several sizes too small.

Shoes don't fit when:
—tip of toe is curled or excessively worn
—soles are worn unevenly, especially if they show excessive wear on inner edge
—heels run over
—upper part of shoe bulges over the sole or is twisted
—toes have worn pockets into the linings, and
—heel counter is broken down.

Also, pink or red on a child's foot may mean his shoe is too narrow, too tight, too short or has wrinkles or torn linings, or rough bulky seams or stitching.

Mrs. Leon (Dorothy) Marks of Rt. 3, Clovis, a longtime 4-H Club leader, has consented to be our Area Homemaker this week.

A native of South Dakota, Mrs. Marks came to New Mexico because of her health. Although she wasn't impressed by the qualities of the land when she arrived, she soon adjusted. Her change in attitude was helped along when she met her husband, Leon.

She received her registered nurse's training at St. Joseph's Hospital in South Dakota and she practiced there for a while. She continued to practice when she came to this area, working for the late Dr. W. M. Lancaster.

She says that's how she became acquainted with the people here. She first met Dr. Lancaster's patients. In fact, Leon was one of his patients.

Mrs. Marks has been leader of the Clovis Cloverettes 4-H Club for 20 years. She received that honor at a 4-H activity last fall. She continues to serve the Club as leader.

She is a member of Sacred Heart Catholic Church and is a member of the Altar Society. She is chairman of the Library Board, an activity which takes up quite a bit of her spare time.

Mr. and Mrs. Marks live on a farm southwest of Clovis. They are parents of four children and have four grandchildren, three grandsons and a granddaughter.

Their children are Sandra Mueller of Moline, Ill., Robert Marks of Farwell, Nancy Lavery of Philadelphia, Pa., and Kay Hanson of William Creek, Ariz.

When asked about her hobbies, our homemaker commented, "kids". She said being a 4-H leader for so many years she has grown to enjoy being around children and helping them in many ways. She also enjoys reading, but confessed now she gets sleepy when she sits down to read.

Our homemaker has consented to share two of her favorite recipes with our readers.

LEMON CHESS PIE

4 eggs
2 c. sugar
1/2 c. lemon juice
1/2 c. melted butter
1 tsp. corn meal
1 tsp. flour
1/8 tsp. salt
1 (9 in.) unbaked pie shell

Beat eggs thoroughly. Gradually beat in sugar. Add remaining ingredients, beating well. Pour into pie shell. Bake at 350 degrees for 40 minutes or until brown. Do not over-bake. Makes six to eight servings.

Portraying Area Homemakers

by Janie Crane



STUDYING COOKBOOK—Mrs. Leon Marks of Rt. 3, Clovis, looks over her cookbook for favorite family recipes for her four grandchildren. Mrs. Marks has been a leader for the Clovis Cloverettes 4-H Club for 20 years. She is also chairman of the Library Board.

PIZZA (Makes two pies)

Measure into bowl 1 c. warm (not hot) water. (Cool to lukewarm for compressed yeast.) Sprinkle or crumble in 1 package or cake of yeast, active dry or compressed.

Stir until dissolved. Stir in 1 tsp. sugar, 1 tsp. salt, 1 tsp. olive or salad oil. Add 2 c. sifted enriched flour. Beat until smooth. Stir in an additional 1 1/2 c. sifted enriched flour.

Turn out on lightly floured board. Knead until smooth and elastic. Place into greased

bowl; brush top with soft shortening. Cover and let rise in warm place free from draft, until doubled in bulk; about 45 minutes.

Immediately mix together 1 can tomato sauce, 1 can tomato paste. Into this mix 1 1/2 T. of oil, 2 T. Italian seasoning and a dash of salt. Mix and let stand while dough rises.

Roll dough out and put sauce on dough. Pizza may be garnished with a number of cheeses to taste, green chili, chopped onions, seasoned ground meat or pepperoni.

Fire Calls

Only one fire call was answered this week by Farwell Fire Department. The fire unit was called Friday, Aug. 24, to extinguish a fire in a vacant lot at 108 Seventh Street about 8 p.m. The fire flared up again about 10 p.m. and the fire unit was called out again to put out the fire.

Texico Fire Department vehicle was called Monday morning to take a man to the Clovis hospital.

One hour's factory labor will buy 10.6 quarts of milk as compared to only 5.1 quarts in 1940.

See The Latest In

MINNEAPOLIS-MOLINE

MM World's Finest Tractors

FARWELL EQUIPMENT CO.

Farwell

Ph. 481-3212

ATTENTION CATTLEMEN IN THE TEXICO & FARWELL AREA

In regard to dead stock removal, if you have a problem with service whether in the Teed yards or the farm please give us a chance!

Your local used cow dealer is
friona bi-products



Seven days a week dead stock removal
please call as soon as possible.

Thank you

CALL COLLECT 247-3032

SERVICE

Is Something For The
Whole Family!

Our Services
Include - - -

- ★ Checking Accounts
- ★ Certificates Of Deposit
- ★ Safety Deposit Boxes
- ★ Drive Up Window
- ★ After Hours Depository
- ★ Trust And Estate Service

Competent Money Management -- Friendly Service
And Complete Banking Facilities Are Yours At The - -

SECURITY STATE BANK

Farwell, Texas

Member F.D.I.C.

Deposits Insured To \$20,000

FARWELL REVENUE SHARING SPENDING

(RETAIN THIS WORKSHEET)

DEPARTMENT OF THE TREASURY
OFFICE OF REVENUE SHARING
1900 PENNSYLVANIA AVE. N.W.
WASHINGTON, D.C. 20226

THE GOVERNMENT OF
FARWELL CITY

HAS USED ITS REVENUE SHARING PAYMENT
FOR THE PERIOD BEGINNING

JAN 1, 1973 ENDING JUN 30, 1973

IN THE FOLLOWING MANNER BASED UPON A

TOTAL PAYMENT OF \$13,921

(L) DEBT How has the availability of revenue sharing funds affected the borrowing requirements of your jurisdiction?

AVOIDED DEBT INCREASE
 LESSENER DEBT INCREASE

NO EFFECT
 TOO SOON TO PREDICT EFFECT

(M) TAXES In which of the following manners did the availability of Revenue Sharing Funds affect the tax levels of your jurisdiction? Check as many as apply.

ENABLED REDUCING THE RATE OF A MAJOR TAX
 PREVENTED INCREASE IN RATE OF A MAJOR TAX
 PREVENTED ENACTING A NEW MAJOR TAX

REDUCED AMOUNT OF RATE INCREASE OF A MAJOR TAX
 NO EFFECT ON TAX LEVELS
 TOO SOON TO PREDICT EFFECT

FARWELL CITY
CITY CLERK
FARWELL TEXAS 79325

PRIORITY EXPENDITURE CATEGORIES (A)	ACTUAL EXPENDITURES (B)	PERCENT USED FOR: (C)	PURPOSE (E)	ACTUAL EXPENDITURES (F)	PERCENT USED FOR:			
					CONSTRUCTION (G)	ACQUISITION (H)	DEBT RETIREMENT (I)	OTHER (J)
1. PUBLIC SAFETY	\$	%	10. MULTI-PURPOSE AND GENERAL GOVT.	\$	%	%	%	%
2. ENVIRONMENTAL PROTECTION	\$	%	11. EDUCATION	\$	%	%	%	%
3. PUBLIC TRANSPORTATION	\$	%	12. HEALTH	\$	%	%	%	%
4. HEALTH	\$	%	13. TRANSPORTATION	\$	%	%	%	%
5. RECREATION	\$	%	14. SOCIAL DEVELOPMENT	\$	%	%	%	%
6. LIBRARIES	\$	%	15. HOUSING & COMMUNITY DEVELOPMENT	\$	%	%	%	%
7. SOCIAL SERVICES FOR AGED & POOR	\$	%	16. ECONOMIC DEVELOPMENT	\$	%	%	%	%
8. FINANCIAL ADMINISTRATION	\$ 619.45	4.5%	17. ENVIRONMENTAL CONSERVATION	\$ 5230.00	37.5%	%	%	%
9. TOTAL ACTUAL OPERATING-MAINTENANCE EXPENDITURES	\$ 619.45		18. PUBLIC SAFETY	\$	%	%	%	%
10. CERTIFICATION (Please Read Instruction F)			19. RECREATION	\$	%	%	%	%
11. ADDITIONALLY, I certify that I am the chief executive officer and, with respect to the expenditure funds reported herein, I certify that they have not been used in violation of either the priority expenditure requirement (Section 103) or the matching funds prohibition (Section 104) of the Act.			20. OTHER/Specify/	\$	%	%	%	%
			21. OTHER/Specify/	\$	%	%	%	%
			22. OTHER/Specify/	\$	%	%	%	%
			23. TOTAL ACTUAL CAPITAL EXPENDITURES	\$ 5230.00				

Revenue Sharing Funds Received
Thru June 30, 1973, \$13,921.00
Interest Earned \$524.00-303.82 to accrue 12/12/73
Total Funds Available \$ 2547.55
Amount Expended \$ 5849.45
Balance \$ 8071.55

SIGNATURE OF CHIEF EXECUTIVE OFFICER
Gill Fatschke - Mayor
NAME & TITLE PLEASE PRINT
State Line Tribune 8-31-73
NAME OF NEWSPAPER DATE PUBLISHED

YOUR WORK SHEET

Enrollment Up 21 - -

Farwell Marks Beginning Of Year With 655 Students

Hustle, bustle, laughter and tears were all part of the opening day of the 1973-74 school year at Farwell Schools Monday, Aug. 27, as 655 students gathered on the school campus.

According to Superintendent W. M. Roberts, enrollment figures for this year are up 21 over last year's figure of 634 with more students expected to

enroll as the week's activities progressed.

Two hundred ninety-eight students were enrolled Monday in Kindergarten, Special Education and elementary grades one through five. Kindergarten enrollment totaled 31 for the first year of the public school kindergarten program with 11 being registered in special education classes.

A breakdown of class enrollments for the first through fifth grades shows 53 first graders, 42 second, 43 third, and 59 students registered in both the fourth and fifth grades. Last year's figures show a total of 295 students in elementary school, three less than 1973-74 figures.

Junior High School registration is up 12 students over the 150 registered the first day last year with a total of 162. Sixty-four students are enrolled in the sixth grade, 52 in the seventh and 46 students in the eighth.

High School enrollment increased six over last year with 195 students registered at the end of the first day Monday. Fifty-nine freshmen, 46 sophomores, 50 juniors and 40 seniors are currently enrolled in Farwell High School.

Break-Ins, Theft Keep Sheriff's Officers Busy

Parmer County sheriff's officers were busy over the weekend investigating a series of break-ins in Bovina.

Friday night, a glass was broken at Gaines Hardware. A few items were "fished out" through the glass; however, the items were left at the scene.

Also, the back door of Gee's Cleaners was broken into and a set of socket wrenches was taken and McCutchen Glass Company was broken into, but nothing was taken.

Sheriff Charles Lovelace reported that about noon Saturday, two youths allegedly stole a pickup from Edwin Lingnau of the Oklahoma Lane com-

munity. The youths had wrecked and abandoned a car, reportedly stolen in Norman, Okla., the day before, about 1 1/2 miles from Lingnau's place. They then took his pickup and it was found in Lubbock, stripped. The youths then reportedly stole another pickup in Lubbock and have not been apprehended as yet.

Remundo Estraca, 23, of Bovina, is being held in the Parmer County jail, awaiting sentence for failing to comply with the terms of his probation. Estraca was given a probation sentence after being found guilty of forgery. He will be transferred to Huntsville after his sentencing.

Watch Your Step

Stairs rank high as the place of home fall fatalities. They can be made less of a peril by adding abrasive treads or carpet to their surfaces, the National Safety Council recommends.

Mixing sand with paint creates a simple non-slip coating mixture for basement and outdoor steps.

The top and bottom steps may also be painted a light color to aid in visual orientation.

Handrails, shaped so that an older person can tell by touch when he or she has reached the bottom stair, should be added.

Rummage Sales To Start Sept. 8

Epsilon Sigma Alpha Sorority, Theta Rho Chapter, will begin its fall rummage sales Saturday, Sept. 8, from 10 a.m. to 6 p.m. in the west door of the quonset building housing Interstate Fertilizer.

Sales are slated each Saturday through Sept. 29. After this Saturday, time of the sales will be from 2 to 6 p.m. at the same place.

Anyone having items for the rummage sale should call any ESA member and the items will be picked up.

Prefinished Paneling
Several Patterns
Prefinished Moulding
6' Split Creosote Post
Latex Interior Wall Paint Gal.
Asphalt Shingles & Roof Coatings

FREE DELIVERY TO TEXICO & FARWELL
Home Lumber & Supply Co.

1201 E. First St. Clovis
 763-4437



GREENHAND ELECTION -- Texico Future Farmers of America Greenhands conducted their officer election Aug. 22. New officers are, from back to front, Joe West, president; Richard Hadley, vice-president; Charlene Whitener, secretary; Ken Richardson, treasurer; Mike Snodgrass, reporter; and Billy White, advisor. Not present for picture is Mark Howard, sentinel. These officers will participate in the District Parliamentary Procedure Contest later in the school year.



On The Farm In Parmer County

By R. MACK HEALD
 County Agent

How will Phase IV affect farmers?

According to Dr. William Vastine of the Texas Agricultural Extension Service, agricultural producers will be most directly affected in the short-run by the following: (1) the beef price freeze that continues until Sept. 12, (2) only dollar for dollar price increases on commodities not frozen may be passed on by processors, wholesalers and retailers, (3) decreases in raw agricultural costs must be passed on to consumers, (4) beef price increases after the proposed freeze termination must be on a dollar for dollar basis.

Several other aspects of Phase IV are of interest. The Tariff Commission has been asked to review temporary suspension of import quotas on non-fat dry milk. Also, an 80

Leave For School

Caroline Anderson of Farwell, accompanied by her mother, Mrs. Bob Anderson, left for Dallas Saturday, Aug. 25, where she will be enrolling at Southern Methodist University.

Mrs. Pat Curry of Houston, sister of Caroline, joined them in Dallas, as did Will Anderson on his way back to College Station where he will be a sophomore at Texas A&M. Mrs. Curry is a senior at Houston Baptist College.

million pound increase for non-fat milk has been ordered on an emergency basis.

Another provision includes bringing back into production all remaining set-aside acres by 1974. Limitations on soybean and related product exports will be continued for the remainder of the crop year.

In addition, a request has been made of Congress to speed up anti-inflation legislation, including authority for export controls and selective tariff reductions, disposal of excess materials from the National Stockpile, and authority for construction of the Alaska Pipeline. The pipeline fight has already resurfaced.

Perhaps of most concern to producers is the request for farm legislation to permit farmers to earn higher incomes through greater production rather than higher prices. Educational efforts have been directed at dispelling this idea for years, and it should be approached cautiously by producers.

Due to the nature of the demand for agricultural products, relatively small changes in supply can evoke relatively large changes in prices. Thus flooding the market with products would reduce prices to consumers, but producers may find themselves in the position of the fellow who said he was losing 5 cents per bushel on his crop but hoped to make it up by producing a larger volume.

HOSPITAL NOTES

Mrs. B. N. Graham of Farwell is hospitalized in a Lamesa hospital suffering from a fractured pelvic bone. Mrs. Graham fell while visiting in Lamesa.

Leon Billingsley of Oklahoma Lane Community underwent surgery Tuesday afternoon in Clovis Memorial Hospital and is reported to be in satisfactory condition. Billingsley was admitted to the hospital last Friday for medical treatment and was dismissed on Saturday. However, he was re-admitted Tuesday morning for the scheduled surgery.

Frank Doshier Jr. of Oklahoma Lane Community was dismissed from the Clovis hospital last Friday. He was admitted to the hospital on Wednesday, Aug. 22. He is feeling better, according to family members.

"People are like steamboats—they toot loudest when they're in a fog."—J. D. Eldridge, Overton (Tenn.) County News.

To Name Committee - -

Farwell Chamber Eyes Health Care Facility

Farwell Chamber of Commerce met Tuesday noon for its regular August meeting. Fifteen members were present to hear a report on the Border Town Days activities and to discuss the Hospital/Nursing home report prepared by Charles Monnot Jr. and Associates of Oklahoma City.

Chamber President Charles Aycock reported that the Chamber-sponsored barbecue was not a financial success and that he had received a number of suggestions from members for next year's celebration. Chamber members gave approval for the president to confer with the Arena Association and other civic clubs to draft a plan for next year's program.

Aycock then read the pertinent parts of the feasibility study on a Hospital/Nursing home recently conducted for the Chamber. Some members felt that the Hospital recom-

mendation should merit further study. To that end, Aycock said he would appoint a committee to further evaluate the feasibility study and to report further findings to the Chamber members at a later date.

So says the VA...

ALLEY OOP by V. T. Hamlin & Dave Gray

Do you know you can take flight training under the GI Bill?

For information, contact the nearest VA office (check your phone book) or write: Veterans Administration, 111A, 810 Vermont Ave., N.W., Washington, D.C. 20520

YOUR SAVINGS ADD UP TO MORE

Folger's Big 10 oz. Inst. Coffee \$1.39	Nestles 2 lb. Quik 79¢	3 lb. Can Crisco Shortening 99¢
Jif 18 oz. Peanut Butter 79¢	Grade "A" Med. Eggs 69¢ Doz.	Shurfine 46 oz. Grapefruit Juice 39¢
Shurfine 16 oz. Mustard 19¢	Pet 13 oz. Skimmed Can Milk 5/\$1.00	10 lb. Bag Russet Potatoes 69¢
Calif Santa Rosa Plums 29¢ lb.	Food King 8 oz. Fish Sticks 5/\$1.00	Shurfine 6 oz. Orange Juice 5/\$1.00
Calif Fancy Nectarines 39¢ lb.	Wilson 1 lb. Bacon \$1.49 pkg.	
Calif Cello Tomatoes 29¢ Tube	Armours Market Sliced Bologna 98¢ lb.	
Borden's Round Half Gallon Ice Cream 89¢	U.S.D.A. T. Bone Steak \$1.39 lb.	Campfire 12 oz. Franks 79¢
Chef's Delight 2 lb. Box Cheese Spread 89¢	U.S.D.A. Extra Lean Pork Steak 98¢ lb.	
Shurfine 22 oz. Hamburger Sliced Dill Pickles 49¢	Soffin 4 Roll Pack Toilet Tissue 39¢	

3-FOR-THE-MONEY PERFORMANCE

Puma BELTED TIRE

- GOOD MILEAGE
- SMOOTH RIDE
- RUGGED CONSTRUCTION

Trop-Artic HIGH PERFORMANCE

- QUICK STARTS
- LONG LIFE
- RUGGED CONSTRUCTION

At Phillips 66 it's performance that counts

HELTON OIL COMPANY

"Serving The Texico-Farwell Area"

AFFILIATED

CAPITOL FOODS

WE GIVE S & H GREEN STAMPS DOUBLE ON WED. WITH \$2.50 PURCHASE

Farwell OPEN TILL 9 O'CLOCK EVERY NIGHT We Redeem U.S. Government Food Coupons

We Feature Shurfresh Milk
 We Feature Tendercrust Bread
 Clovis