

# THE STATE LINE TRIBUNE

"OFFICIAL PUBLICATION OF PARMER COUNTY"

NUMBER 9

SIXTY-SECOND YEAR

15 CENTS

## Rural Fires - -

# County Approves \$2,500 Subsidy For Firefighting

As an alternative to several proposed plans for subsidy to the four Parmer County Volunteer Fire Departments, Parmer County Commissioners approved a \$2,500 per year subsidy for each department.

The decision was made following lengthy discussion during the regular meeting of the Parmer County Commissioners Court Monday, and will be effective as of January 1, 1974.

Discussion on the proposed plans started before lunch with Commissioner Tom Lewellen of Precinct One proposing that a flat rate of \$750-\$1,000 be paid each fire department per year, plus \$50 for each call outside the city limits.

Commissioner Charlie Jef-

erson of Precinct 2, Bovina and Commissioner Raymond Treider Jr. of Precinct Four, Lazbuddie, objected to a "blank checkbook" being handed any fire department.

"I am not against paying the fire department a fair price for rural firecalls," commented Commissioner Jefferson, "but, I am against just handing anyone a blank checkbook." He proposed a flat rate of \$2,000 a year.

Parmer County Judge Archie Tarter had suggested a \$3,000 per year subsidy to each department, citing that many of the rural calls, and in fact most of the rural fire calls, were to grass fires and other minor calls that took 15-30

minutes to control. He said that according to records of the Farwell Volunteer Fire Department, 28 rural calls were made to fires by the Farwell Volunteer Fire Department during the preceding year. He also cited that of four fire calls during the past two weeks, three were to rural fires, and all three calls were grass fires.

It was a nearly unanimous decision that by subsidizing all fire departments equally, the smaller fire departments, such as Bovina and Lazbuddie could add equipment and build up the fire department.

Treider reported that Lazbuddie has a firefighting department of 20 men who have regular meetings and emphasized that the Lazbuddie fire truck is in fact, in running shape and they are ready to fight fires when and where needed.

The Lazbuddie fire truck is housed in a building which was formerly a church. Treider told commissioners the church was abandoned when a new church was built, and was remodeled to become a fire department.

Commissioner Lewellen told commissioners of several experienced firefighters who had been released from the Friona Volunteer Fire Department who were interested in organizing a County Volunteer Fire Department. The proposition was turned down as commissioners were of the opinion that if and when the firemen resigned, they could not be replaced and also, it was not feasible to attempt to centralize a fire department in the county.

Commissioner Jefferson seconded Commissioner Treider's

motion to approve the \$2,500 subsidy. Voting for the proposal was Commissioner Cecil Atchley of Precinct 3, with Lewellen abstaining from the vote.

County Attorney Hurshel Harding told The State Line Tribune representative at the commissioners court meeting he had a personal matter to discuss with commissioners, and the reporter was asked to leave.

As the newspaper representative was not in the courtroom, although no executive session was called, it is not known what "personal matter" was discussed with county commissioners.

In other county business conducted during the day, Judge Tarter reported on plans to widen State Highway 214 from Hub to Clay's Corner and said construction was expected to start in the near future.

Commissioner Lewellen consulted with Commissioners' Court on the possibility of closing a road as per a request received from a resident in his precinct.

Judge Tarter cited a section of Vernon's Statutes which prohibited closing a road unless it had not been in use for a continuous period of three years. He gave the commissioner copies of the statute and told the commissioner to give a copy to the man who requested the road closed.

Diesel problems were discussed briefly, with Tarter reporting he had four maintainers idle due to lack of diesel.

Commissioners Court also checked and paid routine bills and canvassed the election returns from the amendment election last week.



**BOOSTER CLUB HOLDS DRAWING** - Members of the Farwell Booster Club recently sold tickets on a .870 Remington pump shotgun as a fund-raising project and held the drawing during halftime of the Farwell-Sudan game last Friday night. Winner of the shotgun was Martin Kube of Farwell. Pictured here are from left, with his arm hiding his face is Richard Deel. Holding three year old Marla Marsh, daughter of Mr. and Mrs. Glenn Marsh, who did the drawing is Don Gerles, who assisted with the drawing.

## Track Discussed - -

# Farwell Public Schools Face Bus Driver Problems

Farwell School Board Trustees faced a problem last week that pops up more and more in Texas schools this year, since a new requirement for school bus drivers went into effect at the beginning of the school year.

During the meeting last week of the board, discussed was a mounting problem acquiring drivers who can and will take the physical examination as required by new Texas law.

Two former drivers have already had to drop off the bus driver roster as they could not qualify as drivers under the new ruling.

Farwell School Superintendent W. M. Roberts said it is never easy to acquire drivers under the best of conditions, and now the school faces a possible dilemma in getting drivers to complete the school term.

Guidelines provided the Farwell school, along with all other schools in the state, preclude the hiring of retired persons, or, in fact, any potential driver, without a stringent physical examination.

In other action at the board meeting, Joe Jones and Don Williams discussed the possibility of moving bleachers and lights from the football field to the track field.

Roberts commented, "The school feels it has other things more pressing and funds for such as moving the lights and bleachers could not be released."

Jones and Williams were checking into costs for moving

and plan to give a report at the next meeting of the board.

Approved for employment during the meeting was Frank Doshier Jr.

He will count cattle on wheat pasture for the school tax roll and will possibly check other personal property for taxation purposes.

A textbook committee was named. They will check proposed textbooks for the next school term and report their findings to school officials.

Along with other routine business and reports during the meeting, an audit report was given and approved by members of the school board.

## Zoning; Office Hours Changed - -

# City Accepts Low Paving Bid Subject To Public Hearings

With a low bid of \$252,736.80, Jake Diel Dirt and Paving Inc. of Muleshoe, was awarded a paving contract for Farwell city streets, contingent to completion of property owner's public hearings.

Two bids were received Monday evening at Farwell City Commission and the bid tentatively accepted was \$9,337.18 lower than a \$261,064.38 bid submitted by K. Barnett &

Sons of Clovis.

Bob Lydick, engineer, checked both bids as received, and confirmed that calculations were correct on the two bids. He suggested to Farwell Mayor Gil Patschke and City Commissioners Jim Berry and Fred Chandler that Jake Diel be notified as soon as possible by letter of the tentative acceptance of their bid.

Following a public hearing

on the paving project, scheduled for Monday, Dec. 10, at 5 p.m., bids will be formally let and a contract entered into with the low bidder to start the project.

Letters are being mailed to the approximately 150 property owners involved in the paving project and mechanic's liens are being enclosed for signing by the owners of property in the paving project to facilitate getting the extensive paving program underway.

Restrictions were placed on mobile homes in Farwell after a report by Albert Johnson of the Farwell Planning and Zoning Commission.

City Commissioners adopted the commission's recommendations of restricting the parking of mobile homes to seven blocks in the city.

Blocks where mobile homes may be parked (or placed) include the one-half of blocks seven and eight; all of block 10; the east one-half of block 11; all of block 23; the east one-half of block 22; and all of blocks 24 and 35.

It was further recommended and accepted that other locations in the city where current mobile homes are located will be declared void for future use of mobile home parking when the mobile homes move out.

Also in the planning stage at this time is an ordinance controlling the size and type of mobile home that can be placed on any lot within the city.

Other zoning is planned in the near future, with Farwell to be zoned according to industrial, commercial, single family, double-family, and multi-dwelling locations. The zoning and planning commission will continue work as they were instructed to check into further zoning for Farwell.

Street signs and no-parking signs were discussed, with no-parking signs to be placed in some areas, and a possibility that all street signs will be replaced in the near future.

A proposal from the Panhandle Manpower Area Planning Council was rejected for hiring additional help for the city. The City Commission was unanimous in the opinion that no further help was needed at this time.

Commissioners also voted to keep the city hall open on election days and city employees conduct city business as on a regular day. They approved the city hall being closed on January 1; Memorial Day; July 4; Labor Day; Veterans' Day; Thanksgiving and Christmas Day. In the past, the city hall has observed the same

closing days as the courthouse, including election days.

Approved were new office hours for the City Hall. In order to help working people, the City Hall will now be open Monday through Friday, 8:30-12:30 and 1:30-5:30 p.m. The City Hall formerly was open 8:00-12:00 and 1:00-5:00 p.m.

Several items on the agenda were not discussed and were carried over to the next meeting, including the new 'junk car' ordinance and checking the auditor's report and recommendations.

## Newell Wins First - -

# Local Contestants Out Of Top Money

Farwell contestants lost out in the 'top' money in this week's Area Merchant's Football Contest to Muleshoe and Abilene.

Five persons correctly predicted all ten games, but Carlton Newell of Muleshoe took first place money of \$5 with 14 points off on the tiebreaker. In second place and winning \$3 was Jack Allen Kirkland of Abilene, who was 17 points off on the tiebreaker. Lorine Dannheim, who has won previously, was in third place and won \$1 for being 20 points off on the tiebreaker.

Leigh Kirkland and Kim Watkins also guessed the ten games correctly, but Leigh was 23 points off on the tiebreaker and Kim 26 points off.

Becky Taylor and Elaine Wardlaw share the lead in total points this week, each with 77.

Standing pat in second place are Carl Davis, Carl Glenn Davis and Missy Taylor, who have 76 points each.

Gene Beavers and Russ Jones share third place with 75 points and in fourth place are Louise Hancock, Mona Hard-

age and Larry Wardlaw, each with 74 points.

With a definite pattern established, the final two contests could possibly switch leaders around again, as several persons dropped in ratings during the preceding week.

For the top-rated winner in the 12 weekly contests, two tickets to the Cotton Bowl and \$50 expense money, while second place winner will receive two tickets to the Sun Bowl and \$25 expense money.

The contest is sponsored annually by area merchants and the State Line Tribune.

## Judge Hired - -

# Texico City Dads To Change Zoning

With an eye to the future, Texico City Board of Trustees planned a special meeting for Tuesday, Nov. 20, to take a long, hard look at the existing zoning ordinances and a probable change in zoning for mobile homes.

Trustees plan to check locations of mobile homes presently on lots in Texico, and plan future locations for mobile home permits. In keeping with long-range planning, the trustees are checking the existing zoning map, with tentative plans to change the map to adapt to future mobile home locations, double and multi-family dwellings and single family dwellings.

They also discussed a major clean-up, with property owners to be contacted to clean-up vacant lots, and around vacant buildings, or the city to go in and clean up the property and place liens against the property for payment.

Trustees were of the opinion that future industry could not be attracted to Texico unless

and until some improvement is made in the overall appearance of the city.

Due to the resignation of Texico Municipal Judge Grady Goff, which was effective Thursday, Nov. 15, trustees approved the employment of Milton H. (Pete) Poteet as municipal judge to be effective Friday (today).

Poteet will serve as municipal judge until city elections in March.

He is a retired cotton gin manager and has maintained a home in Texico for a number of years.

Texico City Attorney Harry Patton was asked to draw up a joint-power agreement between the City of Texico and Curry County for presentation to Curry County Commissioners Court in an attempt to help subsidize the fire department and ambulance service of Texico.

In a report given on progress on the Texico Community building remodeling, Wesley Ingram said doors have been replaced, concrete work is underway and repairs are progressing at a good rate.

City Officer Willie Ronquillo was instructed to start picking up junk cars covered by state statute and approval of the police report for the preceding month was given.

Stanley Hardwick of Clovis was chosen as the appraiser to appraise land under option for a city park in Texico.



RAYMOND TREIDER JR.

## Community Card Project To End

"Highly successful" has been the word of almost all the volunteer workers who have canvassed Farwell all week in the annual Farwell Elementary School Community Christmas Card project.

Today (Friday) is the final day to get your name on the Community Christmas card which will be featured in the special Christmas edition of The State Line Tribune.

Each person contributing to the Christmas card fund will have their family name included on the card in a greeting to friends, neighbors and business associates.

**PURELY PERSONAL**  
by John

The energy shortage is uppermost in the national news and there are reports that Congress is beginning to look at possible solutions to the crisis. It is Congress that has caused the shortage of energy in this country by responding hurriedly and ill-advisedly to the rantings of uninformed but articulate environmentalists. The question is - "Can Congress correct its own mess in time to avert serious dislocation to many people in the country?"

The following article by Bruce D. Henderson is taken from the "Southwestern", a publication of the Southwestern Public Service Company. It points up Congressional complicity in our present energy crisis.

## TO CREATE AN ENERGY SHORTAGE

Natural Gas. Set a ceiling price on natural gas. This discourages exploration and increases use. Keep the prices down in spite of inflation. This amplifies the effect and guarantees a shortage eventually.

Coal. Ban the use of coal with sulfur content. This sharply restricts the supply. Sharply restrict strip mining for cosmetic reasons. This further restricts the supply. Then suddenly impose drastic new safety rules which will substantially cut output from existing mines. Freeze prices so no one can offset cost increase from reduced output or justify further investment.

Atomic Power. Delay construction a matter of years by uncertainty about licensing requirements. Delay operation at full power after construction. Delay start of construction by environmentalist suits.

Oil. With natural gas, coal and atomic power all severely restricted, that leaves only petroleum. First, grossly increase automotive consumption of gasoline by requiring drastic reduction in engine efficiency because of pollution related modifications. That alone will insure a severe shortage of energy. Then ban the use of oil containing sulfur. This severely reduces refining capacity. Put into effect new pollution objectives which make refineries far more expensive. At the same time, introduce great uncertainty into the requirements that must be met. That will virtually stop refinery sites because of environmental legal delaying tactics. Further curtail refinery investment by making supplies of crude oil very uncertain. Block the use of Alaska North Slope oil by arguments on the cosmetic effects in uninhabited and unreachable regions. Stop the use or search for oil offshore in California because of potential leaks. Slow all offshore operations for environmental reasons. For good measure, hold down the price of gasoline to half that in Europe. This encourages large cars.

To be sure that all of the above is misunderstood by the general public, bring a law suit which charges all the largest energy companies with being noncompetitive and therefore causing the energy shortage.

The above scenario has actually occurred in the U.S. Each and every action described above has been the result of public policy. Each act had laudable objectives. In the aggregate these actions will prove to be very punishing to the general public for years to come.

Approve of thinking in oil producing towns and counties is this reported bumper sticker. "Let the SOB's freeze in the dark." Possibly they will this winter, but you can bet your "long johns" they will make everyone else uncomfortable in the process.

## Early Deadline For Next Week

In order to give employees of the State Line Tribune a holiday on Thanksgiving, Nov. 22, deadlines for news, social items and advertising for the November 23 issue will be noon on Tuesday, Nov. 20.

Your cooperation will assure your news item appearing in the State Line Tribune during the current issue, and will be appreciated by the staff.

This will be moving the deadlines up only one day during this holiday week.

## Schools Dismiss For Thanksgiving

Farwell schools will dismiss Wednesday, Nov. 21, at 2:30 p.m. for the Thanksgiving holidays.

Texico schools will dismiss at regular time on Wednesday. Both schools will resume at regular time Monday, Nov. 26.



**CHECK PRESENTED WEEKLY CONTEST WINNER** - Johnny Curtis, left, of Capitol Food, and one of the weekly sponsors of the Area Merchant's Weekly Football Contest, presents a first place check to Carlton Newell of Muleshoe. He won the \$5 check having all ten games correct and only 14 points off on the tiebreaker. Second was Jack Allen Kirkland of Abilene and third was Elaine Wardlaw. Two more weeks remain in the contest for this year.



Second-class postage paid at Farwell, Texas 79325. Published every Friday.

SUBSCRIPTION RATES -- Parmer and adjoining counties, \$5.50 per year; elsewhere, \$7.00 per year. Payable in advance.

John Getz, Publisher  
Cleta Williams, News Editor  
Patti Parker, Compositor

### Girls Basketball - -

## Season Outlook, Player Roster Reviewed By Coach Nicholas

The 1973-74 basketball season for the Farwell Steerettes will open with competition against Adrian in Farwell gym Friday (today) with play beginning at 4 p.m. Second opponent of the new season will be Dimmitt Saturday, Nov. 17, with play to begin at 5:30 p.m. in the local gym.

Early this week, girls coach Gail Nicholas released the roster of players and a statement concerning individual players and overall outlook for the Steerette season.

Coach Nicholas commented, "Some of the things that could go against us this season are our lack of experience and size. We will be carrying six sophomores and possibly one freshman along with four seniors and one junior. Our entire team's height average is only 5'6" and we don't have great overall speed or quickness. We do have three returning starters coming back and that does seem to give us a little stability. Those three starters are Sharon Booth and Jamye Craig, who both made All-District last season, and the third returnee is Lori Norton, who performed as well as any guard in the district.

"We do have some talent and by the latter part of the season, if we can improve and hold on to our enthusiasm, it is possible that we can give our district foes some problems."

The '73-'74 roster includes guards Terri Boling, Lori Norton, Karen Foster, Jamye Craig, Pam Erwin and Deb Meeks. Forwards listed are Sheryl Woods, Sharon Booth, Joyce White, Tami Haseloff, Bonnie Foster and Kathy Booth. Returning lettermen are Lori Norton, Jamye Craig, Joyce White and Karen Foster.

Coach Nicholas gave the following statements concerning individual Steerettes:

Terri Boling, 5'8" sophomore -- hard worker with a good attitude; has only one year of

experience as a guard; started for the B-Team last season; has improved and with experience should be a complement to any defense.

Kathy Booth, 5'8" freshman -- could see action for the varsity this season; blessed with a great deal of natural ability; has an eagerness to learn and only time is needed for Kathy to develop into an outstanding player.

Sharon Booth, 5'8" junior -- second leading scorer last season with 443 points; averaged 14.9 points per game; great outside shooter and has begun to develop into an all-around player; lacks great speed but plays good defense and rebounds well; has possibilities of becoming a very potent offensive performer.

Jamye Craig, 5'8" senior -- aggressive and strong; not tall for a post guard but is a strong rebounder; grabbed 205 rebounds last season for a 6.6 average; has developed into an all-around defensive player; the defense will depend a great deal upon this girl.

Pam Erwin, 5'3" sophomore -- makes up for lack of size with great hustle and quickness; Pam needs playing time to develop her potential and could become a dependable defensive player.

Bonnie Foster, 5'4" sophomore -- very smooth, quick and exciting forward; Bonnie has the ability to generate the offense and with more experience should develop into a very effective scorer and playmaker.

Karen Foster, 5'4" senior -- a returning letterman who saw a lot of action last season; like so many of the defensive people, Karen is small but usually manages to be at the right place at the right time; with a good attitude could play a role in our defense.

Tami Haseloff, 5'8" sophomore -- had a very successful year for the B-Team last

### Basketball Tonight - -

## JV Falls To Hornets In Seasons Last Game

The Farwell Junior Varsity Steers lost to the Sudan Hornets in their last game of the season in Sudan last Thursday by a score of 22-16. Brad Jones scored both touchdowns for Farwell on passes from Mike Goettsch. Gerald Hardage ran over twice for the extra points.

Coach Don Alana stated that it was a good ball game. "All of the boys played well. Farwell led most of the game,

but with 1:10 left in the game Sudan took over on the 20-yard-line after a bad snap from the center on a punt, and were able to score to win the game," the coach commented.

Alana credited the entire team in the playing of their final game. The JV ended the season with a 1-7-1 season record.

Friday (today) the Junior Varsity starts basketball here against Adrian at 5:30.

### Texico Teams On The Road

Texico varsity and "B" team basketball boys will travel to Springlake-Earth Monday, Nov. 19. Game time is 6:30 p.m.

Jr. high and high school girls are scheduled to play Melrose Tuesday, Nov. 20 at 6 p.m. CST in the Texico gym.

### School Lunch Schedule

At Texico

MONDAY - Hamburger on bun, onions, pickles, lettuce, tomatoes, orange and milk.

TUESDAY -- Turkey and dressing, giblet gravy, pear and cranberry, loaf bread, ice cream and milk.

WEDNESDAY -- Vegetable stew, cheese sandwiches, fruit cobbler and milk.

THURSDAY -- THANKSGIVING HOLIDAYS!!

FRIDAY -- THANKSGIVING HOLIDAYS!!

### Farwell B-Ball Season Starts

Farwell High School basketball season will get underway today (Friday) in the Farwell gym, beginning at 4 p.m.

Both boys and girls "B" teams will play as well as both varsity teams. Everyone is urged to come out and support the teams.

### Texico Girls To Meet Melrose

Texico girls varsity and junior high basketball teams will meet the Melrose girls varsity and junior high basketball teams Tuesday, Nov. 20 for the second game of the season.

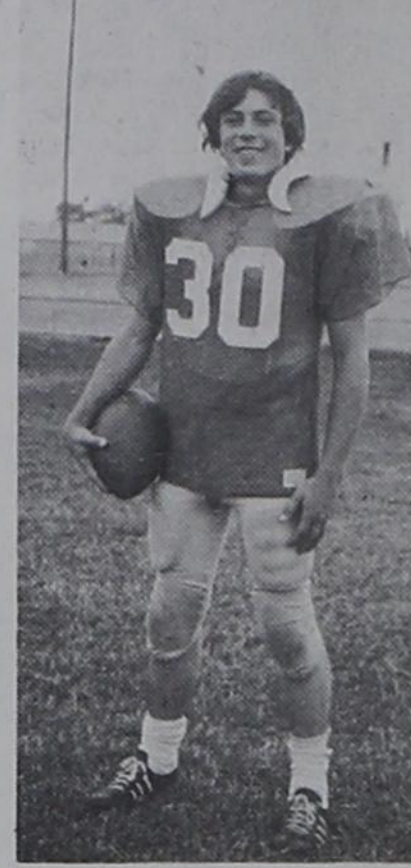
The games will be played at Wolverine Gymnasium.

The juniors will start play at 7:00 p.m. (CST) and the Varsity teams will follow the junior high game.

## Steers Of The Week



KIE WATKINS



MIKE WOODS

Receiving honors as outstanding Steer players of the week for their performances during the final game of the 1973-74 football season are Mike Woods and Kie Watkins. According to Head Coach Toby Booth, "Woods ran real good during the game and Watkins played an outstanding game. Watkins has played good football all year and he is a good defensive tackle." Honorable mentions went to Kevin Hargrove who "did a good job of running", according to Booth, and to all the senior Steer players who "have all played good ball for us this year."

### Final Clash - -

## 8th Yearlings Dropped By Sudan Hornets, 14-6

Farwell eighth grade Yearlings fell to Sudan last week by the score of 14-6 in competition at Hornet Stadium to give them a final season record of 5-5-0.

The Yearlings scored on their first drive with Richard Yruegas making the touchdown. The try for extra points failed. Sudan scored in the second and fourth quarters on two easy passes. Farwell fumbled twice on the 5-yard-line and penalties killed two other drives the Yearlings had going.

Coach Larry McDorman commented that Tim Norton and Richard Yruegas "did a good job of running." McDorman also cited Rusty McFar-

land, Dan Geuther and Carlos Luceo for their outstanding jobs during the final game of the 1973-74 season.

Each farmer in America today, produces enough food for himself and 51 other people. Twenty years ago, he was raising enough to feed just 15 other people.

STEED

A Name Of Service For 65 Years

STEED - TODD

Funeral Home

Prince And Manana

Ph. 763-5541

### To Clovis Girls - -

## Texico Girls Drop Basketball Opener

Texico High School girls basketball team began practice Monday, Nov. 12, which gave them only one day of work out before the season opener Tuesday, Nov. 13, against the Clovis High School girls' basketball team at Clovis High School gymnasium.

Both Texico B-team and Varsity were downed by the Clovis teams. The B-team lost to Clovis, 28-22 in a close game all the way after the first half. Texico Varsity lost to Clovis by a score of 62-17.

According to Coach Charles Stockton, the Clovis team had a lot of height and with only one practice, "we weren't too prepared for the game."

Diane Luce and Beverly Duncan tied for high point honors with five points each.

Coach Stockton added that nineteen girls are out for basketball, which includes five seniors, six juniors and eight sophomores.

Seniors are: Linda Autrey, who played last year, Libby Cavallero, Marty Rogers, Diane Luce, who also played last year, and Belinda Niece, who was also on last year's roster.

Juniors are: Beverly Duncan, Carol Eshleman, Elaine Kelley, Freda Leavell, Elizabeth Pierce and Charlotte Smith. All of these girls played on last year's team.

Sophomores on this season's team are Gia Crooks, Valerie Fitz, Kim Harrison, Sharon Lindley, Rhonda Pace, Vicki Snodgrass, Carolyn Steward and Cheralee Tharp.

"A politician is someone who never met a tax he didn't hike." --Willia M. Jenkins, The Hermitage (Mo.) Index.

### LOO-MIXERS



### What's Cooking At Farwell School

MONDAY -- Burritos with chili, grated cheese, lettuce and tomato salad, orange juice, peach cobbler and milk.

TUESDAY -- Turkey and dressing, giblet gravy, yams with marshmallows, green beans, cranberry sauce, peaches, bread and milk.

WEDNESDAY -- Hamburgers, lettuce, tomatoes, pickles, onions, potato chips, cheese slices, ice cream stick and milk.

THURSDAY -- THANKSGIVING HOLIDAYS

FRIDAY -- THANKSGIVING HOLIDAYS

YOU REAP WHAT YOU SOW, AN' YOU SEW WHAT YOU RIP.

TRI-CO FEED CO.

Featuring

LOOMIX

LIQUID FEEDS

481-3339 - FARWELL

# 4,815

At this time of year, Southwestern Public Service Company is awarding service commendations to 262 of our people for 4,815 total years of service . . . that proves the dedication of our people who are being recognized this year . . . and we have 1,565 other men and women who are just as dedicated to providing you with power for your electrical needs.

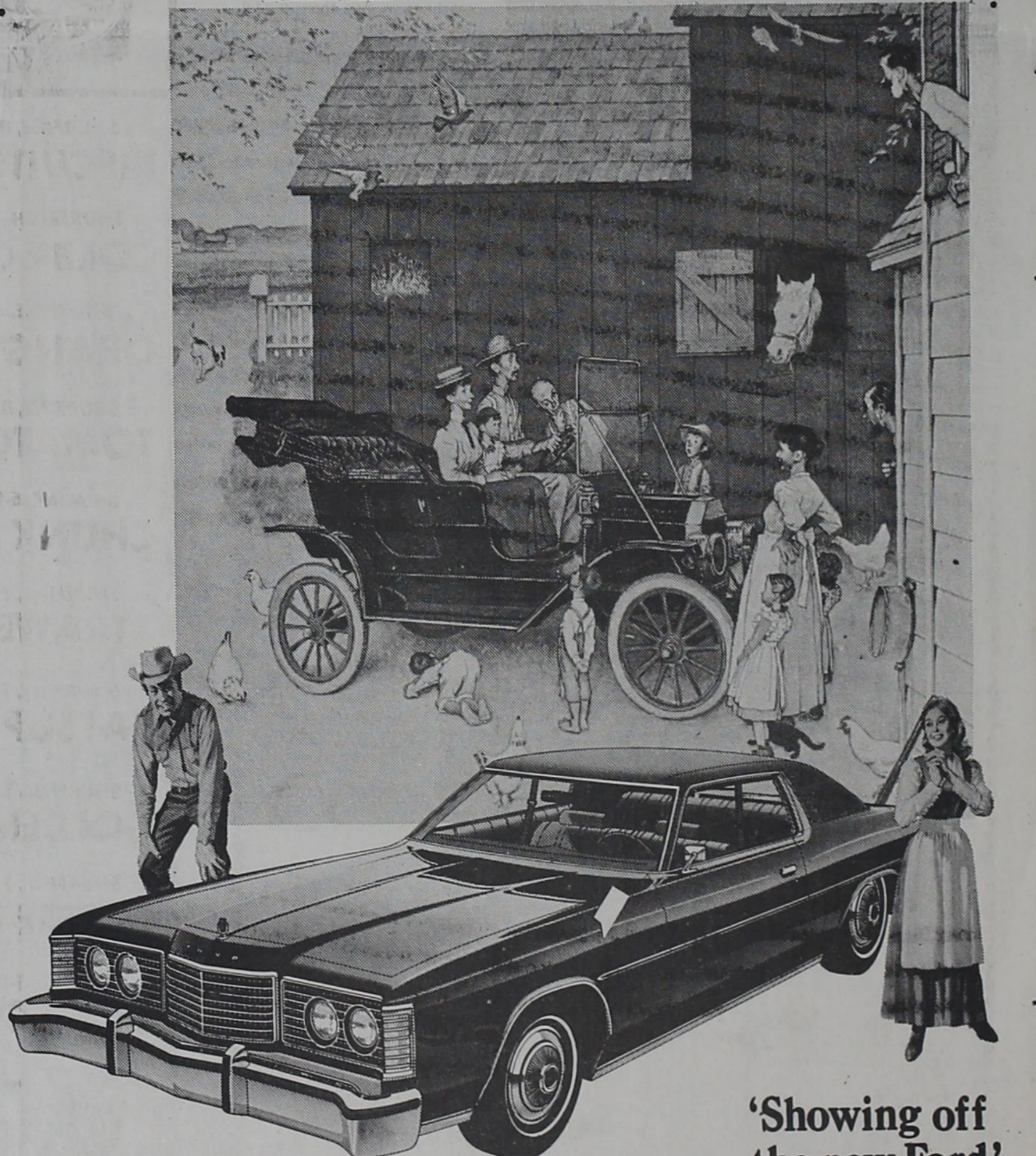
Electricity is something none of us want to do without. So, day in and day out, these skilled people are working as a team to make sure you'll have the electric power you need when you need it.

We're exploring new sources of energy continually so that a hundred, a thousand, four thousand years in the future . . . we'll still be able to deliver to you that modern miracle . . . the KILOWATT . . . 100% usable -- just like today.

And that's what dedicated people can do for people.



Your future is ELECTRIC!



'Showing off the new Ford'

This Norman Rockwell print is yours. Free.

Your Ford Dealer is giving away this Norman Rockwell print--FREE--to licensed drivers while supply lasts. Just ask a Ford salesman for yours. Rockwell's print captures the proud moment of showing off the new Ford. It's an American tradition. 60 years ago or today, Model T or '74 LTD, a new Ford owner can't wait to show the neighbors.

See your Ford Dealer for your free Norman Rockwell print . . . and see the new Fords for '74. Take home an American tradition.

The closer you look, the better we look--your First in the West Ford Dealer.



The closer you look, the better we look--your First in the West Ford Dealer.

## FRIONA MOTORS

Grand & Highway 60

p.o. Box 957 Friona, Tex.

Season Finale - -

# Sudan Hornets Buzz By Steers, 30-14

by Lynn Blankenship

The Sudan Hornets were busier than Bees last Friday night as they buzzed past the Farwell Steers, 30-14 to end the 1973 Football Season.

Sudan didn't play as much better than Farwell as the score indicates. They just got some good breaks and we suffered some very bad breaks in our TD territory.

Sudan kicked off to Farwell to get the game underway. Jack Foster received the ball and ran it up to the Steer 26 yardline to start offensive play. We were soon forced to punt on a fourth and seven situation.

Sudan was also forced to punt back to Farwell. The Steers still couldn't hang on, so back to the Hornets it went. Sudan was then able to remain in possession of the ball until a Hornet flew in from the Steer seven yardline for a Sudan TD. Their plus two attempt was good and Sudan appeared on the scoreboard 8-0 with 4:20 remaining in the first quarter.

Following the Sudan kickoff, Farwell was able to obtain a first down. On the next play, Mike Woods broke loose and ran about 40 yards for a Steer TD. However, a clipping penalty was called on Farwell and the ball was brought back. The Steers were soon forced to punt. This ended the first quarter. Sudan was unable to get a first down and they punted to the Steers.

On the Steers third play, Winfred Long ran the ball 38 yards to put the ball on the Sudan eight-yard-line. Farwell advanced on down to the three yardline when disaster struck. The Steers fumbled!

On Sudan's third play, Kevin Hargrove intercepted a Hornet pass and carried it to the Sudan 16 yardline. We were soon placed in a fourth down situation and the decision was made to go for the first down. The decision was unsuccessful and the Hornets started offensive play on their own 10 yardline.

Sudan drove those 90 yards

with only four first downs. A Hornet took the ball in from two yards out for Sudan's second touchdown. Their try for two extra points was successful and the Hornets widened the gap, 16-0 with 56 seconds remaining in the first half.

The Steers were forced to punt very soon after the Hornet kickoff. On Sudan's second play, a Hornet broke loose and flew 58 yards for a touchdown. Their try for extra points failed and they moved further ahead, 22-0. Time in the first half had already elapsed when the touchdown was made.

After the Farwell kickoff to start the second half, Sudan made several first downs but was finally forced to punt. The Steers soon fumbled and the Hornets tried again. Sudan could not hang onto the ball either and Kie Watkins recovered a Sudan fumble for Farwell. After a series of excellent plays, Kevin Hargrove went in two yards for the first Steer touchdown. Our try for a "plus two," failed, but we were on the scoreboard with 6 points. 4:47 remained in the third quarter.

Following the Steer kickoff, Sudan wasn't going to give up the ball. A Hornet ran the ball in from two yards out for a Sudan TD. Their try for two extra points was good and the score stood 30-6 with 1:13 left in the third quarter.

Farwell was forced to punt soon after the Sudan kickoff. While the ball was bouncing around it came up and hit a Hornet. The Steers fell on the ball and were in command. We drove the ball down to the Sudan four yardline and from

8-2-0 Record - -

## 7th Yearlings Swat Sudan Hornets, 22-0

The "boom offense" and "head hunter defense" of Farwell's seventh grade Year-

lings whollped the Sudan Hornets 22-0 last Thursday at Sudan. DeeDee Foster scored the first touchdown for the Yearlings on a 14-yard run. Rowdy Chandler ran over for the extra two points and then added six more points for the Yearlings to give them a 14-0 lead at halftime.

In the third quarter Kayle Watts scored on a 25-yard pass from Chandler. Steve Owens scored the two extra points for the final points of the game giving Farwell a 22 point lead.

Coach Jerry Owen praised the entire team for their performance. Owen stated that he has a "great group of seventh graders and the entire team was to be commended."

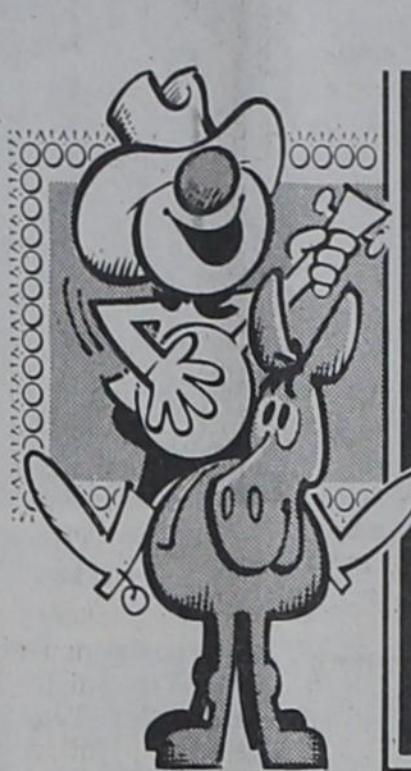
The Yearlings ended the season with a record of 8-2-0 with a total of 130 points in their pocket and gave up only 24 points to their opponents during the season's action.

"We made too many mental fumbles and lost the ball too many times to win the game," stated Coach Toby Booth in his comments regarding the final Steer game of the 1973-74 football season.

The coach stated, "We played pretty good offensive ball the second half. We moved the ball good in the second half and in the first half except for too many fumbles during that first half." He continued by commenting, "Defensively we didn't look sharp at all."

The coach and all Steer players wish to thank all supporters, the band and everyone for the backing and tremendous support they received during this season.

# GOOD FOOD FOR A THANKFUL THANKSGIVING



Home, home to the range. with a pocket of extra change! It's like a raise in pay, the bargains I'm finding today!



Holiday **HAMS** shurfresh **HAMS** \$5.98

**Coca-Cola** 10 Oz. Bottle **2 Ctns. 89¢**

<p>Shurfine <b>CRANBERRY SAUCE</b> 10 Oz. Whole or Strained <b>4/\$1.00</b></p>	<p>Shurfine <b>PORK &amp; BEANS</b> <b>5/\$1.00</b></p>	<p>Shurfine <b>BLACKEYED PEAS</b> <b>5/\$1.00</b></p>
---	---	---

Viking **ALUMINUM FOIL** 12 X 25" **4/\$1.00**

Shurfine **VANILLA WAFERS** 10 Oz. Pkg. **29¢**

- SHURFINE, 8-OZ. CANS **BISCUITS, B.M. or S.M. .... 11/\$1.00**
- SHURFRESH HALFMOON LONGHORN, **COLBY CHEESE ..... 69**
- SHURFINE, 6-OZ. CANS **ORANGE CONCENTRATE ... 5/\$1.00**
- SHURFINE, 8-OZ. CANS **TOMATO SAUCE ..... 9/\$1.00**
- SHURFINE, 6-OZ. CANS **CHUNK STYLE TUNA ..... 2/.89**
- SHURFINE, 18-OZ. JAR **STRAWBERRY PRESERVES ..... 59**
- SHURFINE, 14-OZ. BOTTLES' **CATSUP ..... 4/\$1.00**
- SHURFINE, 17-OZ. CANS **GOLDEN CORN, CS or WK .. 5/\$1.00**
- SHURFINE, 1-LB. **COFFEE-REG., DRIP, ELEC. .... 69**
- ROXEY, 15-OZ. CANS **DOG FOOD ..... 8/\$1.00**



**Allway's 7 TO 11**

- HOT BAR-B-Q DAILY
- DONUTS
- ICEES
- POPCORN
- MONEY ORDERS
- CUBED ICE



TUCK AND RUN was the name of the game played by Winfred Long during competition against the Sudan Hornets Friday night as the Steers played their final game of the season. This is only one of the fine runs made by Long during the game including one touchdown run for the speedy Farwell Steer.

**BUNDLE UP YOUR HOUSE ...**

# WEATHER STRIPPING

**TIME TO WEATHERIZE**

**SAVE FUEL - SAVE MONEY**  
By Preparing For Winter

**•DO IT YOUR SELF TOOLS**

	7 in. circ. Saw	\$33 <sup>95</sup>
	1/4 in. Drill	\$13 <sup>95</sup>
	Jig Saw	\$16 <sup>95</sup>

Selection of Hammers, Screw Drivers - Wrench Sets  
Nails - Tacks - Brads - Staplers  
PLASTIC - HEAT TAPES - TARPS

**ACE** **FARWELL HARDWARE**  
Ph. 481-3286

At Friona - -

## Mental Health Meet Scheduled Monday

Annual meeting of the Central Plains Mental Health Center's Parmer County Advisory Committee is scheduled for Monday, Nov. 19 in Friona, according to W. W. Allen, chairman of the board of trustees.

Baker Duggins, Friona, the Center's Parmer County Trustee, said that persons representing the news media, medical profession, county and city governments, school officials, church and civic leaders will receive invitations to attend the meeting at 7:30 p.m. at Earl's Parmer House Restaurant.

The Center services persons with emotional problems in a nine county area regardless of age, sex, race or financial resources.

"The Center is dedicated to helping the people in Parmer County live more satisfactory lives. Our professional staff is ready at all times to help with their problems," Allen said.

Center staff members will explain the use of Center services during the dinner meeting with about 60 people expected to attend.

Of NADE - -

## Phillips Named President-Elect



CARTHON PHILLIPS

Carthon Phillips, a graduate of Farwell High School, and son of Mrs. Kate Phillips of Farwell, has been named president-elect of the National Association of Disability Examiners (NADE).

The election was Oct. 30 as part of the annual National Rehabilitation Association convention in Atlantic City, N.J. Phillips will serve as president of NADE during the 1975 conference year.

James Mallicote, secretary of NADE, who announced Phillip's election said, "NADE is an affiliate of the 30,000 member National Rehabilitation Association (NRA) and like NRA, its members are primarily concerned with helping the nation's handicapped."



**FARWELL EIGHTH GRADE YEARLINGS** who represented Farwell School during football action for the 1973-74 season are, left to right, front row: Darren Sudderth, manager; David Deel, Larry Timms, Charlie Costillo, Richard Yruegas, Stanley Goldsmith and Dwayne Schults, manager. Second row: Steve Hargrove, Wayne Martin, Tim Norton, Vick Christian, Carlos Luceo, Timmy Ellison, Gustavo Galvan and Dwayne Obenshain. Back row: Dan Geuther, Guy Whitesides, Clay Roberts, Russ Jones, Rusty McFarland, Terry Miller, Josh Ensor and Coach Larry McDorman.



**SEVENTH GRADE YEARLINGS** of Farwell Junior High School battled 10 opponents during regular season to emerge with a 8-2 win, loss record at the close of the season. Team members are, left to right, front row: Peter Cantu, Mike Rodriguez, Carroll Goldsmith, Kirk Magness and Joey Eaton. Second row: Alex Cardenas, Jack Rose, Mark Ancira, Mark Miller and Craig Walls. Third row: Donnie Waller, Bruce Mayfield, Robert Luceo, Steve Owens, Robin Roberts, Kayle Watts, Rowdy Chandler and Tim Bartley. Back row: Gary Lee, David Hernandez, Levi Dorris, Sammy Clines, Randy Gerries, Steve Scott, Radney Robertson and DeeDee Foster. Coach Jerry Dee Owen is standing behind the team.

## At Home In Parmer County

By Jana Pronger  
County HD Agent

Improperly thawed meat is one of the most common sources of food-borne diseases, according to a foods and nutrition specialist.

Bacteria which cause these diseases grow and multiply at temperatures between 40 and 120 degrees F. When foods remain in this 'danger zone' for three to four hours, they can become unsafe to eat.

Only heating food to 170 degrees F. and above for a period of time kills the bacteria. Freezing doesn't simply retard their growth.

The specialist offered several precautions to insure meat safety.

Thaw all meats-including poultry-in the refrigerator. Or, to thaw meat items quickly, place wrapped packages under cold running water.

Both methods, keep meat out of the 'danger zone' for bacteria growth.

Fresh or freshly-thawed ground meat, fish or poultry should be refrigerated and used within 24 hours.

Roasts or large steaks, on the other hand, keep in the refrigerator for 48 hours. If fresh, freeze these items for longer storage periods.

When preparing poultry, cook until done throughout-with an internal temperature of 180 degrees F.

Also cook pork to the well-done stage, or 170 degrees F.

If planning to stuff poultry or pork chops, wait until just before placing them in the oven to stuff the cavity.

With today's high food prices, don't waste food by letting it spoil-and never endanger the family by serving unsafe food.

## My Neighbors



"Separate checks?"

SMALL ENOUGH TO KNOW YOU      LARGE ENOUGH TO SERVE YOU

### 4 SEASONS RV CENTER, INC.

*'We Give You More'*

AUTHORIZED DEALER FOR HOLIDAY RAMBLER, PROWLER AND WINNIEBAGO

LOCATED ON U.S. 60 - 84, 2 MILES WEST OF CLOVIS, N.M. "KOA .. KAMPGROUNDS"

CARL AND JUDY CARTER      P.O. DRAWER M  
763-4650      CLOVIS, N.M. 88101

## UL Sights On Safety

by UL Public Information Office

### Fire Rules For The Aged

The aftermath of fire too often leaves the elderly as a tragic statistic. However, this can be prevented if they are informed of a few basic rules. To help protect the elderly, Underwriters Laboratories Inc. an independent, not for profit organization testing for public safety, offers the following fire rules for the aged.

The aged should be familiar with all exits and know two plans of escape. If possible, they should sleep on the first floor or near an easy way out.

All stairways should be clear of objects to prevent falling.

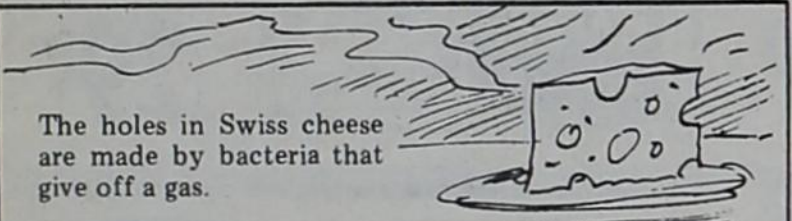
The elderly should be instructed to never smoke in bed.

The aged should wear fire-safe clothing when around an open flame.

They should have easy access to a telephone, with emergency numbers at hand.

Appropriate UL Listed fire extinguishers should be available, and the elderly should be shown how to use them.

Also, the elderly can help themselves by planning ahead; others can help by developing emergency plans for them.



## Energy Conservation Study to Be Made

The National Petroleum Council, an industry advisory body to the Secretary of the Interior, will undertake a major new study on U.S. Energy Conservation.

Responding to a request by Secretary of the Interior Rogers C. B. Morton, the Council has agreed to undertake the study to assist the U. S. Department of the Interior "in assessing patterns in energy use and the potential for energy conservation."

## Muleshoe To Sponsor Christmas Parade

The Llano Estacado Civic Club and the Business Activities Committee of Muleshoe are sponsoring their Annual Christmas Parade, "Happiness is Christmas", Saturday, Dec. 1, at 2:30 p.m.

All organizations and clubs are invited to enter floats, sweethearts, or school bands. There will be prize money

given -- first, \$100; Second \$75; third, \$50; and fourth, \$25

For entry forms contact Mrs. Willie Reeder, 122 W. Avenue H, Muleshoe, Texas 79347 or Mrs. Gayla Toombs, 213 Elm, Muleshoe, Texas 79347. Deadline is Wednesday, Nov. 28.

The parade will start at 2:30 p.m. but all entries must be there by 1:30 at the Babe Ruth Ball Park in Muleshoe, say parade sponsors.

## SWCD Boasts Conservation

Farmers in the Parmer County area who bring additional land into crop production in 1974 are being urged to use sound conservation practices.

Herb Evans, district conservationist for the U.S. Soil Conservation Service at Friona, said conservation measures not only protect the soil from erosion but also increase production.

"Some people are predicting farmers will bring several thousand acres of former 'set-aside' acreage back into crop production in Texas in the next year," Evans said. "This is considered to be the best and

quickest way to check food price increases.

"But it's also the quickest way to increase dust storms, sediment pollution, and other erosion problems unless sound conservation measures are installed," Evans pointed out.

"There is a lot of land in our Parmer County Soil and Water Conservation District which can be used for cropland safely if managed properly," Evans said. "Yet there are other soils which are so susceptible to blowing or washing that they should never be used for crop production."

## Justices Of Peace At Training School

Two justices of the peace from Parmer County were among the 72 judges who participated in a regional 20-hour in-service training school in Amarillo Oct. 23-26.

Local judges participating in the program were Judge Ray E. Mears of Precinct 1, Farwell and Judge Wilbur Charles of Precinct 3, Bovina.

## Marriage Licenses Issued

Marriage licenses issued last week by Parmer County clerk's office went to Willie E. King and Juanita Galicia, and to Riginal J. McNeely and Brenda M. Stanberry.

## Fire Calls

Texico Fire Department reported no fire calls this past week.

Farwell Fire Department was called Nov. 7 east of town to a right-of-way grass fire.

On Nov. 14 the fire unit was called to 601 Ave. D to extinguish a fire on a vacant lot.

## ATTENTION CATTLEMEN IN THE TEXICO & FARWELL AREA

In regard to dead stock removal, if you have a problem with service whether in the feed yards or the farm please give us a chance!

## Your local used cow dealer is friona bi-products

Seven days a week dead stock removal please call as soon as possible.

Thank you  
CALL COLLECT 247-3032

## FESTIVAL OF THANKSGIVING

November 18-20



SPEAKER - DR. CLIFFORD TROTTER

## EVERYONE INVITED! CHURCH SERVICES

Sunday 11:00 a.m. and 7:00 p.m.

Monday - 1

7: a.m. Breakfast

7:30 p.m. Worship

Tuesday

7: a.m. Breakfast

7: p.m. Church Supper

## HAMLIN MEMORIAL METHODIST CHURCH

Prefinished Paneling  
Several Patterns.  
Prefinished Moulding  
6' Split Creosote Post  
Latex Interior Wall Paint Gal.  
Asphalt Shingles & Roof Coatings

FREE DELIVERY TO TEXICO & FARWELL

Home Lumber & Supply Co.

1201 E. First St. Clovis  
763-4437

## PHILLIPS 66 Deep Cleat HI-BAR ALL NYLON CORD

### DELUXE TRACTION WIDE TREAD

## Puma BELTED TIRE

At Phillips 66 it's performance that counts

1. GOOD MILEAGE
2. SMOOTH RIDE
3. RUGGED CONSTRUCTION

## HELTON OIL COMPANY

"Serving The Texico - Farwell Area"

## Sorority Observes Founders Day

A Founders Day observance for members of Delta Delta Delta was held Tuesday at La Villa restaurant in Clovis. The luncheon honored the sorority's founding at Boston University in 1888.

Area Tri Deltas attending the luncheon were Mrs. Donald J. (Eleanor) McKinney, Mrs. Ray (Sarah) Lynk, Mrs. Sherman (Jayne) Williams, Mrs. Hal (Carolyn) Helton, all of Clovis, and Mrs. Gerald (Marty) Hawk of Portales. Tri Deltas in the area but not attending were Mrs. Lee Hicks, Mrs. Langdon Skarda, Mrs. Larry Rierson and Miss Pam Brown. The area also boasts two collegiate chapters, Debra Anderson and Rosemary Cox Yowell.

Table decorations for the luncheon included a replica of the stars and crescent badge, and hand painted pansy plaques as individual favors. Mrs. Lynk read the Founders Day proclamation, and a traditional roll call ceremony was conducted with each member

lighting a candle in honor of her chapter.

Delta Delta Delta has 118 collegiate chapters in the United States and Canada, and 336 alumnae chapters, including three in Canada. The total membership is 98,997.

Tri Delta's national philanthropy is scholarships, and the sorority also donates grants to campus libraries from the Delta Century Fund established in 1966.

"Firsts" for Tri Delta include founding of a women's fraternity as a national organization, establishing an endowment fund, publishing a book-length history, establishing a central office (Arlington, Tex.), and holding a national leadership school. Tri Delta was one of the seven founders of the National Panhellenic Conference.

Any Tri Delta member in the area who has not been contacted is invited to call Mrs. Helton at 762-7483.



TRI DELTA FOUNDERS DAY -- Five members of Delta Delta Delta observed Founders Day with a luncheon at Clovis Tuesday, Nov. 13. The women are, from left, seated: Mrs. Gerald Hawk from Portales, Mrs. Ray Lynk and Mrs. Hal Helton, both of Clovis; standing: Mrs. Sherman Williams and Mrs. Donald McKinney, also of Clovis. Any area Tri Delta who has not been contacted is invited to call Mrs. Helton at 762-7483.

## At Home Around The Area

--- by Bobby Ann Dictson

Home Economist  
For  
Southwestern Public Service

Sandwiches are always a good item to keep in your home food freezer. If unexpected guests arrive, you can have a meal, snack or a party in only a few minutes.

The following recipes are very easy to prepare and very attractive to serve. Many families eat sandwiches so often that we, as homemakers, need to concentrate on preparing and serving nutritious sandwiches.

To Freeze Sandwiches: With Special marking pencil, write

name, date and number of sandwiches on sheet of freezer-weight foil; turn foil over. Place prepared sandwiches, in single layer, in center of foil; turn foil down in one inch folds until foil is tight against sandwiches. Expel air by gently molding foil to sandwiches. Crimp ends tightly to provide airtight seal.

To Serve Sandwiches: Place sandwich packages, wrapped, on cake racks at room temperature for 1 1/2 to 2 hours. Unwrap and cut Sandwich Rolls into three pieces. Cut Ribbon Sandwiches in 1/2 to 3/4 inch slices. Place sandwiches on serving plates and cover with plastic film wrap. Refrigerate until ready to serve.

### HOT DIGGITY ROLL-UPS

8 slices white sandwich bread  
2 tablespoons soft butter or margarine  
1 hot dog  
1 slice (1 oz.) American cheese

With sharp knife, trim crusts from bread. Roll each slice lightly with rolling pin (makes break easier to roll up). Spread each slice with butter. Cut hot dog some length as bread slices, then cut lengthwise into 6 or 8 strips. Place one hot dog strip across one end of bread. Place a cheese strip, parallel to hot dog, across center of bread. Roll up. MAKES: 2 dozen.

### PEANUT BUTTER RAISIN SANDWICHES

2 tablespoons peanut butter  
2 tablespoons peach butter

4 slices raisin bread  
1 tablespoon soft butter or margarine

Measure peanut butter and peach butter into small bowl. With rubber spatula or spoon, stir together until blended. Set aside.

Place bread slices in a row. Spread slices with butter. Spread filling over two of the slices. Top with plain slice, buttered side down. With sharp knife, slice off crusts. MAKES: 1 1/2 dozen.

### REBIBON SANDWICHES

6 slices white sandwich bread  
3 slices whole wheat sandwich bread  
3 tablespoons soft butter or margarine  
1 can (3 1/2 oz.) potted meat spread  
Sweet pickles, sliced lengthwise into thin strips  
1/2 cup soft cheese spread  
Pimiento, sliced into thin strips

Spread white bread on one side and whole wheat bread on both sides with butter. Spread 3 slices white bread with potted meat spread; whole wheat with cheese.

Place pickle strips in 3 rows across each potted meat-filled slice. Place pimiento strips in 2 rows across each cheese-filled slice.

To Assemble: Place cheese-filled slice on top of meat-filled slice, being sure that pickle and pimiento strips run in same direction. Top with plain slice. MAKES: approximately 1 1/2 dozen.

For more recipes or information write "Bobby" in care of this newspaper or call her at 763-4481.

## Thanksgiving Festival Planned By Methodists

Hamlin Memorial United Methodist Church has planned a special series of Thanksgiving services for November 18-20.

Secured as speaker for these services is Dr. Clifford Trotter, superintendent of the Amarillo District of the United Methodist Church.

Dr. Trotter will be speaking at both services on Sunday and then at breakfast services on Monday and Tuesday morning's at 7 a.m. and at evening

services on Monday at 7:30 p.m. and Tuesday at 7 p.m.

The Tuesday evening service has been planned as a great celebration of the Festival of Thanksgiving, said Rev. W. T. Perry, pastor of Hamlin Memorial United Methodist Church. Beginning with a Thanksgiving dinner at 7 p.m., the worship will be conducted in the fellowship hall of the church.

On Sunday morning at 11 a.m., Dr. Trotter will be speaking on 'Christians.' Sunday evening, his topic will be 'Divine/Human Partnership.'

At the breakfast services, Monday morning, Dr. Trotter will speak on 'Bread of Life' and on Tuesday morning, 'Resurrection and Life.' The Monday evening services will be 'People of God' and the concluding service on Tuesday will be 'Disciples-Jesus' People.'

Rev. Perry has extended an invitation to everyone to share in the 'Festival of Thanksgiving' services. Members of the Evangelism Work Area planning this event, under direction of the Administrative board, were Mrs. M. A. Snider, Jr., chairman, Terry Parr and Mrs. Donald Christian.

## Ann McLeod Feted With Bridal Shower

Ann McLeod of Plainview, bride-elect of Roddy Pearce of Texico, was honored with a bridal shower Tuesday, Nov. 6, at the First Baptist Church in Texico.

Hostesses for the event were Diane Eshleman, Donna

Donnahey, Janie Day, Margaret White, Mary Jean Patrick, Mary Bradley, Darlene Haile, Laura Harlan, Ann Madden, Frances Boling and Audrey Kittrell.

The serving table was covered with a white cloth and centered with an arrangement of bright blue and green flowers entwined around a golden candlebra holding white tapers on a circular mirror encircled with blue tulle. Green foam punch, finger sandwiches and assorted nuts were served from crystal appointments.

Guests were registered from a table covered with a white lace cloth over green. The couple's wedding invitation encircled with quilling flowers in a shadow box frame lay on the table and a votive candle flocked with blue and green satin balls and greenery completed the setting.

Many close friends and relatives attended and those unable to attend sent gifts. The hostesses' gifts were a Corningware electric skillet and a hand mixer.

Parents of the couple are Mr. and Mrs. Carlos McLeod of Plainview and Mr. and Mrs. Bud Pearce of Texico.

## ESA Plans Christmas Activities

Epsilon Sigma Alpha met in the home of Faye Parr Monday, Nov. 12, for a regular meeting.

Among items of business discussed were plans for the Sorority to present a Christmas program at Day's Convalescent Home in Clovis on Dec. 22. Sorority members also voted to send a donation of \$26.85 to St. Jude's Children's Hospital in Memphis, Tenn. It was also reported that the ESA Bazaar was a huge success.

Members attending were Rosa Roberts, Dardanella Helton, Martha Peoples, Patsy Berry, Eva Dean Stephens, Dickie Chandler, Alice Vinton, LaMoyn Williams, Omata Scott, Lillie Christian and the hostess, Faye Parr.

## Visit With Sister, Nephew

Mrs. Joyce Coffman of Farwell, Mary Lou Harrelson, Fred Barker of Clovis and Fred Barker Jr. of Friona returned recently from Holtville, Calif., where they visited with their sister, Mrs. Bobby Widner and family. They also visited with their nephew, Jimmy Don Moss of Wilcox, Ariz.

## Texico Women's Club To Meet

An attorney from Clovis will meet with members of the Texico Women's Club Monday, Nov. 19, at 8 p.m. in Citizens Bank at Texico.

The attorney will speak on "Wills," and all members are urged to attend the meeting.

## Okla. Lane Club Elects Officers At Dinner Meet

Members of the Oklahoma Lane Variety Club met in the home of Mrs. Alla May Bandy this week and elected officers prior to having a Thanksgiving dinner.

Elected as officers were Janie Sides, president; Dexter Watkins, vice-president; Carra Christian, secretary-treasurer; Mrs. Bandy, reporter for Bovina and Cora McGuire, reporter for Oklahoma Lane.

All but one member were present for the meeting. Mrs. Dora Vernon was in Oklahoma to attend the funeral of a

brother.

A dinner of turkey and dressing, sweet potatoes, green beans, salads, cakes and pies was served to Mr. and Mrs. Luther Grissom and Lola, Mr. and Mrs. Sam Sides, Mr. and Mrs. G. F. Watkins, Mr. and Mrs. Bill Foster, Carrie Foster, Garner Briscoe, Cora McGuire, and the host couple, Mr. and Mrs. Bandy.

Visitors at the dinner meeting included Mrs. Max Eubanks, Rev. and Mrs. Bob Roberts of Oklahoma Lane.



TEX-ANNS AT SOUTH PLAINS COLLEGE -- The Tex-Anns, women's drill team at South Plains College at Levelland, did some fancy footwork Saturday night, Nov. 10, as they performed for the SPC homecoming basketball game in the Texan Dome. The 23 coeds performed a routine for pre-game activities. The Tex-Anns include (from left) Ronnie Reyes of Lockhart, sophomore, lieutenant; Debi Stancell of Farwell, freshman; Shawn Cox of Fayette, Mo.; and Donna Pawley of Farmington, N.M., freshman.

## Students In College Who's Who

Doug Harriman, son of Mrs. Freddie Harriman, and Trumi Christian, daughter of Mr. and Mrs. Donald F. Christian, have both been named to Who's Who in American Universities and Colleges.

Harriman is a student at Lubbock Christian College and Miss Christian is a student at McMurry College, Abilene.

She is an elementary major and Harriman is a senior secondary education major. He

## Christians Visit McMurry College

Mrs. Donald Christian and son, Charles, were in Abilene the weekend of Oct. 26 and 27 to visit her daughter, Trumi, and to attend the Homecoming activities at McMurry College where Trumi was runner-up for junior class favorite.

serves as vice president of the Student Senate at LCC and a member of Tomo Dachi men's social club.

## Martin Given Ag-Club Award

Kirt Martin, son of Mr. and Mrs. Preston Martin of Farwell, received the "Lubbock Agriculture Club" award at the annual Lubbock Christian College Aggie Club "Steak Fry" held in the Cook Agriculture Pavilion on the LCC campus November 5.

Martin is one of two recipients of this award for outstanding scholarship in the Agriculture Division at LCC.

Martin is a 1971 graduate of Farwell High School. He is enrolled at LCC as a junior Agronomy major.

## HOSPITAL

Jim Castleberry of Farwell was released from a Lubbock hospital last Thursday and is reported to be doing fine.

Wesley May, son of Mr. and Mrs. R. L. May of Farwell, was released from Clovis Hospital Monday and is recuperating at home.

Clint Stone, son of Mr. and Mrs. Stone of Texico, was dismissed from Memorial Hospital Friday and is back in school.

## You Are Invited to a Bridal Shower

Honoring Mrs. William Russell Robinson,

Nee Barbara Goettsch

Saturday, Nov. 17 1973

2 to 3:30 P. M.

205 Eighth Street, Farwell, Tex.

Lynn Makaway, Hostess Chairman

Selections: Michael's and Stanley's

## SPECIAL ANNOUNCEMENT

Did You Know That You Could Have Additional Cable Service For As Little As \$1.00 per month. Let Us Install An Additional Outlet In Your Home For Your Special Receiving. With Football Getting Into High Gear This Week, Give Your Family A Break. Buy A New TV Set From Your Local Dealer And We Will Install The Extra Outlet Free Or Call Us About Our Rates.

MIDWEST VIDEO CORP.

1602 MITCHELL

Ph. 763-4411

## WHAT TO GIVE HIM IF HE'S 6'4" OR MORE!



LA-Z-BOY With Leg Rest Extension

FRED SHIPLEY FURNITURE CO.

1305 Main

Clovis, N.M.

**jeanne durrell**

**SUBURBAN SAFARI.** An easy, casual coatdress shaped with raglan sleeves and buttoned with bamboo pieces. The fabric looks like Hovan silk, but is really 100% polyester in beige or red.

**THE FASHION SHOP**

6th and Main
Clovis
Ph. 763-5431

## Coat Sale

ALL LADIES  
FALL AND WINTER  
COATS

**25% OFF**  
This Week



**Turner's**  
Your Department Store

# LEGAL NOTICE: CITY OF FARWELL CURBS & GUTTERS

NOTICE OF HEARING  
BY  
CITY OF FARWELL  
THE STATE OF TEXAS )  
COUNTY OF PARMER )  
CITY OF FARWELL )

NOTICE is hereby given to the real and true owners, whether hereinafter named or correctly named or not, of property abutting upon herein-after described streets, within the limits as herein defined, in the City of Farwell, Texas, and all persons owning or claiming

Unit	Street or Avenue	From	To
I	1st Street	NPL Ave. B	SPL Ave. C
I	Ave. C	EPL 1st St.	WPL 2nd St.
I	Ave. D	State Line	WPL 2nd St.
I	Ave. E	EPL 1st St.	WPL 3rd St.
I	Ave. F	EPL 1st St.	WPL 4th St.
I	Ave. I	WPL 5th St.	EPL 6th St.
I	5th St.	SPL Ave. F	NPL Ave. I
I	Ave. G	EPL 4th St.	WPL 5th St.
II	Ave. F	EPL 4th St.	WPL 9th St.
II	8th St.	SPL Ave. E	NPL Ave. G
II	Ave. G	EPL 8th St.	WPL 9th St.
II	4th St.	SPL Ave. E	NPL Ave. F
II	5th St.	SPL Ave. E	NPL Ave. F
II	6th St.	SPL Ave. E	NPL Ave. F
II	7th St.	SPL Ave. E	NPL Ave. F
II	Ave. E	EPL 7th St.	WPL 9th St.
III	Ave. D	EPL 4th St.	WPL 9th St.
III	4th St.	SPL Ave. C	NPL Ave. E
III	5th St.	SPL Ave. C	NPL Ave. E
III	6th St.	SPL Ave. C	NPL Ave. E
III	7th St.	SPL Ave. C	NPL Ave. E
III	8th St.	SPL Ave. C	NPL Ave. E
IV	Ave. C	WPL 4th St.	WPL 9th St.
IV	4th St.	SPL Ave. A	NPL Ave. C
IV	5th St.	SPL Ave. A	NPL Ave. B
IV	6th St.	SPL Ave. B	NPL Ave. C
IV	Ave. B	EPL 6th St.	WPL 9th St.
IV	7th St.	SPL Ave. A	NPL Ave. C
IV	8th St.	SPL Ave. A	NPL Ave. C

By said ordinances, the City Commission of the City of Farwell, Texas, has ordered said streets, within the limits indicated, to be improved by excavating, grading and paving the same, by the installation of drainage facilities and by constructing curbs and gutters where adequate curbs and gutters are not now in place, together with other drains incidental and appurtenant thereto, said paving to consist of a crushed caliche base and hot mix surface, with the thickness and width as fully provided for in the plans and specifications thereof, prepared by the City Engineer of the City of Farwell and heretofore approved and adopted by the City Commission, all of said improvements to be done and constructed in the manner and of the materials as provided in said plans and specifications and contracts covering the construction of said improvements, all of which are hereby expressly referred to for a full and complete description of said improvements and all of which are on file in the office of the City Clerk of the City of Farwell, Texas, incorporated herein by reference.

That the City Commission has caused the City Engineer to prepare and file the herein-after set out estimates of the cost of such improvements and has heretofore, by duly en-

any such abutting property or any interest therein and all others claiming or interested in any of said property or in any other proceedings, contracts or matters herein mentioned, that:

The City Commission of the City of Farwell, Texas, by duly enacted ordinances, has determined the necessity for and ordered the permanent improvement of the following described streets within the following limits, in the City of Farwell, Texas, to-wit:

Estimated cost of Unit 2 = 64668.19  
Estimated cost of Unit 3 = 76095.32  
Estimated cost of Unit 4 = 75195.68  
Total estimated cost of Project = 269,214.45

A hearing will be given and held by and before the City Commission of the City of Farwell, Texas, on the 10th day of December, A.D. 1973, at 5:00 o'clock P.M. in the City Hall of the City of Farwell, Texas, to the real and true owners, whether named or correctly named herein or not, of all property abutting upon said streets within the limits above defined and to all persons owning or claiming any such abutting property or interest therein and to all others owning, claiming or interested in said abutting property or any of the proceedings, contracts or matters and things herein mentioned or incident to said improvements or contract herein described.

At said time and place all such persons, firms, corporations and estates and their attorneys and agents shall have the right to appear and be heard and offer testimony as to the said assessments and to the amount thereof proposed to be assessed against said abutting property and the real and true owners thereof, the lien and charge of personal liability to secure payment of said assessments, the special benefits to accrue to each such abutting property and the owner or owners thereof by virtue of said improvements, if any, or concerning any error, invalidity, irregularity or deficiency in any proceeding or contract in reference to said improvements and said proposed assessments and concerning any other matter or thing as to which hearing is a constitutional prerequisite to the validity of said assessments, proceedings and improvements and on which they are entitled to hearing under the Constitution and the Laws of the State of Texas and the proceedings of the said City Commission of the City of Farwell, Texas.

Following such hearing, assessments will be levied against each and every parcel of property abutting upon said streets within the limits above defined and the real and true owners thereof for that portion of the cost of said improvements determined by said City Commission to be payable by such abutting properties and the real and true owners thereof and shall constitute a first and prior lien upon said abutting property from the date said improvements were ordered by said City Commission and shall be a personal liability and charge against the real and true owners thereof as of said date, whether said property be described or correctly described, or such real and true owners be named or correctly named in such proceedings or not, and no error

or mistake or discrepancy in the names of such owner or owners or in describing said property in this Notice or in any of such proceedings with reference to said improvements shall invalidate any assessment or certificate issued in evidence thereof, but nevertheless, each parcel of property abutting upon said streets and the real and true owner or owners thereof shall be charged with and be liable for said assessment, which shall be valid, whether or not such owner or owners be named or correctly named or such property be described or correctly described, all as fully provided for under the Acts of the 40th Legislature of the State of Texas, First Called Session, Chapter 106, known and shown as Article 1105-b, Vernon's Annotated Civil Statutes of Texas, as amended, and as adopted by the said City of Farwell, Texas, under which said improvements, proceedings and assessments are being constructed, performed and levied.

Of all said matters and things, all owning or claiming any such abutting property or any interest therein, as well as all others in anywise interested or affected by the things and matters herein mentioned, will take notice.  
DONE by order of the City Commission of the City of Farwell, Texas, this 12 day of November, A. D. 1973.

Janie Bowery  
Secretary and Clerk  
City of Farwell, Texas

Published in State Line Tribune Nov. 16, 23, 30, 1973.

## Country Singer - -

### Ernest Tubb Slates Concert In Texico

A part of the Grand Ole Opry from Nashville, Tenn. will be in Texico Sunday, Nov. 18, when Ernest Tubb, the Texas Troubadour, plans a concert in the Texico School auditorium. He will present two perfor-



ERNEST TUBB

## Dam Work Started - -

### Groundbreaking Set For RWD Watershed

Dignitaries will gather Tuesday morning, Nov. 20, at 10 a.m. at a location west of Bovina for groundbreaking ceremonies for the Running Water Draw Watershed Project.

With the construction just getting underway by Wilson Construction Co. of El Reno, Okla., several years of planning, frustration and rejection will be realized as successful in the near future.

Acting as master of ceremonies will be A. L. Black of Friona, who will also introduce special speaker, Rep. George Mahon. Groundbreaking will be done by Parmer County Judge Archie Tarter and Parmer County Soil and Water Conservation District Chairman Leon Grissom.

Following the groundbreaking ceremonies, a reception will be in the First State Bank, Bovina, in honor of Rep. Mahon.

The groundbreaking ceremony will be a mile west of the blinking traffic light at Bovina and just back to the north. Signs will direct persons to the site. According to coordinators of the ceremony, the groundbreaking will be public and the public is welcome to attend.

Original efforts on the Running Water Draw Watershed were started in 1959 and the application was rejected in September, 1960.

Local sponsors had rejected the original locations, one of which was just to the east of Bovina.

Reapplication was made in

March, 1962 and the Watershed was approved for planning in January, 1965.

A revised plan was approved by local sponsors in November, 1968 and the project was approved for operations in May, 1970. With all land right cleared by April, 1971, bids were opened for construction on October 1, 1973.

Original sponsors of the watershed are the Parmer County Soil and Water Conservation District; The Parmer County Commissioners Court; the Central Curry Soil and Water Conservation District; the Curry County Commissioners Court and the City of Clovis.

A total of 227,782 acres in New Mexico and Texas are covered by the project, with three flood control structures planned. One is in New Mexico and two in Texas.

Texas landowners cooperating in the early conservation planning include A. L. Black, Andy Hurst, J. W. Gammon, A. L. Hartzog, Melvin Sachs, Wendel Christian, Loyde Brewer, Carl Schlenker, Bruce Parr, O. T. Lesly and Robert Galloway. Parmer County Commissioners Court invested over \$23,000 in planning and rights-of-way for the project.

During the summer a camel can travel without water for a week; during the winter, two weeks.



CARNIVAL QUEEN AND KING - Karen Hadley and Steve Turner, eighth grade students at Texico, were chosen as queen and king of the school carnival held Friday, Nov. 9, in the old gym. Each class from grades seven through twelve entered candidates and the royal pair were selected on a basis of a penny-a-vote. Karen is the daughter of Mr. and Mrs. Raymond Hadley and Steve is the son of Mr. and Mrs. David Turner, all of Texico.

## Broken Window Case Is Solved

With the apprehension of a juvenile from Texico in another case, the recent church window and church sign vandalism spree in Texico was broken last week.

Texico City Officer Willie Ronquillo was called to the Texico Variety Store where a purse with \$175 was reported missing. After checking, he apprehended the juvenile who admitted taking the purse.

With further questioning, he also admitted breaking the church windows and signs. He has been ordered to pay for the damages and to replace the missing \$175 from the stolen purse.

The juvenile was taken to Clovis to appear before the Curry County juvenile officer.

## DEAD ANIMALS

### FREE REMOVAL OF DEAD STOCK

**WHEN YOU HAVE DEAD STOCK, WHY FUSS & CUSS? FOR FREE REMOVAL CALL US!**

**TRI-STATE INDUSTRIES, Inc.**

CLOVIS  
505-763-5513

Amarillo

## CARL'S EXXON SERVICE STATION

Carl Matthews, Mgr.

All Brands Oil  
Wash & Lube  
Tire Service  
Accessories  
Batteries  
Filters  
Good Service

**25 Yrs. Experience**

**Ph. 481-9082**

500 Ave. A - Farwell

## Man-that's Corn!

Mr. Farmer, before you book your Corn Seed this year, look at your neighbors' high yielding results after planting P-A-G SX-520, SX-98 or 344. He'll have high praise for the top yields, standability and threshability plus many of the other high quality characteristics found in P-A-G Hybrid Corns.

In 1973 tests conducted on the John Bridges farm 2 miles north of Earth, SX-520 yielded NUMBER ONE out of 16 hybrids entered with 10,449 lbs. (186.6 bu) per acre.

Bobby G. Free of Muleshoe plans to plant 100% of his 1,400 acres to SX-520 and SX-98 because of their extra yield, threshability and the way they stood.

On the Charlie Myers farm east of Friona, P-A-G's SX-98 yielded 11,215 lbs. (200.3 bu) per acre.

In a 1972 Briscoe County Agent Test, P-A-G 344 yielded 9,309 lbs. (166.2 bu) per acre making it the number one corn tested on the Ray Teeple farm near Silvertown.

344	SX-520	SX-98
A 3-way cross highly recommended for farmers who want a Hybrid Corn just a little earlier in maturity. 344 features medium tall plants of dark green color, with large, girthy ears. This is a proven, consistent yielder.	This P-A-G single cross is a fast germinating, vigorous, high yielding "new breed". It responds quickly to a heavy, balanced fertilizer program and it's adaptable to a wide range of conditions. P-A-G researchers have been impressed with its standability under the stress of high plant populations. SX-520 is an excellent combine corn.	If you insist on "the very best", insist on this real producer. This distinctive dark green plant features relatively upright leaves for maximum light utilization. SX-98 has a bred-in "digestive system" that gives it the capacity to make full use of large amounts of fertilizer.

Find out, first hand, about the advantages of planting P-A-G Hybrid Corns and then contact your local Dealer. Order early and be sure you ask about the attractive booking bonuses available to all P-A-G customers.

Distributed by DORMAN & COMPANY, Lubbock, Texas

FARWELL INDEPENDENT SCHOOL DISTRICT SCHEDULE OF REVENUES AND EXPENDITURES FOR THE YEAR ENDED AUGUST 31, 1973				
	OPERATING FUNDS	CONSOLIDATED APPLICATION FUND	INTEREST & SINKING FUND	TOTAL ALL FUNDS
FUND BALANCE 9/1/72	\$ 4 354 29	\$ 33 47	\$ 20 520 95	\$ 24 908 71
<b>REVENUES</b>				
Local Tax	\$ 186 188 62		\$ 68 864 30	\$ 255 052 92
Other Local Sources	904 31		1 115 96	2 020 27
Intermediate Sources	6 084 89			6 084 89
State Sources	280 379 83	16 197 58		296 577 41
Non Revenue Receipts	6 798 00			11 798 00
Short Term Loans	5 000 00			
<b>TOTAL REVENUE</b>	<b>\$ 485 355 65</b>	<b>\$ 16 197 58</b>	<b>\$ 69 980 26</b>	<b>\$ 571 533 49</b>
<b>TOTAL FUNDS AVAILABLE</b>	<b>\$ 489 709 94</b>	<b>\$ 16 231 05</b>	<b>\$ 90 501 21</b>	<b>\$ 596 442 20</b>
<b>EXPENDITURES</b>				
Instruction Service	\$ 280 187 37	\$ 15 187 05		\$ 295 374 42
Instructional Administration	12 363 97			12 363 97
School Administration	44 703 03			44 703 03
Pupil Services - Counseling	6 140 28			6 140 28
Health Services	8 698 68			8 698 68
Transportation	28 633 42			28 633 42
Transfers to Athletic Dept.	6 027 01			6 027 01
General Administration	43 900 13			43 900 13
Bond Debt Retirement & Interest			\$ 64 265 05	64 265 05
Plant Maintenance and Operation	55 847 93			55 847 93
<b>TOTAL EXPENDITURES</b>	<b>\$ 486 501 82</b>	<b>\$ 15 187 05</b>	<b>\$ 64 265 05</b>	<b>\$ 565 953 92</b>
<b>EXCESS OF FUNDS AVAILABLE OVER EXPENDITURES</b>	<b>\$ 3 208 12</b>	<b>\$ 1 044 00</b>	<b>\$ 26 236 16</b>	<b>\$ 30 488 28</b>
LESS: Loans Payable	5 000 00			
<b>FUND BALANCE (DEFICIT)</b>	<b>\$ (1 791 88)</b>	<b>\$ 1 044 00</b>	<b>\$ 26 236 16</b>	<b>\$ 30 488 28</b>



**TEXICO BAND WINS TROPHY** -- Elizabeth Pierce, left, Texico Wolverine Band drum majorette, and Rudy Walla, band director, show a trophy won by the band in a marching contest during the Homecoming parade for Eastern New Mexico University at Portales last Saturday. The third place trophy was won by the 34-member band in the 2-AA division.



**On The Farm  
In Parmer  
County**

By R. MACK HEALD  
County Agent

Fertilizer-use information will be presented to fertilizer dealers and producers in Extension Districts 1 and 2 during Nov. 27 to Nov. 30, 1973.

The meetings will be aimed at stretching the limited fertilizer supply to maximize profits. The fertilizer supply situation, fertilization practices for major field crops, micronutrient disorders, and current research will be among topics discussed by industry personnel, producers, Extension specialist and Texas Agricultural Experiment Station research scientist.

Meeting locations and dates are as follows: Nov. 27 & 29 - Easter Community Building in Castro County at 7:30 p.m.; Nov. 28 - Alcovc Restaurant, 908 West 5th Street in Plainview from 10 a.m. to 3 p.m.

Details of each program can be obtained from my office in Farwell.

Those interested are cordially invited to participate in the meeting nearest to them.

Specific topics will vary in order that certain points pertinent to each area can be emphasized.

Throughout recorded history the use of animal waste has made an important contribution to domestic agriculture. Within the last few decades commercial inorganic fertilizers have come into prominence as a source of plant nutrients. Without doubt commercial fertilizer will retain this position but since their price is increasing and inadequate supplies are in prospect it is time to take a new look at feedlot waste as a source of plant food.

The USDA Southwestern Great Plains Research Center at Bushland has been studying the effects of feedlot waste since 1968. Their chemical analyses of material from 23 feedlots show that on an average 10 tons of manure contains 268 lbs. nitrogen, 244 lbs. P<sub>2</sub>O<sub>5</sub> and 360 lbs. K<sub>2</sub>O. These values are much higher than those previously reported for barnyard manures. The material varied in nitrogen content with extremes being

226 and 392 lbs. in 10 tons.

Their research indicates that about half of the nitrogen present in 10 tons of manure, or some 120 lbs. of nitrogen, is available the second year and 30 lbs. nitrogen will be available the third year.

The rate at which phosphorus becomes available for plant use appears to be similar to that of nitrogen. Potassium in the material is readily available. In consideration of lesser crop removal and the slower mobility of phosphorus and potassium when compared to nitrogen, it is highly probable that application rates sufficient to supply adequate nitrogen will be more than adequate to supply these elements even on soils known to be deficient.

Ten to 15 tons applied anytime after harvest and just ahead of cultivation is generally adequate for high yields of irrigated sorghum or corn. Additional commercial fertilizer is not likely to be needed.

The possibility of introducing weeds from seeds contained in the waste perhaps warrants consideration. Even distribution and good incorporation into the soil soon after application will insure best results.



**SENIOR BAND MEMBERS AND TWIRLERS** -- Displayed on the bottom row by the Farwell Band twirlers is a certificate presented for a II rating in competition last week in Lubbock. During the contest, the twirlers also received a II rating. Members are from left, top row, Lynn Messenger, Kevin Hardage, Kevin Hargrove and Jessie Cantu; middle row, from left, Leslie Norton, Susan Symcox, Melinda Tabor, Jaqueta Crook and Patti London, all senior band members and bottom row, from left, Pam Nance, Gaye Coffman, Karen London and Sheryl Woods, twirlers.

**Courthouse  
Notes**

Instrument report ending November 8, 1973 in County Clerk office, Bonnie Warren, County Clerk.

WD - Lee R. Pool - James R. Robinson & Derrell L. Jennings - S<sup>1</sup>/<sub>2</sub> of NW<sup>1</sup>/<sub>4</sub> Sec. 21, D & K.

WD - Eddie W. Nickels - Patti R. Nickels - Undiv. 10% int. in S<sup>1</sup>/<sub>2</sub> Sec. 2, T14S; R3E.

WD - Eddie W. Nickels - Nicky Kim Nickels - und. 10% int. in S<sup>1</sup>/<sub>2</sub> Sec. 2, T14S; R3E.

WD - Everardo L. Arce - Sergio P. Arce - lots 10, 11, 12, Blk. 36, Farwell.

WD - C. R. Elliott - Rufus Vinson - NW 44' of lot 1 - NW 44' lot 2, Blk. 14, Bovina.

Deed - Rita J. Carlise & Robert P. Wilson - Ruth C. Wilson - E<sup>1</sup>/<sub>2</sub> Sec. 3, T6S; R3E.

**Don't Guess**



Let Our  
Doctor Of Motors  
Diagnose Your Trouble

**Karl's  
Auto  
Clinic**

Smoky and Fred  
481-3687 Farwell

**FARWELL HIGH SCHOOL  
1973-74 Basketball Schedule**

Nov. 16	Adrian	Here	B&G
Nov. 17	Dimmitt	Here	Girls
Nov. 19	Dora	There	Boys
Nov. 20	Friona	Here	B&G
Nov. 29-30-Dec. 1	Friona Tourney		
Dec. 4	Dimmitt	There	B&G
Dec. 6-8	Springlake Tourney		
Dec. 11	Friona	There	B&G
Dec. 14	Hart*	There	B&G
Dec. 17	Littlefield	Here	Girls
Dec. 20	Bovina*	There	B&G
Dec. 27-28-29	Farwell Tourney		
Jan. 4	Springlake*	Here	B&G
Jan. 5	Kress*	There	B&G
Jan. 8	Sudan*	Here	B&G
Jan. 10-11-12	Springlake B Tourney		
Jan. 11	Vega*	Here	B&G
Jan. 15	Hart*	Here	B&G
Jan. 18	Olton	There	B&G
Jan. 22	Bovina*	Here	B&G
Jan. 25	Springlake	There	B&G
Jan. 29	Kress*	Here	B&G
Feb. 1	Sudan*	There	B&G
Feb. 5	Vega*	There	B&G
Feb. 8 & 11 or 12	Playoffs		
Feb. 15	Playoff date if needed		

\* - District Games

**Invite**



**World  
Into Your Home**

Write for information on how a high school student from another culture can make your life more exciting, rewarding—and fun.

American Field Service  
International Scholarships  
313 E. 43rd St., N.Y., N.Y. 10017

**New Loan Initiated For Deaf Smith REC**

John Scoltock of Washington, D.C. joined REC managers and directors from Texas Electric Cooperatives' Group Five for a conference held recently at Ceta Glen. Scoltock is the Rural Electrification Administration director of the Southwest Area.

The conference was basically to stimulate thoughts and ideas for an even better working relationship between managers, directors and the REA.

Scoltock, associated with REA for many years, came to Deaf Smith REC to meet with Merrill R. Riggan, REA Operations Field Representative from Lubbock, and John H. Carlson, REA Field Engineer from Albuquerque, New Mexico. Purpose of the meeting was to initiate a new loan for Deaf Smith REC.

Scoltock was given an aerial tour of the Deaf Smith REC system and of the cattle and

agricultural industry of this area. He said, "the scope of agriculture is almost unbelievable in Deaf Smith, Castro, Parmer and Oldham counties. A person has to see it to

believe it. Although Scoltock is not unfamiliar with this area and its cooperative, it had been a number of years since he had observed it.

Repair

New Installations

**Wes' Plumbing**



WES ENGRAM



Phone 482-3831

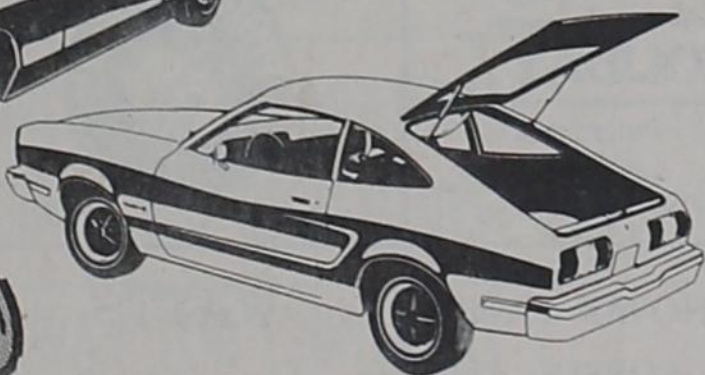
Texico, N.M.

**GRAND OPENING**

**BIG COUNTRY FORD**

MABRY DRIVE - CLOVIS  
THURSDAY - FRIDAY - SATURDAY - SUNDAY

REFRESHMENTS  
DOOR PRIZES



The Closer You Look  
The Better We Look



Every customer is a salesman for...

**BIG COUNTRY FORD**



**Here's one team that's really cooking with gas.**

It's a big job to feed a hundred hungry ballplayers right after a strenuous practice. But at this large university in the Southwest, the job gets done fast and easy... with gas.

It's the fast and easy way to cook at home, too. Plus gas is more efficient and economical because you use it directly. It starts doing the job the instant it's turned on. And gas is always right on top of the action—anywhere from a tiny "keep warm" flame to a high speed boil.

Cooking with gas is fast. And because it's used directly, less of our natural energy is wasted. And that conserves the resources we've got here in the Southwest.

So when you're doing the cooking for a whole team of galloping gourmets, or just a few... do it with gas.



**If you want the job done right, do it with gas.**

SOUTHERN UNION **GAS** COMPANY

# Conservationist Says: Plan Before You Plow

Plan before you plow. That's the plea State Conservationist Edward E. Thomas made recently to Texas farmers putting new land into cultivation in 1974.

"Most land in Texas should not be farmed in clean tilted crops without terraces, contour farming, minimum tillage, or other proven conservation measures," Thomas stressed. "Besides, these practices help increase production in the long run."

"But some land should not be farmed under any circumstances," Thomas said. "We are already getting reports of sandy, highly erosive soils in Texas being plowed up for crop production. Let a drought, coupled with high winds, hit this land and massive dust storms will be the result."

He said some steep soils will probably also be put into cultivation next year. Serious erosion and sedimentation damages can result unless sound conservation measures are installed.

Thomas, head of the U.S. Soil Conservation Service in Texas, said his agency supports full agricultural production as a principal means of checking food price increases. "But we also need full protection of the land along with full production," he emphasized.

He urged farmers to contact local SCS offices before putting land into cultivation. "Our soil surveys show which soils can be farmed safely," Thomas pointed out. "They also can be used to determine which soils are most productive. Careful planning can hold erosion hazards to a minimum; but carelessness can quickly return us to the disastrous erosion conditions that existed in the 1930's and 1950's," he warned.

Such conditions in the Great Plains, where wind erosion is a constant problem, led Congress in 1957 to establish a conservation program to return high risk cropland to grass.

"Under this program in Texas, we have helped farmers convert more than a million acres of cropland to grassland," Thomas said. "This land should remain in grass. For it or other land like it to be

put back into cultivation will be a disastrous step backwards. "As chief guardians of our state's soil resources, farmers and ranchers have a responsibility to themselves and to future generations to use their land wisely," Thomas continued. "They have made great strides in conservation work in the last 35 years. With proper planning, we can meet the demand for food without increasing dust storms, sediment pollution, and other problems caused by accelerated soil erosion."

Farmers are expected to bring thousands of acres of former "set-aside" land back into full crop production in 1974 to meet the increased demand for farm commodities. Many farmers will also farm their land more intensively as they try to increase yields per acre.

SCS works through 193 local soil and water conservation districts in Texas helping farmers, ranchers, and other land users.

**WANT ADS PH. 481-3681**  
CLASSIFIED & LEGAL RATES:

First insertion, per word - 8c  
Second and additional insertions - 6c  
Minimum charge - \$1.25 on cash order, \$1.50 on account  
Card of Thanks - Same as classified word rate, minimum charge - \$1.25  
Double rate for blind ads  
Classified Display - \$1.50 per col. inch

**DEADLINE FOR INSERTION**  
Friday's State Line Tribune - 10 a.m. Wednesday

The Tribune reserves the right to classify, revise or reject any classified ad.

Check advertisement and report any error immediately. The Tribune is not responsible for error after ad has already run once.

**GARAGE SALE** - Friday and Saturday, Nov. 17 and 18, 9 a.m. - 5 p.m. (CST). Furniture, appliances, linens, pots and pans and dishes. 201 Second St., Farwell. 9-1tc

**WANTED TO BUY OR RENT** - Land in Parmer County. Dale Gober, Ph. 806/225-6998 or 806/225-6811. 8-3tp

**FOR SALE** - Used cornet. Ideal for beginner. \$50. Gilbert Kaltwasser, 825-3953. 9-2tc

**SAVE MONEY** On Vaccines, Antibiotics, Instruments and other livestock supplies. **AFFILIATED SUPPLY INC.** 1005 Ave. A Farwell, Texas Ph. 481-9234

**Boyd's Complete Brake And Bear Front End Service**

TIRE TRUING, WHEEL BALANCING AND OVERLOAD SPRINGS, MONROMATIC SHOCKS, DRUM TURNING, BRAKE DRUMS, BRAKE SHOE EXCH. POWER BRAKES, ELECTRIC BRAKES INSTALLED.

BankAmericard And master charge Welcome

**BOYD'S BRAKE SHOP**

2 Blks. off Main St. Leave Car Here and Do Your Shopping 1-tfc

**NEED A HOME LOAN?**  
SEE **FIRST FEDERAL**  
FIRST FEDERAL SAVINGS AND LOAN ASSOCIATION  
801 Pile St. 762-4417  
Clovis, New Mexico

**Individuals Hold Three-Quarters Of Stock**

More than three times as much corporate stock is owned by individuals, as compared to institutions, according to a National Bureau of Economic Research study.

The published report, based on 1968 figures and edited by Raymond W. Goldsmith, is

**LET ME DO YOUR SEWING** - Western shirts, gift making, clothing of any kind. Ph. 481-9376. 9-1tc

All pictures taken by the staff of the State Line Tribune for use in the paper are available to anyone desiring them at a cost of 50 cents each.

**FOR SALE** - Sears Early American cabinet model sewing machine; it buttonholes, monograms, zig-zags and stretch stitches. Complete with solid state foot control and assortment of drop-in cams for endless variety of decorative stitches. Compare at values above \$300; now \$179. For only \$1 more, take home Sears best electric scissors. Ph. 481-3681 days, 481-9123 nights. 8-tfn

**Farwell 4-H Club**  
**HOMEMADE BAKE SALE**  
Sat., Nov. 17  
10 a.m. - 4 p.m.  
at Piggly Wiggly

**FOR RENT** - 2 bdrm. trailer house. Furnished, water paid. Contact John Curtis, 481-9009 or 481-3432. 9-tfc

**J.B. SUDDERTH REALTY**

904 Third Street Box 627  
Farwell, Texas  
Ph. 481-3288 or 505/763-5575 Unit 5408

**WE NEED FARM LISTINGS NOW**

**NEED A FARM LOAN? CALL US.**

300 A. irrigated on highway, quonset barn, good water area. Two 8-inch wells, near Farwell.

160 A. dryland north of Bovina on highway.

320 A. dryland, lays good, north of Bovina, 1/2 mile from highway.

160 A. irrigated, 2 wells, 1 mile north of Muleshoe on highway.

For Rent or Sale - 3 bdrm., 2 bath, with fenced backyard. Has carport, near school in Farwell.

160 A. irrigated, Nice brick home west of Muleshoe. Lots of extras.

3 bdrm., 1 bath, storm cellar, garage, and 1 bdrm. apt. with cellar in Farwell.

Small 1 bdrm., 1 bath house on 3 lots in Farwell.

2 bdrm., 1 bath with basement storage room in commercial area with 6 extra large lots. Possibilities - mobile home sites or commercial location, on highway.

**THIS WEEK'S SPECIAL**

Mr. Farmer - Do you need a farm hand's house in Bovina? We have two left - 3 bdrm., 1 bath each with single car garages. 1 has new carpet.

480 A. irrigated, lays nearly perfect, on highway near Pleasant Hill, 3 strong 8-inch wells.

160 a. irrigated east of Lariat elevator, 2 miles.

Good quarter (1/4) and half (1/2) dryland, north of Bovina.

Brick, extra nice and clean, 3 bdrm., 3 bath, excellent location, with garage, beautiful yard and fenced backyard.

2 bdrm., 1 bath with garage, excellent location.

3 bdrm., 2 bath, extra nice and clean; has garage, storm shelter, nice yard, good location.

240 A. irrigated northeast of Bovina. Small down payment.

160 A. irrigated, one mile north of Muleshoe on highway. Has 2 wells.

Good half (1/2) section of dryland, N.W. of Bovina.

300 A. some irrigated farmland, some grass, southeast of Farwell.

928 A. (irrigated farmland & native grass) southeast of Farwell.

Small tracts: 1-10 A, 1-20 A, 1-44 A, all on Hiway near Lariat.

3 bdrm., 3 bath brick, excellent location, lots of extras.

Several good business locations: With railroad access on Amarillo Hiway.

Large ste. commercial bldg. with 15 A. Caliche-topped yard with railroad access.

**LEARN TO SKATE. BUY A SKATING RING IN FARWELL.**

2 bdrm., 1 bath, with carport, good location.

**★ WE NEED LISTINGS NOW ★**

"Sales and Loans Are Our Service"

**GREAT SCOT!**

Thoughts About Thistle A "thistle-stop tour" of Scotland takes us back to the thirteenth century. Such an excursion is fascinating, according to the Teacher's Scotch Information Centre, for it reveals how the prickly purple thistle became the national emblem of that lovely land.

When Alexander III was king of Scotland, King Haakon of Norway landed an army on the shores of that kingdom and attempted to conquer it. According to legend, during the sneak attack on the Scottish camp at Largs, a barefoot Norseman trod on a thistle and cried out in pain.

The Scots were alerted, and the attack failed. Soon afterward Haakon withdrew his army. His successor surrendered the Hebrides Islands to Scotland.

Since that time, thistle has continued to grow on the Scots. Even today, it is very much to the point.

The average cost of drilling oil and gas wells in the United States increased last year to \$19.03 per foot, the highest figure on record, according to the American Petroleum Institute. The number of wells drilled was only 25,040, the lowest total since 1946.

**USED EQUIPMENT**

1 - 1968 4020 Tractor W/JD Cab & Air  
1 - 1964 Dsl. JD 4020 Tractor  
1 - Used #224 JD Baler

1 - 1968 Chevy Truck, Grain Bed, Hoist, Tandem Axle.  
1 - 1967 JD 4020 Tractor Dsl.  
1 - 1964 Model 95 Combine, Clean Machine

1 - Used Roll-Guard For JD Tractor  
1 - Used Grain Cart  
2 Sets Used 34" Dual Wheels for JD Tractors

1 - Used Shredder

**"WE TRADE"**

**CAL JORDAN IMPLEMENTS**

PH. 763-5517  
201 S. Walnut-Clovis, N.M.

**TWO MINUTES WITH THE BIBLE**

BY CORNELIUS R. STAM PRES. BERAN BIBLE SOCIETY CHICAGO, ILLINOIS 60635

**GRACE ABOUNDING**

In a letter to his spiritual son, Timothy, Paul wrote, some 1900 years ago about his conversion: "(I) was before a blasphemer, a persecutor, and injurious, but I obtained mercy because I did it ignorantly in unbelief. AND THE GRACE OF OUR LORD WAS EXCEEDING ABUNDANT..." (I Tim. 1:13,14). And he follows this with the now famous declaration: "THIS IS A FAITHFUL SAYING, AND WORTHY OF ALL ACCEPTATION, THAT CHRIST JESUS CAME INTO THE WORLD TO SAVE SINNERS, OF WHOM I AM CHIEF" (Verse 15).

Upon reading these words of Paul, those who know their Bibles will immediately recall the words of Rom. 5:20,21: "... The law entered, that the offence might abound, BUT WHERE SIN ABOUNDED, GRACE DID MUCH MORE ABOUND, THAT AS SIN HATH REIGNED... SO MIGHT GRACE REIGN..."

These two passages from the pen of Paul have a closer connection than may appear on the surface. The Apostle Paul, once Saul Timothy, Paul wrote, some 1900 years ago about his conversion: "(I) was before a blasphemer, a persecutor, and injurious, but I obtained mercy because I did it ignorantly in unbelief. AND THE GRACE OF OUR LORD WAS EXCEEDING ABUNDANT..." (I Tim. 1:13,14). And he follows this with the now famous declaration: "THIS IS A FAITHFUL SAYING, AND WORTHY OF ALL ACCEPTATION, THAT CHRIST JESUS CAME INTO THE WORLD TO SAVE SINNERS, OF WHOM I AM CHIEF" (Verse 15).

Upon reading these words of Paul, those who know their Bibles will immediately recall the words of Rom. 5:20,21: "... The law entered, that the offence might abound, BUT WHERE SIN ABOUNDED, GRACE DID MUCH MORE ABOUND, THAT AS SIN HATH REIGNED... SO MIGHT GRACE REIGN..."

These two passages from the pen of Paul have a closer connection than may appear on the surface.

**CLOVIS SHOPPING DIRECTORY**

<b>STEREO</b> CLOVIS ELECTRONICS 1440 MAIN	<b>FABRIC MART</b> Better Fabrics Make Better Fashions HILLTOP PLAZA
<b>AUCTION SALES</b> Thurs. 7:30 P.M. <b>MENNEL'S AUCTION</b> 2021 E. 2nd - 762-2581	<b>Stork Shop</b> Infants and Maternity Wear 1312 Main 763-7145
<b>TYPEWRITER</b> ADDING MACHINE <b>REPAIR</b> GOODMAN OFFICE SUPPLY 1212 Main - Dial 763-5589	<b>ROTHWELL BODY SHOP</b> 1814 West 7th (Behind Chief's Automotive) Clovis, N.M. CALL 763-3530 For Free Estimate On ALL AUTO BODY REPAIR & REPAINTING ALSO GLASS WORK
<b>KODAK BELL &amp; HOWELL</b> MIRANDA MINOLTA POLAROID ROLLEIFLEX CANON PENTAX KONICA MAMIYA SEKOR PROMPT DEVELOPING SERVICE - ALL SIZES FILM - LARGE SELECTION PHOTO ACCESSORIES 617 Main Clovis Ph. 763-3834	<b>TEXACO INC.</b> Woodrow Lovelace 5th & Ave. A 481-9070

<b>FARWELL HARDWARE</b> <b>ZENITH</b> 305 Ave. A 481-3286	<b>CAPITOL FOODS</b> <b>Shurfine</b>
<b>JOHNSON ABSTRACT COMPANY</b> 481-3878 203 Ave. G - Box 88 Farwell, Texas	<b>HUGHES INSURANCE AGENCY</b> General Insurance 509 Ave. A, 481-3671
<b>MM MINNEAPOLIS-MOLINE</b> World's Finest Tractors <b>FARWELL EQUIP. CO.</b> Phone - 481-3212	<b>STATE LINE OFFICE SUPPLY</b> Ph. 481-9235 105 3rd - Farwell IMPORTANT DOCUMENTS COPIED FREE
<b>W &amp; J AUCTION</b> 108 Pile St. Ph. PO 3-7311 SALE EVERY TUES. James Priest & Associates, Auctioneers	<b>The CITIZENS BANK</b> Texico Branch Complete Bank Service Member FDIC
<b>TEXACO INC.</b> Woodrow Lovelace 5th & Ave. A 481-9070	<b>WATTS Machine and Pump</b> Layne Bowler Pumps and Repair-Gearhead Repair Ph. 481-3239-Farwell, Tex.

<b>Hamlin Memorial Methodist Church</b> W. T. Perry - Pastor Church School - 10 a.m. Morning Worship - 11 a.m. Evening Worship - 7:15 p.m.
<b>Farwell Church of Christ</b> James Wilbanks - Minister Sunday School - 10 a.m. Morning Worship - 10:50 a.m. Evening Worship - 6 p.m.
<b>Texico First Baptist Church</b> John Summers - Pastor Sunday School - 10 a.m. Morning Worship - 11 a.m. Evening Worship - 7:30 p.m.
<b>Oklahoma Lane Methodist Church</b> Oran D. Smith - Pastor Sunday School - 10 a.m. Morning Worship - 11 a.m. Evening Worship - 7 p.m.
<b>St. John's Lutheran Church</b> Martin M. Platzer - Pastor Sunday School - 9:30 a.m. Morning Worship - 10:30 a.m.

**TELEX HEARING AIDS**

**CLOVIS HEARING AID CENTER**

★ Batteries ★ Molds ★ Free Hearing Tests  
SERVICE ALL MAKES

416 Mitchell Ph. 763-6900

**ROSE DRUG & GIFT SHOP**  
Prescriptions a Specialty  
481-3281

**OKLAHOMA LANE FARM SUPPLY AND GIN**  
"Where Your Business Is Appreciated"

**Mid-West Video**  
Ph. 763-4411

Ch. 2 Lubbock	13 CBS
Ch. 3 Roswell	8 NBC
Ch. 4 Clovis	12 CBS
Ch. 5 Amarillo	7 ABC
Ch. 6 Amarillo	4 NBC

**WATTS KZOL**  
1570 On Your Dial

**Assembly of God**  
Grady Goff - Pastor  
Sunday School - 10 a.m.  
Morning Worship - 11 a.m.  
Evening Worship - 7:30 p.m.

**West Camp Baptist Church**  
Glenn Harlin - Pastor  
Sunday School - 10 a.m.  
Morning Worship - 11 a.m.  
Evening Worship - 7 p.m.



**Farwell School**

**Reduces Milk**

Farwell School Superintendent W. M. Roberts said that the school has received a letter authorizing a reduction in the cost of milk to all students in the school.

From the Federal government, the letter states that a reimbursement will be made to the school for milk cost.

Roberts said the price will be lowered to six cents for one-half pint of milk.

**Sheriff's Report**

Sheriff Charlie Lovelace reported that Paul Silas Bidwell, 34, of Melrose was picked up there on charges of felony theft from Parmer County.

Bidwell allegedly stole approximately \$800 in tires from the Loomix Co. at Farwell.

The theft occurred on Tuesday night, Nov. 6, and Bidwell, who is said to be a former employee of the company, was apprehended Wednesday night, Nov. 7.

Jailed in lieu of \$5,000 bond, Bidwell will face grand jury for possible indictment. The tires were recovered at Dahart.

Parmer County Deputies Tom Atkins and Henry Minter returned James Henry Burton Jr., 31, of El Paso, from Las Cruces, N.M., where he had been stopped in a road block and arrested on two Parmer County charges.

Grand jury indictments were returned last month in Parmer County on Burton for one charge of rape and one charge of felony theft.

Burton is in Parmer County jail awaiting trial on the two charges. He is under a total bond of \$7,000. Sheriff Lovelace said Lubbock County has placed a hold on Burton to face an indictment in Lubbock County for forgery.

Sheriff's officers investigated a break-in which apparently occurred Sunday night at Bovina Wheat Growers in Rhea.

According to Sheriff Lovelace, the burglars broke out a window for entry, tore up a filing cabinet and took a little change from the business.

He said the business had been entered about a year ago in much the same manner.

**Duo Acquitted In Theft Cases**

Charles Jacobs and Harley Baker, both charged with vehicle theft in separate instances, were acquitted by District Judge Pat Boone last week in Farwell. Both had non-jury trials in district court.

Jacobs, of Muleshoe had been charged with the theft of a pickup from Elvis Childs and Baker, of Littlefield, had been charged with the theft of a pickup from J. G. McFarland of Friona.



**LEADERS OF THE BAND** who directed the outstanding Steer High School Marching Band during half time performances at this season's football games and in marching competition in various contests have been Drum Major Lynn Blankenship, center right, and assistant drum major, Donnie Garner, center left. Twirlers who complemented the band with their individual and team drills are, left to right, top row: Cheryl Woods and Karen London; bottom row: Gaye Coffman and Pam Nance, head twirler.

**Farwell - -**

**Twenty-One Named On First Honor List**

Twenty-one students of Farwell High School maintained the required grade average for eligibility on the Honor Roll for the first nine weeks of school, according to Jack Williams, Farwell High School principal. Included in the group are four freshman students, eight sophomores, four juniors and five seniors.

Freshmen listed on the Honor Roll are Natalie Dollar, Ron Hancock, Karen London and Carol Vinton.

Sophomores maintaining the required grade average are Terri Boling, Estelle Embry, Wesley Hukill, Bruce Kaltwasser, Jacquelyn Langford, Kim Magness, Kathy White and Lee Ann Williams.

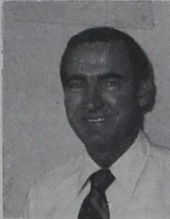
Junior students include Beeky Howard, Karroll Sue Rhodes, Karla Smart and Paula Martin.

Seniors listed are Lynn Blankenship, Patti London,

Pam Nance, Susan Symcox and Joyce White.

To be eligible for the Honor Roll a student must have maintained at least an average of 89½% in all subjects.

**JOHNNY**



**WATFORD**

A flying saucer's mechanism went out of joint, and it came careening into a deep sand trap on the Lakeway golf course. "What do I do now?" the pilot shortwaved to headquarters in outer space. Back came the answer, "Use your number nine iron, you meathead!"

**"DOC"**

**Stewart Inc.**

Mabry Dr. - Clovis

# Specials

FOR A **FESTIVE THANKSGIVING DINNER**

Blackburn qt. <b>White Syrup</b> 39¢	Turkeys All Sizes Swifts Butterball <b>Self-Basting</b> 79¢ lb. Golden Star <b>Self-Basting</b> 79¢ lb. Honey Suckle <b>Self-Basting</b> 79¢ lb.	U.S.D.A. <b>Roasting Hens</b> 69¢ lb. U.S.D.A. Blade Cut <b>Chuck Roast</b> 69¢ lb. Golden West 25 lb. <b>Flour</b> \$3.69	U.S.D.A. Fresh Cut <b>Pork Roast</b> 79¢ lb. Wilson 1 lb. <b>Bacon</b> 99¢ lb. Tendercrust <b>Brown/Serve Rolls</b> 2 pkgs./79¢ Holsun 5 oz. <b>Stuffed Olives</b> 49¢
Bonds 8 oz. <b>Stuffing Mix</b> 39¢	Rainbo Harvest Pride 2 lb. ¾ oz. <b>Fruit Cake</b> \$1.29	Shurfine 5 lb. <b>Flour</b> 85¢	Shurfine 22 oz. <b>Sweet Pickles</b> 59¢
Reynolds 25 ft. <b>Foil</b> 29¢	Shurfine no. 303 WK/CS <b>Corn</b> 5/1.00	Imperial 16 oz. <b>Powdered Sugar</b> 25¢	Bakers 12 oz. <b>Chocolate Chips</b> 49¢
Shurfine no. 303 <b>Cut Green Beans</b> 5/\$1.00	Bakers 7 oz. <b>Coconut</b> 35¢	Shurfine 16 oz. <b>Cranberry Sauce</b> 25¢	Folgers 6 oz. Inst. <b>Coffee</b> \$1.29
Shurfine, 17 oz. <b>Fruit Cocktail</b> 3/89¢	Kraft 7 oz. <b>Marshmallow Cream</b> 29¢	Swanson 13 ¾ oz. <b>Chicken Broth</b> 19¢	Grade "A" <b>Small Eggs</b> 59¢
All King Or Reg. Size <b>Dr. Pepper</b> 49¢ Cnt.	Food King 1½ lb. <b>Loaf Bread</b> 3/99¢	Shurfresh Plastic Gallon <b>Milk</b> \$1.39	Morton 16 oz. <b>Pecan Pies</b> 79¢
Birdeye 9 oz. <b>Cool Whip</b> 49¢	Borden Half Gallon Round Cut <b>Ice Cream</b> 89¢	Morton 2 oz. <b>Pumpkin or Mince Pies</b> 39¢ ea.	Morton 2 in <b>Pie Shells</b> 35¢ pkg.
Shurfine 6 oz. <b>Orange Juice</b> 5/\$1.00	New Crop <b>Sweet Potatoes</b> 19¢ lb.	New Crop <b>Avocados</b> 5/69¢	Calif. 1 lb. Bag <b>Cranberries</b> 29¢ Bag
Calif. Stalk <b>Celery</b> 19¢ Stalk	Yellow <b>Sweet Onions</b> 12½¢ lb.	10 lb. Bag <b>Russet Potatoes</b> 73¢	New Crop lb. <b>Pecans or Mixed Nuts</b> 79¢ lb.
Tex. 5 lb. Bag <b>Oranges</b> 49¢	<b>WE WILL BE CLOSED THANKSGIVING DAY</b>		

## Pre-Holiday SALE

**WOMAN'S STYLECRAFT APPAREL**

**15% OFF** Pant Suits - Blouses Mix & Match

---

**PLAY TEX BRA** 25% OFF  
No Visible Means Of Support

---

**FALL YARDAGE Sale** ALL DOUBLE KNIT MATERIAL 20% OFF

---

**20% OFF** NEW SHIPMENT WESTERN SHIRTS

---

ALL CHRISTMAS DECORATIONS WRAPPINGS AND ORNAMENTS 20% OFF

---

LAY-A-WAY FOR CHRISTMAS  
10% Down Holds Any Item

**HOLIDAY**  
*The Family Store*  
Farwell, Texas

## CAPITOL FOODS

WE GIVE S & H GREEN STAMPS  
DOUBLE ON WED. WITH \$2.50 PURCHASE  
OPEN TILL 9 O'CLOCK EVERY NIGHT

We Redeem U.S. Government Foods Coupons

We Feature  
Shurfresh Milk

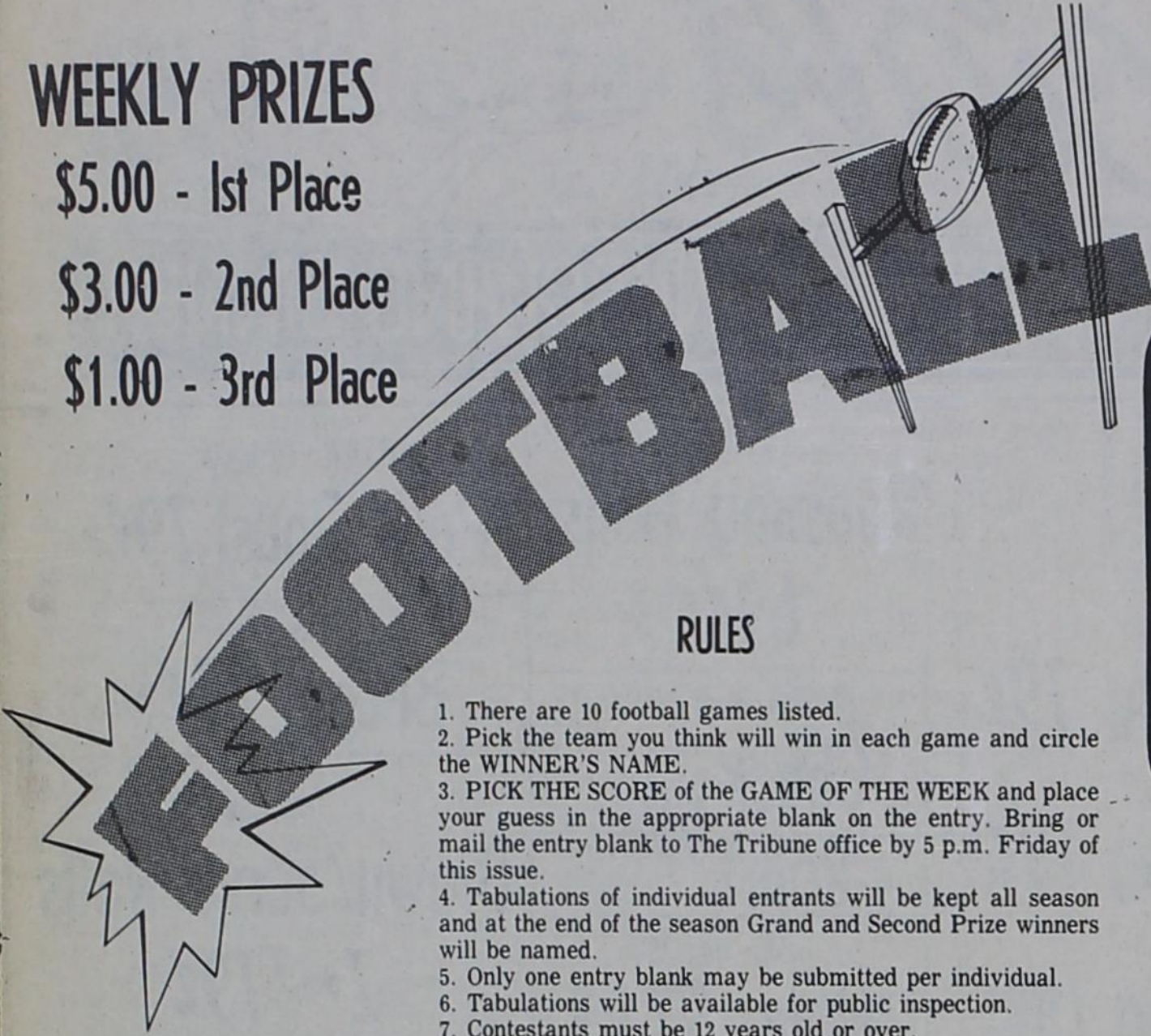
We Feature  
Tendercrust Bread

Farwell Clovis

# THE AREA MERCHANTS 15th ANNUAL

## WEEKLY PRIZES

- \$5.00 - 1st Place
- \$3.00 - 2nd Place
- \$1.00 - 3rd Place



### RULES

1. There are 10 football games listed.
2. Pick the team you think will win in each game and circle the WINNER'S NAME.
3. PICK THE SCORE of the GAME OF THE WEEK and place your guess in the appropriate blank on the entry. Bring or mail the entry blank to The Tribune office by 5 p.m. Friday of this issue.
4. Tabulations of individual entrants will be kept all season and at the end of the season Grand and Second Prize winners will be named.
5. Only one entry blank may be submitted per individual.
6. Tabulations will be available for public inspection.
7. Contestants must be 12 years old or over.
8. Game of the Week used as the tie breaker only.

# COTTON BOWL CONTEST

<b>2 GRAND PRIZE</b> Tickets To The Cotton Bowl And <b>\$50<sup>00</sup></b> Expenses	<b>2 Second Prize.</b> Tickets To The SUN BOWL <b>\$25<sup>00</sup></b> Expenses At El Paso
---	---

## TEXACO INC.

Woodrow Lovelace  
 Your Car and Farm Equipment  
 Deserve The Best  
 Use Texaco Products  
 Ph. 481-3209

## NANCE

### Construction Company

2106 PRINCE — P. O. BOX 1541  
 Clovis, New Mexico 88101

Phone 505 — 762-2292

## PIGGLY WIGGLY

We give S&H Green stamps

## "We Grow For You"

Ph. 481-3810

## Clara's Spur

### Restaurant

Buffeteria-All You Can Eat-Mexican Buffet On Saturday Night  
 Banquet Facilities - Homemade Pies  
 Sandwiches - Steaks - Mexican Food

Make Reservations For After The Game

In Farwell <b>Sherley-Anderson-Pitman Inc.</b> John Williams, Mgr.	In Lariat <b>Sherley-Anderson Grain</b> Asa Smith, Mgr.
"Serving Farmer County Farmers The Year 'Round'"	

## WILLIAMS FERTILIZER

Farwell

## Gifford-Hill & Company, Inc.

806 — 481-3316  
 P. O. Box 99  
 Farwell, Texas 79325

## Oklahoma Lane

### Farm Supply & Gin

"We Care"

## FAR-TEX FEED YARDS INC.

### CUSTOM CATTLE FEEDERS

South Of Farwell On State Line Road

Ph. 481-3324      Dean Avara, Mgr.

## ENTRY BLANK

NAME \_\_\_\_\_

ADDRESS \_\_\_\_\_

Tiebreaker - Pick Score  
 Sudan \_\_\_\_\_ at Kress \_\_\_\_\_

1. Plainview at Snyder
2. Pampa at Amarillo
3. Morton at Friona
4. Hart at Bovina
5. Clovis at Hobbs
6. OK. State at U. of Colorado
7. Rice at Houston
8. Arkansas at SMU
9. Eagles at Cowboys
10. Vikings Vs. Falcons

## SECURITY STATE BANK

FARWELL, TEXAS

## WATTS

### Machine And Pump Co.

Farwell

## INTERSTATE FERTILIZER

481-3838      Night 481-3284

Farwell

## FARWELL HARDWARE

### Hardware & Plumbing Supplies

TV-Radio-Stereo

## Worley Grain Co.

FARWELL      Home Of Okay Feeds      TEXAS

## Hughes Insurance Agency

FIRE - CASUALTY - LIFE

"Local Service From A Local Agent"

"Shorty" Hughes      Farwell, Tex.

Servis & Caldwell      Tye Drills  
 Shredders      King Offset Disc Plows

MINNEAPOLIS - MOLINE  
 Power Units & Tractors

SOLD BY  
**FARWELL EQUIPMENT CO.**