



# BAILEY COUNTY JOURNAL

"The Community of Opportunity Where Water Makes the Difference"

VOL. 9 NO. 45

12 PAGES

Published Every Sunday at Muleshoe, Bailey County, Texas - 79347

10 CENTS

SUNDAY, NOVEMBER 14, 1971

## Weather...

	HIGH	LOW
Nov. 10	65	28
Nov. 11	72	28
Nov. 12	78	31
Nov. 13	80	38

Moisture for year 16.18

# Cotton, Grain Programs Announced

## New Regulations For Cotton Trailers

### Lights, Brakes On Trailers Required

C.A. Dempsey, Texas Department of Public Safety Officer of Lubbock was in Muleshoe Thursday and explained the new traffic regulations for cotton trailers and other farm trailers that is to go into effect January 1, 1972 in Texas.

The new law requires light requirements for trailers and semitrailers 80 inches or more in overall width to include two amber clearance lights on the front, one on each side; two red clearance lights on the rear, one at each side; three identification lights meeting the specifications of the new law which states that the identification lights shall be grouped in a horizontal row, with lamp centers spaced not less than six or more than 12 inches apart and mounted on the permanent structure of the vehicle as close as practicable to the vertical center line; two red tail lights, one on each side; two red stop lights, one on each side; and two red reflectors, one on each side. Lamps and/or reflectors may be incorporated. There also should be two amber side marker lights and two red side marker lights on the side.

All motor vehicles, trailers, semitrailers and pole trailers are to be equipped with electric turn signal lights, except pas-

senger cars and trucks less than 80 inches in width, manufactured or assembled prior to model year 1960.

Dempsey also explained that after January 1, every bus, truck, truck-tractor, trailer, semitrailer or pole trailer 80 inches or more in overall width or 30 feet or more in overall length shall be equipped with hazard warning lights. The lights used to display such warning to the front shall be mounted at the same level and as widely spaced laterally as practicable, and shall display simultaneously flashing white or amber lights, or any shade of color between white and amber. The lights used to display such warning to the rear shall be mounted at the same level and as widely spaced laterally as practicable, and shall show simultaneously flashing amber or red lights, or any shade of color between amber and red. The use of a flasher switch causing the turn signal lamps to flash simultaneously may be used to comply with this regulation.

Dempsey also explained the new braking regulations on trailers which require brakes acting on all wheels of all vehicles except: trailers, semitrailers or pole trailers of a gross weight not exceeding 3,000 pounds, provided that the total weight on and including the wheels of the trailer or trailers does not exceed 40 percent of the gross weight of the towing vehicle when connected to the trailer or trailers; any farm trailer or farm semitrailer operated or moved temporarily upon the highways when its gross weight does not exceed 10,000 pounds and when the speed of the trailer or semitrailer does not exceed 30 miles per hour and when the vehicle and its operation meet all other requirements for total or partial exemption from registration fees; and any farm trailer or farm semitrailer operated or moved temporarily upon the highway solely to transport cotton if the gross weight of the trailer or semitrailer is not more than 15,000 pounds, if the speed of the trailer or semitrailer is not more than 30 miles per hour.

The term "gross weight" means the combined weight of the trailer or semitrailer and the weight of the load actually carried on the highway.

## around muleshoe with the journal staff

Max King, Tim Campbell, and Bob Clark attended a Cattle Feeders Convention at Dallas, Texas. They left Sunday afternoon, November 7 and returned Wednesday, November 10.

Nelda Finley, a student at WST, spent the weekend in Muleshoe visiting her parents Mr. and Mrs. Clifton Finley. The Finley's son Neil and wife Cindy from Lubbock spent Sunday afternoon visiting them.

Mr. and Mrs. Bob Murphy from Las Cruces, N.M. spent a week visiting in the home of Mr. and Mrs. L.O. Norwood.

Mrs. Edd Edmiston has returned after a weeks visit in Brady Texas. Returning with her was her mother - in-law Mrs. Bunny Hurd. Mrs. Hurd plans

Cont'd. on Page 3, Col. 8

## Local United Fund Sponsors Babe Ruth

The Muleshoe Babe Ruth League and the Senior Babe Ruth League are both partially supported by the Muleshoe Area United Fund. This year the Babe Ruth League has a budget of \$700. The primary income of the League is concessions and the purpose of the United Fund aid is for deficit financing. Of a total budget of \$1800 last year, \$700 was from the United Fund. The balance was through concessions. The money was used for operation expenses.

The Babe Ruth League is composed of 13 to 15 year old boys. There are five teams with a total of 75 players who played 45 games last season. The administration is made up of volunteer leaders including the League Officers, the board members, team managers and coaches.

Officers for the Babe Ruth League this year include Cy Stockard, president; Gordon Wilson, vice-president; and Joe Allen Nickles, secretary.

treasurer. Directors are Harold White, Mr. Mick, Herston Parker, Wayne Clark and Wayne Williams. Player agent is Henry Stoneham and the official scorekeeper is Creston Favor.

The league is a program of summer baseball for boys contributing to the social, physical and character development of the players. The boys learn of sportsmanship, teamwork and leadership while at the same time enjoying the wholesome outdoor activity of the national passtime.

The Senior Babe Ruth League is the same program for boys 16 to 18 years old. The League has one team with 15 players who last season played 12 games with area towns. Their budget is set at \$200 from the United Fund. Last year the total budget was \$500 with \$200 coming from the United Fund and the balance from concessions as their major source of income.



LIBRARY BOOK SALE TO BEGIN MONDAY... These members of Muleshoe Study Club are shown unpacking some of the books that will be included in the book sale scheduled for next week. The Study Club is sponsoring the book sale which will start Monday at 2 p.m. and continue through the week at the old library building. All proceeds will go for furnishing the new library. Pictured left to right are Mrs. J.W. Witherspoon, Mrs. J.G. Arm, Mrs. G.L. Spaw, president of the club, and Mrs. Ed Johnson.

## New Mental Health Center Offers Benefits To County

Bill Dillard of the Mental Health Center in Plainview was in Muleshoe Monday to speak to the Muleshoe Jaycees and the Muleshoe Elementary P-TA about the center which now offers its benefits to Bailey County residents.

### Eagles Fly Past Panthers 60-20

The Three Way Eagles flew past the Whitharral panthers Friday night. The Eagles rushed for 429 yards, Nuetzler ran for three touchdowns.

The Eagles struck early when James Parthow romped 56 yards to light the boards. George Duarte ran the extra points. Nuetzler then "did his thing" beginning with a 29 yard run to pay dirt. Seconds later Nuetzler broke loose for 58 yard scoring joint. Later in the same period Nuetzler decided he wanted to pass the ball. Nino took the ball and tossed it to Nuetzler for another Three Way score. Aiding Nuetzler were Duarte and Nino as they ran for the two point conversion on Nuetzler TD runs.

Early in the second period, Nuetzler tossed a 50 yard scoring pass to Terry Pollard, Duarte ran for the extra points. Whitharral then picked up the first score when Carl Hoelacher galloped 10 yards and hit pay mud. The PAT attempt failed.

Whitharral saw a spark of light following the Hoelacher

Cont'n on Page 3, Col. 6

Outpatient treatment provides services to a majority of the center's patients. A person who does not need hospitalization but could benefit from group counseling and other therapy is classified as an outpatient. Muleshoe is establishing an outreach program to provide treatment in the community. The center in Muleshoe is located at 211 East Avenue B, Mrs. Rowena Watson is the outreach director and may be contacted by phoning 272-4433.

### Noland Breaks Record; Leads 'Horns To Win

Quarterback Ricky Seaton lead the Lazbuddie longhorns to their third district win, as the Horns blanked the Amherst Bulldogs 38-0.

Quarterback Seaton scored once and passed for another two helping the Horns up their season mark to 7-2. The Longhorns first score came when Seaton let loose on a 25 yard TD toss to end Loy Dale Clark. The PAT failed. Minutes later the Longhorns defense played to its potential and forced Amherst to punt the ball. Seaton took the pigskin ed 75 yards to hit pay dirt.

The next honor call went to halfback Author Graves as he traveled 61 yards to hit pay dirt. The PAT was again no good.

The second period Graves ran eight yards to light the boards. Mark Barnes kicked the point after. Mark Barnes scored the final touchdown of the period on a two yard run. The two teams went in during intermission with a half time score of 31-0. The final score of the game might have been a repeat of

cont'd. on page 3, col. 5

## Girlstown USA Receives XIT Food Donation

The Muleshoe Jaycees were contacted this week by Gary Miller, owner of the XIT Steak House, and Don Barnes, manager, for the purpose of donating the remaining, undamaged food supply at the XIT Steak House to Girlstown USA in Whiteface.

After the damaging fire at the XIT Tuesday morning, there was a good supply of undamaged food. With the help of the Jaycees, Girlstown was contacted and sent Milton Hill to pick up the food supply.

Thursday morning, Jaycees Jeff Smith, Duane Seay and Don Barnes loaded the Girlstown pickup with boxes of food such as steaks, fish, cheese, lemons, cont'd. on page 3, col. 5

The center is staffed by Bubliss, M.D., psychiatrist, who is director of the medical program and treatment. Jim Jenkins, Ph.D., chief psychologist directs the therapy and counseling programs. John Patterson is director of mental retardation and educational programs.

Mrs. Watson is able to direct an interested person to the proper staff person for treatment. She is available to visit with anyone about their problems.

## XIT Will Reopen In Near Future

Don Barnes, manager of the XIT Steak House, reports that the Steak House will definitely be reopened sometime in the near future but at this time it is difficult to say just when.

He said that the full extent of the damage is not known but it could reach as much as \$100,000.

The cause of the early Tuesday morning fire has not yet been made official. The state of New Mexico fire marshal spent last Thursday investigating the building at the request of the owners.

## Set Aside Acreage Increased

The Agricultural Stabilization and Conservation Service has announced the 1972 Upland Cotton Program and the 1972 Feed Grain Program.

A notice of the 1972 upland cotton allotment will be sent to farmers around December 15. For most farms, it will be about the same as the original 1971 allotment since the national base acreage allotment is unchanged from 11.5 million acres.

As in past year, the farmer must sign up in the program in order to obtain program benefits. This year the sign-up period will be earlier, from January 17 through February 25, 1972. The program benefits include payments and loans.

Next year, payments will be made after July 1. The preliminary payment rate will remain at 15 cents per pound. Any additional payment will be made after January 1, 1973. Since 1971, production will be used in determining 1972 farm payment yields. It is important for the farmer to have good records of the 1971 production and submit a report to the county office as soon as the harvest is completed. Full payments will be made to producers on those farms having at least 90 percent of the allotment planted.

Program participants will be eligible for loans on their cotton at 19.5 cents per pound for mid-ling one-inch cotton with good micronaire at average location. In addition to maintaining their conserving base, program participants are required to set aside to conserving uses an acre

Cont. on page 3, col. 1



## Bartholf Will Head Christmas Seal Campaign

The West Texas Area Texas Tuberculosis and Respiratory Disease Association has named Walter Bartholf, Muleshoe minister and civic leader, as chairman of the Bailey County 1971 Christmas Seal Campaign.

Bartholf is minister of the First Christian Church. He has been an active worker in Boy Scouts of America for over 35 years and is a member of the Board of Directors, of WTA, TTRDA. He and his wife, Charlene, have four children.

November 10 has been set by the National TB and RD Association as the opening day for this year's campaign which has been carried on annually since 1907.

The Christmas Seal Association is the oldest voluntary health organization in the world and the first one to modernize by going on the computer. The return envelopes this year will be marked "Austin" instead of "Lubbock". The computer will tabulate the town, county and area; the funds will then return to work in that area. It is still the one health organization which retains 92 percent of all contributions right

cont'd. on page 3, col. 4

## Mules Fall To Canyon 24-20

The Muleshoe Mules lost a hard game Friday night to the Canyon Eagles, 24-20.

In the first quarter, the Eagles struck early with a 62 yard run by Edmonson around right end. The PAT failed and the score was 6-0 with only 2:29 gone in the game.

The Mules came right back with a 62 yard scoring drive by Bobby Hayes in 10 plays.

Don Long pitched back to Donnie Wheat who hit his brother, David Wheat for a 24 yard pass to give the Mules a first and goal.

Hayes scored on the next play with Heathington kicking the extra point. The Mules took the lead for the only time with a 7-6 score.

The Mules held the Eagles, Cont. on page 3, col. 3



XIT DONATES FOOD TO GIRLSTOWN... The XIT Steak House with the assistance of the Muleshoe Jaycees donated its undamaged perishable food supply to Girlstown, USA this week. A pickup load of steaks, eggs, lettuce and other items were sent to Girlstown with their representative Milton Hill Thursday. Pictured left to right are Duane Seay, Jeff Smith, Don Barnes, manager of the XIT and Milton Hill of Girlstown.



### Final Rites For Farwell Resident Here

Rochelle Christian, 77, died suddenly of a heart attack at his home in Farwell at 5 p.m. Wednesday, November 10.

Christian had lived in the Farwell and Oklahoma Lane communities for the past 52 years. He was a native of Snyder, Oklahoma, and was born in Iowa Park, Texas on August 3, 1894. He was a member of the Primitive Baptist Church of Muleshoe.

Funeral services for Christian will be held at the Singleton-Ellis Funeral Home Chapel of the Chimes at 2:30 p.m., on Friday, November 12. Officiating will be Elder Afton Richards of Ralls. He will be assisted by Elder Bernard Gowens of Friona and Elder Kenneth Morton of Muleshoe. Burial will be in the Sunset Terrace Memorial Park in Farwell under the direction of Singleton-Ellis Funeral Home.

Survivors are his wife, Cora; Four sons, Bill, Texico, New Mexico; Charles, Farwell; John Raymondville; and Gerald of Washington, D.C.; one daughter, Mrs. Mary Montgomery, Canyon. Also four sisters, Mrs.

Leona Henderson and Mrs. Grace Jones, Oklahoma Lane; Mrs. Rose Nix, El Monte, California; and Mrs. Ann Smith, Albuquerque, New Mexico; two brothers, Everett and Clarence, both of Farwell; and eight grandchildren.

### MEXICO & DRUGS

Mexico City -- Assistant Attorney General David Franco Rodriques reports that Mexico has destroyed 439 tons of marijuana, 31 million toxic pills, 440 pounds of cocaine and 110 pounds of heroin during the last 12 months in an effort to rid Mexico of drugs.

### Services Pend For R. Klutts

Robert R. Klutts, 74, of the Stegall, Goodland area died about 1:30 a.m. Friday morning in the Hospitality Home of Littlefield. He was born August 4, 1897 at Edna, Texas.

He had lived in this area since 1930 moving from Podan, Okla. He was in the water well repair business and a veteran of World War I.

Survivors include his wife, Chole; one son, R.J. of San Carlos, Spain; four daughters, Mrs. Lucille Doyle of Pueblo,

Colo., Mrs. Barbara DeVoss of Montclair, Calif., Mrs. Virginia Foley of Hobbs, N.M., and Mrs. Linda Ellis of Tulsa; one brother, Thad Klutts of Oklahoma City; 10 grandchildren and one great-grandchild.

At presstime, services were pending with Singleton-Ellis Funeral Home.

Services will be held 2:30 p.m. Sunday, November 14, at the First Baptist Church. Glenn Williams of Muleshoe will officiate. Burial will be in the Muleshoe Cemetery.

Be as anxious to help others as you are to accept favors.

### Court House News

#### NEW CARS

J.B. Jennings, 1972 Oldsmobile, Brock Motor Company, Inc. F.B. Pierson, 1972 Chevrolet, Modern Chevrolet. Jimmie Pitcock, 1972 Chevrolet pickup, Doc-Stewart Chevrolet-Buick. Billy D. Gilbert, 1972 Chevrolet, Crow Chevrolet Co. Billy Shepherd, 1972 Ford, Muleshoe Motor Co. Clarence Christian, 1972 Ford Muleshoe Motor Co. Cobb's Department Store, 1972

Buick, Scoggin-Dickey Buick Co. Raymond Austin, 1972 Chevrolet pickup, Gwatney - Wells Chevrolet. W.R. Carter, 1972 Chevrolet, Crow Chevrolet Company. Allen Guinn, 1972 Chevrolet pickup, Webb-Mears Chevrolet Inc. Walter Kallwasser, 1972 Ford, Muleshoe Motor Co.

#### MARRIAGE LICENSE

Chalres Albert Barnett, Muleshoe, and Ida Mae McMurry, Muleshoe. James Elmer Cole, Clovis, and Lena May Cole, Clovis.

#### WARRANTY DEEDS

M.K. Dean and wife, John Anna Boyd Dean, to Jay B. Harbin

and wife, Wilma Dorine Harbin. a 2.21 acre tract of land out of the north half of the southeast quarter of Section number 42, Block y, W.D. and F.W. Johnson Subdivision, No. 2, Bailey County.

Ann Miller Carpenter to Bobby E. Free and wife, Dorthy Free, a rectangular tract of land 62 1/2 feet by 140 feet and being all of Lot number 3, and the northeasterly quarter of Lot number 4 in Block number 5, Warren Addition number 2. Joe L. Smallwood and wife, Zuma Jauree Smallwood, Robert B. Blackwood and wife, Cozette T. Blackwood, to Everett Leon Widner, all of Lot number 7, Block number 2, Harvey Addition.



## DOUBLE GREEN STAMPS every Wednesday

with a \$2.50 purchase or more

VALUES GOOD NOV. 15, 16, 17 MULESHOE, TEXAS  
501 W. Amer. Blvd.



Gold Note, Solids

Pound Package


10¢



Limit 6 Please!

Farmer Jones

## EGGS



Grade A Med.

Dozen Limit 3

29¢

## HEN TURKEYS



Oak Valley, U.S.D.A. Grade A, 12-18 Pound Average

Pound

39¢

## CARROTS



Crisp Crunchy

Bag

10¢

...AND YOU GET S&H GREEN STAMPS!

GIBSON'S DISCOUNT CENTER MULESHOE TEXAS

Specials Good Thru Wed.



PRESTO PRESSURE COOKER  
#PCC4A  
4 Qt. \$10<sup>53</sup>



#PCC6A  
6 Qt. \$12<sup>53</sup>

PRESTO AUTOMATIC PERCOLATOR

Fully automatic, no controls to set. Brews perfect coffee every time at cup-a-minute speed, keeps coffee sipping hot to the last cup. Signal light tells when it's ready to serve.

4 to 12 cup #CM12 \$16<sup>99</sup>

Lipton INSTANT TEA

3 oz. jar 79¢

PRESTO 4 slice TOASTER

#T04 \$15<sup>77</sup>

SUNBEAM AUTOMATIC CAN OPENER KNIFE SHARPENER

#CS8K \$9<sup>97</sup>

SUNBEAM ELECTRIC FRY PAN

#FP624 \$13<sup>99</sup>

LADIES CRUSH NYLONS

39¢ pr.

MEN'S CREW SOCKS

10 to 13 37¢ pr.

MARTEX TOWELS

Bath Size \$1<sup>44</sup>

Hand Towel 93¢

Wash Cloth 47¢

PLAYSKOOL 3 Way TABLE DESK

#547 \$4<sup>77</sup>

Ford 4000 TOY TRACTOR

by ERTL #805 \$3<sup>66</sup>

TEARIE BETSY WETSY DOLL

#1158-5 \$3<sup>77</sup>

Buddy L BIG MACK HYDRALIC DUMPER

#5812 \$6<sup>77</sup>

NORTHERN DELUXE 4-WAY MAKE-UP MIRROR



Northern's incandescent lighting brings unsurpassed realism to different lighting conditions.

NORMAL MAKE-UP SETTING—best lighting for application of makeup.

DAY — OFFICE — EVENING — best light settings to check up by and see how others will see you.

Swivels from regular to magnifying.

#1604 \$16<sup>97</sup>

SUNBEAM STEAM-dry IRON

#SD77 \$12<sup>97</sup>

WESTMARK POPCORN POPPER

#1866 4 Ct. \$8<sup>47</sup>

HANKSCRAFT Cool Vapor Air Circulator HUMIDIFIER

#255A \$16<sup>97</sup>

BATTLESHIP TV

Ages: 8 to Adult For 2 Players

Here's one of America's most fascinating strategy games for 2 players. The object is to sink all of the opponent's ships by firing salvos of shots and calling out the strike area. Colorful pegs are used to mark hits and misses.

#4730 \$3<sup>57</sup>

WHICH WITCH? TV

Ages: 6 to 12 For 2 to 4 Players

This is a scary, witchy, fun game. Object is to be the first to get through the witches' house and break the evil spell.

#4012 \$2<sup>88</sup>



## Programs...

cont'd. from page 1

age equal to 20 percent of their cotton allotment. This acreage must be representative of the acreage on the farm normally devoted to cotton.

There is no penalty for growing cotton in excess of the allotment. Consequently, the farmer should consider whether he can produce cotton more economically by growing a larger acreage than he has in the past. He has to consider too, that the payment yield will be preserved for 1973 if he produces as much cotton as the 1972 payment yield times the 1972 allotment; even though his actual yield per acre may be lower.

Farm allotments may again be sold or leased to other farmers. Full details concerning these and other matters will be available

at the county ASCS office in Muleshoe.

The details of the 1972 Feed Grain Program were also recently announced.

The qualifying set-aside percentage will be 25 percent of total feed grain base (corn, grain sorghum and barley). This compares to a 20 percent qualifying set-aside in 1971. Barley has been reinstated as a feed grain for 1972.

The payment for setting aside the qualifying acreage will be prorated on the basis of the acreage of corn, grain sorghum and barley in the TOTAL FEED GRAIN BASE. The per acre rate will be 80 cents for corn, 76 cents for grain sorghum and 64 cents for barley multiplied by the yield for each feed grain in the base.

If the farmer makes the qualifying set aside, he will also be eligible for loans on all of the feed grain production. County corn rates will be about the same level as in 1971. National average loan rates for grain sorghum and barley have been adjusted to more nearly reflect their feed value relationship to corn.

The farmer may offer to set aside an additional acreage for payment of up to 10 percent of the corn-grain sorghum base and up to 20 percent of the barley base. Also, he may offer to set aside still another five to 10 percent of the corn-grain sorghum base. However, this second offering of five to 10 percent above 35 percent of the corn-grain sorghum base will be subject to determination of need and approval in mid-March by the Secretary.

Payment for additional set-aside will be prorated on the basis of the acreage of corn, grain sorghum and barley in the total feed grain base. The per acre rate will be 52 cents for corn, 49 cents for grain sorghum and 42 cents for barley multiplied by the yield for each feed grain in the base.

The program will be similar to the 1971 program. Farmers will need to sign up, set aside the acreage from crop production he indicated at sign-up time, and maintain his farm's conserving base. The balance of his crop-land acreage may be planted to any crop he desires, except acreages of quota crops are limited.

Wheat planted above the wheat allotment and soybeans planted for harvest as beans will count as feed grain acreage to preserve the feed grain base. Likewise feed grain acreage above one-half of the feed grain base and soybeans not credited to feed grain will be considered as wheat to protect the wheat allotment.

Signup in 1972 feed grain,

## wheat and cotton programs

will begin on January 17 and end on February 25.

Question about the 1972 program, should be referred to the County ASCS office.

## Mules...

cont'd. from page 1

but when they received the ball they fumbled on their own 23 yard line. The Mules held the Eagles, with a first and goal on the six yard line in three plays and the Eagles' Podzemny kicked a 23 yard field goal. The goal put the Mules behind and saved the game for the Eagles. Later the Eagles, tried, but missed another field goal. This was also caused by another Muleshoe fumble.

The first half ended with a 9-7 ball game.

Both teams scored the first time they got the ball in the second half. Canyon was then leading 16-4.

The Eagles used four plays to cover 61 yards for another score to give them their last score.

The Mules came back on a 23 play scoring drive to score with 1:16 left in the game. The Mules scored by converting five fourth downs into first downs. Donnie Wheat scored this touchdown and two point conversion was short.

Bobby Hayes lead the Mules with 100 yards rushing. The Mules had 17 first downs to the 16 for the Eagles. In total yardage, the Eagles had 359 yards and the Mules 218. The Mules were hurt by two fumbles with the Eagles recovering both. Canyon was penalized 68 yards to Muleshoe's 20.

The Mules play Perryton here next week in Muleshoe to try for second in district. The final score was 24 to 20.

## Bartholf...

cont'd. from page 1

here in Texas.

The work of the Christmas Seal, carried on by the West Texas area, includes giving help to doctors, nurses and other professionals in their service to patients. It means research and development of new ideas and facilities to help eradicate tuberculosis. It cooperates with health departments and government agencies concerned with health and well being. This past year the Association worked in cooperation with volunteers from the Women's division of the Muleshoe Chamber of Commerce and TB Control of the State Health Department in setting up a skin testing program and Chest Clinics.

Jack Lemmon, therenowned actor, comedian and humanitarian is the National Chairman of the 1971 Campaign. Lee Trevino, International golf champion of El Paso, has been named the National Christmas Seal Sports Ambassador.

## Longhorns...

cont'd. from page 1

the first as Seaton let loose a 24 yard TD toss to Barnes.

Barnes kicked the point after to round out the scoring for the night.

Halfback Arthur Graves scored twice in Friday nights tilt. Graves now has 90 points for the year. Second to Anton's Alvin Williams who has 98 points for the year.

Big Jim Noland a 6' 1" 200 pound linebacker lead the Longhorn defensive team. Noland a definite "all-state" prospect picked up 18 tackles, and up his season record to 251 tackles. Noland's 251 sets a new school record. The old record was held by Frank Hinkson at 233 set in 1968 when Hinkson played twelve games. Noland

also holds the record for most tackles in a game with 40 tackles.

Jim picked off two Amherst passes to prove that he is a definite college prospect.

The Longhorns coached by Buddy Brock have scored 154 points thus far this season while allowing only 54 points. The Horns are now second in district; they will face Turkey next week. Turkey is now 1-3 in district competition.

## Three Way...

cont'd. from page 1

ment, on the following kick-off Partlow of Three Way ran 72 yards untouched to set off the Panther score. Duarte ran the two point conversion.

The Panthers scored twice in the third stanza. Holclacher scored from five yards out. Mike Lopez ran the extra point. Ronald Pence of the Panthers scored the final score.

In the final quarter, Three Way racked up 8 points. With Nino's TD and Duarte's extra points,

## Idea Session Is Tuesday At Chamber

The Muleshoe Chamber of Commerce Board of Directors has scheduled an idea session for Tuesday, November 16, 1971 at 7:30 p.m. in the City Council Chamber. The meeting will last for one hour, of which the first few minutes will be devoted to a review of the present Chamber activities then will divide into groups for Think Sessions, employing a new technique of coming up with new ideas.

All Chamber of Commerce members have received invitations. The session will give the chamber members a more direct vote in the Chamber program and the Chamber will receive new ideas from the members.

Derrrell Oliver and Dave Sudduth are co-chairmen of the session.

## DWI's Lead Arrests This Week In County

Arrests recorded at the Bailey County Law Enforcement Center this week included three sleepers by the Police Department, four DWI's by the Texas Highway Patrol, and the Sheriff's Department arrested two sleepers, two for being drunk, and one for breaking and entering.

devoted to a review of the present Chamber activities then will divide into groups for Think Sessions, employing a new technique of coming up with new ideas.

All Chamber of Commerce members have received invitations. The session will give the chamber members a more direct vote in the Chamber program and the Chamber will receive new ideas from the members.

## Muleshoe...

cont'd from page 1

to make her home in Muleshoe.

Mr. and Mrs. Max Horn, from Seminole, Texas, spent last weekend visiting with Mr. and Mrs. Vernon Bleeker.

Mr. and Mrs. Cecil Cunningham were host to a surprise birthday party honoring Glenna Raney. The guests were served supper and games were enjoyed by the group.

## SCHEDULE OF EVENTS

- Monday, November 15, 1971 Muleshoe Music Teachers Progress WsCs
- Tuesday, November 16, 1971 8:30 a.m. City Council, City Hall
- 7:30 p.m. Alcoholics Anonymous, South First
- 8:00 p.m. Rebekahs, Odd-fellows Lodge
- 7:30 p.m. Chamber of Commerce Idea Sessions, Council Chamber
- 7:30 p.m. Beta Sigma Phi
- 7:30 p.m. OES
- 8:00 p.m. EA
- 8:00 p.m. ESA
- Wednesday, November 17, 1971 8:00 p.m. DeMolay, Masonic Hall
- Thursday, November 18, 1971 Muleshoe Hobby Club, Muleshoe State Bank
- 7:00 p.m. TOPS, REA Meeting Room
- 4:00-7:00 p.m. Weight Watchers, Catholic Church
- LCC Associates
- 8:00 p.m. Kappa Kappa Iota
- Saturday, November 20, 1971 Square Thru, American Legion Hall

Any upcoming community event for Schedule of Events, please report to the Journal office.

Compliments Of: **MULESHOE STATE BANK** MEMBER FDIC

## WISDOM ISN'T NECESSARILY SHOWN BY THOSE WHO MAKE NO MISTAKES.

Wheat planted above the wheat allotment and soybeans planted for harvest as beans will count as feed grain acreage to preserve the feed grain base. Likewise feed grain acreage above one-half of the feed grain base and soybeans not credited to feed grain will be considered as wheat to protect the wheat allotment.

Signup in 1972 feed grain,

**Bailey County Journal**  
 Established March 31, 1963  
 Published by Muleshoe Publishing Co., Inc.  
 Every Sunday at 304 W. Second Box 449  
 Muleshoe, Texas 79547  
 Second class postage paid at Muleshoe, Texas  
 Muleshoe, Texas, 79547.

TEXAS PRESS ASSOCIATION  
 Member 1971

L.B. Hall, President  
 Jessica P. Hall, Sec.-Treas.  
 L.B. Hall, Managing Editor  
 Katie Foster, News Reporter  
 Loretta Stull, Society  
 Elizabeth Barnett, Advertising  
 Polly Orvell, Office Manager

SUBSCRIPTIONS:  
 Zone I - Bailey-Farmer-Cochran-Lamb counties: \$4.00 per year, \$4.50 per year by carrier. With Thursday Muleshoe Journal, both papers \$5.50 per year; \$6.00 per year by carrier.  
 Zone II - Out-of-Territory: \$4.50 per year With Thursday Muleshoe Journal, both papers, \$4.50 per year.  
 Monthly, by carrier-\$5; single copies-10¢  
 Advertising rate card on application.

# Pre-Thanksgiving Food Sale

**Tender...Tasty ROAST-RITE TURKEYS**

Tom 16 to 20 lb. lb. 39¢

Hen 10 to 16 lb. lb. 43¢

**SHURFRESH CRACKERS 19¢**  
Lb. Box

**DUTCH ANN PIE SHELLS 2 FOR 49¢**  
2 PAK

**SHURFINE SWEET POTATOES 39¢**  
23 oz. can

**CRANBERRY SAUCE 25¢**  
16 oz. can

**FOOD KING OLEO 9¢**  
8 oz. patties

**SHURFINE SLICED BEETS 2 FOR 39¢**  
#303 can

**CRISCO 79¢**  
3 lb. can

**FOLGER'S COFFEE 83¢**  
lb. can

**DR. PEPPER 35¢**  
6 BTL. CTN. KING SIZE

**NESTLE QUIK 89¢**  
2 lb. box

**CHARMIN BATHROOM TISSUE 39¢**  
4 roll pkg.

**BOUNTY PAPER TOWELS 29¢**  
JUMBO ROLL

**COMET CLEANSER 2 FOR 49¢**  
21 oz. can

**POTATOES 49¢**  
10 lb. bag

**CELERY HEARTS 45¢**  
cello pkg.

**4 PC. PLACE SETTING 99¢**  
ONLY WITH EACH \$5.00 PURCHASE OR MORE

**ILLUSTRATED WORLD ENCYCLOPEDIA VOLUME #10 ONLY \$1.99 EA.**  
With any purchase of \$5 or more 21 VOLUME SET

## Jim's Pay N' Save

FRIENDLIEST STORE IN TOWN

Specials Good Sun. Nov. 14 thru Sat. Nov. 20 8 a.m. till 10 p.m. 6 Days a Week Sundays 9 a.m. till 10 p.m. 201 S. 1st. Street

Celebrating Our 50th Year

## FUN SHIRTS

Washable 100% cotton

THE NOW FASHION LOOK

Fun fashions by Variety Knits. Long sleeve 100% cottons. Choose a Tic-tac-toe, a Smile, Faces and/or the question mark. Only \$5. In the short sleeve applique of Bubble Gum, Star or Love Apple at only \$4. Ladies sizes in S,M,L. In white, navy or red.

\$4. \$5.

TEXAS BANK AMERICAN BANK

**Anthony's**  
C.R. ANTHONY CO.





UNUSUAL PIE...Lillian Smith of Lazbuddie, second from right, prepares to cut a diet lemon pie with a crust made of cauliflower. Other diet-conscious cooks are Dulcie Hunt, Muleshoe, left, Virginia Greenhill and Mrs. Dick Cole, right, Lubbock.

## Weight Watchers Are Active In Muleshoe

Attractive and flavorsome diet foods are served by a number of Muleshoe and area cooks, whose families enjoy with them the special dishes they prepare. These "diet chefs" are members of Weight Watchers, which was organized in Muleshoe in April of this year. The local lecturer is Lillian Smith, and Dulcie Hunt is the weigher. Other officers are Skeet Bradshaw, clerk, and Jewel Darling is the substitute weigher.

Some of the women have lost a great deal of weight in a carefully planned diet program which has brought them renewed vitality and enjoyment of life. One member, Alice Kelton, has lost approximately 60 pounds since the program began here.

So enthusiastic are some of these women with their own weight loss, they have become volunteers in actively seeking to help others to realize similar success. New friendships are formed through a common bond of needing mutual encouragement to reach desired goals. Sometimes serious health problems call for a rigidly-controlled diet resulting in a great weight loss.

The cooks, using low-calorie but highly nutritious foods, say their families find the special dishes very palatable. Family members may either eat the prescribed diet for needed weight loss or add the dishes to a regular diet for the "added feeling of well-being" derived.

Active members of the weight losers sometimes volunteer their services as lecturers and counselors to encourage others to reach similar goals. Among these is Miss Virginia Greenhill

of Lubbock. She notes that she has lost 124 pounds in about a year and a half. She drove a grain truck during her summer vacation "for fun and because I felt like it".

Mrs. Dick Cole, also of Lubbock, after a weight loss of 110 pounds, proudly shows "before and after" pictures. She again wears a size 8 dress and "feels like a 20-year-old".

Two local women who are equally pleased to tell others of their successful weight loss are Lillian Smith of Lazbuddie and Dulcie Hunt of Muleshoe. Mrs. Smith has lived at Lazbuddie the past 44 years and her husband is a retired farmer. The two women are enthusiastically taking up new hobbies or have renewed old ones.

Mrs. Smith has joined an oil painting class and does both oils and water colors. She gives away most of her pictures. Mrs. Hunt visits shut-ins and likes to crochet. They have listed some of their favorite recipes.

Chill. Makes 2 pie crusts.

Both Mrs. Smith and Mrs. Hunt have originated recipes for pie fillings to use in this special pie crust. Mrs. Smith uses yellow summer squash for a lemon, as well as a chocolate, pie filling.

**LEMON PIE**  
20 ozs. cooked yellow summer squash  
8 tbsps. artificial sweetener  
3 envelopes unflavored gelatin  
1 can diet creme soda Juice of 1 lemon  
2 1/2 tpsps lemon extract  
1/2 tsp. diet salt

Dissolve gelatin in 3/4 cup creme soda. Place over hot water until the consistency of honey. Blend cooked squash in blender, adding lemon juice and lemon extract. Add salt and gelatin and blend well. Add sweetener last. Pour into cauliflower pie crust and chill until set.

**RHUBARB**  
1 20 oz. pkg. frozen unsweetened Rhubarb  
1 cup any flavor diet drink (orange)

**PIE CRUST**  
2 pkgs. frozen cauliflower  
3 envelopes unflavored gelatin  
1 can diet creme soda  
1/4 tsp. diet salt (use sparingly)  
5 tbsps. granulated sugar replacement  
2 tpsps. vanilla or desired extract

Cook cauliflower as directed. Drain and rinse in cold water. Blend in blender. Soften gelatin in 3/4 cup creme soda. Add remaining creme soda to cauliflower. Set gelatin mixture in pan of hot water until gelatin is dissolved and is the consistency of honey. Add this to cauliflower mixture in cauliflower blender. Cool and add salt and flavoring. Shape the crust in pie tin as it begins to set.



PRESENTS PROGRAM...Mrs. Richard Hawkins, left, accepts a gift from Llano Estacado Civic Club member, Mrs. Wayne Peterson. Mrs. Hawkins gave a demonstration to the club on gift wrapping and making bows.

## Llano Estacado Sets Date For Holiday Social

The Llano Estacado Civic Club met Tuesday, November 9, in the First National Bank community room with Mrs. Wayne Peterson and Mrs. Duane Seay as co-hostesses.

Mrs. Richard Hawkins presented the program for the evening by demonstrating gift wrapping and bow making.

*In Fashion*  
Some of the top designers of today are fashioning garments for men and women. Their designs run along classic lines and are quite popular this season with people of both sexes.

Mrs. R.D. Angeley presided at the business session at which time, Mrs. Johnny Collins' name was submitted for membership. She will assume membership in the club at the first meeting in December.

The club voted to enter a float in the Christmas parade and they set a date for the Christmas social which will be on December 11. Members will attend the Hayloft Theatre in Lubbock.

Anominating committee composed of Mrs. Lee Kimbrough, Mrs. Ken Angeley, Mrs. Buddy Embry, Mrs. Ronnie Black and Mrs. Jim Tucker was selected to present a slate of officers at the January meeting. Officers are to be elected in February.

Those present at the meeting were Mrs. R.D. Angeley, Mrs. J.K. Angeley, Mrs. Dwyan Calvert, Mrs. Jerry Gleason, Mrs. Mike Miller, Mrs. Henry Stoneham, Mrs. Ronnie Gustin, Mrs. Kimbrough, Mrs. Tucker, Mrs. Embry, Mrs. Black and the hostesses.

Wide collars, wide ties or turtle neck sweaters for men are popular.

### Christmas Card Project To Be Offered Again

Once again this year, the Muleshoe Hospital and Nursing Home Auxiliary will sponsor Project: Christmas Card.

The auxiliary asks that the money ordinarily spent on Christmas cards be donated to the auxiliary to help relieve

the sick and suffering of the community. The Sunday before Christmas, names of people donating will appear in a page ad in the Journal, which will greet your family and friends with a Merry Christmas. A member of the auxiliary states that "all who participate in this worthwhile project will surely have shown good will toward men!"

Any member of the auxiliary may be contacted in order to participate in this project. Or, the committee appointed to head this project may be contacted. They are Faye Poyner, Billie Powell or Betty Ramage.

### Auxiliary Will Meet Wednesday

A called meeting of the Muleshoe Hospital and Nursing Home Auxiliary will meet Wednesday at 9:30 a.m. in the dining room of the nursing home. A special program will be presented by Bill Dillard, executive director of the Central Plains Comprehensive Community Mental Health and Retardation Center in Plainview.

All auxiliary members are urged to attend and visitors are welcome.

**WESTERN AUTO IS**

*the* **CHRISTMAS STORE**

**SHOP NOW FOR CHRISTMAS . . .**

**Use Our Lay-A-Way**

gifts

from THE WONDERFUL WORLD of W.A.!

**Western Auto**  
THE FAMILY STORE AND CATALOG ORDER CENTER

**SHOP EARLY!**

**228 Main Muleshoe Phone 272-3112**

**WHIPPED TOPPING FOR WEIGHT WATCHER'S PIES**  
1 cup Pet skimmed "99" milk  
1 envelope gelatine  
6 one-half grain saccharin tablets  
1/2 cup cold water  
1 tsp. vanilla  
Dissolve gelatine in skimmed milk. Heat slowly to melt gelatine. Do not boil. Add saccharin tablets and set in refri-

erator to set. Place mixing bowl with 1/2 cup water in it in freezing unit to chill. Also chill the beaters. When the milk has set, add to water and beat well. About 20 or more minutes. Add the extract and taste to see if more sweetener is needed. This must be kept cool after putting on pies or the gelatine will turn watery. Makes enough for two pies.

## Save Here, Santa!

**Jolene Rempe**  
1971  
**Halloween Carnival Queen**

*Jolene is modeling a hostess gown, by Kayser.*

"SOPHISTICATED PERSONIFIED" this one piece hostess gown has paisley print quilted 100% polyester skirt. The matching pom pom scuffs are nylon tricot by Texsheen.



*Jolene displays one of the many styles of baby dolls . . . nylon overlay by Texsheen, to be found at St. Clair's.*

**START YOUR CHRISTMAS SHOPPING NOW WHILE THE SELECTIONS ARE GOOD!**

St. Clair's





BINGO CARNIVAL CLOWN...Janelle Turner, left, Theresa Feagley, right, Melba King and daughter Casey, center, are shown with some of the prizes to be given away at the Beta Sigma Phi Carnival to be held November 18 at the American Legion Hall.

## Beta Sigma Phi Carnival Thursday

Doors will open at 7:30 p.m. at the American Legion Hall for the Beta Sigma Phi carnival on Thursday, November 18.

Bingo will begin at 8 p.m. and tickets may be bought in advance from any sorority member. Tickets purchased advance will be \$1 for 20 games. Tickets at the door will be \$1.50. Special Bingo games will be played with turkeys as the prizes.

A white elephant booth, fishing, concession stand and homemade baked goods will be set up at the carnival. A donkey doll with \$25 in coins will be given away in a drawing. Tickets for the doll are 25¢ a chance.

To add to the carnival atmosphere, Beta Sigma Phi members will be dressed as clowns. The following merchants and businesses have donated prizes for the bingo games: Cobbs, Anthony's, Perrys, Lambert

Cleaners, Fair Store, Western Drug, Whitt-Watts and Rempe, XIT Steak House, Richland Hills Texaco, Harvey Bass Appliance, Poyners, Williams Brothers, Western Auto, St. Clairs, Beavers, Higginbothams, Damron Drug and James Glaze Insurance. Also Muleshoe Antenna, Cashway Grocery.

Muleshoe Jewelry, Dot's Shop, Gunn Brother's Stamp Store, Muleshoe Floral, Heathington Lumber, Gibsons, Art Loft, Piggly Wiggly, Dinner Bell, Corral Restaurant, Leal's Cafe, Lindsey Jewry, Candie Shop, L. A. Hobby, Western 66, Decorators 216 and Calvert's Grocery.

## DKG Meets In Olton

The Epsilon Delta Chapter of the Delta Kappa Gamma Society met Saturday, November 6, in Olton. The meeting was a coffee at 10:30 a.m. in the home-making cottage with the Olton members as hostesses. A gold toned cornucopia with fall flowers and fruits was the centerpiece for the serving table. Breads, cookies, nuts, coffee and tea were served to the area members.

Mrs. Joe Costen presided and gave a brief report of the regional meeting which was held

October 9 in Amarillo.

Mrs. Pat Donnelly, Littlefield, distributed the new yearbooks and previewed the programs relative to the international theme, "Changing Times; Challenge or Dilemma." She introduced the program for the day, "Pride in Progression" which was presented by the research committee. This panel of educators presented the effects of changing times in five areas of woman's life; social, economic, political, home and volunteer service. The chapter theme, "Basic principles never change, and meaningful change is a principle," was reinforced by this presentation.

Group singing of the patriotic songs, "This Is My Country," "America" and "God Bless America" closed the chapter meeting. Muleshoe members attending were Mrs. Joe Costen, Mrs. Clifton Finley, Mrs. E.W. Johnson, Mrs. John Miller, Mrs. Jack Obenhaus, Mrs. John Watson and Mrs. Wilson Witherpoon.

## This Is The Local Hospital Auxiliary

This is the second in a series of articles explaining the duties and capacities of the Muleshoe Hospital Auxiliary.

Becky Miller and Janelle Turner are two of the approximately 40 members of the Muleshoe Hospital Auxiliary. One of their many duties is to keep the ven-

ding machines filled and replenished.

The profit from these machines goes back to the hospital and nursing home to help buy needed equipment. Latest equipment purchased by the auxiliary were a sphygmomanometer, which is a blood pressure gauge; and a stethoscope. A recently completed project of the organization is the redecoration and equipping of the stampoo

## Jennifer Denise Born to Guinns

Mr. and Mrs. Pete Guinn, Jr. became parents for the first time at 1:33 p.m. on November 9. The baby, a girl named Jennifer Denise, weighed five pounds and four ounces and was 19 inches long. Her grandparents are Mr. and Mrs. Pete Guinn and Mr. and Mrs. Ray Bevers, all of Muleshoe.

## Goodland Bible Study Meets

The Goodland Bible Study met November 9 in the home of Mrs. L.W. Chapman with all members present.

As a Christmas project, they voted to help the Three Way head start pupils with a gift of a small Christmas tree. They will also buy fruit, nuts, candy, and stockings. Each of the 13 members drew the name of a pupil, for which to buy a personal gift to hang on the tree. Mrs. Buck Ragsdale, president selected a committee to buy the gifts. They are Mrs. Dean Waltrip, Mrs. Bobbie Kindle and Mrs. Ted Simpson. Thought for the day was: Our yesterdays belong to history. Our tomorrows belong to God. Our todays belong to ourselves.

The group studied the 18th chapter of John and the white elephant sale brought \$11.70. The next meeting will be November 23 in the home of Mrs. Tommy Galt.

Those present were Mrs. Pete Tarleton, Mrs. Terry Hutton, Mrs. Waltrip, Mrs. Tommy Galt, Mrs. Baker Johnson, Mrs. W.C. McCelvey, Mrs. Buck Ragsdale, Mrs. Freddie Parkman, Mrs. Frank Stegall, Mrs. Kindie, Mrs. Cass Stegall, Mrs. Simpson and the hostess.

A velvet suit for men is being shown in smart shops. It is cut on classic lines and in subdued colors and is designed for evening wear.

## WHO KNOWS?

1. How are metamorphic rocks formed?
2. From what substance is marble formed?
3. Who was Luther Burbank?
4. From what is chocolate made?
5. How old is Nationalist China's President Chiang Kai-Shek?
6. When was Queen Elizabeth II and Prince Phillip married?
7. Who created "Huckleberry Finn"?
8. Who wrote the words to "Sweet and Low"?

## Answers to Who Knows

1. By heat and pressure within the earth's crust.
2. Limestone.
3. One of the greatest plant geneticists in history.
4. The seeds of the cacao or chocolate tree.
5. Eighty-four.
6. November 20, 1947.
7. Mark Twain.
8. Alfred Lord Tennyson.

## Mrs. Reed Presents Program

The Women's Missionary Society of the Trinity Baptist Church met at the church Tuesday at 9:30 a.m. for a Bible study.

Mrs. Oscar Reed presented the program which she took from the second and third chapters of Ephesians.

There were eight members and one visitor present at this meeting to which the public is invited. The society meets every Tuesday morning at 9:30 a.m.



HOSPITAL AUXILIARY AT WORK...Jo Jean Blackwell, left, assistant administrator at West Plains Hospital is shown with two hospital auxiliary members. They are Becky Miller, center and Janelle Turner, right, who keeps the hospital's vending machines filled.

## SS Class Meets

The Dorcas Sunday School Class of the Trinity Baptist Church met on Thursday afternoon for its monthly meeting. President Odessa Slayden opened the meeting and opening prayer was led by Bonnie Harlin. The devotion was brought by Loie Precure from the second and fourth chapter of Luke. The subject was "Teach us to pray".

Mrs. Loie Precure talked to the class about her trip to Australia and the class learned about a part of the world they do not live in. The class then looked at pictures Mrs. Precure had taken there. Loyce Brewer dismissed the class with prayer.

Refreshments were served to Josephine Wenner, Odessa Slayden, Vivian Morris, Minnie Redwine, Clara Coffman, Alma Henley, Loie Precure, Eva Ashford, Loyce Brewer, Bonnie Harlin, Chellie Bradley, Euna Reed, Opal Pugh, Mrs. H.H. Williams, Christene Nealy, and the hostesses Amanda Bergstrom and Lois West.

**MR. FARMER:**  
We are still contracting cotton acreage.

**NOW IS THE BETTER TIME TO CONTRACT, AS THE "unknowns" ARE BECOMING "knowns."**

**Hurry Before The Micronaire Gets Lower.**

**Let us look at your cotton before you sell.**

**We Can Make You Money!**

**Dean-Hamilton Assoc.**  
113 W. Ave. D Muleshoe, Texas  
Ph. 272-4645  
South across the street from the Courthouse

**TELEX.**  
Hearing Aids  
**Clovis Hearing Aid Center**  
Batteries & Molds. Free Tests.  
Service All Makes.  
416 Mitchell Phone 763-6900  
Clovis, N.M.

**Extra-clearance...extra strength**

**INTERNATIONAL 140 TWO-WAY PLOW**

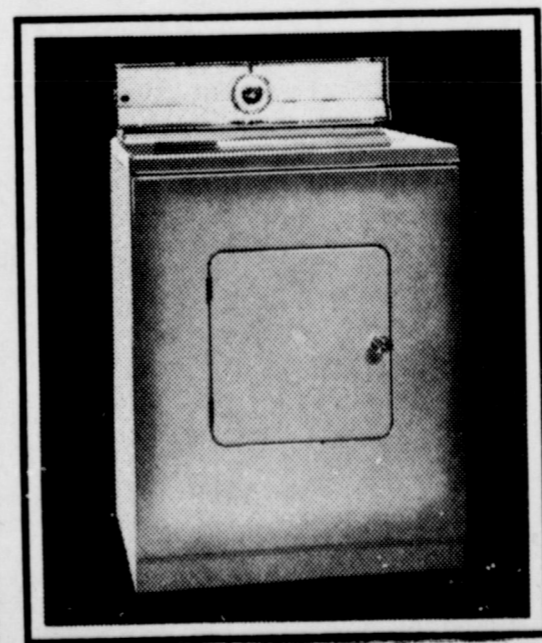
- Big 30-inch vertical clearance lets you work 14-inches deep... handle heaviest trash, non-stop.
- Extra-rugged to work behind today's big power tractors.
- Fast, smooth hydraulic rollover... no chains or gears.
- Three or four-furrow sizes... Category II or III three-point hitch... 16 or 18-inch bottoms... rigid or spring-trip beams.
- Why wait? Start making top-yielding seedbeds now.

**WOOLEY-HURST, INC.**  
522 W. American Blvd. Phone 272-5514

300

FREE

**BE OUR GUEST...  
300 LOADS FREE (A \$15.00 VALUE)**



■ Buy your new electric clothes dryer now and, as our customer, you will receive a \$15.00 certificate. At 5¢ a load, total operating cost, it's just like getting 300 loads dried free. Don't delay - buy now and take advantage of this valuable 300 offer



NOW AT YOUR ELECTRIC APPLIANCE DEALER





# MULE'S TALE



Official Publication of Muleshoe High School Written and Edited by Students of the Muleshoe Schools

Vol. 7 NO. 10

EDITOR Jan Jinks

SUNDAY, NOVEMBER 14, 1971

## Mule's Football Season Highlighted

### Another Facet Of The Fearless Mules

"Hey you, are you speaking of VICTORIOUS? Well you are speaking of the Muleshoe Mules!"

For the first time in 10 years, our team has a winning chance. The 34 boys that make up the team are doing a very fine job; but without the leadership of the fine coaching staff, it would be hard to say how the Mules would rate.

If Ben Franklin had not discovered electricity when he did, coal oil would be a little expensive at MHS. If you pass by Muleshoe High School at 12:00 midnight, do not be astonished of ghosts. It is the coaching staff concentrating on new plays and retracking old ones.

Head Coach Fred Hedgecock came to Muleshoe 3 years ago from McClean. His main purpose was to lead the Mules to victory and that is just what he did.

Coach Hedgecock's first season in 1969 had some tough breaks, with Mules coming out on bottom with a 0-10 record. The second year did not prove to be Coach Hedgecock's year either. The Mules came out with a 3-7 record. By the end of two years with hardly any wins, some coaches would be ready to quit, give up, and give no more; but not Coach Hedgecock. He only put out more effort and burn a little more coal oil. By the time summer practice sessions started, Coach was really fired up and ready to put the ideals to the boys. The boys worked and unity was among them all.

The 1971 football season started out with a loud and enormous BANG! In the first go round of play with Dimmitt, the Mules won 18 to 16. Coming out on top with a 14-6 lead against Olton, the Mules were already beginning to be dreaded by future opponents. The Mule's next game took them to Friona. Fate was against the Mules and they fell to the Friona Chiefs 6 to 13. The Mules were let down by their loss, but knew it could only hurt them to "cry over spilled milk". By holding their heads up high, the Mules gained sight of victory once again by winning their next game with Boy's Ranch. The 12 Senior boys looked forward to this game with great expectation of victory for this game was Homecoming for MHS and the last Homecoming for the Senior boys. The 40-21 score on the board was a very welcome sight to one and all.

Being picked on top to win does not always come true and the Mules proved this by defeating the number 1 state ranked team in New Mexico, the Portales Rams. The game proved very rewarding. Excitement penetrated among all the spectators and in turn to the boys. The Mules became number one in the sight of all the fans by a win of 7-0.

Real excitement appeared when the district play began and the Mules traveled the long journey to Dumas. The Mules played very hard, but that extra punch of victory was not there to guide them. The score board read Dumas 31- Muleshoe 14, but scores do not always tell a true story for over all percentage, the Mules defeated the Demons in yardage. The Demons carried the ball for a total of 250 yards and the Mules for a total of 345 yards. Statistics show that the Demons were beat, but not out scored.

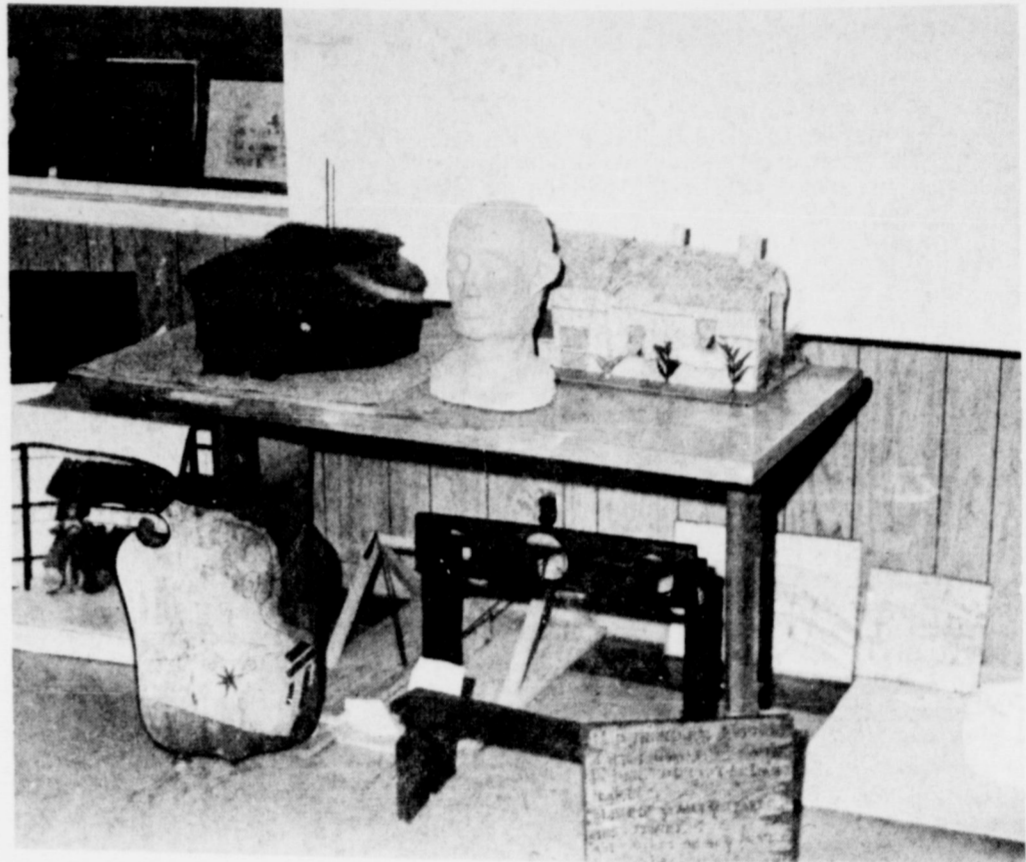
The Tullia Hornets became the next rivalry for the Mules, Edging past Tullia with a 6-0 victory, the Mules picked up speed and were raring to get a Lobo. For several years the Mules had been beaten by the Levalland boys and the Mules were looking for revenge. The Lobos played a very hard game but not hard enough, and the Mules slipped by them 14-13. The game was only another step toward district and the games in the stretch ahead of the Mules were to get tougher.

Muleshoe, a winning team? A few weeks ago, this would not seem possible; but with the dedication and admiration backing this fine group of boys, there is no limit in what the Mules are able to do. Any Muleshoe resident who has not seen the Mighty Mules in action, should take the opportunity that is waiting because the 1971 football season is coming to a close and never again, as a group, will these boys compete together for recognition. As an individual, it is left up to you to show the Mules you are supporting them 100% for without you, what are they fighting for?

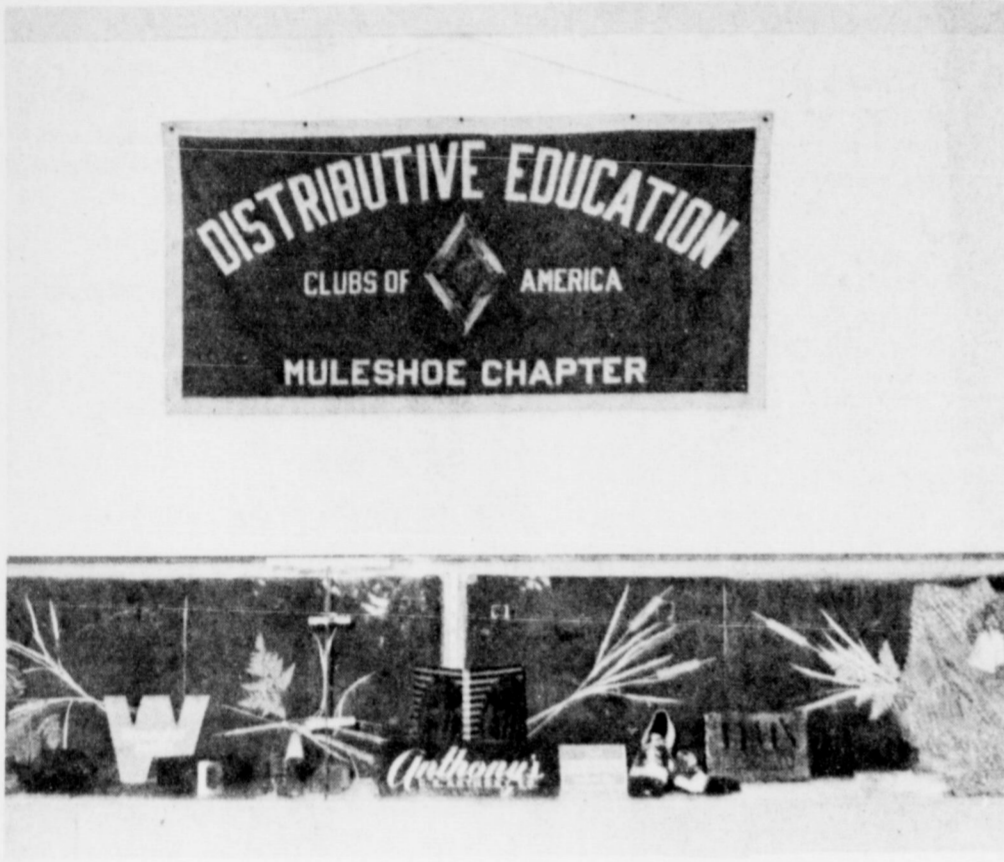
A football player once said that he thought the town of Muleshoe, Texas, had gone insane-completely out of their heads. Everywhere one looked there were signs of victory and proof of support from each and every person in town. This town is the home of the fighting Muleshoe Mules. He also said that it makes one proud to know that the support of the town is on their side. If the boys feel like they are really working for someone and some purpose, then it is our duties as individuals to show the Mules we are always there and won't let them down.

When the going gets tough, the tough get tougher might be a short, but thorough description of the head coach at MHS for when it was so tough, Coach Fred Hedgecock got tougher. He was here for a purpose and too bullheaded to give up. Coach Hedgecock and his wife Connie reside at 719 W. Avenue E with one Little Hedgecock, Rob. Coach has a determined aspect of making the Mules number one and that he will do. Coach Hedgecock has established the type of spirit Muleshoe has been lacking for a great while; but now with the help of so many loyal and dedicated fans, Muleshoe has sprung up and been received for the outstanding ability of what they are capable.

People of Muleshoe have pride in saying they support the Mules. The Mules have worked hard and long for this season and now their dream has become a reality. Now it is the spectator's responsibility to help carry it out. The Seniors last football season is coming to an end, but one with many great and unforgettable memories. They have all come a long way together and will cherish their days at MHS, for the old get wiser and the new learn from the experienced.



CAESAR PROJECTS...These projects were made by the Sophomore students in their study of Shakespeare's Julius Caesar.



DECA STUDENT DISPLAY AT ANTHONY'S

### Mighty Freshmen Mules Win Over The Canyon Eagles

By Prisca Young

On November 4, the Muleshoe Mules met the Canyon Eagles at the Benny Douglas stadium.

In the first period the Mules received the ball and after a great drive, Sam Harris went over for the touchdown. The extra points were stopped when Mike Bland tried to run them over. Later in the first quarter Canyon tried for a field goal, but Mike Bland broke through the line to block the kick. He then went all the way for the TD. The 2-point conversion was

tried but stopped by the opponent. In the second quarter Mike again went over for 6 points. Jimmie Wisian caught a pass to tack on the extra points. The Mules went into the dressing room with 22-0 lead.

The third quarter started out good for the Mules. They kicked off to the Eagles and the Eagles fumbled. The Mules own Jimmie Wisian picked it up and ran. The Mules fumbled and Canyon recovered but Muleshoe showed they couldn't be stopped

and pushed the Eagles over for a safety. Later Canyon again recovered a Mules fumble but went nowhere fast with it. In the same period Hubert Tyler caught a pass for a touchdown. The extra points were added by Kim Smith who caught a pass for two points. At the end of this quarter Louis Reed intercepted a pass, but it was no good because it was out of bounds.

In the fourth quarter, Gary White broke loose for a great run but was stopped from making any points by a diving act by a Canyon player. Also during this quarter Bobby Henry recovered an Eagle fumble. He was shaken up on the play but later in the game played again. With four seconds to play the scoreless Eagles made a TD and extra points. Thus, the final score was Mules 30, Eagles 8. All team members played a great game.

### FFA Leadership Contest Held

The Leadership Contest was held in Friona, Wednesday, October 26 for the FFA members. The placings were first Senior Chapter Conducting; second, Junior Chapter Conducting; third, Greenhand Quiz; and fifth, Farm Radio. The Senior Team which will compete in the Area 1 Leadership Contest in Plainview, Saturday, November 13.

### Debate Tournament Held In Muleshoe

This past week-end Muleshoe Speech Department held their annual Debate Tournament with sixteen teams competing.

Outstanding debator for the tournament was Muleshoe's Martha Jane Chapman. First place girls team was Linda Mason and Martha Jane Chapman from Muleshoe; second place girls team was from Spearman; and third place went to Denver City.

In the boys division first place was Muleshoe's Richard Meyers and Steve Block; second place went to the Spearman boys; and third was won by the Clovis boy's team.

Muleshoe's next speech tournament will be December 10-11 at Monterey of Lubbock.

The debate Sweepstakes trophy was won by Friona with

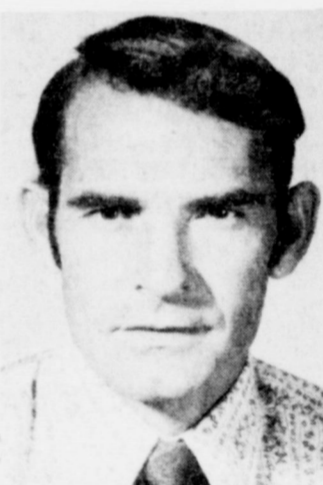
a total of 35 points on the won-loss records during the tournament.

### "Fish" Meet Elect Slaves

On November 4, the "Fish" held their regular class meeting. On the Carnival booth this year, the pie walk, a profit of \$58.00 was made. This is the most ever made by a freshman class. The class also came in second at making the most money at the carnival.

The freshmen then elected their slaves. Those elected were Terri Crane, Lavern Carpenter, Mike Bland and Freddie Flores. These slaves should bring a good price to the Student Council.

### Coaches Comment



FRED HEDGECKOKE

### DE Students Have Displays

Each week a DE student is picked to show a display from the store where he is employed. This is to help the students show how well he presents the merchandise to the customer. Next, after the completion of the display, DE students will be giving sales presentations to the class. This is a good experience for the students in preparations for the future.

Many of the students in school have been asking what film will be this year's Christmas film. It will be "Viva Max". It is possess one of the best wishbone attacks in the Panhandle. It.

### Dinner Show To Be Held

Thespian Troupe 714 has cast their Dinner Theatre Show "Egad what a Cad". The Dinner Theatre will be presented Saturday, December 4. Time of the dinner is from 7:00-8:00 p.m. and show time is from 8:30 - 9:30 p.m.

The production is an "ole fashion meller drammer." Cast members are Dennis Parker, Lou Ann Cole, Martha Chapman, Billy Rials, Howard Kelly, Renee Caldwell, and Judy Woodard. Contact your friends and plan to spend a most delightful evening, Saturday, December 4.

### Pep Squad Meeting Held

The Pep Squad met Monday, November 8, 1971. The main topic of discussion was "Beat Canyon Week." Members agreed to stay after school to make posters which were to be placed in the stores downtown. Plans were also made to get as many as possible to take the Spirit Bus to Canyon. It was agreed that anyone, not just Pep Squad members, could go.

### Sophomores Make Projects

William Shakespeare and Julius Caesar live again! Sophomore students in Mrs. Gist's English II classes have been studying Shakespeare's drama "Julius Caesar" this six weeks. As part of their six week's grade, they have been quite busy the past few weeks preparing individual projects. Since Julius Caesar lived approximately fifty years before the birth of Christ and William Shakespeare lived from 1564 to 1616, these projects range from a full-size, workable Roman chariot to a most intricate model of the Elizabethan Globe Theatre. There appears to be a wide variety of talent among these young people as other projects especially deserving of praise include a life-size bust of Caesar sculpted from clay; a miniature pillory; a hand puppet depicting a Roman character; various models of the Globe Theatre—some constructed of sugar cubes; other of matchsticks; and several Roman costumes or Roman weapons; and several sketches, etchings, and woodburnings were done.

### Senior Class Has Meeting

Seniors held their regular class meeting Tuesday, November 19, in the cafeteria. First order of business was a report on the chili supper held on October 29. A profitable sum was made from the supper. All students were reminded to turn in tickets or money to their committee chairmen. Also they were reminded to pay all dues or fines.

The next order of business was election of slaves for the Student Council Slave Sale to be held in December. The slaves are Kay Douglass, Debby Parks, Ricky Faver and Ricky Black. Last of all the class discussed this week as being "Beat Canyon Week". Senior girls will be selling beat tags in the halls all week, and Seniors are supporting the Mules.

Friday, November 5, the team who sold the most tickets for the Senior Chili Supper enjoyed a coke party in the cafeteria. Jenny Milburn's team sold \$115 worth of chili tickets.



HECE STUDENT...Debbie Glover, HECE student of the week is pictured with Mrs. Willman at the Muleshoe Nursing Home where Miss Glover is working.

cepts Wayne club on

o

l

sided which name ship, ship meet-

r a rade the l be will in

m-g, ud-ack-el-of-ag, in

ret-ty, an, n, s, s.



# WANT ADS DO THE JOB FAST!

## WANT ADS PH. 272-4536

### CLASSIFIED RATES

#### OPEN RATES

First insertion, per word-7¢  
Second and additional insertions-5¢

#### NATIONAL RATES

First insertion per word-9¢  
Second and additional insertions-6¢  
Minimum charge-75¢

Card on Thanks-\$1.50 Double rate for blind ads

Classified Display-95¢ per col. inch

\$1.05 col. inch for reverses

#### DEADLINE FOR INSERTION

Thursday's Muleshoe Journal-Noon Tuesday  
Sunday's Bailey County Journal-Noon Friday

The Journals reserve the right to classify, revise or reject any classified ad.

Check advertisement and report any error immediately. Journals are not responsible for error after ad has already run once.

FOR SALE: Vacant lot, plumbed and wired for a trailer house. Small down payment, will carry balance. Call 272-4932. 8-44s-tfc

IF YOU WANT TO SELL OR buy see Lee Pool or Woody Goforth. POOL REAL ESTATE Phone 272-4716. 8-44s-tfc

FOR SALE: Mobile home in Hereford, 12x60, three bedroom, 3 years old, \$500.00 equity. Call 272-4334. 8-45t-tfc

FOR SALE OR TRADE: 317 acres (25 acres grass and dam) fully allotted cotton, wheat and feed. Paved two sides. Four room house with bath, domestic well and electric pump. Located at Stegall. Phone 806-272-4752 Wilda Fisher, 405 B, Ave. E. 8-45s-2tc

FOR SALE: Three bedroom brick house, two baths, carpeted, central heat. J. Lewis Morris, 429 E. Dallas, Phone 272-3572. 8-45s-tfc

**\$100 REWARD** For convicting evidence of anyone removing any dirt, doing any machinery work or vandalism, or tearing down any signs on my land at Stegall. Wilda Fisher, 405 B, Ave. E, phone 272-4752. 8-46s-tfc

#### 2. LOST & FOUND

LOST: A blue-point Siamese kitten in Lazbuddie area. Eight months old, male, has collar. Reward is offered. Call 965-2185. 2-45s-4tc

#### 3. HELP WANTED

NEED IMMEDIATELY: Full or part time hair stylist, Main Street Beauty Salon, Phone 272-3448 3-35s-tfc

#### 4. HOUSES FOR RENT

FOR RENT: 3 bedroom house, 1505 W. Ave. B. Call 272-3127 or 272-3268. 4-46s-tfc

#### 6. ROOMS FOR RENT

FOR RENT: Bedrooms, 410 West Second. 6-40t-tfc

#### 8. REAL ESTATE FOR SALE

FOR SALE: Small acreage, close in with good well. Write Box 449 7/8 Journal. 8-46s-tfc

#### 11. FOR SALE OR TRADE

FOR TRADE: Government inspected, whole hog sausage or registered Duroc Sows for ear corn. Call Neutzler, 927-3177, Maple, Texas. 11-45s-4tc

#### 12. HOUSEHOLD GOODS

SPOTS before your eyes on your new carpet-remove them with BLUE LUSTRE. Rent electric shampooer \$1. Perry's 128 Main. 12-15-tfc

#### 13. MISCELLANEOUS

Clean rugs, like new, so easy to do with BLUE LUSTRE. Rent electric shampooer \$1. Higginbotham-Bartlett. 215 Main. 12-2s-tfc

FOR SALE: Player Piano, phone 505-356-6651 or write 101 W. 4th, Portales, N.M. 88130 12-44t-tfc

#### 16. LIVESTOCK

FOR SALE: Weaning pigs. Can call 965-2191 or inquire at Phillips 66 Station in Lazbuddie. 15-45t-3tc

#### 17. MISCELLANEOUS

WILL DO: Custom plowing, breaking, listing and discing. Call 272-3320. 15-45t-tfc

#### 18. MISCELLANEOUS

GARAGE SALE: 1914 W. Ave. B. 15-45t-2tc

BLAGGS SALE: Almost any kind of CB radios and accessories, stereos and tape players. Phone 986-3151 at Springlake, Texas. 15-46s-16tc

## School Menu

MONDAY  
Milk  
Barbeque Beef  
Red Beans  
Dill Pickles  
Onion Rings  
Sliced Tomatoes  
Corn Bread  
Sliced Peaches

TUESDAY  
**GET A FREE CAR WASH** with each fill-up AT Riehl's Car Wash

**Used Furniture Wanted**  
By The House Full Or By The Piece...  
**Swap Shop**  
Muleshoe  
Call 272-3074

**New And Used Guns For Sale Or Trade.**  
Reloading And Shooting Accessories Also.  
**GENE BATES**  
Phone 946-2416

Crossroads Cafe Breakfast "Special" -- Served only between 6 and 9 a.m., three strips of bacon, 2 eggs, toast, hash browns, and coffee. All for \$.75 plus tax or 2 hot cakes for \$.35 plus tax. 15-45s-tfc

THIS AND THAT: What's that? To see at 101 Main, Muleshoe, anytime between 9 a.m. and 5:30 p.m. Monday thru Saturday. Variety of interesting things for entire family. Phone 272-4437. 15-43t-tfc

EMBROIDERY beautiful designs in minutes. Enjoyment for all ages. This and That, 101 Main, Muleshoe, phone 272-4437. 15-43t-tfc

CESSPOOLS pumped out. 278-3282 or 272-3036. 15-25s-tfc

LEARN TO START your day with God. This and That 101 Main for tapes on Bible study, messages, music, Christian motivation and Bibles designed for each member of your family. Phone 272-4437. 15-43t-tfc

GARAGE SALE: Lots of stuff, everything goes, come and make an offer. November 18, 19, and 20 at 520 W. 6th. 15-46s-2tc

FOR SALE: Previously owned Chrysler Industrial 413, engines complete. Call, Smith L.P. Gas, 272-4678. 44t-tfc

FOR SALE: Weaning pigs. Can call 965-2191 or inquire at Phillips 66 Station in Lazbuddie. 15-45t-3tc

**NEED A HOME LOAN?**  
SEE FIRST FEDERAL  
FIRST FEDERAL SAVINGS AND LOAN  
801 Pile St. 762-4417  
Clovis, New Mexico

Milk  
Hamburger  
Pickles-Onions  
Lettuce and Tomatoes  
Tater tots  
Purple Plum Cobbler

WEDNESDAY  
Milk  
Fried Chicken  
Creamed Potatoes  
Green Beans  
Hot Rolls  
Honey Peanut Butter  
Cranberry Crunch

THURSDAY

Milk  
Hot Dogs with Chili sauce  
Creole Rice  
Tomato Wedge  
Banana Pudding

FRIDAY  
Milk  
Fish Krispies  
Tartar Sauce  
English Peas  
Buttered Spinach  
Hot Rolls  
Ginger Cookies  
Whole Apricots

## Texas HP Investigates 7 Accidents

The Texas Highway Patrol investigated seven accidents on rural highways in Bailey County during the month of October, according to Sergeant Thurman Keffer, Highway Patrol Supervisor of this area.

The rural traffic accident summary for this county during the first ten months of 1971 shows a total of 49 accidents resulting in no persons killed and 33 persons injured.

The rural traffic summary for the 60 counties of Lubbock Department of Public Safety Region for October, 1971, shows a total of 595 accidents resulting in 19 persons killed and 294 persons injured. This was 96 more accidents, 14 less fatalities, and 26 more injured than during September.

**LOOK TO** For Pre-Thanksgiving Day **SALE**

**Shook Tire Co.**

**ONE WEEK ONLY**  
Monday, Nov. 15 through Sat. Nov. 20

**Bob Glass is TRAD'N WILD!**

**SHOOK FOR LEE**

These Prices Include Federal Excise Tax

**PASSENGER TIRES**

650 x 13.....	\$15.95
700 x 13.....	\$16.95
775 x 14 or 15.....	\$18.95
825 x 14 or 15.....	\$20.95
855 x 14 or 15.....	\$21.95

**WHITE WALLS \$2 MORE**

**FARM TIRE SPECIALS!**

900 x 14 6 ply tubeless	\$14.95	11L x 14-15-16 6 ply	
760 x 15 6 ply tube type	\$13.95	Farm Service	\$33.95

**REAR TRACTOR TIRES**

15.5 x 38 6 ply.....	\$95.95
16.9 x 34 6 ply.....	\$118.95
18.4 x 34 6 ply.....	\$130.95
16.9 x 38 6 ply.....	\$135.95
18.4 x 38 6 ply.....	\$146.95

**MOUNTED ON THE FARM**

**TRUCK TIRES**

670 x 15-6 ply.....	\$21.95
700 x 15-6 ply.....	\$25.95
750 x 16-8 ply.....	\$36.95
825 x 20-10 ply.....	\$53.95
900 x 20-10 ply.....	\$63.95
1000 x 20-12 ply.....	\$89.95

ALL PRICES ARE WITH EXCHANGE.  
HURRY! THESE PRICES GOOD 1 WEEK ONLY.

**LEE OF CONSHOHOCKEN**

For West Texas' Best Tire Buy...LOOK TO SHOOK

# Shook Tire Co.

**FAST - DEPENDABLE FIELD AND HIGHWAY SERVICE**

301 N. FIRST MULESHOE PHONE 272-3420

**Jaycees**  
meets every Tuesday at 12:00  
FELLOWSHIP HALL  
Methodist Church  
Troy Ackinson, President

**Muleshoe Rotary Club**  
Troy Ackinson, President

**Masonic Lodge**  
meets the second Tuesday of each month  
practice night each Thursday  
Fred Horn, WM  
Elbert Nowell, Sec.

**Lions Club**  
meets each Wednesday, 12 Noon  
FELLOWSHIP HALL Methodist Church  
W. T. Millen, President

**VFW Water A. Moeller Post #8570**  
8:00 p.m. 2nd & 4th Mondays  
Old Priboth Skating Rink  
George Tompkins, Commander

**Muleshoe Oddfellows**  
meets each Thursday 7:30 p.m.  
Chripin Green, Noble Grand

**Fine Art Booster**  
MEETS EVERY FOURTH MONDAY  
8:00 p.m.  
Muleshoe High School Band Hall  
DOIN BRYANT, President

**PERSONALS**  
Carl's Meat Company smokes turkeys. Bring them to us. Phone 272-4361. 1-44t-5tc

**POODLE GROOMING** by appointment. 221 E. 4th. Call 272-5587 15-28s-tfc

I WILL NOT be responsible for anyone's debts other than my own. Hillis B. Duncan. 1-45t-3tp

**Planning a Wedding PHOTOGRAPHY by Oecia**  
For Your Pictures Call 385-6083, Littlefield 409 W. 2nd

**SLIM-Gym** exercisers, water therapy JET-BATH, relax and trim, European wrap kits, portable sauna baths for your own home. Lucille Cherry, phone 272-3258. 1-45s-tfc

Whether therefore ye eat, or drink, or whatever ye do, do all to the glory of God. -1 Corinthians 10:31.

**Bras & Girdles By PENNYRICH AT Main Street Beauty Salon**

INCHES GOTTA GO? Then see Nellyne at This and That, 101 Main, Muleshoe. Lose inches the easy way. No exercise! No diets! Guaranteed five to ten inches loss in "one magical hour." Phone 272-4437. 1-43t-tfc

**NEED TWO MEN:** For Bailey County, must have a car, willing to work. Guarantee \$600 per month if qualified. Call Jake Farguhar at RanchHouse Motel, 272-4261, Room 5, Monday and Tuesday from 5:00 to 9:00 p.m. 3-46s-tfc

**NEED IMMEDIATELY:** Full or part time hair stylist, Main Street Beauty Salon, Phone 272-3448 3-35s-tfc

**FOR RENT:** 3 bedroom house, 1505 W. Ave. B. Call 272-3127 or 272-3268. 4-46s-tfc

**FOR RENT:** Bedrooms, 410 West Second. 6-40t-tfc

**KREBBS REAL ESTATE**  
210 WEST FIRST  
PHONE 272-3191  
8-23t-tfc

**FOR SALE:** Small acreage, close in with good well. Write Box 449 7/8 Journal. 8-46s-tfc

**FOR SALE:** In West Camp area, one quarter and one 80 acres irrigated. Good. Call 925-3510 8-37t-tfc

**FOR SALE**  
Brick Homes  
No Down Payments  
\$55 up per month  
Pantry, 3 & 4 bedroom 1 1/2 baths, Utility Room, attached garage, built in range and oven located in Muleshoe

**Ault Realtors**  
Phone 372-1276 or 355-2367 Collect  
Amarillo, Texas

**FOR SALE:** Large two bedroom house at 613 Austin. Call 272-4863. 8-44t-tfc

**JAMES GLAZE COMPANY REAL ESTATE AND FARM & RANCH LOANS**  
Phone 272-4549 219 S. 1st



# McFarland Will Speak To PTA

The 62nd annual convention of the Texas Congress of Parents and Teachers will be held in Dallas November 17-19. Approximately 3,000 delegates are expected to attend.

Each local PTA unit may be represented at convention by its president and one delegate for each 50 members.

This year's PTA theme is "Who Says We Can't Share in Problem Solving?" Five guest speakers will join Texas PTA President Mrs. Jean Harris of Agua Dulce at the rostrum.

Dr. John W. McFarland, dean of the School of Education at the University of Texas at El Paso, will address the third general meeting Wednesday, November 17, at 7:30 p.m. All general meetings will be held in Dallas Memorial Auditorium.

Dr. McFarland is a 25-year man in PTA. He has served

on the PTA State Board of Managers and has worked as public school teacher and principal in Galveston and superintendent of schools in Vernon, Amarillo and Houston. He joined the UT El Paso faculty in 1966.

Dr. Andrew D. Holt, president emeritus, University of Tennessee, Knoxville, will be speaker Thursday, November 18, at the evening meeting. Dr. Holt, too, has had experience in the classroom at the elementary and high school levels.

He is presently serving as educational consultant to Holiday Inns, Inc., Delta Air Lines and American School.

Speaker for the annual Life Members luncheon, Wednesday at noon in the Grand Ballroom of the Hotel Adolphus, will be Dr. W.C. Newberry, director of secondary education, South

west Texas State University at San Marcos.

Dr. Newberry's professional career has varied from football coach to school administrator to his post on the SWTSU faculty.

Dr. Bernice Milburn Moor, assistant for community programs at the Hogg Foundation for Mental Health, University of Texas at Austin, will speak Thursday at noon to the luncheon for president of local units in the Apparel Mart Great Hall.

Dr. Moore has served jointly for 20 years as a Hogg Foundation consultant and with the Division of Home and Family Life Education at the Texas Education Agency.

Lt. Col. O.H. Entwistle Jr. of Vienna, Va., will bring greetings to Texas delegates from the National PTA Office. He is currently chairman of the National PTA Leadership Development Commission and works with the office of the Secretary of the Air Force at the Pentagon.

Convention delegates will be selecting priorities for this year's Legislative Study Program. Among those areas suggested for study are early childhood education, consumer protection laws, control of air, land and water pollution, and methods to influence local, state and national legislating.

Delegates will also elect eight new regional vice presidents.

## CFW Thanksgiving Dinner Planned

The Christian Women's Fellowship of the First Christian Church met at 4 p.m. at the church with the president, Mrs. Walter Bartholf as hostess. Mrs. Bartholf opened the meeting with a prayer which was followed by a short business meeting.

The group set a date for the Thanksgiving dinner which will be November 21 following the morning service at the church.

The CFW will provide the meat and bread, and the rest will be pot luck provided by members of the church. Special guest speaker at the service and at the dinner will be Dr. John Knowles, High Plains Area Association minister from Amarillo.

During the meeting plans were also made to sponsor a five-year-old boy at the Juliet Fowler home in Dallas. This

is an orphanage sponsored by Christian churches. The child's name is Leon Hager and he will be remembered each month with a gift from the CFW hostess of that particular month; and on Christmas and his birthday, by the whole group.

Mrs. Bobby McGee was in charge of the program and worship service entitled "The Church Recovers its Purpose", which meant that the church discovers its purpose by being servants of the community. The worship revolved around the theme that the church should act as a lighthouse which shines forth its benevolence, fellowship, missions and teachings.

Present were Mrs. Bob Solomon, Mrs. Joe Costen, Mrs. T.R. White, Mrs. Charles Long, Mrs. Levina Pitts, Mrs. McGee and the hostess. They brought items to be packaged to be sent to servicemen who are members of the church. They are Jackie Stovall in Japan, Clifford White in Germany and Charles Bell in South Carolina.

School children who are not performing up to expectation in the classroom, or who are becoming behavioral problems, should be given hearing tests. Officials point out that hard of hearing children often appear listless and disinterested in class assignments, or misbehave.

**Singleton-Ellis Funeral Home**  
24 Hour Ambulance Service  
Ph. 272-4574 Muleshoe

### Better Than Ever! 1971 CROP NORTH DAKOTA SEED POTATOES

"They Have the Vigor to Produce Profitable Crops!"

The finest crop in many years has just been harvested in North Dakota. A long, cool growing season plus extra care by experienced growers has enabled us to offer you the very "tops" in quality seed potatoes.

CONTACT YOUR SUPPLIER SOON!

STATE SEED DEPARTMENT  
University Station, Fargo, N. D.

### WEEKLY RECIPE

Sarah Anne Sheridan

#### Turkey Dressing

- 2 c flour
- 2 c corn meal
- 2 t baking powder
- 1 t soda
- 1 t salt if broth isn't salty.
- 6 large onions, chopped
- 1 stalk celery, chopped
- 1/2 lb. oleo or butter
- 9 eggs
- Black pepper or poultry seasoning to taste.

Combine all ingredients in large mixing bowl. Make soft batter by mixing with buttermilk. Pour into well greased baking dish. Bake at 400 degrees until done. Remove from oven. Stir to crumble. Pour broth or giblet gravy over the dressing. Return to hot oven and brown. This recipe can be divided, one-half makes enough for an average family meal.

# Cut YOUR FOOD BILLS

VALUES GOOD NOV. 15-20 **SAVE DOLLARS HERE**

SAVE VALUABLE COUPON SAVE

5.1b. 4oz. KING SIZE **GAIN** ONLY \$1.19

GOOD ONLY AT Wagnon Groc.

OFFER EXPIRES 11-20-71

WITH THIS COUPON WITHOUT COUPON \$1.49

LIMIT 1 COUPON PER PURCHASE

SAVE

**APPLES**  
EXTRA FANCY VIRGINIA YORK **Lb. 19¢**  
(extra good)

LARGE GOLDEN CA **BANANAS Lb. 10¢**

ALL PURPOSE RUSSET **POTATOES**  
20 LB. BAG **79¢**

MIRACLE WHIP **SALAD DRESSING**  
QUART JAR - **59¢**

OCEAN SPRAY **CRANBERRIES**  
1 lb. **29¢**  
cello bag

**Turkeys**  
NORBEST GRADE "A" 16 to 18 lb. avg. **Lb. 39¢**

IMPERIAL PURE CANE **SUGAR**  
**98¢**  
limit one per family with \$5 purchase

IMPERIAL PURE CANE **SUGAR**  
EXTRA FINE granulated

FAMILY PACK, 1/4 PORK LOIN **PORK CHOPS**  
Lb. **69¢**

NESTLE'S **QUIK**  
CHOCOLATE DRINK  
2 Lb. Box **79¢**

GOLD MEDAL ALL PURPOSE **FLOUR**  
5 lb. bag **55¢**

JOHNSTON'S FROZEN **PIE CRUST**  
2 shells in pkg. 2 pkgs. **69¢**

AUTOMATIC DISHWASHER ALL **35 oz. box 69¢**

HORMEL BLACK LABEL **SLICED BACON**  
Lb. **69¢**

NO RETURN BOTTLES **COCA-COLA**  
28 oz. **4 FOR \$1**

VAN CAMP **VIENNA SAUSAGE**  
**4 FOR \$1**

BAKER'S ANGEL FLAKE **COCONUT**  
14 oz. cello pkg. **49¢**

NESTLE'S SEMI-SWEET **CHOCOLATE MORSELS**  
12 oz. pkg. **49¢**

SAVE VALUABLE COUPON SAVE

1qt. KING SIZE **Joy** ONLY **59¢**

GOOD ONLY AT Wagnon Groc.

OFFER EXPIRES 11-20-71

LIMIT 1 COUPON PER PURCHASE

APPIAN WAY REG. **PIZZA MIX**  
12 1/2 oz. box **29¢**

CASSEROLE BRAND COLORADO MOUNTAIN GROWN **PINTO BEANS**  
4 LB. BAG **59¢**

SHURFRESH **EGGS**  
GRADE "A" LARGE **DOZ. 39¢**

- BUY NOW AT THE FOLLOWING PARTICIPATING DEALERS:
- Poynor's White Store, Inc.
  - Gordon Wilson Appliance
  - Harvey Bass Appliance
  - Johnson Furniture
  - Montgomery-Ward
  - Western Auto
- MULESHOE

**Wagnon Grocery & Mkt.**  
515 W AMERICAN BLVD. MULESHOE PHONE 272-4406