

# THE STATE LINE TRIBUNE

"Official Publication of Parmer County"

AUGUST 17, 2006 NUMBER 2 95th YEAR 50 CENTS

## Football contest 2 weeks away

For the football fanatic, it's THAT time again!

The ever-popular Area Merchants Football Contest will begin its 48th year on Aug. 31.

Mark your calendars now - that means it's just two weeks until the football contest begins.

Last year, more than 400 people, ages 12 and up entered the contest. That figure alone testifies to the contest's popularity, given the number of local residents who fit into this category.

This is when area prognosticators probe the sports columns, read their charts and check their favorite armchair quarterbacks. It's a time for folks at local businesses to see who football acumen is tops. And it is a very special time for families to have fun over the dinner table, deciding on which teams are going to win.

And it is so very, very important to enter each week in order to have a strong run at the grand prize award. So be sure to watch for the first week of the contest, in the Aug. 31 issue of the Tribune.

Once again, the Tribune will offer a special package involving the Dallas Cowboys to the overall contest winner. The champion will receive two tickets to the Cowboys game vs. New Orleans Saints on Dec. 10.

And the reason the Tribune is able to offer this contest, plus the weekly cash prizes of \$20 for the first place and \$7 for second, is due to the following sponsors.

1. Lowe's Supermarket, Farwell
2. Wienerschnitzel Restaurant, Clovis
3. Town and Country Insurance
4. Trans-Matic Transmissions, Clovis
5. Trans-Matic Wrecker Service, Clovis
6. Deaf Smith Electric Cooperative
7. Southwest Ag Tire
8. Jay Bowers Construction
9. Security State Bank
10. Hamilton Big Country Ford, Clovis
11. Lowe's Supermarket, Bovina.
12. Muleshoe State Bank's Farwell Banking Center
13. Helton Oil, Inc.
14. Tire Country
15. Citizens Bank of Clovis, Texico Branch
16. Roosevelt County Rural Telephone
17. Yucca Communications
18. Southwest Ag Services
19. Franse Irrigation
20. Farwell Feed Supply
21. West Texas Rural Telephone Cooperative
22. Kelly Green Seeds
23. Kirkland and Kirkland, CPA
24. Five Area Telephone Cooperative
25. Ag Marketing and Management
26. Sports Connection, of Clovis.
27. Farwell Hardware
28. Farwell Abstract
29. AGP Grain Marketing
30. Farmers Electric Cooperative
31. Kirkland Pump Co.
32. Bovina Pump Co.
33. Oppliger Land and Cattle Co.
34. Cargill Meat Solutions, Friona
35. First Bank of Bovina



Kelly Green Seeds' Tim Furlong and Joyce Ketcherside show it's only "2 weeks to go" before the popular Area Merchants Football Contest begins. Kelly Green Seeds is one of the contest sponsors.



The folks at Wienerschnitzel Restaurant in Clovis - Paula Castillo and Yemika Fluellen -- give the "2 sign" to indicate that the big football contest is approaching. Wienerschnitzel is one of the contest sponsors.



### LAZBUDDIE COMMUNITY COOKOUT

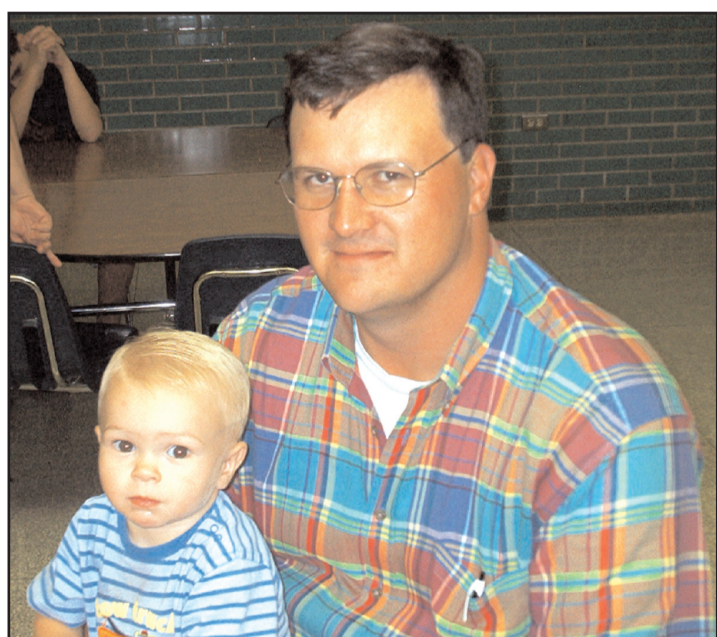
Cooking in standing water after a downpour are Terry Jesko, John Jones and Karl Vaughn. The school officials cooked burgers for the Lazbuddie Community cookout on Monday night. Also pictured are some of the folks attending. See another photo on page 2.



Terri Loudder with dessert entitled "Aiming for Excellence," the school's motto this year



Future Lady Longhorns Ashley Scott and Kenlea Barnes



Clay Carr with 18-month-old son Drew



Student teacher Marie Samarron with daughter Josephine

### Brittany says 'bye

by Brittany Anderson:  
Seeing that Aug. 11 is my last day as summer intern at the State Line Tribune, Mike asked me to write an article on what I have learned while working at the paper. So where should I begin?

I could start by telling you that I learned how to parallel park or that Town & Country's bacon, egg, and cheese burritos are delicious on Wednesday mornings at 7:30. However, I have learned so many things far more important than getting my truck situated and how to thrill my taste buds!

Without a doubt, the most important realization that I have come to is how extremely fortunate we are to live in this community. While working at a small town business, I have witnessed people helping people a number of times. And as a result, community traditions, as well as everyday happenings, are a great success.

I have talked to people who helped start the community, as well as those who are representing our community around the state and even the nation today. I have even been fortunate enough to cover those kids whose only worries are what they are having for snacks and what songs they will sing, at my favorite event while working here ... Vacation Bible Schools.

Finally, I have seen firsthand the support our community gives to students, athletes, organization members, businesses, and best of all, the goodness of our little town. If I were

Continued on Page 10

Continued on Page 3

**Obituaries**



**Elenora Wansley**

Cremation has taken place for Elenora Elaine Wanley, 90, of Texico. A memorial service is planned later. Steed-Todd Funeral Home handled the arrangements.

She died Aug. 9 in Texico.

She was born Oct. 27, 1915, in Peters, Texas, to Felix and Alvine Seyer. She moved to Texico in 2004 to live with her daughter, Mary McClure.

Also surviving are a son, Jean Thompson, of Tucson, Ariz.; 4 grandchildren, and 1 great-grandchild.

**The Latest**

Some late news from last week's Lazbuddie School Board meeting:

-- Voted to keep meal prices the same as last year.

-- Accepted the fuel bid from Charles Oil & Gas, of Bovina. It was the only bid received.

-- Approved the annual agreement with Friona Schools on alternative education program, if needed.

-- Due to new state legislation, voted to move school board elections to coincide with November general elections, starting in 2007.

\*\*\*  
An employee of the construction company working on the highway improvement in Farwell on Aug. 10 was seriously injured when he tried to jump from the back of the pickup he was riding in to the trailer behind it, so he could put out safety cones.

The young man is from

From Debbie Parmer, of the Farwell Convalescent Center:

Why go to Hawaii when you have a luau in your own hometown? Center staffers put on a Hawaiian luau for residents and staff

in the special care unit on Aug. 1.

Everyone had a blast. All kinds of fruit and punch were served, plus other desserts. Just being out on the patio area in the sunshine, with a nice breeze, was pleasant in

itself.

Residents and staffers danced, and it was a joy to

see residents digging in the sand and finding "buried treasure."



Resident Evelyn Curtis finds buried treasure.

**ENMU, Texico seek grant**

by Brittany Anderson  
Eastern New Mexico University is applying for a grant with the help of Texico Schools.

ENMU is being assisted by Texico high school principal/math teacher Buddy Little, elementary principal - chemistry teacher Wayne Anderson, and high school English teacher Dennis Roch.

These three teachers have been teaching college level classes at Texico High School for the past few years. The advantage of these classes is that Texico students receive college credit if they pass the classes. And they get to take the class right there at Texico High School.

If ENMU receives the grant, these Texico teachers will film their classes so that they may be put online. Therefore, rural schools around the area may take the classes online for college credit as

Hondo, Texas.

\*\*\*  
A Hereford man was injured in a one-vehicle rollover at Highway 86 and County Road 1172 on Aug. 10.

well.

Last year, Texico students enrolled in college level courses through Mesa Technical College in Tucumcari. However, if the ENMU grant is received, they will enroll through ENMU.

The advantage to Texico students is that they will get 3/4 of their tuition paid if the grant is received. If not, they will still get to take the college classes for credit, but will be enrolled through Mesa. The cost will be about the same, due to the fact that ENMU charges more per credit hour; however the students will save about \$50 - \$100.

Classes will include trigonometry and algebra under Little; chemistry under Anderson, and English under Roch.



Angela Monroe shows off her hula style.

**Gladys Gibson**

Graveside services for Gladys Marady Gibson, 80 a longtime Fort Sumner resident, were held Wednesday at Fort Sumner Cemetery with Rev. Garlan Hughes officiating.

She died Saturday at the Farwell Convalescent Center following an illness.

She was born Aug. 29, 1925, in Altus, Okla., to Ike and Ada Long. She married Dais "Bud" Gibson on Dec. 31, 1949.

She worked as a restaurant cook in Melrose, Farwell, Hub, and Fort Sumner. Gladys was of the Baptist faith.

Sje was preceded in death by her husband, in 1999; three infant children, and a son, Billy Gibson; her parents; and a sister, Nora Barnett.

Survivors include a daughter, Josie Stephenson, of Clovis; 2 sons, Orby, of Portales, and Henry, of Lompoc, Calif.; 16 grandchildren and 23 great-grandchildren.



Sheri Hardisty

**Barber shop opens in Farwell**

Sheri Hardisty, of Texico, has opened a barber shop in Farwell at 111 First St., next to Tire Country.

"Just Cuts by Sheri" will be open from 9 a.m. to 5:30 p.m. Mondays, Tuesdays, Thursdays and Fridays.

Walk-in only will be accepted.

Her phone number is (505) 309-7597.

The State Line Tribune, LLP, (USPS 520220) is published weekly for \$22.00 in Parmer, Curry and Bailey counties, and for \$33 elsewhere by State Line Tribune, LLP, P.O. Box 255, Farwell, TX 79325-0255. Periodicals postage paid at Farwell TX and additional mailing offices. POSTMASTER: Send address changes to: State Line Tribune, P.O. Box 255, Farwell TX 79325-0255. Pub. #520220.

Rob Pomper, president  
Rebecca Pomper, vice president  
Texas Press Association



**Lazbuddie Cookout**

Alicia Pacheco, Becky Jones, and Carolyn Scott attended the Lazbuddie Community cookout on Monday.

**AHERA PUBLIC NOTICE**

August 1, 2006

The Texico Municipal School District has completed an inspection of all buildings under the school district authority, and prepared a Management Plan for all asbestos containing materials, and suspected asbestos containing materials, identified in the inspection process.

All documentation is available upon five (5) days written notice and a fee of .25 cents per page to cover copying and staff expenses.

Contact:  
Dr. R.L. Richards  
Superintendent  
520 North Griffin Street  
PO Box 237  
Texico, NM 88135

**806-272-3010**  
**www.agmoney.com**  
**1601 W. American Blvd.**  
**Muleshoe, TX**

**Farm & Ranch Loans at Competitive Rates**  
Land Loans • Production Loans • Equipment Loans  
Cattle Loans • Rural Housing Loans

**Also, Ask About Our**  
Cash Management Program • Equipment Leasing Program  
Credit Life Insurance • Crop Insurance • Recreation Loans  
Young and Beginning Farmer Program

**FIRST AG CREDIT**  
FARM CREDIT SERVICES Timely credit, personally delivered. Give Don Sharp a call

**2006 Property Tax Rates in FARWELL HOSPITAL**

This notice concerns 2006 property tax rates for FARWELL HOSPITAL. It presents information about three tax rates. Last year's tax rate is the actual rate the taxing unit used to determine property taxes last year. This year's effective tax rate would impose the same total taxes as last year if you compare properties taxed in both years. This year's rollback tax rate is the highest tax rate the taxing unit can set before taxpayers can start tax rollback procedures. In each case these rates are found by dividing the total amount of taxes by the tax base (the total value of taxable property) with adjustments as required by state law. The rates are given per \$100 of property value.

<b>Last year's tax rate:</b>	
Last year's operating taxes	\$35,119
Last year's debt taxes	\$0
Last year's total taxes	\$35,119
Last year's tax base	\$92,906,896
Last year's total tax rate	0.037800/\$100
<b>This year's effective tax rate:</b>	
Last year's adjusted taxes (after subtracting taxes on lost property)	\$35,051
÷ This year's adjusted tax base (after subtracting value of new property)	\$95,633,677
= This year's effective tax rate	0.036600/\$100
<b>This year's rollback tax rate:</b>	
Last year's adjusted operating taxes (after subtracting taxes on lost property and adjusting for any transferred function, tax increment financing, state criminal justice mandate and/or enhanced indigent health care expenditures)	\$35,051
÷ This year's adjusted tax base	\$95,633,677
= This year's effective operating rate	0.036600/\$100
× 1.08 = this year's maximum operating rate	0.039500/\$100
+ This year's debt rate	0.000000/\$100
= This year's rollback rate	0.039500/\$100

**Statement of Increase/Decrease**  
If FARWELL HOSPITAL adopts a 2006 tax rate equal to the effective tax rate of 0.036600 per \$100 of value, taxes would increase compared to 2005 taxes by \$ 696.

This notice contains a summary of actual effective and rollback tax rates' calculations. You can inspect a copy of the full calculations at 305 3rd Street, Bovina, Tx 79009.  
Name of person preparing this notice: Curby Brantley Jr.  
Title: Chief Appraiser  
Date prepared: August 1, 2006



**Our People Make The Difference!**  
**Kristen Meeks RN**  
**Medicare/MDS**  
**Coordinator**

Farwell  
Convalescent Center  
305 5th St. 481-9027

Offering: Skilled Nursing Care, In-Patient & Out-Patient Therapy, Meals on Wheels & Independent Seniors Apartments. Call Today for more information!

# Farwell grad to perform at Curry County Fair

Farwell High graduate Charla Corn, daughter of Ed and Gwen Corn, will perform at the Curry County Fair on Aug. 19. She is the opening act for Jack Ingram.

This information comes from her biography as listed in the county fair media guide:

Charla finds her inspiration for singing in her very strong bonds, with an extraordinary close-knit family. It was through that fabric that Charla found her voice, or her voice found her. On a Sunday morning, sitting in the 4th pew of an 8-pew Methodist Church, her grandfather, or "Gramps", first heard what would later be described as "jaw-dropping pipes" and began encouraging her to sing, first for him, then for the family. With growing frequency, both in her voice and in her performance, she began belting out the gospel in song for churches all over the windy Texas plains.

Charla's personality lends itself to over-achievement. She simply stands out in a crowd. Throughout her high school years, she sang. Like everyone else at Farwell High, she participated in all the available sports, became an All-American cheerleader, Homecoming Queen, and 1997 Miss Border Town Days. She was also runner-up in the Miss Amarillo Pageant.

After high school, she attended South Plains College, where one of the greatest experiences of her life awaited her in the creative arts department. Here, she learned how to



Charla Beth Corn

function in a real, working, competitive music marketplace. She also got her first taste of the studio, a setting where she's as natural as a thoroughbred on a race track.

After college, she sank her teeth firmly into performing fulltime, and an answered audition call introduced her to what would become her second passion, acting. Her talents as both singer and actor have landed her parts in musicals and plays in Texas and Tennessee.

She first took the stage in the musical production "Texas". Lately, she has been active in the Tennessee theater with leading roles in Tennessee Performing Arts Center Circle Player's productions of "Grease" and "Rocky Horror Show."

She can be found on the Nashville scene both in the studio and on stage with her new project "Texas Uprising and the King Ranch Band."

"It's all about delivering to your audience something they can't get anywhere else," she says about her on-stage persona. "I try to give them a little bit of who I am to take with them, not just 'Hey, look at me, I can sing!'"

## LAZBUDDIE JUNIOR HIGH FOOTBALL SCHEDULE 2006

DATE	OPPONENT	PLACE	TIME
09/07/06	Plainview Christian	Home	5:00p.m.
09/14/06	Christ The King	Away	5:00p.m.
09/21/06	Southland	Away	5:00p.m.
09/28/06	Whitharral	Home	5:00p.m.
10/05/06	Open		
10/12/06	Amherst	There	5:00p.m.
10/19/06	Wilson	There	5:00p.m.
10/26/06	Whitharral	Home	5:00p.m.
11/02/06	Cotton Center	There	5:00p.m.

### Football contest

From page 1

Each entrant must remember to pick a tie-breaker score, a very important feature of the contest since many weekly (and some grand prize winners) have been determined by the tie-breakers.

Each week's scoring is tabulated and kept on record at the Tribune's office. The standings are posted each Monday and may be seen during regular business hours.

All entry blanks must be turned into the Tribune office, 404 Third Street, Farwell, by 5 p.m. on Fridays. If the entries are mailed, they must bear a Thursday or Friday postmark or they will not be accepted.

Folks who mail their ballots to the Tribune can use either of these addresses: if you live in Texas, mail to State Line Tribune, P.O. Box 255, Farwell, TX 79325. If you live in New Mexico, mail to State Line Tribune, P.O. Box 222, Texico, NM 88135

Again, it is stressed that you enter each week's contest to have a strong shot at the grand prize. Even if you never pick 11 or 12 right to take the weekly prize, you can win the Dallas Cowboy tickets with a consistent 8 plus weekly tally.

And don't forget to fill out the tie-breaker each week.

Entry blanks for the first contest will be in the Sept. 1 issue of the Tribune. Entry blanks are also available at the Tribune office starting at 1 p.m. each Thursday.

And a special note to Bovina participants: The Tribune has placed a pickup box at the Parmer County Appraisal District office on 3rd Street in Bovina where you can drop off your ballots. The deadline there is 3 p.m. each Friday.



## FARM EQUIPMENT AUCTION

Thursday, October 5, 2006 — Sale Time: 10:00 a.m.

LOCATED: From Dimmitt, Texas, 4 Miles West On Highway 86 Then 4 Miles South On Road 510.

### To Consign Equipment Call:

Richard Rickert (806) 681-1549 Mobile or (806) 647-2987 Or Five Star Auctioneers: Jim Summers (806) 864-3611, Or Jimmy Reeves (806) 864-3362



**JIM SUMMERS**.....(806) 864-3611  
(10006) (HOME)

**JIMMY REEVES**.....(806) 864-3362  
(Clerk) (HOME)

**DONNA NOEL**.....(806) 293-1124  
(Secretary) (HOME)

## Five Star Auctioneers

OFFICE: (806) 296-0379 — P. O. BOX 1030 — PLAINVIEW, TEXAS 79073-1030  
WEB SITE: WWW.5STARAUCTIONEERS.COM

Terms of Sale: Cash, Personal or Business Check, Cashier's Check  
All Accounts Settled Day of Sale — Lunch Will Be Available

NOTE: Please Bring Your Own Check Book. If You Have Not Established Yourself With Our Company, Please Bring Bank Letter.  
WINCH TRUCK AVAILABLE ON SALE DAY • BRING YOUR TRUCK OR TRAILER • WE ARE AGENTS AND AGENTS ONLY

## Catch a firefly™ for only

**\$19.95** Reg. Price \$95

The Mobile Phone for Mobile Kids.™ While Supplies Last.



firefly™  
Calling Plan

only \$10 mo.  
100 Anytime Minutes

### BACK TO SCHOOL SPECIAL!

Donate 3 School Supplies and Get FREE Activation on a New Plan!

Help the kids in your community. Bring in three school supplies — valued at \$10 or more — and receive FREE activation on a new wireless plan.

A \$25 VALUE!



TEXT MESSAGING ■■■ WEB BROWSING ■■■ PICTURE MESSAGING ■■■

**PLATEAU**  
Wireless

Our BEST Plan is only **\$39.95**

- > 1000 Anytime Minutes with FREE Nationwide Long Distance
- > FREE Unlimited Night and Weekend Minutes with FREE Nationwide Long Distance
- > FREE Unlimited Mobile-to-Mobile
- > FREE Carryover Minutes
- > FREE Loyalty Minutes

#### NETWORK EXPANSION

NEW CELL SITES ARE LOCATED AT:

- Clayton West - Located 2 miles West of Clayton, NM. Provides a second angle of service to the Clayton area and stronger coverage on the West side of Clayton
- Maljamar - Located 1/2 mile North of Maljamar, NM. Provides coverage to Maljamar and Hwy 82 between Artesia and Lovington.
- Glencoe - Located 1/2 mile East of Glencoe, NM. This site will provide coverage to Glencoe and Hwy 70 through the Hondo Valley.

www.plateauwireless.com

877-PLATEAU (752-8328)

Don't Miss Out on Limited Quantities. Hurry to a Plateau Wireless Store Today!

Way To Go, Plateau!



PLATEAU WIRELESS CARRYOVER & LOYALTY MINUTES

<b>Clovis, NM</b> Plateau 600 Main (505) 389-1234	<b>Clovis, NM</b> Plateau Wireless Cannon AFB Commissary (505) 784-8282	<b>Farwell, TX</b> ENMRPlateau 200 Ave. A (806) 481-3800	<b>Friena, TX</b> WT Services 1010 Columbia (806) 250-5555	<b>Muleshoe, TX</b> Five Area Telephone Coop. 302 Uvalde (806) 272-7700
--	---	---	---	---

Contract Term: 2 years. Early termination fee: \$200 per year, maximum of \$400. Night and Weekend hours are Monday through Thursday 7:00 PM through 6:59 AM and Friday 7:00 PM through Monday 6:59 AM. When outside the designated home area. Roaming: \$.50 per minute with Free Long Distance. Additional taxes, fees, and surcharges may apply. Unused plan minutes carried over month to month: 30 minutes after one year of service; 60 minutes after three years of service and 100 minutes after five years of service. Certain restrictions apply. Plan only available on GSM phones. Offer not available in all markets. \*\$19.95 Firefly requires one-year commitment and available while supplies last. Offer valid through 9/31/06.

# Tometti's

Homestyle Pizza

PIZZA	14"	10"
SINGLE TOPPING.....	10.49	5.99
TWO TOPPINGS.....	10.99	6.49
THREE TOPPINGS.....	11.49	6.99
SUPREME.....	12.99	8.49
Pepperoni, sausage, green peppers, onions and mushrooms		
TOMETTI'S TOP TEN.....	13.99	8.99
<b>Your Choice of 10:</b> pepperoni, sausage, hamburger, bacon Canadian bacon, Italian sausage, onions, green peppers, black olives, mushrooms & jalapenos		
LOTS'A MEAT.....	13.49	8.49
GARDEN SPECIAL.....	11.49	6.99
GARLIC CHICKEN & BACON .	12.99	7.99

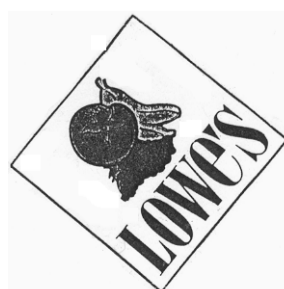
Also available... Pizza by the slice!

CALZONES	Lg	Sm
BACON CHEESEBURGER.....	8.49	5.49
Hamburger, bacon, onion, mozzarella and cheddar		
TOMETTI'S CLASSIC.....	7.99	4.99
Pepperoni, sausage and mozzarella		

### TOMETTI'S TEMPTERS

WINGS (6) - HOT, BBQ OR CAJUN.....	3.49
MOZZARELLA STICKS (6).....	2.99
GARLIC BREAD STICKS.....	2.99

"Take home Tometti's Tonight!"



# Lowe's

Supermarket

901 Avenue A, Farwell • 481-3432  
800 Hwy. 86, Bovina • 251-1324

# Farwell school enrollment increases

The Farwell School Board on Tuesday heard that 505 students started school on Tuesday, compared to last year's first day enrollment of 494.

And School Supt. Larry Gregory said another 20 to 25 students are expected within the next month.

In other news, the board:

-- Heard that elementary physical education

teacher Tim Kasel will be in charge of grounds and building maintenance.

Joe Stanton will continue as transportation director.

--Named Roberta Howard as the delegate to the state school board association convntion.

-- Amended the school calendar to change two days in February for staff development, due to TAKS

# Farwell approves Duncan's rate hike

The Farwell City Council on Tuesday approved Duncan Disposal's rate increase of 6 percent.

At this time, the hike won't be passed on to customers, but this will be reviewed later, said Mayor Jimmie Mace.

Duncan said it sought the hike due increased costs, including fuel rates.

In other business, the council:

-- Received one application for police chief. The applicant will be contacted for an interview.

-- Okayed a building permit for D.E. Hammit, for a storage building at 209 6th St.

-- Renewed its health insurance policies.

-- Increased the Farwell EMS rates. For example, a basic transfer from Farwell to Muleshoe increases from \$514 to \$807, and from Farwell to Clovis from \$442 to \$735.

-- Adopted a budget and a proposed tax rate of .4332 cents per \$100 assessed valuation, the same tax rate as last year. This means, due to higher valuations, that the average homeowner will pay about \$18 more a year in the city tax.

Parmer County tax appraiser Curby Brantley said the city's valuation increased over \$4 million and is now over \$36 million. The value of the average home in Farwell increased from \$49,000 to \$53,000.

testing.

-- Heard that the school is no longer using its 15-passenger vans for hauling students, due to federal rules. Two 29-passenger vans have been purchased.

-- Received the state's

## The Latest

Another half an inch of moisture fell on the Twin Cities Tuesday afternoon.

Word has been received of the death of Tommie Weemes, 68, of Hereford. He was known to many folks in our area for the many years he was employed at Deaf Smith Electric Cooperative.

If you see a bunch of equipment placed across the street from Citizens Bank of Texico, it's for stuff to be used on the new water line project.

The Apple Shack will re-open for the season in Farwell next week.

accountability ratings. Farwell and each campus was named "recognized." -- Approved the proposed budget of \$4,665,451. The proposed tax rate is \$1.2964, compared to \$1.42 last year. The meeting for approvals will be on Aug. 29.

## Texico Police

Texico police report all quiet last week.

*The Parmer County Crimestoppers would like to thank the following individuals and merchants for their generous support of the silent auction at Border Town Days. The auction was a great success with the help of your support. Once again, thank you very much.*

- |                                      |                                   |                          |
|--------------------------------------|-----------------------------------|--------------------------|
| Muleshoe State Bank                  | Bi-Wise Health Mart               | Byrd Realty              |
| Friona State Bank                    | Fransé Irrigation                 | Hometown Hardware        |
| Security State Bank - Farwell        | Bullfrog Rock & Garden            | Kendrick Oil Co.         |
| Bob's Pump                           | 1st National Bank - Friona        | Ingram's                 |
| Carolyn's Christmas Creations        | 1st Bank of Bovina                | Dale Houlette Petroleum  |
| Food Express - Bovina                | Sherley-Anderson                  | Cunningham Electric      |
| Oklahoma Lane Ag Center              | Parmer County Implement           | Cook's -- Clovis         |
| Dinner Bell -- Muleshoe              | Pizza Hut - Muleshoe              | Wilbur Ellis - Farwell   |
| Decorators Floral & Gifts - Muleshoe | Fast Stop - Friona/Bovina         | Southwest Ag Tire Center |
| Ben E. Keith - Lubbock/Amarillo      | ENMR • Plateau                    | Farwell Hardware         |
| Sudderth Realty                      | Leal's Restaurant - Muleshoe      | Heaven Scent Cleaners    |
| Flying J Ranch - Ruidoso             | Ona Patterson                     | Bovina Veterinary Clinic |
| Treider Hardware                     | Allsup's -- Farwell/Bovina/Friona | Bone Joint Chiropractic  |
| Coy's Small Engine Repair            | Charlie Phillips                  | Lowe's-                  |
| State Line Tribune                   | J.R. Jones                        | Farwell/Bovina/Friona    |
| Beauty Box                           | Harley-Davidson                   | W.T. Services            |
| Amy Grant                            | Wonderland Park                   | Annette Black            |
| Hardin Steakhouse - Friona           | Cactus Theater - Lubbock          | Gallery Fifteen          |
| A-1 Service Center                   | Northside Motors - Bovina         | Tire Country             |
| Farwell Country Club                 | Vince Gill                        | Helton Oil               |
| Veterinary Industries                | Charles Oil Co.                   | Kelly Green Seeds        |
|                                      | Ivy Cottage                       | Rick Hubbell             |

## NOTICE OF PUBLIC MEETING TO DISCUSS BUDGET AND PROPOSED TAX RATE

The FARWELL ISD will hold a public meeting at 7:00 PM 08/29/2006 in Farwell ISD Boardroom Farwell, Tx. **The purpose of this meeting is to discuss the school district's budget that will determine the tax rate that will be adopted. Public participation in the discussion is invited.**

The tax rate that is ultimately adopted at this meeting or at a separate meeting at a later date may not exceed the proposed rate shown below unless the district publishes a revised notice containing the same information and comparisons set out below and holds another public meeting to discuss the revised notice.

Maintenance Tax	\$1.225900 /\$100 (Proposed rate for maintenance and operations)
School Debt Service Tax Approved by Local Voters	\$0.070500 /\$100 (Proposed rate to pay bonded indebtedness)

### Comparison of Proposed Budget with Last Year's Budget

The applicable percentage increase or decrease (or difference) in the amount budgeted in the preceding fiscal year and the amount budgeted for the fiscal year that begins during the current tax year is indicated for each of the following expenditure categories:

Maintenance and operations	10.400000% (increase) or % (decrease)
Debt service	1.000000% (increase) or % (decrease)
Total expenditures	11.400000% (increase) or % (decrease)

### Total Appraised Value and Total Taxable Value (as calculated under section 26.04, Tax Code)

	Preceding Tax Year	Current Tax Year
Total appraised value* of all property	\$107,194,403	\$110,758,456
Total appraised value* of new property**	\$895,657	\$2,261,835
Total taxable value*** of all property	\$91,924,495	\$94,314,471
Total taxable value*** of new property**	\$878,382	\$2,261,374

\* "Appraised value" is the amount shown on the appraisal roll and defined by Section 1.04(8), Tax Code.  
 \*\* "New property" is defined by Section 26.012(17), Tax Code.  
 \*\*\* "Taxable value" is defined by Section 1.04(10), Tax Code.

### Bonded Indebtedness

Total amount of outstanding and unpaid bonded indebtedness: \$750,000

\* Outstanding principal

### Comparison of Proposed Rates with Last Year's Rates

	Maintenance & Operations	Interest & Sinking Fund*	Total	Local Revenue Per Student	State Revenue Per Student
Last Year's Rate	\$1.337400	\$0.082600*	\$1.420000	\$2,690	\$4,389
Rate to Maintain Same Level of Maintenance & Operations Revenue & Pay Debt Service	\$1.185900	\$0.072500*	\$1.258400	\$2,409	\$3,936
Proposed Rate	\$1.225900	\$0.070500*	\$1.296400	\$2,491	\$3,362

\* The Interest & Sinking Fund tax revenue is used to pay for bonded indebtedness on construction, equipment, or both. The bonds, and the tax rate necessary to pay those bonds, were approved by the voters of this district.

### Comparison of Proposed Levy with Last Year's Levy on Average Residence

	Last Year	This Year
Average Market Value of Residences	\$49,585	\$55,612
Average Taxable Value of Residences	\$35,057	\$39,573
Last Year's Rate Versus Proposed Rate per \$100 Value	\$1.420000	\$1.296400
Taxes Due on Average Residence	\$497.80	\$513.02
Increase (Decrease) in Taxes	\$0.00	\$15.22


**Under state law, the dollar amount of school taxes imposed on the residence homestead of a person 65 years of age or older or of the surviving spouse of such a person, if the surviving spouse was 55 years of age or older when the person died, may not be increased above the amount paid in the first year after the person turned 65, regardless of changes in tax rate or property value.**

**Notice of Rollback Rate: The highest tax rate the district can adopt before requiring voter approval at an election is 1.297700. This election will be automatically held if the district adopts a rate in excess of the rollback rate of 1.297700.**

### Fund Balances

The following estimated balances will remain at the end of the current fiscal year and are not encumbered with or by a corresponding debt obligation, less estimated funds necessary for operating the district before receipt of the first state aid payment:

Maintenance and Operations Fund Balance(s)	\$1,308,068
Interest & Sinking Fund Balance(s)	\$3,000



**Dr. Scott O. Washburn**  
**Chiropractor**  
 1825 W. 21st St., Clovis  
 (505) 762-5302 • 762-7676  
 OPEN: 7a.m.-4:30 p.m. M-TH  
 (505) 478-2301 residence

**We're here when you need us.®**  
 Health • Medicare Supplement • Home Health Care • Long-Term Care Life • Annuities  
 (505) 762-2774 or (800) 880-1085  
 Clovis, NM

**D. Elaine Zellner - Agent**



Physicians Mutual  
 Physicians Mutual Insurance Company®  
 Physicians Life Insurance Company®  
PNMAC039

**STEED-TODD**  
**Funeral Home**  
*"When Understanding Is Needed Most"*

Prince & Manana -- Clovis  
 Phone 763-5541

**N.M. Quickcare, LLC.**  
**After-Hours Non-Emergency Medical Care**  
**No Appointment Needed**  
**Most Insurances Accepted**

Monday - Friday, - 9 a.m. - 9 p.m. mt.  
 Saturday & Sunday - 10 a.m. - 6 p.m. mt.  
 2000 W. 21st St. -- Suite E-3, Clovis  
 (505) 769-2533

# Auto

*Did you know that State Farm insures 1- out of -every 5 cars in Texas?*



The reason is value-a combination of service ...price...convenience. call us at 1-800-925-0624 or log in at [www.statefarm.com](http://www.statefarm.com).

Homer A Haille, Agent  
 1015 W 11th St.  
 Friona, TX 79035  
 Bus: 806-250-2734  
[homer.a.haille@statefarm.com](mailto:homer.a.haille@statefarm.com)

LIKE A GOOD NEIGHBOR STATE FARM IS THERE.®  
 Providing Insurance and Financial Services

statefarm.com®  
 State Farm Lloyds - Dallas, TX  
 P0481127X 11/04

## FARWELL JUNIOR HIGH / JV FOOTBALL SCHEDULE 2006

DATE	OPPONENT	PLACE	TIME
09/07/06	Dimmitt	Away	5:00/6:00
09/14/06	Smyer	Farwell	5:00/6:00
09/21/06	Morton	Away	5:00/6:00
09/28/06	Sundown	Away	5:00/6:00
10/05/06	OPEN		
10/12/06	Hart*	Farwell	5:00/6:00
10/19/06	Springlake/Earth*	Farwell	5:00/6:00
10/26/06	Sudan*	Away	5:00/6:00
11/02/06	Bovina*	Farwell	5:00/6:00
11/09/06	Nazareth*	Away	5:00/6:00

This schedule is subject to change. Several of the schools we play may have only one junior high team; if this happens we will attempt to find another game for our other junior high team.

## TEXICO JUNIOR HIGH FOOTBALL SCHEDULE 2006

DATE	OPPONENT	PLACE	TIME
08/29/06	Gattis	Texico	4:00
08/31/06	Gattis	Texico	4:00
09/05/06	Ft. Sumner	Ft. Sumner	5:00
09/07/06	Tucumcari	Texico	4:00
09/12/06	Marshall	Marshall	4:00
09/14/06	Marshall	Marshall	4:00
09/19/06	Portales	Texico	4:00
10/21/06	Portales	Texico	4:00
10/03/06	Santa Rosa	Santa Rosa	5:00
10/052/06	Ruidoso	Texico	4:00

## Stock show dinner nears

The 2006 Parmer County Stock Show Dinner is set for Aug. 26 at 7 p.m. at the Farwell Community Center.

This year, local volunteers will prepare the meal. The meal will include rib-eye steak, green beans, new potatoes, salad, and green chile corn.

This dinner is a major fund-raiser for the county junior livestock show.

Last year, all kids who participated, no matter what place they got at a show, received at least \$100 from the fund.

Each community in the county sells tickets. However, a maximum of

### **Muleshoe newspaper sold**

The Muleshoe newspaper has been sold by Chris Bradford to a partnership including Jim Moser, Debbie Aylesworth and Glenn Rea.

Aylesworth, general manager of the Canyon News, is a 1971 graduate of Muleshoe High School.

200 tickets will be sold, and two people may attend on one ticket.

To purchase tickets call Gary Patterson, Farwell; Ed Terry, Lazbuddie; or Al Kerby, Bovina.

## TEXICO WOLVERINES VARSITY VOLLEYBALL SCHEDULE 2006

DATE	OPPONENT	PLACE	TEAM	TIME
08/25/06	Capitan	Texico	JV/V	4:00
08/29/06	Floyd	Texico	7 <sup>th</sup> JV/V	4:00
09/05/06	Estancia	Estancia	JV/V	4:00
09/12/06	Eunice	Texico	JV/V	4:00
09/14/06	Tatum	Texico	7 <sup>th</sup> /8 <sup>th</sup> JV/V	4:30
09/15-16/06	Mt. Top Tourney	Cloudcroft	V	TBD
09/19/06	Melrose	Texico	8 <sup>th</sup> JV/V	4:30
09/21/06	Santa Rosa*	Santa Rosa	JV/V	4:00
09/22-23/06	Portales Tourney	Portales	JV	TBD
09/26/06	Lubbock Christian	Lubbock, Tex	JV/V	4:00
09/28/06	Lovington	Texico	JV/V	4:00
09/30/06	Clayton*	Texico	JV/V	1:00
10/03/06	Floyd	Floyd	JV/V	4:00
10/05/06	Estancia	Texico	JV/V	4:00
10/10/06	Tucumcari*	Texico	7 <sup>th</sup> /8 <sup>th</sup> JV/V	4:00
10/12/06	Tatum	Tatum	JV/V	4:30
10/14/06	Clayton*	Clayton	JV/V	1:00
10/17/06	Tucumcari*	Tucumcari	7 <sup>th</sup> /8 <sup>th</sup> JV/V	4:00
10/19/06	Santa Rosa**	Texico	JV/V	4:00

\*\* Denotes Parent's Night

\* Denotes District Games

## TEXICO JUNIOR HIGH VOLLEYBALL SCHEDULE 2006

DATE	OPPONENT	PLACE	TEAM	TIME
08/29/06	Floyd	Texico	7 <sup>th</sup>	4:00
08/31/06	Marshall	Marshall	7 <sup>th</sup> /8 <sup>th</sup>	4:00
09/07/06	Portales	Texico	7 <sup>th</sup> /8 <sup>th</sup>	4:00
09/11/06	Yucca	Yucca	7 <sup>th</sup> /8 <sup>th</sup>	4:00
09/14/06	Tatum	Texico	7 <sup>th</sup> /8 <sup>th</sup>	4:30
09/18/06	Gattis	Texico	7 <sup>th</sup> /8 <sup>th</sup>	4:00
09/19/06	Melrose	Texico	8 <sup>th</sup>	4:30
09/28/06	Portales	Portales	7 <sup>th</sup> /8 <sup>th</sup>	4:00
10/03/06	Portales	Portales	7 <sup>th</sup> /8 <sup>th</sup>	4:00
10/10/06	Tucumcari	Texico	7 <sup>th</sup> /8 <sup>th</sup>	4:00
10/12/06	Yucca	Texico	7 <sup>th</sup> /8 <sup>th</sup>	4:00
11/13-14/06	Yucca JH Tourney	Yucca	7 <sup>th</sup> /8 <sup>th</sup>	TBD
11/17/06	Tucumcari	Tucumcari	7 <sup>th</sup> /8 <sup>th</sup>	4:00

### 2006 Property Tax Rates in PARMER COUNTY

This notice concerns 2006 property tax rates for PARMER COUNTY. It presents information about three tax rates. Last year's tax rate is the actual rate the taxing unit used to determine property taxes last year. This year's *effective* tax rate would impose the same total taxes as last year if you compare properties taxed in both years. This year's *rollback* tax rate is the highest tax rate the taxing unit can set before taxpayers can start tax rollback procedures. In each case these rates are found by dividing the total amount of taxes by the tax base (the total value of taxable property) with adjustments as required by state law. The rates are given per \$100 of property value.

	FARM TO MARKET ROAD	GENERAL FUND
<b>Last year's tax rate:</b>		
Last year's operating taxes	\$525,220	\$1,760,603
Last year's debt taxes	\$0	\$251,859
Last year's total taxes	\$525,220	\$2,012,462
Last year's tax base	\$475,311,877	\$481,565,295
Last year's total tax rate	0.110500/\$100	0.417900/\$100
<b>This year's effective tax rate:</b>		
Last year's adjusted taxes (after subtracting taxes on lost property)	\$524,930	\$2,012,083
+ This year's adjusted tax base (after subtracting value of new property)	\$488,120,296	\$494,330,663
= This year's effective tax rate for each fund	0.107500/\$100	0.407000/\$100
Total effective tax rate	0.514500/\$100	
<b>This year's rollback tax rate:</b>		
Last year's adjusted operating taxes (after subtracting taxes on lost property and adjusting for any transferred function, tax increment financing, state criminal justice mandate and/or enhanced indigent health care expenditures)	\$524,930	\$1,760,281
+ This year's adjusted tax base	\$488,120,296	\$494,330,663
= This year's effective operating rate	0.107500/\$100	0.356000/\$100
× 1.08 = this year's maximum operating rate	0.116100/\$100	0.384400/\$100
+ This year's debt rate	0.000000/\$100	0.049700/\$100
= This year's rollback rate for each fund	0.116100/\$100	0.434100/\$100
This year's total rollback rate	0.550200/\$100	

### Statement of Increase/Decrease

If PARMER COUNTY adopts a 2006 tax rate equal to the effective tax rate of 0.514500 per \$100 of value, taxes would increase compared to 2005 taxes by \$ 80,803.

### Schedule A: Unencumbered Fund Balances: GENERAL FUND

The following estimated balances will be left in the unit's property tax accounts at the end of the fiscal year. These balances are not encumbered by a corresponding debt obligation.

Type of Property Tax Fund	Balance			
GENERAL	3,002,525			
<b>Schedule B: 2006 Debt Service: GENERAL FUND</b>				
The unit plans to pay the following amounts for long-term debts that are secured by property taxes. These amounts will be paid from property tax revenues (or additional sales tax revenues, if applicable).				
Description of Debt	Principal or Contract Payment to be Paid from Property Taxes	Interest to be Paid from Property Taxes	Other Amounts to be Paid	Total Payment
Parmer County Law enforcement Center	115,000	137,419	0	252,419
Total required for 2006 debt service				\$252,419
- Amount (if any) paid from funds listed in Schedule A				\$0
- Amount (if any) paid from other resources				\$0
- Excess collections last year				\$11,339
= Total to be paid from taxes in 2006				\$241,080
+ Amount added in anticipation that the unit will collect only 95.000000% of its taxes in 2006				\$12,688
= Total Debt Levy				\$253,768

### Schedule A: Unencumbered Fund Balances: FARM TO MARKET ROAD

The following estimated balances will be left in the unit's property tax accounts at the end of the fiscal year. These balances are not encumbered by a corresponding debt obligation.

Type of Property Tax Fund	Balance
FARM TO MARKET	1,408,621

This notice contains a summary of actual effective and rollback tax rates' calculations. You can inspect a copy of the full calculations at 305 3rd Street, Bovina, Tx 79009. Name of person preparing this notice: Curby Brantley Jr. Title: Chief Appraiser Date prepared: August 1, 2006

### 2006 Property Tax Rates in CITY OF FARWELL

This notice concerns 2006 property tax rates for CITY OF FARWELL. It presents information about three tax rates. Last year's tax rate is the actual rate the taxing unit used to determine property taxes last year. This year's *effective* tax rate would impose the same total taxes as last year if you compare properties taxed in both years. This year's *rollback* tax rate is the highest tax rate the taxing unit can set before taxpayers can start tax rollback procedures. In each case these rates are found by dividing the total amount of taxes by the tax base (the total value of taxable property) with adjustments as required by state law. The rates are given per \$100 of property value.

<b>Last year's tax rate:</b>	
Last year's operating taxes	\$137,214
Last year's debt taxes	\$0
Last year's total taxes	\$137,214
Last year's tax base	\$31,674,481
Last year's total tax rate	0.433200/\$100
<b>This year's effective tax rate:</b>	
Last year's adjusted taxes (after subtracting taxes on lost property)	\$137,023
+ This year's adjusted tax base (after subtracting value of new property)	\$34,833,737
= This year's effective tax rate	0.393300/\$100
<b>This year's rollback tax rate:</b>	
Last year's adjusted operating taxes (after subtracting taxes on lost property and adjusting for any transferred function, tax increment financing, state criminal justice mandate and/or enhanced indigent health care expenditures)	\$254,895
+ This year's adjusted tax base	\$34,833,737
= This year's effective operating rate	0.731700/\$100
× 1.08 = this year's maximum operating rate	0.790200/\$100
+ This year's debt rate	0.000000/\$100
= This year's rollback rate	0.790200/\$100
- Sales tax adjustment rate	0.326800/\$100
= Rollback tax rate	0.463400/\$100

### Statement of Increase/Decrease

If CITY OF FARWELL adopts a 2006 tax rate equal to the effective tax rate of 0.393300 per \$100 of value, taxes would increase compared to 2005 taxes by \$ 4,625.

### Schedule C - Expected Revenue from Additional Sales Tax

(For hospital districts, cities and counties with additional sales tax to reduce property taxes) In calculating its effective and rollback tax rates, the unit estimated that it will receive \$ 117,872 in additional sales and use tax revenues. For County: The county has excluded any amount that is or will be distributed for economic development grants from this amount of expected sales tax revenue.

This notice contains a summary of actual effective and rollback tax rates' calculations. You can inspect a copy of the full calculations at 305 3rd Street, Bovina, Tx 79009. Name of person preparing this notice: Curby Brantley Jr. Title: Chief Appraiser Date prepared: August 1, 2006

### Courthouse Notes

The following warranty deeds were recorded in the Parmer County clerk's office last week:

- Deborah Magby – Corry Farms, SW/4 & W/2, E/2 SE/4 S4 BLK H Kelly
- Gorman Byrd – Lance Bradley, TR SW/4 S49 BLK A
- Elsie Joe Buchanan – Elsie Joe Trust Buchanan, E/2 S2 Sullivan
- Maria Alexander – Robert Alexander, L8 B2 Welch Acres U1 Friona
- Victory Family Worship Center – Joe Ruiz, N19.0' L8 & 9 S10.0' L10 B13 Friona
- HUD – Toribio Monarrez, L13 B1 Hicks addition Friona
- Arkatek Inc. – New Horizon Towers, TR 4.047 AC Out of NE/4 S16 T4/2S R5E
- Dennis Boeckner – Brandon Kirkland, 2.168 AC NE/4 S27 T9S R1E
- Dennis Boeckner – Michael Ratke, .0036 AC NE/4 S27 T9S R1E
- Michael Ratke – Brandon Kirkland, 9.285 AC NE/4 S27 T9S R1E
- Goldie Griffith – Fred Wilkerson, L9-10 S27' L11 B66 Friona
- Mark Logan – Kristi Leatherwood, L5' L20 L21-22 B30 Farwell
- Alan Benedict – Renee Mains, L17-20 B58 Farwell
- Mario Vidaurri – Regilio Jaime, L15-16 B29 Farwell
- Mary Taylor – Stephanie Torres, L16 B3 Stanley Friona
- Jimmy Meeks – Yvonne Gonzales, L5-6 B42 Farwell
- Margie Lawrence – Kenneh Miller, 950.48 AC TR of BLK C
- Gil DeLeon – Graceland Cattle Co., NW/4 S11 BLK A
- Thomas DeLeon – Graceland Cattle Co., NW/4 S11 BLK A
- Doyle Johnson – Joe Haseloff, SE/4 S22 T10 S R2E
- HUD – Bruce Fleming, W73' L12 E7' L13 B7 Stanley
- Linda Kidd – Mark Kidd, L5 B10 Stanley
- Lorna Schueler – Monty Scheuler, 2.366 AC TR NE/4 S4 T1N R1E
- Greg Martin – E.L. & J.L. Bass Trust, L31-32 B47 Farwell
- Mark Kidd – Loren Lookingbill, LS B10 Stanley Friona
- Joe Tarter – Gerald Weaver, NE/4 S71 BLK H Kelly
- Charles Saylor – Scott Saylor, S49 BLK Z WS & FW Johnson
- Zane Polson – David Davilia, W61.5' L17 E18.5' L18 B6 Stanley
- Dimple Hand – Hand Family Living Trust, L7-9 B8 Drake
- Ronald Byrd – Thomas Beekman, L29-30 B23 Farwell
- Andrea Kirkland – Carl Kirkland, L1 B2 Hillcrest
- Andrea Kirkland – Theresa Mcleod, L1-2 B2 Hillcrest
- George Rushing – Michael Rushing, 4.13 AC out of E/PT S2 T3S R3E
- Wilson-Welch Family Limited Partnership – George Rushing, 6.90 AC Tract out of SE/4 S32

### Cherry gets scholarship

The CHS Foundation has award Mikayla Cherry, of Texico, a \$1,000 scholarship in celebration of the 75th anniversary of CHS Inc. She is one of 32 high school seniors selected from a pool of more than 1,000 applicants in 45 states .

Mikayla, daughter of Floyd Cherry, is a senior at Texico High School. After graduation she plans to attend West Texas A & M in Canyon, Texas, to study education.



**Xpressions**  
Custom Embroidery

*Now offering FULL screen t-shirt printing capabilities*

Kay Vannatta      505-762-7674  
1212 N. Main      Fax 505-762-7265  
Clovis, NM 88101  
email: xpressions@plateautel.net

*“Great impressions start with Xpressions!”*

**Friona Heritage Estates**  
*“Making Life Easier”*  
16 St. & N. Main, Friona

**Independent Living with Services: 16 room facility, including 2 large rooms for couples, semi-private or single occupancy; 24 hours staff assistance; meals, daily activities, weekly housekeeping and medication supervision; openings available for Private Pay or CBA (Medicaid) Clients; and assistance to local physician appointments.**

For more information contact:  
Rhonda Bentley, AL Mg., (806) 250-5599  
Jo Blackwell, CEO, (806) 250-3922

License No. 100379

*50 YEARS AGO THIS WEEK*

Bill Dollar was named Lone Star Elevator manager. Eddie Smith got a baseball scholarship at TCU. B.L. Barnes was the new Pentecostal Church pastor in Texico.

Dr. Marion Green said he would move his practice from Farwell to Clovis.

Charlie Crume was named president of Texico's reactivated Chamber of Commerce. Rip Snodgrass was secretary.

Paul Jones' Texaco gas station in Bovina had a grand opening.

**Franse Irrigation**  
Farwell • 481-3316



*Kelsey Jones and Clinton Hill*

## Kelsey Jones to wed Clinton Hill

John and Becky Jones, of Lazbuddie, announce the approaching marriage of their daughter, Kelsey Jones, to Clinton Hill, of Melrose, son of Mark and Dee Hill, of Melrose.

The wedding is planned for 2 p.m. mt at Kingswood Methodist Church in Clovis on Oct. 21.

Kelsey, a 2002 Lazbuddie High graduate, is a senior at Eastern New Mexico University, majoring in consumer sciences. She is employed at the Community Service Center in Portales.

Clinton, a 2001 Melrose High graduate, is a also a senior at ENMU, majoring in religion and Greek. He is youth pastor at the First United Methodist Church in Muleshoe. The couple will reside in Portales.



**762-7195**  
1508 N. Prince  
Clovis, NM 88101

**Guns, Archery, Reloading,  
Wall Tents, Fishing and Camping**

*The Re-Ink Spot*  
Refill • Re-ink • Replace

*Ink-Jet, Laser & Toner Cartridges & Fabric Ribbons  
Color Printing, Scanning, & CD Creator Services  
Fax Service 763-4151*

**2901 N. Prince • Clovis**  
**(505) 769-0818**



### LEGAL PUBLICATIONS

CITATION BY PUBLICATION  
THE STATE OF TEXAS  
COUNTY OF PARMER  
CAUSE NO. 9330

In the name and by the authority of the State of Texas  
Notice is hereby given as follows:

To ISAAC ALVARADO and to all who own or have or claim a legal or equitable interest in or lien upon the following described real property, Respondent(s); GREETINGS: YOU HAVE BEEN SUED. You may employ an attorney. If you or your attorney does not file a written answer with the clerk who issued this citation at or before 10 o'clock A.M. after the first Monday after the expiration of forty-two (42) days from the date of issuance, a default judgment may be taken against you.

YOU ARE HERBY COMMANDED to appear and answer before the Honorable District Court, 287th JUDICIAL DISTRICT COURT, Parmer County, Texas, at the Courthouse of said County in The City of Farwell, Texas, at or before 10 o'clock A.M. after the first Monday after the expiration of forty-two (42) days from the date of issuance, hereof, the same being the 18th day of September 2006; then and there to answer the PLAINTIFF'S ORIGINAL PETITION filed in said court on FEBRUARY 17, 2006 in cause number 9330 on the docket of said Court, and entitled "BARBARA BARNETT AND GERALD BARNETT V. CAROLINA ALVARADO AND ISAAC ALVARADO." The nature of said suit is a request for Judgment of Title and possession of real property in Parmer County, Texas. The legal description is as follows:

A tract of land out of the Southwest Quarter (SW1/4) of Section 3, Block 'A', Rhea Brothers Subdivision, in Parmer County, Texas, more particularly described as follows, to-wit:

BEGINNING at a point in the South boundary line of said Section 3 which is 1980' West of the Southwest Corner of the SW1/4 of said Section 3;

THENCE along said South boundary line of said Section 3, a distance of 660', more or less, to the Southwest corner of said section;

THENCE North along the West boundary line of said Section 3, a distance of 330', to a point;

THENCE East and parallel with the South line of said Section a distance of 660', more or less, to a point which is also the Northwest corner of a 1980' x 330' tract of land conveyed to Robert E. Owens, et ux;

THENCE South along the common boundary line between this tract and the tract conveyed to Robert E. Owens, et ux, a distance of 330' to the point and place of beginning.

The Court has authority in this suit to enter any judgment or decree regarding Judgment of Title and possession of real property which will be binding upon you as owner of record of said real property.

## EQIP program to be discussed

The Parmer County Soil and Water Conservation District invites everyone to participate in a Program Development Group meeting at the EMS building in Bovina on Aug. 24 from 9 to 10 a.m.

The meeting's purpose is to get input from a broad range of local agencies, businesses and especially farmers and ranches who have an interest in natural resource conditions and needs.

Earl Behrends, local District conservationist, said the discussion will help his Local Work Group (LWG) to address county based funding for fiscal year 2007's Environmental Quality Incentives Program.

The LWG will make recommendations on resource concerns to be addressed, eligible practices, cost share rate and ranking for county based funding.

For more information, call Berends at 481-3311.

### LEGAL PUBLICATIONS

#### NOTICE OF RECEIPT OF APPLICATION AND INTENT TO OBTAIN AIR PERMIT AIR QUALITY PERMIT NO. 73424

**APPLICATION.** AGP Grain Marketing, LLC has applied to the Texas Commission on Environmental Quality (TCEQ) for an amendment to Air Quality Permit No. 73424 which would authorize modifications to the Lariat Grain Elevator located at 770 County Road DD, Farwell, Parmer County, Texas. The facility will emit the following air contaminants: organic compounds, nitrogen oxides, sulfur dioxide, carbon monoxide and particulate matter (including particulate matter less than 10 microns in diameter).

This application was submitted to the TCEQ on July 24, 2006. The application is available for viewing and copying at the TCEQ central office, the TCEQ Amarillo regional office, and the Parmer County Courthouse, 401 3rd Street, Farwell, Parmer County, Texas. The facility's compliance file, if any exists, is available for public review in the Amarillo regional office of the TCEQ.

The TCEQ executive director has determined the application is administratively complete and will conduct a technical review of the application.

**PUBLIC COMMENT/PUBLIC MEETING.** You may submit public comments, a request for a public meeting, or request a contested case hearing to the Office of the Chief Clerk at the address below. The TCEQ will consider all public comments in developing a final decision on the application. **The deadline to submit public comments is 30 days after newspaper notice is published.**

The purpose of a public meeting is to provide the opportunity to submit comments or ask questions about the application. A public meeting about the application may be held if the executive director determines that there is a significant degree of public interest in the application or if requested by a local legislator. A public meeting is not a contested case hearing.

If only comments are received on the application, the response to comments, along with notice of the executive director's action on the application, will be mailed to everyone who submitted comments or is on the mailing list for this application.

If a hearing request is timely filed, the executive director will complete the technical review, issue a preliminary decision on the application, and a Notice of Application and Preliminary Decision will be published and mailed to those who are on the mailing list for this application. That notice will contain the final deadline for submitting public comments.

After the final deadline for public comments following any required Notice of Application and Preliminary Decision, the executive director will consider the comments and prepare a response to all relevant and material, or significant public comments. If comments are received, the response to comments, along with the executive director's decision on the application, will then be mailed to everyone who submitted public comments or is on the mailing list for this application.

**OPPORTUNITY FOR A CONTESTED CASE HEARING.** You may request a contested case hearing. A contested case hearing is a legal proceeding similar to a civil trial in state district court. Unless a written request for a contested case hearing is filed within 30 days from this notice, the executive director may approve the application. **If no hearing request is received within this 30-day period, no further opportunity for hearing will be provided.** A contested case hearing will only be granted based on disputed issues of fact that are relevant and material to the Commission's decision on the application. Further, the Commission will only grant a hearing on those issues raised during the public comment period and not withdrawn.

A person who may be affected by emissions of air contaminants from the facility is entitled to request a hearing. If requesting a contested case hearing, you must submit the following: (1) your name (or for a group or association, an official representative), mailing address, daytime phone number, and fax number, if any; (2) applicant's name and permit number; (3) the statement "(I/we) request a contested case hearing"; (4) a specific description of how you would be adversely affected by the application and air emissions from the facility in a way not common to the general public; (5) the location and distance of your property relative to the facility; and (6) a description of how you use the property which may be impacted by the facility. **If the request is made by a group or an association, the one or more members who have standing to request a hearing, and the interests which the group or association seeks to protect, must also be identified. You may also submit your proposed adjustments to the application/permit which would satisfy your concerns. Requests for a contested case hearing must be submitted in writing within 30 days following this notice to the Office of the Chief Clerk, at the address below.**

If a hearing request is timely filed, additional notice may be provided. Following the close of all applicable comment and request periods, the executive director will forward the application and any requests for contested case hearing to the TCEQ Commissioners for their consideration at a scheduled Commission meeting. **If a hearing is granted, the subject of a hearing will be limited to disputed issues of fact relating to relevant and material air quality concerns raised during the comment period.** Issues such as property values, noise, traffic safety, and zoning are outside of the Commission's jurisdiction to address in this proceeding.

**MAILING LIST.** In addition to submitting public comments, you may ask to be placed on a mailing list to receive future public notices for this specific application mailed by the Office of the Chief Clerk by sending a written request to the TCEQ Office of the Chief Clerk at the address below.

**INFORMATION.** Written public comments or requests for a public meeting or contested case hearing should be submitted to the Office of the Chief Clerk, MC-105, TCEQ, P.O. Box 13087, Austin, Texas 78711-3087. For more information about this permit application or the permitting process, please call the Office of Public Assistance, Toll Free, at 1-800-687-4040. Si desea informacion en Espanol, puede llamar al 1-800-687-4040. General information regarding the TCEQ can be found at [www.tceq.state.tx.us](http://www.tceq.state.tx.us).

Further information may also be obtained from AGP Grain Marketing, LLC, P.O. Box 2047, Omaha, Nebraska 68103-2047 or by calling Mr. Scott Day, General Manager of Texas Operations at (806) 251-1521.

Issuance Date: August 1, 2006

## A last look at BTD 2006



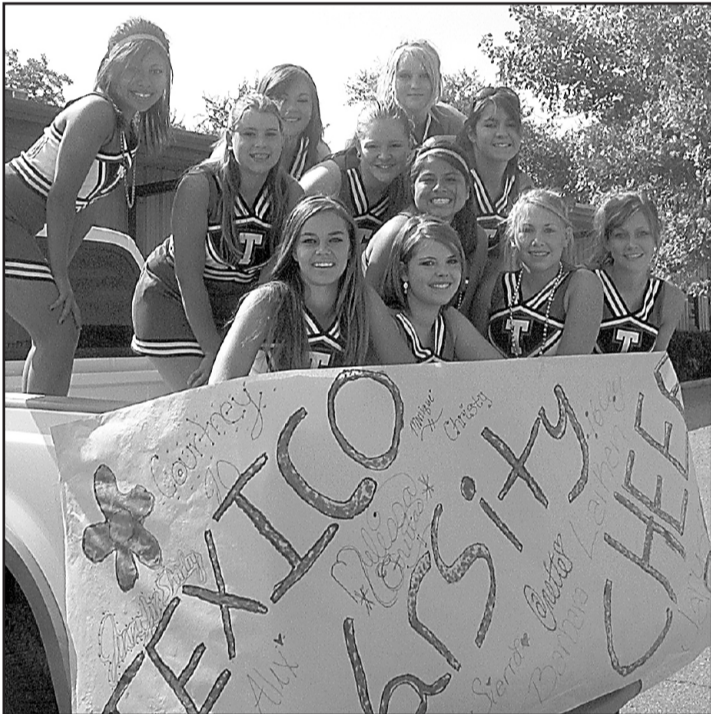
Kendal, Emily, and Carissa from the Parmer County 4-H., in their "Real Hero" costumes.



Farwell class of '66



Christian Barrett, dressed as a Real Hero, his dad, pictured with his folks, Jay Be and Jana Barrett.



Texico varsity cheerleaders.

**The Fillpot Report**  
 Ag Marketing & Management  
 308 3rd St. & Ave. D, Farwell  
 481-2626 - (800) 748-2897  
 \*\*\*\*\*  
 Specializing in commodity futures & options trading  
 \*\*\*\*\*  
 by Bryon Fillpot



**LIVE CATTLE:** We have waited for over 3 months for prices to reach these levels and the market is now poised for top. Although trends are up, there October contract is probably a little too far ahead of the cash even if cash improves over the next few weeks. Overall, the market should ease back lower into the November/December time frame before seeing a rally back up into the Spring.

**FEEDER CATTLE:** Prices have had to fight their way all the way back to major long term resistance levels and everything is pointing to a top at this time. Higher Live Cattle prices helped to support this rally, but feeders are dragging. Corn was 14 cents lower on Friday and feeders close down on the day. Cash contracts a being heavily discounted because feed yards are full at this time with little cattle and may not be pressed to buy high priced feeders which do not project a profit.

**CORN:** In the face of a continuous stream of positive news coming out of the media, corn prices and trends have remained down and major long term support levels were penetrated this week as the December Corn closed at the lowest levels since January. Trends are expected to remain down into the harvest time frame and bottom around early January.

**SOYBEANS:** Although the USDA Crop Production report was friendly for soybeans, lower corn and wheat pressured the market to close at the lowest levels seen in over a year. Long term trends have remained down and the market will probably remain under pressure into harvest.

**WHEAT:** Although the USDA Crop Production report was called neutral for wheat, an overall negative attitude pressured the market for most of the day on Friday. Major support levels at \$4.67 basis the September KC contract was taken out ( which was also the June low ) and prices dropped over 15 cents. Long term support lies below between \$4.00-4.30 basis the Sept contract.

**COTTON:** The market came under pressure on Friday after the USDA Crop Production report failed to drop estimated production to pre report estimates. Private forecaster's are convinced that US production will drop to levels between 18-19.5 million bales which is significantly lower than USDA projections of 20 million bales. Technically, trends are still pointing higher.

Futures and Options Trading involves risk of loss and may not be suitable for everyone.

## County commissioners okay proposed tax rate

The Parmer County Commissioners on Monday adopted a proposed 2006 tax rate of .5258 cents for \$100 assessed valuation.

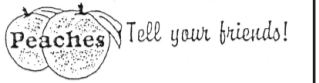
This is slightly down from last year's .5284 cents. With the higher valuations, county tax appraiser Curby Brantley said the average homeowner will pay about \$21 more in taxes next year.

In other business, the commissioners:

-- Received two bids for a road grader for the Farwell area Pct. 3. Warren Cat bid \$58,973; Yellowhouse bid \$56,278. But with the trade-in, Warren's bid was better and it was accepted.

-- Heard from Soil & Water Conservation District's Earl Behrends that he would be re-evaluating the aging water shed structures here.

### Colorado Peaches From Palisade!



Straight from the grower to you!  
 Tree ripe, Juicy and Bursting with flavor.

From the tree to the box,  
 to bring you the best quality shippable.

Refrigerated. Semi-Load. Worth the drive!  
 18# Box -- \$18.25 (970) 314-1469

Saturday, Aug. 19, at the Annix Catering Lot in Hereford on Hwy. 385 North (south of Boots and Saddles) from 8 a.m. to 5 p.m.

visit our web site at [www.CunninghamPeaches.com](http://www.CunninghamPeaches.com)

## NOTICE OF PUBLIC MEETING TO DISCUSS BUDGET AND PROPOSED TAX RATE

The LAZBUDDIE ISD will hold a public meeting at 8:00 PM 08/29/2006 in Lazbuddie ISD Boardroom Lazbuddie, Tx.. The purpose of this meeting is to discuss the school district's budget that will determine the tax rate that will be adopted. Public participation in the discussion is invited.

The tax rate that is ultimately adopted at this meeting or at a separate meeting at a later date may not exceed the proposed rate shown below unless the district publishes a revised notice containing the same information and comparisons set out below and holds another public meeting to discuss the revised notice.

<b>Maintenance Tax</b>	\$1.370000 /\$100 (Proposed rate for maintenance and operations)
<b>School Debt Service Tax Approved by Local Voters</b>	\$0.000000 /\$100 (Proposed rate to pay bonded indebtedness)

### Comparison of Proposed Budget with Last Year's Budget

The applicable percentage increase or decrease (or difference) in the amount budgeted in the preceding fiscal year and the amount budgeted for the fiscal year that begins during the current tax year is indicated for each of the following expenditure categories:

Maintenance and operations	2.850000% (increase) or	% (decrease)
Debt service	0.000000% (increase) or	% (decrease)
Total expenditures	2.850000% (increase) or	% (decrease)

### Total Appraised Value and Total Taxable Value (as calculated under section 26.04, Tax Code)

	Preceding Tax Year	Current Tax Year
Total appraised value* of all property	\$54,785,421	\$53,191,509
Total appraised value* of new property**	\$283,079	\$689,286
Total taxable value*** of all property	\$51,423,500	\$49,658,885
Total taxable value*** of new property**	\$273,389	\$688,530

\* "Appraised value" is the amount shown on the appraisal roll and defined by Section 1.04(8), Tax Code.

\*\* "New property" is defined by Section 26.012(17), Tax Code.

\*\*\* "Taxable value" is defined by Section 1.04(10), Tax Code.

### Bonded Indebtedness

Total amount of outstanding and unpaid bonded indebtedness: \$0

\* Outstanding principal

### Comparison of Proposed Rates with Last Year's Rates

	Maintenance & Operations	Interest & Sinking Fund*	Total	Local Revenue Per Student	State Revenue Per Student
Last Year's Rate	\$1.500000	\$0.000000*	\$1.500000	\$4,783	\$3,201
Rate to Maintain Same Level of Maintenance & Operations Revenue & Pay Debt Service	\$1.330100	\$0.000000*	\$1.330100	\$5,237	\$3,900
Proposed Rate	\$1.370000	\$0.000000*	\$1.370000	\$5,393	\$4,384

\* The Interest & Sinking Fund tax revenue is used to pay for bonded indebtedness on construction, equipment, or both. The bonds, and the tax rate necessary to pay those bonds, were approved by the voters of this district.

### Comparison of Proposed Levy with Last Year's Levy on Average Residence

	Last Year	This Year
Average Market Value of Residences	\$30,256	\$34,794
Average Taxable Value of Residences	\$15,256	\$19,794
Last Year's Rate Versus Proposed Rate per \$100 Value	\$1.500000	\$1.370000
Taxes Due on Average Residence	\$228.84	\$271.17
Increase (Decrease) in Taxes	\$0.00	\$42.33

Under state law, the dollar amount of school taxes imposed on the residence homestead of a person 65 years of age or older or of the surviving spouse of such a person, if the surviving spouse was 55 years of age or older when the person died, may not be increased above the amount paid in the first year after the person turned 65, regardless of changes in tax rate or property value.

**Notice of Rollback Rate:** The highest tax rate the district can adopt before requiring voter approval at an election is 1.370000. This election will be automatically held if the district adopts a rate in excess of the rollback rate of 1.370000.

### Fund Balances

The following estimated balances will remain at the end of the current fiscal year and are not encumbered with or by a corresponding debt obligation, less estimated funds necessary for operating the district before receipt of the first state aid payment:

Maintenance and Operations Fund Balance(s)	\$450,000
Interest & Sinking Fund Balance(s)	\$0

# The Classifieds 481-3681

Classified  
Deadline  
5 p.m.  
Tuesday

**The New You  
Beauty Salon**  
Lyndi Austin  
316 Main, Clovis  
763-1360

**Master Tech  
Auto Service**  
801 Hereford Ave.  
Texico -- 482-9087  
Jerry Cunningham  
Gerryl Roach

*The Beauty Box  
Salon*  
Stop pain with Medic-  
Moist Emu Pain Cream.  
Get yours at The Beauty  
Box Salon, where all hair  
services are available.  
**Stateline Rd., Farwell  
(806) 481-3441**

**Cy's Care & Repair**  
**Jobs of All Kinds**  
Maintenance • Remodeling  
Cyrus Koehn  
**(806) 825-2150**

THE SALVATION ARMY  
Second-Hand  
**THRIFT STORE**  
301 E. 2nd, Clovis  
762-3802 (open weekdays)

**Buy, Sell & Trade  
New & Used Guns**  
Call Brandon  
in Farwell  
**760-0804**

**The Optical Center**  
Hilltop Plaza Shopping Center  
Main & 21st, Clovis - 762-5266  
Eyeglass Prescriptions Filled  
Broken Frames Replaced

**Friesen Lawn Service**  
Professional  
Lawn Maintenance  
**FREE ESTIMATES**  
(806) 925-6789  
(806) 470-0406

**A Brighter Image**  
**Full Painting Service**  
Indoor & Outside  
Specialty Finishes  
Decorative Painting  
**Jack Gilliam**  
481-2222  
Cell: (806) 206-1714  
Licensed Contractor

For all our printing needs  
**Stovall Printing**  
221 E. Ave B, Muleshoe  
(806) 272-3373  
Wells Hall

**Veterinary  
Industries, Inc.**  
1011 Grand St., Friona  
(806) 250-2775  
Toll Free: (800)445-6220

**SILVERHAWK SECURITY** has positions  
open for Security Guards. Must be 18, have  
Diploma or GED, with no criminal record.  
Pays \$7 an hour.  
Call (806) 295 - 8357 or come by the  
security office at Cargill Meat Solutions in  
Friona, Texas.

**Farwell Medical Clinic** is taking  
applications for Office Manager: must  
have computer skills. Position is  
responsible for billing, collections and  
overall office operations. Please call  
the Human Resources office at  
Muleshoe Area Medical Center at:  
806-272-4524 ext. 119

**Risinger Plumbing**  
*Specializes in Repairs*  
**Texas master plumber**  
license #M16066  
**(806) 272-6772 • (806) 523-2222**  
**"Plumbing done right"**  
Why cut out an ad? Because you never know when you'll need us!

**DARE TO CARE**  
*Come join our awesome TEAM at  
Muleshoe Area Medical Center.*  
*RN and LVN positions available.*  
Contact Margaret Heathington, DON, at  
708 S. First St., Muleshoe, Texas 79347.  
Phone: (806) 272-4524

Office: (806) 481-6655  
Cell: (505) 309-9400  
sjfs@plateautel.net  
www.sjfs.us  
**Scott Johnson  
Farm Service**  
• Custom Farm Management  
• Forage Harvesting  
• Commercial Trucking  
• Chemical Application  
120 US Hwy 84, Farwell

**jb Sudderth Realty, Inc.**  
Peggy Sudderth Broker  
Angela Sudderth Sales Associate  
Daren Sudderth Broker Associate  
& Certified Appraiser  
109 5th Street, Farwell, Texas  
**(806) 481-3288 • (505) 799-4947**  
Licensed in Texas & New Mexico  
[www.jbsudderthrealty.com](http://www.jbsudderthrealty.com)

Just Listed - 3114 sq. ft. home, 2 1/2 baths, SE of Bovina.  
HUD - 4 bedroom, 2 1/2 baths, Farwell.  
Just Listed in Bovina -- 3 bedroom, 2 bath, brick hom  
with 2-car garage. Good location.  
Just Listed -- 60 acres irrigated, northeast of Clovis.  
1 irrigation well, 1 circle sprinkler.  
Just Listed -- 220 acres irrigated, northeast of Clovis.  
3 irrigation wells, 2 circle sprinklers, 2 large metal  
barns.  
Just Listed -- 640 acres northeast of Clay's Corners, 8  
irrigation wells, 4 circle sprinklers, large brick home.  
Lays good.  
Just Listed -- 4 bedroom, 2 3/4 bath home in Farwell.  
Good location. Approx. 3,500 sq. ft.  
Just Listed -- 960 acres CRP. North of Pleasant Hill. 11  
wells. 1st year CRP.  
Just Listed in Farwell -- 3 bedroom, 2 1/4 bath brick  
home, 2 car garage, recently remodeled, good location.  
Near Progress ... 1,700+ sq. ft. brick home on 15 acres  
with irrigation well. Recently remodeled and ready to  
move into.  
800 acres. Irrigated with large brick home and barn  
northeast of Muleshoe.  
Just Listed -- 160 acres northeast of Farwell with nice  
2600 sq. ft. brick home, 2 1/2 baths, well, 2 metal storage  
barns and wooden barn.  
74 +/- acres adjoining Clovis Airport on highway.  
Good development property.  
JUST LISTED - 160 acres CRP on highway East of  
Farwell. 1 irrigation well.  
640 acres West of Lariat. 10 Irrigation wells, 1/2 mile  
sprinkler and nice 4500+ sq.ft. home. Permitted for  
Dairy.  
500 Acres irrigated near Clay's Corner. 4 irr. wells,  
1/2 mile from highway. Dairy permit near completion.  
640 Acres NE of Friona. 1 circle sprinkler 5 irrigation  
wells. Near pavement.  
3 bedroom, 1 bath home in Bovina. Large lot. Good  
neighborhood.  
PRICE REDUCED - Nice home with approx. 2000 sq ft  
with 3 bedroom, 2 bath, central heat and refrig. air, fire-  
place, with large 2 car garage, and carport.  
Southwest of Lariat, 319 acres, 2 circle sprinklers, 4  
irrigation wells.  
640 acres of irrigated land, 4 sprinklers, 7 wells, with  
nice country home east of Farwell.  
640 acres NE of Farwell. 4 circles, 5 wells with nice  
country home.  
**"SAVING IS GREAT - INVEST IN REAL ESTATE"**

**RE/MAX**  
RE/MAX First Place Realtors  
817 Llano Estacado Blvd., Clovis  
Office: (505) 763-3729  
Cell: (505) 693-9545  
Toll Free: (800) 345-4166  
E-mail: sharonhicks@remax.net  
[www.SharonHicks.com](http://www.SharonHicks.com)  
**Sharon Hicks**  
New Mexico/Texas Broker

701 4th St., Farwell-- NEW LISTING! Classic Brick Home  
with super nice amenities! New roof added in '06 as well  
as Central Heat/Air Unit. Large Open Floor Plan in Main  
Living Area. Brick Fireplace and Formal Dining Area.  
Master Suite has a big sitting area with Library. All this  
and more just \$150,000! Call 505-693-9545 or go online  
today! [www.iHomeSource.com](http://www.iHomeSource.com)

1234 US Hwy 84, Muleshoe, TX, Beautiful Rock Masonry  
Home on 14 Acres off of US Hwy 84. Over 3000 Sq. Ft. of  
Living Area including a Finished Basement. Landscaping  
with lots of trees provide wind barrier protection, priva-  
cy and noise reduction. 3 Domestic Wells. 120 Acres irri-  
gated land and barns can be purchased with the home or  
separately. Call Sharon for your private showing today!

702 E. Ridglea, Bovina, TX- JUST LISTED! Fantastic Buy  
of the Year! Over 2800+ Sq. Ft. of an Open Floor Plan.  
UPDATES GALORE! This Home has Living in Style  
Written all Over It! Finished Sunroom Over-Looks the  
Fantastic Yard, Landscaped with Huge Pine and  
Evergreen Trees! It's almost like living in Ruidoso! Just  
126,000!

**Vic Coker Land Co.**  
AGRICULTURAL REAL ESTATE  
**Northwestern Lamb County.** 160 acres, 2 wells, center  
pivot, perimeter fence, 1/2 circle of improved grasses,  
good allotments.  
**Lazbuddie area.** Brick home, 3 bedroom, 2 bath, 2  
park garage on 1.3 acres. 2,200 sq. ft. plus large enclosed  
patio. **On pavement.**  
**West of Muleshoe.** 80 acres. Irrigated. 2 wells. Lays  
good. Good direct payment.  
**Bailey County.** 354 acres in Hazzyboro area. 250 acres  
non irrigated farmland, 100 acres of native grass.  
**1288 acres in Southwestern Bailey County.** 932 acres  
in CRP through 2017. Balance is native grass. New  
Mexico state line is west boundary. 6 miles of fence.  
Good domestic well. Quail, antelope and other hunting.  
Excellent cash flow for a hunting retreat.  
**Bailey County -- Stegall Area.** 3000 sq. ft. home. Austin  
stone, metal roof. 3 bedroom, 2 bath, 2 park garage.  
Outside in good condition. Inside needs update. A large  
house for a bargain price. \$50,000.  
**309 Acres near Progress.** Hwy. 84 frontage. 1/2 mile of  
pavement. Good soil, lays good, depreciable assets.  
**Bailey County -- 14.7 acres northwest of Muleshoe on**  
U.S. Hwy. 84. 76'x36' lot. 40'x80'x16'  
shop barn.  
**Bailey County -- West of Muleshoe on 1760.** 315 acres.  
3 wells, 1 towable sprinkler. Fenced. Large quonset barn.  
**Lamb County -- Southeast of Amherst,** 922 acres. 310  
acres of alfalfa. 5 center pivots. 42 acres of drip irri-  
gation.  
**VIC COKER**  
Office 272-3100 316 Main St., Muleshoe Home 965-2468  
[www.vicoland.com](http://www.vicoland.com)

**NOW HIRING!**  
Minsa is accepting applica-  
tions for three full time posi-  
tions in the Maintenance  
Department.  
Some previous maintenance  
or welding experience is  
preferred.  
Pick up an  
application at  
Minsa's main  
office, 1 1/2  
miles east of  
Muleshoe. EOE  
**minsa**

**NOW HIRING**  
Minsa has sev-  
eral positions  
available in our  
Production  
facility.  
We are looking for hard  
working individuals to fill these  
positions.  
If interested, please come to  
the main office at Minsa, 1 1/2  
miles east of Muleshoe and fill  
out an application. EOE

**XTRA-SPACE  
Individual Storage  
Farwell  
Call 481-3222**

"Quality IS the Difference"  
**PORTALES HOMES  
Supercenter**  
• Land / Home packages  
• Permanent Foundations  
• 1000 to over 3000  
sq. ft. homes  
• Free Delivery!  
42479 US Highway 70  
Portales, NM 88130  
800-857-5639 • 505-356-3569  
email: portaleshomes@yucca.net

**Byrd Realty**  
**Ronald Byrd**  
Licensed Broker  
Farwell, Texas  
\*\*\*\*  
**Crista Bass**  
Sales Associate  
Office: (806) 481-3846  
Toll Free: 1-888-999-3846  
308 Third St., Farwell [www.byrdrealestate.net](http://www.byrdrealestate.net)

PRICE REDUCED -- 3 bedroom, 1 3/4 bath home  
with evaporator air conditioning and storage  
building and carport. Motivated Seller!  
**NICE 3 BEDROOM HOME** with 1 bath, carport, large  
corner lot with fenced back yard. Close to school.  
**COUNTRY HOME ON HIGHWAY --** nice 3 bedroom, 2  
bath, brick home on approx. 3 acres, ref. air, central  
heat, large utility, fireplace, built-ins, spacious living  
area, finished basement. 2 car garage, 30'x30' metal  
barn, plus more!  
**Lazbuddie -- 2 bedroom, 1 bath, brick home, with**  
built-ins, ref. air, central heat, single car garage. All on  
approx. 3 acres.  
**NEW LISTING - nice country 2 bedroom, 1 3/4 bath**  
brick home, built-ins, ref. air/central heat, Sunroom,  
large utility room, 2 car garage, sprinkler system, fenced  
backyard, 2 metal barns on approx. 3 acres.  
**NEED FARM LISTINGS!!**  
480 acres Northeast of Bovina, 2 circular sprinklers, 3  
wells, 1 submersible well. Includes 141.5 acres of CRP.  
Excellent cattle operation. Call for details.  
320 acres -- Southwest of Texico, 2 circular sprin-  
klers, 3 wells. Call for details. Owner/agent.



# THE CLASSIFIEDS

4 bedroom, 1 office, 2 large living areas, 2 bath brick home, 2 car garage available in Bovina. 2,500+ sq. ft. home with large fireplace and big front and back yards. 2 blocks from the schools! Call (806) 251-1525 or 225-7218.

Bovina Food Express is accepting applications for workers for morning and evening shifts. Please apply in person at 205 Gardner St. in Bovina.

HELP WANTED -- Tire & Service technician at Charles Oil & Gas in Bovina. Apply in person. (806) 251-1284.

Apartment available for senior citizens in Farwell. Call 481-9027.

QUEEN Pillowtop mattress set, \$145. TWIN Mattress set, \$99. New, in plastic, warranty. (806) 549-3110.

KING Pillowtop mattress set, \$239. Full orthopedic mattress set, \$135. Brand new, warranty. (806) 549-3110.

NO MOTION NASA memory foam mattress & foundation, \$399. New, warranty. (806) 549-3110.

SLEIGH BED with comfortable mattresses. Boxes never opened. Warranty. Sell today \$449. (806) 549-3110.

For Sale: Beautiful glass top table with 4 comfortable chairs. Call 481-3550.

Garage Sale -- Saturday and Sunday, Aug. 19 & 20, from 9 a.m. til ?? on Amarillo Highway, 1 mile east of Farwell Cemetery. Table, dishes, Indian - Santa Fe style pictures, figurines, girl's and women's clothes, shoes, console tv, popcorn machine, bassinet, shelves and misc.

Garage Sale -- Saturday, Aug. 19, from 8 a.m. til ?? at the corner of 5th St. & Ave. E in Farwell. Furniture, tools, clothes, knick-knacks, books, fresh veggies, lots more.

For Sale - Large beautiful sectional, great condition, includes 2 recliners & full-size hide-a-bed. Can be 4 separate pieces. Geometric designs of beige, tan, burgundy, blue & sea foam green. \$700 OBO. Must see. Call 482-9500 or 693-3015. Also, 54 in. wooden glass top coffee table, \$100.

Park View Nursing Care Center in Muleshoe is accepting applications for Evening Cook, 12:00 to 8:30 p.m. For more info, contact Robin Dickerson, (806) 272-7578.

For Sale: Round pen 8 panels 5'x10' galvanized weight 52 lbs. apiece, 2 gates 4'x7' galvanized from Iron Horse Supply in Ft. Sumner. Ex. condition. Retail \$675; sell for \$450. After 6 p.m., (806) 272-3940; cell, (505) 808-1316.

## Sheriff's Report

Here is the weekly report from Parmer County sheriff Randy Geries:

On Aug. 8, Brett Jackson, 26, of Kansas City, Mo., was arrested on a charge of possession of marijuana under 2 oz. Case pending in county court.

On Aug. 9, Joshua Guevara, 18, of Bovina, was arrested by Bovina police on a charge of criminal trespass. Case pending in county court.

On Aug. 9, Irma Rocha, 18, of Bovina, was arrested by Bovina police on a charge of criminal trespass. Case pending in county court.

On Aug. 11, Brian West, 36, of Dimmitt, was arrested by the sheriff's office on a charge of possession of a controlled substance. Case pending before the grand jury.

On Aug. 13, Jack Burk, 49, of Amarillo, was arrested by Texas Highway Patrol on a charge of DWI. Case pending in county court.

On Aug. 12, Kevin Coble, 28, of Texico, was arrested by the sheriff's office on a Curry County warrant. Pending transport.

On Aug. 11, Pable Alvarez, 28, of Canyon, was arrested by Texas Highway Patrol on a suspended license. Case pending in county court.

On Aug. 11, Antonio Gonzales, 20, of Friona, was charged with evading arrest, and motion to revoke (assault). Both cases are pending in county court.

On Aug. 9, Christopher Leal, 17, of Bovina, was arrested by Bovina police on a charge of criminal trespass. Case pending in county court.

On Aug. 8, Raul Sanchez, 34, of Friona, was arrested by the sheriff's office on charges of assault and interfering with an emergency call. Both cases are pending in county court.

On Aug. 9, Enedina Lara, 24, of Bovina, was arrested on a charge of driving on a suspended license. Case pending in county court.

In 287th District Court on Aug. 8, with Judge Gordon Green presiding: -- Abel Herrera, 42, of Las Cruces, N.M., charged with possession of marijuana, was sentenced to 7 years in the Texas Department of Criminal Justice, probated for 10 years; \$316 court costs; \$3,000 fine; \$140 restitution, and loss of driver's license for 180 days.

# Penny Anderson Golf tourney results given

Here are the results of the Penny Anderson golf tourney held last weekend at the Farwell Country Club:

Championship flight - 1st, Max Tenario and Mike Majors; 2nd, Greg Reid and Travis Reid; 3rd, Pat Peralez and Guillermo Chavez; 4th, Blake Berry and David Maldonado.

1st flight: 1st, Clay Bracken and Jack Nutall; 2nd, Larry Powell and Mark Powell; 3rd, Amit Bakahta and Angel Martinez; 4th, Rick Ketcherside and Spencer Ketcherside.

2nd flight: 1st, Doug Hughes and Gary Hoadley; 2nd, Greg Hanks and Robert Boatman; 3rd, Greg Actkinson and Logan Nichols; 4th, Mark Roybal and Tommy Valdez.

3rd flight: 1st, Eric Roanous and Randy Adrian; 2nd, Mark Repogle and John Aisworth; 3rd, Terry Townsend and Clark Colson; 4th, Gary Hibbe and Ed Thornsberry.

4th flight: Tie for 1st -- Gerald Griego and Art Gallegos, and Taylor Nichols and Brandon Harrison; 3rd, Gerald Hardage and Kent Armstrong; 4th, Tyson Hardy and Richard Gallegos.

5th flight: 1st, Jeff Actkinson and Brett Pylant; 2nd, Tom Nichols and Jay Be Barrett; 3rd, Ryan Williams and Brad Heildberg; 4th, Max Best and Jim Hunsucker.

6th flight: 1st, Leland Brockman and Colby Miller; 2nd, Larry Powell and Dick Bishop; 3rd, Ronald Byrd and Chad Byrd; 4th, David Garrett and Terry Mulligan.

7th flight: 1st, Josh Quintana and Isbell Murrfo; 2nd, Lance Bradley and Tige Bradley; 3rd, Tom Beekman and Gary Patterson; 4th, Marcus Sullivan and Robert White.

## OCR

From page 13

high school's rating was "unacceptable."

-- Hired Florence Russell, of Clovis, to teach 5th grade.

-- Set the public hearing on the proposed budget and tax rate for Aug. 31 at 7 p.m.

-- Kept breakfast and lunch prices the same as last year.

# Notice: Parents and Friends of Graduating Seniors

The time is now:

This year, get a jump on your senior portraits by stopping by State Line Photography.

## What are senior portraits?

I hate to tell you this, but your student is growing up. They will soon be productive members of society, and this is a great way to keep them forever young. Plus, if you ask them, it sure beats the standard school photo that they take at the beginning of the year.

## Why now?

Last year we had lots of students who waited for the last moment to get their seniors portraits done. Most students and parents preferred outdoor or natural settings over indoor/studio shots.

It was pretty tough to find an area that was not dead, brown, or inside a studio.

Plus, the longer you wait, the harder it is to schedule time!

And if they think they will look drastically different by the end of the school year, point out that it probably won't happen.

## Why State Line Photography?

It is almost impossible to find a photographer that will take professional portraits for under \$200. And if you find one, you will be faced with two constraints. First, you won't be able to change clothes, and second, they will severely limit the time to get the perfect picture.

Come find out why State Line Photography is right your you.

## Why are you so inexpensive?

Simply because we can be!

Most photographers make their money on high volume and quick sessions. That is great for them, but it is horrible for the person getting their picture taken. Come somewhere that you can relax and know you will get the perfect picture.

A picture you can hold onto forever.

# State Line Photography

404 3rd St, Farwell • 481-3681

Now taking reservations!

# SOUTHWEST

## AG

Farm Supplies,  
Auto Parts & Hardware

**Adams HF 26"**  
Fallowmaster or **\$48<sup>95</sup>**  
Fallow King Sweeps

TIRE CENTER

Michelin AG Tires • Michelin • BF Goodrich  
• Fuzion • Kelly • Bridgestone  
• Firestone Continental & Continental AG  
• Capitol • Kumho • Dayton • Bandag Recaps  
• Goodyear • Winston • Toyo • Maxxis

24-Hour On-the-Farm Service

P.O. Box 166 - 1017 Ave A Farwell, Texas 79325

P.O. Box 1100 - 510 Ave A Farwell, Texas 79325

Toll Free 1-866-481-3295 • Toll Free 1-866-481-3395  
Local 806-481-3295 • Local 806-481-3395

# Great Deals on Vehicles for Back to School

**2001 Chrysler PT Cruiser Ltd.**  
Leather, Sunroof, Stick Shift, Chrome Wheels



**\$179/Mo.<sup>1</sup>** St. #7883

**2005 Dodge Stratus SXT**  
Power Everything, CD, Wheels



**\$199/Mo.<sup>2</sup>** 3 to Choose From!

**2005 Dodge Neon SXT**  
Power Locks/Windows, CD, Wheels



**\$199/Mo.<sup>1</sup>** St. #8052

**2001 Toyota 4Runner SR5**  
2WD, Power Everything, CD



**\$239/Mo.<sup>2</sup>** St. #7915

**2005 Jeep Grand Cherokee Laredo**  
Power Everything, Loaded, Nice Car!



**\$299/Mo.<sup>2</sup>** St. #8071

**2005 Chrysler Town & Country**  
Stow-N-Go, Power Everything, Rear Air, Loaded!



**\$299/Mo.<sup>2</sup>** St. #8069

**2006 Chrysler Pacifica AWD**  
Extremely Nice, Great for All Weather, Leather



**\$399/Mo.<sup>2</sup>** St. #8074

Ask about our 12-Month Vehicle Return Program

WALKAWAY™

PROTECTION FOR AUTOMOTIVE FINANCING  
Because your loan or lease shouldn't lock you in.

Talk to Our Sales Team:

- Buddy Gulley
- Justin Stagner
- David Soto
- Frank Talbott



BENDER CHRYSLER • DODGE

Where the Dealin' is Easy!

3400 Mabry Drive • Clovis, NM  
505-762-4511 • 800-466-4513  
SE HABLA ESPAÑOL!

www.benderdodge.com

1). \$1000 Cash down, 60 months @ 8.99% APR + TTL WAC. 2). \$2000 Cash down, 72 months @ 8.99% APR + TTL WAC.



One of their missions was monitoring terrorists and reporting their whereabouts.



Mortar damage to the street in front of the base.



Easter service aboard ship in the Persian Gulf.



Sheets works on the Hellfire missiles for his helicopter. They were primarily used as defense.

## Lt. Sheets serves in Iraq

U.S. Naval Lt. JG Brandon Sheets, a grandson of Farwell's Harry Sheets, was in town last week after serving six months in the Persian Gulf.

Sheets, a naval aviator, pilots helicopters in the Navy. Among other things over the last several months, he spent time moving troops and civil-

ians, protecting the ship he was based on, the aircraft carrier U.S.S. Ronald Reagan, and identifying and watching for terrorist

movements.

Brandon said that he had a good time over there. He believed that the media really doesn't por-

tray all of the positive side of the rebuilding process in Iraq, and that he really appreciates all of the support from home.

### Brittany

From page 1

to sum up our Texico-Farwell community in two words they would be "Supportive Family."

Three months of working at the paper, and that's only the beginning of what I have learned. I have learned about the history of the community, as my first job here was organizing the books of old papers stored in the back. Also, how to write good articles by condensing down the words and making them easier for people to read. I have learned that I speak 'hick' and that some words I use are not real. (Y'all, goin', gonna, etc.) On the other hand, six words that I have learned to use most often go like this, "State Line Tribune, this is Brittany."

Taking pictures ... Close-ups are good, shade is bad, and if you have any questions, Rob and Becky are pros in the photography world! Captions are a vital part of the pictures. Therefore, getting names down and trying to spell them right are very important. I have learned this the hard way. In fact, I stopped taking captions

for granted after losing the Farwell Country Club swimming pool captions one Friday. Thanks to Valerie Mullin, the kids could be identified, but otherwise, "Name That Kid" would have become a new game to play in the Aug. 3 issue of the Tribune.

Stamps go on the upper left hand side of postcards, Dee Dee Pomper (the lovely lady who puts up with Mike) manages a great yard, and as I witness every Thursday on the way to Bovina, Mike can't dance. And although he is quite crazy, he is actually quite knowledgeable as well.

1st Methodist Church, 1st Baptist Church, and 1st Catholic Church ... not

even close. So the next time you try to look up 1st Catholic Church in the phone book, I can tell you from experience, you won't find it!

Before working here, I had no clue that so many people read our paper. Friends from Clovis and even House, N.M., have informed me that they read the Tribune. Why wouldn't you read the Tribune ... right?

I have truly enjoyed working at the paper this summer. I have learned so much about life, work, and writing, and I feel that this summer job has even helped prepare me for college, as I will head to Abilene Christian University on the 20th.

See y'all!

**Whirlpool** Time for a new appliance? Let us help!

**McDaniel's** APPLIANCES

1020 Main Street, Clovis, NM • 505-762-4481 or 800-682-7891

**W.T. Services has a full package of Telephone, Cable T.V. & Internet Services**

*Available in the Bovina area at Competitive Rates!*

**WT Services is your Local Communications Company! Local Sales, Local Service & Local Employees!**

Call or stop by our office in Friona.

**WT Services Inc.**

A Fully Owned Subsidiary Of West Texas Rural Telephone  
 1010 Columbia at Hwy 60, Friona 250-5555  
 Hours: 8 a.m. to noon & 1 to 5 p.m. Monday-Friday

Let Us Remount Your Old Stones In a New Mounting

**LaRue Jewelry**  
 102 W. 5th, Clovis  
 763-3354

**THE BONE JOINT CHIROPRACTIC CLINIC**

**Dr. Mindy R. Neal**

Office: 806-251-1300  
 509 Avenue I • Bovina, TX 79009  
 www.drmindy.com

<b>Please attend church services</b>	<b>Oklahoma Lane Methodist Church</b> Worship Service -- 9 a.m. Sunday School - 10 a.m.	<b>Bovina Church of Christ</b> Mike Prather, minister Worship - 10:45 a.m. & 6 p.m. Wed. - Bible class - 7:30 p.m.
<b>Lazbuddie Methodist Church</b> Rev. Ken Peterson Sunday School - 9:30 a.m. Worship -- 10:30 a.m.	<b>Church of God in Christ, Mennonite</b> James Koehn - minister Sunday School - 10 a.m. Worship Service - 11 a.m.	<b>First Baptist Church of Lazbuddie</b>
<b>First Baptist Church of Farwell</b> Rev. Kyle Clayton Sunday School - 9:45 a.m. Worship - 11 a.m. & 6 p.m. Wed. - Prayer meeting 7 p.m. Wed. - mission aux., 7:30 p.m. www.fbcharwell.org	<b>First Baptist Church of Texico</b> Rob Hollis - minister Sunday School - 9 a.m. Worship-10:15 a.m., 5:30 p.m. Wednesday - 7 p.m.	<b>St. John Lutheran Church, Lariat</b> David Symm - minister Worship Service - 9:30 a.m. Sunday School - 10:30 a.m.
<b>Hamlin Memorial United Methodist Church</b> Rev. Scott Spitsberg Sunday School - 10 a.m. Worship - 11 a.m. & 6 p.m.	<b>Pleasant Hill Baptist Church</b> Jim Peabody - minister Sunday School - 9:30 a.m. Worship-10:30 a.m., 6:30 p.m. Wednesday - 6:30 p.m. winter 7:30 p.m. summer	<b>San Jose Catholic Church, Texico</b> Sunday Mass - Noon Religious Education - 1:15 - 2:15 p.m. Community Meal -- 1:15 p.m.
<b>Lariat Church of Christ</b> Sam Billingsley - minister Sunday School - 10 a.m. Worship - 10:45 a.m. & 6 p.m. Wednesday - 7 p.m. winter 8 p.m. summer	<b>Church of Christ</b> 110 Ninth St. Sunday School - 10 a.m. Worship - 11 a.m. & 6 p.m. Wednesday - 7 p.m. summer 8 p.m. winter	<b>Farwell Church of Christ</b> Phillip Steyn -- preacher Bible Class Sunday - 10 a.m. Worship ; 10:50 a.m. & 6 p.m. Wednesday - 7:30 p.m. In Search -- 7:30 -- Ch. 4 Sun.
<b>Assembly of God Church, Texico</b> Bob Burris - minister Sunday School - 9:15 a.m. Worship - 10:15 a.m. & 6 p.m. Wednesday - 6 p.m.	<b>New Light Baptist Church</b> Rev. Briyan Phillips Sr. Sunday School - 9:45 a.m. Worship - 11 a.m. & 7 p.m. Bible Study - 7:30 p.m. Wednesday - 7:30 p.m.	<b>Bovina United Methodist Church</b> Sunday School - 9:45 Worship - 11 a.m. & 6 p.m. Wednesday study, 7 p.m.
<b>St. Ann's Catholic Church</b> Fr. Jose Luis Chavez Sunday Mass: 9:30 a.m. in English; Noon in Spanish. CCD -- 10:30 a.m. Evening Mass: 6:30 p.m. Tuesday; 7 p.m. Wed. - Fri.	<b>First Baptist Church Of Bovina</b> Sunday School - 9:45 a.m. Worship - 11 a.m. Wednesday worship & youth, 7 p.m.	<b>Iglesia Bautista Hispana in Bovina</b> Rafael Marin, pastor Sunday School - 9:45 a.m. Worship - 11 a.m. Wednesday worship, 7 p.m.
<b>Farwell Convalescent Center</b> Bill Bridwell -- chaplain Sunday services -- 9 a.m. Bible study - 9:30 a.m. Friday	<b>Lazbuddie Church of Christ</b> Mickey Chambiss - minister Sunday School -- 9:30 a.m. Worship - 10:20 a.m. & 5 p.m. Wednesday -- 7 p.m.	<b>United Pentecostal Church of Texico</b> Rev. Mickey Mounce Sunday School - 10 a.m. Worship - 11:15 a.m., 6:30 p.m. Wednesday - 8 p.m.

### AGP Grain Marketing

West Texas Rural Telephone Cooperative
Bailey County Electric Cooperative • Kelly Green Seeds
Farwell Feed Yard • Farmers' Electric Cooperative
Five Area Telephone Cooperative • Lowe's Supermarket
Town & Country Insurance • Steed Todd Funeral Home
Town & Country Food Stores in Texico
United Supermarkets -- Muleshoe • Wes-Tex Feed Yards
Plains Regional Medical Center Home Health/Hospice
High Plains Federal Credit Union -- Clovis
Roden-Smith Pharmacy -- Clovis
Parmer County Cotton Growers Cooperative
Agri Plan Inc. -- Crop Insurance
Muleshoe Livestock Auction, Inc.

# What was your summer highlight?

by Brittany Anderson  
As our 3-month summer comes to a close, it is fun to see what others around the community have done with their time. Some pick a hobby, some work, some travel, and some just simply enjoy the local events here in our community.

Last week, I took my truck down to Lowe's Supermarket in Farwell to ask the customers this question, "What has been the highlight of your summer?"

Here is what some had to say:  
"The highlight of my summer is taking my boys to rodeo play days," said Sheryl Christian.

For Juan Sanchez, the summer has been spent working many hours at Cargill Meat Solutions.

"The highlight of my summer was watching my kids, Zane and Lane, play baseball," said Michelle Minks. "They went to state!"

Candice Parker has spent her summer enjoying her new chihuahua, "Piglet."

"Going to South Dakota to see Mt. Rushmore has been the highlight of my summer," said Rueben Rivera. "I took a trip on an 1880 year train up into the mountains; very fun trip."

One Lowe's customer said that he just enjoyed getting out of the hospital and now home is his highlight.

"My highlight was going to Dallas to play basketball," said Dellani Jones.

And for Brenda Cano, taking a trip to Cali, Mexico, was the highlight of her summer.

# Let it rain...

A great soaking rain fell on the area early on Monday morning.

Around 2 inches of rain was recorded in Friona.

Lazbuddie received .35", and Ted Treider said four miles south of there was no rain. But Muleshoe got some flooded streets, indicating much of the storm bypassed Lazbuddie.

Walter Curd in Texico said 2 inches of moisture fell there.

Mike Pomper said nearly 2 1/2 inches of moisture fell at his home in south Farwell.

On Monday night, Lazbuddie got another .45" of rain. The rain missed Bovina and Farwell got just a trace.

# Border Banter

--Mike Pomper

## Contest time nears

Well, folks, it's time to start gearing up for our annual Area Merchants Football Contest.

As always, we plan to give away two tickets to a Dallas Cowboys game to the overall champion, plus cash prizes for weekly winners.

It's a fun time for us. I believe that the number of participants we get is larger than any newspaper in the Texas Panhandle other than Lubbock or Amarillo, but I can't swear to it.

All I know is that hundreds of ballots get turned in every Friday.

This year, our contest will start on Aug. 31. I wish I could hold off a week, but that puts the final week into the Thanksgiving holiday, and that's not a great time for our contest to end.

So what we do is end our contest just before Thanksgiving each year. Thus, it means an early start this go-round.

I look forward to our contest each year because I get to see a lot of folks I

don't normally see during the rest of the year, folks like Bill Brigham and Rowdy Chandler, for example. And we miss Gracie Dane's weekly appearance at 5 p.m., although she still sends in her picks from Roswell, N.M.

But what is really special about our contest is that is often is a family affair. So many families play it as a family entertainment, and I really like that.

For these families, it's not about winning any prizes. It's about doing something together as a family. It's a time for the family to get out their ballots after dinner on Thursday and make their picks, for better or for worse.

I have had so many family members tell me over the years what fun it has been for their family to debate the picks, having a good time over it.

That is nifty. And a lot of businesses have their own pools based on our contest. That leads to a lot of fun, too.

That is the key word ... fun. And it doesn't cost one red cent to play.

So when the contest starts, enjoy! Participate, and have fun!

\*\*\*\*  
Speaking of contests, here's an idea:

Pick how long the next Farwell police chief will be here:

- a) 3 hours
- b) 6 hours
- c) 2 days
- d) shorter than a, b or c

\*\*\*\*  
ENMR • Plateau's newsletter reports that the federal excise tax has been repealed on long distance phone service.

The 3 percent tax has been in place since 1898 and was introduced to generate revenue to finance the Spanish-American War.

And today, 108 years later, it is no longer needed. I guess we finally won that war?

\*\*\*\*  
I don't have much new to say on the war on terror front.

Congrats to the Brits for breaking up that threatened airplane terrorism. Good job!

What I am reading in the papers and seeing on TV are more and columnists echoing what I have been writing for years -- the war will be long, the decline of American values, etc.

At least they are catching up. Frankly, I don't find it

very appealing for me to alert folks early to what is transpiring. I realize I'm not "on the same page" because I take a long-range view.

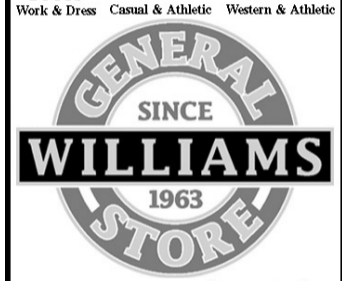
This is why I cannot serve on committees. I am usually out of sync.

At least the one or two people who read my meandering over the years are kept abreast of upcoming events, even if they are 10 or 15 years down the road. And they can plan accordingly.

Unfortunately, that is something our government cannot do -- long-range planning. Can you tell me what our long-range plans are for fighting the war on terror, or for reducing our oil dependency?

Kind of sad, isn't it.

BOOTS SHOES CLOTHING  
Work & Dress Casual & Athletic Western & Athletic



**GENERAL STORE**  
SINCE 1963

1405 West American Blvd.  
Muleshoe, Texas  
806-272-MULE (6853)

**The Medicine Shoppe**  
The Pharmacy That's All About Your Health

1801 W. 21st St. Half-mile east of Plains Regional Medical Center Hospital  
Clovis, NM  
762-4579

*Jim Herman -- Pharmacist*  
*Debra Herman -- Pharmacist*

**Sheri's Back!**

*Just Cuts By Sheri*  
Sheri Hardisty  
Owner/ Operator

111 First Street  
Farwell, TX 79325  
(505)309-7597

9 to 5:30pm Monday, Tuesday, Thursday, & Friday  
Walk-ins Only

**Farwell**  
Monday - chicken fried steak, mashed potatoes, green beans, wheat rolls, fruit, milk.  
Tuesday - chalupas, taco salad, corn, fruit, milk.  
Wednesday - deli ham & cheese sandwich, lettuce leaf, dill pickle, carrot, chips, fruit, milk.  
Thursday - spaghetti, salad, green beans, bread sticks, fruit, milk.  
Friday - burrito with salsa, taco salad, corn, fruit, chocolate chip cookie, milk.

**Texico**  
Monday - no school  
Tuesday - beef & bean burrito with salsa, corn, fruit, milk.  
Wednesday - corn dog, pork & beans, pickle spear, fruit, milk.  
Thursday - hamburger, french fries, lettuce, pickles, fruit, milk, no salad bar.  
Friday - pizza, garden salad, chocolate pudding, fruit, milk.

**MENUS**  
**Citizens Bank**  
**Texico Branch**

### 2006 Property Tax Rates in PARMER COUNTY HOSPITAL

This notice concerns 2006 property tax rates for PARMER COUNTY HOSPITAL. It presents information about three tax rates. Last year's tax rate is the actual rate the taxing unit used to determine property taxes last year. This year's effective tax rate would impose the same total taxes as last year if you compare properties taxed in both years. This year's rollback tax rate is the highest tax rate the taxing unit can set before taxpayers can start tax rollback procedures. In each case these rates are found by dividing the total amount of taxes by the tax base (the total value of taxable property) with adjustments as required by state law. The rates are given per \$100 of property value.

Last year's tax rate:	
Last year's operating taxes	\$627,604
Last year's debt taxes	\$0
Last year's total taxes	\$627,604
Last year's tax base	\$348,669,076
Last year's total tax rate	0.180000/\$100
This year's effective tax rate:	
Last year's adjusted taxes (after subtracting taxes on lost property)	\$626,557
÷ This year's adjusted tax base (after subtracting value of new property)	\$361,667,072
= This year's effective tax rate	0.173200/\$100
This year's rollback tax rate:	
Last year's adjusted operating taxes (after subtracting taxes on lost property and adjusting for any transferred function, tax increment financing, state criminal justice mandate and/or enhanced indigent health care expenditures)	\$626,557
÷ This year's adjusted tax base	\$361,667,072
= This year's effective operating rate	0.173200/\$100
× 1.08 = this year's maximum operating rate	0.187000/\$100
+ This year's debt rate	0.000000/\$100
= This year's rollback rate	0.187000/\$100

**Statement of Increase/Decrease**  
IF PARMER COUNTY HOSPITAL adopts a 2006 tax rate equal to the effective tax rate of 0.173200 per \$100 of value, taxes would increase compared to 2005 taxes by \$ 22,047.

This notice contains a summary of actual effective and rollback tax rates' calculations. You can inspect a copy of the full calculations at 305 3rd Street, Bovina, TX 79009.  
Name of person preparing this notice: Curby Brantley Jr.  
Title: Chief Appraiser  
Date prepared: August 8, 2006

### Notice of Public Hearing on Tax Increase

The PARMER COUNTY HOSPITAL will hold a public hearing on a proposal to increase total tax revenues from properties on the tax roll in the preceding tax year by 7.967667 percent (percentage by which proposed tax rate exceeds lower of rollback tax rate or effective tax calculated under Chapter 26, Tax Code). Your individual taxes may increase at a greater or lesser rate, or even decrease, depending on the change in the taxable value of your property in relation to the change in taxable value of all other property and the tax rate that is adopted.

The public hearing will be held on August 29, 2006 at 7:00 PM at Parmer County Hospital Boardroom. A second hearing will be held on September 12, 2006 at 7:00 PM at Parmer County Hospital Boardroom.

The members of the governing body voted on the proposal to consider the tax increase as follows:

FOR:	Dale Schueler, Robert Neelley, Brett Whitten
AGAINST:	none
PRESENT and not voting:	none
ABSENT:	Dennis Anthony, Danny Kendrick

#### Comparison of Proposed Budget with Last Year's Budget

The applicable percentage increase or decrease (or difference) in the amount budgeted in the preceding fiscal year and the amount budgeted for the fiscal year that begins during the current tax year is indicated for each of the following expenditure categories:

Category	Percentage Change	(increase) or (decrease)
Maintenance and operations	11.000000%	(increase) or % (decrease)
Debt service	0.000000%	(increase) or % (decrease)
Total expenditures	11.000000%	(increase) or % (decrease)

#### Total Appraised Value and Total Taxable Value as calculated under section 26.04, Tax Code

	Preceding Tax Year	Current Tax Year
Total appraised value* of all property	\$365,808,952	\$394,252,400
Total appraised value* of new property**	\$1,019,389	\$13,498,913
Total taxable value*** of all property	\$348,919,908	\$375,100,762
Total taxable value*** of new property**	\$1,009,749	\$13,433,690

#### Bonded Indebtedness

Total amount of outstanding and unpaid bonded indebtedness: \$0

#### Tax Rates

Adopted tax rate for the preceding tax year	\$0.180000 per \$100 in value
Proposed tax rate for the current tax year	\$0.187000 per \$100 in value
Difference in the proposed tax rate and the adopted tax rate for the preceding tax year	\$0.007000 per \$100 in value
Percentage increase or decrease in the proposed tax rate and the adopted tax rate for the preceding tax year	3.888889 % Increase OR % Decrease

**These tax rate figures are not adjusted for changes in the taxable value of property.**

\* Appraised value is the amount shown on the appraisal roll and defined by Section 104(B), Tax Code.  
\*\* New property is defined by Section 26.01(3)(7), Tax Code.  
\*\*\* Taxable value is defined by Section 104(B)(10), Tax Code.

### Comparison of Residence Homestead Values

Average appraised and taxable values on residence homesteads are compared from the preceding tax year and the current tax year.

	Preceding Tax Year	Current Tax Year
Average residence homestead appraised value	\$43,485	\$49,015
Homestead exemption amount for the taxing unit (excluding special exemptions for persons 65 years of age or older or disabled)	\$4,850	\$6,322
Average taxable value of a residence homestead (excluding special exemptions for persons 65 years of age or older or disabled)	\$38,625	\$42,693

#### Comparison of Residence Homestead Taxes

The taxes that would have been imposed in the preceding tax year on a residence homestead at the average appraised value (excluding special exemptions for person 65 years of age or older or disabled) are estimated to be \$70. The taxes that would be imposed in the current tax year on the residence homestead appraised at the average appraised value in the current tax year (excluding special exemptions for person 65 years of age or older or disabled), if the proposed tax rate is adopted, are estimated to be \$80. The difference between the amount of the taxes on the average residence homestead in the current tax year, if the proposed tax rate is adopted, and the preceding tax year would be an increase of \$10 of taxes.

## TEXICO HEALTH FAIR

The annual health fair at Texico Schools was held on Aug. 10. It included kindergarten registration, pre-school screening, immunizations by the Public Health Department, and fingerprinting for children for child identification.



Ethan Drager at the Speech and Language station



Christi Little working with Anthony Galaviz

### TO ALL INTERESTED PERSONS AND PARTIES:

AGP Grain Marketing, LLC has applied to the Texas Commission on Environmental Quality (TCEQ) for an amendment to Air Quality Permit No. 73424 which would authorize modifications to the Lariat Grain Elevator located at 770 County Road DD, Farwell, Parmer County, Texas. Additional information concerning this application is contained in the public notice section of this newspaper.



Are you ready for some football (and volleyball)?

Texico -- The Wolverines open with a scrimmage at Ft. Sumner on Aug. 17 at 6 p.m. mt. The Lady Wolverines open play by hosting Capitan on Aug. 25 at 4 p.m. mt.

Lazbuddie -- The Longhorns open with a scrimmage at home against Christ the King at 11 a.m. on Aug. 19.

Farwell -- The Steers open with a home scrimmage vs. Morton at 10 a.m. on Aug. 19.

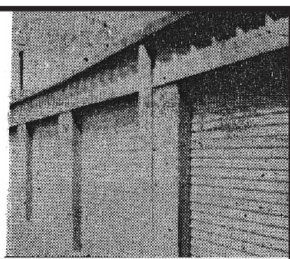
Bovina -- The Mustangs open with a scrimmage on Aug. 19 at Memphis.

\*\*\*  
The 2006 Parmer County Stock Show Dinner is set for Aug. 26 at 7 p.m. at the Farwell Community Center.

This dinner is a major fund-raiser for the county junior livestock show. Last year, all kids who participated, no matter what place they got at a show, received at least \$100 from the fund.

To purchase tickets call Gary Patterson, Farwell; Ed Terry, Lazbuddie; or Al Kerby, Bovina.

**XTRA-SPACE**  
Individual Storage  
Farwell  
Call 481-3222



A community service provided by:

**Helton Oil, Inc.**



Serving the Texico-Farwell area since 1949  
481-3222



Jasmine Colmenero matching blocks for Gila Kelley

### FJH schedules 6th grade parent orientation program

Farwell Junior High will have a 6th grade parent orientation night on Aug. 21 at 6 p.m. at the school cafeteria. The middle school cheerleaders will provide child care in the gym. Hot dogs will be served afterwards.

### It's a Girl

Sidney D'Lynn Gruntmeir was born July 18 to Brian and Amy Gruntmeir of Kahoka, Mo.

She weighed 6 lbs., 13 oz and was 21" long. She has a sister, Brianna, 3.

Grandparents are Roy and Trudy Hartzog, of Farwell; and Bob and Donna Gruntmeir, of Rocky Mount, N.C.

Great-grandparents are Hugo and Peggy Falkenberg, of Bovina; and Louise Gruntmeir, of Okarche, Okla.

Annie Scarborough, of Lubbock, is a great-great-grandmother.

### Texico football changes listed

There have been a couple of changes to the Texico Wolverines varsity football schedule:

The scrimmage at Fort Sumner has been moved to Aug. 17 at 6 p.m. mt, instead of Aug. 18.

And the game against Canadian on Aug. 31 will be played at Dick Bivins Stadium in Amarillo at 7 p.m., instead of 6 p.m. on the original schedule.

Schedule changes also are carried on the Texico School website.



**Now Open!**

**The Donut Depot**

*Featuring Potato Donuts!*

111 First Street • Muleshoe 272-7760

*Wouldn't a potato donut be great right now!*

Park behind the building or in the La Tea Da parking lot.

## NOTICE OF PUBLIC MEETING TO DISCUSS BUDGET AND PROPOSED TAX RATE

The BOVINA ISD will hold a public meeting at 7:00 PM 08/31/2006 in Bovina ISD Boardroom Bovina, Tx. **The purpose of this meeting is to discuss the school district's budget that will determine the tax rate that will be adopted. Public participation in the discussion is invited.**

The tax rate that is ultimately adopted at this meeting or at a separate meeting at a later date may not exceed the proposed rate shown below unless the district publishes a revised notice containing the same information and comparisons set out below and holds another public meeting to discuss the revised notice.

<b>Maintenance Tax</b>	\$1.192700 /\$100 (Proposed rate for maintenance and operations)
<b>School Debt Service Tax Approved by Local Voters</b>	\$0.000000 /\$100 (Proposed rate to pay bonded indebtedness)

### Comparison of Proposed Budget with Last Year's Budget

The applicable percentage increase or decrease (or difference) in the amount budgeted in the preceding fiscal year and the amount budgeted for the fiscal year that begins during the current tax year is indicated for each of the following expenditure categories:

Maintenance and operations	2.600000% (increase) or	% (decrease)
Debt service	0.000000% (increase) or	% (decrease)
Total expenditures	2.600000% (increase) or	% (decrease)

### Total Appraised Value and Total Taxable Value (as calculated under section 26.04, Tax Code)

	Preceding Tax Year	Current Tax Year
Total appraised value* of all property	\$74,413,664	\$75,993,972
Total appraised value* of new property**	\$767,723	\$1,960,174
Total taxable value*** of all property	\$63,489,289	\$64,468,572
Total taxable value*** of new property**	\$728,083	\$1,959,397

\* "Appraised value" is the amount shown on the appraisal roll and defined by Section 1.04(8), Tax Code.  
\*\* "New property" is defined by Section 26.012(17), Tax Code.  
\*\*\* "Taxable value" is defined by Section 1.04(10), Tax Code.

### Bonded Indebtedness

Total amount of outstanding and unpaid bonded indebtedness: \$0

\* Outstanding principal

### Comparison of Proposed Rates with Last Year's Rates

	Maintenance & Operations	Interest & Sinking Fund*	Total	Local Revenue Per Student	State Revenue Per Student
Last Year's Rate	\$1.300000	\$0.000000*	\$1.300000	\$1,637	\$5,049
Rate to Maintain Same Level of Maintenance & Operations Revenue & Pay Debt Service	\$1.152700	\$0.000000*	\$1.152700	\$1,598	\$5,287
Proposed Rate	\$1.192700	\$0.000000*	\$1.192700	\$1,653	\$5,666

\* The Interest & Sinking Fund tax revenue is used to pay for bonded indebtedness on construction, equipment, or both. The bonds, and the tax rate necessary to pay those bonds, were approved by the voters of this district.

### Comparison of Proposed Levy with Last Year's Levy on Average Residence

	Last Year	This Year
Average Market Value of Residences	\$32,539	\$36,126
Average Taxable Value of Residences	\$18,707	\$20,942
Last Year's Rate Versus Proposed Rate per \$100 Value	\$1.300000	\$1.192700
Taxes Due on Average Residence	\$243.19	\$249.77
Increase (Decrease) in Taxes	\$0.00	\$6.58

Under state law, the dollar amount of school taxes imposed on the residence homestead of a person 65 years of age or older or of the surviving spouse of such a person, if the surviving spouse was 55 years of age or older when the person died, may not be increased above the amount paid in the first year after the person turned 65, regardless of changes in tax rate or property value.

**Notice of Rollback Rate: The highest tax rate the district can adopt before requiring voter approval at an election is 1.192700. This election will be automatically held if the district adopts a rate in excess of the rollback rate of 1.192700.**

### Fund Balances

The following estimated balances will remain at the end of the current fiscal year and are not encumbered with or by a corresponding debt obligation, less estimated funds necessary for operating the district before receipt of the first state aid payment:

Maintenance and Operations Fund Balance(s)	\$926,828
Interest & Sinking Fund Balance(s)	\$0

# OCR rules in favor of Bovina Schools

The Bovina School Board on Monday got news about the U.S. Office of Civil Rights' investigation into the school sports program. Last year, resident Tammy Knoll had complained to the federal agency, saying that the school had started a boys' sports program (baseball) but wasn't adding a girls' sport, too. This went against Title IX guidelines, she felt.

After an investigation, the OCR issued its final report that Bovina School was "not out of compliance" and its investigation was over.

In other business, the board:  
 -- Heard that the first day enrollment was 469, up from 454 on the first day of 2005.  
 -- Approved a balanced budget of \$3,840,256. For the past couple of years, the proposed budgets had included deficits. New school Supt. Bill Bizzell set as one of his goals to present a completely balanced budget.  
 -- The proposed tax rate will be \$1.1927, down from \$1.30 last year. The district's valuation was \$64,468,572, up about \$2 million over last year.  
 -- Received the preliminary state accountability ratings. The district was ranked as "acceptable" but the

Continued on Page 9

# Villarreal to head Guadalupanas

St. Ann's Catholic Church Guadalupanas gathered on Aug. 9 to elect officers.

Rita Villarreal gave the opening prayer. Of the group's 19 members, 11 were present.

Officers for 2006-2008 will be: Norma Villarreal, president; Elva DeLeon, vice president; Lupe Rodriguez, secretary; Tina Uriegas, treasurer; Maria Robleo, reporter; Grace Ortiz, historian; and Juanita Contreras, parish council representative.

The group discussed the annual Mexican dinner, which will be held on Sept. 24 at S. Ann's from 11:30 a.m. to 2 p.m. All are invited.

Norma Villarreal gave the closing prayer.

**PIZZA-SUBS-SNACKS**  
*Saturday All Day Special!*  
 Large Pepperoni Pizza - or - Any 12" Sub  
**Only \$4.99**  
*Call store for details.*

**Food Express**  
**Hwy. 60 • 251-9945**

***Bovina Banter***  
 Toya DeLeon • 251-1496

Folks, we are two weeks away from the big football contest, with weekly cash prizes and the overall winner getting two Dallas Cowboys tickets.

It's fun to play, and doesn't cost a penny. Lots of families and businesses participate, and we hope you do, too.

Remember to turn in your ballot before 3 p.m. on Friday to the Parmer County Appraisal District office on 3rd Street. They will fax it to the Tribune.

\*\*\*  
 An adult softball league is starting up soon, headed by a couple of the guys at Charles Oil Co. It's scheduled for six games, and to end before harvest.

\*\*\*  
 Larry Hodnett had surgery last week.

\*\*\*  
 The Church of Christ fish fry was this week.

\*\*\*  
 On Aug. 10, Bovina Lowe's employees held a going away party for manager Danny Pollard. His last day was Aug 12.

\*\*\*  
 A special thanks to the folks who ran the recent Vacation Bible School at the 1st Baptist Church:

Nursery, Veda McKay; 3 & 4 year olds, Darlene Miller, Suezy Smith, Hannah Miller; 5 year olds, Michelle Hromas; 1st grade, Maria Jass; 2nd grade, Carla Silva; 3rd grade, Cristy Harris; 4th grade, Donann Teague; 5th grade, Johanna Knoll; 6th grade, Randy Stone; kitchen, Toya DeLeon, Alice Stone; trailers, Andy Garza, Billy Smith, Jessie Stone, Larry Hodnett; Bible story, Arlene Brozek; music, Justin Brozek, Mike Teague; sound and computer, Stan Miller and Jake Brozek; directors, Ester Steelman and Arlene Brozek.

\*\*\*  
 Next week's school lunches:  
 Monday - Salisbury steak, chef salad, au gratin potatoes, carrot/celery, wheat rolls, garden salad, mix veg-

**The City of Texico will hold a public meeting on August 22, 2006 at 6:30 p.m. mt at Texico City Hall, 219 Griffin St.**

**To review the infrastructure plan for capital improvements for the City of Texico**

etables, fruit cocktail.  
 Tuesday - Chicken on bun, hamburger, potatoes wedges, burger setup, green beans, juice bars.  
 Wednesday - Nachos, chalupas, refried beans, tossed salad, spanish rice, cottage cheese, jello with fruit.  
 Thursday - Hot turkey sandwich, hamburger, green beans, cream potatoes, cranberry sauce, garden salad, carrot/celery, yellow cake, peaches.  
 Friday - Lasagna, pepperoni pizza, bread sticks, carrot/celery, corn, salad, cottage cheese, pears.

\*\*\*  
 The First Baptist Church of Bovina held an Appreciation Luncheon last Thursday to welcome back the staff of Bovina ISD. There were hamburgers, baked beans and brownies.

The Church also gave everyone a "Survival Kit" to help get them through the year. The food was great and the staff of Bovina ISD really appreciated the lunch. To my knowledge this is the first time anything like that has been done here in Bovina. Thanks to everyone involved!

\*\*\*  
 On Sunday night, we had 1 1/5 inches of rain in Bovina.

\*\*\*  
 Congratulations to Hugo and Peggy Falkenberg on their new great-granddaughter.

**Mark & Glenn**

**Trees, Bushes & Hedges Trimmed & Shaped**

**Shot's Tree Trimming will do it right!**

**FREE ESTIMATES: 762-0060**

**Opening Soon**

**X-PRESS CARE**

**Non-Emergent Care Clinic**

Also accepting Primary Care Patients

Marc Osborn, FNP  
 Melvina Fielden, FNP

Open 7 days a week for your convenience  
 Mon.-Sat. -- 9 a.m. to 9 p.m. mst.  
 Sundays -- 1 p.m. to 9 p.m. mst.  
 Walk-ins welcome  
 Most insurances accepted

**X-PRESS CARE**

2021 W. 21st St. Clovis • 505-762-7331

**Notice of Public Hearing on Tax Increase**

The PARMER COUNTY will hold a public hearing on a proposal to increase total tax revenues from properties on the tax roll in the preceding tax year by 2.196307 percent (percentage by which proposed tax rate exceeds lower of rollback tax rate or effective tax calculated under Chapter 26, Tax Code). Your individual taxes may increase at a greater or lesser rate, or even decrease, depending on the change in the taxable value of your property in relation to the change in taxable value of all other property and the tax rate that is adopted.

The public hearing will be held on August 28, 2006 at 10:00 AM at Parmer County Courthouse. A second hearing will be held on September 18, 2006 at 10:00 AM at Parmer County Courthouse.

The members of the governing body voted on the proposal to consider the tax increase as follows:

FOR:	Kirk Frye, Tom Ware, Michael Haseloff, Elvis Powell,
AGAINST:	None
PRESENT and not voting:	None
ABSENT:	None

**Comparison of Proposed Budget with Last Year's Budget**

The applicable percentage increase or decrease (or difference) in the amount budgeted in the preceding fiscal year and the amount budgeted for the fiscal year that begins during the current tax year is indicated for each of the following expenditure categories:

Maintenance and operations	4.000000% (increase) or	% (decrease)
Debt service	% (increase) or	-1.000000% (decrease)
Total expenditures	3.000000% (increase) or	% (decrease)

**Total Appraised Value and Total Taxable Value as calculated under section 26.04, Tax Code**

	Preceding Tax Year	Current Tax Year
Total appraised value* of all property	\$510,055,877	\$541,936,388
Total appraised value* of new property**	\$1,962,753	\$15,921,703
Total taxable value*** of all property	\$483,731,683	\$510,245,011
Total taxable value*** of new property**	\$1,945,740	\$15,914,348

**Bonded Indebtedness**

Total amount of outstanding and unpaid bonded indebtedness: \$2,940,000

**Tax Rates**

Adopted tax rate for the preceding tax year	\$0.528400 per \$100 in value
Proposed tax rate for the current tax year	\$0.525800 per \$100 in value
Difference in the proposed tax rate and the adopted tax rate for the preceding tax year	\$0.002600 per \$100 in value

Percentage increase or decrease in the proposed tax rate and the adopted tax rate for the preceding tax year

0.492051 % Increase  
 OR  
 0.492051 % Decrease

**These tax rate figures are not adjusted for changes in the taxable value of property.**

**Comparison of Residence Homestead Values**

Average appraised and taxable values on residence homesteads are compared from the preceding tax year and the current tax year.

	Preceding Tax Year	Current Tax Year
Average residence homestead appraised value	\$44,939	\$49,093
Homestead exemption amount for the taxing unit (excluding special exemptions for persons 65 years of age or older or disabled)	\$0	\$0
Average taxable value of a residence homestead (excluding special exemptions for persons 65 years of age or older or disabled)	\$44,939	\$49,093

**Comparison of Residence Homestead Taxes**

The taxes that would have been imposed in the preceding tax year on a residence homestead at the average appraised value (excluding special exemptions for person 65 years of age or older or disabled) are estimated to be \$237. The taxes that would be imposed in the current tax year on the residence homestead appraised at the average appraised value in the current tax year (excluding special exemptions for person 65 years of age or older or disabled), if the proposed tax rate is adopted, are estimated to be \$258. The difference between the amount of the taxes on the average residence homestead in the current tax year, if the proposed tax rate is adopted, and the preceding tax year would be an increase of \$21 of taxes.

**2006 Property Tax Rates in CITY OF BOVINA**

This notice concerns 2006 property tax rates for CITY OF BOVINA. It presents information about three tax rates. Last year's tax rate is the actual rate the taxing unit used to determine property taxes last year. This year's effective tax rate would impose the same total taxes as last year if you compare properties taxed in both years. This year's rollback tax rate is the highest tax rate the taxing unit can set before taxpayers can start tax rollback procedures. In each case these rates are found by dividing the total amount of taxes by the tax base (the total value of taxable property) with adjustments as required by state law. The rates are given per \$100 of property value.

**Last year's tax rate:**

Last year's operating taxes	\$144,956
Last year's debt taxes	\$0
Last year's total taxes	\$144,956
Last year's tax base	\$24,992,409
Last year's total tax rate	0.580000/\$100

**This year's effective tax rate:**

Last year's adjusted taxes (after subtracting taxes on lost property)	\$144,925
÷ This year's adjusted tax base (after subtracting value of new property)	\$26,329,354
= This year's effective tax rate	0.550400/\$100

**This year's rollback tax rate:**

Last year's adjusted operating taxes (after subtracting taxes on lost property and adjusting for any transferred function, tax increment financing, state criminal justice mandate and/or enhanced indigent health care expenditures)	\$163,693
÷ This year's adjusted tax base	\$26,329,354
= This year's effective operating rate	0.621700/\$100
× 1.08 = this year's maximum operating rate	0.671400/\$100
+ This year's debt rate	0.000000/\$100
= This year's rollback rate	0.671400/\$100
- Sales tax adjustment rate	0.069700/\$100
= Rollback tax rate	0.601700/\$100

**Statement of Increase/Decrease**

IF CITY OF BOVINA adopts a 2006 tax rate equal to the effective tax rate of 0.550400 per \$100 of value, taxes would increase compared to 2005 taxes by \$ 3,122.

**Schedule C - Expected Revenue from Additional Sales Tax**

(For hospital districts, cities and counties with additional sales tax to reduce property taxes)

In calculating its effective and rollback tax rates, the unit estimated that it will receive \$ 18,768 in additional sales and use tax revenues.

**For County:** The county has excluded any amount that is or will be distributed for economic development grants from this amount of expected sales tax revenue.

-----

This notice contains a summary of actual effective and rollback tax rates' calculations. You can inspect a copy of the full calculations at 305 3rd Street, Bovina, TX 79009.  
 Name of person preparing this notice: Curby Brantley Jr.  
 Title: Chief Appraiser  
 Date prepared: August 1, 2006

# BOVINA



Proud Home of the Mustangs & Fillies

## BOVINA JUNIOR VARSITY FOOTBALL SCHEDULE 2006

DATE	OPPONENT	PLACE	TIME
08/31/06	Morton	Morton	6:30
09/07/06	San Jancito	Bovina	6:00
09/14/06	New Deal	Bovina	7:30
09/21/06	Friona	Friona	6:30
09/26/06	San Jancito	Bovina	6:00
10/05/06	OPEN		
10/12/06	Sudan	Sudan	7:30
10/19/06	OPEN		
10/26/06	OPEN		
11/02/06	Farwell	Farwell	6:30
11/09/06	Springlake/Earth	Bovina	6:30

## BOVINA 8<sup>TH</sup> GRADE FOOTBALL SCHEDULE 2006

DATE	OPPONENT	PLACE	TIME
09/07/06	Open		
09/14/06	New Deal	Bovina	6:15
09/21/06	Friona	Bovina	6:15
09/28/06	Open		
10/05/06	Open		
10/12/06	Sudan	Sudan	6:15
10/19/06	Hart	Hart	6:15
10/26/06	Nazareth	Bovina	5:00
11/02/06	Farwell	Farwell	6:15
11/09/06	Springlake/Earth	Bovina	6:15

## BOVINA 7<sup>TH</sup> GRADE FOOTBALL SCHEDULE 2006

DATE	OPPONENT	PLACE	TIME
09/07/06	Open		
09/14/06	New Deal	Bovina	5:00
09/21/06	Friona	Bovina	5:00
09/28/06	Open		
10/05/06	Nazareth	Nazareth	5:00
10/12/06	Sudan	Sudan	5:00
10/19/06	Hart	Hart	5:00
10/26/06	Nazareth	Bovina	5:00
11/02/06	Farwell	Farwell	5:00
11/09/06	Springlake/Earth	Bovina	5:00

## Teams to be charged for using city ball field

The Bovina City Council on Aug. 10 unanimously voted to charge teams for using the city's ball field.

In order to use it, you must reserve it two weeks prior to the event. There will be a \$100 deposit for the scoreboard (if used) and a \$100 security deposit for the field. Both fees are refundable after the cleanup and inspection.

Also, there is a \$150 fee to use the field, and this is not refundable.

There are exceptions, though. These fees do not apply to school-sponsored events. Also, the city's Little League program will be exempt.

There will be a one-time charge for a softball league.

In other business, the council:

--Received the news from Duncan Disposal that they were raising their rates 5.5 percent.

So the city is raising the trash fees for city residents \$1 a month. The cost for residents will go from \$15 to \$16 a month, and for commercial users, \$45 to \$46.

City Manager Ernest Terry said this will be their fourth raise in the past five years. The other raises were absorbed by the city, but this hike has necessitated higher fees to users for the first time in five years.

-- Scheduled public hearings for Sept. 1 and 12 for the budget and tax levies.

-- Received one bid, from Gabriel Valeriano, for the 1964 Army 5-ton dump truck, for \$1,500. It was accepted.

-- Set the next regular council meeting for Sept. 12.

-- Okayed a request from the firemen to buy a grass fire-fighting unit for \$12,300. The unit will be put on a platform on the old fire truck.

Fire Chief Cesar Marquez reported that the city has to ante up \$4,000 toward the purchase, with the rest of the money coming from a grant.

Marquez was commended for his work on getting grant funds over the years.

## Bovina loves enchiladas

by Brittany Anderson:

There is nothing better than sitting down to enjoy your favorite meal. It's one subject that everyone can relate to ... Food!

Therefore, my last Man on the Street interview for the year at the Lowe's Supermarket in Bovina was, "What is your favorite meal?"

Everyone's favorite seems to be a little different. For instance, Fernando Madrid loves tamales, Arlene Brozek's favorite is tacos, and for Marissa Marquez it just doesn't get any better than a good pizza.

The favorite of the day seemed to be enchiladas. Enchilada lovers were Marivel Larrea, Rosa Anaya, and Brandie Munoz.

Brandie likes chicken enchiladas the best. "We make them at the house with cream of mushroom and jalapenos," she said. "Rice and beans go great with them as well."

Second on the favorites list was lasagna. Both Rita Navarro and Danny Pollard love that Italian specialty. "It's especially good at the Olive Garden," said Danny.

Michael Silva, loves the traditional American fast food meal ... a hamburger and french fries.

"Prime rib steak," says Andrew Forrest. That about says it all right?

Little Miss Mya Navarro loves blueberry waffles with syrup. In fact, her mom, Rita Navarro, had just picked up a box, when I talked with them.

"I like chicken of any kind," said Tim Michalak.

"Popcorn shrimp from Red Lobster, on special occasions, is my favorite," said Cathy Riley.



A fresh coat of paint

There are some new paint jobs at Bovina Schools when kids return. Pictured are Yancy Graves, above, in the newly-repainted cafeteria, and Stan Miller "drumming it up" for the renovated Band Hall.



**Cargill Cattle Feeders**  
Pat Schwab, Manager  
225-4400

**Bovina Community Network**  
251-1333

**Sherley - Anderson**  
907 Hwy. 86 West • 251-2510

**1ST BANK MULESHOE**  
**Bovina Branch**  
101 N. 3rd St. • 251-1442  
Member FDIC Equal Housing Lender

PIZZA - SUBS - SNACKS  
**Food Express**  
Hwy. 60 • 251-9945

**Bovina Pump**  
W. Hwy. 86 • 251-1596

**Lowe's Supermarket**  
Danny Pollard, Manager  
800 Hwy. 86 • 251-1324