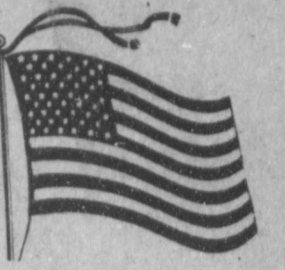




BAILEY COUNTY JOURNAL

'The Community of Opportunity-Where Water Makes the Difference'



20¢

Volume 19, No. 1

10 Pages Today

Published Every Sunday at Muleshoe, Bailey County, Texas 79347

Sunday, January 4, 1981



1981 NEW YEAR BABY.....Several hours after he was born, Brian Heith Mullins was looking around this strange new world. The first baby born in 1981 was born at 2:04 a.m. on Friday, January 2 to Mr. and Mrs. Dewaine Mullins. Mullins is an employee of the Texas Department of Highways and Public Transportation. The newborn received several gifts from local merchants.

Near-Perfect Weather Ushers In New Year

Brian Mullins New Year Baby

For the first time in three or four years, the New Year Baby made it into this world almost on

January 1.

Brian Heith Mullins was born to Mr. and Mrs. Dewaine Mullins at 2:04 a.m. on January 2 to become the first baby born in Bailey County in 1981.

Low Crop Insurance Increases

Several Bailey County farmers are among those receiving more than \$21 million paid to New Mexico, Oklahoma, and Texas farmers on this year's low crop yields, the Federal Crop Insurance Corporation announced.

"This was one of the worst years in history for U.S. farmers. In this region, farmers were faced with everything from hot, dry weather to hurricanes. Every crop we insure and almost every acre of the region was hit by some disaster. Claims have been filed on over 33 percent of our insurance units. With the cost-price squeeze farmers are facing today, the FCIC indemnity many receive is going to be the only way they can continue operating," explained Ben A. Jordan Jr., College Station Regional Director.

Texas farmers will receive more than \$18 million of FCIC indemnities while some \$2.4 million will go to Oklahoma farmers and over \$400 thousand will go to farmers in New Mexico. The most heavily damaged crops include cotton, wheat, grain sorghum and peanuts, but substantial payments will also be made on citrus, corn, rice and soybeans.

The government sponsored program is designed to cover the investment a farmer makes in raising a crop. Since the voluntary program was started in 1938, more than 90 cents of every dollar of

Cont. Page 6, Col. 2

Weir Wins Bowl Game Top Honor

It's finally over for 1980, and football has all but ended. In Muleshoe and the surrounding area, where the annual football contest is ever-popular, with the Bowl Game, or Consolation Contest, football has officially ended.

And for irony of all ironies, the winner of the annual Bowl Game Contest was Doyle Weir, who lost the annual football contest on a toss of a coin.

He missed two games in the Bowl Game Contest, and was only 21 points away on the tiebreaker scores. Weir missed the Florida-Maryland game and the Florida State-Oklahoma game.

Weir correctly predicted the outcome and the exact score in the Sugar Bowl game between Georgia and Notre Dame, but figured Baylor would fall 10-17 to Alabama.

In second place, but out of the money was Gary King, last year's Bowl Game winner. He missed two games, Ohio State-Penn State and the North Carolina-Texas game, but was away 26 points on the double tiebreakers.

Others missing two games and their tiebreaker scores were Oscar Hernandez, 31; Elaine Roddam, 32; Lupe Rejino, 39; and Gig Pierce, 48.

Weir was presented his

Farmer, Rancher Tax Time Requires Multi-Decisions

Farmers and ranchers have only a few more days to make decisions that could affect their 1980 in-

come tax situation. Year-end planning can help save tax dollars, says Spencer Tanksley, county agent with the Texas Agricultural Extension Service, Texas A&M University System.

He suggests that farmers and ranchers follow a systematic procedure in making end-of-the-year tax management moves.

First, decide what your tax management goals are. Commonly, the goal is to save income taxes, but check the impact of this goal on social security retirement income. Although an important objective in income tax management is to smooth out variations in income from year to year, individuals nearing age 65 may want to defer the recognition of income until

age 65 to take advantage of the larger personal exemption.

After defining your tax management goals, it is time to make some estimates, points out Tanksley. Calculate 1980 net farm profit, taxable non-farm income, and total tax due. Estimate the same items for the 1981 tax year.

By comparing 1980 and 1981 taxable income estimates, decide whether to increase or decrease this year's taxable income (especially net farm profit) relative to next year's. If the drought had reduced your 1980 taxable income and you expect that 1981 will be a more profitable year, you may want to postpone some expenses for farm supplies and purchases of machinery until



According to Sammie Ethridge, the names of Ernest and Jewell McNatt were inadvertently left off the Community Christmas Card in the December 21 edition of *The Journal*.

The McNatt's hope you and yours have had a joyous holiday season.

Guests in the Jinks Meyers home Christmas Day were Charlie and Winn Cantwell and daughter.

Cont. Page 6, Col. 1



HE'S A WINNER.....Muleshoe and Bailey County Journal's bookkeeper Joy Williams.

Friday Sandstorm Lowers Temperatures

Unseasonably warm temperatures ushered in 1981, with shirt-sleeve and almost bathing suit weather recorded on January 1.

Since two rather severe cold snaps accompanied each time by 10 inches of snow in November, the weather has remained balmy in this area.

Despite very cold nights, which generally leave car windshields and windows iced over, daytime temperatures are reaching into the high 60's and 70's creating a spring-like effect.

Tiny flowers and spring greenery have already popped out of the ground, apparently unaware they will be 'nipped back' when really cold wintertime again makes its presence known. Some trees and

bushes are budding out, an event that is not normally noticed until around March when the first warm weather starts warming the soil.

For this weekend, the National Weather Service predicts more of the warm weather, although on Friday, wind and sand whipped around in another spring display.

While approximately half of the nation is enjoying the warm, dry weather, the other half is experiencing snow, ice and extremely cold temperatures.

Much of the northeastern part of the United States greeted the new year with an abundance of snow and ice, accompanied by temperature hovering around the 0-40 degree

Cont. Page 6, Col. 4

Pioneer Gas Opens Split Stock Sales

Stockholders of Pioneer Corporation (NYSE) approved today a two-for-one split of the company's common stock.

The split becomes effective at the close of business today. Pioneer officials said that certificates representing the increased shares will be mailed to stockholders about January 20. Pioneer's directors had earlier announced their intention to raise the quarterly dividend to 22 cents per split share from 40 cents per share before the split.

The amendment to Pioneer's articles of incorporation providing for the stock split increased the authorized shares from 40 million to 80 million. Shares outstanding will increase from approximately 18.6 million to 37.2 million.

Approval also was given at the special meeting of stockholders to an amended company stock option plan.

During the meeting, K. B. Watson, president and chief executive officer of Pioneer, told stockholders that two new drilling rigs ordered for 1981 by Sharp Drilling Co., Inc., a Pioneer subsidiary, will be sent to the Williston Basin of North Dakota for use by another subsidiary, Pioneer Production Corporation. Sharp announced in early December that the company had ordered four new rigs for delivery in the coming year, and the two additional rigs will increase the Sharp fleet to 28 rigs.

Pioneer Production has long-term contracts for the two new Sharp rigs and plans to use them for exploratory drilling. Pioneer Production has leases on about 20,000 acres in the Williston Basin and expects to make trades with other leaseholders on early expiring leases, Watson said.

The first of the rigs is

Cont. Page 6, Col. 3



OFFICIALS RECEIVE OATH OF OFFICE.....Several newly elected county officials received their oath of office from Bailey County Judge Glen Williams on Thursday. Included as new officials are from left, R.L. Scott, Commissioner,

WE'VE GOT YOUR DOLLARS WORTH AT
Pay-n-Save

IT PAYS TO SAVE WITH US!

RICH'S TURKEY FRANKS
 12 OZ. PKG. **89¢**

RICH'S BNL'S FULLY COOKED TURKEY HAMS
 LB. **\$1.89**

HORMELS SUPER SELECT LEAN TRIM FRESH PORK QUARTER LOIN FAMILY PACK

PORK CHOPS
\$1.39
 LB.

MEAT SPECIALS		
PORK CHOPS	CENTER CUT LOIN ... LB.	\$1.79
PORK CHOPS	WAFER THIN CUT BREAKFAST ... LB.	\$1.89
SPARE RIBS	COUNTRY STYLE LOTS OF MEAT ... LB.	\$1.49
PORK STEAK	SUPER SELECT LEAN FRESH ... LB.	\$1.39

WRIGHTS HICKORY SMOKED SLICED **SLAB BACON**
 LB. **\$1.19**

HUNT'S SUPER SAVERS
 HUNT'S TOMATO SAUCE, HUNT'S PEACHES, SNACK PACK, FRUIT

RANCH STYLE **PLAIN CHILI**
 NO. 300 CAN **79¢**

DIET OR REG. **PEPSI-COLA**
 6 PK. CTN. 32 OZ. BTL. PLUS DEPOSIT **\$1.49**

HUNT'S **TOMATO JUICE**
 46 OZ. CAN **69¢**

SHURFINE ALL GRINDS **COFFEE**
 1 LB. CAN **\$1.99**

COFFEE-MATE 22 OZ. JAR **\$1.89**

SPECIALS FROM THE GROCERY DEPARTMENT		
POPCORN	ORVILLE REDENBACHER ... 30 OZ. JAR	\$1.59
MUSHROOMS	SENECA WHOLE/SLICED ... 8 1/2 OZ. JAR	\$1.59
FLOUR	ENRICHED GLADIOLA ... 5 LB. BAG	89¢
DRESSING	KRAFT 1000 ISLAND/ CREAMY CUCUMBER ... 16 OZ. BTL.	\$1.19
JELLY	KRAFT GRAPE ... 2 LB. JAR	\$1.09
MAYONNAISE	KRAFT REAL ... 16 OZ. JAR	89¢
DOWNY	15' OFF LABEL FABRIC SOFTENER ... 33 OZ. BTL.	99¢

HUNT'S YC HALVES OR **SLICED PEACHES**
 29 OZ. CAN **69¢**

HUNT'S ASSTD. PUDDINGS **SNACK PACK**
 4 CT. PACK **89¢**

SPILLMATE PRINTS/ASSTD. **PAPER TOWELS**
 JUMBO ROLL **69¢**

SUNSHINE **KRISPY CRACKERS**
 16 OZ. BOX **59¢**

SHURFINE WK/CS GOLD **CORN**
 17 OZ. CANS **3\$1**

HEALTH AND BEAUTY AIDS

PONDS **COLD CREAM**
 6.1 OZ. JAR **\$2.39**

REVLON SHAMPOO OILY MILK PLUS 6
 TINTED NORMAL 8 OZ. BTL. **\$1.69**

FOR YOUR COLD **VICKS NYQUIL**
 10 OZ. BTL. **\$2.89**

35¢ OFF LABEL DETERGENT **TIDE**
 84 OZ. BOX **\$2.69**

PRODUCE SPECIALS

CALIFORNIA GREEN SKIN **AVOCADOS**
5\$1 FOR

ORANGES JUICY TEXAS 5 LBS. **\$1.19**
BELL PEPPERS GREEN TEXAS LB. **49¢**
POTATOES COLORADO RUSSET 10 LB. BAG **\$1.79**

DAIRY AND FROZEN FOODS

SHURFRESH **BUTTERMILK** 1/2 GAL. CTN. **99¢**

SHURFRESH **HALF & HALF** PT. CTN. **49¢**

KRAFT **VELVEETA** 1 LB. BOX **\$1.59**

PILLSBURY BAKERY STYLE **ROLLS** 11 OZ. PKG. **69¢**

PARKAY QUARTERS **MARGARINE** 1 LB. BOX **59¢**



Double Stamps Every Wednesday & Saturday



COME TO PAY-N-SAVE FOR YOUR WIC CARD PURCHASES

Scanning Social Security

What would life in these United States be like without Social Security? Today's column is an objective observation of our nation without the stabilizing effect of social security has on our economic and social life.

Social Security was born in 1935, after six years of severe depression. Jobs were not available for more than 20 million who wanted to work. Cities, counties, and states could not handle the heavy load of taking care of the hungry and jobless.

The problem was addressed in the Congress of the United States at the prodding of then President

Franklin Delano Roosevelt. Legislation was passed which enabled the Federal government to provide for the hungry and the unemployed with no income.

Today we have almost 7 percent of the working people of this country out of work. Contrasted with the mid-thirties however, this 7 percent is much worse off than then because a pound of bacon cost nineteen cents then and about \$1.90 at this time. To those with no income, the present situation is intolerable.

Today, social security provides income for almost 35 million persons, most of whom need the income to pay for food, clothing, and shelter for themselves and their families. In the 1930's there were no payments made from Social Security to give the Trust Funds time to accumulate, but

today millions of people depend upon social security to pay a large part of their expenses.

I am convinced that without social security today we would see many people resorting to violence to obtain the very necessities of life, at best, and at worst no telling what. Thinking people realize the impact that social security has at the present time.

It Couldn't Last
Druggist—Did the mud-pack I suggested improve your wife's appearance?
Customer—It did for a few days, but then it wore off.

Bailey County Journal USPS 040-300
Established March 31, 1963. Published by Muleshoe Publishing Co., Inc. Every Sunday at 50¢. Second class postage paid at Muleshoe, Texas, 75347. Second class postage paid at Muleshoe, Texas, 75347.

MEMBER 1981
TEXAS PRESS ASSOCIATION

L.B. Hall - President
James Woods - Vice President
Cleta Williams - News
Evelene Harris - Society
Holly Milling - Advertising
Dorinda Crowder - Bookkeeper

SUBSCRIPTIONS:
Muleshoe Journal and Bailey County Journal
Bailey and surrounding counties.....\$10.50
Muleshoe Journal and Bailey County Journal
Elsewhere in Texas.....\$11.95
Muleshoe Journal and Bailey County Journal
Outside of Texas.....\$12.95
Yearly by Carrier.....\$11.50
Monthly by Carrier.....\$1.45
Advertising rate card on application

TOPS Weekly Meeting

Muleshoe TOPS Chapter TX 34 met at 6:30 p.m. in the Meeting Room of Bailey County Electric. Carlene Stroud, leader, called the meeting to order. The TOPS song was sung and pledge recited.

Linda Vinson, weight recorder, called the roll with 21 members present. Minutes of the previous meeting were read by the secretary, Vickie Garner.

Carlene read the rules for the contest that starts next week. The contest will end in six weeks.

Best loser for the week was Evelene Harris, first runner up was Jenny Mitchell and Wanda Kemp was second runner up.

The members were reminded that the six month's best loser will be crowned next week, also the KOPS yearly queen. The monthly best loser will also be crowned.

JANUARY CLEARANCE

Sale Starts 9 am Tues. Jan. 6, 1981

Save On Men's Suits

You'll find savings on men's famous label suits. All selected from our regular stock. Shorts, Regular, Longs & X-Longs

Values to \$125.00.....	\$84.00
Values to \$130.00.....	\$86.00
Values to \$140.00.....	\$94.00
Values to \$150.00.....	\$99.00
Values to \$165.00.....	\$110.00
Values to \$170.00.....	\$115.00
Values to \$185.00.....	\$120.00
Values to \$200.00.....	\$140.00
Values to \$210.00.....	\$145.00
Values to \$230.00.....	\$152.00

SPECIAL GROUP 1/2 PRICE AND BELOW

Sport Coats & Ensembles

An outstanding selection has been reduced to clear.

SHOP EARLY!

Values to \$90.00.....	\$65.00
Values to \$100.00.....	\$69.00
Values to \$115.00.....	\$74.00
Values to \$150.00.....	\$99.00
Values to \$165.00.....	\$110.00
Values to \$175.00.....	\$120.00

SPECIAL GROUPS

Values to \$110.00	
One Group.....	\$20.00
One Group 1/2 Price and Below	

Men's Dress Shirts

Enormous selections of long sleeve dress shirts in solid colors and fancies to choose from.

Values to \$14.00.....	\$9.99
Values to \$16.00.....	\$10.99
Values to \$17.00.....	\$11.99
Values to \$18.00.....	\$12.99
Values to \$20.00.....	\$13.99
Values to \$22.50.....	\$14.99

ALSO TALL MAN INCLUDED

Sport Shirts

You'll see a large selection of velours, woven and knit sportshirts in solids and fancies.

Values to \$10.00.....	\$6.99
Values to \$12.00.....	\$7.99
Values to \$13.00.....	\$8.99
Values to \$16.00.....	\$10.99
Values to \$18.00.....	\$11.99
Values to \$20.00.....	\$13.99
Values to \$23.00.....	\$15.99
Values to \$26.00.....	\$16.99
Values to \$35.00.....	\$22.99
Values to \$37.50.....	\$24.99
Values to \$39.00.....	\$26.99
Values to \$43.00.....	\$28.99

ALSO TALL MAN INCLUDED

Special Groups Priced at 1/2 Price & Below

Bell-Bottom Jeans

Famous brand Size 28 to 36
Values to \$24.00.....~~\$10.99~~

Winter Coats And Vests

You'll save on your favorite style coat now! Selections of corduroy's, poplin, downs & polyester fabrics.

Values to \$28.00.....	\$19.99
Values to \$30.00.....	\$22.99
Values to \$37.00.....	\$24.99
Values to \$40.00.....	\$26.99
Values to \$42.00.....	\$27.99
Values to \$52.00.....	\$34.99
Values to \$55.00.....	\$36.99
Values to \$59.00.....	\$38.99
Values to \$63.00.....	\$41.99
Values to \$68.00.....	\$45.99
Values to \$71.00.....	\$47.99
Values to \$75.00.....	\$51.99
Values to \$102.00.....	\$74.99

Save On Men's Shoes

Groups consist of casual and dress type shoes. Shop early for best selections.

Values to \$35.00.....	\$23.99
Values to \$39.00.....	\$25.99
Values to \$45.00.....	\$29.99
Values to \$60.00.....	\$39.99

Special Groups Priced at 1/2 Price & Below

Men's Dress Pants

Groups consists of woven polyesters, wool & polyester knits. Good selection of colors to choose from

Values to \$18.00.....	\$13.99
Values to \$23.00.....	\$14.99
Values to \$25.00.....	\$17.99
Values to \$27.50.....	\$18.99
Values to \$30.00.....	\$20.99
Values to \$32.50.....	\$21.99
Values to \$34.00.....	\$23.99
Values to \$36.00.....	\$24.99
Values to \$38.50.....	\$25.99
Values to \$42.00.....	\$27.99
Values to \$47.00.....	\$29.99

SPECIAL GROUP 1/2 PRICE & LESS

Corduroy Overalls

Good selection of colors Size 27 to 32

Values To \$29.00.....	\$19.99
------------------------	--------------------

Men's Casual & Fashion Jeans

Selections of several styles. Ideal for all casual wear fabrics consists of corduroy, khaki & denim.

Values to \$25.00.....	\$17.99
Values to \$28.00.....	\$19.99
Values to \$30.00.....	\$20.99
Values to \$32.50.....	\$22.99

SPECIAL GROUPS 1/2 PRICE & BELOW

Small group price at \$6.00 each

Leather Coats

Save on entire stock of leather coats! All styles & colors included. Regs. or Longs.

Shop early on these

Values to \$135.00.....	\$89.00
Values to \$155.00.....	\$114.00
Values to \$165.00.....	\$120.00
Values to \$190.00.....	\$142.00
Values to \$225.00.....	\$155.00

Men's Sweaters

Save on large selections of cardigan, v-necks, sleeveless, ski types and suede fronts.

Values to \$15.00.....	\$9.99
Values to \$18.00.....	\$12.99
Values to \$23.00.....	\$15.99
Values to \$26.00.....	\$16.99
Values to \$30.00.....	\$19.99
Values to \$33.00.....	\$22.99
Values to \$37.50.....	\$24.99
Values to \$45.00.....	\$29.99
Values to \$57.50.....	\$39.99
Values to \$78.00.....	\$52.99
Values to \$90.00.....	\$61.99

Groups priced at \$5.00 to \$8.00

SHOP EARLY !!

Robes, Belts, Ties, Gloves, Dress Or Casual Vests And Many Other Items Greatly Reduced To Clear

We Will Be Closed Monday

January 5 To Prepare For This Sale Minimum Charges For Alterations



BAH, HUMBUG..... Who cares if it is 1981? While waiting for his father, Tom, to be sworn in Thursday morning as a deputy sheriff in Bailey County, Thomas Watson clearly exhibited what he thought of the whole thing.

January
Clearance
Special
Boys
Super Hero
Tennis Shoes

Sizes 5-12
1 1/2-6
Value \$19.99
\$9.97

St. Clair's

110 Main Muleshoe 272-4453

The Exciting
Mrs. Sally Nelson
Our National Director,
Will Be In The Salon
January 14
For An
Open House
Come By And Visit
With Mrs. Nelson



After



Before

Fat Walker's
Fat Walker's Figure Perfection Salons International
More than 28 years of success

Albertson's Shop For Men

Miss Drain, Pate Exchange Vows



MRS. STEVEN PATE (nee Lisa Meg Drain)

Lisa Meg Drain became the bride of Steven Keith Pate, Sunday, December 21 in a 3 p.m. ceremony at Arapaho Methodist Church in Richardson. The ceremony was performed by Rev. John Taylor.

Parents of the couple are Mr. and Mrs. Dan Drain of Richardson and Mr. and

Mrs. Keith Pate of Muleshoe. Mrs. Alta Taylor and Mrs. A.A. Drain of Farmersville are grandmothers of the bride. Mrs. Louis Rackley of Hale Center and Mr. and Mrs. Carl Pate of Plainview are grandparents of the groom.

The alter was outlined with poinsettias and tradi-

tional early American touches. The unity candle was highlighted by three large candelabras.

Matron of honor was Pam Drain Henderson; maid of honor was Belinda Drain, sisters of the bride; bridesmaids were Laurie Myers and Kathy Lynn Pate.

Best man was Brad Pate, brother of the groom. Groomsmen were Kerry Gilmore, Tim Healie and David Brooks.

Ushers were Brad Henderson, Stephen Zeech, Paul Webb, and Dan Novak. Leland Baker was the soloist, she was accompanied by Jane Swanson.

The bride and groom are recent graduates of Texas Tech University. After a wedding trip to Cancun, Mexico, they will make their home in San Antonio.

Mr. and Mrs. Keith Pate parents of the groom, hos-

December 20, in the Plano Room of the Marriott Inn North, Dallas. Special guests were the wedding party, Rev. and Mrs. John Taylor, Mr. and Mrs. Dan Drain, parents of the bride and Pat Graves, who served as emcee and coordinator of a "This Is Your Life" program, spotlighting the bride and groom and their families.

When you watch some television programs, you can almost be thankful for the commercials.

BIBLE VERSE

"He that hath two coats, let him impart to him that hath none; and he that hath meat, let him do likewise."

1. Who made the above statement?
2. To whom was he speaking?
3. What happened just after this?

Answers to Bible Verse

1. John the Baptist.
2. The people who were listening to his sermon.
3. He introduced Jesus as the long promised Messiah of the Jews.

Trinity Baptist Celebrates Anniversary

under the direction of the pastor of the First Baptist Church, Bro. A.W. Blaine. The twenty-six charter members came also from the First Church, Bro. J.E. Moore opened the first worship service and later accepted the call as the first pastor of the Mission.

By January 1, 1956, the Mission had been rebuilt and had a seating capacity of two hundred. At that time the Mission requested to be recognized as Trinity Baptist Church and the request was granted.

As the years went by and the congregation grew additional room was needed, and in 1961 an educational unit was added onto the back of the auditorium which has a seating capacity of four hundred.

The celebration will be held on Sunday, January 11, morning services will begin at 9:45 a.m. A meal will be served at noon and afternoon services will start at 2:00 p.m. There will be special singing and fellowship throughout the day.

Among the speakers and guests of the day will be Bro. Troy Walker, Bro. V.L. Huggins, and Bro. David Evetts, all one time pastors of Trinity. Also Bro. A.W. Blaine, Franklin Swanner, Marvin Lewis, Jimmy Hatcher, and D. Jay Lewis.

The pastor, Don Knight and all the members of the Trinity Baptist wish to extend this invitation to all members past and present to come and participate in this joyous occasion and to visit with many old friends and fellow church members.

No Stable
Ill-mannered Diner--Hey, waiter!
Waiter--Don't serve it, sir.

Bailey County 4-H Council Meeting Held

The Bailey County 4-H Council met December 17 at 4:30 p.m. in the courthouse. Officers for the coming year were elected. They are as follows: president - Tim Sain; vice president - Alan Harrison; reporter - Tamara Gilliland; historian - Brenda Flowers; and parliamentarian - Jimmy Gleason.

The summer exchange program was discussed. The representatives were to take the idea back to their clubs for consideration there. The members were also reminded about helping with the concession stand at the stock show.

The next council meeting will be held January 28, at 4:30 p.m. in the courthouse.

Members attending the meeting were Tim Sain, Mandy Plank, Marlin By-

num, Glen Flowers, Brenda Flowers, Tamara Gilliland, Mitzi Robertson, Staci Kirby, Belinda Wheeler, Kelly Harrison, Alan Harrison, and Jim Irwin.

The man that blushes is not quite a brute.
-Edward Young.

Keep Away
"Bill got his nose broken in three places."
"Well, if he takes my advice he'll keep out of those places in the future."

Naturally
"When did you become acquainted with your husband?" a wife was asked.
"After I married him," she sighed.

Society Deadlines Set

Weddings must be in the office by Monday noon for the Thursday paper and by Thursday noon for the Sunday paper. Any wedding more than two weeks old must be edited and only the basic information included.

No shower picture will be taken without a 24 hour notice and copy must be in the office by Monday at 5 p.m. for the Thursday paper and by Thursday at 5 p.m. for the Sunday paper. An honoree's picture will be taken at only one shower.

All club stories for following edition of paper must be in the office by 10 a.m. on Tuesday and Friday preceding the next issue of the paper.

True Value
HANDMADE STORE

BARGAIN OF THE MONTH

QUANTITIES LIMITED

Taylor
now
468

While Supplies Last

Indoor/Outdoor THERMOMETER
Twin 9 3/4 x 2 1/4 in. tubes give readings of indoor and outdoor temperatures, so there's no need to go outside to find out how cold it is. Black case. 5377

401 S. 1st.
Muleshoe
272-4511

Copy
INC.
GAY

January

CLEARANCE SALE

30 - 50% OFF

In All Departments

Sale Starts
9 a.m.
Monday, January 5

Ware's

January Clearance Special

Junior Fashion Jeans
Value \$25
\$11.97

St. Clair's

110 Main Muleshoe 272-4453

January Clearance Sale

Monday January 5
10 a.m. - 6 p.m.
1/4 To 1/2 Off
On All Fashions

Infants Toddlers
Girls 7-14 Pre-Teen Girls 4-6x
Juniors Ladies

No Returns
No Charges
No Layaways

Latrell's Fashions

PHONE 806 272-3459
1519 WEST AMERICAN BLVD

STOREWIDE CLEARANCE

ALL Lamps 1/2 price

Values On Ceiling Fans
G.E. Home Appliances

Excellent Selection of Broyhill, Tell City & Lazy Boy

Just Arrived
15 New Rolls of Carpet
Over 5000 sq. yds.
In Stock

Johnson Furniture

Mrs. Long, Marty O'Brian Honored With Baby Shower



MRS. MART LONG AND MARTY O'BRIAN

PEANUT CRUNCH

1 C. sugar
 1/2 tsp. salt
 1/2 C. butter
 1/4 C. water
 1/2 tsp. vanilla flavoring
 1 C. chopped peanuts (divided)
 1 (6 oz.) pkg. semi-sweet chocolate pieces

Butter a 15x10-inch cookie sheet and set aside. In a medium saucepan, combine sugar, salt, butter and water. Cook until mixture reaches 240 degrees F. (132 degrees C.) on a candy thermometer. Add vanilla flavoring, stir in 1/2 cup chopped peanuts. Pour mixture onto buttered cookie sheet and spread to 1/4-inch thickness. Sprinkle 1/2 cup peanuts over top. Let mixture cool. Melt chocolate and spread over cooled candy mixture. Let cool and break into small chunks.

Mrs. Mart (Darlene) Long and Marty O'Brian were honored with a baby shower December 30 from 7-9 p.m. in the fellowship hall of the Trinity Baptist Church. Mrs. Long and Marty's grandmother, Nettie Long, greeted the guests.

Toni King and Sylvia Harp served blue thumb-print cookies and banana punch from crystal appointments. The serving table was covered with a white cloth and accented with a centerpiece of blue and white silk roses and baby's

breath. A corsage of blue and white baby booties, play pen and a high chair were presented to the honoree by the hostesses. Hostesses for the occasion were Toni King, Louise King, Terec Donaldson, Maxine Donaldson, Nina Rials, Sylvia Harp, Lela Sue King, Maudie Speck, Tammie Bratcher,

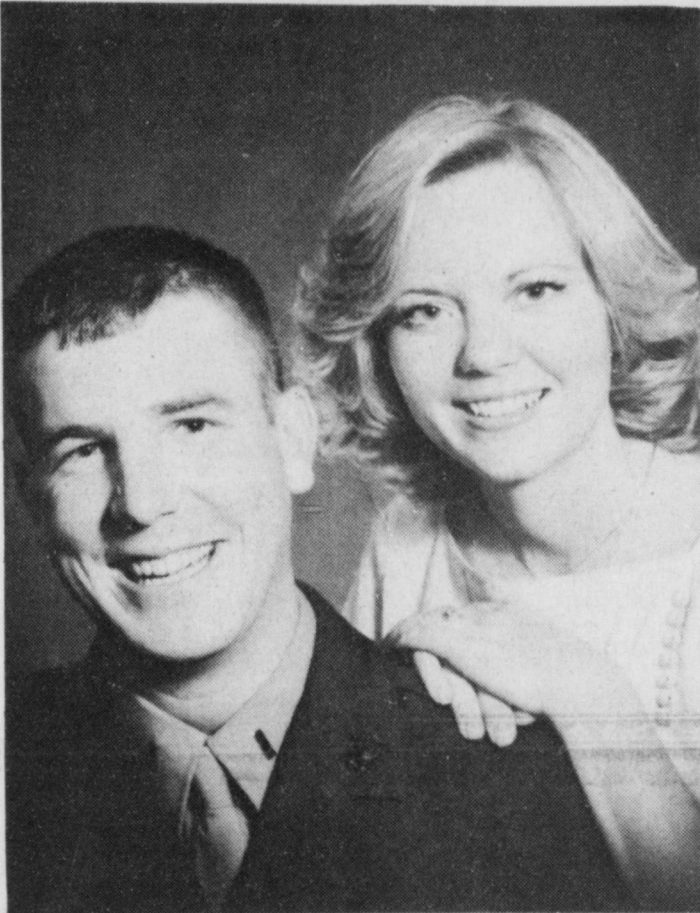
Connie Beversdorf, Lucille Harp, Ann Moore, Debbie Green, and Carren Pitcock.

Golden Gleams
 When you blush, it is nice to be careful.
 -F.W. Howe.

A blush is beautiful, but sometimes inconvenient.
 -Carlo Goldoni.



JANUARY WEDDING PLANS....Mr. and Mrs. Keith Pate of Muleshoe, announce the forthcoming marriage of their daughter, Kathy Lynn to Mark Allison Scott of Lubbock. Oakwood Baptist Church in Lubbock will be the scene of the January 17 wedding. Kathy is a graduate of Monterey High School in Lubbock and received a degree in secondary education from Texas Tech University in 1979. He is a graduate of Monterey High School and Howard Payne University.



ENGAGEMENT ANNOUNCED....Mr. and Mrs. Mickey Sowder of Goodland announce the engagement and forthcoming marriage of their daughter, Shannon Kay, to Lt. Powell Thompson 'Pat' Calhoun, son of Mr. and Mrs. Allen Calhoun of Goliad. The couple will wed January 31 at 6 p.m. in the First United Methodist Church in Muleshoe. The bride is a 1976 graduate of Three Way High School and received a degree in agronomy from Texas A&M University in 1980. The prospective groom is a 1976 graduate of Goliad High School. He also received a degree in agronomy from Texas A&M in May 1980. He is a lieutenant in the United States Marine Corps.

January Clearance Special

Dan Skins
 1/2 price

St. Clair's

110 Main Muleshoe 272-4453

321 MAIN MULESHOE

Anthony's

C. R. ANTHONY CO.

OPEN 9 to 6

JANUARY CLEARANCE SALE

SAVINGS IN EVERY DEPARTMENT

★★ MENS WEAR ★★	
VELOUR SHIRTS.....\$7 ⁸⁸ TO \$15 ⁸⁸	KNIT SKI CAPS.....REDUCED
BELTS & TIES.....1/2 PRICE	WINTER CAPS.....1/3 OFF
Good DRESS SHIRTS.....\$6 ⁸⁸	Best DRESS SHIRTS.....\$8 ⁸⁸
LEVI ACTION SLACKS.....\$14 ⁸⁸	SUITS, SPORT COATS.....1/2 PRICE
★ LINGERIE & ACCES. ★	
SCARF & HAT SETS.....\$3 ⁹⁷ ea.	★ LADIES & JRS ★
WINTER GLOVES.....REDUCED!	Two Racks JUNIOR ATB JEANS.....\$9 ⁸⁸
ISOTONER GLOVES.....\$9 ⁸⁸	One Rack SPORTSWEAR.....\$5.
Regular to \$13.	One Rack SPORTSWEAR.....\$10.
WARM VELOUR ROBES.....\$5.	One Rack TOPS & SHELLS.....\$1 ⁹⁷
Reg. to \$23 ⁹⁹	Four Racks LADIES & JR SPORTSWEAR.....1/3 OFF
WARM VELOUR ROBES.....\$10.	Two Racks LADIES & JR SPORTSWEAR.....1/2 Price
Regular to \$36.	Ladies and Juniors WINTER COATS.....1/3 OFF
WARM VELOUR ROBES.....\$18.	
One Rack WARM & NYLON LINGERIE.....1/2 Price	
One Rack NYLON SLEEPWEAR.....1/3 OFF	
★ GIRLS ★	
Regular to 11.99	★ LINENS ★
ATB FASHION JEANS.....\$6 ⁸⁸ 2 FOR \$13	SEE OUR WHITE SALE NOW IN PROGRESS FOR
Famous Brands	SHEETS PANELS
GIRLS FASHION JEANS.....\$8 ⁸⁸ 2 FOR \$17	PILLOWS BEDSPREADS
Nylon And Brushed	TOWELS CURTAINS
GIRLS SLEEPWEAR.....1/3 OFF	BLANKETS RUGS
Two Racks GIRLS SPORTSWEAR.....1/3 OFF	
One Rack GIRLS SPORTSWEAR.....1/2 PRICE	
★ SHOES ★	
LADIES CASUAL SHOES.....\$10 ⁰⁰	★ FABRICS ★
FASTBAK ATHLETIC SHOES.....\$9 ⁸⁸	Cotton & Blends PRINTS & ASST.....97¢ YD.
MEN'S HUSHPUPIES SHOES.....\$17 ⁸⁸	New Shipment SHORT LENGTH VELOUR.....\$1 ³⁷ 3 YDS \$4.
CHILDREN'S HUSHPUPIES.....\$11 ⁸⁸	Giant Group ASSORTED FABRICS.....\$1 ⁷⁷ 3 YDS. \$5.
LADIES HUSHPUPIES SHOES.....\$15 ⁸⁸	Regular \$5 ⁹⁹ yd. WASHABLE WOOLENS.....\$1 ⁹⁷ YD.
LADIES HUSHPUPIES BOOTS.....\$24 ⁸⁸	Reg. \$4 ⁹⁹ yd. SUEDES.....2 YDS. \$5.
LADIES FASHION BOOTS.....\$17 ⁸⁸	Beautiful RIBBED VELOUR.....2 YDS. \$5.

**** Private initiative seems to function best when liberally supported by public funds.

True Value
 HARDWARE STORE

TOOL VALUE

OF THE MONTH

MECHANIC

now 6⁷⁵ While Supplies Last

25-Ft. x 1-Inch POWER TAPE RULE
 Positive toggle locks epoxy-coated "write-on" blade in place to let you measure longer distances single-handedly. MMP4425
 QUANTITIES LIMITED

401 S. 1st.
 Muleshoe
 272-4511

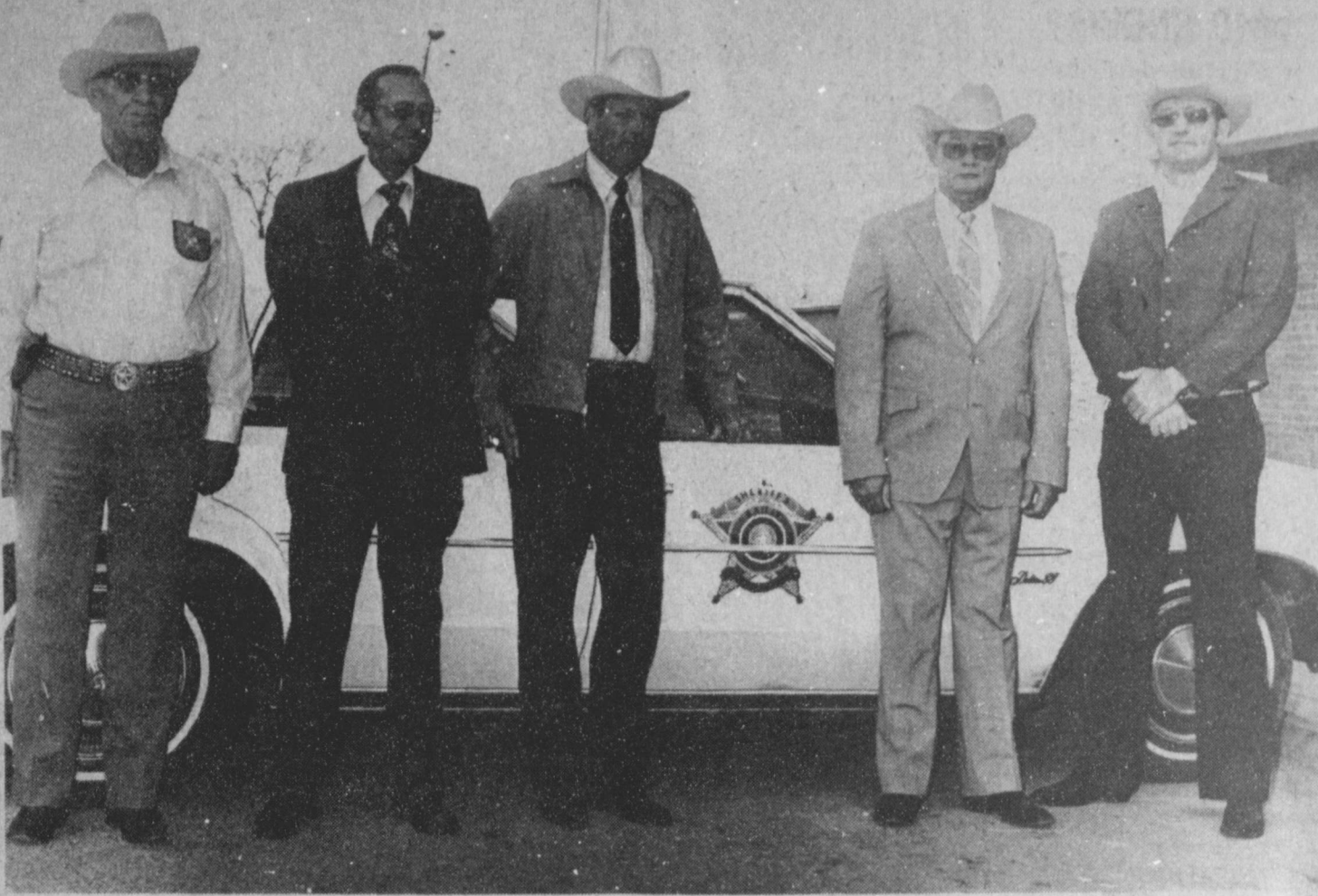
Copy

January Clearance

SALE

Starts Monday
 January 5

Clair's



BAILEY COUNTY SHERIFF'S OFFICERS.... Thursday morning, a new slate of officers took over the reins of the Bailey County Sheriff's Office following retirement of the 24 year sheriff, Dee Clements. Officers administered oaths include from left, Edd Edmiston, deputy; Hal Bynum, deputy-investigator; Tom Watson, deputy; Bob Henderson, sheriff and James Williams, deputy. The officers are currently moving into the various offices left vacant in the law enforcement center when the Muleshoe City Police moved in October.

Muleshoe...

Cont. From Page 1

ter, Angela from Austin. Larry Meyers and Kris Tidmore from Arlington, Virginia, Merryl Davis from San Antonio, Rick and D'Anne Meyers from Lubbock, Cliff Meyers from Lubbock, and Dennis Watson from Texas Tech.

Mr. and Mrs. Leon Lewis had all their family visiting in their home during the holidays. They were Ronald, Linda Jo, Clinton, Avery, Laurette and Leon Lewis, Linda and Dwayne Green all of Guthrie; Shirley Lewis of Jayton, Rita, John, Sherri and Amy Brunton of Phoenix; Patricia, Stanley, Roby, Casey and Andy Wilson of Muleshoe; Ellen, Larry, Lisa and Jason Seales of Whitelace and Kirk Lewis of A&M.

Insurance...

Cont. From Page 1

premium paid has been returned to farmers in indemnities.

Spending New Year's holiday in the home of his mother were S/Sgt. and Mrs. Randy Williams and daughter, Cathy, of Ft. Bliss, El Paso.

They also visited his grandparents, Mr. and Mrs. Buck Creamer and with several local friends.

Tax...

Cont. From Page 1

of expectations for 1981, says Tanksley. So determine your 1980 income tax status and also get a quick look at 1981. With the new year, the cash basis taxpayer loses much of the present flexibility because many income tax management strategies are no longer available for the 1980 tax year.

Since each taxpayer's situation is unique, year-end tax management decisions may require consultation with your tax specialist, concluded Tanksley.

A business without someone to push it follows the law of gravity downhill.

Pioneer...

Cont. From Page 1

scheduled for delivery to Sharp in April and should be working by late June. The second rig will be delivered in June.

Watson also announced at the meeting that Pioneer Production has 10 wells awaiting completion in the Texas Gulf coast area, the Anadarko Basin, northern Louisiana, and Mississippi. Some of those wells are new discoveries and results will be announced as soon as the wells have been completed and tested, he said.

Pioneer Corporation is a diversified energy resources corporation, which has its headquarters in Amarillo and operations in 14 states, the Gulf of Mexico, and the Atlantic Ocean.

Henry Bellmon, Seantor, (R-Okla), on federal spending legislation: "It is the first coherent effort Congress has made to bring uncontrollable (federal) spending under control."

Karate Group

Is Promoted

After Testing

Four students from West Texas Karate Academy received their yellow belt promotions in December after completing tests held at the school.

Students proved their skills in basic clocking, kicking and punching techniques, as well as one-step sparring and forms.

Receiving promotions were Jerry Bruns, Jeremy Bruns, Lynn Moore, and Sammy Sayago.

West Texas Karate Academy is located at 102 East Ash, and is associated with Tri County Gymnastics.

Weather...

Cont. From Page 1

On New Year's Day around Muleshoe, it was a time to cook outside, work in the yard, have the doors open, and in general relax in bright sunshine, a contrast to last year's very cold temperature, and that of a year ago when ice and snow made driving and even walking hazardous.

The unseasonable weather is expected to continue for the next few days, according to the NWS, while a high pressure ridge dominates the weather picture across the entire southwest.

Roger Connor, Executive Director, Federation of Americans for Immigration Reform:

"In every other industrialized nation on Earth, it is illegal to hire a foreigner who does not have the legal right to work in that country."

People who are always late have no need for watches.

The Scientists Tell Me...

Cattle Feeders May Get Quality With Shorter Feeding Period

By Robert L. Haney
TAES Science Writer

Are cattle being kept too long in the feedlot because of present government grades and are the latter the best measure of quality? Scientists at Texas A&M University say present practices may be needlessly expensive.

It's an old adage with cattle feeders that "the last 100 pounds put on in the feedlot are the most expensive."

At present, in an effort to supply highly palatable beef to retail market and food service consumers, the cattle industry bases many of its marketing decisions on USDA grades.

USDA quality grades are used to sort carcasses into groups indicating expected eating quality. Most beef cattle breeders and feedlot operators concentrate on producing and marketing cattle that are expected to produce US Choice cattle since that grade presently serves as a product-quality benchmark for maximum profits. It usually means an extensive stay in the feedlots.

Some researchers contend that USDA quality grades are closely related to the quality attributes (flavor, juiciness, tenderness) of cooked beef; other researchers are equally convinced that USDA quality grades are not very closely related to cooked beef palatability.

In any case, there is increasing concern within the industry that present USDA quality grades unnecessarily

Ollie Steele

Final Rites

Held Saturday

Funeral services for Ollie Steele, 77, were conducted at 3 p.m. Saturday at Singleton-Ellis Funeral Home Chapel of the Chimes with L. L. Ginnings, pastor of a Church of Christ from Clovis, N.M. officiating. Interment followed in Sudan Cemetery under direction of Singleton-Ellis Funeral Home of Muleshoe.

Mrs. Steele died at Wilbarger General Hospital in Vernon on January 1 at 3 p.m. A former resident of Farwell, she had been a resident of Vernon for the past six years.

Mrs. Steele was born April 24, 1903 at Little Rock, Ark. She was a member of the Church of Christ at Bovina.

Survivors include sons, Charles Steele, Bovina and Kenneth Steele, Houston; daughters, Mrs. Cora Mae Downes, Vernon; Mrs. Alene Jennings, Bryson; Mrs. Christine Brinegar, Waco; Mrs. Virginia Brinegar, Waco; Mrs. Doris Herington, Farwell; Mrs. Lena Cole, Farwell; a total of 51 grandchildren, several great-grandchildren and also two great-great-grandchildren.

emphasize marbling and, as a result, encourage overfattening of cattle.

"Alternatives are being sought to the use of marbling to identify quality in beef," according to Dr. Zerle Carpenter, head of the Department of Animal Science at Texas A&M University.

"One such alternative that has been proposed involves use of time-on-feed as an adjunct to, or substitute for, intramuscular fatness for predicting cooked beef palatability.

"A study, recently completed by the Texas Agricultural Experiment Station, was made to test the effectiveness of using time-on-feed to predict the ultimate eating satisfaction of cooked beef from steers and heifers and to identify a point in high-concentrate-feeding time beyond which additional time-on-feed does little to further improve cooked beef palatability.

"To do so, 326 steers of various breed-types were segmented into nine groups with group one being grass-fed and the remaining groups being grain-fed on rations of high-concentrate levels for 30, 60, 90, 100, 160, 200, and 230 days.

In addition, 68 heifers of various breed-types were divided into three groups with group 10 being grass-fed and groups 11 and 12 being grain-fed for 90 or 200 days, respectively.

"Upon finishing each feeding period, cattle were slaughtered. About 24 hours later, complete USDA yield and quality grade data were obtained.

"After the same aging period, steaks were removed from the same position on each carcass, cooked in the same way, and used for sensory panel and shear-force analysis.

"Time-on-feed was related to overall palatability of cooked rib steaks in the following manner: steaks from cattle fed only on grass were less desirable than were steaks from cattle fed 90 days or more; steaks from cattle fed 90 days or less were less desirable than were steaks from cattle fed 100 days or more.

"But feeding steers beyond 100 days provided little additional assurance of desirable overall palatability or eating quality.

"In the test with heifers, as time-on-feed increased from 0 to 90 to 200 days, flavor desirability and overall palatability increased, but tenderness was not associated with time-on-feed.

"These data suggest that rib steaks from heifers do not increase in overall palatability when time-on-feed increases from 90 to 200 days.

"We sought to determine if some time-on-feed minimum could be used to make possible a lowering of the mini-

imum requirement for the US Choice grade.

"Results suggest that low-Good carcasses from cattle fed 0 to 230 days produced steaks which differed from those of Choice carcasses in flavor, tenderness, shear force, and overall palatability.

"However, low-Good carcasses from cattle fed 90 days or more produced steaks that were essentially equivalent in palatability to those steaks from Choice carcasses.

"Identical results were obtained when steaks from low-Good carcasses from cattle fed 100 days or more were compared to steaks from Choice carcasses.

"Steaks from low-Good carcasses were essentially equivalent in palatability to those steaks from Choice carcasses.

"We're suggesting that based upon research results and trends in the economics of the livestock production segment, there appears to be a need to modify the beef grading standards.

Editor's Note: Any questions regarding this column should be addressed to Science Writer, Department of Agricultural Communications, Texas A&M University, College Station, Texas 77843.

Reid Real Estate
Do You Want To Buy A New Home?

If You Qualify, We Now Have 100% Financing With Closing Cost Not Included

Call Today!

Thursie Reid 272-3142
George Nieman 272-3142 or 965-2488
Dianne Nieman 272-3142 or 965-2488
Lucille Harp 272-3142 or 272-4693

Mornings Are Fun

At **Hawkins & Purdy's School of Dance**

Ladies Exercise Classes Will Begin

Tuesday, January 6 At 9:30 a.m.

Come By & Exercise With Us!

On Tues & Thurs Mornings 9:30-10:30

If You Can't Come By Mornings

Come By Evenings

Tues 6:30 -7:30 p.m.

Thurs 8-9 p.m.

No Need To Call! Just Come By!

Hawkins & Purdy's School of Dance

219 E. Ave. B



Your Home Town

Pizza Hut

"Muleshoe" Pizza Hut

1412 W. American Blvd.

272-4214

Your Home Town Favorite!

"MMMMMADE IN THE PAN!"

\$200 OFF NEW PAN PIZZA.
*2⁰⁰ off any large New Pan Pizza, *1⁰⁰ off any small.

What would you say about a great new pizza that's baked and served in a pan? By just one bite and you'll say "AAHHH!" We make it fresh daily with a delicious new crust so that it's crisp on the outside and light on the inside. "OOOH!" Then we top it all off with our fabulous sauce, 100% Mozzarella cheese, and your favorite toppings. MMMMM!



N.O.W. More Than Ever...

The N.O.W. account has arrived at Muleshoe State Bank! The N.O.W. account is here combining benefits of checking and savings in one account, letting you write checks while receiving interest at the same time. The N.O.W. account will pay the highest legal rates of interest allowed on your N.O.W. account. Come in and get the full details.

The N.O.W. account... Now more than ever.

MULESHOE STATE BANK



Computerized Future Arriving For Cattlemen

AUSTIN--Cattlex, a system of electronic marketing for cattle in the state, is affirming its proponent's high hopes that the computerized future has arrived for the cattle industry. At least, Tom Sporleder, agricultural economics professor at Texas A&M University, will tell you so.

Sporleder and Dr. Ernest E. Davis, with Agricultural Economics at A&M, have worked together with industry representatives, and the aid of federal funds to develop an electronic marketing system linking buyers and sellers at one location to market cattle. Research is monitored by the Texas Department of Agriculture. The system, Cattlex (or cattle exchange), has been designed and is presently being tested

through 18 strategic terminal locations linking feedlots, auction markets and order-buyers throughout the state.

"What we have is a centralized remote access cash market for feeder cattle where computer terminal operators actually negotiate terms of trade through a central computer located at A&M University," Sporleder said. "If successful over a nine-month trial period it will probably be commercialized by the cattle industry."

The system offers an array of benefits to cattle producers, buyers, sellers, auction markets and even cattle as stress and health problems are minimized because of direct sales. Sellers have the advantage of listing cattle lots to more prospective buyers simultaneously,

and conversely, buyers have more lots from which to choose. Both parties have the unique economic benefit of transacting deals while the cattle remain on pasture, reducing shrink, stress, and health problems.

"The concept of Cattlex is to centralize a market without having to centralize the buyers and sellers. We feel we can have the advantages of a large central market without having to move people or products," Sporleder explained. "The old concept was that everybody went to Chicago's stockyards. Well, we'll have the same advantages except with remote access."

Cattlex, like most computer systems, seems complex at first. Once familiar with it though, one realizes how simple it is to work and at the same time, the wealth of information which it offers.

The system offers two types of cattle--ranch (at pasture) and delivered (at auction). The cattle are described (breed, age, sex, etc.) by third-party graders and sold on estimated weight basis. Described lots are entered into computer terminals, and buyers at remote locations can survey listed lots available and ready for auction every business day from 10:00 a.m. to 2:00 p.m.

If a buyer is interested in a particular lot, he can call up more information, Davis explained. In addition to how many head, location, basic age, sex and weight, more specific information breaks down the lot into common name groups, each of which is described by average weight, age, predominant breed and USDA grade.

"Still more information can be called up to the screen such as which grader described the lot, when, time and place of delivery, weighing location and conditions, whether any shrink is expected and how much, and any other grader comments such as appearance, color, or the type of feed used," Davis continued. Sellers at their options may provide other information which may aid in merchandising their cattle.

All buyers, sellers and graders have their identification and authorization numbers, known only to themselves. Buyers have a maximum total dollar purchase limit per day and some buyers may be required to obtain a letter of credit.

Upon settlement, both parties receive a "Confirmation of Sale" print out. All transactions are subject to regulations of the federal Packers and Stockyards Act

and the Uniform Commercial Code, "just like auction markets," Davis said. "The transactions, in print, constitute binding written contracts between buyer and seller."

As with most computer systems, the potential advantages of information acquisition, storage, cataloging and retrieval, offer tremendous opportunities. Some unique features of the system allow buyers to actually sort through the various lots listed for sale by weight, sex, age, grade, location, weighing conditions and other criteria, "which were simply not available before," Davis said. "Imagine the time-savings for a potential buyer."

"There are still other potential benefits which might come through use of Cattlex," Sporleder pointed out. A few are better prices through better competition, more market opportunities for smaller buyers and sellers, and greater market efficiency as buyers can enter several markets without physical presence. The system also allows quick consummation of trades by offering products to all interested parties at once and finally, there is increased and more efficient market news available, Sporleder continued.

Agriculture Commissioner Reagan V. Brown echoed Sporleder, adding, "Accurate and timely marketing information is vital in helping ranchers decide to sell or keep their cattle."

As savings are realized through cost, time and transportation, they might eventually be passed on to consumers, Sporleder speculated.

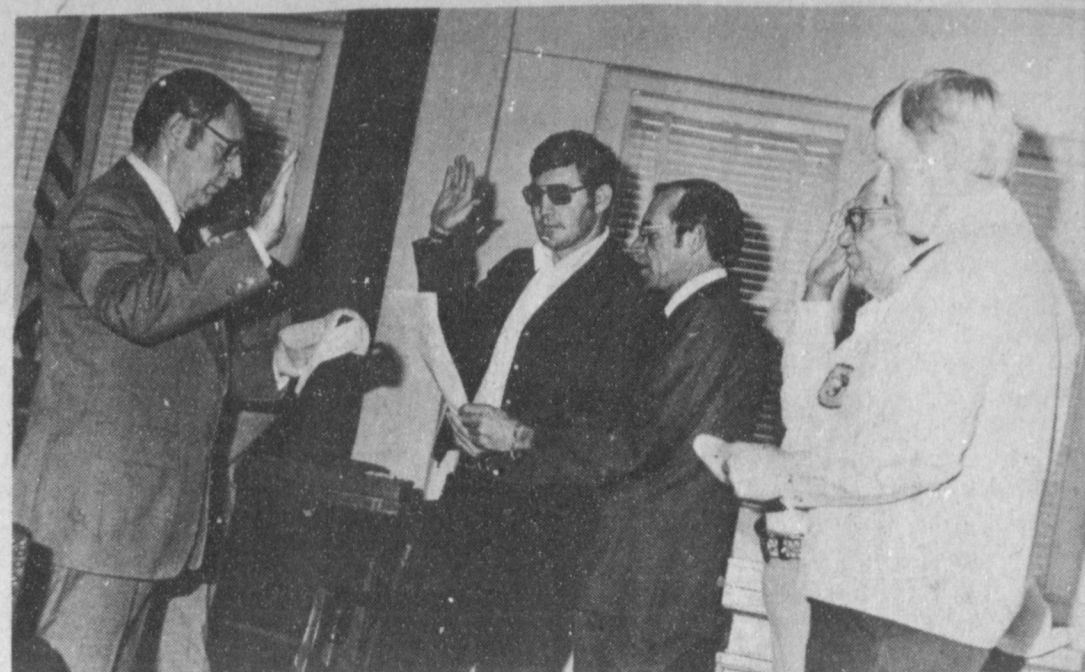
In any event, beleaguered cattlemen and ranchers, already troubled by production costs, uncertainty in weather conditions, heavy debts, and an uneven economy, might just be witnessing the arrival of computerized technology that has the potential of helping them solve most, if not all, of their marketing problems.

WHO KNOWS?

1. What are the first five books of the Bible called?
2. What is another name for these books?
3. What is the largest bay on the U.S. eastern coast?
4. For what do the letters A.F.L.-C.I.O. stand?
5. What is another name for Aurora Borealis?

Answers To Who Knows

1. Pentateuch.
2. Five Books of Moses, or The Law.
3. Chesapeake Bay.
4. American Federation of Labor and Congress of Industrial Organizations.
5. Northern Lights.
6. Aurora Borealis is seen



OFFICERS RECEIVE OATH....Promising to fulfill their duties as Bailey County Deputies Sheriff Thursday morning, with the oaths administered by Bailey County Judge Glen Williams, with Sheriff Bob Henderson looking on (behind judge) were from left, James Williams, Hal Bynum, Edd Edmiston and Tom Watson.

STARTING JANUARY 19

Womens Basic Self Defense Course

Enrollment Starts Jan. 5

Call 272-5190

Limited Enrollment

January

Clearance Special



Mens Fashion Jeans

Value \$25

\$7.97

St. Clair's

110 Main Muleshoe 272-4453

Annual

Clearance Sale

Doors Open Monday 8:30 am (C.S.T.)

1/3 & 1/2 Off Fall & Winter Merchandise

No Layaways or Exchanges On Sale Merchandise

All Sales Final

Where Fashions Live
Queens n' Teens
LADIES 6-18 JUNIORS 1-15

RECIPE

By Sarah Anne Sheridan

Your holiday meal will not be complete without a colorful and tasty salad. Cranberries and fruit salads always go well with turkey and ham. These two salads are favorites at our home and are used often during cold winter months.

Cranberry Salad

- 1 can (20 oz.) crushed pineapple
- 1 lb. fresh cranberries
- 1/2 c sugar.
- 2 envelopes unflavored gelatin
- 1 c chopped pecans
- Lettuce

Drain juice from pineapple and add enough water to make 1 cup liquid. Combine juice, cranberries and sugar in saucepan; cover and cook until berries pop (about 10 minutes). Add gelatin to hot cranberries and stir until dissolved. Cool, add drained pineapple and nuts. Refrigerate. Serve on lettuce leaf. This salad can be made a day ahead of serving.

True Value
Hardware value of the MONTH

BALLOFF home products

SPECIAL OFFER!

now 8.99 While Supplies Last

INSULATED SECURITY BOX
Keep important documents locked away in fire-resistant, insulated security box. Steel with tan enamel finish. 14 1/2" x 9 1/2" x 4 1/2" in.

QUANTITIES LIMITED

401 S. 1st.
Muleshoe
272-4511

Copy
INC. &
COY

GROUP	APPLICATION	WARRANTY	PRICE
1	IHC-GM-FORD	18 Mos.	26.35
1	IHC-GM-FORD	24 Mos.	37.89
2	AC-CAT-IHC OLIVER TRACTORS	24 Mos.	41.79
3	CASE-IHC-MF TRACTORS	24 Mos.	53.10
4	MOST DIESEL TRUCKS	24 Mos.	64.59
5D	JD-MF-MM-OLIVER WHITE TRACTORS	24 Mos.	68.30
7D	JD-FORD TRACTORS	24 Mos.	82.75
8D	CAT.-JD-IHC TRACTORS	24 Mos.	147.20
22F	FORD-GM-CHRYSLER	36 Mos.	36.70
24	GM-AMC-DODGE-CHRYSLER	24 Mos.	31.35
24	GM-AMC-DODGE-CHRYSLER	36 Mos.	40.70
24	GM-AMC-DODGE	60 Mos.	57.95
24F	FORD MOTOR	36 Mos.	40.70
24F	FORD MOTOR	60 Mos.	57.95
27	GM	36 Mos.	49.79
27	GM	60 Mos.	63.95
27F	FORD MOTOR	36 Mos.	49.79
27F	FORD MOTOR	60 Mos.	63.95
29F	FORD MOTOR	36 Mos.	40.79
30H	AC-CASE-JD-IHC-MASSEY-MM TRACTORS	24 Mos.	68.10
3EH	JD-IHC TRACTORS	24 Mos.	54.25
3ET	JD TRACTORS	24 Mos.	59.69
4EH	IHC TRACTORS	24 Mos.	66.49
4DLT	FORD TRACTORS	24 Mos.	91.79
42	VOLKSWAGEN	36 Mos.	42.89
53	INDUSTRIAL	36 Mos.	35.79
60	GM	36 Mos.	44.85
UIL	Garden Tractor	12 Mos.	32.30
72	GM	36 Mos.	40.35
74	GM	36 Mos.	54.95
74	GM	60 Mos.	61.95
1-8V	Replaces 6 V APP.	24 Mos.	35.85
2-8V	Replaces 6V APP.	24 Mos.	45.39
4-8V	Replaces 6V APP.	24 Mos.	62.25

A&M

FARM & RANCH SUPPLY

3 CONVENIENT LOCATIONS
300 S. Ave. C Portales, 2600 E. Mabry Drive, Clovis
Also Muleshoe, Texas

Research Discovery Could Aid Control of Imported Fire Ants

By Robert L. Haney
TAES Science Writer

Identification of the complex chemical that red imported ants lay down for trail identification may enable scientists to devise practical controls for this widespread agricultural and urban pest.

Scientists at Texas A&M University first identified the chemical compound (allofarnesene, which is the chemical shorthand way of saying a yard-long name) and then succeeded in duplicating it in the laboratory.

Since its accidental introduction from Brazil in 1940, the imported fire ant, *Solenopsis invicta*, has spread across half of Texas and most of the Southeastern states and has become one of our most serious pest control problems.

The large size of the colonies, the aggressiveness of individual ants, and the tendency of nest members to attack and sting *en masse* makes this species potentially dangerous to humans and livestock.

A sizeable number of

mounds of these aggressive ants in a field can effectively bar hand labor from working or harvesting a crop. And the large, concrete-like mounds they build can damage expensive farm equipment.

"Non-species-specific baits using chlorinated hydrocarbons have proven ineffective in controlling the spread of

this species," according to Dr. S. Bradleigh Vinson, entomologist with the Texas Agricultural Experiment Station and Texas A&M University.

"There is some evidence that such baits have even hastened the spread of this species of ant by eliminating competing species.

"Use of a species-specific attractant with a bait has been shown to increase the effectiveness of the bait in controlling a target species.

"We are studying control methods for *S. invicta*, using this pheromone as the attractant so only this particular ant will take the bait," Vinson said.

It was in Vinson's Experiment Station laboratory that Dr. Howard J. Williams, research chemist, succeeded in identifying and duplicating the pheromone.

Vinson says previous research has shown that fire ants are so sensitive to the chemical scent of their trail pheromone that they can follow it even when it intersects other fire ant trails.

The secret is that each trail is laid down in a different

concentration. While most of these fall in at about 500 pg/cm level, Vinson says that the ants can detect the chemical even at a level of 1/1000th.

"This sensitivity to the trail pheromone should enable us to devise a bait that will attract this species of ant, and *only this species*," Vinson said.

"We also know the brood pheromone (triolein) of the fire ant and we hope to devise a control that will attract the ants to the bait and cause them to pick it up and carry it back to the nest where it will kill the ants in the nest, as well as those bringing it in," Vinson concluded.

Editor's Note: Any questions regarding this column should be addressed to Science Writer, Department of Agricultural Communications, Texas A&M University, College Station, Texas 77843.

The happiest person in this community is probably the one who has helped the most people, in one way or another.

Singleton-Ellis Funeral Home

24 Hour Ambulance Service

Ph. 272-4574

January 5-9

MONDAY

BREAKFAST
Milk, Cereal, Fruit

LUNCH

Milk
Frito Pie
Beans
Buttered Corn
Cornbread
Fruit

TUESDAY

BREAKFAST
Milk, Honey Bun, Juice

LUNCH

Milk
Hamburgers
Lettuce & Tomatoes
Pickles & Onions
Tater Tots
Cobbler

WEDNESDAY

BREAKFAST

Milk, Toast, Jelly, Fruit

LUNCH

Milk
Pizza
Buttered Mixed Vegetables
Pickles
Cake
Fruit

LUNCH

Milk
Corn Dogs
Vegetable Beef Soup
Crackers
Cinnamon Rolls
Fruit

Milk

Chicken Pot Pie
Cheese Stick
Spinach
Cookies
Fruit Jello

Look into the mirror and you'll see what others see.

Money multiplies the power of man, either for better or for worse.

West Plains Medical Center Report

ADMITTED

December 30, Patricia Jaime, Oscar Allison, C.E. Grant, Jr., John Barham

December 31, Joseph Hawkins, Will Norman, Jason Wisenham, Edith A. Dunlap, Melaine Briscoe, Homer Huff

DISMISSED

December 31, Rhonda Kit-chens and baby boy, Michael Richards, Julie Salinos and baby boy, Gloria Reyes, Lupe Flores

December 31, Florence Holmes, John Barham, Casimia Nikel, Ruth Clements

January 1, Anita Foster, Adelina Trigill, Patsy Rodriguez, Louva Kersey, Ruby Hodge, Lavena Smith
January 2, Geraldine Clingenpeal, Patricia Jaime

CALENDAR OF EVENTS

MONDAY

12 p.m. Jaycees, XIT Restaurant (every)
3:45 p.m. P.T.A., Mary DeShazo or Richland Hills School Cafeteria (second)
7:30 p.m. Rainbows, Masonic Hall (second&fourth)
8 p.m. Fine Arts Boosters Band Hall

TUESDAY

12 p.m. Rotary Club, Civic Center (every)
2 p.m. Art Association, Muleshoe State Bank (second)
4 p.m. Christian Women Fellowship, First Christian Church (second)
7:30 p.m. Progress 4-H West Camp Community Center (third)
7:30 p.m. Llano Estacado (second)
8 p.m. Athletic Boosters, Muleshoe High School Cafeteria

WEDNESDAY

12 p.m. Lions, Civic Center (every)

THURSDAY

11:30 a.m. W. O. T. S. (every)
12 p.m. Optimist Corral Restaurant (every)
2 p.m. Hobby Club, Muleshoe State Bank (first & third)
6:30 p.m. T.O.P.S. Bailey County Electric Community Room (every)
7:30 p.m. Odd Fellows, Odd Fellows Hall (every)

FRIDAY

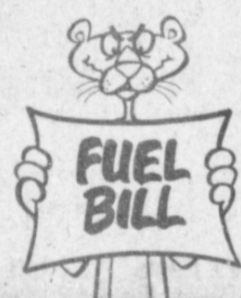
11:30 a.m. A.A.R.P., Civic Center (fourth)
6:30 p.m. Kiwanis, Corral Restaurant (every)

SATURDAY

7 p.m. Muleshoe Singing Group Trinity Baptist Church (every)

If you would like your club or organization listed on the calendar of events, please furnish the information in with your report.

A Better Way To Keep "Warm" This Winter.



Add blown insulation now. Don't get steamed this winter because of heating bills going through the roof. Add pink Fiberglas® blown insulation instead. It's easy.

Your independent Owens-Corning contractor will help you determine how much insulation you need to add. And before you know it, he'll have it installed. With no mess, no bother.

Pink Fiberglas blown insulation can help you save on your fuel bills, and make your home more comfortable, too.

Call your independent Owens-Corning contractor now... before your winter heating bills have a chance to make you "warm" again.

Savings vary. Find out why in the seller's facts sheet on R-values. Higher R-values mean greater insulating power.

OWENS-CORNING FIBERGLAS

Distributed By:

E.T. Ford

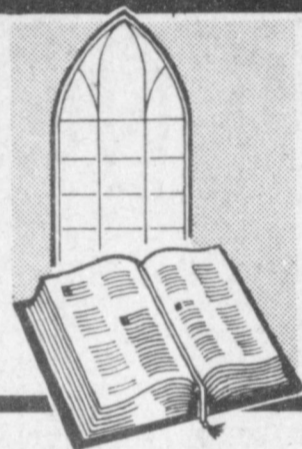
Construction

Co.

272-4039



ATTEND THE CHURCH OF YOUR CHOICE



MULESHOE ASSEMBLY OF GOD

517 S. First
Rev. Joe Stone

EMMANUEL BAPTIST CHURCH

Iglesia Bautista Emmanuel

107 E. Third

Isaia Cardenas, Pastor

RICHLAND HILLS BAPTIST CHURCH

17th and West Ave. D

Roy L. Sikes, Pastor

SPANISH BAPTIST MISSION

East Third and Ave. E

Rev. Aradio Gonzalez

TRINITY BAPTIST CHURCH

314 Ave. B

Don Knight, Pastor

LONGVIEW BAPTIST CHURCH

Phone 946-3413

B.C. Stonecipher, Pastor

SIXTEENTH AND AVE. D

CHURCH OF CHRIST

Sunday - 10:30 a.m.

Evening - 6 p.m.

Wednesday - 8 p.m.

PROGRESS BAPTIST CHURCH

Progress, Texas

NORTHSIDE CHURCH OF CHRIST

117 E. Birch Street

SPANISH ASSEMBLY OF GOD

East 6th and Ave. F

Rev. Hipolito Pecina

UNITED PENTECOSTAL GOSPEL

LIGHTHOUSE CHURCH

207 E. Ave. G

George Green, Pastor

MULESHOE BAPTIST CHURCH

8th Street and Ave. G

Bob Dodd, Pastor

FIRST BAPTIST CHURCH

220 West Ave. E

Rev. J.E. Meeks

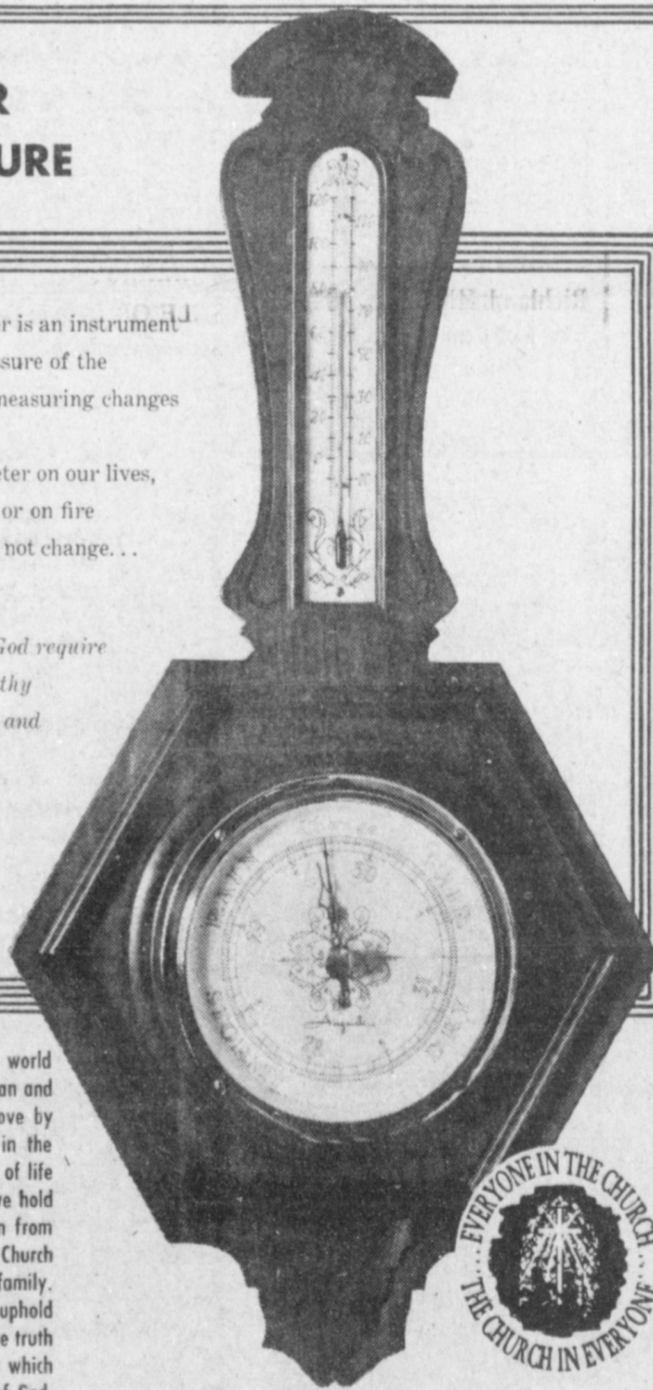
BAROMETER for the FUTURE

Webster says that a barometer is an instrument measuring the weight or pressure of the atmosphere, foretelling and measuring changes of weather and altitude.

If God were to place a barometer on our lives, would we be cold, lukewarm, or on fire for the Lord. The past we can not change... the future is up to us.

"... what doth the Lord thy God require of thee, but to fear the Lord thy God, to walk in all His ways, and to love Him, and to serve the Lord thy God with all thy heart and with all thy soul." ATTEND CHURCH REGULARLY.

The Church is God's appointed agency in this world for spreading the knowledge of His love for man and of His demand for man to respond to that love by loving his neighbor. Without this grounding in the love of God, no government or society or way of life will long persevere and the freedoms which we hold so dear will inevitably perish. Therefore, even from a selfish point of view, one should support the Church for the sake of the welfare of himself and his family. Beyond that, however, every person should uphold and participate in the Church because it tells the truth about man's life, death and destiny; the truth which alone will set him free to live as a child of God.



CHURCH OF THE NAZARENE

Ninth and Ave. C

Dana Shunko, Pastor

FIRST CHRISTIAN CHURCH

130 W. Ave. G

Rev. Walter Bartholf

Sunday School 10:00 a.m.

Worship 11:00 a.m.

LATIN AMERICAN METHODIST MISSION

Ave. D and Fifth Street

R.Q. Chavez, Pastor

THE COMMUNITY CHURCH

Morton Highway

H.D. Hunter, Pastor

CALVARY BAPTIST CHURCH

James Williams, Pastor

1733 W. Ave. C

PROGRESS SECOND BAPTIST CHURCH

Clifford Slay, Pastor

1st and 3rd Sundays

FIRST UNITED METHODIST CHURCH

Rev. Bill Kent

507 West 2nd, Muleshoe

ST. JOHN LUTHERAN

Lariat, Texas

Herman J. Schelter, Pastor

Sunday School - 10 a.m.

Worship Service - 11 a.m.

PRIMITIVE BAPTIST CHURCH

621 South First

Elder Bernard Gowens

MULESHOE CHURCH OF CHRIST

David Cox, Minister

Clovis Highway

JEHOVAH WITNESS

Friona Highway

Boyd Lowery, Minister

IMMACULATE CONCEPTION CATHOLIC CHURCH

Father Patrick Mahar

Northeast of City in Morrison Edition

ST. MATTHEW BAPTIST CHURCH

Corner of West Boston and West Birch

Rev. M.S. Brown, Pastor

Bratcher Motor Supply
107 E. Ave. B 272-4288

Muleshoe Publishing Co.
Muleshoe 272-4536

White's Cashway Grocery
Where Friends Meet & Prices Talk

Bailey County Memorial Park
"Every Service A Sacred Trust"
272-4383

Dairy Queen
Margie Hawkins, Manager
272-3412

Watson Alfalfa
272-3552 272-4038

Dent-Rempe Implement Co.
John Deere Dealer 272-4297

Dari-Delite Drive In
Take Out Orders
210 N. First 272-4482

Western Drug
114 Main 272-3106

James Roy Meat Market Co.
506 W. Amer. Blvd. 272-4361

Muleshoe Co-op Gins

First National Bank
"Home Owned"
202 S. 1st 272-4515

Baker Farm Supply

Roy Whitt

Western Sprinklers

Lambert Cleaners

DIET CENTER

YOU CAN LOSE 17 TO 25 POUNDS IN JUST 6 WEEKS!

NO SHOTS • NO DRUGS
NO CONTRACTS

CALL TODAY FOR A FREE CONSULTATION

**BUY
SELL
AND
TRADE
WITH...**

Classified Ads

**Deadline for Classified Ads is 11:00
Tuesdays And Fridays**

CLASSIFIED RATES

1st Insertion,
Per Word--\$.15
Minimum Charge--
\$2.00
2nd Insertion,
Per word--\$.13
3rd Insertion,
Per Word--\$.10
Minimum Charge
\$.80
1/3 Cheaper to run
Classifieds 3 times or more
CARD OF THANKS
25 words--\$3
Over 25 words
charged at regular
classified rates.
Classified Display--
\$1.55 per column inch
Double Rate for
Blind Ads
**DEADLINE FOR
-INSERTION**
11 a.m. Tues. for Thurs.
11 a.m. Fri. for Sun.
**WE RESERVE THE
RIGHT TO CLASSIFY
REVISE OR REJECT
ANY AD.
NOT RESPONSIBLE
FOR ANY ERROR
AFTER AD HAS RUN
ONCE.**

1. PERSONALS

**WE BUY
USED FURNITURE AND
APPLIANCES
CALL 272-3030
HARVEY BASS
APPLIANCE**
1-18s-tfc

Square Dance Lessons
Full session, 20 lessons,
\$25. Lessons begin first
week in February. 272-
4457 322 West 9th.

3-52s-2tc

Card of Thanks

We would like to give a
special 'Thank You' to all
our friends who honored us
with the reception and
great gifts for my retirement
as sheriff of Bailey County.

Your continued support
through the years and the
great love we feel for all
our friends in this area will
always be remembered.

Again, Thank You for all
your assistance during the
past 24 years.

Dee & Ruth Clements
1-1s-1tc

For carpentry and home
repair, specializing in
small jobs. Quality work-
manship, reasonable prices
- free estimates - Call
Roger Radney at 272-5395
after 5 on week days.
1-1s-9tc

Adult basic drawing clas-
ses - Composition and per-
spective - January 5-8;
January 12-15 - 9:30 a.m.
to 2:30 p.m. Night classes
for working people. Starts
Monday January 5 - Feb-
ruary 23 - 7:30-9:30. Chil-
dren's classes and teenage
classes 4:15-6:15.
RHEATA WHITE STUDIO
800 AMERICAN BLVD.
272-3889
1-1t-2tc

3. HELP WANTED

**TOWN&COUNTRY FOOD
STORE** are now hiring part
time help for evenings and
weekends. Apply at 1900
American Blvd. 272-5337.

HELP WANTED

Muleshoe Independent
School District is now
accepting applications for
male and/or female quali-
fied bus drivers. Appli-
cants must be able to
obtain, prior to employ-
ment, a Texas Chauffeur's
License, pass a Physical
Examination provided for
by the School, have a safe
driving record from the
Texas Department of Pub-
lic Safety, and complete a
twenty hour driving course
provided by the school.

Salary range is \$14.00 to
\$16.00 per day with driving
time being two to three
hours per day.

Application forms may
be picked up from Bob
Willoughby at the bus gar-
age or at the School Busi-
ness Office.
3-52t-4tc

**DISSATISFIED WITH
PRESENT JOB OR IN-
COME?**

Multi-million dollar
corporation is looking for
3 people in the Muleshoe
area. You must be mat-
ure, willing to train and
able to accept responsi-
bility. Agricultural back-
ground helpful, also sports
minded. Part time posi-
tions pay up to \$219 per
week; full time up to \$438
per week to those who
qualify. Have management
position paying \$27,000.00
upon qualification. For in-
terview apply in person at
Bailey County Civic Center
Thursday, January 8th, at
10:00 sharp. Ask for Mr.
Sutton.
3-1s-1tc

Needed full time mechanic.
Contact Bill Nichols at
965-2700; or Carl Gable at
965-2416.
3-1s-4tc

The Texas Migrant Council
is accepting applications for
Center-Director.
Call 272-3992
3-35s-tfc

Needed experienced farm
hand. Call Bill Nichols at
965-2700; or Carl Gable at
965-2416.
3-1s-4tc

7. WANTED TO RENT

WANT TO RENT: Dryland
farm around Baileyboro
and Stegall area. Call
Aubrey Heathington at
272-4766 or Don Heathington
at 272-4351.
7-50s-tfc

WANTED: Irrigated farm
land for 1981. Tom Little
Farms 272-3802 or
272-4086.
7-48t-13tc

STORAGE ROOMS

For Rent

'15-'25

Ted Barnhill

272-4903

8. REAL ESTATE

FOR SALE: 3 bedroom, 2
bath, den, fenced, garage,
ref. air, central heat, gar-
bage disposal and dish-
washer. Convenient to
schools. Call 272-4496 or
275c

**SMALLWOOD
REAL ESTATE**

232 Main 272-4838
Joe and Ricky
Smallwood

96 acres, 3 miles north-
west of Muleshoe, elec-
tric circular sprinkler.
Will take house in trade

160 acre farm, 5 miles
from Muleshoe on 1760.
2 wells, water drive
Valley Sprinkler.

We need listings.
See or call Joe or Ricky.
8-51t-tfc

**TOWN and
COUNTRY
REAL ESTATE**

3 bedroom, brick,
double garage, 2 bath.
1916 West Ave. H.
\$55,000.

3 bedroom, 2 bath, car-
pet, central heat and
refrigerated air. 1733
W. Ave. B. \$44,000.

Modern home with 3
bedrooms and a lot of
improvements. Four
miles west of Muleshoe
\$40,000.

2 bedrooms, 1 bath,
stucco. Good location.
\$21,500.

Richland Hills Lot. 103
foot front on West Ave.
H.

John W. Smith, Broker
806-272-4678
806-272-3725

8-47s-tfc

FOR SALE: Lot #6 Block #8
Pool Addition, replat. 125 X
75, 600 block facing Ave. K
Call 272-4536.

**We want your business
"remember"**

REID REAL ESTATE

THURSIE REID

272-3142

George Nieman

965-2488

Dianne Nieman

965-2488

Lucille Harp

272-4693

Owner will finance this
nice three bedroom, 1
bath home at low in-
terest rate.

Equity buy on this extra
nice 2 bedroom.

Let us show you this
extra nice two bedroom
with rock fireplace.

2 - 2 bedroom houses
on same lot. Excellent
rental property.

Lot - 60X140 - plumbed
for trailer. Sidewalk and
some shrubs.

Check with us if you are
thinking of investing in
rental property.

FARMS

320 acres tw, 8 inch
wells Lazbuddie area.

200 acres, Muleshoe
area, 500 - 600 GPM
priced to sell

146 acres, 2 wells with
valley sprinkler

**J.B. SUDDERTH
REALTY INC.**
Box 627
109 Fifth St.
Farwell, Texas 79325
Phone (806) 481-3288
or 481-9149

148 Acres irrigated on
highway. Lays good
with super nice, extra
large 4 bedroom, 3
bath brick home. 2
miles south of Bovina.

320 Acres irrigated, 2
wells. Priced right. 5
miles southeast of
Farwell.

60 Acres west of Mule-
shoe on highway. One 6
inch well, side - roll
sprinkler. Steel build-
ing. 2 sets of nice
improvements.

160 acres northwest of
Muleshoe, 2 wells, lays
good on FM highway.

320 acres irrigated with
2 electric wells and
circles all wheat, fenced
excellent water area.
Near Bovina Feeders.

1285 acres, circle
sprinklers, 7-8 inch
wells, corrals and feed
pens, trailer house.
Priced to sell. Owner
will finance. 29 percent
down or will take cash.
8-49s-tfc

FOR SALE: 80 acres, irri-
gated. 2 1/2 miles northwest
of Muleshoe. Phone
272-3658 or 272-5578.
8-42s-tfc

SALE OR RENT: One bed-
room house. Will sell for
small down, balance like
rent. Adults. Write Box
563, Capitan, N.M. 88316.
8-51t-7tp

**For all your real estate
needs call:**
GLAZE & GOFORTH
112 Ave. C
272-4208
8-11-tfc

**9. AUTOMOBILES
FOR SALE**

FOR SALE: Good clean
1977 Chev. Bonanza pickup
Big 10 pack, loaded, 47,000
miles, ready to go. Call Bill
Darnell 272-4825.
9-46s-tfc

**10. FARM EQUIP.
FOR SALE**

Farm Equipment For Sale:
1 ERCO side-roll, 1280 ft.
length, self - leveling noz-
zles, 6 ft. wheels and wind
tie downs. \$3000. Call
946-3471.
10-50t-tfc

**11. FOR SALE
OR TRADE**

FOR SALE: Used pegboard
and shelves, etc. Very rea-
sonably priced. Hidden
Talents 272-5098; 965-
2776; 925-6634.
11-11-2tp

FOR SALE: 160 acres, 4
miles north of Muleshoe, 2
wells. Phone 965-2200 after
7 p.m.
11-48t-tfc

FOR SALE: Young goats.
Call 965-2913 after 6 p.m.
11-50s-tfc

**Treflan Prowl,
Atrazene, etc.
For Sale
Watson Chemical
272-4737**



Most agree that a part of the message sent to Washington by the voters in November said in effect: "Take away the dictatorial power of over-zealous bureaucrats and restore it to the elected representatives of the people."

And there are reasons for cautious optimism that Congress may be getting that message, says Donald Johnson, Executive Vice President of Plains Cotton Growers, Inc., Lubbock. Johnson cites three examples of recent Congressional actions that promise a degree of relief from what PCG had considered abuses of bureaucratic power.

First, the Senate and House attached an amendment to the Agricultural Appropriations Bill prohibiting the U.S. Department of Agriculture (USDA) from using any of its funds to administer or enforce a requirement that growers of wheat, feed grains and cotton in 1981 plant within their established "Normal Cropland Acreage" (NCA). USDA had announced the NCA requirement for wheat and feed grains, and despite protests from virtually the entire cotton industry had made clear its intention to do the same for cotton. But Congress, by denying funds, appears to have effectively stopped what the industry, including the PCG Board of Directors, thought would have been a grave mistake.

Then Congress on December 4 again asserted itself in a bill which gives it the right to veto future Federal pesticide regulations and provides for "peer review" by independent scientists of major scientific studies used as the basis for Environmental Protection Agency (EPA) regulations. So, instead of EPA regulations automatically becoming the law of the land as before, both houses of Congress now will have 60 days in which to pass a resolution of disapproval. If neither house disapproves, the regulation becomes effective.

But if any committee or either house resolves to oppose the regulation within 60 days and if both houses adopt an opposing resolution within a total of 90 days, the regulation will be vetoed.

On another front, again resorting to the "power of the purse," the Senate has moved to put a brake on the Department of Labor's runaway assumption of authority under the Farm Labor Contractor Registration Act (FLCRA).

In an amendment to a continuing resolution for U.S. Department of Labor (USDOL) funding, the upper

**Rent-to-Own
Color TV**
Washers Dryers Refrigerators
No Service Expense No Interest To Pay
Wilson
Appliance
117 MAIN MULESHOE 272-5631

FOR SALE: 1975 Harley
Davidson Sportster - 1000
CC's. Good, clean bike,
low mileage. 965-2668.
11-1s-2tc

15. MISCELLANEOUS

Lady Bee at Earth is
now carrying
SCULPTRESS BRAS.
Call 252-3748.
15-26s-stfc

**BURROWS
UPHOLSTERY AND
FURNITURE REPAIR**
118 W. Ave. C
In the rear
Phone 272-4255
12-39s-tfc

35 square yards of used
carpet. \$4 a yard. 925-6766.
15-1s-6tc

Make that old metal
barn or shop look new with
a fresh coat of aluminum
paint. We also do inside
and outside painting, blow
acoustic ceiling, and do out-
side plaster work.

Serving the Muleshoe
area, for more than twenty
five years. Free estimates.
Lowery & Sons Paint Con-
tractors
Ca! 272-4952 or 385-3003
Littlefield
15-52t-4tp

Want a propane system?
Check with **SMITH LP GAS
MULESHOE.**
15-20s-tfc

chamber voted to block USDOL spending to force registration of farmers and other agricultural employers as farm labor contractors, something well outside the intent of Congress when the law was passed. A House-Senate Conference Committee as of this writing has yet to meet on this issue.

"These things are only a start," Johnson comments, "but they are indications that if we the voters keep the pressure on, Congress may further respond to our demands for reasonable and responsible administration of our laws."

**Sheep, Lambs on Feed
Up 25% Over Last Year**

AUSTIN-- Agriculture
Commissioner Reagan V.
Brown has some good news
for consumers who find a
delicious roast leg of lamb to
be an irresistible treat:
According to the current
livestock reports, supplies of
lamb should be in plentiful
supply the coming months.

"Figures just released from
the Texas Crop and Livestock
Reporting Service indicate 25
percent more sheep and lambs
were on feed for slaughter on
December 1 than last year,"
Brown said. "And although
much of Texas' production is
shipped to other markets,
especially the East Coast, this
should be good news for lamb
lovers everywhere."

Brown noted that the
134,000 head on feed resulted

from above-average place-
ments into feedlots during
November, which totaled
49,000 head. Marketings of
sheep and lambs out of
fattening lots during
November were up 30 percent
from a year ago, he added.

The general financial
outlook for sheep and lamb
producers is somewhat more
favorable for 1981, although
several persistent problems
may continue to hamper the
industry's expansion plans.

Brown also noted. "The sheep
industry is in the midst of
efforts to expand production,
but predator problems and a
shortage of adequate labor for
many operations are making
this task more difficult," he
added.

"FASHION DREAMS COME TRUE...
AT
**Charlie's
Originals, Inc.**
TRADE WINDS PLAZA
800 WEST AMERICAN BLVD.
MULESHOE, TEXAS 79147
806-272-5180

**January Clearance
The Sale Everyone
Has Been
Waiting For!
ALL
Fall & Winter
Merchandise
Drastically Reduced
Sale Starts
Monday, January 5
9 a.m.**

**PIONEER
DECISION DAYS**
January 12-17
Be sure to get your free white cap during Pioneer Decision Days.

Come on over!
We're ready to help you make one of your toughest farming decisions.
That's right. We saw a dramatic story unfold in fields around here last fall. And we're eager to tell you about it. From what we saw, Pioneer brand hybrids and varieties were clear-cut winners across the board. And, it proved what we've been saying all along. In a good year, they're as good as you'll find. In a tough year, no one else even comes close.
Come see us during Pioneer Decision Days. We'll show you yield and performance records from this year and several years back, and help you select the right combination of Pioneer brand seeds to be your money makers. And during Pioneer Decision Days, we'll give you a free white cap just for taking time to think seriously about your seed needs.
**PIONEER
BRAND SEEDS**
RESEARCH... for the Business of Farming
Sherley Anderson Grain
Drawer J
Lazbuddie, Texas 965-2922



CHUCK ROAST

Blade Cut
U.S.D.A.
Western
Select

\$1.29
lb.



GROUND BEEF

Fresh - Not Less
than 70% Lean

\$1.19
lb.

3 lbs. or more



BACON

Glover's
Sliced Slab
Market Style

\$1.19
lb.



FRYER BREAST

U.S.D.A. Grade A

\$1.19
lb.

Legs or Thighs \$1.09 lb.



First Of The Year Food Values **SHOP RITE FOODS**

Prices Good Sun. thru Wed. Jan. 4-7, 1981

Each of these advertised items is required to be readily available for sale at or below the advertised price in each store, except as specifically noted in this ad. We reserve the right to limit quantities. None sold to dealers.



MARYLAND CLUB

All Ass't. Grinds

\$2.39

2-lb. Can \$4.77
1-lb. can

Sauerkraut Del Monte 16-oz. can	41¢	Spinach Del Monte 16-oz. cans	2 89¢
Fruit Cocktail Del Monte 30-oz. can	88¢	Cling Peaches Del Monte-Slices or Halves 29-oz. can	77¢
Hominy White Swan 29-oz. can	47¢	Catsup Del Monte 24-oz. btl.	79¢
Prune Juice Sunsweet 32-oz. btl.	99¢	Banquet Dinners Chicken, Turkey, Salisbury Steak, Chopped Beef, Meat Loaf, Italian, Bean & Frank, Western 11-oz. pkg.	63¢



1 1/2% LOW FAT MILK

\$1.89

Bell
1-Gal. jug



KING COLA

Regular or Slim

\$1.29

6-pack
12-oz. cans

Lysol Spray Deodorizing Spray 18-oz. can	\$2.59	Jeno's Pizza "You Top It" 30-oz. pkg.	\$3.99
Pine Sol Household Cleaner 15-oz. btl.	\$1.09	Apple Pie Mrs. Smith's 26-oz. pkg.	\$1.59
Dawn 13¢ Off Label 22-oz. btl.	\$1.16	Beef Stew Dinty Moore 24-oz. can	\$1.57
All Ways Soft Fabric Softener 64-oz. btl.	\$1.99	Buttered Syrup Log Cabin 24-oz. btl.	\$1.69
Diapers Johnsons Daytime 24-ct.	\$2.99	Tampax Regular, Super or Super Plus 40-ct.	\$2.39



LARGE EGGS

Country Fresh

75¢

1-do.

PLAY **WINNING DEAL**

IT COULD BE A BIG DEAL.... FOR YOU!

WIN \$1,000, \$100, \$10,
\$5, \$2, \$1 OR \$25 IN
GROCERIES!

ODDS TO WIN

ODDS vary depending on the number of Game Tickets you obtain. The more tickets you collect the better your chances of winning.
WINNING DEAL Series - WDIS is being played in 5 participating Shop Rite Food Stores located in Belton and Granite, New Mexico and Muleshoe, Tulsa and Nicoma, Texas, and 11 Piggy Wiggly Stores located in Alamo, Alamo, California, Roseburg, Clatsop, Bullhead, Consequences, Silver City, Carrizozo and Carlsbad, New Mexico and Florida, and Seminole, Texas.
Scheduled termination date of this promotion is February 18, 1981, however, WINNING DEAL officially ends when all Game Tickets are distributed.
Copyright © 1980 Wallace Games Inc.
Game program may be repeated by popular demand.
The total number and worth of prizes to be awarded will depend upon the number of winning tickets actually redeemed.

ODDS CHART EFFECTIVE NOVEMBER 20, 1980

PRIZE VALUE	NUMBER OF PRIZES	ODDS FOR ONE GAME TICKET	ODDS FOR 10 GAME TICKETS	ODDS FOR 100 GAME TICKETS
\$1,000	1	1 in 144,444	1 in 14,444	1 in 1,444
\$100	10	1 in 14,444	1 in 1,444	1 in 144
\$10	100	1 in 1,444	1 in 144	1 in 14
\$5	1,000	1 in 144	1 in 14	1 in 1
\$2	2,500	1 in 58	1 in 6	1 in 1
\$1	25,000	1 in 5.8	1 in .6	1 in .06
TOTAL NO. PRIZES	36,610	1 in 3.7	1 in .4	1 in .04

Game Tickets and Collector Card available at checkout or store office. No Purchase Necessary.



GOLD MEDAL FLOUR

Great For Cakes and Pies

99¢

5-lb. bag



GREEN BEANS

Del Monte Cut
Spice Up With Bacon

\$1

3
16-oz. cans



POTATOES

NO. 1 RUSSET

Serve With Sour Cream

29¢

lb.



PINTO BEANS

Save With the Casserole Label

79¢



GOLDEN CORN

Del Monte
Whole Kernel or Cream Style

\$1

3
16-17-oz. cans

Spinach Try With Your Next Salad	bun.	69¢	Bananas Golden Ripe	3 \$1
Yellow Onions Great in Stew	lbs.	4 \$1	Mushrooms Snow White	\$1.89
AVOCADOS Great Salad Favorite	5	\$1	Broccoli Fresh Green Heads	59¢