

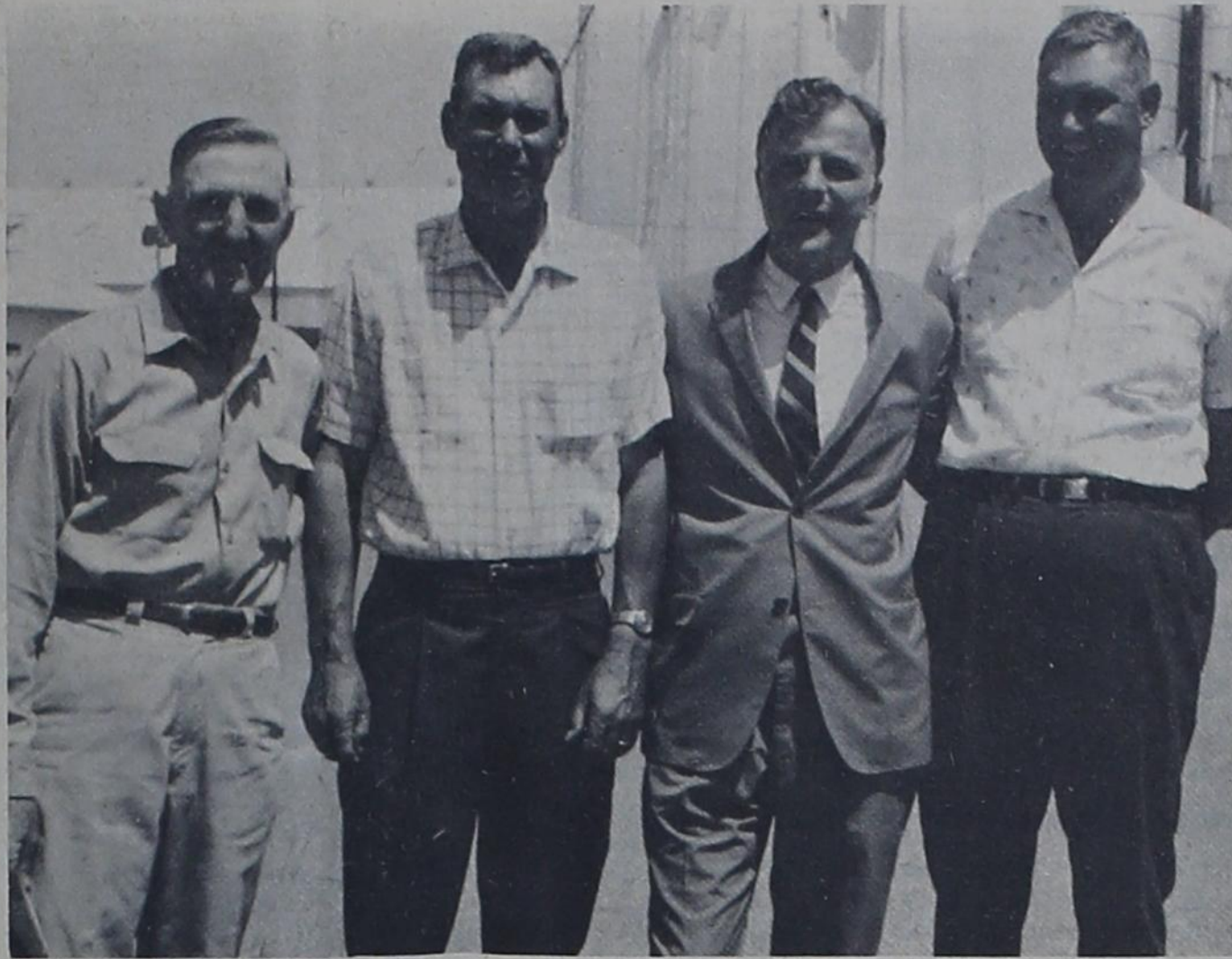
THE STATE LINE TRIBUNE

"OFFICIAL PUBLICATION OF PARMER COUNTY"

SIX PAGES

FIFTY-SIXTH YEAR

10 CENTS



GUBERNATORIAL CANDIDATE VISITS -- Paul Eggers, second from right, candidate for governor of Texas, discusses some of the vital issues of the day with Elmer Langford, R.L. (Bob) Jones, and Glen Lust, Parmer County Republican chairman, on his arrival in Farwell Wednesday.

Paul Eggers Gives Stand On Political Issues

"I am in the campaign to win and I will win" stated Paul Eggers, Republican candidate for governor of Texas, as he told persons who had gathered to hear his stand on some of the political issues of the day Wednesday upon his arrival in Farwell.

Eggers stated that he believes that the state needs more dedi-

ated people to give a part of their lives to government service. People in Texas are rebelling against higher taxes he said, and if elected he will immediately try to reform the tax set-up. He believes that he can work well with the House and Senate, should they remain primarily Democratic, however, he stresses the fact that he believes that this is a year when persons all over the state have taken an attitude of "kick them out and elect new ones and let's start over."

protected as they are by existing laws.

Queried on his stand on educational issues, he said, "I believe that we need vocational and technical schools to train people to help themselves."

Eggers said he is not endorsing any presidential candidate, but is devoting all his efforts to winning the gubernatorial race and trying to return power to the state where it belongs.

He was met in Farwell by

Glenn Lust, Parmer County Republican Chairman, R.L. Jones, candidate for Parmer County commissioner on the Republican ticket, and other interested persons. Eggers spoke to the group at the hospitality room of Security State Bank, where a reception had been planned in his honor.

Following his address, he graciously answered questions put to him by his listeners on vital issues of the day.



Paul Eggers, Republican candidate for governor of Texas, greets persons gathered to welcome him and hear his views on political issues of the day as he alights from the campaign bus which brought him to Farwell on a tour through the Panhandle.

Dignitaries To Attend Border Towns Days

Word was received early this week that Senator Jack Hightower and Representative Bill Clayton will be in town Saturday, August 3, to attend the barbecue and rodeo performance, which is a part of the Border Towns Days celebration.

Tentative schedule of events has been announced by Mrs. JoAnn Liethen, chairman of the celebration. Kick-off for the celebration will be a gigantic parade Thursday, Aug. 1, at 4 p.m.

A Kiddie Carnival with several rides is scheduled for each day during the celebration and on Wednesday prior to the beginning of the celebration. The rides will be in the area north of the county courthouse in Farwell and will be in operation until 7:30 p.m. each evening, but will not operate during rodeo performances.

Queen contestants will be introduced each evening, Thursday through Saturday, prior to the grand entry at the rodeo. Rodeo performances are set at 8 p.m. each evening during the three-day celebration.

Saturday morning, a golf tournament is set to begin at 8:30 a.m. at Farwell Country Club, and judging of queen contestants on horsemanship will be at 9 a.m. at the rodeo arena.

Lions Club is sponsoring a trap shoot at the trap north of town beginning at 1 p.m. on Saturday. Also at 1 p.m. Saturday, Ed Hardage and a western band will begin presenting western music at Farwell City Park. The music will be presented throughout the afternoon, as various contests are being conducted. Contests are set for each 30 minutes until 4 p.m. when the barbecue will be served. Contests planned are Min-

nie Pearl Hat Contest, hog or cow calling, whittlers, country crooners, and various others. All hog and cow callers, and country crooners are urged to begin practicing NOW for the contests.

Also on the agenda for the afternoon is the interviewing of queen contestants at the park, introduction of Senator Jack Hightower and Rep. Bill Clayton, and other special guests and dignitaries who attend the celebration. A square dance exhibition will be presented by members of the Bovina Square Dance Club. The barbecue will conclude at 7 p.m.

Mrs. JoAnn Liethen stated that some 40 floats have already been entered in the parade including floats from all churches in the Twin Cities, antique car club from Portales, Clovis Chamber of Commerce

float, and various others. Also expected are bands from over the area, the Drum and Bugle Corps from Clovis, and various riding clubs, and individual horsemen. All persons who have horses and wish to ride in the parade are invited to do so. An added attraction for the parade is an air show, planned by Clovis Aviation, when three planes will make three 800-1000 feet sweeps over the parade flying in a V formation, piloted by Dan Burkhalter, Robert Armstrong and Bryan Kos.

Dutch Quickel will be master of ceremonies at the Saturday activities. Band stand will be erected at the park and decorated with banners by the Farwell Firemen. Firemen will also hang banners over town and around the park and rodeo arena area.

Pat Patrick urges all business firms who wish to order banners to contact him immediately in order that more banners may be ordered this week. Also Troop 121 Girl Scouts are selling flags complete with holder and flag pole. Price of the flags is \$6.00 each.

"Let us make this the biggest and best celebration the Twin Cities has ever known," reiterated Mrs. Liethen, as she stated that "some 1000 persons are expected to be in Texico-Farwell for the celebration."

Rules Explained --

40 Girls Enter Queens Contest

A total of 40 girls are entered in the Border Towns Days Queen Contest, according to information released by Mrs. Maxine Williams early this week.

Beginning Thursday, July 25, and continuing through July 31, eight of the girls will be interviewed by Betty Crnahan on the "Coffee Time" program appearing locally over TV Channels 10 and 4 each day. Time of the program is 10:30-11 a.m.

All of the queen contestants will ride on the ESA float in the gigantic parade, which is scheduled to kick-off the celebration August 1 at 4 p.m. Each evening prior to the rodeo performances, (7:45 p.m.), all of the queen contestants will be introduced; and on Saturday morning, Aug. 3, at 9 a.m.,

contestants will be judged at the rodeo arena on horsemanship.

Final judging of the contestants will be at Farwell city park Saturday, Aug. 3, beginning at 3 p.m. when each of the contestants will be interviewed by the judges. For the judging, all of the girls are to be dressed in Levis and western shirts; no fancy western suits will be allowed for these appearances. White long sleeve western shirts are preferable; however, if a contestant already has a long sleeved colored western shirt she may wear it.

On Thursday for the parade and on Thursday, Friday and Saturday nights for the rodeo appearances, contestants may wear western suits, if they so desire.

In each appearance, the contestant must wear a western

hat, with the name of her sponsor on the hat band.

The queen and two runners-up will be named and presented immediately following the grand entry at the rodeo performance on Saturday evening, after the judges have been introduced. Contest judges are Mrs. Wilma Fulgham and Kay Green Schell, former County Fair Queens and also former New Mexico State Fair Queens, and Andy Sutter, Clovis businessman.

Any of the queen contestants, who ride well enough, are invited to ride in the grand entry each night at the rodeo performances.

Some 36 girls who are entering the contest met at Clara's party and to receive instructions on contest rules. Mrs. Wilma Fulgham spoke to the group explaining the rules and regulations by which they will abide.

Association Sets Monday Night Meet

Farwell Arena Association announces a meeting for Monday, July 22, 8:30 p.m. at Gateway Cafe. At that time, final plans for the AJRA Rodeo set for August 1, 2, 3 in Farwell, in conjunction with the Border Towns Days celebration, will be made.

Delbert Garner, president of the association, encourages a good attendance by all Arena Association members.

Girl All-Stars To Play Saturday

Announcement was made early this week that the Girls All-Stars, picked from the local girls baseball team, will be playing a team from Cannon Air Force Base this Saturday, July 20, 7:30 p.m. at the local baseball park.

All of the team members are girls 12 and 13 years of age. Coaches for the team are Mrs. Aileen Pearce and Mrs. Jerri Tharp. Names of the team members will be published at a later date.

Turf-Grass Meeting Set

A meeting of the Panhandle Turf-Grass Association has been set for 8 p.m. August 1 at the Amarillo Country Club, according to Gene Deeds, secretary-treasurer of the group.

Speaker for the meeting will be Wade Stith from Pennsylvania who will speak on the "Principles of verifying greens and fairways--Putting right behind verticut. All interested persons are invited to attend.

Directors of the association are Oliver Himes and Jim Stringer.

LITTLE LEAGUE ALL-STARS will play the Tucumcari All-Stars Saturday, 7 p.m. (CDT) at the Tucumcari Little League ball park. Coaches for Texico-Farwell all-stars are Robert Curtis, Bob Martin and Lewis Foster, Bill Brigham is manager. Team members include Craig Chumley, Kevin Hardage, Mac McFarland, Paul Brigham, Kevin Hargrove, David Dannheim, Freddie Dale, Carl Kirkland, Domingo Rojas, Garry Green, Roman Gonzales, Leslie Curtis, Albert Galvan and Raymond Cantu.

Club Sets Scotch Foursome July 28

Gene Deeds, pro at the Farwell Country Club announces a Scotch Foursome for the Farwell Country Club on July 28, Tee time is 2 p.m. All entrants will be charged a fee of \$1.00 each. Ladies and men are invited to participate in the tourney. Drawing for partners will be held.

Meeting Set

Regular meeting of the Farwell Country Club Ladies Association is set for Friday, July 26, 9:30 a.m. at the club house, according to Mrs. Bernice Norton, president of the organization. She urges a good attendance for the meeting. Hostesses for the coffee, named alphabetically, are Mmes. Elva Ruth Davis, Reta Dollar, Betty Flower, Jeanette Ford, Jeanne Garner and Linda Gerries.

Former Resident Breaks Hip

Word was received in Texico-Farwell early this week that Mrs. Jehn (Mary) Floyd, a former resident of Texico-Farwell, had received a broken hip in an accident at her home in Crescent City, Calif. Mrs. Floyd is hospitalized in room 242, Seaside Hospital, Crescent City, Calif. 95531. For many years Mrs. Floyd and her late husband owned and operated a restaurant in Farwell before moving to California. She is an aunt of Mrs. Lois Farris of Clovis.

O. C. McBride

Dear Turnrow Tunkel . . .



DID YOU read that a farm spokesman said farmers were in trouble, when a bushel of wheat won't buy a haircut? I agree, but that's not half of it. A bushel of wheat will buy about as much time in a barber's chair as a bale of cotton will buy in a hospital.

TRAVEL EXPERTS predict that the new air service between New York and Moscow will result in more Americans vacationing in Communist countries.

I'm not about to spend my vacation behind an Iron Curtain. When I get ready to come home, I don't want to have to ask permission from anyone but my wife.

I SEE where the FTC has asked Congress to ban all cigarette advertising on television.

That would throw a lot of people out of work, especially cowboys. However, many ranchers need help, and those people in Marlboro Country wouldn't have any trouble finding jobs unless they have been sitting around smoking in front of cameras so long they have forgotten how to fix a windmill.

ACCORDING TO manufacturers of golf equipment, players using the new clubs with aluminum shafts can drive the ball up to 30 yards farther.

If changing the type of shaft makes that much difference, I may try a set. About the only time I get any distance with my present sticks is when I happen to hit the ball with the clubhead.

SINCE PRESIDENT Johnson has pulled out of the race, a new Administration will be coming in after the elections. Do you suppose we will finally be rid of Orville Freeman?

Let's keep our fingers crossed. There's always the danger that another vacancy will occur in the Supreme Court before Lyndon leaves office.

DID YOU know that the NLRB has ruled that an employe can not be fired for pounding on a manager's desk and swearing at him?

Times have changed, I can remember when this wouldn't have been considered a Federal case, although it would have stood a good chance of being an ambulance case.

URELY PERSONAL
By John

From time to time we come across articles and published interviews with noted persons wherein they seriously question the present day validity of our federal Constitution. This is especially true in regard to the functioning of the Electoral College. It is not our desire to go into the pros and cons of this particular matter now. Rather, we would mention a fact that we have pondered upon at some length.

As we know, each state elects two U.S. Senators to the National Congress for a six-year term. These Senators, with a longer term than the President, not only reflect their state's immediate business and local interests but they inflect upon the entire nation the thinking of a small segment of this nation in respect to foreign affairs.

This is especially true, apparently, in considering such an influential man in the Senate as William Fullbright. The Senate is a very powerful and important body in the field of foreign relations. How to have this body reflect the views of the country as a whole under the present system of local elections and then senate seniority rules is a problem that we think will have to be eventually resolved.

This problem of election by a relative small base of votes and then for them automatically to represent the entire country in many vital areas is very much more in evidence in the Senate than in the House of Representatives. Possibly a number of "Senators-at-large" will eventually direct foreign affairs.

An article of passing interest to us is the receiving of a plea for funds to help elect one Jack Metcalf as U.S. Senator from the State of Washington. This plea is based on the voting record of the incumbent Senator, Warren G. Magnuson. Senator Magnuson is credited with a bill that would increase traffic with the Communist countries under the guise of "softening them up." We are totally opposed to trade with Communist countries and feel strongly about a public servant who would urge such a course.

This is the first time we have known of a conservative organization soliciting money in outside areas to defeat a "liberal" office holder. We have been aware that many Unions pour vast sums of money into a state to elect their candidates and feel that a plea by conservative elements is in order. All conservative thinkers have a personal stake in the continued re-election of men of the stripe of Magnuson and Fullbright.

We hesitate to condone apparent outside influence in a state election but this is a fact of political life and must be lived with until a satisfactory solution can eventually be worked out.

The Twin Cities Border Towns Days celebration is only two short weeks away. From all reports, we will have a town full of people for the many events. This is a good time for us to show off the beauties of our community. This cannot be done if the "beauty" is hidden behind a screen of weeds or lost in a setting of accumulated trash. There are some spots in town that need attention by the owners as well as the City. We hope we can say to our many out of town guests, "Don't you wish you lived in the Twin Cities?" and get an affirmative answer.

1898 - Remember the Matine!

1968 Remember The Pueblo!

NOTICE

W. M. Roberts, school superintendent in Farwell, reminds all area residents of the meeting of the Board of Tax Equalization at his office July 22-23 between the hours of 9 a.m. and 5 p.m. He invites all residents of the school district who have business with the board to be present on one of the days.



WHO KNOWS what happened Saturday morning when some 40,000 bushels of wheat came tumbling down from Sherley-Anderson Lariat Grain Co. through a hole approximately 30 feet long. Asa Smith, elevator manager, said "The first thing we knew a cloud of dust rose--no noise, and the grain came pouring out." Grain was being moved from one tank to another tank at time of the incident. Smith stated that the loss of grain would be much less than would be expected and repairs on the elevator would be completed in ample time for the fall grain harvest. The grain had been moved from the railroad tracks which ran adjacent to the elevator by 1 p.m. Saturday and extra help came to pick up the grain. Clean-up operations were being completed Monday morning.



Member Panhandle Press Association 1968

Entered as second class matter at Farwell, Texas, 79325, under the act of March 3rd, 1879, Published every Thursday.

SUBSCRIPTION RATES -- Parmer and adjoining counties, \$4.00 per year; elsewhere, \$5.00 per year Payable in advance.

Queen Contestants



JEANNE WILLIAMS
Atey Sinclair

Mrs. Kahtyeen Walser is in Albuquerque this week visiting with a sister, Mrs. Naomi Smith.



MARRION BUSBICE
Johnny's Enco

Mr. and Mrs. Fred Chandler and son, Rowdy, returned from Colorado Monday, where they had been visiting W. A. Bryant, grandfather of Mrs. Chandler. They were accompanied to Colorado by Mrs. A. F. Buck, mother of Mrs. Chandler who lives in Phoenix, Ariz., who has been visiting in the Chandler home recently.



Cricker

NURSERY NEWS

By Alvin Woodburn
Garden Center Nursery
Clovis, N.M.

Who owns that strip of real estate between the ruts we use to get where we are going and the fence or designated right of way? The litter bugs? At least they make good use of it. The herbicide developers? At least it furnishes a good place to propagate the undesirable plants that we refer to as weeds. The property owner? Everyone that has property has given room for a road or right of way all around it. The travelers? They only need the "rut" or strip of land that the wheels run on. The taxpayers? They have all that they can pay for anyway. The politicians? They have enough without it. The road builders? They gave the name to the "borrow ditch" or bar pit as we refer to it. When they got the borrowing done, they don't need it either. It is another one of those things that society has to work out.

To the farming area, it serves as a source in which to propagate the undesirable weeds such as bindweed and Johnson grass. Personally, we feel that the people who demand and use the "rut" should be the ones to see to it that it doesn't become a hazard to those around.

The "hazard to the ones around" can vary from one year to the next in the same locality. It can also vary from one locality to another. The bindweed isn't a serious problem where ranching is the only occupation endeavored. Bindweed makes real good early forage for cattle, especially for the dry years, yet it can play havoc to a cotton field or vegetable garden. We pick on the bindweed the same way we often refer to the elm tree in landscaping. It is definitely a hardy plant or it couldn't take the cussing that it gets.

The effort to beautify the place in which we live will pay off in enjoyment for ourselves and everyone else that is here to see, feel or smell this thing called beauty.

The John Deere Implement Dealer For YOU

Ingram Bros. Implement Company

MABRY CLOVIS

Baseball Season Draws To A Close

Play in the Little League baseball league will continue through next Friday, July 27, according to information released this week. However all other teams in the local baseball league have completed play for the season.

The Little League All-Stars are scheduled to play the Tucumcari All-Stars Saturday, July 20, 7 p.m. (CDT) in Tucumcari.

During regular season play to date, Aldridge Insurance is leading the Little League teams with eight wins, one loss, and two tie games. Next in line is Kelly Green Seed with eight wins, two losses and one tie game. Worley Grain has seven losses and one tie game. Fireboys have four wins and eight losses; Tide Products has one win and 12 losses.

In games this week scoring has been as follows: Kelly Green 19- Oklahoma Lane 11; Worley Grain 16-Fireboys 15; Aldridge Insurance 15-Tide Products 13; Kelly Green won over Tide by a forfeit; Aldridge Insurance 25-Fireboys 11; Oklahoma Lane 11-Worley 10.

Gifford Hill was winner of the Pee Wee division with nine wins, and no losses. Sherley-Anderson-Pitman came in second with four wins, four losses and one tie game; Piggly Wiggly was third with three wins, five losses and one tie game;

while the Citizen's Bank team had one win and eight losses for the season.

In the Girl's League, State Line Grain topped the list with nine wins and no losses. Mil and Mary's was second with six wins and three losses; Holiday's had two wins and seven losses; while Capital Food had one win and eight losses.

Helton Oilers were top team in the Pony League with six wins and seven losses for the season. No standing was available on the other two Pony

League teams, Charles Oil and Sherley Grain, both of Bovina.

The Little League had some nine games left to play before their season will be over and a final standing can be given for that division. The baseball season which is drawing to a close is listed as one of the best in recent years with many boys and girls participating in the local Lions Club and coaches have been volunteers from Texico and Farwell. Bill Meeks has served as player representative for the teams.

On The Farm In Parmer County

By RONNY McNUTT
County Agent

BE ON THE LOOKOUT

Gains already made in the Southwest Screwworm Eradication Program are in jeopardy each day unless every producer checks his livestock every day, and treats all wounds, man-made or otherwise. Larvae of all sizes should be collected from wounds and sent to the Mission, Tex. Screwworm Laboratory for positive identification. Vials for mailing may be secured from the County Agent's office in Farwell.

Livestock producers, wildlife enthusiasts and owners of household pets should give the program their full support in the critical summer and fall months.

Program officials, think the situation is worse than in 1963, a high case year when the program was a year old. They believe the infestation is at least four times as great as reported cases indicate, and they are concerned about second and third generation fertile screwworm flies in counties that have not yet reported a 1968 screwworm case.

This is no time for complacency or indifference. Texas has had 823 confirmed cases this year, and additional cases are expected.

Producers can help halt the screwworm outbreaks by observing good management practices, such as treating all wounds on animals particularly in shearing, castrating and de-horning with materials recommended for screwworms on the label; and by following routine livestock spraying programs, again using materials that are recommended.

In case of screwworm outbreaks, all producers of the area are encouraged to spray their herds. Inspect, and if possible, spray all animals prior to movement. Be sure and remove any wounded animals from the shipment.

MIDGE SURVEY
Norris Daniels, entomologist with the Bushland Experiment Station, was through Parmer County last Friday making his first midge survey for this year. Daniels collected Johnsongrass heads from various locations in the County. These heads will be observed closely for midge hatching. Daniels also observed two or three fields for the corn leaf

aphid and greenbug infestation. Most fields in the County have these insects present but Daniels did not recommend a spray program.

DIAGNOSTIC WORKSHOP

A diagnostic workshop will be held at the South Plains Research and Extension Center in Lubbock, August 1.

The purpose of this workshop is primarily to permit visual observation of symptoms caused by nutrient deficiencies, herbicides, physical conditions, diseases and nematodes.

You are invited to attend this workshop.

DISTRICT 4-H HORSE SHOW

Six 4-H members from Parmer County participated in the District 4-H Horse Show in Pampa on Tuesday, July 16. Those members participating were: Letha Templar of Lazbuddie, Laura Doshier of Farwell, Loy Dale Clark of Lazbuddie, Conda Jones of Oklahoma Lane, Charles Christian of Oklahoma Lane and Ernestine Templar of Lazbuddie.

4-H horsemen from throughout the 22 Panhandle Counties will vie for top honors at the Top O' Texas Rodeo Grounds. The top 20 contestants from the district show will be eligible to compete in the State 4-H Horse Show, August 8-10 at Fort Worth.

Hospital Notes

Mrs. Janie Bowery is still confined to Clovis Memorial Hospital where she is undergoing a series of tests and x-rays.

Mrs. Homer Dykes of Texico, who underwent surgery at Clovis Memorial Hospital last week, is reported to be in "good condition." She expects to be released from the hospital later this week.

Mrs. Douglas Landrum underwent major surgery at Clovis Memorial Hospital last week. She is reported to be in satisfactory condition.

Mrs. L.C. Wagner entered the hospital in Clovis Tuesday and was scheduled to have surgery Wednesday morning. No report on her condition was available at press time.



MAKE A RECORD -- Farwell cheerleaders returned from the Texas Tech cheerleading workshop on Sunday with six awards, a record for the school. They received the spirit stick (highest award given) three first places, one second place, one third place and also an honorable mention on their poster. Cheerleaders Cindy Phillips, Linda Meeks, Debbie Chandler, Rene' Walser, Jana Bass and Debra Wardlaw, stated that they were in competition with schools from Amarillo, Lubbock, and also some from Oklahoma and Colorado.

4-H LEADERSHIP-ELECTRIC CAMP PLANNED

Three 4-H members from Parmer County will attend a leadership - electric camp at Cloudercroft, N.M. July 22-26.

Kevin Kaltwasser and Harold Jones of the Oklahoma Lane 4-H Club and Dale Clark of the Lazbuddie Club are the members attending the camp. These boys will receive training in duties and function of a 4-H Council and also some training in electricity and its uses.

Scott Wins Tourney

Low Gross winner in the one club-one putter golf tournament held at the Farwell Country Club on Sunday afternoon was Vernon Scott with a score of 41. Second place in low gross was Bill Prince with a score of 44.

Pat Patrick was first place winner of low net with a score of 36 followed by Buster Herington with a score of 38.

Sis Deeds won the low gross for ladies followed by Doris Herington. No scores for the ladies were available.

M. T. (Mose) Glasscock is confined to Clovis Memorial Hospital for a series of tests and x-rays. He is in room 225.

Red Sez

Joe "Who is more satisfied: a man with a million dollars or a man with six children?"

Red "A man with six children. A man with a million dollars wants more."

Let Us Service Your Car With Fuel-Oil-Wash Lube Job We Will Pick Up And Deliver

Wheeler Avenue "66" Station Texico - Ph. 482-9148 And RED'S "66" RED PRATHER 481-3662--Farwell

Persons interested in buying and the Girl Scouts will deliver a flag should call either Mrs. T.J. Glenn or Mrs. B.D. Nance the Flag immediately.

Treasurer's Report

REPORT of Mabel Reynolds County Treasurer of Parmer County, Texas, of Receipts and Expenditures from April 1, 1968, to June 30, 1968, inclusive.

JURY FUND, 1st Class	
Balance last Report, Filed Mar. 31, 1968	\$3,408.37
To Amount received since last Report,	28.93
By Amount paid out since last Report, Ex. "A"	590.00
BALANCE	\$2,847.30
ROAD AND BRIDGE FUND, 2d Class	
Balance last Report, Filed Mar. 31, 1968	\$6,441.02
To Amount received since last Report,	28.93
By Amount paid out since last Report, Ex. "B"	150.00
BALANCE	\$6,319.95
GENERAL COUNTY FUND, 3d Class	
Balance last Report, Filed Mar. 31, 1968	\$155,070.05
To Amount received since last Report,	19,108.82
By Amount paid out since last Report, Ex. "C"	41,861.43
BALANCE	\$132,317.44
PERMANENT IMPROVEMENT FUND 4th Class	
Balance last Report, Filed Mar. 31, 1968	\$3,112.46
To Amount received since last Report,	28.93
By Amount paid out since last Report, Ex.	000.00
BALANCE	\$3,141.39
RIGHT OF WAY FUND, 5th Class	
Balance last Report, Filed Mar. 31, 1968	\$120,201.53
To Amount received since last Report,	412.87
By Amount paid out since last Report, Ex.	2,598.50
BALANCE	\$118,015.90
LATERAL FUND, 6th Class	
Balance last Report, Filed Mar. 31, 1968	\$8,011.45
To Amount received since last Report,	8,000.05
By Amount paid out since last Report, Ex.	11.40
BALANCE	\$16,000.10
SOCIAL SECURITY FUND, 7th Class	
Balance last Report, Filed Mar. 31, 1968	\$10,129.58
To Amount received since last Report,	2,329.00
By Amount paid out since last Report, Ex.	9,620.22
BALANCE	\$2,838.36
FARM TO MARKET R, & B, FUND, 8th Class	
Balance last Report, Filed Mar. 31, 1968	\$150,297.73
To Amount received since last Report,	54,945.82
By Amount paid out since last Report, Ex.	49,400.89
BALANCE	\$155,842.66
RECAPITULATION	
JURY FUND, Balance	\$ 2,847.30
ROAD AND BRIDGE FUND, Balance	6,319.95
GENERAL COUNTY FUND, Balance	132,317.44
PERMANENT IMPROVEMENT FUND, Balance	3,141.39
RIGHT OF WAY FUND, Balance	118,015.90
LATERAL FUND, Balance	11,400.00
SOCIAL SECURITY FUND, Balance	2,838.36
FARM TO MARKET FUND, Balance	155,842.66
TOTAL	\$421,334.40
LIST OF BONDS AND OTHER SECURITIES ON HAND	
U. S. Government Bonds	\$483,500.00
COUNTY INDEBTEDNESS:	
Machinery Time Warrants	\$34,100.00
THE STATE OF TEXAS COUNTY OF PARAMER	

Before me, the undersigned authority, on this day personally appeared Mabel Reynolds, County Treasurer of Parmer County, who being by me duly sworn, upon oath, says that the within and foregoing report is true and correct.

Mabel Reynolds County Treasurer

Sworn to and subscribed before me, this 3 day of July, 1968.

Bonnie Warren Clerk,
County Court Parmer County, Texas

Don't Forget!

To See George Long

For Your Automotive And Truck Needs
Pontiac, GMC, Rambler, And Better Used Cars Rierson Pontiac

Clovis, New Mexico
Home Phone: 481-3876
Farwell, Texas

FIRST FEDERAL

VARIABLE DIVIDEND RATE STRUCTURE

5.25% PAID OR COMPOUNDED QUARTERLY
per annum . . . on 6-12 month Savings Certificate Accounts of \$15,000. up.

5% PAID OR COMPOUNDED QUARTERLY
per annum . . . on 6-12 month Savings Certificates of \$10,000. but less than \$15,000.

4.75%
per annum . . . on regular savings accounts . . . compounded quarterly. Accounts opened by the 10th of the month earn from the 1st.

Second largest and one of the oldest Federally Chartered in New Mexico.

FIRST FEDERAL

SAVINGS & LOAN ASSOCIATION of CLOVIS

HOME OFFICE: 8th and Pile Streets, CLOVIS, NEW MEXICO
BRANCH OFFICE: 2nd and Abilene Street, PORTALES, NEW MEXICO

COURTHOUSE NOTES

Instrument report ending June 29, 1968, in County Clerk office, Bonnie Warren, county clerk.

WD, Floyd L. Rector, Dennis Wesley, Lot 18, Blk. 3, Staley Add, Friona.

DT, Dennis Leo Wesley, Hi-Plains Sav. & Loan, Lot 18, Blk. 3, Staley Add, Friona.

WD, J. B. Coe Lumber Co., J. C. Parvin, Lot 65, Blk. 2, Western Friona.

DT, J. C. Parvin, Lubbock National Bank, Lot 65, Blk. 2, Western Friona.

DT, F. Leroy Johnson, Commodity Cr. Corp, 10 ac. out W 1/2 Sect. 12 T6S; R3E.

WD, Leonard L. Grissom, Robert Estes, Lot 4, Blk. 114, OT Bovina.

ML, Marlon F. Fite, Kenneth E. Walker, Lot 34, Blk. 1, Western Add, Friona.

WD, Si G. Darling, Caroline Bush Emery, N 1/2 of Sect. 24, T1N; R3E.

WD, Caroline Bush Emery, Ivan W. Adkins, N 1/2 of Sect. 24, T1N; R3E.

WD, Lavon Jones, Oswell Jones, N 17' of lot 28, & Lot 29 & 30, Blk. 47, Friona.

DT, C. N. Treinen, C. R. Elliott, Lots 6, 7, 8, 9, in Blk. 5, Lakeside Add, Friona.

DT, C. N. Treinen, First Fed. Sav. & Loan, Lots 6, 7, 8, 9, in Blk. 5, Lakeside Add, Friona.

DT, Lloyd L. Thompson, First Fed. Sav. & Loan, Lot 35, Blk. 1, Western, Friona.

WD, L. E. Oldham, Jessie D. Adams, W 1/2 of Sect. 24, Blk. B, Synd.

DT, Jessie D. Adams, L. E. Oldham, W 1/2 of Sect. 24, Blk. B, Synd.

WD, Dan Ethridge, Dale Earl Houlette, Lot 1, Blk. 10, 2nd, instal Staley #3, Friona.

DT, Dale Earl Houlette, Friona State Bank, Lot 1, Blk. 10, 2nd instal Staley #3, Friona.

DT, Kenneth W. Neill, Parmer Co. Pump Co., N 158 ac. of Sect. 15, Harrah Sub

Instrument Report Ending July 6, 1968 in County Clerk Office Bonnie Warren County Clerk

Abst Judg., Johnson & Nix Inc, vs Bill Wall, SR

Abst Judg., State of Texas vs R. S. Johnston, Jr., SR

Abst Judg., First National Bank, Hereford vs Bethel & M. L. Drager, SR

Abst Judg., Northwest Tex. Hospital vs Isaac Tape, SR

WD, William L. Scales, James Frances Ball, Lots 7, 8, Blk. 2, Friona

DT, Ray Dean Fleming, First Fed. Sav. & Loan Asso., Lot 29, Blk. 1, Western Friona

WD, Bessie Caldwell, Robert E. Caldwell, et al, N 1/2 of SE 1/4 Sect. 10, T10S; R2E Deed, Veterans Land Board, Preston E. Cargile, E/pt of W 1/2 of Sect. 16 Blk. Z, Johnson

DT, Joe Mendoza, Farmers Home Adm., Lot 9, Blk. 87, Friona

WD, Geo. C. Taylor, Jr., Joe Mendoza, Lot 9, Blk. 87, Friona

WD, Jack Moseley, Floyd L. Rector, SE/pt. of NE 1/4 Sect. 8, T4S; R4E

WD, Ernest E. Houlette, J. T. Gee, N1/2 Lot 8 & 9, Blk. 19 OT Friona

WD, Herman Shcueler, Walter Kaltwasser, S 54' of lot 3,

& N 26' of lot 4, Blk. 1, Ridgecrest Unit #1 Add, Farwell

Instrument report ending July 12, 1968

DT, Paul L. Spring, American-Amicable Life, Ins. Co. NW/4 Sect. 29 T2N R1E

WD, Dale E. Houlette, Mobile Oil Co., Part in Lot 1 Blk 10 Second Install Staley #3 Friona

WD, Kennard D. Geard, Billy W. Carthel, 95,27 a in Lot 9 Oscar Davis Sub.

WD, Ray D. Fleming, Billy Charles Carmack, Lot 6 Blk 5 First Install Staley #3 Friona

DT, Billy Charles Carmack, First Fed. Sav. & Loan, Lot 6 Blk 5 First Install Staley #3 Friona

DT, Raynaldo C. Gonzalez, FHA, Lot 9 Blk 92 Friona

WD, Geo. C. Taylor Jr., Reynaldo C. Gonzalez, Lot 9 Blk 92 Friona

WD, James D. Click, H. C. Claborn, Jr., S part Lot 6 & N part Lot 7 Blk 2 First Install Welch Acres, Friona

DT, H. C. Claborn, Jr., American Mtg. Co., S part Lot 6 & N, part Lot 7 Blk. 2 First Install, Welch Acres, Friona

DT, James D. Click, Ronald L. Yarnell, N part Lot 8 & S, part Lot 9 Blk 3 First Install, Welch Acres Friona

DT, Ronald L. Yarnell, American Mtg. Co., N part Lot 8 & S part Lot 9 Blk 3 First Install, Welch Acres Friona

WD, Collard & Elliott, Virgil Widmier, Lot 5 & 6 Blk 76 Friona

DT, Virgil Widmier, Collard & Elliott, Lot 5 & 6 Blk 76 Friona



SHARON MAULDIN

Instructor For ENMU Drills

Sharon Mauldin, daughter of Mr. and Mrs. Emmett Mauldin of Amarillo and a niece of Mrs. J. B. Benderman of Farwell, is listed as head instructor for a drill team camp at Eastern New Mexico University this week.

Miss Mauldin is a former Amarillo High School Sandie Stepper Captain and a private instructor in drills teams and modeling. She is a senior at North Texas State University. Some 80 girls from over Texas and New Mexico are attending the camp.

Ten Accidents Recorded In June

The Texas Highway Patrol investigated 10 accidents on rural highways in Parmer County during the month of June, according to Sergeant W.E. Wells, Highway Patrol supervisor of this area.

These crashes resulted in one person killed, ten persons injured, and an estimated property damage of \$10,985.

The rural traffic accident summary for this county during the first six months of 1968 shows a total of 56 accidents resulting in three persons killed, 44 persons injured, and an estimated property damage of \$37,405.

"During the first six months of 1968 in Texas there were 1472 traffic deaths, or four less as compared to the 1476 traffic deaths for the same period of 1967," the Sergeant stated. However, if past trends continue the last six months will



VISIT WITH CONGRESSMAN -- Mr. and Mrs. Gene Tomlinson, left, and Mrs. Ray Tomlinson, Novice, Tex., talked over some of the problems facing our nation with Congressman Bob Price, on their recent visit to the Nation's Capital, Mr. and Mrs. Gene Tomlinson are teachers at Farwell Junior High School.

Patriotic Program Highlights July 4 Celebration

Highlight of the July 4 celebration at Oklahoma Lane Community Center last week was a patriotic program spotlighting the American Flag and presided over by James Ensor.

Rev. Jimmy McGuire, Lubbock, and N.D. Kelso, Alamo-gordo, former residents of the community, gave brief talks on "Great Men of America", and the entire group joined in pledging allegiance to the flag. Mrs. Doris White and Zelda Donaldson presented a musical number, "Battle Hymn of the Republic," accompanied at the piano by Harold Carpenter. James Ensor had made copies of various patriotic songs which everyone joined in singing.

In a baseball game prior to the program, the men from the south won handily over the men from the north part of the community. Most of the afternoon was spent in playing games of volleyball. Lemonade and ice cream were served throughout the afternoon and a picnic meal was served in the evening.

In a short business session, R.J. Garner was elected to serve as president of the July 4 and Christmas celebration committees. Serving with Garner will be Harold Carpenter as treasurer and Genny Blankenship as secretary.

Retiring committee members were Doris White, Gloria Hutchins and James Ensor.

Vernon Symcox was in charge of the fireworks display which concluded the day's activities. Names as a new director for the Community Center organization was W.D. Pierson. Hereafter, the community center will have only seven directors on the board instead of the nine they have had in previous years.

Program Announced

Farm wheat allotments will be 13 per cent less in 1969 than in 1968, Prentice Mills, Parmer County ASCS office manager, announced this week as details of the government wheat program for next year were made available.

"This reduction in allotment makes necessary a diversion program similar to that of '66," Mills said.

There will be diversion payments for diverting acreage from wheat below the farm allotment. The 1969 program again provides for price support loans, marketing certificates and substitution between wheat and feed grain.

Program options, as explained by Mills, include the following three:

1. A farmer can sign up in the program, divert to a conserving use an acreage equal to 15% of the 1969 farm allotment, and plant his full wheat allotment. By signing up this way, the farmer would earn his wheat certificate payment.
2. A farmer can elect to plant less than his full allotment, earn diversion payments and qualify for certificate payments. At least 43% of the farm allotment must be planted to qualify the farm for maximum certificate payments.
3. A farmer can, if he so desires, sign up to divert as much as 50% of his wheat allotment (in addition to the minimum diversion requirement) and receive a diversion payment on each acre of wheat allotment diverted. The diversion payment rate per acre is determined by multiplying 50% of the county wheat loan rate times the farm's projected yield. The Parmer County Loan Rate is \$1.26 per bushel. Therefore, to arrive at the diversion rate for a farm, you would multiply the farm yield by 63¢. Certain small farms could be signed up to divert more than 50% of the farm allotment for payment.


Example Of Maximum Diverted Acreage For Payment:

1969 Farm Allotment	Minimum Required Diversion (No Payment)	Maximum Additional Diversion (For Payment)	Total Diverted Acreage Requirement	Permitted Wheat Acreage
10.0	1.5	10.0	11.5	Zero
20.0	3.0	20.0	23.0	Zero
21.7 1/3	3.3	21.7	25.0	Zero
30.0	4.5	20.5	25.0	9.5
38.4 2/3	5.8	19.2	25.0	19.2

1/Allotments of 21.7 acres or less -- may divert total allotment for payment.
2/Allotments of 38.4 acres and larger -- the maximum additional diversion for payment is 50 per cent of the allotment.

STEED
A Name Of Service For 61 Years

STEED-TODD FUNERAL HOME
16th and Pile St. Clovis
Phone 763-5541



Dexter Todd

Bookmobile Is Coming

THURSDAY, JULY 25, Progress, 8:30-9:30; Okla. Lane, 9:50-10:50; Rhea Community, 12-1:30; Black, 2:30-3:30.

FRIDAY: JULY 26, Hub, 8:45-9:45; White's Elevator, 10-11; Lazbuddie, 12-1; Clay's Corner, 1:15-2:15.

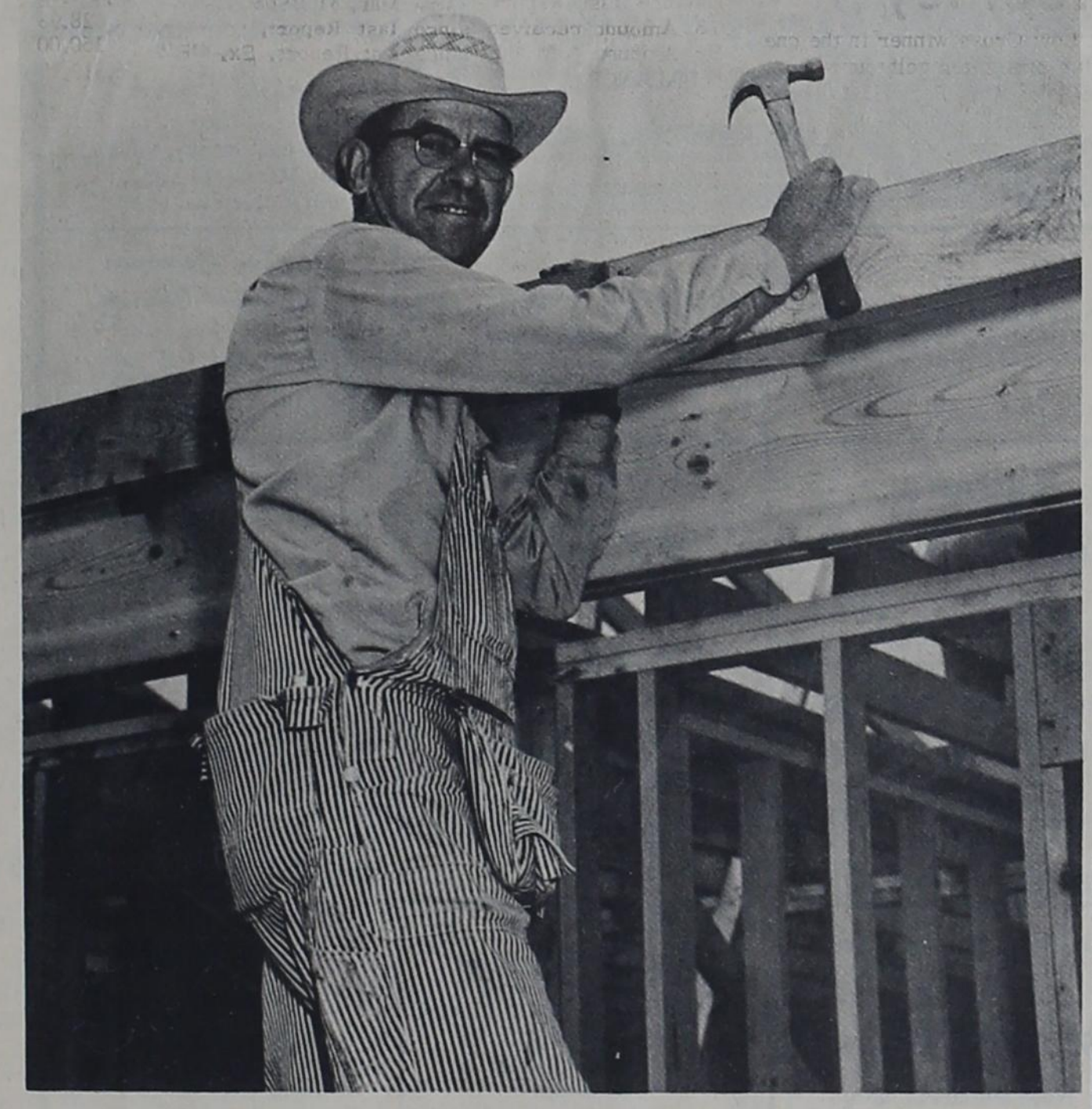
SATURDAY, JULY 27, Farwell, 8:45-11:45; Friona 1:00-4:00.

Mrs. Cassie Morgan of Texico, who underwent surgery at M. D. Anderson Hospital some two months ago, is returning to the hospital for additional tests this week.

SEE The Latest In MINNEAPOLIS-MOLINE

MM World's Finest Tractors

At **FARWELL EQUIPMENT CO.**
Ph. 481-3212



Charlie Hromas gives personal attention to his homes

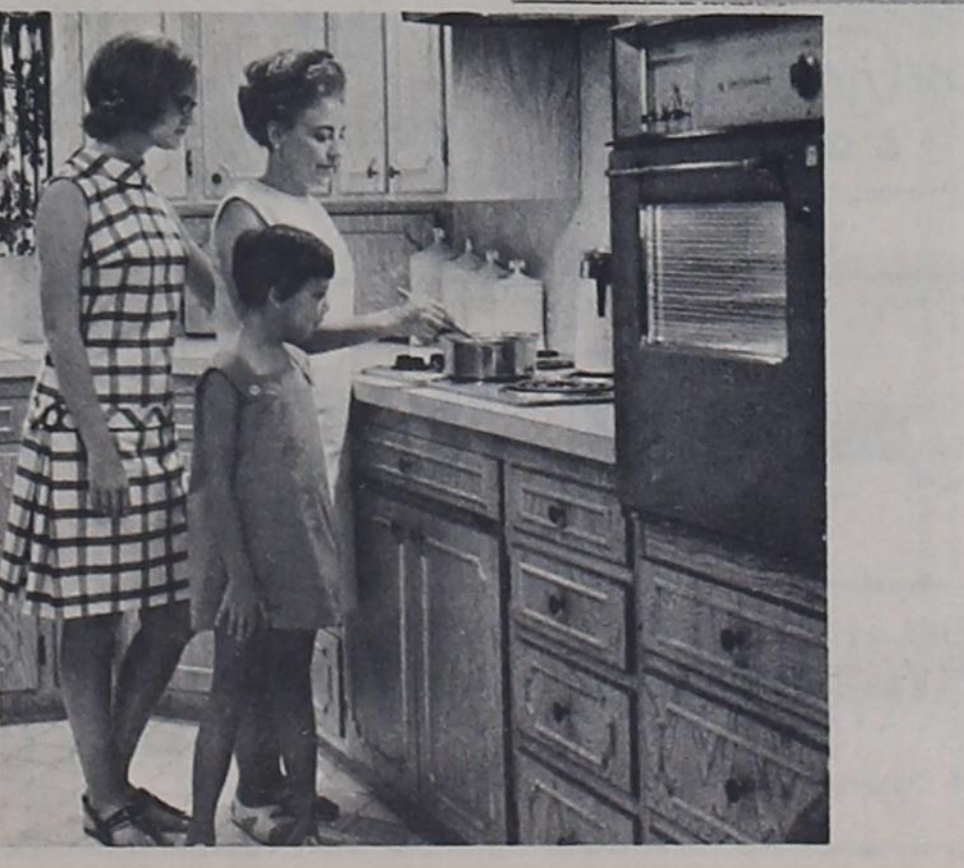
CHARLIE HROMAS
Hromas Construction Company
BOX 272 Phone 481-3616 FARWELL

is building this total electric home on Ridgelea Dr., Bovina
watch its progress - it's for sale!



he already built this total electric for the Meeks family at 906 6th St., Farwell.

a total electric home is a best buy for today and the future!



SOUTHWESTERN PUBLIC SERVICE COMPANY

Total ELECTRIC Living



LEGAL NOTICE

THE STATE OF TEXAS
 To: Ralph Palmateer and Helen Palmateer Defendants, Greeting:
 You are hereby commanded to appear by filing a written answer to the Plaintiff's Petition at or before ten o'clock A.M. of the first Monday after the expiration of forty-two days from the date of the issuance of this citation, same being Monday the 26th day of August 1968, at or before ten o'clock A.M. before the Honorable District Court of Parmer County, Texas, at the Court House of said County in Farwell, Texas.
 Said Plaintiff's Petition was filed in said court, on the 23rd day of March A.D. 1967, in this cause, numbered 2759 on the docket of said court, and styled, Watts Machine and Pump Company, Inc. Plaintiff, vs. Ralph Palmateer and Helen Palmateer Defendants.
 The names of the parties to the cause are as follows: Watts Machine and Pump Company, Inc. is Plaintiff and Ralph Palmateer and Helen Palmateer are Defendants.
 A brief statement of the nature of this suit is as follows, to-wit:
 Suit on sworn account for goods, wares and merchandise sold and personal services rendered and labor done, for which a writ of attachment has been issued to enforce an attachment lien on the following described real estate owned and fee simple by Ralph Palmateer and Helen Palmateer at the time of the issuance of said writ, to-wit: West One-half (W1/2) of Section Twenty-nine (29); all of Section Thirty (30); all in Block C, Rhea Brothers Subdivision in Parmer County, Texas; Save and Except the South Twenty (20) acres of the West One-half (W1/2) of Section Twenty-nine (29) and the South Twenty (20) acres of said Section Thirty (30) (being the land conveyed to Mary Jane Ellison by Helen K. Palmateer as shown by the deed records of Parmer County, Texas), as is more fully shown by Plaintiff's Petition and writ of attachment on file in this suit.
 If this citation is not served within ninety days after the date of its issuance, it shall be returned unserved.
 The officer executing this process shall promptly execute the same according to law, and make due return as the law directs.

the same according to law, and make due return as the law directs.
 Issued and given under my hand and the Seal of said Court, at office in Farwell, Texas, this the 11th day of July A.D. 1968.
 Attest:
 Dorothy Quickel Clerk,
 District Court,
 Parmer County, Texas
 SEAL
 Published in The State Line Tribune July 19, 26, and August 2, 9, 1968.

THE STATE OF TEXAS
 To: Ralph Palmateer, Helen Palmateer and Mary Jane Ellison Defendants, Greeting:
 You are hereby commanded to appear by filing a written answer to the Plaintiff's Petition at or before ten o'clock A.M. of the first Monday after the expiration of forty-two days from the date of the issuance of this citation, same being Monday the 26th day of August 1968, at or before ten o'clock A.M. before the Honorable District Court of Parmer County, Texas, at the Court House of said County in Farwell, Texas.
 Said Plaintiff's Petition was filed in said court, on the 28th day of March A.D. 1967, in this cause, numbered 2762 on the docket of said court, and styled, Larry Rutherford Plaintiff, vs. Ralph Palmateer, Helen Palmateer and Mary Jane Ellison Defendants.
 The names of the parties to the cause are as follows: Larry Rutherford is Plaintiff and Ralph Palmateer, Helen Palmateer and Mary Jane Ellison are Defendants.
 A brief statement of the nature of this suit is as follows, to-wit: Suit on a sworn account for personal services rendered and labor done, for which a writ of attachment has been issued to enforce an attachment lien on the following described real estate owned in fee simple by Ralph Palmateer, Helen Palmateer and Mary Jane Ellison at the time of the issuance of said writ, to-wit: West one-half (W1/2) of Section Twenty-nine (29); the Northeast Quarter (NE1/4) and the East One-half (E1/2) of the Northwest Quarter (NW1/4) of Section Twenty (20); all in Block C, Rhea Brothers Subdivision in Parmer County, Texas, and All of Section 30,

in Block C, Rhea Brothers Subdivision in Parmer County, Texas, as is more fully shown by Plaintiff's Petition and writ of attachment on file in this suit.
 If this citation is not served within ninety days after the date of its issuance, it shall be returned unserved.
 The officer executing this process shall promptly execute the same according to law, and make due return as the law directs.
 Issued and given under my hand and the Seal of said Court, at office in Farwell, Texas, this the 11th day of July A.D. 1968.
 Attest:
 Dorothy Quickel, Clerk,
 District Court,
 Parmer County, Texas
 (SEAL)
 Published in The State Line Tribune July 19, 26 and August 2, 9, 1968.

THE STATE OF TEXAS
 To: Ralph Palmateer, Helen Palmateer, and Mary Jane Ellison Defendants, Greeting:
 You are hereby commanded to appear by filing a written answer to the Plaintiff's Petition at or before ten o'clock A.M. of the first Monday after the expiration of forty-two days from the date of the issuance of this citation, same being Monday the 26th day of August 1968, at or before ten o'clock A.M. before the Honorable District Court of Parmer County, Texas, at the Court House of said County in Farwell, Texas.
 Said Plaintiff's Petition was filed in said court, on the 6th day of December A.D. 1966, in this cause, numbered 2735 on the docket of said court, and styled, O. L. Winkles Plaintiff, vs. Ralph Palmateer, Helen Palmateer and Mary Jane Ellison Defendants.
 A brief statement of the nature of this suit is as follows, to-wit: Suit on a sworn account for personal services rendered and labor done, on which a writ of attachment has been issued to enforce an attachment lien on the following described real estate owned in fee simple by Ralph Palmateer, Helen Palmateer and Mary Jane Ellison at the time of the issuance of said writ, to-wit: West one-half (W1/2) of Section Twenty-nine (29); the Northeast Quarter (NE1/4) and the East One-half (E1/2) of the Northwest Quarter (NW1/4) of Section Twenty (20); all in Block C, Rhea Brothers Subdivision in Parmer County, Texas, and All of Section 30,

the same according to law, and make due return as the law directs.
 Issued and given under my hand and the Seal of said Court, at office in Farwell, Texas, this the 11th day of July A.D. 1968.
 Attest:
 Dorothy Quickel, Clerk,
 District Court,
 Parmer County, Texas
 (SEAL)
 Published in The State Line Tribune July 19, 26 and August 2, 9, 1968.

THE STATE OF TEXAS
 To: Ralph Palmateer, Helen Palmateer, and Mary Jane Ellison Defendants, Greeting:
 You are hereby commanded to appear by filing a written answer to the Plaintiff's Petition at or before ten o'clock A.M. of the first Monday after the expiration of forty-two days from the date of the issuance of this citation, same being Monday the 26th day of August 1968, at or before ten o'clock A.M. before the Honorable District Court of Parmer County, Texas, at the Court House of said County in Farwell, Texas.
 Said Plaintiff's Petition was filed in said court, on the 28th day of March A.D. 1967, in this cause, numbered 2762 on the docket of said court, and styled, Larry Rutherford Plaintiff, vs. Ralph Palmateer, Helen Palmateer and Mary Jane Ellison Defendants.
 The names of the parties to the cause are as follows: Larry Rutherford is Plaintiff and Ralph Palmateer, Helen Palmateer and Mary Jane Ellison are Defendants.
 A brief statement of the nature of this suit is as follows, to-wit: Suit on a sworn account for personal services rendered and labor done, for which a writ of attachment has been issued to enforce an attachment lien on the following described real estate owned in fee simple by Ralph Palmateer, Helen Palmateer and Mary Jane Ellison at the time of the issuance of said writ, to-wit: West one-half (W1/2) of Section Twenty-nine (29); all of Section Thirty (30); all in Block C, Rhea Brothers Subdivision in Parmer County, Texas; Save and Except the South Twenty (20) acres of the West One-half (W1/2) of Section Twenty-nine (29) and the South Twenty (20) acres of said Section Thirty (30) (being the land conveyed to Mary Jane Ellison by Helen K. Palmateer as shown by the deed records of Parmer County, Texas), as is more fully shown by Plaintiff's Petition and writ of attachment on file in this suit.
 If this citation is not served within ninety days after the date of its issuance, it shall be returned unserved.
 The officer executing this process shall promptly execute the same according to law, and make due return as the law directs.

THE STATE OF TEXAS
 To: Ralph Palmateer, Helen Palmateer, and Mary Jane Ellison Defendants, Greeting:
 You are hereby commanded to appear by filing a written answer to the Plaintiff's Petition at or before ten o'clock A.M. of the first Monday after the expiration of forty-two days from the date of the issuance of this citation, same being Monday the 26th day of August 1968, at or before ten o'clock A.M. before the Honorable District Court of Parmer County, Texas, at the Court House of said County in Farwell, Texas.
 Said Plaintiff's Petition was filed in said court, on the 6th day of December A.D. 1966, in this cause, numbered 2735 on the docket of said court, and styled, O. L. Winkles Plaintiff, vs. Ralph Palmateer, Helen Palmateer and Mary Jane Ellison Defendants.
 A brief statement of the nature of this suit is as follows, to-wit: Suit on a sworn account for personal services rendered and labor done, on which a writ of attachment has been issued to enforce an attachment lien on the following described real estate owned in fee simple by Ralph Palmateer, Helen Palmateer and Mary Jane Ellison at the time of the issuance of said writ, to-wit: West one-half (W1/2) of Section Twenty-nine (29); the Northeast Quarter (NE1/4) and the East One-half (E1/2) of the Northwest Quarter (NW1/4) of Section Twenty (20); all in Block C, Rhea Brothers Subdivision in Parmer County, Texas, and All of Section 30,

the same according to law, and make due return as the law directs.
 Issued and given under my hand and the Seal of said Court, at office in Farwell, Texas, this the 11th day of July A.D. 1968.
 Attest:
 Dorothy Quickel, Clerk,
 District Court,
 Parmer County, Texas
 (SEAL)
 Published in The State Line Tribune July 19, 26 and August 2, 9, 1968.

THE STATE OF TEXAS
 To: Ralph Palmateer, Helen Palmateer, and Mary Jane Ellison Defendants, Greeting:
 You are hereby commanded to appear by filing a written answer to the Plaintiff's Petition at or before ten o'clock A.M. of the first Monday after the expiration of forty-two days from the date of the issuance of this citation, same being Monday the 26th day of August 1968, at or before ten o'clock A.M. before the Honorable District Court of Parmer County, Texas, at the Court House of said County in Farwell, Texas.
 Said Plaintiff's Petition was filed in said court, on the 28th day of March A.D. 1967, in this cause, numbered 2762 on the docket of said court, and styled, Larry Rutherford Plaintiff, vs. Ralph Palmateer, Helen Palmateer and Mary Jane Ellison Defendants.
 The names of the parties to the cause are as follows: Larry Rutherford is Plaintiff and Ralph Palmateer, Helen Palmateer and Mary Jane Ellison are Defendants.
 A brief statement of the nature of this suit is as follows, to-wit: Suit on a sworn account for personal services rendered and labor done, for which a writ of attachment has been issued to enforce an attachment lien on the following described real estate owned in fee simple by Ralph Palmateer, Helen Palmateer and Mary Jane Ellison at the time of the issuance of said writ, to-wit: West one-half (W1/2) of Section Twenty-nine (29); all of Section Thirty (30); all in Block C, Rhea Brothers Subdivision in Parmer County, Texas; Save and Except the South Twenty (20) acres of the West One-half (W1/2) of Section Twenty-nine (29) and the South Twenty (20) acres of said Section Thirty (30) (being the land conveyed to Mary Jane Ellison by Helen K. Palmateer as shown by the deed records of Parmer County, Texas), as is more fully shown by Plaintiff's Petition and writ of attachment on file in this suit.
 If this citation is not served within ninety days after the date of its issuance, it shall be returned unserved.
 The officer executing this process shall promptly execute the same according to law, and make due return as the law directs.

THE STATE OF TEXAS
 To: Ralph Palmateer, Helen Palmateer, and Mary Jane Ellison Defendants, Greeting:
 You are hereby commanded to appear by filing a written answer to the Plaintiff's Petition at or before ten o'clock A.M. of the first Monday after the expiration of forty-two days from the date of the issuance of this citation, same being Monday the 26th day of August 1968, at or before ten o'clock A.M. before the Honorable District Court of Parmer County, Texas, at the Court House of said County in Farwell, Texas.
 Said Plaintiff's Petition was filed in said court, on the 6th day of December A.D. 1966, in this cause, numbered 2735 on the docket of said court, and styled, O. L. Winkles Plaintiff, vs. Ralph Palmateer, Helen Palmateer and Mary Jane Ellison Defendants.
 A brief statement of the nature of this suit is as follows, to-wit: Suit on a sworn account for personal services rendered and labor done, on which a writ of attachment has been issued to enforce an attachment lien on the following described real estate owned in fee simple by Ralph Palmateer, Helen Palmateer and Mary Jane Ellison at the time of the issuance of said writ, to-wit: West one-half (W1/2) of Section Twenty-nine (29); the Northeast Quarter (NE1/4) and the East One-half (E1/2) of the Northwest Quarter (NW1/4) of Section Twenty (20); all in Block C, Rhea Brothers Subdivision in Parmer County, Texas, and All of Section 30,

Classified Ads

NOTICE
 Classified advertising rates are as follows: Three cents per word for the first insertion, two cents per word per insertion thereafter. Minimum rate, 50 cents on cash orders, \$1 on account.
WANTED baby sitting; Call 481-3665, Jo Dell Goldsmith, 41-3tp
FOR SALE -- Honda 50 motor bike, call 825-2554 or contact L. L. Norton, Rte 2, Farwell, 43-3tc
LADIES -- Start your own profitable business selling Lutzier Cosmetics. If interested write: Francis Moore, 1105 Thunderbird, Plainview, Tex. 79072. 43-3tc
SWIMMING LESSONS
 For Adults and children. Classes start July 22. Call Farwell Country Club for additional information. 43-1tc
WORK at home, repairing appliances: Big income, No exp. nec. Write EQUIMATRIX T-107-W, P. O. Box 31306, San Francisco, California 94131. 40-4tc
FOR SALE -- Chest type freezer, Phone 482-9027. 43-2tc
FOR SALE -- Used shotgun and stereo, excellent condition. See at Farwell Hardware. 43-4tp
Need party with good credit in Farwell area to take over payment on 1968 model Singer sewing machine. Equip. with automatic zig-zagger, buttonhole, sews on buttons, blind hems, fancy patterns, etc. 5 payments at \$7.38 or discount for cash. Write Credit Manager, 1114, 19th Street, Lubbock, Texas, 38-tfnc

CALLING CARDS, Business forms, invoices, statements, envelopes etc. See State Line Tribune, 404 Third St., Farwell, Phone 481-3681. 2-tfnc
Reduce safe, simple and fast with GoBese tablets, Only 98¢, Rose Drug. 43-4tc
Boyd's Complete Brake and Bear Front End Service
 TIRE TRUING, WHEEL BALANCING AND OVERLOAD SPRINGS, MONROMATIC SHOCKS, DRUM TURNING, BRAKE DRUMS, BRAKE SHOE EXCH. POWER BRAKES, UNITS, ETC.
BOYD'S BRAKE SHOP
 Over 25 Years in Clovis 221 W. Grand -- 763-4326 2-tfnc

COLORADO RANCHES -- NEW MEXICO ranches and farms. Attractive terms. Contact Wilfred Quickel, Farwell, Texas. 27-tfnc
 Farwell Independent School District will sell a 1963 Dodge School Bus with 54 passenger Ward Body. Bids should be sent to W. M. Roberts, Supt. of Schools, Farwell, Tex. Bids will be opened at 3 p.m. Monday, August 22. The School Board reserves the right to reject any or all bids. 42-2tc
Farm and Ranch Loans
 Long Term
 Low Interest
Ethridge-Spring Agency - Friona
 Phone 247-2766

NEED A LATE MODEL TRUCK? CALL LAVON JONES AT, 806-36-2727, HEREFORD, TEXAS 34-tfnc
SEPTIC TANKS & CESSPOOL SERVICE
 Drilled-Repaired-Installed

 Cesspools-Pier Holes, Boot Pits. Concrete Covers and Turn-key Jobs Available. Pump Bases & Spillway
WILSON Drilling Co.
 Muleshoe Phone 272-4180 Mobile Phone 965-2359

As cooks, some women are limited.

They lack certain advantages that women with gas ranges enjoy. For example: Cooking with gas, there is practically *no limit* to the number of heat selections between on and off. Boilovers can be prevented on a gas range merely by lowering the flame. There is *absolutely no wait* for heat reduction--no need to remove the pan from the burner! You can try even the trickiest recipes with confidence. Gas flame consumes smoke, so you can broil

with the door closed on *any* gas range. A gas oven gets hot fast. And the flames give you a true artist's touch for baking, roasting, browning and broiling. **BONUS:** Gas cooks for 1/2 the cost of electricity. For the sweet taste of success, hurry down to Southern Union or your appliance dealer's for a new gas range. You can add the payments to your gas bill. Southern Union Gas Company



If you want the job done right do it with gas.

PARENTS' RESPONSIBILITY

"Train up a child in the way he should go; and when he is old, he will not depart from it." Proverbs 22:6

Ask anyone what his most precious possession is, and he will almost invariably say, "My children." The desire for the welfare of our children enables us to "move mountains". We will do anything, give them anything, if we think it will help them.

The one most important thing we can do for them, however, is to instill in them a love of God, and a desire to obey him. The church can help you in this endeavor, inspire and strengthen you. We invite you to take your family to church this week. It may make a great difference in the life direction taken by your children.



EVERYONE IN THE CHURCH THE CHURCH IN EVERYONE

The Church is God's appointed agency in this world for spreading the knowledge of His love for man and of His demand for man to respond to that love by loving his neighbor. Without this grounding in the love of God, no government or society or way of life will long persevere and the freedoms which we hold so dear will inevitably perish. Therefore, even from a selfish point of view, one should support the Church for the sake of the welfare of himself and his family. Beyond that, however: every person should uphold and participate in the Church because it tells the truth about man's life, death and destiny; the truth which alone will set him free to live as a child of God.

Coleman Adv. Ser.

Farwell First Baptist Church
 J. L. Bass - Pastor
 Sunday School - 10 a.m.
 Morning Worship - 11 a.m.
 Evening Worship - 7 p.m.

Oklahoma Lane Baptist Church
 Charles Vick - Pastor
 Sunday School - 10 a.m.
 Morning Worship - 11 a.m.
 Evening Worship - 7 p.m.

Laral Church of Christ
 Paul Burch - Minister
 Sunday School - 10 a.m.
 Morning Worship - 11 a.m.
 Evening Worship - 6 p.m.

United Pentecostal Church
 Floyd Leverton - Pastor
 Sunday School - 10 a.m.
 Morning Worship - 11 a.m.
 Evening Worship - 7:30 p.m.

Pleasant Hill Baptist Church
 Billy Parvin - Pastor
 Sunday School - 9:30 a.m. (MDT)
 Morning Worship - 10:30 a.m. (MDT)
 Evening Worship - 7 p.m. (MDT)

Calvary Baptist Church
 Eddie Booth - Pastor
 Sunday School - 10 a.m.
 Morning Worship - 11 a.m.
 Evening Worship - 7 p.m.

St. Joseph's Catholic Church
 Uhl Myron - Pastor
 Confession, Sunday, 9:30 a.m.
 Sunday Mass - 10 a.m.
 Christian Doctrine after Mass

FARWELL HARDWARE ZENITH 305 Ave. A 481-3286	WATTS MACHINE & PUMP CO., Inc. LATER-BORN PUMPS & REPAIRS SPECIALIZING IN: MOUNTAIN VIEW PHONE 481-3638 BOX 84 FARWELL, TEXAS	WINKLES & WINKLES BLACKSMITH and WELDING Phone 481-3612 FARWELL TEXAS	Hamlin Memorial Methodist Church Philip Baker, Pastor Church School - 9:45 a.m. Morning Worship - 10:55 a.m. Evening Worship - 7:15 p.m.
STATE LINE GRAIN-CHEMICAL 481-3301	Claborn Funeral Home Phone 247-2801 Friona, Texas	CASTOR FARMS A. R. Jordan 482-9049	Farwell Church of Christ Pat Burk - Minister Sunday School - 10 a.m. Morning Worship - 10:55 a.m. Evening Worship - 6 p.m.
MINN. MINNEAPOLIS-MOLINE. World's Finest Tractors FARWELL EQUIP. CO. Phone - 481-3212	Benny & Wilma Bud & Maude B-W FEED YARDS Clovis Braiding - Dipping - Feeding Buy or Sell - Stocker & Feeder Cattle	CAPITOL FOODS <i>Shurline</i>	Texico First Baptist Church Leroy Loper - Pastor Sunday School - 10 a.m. Morning Worship - 11 a.m. Evening Worship - 7:30 p.m.
Worley Mills, Inc. BOX 416 Farwell, Texas	go to church--then come to-- CLARA'S SPUR RESTAURANT Noon buffetaria daily	W & J AUCTION 108 Pile St. Pho. PO 3-7811 SALE EVERY TUES. James Priest & Associates, Auctioneers	Oklahoma Lane Methodist Church C. W. Williams - Pastor Sunday School - 10 a.m. Morning Worship - 11 a.m. Evening Worship 7 p.m.
TEXACO INC. Woodrow Lovelace	HOLIDAY The Family Store 5th & Ave. A 481-9070	Atwell Plumbing Company Repairs, Fixtures, Water Heaters Phone 763-4322 801 1st St. Clovis, New Mexico	St. John's Lutheran Church Herbert F. Peiman - Pastor Sunday School - 9:30 a.m. Morning Worship - 10:30 a.m.
ROSE Rexall DRUGS & Gift Shop Prescriptions a Specialty 481-3281	Monsanto Agricultural Center Science Service Agriculture Ph. 825-2615 Farwell	HUGHES INSURANCE AGENCY General Insurance 509 Ave. A 481-3671	Assembly of God Raymond Sutton - Pastor Sunday School - 10 a.m. Morning Worship - 11 a.m. Evening Wtrship - 7:30 p.m.
PIGGLY WIGGLY	SHERLEY-ANDERSON-PITMAN, INC.	R.M. "PAT" PETTY BUILDING CONT. Churches-Commercial Residential And Farm Buildings Building To Your Order Estimates A Specialty Financing Arranged 2400 N. Prince Ph. 762-4566 Clovis	West Camp Baptist Church Dale Ward - Pastor Sunday School - 10 a.m. Morning Worship - 11 a.m. Evening Worship - 7 p.m.
OKLAHOMA LANE FARM SUPPLY AND GIN "Where Your Business Is Appreciated"	The CITIZENS BANK Texico Branch Complete Bank Service Member FDIC	Snell's Bible Book Store GIFTS FOR ALL OCCASIONS PHONE 763-1891 104 W. 8th STREET CLOVIS.	

The Women's Page

Chris Moss, Society Editor --- Phone 481-3681



AUTOGRAPH -- Shawn Stephens, front, a member of the "Texas" cast, is shown getting an autograph from Mrs. Charles Robb (Lynda Bird Johnson) daughter of President and Mrs. Lyndon B. Johnson, when she recently attended the Texas production at Palo Duro Canyon. Other members of the cast are shown looking on as the autograph is signed. Shawn, daughter of Mr. and Mrs. Buddy Stephens of Amarillo, is a granddaughter of Mr. and Mrs. Leroy Faville. She and her brother, Brent, have been in the Texas production for the past three years.

Spends Leave With Parents

Steven Hillock, son of Mr. and Mrs. Vernon Symcox who has been in training (Paratrooper school) at Ft. Benning, Ga., is spending a leave with his parents, prior to going to Ft. Lewis, Wash., where he will take a plane for Vietnam.

Steven has been in the Army since January, prior to which he had served a number of years in the Navy, with many months of overseas service.

Attend Stephens Family Reunion

Several local people were among those attending a family reunion of the Stephens family, family of the late Mrs. Joe Donaldson, in Plainview Sunday. Some 100 from over the area were in attendance at the affair.

Attending from Farwell and Oklahoma Lane were Messrs. and Mmes. Joe McWilliams, Charlie Hromas, Sterling Donaldson, Robert White, Larry Donaldson, Roy Donaldson, and Frank Edwards, Mr. and Mrs. J. C. Boone and family and Mr. and Mrs. Clyde Sparks and family attended from Clovis.

Attends School Of Missions

Mrs. C. C. Christian is spending this week attending a Mission School for WSCS members in the Sacramento Mountains, Mrs. Christian is a member of the local Methodist women's group and also a district officer of the WSCS.

Visit Relatives In Ft. Worth, Odessa

Mr. and Mrs. Bill Whitesides and children, Guy, Ruth Anne and Elva Louise, spent last weekend visiting with the Paul Whitesides family in Fort Worth and with the George, Grady and Eli Whitesides families in Odessa. The latter three families are former residents of Bovina and are well-known in this area.

Carl Dean Hutchins Arrives June 29

Mr. and Mrs. Lee Hutchins announce the arrival of a son on June 29. The infant weighs 6 lb, 12 1/4 oz. and has been named Carl Dean. The infant has a sister, Geretta, two years of age. Grandparents include Mr. and Mrs. Vernon Symcox, Farwell, and Mr. and Mrs. Art Hutchins, Clovis.

18 Attend First Bridge Session

Eighteen ladies were in attendance at the first bridge sessions at Farwell Country Club Monday afternoon. The bridge sessions will be held each first and third Monday afternoon in each month. Bridge classes are planned for beginning players in the future, if enough interest is shown. Mrs. Johnnie Williams, spokesman for the group, encourages all ladies who wish to play bridge to attend the next session which is set for Monday, August 5. You do not have to be a member of the Country Club to play bridge on the first or third Monday afternoon.

He is scheduled to leave Farwell July 30.

Visit In Carpenter Home

Visitors in the home of Mr. and Mrs. Harold Carpenter and Richard last week were Capt. and Mrs. Donnie Carpenter and son, Steve, from El Paso; Mr. and Mrs. R. R. Terry from Roby, and Mrs. Fred Bolton from Kirkland, Wash. Mrs. Bolton also visited in the home of Mr. and Mrs. Conrad Nelson.

Visit In Amarillo

Mr. and Mrs. Jerry Darby and children, Lisa and Darin, accompanied by Mrs. Elizabeth Rolland spent the day Sunday visiting in Amarillo in the home of Mr. and Mrs. Ed Rolland and children, Troy Lee and Joe, and with the Pete Rollands.

Vacations In Oklahoma, Texas

Mrs. Hope Shuman has returned to Farwell from a trip which took her to Frederick, Okla., Vernon and Chillicothe, Tex., to visit with relatives.

She also returned her granddaughter, Faralyn Williams, who has spent the past five weeks in Farwell, to her home at Frederick.

Art Show Deadline Set

Final deadline for entering works of art in the Border Towns Days Art Show, sponsored by Farwell Study Club, is Monday, July 29. All works of art should be at the hospitality room of Security State Bank during the day and a member of the Study Club will be on hand to receive the items. An entry fee of 50¢ is being charged for each entry.

Prizes will be awarded for the best western picture and also for the best all-around picture. However, pictures of any type of art will be accepted for the show.

Persons desiring further information on the art show should call any member of the Farwell Study Club or Mrs. Ann Glenn, chairman of the art show.

LWML Plans Ice Cream Social

Lutheran Women's Missionary League of St. John's Lutheran Church at Lariat met in the parish hall Thursday with Mrs. Ernest Ramm giving a report on the recent LWML meeting held in Austin, Mrs. Ramm and Mrs. Walter Kaltwasser were delegates to the convention from the local church.

Yearbooks were handed out and \$35.66 was sent to the American Bible Society. Members also have had an air conditioner installed in the kitchen at the parish hall. Plans were made for an ice cream social for this Sunday night (July 21) for the regular family night program. The social will be held at the parish hall beginning at 7 p.m.

Attend GA Camp

Junior GA's from Farwell First Baptist Church attended the Plains Baptist Association camp near Floydada last week.

While in camp the girls went swimming, hiking, attended classes on grooming and poise, and also attended special services at the chapel. They also heard several missionary speakers.

Attending the camp were Debbie Meeks, Terri Boling, Gaye Coffman, Sheryl Woods, and Gaye London. Sponsors for the trip were Susan Patrick and Mrs. Joy Chadwick.



HOME FROM WEHINAHPAY -- Scoutmaster Gene Bitner presented Conquistador Council Camps patches to members of Texico-Farwell Boy Scout Troop 200 at Monday night's meeting. Just returned from a week of camping, all uniforms were still in the wash. Out of 21 boys attending with Troop 200, 15 were first-year campers.

Texico-Farwell Scouts Attend Camp Wehinahpay

Texico-Farwell Boy Scout Troop 200 had a record attendance of 21 boys and two adult leaders at this year's Camp Wehinahpay, located near Sacramento, N.M. It was also a record week in overall camp attendance, with 135 boys from seven troops present, compared with only 28 boys from four troops at camp the previous week.

Troop 200 boys, leaders, and parents gathered at Farwell First Baptist Church Sunday morning for outdoor church services before embarking for camp. Rev. Phil Baker related impressions from his work in Scouting and presented the devotional, J. L. Bass, who gave the opening prayer, represented the sponsoring church.

Providing transportation for the troop were Mr. and Mrs. M. E. Turnbough, Scoutmaster and Mrs. Gene Bitner, Assistant Scoutmaster Bill Yohner, and Ronnie Langston.

Several boys completed work on merit badges during the week, under instruction by members of the Conquistador Council staff. Earning badges were Kent Blain, First Aid; Mike Casey, Archery; Mitchell Turnbough, Riflery; Loren Gibbs, Soil & Water Conservation; and Ted Glenn, who earned badges in Soil & Water Conservation and Camping.

Many hours were devoted to rank advancement, Kie Watkins, recently transferred from Lubbock Troop 555, completed requirements for Second Class. Other advancement work was done in Map Drawing, Tracking and Trailing, Morse Code, Knife & Axe, Poison Plants, Wildlife Recognition, Cooking, and Lashings.

Highlight of the week was a combined campfire held with Portales, Troop 777, Popcorn, songs, and skits provided the entertainment as members and leaders of both troops exchanged stories of their units in Troop 200's campsite.

Regular troop competition scheduled for Friday afternoon was rained out, but Troop 200 received a special award for having the cleanest tables after each meal in the dining hall. Award was a log in which each troop in competition for the honor had carved its number.

Other boys attending the week-long camping experience were Scott Watkins, David Turnbough, Ricky Johnson, Kevin Stanley, Randy Gregory, Max Winkles, Donnie Garner, Tommy Nabours, Roy Johnson, Ricky Hendrix, David Mc-Masters, Paul Thornton, Greg Taylor, Jackie Hitson, and Kenneth Hultman from Grady Troop 205.

Troop 200's week at camp was filmed in both color slides and 16-millimeter color movies. Both will be presented to boys, parents, and friends as soon as processing is completed.

Attending the Thursday meeting were Mmes. Ernest Ramm, Walter Kaltwasser, Hubert Gohlke, Adolph Haseloff, Henry Haseloff, Wilbert Kalas, Bertha Kaltwasser, Otto Lingnau, Gilbert Kaltwasser, Delbert Lingnau, G. P. Meissner, and Edd Ramm.

ESA Sorority Has Family Night Social

Family night for Theta Rho chapter of ESA Sorority was held at Farwell Country Club Friday night with 12 members and two members-at-large present with their families.

Prior to the fried chicken dinner, and also following the meal, swimming was enjoyed by the group. Brownies, baked by Mrs. Bert Williams, completed the meal.

Attending the social were Messrs. and Mmes. Hugh Moseley; Joel Tankersley and children; Mitz Walling and grandson, Jeffrey Fulgham; Pete Rundell, Gwen and William; Duane Herington and Stanley; Bert Williams and children; Don Williams, Dena and Clay; Bobby Joe Crume and family; John Getz; Joe Helton; Chester Collinsworth and sons; Mark Liethen and son; Troy Christian and children; and Mrs. Rosa Roberts.

Visit HemisFair

Bruce Billingsley, Dale Goeber and Jerry Roach, all of Oklahoma Lane, spent last week at HemisFair and Six Flags. Before returning home, they attended the wedding of a friend in Fort Worth.

Visit In Cooper Home

Dr. and Mrs. Larry Cooper and children, Royce and Chris, were visitors in the home of Mr. and Mrs. L. L. Cooper last Thursday evening. Dr. Cooper and his family have recently moved to Hale Center, where he is associated with the hospital.

On Sunday, the L. L. Coopers and daughter, Leslie, a student at McMurry College, were in Hale Center to attend openhouse at the hospital. They report an attendance of some 700 at the affair.

A Daughter For Pete Rollands

Mr. and Mrs. Donnell Neil (Pete) Rolland of Amarillo announce the birth of their first child, a girl, on July 12 at Northwest Texas Hospital in Amarillo.

The little girl, who weighs 7 lb, 8 oz., has been named Debra Rye.

Maternal grandparents are O. K. Gamble of Nara Visa, N.M., and Mrs. Eva Gamble of Dalhart. Paternal grandmother is Mrs. Elizabeth Rolland of Farwell.

Marriage Licenses Issued

Four permits to wed have been issued from the office of Parmer County Clerk, Bonnie Warren, in recent days.

The permits went to Thomas Garland Shoemaker and Mary Ellen Dickey on July 8; Lloyd Wayne Harrison, Linda Sue Hadley, July 12; Donald Ray Gibson, Clara Patcine Broyles, July 12; and Douglas Arthur Biggerstaff, Carla Sue Jones, July 12.

Picnic Honors Mrs. Jamison

A picnic was held at Farwell City Park Sunday honoring Mrs. Leon Jamison and son, Jason, who are here from Grand Prairie, Kan., visiting in the L. L. Norton home.

Attending the celebration were Mrs. D. W. Carpenter, Mr. and Mrs. Harold Carpenter and Richard, Capt. and Mrs. H. Donnie Carpenter and Steve, Mr. and Mrs. L. L. Norton,

David and Charles Wade, Mr. and Mrs. Gerald Norton and children, Mr. and Mrs. Darrell Norton and children, and Mr. and Mrs. Herman Gerles and children. In the afternoon, Mrs. Ted Sheets, Harry Sheets, Mr. and Mrs. Thomas Scott and children, and Mr. and Mrs. Vernon Jamison called for a visit.



BIRTHDAY GIRL -- Tammy Obenshain, daughter of Mr. and Mrs. Harlin Obenshain, celebrated her third birthday July 11. The "birthday girl" has a brother, Dwayne Obenshain, eight years of age. She is granddaughter of Mr. and Mrs. Oris Hubbell of Clovis, and Mr. and Mrs. Harvey Obenshain of Rogers, Ark. Great-grandparents of the "young lady" are Ernest Foster, Clovis; Mr. and Mrs. Ray Hubbell, Helena, Okla.; and Mrs. Ellar Dutton, Rogers, Ark.

Farmerettes Gather For Outdoor Meal

Farmerettes Club and their families gathered at the home of Mr. and Mrs. Delbert Garner last Thursday evening for an outdoor meal and informal visiting.

Hamburgers were grilled out of doors and served with all the trimmings. Strawberry shortcake completed the meal.

Attending the social were Messrs. and Mmes. Leon Billingsley, Harold Carpenter, James Roach, Herman Gerles, Donald Christian, Wendol Christian, Troy Christian, R. E. Blankenship, Gerald Norton, Billy Meeks, and their families; and Capt. and Mrs. Donnie Carpenter and son, Mr. and Mrs. R. L. Collinsworth, Wichita Falls, and Dan Foster and Mrs. Veta Batton.

Visit In Bieler Home

Visitors in the home of Mr. and Mrs. C. F. Bieler in recent weeks have been Gary and David London of Amarillo, who spent three weeks; and Mr. and Mrs. Orville London and Mr. and Mrs. Wayne London, all of Amarillo, who were in Clovis to attend the funeral of Mrs. Wayne London's mother, Mrs. Pauline Bloxom, last week.

Other visitors have been Mr. and Mrs. T. A. Gilson and family, also of Amarillo.

Marsha Cunningham, granddaughter of Mrs. Bieler, who spent last year in Farwell with the Bielers and attended Farwell school, has returned to Miami Beach, Fla., to make her home.

Visit HemisFair

Bruce Billingsley, Dale Goeber and Jerry Roach, all of Oklahoma Lane, spent last week at HemisFair and Six Flags. Before returning home, they attended the wedding of a friend in Fort Worth.

Attending the social were Messrs. and Mmes. Joe McGregor, Clovis; Fred Barker, Friona; Owen Drake, Friona; Elmer Langford and Carolyn, Texico; Lester Harrelson, Clovis; E.R. Coffman, Alice, Gaye and April, Farwell; Mrs. Sharon Wilson and children, Kimberly and Robbie, Waynoka, Okla.; Mrs. Sharon Harrelson and Kyle, Clovis; Butch Barker and Miss Linda Elam, Friona; Mrs. Elizabeth Rolland, Farwell; Vicki Smart, Farwell; Mr. and Mrs. Jimmy Don Moss, Mike, Jeris and Rick, Roswell; and Mrs. Crystal Moss, Farwell.

Mrs. Bill Glenn of McCamey, Tex., is visiting in the home of Mr. and Mrs. Elmer Teel for a few days this week.

Mrs. Bill Glenn of McCamey, Tex., is visiting in the home of Mr. and Mrs. Elmer Teel for a few days this week.

A Second Son For Tommy Wursters

Mr. and Mrs. Thomas (Tommy) Wurster of Midland announce the birth of a second son at 8:37 p.m., July 9 in a Midland hospital.

The little boy, who weighs 7 lb, 7 oz., has been named Bryan Votie. The infant has an older brother and sister.

Paternal grandmother is Mrs. Paul F. Wurster of Farwell. Maternal grandparents are Mr. and Mrs. J. B. Prewitt of Ralls. Paternal great-grandmother is Mrs. Hattie Thomas of Farwell.

PAGE'S NURSERY

208 Ross St.
Clovis, New Mex.
Ph. 763-9878

Fancy Landscapes; Lawns Planted; We Doctor For Bugs and Weeds.

Attend The Big SIDEWALK BAZAAR Saturday July 20th Our Bargains Too Low And Too Many To List! Reg. For \$500.00 in Prizes

TURNER'S OF CLOVIS, INC. 520 MAIN CLOVIS, NEW MEXICO 88101

FOR FAST SERVICE CALL

Smith-Douglass Dry Fertilizers Phillips Ammonia Gasoline Diesel Greases Oils

Headquarters For Phillips, Tires, Tubes, Batteries and Accessories

PHILLIPS 66

Shop for Better Food at Low Prices at Uncle Ray's Big Little Store.

HELTON OIL CO. Fast Delivery Phone 481-3222

Uncle Ray's "Hot Air"

"The best after dinner speech a man can hear is 'put it all on my check!'"

A capable wife is one who gets home 15 minutes before her husband does and looks as if she has been there all day.

Shop for Better Food at Low Prices at Uncle Ray's Big Little Store.

Ray Mears Hwy. 70-84 -FARWELL-

Mr. Jack DALLAS

A slender beauty, handsomely tailored of heavy linen-weave 93% rayon and 7% silk -- with saddle-stitched wing collar and pockets and its own multi-color tie. Autumn-colored colors, in sizes 10 to 20.

THE FASHION SHOP 6th and Main Clovis Ph. 763-5431

DRESS RIGHT... You Can't Afford Not To

JACK HOLT "The Clothier"

304 MAIN CLOVIS

Peace Corps Experience Rewarding And Self-Satisfying

by Chris Moss
 "The most rewarding thing I have ever done and the experience of a lifetime" is the way Mrs. Bill (Carolyn) Owen explains her one-year stay in India as a member of the Peace Corps.

She and husband, Bill, left for India in February 1967 and returned to the states in February 1968. They were required to take three months of intensive training in language, technical studies and Indian culture and also pass a rigid physical examination before being allowed to leave the states for their assignment.

Arriving in India they were soon at home in Hyderabad in a house made from bamboo siding, grass and straw. Although the housing in this area was quite crude, the Owens later moved into a three-room apartment in a government housing project where they had electricity.

None of the houses had running water or indoor bathrooms; however, some did have indoor latrines.

Since the Owens were in India to try to assist the Indian people, they of necessity had two servants, since people who do their own work are considered to be low cast, and the higher cast, or class, of people would not associate with them if they did any of their own work.

Most of the farms are five-acre plots or less, and since Owen had gone there to assist the farmers in making the most of their farming opportunities, he was soon busily engaged in assisting with an artificial insemination program to try to up-breed the work cattle.

Mrs. Owen quickly explained that although the Hindu will not eat beef (considered the cow sacred) they think nothing of

working the animals or beating them to death. All of the farming is done with crude wooden tools, and bullocks. Women do most of the field work which does not require the use of bullocks, but men do the work which requires the handling of bullocks. Only men of the lower cast work however.

"Most Indian families are large," said Mrs. Owen, explaining that girls do not count since a dowry has to be paid when they marry. Females in a family are required to eat last and if no food is left then they get nothing. However, Mrs. Owen explained that all boys are dressed to look like girls until they are several years old in order that the God's will not destroy them. Hindu people believe that the God's wrath is aroused when boys arrive and that he will destroy the infant; therefore they resort to this ruse to fool the Gods.

In most Indian families only one bed is available and that is for the father; mothers and children sleep on the floor or any other place available in the one-room houses which are commonly occupied by a large family.

While in India, Mrs. Owen was able to get enough funds through CARE to build a nursery school (Bawdwia). The building was a stucco structure, built by the villagers who had come to Mrs. Owen and asked if she could get funds for the school. She found the children eager to learn. However, there was no regular attendance with almost a different group of children coming each day. Most of the children attending were boys and were from four to nine years of age.

There were no desks in the school and all of the children

sat on mats on the floor. The love and attention they found in the school made a great difference in their lives, stated Mrs. Owen, who said, "I found that although my two years of college work was beneficial in teaching the children, the main necessities were a genuine interest and love for children." Approximately 25 children attended the school.



HOUSEKEEPING FACILITIES -- "This," explains Mrs. Carolyn Owen, "was the complete kitchen with sink, cabinet and stove all in evidence in our first home in India."

The temperature in the southern part of India, where the Owens were stationed, is about 98 degrees in the winter and reaches as high as 130 degrees in the summer. Four crops can be raised in one year and the farmers never let the land rest, consequently the crops are poor and the land needs much fertilizer.

Most of the food is rice and chappaties (bread made from flour and water). Christians and

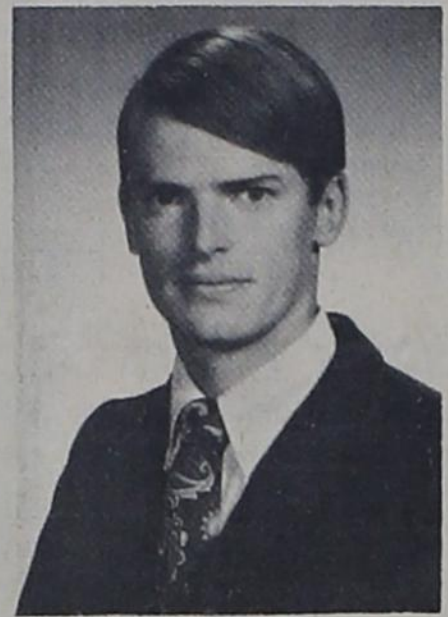
some of the Moslems do eat a little meat. The Owens found that the people who were most willing to accept the help they could give were from the low cast (Christians and untouchables). The Indian people had great respect for the Owens calling them sister and brother.

One of the things the Owens found to their liking about the Peace Corps is the fact that one

at Jacksboro, Tex. Mrs. Owen is visiting with her parents, Mr. and Mrs. E. E. Routh, and Owen's parents, Mr. and Mrs. Dee Owen, while awaiting the arrival of a baby. She will join her husband in Jacksboro after the infant arrives.

Questioned as to whether she would like to return to India or some other foreign country, Mrs. Owen replied, "Yes, but not as a member of the Peace Corps, but in some other capacity since most of the other organizations have much better living conditions."

"The self-satisfaction we received from this experience was by far more beneficial than any monetary gain," concluded Mrs. Owen.



RONN SMITH
 Former Residents Visit In Farwell

Mr. and Mrs. John Sharum of Greenville, Tex., and former Farwell residents, have been visiting in Texico-Farwell and Portales with friends and relatives for the past week.

They were accompanied by Farwell by Mr. and Mrs. Bobby Sharum, who have been visiting in the home of Mr. and Mrs. Ivan Parr, parents of Mrs. Bobby Sharum.

The John Sharums also report that their other son, Rocky, is now stationed in Korea as a member of the Armed Forces.



MOVING -- This mode of transportation was used in moving from one place to another by the Owens. This is also the common method of transportation used by most of the Indian people.

Named To Dean's List Fourth Time

Ronn Smith, son of Mrs. Vada Smith and a 1965 graduate of Farwell High School, has recently been named to the dean's honor roll at Texas Tech for the fourth time. He attended North Texas State University in Denton one year before transferring to Tech. He is majoring in English and journalism.

In being selected to the dean's list, Smith maintained a 3.23 over-all average on a 4.00 grade scale, with an average of 3.67 in his major field of study.

During the past year he was employed by the school paper

for one semester; was a member of the 1967-68 staff of the yearbook; and was accepted for membership in Sigma Delta Chi, national fraternity for professional journalists.

Mrs. Jon Schroeder and son, Jerry, of Houston have been visiting in Texico with Mrs. Schroeder's parents, Mr. and Mrs. John Lockhart, and Kathy. Kathy Lockhart accompanied Mrs. Schroeder and Jerry to Albuquerque to visit in the home of Mr. and Mrs. Dick Lockhart.

Buildings Torn Down

The elementary building at Texico school which had been built in 1918 has now been torn down and the bricks hauled away. The ground has been cleared and at this time plans are underway for the other three old buildings, the lunchroom, the old home economics building, and the agriculture shop, to be moved away by August 10 and the area cleared off before the beginning of school.

The latter three buildings were sold at the auction held at the school last Saturday when several items were disposed of.

New Parts For Old Motors

*Blue Streak Ignition Parts

- *Points
- *Plugs
- *Belts
- *Filters
- *Hoses
- *Clamps

Wholesale Retail

Karl's Auto Clinic

Smokey And Fred
 481-3687 Farwell

Reiser Florist

"LET GEORGE DO IT"

"flowers for glad or sad Occasions"...

flowers by wire...

IMMEDIATE DELIVERY FOR ALL

• hospitals • funeral homes

Ph. 763-4242 Clovis

Hi-Plains Hospital & Clinic

203 West 4th Street
 Hale Center, Texas, TE9-2471

ANNOUNCES THE ASSOCIATION OF

LARRY J. COOPER, M.D.

General Practice and Surgery

Office HoursBy Appointment
 8:00 A.M. to 12:00 P.M. and 2:00 P.M. to 5:00 P.M.
 Monday through Friday, Sat. 8:00 A.M. to 12:00 P.M.



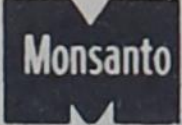
HARVESTING POTATOES -- A common sight in India is one similar to this where family members assist in doing the field work. The plow is made entirely from wood.

MONSANTO AGRICULTURAL CENTER HAS A NEW TELEPHONE NUMBER

For Complete Agricultural Service,

Call

481-3366



MONSANTO AGRICULTURAL CENTER

Farwell, Texas

YES CASH VALUE	YES CASH VALUE	YES CASH VALUE	YES CASH VALUE	YES CASH VALUE	YES CASH VALUE	YES CASH VALUE	YES CASH VALUE	YES CASH VALUE	YES CASH VALUE	YES CASH VALUE	YES CASH VALUE							
Sunshine Vanilla Wafers 12 oz. 3/\$1.00	Kraft Barbecue Sauce 28 oz. 57¢	Shurfine #303 Cut Green Beans 5/\$1.00	Shurfine Shortening 3# Can 67¢	Hills Bros. 1# Coffee 65¢	Shurfine Tuna Flat Can 3/89¢	Soffin Napkins 200 Count 25¢	Shurfine Potato Chips 39¢	American Beauty Roni-Mac 22 oz. Pkg. 39¢	Shurfine Flour 10# Bag 75¢	Food King Peaches #2 1/2 3/89¢	Hunt's Tomato Sauce 8 oz. 9/\$1.00	Food King Tomatoes #303 5/\$1.00	Libby's Potted Meat 3/4 oz. 10¢ Can	Gerber's Strained Baby Food 10¢ Jar				
Borden's Fruit Drinks (Ice Cold) Gallon 59¢					Fruits And Vegetables					YES CASH VALUE								
Home Grown Yellow Squash 10¢ #					Ariz. New Crop Red Potatoes 20# Bag 89¢					Calif. Hot Fresno Chili 39¢ #			YES CASH VALUE					
New Load Ice Cold Watermelons 4¢ #					Ariz. Nice Size Canteloupes 4/\$1.00					Calif. Bulk Carrots # 12 1/2¢			YES CASH VALUE					
Top Hand Sausage 2# Bag 69¢					Meats					Frozen Foods			YES CASH VALUE					
Top Hand Franks 3# Bag 99¢					Lean and Tender Pork Steak 49¢ #					Borden's Mellorine Half Gallon Limited Quantities 25¢			Shurfine Lemonade Big 12 Oz. 19¢			YES CASH VALUE		
Mexican Hot Links # 49¢					Center Cut Pork Chops 79¢ #					Columbia Bacon 1# Pkg. 39¢			Patio Mexican Dinners 15 Oz. 3/\$1.00			YES CASH VALUE		

Open Til 9 p.m. Evenings

901 Ave. A Farwell

CAPITOL FOODS

We Give YES Stamps
 We Cash YES Stamps
 We Redeem YES Stamps

YES Stamps
 Double On Wednesday!

Save Shurfresh & Tender Crust Coupons

Ask Your Grocer For Prize List

American Express Money Orders



SECURITY STATE BANK

Back: Assistant coach Bobby Vinton; back row: Jerry Askew, James Hobbs, Lonnie McFarland, Bill Johnson, Arturo Esparza, Coach Jack Kirkland, Billy Brigham; front row: Edward Terry, Mickey Lunsford, Zeferino Villareal, David Esparza, Jack Kirkland, Kirk McFarland.



HELTON OIL CO.

HELTON OIL: Back row l to r: Coach Vane Doshier, Robby Blair, Terry Armstrong, Ronny Langston, Jackie Gilliam, Johnny Boling, Coach Bob Dollar. Front row l to r: Darwin Green, Ronald Steele, Randy Skaggs, Kent Armstrong, Ronny Winegeart.



GIFFORD - HILL WESTERN

Coaches: Joe Jones and Herman Chandler. Team members: Rudy Sanchez, Russ Jones, David Harding, Steve Owen, Ricky Orozco, Stan Goldsmith, Rowdy Chandler, Keith Herington and Tim Norton. Not shown: Stan Edwards, Stan Herington, Daren Sudderth and Mark Howard.



CITIZENS BANK

COACHES: Roy Dunn and Jimmy Walker. Standing between the coaches is Domingo Rojas. Back row L to R: Heary Salguero, Raul Esparza, Steve Christian, Jerry Bradley, Monte Leavell, Swayne Obenshain, Gary Stone. Front row L to R: Gary Hardage, Jeff Christian, Billy Payne, Guy Whitesides and Kenny Livingston. Benny Yuragas was not present for the picture.



SHERLEY-ANDERSON PITMAN

Back row: Everardo Arce, coach, Josh Ensor, Richard Kelley, Kelly Deeds, Vic Christian, Eugene Terry and Coach Vernon Scott; front row: Benito Rivas, Charles Johnson, Kelly Lindley, Steve Scott, Juan Arce and John Scott. Other team members not shown are Terry Miller, Mark Miller and Richard Johnson.



PIGGLY WIGGLY

Coach Billy R. Boling, Team members back row: D. D. Foster, Justin Gattis, Kent Goldsmith, Timothy Askew, Robin Roberts; front row: Rusty McFarland, Larry Parvin, Peter Cantu, Brent Black, and Carroll Goldsmith.



OKLAHOMA LANE FARM SUPPLY

Coach Weldon (Pete) Rundell; Back row: Craig Chumley, Robert Johnson, Kevin Hardage, William Rundell, Donny Campbell; front row: John Johnson, Ricky Wall, Gerald Hardage, Leslie Curtis, Max Winkles, Scott Watkins.



TIDE PRODUCTS

Coach Bob Martin. Team members: Terry Williams, Mike Woods, Kent Blain, Curtis Lindley, Barry Lindley, Bruce Kaltwasser, Jerry Ortiz, Gilbert Ortiz, Richard Yuragas, Chris Eshleman, Tommy Comstock, Dell Edwards and Fidel Esparza. The last three are not pictured.



MIL and MARY'S

BACK ROW L TO R: Sandra Ensor, Diane Luce, Debra Foster, Patty Martin, Karen Foster. Front row L to R: Jaquetta Crook, Bonnie Foster, Debbie Milstead, Freda Leavell, Caroline Anderson. Other team members include LaWanda Yell, Judy Yell, Debbie Meeks, Vicki and Susan Snodgrass, Christine and Vicki Gleaton.



STATE LINE GRAIN

Coach Jerri Tharp, Lynn Fought, Dianne Looper, Robyn Craig, Nedda Foster, Virginia Rojas, Cynthia Armstrong, Coach Aileen Pearce. Middle row: Sabrina Kittrell and Debbie Stevens. Front row: Ginger Trimble, Cheri Tharp, Jayme Vraig, Jo Pearce, Gaye Coffman, Kim Pearce, Kathy Stanley. Team members not pictured are Hilda Rojas and Kathy Stevens.



CAPITOL FOODS

Back row: Jeanette Powell, Othena Smith, Pam Blair, Cynthia Burgett, Vickie Gilliam, Starla Doshier, Geraldine Steward, Coaches Pat Blair and Betty Doshier; front row: Connie Terry, Pam Erwin, Debra Harding, Elizabeth Pierce, Beverly Roberts, Rose Steward.



HOLIDAY STORE

Front row: l to r: Judy Hardage, Jean Askew, Linda Cooper, Terri Boling, Jill Watkins; front row: Sue Hall, Coretta Askew, Betty Steward, Cheryl Boling, Carol Eshleman, Beverly Obenshain-coach, Lorena Bullington, Cindy Eshleman.



WORLEY GRAIN

Coach Jack Wardlaw; Back row: Mack McFarland, Clint Robertson, Larry Wardlaw, Tim Jones; Front row: Carl Kirkland, David Dannheim, Jackie Hitson, David Shira. Team members not pictured are JeDan Sudderth and Thad Phillips.



KELLY GREEN SEED CO.

Coach Lewis Foster; Back row: Raymond Cantu, M. H. Askew, Oran J. Autrey, Kevin Hargrove, Jace Ensor; Front row: Billy Ray Autrey, Steve Askew, Kevin Stanley, Bobby Urioste. Other team members not pictured are Domingo Ortiz, Elijah Anderson, and David Cantu.



FARWELL FIRE BOYS

Jim Rogers—Coach; Back row L to R: Sammy West, David Garner, Jubel Blair, Robby Bradley, Steve Meeks. Front Row L to R: Mike Snodgrass, Luther Bullington, James Steward, Rickey Gonzales, Joe West. Other team members are: Roman Gonzales, Donny Garner, Chris Nabours, Jimmy Ortiz and David Snider.



ALDRIDGE INSURANCE AGENCY

Front row: Dwight Green, Arthur Salguero, Bradley Owens and Kent Gast; back row: Albert Galvan, Gene Christian, Paul Brigham, Brad Jones, Gary Green and Tommy Galvan, Coach Bill Brigham.