

TA MEMBER 1985
TEXAS PRESS ASSOCIATION

STATE LINE TRIBUNE
Box 255
Farwell, Texas 79325
Ph. 481-3681
USPS 520 220

Mike Pomper, Publisher
Judy Pomper, Co-publisher
Mary Lou Hillock, Editor
Betty Castleberry, Compositor

Second-class postage paid at Farwell, Texas 79325.
Published weekly at 404 Third Street, Farwell, Texas 79325.

SUBSCRIPTION RATES—Farmer and adjoining counties, \$10.00 plus 50 cents state tax per year; elsewhere, \$13.00 plus 65 cents state tax per year. Payable in advance.

Obituaries

Jack Burns

Funeral services for Jack Andrew Burns, 84, of Farwell, were held Wednesday at 11 a.m. at George Christ Funeral Home Chapel, Levelland, Texas.

Mr. Burns died Saturday at 10:15 p.m. He was a resident at the Farwell Convalescent Center. He was born in Thomasville, Ark., in 1901.

Survivors include two daughters, Bobbie Gilliam, Farwell and Robbi Johnson, Andrews, Texas; a son, Roland Burns of Wis.; 15 grandchildren and 16 great-grandchildren.

Burial was in the Memorial Gardens in Levelland.

James Ussery

Services for James C. Ussery, 66, were held last week under the

direction of Franklin-Bartley Funeral Home in Lubbock.

He died Aug. 8 in South Park Medical Center after a lengthy illness.

He was born July 19, 1919, in Knox County. He was a retired upholstery worker and owned the Cover Shop. He was a resident of Lubbock since moving from Clovis, N.M. in 1968. He was a member of the Quaker Avenue Missionary Baptist Church and a World War II veteran. He married Lorene Nicholson Nov. 21, 1940, in Munday.

Survivors include his wife; two sons, James and Ronnie, both of Lubbock; a sister, Jewel Ford of Knox City; five brothers, Arthur Ussery of Mineral Wells, E.D. Ussery of Lubbock, Lois of Buffalo, N.Y., Jack and Deb Smith, both of Carlsbad, N.M.; and four grandchildren.

Railroad problem should be over

By now, a problem involving the Santa Fe Railroad in Farwell should be alleviated.

The addition of coal cars going through Farwell to Muleshoe has caused a problem recently in that the railroad crossing near Franse Irrigation and Nutri-Tech have been tied up for as long as an hour at a time.

The coal cars make a "U-turn" in Farwell and then some are placed along the siding. In doing their procedures here, some crews have not cleared the crossing, causing lengthy traffic holdups.

But Santa Fe Trainmaster Bill Slaughter told the State Line Tribune earlier this week that by the time this article appears the problem should be over.

"We have issued instructions for the coal trains to come around the 'Y' and before they move in reverse, the crossing should be cleared for traffic," said Slaughter.

'Land of Nod' opens

Mike Goodenough of Lazbuddie has recently opened The Land of Nod - A Gallery of Waterbeds in the Hub Mall in Clovis.

Goodenough was formerly the manager of Shallow Waterbeds at Hilltop Plaza.

"I'm very excited about owning my own business," said Goodenough.

Farwell

not pre-enroll.

The Farwell Elementary School has released the supply list for the 1985-86 school year.

Kindergarten: 1 work box (cigar box is fine); 1 medium size Elmer's glue; 2 jumbo pencils; 1 box jumbo crayons (8 colors or more); 1 set of big-tipped felt watercolor markers, 3 packages construction paper (1 red, 1 green, 1 white); 1 large box Kleenex; and 1 set watercolors paint.

First grade: 16 count crayons, 8 oz. glue; No. 2 pencils (4); sharp pointed scissors; eraser; water colors; Kleenex 200 count; school box; towel or mat (for rest time); please mark all items with child's name.

Second grade: No notebooks or clipboards. 3 hole wide-lined notebook paper (300 sheets); 2 no. 2 pencils; 1 eraser art gum; 1 box crayons (24 colors only); 1 large bottle school glue; 1 pair sharp pointed scissors; 1 zip pockets to hold supplies; 1 set of water colors - basic colors; 1 large box of Kleenex; 2 spiral notebooks - 40 pages; 2 red grease marking pencils (from office supply); 1 box of 8 map colors.

Third grade: 2 No. 2 pencils; 2 red pencils; scissors; Elmer's glue; box crayons; water colors; notebook paper; notebook or clipboard; zipper supply bag (no boxes); 3 spiral notebooks; 1 large box tissues.

Fourth grade: 2 No. 2 pencils; 2 red lead pencils; 1 pair sharp pointed scissors; 1 Elmer's glue; 1 box crayons; 1-8 color watercolors; notebook paper-regular width; notebook or clipboard; 2 spiral notebooks-regular width; 1 large box Kleenex; 1 eraser (not art gum).

Fifth grade: 4 wide line spiral notebooks (75 to 100 pages) not 5 subject spiral; 3 red grading pencils (no pens); 1 scissors; 1 Elmers glue; 1 box crayons; 1 water colors; 1 map pencils; notebook and paper; 2 No. 2 pencils (no pens) and 1 large box Kleenex.

The kindergarten sessions for 1985-86 are: morning, 8:25 to 11:20, and afternoon, 12:45 to 3:40.

The members of the school board are Joe Hughes, president; Richard Haseloff, vice-president; Ed Corn, secretary; Maxine Williams; Doyle Johnson, Joe Schilling and Steve Pierson.

In the administration offices are John Grigsby, superintendent, and Georgia Lee Rundell, secretary.

High School faculty members include Lynn Burton, principal; Dolly Villarreal, secretary; Howard Carlyle, counselor; Monte Barnes, athletic director and coach; Gary Cates, biology and coach; Lucille Franse, English; Pat Graham, Librarian; Larry Gregory, boys coach; Merlene Hill, math; Cynthia

Landers, resource; George Langan, coach and U.S. History; Ron McWilliams, band; Richard Montgomery, vocational agriculture; Kay Ray, English; Brenda Riddle, English III and Spanish I; Eva Dean Stephens, science; Edward Wees, math and computer; Dorris White, business and Martha White, homemaking.

Tutorials will be from 8 to 8:20 a.m. and 3:40 to 4:00 p.m. each day (if missed morning session).

Elementary school faculty members include James Craig, principal; Eva Ancira, secretary; Delayne Barnes and Leesa Stephens, fifth grade; Gretchen Montgomery and Billie Worley, fourth grade;

Verona Traynor and Nelle Craig, third grade; Billie Carlyle and Nancy Burch, second grade; Lynn Roberts and Jane Stephens, first grade; Carol Coburn, resource room II; Dorothy McReynolds, resource room I; Carolyn George, speech; Edith Martin, reading lab; Flo Davis, migrant room and Judy Howard, P.E.

Junior High school faculty members include Jerry Dee Owen, principal; Tanya Chadwick, secretary; Pat Owen, reading improvement; Marcia Cole, reading and literature; Frances Boling, remedial math and computer; Kay Ray, language arts; Jo Lynda Robbs, math and computer; Liz Phillips,

(Continued from Page 1) history; Gary Cates, coach and science; Eva Dean Stephens, science and language art, and Jerry Dee Owen, science.

School nurse is Sarah Owen and diagnostician is Judy Sheridan.

The custodians are Jesse Cantu, high school; Arthur Crab, elementary and Lacy Langdan, junior high.

Lunchroom staff include Linda Moss, manager, Stella Garcia, Bea Howard, Lillie Hughes, and Patsy Lonsdale.

Randy Grady is in charge of maintenance.

Bus drivers are R.T. Langston, director - bus 4; Art Crabb, bus 1; Ron McWilliams, bus 2; Reta Dollar, bus 3, and Lacy Langan, bus 5.

PRICES EFFECTIVE
AUG. 15-17, 1985

OPEN 24 HOURS A DAY
GROCERIES-SOFT DRINKS-
SNACKS-HOT COOKED FOODS-
SELF SERVE GAS-MONEY ORDERS
WHILE SUPPLIES LAST



2ND WEEK BACK-TO-SCHOOL SALE

ALL GRINDS SHURFINE COFFEE
\$1.89
1 LB. CAN

GROCERY BUYS

SHURFINE SUGAR	5 LB. BAG	\$1.39
CARNATION EVAPORATED MILK	2 12 OZ. CANS	89¢
SHURFINE SALTINE CRACKERS	2 16 OZ. BOXES	\$1
SHURFINE PORK & BEANS	4 16 OZ. CANS	\$1
SHURFINE MACARONI & CHEESE	5 7 1/2 OZ. BOXES	\$1

SHELF SPECIALS

DELSEY BATH ASSTD. COLORS TISSUE	4 ROLL PKG.	99¢
HI-DRI PAPER TOWELS	2 JUMBO ROLL	\$1.00
SHURFINE ALUMINUM FOIL	2 12x25 ROLL	\$1
SHURFINE SANDWICH BAGS	3 80 CT. BOXES	\$1
SHURFINE SALT	28 OZ. BOX	29¢

ALLSUP'S ASSORTED ICE CREAM
\$1.59
1/2 GAL. CTN.

SHURFRESH QTRS. MARGARINE	2 1 LB. PKGS.	89¢
SHURFRESH IND. SLI. AMER. CHEESE	16 OZ. PKG.	\$1.59
KRAFT CHEESE	HALFMOON LONGHORN CHEDDAR OR COLBY 10 OZ. PKG.	\$1.69
PETER PAN PEANUT BUTTER	SMOOTH OR CRUNCHY 18 OZ. JAR	\$1.59
EAGLE BRAND MILK	14 OZ. CAN	\$1.25

BORDEN'S COTTAGE CHEESE
69¢
12 OZ. CTN.

SCHOOL SUPPLIES

HERLITZ RULED THEME 3-SUBJECT BOOK	EACH	79¢
BIC STICK BLACK OR BLUE PENS	10 CT. PKG.	99¢
SCHOOL YEL./ASSTD. COLORS PENCILS	8 CT. PKG.	59¢
NOTEBOOK FILLER - 10 1/2" x 8"	200 CT. PKG.	59¢

COOKED FOOD SPECIAL
CORN DOGS
2.89¢
2 FOR

16 oz. bottles PEPSI
\$2.19

ASSORTED/WHT. FACIAL TISSUE KLEENEX
79¢
175 CT. BOX

SYLVANIA LIGHT 60-75-100 WATT BULBS	2 CT. PKG.	\$1.19
BIC DISPOSABLE LIGHTERS	EACH	69¢
BIC DISPOSABLE SHAVERS	5 CT. PKG.	69¢

11TH ANNUAL ALLSUP'S ROADRACES
SEPTEMBER 14, 1985
7:00 A.M.
CLOVIS, NEW MEXICO
MARATHON-1/2 MARATHON-10,000 METER-1 MILE

FOR FURTHER INFORMATION WRITE TO:
ALLSUP'S ROADRACES
P.O. BOX 1907
CLOVIS, NEW MEXICO 88101
OR PHONE (505)-769-2311

GREAT PERFORMERS



Phillips 66
Regular
and
Unleaded
Gasolines

Trop-Artic Oil
1040 Grade
For Your Car

HDG Oil
For
Irrigation Wells



Helton Oil, Inc.
Serving The Texico-Farwell Area
Phone 481-3222



Texico registration

Ken Shaw (Left), Texico high school principal, signs up students Monday for the 1985-86 school term. Registering are, Carroll Smith, junior, and Jim Thornton, a senior. Classes begin Tuesday at Texico.

Texico students prepare for school to open

On Aug. 20, Texico students will return to school for the 1985-86 term at 8:30 a.m. (MDT).

Classes will be in session from 8:30 a.m. to 3 p.m., except on Tuesday, the first day of school, when classes will dismiss at 2 p.m.

School lunch prices will remain the same as last year. The prices will be 90 cents in all grades and 40 cents for reduced price lunches.

Members of the school board are Arlye Crooks, president; Herman Gerles, vice-president; Paul Barnes, secretary; Roy Thornton and Johnnie Rucker.

In the administrative office are James B. Pierce, superintendent; Marcia Leavell, business manager, and Teresa Montano, receptionist.

High school faculty members include Kenneth Shaw, principal; Audrey Kittrell, secretary; Dorothy Robinson, computer aide; Kendale Burch, home economics and social science; Billie Cooper, art, librarian; Juanita Hadley, English, Spanish and speech; Roy King, civics, PE and coach; Paula Leighton, resource room, Ann Liethen, business education; Michael Littlejohn, social science, PE and coach; David Lynn, history, PE and coach; Nadine Maben, science; Borde Williams, health, PE and coach; Ronnie Warmuth, math and computer; Eddie West, vocational agriculture, and Katherine West, English and Journalism.

Junior high school faculty members include Dixie Jesko, secretary and library aide; Carol Brock, math and computer; Jerry Sadberry, music and band; Anna Southard, language arts; and Ima Gene Swinney special education.

Elementary school faculty members include George Herrington, principal; Mary Morin, secretary; Janice Jenkins, kindergarten; Rita Dunsworth, first grade; Vicky Lynn, first grade; Eloisa Aragon, second grade; Ann Pearce, second grade; Alice Richmond, third grade; Nona Beth Holloman, fifth grade; Wanda Turnbough, fourth

grade and Dale Schwartz, third grade.

Special programs personnel includes Joan Edwards, diagnostician and special education; James Harding, counselor, and science; Jeanne

Kriegshauser, nurse; Cindy Osburn, speech/language therapy and Lupe Olivas, Chapter I and regular.

Maintenance workers and custodians are Glen Neie, Kenneth Doolittle, Marie Rogers, Arthur Sal-

guero and Lorene Salgurero.

Lunchroom workers are Mozelle Kirby, cook; Marcine Tipton, head cook; and Amelia Torres, cook.

Bus contractors are Patricia and Max Carter.

SPS announces executive changes

The board of directors of Southwestern Public Service announced key executive changes in the electric utility's leadership in preparation for the pending retirement on Aug. 31, of board chairman and chief executive officer Berl M. Springer.

Bert Ballengee, president, was named the chief executive officer of SPS, and W.R. "Bill" Esler, executive vice president, became the company's chief operating officer.

Lazbuddie school rate to remain the same

The Lazbuddie School Board met Tuesday to hold a public hearing regarding the 1985 tax rate.

The proposed tax rate is 95 cents, which remains the same as 1983 and 1984 actual tax rates. This shows an increase in effective tax rate.

The 1984-85 preliminary amended budget and 1985-86 proposed budget were discussed and set for final adoption on Aug. 29 at 8 p.m.

The school lunch prices were set for 1985-86 as follows:

For students the cost will be: Kindergarten through second, 80 cents; third through sixth, 95 cents; seventh through 12th, \$1.10 and adult, \$1.50. The breakfast cost for kindergarten through second, 40 cents; third through sixth, 45 cents; seventh through 12th, 50 cents, and adult, 90 cents.

The board accepted the resignation of teacher Pat Seymore.

The board employed the following Richard Luscombe - social studies teacher, girls basketball coach and P.E.; Nancy Smith - Chapter I Elementary teacher; Rebecca Williams - secondary Chapter I and migrant teacher; Darla McBroom - aide; Sharon Allen - aide and Kay O'lynn Smith - aide.

Effective Sept. 1, the first day of Southwestern's next fiscal year, Ballengee will become board chairman and chief executive officer, and Esler will begin serving as president and chief operating officer.

Ballengee began his SPS career as an accounting clerk in 1949, and served in personnel, data processing and financial management positions until he was promoted to executive vice president in 1979. He was elected president in 1982. Ballengee was born in Trinidad, Colo., and earned a business administration degree at the University of Texas.

Esler began work with the utility in 1948 as an engineer, and moved through division superintendent, executive management, engineering and construction responsibilities prior to his selection as executive vice president in 1983. He is a native of Denison, Texas, and was graduated from the University of Texas with an electrical engineering degree.

Springer joined SPS as a draftsman in 1946, and progressed through engineering, rate and budget assignments before being named executive vice president in 1972. He became president in 1976.

Goforth named

Ruby Goforth of Texico was named to the New Mexico Statewide Health Coordinating Council by Gov. Tony Anaya. She will serve until April 1987.

BACK-TO-SCHOOL

Football and Volleyball Shoes

Great Selection Of Fall Sportswear



THE STORE WITH THE CONNECTION

CLOVIS SPORT CENTER

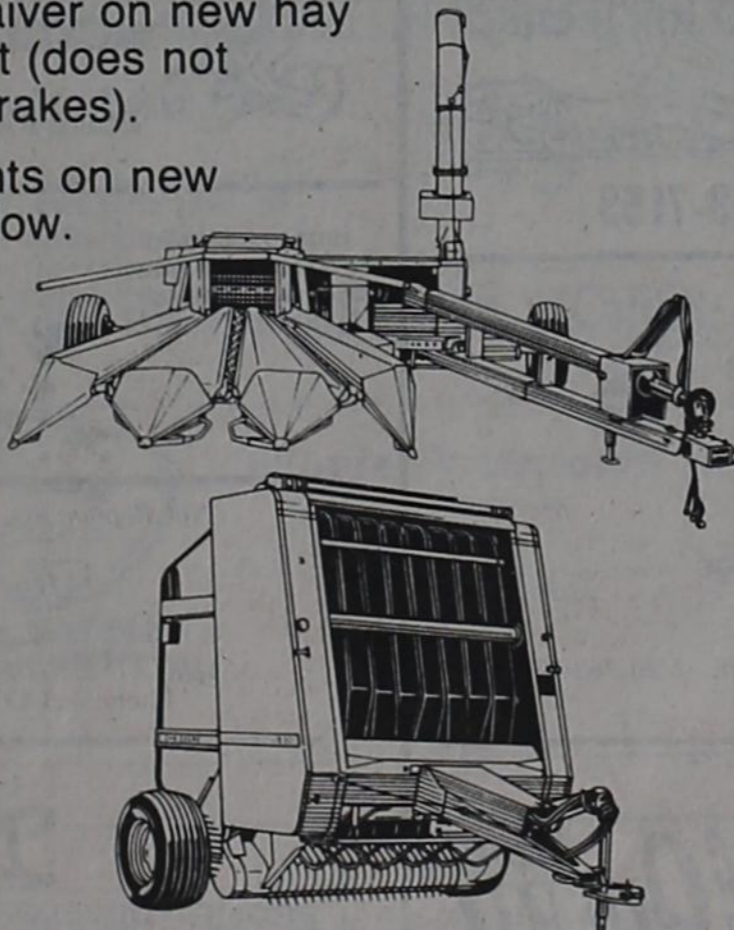
518 Main St. - 762-7157 - 762-0013 - Clovis

Interest-Free Until April 1

Extended waiver lets you save even more on new John Deere Hay and Forage Tools

- Now's the time to save big on new hay and forage equipment.
- Interest-free financing* until April 1, 1986 on new hay and forage equipment (on used until January 1, 1986).
- Discount in lieu of waiver on new hay and forage equipment (does not include mowers and rakes).
- Big customer discounts on new equipment shown below.

EQUIPMENT	CUSTOMER DISCOUNT
Round Balers	\$ 400
Square Balers	400
PTO Forage Harvester	
Model 3940	850
Model 3960	850
Model 3950	500
Model 3970	500
Model 4720	500
Mower Conditioners (except 1424)	450
Model 1424	1000
Self-Propelled Windrowers	
Model 2320 (grain only)	2500
Model 2420 (grain only)	2500
Model 2320 (auger platform)	2500
Model 2420 (auger platform)	2500
Model 2280 (auger platform)	3000
Model 3430	650
Model 3830	650



*Availability of John Deere financing subject to approval of credit. These offers may be withdrawn at any time.



Cal Jordan Implements

EAST MABRY DRIVE

CLOVIS

763-5517

Great Value

HypoTears
15 ml \$3.97
30 ml \$5.27

Lubricating Eye Drops
Soothes gritty, "dry" eyes

Farwell United Drug

9th & Ave. A 481-9100

9 a.m. to 7 p.m. CDT Monday thru Friday
9 a.m. to 2 p.m. CDT Saturday

HOME TOWN SERVICE AT BIG TOWN PRICES

Loving Care
No-Paroxide Color Lotion

Only \$2.99

12 oz. \$2.69

100's \$3.39

Ascriptin

100 TABS \$2.79

100's \$6.39

FOX PHOTO
QUALITY PHOTOFINISHING

Fox Photo Film Developing Available

100's \$1.99 EACH

Aries

Curling Bursh or Curling Iron

Reg. \$8.99
SALE \$4.99

ONE A DAY
Maximum Formula

24 VITAMINS AND MINERALS

100 TABLETS

30's \$2.27

NOTICE OF PUBLIC HEARING ON TAX INCREASE

The LAZBUDDIE INDEPENDENT SCHOOL will hold a public hearing on a proposal to increase total tax revenues from properties on the tax roll in 1984 by 7.805

percent. Your individual taxes may increase at a greater or lesser rate, or even decrease, depending on the change in the taxable value of your property in relation to the change in taxable value of all other property.

The public hearing will be held on August 27, 1985 at 8:00p.m at Lazbuddie ISD Administration Office

FOR the proposal: Phil Brockman, Bobby Redwine, Nicky Nickels, Melvin Morris, Glenn Lust, Jerry Engelking

AGAINST the proposal: NONE

ABSENT and not voting: Harrol Redwine

(Names of all members of the governing body, showing how each voted on the proposal to consider the tax increase or, if one or more were absent, indicating the absences.)

Sarpalius: Students continue to lose

School reform was such a wonderful idea in the beginning. It made good sense to put our educational system under the microscope and remove the numerous flaws in the way we teach our children.

Having spent five years as an educator, I was among the most excited. I had seen first-hand some of the problems with our educational process and welcomed the opportunity to improve schools. No doubt many other people in the 31st Senatorial District felt the same way.

We all have been sorely disappointed with the results of what we thought would be one of the most dynamic reform projects in Texas history. What started as a plan to benefit the state's teachers and students has become a proverbial political football with various egos suffocating any chance for real reform.

One need look only at two areas that allegedly have been reformed - extracurricular activities and vocational education - to see the problems our educational overhaul has caused.

Everyone by now is familiar with the extracurricular activity controversy. The Legislature, acting on the Select Committee on Public

Education's recommendations, strengthened the requirement that a student be passing only three courses to participate in extracurricular activities. The student now must be passing all courses.

In theory, the "no-pass, no-play" rule, is a good one. If Johnny can't read, Johnny shouldn't be participating in extracurricular activities. In reality, the rule amounts to punitive action against 15 and 16-year-olds.

The basic problem with "no pass, no play" is the suspension period - six weeks. The period is just flat too long. Instead of giving the student an incentive to raise their grades, that lengthy a suspension probably serves only to disillusion the student with the educational process and, in the long run, contributes to a higher drop-out rate.

Students ideally should be on a week-by-week suspension system. The grades should be checked each week, and if a suspended student has raised their grade to passing, their eligibility should be restored. A weekly system benefits those borderline students who have slipped in a single course; it does not help the "goof-offs" "no pass, no play" actually was intended to affect.

Senator Bill Sarpalius Reports

The next best thing would be to cut the suspension period in half. Gov. Mark White essentially promised to do that during the regular legislative session, but last week was quoted as vowing to keep suspension at six weeks.

Vocational education, of course, is a related story. The select committee's leaders believe vocational education detracts from scholastic work. They believe it encourages students to ignore the basics of education in favor of trade skills.

Maybe there was an over-emphasis on vocational education in some schools, but the answer is not to do away with vocational education. The answer is to more closely regulate the amount of time a student may spend in vocational classes.

Alas, the state foolishly has chosen the former course. School districts are being required to foot the lion's share of vocational education, and vocational field staff positions are being eliminated at the end of August. In essence, vocational education is being gutted for those school districts with only limited financial resources.

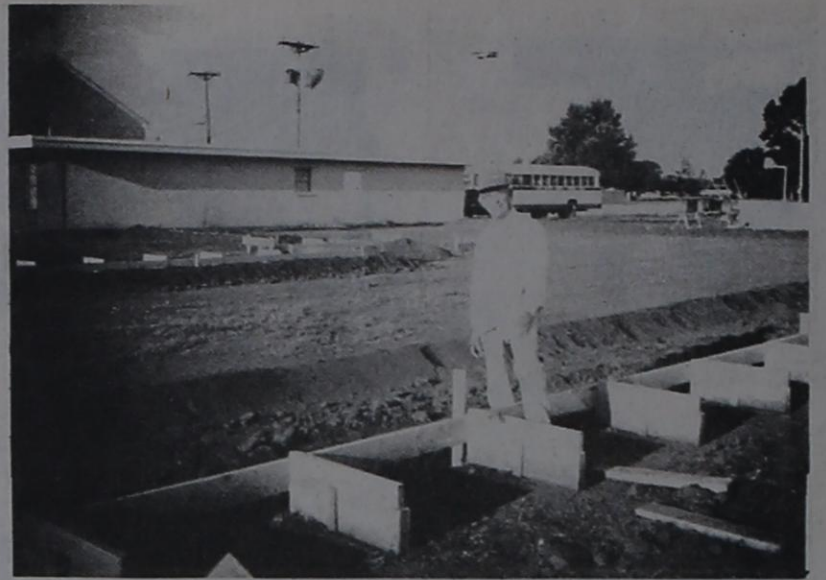
All this is a shame because vocational education can be part of a well-rounded educational system. The goal of any good system is to properly prepare students for life, and vocational studies, kept in perspective, obviously aid that preparation.

Honey-Do's finish third

The Texico Farwell women's softball team, the Honey-Do's finished third place in their division, which is the Women C Gold.

The Honey-Do's played a double header Aug. 8.

They ended the season losing to Paul Teel but won 11-8 against Circle K.



Construction starts

Construction began last week on the addition to the First Baptist Church of Farwell. Classrooms, a kitchen and fellowship hall are to be added

on to the current facility. Shown is Charlie Hromas checking the ground levels while waiting for the fill to arrive.

STEED-TODD FUNERAL HOME
 "When Understanding Is Needed Most"
 Prince & Manana-Clovis
 Ph. 763-5541

Happy Late Late Birthday
 Leslie!!
 Love, Your Secret Pal

\$100⁰⁰ REWARD

For information leading to the arrest of the person or persons opening the gates and harassing the animals at the Farwell Ag Farm. If you have information, call Lee Hutchins at 481-3215.

Clovis Shopping Guide

ROTHWELL BODY SHOP
 3100 La Fonda Rd. Clovis, N.M.
 CALL 763-3530 For Free Estimate On
 ALL AUTO BODY REPAIR & REPAINTING
 ALSO GLASS WORK

CLOVIS HOMECARE, INC.
 PRIVATE DUTY HOMECARE NURSING SERVICE
 1944 W. 21st ST. CLOVIS, NEW MEXICO 88101
 (505) 769-2243

Land of Nod
 A Gallery of Waterbeds
 321 Main - Hub Mall
 Clovis - 762-7532
 Mastercard - Visa - Financing Available

ROLLER WORLD
 1721 Wallace
 Phone 762-5777

SUMMER SKATING SCHEDULE
 Sunday: 2:00-5:00 \$2.00
 Monday: Closed
 Tuesday: 2:00-4:00 \$1.25
 7:30-9:30 \$1.00
 Wednesday: 2:00-4:00 \$1.25
 Thursday: 2:00-4:00 \$1.25
 7:30-9:30 \$1.00
 Friday: 2:00-4:00 \$1.25
 8:00-11:00 \$3.00
 Saturday: 2:00-5:00 \$2.00
 8:00-11:00 \$3.00
 CHECK DRESS CODE

Rupert Stratton, Sr.
 Piano Tuning & Repairs

STRATTON SCHOOL OF MUSIC
 Teaching all Musical Instruments

3221 Mandell
 Clovis, NM 88101 763-3153

Tuesday through Saturday
ERONICA'S early and late appointments
 Shear Magic 762-7657 Free hair styling consultations
 106 W. 5th
 Hair designed with YOU in mind

BUY OR SELL GOLD - SILVER AND COINS
 Krugerrand, Maple Leafs, China Pandas
HUMPHREY DISTRIBUTING COMPANY
 COINS, METALS, JEWELRY
 1 Mile East Of Golf Course On East 7th
 Clovis, New Mexico - 769-0042

Color Analysis C.W. Designs Wardrobe Advice
 Facial & Make-up
 Pat Martin
 Image Consultant 769-2196
 At Teen Scene Hilltop Shopping Center

BOYD'S
BRAKE & ALIGNMENT SERVICE
 39 YEARS IN CLOVIS
 CUSTOM MUFFLER INSTALLATION
 PROFESSIONAL DISC & DRUM TURNING

RAY BOYD 763-4326 1605 MABRY DR CLOVIS, N.M.

Hailey's FAMILY AFFAIR
 522 W 21st IN THE HI WINDS CTR
 CLOVIS, NM 88101 (505) 762-1223

Family Clothing And Gifts

Misses 6 - 18
 Juniors 3 - 15

Queens n' Teens

500 Main, Clovis - (505) 763-7153

WE TRADE AND SELL PAPERBACK BOOKS
 GIFTS FOR ALL OCCASIONS
 GAG GIFT HEADQUARTERS

Talico
 Gift Shop & Book Exchange

1301 N. PRINCE CLOVIS, N.MEX. 88101 PHONE (505) 763-7720

Stork Shop
 Infants and Maternity Wear
 1312 Main 763-7145

McGuffin BOOTS
 Specializing In Boot Repair and Custom Boots
 Tuesday-Saturday 9 to 5:30
 605 Connelly 769-0833

Tagi's
 THE "SCENTSIBLE" SHOP
 7 Hilltop Plaza - Clovis
 (505) 763-6700
 Candles - Gifts For Every Occasion

Brand'n Iron Bar-B-Q
 Corner of Morris and Mabry
 Eat Here Or Take Out
 Open Monday-Saturday 11 a.m. to 10 p.m.
 762-7322
 Beef - Pork Ribs - Sausage
 Hickory Smoked by Floyd Trantham

THE DONUT SHOP
 Hi-Winds Shopping Center
 608 W. 21st 763-3044

High Plains Photography
 Instant Passports
 Copies of Photographs
 511 Main - 763-6387
 Al Sass, Proprietor

Where your appearance is our concern.

Veldonna's WOMEN'S APPAREL
 Open 10-6
 Hub Mall 321 B. Main
 owner Donna Harris 762-7761

Common Cents
 Re-Sale Shoppe
 New & Pre-Owned Clothing for the entire family.
 414 Mitchell Clovis N.M. 762-9356

Authorized Concord Bicycle Dealer
ELSIE'S BICYCLE SHOP
 •Parts and Accessories
 •Handle Other Bicycles
 •Tricycles and Other Toys

ELSIE PARSONS, Owner 1221 Edwards Res. (505) 763-5260

(505) 763-6830
 5100 NORTH PRINCE CLOVIS, NM 88101

W & W Masonry
 ALL TYPES MASONRY & SUPPLIES
 COMMERCIAL AND RESIDENTIAL
 NEW MEXICO LIC # 2239

Needlepoint Yarns Crewel Rugs
The Knitting Nook
 MADELEINE KNIPPRATH Phone 763-4354
 #9 Highland Shopping Center Manana and Main Clovis, New Mexico 88101

Duffys
 PROMPT DEVELOPING SERVICE - ALL SIZES FILM - LARGE SELECTION PHOTO ACCESSORIES
 O.L. ANDERSON, PROPRIETOR
 617 Main 2400 N. Prince



Ten students from the Texico-Farwell area attended three days of a cooking school for ages 9 to 12 provided by SPS. Above, attending last Friday were Paul Beavers, Laura Vidana, Marsha Hamilton.

Karen Aycock, Jill Atkinson, Danielle Palady, Melinda Landrum, Katrina Stewart, Cynthia Beavers and CEA Jeanette Pierce. Below, Connie Moyers, home economist, shows the students Pita Bread.



Cooking class held

Southwestern Public Service Company and County Extension agent - home economist Jeanette Pierce last week taught a cooking class at the Farwell Community Center for Farwell boys and girls. The objectives of the class are to teach nutrition, kitchen safety, and the proper uses of small appliances.

On Tuesday the boys and girls made ice cream and no-bake cookies. On Wednesday they made fruit pizzas, orange milk shakes, and orange pop. On Friday, they played "Family Food" and prepared meat dishes.



Muleshoe parade

DeAnn Curtis, Miss Border Town Days, rode in Saturday's Mule Day parade in Muleshoe. DeAnn re-

ceived her crown July 27 and will represent the Twin Cities during the next 12 months.

The Latest

Visiting with their daughter Wyvonna Haney were the Willie Gipson's.

Rev. Steve and Leesa Stephens and Hanna took a short vacation to Ruidoso.

Robert and Cheryl Spiewak and son Tom of West Chicago, Ill., recently visited the home of Prentice Mills of Farwell. Mrs. Spiewak is the Mills' daughter. "I've enjoyed our yearly visits here for many years," said Mr. Spiewak.

Mr. and Mrs. Olney Dean of Edinburg and Mrs. Essie Green of Clifton visited last week in the home of W.T. and Velma Magness and

with other relatives and friends in the area. Mrs. Dean and Mrs. Green are sisters of W.T. Magness.

Weekend guests in the home of Ted and June Magness in Farwell included their daughter Kim and her prospective mother-in-law, Jackie Alles, both of Evansville, Ind., and June's parents, Buck and Mozelle Hensley of Walnut Springs, Texas.

Shower held for Kim Magness

Kim Magness, bride-elect of Gary Alles, was honored at a pre-nuptial shower Saturday afternoon at the Hamlin United Methodist Church in Farwell.

Special guests were the honoree's mother, June Magness of Farwell, the prospective bridegroom's mother, Jackie Alles of Evansville, Ind., and the honoree's grandmothers, Mae Magness of Farwell and Mozelle Hensley of Walnut Springs.

Guests were served refreshments of ham rolls, assorted party sandwiches, cookies and punch from crystal and silver appointments. An arrangement of fresh flowers in hues of pink, mauve and white in a

silver epergne centered the table which was covered with white lace and accented with turquoise. Turquoise napkins completed the table decor.

Corsages of carnations, baby's breath and stephanotis were presented to the honoree, her mother, and the mother of the future bridegroom.

Hostesses for the bridal courtesies were Peggy Gikas, Dorothy Lovelace, Beth Howard, Irene Jones, Doris Martin, Dorothy Quickel, Tommie Snodgrass, Anne Norton, Dardanella Helton, Joann Getz, Mina Sheets, LaMoin Williams, Dot Christian and Lillie Christian.

Curry County Fair approaches

The 1985 Curry County Fair will be held Aug. 26-31 at the fairgrounds in Clovis.

Here's a rundown for each day: Aug. 26, Entry Day: Appaloosa open performance and youth activities show, and halter show; carnival; wool lead class; weigh and classify steers; shearing demonstration, and flower show entries.

Aug. 27, Merchants Day: weigh and classify lambs; junior market swine show; dog show; longhorn cattle show; talent show, and carnival.

Aug. 28, 4-H and FFA Day: breeding sheep show; junior breeding cattle show; open beef show; junior dairy show; junior market steer show; rabbit showmanship contest; little buckaroo rodeo; youth pet show.

Aug. 29, Parents Day: dairy goat show; Curry County Youth Horse Show; junior market lamb show; watermelon contest and eating contest; fun dancers; art demonstration; garden tractor pull and carnival.

Aug. 30, School Day: all school children admitted free from 2 to 6 p.m.; junior livestock sale meeting; Curry County Youth Performance Horse Show; horseshoe pitching contest; Clovis High band cake walk; junior livestock sale; square dancing; tractor pull and carnival.

Aug. 31, Pioneer Day: Performance cattle classes; old timers celebration; youth halter show; horseshoe pitching championship; old fiddlers contest; stomper pull; Clovis High band cake walk; team roping; milking contest; halter show; square dancing; tractor pull; rainbow poppin puppets; high plains muzzle loaders; Buchanan & Cook Band and carnival.

Although most of the events are scheduled the same this year as they have been in the past, there are 2 major changes in the events.

The Junior Livestock Sale will be Friday evening at 7 p.m. MDT instead of Saturday morning as it has been in the past.

There will be an appreciation barbeque Sept. 26 to honor those who purchase the 120 head which will be sold at the sale. In previous years, there has been a breakfast to honor the supporters of the Livestock Sale.

Anyone may enter and participate in the Curry County Fair.

Stepping back in time

Step back in time and make plans now to come to one of the luncheons to be held next April at the E.B. Black House in Hereford.

The E.B. Black House residence was built in 1909 and is on the national register of historic places. It is maintained by Deaf Smith County and supervised by the Deaf Smith County Historical Society for the use of the public.

The 1910 era will be depicted in the decorations and serving. A gourmet meal will be served for \$7 a plate. Groups might like to wear hats of that era or clothing depicting times of years ago.

Groups of at least 20 and no more than 32 will be accepted. Reservations may be made by calling the Deaf Smith County Museum, 364-4338. With reservations, tours can also be made of the county museum and the newly-opened Lomas-Hacker Wagon Yard; as well as a tour of the Black House. The luncheons will be served on Tuesdays and Thursdays in April in conjunction with the Sesquicentennial.

Need Business Forms?
Need Personalized Stationery?
Need Business Cards?
 Stop by the State Line Tribune office
 404 Third St. Farwell

Levi's® Menswear has taken a great fabric one step farther, we've made it comfortable to wear year round in 100% texturized polyester. But, we didn't stop at improving the fabric. Our Action Twills have Action Waistbands for superb fit and easy comfort. The final touch - Sta Prest® - keeps creases sharp.

TURNER'S
 YOUR DEPARTMENT STORE
 520 MAIN CLOVIS

SUBARU®

No Payment Until December

GL 4WD 4 Door Sedan

TAKE A TEST DRIVE!

The price... the service... the satisfaction.

HAGELGANTZ
 BIG COUNTRY SUBARU
 2400 MABRY DRIVE 762-4427

IT ALL STARTS HERE!

BENTWOOD ROCKERS
 CANE VELOUR OR UPHOLSTERED BACK ROCKERS
 In Oak Or Walnut Finish
\$49.95 & UP

See our complete line of ready-to-finish furniture.

REGISTER FOR FREE HAWAIIAN VACATION:

The Heart of Clovis is Downtown

Clovis Downtown Inc. presents A Trip for Two to HAWAII

NAME _____
 ADDRESS _____
 CITY _____ PHONE _____

Must be 18 or over to be eligible to win

BALY Furniture Inc.
 601 Main Clovis 763-7121

CLASSIFIED ADS GET RESULTS

MEALS ON WHEELS
 481-9027

SUNDAY - Southern fried chicken, mashed potatoes, gravy, green beans, hot roll, fruit ice box pie, beverage.
 MONDAY - Sloppy Joe, red beans, relish plate, pickled beets, corn bread, fruit, beverage.
 TUESDAY - Meatloaf w/ tomato sauce, blackeyed peas, buttered carrots, tossed salad w/dressing, corn bread, fruited jello, beverage.
 WEDNESDAY - Fried pork chops, sweet potato casserole, okra gumbo, hot roll w/margarine, peanut butter brownie, beverage.
 THURSDAY - Fiesta baked steak, buttered corn, brussel sprouts, bread/margarine, chocolate honey nut bar, beverage.
 FRIDAY - Chicken livers, parsleyed new potatoes, buttered zucchini and tomatoes, hot roll, fruit cobbler, beverage.
 SATURDAY - Enchilada casserole, spanish rice, tossed salad w/tomato wedge, crackers, jellow w/fruit, beverage.

FARWELL STEERS

1985 Varsity Football Schedule

Sept. 6	Wilson	Here
Sept. 13	Petersburg	Here
Sept. 20	Seagraves	There
Sept. 27	Bovina	There
*Oct. 4	Sudan	Here
*Oct. 11	Vega	Here
*Oct. 18	Lazbuddie	Here
*Oct. 25	Kress	There
*Nov. 1	Happy	There
*Nov. 8	Nazareth	Here

**HOMECOMING
*DISTRICT GAMES

Non-district games begin at 8 p.m.
Homecoming begins at 8 p.m.
District games begin at 7:30 p.m.



Eight Cub Scouts from Farwell attended Day Camp at Clovis. Shown are, from top left, Robbie Pomper, Kevin Welch, Jody Mahaney and Mark Chandler; bottom from left, Reace Bennett, who received a plaque for Camper of the Week; Donnie Grissom, Clay Corn holding the Webelos flag that he made; and Klay Camp.

Cub Scouts attend day camp in Clovis

The Cub Scout troop Den 2 and the Webelos of Den 1, Pack 213 of Farwell, attended day camp at Ned Houck Park in Clovis July 23-26.

Reace Bennett of Den 2 was named Camper of the Week. The eight boys that went were placed in different camps such as Flying Eagles, Thunderbirds, Bears and Superscouts.

The different activities the boys were involved in were archery, BB guns, nature, face painting and arts and crafts.

The boys that went were Robbie Pomper, Kevin Welch, Jody Mahaney, Mark Chandler, Reace Bennett, Donnie Grissom, Clay Corn and Klay Camp.

The last day of camp the parents brought a covered dish for a potluck dinner. Afterwards the boys did skits and sang.

The Cub Scout troop received a ribbon for participation.

FARWELL JUNIOR VARSITY & JR. HIGH

1985 Football Schedule

Sept. 5	Hart	H	J.V.	6:30
Sept. 12	OPEN			
Sept. 19	Springlake-Earth	H	J.V.	6:30
Sept. 26	Bovina	H	7-8-J.V.	5:00
Oct. 3	Sudan	T	7-8-J.V.	5:00
Oct. 10	Vega	H	7-8-J.V.	5:30
Oct. 17	Lazbuddie	T	8-J.V.	5:00
Oct. 24	Kress	H	7-8-J.V.	5:30
Oct. 31	Happy	H	7-8-J.V.	5:30
Nov. 7	Nazareth	T	7-8-J.V.	5:30

(7th grade games will be played provided both schools have enough players.)

LAZBUDDIE LONGHORNS

1985 Varsity Football Schedule

Sept. 6	Melrose, N.M.	Here
Sept. 13	Hart	There
Sept. 20	O'Donnell	There
Sept. 27	Sudan	There
*** Oct. 4th	Clovis Sophomores	Here
** Oct. 11	Kress	Here
* Oct. 18	Farwell	There
* Oct. 25	Nazareth	Here
* Nov. 1	Vega	There
* Nov. 8	Happy	Here

***PARENTS NIGHT
**HOMECOMING
*DISTRICT GAMES

Non-district games begin at 8 p.m.
District games begin at 7:30 p.m.

TEXICO WOLVERINES

1985 Varsity Football Schedule

Aug. 31	Estancia	There
Sept. 6	Cloudcroft	Here
Sept. 13	Capitan	Here
Sept. 20	Eunice (Parent Night)	Here
Sept. 27	Jal	There
* Oct. 4	Springer	There
* Oct. 11	Hagerman (Homecoming)	Here
* Oct. 18	Melrose	There
* Oct. 25	Tatum	There
* Nov. 1	Ft. Sumner	Here

All games begin at 7:30 p.m.

*District games

Texico Boosters discuss plans

Members of the Texico Athletic Booster Club met Tuesday in the high school library to discuss its upcoming projects to assist the school teams.

On Aug. 24, they will again sponsor a watermelon feast for the players who come to the first scrimmage of the year. On that day, the volleyball teams will scrimmage other teams from 8 a.m. - 5 p.m., and the football teams will start their scrimmage at 6 p.m.

The club will be purchasing soft drinks and cups so that players and officials may enjoy refreshments at the games.

The club will also sponsor the annual school athletic calendar. Local businesses will be asked to help sponsor the calendar by placing their advertisements on the calendar.

Every parent in the Texico school district is invited to join and participate in the Booster Club activities.

Fire Calls

The Farwell Fire Department received one call this past week.

On Aug. 12, the ambulance was called to 307 7th St. and transported a patient to Clovis High Plains Hospital at 7:07 a.m.

The Clovis Dispatcher reported two calls this past week.

On Aug. 7, the ambulance was called out to an accident at 108 77th and transported 2 patients to Clovis High Plains Hospital, at 7:19 a.m.

On Aug. 9, the ambulance was called out to Port of Entry and transported a patient to the Clovis High Plains Hospital.

TEXICO JUNIOR HIGH

1985 Football Schedule

Sept. 5	Gattis	Here	5:00 p.m.
Sept. 12	Portales 8th	There	3:00 p.m.
Sept. 28	Portales 8th	Here	10:00 a.m.
Oct. 3	Melrose	There	5:00 p.m.
Oct. 12	Ft. Sumner	Here	10:00 a.m.
Oct. 19	Tucumcari	Here	10:00 a.m.
Oct. 25	Tatum	There	4:30 p.m.

ATTENTION!

You Can Build Your Skills By Enrolling At ENMU-Clovis Through September 9, 1985 In the Following Programs:

• AIR CONDITIONING,
HEATING, AND
REFRIGERATION

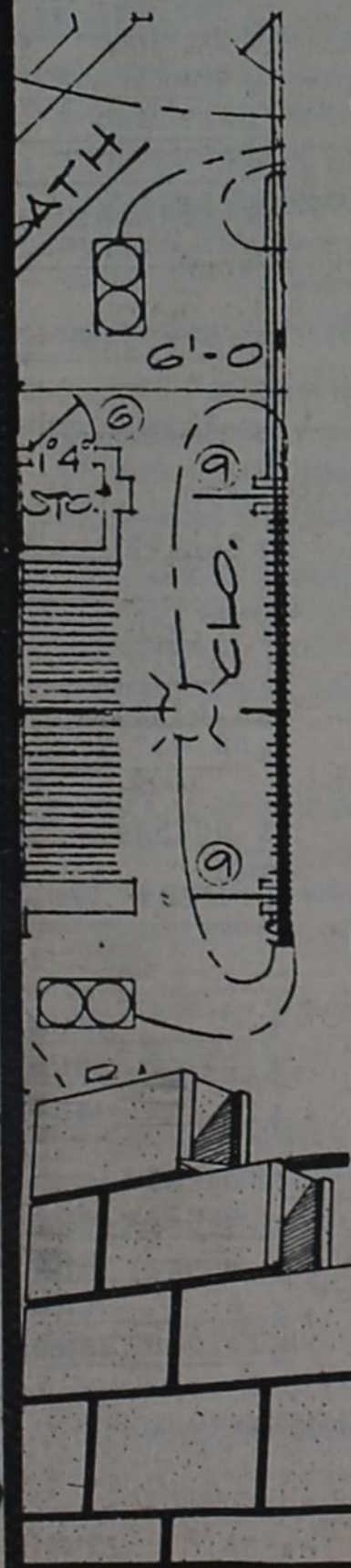
• ALCOHOL FUEL
PRODUCTION

• CARPENTRY

• BRICKLAYING

For More Information

Contact the Office of Admissions and Records, or Phone 769-2811, ext. No. 111 or No. 112



Eastern New Mexico University—Clovis
417 Schepps Blvd. Clovis, NM 88101

NEW
2157
2165

Superior grain yields with a good grazing bonus. Excellent straw strength, too!

Our researchers were impressed by the tremendous pasture production and grain yields from these new varieties during testing. And now that the varieties have stood the test of actual production on many farms under many conditions, the proof is in!

They grow off well and show strong resistance to SBMV, leaf rusts, fungal leaf blights, and the Hessian fly.

• New 2157 gives you good, early grazing, then stays with you through the winter. And the grain yields are right up there with anything you care to compare it against. Choose 2157 for dryland or limited water production.

• New 2165 works with your irrigation program to make the most of all you put into the crop. Pasture comes on strong in the fall and grain yields are among the best you'll find, bar none.

See your Pioneer dealer right away. He'll show you yield results and interesting new facts about the advantages of pure seed.



*Registered trademark of Pioneer Hi-Bred International, Inc. PIONEER, brand products are sold subject to the terms and conditions of sale which are part of the labeling and sale documents. Pioneer is a brand name; numbers identify varieties. © PHB 1985



KATHY BOOTH

Booth joins SPC staff

Kathy Booth, assistant girls basketball coach at Levelland High School for the past four years, has joined the South Plains College Athletic Department as assistant women's basketball coach and director of Physical Fitness Center, according to Joe Tubb, athletic director.

"We are very excited to have Kathy join our staff," said Lyndon Hardin, women's basketball coach at SPC. "She is well-respected in the community and has done an excellent job as assistant coach at Levelland High School. I look forward to her assistance with our women's program here and look for her to bring some fresh ideas into our program."

Ms. Booth played basketball four years at Wayland Baptist University where she received her bachelor of science degree in physical education in 1981. Two of those years she played under Dean Weese, current girls basketball coach at Levelland High School.

Ends training

Airman Martin L. Percifield has been assigned to Keesler Air Force Base, Miss., after completing Air Force basic training.

During the six weeks at Lackland Air Force Base, Texas, the airman studied the Air Force mission, organization and customs and received special training in human relations.

His wife, Beth, is the daughter of Lawson and Mary A. Williams of Texico.

land High School. She joined Weese at LHS in the fall of 1981.

She earned All-State honors in basketball in 1976 and 1977 at Farwell High School, where she was also a member of the school's state qualifying girls golf team.

"I am very excited about being a part of South Plains College athletics and working with Coach Hardin," said Ms. Booth. "This is a good step up for me in my coaching career, because it will give me the opportunity to meet a lot of people and work on a different coaching level."

In addition to her assistant coaching responsibilities, Ms. Booth will manage SPC's Physical Fitness Center, an exercise facility which features Nautalus and Polaris exercise equipment. She will also coordinate a lot of the recruiting for the women's basketball program, Hardin said.

"It will be a new experience for me, but I am eager to jump into

recruiting," said Ms. Booth. "I know a lot of the coaches on the South Plains, and I have either coached against the better players in area high schools and have coached them in basketball camps."

This past week, Ms. Booth had a chance to meet and work with SPC's women's basketball team during the College's Girls' Summer Basketball Camp, where she was a camp coach. "I am really looking forward to working with the SPC players," she said. "They are going to be a great team."

Ms. Booth's family is not a newcomer to South Plains College. Her sister, Sharon, played women's basketball at SPC from 1976-77 under Gayle Nicholas who came to SPC from Farwell High School. Her parents are Mr. and Mrs. Toby Booth of Lazbuddie.



Computer camp

Richard Turner, a freshman at Farwell High School, recently completed the Summer Computer Camp at Eastern New Mexico University. The one-week camp offered stu-

dents a chance to sharpen their skills in BASIC programming. Richard is the son of Charles Turner of Rt. 1 Farwell.

Lions plan broom sale

The Texico-Farwell Lions Club Monday night announced that its annual fund-raising broom sale will be Sept. 6 and 7.

Brooms, mops and accessories will be sold starting at 2 p.m. Sept. 6 in front of the Farwell Post Office. Then, starting at 8 a.m. Sept. 7, they will be sold in front of both the Farwell and Texico post offices.

All articles sold are made by blind persons.

In other business, it was noted that the club-sponsored trap shoot will begin at 1:30 p.m. Aug. 25 at the range one-half mile north on State Line Road. Blue magic shells will be given as prizes to the winners.

CITY OR SPECIAL DISTRICT: Farwell City



MARTIN PERCIFIELD

NOTICE OF CALCULATION OF EFFECTIVE TAX RATE, ESTIMATED UNENCUMBERED FUND BALANCES, AND DEBT SCHEDULE

I, Ronald E. Procter, Chief Appraiser for Farwell I.S.D., in accordance with Sec. 26.04, Property Tax Code, have calculated \$ 1.10887 per \$100 of value as the tax rate which may not be exceeded by more than three percent by the governing body of the Farwell I.S.D. without holding a public hearing as required by the code.

The estimated unencumbered fund balance for Maintenance & Operation fund: \$ 142,800
The estimated unencumbered fund balance for Interest & Sinking fund: \$ 16,222

The following schedule lists debt obligations that 1985 property taxes will pay:

[Expand worksheet as necessary to list debt obligations. If the unit needs additional space, refer the reader to the portion of the notice of the effective tax rate for this debt schedule. See examples]
Bonded Indebtedness \$91,555

(Name), (Title/position) Ronald E. Procter, R.P.A., Chief Appraiser
(Date) August 8, 1985

NOTICE OF CALCULATION OF EFFECTIVE TAX RATE, ESTIMATED UNENCUMBERED FUND BALANCES, AND DEBT SCHEDULE

I, Ronald E. Procter, Chief Appraiser for Farwell City, in accordance with Sec. 26.04, Property Tax Code, have calculated \$.22431 per \$100 of value as the tax rate which may not be exceeded by more than three percent by the governing body of the City of Farwell without holding a public hearing as required by the code.

The estimated unencumbered fund balance for Maintenance & Operation fund: \$ -0-
The estimated unencumbered fund balance for Interest & Sinking fund: \$ -0-

The following schedule lists debt obligations that 1985 property taxes will pay:

[Expand worksheet as necessary to list debt obligations. If the unit needs additional space, refer the reader to the portion of the notice of the effective tax rate for this debt schedule. See examples]

(Name), (Title/position) Ronald E. Procter, R.P.A., Chief Appraiser
(Date) August 8, 1985

CALCULATIONS USED TO DETERMINE EFFECTIVE TAX RATE

I. DATA

1. 1984 Total tax levy from the 1984 tax roll	\$ 698,855.83
2. 1984 Tax rate (\$ <u>1.10</u> M&O and \$ <u>.15</u> I&S)	\$ 1.25 /\$100
3. 1984 Debt service (I&S) levy	\$ 83,862.70
4. 1984 Maintenance and operation (M&O) levy	\$ 614,993.13
5. 1984 M&O taxes on property in territory that has ceased to be a part of unit in 1985	\$ -0-
6. 1984 M&O taxes on property becoming exempt in 1985	\$ 4,125.00
7. 1984 M&O taxes on taxable value lost because property is appraised at less than market value in 1985	\$ 1,218.58
8. 1985 Total taxable value of all property	\$ 60,070,450
9. 1985 Taxable value of new improvements added since Jan. 1, 1984	\$ 619,890
10. 1985 Taxable value of property annexed since Jan. 1, 1984	\$ -0-
11. 1985 Tax levy needed to satisfy debt service (I&S)	\$ 91,555
12. Rate to raise 1984 tax levy due to appraisal roll errors (lost dollars divided by the difference of 1985 taxable values minus over-65 homesteads taxable values) [\$ <u>-0-</u> ÷ (\$ <u>-0-</u> - \$ <u>-0-</u>) × 100]	\$ -0- /\$100
13. Rate to regain taxes lost in 1984 due to appraisal roll errors (lost dollars divided by the difference of 1985 taxable values minus 1985 over-65 homesteads taxable value) [\$ <u>-0-</u> ÷ (\$ <u>-0-</u> - \$ <u>-0-</u>) × 100]	\$ -0- /\$100
14. 1984 M&O taxes used to regain lost 1983 levy	\$ 43,260.27
15. 1985 Taxable value of over-65 homesteads with frozen taxes	\$ 1,633,270
16. Frozen M&O levy of over-65 homesteads with frozen taxes	\$ 13,968.24
17. Frozen I&S levy of over-65 homesteads with frozen taxes	\$ 1,904.76
18. Rate to generate reduced state aid or receive maximum equalization allotment (amount of lost aid or additional levy for equalization, divided by 1985 taxable values minus 1985 over-65 homesteads' taxable value, × 100) [\$ <u>-0-</u> ÷ (\$ <u>-0-</u> - \$ <u>-0-</u>) × 100] (If both lost aid and equalization apply, use larger amount of the two.)	\$ NA /\$100

MAINTENANCE AND OPERATION (M&O) TAX RATE

1. (A) 1984 Total tax levy (Data 1)	\$ 698,855.83
(B) Subtract 1984 debt service levy (Data 3)	- \$ 83,862.70
(C) Subtract 1984 taxes on property no longer in unit (Data 5)	- \$ -0-
(D) Subtract 1984 taxes on exemptions (Data 6)	- \$ 4,125.00
(E) Subtract 1984 taxes on productivity valuation (Data 7)	- \$ 1,218.58
(F) Subtract frozen M&O levy of over-65 homesteads (Data 16)	- \$ 13,968.24
(G) Subtract 1984 M&O taxes used to regain lost 1983 levy (Data 14)	- \$ 43,260.27
(H) Adjusted 1984 M&O levy	\$ 552,421.04
2. (A) 1985 Total taxable value of all property (Data 8)	\$ 60,070,450
(B) Subtract 1985 value of new improvements (Data 9)	- \$ 619,890
(C) Subtract 1985 value of annexed property (Data 10)	- \$ -0-
(D) Subtract 1985 value of over-65 homesteads (Data 15)	- \$ 1,633,270
(E) Adjusted 1985 taxable value for M&O	\$ 57,817,290
3. (A) Divide the adjusted 1984 M&O levy (1-H above) by the adjusted 1985 taxable value for M&O (2-E above) (\$ <u>552,421.04</u> ÷ \$ <u>57,817,290</u>)	\$.00955459
(B) Multiply by \$100 valuation	× \$100
(C) Effective M&O rate for 1985	\$.95546 /\$100

INTEREST AND SINKING (I&S) TAX RATE

4. (A) 1985 I&S levy needed to satisfy debt (data 11)	\$ 91,555
(B) Subtract frozen I&S levy of over-65 homesteads (Data 17)	- \$ 1,904.76
(C) Adjusted 1985 I&S levy	\$ 89,650.24
(D) 1985 Total taxable value of all property (Data 8)	\$ 60,070,450
(E) Subtract 1985 value of over-65 homesteads (Data 15)	- \$ 1,633,270
(F) Adjusted 1985 taxable value for I&S	\$ 58,437,180
(G) Divide the adjusted 1985 I&S levy (4-C above) by the adjusted 1985 taxable for I&S (4-F above) (\$ <u>89,650.24</u> ÷ \$ <u>58,437,180</u>)	\$.00153413
(H) Multiply by \$100 valuation	× \$100
(I) Effective I&S rate for 1985	\$.15341 /\$100

APPRAISAL ROLL ERROR RATE

5. (A) Rate to raise 1984 levy due to appraisal errors (Data 12)	\$ -0- /\$100
(B) Add rate to regain taxes lost due to errors (Data 13)	+ \$ -0- /\$100
(C) Total rate to adjust for appraisal roll errors	\$ -0- /\$100

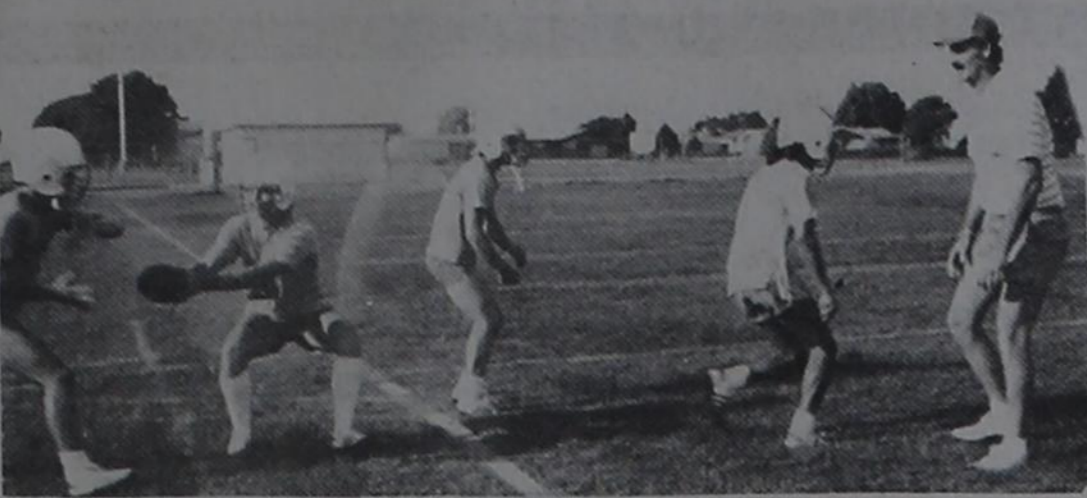
TOTAL EFFECTIVE TAX RATE FOR 1985

6. (A) Effective M&O rate (3-C above)	\$.95546 /\$100
(B) Add effective I&S rate (4-I above)	+ \$.15341 /\$100
(C) Add rate to adjust for appraisal roll errors (5-C above)	+ \$ -0- /\$100
(D) 1985 Effective Tax Rate	\$ 1.10887 /\$100

1985 Effective Tax Rate is the tax rate published as required by Sec. 26.04, Property Tax Code.

STATE AID/EQUALIZATION ENRICHMENT AID RATE

7. Rate to replace reduced state aid or qualify for maximum equalization (Data 18)	\$ NA /\$100
--	--------------



Workouts start

The Farwell Steers started their two-a-day workouts this week in preparation for the fall football schedule. At right is Head Coach Monte Barnes. The Steers are in Class A, playing in the North Zone.

Their district includes Sudan, Vega, Lazbuddie, Kress, Happy and Nazareth. Their first scrimmage will be with Plains Aug. 23 there, and second scrimmage will be with Dimmitt Aug. 30 here.



Wolverines prepare

Texico Head Coach David Lynn instructs his team on pass and run plays preparing them for the season. Texico will scrimmage Clovis

sophomores Aug. 23 or 24. The season will open with the Wolverines playing Estancia Aug. 31 here.

Quilt block contest offered

The Panhandle-Plains Historical Museum and the Texas Agricultural Extension Service are co-sponsoring this contest in honor of Texas' 150th birthday. Quilt block competitions will be held in each of the top 26 counties of the Texas Panhandle. Anyone is eligible to enter with the exception of Extension agents, museum staff and their families.

The first place blocks will be sent to the museum in Canyon on Feb. 1, 1986, where they will become part of a 30-block Sesquicentennial Quilt. Thus, each of the top 26 counties will have a representative block with the remaining 4 blocks representing the museum, the Extension Service, the Sesquicentennial and the Quilt project itself.

Each entrant is asked to create one or more quilt blocks representing a specific characteristic of his or her county. A panel of three judges will select the top three blocks in each county. Entries will be judged on overall appearance, workmanship, originality of design, adherence to theme, appropriate-

ness of material and use of color. The museum and quilting Service and planning a "quilting bee" for Feb. 22-23. After the quilt has been finished it will be on display at the museum as part of "Lone Stars: A Legacy of Texas Quilts, 1836-1986" a major exhibit of the best quilts in Texas. This display will be on April 27, 1986 through June 8, 1986.

Kalbas cited

Donna Kalbas of Farwell was named to the Dean's List at Southwestern Oklahoma State University for the 1985 summer semester.

Persons interested in obtaining information on deadline dates, rules, tips, and entry blanks for the Sesquicentennial Quilt Block Contest should contact Janette Pierce, County Extension Agent for Home Economics at 481-3619.

Sheriff's Report

Here is the weekly report from Parmer County Sheriff Bill Morgan.

On Aug. 11, Javier Robledo, Bovina, reported the theft of a hog from his pens located north of Bovina. Arrests have been made in this case.

On Aug. 13, Lawrence Cooper, Farwell reported the theft of his grain cart from the old Cooper Gin, located in north Farwell.

On Aug. 12, Wayne Smith, Rt. 1, Farwell reported the theft of a drive and U joint taken from his truck while parked at the Oklahoma Lumber & Supply Co.

The following arrests have been made:

On Aug. 10, Juan Sierra, 66, Friona was arrested by the Texas Highway Patrol on a charge of driving while intoxicated. His bond was set at \$500. His case is pending before the County Court.

On Aug. 12, Alberto Arias, 19, Friona was arrested by the Sheriff's Department on a charge of theft of swine. His bond has been set at \$1,000. His case is pending before the Grand Jury.

On Aug. 12, Antonio Arias, 27, Friona was arrested by the Sheriff's Department on a charge of theft of swine. His bond has been set at \$1,000. His case is pending before the Grand Jury.

On Aug. 12, Richard Mora, 26, Friona was arrested by the Sheriff's Department on a charge of theft of swine. His bond has been set at \$1,000. His case is pending before the Grand Jury.

Parmer COUNTY

NOTICE OF CALCULATION OF EFFECTIVE TAX RATE, ESTIMATED UNENCUMBERED FUND BALANCES, AND DEBT SCHEDULE

I, Ronald E. Procter, Chief Appraiser for Parmer County, in accordance with Sec. 26.04, Property Tax Code, have calculated \$.2871 per \$100 of value as the tax rate which may not be exceeded by more than three percent by the Commissioner's Court of Parmer County without holding a public hearing as required by the code.

\$ -0-	per \$100 for farm-to-market/flood control tax;
\$.2184	per \$100 for the general fund, permanent improvement fund, and road and bridge fund tax;
+ \$.0687	per \$100 for public road maintenance tax; thus
\$.2871	per \$100 TOTAL COUNTY EFFECTIVE TAX RATE

The estimated unencumbered fund balances are as follows:

Farm to Market/Flood Control	Public Road Maintenance
Maintenance & Operation: \$ NA	Maintenance & Operation: \$ 364,020.47
Interest & Sinking: \$ NA	Interest & Sinking: \$ -0-
General Fund	
Maintenance & Operation: \$ 427,452.44	
Interest & Sinking: \$ -0-	

The following schedule lists debt obligations that 1985 property taxes will pay: -0-

[Expand worksheet as necessary to list debt obligations. If the unit needs additional space, refer the reader to the portion of the notice of the effective tax rate for this debt schedule. See examples.]

(Name) (Title/position) Ronald E. Procter P.P.A., Chief Appraiser
 (Date) August 8, 1985

CALCULATIONS USED TO DETERMINE EFFECTIVE TAX RATE

Separate calculations are performed for each type of tax levied by Parmer County in order to determine a 1985 total effective tax rate. The following guide corresponds with the calculations shown: A - Farm-to-market Road/Flood Control Tax; B - General Fund Tax; C - Maintenance of Public Roads Tax.

I. DATA	Type of Tax:	A
1. 1984 Total tax levy from the 1984 tax roll		\$ 209,003.11
2. 1984 Tax rate (\$.0744 M&O and \$ _____ I&S)		\$.0744 /\$100
3. 1984 Debt service (I&S) levy		\$ -0-
4. 1984 Maintenance & operation (M&O) levy		\$ 209,003.11
5. 1984 M&O taxes on property in territory that has ceased to be a part of unit in 1985		\$ -0-
6. 1984 M&O taxes on property becoming exempt in 1985		\$ 427.80
7. 1984 M&O taxes on taxable value lost because property is appraised at less than market value in 1985		\$ 448.32
8. 1985 Total taxable value of all property		\$ 293,847,213
9. 1985 Taxable value of new improvements added since Jan. 1, 1984		\$ 5,307,062
10. 1985 Taxable value of property annexed since Jan. 1, 1984		\$ -0-
11. 1985 Tax levy needed to satisfy debt service (I&S)		\$ -0-
12. Rate to raise 1984 tax levy due to appraisal roll errors (lost dollars divided by 1985 taxable values) (\$ _____ ÷ \$ _____ x 100)		\$ -0- /\$100
13. Rate to regain taxes lost in 1984 due to appraisal roll errors (lost dollars divided by 1985 taxable value) (\$ _____ ÷ \$ _____ x 100)		\$ -0- /\$100
14. 1984 M&O taxes used to regain lost 1983 levy		\$ 9,964.48

II. CALCULATION		
MAINTENANCE AND OPERATION (M&O) TAX RATE		
1. (A) 1984 Total tax levy (Data 1)		\$ 209,003.11
(B) Subtract 1984 debt service (Data 3)		-0-
(C) Subtract 1984 taxes on property no longer in unit (Data 5)		\$ -0-
(D) Subtract 1984 taxes for exemptions (Data 6)		\$ 427.80
(E) Subtract 1984 taxes for productivity valuation (Data 7)		\$ 448.32
(F) Subtract 1984 taxes used to regain lost 1983 levy (Data 14)		\$ 9,964.48
(G) Adjusted 1984 M&O levy		\$ 198,162.51
2. (A) 1985 Total taxable value of all property (Data 8)		\$ 293,847,213
(B) Subtract 1985 value of new improvements (Data 9)		\$ 5,307,062
(C) Subtract 1985 value of annexed property (Data 10)		\$ -0-
(D) Adjusted 1985 taxable value for M&O		\$ 288,540,151
3. (A) Divide the adjusted 1984 M&O levy (1-G above) by the adjusted 1985 taxable value for M&O (2-D above) (\$ 198,162.51 ÷ \$ 288,540,151)		\$.000686776
(B) Multiply by \$100 valuation		x \$100
(C) Effective M&O rate for 1985		\$.06868 /\$100

INTEREST AND SINKING (I&S) TAX RATE		
4. (A) 1985 I&S levy needed to satisfy debt (Data 11)		\$ -0-
(B) 1985 Total taxable value of all property (Data 8)		\$ 293,847,213
(C) Divide the 1985 I&S levy (4-A above) by the 1985 total taxable value (4-B above) (\$ _____ ÷ \$ _____)		\$ -0-
(D) Multiply by \$100 valuation		x \$100
(E) Effective I&S rate for 1985		\$ -0- /\$100

APPRAISAL ROLL ERROR RATE		
5. (A) Rate to raise 1984 levy due to appraisal errors (Data 12)		\$ -0- /\$100
(B) Add rate to regain taxes lost due to errors (Data 13)		+ \$ -0- /\$100
(C) Total rate to adjust for appraisal roll errors		\$ -0- /\$100

1985 EFFECTIVE TAX RATE FOR EACH TAX		
6. (A) Effective M&O rate (3-C above)		\$.06868 /\$100
(B) Add effective I&S rate (4-E above)		+ \$ -0- /\$100
(C) Add rate to adjust for appraisal roll errors (5-C above)		+ \$ -0- /\$100
(D) 1985 Effective Tax Rate for this tax		\$.06868 /\$100

TOTAL EFFECTIVE TAX RATE FOR 1985		
7. Add 1985 effective tax rate for each tax (\$.0687 /\$100 + \$.2184 /\$100 + \$ _____ /\$100)		\$.2871 /\$100

1985 Effective Tax Rate for Each Tax Levied and the Total 1985 Effective Tax Rate are the rates published as required by Sec. 26.04, Property Tax Code.

Do you want to have your prescription changed over to the new Farwell United Drug store? Just call Farwell pharmacist Steve Breckenridge at 481-9100 and he will handle ALL the arrangements.

9th & Ave. A **Farwell United Drug** 481-9100
 Open 9 a.m. to 6 p.m. CDT Monday thru Saturday



Send them news from home! Order a student subscription to State Line Tribune

All student subscriptions are for nine months and run from Sept. 1 to May 15. Cost is just \$9.45.

To order your student gift subscription, simply fill out this coupon and send it with payment to State Line Tribune, Box 255, Farwell, Texas 79325.

Please send a student subscription to

Name Student _____

School Address _____

