

SCHOOL

Lazbuddie School Starting

--See Page 9

HISTORY

Bailey County Creation

--See Page 10

Foreman Company
Box 66
Marathon, Ill. 60462

LOCAL

Mule Show

--See Page 3

WEATHER

August 12	88	67	.T
August 13	91	64	.00
August 14	87	67	.00
August 15	93	65	.00

BAILEY COUNTY JOURNAL

'The Community Of Opportunity-Where Water Makes the Difference'



Vol. 64, No. 33

12 Pages Today

Published Every Sunday at Muleshoe, Bailey County, Texas 79347

20¢

Sunday, August 16, 1987

County Agent 'Paints' Good 1987 Crop Outlook

around muleshoe

Tomorrow, Monday, August 17, the Muleshoe Rebekah Lodge will be serving a special public dinner at the Lodge Hall located at 308 West Second Street.

From 11:30 a.m.-1:30 p.m., the meal will be available for \$5 for adults and \$3 for children under the age of 12.

On the menu are roast beef, buttered potatoes, gravy, green beans, fresh vegetables, sweet corn and fruit cocktail, with bread and drink.

The Muleshoe Chamber of Commerce and Agriculture has announced that the term of James Lee, on the Chamber Board, has been filled. Ronald Ashford of Ashford Electric has agreed to fill the unexpired term.

Toni Eagle, manager, said, "The Chamber will miss James Lee and his family, but is pleased that Ronald Ashford has chosen to accept the position of board member."

Everyone is also reminded that a ballot is now being secured to the Chamber Board election to be held in September. If you would like to serve on the board, and are presently a member of the Muleshoe CofC, please call the Chamber office at 272-4248.

Members of the Board of Trustees of the Muleshoe Independent School District will meet in regular session on August 20, at 8 p.m. in the temporary administration office in the Muleshoe Watson Junior High School gym foyer.

The only item on the agenda will be the 1987-88 School Budget hearing.

Sundown will host a Co-Ed Benefit Softball Tournament Saturday and Sunday, August 22-23. Entry fee is \$110 per team, with deadline for entry, Thursday, August 20.

Sundown will furnish the balls, with the men playing with a 'gold dot' ball and the women playing with a 'green dot' ball.

First through third place teams will receive trophies; while first and second place team individuals will be given silk-screen T-shirts; there will be awards for both male and female MVP and Sportsmanship award.

For additional information call 806/229-3491 or 806/229-8711 after 5 p.m.

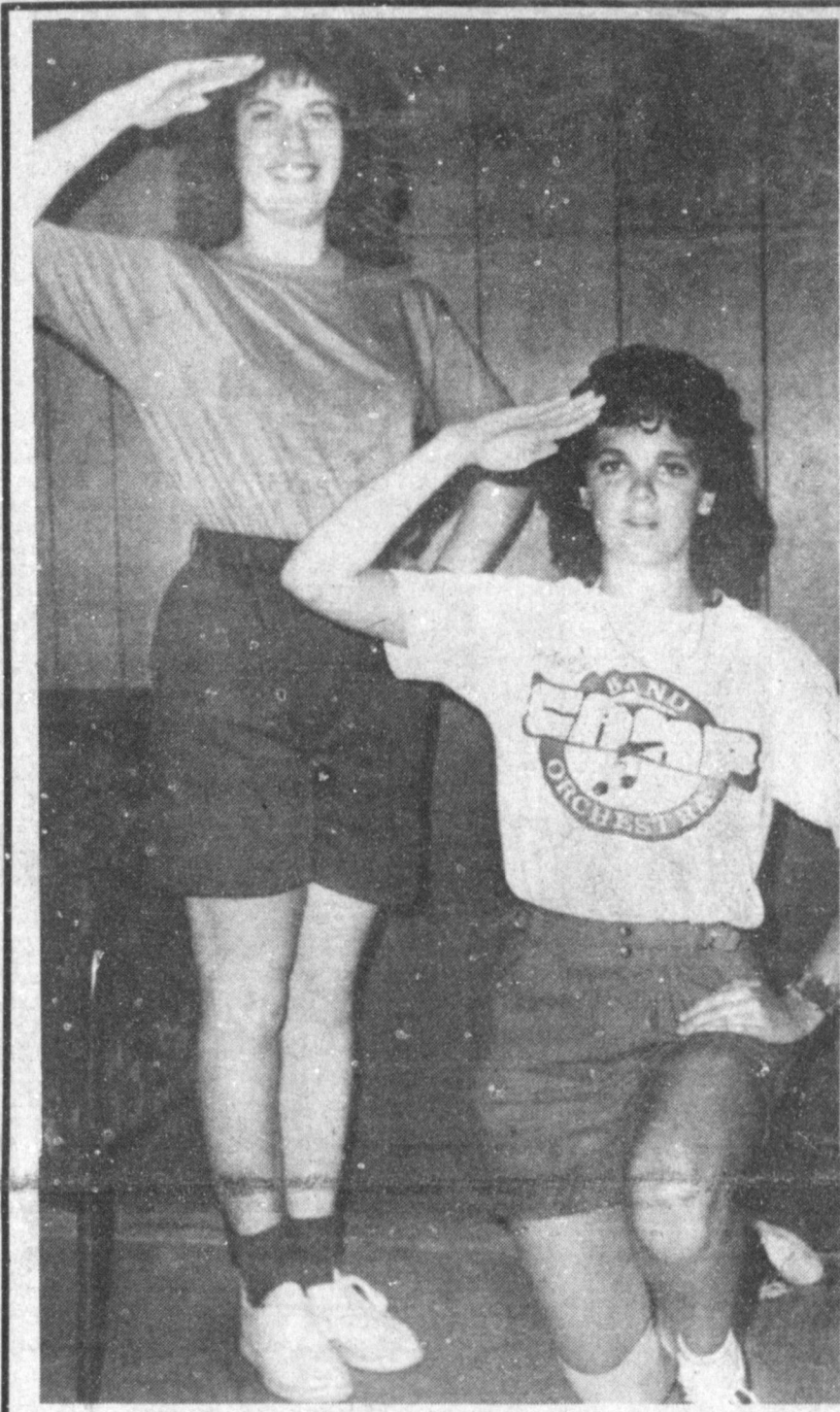
At presstime, local officers were still conducting an investigation into an early Thursday morning burglary and rape, with the rape involving a 10-year old girl in her home. The girl was taken to Lubbock for treatment and counseling.

Several suspects have been questioned, but no charges had been filed at the time The Bailey County Journal went to press.

Officers suspect a Thursday afternoon attempted burglary in the same neighborhood, the burglary of the San Francisco Cafe on Wednesday night, and a stolen bicycle are all tied into the same suspect.

Special guest speaker for the Muleshoe Lions Club Wednesday at noon was Dr. Will Graham, a retired dentist from Borger.

Cont. Page 6, Col. 3



SA-A-LUTE!--- Sue Haire, standing, head drum major; and Ronnie Gail Barrett, kneeling, assistant drum major, show off some of the form they learned recently during the Texas Tech Band-Orchestra Camp. With around 70 members, they say the Mighty 'M' Band has gotten off to a good start this year. "We're looking forward to a great year and winning sweepstakes again," they said.

Says Fall Harvest Brightest For Last 10 Years

"We probably didn't receive enough rainfall on the dryland crops to the south, basically, south of the game refuge and west to the Maple area," said Bailey County Extension Agent Spencer Tanksley, on Thursday

Season Football Tickets Going On Sale Soon

Persons who held reserve seat tickets for the 1987 football season may pick up their options on these tickets at the School Business Office, 514 West Avenue G, starting Tuesday, September 8, through Wednesday, September 23.

Those persons whose names appear on the chart may pick up their tickets (1) in person; (2) by mail with ticket holder's personal check; or (3) by third party if tickets are purchased with ticketholder's personal check.

Beginning September 24, all remaining tickets will go on sale on a first come, first serve basis. Reserve tickets may be purchased at the School Business Office during regular office hours from 8 a.m. - 5 p.m.

The cost of a reserve season ticket for four home games will be \$14. Any reserve seats remaining after the season starts will be \$4 each for each home game. General admission tickets for adults are \$3; a student season ticket is \$6 and a student general admission ticket is \$2.

Large schedule placards with a place to record scores may be picked up at the School Business Office or the Athletic Office.

morning. At mid-week, the county agent toured the entire county, checking crops and moisture.

"The rain we received was very beneficial to the county, and as the oldtimers say, "We have our Sunday clothes on in July and August," added Tanksley. "I don't remember crops looking so good or having so much potential in the last 10 years."

"Barring heavy insect infestations, and turbulent type weather, and if we have good temperatures through the fall, Bailey County could be looking at one of its best crops in the last ten years, both quality and quantity," he added.

Cotton, with 75,000 acres planted, is the largest acreage crop in the county, said the county agent. It has an excellent potential, with a tremendous fruit load, the cotton condition at this time is good to excellent.

One major concern with cotton is the threat of a bollworm infestation, and the county agent cautioned producers to be scouting their fields. Entomologists are saying that now is the time for the bollworm moth to put the most pressure on and lay eggs.

The rains could not have been more timely for dryland grain sorghum, added the county agent. He said most dryland grain sorghum is at the boot to heading stage and the rain was perfect timing. There are 25,000 acres of grain sorghum planted this year.

At 15,000 acres, corn is at the hard dough and dent stage, said Tanksley, and is rapidly maturing. Corn is in excellent condition in the county, and making very good progress, with harvest expected in mid-September. At this time, there is quite a bit of ensilage cutting going on.

Corn, grain sorghum and cotton are the three major crops grown in this country, added Tanksley.

The county agent said irrigation is over for this summer and those who received two to four inches of rain during the past week are recommended to apply no more water. Early maturing corn could be completed now without irrigation, he said, but if the weather gets very hot, some producers may need to water. The soil water meter is very good this year in determining corn water use, said Tanksley.

Across the county, vegetables are being harvested, including potatoes, cabbage, cucumbers, and peppers. The onion harvest has been virtually completed. Rainfall has delayed field work and harvesting of vegetable crops, or has at least slowed harvest down.

Tanksley said vegetable prices have weakened some, and producers are concerned about getting the remainder of their vegetable crops marketed.

He added that alfalfa is slightly hurt, as several hundred acres of alfalfa is cut and on the ground, which has reduced the quality in the recent rains, and the alfalfa received some damage.

The Bailey County Crop that has the second largest acreage in the county, wheat, is being planted at this time. Several fields have had early wheat planted, and more will be planted between now and September.

Tanksley cautioned producers to be aware of the grasshoppers that could cause damage to germinating wheat, especially wheat fields planted adjacent to range land.

The county agent says the main problem with grasshoppers feeding on the germinating wheat is that producers may be forced to look at re-planting. He said the worst grasshopper infestations are in the eastern part of Bailey County, east of Muleshoe, where rangeland is

Cont. Page 6, Col. 1

Police Chief, School Warn About Traffic

With the first day of school fast approaching, Muleshoe City Police Chief Wayne Holmes has issued a stern traffic reminder.

"School will be starting September 1 and children will be crossing streets, especially around the schools and crossing SH214 from the east," said the chief.

"We need motorists to be very alert and watch closely for

Junior High Football Boys To Be Fitted

On Tuesday, August 18, from 1-4 p.m. eighth grade football players will be fitted for uniforms in the junior high school gym. They are asked to use the west side entrance.

This will be followed by seventh grade football players, who will report for uniform fittings on Wednesday, August 19, 1-4 p.m. They are also asked to use the west side entrance to the gym.

Then, on Monday, August 31, at 7:30 p.m., a meeting is scheduled in the junior high gym for the parents of both boys and girls involved in the athletic programs at junior high.

They are asked to use the west side entrance, and the meeting will cover what the school provides and what needs to be purchased for the athlete; athletic insurance will be discussed. The Booster club explained.

Each athlete's parents are encouraged to attend the meeting.

these children, who tend not to watch out for themselves."

Chief Holmes also warned motorists about the school zone speed - in most instances, around the schools, the speed limit is 20 miles per hour, and all officers of the Muleshoe Police Department will strictly enforce the school zone speed limits.

"With your cooperation, we can make this another safe year for the youngsters as they go to and from school," added chief Holmes.

WATCH FOR THE BIG YELLOW BUSES

H. John Fuller, and Tom Jinks, Muleshoe school officials, also would like to add their word of caution.

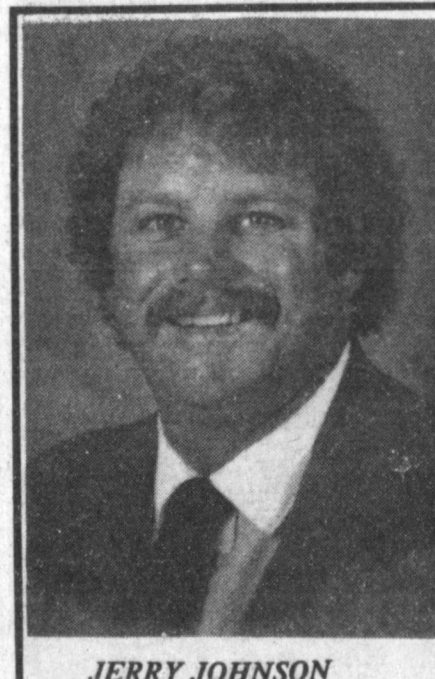
"We would like to caution everyone relative to safety measures to protect children riding school buses and also children walking to school," they said.

"All drivers of school buses have completed a 20 hour refresher course taught by David Gray, a high school instructor, therefore the drivers are certified by the Texas Education Agency."

According to the school officials, in general there are several laws to be obeyed to assure protection of all students:

- (1) Obey speed limits, especially in the school zones -- the limit is 20 miles per hour;
- (2) Drivers stop completely for unloading students when red flashing lights on the bus are in operation;

Cont. Page 6, Col. 2



JERRY JOHNSON
Jerry Johnson
New Assistant HS Principal

In board action taken last Monday night, the trustees of the Muleshoe Independent School District promoted Jerry Johnson to the position of assistant principal at Muleshoe High School.

Johnson has thirteen years of experience in education as a teacher and coach. He and his wife, Roxie, moved to Muleshoe in the fall of 1983. They are the parents of two sons.

Johnson received his Bachelor of Science degree from Eastern New Mexico University in 1974 and his Master of Science degree in 1979. He has continued his work toward administrative certification at ENMU since 1979.

The new assistant principal will assume duties at the school on Monday, August 17, following two weeks of Instructional Leadership and Appraisal Training at the Region XVII Education Service Center.

Gifted/Talented Teacher Gets Special Training At A&M

Alice Liles, Muleshoe I.S.D. teacher, completed a two-week professional training program through the Texas A&M University Gifted and Talented Institute this June. The program was conducted in conjunction with the Galveston Island Adventure, a summer residential experience for gifted and talented junior and senior high students, which was held on the campus of Texas A&M University at Galveston.

Mrs. Liles was selected as the first recipient of the John and Zora Felder and Tom and Jewel Hogan Endowed Gifted/Talented Teacher Training Stipend established by Tom and Joan Hogan of Crane, Texas, which serves as a scholarship for the training of teachers of gifted/talented students.

Mrs. Liles assisted the professor and three graduate students and interacted with 28 students and three other participating teachers in the Marine Biology class. Most of the activities were hand-on involvement and included the study of the Kemp's Ridley sea turtle project, a turtle necropsy, catching and dissecting marine specimens and the study of dolphins. Also, Mrs. Liles assisted in the on-location study of marine ecosystems including estuaries, saltmarshes, oyster reefs, sea grass meadows, and jetties, a bay trawling trip, study of

beach debris, study of poisonous and venomous marine animals. The class visited an oyster hatchery, and went on an oyster dredging trip. The students also toured the historical section of Galveston called the Strand.

Other areas of study available at the Galveston Island Adventure included Coastal Lore and Creative Writing, Space Science, and Veterinary Medicine.

Mrs. Liles teaches 7th grade reading and the 6th, 7th, and 8th grade Gifted/Talented class at Watson Junior High.



ALICE LILES

Teacher Inservice Begins August 21

You can tell it is almost time for school to start for another year. The melodious sounds of the Mighty 'M' Band ring out from the school band hall -- the football players are on the field for two-a-days -- and teachers are preparing for inservice.

H. John Fuller, superintendent of the Muleshoe ISD, reports that administrators are finalizing plans for the Inservice Training scheduled to begin on Friday, August 21.

Principals, directors and other administrators are presently meeting together and reviewing

plans, programs, and Texas Education Agency mandates, in preparation for the opening of school on September 1.

"The inservice program is geared to help implement Muleshoe's School Improvement Plan which was initiated last year," said the superintendent.

On Friday, August 21, all new teachers and teacher assistants, will meet in the Mary DeShazo Library for orientation and a Box Lunch served by the Muleshoe Classroom Teachers Association.

The morning session will be a

capsule review of the business and instructional components of Muleshoe ISD by the superintendent, assistant superintendents, principals and directors. In the afternoon session, principals will explain campus procedures and regulations.

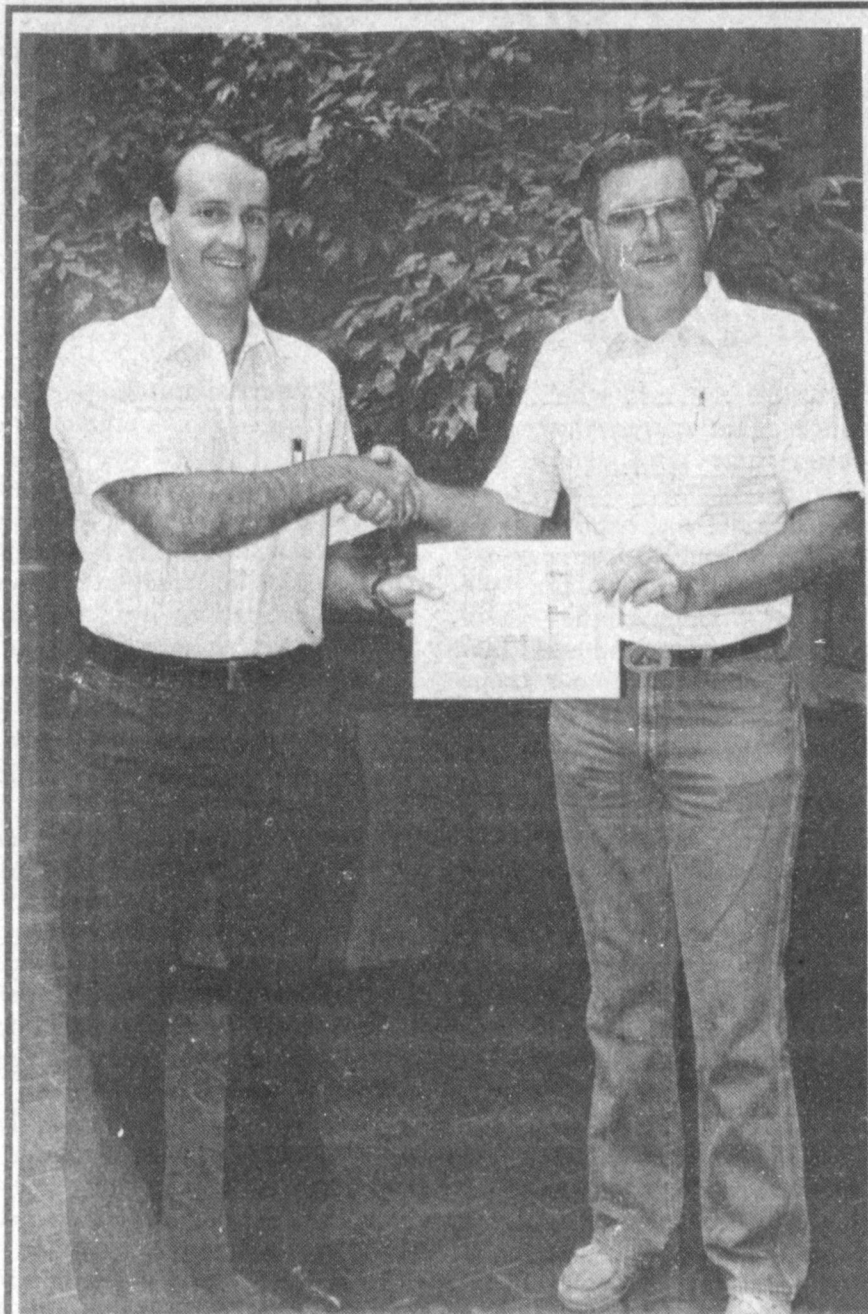
On Monday, August 24, the Muleshoe Board of Trustees will serve the First Annual Faculty Breakfast for all the faculty members. The superintendent will welcome and introduce new teachers and support personnel and update all educators relative to OUTCOMES BASED EDUCATION, Muleshoe's Improvement Plan, effective teaching practices, assertive discipline and extended thinking skills. Consultants from Scott, Foresman Publishers will give assistance in using the new reading program adopted for grades 1-8 in the afternoon session.

Dr. June Hogue, Staff Development Consultant from Lubbock ISD, will be the guest on Tuesday, August 25 and will give an overview of how Bi-Popular Techniques can improve classroom interactions and interpersonal skills. Special education personnel and teacher assistants will have separate sessions with the respective directors, Betty Jennings and Georgia Pena.

On Wednesday, August 26, Joan Maxwell, an Associate of Madeline Hunter, an educational research psychologist, will be the consultant. Mrs. Maxwell will demonstrate strategies of how to accelerate student achievement by increasing student participation. Also, she will stress ways to improve instructional delivery.

This will be followed on Thursday, August 27, when the elementary teachers will be involved with the handwriting consultants for the new adopted series in grades K-6. Mrs. Bekah Dannelley from Midland will be the consultant and demonstrate how theater arts can be integrated in the classroom. The secondary teachers will be in departmental meetings and campus faculty meetings.

Nurses, counselors, librarians, and P. E. teachers from all campuses will collaborate and coordinate these specific programs.



CERTIFICATE--Carl Wheeler of Muleshoe High School, right, accepts a certificate of completion from Seth Thomason of Southwestern Public Service Company following the "Electrical Controls and Safety Workshop" conducted Aug. 4 and 5 at West Texas State University. The seminar -- sponsored by SPS, Texas-New Mexico Power Company, West Texas Utilities and WTSU -- updated vocational-agriculture teachers on the fundamentals of electric control equipment and safety. Teachers received 10 hours of Advanced Academic Training from the Texas Education Agency for completing the workshop.

Sudan News

by Evelyn Ritchie

Lula Burnett, and Mrs. Dottie Haynie and grandson, Shawn, visited recently in Canyon at the Golden Age Nursing Home with Lula's aunt, Mrs. Delia Taylor, who is seriously ill. They also visited in the home of Pauline Taylor and with Mrs. Al Harrison in Canyon. Enroute home they stopped in Dimmit to visit Mrs. Leon Gunn and Mrs. Joe Campbell, nieces of Lula's.

Mrs. John Chester and girls of Clovis visited here Thursday

with Mr. and Mrs. Glenn Gatewood, Jo Ann Chester and other family members.

Mr. and Mrs. Bernard Williams attended a Wilson family reunion July 24-26 at the Paragon in Lubbock. Among those present were relatives from Abilene, San Antonio, Houston, Clyde, McAllen, California, New Mexico and Arizona.

Recently returning home from Pensacola, Fla. were Donna Masten and Shawnda, and Mrs. Louise Parrish. They were there for Shawnda to accompany him as his guest to attend an officer's candidate school ball of Keevan Masten.

Jeff Gordon and Ricky Tennyson spent the weekend at Six Flags.

Get Away to Casual Luxury at the Most Exclusive Beachfront Condominium Resort on Galveston Island.

CALL TODAY FOR SPECIAL SEASONAL RATES

- All Condos are Beachfront
- Efficiencies, 1-2 and 3 B.R. Units
- Quiet Location Away From Traffic and Commercial Development
- Soundproof Design
- Large Heated Swimming Pool
- Hot Tub/Jacuzzi Overlooking Gulf on Elevated Deck to Afford Privacy With a Spectacular View
- Two Lighted Tennis Courts
- Miles of Sandy Beach at Your Door
- Only 3 Minutes to Downtown Galveston
- Only 50 Minutes From Houston's Hobby Airport
- Only a Few Minutes to Port Holiday Mall, Golf, Fishing, Sea Arama Marine World, Galveston's Fabled Historic District, Nightclubs and Restaurants

Sales Information or Reservations Call 409/765-6161

THE GALVESTONIAN

1401 East Beach Boulevard • Galveston, TX 77550

We Salute Our Farmers!

We offer our **THANKS** to the farmers of Bailey County.

You have been and are a vital part of our community. Bringing useful products to the enjoyment of each of us and also providing jobs, jobs that help maintain a healthier economy for our area, state and nation.

You have sacrificed much in order for us to have food on our tables, clothes and furnishings for our homes.

We at First Bank appreciate and salute you!

202 S. 1st Member FDIC 272-4515

tropical sno

SOFT ICE

Watch for the Flavor of the Day

Watch for these New Specials

Tropical Sno- Club Card/ T-Shirt Give Away Fill in complete card and receive a T-Shirt

AARP - Day 2 for 1 or 1/2 price Present your AARP card with order for the discount

Gasoline Give Away 10 gals. Each Week Sign up with name, address, and drivers lic. no. for free drawing

Happy Hour 7-8 Each Day 2 for 1

TROPICAL SNO
Hawaiian Shave Ice
4th & American Blvd. - Muleshoe
Serv All Thriftway Lot
10th & Park - Littlefield
Pay & Save Lot

Hours
Mon thru Sat 11:00 to 11:00
Sun 1:00 to 11:00

Sensational New Frozen Dessert

Mule Day; Mule Show Successful

It was a jubilant group of Muleshoe Mule Skinners, who were delighted with 127 entries in the first annual Mule Days Mule Show.

This special event was held all day on Sunday, August 9, on the day following the annual Mule Days Festival, at Jeff Smith's arena.

Entries in the show came from far and wide, and the excited contestants promised to return for another show. It was determined to make the Mule Days Mule Show an annual event.

In the show last Sunday, here are the results, with the division, the handler, the animal and home town, named in order:

Hi-Point Youth, Todd McDaniel, Penny, Dimmitt.

Hi-Point Mule, David Smith, Matilta, Lenorah.

Grand Champion Halter Mule, David Smith, Matilta, Lenorah.

Reserve Champion Halter Mule, Edgar Dennis, Ruth, Dimmitt.

Grand Champion Halter Donkey, Darr Huckaby, Lil Abner, Stanton.

Reserve Champion Halter Donkey, Natasha Ronck, Sugar, Muleshoe.

Youth Showmanship, First, Kim McCall, Doc Sox; Second, Toby LeBlanc, Jenny Len, Levelland; and Third, Michael Thompson, Blondie, Muleshoe.

Mule Yearlings and Foals, First, Kevin Musik, Spamoni, Clovis.

Jennets, First, Natasha Ronck, Spamoni, Sugar, Muleshoe; Second, Martha Clawson, Bear, Spearman.

Jacks-AllSizes, First, Darr Huckaby, Lil Abner, Stanton; Second, Donald Harrison, Henry Jackson, Muleshoe.

Matched Pair-Donkey or Mule, First, Ray Adams, Bell and Joe, Tulia; Second, Donald Harrison, Mickey and Maude, Muleshoe.

Mule (Up to 48") First, Heath Eagle, Gypsie, Muleshoe; Second, Loretta Dillon, Joni, Lubbock.

Mule (Up to 56"), First, Carol Smith, Classicissie, Farwell.

Second, Donnie Templar, Ronchy, Lazbuddie; Third, Janet McDaniel, Penny, Dimmitt.

Mules (56" and over), First, David Smith, Matilta, Lenorah; Second, Edgar Dennis, Ruth, Dimmitt; Third, Mike Pierce, Dixie, Amarillo.

Mule Pleasure, First, Donnie Templar, Wadette, Lazbuddie; Second, David Smith, Matilta, Lenorah; Third, Edgar Dennis, Ruth, Dimmitt.

Youth Pleasure, First, Todd McDaniel, Penny, Dimmitt; Second, Jody LeBlanc, Bob, Levelland; Third, Jockey Dickson, Ruth, Anton.

Mule Trail, First, Janet McDaniel, Penny, Dimmitt; Second, Kenny Gillespie, Jessie, Knott; Third, David Smith, Matilta, Lenorah.

Youth Trail, First, Todd McDaniel, Penny, Dimmitt; Second, Jody LeBlanc, Bob, Levelland; Third, J. W. Nelson, Katy, Amarillo and Toby LeBlanc, Molly, Levelland.

Polebending Donkey or Mule, First, David Smith, Matilta, Lenorah, Second, Janet McDaniel, Penny, Dimmitt; Third, Jan Templar, Fatima, Lazbuddie.

Cloverleaf Mule, First, Jan Templar, Fatima, Lazbuddie; Second, David Smith, Matilta, Lenorah; Third, Janet McDaniel, Penny, Dimmitt.

Youth Barrels Cloverleaf Donkey or Mule, First, Jockey Dickson, Ruth, Anton; Second, Toby LeBlanc, Molly, Levelland; Third, Todd McDaniel, Doc Sox, Dimmitt.

Tunnel Race, First, David Smith, Matilta, Lenorah; Second, Donnie Templar, Wadette, Lazbuddie; Third, Donna Thompson, Blondie, Muleshoe.

Boot Race, First, Todd McDaniel, Penny, Dimmitt; Second, Kip McCall, Doc Sox; Third, Jan Templar, Fatima, Lazbuddie.

Coon Jumping, First, Harvey Tidwell, Daisy, Clovis; Second, James LeBlanc, Bob, Levelland; Third, Keith Dickson, Ruth, Anton.

Single-Hitch Driving, First,

Martha Clawson, Bear, Spearman.

Multi-Hitch Driving, First, Donald Harrison, Rosey and Roco, Muleshoe; Second, Jan Templar, Gypsie and Lulu Bell, Lazbuddie.

The fear of competition explains much that happens in business, politics and life in general.

In the quest of success, just remember that there is no substitute for character or service.

New Elementary Student Registration Dates Set

Students who are new to the Muleshoe Public Schools are asked to register during the week of August 17-21 from 8:30 to 3:00 each day at the campus the student will attend. Students who are in pre-kindergarten through second grade attend Neal B. Dillman Elementary, third through fifth grade students attend Mary DeShazo Elementary, sixth through

eighth grade students attend Watson Jr. High, and ninth through twelfth grade students attend Muleshoe High School. Copies of birth certificates and health records must be provided upon registration.

To be eligible for pre-kindergarten, children must be four years old by September 1, 1987 and must be either limited English proficient or qualify for

free lunches. All kindergarten children must be five years old by September 1, 1987. Pre-kindergarten and kindergarten students who registered in May do not need to register again.

Homeroom class assignments at Dillman and DeShazo Elementaries will be posted for all students by Thursday, August 27. All Jr. High students may pick up their class schedules on Monday, August 31 from 11:00 til 12:00. High School students will pick up their class schedules the first day of school.

For additional information, call Dillman Elementary at 272-7541, DeShazo Elementary

at 272-7546, Jr. High at 272-4841 and High School at 272-3080.

Fussy

Magistrate: "But why did you break into this shop four nights running?"

Defendant: "I got a new dress for my wife and she made me go back and change it three times."

Some people give so much time to attending to the business of others that they forget to attend to their own.

DON'T BUY ANY FURNITURE BEFORE

SATURDAY, AUGUST 15, 1987

SUPERIOR FURNITURE

507 E. 2nd - Portales, N.M.

WAREHOUSE INVENTORY

STORE WILL BE CLOSED THURSDAY PM & FRIDAY OVER \$350,000 NAME BRAND FURNITURE ON SALE DOORS OPEN 11:00 AM SHARP!

SMALL DOWN PAYMENT UP TO 36 MONTHS TO PAY O.A.C.

10 HOURS ONLY

BLOWOUT SALE

DON'T MISS THESE LOW PRICES

11 a.m. 'Til 9 p.m.

REAL \$\$\$ SAVINGS

WE GUARANTEE YOU THE LOWEST PRICES IN EASTERN NEW MEXICCO FOR 10 HOURS!!

SATURDAY

11 a.m. 'Til 9 p.m.

NAME BRANDS RELEASED

Custom • Sealy • Flexsteel • Broyhill • Lane • Charles • Tell City • Benchcraft • La-Z-Boy

SAVE 30 to 55%

Saturday 11 a.m. - 9 p.m.

Twin Size Mattress Sets Smooth top construction. Includes 2 piece sets (Reg. \$139.95) Sat. Only Sale... \$67 Set	Decorative Lamps Good Selection of Colors & Styles. These won't last long (Reg. \$39.95) Sat. Only Sale... \$9.97	4-Drawer Chest Lots of storage-metal handles, nice wood grain-Limit 2 per family (Reg. \$69.95) Sat. Only Sale... \$27	5-Piece Brass & Glass Dinette Wood Trim w/glass top-Velvet Seat & Cane Back Chairs (Reg. \$299.95) Sat. Only Sale... \$147
Velvet Swivel Rockers Choice of Decorator Covers - All hardwood construction (Reg. \$149.95) Sat. Only Sale... \$79	White Iron Day Bed w/brass accents Complete with Back-Ends, Spring & Mattress (Reg. \$349.95) Sat. Only Sale... \$187	Sofa & Chair Set Hardwood construction, good looking cover (Reg. \$299.95) Sat. Only Sale... \$157	Brass Finish Planters 36" high-Large Size-Limit 2 per cust. (Reg. \$14.95) Sale... \$6.77

LIVING ROOM	BEDROOM	RECLINERS & CHAIRS	BEDDING	DINING ROOM & DINETTE	OCCASIONAL FURNITURE	SLEEPER SOFAS
2-Piece Sofa & Loveseat Camel Back-Beautiful Brown Velvet cover with trim (Reg. \$899.95) Sale... \$447	5-Piece Bedroom Suite In Beechwood-Includes Triple dresser-mirror-headboard-chest and night stand (Reg. \$399.95) SALE... \$197	Wallaway Recliner Large Size-Pillow Back-Velvet Cover (Reg. \$349.95) SALE... \$177	MATTRESS SALE 5-Year Warranty mattress sets - Quilted Covers, 312 Coil Mattress Twin Size Set (Reg. \$199.95) SALE \$97 Full Size Set (Reg. \$299.95) \$137 Queen Size Set (Reg. \$399.95) \$177 King Size Set (Reg. \$499.95) \$227	Tell City Dining Room Solid Oak-Large table with 2 leaves & 6 cane back chairs & \$1597	Over 15 Wall Units-Bookcases & Misc. Pieces Sofa, Chair, Bed, Desk, Table, etc. SALE... \$47	Loveseat Sleeper Cushion Size-Twin Size-Velvet Cover (Reg. \$299.95) SALE... \$157
3-Piece Living Room Suite Early American-Maple Trim, Antron Cover-Includes Sofa-Love-Chair (Reg. \$1,299.95) SALE... \$677	5-Piece Oak Country Set Includes Dresser Shell mirror-chest-night stand and headboard (Reg. \$899.95) SALE... \$497	Wing Back Chairs Beautiful Velvet Cherrywood legs - Queen Anne Style (Reg. \$399.95) SALE... \$187	Full Size Mattress Sets-Smooth Top Construction-while they last! (Reg. \$179.95) SALE... \$77	5-Piece Dining Room Solid Oak-Large table with 2 leaves & 6 cane back chairs & \$1095.00	Antique White Armoire Large Size-Lots of Storage Area (Reg. \$349.95) SALE... \$137	Early American Sleeper Queen Size, Beautiful Antron Cover-Queen Size Mattress (Reg. \$699.95) SALE... \$347
3-Piece Living Room Suite Country Style-Beautiful Blue Antron-Includes Sofa-Love-Chair (Reg. \$1,299.95) SALE... \$797	Solid Oak Bedroom Suite Top Quality-King Size Bed-By Sumter-Triple Dresser-Mirror-Night Stand-King Headboard (Reg. \$2195.00) SALE... \$1077	Velvet Recliner 3 position style - choice of colors-all hardwood construction (Reg. \$179.95) SALE... \$87	15-Year Full Face Deluxe Quality Twin Size Set Queen Size Set \$277 King Size Set \$347	8-Piece Dining Room Suite Traditional-Large lighted China-Large Extension Table & 6 Deluxe Chairs (Reg. \$2995.00) SALE... \$1647	3-Piece Table Set Includes Glass Top Cocktail & Matching End Tables (Reg. \$299.95) SALE... \$167	Full Size Sleeper Sofa w/Beautiful Velvet Cover - Full Size Mattress (Reg. \$469.95) SALE... \$297
4 Only Beautiful Odd Love Seats Choice of styles & covers. Ideal Price Less Than 1/2 Price	5-Piece Lacquer Bedroom Suite In Rich Grey Color. Includes Triple Dresser-Rd Mirror-Night Stand and Headboard (Reg. \$899.95) SALE... \$397	Action Lane Deluxe Recliner The King of Chairs (Reg. \$1495.00) SALE... \$97	Country Style Loveseat Blue Antron Print Cover - Wood Arm & Wing Style (Reg. \$399.95) SALE... \$167	7-Piece Brass & Glass Dinette Set Rectangle Table w/6 chairs (Reg. \$449.95) SALE... \$277	Traditional Queen Sleeper 3 Cushion Style - Loose Pillows - Beige Cordourou cover (Reg. \$999.95) SALE... \$577	
3-Piece Living Room Suite Early American-Antron Cover-Includes Sofa & Loveseat & Chair (Reg. \$699.95) SALE... \$307	5-Piece Starter Bedroom Suite Includes Dresser, Mirror, Night Stand, Headboard (Reg. \$1495.00) SALE... \$797	Large Size Man's Recliner Beautiful Velvet Covers-3 Positions (Reg. \$279.95) SALE... \$137	Heavy All Wood Desk & Chair Rich Pine Finish - 2"x6" Stock - Nice Finish (Reg. \$299.95) SALE... \$177	Custom Quality Dining Room Suite All Wood-Huge Lighted Breakfront China-w/Built In Lazy Susan (Reg. \$5995.00) SALE... \$2497	Occasional Chair Custom Quality, Shrimp Color, Slightly Soiled (Reg. \$249.95) SALE... \$117	
Sofa Loveseat Suite In Contemporary Style, Oakwood inlaid with waterfall style-Herculon (Reg. \$999.95) SALE... \$497	Large Size Man's Recliner Beautiful Velvet Covers-3 Positions (Reg. \$279.95) SALE... \$137	2 Only Accent Chairs w/Cane trim-Choice of colors. (Reg. \$199.95) SALE... \$87	Black Lacquer Student Desk Lots of storage and at a giveaway price (Reg. \$149.95) SALE... \$77	7-Piece Dining Room Suite All Wood-Huge Lighted Breakfront China-w/Built In Lazy Susan (Reg. \$5995.00) SALE... \$2497	Large 5-Drawer Chest of Drawers Lots of storage space (Reg. \$169.95) SALE... \$77	

HELD OVER SUNDAY 12-6

Cunningham Boot & Shoe Repair
111 E. 4th

SUPERIOR FURNITURE
507 E. 2nd; Portales, N.M. (Formerly Calton Furniture)

Jennyslippers Hold Regular Meeting

Muleshoe Jennyslippers, Women's Division of the Chamber of Commerce, met at noon Tuesday at the library for their regular monthly meeting and luncheon.

Billie Downing, president, called the meeting to order. Following the reading of the minutes of the previous meeting by Sandi Robinson, secretary, a treasurer's report by Evelyn Peat, treasurer, Thursie Reid gave a report on the history book. She reminded everyone of the work being done on the book each Monday afternoon at the library at 5 p.m. Anne Camp, librarian said that anyone wishing to go earlier may do so.

A discussion was held on the following activities: West Texas Bailey County Fair, scheduled for September 11 and 12, Jennyslippers will have a food and concession stand; a special presentation by Pat Langfitt; Girl Scout open house; and the grand opening of the Depot-Senior Citizens Service Center, September 12. A burrito breakfast is scheduled for 9:13 with the ribbon cutting and dedication ceremony following.

Also the 200th. Anniversary of the signing of the Constitution on September 17, the Jennyslippers will have bells for sale, for the Nationwide ringing of bells; and the Regional Women's Division conference on September 26 at Hereford.

Other activities scheduled for September will include the MDA Telethon on the 6th and 7th, Jennyslipper monthly meeting on the 8th., skating on the 18th from 7 to 9 p.m. A nominating committee will also be appointed.

Everyone was asked to get

Keep Looking

Man is not rational: He keeps looking for home atmosphere in a hotel and hotel service at home.

-Farm Journal.

any items they have for the scrapbook to Sandi Robinson by August 25, so she can have the scrapbook ready for the regional meeting.



Evalyn Amanda Scott

Randall (Randy) and Sandra Park Scott are the proud parents of a daughter, Evalyn Amanda, who was born at 12:43 p.m. Tuesday, Aug. 4 at Hillcrest Baptist Hospital in Waco.

The young lady weighed eight pounds and 11 ounces. Evalyn Amanda has a sister, Mary Jo, and two brothers, Chess and Corey.

Paternal grandparents are R.E. (Jack) and Evalyn Scott of Sudan. Maternal great grandparents are Mr. and Mrs. Bazzell Tipps of Rangely, Col.

Three News by Mrs. H.W. Garvin

Mrs. Bill Dolle and Darla were in Clovis Tuesday shopping.

Mrs. Nettie Quesenberry from Muleshoe spent Wednesday with her daughter, the Jack Lane family, and helped can.

Mr. and Mrs. S.G. Long and Mrs. Beulah Toombs visited Mrs. H.W. Garvin Friday evening.

Mr. and Mrs. Rodger Chaffen and family from Lubbock were dinner guests in the Bill Dolle home Sunday. Mr. Chaffen is Minister of Maple Church of Christ.

Mr. and Mrs. Rayford Masten spent the past week at their cabin at Lake Kemp. Their daughter and family Mr. and Mrs. Billy Sokora and daughter from Arora, Ill., spent two days with her parents.



COUPLE CELEBRATES ANNIVERSARY—Mr. and Mrs. Carl Bamert were honored Saturday, Aug. 15 with a dinner and dance in honor of their 40th wedding anniversary. Hosting the event were their children, Nick and Rayniel Bamert of Muleshoe and Greta Hillin of Austin. The couple were married on Aug. 20, 1947, in Las Cruces, N.M. and moved to Muleshoe in September of 1947. The couple have two grandchildren, Misty and Resse Hillin.

Rebekah Lodge

Muleshoe Rebekah Lodge met Tuesday night at the Lodge Hall with Noble Grand Pat Langfitt opening lodge. The roll was called and absentees noted. Those that are reported sick are: Lillian Sims was reported to have had a bad day, Bula Davenport's daughter, Marica Fern Damron, has cancer and now has blood clots in the lungs and is on medicine at this time, Juanita Snow is settling down in the Nursing Home. Jewell Griffith is using a walker, Adele Thompson has two or three more weeks with her cast, Raneta Dawson is in New Mexico, Lena Hawkins' granddaughter, Sue Hawkins, has pneumonia, Hazel Abernathy has found spots on her lungs at St. Mary's Hospital, June Green's dad is taking strong medicine for headaches, Joylene Costen is having to make a decision about her mother, Velma Sern, about rest homes.

Committees that were reported on were: Ina Wilemon chose a committee to drap the charter. Committee members are Teri Snell, Sandi Robinson and Thursie Reid. Circle Seven is scheduled Thursday, it will be pot luck. Sandi Robinson is in charge of entertainment. Ruby Green reported that she needs more recipes. The Rebekah luncheon is planned and ready for the public to go out and enjoy. Under the Stars is scheduled Saturday and Rebekah's are asked to please take a dish. It was reported that the Rebekah's will sponsor skating every second Friday of each month and they will have prizes, the chairman is Lori Tosh with Sandi Robinson as co-chairman. The first skating will be Oct. 9. Ruby Green has a dinner scheduled to be served in September. The conductor escorted Teri Snell and Ina Wilemon to the center of the room to receive a penant and a treasure chest for getting new members. June Green reported on her meeting in Dallas. Ruby Green reported that the jelly is made. Pat Langfitt read a poem called Laws and Customs. Lodge was then closed with a prayer by Lena Hawkins. Refreshments next week will be by Lena Hawkins and Ruby Green. It was reported that they had an informative school of instruction by Thursie Reid.

If there is nothing to talk about, try not saying anything.

Courtesy is so cheap that most people take no interest in it.

Immunizations Required By Public Schools

More than any other preventive health care practice, immunizations begun in childhood and kept current, save money, misery, and lives. In the U.S., an estimated \$1 billion are saved annually in would-be medical costs because of immunizations against polio, tetanus, measles, rubella (German measles), mumps, and diphtheria.

In Texas proof of vaccinations for these six communicable diseases is required by law for all children registering for day care or public school. In addition, pertussis vaccine is required for children less than 5 years old in day care and public school. The Texas Department of Health (TDH) and the American Academy of Pediatrics recommend pertussis (whooping cough) vaccine for most children through six years old as well.

Wes Hodgson of the TDH Immunization Division, said, "Today's parents of young children are sometimes too young themselves to remember a time when immunizations were neither available nor required. But a few decades ago, outbreaks and epidemics of killer diseases such as polio and diphtheria not only threatened every child but were occurring more frequently every year."

Hodgson said because of vaccinations, polio and diphtheria are now rare in Texas. In the past ten years, only six cases of diphtheria and four cases of polio, one

of them fatal, were reported in the state.

"What some young parents may not realize is that although outbreaks of vaccine preventable diseases are now less frequent in Texas, the diseases can still spread among us.

Children are not born immune to these diseases," Hodgson said, "it is important that their parents follow their physicians' advice in scheduling all the necessary vaccinations and booster, and in keeping accurate records for each child," he added.

Some preventable diseases persist, mainly because parents often do not take them seriously enough to ensure their children's immunizations are up-to-date. In 1986, TDH recorded sporadic outbreaks of measles (398 cases), mumps (239), pertussis (112), rubella (78), and tetanus (12) in the state. Victims included unimmunized children as well as adults who had allowed their own immunizations to lapse.

Hodgson said, "Parents who are not sure that their children's vaccinations are current should begin now to update their records, to be ready for the coming school year. Their family physicians should be able to advise them on any booster shots that are due. Parents who have no family physician, or who cannot afford a private doctor should, check with local public health clinics."

Summer MARKDOWNS

1/2 Price

Lookin' Good

206 Main 272-5052

It's Back To Campus and Class Time!

With classes starting up soon, you'll want to look your greatest.

The Shear Shack

208 Main 272-3991

Bailey County Journal USPS 040-200

Established March 31, 1963. Published by Muleshoe Publishing Co., Inc. Every Sunday at 204 W. Second, Box 449, Muleshoe, Texas, 79347. Second Class Postage paid at Muleshoe, Texas 79347.

Member NATIONAL NEWSPAPER ASSOCIATION PANHANDLE PRESS ASSN. WEST TEXAS PRESS ASSOCIATION

L.B. Hall - President & Publisher
SAMMIE HALL - Vice President & Controller
Cleta Williams - News
Evelene Harris - Society
Doritt Bunch - Advertising
Lilith Nino - Bookkeeping

Muleshoe Journal and Bailey County Journal
Bailey and surrounding counties
Muleshoe Journal and Bailey County Journal
Elsewhere in Texas \$14.75
Muleshoe Journal and Bailey County Journal
Outside of Texas \$16.50
Yearly by Carrier \$12.50
Advertising rate card on application.

Ben Franklin

Better quality for less

Mon.-Sat. 8 a.m.-8 p.m. Sun 12-5 p.m.

272-3855 2104 W. Amer. Blvd.

Side Walk Clearance Sale

<p>Lawn Chairs Values To \$17.97 Special \$9.99</p>	<p>Igloo Ice Chest 34 qt. Special \$12.97</p>
<p>Playmates Ice Chest By Igloo Reg. \$19.95 Special \$12.97</p>	<p>Wheelbarrow 4 Cubic Ft. By Douglass Reg. \$39.97 Special \$29.95</p>
<p>Vinal Tubing Lounger Special \$7.99</p>	<p>Weed 'N Feed & Super Lawn Food By Turf Magic 40 lb. Bags Special \$5.99</p>
<p>Webbed Lawn Chairs Special \$5.97</p>	<p>Portable Gas B.B.Q. Grill With Lava Rock 188 sq. Inch By Sunbeam Reg. \$25.99 Special \$15.00</p>
<p>Webbed Chaise Lounger Special \$11.99</p>	<p>Galaxy Breeze Box Fan 20 Inch 3 Speed Reg. \$19.99 Special \$15.99</p>

IT'S ELECTRIC. BUT WORKS WITH GAS.

Dual Fuel Heat Pump

It cools. It heats. It works with your present gas system. The Dual Fuel Heat Pump offers you the best of both energy worlds. It is electric, so you get modern, clean, quiet heating and cooling. The Dual Fuel Heat Pump takes care of 100% of your cooling and about 80% of your heating needs. It is only when temperatures are extremely low that your gas furnace goes to work and the Dual Fuel Heat Pump rests. Each system works at the temperature at which it is most efficient... and most economical.

ASK THESE HEATING AND COOLING SPECIALISTS —

Bob Bomer
Bomer Electric

Dee Puckett
Southwestern Geo-Thermal

Stanley Wilson
Southwestern Geo-Thermal



WHEELABRATOR COAL SERVICES PRESENTS AWARDS—Five year awards were recently presented to (L-R) Michael Wilkinson, Reagan Cox, Leon Logsdon, Michael Albers and David Friday, all employees of Wheelabrator Coal Services, Tolk Station.

Creative Living

by Sheryl Borden

Three interesting topics will be presented on "Creative Living" on Tuesday, August 18 at 12 noon and repeated on Saturday, August 22 at 2:00 pm on KENW-TV (all times are Mountain).

Betty Wedman, spokesperson for Uncle Ben's Rice Co. in Columbia, MO will discuss the Seven-Day Rice diet and explain what the concept is behind this successful weight loss program.

The ability to dress oneself, and the ease of dressing or undressing, as well as the comfort of a garment are often determined by the type of closure on the garment. Dr. Joyce Davis, instructor in the home Economics Department at Eastern New Mexico University, Portales, NM will focus on the use of several different types of fasteners in adapting or constructing clothing for persons with special needs.

Since most people, especially women, are looking for ways to get additional calcium in their diets, Helen Hatton will demonstrate a delicious cream soup made with calcium-rich milk. Helen is a home

economist with the National Dairy Board.

Due to program changes, "Creative Living" will not be seen on Tuesday, August 18 at 9:30 p.m., but will return to its regularly scheduled time on August 25.

Information on glass etching, cooking with brown rice and using convenience foods with pasta will be presented on the show on Thursday, August 20 at 12 noon.

Betty Neal, a homemaker from Arch, N.M. will demonstrate how easy it is to do glass etching. She will show how to make some beautiful glass pieces even prettier by making etchings on them.

Brown rice is the whole grain rice from which only the inedible hulls have been removed. It is not polished, and therefore, it remains a natural coating of bran. Amy Lloyd, home economist with the Rice Council in Houston, TX will demonstrate the versatility of brown rice by preparing a very different dish—vegetable pancakes, and it's a good way to incorporate a meatless meal

in your menu.

Convenience foods can make meal preparation much more fun and really cut down on the time involved. Convenience favors everyone when pasta is concerned. Mari Lou Callahan is a home economist with the Hershey Foods Corp., and she will demonstrate three different foods that all come from ingredients that are in the pantry or in the refrigerator. Ms. Callahan is from Hershey, PA.

"Creative Living" is produced and hosted by Sheryl Borden. The show airs on more than 95 PBS stations in the United States, Canada, Guam

and Puerto Rico and is distributed by Pacific Mountain Network, Denver, CO. Viewers can request copies of printed materials offered on the show by calling on KENW-TV's toll-free telephone lines between 8 am and 5 pm, Monday through Friday. In New Mexico, the number is 1-800-432-2361, out-of-state: 1-800-545-2359 and Portales and Roosevelt County: 562-2112.

Dog days are about to overtake more than the dogs about now.

Hint to adults: kind words to children pay dividends for many years.

TOPS CLUB

TOPS Club chapter No. 34 met at 6:30 p.m. Thursday, August 13 in the Heritage Thrift Shop. Laverne James, leader, called the meeting to order.

The TOPS pledge was recited and the fellowship song sung. Evelene Harris, weight recorder, called the roll. Thresia Davis, secretary, read the minutes of the previous meeting and they were approved as read. A treasurer's report was given by Ruth Clements, treasurer.

A new contest called the Bumper Board will start next week and will run in conjunction with other contests.

Evelyn Harris was named best loser for the week. Run-

ners-up were Orvide Burris, first and Jena Kemp, second.

Rose Sain and Orvide Burris received a charm for ten pounds lost. Jean Kemp received a gift from the White Elephant Box and Orvide Burris celebrated her birthday and received a gift from the Birthday Box.

One renewal, Inez McWilliams, was welcomed back to the club and the meeting was closed with the singing of the good-night song.

Following the meeting an auction was held, ending the present contest.

Faith is what helps us to carry on in spite of life's disappointments and regrets.

Most people can stand tragedy but few can master the small irritations of life.



AWARDED FOR FIVE YEARS—(L-R) David Dominguez, Julio Garcia, and Ralph Sanchez were presented five year awards on August 11, by Wheelabrator Coal Services at Tolk Station.

A little authority affects some men more than strong drink.

A friend is someone who doesn't expect any favors.

No matter how much money men make, they always want more.

The smartest man in every community is the one who knows how to relax.

Back To School Supplies

<p>Writing Tablets 2125 & 2225 & 2220 All .69¢ Each</p>	<p>Spiral Note Books 1-3 & 5 Subject \$1.79 To \$5.40</p>
<p>3 Ring Note Books 1"- \$3.50 1 1/2"- \$4.75 2"- \$5.35</p>	<p>Filler Paper 200 Count- \$1.39 100 Count- .89¢</p>
<p>Bic Pen \$1.39 Per Doz.</p>	<p>Glue Stick .49¢ And .69¢</p>
<p>Zebra Pen Set \$2.69 Set</p>	<p>Liquid Paper Reg. \$1.49 .99¢</p>

Williams Bros. Office Supply
322 Main Muleshoe, Texas

Fat Walker's

Figure Perfection Salons International
2401 N. Main Clovis 769-2105

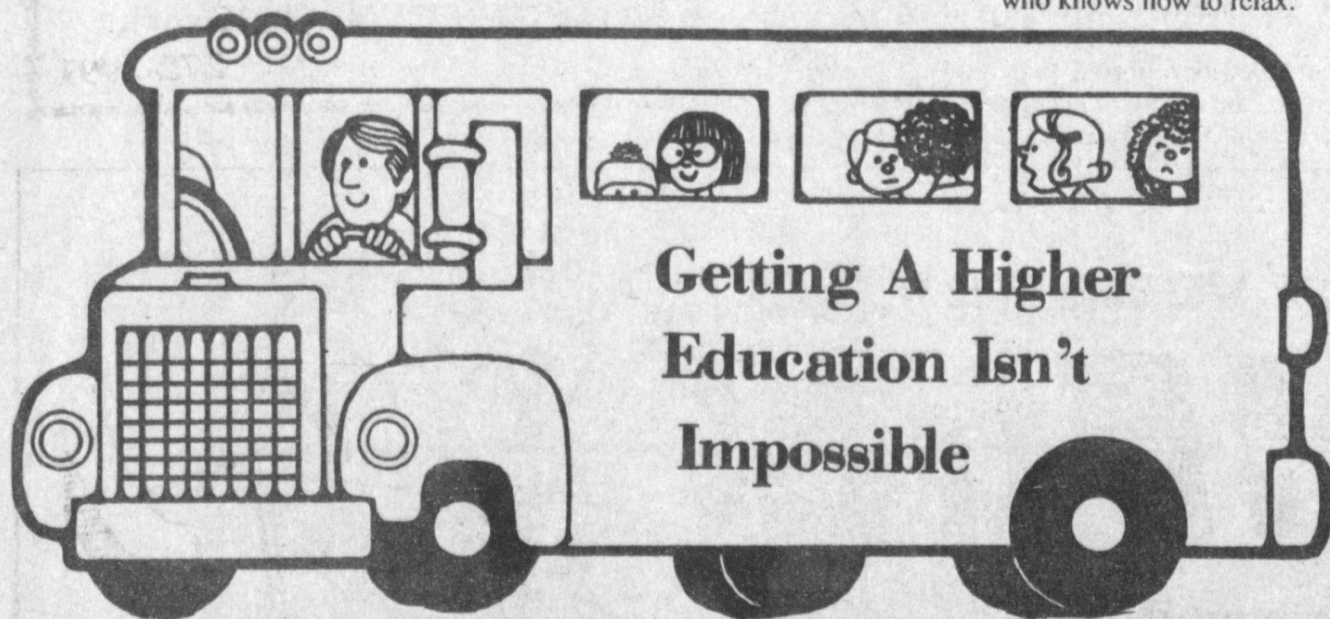
O.K. GALS.

VACATION TIME IS ABOUT OVER.

IT'S STILL TIME FOR OUR SUMMER SPECIAL

12 WEEKS \$200.

EVERY DAY FOR AN HOUR AT THIS SPECIAL LOW LOW PRICE.



Getting A Higher Education Isn't Impossible

We Can Take Care Of Those Financial Worries, & Help You Achieve That Dream...

How?

With A Student Loan!

- Maximum \$2500 per year
- Flexible
- Low Interest
- Application, Easy & Fast
- Convenient Repayment Terms
- Opportunity Available To All Regardless Of Race, Color, Religion, Sex, Age or Marital Status.

Only At

MULESHOE STATE BANK



MEMBER FDIC
101 West American Blvd. Phone 806/272-4561
MULESHOE, TEXAS 79347

Welcome To Muleshoe



WELCOME TO MULESHOE—We would like to welcome Don Carter and his wife, Sherry to Muleshoe. Don became a Muleshoe City Police officer June 25th. He attended the South Plains Association of Governments Law Enforcement Academy in Lubbock. His first law enforcement job was in Levelland his home town, where he was with the Hockley County Sheriff's Dept. Don's hobbies include horseback riding, and water sports. Sherry Carter is a Levelland native also. She enjoys reading and water sports.

James Crane Tire Co.

322 N. 1st

GOODYEAR

272-4594

Henry Insurance Agency

111 W. Ave. B.

272-4581

Damron Rexall Drug

308 Main

272-4210

Crop Outlook

Cont. from Page 1

connected to cropland. However, grasshoppers are now all over the county.

Dr. Pat Morrison, entomologist, from Lubbock, contends the grasshoppers are on the 'down side.' He says we still have them, but what you see is what you get—as the grasshopper hatch is over for this year. He says the current grasshoppers have matured, have become weaned, and their main purpose now is to lay eggs, 100 of them, to continue their cycle next year. The eggs are embedded in the ground, and will remain in unplowed, uncultivated land, such as rangeland, layout land and corners.

"We are starting to see a few light weight stocker cattle in the county. They are being placed on grass and haygrazer, getting ready to go on wheat around November 1," said Tanksley. "Livestock is in excellent condition, and have excellent forage on both improved and native pastures."

"Although the total acreage of crops in the county is down due to government farm programs, including set-aside and the 100,000 acres in the CRP, I believe the outlook for the county is greatly improved," he added. "The per unit basis is for the greatest gross dollars in several years."

He cited figures by Dr. Carl Anderson, economist from College Station, who predicted

the gross agriculture dollar is the highest it has been in several years, because cotton and livestock prices are at a higher than normal price at this time.

Dr. Anderson reminded that livestock and cotton make up more than 50 percent of agricultural commodities, than all other agricultural commodities put together in Texas. When these two commodities are at the highest, Texas agriculture is at its brightest.

Concluded Tanksley, "Before all basic program base acreage is taken out for government supported farm programs, we have 350,000-400,000 agricultural acres in the county. When we take out the acres for set-aside and the CRP, we are only farming 160,000-170,000 acres, or only 36 percent of our farmland, yet our crop outlook and the dollar return looks better."

He also said 5,000 acres were lost to weather, when crops were hail-damaged on the Monday before July 4th, and the Monday following July 4th. Most of the lost crops were in the Circleback area.

Traffic...

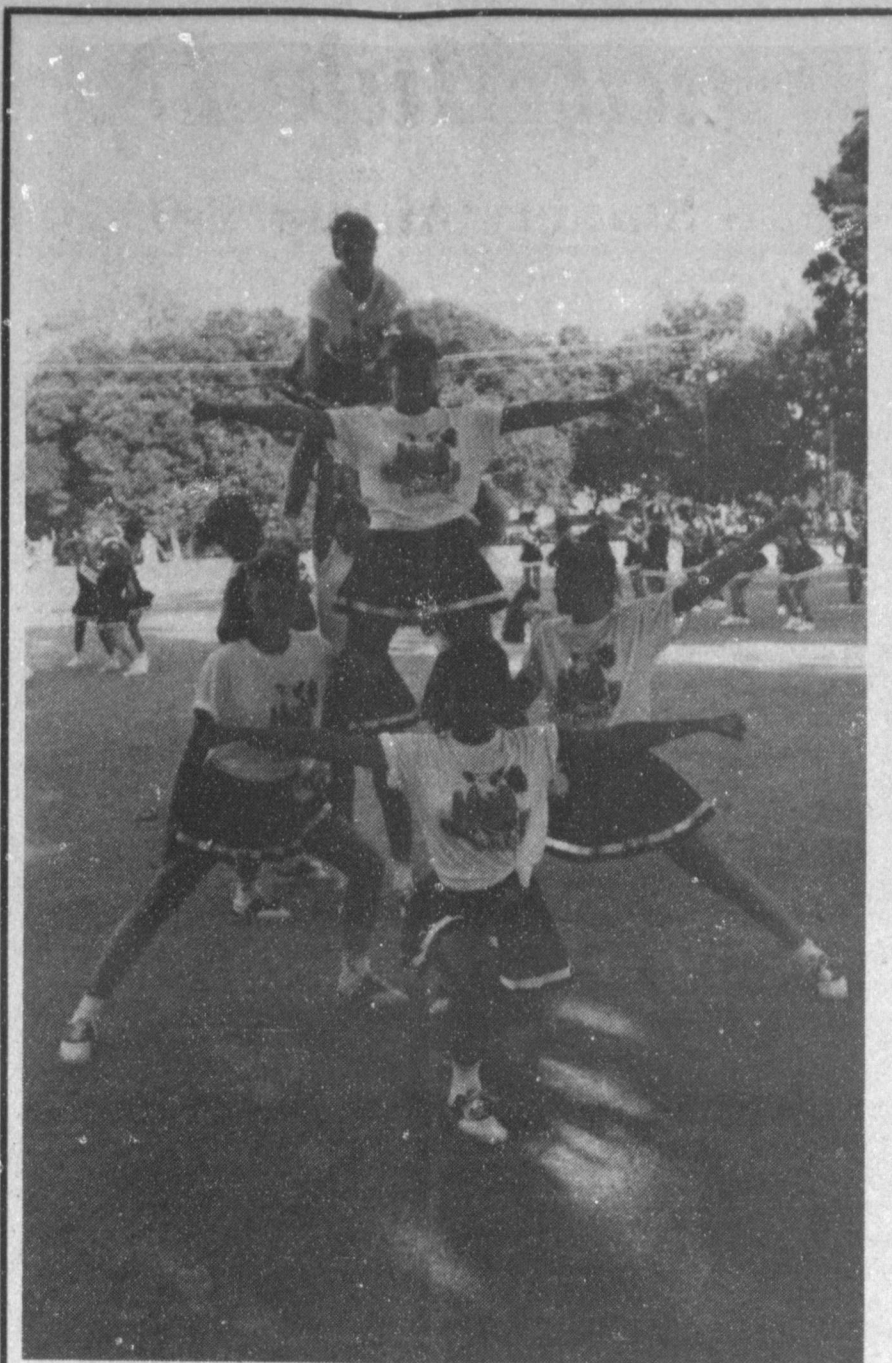
Cont. from Page 1

(3) Watch out for small children on their way to and from school; (4) Make complete stops, especially where crosswalks are painted; (5) Drive as if your child were a pedestrian or a school bus rider;

(6) Parents should have their children at the assigned pick-up points on time or a little ahead of time; (7) Parents of Dillman Elementary students need to help supervise your children at loading or unloading zones and at your pick-up or drop-off points. Please don't let these children cross a highway by themselves;

(8) Please do not park in loading zones at Dillman Elementary, Mary DeShazo Elementary, Watson Junior High and High Schools; (9) Drive as if YOUR child's life depended on it -- it does.

Fuller and Jinks said the Muleshoe School District operates 14 buses and covers 1,100 miles in the area each day. This is a big operation and every measure has been taken to have maximum security, but the cooperation of every one is needed to provide safer transportation of school children.



CHEERLEADERS READY--After making a trip to Cheerleading Camp at San Marcos, the Muleshoe High School cheerleaders came home with a lot of good ideas, enthusiasm, and new drills to try out for the homefolks once football season gets underway on September 4. The first football game will be at Olton, and gametime is 8 p.m.

Around Muleshoe

Cont. from Page 1

Dr. Graham is an unannounced Republican candidate for Texas State Senator, spoke on the "Texas Criminal Justice System."

Charles Hamilton said there will be a meeting of the Fine Arts Booster Club on Monday, August 17, at 7:30 p.m. in the Muleshoe High School Band Hall.

All parents of students in art, speech and band are asked to attend, as there will be an election of officers.

Area residents have been asked to attend a meeting in Lubbock on Wednesday, August 19 from 2:45-5:30 p.m. and hear Presidential Candidate Dick Gephardt speak on Farm, Trade and Economic Issues. The meeting will be at the Lubbock

Civic Center.

Representative Gephardt is expected to be accompanied by several members of the U.S. Congress.

A 'Gephardt for President' organizational meeting will be held at the Civic Center at 2 p.m. the same day.

Cheerleaders Attend Camp At San Marcos

A tired, but happy group of cheerleaders, sponsors and mothers returned from the annual cheerleading conference last week. Hellen Adrian and Pam Gamble, sponsors, took cheerleaders Lisa Triana, Amy Harrison, Debbie Brown, Amber Green, Krystal Angeley, Selina Gonzales, Monica Pacheco and Lisa Noble, along with Wendy Green, mascot, to Southwestern Texas University at San Marcos.

Held under the auspices of Universal Cheerleading Association of Memphis, Tenn. Mrs. Adrian commented about the school, "We expect a lot of good things from the girls this year. We also thing the whole town will be excited about what they will be doing."

The sponsor said the girls brought home new drills, a lot

of their own ideas, and a bundle of awards. In Evaluations, the cheerleaders from Muleshoe won two red ribbons, six blue ribbons and two gold, the top prize given. Mascot Wendy Green won one red and two blue ribbons. Both the cheerleaders and the mascot brought home spirit-sticks.

For relaxation, Donna Green, who accompanied the group, took them to Lake LBJ to the Green cabin where they spent time on the lake and playing.

NEWSVIEWS

Caspar W. Weinberger, Defense Secretary:

"It's [B-1] the most advanced bomber in the world. It can perform the missions that it was designed to perform and perform them well."

Elizabeth Dole, Transportation Secretary, to FAA:

"Take more aggressive actions to get airlines to tighten procedures for screening passengers and carry-on baggage at the nation's airports."

Interested?

In a Medicare Plan that would equal A.A.R.P. policies benefits for only \$17.64 a month.

OR

One that pays 100% of charges in addition to Medicare approved charges for a little more money.

OR

A nursing home plan that pays all charges in any custodial, intermediate and skilled care home.

OR

A plan that pays on Dr. bills and prescription drugs.

OR

A major medical plan for people not on Medicare, that pays 100% of all charges after a selected deductible. Not 80% like most plans are.

Home Wilson Agency Life
Health Box 431 or 201 Ave. C Auto
Muleshoe, Texas 79347
Phone 272-4159

Enochs News

by

Mrs. J.D. Bayless

Mr. and Mrs. Mack Red of Muleshoe were recent visitors in the home of Mabel Reed.

Michael Richards, son of Mr. and Mrs. Bobby Richards, is now recuperating at home following a stay at Lubbock General Hospital.

Mr. and Mrs. Roby Lynn and family have returned home to Mansfield, La. after a visit here with her parents, Mr. and Mrs. Jerry Ray, and Mabel Reed and Mary Olds.

Ruby Smith has returned to Sudan following a visit in Auburn, Wash., with her son and family, Brian and Robin Thomas and her new granddaughter, Samantha.

Join the Trend
Discover TV Worth Watching
on KENW-Channel 3, Public TV
Summer Pledge Fest
August 15 through 24



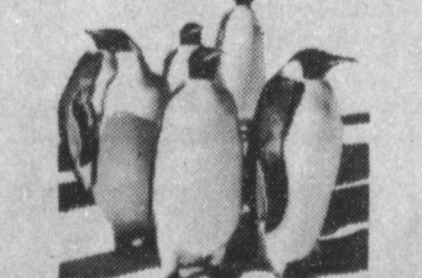
KENW and You,
a Perfect Pair!



Kick-Off
"The Grand Ole Opry"
Saturday 15th, 8:00 p.m.



"Legends of Laughter"
Sunday 16th, 4:30 pm



"Antarctica: The Last Continent"
Tuesday 18th, 9:00 pm

... Meet Some Rare Birds

"The Man Who Loved Birds"
Tuesday 18th, 10:00 pm
Sunday 23rd, 8:00 pm



"That's Dancing!"
Wednesday 19th, 8:00 pm

"Sentimental Swing: The Music of Tommy Dorsey"
Saturday 22nd, 7:00 pm

"Speaking of Love" with Leo Buscaglia
Monday 24th, 7:00 pm

"A Musical Toast—The Stars Shine on Public Television"
Monday 24th, 9:30 pm

Become a KENW "Friend"

Call— NM 1-800-432-2361
TX 1-800-545-2359
Roosevelt Co. 562-2112

TV Worth Watching

kenw 3
EASTERN NEW MEXICO UNIVERSITY
PORTALES, NM

TV Worth Paying For

You Load We Drive

North American Van Lines offers an alternative to the rent-a-truck move. . . You Load-We Drive Moving Service.

Now you can receive professional moving assistance from professionals who operate the most modern and best maintained equipment on the road while saving yourself money by proving much of the work yourself.

Pay for your move with the North American Payment Plan:

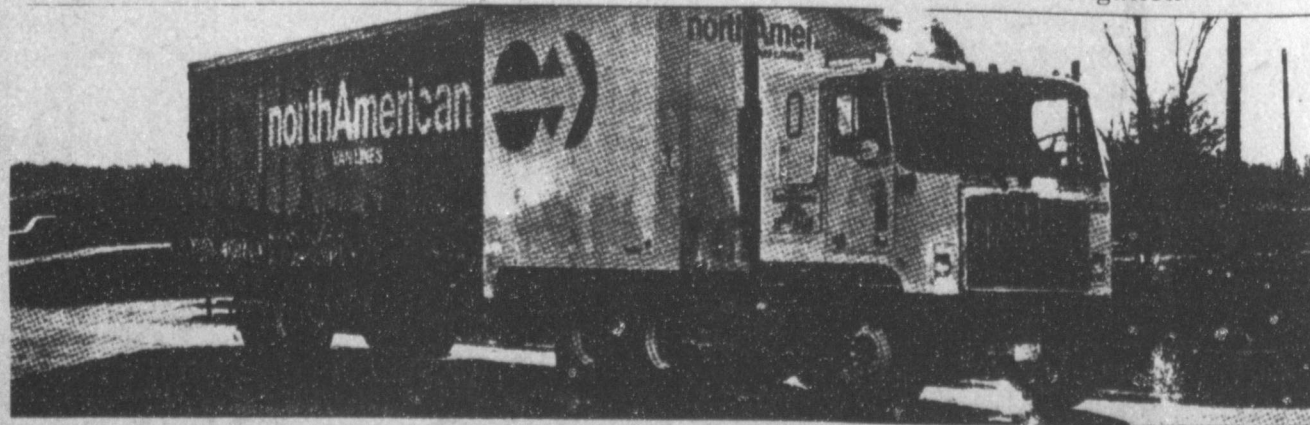
- No Down Payment Required
- Convenient Monthly Payments
- Rapid Credit Approval
- No Annual Fees
- Makes Budgeting Easier

The Full Service Move is still available and the following services can be financed:

- Packing Materials
- Packing, Unpacking
- Crating, Uncrating
- Loading, Unloading
- Special handling for large, bulky items like autos.
- Line Haul Transportation
- Qualified Storage
- Third Party Services
- Possession Protect.

National accounts welcome

FREE estimates-no obligation



northAmerican.
CLOVIS MOVING
and STORAGE

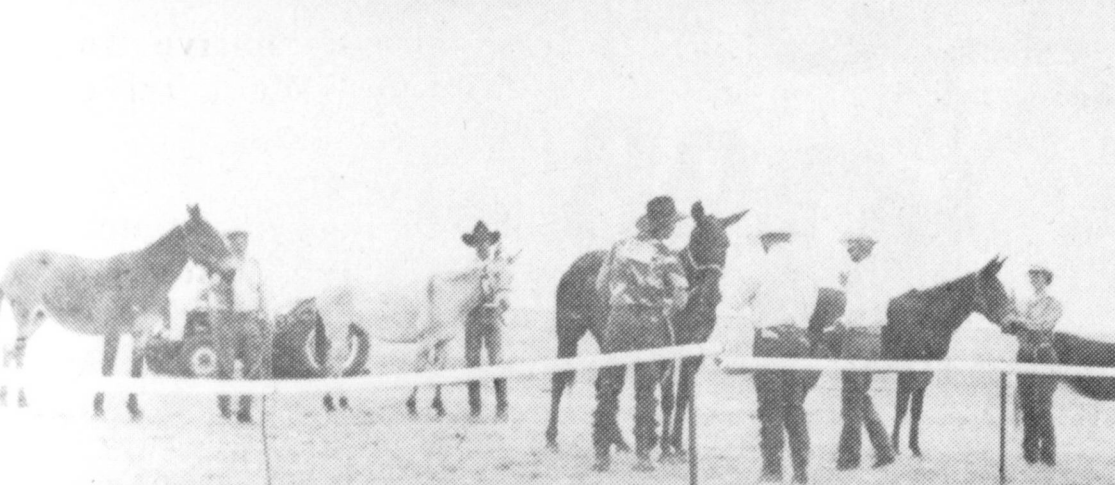
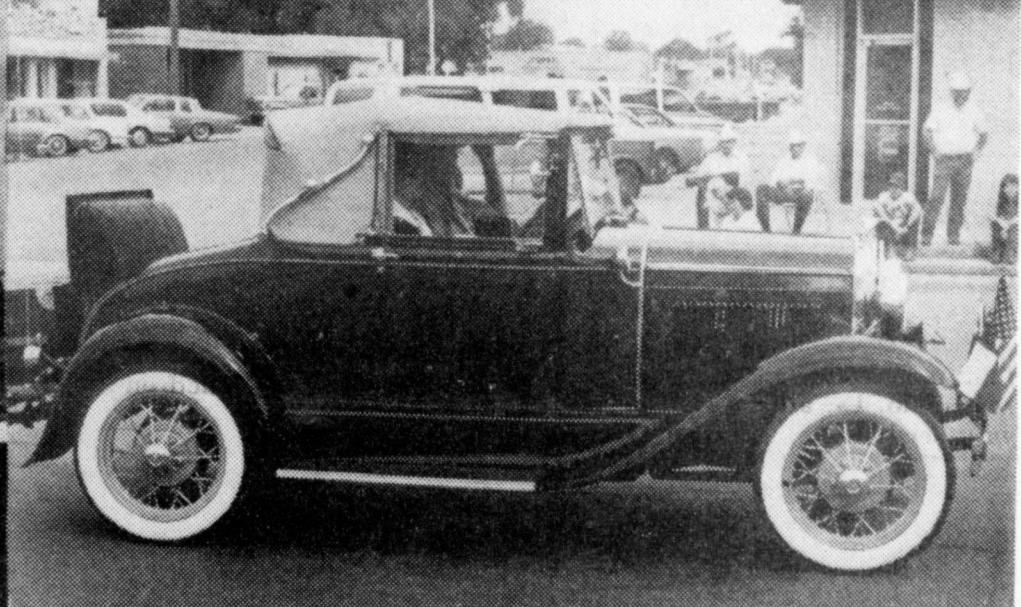
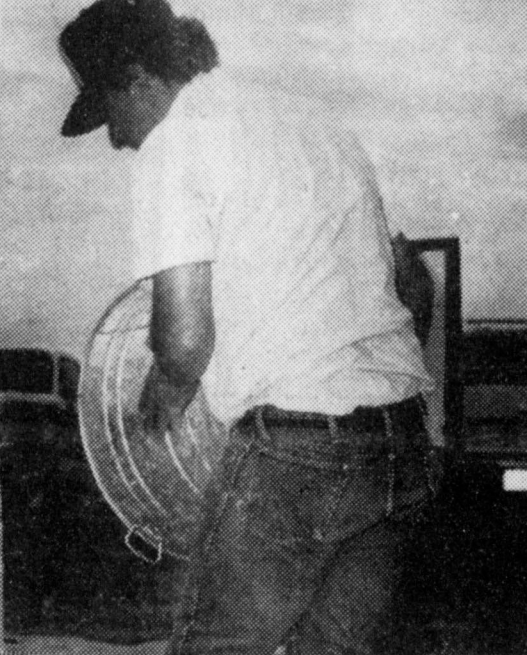
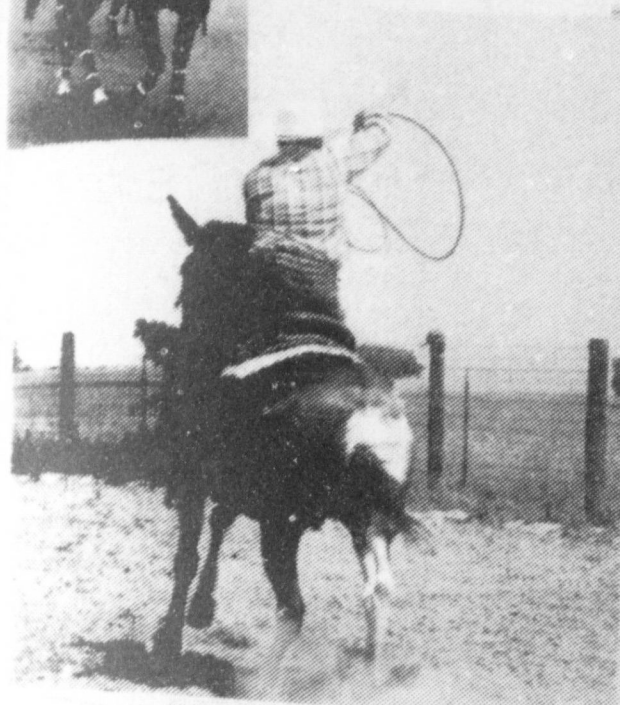
700 E. Tatum

Contact Doyle Porter

763-5571

Sixth Annual Mule Days Festival

Friday - Sunday August 7-9, 1987



Steve Raney Continuing To Conquer

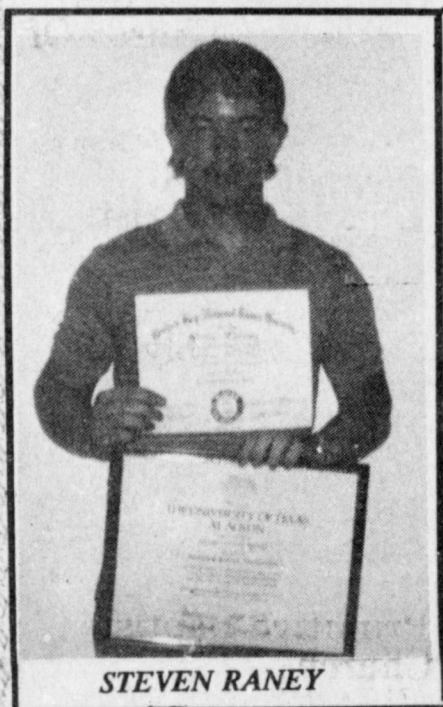
A man who was born in Muleshoe on July 7, 1965, is a walking, living example of what desire and dedication can do -- as he continues to rack up impressive credentials in his young life.

Steven E. Raney is the son of Lee Raney, former Muleshoe resident, now of Levelland, and a 21-year employee of Southwestern Public Service Company. He is also the grandson of Mr. and Mrs. Edd Edmiston, who are justifiably proud of their grandson's accomplishments.

He attended school at Littlefield, staying on the 'A' honor roll through junior high school and graduated from Muleshoe High School in 1983 as an 'honor graduate.'

His youth and high school honors included Cub Scouts, Boy Scouts, Order of the Arrow-Brotherhood, Eagle Scout Award. In high school, he was presented the American History Award; World History Award; Government Award; National Honor Society; Who's Who Among High School Students.

From 1983-1985, Steve attended South Plains College, Levelland, and received an Associate Degree in Business Administration. He was on the Dean's Honor Roll, a member of Phi Theta Kappa Honor Society



STEVEN RANEY

and was named Outstanding Student in Business Administration.

In the spring of 1987, Steve graduated from the University of Texas at Austin, with a Bachelor of Business Administration in General Business degree.

He was named to the Dean's Honor List, Golden Key National Honor Society; a 3.35 grade point average; and passed the Law School Administration Test-Raw Score; 38-Percentile Ranking 83 percent and was among the top 17 percent of all tested in the US.

This fall, Steve will be a law student, again at the University of Texas at Austin as he continues to quest.

Three-Way News by Mrs. H.W. Garvin

Mr. and Mrs. Pete Tarlton spent the week end in Kerrville attending the funeral of Mrs. Joyce Walters, Mr. Tarlton's niece.

Mr. and Mrs. George Tyson and their daughter, Mrs. D.A. Williams, from Enoch were in Lubbock Wednesday on business.

Guests in the Ben Gibbs home the past week were Mr. and Mrs. Gary Gibbs family from Olton, the Boyd Gibbs family from Lubbock, Mr. and Mrs. Bill Shays and son from Wayne, Nebraska, Mr. and Mrs. Orville Gordon from Oklahoma, and Bob Gordon from Amherst.

Mrs. Ben Nelson from Seminole visited her sister, the Robert Kindles, the past week.

The Carl Dupler family from Midland and Mrs. Minnie Dupler spent the week end with the Bill Duplers. Also Eugena Dupler from Levelland was home Saturday.

Mr. and Mrs. Adolph Wittner attended a wedding in Lubbock Saturday evening.

School Supply List For Area Schools Given

Most school systems will furnish textbooks for the pupils, the students are expected to furnish their own supplies. According to the list issued by the Muleshoe and Lazbuddie Independent School Districts, students will need the following supplies for the 1987-88 school year.

Kindergarten students will need eight color crayons (giant size), scissors (sharp point), white glue in the squeeze bottle and handkerchief tissues (one box).

A first grader will need a handwriting tablet No. 1 with 1/4-inch rulings on both sides, 3/8-inch descender line, eight color crayons (giant size), No. 2 lead pencils (big pencils are acceptable), scissors (sharp point), a metal-edged ruler (inch and centimeter), white glue in the squeeze bottle and handkerchief tissues (one box).

Second graders need handwriting tablets No. 2 (10 1/2 X 8) with 1/2-inch rulings on both sides, 1/4-inch midline with a red baseline and 1/4-inch descender line, 16 color crayons, No. 2 lead pencils (regular), scissors (sharp point), a metal-edged ruler (inch and centimeter), white glue in the squeeze bottle, handkerchief tissues (one box) and second-grade spiral composition books

with 1/2-inch rulings on both sides, 1/4-inch midline with a red baseline and 1/4-inch descender line.

In addition to the required supplies, three-ring binders, notebooks, dividers, backpacks, colorful markers and plastic school boxes can also be purchased to hold the child's supplies.

Third-graders will need a handwriting tablet No. 3 (10 1/2 X 8) with 1/2-inch rulings on both sides, 1/4-inch midline with a red baseline and 1/4-inch descender line, 16 color crayons, No. 2 lead pencils (regular), scissors (sharp point), a metal-edged ruler (inch and centimeter), white glue in the squeeze bottle, handkerchief tissues (one box) and third-grade cursive writing composition book with 1/2-inch rulings on both sides, 1/4-inch midline with a red baseline and 1/4-inch descender line.

A fourth-grader will need a handwriting tablet No. 4 or loose leaf notebook paper (8 X 10 1/2) with 3/8-inch rulings on both sides, 3/16-inch midline and 3/16-inch descender line, 16 or 24 color crayons, No. 2 lead pencils (regular), scissors (sharp point), a metal-edged ruler (inch and centimeter), white glue in the squeeze bottle, ballpoint pens (as suggested by the teacher), handkerchief tissues (one box)

and a fourth-grade spiral composition book.

Fifth and Sixth graders will need notebook paper (8-inch X 10 1/4-inch standard loose leaf with 3/8-inch or 11/32-inch ruling on both sides, 16 or 24 color crayons, No. 2 lead pencils

(regular), white glue in the squeeze bottle, a metal-edged ruler (inch and centimeter), ballpoint pens (as suggested by the teacher), handkerchief tissues (one box) and a spiral composition book.

School starts Sept. 1.

INMIGRACION?
NECESITA EXAMEN FISICO?
NO SE NECESITA CITA

ADULTS \$38
CHILDREN UNDER 14 \$10

Aprobado por el INS para hacer examen fisicos de inmigracion

MEDICO CIRUJANO
ANTONIO P. SERRANO, M.D., P.A.
Family Practice & Emergency Medicine

SLIDE MEDICAL CLINIC
ACROSS FROM SOUTH PLAINS MALL
5705-D SLIDE ROAD, LUBBOCK (806) 795-5844
OPEN 7 DAYS A WEEK—8:00 A.M. to 10:00 P.M.

Enochs News by Mrs. J.D. Bayless

Mr. and Mrs. E.N. McCall flew to Harlingen, last Tuesday to visit a daughter-in-law; Mrs. Nadean McCall, and family then they visited her sister, Mr. and Mrs. R.T. Lytle at Conroe, Texas. They returned home Thursday evening.

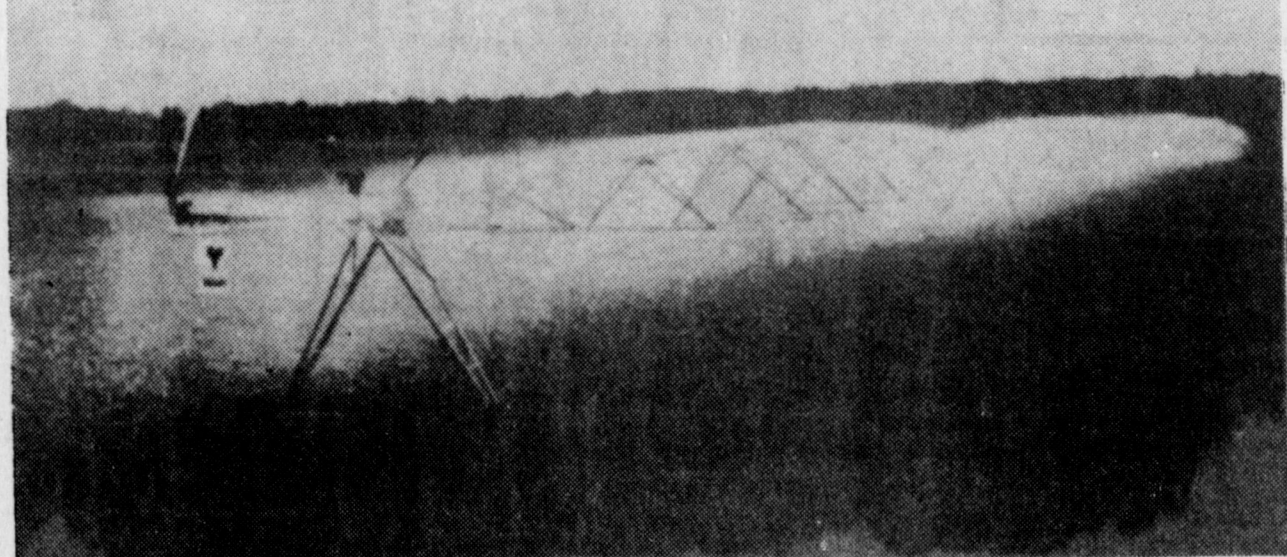
Mr. and Mrs. Chester Coffman of Big Spring visited her sister, Mrs. Ellen Bayless, Thursday afternoon.

Everyone was proud of the rain received Wednesday evening .6 and .9 and more in places.

JONES • BLAIR JONES • BLAIR LOWEST PRICES OF THE YEAR

	\$ 6.98 GAL. Mfg. Sugg. Retail \$10.50 SAVE \$3.52
<ul style="list-style-type: none">• Excellent coverage• Easy to apply• Dries to touch in 30 min.	SUPER-KOTE LATEX WALL PAINT
	\$ 9.98 GAL. Mfg. Sugg. Retail \$15.52 SAVE \$5.54
<ul style="list-style-type: none">• Easy to apply• Desirable low lustre• Offers good color retention	SUPER-KOTE LATEX HOUSE PAINT
	\$ 8.98 GAL. Mfg. Sugg. Retail \$13.28 SAVE \$4.30
<ul style="list-style-type: none">• Excellent touch-up and coverage• Good washability• Spot resistant, fade resistant	DECORATOR LATEX WALL PAINT
	\$ 10.98 GAL. Mfg. Sugg. Retail \$18.20 SAVE \$7.22
<ul style="list-style-type: none">• Resists flaking, peeling and blistering• Dries in 30 minutes• Colorfast, stain and mildew resistant	DECORATOR ACRYLIC LATEX HOUSE PAINT
	\$ 10.98 GAL. Mfg. Sugg. Retail \$17.97 SAVE \$6.99
<ul style="list-style-type: none">• Easy to apply, spatter resistant• One coat coverage• Spot and fade resistant	SATIN LATEX WALL PAINT
	\$ 12.98 GAL. Mfg. Sugg. Retail \$21.84 SAVE \$8.86
<ul style="list-style-type: none">• Sunfast colors• Resists flaking, peeling, blistering• Durable, long lasting	POLYFLEX LATEX HOUSE PAINT
	\$ 14.98 GAL. Mfg. Sugg. Retail \$23.98 SAVE \$9.00
<ul style="list-style-type: none">• Beautiful medium gloss finish• Sunfast colors• Dries in 30 minutes	POLYFLEX HOUSE & TRIM PAINT

VALLEY SUMMER BONUS



\$2000* CASH BACK
OR
3.15% APR LEASE RATE

It's the brand new Valley 6000. Redesigned from the ground up to bring you the most rugged, dependable Valley ever built. Just check into this summer's savings. And the sooner you check the more you can save—cash back up to \$2000 or more—and a 3.15% lease rate that's so low you can't afford not to check. Prices change August 15th, so act now.

\$2000* CASH BACK FROM JULY 16 - AUG 15
\$1600* CASH BACK FROM AUG 16 - SEPT 15

*BASED ON A 1300' 8 TOWER VALLEY 6000 PIVOT



American Valley Inc. Of Muleshoe
Hwy 84 West 272-4266

"Quality And Service At The Right Price"
Higginbotham-Bartlett
215 Main 272-3351



Lazbuddie Schools Open September 1

Lazbuddie I.S.D. will begin school this year on Tuesday, September 1. Staff members will report for inservice and professional growth on Monday, August 24, according to Joe A. Hall, Superintendent.

Registration for new students to Lazbuddie is open any day through August 31. Registration packets are available in the central administrative office each weekday 8:00 a.m. to 4:00 p.m.

Students in grades 6 through 12 who have previously attended Lazbuddie I.S.D. and pre-registered last spring may obtain their class schedules and locker assignments Friday, August 21, according to Roy Willingham, High School Principal.

Grades 9, 10, 11 & 12, 8:30 a.m. - 11:30 a.m.; Grades 6, 7, & 8, 1:30 p.m. - 3:30 p.m.; and Any student, 3:30 p.m. - 4:30 p.m.

Students missing the August 21 times may register or obtain class schedules and locker assignments on August 28 from 8:30 a.m. to 11:30 a.m.

Students in Pre-Kindergarten through 5 will report to school September 1. School supply lists are available in the elementary office and are posted in various stores in Muleshoe, according to

Anne Farris, Principal.

Students at Lazbuddie will return to school to find newly painted classrooms in elementary school. Both gymnasiums and the auditorium have been painted and regubished. As an added safety precaution, the elementary playground has a new metal fence surrounding it.

The Lazbuddie I.S.D. employs 24 professional teachers, six paraprofessional aides, three custodians, six bus drivers, and three cafeteria staff members. Employees include the following:

Central Office: Joe A. Hall, Superintendent; Kim Puckett, Accountant; and Susie Sterling, Administrative Secretary.

Elementary Staff: Anne R. Farris, Principal; Paulette Foster, Secretary; Dianne Hernandez - Pre K & English as a Second Language; Janet Elliott - Kindergarten; Adeana Carlyle - First Grade; Nancy Smith -

Second Grade; Pat Spencer - Third Grade; Barbara Hall - Fourth Grade; Marca Morris - Fifth Grade; Debra Hall - Chapter I/Language Arts/Math; Sharon Allen - Instructional Aide; Teresa Valencia - Instructional Aide; and Alice Barber - Special Education.

High School Staff: Roy G. Willingham, Principal; Mary Autry, Secretary; Alice Barber - Special Education; Carl Bodiford - Spanish/History; Vickie Burch - English/Journalism; Hardy Carlyle - English/Computer; Thelma Coffey - Math/Reading; Rick Copp - Vocational Agriculture; Marsella Jennings - Business/Typing; Becky Jones - Band/Music; JoAnn Luscombe - Girls Athletic Coach/Elementary P.E.; Richard Luscombe - Boys Basketball Coach/Social Studies; Barbara Lust - Home Economics; Mark Scisson - Industrial Arts/Assistant Coach;

Belinda Steinbock - Science; C.W. Williams - Chapter I/Language Arts/Math; Barbara Willingham - Math/Gifted-Talented; LaReta Barber - Instructional Aide; Gloria Elliott - Special Education Aide; Caralyn Jarman - Library Aide; and Darla McBroom - Instructional Aide.

Custodians: Pablo Mendoza, Sr.; Celia Mendoza; and Ray Orozco.

Bus Drivers: Leonard Elliott; Ray Orozco; Pablo Mendoza; Larry Reed-Farris; and Ray Stanley.

Cafeteria: Cheryl Weaver; Carol Holt; and Robbie Davis.

Nursing Home News

What a great time we had at our family ice cream supper Tues. night! We had a wonderful attendance and participation by our families and friends. We enjoyed the home made ice cream and the cookies and cakes and visiting. Our thanks to our families for all the nice things they do for us and with us.

Sunday Services: The Muleshoe Church of Christ brought Communion Sun. morning. Earl Peterson came Sunday morning for Bible Study. The Muleshoe Singers came to sing gospel music.

Welcome home from the hospital, Arnold Morris, We are so pleased that you are able to be back with us.

Ruth Williams and Ray Edwards are now residents of the Nursing Home. We welcome them to our Nursing Home family and encourage their friends to come and visit them.

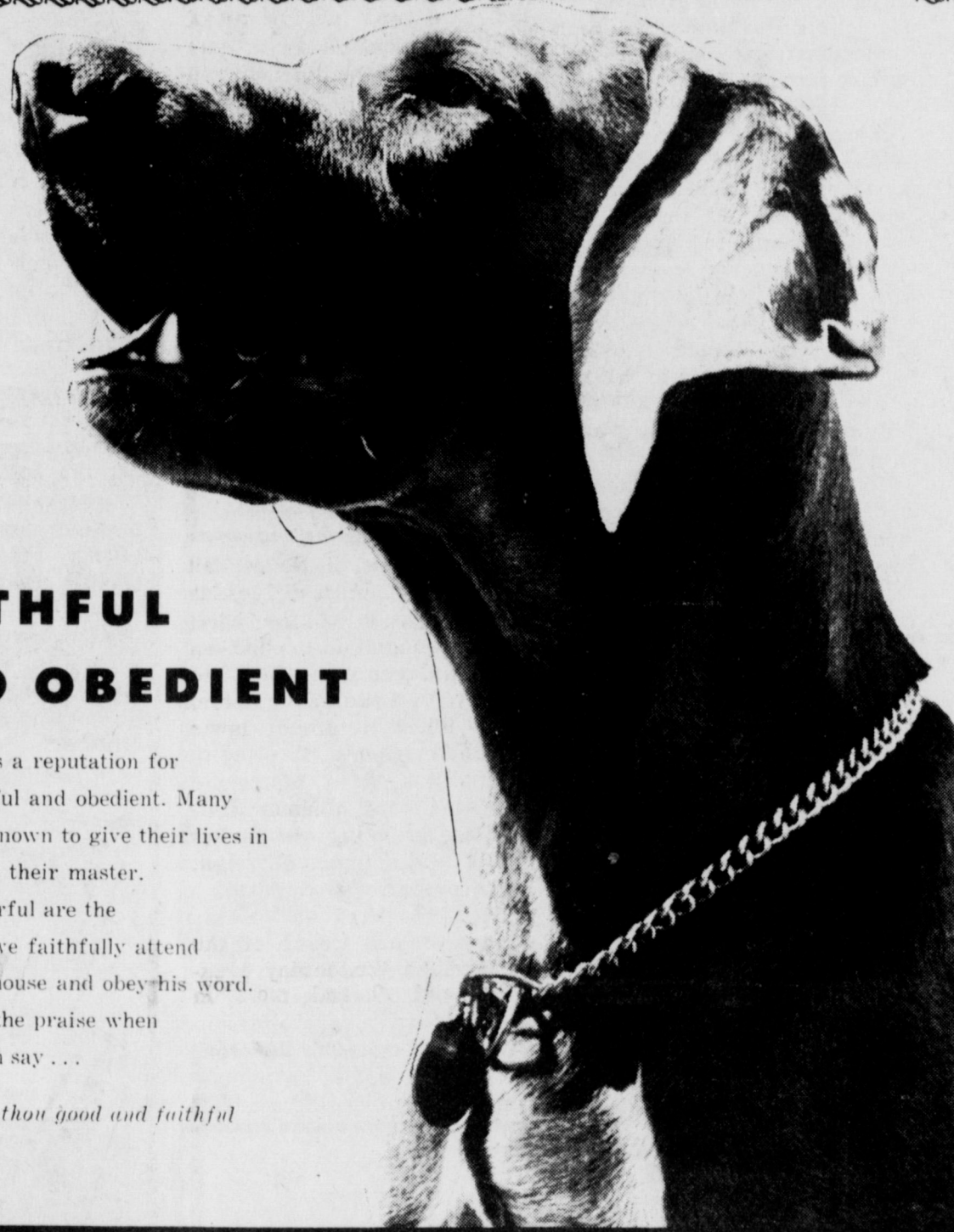
Ruth Williams will be having a birthday this Mon. Aug. 23rd. She would very much enjoy a birthday greeting.

Eric Smith was visited this week by Stinson and Margaret Yoachum of Pinetop, Arz. Della Mae Little of Silver City, N.M. Glenda Maud of Pinetop, Arz. Marlyn Guedna of Portales and Norene Thomas.

We are glad that Cari Kidd is back on the job, after being at camp last week. We sure miss her when she is gone.

Mr. and Mrs. L.F. McCormick visited Effie Smith and Mamie Askew Tues. afternoon.

If You Need An Ambulance Call 272-4200



FAITHFUL AND OBEDIENT

The dog has a reputation for being faithful and obedient. Many have been known to give their lives in sacrifice for their master. How wonderful are the joys when we faithfully attend the Lord's house and obey his word. How great the praise when the Lord can say...

"Well done, thou good and faithful servant..."



The Church is God's appointed agency in this world for spreading the knowledge of His love for man and of His demand for man to respond to that love by loving his neighbor. Without this grounding in the love of God, no government or society or way of life will long persevere and the freedoms which we hold so dear will inevitably perish. Therefore, even from a selfish point of view, one should support the Church for the sake of the welfare of himself and his family. Beyond that, however, every person should uphold and participate in the Church because it tells the truth about man's life, death and destiny, the truth which alone will set him free to live as a child of God.

© Coleman Adv.

Immaculate Conception Catholic Church

Father Patrick Maher
Northeast of City

First Baptist Church

220 West Ave. E.
Barry Bradley, Pastor

Emmanuel Baptist Church

Iglesia Bautista Emmanuel
107 East Third

Isaias Cardenas, Pastor

Trinity Baptist Church

314 E. Ave. B.
Rev. V.L. "Buster" Huggins

Circle Back Baptist Church

Intersection FM 3397 & FM 298
946-3676

Calvary Baptist Church

1733 W. Ave. C.
Rev. Darrel Martin

Muleshoe Baptist Church

8th and Ave. G.
Bob Dodd, Pastor

Progress Baptist Church

Paul Brigham, Pastor
Progress, Texas

Richland Hills Baptist Church

17th and West Ave. D.
David McAdams, Pastor

St. Matthew Baptist Church

Corner of West Boston & West Birch
M.S. Brown, Pastor

Progress Second Baptist Church

1st and 3rd Sunday
Clifford Slay, Pastor

The Community Church

Morton Hwy.
H.D. Hunter, Pastor

St. John Lutheran

Sunday School and Bible
Classes 9:30 a.m.

Church services
Church Services 10:30 a.m.

Rev. Mac Bearss, Pastor

Lazbuddie Methodist Church

965-2121
Larry Raid Farris, Pastor

Templo Calvario

507 South Main
Sunday 10:00 a.m.

Sunday Evening 7:00 p.m.

Evangelistic Services
J.L. Soto, Pastor

New Covenant Church

Plainview Hwy.
Sunday 10:00 a.m.

Wednesday 7:00 p.m.

Jimmy Lowe, Pastor

Church Of The Nazarene

9th and Ave. C.
Dennis Hayes, Pastor

Longview Baptist Church

965-3413
B.C. Stonechiper, Pastor

Primera Iglesia Bautista

223 E. Ave. E.
Roy Martinez, Pastor

Lariat Church Of Christ

Sunday School 10:00 a.m.
Worship 11:00 & 6:00 p.m.

Wednesday Services 7:00 p.m.
Sam. Billingslev, Minister

Muleshoe Church Of Christ

Clovis Hwy.
David Alessandro, Minister

16th & Ave. D. Church Of Christ

Sunday 10:30 a.m.
Evening 6:00 p.m.

Wednesday 8:00 p.m.

First Assembly Of God

Rev. David C. McCune
9:45 Sunday School

11:00 Morning Worship
6:30 Evening Services

7:30 Mid Week Services
272-3984

Primitive Baptist Church

621 South First
Elder George Johnson, Pastor

Spanish Assembly Of God

East 6th and Ave. F.
Luis Campos, Pastor

First United Methodist Church

507 W. 2nd Street
Richard Edwards, Pastor

El Divino Salvador Methodist Church

5th and Ave. D.
Jose M. Fernandez, Pastor

1st Baptist Church

Lazbuddie, Tx. 965-2126
Gary Wilcox, Pastor

Lazbuddie Church Of Christ

207 East Ave. G.
Rev. J.A. Torres

United Pentacostal Lighthouse Church

207 East Ave. G.
Rev. J.A. Torres

Letter To The Editor

July 30, 1987

Dear Toni Eagle:

We really appreciated all the work and preparation you and your staff put into making the 1987 Interstate Batteries' Great American Race stop in Muleshoe such a success for all.

Enclosed is an "open letter" to the citizens of your city thanking them for the warm reception they gave us. We would appreciate your sending it to your local newspaper(s) for possible publication so we can express our appreciation.

Please thank the appropriate people for Interstate and all the Great Racers. Thanks again for your efforts.

Sincerely yours,
Norman Miller
President
Interstate Battery System of America

July 30, 1987

To the Citizens of Muleshoe:

On behalf of Interstate Battery System of America, Inc. and our 140,000 service dealers all across America, I would like to thank you for the wonderful reception you gave us as we came through your city on the 1987 Interstate Batteries' Great American Race.

We appreciated your warm hospitality, the great crowds, and all the work done by city officials, clubs, and organizations to make the race such an overwhelming success for the public, Great Racers, and sponsors. We could not have done it without your tremendous support.

It's the friendly citizens of Muleshoe that truly make you a "Great American City".

Sincerely yours,
Norman Miller
President
Interstate Battery System of America

Courthouse News

WARRANTY DEEDS

Enrique Muyschondt and wife, Bertha Muyschondt to Orval Gene Atkins and wife, Genice Ann Atkins--All of Lot 103 and the (E/20') of Lot 102, Richland Hills Addition to the City of Muleshoe, Bailey County, Texas.

Don McDaniel to Billie Joe Copley--All of the (E/2) of the (N/2) of Tract (4), Aylesworth Acres, out of Tract (16), Milroy Subdivision, out of the (SW/4) of Section (32), Block Y, WD&FW Johnson Subdivision, Bailey County, Texas.

Pat Pena to Ruben Price and wife Glenda Price--All of Lots (58) and (60), in Block (5), Apple Street in the Town of Progress, Bailey County, Texas.

COUNTY COURT

Ruben Reyna, and Darrell Dean Browning, Order of Dismissal.

Western Drug 114 Main 272-3106			Dairy Queen 1204 W. Amer. Blvd. 272-3412
Little Gulf 272-4918	Baker Farm Supply 1532 W. Amer. Blvd.	American Valley Inc, Hwy. 84 W. 272-4266	Robert D. Green Inc. 2400 W. Amer. Blvd. 272-4588
Farmers Spraying Service Lazbuddie 965-2624	Bob Stovall Printing 221 E. Ave. B 272-3373	James Roy Meat Market 506 W. Amer. Blvd. 272-4361	Lookin Good 206 Main 272-5052
Main Street Beauty Salon 115 Main 272-3448	1st Bank 202 South First 272-4515	Bratcher Motor Supply 107 E. Ave. D 272-4288	Five Area Telephone Cooperative, Inc. 302 Uvalde 272-5522
Irrigation Pumps & Power West Hwy. 84 272-4483	Farmers Co-Op Elevators 272-4490	Foster Fertilizer Lazbuddie 965-2921	John's Custom Mill 523 E. Amer. Blvd. 272-4373

TOUCH OF HISTORY

Bailey County Is Created Despite Rancher Opposition

Bailey County was one of the 54 counties created from Bexar Territory on August 21, 1896 by an act of the Texas State Legislature.

This was the first and only time 54 counties were created at one and the same time.

The county was named in honor of Peter James Bailey, a Kentucky lawyer killed while defending the Alamo. A Centennial Historical Marker, located two miles northwest of Muleshoe on Highway 70, has been erected in honor of Bailey.

Between the years 1836 and 1876 the part of the public domain out of which Bailey County was created without judicial authority to try offenders. When Bailey and 21 of the other counties created at that time should be attached to Jack County for judicial, surveying, and all other purposes.

This arrangement continued until 1881, when the State Legislature approved an act whereby Bailey and 15 other counties were attached to Baylor County for judicial purposes.

Bailey was in the Baylor land district and the county surveyor of Baylor County also was surveyor of Bailey County. The surveyor's office was at Seymour and all records of files and surveys for the district were kept in his office.

In 1887 the 21st Legislature attached Bailey to Hale County, which had as its county seat Plainview. This state of affairs continued until 1892 when the 22nd Legislature attached Bailey to Castro County which had its county seat at Dimmitt. Bailey remained under this jurisdiction until it was organized as an independent government November 5, 1918.

The first attempt to organize the county made in the summer of 1909 failed because there was not a sufficient number of voters and the ranchers opposed the organization.

SEVERE DROUGHT

During the year 1910 there was the most severe drought known in Bailey County. This caused many of the settlers to leave and the county did not

show much growth in population for two to three years.

The railroad was being built between Lubbock and Farwell at that time and during this period the automobile was fast becoming the principal means of travel. The need for roads for automobiles was felt but as long as Bailey was attached to Castro County and was not organized, the road could not be legally laid in the county.

Because the land owned by non-residents of Bailey was exempt from county taxes, there was little money for schools and practically none for roads. This unfair taxation and a belief in the need for more schools and roads prompted citizens of Bailey to talk with officials of Parmer County who promised to use their influence to get connections between Lamb and Parmer through Bailey.

LET'S ORGANIZE

When the Parmer County officials promised to help, a mass meeting was called in January, 1917 at the Hurley school house to determine whether to sever connections with Castro and be connected with Parmer. This would have to be done by a petition to the legislature which was in session at the time, according to W.M. Wilterding who was first county judge of Bailey County.

Committees were appointed at the first meeting. The second meeting held some two weeks later was attended by about 40 citizens who discussed at length whether to join to Parmer or Lamb, if a transfer from Castro were possible.

During the discussion, T.E. Millen rose to his feet and yelled, "Why join to any county? Let's organize!" After the shouting and cheering had subsided, it was unanimously decided to appoint a committee to investigate the cost, vote, and efforts necessary to put over such an organization.

The committee found the law required 150 legal voters in the county before an organization could be completed. At that time there were about ninety voters in the county, so the

committee determined in order to have an organization it would be necessary to change the law.

A subscription of about \$1,500 was raised to put over the organization and William G. Kennedy and Josephine Jennings were chosen as delegates to go to Austin with a petition signed by nine-tenths of the voters of the county. The petition asked that the number of 150 voters necessary to complete an organization be changed to 75.

RANCHERS OPPOSE

After the proposed bill passed through the hands of the committee and when it came up before the legislature, the big ranchmen of the county decided they did not want the county organized. They put up a vituperous fight led by W.H. Fuqua of Amarillo.

The ranchmen argued that the land was not fit to be cultivated and that it would never be used for anything except ranching. They knew that when the county was organized their taxes would be increased.

Nevertheless, the citizens were successful in getting the law changed to read 75 legal voters instead of 150. The bill was declared an emergency one to go into effect as soon as the governor signed it.

As soon as the Bill was signed a petition was circulated asking the Commissioners Court of Castro County to declare Bailey an organized county and to set a date for an election to fill the offices of Bailey. The petition was presented at the regular session of the Castro Commissioners Court the second Monday in April, 1917.

Those opposed to the petition employed W.H. Kimbrough of Amarillo, and those favoring the organization were represented by Mart Cozzart of Dimmitt.

After three days of hearing during which time each signer of the petition was contested as a legal signer, the Castro County Bailey County legally organized and set May 11 for the election of officers.

After hard fought opposition by ranchers opposing the organization, and before an injunction Court from canvassing the elec-

tion which was appealed by the ranchers from the district court in Dimmitt to the State Supreme Court, could be heard, an election was held in November. At the November election the same officers elected in May were again elected.

Since the injunction, filed by the ranchers was against the May election only, the following

Muleshoe School Lunch Program Guideline Given

The Muleshoe Independent School District serves nutritious meals every school day. Students may buy lunch for Kindergarten, 1st and 2nd grades for .85; 3rd, 4th and 5th grades for .90; and 6th through 12th grades for 1.00. Students may buy breakfast for Kindergarten, 1st and 2nd grades for .40; 3rd, 4th and 5th grades for .45; and 6th through 12th grades for .50. The price for extra milk will be .20.

Children from families whose income falls within the level shown on the attached scale are eligible for either free or reduced-price meals priced at .40 for lunch and .30 for breakfast.

To apply for meal benefits, you must provide the following information and sign the application: (1) list the names of everyone who lives in your household. Include parents, grandparents, all children, other relatives and unrelated people who live in your household, (2) list the social security number of each adult age 21 or older. If an adult does not have a social security number print "None", (3) list total monthly income and amount of income (BEFORE deductions for taxes, social security, etc.) each person received last month and where it is from, such as wages, retirement, or welfare. If you have a household member for whom last month's income was higher or lower than usual, list the person's expected average monthly income.

A person's intelligence can be accurately judged by what he or she is interested in.

officers were sworn into office on the second Monday in January of 1918; W.M. Wilterding, county judge; H.A. Douglas, sheriff and tax collector; C.C. Greenfield, tax assessor; J.B. Diggs, commissioner for precinct 1; and T.L. Snyder, commissioner for precinct 2.

School Programs Offering Broad Education Basis

Muleshoe I.S.D. offers vocational programs in Vocational Agriculture, Useful and Gainful Homemaking, Industrial Education, and Distributive Education. Admission to these programs is based on enrollment in appropriate grade level in Muleshoe High School.

It is the policy of Muleshoe I.S.D. not to discriminate on the basis of sex, handicap, race, color, and national origin in its educational and vocational programs, activities, or employment as required by Title IX, Section 504, and Title VI.

Muleshoe I.S.D. will take steps to assure that lack of English language skills will not be a barrier to admission and participation in all educational and vocational programs.

For information about your rights or grievance procedures, contact the Title IX and Section 504 coordinator, H. John Fuller, at 514 West Avenue G, Muleshoe, Texas, 272-3389.

Shop Muleshoe First!

NOTICE TO DELINQUENT TAXPAYERS

The Bailey County Appraisal District has retained the firm of Perdue, Brandon, and Fielder, Attorney at Law of Lubbock, Texas, to collect all delinquent taxes.

Final delinquent notices will be mailed at the end of August, 1987. The taxpayer must make payment or arrange for a suitable agreement within the month of September 1987 to avoid a tax suit being filed.

Fry & Cox, Inc. is holding a Bush Hog Ro-Till Field Day

Reduce Input Costs, Conserve Moisture and Soil Fights Soil Compaction.

Witness the Results of Minimum Till Hands on Demonstration

— Guest Speaker —
DR. ALBERT TROUSE
National Tillage Lab
Auburn University

TUESDAY, AUGUST 18, 1987
1:00 p.m.

DOYCE TURNER FARM
3 miles West of Progress Gin
or
8 miles Northwest of Muleshoe
on Clovis Highway,
1 mile South

ATTENTION MR. FARMER!

Plant the new variety of wheat that made the big yields plus high grazing!!

If you're going to graze cattle, plant the new varieties of wheat:

Certified Mustang • Certified Hawk • Certified Ram

These wheat are wide bladed, have high grazing potential plus yield potential of over 100 bushels per acre on irrigated land. The increase in grazing will off-set the cost of seed over planting your own seed.

The state of Nebraska says that you can increase your yield from 3 to 7 bushels per acre over non-certified seed by planting certified WHEAT seed.

Our bushel increase in yield will more than pay for the certified seed over using your own seed. The extra increase is profit to you.

We have the following varieties of Wheat Seed:

- Certified Hawk Wheat
- Certified TAM 105
- Certified Sage Wheat
- Certified Ram
- Certified Mustang

We Also Have Rye, Rye Grass & Triticale For Pasture.

McCormick Seeds Inc.

400 East Ash Muleshoe, Texas Ph. 272-3156

NEW AMT 600

Carries a big load and a small list price



\$3,395

- John Deere AMT™ 600 All Materials Transport features 600 pound payload capacity on level ground.
- Adapts to many jobs.
- Landscaping.
- Plant maintenance.
- Construction.
- Hunting, trapping, fishing.
- Grounds care operations.
- High flotation, 5-wheel configuration for low ground pressure and stability.
- Four-wheel tandem drive for excellent traction.
- Locking differential for added pulling power.
- 1000 pounds of towing capacity.
- 8.5 hp (341 cc) gasoline engine.
- Tilting 43 x 48-in. box.
- Automatic transmission with reverse gear.
- Shock absorbing front fork design.
- Comfortable saddle seat with backrest for low fatigue operation.

Nothing Runs Like a Deere®



Dent & Co.

W. Hwy. 84

Muleshoe

272-4296

Bailey County Journal

Classified

Call 272-4536

CLASSIFIED RATES
Per Word.....\$.15
Minimum Charge \$2.30

Consecutive Insertions
Minimum Charge \$2.00

CLASSIFIED DISPLAY RATES
\$1.75
Per Column Inch

DEADLINES
12 noon Tues.
For Thursday Paper
12 noon Friday
For Sunday Paper
We reserve the right to classify, revise, or reject any ad. Not responsible for any error after ad has run once.

1. Personals

MAKE THE friends of your dreams worldwide. Rush stamped envelope for free details!!! Young, P.O. Box 2511, Quincy, Ma. 02269. 1-32t-tfc

NANNY for two little girls. Live-in or out. Denver. Call (303) 758-7272. 1-33t-2tp

CUSTOM ROUND hay baling call after 7:00 Larry Free 925-6739. fl-18s-tfc

MARY KAY COSMETICS Josie Flowers 272-3865. fl-49s-tfc

OFFICE SPACE & storage space for rent call 272-4754. \$1-29s-tfc

BEAUTI CONTROL COSMETICS
Back-to-School Special 20% off on all purchases in August. Free color analysis. Nelda Hunt 925-6634. h1-33t-3tc

FOR YOUR insurance needs with Universal Fidelity Life see or call the Wilson Agency, 201 Ave. C. or phone 272-4159. w1-33s-2tc

PIANO TUNING & Repair. Douglas Rittenberry; Technician for McBrayer - Day Baldwin, Amarillo Symphony, E.N.M.U., 15% Discount to farm families NO MILE-AGE 359-9878. 1-30s-4tsp

PROFESSIONAL CARPET CLEANING
Reasonable Rates Free Estimates, Call Carlos after 5 mon-fri. 272-5362. Week-ends call anytime. cl-32s-5tc

STORAGE
Rooms Available For Storage \$25.00-\$30.00 per month Ted Barnhill 272-4903 bl-42s-tfc

CONCERNED About Someone's Drinking? HELP IS AVAILABLE through Al-Anon Call 227-2350 or 965-2870 or come to visit Tuesday nights, 8:00 p.m. or Saturday mornings at 10:30 a.m. at 1116 W. American Blvd., Muleshoe.

How True
Boy: "What do you call a man that drives a car?"
Dad: "It depends on just how close he comes to me."

3. Help Wanted

HELP WANTED
Muleshoe Independent School District is now accepting applications for qualified bus drivers for the 1987-88 school year. Applicants must be able to obtain, prior to employment, a Texas Class A or B License, pass a physical examination provided for by the school, have a safe driving record from the Texas Department of Public Safety, and have completed or be enrolled in a twenty hour driving course provided by the school.

The next Bus Driver Training Course is scheduled for August 3 through August 7, 1987 at the Muleshoe High School.

Salary range is from \$232 to \$332 per month with driving time being two to three hours each day.

Application forms may be picked up at the bus garage or the school business office. m3-30s-9tc

NEW PARTY PLAN
Candles by House of Lloyd is now hiring demonstrators to show beautiful line of candles & accessories that sell itself. Free kit & supplies. No collecting or delivering. Call Ernestine Barretero 938-2618. b3-32s-6tcts

\$100 PER 100
Envelopes Paid, Process mail from home. No Quotas. Limits. Free Details. Rush Self-Addressed-Stamped Envelope. Blackman, 20 Lynwood Cir., Asheville, NC. 28806. 3-20s-tfc

ELECTRICIAN needed for Industrial Plant. Please send resume to P.O. Box 484, Muleshoe, TX. 79347. v3-33t-tfc

BOOKKEEPER WANTED
Full time. Responsible for T&L; A/R; A/P; P/R; computer experience required. Apply in person. Bamert Seed Co. b3-32s-tfc

PART TIME LVN, RN or EMT to take health history for insurance company. Reply to Portamedic P.O. Box 6705 Lubbock, Texas 79493. Include Telephone number. p3-32s-4tc

GREEN THUMB, Inc. is taking applications for those persons 55 years of age and older who meet Department of Labor income eligibility requirements to work with local non-profit organizations. Interested applicants should contact Green Thumb, Inc., P.O. Box 7898, Waco, TX 76714. Green Thumb is an Equal Opportunity Employer. g3-33s-1tc

4. Houses For Rent

2 - 2 BEDROOM homes for rent. Call 272-5383 after 6:00. m4-32t-4tc

FOR RENT 2 bdrm., remodeled house available now. Call 272-4475. h4-33s-1tc

5. Apts. For Rent

1 BEDROOM FURNISHED apartment. Good location. Water paid. Phone 272-7575. p5-32s-tfc

2 BEDROOM apartment. Good location. Range & refrigerator, furnished. Water paid. Plumbed for washer & Dryer. Phone 272-7575. p5-32s-tfc

8. Real Estate

FOR SALE: Methodist Church Building, Bu-la, Tx. 3,072 sq. ft. must be moved. Sealed bids received through Aug. 20, 1987. Rev. Bruce Parks Box 1299, Plainview, Tx 79073. 8-29s-9tp

HOUSE FOR SALE by owner. 2 bdrm., 1 bath, fireplace, and efficiency apartment in back. Owner financing. Call 272-3006 or 272-5813. oR. 18s-tfc

NICE COUNTRY home, 2048 sq. ft. Brick, 3-2-2 1 Acre tract, 30X40 fab steel barn. Paved drives, 6 ft. block fence, nicely landscaped. Big orchard. 1 1/2 mile North of Maple TX. Intersection Highway 54 and 1731 - 806-793-7734 or 806-946-3452. p8-33t-8tc

8. Real Estate

116 E. Ave. C. BINGHAM & NIEMAN REALTY 272-5285 --- 272-5286

We have homes for as little as \$600.00 total move in cost, with payment scheduled according to income for qualified buyers!!!!

RICHLAND HILLS
NICE-3-2-2 Brick, Cent. A&H, built-ins, FP, fenced yard, & more..... *****

IMMACULATE 3-2-2 Brick, corner lot, Cent. A&H, built-ins, FP, loads of storage & closet space, sprinkler sys.!!!! *****

PRICE REDUCED-3-1-1 Brick, Cent. heat, Evap. air, built-ins, fenced yard..... *****

SPACIOUS 3-2 1/2-2 Brick Home on corner lot, Cent. A&H, built-ins, fireplace, loads of storage, 2900+ sq. ft. of living area, lots of extras, undgr. sprinkler sys., fenced yard. A GREAT BUY!!!! *****

PARKRIDGE

IMMACULATE 3-2-2 Brick Home, Cent. A&H, built-ins, fireplace, energy efficient, nicely decorated, plus beautifully landscaped yard. \$50's!!!! *****

HIGH SCHOOL

PRICE REDUCED-3-2-2 Brick, Cent. A&H, built-ins, nice carpet, FP, basement!!!!!!\$40's. *****

JUST LISTED-3-2-2 home, corner lot, nice carpet, fenced yard. \$30's!!!! *****

3-1-1 home, corner lot, Cent. A&H, built-ins. \$30's..... *****

SPACIOUS 3-2 Brick, Cent. A&H, built-ins, nice den w/FP, fenced yard, storage bldg., & much more. \$70's!!!! *****

2-1-1 home, wall furnace heat, nice carpets. \$16,000..... *****

JUST LISTED-3-1 home, nice carpets, new roof, storm windows, & much more. \$20's!!!! *****

NICELY REMODELED 3-2-1 carport home, Cent. heat, evap. air, built-ins, utility, earthtone carpets, ceiling fans, covered patio, fenced yard & more. \$30's!! *****

3-2-1+2 carport home, Cent. A&H, built-ins, fireplace, fenced yard & more. \$40's!!!! *****

LENAU ADD.

3-2-2 carport home, Cent. A&H, large den w/FP, encl. patio, loads of storage. \$50's!!!! *****

3-1 1/2-1 home. Central Heat, Nice. Priced To Sell.

DIANNE NIEMAN, BROKER
"WE APPRECIATE YOUR BUSINESS"

8. Real Estate

1981 ARTCRAFT Mobile Home, 14x76, 3 bedroom, 2 bath, refrigerated air conditioning, central heat, fully skirted, 1 carpeted porch, 150' chain link fence, 10'x9' storage building, very good condition, Call Mike Dale at 965-2683 or 272-5576.

HOME FOR SALE: Priced Right!!! 2 bedroom, 1 1/4 bath, living room with dining area, large kitchen with breakfast area, den with fireplace (den could be 3rd bedroom), double garage, large lot with sprinkler system. Located at 510 E. Chicago. Call Marilyn between 7:30 am to 4:00 pm at 965-2123, after 5:00 pm call 272-5690 or 505/392-1173.

PRICE TO SELL: Nice 3 bdrm., 2 bath, brick home, 2 car garage, high efficiency, central refrig. air & heat. Concrete patio with back yard. Call for appointment. 909 Hickory, 272-5045.

9. Automobiles For Sale

1983 GMC Suburban, loaded, good tires, excellent condition, phone 806-272-4001. 9-33s-2tp

8. Real Estate

HOUSE FOR SALE: 2 bedroom, 1 bath, garage, wood - burning stove, storm windows, 24 x 14 shop, 2 car carport. \$28,000, 218 E. Fir. Call 272-3298. 8-30t-8tp

HOUSE FOR SALE: beautiful 2 story country home on 1.3 acres, 1 mile E. on Plainview Hwy - approximately 3,000 sq. ft. 4 bdrm, 2 1/2 bath, 2 living areas. 272-3907 or 272-4987. L8-31s-5tsc

11. For Sale Or Trade

FOR LEASE BY THE acre 2 - 510 Internationals, double-disc drills. Phone 272-3733. 11-32s-tfc

FOR SALE: Black rat-ran chairs with white ultra suede cushions, 272-3747.

FOR SALE 8 hp Troy-built tiler, recliner, and a grill. Call 272-4683. a11-31s-tfc

JAMES'S GARDEN
Great Sweet Corn --LAST CALL--
Order @ 806-925-6716 j11-33t-3tc

Howler
Teacher—What is a flood?
Pupil—It's a river that's too big for its bridges.

8. Real Estate

NICE 3-2-2 Brick, Cent. A&H, built-ins, fenced yard. \$40's!!!! *****

3-2-2 carport home, corner lot, nicely remodeled. \$30's..... *****

LARGE BUILDING on 2 lots, paved parking..... *****

PRICED TO SELL-Office Bldg. across from courthouse..... *****

APPROX. 3,000 sq. ft. bldg.. Railroad frontage. CASH PRICE \$15,000.00. *****

COUNTRY CLUB
3-2-2 Brick, Cent. A&H, built-ins, fenced yards, & more. \$50's!!!! *****

COUNTRY HOMES
JUST LISTED-2-1-1+1 carport home on 1 acre on pavement close to town, built-ins, wall furnace heat, evap. air, satellite system, and fenced area for horses or calves. \$20,s!!!!!! *****

JUST LISTED-Nice 3-2-2 Brick home on 2.5 acres, built-ins, fireplace, on pavement close to town!!!! *****

3-2-3 carport home, built-ins, Geo. A&H, storm cellar, barns, corrals, 11 acres..... *****

3-1-2 home, 1/2 acre, Cent. A&H, new paint, nice carport, cellar. \$30's!!!! *****

2-1 home, 20 acres, sub. pump, -sprinkler, barns & corrals. \$40's!!!! *****

SPACIOUS 3-2 1/2-2 Brick Home on 5 acres, Cent. A&H, built-ins, fireplace, sunroom, finished basement, sprinklers sys., storage bldg., horse barn, calf barn, corrals & much more. Close to town. MUST SEE TO APPRECIATE!!!! *****

3-2 home on 1 acre on pavement close to town, Cent. A&H, built-ins, storm windows & doors, fenced yard. \$30's!!! *****

3-1 home on .59 acres on highway at edge of town plus 1-1 mobile home for rental unit, storage, or workshop. A GOOD BUY!!! *****

HIGHLAND ADD.

2-1-1 home, wall heat, evap. air, fenced yard. \$20's!!!! *****

GEORGE NIEMAN, BROKER

15. Misc.

FEED WHEAT
Several varieties of Rohm and Haas High Germination Hybred Seed Wheat cleaned, baged & treated. \$3.60 PER BUSHEL
Bruegel & Son Elevators
Box 1069
Dimmitt 79027
ph. 806-647-3138
b15-32s-8tc

GOVERNMENT HOMES from \$1 (U-repair) also tax delinquent & foreclose properties. Available now. For listing call 1-315-733-6062 EXT J1741. 15-31s-6tspts

STOP!
Before you pay next months rent. Call collect Alliance Homes 806-763-4051. a15-30s-tfc

18. Legal

PUBLIC NOTICE BUDGET HEARING
The Muleshoe Board of Trustees will meet Monday, August 20, 1987, for the purpose of conducting a public hearing on the 1987-88 proposed school budget. 8:00 p.m. - Temporary Administration Offices in the Jr. High Gym.

8. Real Estate

640 ACRES IN PLEASANT VALLEY- 3 electric sprinklers, excellent water, productive soil, can be divided. Seller is motivated.

1050 ACRES OF DRYLAND- 350 acres cultivated, balance is grass. Wheat allotment. 2 windmills. Absentee landowner is anxious.

160 ACRES IN LAMB COUNTY- Excellent water, electric sprinkler, fully allotted, fenced, prime opportunity for first time buyer.

640 ACRES- 4 electric sprinklers, steel pens with concrete bunks, domestic well, all fenced. Best soil & water. Rare opportunity, good value.

750 ACRES OF GRASS FOR LEASE by the hundred weight with 180 Acres of wheat to lease for winter pasture. Call for Details.

8. Real Estate 8. Real Estate

SMALLWOOD REAL ESTATE-BROKER
232 MAIN 272-4838
2-bedroom, one bath, stucco. small lot. \$500.00 Down, \$160.00 per month.

STUCCO, 3-bedroom, two bath, central heat, evaporative cooling on roof, carpet. 1360 sq. feet. \$19,900.00. *****

RICHLAND HILLS, corner lot. 3-bedroom, 1 1/4 bath, 2-car garage, central heat, evaporative roof cooler, range, dishwasher, carpet, drapes.

JAMES F. HAYES & CO.
AGRICULTURAL REAL ESTATE
Vic Coker-Agent
(806) 965-2468

8,000,000 POUNDS OF CORN STORAGE in two steel bins with concrete hopper bottoms, boot pit, leg, and aeration system. Additionally there is a 80' X 90' X 16' steel barn with 30' door. Underground fuel storage. Domestic well. All this on 5 acres enclosed by a chain link fence. Call Vic for further details.

160 ACRES WITH MODERN HOME N.E. of Muleshoe in Parmer County. Electric Sprinkler. Good soil, Best water. \$700 / acre.

640 ACRES IN PLEASANT VALLEY- 3 electric sprinklers, excellent water, productive soil, can be divided. Seller is motivated.

1050 ACRES OF DRYLAND- 350 acres cultivated, balance is grass. Wheat allotment. 2 windmills. Absentee landowner is anxious.

160 ACRES IN LAMB COUNTY- Excellent water, electric sprinkler, fully allotted, fenced, prime opportunity for first time buyer.

640 ACRES- 4 electric sprinklers, steel pens with concrete bunks, domestic well, all fenced. Best soil & water. Rare opportunity, good value.

750 ACRES OF GRASS FOR LEASE by the hundred weight with 180 Acres of wheat to lease for winter pasture. Call for Details.

WHITT-REID REAL ESTATE

201 Main Office 272-3611

3 Bedroom, 1 bath, fenced backyard, gas grill, storage, Morrison Addition. \$22,000 OH16. ***

2 Bedroom, 1 bath, fireplace, assumable loan. Must see to appreciate \$25,000. 25H32 ***

NICE 2 bedroom, 1 bath, good condition \$25,000 Hillcrest Addition #2. 25H31 ***

3 Bedroom, 1 and 3/4 bath, Hillcrest Addition #2 \$28,000. 25H30 ***

2 lots to build on, McCain Addition \$3500 for both lots.
Roy Whitt **Thursie Reid**
272-3058 272-5318
Certified Appraiser

GRAIN PRICES
CORN.....320 cwt.
MILO..... 290 cwt.
SOYBEANS.....Call
NEW WHEAT.....210
COMMODITY CERTIFICATES
110%
Prices - August 14, 1987
FARMERS CO-OP
272-4335

One Minute Sports Quiz

1. Who is Mike Henne-man?
2. For whom does Steve Trout pitch?

Answers:
1. Relief pitcher for the Detroit Tigers, of Festus, Missouri.
2. The New York Yankees.

Think Classified!