

LAMB COUNTY LEADER-NEWS

VOLUME 52 NUMBER 11 LITTLEFIELD, LAMB COUNTY, TEXAS, SUNDAY, JUNE 2, 1974 THREE SECTIONS 34 PAGES

15 CENTS TAX INCLUDED

C-C To Conduct Membership Drive

The Littlefield Chamber of Commerce and Agriculture will stage its annual membership drive Tuesday, June 4. Members of the board of directors will meet at 8 a.m. in the council chamber of the city hall, where prospect cards and instructions will be issued.

Board members will make progress reports at noon that day.

Benny Zahn has been appointed to fill the unexpired term of David Hamblin on the board. Rev. Hamblin is moving to Abilene to pastor a church there. He is immediate past president of the C-CA.

Chamber officials also remind all area artists that the deadline for submitting sketches for the Littlefield Commemorative coin is noon Monday. Sales for the coins, which will be available in August, are continuing at a fast clip according to Chamber Manager Bill Payne.

Sheriff's Office Checking Suicide

Sheriff's deputy Elmer Hall conducted an investigation of an apparent suicide six miles west and two miles north of Earth early Thursday morning.

Delia Carrasco, 26, of Muleshoe was pronounced dead at the scene by justice of peace Ted Borum. The woman had been shot with a .32 calibre revolver. Her body was east of a farm house near a shed.

Borum ordered an autopsy.

Ironically, the woman's husband killed himself eight months ago with the same gun as that found at the scene. After the man's death the gun was at the Muleshoe sheriff's office, and the woman had persuaded the Bailey County sheriff to let her have the gun.

In other reports at the sheriff's office, Floyd Houston of Earth reported the theft of items from his barber shop valued at \$95. Taken were a pair of clippers, two bottles of tonic and a razor.

Only one arrest was made the latter part of this week. A Sudan man was arrested on a warrant for driving while intoxicated, and made bond of \$1,000.

Incilmen Point Board

Friday noon, Littlefield City Board of Equalization and to the General Telephone rate

to serve on the Equalization Board were Roger Jones, Paul McRobert Richards, Charles and Jerry Tunnell.

men learned that the final rate for the General Telephone rate will be set for June 27 and 28 in court at the county courthouse. Board will decide the fair rate of service to the company, and the rate

Littlefield, Sudan Beauties Latest Entrants In Pageant



SEVEN cooling towers located at Southwestern Service's Plant X was destroyed at approximately Tuesday afternoon by high winds or tornado-like. The huge structure, 40 feet high, 42 feet wide and

420 feet long, was composed primarily of treated red-wood and it is expected to take four or five months to replace it.

(Staff Photo)

Two more young women have entered the Miss Lamb County Beauty Pageant.

Cris Montalvo of Littlefield is sponsored in the pageant by Western Auto, and Mary Ann Bellar of Sudan is sponsored by Central Compress of Sudan.

The pageant is slated for Friday night, June 14, at 8:30 in the Littlefield High School Auditorium.

It is possible that the winner of the Lamb County pageant may go on to the Miss Texas Contest and eventually be entered in this year's Miss America extravaganza.

The annual pageant is sponsored by the Beta Sigma Phi Tau Chi Chapter.

Cris Montalvo is 17 and a junior. Her parents are Mr. and Mrs. Manuel Montalvo of 1107 W. 10th. Her talent includes playing a saxophone and singing and dancing.

Miss Montalvo is active in school activities, is a member of the pep squad, enters school plays and attends all school spectator sports events.

Mary Ann Bellar is 17, and the

daughter of Mr. and Mrs. Waymon Bellar. A junior at Sudan High School, she is head cheerleader, active in basketball, tennis, golf, volleyball, and track. She participated in her junior play, is active in FHA, FTA and was Plowgirl and FFA Sweetheart. She has received several school titles including Most Beautiful, Most Talented, Friendliest and Wittiest.

Her talent includes playing a clarinet and the piano.

The first two contestants in the 1974 pageant are Tonya Kay Bearden and Darla Hedges, both Amherst High students.

Entry blanks for the contest may be picked up at the Leader-News, or contact Judy Vaughn at 385-5941 or Bonnie Stephens at 385-5700.

Miss Lamb County will be awarded a plaque and a \$100 scholarship. The first runner-up and Miss Congeniality will be awarded plaques, and charms will be presented to the second, third and fourth runners-up.



CRIS MONTALVO



MARY ANN BELLAR

HAD A NICKEL, TELL YOU WHAT I'D DO

5¢ Will Buy An Empty Pop Bottle, One-Third Cup Coffee, 100 Peas

LAH RODGERS probably comes as no surprise to that a nickel will not purchase in our inflated economy.

surprising ideas on What A Can Buy are presented here by a Littlefield ninth graders who this assignment for the Leader-

seems most surprising to the is what a nickel bought in "the days." Almost all of the freshmen on the former status of the as told by their parents and their

Roberts remembers hearing her father talk about when his father give him a nickel to go to town. could buy all sorts of candy and she marveled. "They used to nickel cokes, nickel stamps, nickel and many other things for a

concluded her remarks by adding thought. "The nickel has lost a lot of and will probably lose more. I never have to tell my grand kids the good old days when you could the show for ONLY three dollars, 10-cent box of popcorn and get a quarter."

Harvey said his parents always about when they could go to the out candy and popcorn and do it about three nickels. "now it costs three dollars," he added.

aid in his drastic search for things a nickel can still buy he a news reporter talking about "Economic" the movie which has much attention lately.

looked up," he wrote, "I saw a the lobby of the theatre which DISTRESS BAGS 5 cents'. I that these people must really their nerve charging someone for a thing as that. But as I continued research I found that they weren't making any profit. In fact, they are barely breaking even. When I at how much plastic bags were. I needed a 'distress bag' myself."

ard Rogers went to a great deal of to document today's nickel he discovered that a nickel will about two vienna sausages or three . A nickel will buy 100 dry peas, 62 noodles, 34 small cut

green beans, 240 Cocoa Krispies or four-fifth of an egg. The test for this data was held between the Waltons and Music Country U.S.A. at 700 Crescent Drive.

Harlan Gilliam pronounced the day of doom on the days when a boy with a nickel could get gum drops, peppermint sticks, peanuts, popcorn and a ticket to the show. He thinks that in the future nickels probably won't be minted. "If we do not have the nickel, what will we pay the deposit on Coke bottles with?" he asked.

In his deductions, Harlan said a nickel will buy one-sixth of a slice of pizza, one-third cup coffee, one-ninth of a gallon of gasoline, and one-eighth of a box of malted milk balls.

Olga Mendez called the era when carnival rides and comic books were a nickel "glorious days."

Although they can't remember when hamburgers could be purchased for a nickel, Lesa Berry and Jay Lee bemoan the passing. They figure the increase in the price of a hamburger is 13 to 19 nickels.

Lesa wonders what happened to "the good old days" when a nickel would buy a big, juicy hamburger. "Now you pay nearly a dollar and get about half the meat," she said.

Jay added that the nickel is now used mostly for tax on a dollar and that you may consider yourself broke if you're down to a nickel.

Lesa discovered that about the only place where a nickel still has purchasing power is at a garage sale.

Several students said a nickel won't even buy a bar of candy, and that although the price has been doubled the size has been cut in half. Bruce Harlan added that even the size of penny bubble gum has been reduced considerably.

"You can see the devaluation of the nickel yourself," he said, "by going into a five and ten cent store where hardly anything can be bought for either of these amounts."

Blake Wood said the nickel lives on, even though it will only buy an empty Coke bottle with a bug or two in it. "And if you're lucky," he said, "You might find a shriveled orange or apple at the fruit stand for a nickel, but it will probably be only a bite or two."

Several lemon lickers said you could buy a pack of salt for a nickel "and sometimes a very small lemon."

Dennis McCain summed up the worth of nickel pretty well by quoting the inscription on the front of the coin. "It reads: In God We Trust," he said. "I think it should read: In God We Trust (all others must pay cash.)"

After noting the price of things, Tana Ratliff said the nickel is the only thing that has decreased in value during the past 50 years.

Drivers Advised Continuance Of Gas Conservation

Motorists were advised to continue their conservation of gasoline or be prepared for either waiting lines at Service stations or for signs reading "Out of Gas."

This was the advice given by Delbert M. Fowler of Dallas, administrator for the five-state region of the Federal Energy Office (FEO).

"Too many people are operating under the illusion that the lifting of the Arab embargo for the United States solved the energy crisis," Fowler stated.

"But these people are just fooling themselves, because we do still have an energy crunch, and it will be with us for years to come," the FEO official continued.

Fowler said motorists are going to have to cut back their speed to the legal 55-mile-per-hour limit, continue and expand carpooling, and avoid unnecessary trips. There is further need to try riding the bus to work and to keep those thermostats up to 78 degrees.

The Texas Transportation Research Institute has estimated that from 2 to 5 per cent of all gasoline used in automobiles could be saved if we all reduce our speed from 70 to 55 miles per hour.

Five percent amounts to total consumption for a full day and a half in every month.

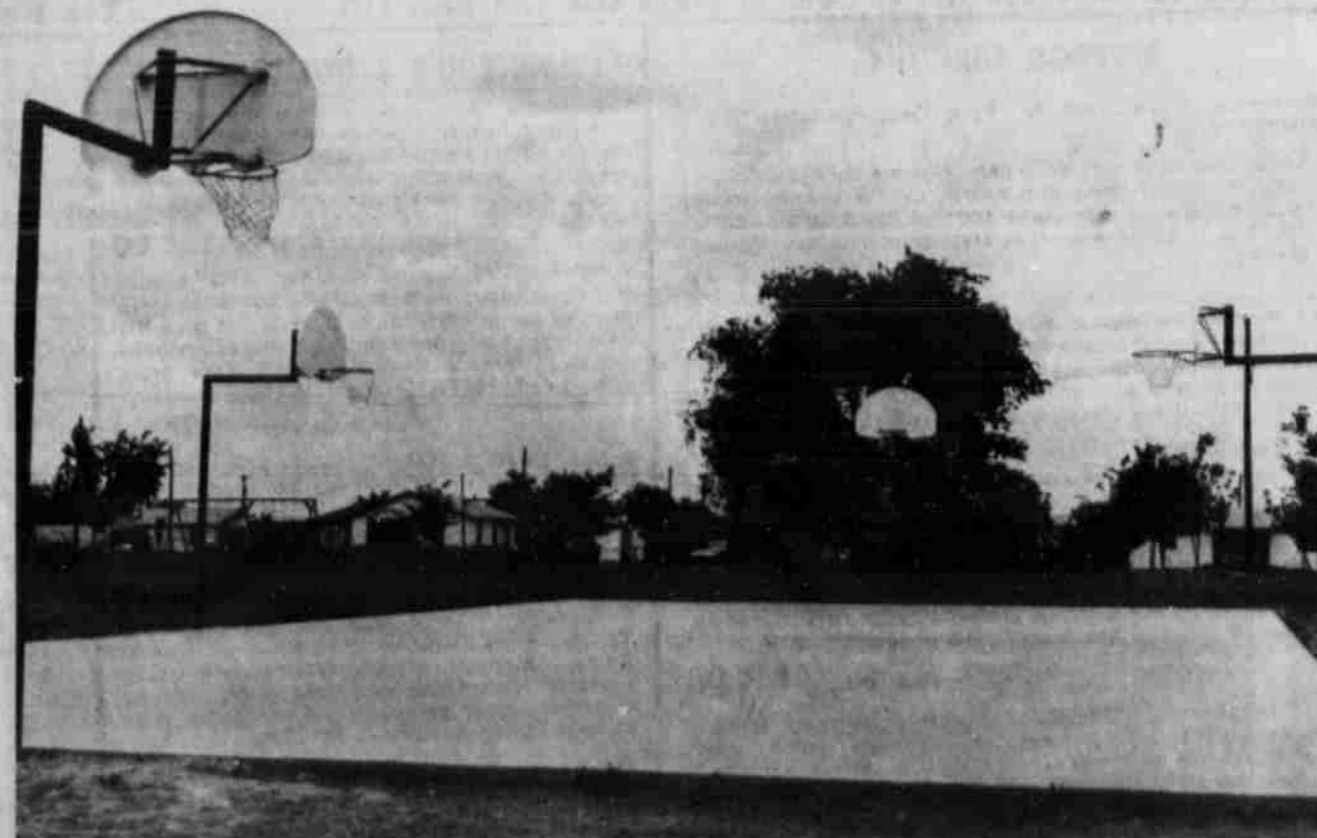
Fowler said that with strict conservation, it would be possible for most persons to take their annual summer

vacation, but he added there would still be spot shortages throughout the nation.

"It is more energy-efficient to take the train or bus or perhaps the airplane for longer trips than it is to take an automobile.

Fowler further pointed out that it was just a year ago on the Memorial weekend that many motorists began feeling the gasoline shortage—long before the Arab embargo began.

With continuing conservation on the part of the public, and with the allocation system to insure a more even distribution across the nation, the spot shortages of last year should not be felt this year.



READY FOR THE SUMMER is this four-goal basketball court recently completed in Dunbar Park. The much-needed facility was a project of the First United Methodist Church, Littlefield. Serving as project

chairman was Byron Ford. David Hamblin, pastor of the church, served as the "sidewalk superintendent."

(Staff Photo)

Remember, The Best Values In The Area Can Be Found In Littlefield During DOLLAR DAYS!

Couple Exchanges Vows In Springtime Setting

Help Wanted Male or Female LEVI-STRAUSS & COMPANY Announces

New increased earning opportunity while you learn to be a professional sewing machine operator. After completing training, opportunity to earn \$2-\$4 and above.

- *No tests required
- *No experience required
- *Free hospital & life insurance
- *2 paid vacations each year
- *weekly pay
- *retirement plan

*working hours 7 a.m.-3:30 p.m.
Call 763-9266 for interview appointment. 524 E. 40th, Lubbock, Texas.
We are proud to be an equal opportunity employer.

Miss Sheryl Ruth Willson, daughter of Rev. and Mrs. Glenn Willson of Amherst, and Hoyt Steven Wauhob, son of Mr. and Mrs. George Wauhob of Booker, were united in marriage Saturday evening, June 1, in the First Baptist Church of Amherst.

The father of the bride, assisted by the uncle of the groom, Rev. Bill Baxter of Tuttle, Okla. officiated at the double ring ceremony. The couple exchanged vows in a springtime setting, featuring floral arrangements of daisies and mixed spring flowers and illuminated by yellow votive candles in spiral candleabra.

Presented in marriage by her father, the bride wore a formal gown of candlelight organza, fashioned with a high neckline and a full skirt. Scalloped bobbin lace threaded with satin ribbon

outlined a panel of flocked voile and was repeated on the oval yoke and Bishop sleeves. A wide ribbon of candlelight satin encircled the natural waistline. A matching tiered veil of imported candlelight illusion fell from a small lace headpiece overlaid with satin ribbon, bobbin lace and seed

pearls. She carried a white Bible, presented by her Y.W.A. sisters, and encased in a handmade lace and pearl ivory cover. Her Bible was topped with a colonial bouquet of daisies, mixed Spring flowers, baby breath and stephanotis. For something old, she wore a lavalier

which belonged to her maternal grandmother; something new were earrings given to her by the groom; and something borrowed was an heirloom ruby ring belonging to her sister. A blue garter and a six pence in her shoe completed her bridal attire.

Mrs. Robert Wheeler of Plainview served her sister as matron of honor; and Miss Cheri Wauhob of Booker, sister of the groom, was her maid of honor. Bridesmaids were Miss Kerry Madison of Amarillo, cousin of the bride, and Miss Robin Reecer of Plainview. Her attendants wore identical gowns of aqua tussah linen, fashioned with a square neckline, natural waist, and tiered skirt. Candlelight lace accented the short puffed sleeves, bodice and each tier of the skirt. Their headpieces were of ribbon and flowers, and they carried yellow votive candles surrounded by daisies and Spring flowers.

Billy Vestal of Booker attended the groom as best man. Groomsmen were David Wauhob of Baltimore, Md., brother of the groom, Ron Melnichuk of Winnipeg, Canada, and Philip Golden of Plainview.

The bride's niece and nephew, Ronda and Robbie Wheeler of Plainview, served as flower girl and ring bearer. Cousins of the groom, Cindy and Doug Baxter of Tuttle, Okla., presided at the registration table and handed scrolls to the guests.

Ushers were Robert Wheeler of Plainview, Paul Holland of Lubbock, David Wilson of Stanton and Pat Precott of Albuquerque, N.M. Music was provided by Miss Jon Ann Carter of Lubbock, pianist; and by Mrs. Lanny Frederickson of Plainview, vocalist, who sang "For All We Know", "Sometimes", and "Color My World".

The mother of the bride wore a formal gown of turquoise chiffon over satin, accented with matching satin belt and rhinestone buttons. The groom's mother wore a floor length aqua and white print with sheer sleeves. Their corsages were ivory sweetheart roses.

Following the ceremony, a reception was held in Fellowship Hall of the church. The bride's table was laid with an ivory lace over satin full skirted cloth and featured a candleabra centerpiece of ivory tapers and flowers. The three tiered cake topped with ivory cupid holding doves was served with fruit punch by Mrs. Larry Murphy of Abilene, cousin of the bride, Miss Sharon Reeves of Lockney, and Mrs. Kenny Fisher of Sudan. An ivory antique satin and lace cloth covered the groom's table and featured a cupid centerpiece. From it, chocolate cake and coffee were served by the groom's sister-in-law, Mrs. David Wauhob, and his cousins, Miss Cindy Baxter and Mrs. Sharon Davis of Liberal, Kans. Robbie and Ronda Wheeler handed rice bags to guests.

For her wedding trip, the bride chose a pant suit of natural linen and a blouse of yellow silk.

The bride is a graduate of Amherst High School and is a senior at Wayland Baptist

Cathey Snitker Honored With Tin Can Shower

BULA— Miss Cathey Snitker, bride-elect of Ronnie Gilbert, was honored Friday evening in the school homemaking department with a tin can shower.

She came for the FHA slumber party to find their sewing room decorated in her colors of purple and white.

The serving table was laid in white lace over white, white cake, punch and nuts from a purple cup were served by girls alternating at the serving table.

Cathey received a large trash receptacle from the hostesses filled with cans of vegetables and fruit. Labels were removed from the cans so Cathey would have to guess what was in the can, but to help her, each girl wrote what the can contained on bottom of the can.

Attending besides the 15 FHA girls were their sponsor, Mrs. Kester and Miss Gayla Underwood.

Cathey and Ronnie plan a 6 o'clock wedding at the Enoch Methodist Church on June 22.



MRS. HOYT STEVEN WAUHOB

SUPER TOPS AND SHORTS

PAZAZ

329 PHELPS

385-4090

STACY-MASON'S

MILLION DOLLAR SALE

Stacy-Mason Has A Million Dollars
Sales Goal To Meet!

Don't Wait On July Clearances - Don't Wait Till It Rains - Don't Wait Till Prices Go Up - Don't Wait On Anything
The Best Furniture And Carpet Buys For 1974 Are Here Now At Stacy-Mason - Don't Wait-

LA-Z-BOYS

Stacy-Mason has the largest selection of La-Z-Boys in Texas. Over 800 in stock, your welcome to count them. Remember Father's Day.

1. Traditional or modern La-Z-Boy recliner-rocker-your choice of Herculon or vinyl fabrics. La-Z-Boy suggested list is 234.00, your price **\$138.00**
2. Velvet La-Z-Boy recliner-rocker-your choice of red-gold-olive-orange velvet-Regular size chair to fit average size person. Also available in Herculons and vinyls-Suggested list price 267.00, your price **\$168.00**
3. King size La-Z-Boy for the big man-your choice of velvets-vinyls-and Herculons-the big Dad would be really proud of this La-Z-Boy-list price 291.00, your price **\$198.00**
4. La-Z-Boy love seat that rocks and reclines in your choice of velvet colors-real comfort for people who do not have room for 2 La-Z-Boys-list price \$16.00, your price **\$299.00**
5. La-Z-Boy swivel rockers-our newest product-quality-comfort and beauty in La-Z-Boy tradition-your choice of velvet colors-list price 201.00, your price **\$148.00**
6. La-Z-Boy executive desk chair-yes-now Dad can take his La-Z-Boy to the office-leans back and has foot rest-yet designed for the office-list price 420.00, your price **\$250.00**

CARPET

Stacy-Mason's in-stock selection of the latest styles & colors is excellent. If you need carpet the Million Dollar Sale is the time to buy it. Shop this selection & you will agree that Stacy-Mason's carpet prices are right—Stacy-Mason has a good selection of short rolls & remnants because of our large carpet volume. These 1st quality prices will be sold during this sale at sacrifice prices. You can save DOLLARS on these prices during the Million Dollar Sale.

FREE DELIVERY -

Use Your Good Credit

CHAIRS & ROCKERS

1. Condren swivel rockers-traditional styling in your choice of gold, olive, orange velvet-extremely comfortable-Regular 169.95, your price **\$128.00**
2. Spanish hiback chairs-brass knobs-silk rope trim-beautiful Adslay stripe velvet in your choice of colors-Reg. 199.95, your price **\$148.00**
3. La-Z-Boy La-Z-Rocker-Special limited edition of the already famous swivel rocker. Combination of heavy crush velvet outside and beautiful wide stripe inside on seat and back-good color choice-Reg. 219.95, sale **\$158.00**
4. High back platform rocker-Early American design-colorful scotchguard print fabrics of 100 percent cotton-rich maple finished wood-Reg. 89.95, your price **\$58.00**
5. Super big and comfortable chair and matching ottoman-practical natural colors in its durable 100 percent Herculon plaid fabric-pub styling-Reg. 299.95, your price **\$188.00**
6. Classic traditional chairs. Mildly formal in an excellent antique style velvet. Colored to complement many of Stacy-Mason's or your patterned sofas. Made by Condren-Regular 109.95, your price **\$142.00**
7. Riverside hi back swivel rocker-heavy woven crush velvet in your choice of tangerine-gold and olive colors-certain comfort-Reg. 199.95, your price **\$143.00**

SOFAS

1. Elegant traditional 3 cushion sofa by Condren-Your choice of Ardsley stripe gold & green velvet or the newest broad stripe velvet in Harvest colors. Quality made for long lasting beauty-Reg. 499.95, your price **\$338.00**
2. Your choice of traditional or early American styles-Wide choice of velvet-Herculons-& nylon fabrics-Over 40 different sofas in this group-You will not be able to believe these great buys. Regular 299.95 and 399.95, your price **\$148.00**
3. Den sofa-comfortable-practical pub sofa in 100% herculon. Newest plaid look texture-Big tail back & deep seating for comfort plus-Regular 399.95, your price **\$278.00**
4. Riverside traditional sofa-Quilted La France velvet-The original railroad track design. Not the copy but the real thing-Choice of two colors-Coordinates with sleeper & love seat. Reg. 529.95, your price **\$348.00**
5. Elegant new Riverside sofa with the newest look in quilted pattern velvet. Small scale flowers in greens-golds-blues & rusts floating on a off-white background. Beautiful-Regular 699.95, your price **\$432.00**
6. Woven crush velvet hiback sofa-transitional feeling with comfort plus. Here is a hiback sofa that does not muss the ladies hair-Choice of light olive-gold-tangerine colors. Reg. 399.95, your price **\$288.00**
7. Pillow arm sofa-Your choice of bold colors in Herculon plaid or nylon velvet in bronze or tangerine. Made by Riverside-unusual sofa look. Comfortable & practical-Regular 449.95, your price **\$288.00**

SLEEPERS

1. Riverside Sleeper-Spanish design with peacan wood trim-quilted velvet fabric in multicolor design-interpring mattress-Regular 549.95, your price **\$274.00**
2. Riverside sleeper-deep quilted La France velvet in rich green gold colors. Famous Rail Road track pattern-interpring mattress-Regular 609.95, your price **\$448.00**
3. Riverside Sleeper newest and most demanded quilt velvet-off-white background with patterns in gold-green or blue-elegant with perfect tailoring-Regular 599.95, your price **\$408.00**
4. Riverside Early American sleeper-La France quilted velvet in a floral pattern-easy our best seller-interpring mattress-Regular 609.95, your price **\$448.00**
5. Riverside Early American sleeper-100 percent Herculon tweed fabric-long lasting. Queen size makes a great bed-Regular 399.95, your price **\$289.95**
6. Riverside Sleepers-classic traditional design-your choice of heavy Herculon fabrics or elegant crush velvet-excellent color choices-Regular 399.95, your price **\$289.95**

Furniture Manufacturers Are Raising Prices Every Day -

This Furniture Can Not Be Sold At Prices Like This Next Fall

Shop & Compare Prices & Quality

You Will See Stacy-Mason Has The Rest Beat

BEDROOM FURNITURE

Remember-Plastics are for Ping Pong Balls-Not Bed Room furniture.

1. Harrison solid maple-100 percent wood-early American style. Beautiful landscape mirror over 9 drawer triple dresser-2 drawer nite stand-massive headboard-a really new look in Early American styling- four pieces regular 599.00, your price **\$348.00**
2. Harrison antique-100 percent solid oak wood-no plastics. definite Spanish design-dark rich oak finish-choose triple dresser with cathedral mirror-cathedral headboard-commode nite stand-many other pieces of antiques are available-all four pieces-Regular 649.00, your price **\$488.00**
3. Harrison rustic oak-a major group for Stacy-Mason with all coordinated pieces-you can furnish any size room from pieces like Bachelor chests-bookcases-dressers-trundle beds-desks. Here's a good looking boys room-double dresser with mirror-student desk with bookcase hutch above-bachelor chest with bookcase above. Bunk bed with storage underneath bottom bunk. Any young man would be pleased with this group-all 7 pieces regular 1185.00, your price **\$888.00**
4. Thomasville "Litchfield" authentic colonial styling made from heavy oaks-rich medium finish with distressing-large triple dresser, vertical mirror, 5 drawer chest-spindle head board and nite stand-real quality-all 5 pieces regular price 880.00, your price **\$548.00**

This is only a partial listing of the large stock of bedroom furniture on sale.

LIVING ROOM & DEN TABLES

1. Riverside "Bella Vista" dark shimmering oak with ropelurnings & carved door front give the correct added touch-Choose from square commode, hex commode, chairside chest, or cabinet cocktail tables. Each piece regular 129.95, your price **\$88.00**
2. RIVERSIDE Spanish slate top "2800" group-Rich oak colors with honest to goodness slate inset in top of each table. A design to give the traditional look a Spanish flair-Square commode or hex commode. Regular 129.95. Your price **\$88.00**. Large cocktail-regular 129.95, your price **\$128.00**
3. Mersman closeouts-#16-17-18-19 groups-traditional with & without marble-Spanish with & without slate-odds and ends-mix & match-square & hex commodes-cabinet cocktail tables regular 89.95, your price **\$38.00**
4. Mersman "Terra Madre", "Mandrake" & "Haddon Hall" groups-Spanish-traditional-Early American styles. Wood construction-Formica tops-Commodes-lamp tables-drawer commodes-drop leaf- close out-Not all pieces in all groups-Regular prices to 129.95, your price **\$58.00**

STACY-MASON WILL GET ITS MILLION DOLLAR SALES GOAL- YOU WILL GET THE BEST FURNITURE BARGAIN IN THE WHOLE STATE

THANKS TO ALL OF YOU FINE FOLKS WHO HAVE MADE THIS FANTASTIC YEAR POSSIBLE.

LIVING ROOM & DEN GROUPS

1. Plaid Early American or Velvet Traditional Style Sofa and Matching Love Seat-Made by Jackson-Good Looking Reg. 499.95, your price both pieces **\$266.00**
- Matching traditional chair-Reg. 129.95, your price **\$88.00**
2. English Pub group-sofa-love seat-chair and ottoman-Richly covered in heavy Herculon Harvest Plaid colors. Designed to take hard usage. All four pieces Reg. 999.85, your price **\$598.00**
3. Riverside Pillow Arm sofa and love seat group-your choice of 100 percent nylon velvet or 100 percent Herculon plaid- mix or match looks great-comfortable-quality constructed-sofa and love seat-Regular 789.90, your price **\$448.00**
4. Riverside High Pillow Back group-luxurious woven crush velvet-3cushion sofa-love seat-swivel rocker-your choice of tangerine-gold or olive colors-mix and match colors-real comfort-all three pieces-Regular 899.85, your price **\$628.00**
5. Quilted La-France Velvet sofa and love seat classic traditional design with famous Rail Road track patterned velvet. Your choice of green gold or off-white and gold colors-both pieces-Reg. 799.90, your price **\$568.00**



SUMMER GYMNASTIC CLASSES

TUMBLING TRAMPOLINE APPARATUS

AGES 1-14

CLASSES TAUGHT BY

JOHNNY HAMILTON

ALL AMERICAN AND OWNER OF

THE MCKAY DANCE SCHOOL

IN

LEVELLAND

Classes On Mondays & 30 New Students

Friday & 20 New Students

TWO FOUR WEEK SESSIONS

BEGINNING JUNE 13RD

ENROLL AT FIRST CLASS

ON EAST 5TH STREET

College in Plainview she is majoring in She teaches piano Spence Music in

The groom is a Booker High School attends Wayland College where he is in chemistry. He is of Wayland's track is presently on Conner-Mathis Au

The couple will home at 1501 H Plainview.

HAMMO FUNERAL

Debit \$ % \$ + Loss

Prevent those vis loss in your mind the storm and the ones in your fam book after the Insure your growing against loss from Ha It's so easy to obt insurance service a net cost - a dividend paid to 1971, 72 a Crop Hail Policy Just call your Bureau Insurance

Joe Gilbert Home 385-306
Elroy Wisian Home 986-288
Eddie Wilson Home 933-251
Ed Jennings Office 385-347
708 W Delono

TEXAS FE

Couple Repeats Vows Sunset Ceremony

Karyn Lynette Vrabel and Dean Pence were married in a sunset ceremony May 10 in the yard of the bride's aunt and uncle, Mrs. Joe Vasek, 600 N. Drive, in Littlefield. The ceremony was officiated by the First Baptist Church pastor, Smyer, officiated by the reading of the double ceremony, as the couple exchanged the sunset. The bride is the daughter of John Vrabel and Mrs. L. Lubbock, of Lubbock, Texas. Mrs. Alton Pence of Amarillo are parents of the bride.



MRS. RONALD DEAN PENCE

her new mother-in-law a red rose. Matron of honor was Mrs. Ricky Miller of Amherst. Other attendants were Miss Gayla Freeman of Spade, Mrs. Bill Bowers of Whiteface and Miss Charla Carpenter of Amherst, cousin of the bride. The matron of honor wore a princess style sapphire blue dress designed with short puffed sleeves and a portrait neckline. Other attendants wore identical dresses of electric blue. They carried nosegays of two-tones blue feathered carnations and two-toned blue satin streamers. Randy Miller of Amherst served the groom as best man. Groomsmen were Jimmy Pence of Levelland, Johnny Hodges of Whitharral and Greg Hodges of Anton. Ushers were Kenneth Tomes of Amherst and Gary Hodges of Canyon, a cousin of the bride. Amy Bowers of Whiteface was flower girl, and Blaine Odon of Anton, nephew of the bridegroom, was ring bearer. Candlelighters were Todd and Lance Carpenter of Amherst, cousins of the bride. Mrs. Larry Vrabel, sister-in-law of the bride, registered the guests from a lace-covered table. Kenny Dukatnik of Whitharral sang, "My Sweet Lady", accompanying himself on the guitar. While the couple lit the memory candle, he sang, "I'd Like to Make It With You". The bride's mother wore a floor-length ice blue dress with white accessories. The groom's mother wore a long sapphire blue dress with white accessories. Both wore white orchid corsages. Following the ceremony, Miss Vicki Mills of Spade and Mrs. Kenneth Tomes of Amherst served the four-tiered wedding cake and white punch from a table laid with a crocheted lace cloth made by the bride's late grandmother, Mrs. F. W. Lichte. As the couple left for their honeymoon in Colorado, they placed the orchid center lifted from the bridal bouquet and the groom's boutonniere on the grave of the bride's father. The newlyweds are now at home on a farm near Whitharral.

her new mother-in-law a red rose. Matron of honor was Mrs. Ricky Miller of Amherst. Other attendants were Miss Gayla Freeman of Spade, Mrs. Bill Bowers of Whiteface and Miss Charla Carpenter of Amherst, cousin of the bride. The matron of honor wore a princess style sapphire blue dress designed with short puffed sleeves and a portrait neckline. Other attendants wore identical dresses of electric blue. They carried nosegays of two-tones blue feathered carnations and two-toned blue satin streamers. Randy Miller of Amherst served the groom as best man. Groomsmen were Jimmy Pence of Levelland, Johnny Hodges of Whitharral and Greg Hodges of Anton. Ushers were Kenneth Tomes of Amherst and Gary Hodges of Canyon, a cousin of the bride. Amy Bowers of Whiteface was flower girl, and Blaine Odon of Anton, nephew of the bridegroom, was ring bearer. Candlelighters were Todd and Lance Carpenter of Amherst, cousins of the bride. Mrs. Larry Vrabel, sister-in-law of the bride, registered the guests from a lace-covered table. Kenny Dukatnik of Whitharral sang, "My Sweet Lady", accompanying himself on the guitar. While the couple lit the memory candle, he sang, "I'd Like to Make It With You". The bride's mother wore a floor-length ice blue dress with white accessories. The groom's mother wore a long sapphire blue dress with white accessories. Both wore white orchid corsages. Following the ceremony, Miss Vicki Mills of Spade and Mrs. Kenneth Tomes of Amherst served the four-tiered wedding cake and white punch from a table laid with a crocheted lace cloth made by the bride's late grandmother, Mrs. F. W. Lichte. As the couple left for their honeymoon in Colorado, they placed the orchid center lifted from the bridal bouquet and the groom's boutonniere on the grave of the bride's father. The newlyweds are now at home on a farm near Whitharral.

Tractor Driving Safety Course Set

A tractor safety driving course will be held at the Amherst Vocational Agriculture Department June 4-7 by Advisors Don Ham of Sudan and Donald Booth of Amherst. Tractor driver education is as important for young farmers as drivers education for young motorists according to Donald Booth. "One in five tractor deaths is to a young person between 10 and 20 years of age," he added. The Amherst and Sudan agriculture departments are conducting the safety program in the Amherst Ag building beginning at 8:30 a.m. Tuesday, June 4. This course is sponsored by the Farm & Industrial Equipment Institute, the National Safety Council and the U.S. Department of Labor in the Agriculture Hazardous Occupation Order pertaining to the employment of youth under age 16.

Any students, boys or girls, 14 years of age or older by July 1 is qualified to take the four-day course from 8:30 to 3:30 p.m. daily. Anyone interested in taking the course may contact Donald Booth or Don Ham. The tractor safety program stresses learning about causes of accidents, rules for safe operation, passing a written test, and a driving test. Upon completion, the student will be awarded a certificate of training by the Division of Labor. This certificate serves the same purpose as a driver's license. If a student has had this course and is under 16, he will be eligible to hire out for farm work. There will be no fee for the course.

Courtesies, Fete Sheryl Willson

Miss Sheryl Willson of Amherst, bride-elect of Hoyt Wauhob of Booker is honored at a linen shower given by Mrs. Troy Carter at her home in Plainview May 16. The serving table was covered in aqua linen and was centered with an arrangement of fresh spring flowers—later presented to Miss Willson. Punch, coffee, spiced tea, chocolate Angel cake and mints were served by Mrs. Randy Reecer of Bremerton, Wash. and Mrs. Robin Reecer of Plainview. The bride-elect and her mother, Mrs. Glenn Willson of Amherst, were presented with orchid corsages. The hostess gift was a blanket, sheet set and bath set. Guests registered from Amarillo, Kress, Amherst, and Plainview. The home of Mrs. Corky Holderman of Booker was the scene of a miscellaneous shower honoring Sheryl Willson, bride-elect of Hoyt Wauhob of Booker. An arrangement of fresh peonies, centered the table which also held a punch bowl and coffee service and assorted cookies. Hostesses alternated at the serving table and each wore a yellow rose corsage. The bride-elect, her mother, and the groom's mother were also presented yellow rose corsages. Hostess gift was a bedspread. Guests attended from Liberal, Kans., Florida, Amherst, and Booker. The couple will be married at First Baptist Church in Amherst Saturday evening, June 1, at 8:30 p.m.

Artists Honor Wanda Hamblin At Luncheon

Members of the Art Club of Littlefield and the Daubers Art Club met Monday for a courtesy luncheon, honoring one of their members, Mrs. Wanda Hamblin. The Hamblins will be moving to Abilene in June. The day was spent in oil painting, and those present were Hettie Bussanmus, Dorothy Harvey, Vera Griffin, Ferol Krisek, Lela Nicholas, Blanche Dodgen, Myrtle Haire, Hattie Street, Judy Bolton, Ocia Stone, Gwen Tucker, Dorothy Ferguson, Pearl Rountree, Naomi Hewitt, Anna Neale, Louise Bennett, Irene Fore and the honoree, Wanda Hamblin.

Sudan Churches Set Vacation Bible Schools

SUDAN—Vacation Bible Schools have been set in Sudan churches with the dates of June 3-7 at First United Methodist Church from 9 to 11 a.m. each day, and the Church of Christ the same week and time. The school will be held in the afternoon at the First Baptist Church from 3:5-5:30 p.m. daily during the same week. Classes at Church of Christ, according to Minister Mike White, will be for all aged children. Shop LITTLEFIELD First!

Walker-Motl Wedding Vows Solemnized

Mr. and Mrs. Toby Walker of Littlefield announce the marriage of their daughter, Terry Lynn, to Gary J. Motl, son of Mr. and Mrs. Frank Motl Jr. of Red River, N.M. Terry is a graduate of Littlefield High School and West Texas State University, where she received a B. S. degree in Education. Motl is a graduate of Anton High School and attended WTSU and Texas Tech. He is currently employed by Conally Implement and Supply Company of Amarillo. The couple was married May 10 in Corpus Christi. They are now making their home at 3002 B Westhaven Drive in Amarillo.

High School and attended WTSU and Texas Tech. He is currently employed by Conally Implement and Supply Company of Amarillo. The couple was married May 10 in Corpus Christi. They are now making their home at 3002 B Westhaven Drive in Amarillo.



MRS. GARY MOTL

Barbara Aigaki Earns Degree

SPRINGLAKE—Barbara Jean Aigaki, daughter of Mr. and Mrs. Henry Aigaki of Olton, was among graduates at the West Texas State University Commencement May 4, at the Civic Center in Amarillo. A 1970 graduate of Olton High School, Barbara completed requirements for a Bachelor of Science degree in Animal Science. Barbara was a member of the WTSU Marching Band; WTSU Agricultural Honorary Society; Block and Bridle; WTSU Animal Science Club; WTSU Agricultural Council and Junior Livestock Judging Team. She served as secretary-treasurer of the WTSU Agricultural Honorary Society. Miss Aigaki was nominated for "Who's Who Among Students in American Colleges and Universities," selected as Outstanding Animal Science Senior, and was on the dean's list for two semesters. Barbara served as a lab assistant in the biology department for two years and worked in the animal science department her senior year. She is presently employed by the WTSU School of Agriculture Swine Research Operation with plans to enter the field of veterinary medicine.

Housewarming For The Hawks

Mr. and Mrs. W. C. "Buster" Hawks were honored with a housewarming at their home at 1315 W. 5th Tuesday night. Hostesses for the courtesy were Mmes. Wayne Cowan, A. D. Short, Doc Bowman, Bobby Short, and A. D. Chaney. Punch, coffee and cookies were served to Rose Hodge, Mr. and Mrs. Lewis Atkins, Mmes. Leroy Davis, Larry Wren, Naomi Sollie, Ginger Rainbolt, Sisk Jacobs, Clifford Throckmorton, W. L. Hopper, Mmes. and Messrs. A. R. Streety, J. R. Mixon, Clinton Phillips, Jerry Huddleston, Warren McCurry, Cecil Price, W. L. Hopper, Paul Green. Also Miss Donna Bowman, Sisk Jacobs, Mrs. Donald Cowan and Marilyn, Carl Kinsey and Oleta Landrum.

Dinner Fetes Wedding Party

The wedding party for Sue Hamill and Johnny Harrell were guests of honor at a rehearsal dinner at the Lubbock Club Saturday evening, June 1, with Mr. and Mrs. Seally Harrell of Levelland host and hostess. Miss Hamill is the daughter of Mr. and Mrs. Peyton Reese of Littlefield. The serving table was covered in white and centered with spring flowers, English ivy, votive candles and miniature flower carts. The couple will be united in marriage today in the First Baptist Church in Levelland.

Reast-Mackey Wedding Planned

Mr. and Mrs. James L. Reast of Littlefield announce the engagement and approaching marriage of their daughter, Willa Jean, to Alan Wayne Mackey, son of Mr. and Mrs. T. W. Mackey of Littlefield. The bride-elect is a 1973 graduate of Littlefield High School and has recently completed the one-year Secretarial Science course at South Plains Junior College. The prospective bridegroom will begin his sophomore year this fall at Texas Tech University. He is a former Littlefield High School student, having graduated in 1973. The wedding date has been set for Aug. 23 in the First Baptist Chapel of Littlefield.



JEANIE REAST AND ALAN MACKAY

United Church School Begin Here Monday

Littlefield churches sponsoring a united church school, to June 3 and continue through June 7. Classes will be conducted at the United Methodist Church from 9 to 11:30 a.m. with children from 3 through the sixth grade participating. Teachers and co-teachers will meet today from 4:30 p.m. in the First United Methodist Church for a meeting. Teachers in the nursery department are Mrs. Jerry Johnson, Mrs. Charles Johnson and Mrs. Harry Johnson. Kindergarten department will be staffed by Mmes.

KIRBY VACUUM CLEANERS
SALES AND SERVICE
Pat's Record Center

No money necessary for those who qualify
Jewell's Hospitality House. For Senior Citizens
to qualify and draw Social Security, all
living at no charge to you is offered.
For those who qualify, the State will pay.
expense to family if you qualify.
Jewell's Hospitality House, being the
best home in Lamb County, welcomes the
private paying citizens. For
qualifying information please call 385-5112
JEWELL'S HOSPITALITY HOUSE 385-5952

Findley's Jewelry
IS PLEASED TO
PRESENT OUR
Bride
of the
Week
See Her Selections On
Display In Our Store.

CARLA OWENS

do your food shopping where **every penny counts**

SMOKED PICNICS	PORK CHOPS
WHOLE, 49¢ LB	CENTER SLICES, LB 98¢
SLICED, 55¢ LB	
PORK ROAST	CHUCK ROAST
LB. 59¢	BLADE CUT, LB 79¢
RIB STEAK	7 BONE LB 89¢
LB. 98¢	
BOUNTY JUMBO TOWELS	SUNSHINE KRISPY CRACKERS
ROLL 2 FOR 89¢	1 LB BOX 39¢

FRESH BAR-B-Q MADE DAILY
QUALITY MEATS COST NO MORE AT
MERLIN'S FOOD
Double Gunn Bros. Stamps, Tuesday & Wednesday
OPEN 7 DAYS A WEEK 9th & Levelland Highway WE REDEEM FOOD STAMPS
DOUBLE GUNN BROS. STAMPS TUES. & WED.

LETTERS

To The EDITOR

Mr. Wade Warren
Lamb County Leader-News
Littlefield, Texas

May 27, 1974

Dear Mr. Warren:

On behalf of the members of the 1974 Senior Class, we would like to express our appreciation to Mr. Jack Wicker and the Security State Bank for the beautiful plaque he presented each member of our class.

This personalized gift will always be a reminder of that important time in our lives—graduation!

We would like to say "thank you" to Mr. Wicker and his staff for being so thoughtful.

Sincerely yours,

Mari Louise Bennett
Glyndene Spencer
Carol French
LaNona Betts
Dianne Milligan
Tandy Talburt
Ann Coffman
Cindie Huber
Larry Lobaugh
Wayne DeBusk

Gina Bartley
Judy Cannon
Maurice Gonzales
Linda Sherley
Bruce Peel
Karen Walker
Ed Yoakum
Kim Jungman
Barbara McBride
Cindy Wattenbarger
David Williams
Terri Chandler
Terry Bryson
Andy Rogers
Craig Ratliff
Pamela Turville
Larry Wright
Patricia Sevier
Debra Pryor
Elvira Castillo
Roger Muller
Rita McKinney
Dona Davis
Robby Newton
Danny Hukel
David Barker
Julie Payne
Kelly Pratt
Randall Parker
Kevin Kriby
Len Richey
Ricky Richards
Eileen Hinckley



EDITORIAL

Who Believes In America?

SO WHO BELIEVES in America now—after Spiro Agnew, the energy shortage, inflation, the President's taxes and the Watergate transcripts? A great of Americans, that's who.

IN A NEW Gallup poll, 7 out of every 10 adults interviewed express a high degree of confidence in the nation's future. Significantly, the vote of confidence is greatest among the best informed citizens in the country, with nearly 8 in 10 college graduates saying they have "quite a lot" of confidence in the future of America.

We believe their confidence, and our own confidence, is based on more than blind faith. For the first time in more than a decade, no American serviceman is dying in combat. Inflation is intolerably high but still not as high as in many other industrialized countries. And the assorted events called "Watergate" have unearthed some disheartening words and deeds by some of our government's leaders; but, at the

same time, our system of justice continues to prove itself remarkably capable of ferreting out and punishing the wrongdoers.

NO ONE WHO KNEW what he was talking about ever claimed that our peculiar system of government would not require some risk and sacrifice.

But our citizens, time and again during the past 200 years, have shown themselves willing to take those risks and make those sacrifices to preserve a system that is far better than any other that has ever been devised for the happiness and progress of people.

JUDGE LEARNED HAND once observed that "liberty lies in the hearts of men and women. When it dies there, no constitution, no law, no court can save it."

The latest Gallup poll shows clearly that, whatever our problems, liberty is indeed alive and well in America.

Simplify Those Tax Laws

NOW THAT APRIL 15 has longtime passed, we wonder whether it is safe to relax just because we beat the deadline with our income tax returns.

It used to be, in those good old days, that anyone with a fair amount of common sense could do his own income tax return. Now and then, of course, it would be necessary to get a little professional help.

But generally speaking, if you were on a salary or were self-employed, it was a nuisance and perhaps a headache to complete tax forms, but that was about all. Once you had it done you could feel the matter had been put to rest for another.

BUT NOT NOW. All you can do is sit around uneasily, waiting to see if the other shoe is going to drop. Or, more precisely, waiting to see if the Internal Revenue Service will decide it wants to audit your return.

Now they even have computers. And what a computer can do to you! It can look over your report and, for a reason known only to those who run those horrible machines, decide you are going

to have to explain the whole thing. Worse than that, you are going to have to come up with receipts for every penny.

THE BIG TROUBLE as we see it is that the income tax laws are so complex that they need a major review and simplification.

Each year the number of tax reports that are audited increases. And, each year more and more people are hiring accountants, lawyers, and tax experts to help them with the pages and pages of required forms.

BUT THE LAWS are so incredibly complex that even the experts differ on interpretation of the various clauses. As a result, many a taxpayer has found himself facing an audit after doing everything he could to file an honest report.

We can only come to one conclusion. The income tax laws have gotten out of hand and should be rewritten and simplified before another year rolls around.

A Woman's View

By PEARL BRANDON

DID YOU ever see a person who was really hungry? I used to have one in my office occasionally. It is a sad situation. They swallow constantly when food is mentioned. I could always tell if they were really hungry.

RIGHT AFTER Jesus was baptized He was urged by the Holy Spirit to go out into the wastelands of Judea, where Satan tempted Him 40 days. He was very hungry as He ate nothing all that time.

Satan tortured Him by saying "If you are God's son, tell these stones to become bread."

REMEMBER, Jesus had the power to turn the stones into bread. He fed the five thousand with only a few fish and a few tiny loaves of bread. But Jesus would not use His power to relieve His own hunger, or pain.

When He hung on the Cross, people mocked Him saying, "You saved others, now save yourself."

HE USED His power to relieve the pain of others, but did not try to save Himself.

There is so much pain in this world—so much really among our friends and loved ones all around us—among both the young and the old.

WHEN YOU are young it is hard to realize death. I heard a man say it is a part of the process of living—we are born into the world—at best we live only

a short time and then death.

In the article about the news correspondent Stewart Alsop's death, they quoted him as saying, "when the time comes for a man to die, he should be allowed to die, as he needs death as a sleepy man needs to sleep."

WE DON'T know what the Lord has prepared for us over there, but it must be grander and more beautiful than this life.

When He first began His ministry, He went into a synagogue and was asked to read. He read this, "The Spirit of the Lord is upon me; He has appointed me to preach the good news to the poor; He sent me to announce that captives shall be released and the blind shall see, that the downtrodden shall be free from their oppressors, and that God is ready to give blessings to all who come to Him."

JUST THINK, some day there will be no more hungry people, or sick, or poor—no one will be in prison, nor oppressed by other people.

All will be blessed that comes to Him. Then we shall know Him as He is and to know Him will be to love Him and obey Him.

AFTER HE had sat down from reading these Scriptures, He said, "These Scriptures, came true today."

This is from the Love translation of the Bible.

I AM in the hospital again but hope to be out soon.

Convention Having Trouble

The delegates to the Texas Constitutional Convention have spent the past two weeks engaged in what has so far been a fruitless task. After long and heated debates on the important Judiciary Article, which will provide the base for the Texas court system in the new constitution, delegates voted to defeat the article, in effect sending it back to the committee for a new start.

The major sources of dispute on the article, according to Representative Bill Clayton (D-Springlake), were provisions which would have established a system of circuit courts and eliminated the present duties of the county judge, and a provision which would have allowed the state to appeal adverse lower court decisions in certain instances. Representative Clayton reported that it was a coalition between the opponents of these two issues that led to the defeat of the entire article.

One attempt was made to salvage the work done on the article, but after heated debate on a proposed "compromise" substitute for the article, it too went down to defeat. The Committee on the Judiciary must now try again to work out a document acceptable to a majority of the delegates, according to Clayton.

The Convention has now moved into consideration of the proposed General Provisions Article, which contains more potentially controversial sections than any other article. Included under the General Provisions topics are such subjects as right to work, branch banking, abortion, usury rates, gambling and the environment.

Representative Clayton stated that debate on this article should be as long and heated as has been any article thus far in the convention.

THE ABUNDANT LIFE

Carry The Load

THERE IS A LOAD to carry in every area of living, and someone has to carry it.

This is true in the home; the office; the business operation; the community; and in every other segment of the human structure for life. Many things depend upon how well the load is carried.

IN VIEWING LIFE from this standpoint of responsibility, we see much that is neglected because so many persons refuse to help; but this is not all we see. We see responsible, energetic, capable people taking up the load and moving along doing their best.

In this total picture, we can see all kinds of inequities; and there are too many. This is part of reality with which we must live, and the condition requires adjustments which must be made as wisely and graciously as possible.

"LET GEORGE DO IT" has long been a commonly used expression for the practice of letting someone else "carry the load". All of us know that this attitude is unworthy of mature understanding, and the neglect of duty which it produces is one of the great tragedies in the human experience.

In many instances, that which should be done is not done. In other instances, the person willing to assume the role of "George" is the wrong kind of person. The result is additional problems.

IN GROUP ACTIVITIES, we often hear it said that ninety percent of the load is carried by ten percent of the people. This may not be the ratio in all

situations, but we know the seldom an equal sharing of. This inequity brings about and difficulties which we cannot avoid.

IT IS TRUE that some are able to assume more of the load than others, and there is nothing wrong with that. In fact, it is right that according to our strength and ability.

It is not right, however, to be unwilling and the capable person be overloaded. This overloading about as much discouragement as more, as any one other happens.

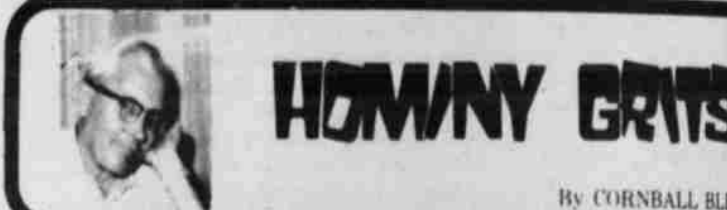
THE SHIRKER is the individual who will not carry his part of the load. There is no way to correctly evaluate the shirker's contribution done by such an unworthy person.

First, the slothful person himself. If such an individual member of a family, the weakened, or, in some cases, destroyed.

The slacker is also a source of trouble in the office, and in the operation. Strange as it may seem, there are different reasons, it may be that he tolerates these people, but the result is far from desirable.

In community life, the shirker of so many persons to help carry the load" is the biggest hindrance to community progress and growth being.

WHATEVER OUR ROLE in life is very important to us and to others. Let us do our part, and let us do it worthwhile that we help carry the load.



I DO ADMIT to having my "off days", but I've yet to reach the state of a guy I heard about this past week.

Seems this fellow arose one morning, after a night before, jumped on his tractor, and had UNPLANTED forty acres before he realized that he'd mounted the tractor facing the wrong way! Congress, take note!

WHETHER YOU THINK of the 55 mile speed limit as a blessing in disguise, or disgust, you might take note of the drop in highway fatalities. They're way down.

Just think, one of the present living that may not have been here otherwise, may be YOU!

SOME PEOPLE TRY to fashion their lives according to the things written in the Bible, while others are content to be guided by their prejudices.

Some are so contrary that, if they should drown, you'd have to look upstream for their bodies.

Turn Row COMMENTS

By EMIL MA...

A TIP OF THE HAT goes to a lot of parents for making the Regional Little Dribblers All-Star Tournament a success. And a special thanks to the local school system for letting us use the Junior High and High School gyms for the occasion. A lot of work and expense is required to put on a tournament such as this, but the parents and officers of the Girls' Little Dribblers Association here in Littlefield think it is worth it.

"I'm not too sure as to how much money a tournament like this brings into a community, but I do know that when I travel with a team to other towns, we always drop a bundle. Of course most of the money is spent on eats for the team and their fans.

For example, a couple of years ago while playing in the national tourney in Levelland, our group spent almost \$100 in one restaurant. Now, some merchant might say, well that doesn't help me any. But it is my opinion that if any money is spent in a community, it will circulate and help the whole economy.

It is almost certain that the economy of our local community was helped by holding this tournament because of some teams having to travel a distance to play and a few having to stay over in order to play their second game on the same day.



WARNING!

Leaving your pet in a parked car during the hot summer months, even for a short period, can result in the death of the animal.

Even though windows may be open (making the animal an easy prey for the pet-napper), a parked car becomes unbearably hot in a very short time, and the animal faces a cruel death from heat prostration. Air conditioned cars are just as likely to become death traps when the cooling system is shut off.

For the sake of your pet, do not leave the animal in your car when the weather is hot.

Friends of Animals
11 West 60th Street
New York, N.Y. 10023

Original drawing by Susan Port

LAMB COUNTY LEADER-NEWS

ESTABLISHED IN 1923
Lamb County Leader and County Wide News Combined Feb. 13, 1969

NEWSPAPER ASSOCIATION 1973

WADE A. WARREN, Publisher
JOELLA LOVORN, News Editor
NILAH RODGERS, Staff Writer
BILL MOTT, Advertising Sales

Second Class Postage Paid at Littlefield, Texas 79339

PUBLISHED SEMI-WEEKLY each Thursday and Sunday morning by the Leader-News, 313 W. 4th, Littlefield, Texas 79339. Subscription rates: Lamb and adjoining counties, \$8.00 year, \$5.00 6 months. Elsewhere in Texas, \$10.95 year, \$7.45 6 months. Outside of Texas \$12.00 year, \$8.45 6 months. Single copy rates, 15 cents on Thursday and 15 cents on Sunday. Telephone 385-4481.

We are not bragging because helping the economy, but we are proud that we have parents, lobbyists and interested individuals believe in this organization, working as a single unit to make growing success it is.

A special thanks goes to a couple who have given up two of their own anniversaries to help with the tournament and from all indications, accept the talent in their family, they are to give up at least nine more before can have an anniversary to the Mrs. Jerry Tunnell. It seems always have a daughter on the squad and they usually have to keep the clock and book of tournaments, which always has an anniversary: Well, Jerry and guess that is one way to keep together.

SAY ALL YOUR GIRLS before years of age before September something new for you. They are to get a girl's softball league this summer.

In case you are interested, be a meeting in the Flame Room Pioneer Natural Gas Building from 6:30 to 8 p.m.

Also a special invitation is extended to any women who would like to contact any merchant who might be interested in sponsoring a team.

THE THREAD OF ENERGY through so many areas of life, endeavor that it creates not only between various people, but difficult problems of fairness and within each thinking person's of concerns.

What is at stake is a whole new value systems which exist, and people's minds, as independent unrelated areas of human con-

Littlefield News

MRS. GENE WILLIAMS and son, Gene and daughter, Beth were in Baytown last week where Beth took part in the wedding of a college friend, Melonie Sheppard, and attended the wedding parties. From Baytown they went to Houston where Gene visited his college roommate Carter Noonan and Mrs. Williams and Beth visited with Mrs. Williams' niece, Mr. and Mrs. Charles Cook and Kanda.

MRS. G. M. Nickelson flew to Monroe, La. to visit her sister, Mr. and Mrs. P. D. Mim, she returned to Littlefield Wednesday.

MR. AND MRS. Terry Tennyson, Mr. and Mrs. Savoy Tennyson and Mr. and Mrs. Jim Dunn were in San Marcos over the Labor Day weekend where they enjoyed the fishing and running the rapids.

MRS. EVELYN CREWS, Mrs. Gladys and Mrs. Bernice Reeves spent the weekend at Carlsbad Caverns.

MR. AND MRS. H. O. Bigham have just returned to Littlefield from their vacation home at Possum Kingdom. MRS. HERBERT DUNN spent ten days with her grandchildren in Wichita Falls. Her son, Mr. and Mrs. Jerry Dunn, were in Madrid, Spain where Dunn gave a paper on Computerized City Government at a European Symposium. They toured several points of interest while in Spain.

MR. AND MRS. Ronnie Smith spent last weekend in El Paso and Dell City, N.M. They attended the wedding of one of his former students in Dell

City. MR. AND MRS. Delton Jones visited their son, Mr. and Mrs. William Jones in Ft. Worth and saw their new grandson for the first time.

MRS. J. C. SMITH of Littlefield and her sister, Mr. and Mrs. Wylie Rogers of Lubbock went to Lake Brownwood over the Labor Day weekend. They were met there by Mrs. Smith's son, Mr. and Mrs. Ellwood Smith and family of Temple.

MR. AND MRS. F. L. Newton returned Tuesday night from Paris, France where they had spent eight days. They were with a group of 300 State Farm Insurance agents. Their son, Alan, accompanied them. The Newtons attended the graduation exercises of Alan from SMU in Dallas where he received a BBA May 19 and then departed Dallas May 20. They made daily side trips out of Paris. They visited Versailles, Tours, Chateau Thierry where one of the battles of World War I was fought close by in Belleau Woods in 1918. In Chateau Thierry they visited a

cemetery where 2,288 American soldiers were buried. They went to Bourlon where Mrs. Newton's grandfather was born and lived until he came to America. The grandfather's name also was Bourlon, which was Mrs. Newton's maiden name. They visited two of Mrs. Newton's second cousins who still live in Bourlon. Alan Newton remained in Europe for an extended tour of Switzerland, Spain and Germany.

A TEAM from Lubbock, Plainview and Amarillo are holding a seminar from 3 until 10 today for the workers of First Presbyterian Church. They will teach "Ways of

Making Your Church Better." MR. AND MRS. George White visited her mother and other relatives in Taft and vacationed several days in Rockport. On their way home they visited in Snyder with Mrs. J. B. McShan and Mrs. Hal Donaldson.

MR. AND MRS. Pat Diersing and Mr. and Mrs. Sam Albus spent the weekend fishing at White River.

AT THE OPENING of "The Gallery" in their new location, first prize was won by Mrs. O. P. Wilemon, second prize by David Bawcom and third prize by Marie Cline.

MR. AND MRS. Ernest Sell, and Mr. and Mrs. Henry

Minter, Larry and Sandi Sides of Bovina spent the past weekend in San Angelo visiting relatives.

MRS. BERTIE CLAWSON visited three daughters and attended the graduation for her grandson, Billy Brewer, at Amarillo Caprock High School this past week.

MRS. DOSS MANER had as her house guest over the weekend her granddaughter, Mr. and Mrs. Keith Overland and children Brian and Tasha of La Junta, Colo.

MR. AND MRS. Buddy Bingham were in Abilene for the graduation of their daughter, Tonya Bingham Currey, who received a B. S.

degree in Home Economics Education. She graduated Cum Laude. Her grandparents, Mr. and Mrs. Stanley Doss also attended the exercises.

MRS. DOSS MANER spent four days in Snyder with her daughter, Mr. and Mrs. Tommy Echols.

COOLING EQUIPMENT
Use cooling equipment in the correct size for the space to be cooled. An oversized or undersized system wastes energy. Required cooling capacity depends on exposure to the afternoon sun and amounts of insulation and window space.

SUMMER SIZZLERS

WITH PURCHASE ONE DOZEN MEDIUM OR LARGE EGGS 1 LB PACKAGE CHUCK WAGON

BACON EA. **49c**

Extra Lean **PORK STEAK** Lb **69c**

Chicken Fried **STEAK FINGERS** Lb **89c**

Longhorn Cheddar **MOON CHEESE** Lb **69c**

Serving Suggestion



FRESH FRYERS lb. **39c**

SUPER SAVER

3 OZ ASSORTED FLAVORS **JELLO** PACKAGE **9c**

FOOD KING OR SHURFRESH 10 COUNT **BISCUITS** **6/59c**

BREAD TENDER CRUST FAMILY SIZE **2 FOR 79c**

COKE 8 BOTTLE CARTON **89c**

MILK SHURFINE TALL CANS **4 FOR \$1**

EAGLE BRAND **MILK** **2/83c**

SHURFINE **TUNA** FLAT CANS **2/99c**

BUY-ONE-3 OZ-NESTEA AND GET BONUS BUY FOLGER'S 1 LB CAN **COFFEE** **79c**

VIENNA SAUSAGE ARMOUR'S **2/69c**

ICE CREAM SHURFRESH GAL. **79c**

FROZEN FOOD

EGG SUBSTITUTE **EGG BEATERS** 8 OZ **79c**

MR G'S 2 LB BAG **POTATOES** FRENCH FRIES **59c**

TROPHY 10 OZ **STRAWBERRIES** **3/89c**

DRUG ITEMS **RUBBING ALCOHOL** PINT **2/39c**

SCOPE MOUTHWASH 18 OZ **89c**

DIAL DEODORANT 6 OZ **79c**

FRUITS AND VEGETABLES Carton **TOMATOES** Each **33c**

10 Lb Bag **POTATOES** **\$1.59**

Ready-to-eat **AVOCADOS** **2/29c**

Yellow **ONIONS** Lb **9c**

BORDEN'S DAIRY PRODUCTS BORDEN'S **BUTTERMILK** 1/2 Gal. **69c** **CHEESE COTTAGE** 8 OZ **47c** **WHIPPING CREAM** **47c**

CONVENIENT LOCATIONS 322 E. DELANO AND 601 E. 10th

AFFILIATED

Pay-n-Save

QUALITY AND SERVICE

WE GIVE GUNN BROS STAMPS

DOUBLE STAMPS TUESDAYS & WEDNESDAYS WITH \$2.50 OR MORE PURCHASE (EXCLUDING CIGARETTES)

WE RESERVE THE RIGHT TO LIMIT QUANTITIES

WE REDEM AND GIVE STAMPS ON FOOD STAMPS

WE SELL TRAVELERS EXPRESS MONEY ORDERS, PAYROLL CHECKS CASHED

PUBLIC NOTICE

THE STATE OF TEXAS

TO: THE UNKNOWN HEIRS OF ETHEL ROSE NEWBERRY, DECEASED

GREETINGS:

You are hereby cited, required and commanded to be and appear before the County Court of Lamb County, Texas to be held in the County Courtroom in the Courthouse of said County in the City of Littlefield, Lamb County, Texas, such appearance to be at or before ten o'clock A.M., of the first Monday next after the expiration of ten days from the date of service, exclusive of the day of such service, which day and date service shall be the date of publication that this newspaper bears, and which appearance shall be at such time on such Monday, which shall be the 10th day of June, A. D., 1974, by filing written answer to the petition hereinafter mentioned to answer to the petition of Coy Newberry, Florene Newberry Dial, John D. Newberry and Laura Dene Newberry Melton, filed in the County Court of Lamb County, Texas, in Probate, on the 31st day of May, A.D., 1974, against you, the unknown heirs of ETHEL ROSE NEWBERRY, now deceased, as Defendants, said suit being numbered 2121 on the docket of said Court, and the nature of such proceeding being to determine and declare who are the heirs and the only heirs of Ethel Rose Newberry, now deceased, and their respective shares and interest, under the laws of this State, in the estate of such decedent, and a copy of such petition to be served is here referred to for a more particular showing of the nature of such proceeding.

If this citation is not served within 90 days after date of its issuance, it shall not be returned unserved.

Herein fail not, but have you before said Court at or before said hour on the said Monday after such service is perfected, which will be the 10th day of June, A.D., 1974, this citation with your return thereon showing how you have executed the same.

Witness Mary Beth Willey, Clerk of the County Court of Lamb County, Texas.

Given under my hand and seal of said Court, at office in the City of Littlefield, Texas, this 31st day of May, A.D., 1974.

CLERK OF THE COUNTY COURT OF LAMB COUNTY, TEXAS

BY: Earlyne Wimberly

DEPUTY

Logan
COTTON HARVESTER

TRIPLE YOUR RECOVERY
at HALF THE COST
with "Back Guarantee"

LOGAN ground cotton every cost per bale is the lowest achieved in the industry.

LOGAN'S pickup efficiency LOGAN'S 50% greater capacity triples your recovery over rows at a time... in one

LOGAN harvests more cotton, faster, recovers more cotton, faster and at the lowest cost. LOGAN pays its own way makes the cotton grower a

LOGAN. Lowest cost and highest recovery and gives you the opportunity to do the job. Place your order promptly. It is most important to your delivery. Write or call today.

Logan INDUSTRIES
4929 REIGER DALLAS, TEXAS 75214 214/827-6563

Calling All Homemakers

Brought To You By Bert & Carol Wallace



HOW TO INVEST IN FURNITURE

Did you ever stop to think that, of all the things you buy, you will probably keep your furniture for the longest time?

People keep an automobile perhaps two, three, four or five years; their clothes last about the same time; but furniture stays around longer than all those things—and can outlive the time spent in a particular house, because when you move you can take your furniture with you from one house or apartment to another.

So, furniture can be an investment not only for today's living, but for tomorrow's as well—for example, the sofa you buy for your living room today could well be used in a family room or den tomorrow; today's dining room table might be tomorrow's desk; a chair used in one room today can serve you when you move.

Whether you're a young married who expects to go to a larger home someday, or whether you're in a house now and expect to move to a smaller place when you get older, you can gear your furniture's usefulness for the future as well as the present.

Whatever your situation might be, we'll be happy to sit down with you and discuss your plans, and help you select furniture that will serve you well today, and tomorrow, too. Stop in and talk it over with us.

Wallace HOME FURNISHINGS
Open Daily 9:00 to 6:00
221 N. Main Box 365
Phone 385-3888
Littlefield, Texas, 79239

CLASSIFIED ADS

Rates on CLASSIFIED ADVERTISING are 10 cents per word 1st insertion (\$1.50 minimum charge) and 6 cents per word 2nd insertion (\$1.00 minimum charge). Blind box ads are \$1.00 additional. **DISPLAY CLASSIFIED RATES:** \$1.40 per column inch first insertion and additional insertions, \$1.15 per column inch. Card of Thanks — 1 time — maximum of 20 words, \$1.50. All cards of Thanks over 20 words are to be charged at regular classified rates.

Help Wanted

WANTED FULL time salesman to sell office supplies in Littlefield trade area. Apply at A & B Office Supply. TF-A

BEAUTICIAN needed at City Beauty Salon, 825 Littlefield Drive. Call 385-5044. TF-B

SOMEONE wanted to care for elderly couple, nights & weekends. 385-5144 days. 385-4524 nights. 6-2-A

WANTED salesman calling on agriculture accounts, feed, fertilizer, etc. Have allied products to sell in this market on commission. Call 806-335-2138 or write Box 9212, Amarillo, Tex. 79105. TF-A

Wanted

WANT to buy a 2 bedroom house. Call 227-5721 after 5 p.m. 6-16-P

WILL BUY estate sales complete or we buy good furniture, one piece or household. 385-3174 or 385-5979. TF-Y

WANTED: Lawns to mow. Experienced. 385-4861. TF-L

Misc.

OLD PHOTOGRAPHS copied and restored. Bring your photographs in for an estimate. Roberts Studio Fine Photography, 203 W. 3rd St., Littlefield, Tex. TF-R

JEWEL'S HOSPITALITY House of Littlefield, is now taking applications for nurses' aide training school. This will be a six weeks course, 3 hours a night, 2 nights a week. Certified certificates will be issued at the end of six weeks course. Most hospitals and nursing homes accept this training as experience. 385-5112. 6-6-H

Personal

SWIMMING LESSONS taught by experienced qualified instructors. From June 11-22 at Country Club pool for people of any age. Call 385-3895 for more information.

Beauty By Mary Kay
Call: Freddie Duke
385-5064

Autos For Sale

GREAT graduation gift, 1973 Vega, new tires, new Matrix tape player, 26,000 miles, \$1800.00 or \$2000 equity and take up payments. Have to see to appreciate. Ranch House Motel, Muleshoe, Tex. 272-4261. TF-R

1972 Ford Gran Torino, 2 door hardtop. Brown with white vinyl roof. Mag wheels. phone 385-5537. 5-26-P

SALE my personal car, 1970 LTD. Call 385-4120 or after 6 call 385-4576. TF-B

1963 Ford Galaxie, 2 door hardtop. \$150. Call 385-3725. 6-2-C

1970 Chevrolet long wheel base pickup, 6 cylinder motor, standard transmission. TF-S

1969 Blue Malibu 307. 385-5266. If no answer call 385-5266. 6-6-O

CLEANEST USED CARS in town. Marcum-Olds-Cadillac. 8th and Hiway 385, Littlefield, 385-5171. TF-M

Houses For Rent

FOR RENT, 2 bedroom house, couple preferred. No pets. See or call R.L. Alexander, 385-4254. 6-2-A

2 bedroom house for rent, 1 mile east and 1/8 south of 385 overpass, Littlefield. \$70.00 a month. For information call Jerry Austin, 915-751-3516, El Paso, Tex. TF-A

Houses For Sale

FOR SALE: a rare find-bargain. 2 bedroom house on W. 2nd St. Owner leaving town. Contact L. Peyton Reese Real Estate. TF-R

3 bedroom, living room, all carpeted, tile bath, central heat, plumbed for washer and dryer. Wired for electric stove. To be moved, nice. 385-3198. TF-G

2 bedroom trailer 12 x 54'. Reasonable. Phone 385-4745 after 7:30 p.m. or Sunday mornings. 6-2-H

3 bedroom, 2 bath, 2 dens, 2 car garage, 1 acre on pavement. 3 miles west of Littlefield. City water. Call J.D. Ratliff, 385-3241. TF-R

Apts. For Rent

FOR RENT furnished 1 and 2 bedroom apartment, adults only. No pets. 385-3880. TF-H

Farm Equip

8 inch Peerless water lubricated pump, 230' setting with 4 twelve inch bowls. No repairs needed. \$2500. 385-5816 or 385-3620. TF-B

Real Estate

APPROXIMATELY two acres on Highway 84. Good location for business, trailers, or trading lot. 250 ft. highway frontage, with three bedroom house, single garage, pressure system. \$500 down, \$50 a month, or will trade for 40 to 80 acres land. J.M. Hamby, Hereford, 364-3566 or 364-2553 (residence). 6-6-H

DURANGO, COLO. 1 acre, heavily wooded, near 2 major ski areas, and 100 lakes and streams. \$385.00 down, \$39.00 per month. Call 806-963-5410. 6-13-A

Having weed problems? Need to buy or sell land? Call G.D. HARLAN 385-4265 nights

1 Lamb County farm, plenty of water. Immediate possession. 194 acres.

1 Hale Center farm, 320 acres. Immediate possession. Inman Real Estate

Lost
LOST: Female dog, part wire-haired terrier. White w/ brown spots. Short ears and short tail. Answers to name of "Daisy". Call 385-4521 after 5. Reward offered. 6-2-O

Bus. Services

WILL BUILD re-enforced concrete cellars. Red-built houses. H.G. Ferguson, 385-5508. 8-30-F

ALL KINDS ALTERATIONS, covered button, buttonholes, belts. Mr. and Mrs. G.E. Scifres, 905 E. 6th St. Phone 385-3971. Former Drive in Cleaners. TF-S

Truck Seats

EXCHANGED 15 MINUTE SERVICE
MCCORMICKS
UPHOLSTERY
CHARLES POWELL
227 PHELPS AVE.,
PH. 385-4555
Littlefield, Texas, 79339

G.H.T. Point Contractors
Residential & Commercial
Free Estimates
No job too small or too large
385-3715

REFRIGERATED air conditioner. \$50. Call 385-3725. 6-2-C

COUCH AND chair, new upholstery with black vinyl. Antique white chair with red velvet material. 401 Bell. 385-4934. 6-2-C

Bus. Services

LITTLEFIELD Roofing specialist, built up asphalt roofs. All work guaranteed. 1115 W. 9th. Call 385-3507 or 385-5680. TF-L

MATTRESSES complete renovating. New mattresses & box springs, any size. Call Mrs. Claude Steffey, 385-3386, agent for A & B Mattress Co., Lubbock, Tex. TF-S

CLEAN expensive carpets with the best. Blue Lustre is America's favorite. Rent-champoer, \$1. (Nelson's Hardware.)

RENT CONVALESCENT equipment at Brittain Pharmacy. Wheel chairs, crutches, hospital beds, other items. Complete line convalescent needs. TF-B

EXPERIENCED house painter, inside our outside. Call 997-5021. 6-6-G

LOCAL MOVING in the Littlefield area at a reasonable rate. Load or hourly rate. Plainsman Moving Service, call collect 806-234-3131. Make moving day easier for you. 6-6-P

TRY CHEM liquid embroidery. Become a Try Chem hostess. Earn your points. You will actually be paid for bringing your friends together. Classes are free. Phone Marie Emerson, 246-3484. 6-13-E

KIRBY Sales & Service Call 385-3357 For a free demonstration on the Kirby Classic 1013 W. 9th

Industrial BEARINGS & BELTS, Fomey Welders & Supplies *Farm Equip. *Industrial Equip. G & C AUTO SUPPLY 700 E. 14th 385-4431

THUNDERBIRD folding tent trailer, good condition. Sleeps eight, with sink and storage. Call 246-3447 or come by after 7 p.m. 208 W. 1st, Amherst. TF-H

3 lots in Littlefield Cemetery, front garden, east side. 227-4441, Sudan. TF-W

FREIGHT damaged Mediterranean style console stereo with am/fm stereo radio. Built in 8 track tape player, Garrard turn table, 12 speaker system. Damaged during shipment. List price \$389.00, now only \$198.00 or \$10 monthly at Martin's Sound Center, 34th & University, Lubbock. TF-M

PLAN PLANT ENJOY NOW

FOR ALL YOUR BEDDING PLANTS, TOMATOES, PEPPERS

JOHN'S NURSERY WESTSIDE AVENUE LITTLEFIELD, TEXAS

Rena's Poodle Parlor Professional Grooming By appointment only 997-4731

Corpet Cleaning Discount "Free Estimates" Call collect 806-799-2755 Local references furnished

CARPET Shop at home and save. Hi lo plush shags, multicolor shags, hi lo shags, level loop tweeds, pattern and tweeds in bath and kitchen carpet and commercials. Installation guaranteed to satisfy. Call for samples and free estimates. 385-4953 or 385-6194. J.C. & Bill Duncan.

Card Of Thanks

To our dearest and beloved friends, we would like to express our deepest appreciation for the beautiful flowers, cards, food, time and care that was sent to us during the time of our sorrow and death of our loved one. Our special thanks to the rescue unit and Sheriff's Department. There will always be a special place in our hearts for your kindness and thoughtfulness. **The Ray Smith Family; The Marie O. Hamilton Family; The Bob Smith Family.**

Misc. For Sale

BRAND new 10-speed bike for sale. Call 385-4993. TF-C

BEEF CALVES for freezer. Yearling bulls, yearling heifers. Douglas Walden, 385-4998 after 6 p.m. TF-W

Maple dresser & night stand. Twin size mattress and box springs. Call 385-4232 mornings or after 5:00. TF-W

THUNDERBIRD folding tent trailer, good condition. Sleeps eight, with sink and storage. Call 246-3447 or come by after 7 p.m. 208 W. 1st, Amherst. TF-H

3 lots in Littlefield Cemetery, front garden, east side. 227-4441, Sudan. TF-W

FREIGHT damaged Mediterranean style console stereo with am/fm stereo radio. Built in 8 track tape player, Garrard turn table, 12 speaker system. Damaged during shipment. List price \$389.00, now only \$198.00 or \$10 monthly at Martin's Sound Center, 34th & University, Lubbock. TF-M

LEFT IN layaway-component stereo with 200 watt amplifier, 8 track tape player. Am-fm stereo radio. Garrard turn table, 10 speaker system. Regular price \$399.95, assume balance of \$245.00 or \$10 monthly at Martin's Sound Center, 34th & University in Lubbock. TF-M

UNCLAIMED layaways, 12 only no balances over \$39.95. 3 Singer Touch and Sew 73 models. 6 Universal zigzag, buttonhole, blind hem, fancy patterns, etc. \$29.95. 3/73 Model dressmaker zigzag \$24.70. All sew double knit and guaranteed terms. Lubbock Sewing Center. Your authorized Bernina Dealer, 1913 19th, Lubbock, 762-3126. 5-30-L

YOUNG ducks for sale, \$2 each. Call 997-3431. 6-2-L

COMMERCIAL building at 617 W. 8th. \$4500.00. Owner will carry note. \$500 down. \$64.36 per month for 7 years. Call 385-6113. TF-B

corner lots 12 and 1/2 of 11 on 17th St. across from First Christian Church and Crescent Park. A.O. Dickson, Amherst, 246-3250. TF-D

REFRIGERATED air conditioner. \$50. Call 385-3725. 6-2-C

COUCH AND chair, new upholstery with black vinyl. Antique white chair with red velvet material. 401 Bell. 385-4934. 6-2-C

Public Notices

NOTICE OF DISSOLUTION OF PARTNERSHIP WITH CONTINUANCE AS A CORPORATION UNDER SAME NAME

Notice is hereby given that the partnership composed of David H. Metcalf and Phil Neinst, doing business at Springlake, Lamb County, Texas, under the firm name of M & N Farms, will be dissolved by mutual consent as of June 1, 1974.

The business will be continued as a corporation under the firm name of M & N FARMS, INC., at Springlake, Lamb County, Texas. All debts owing and all debts due the partnership will be received or paid at the address of the corporation set forth above.

DATED May 15, 1974.
s/ David Metcalf
David H. Metcalf
s/ Phil Neinst
Phil Neinst

NOTICE OF INTENTION TO INCORPORATE UNDER PRESENT FIRM NAME

Notice is hereby given that pursuant to Article 1302-2.02 of the Texas Miscellaneous Corporation Laws Act, M & N Farms, a partnership composed of David H. Metcalf and Phil Neinst, of Springlake, Lamb County, Texas, intends to incorporate its business under the name of M & N FARMS, INC., as a Texas corporation, effective June 1, 1974.

s/ David Metcalf
David H. Metcalf
s/ Phil Neinst
Phil Neinst

NOTICE TO CREDITORS NOTICE IS HEREBY GIVEN that on the 28th day of May, A. D., 1974, PAMELA JEAN MARCUM, a resident of Littlefield, Lamb County, Texas was duly appointed COMMUNITY ADMINISTRATRIX of the Community Estate of J. L. (JIM) MARCUM, III, Deceased.

All persons having claims against the Community Estate of J. L. (JIM) MARCUM, III, are hereby required to present same to PAMELA JEAN MARCUM, 209 East 17th Street, Littlefield, Texas, within the time required by law.

KIRBY, RATLIFF & SANSOM Attorneys for PAMELA JEAN MARCUM P.O. BOX 888 LITTLEFIELD, TEXAS 79339

BY: s/Louis M. Ratliff, Jr. LOUIS M. RATLIFF, JR.

To any oil, gas, utilities and industries having property in Whitharral School District.

The Whitharral Board of Equalization will convene at 10:00 a.m. on the 10th of June 1974 at the school house in Whitharral, Texas at which time and place said board will then consider any evidence you may elect to submit as to the value of said property for taxable purposes. The Board, on said date, after consideration of all evidence submitted, will finally fix, determine and equalize the value of your property for taxable purposes for the year 1974. This applies only to oil, gas, utilities and industries.

Signed: s/Robert Avery
Chairman of Equalization Board

Summer Term Starts Monday

Registration for the first term of the summer session at Texas Tech University is scheduled to begin at 1 p.m. Monday, June 3, and continued through 6 p.m., Tuesday, June 4. Registration will be conducted in the Lubbock Municipal Coliseum.

Classes for the first term will begin Wednesday morning (June 5).

Enrollment for the first term of the 1973 summer session totaled 8,333 and officials estimate this summer's first term figure will be about the same.

The first term ends July 13, the second one begins July 15 and ends Aug. 24.

Ch. 11 KCBD

7:15 * News Weather Sports
7:30 * Sacred Heart
7:45 * Ask The Minister
8:00 * Day of Discovery
8:30 * Get Together
9:00 * Rex Humbard
10:00 * Oval Roberts
11:00 * Living Your Religion
11:30 * A Better Life
12:00 * Old Time Gospel Hour
1:00 * American Outdoorsman
1:30 * "Under Capricorn"
3:30 * "Nearly A Nasty Accident"
5:00 * Wild Kingdom
5:30 * NBC News
6:00 * Evening Report
6:30 * World of Disney
7:30 * Sunday Mystery Movie
9:30 * The Protectors
10:30 * "Weekend Wrap-Up"
11:30 * "Meet The Press"
11:30 * Universal Startime
12:30 * News Weather Sports

SUNDAY
Ch. 13 KLBK

7:00 * This is the Life
7:30 * Samson
8:00 * Bobby's Comics
8:30 * Amazing Chan & The Chan Clan
9:00 * Johnny Quest
9:30 * Underdog
10:00 * 3 Stooges
10:30 * Inquiry
11:30 * Kaleidoscope
12:00 * "Face the Nation"
12:00 * "Drums Along The Mohawk"
1:30 * CBS Tennis Classic
2:30 * World Cup
3:00 * Danny Thomas Memphis Classic
5:00 * 60 Minutes
6:00 * Channel 13 News
6:30 * Apple's Way
7:30 * Mannix
8:30 * Barnaby Jones
9:30 * To Tell the Truth
10:15 * CBS Evening News
10:30 * Family Cinema

Ch. 28 KSEL

8:00 * Encounter
8:30 * Highland Adventure
9:00 * Kid Power
9:30 * The Oddballs
10:30 * Willie Acosta Show
10:30 * Christopher Crossup
10:45 * First Baptist Church
11:45 * Film Feature
12:00 * Let The Bible Speak
12:30 * Issues and Answers
1:00 * "Fright"
2:30 * "A Friend For Joey"
3:00 * Outdoors with Ken Collaway
3:30 * The Bill Dance Show
4:00 * World Invitational Tennis Classic
5:00 * Untamed World
5:30 * The Lip Witness
6:00 * Get Down Country
6:30 * The F.B.I.
7:30 * "You Can't Win 'em All"
9:30 * "The President's Analyst"

Morning & Afternoon - Monday through Friday

Ch. 11 KCBD	Ch. 13 KLBK	Ch. 28 KSEL
6:30 * Garner Ted Armstrong 7:00 * News and Weather 7:10 * Today in Texas & New Mexico 7:25 * Weather 7:30 * Today Show 7:55 * Weather 8:00 * Today Show 8:25 * News and Weather 8:30 * Today Show 9:00 * Dinah's Place 9:30 * Jeopardy 10:00 * Wizard of Odds 10:30 * Hollywood Squares 11:00 * Jackpot 11:30 * Celebrity Sweepstakes 11:55 * NBC News 12:30 * Three on a Match 1:00 * Days of our Lives 1:30 * The Doctors 2:00 * Another World 2:30 * How to Survive a Marriage 3:00 * Somerset 3:30 * Daniel Boone 4:30 * I Dream of Jeanie 5:00 * Hogan's Heroes 5:30 * NBC Nightly News 6:00 * Evening Report	6:30 * Farm and Ranch 7:00 * CBS Morning News 8:00 * Captain Kangaroo 9:00 * Jack Lo Lonne 9:30 * Not for Women Only 10:00 * "New You See It" 10:30 * Law of Life 10:55 * CBS Midday News 11:00 * Young and Restless 11:30 * Search for Tomorrow 12:00 * Channel 13 News 12:30 * "As the World Turns" 1:00 * Guiding Light 1:30 * Edge of Night 2:00 * Price is Right 2:30 * Match Game 3:00 * Tatortales 3:30 * Joker's Wild 4:00 * Gombi 4:30 * Bonanza 5:30 * CBS Evening News 6:00 * Channel 13 News	8:30 * Pagey and Polly 9:00 * Wilburn Brothers 9:30 * Perry Mason 10:30 * The Brady Bunch 11:00 * "Passover" 11:30 * Split Second 12:00 * KSEL Agr-News 12:30 * Bernia Howell Show 12:30 * Let's Make a Deal 1:00 * The Newlywed Game 1:30 * Girl in My Life 2:00 * General Hospital 2:30 * One Life to Live 3:00 * "10,000 Pyramid" 3:30 * "All My Children" 4:00 * "Drawn to a Fault" 4:10 * "Admiral Fagan" 4:30 * The Lucy Show 5:00 * ABC Evening News 5:30 * KSEL 28 News

MONDAY EVENING

Ch. 11 KCBD	Ch. 13 KLBK	Ch. 28 KSEL
6:30 * Sanford & Son 7:00 * Major League Baseball 7:00 * Weekday Wrap-Up 10:30 * Tonight Show 12:00 * Tomorrow 1:00 * News Weather Sports	6:30 * To Tell the Truth 7:00 * Billy Graham Arizona Crusade 8:00 * Here's Lucy 8:30 * Dick Van Dyke 9:00 * Medical Center 10:00 * Channel 13 News 10:30 * "Patch of Blue"	6:00 * Star Trek 7:00 * The Rockies 8:00 * "No Way to Treat A Lady" 10:00 * KSEL 28 News 10:30 * Wide World Mystery

TUESDAY EVENING

Ch. 11 KCBD	Ch. 13 KLBK	Ch. 28 KSEL
6:30 * Dragnet 7:00 * Adam 12 7:30 * "Banquet" 9:00 * Police Story 10:00 * Weekday Wrap-Up 10:30 * Tonight Show 12:00 * Tomorrow 1:00 * News Weather Sports	6:30 * To Tell the Truth 7:00 * "Mouset" 7:30 * Billy Graham Arizona Crusade 8:30 * Tuesday Night Movie 10:00 * Channel 13 News 10:30 * "Red Line 7000"	6:00 * Star Trek 7:00 * The Happy Days 7:30 * "Star Trek" 9:00 * "Star Trek" 10:00 * KSEL 28 News 10:30 * Wide World Mystery

WEDNESDAY EVENING

Ch. 11 KCBD	Ch. 13 KLBK	Ch. 28 KSEL
6:30 * Dragnet 7:00 * "Chew" 8:30 * "The World of Henry Orent" 10:30 * Weekday Wrap-Up 10:30 * Tonight Show 12:00 * Tomorrow 1:30 * News Weather Sports	6:30 * To Tell the Truth 7:00 * Bobby Gentry's Happiness Hour 8:00 * "Crime Club" 9:00 * Billy Graham Arizona Crusade 10:00 * Channel 13 News 10:30 * "Bonkers 8-52"	6:00 * Star Trek 7:00 * The Cowboys 7:30 * Wednesday Movie 9:00 * Doc Elliot 10:00 * KSEL 28 News 10:30 * Wide World Special

THURSDAY EVENING

Ch. 11 KCBD	Ch. 13 KLBK	Ch. 28 KSEL
6:30 * Dragnet 7:00 * "Top Gun" 8:00 * "The World of Henry Orent" 9:00 * "Darr Martin" 10:30 * Weekday Wrap-Up 10:30 * Tonight Show 12:00 * Tomorrow 1:00 * News Weather Sports	6:30 * To Tell the Truth 7:00 * The Wilton's 8:00 * "Prime of Miss Jean Brodie" 10:00 * Channel 13 News 10:30 * "Spy with the Cold Nose"	6:00 * Star Trek 7:00 * Chopper One 7:30 * "Fahrenheit" 8:00 * "Kung Fu" 9:00 * "Streets of San Francisco" 10:00 * KSEL 28 News 10:30 * Wide World Special

FRIDAY EVENING

Ch. 11 KCBD	Ch. 13 KLBK	Ch. 28 KSEL
6:30 * Emergency 7:30 * "Brain Farts Show" 8:00 * "The Anderson Tapes" 10:00 * Weekday Wrap-Up 10:30 * Tonight Show 12:00 * Midnight Special 1:30 * News Weather Sports	6:30 * To Tell the Truth 7:00 * "Seductions" 8:30 * "Crime Club" 10:00 * Channel 13 News 10:30 * "Moon Zero Two" 12:30 * "Nightlight Theatre"	6:00 * Star Trek 7:00 * Brady Bunch 7:30 * "Six Million Dollar Man" 8:30 * The Odd Couple 9:00 * "Tamo" 10:00 * KSEL 28 News 10:30 * Wide World in Concert

SATURDAY

Ch. 11 KCBD

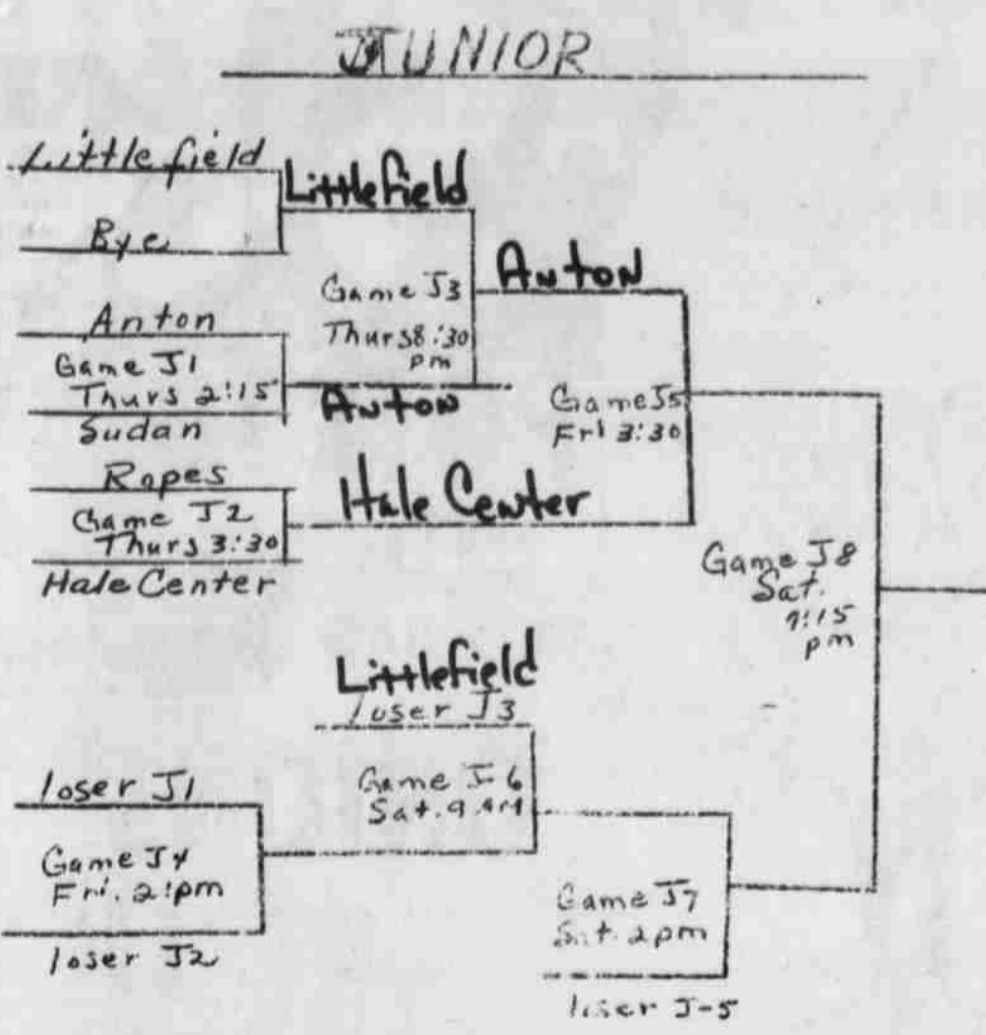
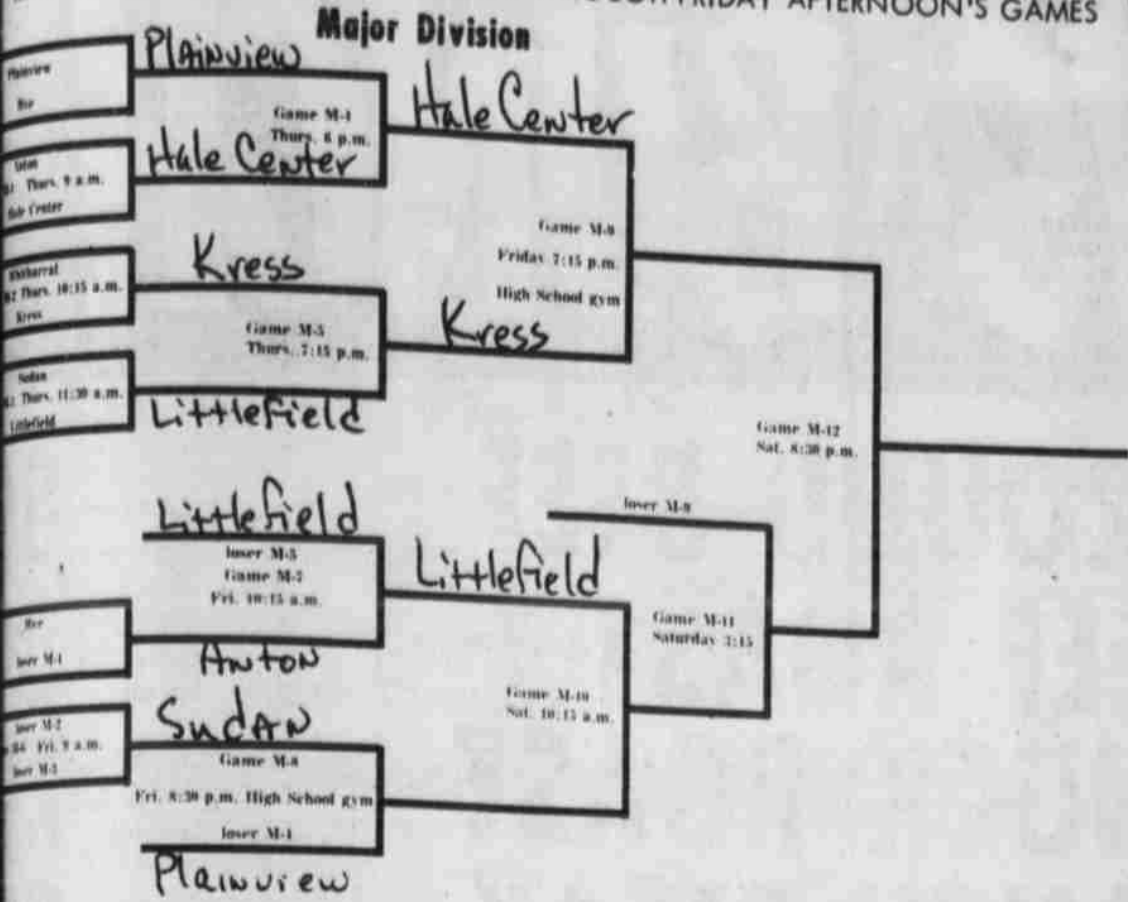
6:45 * News Weather Sports
7:00 * "Livin' on a Prayer"
7:30 * "Address Book"
8:00 * Emergency
8:30 * "The New York Times"
9:00 * "Sigmund"
9:30 * "The Five Peas in a Pod"
10:30 * "Star Trek"
11:00 * "Sally Cassidy"
11:30 * "The Dick Van Dyke Show"
12:00 * "The Bill Dance Show"
1:00 * "World Invitational Tennis Classic"
4:00 * "Other People's Lives"
4:30 * "Armed and Dangerous"
5:00 * "Wild Kingdom"
5:30 * NBC News
6:00 * "Parker Regency"
6:30 * "The Dick Van Dyke Show"
7:00 * "The Dick Van Dyke Show"
7:30 * "The Dick Van Dyke Show"
8:00 * "The Dick Van Dyke Show"
8:30 * "The Dick Van Dyke Show"
9:00 * "The Dick Van Dyke Show"
9:30 * "The Dick Van Dyke Show"
10:00 * "The Dick Van Dyke Show"
10:30 * "The Dick Van Dyke Show"
11:00 * "The Dick Van Dyke Show"
11:30 * "The Dick Van Dyke Show"
12:45 * News Weather Sports

MOTOROLA

Quasar

WORKS A DRAWER

100% SOLID STATE CHASSIS 25" CREDENZA COLOR TV



Lamb Posse Wins Parade Trophies

Lamb County Sheriffs won two trophies when they traveled to Seagraves for a parade and a rodeo. Last year Lamb County won second at the AASP&RC national finals banquet. Members also rode in the grand entry kicking off the three-day Gaines County Rodeo. Sunday some members of the club will travel to Lubbock for the District Playday riding in competition with 300 area riders. The playday begins at 9 a.m. at the Lubbock Saddle Club arenas located next to Jack Aull's Sports Arena. Admission is free for spectators. Lamb County residents are invited to come out and support their Posse and see some fine horsemanship.

A regular business meeting will be held Monday night at 8 p.m. in the Willie Room of the REA Building. All members and guests are urged to attend as final plans will be made for attending the Hereford parade on June 15th. Other parade invitations will be decided on and plans will be made for those.

Little League Standings

MINOR LEAGUE STANDINGS			MAJOR LEAGUE STANDINGS			
W	L	T	W	L	T	
TASTY TACO	7	0	2	WOW	6	2
CARLISLE-OLDHAM	5	2	1	BIRKELBACH	4	3
VFW	5	3	1	ROTARY	4	4
LEADER-NEWS	3	6	1	LIONS	3	4
SECURITY STATE	0	9	0	FIRE DEPT.	2	3
				PAY & SAVE	2	5

Girls Softball Organizational Meeting Rescheduled To Friday

An organizational meeting will be held Friday, June 7, in the Flame Room of the Pioneer Natural Gas Building from 6:30 p.m. to 8 for all girls 7-12 who are interested in playing girls' softball. The meeting had originally been scheduled for June 6. All women who would like to coach and any merchant who would like to sponsor a team are urged to attend the meeting.

VFW, Taco, WOW, Birkelbach Net Wins

Tasty Taco and WOW continued to lead the Little League races as they both posted easy wins during the past half-week. Birkelbach dropped Rotary to get back into second place in the majors, a position they lost to the Rotarians last week. In the minors, Carlisle-Oldham and VFW, in second and third place, battled it out Friday to see who would challenge Taco. The Veterans opened Little League play Tuesday by outlasting Leader-News 18-16. Both teams scored five runs in the second and fourth innings, but VFW had eight in the third to the Newsmen's six. Joshua Rangel was the winning pitcher and socked a double. Junior Rangel, Dan Johnson and David Jones knocked singles. Danny Marquez pitched for the Newsmen and slashed a double. Scott Lewis and Alex Burnett added singles. Tasty Taco handed Security State their ninth loss Thursday by scoring at least three times in every inning for a 21-6 win. Johnny Logan led the Taco batters with a double and a single. Adrian Solis and Dennis Garcia popped two singles each, Curtis Williams doubled, and Adam Solis singled. Barry Fisher handled the winner's pitching. Ronnie Smith hammered out three singles for the Bankers. Pat Torres slammed two doubles, and Nathan Ristvedt and Oscar Torres had singles. WOW pushed across six runs in the first inning and got three more in the second as they coasted past Pay & Save 9-4 Tuesday in a major league outing. Eddie Gregory slugged a two-run homer and a single for the winners. Joe Rodriguez notched two singles, Mark Yarbrough and Scot Yarbrough punched doubles and pitcher Randy Healy added a single.

Sr. Babe Ruthers Keep On Winning

The Littlefield Senior Babe Ruth team continued their winning ways last week by winning twice, beating Anton 7-2 May 23 and dropping Sudan 3-0 May 25. Pat Henderson was the winning pitcher both games. He tossed a one-hitter at the Sudan squad and limited Anton to just four hits. Kelly Pratt and Lonnie Twitty knocked homers to pace the Littlefield batters against Anton. Kenny Owens doubled and Len Richey had a single. Amalla was the losing pitcher. T. Gilliam slashed two singles, J. Parrish doubled and Goen added a single. Bill Turner slugged a round-tripper against Sudan and also notched, two singles, Owens and Henderson both pitched in singles. Richard Tamplin got the only Sudan hit, a double. Donnie Noles was the loser.

DINE OUT

NEW TASTY TACO RESTAURANT

5TH & XIT DRIVE

SUNDAYS ONLY

FROM 11:00 A.M.-2:00 P.M.

COMPLETE LINE OF AMERICAN BUFFET

Swimwear is in the Yellow Pages

CLIFF'S GROCERY AND DELICATESSEN

FISH FRY - EVERY FRIDAY WITH ALL THE TRIMMINGS

INQUIRE ABOUT OUR CUSTOM COOKING

PARTIES AND ORGANIZATIONS OF BAR-B-Q BEEF, HAM, HOT LINKS AND POULTRY.

1200 HALL AVE. LITTLEFIELD, TEXAS 385-3441

Pee Wee Leaguers Ready For Play

Rosters for the Littlefield Pee Wee League have been completed, and play will begin June 4 when the Pioneers meet the Lions. The Pee Wees will play two nights a week through July 2. The first game each night will be from 6:30 to 8 p.m., and the second game will be from 8:30 to 10.

SCHEDULE

June 4— Pioneer vs. Lions; Roadrunners vs. Tigers

June 7— Chiefs vs. Lions; Pioneers vs. Tigers

June 11— Chiefs vs. Roadrunners; Tigers vs. Lions

June 14— Pioneers vs. Roadrunners; Chiefs vs. Tigers

June 18— Pioneers vs. Chiefs; Lions vs. Roadrunners

June 21— Pioneers vs. Lions; Chiefs vs. Tigers

June 25— Pioneers vs. Roadrunners; Lions vs. Chiefs

June 28— Roadrunners vs. Chiefs; Lions vs. Tigers

July 1— Pioneers vs. Chiefs; Roadrunners vs. Tigers

July 2— Pioneers vs. Tigers; Lions vs. Roadrunners

always value-priced

FOOD KING

BISCUITS TALL CAN 11¢

JEWEL **SHORTENING** CREAMED 42 OZ. \$1.19

SHURFINE **FRUIT COCKTAIL** 303 CAN 2 FOR 69¢

FIRESIDE **CRACKERS** SALTINE 1 POUND 39¢

BELL **FRUIT DRINK** 64 OZ. 3 FOR \$1

PUREX **BLEACH** GALLON 57¢

SHURFINE **GREEN BEANS** CUT 303 CAN 19¢

SHURFINE **COFFEE** POUND 89¢

GOLD-N-SOFT **MARGARINE** POUND 49¢

VISTA **COOKIES** LEMON, COCONUT, ICED LEMONADE, SUGAR 12 OZ. 39¢

DEL MONTE **SWEET PEAS** 303 CAN 29¢

CALIFORNIA **POTATOES** LONG WHITE 10 LB. BAG \$1.79

CALIFORNIA SUNKIST **LEMONS** POUND 29¢

CURED 81 HALF **HAM** POUND \$1.69

HORMEL **WEINERS** 12 OZ. PKG. 59¢

GOOCH'S **SMOKED SAUSAGE** 12 OZ. 89¢

FRESH GROUND **BEEF** POUND 79¢

CHOICE **CHUCK STEAK** POUND 89¢

DOUBLE GUNN BROS STAMPS TUES. & WED. WITH PURCHASE OF \$2.50 OR MORE EXCLUDING CIGARETTES

PIONEER SUPERMARKET

WE REDEEM USDA FOOD STAMPS

Before You Buy Central Air Conditioning...

ADD IT ALL UP!

THE ROUND ONE

Be careful! Don't just buy the central air conditioner with the lowest price tag! It could cost you a lot more money in the long run. By adding high electric bills and expensive repair costs later!

Put your confidence in The Round One... Carrier's unique central air conditioner. The Round One gives you the most value for your money. That's because it uses less electricity to keep your home cool. And it requires less service because of special protective devices like solid state controls, crankcase heater, brass service valves, and a patented equalizer valve that safeguards the compressor.

Go ahead! Add it all up for yourself... and you'll see why The Round One gives you the most value for your money!

Campbell's
Clumping Company
Heating & Air Conditioning
Phone 385-5020
1022 E 9th



A \$ BUYS A BUNCH

PEACHES
ORANGES

GREEN ONIONS

TEXAS SQUASH

POTATOES
RED
10 LB. BAG **\$1.53**

ONIONS

TEXAS MEDIUM
YELLOW, LB **11¢**

SWEET AND TANGY, LB. **6/\$1.00**

BUNCH **2/31¢**

WHITE, YELLOW
ZUCCINI LB. **28¢**

GROUND BEEF FRESH GROUND, LB Adv. Special **80¢**

BEEF ROAST FURR'S PROTEN, 7-BONE SHOULDER CUT, LB Adv. Special **80¢**

CHUCK ROAST FURR'S PROTEN, LB Adv. Special **79¢**

RANCH STEAK FURR'S PROTEN, LB Adv. Special **98¢**

DELUXE RIBS FURR'S PROTEN FOR BAR-B-Q LB Adv. Special **60¢**

TURKEYS TOP FROST LORD MARLIN VARIOUS SIZES LB. **50¢**

SIRLOIN STEAK Advertised Special Furr's Proten, Lb **\$1.09** **T-BONE STEAK** Furr's Proten, Lb Advertised Special **\$1.09**

ROUND STEAK Advertised Special Furr's Proten, Lb **\$1.09** **RIB ROAST** Adv. Special Furr's Proten, Lb **\$1.09**

RIB STEAK Advertised Special Furr's Proten, Lb **\$1.09** **FRYERS** USDA WHOLE **\$1.39**

CLUB STEAK Furr's Proten, Lb Advertised Special **\$1.39** **CHEESE** FOOD CLUB PKG., 8 oz. halfmoon **70¢**

DOG FOOD VET'S BEEF, CHICKEN OR LIVER, 15 1/2 OZ CAN **8 FOR \$1**

TEA BAGS FOOD CLUB 100 COUNT PACKAGE **83¢**

IVORY LIQUID DETERGENT, 20¢ OFF LABEL **69¢**

TOMATOES FOOD CLUB, NO. 303 CAN **4 FOR \$1**

SPAGHETTI FRANCO AMERICAN, NO. 300 CAN **5 FOR \$1**

SPINACH FOOD CLUB, NO. 303 CAN **3 FOR 69¢**

DRESSING PFIFFERS FRENCH, 8 OZ SIZE **3 FOR \$1**

GREEN BEANS FOOD CLUB CUT, NO. 303 CAN **3 FOR 69¢**

POTATOES FOOD CLUB INSTANT, 13 OZ PACKAGE **49¢**

DREAM WHIP Topping, 8 Oz **96¢** **HANDI-WRAP** 200 Ft. Roll **53¢**



EGGS FARM PAC USDA GRADE A LARGE, DOZEN **49¢**

PEARS FOOD CLUB IN HEAVY SYRUP, NO. 2 1/2 CAN **55¢**

FOOD CLUB RICE instant 14 OZ. **64¢**

Frozen Food Favorites

ORANGE JUICE GAYLORD FRESH FROZEN 6 OZ CAN **5 FOR \$1**

CORN TOP FROST FROZEN WHOLE KERNEL, 10 OZ PACKAGE **4 FOR \$1**

CARROTS TOP FROST SLICED, FRESH FROZEN, 10 OZ PACKAGE **5 FOR \$1**

BREAD Pepperidge Farm, 16 Oz Loaf **46¢**

ROUND WAFFLES Top Frost, Fresh Frozen, 12 Oz Package **39¢**

VEGETABLES Birdseye International, Fresh Frozen, 10 Oz **54¢**

EGG BEATERS Fleischman's 2-8 Oz Pkgs **89¢**

ICE CHEST
Gotham's 28 Qt with lid-moulded handles
Each **77¢**

CHARCOAL LIGHTER
KINGSFORD
Qt Can **43¢**

HAIR TREATMENT CONDITIONER
LIFE 6 OZ SIZE **\$1.17**

Colgate MFP TOOTH PASTE
7 OZ FAMILY SIZE **74¢**

PEPTO-BISMOL LIQUID
12 OZ SIZE **\$1.27**

ASPIRIN SWABS Squibb, 5 Gr, 250 Count
Topco Cotton, 170 Ct.

LAWN CHAIR
GAY PRODUCTS
5x4 WEB CONSTRUCTION
MATCHING CHAISE **\$7.99**

INTENSIVE CARE BUBBLE BATH
VASELINE
18 OZ SIZE **93¢**

PANTY HOSE
AMPLON HOLEPROOF NYLON, THE SIZE THAT WON'T QUIT
66¢

SECURE FEMININE DEODORANT
5 OZ **69¢**

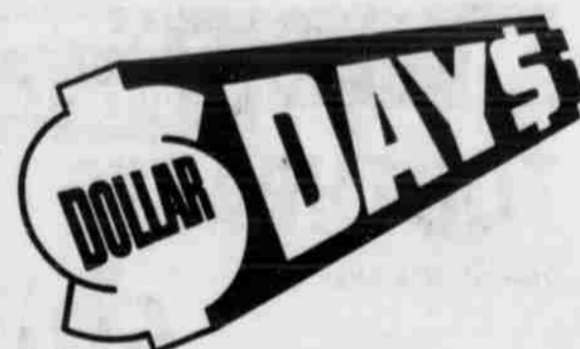
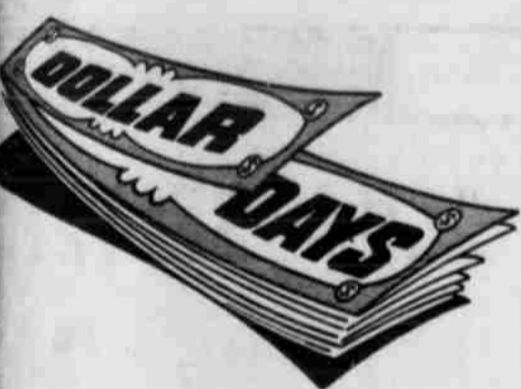
SHAMPOO
TOPCO BEACON EGG, LEMON GREEN, 32 OZ SIZE **61¢**

SHOP Furr's MIRACLE PRICES

LITTLEFIELD



DOLLAR DAYS



Ware's **DOWN** come PRICES!

Dollar Days

ONE GROUP SPORTSWEAR

MISSES & JUNIOR

1/2 PRICE

ONE GROUP LADIES PANT SUITS

LONG SLEEVE AND SLEEVELESS
100% POLYESTER

SIZES 8 TO 20

\$30.00

NUDIE PANTY HOSE

PAIR
79c

ONE GROUP LADIES DRESSES

28.00.....	\$20.99	44.00.....	\$31.99
30.00.....	\$21.99	46.00.....	\$33.99
32.00.....	\$22.99	48.00.....	\$35.99
34.00.....	\$24.99	50.00.....	\$36.99
36.00.....	\$26.99	52.00.....	\$38.99
38.00.....	\$27.99	54.00.....	\$40.99
40.00.....	\$28.99	56.00.....	\$42.99
42.00.....	\$29.99	58.00.....	\$44.99
60.00.....	\$46.99		

ONE GROUP JUNIOR DRESSES

16.00.....	\$10.99	24.00.....	\$17.99
18.00.....	\$12.99	28.00.....	\$20.99
20.00.....	\$14.99	30.00.....	\$21.99
22.00.....	\$15.99	32.00.....	\$22.99

ONE GROUP LADIES SHOES

17.00	WHITE & PASTELS	18.00
\$8.99		\$9.99

ONE GROUP MEN'S CANVAS SHOES

1/2 PRICE

ONE GROUP LADIES CANVAS SHOES

1/2 PRICE

ONE GROUP CHILDREN'S CANVAS SHOES

1/2 PRICE

ONE GROUP YOUNG MEN'S PERMANENT PRESS CASUAL SLACKS

REG. 25.00	\$17.00	REG. 15.00	\$9.00
REG. 20.00	\$14.00	REG. 14.00	\$9.00

VALUES TO 18.00 **\$5.00**

Ware's

DOLLAR DAY

SPECIALS

TOOTHPASTE
COLGATE PEAK
FAMILY SIZE **39¢**

SOAP
PALMOLIVE OR VEL
BAR **19¢**

TOOTHPASTE
COLGATE DENTAL CREAM
SUPER SIZE **69¢**

TOOTHBRUSH
COLGATE
REGULAR 69¢ **17¢**

VITAMIN C
REXALL
500 MG
100 COUNT **79¢**

CONTAC
10 COUNT **89¢**

CAMERA
POLAROID
SQUARE SHOOTER 2 **\$19.95**

HAIR DRESSING
BRYLCREME
KING SIZE **69¢**

CREME RINSE
16 OZ **79¢**

VO 5
HAIR DRESSING 1 1/2 OZ **59¢**

TONI INNOCENT COLOR
HAIR COLOR SHAMPOO EASY **79¢**

KODACOLOR INSTAMATIC 20
POCKET CAMERA **\$17.95**

WILKINSON 5 COUNT 10 COUNT
RAZOR BLADES **49¢** **98¢**

HOUR AFTER HOUR SPRAY 4 & 5 OZ 7 & 8 OZ
DEODORANT **49¢** OR **89¢**

MISS BRECK
SUPER BALSAM 8 OZ **49¢**

BRECK BASIC 4 OZ **99¢**

NEW DAWN 2
HAIR COLOR SHAMPOO IN **89¢**

SUPER 8
MOVIE FILM EKTACHROME 160 **\$2.98**

MASSENGILL LIQUID DOUCHE 8 OZ **98¢**

MASSENGILL POWDER DOUCHE 6 OZ **79¢**

RODEN REXALL DRUG
STORE HOURS: 8 A.M. TO 7:00 P.M. MON. TO SAT. 9 A.M. TO 5:00 P.M. SUNDAY
WE RESERVE THE RIGHT TO LIMIT QUANTITIES

MYADEC 30 COUNT **99¢**
DIPPTY DO GEL 8 OZ **59¢**

HYDROGEN
PEROXIDE 16 OZ **29¢**

ALKA SELTZER 25 COUNT BOTTLE **39¢**

ANACIN 100 COUNT **99¢**

VAPORUB VICK 3.1 OZ REGULAR \$1.29 **49¢**

SHAVE CREAM COLGATE INSTANT REGULAR 79¢ **29¢**

SUDDEN TAN BRONZES INSTANTLY REGULAR \$3.00 **\$1.79**

Q.T. LOTION 4 OZ **\$1.49**

COLOR FILM KODACOLOR 11 C126-12 EXPOSURE **89¢**

News about our Lamb County Neighbors in

OLTON

MRS. W. B. SMITH, JR. 285-2385

SUNYA SORLEY was graduated Friday from Houston Baptist College. Attending the graduation exercises from were Mr. and Mrs. Sorley and Cynthia, Pearl Schreier and Mrs. Lewis. Also attending were Mr. and Mrs. Ralph and Kyle David of the local office since February, 1970.

HARRY JOHNSON has received a Bachelor of Science degree in Forestry from Texas A. & M. University. He is the son of Mr. and Mrs. Lenrel Johnson and grandson of Mr. Mrs. H. A. Cavett and J. A. Johnson.

MELLIE V. Gabehart is residing in Heritage in Plainview. **MR. AND MRS. C. T. Lokey** were several days last week in Mr. and Mrs. Roy at Possum Kingdom.

OPEN INSTALLATION will be held Saturday, June 8, at 8 for Chapter 847 of the Order of the Eastern according to Mrs. Ceremonies will be held in Olton Masonic. All interested persons are invited to attend both the ceremonies and the social following.

POSTMASTER D. M. Holt recently been named one of two directors of area district 5. The area is composed of southern Kansas, Oklahoma and West Texas from the Oklahoma line to El Paso. Holt has been serving as postmaster of

Classes For Summer Start Monday

Registration for West Texas State University's first summer session will begin at 8 Monday, June 3, in the Activities Center.

Class instruction starts Tuesday, June 4. Beginning Freshman orientation and Academic advising is set for 9-11:30 a.m. Monday in the University Complex South, Room 101. Registration for the beginning freshmen will be from 3-4 p.m. at the AC.

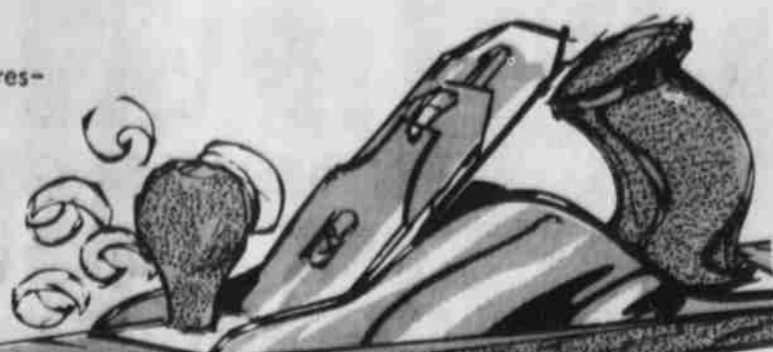
All other enrolling students will follow an alphabetic time schedule based on the first letter of the student's last name.

Tuesday will be the last day for payment of fees without a penalty fee, but late registration will continue through Friday.

In addition to the variety of credit courses offered during the summer session, students may register for special music workshops scheduled during the first summer term.

FAMILY CIRCLE
Families provide love and emotional support. The family circle is a place where full opportunities for emotional, intellectual and social development can be given unconditionally—not "if" or "because."

We're Remodelling The Entire Store And EXPANDING Too! New Fixtures—The Works Plus—Our Store Will Take In The Old Littlefield' Variety Store Also. Not Just A Paint Job—We're Truly Remodelling To Serve You Better!



PRE-REMODELLING SALE!

THE ENTIRE STOCK OF DACRON DOUBLE KNIT

OVER 5,000 YARDS INCLUDES YARN DYED FANCIES, CHECKS, CREPE STITCH & CO-ORDINATES-EVERYTHING!

\$2.44

YARD

HOTTEST PRICE EVER

200 MEN'S 100% POLYESTER SUITS

SIZES 36-46 SHORT, REGULAR & LONGS
REGULAR \$80.00
CARAVAN PRICE

\$59⁰⁰

During This Great Remodelling Sale, You'll Find

VALUES GALORE!

GIRL'S LOW RISE

JUNIOR DENIM JEANS

2 STYLES
LARGE SELECTION

\$10.00 VALUES **\$4⁰⁰**

JUST RECEIVED

LADIES FAMOUS BRAND NAME

PANT SUITS

GREAT SELECTION IN PRINTS, SOLIDS, DOTS & MANY OTHERS

\$19⁸⁸

OVER 300 MEN'S

POLYESTER KNIT PANTS

ALL FAMOUS NAME BRANDS
SPECIAL PURCHASE FOR DOLLAR DAY

VALUES TO \$18.00 **\$10⁰⁰**

MEN'S FAMOUS BRAND NAME

BOOT JEANS & CASUAL SLACKS

OVER 300 PAIR
REGULAR \$12.00 **\$6⁰⁰**

LADIES FAMOUS BRAND

BRAS

REGULAR \$3.50

DOLLAR DAY **2 FOR \$5⁰⁰**

SUPER BIG

"HE-MAN" TOWELS

REGULAR \$3.99 **2 FOR \$6⁰⁰**

ALL LADIES

SANDALS

1/3 OFF

MANY OTHER SHOES TAG SPECIALS

LADIES PANTIES

REGULAR 49¢

3 PAIR \$1¹⁹

REMAINING STOCK OF MEN'S COLORED

BRIEFS & T-SHIRTS

REGULAR \$1⁰⁰
\$1.50

ALL MEN'S, WOMEN'S & CHILDREN

SWIMWEAR

1/3 OFF

OVER 100

JUNIOR TOPS

MANY STYLES & COLORS

REG. \$10-11-12 **\$7.88**
REG. \$7-8-9 **\$5.88**
REG. \$5-6 **\$3.88**

FOR FATHER'S DAY OR GRADUATION

BULOVA makes time a little more precious

Any watch is an impressive gift. But a Bulova gift watch shows how much you really care, how carefully you selected, how anxious you are to please. Bulova is America's outstanding gift watch because Bulova offers you a choice of all the most-wanted features: modern styling, integrated bracelets, bright and colorful dials, self-winding and calendars... and more, much more.

A. Impressive 30 jewel automatic with two-tone link band. \$65.
B. Smart hexagon shaped case with silver dial. 17 jewels. \$60.
C. Brush textured bracelet watch that's easy-on-the-eyes. 17 jewels. \$65.
D. Beautifully textured with pierced design bracelet. 23 jewels. \$80.
E. Time, day and date told with 17 jewel precision. Automatic. \$80.

Putt Jewelry
5TH & XIV

your **master charge** THE INTERBANK CARD

"ON THE BLOCK TO SHOP"

Anthony's
C. R. ANTHONY CO.

your **BANKAMERICARD** welcome

your **BANKAMERICARD** welcome

OPEN
8:30A.M. - 6:00P.M.

your **master charge** THE INTERBANK CARD

Anton Names New Head Coach

Anton High School has hired as its new head football coach a former Morton athlete who has coached in the junior high or assistant ranks at both Whiteface and Morton.

He is Lester Dupler, 29, son of Mr. and Mrs. Hugh Dupler of the Griffith community, west of Morton.

Dupler will be taking his first head coaching job. For the past two years, he has been an assistant at Hempstead.

He will bring two assistants with him to Anton, but he said Saturday he has not decided yet who they are.

Dupler, who has been studying the films of all of the Bulldogs' games last season, said his offense will be the Houston veer.

"Hopefully, it's going to be balanced, but it's a run-oriented offense," he said.

Anton will have its starting backfield back next fall, except for the quarterback. A starting guard will return, as will several part-time starters off the line. The defense apparently has about six returning starters, Dupler said.

Coach and Mrs. Dupler plan to leave Hempstead as soon as school is out and move immediately to Anton.

"It's my first head job and I'm anxious to get up here," Dupler said.

"I'm excited about it, but kind of apprehensive because I've never been in that situation before. I have so many things I want to do,

preparation wise, and I don't want to leave anything out."

Dupler was an all-district performer in football at Morton and also participated in basketball and track. He went to Hardin-Simmons on a football scholarship, as a halfback, but the Cowboys dropped football after his freshman season.

He transferred to Eastern New Mexico University, but suffered an injury.

"It didn't look like I would be able to play there, so I

transferred to Texas Tech. He received a degree, with a minor in secondary education.

From Tech, he transferred to Whiteface as junior assistant high school coach. After a year, he transferred to Morton for three years as varsity assistant football, basketball and baseball coach. His last year there, first assistant in football, he was named MVP. He was two years ago in the Hempstead as an assistant.

Boys To Attend Camp

Six boys from Littlefield will be given a free, one-week vacation this summer at The Salvation Army's Camp Hoblitzelle near Dallas, according to Rev. Joseph James, The Salvation Army Service Unit camp chairman.

Boys chosen to attend the camp this summer are Tony Muniz, Danny Marquez, Richard Soria, Juan Ortiz, Dale Boleyn and James Wright.

They will leave for camp Sunday, June 9.

"This will be an excellent experience for these boys who have never been to a real camp," Rev. James said.

"At Hoblitzelle they will enjoy boating, hiking, archery, horseback riding, fishing, swimming, handicrafts, movies and baseball as well as worship services and Bible study."

All organized activities supervised by coach counselors. The camp is housed in brick and wood cabins and receives balanced meals in the dining hall.

"Each boy's trip is financed by the Littlefield Service Unit Committee donations from citizens in our community," Rev. James said.

Camp Hoblitzelle is a 360 wooded acres with a lake and is fully equipped with modern recreational facilities. The Salvation Army operates Hoblitzelle for children and families who could otherwise have the opportunity to enjoy camp. This summer over 4,000 boys are expected to attend camp sessions.

4th TIRE FREE

WHEN PURCHASING THREE WHITE "Magic 50" STEEL BELTED RADIAL TIRES AT REGULAR PRICE

GUARANTEED 44,000 MILES
Against All Road Hazards and Wearout!

Two flexible rayon cord body plus high tensile steel belt sandwiched between four cushiony rayon belts.

TIRE SIZE	EXC. TAX PER TIRE	REGULAR PRICE EA.	REGULAR PRICE FOR 3	4TH TIRE
BR70-13	2.28	49.95	149.85*	FREE
FR70-14	3.04	52.95	158.85*	FREE
GR70-14	3.18	56.95	170.85*	FREE
HR70-14	3.47	59.95	179.85*	FREE
GR70-15	3.22	59.95	179.85*	FREE
HR70-15	3.42	61.95	185.85*	FREE
JR70-15	3.82	66.95	200.85*	FREE
LR70-15	3.86	71.95	215.85*	FREE

*Plus Tax on 4 Tires and Trade-In Tax.

Triple Written Guarantee

- FREE 30 DAY REPLACEMENT GUARANTEE if you have had to have a tire replaced in 30 days because of wearout.
- FREE SERVICE GUARANTEE against all types of road hazards. Replacement tire sent in 24 hours or less. Road hazard repair guaranteed for 90 days. Road hazard repair guaranteed for 90 days. Road hazard repair guaranteed for 90 days.
- FREE 90 DAY GUARANTEE against wearout. Replacement tire sent in 24 hours or less. Road hazard repair guaranteed for 90 days. Road hazard repair guaranteed for 90 days. Road hazard repair guaranteed for 90 days.

Save 22%
AMALIE MOTOR OIL
Reg. 69¢
54¢
Either SAE 20 or 30 Weight.

Save 39%
AC or Champion SPARK PLUGS
Reg. 98¢
59¢

SAVE \$27 to \$40 ON A SET OF 4!

WHITE "220" 2+2 BELTED TIRES

• New, wide, advanced rosette tread design puts lots of tire on the road.

• 2+2 Belted Construction - two polyester body plies, two fiberglass belts.

TIRES INSTALLED FREE

Tire Size	Exc. Tax	Reg. Price	Sale Price	YOU SAVE
A78-13	1.81	119.80*	92.80*	27.00
C78-13	2.01	123.80*	95.80*	28.00
E78-14	2.31	127.80*	98.80*	29.00
F78-14	2.50	135.80*	104.80*	31.00
G78-14	2.67	147.80*	113.80*	34.00
H78-14	2.94	155.80*	119.80*	36.00
A78-15	2.03	123.80*	95.80*	28.00
G78-15	2.73	147.80*	113.80*	34.00
H78-15	2.86	155.80*	119.80*	36.00
L78-15	3.31	171.80*	131.80*	40.00

*Plus P.E. Tax on 4 Tires and Trade-In.

GUARANTEED 36,000 MILES
Against All Road Hazards & Wearouts!

- Reliability
- Durable Construction
- Soft Smooth Ride
- Long Tire Life
- Lots of Rubber On The Road For Excellent Traction

Triple Written Guarantee

- FREE 30 DAY REPLACEMENT GUARANTEE if you have had to have a tire replaced in 30 days because of wearout.
- FREE SERVICE GUARANTEE against all types of road hazards. Replacement tire sent in 24 hours or less. Road hazard repair guaranteed for 90 days. Road hazard repair guaranteed for 90 days. Road hazard repair guaranteed for 90 days.
- FREE 90 DAY GUARANTEE against wearout. Replacement tire sent in 24 hours or less. Road hazard repair guaranteed for 90 days. Road hazard repair guaranteed for 90 days. Road hazard repair guaranteed for 90 days.

4 Convenient Credit Plans!
USE OUR CHARGE CARD
CHARGE IT! Months To Pay!

WHITE 8 TAPE PLAYER
Save \$15.95
Reg. \$44.95
\$29
• Compact Design For Easy Mounting!
• Tone, Balance, & Volume Controls!

Save 28% Coleman LANTERN
Reg. \$17.95
\$12.88
Double Mantle Model!

Save 30% Charcoal BRIQUETS
Reg. 98¢
69¢
10 Lb. Bag!

Save 33% FREON KIT
Reg. \$5.98
3.99
With Freon, Valve, & Hose!

Save 21% STP GAS TREATMENT
Reg. 98¢
77¢
12 Ounce Can!

Save 29% 3-Piece Bar-8-0 TOOL SET
Reg. \$2.75
1.99
3 Pieces: Fork, Spatula, Tong!

Catalina 5000 BTU Air Conditioner

Compact Catalina provides cool comfort in a hurry. Lightweight, easy to install, plugs in anywhere... operates on 115 volts. Aluminum/fiberglass construction resists rust and corrosion. Permanent filter, 2-speed fan.

99.95

HI-SPEED 12-VOLT BATTERY

15.88 each
+ Guaranteed 24 Months!
+ Group 24, 22F and 29N
SAVE UP TO 17%

PLASTIGLAS 12 VOLT BATTERY

+ Guaranteed 48 Months!
+ Groups 24, 22F, 24F and 29N
24.88 each

STANDARD BATTERY 12 MONTH 12 VOLT

12.88 each
ALL BATTERY PRICES ARE EXCHANGE PRICES

WHITE Hi-Speed

GUARANTEED 25,000 MILES
Against All Road Hazards & Wearouts!

MONTHS TO PAY!

WHITE Whisper Jet WIDE TREAD

4-Ply Nylon TIRES

PRICES CUT!

Tire Size	Exc. Tax	Blackwall Sale Price	Whitewall Sale Price
C78-13	1.93	16.51*	19.51*
E78-14	2.27	17.51*	20.51*
F78-14	2.37	18.51*	21.51*
G78-14	2.53	21.51*	24.51*
H78-14	2.75	26.51*	
F78-15	2.42	18.51*	24.51*
G78-15	2.60	21.51*	24.51*
H78-15	2.80	26.51*	

*Plus P.E. Tax and Trade-In.

GUARANTEED 25,000 MILES
Against All Road Hazards & Wearouts!

Charge It!

- 4 plies of strong, durable nylon.
- Wide 78 series low profile design for excellent stability & control.

LOW 78 PROFILE SUPER & POWER TRAC TIRES

For Pick-ups, Vans & Campers

New! EXTRA Wide, EXTRA Strong with EXTRA Load Carrying Capability! Specifically for Pick-ups, Vans and Campers! Wide 78 Profile Assures You Positive Control and Stability, Excellent Traction, Flotation and Mobility!

No Trade-In Required!

SUPER TRAC (Tube Type)				POWER TRAC (Tube Type)			
Tire Size	Exc. Tax	Reg. Price	Sale Price	Tire Size	Exc. Tax	Reg. Price	Sale Price
E78-13	1.76	33.95*	31.44*	E78-13	1.76	33.95*	31.44*
F78-13	1.86	35.95*	33.44*	F78-13	1.86	35.95*	33.44*
G78-13	1.96	37.95*	35.44*	G78-13	1.96	37.95*	35.44*
H78-13	2.06	39.95*	37.44*	H78-13	2.06	39.95*	37.44*
I78-13	2.16	41.95*	39.44*	I78-13	2.16	41.95*	39.44*
J78-13	2.26	43.95*	41.44*	J78-13	2.26	43.95*	41.44*
K78-13	2.36	45.95*	43.44*	K78-13	2.36	45.95*	43.44*
L78-13	2.46	47.95*	45.44*	L78-13	2.46	47.95*	45.44*

*Plus P.E. Tax.

48.44 8.75-16.5 TUBELESS BLACKWALL
49.44 8.75-16.5 TUBELESS BLACKWALL

SPORTSTER XWT SUPER 70

With RAISED WHITE LETTERS

Buy A Pair **SAVE \$11!**

Tire Size	Exc. Tax	Reg. Price	Sale Price
D70x14	2.27	31.95*	52.98*
E70x14	2.49	33.95*	56.98*
F70x14	2.57	35.95*	60.98*
G70x14	2.79	37.95*	64.98*
H70x14	2.98	39.95*	68.98*
I70x14	3.20	42.95*	72.98*
J70x14	3.40	45.95*	76.98*
K70x14	3.60	48.95*	80.98*

*Plus P.E. Tax on 2 Tires and Trade-In.

• Extra wide "70" series low profile.
• Wide 7 rib tread! 6 deep channels.
• Distinctive Raised White Letters.

GUARANTEED 25,000 MILES
Against All Road Hazards & Wearouts!

MONTHS TO PAY!

Whites Auto Stores

424 PHELPS LITTLEFIELD

Cave Opened National Park

A new cave named New Cave formally introduced to the public as the 100 persons trooped to Carlsbad Caverns National Park, May 11, to see the rugged untraveled passage.

Those who were Leader-Explorer Wade Warren and his wife Carolyn, who were near the mouth of the canyon in the 46,753 acre national park, the cave's discovery began about 250 years ago but was rediscovered by a goat herder in 1937.

Tom Tucker in 1937, who's tour kicks off public visits to New Cave after the hardy "more advanced" experience after visiting Carlsbad Caverns.

Visitors will be limited to 100 with four trips per week. Advance reservations will be required.

Superintendent Don says the cave gives a different kind of experience than does world-famous Carlsbad Caverns, with electric lighting, interpretation and trails.

New Cave is a primitive cave, said Dayton, "and only those who can handle the stress of the area can venture to a tour that is only to true wilderness in a wild cave."

He said the potential of the cave is perhaps the most exciting of the Carlsbad Caverns is perhaps the most exciting of the cave lighting and the people present. "New Cave offers a different kind of experience," he said. "Visitors carry lanterns and tour will be limited in size."

He said the intimacy of a group, the opportunity for rangers to develop rapport with their people and the heightened sense of adventure help make New

Cave "something special." The trip is not for those lacking stamina. They must walk 1 1/4 miles to the cave, 500 feet of steep climbing. There is over a mile of difficult walking inside the cave, plus the trip back to the parking area, a total of 3 1/2 miles.

New Cave consists of a long corridor of 1,140 feet with numerous side passages. It contains formations rivaling those of Carlsbad Caverns, including:

—Chinese Wall, a 3/4 inch thick wall from four to twelve inches high formed around the edge of a pool and covering an area of 1,000 square feet.

—The Monarch, at 60 feet high among the largest formations in the park. On the back side, the formation gives the appearance of a cluster of draperies.

—The Klansman, a grotesque formation that got its name because of its resemblance to a hooded rider.

—The Christmas Tree, a 35-foot formation with a diameter of 14 feet.

Once called Slaughter Cave, the cavern was developed as a guano mine in the early 1940's and a movie, "King Solomon's Mine," was partially filmed there in 1950.

Those taking part in the lantern trips should wear good walking shoes, long pants and long-sleeved shirts and bring a flashlight and drinking water.

Cost of the trip is covered by the regular park entrance fee of \$3.00 per carload for private non-commercial vehicles or by an annual Golden Age passport.

Also available in Slaughter Canyon are many hiking, backpacking and horseback opportunities for park visitors wishing to venture into the park's rugged backcountry.

Pioneer's Net Income

Up From Last Year

Natural Gas today announced the consolidated net income for the first quarter of 1974 was \$3,779,042. This compares with \$3,779,042 in the first quarter of 1973. The increase of 51 cents per share over the 55 cents per share for the first quarter of 1973.

He also announced that Pioneer Production Corporation's fourth well in the new Townsite Field in Davis Parish, La., is electric logs and these indicate that two formations are productive. These wells are also present in the wells previously drilled in the field. In addition to these productive wells, a new pay has been established below a new production casing is being run at this time and will continue to test for sands. These sands will be encountered at a higher than in any of the other wells that have been drilled in the field.

According to K. B. "Tex" Watson, president of Pioneer Gas Company, there are four principal reasons for the failure to increase production during the period.

Watson pointed out that the weather was very mild with the result that volumes of gas were heating customers off in excess of 17 percent of the same quarter of the total volumes of gas were practically unutilized with the deficiency in demand to domestic and commercial customers being made up by increased sales of irrigation and industrial customers at comparatively lower contract

rates. Due to spot and accelerated purchases, the average cost of gas increased more rapidly in the quarter than would be expected in the second and third quarter of the year with the increase not yet reflected completely in cost-of-gas adjustments to customers.

Extremely low rainfall in the service area has caused irrigation sales to exceed those experienced during the first quarter of previous years, particularly as pre-plant watering accelerated in March. These larger sales of gas for irrigation are, to a noticeable extent, reflected in cost of gas purchased for which no revenue has yet been realized due to the billing cycle.

During the first quarter revenue from gas sales increased \$2.8 million from the same quarter of 1973 while gas purchased cost increased \$5.3 million. Total revenues increased from \$35.2 million to \$47.6 million with sales of heavy machinery over 50 percent and contributing \$5.3 million of the increase and the new revenue from contract drilling of oil and gas wells contributing \$3.5 million. Increased profit was realized from each of these activities but the profit margin on sales of heavy equipment is relatively smaller than for the other principal activities of the company.

Finally, Watson pointed out that the depreciation rate on total gas plant in service had been increased from three percent to four percent effective Jan. 1, 1974.

VALUES

to whet your appetite!



- ENGLISH CUT ROAST USDA CHOICE LB. 99¢
- T-BONE STEAK USDA CHOICE LB. \$1.39
- ROUND STEAK USDA CHOICE LB. \$1.09
- SIRLOIN STEAK USDA CHOICE LB. \$1.09
- GROUND BEEF USDA CHOICE LB. 89¢
- BEEF & BEAN BURRITOS 4/89¢
- LUNCH MEATS DECKER ASSORTED 6 OZ. PKG. 39¢

- FLOUR EVERLITE 25 LB. BAG \$3.99
- SUGAR WHITE SWAN 5 LB. \$1.19
- COFFEE WHITE SWAN 1 LB. CAN 99¢
- TUNA CARNATION 6 1/2 OZ. CAN 59¢
- SHORTENING 42 OZ. \$1.29
- TEA LIPTON'S INSTANT 3 OZ. 99¢
- CATSUP HUNTS 20 OZ. 39¢
- PICKLES DEL MONTE HALVES OR WHOLE 22 OZ. 39¢
- VIENNA SAUSAGE CANARY 4 OZ. 5/\$1
- HOT DOG SAUCE GEBHARDTS 10 OZ. 4/\$1
- SPAM HORMEL 7 OZ. CAN 63¢
- PORK & BEANS WESTERN GOLD 30 OZ. CAN 39¢
- PEANUT BRITTLE KRAFT 12 OZ. BOX 39¢
- SQUEEZE-A-SNACK MIX OR MATCH 6 OZ. 2/79¢
- POTATO CHIPS SAMMY'S PRIDE TWIN PAK 49¢
- FOIL DIAMOND 25 SQ. FT. 4/\$1
- PINTO BEANS KIN-FOLKS 15 OZ. CAN 5/\$1

SPECIALS GOOD 6-3 THRU 6-8
WE RESERVE THE RIGHT TO LIMIT QUANTITIES
DOUBLE GUNN BROS. STAMPS TUESDAY & WEDNESDAY

- FRYERS USDA INSPECTED LB. 39¢
- FROZEN FOOD
- PIZZA TONY'S WORLD'S BEST ASS'T \$1.09
- COOL WHIP BIRDSEYE 9 OZ. 63¢
- STRAWBERRIES TROPHY 10 OZ. 3/\$1
- CATFISH FILLETS BOOTH 16 OZ. \$1.29
- SALISBURY STEAK FREEZER QUEEN 32 OZ. \$1.59
- MEAT LOAF
- CHAR BROIL PATTIES

- DAIRY
- BUTTERMILK CLOVERLAKE 1/2 GAL. 69¢
- COTTAGE CHEESE BELL 24 OZ. 89¢
- BUTTER WESTERN GOLD 1 LB. 89¢
- MARGARINE KRAFT 1 LB. 49¢
- FRUIT PUNCH BELL ASS'T 1/2 GAL. 3/\$1
- ICE MILK BELL SLIM & TRIM 1/2 GAL. 89¢

GROCERY SPECIALS

- BROWNIE MIX DUNCAN HINES 23 OZ. 89¢
- EGGS LARGE COUNTRY OR GRADE A 45¢
- DEODORANT ULTRA BAN 5 OZ. 99¢

FRESH PRODUCE

SPECIALS

- CANTALOPE TEXAS VINE RIPE LB. 19¢
- BANANAS DOLE LB. 17¢
- LETTUCE CALIFORNIA ICE BURG LB. 29¢
- GREEN ONIONS BUNCH 2/25¢
- POTATOES CALIFORNIA LONG WHITE LB. 19¢
- CELERY GREEN PASCAL STALK 19¢

HOME OWNED - HOME OPERATED

LITTLEFIELD SUPER MARKET

Learn to swim the safe way, taught by experienced, qualified instructors Jill Owens and Andy Rogers.

Both Jill and Andy have their Red Cross Senior Life Saving badges. Andy is a certified water safety instructor's aide.

FOR MORE INFORMATION CALL ANDY ROGERS AT 385-3895. CLASSES WILL BE AT THE COUNTRY CLUB POOL JUNE 11 THRU JUNE 22

GIBSON'S DOLLAR DAYS

<p>TANYA SUNTAN LOTION 4 OZ. REG. \$1.37 SALE 99¢</p> 	<p>SAFEGUARD SOAP COMPLEXION SIZE REG. 20¢ SALE 2/25¢</p> 	<p>SAVAGE SHAVING CREAM 20 OZ REG. \$1.77 SALE 69¢</p> 
<p>COPPERTONE 4 OZ. SALE 99¢</p> 	<p>ECONO PAPER PLATES 100 CT. REG. 77¢ SALE 57¢</p> 	<p>RIGHT GUARD DEODORANT 7 OZ. SIZE REG. \$1.24 SALE 99¢</p> 
<p>PEPTO BISMOL 8 OZ. REG. \$1.00 SALE 77¢</p> 	<p>ADORN SELF STYLING HAIR SPRAY 13 OZ. SIZE REG. \$1.59 SALE 99¢</p> 	<p>PEPSODENT TOOTH PASTE LARGE SIZE REG. 77¢ SALE 57¢</p>
<p>LISTERINE ANTISEPTIC 32 OZ. REG. \$2.09 SALE \$1.47 With 25¢ coupon on bottle</p>		

<p>MEN'S WORK SOCKS CUSHION SOLE 100% COTTON PKG. OF 3 REG. \$1.19 SALE 89¢</p>	<p>MEN'S BAN-LON SOCKS \$1.00 VALUE SALE 65¢</p>	<p>LADIES STRAW BAGS REG. SALE \$2.69 \$1.61 \$2.99 \$1.79 \$4.49 \$2.69</p>	<p>LADIES SUMMER BLOUSES SHORT SLEEVE & SLEEVELESS REG. \$3.97 SALE \$2.99</p>
---	--	--	--

<p>LADIES CANTRECE II PANTY HOSE SANDAL FOOT-NUDE LOOK REG. \$1.47 SALE 99¢</p>	<p>LULLABY LAND BABY PANTS SOFT WATER PROOF PKG. OF 3 REG. 99¢ SALE 77¢</p>	<p>MEN'S WESTERN SHIRTS BY APPALOOSA REG. PRICE SALE PRICE \$6.97 \$5.57 \$5.97 \$4.77</p>
<p>CHILDREN'S ANKLETS BY DURA WHITE, YELLOW, PINK, BLUE REG. 49¢ SALE 37¢</p>	<p>MEN'S HEALTH KNIT UNDERWEAR YOUR CHOICE BRIEFS, T-SHIRTS OR ATHLETIC SHIRTS PKG. OF 3 REG. \$3.17 SALE \$2.37</p>	

<p>BICYCLES 5 SPEED Reg. 79.97 3 SPEED Reg. 69.97 SALE \$63.97 \$55.97</p>	<p>QUAKER STATE MOTOR OIL 20 & 30 WT. REG. 61¢ SALE 49¢</p> 	<p>MOTOR CRAFT OIL FILTERS REG. \$1.99 SALE \$1.69 REG. \$2.39 SALE \$1.99 REG. \$2.65 SALE \$2.19</p>
	<p>PENNZOIL WHEEL BEARING LUBRICANT REG. 42¢ SALE 32¢</p>	

<p>STP GAS TREATMENT PENNZOIL HYDRA FLO REG. 89¢ SALE 69¢</p> 	<p>EVEREADY AUTOMOTIVE HEAD LAMPS 12 VOLT #4000 & 4001 REG. \$1.58 SALE \$1.49 #6014 REG. \$1.78</p>	<p>MOTORCRAFT REFRIGERANT "12" REG. 99¢ SALE 79¢</p>
<p>PRESTONE 11 COOLING SYSTEM FLUSH KIT REG. \$1.83 SALE \$1.53</p>	<p>MOTORCRAFT BATTERY REG. \$19.99 SALE \$16.99</p>	

COCA COLA
32 OZ.
CASE OF 6
REG. \$1.57
SALE **\$1.29**



GIBSON'S DISCOUNT CENTER
LITTLEFIELD, TEXAS
Open 9 AM till 9 PM Daily
Open 1 PM till 7 PM Sunday

News about our Lamb County Neighbors

SUDAN

BILLYE DOTY 933-2



MR. AND MRS. Glen Cardwell were in Lubbock to spend the weekend with his parents, Mr. and Mrs. Hal Cardwell and other relatives.

CONNIE HAM left the last part of the week for Abilene where she will work and enter ACC for the first summer term of college.

VISITING during the weekend in the home of Mr. and Mrs. John Burnet and Carl were Mr. and Mrs. A. J. Blackman, GERAL and Jorby of Causey, N.M., Mr. and Mrs. Joe Watson of Plains, Mrs. Eunice Wilson of Denver City, Mrs. Sava Ray of Littlefield, Mr. and Mrs. Andy Anderson of Brownwood, Mrs. Betty Kelly of Amherst and Mr. and Mrs. Noble Dudgeon, Roy and Ray, and Mr. and Mrs. Charles Burnet.

ELSIE SEYMORE, Yvonne Pierce and Bobbie Carpenter were among those attending the showing of "Boeing, Boeing," at the Hayloft Monday night.

WEEKEND VISITORS in the home of Mr. and Mrs. Connie Hall and Mr. and Mrs. Milton Williams were their children, Mr. and Mrs. Larry Durham and children of Plainview and Mr. and Mrs. Ronnie Hill and James of Lubbock.

MR. AND MRS. Billy Chester and Mr. and Mrs. Dick West were in Lubbock last week to be with their father, Earl Chester who underwent surgery at the Methodist Hospital last week.

MRS. LYNETTE BURNS returned home from the Littlefield Hospital where she had been a surgical patient several days.

MR. AND MRS. Weaver Barnett returned home Saturday from Quinlan where they visited for a month with their daughter, Mr. and Mrs. Jim Sorrells and new infant son.

MR. AND MRS. D. W. Williamson and Mr. and Mrs. Pat Minyard were in Clovis Sunday to be with their father and grandfather, Dempsey Williamson who is still in serious condition in the Memorial Hospital.

MR. AND MRS. G. C. Ritchie visited her brother, Paul Corley who underwent emergency surgery Saturday in a Clovis hospital.

MR. AND MRS. Nolan Parrish plan to return home this week from Dallas where he underwent tests. They also visited Rev. and Mrs. Willie Hazel while there.

WEEKEND VISITORS in the home of Mr. and Mrs. Jack Engram were their daughter Mr. and Mrs. Dawson Popejoy of Sunray.

MR. AND MRS. Raymond Hanna of Maple attended the Baccalaureate Services here Sunday night for seniors when their grandson Mark was among the graduates.

WEEKEND VISITORS in the home of Mr. and Mrs. Billy Hanna and Mat were Mrs. Larry Hanna and Shad of Albuquerque, N.M. Mrs. Jerry Bellar returned to

Albuquerque with them Monday.

MR. AND MRS. Bob Edwards and family attended graduation exercises Friday night in Spade, when their nephew, Randy Gray, was among the graduates. They visited the Grays including another nephew, David who was home from college.

VISITING in the home of Rev. and Mrs. Eddie Freeman and children over the weekend were her parents and brother, Mr. and Mrs. W. D. Rambo of Midland, Mr. and Mrs. Ronnie Rambo, Penny, Kim, Scott and Brian of Fort Worth. Other visitors were his brother, Mr. and Mrs. Jack Freeman, Rusty and Jennie of Midland, and Mrs. Leona Miller of Guthrie, Okla.

DR. EVELYN MILAN of Sherman who is here visiting her parents, Mr. and Mrs. Jno Milan, took her parents to Tulsa Thursday night where they attended graduation exercises for their nephew and grandson, Michael Milan, son of Mr. and Mrs. J. K. Milan.

OLA BACCUS was in Dimmitt over the weekend to visit her daughter and family, Mr. and Mrs. James Shearer and Sharon. They attended the band concert at Dimmitt High School auditorium. Sharon is a member of the band.

VISITING Ola Baccus last week were three sisters, Mrs. Irene Sharp of Fredrick, Okla., Mrs. Alma Teel of Mountain View, Okla., and Mrs. Matta McClain of Sweetwater.

ATTENDING a joint meeting of the Progress and Enochs Home Demonstration Clubs at the Needmore Community Center held recently was Mrs. J. C. Wills.

LEE ROY COLE who was a recent surgical patient in Methodist Hospital, Lubbock, is now recuperating at home.

MRS. G. W. Davis of Littlefield was a visitor last week in the home of Mrs. Evah Doty.

MRS. VIRGINIA RONE has returned home following a visit at Graham with her brothers, Mr. and Mrs. Neol

Lumpkin and Jack Bellar have moved to O. Baker home.

MRS. BOB DAY Muleshoe to be daughter and family Morris'. The parents of an infant Thursday. They have son, Sid.

MR. AND MRS. of Dallas arrive spend the summer parents, Mr. and Mrs. West.

CORINNE LAW Denver, Colo. weekend to be children, the Kent Arknhechts.

MRS. CLOVIS returned Saturday taking her mother Mrs. Ruth Bridges Littlefield to Dallas.

BELINDA BEN children spent Saturday with her parents, Mrs. Clovis Bridges. Bensing remained the week with her parents.

MR. AND MRS. Bridwell and the Canyon spent the with their parents, bridwells and the Gatewoods.

MR. AND MRS. Gatewood visited with the I. A. P. Abilene.

MRS. R. S. G. was in Vernon weekend. She attended granddaughter's and attended to her.

MR. AND MRS. spent the weekend with her brother and MR. AND MRS. Harper spent the with their daughter family, the Bill Tr Birmingham, Ala. which is near Dallas.

MRS. ORA KING Olivia King and Gatedwood of San visited Sunday in relatives.

MRS. MARY LO was admitted last week South Plains Hospital Amherst.

IT'S THE CUSTOM

Many Americans traveling abroad are unnecessarily fearful about getting through customs. It's neither difficult nor dangerous if you follow these suggestions from the Holiday Inn travel writers:

- Your purchases can be exempt from duty if you dutifully fill out the customs form, if they are for your personal or household use, if your trip was not made just to buy them and if you didn't order them in advance.
- You're allowed to bring in duty free items worth \$100 including 100 cigars (not Havanas) and one quart of spirits. Certain art objects and antiques over 100 years old are exempt from this and may come in for free whatever their cost.
- To avoid overloading your luggage while you travel, send gifts back marked "Gift - under \$10." You may have as many as you like, present, you can send more than one a day per person. If you have any questions about whether you can bring a particular item home, contact the U.S. consul, or put the matter with the purchase plane.

Hopefully, these tips will keep you from holding up border lines and help you come accustomed to customs.



DOLLAR DAYS

<p>ONE GROUP DRESSES, JACKETS AND PANTS ALL 1/2 PRICE Original \$14.00 To \$98.00</p>	<p>ONE GROUP DRESSES, JACKETS AND PANTS VALUES \$8.00 TO \$18.00 \$3.99 TO \$8.</p>
<p>SANDALS \$9.50 TO \$12.95 \$5.99 & \$7.99</p>	<p>ONE TABLE SHOES LADIES & CHILDREN'S CANVAS & FLATS</p>
<p>VALUE SALE PRICE \$19.95.....\$10.99 \$21.95.....\$12.99 \$28.95.....\$17.99 \$22.00.....\$8.99</p>	<p>JARMAN & NUNN BUS \$25.95 VALUE SALE \$10.99 TO \$14.99</p>

Moss
SHOES AND SPORTSWEAR
426 Littlefield
385-36 Littlefield

6 Million Auto Visitors Toured Texas During 1973

The Highway Department survey figures show that 15,975,000 auto visitors from other states toured Texas during 1973. They spent a total of \$1,745,465,000 including \$1,000,000 paid directly to the state.

The Highway Department made no survey of the number of visitors to Texas who came by commercial carrier, however, recent surveys conducted by the U.S. Census Bureau, the American Automobile Association, and the 3M Advertising Company show that a minimum of 14 per cent of all travel is by commercial carrier, and 14 per cent is by bus, train, etc. Using these percentages, an estimated 2.6 million additional visitors came to Texas in 1973 by commercial carrier, for a total out-of-state figure of 18,575,000.

As they have for decades, the three primary essentials in modern auto travel—food, lodging and auto expenses—consumed nearly three fourths of the average travel dollar. Food took the largest portion, 26 per cent, while lodging accounted for 25 per cent of the travel dollar, and auto expenses another 22 per cent. Out-of-state visitors spent 10 cents of each travel dollar on entertainment and 17 cents on miscellaneous items.

Pure vacationing continues to bring slightly more than half, 51 per cent, of all auto visitors to Texas, but the sum of business, conventions, and combination business-vacation trips adds to a very impressive 43 per cent. Another 2 per cent of out-of-state visitors came to visit friends and relatives, and 4 per cent were moving to Texas.

According to the Highway Department survey, motels are the most favored accommodations among Texas auto travelers, hosting 45 per cent of them during 1973. Another third, 33 per cent, either camped or stayed in a trailer, while 14 per cent used hotels. Private homes had 4 per cent and "other" accommodations accounted for another 4 per cent of visitor stays.

Visitors answer the question "Where did you go in Texas?" many different ways. Some give a specific city, some mention a region, many say they just "toured." The cities mentioned most often as destinations were Dallas and Houston (7 per cent), El Paso (6 per cent), San Antonio (5 per cent), Austin, Brownsville and Fort Worth (2 per cent), and Amarillo, Arlington, Corpus Christi, Galveston, Laredo, McAllen, and Wichita Falls (each mentioned by 1

per cent of the visitors). As to regions, a whopping 31 per cent listed general touring, while 5 per cent said they were heading for the Lower Rio Grande Valley; 4 per cent, coastal region; 4 per cent, north Texas, Big Bend, central and east Texas each were the destinations of 2 per cent of auto visitors, while the Hill Country, the Panhandle, south Texas, and Mexico each registered 1 per cent.

California contributed the largest volume of visitors with 11 per cent. Second was Oklahoma with 8 per cent. Florida, Illinois, Louisiana, and Michigan each added 5 per cent of out-of-state auto visitors, while 4 per cent each came from Kansas, Ohio, and Mexico.

Exhibiting a trend opposite that of U.S. travelers, visitors from Mexico showed a sharp upsurge during 1973. The U.S. Immigration and Naturalization Service reported 645,000 Mexican auto visitors to Texas last year, a 23 per cent increase over 1972. Mexican air travelers also increased. Nearly 189,000, 21 per cent more than the previous year, arrived at eight Texas airports that serve direct flights from Mexico. Only Mexican visitors who stayed longer than 72 hours or traveled more than 25 miles from the border were included

in this survey. The many shoppers who stayed a shorter time and did not leave the border area were not counted in the visitor totals.

The Texas Highway Department's annual survey, based on decades of practical experience plus the precision of computer technology, is a model by which other state surveys are compared. All information about where visitors come from, what they do, where they go, and how much they spend during Texas trips is reported by the visitors themselves on post-card questionnaires given them in Highway Department tourist bureaus. The visitors are asked to return the cards at the conclusion of their trip.

During 1973, more than 48,000 out-of-state travel parties responded to that request, reflecting the travel experiences of nearly 132,000 individuals. To project the answers of 48,000 travel parties for total visitors from out of state, the Highway Department employs a system of daily traffic counts which includes both visual license plate surveys and automatic vehicle tabulators. More than 10,000 hours of counting were required for this report. To exclude commuters, visual counts ignore vehicles with license plates from adjacent counties in other states.

The report does not include intrastate recreational travel by Texans. To measure this "native" segment of the tourist industry, the Highway Department currently is conducting the first scientific study of Texans' own travel habits.

Nearly 1.7 million visitors sought travel assistance in the 11 Texas Highway Department tourist bureaus last year, a 3.9 per cent increase in the number of visitors over 1972 and a record high. Services to visitors from the Austin office of the Department's Travel and Information Division, primarily responses to mail and telephone requests for travel literature, showed an increase of 16 per cent, with the number of services totaling 426,837.

FAT STUDY?
Baritrics is a branch of medicine that deals with treatment of obesity.

\$10 Bonus Refund!

Buy this new Solid State RCA Black-and-White Portable and RCA will send you \$10!

Here's what you get!

- Solid State Reliability. No chassis tubes to burn out.
- Power Savings. Uses less electricity than a 60-watt light bulb.
- Convenient Tuning. Separate "click" position and number for all channels.
- "Plus" Features. Combination VHF/UHF antenna. Private listening earphone.



Only **\$119⁹⁵**

Limited-time offer. **ACT NOW!**

RCA \$10 BONUS REFUND OFFER

Buy RCA's new 100% solid state portable TV, model AT122W, between May 27 and June 14, 1974 and RCA will send you a check for \$10.00! Just complete this coupon, (including the serial number from the back of your set, and the name of the dealer from whom you bought the set), and mail it to the address shown below. Mailing must be postmarked before midnight, June 21, 1974.

MAIL COUPON TO: RCA Redemption Center—Box 1467, Indianapolis, Indiana 46206
I certify that I have purchased the RCA TV set, model AT122W, during the period specified, from the RCA dealer indicated below, and am entitled to the \$10.00 refund.

AT122W SERIAL # _____	SIGNATURE _____
DATE PURCHASED _____	NAME (PLEASE PRINT) _____
DEALER NAME _____	STREET _____
STREET _____	CITY _____ STATE _____
CITY _____ STATE _____	ZIP CODE _____

NOTE: Allow 30 days for check delivery—offer void where prohibited.
• Offer good while supply lasts • Offer expires June 14, 1974

Offer good MAY 20-JUNE 14 **ACT NOW!**



FURNITURE & APPLIANCE
1804 Hill Ave.
PH. 385-5883
LITTLEFIELD

HOWDY FARDNER

GO ON DOWN TO BILL'S BOOT SHOP

To Fit The Entire Family In Their Western Needs.

FOR THE GRADUATE COWGIRL OR COWBOY, LARGEST SELECTION OF STRAW HATS AND MEN'S SHORT SLEEVE WESTERN SHIRTS IN TOWN. FREE GIFT WRAPPING.

LAMB COUNTY FARM BUREAU

CONGRATULATIONS JOE GILBERT FOR HAVING ISSUED OVER ONE MILLION 200 THOUSAND DOLLARS WORTH OF LIFE INSURANCE FOR 1973. JOE WON AN EXPENSE-PAID TRIP FOR HIS WIFE AND HIMSELF TO SPAIN FOR ONE WEEK.

INTRODUCING EDDIE WILSON



THE NEWEST MEMBER OF LAMB COUNTY FARM BUREAU AGENCY FORCE PHONE 933-2517



JOE GILBERT
HOME PHONE 385-3062



ELROY WISIAN
HOME PHONE 986-2881

- (1) SOUTHERN FARM BUREAU LIFE INSURANCE CO.
- (2) SOUTHERN FARM BUREAU CASUALTY INSURANCE
- (3) TEXAS FARM BUREAU MUTUAL INSURANCE CO.
- (4) TEXAS FARM BUREAU UNDERWRITERS



ED JENNINGS
HOME PHONE 385-5012

SPECIAL AGENTS

JOE GILBERT
HOME PHONE 385-3062
ELROY WISIAN
HOME PHONE 986-2881
EDDIE WILSON
HOME PHONE 933-2517

ED JENNINGS
AGENCY MANAGER
HOME PHONE 385-5012

FB Texas Farm Bureau Insurance Companies

BOX 266, LITTLEFIELD
PHONE 385-3444

BULA NEWS

MONDAY was the last day of school for Bula students, and Tuesday evening closed all end of school activities. Baccalaureate services were held Sunday evening in the school auditorium, with Rev. Eddie Riley, pastor of the Bula Baptist Church, giving the address. Invocation was given by James Sinclair, superintendent of Bula school and benediction was given by Rev. Bob Stone, pastor of the Bula and Enochs Methodist churches. Mrs. James Sinclair played the processional, "God of Our Fathers" and recessional. Mrs. Raymond Austin Jr. provided the special music for the evening.

GRADUATION EXERCISES for the high school graduates were held Tuesday evening with Mrs. James Sinclair playing the processional and recessional, "Pomp and Circumstance". Invocation was given by Rev. Charlie Shaw, pastor of the Enochs Baptist Church, with benediction being given by Bob Stone. Vocal music was provided by Mrs. Raymond Austin Jr. and Kelly Sinclair, with Mrs. Sinclair at the piano. Salutatory address was given by Jerry Lynn Sowder and the valedictory address was given by Edward Clawson. Rev. Bob Stone gave the commencement address. Superintendent James Sinclair presented the senior class to Bennie Claunch, who presented their diplomas, and G. O. Smith, principal of the School presented the awards.

MONDAY EVENING, May 27, the eighth grade class of Bula school held their promotion service in the school auditorium. Mrs. James Sinclair played the processional and recessional. Invocation was a reading of

the 23 Psalm by Sharon White. Vocal music was given by Kelly Sinclair who sang "My Country 'Tis of Thee" and Mrs. Raymond Austin Jr., "The Way that we Were". Welcome was given by Dona Jean Bruton, prophecy by Shonnye Wes Autry, farwell by Sherri Lynn Claunch. The speaker, Superintendent Sinclair, was introduced by Carey Austin. Sinclair also presented the certificates to the class. Benediction was given by Robert DeLaRosa.

As each Junior-high graduate marched in they presented their mothers with a long-stemmed yellow rosebud. Honored guest for the evening was the first and second grade teacher for the class, Mrs. Nettles from Morton. She was presented with a corsage from the class.

STUDENT USHERS were Jarrol Layton and Elnora Peacock. Parent ushers were Teresa Autry and Mike Nichols. Class officers were Carey Austin, president; Shonnye Autry, secretary and treasurer; vice-president, Sherri Claunch. Members of the class are Dona Jean Bruton, Robert DeLaRosa, Terry Mullins, Melonie Roberts, Marylan White, Sharon White, Donny Young, Carey Austin, Shonnye Autry and Sherri Claunch. Sponsor was G. O. Smith and advisor Mrs. Ashel Richardson.

BULA HEADSTART end of school program was given Friday evening in the school auditorium. The teacher Miss Gayla Underwood gave the welcome to all parents and friends. Each child walked across the stage and introduced himself. Mitch Birdwell led the group in "Pledge to the Flag" and Kimberley Quiram and Iyma

Ybarra led the group in singing "America the Beautiful". Each child gave a short nursery rhyme he had memorized, followed by the group singing several selections by memory and also to accompaniment to their record player. Mrs. Virginia Davila, teacher aid, assisted the children.

Following the program all went to the lunch room where refreshments of decorated cake and punch were served. The cake was iced in white carrying the words "Congratulation Headstart" in red and the silhouette of a graduate in black. Served with cake were cookies and red punch, by mothers of head-start students. For the reception, the students were seated at a table by themselves. This was laid in white with red and black crepe streamers running down the center.

HOUSTON BLACK became the grandfather of a little girl, Jennifer Marie, born May 13, to Mr. and Mrs. Jim Carroll of Abilene. She arrived weighing 6 pounds, and 2 ounces. Mrs. Carroll will be remembered as Miss Barbara Black.

MR. AND MRS. Nolan Harlan and children, Ann and John David, along with Jackie and Jodie Withrow, drove to Maple Sunday evening and heard Rodney Marshall, a ministerial student, preach at the Maple Church of Christ. Afterwards a fellowship was held at the residence of a member of the church.

MRS. MARGIE S. Milligan from Sterling City is a house guest in the home of Mrs. Carolyn Snitker and children, for a few days. She came up for the graduation of her great niece, Cathey Snitker.

MR. AND MRS. Tom Bogard received a message Sunday evening that his sister and husband, Mr. and Mrs. Clate Peabody of McLean, had been involved in a pick-up and car accident on the river bridge about five miles north of Clarendon. The pick-up

swerved into the pathway of the car. Driver of the pick-up was killed, and both Mr. and Mrs. Peabody are in critical condition. Mrs. Peabody has multiple face lacerations, broken arm and both legs broken. Peabody has several cuts on his face, concussion of the head and a punctured lung. At present they are in the Groom hospital. Mr. and Mrs. Bogard left Monday to be with them.

SEVERAL WOMEN from the Bula WMU attended the South Plains WMU encampment Monday at the Baptist camp near Floydada. Going were Mmes. P. R. Pierce, Clyde Hogue, Rowena Richardson, C. A. Williams, Eddie Riley, and Miss Vina Tugman.

MRS. A. M. McBEE accompanied by her daughter Doris Childers of Roosevelt, flew to Montgomery, Ala. recently. They went for the graduation exercises for Mrs. McBee's grandson, Perry Spell III. They plan to spend two weeks and help Mr. and Mrs. Spell move to Chattanooga, Tenn.

W. C. RISINGER, accompanied his son Mike of Lubbock to Fort Collins, Colo. recently, where they will spend about two weeks. Mike a soil scientist, will be involved in soil testing in that area.

MR. AND MRS. Jack Birdwell and boys Mitch and Jason spent the weekend in Coleman where they tended to business and visited his mother, Mrs. Gerald Welch.

MR. AND MRS. Dewitt Tiller and son, Billy, attended a family get-together Sunday at the home of her aunt, Mr. and Mrs. J. B. Duckett of Plainview. Her parents of Littlefield, Mr. and Mrs. John Aduddell and an aunt and uncle Mr. and Mrs. J. H. Huffstutler from San Bernardino, Calif. who are visiting here also attended.

MR. AND MRS. W. R. Adams attended the graduation exercises for

Morton high school Friday night. Their granddaughter, Debbie Adams, was a member of the graduation class.

MR. AND MRS. John Blackman drove to Portales Sunday evening for the Baccalaureate services for the Portales graduates, given in the high school gym. A grandson, Dennis Cash, was a member of the class. Rev. Jim Green, pastor of the Emmanuel Baptist Church in Portales, gave the sermon. Rev. Green is a former teacher and girls' basketball coach at Bula school. He was coach when Mrs. Cash was playing basketball. Tuesday evening, the Blackmans also drove to Portales and attended graduation exercises. Recognition of honor students was given by the school superintendent L. C. Cozzens. Dennis was among the honor students and was recognized for receiving a \$700 scholarship to Lubbock Christian College.

MR. AND MRS. W. R. Adams visited Sunday afternoon with a friend, Mrs. John Culpepper in Littlefield.

THE FHA girls with their sponsor, Mrs. Alice Kester, and guest Miss Gala enjoyed a slumber party Friday night in the school homemaking room. They enjoyed a feast of hamburgers, tuna sandwiches, chips and dips and caramel apples at about midnight. Fifteen FHA girls attended.

A SUMMER Homemaking program will be taught by Mrs. Kester for two weeks this summer, beginning June 4. All next-year homemaking girls are urged to attend. Part of the work will be re-decorating the sewing room.



Texas TOPS No. 102 met in the dining room of Medical Arts Hospital Tuesday night for their regular meeting with eight members present. Members were weighed and weights recorded as they arrived.

The meeting was called to order by Hazel Davis. Trudy Bryant called the roll and read the minutes.

Violet Holly was welcomed back as a member after a long absence.

Two members had eight weeks perfect attendance.

The weekly queen lost 3 1/2 lbs. and the runner-up lost 2 1/4 lbs.

Secret pal cards and gifts were distributed and some games of Bingo were played before being dismissed by saying the pledge in unison.

SUMMER GYMNASTIC CLASSES

TUMBLING TRAMPOLINE APPARATUS

AGES 4-18

CLASSES TAUGHT BY

JOHNNY HAMILTON

ALL AMERICAN AND OWNER OF

THE MCKAY DANCE SCHOOL

IN

LEVELLAND

Classes On Monday 4:30 New Student
Friday 9:00 New Students

TWO FOUR WEEK SESSIONS
BEGINNING JUNE 3RD
ENROLL AT FIRST CLASS

711 EAST 5TH STREET

LET FORREST PRICE PLUG IN Savings for you and stay cool.

SHOP LITTLEFIELD FIRST "ON THE BLOCK TO SHOP TO SHOP"

ESSICK

5-YEAR GUARANTEE

Leave Cooler installed all year 'round yet have complete weather control—open to enjoy summer cooling and fall and spring ventilation—closed and locked to shut out winter's icy blasts, fall and spring's cold nights, summer's dust and wind, and to provide all year "away from home" security.

Patented no-clog sta-fresh filters, guaranteed clogproof, with complete insect protection, assure 100% cooling efficiency all summer long. Patented grip lock filter holders, guaranteed to prevent sagging and settling of filters for life of cooler, assure 100% cool, filtered air.

Patented free-flow visible water troughs with external adjustment assure 100% cooling for cooler's entire life.

GET YOUR "OCEAN OF COOL AIR" NOW WITH AN ESSICK COOLER

move oceans of cool air all summer long... with patented ALL WEATHER CONTROL

ESSICK COOLERS

FORREST PRICE'S WESTERN AUTO STORE

302 PHELPS, LITTLEFIELD 385-4214

EQUAL OPPORTUNITY EMPLOYER

a water source and an electrical outlet. You can also store stuff right next to an electric water heater, because it's insulated on all sides. It's cool to the touch. So do yourself a favor and find out all the details.

That's right, you can store stuff on top of an electric water heater, because there's no flue or vent to take up valuable storage space. And, an electric water heater can be installed practically anywhere... all it takes is

STORE STUFF ON TOP OF... ELECTRIC Water Heaters

ELECTRICITY-IT DOES SO MUCH GOOD

Modern ELECTRIC Water Heating FOR SO MANY PEOPLE

WE SELL, SERVICE, INSTALL, FINANCE & GUARANTEE 'EM!

Call Us!

BOWLING RESULTS

LEAGUE W L
 13-3
 10-6
 10-6
 7-9
 7-9
 7-9
 6-10
 4-12
 Individual game Ken
 Individual Series
 Games 537
 Team Game Coca-Cola
 Team Series Purdy

of turkey as an
 "many meal"
 an elegant roast
 with all the
 then cut the
 from the bone
 in delectable dishes
 turkey-rice scallop,
 appetites and turkey-
 salad.

**OVER 50
 WATCHES -
 FAMOUS
 BRANDS
 UP TO
 60% OFF**

IMAGINE!
1 CARAT
 TOTAL WEIGHT
 of diamonds



\$399.00
 EASY TERMS
 GENTLEMAN'S
 DIAMOND RING

For Father's Day Giving

1 2 CARAT
 White Gold
\$19995



14K

*the New
 custom-made
 Family Stone
 TIE TACK*



Enlarged to Show Detail

An elegant gift for Dad or Granddad!
\$6.97
 Plus \$1.00 for Each Birthstone

Yellow Gold Filled or Sterling Silver

A personalized tie tack with birthstones for each member of the family!

Pratt's Jewelry
 5TH & 1ST

Ware's SUMMER FABRIC CLEARANCE

PRINTED VOILES & SHEER
 45" WIDE

REG. \$1.98
 REG. \$2.29

\$1.49

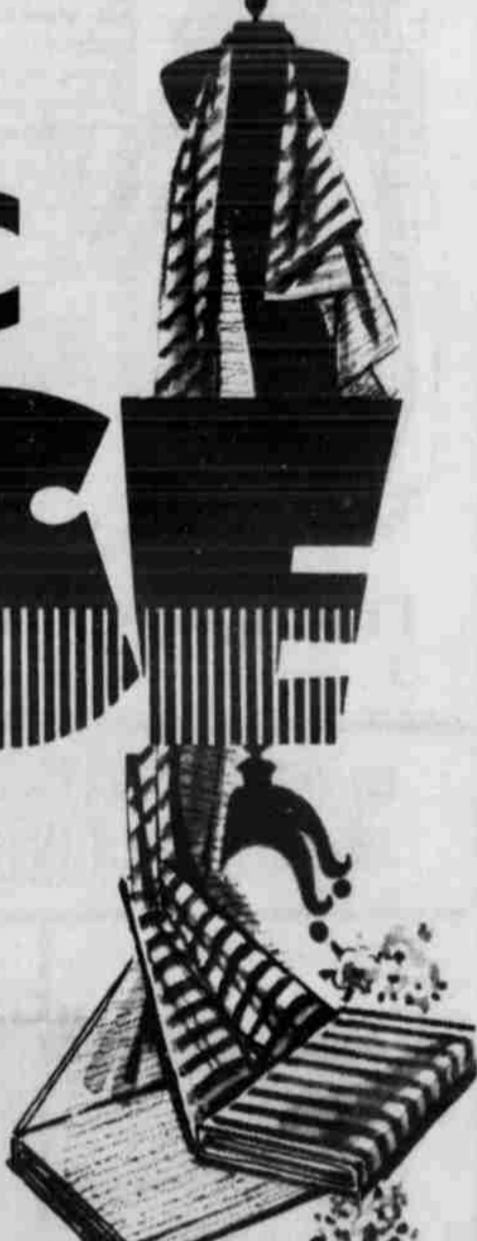
KETTLE CLOTH
 45" WIDE

\$1.98 AND \$2.49 YARD

\$1.49

MINI PRINTS
 45" WIDE
 100% COTTON,
 COTTON & POLYESTER BLENDS

REG. \$1.98 **\$1.39**
 REG. \$2.29 **\$1.69**
 REG. \$2.49 **\$1.89**
 REG. \$2.98 **\$1.98**



STARTS MONDAY, 9:00 A.M.

SUITINGS
 ACRYLIC, POLYESTER & RAYON BLENDS
 60" WIDE

REGULAR \$5.98

\$3.49

ONE GROUP OF
POLYESTER KNITS

VALUES TO \$5.98

\$2.49 YARD

ONE GROUP
TRIMMINGS

1/2 PRICE

100%

COTTON KNITS
 60" WIDE

REG. \$4.98
 REG. \$4.49

\$3.49

SEERSUCKER
 45" WIDE
 POLYESTER AND COTTON

REGULAR \$2.98

\$1.98

POLYESTER KNIT
 60" WIDE

REG. \$4.98
 REG. \$5.49
 REG. \$5.98 **\$3.98**
 REG. \$6.98 **\$4.98**
 REG. \$7.98
 REG. \$8.98 **\$5.98**
 REG. \$9.98
 REG. \$10.98 **\$6.98**
 REG. \$12.98 **\$7.98**

ONE GROUP
 OF
SEERSUCKER

VALUES TO \$2.98

\$1.49

100%
COTTON PIQUE
 45" WIDE

REG. \$7.98 **\$5.98**
 REG. \$6.98
 REG. \$6.49 **\$4.98**
 REG. \$5.98 **\$3.98**
 REG. \$3.98 **\$2.89**
 REG. \$2.98 **\$1.98**

Do You Have A Hearing Problem?

...ed for hearing conservation. In substantiating his statement, Smith pointed out that figures released by the U.S. Department of Health, Education and Welfare indicate approximately 14 1/2 million persons in the U.S. are suffering from measurable hearing losses.

"Because most hearing losses appear gradually, many persons with hearing impairments are not even aware of their problems," Smith explained. "While the only way to be certain your hearing ability is normal is to have a hearing test—and such a test should be part of everyone's annual physical check-up—there is a simple 10 question quiz that can detect the possibility of a hearing loss," Smith said.

- The 10 questions are:
1. Have you noticed people mumble more often than they used to?
 2. Do you hear, but often have trouble understanding?
 3. Do you often ask people to repeat what they have said?
 4. Do you find telephone conversations increasingly difficult?
 5. Does your family complain you play the radio or television too loudly?

6. Do you no longer hear sounds like a faucet dripping or a doorbell ringing?
7. Are you having more and more difficulty hearing in noisy places?
8. Do you have trouble hearing when your back is turned to the speaker?
9. Do you actually seem to hear better in noisy places?
10. Have you been told you speak too loudly?

"While this quiz is in no way a diagnostic test of a hearing problem, and can not absolutely predict that a hearing loss may exist, persons who answer 'yes' to four or more of the questions may have a hearing loss, and should have a hearing test at the earliest convenient time," Smith stressed.

Hearing tests are available from medical doctors, at hearing clinics or from hearing aid specialists.

'Rediscover America' Tour Scheduled For June 3-23

Wayland Baptist College department of history will sponsor its third "Rediscover America" travel-study tour, June 3-23, according to Dr. C. Gwin Morris, chairman of the division of social science and head of the department.

Participants in the tour may take the course for college credit as "United States History of 1865" or "United States Social and Cultural History." The group will travel by air-conditioned chartered bus, which will insure the securing of fuel.

"We feel that the best way to understand the United States is to see it, to visit its battlefields, monuments, historic house, recreated villages and other sites," Dr. Morris says of the trip. "This is the premise behind our travel study tours in American History and it is one of the least painful ways of earning college credit in history."

The tour proves to be an ideal situation for graduating high school seniors who face required history credits in college. The trip is designed as an excellent graduation gift.

During the three week jaunt, the group will tour through Shreveport, La., Birmingham, Ala., Knoxville, Tenn., Charlottesville, Va., Philadelphia and King of Prussia, Pa., Springfield and Boston, Mass., Bridgeport, Conn., New York City, Washington, D. C., Williamsburg and Petersburg, Va., Greensboro, N.C., Atlanta, Ga. and other historical cities.

Farm-facts

Compiled From Sources Of The Texas Department of Agriculture
John C. White, Commissioner

Texas Crops Doing Well... Livestock Export Pens Go Modern... Ear Ticks a Menace... Shortages Yet.

GRAIN SORGHUM is reported heading out from South Central Texas southward, and cotton is blooming in the Lower Rio Grande Valley, as most of Texas enjoyed good growing weather within the past week or 10 days. Planting of both grain sorghum and cotton is gaining momentum on the Low and High Plains. There was some hail damage in the Valley recently as there was on peaches in the Limestone and Freestone Counties areas. The rains slowed harvest of potatoes and cabbage in the San Antonio-Winter Garden area. Watermelons and cantaloups

were beginning to come off in the Valley. Rice is almost complete in the State, compared with about 50 percent at this time last year. Wheat and oat harvest is underway.

THE TEXAS Department of Agriculture is operating five new livestock export facilities at Brownsville, Del Rio, Houston and Eagle Pass, and the final installation authorized by the legislature, built at Laredo. Texans who have not visited one of the facilities would be interested to see what is happening in the livestock exporting business which adds millions to the economy each year. Everything has been done at the facilities to make it easier and safer for animals and to prevent the export-or import-of diseases. The loading and unloading chutes may be lowered hydraulically, and vats for dipping cattle are movable. The strong-built pens, all under a roof, have concrete floors and curbs that make cleaning easier. Space and laboratories also are at each location.

MOND... of scho... and T... all e... Baer... hel... se... F



PANT SETS

Play it cool...

\$12.00

Compare At \$15.99

On-the-go checkered pant sets that shun wrinkles, keep you fresh as a daisy day long. Easy care cotton/acetate blend seersucker sleeveless cardigan style V-neck jacket. Modest flare leg pull-on pants with elastic waist band.

Sizes Misses 10/18

mode o'day

G... 400 Phelps 385-3226



DOLLAR DAYS

<p>MEN'S FAMOUS BRAND DRESS & WESTERN JEANS REGULAR TO \$13.00 SIZES 32-50 \$5.00</p>	<p>MEN'S 100% POLYESTER DOUBLE KNIT PANTS DOLLAR DAY ONLY REGULAR \$16.00 \$5.00 SALES ARE FINAL NO REFUNDS OR EXCHANGES</p>	<p>ONE GROUP SHORT SLEEVE SHIRTS PERM PRESS VALUES TO \$4.95 2 FOR \$5.00</p>
<p>ONE GROUP MEN'S WESTERN SHIRTS "FOR THE BIG MAN" REGULAR \$11.00 DOLLAR DAY ONLY \$5.00</p>	<p>LADIES & GIRLS BLOUSES, TUNICS & TOPS 10% OFF</p>	
<p>BOYS SHOES REGULAR TO \$5.95 \$3.00</p>	<p>NEW BY LEVI'S HARDWEAR JEANS  BOYS SIZES 22 TO 30 WAIST Levi's super-tough jeans! Made with a steel-strong denim that never needs ironing. 2 FOR \$5.00</p>	
<p>GIRLS SHOES VALUES TO \$4.00 2 FOR \$5.00</p>	<p>THE FAIR STORE</p>	

JCPenne

FATHER'S DAY
IS JUNE 16th

FOR 3 DAYS

ENTIRE STOCK 100% Polyester Double Knit

ENTIRE STOCK DENIM DOUBLE KNIT, FANCY DOUBLE KNIT, SOLID DOUBLE KNIT, ALL REDUCED. NOTHING HELD BACK. FOR 3 DAYS ONLY.

\$2.99^{Yd}

100% POLYESTER
SOLID & FANCY
DOUBLE KNIT
SHORT LENGTHS
MANUFACTURERS CLOSEOUT
\$1.66

MEN'S SHORT SLEEVE
FANCY 100% POLYESTER
SPORT SHIRTS
LARGE SELECTION
\$2.99

NUDE HEEL OR REINFORCED HEEL
WOMEN'S PANTY HOSE
COFFEE BEAN, SUNTAN, GALA GREY MIST, NAVY & MORE.
SHORT, AVERAGE, LONG, XL
REG. \$1.69 NOW **88¢**

MANUFACTURERS CLOSEOUT
MEN'S STRETCH POLYESTER
CUFF SLACKS
2-WAY STRETCH
MACHINE WASHABLE
SOLID COLORS
\$5.99

ONE GROUP
GIRLS TOPS & BLOUSES
1/2 PRICE
REG. \$4 TO \$5, NOW **2 FOR \$2.50**

MEN'S SOLID COLOR
100% POLYESTER
JUMPSUITS
REGULAR'S & LONG'S
\$15.00

GROUP WOMEN'S CASUAL BAGS
STRAW, CLOTH
ONLY **\$1**

MEN'S GINGHAM CHECK SHIRTS
SHORT SLEEVES-PENN PREST
\$1

10 PRS JUNIOR JEANS
FLARE LEGS-LEFTOVERS
\$1

MEN'S CASUAL KNIT SHIRTS
POLYESTER-COTTON
\$1

WOMEN'S BETTER HOUSE SHOES
MANUFACTURERS CLOSEOUT
\$1.99

BOY'S KNIT TANK TOPS
FOOTBALL NUMERALS
\$2

PRICES GOOD
MON., TUES., WED.
WHILE QUANTITIES LAST

JUNE DOLLAR DAYS

PRICES GOOD
MON., TUES., WED.
WHILE QUANTITIES LAST

perry's ...proudly presenting our 60th

OUR
60th
YEAR

ANNIVERSARY SALE

WHITE ONLY 100% POLYESTER

SPUN DEE

The Anything Thread

500 YDS.

PERRY'S
SALE
PRICE

28^c

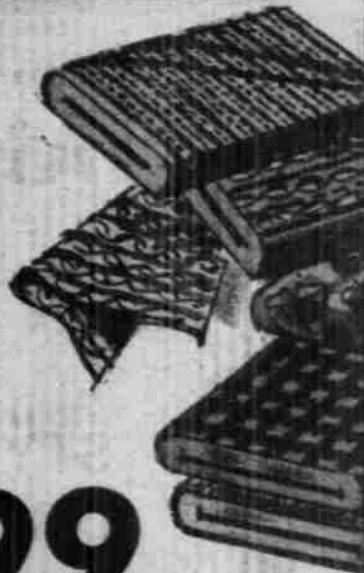
SPOOL



ASSORTED

DOUBLE KNITS

100% Polyester, 60" wide. A fantastic selection of crepes, piques, mini-jacquards and other patterns. All in flattering soft pastels. Wash and tumble dry in your machine. Forget the ironing. Just the thing for travel!



PERRY'S
SALE
PRICE

1⁹⁹

YARD

SALE STARTS TODAY

FASHION HAIR TIES

DOLLAR
VALUE



42 INCHES
LONG

Made of 100% acrylic rope-yarn... color-fast, will not fade... 42 inches long... assorted colors to pkg. Today's most popular fashion in hair accessories.

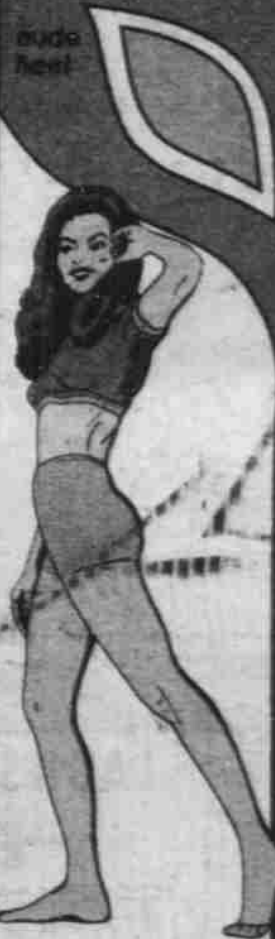
PACKAGE
OF 12

PERRY'S
SALE
PRICE

53^c

SUPER
FIT
ultra sheer
ONE SIZE
panty hose

40
9-10"
100-110 LBS.
37^c



SUPPLEMENT TO
**LAMB COUNTY
LEADER NEWS**

PERRY'S
IN
LITTLEFIELD, TEXAS

perry's ...proudly presenting our 60th



ANNIVERSARY SALE



11-OZ.
**COLGATE
INSTANT
SHAVE**

**PERRY'S
SALE
PRICE** **37¢**



14-OZ.
**LISTERINE
ANTISEPTIC**

**PERRY'S
SALE
PRICE** **77¢**



6-OZ. VASELINE
**INTENSIVE
CARE
LOTION**

**PERRY'S
SALE
PRICE** **61¢**



5-OZ.
**DIAL
DEODORANT**

**PERRY'S
SALE
PRICE** **66¢**



JOHNSON'S
**BABY
SHAMPOO**

**PERRY'S
SALE
PRICE**

1.22

100-COUNT
**WHILE
72
LAST**



**PERRY'S
SALE
PRICE** **57¢**

FAMILY SIZE



**PERRY'S
SALE
PRICE** **81¢**



300
**COUNT
COTTON
BALLS**

**PERRY'S
SALE
PRICE** **47¢**



FREE!
30% MORE
5.2 OZS. FOR THE
PRICE OF 4 OZS.
Less Than Our
Regular Price

DEODORANT

**PERRY'S
SALE
PRICE** **61¢**



13-OZ.
HAIR SPRAY
• REGULAR • SUPER HOLD

**PERRY'S
SALE
PRICE** **61¢**

**GET A
BONUS FROM
Crest**

SPECIAL 8.75 OUNCES
AT 7 OUNCE PRICE

Less Than Our
Regular Price



**PERRY'S
SALE
PRICE** **81¢**

GREAT MONEY SAVING VALUES

**LADIES' NYLON
BRAS**



CROSS
OVER
STYLE

A-B-C
CUPS

SIZES
32
TO
38

**PERRY'S
SALE
PRICE**

1¹⁷ LIGHTLY FIBERFILLED
BRA with STRETCH
STRAPS. Comes in
white, blue, maize,
and pink.

**LADIES' TRIANGLE
SCARF HATS**



• 65% POLYESTER
• 35% COTTON

1³⁷ HUGE ASSORTMENT . . .
LOVELY COLORS. A SPE-
CIAL PURCHASE for our
GREAT SALE.

AFTER SALE . . . \$1.99

**LADIES' NYLON SATIN
BIKINI
PANTIES**



AFTER
SALE
89c

SMOOTH
FITTING

TRIM
LOOKING

**PERRY'S
SALE
PRICE**

53^c PERFECT FITTING
ELASTIC LEGS . . .
We have a large as-
sortment of PAT-
TERNS and COLORS
to choose from.

**LADIES' DOUBLE KNIT
CHEVISETTE**



"TURBAN" **2⁴⁹**
ASSORTED
SPRING COLORS EACH

**LADIES'
NYLON SATINETTE
BRIEFS**

FULL COMFORT CUT . . .
Compare with any DOLLAR
PANTIES . . . You must see
the QUALITY to appreciate
this excellent VALUE.



**PERRY'S
SALE
PRICE**

57^c

BY A.H. SCHREIBER CO., INC.

**NORTHERN HAND HELD
HAIR DRYER**



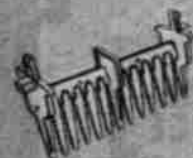
**STYLER
DRYER**

12⁸⁸

WIDE TOOTH DRYING COMB



STYLING COMB



STYLING BRUSH

• The universal hair dryer for every member of the family.
• 500 watts of drying power plus high air flow for quick and easy drying. Low speed and heat for styling • Low speed and heat setting permits instant touch-ups and styling • 3 attachments including fine and wide tooth combs, styling brush.

Famous
CANNON
BLANKETS

Special

WITH THE EXCLUSIVE FINISH

LOCK-NAP

USE OUR **LAY-AWAY PLAN**

A SMALL DEPOSIT
 WILL HOLD YOUR CHOICE

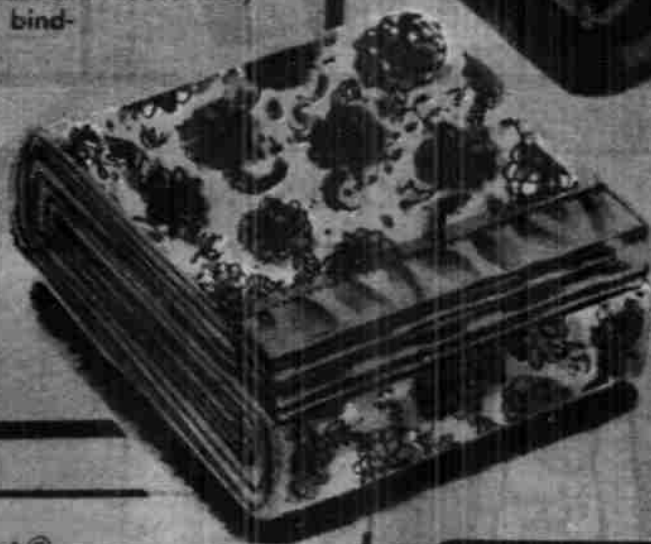
• ALL
 WITH
 NYLON
 BINDING

**AMERICAN BEAUTY
 ROSE
 BLANKET**

These popular all-over printed blankets will add beauty to any bedroom. 100% Polyester with 5-inch nylon binding. You'll love 'em!

SIZE
 72x90 INCHES

667



**ASHFORD
 100% ACRYLIC
 BLANKET**

547

Moistureproof, washable, and non-allergenic. It also has Cannon's exclusive Lock-Nap finish that reduces shedding, pilling, and matting.

CANNON

NORTHERN[®]
WARMCREST

GUARANTEED
2
 YEARS

**ELECTRIC
 AUTOMATIC
 BLANKET**

**72"x84" DOUBLE BED
 SINGLE CONTROL**

45% POLYESTER
 30% ACRYLIC
 25% NYLON

A colorfully poly-wrapped blanket packed with features customers want most, to assure years of luxurious sleeping comfort.

16⁸⁸

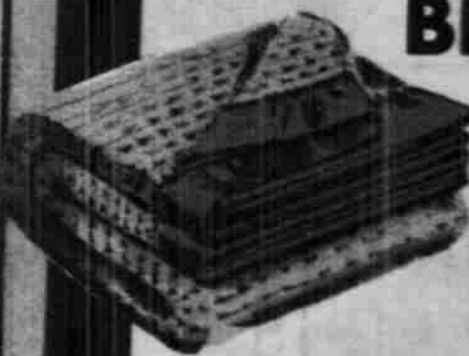


 **BEACON[™]
 GINGHAM WEAVE
 BLANKET**

50% POLYESTER
 50% NYLON
 SIZE 72x90

497

Machine Washable . . . Treated to reduce shedding with nylon binding . . . give warmth without weight . . . Manufactured by BEACON MANUFACTURING COMPANY.



PERRY'S

HEADQUARTERS FOR FAMOUS *Buster Brown* children's clothes



#388 Tank Top, St. Tropez Cut, Premium Cotton, Marigold, Navy, Red. Sizes: 2 to 6x \$2.79



#5611 Knit Boxer Shorts, Premium Cotton, Marigold, Cranberry, Brown, Navy, Red. Sizes: 1 to 4 \$1.49



#199 Striped Mini-Rib Tank, Premium Cotton, Cranberry/Hot Pink, Brown/Marigold, Navy/Red. Sizes: 1 to 3: \$1.89



#5236 Boys' Poly/Cotton Shorts, Marigold, Cranberry, Navy, Harbor Blue. Sizes: 2 to 6. \$3.29

NOT AVAILABLE IN ALL STORES

REVERSIBLE



HALTER TOP

contour shaped for proper fit

ONE SIZE FITS ALL

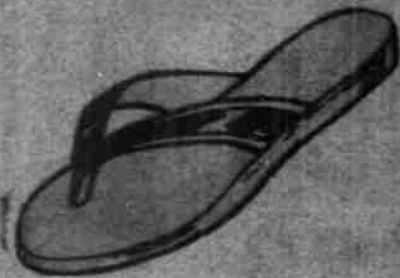
65% POLYESTER
35% COTTON

BUY SEVERAL

233

EACH

ZORI SANDALS



LADIES'

59c

CHILDREN'S

49c

MEN'S

59c

Lively Looks for TODDLERS

IN

POLYESTER & COTTON

BOYS' AND GIRLS' DIAPER SETS

SIZES 0 TO 18 MO.



ASSORTED COLORS

3⁴⁹ to 3⁹⁹

CRADLE TOGS

Manufacturers of Infants' Wear

CHILD'S DOUBLE THICK COTTON TRAINING PANTIES

Spencer's



SIZES 1 TO 4

53c

IDEAL FOR SUMMER

GIRLS' NYLON SATINETTE PANTIES

Elastic Leg Panties... DOUBLE front and Double Seat, 2-Bar Tricot, with novelty lace trim. White, Pink, Blue, Mauve, Sky Blue, Striped and Coral. GREAT VALUE at our low price.

SIZES 2-12

59c



BY WUNDIES INC.

LADIES' ELASTIC LEG PANTIES

in the wonderful new knit fabric

eiderlon.

Eiderlon is a special blend of finest rayon with the gentle "bloom" of combed cotton—so it's especially absorbent. And it's softer, the way you like your undies. Comes in white that's whiter than any white knit.

REGULAR SIZES

98c

EXTRA SIZES

89c

BY A.H. SCHREIBER CO., INC.

perry's

Try the Mood Makers.
Just for a change.

Foster Grant's fabulous new collection is here. A style and color for every mood. And the lenses are all polarized and famous fl77 Impact.™ Slip into a pair and slip into a whole new mood.

KIDDIES', TEENAGERS' and JUNIORS' 29' to 1.00



LADIES' 1⁰⁰ to 3⁴⁹



MEN'S 1⁴⁹ to 3⁴⁹



everybody loves
Pampers



Toddler 12's

1³⁹

Overnight 12's

1¹⁹

Daytime 30's

2⁰⁹

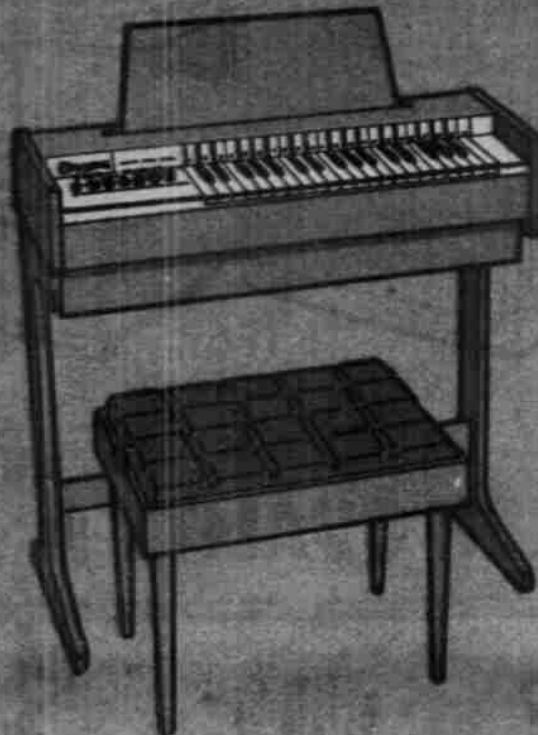
Nighttime 30's

1⁰⁹

OUR
60th
YEAR

ANNIVERSARY
SALE

magnus
CHORD ORGAN



SOFT
VIBRANT
VOLUME
CONTROL

3
PIECE
ENSEMBLE
SET



- Bold Modern Styling
- Full 3 Octave Range with 37 Treble Keys
- 12 Chords — 6 Major, 6 Minor
- On/Off Switch
- Fingertip Volume Control
- Designer Organ Stand
- Magnus Music Book
- Matching Hockock Bench with Deep Foam Cushion

- ORGAN
- BENCH
- MUSIC BOOK

MODEL 665-P

39⁹⁵

SPECIAL

FRESH COCONUT AND CARAMEL

CANDY



**POUND
BAG**
FOR
ONLY

57^c

PERRY'S
SALE
PRICE

- COCONUT BON BONS
- COCONUT CUBES
- COCONUT STACKS
- CARAMEL WHIRLS

perry's

OUR
60th
YEAR

ANNIVERSARY

SALE

• ALL STEEL
4-SHELF
STORAGE
UNITS

6⁸⁸

PERRY'S
SALE
PRICE



- Gray Double-Wall Shelves Adjust at 1/2" Intervals
- Rugged Black Double-Diameter Lock-Seam Posts
- Roomy! 60" High, 30" Long, 12" Deep

FAMILY ENTERTAINMENT CENTER

— Merchandise Not Included —

DON'T MISS
THIS GREAT
VALUE!

\$24.88
VALUE



Complete
with
Record Rack

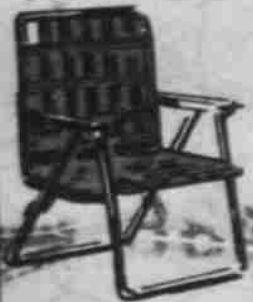
PERRY'S
SALE
PRICE

16⁸⁸

7-SHELF MUSIC CENTER WITH SLIDING DOOR CABINET

- Sturdy, Spacious—60" Long, 16" Deep, 30" High Overall
- All Steel with Walnut Grain Finish—Like Fine Furniture
- Double-Wall Shelves, Lock-Seam Posts. Record Rack Included.

LAWN CHAIRS FOLDING ALUMINUM

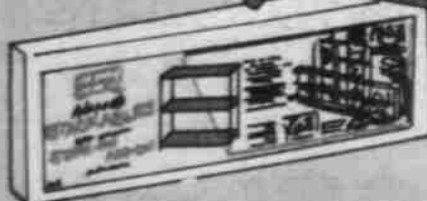
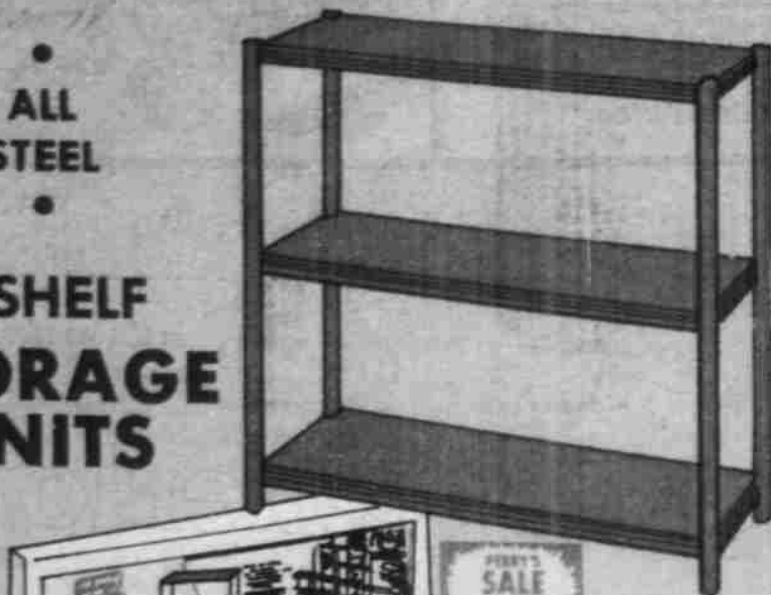


3⁹⁷

Sturdy tubular aluminum, heavy
plastic webbing.

• ALL
STEEL

3-SHELF
STORAGE
UNITS



PERRY'S
SALE
PRICE

6⁸⁸

3-SHELF STORAGE UNITS . . . rugged all steel modules, 30 x 30 x 10" deep. • Stack 'em one on top of the other • Line them up side-by-side to fill the whole length of the wall • Utilize all the storage space in basement, garage workshop or office!

HI-BACK ROCKER

IN
ANTIQUE
MAPLE

PERRY'S
SALE
PRICE

24⁸⁸



HI-BACK ROCKER (Vinyl seat and back). Hand crafted comfort from Early American stock. Maple finish, 43" high — seat 23". No comparison for this comfort in low price field.

sterilite

BUY NOW!

LAUNDRY BASKET

**PLASTIC
HOUSEWARES
ASSORTMENT**

• ASSORTED
COLORS



**GREAT
VALUES**

29-QT.
WASTEBASKET

11-QT.
DISHPAN

12-QT.
WASTEBASKET

PERRY'S
SALE
PRICE

YOUR
CHOICE

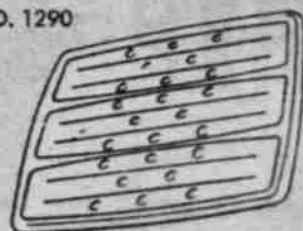
EXTRA HIGH QUALITY . . . FOR ONLY

77c

Rubbermaid®

SINK MATS

NO. 1290



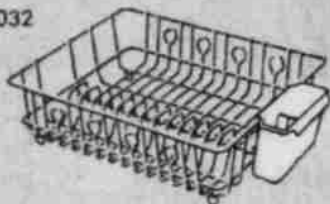
• WHITE
• GOLD

89c
EACH

DISH DRAINERS

NO. 6032

• GOLD
• WHITE

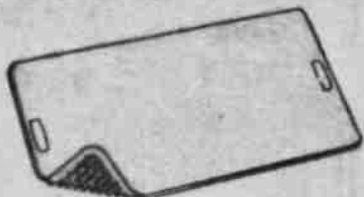


349
EACH

BATHTUB MATS

NO. 0450

• PINK
• WHITE
• AVOCADO
• GOLD



159
EACH

**7-PIECE
REFRESHMENT
SET**



**EACH SET
CONSISTS
OF
6 — 16-OZ.
GLASSES
1 ONLY 86-OZ.
PITCHER
IN**



COLONIAL TULIP PATTERN

The lovely design and colors will help you enjoy refreshing, cooling drinks on all occasions. Our quantities are limited on this GREAT VALUE!

• Avocado • Blue



PERRY'S
SALE
PRICE

233
SET

LATHER UP

HOT LATHER DISPENSER

- Dispenses hot moist shave cream for smooth comfortable shaves.
- Uses all 6 oz. and 11 oz. standard aerosol shave cream cans.
- Convenient rotary "on-off" switch.
- Attractive styling blends with any bathroom decor.
- Ready light signals when lather is hot.
- Thermostatically controlled for even warmth.



**PERRY'S
SALE
PRICE**

1088

NORTHERN



IT'S GIFT TIME!

FRUIT OF THE LOOM

UNCONDITIONALLY GUARANTEED



THE SWIRLS
3 for **\$3¹⁹**

KNIT BRIEFS
3 for **\$2⁹⁹**

ATHLETIC SHIRTS
3 for **\$2⁴⁹**

WASH and WEAR SHORTS
3 for **\$3⁸⁹**



MEN'S KNIT PULLOVER SPORT SHIRTS

4⁹⁹

- 50% Dacron, 50% Cotton
- 4-Button Placket Pullover
- Lined self-collar with stays... In assorted colors.

THREE LEG FOLDING BED

WITH
MATTRESS

SIZE 24x72

Best value of its kind on the market. Quality construction features similar to all Flanders beds. One inch thick foam mattress, covered with striped ticking on one side, heavy-duty vinyl plastic on the other. An excellent camping bed, offering exceptional value for its price. 72 inches long, 24 inches wide.



**PERRY'S
SALE
PRICE**

9⁸⁸



ELECTRIC ALARM CLOCK

Compact alarm clock. Large easy-to-read dial and hands. Available in antique white.

**PERRY'S
SALE
PRICE**

2⁸⁸



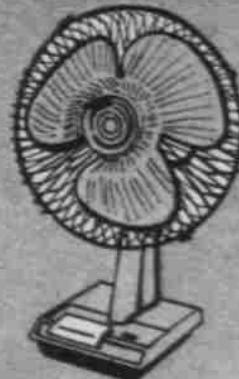
THE ALPINE "FULLY INSULATED" CANTEEN

2⁹⁸

Perfect for Stadium, Campers, Hikers, Beach Goers, Bikers, Scouters, Fisherman, Boaters, Hunters, Sportsmen...

12-INCH OSCILLATING TABLE FAN

- 3-SPEEDS
 - 1-YEAR GUARANTEE
 - PUSH BUTTON CONTROL
- NOT AVAILABLE IN ALL STORES



perry's

OUR
60th
YEAR

ANNIVERSARY
SALE

3 GREAT VALUES

IN
Spartan
the house of time



**ELECTRIC
WALL
CLOCKS**



KETTLE . . . A wall clock that perks up the right time, as well as your kitchen or family room.

HEN . . . Colorful clock has crystal covered easy-to-read dial. Available in avocado/blue.



**PERRY'S
SALE
PRICE**

LARK . . . Daises do tell — the time in a SPRIGHTLY manner.

Pick your petals in yellow/brown.

YOUR CHOICE

447
EACH

**3 1/2 x 3 1/2
DOUBLE
5x7
SINGLE
8x10
SINGLE**



**PERRY'S
SALE
PRICE**

**YOUR
CHOICE**

47c

**THROW
RUGS**

MADE OF
POLYESTER
NYLON
BLEND



**3
STYLES**

**LARGE
ASSORTMENT
OF
COLORS
SIZE
26x45**

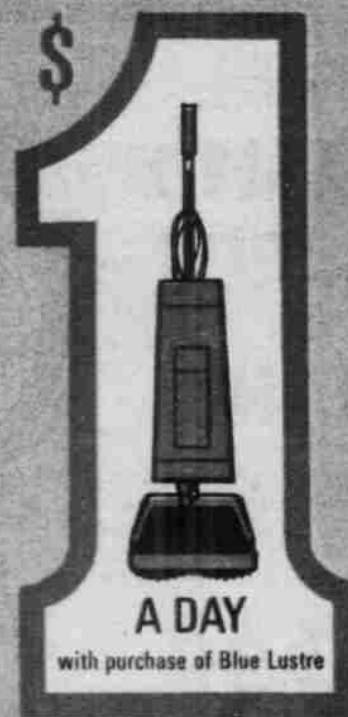
A SPECIAL purchase just for this
GREAT 60th ANNIVERSARY SALE.

**PERRY'S
SALE
PRICE**

288

**BLUE
LUSTRE.**

*Rest Electric Shampooer
\$1 per day with purchase of Blue Lustre*



A DAY

with purchase of Blue Lustre

perry's

60th YEAR

ANNIVERSARY SALE

REGULAR \$15.95

RCW

ELECTRIC FREEZER 4-QT.

Textured polyethylene tub in new civacoda color. Just pour in your mix, put the top on, pack ice around the 4 qt. can and PLUG IT IN. In minutes you'll have firmly frozen ice cream.



PERRY'S
SALE
PRICE

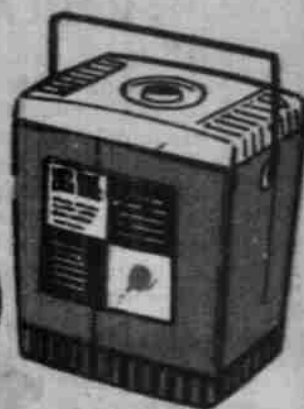
10⁸⁸

10 QUART CHEST

CAN ALSO
BE USED
AS
MINNOW
BUCKET

No. 511-6—11½" x 7¾" x 11¾". Beige colored body and yellow cover. Rod carrying handle. Holds six twelve oz. bottles.

1²⁹



ICE CHEST

30 QUART
CAPACITY

2⁷⁹



No. 515-6 Size 16"x12"x13½". Green/White. Aluminum basket type handles. Molded divider provides two storage sections—adds structural strength.

ICE CHEST 18 QUART CAPACITY



15"x10½"x11¾". Beige colored body and yellow cover.

• ROD CARRYING HANDLE

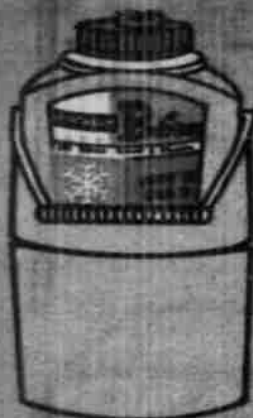
1⁶⁹

KEEPS FOOD
OR DRINKS
COLD
FOR HOURS

SUPERTHERM HALF GALLON POUR SPOUT JUG

FOR
JUST

1⁴⁹



No. 519-6 Lightweight and durable foam plastic Vacucl[®] jacket. White plastic liner. Dripless "flip cap" pour spout. Comfortable carrying handle. Blue base, White body.

5-QT. STERLING ICE CREAM FREEZER



AFTER SALE
8⁹⁵

Freeze delicious ice cream in just minutes. Makes five full quarts. Enjoy it all summer long.

PERRY'S
SALE
PRICE

5⁸⁸

PORTABLE FAN

20" 2-SPEED

Convenient 2-SPEED ELECTRIC BOX FAN with ROTARY SWITCH, STRAP CARRYING HANDLE . . . Metal blades more durable than plastic.



1⁶⁸⁸

NOT AVAILABLE IN ALL STORES

1 YEAR
GUARANTEE

**PRACTICAL, GLEAMING
STAINLESS**
BY ONEIDA LTD. DELUXE

Royal York



VIEW PACK SET

25-Piece Service for 4

- | | |
|----------------|-----------------|
| 8 Teaspoons | 4 Dinner Knives |
| 4 Dinner Forks | 4 Soup Spoons |
| 4 Salad Forks | 1 Tablespoon |

Retail **\$15⁹⁹**

5-Piece Hostess Set

- | | |
|----------------------|---------------|
| 1 Cold Meat Fork | 1 Gravy Ladle |
| 1 Butter Knife | 1 Sugar Spoon |
| 1 Plated Table Spoon | |

Retail **\$6⁹⁹**

**50-Piece
Service for 8**

- | | |
|-----------------|----------------|
| 16 Teaspoons | 8 Soup Spoons |
| 8 Dinner Knives | 8 Salad Forks |
| 8 Dinner Forks | 2 Table Spoons |

Retail **\$29⁹⁹**

WE ALSO HAVE OPEN STOCK
ON ALL ITEMS

**OVAL
FRAMED
MIRROR
ON
STAND**



It's something different.
Don't miss out on this item.
Your friends will never believe
you paid only \$2.99 for this An-
tique Plastic Gold finished Mirror.

2⁹⁹

**STAINLESS STEEL
SCISSORS**

IN
PLASTIC
CASE

5.00
VALUE



These SCISSORS are LIGHTWEIGHT
and EXCELLENT for CUTTING DOUBLE
KNIT FABRICS ...

3⁹⁹
PAIR

**AVERY
LABEL
MAKER**

HOT
SALE
PRICE

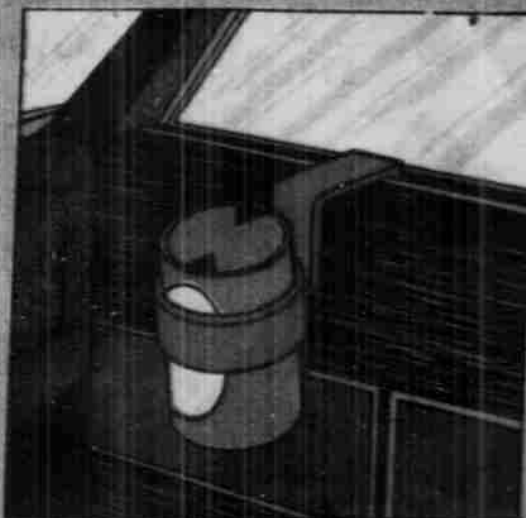
66^c

The New Avery Astro is the POPULAR ECONOMY
MODEL LABEL MAKER. It uses 3/8" tape and is
ideal for SCHOOL or HOME.



**GREAT
VALUE**

**BEVERAGE
HOLDER**



These holders can be used in
Autos, Trucks, Boats, and will
hold Cans, Bottles, and Cups.
They are available in Black,
White, Brown, Green, Red, and
Yellow.

19^c

**NOVELTY
SEW-ON
PATCHES**



24
STYLES



59^c
2 FOR
100



COLECO
INDUSTRIES, Inc.

Today's Most Popular

POLY POOL



RUGGED ROUND POLY POOLS with Coleco's exclusive DECO-BRITE designs. Tough seamless polyethylene construction guarantees easy cleaning and durability . . . Proven favorite with kids . . . Folds and stores easily . . . BACKYARD FAVORITE all summer long.

48" SIZE

4.47

60" SIZE

7.00

72x27-INCH

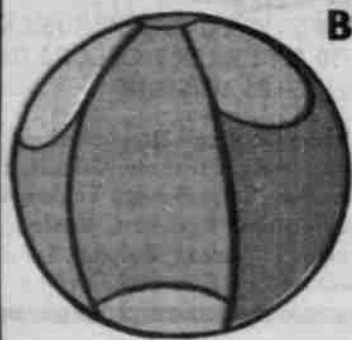
AIR MATTRESS

WITH BUILT-IN
PILLOW



- Strong, heavy gauge vinyl
- Bright, non-fading color
- Built-in pillow

1.99



BIG 20" INFLATABLE

BEACH BALL

77c IN RAINBOW COLORS

SLIP 'N SLIDE FOR COOL SPLASHING FUN



JUST RUN AND SLIDE
25 FEET ON A
CUSHION OF
WATER

GREAT
FUN!

SPECIAL LUBRICATING
COMPOUND MOLDED
INTO TOUGH SURFACE
OF PLASTIC FOR
SLICKNESS



9.95

ATTACH
TO ANY
HOSE
AND AWAY YOU GO

20" RENEGADE DELUXE SUPER SPORTS

BICYCLE

AMF

BUY NOW
FOR
CHRISTMAS

MADE
IN
U.S.A.

IN
BOYS'
AND
GIRLS'
STYLES
AFTER
SALE
\$49.95



FOR
JUST

43.95

Contoured style saddle/Chrome saddle brace/BMA/6 approved reflectivity/Hi-riser chrome handlebars/20" x 1.75" tires/Pedals with safety reflectors/Stylish chrome fenders.

perry's

OUR
60th
YEAR

ANNIVERSARY

SALE

Sunbeam

Steam or Dry Iron



**PERRY'S
SALE
PRICE**

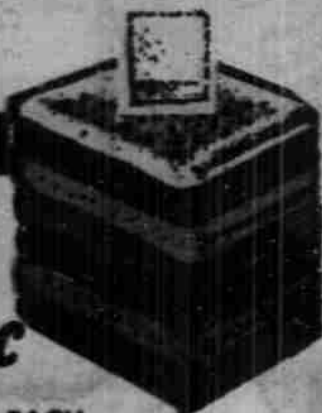
\$8⁸⁸

with exclusive

STEAM FLOW VENTS

IRREGULARS

**WASH
CLOTHS 24^c** EACH



ASSORTED
COLORS

ASH TRAY 77^c

IN GIFT BOX



BIG HEAVY TOWELS

These are irregulars of \$1.49 and \$1.79 Towels but the quality is superb. A special purchase just for our Big June Sale. If you need Towels now or any time in the future, you should take advantage of this great saving.



**PERRY'S
SALE
PRICE**

96^c

LIMIT 4

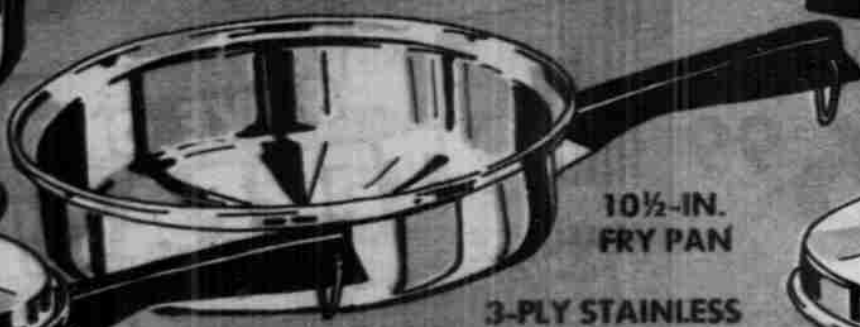
7 PIECE

Imperial by REGAL
**STAINLESS
STEEL**

6 QT.
DUTCH
OVEN



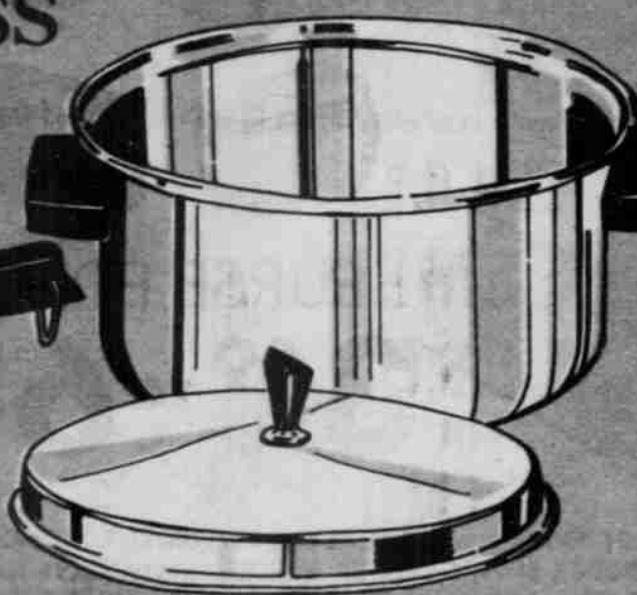
2 QT. COVERED SAUCE PAN



10 1/2-IN.
FRY PAN

3-PLY STAINLESS
STEEL FRY PAN

1 QT. COVERED SAUCE PAN



DESIGNED FOR EASIER FLAVORFUL COOKING. EXCITINGLY BEAUTIFUL AND DIFFERENT! Wonderful Stainless Steel Imperial cookware adds glamour to your kitchen... makes cooking easier and tastier. Foods are prepared with a minimum of water over LOW HEAT. Covers fit snugly to seal in moisture and health-building vitamins and minerals. No scouring — only ordinary washing is necessary. Each matching piece is superbly styled in brilliant stainless steel with molded heat-resistant bakelite handles that won't turn or loosen.

**PERRY'S
SALE
PRICE**

15⁸⁸



perry's
60th
YEAR

ANNIVERSARY SALE

ASSORTED DOUBLE KNITS
\$1.99 YD.
 100% polyester, 60" wide. A fantastic selection of crepes, piques, mini-jacquards and other patterns. All in flattering soft pastels. Wash and tumble dry in your machine. Forget the ironing. Just the thing for travel!
 PRICE GOOD AT ALL PERRY'S STORES

ENTIRE STOCK
100% POLYESTER FANCY DOUBLE KNITS
 FABRIC STORE ONLY
 Perry's brings the price way down on every 100% polyester double knit in stock. These are beautiful knits from leading mills—the kind you won't see everywhere. Jacquards, crepes, novelties, 2 and 3 tone fancies, checks, plaids, diagonals and more. All 60" wide in fashion colors. All wrinkle-free, travel-perfect & permanent press.
\$2.99 YD.

POLYESTER CREPE PRINTS
 Puff-light soft-touch 100% polyester in bold prints. 45" wide. Sheds wrinkles, stays neat. Wash and dry in your machine.
\$1.49 YD.
 FABRIC STORES ONLY

100% POLYESTER KNITS
 Take it easy! These light and airy single knits wash and dry in your machine. No ironing needed and they couldn't be more comfortable! 60" wide!
\$1.59 YD. ONLY
 FABRIC STORES ONLY

JERSEY PRINTS
 Sleek, silky knits, so great for wrap blouses, halter dresses, caftans. Annel, tricotates. 45" wide. Machine wash & dry.
\$1.29 YD.

ACRYLIC CHALLIS
 Color-drenched island prints. Much in demand for sport shirts, blouses, caftans, long skirts. 45" wide. Machine wash and dry. A great buy!
\$2.29 YD. ONLY
 FABRIC STORES ONLY

GREAT BUY IN SCISSORS
 Light, sturdy stainless steel with plastic handles for comfort and cutting ease. Especially good for cutting knits.
\$3.99 PAIR

CUTTING BOARDS
 22" x 40" size, really ideal in 1. Equipped with easy storage. Protects tables.
\$1.66 EA.

A COMPLETE DECOUPAGE CENTER

1.29 1.29 2.59 1.29 3.29

PURSE BOXES
3.49 to 6.99

WE ALSO HAVE PLAQUES \$1.29 TO \$3.29, BRUSH CLEANER & THINNER 1.29, PRINT & WOOD SEALER \$1.99, ORIENTAL LACQUER \$2.29 WOOD STAIN 69¢, 10 DIFFERENT COLORS OF PAINT 69¢ EA., MOD PODGE \$1.29, CATCHES, HINGES, TWIST & VINYL HANDLES ALL \$1.19, GLUE 69¢, BRUSHES, SCISSORS BRAYER \$1.29, PRINTS, BOOKS, AND MANY OTHER ITEMS TOO NUMEROUS TO LIST.

IN THESE STORES ONLY:
 TEXAS: Center, Carthage, Nacogdoches, Jacksonville, Tyler: 114 N. College and 2742 E. 5th. Vidar, Longview: 120 W. Tyler and 2421 Gilmer Rd., Brenham, Gilmer, Pittsburg, Yoakum, El Campo, Grand Saline, Hereford, Atlanta, New Boston, LaGrange, Ennis, Cuero, Bay City, Brady, Taylor, Gatesville, Snyder, Coleman, Angleton, Navasota, Gonzales, Comanche, Littlefield, Caldwell, San Benito, Lockhart, Weslaco, Orange, Galveston, Rosenberg, Seguin, Plainview, Port Lavaca, Winnie, Athens, Wharton, Seabrook, Laredo, Sulphur Springs, Dickinson, San Marcos, Tomball, Lufkin, Huntsville, Marlin, Alvin. ARKANSAS: Camden: Garden Oaks Ctr. and Cardinal Ctr. IN LOUISIANA: Lake Charles.

SPORTSWEAR PRINTS
 Fantastic value in the 11 color-cotton! Eye-catching prints, 45" wide. Machine wash and dry. Buy several handy dressmaker lengths!
67¢ YD.
 FABRIC STORES ONLY

SAVE ON INTERFACING
 A very special price on the extra touch that supports detailing and adds extra durability. 100% polyester, non-woven, 25" wide. Machine wash and dry.
29¢ YD.
 FABRIC STORES ONLY