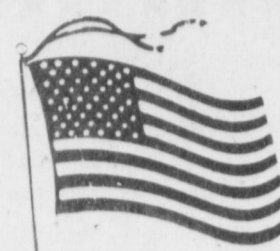


WEATHER

		Soil Temp.
May 27	85 55 73	67
May 28	89 54 74	68
May 29	87 55 74	69

# BAILEY COUNTY JOURNAL

*'The Community Of Opportunity-Where Water Makes The Difference'*



© 1990

Vol. 32, No. 22

Published Every Sunday At Muleshoe, Bailey County, Texas 79347

Member TEXAS PRESS ASSOCIATION

25¢

Sunday, May 30, 1993

## Redwine, Brockman Receive Spirit Award

### Lazbuddie Athletic Banquet Saturday

'Champions Longhorn Style' was the theme of the Lazbuddie Athletic Banquet held Saturday night, May 22 in the school cafeteria. A large number of students were awarded for their outstanding work during the 1992-93 school term.

Jarah Redwine and Leland Brockman were the recipients of the Spirit Award. Making the presentation was Rick Copp, high school principal. Copp also presented the Academic Award, stating that these students not only did well in athletics, but did well academically also. Jarah Redwine and Jody Copp were the recipients of this award.

The Outstanding Athlete Award went to Matt Cozby and Leland Brockman. These awards were presented by Phil Warren,

superintendent.

Leland Brockman gave the invocation and Melvin Morris, Booster Club president, gave the welcome.

In presenting the next few awards Coach Grahn said "We had a good year. This is one of the classiest and nicest banquets I have ever been to and I am proud to be here. We had a good year and a lot of fun, with about 40 kids like these (Junior High Athletes) you can see we have got good years ahead. You get excited when you have kids like these. Grahn presented awards to the seventh and eighth grade athletes.

Jo Anna Gallman received the Most Improved Cross Country Athlete Award. The Most Valuable Player Award went to Ivette Reyes and Rogelio Pacheco.

Those running track were also recognized along with their accomplishments.

"Our Outstanding Runner Award goes to a young man I felt worked the hardest. He never missed a practice Leland Brockman," said Coach Scisson.

Receiving the Outstanding Field Event Award was Jon Colby Miller, State Champion. "He drove to Springlake each day to work out, when you are up in the air 15 feet you need special equipment," the coach continued. Miller received a standing ovation.

The Most Valuable Track Award for the girls went to Jarah Redwine. Don Burch and Trina Orozco received the Tennis Awards. Golf Awards went to Dawnda Magby and Matthew Elliott.

Averaging nine points per game, Lauri Bradshaw was named Best Offensive Girls Basketball Player. Gina Jarman was named Best Defensive Player. The Most Improved Player Award went to Jodi Morris, and the Best All-Around Award went to Jessica Burch.

In the Boys Basketball, Brett Thomas was named Most Valuable Player; Eddie Lueras, Most Improved; and Mario Zamora received the PHD Award.

Matt Hodges was named the Best Offensive Lineman (football), Leland Brockman, Defensive Back; Mario Zamora, Offensive Back; and Brett Thomas, Most Valuable Player. Also recognized was Jon Colby Miller.

Coach Scisson stated that something new was being added this year, start building a Hall of Fame. All students that make All-State will have their names placed in the Hall of Fame.

Shelly Kay presented the Cross Country and Tennis Awards. Hardy Carlyle presented the Golf Awards.

Cont. Page 6, Col. 1

### OUT-OF SCHOOL TEAMS/TAAS

#### Packets Available

The out-of-school examinee registration packets for the Texas Educational Assessment of Minimum Skills (TEAMS) and the Texas Assessment of Academic Skills (TAAS) exit level tests are now available at Muleshoe High School. During each regular exit level test administration, individuals who are no longer enrolled in school and have not previously passed all sections of the TEAMS or TAAS tests, but have met all other graduation requirements, may retake the necessary section(s).

Individuals who are no longer enrolled in a Texas public school and wish to register to retake the exit level TEAMS or TAAS TESTS may pick up a registration packet at any high school campus, district central office, or education service center. The test registration form must be completed and returned in the pre-addressed envelope and must be received in Iowa City, Iowa, no later than 5 p.m. on June 11, 1993. The Texas Education Agency and National Computer Systems will not be responsible for registration forms that are delayed or lost in the mail. To ensure that individuals are registered, forms should be sent either by registered mail or certified mail.

Questions concerning out-of-school examinee testing should be directed to Linda Marr, Counselor, Muleshoe High School, telephone 272-7571.

### Early Voting

Tuesday, June 1 is the last day for early voting in the upcoming June 5 election.

purchasing food products.

A lengthy discussion was held on the TAAS test administered earlier this month to grades 4, 8, 10 (Exit).

Cont. Page 6, Col. 2

### First Class Of Volunteers Complete Training

The first class of volunteers interested in horticulture has completed Phase 1, an intensive 50-hour classroom course, in the South Plains Master Gardener program, the Texas Agricultural Extension Service has announced. These participants are now beginning 50-hours of hands-on volunteer work in horticultural education programs in Bailey County, said County Extension Agent, Curtis Preston.

Kristi Price completed the course work from Bailey County. She is among 32 who completed the eight weeks of training in Lubbock. Courses studied included soil fertility; insect, weed and disease control; flower, fruit and vegetable gardening; lawn and turf management; proper watering; landscape design, and plant

Cont. Page 6, Col. 1



DEVASTATING FIRE---The trailer home of the Raymond Mendoza family on West Dallas Street was completely destroyed by fire last Tuesday afternoon. Jimmy Mills, Fire Marshal, stated that the fire apparently was ignited by a clothes dryer filter clogged with lint. (Journal Photo)

## Rodriguez Receives May Support Staff Award

Joe Rodriguez, a custodian at Dillman Elementary School for the past five years, received the Support Staff Award at the school board meeting Monday night.

"During most of this time, he has been a bus driver---a driver who is very popular with the students," said Bill Moore superintendent of MISD. "Muleshoe Independent School District is proud to recognize Joe with the Support Staff of the Month Award. Joe has been nominated for this award by a large number of people on the Dillman Campus.

It has been noted that Rodriguez is the only man on the staff at Dillman. He always has a smile and a greeting; he's always willing to help where he's needed---with a cheerful attitude. The flower beds in front of Dillman, and the gleaming hall floors attest to his desire to make Dillman school "extra special."

Rodriguez was born in San Antonio and grew up in Lamesa. He learned early in life the value of hard work. He has been a farm worker and a sheep shearer in the past. In fact, his demonstrations of sheep shearing are a high point of Western Day at Dillman in the spring.

Rodriguez and his wife, Esther, have eight children---four sons and four daughters. They also have sixteen grandchildren. Some of

these grandchildren are students at Dillman and enjoy getting to eat lunch with their grandfather on occasion. His main hobbies include hunting, fishing, and singing and playing for song services in his church.

When asked about his work, Rodriguez said, "I love working here and enjoy the kids. I enjoy working with everybody". It has been observed that he really does enjoy the students; he's never too busy to say something to them or to take a minute to tie a shoe lace.

"Special employees like Joe Rodriguez make MISD a great place for students and a good place to work," Moore continued.

Cindy Purdy, president, called the school board meeting to order at 7 p.m. in the board room of the School Administration Building.

Following the invocation and recognition of the Support Staff Member of the Month, certificates were presented to a large number of worthy high school students.

Minutes of the April 26th meeting were approved as distributed.

Following a discussion on the Goals and Objectives for the 1993-94 school year, they were approved.

The board also approved the renewing of the food service contract with ARA.

They also approved a resolution to renew membership in the Texas Purchasing Consortium for

### Hospital Board Takes Oath Of Office

District Judge Jack Young administered the Oath of Office to Bob Finney and Buck Campbell, during the board meeting of Muleshoe Area Hospital District Tuesday night.

Richard Murphy, administrator, called the meeting to order and minutes of the previous meeting were approved.

Financial reports were given from both the hospital and Muleshoe Health Care Center.

Richard Albertson was presented the Outstanding Rural Scholar Award (plaque). Albertson will be attending Texas Tech School of Medicine.

Other business items included: the appointment of E.R. Physicians, appointment of C.R.N.A.s; Appointment of P.A.; Review of FmHA request; Review of Survey of HealthCare Center; Consideration of O.R. equipment needs.

### around muleshoe

Two students from Maple are among the 764 South Plains College students who are candidates for graduation this spring.

Receiving the Associate of Arts degree is Carrie Anne Kindle; and receiving the Associate of Science degree is Joel Bryan Kindle.

South Plains College conferred the Associate of Arts, Associate of Science and Associate of Applied Science degrees and certificates of proficiency during the college's 35th commencement exercises Friday, May 14 in Texan Dome.

Bailey County EMS will be sponsoring an emergency medical training class in the near future. Dates will be announced at a later date.

For more information contact Bailey County E.M.S (806) 272-4390 or go by the business office at 715 W. Ave. C.

Two students from Muleshoe are among 764 South Plains College students who are candidates for graduation this spring.

Marsha M. Wilson will receive the Associate of Science degree and John Parker Rogers will receive a certificate of proficiency, vocational nursing.

The 70th Annual Tri State Fair in Amarillo will host a Demolition Derby on Tuesday, September 21 at 7 p.m. A \$2,000 purse plus trophies will be awarded. The Derby is sponsored by Miller Genuine Draft.

This is the first time the event has been held in conjunction with the annual Fair. Event coordination is being handled by the Amarillo Fire Fighters, Local 542.

Entries will be accepted for the first 40 cars only. All drivers must be 19 years of age or older and have a valid driver's license to participate.

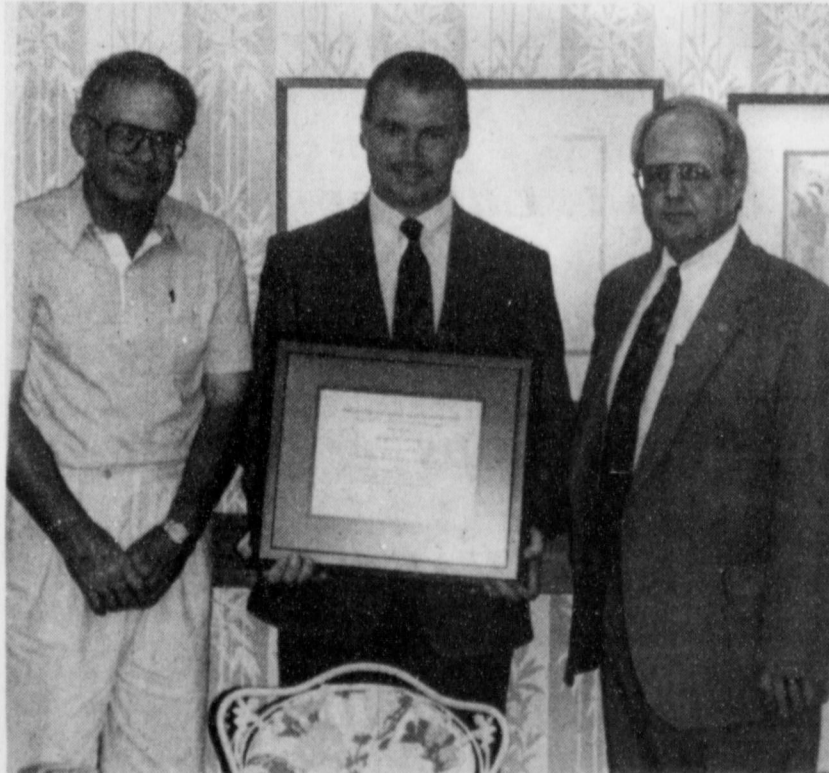
For more information and entry forms, contact Amarillo Tri State Fair, P.O. Box 31087, Amarillo, TX 79120, (806) 376-7767 or Fax: (806) 376-6942.

The fair will be September 20-25.

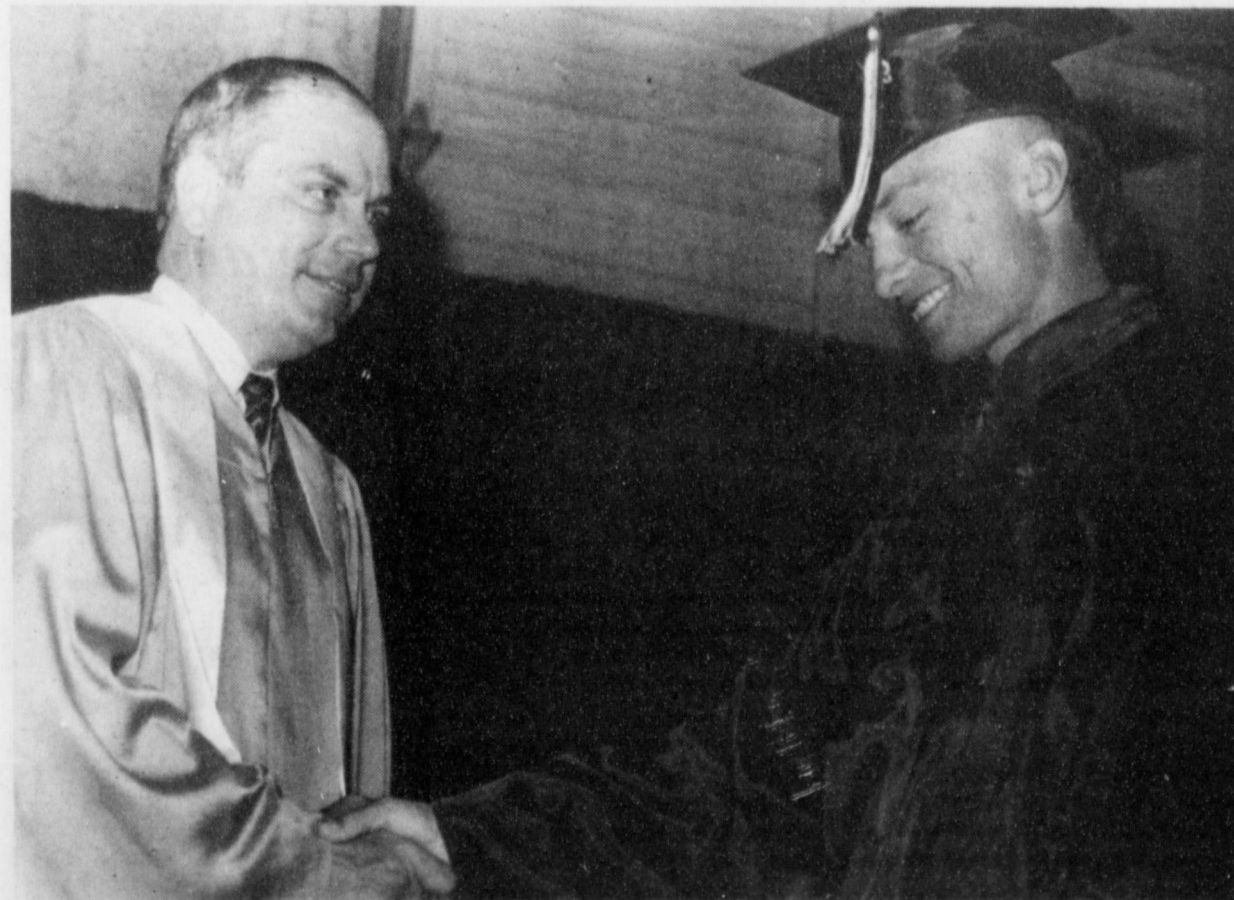
Cont. Page 6, Col. 1

### Class Reunion Planned, Classmates Sought

The Muleshoe High School graduating class of 1983 has planned a reunion for July 3 and need the addresses of the following classmates: Kris Gibson, Thod Thornton, Chris Kervin, Willie Coleman, Holly Oakes, Maria Davila and Maria Rodriguez.



OUTSTANDING RURAL SCHOLAR AWARD---During Tuesday night's hospital board meeting Richard Murphy, administrator, presented Richard Albertson the Outstanding Rural Scholar Award as Buck Campbell, president of the board, looks on. (Journal Photo)



CONGRATULATIONS---Bill Moore, superintendent of MISD, congratulates Eric Cisneros during commencement exercises Tuesday night at the Bailey County Coliseum. (Journal Photo)



Memorial Day is not just a day off. It recognizes the contributions of generations of military men and women who played a vital role in fighting to keep this country strong and secure.

Join us in paying homage to all those who made America the best place in the world to live!

*Posada's Radiator*

*Decorators Floral & Gifts*

*Terry Field Ins.*

*Pivot Products & Kristy's Plants*

*Bailey County Farm Bureau*

*Lowes Pay-N-Save*

*Bailey Gin Co.*

*Wes Tex Feed Yards*

*Nacho's Southside Chevron*

*Muleshoe Trade Center*

*Violas Restaurant*

*Sudduth Field & Co.*

*Lenau Lumber Co.*

*Alex's Tire Service*

*Paco Feed Yard*

*Lambert Cleaners*

*Spudnut Shop*

*Bobo Insurance Agency*

*Irrigation Pumps & Power*

*Chubby's Beauty Shop*

*Leals Restaurant*

*American Valley Inc.*

*James Crane Tire Co.*

*Lowes Marketplace*

*Wilson Drilling*

*Williams Bros Office Supply*

*Muleshoe Livestock Auction Inc.*

## Spaces Going Fast For Texan Basketball Camps

Spaces are going fast for Texan Basketball Camp, with two one-week sessions to be held at South Plains College in June and July.

The camp, under the direction of former South Plains college men's basketball coach Ron Mayberry, will be held June 13-17 and July 25-29.

"I think our camp has grown and grown," Mayberry said. "But at the same time, it has stayed consistent in that we're the least expensive overnight camp in the area and we're people oriented."

The purpose of the camp is to provide an opportunity for boys and young men to improve their basketball skills in a fun environment. The fundamentals of basketball are stressed, with sportsmanship, team play and self-confidence emphasized as well.

"We stress fundamentals, team basketball and individual attention," Mayberry said. "The kids have a good time."

"It's a learning camp. They can learn something about basketball, and they can also have fun. That's the key."

The camp, open to boys in third grade through high school, will be held in Texan Dome on the SPC campus. Other facilities for use by the campers are an indoor swimming pool, indoor racquetball courts and tennis courts. In addition, campers also may spend time at the SPC Student Center, which features a video arcade, pool and ping pong tables and a giant-screen television.

Camp participants may commute daily from their homes or spend the week on campus in a college residence hall.

The cost of the camp is \$190 for overnight campers, \$160 for day campers who eat in Texan Hall and \$100 for day campers who do not eat in the dining hall. Campers who do not plan to eat in the dining hall are requested to bring a sack lunch.

Special discounts are available for families wishing to send more than one child to the camp.

Included in the camp fee is instruction, insurance, awards and entertainment, as well as a camp report card, certificates, a t-shirt, official camp photo and a basketball for each participant.

The camp schedule will include ball handling, dribbling, passing and shooting drills, various

contests, including the popular Slam Dunk Contest, and game situations.

Assisting Mayberry with the camp will be Darryl Beasley, assistant men's basketball coach at SPC. Other members of the camp staff include members of the SPC

men's basketball team and other area high school coaches and college players.

Other college coaches will be invited to the camp to visit and talk with the camp participants.

Mayberry, who spent eight seasons at SPC before stepping down in March, guided the Texans to their first-ever appearance at the NJCAA national tournament a year ago. He is one of the few American coaches ever to be invited to direct

## News From Congressman Larry Combest

In Washington, it's not so much the way they say things that makes them sound different from us, it's the things they say. It seems that if they repeat anything often enough, they tend to believe it. They may think you might believe it, too. The problem is, the country needs some plain talk.

Take for instance, recent works from the Houston Ways and Means Committee that farmers were going to be "partially exempted" from paying the Clinton Energy Tax to fuel their tractors. To me, you're either exempt or you're not--there is no in-between. It turns out that tractor fuel costs will increase 4 cents more for each gallon when they pay Clinton's base tax rate on all energy sources. Ways and Means just didn't add on the extra 4 cent-a-gallon energy tax penalty that Clinton envisioned for gasoline and diesel. Farmers will pay 4 cents more a gallon for gasoline and diesel instead of 8 cents more. I sincerely doubt that farmers are "partially pleased" about the tax. (Or, would some just consider it a "contribution?")

Then there's the one about the line-item veto, in which only a two-thirds vote of Congress could override the president's veto of a spending item. However, we did not get a line item veto law out of Congress last month. Instead, we got something they call "enhanced rescission." The difference --as always --is in the numbers. "Enhanced rescission" makes it much easier for big-spenders in Congress: only a simple one-vote majority is needed to override the president's veto of spending--instead of the more difficult two-thirds majority that we have all insisted on in a line-item veto law.

If Washington acts like the Tower of Babel, with everyone speaking

some language foreign to the rest of us, it is little wonder that people feel that progress is not being made. In the Ways and Means

Committee for instance, those who believe government should have more social spending programs have more members than the fiscal conservatives: 23 to 15. The result was anything but gridlock when the tax package was steamrolled over the protests of conservatives, who were also out-numbered in the vote to stop the committee from holding its hearings in secret.

Last year, the American people demanded an end to gridlock. Legislative traffic was snarled and it seemed everyone was leaning so hard on the horn so that no one could hear what was actually being said. I believe what people were saying was, quite plainly, "move it!" but they didn't want the big spenders to drive us further into debt just because they steer all the committees.

Your phone calls, letters and town hall meetings confirm the principle we share about the direction this country should go in fiscal policy: cut spending first and balance the budget. Those in government should tell the whole story about the Clinton tax plan: his large spending cuts are planned for later years, but only after the largest tax increase in history fuels more yearly deficit spending and leaves us with an additional \$1 trillion total debt. Congress must cut spending first, not later, as Congress always intends to do (with the discarded Gramm-Rudman-Hollings Law and the tax-heavy 1990 Budget Deal).

Words from Washington should carry a lot more plain talk. That way maybe there would be less fancy talk and a lot more honest action.

## Solio Arellano Fabela Services Held

Service for Solio Arellano Fabela, 71, of Muleshoe was held Saturday, May 29, 1993 at 2:00 p.m. at the Immaculate Conception Catholic Church, Father Joseph Augustine officiating.

Rosary was said Friday, May 28 at the Ellis Funeral Home Chapel. Burial was in Muleshoe Cemetery, under the direction of Ellis Funeral Home, Muleshoe.

Mr. Fabela died May 27, 1993 at Muleshoe Area Healthcare Center. He was born June 27, 1921 in Eden, TX. He married Isabel Gonzales in 1943 in Eden, TX.

Fabela had been a resident of Muleshoe since 1947, moving here from Eden, TX. He was a farmer and had worked for Ralph Ethridge for 12 years and for Bob Jones 11 years. He was a member of Immaculate Conception Catholic Church and a member of Cursillista De Cristiandad of Muleshoe. He was preceded in death by a son Jose Fabela and a daughter Herlinda Fabela.

Survivors include his wife, Isabel Fabela of Muleshoe; six sons, Mike Fabela, Manuel Fabela, Gilbert Fabela, all of Muleshoe, Richard Fabela of Bovina, Ray Fabela of San Antonio, Soilo Fabela, Jr. of Lovington, NM; three brothers, Martiñ Fabela of Muleshoe, Roy Fabela of Eden, Paul Fabela of San Antonio; 29 grandchildren and 12 great grandchildren.

## Patients In Muleshoe Area Medical Center

MAY 24, 1993  
Brenda Villegas, Jeffrey Seaton, Lela Ann Smith

MAY 25, 1993  
none

MAY 26, 1993  
Palestina Contreras

MAY 27, 1993  
Palestina Contreras

a basketball camp and clinic for boys and coaches in the Grande Canary Islands in Spain.

Camp applications will be accepted as they are received and should be returned as soon as possible. A \$50 deposit should be sent with the application, and the remaining balance will be due at the time of registration.

The deposit is non-refundable after May 20 and July 5. A \$15 charge will be made on all refunds.

## Perot's Poll

The results of Ross Perot's poll of over a million supporters shows remarkably solid support for financial responsibility.

Support for two dollars in spending cuts for every new tax dollar: 97.4 percent. Support for a constitutional balanced budget amendment: 93.2 percent. Support for a presidential line item veto: 97.4 percent.

Support for reduced federal salary levels and retirement: 98.3 percent.

Even from Perot supporters, these one-side numbers should be a clear signal to Congress.

For more information, contact Mayberry at (806) 894-9611, ext. 225, or write: Texan Basketball

Camp, South Plains College, 1401 S. College Avenue, Levelland, Tex., 79336.

Bruce Perry, M.D.: "Over the course of two months (investigation), the kids have become increasingly open about 11 and 12-year old girls being David's wives," speaking of David Koresh and cult children.

**Bailey County Journal** USPS 040-200  
Established March 31, 1963. Published by Muleshoe Publishing Co., Inc. Every Sunday at 304 W. Second, Box 449, Muleshoe, Tx. 79347. Second Class Postage paid at Muleshoe, Tx. POSTMASTER: Send address changes to the Bailey County Journal, P.O. Box 449, Muleshoe, Tx. 79347.

We are qualified members of:  
Panhandle Press Association, National Newspaper Association, West Texas Press Association and Texas Press Association

**NNA**  
National Newspaper Association

**TA**  
TEXAS PRESS ASSOCIATION  
MEMBER 1992

L.B. Hall, Publisher  
Saraty Hall, Vice-President/Controller  
Evelene Harris, News  
Annette Borteman, Society  
Holly Millisp, Advertising  
Tammy Vae, Classified

WEST TEXAS PRESS ASSOCIATION

Subscriptions:  
Muleshoe Journal and Bailey County Journal  
By Carrier Yearly - \$15.00  
By Mail - \$16.75  
Elsewhere - \$18.50

Advertising Rate Cards on Application

\*Advertisers should check their ad the first day of insertion. The Journals will not be liable for failure to publish an ad or for a typographical error or errors in publications except to the extent of the cost of the ad for the first day of insertion. Adjustment for errors will be limited to the cost of that portion of the ad where the error occurred.\*

**ALLSUP'S MONEY**  
INSTANT WIN GAME

**WIN UP TO \$1000 CASH!**

Pick up your free game ticket today!

**Your Holiday Shopping Headquarters Have a Safe Holiday**

PRICES EFFECTIVE MAY 30-JUNE 5, 1993 318 W. Amer. Blvd. 272-4862

**GOTTA HAVE IT** ALL TYPES PEPSI-COLA 6 Pk. 12 oz. Cans **1.89**

SUNNY CREME COOKIES 14 OZ. PKG. **99¢**

Lay's ALL FLAVORS LAY'S POTATO CHIPS REGULAR \$1.49 FOR ONLY **99¢**

BBQ BEEF SANDWICH FOR ONLY **89¢**

HAM, EGG & BISCUIT FOR ONLY **89¢**

SOUVENIR INDY CUP-BIG 44 OZ. HONCHO FOUNTAIN DRINK FOR ONLY **79¢**

ASSORTED FLAVORS GATORADE THIRST QUENCHER 32 OZ. BTL **99¢**

SHURFINE CHARCOAL LIGHTER 32 OZ. CAN **\$1.19**

SHURFINE CHARCOAL BRIQUETS 10 LB. BAG **\$1.59**

**ALLSUP'S** BATHROOM TISSUE CHARMIN SPACEMAKER 8 ROLL PKG. **\$2.49**

**\$50.00 WORTH OF GASOLINE FREE!** TAKE THIS COUPON TO SIERRA BLANCA MOTOR CO. RUIDOSO, NEW MEXICO 88345. IF YOU PURCHASE A NEW VEHICLE BEFORE AUGUST 13, 1993 YOU WILL RECEIVE \$50.00 WORTH OF FREE GASOLINE COURTESY OF ALLSUP'S.

DECKER 4X6 CHOPPED HAM 10 OZ. PKG. **\$1.49**

SHURFINE CUT GREEN BEANS 16 OZ. CAN **39¢**

SHURFINE WHOLE PEELED TOMATOES 16 OZ. CAN **49¢**

**COMBO OF THE MONTH** 2 CORN DOGS & A 22 OZ. COKE FOR ONLY **\$1.99**

**ALLSUP'S MONEY** Enter to Win a 1993 Chevrolet Cavalier!

**Weight Watchers**  
PAY JUST \$59 FOR 8 WEEKS!

SAVE OVER **40%** JOIN TODAY AND SAVE!

SHOW THE WORLD A BRAND NEW YOU

Discover the special feeling you get when you are motivated, eating healthier, and really taking control of your life.

**OPEN ENROLLMENT FOR A NEW 8 WEEK SERIES**

Come and See What Weight Watchers is all about. Attend A FREE meeting at Muleshoe The Depot 220 Ash St. Tuesday, June 1, 6:30 p.m. Call 1-800-359-3131 for more information

For more information call **1-800-359-3131**

Offer valid in participating areas 37, 96, and 107 only, South Texas, West Texas, and Santa Barbara County, Calif. © 1993 Weight Watchers International, Inc. All rights reserved.



Joyce Adams-Rick Beadle

## Pre-Nuptial Shower Honors Adams-Beadle

A pre-nuptial reception honoring Joyce Adams and Rick Beadle was held at the home of Sam and Elaine Damron, 1815 W. Ave. G. in Muleshoe on Saturday, May 22 from 5 to 6:30 p.m.

Hostesses Myrt Feagley, Sally Ellis, Julie Cage and Joan Lewis prepared hors d'oeuvres that included an artichoke dip, ham and green pepper roll, an apricot delicacy and tortilla roll-ups. Pat Nickels of Amarillo and Dorothy St.Clair provided fresh fruit and joined the Muleshoe hosts and hostesses to arrange the event. Sparkling cider and coffee were served by Wilton Armstrong of Hale Center and Sally Ellis. Ms. Ellis also created a fruited ice ring of grapes and peaches that centered the punch bowl.

The Damron home was decorated with fresh flowers cut from gardens of Marie Lenau and Elaine Damron.

The centerpiece floral contained yellow, bronze and purple iris, pink roses, white snap dragons, pink and purple larkspur, honeysuckle and Colorado columbine. Pink and white roses complimented the gift display rooms.

The bride-elect's aunts Mrs. A.C. Hamilton of Plainview and Mrs. James Adams of near Tulia joined her father, J.K. Adams of Muleshoe and Joe D. Armstrong of Hale Center as special guests.

Hosts for the occasion were Mr. and Mrs. J.D. Cage, Farene Harris, Mr. and Mrs. John Smith, Pat Nickels, Mr. and Mrs. Irvin St.Clair, Jean Allison, Mr. and Mrs. J.E. McVicker, Dr. and Mrs. Charles Lewis, Mr. and Mrs. Frank Ellis, Mr. and Mrs. Jay Feagley and Mr. and Mrs. Sam Damron. They gifted the couple with an antique oak bureau from the Art Loft.

## 1943 Class Reunion Committee Meets

Committee members of the Muleshoe High School class of 1943 met Thursday afternoon to finalize plans to celebrate their 50th year reunion. Committee members present were Gladys (Wagon) Black, June Arnold, Bertie (Seals) Purcel, Irvin St.Clair, Jean (Hunt) Landers.

Twenty-five members of the 1943 class have contacted us and sent their money.

Plans have been set to meet at the Muleshoe Country Club on Sat., July 3 at 10:00 a.m. for a brunch and will resume at 7:00 for dinner and a dance. The Country Club will be open all afternoon for visiting.

There will be a morning parade and an early settlers reunion in the afternoon. There will be many people in town for the 4th of July activities.

---  
**It Would Be Simpler**  
Why not let the government take everything and send us a check for living expenses?  
-The Copperfield Magazine.



ENGAGEMENT ANNOUNCED-Mr. and Mrs. Keith Vourazaris of Dripping Springs, TX wish to announce the engagement and approaching marriage of their daughter, Noel to Steve Turner, the son of Mr. and Mrs. Royce Turner of Muleshoe. The couple will exchange vows August 28, 1993 at the First Baptist Church in Muleshoe.  
guest photo

## Cal Farleys Boys Ranch And Girlstown Holds Graduation

The largest graduating class in Boys Ranch and Girlstown history-a total of 56 young men and women-observed late May graduation ceremonies.

The 49 graduating seniors of Boys Ranch High School received diplomas May 29 in the Ned O. Miller Auditorium on the campus of Cal Farley's Boys Ranch, 36 miles northwest of Amarillo. In addition, seven Girlstown, U.S.A. seniors graduated May 21 from Whiteface High School. The Boys Ranch and Girlstown youths represent 10 states: Arkansas, California, Colorado, Florida, Nevada, Oklahoma, Rhode Island, Texas, Washington and Wisconsin.

Earning valedictorian honors at the Ranch, Jose Tamayo posted a grade point average of 4.485. While a Boys Ranch student, Jose played varsity football, participated in varsity wrestling, and served as a member of the National Honor Society and the Spanish Club. Jose lived at the Ranch for 12 years.

Adam Gordon earned the rank of salutatorian, with a 4.167 grade point average. A National Honor Society member, Adam also served as a member of Latin Club. Adam lived at the Ranch for almost three years.

Following a welcome by Boys Ranch and Girlstown President Ted Lokey, diplomas were presented by school Superintendent Jimmy Davis, Principal Ken Sawin, and Mrs. Genie Farley Harriman, daughter of Cal and Mimi Farley.

Participating in graduation ceremonies at Whiteface High

School were Cylinda Case, Nellie Corral, DauVeen Gunn, Gari Milton, Shamara Moore, Michelle Riley, and Lori Vines. Other members of the 1993 Boys Ranch graduating class were Mikal Ayala, Nicole Bailey, Clay Baker, Edward Batt, Josh Boyd, Henry Campfield, Jimmy Chambers, David Cherry, Daniel Clay, Sean Collette, Andy Crist, Jimmy Edwards, Bryan Ellis, Chris Estes, Eric Garner, Brandon Garrison, Brad Golden, Daniel Gonzales, Chris Grepo, Jamie Hendricks, Billy Horton, Jason Kysar, Robert Larroy, Frank Marcinek, Daniel Markley, Tom Matthews, Mike Morgan, Teddy MacVaugh, Teddy Parker, Steve Perkins, Raymond Phillips, Ricky Pruett, Michael Rinehart, Daniel Roberts, Daniel Saiz, Dom Schiro, Patrick Stout, David Sullivan, Chris Sweeten, Mark Thaxton, Tim Tibbits, Bobby Urango, Erick Walker, Melanie Weathers, Jason Weaver, Corey White, and Stephen Ziatas.

Waiting for the young men and women of Boys Ranch and Girlstown are careers in military service, additional education at vocational schools and colleges, or immediate entry into the work force. The graduates go prepared with vocational certificates, scholarships, and educational loans.

---  
GOP hopefuls gearing up for 1996 presidential primary.

## Muleshoe Area Retired Teachers Association

The Muleshoe Area Retired Teachers Association met at noon on May 21st at the 16th and Ave. D. Church of Christ meeting room for a covered dish luncheon and business meeting. Hostesses were Maude Blaylock and Mary B. Obenhaus.

After lunch Wilma Smith presided over the business meeting which was opened by the Pledge of Allegiance to the U.S. and Texas flags.

A tribute to Carrie Lee Bishop, former outstanding teacher and member of Muleshoe Area RTA, now deceased, was given by Elizabeth Watson.

Margie Moore installed the newly elected officers for next year in a very impressive ceremony. They are Wilma Smith-President, Ann Oyler, V-President, Elizabeth Watson-Secretary, and Letha Patterson-Treasurer.

A district meeting will be held in Levelland on May 26th and all newly elected officers are urged to attend.

Plans were completed for serving at the monthly birthday party at the Nursing Home. Those members serving are to be at the Nursing Home at 3 p.m. May 27.

Members present were Letha Patterson, Wilma Smith, Mary B. Obenhaus, Ethel Allison, Elizabeth Watson, Beulah Mimms, Pauline Guinn, Alene Bryant, Margie Moore, Mary Nell Blecker, Winona Dudgeon, Maude Blaylock, Ann Oyler, and Lucy Faye Smith.

Next meeting will be in September!

Best of Press



Can You?

Will power is having the same ailment a friend has and not mentioning it.

-Globe, Atchinson, Kan.

Good Point

A conceited person has one good point. He doesn't talk about other people.

-Grit.

For Your  
Mary Kay Cosmetics  
Josie Flowers

272-3865

8 a.m. - 12 noon  
& After 6 p.m.

## Parenting Pointers

...from your friends at De Shazo Elementary.

All children need to feel that their parents love and accept them for who they are. Studies have shown that parents who are warm and accepting when their children were young, had children with high self esteem at age 12.

From 101 Ways Parents Can Help Students Achieve.



A Look at God's Plan - Genesis to Revelation

## VACATION BIBLE SCHOOL

Games • Crafts • Songs • Snacks

Place: MULESHOE CHURCH OF CHRIST

Dates: MAY 31 - JUNE 4, 1993

Time: 9:30 - 11:30 AM

\*\*\*

NEED A RIDE?  
CALL - 272-4256

# ANTHONY'S

# 1 DAY SALE

# SPECTACULAR

# ENTIRE STOCK REDUCED

## MONDAY ONLY!

- Shorts & Shirts for the Family
- Women's & Juniors' Dresses
- Athletic, Casual & Dress Shoes
- Men's Slacks, Suits, Ties, Shirts
- ALL Children's & Infants' Apparel
- Swimwear for Everyone!
- ALL MERCHANDISE REDUCED!

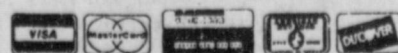
ALL Merchandise In EVERY Department Is On SALE For 1 DAY

OPEN Memorial Day 9:30 a.m. to 5 p.m.

321 S. Main Muleshoe 272-3478

Open 9:30 a.m.-6 p.m.

Mon.-Sat.



## STEP AEROBICS

Low Impact With High Impact Benefits.

Beginning Wednesday, June 2nd.

320 Main Street, Muleshoe

Classes Limited

Mon.-Wed.-Fri.

Mornings 8:30 a.m.-9:30 a.m.

6:00 p.m.-7:00 p.m.

Call 272-5190 To Register

For Both Men & Women Of All Ages. Go At Your Own Pace.

(Instructor - CPR and First Aid Certified)





**BIRTHDAYS CELEBRATED**-At a birthday party, hosted by the Muleshoe Retired Teachers, Pulma Walker 5/25/1906, Jackie Davenport 5/6/1912 and Mary Duran 5/17/1899 were honored. Entertainment was provided by Lois Killingsworth and Lisa Turner, and Kathy's Kreations supplied the flowers. Journal photo

**Tops News**

Tops Chapter No. 34 met at the Muleshoe Church of Christ Thursday, May 27, 1993 at 6:30 p.m. Leader Laverne James called the meeting to order. The Tops pledge was recited and the fellowship song was sung. Mrs. James led the group in a prayer.

Betty Jo Davis, weight recorder, called the roll with 20 members answering with the amount of weight they had lost or gained. Minutes of the previous meeting were read by Aurora Mata, secretary and they were approved as read.

Best loser for the week is Alma Robertson. Runners up are Linda White, first runner up, and Ruth Clements, second runner up.

The meeting was adjourned with the singing of the good night song.



**PERFECT ATTENDANCE AWARD WINNERS**-Dillman Elementary Perfect Attendance award winners were: (not in order) Robert Bomer, Thomas Bonda, Kelsey Beggs, Erin Gallman, Lauren Edler, Theran Edler, Tanisha Norman, Robbie Jan Barrett, Ariana Gonzales, Elizabeth Rodriguez, Crystal Bailey, Juan Garza, Monique Rodriguez, Luis Sanchez, Tiffany Flores, Jordan Dale, and Michael Tosh. Journal photo



**New Arrival**

**Dustin Lee Copley**

Lee and Tammy Copley of Amarillo, announce the birth of a son, Dustin Lee Copley. The baby was born May 26 at Hi Plains Baptist Hospital, Amarillo. He weighed 7 pounds and 13 ounces and was 19 1/2 inches long. Maternal Grandparents are Bill and Cil Johnson of Amarillo. Paternal grandparents are Jimmy and Myra Copley of Muleshoe.

**Evidently**

Brown eyes are an indication of a weak will; black eyes, of a weak defense.

-Mainsheet, Bainbridge.

**Should!**

A lot of self-made men should deny it.

-The Log, Bremerton, Wash.

**Always**

The man who thinks he knows everything always irritates those of us who do.

-Record, Columbia, S.C.

**Lawn & Garden Headquarters**

**Memorial Day Sale**

INTRODUCING **QUIK-KILL** Home, Garden & Pet Sprayer

Have A Good One Of Bedding Plants Our Greenhouse! Flower & Vegetables)

**Geraniums All Sizes and Colors**

Storewide **10-20% Off**

Kristy's Also Carries A Full Line of Bulk Garden Seed!

**Kristy's Plants**

710 E. Amer. Blvd. Muleshoe 272-5536



Pat Watson

**Pat Watson Named Teacher Of The Year**

Patricia Ann Watson, MHS English Teacher was named Teacher of the Year in Muleshoe I.S.D. at the general faculty meeting on Wednesday. Watson has taught in Muleshoe for all of her 20 years in the profession. She received a golden apple and a check for \$250 from Bob Finney, President of Muleshoe State Bank who sponsors the award.

Mrs. Watson is a member of numerous professional education associations. She has authored and co-authored with fellow MHS teacher, Johanna Wrinkle many articles, books, and teaching

guides. She has also co-presented workshops and teacher training sessions in the district, at the Region XVII Education Service Center, and at state conventions.

Watson and her husband, W.T., have three sons, David, Edwin and Clifford, and eight grandchildren.

Watson will now enter the Region XVII Teacher of the Year competition in Lubbock. From there she may become eligible for the State and National Teacher of the Year Awards. Last year's MISD Teacher of the Year, Kerry Moore was also named Region XVII Secondary Teacher of the Year.

**Rip's Western Wear**

OPEN 8 AM-6:30 PM CDT

We're Your Family Store

IN TEXICO 314 Wheeler Ave. 482-3363 or 800-748-2459

**The Great Round-Up**

**PIONEER DAYS RODEO CELEBRATION OF SAVINGS**

Mens Suits one group **20% off**

Justin Boots **\$79<sup>98</sup>**

Hi Ties **\$95<sup>98</sup>**

Straw Hats **20% off**

Mens Long Sleeve Shirts **20% off**

One group 4X Beaver Hats **\$65<sup>00</sup>**

Childrens Ropers ..... **\$46<sup>98</sup>**  
Hi Ties ..... **\$54<sup>98</sup>**

One group Rocky Tops **20% off**  
Rocky Shorts **20% off**

Wrangler Jeans 13 MWZ **\$17<sup>98</sup>**  
Denim ..... **\$24<sup>98</sup>**  
Colored ..... **\$24<sup>98</sup>**

Rocky Mountain & Panhandle Slim JEANS **\$19<sup>98</sup>**  
as low as

All other Beaver Felt Hats **20% off**  
Boys Shirts **20% OFF**

Girls' Jeans **30% OFF**



Harley Riders of Eastern New Mexico Presents The 2nd Annual

**MAKE A WISH**

POKER RUN

June 5, 1993  
\$15.00 Single - \$25.00 Couple  
Registration - 9 a.m. - 11 a.m. MDT  
First Out 9:30 a.m. - 11 a.m. MDT  
Sign Up At: Excalibur Custom Motorcycles  
2204 Mabry Drive  
Clovis, N.M. 88101

Live Band - Andy Chase and Route 66  
Food and Drinks  
Bike Games  
50 / 50  
Door Prizes  
All Motorcycles Welcome  
Remember It's For The Kid's !!!  
For More Information, Call (505) 763-6900  
9 A.M. - 7 P.M. MDT

# Muleshoe

Cont. From Page 1

The Mid-Plains Singles will sponsor a Singles Dance on Friday, June 11 from 8 p.m. to 12 midnight in the fellowship hall of the First Christian Church at Plainview. Music will be by Teri Hart and admission is \$5 per person. There will be babysitting by reservation on or before June 8, call 293-1724 or 296-6630. No alcoholic beverages are allowed.

Stacey Langfitt of Rio Rancho, N.M., formerly of Muleshoe, has been awarded a \$2,150 per year scholarship, awarded for four consecutive years.

This is a Presidential Scholarship to attend The University of New Mexico for the 1993-94 academic year.

Each scholarship is a combination of private funds, donated by individuals and businesses from New Mexico and across the country, as well as a contribution from the University's Hugh B. and Helen K. Woodward and Daniel Jackling Trust Funds.

"The Presidential Scholarship is one of the University's most prestigious scholarship and a very exciting program for our recipients," said John Whiteside, Director. "Your selection is truly

## Volunteers...

Cont. From Page 1  
selection for the High Plains of Texas.

Among projects with which the Master Gardener candidates will assist the County Extension Office and local residents are population monitoring of the peach tree borer and pine tip moth, "Don't Bag It" lawn management programs, providing current information for flower and vegetable gardeners and writing a gardening newsletter.

Upon completion of their 50 hours of volunteer service, the candidates will be certified as Texas Master Gardeners of the South Plains.

"We are pleased that these dedicated citizens are giving their time and knowledge to help us conduct educational programs in horticulture for the people of Bailey County," Preston said.

## Banquet...

Cont. From Page 1  
Ms. Hernandez recognized the High School and Junior Varsity Cheerleaders and Ms. Scott recognized Ms. Scott. A video of the athletes was shown following the presentation of awards.

The tables were covered with black clothes and pictures of the athletes in various sporting events were hung on the walls.

Grilled steaks, baked potatoes, salad, red velvet cake and tea were served by the sixth grade athletes. Warren gave the closing remarks and Jarah Redwine gave the benediction.

an honor for you, your parents, and your school."

Stacey Langfitt was the recipient of a \$300 Albuquerque Metropolitan Alumnae Panhellenic Scholarship, presented at a banquet on May 4th.

Marine Pfc. Joe L. Gutierrez, a 1992 graduate of Muleshoe High

## School...

Cont. From Page 1  
A resolution allowing Muleshoe ISD and Muleshoe ISD Group Health Trust to become participants in the TexPool investment program, was approved.

The 1993-94 school calendar was discussed and it was noted that MISD will host all U.I.L. meetings next year. "There will be hundreds of kids here," Moore said.

In the informational reports, Moore stated that he had had a lot of positive feedback on the health screening for the facility of MISD. A total of 181 people were screened.

Adrian Neader, superintendent of instruction, reported that the Summer School had been modified.

"The construction is going well on the addition to the high school," said Buck Johnson, superintendent of operations. He also reported on the new score board for the gym and the sand box at Dillman Elementary.

Jo Mayhugh gave a tax report, and bank balances fund balances. Current bills were paid.

During the executive session, resignations were accepted from Julie Broyles, Rosemary Lowe, Doris Scoggin, and Toni Dutton.

Three new teachers were hired and include: Alice Felan, Jeff Chaney and Chad Wood.

## Jennyslippers Will Host Regional Seminar June 26

The Muleshoe Jennyslippers will host a Regional Seminar on Saturday June 26 from 10 a.m. to 3 p.m., with the place being announced at a latter date.

"Women Leading, Women Doing" will be the theme. More information will be printed at a latter date.

Nancy Kidd, president, called the regular Jennyslipper meeting to order at noon Tuesday at the Girl Scout Hut.

A lengthy discussion was held on the upcoming seminar, and a report was given on the Walk-A-Thon.

Jars will be distributed in the various businesses for donations to the Fire Works Fund. If everyone would place a small amount of money in these jars when they are shopping, it wouldn't take long for the funds to grow to the needed amount to purchase fireworks.

School recently completed the school of Infantry.

During the course at the School of Infantry, Camp Pendleton, Calif., students receive classroom instruction and participate in field exercises involving infantry tactic, construction and camouflage of fighting positions, and the use of mines, demolitions and intra-company communications equipment.

He joined the Marine Corps in October, 1992.

A course in use of force for area law enforcement officers is scheduled June 7-16 at South Plains College. Classes will meet from 6 to 10 p.m. Mondays, Tuesdays and Wednesdays in the SPC Petroleum/Law Enforcement Technology Building, room 115.

Cost is \$24 a person. Registration deadline is noon June 4. "During this course, students will obtain a basic understanding and a working knowledge of the elements of the laws pertaining to the use of force.

The course will concentrate on Chapter 9 of the Texas Penal Code and case laws involving liability of the officer in situations involving use of force," said George Lawless, coordinator and professor of law enforcement technology at SPC.

"This is one of the required courses necessary for intermediate certification by the Texas Commission on Law Enforcement Officer Standards and Education," he said.

Interested persons can contact the SPC law enforcement office at 806-894-9611, ext 291.



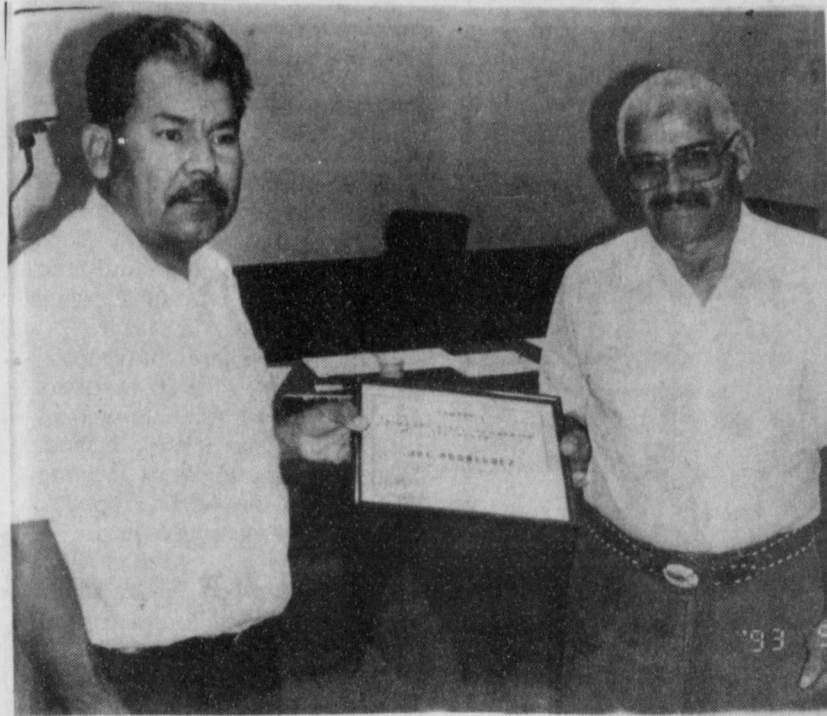
JON ROBIN WATKINS

The truth hurts people who don't like to face facts.

## Copley Tractor & Equipment

272-4718

Buy, Sell, Trade  
Tractors, Equipment,  
Fork Lifts & Trailers



SUPPORT STAFF MEMBER---Frank Saldana, left, presented the Support Staff Member, for the month of May, plaque to Joe Rodriguez during the school board meeting Monday night. (Journal Photo)

## Watkins Receives Scholarship

Jon Robin Watkins was recently notified that he is the winning applicant for the Fred Johnson Memorial Scholarship, for 1993-94.

Watkins is a graduating senior of Muleshoe High School, and is the son of Glen and Marsha Watkins of Muleshoe. Watkins plans to utilize the \$500 award at South Plains College, Levelland--where he intends to enroll and major in chemistry.

His long-range goals include obtaining a bachelor of science degree from Texas Tech, and acceptance into the Texas Tech School of Medicine. He hopes to ultimately go into medical research and help people have a better quality of life.

The Fred Johnson Memorial Scholarship was awarded on a basis of leadership, scholarship, citizenship/community service, a sound work ethic; appreciation of fine arts, and athletic endeavor.

Activities and honors listed by Watkins included: Leadership Muleshoe, president; National Honor Society, Boy Scouts of America-Eagle Scout Award; Student Community Action Club, Fellowship of Christian Athletes, UIL Science Team, Future Teachers

of America, Track, Theater, Band, and Honorable Mention All District Football Team.

In addition to all of these activities, Watkins has maintained a 3.6 grade point average and works after school and on weekends at Fry & Cox Hardware.

The Fred Johnson Memorial Scholarship is given annually in memory of Fred Johnson who died in 1972. He was a farm equipment dealer in Muleshoe from 1945 to 1971.

As an active supporter of youth in the community, he served as pronouncer for the Bailey County Spelling Bee for 17 years; served as first commissioner of Little League Baseball in Muleshoe, was first Packmaster of Cub Scout Pack 620, served as a resource teacher for

high school English classes studying Shakespeare, and taught reading to a number of high school boys over the years. An orphan of Norwegian immigrants at age 5, Johnson valued work and education as the fundamental elements of building a personal future and a stronger America.

It is good to have companions in misery.

-John Gower.

It is hard for the happy to understand misery.

-Quintillian

## Girl's All-Star Basketball Team Goes To National

Muleshoe's fifth and sixth grade Little Dribbler All-Stars recently stormed into the Regional Little Dribbler Tournament that was hosted by Littlefield.

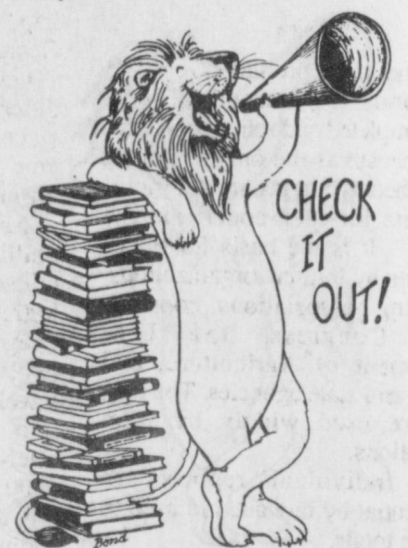
The Muleshoe girls dominated Littlefield's No. 2 team, getting past them 48-12. They next defeated Littlefield's No. 1 team 40-22, and Dalhart 30-22.

In the Championship game they again faced Dalhart (40-34) and sent them home with a second place trophy.

With the victory, the Muleshoe girls will compete in the National Tournament to be held in Weatherford on June 2 through 5. The girls will leave on the first of June. They will play at 8:30 p.m. on June 2 against Quitman.

The All-Stars are coached by Tanya Crawford and Adena Johnson. "They have done an excellent job coaching the girls," said Ralph Sanchez. "All their work is appreciated by the people of Muleshoe. Good luck goes out to the team from everyone! Bring back the National first place trophy once again.

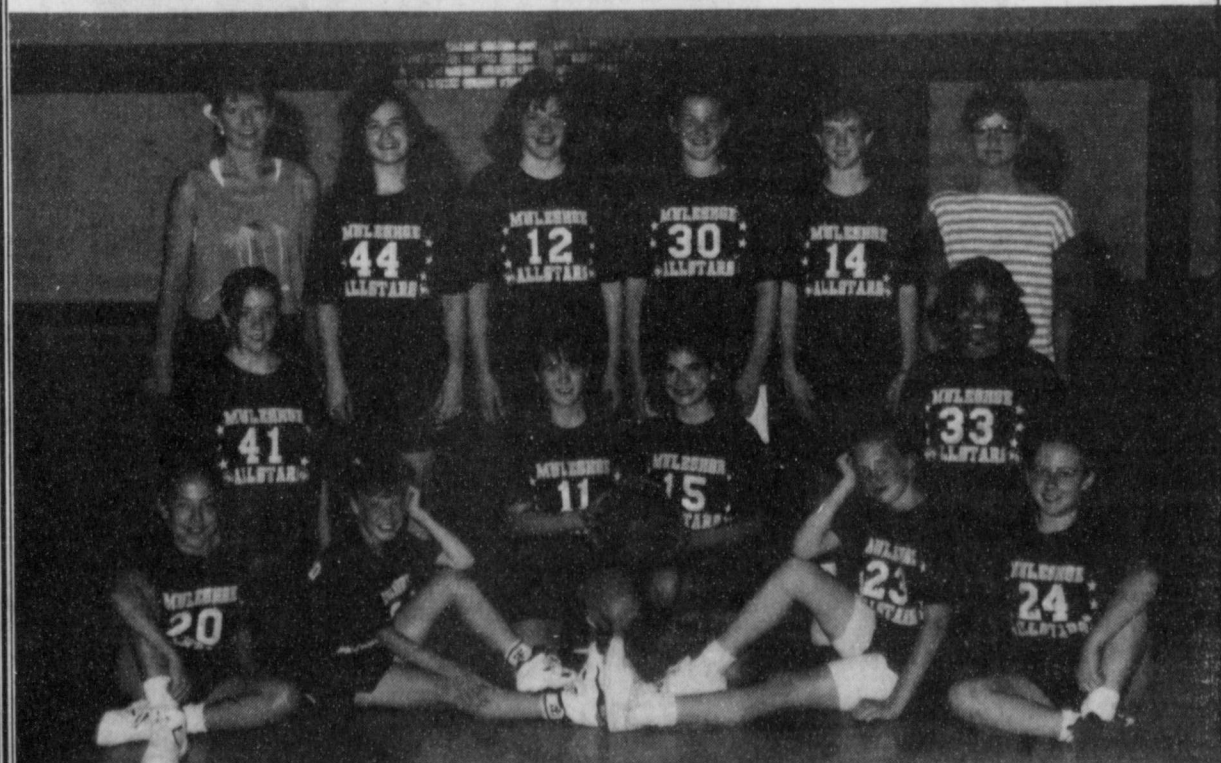
Making up the All-Star team are: Ashley Crawford, Melissa Williams, Andrea Roberts, Lindsey Field, Erin Wilhite, Alma Gonzales, Kellie Morris, Krystal Heathington, LaRonda Copley, Vanessa Orozco, Ashley Pool, and Kayna Puckett.



Muleshoe Public Library

**Classifieds!**  
Bigger and Better  
Than Ever  
272-4536

## Muleshoe Little Dribblers Thank The Following For Their Support During The 1993 Season And Sponsoring Their Trip To Weatherford For The National Tournament

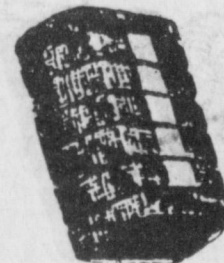


Muleshoe Little Dribblers L. to R. Back Row, Coach Tanya Crawford, Melissa Williams, Andrea Roberts, Erin Wilhite, Krystal Heathington and Coach Adena Johnson. Front Row, L to R, Alma Gonzales, Kayna Puckett, Ashley Crawford, Kellie Morris, Ashley Pool, Lindsey Field, Vanessa Orozco and Rhonda Copley.

Wilson Appliance  
Dale Oil  
Harrison & Harrison  
Lenau Lumber  
Joes' Boot Shop  
Connies' Place  
Person Construction

Muleshoe State Bank  
Inez Bobo  
Burton Service Center  
Muleshoe Animal Clinic  
Wes-Tex Feed Yards  
Hal & Linda Wood  
Delson Wilhite & Associates

# 40th Annual Stockholders Meeting



## Muleshoe Co-Op Gins

Tuesday, June 1, 1993

7:30 p.m.

at the

## Muleshoe High School Cafeteria

Steak dinners will be served, followed by the business meeting and election of new officers.

There will also be drawings for door prizes!!

Officers:

Stephen Bell, Pres.  
M.W. Vise, Vice Pres.  
Bobby Redwine, Sec.  
Charles Moraw, Mgr.



Directors:

Gerald Shanks  
Tim Campbell  
Max Crim  
I.N. Wilcox

We Will Be Looking For You There!!

## Rotary Hears Program On Switzerland

Opening the regular noon meeting of the Muleshoe Rotary Club Wednesday was David Tipps. The prayer was given by Curtis Shelburne and Max King led the Pledge of Allegiance. Terry Hutto led the group in singing "Viva le Rotary".

Visitors were welcomed: Corey Knowles, Cindy Purdy, Stacey McElroy, Bob Malone and Marie Bass.

Stacie Harris, Rotarian Sweetheart, was presented a gift for graduation and for appreciation from the Rotarians.

Scholarship winner was announced. Jodi Lynn Thomas, Muleshoe High School senior, with ACT score of 30 out of 36, was ranked # 3 of 63, and plans to attend U.T. at Arlington.

In charge of the program was Paul Wilbanks. Recently returning from a trip to Switzerland, he showed a video on the countries highlights. The country, known as "Europe In Miniature" is a perfect panorama of contrast. The Swiss Alps cover more than 60% of the Swiss terrain, and the cultural heritage is known for its wealth of dairy products. Alpine skiing is the form of recreation, and from the largest city, Zurich, came a famous artist, Marcel du Shondt.

The meeting was adjourned by David Tipps.

\*\*\*

Agricultural producers received their forms last December. Most have completed and returned them.

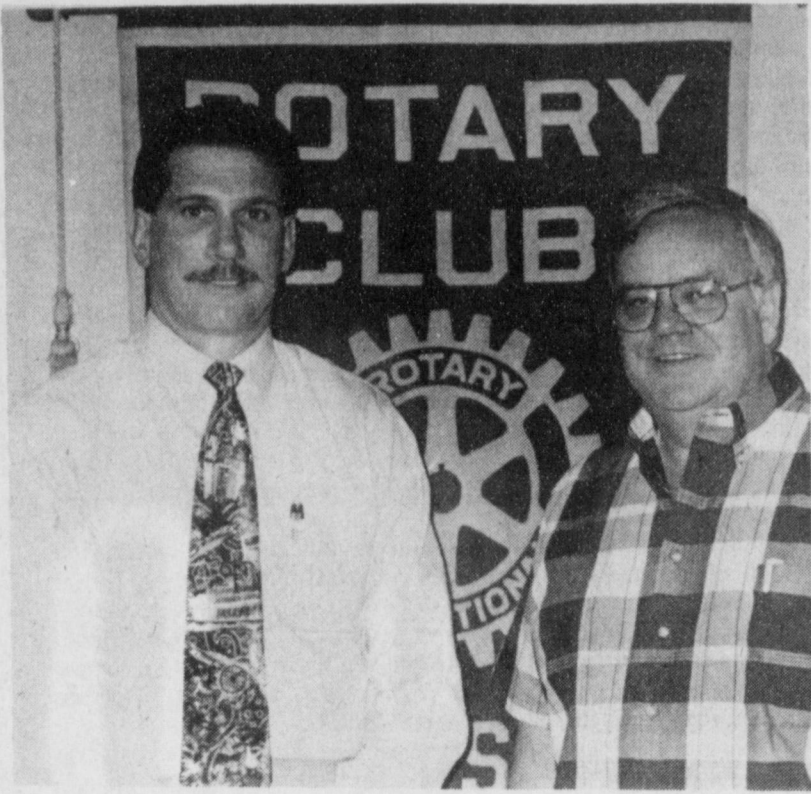
The census is the only source of comprehensive, consistent agricultural data for each country in the Nation. It is the basis for major decisions by farmer organizations, marketing associations, cooperatives, Congress, the U.S. Department of Agriculture, and Federal and state agencies. The data also are used widely by farm publications.

Individual reports are confidential by law and are used to tabulate totals.

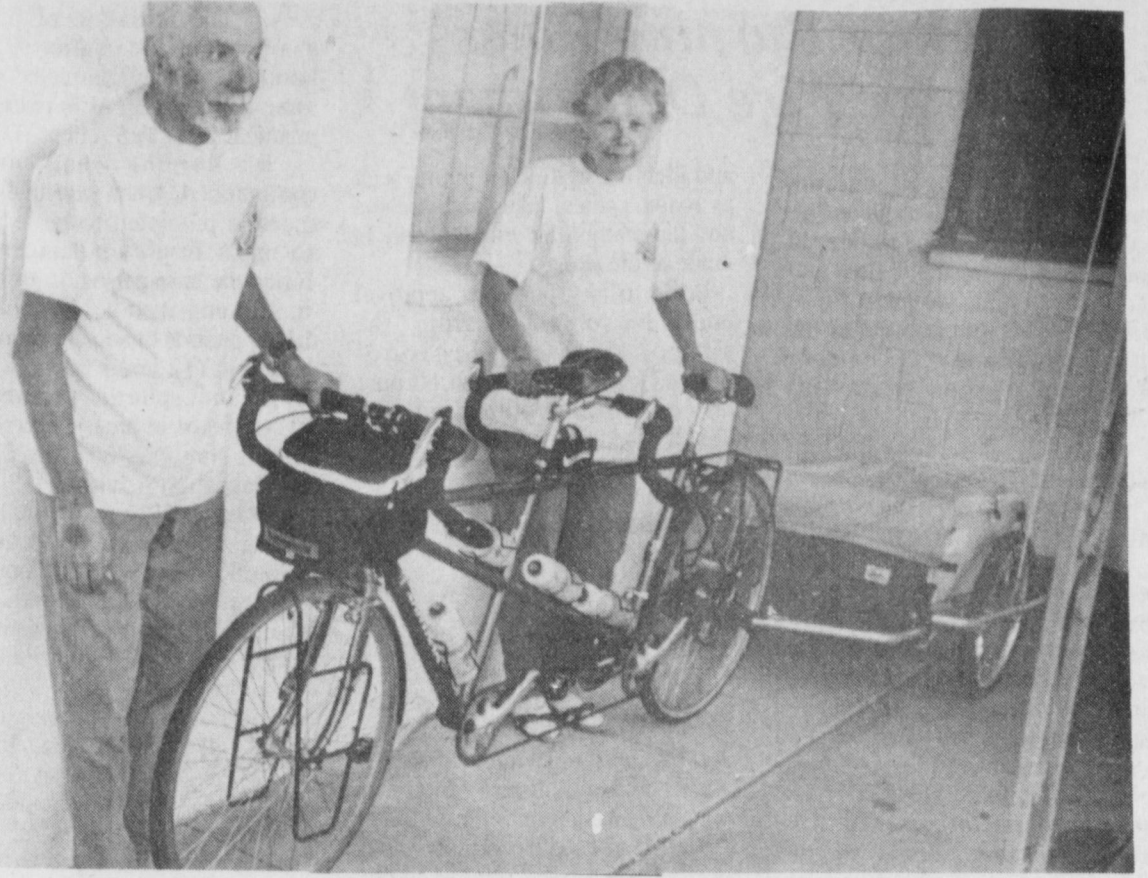
Advance reports of all counties, states, and Nation will be published starting this fall. Reports will be available through the U. S. Government Printing Office as well as many universities, and depository libraries.



Muleshoe Public Library



WILBANKS PRESENTS ROTARY PROGRAM---Paul Wilbanks, right, presented the Rotary program at Tuesday's Rotary Club meeting. Pictured along with Wilbanks is David Tipps, Rotary president. (Journal Photo)



BICYCLE RIDERS TRAVEL THROUGH MULESHOE---Phillip and Vivian Sherman stopped in Muleshoe last Wednesday afternoon. They left their home in New York in March and are on their way to Portland Oregon riding a bicycle built for two. (Journal Photo)

## Bicyclist Finds Texans Very Friendly People

"What intrigues me the most is the friendliness and helpfulness of the people, especially in Texas, we have met since beginning this trip," said Vivian Sherman of Hempstead Long Island, New York. "They make you feel welcome. Its different, in New York people never wave, speak or blow their horn at you, they are afraid you will misinterpret it."

Mrs. Sherman and her husband, Phillip, left Hempstead, about 30 miles east of New York City on March 21 in route to Portland Oregon, riding a bicycle built for two, pulling a trailer. Having traveled over 2500 miles, they rode into Muleshoe last Wednesday afternoon. They still had from 1600 to 1800 more miles to go.

In their trailer they carry camping equipment, jackets, food, and tools for their bike. When asked about

### City Council Approves H-GAC Agreement

Muleshoe City Council met Tuesday morning in the Council Chambers of the City Hall.

Mayor Robert Montgomery called the meeting to order and minutes of the May 4 meeting were approved.

Following a discussion on H-GAC (Houston-Galveston Area Council) the councilmen approved the agreement. Dave Marr, city manager, explained that H-GAC is a purchasing agent. A no cost deal, just a way to gather information, there is no membership fee.

Following a lengthy discussion on the continued operation of a landfill by the city of Muleshoe, no action was taken.

The council discussed budget work sessions, and set these up for Wednesday afternoons.

A discussion was also held on the reading of water meters.

With no further business, the meeting was adjourned.

camping out, Sherman stated, "You have to be prepared. Like at one town that AAA showed to have a motel, when we got there there was no place to stay and we were forced to camp out," Sherman said. "We would rather stay in a motel, you have to do your laundry and bathe, but you still have to be prepared. We carry enough food for two days."

The Sherman's usually ride from 50-60 miles per day. On Wednesday they rode from Lubbock to Muleshoe, 70 miles. Tuesday they planned a short day, only going to Clovis, N.M.

"When the wind is to our back we can make about 20 miles per hour," Sherman said. "When the wind is to our side, our speed drops to about 10 miles per hour and when we are facing it (the wind), we do good to make six miles per hour. One thing about West Texas, the winds are continual, always blowing the same direction."

Some of the worst weather the Sherman's have encountered so far was at Albany, TX. "The wind was so strong, it was the worst we have experienced."

When asked why they chose this route, Sherman stated that they came through Dallas to see their son, Ernest, who recently became engaged. They spent five days in Dallas.

"We came down the coast and in Mississippi we started to look over our maps and changed our route to the northwest trying to skirt the rockies as much as possible," Sherman said.

"The name intrigues me," Mrs. Sherman replied when ask why they chose to stop in Muleshoe for the night. They visited the Mule Memorial and took some pictures. Mrs. Sherman has taken pictures and kept a diary all along their journey.

Although the name intrigues Mrs. Sherman, Sherman stated that they stopped in Muleshoe because AAA showed it had a motel. "We have to be prepared to camp out, but we would rather stay in a motel. Vivian enjoys the Texas cooking," Sherman continued.

The Sherman's both retired on the same day in October 1992. He was an Administrative Law Judge and she was a Community Resource Specialist with Probation in New York.

### Muleshoe City Police Report

Issuance of Bad Checks continues to lead in the arrests made by the Muleshoe City Police. Six were arrested for Issuance of Bad Checks.

Two were arrested for No Drivers License and Speeding, three on Copies Warrants; one Disorderly Conduct and Public Intoxication, one for Resisting Arrest, and one for Disorderly Conduct and FTA (Local Warrants).

Complaints logged included: one Assault and Criminal Mischief; three Theft; one Suspect Threw Water Balloon at Vehicle; one Criminal Mischief, two Broken Window; Lost or Stolen Property; Assault, Theft, Criminal Mischief; Hit and Run; Theft of Service; Disorderly Conduct; Gas Drive Off, Stolen Purse, Broken Vehicle Window and one Criminal Mischief.

Shermans' went through vigorous training, complete with weight lifting. According to Sherman, they would not have made it to New York City without the training.

### HINTS FOR HOMEOWNERS

(NAPS)—The key to getting a fair price for your house is to give yourself as much time as possible to sell it. More time means more potential buyers will be able to see the house. This could result in more offers. It also gives you a chance to consider more options if the market is slow or initial interest

is low. Remember that neatness sells. To make your house show better make it look as clean and spacious as possible. Yes, there are potential buyers who will look behind every door—your closet and crawlspace doors as well as those to the bedrooms and bathrooms.

**Swimming Lessons**  
At  
**Muleshoe City Pool**  
By **Selina Gonzalez**  
Certified Life Guard, Swimming Instructor,  
CPR & First Aid  
2 Years Experience Teaching Over 200 Children  
In Dallas Area  
Water Fitness Classes  
Tuesdays & Thursdays  
Come By City Pool To Register

## Some Of The Best Recovery Rooms Aren't Located In Any Hospital.



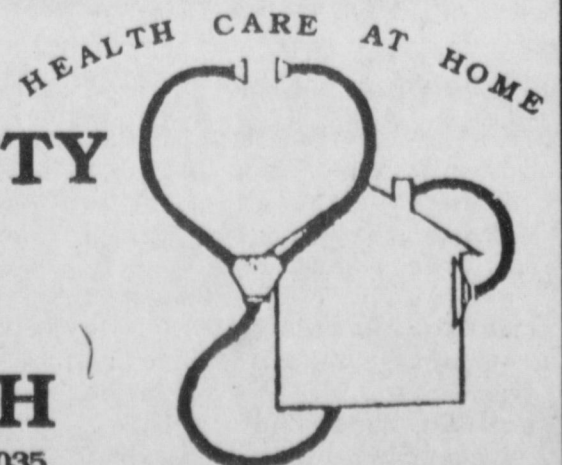
Simply put, there's no place like home. And increasingly, health care professionals are recognizing the unique advantages afforded by home health care.

In-home covered services include everything from Nursing and Physical Therapy to Medical Social Services, offering the best in both worlds. The comfort, convenience and familiarity of a home setting are irreplaceable in the recovery process. At the same time, these experienced professionals can provide a range of medical services which were previously restricted to a clinical setting. Best of all, a typical home health visit costs one-tenth the price of an average day in the hospital, making it an invaluable asset.

For more information contact:

**PARMER COUNTY COMMUNITY HOSPITAL HOME HEALTH**

1307 Cleveland Friona, Texas 79035  
Ph. 247-2754 or 1-800 525-2754



Keeping Families Together

## Memorial Day Sale

### '92 Thunderbird

PST P.W. AC Cassette Tape Power Seat \$11,990.00

### '92 Mercury Sable

PST PW AC Cassette Tape Power Seat \$12,500.00

### '92 Mercury Topaz

PW PST AC Cassette Tape Power Seat \$8,427.00

### '91 Pontiac

PW Doorlocks Tilt Cruise AC Cassette Tape \$7,990.00

### '92 Ford Taurus PST PB PW Dr. Locks

Cassette Tape PW Seat \$11,980.00

### '92 Ford Mustang

PST PB Automatic AC PW Cruise Control \$8,990.00

### 1988 3/4 Ford XLT

Super Cab, 460 Auto Transmission, PW Door Locks Cruise Tilt Cassette Tape Grill Guard Running Boards Bed Mat Clean

## Muleshoe Motor Co.

"Car Capitol Of The South Plains"

1225 W. Amer. Blvd. 272-4251

## Outdoor Burning Rules Muleshoe Fire Department

With the traditional burning season upon us, the Muleshoe Fire Dept. deemed it appropriate to introduce you to the rules and regulations that govern these activities. This article outlines the general prohibition of outdoor burning and gives the exceptions to the rule.

General rule prohibiting outdoor burning: No person may cause, suffer, allow, or permit any outdoor burning within the State of Texas.

Exception to prohibition of outdoor burning: A. The Executive Director of the Texas Air Control Board can grant a written exception if there is no practical alternative and if the burning will not cause or contribute to a violation of any federal primary or secondary ambient air quality standard. The Executive Director may specify methods or procedures to be followed in conducting the outdoor burning. B. Outdoor burning shall also be authorized in each of the following circumstances:

1. Training of fire fighting personnel when permission is requested in certified mail and when authorization is received in writing from a local air pollution agency or the local health unit.
2. Domestic waste burning at a property designed for and used as a private residence when collection of domestic waste is not provided or authorized by local governmental entity having jurisdiction.
3. Campfires and fires used solely for recreational or ceremonial preparation of food or supplying warmth during cold weather.
4. Diseased animal burning when such burning is the most effective means of controlling the spread of disease.
5. On-site burning of trees, brush, grass, and other dry plant growth in rural areas when no practical alternative to burning exists for right-of-way maintenance and land clearing operations.

All land on which burning is to be conducted shall be registered with the appropriate Regional Office of the TACB and its location identified on a US Geological Survey map or equivalent. The person who owns or controls the land must also submit a legal description of the land boundaries

and identify significant points such as roads, canals, lakes and streams and the method by which access is made to the site.

Prior to any burning, approval must be obtained from the appropriate Regional Office. Notification of the burning may be verbal or written and must identify the specific area and block to be burned, estimated acreage, start and end time of the burn, and a person who can be contacted during the burn period.

The person responsible for the burning must provide access and transportation to the burn site upon request by the Regional Office.

General Requirements for Allowable Outdoor Burning: Outdoor burning which otherwise is permissible shall also be subject to the following requirements:

1. Prior to prescribed or controlled burning for forest management purposes, the Texas Forest Service shall be notified.
2. The burning must be outside the corporate limits of a city or town except when it is necessary to eliminate a naturally occurring fire hazard as determined by the local fire department.
3. Burning shall be commenced only when the wind will carry smoke and other pollutants away from any city, town, residential, recreational, commercial, or industrial area, navigable water, public road, or landing strip which may be affected by the smoke. Burning shall not be conducted when a shift in wind direction is predicted which could produce adverse effects to person, animals, or property during the burning period. If at any time the burning ceases or may tend to cause smoke to blow onto or across a road or highway, it is the responsibility of the person initiating the burning to post flag persons on affected roads in accordance with the requirements of the Department of Public Safety.
4. The burning must be at least 300 feet from any adjacent properties which have residential, recreational, commercial, or industrial use.
5. The hours and wind conditions for burning shall comply with the following:

A. The initiation of burning shall commence after 9 a.m. burning shall be completed on the same day as soon as is reasonably practical prior to 5 p.m.

B. Burning shall not be commenced when surface wind speed is predicted to be less than six m.p.h. or greater than 23 m.p.h. during the burn period.

6. Burning shall not be conducted during periods of actual or predicted persistent (12 hours or more) low-level atmospheric temperature inversions or in areas covered by a current National Weather Service Air Stagnation Advisory.

7. Heavy oils, asphaltic materials, items containing natural or synthetic rubber or any material which may produce unreasonable amounts of smoke must not be burned.

### "Call 9-1-1" Sign Decals

While travelling throughout the state, you may see a sign identifying 9-1-1 availability for summoning police, fire or medical services for emergency help. Advisory Commission on State Emergency Communications, in conjunction with the Texas Department of Transportation, will be placing 9-1-1 decals on highway signs all around Texas. "This program will benefit everyone," said Mary A. Boyd, ACSEC Executive Director. "For example, if someone is travelling on a highway and experiences a collision, they will recall the signage and dial 9-1-1, which in turn, results in quicker access to emergency services." The Texas Department of Transportation will post the decals on 30,000 "Watch for Ice on Bridge" signs as they are folded up in the spring.

"Our agency views this program as an excellent opportunity to enhance the travelling public's safety," said Carlos Lopez, Special Projects Engineer with the Texas Department of Transportation.

9-1-1 offers the benefit of one, easy-to-remember telephone number for accessing emergency services. In the past, many counties would have several 7-digit numbers to call for help which adds a potential life-threatening delay for summoning help from emergency services.

### Responsibility For Consequence of Outdoor Burning:

The authority to conduct outdoor burning under this regulation does not exempt or excuse any person responsible from the consequences, damages, or injuries resulting and does not exempt or excuse anyone from complying with all other applicable laws or ordinances, regulations, and other governmental entities having jurisdiction, even though the burning is otherwise conducted in compliance with regulation NUISANCE:

No person shall discharge from any source whatsoever one or more air contaminants or combinations thereof, in such concentration and of such duration as are or may tend to be injurious to or to adversely affect human health or welfare, animal life, vegetation, or property, or as to interfere with the normal use and enjoyment of animal life, vegetation, or property.

### Once Was Enough

Mrs. Briggs: "Did you ever catch your husband flirting?"

Mrs. Jiggs: "Yes, just once."

Mrs. Briggs: "What did you do to him?"

Mrs. Jiggs: "I married him."

### SPC Summer Late Registration Scheduled

Classes begin June 1.

"We are offering a variety of technical courses this summer to help people get a headstart on their training," said Bobby James, dean of admissions. Courses in welding technology being offered this summer include basic and advanced welding procedures, introduction to welding, basic structural welding, advanced plate welding, pipe welding, gas metal arc welding, tungsten arc welding, fabrication and layout and advanced pipe fabrication.

Beginning through advanced courses will be offered in auto collision repair, automotive service technology, and diesel service technology. Five-week courses offered during the first summer session include those in sociology, Spanish, psychology, English, government, history, computer information systems, law enforcement technology management, petroleum technology and others.

Late registration on the SPC Lubbock campus is scheduled from 8:30 a.m.-3:30 p.m. and 5:30 -6:30

p.m. June 1. Late registration on the Lubbock campus is set from 8 a.m.-1 p.m. and 4-6 p.m. that day. A \$10 late registration fee will be charged.

For more information, contact SPC Lubbock at 894-9611, ext. 372 or 373, SPC Lubbock at 747-0576.



Sports Quiz

- By Christian Thorlund
1. Who is Bob Wickman?
  2. Who is the manager of the Colorado Rockies?
  3. Who is Harold Henning?
  4. What college basketball team is all-time A.P. Top Twenty leader?
  5. What college basketball team had the longest winning streak?

- Answers:
1. Pitcher for New York Yankees.
  2. Don Baylor.
  3. Pro (Senior) golfer, recent victor in Austin, Texas.
  4. Kentucky.
  5. UCLA--88 (1971-74)



**BUSINESS OF THE MONTH**---Kristy Price from Kristy's Plants was presented the Business of the Month plaque Tuesday morning as her employees Dawn Williams, Virginia Rodriguez, Andrea Nielson, and John Anguiano, and members of the Chamber of Commerce look on. In expressing her appreciation for the honor Mrs. Price stated, "I appreciate it and all of you made this possible". (Journal Photo)

### NOTICE OF ELECTION

The Farmers Home Administration (FmHA) county committee election this year will be held on June 29, 1993. The ballot below must be filled out, detached and mailed and received or returned in person to Bailey County FmHA, 115 E Avenue D, Box 1007, Muleshoe, TX 79347 not later than June 29, 1993. If you do not vote in person you should mail your ballot inside a blank envelope marked ballot to ensure a secret ballot. This blank envelope should be placed inside the envelope you use to mail your ballot. Your name and address must be legible on the outer envelope. Failure to provide this information will render your ballot invalid. Only one ballot may be voted in person or by mail by any voter. Votes in envelopes containing more than one absentee ballot will not be counted. Ballots and envelopes will also be obtained from your local FmHA office.

The slate of nominees for Bailey County Committee are listed in the ballot below. The qualifications of persons voting are described in the "Voter Certification Statement." For further information regarding voting and voter eligibility, see the County Office listed above. FmHA elections are open to all eligible voters without regard to race, color, religion, national origin, age, political affiliation, marital status, sex, and/or handicap.

U.S. DEPARTMENT OF AGRICULTURE  
FARMERS HOME ADMINISTRATION  
BALLOT FOR COUNTY MEMBER(S)  
STATE TEXAS COUNTY BAILEY  
★ Candidates

William Britt Birdwell-----

Please detach this notice before voting ballot

VOTER CERTIFICATION STATEMENT  
Support W of Part 2054 of Title 7, Code of Federal Regulations requires that all eligible voters for FmHA county or area committee elections meet the following eligibility requirements: (a) be farmers or spouses of farmers; and (b) have their principal farming operation within the county or area for which the election is being held.  
By submitting this ballot, I attest that I meet the criteria to vote.

## MEMORIAL DAY WEEKEND SALE

We Will Be Open  
Monday,  
Memorial Day

Prices Good Thru June 5

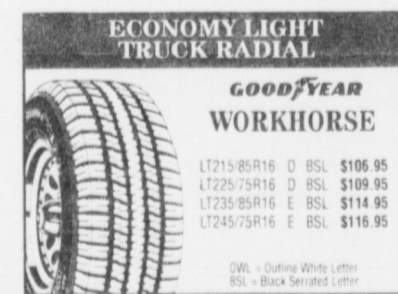
# ALL TIRES IN STOCK ON SALE!

**FREE!**  
TIRE ROTATION  
with tire purchase

It's called tire maintenance and it's free! Bring your Goodyear tires back every 6,000-8,000 miles for no-charge tire rotation and inspection.

**FREE!**  
MOUNTING  
with tire purchase

Your new Goodyear tires will give you top performance from Mile One. Two reasons: we mount them right and the price is right - FREE! Balancing & valve stems extra.



ECONOMY LIGHT TRUCK RADIAL

GOODYEAR WORKHORSE

L7215/85R16	D BSL	\$106.95
L7225/75R16	D BSL	\$109.95
L7235/85R16	E BSL	\$114.95
L7245/75R16	E BSL	\$116.95

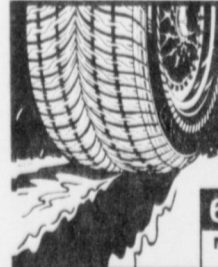
BSL - Cutting White Letter  
BSL - Black Separated Letter



COUPON  
COMPUTERIZED THRUST ANGLE WHEEL ALIGNMENT  
24.95

FREE Alignment Check  
Set caster, camber and toe to manufacturer specifications while referencing and compensating for thrust line. Excludes some four wheel drive vehicles, rear wheel drive trucks to front wheel drive vehicles. Limited warranty - 6 months or 6,000 miles, whichever first. Offer ends June 30, 1993. No other discounts apply. Redeem at participating Goodyear retailer.

James Crane Tire Is Now  
An Authorized State  
Inspection Station.



AQUATRED® ALL SEASON RADIALS.  
Only From Goodyear

AS SEEN ON TV.

60000 MILE TREADLIFE WARRANTY

- AquaChannel™ deep center groove channels water out of your way
- Exclusive new compound delivers road-hugging traction

Have A Happy and Safe Memorial Day



When You Need On-The-Farm Tire Service In A Hurry, Just Call Us. We Can Cut Your Downtime Down To Size!

GOODYEAR

The American Farmer & Goodyear  
The Partnership Continues Growing

## JAMES CRANE TIRE CO., INC.



Mike & Terri Hahn

Office 806/272-4594 - Home 272-3594

Mobile 806/946-7501

322 North First Muleshoe, Texas



# "Longhorn Spirit"



EDDIE LUERAS, BRETT THOMAS, GINA JARMAN, MARIO ZAMORA, AND JESSICA BURCH



GINA JARMAN, JARAH REDWINE, COACH GRAHN, JODY COPP, AND LELAND BROCKMAN



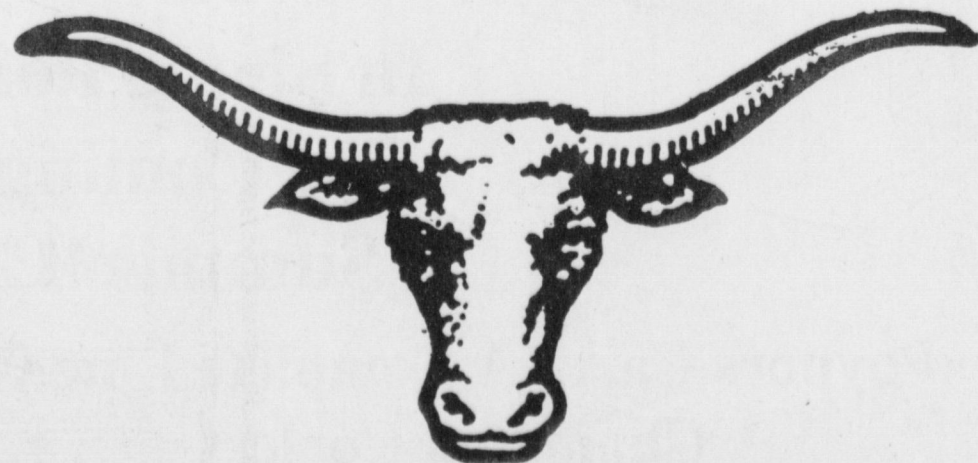
TISHA OROZCO, DAWNDA MAGBY, DON BURCH, AND MATT ELLIOT



LELAND BROCKMAN, BRETT THOMAS, MATT COZBEY, MARIO ZAMORA, AND JON COLBY MILLER



LELAND BROCKMAN, JON COLBY MILLER, CHRIS COZBEY, IVETTE REYES, JARAH REDWINE, AND JOANNA GALLMAN



## Lazbuddie Athletic Awards

## Nursing Home News

by Joy Stancell

The residents and staff of the Healthcare Center wish you and yours a safe and enjoyable Memorial Day holiday.

Pulma Walker received cards, visits, and gifts on her birthday Sat., May 23rd. Her husband, brother and sister-in-law ate lunch and had birthday cake with her Saturday and Sunday.

Noma Davis went out to visit in her daughter's home Tuesday.

Mrs. Martinez's family visited with her Tuesday.

Rena Tharp's daughter Doris Lackey visited her this week.

We wish to thank the Fifth Grade class of Lazbuddie School for the special Father's Day decorations. A special thank you to Dixie and Jason Jesko for over-seeing the project.

Friday we were delighted to have Mike and Eva Doyle and Nathan from El Paso, formerly of Muleshoe came and visited us.

Friday afternoon, Rev. Dean Reid of the assembly of God Church, directed our song and devotional time. He presented artifacts from different lands, that went along with his lesson.

Tuesday afternoon, Mary Scoggins, Freida Locker, Beth Watson, Claudine Embry, Beverly Wagnon and Olive Cox came to shampoo and set the ladies' hair and give a lot of T.L.C.

Wednesday morning Buster Kittrell hosted the Men's Spudnut, coffee time.

Kristi and Dawn from Kristies plants came Wednesday morning and gave a demonstration on transplanting plants. At the end of the program, they presented the large pot of beautiful plants and flowers to the residents. Concluding our 'Garden Party', "dirt" was served from clay pots with gummy worms to garnish the dish. Each resident and guest received a package of flower seeds for party favors.

Wednesday afternoon, Barry Moynihan from the First Baptist Church came to lead the residents in a Gospel sing-a-long.

Lona Embry assisted the residents in hosting a Graduation reception in honor of Mandy Edwards Tuesday afternoon. Congratulations Mandy. We are proud of you.

We wish to thank Maurice Browning for sharing with us the beautiful cut flower centerpiece. It was in memory of her husband Jack and her parents Mr. and Mrs. Dan Evans.

Aruel Robertson's daughter, Vetta Fyie visited him daily.

John and Kay Graves have visited Modean Graves several times this week.

Our thanks goes to Mrs. Robert Hooten for the lovely fresh fruit ice rings and punch ingredients for open house Sunday.

Tuesday afternoon Laverne James, Beth Watson, Bonnie Green, Lynda Low, Beverly Wagnon, came to shampoo and set the ladies' hair. Mandy Edwards gave manicures.

Mrs. Reyna's family from Houston is here visiting her and some from El Paso.

## SPC Schedules Annual Summer Band Camp

South Plains College's annual Junior Band Camp is scheduled June 14-19 and is open to students who have completed their first year of band through entering ninth graders this fall.

The camp will meet 9 a.m.-4 p.m. daily in the SPC Fine Arts Building and will include band and section rehearsals, recreation activities, marching class. Electives to be offered include drum majors, flags, twirling, aerobics, jazz ensemble, jazz improvisation, music synthesis, conducting and music history/appreciation.

A concert is scheduled at 10 a.m. to wrap up the activities.

"We would like to invite all interested young musicians to attend the camp. We have designed the camp so that it will be a fun and educational learning experience which they can apply to their future music studies," said Lynda Reid, band camp director and conductor of the SPC Symphonic Band.

Cost is \$60, which covers tuition, insurance and a camp t-shirt.

No on-campus housing or meals will be available.

The camp is instructed by area college and high school band directors.

To obtain an application form, contact the SPC Continuing Education Office at 894-9611, ext. 341.

## School Funding Proposal Provides Stable Financing

The Edgewood vs. Kirby lawsuit which created the need for Robin Hood and other school financing schemes was filed on "my watch" as Chairman of the State Board of Education. When I first met with the Governor, the Lt. Governor, and the Speaker, I explained that if Texas were to lose the lawsuit, the most likely remedies would be mass school consolidation or a state income tax. I was wrong.

There is a way we can eliminate the need to consolidate school districts and/or eliminate the need for a state income tax.

We have an opportunity to enhance Texas' economic well being while at the same time better the public education system. Prosperity and new industry are the foundation for creating a sound education system. We have debated which comes first, education or economics, long enough; given the situation that the legislature faces today, Texas needs to move beyond the problem to the solution.

First, we must admit that we have an unfair tax system that attracts corporate headquarters and higher paid executives but does not attract manufacturing plants. That's backward. The Penney's and Exxon headquarters are great for Plano and Irving, but what about Weatherford, Azle, Burleson, Spur, San Angelo, El Paso, Laredo, Brenham, the Golden Triangle, Hillsboro, Amarillo, Fort Worth, Dallas, Harlingen, Pampa, San Antonio, etc.

Corporations put their home offices in Texas to save individual tax money, but they can't bring their plants because we over-tax capital investment. We are not attracting the companies that hire Texas labor. Our tax system simply keeps raising taxes on property and homes. What is the moral justification for taxing people's homes?

In addition to the system being outdated, we are short on revenue to be applied to education. Texas ranks 44th among the 50 states in per-student expenditures; yet our

property taxes rank among the highest and fastest-rising in the nation. The legislature must relieve the pressure on homeowners, individual taxpayers and capital-intensive businesses that shoulder the burden of school finance.

It can't be done with another tire patch. A "quick fix" designed to beat an arbitrary June 1 deadline seems less desirable than a solution that puts schools on sound financial footing for decades to come, even if it takes a few days or weeks longer to enact the lasting program.

Quick fixes like dedicating lottery money feel good because it's painless (for now), but lottery money is notoriously unreliable from year to year.

Consolidation is about as unpopular as an income tax, because Texans like local control of their schools.

Higher property taxes would just mean more homeowners who can't afford their homes and more jobs being chased out of Texas to states where businesses with property, plant and equipment are more welcome.

And, transferring the taxable value of a plant from its home district to some other district far away? Would you move a company to Texas not knowing where it would be taxed, or at what rate?

Why not take a bold step of leadership and create a program that can solve the school funding problem once and for all? Why not create a plan that will last?

Such a plan exists. It's called the Business Plan to Support Schools, and it was developed by the Alliance for Quality Education, a business-led coalition that includes support from educators, businesses and taxpayer-citizens around Texas.

Service companies, by and large, don't pay a full share for schools through the property tax. That's because they don't have much property. That limits the ability of schools to raise money using the property tax.

The same is true at the state level. The franchise/earned surplus tax taxes corporations, but not other types of businesses. That limits the state's ability to raise money for the general revenue. And it's the general revenue that funds aid to education.

For more information please call: Bruce Bakke (AQE)(214)720-0607.

## Enochs News

by Mrs. J.D. Bayless

Guests in the home of Mrs. Inez Sanders Friday and Saturday was her sister and husband Ethel and Jeter Fagan of Lubbock.

Congratulations to Mr. and Mrs. Ted Thomas of Lubbock on the birth of a baby daughter who was born Monday, May 17, 1993. Her name is Alayna Troi. She weighed 8 pounds and 2 ounces. This is the first child for the couple. Grandparents are Mr. and Mrs. Keith Price and Bud Thomas.

Dale Nichols drove to Lubbock Sunday morning after Sunday school to bring his cousin home to Littlefield from Methodist Hospital. Rev. and Mrs. Ray Cunningham, Mrs. Rose Nichols and Mrs. Ellen Bayless met Dale at a cafe in Littlefield and ate lunch together.

Rev. Cunningham and Mrs. Bayless went by Pep coming home and visited Mr. and Mrs. G.O. Smith. The Smith's are not feeling too well.

Mr. and Mrs. Ted Thomas and baby were visitors at the Baptist Church Sunday morning. We are proud to have Mrs. Frances Price back at Church Sunday morning.

Mrs. Myrna Turney attended the graduation of a grandson, Barry Newton at the Morton Activity Building in Morton Saturday.

Mr. and Mrs. J.E. Layton attended the music recital at Three Way Sunday afternoon, which their granddaughter Ashley played in.

Mrs. Mutt Autrey and daughter, JoAnn spent the weekend in the

home of her son and family the Mitch Autrys at Plainview.

Mr. and Mrs. Bob Newton have moved to Levelland, they will be missed so much. They had lived at Enochs 42 years.

Mrs. Ellen Bayless was in Muleshoe the past week and visited Mrs. Clara Coffman.

I got a call from my brother Chester Coffman at Big Spring Saturday night and it was raining there. Hoping we will get rain soon. Another brother, Carl and wife Rena Coffman of Lamesa called Sunday night.

CORRECTION: Jake Bogard was raised in our area, didn't move here till after he graduated at Bula school.

## Money Talk

By Charles Carlson  
Dow Theory Forecasts

According to the Tax Foundation, Tax Freedom Day was May 3 this year. It took the average American until May 3 to pay federal, state and local taxes.

If you lived in high-tax states, Tax Freedom Day comes even later in the year -- May 22 for New York residents and May 19 for Alaska residents.

If you live in South Dakota, Tax Freedom Day was April 15.

The Tax Foundation also worked out the tax bite for a typical day at work. It seems that Federal taxes consume nearly two hours worth of daily pay, followed by health care, which consumes one hour and 22 minutes.

Call or come by and check out our new rates  
On 1993 Crop Hail Insurance.

We have insurance companies that will cover  
your crop for Actual Cash Value.

Cash or Note Available

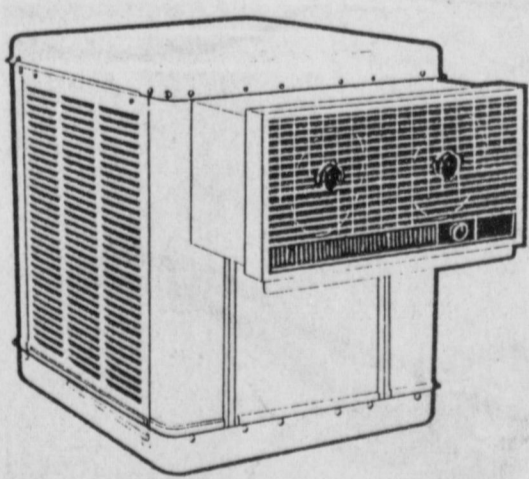
Delton E. Wilhite  
and Associates

1631 W. American Blvd. - Muleshoe, Texas  
(806) 272-3652 1 (800) 658-2119



ACCIDENT ON NORTH FIRST--- The driver of this 1988 Ford pickup, Roy Thomas Atchison, escaped injury when it collided with a 1979 Silverado driven by Renee F. Pate Wednesday afternoon, May 19 at 5:25 p.m. in the three hundred block of North First. (Journal Photo)

Beat The Heat!!  
Get Those  
Air Conditioners  
In Shape For  
The Coming  
Summer!!



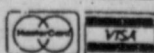
Poy Nors Carry A Complete Line Of  
Champion Coolers

2800-5500 CFM (Down Draft & Window Units)

Pumps - Pads - All Water Hookups -  
Motors (1 & 2 Speed) - Bearings

P O Y N O R S

103 Main



Muleshoe

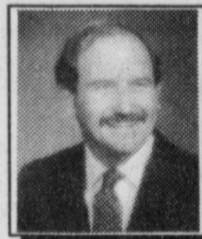


272-4552

SALE SALE SALE

UNDER INVOICE ?? AT COST ??

\$100 Over Invoice ??



Sid Strebeck

"Folks, we know you're smarter than that!"

Our Guarantee Has Always Been:

- ① THE LOWEST PRICE
- ② THE BEST SELECTION AND
- ③ THE BEST SERVICE AFTER THE SALE

That's why we're

Eastern New Mexico's  
Largest Volume Dealer

New Trucks  
as low as  
\$10,995

Over 140 Units  
To Choose From

TEAGUE-STREBECK



356-8581

1115 N Chicago, Portales NM  
(On the First Curve Into Portales)

762-3845

## New Texas Voters Survey Shows Strong Support

A statewide poll shows strong public support for Texas' proposed new high-speed rail system despite vocal opposition by rural residents.

The recently completed survey of 1,000 registered voters conducted by MEM Associates, Inc. revealed overwhelming public favor for the proposed Texas Supertrain system which will connect the state's major cities.

The study was conducted April 19-26 and involved voters from across the state, not just the Houston, Dallas, Ft. Worth, San Antonio "triangle" whose communities would be served directly by the proposed \$6.8 billion high-speed rail project to be built by Texas TGV Corporation.

The telephone poll showed that five out of eight voters (63 percent) have heard of plans to introduce high-speed rail service in Texas. Inside the triangle, awareness measured 72 percent.

While many Texans have yet to make up their minds, the supporters of high-speed rail outnumber opponents by a ratio of four to one (41 percent to 10 percent, while 49 percent said that they needed more information or were undecided). Among those who have heard about plans for high-speed rail, 52 percent are for the project while only 13 percent are against it.

Even in counties outside the triangle, significantly more voters are favorable to the concept of high-speed rail (37 percent) than unfavorable (7 percent).

The project is supported strongly in five of the six regions of Texas. However, in Central Texas, the only region where more than 10 percent are opposed, the rail project still is favored by a plurality of voters.

Respondents to the MEM Associates' survey also believe that our state government should promote high-speed rail, with 63 percent saying that the opportunity to create thousands of jobs in Texas is more important than the

objections of rural residents (19 percent).

President Bill Clinton's economic plan calls for more than \$1 billion to be made available for states to develop high-speed rail systems. By a six to one ratio (77 percent to 13 percent) respondents said Texas should try to obtain a share of these funds when they become available.

Texas TGV Corporation, the company that will build the 602 mile high-speed rail project, estimates investment to the Texas economy to be more than \$4 billion. Of those surveyed, 65 percent said they would still support the Texas Supertrain project if the start of construction were delayed while private financing is arranged. Only 16 percent said they would oppose the project if a delay were to occur.

The survey also noted these ridership patterns by those who live in Houston, Dallas, Fort Worth, San Antonio triangle:

\* People would prefer riding the Supertrain as opposed to an airplane by a two to one ratio (49 percent to 23 percent), assuming the train ticket costs the same as a plane ticket.

\* Dallas and Houston would be the most frequent destinations for those interested in riding the high-speed train. However, among Dallas metropolitan area residents, San Antonio was named as a destination more frequently than Houston.

\* Most envision that their trips on the Supertrain would be mainly for leisure (67 percent) rather than business or business/leisure combined (30 percent). The survey also shows that business and leisure travelers both prefer riding a train as opposed to an airplane.

He bears misery best that hides it most.

-H.G. Bohn

Misery acquaints man with strange bedfellows.

## News From Congressman Larry Combest

Spreading the word that farmers will still pay hefty taxes for fuel, fertilizer and irrigation, U.S. Representative Larry Combest (R-Texas) warned that the Clinton Energy Tax will increase diesel and gasoline taxes by at least 4 cents a gallon. Combest said the House Ways and Means Committee voted to slap farmers with the bulk of the Btu Tax, contrary to what some farmers have heard about being exempt from the tax. West Texas families will also feel Btu's heat, according to Combest. The congressman is working to defeat the Clinton Btu Energy Tax in both the House and in the U.S. Senate, where Senators express strong opposition.

"Instead of a 9-cent-a-gallon farmer's fuel tax, the increase is 4 cents on diesel and nothing for farmers to be happy about," said Combest. "There's little difference between being hit over the head with a baseball bat instead of a sledge hammer."

Combest cited the combination of the Clinton Energy Tax on fertilizer produced from natural gas, natural gas-fueled irrigation pumps and diesel costing a farmer as much as \$2,800 to produce 800 acres of cotton and 500 acres of wheat in West Texas.

Additionally, the Clinton Btu Energy Tax in its present form will now be felt more directly by consumers. A Texas household can expect to pay as much as \$442 more each year in direct costs for travel, heating and cooling their home. Those costs are in addition to the costs a family will pay for retail purchases that will include energy taxes on the manufacturers and shippers of goods.

"This is a call to arms against the Clinton Energy Tax based on Btu's-British Thermal Units," said Combest. "It's 200 years later and Bill Clinton borrows from the British for a new way to tax West Texans: taxation without hesitation."

June 16, "That'll Be The Day" rock 'n roll legend Buddy Holly's

Lubbock hometown sells the new stamp booklet honoring Holly and six other musicians, resulting from efforts by U.S. Representative Larry Combest (R-Texas). Combest persuaded Postmaster General Marvin Runyon of the benefits of allowing Lubbock to sell the stamp booklet on the same day as it is released in Cleveland, Ohio, the future home of the Rock 'n' Roll Hall of Fame. Usually, only the city where a stamp is released is allowed to offer sales on the first day of issue, but on June 16 post offices nationwide will offer the stamp for sale. Combest, Lubbock's congressman, had last year suggested Holly be featured in a postage stamp series on rock 'n' roll musicians, and on October 8, the U.S. Postal Service agreed.

"For Buddy's worldwide fans and his hometown folks, issuing his stamp in Lubbock on the first day

## Salvation Army Service Network System Links Community In Response To Wylie Tornado

The Salvation Army Service Network System linked with Wylie businesses to aid in clean-up and relief efforts following the devastating tornado. Seventy-five volunteers worked 900 hours serving meals to 24,500 emergency personnel and victims, distributing groceries to 8,400 people, and providing 1,519 items of clothing. Seven Salvation Army officers, all ordained ministers, counseled 34 victims and worked with volunteers serving the community.

Two regionally located mobile kitchens from Dallas and Tyler, the Garland Salvation Army Corps Community Center, the Salvation Army volunteer Wylie Service Unit Committee, and generous local businesses joined forces to help. Salvation Army vehicles traveled through the devastated residential areas taking food, supplies and water to the people. Home Depot donated over \$100,000 in building supplies; Sam's donated thousands of dollars; McDonalds, Subway, and Domino's donated meals, and Brookshire's and Albertson's provided a wide range of supplies and food.

This is just one example of how the Salvation Army Service Network can benefit your town in such a crisis.

of issue has appropriate significance," said Combest. "To his fans the world over, Lubbock is known as Buddy's birthplace, where his family encouraged and enriched his career. I am pleased to be one of the many thousands of Buddy's fans supporting continued efforts to recognize his contribution to American music."

Combest praised efforts by area residents, notably Buddy Holly Fan Club president Bill Griggs, the U.S. Postal Service in Lubbock and the Lubbock Chamber of Commerce for their work to organize local celebrations on the first day of issue. When he wrote

the postmaster general with the ideas to allow same day participation by other cities connected to artists in the stamp booklet, Combest noted the continued support of Lubbockites, notable, Holly's two brothers and sister. In his letter to the postmaster general, Combest highlighted the additional element of Lubbock's U.S. Postal Service

commemorative stamp shop, located within blocks of a Buddy Holly life-sized bronze statue and the focal point of the Walk of Fame honoring nationally-famous artists from the region.

## Texas Osteopathic Medical Association Meets

A resolution urging all Texas osteopathic physicians to enroll in the Texas Medicaid Program in order to help provide health care to more needy children and families, was among the major actions taken during the May meeting of the House of Delegates of the Texas Osteopathic Medical Association (TOMA).

In the area of rural health, the House expressed concern over the policy of many insurance companies making exclusive contracts with larger regional hospitals, thereby excluding small rural hospitals. The House noted that this practice is detrimental to the future of rural health care in the United States and supports state and federal legislation providing for free choice by the patient of physician and hospital.

The House of Delegates is the policy-making body of the over 2,000-member association headquartered in Fort Worth, and met in conjunction with the 94th Annual TOMA Convention and Scientific Seminar at the Stouffer Hotel in Austin.

Brian G. Knight, D.O. of Corpus Christi, was elected president for the coming year, and T. Eugene Zachary, D.O., FACGP, of Ft. Worth, was elected President-elect. The new vice-president is William D. Hospers, D.O., of Ft. Worth, and Jerry E. Smola, D.O. of Sweetwater, is the immediate past president.

Elected to three-year terms on the TOMA Board of Trustees were James E. Froelich, III, D.O., of Bonham; Arthur J. Speece, III, D.O., of Grand Prairie; Kenneth S. Bayles, D.O., of Dallas; and Joe W. Morrow, D.O., of Amarillo. Mark A. Baker, D.O. of Ft

Worth, was elected speaker of the TOMA House of Delegates, and Monte E. Troutman, D.O., of Ft. Worth, was elected Vice Speaker.

Four TOMA members elected to three-year terms to the American Osteopathic Association (AOA) House of Delegates were Mary M. Burnett, D.O., FACGP, of Dallas; Gerald P. Flanagan, D.O., FACGP,

of Argyle; Robert G. Maul, D.O., FACGP, of Lubbock; and Donald M. Peterson, D.O., FACGP, of Dallas.

Elected as alternate delegates to the AOA House were Dr. Knight, as first alternate; Jim W. Czewski, D.O. of Ft. Worth, as second alternate; R. Greg Maul, D.O. of Lubbock, as third alternate; Dr. Smola; Dr. Froelich; Donald F. Vedral, D.O., Ph.D., of Cedar Hill; Dr. Baker; Dr. Morrow; Bill V. Way, D.O. of Dallas; Larry J. Pepper, D.O. of Houston; Rodney M. Wiseman, D.O. of Whitehouse; Nelda N. Cunniff, D.O. of Burleson; and Robert J. Breckenridge, D.O. of Tyler.

### Smart Scotsman

Two Scotsmen tossed to see who would pay for the dinner. The winner called, "heads." The loser called, "Fire!" and escaped in the confusion.

### Innocent

"Our economic professor talks to himself. Does yours?"  
"Yes, but he doesn't realize it—he thinks we're listening."

\*\*\*  
High flying causes more than airplane accidents.



EMPLOYEE OF THE MONTH--- Evelyn Ziegenfuss, an employee of the Spud Nut Shop, was named May Employee of the Month and received a plaque and the traveling trophy Tuesday morning. Charles Bratcher, president of the Chamber of Commerce, made the presentation as members of the chamber look on. (Journal Photo)

## Grand Slam Savings!

**We Have Your Fishing Equipment Needs In Stock**

Rods - Reels - Hooks  
Lines - Sinkers - Floats  
Etc

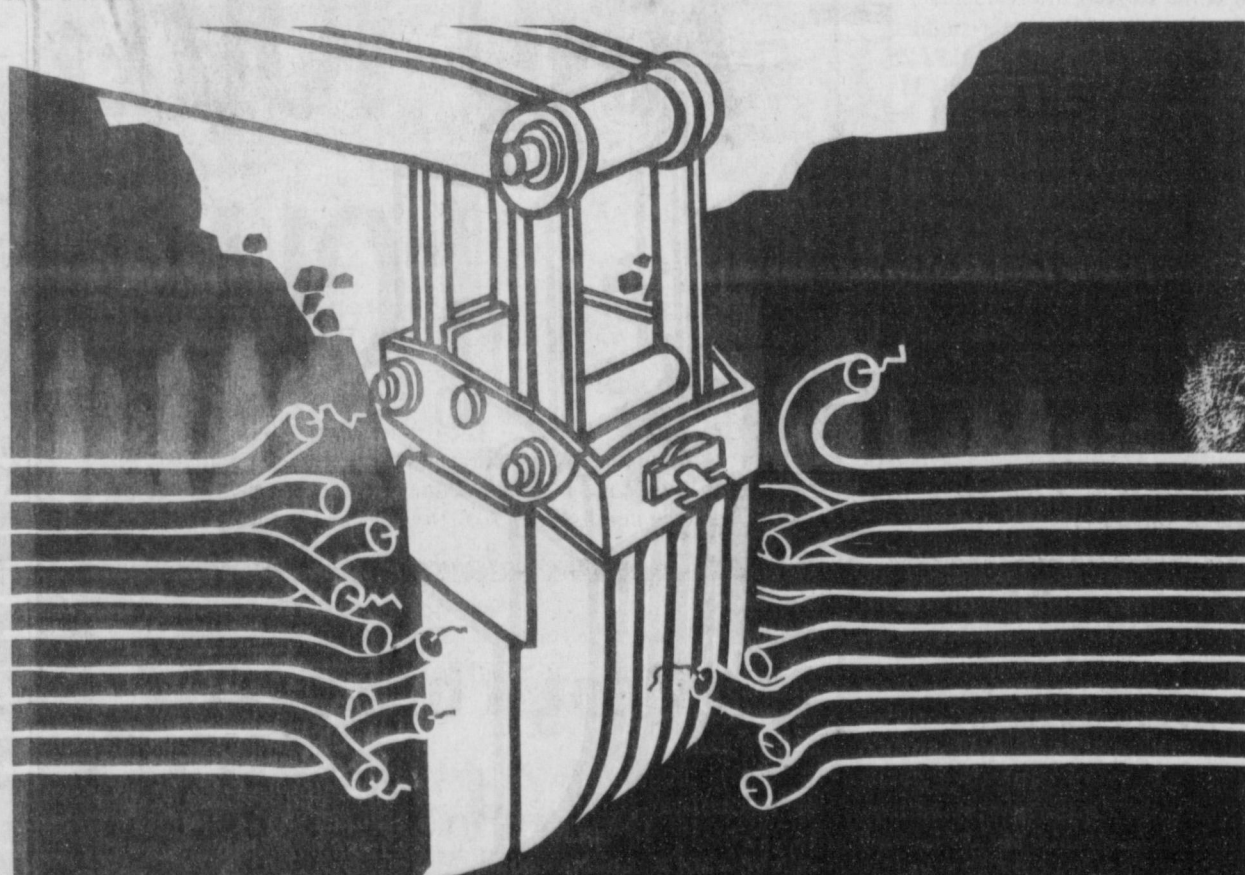
**Check Us For Your Baseball Equipment**

Bats - Balls - Gloves

**We Also Have A Good Selection of Tennis Rackets  
Soccer Balls - Basketballs**  
Be Sure To Check With Us For All Your Sporting Needs!

**P O Y N O R S**

103 Main Muleshoe 272-4552



**When you cut the lines of communication, everything stops.**

If you're planning on excavating for construction, contact GTE first. There could be telephone cables under the surface.

If you cut those cables, it may disrupt service for thousands of people, including your friends and relatives. It could also delay your construction and you may have to pay the cost of cable repairs.

Refer to your telephone directory for the number of your local GTE office. Help us keep the lines of communication open and working for everyone.



## Astroworld Kicks Off New Season

In celebration of its 25th Anniversary, AstroWorld, Houston's Six Flags theme park, kicks-off a brand new line-up of shows for the summer. With everything from the world renowned Chinese Acrobats to the bee-bop rock 'n roll show, "Legends in Concert," AstroWorld has a show for every family member.

AstroWorld kicks off its new line-up of shows June 4 with "The Dennis the Menace Screen Test," a hilarious show, where the whole family can get into the act. Guests from the audience will participate in the recreation of movie scenes, as they are produced in Hollywood.

Playing the parts of the Wilsons, the Mitchells and extras, 15 audience members will see their actions come to life as on-stage action is integrated into pre-produced video. When all of the elements come together on screens surrounding the stage, Guests witness first hand the magic of special effects like the illusion of audience members performing exciting stunts really executed by stuntman doubles. "The Dennis the Menace Screen Test" runs June 4-June 13 in AstroWorld's Showcase Theatre.

From the Far East comes the Incredible Acrobats of China, a 21 member troupe, which includes China's most gifted tumblers, contortionists, jugglers, cyclists, and gymnasts, who will bring their 2,000-year old art form to AstroWorld June 15-July 4. Daring maneuvers atop a precarious pagoda of chairs--treacherous wire walking--amazing displays of contortion and foot juggling dexterity--all combined with the grace and festive pageantry that is legendary of the Peking Acrobats, from the People's Republic of China, will be seen by AstroWorld Guests.

Guests can take a trip down memory lane when the legendary stars like Tina Turner, the Blues Brothers, Elvis Presley, and Roy Orbison recreate an era of rock 'n roll as they take to the stage of the Showcase Theatre in "Legends in Concert". Direct from the Imperial Palace in Las Vegas these talented performers will share the magic begun by many legendary rock 'n rollers. "Legends in Concert" can be seen July 5-25 in AstroWorld's Showcase Theatre.

Join AstroWorld in a star-studded musical tribute to AstroWorld's 25 year history from July 31-September 5. Guests will be dazzled and dazzled with this entertainment extravaganza.

With AstroWorld's incredible line-up of new shows and its new attraction BATMAN THE ESCAPE, there has never been a better time to visit than during the park's 25th Anniversary celebration.

AstroWorld is open at 10 a.m. daily May 24 through Labor Day. The park is located off Loop 610 at the Fannin exit. A one-day adult ticket is \$23.95 plus tax. Children under 54-inches are admitted for \$15.95 plus tax. For more information call 713-799-1234.

### Lazbuddie Kindergarten Celebrates With Graduation Ceremony

The Lazbuddie Kindergarten Class had its graduation ceremony on May 25, 1993. Under the direction of their teacher, Mrs. Mandi Seaton, the students performed "The Three Little Pigs" musical skit and sang favorite songs. School Board members Steve Foster and Gail Morris presented diplomas to the following students: C.J. Bomer, Tanner Gartin, Mandy Haney, Marli Johnson, Brett Mimms, Garrett Scisson, Melanie Winders, Chris DeLeon, April Godinez, Corey Jennings, Kirby Kimbrough, Cory Puckett, Roper Smith, and Susie Juarez. Becky Jones provided the musical accompaniment; Reta Mimms and Barbara Lust's Comprehensive Home Economics Class prepared the reception and Marsha Grahn provided special assistance.

Nancy Kassebaum, U.S. senator (R-Kan): "There's little incentive for labor to make demands that are reasonable and reflect market realities," (under provisions of bill to bar employers from hiring permanent replacements for striking workers).

## Creative Living

with Sheryl Borden

Information on home computers and microwave and convenience baking will be the featured topics on "Creative Living" on Thursday, June 1st at 12:00 and Saturday, June 5th at 2 p.m. (All times are Mountain.) "Creative Living" airs on public broadcasting station, KENW-TV, from Eastern New Mexico University in Portales, NM.

Debra Borchert is a representative with Prodigy Services, Co. in White Plains, NY, and she will discuss how computers are making their way into the American home and demonstrate some of the various uses for on-line computer services.

Martha Reynolds, Nestle Foods in Purchase, NY will show how easy it is to create quick, delicious dishes that are made in the microwave oven using convenience foods.

On Tuesday, June 1st at 9:30 p.m. and on Thursday, June 3rd at 12:00 "Creative Living" will present food gift ideas, show decorating ideas using dried flowers and demonstrate making meal-in-a-loaf quick breads.

Sue Vaughn, cookbook author from Lamesa, TX, will share some clever food gift ideas based on her

newest cookbook, "More Calf Fries To Caviar". She will also show some containers that make each of the gifts even more special.

Another guest, Abbie Small of Simplicity Pattern CO., Inc., in New York City, will demonstrate some creative decorating ideas that can be put together with the use of dried flowers.

Charolotte Hill, Extension Home Economist for Chaves County, will share her version of what some people call meal-in-a-loaf. Other names include "Monkey Bread" and "Pull Apart Bread". Regardless of the name, the end product is delicious, and they are quick to make. Hill is from Roswell, NM.

"Creative Living" is produced and hosted by Sheryl Borden. The show is carried on more than 100 PBS stations in the United States, Canada, Guam, and Puerto Rico and is distributed by Pacific Mountain Network, Denver, CO. Viewers can request copies of materials offered on the show by sending one 29 cent stamp for each handout requested. Send the stamps, along with your name, address, and booklets requested to:

"Creative Living" Requests  
% KENW-TV  
52 Broadcast Center  
Portales, NM 88130

### Toll House Cookie and Ice Cream Treatwiches

1 package Nestle Toll House ready-to-bake cookies, original chocolate chip or chocolate chip with walnuts

12 small scoops favorite ice cream, slightly softened

Bake cookies according to package directions; cool completely. Sandwich a small scoop of your favorite ice cream between two cookies. Eat immediately or wrap in plastic wrap and freeze up to 2 days. Let frozen treatwiches stand at room temperature a few minutes to soften slightly before serving. Makes 12 servings.

### Volunteers Recognized At Girl Scout Meeting

"Partners in the Vision" was the theme for the Annual Council Meeting and Adult Recognition Event of Caprock Girl Scout Council. The third highest award in Girl Scouting, the Honor Pin, was given to Lynn Buxkemper of Slaton. Rhonda Bently of Ranson Canyon. Las Leonitas Service Unit received the prestigious President's Award.

Grimes Insurance, Martin Outdoor, Lubbock Avalanche Journal, Mayflower Transit, KJTV-34 and Dawna Cowan were recognized for their generous support and service to Caprock Girl Scout Council.

Membership delegates representing the 18 counties elected members to serve on the Caprock Council Board of Directors and delegates to represent the Council at the National Girl Scout Convention. The following directors were reelected to serve a second term: Sam Hill, Richard Zartman, Dede Sava all of Lubbock and Vivian Cockrell of Denver City. They will be joined by new directors Linda Mothershed and Kathy Williams of Lubbock. Delegates to the National Meeting in Minneapolis next fall will be Lee Ruth Krieg, Myra Burris, and Senior Girl Scout, Sharon Fuller. Alternates to the convention will be Mickey Hall, Dede Sava, and Vivian Cockrell.

\*\*\*  
Have you ever met anyone who had nothing to complain about?

### Cookies 'n Cream Ice Cream

One 14.1 oz. pkg. Nestle Toll House Chocolate Chip ready-to-bake cookies

1/2 gallon vanilla ice cream, slightly softened

Bake Nestle cookies according to package directions. Cool completely; crumble cookies into pieces. In chilled large bowl, combine ice cream and cookie pieces. Spoon into air tight containers; cover and freeze until firm, about 3 hours. Makes 8 to 12 servings.

### Tips for Sending Perfect Wedding Invitations

(NU) - Computer technology has revolutionized the task of writing. But there are some instances where computer-generated materials simply are not appropriate. Wedding invitations are a prime example. For this once-in-a-lifetime event, quality and elegance can not be sacrificed.

Wedding Invitations by Elaine offers a collection of deluxe wedding invitations printed with rich raised lettering. To receive a free catalog, call 1-800-323-2717. Rexcraft wedding stationery also offers 80 invitation styles in their full-color catalog. To receive a free copy, call 1-800-635-4653.

The experts at Rexcraft and Elaine also offer some valuable tips on send-

ing wedding invitations in style:

— When addressing the inner envelope, exclude the adults' first names and addresses. Intimate relatives may be addressed as "Aunt Elizabeth and Uncle John." Below the parents' names, include the first names of all children to be invited.

— On the outer envelope, always use a guest's full name and formal title. Use abbreviations only for Mr., Mrs., Ms., Dr. and Jr.

— It is improper to use abbreviations in the street address or to abbreviate a city or state. House numbers and zip codes may be written in figures.

— It is recommended to have your return address professionally printed on the outer envelopes to ensure that any undeliverable invitations are returned to you.

### Clarks Central Texaco

Offers  
Automobile  
Air Conditioner Service  
With Approved Equipment  
See Bob For  
Oil Changes - Wash Jobs  
Full and Self Service Gas



### Clark's Central Texaco

221 W. Amer. Blvd.

272-3915

# BUY A NEW F-SERIES TRUCK AND YOU'LL GET ONE OF THE FOLLOWING OPTIONS.

5 - \$100s

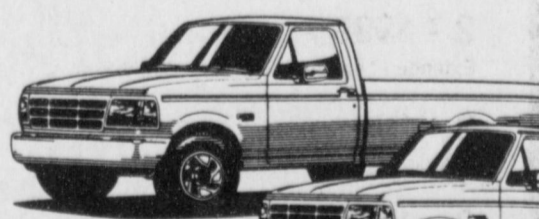
10 - \$50s

25 - \$20s

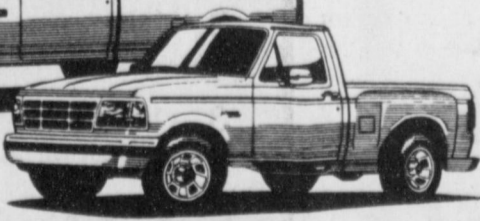
50 - \$10s

100 - \$5s

500 - \$1s



TEXAS SE



XLT FLARESIDE



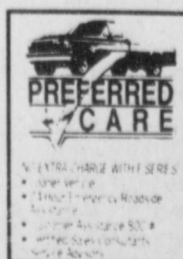
XLT SUPER CAB

XLT

## BUY AN F-SERIES TRUCK AND GET \$500 CASH BACK.

Your Ford Dealers must sell thousands of new F-150s. So now, qualified employers and their employees can get \$500 cash. Plus, get each dealer's absolute lowest selling prices.

Choose from a great selection of F-150s. All well-equipped and priced to move. There has never been a better time to buy the best-selling truck in America.\*  
Hurry to your Ford Dealer today.



### Muleshoe Motor Co.

1225 W. Amer. Blvd. Muleshoe 272-4251

\$500 Commercial Account Incentive to qualified businesses and their employees. Take new vehicle delivery from 3/26-6/30/93. Limit 10. Excludes Crew Cab, RCI, and A, X, Z trim. See dealer for details.  
\*Based on 1992 model year manufacturer's reported retail deliveries by segment.

### Nation's First Four-Year Educational Program For Doctor of Audiology

Baylor College of Medicine in Houston will offer the nation's first four-year educational program for a Doctor of Audiology (Au. D.) degree.

Unlike the College's Ph.D. program in audiology, which is research-oriented, the doctoral-level program emphasizes clinical training in a medical setting.

"Baylor's Au.D. program is an important first step in upgrading the standards of training and competence in the field of audiology to the doctoral level," says James F. Jerger, Ph.D. Professor and Head of the Division of Audiology and Speech Pathology, and Director of the Au.D. program.

According to the Audiology Foundation of America, no other U.S. institution offers a doctoral degree in the study of hearing problems.

"This new program offers unparalleled opportunities for students to gain a broad spectrum of hands-on experience through the institutions affiliated with Baylor," says Jerger.

The five students accepted each year for the program will rotate through audiology clinics at The Methodist Hospital, Texas Children's Hospital, Ben Taub general Hospital, the Veterans Affairs Medical Center, the Institute for Rehabilitation and Research, and the Houston School for Deaf Children.

The variety of disorders and patients in these settings will give students a chance to treat profound hearing loss in children as well as mild hearing loss in elderly people. They are likely to encounter hearing losses that are medically or surgically correctable, and those that require hearing aids, assistive-listening devices, or other forms of nonmedical intervention.

Au.D. students will have the opportunity to experience:  
\* diagnostic evaluation of hearing problems  
\* screening of hearing disorders in

The Au.D. curriculum includes two years of intensive course work, one year of clinical clerkships, and one year of clinical rotations. The program will be administered by the medical school through the Department of Otorhinolaryngology & Communicative Sciences.

Graduates of the program will be better prepared to treat the approximately 20 million people in the United States who have some type of significant hearing loss, Jerger says.

The Office of Admissions at Baylor is now accepting applications for the Au.D. program; the first class begins in January.

newborns

- \* fitting and dispensing of hearing aids
- \* rehabilitation of children and adults who have hearing aids or cochlear implants
- \* audiologic evaluation of children and adults with speech and language problems
- \* evaluation of dizziness and other problems with equilibrium
- \* topographic brain mapping.

### Three Way News

by Mrs. H.W. Garvin

On April 27, 1993 Emily Taylor was born at Methodist Hospital. Parents are Mr. and Mrs. Joe Gonzales of Amherst. Grandparents are Mr. and Mrs. Don Lowe of Maple. Also visiting in the Lowe home is another daughter of the Lowes, Renay Morim and great grandmother, Ruby Nula from Yuma, AZ.

\*\*\*

Monday there was a baby shower at the home-ec room at school honoring Mrs. Kevin Macnrow of Three Way.

\*\*\*

Rev. and Mrs. James Gillentine from Lubbock and Mr. and Mrs. Kenneth Fox from Clovis spent Friday night and Saturday with their mother Mrs. H.W. Garvin.

\*\*\*

A going away party honoring Anita Chun Syri after over twenty years as an employee of the Three Way school was held Sunday afternoon.

\*\*\*

Mr. and Mrs. Tom Jones from Whiteface visited the Joe Wheelers Sunday afternoon.

\*\*\*

Mr. and Mrs. Robert Kindle returned home after fishing at Stamford Lake.

\*\*\*

Mr. and Mrs. Johnnie from Lovington, NM visited Mrs. H.W. Garvin Sunday afternoon. The Wheelers lived in our community over 29 years.

\*\*\*

Mr. and Mrs. Autry and children from Tahoka spent the weekend with her parents the Bob Foleys.

\*\*\*

Robin Kindle, a teacher in the Lamesa school system, spent the weekend with her parents the Bobby Kindles.

\*\*\*

Mrs. Jack Lane and Mrs. Obie Standard visited Mrs. Quesenberry in Muleshoe Monday and Tuesday. Mrs. Lane's brother from San Antonio was visiting his and Mrs. Lane's mother, Nettie Quesenberry.

\*\*\*

The cotton planted on irrigated land is up. Farmers are still watering.

### Texas Department of Transportation

As summertime draws near, Texans' thoughts turn to family vacations and the great outdoors.

The latest *Texas Events Calendar*, just released by the Texas Department of Transportation, lists more than 1,200 happenings, just in time for valuable vacation planning.

Spanning the sun-filled months of June, July, and August, the quarterly calendar is the authoritative list of Texas events. From international music festivals and Shakespeare festivals to old-fashioned country fairs and good down-home fiddling, the summer calendar tells the where and when of it all.

Visitors will delight in an astonishing variety of outdoor activities, including rough-riding rodeos, open-air concerts, laser light shows, and major outdoor dramas. Fun-seekers race across Texas in hot air balloons, canoes, drag boats, and sailboats, and on bicycles, jet skis, and horses.

Texas' ethnic diversity is spotlighted in Juneteenth celebrations, Indian powwows, a Scottish clan gathering, and German heritage festivals, complete with international foods, authentic costumes, and traditional folk music and song.

Children revel in puppet shows, kiddie carnivals, and turtle races, while zany adults compete in bed races, cow-calling contests, and a World Championship Corn Cob Throwing competition.

The bounty of summer is celebrated at peach, watermelon, cantaloupe, black-eyed pea, corn, tomato, and onion festivals. And Texas' best cooks compete with winning recipes at chili, fajita, barbecue, menudo, and pinto bean cookoffs.

Replete with patriotic parades, major air shows, and a host of seaside and lakeside festivities, the summer calendar is free for the asking by calling 1-800/452-9292. The toll-free number is answered by professional travel counselors at the department's Texas Travel Information Centers, and offers information on events, Texas trip planning, *Texas Highways* magazine subscriptions and products, and travel literature. The service is available daily to callers anywhere in the United States from 8 a.m. to 9 p.m. CDT.

Sincerity is a pleasing and vanishing virtue.

Eva Clayton, congresswomen (D-NC): "Lobbyists have a bad name but lobbyists are not bad people. They represent many of my constituents and they do it very well."

The best way to avoid bills is to pay cash.

Ron Fry, of Career Press: "Last year *The New York Times* said it was the worst job market in fifty years. Now it's the worst in fifty-one years."

Life would be simple if everyone were sincere.

Robert Stovall, investment analyst: "There's a general feeling that the economic recovery is slow and sluggish and spotty, but we're getting there."

# Clearing House



...that's our **CLASSIFIEDS**

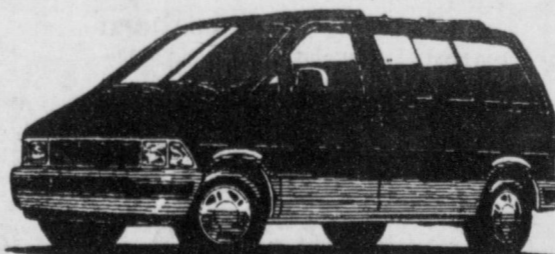
Remember our Clearing House for turning one man's junk into another man's treasure. It's called our Classifieds.

Advertise those odds and ends of discards and put extra cash into your pockets — fast!

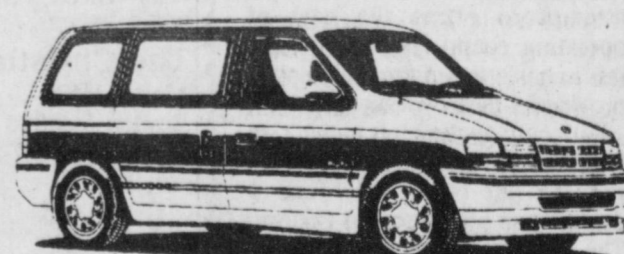
Move things no longer needed into **MONEY!**  
**Muleshoe & Bailey County Journals**

## MEMORIAL DAY

### MINI-VAN SALE



AEROSTAR



CARAVAN

We will be closed this Monday to celebrate Memorial Day. Feel free to stop in anyway to admire our selection of Mini-Vans and more. We will be back to serve your needs on Tuesday... Hurry in - These won't last long!

2 - 1992 Aerostars  
Extended Length, XLT, 4x4, 1-Quad Seating

2 - 1993 Dodge Grand Caravans

3 - 1991 Aerostars  
Extended Length, XLT, 4x4

1 - 1992 Chevy Lumina APV

3 - 1990 Aerostars  
XLT, 4x4, Seat Bed Models

1 - 1990 Oldsmobile Silhouette

1991 Chevy Suburban  
Classy Conversion  
Quad Seating  
Fully Loaded  
Only 20,000 Miles

1992 Dodge Caravan  
\$11,995  
Only 10,000 Miles

## TEAGUE-STREBECK



Ford · Mercury  
Chrysler · Plymouth · Dodge



356-8581

1115 N Chicago, Portales NM  
(On the First Curve Into Portales)

762-3845

## "Worship Is A Matter Of The Heart"

"Go call your husband."



Focus On Faith  
Curtis Shelburne

The words were not cruel, but still they hit hard, and the Samaritan woman standing beside Jacob's Well was already reeling. She'd trudged up to the well hoping to be alone. She liked it that way. Her marital history and her present romantic alliance conspired to make her unwelcome when "respectable" ladies came to draw water. They didn't think her fit company. Fine. She didn't much care for theirs either.

But on this day she was not alone. She met a man there. A Jewish man! What sort of Jewish man would speak to a woman in public? A Samaritan woman, at that! But speak he had. He offered her "living water," water that would quench her thirst forever. She could hardly imagine never having to draw water again, but it sounded good! She was asking Jesus for that water when he stopped her in her tracks by saying, "Go call your husband."

That was a problem. She stammered, "I have no husband." And Jesus replied, "You're right! The fact is you

have had five husbands, and the man you now have is not your husband. What you have just said is quite true."

Her head was spinning. How did he know? Was he a prophet?

Prophet or not, he was probing too deeply, and so she pushed one of the religious "hot buttons" of her day. It's always more fun to discuss ritual than it is to seriously consider our own character. It's much more comfortable to debate how and when we ought to baptize or how often we ought to take communion than to deal with the moral quality of our own lives. So she jumped on an issue dividing Jews and Samaritans: "Our fathers worshiped on this mountain (Mount Gerizim), but you Jews claim that we must worship in Jerusalem."

Jesus' reply cuts to the heart of what it means to worship God. The time is coming, he says, when the "where" of worship will be far less important than the heart of the worshiper. "God is spirit," and true worshipers must worship him "in spirit and in truth."

Jesus wasn't sidetracked long. But before he offered this lady the forgiveness of Heaven, he left us all a deep insight: True worship is a matter of the heart as we reach out in contrite humility to join hearts with God.

Curtis Shelburne is the minister of the 16th & D Church of Christ in Muleshoe.

### Studies Performed On Breast-Fed And Formula-Fed Infants

Studies at the USDA's Children's Nutrition Research Center in Houston indicate there are significant differences between the sleep patterns of breast-fed and formula-fed infants.

Dr. Nancy Butte, an associate professor of pediatrics at Baylor College of Medicine, found that four-month old, breast fed infants spent more sleep time in a "quiet" cycle called NREM (nonrapid eye movement) than formula fed infants. The NREM stage appears to require complex feedback from the brain that maintains blood pressure, regulates breathing and heart rate, and inhibits physical activity.

In contrast, formula-fed infants spent more time in the REM (rapid eye movement) cycle. During REM, also known as the dream cycle, the body experiences an increase in breathing and heart rate, blood pressure and physical activity.

"The duration of 'active' sleep and 'quiet' sleep shifts as the infant grows and begins to undergo longer periods of unbroken sleep," Butte said. "These changes in sleep behavior reflect changes in brain function."

According to Butte, differences in sleep patterns may be due to differences in the composition of human milk and formula or developmental differences between the breast-fed and formula-fed infant.

"This is another piece of the puzzle that appears to support increasing evidence that the way a baby is fed may impact growth and development," she said.

Results from this study follow previous CNRC findings that indicate breast-fed infants burn fewer calories when they sleep and have lower heart rates than formula-fed infants.

Despite early differences in sleep patterns between breast-fed and formula-fed infants, Butte emphasizes that scientists do not know the cause or the long-term implications.

# 'Summer Of The Wild Plum Moon' To Debut At Copper Breaks State Park

"The Summer of the Wild Plum Moon," an outdoor musical drama, will debut at Copper Breaks State Park on June 10-11-12 and June 17-18-19 at 8 p.m. each evening.

Copper Breaks is located 13 miles south of Quanah on Texas Highway 6.

Written by Foard County native Jerry Ayers, "The Summer of the Wild Plum Moon" is the musical retelling of the Cynthia Ann Parker legend, giving new light to what must be done to survive in an untamed land.

Set in the 1880s, the story traces the history of the land that is now known as Copper Breaks State Park. A young Indian princess tells her poignant tale of survival and the

pioneers she encounters who settled a land, loved a land and survived.

The land between the two rivers (Red and Pease) demanded many things of the people who decided to live on the land. The pioneers who came to the area faced a rough and demanding existence. They had to learn what the Comanche knew about making peace with a wild and rugged land. "The Summer of the Wild Plum Moon" takes the audience to the period of Texas history when the land demanded the most of its inhabitants.

The two-hour performance will feature a cast of professional actors who have performed at leading theaters and ballets throughout the United States and Europe. Professional stage, lighting and sound per-

sonnel and equipment will contribute to the production.

The drama is being sponsored by the Quanah and Crowell Chambers of Commerce. Tickets priced at \$7.50 for adults and \$5.00 for children age 12 and under are available from the Quanah Chamber of Commerce by calling 817-663-2222. To order by mail, write P.O. Box 158, Quanah, Texas 79252. Indicate which nights you plan to attend.

Ticket-holders will not be required to pay the park entrance fee unless staying overnight. Parking assistance will be available, with handicapped parking and shuttle service. Seating will be provided or you may bring your own lawn chair.

A fully stocked concession stand will also be available.

## Family Channel

Responding to its subscribers' growing appetite for more news and entertainment programming, Prime Star, the nation's premier direct broadcast satellite (DBS) service, announced today that CNN: Cable News Network, TNN: The Nashville Network, and the Family Channel will join its channel lineup as of June 1.

"Now Prime star subscribers in the Lubbock area will join millions of other American families who are able to tune in the day's events when they want to simply by turning to CNN," said Shana Cook. "And when it's time to

unwind, we think the Nashville Network and the Family Channel really deliver the kind of quality television our community is looking for."

Shana noted that PrimeStar will continue to feature hundreds of movies and sporting events each month plus a full spectrum of other programming by also delivering superstations WTBS-Atlanta, WGN-Chicago, KTUV-San Francisco and WPIX-New York as well as selections from WHYY-

Philadelphia/Wilmington. Aired in November, the 1990 PrimeStar delivers an exciting menu of affordable in-home entertainment and information. The offering includes a 24-hour-a-day entertainment lineup; PrimeCinema, offering pay-per-view movies and events; and PrimeAudio, an array of digital quality music and information channels. Subscribers also have access to the PC based X\*Press and X\*Change services, as well as TV-Japan.

### FREE HEARING TESTS FOR SENIOR CITIZENS

MEET AT WESTERN DRUG—MULESHOE  
114 MAIN

Wednesday, June 2, 1993

COME BY OR CALL 272-3106 9:30 a.m.-10:30 a.m.  
10 DAYS FREE TRIAL 12 BRANDS TO CHOOSE FROM

SATISFACTION GUARANTEED

Sponsored by:  
**LIVINGSTON HEARING AID CENTER**

Roland K. Denison

5303 50th Lubbock, Tx. 79414 806/799-8950 800-828-0722  
606-B Quincy Plainview, Tx. 79072 806/293-8874

**HEALTH INSURANCE**  
CALL Mark Morton 109 S. 1st Muleshoe 272-7519  
State Farm Mutual Automobile Insurance Company Home Office Bloomington, Ill.

## Texas Senate Week In Review

The Texas Senate gave preliminary approval of legislation that would allow Texans to carry concealed handguns, providing they meet certain qualifications. CS HB 1776 by Rep. Ron Wilson of Houston is sponsored in the Senate by Sen. Jerry Patterson of Pasadena. The bill, as it is currently written, will issue a handgun permit to persons who complete a handgun proficiency and safety training course and pass a criminal background check. Sen. Royce West of Dallas filibustered the bill for over five hours in an attempt to defeat its passage. The bill passed to third reading.

The Texas Senate met and passed CS HB 1776, the concealed handgun bill. Several amendments were passed that: require applicants to pass a drug test prior to receiving a handgun license; prohibit guns in restaurants that serve alcohol and bars; allow employers to prohibit guns in the work place; require that applicants be registered to vote; and allow business establishments to prohibit guns on the premises. The amended bill now goes to the House.

The Senate passed HB 1852 by Rep. Bosse which provides for the removal of illegal outdoor advertising signs through injunctive proceedings; makes it an offense for an owner or renter of a tract of land to allow a person to erect or maintain an illegal sign; and raises the penalty for maintaining or erecting an illegal sign. Federal law requires states to provide for effective control of outdoor advertising signs along interstate and primary highways.

The Senate met and passed HB 1056 by Rep. Wilhemina Delco of Austin which creates the County Jail Industries program to provide for the use of county jail inmates for public works, public improvements, and public maintenance projects. The bill is an attempt to offset the cost of operating county jails by putting jail inmates to work in attempt to provide for their own support.

With only 10 days left in the 73rd Legislative session, time is running out before the June 1 deadline on public school finance. The Legislature then moved one step closer to meeting that deadline by appointing a Conference Committee to work out differences between the House and Senate proposals. The Senate refused to concur on the dozens of House amendments added to CSSB 7, the business property tax transfer plan passed out of the Senate last week. The following Senators were appointed to the Conference Committee; Senators Ratliff, Haley, Lucio, Luna, and Sibley. The committee will begin meeting Saturday, May 22 at 8:00 A.M. and continue working each day until a compromise can be reached.

**The Same**  
Wilbur—I don't believe in using a long word when a short one does just as well.  
Dean—Nor me either. For instance, instead of saying, "profiteer" I just say "robber."

Open Your Heart...  
Open Your Home.

Your family can make a **DIFFERENCE** in the life of a young person by hosting a High School Exchange Student.  
Call: 1-800-727-4540 or contact:  
**Jo Ann DeLano**  
352-4355 or 800-333-0606  
AYUSA International  
A non-profit student exchange organization  
One Post Street, 7th Floor • San Francisco, CA

### Immaculate Conception Catholic Church

805 E. Hickory  
Father Joseph Augustine

**First Baptist Church**  
220 West Ave. E.  
Pastor, Stacey Conner

**Emmanuel Baptist Church**

Iglesia Bautista Emmanuel  
107 East Third  
Isaias Cardenas, Pastor

**Trinity Baptist Church**

314 E. Ave. B  
Rev. Dale Berry

**Circle Back Baptist Church**

Intersection FM 3397 & Fm 298  
Rev. Jessie Shaver  
946-3676

**Calvary Baptist Church**

1733 W. Ave. C.  
Pastor B.G. Hill

**Progress Baptist Church**

Alan Petersen  
Progress, Texas

**Richland Hills Baptist Church**

17th and West Ave. D  
Rev. Terry Taylor

**St. Matthews Baptist Church**

Corner of West Boston & West Birch  
Pastor,

**Progress Second Baptist Church**

1st and 3rd Sundays  
Rev. Arthur Hayes

**Primitive Baptist Church**

621 South First  
Elder Cleveland Bass, Pastor

**1st Baptist Church**

Lazbuddie, Tx.  
Gary Wilcox, Pastor  
965-2126

**The Christian Center**

Morton Hwy  
Reydon Stanford  
272-5163 or 227-2136

**St. John Lutheran**

Sunday School and Bible  
Classes 9:30 a.m.  
Church Services 10:30 a.m.  
Rev. Richard Greenhaner

**Jehovah Witness**

Friona Hwy  
Jack Tiffin, Minister  
Warren Meeks, Minister

**Lazbuddie Methodist Church**

965-2121  
Doug Chapman, Pastor

**New Covenant Church**

Plainview Hwy  
Sunday 10:00 a.m.  
Wednesday 7:00 p.m.  
Jimmy Lowe, Pastor

**Templo Calvario**

507 South Main  
Sunday 10:00 a.m.  
Sunday Evening 7:00 p.m.  
Evangelistic Services

**New Vision Church of the Nazarene**

814 W. Ave. C  
272-3622  
Pastor David R. McIntire

**First United Methodist Church**

507 W. 2nd Street  
Richard Edwards, Pastor

**El Divino Salvador Methodist Church**

5th and E. Ave. D  
Leonard Gonzales, Pastor

**Bob Stovall Printing**

221 E. Ave. 272-3373

**American Valley Inc.**

W. Hwy 84 272-4266

**Decorator's Floral & Gifts**

616 S. 1st 272-4340

**Irrigation Pumps & Power**

W. Hwy 84 272-4483



## Roller Coaster Spirit

There are days when we feel on top of the world. Everybody loves us and shows it. Nice things are done for us. Sunshine and happiness drenches everything. And then there are other days — when we're blue; people are busy. We're alone. We're afraid. It might as well be raining. Nobody knows the trouble we're in. Needed is a little self-discipline, not a lot of self-pity. We must learn to face the fact that life is not always a flowery bed of ease, and pleasure. Children dodge hard places, responsibility, and painful experiences. A mature person stands on his own two feet under God. Time, insight, and the grace of God can remove mountains — and take away that roller coaster spirit. Begin the road to spiritual maturity by attending church this week.

The Church is God's appointed agency in this world for spreading the knowledge of His love for man and of His demand for man to respond to that love by loving his neighbor. Without this grounding in the love of God, no government or society or way of life will long persevere and the freedoms which we hold so dear will inevitably perish. Therefore, even from a selfish point of view, one should support the Church for the sake of the welfare of himself and his family. Beyond that, however, every person should uphold and participate in the Church because it tells the truth about man's life, death and destiny; the truth which alone will set him free to live as a child of God.



Coleman Adv. Ser.



## Attend The Church Of Your Choice!



<b>Bob Stovall Printing</b> 221 E. Ave. 272-3373	<b>Attend The Church Of Your Choice!</b>	<b>Muleshoe Trade Center Tex-Pack</b> 130 Main 272-4906	<b>Williams Bros. Office Supply</b> 322 Main 272-3113
<b>American Valley Inc.</b> W. Hwy 84 272-4266	<b>First Bank</b> Member F.D.I.C. 202 South First 272-4515	<b>Bratcher Motor Supply</b> 107 E. Ave. B. 272-4288	<b>Western Drug</b> 114 Main 272-3106
<b>Decorator's Floral &amp; Gifts</b> 616 S. 1st 272-4340	<b>Bailey County Farm Bureau</b> 1612 W. Amer. Blvd. 272-4567	<b>Nacho's Southside Chevron</b> 502 S. 1st 272-3251	<b>Wes-Tex Feed Yards, Inc.</b> 272-7555
<b>Irrigation Pumps &amp; Power</b> W. Hwy 84 272-4483	<b>Attend The Church Of Your Choice!</b>	<b>Viola's Restaurant</b> 2002 W. Amer. Blvd. 272-3838	<b>5-Area Telephone Cooperative, Inc.</b> 302 Uvalde 272-5533

# CLASSIFIEDS 272-4536

## CLASSIFIED RATES

15 Words & Under Minimum Charge \$2.30  
 Thereafter \$2.00  
 16 Words & over

1st Insertion 15 cents per word  
 2nd Insertion 13 cents per word

**CLASSIFIED DISPLAY RATES**  
 \$1.75  
 Per Column Inch

**DEADLINES**  
 12 noon Tues. For Thursday Paper  
 12 noon Friday For Sunday Paper

To receive the reduced rate after the first insertion, ad must run continuously.

We reserve the right to classify, revise, or reject any ad. We are not responsible for any error after ad has run once.

For more information and assistance regarding the investigation of get-rich-quick, work-at-home and other financial/business opportunities. The Muleshoe and Bailey County Journals urges its readers to contact the Better Business Bureau, 1206 4th St., #901, Lubbock, TX 79401 or call (806)763-0459.

## 1. Personals

**CONCERNED About Someone's Drinking? HELP IS AVAILABLE** through Al-Anon Call 272-2350 or 965-2870 or come to visit Tuesday and Thursday nights, 8:00 p.m. & through AA call 965-2870 or come visit Tuesday nights, 8:00 at 620 W. 2nd, Muleshoe

## E's Floor Covering Service

New and used Carpet installed. Restretching and Repairs. Vinyl installation. Free Estimates. Call 272-3740, and please leave name and number.

CI-22t-6tc

**JANITORIAL SERVICE**  
 Free Estimates, Work Guaranteed. Call: Care Janitorial 272-3076

CI-22t-8tc

Photography by Lonnie and Sue Gibson P.O. Box 364 Amherst, TX 79312 (806) 246-3337 G1-17s-6tp(S)

Near Lazbuddie Want to Babysit in my home. Good meals and snacks. Lots of Love and Attention. Call any time 965-2335.

BI-21s-4tc

Exterior and Interior Painting. Experienced-Clean and Neat. Reasonable Rates-Free Estimates. Call: 272-4012.

HI-22t-2tc

## CLEAN MACHINES!

Two college girls want summer cleaning jobs. We'll make your house Sparkle! References Available. Call: 272-5922

## 3. Help Wanted

**MULESHOE AREA HOME HEALTH**  
 Agency

Now Accepting applications for:

**FULL-TIME RN**

Competitive Salary  
 Excellent Benefits

**EQUAL OPPORTUNITY EMPLOYER**

806-272-4524 708 SOUTH FIRST STREET MULESHOE, TEXAS 79347

**LICENSED VOCATIONAL NURSE**  
 South Plains Health Provider Organization, Inc., in Muleshoe is seeking a Licensed Vocational Nurse for the WIC Program. Mon thru Fri, 8-5 p.m. Bilingual in English/Spanish preferred but not required. direct inquiries to (806)272-4521. Apply: SPHPO/WIC - 122 W. Ave. C Muleshoe, Texas 79347. AN EQUAL OPPORTUNITY EMPLOYER S3-22t-2tc

Bailey County Electric Cooperative Assn. is now accepting applications for Receptionist/Cashier at the Muleshoe office. Applications and job descriptions can be picked up at the Muleshoe office at 305 E. Ave. B. All interviews will be conducted after the closing date of June 10, 1993 at 5:00 p.m. Bailey County Electric Cooperative is an equal opportunity employer.

Need outside commissions sales people in Muleshoe Area. KERC 107.5 FM Radio Station. Apply at 4901 N. Prince in Clovis or phone Janet Patterson at (505)763-7109.

## 5. Apts. For Rent

**Apartment For Rent**  
 Good Location, Water Paid, Call 272-7575 P5-11t-tfc

## 10. Farm Equip. For Sale

Trailers for Sale: 5'x8' or 16'x77" utility new; Gooseneck Trailers all sizes. 272-4718. 10-22s-2tp

## 11. For Sale or Trade

85 Mercury Marque Wagon. Good shape, will consider any offer. 272-3076.

11-22t-4tc

## 13. Property For Lease

Texaco Service Station For Lease Contact: Morrison Oil Company 806-272-4688 M13-19t-18tc

## 3. Help Wanted

**DIRECTOR PCCCH**  
 Home care service management opportunity for R.N. with a minimum of 1 year Home Health experience. Full benefit package. LVN(FIELD) Requires minimum of one year of professional experience. Ability to work independently. Full benefit package. Send resume to: PARMER COUNTY COMMUNITY HOSPITAL/HOME HEALTH DIRECTOR 1307 Cleveland, Friona, Tx. or call 247-2754.

Operate a fireworks stand outside Muleshoe June 24 thru July 4. Make up to \$1,500.00. Must be over 20. Phone 1/210-429-3808 or 1-800-364-0136 10 AM - 5 PM.

**8. Real Estate**  
**BUILDING LOT BY OWNER**  
 Beautiful Park Ridge Addition-Muleshoe. 103' X 125' paved street, utilities. Great View! Consider trade-in or owner financing. For information--- (806) 795-5409

**8. Real Estate**  
 House For Sale 4-1 1/2-2 brick, near Dillman. 272-4010. 4-20t-6tp

## 8. Real Estate

**FOR SALE**  
 2100 sq. ft. 4 bedroom brick with new timber-line roof. Total electric-3 year old heat pump-(heat & cool). 2 baths, double garage, lots of closets. Call 272-4793 or 5531.

## 8. Real Estate

**FOR SALE:**  
 3-3-2, 1819 W. Ave. H. Great Location, Corner Lot. 272-5097. CB-18s-10tc

## 8. Real Estate

**HOME FOR SALE**  
 3-1-1 Brick, Heat Pump, Fence, Trees (just planted); FmHA Financing, 808 W. 9th. 272-5687

## 15. Misc.

**WINDOW TINTING**  
 Now Available on Wednesdays at Muleshoe Body Shop. Specilizing in all makes and Models including farm machinery; tractors, trucks, combines etc. By appointment only. Call 272-4246

**KILL ROACHES!**  
 Buy ENFORCER OverNite Roach Spray. Kills roaches overnight or your money back; **GUARANTEED!** Available at: Scoggin Ag Center 1532 W. American Blvd. 15-21t-19tp(TS)

**KILLS FLEAS!**  
 Buy ENFORCER Flea Killers for pets, home & yard. Guaranteed effective! Available at: Scoggin Ag Center 1532 W. American Blvd. 15-21t-20tp(TS)

**KIRBY SALES & SERVICE**  
 Corner of 7th and Mitchell. Clovis, N.M. 88101. (505) 762-4991 Come in and Look at our new self-propelled Kirbys. Joe Ennis 15-15tp

## 15. Misc.

**SEPTIC TANK BACKED UP?**  
 Use ENFORCER Septic Tank Treatment to Prevent Back-up, Foul Odors and to Keep Your System Working Properly. Available at: Scoggin Ag Center 1532 W. American Blvd. 15-21t-16tp(TS)

## 15. Misc.

**Major Appliance and Minor Home Repairs!**  
 Call 272-4450 **HENDERSON SERVICE, CO.**

## 20. Public Notice

Independent School District will accept bids for materials to install an underground sprinkler system on the playground north of Mary DeShazo Elementary School. Sealed bids will be accepted for materials only. Specifications may be obtained by contacting Buck Johnson, Asst. Supt./Operations, Muleshoe ISD, 514 W. Ave. G, Muleshoe, TX 79347; (806)272-3911. Sealed bids will be accepted until noon, June 10, 1993. Bids should be sent to the address listed above and marked "Sealed Bid". MISD reserves the right to accept or reject any or all bids or any portion thereof. M20-22s-2tc

## 20. Public Notice

The annual return of the Howard Charlyle Memorial Scholarship Fund is available, at the address noted below, for inspection during normal business hours, by any citizen who so requests within 180 days after publication of this notice of its availability. Lazbuddie Independent School District Drawer A Lazbuddie, Texas 79053 The Principal Manager is Hardy Carlyle, Chairman. Telephone (806) 965-2156. C20-22s-1tc

**Job Situation Up in the Air?**  
 Whether you're looking for a job or trying to find one, classified ads help. It's a fact. Classified is the most popular method of matching the right people to the right jobs. Let classified help you and your job situation.

**Muleshoe Journal**  
 272-4536

**8. Real Estate**  
 3-2-1 house for sale. Reasonable price, fenced yard. 1521 W. Ave. B. Phone: 272-3224

## 8. Real Estate

**Home For Sale**  
 901 Juniper 3-2 Brick, \$42,000 FHA qualifying Assumable. Days 293-3888, Nights 293-9706 G8-12s-tfc

## 8. Real Estate

**FOR SALE:**  
 3-3-2, 1819 W. Ave. H. Great Location, Corner Lot. 272-5097. CB-18s-10tc

## 8. Real Estate

**Home For Sale**  
 901 Juniper 3-2 Brick, \$42,000 FHA qualifying Assumable. Days 293-3888, Nights 293-9706 G8-12s-tfc

## 8. Real Estate

**8. Real Estate**  
 1735 Acres- Deaf Smith County. 400 Acres of Grass Balance is Cultivated at Irrigation Water with Underground Pipe. Sold. Soils. Grass has good turf.

**8. Real Estate**  
 160 Acres in Southwestern Castro County. Excellent water. Allotted, Ego Sprinkler. Sold.

**8. Real Estate**  
 700 Cow Dairy- Mo' facility. Good equipment. Terms available. Sold.

**8. Real Estate**  
 193 Acres Northeast of Muleshoe in Parmer County. 2 wells-Excellent water-late model center pivot sprinkler. Full Allotted. Call for further details.

## 8. Real Estate

**8. Real Estate**  
 310 Main Street, Suite 103 Office Muleshoe Home 272-3100 965-2468

## 8. Real Estate

**SMALLWOOD REAL ESTATE**  
 232 Main 272-4838

## 8. Real Estate

**3 Bedroom, 1 Bath, Living Room, den with wood stone. Nice carpet, 1 car garage, fenced back yard. Priced To Sell!!**

## B.J. CROWLEY'S HOROSCOPE

**Week of May 31, 1993**  
**GEMINI--May 21 to June 20--**Responsibility is suddenly thrust upon you. Although the going may seem a little rough in the beginning, you will adjust quickly.  
**CANCER--June 21 to July 22--**Someone from the past shows up. You extend an invitation to lunch, which he (or she) readily accepts. Too much water has passed under the bridge for you to have much in common.  
**LEO--July 23 to Aug. 22--**Show a loved one you care with a special gift. An inexpensive item chosen with some thought to the recipient's interests will be greatly appreciated.  
**VIRGO--Aug. 23 to Sept. 22--**A telephone call brings good news. Expect invitations to weddings, graduations, and showers. You may feel as though you are getting more of these than your fair share.  
**LIBRA--Sept. 23 to Oct. 22--**if you can, give to a fund that is feeding the world's hungry. If you are in good health, you might cut out a meal or two and give the money you would spend.  
**SCORPIO--Oct. 23 to Nov. 22--**Good buys in

## 8. Real Estate

clothing are everywhere this week. Beware that you don't buy items impulsively. Make a list of your needs.  
**SAGITTARIUS--Nov. 23 to Dec. 22--**You need more comfort in your home. Look for a comfortable chair and make sure your mattress is comfortable.  
**CAPRICORN--Dec. 22 to Jan. 19--**Avoid troublesome people. A quiet approach to life is needed now. Get down to the serious business of planning your future.  
**AQUARIUS--Jan. 20 to Feb. 18--**Plant a small garden of flowers or/and vegetables. You will derive great satisfaction from growing plants.  
**PISCES--Feb. 19 to March 20--**A telephone call from a member of your family brings good news. Out-of-town guests could give you a pleasant surprise.  
**ARIES--March 21 to April 20--**A creative project forces you to become less involved in civic affairs. You enjoy immensely the time you spend on the endeavor.  
**TAURUS--April 21 to May 20--**A close friend shows loyalty. You can show your appreciation by giving them a small gift. A book on a subject in which they are interested will be well received.

## 8. Real Estate

**James F. Hayes & Co.**  
 AGRICULTURAL REAL ESTATE SERVICES

3840 Acres of Excellent Deaf Smith County. Fully Allotted. Livestock Water, Barns, Pens. This is an excellent opportunity.

## 8. Real Estate

**8. Real Estate**  
 240 Acres in Bailey County West of Muleshoe. Irrigated. Lays Good. Call for further details.

## 8. Real Estate

**8. Real Estate**  
 1735 Acres- Deaf Smith County. 400 Acres of Grass Balance is Cultivated at Irrigation Water with Underground Pipe. Sold. Soils. Grass has good turf.

## 8. Real Estate

**8. Real Estate**  
 160 Acres in Southwestern Castro County. Excellent water. Allotted, Ego Sprinkler. Sold.

## 8. Real Estate

**8. Real Estate**  
 700 Cow Dairy- Mo' facility. Good equipment. Terms available. Sold.

## 8. Real Estate

**8. Real Estate**  
 193 Acres Northeast of Muleshoe in Parmer County. 2 wells-Excellent water-late model center pivot sprinkler. Full Allotted. Call for further details.

## 8. Real Estate

**8. Real Estate**  
 310 Main Street, Suite 103 Office Muleshoe Home 272-3100 965-2468

## 8. Real Estate

**SMALLWOOD REAL ESTATE**  
 232 Main 272-4838

## Nieman Realty

116 E. Ave. C George Nieman, Broker 272-5286 or 272-5285  
**CHECK WITH US FOR AVAILABLE HUD PROPERTIES!!!!**

**RICHLAND HILLS**  
**NICE RESIDENTIAL LOTS...\$5,000 UP**  
 4-2-2 Brick, Large living/dining combined... \$50's!!! RH-5  
 3-2-1 Brick, Cent A&H, with fenced yard... \$50's!!!!RH-6  
 3-2-2 Brick with fireplace, 5 ceiling fans, new carpet & paint, new dual fuel heat pump, abundance of closet space...\$90's...RH-8

**HIGH SCHOOL**  
**IMMACULATE LARGE BRICK HOME 3-2-2**  
 Heat Pump, built-ins, Whirlpool, loads of storage, lg. shop-storage, \$70's!!! HS-2  
**PRICE REDUCED 3-2 Remodeled,**  
 heat pump, built-ins, fenced yd., storage bldg. \$23,000!! HS-3  
**JUST LISTED-IMMACULATE 2-1-1 Home,**  
 Cent. heat, evap. air, built-ins, gas grill, fenced yd., FmHA financing available!!!! \$20's! HS-4  
**JUST LISTED-3-2 Home Cent. A&H, built-ins,**  
 fans, st. bldg., fenced yd. \$30's!!!! HS-5  
**JUST LISTED-Nice 3-1-1 Home, floor & wall**  
 furnace heat, window ref. air, DW, fans, storage-workshop, cellar, & more. \$30's!!!! HS-6

**HIGHLAND AREA**  
 3-2-1 Brick, Cent. A&H, FP, built-ins. MAKE OFFER!!!! HL-1  
**NICE 3-2-2 Brick, Cent. A&H, built-ins, FP,**  
 sunroom, auto. spktr., fenced yd., MORE!! \$70's!!!! HL-2  
**FmHA Financing To Qualified Buyer--NICE**  
 3-1-1 Brick Home, Cent. A&H, ceiling fans, storage bldg., fenced yd. \$30's!!!! HL-3  
 3-2-1 Brick, Cent. heat, evap. air, built-ins, fenced yd., storage bldg. \$40K. HL-4

**LENAU ADDITION**  
**PRICE REDUCED-3-1 1/2-1 Home, Cent.**  
 heat, evap. air, cov. patio, st. bldg., fenced yd. \$30's!!! L-1  
**REMODELED BRICK-3-2-1 With Cent.**  
 heat, built-ins--PRICE REDUCED!!! L-2  
**JUST LISTED-2-1-1 Home with Heat Pump,**  
 has extra insulation in attic & floors...\$20's...L-4  
 3-2-1+carport, Brick, ceiling fans, Approx. 2060 sq. ft...\$40's!! L-6

**RURAL HOMES**  
**NICE 3-2-2 carport Home, one acre tract, Cent.**  
 A&H, built-ins, fenced, on pavement close to town. \$40's!!!! HR-2  
 4-3 Bath, Brick, on 2 acres, built-ins, FP, Geothermal Ht. pump, horse stalls, pens & tack rm. Also income producing shop on location or use for your own needs...\$60's!! PRICE REDUCED!!!!  
**VERY NICE 4-2-2 Brick home on 6 ac., Cent.**  
 A&H, 2300'+lv. area, Much More!! \$70's!HR-4  
 3-2-2 Brick, blt-ins, Ht. pump, FP, 2.5 acres on pavement. \$60's!!! HR-3  
 3-2-3 Carport Mobile home on 11 ac. edge of town, MAKE OFFER!!!! HR-5  
 3-2-1 on 1 acre, Cent. Heat, Evap. Air, Remodeled, \$30's!!! HR-6  
 3-1-2 Home on 1 1/2 acres storm cellar & storage bldg...\$20's!!!! HR-8

**ASK ABOUT OUR COMMERCIAL LISTINGS!!!**  
**JUST LISTED--Property on Hwy. 84--Can be**  
 used as residential or commercial, large shop, storm cellar, two story home, lot size 140'x100'...C-1 Circle Back Area-177 acres of good dryland... Fully Allotted!!!  
**PLEASANT VALLEY- 160 acres, 8" well.**  
 Lindsey circle!!!!  
 354 ac. S. of town, good allot. & yields!!!!

## 8. Real Estate

**8. Real Estate**  
 240 Acres in Bailey County West of Muleshoe. Irrigated. Lays Good. Call for further details.

## 8. Real Estate

**8. Real Estate**  
 1735 Acres- Deaf Smith County. 400 Acres of Grass Balance is Cultivated at Irrigation Water with Underground Pipe. Sold. Soils. Grass has good turf.

## 8. Real Estate

**8. Real Estate**  
 160 Acres in Southwestern Castro County. Excellent water. Allotted, Ego Sprinkler. Sold.

## 8. Real Estate

**8. Real Estate**  
 700 Cow Dairy- Mo' facility. Good equipment. Terms available. Sold.

Check Our Insert In Today's  
Bailey County Journal  
For More Specials!

**Lowe's** **Pay-n-Save**  
**MARKETPLACE**

AVAILABLE AT PARTICIPATING STORES **FINAL WEEK!** To Complete Your Set!

ALL TYPES  
COCA COLA **\$1.49**  
3 LITER BTL.

# NATIONAL BRANDS

## S A L E



HEAVY GRAIN FED BEEF BONELESS  
**Chuck Roast \$1.49** LB.

HEAVY GRAIN FED BEEF BONELESS  
**Chuck Steak \$1.59** LB.

HEAVY GRAIN FED BEEF BONELESS  
**Arm Roast \$1.69** LB.

HEAVY GRAIN FED BEEF BONELESS ARM  
**Charcoal Steak \$1.79** LB.

LEAN BEEF CUBES BONELESS  
**Stew Meat \$1.99** LB.

FAMILY PACK LEAN  
**Ground Beef \$1.69** Small Pack \$1.79 LB.

PILGRIM'S PRIDE BONELESS SKINLESS BREAST OR  
**Breast Strips \$2.69** LB.

LOUIS RICH  
**Turkey Bacon \$0.99** 12-OZ. PKG.

LOUIS RICH ORIGINAL OR HOT TURKEY  
**Breakfast Sausage \$0.99** 12-OZ. PKG.

OSCAR MAYER REGULAR  
**Lunchables \$0.99** 4.5-OZ. PKG.

NEW CROP  
**Peaches 59¢** LB.  
GREEN LEAF Lettuce **49¢** EA.  
SWEET JUICY Mangos **2.99** FOR

GARDEN FRESH  
**Zucchini Squash 59¢** LB.

ITALIAN SWEET  
**Red Onions 39¢** LB.

NEW CROP Nectarines **79¢** LB.  
SNOWWHITE Cauliflower **99¢** EA.

CALIFORNIA Cherries **\$1.79** LB.  
CRISP STALK Celery **59¢** EA.

WILSON'S REG. OR POLISH  
**Smoked Sausage \$1.49** LB.  
WILSON'S Meat Bologna **79¢** 12-OZ. PKG.

SHURSAVING FULLY COOKED BONELESS - 5 TO 7-LB. AVG.  
**Whole Ham \$1.69** Half Ham \$1.79

WRIGHT'S STACK PACK  
**Sliced Bacon \$1.39** 1.5 TO 3-LB. PKG.

DUBUQUE Meat Franks **69¢** 12-OZ. PKG.

DUBUQUE Sliced Bacon **\$1.09** 12-OZ. PKG.

MAMA ROSA DELUXE OR PEPPERONI  
**Pizza \$3.49** 2 PACK 40-OZ. PKG.

Ham **\$2.99** 1-LB. PKG.  
Turkey Breast **\$2.69** 1-LB. PKG.

DELI MAKER SLICED CHICKEN  
**Thin Meats \$1.99** 1-LB. PKG.

VELVEETA Process Cheese Spread  
**\$3.69** 2 LB. PACKAGE WITH COUPONS

ORIGINAL LIGHT Parkay Margarine **2.89** 16-OZ. QTRS.

KRAFT Parkay Spread **\$1.69** 3-LB. TUB

KRAFT AMER.-SWISS PIMENTO LIGHT AMERICAN Singles **\$1.99** 12-OZ. PKG.

KRAFT LONGHORN 1/2 MOON CHEESE COLBY JACK/MOZZ. Cheese **\$2.89** 16-OZ. PKG.

KRAFT SHREDDED MILD CHEDDAR COLBY JACK/MOZZ. Cheese **\$1.69** 8-OZ. PKG.

MIRACLE Whip **60¢ OFF** With IN-AD Coupon First 1 At \$1.59 Thereafter \$2.19

SPoonFULL Nutra Sweet **\$1.99** 2-OZ. JAR  
LIPTON - ASSORTED Noodles & Sauce **99¢** 4.2-4.5 OZ. PKG.

MINUTE MAID - CHILLED Orange Juice **\$2.59**

ASSORTED FLAVORS Hershey's Pudding **\$1.99** 5-PACK 4 OZ. UPS.

SAU-SEA COOKED Shrimp Cocktail **\$3.29** 1-PACK 4 OZ. UPS.

BLUE BUNNY ASSORTED FLAVORS Ice Cream **\$1.89** 1/2 GAL. 5Q. CTR.

DEL MONTE Vegetables **2.88** 15 TO 17-OZ. CANS

DEL MONTE PIZZA OR Pasta Style Chunky Tomatoes **79¢** 14.5 OZ. CAN

DEL MONTE ASST. Pudding Cups **99¢** 4-CT. PKG.

Del Monte Ketchup **99¢** 28-OZ. BTL.

DEL MONTE Fruits **89¢** 16 TO 17-OZ. CANS

HERSHEY'S OR REESE'S Miniatures **\$2.69** 14-OZ. PKG.

York Miniatures **\$2.69** 14-OZ. PKG.

Almond Joy Miniatures **\$2.69** 14-OZ. PKG.

ASSORTED Pillsbury Cake Mix **79¢** 18-OZ. BOX

ASSORTED COCKTAIL DRY ROAST SPANISH Planters Peanuts **\$2.19** 17-OZ. BTL. OR CAN

ASSORTED Chun King Chow Mein **\$2.99** 42-OZ. BI-PACK

ASSORTED Harvest Best Punch **99¢** 64-OZ. BTL.

DOLE Pineapple Juice **\$1.49** 48-OZ. CAN

DOLE ASSORTED Pineapple N' Juice **89¢** 79-OZ. CAN

LUZIANNE Family Tea Bags **\$1.39** 24-CT. BOX

ASSO. SOFTENER Ultra Downy **\$3.99** 49-OZ. BTL.

DISH DETERGENT Dawn Liquid **\$2.39** 42-OZ. BTL.

LIQUID - ASSORTED Ultra Tide **\$3.99** 59 OZ. JUG

ASSO. HIM OR HERS Huggies Diapers **\$7.99** CONV. PAK

Peter Pan Peanut Butter **\$1.69** 14 TO 18 OZ. JAR

Orville Redenbacher Microwave Popcorn **\$1.99** ASST. REG. OR LITE 3 PACK

ASST. REG. OR LIGHT & HEALTHY Budget Gourmet Dinners **2.33** 8.5 TO 10-OZ. PKGS. FOR

NEW! "DOUBLE ROLL" ASSORTED Kleenex Bath Tissue **\$1.99** 4 ROLL PKG.

HI-DRI - ASSORTED Paper Towels **79¢** ROLL

ASSORTED Facial Tissue **99¢** 175 CT. BOX

ASSORTED Huggies Pull-Ups **\$9.49** CONV. PAK

ASSORTED Huggies Baby Wipes **\$2.89** 84 CT. PKG.

32-OZ. JAR WITH COUPON **\$1.59**

ORIGINAL OR LIGHT Miracle Whip **60¢ OFF** With IN-AD Coupon First 1 At \$1.59 Thereafter \$2.19

WISHBONE - ASSORTED Salad Dressing **\$2.19** 16 OZ. BTL.

LIPTON Instant Tea **\$2.49** 3-OZ. JAR

ASSORTED Spam Luncheon Meat **\$1.59** 12-OZ. CAN

HORMEL Vienna Sausage **2.99** 5-OZ. CAN FOR

BANQUET-ASSORTED Dinners **99¢** 9 to 10 oz. Box

BANQUET-ASSORTED Fried Chicken **\$2.69** 25 oz. Box

BANQUET-ASSORTED Cream Pies **99¢** 14 oz. Box

VAN DE KAMP - BREADED Fish Fillets or Fish Sticks **\$3.89** 20-21 OZ. BOX

REGULAR OR LITE Coffeemate Creamer **\$2.39** 16-OZ. JAR

FREE 18 OZ. KELLOGG'S CORN FLAKES

MJB Coffee **\$1.89** 12 TO 12-OZ. CAN

BUY 1 GET 1 FREE

BATH BAR Soap **\$1.99** 5 OZ. 3 PACK

Hi-C Drinks **79¢** 3 PACK

PICANTE Sauce **\$1.69** 16 OZ. JAR

Cranberry Juice Drinks **\$2.99** 64 OZ. BTL.

ORIGINAL OR DIET ASST. Shasta Soda Pop **\$1.29** 12-OZ. CANS

ASSORTED Rich N' Ready Punch **\$1.79** 128-OZ. JUG

BI-TE SIZE Field Trial Dog Food **\$3.49** 29-LB. BAG

ORIGINAL OR LEMON Liquid or Solid Jet Dry **\$2.49** 7.68-OZ. BOX OR 3.5 OZ. BTL.

ASSORTED Ragu Spaghetti Sauce **\$1.89** 28 TO 30-OZ. JAR

**Lowe's** **Pay-n-Save**  
515 W. Amer. Blvd. Muleshoe 272-4406  
**MARKETPLACE**  
401 W. American Blvd. Muleshoe, TX 79347 (806) 272-4585  
Prices effective May 30 - June 5, 1993  
WE RESERVE THE RIGHT TO LIMIT QUANTITIES IN TEXAS. *Our Best to You!*