

WEATHER

Sept. 30 83 48
Oct. 1 86 46
Oct. 2 77 44

BAILEY COUNTY JOURNAL

'The Community Of Opportunity-Where Water Makes The Difference'

Foreman Company
P.O. Box 50
Morrow, ILL. 61462-0050

11/9/200

17

© 1990

Vol. 32, No. 40

Published Every Sunday At Muleshoe, Bailey County, Texas 79347

Member
TEXAS PRESS ASSOCIATION

25¢

Sunday, October 3, 1993

Glover Crowned Homecoming Queen

around
muleshoe

The Board of Trustees of the Three Way independent School District will meet at 8 a.m. Tuesday, October 5 in the Administrative Offices of the Three Way School, located at Maple, Texas.

The subjects to be discussed are listed below on the Agenda and made a part of this notice.

AGENDA

1. Minutes of Previous Meetings
2. Open Forum
3. Hearing on Proposed Tax Rate for 1993-94 School Year.

Myra Burris, Executive Director for Caprock Girl Scout Council has resigned to take the position of Executive Director of Muir Trails Girl Scout Council in Modesto, California. She is a native of South Carolina and has been a member of the Lubbock community for six years. Burris is the 1992 recipient of the Extra Mile Award for her leadership service to the Lubbock community.

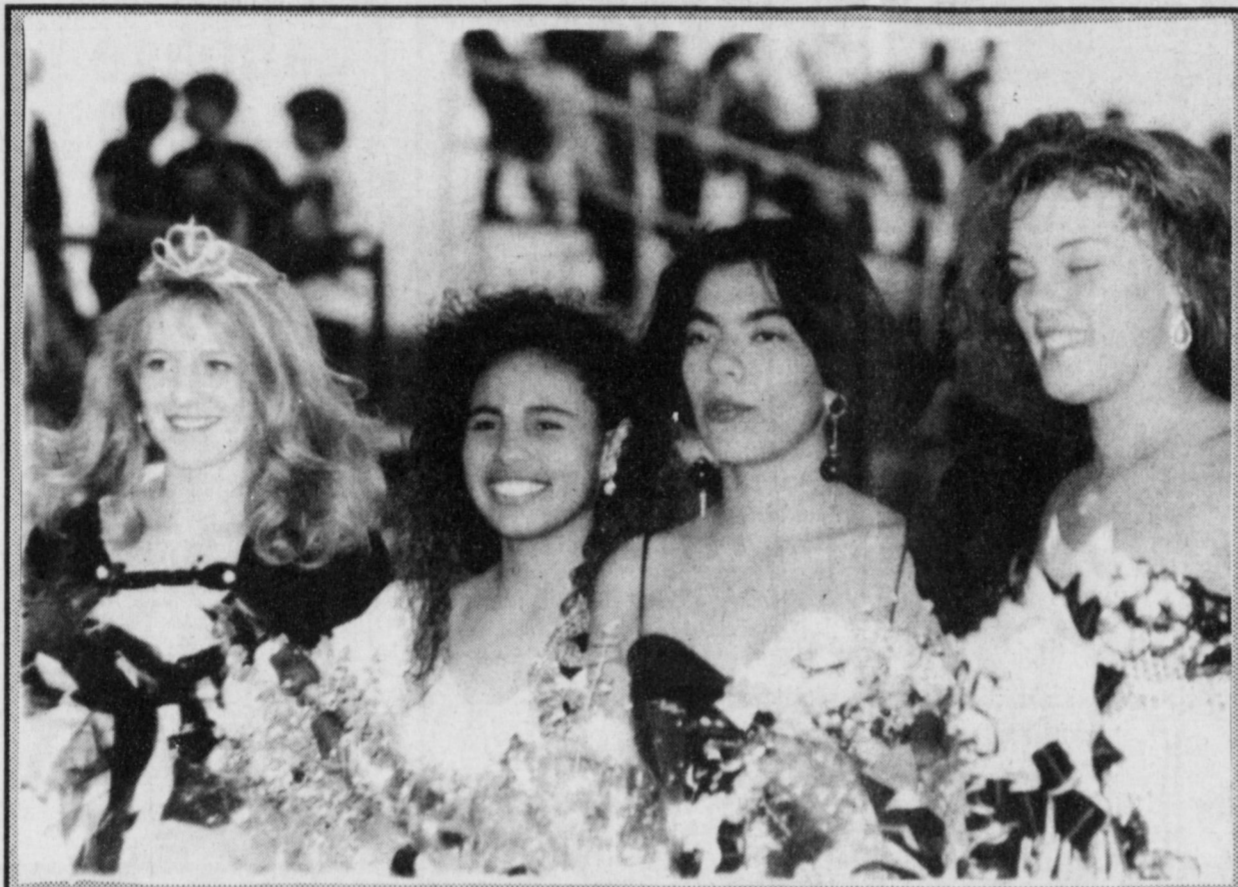
The Progressive Extension Homemakers will be sponsoring a Christmas Arts and crafts Jubilee Cont. Page 6, Col. 6

Spaghetti Supper To Be Served

The Muleshoe Athletic Booster Club will sponsor a Spaghetti Supper Tuesday, Oct. 5 from 6:30 to 8 p.m. in the high school cafeteria.

This supper is in honor of the Junior Varsity football players, coaches, and the Junior Varsity Cross Country team, as well as the cheerleaders.

You are asked to take your favorite salad or dessert. Spaghetti will be provided.



HOMECOMING QUEEN CROWNED—Keetha Glover is the 1993-94 Muleshoe Homecoming Queen. She was crowned in a pre-game ceremony Friday night. Also pictured are candidates Stephanie Perez, Gloria Mendoza, and Misty Davenport. After the pre-game activities the Mules went on to a Homecoming victory over Colorado City, 27-7. **GO MULES !!**

(Journal Photo)

Keetha Glover, daughter of Mr. and Mrs. Gary Glover, was named 1993 Homecoming Queen in pre-game activities Friday night. Miss Glover's court was Misty Davenport, daughter of Mr. and Mrs. Raymond Davenport; Gloria Mendoza, daughter of Mr. and Mrs. Alfonzo Mendoza; and Stephanie Perez, daughter of Mr. and Mrs. Freddy Perez.

**Mules 27
Wolves 7**

The Mules took to the field with a lot of determination to make this the best homecoming Muleshoe High School has had in years, and that they did. Taking an early lead, with two quick touchdowns by Jake Adair, the Mules defeated the Colorado City Wolves 27 to 7.

Receiving the opening kickoff, the Colorado City Wolves put the ball into play on their own 16 yard line. Two plays later they picked up a first down on a 34 yard run, before fumbling the ball. The Mules recovered and put the ball into play on Colorado City's 45 yard line.

The Mules were unable to move the ball and were forced to punt it away.

A tough Mule defense held the Wolves and they were forced to punt the ball back to the Mules. The Mules picked up a first down on a second and 7 to go. Jake Adair then raced 35 yards down field for the first touchdown of the night. Pedro Nunez kicked the extra point and the Mules led 7-0 on the scoreboard, with 5:27 left in the quarter.

Kicking back to the Wolves (on sides kick) Chad McCormick came up with the ball. With 5:13 left in the quarter, Jake Adair raced 46 yards down the field for another touchdown for the Mules. Just 14 seconds after the first touchdown. Once again Nunez kicked the extra point and the Mules led 14-0 on the scoreboard.

The Mules kicked the ball back to the Wolves. The Wolves picked up a first down before punting the ball back to the Mules.

At the end of the first quarter, the Mules led 14-0 on the scoreboard.

The Mules picked up four first downs before fumbling the ball. Colorado City came up with the fumble. Three plays later, the wolves were forced to punt the ball away.

On their next possession of the ball, the Mules fumbled the ball and Colorado City came up with it.

Daniel Garbarino intercepted the ball and returned it for a 65 yard touchdown only to have it called back due to a penalty downfield. The Mules came back for another first down before Garbarino hit pay dirt on a nine yard run. Nunez kicked the extra point and the Mules led 21-0.

The Wolves picked up another first down, on their next possession of the ball, before the end of the first half.

At halftime the score stood Mules 21-Denver city 0.

During the halftime activities, Cont. Page 6, Col. 3

**Lazbuddie-44
Jesus Chapel 34**

MISD Board Levies Tax Increase

Following a public hearing Monday night, the Muleshoe Independent School District levied a ten cent tax increase, bringing the tax rate to \$1.26 per one hundred dollar valuation of property. This is a ten cent increase over last year.

In case you are wondering where your taxes go to, MISD's budget last year provided \$5,017.76 per student for current operations, and \$663.25 for capital outlay based on 1,581 students enrolled in October 1992.

The average base salary for

classroom teachers paid by Muleshoe ISD in October 1992 was \$24,443.00 plus supplements for the career ladder. The average for administrators was \$39,483.00 and \$29,471.00 for other professional support employees (librarians, counselors, nurses, supervisors, etc.).

Four dollars in each five were spent for salaries. Statewide payroll expenses averaged \$3,439 per student, as compared to \$3,795.82 in Muleshoe ISD. Payroll expenses is determined by salary levels and staffing patterns.

Taxpayers provided one teacher for 13.6 students in Muleshoe ISD while the statewide pupil-teacher ratio was 16.1 to one.

In making the presentation of the Support Staff Member of the Month, MISD Superintendent Bill Moore stated, "If the September awardee of the Support Staff of the Month were paid by the hour, the Muleshoe Independent School District could not afford his services. This month, we are happy to recognize an individual who

literally lives on the job. When a bus goes out on a trip, Elmer Smith stays on the job until all students are safely returned to Muleshoe.

"Elmer Smith, Director of Transportation, has been an employee of MISD for 24 years. He oversees the maintenance and operation of a fleet of 27 school buses as they operate 15 routes daily in addition to all field trips and co-curricular and extra curricular activity trips. MISD buses travel over 200,000 miles a year, with the safety of their riders always the first consideration.

"Elmer began working for MISD in 1959 as a grounds-keeper and bus driver. He worked in this capacity until 1963, when he went to work for Bailey County Electric Co-op. He returned to MISD in September 1973 as assistant Cont. Page 6, Col. 3

SWCD Director Election Set Oct. 5

"An election of a district director to serve in Zone 5 of the Blackwater Valley Soil and Water Conservation District will be held at the Maple Co-Op Gin. This election will be held at 8:30 a.m. on October 5," Ernest Ramm, Chairman of the district board, stated.

State Law states that to vote in a SWCD director election, a person must own agricultural land in Bailey County, live in Bailey County, and be 18 years of age.

Qualifications for District Director are as follows:

1. Must own land in the zone represented.
2. Be 18 years of age and actively engaged in farming or ranching.
3. Must live in Bailey County.

Directors serve four year terms of office. Zone 5 North boundary is two miles South of Stegall and running from the New Mexico state line to intersect with HY 214, West boundary is from the New Mexico state line, South boundary is Cochran County line and the East boundary runs parallel to HY 214, a mile West of Enochs and intersects the North boundary at the Muleshoe Wildlife Refuge.

The purpose of Blackwater Valley SWCD, with head-quarters in Muleshoe, is to promote sound soil and water conservation programs on farms and ranches within the district. The District also serves as a voice for farmers and ranchers on conservation matters.

The local board also coordinates the conservation efforts of various local, state and federal agencies as well as other organizations. The district has the authority to enter into working agreements with governmental agencies and private concerns to carry out its purpose. Cont. Page 6, Col. 1

Education Leaders Convene In Dallas

Frank Saldana, a member of the Muleshoe Independent School Board, was among the more than 10,000 school board members, superintendents and school officials to convene at the Dallas Convention Center September 24-27 to discuss and debate current issues and share planning and strategies for meeting the financial, social and educational challenges facing Texas schools.

The 33rd joint annual convention of the Texas Association of School Boards (TASB) and the Texas Association of School Administrators (TASA) covered every facet of public education in 1993 and beyond.

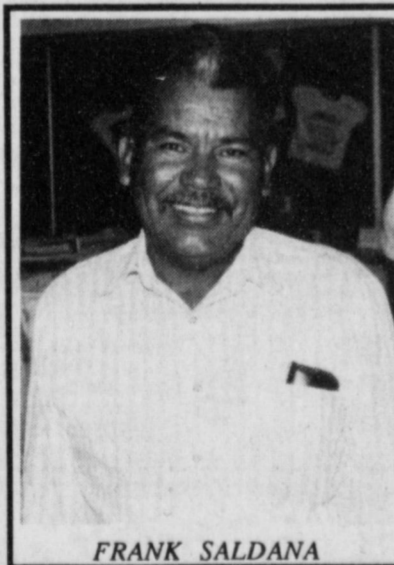
Religion and public schools, total quality education, assessment and accountability, and school finance were among the many topics of discussion.

A diverse trio of speakers, including Robert Fulghum, Tommy Hall, and Roger Staubach, addressed attendees at the convention's general sessions Sunday and Monday.

Fulghum is author of the best-selling book, *All I Really Needed to Know I Learned in Kindergarten*. Hall is a nationally recognized motivational speaker, consultant, and business woman. And Staubach, now a successful Texas businessman, is renowned for his 11 years as a Dallas Cowboys quarterback.

State education officials were also well represented at the convention. Texas Education Commissioner Lionel "Skip" Meno led a session focusing on challenges and direction for Texas schools. After providing highlights on the revised school finance system, current governance roles, and strengthened assessment and accountability measures.

Mena opened the floor to questions and comments from audience members. In a separate session, State Board of Education (SBOE) Chair Carolyn Crawford



FRANK SALDANA

moderated a panel discussion of critical initiatives being implemented by the Board to increase student achievement in Texas.

The SBOE panel also addressed questions posed by the audience. Throughout the four-day convention, school board members, administrators, and other education officials participated in breakout sessions targeted at specific areas of interest. School choice, gangs and violence, year round education, AIDS and sex education, and parental involvement were among the more than 250 mini-workshops presented. TASB is a voluntary nonprofit association established 40 years ago to serve local Texas school districts.

It is composed of 1,055 school districts and county school boards 46 junior colleges, 48 tax appraisal

Cont. Page 6, Col. 1

Local Cancer Unit, Triple Crown Winners

Volunteers in the Bailey unit of the American Cancer Society have won the prestigious Triple Crown Award. This award represents the winning combination of Public Education Lifeguard, Patient Services Quality of Life, and Income Development's Golden Achievement awards.

The Lifeguard award is given to units that surpass last year's program results and exceed current year youth and audience goals. Bailey's education committee headed by Lynda Low reached 3843 adults and 3765 youth with messages about prevention and early detection last year.

Quality of Life is bestowed on units that serve at least 33 percent of their potential patient population with an increase of ten percent over the previous year. Bailey volunteers led by Barbara Murphy and Diane Brown served twenty patients through information, equipment loans, housing, gift items such as wigs and support programs.

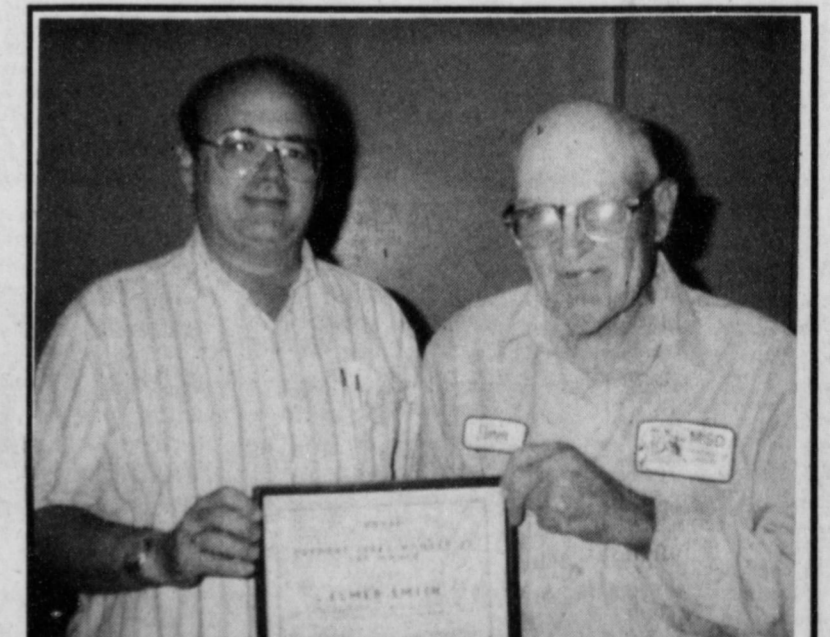
Golden Achievement is given to units that raise 85 cents per capita while achieving an all-time high in total funds raised. Income Development chairperson Myrt Feagley and the entire Bailey board of directors worked to raise \$8,961.00 to fight cancer during the

Cont. Page 6, Col. 1

Cub Scout Pack 620 Begins New Year

Cub Scout Pack 620 began their new year Tuesday night with a Pack Meeting at the Methodist Church. The Webelos II gave the opening ceremonies, Posting the Colors. A skit on the Boy Scouts Trip to Jamboree was presented. The Bob Cats and Webelos II advanced by dens and the new Cubs and their families were introduced. It was announced that den dues are \$1 per scout and more leaders are needed. Betty Griswold, Cub Master, gave the opening ceremony. A Special Good Turn Award was presented to Jeffrey Skipworth, Michael Tosh, and Jim Lutz by their Den Leader Mark Callaway and new assistant Den Leader Shawn Muning. The Tigers all received Pencils. Webelos Awards went to Westin Price, Dan Williams, Jeffrey Shelburne, and Rocky De Hoyas. They all received the Showman and Handyman awards. Chris Seymore received the Traveler award. The "Whisker Award" went to Jaret Tucker, Tanner Winkler, Christopher Jones, Andy Sain, Chase Winkler, and Brent Wedel. Tanner Winkler also received the Fair award. Christopher Jones also received a Gold and Silver Arrows. Newton was named Student Of The Month. Mule Awards went to T.J. Hutto, and Tyson Purdy. The Webelos I Leader is Larry Hancock. Webelos I received flags from the American Legion. "Thank You, Helping Awards" go to the Methodist

Church, for the meeting place; Roger Williams for Copies; Businesses for Support, Irrigation Pump and Power, Kiwanias for Sponsors, Dr. Robert Lepard, Indian Program, Soil Conservation, Books. Dates to remember include: Den Meetings, Oct. Pack Meeting, October 26; Registration Due from Last Year Cubs, \$8 and \$8 for life insurance if you wish to purchase it. You also need to inform the Cub Master of school activities.



SUPPORT STAFF MEMBER OF MONTH—Elmer Smith has been named as the September "Support Staff Member of the Month" by the Muleshoe Independent School District. Edwin Cox, School Board Member presented Smith a plaque during the board meeting Monday night. (Guest Photo)

DOUBLE COUPONS EVERYDAY!

Lowe's
Pay-n-Save
MARKETPLACE

SAVE
7 up & Other Famous Flavors **99¢**
6 pack 12 oz. Cans
See Stores for Flavors Included

SAVE
Coke or Dr. Pepper **\$1.39**

QUALITY MEAT

Small Pack \$1.19
Ground Beef 99¢
lb.

VALUE PACK
Fryer Drums & Thighs **59¢**
lb.

Supreme Ground Beef Patties \$3.79
5 lb. Box

Pork Spare Ribs 69¢
5 lb. & up lb.

Guaranteed Freshness!

Garden Fresh Green Cabbage 4 \$1
lbs. For

Bananas 4 \$1
lbs. For

Ruby Red Grapefruit 3 \$1
For

Sweet Potatoes 2 \$1
lbs. For
from East Texas
New Crop

Medium Yellow Onions 4 \$1
lbs. For

U.S. No. 1 Potatoes 99¢
10 lb. bag

Cure #1 Whole or Half **Mini Hams \$3.49**
lb.

El Monterey **Burritos 2 \$5**
Pkg. For All Varieties

Tres Monedas **Flour Tortillas 99¢**
12 Count

Split Jumbo **Fryer Breast \$1.19**
lb.

Mama Rosa Pizza \$3.99
Reg. or Pepperoni
2 pack

Turkey Drumsticks or Wings 59¢
lb.

Ramirez Corn Tortillas 89¢
32 ct. pkg.

Crystal Farms Shredded Cheese \$4.19
24 oz. Bag
Cheddar, Mozzarella, or Marble

Paty Bacon Wrapped Fillets \$4.79
5 oz. Box of 2
Beef or Turkey

Eckrich Lunch Makers 99¢
3.7 oz. Pkg.
Ham, Turkey, Chicken, or Bologna

Eckrich Smoked Sausage \$1.79
lb.
Reg. Polish, Lite or Cheese

Eckrich All Meat Bologna \$1.49
1 lb.

Eckrich Cooked Ham \$2.29
10 oz.
Reg or Honey

Señora Ruiz Menudo \$2.99
2 lb.

Señora Ruiz Menudo \$8.79
6 lb.
Boil in Bag

Lowe's Bread FREE
Buy One Lowe's 24 oz. White Bread And Get One

Mrs. Baird's 24 oz. Split Top Wheat Bread FREE
Buy One And Get One

Low's Coffee 99¢
11 oz. PAC, 12 oz. Columbian PAC, or 12 oz. Lite PAC

SAVE
Shursaving Bath Tissue White **2 \$99¢**
4 Roll Pkgs. For

SAVE
Shursaving Paper Towels White **3 \$99¢**
2 Ply Rolls For

SAVE
Gingham Girl Cinnamon Rolls **30¢**
8 ct. pkg.

Campbell's Soup \$1.00
10.75 oz. For
Chicken Noodle

Shursaving Saltine Crackers 2 \$99¢
16 oz. For

SAVE
Palmolive Automatic Dish Detergent Ultra **\$1.89**
25 oz.

Shursaving Tomato Sauce 8 \$99¢
8 oz. For

SAVE
Nabisco Oreo DoubleStuf **2 \$5**
20 oz. Oreo- Regular or DoubleStuf, 16 oz. Ritz Crackers- Regular, Low Salt, or Whole Wheat

Shursaving Liquid Bleach 69¢
1 Gallon

SAVE
Palmolive Dish Liquid Original **\$1.99**
42 oz.

HEALTH & BEAUTY

Vibrance Shampoo \$2.79
15 oz.

Vibrance Styling Aids \$1.99
7 oz.

Colgate Toothpaste \$1.99
6-6.4 oz.

Western Family Skincare Lotion \$1.99
16 oz.

Western Family Aspirin 99¢
100 ct.

Shurline Soft White Light Bulbs 69¢
2 pack
80, 75, 100 Watt

DAIRY

SAVE
Texas Sun Orange Juice **2 \$3**
24 oz. For
Reg. or Homestyle

SAVE
Quality Checkd Cottage Cheese **2 \$3**
24 oz. For

SAVE
Quality Checkd Sour Cream **FREE**
Buy One Get One

SAVE
Shursaving Cheese Singles **99¢**
10.8 oz.

SAVE
Quality Checkd Dips **FREE**
Buy One Get One
French Onion Dip

FROZEN FOOD

SAVE
Pilgrim's Pride Breast Fillets **\$1.97**
Nuggets, or Tenders
Ass't.

SAVE
Shurline Ice Cream **\$2.99**
1 Quart Tub
Vanilla, Chocolate, or Strawberry

SAVE
Tony's Pizza **\$1.99**
15.3-17.5 oz.

SAVE
Am't Jemima Waffles **99¢**
10 oz. ea.
Original or Blueberry

SAVE
Libby's Vegetables **6 \$1.97**
Pack Specially Wrapped
6-pack cans
16-17 oz. Ass't.

SAVE
Cuddles Disposable Diapers **\$3.99**
32 ct. Med. and 24 ct. Large- Boy or Girls

SAVE
Quality Check'd Homogenized Milk **97¢**
1 1/2 Gallon

SAVE
Lay's Potato Chips **FREE**
Buy One \$1.49 Size Get One

SAVE
Shursaving Granulated Sugar **99¢**
4 lb.

SAVE
General Mills Cheerios **FREE**
Buy One at \$2.59 Get One with Coupon

SAVE
General Mills Trix **FREE**
Buy One at \$3.39 Get One with Coupon

SAVE
Kix Corn Cereal **FREE**
Buy One at \$3.59 Get One with Coupon

SAVE
Liquid Double Power Surf **\$2.39**
32 oz.

SAVE
Gravy Train **\$4.99**
20 lb. with Coupon
Additional Purchases \$6.99

BUY ONE, GET ONE FREE
Good at Lowe's Pay-N-Save Marketplace Expires 10/6/93

BUY ONE, GET ONE FREE
Good at Lowe's Pay-N-Save Marketplace Expires 10/6/93

BUY ONE, GET ONE FREE
Good at Lowe's Pay-N-Save Marketplace Expires 10/6/93

BUY ONE, GET ONE FREE
Good at Lowe's Pay-N-Save Marketplace Expires 10/6/93

200 OFF ANY 20 lb. BAG
Gravy Train

SAVE
Fruit Drink Tropicana Twister **2 \$3**
46 oz. For

SAVE
Pillsbury Cake Mix **69¢**
18.5 oz.

SAVE
Pillsbury Ready-to-Serve Frosting **1.49**
Asst. 16oz.

SAVE
Schilling Bacon Bits **99¢**
1.25 oz.

SAVE
Schilling Country Gravy Mix **3 \$1**
2.75 oz. For

Lowe's Pay-n-Save
515 W. Amer. Blvd. Muleshoe 272-4406
401 W. American Blvd. Muleshoe, TX 79347 (806) 272-4585
Prices effective September 30 - October 6, 1993
WE RESERVE THE RIGHT TO LIMIT QUANTITIES IN TEXAS.

Bailey County Fair

Home Economics Dept.

Division I-Culinary, Class 2, Muffins, adult Katie Roubinek; Class 4-Bread, loaf, banana, adult, 1st-Katie Roubinek, 2nd-Patsy Lindley; Class 5-Bread, loaf, pumpkin, 1st-Eunice Crume, 2nd-Patsy Lindley; Class 6, Bread, loaf, white yeast, adult 1st-Katie Roubinek, 2nd-Maude Blaylock, youth, 1st-Rachel Embry; Class 7, Rolls, cinnamon yeast, adult 1st-Betty Embry, youth, 1st-Rachel Embry; Class 9-Miscellaneous, adult 1st-Maude Blaylock, youth 2nd-Audra Lee; Category Best of Show, adult, Betty Embry, youth Rachel Embry; Category 2-Cakes, Class 1-Sheet Cakes, iced, adult 1st-Patsy Lindley; Class 2-Fruit Cakes, adult 1st-Lucy Mardis; Class 3-Iced Layer, adult 1st-Ruby Ward, 2nd-Debra McIntire; Class 4-Pound, adult 1st-Patsy Lindley, 2nd-Anna B. Lane, youth 1st-Rachel Embry; Class 5-Decorated, adult 1st-Ruby Ward; Class 6-Miscellaneous, adult 1st-Patsy Lindley, 2nd-Aline Locke; Category Best of Show, Ruby Ward; Category 3-Candies, Class 1-Chocolate Fudge, adult, 1st-Vicki Groneman, 2nd-Patsy Lindley, 3rd-Ruby Ward; Class 2-Divinity, adult 1st-Patsy Lindley, 2nd-Betty Embry; Class 3-Peanut Brittle, adult 1st-Betty Embry; Class 4-Peanut Patties, adult 1st-Patsy Lindley, 2nd-Betty Embry; Class 5-Holiday, adult 1st-Patsy Lindley; Class 6-Miscellaneous, adult 1st-Patsy Lindley, youth 1st-Tori Townsend; Category Best of Show, Patsy Lindley; Category 4-Cookies, Class 1-Dropped, adult 1st-Patsy Lindley, 2nd-Patsy Lindley, 3rd-Sondra Scolley; Class 2-Shaped, adult 1st-Janice Johnson, 2nd-Patsy Lindley; Class 3-Rolled, adult 1st-Patsy Lindley, 2nd-Patsy Lindley, 3rd-Betty Embry; Class 4-Bar-Patsy Lindley, 2nd-Vicki Groneman, youth 1st-Candace Hutto, 2nd-Rachel Embry; Class 5-Holiday, adult 1st-Patsy Lindley, 2nd-Carrol Price, 3rd-Janice Johnson; Class 6-Miscellaneous, adult 1st-Patsy Lindley; Category Best of Show, Patsy Lindley; Category 5-Pies, Class 1-Apple, adult 1st-Naomi Black, youth 1st-Stephanie Kirk; Division Winner, adult Betty Embry, youth Rachel Embry.

Division II-Canned Fruits & Vegetables, Category 1-Fruits, Class 1-Apples, adult 1st-Aline Locke; Class 2-Apricots, adult 2nd-Doris Wedel; Class 3-Peaches, adult 1st-Rose Sain; Category Best of Show, Rose Sain; Category 2-Vegetables, Class 2-Beans, green snap, adult 1st-Anna B. Lane, 2nd-Anna B. Lane, 3rd-Rose Sain, youth 2nd-Christi Adrian; Class 5-Peas, blackeyed, adult 1st-Anna B. Lane, 2nd-Rose Sain, 3rd-Anna B. Lane; Class 8-Tomatoes, adult 1st-Rose Sain; Class 9-Tomato Juice, adult 1st-Rose Sain; Class 11-Carrots, adult 2nd-Rose Sain; Class 12-Miscellaneous, adult 1st-Rose Sain, 2nd-Rose Sain; Category Best of Show-Rose Sain; Category 3-Pickles, Class 2-Bread and Butter, adult 1st-Dolores Harvey; Class 7-Peppers, adult 1st-Rita Hawkins;

Class 8-Okra, adult 1st-Michelle Standard, 2nd Michelle Standard; Class 12-Hot Sauce, adult 1st-Bobbie Nell Dunham, 2nd-Nancy Allison, 3rd-Rhonda Myers; Category Best of Show-Dolores Harvey; Category 4-Preserves, Class 2-Jam, apricot, adult 1st-Katie Roubinek, 2nd-Anna B. Lane, 3rd-Doris Wedel; Class 3-Jam, plum, adult 2nd-Mary Marines; Class 5-grape, adult 1st-Rose Sain, 2nd-Rose Sain, 3rd-Naomi Black; Class 8-Preserves-apricot, adult 1st-Nancy Allison, 2nd-Rose Sain; Class 9-Preserves, peach, adult 1st-Aline Locke, 2nd-Mary Marines; Class 10-Preserves, strawberry, adult 1st-Katie Roubinek; Class 11-Miscellaneous, adult 1st-Katie Roubinek, 2nd-Rose Sain, 3rd-Katie Roubinek; Category Best of Show, Katie Roubinek; Division Winner-Dolores Harvey.

Division III-Textiles, Category 2-Embroidery, Class 5-Tablecloth, adult, 1st-Betty Griswold; Class 6-Dish Towel, adult 1st-Peggy Dodd, 2nd-Betty Motley; Category Best of Show, Betty Griswold; Category 3-Crochet, Class 1-Baby Afghan, adult 1st-Ruth Clements, 2nd-Minnie Underdown, 3rd-Minnie Underdown; Class 2-Afghan, stitch, adult 1st-Evelene Harris; Class 3-Afghan-regular, adult 1st-Kathleen E. Franks, 2nd-Betty Griswold, 3rd-Lucille Harper; Class 4-Afghan, lap size, adult 1st-Maude Blaylock, 2nd-Margretha Taylor; Class 5-Baby Set, adult 1st-Lucy Mardis; Class 8-Doily (over 14"), adult 1st-Peggy Dodd; Class 9-Doily (under 14"), adult 1st-Nadine Hawkins; Class 14-Tablecloth, adult 1st-Betty Griswold; Class 15-Toys, adult 1st-Lavelle Parker, 2nd-Betty Griswold, 3rd-Minnie Underdown; Class 16-Pot Holders, adult 1st-Nadine Hawkins, 2nd-Nadine Hawkins; Class 19-Miscellaneous, adult 1st-Sandy Adair; Category Best of Show-Evelene Harris; Category 4-Needlepoint, Class 2-Picture, wall hanging, adult 1st-Cleta Robertson; Class 5-Longstitch, adult 1st-Eunice Crume; Class 6-Miscellaneous, adult 1st-Mandy Whitaker, 2nd Mandy Whitaker; Category Best of Show-Eunice Crume; Category 5-Quilts, Class 3-Embroidered, adult 1st-Margretha Taylor; Class 4-Appliqued, adult 1st-Peggy Dodd, 2nd-Eunice Crume, 3rd-Aline Locke; Class 5-Pieced, adult 1st-Betty Harlan, 2nd-Eunice Crume, 3rd-Winnie Wurst; Class 6-Crossed Stitch, adult 1st-Betty Griswold; Class 7-Pillows, adult 1st-Eunice Crume; Category Best of Show-Betty Harlan; Category 6-Rugs, Pillow, Wall Hangings, Class 3-Miscellaneous, adult 1st-Betty Griswold, 2nd-Eunice Crume; youth 1st-Gradee Adrian, 2nd-Cayla Mitchell, 3rd-Christi Adrian; Category Best of Show-Gradee Adrian; Category 7-Counted Cross Stitch, Class 1-Original Picture, adult 1st-Michelle Standard; Class 2-Picture (up to 12x12) Adult 1st-Ronnie Bennett, 2nd-Marilyn Gable; Class 3-Picture (over 12x12), adult 1st-Peggy Dodd, 2nd-Ronnie Bennett; Class 4-Pillow, adult 1st-Marilyn Gable, 2nd-Peggy

Dodd; Class 7-Miscellaneous, adult 1st-Carrol Price; Category Best of Show-Peggy Dodd. Category 9-Women's Clothing, Class 1-Jacket, adult 1st-Norma Bruce, 2nd-Leavell Parker; Class 4-Dress, fancy, adult 1st-Charlotte Holt; Class 6-Skirt Suit, adult 1st-Wendy Sain; Class 8-Skirt, youth 1st-Tori Townsend; Class 12-Miscellaneous, adult 1st-Eunice Crume, 2nd-Eunice Crume; Category Best of Show-Charlotte Holt. Category 10-Novelty Fashions, Class 2-Painted T-Shirts, adult 1st-Donna Kirk, 2nd-Janice Johnson; Class 3-Appliqued T-Shirts, adult 1st-Sondra Scolley; Class 4-Painted Sweatshirt, adult 1st-Shelly Sain, 2nd-Janice Johnson; Youth 1st-Mandy Johnson; Class 7-Miscellaneous, adult 1st-Margretha Taylor, 2nd-Irene Dilts, 3rd-Sondra Scolley; Youth 1st-Brianne Locker, 2nd-Lauren Foote, 3rd-Creston Standard; Category Best of Show-adult, Donna Kirk, youth, Brianne Locker. Category 12-Children's Clothing, Class 2-Child's Suit with Pants or Skirt, adult 1st-Leavell Parker; Class 4-Child's Fancy Dress, adult 1st-Hortense Poteet, 2nd-Hortense Poteet; Class 5-Playsuit, adult 1st-Donna Kirk, 2nd-Donna Kirk, youth 1st-Stephanie Kirk; Class 7-Pants, adult 1st-Donna Kirk, youth 1st-Candace Hutto; Class 8-Miscellaneous, adult 1st-Donna Kirk, 2nd-Leavell Parker, youth 1st-Daniel Patterson; Category Best of Show-adult-Hortense Poteet, youth-Stephanie Kirk; Division Winner-adult-Peggy Dodd, youth-Stephanie Kirk.

Division IV-Fine Arts Category 1-Professional, Oils & Acrylics, Class 1-Landscapes, adult 1st-Betty Embry, Class 2-Still Life, adult 1st-Betty Embry; Class 4-Floral, adult 1st-Betty Embry, 2nd-Betty Embry; Category Best of Show-Betty Embry. Category 2-Watercolor, Class 1-Landscape, adult 1st-Betty Embry; Class 2-Still Life, adult 1st-Betty Embry. Category 5-China Painting, Class 1-Dishes, adult 1st-Erald Gross, 2nd-Erald Gross, 3rd-Erald Gross; Class 3-Dresser Set, adult 1st-Erald Gross; Class 4-Hanging Plate, adult 1st-Erald Gross; Class 5-Framed Tile, adult 2nd-Erald Gross; Class 6-Miscellaneous, adult 1st-Erald Gross; 2nd-Erald Gross, 3rd-Erald Gross; Category Best of Show-Erald Gross. Category 6-Photography, colored, Class 1-Portrait, adult 1st-Carrol Price, 2nd-Carrol Price; Class 2-Still Life, adult 1st-Carrol Price; Class 4-Landscapes, adult 1st-Carrol Price, 2nd-Carrol Price; Category Best of Show-Carrol Price. Category 1-Non-Professional, Oils & Acrylics, Class 1 Landscapes, adult 1st-Sharon Burris, 2nd-Lorene Obenhaus, 3rd-Sharon Burris, youth 1st-Keisha Whitt; Class 3-Animals, youth 1st-Russell McGuire, 2nd-Brant Wedel, 3rd-Jami Wedel; Class 4-Floral, adult 1st-Pat Prather, 2nd-Pat Prather; Class 6-Miscellaneous, adult 1st-Lorene Obenhaus, 2nd-Lorene Obenhaus, youth 1st-T.J. Hutto, 2nd-Jami Wedel, 3rd-Candace Hutto; Category Best of Show-adult, Lorene Obenhaus, youth, Russel McGuire; Category 2-Watercolor, Class 2-Still Life, youth, Megan Tipps; Class 3-Animals, youth 1st-Joshua Pyle, 2nd-Joshua Pyle, 3rd-Jeffrey King; Class 4-Floral adult 1st-Debra McIntire, 2nd-Debra McIntire, youth 1st-Keisha Whitt, 2nd-Megan Tipps; Class 5-Miscellaneous, youth 1st-Jeffrey King, 2nd-Joshua Pyle; Category Best of Show, youth-Joshua Pyle. Category 3-Pastels, Class 1-Still Life, youth 1st-Christi Adrian; Class 2-Animals, youth 1st-Robert Gardner, 2nd-Robert Gardner; Class 4-Miscellaneous, youth 1st-Keisha Whitt, 2nd-T.J. Hutto; Category Best of Show-youth, Robert Gardner. Category 4-Charcoal, Class 1-Still Life, youth 1st-Nathan Noble, 2nd-Jami Wedel; Class 2-Animals, youth 1st-Leslie Radford, 2nd-Cory Blain Hunt, 3rd-Bret Clements; Class 3-Portrait, youth 1st-Nathan Noble, 2nd-Nathan Noble; Class 4-Miscellaneous, youth 1st-Brant Wedel, 2nd-Leslie Radford, 3rd-Joshua Pyle; Category Best of Show-youth, Nathan Noble. Category 6-Photography, color, Class 1-Portrait, adult 1st-Sondra Scolley, 2nd-Tracy Pyle, 3rd-Regina Finke, youth 1st-Travis Copley, 2nd-Travis Copley; Class 2-Still Life, adult 1st-Tracy Pyle, 2nd-Robert Marines, 3rd-James P. Wedel, youth 1st-Travis Copley; Class 3-Animals, youth 1st-Brianne Locker, 2nd-Travis Copley, 3rd Kristi Bennett; Class 4-Landscape, adult 1st-Kay Mardis, 2nd Regina Finke, 3rd-Tracy Pyle, youth 1st-Kristi Bennett, 2nd-Leslie Radford, 3rd-Brianne Locker; Class 5-Miscellaneous, adult 1st-Regina Finke, 2nd-Tim Sain, 3rd-Sondra Scolley, youth 1st-Travis Copley, 2nd-Travis Copley;

Category Best of Show, adult-Kay Mardis, youth-Brianne Locker; Category 7-Photography (B&W), Class 4-Landscapes, adult 1st-Robert Marines; Class 5-Miscellaneous, adult 1st-Rhonda Myers. Category 8-Pen & Ink, Class 1-Portrait, youth 1st-Keisha Whitt; Class 3-Animals, adult 1st-Tony Scolley, 2nd-Tony Scolley, youth 1st-Keisha Whitt, 2nd-Robert Gardner, 3rd-Megan Tipps; Class 4-Miscellaneous, adult 1st-Tony Scolley, youth 1st-Jami Wedel; Category Best of Show, adult-Tony Scolley, youth-Keisha Whitt. Division Winner, adult-Debra McIntire, youth-Nathan Noble.

Division V-Crafts & Hobbies, Category 1-Holiday Parade, Class 1-Christmas Tree Ornament, adult 1st-Patricia Angeley, 2nd-Patricia Angeley, youth 1st-Belle Angeley, 2nd-Buck Angeley, 3rd-Belle Angeley; Class 3-Christmas Stocking, adult 1st-Brenda McDearman, 2nd-Sherry Embry; Class 5-Door Decoration, adult 1st-Marilyn Gable; Class 6-Table Decoration, adult 1st-Kathleen E. Franks, 2nd-Nelda Hunt, 3rd-Betty Griswold; Class 8-Picture, youth 1st-Tyrel Gear; Class 9-Miscellaneous, adult 1st-Leavell Parker, 2nd-Nadine Hawkins, youth 1st-Derek Purdy; Category Best of Show-adult-Leavell Parker, youth-Belle Angeley; Category 2-Pictures, Class 3-Decorated Board, youth 1st-Jonathan Bennett, 2nd-Jonathan Bennett; Category 3-Ceramics, Class 1-Animals, adult 1st-Mandy Whitaker, 2nd Mandy Whitaker, youth 1st-Joshua Pyle; Class 2-Statue, adult 1st-Edie Lopez, 2nd-Cleta Robertson, youth 1st-Joshua Pyle; Class 7-Christmas Decorations, adult 1st-Edie Lopez, youth 1st-Tanner Winkler; Class 8-Other Holiday-youth 1st-Bailey Barrier; Class 9-Planter, youth 1st-Cory Hunt, 2nd-Chase Winkler; Class 10-Miscellaneous, adult 1st-Cleta Robertson, youth 1st-Candace Hutto, 2nd-Tanner Winkler, 3rd-Megan Tipps; Category Best of Show-adult-Edie Lopez, youth-Joshua Pyle. Category 4-Dolls, Toys, Class 1-Stuffed Animals, adult 1st-Charlotte Holt, 2nd-Eunice Crume, 3rd-Kay Dale, youth 1st-Stance Dale; Class 3-Dolls, dressed by exhibitor, adult 1st-Lucille Gross; Class 5-Miscellaneous, adult 1st-Peggy Dodd, 2nd-Lucille Gross; Category Best of Show-Charlotte Holt. Category 5-Miscellaneous, Class 2-Jewelry, adult 1st-Bobbie Harrison, youth 1st-T.J. Hutto; Class 3-Leathercraft, youth 1st-Ben

Angeley; Class 4-Sculpture, metal, adult 1st-David Cockerham, 2nd-David Cockerham; Class 5-Sculpture, other, adult 1st-David Cockerham, 2nd-David Cockerham, youth 1st-T.J. Hutto; Class 6-Wood Carving, adult 1st-Bill Moore; Class 10-Wood Working, adult 1st-Marshall Cook, 2nd-David Low, 3rd-Kelvin Johnson, youth 1st-Mendy Johnson, 2nd-Andrew Foote, 3rd-Daniel Johnson; Class 11-Wreaths, adult 1st-Janice Johnson, youth 1st-Daniel Johnson; Class 12-Miscellaneous, adult 1st-Donna Kirk, 2nd-Hortense Poteet, 3rd-Kathleen E. Franks, youth 1st-Stance Dale, 2nd-Buck Angeley, 3rd-Lauren Foote; Category Best of Show, adult-Marshall Cook, youth-Stance Dale. Category 6-Flower Arrangements, Class 3-Silk Flowers, adult 1st-Debbie Hutto, 2nd-Kay Mardis, 3rd-Bobbie Harrison; Class 4-Wreaths, adult 1st-Rita Hawkins; Class 5-Miscellaneous, adult 1st-Winnie Hurst; Category Best of Show, adult-Debbie Hutto; Division Winner, adult-Marshall Cook, youth-Joshua Pyle.

Small Pets Department, Division 1-Small Pet Show, Category 1-Dogs, youth 1st-Trisha Robertson, 2nd-Wendy Allison, 3rd-Stephanie Kirk; Class 2-Best Trained, adult 1st-Roger Clarkson, youth 1st-Audra Clarkson; Class 3-Smallest Pet, youth 1st-Wendy Allison, 2nd-Shelby Robertson; Class 4-Ugliest, youth 1st-Chelsi Hawkins; Category Best of Show, adult-Roger Clarkson, youth, Audra Clarkson; Category 2-Cats, Class

1-Best Costume, youth 1st-Christi Adrian, 2nd-Jennifer Walls, 3rd-Jennifer Barnes; Class 3-Smallest Pet, youth 1st-Jennifer Walls, 2nd-Christi Adrian; Category Best of Show-youth, Christi Adrian; Category 3-Other Pets, Class 1-Best Costume, youth 1st-Daniel Johnson; Class 3-Smallest Pet, youth 1st-Mendy Johnson; Category Best of Show-youth, Daniel Johnson.

Enochs News

by Mrs. J.D. Bayless

Mr. and Mrs. Dale Nichols and son Jerry are home after a 10 day trip to Branson, MO. They visited the Sammy Nichols to Claremore, Ok. Donnie Nichols family in Canyon, TX, Paula Grant and children in Amarillo, and a grandson, Chandler Grant came home with them to spend the week with them.

Mrs. Oleta Burris of Wemmann and Mrs. Wanda Layton drove to Show Low, AZ Wednesday, Sept. 15 for a visit with her brother Cleo and Leta Hall. They returned home Wednesday, Sept. 22.

Mr. and Mrs. Bill Key visited a cousin Mr. and Mrs. L.D. Estep at Belen, NM the past week and also their daughter, Jane Yarbrough and her daughter.

Mrs. Ellen Bayless was in Muleshoe Friday and visited in the home of Mrs. Clara Coffman also Mrs. Maudie Speck.

Bailey County Journal USPS 040-200
 Established March 31, 1963. Published by Muleshoe Publishing Co., Inc. Every Sunday at 304 W. Second. Box 449, Muleshoe, Tx. 79347. Second Class Postage paid at Muleshoe, Tx. POSTMASTER: Send address changes to the Bailey County Journal, P.O. Box 449, Muleshoe, Tx. 79347.

We are qualified members of:
 Panhandle Press Association, National Newspaper Association, West Texas Press Association and Texas Press Association

NNA
 National Newspaper Association

TA MEMBER 1993
 TEXAS PRESS ASSOCIATION

L.B. Hall, Publisher
 Sammie Hall, Vice-President/Controller @1990
 Evelene Harris, News
 Anette Redeman, Society
 Holly Millsp, Advertising
 Gina McBe, Classified
 SUBSCRIPTIONS
 Muleshoe Journal and Bailey County Journal
 By Carrier Yearly - \$15.00
 Bailey and surrounding counties
 By Mail - \$16.75
 Elsewhere - \$18.50
 Advertising Rate Cards on Application

Advertisers should check their ad the first day of insertion. The Journals will not be liable for failure to publish an ad or for a typographical error or errors in publications except to the extent of the cost of the ad for the first day of insertion. Adjustment for errors will be limited to the cost of that portion of the ad where the error occurred.

Muleshoe Area Hospital District would like to thank the following people for their donations during the previous month:

MULESHOE AREA HEALTH CARE CENTER

MULESHOE AREA MEDICAL CENTER

Muleshoe Area Medical Center Memorials

Given in Memory of Evelyn Johnson by Dorothy Green Jo Wood

J.K. & Margret Adams Watson Jr. Hi. Faculty Mr. & Mrs. Robert Hooten Dorothy & Irvin St. Clair Marlene & Bill St. Clair Mr. & Mrs. Edwin Cox & Family Mr. & Mrs. Jim Cox

Given in Memory of Shonda Elledge by Marsha & Randy Lewis & Jacquelyne Carlan

Given in Memory of Eddie Wood to Home Health (Wheel Chair & Walker) by A.V. Wood

Notice of Vote on Tax Rate

The Muleshoe I.S.D. conducted a public hearing on a proposal to increase your property taxes by 193.98 percent on September 27, 1993

The Muleshoe I.S.D. is scheduled to vote on the tax rate at a public meeting to be held on October 11, 1993 at 7:00 p.m. at 514 W. Ave. G, Muleshoe, Texas

Lazbuddie News & Notions

by Marilyn

A note of gratitude goes out to you folks out there who have called me your news, given me a work of encouragement to continue with the news. This is your column, and if it wasn't for you all co-operating so nicely, it would be very boring to read.

Nicki Nichols and sons, Chad and Trey, recently spent a most exciting and interesting week-end visiting Nicki's sister, Patti Hunter and husband, Dickie and son, Durrel in Allen, Texas. They enjoyed a Garth Brook's Concert, a tour of the Fossil Rim Wildlife Center, a drive through area of the Dallas Zoo where they have animals that are extinct. They took an educational tour of the Comanche Peak Nuclear Power Plant. They also attended a soccer game and the Malibu Speedway. Also, Chad and Trey were treated to a tour of the Southwest Airlines cockpit on their flight home.

Phil and Judy Brockman enjoyed having their daughter, Launa and husband Ronnie Hawkins and

children, Meagan and Gregory visiting with them last week. They are from Mesquite, Texas.

Several Lazbuddie students will be participating in the South Plains Fair at Lubbock this weekend. Will try to have complete results next week.

Lazbuddie School Superintendent Phil Warren and wife, Gwen, along with school board members, Steve and Paulette Foster, Tommy and Jana St. Clair and Robert and Ellen Gallman, attended the School Board State Convention in Dallas last weekend.

A surprise 40th Anniversary supper was held at K-Bob's banquet room in Clovis Friday, September 24th, in honor of Floyd and Betty Embry.

Their children treated immediate family members to this special event. Hosting the steak supper were Eldon Embry, Weldon and Sherry Embry and children, Rachel, Brandon and Dawson; Brian and Estelle Eckstein and child, Cindy, Holly, Tammy and Ethan of Bloomfield, New Mexico.

Other immediate family members present were: Mrs. E.E. (Florence) Engelking (Betty's mother) of Lazbuddie. Betty's brothers, Jerry and Louise Engelking and Richard and Marilyn Engelking of Lazbuddie.

Floyd's family that were present included: Joe and Claudine Embry, Calvin and Loma Embry, (They are Floyd's brothers). His sister, Lola Mae Shanks was present also and helped to liven up the party by telling funny stories of events that happened during the wedding ceremony. A good time was enjoyed by everyone present.

Parenting Pointers

...from your friends at DeShazo Elementary.

Establish routines for your child. Children thrive on orderliness. When a child is used to a routine at home, she can adapt to classroom rules more easily.

From 101 Ways Parents Can Help Students Achieve.

Rebekah News

by Ina Wilemon

This evening Sept. 28, 1993, everyone brought a dish and all enjoyed a very good meal.

Lodge was opened by our N.G. Mary Ann Ramirez. June Green read the last weeks minutes and roll call of all members.

Several were reported ill. Betty Vansandt called Ina on her way home from Springdale, Arkansas reporting her daddy had both knees operated on and he is doing fairly well. He may get to go home Friday. Ruby Garner reported on Floyd. He was doing fairly well. Get well soon, we missed you.

The skating Friday night was well attended. Our next date is Oct. 29. This may be a real fun night.

We will have our Garage Sale at 603 S. Main St. Friday, Oct. 1 and Saturday Oct. 2. These donation sales go toward our building fund. We have a lot of new things. Open 9 a.m. Come see.

We have three new members in our Oddfellow and Rebekah Home in Ennis, TX. They are Richard Haines, Lucille Reinle, and Jerry Dolezal.

N.G. Mary Ann drew two names for the love gift. Dorothy Browning and Ina Wilemon. Thank you. These gifts are so special.

N.G. Mary Ann turned the lodge over to the initiation team. Our new member is Maggie Ruiz Martinez. Welcome Maggie.

There were eighteen present.

Our October birthdays are Norene Pearson, Ona Berry, Della Puckett, Frances Burrows, Betty Vansandt, and Jessie Robinson.

Emeritus Faculty Awards

The Eastern New Mexico University Friends of Eastern Foundation will present the 1993 Distinguished Emeritus Faculty Awards to Portales residents Shirley Gail Ferguson and Vern E. Witten on October 9. The ceremony will be at the Friends of Eastern Breakfast held during the October 8-9 Eastern New Mexico University homecoming.

Mrs. Ferguson retired from ENMU in 1992 as an assistant professor emeritus in communicative disorders. She was an assistant professor and coordinator of the ENMU speech and language clinic from 1965 until her retirement.

Witten retired from ENMU in 1991 as an associate professor emeritus in mathematics. He was an assistant professor in 1964-68 and associate professor 1968 until his retirement. He continues on a part-time basis as coordinator and director of the mathematics program for the Upward Bound Program at ENMU.

Microwave

Tips

Microwaving fresh peas is easy. High Power, 4-7 minutes.

Place 2 cups in 1 quart casserole. Add 2 tablespoons butter or 1/4 cup water to young peas, to mature peas only water.

Microwave until tender, stirring after half cooking time. Let stand, covered, 3 minutes.

Journal Society Notice

A processing charge of \$4.00 is made when a photo accompanies any wedding, engagement or anniversary with the exception of Anniversaries of 50 years or more.

\$5.00 will be charged for any shower picture taken by the Journal staff and \$4.00 charged for any shower picture accompanying a story. Pictures may be picked up after the article appears in the paper.

Wedding, engagement, and anniversary stories must be in the Journal office by Monday noon for the Thursday paper and by Thursday noon for the Sunday paper.

After that time, stories will be run on a space available basis. Any wedding more than two weeks old, when received, will be edited and only the basic information will be included.

Shower pictures will not be taken without a 24 hour notice and copy must be in the office by 5:00 p.m. Monday for the Thursday paper and 5:00 p.m. Thursday, for the Sunday paper.

A charge of \$4.00 will be assessed when a picture accompanies a baby announcement, and \$5.00 when taken by the Journal staff.

Or Vice Versa

A hospital is a place where people who are run down wind up. -U.S. Coast Guard Magazine.



PARTY TIME! Members of the Muleshoe Healthcare Center staff were honored with a barbecue at noon on Wednesday, September 27, 1993 in the patio off of the yellow dining room. Hamburgers, along with all the trimmings, were enjoyed by all!



CELEBRATES 90TH BIRTHDAY-Addie Moyer, of Muleshoe, TX was honored on her 90th birthday by members of the Confirmation Class of the First United Methodist Church, accompanied by Dr. and Mrs. Bell. The kids brought Addie cupcakes and sang "Happy Birthday" to her. Those attending were Judd Glover, Greyson Rennels, B.J. Copeland, Christopher Seymore, Toni Bray, Bobbi Benham, Beau Henry, Rhett Green, Randy Bohler, Clint Black, and not pictured, Jeff King.



Cookbook Committee Members Shown Here Jo Ellen Cowart, Wilma Smith & Nell Blecker

The Cookbooks Are Here!

The First United Methodist Women's Cookbook Has Arrived! They Would Make Great Gifts For Showers, Christmas or For Any Occasion.

Cookbooks Are **\$8.00**

Contact Members of Cookbook Committee or Any Member of U.M.C.

TATER BAKE

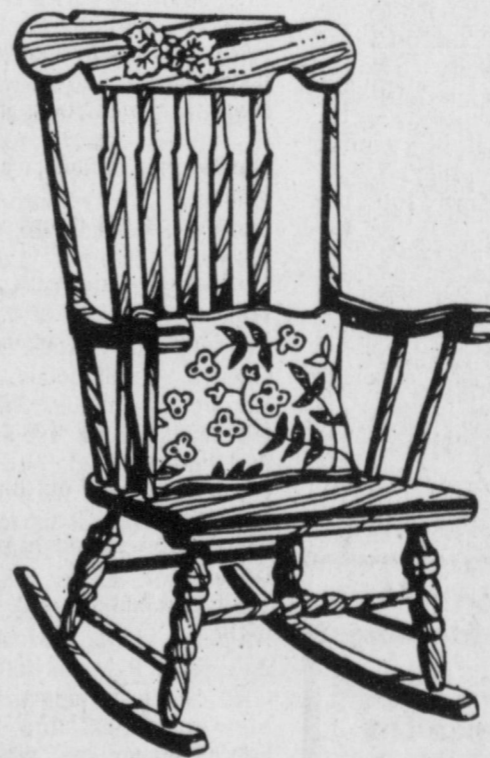
Sponsored by the 1956 Study Club of Floydada
Friday, October 8, 1993
Floydada Junior High Cafeteria
5:00-7:00 p.m., before the game
\$4.00 adults, \$2.00 children
Includes: baked potatoes, choice of toppings: ham, cheese, chili, broccoli and cheese, bacon bits, and sour cream.
We will also have salads, breadsticks, and homemade pies.
Proceeds go toward the two \$500.00 scholarships given, sponsored by the Study Club.

Happy Birthday Tammy

We Love You
The Girls At
Connie's Place



We're Off Our Rocker!



You might think we're crazy, but we're offering **25% TO 50% SAVINGS** STOREWIDE
Come in today & See Our Selection

- La-Z-Boy Reclina-Rockers..... **\$269⁹⁵**
- Over 100 To Select From -
- Tell City Oak & Maple Rockers..... **\$229⁰⁰ UP**
- Tell City Solid Wood Dining Room & Bedroom..... **1/3 OFF**
- Hunter's Run Shaker Pine, Gathering House Cherry Solid Kincaid Bedroom Wood..... **1/3 OFF**
- One Of A Kind Occasional Tables..... **1/2 PRICE**
- (2 Only) Sleepers Reg. \$795..... Now **\$499⁹⁵**
- (Swivel Chairs) Dinettes Reg. \$799.95..... NOW **\$599⁹⁵**
- Charles Custom, La-Z-Boy, Mayo Sofas..... NOW **\$399⁹⁵ UP**

Calton Furniture

507 E. 2nd

Portales

359-1442



Jacob (Jake) Riley Young

Rebecca and Robby Young of Muleshoe are proud to announce the birth of their bouncing baby boy, Jacob (Jake) Riley. He was born at 4:24 p.m. on September 19, 1993 at U.M.C. Hospital in Lubbock. He weighed 8 pounds and 9 ounces.

Jake has two sisters, Jennifer and Brittany, and one brother, J.R.

Grandparents are Billie and Dewane Beckwith of Clovis, NM, Vickie LaCrone of Oklahoma and John Young of Muleshoe.



Jacob (Jake) Riley Young

CCC Activities Focus On Disability Awareness

Disabilities come in many forms and are not always apparent. Someone with a learning disability can be as handicapped as a person confined to a wheelchair or one who has a visual impairment.

"No matter what the disability is, there is a need to increase awareness of what disabled people have to face each day," says Rosalie Richards, coordinator of the special needs program-EVOLVE-for students at Clovis Community College. (EVOLVE stands for Expanding Visions and Opportunities for Learning in Vocational Education.)

Information is the reason for hosting "Disability Awareness Days" at CCC throughout the month of October. Richards has arranged activities and displays to educate people and increase their sensitivity to the needs of individuals with disabilities.

"The little things that most people take for granted can be very frustrating to people with disabilities," she said. Simple tasks such as getting a drink from a water fountain, using a pay telephone, closing or opening heavy doors, or maneuvering through crowded aisles can present obstacles to a person in a wheelchair.

Individuals with visual impairments have difficulties using elevators or finding rooms in buildings which do not have Braille identification. People with dyslexia have difficulties reading printed textbooks, because the letters and words are visually reversed.

The awareness month will kick off Tuesday, October 5, with the Clovis Noonday Lions Club holding their meeting at CCC. Richards will show and demonstrate some of the adaptive equipment for the visually impaired. Some area Lions Clubs also will participate in the Agency Information Day, Thursday, Oct. 21, with a booth and information on their Eye Bank and Eyeglass program.

Six movies addressing various types of disabilities will be shown on Wednesday and Thursday, Oct. 6-7, 20-21, and 27-28, at three different times. The free movies will be rotated and shown at 9:30 a.m., 1:30 p.m., and 5:30 p.m. in the Commons. Movie titles include "Rainman", "Awakenings", "Children of a Lesser God", "Mask", "My Left Foot", and "Steel Magnolias".

A community Blood Drive will be held from noon to 7 p.m., Wed., Oct. 13 in the Commons. Anyone is welcome to donate blood on a walk in basis, or appointments may be made by calling 769-4012.

New this year will be a seminar on HIV/AIDS presented by the Education for Zero Infection committee. There will be two presentations on Wed., Oct. 20, one from 1:30-4:30 p.m. and again from 7-9 p.m. in the Town Hall.

The EZI is a statewide committee, established in January 1992, with a goal to have 100 percent of the New Mexico school districts meet minimum requirements concerning HIV/AIDS education. Information distributed

by the committee notes the importance of education youngsters about the long-range implications of the diseases including the ten year incubation period for AIDS. Hopefully, with HIV/AIDS education, the number of AIDS cases and HIV-infected individuals will decrease over the next few years.

Thursday, October 21st is Agency Day from 2 p.m.-4:30 p.m. in the Commons. Area agencies and service organizations will have booths and displays to provide information on disabilities, support groups, and ways individuals can relate with more sensitivity to persons with disabilities.

Visual and wheelchair obstacle courses will be set up in the Commons Wednesday and Thursday, October 27-28. Wednesday hours are 8:30 a.m. to 7 p.m., and Thursday the courses will

be open 8:30 a.m. to 4:30 p.m. Everyone is invited to participate. By exercising the obstacle courses, individuals can gain a better understanding of the problems faced by people who have visual or physical impairments.

The last event will be held from 1-3 p.m., Thursday, Oct. 28. Dr. Janna Siegel will give a workshop on "Learning Styles and Motivation." The public is invited to attend the workshop, but it will be of particular interest to teachers and students. Siegel is an assistant professor of special education at Eastern New Mexico University.

There are numerous disabilities, Rosalie said, and the EVOLVE program at CCC focuses on the specific needs of students. For additional information on the EVOLVE program or the activities for Disability Awareness Days, contact Richards at 769-4099 or in room 148 at CCC.

Surprise Baby Shower Held In Honor Of Pam Flores

The home of Danna Perez was the scene for a surprise baby shower held on September 25, 1993 at 7:00 p.m. in honor of Pam Flores.

Cookies, cake, and pineapple sherbet were served from a table covered in a pink lace cloth, adorned with a pink flower arrangement. The centerpiece was a baby bassinet filled with baby powder, lotion, wipes, towelette, balloons, and a pacifier with a balloon arrangement that said "It's a Girl".

Special guests were Amelia Costilla, grandmother and Anita Flores, mother.

The hostess gifts were a baby carrier, a carseat, bumper set and a comforter.

Hostesses for the occasion were Danna Perez, Dora Triana, Mary Martinez, Sandra Vinson, Leonar Daniel, Alice Garza, Yolanda Vasquez, Raquel Bustillos, Elena Mendoza, and Anita Alacon.

Now He Remembers

An enthusiastic golfer came home to dinner. During the meal, his wife asked: "Willie tells me that he caddied for you this afternoon."

"Just think of that," said Willie's father. "I knew I'd seen that boy before."



Pam Flores

Candy Bar Cookie Pizza

1 pkg. (20 oz.) refrigerated sugar cookie dough
2 c. miniature marshmallows
1 Milky Way bar (2.15 oz.)

Walnuts
1 Snickers bar (2.23 oz.)
1 c. M&M's Plain choc. candies

Preheat oven to 325 degrees F. Cut candy bars in half lengthwise. Cut each half into 12 slices. Set aside. Grease 14 inch round pizza pan. Slice cookie dough into 1/4 inch slices. With floured hands, press sugar cookie dough into bottom of pan. Bake 12 to 15 minutes until golden browned in center. Sprinkle evenly with marshmallows and return to the oven 3 to 4 minutes until marshmallows are puffed, but not brown. Remove from oven and sprinkle with candy bar slices, M&M's and walnuts. Press into marshmallow; cool completely. Cut into triangles to serve.

Children's Birthday Parties

Believe it or not there are 11,000 babies born in the United States every day! That's a lot of birthday celebrations each year. Parents anxious to throw a perfect party can relax because with a little planning and creativity it's easy to stage a birthday even that will be a cherished memory for the entire family.

Share In The Fun:
Invite the birthday boy or girl to participate in the planning process by helping to write invitations, organize games, blow up balloons, and prepare refreshments.

Create An Environment:

Choose a theme for the party that can be carried out in the decorations, food and games.

Serve Up Traditional Favorites:

Familiar fare such as ice cream, cake, cookies, hot dogs, pizza and peanut butter are usually met with enthusiasm. Serving food in unique shapes, sizes and colors makes it more fun. Surprise them with pizza for dessert. Glowing with candles, the Candy Bar Cookie Pizza is a novel twist on a traditional birthday cake.

Lazbuddie F.F.A. Members Bring Home Honors

Lazbuddie F.F.A. members recently attended the Tri-State Fair in Amarillo on September 25. There were four members participating in competition. Results are Clay Hurst, receiving 2nd with his exotic steers; Jeffrey Seaton, receiving 1st on his British Breed, two 4ths and one 8th with exotic steers; Seth Black, receiving 4th and 6th place with exotic steers; and Savannah Black, receiving 3rd with British breed.

No Compliment

A fat lady stepped on the scales, not knowing they were out of order. The indicator stopped at 75 pounds.

"Holy smoke," exclaimed a drunk who watched her. "She's hollow!"

"The Unseen Player"

The illustration below was reprinted in *Leadership* journal (from the *London Observer*) some time ago. It's entitled, "The Unseen Player":



Focus On Faith
Curtis Shelburne

"Imagine a family of mice who lived all their lives in a large piano. To them in their piano world came the music of the instrument, filling all the dark spaces with sound and harmony. They drew comfort and wonder from the thought that there was Someone who made the music--though invisible to them--above, yet close to them. They loved to think of the Great Player who they could not see.

"Then one day a daring mouse climbed up part of the piano and returned very thoughtful. He had found out how the music was made. Wires were the secret, tightly stretched wires of graduated lengths which trembled and vibrated. They must revise all their old beliefs: none but the most conservative could any longer believe in The Unseen Player.

"Later, another explorer carried the explanation further. Hammers were now the secret, numbers of hammers dancing and leaping on the wires. This was a more

complicated theory, but it all went to show that they lived in a purely mechanical and mathematical world. The Unseen Player came to be thought of as a myth.

"But the Pianist continued to play."

Reduce the world to its most mechanical level, and you end up with a mistaken and poverty-stricken view of reality.

Reduce worship, for example, to just its mechanics and you will see only men and women with closed eyes talking to themselves, eating little pieces of bread and drinking swigs of grape juice, listening to a speaker delivering a speech. If you conclude that worship is just the sum of these and other purely mechanical acts, you would be technically correct--as far as you go. Click of the "acts of worship" in mechanical way. Get your card punched, and go home. Not much music in that view. Precious little beauty.

But add one component. Add faith. And then with new eyes you will see men and women in hallowed communication with the God of the universe, participating in a beautiful way in the death and new life of their Lord, receiving Heaven's message as a messenger shares words of life from the revealed will of the Author of life and joy.

With faith we're able to hear the music with real thanksgiving as the Pianist continues to play.

Curtis Shelburne is the minister of the 16th and Ave. D. Church of Christ in Muleshoe.

Muleshoe High School English Students Write

Muleshoe High School students have been writing creatively. The following are examples of Freshman, Sophomore, Junior and Senior writing.

Friendship

April Sawyer
English III
We met and soon we became good friends.

We shared all things, some odds and ends.
We laughed and cried; we dreamed and schemed.
It all was perfect, or so it seemed.

We dreamed of fame; we played the game.
We thought all things would stay the same.
We planned our dates; we stayed up late.
The days to come we thought first rate.

One day our joy was changed to grieving.
My friend found out that she was leaving.
The future we thought so clear, so bright,
We found had dimmed in just one night.

Dusty

Lance Latham
English 3

"Twas on a lovely Sunday morn
Deep in my heart a pain was born.
I heard a church the saddest word
That a terrible accident had occurred.
I couldn't believe he had gone away,
But I knew I would see him some day.

He was such a wonderful frield,
When he was around he made me grin.
He was always someone to look up to.
Especially when you needed someone to talk to.

Creasing hats, and roping calves,
his trade,
And his love for life will never fade.
As hard as it is to believe he's gone
His style will still be carried on.
His friendship will ne'er be replaced,
But he is now in a better place.
Although he bade this world a "bueno-bye"

For Your
Mary Kay Cosmetics
Josie Flowers
272-3865
8 a.m. - 12 noon
& After 6 p.m.

We will always remember that wonderful smile.
We will miss you.

Lost Love

Rebecca Warren
English 3
My first true love, that I did lose,
He broke my heart, not just a bruise.
'Twas at a camp he messed around
And soon it was all over town.

He is full of hypocrisy,
And I was full of jealousy.
The act she did was, oh, so low;
She is one I wish not to know.

I think he's happy, as of now,
But she is ugly and a cow.
Our future together he will miss.
And all because of their first kiss.

I am happy, my heart did mend;
As of now I have a boyfriend.
He is much better than the last.
I look towards the future not the past.

My Contact Lens

Fara Black
English 3
There on my finger it was not,

I thought, "My gosh, it cost alot.
All of my feelings; what a pain,
And there it went right down the drain.

I cried and cried, 'twas all night long,
While I sat singing a weary song.
My mom will be so very mad,
I don't know what to tell my dad.
Now back to glasses I must go,
Why it is lost I can not know.

My glasses always make me sad,
'Cause when they're on, I look like dad.
All because of my carefulness,
I'm tangled up in this big mess.
I can't believe what I have done,
I hope I'll get another one.

1943-1993
IN TEXICO
314 WHEELER
482-3363 or
800-748-2459

Rip's

50 Years

CELEBRATING

\$50 OFF

On Every Pair Of Full Quill Ostrich, Genuine Lizard

And One Group Of Rios Calfskins

Plus In-Store Red Tag Sale
On Men's & Ladies Boots

Register For Our Anniversary Drawing:

\$100.00 Gift Certificate

WE ACCEPT:

Open 9:00 a.m. to 6:30 p.m. CDT

LAYAWAYS WELCOME

Changes In Telecommunications

By Hubert Kidd

During the past few years, we all have seen many changes in telecommunications. Technology has spawned a host of new services that most people now take for granted. Cellular phones, fax machines, voice mail, data transmission, and paging have changed the way people do business and interact with one another.

Change has also affected long-distance service. Not too long ago, you had to go through AT&T when you placed a long-distance call. Competition changed all that. Now you can choose among many long distance carriers. As a result, long-distance rates have fallen, volume has increased, and companies such as MCI and Sprint have become significant players in America's economy.

It's only natural that this trend would eventually extend to local service. Competition will not arrive at our doorstep tomorrow, but it is coming. Just as long-distance competition began in the cities, many urban businesses today have a choice of providers for different services.

Many regulators believe local competition could be fostered by requiring existing providers (local telcos) to offer individual services such as dial tone and various forms of signaling and transmission. The industry calls such "unbundling" of services Open Network Architecture (ONA). Instead of having to buy the entire package of services, potential competitors would purchase these services individually to supplement their own service

SWCD...

Cont. From Page 1

All conservation programs managed by the district are of voluntary nature to the landowner or operator.

Cancer...

Cont. From Page 1

1992-93 fiscal year which ended August 31.

The Triple Crown award will be presented in Austin at the Texas Division Annual Meeting at the end of September.

Last year, only eleven out of approximately 300 Texas Units received this high honor.

Education...

Cont. From Page 1

boards, 47 cooperatives, and the 20 Education Service Centers. School board members are the largest group of publicly elected officials. They oversee a combined annual budget of \$15 million and employ more than 400,000 people.

TASA is the professional organization of school executives. Its mission is to promote and provide effective leadership that enables all students to achieve excellence.

TASA endeavors to accomplish this mission through its wide array of services, programs, and professional development opportunities. The Association's membership exceeds 1,800 and includes school leaders representing more than 95 percent of Texas schools, college and university members, students in educational administration, and associate members.

Muleshoe City Police Report

The Muleshoe City Police were kept busy over the past two weeks. Two persons were arrested for Public Intoxication, four for the issuance of Bad Checks, four for Driving While Intoxicated, one for No Drivers License, and one for Failure To Appear.

Also one for No Drivers License and No Liability Insurance, two on Traffic Warrants, one for Public Intoxication/Failed To ID/Assault, one for No Drivers License/Expired MCI/Expired License Plate/Def. Tail Lamp, one for Local Traffic Warrants, and one for DWI.

The City Police also investigated the following incidents: two Criminal Mischief Cases; one Criminal Trespassing, one Broken Vehicle Window, one Stolen Rifle from pick-up, one Dented Car, one Doors Egged, Bike Stolen, two Burglary of Vehicle, Truancy and Runaways.

And Stolen Monitor, Video's Not Returned, Forged Check, Attempted Break-in, Hit and Run, two Theft cases, two Stolen Bikes, Loud Music, one Boys Putting Beer Bottles on Roadway, Break-In, Harassment, three Burglary, Vandalism, Forgery and Broken Window/Stolen Rifle.

offerings. ONA could make it easier for new local carriers to enter the market.

Regulators have also considered fostering competition through collocation, which could allow new local carriers to place their equipment alongside the existing plant of the established telco and use its central office interconnection. In a sense, collocation represents an extension of ONA since it would allow competitors to take advantage of the local telco's economy of scale.

This may sound rather strange to you. After all, the government does not tell GM to sell engines to Ford so it can help Ford build its cars. However, the telephone industry, similar to other utilities, differs from most other industries. The telco with the most plant has a distinct advantage over any new players in the marketplace. Regulators would like to even the playing field, so to speak.

Before local competition comes to rural America, however, steps must be taken to protect universal service which depends on the vitality of "the carrier of the last resort". A generation or more ago, many small, independent telcos and cooperatives were formed to provide phone service to their rural communities, places where the large telephone companies chose not to serve because of the cost. Telcos such as Five Area Telephone Cooperative, Inc. take great pride in bringing service -- at a reasonable cost -- to even the most remote customers. Competition, however, could threaten many sources of revenue, which help make possible the delivery of service by the carrier of the last resort.

With universal service protected, local competition could very well present small telcos with the opportunity to expand services to neighboring areas, perhaps overlooked by larger telephone companies.

Customer satisfaction, we believe, is the key to the challenge of local competition. Telcos that invest in their infrastructure and dedicate themselves to service will thrive; those that fall short in these areas risk losing their market. Rest assured that Five Area Telephone Cooperative, Inc. is taking all the necessary steps today to ensure its future vitality. The communities and areas we serve can only benefit from these efforts.

Three Way News

by Mrs. H.W. Garvin

Three Way football boys played Midland Christian there Friday losing the game.

Several from the Three Way school board of trustees and their wives attended a convention in Dallas the past weekend.

George Tyson was in Portales Friday on business.

Mr. and Mrs. Uvaldo Costillo spent the weekend in El Paso.

Anna Gillentine from Lubbock spent the later part of the week with her mother, Mrs. H.W. Garvin.

We wish to express our sympathy to the Kindles on the death of Mrs. Robert Kindle's sister in Carlsbad, NM. She was buried Monday.

Brandon Austin spent the week with his grandparents and aunt, the Bill Dolle family.

The community received rain Thursday night amounts ranging from 1/2 inch and up.

Mrs. Jack Lane spent Saturday in Muleshoe visiting her mother, Mrs. Nettie Quesenberry and a brother visiting Mrs. Quesenberry.

Nature covers all her words with a varnish or beauty.

-Schopenhauer.

Bailey County Farm Bureau Holds Annual Convention

At the 1993 Bailey County Farm Bureau Annual Convention, 105 members and guests were in attendance. Preceding the business meeting, a barbecue dinner with all the trimmings was served.

Special guest was Leland White, District Director.

Ronald Scott gave the invocation and Jeffrey Skipworth led the pledge of allegiance.

Don Puckett gave the welcome. Gerald Shanks read the minutes of last year's annual meeting. Norma Bruce, from Sudduth Field & Co., gave the financial report.

David Tipps gave the Agency Manager's Report.

Dale Vise was recognized as the new agent. Bobbie Harrison was

MISD...

Cont. From Page 1

director of transportation under director Homer Long. Elmer assumed responsibility as the director of transportation in 1977, and has served in that position since.

"About his 24 year tenure with MISD, Elmer says 'I've enjoyed it. There's been ups and downs, but the people have all worked together pretty well. It takes all of us to keep things going. I've seen a lot of them have gone off and accomplished quite a bit. Some of them have returned home and done real good too.'

"Elmer graduated from Sickles, Oklahoma High School in 1944, where he drove a school bus his senior year. Following graduation, Elmer moved to the Muleshoe area in 1945, with his father, mother, and two sisters. They started farming in the YL area northwest of town, where Elmer still has a farm.

"We are indeed proud to recognize Elmer Smith for his steadfast loyalty and dedication to his job. We have said this about others, but it can truly be said that Elmer 'keeps the wheels rolling' for MISD."

In other school board action, the minutes of the previous meeting were approved as read.

Reports were heard from the board president, Cindy Purdy; Superintendent Bill Moore; Assistant Superintendent of Instruction Adrian Meador; Assistant Superintendent Buck Johnson; and Business Manager, Jo Mayhugh.

Mules...

Cont. From Page 1

the Mighty "M" Marching Band received a standing ovation for their performance.

The Mules received the opening kick off after halftime and put the ball into play on their own 20 yard line. They picked up a first down before being forced to punt the ball away.

On their second play, the Wolves fumbled the ball and the Mules recovered. After two plays the Mules fumbled the ball and Colorado City recovered.

The ball see-sawed back and forth a few more times before Garbarino intercepted a Wolves pass. Not to be out done the Wolves intercepted a Mule pass.

After two first downs for the Colorado Wolves, the Mules intercepted the ball again.

The Mules picked up another first down before fumbling the ball on their own 34 yard line. The Wolves came up with the ball. With 7:06 left in the game, Colorado City made it into the endzone. The point after kick was good and the Mules led 21-7 on the scoreboard.

Once again the ball changed hands a few more times with both teams picking up some first downs. With 1:50 left in the game, the Mules intercepted the ball on Colorado City's 37 yard line. Garbarino raced 39 yards into the endzone. The point after kick was no good and the score stood Mules 27-Colorado City 7.

The ball changed hands a couple more times before time ran out on the clock. The final score for the night was Mules 27-Wolves 7.

recognized for 20 years as a secretary at Farm Bureau. Cliff Buckner gave the TASCO Report.

Mason Conklin attended the 1993 Texas Farm Bureau Students Citizenship Seminar at San Angelo State. Conklin expressed his appreciation for the privilege to attend the seminar, and then he gave his speech on Free Enterprise.

The 1993-94 Nominating Committee is Norris Conklin, Ernest Ramm, R.L. Scott, and Jeff Skipworth.

Allen Smyer gave the report of Policy Development. Leland White reported on Farm Bureau activities.

Door prizes were given and included: Membership-Rose Buckner, Jan Billingsley, Harrol Redwine, Judy Puckett, and Wanda Shafer.

Watermelons, Kline Buhrman, Derrell Nowell, Sharon Dale, Morris McKillip, Gayle Seagroves Richerson, and Ricky Richerson.

Winners of Gift Certificates given by the agents included: Joe's Boot Shop-R.L. Scott, Lewis Wayne Shafer and Crystal Walton.

Muleshoe Locker- S.E. Sims. Connie's Place-Eugene Black. Scoggin Ag-Ted Millsap.

Leal's-Ethel Ayres, Zeffa Shafer and Sam Billingsley.

TASCO-Gene Paul Jarman. Latrell's Fashions-Myrtle Puckett.

Mohawk Auto Parts-Ernest Ramm.

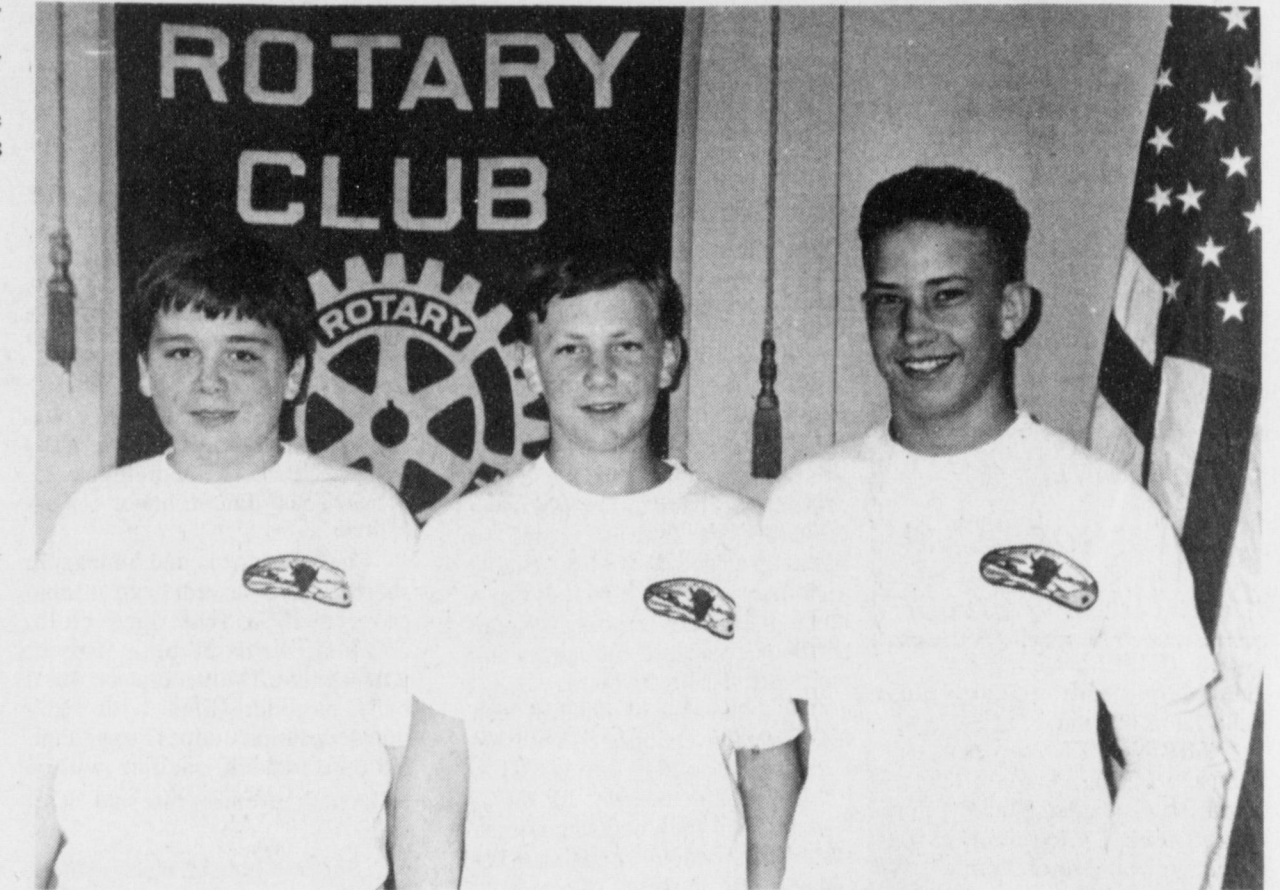
Country Junction-Velma Gwyn.

Muleshoe

Cont. From Page 1 on Saturday, November 20 at the Briscoe County Showbarn in Silverton. Booth spaces will be 8X10 feet for \$5.

Tables are limited, they will be on a first call-first serve basis. All kinds of arts and crafts are welcome.

For more information or to reserve a booth you may call Bena Hester at (daytime) 806-823-2131. Ext. 11 or (after 5) 806-823-2093.



BOY SCOUTS TALK AT ROTARY-At the noon meeting of the Muleshoe Rotary club Tuesday, Boy Scouts Peyton Rennels, Aaron Purdy, and James Cox gave an overview of some of their experiences at the Boy Scout Jamboree they had attended beginning August 31, 1993 in Washington, D.C.

Golden Gleams

Autumn is marching on: even the scarecrows are wearing dead leaves.

-Nakagawa.

In Autumn, there's a lustre in its sky,
Which thro' the Summer is not heard or seen.

-P.B. Shelley.

John David Hamblen, D.D.S.
Announces The Association Of
Kelly S. Hamblen Vela, D.D.S.
For The Practice Of
General Dentistry
4501 50th St. Lubbock, TX 79414
806-795-7173

Loans For Farm Equipment

New Equipment & Sprinklers

8 1/2%

Annually Adjustable
With Approved Credit & Required Down Payment
Terms Subject To Change Without Notice

Check With Us For Financing Used Equipment
or For Refinancing Equipment

MULESHOE STATE BANK

101 West American Blvd. Phone 806/272-4561
MULESHOE, TEXAS 79347

And Farwell Branch
801 Ave. A Farwell, Tx. 806-481-9580

MEMBER FDIC

FREE HEARING TESTS FOR SENIOR CITIZENS

MEET AT WESTERN DRUG--MULESHOE
114 MAIN
Wednesday, October 6, 1993
COME BY OR CALL 272-3106 9:30 a.m.-10:30 a.m.
10 DAYS FREE TRIAL 12 BRANDS TO CHOOSE FROM
SATISFACTION GUARANTEED

Sponsored by:
LIVINGSTON HEARING AID CENTER

Roland K. Denison

5303 50th Lubbock, Tx. 79414 806/799-8950 800-828-0722

606-B Quincy Plainview, Tx. 79072 806/293-8874

Muleshoe Schools Menus

Oct. 4-8, 1993

DILLMAN & DESHAZO

MONDAY BREAKFAST

Breakfast On A Stick, Chilled Juice, Milk

LUNCH

Hamburger, Crispy French Fries, Boston Baked Beans, Chocolate Chip Cookie, Milk

TUESDAY BREAKFAST

Pancakes w/Syrup, Mixed Fruit, Milk

LUNCH

Italiano Stromboli, Tossed Salad, Sweet Peas, Cherry Gelatin, Milk

WEDNESDAY BREAKFAST

Homemade Cinnamon Roll, Chilled Juice, Milk

LUNCH

Steak Fingers, Mashed Potatoes & Gravy, Garden Salad, Dinner Roll, Milk

THURSDAY BREAKFAST

French Toast Sticks, Chilled Juice, Milk

LUNCH

Hamburger Pizza, Garden Salad, Golden French Fries, Milk

FRIDAY BREAKFAST

Texas Cinnamon Toast, Chilled Juice, Milk

LUNCH

Barber Poles (hot dogs wrapped in homemade rolls), Baked Beans, Garden Fresh Salad, Milk

JR. HIGH & HIGH SCHOOL

MONDAY BREAKFAST

Breakfast On A Stick, Chilled Juice, Milk

LUNCH

Fajitas, Frito Pie, Tossed Salad, Pinto Beans, Milk

TUESDAY BREAKFAST

Pancakes w/Syrup, Mixed Fruit, Milk

LUNCH

Foot Long Hot Dog, Italiano Stromboli, Sweet Peas, Fresh Fruit, Cherry Gelatin, Milk

WEDNESDAY BREAKFAST

Homemade Cinnamon Roll, Chilled Juice, Milk

LUNCH

Sloppy Joe, Steak Fingers, Mashed Potatoes & Gravy, Garden Salad, Dinner Roll, Milk

THURSDAY BREAKFAST

French Toast Sticks, Chilled Juice, Milk

LUNCH

Hard Tacos, Burrito, Pinto Beans, Fresh Apple, Arroz (Spanish Rice), Milk

FRIDAY BREAKFAST

Texas Cinnamon Toast, Chilled Juice, Milk

LUNCH

Barber Poles (hot dogs wrapped in homemade rolls), Baked Beans, Garden Fresh Salad, Milk

Jim Long, N.C. insurance commissioner:

"It jogged to the east just before it hit," explaining limited damage caused by Hurricane Emily.

Les Aspin, defense secretary:

"It's very tough to do. But this is absolutely critical," speaking of another round of base closings, scheduled for 1995.

Bill Clinton, president:

"Louis Freeh is a born leader, a brilliant investigator," speaking at swearing-in of new FBI director.

Muleshoe High School Honor Roll

First Six Weeks 9th Grade

Kristi Dawn Bennett, Jamie Lane Bohler, Kenneth D. Box, Jacob Caswell, John Bryan Cowart, James E. Cox, Darren Kyle Elliott, Kyle Aaron Embry, Cari Ann Faver, Jo Beth Gilleland, Denice Lynn Greenhouse, Megan Ray Harlan, Stacy Lee Harlan, Brandi Nicole Harrison, Heather Hollye Hooten, Mendy Ch'Ree Johnson, David M. Keller, Adrian King, Colby Alan Latham, Melissa Eran Leffler, Melissa Michelle Mata, Kendall Wade McDaniel, Reagan Nicole McElroy, Mark Alan McGuire, Jason Isaac Miramontes, Leigh Moraw, Daniel N. Morris, Shannon Leigh Noak, Jennifer D. Patterson, Raquel Posadas, Leslie Leigh Powell, Kermit Arnold Price, Leslie Ann Radford, Jarrod Keith Redwine, Carlos Alberto Rojas, Carolyn D'Ann Schuster, Stefan Phillip Sutton, Twyla Maurine Wagnon, Sarah Elizabeth Watson, Ransley Cale Welch, Jeffrey Wayne Wheeler, Kandy Annette Wilcox.

10th Grade

Robbie Jeffry Clapp, Suzy Beth Hodges, Lauri Deann Puckett, Rebecca Janene Snell, Dacia Carol Stewart, Samuel Amos Villarreal.

11th Grade

Jason Lewis Barrett, Fara Renee Black, Kevin Jack Bush, Tiffany Lashell Copley, Angela J'Lyn Crawford, Jesus Flores, Jodie Lea Foster, Jimmy Guana, Julie Dianne Gilleland, Keetha Lynette Glover, Crystal Erin Howe, Audra Jean

CMV May Cause Much Deafness

Cytomegalovirus, present in 1 in 100 births, may be the most common cause of unexplained deafness.

Physicians already knew that CMV transmitted through the mother's blood caused hearing impairments in babies who showed no signs of CMV, said Dr. Gail J. Demmler, a pediatrician at Baylor College of Medicine in Houston.

"But we are just now realizing that a significant number of these babies go on to develop severe and even profound hearing loss. It gets progressively worse as they age," she said.

Demmler believes a majority of profound deaf people who were not born deaf may have been victims of CMV.

Prior to considering pregnancy, women can be tested for CMV, a herpes virus transmitted through close personal contact. The CMV test is not routinely offered or mandated.

Lazbuddie School Menu

Oct. 4- Oct. 8 1993

MONDAY BREAKFAST

Cereal, Toast, Juice, Milk

LUNCH

Baked Potato w/Ham, Broccoli & Cheese, Hot Rolls, Pudding, Milk

TUESDAY BREAKFAST

Waffles, Juice, Milk

LUNCH

Sloppy Joes, Potato Chips, Pea Salad, Fruit, Milk

WEDNESDAY BREAKFAST

Biscuits & Gravy, Sausage, Juice, Milk

LUNCH

Steak Fingers, Mashed Potatoes & Gravy, Corn, Hot Rolls, Spice Cake, Milk

THURSDAY BREAKFAST

Scrambled Eggs, Toast, Juice, Milk

LUNCH

Corn Dogs, Fritos, Green Beans, Cherry Cobbler, Milk

FRIDAY BREAKFAST

Cinnamon Rolls, Juice, Milk

LUNCH

Hamburgers, Lettuce, and Tomatoes, French Fries, Cookies, Milk

SALAD BAR SERVED DAILY

Patients In Muleshoe Area Medical Center

SEPTEMBER 24, 1993

Stan Miller, Clifton Finley, Ida Kellar, Jewel Bruton

SEPTEMBER 25, 1993

Dalmacio Barron, Antonio Torres, Elizabeth Granado, Stan Miller, Laura Daila, Clifton Finley, Ida Kellar, Jewel Bruton, baby boy Granado

SEPTEMBER 26, 1993

Minnie Pettyjohn, Stan Miller, Clifton Finley, Ida Kellar, Jewel Bruton

SEPTEMBER 27, 1993

Minnie Pettyjohn, Stan Miller, Clifton Finley, Ida Kellar, Jewel Bruton

SEPTEMBER 28, 1993

Minnie Pettyjohn, Lupe Mendoza, Marta Guerro, Clifton Finley, Patsy Fisher, Ida Kellar, Jewel Bruton

SEPTEMBER 29, 1993

Marta Guerra, Marissa Orozco, Ropalinda Rincon, Linnie Bauer

SEPTEMBER 30, 1993

Marta Guerra, Marissa Orozco, Rosalinda Rincon, Linnie Bauer

Combined Effort.



LIMITED OFFER

EQUIPMENT LOANS

Make your best deal and then see us!

Your local Production Credit Association for a limited time has fixed rate farm equipment loans at:

3-YEAR TERM **6.75%**

5-YEAR TERM **7.10%**

GIVE US A CALL!

Flexible financing to keep your engines running!



Production Credit Association

312 W. 2nd Muleshoe 272-4229

* Stated rate, effective rate will be higher by virtue of required stock purchase.

In Fashion

Little girls' dresses are designed for dual use. One dress has a denim jacket with dress fabric trim. When cooler weather arrives she can add cotton/Lycra leggings for warmth. Replace a cotton blouse with a turtleneck sweater and wear leggings under a pleated, plaid skirt. Leggings are popular for both children and moms.

Need Extra Cash For Christmas?

Why Not Join The Avon Family?

"The Smartest Shop In Town"

No More Door to Door Sell To Family & Friends

Earn Extra Money As Well As Fabulous Gifts For Yourself.

Call:

Holly Millsap

272-5607 (after 6 p.m.)

ALLSUP'S

PRICES EFFECTIVE OCT. 3-9, 1993

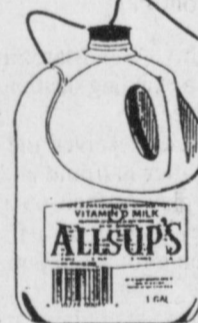
318 W. Amer. Blvd. 272-4862

ALL TYPES COCA-COLA



6 Pk. 12 oz. Cans

2.29



HOMOGENIZED ALLSUP'S MILK GALLON **\$1.99**



2 FOR 99¢

CORN KING MEAT FRANKS 12 OZ. PKG.

49¢

WILSON MEAT BOLOGNA 12 OZ. PKG.

79¢

ASSORTED FLAVORS ICE MOUNTAIN SPARKLING BEVERAGE 11 OZ. BTL

69¢



SAUSAGE, EGG & BISCUIT FOR ONLY

89¢

Allsup's 1 1/2 lb. loaf Bread 2 for 1.00 or 69¢ each

ASSORTED FLAVORS CELESTIAL SEASONING TEA 16 OZ. BOX

79¢

SHURFINE CRISPY RICE 13 OZ. BOX

\$2.19

SHURFINE FANCY SWEET PEAS 17 OZ. CAN

39¢

SHURFINE PEELED WHOLE TOMATOES 16 OZ. CAN

49¢

ALL FLAVORS DORITOS® GRAB BAGS REG 69¢

2 \$1

COOKED FOODS SPECIAL OF THE WEEK

CORN DOG AND A 20 OZ. N.R. COKE FOR ONLY

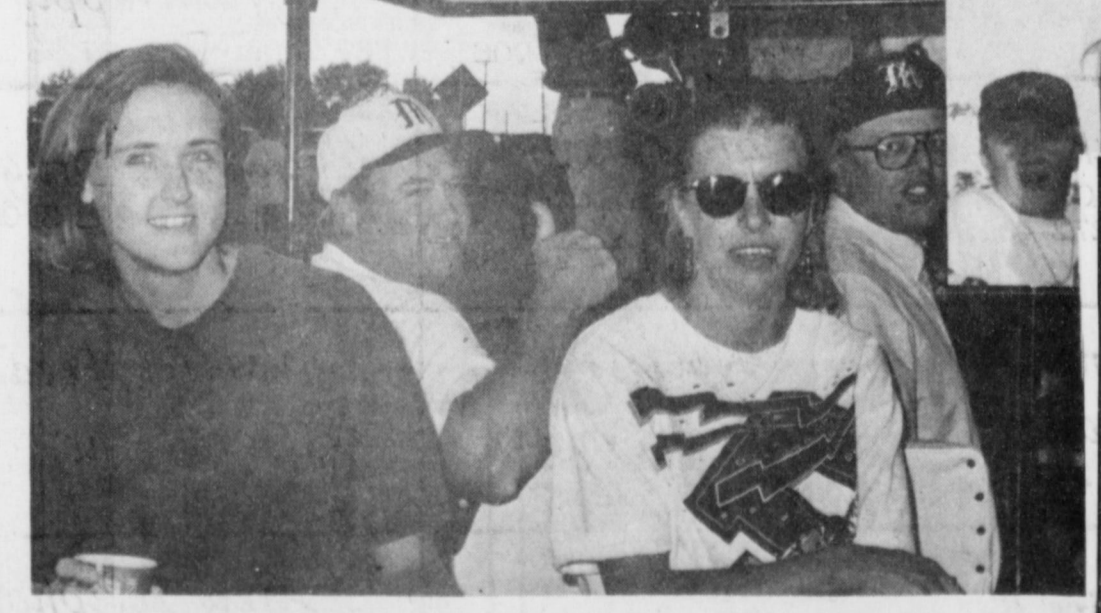
99¢

COMBO OF THE MONTH

TALLSUP AND A LARGE POPCORN FOR ONLY

89¢

Camp Fire, Bonfire, Inferno



Predictions By Mules's Tackle Kalam Puckett Come True As The Mules Enjoy A Homecoming Victory Over The Colorado City Wolves.... 27-7

Robert W. Trapp Services Held

Services for Robert W. Trapp, 70, of Amarillo, were held Saturday, October 2, 1993 at 11:00 a.m. at Ellis Funeral Home Chapel, Muleshoe, with Joe Smitherman and Lynn Trapp officiating.

Burial was in Muleshoe Cemetery, under the direction of Ellis Funeral Home, Muleshoe.

Trapp died September 28, 1993 at St. Anthony's Hospital in Amarillo, TX.

He was born February 18, 1923 in Goodwell, OK. He married Verna Raye Snyder on November 22, 1946 in Clovis, NM.

Trapp had lived in Amarillo since May of 1993, moving there from Grandin, MI. He was a member of the Church of Christ and was a postal letter carrier.

Survivors include his wife, Verna Raye Trapp of Amarillo; three sons, Robert A. Trapp of Silverton, OR, Lynn Trapp of Budapest, Hungary, and Darryl Trapp of Amarillo; two daughters, Glenda Wardrup of Spring, TX and Carryl Trapp of Malden, MO; one brother, Byron Wilson of Amarillo; two sisters, Claudine Embry of Muleshoe and Martina Holt of Donison, TX; eleven grandchildren and one great-grandchild.

Mildred Handley Services Held

Services for Mildred Handley, 76, of Plainview, TX were held at 2:00 p.m. on Saturday, Oct. 2, 1993 at 16th and D. Church of Christ, with Curtis Shelburne, pastor, officiating.

Mrs. Handley died at 8:35 a.m. on Thursday, September 30, 1993 at Methodist Hospital of Plainview.

Burial was in Muleshoe Memorial Park Cemetery, under the direction of Lemons Funeral Home, Plainview.

She was born on January 17, 1917 in Alabama.

She moved to Texas at an early age and attended schools at Hyman. She moved to Lamesa in 1934 from Ackerly. She moved to Muleshoe in 1958 and operated Mildred's Hair Styling. She retired in 1974 and moved to Corsicana in 1974, then to Lubbock in 1976, and to Shreveport in 1985. She moved to Plainview in Sept. of 1993. She was a member of the Sunset Church of Christ in Lubbock.

Survivors include one daughter, Shirley Suess of Lubbock; three brothers, I.W. Smallwood of Truth or Consequences, NM, J.J. Smallwood of Shreveport, LA, and Joe Smallwood of Muleshoe; two sisters, Mrs. A.D. (Eula Mae) Warren of Plainview and Lillie Doshier of Ackerly; one niece, Mrs. Paul (Linda) Lyle of Plainview; one grandchild and two great-grandsons.

Lawrence O. (Bill) Shankles Services Held

Service for Lawrence O. (Bill) Shankles, 78, of Frederick, OK were held at 2:00 p.m. Saturday, September 25, 1993 in the Gish Memorial Chapel of Gish Funeral Home, with Rev. Vernon Floyd, Bible Baptist Church, Frederick OK officiating.

Burial was in Fairlawn Cemetery, Snyder, Ok., under direction of Gish Funeral Home.

Shankles died Thursday, September 23, 1993 at 12:05 p.m. at Frederick Memorial Hospital, Frederick, OK.

He was born September 16, 1915 in Waurika, OK. He was raised in the Snyder community and moved from Muleshoe to Frederick in 1976. He married Bobbie B. Fraley on December 3, 1984 in Vernon, TX. He was a member of First Baptist Church of Frederick, OK, a retired farmer and real estate salesman.

Survivors include his wife, Bobbie Shankles of the home; one daughter, Janie Timm of Clovis, NM; one son, Gary Shankles of Carlsbad, NM; three step-sons, Jeff and Scott Fraley, both of Frederick, OK and Gary Kays of Pritch, TX; one granddaughter, Shari Shankles of Enid, OK; two step-grandchildren; three sisters, Wilma Joseph and Winnie Lee Perryman, both of Fresno, CA and Alta Barnard of Waurika, OK; and one sister-in-law, Irene Shankles of Snyder, OK.

Pallbearers were Cecil Bennett, Marion Bennett, Jim Hendrix, Carvel Hudspeth, Alfred Doze, and Milton Hill.

Memorials may be given to the Frederick Chamber of Commerce Memorial Fund.

grandchild.

The family suggests memorials to Muleshoe Public Library, Muleshoe, TX or Perry Memorial Library, Perryton, TX.

BIBLE VERSE



"This is the confidence that we have in him: that, if we ask anything according to his will, he heareth us."

1. Of whom is the writer speaking?
2. Who is the author of the above statement?
3. By what term was he known?
4. Where may this statement be found?

Answers:

1. Of Jesus Christ.
2. John the Apostle.
3. The "disciple whom Jesus loved."
4. 1 John 5: 14.

Services For Ramiro "Domingo" Estrada Pending

Funeral services for Ramiro "Domingo" Estrada, 72 are pending at this time with Ellis Funeral Home of Muleshoe.

Mr. Estrada passed away Friday, October 1, 1993 at 8:05 a.m. at his residence in Muleshoe.

He was born March 7, 1921 in Goliad, TX. He married Concha Orozco May 25, 1949 in Ada, Minnesota. She died in August 1992.

Mr. Estrada had lived in the Muleshoe area since 1952, moving here from Progreso, TX. He was a farmer, a member of the Immaculate Conception Catholic Church and a member of Cursillista.

Survivors include one daughter, Janie Regaldo of Muleshoe; two grandchildren, Raymond Martinez and John Paul Regaldo, both of Muleshoe.



Sports

Quiz

By Christian Thorlund

1. When is the Army-Navy football game?
2. What was the score of the Colorado-Miami football game?
3. When is the Alabama-Auburn game?
4. Where is the Alamo Bowl?
5. Atlanta Braves 20-game winner.

Answers:

1. Dec. 4.
2. 35-29 Miami.
3. Nov. 20.
4. The new bowl is in San Antonio, 31 Dec.
5. Who is Tom Glavine?

Nursing Home News

by Joy Stancell

We wish to thank the ladies of the Sudan Assembly of God Church for hosting our Sept. birthday party. Also, Mr. and Mrs. J.C. Shanks and (Gabby) Nelda Hunt.

Tuesday afternoon, the Progress Baptist Church came for church services.

Tuesday morning Louise Legg from Me Ma's Ceramic Shop in Sudan made and brought ceramics for the residents to paint. Residents participating were Nannie Blackman, Lillie Wuerflein, Vera Downing, Gladys Pierce, Modean Graves, Janetta Hukill, Lib King, Clara Weaver, Stella Morgan, Rosa Sneed, Bobbie Walker.

Tuesday afternoon Freida Locker, Mary Scoggins, Laverne James, Olive Cox, Claudine Embry and Beth Watson came to shampoo and set the ladies' hair.

Wednesday morning Melvin Griffin and Buster Kittrell hosted coffee spudnut time. Wanda Kittrell, Clara Lou Jones and Thursie Reid helped with our submarine sandwich party. Buster Kittrell and Clara Lou Jones lead and played the piano for a gospel sing-a-long. Hilly Millsap brought her little bear friend by for a visit.

HEALTH INSURANCE

CALL Mark Morton 109 S. 1st Muleshoe 272-7519

STATE FARM Mutual Automobile Insurance Company HOME OFFICE Bloomington, IN

Immaculate Conception Catholic Church

805 E. Hickory
Father Joseph Augustine

First Baptist Church

220 West Ave. E.
Pastor, Stacey Conner

Emmanuel Baptist Church

Iglesia Bautista Emmanuel
107 East Third

Isaia Cardenas, Pastor

Trinity Baptist Church

314 E. Ave. B

Rev. Dale Berry

Circle Back Baptist Church

Intersection FM 3397 & Fm 298

Rev. Jessie Shaver
946-3676

Calvary Baptist Church

1733 W. Ave. C.

Pastor B.G. Hill

Progress Baptist Church

Progress, Texas

Richland Hills Baptist Church

17th and West Ave. D

Rev. Terry Taylor

St. Matthews Baptist Church

Corner of West Boston & West Birch

Pastor,

Progress Second Baptist Church

1st and 3rd Sundays

Rev. Arthur Hayes

Primitive Baptist Church

621 South First

Elder Cleveland Bass, Pastor

1st Baptist Church

Lazbuddie, Tx.

Bobby Alexander, Pastor
965-2126

The Christian Center

Morton Hwy

Reydon Stanford
272-5163 or 227-2136

"an apple a day..."

... a famous and well known quotation, and a good rule to follow. Any doctor will agree that eating some fruit every day is beneficial to health. Eating fruit is an aid to health and also gives us great pleasure, for instance how about one of mother's delicious apple pies, or what joy comes from biting into a nice juicy apple, or orange. Spiritually, attending church is of great benefit to us. The soul needs the nourishment provided by a good sermon or the encouragement of fellow worshippers. Not only do we need the teachings that the church offers, but there are many pleasures to be derived there.

The Church is God's appointed agency in this world for spreading the knowledge of His love for man and of His demand for man to respond to that love by loving his neighbor. Without this grounding in the love of God, no government or society or way of life will long persevere and the freedoms which we hold so dear will inevitably perish. Therefore, even from a selfish point of view, one should support the Church for the sake of the welfare of himself and his family. Beyond that, however, every person should uphold and participate in the Church because it tells the truth about man's life, death and destiny; the truth which alone will set him free to live as a child of God.

EVERYONE IN THE CHURCH THE CHURCH IN EVERYONE

ATTEND Church REGULARLY

© Coleman Adv. Serv.

Primera Iglesia Bautista
223 E. Ave. B
Roy Martinez, Pastor

"Iglesia Pentecostal Unida"
207 East Ave. G
272-3636
Pastor: Wenceslado Trevino

Lariat Church of Christ
Sunday School 10:00 a.m.
Worship 11:00 & 6:00 p.m.
Wednesday Services 7:00 p.m.
Sam Billingsley, Minister

Muleshoe Church of Christ
Clovis Hwy
Gary Montgomery, Minister

16th & Ave. D Church of Christ
Sunday 10:30 a.m.
Evening 6:00 p.m.
Wednesday 7:30 p.m.
Curtis Shelburne, Minister
272-4619

Lazbuddie Church of Christ
Minister, Keith Courmier
Sunday School 9:30 a.m.
Morning Services 10:20 a.m.
Evening Services 5:00 p.m.
Wednesday Night 7:00 p.m.

First Assembly of God

Sunday School 9:45 a.m.
Morning Worship 11:00 a.m.
Evening Services 6:30 p.m.
Mid-Week Services 7:30 p.m.
272-3984

First United Methodist Church
507 W. 2nd Street
Dr. James Bell, Pastor

El Divino Salvador Methodist Church
5th and E. Ave. D
Rev. Libney Peneda, Pastor



Attend The Church Of Your Choice!

Bob Stovall Printing 221 E. Ave. 272-3373	Bailey Gin Co. 946-3397	Muleshoe Trade Center Tex-Pack 130 Main 272-4906	Williams Bros. Office Supply 322 Main 272-3113
American Valley Inc. W. Hwy 84 272-4266	First Bank Member F.D.I.C. 202 South First 272-4515	Bratcher Motor Supply 107 E. Ave. B. 272-4288	Western Drug 114 Main 272-3106
Decorator's Floral & Gifts 616 S. 1st 272-4340	Bailey County Farm Bureau 1612 W. Amer. Blvd. 272-4567	Nacho's Southside Chevron 502 S. 1st 272-3251	Wes-Tex Feed Yards, Inc. 272-7555
Irrigation Pumps & Power W. Hwy 84 272-4483	James Crane Tire Co. 322 N. 1st 272-4594	Viola's Restaurant 2002 W. Amer. Blvd. 272-3838	5-Area Telephone Cooperative, Inc. 302 Uvalde 272-5533

CLASSIFIEDS 272-4536

CLASSIFIED RATES

15 Words & Under
Minimum Charge
\$2.30
Thereafter
\$.00
16 Words & over

1st Insertion
15 cents per word
2nd Insertion
13 cents per word

CLASSIFIED DISPLAY RATES
\$1.75
Per Column Inch

DEADLINES
12 noon Tues.
For Thursday Paper
12 noon Friday
For Sunday Paper

To receive the reduced rate after the first insertion, ad must run continuously.

We reserve the right to classify, revise, or reject any ad. We are not responsible for any error after ad has run once.

For more information and assistance regarding the investigation of get-rich-quick, work-at-home and other financial/business opportunities. The Muleshoe and Bailey County Journals urges its readers to contact the Better Business Bureau, 1206 14th St., #901, Lubbock, TX 79401 or call (806)763-0459.

1. Personals

CONCERNED
About Someone's Drinking?
HELP IS AVAILABLE
through **Al-Anon**
Call 272-5857;
927-5110 or
965-2870 or come to visit Tuesday and Thursday nights, 8:00 p.m. & through AA call 965-2870 or come visit Tuesday nights, 8:00 at 723 W. Ave. E, Muleshoe

NEEDED
Representatives in Sudan Lazbuddie and Muleshoe. For more information call 272-5607
AVON
"The Smartest Shop In Town"

Will babysit in my home. Infant to 4 years. 228 E. 6th. 272-3633, Leave Message.
B1-40t-3tc

Need to have an ESTATE SALE? Let us do it for you! (806) 227-2016 (806) 227-2060.
B1-39t-8tc

3. Help Wanted

Truck Driver.
CDL License needed, experience a big PLUS.
C & H Equipment, Muleshoe.
C3-39s-4tc

WILDLIFE CONSERVATION JOBS
Game Wardens, Security, Maintenance, Etc.
No Experience Necessary.
Now Hiring. For Information Call 219-794-0010 Ext. 9689.
8 a.m. - 8 p.m. 7 Days.
3-40t-10tp

Beauticians Needed!
Main Street Beauty Shop. Call: 272-3448.

Needed Service Technician (Diesel Mechanic).
C & H Equipment, Muleshoe.
C3-39s-4tc

3. Help Wanted

TEXAS MIGRANT COUNCIL
Is Now Taking Applications For Bus Drivers.
Qualifications needed:
CDL license
For Applications Come By
101 E. Ave. B, Muleshoe Texas
3-37s-tfc

MULESHOE AREA HEALTHCARE CENTER
LVN'S
FULL TIME/PART TIME
Muleshoe Area HealthCare Center is a 55 bed Medicaid approved Nursing Facility managed by Muleshoe Area Hospital District.
Position offers: Stable staff, competitive salary, 7 paid holidays, 12 sick days, and 2 weeks vacation per year, paid Health Insurance. To apply send resume to:
Personnel Department
Muleshoe Area Hospital District
708 S. First Street
Muleshoe, Texas 79347
806/272-4524
M3-37s-4tc(S)

11. For Sale or Trade

Tomatoes, hot and sweet peppers, and okra for sale across from John Deere house on highway 84 by-pass in Littlefield.
385-5980.
T11-37t-tfc

For Sale
New Lockwood Pivots.
No payments until January 95.
5 years to pay.
8.9% Interest.

Down Payment 10% and as low as 5%.
Irrigation Supply
272-4466 or 272-3246.
111-35s-12tc

Tomatoes for sale!
Call Kenneth Hanks - 965-2471. 3 miles east on Plainview Highway and 3 miles north on right.
HT1-38t-tfc

BAHAMA CRUISE!
5 days/4 nights,
Underbooked! Must Sell!
\$299/Couple.
Limited Tickets.
(407) 767-0208 ext 6310
Mon. - Sat.
9 a.m. - 10 p.m.
11-38t-7tp

15. Misc.

Health Insurance for the self-employed at affordable group rates. Built in supplemental cash fund. Peggy Wittner Knox 1-800-687-0018.
15-39s-8tp

18. Legals

NOTICE OF BIDS
The Bailey County Appraisal District is accepting sealed bids for bank depository. The period is for January 1, 1994 through December 31, 1995. Bids must be marked "Bid for Bailey County Appraisal District Depository" on the outside of a sealed envelope. No bids will be accepted after 5:00 p.m. on October 13, 1993. Bids will be opened at the regular session of the Bailey County Appraisal District on October 14, 1993. The Bailey County Appraisal District reserves the right to refuse any and all bids. For further information contact Margaret L. Johnson, Bailey County Appraisal District (806)272-5501.
B18-40s-2tc(S)

CLASSIFY!
MULESHOE JOURNAL
272-4536

3. Help Wanted

Which Color Is Right For Your Dog?
(NAPS)—Did you know that the color you choose for your dog says a lot about your relationship with your pet? Here's a quick color quiz that may be enlightening.



Red looks great on black dogs and black and white pets.

Q. Red signifies loyalty. True or False?
A. False. From the time of Egyptian Pharaohs, red has been known as the color of bravery. The term "fire engine red" means more than just the color of the fire engine. It's also the color for the courage of firemen who will brave flames to pull a pet to safety. It's the color preferred for fire house mascots such as Dalmatians. Fire engine red, say the makers of Scratchex "Color-Full" Flea Collars, looks great on black dogs, on black and white animals and on black and tan coat combinations.

You can't lose—or get lost—with THE ROADS OF TEXAS!
Get your copy at the newspaper office. Only 12.95

8. Real Estate

SMALLWOOD REAL ESTATE
232 Main 272-4838

2 Bedroom, 1 Bath, 1 Carport, Den with fireplace, Car port. \$810.00. **SOLD** Uses, \$270.00 per month.

3 Bedroom, 1 3/4 Bath, 1 Car Garage, Fenced Back Yard. **SOLD**

11 Acres (Joins city limits) 7' x 14' Mobile Home, 672 sq. Feet built on 1/2 acre, Barns and 5 horse power pump.

3 Bedroom Brick, 2 Bath, 1 Car Garage, Fenced Back Yard. Priced to sell.

Commercial, with large house. Storage or Apartments. Make repairs & make money. This is for someone who can repair and paint. Owner financed.

Joe L. Smallwood, Broker

8. Real Estate 8. Real Estate 8. Real Estate 8. Real Estate

Nieman Realty

116 E. Ave. C George Nieman, Broker 272-5286 or 272-5285

RICHLAND HILLS
NICE RESIDENTIAL LOTS...\$5,000 UP
JUST LISTED-Nice 3-1 3/4-2 Brick, Cent. A&H, built-ins, fenced yard. \$40's!!!!RH-1

3-2-2 Brick, built-ins, FP, Heat pump, fans, new carpet & paint, abundant closets & storage. \$90's...RH-8

HIGH SCHOOL
3-1-1 Brick, Cent. heat, evap. air. FmHA financing. \$20's!!!!HS-1

PRICE REDUCED 3-2 Remodeled, heat pump, built-ins, fenced yd., storage bldg. \$23,000!! HS-3

3-1-1 carport Home, heat pump, storm windows & doors. MUCH MORE. \$20's!! HS-4

JUST LISTED-VERY NICE 3-2-1 carport Home, Cent. A&H, built-ins, FP, 2,000'+lv. area, fans, st. bldg., & MUCH MORE!!!! HS-5

PRICE REDUCED-BUYER INCENTIVES- 3-2 Home, fl. furnace, evap. air, st. bldg., fenced yard!!!!HS-6

IMMACULATE 3-2-2 Brick, Cent. A&H, built-ins, fenced yard, storage bldg., & MORE!!!! \$60's HS-8

HIGHLAND AREA
3-2-1 Brick, Cent. A&H, FP, built-ins. MAKE OFFER!!!! HL-1

FmHA Financing To Qualified Buyer -NICE 3-1-1 Brick Home, Cent. A&H, ceiling fans, storage bldg., fenced yd. \$30's!!!!HL-3

3-2-1 Brick, Cent. heat, evap. air, built-ins fenced yd., storage bldg. \$40K..HL-4

4-2-1 Brick, Cent. A&H, built-ins, encl., patio spktr. sys., st. bldg., fenced yd., \$60's!!!!HL-5

PARKRIDGE-Very Nice 3-2-2 Brick, Cent. A&H, built-ins, FP, earthtones, cov. patio, fenced yd., MORE. \$50's!!!!

LENAU ADDITION
PRICE REDUCED-3-1 1/2-1 Home, Cent. heat, evap. air, new roof, cov. patio, st. bldg., fenced yd. \$30's!!!! L-1

3-2-1+carport, Brick, ceiling fans, Approx. 2060 sq. ft...\$40's!! L-6

RURAL HOMES
NICE 3-2-2 carport Home, one acre tract, Cent. A&H, built-ins, fenced, on pavement close to town. \$40's!!!! HR-2

VERY NICE 4-2-2 Brick home on 6 ac.. Cent. A&H, 2300'+lv. area, Much More!! \$60's!HR-4

3-2-2 Brick, blt.-ins, Ht. pump, FP, 2.5 acres on pavement. \$60's!!!! HR-3

3-2-3 Carport Mobile home on 11 ac. edge of town, MAKE OFFER!!!! HR-5

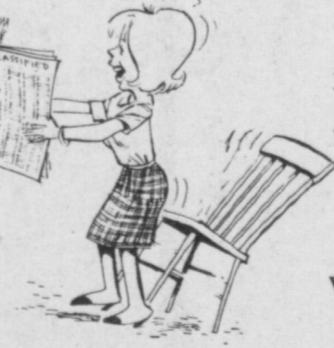
3-2-1 on 1 acre, Cent. Heat, Evap. Air, Remodeled, \$30's!! HR-6

3-1-2 Home on 1 1/2 acres storm cellar & storage bldg...\$20's!!!! HR-8

LAZBUDDIE-VERY NICE 3-2-2 Brick Home on 1 acre, Cent. A&H, built-ins, FP, nice carpets, large cov. patio. \$60's!!!! HR-7

ASK ABOUT OUR COMMERCIAL LISTINGS!!!
Circle Back Area-177 acres of good dryland... Fully Allotted!!!

PLEASANT VALLEY-160 acres, 8" well. Lindsey circle!!!!



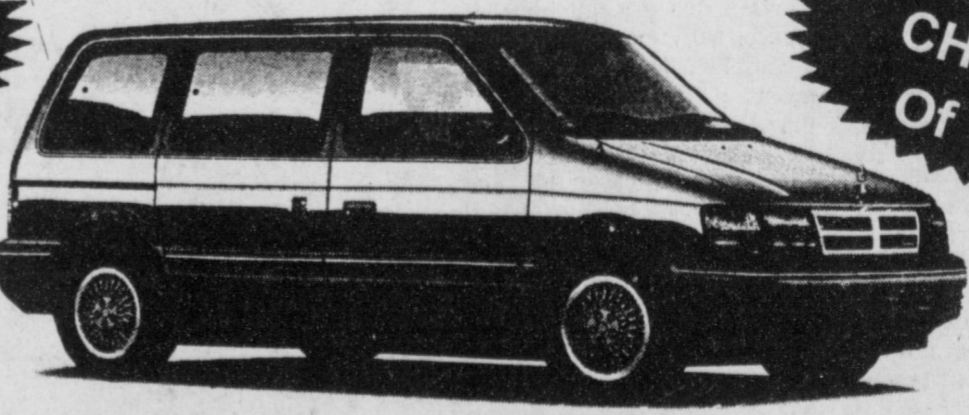
HOME FOR SALE
3-1-1 Brick, Heat Pump, Fence, and Much More. Very Reasonably Priced.
FmHA Financing Available.
808 W. 9th.
272-5687.
W8-39t-tfc

House for sale: 2 bedroom, 1 1/2 bath, single garage, double carport, sunroom and hot house, covered patio, new heat pump and air conditioner. Phone 272-6491.
N8-38t-tfc

BUILDING LOT BY OWNER.
Beautiful Parkridge Addition, Muleshoe. 103' x 125', paved streets, utilities. Great View! Consider trade-in or owner financing. (806)795-5409.
W8-38s-tfc(1TS)

USED 1993 DODGE GRAND CARAVAN SE

SPECIAL PURCHASE
From Chrysler



YOUR CHOICE
of 10

Only \$17,995
Delivered In Portales

- Power Windows • Power Door Locks
- Tilt • Cruise • AM/FM Cassette • And More!

HURRY IN WHILE THE SELECTION IS BEST!

Teague-Strebeck
Ford - Mercury - Chrysler - Plymouth - Dodge
1115 N. Chicago • Portales, NM
356-8581 (On the First Curve into Portales) 762-3845

CLASSIFIEDS 272-4536

8. Real Estate 8. Real Estate

James F. Hayes & Co.
AGRICULTURAL REAL ESTATE SERVICES
 1200 Acres in Castro County, 5 wells, 3 sprinklers, 2000 Head Feedyard. Ideal Cattle Operation for Wheat Pasture and Finishing Operation.

 6400 Acres in Western Deaf Smith County. 4600 Acres of grass. Balance in Cultivation. Nice home, Good Pens and Fences, Good Stock Water. Call for more details.

 240 Acres in Bailey County West of Muleshoe. Irrigated. Lays Good. Call for further details.

Vic Coker, Agent
 310 Main Street, Suite 103
 Office Muleshoe Home
 272-3100 965-2468

HENRY REALTY
 111 W. AVE. B 272-4581
 Muleshoe, Tx.
 Lenau Addition-4 bedroom, 2 bath, carport, central heat and air, carpet, dining area, built-in dishwasher and stove. Covered patio, wood fence, storm doors and windows, drapes and curtains. One ceiling fan. Ample storage and shed for travel trailer.

 RURAL-3 bedroom, 1 bath, 2 car garage, masonite siding, carpet throughout, central heat, evap. air cond. on roof ducted to all rooms. Built-in dishwasher. New roof. Additional acres available, owner financing to qualified buyer.

 Reduced Price - Owner ready to sell. 2 bedroom, 1 bath, 1 car garage, carpet, wood fence, storm cellar.

 Lenau Addition - 2 bedroom, 1 bath, large den, carport, carpet, storm doors and windows, patio. Spacious, clean and ready to move into. Local financing could be arranged. \$27,500.00.

 Near High School - 2 bedroom, 1 bath, wood fence, carpet, storm doors & windows. Local financing could be arranged. Immediate occupancy.

COMMERCIAL PROPERTY
 Ideal location on West American Blvd. 150' highway frontage. A great business opportunity.

 West American Boulevard 150' frontage. Priced to sell.
LAND
 160-acres irrigated farm land with pivot sprinkler SW of Muleshoe, 60 acres of wheat. Ideal for livestock operation. Good water.

spotlight on health

Diagnosis Slow And Uncertain For Dystonia Sufferers
 (NAPS)—Imagine waking up one morning with eye twitches you initially attribute to strain from reading. The spasms gradually worsen until you can no longer open your eyelids voluntarily. You feel angry, depressed and out-of-control. Every member of the medical community you consult dismisses your symptoms as emotional and suggest you "just relax."
 Such is the odyssey of pain, helplessness and frustration endured by many sufferers of blepharospasm—a common form of the neurological disorder, dystonia. Dystonia involves involuntary, uncontrollable muscular contractions that force certain muscles into abnormal, often painful, movements or positions. It is not life-threatening, but the road to proper diagnosis and treatment can be long and tortuous; as few as 5 percent of the estimated 200,000 people with dystonia have obtained accurate diagnosis and appropriate treatment.
 "For more than 20 years, I didn't know what was wrong with me," recalls Helen McDaniel, who suffers from blepharospasm—a form of dystonia that affects the muscles around the eye. "I was depressed, confused and embarrassed until a physician finally recognized my symptoms and prescribed treatment."
 Blepharospasm affects the muscles of the eyelids, forcing the eyes to blink uncontrollably or clamp shut—sometimes for long periods of time. Many people with blepharospasm are functionally blind, though their vision is perfectly normal. Other muscles in the face may also be affected, causing grimaces and facial distortions.
 Blepharospasm is not caused by emotional or psychological problems. However, the physical pain and limitations often associated with the disorder, coupled with embarrassment over disfigurement and confusion over the cause of the symptoms, force many sufferers to

withdraw from social and community activities. Job loss is common, as is the inability to drive a car. Isolation, depression and low self-esteem often result.
 Other forms of dystonia include **cervical dystonia** (or spasmodic torticollis)—which causes muscles of the neck and shoulders to contract, twisting the sufferer's head up, down or to the side; and **spasmodic dysphonia**—involving spasms of the vocal cords that disrupt speaking. Other forms of the disorder affect muscles controlling the arms and legs, hands and fingers, jaw, lips and tongue.
Diagnosis & Treatment
 "Many physicians who aren't familiar with the disorder are quick to dismiss blepharospasm's symptoms as emotional or psychological," explains Mitchell Brin, M.D., assistant professor of neurology at Columbia-Presbyterian Medical Center in New York City. "It is important for physicians to recognize sufferers' symptoms as legitimate, and be prepared to offer appropriate treatment."
 To date, researchers have not identified a cause

or cure for blepharospasm. Physicians have tried a wide range of treatments to relieve symptoms, including drugs, surgery, biofeedback, acupuncture and physical therapy—with varying degrees of effectiveness.
 In 1990, BOTOX (Botulinum Toxin Type A) purified neurotoxin complex was approved for the treatment of blepharospasm. Administered by subcutaneous injection at specific sites around the eye, BOTOX purified neurotoxin complex inhibits contractions of the affected face and eyelid muscles. The drug offers clinical improvement in approximately 72 to 92 percent of blepharospasm cases. The benefits of treatment—which can be administered on an outpatient basis—last up to three months, after which treatment is repeated.
 To receive information on dystonia, contact: Affiliated National Dystonia Associations, c/o The Dystonia Foundation, One East Wacker Drive, Suite 2900, Chicago, IL 60601-2001.

NEWS OF JOBS

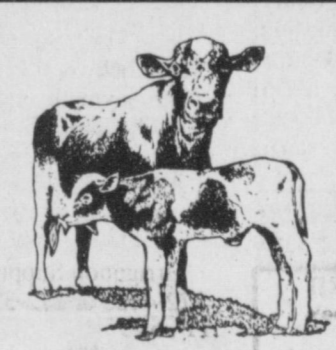
Contract Promises Jobs
 (NAPS)—Buy American. Whether it's American-made goods or services, buying American makes sense. It's an axiom that's bringing jobs back to this country.
 Yet evidence of anti-Buy American sentiment can still be found close to home, even in San Francisco. That's where the Bay Area Rapid Transit (BART) district has awarded a base contract for the purchase of automatic fare collection equipment at five new BART stations to a foreign company rather than to San Diego-based Cubic Corporation.
 Normally, American companies are supposed to take precedence over foreign companies when job bids occur. Nevertheless, the Federal Transit Administration granted BART a waiver in March saying they didn't have to abide by the Buy American requirements. They upheld but clarified the waiver on May 4, then took the waiver away on May 24 after five California representatives wrote to Robert McManus, FTA acting administrator, urging him to reconsider the BART waiver that allowed them to choose a foreign firm over an American firm. The FTA was not sure whether the waiver was appropriate and in keeping with the intention of existing Buy American requirements.
 When the FTA asked Congress for its opinion (the FTA is under no obligation to heed the advice), Congress recommended that the money saved by awarding this contract to a German firm will not be offset by the federal tax dollars that will need to be spent on food stamps, unemployment and job training for the Americans whose jobs are at stake. The bottom line, ruled Congress, is that they would rather employ Americans than Germans.
 However, despite Congress' recommendation, the FTA ultimately upheld the waiver, ruling that it was okay to award the contract to the foreign firm. The American company that lost the bid is not letting it go at that.

Job Situation Up in the Air?

 Whether your situation is changing or you're looking for a job or other one, classifieds can help. It's fast, classified is the most popular method of equalizing the right people to the right jobs. Let classified help you and your job situation!
Muleshoe Journal
 272-4536

Clovis Livestock Auction

Clovis, N.M.
Wednesday - October 6th
NEW SALE TIME 9:00 A.M.
Expecting Over 3,000



Your Consignments are Always Appreciated
Complete Dispersal of the Diaz Ranch Cows

Includes:
 218 Cows carrying second calf or with 1st calf by their side, all Calhhood vaccinated. Cows are BWF, RWF, Brangus and Crossbred.
 296 Cows 4-10 Years Old. Cows are also BWF, RWF, Brangus, Crossbred and Angus. Mostly Spring Calves with a few late Calvers being sold as pairs.
 400 (Approx.) Calves weighing 350-500#. Calves are out of cows and bulls listed above. The summer was dry until recently leaving the condition of these calves very desirable.
 18 3-6 Year Old Charolais, Limousin and Brangus Bulls.
 14 Registered 2 year old Limousin Bulls
Additional Stock Cow Consignments:
 181 Replacement quality Heifers, Brangus, BWF, and RWF, Calhhood Vaccinated and Year Branded, pre-conditioned weaned for 3 weeks by sale time, 400-425#.
 14 Coming 23 Year Old Red Saler and Saler Cross Bulls (Guar. Fert.)
 25-30 3 Year Old Crossbred Cows, bred to Beefmaster Bulls
 100-150 Charolais Cross Cows 4-12 Year Old Bred to Charolais and Beefmaster Bulls - Younger Cows 1st Trimester
 150 English Cross and Crossbred Cows 7-10 Year Old, medium fish bred to beefmaster and White Face Bulls.
 30 Running aged pairs, 4-8 Years Old, Cows are BWF, Brangus Chi Cross WF, Bred to Brangus and Brarford Bulls - Calves out of same 200-350W.
 20-25 Good aged pairs and 75-100 good aged Cows, mostly BWF, and RWF, bred to Brangus Bulls to be preg. tested.
 68 RWF and BWF Cows 4-8 Years old about 1/2 calved out - remainder heavy springers.
Holstein Steer Special Consignments:
 17-20 Holstein Steers 400-500#
 20 Holstein Steers 750#
 25-30 Holstein Steers 300-325#
 90 Holstein Steers 375-425#
 75 Holstein Steers 325-375# bad all shots - ready to turn out
 80 Holstein Steers 300-325# had all shots - ready to turn out
 65 Holstein Steers 300-350# had all shots - ready to turn out
 24 Holstein Steers 650# Off Cake and Grass
Expecting 1500 Beef Type Calves & Yearlings - Early Consignments:
Estimating 300 Calves off the Diaz Ranch weighing 300 to 400#.
 20-25 English Cross Yearling Steers - thin 600#
 82 Fancy English Cross Steers - 575-625#
 70 Hereford and BWF Yearlings 750#

SALE SCHEDULE:
 9:00-10:00 Weigh Cows
 10:00-11:00 Odd Calves and Yearlings
 11:00 Holstein Steers
 Cows and Pairs Will Sale After 4:00 P.M.
 Weigh Cows and Bulls Sale After Pairs & Bred Cows

REMINDER:
 TEXAS HAS LIFTED THE CALFHOOD VACCINATION REQUIREMENTS FOR COWS TO ENTER TEXAS. ALL NM COWS ARE ELIGIBLE TO GO TO TEXAS.
 For More Information Or To Consign Livestock Call 505-762-4422
 Wayne Kinman 769-2540 Charlie Rogers 762-0811 Ryan Figg 769-3624

Beef Producers Told To Increase Demand For Their Product

The bumper sticker that reads, "Eat More Beef", run over a chicken," may not be far from the truth. Cattle producers will have to find ways to cut into the market share of other meats to increase demand for beef by the mid-1990's.
 According to predictions made by a representative of the Beef Industry Council and a representative of Keystone Foods at the recent 1993 Beef Cattle Short Course at Texas A&M University, producers better be prepared to encourage consumers to eat more beef in the latter part of the decade.
 The industry is building its cow herds as part of a normal 10 year cycle, which means a greater supply of beef coming to market in the next several years, Matt Wineinger told more than 500 producers and industry representatives gathered at the short course. Wineinger is the director of retail programs with the Beef Industry Council.
 "As with any cattle cycle, the growth will carry us to a point where it becomes less profitable for producers to be in business, and they will liquidate their cow herds," he said.
 Presently, per capita meat consumption is nearly 225 pounds per year. In 1995, industry projections are that it will be about 240 pounds per year.
 The beef herd expansion means that cattle producers must seize the initiative and take more of the market from their competitors--poultry, pork, and imported beef.
 "The pork industry has positioned itself for the year 2000," he said. "They are going to become more efficient, which will bring their average price down" and increase sales.
 Additionally, the poultry industry is continuing to erode beef's share of the market by selling value-added products. The industry has "cut up the bird," Wineinger said.
 "They've gone to marinated chicken breasts and marketed buffalo wings. I don't know exactly what buffalo wings are, but the industry has been pretty successful marketing them."
 The beef council's current advertising campaign, "Beef. It's What's For Dinner," in It, BIC is marketing what he called bundle, or whole meals.
 "When I come home, I want to get something on the table in less than 30 minutes. That's the idea behind the campaign," he said.
 To consume that excess beef, consumers simply need to eat more of it, he said. Presently, beef is served 4.2 times over 14 evening meals. That has to be increased to 5.2 times every two weeks to take care of the increased production, Wineinger said.
 If consumer demand is not increased, the price to the beef producer will drop. "All beef will be consumed at some price," he warned.
 The lingering drought in the southeastern United States and Texas could delay the herd expansion, but for only about a year, he said. "The expansion is coming. It's profitable to be in the cow business right now."
 Randal Garrett, product value manager for Keystone Foods, also said that the beef industry could learn much from its competitors.
 "We've learned a lot of things on the beef side that the poultry side of our business taught us," Garrett said of Keystone, a major supplier of meat to McDonald's.
 The goal of a poultry company is to maximize the amount of meat products it supplies at the lowest possible cost. On the other hand, the goal of the beef industry is to get as much money as possible for the beef produced, he said.
 He suggested that the beef industry instead take a closer look at titak quality management.
 Currently, the cattle industry is focused on increasing its "averages." Producers manage for average live weight, calf crop, yield grades, carcass weights, quality, and boning yields.
 "My problem with that is that we manage a lot of averages. We're average managers. With total quality management, we have to do more than meet the average," Garrett said.

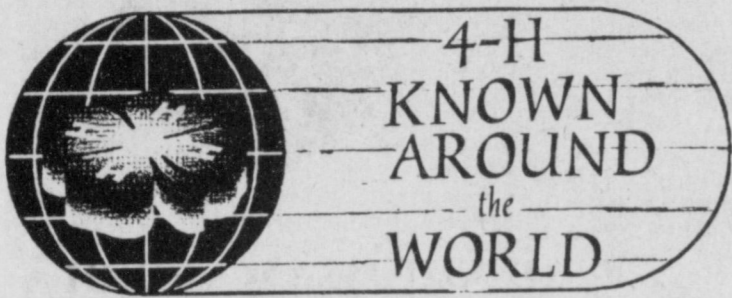


4-H WEEK

October 3-9

The 4-H pledge:

I pledge
 My Head to clearer thinking,
 My Heart to greater loyalty,
 My Hands to larger service, and
 My Health to better living,
 for my club, my community,
 my country, and my world.



More than 80 countries have 4-H or similar programs to help young people learn skills needed to become productive and responsible citizens. 4-H members work on a variety of projects and activities dealing with leadership, the environment, health and safety, nutrition, science and technology, plants and animals, and many others.



**Bailey County 4-H
 Achievement Banquet**

Sunday, October 3, 1993
 1:30 p.m.
 Bailey County Civic Center



Lowes Pay N Save
 And Marketplace

Decorators Floral & Gifts

American Valley Inc.

Violas Restaurant

Williams Bros Office Supply

Spudnut Shop

Muleshoe Livestock Auction, Inc.

Bailey County Electric Cooperative
 Association



Bailey County Farm Bureau



Muleshoe Diagnostic Lab

Family Hair Salon

Pizza Hut

Posadas Radiator Shop

Bob Stovall Printing

Shipman & Son Body Shop

Connies Place

Bobo Insurance

Lambert Cleaners

Muleshoe Trade Center

Leals Restaurant

Dale Oil Co., Inc.

Wes Tex Feed Yards



Paco Feed Yard

Sudduth Field & Co.

Alex's Tire Service

Nacho's Southside Chevron