

resulted in an output of 1,350,000 cars this year, breaking by a wide margin all former Chevrolet annual production records, according to W. W. Gillette, local dealer.

Scores of distinct improvements have been made in the 1930 Chevrolet line, the factory announces. Greater beauty, added safety factors, improved riding comfort and better power, and faster acceleration are announced as features of the new line.

Larger tires, small wheels, Delco-Lovejoy hydraulic shock absorbers

at all four wheel brakes, Fisher slanting non-glare VV windshield and vastly improved four wheel braking system are some of the highlights.

Brakes are of the internal expanding "articulated shoe type" both front and rear, those on the front wheels having two shoes while those on the rear have four. These brakes, also, are fully enclosed giving perfect protection against water and dirt.

The brakes represent an innovation not only in the Chevrolet line but in the entire passenger car field. The length of service that these linings give in the new design Chevrolet brakes is second to none. The brakes may be adjusted without the removal of any plates from the brake drum and operate with equal efficiency on all four wheels. The brake drums are 11 1-2 inches in diameter. The emergency brake is an independent unit operating on the rear drums. A new method of construction known as the "articulated shoe type" assures uniform braking under all conditions of temperature. Tests at the General Motors Proving Ground show that the new brake will stop a car traveling thirty miles per hour in two and one-tenth seconds within 48 feet.

The attractive new closed bodies, in a variety of colors, carry the famous Fisher stamp of craftsmanship. Eight models, three of which are new to Chevrolet, comprise the line. Of the eight, five are closed cars and three are open. The closed cars are the sedan, coach, coupe, sport coupe and club sedan. The open models are the roadster, sport roadster and phaeton. The models new to the line this year are the sport coupe, sport roadster and club sedan.

The six cylinder valve-in-head engine introduced a year ago after four years of research and development, has been further improved and refined, giving a smoother, quieter, more powerful motor. The new engine, fully enclosed, with a high compression non-detonating head, develops 50 horsepower.

The brake horsepower has been increased over the entire speed range. At 1000 revolutions per minute 24.5 horsepower is developed and a maximum of 50 horsepower is attained at 2,600 revolutions per minute. This increase in power insures a marked improvement in acceleration and hill climbing ability. Specifically the rear axle has been redesigned while

## We Are Ringing In The New Year



With a reduction of prices on Seasonable Merchandise that will clear our shelves and make room for our big Spring stock.

- Remnants, going at ----- one-half price
- Pepperill Brown Sheeting, 9/4 wide, 2 1/2 yards for ----- .99
- All remaining Ladies and Children's Winter Coats at ----- COST
- All remaining Winter Millinery, Felts and Velvet Hats, each ----- .99
- Close out on Winter Dresses at ----- 1/2 price
- Our \$14.95 Dresses at ----- \$7.49
- Our \$ 9.95 Dresses at ----- \$4.98
- Our Spring line of "Virginia Hart Dresses" are now on sale, each ----- \$1.95
- Peter Pan Gingham, per yard ----- .49
- Our regular 25 cent Gingham, per yard ----- .25
- Ladies Outing Pajamas, sizes 15, 16, 17, 18 pair ----- \$1.75
- Quilting Cotton, 3 pound size ----- .49
- Little Girls "Comfy Cut" Unions, sizes 2 to 12, per suit ----- .79
- Girls "EZ" Unions, two styles, with and without sleeves, special per suit ----- .89
- 36-in. Bungalow Cretonne, nice assortment of patterns, our 25 cent quality at ----- .21
- "Buck" brand Overalls, standard 8 oz. \$1.58
- Men' and Boys' all wool shaker suit Sweaters, sizes 34 to 44, \$4.95 quality at \$4.39
- "Blue Bell" Shirting, blue and striped, very special at per yard ----- .15

## Cuenod's Dry Goods Co.

LITTLEFIELD,

TEXAS

# NOW OPEN

—THE—

## Littlefield Auto Co.

IN THE NEW BRICK BUILDING OPPOSITE THE PALACE THEATRE ON MAIN STREET

SALES - SERVICE - AND - STORAGE

OPEN 24 HOURS OF THE DAY

Chrysler And Plymouth Auto Agency

GOOD USED CARS OF DIFFERENT MAKES

**SPECIAL OFFER**

Until January 31, we will wash, grease and give you a gallon of Texaco Oil for—

**Only \$1.50**

YOUR PATRONAGE WILL BE APPRECIATED

## Littlefield Auto Company

LITTLEFIELD'S FINEST GARAGE

J. E. WHICKER and FRED O. HANNA,

Proprietors

the differential unit has been strengthened and its oiling system redesigned to insure long life and quiet operation.

Smoother operation of the engine and longer life are assured through the use of light weight pistons. Steel-backed crankshaft bearings have been adopted because they are more durable.

The oil pump has been increased in capacity and improved in efficiency, while the carburetor has been improved in respect to both its accelerating pump and jet size. The accelerating pump has been increased in length and reduced in diameter. This improvement also helps the acceleration performance by increasing the duration of the spray. Improved distribution and increased economy has been made by the new intake and exhaust manifolds of the heated T design.

The air cleaner has been improved by reversing the position of the intake slots and providing for a less restricted flow of air.

The clutch on the new car has been improved by the adoption of an integral disc, made in one piece of high carbon steel.

Easier riding and greater quietness are accomplished through a new type of self-adjusting spring shackle in which bushings in the spring eyes and brackets are eliminated, thus doing away with wear.

Another improvement bringing about easier riding, is found in the Delco-Lovejoy hydraulic shock absorbers in the form of a rigid link rod instead of a strap connecting the operating arm with the chassis and assuring positive transmission of all rebound movements.

A new type of gasoline gauge of unusual accuracy is found on the new Chevrolet.

The position of the steering wheel in relation to the seat has been changed, making the driver's position much more comfortable. The horn button in the center of the wheel has been made more accessible and easier to operate by increasing the height of the crown and improving the design of the rubber bellows.

Appearance and riding quality of the car have been improved through change in the tire size from a 4.75-

## RESOLUTIONS FOR THE NEW YEAR

This is the time of year when you begin taking a look forward to doing better in the future.

While making your new year resolutions, we suggest that it would be a good plan to RESOLVE THAT DURING 1930 YOU WILL BUY YOUR GROCERIES AND MEATS FROM THE B & M GROCERY & MARKET.

No concern of this town exceeds us in quality of goods; no concern exceeds us in courteous service, and no concern exceeds us in the appreciation of your patronage.

We will make it to your interest to buy of us. **B & M CASH GROCERY & MARKET**

WE CLOSE SUNDAYS

The rim diameter has been reduced one inch.

Disc wheels are provided as standard equipment on all models except the sport roadster and sport coupe. The wire wheels on these models are equipped with drop center rims and are demountable at the hub.

Any possibility of the hood rattling has been eliminated through the addition of a rubber bumper mounted on the upturned flange of the fender skirt, against which the hood bears.

### GLOVER BUYS INTEREST

B. F. Glover, of Artesia, N. M., this week purchased the interest of Otha Key of the Henry & Key tailor business and is now associated with Jack Henry in the firm.

The firm name will be changed to Henry and Glover Cleaners, and will remain in its present location.

A new Hoffman press of the latest make has recently been installed by the company and plans are being made to install a plating and hat renovating department in the near future.

It's great to be a Texan!

### GOERTZ-LUECK

Wednesday, January 1, Miss Virginia Lueck, daughter of Mr. and Mrs. F. W. Lueck, was married at home at the 10:00 a. m. hour by Harold Goertz, Rev. Walter J. Lu of the Emanuel Lutheran church officiating.

Following the nuptial ceremony a sumptuous dinner was spread to a large number of relatives and friends attending, after which newly weds left on their wedding trip which included a visit to the Carlsbad Caverns.

### Virginia Once First

In 1790, when the first census was taken, Virginia ranked ahead of the states both in population and in commerce. At that time Virginia's population was twice as great as that of New York and she was a far more prosperous state.

### Health Hint

It is a wise health measure to see that the automobile you drive or habitually ride in is free from defects. The proper adjustment of the brakes is most important. To be careless in these matters is to invite injury or even death.

# Lamb County Leader

LITTLEFIELD TEXAS,

Canada's New Outlet to Atlantic Ocean.



Construction camp at Churchill, on the west coast of Hudson bay, where Canada is building a new port for the shipment of grain to Europe.

1—Neptune's envoys announce the coming of 1930 on the sands of Santa Monica, Calif. 2—Senator Frederick M. Sackett of Kentucky who was selected as American ambassador to Germany. 3—Office in the State, War and Navy building, formerly occupied by General Pershing, now used by President Hoover while the executive office building is being repaired after the fire.

## NEWS REVIEW OF CURRENT EVENTS

### Prohibition Enforcement Is Still the Chief Topic in Washington.

By EDWARD W. PICKARD  
PROHIBITION enforcement continued to be the dominant question in Washington, and the dry leaders in congress were especially vocal in the controversy. The most important development of the week was the statement by Senator Wesley L. Jones of Washington that during conferences with members of the Hoover crime commission he had been glad to learn that the commission is unanimous in agreeing that its function is to devise the best means possible for enforcement of the Eighteenth amendment. Senator Jones averred that the commission holds that the wisdom or unwisdom of the amendment is not involved in its work.

This was held to be a severe blow to the hopes of the wets, though it is hard to see how the latter could have expected the commission to try to determine the practicability of prohibition. Senator Jones asserted that the dry phase of the commission's work should be completed by January 1 and warned that a clear-cut ruling should be made before funds for prolonging the prohibition inquiry beyond that date are made available. As Jones is prospective chairman of the senate finance committee, he will be in a position to supervise funds asked for the commission's work.

The Washington senator continued: "I find that an important report has already been given to the President. It will be submitted to the congressional joint committee sought by the President as soon as created and ready for work. Other reports will be ready soon."

"All seem to view the industrial alcohol situation as the most difficult one to solve properly, as well as one of the most important phases of prohibition enforcement. In working this out the commission should shield no individual and no line of business."

Senator Borah of Idaho repeated his attacks on the present dry enforcement personnel, asserting that "practically open saloons" are to be found all over the land. "When I say this," he said, "I do not mean simply New York or Chicago. I mean to state a condition which prevails throughout the country. I do not assume that you can catch every bootlegger. But the open flaunting, defiant, persistent disregard of the law, day after day and month after month, with no effort being made to stop it, calls for discussion."

Mr. Borah sent one or two letters to President Hoover, and though their contents were not made public it was understood the senator offered proof of his assertions, and it was indicated that if the administration did not make use of the information given he would lay his evidence before congress.

Then came F. Scott McBride, superintendent of the Anti-Saloon league, with a statement in which he took issue with Borah's charges.

"The prohibition department has been doing good work, but there are places where conditions can be bettered," McBride said. "These will be found and corrected. The Department of Justice has had some bad spots. Mr. Mitchell has been active in correcting these but the job has yet to be completed."

"The most hopeful sign about the situation is the fact that the legislative officers, as well as the administrative officers, including the President, are not sidestepping responsibility as has been true under some former conditions and the fact that in the Capitol and all over the country enforcement is responding to official insistence."

Senator Brookhart of Iowa, the unrelenting foe of Secretary of the Treasury Mellon, renewed his demands that President Hoover remove the secretary from his cabinet, and also declared that Undersecretary of the Treasury Ogden Mills, Assistant Secretary Seymour Lowman and Prohibition Commissioner James M. Doran should be dismissed.

COAST guardsmen seeking to prevent the landing of liquor near Newport, R. I., opened fire on a rum running boat, the Black Duck, and killed three members of the crew. Their action was upheld by their superiors, but the incident serves to provide more ammunition for the enemies of the Eighteenth amendment.

In old Faneuil hall, Boston, the Liberal Civic league held a mass meeting that sent to President Hoover a message asking a searching investigation of the slayings by the coast guard, and after the meeting a mob attacked the coast guard station. Celebrants of New Year's eve in the larger cities found their activities were subjected to rather less interference by the enforcement officers than in recent years. The supply of intoxicating liquor seemed unlimited, though it is admitted most of it was synthetic with bogus labels.

THOUSANDS of Washingtonians and visitors to the National Capital attended the New Year's day reception held by President and Mrs. Hoover. Among the callers were the members of the cabinet, the handsomely garbed diplomatic corps, senators and representatives and many high officers of the army and navy. Sir Esme Howard, the British ambassador, and Lady Isabella were the first of the long line of diplomats to wish the Hoovers a happy New Year. The chief justice and Mrs. Taft were missing from the White House reception for the first time in years, owing to the death of Charles P. Taft.

IF JOUETT SHOUBE, chairman of the Democratic national executive committee, knows what he is talking about, we are not likely to have a new tariff act in the near future. He issued a statement in Lexington in which he said that either the coalition tariff measure, which attempts to carry out the promise of real tariff benefits for the farmers, will be enacted or there will be no tariff bill at all. "That latter," he said, "is the more probable outcome, which means that months and months of congressional sessions have been utterly wasted because of the effort to jam through a tariff revision that had no reason in economy or justifiable excuse at this time."

INDIA'S Nationalists under the leadership of Mahatma Gandhi have taken a bold step toward independence for their country. The national congress, with only six dissenting votes out of 2,000, adopted Gandhi's resolution for a middle course toward the objective. The resolution authorized the all-India congress committee, an executive body of about 300 members, to launch, whenever it thinks the time ripe, a program of civil disobedience to include non-payment of taxes and similar resistance to British rule.

The Indian Liberal federation has accepted the British declaration of ultimate dominion status for India.

PRINCE CAROL seemingly is still trying to gain the throne of Rumania, and Italy is reported to have

espoused his cause. In a way that has aroused the anger of the Rumanians. Recently Signor Preciosi, Italian minister to Bucharest, called at the Rumanian foreign office and informed it in the name of the Italian government that Italy considered it necessary to regularize the dynastic succession to the Rumanian throne and that Prince Carol should be recalled to Rumania and crowned king.

The Rumanians do not dare to make effectual protest against this interference in their internal affairs for they fear they would be isolated in their quarrel with Yugoslavia, which they and Italy regard as an enemy.

THERE was great rejoicing and celebration in China over the announcement of the Nationalist government that extraterritoriality was to be summarily ended on January 1. But the state council's mandate evidently was issued for home consumption and it had little or no effect in the treaty ports, where the foreign officials still declined to let their nationals be tried in native courts. Foreign Minister C. T. Wang said his government was prepared to consider and discuss, within a reasonable time, any representations made by foreign nations with reference to the Chinese decision to end the consular court system and assume legal jurisdiction over foreigners.

SENATOR FREDERICK M. SACKETT of Kentucky has been selected as ambassador to Germany. He was cruising in the West Indies when informed of this fact and that the German government had announced that his appointment was acceptable to it. Mr. Sackett started back to Washington at once, saying he would resign from the senate and soon be ready to leave for Berlin.

KENNETH HAWKS, movie director and sportsman, and nine other men engaged in the filming of venture-some air "shots," were hurled to death in the Pacific ocean in two tangled, blazing monoplanes off the Palos Verde hills, 25 miles from Los Angeles. Eyewitnesses said that one of the two planes poised above the other and then, as if the pilot had lost his vision in the piercing rays of the setting sun, had darted down and struck the top of the lower plane.

SCOTLAND'S worst tragedy of 1929 came just at the close of the year. A moving picture theater at Paisley was thronged with children attending a gala performance when fire broke out in the projection booth. Panic ensued, and within a few moments seventy little ones were dead and scores injured.

MOST noteworthy of the deaths of the week was that of Charles P. Taft, Cincinnati newspaper publisher and half-brother of William Howard Taft, former President and now chief justice of the United States Supreme court. Eighteen months ago Mr. Taft was stricken with pneumonia and he never had fully recovered. He had a distinguished career as a lawyer and publisher, served one term in congress and was prominent in state and civic affairs.

NEW YEAR'S day was Football day in California. In the great Rose Bowl at Pasadena the University of Southern California met the undefeated team from the University of Pittsburgh and fairly swamped it, winning by a score of 47 to 14. In San Francisco teams of star college players from the East and the West battled in a game for charity, the Easterners scoring 19 points to 7 for their rivals.

(© 1930, Western Newspaper Union.)

## Scientist Finds Influenza Germ

### Successfully Isolated After Six Years Research at Chicago University.

Chicago.—The germ which causes influenza has been isolated in the laboratories of the University of Chicago. Prof. Isidore S. Falk, who directed six years of research which culminated in the discovery, has announced. The thirty-year-old bacteriologist chose as the audience for his announcement not a distinguished scientific gathering, but half a hundred students and research workers at the university—the members of the Bacteriology club.

With the discovery of the specific micro-organism which has been held responsible for millions of deaths since the flu epidemic during the World war, Doctor Falk held out hope that a vaccine might be prepared shortly which would immunize humans against the scourge.

Make Vaccine Experiments. Experiments already have been made with a vaccine made from the dead microbes, which has been sprayed into the throats and nasal passages of monkeys used as test specimens for the purpose of immunization. So far these experiments have not been conclusive, however.

Influenza is caused by a form of streptococcus, the germ whose cousins are responsible for different forms of pus infections. Because the influenza germ takes a variety of forms under the microscope, it has been christened pleomorphic streptococcus. It developed during the present series of experiments, started with feverish activity during the influenza epidemic of 1928, that the germ of the disease is frequently present in the throats of humans in too mild a form to cause the disease.

But pleomorphic streptococci have the power to increase in virulence during the experiments this virulence was promoted artificially, until finally a culture taken from the throat of anyone who had a mild "influenza cold" could be developed to the state where it caused an acute form of influenza in monkeys.

All of the members of the research staff under Doctor Falk who took part in the frantic efforts to isolate the germ during the days of the last influenza epidemic, when specimens from victims of the disease were available, contracted the "flu." Due to the fact that an attack creates a temporary immunity, the workers were unable to offer themselves in the usual

roles of scientific martyrs as test subjects. Instead, monkeys were used.

The influenza germs congregate in colonies or clumps of billions of bacteria in the culture in which they are raised. The virulent form of the germ is characterized by clumps having a rough porous surface. The smoother clumps were found to be progressively less dangerous, ranging down through those forms which produce bronchitis, to those which cause a variety of common colds, and finally to those very smooth surfaced clumps which are innocuous and are present in the "normal" throat.

By taking specimens from the roughest portions of clumps, breeding new cultures from them and successively selecting the roughest specimens through 15 generations of the streptococcus, it was found possible to produce the virulent form from the non-virulent form of the germ.

### England Makes Currency for Other Countries

London.—Making money for other countries is a regular business of the British government.

Not only the British colonies, but Rumania, Estonia, Czechoslovakia, Finland, and even Soviet Russia have their currency made in England. The royal mint also gives many countries advice on coinage.

Many of the orders received by the mints are not easy to execute. Egypt recently placed a large order for gold coins which, though larger than the earlier Egyptian currency, had to resemble it in other respects. Much research was necessary to obtain the peculiar greenish tinge of the old coins instead of the faintly reddish hue of the British gold coinage.

When the Spanish mint was reorganized, a commission came from Madrid to study the British mint, and the new machinery was made in Britain.

### Keep Caruso Dandily Dressed in His Tomb

Paris.—Although he has been dead for a number of years, Enrico Caruso, always a great dandy in his lifetime, is clothed in the latest fashions of Bond Street, Tito Schipa, Italian tenor, who is singing at concerts in Paris, revealed.

At the present moment the greatest tenor of all time is garbed in a morning coat and accessories, which are the pride of one of the best houses

In London, said Signor Schipa, who was one of his close friends and admirers.

"Every three years we go to his tomb in the Pozzolo Reale cemetery in Naples and dress the body anew," said Signor Schipa. "The body is embalmed so well that it still appears alive. Even the complexion is fresh, which makes the illusion complete. At each of our triennial visits the body is taken out and garbed in the latest style, which at the moment is a snappy morning coat. It has not yet been decided what the next costume of our old friend will be."

### HOOVER MEDAL



First photograph of the President's medal commemorating the administration of Herbert Hoover, which has just been cast by the United States mint at Philadelphia. The medals are now available for purchase by the public.

### Gets \$250,000 Bag by Mistake, Finds Owner

New York.—Oscar H. Strobel, Jr., Texas cowboy and artist, on his way to Berlin to study art on a scholarship, stepped off a train at Grand Central terminal and his luggage was bundled in a taxi after him.

The car stopped before the Hotel Governor Clinton. "I'll look after your luggage," a doorman told him.

Strobel was shown to a room. He had just doffed his overcoat when the luggage arrived. He opened one bag and found it full of gold backed stocks and bonds, worth \$250,000.

Strobel phoned Gordon Renschler of the National City bank, and he identified the bonds by their serial number. They belonged to Frederick Appel of Indianapolis. The bank located Appel and he hurried to Strobel's hotel, where he identified the bag and recovered the bonds.

### Gold Medal Presented to Elihu Root



Detailed view of both sides of the new President's gold medal which the National Academy of Art presented to Elihu Root, in recognition of his distinguished service to the cause of fine art. The medal is the work of Robert Aitken, American sculptor.

# Big Seas



Scene on the Shore of the Caspian Sea.

(Prepared by the National Geographic Society, Washington, D. C.)

**T**HE world's two most important and best known bodies of water that lie below sea level are the Dead sea and the Caspian sea. The Dead sea is really a gigantic sinkhole. In no other continent is there such a deep depression in the earth's crust; nor will one find greater desolation or more uncomfortable conditions for man and most other living things even in the hearts of the greatest deserts.

The Hebrew scriptures have thrown an atmosphere of tragedy about this country. There, the chronic states, were situated the wicked cities of Sodom and Gomorrah, destroyed by the wrath of Jehovah; and there the modern reader sees the blasted region, seared by unbearable heat, with its bitter death dealing waters, to prove the story to his satisfaction.

According to the Biblical narrative the Jordan valley and the plain near its mouth on the shores of the Dead sea where the destroyed cities lay shared the early good fortune of the Promised Land itself and "flowed with milk and honey." But an end was put to this pleasant condition by the rain of brimstone and fire.

The story of the region deciphered from its rocks by geologists begins much earlier than the days of the patriarchs whose actions are recorded in the Bible. This record seems to indicate that Palestine and the whole western end of Arabia rose from the sea a million or more years ago in what the geologists term the Tertiary era. Shortly after the rise, it seems, a great slice of the land parallel to the coast of the Mediterranean sank to great depth, forming the huge rift valley, "the Ghor," now occupied by the Jordan river and the Dead sea.

It is not clear whether there was a connecting channel between the Mediterranean and the great valley; but a well defined ancient beach indicates that in those remote times the great depression held a sea or lake at about the same level as that of the Mediterranean. The Jordan did not then exist; its entire valley as well as the sea of Galilee was swallowed up in the parent of the Dead sea, which was some 200 miles long and 10 to 15 miles wide.

### Dead Sea Has No Outlet.

It is believed that the climate of Palestine in remote times was moist and that the great inland lake was for a while kept at its highest point. When drier conditions set in the lake began to shrink, eventually retreating into the present position of the Dead sea and exposing the valley now occupied by the Jordan. This is practically the only large river in the world which flows in a valley ready-made for it almost from source to mouth.

The Dead sea depression having no outlet, all the salts contained in the large original inland sea were retained when evaporation reduced the volume of the body of water to its present dimensions. In addition, for hundreds of thousands of years the Jordan and the other streams and torrents that flow from the desert hills into the basin have been carrying in additional salts until now the waters of the Dead sea constitute one of the most highly concentrated natural brines in existence. It is estimated that on the average some six million tons of water flow into the Dead sea daily, and since the level of the sea changes but little, an equal amount is pumped out daily by evaporation.

The present Dead sea is 47 miles long and about 10 miles wide. Its surface lies approximately 1,300 feet lower than sea level and at its deepest point its bottom lies another 1,300 feet down. This great rift in the earth's crust, therefore, lies 2,600 feet below sea level and is the deepest hole in the land anywhere in the world. Because of the intense heat and dryness and the presence everywhere of salt the land immediately about the Dead sea is a region of desolation.

Because the intense heat and pressure often prove fatal to others than the few hapless Arab nomads that manage to survive in the region, this area has until recently not been intensively studied by scientists. It was at first thought that there is no evidence of recent volcanic action and that the traditional destruction of the cities by a rain of fire and brimstone may have referred to the explosion of pockets of crude petroleum. A scien-

tist who visited the region in 1909, however, reported a small extinct volcano near the northeastern corner of the Dead sea near the reputed site of Sodom and concluded that a shower of ashes from this vent may have caused the catastrophe so vividly described in Genesis.

### Caspian Sea is a Puzzle.

The Caspian sea was thought, in the earliest periods of recorded time, to be part of the great "stream of ocean" surrounding the habitable earth. Herodotus, the Greek Banedeker, mentions a visit to it in 455 B. C., when it was an even greater mystery than today, for then no one knew its extent.

Some authorities claim that the Caspian had its origin in a great inland sea, an Asiatic Mediterranean, with an outlet to the Arctic ocean. In support of the Arctic outlet it is pointed out that seals are still hunted in the Caspian and there are other forms of life which show evidence of Arctic ancestry. It is argued that the Caspian owes its present size to climatic changes and evaporation. That the sea has reached other levels is evident by the number of terraces that can be seen back from the coast. However, to complicate matters, the weak development of the terraces indicates that the sea did not stand at any one level for a long time. Walls and cities have been found in many sections underneath the surface, an indication that the level of the water was even lower at one period than it is now.

Shifting shore lines are not the only eccentricities of the Caspian. Although 85 feet below the level of its neighbor, the Black sea, and with no known or possible outlet, the Caspian is less than half as salty. It is only three-eighths as salty as the ocean. Furthermore, the northern part, which receives large quantities of fresh water from the Volga, Ural and Terek rivers, is so slightly salty the water is quite drinkable.

The Black sea, with approximately an equal surface and almost the same climatic conditions, not only retains a constant level but is continually discharging at the Dardanelles. Yet the volume of water poured into the Black sea is not nearly so great as that which the Caspian receives. The Volga, alone, drains almost half a million square miles into the Caspian.

No other inland body of water is so richly stocked with fish, nor has as wide a range of species. The Caspian presents an intermingling of salt and fresh water forms. Before the World war the annual catch, including the seals of Krasnovodsk bay, was valued at more than five million dollars.

With an area equal to that of the state of California, or more than all the Great Lakes combined, the Caspian sea today occupies the deepest part of a great depression situated to the west and south of the Ural mountains. The northern or fresh water half is shallow, nowhere reaching a depth of more than 118 feet. The southern half, however, is cut by two deep depressions and soundings have reached 3,600 feet.

### Coastal Strip is Narrow.

Both the north and the east coasts are flat and hard to approach. Caucasus mountains on the west and the Elburz on the southern, or Persian, shore are close to the sea and leave only a narrow coastal strip. On this strip are most of the important cities of the region. Taken as a whole the Caspian is not an attractive body of water. Its shores are as barren as the granite boulders of its bordering mountains. As there is no fresh water above or below the surface of the ground near the southern coasts, the inhabitants must bring drinking water from long distances or condense sea water. One of the distinguishing features of towns along this part of the Caspian sea is the floating condenser plant, usually some worn-out steamer or sailing vessel. Sometimes the water is piped ashore, sometimes it is carried in tank barges and then peddled around the streets, as is milk in other cities.

Baku, the capital of the Soviet republic of Azerbaijan, is the largest city on the sea and the center of a prosperous, busy oil region. Its surroundings are like those of the nitrate towns along the coast of Chile, only the settlements are more numerous and better built. Before the war Baku was one of the most important cities in the Russian empire.

## Daddy's Evening Fairy Tale

By Mary Graham Bonner

### NEW FRIENDS

David had just had a talk with a lady whose name was Vapor and who helped keep the air nice and moist. Now he was meeting no less a person than the Eastern Hemisphere.

He looked so differently in real life than he did in the book where David had always seen him. He was talking now:

"I have charge of so much, you know—Europe, Asia and Africa, not to mention Australia and much else besides. You see with Europe, Asia and Africa forming the largest mass of land on earth and all joined together there is quite a job in attending to them.

"The first part of my last name, as without a doubt you know (David always liked people who gave information but at the same time acted as though he knew) means Half—that's the Hemi part of my name. I'm half a sphere, or half of the earth. That makes me pretty important. I'm a good deal more than a continent, and you wouldn't sneeze at a continent."

"I wouldn't sneeze at anything unless I had a cold."

"Now don't be upsh! If you were half a sphere and were allowed a holiday you would want to have some fun, so I put some sneezes into my conversation so my talk wouldn't



He Looked So Differently.

sound too boastful. You can't be too boastful with sneezes."

"I should say not."

"To be sure a continent is a great thing. When the sea divides the land and makes continents it's doing a big job for continents. Two of the largest continents are in my part of the world, Asia and Africa. Your continent, North America comes next and then comes South America, and after that in size comes our little friend Europe, not so little either, and lastly comes Australia, whose name means South Land and who isn't any undersized land, I can tell you."

"Here in Europe and in Asia, too, there are so many bays and seas and gulfs that I have a great deal to watch. Africa doesn't cause me so much thought that way. But it does explain my costume. It has to be suitable for all my moves. Now you have a suit that fits your arms and legs, and so must my suit fit. If my shape is strange then my suit must be strange to be in keeping."

Eastern Hemisphere laughed a little as he noticed David was still smiling at his costume.

"I hear," he went on, "that you've met Atlantic Ocean before, but Western Hemisphere introduced you to the Pacific first of all, and I want to be as polite as my brother and show you happy hemisphere habits. Come, I'll reintroduce you to Atlantic and to the Gulf Stream lady who comes over this way to warm up the country."

It was very bright and dazzling now and David took off his raincoat. He could see how the map had spread itself out just as it had before but it looked quite different. The very shape of Eastern Hemisphere was unlike that of Western Hemisphere, but it all was just like a living or magic map, or, as he had said before, like a great toy world.

As he wandered a little to the west where he could see Compass was pointing with his left arm he saw once more his old friend Atlantic Ocean and could hear a soft voice talking to Atlantic which he recognized as the voice of Gulf Stream. To the right of him he could see the country spread out, a world that looked like and yet unlike the half he had already seen. He wanted to see it all, at once, but he must speak to Atlantic and Gulf Stream first.

Gulf Stream was arguing with Atlantic. It was a warm argument, yet not over heated. Her voice was gentle but he could tell she was getting her way.

"I have to help over here, Atlantic, or they would have cold weather such as they have in Labrador. You know that!"

"All right, Gulf Stream, I must, as always, give in to you!"

### Its Name

In a kindergarten class, flags were shown, and in answer to a question, a little girl gave the response that was expected of her: "This is the flag of my country."

"And what is the name of your country?"

"Tis of thee," was the prompt reply.

## NEW IDEA IN MIDSEASON HATS; STYLES IN FOOTWEAR FOR 1930



**W**HILE fashion's clientele is waiting for the "spring bonnet" to make its debut on the style stage, midseason hats are filling in the interim with a most entertaining program. Two of the chief performers in the between-season's play are belting ribbons and buttons.

### SOME MIDSEASON HATS

Belting ribbon is used not only for the making of entire hats, but it is accompanying with felt to an intriguing degree. While hats for immediate wear stress use of black ribbon also certain dark browns, winter-resort millinery flaunts the gayly colorful.

Indeed the color theme is one of flattering promise in regard to hats. Pastel is a word which is occurring repeatedly in the story of colors for spring chapeaux. Angora berets in pastels are at this moment quite a favorite topic in the sportswear realm. As to pastel felts they are enticing every advance millinery collection. Pastel belting ribbon, in connection with the new felts makes an excellent showing.

When a hat is all of belting ribbon it is apt to present the appearance of the cloche which is sketched first in this group. The color of this model may be left to imagination, making it black if you will, or hula brown, or beige clair or possibly fleet blue if you are partial to bright navy.

Belting ribbon is worked with felt for the model shown just below it, the crown designed with a shapely inset while the brim ruffles becoming around the face.

Below this is a charming felt-ribbon cap-shape model. The cuff is of aqua marine blue belting with a bow of the same at the back. The crown is of black tustrous felt.

Buttoned hats are the latest or rather one of the earliest novelties of the new season.

The picture at the top to the right and the one just below it emphasize

will take the lead for all but evening and the sturdier type of sports shoes. Secondly, for Palm Beach and other southern resort wear, and for summer throughout the country the all white and the trimmed white kid shoe will be very important.

There are many reasons for this "white" forecast. First, there is no doubt whatever that the suntan mode will be strong as ever in 1930 and nothing goes quite as well with the many suntan tones as white sleeves. Footwear of this class will be extremely simple, sometimes with pastel trims restricted to little more than pipings or straps.

For general street, business, shopping and town wear, black was duty stressed; also interesting browns; also tropical tan and suntan beige with nautical and other shades of dark blue. There will be many pastel shades, too, as well as such novelties as aubergine (eggplant), a dahlia range; also greens and reds. The idea is for colorful shoes to carry out the theme of the costume ensemble.

With the stunning silk print frocks to the lower picture the headlines of which are longer, yet not too long to effect any real change, ensemble shoes give the finishing color touch. With her blue-and-white print crepe dress the young woman standing wears navy pumps. This frock is cleverly styled with a unique jabot drape. The dash is drawn through a slot and ties at the right side, indicating a normal waistline.

Dark red enters into the color study of the other silk gown and the



### FOOTWEAR FOR SPRING AND SUMMER

clever button treatments. Pearl buttons are mostly in use, not only white but in colors to match the felt of the hat.

Speaking of media in the midseason but one is reminded of the favor shown for taffeta. In the recent collections one encounters fetching modish, some of them hand embroidered. Shantung, too, in vivid and novel shades is extensively employed by milliners.

### Footwear for 1930

Recently several hundred men and women shoe stylists met to discuss trends in footwear for spring and summer, 1930. According to the program voted upon at this conference here is what you will wear this spring and summer:

First of all kid leather "flop" shoes

one-strap shoes are of the same rich hue. For daytime wear one-strap and pleated, pump, dress-shoes, oxfords and most novelties are included in the list of novelties.

In the evening dress, dressable fabrics such as satin, silk, crepe and multi-color brocades are sponsored if they become the fashion among women of the high-toned taste to buy evening slippers in white or near-white in any preferred material with a view to having them used to order.

And now for the climax to the story of color for shoes—it is said that men's shoes are also to be color fast, including dark red, dark blue and dark green.

JULIA BOYD SMILEY.

1930 Women's Newspaper Union.



Mrs. H. A. Lawson

## How Dallas Mother Keeps Children Well

When a person can depend on one medicine to keep herself and her family free from the effects of constipation for more than ten years, what more can you expect? Mrs. H. A. Lawson, who lives at 2015 Terrace Drive in Dallas, says "Nature's Remedy" hasn't failed us in the ten years since I first started using it for myself and children. I give these little tablets the credit for keeping us healthy all these years."

Results like that are what make Nature's Remedy (NR Tablets) so popular. More than three million tablets are used a day. Any druggist will tell you to use them if you suffer from biliousness, sick headache, indigestion, rheumatic aches and lack of energy. The cost is only 25c.

### Muskrat Found Glasses

Last summer Ronald Wagershauser dived off a pier at Lake Mendota, Wis., and lost his glasses. Jack Hayward helped him look for his spectacles, but they could not be located on the bottom of the lake. Later, Hayward noticed something shining in a muskrat house built near the pier, and investigated. He found that a muskrat had taken possession of the glasses. Hayward returned them to their owner.

### NERVOUSNESS

Helpfully treated with This Famous Aid

If your nerves are jumpy and every little thing or irregular habit makes you feel nervous, you need Koenig's Nervine. This world-famous, tried and tested medicinal aid has successfully proved its great beneficial worth in the treatment of Rheumatism, Nervous Indigestion and Nervous Irritability. Agonies All Over the World.

AT ALL DRUG STORES  
Generous FREE Sample  
Bottle Sent on Request  
Koenig's Nervine Co.  
Dept. 31  
1045 No. Wells St.  
Chicago, Ill.

Formerly "Pastor Koenig's Nervine"

### KOENIG'S NERVINE

### STOP THAT ITCHING

Apply Blue Star Ointment to relieve Skin Irritations, Itching Skin or the Itch of Eczemic conditions, Tetter, Ringworm, Itching Toes, Poison Oak and as an Antiseptic Dressing for Old Sores, etc.

Ask your Druggist for

### BLUE STAR OINTMENT

## PISO'S for COUGHS

PISO'S gives quick, effective relief. Pleasant, soothing and healing. Excellent for children—contains no opiates. Successfully used for 65 years. 35c per bottle. All sizes.

QUICK RELIEF

What is known as the Frank Hunt Place, situated in South Hiram, Maine, does not differ in appearance from scores of other farmhouses, but its history is singular from the fact that there has never been a birth, death or marriage within its walls in its more than a century of existence.

It would be nice to have all the money you've spent foolishly so you could spend it foolishly again.



## AFTER OPERATIONS

"I was three times under an operation and I was very weak and nervous and could not eat. I suffered for ten years. I learned about Lydia E. Pinkham's Vegetable Compound and my husband bought me a bottle. I felt a little better and he bought me two more. I had the Compound in my home for two years and took it all the time. Now I feel strong and can do anything."—Mrs. A. Michalk, 5443 Mitchell Ave., Detroit, Michigan.

Lydia E. Pinkham's Vegetable Compound

**CLOVIS NEWSPAPER SOLD**

The Nunn-Warren Publishing Co., has purchased of Max Stranton the Clovis Evening News-Journal taking charge January 1. This concern now owns newspapers at Pampa, Panhandle, Borger, Childress, Spearman, White Deer, Stinnett, Hereford, Demmitt, Frizana, Silverton and Quitaque.

**TOWNSITE SALE AT LARIAT**

Plans are in formation for a townsite sale to be held in the near future at Lariat, 16 miles northwest of Muleshoe on the Santa Fe railroad. The sale will comprise about nine blocks of business and residence lots. There are now located two elevators, five stores and several residence houses.

**AGRICULTURE NOTES**

Featuring Carl Williams of Oklahoma, cotton member of the Federal Farm Board, the second annual farmer's short course given by Texas Technological College will be held late in January or early February. Professor H. J. Bower, director, says that Mr. Williams has definitely agreed to appear on the short course program, the time of meeting depending upon the convenience of the Federal Farm Board member.

The first meeting held the early part of this year for two days was well attended and successful. The coming session will last three days, the first day being devoted to marketing problems, the second to community work, and the third to a general livestock program.

The first day's program will include a speech by R. F. Cook of Amarillo, manager of the Texas Wheat Growers Association, Harry Williams of Dallas, manager of the Texas Farm Bureau Cotton association, Miss Mary Mims of Baton, Rouge, La., community worker of the Louisiana state department of agriculture, President Paul W. Horn of Texas Technological College and other Tech professors.

The remainder of the first day's program will be in charge of the Lubbock County Farm bureau, ending in a dinner in the evening. The food served will be the product of Lubbock county farms and the tables will be decorated with wheat and cotton.

D. F. Eaton, Lubbock county agricultural agent, will be chairman for the second morning, with H. G. Lucas, Brownwood, president of the Texas farm bureau federation, in charge of the afternoon program and Sterling C. Evans district extension agent for Texas A. and M. college, in charge for the evening.

The second day will include addresses by Miss Mary Mims of Louisiana, Sterling C. Evans and others. The community work will feature this day, the night program to be jointly given by 4-H club workers, Texas A. and M. extension workers, the Tech agricultural club.

The general livestock marketing program for the third day will feature cow-testing, on which subject Sterling C. Evans and Prof. K. M. Renner, of the Texas Tech Dairy Products department, will speak, as well as Prof. W. L. Strangel in charge of the Tech. department of animal husbandry.

It is hoped the farmers of Lamb county will arrange their work so there will be present a very representative delegation.

**AGED MATRON DIES**

Mrs. Sallie Laura Tinsley, age 57 years, wife of Lee Tinsley, who resided 12 miles east of Littlefield died at the late family home Saturday afternoon at three o'clock.

The deceased was born in White county, Tennessee. She was a member of the Nazarene church, and early in years gave her self to be a Christian.

Funeral services were held at the Tabernacle Baptist church with Rev. Roy A. Kemp officiating.

Funeral arrangements were in charge of Burleson Co., Inc.

**Record Elm Trees**

Wethersfield (Conn.) claims a larger elm than the celebrated Kingsford elm. Its height is 102 feet; spread of branches, 148 feet; circumference 1 foot above the ground, 40.9 feet; circumference 4 feet above ground, 29.1 feet.

**Useful to Know**

You will always be able to remove the meats from English walnuts in a whole condition if you crack the nut on the side opposite the "seam" and take out the kernel from that side.

**SPECIAL LOT PRICES**

300 resident lots in Littlefield, close in and convenient to schools, to be closed out this year.

If interested, see any of our agents, or call at our Littlefield office.

—Yellow House Land Co.

**Nature Thought of Everything**

Nature thought of everything when the human body was made. When the body is about to become ill, nature planned danger signals to warn us. Thus, if our children grind their teeth when they sleep, or lack appetite, or suffer from abdominal pains, or itch about the nose and fingers, we should know that they may have contracted worms. Then, if we are wise, we buy a bottle of White's Cream Vermifuge and safely and surely expel the worms. Thus we avoid the danger of very serious trouble. White's Cream Vermifuge costs only 35c a bottle, and can be bought from Stebbins-Alexander Drug Company

**FIRE LOSS IN TEXAS TOTAL \$1,160,843.98 FOR NOVEMBER 1929**

According to the State Fire Losses in the State of Texas for the month of November, 1929, totaled the vast sum of \$1,160,843.98.

The leading causes in the State of Texas for the month of November was stoves, furnaces, pipes, etc.; electricity; matches and smoking; explosions; incendiaryisms; and defective chimneys and flues. Each of these causes are preventable, and a large per cent due to carelessness.

It might surprise you to know that, the fire loss, plus the upkeep of fire departments, water supplies and fire alarm services, cost the people of this country approximately \$1,112,000,000 last year.

It is estimated that 15,000 people in America are annually burned to death or suffer burns from which death occurs and that more than double this number suffer serious injuries through fire.

Of these deaths from fire 30 per cent are from the country and 70 per cent are from the city.

One of the startling disclosures of our fire record is that 31 per cent of the deaths and 13 per cent of the injured are children under 10 years of age.

66 per cent of the deaths and 40 per cent of the injuries occur in dwellings.

It is almost unbelievable but reports of fire losses in the leading large cities in the United States show that 1 per cent of the number of fires is responsible for 66 per cent of the amount of loss. Carefulness and building to lessen the danger of fire will, no doubt, contribute greatly to the reduction of our fire losses but where fires do occur there is no substitute for weapons with which to fight which can be brought into play immediately after the fire breaks out.

**Humanity and Dogs**

However much of a friend of man the dog may be, when his mode of life is applied to humanity, it means something else again. The sayings, "To lead a dog's life" or to lead some one else a "dog's life" speak volumes for the way some people treat their dumb friends.

**BULA MAN DIES**

G. B. Salyer, age 58, died at the family home at the Bar N Bar head-

quarters, in the New Bula community Sunday morning at three o'clock. Death was said to be due to heart trouble.

The remains, accompanied by A. E. Walker, were shipped to Wilson, Okla., where interment was made.

Hammons Bros., undertakers, were in charge of arrangements.

**Bill Der Says**

Look up and you'll see the sky is the limit.

HAPPY IS THE FARMER WITH A FINE BIG BARN



JUST LUMBERING ALONG!

Good lumber is just as important in your new home or building as is good plumbing.

In fact more so—because without it the plumbing would soon fail. Please let us be considered in your next considerable piece of work. We will make it worth your while.

**Wm. CAMERON & CO.**  
LUMBER  
Littlefield, Texas

**Happiness Contagious**

A happy man or woman is a better thing to find than a five-pound note. He or she is a radiating force of good will, and their entrance into a room is as though another candle had been lighted.—Stevenson.

**BETTER MAKE THIS RESOLUTION**

Better resolve that you'll be able to put the roof back over the heads of your family, or rebuild the barn or garage if fire wipes it out during 1930. It's apt to be YOUR FIRE next time. And the first question your neighbors will ask is: "Did he have it insured?"

Come in and let us tell you how little it will cost to make the answer "YES."

**C. H. GROW**

Room 6, First Nat'l Bank Bldg.

**MAGNOLIA GASOLINE**

**MAGNOLENE**

Oils and Greases "The Dependable Lubricant"

Real Quality Products Demand them from your Dealer

**MAGNOLIA PETROLEUM COMPANY**

Luther F. Hargrove, Agent, Littlefield, Texas

**LOANS**

ON CITY PROPERTY EITHER RESIDENCE OR BUSINESS Low Interest Rate, Monthly or Annual Payments

**LOANS**

Your business will be appreciated! **STREET & STREET**

Pioneer Insurance Agents LITTLEFIELD, TEXAS

**START THE NEW YEAR RIGHT**

Buy Your Groceries And Provisions From Us

**RENFRO BROTHERS**

RAYMOND RENFRO NORMAN RENFRO LITTLEFIELD

**MEATS OF ALL OCCASIONS**

Here you will find a complete line of both fresh and cured meats for the holiday season. Tender juicy cuts are our specialty. Let us supply you.

LUNCHEON MEATS OF ALL KINDS

**J. C. HOUK'S MARKET**

**Good USED BUICKS**

You make no mistake when you buy a used Buick from a Buick dealer.

Our cars are put in first class condition by real Buick mechanics, and are more than worth the money.

We are here to stay and want your business.

**BAIRD-BUICK CO.**

ALEX DeLONG, Manager

Littlefield, Texas

**NOTICE**

I am now located in the building south of Cox's Tin Shop with a full line of

**OLIVER**

FARM MACHINERY AND REPAIRS

**L. E. DAVANAY**

Littlefield, Texas

**PUBLIC SALE**

To be held at my place five miles north, one-half mile east, one-half mile north and one-half mile east of Littlefield.

**Friday, Jan. 10**



**FARM IMPLEMENTS**

- 1 two row Emerson Lister
- 1 two row Standard Cultivator
- 1 two row P. & O. Go-devil
- 1 single row P. & O. 2-wheel Lister
- 1 single row P. & O. 4-wheel Lister
- 1 single row P. & O. peddle guide Cultivator
- 1 single row P. & O. seat guide Cultivator
- 1 Iron wheel Wagon

**HORSES AND MULES**

- 1 bay Horse, 8 years old
- 1 bay Mare, smooth mouth
- 1 paint Mare, seven years old
- 1 bay Mare, nine years old
- 1 dun Horse, nine years old
- 1 sorrell Horse, smooth mouth
- 1 brown Mare and Colt
- 1 dun Pony, smooth mouth

FREE LUNCH AT THE NOON HOUR. PLEASE BRING YOUR CUPS.

SALE BEGINS PROMPTLY AT 10:00 A. M. PLEASE BE ON TIME

TERMS OF SALE: All sums of \$25.00 and under, cash. On all sums over that amount a credit of ten months time will be given on approved note, bearing ten per cent interest from date of sale. Five per cent discount will be allowed for cash on sums over \$25.00

**M. E. BOLTON, Owner**

COLS. J. W. HORN and M. L. LYNN,

JIM HARLESS, Clerk

**AUCTIONEERS**

# GREAT - \$2,000 - AWARDS

GREATEST OFFER OF A LIFE TIME OPEN TO MEN AND WOMEN OF ALL AGES

Given Saturday, February 15th

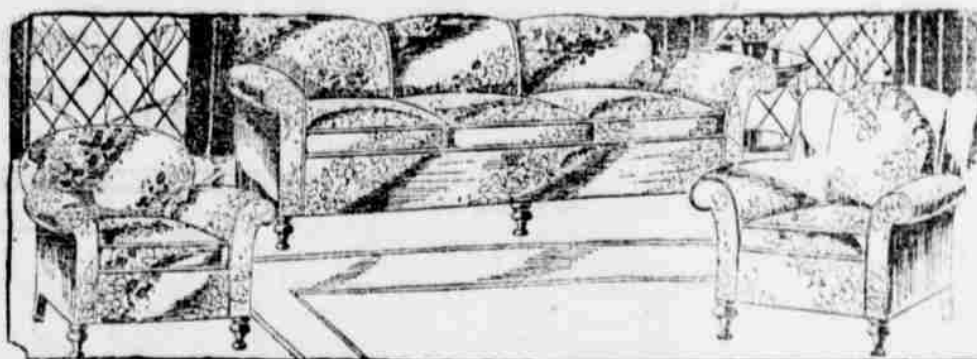


**Get Busy Today**

JUMP IN TODAY AND PUT YOUR OWN TOWN OR COMMUNITY ON THE MAP IN BIG RED LETTERS BY WINNING ONE OF THESE PRIZES. NOT LUCK, NOT CHANCE—EARNEST EFFORT ALONE WILL WIN. TEST YOUR ABILITY. REMEMBER THOSE WHO START NOW WILL HAVE THE ADVANTAGE. BE AN EARLY BIRD! THIS IS A SHORT CAMPAIGN. SATURDAY, FEBRUARY 15, IS ONLY A VERY SHORT DISTANCE AHEAD. YOUR HUSTLING ABILITY WILL PLACE YOU IN THE WINNING LIST

**Ride Away Feb. 15th**

## Second Grand Prize



**\$300.00 LIVING ROOM SUITE OF FURNITURE**

Purchased from and to be displayed at Burleson & Co., Furniture and Undertaking

## FIRST PRIZE

Costing \$860

**NEW CHRYSLER**

EQUIPPED

**LITTLEFIELD**

NOTE: The picture of this prize is...

### HOW SUBSCRIPTIONS COUNT IN VOTES AND HOW TO GET WINNING VOTES

It costs nothing to compete, either now or later.

Votes alone will decide the winners. These votes are obtained by securing new and renewal subscriptions to the Lamb County Leader. These subscriptions may be obtained ANYWHERE. Candidates are not limited to their own town in securing subscriptions.

Below is shown the subscription rates of the Lamb County Leader and the number of votes given on each subscription according to the amount paid. Note particularly the tremendous vote on longer term subscriptions.

TERM	PRICE	VOTES
1 Year	\$1.50	2,000
2 Years	3.00	5,000
3 Years	4.50	15,000
4 Years	6.00	30,000
5 Years	7.50	50,000

Advantage of additional votes may be obtained by securing extensions of subscriptions taken during the early part of the campaign. Such subscriptions must be marked "Second Payment" on the stub and the amount of first payment must also be written. Subscriptions for longer periods than above listed will receive votes pro rata on the above scale.

### RULES AND REGULATIONS HOW TO ENTER

Fill out the entry blank with your name or the name of the person to be nominated. Bring or mail this blank to the Campaign Manager and you will be credited with 2,000 votes as a starter.

Any man or woman of good character, either married or single may become a candidate in this campaign and is entitled to one entry credit of 2,000 votes.

The Campaign Manager reserves the right to reject objectionable nominations.

There are no obligations attached to entering the campaign and it costs absolutely nothing to try for a prize.

No candidate will be permitted to transfer votes to another candidate after receiving them.

Subscriptions cannot be transferred. All subscriptions must be paid in cash before votes are issued.

No subscriptions for a period longer than five years will be accepted.

In accepting nominations all candidates agree to abide by the conditions named. The Campaign Manager reserves the right to make changes and conditions that are deemed necessary in the interest of the campaign, to the conditions or the prize list.

All prizes will be delivered to winners at Littlefield, Texas, just as soon as all winners are announced by the official judges.

In case of a tie of any prize, the candidates tying will receive prizes identical with the one tied for.

This campaign opens January 9, and closes Saturday, February 15th, at 8:00 p. m.

No agreements or promises, either written or verbal, made by solicitors than those published in the Lamb County Leader will be recognized.

No one in any way connected with the Leader will be allowed to compete nor supply coupons to candidates.

### THE LAMB COUNTY LEADER THE MOST STUPENDOUS CAMPAIGN EVER INAUGURATED

An appropriation has been made for a new automobile, together with men and women who by their industry and vote gathering during the campaign...

The prizes have been purchased by the highest vote totals by February 15th. An already large list of readers, many of these prizes, worth thousands of dollars to citizens of this section.

The fact that this newspaper is the Chrysler-Plymouth four door car of those who appreciate the prize has an offer of this magnitude. The biggest offer of its kind ever. THE BIG AUTOMOBILE IS HERE. MOB...

Any person residing within the county may enter. To enter it is only necessary to fill out the entry blank and return it in at once. Once a candidate has been chosen, it is fun to gather votes and votes February 15th.

It is not necessary that you pay for the car. It will cost you a cent, either now or later. You will gain the greatest vote totals. Cars, books, and prizes will be awarded.

The campaign officially opens January 9th. Return mail free upon receipt of the entry blank. THE BIG AUTOMOBILE IS HERE. Read every word of this blank. The prizes will be awarded.

Send in Your Name Today--Share in This Liberal Campaign

### First Subscription Coupon Good for 10,000 Extra Votes

This coupon accompanied by the entry blank and your first subscription will start you in the race with more than 12,000 votes—only one of these coupons will be credited to each candidate.

Name of subscriber \_\_\_\_\_  
 Address of subscriber \_\_\_\_\_  
 Candidate's Name \_\_\_\_\_  
 Address \_\_\_\_\_ Amt. Enc. \$ \_\_\_\_\_

Return this coupon to the Campaign Manager of the Lamb County Leader with your first subscription and you will receive 10,000 extra votes in addition to regular votes as shown in the regular schedule.



### THIS BLANK

and one subscription to the Lamb County Leader starts you with more than 14,000 votes. See one of your friends today about his subscription. Let this blank be your stepping stone to success.

### HOW VOTES ARE SECURED

Votes cannot be purchased and they cannot be transferred. Once they are issued to the credit of a candidate, they must remain issued. This rule is imperative. There are just two ways to obtain votes. One is by clipping the free vote coupons which will appear in each issue of The Lamb County Leader. The other is by securing new and renewal subscriptions to this newspaper. The coupons must be deposited in the ballot box in the campaign office before the expiration date printed on them. All subscriptions must be paid before votes are issued on them.

Between the dates of Thursday, January 9th, and Saturday January 25th, 1930 at 8 p. m., 100,000 extra bonus votes will be given for each and every \$20.00 worth of subscriptions turned in. Between the dates of Monday, January 27th and Saturday, February 1st, at 8 p. m., 90,000 extra bonus votes will be given for every \$20.00 worth of subscriptions turned in. Between the dates of Monday, February 3rd, and Saturday, February 8th at 8 p. m., 80,000 extra bonus votes will be given for every \$20.00 worth of subscriptions turned in.

The last week of the campaign subscriptions will count ten per cent less in extra votes than the last offer herein above.

For Further Information

Blank

CAMPAIGN  
LAMB COUNTY LEADER

Open  
Tele

Leader Announces

# PRIZE - CAMPAIGN

LITTLEFIELD AND LAMB COUNTY AND SURROUNDING TRADE TERRITORY

## 15th--5 Awards In All

### GRAND PRIZE

Model . . .

### PLYMOUTH SEDAN

Latest Model

AND SPARE TIRE

Displayed at

### COMPANY

obtainable but will appear next week

### Third Grand Prize



\$150.00 BEDROOM SUITE OF FURNITURE

Purchased from and to be displayed at the Hammons Bros., Co. Furniture and Undertaking



### Easy to Enter

TO ANY PARTICULAR TERRITORY TO OBTAIN YOUR SUBSCRIPTIONS AND VOTES. THE WORLD IS YOUR FIELD. WHETHER YOU LIVE 75 MILES AWAY OR ONLY A BLOCK FROM THE CAMPAIGN OFFICE YOUR OPPORTUNITY TO WIN ONE OF THESE BIG PRIZES IS THE SAME! THE PRIZES ARE ALL GRAND FREE-FOR-ALL PRIZES. YOUR CHANCE IS EQUAL YOUR HUSTLING ABILITY WILL DETERMINE.

MEASURE IN ANNOUNCING AND PRIZE VOTING CAMPAIGN SECTION OF THE STATE.

Excellent prize list. A big, powerful, luxurious, presented absolutely free of charge to those of their best qualities of salesmanship ability.

Who by their hustling ability, obtain the use of this unique method to increase the number of engaging solicitors, will distribute will tempt many of the most representative

mobile to lead the magnificent prize list, will undoubtedly command the attention of the country. TO WIN THIS BEAUTIFUL CASH PRIZE ALWAYS WANT TO ENTER.

to enter and compete for one of the prizes (lower right hand corner), and send in your entry today. You will find it great big automobile and other prizes on

to become a candidate. Nor will it be given to the candidate who gain in this memorable campaign will it

continues until Saturday, February 15th. Canopies and full information will be sent by mail out. Jump in today, get an early start scan the tremendous prize list—see how "k" and send it in today.

### EVERYBODY WINS IN THIS

## 20% CASH COMMISSIONS

An appropriation has been set aside to pay cash commissions to contestants who do not win automobiles or other prizes. Every active worker who fails to win one of the regular prizes will receive 20 per cent of the amount in subscriptions he or she has turned in, providing of course, he or she remains active until the end and makes a cash report each week of one or more subscriptions from the time he or she enters the campaign and at least THREE subscriptions the last week. Not only does the campaign offer you an unparalleled opportunity to win a handsome prize for effort—it is a good paying job as well.

### FOURTH GRAND PRIZE

\$100 Blue White Diamond Ring

### FIFTH GRAND PRIZE

\$75.00 Blue White Diamond Ring

Both purchased from and on display at the Jewelry Department of Stokes-Alexander Drug Company, Inc.

### HOW THE AWARDS WILL BE MADE

The prizes will be given away absolutely free February 15th, 1930, to the persons polling the highest number of votes by that time. The contestants, regardless of where he or she lives, who polls the highest number of votes by 8 P. M., Saturday, February 15th, wins the Chrysler-Plymouth Sedan.

The contestant polling second highest number of votes by Saturday, February 15th, at 8 P. M., wins the \$300.00 Living Room Suite of Furniture, and etc.

To everyone who does not win one of the prizes a cash commission of twenty per cent will be paid.

### Easy to Win

## An Early Start Means Success--Do Not Procrastinate!

### Subscription

### Call, Write

one

### MANAGER

### LEADER

6:00

ber 27

### HOW THE TERRITORY

### IS DIVIDED

There is but one district—all territory in the City of Littlefield, as well as all territory outside the City of Littlefield, consists of but one district. Every contestant has the same equal opportunity to win the automobile or other prizes.

### THE PRIZES GO TO FIRST

### Five Highest Candidates

### REGARDLESS OF WHERE

### THEY LIVE



### THIS BLANK

is all you need to start.

All you have to do is to send it to the Campaign Manager, Lamb County Leader, and you will be credited with 2,000 votes as a starter.

Send it in Today!

### ENTRY BLANK

### Good for 2000 Votes

PLEASE NOMINATE

M \_\_\_\_\_

As a candidate in The Lamb County Leader's Automobile and Prize Campaign.

Town or City \_\_\_\_\_

Street and No. \_\_\_\_\_

Signed \_\_\_\_\_ Phone No. \_\_\_\_\_

Address \_\_\_\_\_

This blank counts for 2,000 free votes. Only one nomination will be credited to each candidate. The nominator's name will be divulged if requested.

YOU ARE NOT LIMITED

**WEST NEWS**

Bula Bruce and son returned their home in Temple after a three weeks visit with her parents, Miss Rose Scheuer and Jene Lupton left for Canyon Friday to take up their studies again.

A few friends gathered at Ben Dolle's New Years day to celebrate his birthday. Everyone came with well filled baskets.

Mac Schimchat is moving this week to the Willis farm north of town. Mr. Witcher and family will move on the place Schimchat vacated. Mrs. Ben Dolle is on the sick list. Jas. M. Scheuer and daughter, Lucile took Margaret Scheuer to her school near Reserve, New Mexico Saturday.

A host of friends gathered at the Willie Geistman home Thursday evening to celebrate his birthday. All enjoyed themselves and returned

at a late hour wishing him many more birthdays.

O. L. Schlottman is moving to his own farm two and one-half miles west of town. Joe Foltyn is moving on the farm they vacated. Genevieve and John D. Scheuer spent Friday afternoon with Ouida Mae Simpson.

Ed Womack moved to Enochs Saturday and Grady Simpson moved on that place. Herman Miller spent Sunday with

Ben Doole and family. Henry Schlottman is on the sick list. Miss Fronia Yohner spent Thursday with Laura Schlottman.

Home Demonstration Agent's Itinerary for 1930.

Monday  
1. Olton  
2. Olton  
3. Amherst

Tuesday  
1. Spring Lake  
2. Sod House  
3. Olton  
4.  
Wednesday  
1. Amherst  
2. Fieldton  
3. Littlefield  
4.  
Thursday  
1. Ruby

2. Littlefield  
3. Fieldton  
4. Spring Lake  
Friday  
1. Olton  
2. Sand Hill  
3.  
4.  
Saturday  
1. Amherst  
2. Amherst  
3. Amherst  
4. Amherst

# CLEARANCE SALE

## Of All Winter Merchandise

### BEGINNING FRIDAY, JANUARY 10th

Notwithstanding there are yet several weeks of winter weather, we find it necessary to begin clearing our shelves in preparation for the arrival of our big stock of Spring Merchandise, much of which has already been purchased and some of it now in transit. The prices here quoted represent a considerable saving which should be taken advantage of by every buyer who still finds a need for seasonable merchandise.

#### SWEATERS FOR MEN and WOMEN

- Men's and Women's all wool Slip-over and Coat Sweaters, \$7.50 values to go at ..... \$4.95
- Men's and Women's all wool slip-Over and Coat Sweaters, \$5.95 values going at ..... \$3.95
- Men's and Women's Heavy Coat Sweaters, all colors, regular \$5.50 values, at ..... \$3.79
- Men's and Women's all wool Coat Sweaters at ..... \$2.95
- Men's and Women's part wool Sweaters at ..... \$1.95
- Part wool Sport Sweaters for Men or Women at ..... \$1.59
- Men's and Women's Coat Sweaters, only ..... .89
- Children's Wool and Rayon Sweaters, sizes 26 to 36, ..... .98

#### LUMBERJACKS and HEAVY SHIRTS

- Men's Corduroy Jackets, made by Sweet-Orr, regular \$6.00 values to go at ..... \$3.95
- All \$5.50 and \$6.50 Wool Lumber Jacks going at ..... \$3.19
- Men's Buckskein Lumber Jacks, regular \$3.50 values at ..... \$2.19
- Extra heavy Buckskein Shirts for Men, \$3.95 value at .... \$2.79
- Men's Buckskein Shirts, \$3.50 value going at ..... \$2.59
- Men's all Wool Shirts, \$2.50 value at ..... \$1.59
- 1 group of Buckskein Shirts selling at ..... \$1.49

#### DRESSES FOR WOMEN AND MISSES

- All \$18.75 and \$19.50 Dresses at .. \$11.95
- All \$12.50 to \$14.50 Dresses at .... \$ 7.95
- All \$6.50 to \$7.50 Dresses at ..... \$ 4.95
- One group of Dresses at ..... \$ 3.95

#### OVERCOATS for MEN

- Two \$26.50 Top Coats at ..... \$16.95
- Two \$21.50 Top Coats at ..... \$14.95
- Three 16.50 Top Coats at ..... \$11.95
- Two \$14.95 Top Coats at ..... \$ 9.95

#### SUITS FOR MEN

- All \$38. 50 Suits, 2 pair pants, at .. \$31.50
- All \$35.00 Suits, 2 pair pants at ... \$28.50
- All \$31.50 and \$32.50 Suits, 2 pants \$24.95
- All \$22.50 to \$24.50 Suits, 2 pants \$17.95

#### Good Winter Blankets

- Part Wool double Blankets, 70x80 in. \$5.50 value at ..... \$3.79
- Part Wool double Blankets, 66x80 in. \$4.25 value at ..... \$2.98
- Single Blankets, part wool, 66x80 in. \$4.75 value, at ..... \$2.95
- Single Blankets, part wool, 66x80 in. \$2.95 value at ..... \$1.95

#### MEN'S HEAVY COATS

- Men's genuine horsehide leather Coats, \$10.50 value at .. \$7.95
- One group of Men's leather Coats, at ..... \$6.95
- Men's Suede leather Coats \$14.95 value at ..... \$9.95
- Men's sheepskin lined Coats, full length at ..... \$4.95
- Men's Corduroy sheepskin lined Coats, \$14.50 sellers at .. \$9.75
- One group of Men's leather Coats at ..... \$3.95

#### Final Clearance of Women's Ready-to-Wear

- One \$75.00 Coat at ..... \$47.75
- One \$47.50 Coat at ..... \$27.50
- Two \$27.50 Coats at ..... \$17.75
- Six \$18.75 Coats at ..... \$11.75
- One group of Coats, at ..... \$ 5.95

Good Double Blanket, 60x74 in. at ..... \$1.39      Men's Winter Underwear, per suit ..... .98

# THE FAIR STORE

LITTLEFIELD,

TEXAS

# Improved Uniform International Sunday School Lesson

(By REV. P. B. FITZWATER, D.D., Member of Faculty, Moody Bible Institute Chicago, in Newspaper Union.)

### Lesson for January 12

## THE BAPTISM AND TEMPTATION OF JESUS

**LESSON TEXT**—Matthew 3:1-4:11 (Print Matt. 3:13-4:11)  
**GOLDEN TEXT**—This is My beloved Son, in whom I am well pleased.  
**PRIMARY TOPIC**—When Jesus Was Baptized.  
**JUNIOR TOPIC**—The Baptism and Temptation of Jesus.  
**INTERMEDIATE AND SENIOR TOPIC**—Jesus Facing His Life Work.  
**YOUNG PEOPLE AND ADULT TOPIC**—Triumphing Over Temptation.

### I. The Baptism of Jesus, the King (2:13-17).

While the forerunner was discharging his office, the King emerged from His seclusion at Nazareth and demanded baptism at John's hands. The incongruity of this demand with the purpose of baptism brought from John a protest, but upon Jesus' satisfactory explanation, John baptized Him. Touching Christ's baptism, note:

1. Its significance. (1) Negatively a. It did not mean His mere obedience to the commandment of God, because His entire life had been lived within the will of God. There was not a moment in His life but what was lived fully in accordance with the Father's will. b. Not because He had sinned, for He was absolutely sinless, harmless, undefiled—separate from sinners. This separation was so complete that even the devil could find no occasion against Him (John 14:30).

(2) Positively. Its significance is found in harmony with the central purpose of His coming into the world, which was to secure for His people salvation through death and resurrection. This act was the official entrance upon His work. It was an act of consecration on His part to the work of saving His people through sacrifice.

While baptism is a sinner's ordinance, Christ was baptized not because He had sinned, but because He took the place of sinners to be a substitute for them. In this He who knew no sin was made sin for us that we might be made the righteousness of God in Him (II Cor. 5:21).

2. Approval from the opened heavens (vv. 16, 17). Immediately following His consecration to His work, the heavens were opened and the Spirit came and abode upon Him, followed by words of approval from the Father.

### II. The Temptation of Jesus, the King (4:1-11).

Being thus commissioned for His work, His ability to meet the one whose destruction He had come to accomplish, must be demonstrated (Heb. 2:14). This temptation was the opening battle of the dreadful conflict between Christ and Satan. In this struggle note:

1. The battleground—wilderness of Judea (v. 1).

The first man was tempted in a garden with the most pleasant surroundings, and failed. The second man was tempted in a bare wilderness, and triumphed.

#### The method of attack (vv. 3-9).

Since, as the Redeemer of mankind, Christ sustains a threefold relationship, the Son of Man, the Son of God, and as Messiah, each one was made a ground of attack. (1) As Son of Man. This was a test of the reality of His humanity to demonstrate as to whether the humanity which He obtained through the virgin birth was real. The appeal was made to the instinct of hunger. Hunger is natural and sinless. (2) As the Son of God. It was a test as to whether this personality which had taken upon itself humanity, was divine. The devil quoted from a Messianic psalm to induce Jesus to presume upon God's care. God does really care for His own, but to neglect common precautions to do the uncalculated thing, just to put God's promise to a test, is to sin and to fail. (3) As the Messiah. Christ's mission as the Messiah was to recover this world from the devil. The devil offered to surrender to Him on the simple condition that He adopt his method, thus obviating the necessity of the cross.

#### 3. The defense—the Word of God (vv. 4, 7, 10).

Christ met the enemy each time and repulsed him with "It is written." Each time he quoted from Deuteronomy—the book which the higher critics would discredit as unreliable. Jesus had enough confidence in it to use it in this the most crucial hour of the world's history.

#### 4. The issue (v. 11).

The enemy was completely routed. The strong man was bound, so that the spoiling of his house was possible.

#### To Secure Salvation

"But what can mortal man do to secure his own salvation?" Mortal man can do just what God bids him do. He can repent and believe. He can arise and follow Christ as Matthew did.—W. Gladden.

#### For the Millions

Christ appeals to the soul as light appeals to the eye, as truth fits the conscience, as beauty speaks to the esthetic nature.—The American Magazine.

# OUR COMIC SECTION

## Promises



(Copyright, W. N. U.)

## THE FEATHERHEADS

FANNY'S RAISED ME OVER MY IDEAS OF HAVING THE BOYS OVER TO A POKER PARTY AND BUFFET LUNCH, BUT GREAT GUYS!—I'VE TOLD THE BOYS SO OFTEN THAT I WAS GOING THROUGH ONE, I'VE REALLY GOT TO!



HELLO MILTON—ABOUT THAT POKER PARTY—SAV OUTSIDE OF YOU AND SATCH, NO ONE CAN COME—WIFE-TIED ALL OF 'EM!—SO IT'S OFF—SORRY—SMOTHER TIME—YEH...



© Western Newspaper Union

## How Sweet of You, Felix

YEH HARRY—SATURDAY NIGHT—POKER AND SIDE BOARD EATS—WHAT?!—YOU CAUT!—WHY I WAS COUNTING ON YOU AN' WILLIS SURE!—HE CAN'T EITHER?—OH RATS!...



I'VE BEEN THINKIN' IT OVER, ABOUT THAT POKER PARTY, FANNY... AN' I'M AFRAID THE BOYS WOULD MAKE A MESS—AND, WELL—I WOULDN'T HAVE ANY FUN KNOWING YOU DIDN'T WANT US TO HAVE IT...



© Western Newspaper Union

### Stimulating Modern Interest

"We must do something to keep the young people interested in their school books," said the school visitor. "Yes, perhaps so," said the weary teacher, "we might try illustrating them like story magazines or fashion periodicals."

### A GHOST OF A PIECE



Landlady—"Don't you think this pie has a really haunting flavor?" Boarder—"It sure has—mine is a mere ghost of a piece of pie."

### An Unsociable Husband

Wife (to Hubby Deep in His Paper)—Ed! I told you you were wrong on that paint question.  
He—So?  
She—Yes, and you were also way

### DETESTED SALT MEAT



Sailor—"Don't clam me like that just for trying to kiss you." Flapper—"I'd bite you if I didn't detest salt meat."

### The Mistake

"Why is Mabel so wrought up? The papers gave a full account of the wedding."  
"Yes; they put 'Miss Blackfield was married to the well-known collector of antiques.'—Nebelspalter (Zurich)."

### Where It's Usually Sticking

"I don't believe I would feel comfortable up in the air," remarked Miss De Snob, during the discussion of air travel.  
"Well, dearie," broke in the Cat, "your nose certainly would feel perfectly at home up in it."

### High Cost of Shows

"I've always wanted to get in on the ground floor."  
"Here, too, but never can afford anything but gallery seats, either."

### Greater Hate

Magistrate—Was the prisoner violent when you arrested him?  
Policeman—Violent, sir? Why, he threw his wife at me.

### Permanent

"So the doctor said you would have to give up smoking for a while?"  
"Yes, and he also said I would have to give up \$10 for good."

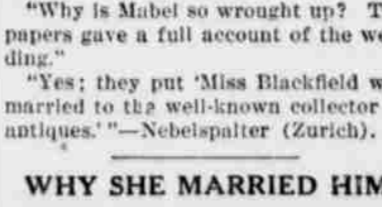
### The Collar Business

The Boss—if 'armin' don't agree with you, why don't you go to the city and get a white collar job?  
Tom Turkeyneck—Gee! That would just suit me, posin' for them collar advertisement pitchers.

### Willing to Risk It

Bland—Now that you are married, I suppose you will take out an insurance policy?  
Suave—Oh, no! I don't think she's going to be dangerous.—Stray Stories.

### Why She Married Him



Junie—"Sophie, why did you ever marry an ex-convict?" Sophie—"They're so accustomed to staying in, my dear."

### Large Membership

"Smart fellow, that Jiggsly."  
"You said it—he's now organizing an international order of vice-presidents and has 600,000 applications on hand."

### Prehistoric Bargaining

Mr. Skipspats—I want to marry your daughter. She's a priceless treasure.  
Old Pa Bonechisel—Where do you get that priceless stuff? Her price is forty skins. Come across.

### Nervousness

Nervous Westerner (arriving at Kansas farm for a visit)—I'm so glad to see you. Such a delightful place you have. Where's your cyclone cellar?

## Makes Life Sweeter

... to eat—too rich a diet—much smoking. Lots of things on stomach, but one thing can't be helped. Phillips Milk of Magnesia will alkalize the acid. A spoonful of this pleasant food, and the system is soon...

## PHILLIPS Milk of Magnesia

... always ready to relieve from over-eating; to check all or neutralize nicotine. Rest this for your own comfort; sake of those around you; by physicians, but they all say Phillips. Don't buy some and expect the same re-

## You Successful?

From the day that a young man starts out to seek his first position to the end of his business life, his health and personal appearance have a world to do with his success. If you are not physically up to the mark...

## Avoid Infection

Use Leonard's Murrh... Must Have Money... his wife keeps up with y have two cars and a shed home, yet he never...

## Proves Claim

Children don't ordinarily take to medicines but here's one that all of them love. Perhaps it shouldn't be called a medicine at all. It's more like a rich, concentrated food. It's pure, sweet to the taste and your child's little stomach up and strengthens weak underweight children, makes hearty, brings the roses to their cheeks, makes them energetic, full of life. Anus, headache, constipated fretful baby or child ever respond to the gentle influenza California Fig Syrup on their heels. It starts lazy bowel action, cleans them out thoroughly, strengthens them so they act normally, of their own...

of mothers know about California Fig Syrup from experience. My mother, Mrs. J. G. Moore, Ave., San Antonio, Texas California Fig Syrup is, certainly, that's claimed for it. I had that with my little Doris was a bottle baby and very her bowels were weak. I on California Fig Syrup when she months old and it regu her. I have used it with for colds and every lit and her wonderful con- ter than words how it...

Sal... AC... When Back... Kidneys as fu... Your Be...

Most folks forget that... like the bowels, sometimes... occasionally, else we have... and dull misery in the kidney... severe headaches, rheumatic... torpid liver, acid stomach, sleep... ness and all sorts of bladder disorder...

You simply must keep your kidney active and clean and the moment you feel an ache or pain in the kidney region begin drinking lots of water. Also get about four ounces of Jad Salts from any good drug store here, take a tablespoonful in a glass of water before breakfast for a few days and your kidneys will then act fine. This famous salt is made from the acid of grapes and lemon juice, combined with lithia, and is intended to flush clogged kidneys and help stimulate them to activity. It also helps neutralize the acids in the urine so they no longer irritate, thus helping to relieve bladder disorders.

Jad Salts is inexpensive; makes a delightful effervescent lithia water drink which everybody should take now and then to help keep their kidneys clean. A well-known local druggist says he sells lots of Jad Salts to folks who believe in trying to correct kidney trouble while it is only trouble.

### COUGH STOPS

Quick as a Flash!—Coughs Stop!—Mentodene—a Specialist's prescription—stops worst cough in 1 minute. Cures cold overnight. No "dope." At all druggists.

### PARKER'S HAIR BALSAM

Removes Dandruff, Itchiness, Restores Color and Beauty to Gray and Faded Hair. 50c and \$1.00 at Druggists. Hiseox Chem. Works, Paterson, N. Y.

### Bucket Holds Ten Tons

At the Buffalo docks there has just been put into service the largest clamshell bucket ever built. From the bottom of its scoop to the top of its head this monster bucket measures 18 feet 9 inches, and when lowered, ready for action, it has a spread of 19 feet, covering an area of 133 square feet. At one grab it is able to pick up 10 gross tons.

### Entitled to Honor

Any person who has served in the army, navy or marine corps, and, if no longer connected, has an honorable discharge, is entitled to burial at Arlington.

### Naturally

Brown—Is the doctor in?  
Mild—No. He's on his vacation.  
Brown—Killing time, I suppose.

## Cold in Head, Chest or Throat?

RUB Musterole well into your chest and throat—almost instantly you feel easier. Repeat the Musterole-rub once an hour for five hours... what a glorious relief! Those good old-fashioned cold remedies—oil of mustard, menthol, camphor—are mixed with other valuable ingredients in Musterole. It penetrates and stimulates blood circulation and helps to draw out infection and pain. Used by millions for 20 years. Recommended by many doctors and nurses. Keep Musterole handy—jars, tubes. All druggists.

To Mothers—Musterole is also made in milder form for babies and small children. Ask for Children's Musterole.

### MUSTEROLE

BETTER THAN A MUSTARD PASTER

## ASTHMA

FREE TRIAL PACKAGE of Dr. J. H. Guild's Green Mountain Asthma Compound sent on request. Originated in 1907 by Dr. Guild, specialist in respiratory diseases. Its pleasant smoke vapor quickly soothes and relieves asthma—also catarrh. Standard remedy at druggists, 25 cents, 50 cents and \$1, powder or cigarette form. Send for FREE TRIAL package of 6 cigarettes. J. H. Guild Co., Dept. P-2, Rupert, Vt.

## Dr. Guild's GREEN MOUNTAIN ASTHMA COMPOUND

FOR SALE—250 choice Chinchilla rabbits, breeding use, eligible for registration, at \$5 each. White New Zealand Breeders, \$4 to \$9 pounds. \$4. Safe delivery, satisfaction. Auburn Fox and Fur Farm, Auburn, Wash.

### ENGAGEMENT DIAMONDS

SELECTION PACKAGE SENT ANYWHERE AT OUR RISK. ARTHUR A. EVERTS CO. DALLAS, TEXAS



**THWEST NEWS**

Bula Bruce and son, returned their home in Temple after a three weeks visit with her parents, Miss Rose Scheuer and Jene Lupton left for Canyon Friday to take up their studies again.  
A few friends gathered at Ben Dolle's New Years day to celebrate his birthday. Everyone came with well filled baskets.

Mac Schimchat is moving this week to the Willis farm north of town. Mr. Witcher and family will move on the place Schmitchat vacated.  
Mrs. Ben Dolle is on the sick list. Jas. M. Scheuer and daughter, Lucile took Margaret Scheuer to her school near Reserve, New Mexico Saturday.  
A host of friends gathered at the Willie Geistman home Thursday evening to celebrate his birthday. All enjoyed themselves and returned

at a late hour wishing him many more birthdays.  
O. L. Schlottman is moving to his own farm two and one-half miles west of town. Joe Foltyn is moving on the farm they vacated.  
Genevieve and John D. Scheuer spent Friday afternoon with Ouida Mae Simpson.  
Ed Womack moved to Enochs Saturday and Grady Simpson moved on that place.  
Herman Miller spent Sunday with

Ben Doole and family.  
Henry Schlottman is on the sick list.  
Miss Fronia Yehner spent Thursday with Laura Schlottman.  
Home Demonstration Agent's Itinerary for 1930.  
Monday  
1. Commissioners' Court  
2. Olton  
3. Amherst

Tuesday  
1. Spring Lake  
2. Sod House  
3. Olton  
4.  
Wednesday  
1. Amherst  
2. Fieldton  
3. Littlefield  
4.  
Thursday  
1. Ruby

2. Littlefield  
3. Fieldton  
4. Spring Lake  
Friday  
1. Olton  
2. Sand Hill  
3.  
4.  
Saturday  
1. Amherst  
2. Amherst  
3. Amherst  
4. Amherst

# CLEARANCE SALE

## Of All Winter Merchandise

### BEGINNING FRIDAY, JANUARY 10th

Notwithstanding there are yet several weeks of winter weather, we find it necessary to begin clearing our shelves in preparation for the arrival of our big stock of Spring Merchandise, much of which has already been purchased and some of it now in transit. The prices here quoted represent a considerable saving which should be taken advantage of by every buyer who still finds a need for seasonable merchandise.

**SWEATERS FOR MEN and WOMEN**

- Men's and Women's all wool Slip-over and Coat Sweaters, \$7.50 values to go at ..... \$4.95
- Men's and Women's all wool slip-Over and Coat Sweaters, \$5.95 values going at ..... \$3.95
- Men's and Women's Heavy Coat Sweaters, all colors, regular \$5.50 values, at ..... \$3.79
- Men's and Women's all wool Coat Sweaters at ..... \$2.95
- Men's and Women's part wool Sweaters at ..... \$1.95
- Part wool Sport Sweaters for Men or Women at ..... \$1.59
- Men's and Women's Coat Sweaters, only ..... .89
- Children's Wool and Rayon Sweaters, sizes 26 to 36, ..... .98

**LUMBERJACKS and HEAVY SHIRTS**

- Men's Corduroy Jackets, made by Sweet-Orr, regular \$6.00 values to go at ..... \$3.95
- All \$5.50 and \$6.50 Wool Lumber Jacks going at ..... \$3.19
- Men's Buckskein Lumber Jacks, regular \$3.50 values at ..... \$2.19
- Extra heavy Buckskein Shirts for Men, \$3.95 value at .... \$2.79
- Men's Buckskein Shirts, \$3.50 value going at ..... \$2.59
- Men's all Wool Shirts, \$2.50 value at ..... \$1.59
- 1 group of Buckskein Shirts selling at ..... \$1.49

**DRESSES FOR WOMEN AND MISSES**

- All \$18.75 and \$19.50 Dresses at .. \$11.95
- All \$12.50 to \$14.50 Dresses at .... \$ 7.95
- All \$6.50 to \$7.50 Dresses at ..... \$ 4.95
- One group of Dresses at ..... \$ 3.95

**OVERCOATS for MEN**

- Two \$26.50 Top Coats at ..... \$16.95
- Two \$21.50 Top Coats at ..... \$14.95
- Three 16.50 Top Coats at ..... \$11.95
- Two \$14.95 Top Coats at ..... \$ 9.95

**SUITS FOR MEN**

- All \$38. 50 Suits, 2 pair pants, at .. \$31.50
- All \$35.00 Suits, 2 pair pants at ... \$28.50
- All \$31.50 and \$32.50 Suits, 2 pants \$24.95
- All \$22.50 to \$24.50 Suits, 2 pants \$17.95

**Good Winter Blankets**

- Part Wool double Blankets, 70x80 in. \$5.50 value at ..... \$3.79
- Part Wool double Blankets, 66x80 in. \$4.25 value at ..... \$2.98
- Single Blankets, part wool, 66x80 in. \$4.75 value, at ..... \$2.95
- Single Blankets, part wool, 66x80 in. \$2.95 value at ..... \$1.95

**MEN'S HEAVY COATS**

- Men's genuine horsehide leather Coats, \$10.50 value at .. \$7.95
- One group of Men's leather Coats, at ..... \$6.95
- Men's Suede leather Coats \$14.95 value at ..... \$9.95
- Men's sheepskin lined Coats, full length at ..... \$4.95
- Men's Corduroy sheepskin lined Coats, \$14.50 sellers at .. \$9.75
- One group of Men's leather Coats at ..... \$3.95

**Final Clearance of Women's Ready-to-Wear**

- One \$75.00 Coat at ..... \$47.75
- One \$47.50 Coat at ..... \$27.50
- Two \$27.50 Coats at ..... \$17.75
- Six \$18.75 Coats at ..... \$11.75
- One group of Coats, at ..... \$ 5.95

Good Double Blanket, 60x74 in. at ..... \$1.39      Men's Winter Underwear, per suit ..... .98

# THE FAIR STORE

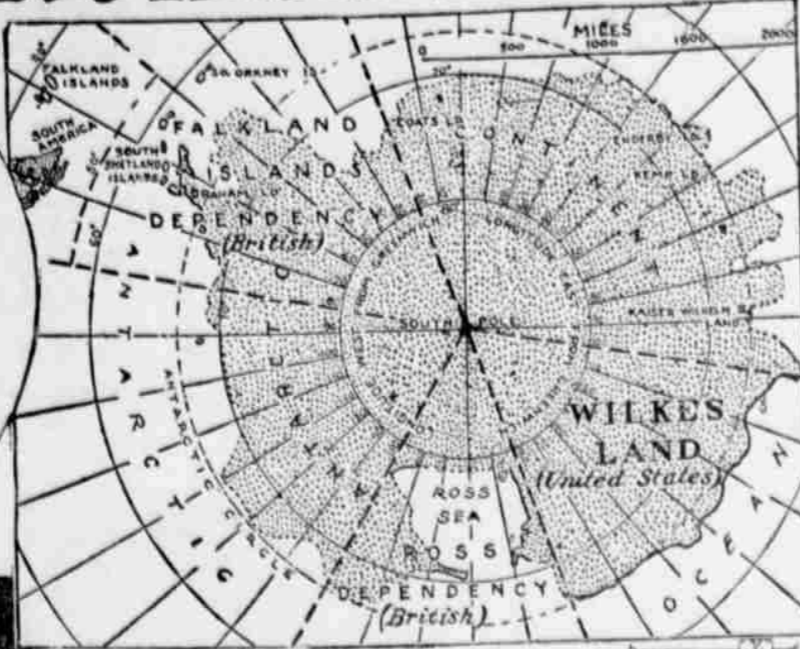
LITTLEFIELD,

TEXAS

# Owns Antarctica?



LIEUT. COMDR. R.E. BYRD, JR., U.S.N.



By ELMO SCOTT WATSON

**A**ND when Commander Richard E. Byrd of the United States navy in his giant three-motored airplane, the NX4542, flew over the South pole on November 29, 1929, his feat did more than merely add to a brilliant record the achievement of being the first man to reach the South pole by air, and first to fly over both the North and South poles. During his history-making flight he discovered 40,000 square miles of ice-blanketed lands never before seen by man and claimed them in the name of the United States. And thereby hangs the tale of a dispute between nations as to who owns Antarctica, dispute which would seem to the casual observer to be a silly one. For, as he would naturally think, what difference does it make who "owns" that 40,000 square miles of ice and snow, so far as practical value to the possessor is concerned? But what if it should be discovered that that vast territory contains vast stores of oil, gold and other mineral values that would be something else again!

While the dispute so far has not reached anything approaching a critical stage, it is, nevertheless, one which offers some interesting possibilities. For Uncle Sam and John Bull are the two would-be "owners" of Antarctica. When it became known that Commander Byrd was planning an Antarctic expedition, the British government filed with the State department of this country a communication offering to lend any assistance possible while Byrd was "in British territory" and defining that territory by quoting a resolution of the imperial conference in 1926, promulgated at the request of Australia.

This note was received by the State department on November 17, 1928, but the department did not give its official answer until November, 1929. Just a short time before Byrd made his epic flight. That reply, it is said unofficially, was a courteous "thank you" for England's expression of interest in Byrd's activities "in the Ross dependency and the Falkland island dependency," but was strictly noncommittal in either conceding or denying British claims to sovereignty over the areas enumerated in the British note.

British claims to sovereignty in Antarctica go back for their beginnings to an event which took place just 157 years ago. That was on January 17, 1773, when Capt. James Cook, later famous for his discovery of the Hawaiian Islands, in his ship, Resolution, accompanied by the Adventure, crossed the Antarctic circle for the first time in history. A year later he reached what was then "farthest south" (even though it was 1,318 miles from the South pole!) and discovered a land which he named the Isle of Georgia, in honor of George III, and Sandwich Land, in honor of the fourth Earl of Sandwich, first lord of the admiralty during the American Revolution.

In 1823 James Weddell of the British Royal navy discovered the sea which now bears his name and set a new "farthest south" record of 1,102 miles from the pole. Soon after that the famous whaling firm of Enderby in London became interested in Antarctic exploration and sent out several expeditions. In one of them in 1830 James Briscoe of the British navy discovered and named Kemp Land, and in 1839 John Balleny discovered and named the Balleny Islands.

By this time the United States had become interested in South polar exploration also, and in 1836 congress authorized an expedition which was to make discoveries, upon which our principal claims to ownership of land in Antarctica were to be based. Command of the expedition was given to Lieut. Charles Wilkes of the United States navy and in command of six



CAPT. ROALD AMUNDSEN



LIEUT. CHARLES WILKES, U.S.N.

ships, the sloops Vincennes and Peacock, the storeship Relief, the brig Porpoise and the tenders Sea Gull and Flying Fish, he set sail from Hampton Roads, Va., for the polar regions on August 18, 1838. His long wanderings in the Antarctic regions are recorded in detail in the five-volume narrative of the expedition written by Wilkes himself, so only a brief summary of what he accomplished can be given here. Embarking from Sydney, Australia, on December 26, 1839, Wilkes made Macquarie Island the first rendezvous. He had already lost the Sea Gull and all its crew in the South Pacific below South America, and within a week after leaving Sydney the Flying Fish and the Peacock dropped out of sight in the fog. Then the Porpoise disappeared but Wilkes pushed on southward in the Vincennes.

By January 16, 1840, he had reached 66 degrees south latitude and had found the Peacock and the Porpoise. They were now confronted by an ice barrier, but the crews of the remaining ships reported that appearances beyond the barrier seemed to indicate land, and in his report Wilkes sets January 16, 1840, as the date of the discovery of a new continent. For the next two weeks the ships cruised about independently and repeatedly saw "appearances of land." On January 30 the Vincennes entered an indentation of the ice-bound coast which was named Piner's Bay. "We approached within half a mile of the dark volcanic rocks which appeared on both sides of us, and saw the land gradually rising beyond the ice to the height of 3,000 feet," says Wilkes. "It could be seen distinctly extending to the east and west of our position fully sixty miles. I gave the land the name of the Antarctic Continent."

After skirting the Antarctic coast for some 1,700 miles and reaching a point 66 degrees, 1 minute, south, Wilkes turned north and set sail for Australia. He had discovered the segment of Antarctica, which now bears his name, Wilkes Land, and later explorations have proved what he believed he had discovered—a vast Antarctic continent.

In the meantime a British expedition was in the Antarctic, led by Capt. James Clark Ross of the British Royal navy. He had planned to visit the very region where Wilkes was exploring, and when he learned that the American was ahead of him, he was very much chagrined. So he changed his plans and this resulted in his discovery of Victoria land and Ross sea. While he was stopping at Hobart Town in November, 1840, he received a letter from Wilkes describing his recent voyage and enclosing a chart. There were sent with the friendliest intention of aiding a fellow explorer, but it had the unexpected result of starting a long controversy with Ross and discrediting Wilkes' discoveries in the eyes of the British.

Wilkes' discoveries. It is true that Wilkes did make some mistakes in his locations, because he could not land his instruments and check his locations magnetically so that they would be free from error due to the attraction of his instruments by the metal on board his ship. But, for all such errors, he cannot in justice be denied his right to having discovered and described the Antarctic continent, thereby giving his country a claim to it by right of "discovery."

Ross crossed the Antarctic circle on January 1, 1841, and during the course of his exploration that year and the next, he discovered two volcanoes, which he named after his ships, the Erebus and Terror; he saw a chain of high mountains, naming one peak for Lord Melbourne, the British premier; and he landed on an island which he called Possession Island, and took formal possession of the continent, which he called Victoria Land, in the name of Queen Victoria.

Unfortunately for Wilkes' fame, the doubt which had been cast upon his explorations by Ross, and later British writers was shared by many Americans. After he returned from his trip to the Antarctic he was involved in a series of courts-martial, instigated by some of his officers, who had disapproved of his management of the expedition.

Great Britain's further claims to Antarctica are based upon explorations made under their auspices by Nares in 1844, Borchgrevink in 1900, Bruce in 1874, Scott in 1902 and 1912 (the latter date being the one in which he reached the South pole) and Shackleton in 1909 and 1915. One curious fact is that Wilkes' discovery of Wilkes land and the rightfulness of attaching his name to that territory was confirmed by a Briton in 1912. In 1911-1914 Sir Douglas Mawson landed two parties at the opposite ends of the Antarctic continent. Writing of this expedition in 1912, Dr. W. S. Bruce, the Scotch explorer and geographer, said that it had "proved, over a distance of more or less 1,200 miles, the existence of Wilkes land, which has been disputed during the past seventy-two years."

But Great Britain and the United States are not the only nations which have claims, based upon discovery and exploration, in Antarctica. There is Russia which took a hand in the game as far back as 1819, when Czar Alexander I fitted out an expedition under Fabian von Bellingshausen, who discovered Traverse Islands in December, 1819, and two years later found two other islands which he named after Peter I and Alexander I. There is France which sent out the Dumont d'Urville expedition, which in 1840 when Wilkes and Ross were sailing the south polar seas, discovered land which was called Adelle Land, and a high ice barrier which was called Clarie Coast. There is Norway, which sent out a series of expeditions from 1892 to 1895, including the expedition of Captain Christensen, who on January 23, 1895, landed on the Antarctic continent near Cape Adare, the first human beings to set foot on that land. And, of course, it was a Norwegian, Capt. Roald Amundsen who first reached the South pole on December 14, 1911. And even Argentina comes into the picture by declaring that she has the best right to Antarctica, not by "exploration" or "discovery," but geographically—because, she asserts the Antarctic continent is simply an extension of the Falkland archipelago, which by right belong to her, even though she has been deprived of them by British occupation, and by right of peaceful and continuous occupation of lands nearest to the polar territories.

## The KITCHEN CABINET

(By 1921, Western Newspaper Union.)  
 May every soul that touches mine, Be it the slightest contact, get there from some good. Some little grace, one kindly thought, One aspiration yet unfulfilled, one bit of courage. For the darkening sky, one gleam of faith. To leave the thickening mists of life, One glimpse of brighter sky beyond the gathering mist. To make this life worth while And heaven a heritage.  
 —The Outlook.

### FOODS THAT ARE SEASONABLE

When one has a can of small beans and would like to change the serving of them, try the following:

**Pickled Beets.**—Remove the beets from the can and place in a scalded fruit jar. Put enough vinegar to cover the beets in a saucepan and for each cupful of vinegar add one tablespoonful of sugar, two cloves and one-eighth teaspoonful of salt. Simmer until the sugar is dissolved and pour over the beets. Close the jar and let stand for three or four days before serving. Anise seed is liked for flavor by many in place of cloves. If the vinegar is too acid, dilute it with water, to the ordinary acidity.

**Deviled Peanut Sandwiches.**—Mix one small can of deviled ham with one-third of a cupful of peanut butter, one-fourth cupful of mayonnaise, and a bit of salt. Spread on buttered slices of graham bread and serve with a hot drink of fruit juices or cocoa when the young folks come in from skating.

**Swiss Date Sandwiches.**—Mix equal quantities of chopped dates and nuts, moisten with mayonnaise. Spread canned swiss cheese on buttered whole wheat bread as thickly as desired, then cover with the date and nut mixture. Cover with a slice of buttered bread.

**Orange Poultry Sauce.**—Take a teaspoonful of bouillon extract, one cupful of water, to make stock. Season with pepper, paprika, one cupful of orange juice, two oranges, with a few slices of rind. Melt two tablespoonfuls of butter, add two tablespoonfuls of flour, cook until creamy, add the stock mixture, stirring all the while. Cook until thickened, remove from the fire and add one-half cupful of white grapes which have been skinned and seeded.

This is excellent with fish, poultry or game.

### THE OLD TIME FLAVOR

In the old dishes which our New England ancestors used daily we find a distinct cookery which is characteristic of the sturdy people of those days. We like to recall some of them and will find them most tasty and satisfying today.

**Calves' Head.** Scrape and clean thoroughly a calf's head, removing the brains, tongue, eyes and gristle. Soak two hours in salted water. Boil head, tongue, heart and liver, after scalding, the liver added when the other meat is nearly done. Season with salt and pepper and savory herbs tied in muslin; these are added when they are put on to cook. When all is tender, serve the liver and tongue and heart sliced thinly; lay on the platter with pieces of the head meat and garnish with parsley. Accompany with a rich sauce made from the strained broth. The brains may be soaked after the membrane is removed; simmer ten minutes in water to which a little lemon juice and salt are added, then plunge into cold water; break into bits and scallop with crumbs and butter.

**Dried Beef and Cream.**—Cut thinly sliced smoked dried beef into slivers with the kitchen shears and add to a rich cream sauce in a double boiler. Serve with baked potatoes. The real old time dish was prepared with real cream thickened. Whip the sauce with an egg beater before adding the beef.

**Sunday Chicken.**—Cut up a large fowl into serving sized pieces. Dip into seasoned egg and water, roll in crumbs and pack in a dripping pan in which a little minced salt pork is fried out. Dot with butter or pork bits and brown in a hot oven. Serve garnished with small baking powder biscuits around the platter of meat and pour over a cream gravy made from the fat in the pan with added flour and milk.

**Beefsteak Roll.**—Pound a half inch slice of round steak well and spread with a savory poultry dressing including an egg. Roll up, making a shape like a loaf of bread, skewer, dredge with flour, salt, and cover with strips of salt pork. Place in a hot oven and bake until brown and crisp.

Cream and milk with butter will be liked for many gravies.

**Fried Pork and Cream Gravy.**—Dip sliced salt pork into flour and fry until crisp and brown. Pour off part of the fat, add two to three tablespoonfuls of flour, cook until smooth, then add rich milk or cream to make of the right consistency. This, too, must be best served with baked potatoes. Accompany with fried apples.

Nellie Maxwell



## For COLDS

We all catch colds and they can make you but yours needn't last long if you will do two or three tablets of Bayer Aspirin just possible after a cold starts. Stay in the house—keep warm. Repeat with another tablet of Bayer Aspirin every three or four hours, if symptoms of cold persist. Take a good laxative you retire, and keep bowels open. If throat dissolve three tablets in a quarter-glassful of water and gargle. This soothes inflammation and infection. There is nothing like Bayer Aspirin for cold, or sore throat. And it relieves aches and pains almost instantly. The genuine tablets, marked Bayer, are absolutely harmless to the heart.

## BAYER ASPIRIN

"Hello! Hello! How Much Does Happiness Cost?"

Only the price of learning a simple health rule, this smiling youngster finds!

"HAPPINESS just radiates from our baby since we began giving her—"

What was it that Mrs. Fred E. Schmitt of 2023 Stone Street, Falls City, Nebraska, discovered, which she could give to her baby that made her happy, well, strong and buoyant?

Not a medicine; not a drug of any kind; just harmless bodily lubrication. Only that, and nothing more. Mrs. Schmitt's discovery that little Barbara kept well when she was made regular as clock work is the same discovery as has been made by millions of other people, who are enjoying the happiness of health because they use Nujol.

Babies, old folks, people in the prime of life—all alike need to have the bodily poisons (we all have them) regularly cleaned out. Nujol just gently, naturally, normally lubricates the action of your body which needs lubrication as much as any other machine.

Please remember that Nujol contains no drugs; is non-fatting; is not absorbed in any way by the body; can form no habit; cannot hurt you, no matter how much you

## Your Kidneys

Give Them Prompt Help When Needed. KIDNEY disorders are too serious to ignore. It pays to heed the early signals. Scanty, burning or too frequent excretions; lameness, stiffness and constant backache are timely warnings. To promote normal kidney action and assist your kidneys in cleansing your blood of poisonous wastes, use Doan's Pills. Endorsed the world over. Sold by dealers everywhere.

## Doan's Pills

A Stimulant Diuretic to the Kidneys

Why Suffer with Skin Troubles when Cuticura

## CHANGES MADE IN BODIES OF NEW MODEL A FORD

The most notable change in body of the Model A Ford, to be here Wednesday have been in the Ford Sedan, the Coupe, the open cars," said John Ford, local dealer, today.

## A. L. P.

Poultry, H

We ha

DAIR

NOW LOCAL NEXT D

Littlefield,

Ren

And the

to the b

Each c

but do

W

And i

your

cold

Wh

to

and

and

and

**MAKES CHANGES  
MADE IN BODIES OF  
NEW MODEL A FORD**

The most notable change in body lines of the Model A Ford, to be introduced Wednesday, have been made in the Tudor Sedan, the Coupes and the open cars," said John H. ... local dealer, today.

occupants of the rear compartment. Access will be easier around the folding seats in front. In exterior appearance, the car will be much improved. "It still will retain the crown roof effect with rounded corners on the rear quarter, the beauty of which will be accentuated by an entirely new design body belt and moulding treatment.

**Coupe is Changed**

"The coupe, too, will be entirely new in design. It will have a lower roof line. French roof quarters will emphasize the low effect and the long lines of the new moulding treatment. A panel effect carried out by the moulding on the rear deck will add much to the smart appearance of the car.

"Lowering of the roof line will not bring any loss of head room inside, and driving will be made more comfortable by an adjustable seat, which may be moved forward or backward to suit the driver's convenience.

"The Sport Coupe, which will have a rumble seat as standard equipment, will have all the lower body lines of

the coupe. The sport treatment will be carried out above the belt line, as heretofore. The roof line will be lower, also, and in this car, too, driving comfort will be improved by the installation of an adjustable seat. The same feature will be extended to the Convertible Cabriolet.

**Open Cars Are New**

"The two open cars, the phaeton

and roadster, are entirely new in design, with long, lower lines, and more beautiful appearance."

Mr. Arnett emphasized the fact that no new model has been brought out. Mechanically the car is essentially the same. While new features such as wheels and a new composition steering wheel, black and polished to a high lustre, with finger knobs underneath the rim, have been added, all the standard features which have made the Model A car of such remarkable dependability have been retained, he said.

These include sturdy steel construction four Houdaille hydraulic double-acting shock absorbers, Triplex shatter-proof glass windshield, quick acceleration, ease of control, 55 to 65 miles an hour and smoothness, balance and security at all speeds.

Buy it in Littlefield.

**MRS. BOONE ENTERTAINS**

The Thursday Bridge club held their annual Christmas party entertaining their husbands at the home of Mrs. P. H. Boone, Monday evening of last week.

A delightful evening was spent in the club game after which delicious refreshments of salad, sandwiches, potato chips, olives, fruit cake, boiled custard and coffee were served, the husbands receiving white linen handkerchiefs for plate favors.

Those present were Messrs and Mesdames J. C. Hilburn, F. G. Sadler, Charles L. Harless, J. H. Arnett, Sidney Hopping, A. P. Duggan, J. C. Whicker, H. W. Wiseman, E. S. Rowe, M. M. Brittain, P. H. Boone, S. J. Farquhar and Mesdames W. O. Stockton, W. G. Street, and Lena Howard.

Let Texas folks live for Texas!

**15 new improvements  
in 1930  
RED LINE Delco-Light**

Look what you get in the new 1930 "Red Line" Delco-Light... no less than 15 major improvements. Glance over the list. (1) More watts per H. P. (2) Heavier armature. (3) 33% greater oil capacity. (4) Bigger generator. (5) Perfect alignment of brush assembly. (6) New "Tension Control" for uniform brush pressure. (7) "No arcing" brush. (8) Positive "load controller." (9) Instant response to power and lighting loads. (10) New throttle insures proper "trickle charge." (11) Oil filler more accessible. (12) Greater circumference of generator housing gives stability to switchboard. (13) Fewer parts in brush assembly. (14) Better generator ventilation. (15) Heavier construction throughout.

Don't look for these improvements elsewhere. They're exclusive with Delco-Light. May we show them to you? We are authorized dealers for this territory. Come in today.

**MONTE BOWRON**  
1702 West 11th St.  
Plainview, Texas

Or apply, Leader Office, Littlefield, for information

Just phone or drop us a card and we'll bring Delco-Light to your home for a night demonstration

**DELCO-LIGHT**  
ELECTRIC POWER AND LIGHT PLANTS

Also Manufacturers of Electric Water Systems  
PRODUCTS OF GENERAL MOTORS  
Made and Guaranteed by Delco-Light Company, Dayton, Ohio.

**A. L. PORTER & SON**

Cash Buyers of

**Poultry, Hides, Eggs and Cream**

We have also stocked a line of

**DAIRY AND POULTRY FEEDS**

NOW LOCATED IN OLD BEISEL BUILDING  
NEXT DOOR TO JEFFRIES MERC. CO.  
Littlefield, Texas

**Winter Has  
Renewed Its Grip!**

And the nice summer weather has been pushed in to the background.

Each cold wave brings the bad colds and coughs; but don't forget that we carry all the

**WELL KNOWN COUGH REMEDIES**

And if you are supplied with them you can relieve yourself and family of the discomforts caused by colds and exposure.

**WE WORK WITH YOUR DOCTOR**

When we fill your prescriptions we fill them correctly, and we know how.

**WALTERS DRUG COMPANY**  
"The Store of Better Service"

LITTLEFIELD, TEXAS

**SPRING SAMPLES**

We are broadcasting announcement of the arrival of our new line of samples of—

**Spring Suits**

All the very latest weaves, styles and new Spring colors.

**\$23.50 and \$24.75**

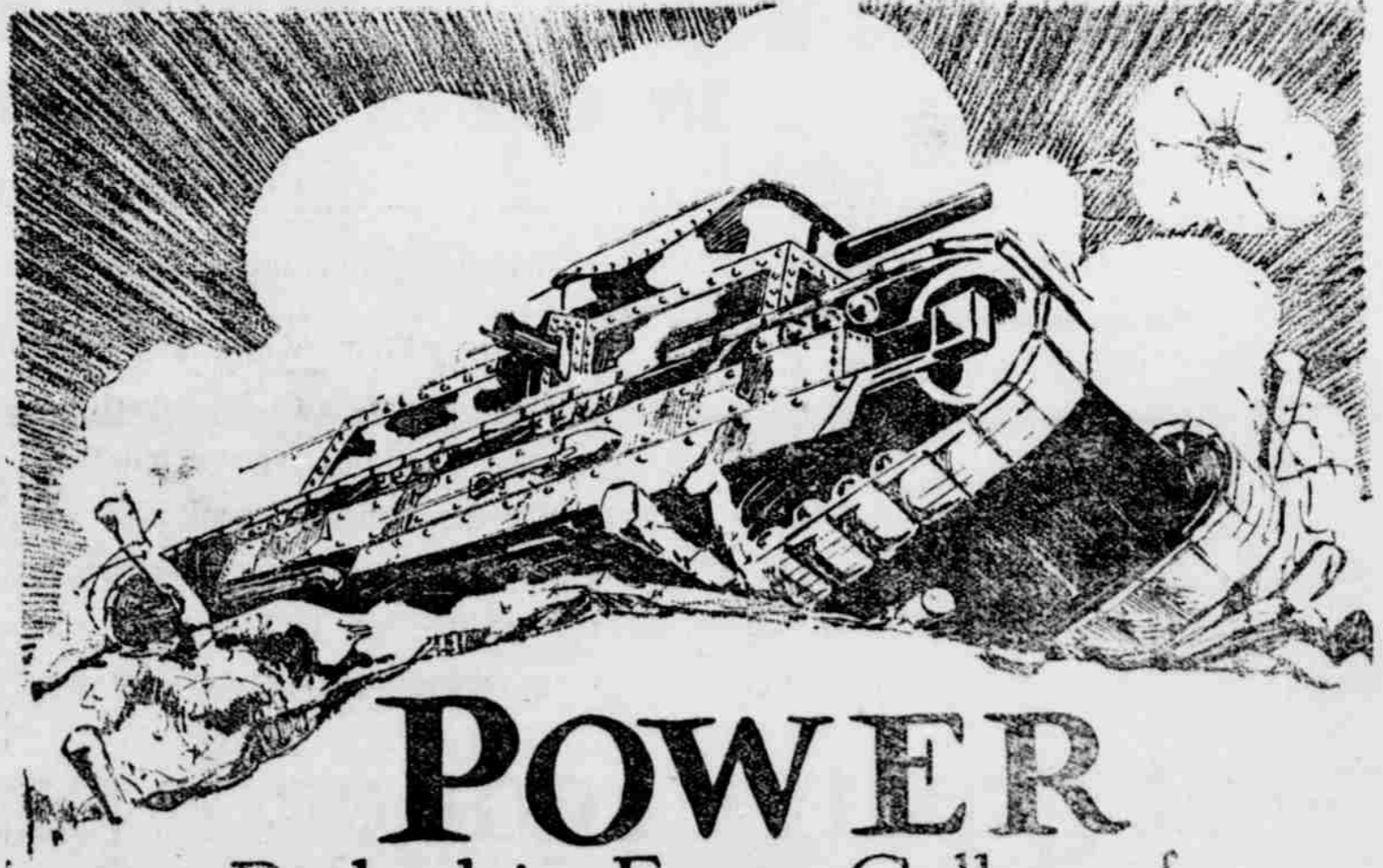
Regular \$30.00 and \$40.00 values reduced

SEE US BEFORE YOU BUY

We do all kinds of cleaning and pressing. Hats cleaned and reblocked, \$1.00

**EVINS DRY CLEANER**

LITTLEFIELD, TEXAS Phone 190



**POWER**  
Packed in Every Gallon of

**Simms White Gasoline**

Exhausts spit flame—giant motors hurl tons of cold gray steel up out of yawning creaters—over shell-torn hills—through mud, ditch and trench—that's Power!

And now Simms sparkling white, power-packed gasoline sweeps stream-lined motor cars up over the highest hills—pulls heavy motor trucks through swampy, flooded bottoms—with power to spare.

Know the fatigueless driving, the positive control that comes from the surplus power of Simms power-packed white gasoline—try a tank now.



Amalgam products are now distributed with Simms Paraffin Base Lubricants for the convenience of those who use 100% Pennsylvania Motor Oils and Greases

**SIMMS OIL COMPANY**  
PRODUCERS - REFINERS - MARKETERS

DALLAS

**HI-WAY SERVICE STATION,**  
Littlefield, Texas

**W. C. STANSELL SERVICE STATION,**  
Littlefield, Texas

S. C. HUKEL, at Yellow House

**G. R. SANDIDGE, General Agent,**

**Littlefield, Texas**



# Today

*-Chevrolet announce*

## THE GREATEST CHEVROLET IN CHEVROLET HISTORY

Today, Chevrolet presents the Greatest Chevrolet in Chevrolet History—a smoother, faster, better Six—with beautiful new bodies by Fisher.

Basically, it is the same sturdy, substantial Six which won such tremendous popularity in 1929. But it is a greater car in every way—for there are scores of vital improvements

which contribute to comfort, performance, endurance and safety!

An improved six-cylinder valve-in-head motor, with its capacity increased to 50 horsepower; four Lovejoy hydraulic shock absorbers; fully-enclosed internal-weather-proof brakes; gasoline gauge; heavy

rear

sl

### ---at greatly reduced

During 1929, more than a million three-hundred thousand persons bought six-cylinder Chevrolets. This enormous volume has made possible many savings at the Chevrolet factories—and, in keeping with our established policy, Chevrolet is sharing the

The ROADSTER .....

The PHAETON .....

The SPORT ROADSTER .....

The COACH .....

The COUPE .....

The SPORT COUPE .....

All prices

# Bell-Gillette

LITTLEFIELD,

A SIX IN THE PRICE

LAM

Lead

### AGRICULTURE NOTES

**By D. A. ADAM**  
Lamb County Farm Agent

Terracing school was held on the Robinson farm Saturday of last week. Two bull circles are in process of organization in the Anton territory, and most of these bulls that are being placed are coming into Lamb county, states D. A. Adam, County agent, who attended a meeting of the Anton Chamber of Commerce Monday night. It is estimated that Lamb county will get in 30 more pure bred bulls during the ensuing year.

M. R. Bentley, agricultural engineer of the Extension Service, and his crew will be in Lamb county on Monday January 20th, for a terracing school in conjunction with the county agent's school on the E. Holland farm, one mile south of the demonstration on the

Clyde Robinson farm Saturday of last week. Two bull circles are in process of organization in the Anton territory, and most of these bulls that are being placed are coming into Lamb county, states D. A. Adam, County agent, who attended a meeting of the Anton Chamber of Commerce Monday night. It is estimated that Lamb county will get in 30 more pure bred bulls during the ensuing year.

M. R. Bentley, agricultural engineer of the Extension Service, and his crew will be in Lamb county on Monday January 20th, for a terracing school in conjunction with the county agent's school on the E. Holland farm, one mile south of the demonstration on the

### Gateway of Philadelphia's



Gateway to the new magnificent Rodin museum, the gift of the late Jules Mastbaum, motion picture city of Philadelphia, which was formally dedicated the other day. The museum is a reproduction of the Rodin in Paris and houses a fine collection of the great French sculptor's works.

any in 25 will EX- regul- back of is no lim- you can with every turn in. turn in the at one time; ty dollars may be added, and extra votes for twenty dollars in is positively the offer. After January m., the votes will never again will they much as now.

**Everyone Eligible**

There isn't a woman in Lamb county but who could turn in at one club between now and expiration of this great offer they tried. The indications thus are that this is going to be very for the energetic candidates to the automobile and other prizes. It is expected that the big offer will be the means of several prospective candidates who have been "on the spot" to send in their nominations as soon as they are familiar with the offer and see how easily a vote total may be piled up during the next week, likewise it will be an incentive for those already entered to push right in and do their best while the offer is effective.

The preliminary work of the campaign is almost completed and almost every one is familiar with the campaign, the advantage of an early entry is obvious, so all that remains to do is to fill in the entry blank and get it into the hands of the judges.

The entry blank entitles a candidate to 2,000 votes free as a starter and it is believed that one can easily secure at least one \$20 subscription. Several ladies have been nominated by friends and relatives. The vote gathering situations have been discussed and it is believed that one should get their names in now and get the extra votes before the mass Vote Offer, and it is positively the biggest offer of the campaign. Never be repeated now is your big chance. If you come to The Leader get full information.

Under's Candidates to Circulation Drive. How representatives have been selected and

**EARLY ENTRIES IN LEAD**  
**BIG CIRCULATION CAMPAIGN**

Littlefield

Miss Donny Lou Adams	2,000
Miss Alma Busher	2,000
Miss Prudence Courtney	2,000
Miss Avis Dow, Rt. A	2,000
Miss Vilas Emfinger, Rt. A	2,000
Miss Lois Farquhar	2,000
Mrs. C. H. Grow	2,000
Mrs. Sid Hopping	2,000
Alfred Raby	2,000
Miss Lucille Scheuer, Rt. 1	2,000

Pep

Miss Ida Jungman	2,000
------------------	-------

Fieldton

Mrs. G. W. King	2,000
-----------------	-------

The candidates are only credited with the "Entry Blank" which is good for 2,000 votes as a starter. The names of the candidates are listed alphabetically.

### TO ENFORCE TRAFFIC LAWS

Violation of state traffic laws and city ordinances of the same character must be stopped, according to local police department.

Parking rules are being violated, motorists are cutting corners on intersection center blocks, and some even run races up Main street to see who can get first to the park.

"Has to be stopped!" says the Law. If not, contributions to the city treasury will be in order.

### CITY COLLECTS \$108.70

Law-breaking propensities of Littlefield citizens since the first of January has netted the city treasury the sum of \$108.70.

The principal offenses were drunks and gambling charges, with one charge of vagrancy and one for disturbing the peace.

**Smooth Your Shaving Troubles Away!**



**Klenzo Shaving Cream 39 cents**

Its penetrating lather softens the beard close to the skin and enables you to sweep it off smooth and clean.

**Gentlemen's Talc 25 cents**

Soothes the skin and removes the shine. Slightly scented and quite invisible on the face.

**Stokes & Alexander Drug Co.**

THE **Rexall** STORE

"In Business For Your Health"

### any Holds Aviation Laurels

U. S. seaplanes, and this may account for the difference in the records.

America's only record is still in the names of Reginald Robbins and James Kelly, who stayed in the air over Fort Worth in a monoplane for 172 hours 32 minutes in May, 1929. The later performances which bettered that time have not been submitted to the federation for registering, so for the present the Texas record stands.

The records Germany holds are for altitude, Willi Neuenhofen rising 12,739 meters in a monoplane at Dessau on May 23, 1929, and for nonrefueling nonstop duration, when Ristic and Zimmerman kept a Junkers aloft for 65 hours 25 minutes in July, 1928.

Germany has captured also every important gliding record in existence, and holds, among others, three free balloon records, altitude and distance, all of them of long standing. The Graf Zeppelin brought her more honors in the world flight, but there is no recognized record for this.

### Blacksmith Quits; Finds Gold in Tools

Brooksville, Maine.—When the automobile knocked the blacksmith business to smithereens Everett A. Snowman, who had operated such a shop for years, did not quit. Instead he turned his skill as a manipulator of iron and steel to a different line, with the result that he has built up a business which brings him more dollars each year than the shoeing of horses and repairing of wagons, buggies, sleighs and sleds ever did. Now he is making butcher knives and hunting knives, all hand-forged from steel.

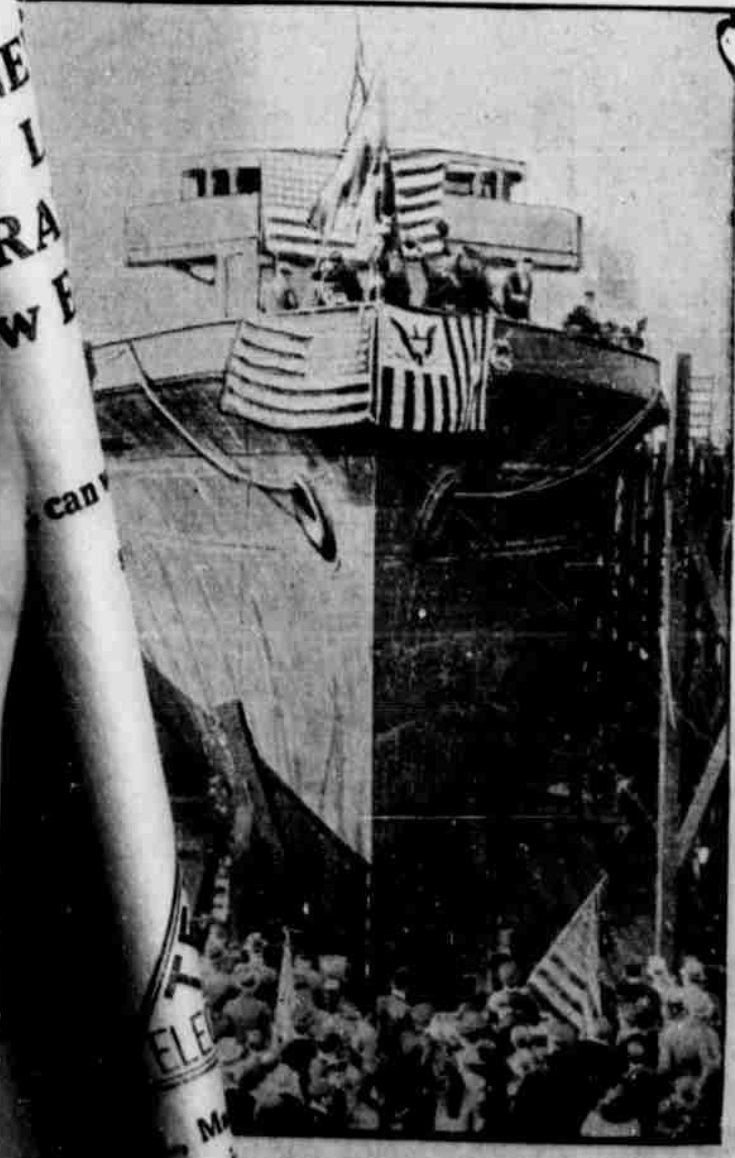
tion with the navy and scout ships and destroyers will be stationed along the route ready to assist in the event of an emergency. Italo Balbo, air minister, will command the flight in person.

The project will constitute the 1930 cruise of Italy's aerial navy. In 1923 the air forces carried out an extensive flight over the western Mediterranean sea and northern Africa. This year the ships flew over the eastern Mediterranean and Black sea.

### Boys Adopt Rule to Gag Chattering Girls

East Orange, N. J.—Disturbed by the chatter of their coed classmates, East Orange high school boys will put into effect a gag rule for girls during the 40-minute study periods. Girls guilty of communicating by any means whatever during these periods will be haled before a tribunal of boys and fined from one to five hours' extra time in school hours. The boys recently complained the girls chatter prevented them from concentrating.

### Electric Cutter for Coast Guard



electric cutters for the coast guard, taking the form it was built.

**MAKE ELECTRIC your selection**

### A. L. P. PUBLIC OFFICE

In this issue of the announcement for the office of Public Printer.

Mr. Porter is 42 years of age, a citizen of Texas 23 years, coming from county to Lamb county years ago. He has had 10 years actual business experience, years actual experience as cotton weigher before Lamb county.

During his residence in this county Mr. Porter has proven himself a citizen, always landing his feet for the betterment of the county in general.



# Today

-Chevrolet announces

## THE GREATEST CHEVROLET IN CHEVROLET HISTORY

Today, Chevrolet presents the Greatest Chevrolet in Chevrolet History—a smoother, faster, better Six—with beautiful new bodies by Fisher.

Basically, it is the same sturdy, substantial Six which won such tremendous popularity in 1929. But it is a greater car in every way—for there are scores of vital improvements

which contribute to comfort, performance, endurance and safety!

An improved six-cylinder valve-in-head motor, with its capacity increased to 50 horsepower; four Delco-Lovejoy hydraulic shock absorbers; fully-enclosed internal-expanding weather-proof brakes; a new dash gasoline gauge; heavier and stronger

rear axle; Fisher non-glare windshield; larger tires—

—these are typical of the many improvements which make this car the Greatest Chevrolet in Chevrolet History.

But most impressive of all from the standpoint of the motor car buyer—this smoother, faster, better Six is available—

---at greatly reduced prices! . . . . .

During 1929, more than a million three hundred thousand persons bought six-cylinder Chevrolets. This enormous volume has made possible many savings in the Chevrolet factories—and, in keeping with its long-established policy, Chevrolet is sharing these savings

with the public. No written description can do justice to the extra value and quality provided in this new car. Visit your Chevrolet dealer—see this car—check its new features—ride in it—and judge for yourself the sensational value it represents.

The ROADSTER .....	\$495	The CLUB SEDAN .....	\$625
The PHAETON .....	\$495	The SEDAN .....	\$675
The SPORT ROADSTER .....	\$525	The SEDAN DELIVERY .....	\$595
The COACH .....	\$565	The LIGHT DELIVERY CHASSIS .....	\$365
The COUPE .....	\$565	THE ONE AND ONE-HALF TON CHASSIS	\$520
The SPORT COUPE .....	\$625	The One and One-half Ton Chassis	
		With Cab .....	\$625

All prices f. o. b. factory, Flint, Michigan

# Bell-Gillette Chevrolet Co.

LITTLEFIELD,



TEXAS

A SIX IN THE PRICE RANGE OF THE FOUR

000 EXTRA WORKERS  
Attractive Offer  
ount More Votes  
They Will Later  
order to assist each  
date in The Leader  
and Prize campaign  
nt today announced  
best vote gathering  
to entire campaign  
pplica on both new  
riptions and will  
date or new ent  
leading position  
of intensive so  
friends and ac  
scription vote  
a decided decl  
is present offe  
\$5, and now is  
er best licks ar  
to the autom  
mpish during th  
ably be the dec  
ing of the bi  
prizes when  
around. It is  
that NOW,  
prize winning  
the automobile  
another vote

Everyone  
are isn't a  
ty but who  
one club  
expiration o  
ay tried.  
are that th  
for the en  
the autom  
expected t  
the means  
dates wh  
to serv  
son as the  
sent offer  
vote toin  
the next  
an incenti  
ed to pit  
while th  
the peon  
gn is ab  
at every  
paign, th  
it is ob  
to fill in  
to  
an  
su  
ave been  
have not  
These w  
sent into  
supplies  
automob  
100,000  
nounced  
not au  
paign a  
duplica  
Call ph  
bulkin  
TODA  
First  
The  
candi  
made  
and  
publi  
and  
real  
hes  
dpe  
A  
hou  
for