

# LAMB COUNTY LEADER

Official Newspaper of Lamb County, Texas

LITTLEFIELD, LAMB COUNTY, TEXAS, THURSDAY, APRIL 18, 1929

No. 1

## COMMERCIAL BODY DISCUSSES MANY IMPORTANT ITEMS

Interest was shown at the meeting of the Littlefield Chamber of Commerce.

J. S. Hilliard opening the meeting made a strong appeal for the cooperation of the citizens of the county.

The day program was discussed, and G. Sadler, in the absence of Cundiff, made a report stating everything was being put in motion for an interesting program for sales days to be held the first of each month, for five beginning Monday May 6th.

Harris reported that contract was signed for the erection of hotel for Littlefield.

## AT FIELDTON ON COURT HOUSE FRIDAY NITE

Meeting is to be held at the schoolhouse Friday night of the month under the auspices of the court house removal committee which all people from all county are invited attend.

There will be present to explain of immediate action regarding moving of the courthouse to a desirable location, and why it is moved to Littlefield.

There are speakers present and Amherst, they will be the courtesy of part of the time.

## WHEAT FARMER SHIPPING A TRAIN LOAD OF FEED

Bill Beller, living on the Clois farm near Lazbuddy, made a shipment of sudan seed from this week. The total amount 600 pounds, representing a about \$10,000. He also has ears of maize, kaffir and is shipped, which, although make a fairly good train Beller makes Muleshoe shipping point.—Muleshoe Journal

## AMHERST GAME 12-12

and Sudan played a game all Sunday, which ended in a tie. The feature of the game was a long home run in the 10th inning by "Big Hanks" of Littlefield which tied the score.

## Wesley L. Jones, Author



Wesley L. Jones, author of the law, which has maximum up to five years imprisonment and up to \$10,000 fine for violators.

## Croping

By Albert T. Reid



## LITTLEFIELD LADS WIN HIGH HONORS AT TRI-STATE MEET

F. O. Boles, Percy Carter, Harry Amarillo last Friday to the Tri-State White and A. C. Tremain went to meet.

Percy Carter went to the finals in the 100 yard dash, and won third place in the 440 yard dash. Time was 53.7 seconds which is exceptionally fast time for the 440 yard dash. The meet was the fastest ever held in West Texas.

The state record in pole vault 12 feet was tied by Willis, of Pampa.

Russell, of Hereford, ran the 100 yard dash in 10 seconds and the 220 yard dash in 22.1 seconds in the preliminaries.

Sam Harmon, of Amherst, won the half mile race in 2 minutes, 4 seconds which is possibly the fastest time ever made by a high school man in West Texas.

Another record breaking performance was Austin, of Slaton, javelin throw of 174 feet.

The following Littlefield boys will compete in the district meet to be held at Lubbock next Friday and Saturday.

Ferrell Burford, 100 and 440 yard dash and relay.

Percy Carter, 440 yard dash and relay.

David Mitchell, relay and broad jump.

Paul Roberts, relay and mile run.

Fly Thornton, broad-jump.

These men have a good chance to qualify in the state meet at Austin, May 2, 3, and 4.

## SPEAKING HELD THURSDAY

A public speaking, in behalf of moving the courthouse, will be held Thursday night (tonight) at the home of George K. Mitchell, on the Spade ranch.

Vital issues of the campaign will be discussed, and every interested citizen is invited to attend.

## NEW MANAGER OF STATE TELEPHONE COMPANY HERE

H. C. Daggett, recently appointed manager for the State Telephone Co., of the Littlefield district, is here this week entering upon his duties. He takes the place of Jimmie Singer, transferred to Crosbyton district.

Mr. Daggett comes from Long Beach, California, and has had 19 years experience in the telephone business.

## RECREATION HALL CLOSED

A domino parlor, operated by J. R. Harrison in the old theatre building, was closed last week by Officer L. W. Wynn, it being charged that gambling was being permitted in connection with games played in the building.

## COMMERCIAL BODY MEMBERS GROWING WITH BIG INTEREST

Secretary Ratekin, of the Littlefield Chamber of Commerce states that the membership of the Chamber of Commerce is now approximately 160, and will no doubt reach at least 225 when every business man and citizen has been called upon. This is an exceptional enrollment for a city of the size of Littlefield. It is a better showing than the city of Fort Worth makes population considered.

The growth of the commercial body is proof sufficient that undivided attention must be given the organization. A full time secretary was always desired, but none was secured prior to Secretary Ratekin assuming the position.

The Chamber of Commerce is putting Littlefield more firmly on the map and considerable publicity is now being given this section through the efforts of the organization. Every body is glad to see the Chamber succeeding so nicely. Littlefield business men are alive to their best interests by giving unstinted support to the organization.

## COUNTY AGENT ADAM URGES SEED TREATMENT

"During the past year smut has cost Lamb county farmers the handsome sum of \$15,000," according to County Agent D. A. Adam, who figures the loss on grain sorghum alone at one per cent. He states, however, that this is a very low estimate as there are many fields which were damaged fully 50 per cent.

Mr. Adam is this week holding smut demonstration meetings in various sections of the county, thus teaching the farmers how to control this crop blight, which may be done so easily and so cheaply.

Mr. Adam states it costs only 25 cents per pound for copper carbonate with which to treat seed against smut. Three ounces of this chemical is enough for one bushel of sorghum grain, which in turn will plant between 25 and 30 acres—so the cost is practically nothing; yet the loss so very great where the precaution is not used.

## STORK SPECIALS

Mr. and Mrs. O. D. Wright, girl, April 9th.

Mr. and Mrs. R. E. Brett, boy, April 11th.

Mr. and Mrs. Fred Dewett, boy, April 11th.

Wylie T. Morgan went to Clovis, Saturday night, returning Sunday with his wife and son, who spent last week there with her sister, Mrs. Burt Brown.

## ENGINEERS SHOW WILL BE HELD AT LUBBOCK ON SAT.

Lubbock, Texas, April 16.—Students and faculty members of the high schools of District No. 2, of the Interscholastic League, will be given a special invitation to attend the first Engineers' show to be held at the School of Engineering, Texas Technological College, Saturday, April 20. Business men of towns in this section also have a special invitation to attend the show.

The three engineering buildings and all the machinery and apparatus will be put in use by students and faculty members of the school at the Engineers' School to show the general public what work the school is doing.

The show will open at two o'clock in the afternoon and will continue until late in the afternoon, according to Dean Wm. J. Miller.

The School of Engineering has seven departments, electrical, mechanical, civil, textile, architectural, geological, and chemical and special tests will be conducted in each of the departments to give the visitors complete information about the work.

"We have had a number of visitors and we have attempted to show them through the plant," Dean Miller states. "These visitors have only been able to see a part of the equipment in operation, however, and the Show will give those in attendance a chance to see the entire plant in operation with special experiments in progress."

A committee of seven seniors, representing the seven departments of the school, is in charge of the show. They are: June Hewitt, Plainview, chairman; B. A. Schmidt, Pampa; J. F. Sanders, Haskell; Ray Thomas, Tehuacana; Kinsey Miller, Lubbock; Neville B. Graham, Guion; and J. T. Gist, Colorado.

## ESSAYS SHOW CONSTRUCTIVE THOUGHT OF MANY PUPILS

The boys and girls in the Essay contest are all to be highly complimented for the interest they have taken. The essays which have so far been turned in to the manager's office of the Lamb County Seat movement are good, and show the real foundation interest the boys and girls have in the future of Lamb county, for they are to become active citizens of tomorrow.

The citizens of the County Seat movement are well pleased over the interest manifested, and the large number of pupils in the county taking active part. These essays describing the reasons set out in the contest will be a very interesting part of history work, and will tend to develop the pupils of the schools in knowledge of current history as well as of a future nature.

## LARGE ATTENDANCE AT FUNERAL OF MRS. ALOYSIA DVORAK

One of the most solemn and orderly obsequies ever witnessed in Littlefield took place Thursday morning at nine o'clock, April 11, when Mrs. Aloysia Dvorak, mother of Rev. Chas. J. Dvorak, pastor of the Catholic church here, was interred.

The funeral cortege started in the house of mourning, where the Psalm Misere was chanted by the clergy, dressed in black cassocks and white surplices. The priests and others forming a procession walked before the casket from the parsonage to the church, where a solemn Requiem Mass was sung by the son of the deceased, the Rev. Charles Dvorak, assisted by Rev. Paul Mosler, of Seymour, Rev. R. Schindler, of Lubbock, and Rev. E. J. Gerlich, of Vernon. Following the Requiem Mass, the Very Rev. Dean T. O'Brien, of Slaton, delivered an eloquent oration, taking for his text the words: "Blessed are they who die in the Lord." Then followed the absolution for the dead, after which the procession moved to the cemetery, where again the final funeral rites were conducted by the son of the deceased. The prayers being concluded, Rev. Chas. J. Dvorak let a hand full of earth into the grave with the words: "Remember, O man, that thou art dust, and into the dust thou shalt return." Incense and sprinkling with blessed water was made use of, according to the church ritual, a symbolic rite conveying the idea of the prayers of the priests and mourners ascending to heaven as sweetly smelling frankincense.

The choir for the funeral consisted of priests and catechists from Lubbock. An exceptionally large concourse of citizens, with official representatives from the local Chamber of Commerce and Rotary International, (of which the priestly son was a member) attended the funeral rites of deceased. Many life long friends of Rev. Chas. J. Dvorak also attended the services, some from West, Megargel and Penelope, Texas. Mayor F. E. Barton, of Wichita Falls was here, as were also 12 priests of the church from Seymour, Vernon, Childress, White Deer, Umbarger, Slaton, Plainview, Lubbock, and Clovis, N. Mex.

Mrs. A. Dvorak is survived by three daughters and two sons, all of whom are married except the one living in Littlefield who has dedicated his life to the cause of the Church. She was nearly 75 years of age, and the last 12 years she had spent in keeping house for her youngest son, the priest.

Of her character it may be said that she possessed an initiative and sturdy courage equaled by few of her sex now days. Coming from Europe about 25 years ago, accompanied by two girls, one 18 years of age, the other 15, and the boy also in his teens, she located in Texas, and took up a task far from small, when it is considered that she had no vital cause for leaving her native land where she had property and where her three older children were married and well provided for. October 27, 1900 she lost her husband, and since that time has lived as a widow in seclusion, devoted to her God and to the care of her three remaining children. When she arrived in this country she purchased a farm near Ennis, which she successfully managed until her two younger daughters were married, and while her boy, Charles, finished the long years of higher studies and was eventually ordained as a priest in the Catholic church, after which she made her home with him, caring for him and his interests as only a mother could.

## FIRE INSPECTOR HERE TO INSPECT FOR LOWER RATE

J. M. Swor, State Fire Insurance Commission inspector, was in Littlefield last week and made a thorough inspection relative to a change of insurance key rate for this city.

It was stated that reduction credits would be allowed because of the new fire engine recently purchased, on the paving and also the waterworks extension, though what amount has not yet been determined.

It will probably be three or four weeks before the new rate will be known and becomes effective.

Love is an ocean of emotion entirely surrounded by expenses.—Lord Dewar

## MANY INQUIRIES BEING RECEIVED HERE BY C. OF C.

The Littlefield Chamber of Commerce is receiving many inquiries about this section, many people of other sections are looking for a new location and investment. The secretary reports he has recently received letters from parties living in seven different states making inquiries with view of purchasing farms and locating here. These are all stepping stones to additional population for the Littlefield section. Littlefield is growing, it is going to grow by leaps and bounds, and it is necessary for every person to put his shoulder to the wheel and do his share toward every forward movement.

"The Littlefield Chamber of Commerce is devoting its activities to every constructive and progressive matter that it can devise for the progress and prosperity of Littlefield and Lamb county," said Secretary Ratekin. "Perhaps it is not doing just what you think it ought to do. If so, and you will communicate your ideas to the Chamber the matter will be discussed, and, if feasible it will be put into operation.

"Constructive suggestions are what the Chamber of Commerce invites, for it is looking for an opportunity to serve Littlefield and Lamb county in every possible way. No man ever devoted himself to civic and moral welfare of a community without becoming a better citizen.

"Serving the Chamber of Commerce means serving Littlefield and Lamb county; means an extended vision, a clearer perspective and larger sympathy and understanding of the city's and county's problems. There are big things ahead for all, and it is most necessary for every one to do his part, and help make Littlefield and Lamb county one of the biggest and most prosperous localities of the South Plains country.

## CITY COMMISSION PASSES ORDERS AT LAST MEETING

At a meeting of the City Commission held last week, upon complaint of Water Superintendent H. J. Gibbs local plumbers were to be notified the Superintendent must be informed when new water connections have been completed and that the water for such connections must be left turned off.

It was ordered that the change in the cost of water connections should be made from \$10.00 to \$17.50, the meter deposit to be \$5.00, as heretofore.

A free occupation tax was granted Tom Singer for operating the skating rink, so long as the local Fire Department received a percentage of the income.

A transfer of \$2,500.00 was ordered from the Paving fund to the General fund to cover money to be used in payment of interest on Waterworks bonds due April 15, this year.

The matter of removing all surface toilets within the city limits, as required by ordinance, was discussed, and current bills allowed.

## BUYS GULF STATION

L. C. Grissom, of Sudan, bought the Gulf wholesale station, formerly owned by Tom Matthews.

Mr. Grissom took charge of the station Thursday.

## Welcomes "Talkies"



Richard Dix, Paramount star, who was formerly a "matinee idol" of the legitimate stage, is one establishing picture player who welcomes the arrival of "talking pictures." Dix has had the advantage of a long training under the guidance of William Fox.

For Girls Only!



Miss Agatha Clarke, Australian Mission worker, has returned to Sydney with a tale of an island on the Western Coast of Australia inhabited entirely by women ready to beat off any trespassing male.

**BAPTIST MISSIONARY MEET**

Circle No. 1 of the Baptist church, met Tuesday afternoon with Mrs. J. H. Lucas, for a mission study and special prayer service.

After the roll call with verses beginning with the letter C, Mrs. Otha Key took charge of the devotional, reading a very beautiful passage of scripture which Mrs. Howard discussed at length, followed with prayer by Mrs. Key.

The circle was glad to have Mrs. G. G. Shirley present, who discussed business matters fully.

Mrs. Howard then taught from the mission book, after which special prayer was offered for the Baptist revival now in progress.

Those who attended were Mesdames Shirley, Howard, Connell, Crow,

George, Ross White, Key, Matthews, Lowe, Spurlock and Lucas.

All circles meet next Tuesday at the church.

Circle No. 2 met with Mrs. J. I. Griffin for Mission study and special prayer service. Mrs. Roles led the devotional, after which Mrs. Griffin taught the lesson.

Those in attendance were Mesdames Smith, Tucker, Pate, Morgan, Payne, Jess Seale, Barton, Boles and Griffin.

Circle No. 3 met with Mrs. R. E. McCaskill for a study in the Mission book, also, special prayer service.

Those meeting with Mrs. McCaskill were Mesdames Lloyd, Griffin, Mid Seale, Hall and Hammon.

Don't let the mail order houses deceive you.

In 1744 Texas had a population of only about 1,500, centered largely about San Antonio. In 1806 the population was estimated at 7,000. In 1831 it was about 20,000 increasing to about 50,000 in 1836 when Texas voted for the first president of their Republic. The greatest percentage of growth was between 1870 and 1880 when the population increased 94.5 per cent.

**ABOUT WARTS**

Chicago, April 16.—Says Karl P. Schmidt in a book recently published by the Field Museum of Natural History: "The belief that the handling of toads causes warts is wholly without foundation. It evidently has arisen from the simple analogy between the wartiness of toads and the existence of warts on the hands of 'small boys.'"

**DAIRY FACTS**

**PREVENT LOSS BY CLEAN HANDLING**

**Souring Is Caused by Bacteria After Milking.**

Clean production, prompt cooling, and frequent deliveries will prevent the souring of milk and will put dollars in the pockets of dairy farmers. "This souring is caused by bacteria which get into the milk after it is drawn from the cow and can only be prevented by the most careful handling," says John A. Arey, extension dairymen at North Carolina State college.

When first drawn from the cow, milk contains very few if any of the bacteria and the contamination comes from outside sources. Chief among these are the cow's body, the hands of the person doing the milking, the air and the containers.

Mr. Arey states that all of the sources can be eliminated by seeing that the cow's flanks and udder are thoroughly cleaned before milking, that the milker's hands are clean, and that all vessels or containers have been cleaned and sterilized.

These containers should first be rinsed in lukewarm water and then scrubbed with a heavy brush in water to which has been added a strong alkali solution. They should then be sterilized with live steam or some chemical made for that purpose. All utensils in which the seams are not well flushed with solder should be avoided as these crevices are hard to clean and furnish a harboring place for bacteria.

The milk should be cooled as soon as possible after milking, placed in the containers in which it is to be delivered and stored in a refrigerator or cooling tank. Only by taking these precautions can the dairymen prevent the milk from souring and be sure of delivering pure, sweet milk to the market, states Mr. Arey.

**Give Dairy Cows Silage With Their Winter Feed**

Corn silage is the best and most economical way of providing cattle with the succulence necessary in dairy feeding, says the New York State College of Agriculture at Ithaca, New York. Some way must be provided to carry pasture conditions over into winter feeding and silage is the best form of succulence to be provided.

Good legume hay with a succulent feed furnishes a combination of protein, minerals, and succulence which comes as near as possible to pasture conditions. This palatable and bulky feed is good for the digestive tract, and is economical as a source of carbohydrates. Corn silage stimulates the appetites of the animals so that they do not easily go off feed; they consume larger amounts of roughage than when fed on hay alone.

**Get Cow Into Condition During Its Dry Period**

Largest profit during the milking period may be expected only from cows that have been gotten in good condition during the dry period. Cows that are thin at calving time never have an opportunity to do their best.

Silage and a legume hay are the best foundation of a ration for the heifer or dry cow. The fitting ration should be fed liberally (from 7 to 12 pounds per day) for a period of four to six weeks before calving excepting that when within a week or ten days of calving it is best to change to a lighter and milder laxative ration. Equal parts of corn or hominy feed, wheat bran, ground oats, and from 10 to 25 per cent of linseed oil meal approaches the ideal as a grain mixture for the preparation period.

**Dairy Facts**

It doesn't pay to overfeed. Overfeeding usually leads to digestive disorders that play hob with the calf.

Inch board overlays or cork brick floors under cows insure against many udder troubles which arise from cold concrete floors.

Experiments at different experiment stations show that ground corn is worth 16 per cent more than whole corn when fed to dairy cows.

Slimy, stringy, andropy milk are all caused by bacteria. Such bacteria may come from water or ice, and cows after wading through surface water may carry these bacteria on their bodies to the barn.

Sweet clover pastures seem to give best satisfaction to dairymen who supplement the pasture with silage, hay or grain.

Grooming cows will directly or indirectly prove profitable. It improves the quality of the milk and affords satisfaction to the owner.

Particular care must be taken of milk and cream. They should be kept in a cool place in earthen or glass containers, and should be covered so as not to absorb any sort of odors.



REV. J. C. SISEMORE

**REV. SISEMORE IS HERE IN REVIVAL FOR BAPTIST**

A revival meeting was begun in Baptist church last Sunday, there being seven additions and a baptism that day. Rev. J. C. Sisemore, Amarillo arrived Monday for service that night and will be throughout the series of meetings. "He is a preacher who delivers the word of God with a holy fervor, Genesis to Revelation," according to Pastor Roy Kemp.

A general invitation is extended to the public to attend these services.

Rev. Sisemore announces the following sermon subjects, beginning with tonight's service:

Thursday evening, Interior Christians.

Friday evening, The Four Fools in Littlefield.

Saturday evening, Shooting in the Presence of God.

Sunday morning, The Call of Cross.

Sunday afternoon, 3:30 o'clock, Second Coming of Christ.

Sunday evening, Are We Near End of Time?

Monday evening, special service—family night. Families are invited to come and sit in groups, the family to be awarded a prize.

There will be services each evening at 10:00 o'clock and on Sunday evening at 8:00 o'clock.

Give the range a chance to regenerate, says the Forest Service of U. S. Department of Agriculture. Ideal pasture arrangement for stock where the range is grand year round is to divide the range into two units, one for summer and other for winter grazing, using pastures for the poorest and best grazing for all the herd and allows part of the range to recover during the growing season each year.

When Texas was annexed to United States, she then included present eastern half of New Mexico the portion of Oklahoma today north of the Texas Panhandle, western Kansas, a large portion Central Colorado, and a section Wyoming.

**NOTICE TO BIDDERS**

The Commissioners' Court of Olton, Texas, will receive bids for purchase of one or more Sixty Power or more road tractors, one or more 12 foot Road Grabs Simon D. Hay, County Judge, Olton, Texas.

At Olton, Texas, April 10, 1929, April 11, 18, 25, May 2, 1929.

**DISHWASHING MADE EASY FOR YOU**

IF there's any task which seems to sum up the dreary of household work, the washing of dishes, the meal leaves its quota. can't suggest any way to eliminate them, but we suggest a way to put the washing on an efficient basis.

First: A sink of the right height you won't tire from bending; Second: a modern swinging spout faucet spray; Third (and this almost always with the whole problem) electric dishwashing sink. Come and see our demonstrating model will be delighted!

**L. C. CAWTHON**  
Plumber, Phone



**QUALITY GOODS AT Fair Prices**

**A Few of the Many Good Prices FOR SATURDAY**

**FLOUR** WHITE FEATHER, 48 lb. sack **\$1.30**

**NEW POTATOES** Real New Ones, pound **41-2c**

**POTATOES** No. 1 Rurals, pound **11-2c**

**BANANAS** per dozen **25c**

**COFFEE** "ELEGANT" brand, 1 pound, 54c  
"ELEGANT" brand, 3 pounds **\$1.57**  
**FREE SUGAR**  
2 pounds with each pound of coffee purchased  
5 pounds with each 3 pounds of coffee purchased

**SALMON**, Pink, tall can, 2 for **35c**

**PINTO BEANS**, pound **9c**

**MEAL**, Youkon's Best, 24 pound sack **69c**

**GREEN BEANS** Nice and Fresh, pound **9c**

**JELLO**, All flavors, 3 packages for **25c**

**PORK AND BEANS**, Van Camp's No. 2 can **10c**

**PEAS**, Glen Valley, No. 2 can **14c**

**MEAT** Dry Salt, square cuts, pound **17c**

**CORN**, Templar brand, No. 2 can **12c**

**SKINNERS** Macaroni or Spaghetti, 3 packages for **23c**

**BRAN FLAKES**, Kellogg's, per package **10c**

## ALL PRELIMINARIES FOR OIL TEST NEAR MORTON COMPLETED

All legal preliminaries incident to the securing of a deep oil test on the Laughter Block, about fifteen miles southwest of town, according to the terms of a drilling contract entered into several weeks ago by McElrath Suggett, contractors, and the Laughter interests combined with the owners of the farms in that vicinity,

were completed last week. Approximately forty-eight farmers living in that vicinity were paid an average price of around \$1.50 per acre for a lease on their lands, and while some held larger tracts of land than others the amount received will average about \$240 per man. These amounts were paid last week and will be a material aid in bridging the crop seasons this year.

The active drilling will begin not later than July 1 of this year and is to continue until a depth of 4,500 feet is attained unless oil in commercial quantities is found at a less depth. A steel rig will be erected and the drilling done with rotary machinery until the lime formation is encountered, after which a change will be made to standard tools.

S. P. Soash, of Lubbock, head of the Slaughter properties in Hockley County, Terrell & Allison, of the Lone Star Land Company, and Jess W. Harvey of the Hockley County Realty Company, have worked untiringly for the past several months to get all parties together with the idea of obtaining a thorough test for this section. These men only recently returned from Fort Worth where they spent a week in adjusting the matters pertaining to the leases to the satisfaction of the oil men. It is largely to their efforts that the land owners received the price for their leases and the drilling contract made.

The geological reports on this location are said to be exceeding favorable, and the price paid for the leases would indicate a confidence on the part of the oil companies seldom shown in a wildcat territory.—Hockley County Herald, Levelland.

### NEW CLUB ORGANIZED

The "L" club met last Friday evening and elected the following officers: President, Bill Arnn; Vice-President, Charles Evans; Secretary-Treasurer, Avis Dow; Reporter, Doc Phipps. The club is planning to present a play to finance the club. The club will meet every two weeks on Friday evening.—Reporter.

Chasing a rainbow is a very poor way to provide for a rainy day.

### LITTLEFIELD CITIZEN IS HONORED BY SPUR PEOPLE

On Monday evening members of the Senior class honored their class sponsor, Mr. Kenneth Hemphill with a birthday dinner.

A number of clever and unusual gifts were presented Mr. Hemphill and a very pleasant time was enjoyed. The senior class colors were brought out in the ice course, in gold and white.

Following the dinner the guests re-assembled at the home of Mabel King, where a most enjoyable hour was spent.

Each day this week some kind of entertainment will be given for the seniors. Plans have been made for a party on Tuesday evening, with Nig Lisenby as hostess. On Wednesday the class will enjoy an apron and overall picnic at the Spur ranch. Mary Elizabeth Hogan will entertain at her home on Thursday evening. On Friday the entire class will leave on a trip to Carlsbad Cavern, in New Mexico. They will return on Sunday.—Texas Spur.

### DELL KENNEDY GIVEN FIVE YEARS ON LIQUOR CHARGE

The first trial of a liquor charge in the District Court in the history of this County resulted in a verdict for five years in the State penitentiary for Dill Kennedy, the defendant.

Kennedy was billed by the Grand Jury during the first week of the session and his case came to trial Wednesday. He was charged with the illegal possession of liquor for the purpose of sale.

The testimony introduced in alleged

to have shown that one Johnson purchased one-half gallon, paying \$5.00 for it. Further testimony was to the effect that at a dance held in Geo. Smith's pasture about the time of the Rodeo here last Summer, Kise Walker, Lemon Clark and Seborn Jones made up \$4.00 between them and gave Charlie Dozier the money to purchase liquor, and that he bought two pints, paying \$2.00 per pint. Dozier and other alleged purchasers were under age, some of them being not over 18 years.

The jury was out only a short time bringing in a verdict of guilty and assessing his punishment at five years in the penitentiary.

Kennedy, who acted as his own counsel, gave notice of appeal.—Hockley County Herald, Levelland.

### LITTLEFIELD BALL PLAYERS ARE GIVEN HOPEFUL TRY-OUT

Embert Mueller and Dick Ratliff, Littlefield ball players, who went to Tyler last week for try-outs in the Lone Star league, are hopeful of acceptance, according to reports carried in a Tyler newspaper of recent date.

Both boys are making good showing in the practice games. In the first game played Embert got one home run and two singles, while in the second he also scored a home run.

The season opens the 24th of this month.

Pittsburgh, Pa., April 16.—Ulysses S. Grant, second cousin of the great American general, is a night watchman at the University of Pittsburgh.

# FORD

TOWN CAR  
ON DISPLAY HERE  
FRIDAY, APRIL 19

For the first time in the history of American automobile manufacture a chauffeur-driven automobile is being offered the buying public in the medium and low price fields. It remains for the Ford Motor Co., to introduce this snappy, stylish automobile patterned after the high priced French cars of this type.

Upholstered in genuine long grain black leather and imported whipcord, rickie trimmed and coming in a variety of luxurious colors, it is a model of unusual attractiveness. We want you to see it and witness its performance at our house next Friday.

JOHN H. ARNETT  
Motor Company

LITTLEFIELD, TEXAS

## Week End SPECIALS

"Eternal values" may be everlasting, but it takes the grasp of Opportunity to recognize and take advantage of those special values in merchandise which last for only a few days. For this weekend we are making some real enducements to shrewd buyers who are looking for money-saving purchases that will bring extra satisfaction in value received. Look over this list—you are sure to find one or more items of interest and saving.

- One assortment Spring Ready-to-Wear Hats, special at \$2.49
- Assortment new Spring Hats, special \$3.69
- Assortment new Spring Dresses, special \$8.89
- Assortment new Spring Smocks, special .98
- Assortment new Spring Hoovers, special .98
- Assortment Little Boys Suits, sizes 2 to 7, special .98
- Assortment Little Girls Dresses, sizes 6 to 14, at .98
- Virginia Hart Wash Dresses special \$1.79
- Crinkle Bed Spreads, 80x90 inch, special .98
- Crinkle Bed spreads, 80x105 inch, special \$1.25
- 5-inch Unbleached Muslin, 10 yards for \$1.00
- Men's Overalls, "Buck" Brand, at \$1.58
- C. A. Standard 8 oz. Feather Tick, per yard .27
- Video Pants, at per pair \$1.65
- Men's Rodeo Pants, red trimmed, per pair \$1.48
- Men's khaki and sand color Pants, per pair \$1.48
- Men's Extra heavy blue and sand color Shirts, 14 to 17, special at .98
- Men's Dress Shirts, nice assortment, special each .98
- Special rack Ladies Dress Shoes, values up to \$7.50, per pair \$2.98
- Special rack Men's Dress Shoes, values up to \$6.00, per pair \$3.85
- Shipment Spring and Summer Suits, Men's and Young Men's, at \$8.50 to \$3.50
- Shirting, heavy quality, 8 yards for \$1.00
- Washing Thread, 7 spools .25
- Crinkle Dress Prints, very special, per yard .16
- Box, 3 packages for \$1.00
- Assortment Ladies Hose, values up to \$2.35, broken lots, special \$1.49

CUENOD'S DRY GOODS COMPANY

T. S. SALES, Manager  
LITTLEFIELD, TEXAS  
We close at 6:30 P. M.

Thursday, Friday & Saturday  
April 25th, 26th and 27th

The Original  
**Rexall**

Thursday, Friday & Saturday  
April 25th, 26th and 27th

ONE 1¢ SALE

It is a sale where you buy an item at the regular price, then another item of the same kind for one cent. As an illustration: The standard price of Klenzo Dental Creme is 50c, you buy a tube at this price and by paying 1 cent more, or 51 cents, you get two tubes. Every article in this sale is a high class standard piece of merchandise, just the same as is sold every day at the regular price. This sale was developed by the United Drug Co. as an advertising plan. Rather than spend large sums of money in other ways to convince you of the merit of these goods, they are spending it on this sale in permitting us to sell you a full size package of high standard merchandise for 1 cent. It costs money to get new customers, but the sacrifice in profit is justified, knowing the goods will please you.

 <p><b>60c PURETEST MILK OF MAGNESIA</b> Smooth as cream. A good laxative for children and elderly people. 2 for 61c You Save 59c</p>	 <p><b>50c JONTEEL COLD CREAM FACE POWDER</b> A soft, smooth, fragrant face powder. Contains real cold cream. Blends perfectly. 2 for 51c You Save 49c</p>	<p><b>\$2.25 MAXIMUM HOT WATER BOTTLE</b> 2-quart Capacity 2 for \$2.26</p> <p><b>\$2.25 MAXIMUM FOUNTAIN SYRINGE</b> 2 for \$2.26</p> 
<p>Catarrh Jelly, 1/2 oz. 2 for 26c Dyspepsia Tablets, 50's 2 for 51c Hair Tonic, 6 oz. 2 for 51c Spirits Camphor, 1 oz. 2 for 26c Hard Candies, 1 lb tins 2 for 61c Rexall Tooth Paste 2 for 26c Olivo Shampoo 2 for 51c Hair Stimulator 2 for 76c Rexall Toilet Soap 2 for 16c Little Liver Pills, 100's 2 for 26c</p>	<p><b>60c CASCADE OR MARSALA POUND PAPER</b> 2 for 61c</p>  <p><b>60c CASCADE LINEN ENVELOPES</b> 2 for 61c</p>	<p>Klenzo Tar Shampoo Soap 2 for 26c Harmony Toilet Water, 5-oz. 2 for \$1.01 Hair Fix 2 for 51c Tiny Tot Talcum 2 for 26c Harmony Liquid Shampoo 2 for 51c White Pine and Tar Comp. with Cherry, 7-oz. 2 for 61c Rubbing Oil, 3-oz. 2 for 36c Tooth Brushes, assorted 2 for 36c Many other Articles too numerous to Mention</p>
<p><b>65c ASSORTED Wrapped Cream Caramels</b> 1-lb Box A full pound of tasty, pure caramels. The favorite kind of the children as well as the grown-ups. 2 for 66c You Save 64c</p> 	<p><b>50c KLENZO DENTAL CREME</b> Keeps the teeth clean, white and beautiful without injury to the enamel. Pleasant tasting. A common-sense dentifrice. 2 for 51c You Save 49c</p> 	<p><b>\$1.00 ASSORTED CHOCOLATES</b> 1-lb Box A full pound of delicious high grade assorted chocolates. A real value for everyone who likes good candy. 2 for \$1.01 You Save 99c</p> 

This is Your Opportunity to Obtain Seasonable Household Items at a Big Saving. Every Article Guaranteed to Give You Satisfaction.

EVERY ARTICLE IS STANDARD and GUARANTEED

**STOKES & ALEXANDER DRUG COMPANY**  
The Rexall Store

LITTLEFIELD, E. G. Alexander, Alexander Drug Co.

TEXAS  
Brownfield, Texas  
Levelland, Texas

NO LIMIT to the QUANTITIES YOU MAY BUY

**PRESBYTERIAN AUXILIARY**

The ladies of the Presbyterian auxiliary were charmingly entertained Tuesday afternoon at the home of Mrs. A. P. Duggan.

The meeting was called to order by the President, and regular business attended to, one of the most interesting questions discussed being the establishment of living quarters, homes and a church for the negroes living in Littlefield.

The lesson was nicely presented by Mrs. Wilbur Stockton from the study book on Africa.

Devotional service was given by the entire group repeating the 23rd Psalm.

The hostess served lovely refreshments of jelly and ice cream, and angel food cake to the following ladies:

**GASOLINE IKE**



"When cylinders go without care and some minding,  
They have to submit to reboring and grinding;  
We tackle the job with an ardor intensive;  
Our methods are modern and not too expensive!"

**ARDOR AND ACCURACY**  
Are the principal factors in a job of cylinder reboring and grinding presided over by Gasoline Ike. We are equipped to turn the trick with the tools and machinery most efficient for the purpose. And we realize the responsibility of such an undertaking.

**LITTLEFIELD SERVICE STATION OF COURSE**  
Park your Pet Peeve in the Ike House

**PROMPT FORD SERVICE**

Bring your Ford here for that hurry-up job. Maybe it's only a little thing. Big or little, our mechanics will find the trouble in a jiffy and send you away smiling. All labor billed at low flat rate. Ask about the Special \$1.50 Inspection Service.



**JOHN H. ARNETT MOTOR CO.**  
Littlefield, Texas

Mesdames Chas. Barber, E. A. Bills, Mike Brewer, N. A. Douglass, Cater, J. S. Hilliard, Sid Hopping, J. W. Porcher, F. G. Sadler, Bob Smith, W. O. Stockton, T. P. Wright, A. P. Duggan, Miss Lulu Hubbard, Miss Jimmie White, Mrs. Joe Chitwood, and three guests, Mrs. J. W. Rakekin, Mrs. Tom Holloman and Mrs. Kirk Allbright, of Abilene.

**TAHOKA PLANS BIG DIST CONVENTION THERE, APRIL 24**

The Tahoka Chamber of Commerce and the chambers of commerce of the South Plains are preparing to put over one of the largest District Chamber of Commerce conventions in the history of the West Texas Chamber of Commerce at Tahoka on April 24th. Invitations have been sent to every chamber of commerce and high school on the South Plains and those in adjoining territory, inviting them to be present, with their various organizations, bands, service clubs such as the Rotary, Lions, Kiwanis and High school clubs of various kinds.

A Silver loving cup is being offered by the Tahoka Chamber of Commerce to the winner of the My-Home-Town speaking contest. This contest is open to one contestant from each public school on the South Plains. Rivalry is expected to be keen in this contest as several schools have already stated that they were going to enter the contest.

The convention luncheon will be served by the Lynn County Home Demonstration clubs under the direction of Miss Thelma Greenwade, county demonstrator. Practically all the food served will be Lynn county products, produced by the ladies of the Home Demonstration clubs.

All of the large newspapers of the state have been requested to have their correspondents at the convention, so as to be in a position to give to the world news of the happenings during the convention.

Five towns have thrown their hats in the ring for the next convention. Kalls and Slaton stated last year that they would ask for the convention in 1930. Abernathy, Littlefield and Matador have sent word that they were coming after the convention for 1930. Randa and other organizations have been promised from Lamesa, Slaton, Brownfield, Crosbyton, Abernathy, Lubbock, Plainview and Matador.

More interest is being manifest by the various cities of the South Plains as the time draws nearer the convention. Most every town has stated that they expect to have a large delegation at the convention. Entries keep coming in for the "My Home-Town" speaking contest.

**STATE AGRONOMIST HERE**

E. A. Miller, extension sodvice agronomist, visited Lamb county 4-H clubs this week, accompanied by County Agent D. A. Adam.

Mr. Miller expressed himself as greatly pleased with the work carried on by Mr. Adam and the successes of the club boys.

**CAMP FIRE GIRLS COMING**

Thursday of next week J. M. Gamel, of Lubbock will be in Littlefield bringing with him a group of Lubbock Campfire girls.

They will begin a campfire program about 6:00 p. m. The public is cordially invited to attend, and especially the parents of the local campfire girls urged to be present.



**EVANGELIST J. N. COWAN, ROBSTOWN, TEXAS**

Evangelistic services are being held this week at the Church of Christ corner West Side ave., and 9th street, Evangelist J. N. Cowan, of Robstown, doing the preaching. Meetings are being held each night, beginning at 8:00 o'clock, continuing until next Monday night.

Evangelist Cowan is well known in this section as one of the preachers of his denomination, large audiences are being attracted to the services.

A commodious tabernacle has been erected beside the church, that is seated, lighted and equipped with stove for comfort. A general invitation is extended the public to attend the services.

**P.-T. A. MEETING**

The next regular meeting of the Littlefield Parent-Teachers association will be held next Wednesday, April 24.

A good program has been prepared for rendition and delegates to the recent district meeting at Floydada will make reports.

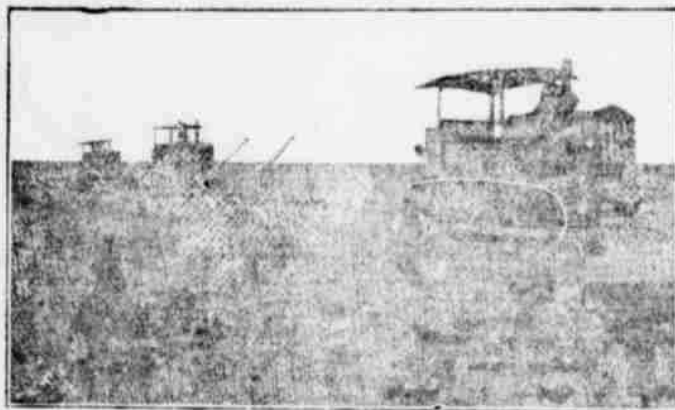
**RECORD VOTER**

Belmont, O., April 15—W. Porterfield died here recently. He had held the distinction of being voted for 16 presidents, starting with ham Lincoln and continuing to Herbert Hoover.

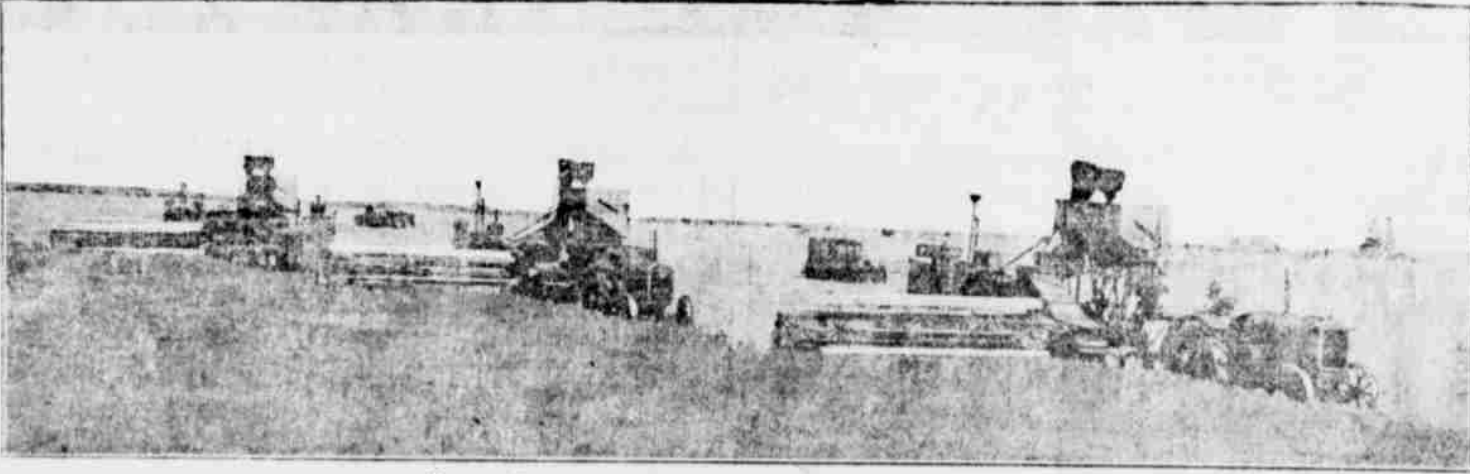
**TRAINED BULL**

Parishville, N. Y., April 15—A farmer has trained a bull well broken to harness and pulling power of a heavy pull automobiles out of mud near his home.

**Myrick Farms Are "Sold" on Phillips Oils**



Three 10 Ton Holt Caterpillars on the Myrick Farms



Harvest Time on the Myrick Farms West of Lubbock, Texas



This Map Shows Where the Phillips Stations are Located

**W. A. Myrick, Jr. Myrick Hardware Company**  
Lubbock, Texas

Phillips Petroleum Company, T. E. May, Agent, Lubbock, Texas, March 28, 1929.

Gentlemen:

Answering your inquiry of recent date as to what service and satisfaction we are getting from Phillips products, namely 66 and 66-66 Phillips products in our tractors and motor cars and find them to be highly satisfactory.

For your information, we are operating four 10-ton Holt, one Best 60 and six 15-20 McCormick-Dering tractors using general farming work, such as plowing, harrowing, seeding and cultivating.

We have in cultivation around 9000 acres, one 2000 acres of which is farmed by tenants. We have 2300 acres in wheat and 1000 acres to be sown in wheat next fall and are preparing 1000 and will plant 500 acres of soy beans. All the above named lands are farmed by tractors with exceptions of tenant farmers.

In connection with our farming we are operating a chicken plant of 7000 White Leghorn hens, 1000 of which are trap-bred, have an incubation capacity of 45,000 and brooder capacity of 24,000.

We are sold on Phillips products and any inquiries you direct to us, we shall be glad to answer.

We are  
Yours very truly,  
**W. A. Myrick, Jr.**  
MYRICK HARDWARE COMPANY  
(Signed) RUSSELL MYRICK.

There's Full Satisfaction in Phillips Products

**Phill-up with Phillips**

© P.P.Co. 1929



**O. K. YANTIS, General Agent**  
Day & Night Service Station  
Phillips Service Station, South Main Street  
Arnn's Filling Station

**Now is the time to fix up your MODEL T FORD**

RIGHT now, after winter lay-ups and winter driving, is the time to go over your Model T and find out just what it needs in the way of replacement parts and adjustments. For a very small cost, you may be able to protect and maintain your investment in the car and get thousands of miles of additional service.

To help you get the fullest use from your car, the Ford Motor Company is still devoting a considerable section of its plants to the manufacture of Model T parts and will continue to do so as long as they are needed by Ford owners.

These parts are quickly available through Ford dealers in every section of the country. Note the low prices in the partial list given below:

Piston and pin	.....	1.00
Connecting rod	.....	1.00
Crankshaft	.....	1.00
Cylinder head	.....	1.00
Cylinder	.....	1.00
Time gear	.....	1.00
Time gear cover	.....	1.00
Crankcase	.....	1.00
Blagneto coil assembly	.....	1.00
Fl. wheel	.....	1.00
Transmission gear shaft	.....	1.00
Transmission cover	.....	1.00
Clutch pedal	.....	1.00
Steering gear assembly (less wheel and bracket)	.....	1.00
Starter drive	.....	1.00
Generator	.....	1.00
Battery	.....	1.00
Carburetor	.....	1.00
Vaporizer assembly (with fittings)	.....	1.00
Rear axle shaft	.....	1.00
Differential drive gear	.....	1.00
Universal joint assembly	.....	1.00
Drive shaft pinion	.....	1.00
Front axle	.....	1.00
Spindle connecting rod	.....	1.00
Front radius rod	.....	1.00
Rear spring	.....	1.00
Radiator—less shell (1917-23)	.....	1.00
Radiator—less shell (1923-27)	.....	1.00
Hood (1917-1925)	.....	1.00
Hood (1926-27) black	.....	1.00
Gasoline tank	.....	1.00
Front fenders (1917-1925) each	.....	1.00
Front fenders (1926-1927) each	.....	1.00
Rear fenders (1922-1925) each	.....	1.00
Rear fenders (1926-1927) each	.....	1.00
Running board	.....	1.00
Horn (battery type)	.....	1.00
Headlamp assembly (1915-26) pair	.....	1.00
Touring car top (1915-25) complete	.....	1.00
Touring car top (1926-27) complete, includes curtains and curtain rods	.....	1.00

These prices are for parts only, but the charge labor is equally low. It is billed at a flat rate so you know in advance what the job will cost.

**FORD MOTOR COMPANY**



**CREAMERY**  
16.—The local  
for a creamery  
had any tenants  
and there was  
being used in  
pose for which it

**ED!**  
and Cream  
best market.  
local and foreign  
prompt returns

**ES, Produce**  
MAIN STREET

**er Say**  
A human  
on the harp.

**EXAS**  
one of the  
nomination,  
being attract

**ernacle has**  
urch, that is  
equipped  
A general in  
public to a

**OTER**  
16.—W  
recently at  
action of  
ting with  
tuning h

**OR YOUR GRAIN**  
ot take time to call on  
sars, we believe we  
unch for you.

**to build a REAL**  
o handle your crops as  
ng. It will add greatly  
of your property, too.

**ublished a considerable**  
builders of Granaries,  
nd of it.

**MERON & CO.**  
**LUMBER**  
Texas

**Early Captain of Industry**  
The first water-mill, the first iron-works and the first ship built in America were constructed in Virginia by George Sandys, who came over in 1621 as Colonial treasurer and returned to England in 1624.

**Wore Veil With Purpose**  
The "Veiled Prophet of Khorassan" was Hakim Ben-Allah, the founder of an Arabic sect in the Eighth century. While a soldier he lost the sight of one eye and wore a veil to hide his loss.

**Sage's Bitter Reflection**  
There are four good mothers, of whom are often born four unhappy daughters. Truth begets Hatred; Happiness, Pride; Security, Danger; and Familiarity, Contempt.—Steel.

**FOR REAL COMFORT AND GOOD FOOD**  
Patronize Lon's Cafe

Prompt service, pleasant surroundings, pure food, tastefully prepared—we never lose a customer.

Everything well prepared—there's no better place to eat in town.

**LON'S CAFE**  
Lon Campbell, Prop.

There's a better way for the good wife on Wash-day, the—

**MAYTAG WAY**

**T. W. MOSS**  
P. O. Box 182, Littlefield  
Sales Manager for Lamb, Hockley and Cochran counties

A postcard will bring a demonstration to your home.

**Community Building**

**Essential Points in Locating House Line**

Following the signing of the contract for the construction of the house, the activity in the field begins. The location of the house on the lot must be accurately determined. Otherwise the builder might construct the house too near the lot lines, or even on the neighboring property.

A survey has established the corners of the property and marked them with wood stakes or stone markers. Working from these established points, the corners of the house can now be located and temporarily marked by stakes. As soon as the excavation is started stakes at the actual corners would be disturbed, so the lines of the house are permanently marked by boards set several feet back from the house lines. The cords from which the mason plumbs for his work are stretched between these batter boards. Trees and shrubs are very valuable, and the house should be so placed as to disturb as few of these as possible. Trees which are close to the work will be in danger of damage to the bark during delivery of material and handling of same. Therefore, all trees should be adequately boxed to prevent damage which might cause harm.—Exchange.

**Force of Advertising Must Be Recognized**

The rural business man can use advertising with as great success as the town and city business man. He has found that it is successful when he holds his semi-annual or annual farm auction. Why should it not be equally as helpful during other seasons of the year? Modern business methods will help solve modern farm problems. Advertising used with the same discretion and same faith and understanding which towns and city business men exhibit in advertising their goods, could be made of inestimable value to the rural business men who have the courage to take up a new idea and give it a trial. Why shouldn't farm selling move forward just as farm production methods have changed vastly in the last decade? Advertising, judiciously used, is the answer. The automobile and good roads make delivery or farm gate sales profitable and quick. All that remains is to convey the message to the consumer.—Rushville (Ind.) Republican.

**Planting the Front Yard**

Generally speaking, where the front ground is of a fair size, one can plant something along the walks to discourage pedestrians inclined to take short cuts. A row of Japanese barberry is suitable in this place. There is usually room for a tree or two in the middle of the grounds. Get good varieties for this—something that will not start shedding its leaves all over the lawn in the middle of summer. Birch, maple or elm are suitable. Along the walks more barberry or clumps of other low shrubbery may be planted. Verandas may be screened with dutchman's pipe, virginia creeper, clematis or other vines, with the steps leading to the same flanked with shrubbery or flowers. Tall shrubs may be used here and at the corners or under windows. The tall spires, nonspreading lilacs, mock-orange or forsythia will be found suitable. Before planting consult a good catalogue and select the material which will be the proper height when mature, and will not all bloom at the same time.

**Color Aids Construction**

Color in architecture has helped to stimulate construction and is partly responsible for the large amount of building in the past few years. In the opinion of Maj. F. S. Lawrence, president of the North American Society of Arts. The abandonment of the drab notes in building, for the more cheerful hues, is but one phase of a widespread demand for color which has swept America and affected scores of industries, says Major Lawrence.

**Keep Trees Straight**

Make sure that all trees which are planted are kept straight. It may be necessary to stake them or use guy wires. Such wires should be attached to the trees by screw eyes or circling the tree with a piece of rubber hose. Wire or rope should never be drawn tight around the bark as this cuts off the flow of sap and kills the tree.

**Excellent Initiative**

A bill providing that each city of more than 10,000 inhabitants shall organize a general plan for the growth and improvement of every city in the state, has been introduced in the legislature of the state of Sao Paulo, Brazil.

**One of His Specialties**

The man who does more talking than anybody else in this neighborhood about the duties of good citizenship succeeded in lying out of jury service yesterday.—Ohio State Journal.

**New Window Adjusters**

New adjusters for casement windows pass under inside screens, so that the inconvenience of opening screens in order to get at the windows is eliminated.

**TEACHERS ELECTED FOR ANOTHER YEAR IN LFD. SCHOOLS**

At a recent meeting of the board of directors the following teachers were elected for another year.

**HIGH SCHOOL:** John R. Tucker, Galen M. Irvin, Mrs. Pat Boone, Miss Mary Louise Thaxton, Miss Mary Parilee Porter, Mrs. Patsy L. Brittain, Mrs. Mallory Etter and Miss Helen Moore.

**GRAMMAR SCHOOL:** Misses J. Lucille Killough, Anna Benzal, Elsie Mitchell, Gladys Wales, Thelma Killough, Margaret Evahart and Mrs. Stacey Lambert, Mrs. Susie Rowe,

Mrs. Josie Hilburn, Mrs. J. M. Tunnell.

**PRIMARY SCHOOL:** Mrs. B. L. Cogdill, Mrs. Anna Louise Wiseman, Mrs. R.A. Davis, Mrs. B. M. Harrison, Mrs. Ray Jones, Miss Jimmie White, Mrs. Janie Powers, Miss Ruth Matthews, Miss Audie Terrell and Mrs. W. G. Street.

Superintendent B. M. Harrison, Principal F. O. Boles and Principal J. E. Chisholm were elected at a previous meeting about two months ago.

**ROTARY MEETING**

The Littlefield Rotary club met last Thursday with 24 members present. President R. E. McCaskill officiated. The visitors were Rev. L. G. H. Williams, Lubbock, scout council for the Plains district and Mr. Clapp, Lubbock, scout executive of this district.

The meeting was devoted exclusively to the Boy Scout movement. Rev. Williams made a very interesting talk on "What the Scouts are Doing in This District." Mr. Clapp also made a very interesting talk. He stated they were meeting with very favorable success in raising funds to clear the indebtedness of the scout organization and that they expect to have the indebtedness clear by the close of the year. He also stated that they expected to make considerable improvements on the scout camp ground near Post. He said the two groups in Littlefield were making fine progress and was well pleased with the co-operation given by the Rotary club and other citizens of the town. Rev. Williams and Mr. Clapp will return to Littlefield in two weeks to hold a court of honor in behalf of the Littlefield troops.

The Senior play "Cyclone Sally," will be presented at the High school auditorium Friday night at eight o'clock.

Mrs. A. H. McGavock and son, of Olton, were in Littlefield Tuesday.

Mac McKelvey, of Lubbock, was a Littlefield visitor, Tuesday.

Mr. and Mrs. W. H. Oswell, of Am-

herst, were shopping in Littlefield, Tuesday.

Mr. and Mrs. Henry Newman and son, of Memphis, spent the weekend here with his sister, Mrs. J. E. Chisholm and family.

Miss Eva Gertrude Chisholm, of Tech., spent the weekend here and was accompanied home Sunday afternoon by her parents, Mr. and Mrs. J. E. Chisholm and family, and Mr. and Mrs. Henry Newman and son.

Mr. and Mrs. C. E. Willis and children spent Sunday in Olton with Mr. and Mrs. Guy Willis.

Donley Hobbs returned Sunday from a week's stay in Dallas and Weatherford.

Mr. and Mrs. Rose White, of Lubbock, have come to Littlefield and will make their home here.

**Old-Time "Sorcerer"**

Philippus Aureolus Paracelsus was the assumed name of Theophrastus von Hohenheim, the celebrated alchemist of the Sixteenth century, around whom many legends of demonism and black art have sprung up.

**OLD DOG BIRD SAYS**

Motto to the home brewer:  
"Jug no that you be not jugged."



No. 15

**NOW IS THE TIME**

To put your car in shape for Summer driving. Your car has just finished a long hard season. The Lubricants are worn out. Now is the time when new, fresh, clean lubricants are an actual necessity. Drive in and we will give your car a good thorough greasing, drain the dirty oil out of the crankcase and refill with CONOCO OIL. After you have done this you will enjoy real driving.

**TEXAS SERVICE STATION**

**For Sale!**  
Alfalfa Hay  
90c. per bale

**W. H. HEINEN**  
Littlefield, Texas

**GRAIN**  
BRAN SHORTS  
COTTON SEED  
MEAL

**HIGH GRADE**  
COLORADO COAL  
**WALKER**  
GRAIN & SEED CO.  
LITTLEFIELD, TEXAS

**JOHN S. KERR**  
Nursery Co.  
Oldest and Largest  
Nursery in the State  
Since 1874

By running the entire nursery stock through test stations on the Plains, we have found the best for the Plains. For Nursery Stock we have the best for prices we are the cheapest.

**C. A. Baird**  
General Agent  
LITTLEFIELD, TEXAS

**BATTERY STATION**  
RECHARGING  
REPAIRING

Full Satisfaction is Guaranteed  
Twelve months guarantee on new Batteries sold  
**CARL SMITH**  
At Bell-Gillette Chev. Co.

**COZY BARBER SHOP**  
Shave 25 cents  
Hair Cut 35 cents

**SOUTH END OF MAIN STREET**  
On West Side  
In Walter's Drug Store Building, just south of Littlefield Hotel  
**C. A. McDONALD, First Chair**  
IRA GORDON, Proprietor  
We will appreciate your business

**HATCHERY NOW OPEN!**

—Doing custom hatching and baby chicks. Your patronage is solicited—all old customers as well as new ones.

**BABY CHIX FOR SALE:**

White Leghorn chix, per hundred	\$10.00
White Leghorn chix, fancy, per hundred	\$12.00
Rhode Island Reds, per hundred	\$14.00
Rhode Island Reds, fancy	\$16.00
Barred Rocks	\$14.00
Barred Rocks, fancy	\$16.00
Buff Orpingtons	\$16.00

**PLAINS ELECTRIC HATCHERY**  
Located Opposite Palace Theatre, Littlefield

**AN UNFAIR ADVANTAGE**

DUMB: "I bet I can make a worse face than you can."  
BELL: "I should hope so; look what you've got to start with."

**OUR HELPFUL, LIBERAL OFFER**

You can't change your features, but you can keep your teeth white and add much to your appearance.

We are offering for a short time a large size tube of

**TOOTH PASTE FREE**

with each Dr. West Tooth Brush, adult size. Only a limited number to be given, so get yours before it is too late.

LEAVE YOUR ORDER NOW FOR FLOWERS FOR MOTHER'S DAY

**WALTERS DRUG COMPANY**  
"The Store of Better Service"

LITTLEFIELD, TEXAS

**100 ACRES**

adjoining the Littlefield College

into 40 five acre tracts for sale as home plots or for investment.

**BEST LOCATED SMALL ACREAGE TRACTS IN LITTLEFIELD**

PRICED: \$1,000 or \$750 per tract, according to location. TERMS: One-third cash, balance one and two years.

City Lots—Farms—Offices for Rent

**LITTLEFIELD TOWNSITE OFFICE**  
WHICKER LAND COMPANY  
LUGGAN BLDG., LITTLEFIELD

**MONEY TO LOAN!!**

**LOANS MAY BE SECURED NOW AT AN ADVANTAGE**

At this time of the year when money is plentiful, interest rates being 10 per cent in New York City, it might pay you to place your loan with me now while you can get it through at a reduced rate of interest.

**DELAY MAY COST YOU MORE MONEY LATER ON!**

**A. G. HEMPHILL**

**THE LOAN AND INVESTMENT MAN**  
First National Bank Bld'g  
LITTLEFIELD, TEXAS

# LAMB COUNTY LEADER

Published every Thursday afternoon at Littlefield, Texas.  
Subscription: \$1.50 per year; 75 cents for six months.  
Advertising rates given upon application.

No. Entered as second class matter May 24, 1923, at the post office 27 at Littlefield, Texas, under the Act of March 3, 1897.

JESS. MITCHELL,

Editor and Publisher

Subscribers who change their addresses, or fail to get their paper, should immediately notify this office, giving both new and old addresses. Communications of local interest are solicited. They should be briefly written, on only one side of the paper, and must reach this office not later than Wednesday noon of each week. The right of revision or rejection is reserved by the publisher.

Advertising that does not show in its text or typography that it is paid for must be marked as an advertisement. All local advertisements remain in this paper for the time specified or until ordered out. All notices, matters not by whom nor for what purpose, if the object is to raise money by admission fee or otherwise, is an advertisement and when sent in for publication must be paid for at the regular advertising rate per line for each issue printed.

Obituaries, cards of thanks, and resolutions of respect will also be charged for at the same rate.

Any erroneous reflection upon the character, standing or reputation of any person, firm or corporation which may appear in the columns of the Littlefield Leader will be gladly corrected upon its being brought to the attention of the publisher.

In case of errors or omissions in local or other advertisements, the publisher does not hold himself liable for damage further than the amount received by him for such advertisement.

## A THOUGHT FOR THE WEEK

Walk while ye have light, lest darkness come upon you.—John 12:35.

Light, seeking light, doth light of light beguile; so, ere you find where light in darkness lies, your light grows dark by losing of your eyes.—Shakespeare.

## THOSE "AIR SERMONS"

Quite a good while ago we predicted that the radio, while a blessing in a great many ways, might some day prove a serious problem in church attendance. And now our prediction appears to have come true. The man who substitutes an hour of listening in on a radio sermon instead of going to church in person is betraying the spiritual interests of his entire community, asserts Dr. S. Parkes Cadman in an interview.

Dr. Cadman preaches every Sunday afternoon in Brooklyn, N. Y., and his sermons are broadcast regularly over a network that reaches many millions of listeners. We are sure a large number around Littlefield regularly enjoy these sermons. And yet this same Dr. Cadman realizes that unless radio listeners pledge themselves not to let their "air sermons" interfere with their regular attendance at some church the church itself, and especially those in our small towns and rural communities, are going to suffer.

"No sermon on the air can bring the satisfaction that comes with sitting in the presence and listening to the minister who is also your neighbor in the community," asserts Dr. Cadman. Nor can a radio sermon minister to the sick like the neighborhood minister does in person, we might add. The radio, as we have all along contended, is a blessing. But it can also be abused. And it is being abused to the detriment of the whole community if you depend upon it for your sermons and thus rob your neighborhood church of your presence.

Some of the Olton citizens who are doing their courthouse fighting with the jawbone of an ass, must have been studying the campaigns of Samson.

## WHAT NEGLECT COSTS

According to estimates sent out from Washington, American farmers who neglect or delay the regular painting of their homes, barns, fences and mechanical equipment from year to year are piling up an annual loss of approximately \$400,000,000.

The government, in urging a painting campaign, points out the false economy of the idea that a property owner is saving money by failing to protect his buildings from the weather. The decay of wood, the rust and corrosion of metal, both of which can be prevented by paint and made to serve far longer than if paint is not applied, is eating away the profits of rural residents at an alarming rate, declare Uncle Sam's experts.

Rural residents around Littlefield need not be told that changing climate—heat and cold, moisture and dryness—quickly affect wood and metal. They know that without being told. But they have not learned, at least not all of them, that they can save more money by applying a coat of paint every three years than they can make by not applying it. And neither are all of them aware that one coat every three years is better than a double coat at long intervals. But these are facts, worked out after careful experiments over a long period of years and with every kind of wood and metal. Since there isn't any more money floating about this

neighborhood than is good for us, let's study this paint proposition a little and see if we can't stop at least one leak by protecting property exposed to the elements, instead of letting it go to rack and ruin.

Most anything will be acceptable as farm relief that enables the farmer to keep out of debt two months instead of one.

## UNITING THE FAMILY

Every now and then we see in some family around Littlefield a lack of sympathy and cooperation that should not exist. It is more conspicuous at the present time than heretofore, because life is more complex than ever.

If children look upon parents as "back numbers" and if older people regard youth as unappreciative of advantages it is because there is a lack of comradeship between them.

One of the easiest and most important methods of overcoming this difficulty lies in a plan whereby parents train their offspring in regard to money matters. Take the young people into parental confidence. Teach them what it means to turn honest endeavor into dollars. Show them how every cent of the family income represents conscientious energy and life blood and is, therefore, a sacred commodity to be treated accordingly.

There is nothing better calculated to bind members of a family into a united group, all interested in making a success of the enterprise.

Understanding each other's problems, those problems will be more easily solved. No matter what the home contains, it is never complete without harmony.

In Mexico about the only formality necessary to hold an election is to issue the ammunition.

## THE SMALL TOWN WINS

It ought to be gratifying to Littlefield citizens to note that Calvin Coolidge, upon leaving the presidency of the U. S. could have joined a New York law firm and his earnings would have been more than \$200,000 a year but instead of living in America's greatest city, and instead of plunging himself into complicated legal practice he chose to return to his home town of Northampton, Mass.

In his home town he can live the simple life he so much loves. He can be more free in doing what he wants to do. With the world from which to choose, he chose his home town to make his home.

His action is a fine commentary upon the smaller towns of America, and upon their opportunities and attractions. It proves that in spite of opportunities to live any place in the world, there is one man at least who prefers the advantages of the small town.

One trouble with industry and commerce, is that Congress does too much back-seat driving.

## CLEANING IT UP

Uncle Sam appears to think the grocery business of this country needs cleaning up. So the Federal Trade commission has drawn up a code of ethics for the grocers of America and asked them to sign it and abide by it.

It provides that there are to be no more secret rebates, secret concessions or price discriminations; no more giving of premiums involving a game of chance or a lottery; no

more false, untrue or misleading advertisements; no more deceptive shaped containers and no more selling below cost for the purpose of injuring a competitor. It is also ordered that there are to be no more misleading selling prices, no free deals by manufacturers, and no substitution by a wholesaler or retailer of another product for the product ordered.

To most of us it will be news that all this has been going on among a certain class of grocers. But the government must be aware of its existence or it would not be asking the guilty ones to quit it.

The fact that there are more honest grocers than there are dishonest ones ought to help a lot in the house-cleaning.

You never can tell. Many a man gets into the swim only to realize that he has stepped in over his head.

## LITTLE LEADERS

The Littlefield man who used to consider the world his oyster now has a son who kicks because there isn't a pearl in it.

An "improved model" is one that has just enough new attachments to make the average Littlefield citizen dissatisfied with the old one.

It won't be long now until Littlefield residents can tell how big a liar the fellow is who draws pictures for the seed catalogue.

We don't want to see anybody around Littlefield get killed, and that's why we are not suggesting that someone get up a beauty contest for fat women.

We know of but one thing around Littlefield more numerous than sands of the seashore. That's cold cures.

Every now and then we reach the conclusion that there are a lot of things some Littlefield people can do better than singing.

There are plenty of Littlefield citizens who have little use for Moses, but think a great deal of the profits. Some men's idea of a good citizen

## What's In A Name?



Johnnie Brest of New Haven, Conn. has broken the National Breaststroke record at Yale Carnegie pool.

is the Littlefield man who only breaks the same laws they do.

Littlefield boys who are longing for adventure will have a chance during the coming summer to go out into the garden and fight the weeds and insect pests.

## This Week's Poem

### YOUR REAL FOE

If honestly you wish to know  
The man who is your deadly foe  
Gaze in the glass when one is by  
And you look in the villain's eye.

Yet you may make this foe your slave  
Who will, beneath your will, behave,  
If you will whip him into line  
By power of faith in grace divine.

Oh, many rounds you have with him  
Before you ultimately win.  
But when you strike a knockout blow  
He'll be your slave and not your foe.

### NOT A SINGLE ARREST

The town of Hooper, Neb., has laid claim to the "Law Abiding Championship."

It is a town of 1,014 population, and during 1928 not a single arrest was made within its borders.

All the people obeyed the law. At least none were caught disobeying it.

## Pure Half and Half Cotton Seed

From Frederick Seed Farms, Frederick, Okla. Seed on hand in three bushel sacks. These seed are extra good quality. Only have small supply. See me at once.

J. B. SIKES

At Blalock Land Office,

Littlefield

## DON'T

Neglect your Battery and your Tires. Drive in! Let us fill your Battery, test your Tires, and re-TIRE you where it is needed with a FIRE-STONE.



## STATION

One Block East of Bank

W. W. JONES,

Manager

## SPECIAL PRICES FOR SATURDAY

We meet all competition prices!—and you are always assured of fresh, wholesome groceries when trading at our store.

We specialize in Fresh Vegetables and Fruits direct from the gardens, orchards and cold storage of producers.

Our Quality, Prices and Service  
Will Please You

## HARRIS CASH GROCERY

N. E. HARRIS, Owner G. C. HARPIS, Manager

## THE HOUSE OF SERVICE

With our modern equipment we can take care of all your tailoring needs.

Let us have your fine garments as well as your heavier clothing. We will handle them as carefully as you would yourself and insure you the very best of service.

We do relining, repairing for all garments, and cleaning and blocking of hats, every phase of our work being handled in a manner to meet your most critical approval.

## EVINS DRY CLEANER

"Where Cleaning Is An Art"

On South Main Street,

Littlefield

William J. Dau, Chairman of the Board of Trustees of that town, says that the churches are well attended, the schools are well filled, and the people mostly "mind their own business."

That's the valuable lesson that can be learned from the record of this model town. The people mostly "mind their own business."

When people do that, there is very little chance of their breaking any of the laws. More than that, there is very little chance of the heartbreaking tragedies that happen mostly because people attend to other people's business.

Well said, Mr. Dau.

Your town is to be congratulated.

Kwichebrelliakin and smile

## OLD-TIME BROWN

One cup brown butter, 1/2 cup cream yolks lightly add add vanilla flavoring melted butter. Beat to a stiff froth, fold into pastry shell and

## NOTICE TO CUSTOMERS

Our customers are that on and after National Bank, this business hours at 4:00 p. m. It is appreciated if this membered and business cordingly. 52-3tc

—C. O.

## Walthall

Building Littlefield

## D. V. COBB

Chiropractic you the best of service FREE Facilities 10 to 12 a. m. Other times by appointment. Res. 63 Bldg. Theat. Texas

## Ed Bakery

BREAD ROLLS AND PIES Wheat Bread Thursday. Ed Bakery

## H. Harris

& Surgeon Phone 49 Office

## A. BILLS

and Counselor Littlefield, Texas. Bank Building Littlefield, Texas

## MADE PO

Littlefield, Texas

## C. CLEM

Dent Machine in First Building Littlefield, Texas

## DER

RYOR Licensed take Funer AMM

## boc

bern boc

## J. E.

R. D. C. D. R. D.

**Here's Feed for Chick**  
WALK in and let's talk over what your chicks to keep them growing. Let us show you a way to your chicks to early maturity at a lower per chick.  
Chicks need cod-liver oil to protect against leg weakness. They need milk, alfalfa leaf meal, granulated meal, meal, wheat germ and other ingredients make bone, flesh and feathers.  
We have all of these ingredients chosen, tested, balanced, uniformly and ready to feed. Purina Chick Starters name of the feed. You'll know the new feeding discoveries that give you in this year's Starters give 15 to 20 per cent greater growth than ever before. More than 2,500 hatcheries say, "Purina Starters." So do we. How many bags do you need?

**LITTLEFIELD COAL & GRAIN CO.**  
Phone 12  
**LITTLEFIELD FEED & SEED STORE**  
The Checkerboard Store on Main St. Phone

## RECIPE FOR FARM RELIEF

Cows—Sows—Hens—Diversification.

Mix these with a fair sprinkling of good management.

ALWAYS RELIEVES!

And no legislator nor body of legislators can provide anything better.

Try this remedy this year.

THE BANK THAT SATISFIES

"There is no Substitute for Safety"

## FIRST NATIONAL BANK

LITTLEFIELD, TEXAS

WE STRIVE FOR A MAN TO MAN RELATIONSHIP THAT WILL PREVENT MISUNDERSTANDINGS, MERIT MORE CONFIDENCE, AND CREATE FRIENDSHIPS.

**Walthall**  
**WALSH**  
 BUILDING  
 Littlefield

**D. V. COBB**  
 Chiropractic  
 you the best of  
 service  
**ATION FREE**  
 Facilities  
 9 to 12 a. m.  
 Other times by  
 appointment  
**PHONES** Res. 63  
 Theatre Bldg.  
 Texas

**Bakery**  
**BREAD**  
**ROLLS**  
**PIES**  
 Wheat Bread  
 Thursday.  
**Bakery**

**H. Harris**  
 & Surgeon  
 upstairs in  
**ACK BUILDING**  
 Phone 49 Office 201

**A. BILLS**  
 and Counselor at Law  
 Littlefield, Texas  
 upstairs in Littlefield  
 Bank Building  
 practice in all Courts.  
 attention given to Land  
 Titles.

**MADE POTTER**  
 Attorney at Law  
 Littlefield State Bank  
 Building.  
 Littlefield, Texas

**C. CLEMENTS**  
**Dentist**  
 Machine in Connection  
 in First National Bank  
 Building.

**ERTAKERS**  
**RYOR HAMMONS**  
 Licensed Embalmer  
 take full charge of  
 Funeral Services  
**AMMONS BROS.**  
 —PHONE— Night 39

**book Sanitarium**  
 (Fireproof Building)  
 and  
**book Sanitarium**  
**Clinic**  
**R. J. T. KRUEGER**  
 Surgery and Consultations  
**J. T. HUTCHINSON**  
 Ear, Nose and Throat  
**R. M. C. OVERTON**  
 Diseases of Children  
**J. P. LATTIMORE**  
 General Medicine  
**DR. F. B. MALONE**  
 General Medicine  
**DR. J. H. STILES**  
 General Medicine  
**DR. L. P. SMITH**  
 X-Ray and Laboratory  
**MABEL McLENDON**  
 Laboratory Technician  
**C. E. HUNT**  
 Business Manager  
 and Training School for  
 conducted in connection  
 Sanitarium. Young wo-  
 men desire to enter training  
 at the Lubbock Sanitar-

**"Shirt Tail Lady"**



Mrs. J. L. Murray, of Bloomington, Ill., who has presented to Mrs. Herbert Hoover an old-fashioned quilt made out of flour bags of a design which Mrs. Hoover so admired that she sent one to her son as a wedding gift several years ago. Mrs. Murray was known during the world war as the "Shirt Tail Lady" because of the unique things she made out of men's old shirts.

**SELECTING A WIFE**

Young men like to think that they select their wives; it caters to their vanity. But actually, it is often the wives who do the selecting. For example: A girl decides she wants a certain chap for her husband—and she sets out to get him. He may be willing, or he may not, but girls have a way of knowing how to win over the reluctant male, and in the end he usually succumbs.

But there are young men who really do select their wives, and it is to them that this little talk is directed.

There are many standards of course by which the ideal wife can be measured; tastes vary. But there are also certain innate qualities that a girl must possess in order to be a good wife to any man. And these are among them:

First of all, she must possess a splendidly vigorous body. The more

**Spiritual, Mental and Physical Happiness Often Achieved Through Constant Creative Activities**

BY S. W. STRAUS, President American Society for Thrift

It is well to bear in mind that one of the greatest sources of human happiness is work. And this is a truth that could be more widely learned to advantage.

Too many follow the rule that the more work they can avoid the greater will be their happiness.

There is no true happiness in an idle life. Waste of time is a form of thriftlessness that is as destructive of rightful pleasure as waste of money or waste of health.

Work alone brings happiness, because work is creative and upbuilding.

All the instincts of the human race which have been responsible for humanity's development have found their fulfillment only in work.

In every realm of man's activities whether it be spiritual, mental or physical human experience has shown that progress alone has come through work.

It is vital she is the better your chance for marital happiness.

She should be a natural, wholesome vivacious girl, who will be honest and above-board in all her dealings with you. The painted sexy little vamp is not one to choose for your life partner; she is usually a "fair-weather" friend.

She should love you for what you are and not for what you have.

She should have a background of wholesome family life in which she has learned to respect the rights of others along with unselfishness and loyalty. And she must have reverence for its divine associations.

"Handsome is as handsome does," is a trite old saying, but like many old sayings it has its foundation in truth. Beautifully molded features while pleasant to look upon, are not all-important because the impacable march of Time changes them. But a beautifully molded character lasts as long as the spirit is in the body. And no character can be called beautiful that does not count among its dearest possessions a fine set of moral

This does not mean that there is no rightful place in life for play, or that diversion is not in accordance with good thrift. It is a matter of common sense, that life cannot be made up entirely of labor. There would be little if any progress in a material way under such a condition, and, in the finer things of life, there would be absence of all development.

You cannot transform a man into a machine and get human results. But, within the average routine of life, work brings the most satisfying happiness—work that is right, upbuilding and helpful.

Do not allow an ambition for idleness to spring up in your heart. Wasting time, never, under any circumstances, can bring lasting joy. It is not dissimilar to every other unthrifty practice.

Happiness through work is one of the fundamentals that can be continually counted on. It is a splendid type of true, constructive thrift.

principles.

In choosing your wife, it must be remembered that you are also choosing the mother of your children, and unfortunately this is not always given enough consideration. Your wife should be fitted to bring into the world children of whom you can be proud. They should be a living, lusty, glowing tribute to your love. Scrawny, spindle-legged, knock-kneed, bow-legged children are anything but this.

But even though you agree heartily to this advice—watch out. Many a bright young man has said: "Oh, I'm just killing a little time. I have no serious intentions." But how about the girl's intentions? She may be serious and if she does not measure up to your ideals, you are in danger.

Sometimes it is painful in the extreme to break off an association of this kind; like a painful surgical operation. But if you do not break it off now, it will break you up later on—when your hopes and dreams of a blissful married life have gone to pieces on the rocks of disillusion.

—BERNARR MACFADDEN.

**Spanked By Thaw?**



Marcia Estardus of New York, known as Mac O'Neill, now is suing Harry K. Thaw, claiming that he gave a severe spanking to her on New Year's Eve, 1937.

**THEY ARE DEAD**

Deep wisdom—Swelled head.  
 Brain fever—He's dead.  
 A Senior.  
 False fair one—Hope fled,  
 Heart bursted—He's dead.  
 A Junior.  
 Went skating—'Tis said,  
 Floor bumped him—He's dead.  
 A Sophomore.  
 Famine—Unfed,  
 Starvation—He's dead.  
 A Freshman.

Settling is a principle of action, but among no class of human beings has nature so profusely distributed this principle of life and action as through the whole sensitive family of genius.—Dierrel.

2 the said the Spring F. Kelly by appoint in said pre-

3 the said residence his Brown by appoint in said pre-

4 the said e City Hall Texas; and Harless are f said elec-

5 the said the High Independent C. Preston hereby appo in said

6 the said e Pleasant Fred Deit are hereby lection in

7 the said City Hall s; and W.

shall be entitled to vote at said election.

Should the voter be in favor of removing the county seat from Olton, Texas, to Littlefield, Texas, he or she shall write or cause to be written or printed on his or her ticket: "For removal to Littlefield, Texas"; or, should the voter be in favor of the county seat remaining at Olton, Texas, he or she will write or cause to be written or printed on his or her ticket: "For remaining at Olton, Texas."

A copy of this order signed by the County Judge of Lamb County, Texas, and certified to by the County Clerk of said County, shall serve as proper notice of said election. And thirty (30) days notice of the time and places of holding said election shall be given by posting true and correct copies of this order in three (3) public places within each voting precinct in said county, and by publication thereof in the English Language in four (4) weekly issues of a newspaper of general circulation which has been regularly and continuously published for at least one (1) year previous to the date of this order in Lamb County, Texas, and the date of first publication of said notice shall be thirty (30) full days prior to the day of election.

It is further ordered that this or-

**CHIROPRACTIC** **CHIROPRACTIC**

A lot of us make a big mistake in treating a periodic headache. We grab a tablet and swallow it down. It halts the pain, so we've done it up brown. We keep this up 'til our health is busted—Far better to have the cause adjusted.

(Copyright. To be continued.)

**DR. MAYNARD V. COBB**  
 Phones: Office 124; Residence 63. Calls answered day or night.

**LITTLEFIELD COLLEGE**

Affiliated Co-Educational  
 Primary through Junior College  
**ART - VOCAL MUSIC - VOICE**  
 Mental Development Moral Purity  
 Opposition to False Science  
 Wholesome Association  
**JOHN R. FREEMAN, President**  
**LITTLEFIELD, TEXAS**

**MAGNOLIA GASOLINE**

**MAGNOLENE** Oils and Greases  
 "The Dependable Lubricant"

Real Quality Products  
 Demand them from your Dealer

**MAGNOLIA PETROLEUM COMPANY**  
 Luther F. Hargrove, Agent, Littlefield, Texas

ASK ABOUT THE  
**Fine Bedroom Suite**  
 To Be Given Away  
**FREE**  
 AT OUR STORE  
 On the Day of Our Opening  
**Saturday, April 20th**  
 Visitors and Customers Are  
 Requested to Register  
**BURLESON-MASON COMPANY**  
 INCORPORATED  
 FURNITURE AND UNDERTAKING  
**LITTLEFIELD, TEXAS**

**LITTLEFIELD CLINIC AND HOSPITAL**  
 Telephone 171  
**LITTLEFIELD, TEXAS**  
 Equipped for Surgical, Medical and Obstetrical Cases

**J. D. SIMPSON, B. L., M. D.**  
 Surgery, Medicine and Consultations

**J. R. COEN, B. S., M. D.**  
 Obstetrics and Diseases of Children

**BESS COEN, GRADUATE R. N.**  
 Anaesthetist

**ILA SIMPSON, GRADUATE R.N.**  
 Dietitian

Doctors offices over First National Bank Laboratory and X-Ray

Telephone -o- 131

You are invited to see—  
**DR. W. E. BROMLEY**  
 Chiropractor and Combinathic

Examinations are Free  
 Located over Sadler Drug STORE  
**LITTLEFIELD, TEXAS**

**Rowe Abstract Co.**  
 Complete Abstracts of all Lands in Lamb County

Let us make that trip to Olton for you!

Located in old Bank Building.  
**LITTLEFIELD, TEXAS**

**BURLESON-MASON COMPANY, Inc.**  
 FUNERAL DIRECTORS AND LICENSED EMBALMERS  
 Embalmer of 20 years experience, insuring very best of embalming and demisurgery.  
**UP-TO-DATE EQUIPMENT**

**AUCTIONEER**  
 Sell any thing, any time, any where. I get you the highest possible dollar for your goods. See me for dates.  
**J. W. Horn, Auctioneer**  
 Littlefield, Texas

**CLASSIFIED ADVERTISING**

Want ads., Rentals, Lost and Found, Exchanges, Lands and Stock, Miscellaneous, etc. **RATES:** Classified, first insertion, 10c per line; minimum 25c; subsequent insertions, 7½c per line; obituaries, 5c per line; poetry, 10c per line. Unless advertiser has an open account, cash must accompany order.

**FOR SALE**

**FOR SALE:** Three row Oliver Monitor hitch. Will sell cheap for cash. 3 miles north, 8 miles east of Littlefield W. W. Barbarick. 1-4tp

**FOR SALE:** about 40 Johnson Strain White Leghorn Hens, all young and laying. Bell-Gillette Chevrolet Company. 1-1tc

**FOR SALE:** New model Ford Truck, or will trade for cattle. C. W. Evans, Phone 213. 1-1tp

**MISCELLANEOUS**

**LICE ON CHICKENS**  
 Lice makes setting hens sick and leave their nests and kills many little chicks Fruits Lice Powder is Guaranteed to take Lice off your chicks in less than two minutes or your MONEY BACK. And don't forget GermeT to put in the chickens drinking water to kill germs. Sold by Stokes-Alexander Drug Store. 1-2tc.

**TEN DOLLARS REWARD**  
 For information leading to recovery of mule strayed or stolen from our lot in Littlefield two weeks ago, described as follows: dark brown horse mule about 16 hands high, weight about 1200 pounds, 5 years old, no brands that we know of. Phone 56 or 135, Bell-Gillette Chevrolet Company, Littlefield, Texas. 1-1tc

THE Subscription price to the Dallas Semi-Weekly Farm News is \$1.00; that of the Lamb County Leader is \$1.50. We will mail both to your address for \$2.00. Why not subscribe now?—Lamb County Leader. 9-1fdh

**GOOD MILCH COWS**  
 Good young fresh Jersey Milch Cows for sale, priced right. Bell-Gillette Chevrolet Company. 1-1tc

**FOR SALE or Trade:** House, 9 rooms 2 halls, bath, on lot 60x218 feet, also 3 lots located close in, for farm suitable for pecan growing. See Dr. J. D. Simpson, 51-4tc.

**FOR SALE:** Guernsey heifer, 5½ months old. C. W. Toews, Littlefield. 51-3tp

HIGHEST prices paid for Eggs, Cream and Hides. W. H. Heinen. 1tc

**TATE-LAX**  
 Sweet or bitter. The nation's greatest laxative tonic. For rheumatism, neuralgia, colds, stomach, liver and kidneys. It's guaranteed to satisfy. Ask your druggist. 32-24tp-33

Now is the time to buy city lots in Littlefield. J. C. Whicker. 32-1tc

**SOME BARGAINS**  
 \$387.50 due bill on new Pontiac or Oakland car at Jones Bros. Will give discount for cash or accept cows, calves, hogs or lots on it.

School land on 40 years time, any size farm. Will let you work out first payment, breaking, grubbing, planting or cultivating.

Cotton seed, pure Half and Half. Will take cows, calves or hogs as payment.

Good 177 acre farm in cultivation, no improvements, except fenced. Take trade. Price \$35.00 per acre.—**JOHN W. BLALOCK.** 50-4tc

**FOR RENT**

**FOR RENT or sale:** one car garage on back of old Gold Star rooming house lot. See Maude Foster. 52-1tc

**FOR RENT:** About 140 acres to somebody who can work it in cotton. Apply at office of Littlefield College. 52-2tp

**FOR SALE or Trade:** Both my residence properties in Littlefield. Write Mrs. Jennie C. Parker, Box 491, McCamey, Texas. 52-2tc

SUBSCRIBE TO THE LAMB COUNTY LEADER, NOW

## Viking Cream Separators

FATTEN YOUR BUTTER FAT PROFITS

Lead the world for efficient skimming and easy washing. Noted for easy turning and low upkeep.

NOW ON DISPLAY AT OUR STORE In Three Sizes

We will be glad to explain their merits.

See our line of Implements and get prices before you buy.

**HARDWARE**

Texas

## HAIL! THE COW!

No section North, South or West of us offers the golden opportunity we have to make this one of the greatest dairy sections, in not alone all of Texas, but the entire South. Now is the time for every farmer and citizen to give this industry serious consideration.

### FEDERAL LAND BANK FARM LOANS

The Federal Land Bank of Houston will loan you money at 5% interest. We will make five year loans with a 31 year option, repayment privilege in whole or in part after five years without bonus.

### THREE MILK COWS

Pay Principle and Interest on your farm loan, your profit from other crops are yours. Milk returns more dollars to farmers in a year than crops of cotton and wheat. The dairy crop in the United States is worth \$2,700,000,000 a year to those who produce it. Come in and see us, we are here to serve you and to help you.

**J. E. Barnes, Sect'y**

"If it's Insurance, we write it."  
COOPER BUILDING, LITTLEFIELD, TEXAS

## COUNTY JUDGE HAY RULES THAT COUNTY SEAT ELECTION BALLOTS MUST BE PRINTED BLANK

In compliance with the Attorney General's ruling last Friday, in that Amherst must be placed on the ballot, County Judge Simon D. Hay, ruled at Olton, Tuesday, that the ballots would be printed blank and that the correct form of ballot used would be as follows:

"For removal to \_\_\_\_\_" (inserting the name of the place)

"For remaining at \_\_\_\_\_" (inserting the name of the place)

The report has been rumored and advertised throughout Lamb County that only Littlefield would be on the ballot, but County Judge Hay' decision, stated above, together with the Attorney General's opinion, conclusively and definitely settles the issue. The names of all towns will be omitted from the ballot, and the voters may go to the polls and write in the name of the town they desire the County Seat to be moved to, or, if they desire the County seat to remain at its present location, the voters may also write in the name of Olton.

**REMEMBER: Amherst is the logical place for the County Seat. Amherst IS situated within five miles of the geographical center of the county. A majority of one vote is all that is needed to move the County Seat to Amherst.**

**AMHERST CAMPAIGN COMMITTEE**

(Advertisement)

## Social Status of Mrs. Gann a Problem



●Vice President Curtis and his sister, Mrs. E. E. Gann, who is his official hostess. A ruling places her below the wives of foreign ambassadors and ministers at official functions. The official demands she be put ahead of them, as his wife would be were she alive today.

## WHY THE COUNTY SEAT OF LAMB COUNTY SHOULD BE LOCATED IN LITTLEFIELD

First and Second Prize Essays Submitted by Students of Harts Camp High School

### FIRST PRIZE ESSAY

By Miss Inez Carr

The County Seat of Lamb County should be located in Littlefield because it is the metropolis of the county.

Littlefield is a center of all industry of Lamb county; about seventy per cent of our people do their business there. Therefore, by moving the county seat to Littlefield many more people would be accommodated.

The five gins of Littlefield are very busy places. In the last year about ten thousand bales of cotton were ginned there, while Olton with two gins only ginned four thousand bales.

Littlefield with its splendid railroad has a far better opportunity of meeting the needs of the growing population than Olton.

The greatest per cent of the population of Lamb county is south of the Sand Hills. Since we are a democratic nation we should strive to accommodate the majority of people.

Some people might contend that it is more economic to keep the courthouse at Olton; but thousands and thousands of dollars are spent yearly for conveyance to our badly located county seat.

We are badly in need of a new building, therefore, why not move the courthouse to Littlefield—build a new courthouse and a jail.

It is time to start business right, so why not start it in the right town?

Littlefield is an attractive town, good location and much business transacted there. By adding the courthouse to this town will not only cause the town to become a prosperous town, but will also boost our county.

The only Junior college of Lamb county is located at Littlefield. Since a good college is necessary for the prosperity of any county, why not move the county seat to help accommodate the many people attracted by the college.

A good telephone system is established at Littlefield and service is given to people all over the country. Any county seat needs a good telephone service.

Littlefield prides herself in having a good bank. This bank renders service to any one who is in need Olton has no bank, making it inconvenient for those who are forced to do business in that town.

The best organization of our county is the Chamber of Commerce at Littlefield, which is very active. This is essential to any growing town to make it a noted one.

The water system at Littlefield can't be beaten by any in the county.

Littlefield also has a good sewerage system; a system not found elsewhere in Lamb county.

Littlefield is situated on a highway connecting all important towns between Dallas, Texas and Roswell, New Mexico.

The \$200,000 paving project just completed in Littlefield makes it better fitted to accommodate the people of Lamb county.

Last, but not least, Littlefield has one-fourth of the entire population of Lamb county, whereas Olton only has one-sixteenth.

### SECOND PRIZE ESSAY

By Miss Hazel Roddy

The county seat should be located in Littlefield, because it is the center of population in Lamb county.

Littlefield also has more accommodations to offer to the people, which attend court affairs.

The court house should be located where there is more industry, and in a city which is increasing in size.

The county seat should be on the south side of the Sand Hills, because most of the population and wealth of the county is on the south side.

Littlefield has a better market for the products produced by the farmers of Lamb county.

The railroads of Littlefield would make the county seat a better market for the farmers of Lamb county. The people of Lamb county want a good city with highways leading to it. Littlefield is a leading city and has good roads.

Littlefield has an excellent mail service to all parts of the county.

The county seat should be a trade center for all the people.

The population of the county will increase, and the county will elect more officers the next year. With the present court house they are unable to care for the other county officers which will be elected.

With the county seat at Littlefield it would enhance the value of more property than if it was at any other place.

There will be no more cost to the county to move it to Littlefield than for it to be left at Olton. Olton will have to build a new jail and more rooms to the court house.

Littlefield is the only appropriate place for the county seat, because it already has its railroads and shipping points. Olton doesn't have a railroad and it is too close to other good market towns which have railroads for it to gain a railroad in the future.

It should be at Littlefield because it divides the territory between the other markets of the county seats of the adjoining counties.

Littlefield has the only Junior college in Lamb county.

Littlefield has four gins, and gins the total of eight thousand bales while Olton has only two gins and gins about three thousand bales.

It is a much larger town than Olton. It has a population of three thousand and five hundred while Olton has only four hundred. In this agricultural county this alone proves the necessity of moving the county seat.

The roads through the Sand Hills are almost impassable in winter; therefore, the court house should be south of them.

The telephone service in Littlefield is better than Olton.

The county officers will be better satisfied living in Littlefield than in Olton.

## COLLEGE NEWS

Farming is the order of the day on the college acreage tracts, and many of these splendid little ten-acre farms are ready for planting, while others are being broken or listed. These farms embrace about 1,000 acres of the college land, and many of them are soon to have the houses and other improvements erected on them.

Mr. Stagers, who has one of the acreage tracts on the south tier was at the office a day or two ago, and said he was planning to do some fencing around his place soon. He is planning to have a sure enough home on this place, and seems to be well pleased with his location.

S. H. Pierce is putting the J. A. Johnson acreage tract bordering on the Lytleland highway, in shape for planting.

Quite a number of people have been here the last few days looking over the college grounds with a view to moving here to make their future home, and some have bought farms, and contemplate improving them soon.

Among the recent visitors who now own college acreage tracts, were E. L. Martin, of Eden, and Claude Williams of Eola, who were here the latter part of last week. All here who know these men are exceedingly glad to have them financially interested here and contemplating moving into our midst.

R. O. Conner, of Dallas, business manager of the college, has been here for several days, and it will be gratifying news to his many friends who read this to learn that his health is considerably improved and he hopes soon to be able to be on the job again for full time. He has been contemplating since last summer, moving his family here, but for many reasons has found it impractical, so far. It is not likely that he will be able much longer to resist the appeal of the West but will fall for the lure of the green carpeted prairies and the charm of the western skies, where the gentle zephyrs wafts to you the delicate fragrance of the wild honeysuckle and sweet verbena, and woos you into forgetfulness of all the shortcomings you ever charged up to this boundless domain of the Plains of Texas. That's what brings people here and makes them want to stay.

J. Frank Copeland and L. W. Hayhurst were here a few days the latter part of last week visiting their families, and are now out in the field again in the interest of the college. They report many people interested in learning more about Littlefield and the college almost everywhere they go.

Van Bonneau, a graduate of Gunter college and a devoted friend to the school, is here this week visiting with old friends. He and his wife and little son, Charles Leland, have been making their home at Gunter, but are

Friday from a week's visit to folks at Abilene.

Mrs. Wesley Joneson is to be given by the College in the near future. This is an interesting play, and all are looking forward with interest for the announcement date it is to be given.

One of the most interesting features of the programs rendered Dramatic Art club and the club is the music by the guitar strung instruments and band. The personnel of this quartet follows: Misses Canzadina and Lois Freeman, L. C. and Homer Graham.

The "Single Four" quartet, composed of four college young men went with the motorcade from field to Sudan recently in the of the coming county seat election.

**Gave Name to Metal**  
Babbitt metal takes its name that of its discoverer, Isaac Babbitt an American inventor, a native of Massachusetts. The metal was invented and patented in 1839.

## A SUIT IS AS OLD AS IT LOOKS

A suit of clothes is new just as long as it looks new. Our modern dry cleaning methods keep clothes looking NEW. They help you get more wear and value and service out of the clothes you buy.

To the man or woman who is interested in economy, we offer an economical service which will save them money in the long run.

Phone us—we call for and deliver.

**HENRY & KEY, DRY CLEANERS**

"We Know How"

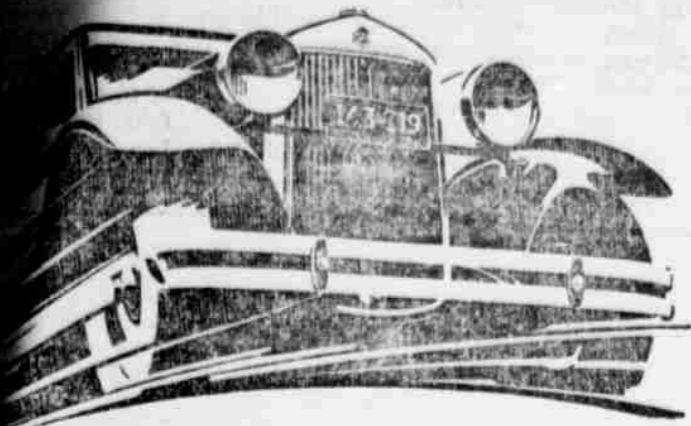
Phone 48,  
LITTLEFIELD, TEXAS

We Call for and Deliver

TEXAS



# ESSEX CHALLENGER



Hear the radio program of the "Hudson-Essex Challenger" every Friday evening

Challenging you to know the best in Performance—Fineness—Comfort

For Instance, the Coach \$52.45 TO BUY Down, and monthly Payments of \$285

Your present car will probably cover the entire first Payment.

The H. M. C. Purchase Plan Offers the lowest available finance terms on the balance.

TO OWN On our own streets Essex the Challenger, under competent observation, averaged 22 miles per gallon. The average owner in this city can expect 18 to 20 miles and upward. Commercial users operating large fleets of Essex cars say that service and maintenance costs, covering millions of miles of operation, are lowest of any car ever tested.

Essex the Challenger offers a completeness of fine car equipment formerly identified only with costly cars, and available, when at all, only as "extras," at extra cost on cars of Essex price. Check these items as you buy. In Essex the Challenger—a complete, fine big "Six"—these items of course are standard. They cost not one cent extra and represent easily above one hundred dollars' additional value.

**\$695**

Standard equipment includes hydraulic shock absorbers, electric brake for rear end only, radiator shutters, auxiliary lamps, windshield wiper, glass proof floor, spare tire, six spoke wheels, controls on steering wheel—all bright parts chromium-plated.

Coach	—	\$695
2-Pass. Coupe	—	695
Phaeton	—	725
Coupe	—	725
(with rumble seat)		
Standard	—	795
Sedan	—	795
Town Sedan	—	859
Roadster	—	859
Convertible	—	859
Coupe	—	896

## ABBOTT MOTOR CO.

LITTLEFIELD,

TEXAS

### FEEDING CALVES

The practice of feeding a grain ration to calves still running with their dams on pasture is growing in popularity, especially under intensified farming conditions where pasture is limited. Finishing calves by this means a quick turnover and is desirable where grade herds are maintained for beef production in farming areas, says the U. S. Department of Agriculture.

Calves may be allowed to run with their dams and have access to a self-feeder in a creep, or they may have a separate pasture and creep with their dams two or three days.

Spring calves fed a grain supplement while nursing can be marketed in the fall when weaned at an average weight of about 500 pounds and usually bring greater net returns than calves carried over another year or two.

Mrs. R. E. Foust and daughter, Mrs. Fred and Ralph, left early morning for San Angelo where they will visit Charles Foust and other relatives.

### A JOINT RESOLUTION

Proposing an amendment to the Constitution of the State of Texas providing for a Supreme Court of nine members, and for continuous session of that Court.

RESOLVED BY THE LEGISLATURE OF THE STATE OF TEXAS:

Section 1. That Sections 2 and 3 of Article 5 of the Constitution of the State of Texas be amended so as to read as follows:

"Article 5. Section 2. The Supreme Court shall consist of a Chief Justice and eight Associate Justices, five of whom shall constitute a quorum, and the concurrence of five shall be necessary to a decision of a court, and in other matters, until otherwise provided by Law, the jurisdiction of the Court shall be exercised under such regulations and orders as the Court by a majority vote may prescribe. No person shall be eligible to office of Chief Justice or Associate Justice of the Supreme Court unless, at the time of his election, and of the United States and of the State and unless he shall have attained the age of thirty years, and he has been a practicing lawyer or judge of a court, or such lawyer and judge, together at least seven years. Chief Justice and Associate Justices shall be elected by the qual-

ified voters of the State at a general election, shall hold their offices six years or until their successors are elected and qualified, and shall receive such compensation as may be provided by law. In case of a vacancy in the office of Chief Justice of the Supreme Court, the Governor shall fill the vacancy until the next general election for State officers, and at such general election the vacancy for the unexpired term shall be filled by election by the qualified voters of the State. The Judges of the Supreme Court who may be in office at the time this amendment takes effect shall continue in office until the expiration of their term of office under the present Constitution, and until their successors are elected and qualified. When this amendment takes effect, the Governor shall immediately appoint six additional Associate Justices of the Supreme Court for terms of office so that the terms of two of such appointed Associate Justices shall expire with the term of office of each of the present members of the Supreme Court, and, upon the qualification of such new Justices, the Commission of Appeals of the State of Texas shall terminate."

"Article V. Section 3. The Supreme Court shall have appellate jurisdiction only except as herein specified, which shall be co-extensive with the limits of the State. Its appellate jurisdiction shall extend to questions of law arising in cases of which the Courts of Civil Appeals have appellate jurisdiction under such restrictions and regulations as the Legislature may prescribe. Until otherwise provided by law, the appellate jurisdiction of the Supreme Court shall extend to questions of law arising in the cases in the Courts of Civil Appeals in which the Judges of any Court of Civil Appeals may disagree or where the several Courts of Civil Appeals may hold differently on the same question of law, or where a Statute of the State is held void, and shall extend to such other questions as may be within the Court's Appellate Jurisdiction under the Statutes of the State in force when this amendment takes effect. The Supreme Court and the Justices thereof shall have power to issue writs of habeas corpus, as may be prescribed by Law, and under such regulations as may be prescribed by Law, may issue the writs of mandamus, procedendo, certiorari and such other writs, as may be necessary to enforce its jurisdiction. The Legislature may confer original jurisdiction on the Supreme Court to issue writs of quo warranto and mandamus in such cases as may be specified, except as against the Governor of the State.

The Supreme Court shall have power, upon affidavit or otherwise, as may be determined by the Court, to ascertain such matters of fact as may be necessary to the proper exercise of its jurisdiction. The Supreme Court shall be open at all times and shall sit at the State Capitol for the transaction of business at such times as may be designated by the Court.

The Supreme Court shall appoint a clerk, who shall give bond in such manner as is now or may hereafter be required by law, and he may hold his office for four years and shall be subject to removal by said Court, for good cause entered of record on the Minutes of said Court who shall receive such compensation as the Legislature may provide."

Sec. 2. Said proposed Constitutional amendment shall be submitted to a vote of the qualified electors of this State at a special election to be held throughout the State on Tuesday July 16, 1929, at which election each voter opposing said proposed amendment shall scratch off of the ballot with a pen or pencil the following words printed on said ballot: "For the amendment to the State Constitution providing for a Supreme Court of nine members, and for continuous session of that Court", and each voter favoring said proposed amendment shall scratch off the ballot in the same manner the following words printed on said ballot: "Against the amendment to the State Constitution providing for a Supreme Court of nine members, and for continuous session of that Court." If it appears from the returns of said election that a majority of the votes cast are in favor of said amendment, the same shall become a part of the State Constitution.

Sec. 3. The Governor shall issue the necessary proclamation for said election and have the same published and said election held as provided by the Constitution and Laws of this State.

Sec. 4. The sum of Five Thousand (\$5,000.00) Dollars, or so much thereof as may be necessary is hereby appropriated out of the State Treasury to pay for the expenses of said publication and election.

Approved February 19, 1929.  
(A Correct Copy)  
JANE Y. McCALLUM,  
Secretary of State.  
April 11, 18, 25, May 2, 1929.

H. J. R. No. 7  
A JOINT RESOLUTION  
proposing an amendment to Section 5 of Article 4 of the Constitution of the State of Texas fixing the salary of the Governor; providing for its submission to the voters of the State of Texas as required by the Constitution, and making appropriation therefor.

RESOLVED BY THE LEGISLATURE OF THE STATE OF TEXAS:

Section 1. That Section 5 of Article 4 of the Constitution of the State of Texas be so amended as to hereafter read as follows:

"Section 5. The Governor shall,

at stated times, receive as compensation for his services an annual salary of Ten Thousand Dollars and no more and shall have the use and occupation of the Governor's Mansion, fixtures and furniture; provided that this amendment shall not become effective until the third Tuesday in January, 1931."

Sec. 2. The foregoing Constitutional amendment shall be submitted to a vote of the qualified electors of this State at an election to be held throughout the State on July 16, 1929, at which election all voters favoring said proposed amendment shall write or have printed on their ballots the words: "For the amendment to the Constitution of the State of Texas fixing the salary of the Governor." Said proposed amendment shall write or have printed on their ballots the words: "Against the amendment to the Constitution of the State of Texas fixing the salary of the Governor."

Sec. 3. The Governor of the State of Texas is hereby directed to issue the necessary proclamation for said election and to have same published as required by the Constitution for amendments thereto.

Sec. 4. The sum of Five Thousand (\$5,000.00) Dollars, or so much thereof as may be necessary, is hereby appropriated out of any funds in the Treasury of the State of Texas not otherwise appropriated to pay the expense of such publication and election.

Approved March 19, 1929.  
(A Correct Copy)  
JANE Y. McCALLUM,  
Secretary of State.  
April 11, 18, 25, May 2, 1929.

### ORDER FOR COUNTY SEAT ELECTION

THE STATE OF TEXAS  
COUNTY OF LAMB

WHEREAS, on the 29th day of March, A. D. 1929, a petition was presented to me, as County Judge of Lamb County, Texas, by W. H. Harris and 581 others, stating that it is desirable to remove the County Seat of Lamb County, Texas, from Olton, Texas, to Littlefield, Texas, of which number more than two hundred are legal and qualified voters and free holders of Lamb County, Texas, residing in said county, praying that an election be held in Lamb County, Texas, at the various voting precincts of said county, for the purpose of submitting to a vote of the people of Lamb County, Texas, the question of whether or not the County Seat of Lamb County, Texas, shall be removed from Olton, Texas, to Littlefield, Texas; and

It appearing that said petition bears the requisite number of qualified voters and free holders who are residents of said county, and is in every respect in conformity to law:

THEREFORE, I, Simon D. Hay, in my capacity as County Judge of Lamb County, Texas, do hereby grant said petition, and do hereby order that an election be held in the various voting precincts of Lamb County, Texas, on

Saturday, the 11th day of May, A. D. 1929, for the purpose of determining whether or not the County Seat of Lamb County, Texas, shall be removed from Olton, Texas, to Littlefield, Texas.

The said election shall be held in Voting Precinct No. 1 in the Court House of Lamb County, Texas; and B. A. Dodson and Mrs. C. M. Owens are hereby appointed judges of said election in said precinct.

In Voting Precinct No. 2 the said election shall be held at the Spring Lake School House and J. F. Kelly and Jack Hanson are hereby appointed judges of said election in said precinct.

In Voting Precinct No. 3 the said election shall be held at the residence of H. L. Woody; and Archie Brown and H. L. Woody are hereby appointed judges of said election in said precinct.

In Voting Precinct No. 4 the said election shall be held at the City Hall in the City of Littlefield, Texas; and R. E. McCaskill and C. L. Harless are hereby appointed judges of said election in said precinct.

In Voting Precinct No. 5 the said election shall be held at the High School Building of Sudan Independent School District; and C. C. Preston and J. J. Blowhard are hereby appointed judges of said election in said precinct.

In Voting Precinct No. 6 the said election shall be held at the Pleasant Valley School House; and Fred Deitlerman and R. L. Robineck are hereby appointed judges of said election in said precinct.

In Voting Precinct No. 7 the said election shall be held at the City Hall in the City of Sudan, Texas; and W. W. Carpenter and J. M. Carruth are hereby appointed judges of said election in said precinct.

In Voting Precinct No. 8 the said election shall be held at the public school building in City of Amherst, Texas; and E. T. Phillips and W. L. Gentry are hereby appointed judges of said election in said precinct.

In Voting Precinct No. 9 the said election shall be held at public school house of Fieldton School District; and J. E. Holland and Millard Phillips are hereby appointed judges of said election in said precinct.

In Voting Precinct No. 10 the said election shall be held at Sod House Camp; and Martin White and C. E. Presley are hereby appointed judges of said election in said precinct.

In Voting Precinct No. 11 the said election shall be held at the residence of A. H. Scivally; and E. M. Sullivan and J. B. Blessing are hereby appointed judges of said election in said precinct.

In Voting Precinct No. 12 the said election shall be held at the residence of Fred Groom; and J. L. Dow and Roy Hutson are hereby appointed judges of said election in said precinct.

In Voting Precinct No. 13 the said election shall be held at the residence of J. G. Harrell; and J. G. Harrell and John Lowell are hereby appointed judges of said election in said pre-

dict.

The said election shall be held under the provisions of Chapter 5, Title 33, Revised Statutes of Texas, 1925, and the Constitution and Laws of the State of Texas; and shall be conducted as near as may be in accordance with the general election laws of the State of Texas; and all persons who are qualified voters under the Constitution and Laws of the State of Texas shall be entitled to vote at said election.

Should the voter be in favor of removing the county seat from Olton, Texas, to Littlefield, Texas, he or she shall write or cause to be written or printed on his or her ticket: "For removal to Littlefield, Texas"; or, should the voter be in favor of the county seat remaining at Olton, Texas, he or she will write or cause to be written or printed on his or her ticket: "For remaining at Olton, Texas."

A copy of this order signed by the County Judge of Lamb County, Texas, and certified to by the County Clerk of said County, shall serve as proper notice of said election. And thirty (30) days notice of the time and places of holding said election shall be given by posting true and correct copies of this order in three (3) public places within each voting precinct in said county, and by publication thereof in the English Language in four (4) weekly issues of a newspaper of general circulation which has been regularly and continuously published for at least one (1) year previous to the date of this order in Lamb County, Texas, and the date of first publication of said notice shall be thirty (30) full days prior to the day of election.

It is further ordered that this order shall be spread and recorded upon the minutes of the Commissioners' Court of Lamb County, Texas.

Ordered this 30th day of March A. D. 1929.

SIMON D. HAY, County Judge  
Lamb County, Texas.

THE STATE OF TEXAS,  
COUNTY OF LAMB

I, A. H. McGavock, Clerk of the County Court and ex-officio Clerk of the Commissioners' Court of Lamb County, Texas, do hereby certify that the above and foregoing is a true and correct copy of election order issued by the county judge of said county, ordering an election to be held in the various voting precincts of Lamb County, Texas, to determine whether or not the county seat of Lamb County, Texas, shall be removed from Olton, Texas, to Littlefield, Texas, which order is of record on page 444 of Book 2 of Minutes of Commissioners Court of said County.

Witness my hand and seal of said court, this 30th day of March, A. D. 1929.

A. H. McGavock, County Clerk and Ex-Officio Clerk of the Commissioners' Court of Lamb County, Texas.

(SEAL)  
Commissioners Court, Lamb County, Texas.

(SEAL)  
County Court, Lamb County, Texas.

April 4, 11, 18, 25, 1929.

## GENERAL MOTORS

# SPRING SHOWING



## See the NEW CHEVROLET SIX

- a Six in the price range of the four!

You are cordially invited to visit our special display of the new Chevrolet Six—arranged in conjunction with the nationwide Spring Showing of General Motors cars.

Here, in a price class that has hitherto been occupied exclusively by four-cylinder automobiles, you will see displayed a line of beautiful models that bring you every advantage of six-cylinder performance. Yet, due to the greatest array of mechanical advancements that Chevrolet has ever announced, the new Chevrolet Six delivers better than twenty miles to the gallon of gasoline with extremely low oil consumption.

And this amazing six-cylinder performance is matched in impressiveness by the beautiful new Fisher bodies. Come in. See for yourself that no other car in the world can give you so much at prices within the reach of all.

For Economical Transportation

The COACH	\$595
The Roadster	\$525
The Phaeton	\$525
The Coupe	\$595
The Sedan	\$675
The Sport Cabriolet	\$695
The Convertible Landau	\$725
The Sedan Delivery	\$595
Light Delivery	\$400
Chassis	\$450
1 1/2 Ton Chassis	\$545
1 1/2 Ton Chassis With Cab	\$650

All prices, f. o. b. factory Flint, Michigan

COMPARE the delivered price as well as the list price in considering automobile values. Chevrolet's delivered prices include only reasonable charges for delivery and financing.



You are Cordially Invited to See Our Special Exhibit of the New Chevrolet Six

## BELL-GILLETTE CHEVROLET COMPANY

LITTLEFIELD, TEXAS

### QUALITY AT LOW COST

## AT THE CHURCHES

### METHODIST CHURCH

Sunday School, 9:45 a. m.  
 Preaching Service, 11:00 a. m.  
 Senior and Intermediate Epworth League, 6:45 p. m.  
 Bible Study, Wednesday evening.  
 District Conference will be held in Levelland, Thursday and Friday of this week. This will be the best opportunity for Littlefield members to visit such a conference that we may have for a long time. The pastor will preach Sunday morning and dismiss the evening congregation that they may attend the Baptist meeting. Don't forget the weekly freewill offering asked by the building committee.  
 —Geo. E. TURRENTINE, Pastor.

### LUTHERAN CHURCH

Regular Sunday morning services held in the German language begin at 10:30 a. m.  
 Sunday night at 8 o'clock, English services.  
 —WALTER J. LUCKE, Pastor.

### BAPTIST CHURCH

Sunday School, 9:45 a. m.  
 Morning worship, 11:00 a. m.  
 Senior and Intermediate B. Y. P. U., 7:30 p. m.  
 Evening worship, 8:30 p. m.  
 Prayer meeting, Wednesday, 8:30 p. m.  
 —ROY A. KEMP, Pastor.

### SACRED HEART CHURCH

Divine services every Sunday.  
 All preaching in the English language only.  
 The general time for services during the winter months is 10:30 o'clock a. m. one Sunday, and 8:30 o'clock a. m., the following Sunday.

When we have 8:30 o'clock services in Littlefield, 10:30 o'clock services will be held at Pep, and vice versa.  
 Everyone interested has a free access to our church, and is cordially invited by—  
 REV. CHARLES J. DVORAK, Pastor

### PRESBYTERIAN CHURCH

Sunday School, 10:00 A. M.  
 Morning Service, 11:00 A. M.  
 Junior Endeavor, 4:00 P. M.  
 —WILLIAM F. FULTON, Minister.

### CHURCH OF CHRIST

Bible Study, 10:00 A. M.  
 Preaching, 11:00 A. M.

Preaching, 8:15 P. M.

"Things that Hinder Christianity," will be the subject for the morning hour. We extend an invitation to all to attend our services, and especially request a 100 per cent attendance at both services by the members. Why not put over an attendance program for which we will be proud.  
 —T. L. KIMMEL, Minister.

### CLASSY FORD TOWN CAR TO BE HERE ON FRIDAY

The Ford town car, chauffeur driven, will be on display at the John H. Arnett Motor Co., Littlefield, Friday, April 19.

This car embodies something entirely new in automobiles, according to John H. Arnett, in the fact that it is the first chauffeur-driven car ever manufactured in America in the medium or low price fields, yet both in design and interior appointments the body is similar to the smart, chauffeur-driven cars seen on the boulevards of continental Europe.

Triplex, shatterproof glass forms the partition between the driver's seat and the interior compartment. The finest imported whipcord is used for the interior upholstery, while on either side of the cushioned seat is a covered arm rest. It is finished in a variety of rich color schemes, with full nickel trimmings.

### CARD OF THANKS

Deeply felt gratitude prompts me to thank each and every one of my fellow citizens of Littlefield, all my friends, but particularly, The Rotary Club of Littlefield, and The Chamber of Commerce for their expression of sincere sympathy and condolence with me in the hour of grief for the loss of my beloved mother, for the floral offerings and every kindness and service they have given me in my distress. Would that these words reach them, and also those old friends of mine, the regular standbys from many neighboring cities, some places rather more distant, such as Ennis, West, Penelope, Mogargel, Vernon and Wichita Falls. My deepest gratitude! God bless you all.  
 —Rev. Chas. J. Dvorak, Itp

Electricity and gas are being carried to remote sections of Texas by the interconnected systems of pipe lines and electric lines.

## WHAT IS DOING IN WEST TEXAS

Stamford is to have a new modern 24 room brick veneer hotel in the near future to take the place of the Rigbins Hotel, an old landmark on Eats Reynolds street. The building, according to M. Rogers Williams, Abilene, owner of the property, will be leased when completed.

Tulia's two mile caravan of cars filled with representatives to the Panhandle Tulia Band returned after the handle Plains Dairy Show, headed by show with a large percent of the ribbons offered. Two championships were won by Tulia dairymen, and the coveted P. C. Bennet trophy was also won.

Pecos, with the completion of a \$40,000.00 tourist camp to be known as Beacon camp will have one of the most modern and convenient camps in the country. It will have 20 suites and 20 rooms, equipped with garages, childrens playgrounds, etc. It will be opened by May 1st.

Floydada's first First Monday drew a large crowd, and nearly \$4,000.00 worth of every kind of goods needed on the farm was sold at the auction which featured the afternoon entertainments. Merchants of the town financed the auction sale and spread advertising of the event over the county.

Levelland's latest scholastic census showed an increase of 33 percent over children between the ages of 7 and 18 years are in the community. And would indicate that 12,600 people reside in the county.

El Paso will be the scene of the eleventh annual convention of the West Texas Chamber of Commerce late in the summer instead of in May. It is hoped that the postponement of the dates will make it possible for President Hoover to attend and to participate in the convention, and in the Gadsden Purchase commemoration.

Breckenridge school children are taking part in the Clean-Up program being observed in the town this week. They spent their time beautifying the

school campuses and buildings, along with the rest of the town. The observation was started off with a parade in which every school was represented.

Brady's Chamber of Commerce Secretary points out that 10 Wolfe Clubs have saved the Heart O' Texas area \$2,000,000.00. Clubs in McCulloch, Comanche, Brown, Mason, Kimble, Runnels, Calahan, Coleman, San Saba and Taylor Counties have collected 2400 wolves and 1000 wild-cats.

Have your printing done at home.

### B. Y. P. U. MEETING

The B. Y. P. U. of the Baptist church met Sunday evening at seven o'clock with 24 members present. Vernon Brewer had charge of the program which was very interesting and instructive. Two new members were voted in.  
 The following program will be given next Sunday evening.  
 Doctrinal meeting— "Stewardship of Life Possessions."  
 Leader—Lexie Dunagin.  
 Fill your Christian Namefull, Edna Byers.

What is Stewardship?  
 Hendricks.  
 Stewardship in the New Testament.  
 Alonzo James.  
 Stewardship Applies to All.  
 Shirley.  
 Stewardship and Service.  
 White.  
 Stewardship Involves The Pearl Atkinson.

BARNFIELD TO ASTORIA  
 Clarence Barnfield, resident of Sudan, having been adjudge, was taken Tuesday by Len Irvin to the State Insane at Wichita Falls.

GEN. SALES OFFERS  
 SPRING SHOWING  
 APRIL 20 TO 27 IN LITTLEFIELD

You are cordially invited to visit a  
 Special Spring Showing  
 of  
 New Oakland  
 All-American Sixes  
 and  
 New Pontiac  
 Big Sixes  
 April 20<sup>th</sup> to 27<sup>th</sup>  
 in our Salesrooms

Special performance demonstrations have been arranged

JONES BROS. MOTOR CO.  
 LITTLEFIELD, TEXAS

## HOGAN'S Specials ..for.. Saturday ONE DAY ONLY, SATURDAY, APRIL 20

POOL'S "SWETPRUF"  
 PANTS and SHIRTS \$1.95  
 The Best—Guaranteed  
 Sand, Powder Blue, Reg. \$2.25—\$2.50

BEAUTIFUL NEW PRINT-  
 ED SILK RAYON VOILES  
 \$1.00 yard  
 Color Fast

"AIRWAY" PRINTS 39c  
 Printed Indian Heads and  
 Piques  
 50c and 65c value

MEN'S BLUE-GRAY CHAM-  
 BRAY WORK SHIRTS 79c  
 A Good Quality  
 \$1.00 values

LADIES SILK HOSE  
 \$1.95—\$2.45 values  
 \$1.45

25 PER CENT OFF  
 on our Entire Stock of  
 SILK DRESSES

MEN'S FANCY RAYON  
 HOSE 35c  
 50c values

CHILDREN'S RAYON  
 HALF SOX 29c  
 Fancy Tops

SPRING MILLINERY  
 20 per cent off

HUCK TOWELING  
 10c yard

HOGAN DRY GOODS CO.  
 LITTLEFIELD, TEXAS

at Zero or 90  
 CONOCO-ETHYL  
 is weatherproof  
 in the shade



Conoco Ethyl Gasoline performs at its best twelve months out of every year. It knows no seasons.

It gives the same quick start in February as it does in May—and it follows through by delivering steady, sustained, "knockless" power against the piston heads.

That's important! It's not hard to find a motor fuel that will start easily. Your chief concern should be in what it does after starting.

Being a combination of Conoco, the Triple-Test Gasoline, and Ethyl Brand of Anti-Knock Compound developed by General Motors, Conoco Ethyl is the ideal motor fuel. You'll feel the difference in the operation of your car the very second you switch to Conoco Ethyl.

So why not join the thousands of contented Conoco Ethyl users? Why not get out of your car all of the power which its designers put into it?

Start the habit today by drawing up to a Conoco Ethyl Pump—at service stations and garages.

CONTINENTAL OIL COMPANY

Producers, Refiners and Marketers  
 of high-grade petroleum products in Arizona, Arkansas, Colorado, Idaho, Kansas, Missouri, Montana, Nebraska, New Mexico, Oklahoma, Oregon, South Dakota, Texas, Utah, Washington, Wyoming

CONOCO-ETHYL  
 GASOLINE  
 Quick Starting-Knockless Miles

**MISSIONARY SOCIETY**

Woman's Missionary society Methodist church met Monday at three o'clock at the home of B. L. Cogdill. Mrs. T. Wade gave a review of four chapters "Life Work of Bell Harris Ben-After which a short business was held.

At the close of the regular meet- ing Mrs. Van Clark, Mrs. Teal then gave a reading "A Mother's Prayer."

Refreshments of ice cream and wafers were served to the members of the missionary society and the following guests: Mesdames Chas. Harless, Jesse Seale, Ike Griffin, Pryor Hammons, J. L. Pate, Harry Wiseman F. G. Sadler, Claude Clark, R. E. McCaskill, J. M. Stokes and J. W. Porcher.

**MYSTERIES ARE EXPLAINED**

The Lively club met last Friday afternoon, and initiated the girls who had never had Home Economics, and

the Home Economics girls who were not charter members.

After the initiation the club members chaperoned by Mrs. M. M. Brittain, sponsor of the club, Miss Helen Moore and Miss Mary Louise Thaxton, enjoyed a weiner and marshmallow roast.

The many Littlefield friends of Mrs. J. C. Tuttle will be interested to know that her permanent address is now 2116 East Randolph St., Enid, Okla., according to a letter received. She states that the weekly visits of the Leader are like a "letter from home," and urges an immediate change to her new address so she will not miss a single copy.

**Makes 22-Hour Flight.**



Louise McPhetridge, holder of the airplane altitude record for women, has now set a new woman's endurance flight record of 22 hours, 3 minutes and 12 seconds at Oakland, Cal., bettering the previous record by nearly five hours.

John H. Arnet Motor company reports the following sale of new Fords: L. C. Grissom, fordor sedan; A. C. Chesher, standard coupe; L. N. Rector, Sudan, fordor sedan; W. L. Russell, phaeton; J. G. Hester, standard coupe; Luther Hargrove, truck.

W. H. Badger, accompanied by Mrs. Badger, returned last Friday to their home in Austin. He is manager of the Yellow House Land Co., this city. Before leaving, Mr. Badger stated, "We have had a wonderful business during the past winter. The sales of our lands have been far above expectation, and we are anticipating an even greater business during the coming fall. Everything looks fine for the future of the Littlefield community."

**Remarkable, but True**

It's a most amazing thing, but if you tell a man that there are 326,244,513, 214,327,216 stars in the sky, he will accept it as a fact. But if you put up a notice saying, "Wet Paint," he has to go and dab it to see if it's true.

**Scientific Advance**

A Massachusetts scientist claims to have rediscovered the art, lost in the Fourteenth century, of making gold lighter in comparison to its bulk so it can be used to manufacture more jewelry.

**Money Well Defined**

Strictly speaking, money is neither good nor ill. It is force, like water or wind or electricity, and in itself is, therefore, without moral quality. It is a force made good or bad by its use.—Dr. N. Dwight Hillis.

**Butterflies Absorb Perfume**

Butterflies absorb perfume from flowers, according to an English naturalist, who claims to be able to identify certain species by their odors.

**Coming and Going**

A single man can't tell much about women, and a married man is afraid to.—Washington Post.

**Awaiting an Answer**

An epigrammatist says, "If you don't want to be shunned by your friends keep your troubles to yourself." But if you can't ask their sympathy and receive it, what is the use of friends?

**Patch to Repair Bottle**

The bureau of standards suggests that a hot-water bottle be repaired in the same manner that one repairs an inner tube of an automobile tire—that is, by applying a patch with rubber cement.

Catalogs come and orders go, but neither helps Littlefield.

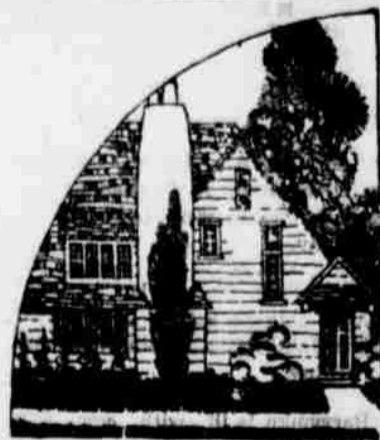
**C. E. TOWNSEND**

General Electrician

LET ME FIGURE YOUR WORK

Phone 192, Littlefield

**Every Family is Entitled to the Greatest Blessing on Earth—A "HOME"**



Our principal business is the dispensing of this blessing.

We feel we have accomplished a real humanitarian task when we are privileged to furnish good sound material to enter into the construction of your home, whether it be a mansion or a cottage.

We have been building homes in and around Littlefield for several years past—we want to build many more. Our entire business is at your service. We will take pleasure in furnishing you with estimates for any buildings you may desire.

We have a large assortment of plans and specifications that are at your service—plus our personal assistance gladly rendered. Let's talk the matter over!

**HIGGINBOTHAM-BARTLETT CO.**

LITTLEFIELD,

TEXAS



Unusual



**Money-Saving**

**FURNITURE EVENT**

We have just received a carload of crisp, new Furniture, fresh from the hands of the Eastern manufacturers. This furniture is all the very latest in style and design, and will make attractive and happy any home. It is the very best obtainable—something any householder may well be proud to own.

During this special sales event you can get anything from a single chair to a complete suite at a great money-saving value—and we have an exceptionally wide range for selections.

Those who are furnishing homes can take no better step than to come to this store, where they can discuss their furnishing problem frankly and receive disinterested advice. We are willing to plan with you, free of charge, one room or many.

Take advantage of our special low prices during this extraordinary event. Such opportunities as this sale presents are indeed rare.

REMEMBER—the choice of woods includes oak, walnut, cherry and maple, pine, beech, chestnut and mahogany in all their tones and finishes.

THIS IS REFRIGERATOR SEASON—WE HAVE A NICE LINE—GET YOURS NOW!

See us for all kinds of Camping Equipment

**HAMMONS BROS.**

"The House of Service"

FURNITURE AND UNDERTAKING

LITTLEFIELD



**For 9 Years Gas**

**Ruined Her Sleep**

"Due to stomach gas I was restless and nervous for 9 years. Adlerika has helped me so that now I eat and sleep good."—Mrs. E. Touchstone.

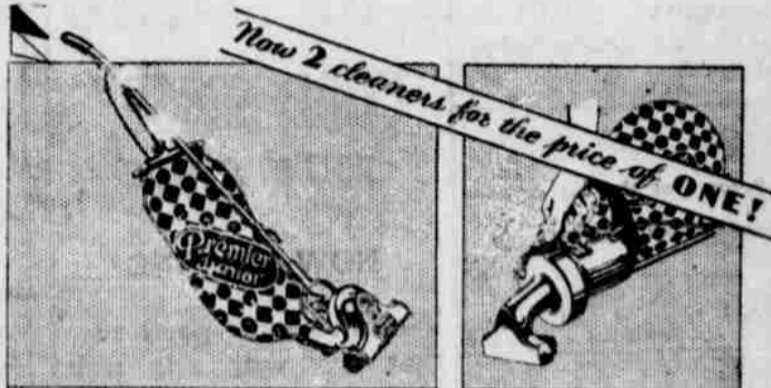
Just ONE spoonful Adlerika relieves gas and that bloated feeling so that you can eat and sleep well. Acts on BOTH upper and lower bowel and removes old waste matter you never thought was there. No matter what you have tried for your stomach and bowels, Adlerika will surprise you.

Stokes & Alexander Drug Co.

**SPEED UP Electric Cleaning This New Way!**

Premier now offers two electric cleaners for the price of one.

A big cleaner for the rugs and carpets, and the new small cleaner—the Spic-Span—to take the place of attachments. Weighing only four pounds, the Spic-Span can be taken from task to task without wasting time or steps. You simply plug it into any electric socket and clean mattresses, clothes stairways, upholstery, automobiles, nooks and crannies everywhere.



The Spic-Span may be purchased separately for \$14.50 . . . or in one of the following combinations. Easy Payments. Phone or visit us today and arrange for a private demonstration. No obligation.

**Two Cleaners for the Price of One**

Premier Duplex and Premier Spic-Span Both \$72.50 for

Premier Junior and Premier Spic-Span Both \$48 for



R. E. McCASKILL, Manager, Ellis Bldg., Littlefield, Texas

Electricity is Your Lowest Priced Servant

## LOCAL HAPPENINGS

Ralph Gillette made a trip to Am-  
arillo, Tuesday.

Otis Smith made a business trip to  
Amherst, Friday night.

Misses Edith and Katie Ratliff are  
ill this week with the flu.

Mr. and Mrs. Beaman Phillips were  
Lubbock visitors, Sunday.

Linnie Connell made a business trip  
to Lubbock Saturday night.

J. T. Ewins is ill this week with  
a severe attack of appendicitis.

Dr. Milligan, of Amherst, was in  
Littlefield on business last week.

A. R. Hendricks, of Lubbock, was a  
Littlefield visitor last Friday.

Mrs. T. P. Wright and son, Tilden,  
were Lubbock visitors Saturday.

Mrs. Zora Norman, of Enochs, was a  
Littlefield visitor last Saturday.

Mrs. Len Irvin and Mrs. Star Haile  
were Lubbock visitors, last Friday.

Mr. and Mrs. K. F. Albright, of  
Ablene, are here visiting friends.

Professor Rochelle, of Amherst,  
was a Littlefield visitor last Friday.

E. B. Allen, of Hale Center, was in  
Littlefield last Tuesday on business.

Mr. and Mrs. J. C. Houk and child-  
ren were in Plainview last Thursday.

Mrs. T. S. Sales, Mrs. Maude Fos-  
ter, Mrs. J. P. Spinks and father, Mr.

Thornton, were Plainview visitors,  
last Thursday.

Mick Ratliff and Alvin Mueller  
were Amherst visitors Sunday after-  
noon.

Mrs. Jim Blessing was on the sick  
list last week, but is much improved  
now.

Leonard Wright and Roy Wade  
were Lubbock visitors, Saturday  
night.

Mrs. E. Mills, of Roby, is here visit-  
ing her brother, Mallory Etter, and  
family.

Carl Jones, of Goree, is here visit-  
ing Mr. and Mrs. F. R. Jones and  
family.

Dr. J. D. Simpson made a business  
trip to Hereford and Muleshoe last  
Friday.

Mr. and Mrs. E. B. Allen, of Hale  
Center were Littlefield visitors last  
Sunday.

Mr. and Mrs. Roy E. Smith, of  
Levelland were Littlefield visitors,  
Monday.

Mrs. C. O. Griffin and Mrs. Lon  
Campbell were Lubbock visitors,  
Monday.

Mr. and Mrs. J. H. Ware and  
children were visitors in Lubbock,  
Sunday.

R. O. Conner, of Dallas, is here, at-  
tending to Littlefield College business  
matters.

Mr. and Mrs. W. H. Harris and  
son, Perry, were Lubbock visitors,  
Saturday.

Misses Blanche Cowan and Pauline  
Bell were shopping in Lubbock last  
Wednesday.

"Frenchie" Glover returned Sun-  
day from a month's visit in Artesia,  
New Mexico.

Mr. and Mrs. C. C. Hammons and  
son spent the weekend in Post with  
his parents.

Mrs. J. W. Ratekin and Miss Ruth  
Mitchell were Lubbock visitors, Satur-  
day afternoon.

A. F. Curry Jr., Hack Stewart, Carl  
Duke and Ansel Stone were Lubbock  
visitors, Sunday.

Travis Jones, Kenneth Houk, and  
Lynn Dobbs spent the weekend in  
Clovis, New Mexico.

Miss Alynne Arnett, of Lubbock,  
spent the weekend in Littlefield with  
Miss Bessie Bellomy.

Vernon Head, of Slaton, spent the  
weekend in Littlefield with Mr. and  
Mrs. W. T. Jones, jr.

Mr. and Mrs. J. W. Porcher, jr.,

and little son, attended the circus in  
Lubbock, last Friday.

Mr. and Mrs. John Matheson, of  
Amarillo, spent Tuesday in Littlefield  
with their niece Mrs. C. R. Singer.

Mr. and Mrs. Richardson, of Lelia  
Lake, bought a farm on the Maple  
Wilson land last week.

Mrs. S. C. Lloyd, after spending a  
week with her daughter at Afton, re-  
turned home Saturday.

Mr. and Mrs. C. O. Griffin and  
Mrs. Mid Seale were in Plainview,  
Wednesday of last week.

Chester Pate left Saturday night  
for Altus and Healdton, Okla., where  
he will visit several days.

Miss Polly Porter spent the week-  
end in Muleshoe, the guest of Mr.  
and Mrs. John C. Jenkins.

Mrs. Bob Steen and son, Tom Ar-  
nett, of Lubbock, spent the weekend  
in Littlefield with friends.

Miss Margaret Cress, of Amarillo,  
is here the guest of Miss Bessie Bellomy  
and Mrs. R. E. McCaskill.

Bruce Harris, of Sudan, has accept-  
ed a position with John H. Arnett  
Motor company as salesman.

Miss Era Pillard, of Amherst, spent  
the weekend in Littlefield the guest  
of Dr. and Mrs. J. D. Simpson.

Mr. and Mrs. J. M. Tunnell spent  
Saturday night in Morton with her  
sister, Mrs. George Smith and family.

Mr. and Mrs. F. M. Burleson and  
Daniel were Lubbock visitors, Sun-  
children and Mr. and Mrs. W. P. Mc-  
day.

Mrs. J. D. Blalock, postmistress, of  
Enochs, spent the weekend in Little-  
field with Mr. and Mrs. John W. Bla-  
lock.

Osa Blalock and Fred Hanna, of  
Corsicana, spent Friday night in Lit-  
tlefield, with Mr. and Mrs. John W.  
Blalock.

Mr. and Mrs. G. A. Johnson and  
children, of Childress, spent the week-  
end here with their daughter, Mrs. E.  
F. Arnn.

Jess Seale made a business trip to  
Causey, New Mexico, last Thursday,  
in interest of John H. Arnett Motor  
company.

Miss Maurine Irvin spent the week-  
end in Lubbock the guest of Miss  
Edna Davis, and was accompanied

home Sunday afternoon by Miss  
Davis and Messrs Ward and Winston  
Cox.

Mallory Etter accompanied his  
father, S. J. Etter, who spent the  
latter part of last week here, home  
Saturday.

C. O. Griffin reports the following  
sale of Whippets: Robert Parker,  
coupe; J. R. Griffin, coach; G. O. Rat-  
liffe, coach.

W. T. Jones, of Lovington, New  
Mexico, is here visiting his son, W.  
T. jr., and daughter, Miss Emma  
Ruth Jones.

Mr. and Mrs. Payne Wood, of Am-  
herst, and Mr. and Mrs. J. P. Spinks  
spent the weekend in Ruidosa Springs  
New Mexico.

Mayor Otto Jones accompanied  
Rev. Geo. E. Turrentine to Harts  
Camp Sunday, where Rev. Turrentine  
held services.

Mr. and Mrs. T. A. Henson and  
daughter, Olga Reed, R. T. Badger  
and Miss Irene Hobbs were Lubbock  
visitors, Sunday.

Miss Minnie Ruth Wells, who has  
been ill, was able to return to her  
duties at the John Arnett Motor Co.,  
Monday morning.

Truitt Berryman is ill with com-  
plications following scarlet fever.

Adwyer Mills is ill with a relapse  
of bronchial pneumonia.

Mrs. Van Clark and son, Van Eu-  
gene, returned Sunday from a week's  
stay with her parents, Mr. and Mrs.  
W. N. Gore, of Lubbock.

Mr. and Mrs. E. L. Stovall and little  
daughter, Ruby Jean, of Ralls, spent  
the weekend in Littlefield, the guests  
of Mr. and Mrs. H. B. Teal.

Miss Pauline Courtney was able to

attend school Monday, after a week's  
absence, due to breaking her collar  
bone when she fell off a truck.

Mr. and Mrs. W. C. Thaxton and  
little daughter, Betty Alice, went to  
Clyde, Sunday, where they will visit  
relatives and friends a few days.

The Dixie Revue was put on at  
Amherst, Friday night. A large  
crowd attended and every one was  
well pleased with the program.

Mrs. J. W. Lanier, of Floydada,  
spent last week here with her mather  
Mrs. S. C. Lloyd, and her sisters, Miss  
Stella Lloyd and Mrs. J. M. Stokes.

Mr. and Mrs. Tom Arnn and son,  
Junior, and Mr. and Mrs. Walter  
Free, of Childress, spent the weekend  
in Littlefield with Mr. and Mrs. J. W.  
Arnn.

Rev. J. C. Sismore, pastor of  
Tabernacle Baptist church, Amarillo,  
came to Littlefield Monday, and will  
hold a two weeks revival at the Bap-  
tist church.

Mr. and Mrs. Boyd and son, Joe,  
daughter, Grace, and Miss Gladys  
Porter, of Lubbock, spent the week-  
end in Littlefield the guests of Mr.  
and Mrs. E. Porter.

Miss Eva Gertrude Chisholm,  
daughter of Prof. and Mrs. J. E.  
Chisholm, this city, made the honor  
roll for the winter term at Teeh.,  
college with a B average.

Jones Bros. report the following  
sale of Pontiacs: W. P. Kirk, four  
door sedan; A. H. McGavock, Olton,  
two-door sedan; Yellow House Land  
company, four door sedan.

Mrs. L. R. Crockett and daughters,  
Misses Lydia and Thelma, Mrs. Frank  
Salter, of Lubbock, and Bill Lindley,  
of Wichita, Kansas, were in Littlefield  
last Friday visiting friends.

L. G. H. Williams, Episcopal  
tor, of Lubbock, and daughter, were  
in Littlefield Sunday, Rev. Williams  
held Episcopal services at the Pres-  
terian church Sunday afternoon.

Max L. McClure will leave Sun-  
day for Elmira, New York, the trip  
being occasioned by the serious illness of  
mother who is past 83 years of age.  
He expects to be gone about a month.

Mrs. Arthur P. Duggan who, some  
time has been prominently con-  
nected with the work of the Women's  
Federated clubs of this state, has  
recently been appointed chief advisor  
to the president.

Bell-Gillette Chevrolet company re-  
ports the following sale of Chevies:  
George D. Neely, coupe; J. W. Do-  
sedan; Harris Brantley, sedan; J.  
Minton, Anton, sedan; Mrs. Alta  
Cutcheon, coupe; E. W. Henson,  
truck.

Miss Zoa White, daughter of  
and Mrs. J. P. White, former owner  
of the Yellow House ranch, near Lit-  
tlefield, was married Tuesday after-  
noon to Mr. Hamilton McGee, of  
Ver, Colorado, the ceremony being  
place at the home of the bride's  
parents.

Mr. and Mrs. George Wash, of  
ton, have been in Littlefield a  
days looking after property in  
Littlefield. They own two fine farms near  
and contemplate making this their  
home. While here they ordered  
Lender to follow them to Hyden  
a year.

Rev. and Mrs. Roy A. Kemp,  
and Mrs. J. H. Lucas, Mr. and  
Tom Matthews, Mrs. Roberts left  
with a large group of young peo-  
ple from the Baptist church, attend-  
ing the 19th street Baptist church,  
Lubbock, last week.

## PALACE THEATRE

Littlefield Texas

THUR. AND FRI.

Ramon Novarro in—  
"The Flying Fleet"

Also Serial 20c and 40c

SATURDAY

Victor McLaglen in—  
"The River Pirate"  
Collegian and News

MONDAY

Charles Ray in— "Vanity"  
Also Cartoon

TUESDAY

Billy Dove in— "Adoration"  
and News

WED. AND THURS.

Jack Holt in a dandy Zane Gray  
Story— "The Water Hole"  
And Comedy 20c and 40c

FRIDAY

Wm. Haines in—"Alias Jimmy Valen-  
tine." and Serial

What has become of the fat woman  
that used to ride a bicycle?

FULLER PEP



Fat or slender, young or  
aged—their clothes all look  
alike to us when it comes to  
giving expert improvement  
service—we satisfy them all

Just crank up your phone  
on our number, and we'll be  
there in a jiffy to render you  
as efficient service in, clean-  
ing, pressing and repairing  
as you could ask.

LITTLEFIELD  
TAILOR SHOP

Phone 101, Littlefield, Texas

### For Sale

### GOOD JERSEY MILK COWS

NOW MILKING

We have some good ones  
that we will sell well  
worth the money.

Let us show them  
to you!

### CARL ARNOLD

At Bell-Gillette Chevrolet  
Company  
LITTLEFIELD, TEXAS



Just Telephone  
Your Order

### WE DELIVER PROMPTLY!

We have the best of  
Groceries at the lowest  
prices—and we deliver all  
telephone orders with  
speed and accuracy.

Your business solicited  
on the basis of value  
received for Quality  
Groceries

### B & M

### CASH GROCERY

Littlefield, Texas

## FARM LOANS

Liberal Valuations  
Low Rate of Interest

SEE US!

Your business will  
be appreciated! **STREET & STREET**  
Pioneer Insurance Agents  
LITTLEFIELD, TEXAS

## The LITTLEFIELD SECTION

### Of The Famous South Plains Offers One of the Greatest Opportunities

### In the Entire South for Homeseekers

### And Investors

Our 100 per cent agricultural lands in the center  
of development sell at \$30.00 to \$35.00 per acre.  
One-fifth cash, balance on liberal terms at six per  
cent. They can't be beat for investments or homes.  
These lands are increasing in value, and now is the  
time to buy!

Our combination tracts for farm and stock-rais-  
ing, at from \$15.00 to \$20.00 per acre, convenient to  
schools, railroad and good towns, will appeal to any  
man who wants a real proposition of this kind.

The town of Littlefield is growing rapidly, and  
we have on the market splendid resident property at  
the right price, and on liberal terms.

See any of our authorized agents, or address the  
company at Littlefield, Texas.

## YELLOW HOUSE LAND COMPANY

(OWNERS)

LITTLEFIELD,

TEXAS