

# LAMB COUNTY LEADER

Official Newspaper of Lamb County, Texas

LITTLEFIELD, LAMB COUNTY, TEXAS, THURSDAY, APRIL 25, 1929

No. 2

## TRADES DAY EVENT, MONDAY TO BE FEATURED BY BIG RODEO AND PRIZES GIVEN AWAY TO WINNERS

### RED JERSEY HEIFER, PUREBRED PIG, HENS AND OTHER PRIZES IN LIST; CON- TESTS AND GAMES ON THE DAILY BILL.

Plenty of free lemonade will be available to all guests, and everyone is invited to come, bring their friends and enjoy the day.

One of the leading entertaining features of the day will be a rodeo at which there will be bronco riding, steer riding contests, ladies bronco and steer riding, cowboy novelty and relay races. "Texas Maude," well known bucking bronco rider, will be present to perform, and other well known cow boys and western feature performers will take part in the events.

Beginning at 10:00 o'clock in the morning there will be a free auction, and farmers living in the Littlefield trade territory are cordially invited to bring in their farming implements, horses, cows and other livestock to be offered for sale without cost to them.

Music by the Littlefield band will be furnished throughout the day.

## OLTON ANSWERS OLTON'S CLAIMS REMOVAL OF CO. SEAT WOULD CAUSE BIG INCREASE IN TAXES NOT NOW NECESSARY

hills have been paying taxes on the \$50,000 of the road bond issue for not longer than nine years. The taxes thus paid take care of the sinking fund to pay principal, as well as interest, on the \$50,000 bonds against the district on the south side. During the nine years that the bonds have been in existence do you know how much money has been accumulated to pay on the \$50,000 issue for the south side? According to the records of this county, which can be easily verified by inquiring at the bank, we now have on hand to the credit of the road district on the south side, the sum of \$22,018. This sum of money has been accumulated by the south side during the last eight or nine years and is in the bank to apply to the payment of principal on the \$50,000 bond issue. In other words, it constitutes the sinking fund to pay off principal. Now, in what time was this \$22,018 accumulated? The answer is nine years. At the end of ten years at the same rate, how much will be accumulated? The answer is, \$25,000. What is the total amount to pay off? The answer is, \$50,000.

If we accumulate \$25,000 in ten years that pays half of the \$50,000 issue for the south side and the whole issue can be paid off in twenty years at the same rate. These were forty year bonds as originally issued and at the rate we are now paying taxes, at the end of twenty years, after the bonds were issued, we will have enough money in the bank to pay off all of the principal on the bonds. In other words, spread out over a term of forty years it would take only half of the tax rate that we now pay on the \$100,000 issue to pay off the whole issue at the end of forty years. Or, a tax of only 86c (instead of \$1.92) on each quarter section of land, at the present valuation of property in this county, would pay off the \$100,000 road bond issue in forty years.

When the road bonds were issued by Lamb County the assessed valuation of the property in the county was considerably less than it is now and the 15c rate was set and fixed by the Commissioners' Court to pay the principal and interest on the road bond. Since the assessed valuation of the property has so remarkably increased since that time we see that it would take only a rate of 7 1/2c in order to pay off the \$100,000 bond issue in forty years. The auditor has figured that it will take only 1c per acre, or, \$1.60 on a quarter section of land, at the present valuation in the county, to set aside a sinking fund to discharge principal and also to pay interest on a \$150,000 bond issue for a new court house. Olton's statements with reference to amount of taxes when viewed in the light of ALL the facts verifies our auditor's report in every respect.

Olton, in his letter, makes a further statement that evidently the move will cost two or three times this amount. That is a very broad statement to



## "Amherst Move Will Block Removal"

Well, Amherst has kicked over the skillet and the fat is in the fire.

On Friday of last week the State's Attorney General through an assistant, wired Judge Simon D. Hay that the name of Amherst must be placed on the ballot in the coming election for removal of the county seat.

Amherst by her action plainly says, "If we can't get it, let it remain where it is." In plain words, dog in the manger. "I can't eat the hay, neither shall you." It doesn't require a Solomon to see that with Amherst and surrounding territory

polling anything like a solid vote, the vote of the county will be so split up that Littlefield can not muster the necessary two-thirds. To the man up a tree this looks like all that Amherst is aiming at. Amherst surely is not so credulous as to imagine that she can poll even a majority of the vote of Lamb County. With Littlefield and Olton fighting her, what earthly show has she? All she can possibly hope for is stalemate—and Olton sits back and laughs in her sleeve to see poor Amherst burn her fingers pulling her (Olton's) chestnuts from the fire.

A thought: It can't be possible that, with all her professed civic pride, this is the very result the promoters of the Amherst movement are aiming at. At any rate, this will be the certain and inescapable result of her action—the county seat will remain at Olton, and four-fifths of Lamb County citizens will trek an average of fifty miles whenever they have business at the county seat.

Grover Cleveland once remarked that this country had confronting it "a condition, not a theory." It is high time that all of Lamb County—and Amherst in particular—realized that is exactly our condition. It is no theory confronting us—it is a very positive condition.

There is such a thing as good sportsmanship even in politics—even in civic endeavor. Littlefield was first in the field as an applicant for the county seat. The sorting thing to have done would be to give her the chance. If she lost, then would come Amherst's turn. But by this unsportsmanlike move Amherst has sawed off the limb between herself and the tree. If she loses out—no, WHEN she loses out this time, she will have two bitter opponents in any possible future contest—and so exit Amherst.

The territory south of the sandhills will have to increase its voting population by many hundreds before it can hope to win with a divided vote over Olton with a solid vote—which she most certainly has. Don't confuse the issue. It is South Lamb County against North Lamb County, and NOTHING but close cooperation has the faintest chance of success.

The Sudan News had not considered taking a stand for or against the move, preferring to trust to the judgment of the voter to direct him aright in the matter. But the plain effort of the Amherst committee to block the game appears to this paper just a little thick.

The Amherst committee make a great howl over their "central" position—6 1/4 miles from the center of the county. Well, Littlefield is only 9 miles removed from the center. Not enough difference to consider serious.

Respectfully submitted,  
LITTLEFIELD CAMPAIGN COMMITTEE FOR REMOVAL OF COUNTY SEAT.  
Read other articles in this newspaper on the County seat removal.

## SCHOOL CENSUS OF LFD. HAS INCREASE OF 343 IN PUPILS

Compilation Indicates Littlefield Has Population Now of Approximately 3,000 People.

The scholastic census of Littlefield independent school district, completed last week by Secretary J. S. Hilliard, of the School Board, show an increase of approximately 25 per cent during the year 1928-29.

The scholastic census for 1928 showed a scholastic population of 1,301, while the census this year totals 1,644, an increase of 343 during the past 12 months.

State per capita money received by the Littlefield school district last year, on the basis of \$15.00 per pupil, totaled \$19,515. At the same rate this year, the Littlefield schools will receive \$24,660, or an increase of \$5,155 over that awarded this school last year. However, indications are that the state per capita funds this year will be increased \$1.00 over that of last year. State Superintendent of Education Marrs, has made such a recommendation, and, while the Board will not meet for decision in this regard until the month of August, yet it is reasonably expected that such apportionment will be made, and school boards everywhere are arranging their budgets accordingly. This will mean an addition of \$1,644.00 for the Littlefield school funds, or a total of \$26,320.

Incidentally, the school census reveals that about 40 per cent of the total scholastics of this district live within the corporate limits of the City of Littlefield which, on the basis of ordinary computation, would indicate a population of this city amounting to 3,280.

## COMMERCIAL BODY DISCUSSES MANY IMPORTANT ITEMS

That the Littlefield Chamber of Commerce is the center of community interest and activity was fully demonstrated at the regular weekly meeting held Tuesday. It is very efficiently serving the business men and citizens of this city as a business and social organization. Tuesday's meeting was well attended and full of interest from the start.

President J. S. Hilliard reported the enrollment of 17 new members since the last meeting a week ago. He also read an invitation from the Littlefield Camp Fire girls extending the organization an invitation to attend a program to be given by the Lubbock Camp Fire girls at the Grammar school playgrounds April 25th, at six p. m.

E. C. Cundiff and F. G. Sadler reported that the entertainment had been planned for Trades Day, May 6th, when a strictly rodeo program would be in Littlefield, and would be exclusive of any gambling devices or other side issues which some times follow such entertainment.

T. S. Sales, chairman of the Censor committee of the Chamber of Commerce, reported the plans outlined by his committee which would soon be effective among the business men of Littlefield.

President Hilliard called attention to the District meeting of the West Texas Chamber of Commerce to be held in Tahoka Wednesday, at which time Arthur P. Duggan, of this city, and former president of that organization, would preside. He urged every member to attend.

D. Rector, of Ft. Worth, was a guest and responded with a snappy talk, complimenting Littlefield business men for the interest shown in their commercial organization.

A vote of thanks was given Ray Jones for his good activities the past week in securing memberships.

## SPEARMAN WINS COUNTY SEAT FIGHT IN HANSFORD

Last Saturday night Spearman celebrated its victory in finally wresting the county seat of Hansford county from the town of Hansford, an inland location, which has held it since organization of the county about 40 years ago.

The vote, which requires two-thirds majority to remove a county seat, was Spearman, 867; Gruver, 387; Hansford, 15.

It was the fourth time that an election has been held in that county to change the county seat location.

## CROCKETT-LINDLEY

Miss Lydia Crockett formerly of Littlefield, was married Sunday afternoon to Bill Lindley, of Wichita, Kansas.

The bride is the daughter of Mr. and Mrs. L. R. Crockett, and is well known in Littlefield, having a host of friends here.

Her friends will be interested to know that she will be at home in Lubbock at a near date.

## SACRED HARP SINGING

There will be a Sacred Harp singing next Sunday afternoon, beginning at one o'clock, at Friendship church, 10 miles west of Amherst and five miles south of Sudan.

A general invitation is extended to come and bring Sacred Harps.

## Basketball Queen



Miss Evelyn Armstrong of Wichita, Kan., 20, was selected from among 250 popular players as the Basketball Queen of America.

MONDAY, APRIL 29

**"HOME JAMES" AND MOUNTED POLICE**  
ONLY PERFORMANCE OF ITS KIND IN THE WORLD

The Northwest

Mounted Police

Company

IN PERSON IN THEIR

Big Artic Vaudeville

—AT—

PALACE THEATRE

THE MOST INTERESTING  
PERFORMANCE ON  
EARTH. YOUR MONEY'S  
WORTH OR YOUR  
MONEY BACK!

ADULTS ..... 40c  
CHILDREN ..... 20c

BIG PICTURE PROGRAM  
IN ADDITION! GET IN  
EARLY IF YOU WANT A  
SEAT!



**COMMITTEE ANSWERS  
NEW JAIL NOT NEEDED IN  
TELLS DANGER IN MIXED CONFINEMENT**

An Olton committee has recently mailed to each and every voter of Lamb County a letter signed "COMMITTEE ON KEEPING THE COUNTY SEAT AT OLTON AT PRESENT," calling attention of the voters to the coming county seat election to be held on May 11th, and advising that their votes be cast to retain the county seat at Olton, Texas.

This committee sets out several purported reasons why the county seat should not be removed at this time and especially do they urge that it is not now necessary to build a new jail or make additions to the present court house.

In answering the argument with reference to the jail and additions to court house made by the Olton committee we sincerely direct the attention of the voters to the FACTS connected with the matter. In their letter the Olton committee admits that the grand jury has recommended that the jail be condemned. We have used this argument in support of our proposition to remove the county seat and we thank the Olton committee for agreeing with us, that the jail has been condemned. All citizens of Lamb County who have heretofore had occasion to inspect the jail now maintained by this County realize that same is being maintained in violation of law. Several grand juries in making their reports to the district judge have heretofore condemned the jail. It is the duty of each grand jury convening in our county, on instructions from the district judge,

to visit the jail and inspect the same and to report to the district judge the conditions found. In every instance where a report has been made relative to our county jail the same has been adverse and recommended the building of a new jail. Now, the present county jail is located in the basement of the court house and contains one room and one cell. This one cell has four beds, two lower and two upper, in which the prisoners who are kept in the jail have to sleep. Negroes, whites, males, females, adults, juveniles, Mexicans, and every other class of people who are arrested and placed in jail must occupy the same room and same cell for sleeping quarters. A few months ago a white woman was arrested in Lamb County on some charge and this woman was placed in the county jail along with several men who were in jail charged with violation of the laws of this State. We do not know whether the woman was guilty or innocent, that is not a matter for us to pass upon, but twelve men who investigated the crime found her not guilty and refused to indict and the lady was released after having spent several days and nights in our county jail in the same room and cell with several male prisoners. Only a few weeks ago a young man residing in Lamb County with his father and mother was charged with the violation of the laws of this State and placed in jail and forced to occupy the same room and cell with a negro man and negro woman. This boy remained in jail several days

before release. He may be innocent, he may be guilty, that is not a matter for us to pass upon, but he was some mother's boy, and his family reside in our county. Your boy may be charged with violation of the law and be innocent, but, nevertheless, by reason of the fact that he is charged, he forced to occupy the same jail and same cell with perhaps negroes and Mexicans. As long as we reside in the South and in the grand old State of Texas we will not consent to a jail where it is necessary to keep negroes, whites, women and children, all in the same room and same cell.

Furthermore, we direct your attention to the fact that our present jail is inadequate in room and that it will be absolutely necessary in a short time to build an additional jail. In this connection, it is an unsafe place, located as it is in the basement of the court house. We are not out of place when we predict that in the future, if the present jail is maintained, some lady charged with violation of the laws of this State, placed in the same jail with negroes and white men, and being found innocent by a jury, of Lamb County citizens, may file a suit against Lamb County and obtain a judgment sufficient in amount to build a new jail and court house. Or, some white man, innocent or guilty, may be placed in the jail of Lamb County, Texas, a fire break out in the court house and by reason of its location in the basement as it is, the prisoner be unable to escape jail and lose his life, and his wife and children who heretofore depended on him for support, may bring a suit against Lamb County and cost the county more than a new jail and court house.

Olton concedes and admits that a new jail is necessary when she argues that our prisoners could be kept in other county jails. Our present court house and jail were erected when Lamb County was very sparsely settled and very seldom a prisoner was placed in our jail. But, with the influx of people that has occurred during the last few years the jail has become inadequate to accommodate the law enforcing agents of our county as a place to keep prisoners and it is not fair, and it is not right, that the conditions should remain as they are.

But, do we, as citizens of Lamb County, want to keep our prisoners in Plainview or Lubbock? Why not say that if the court house is inadequate that we will also hold court in Plainview or Lubbock, or have some of the officers to maintain their offices in Plainview or Lubbock, which would have as strong a sanction of our laws and statutes as keeping prisoners in some other county jail. Olton says the jail has not been condemned, and in the very same letter agrees that the grand jury has recommended that it be condemned. We say that the report of the grand juries heretofore is a sufficient condemnation of our jail, but, if that is not sufficient, the time will come when the State Department will have the jail inspected and condemned and then it will be necessary to either erect a new jail or maintain a separate building with guards as provided by Article 5115, of our statutes.

Article 5115 of our Statutes provides that the Commissioners' Court SHALL provide safe and suitable jails for THEIR respective county, and shall cause the same to be kept in good repair and in a clean and healthy condition and NOT OVERCROWDED with prisoners, and that such jails be furnished with clean and comfortable beds for prisoners. Inspect our jail and advise whether you find we are complying with the law in this county. If we are not then it is high time that something be done to provide a new jail for this county, and if a new jail is built under the present conditions it will have to be built separate and apart from the court house which would cost the county several thousand dollars. Now voters, that is going to have to be done!

Olton says further, in its letter to the voters of Lamb County, that the court house is adequate for at least ten years. Let us see if that is right. We are sure that the citizens of Lamb County, Texas, who have heretofore visited the court house, and practically all of them have, have found that the same is inadequate, that on tax-paying date there is not room for one-fourth of the tax payers who gather to pay their taxes. That the clerk's office, sheriff and tax collector's office, are all crowded, and the treasurer has to occupy an office with other officers. During district court the district attorney and district judge occupy offices with others. It is undisputed that the county court house is inadequate in space under present conditions, and, in the future, the same will be less adequate. Articles 7245 and 7246 of our Statutes provide that when a county has reached a population of 10,000 inhabitants, the sheriff and tax collector's office must be divided, and that there be elected by the voters of the county a separate tax collector. I presume

that all of us will consider the population of Lamb County more than 10,000 inhabitants when the 1930 Federal census taken the population will be probably more than 10,000. The tax collector's and sheriff's offices will be divided.

Article 1903 of our Statutes provides, that when a county has a population of 8,000 inhabitants, the clerk and county clerk offices be separated. That this population be determined by multiplying the number of votes cast for mayor in such county at general election. At the last election held in November, 1928, over 1600 votes were cast for mayor in Lamb County, which verified by records of County Court. Multiply this number and we have already in Lamb County over 8,000 population. Therefore, if to law the district and clerk offices must be divided. Statutes further provide that a county with scholastic population of 3,000 there MUST be elected a school superintendent. Lamb County has more than 3,000 scholastics and it is now necessary to have a school superintendent for Lamb County. We readily see that it is necessary to add more officers to the court house.

Now, four-fifths of the population of Lamb County is south of the hills, and you will realize in a short time the county seat is going to be moved anyway. Further concede that it is necessary in a very short time to build a new jail and make our court house which will require expenditure of money in the neighborhood of \$150,000. The county seat is going to be moved in the future, anyway, should we now expend the money to build a new jail in the court house and then time move the county seat south of the sand hills, then the value and use of the court house at Olton, and imposing upon the people double taxation.

Olton concedes that the county seat will finally be moved in the future. The Olton committee signs the letter to the voters as "Committee on the County Seat at Olton, AT PRESENT." Olton realizes that she can't move the county seat AT PRESENT. Let us move it at the time is opportune and let more money belonging to the people of the county is expended at present site.

Respectfully submitted,  
LITTLEFIELD CAMPBELL  
COMMITTEE FOR COUNTY SEAT MOVAL.

Read other articles in this issue on the County seat removal.

STORK SPECIAL

Mr. and Mrs. E. M. ...  
April 21.

Mr. and Mrs. Ed White ...  
April 21.

Mr. and Mrs. I. L. ...  
April 21.

The Leader for printing.

NOTICE TO BIDDERS

The Commissioners' Court of Lamb County, Texas, will receive bids for the purchase of one or more acres of land in the ...

Power or more road ...

one or more 12 foot ...

Simon D. Hay, County ...

County, Texas.

At Olton, Texas, April ...

April 11, 18, 25, May 2.

DISHWASHING

EASY FOR YOU

First: A sink of the type you won't tire from bending a modern swinging spray; Third (and this is the way with the whole electric dishwashing sink) and see our demonstration will be delighted!

L. C. CAWTON

Plumber,

...

...

...

...

...

...

...

...

...

...

...

...

...

...

...

...

...



**M SYSTEM PRICES**  
**Reflect True Value**

A FEW OF OUR MANY GOOD PRICES FOR SATURDAY

**FLOUR** Enn's Best, 48 pounds **\$1.63**

PEACHES, Calpana, No. 2 1-2 ..... 17c JELLO, All Flavors, 3 for ..... 23c

CORN, Templar, No. 2 ..... 12c MATCHES, Spotlight, 6 boxes .... 24c

APPLE BUTTER, Libby's 2 1-2 ... 25c RAISINS, 2 lb. package ..... 15c

**BANANAS** Large Yellow Fruit, dozen **19c**

KAFFEE HAG, 1 lb. .... 64c CORN FLAKES, Kelloggs large pkg 11c

MALT, Puritan, 2 1-2 lb. can ..... 49c SOAP, Big 4, 10 bars ..... 35c

SKINNERS, 3 packages ..... 23c CIGARETTES, Carton ..... \$1.15

MACARONI AND SPAGHETTI

LUCKY'S, CAMELS, CHESTERFIELDS

**Shortening** Armour's White Cloud, 8 pounds **\$1.12**

CLEANSER, Sunbrite, 4 for ..... 19c RAISIN BRAN ..... 11c

COCONUT, Dunham, 1-2 lb. pkg. ... 19c PEAS, Blue Bell, No. 1 ..... 12c

DRY SALT, lb. .... 16c SOAP, Palmolive, 3 for ..... 21c

**Marshmallow Cookies** ASSORTED 3 POUND BOX **59c**

# A BIG TRADES DAY AT

## Littlefield, Monday, May 6th

\$200 AWARDS  
In Valuable  
Prizes and  
Premiums

### RODEO, RACES AND SPORTS! Pure Bred Livestock Given

\$200 AWARDS  
In Valuable  
Prizes and  
Premiums

## Fun for Everybody During the Day

A cordial invitation is extended by the merchants of Littlefield to the people living in the neighborhood towns and the country surrounding this city to be their guests on this occasion. Come—let's make it one day of real pleasure to all!



Bronc Riding, Steer Riding Bell Contest, Ladies Steer and Bronc Riding Exhibitions, Cowboy Novelty and Relay Races.

FIRST PRIZE—  
Registered Jersey Heifer Calf.

SECOND PRIZE—  
Registered Young Sow.

THIRD PRIZE—  
Pen of Pure Bred Chickens.  
Four Hens and One Rooster.

FOURTH PRIZE—  
250 Pounds of Flour

FIFTH and SIXTH PRIZES—  
Valuable Carpenter Tools.



Old Frontier Day Show of Numerous Attractions of Interest and Instruction. Various Other Athletic Events.

Rodeo Lasts Two Days, SATURDAY and MONDAY, May 4th-6th  
TEXAS MAUDE, Lady Bucking Bronc Rider, will ride each day. Show and Rodeo begins 2:30 o'clock each afternoon

### FREE AUCTION

At 10:00 A. M. of Trades Day there will be a free auction to which all visitors are invited attendance. Bring your farming tools, implements, household goods, livestock or what you have to be sold without cost to you.



BAND MUSIC DURING THE DAY

### MERCHANT TREAT

The merchants of Littlefield have put up the cash to pay for the Premiums. They believe in good stock, well farmed land, and always stand ready to forward the interests of the community.

FREE LEMONADE FOR EVERYBODY  
Drink Your Fill on Littlefield

EVERY MERCHANT IN LITTLEFIELD WILL GIVE SPECIAL PRICES ON THEIR GOODS DURING TRADES DAY

These Trades Days will be continued each First Monday, at which time prizes of Registered Bulls and Heifers, Pure Bred Hogs and Poultry will be given away. After this first Trades Day, tickets will be given at each business place—one ticket with each Dollar purchase.

SUBSCRIBE TO THE LAMB COUNTY LEADER, NOW

## Viking Cream Separators



**FATTEN YOUR BUTTER FAT PROFITS**

Lead the world for efficient skimming and easy washing. Noted for easy turning and low upkeep.

**NOW ON DISPLAY AT OUR STORE In Three Sizes**

We will be glad to explain their merits.

See our line of implements and get prices before you buy.

**THAXTON BROS. HARDWARE**

Littlefield,

Texas

## HAIL! THE COW!

No section North, South or West of us offers the golden opportunity we have to make this one of the greatest dairy sections, in not alone all of Texas, but the entire South. Now is the time for every farmer and citizen to give this industry serious consideration.

### FEDERAL LAND BANK FARM LOANS

The Federal Land Bank of Houston will loan you money at 5% interest. We will make five year loans with a 21 year option, repayment privilege in whole or in part after five years without bonus.

### THREE MILK COWS

Pay Principle and Interest on your farm loan, your profit from other crops are yours. Milk returns more dollars to farmers in a year than crops of cotton and wheat. The dairy crop in the United States is worth \$2,700,000,000 a year to those who produce it. Come in and see us, we are here to serve you and to help you.

**J. E. Barnes, Sect'y**

"If it's Insurance, we write it."

COOPER BUILDING, LITTLEFIELD, TEXAS

## PROTECT THE TAX PAYERS MONEY!

SAVE IN FUTURE ELECTIONS!

SETTLE THE QUESTION NOW!

MOVE IT TO AMHERST MAY 11

The tax payers of Lamb County cannot afford to spend their money for a county seat election every two years.

Amherst has the advantage over all other towns for the location of the County Seat. The great Commonwealth of Texas, provides this advantage for towns located within five miles of the geographical center of their respective counties.

Only a majority of the votes cast are required for Amherst to secure the County Seat. It requires Sixty-six and two-thirds of the votes cast to move it to Littlefield. Why move it from one corner of the county to another? Amherst is the nearest point to the center that can ever be had in Lamb County.

AMHERST is the strategic point. It is more convenient to all other towns in the county than any other location in Lamb County.

All these reasons point to the fact that the State of Texas, with its just laws, award AMHERST a large margin over all other points in the County.

AMHERST is going to secure the County Seat! Citizens who know the real facts, admit that AMHERST is the most convenient point to serve all alike. True committee reports show that AMHERST is gaining votes rapidly. The excellent citizenship of Lamb County is learning the facts; they wish to be fair; they want equality; they want the County Seat in a central point where all will be served on an equal basis.

The voters of Lamb County are going to settle this vital question once and for all, and locate the County Seat at AMHERST; and by doing so WILL SAVE THE TAX PAYERS MUCH EXPENSE IN FUTURE ELECTIONS.

**AMHERST CAMPAIGN COMMITTEE**

(Advertisement)

## COMMITTEE ANSWERS OLTON'S CLAIMS MOVEMENT OF COUNTY SEAT FROM N. E. CORNER TO LITTLEFIELD IS UNDESIRABLE

In its letter recently mailed to every voter in Lamb County the Olton committee, in an effort to convince the voters that it is best to keep the county seat at Olton, Texas, makes several statements, each of which when properly construed, is good argument in favor of removing the county seat from Olton at this time, and we trust that the voters will carefully read the letter and see if sufficient admissions are not made by an extreme point, but simply says, citizen of the county, living either north or south of the sand hills, in voting for removal of the county seat to Littlefield.

One paragraph and sentence, in the Olton letter, reads as follows: "IT IS TRUE THAT OLTON IS LOCATED IN THE NORTHEAST PART OF THE COUNTY, BUT WHY FAVOR A MOVE TO ANOTHER EXTREME?"

By making the above statement Olton admits that she is located at an extreme point. Further, in making the statement she does not come out and say that Littlefield is located at an extreme point, but simply says, "Why favor a move to another extreme." It is to be presumed that Olton intends to infer thereby that Littlefield is located in an extreme place. This Littlefield denies, and says, that the town of Littlefield, Texas, is the proper location for the county seat of Lamb County, Texas.

Why do we so contend? Take into consideration, now, the location of Littlefield. It is located half way between the east line and west line of Lamb County. Then it is centrally located east and west. Littlefield is eight miles from the south line of the county and about ten miles from the sand hills. Four-fifths of the population of the county reside south of the sand hills. About one-fourth of the population reside within the town of Littlefield. All citizens of the county will agree with us that the county seat should be located at the place most conveniently accessible by the majority of citizens of the county, and, when it is considered that Littlefield is half way east and west, and eight miles from the south line of the county and only ten miles to the sand hills, and located in the

heart of the thickly settled portion of the county, then answer this, how can Littlefield be considered an "extreme?"

Furthermore, we hear a great deal about the center of the county today. Amherst claims to be within five miles of the center of the county. We have not measured the distance with a tape line from Amherst to the center, but it is commonly known that the depot in Amherst is seven miles from the center of the county, and that the depot in Littlefield is nine miles from the center, this distance being an air line. The difference of two miles is too negligible to fuss over. But, the center of the county is practically due north of Littlefield, and considerably northeast of Amherst. A farmer who resides exactly at the center of the county, in order to go to Amherst must travel the same distance as he would to go to Littlefield. Why do we say this? Because in going from the center of the county to either Littlefield or Amherst, it is going to be necessary to follow the section or labor lines, and since Amherst is located several miles west and south of the center of the county, traveling from the center to town of Amherst it is necessary to go south and east and in following the section lines one would have to go as far to Amherst as to Littlefield from the center of the county. This can very easily be verified by an inspection of a county map showing the center of the county, or by the use of an automobile speedometer, if someone cares to test and prove our statement.

The southern part of the county pays 81 per cent of all taxes of the county. The precinct in which the town of Littlefield is located pays 38 percent of all county taxes. As indicated above, about one-fourth of the people of the county reside in the town of Littlefield. The rural population is more dense immediately surrounding the town of Littlefield than elsewhere in the county. The county seat located at Littlefield will conveniently accommodate the majority of citizens of Lamb County, and we think that this should control in considering location.

Respectfully submitted,  
LITTLEFIELD CAMPAIGN COMMITTEE FOR COUNTY SEAT REMOVAL.

Read other articles in this newspaper on the County seat removal.

### AMHERST vs. ANTON

Amherst defeated Anton Sunday afternoon 12-4 in a game of baseball. "Big Hanks" again featured with the willow.

Chasing a rainbow is a very poor way to provide for a rainy day.

### WHY THE COUNTY SEAT SHOULD BE MOVED TO LFD.

By Blanche Brannen, Littlefield High School

When Lamb County was organized there was only one place to locate the county seat. That place was at Olton. In recent years, several towns have been founded and are rapidly progressing. Some of the towns want an election to be called in order that the location of the county seat may be voted upon. Lamb County has never had an election like this since its organization and some of the people want an election so as to give the newer towns a fair chance for being the place chosen for the county seat.

First in growth among the towns of Lamb County is Littlefield. Although not the center of the county, Littlefield is the center of population and industry. Eighty-two per cent of the people of Lamb County live south of the sand hills. Thirty-eight per cent of the county's tax payers live in or near Littlefield. No other town in the county has as many industrial enterprises, such as cotton gins, compress, packing house, and others, as has Littlefield. Littlefield is one of the promising towns of the South Plains. It is better to locate the county seat in the center of population and industry than to locate it in the center of the county according to miles.

Littlefield is a good place for the county seat to be located because of its location on the main Santa Fe railway line and the R Q M high-way.

one of the best dirt roads in the of Texas. The county officials easily come to Littlefield when necessary because of the good auto roads or the railroad.

There are some of the large who do not want the county seat moved because of the extra expense to the county for building a new house. The court house which have now is not large enough, a new one could be built at only a more expense than the one which are using could be built over.

There are various other reasons why the county seat should be located in Littlefield. I have only the outstanding reasons, I am sure that if the citizens of Lamb County choose Littlefield for the location of the county seat, they have made a very wise choice.

### OFFICERS ELECTED

The ladies of the Lutheran church at their meeting held last week elected officers as follows:

Mrs. Brehelbach, president;

W. Luecke, sec'y-treasurer.

The next meeting will be held at the home of Mrs. Bohot, May

### EASY FRENCH DRESSING

Measure into wide-mouthed bottle with tight top three times as much olive oil as vinegar or lemon juice to taste, add few drops of salt and a small cube of ice. Shake several times and dressing will be perfectly blended.

Have your printing done at

## CLEANLINESS!

IS NEXT TO GODLINESS!

The preacher may help to make you good, but it takes us to CLEAN YOUR CLOTHES.

Give us a trial!

## HENRY & KEY, DRY CLEANERS

"We Know How"

Phone 48,

We Call for and Deliver

LITTLEFIELD,

TEXAS

## ANNOUNCEMENT

Having moved to our new location five doors south on the same side of Main street, we will be equipped with larger quarters, increased stock and better facilities for taking care of our increasing patronage. We invite you to call and see us in our new location.

We wish to express our appreciation for the more than 1,000 people who visited our store and registered last Saturday. Call again!

### MOTHERS DAY SOON HERE

Better place your order for flowers now. We can give you prompt and efficient service in either Cut Flowers or Potted Plants

## Burleson-Mason Company

Incorporated

PIONEER UNDERTAKERS AND EMBALMERS IN LITTLEFIELD

LITTLEFIELD,

TEXAS

SEE US WHEN IN NEED OF FURNITURE OF ANY KIND

**RESOLUTION**  
**OF THE STATE OF TEXAS**

(A Correct Copy)  
**JANE Y. McCALLUM,**  
 Secretary of State.  
 April 11, 18, 25, May 2, 1929.

**A JOINT RESOLUTION**

H. J. R. No. 7  
 proposing an amendment to Section 5 of Article 4 of the Constitution of the State of Texas fixing the salary of the Governor; providing for its submission to the voters of the State of Texas as required by the Constitution, and making appropriation therefor.

**BE IT RESOLVED BY THE LEGISLATURE OF THE STATE OF TEXAS:**

Section 1. That Section 5 of Article 4 of the Constitution of the State of Texas be so amended as to hereafter read as follows:

"Section 5. The Governor shall, at stated times, receive as compensation for his services an annual salary of Ten Thousand Dollars and no more and shall have the use and occupation of the Governor's Mansion, fixtures and furniture; provided that this amendment shall not become effective until the third Tuesday in January, 1931."

Sec. 2. The foregoing Constitutional amendment shall be submitted to a vote of the qualified electors of this State at an election to be held throughout the State on July 16, 1929 at which election all voters favoring said proposed amendment shall write or have printed on their ballots the words: "For the amendment to the Constitution of the State of Texas fixing the salary of the Governor." -oid pms Jusosodo sioqoa osopq puy posed amendment shall write or have printed on their ballots the words: "Against the amendment to the Constitution of the State of Texas fixing the salary of the Governor."

Sec. 3. The Governor of the State of Texas is hereby directed to issue the necessary proclamation for said election and to have same published as required by the Constitution for amendments thereto.

Sec. 4. The sum of Five Thousand (\$5,000.00) Dollars, or so much thereof as may be necessary, is hereby appropriated out of any funds in the Treasury of the State of Texas not otherwise appropriated to pay the expense of such publication and election.

Approved March 19, 1929.  
 (A Correct Copy)  
**JANE Y. McCALLUM,**  
 Secretary of State.  
 April 11, 18, 25, May 2, 1929.

**ORDER FOR COUNTY SEAT ELECTION**

THE STATE OF TEXAS  
 COUNTY OF LAMB

WHEREAS, on the 29th day of March, A. D. 1929, a petition was presented to me, as County Judge of Lamb County, Texas, by W. H. Harris and 531 others, stating that it is desirable to remove the County Seat of Lamb County, Texas, from Olton, Texas, to Littlefield, Texas, of which number more than two hundred are legal and qualified voters and free holders of Lamb County, Texas, residing in said county, praying that an election be held in Lamb County, Texas, at the various voting precincts of said county, for the purpose of submitting to a vote of the people of Lamb County, Texas, the question of whether or not the County Seat of Lamb County, Texas, shall be removed from Olton, Texas, to Littlefield, Texas; and

It appearing that said petition bears the requisite number of qualified voters and free holders who are residents of said County, and is in every respect in conformity to law:

THEREFORE, I, Simon D. Hay, in my capacity as County Judge of Lamb County, Texas, do hereby grant said petition, and do hereby order that an election be held in the various voting precincts of Lamb County, Texas, on Saturday, the 11th day of May, A. D. 1929, for the purpose of determining whether or not the County Seat of Lamb County, Texas, shall be removed from Olton, Texas, to Littlefield, Texas.

The said election shall be held in Voting Precinct No. 1 in the Court House of Lamb County, Texas; and B. A. Dodson and Mrs. C. M. Owens are hereby appointed judges of said election in said precinct.

In Voting Precinct No. 2 the said election shall be held at the Spring Lake School House and J. F. Kelly and Jack Henson are hereby appointed judges of said election in said precinct.

In Voting Precinct No. 3 the said election shall be held at the residence of H. L. Woody; and Archie Brown and H. L. Woody are hereby appointed judges of said election in said precinct.

In Voting Precinct No. 4 the said election shall be held at the City Hall in the City of Littlefield, Texas; and R. E. McCaskill and C. L. Harless are hereby appointed judges of said election in said precinct.

In Voting Precinct No. 5 the said election shall be held at the High School Building of Sudan Independent School District; and C. C. Preston and J. J. Blowhard are hereby appointed judges of said election in said precinct.

In Voting Precinct No. 6 the said election shall be held at the Pleasant Valley School House; and Fred Deitmerman and R. L. Robineck are hereby appointed judges of said election in said precinct.

In Voting Precinct No. 7 the said election shall be held at the City Hall in the City of Sudan, Texas; and W. W. Carpenter and J. M. Carruth are hereby appointed judges of said election in said precinct.

In Voting Precinct No. 8 the said election shall be held at the public school building in City of Amherst, Texas; and E. T. Phillips and W. L. Gentry are hereby appointed judges of said election in said precinct.

In Voting Precinct No. 9 the said election shall be held at public school house of Fieldton School District; and J. E. Holland and Millard Phillips are hereby appointed judges of said election in said precinct.

In Voting Precinct No. 10 the said election shall be held at Sod House Camp; and Martin White and C. E.

Presley are hereby appointed judges of said election in said precinct.  
 In Voting Precinct No. 11 the said election shall be held at the residence of A. H. Scivally; and E. M. Sullivan and J. B. Blessing are hereby appointed judges of said election in said precinct.

In Voting Precinct No. 12 the said election shall be held at the residence of Fred Groom; and J. L. Dow and Roy Hutson are hereby appointed judges of said election in said precinct.

In Voting Precinct No. 13 the said election shall be held at the residence of J. G. Harrell; and J. G. Harrell and John Lowell are hereby appointed judges of said election in said precinct.

The said election shall be held under the provisions of Chapter 5, Title 33, Revised Statutes of Texas, 1925, and the Constitution and Laws of the State of Texas; and shall be conducted as near as may be in accordance with the general election laws of the State of Texas; and all persons who are qualified voters under the Constitution and Laws of the State of Texas shall be entitled to vote at said election.

Should the voter be in favor of removing the county seat from Olton, Texas, to Littlefield, Texas, he or she shall write or cause to be written or printed on his or her ticket: "For removal to Littlefield, Texas"; or, should the voter be in favor of the county seat remaining at Olton, Texas, he or she will write or cause to be written or printed on his or her ticket: "For remaining at Olton, Texas."

A copy of this order signed by the County Judge of Lamb County, Texas, and certified to by the County Clerk of said County, shall serve as proper notice of said election. And thirty (30) days notice of the time and places of holding said election shall be given by posting true and correct copies of this order in three (3) public places within each voting precinct in said county, and by publication thereof in the English Language in four (4) weekly issues of a newspaper of general circulation which has been regularly and continuously published for at least one (1) year previous to the date of this order in Lamb County, Texas, and the date of

first publication, or so much thereof as may be necessary, shall be thirty (30) full days prior to the day of election.  
 It is further ordered that this order shall be spread and recorded upon the minutes of the Commissioners' Court of Lamb County, Texas.

Ordered this 30th day of March, A. D. 1929.

**SIMON D. HAY,** County Judge  
 Lamb County, Texas.

THE STATE OF TEXAS,  
 COUNTY OF LAMB

I, A. H. McGavock, Clerk of the County Court and ex-officio Clerk of the Commissioners' Court of Lamb County, Texas, do hereby certify that the above and foregoing is a true and correct copy of election order issued by the county judge of said county, ordering an election to be held in the various voting precincts of Lamb County, Texas, to determine whether or not the county seat of Lamb County, Texas, shall be removed from Olton, Texas, to Littlefield, Texas, which order is of record on page 444 of Book 2 of Minutes of Commissioners' Court of said County.

Witness my hand and seal of said court, this 30th day of March, A. D. 1929.

**A. H. McGavock,** County Clerk and Ex-Officio Clerk of the Commissioners' Court of Lamb County, Texas.

(SEAL)  
 Commissioners Court, Lamb County, Texas.  
 (SEAL)  
 County Court, Lamb County, Texas.  
 April 4, 11, 18, 25, 1929.

**MAYOR OF PENELOPE**

In last week's issue of the Leader, in reporting the funeral services of Mrs. A. Dvorak, it was stated that Mayor F. E. Barton, of Wichita Falls, was among those attending. Mayor Barton was from Penelope. The reporter having confused the places, correction is herewith made.

Most of the Texas honey crop comes from cotton blossoms and the millions of acres of cotton put Texas in second place in honey production, excelled only by California.

**GUERNSEY HEIFERS ARE TO BE SHIPPED INTO LFD.**

Arrangements have been made to finance a carload shipment of Guernsey cows from Wisconsin into Lamb county, according to E. C. Cundiff, who is taking an active part in the movement.

He states that Guernseys were selected because of the general favorable interest in that breed in this vicinity. There is little difference between Guernseys and Jerseys, said Mr. Cundiff, but from actual experience the Guernseys have proved to be gentler in nature and not so nervous in disposition as the Jerseys, and apparently adapt themselves more naturally to the Plains country.

County Agent D. A. Adam reports there will be about six head placed in Sudan, one or two in Amherst and 14 or 15 in Littlefield.

Several Littlefield business men have offered to put up half the price of a Guernsey heifer, the purchaser paying them back at so much per month. This plan will enable many to buy these fine heifers. These heifers are to be bought already bred and due to freshen in early fall, as by getting bred heifers one will be able to obtain blood of some of the best Guernsey bulls in Wisconsin. A registered bull is also to be shipped here in this carload.

There is still lacking five or six head to complete the carload, and parties interested should see Mr. Cundiff or Mr. Adam immediately.

About 450,000 electric irons are used in Texas homes. This is the most widely used electrical appliance.

**ADVERTISEMENT OF LIMITED PARTNERSHIP**

We, the subscribers, have this day entered into a limited partnership agreeably to the provision of the Revised Statutes, Title 105, relating to limited partnerships, and do hereby certify that the name of the firm under which said partnership is to be conducted is HAPPY HILL FARMS; that the general nature of the business to be transacted is the buying and selling of chickens, turkeys, hogs, cattle and other livestock, and producing crops of different kinds and doing a general stock farm business, and the same will be transacted in the city of Amherst; that the names of the general partners of the said firm are J. W. White and his wife, Velma G. White, of Lamb County, and the special partner is Wm. J. Harris, of Lamb County, Texas; that the capital contributed by the said Wm. J. Harris, special partner, is \$500.00 in cash; that the period at which said partnership is to commence is the 31st day of January, A. D. 1929, and that it will terminate on the 31st day of December, A. D. 1929. Dated this 31st day of January, 1929.

**J. H. WHITE, VELMA G. WHITE,**  
 General Partners.  
**Wm. J. HARRIS,** Special Partner.  
 April 25, May 2, 9, 16, 23, 30, 1929

In 1928 Texas produced and marketed 2,830,000 quarts of strawberries valued at \$566,000, 91,900 tons of cabbage valued at \$1,760,000, 5,000,000 bushels of spinach valued at \$2,250,000.

The 1920 census showed that during the preceding decade Dallas had increased 72.6 per cent in population, Houston 76.2, and San Antonio 67 per cent, with Ft. Worth a 45.2 per cent.

**What Satisfied Users Say**



Walter Fly, of Vega and Amarillo—a Prominent Phillips User



Scene on Fly's Farm South of Vega, Showing 5 Tractors which Use Phillips Products 100%

The following are excerpts from bona-fide letters on file at Phillips Petroleum office, written by satisfied customers. They tell their own story!

Vega, Tex., March 20, 1929

Phillips Petroleum Company,  
 Amarillo, Texas.  
 Gentlemen:  
 I started to use Phillips oil last July 1, and find it superior to all oils I ever used. I had the first tractor used successfully in the Panhandle in 1913. I think I have used about all kinds of oil made.  
 Anyone can't go wrong in buying Phillips oil.  
 Yours truly,  
 Herschel Climer

Hereford, Texas, March 21, 1929

Phillips Petroleum Company,  
 Amarillo, Texas.  
 Dear Sirs:  
 I have obtained complete satisfaction from the use of Phillips motor oils and Phillips 66. Before using them, my oil was costing me much more money. Now I am getting exactly as good service from Phillips oils and will continue to use them in both my tractors and my automobiles.  
 Your service is excellent.  
 Yours very truly,  
 J. L. Hutson

Hereford, Tex., March 21, 1929

Phillips Petroleum Company,  
 Amarillo, Texas.  
 Gentlemen:  
 I want to tell you of the extra fine service I have obtained from the use of your Phillips oils and motor fuel. Recently we overhauled a tractor that had completed about 3500 acres of plowing. We found a very small amount of carbon which showed us that the lubricating oil was doing a correct job. We also found that there was practically no wear on any part of the motor.  
 I am convinced there is no economy in buying bargain oils. Phillips motor and tractor oils meet my demands and I have never found as complete satisfaction in any other oils.  
 Yours very truly,  
 F. W. Brunson

Hereford, Texas, March 21, 1929

Phillips Petroleum Company,  
 Amarillo, Texas.  
 I am an Oakland and Pontiac dealer and am very much interested in lubricating oils. I have made a number of endurance tests and operating tests and find Phillips motor oils are far superior to any I can obtain. Therefore, I am using them exclusively and am glad to recommend them to my customers.  
 Yours respectfully,  
 Dixon Motor Co.  
 By O. M. Dixon, Pres.

There's Full Satisfaction in Phillips Products

**Phillip-up with Phillips**



**O. K. YANTIS, General Agent**

Day & Night Service Station  
 Phillips Service Station, South Main Street  
 Arnn's Filling Station

© PP Co. 1929

# LAMB COUNTY LEADER

Published every Thursday afternoon at Littlefield, Texas.  
Subscription: \$1.50 per year; 75 cents for six months.  
Advertising rates given upon application.

No. Entered as second class matter May 24, 1923, at the post office 27 at Littlefield, Texas, under the Act of March 3, 1897.

JESS. MITCHELL, Editor and Publisher

Subscribers who change their addresses, or fail to get their paper, should immediately notify this office, giving both new and old addresses. Communications of local interest are solicited. They should be briefly written, on only one side of the paper, and must reach this office not later than Wednesday noon of each week. The right of revision or rejection is reserved by the publisher.

Advertising that does not show in its text or typography that it is paid for must be marked as an advertisement. All local advertisements remain in this paper for the time specified or until ordered out. All notices, it matters not by whom nor for what purpose, if the object is to raise money by admission fee or otherwise, is an advertisement and when sent in for publication must be paid for at the regular advertising rate per line for each issue printed.

Obituaries, cards of thanks, and resolutions of respect will also be charged for at the same rate.

Any erroneous reflection upon the character, standing or reputation of any person, firm or corporation which may appear in the columns of the Littlefield Leader will be gladly corrected upon its being brought to the attention of the publisher.

In case of errors or omissions in local or other advertisements, the publisher does not hold himself liable for damage further than the amount received by him for such advertisement.

## GETTING TOGETHER

One reason why "farm relief" hasn't materialized is because the organizations maintained by the farmers themselves have been unable to agree on what the relief should consist of and how it should be distributed. In the past few weeks, however, three of the largest farm organizations in the U. S. have gotten together on the proposition, reached an agreement, and are now standing firm for exactly the same thing.

The National Grange, The American Farm Bureau Federation and The Farmer's Educational and Cooperative Union have drawn up a measure to be offered Congress through its agricultural committee. It asks for a system whereby the tariff will be effective on all crops so that surpluses will not depress domestic prices; it seeks to have the government control and dispose of surpluses, which would automatically check over-production. And it further seeks to establish farmer ownership and control of marketing organizations, with due consideration for cooperatives already established.

It is the longest step yet toward actual relief, the getting together of the three big farm organizations, and everyone around Littlefield will join with the balance of the country in praising such a move. Now that farm organizations have quit fighting among themselves and started to work in unison relief of some sort is bound to come.

If you believe the ads, cigarette can now cure everything but skidding.

## BE SATISFIED

We suppose it's human nature to be dissatisfied. But we sometimes wish nature had been more sparing with it and had not, so far as Littlefield citizens are concerned, scattered so much of it around.

The hardest thing we have to contend with here, and we feel that all towns of like size are in the same boat, is dissatisfied boys and men. The boy wants to be a man, and the man wants to be a boy; they are both dissatisfied at intervals with local conditions, and along about this time of year the germ of unrest gets into their systems and they want to "get away." The boy imagines he isn't appreciated in his home town and feels he could do better somewhere else. The man gets "blue" when a little cloud comes in the sky, and starts telling how much better off are those who live in some distant section than we are here. And these fits of dissatisfaction, even though they may occur at long intervals, only serve to rile up others and make them, too, complain of their lot and their surroundings.

We guess the only cure for the dissatisfied ones is for them to get out, visit other communities and see how others fare. Maybe we've been using the wrong kind of remedy in trying to persuade them to stay here and be satisfied. Maybe it would be a good idea, the next time you meet a fellow who tells you how much better some other town is than his own, to ask him why he doesn't move there.

To enable your boy to overcome that shy and retiring disposition get him a job driving a five-ton truck.

## DON'T TRUST TO LUCK

Whether he owns a car or not, the average Littlefield citizen knows more about it from a mechanical standpoint now than he did eight or ten years ago. Even the man who does not own an auto knows it will not run

safely month in and month out without attention and adjustments. No other kind of machine will, so why should an auto?

Starting the spring and summer driving without first having a mechanic go over the car to make sure that every part is in good condition, and properly adjusted and that every bolt and nut is tight is just another way of preventing an accident later on. Wishing after the mishap occurs that you had done so isn't going to help any. It's foolish to postpone the very thing that may occasion a stiff bill if it is not attended to.

Maybe you've been lucky so far—but luck has a way of deserting us just when we need her most. Do the sensible thing and have the car overhauled before you start your spring and summer driving.

An honest confession is not only good for the soul, but it's good for a column or two in the newspapers.

## OUR WORST AILMENT

Start down the street and ask every Littlefield resident you meet to name what he or she believes is our worst ailment and we'll venture to say not one out of the entire number will furnish the correct answer.

It's "worry," according to members of the Missouri Medical Society at their recent state convention. Worry, they say, brings about more distress than anything else with which the human race is afflicted. They assert that worry is caused by fatigue, and their cure for it is rest and relaxation.

Worrying over the loss of a job, or a poor crop yield, over unpaid bills or a thousand other things will shorten life more quickly than anything else, they contend, and bring about more unhappiness in a community than an epidemic of disease.

"Forget yesterday and live in hope that tomorrow will be a better day," is their remedy. And it's good medicine if you can make yourself take it.

The government is able to make smaller bills, but it can't reduce the size of a charge account.

## LITTLE LEADERS

Say what you will about them, but Littlefield girls dearly love spinning wheels—providing they are on automobiles.

Our advice to every Littlefield man is not to knock the church. It may have improved a good deal since you were there.

The reason some Littlefield women quit calling their husbands "pet" is they soon get so they are about as much of a one as a pet corn.

No Littlefield man can be said to be truly wise until he has learned that hair tonics are a lot of bunk.

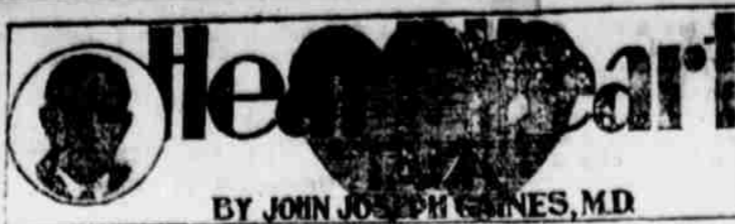
What we need around Littlefield is not more young men making speed, but more young men planting spuds.

Littlefield parents will do well to teach their boys that well-digging is about the only profession in which they can start at the top.

About the only thing the average Littlefield wife knows about the perfect husband is that her's is a long, long ways from being one.

A Littlefield woman likes for her husband to pay her compliments, but she also wants him to remember she can use a little money, too.

Littlefield girls have about quit studying the art of cooking. We presume they're all figuring on marrying millionaires now.



## GETTING ON

Yesterday my chauffeur took me through a much-crowded traffic way. Some of his maneuvers with the machine were hair-breadth in precision. He never grew ruffled in temper; his nerve seemed absolutely dependable, though his welfare and mine were skirting the danger-zone. I congratulated him when we alighted at our destination.

"It's done by practice," said he; "You've got to observe the rules—watch for an opening, and go ahead."

Simple enough. Just obey the laws, watch for your opening—and go ahead! Come to think of it, don't the same three simple rules hold good in every walk of life?

There are people who are very lax about the rules; they seem disobedient to begin with—a very undesirable trait in men and women. Negligence of existing laws grows on folks that

travel on life's crowded thoroughfare. They get on the wrong side of the street, get fined, curse the traffic policemen secretly, and imperil the lives of their fellow-men, as though life were a trivial thing.

The fellow who never gets there hasn't looked for the opening; goes around in circles, with eyes half closed. Then he grumbles because business is dull; he is the dullard. The opening is there, just as soon as the other driver gets out of the way.

Then, if one doesn't see the opening—hasn't looked for it—he simply never goes ahead. He is in a position to get bumped into, and soundly roasted because he is obstructing the traffic; worse than all, he has only himself to blame. If he doesn't do it, his fellow travelers will blame him in full measure. Obey the rules watch for the opening—then go ahead. Simple, isn't it?

## AMERICAN ART REFERRED TO THAT OF OTHER COUNTRIES

By Eric Dell Adams, English IV.

Why should we go to Europe to buy our pieces of art, when we have as good and better art at home in America? Is it false pride that makes us proud of imported things? Yes, that is the reason. When a lady comes home from abroad, she likes to say to her friends, "Oh, that little picture? I picked that up in Versailles," or, "I happened to find this in a little antique shop in Italy. I only paid five thousand dollars for it. Don't you think I was lucky?"

If you are going to spend this much for art, why not spend it at home. We should always patronize our own country when it is possible. We should not go back on our own country and help other nations to rise.

You may say that one reason for

buying works of art from other countries is that American art is young and undeveloped. It is true that art in America is not as old as that of Europe, but this does not make it impossible for America to have as fine arts as the other countries. In America, we have the works of Stuart Morse, Trumbull, West, Gilbert and many others.

However, it is not very encouraging to our American artists and sculptors to see the American people go to other countries to buy their art. Compare art production with any other profession or business. If the people persist in going away from home to buy the same quality of goods that they could buy at home, there is not much room for the dealer or the producer to get ahead.

Again, compare the artist or the sculptor with a plant or a flower. Just as a flower needs sunshine and rain, so does the artist or the sculp-

## Pure Half and Half Cotton Seed

From Frederick Seed Farms, Frederick, Okla. Seed on hand in three bushel sacks. These seed are extra good quality. Only have small supply. See me at once.

J. B. SIKES

At Blalock Land Office,

Littlefield

## American Gasoline

"Powerful As Its Name"

AMERICAN OILS

We Fix Flats



STATION

One Block East of Bank

W. W. JONES,

Manager

## SPECIAL PRICES FOR SATURDAY

We meet all competition prices!—and you are always assured of fresh, wholesome groceries when trading at our store.

We specialize in Fresh Vegetables and Fruits direct from the gardens, orchards and cold storage of producers.

Our Quality, Prices and Service Will Please You

HARRIS CASH GROCERY

N. E. HARRIS, Owner G. C. HARRIS, Manager

## THE HOUSE OF SERVICE

With our modern equipment we can take care of all your tailoring needs.

Let us have your fine garments as well as your heavier clothing. We will handle them as carefully as you would yourself and insure you the very best of service.

We do relining, repairing for all garments, and cleaning and blocking of hats, every phase of our work being handled in a manner to meet your most critical approval.

EVINS DRY CLEANER

"Where Cleaning Is An Art"

On South Main Street,

Littlefield

for need backing, words of encouragement, and signs of appreciation. Otherwise, his art cannot live. The American people have the same thoughts and ideals that other people do. Then, why is other art considered better than ours? If we think that America, our home country is not good enough for us, the trouble is that we are not good enough for America.

## 5,000 EXPECTED TO BE HERE AT CAMP MEETING

R. O. Connor, business manager of the Littlefield college, advises that the Church of Christ plans holding a camp meeting here about the middle of August, which will continue for a period of two weeks, the meeting to

be held on the college grounds. 5,000 people are expected to attend. The meeting held here last year was a very successful one, people attending from different states, an excellent representation from over 100 churches.

## NOTICE TO CUSTOMERS

Our customers are hereby notified that on and after May 1st National Bank, this city will have business hours at 8:00 a. m. to 4:00 p. m. It will be appreciated if this change is noted by all members and business transacting with the bank.

—C. O. STOKES  
Kwiterchellakin and



LIFE and growth for chicks... this sign points that out to you. It directs you to Purina Chick Startena. The new feeding discoveries that come to you in Startena this year will give better livability and 15 to 20% greater growth than ever before.

There's lots of buttermilk in Startena. Chicks like it and grow on it. The cod-liver oil in Startena takes the place of sunshine and keeps chicks from getting leg weakness.

And there's alfalfa leaf meal, granulated meat, wheat middlings, wheat bran, wheat germ, corn meal, bone meal, linseed meal, calcium carbonate and salt in Startena.

Everything there... that chicks need. Order your Purina Chick Startena today



LITTLEFIELD COAL & GRAIN CO.

Phone 12

LITTLEFIELD FEED & SEED STORE

The Checkerboard Store on Main St. Phone

## RECIPE FOR FARM RELIEF

Cows—Sows—Hens—Diversification.

Mix these with a fair sprinkling of good management.

ALWAYS RELIEVES!

And no legislator nor body of legislators can provide anything better.

Try this remedy this year.

THE BANK THAT SATISFIES

"There is no Substitute for Safety"

FIRST NATIONAL BANK  
LITTLEFIELD, TEXAS

WE STRIVE FOR A MAN TO MAN RELATIONSHIP THAT WILL PREVENT MISUNDERSTANDINGS, MERIT MORE CONFIDENCE, AND CREATE FRIENDSHIPS.

**Dr. R. M. Walthall**  
DENTIST  
ROMBACK BUILDING  
Littlefield  
Phone 201.

**MAYNARD V. COBB**  
Doctor of Chiropractic  
Equipped to give you the best of health service  
CONSULTATION FREE  
X Ray Facilities  
Office Hours: 9 to 12 a. m.,  
2 to 5 p. m. Other times by appointment  
PHONES Res. 63  
Office 124  
2nd Floor Palace Theatre Bldg.  
Littlefield, Texas

**Littlefield Bakery**  
FRESH BREAD  
HOT ROLLS  
AND PIES  
Whole Wheat Bread  
Every Thursday.  
Littlefield Bakery

**Dr. W. H. Harris**  
Physician & Surgeon  
Office upstairs in  
ROMBACK BUILDING  
Residence Phone 49 Office 201

**E. A. BILLS**  
Attorney and Counselor at Law  
Littlefield, Texas  
Office upstairs in Littlefield  
State Bank Building  
General Practice in all Courts.  
Special Attention given to Land  
Titles.

**T. WADE POTTER**  
Attorney at Law  
Office in Littlefield State Bank  
Building.  
Littlefield, Texas

**C. C. CLEMENTS**  
Dentist  
X-Ray Machine in Connection  
Office in First National Bank  
Building.

**UNDERTAKERS**  
PRYOR HAMMONS  
Licensed Embalmer  
We take full charge of  
Funeral Services  
HAMMONS BROS.  
Day 64 —PHONE— Night 89

**Lubbock Sanitarium**  
(A Modern Fireproof Building)  
and  
**Lubbock Sanitarium  
Clinic**  
DR. J. T. KRUEGER  
Surgery and Consultations  
DR. J. T. HUTCHINSON  
Eyes, Ear, Nose and Throat  
DR. M. C. OVERTON  
Diseases of Children  
DR. J. P. LATTIMORE  
General Medicine  
DR. F. B. MALONE  
General Medicine  
DR. J. H. STILES  
General Medicine  
DR. L. P. SMITH  
X-Ray and Laboratory  
MISS MABEL McCLENDON  
X-Ray and Laboratory Technician  
C. E. HUNT  
Business Manager  
A chartered Training School for  
Nurses is conducted in connection  
with the Sanitarium. Young women  
who desire to enter training  
may address the Lubbock Sanitarium.

**MRS. SADLER ENTERTAINS**  
Mrs. F. G. Sadler entertained the  
Thursday Bridge club Saturday after-  
noon. The rainbow color theme was  
carried out in the table appointments  
and baskets of flowers.  
Delicious individual strawberry  
short cake and vari-colored punch  
was served to the following members  
and guests: Mesdames Pat Boone, A.  
P. Duggan, Everett Whicker, W. G.  
Street, Ray B. Jones, J. M. Stokes,  
Harry Wiseman, E. S. Rowe, Joe  
Clements, T. Wade Potter, Jimmie  
J. W. Ratekin, J. C. Houk, C. C.  
Clements, T. Wade Potter, Jimmie  
Brittain, and the hostess, Mrs. F. G.  
Sadler.



A spark-plug, a piston-ring, even a  
gasket  
Can cause lots of trouble, if any  
should ask it!  
But Gasoline Ike is a person of parts;  
At rendering service a master of arts.

**WHATEVER HAPPENS**  
Don't hesitate to call on us for  
help. If you can't bring the car in,  
we'll come out to you. That's what  
we're here for. What could be fairer?

**LITTLEFIELD  
SERVICE STATION  
OF COURSE**  
Park your Pet Peeve in the Ike House

**LITTLEFIELD CLINIC  
AND HOSPITAL**  
Telephone 171  
LITTLEFIELD, TEXAS  
Equipped for Surgical,  
Medical and Obstetrical  
Cases  
J. D. SIMPSON, B. L., M. D.  
Surgery, Medicine and  
Consultations  
J. R. COEN, B. S., M. D.  
Obstetrics and Diseases  
of Children  
BESS COEN, GRADUATE R. N.  
Anaesthetist  
ILA SIMPSON, GRADUATE R. N.  
Dietitian  
Doctors offices over  
First National Bank  
Laboratory and X-Ray  
Telephone -o- 131

You are invited to see—  
**DR. W. E. BROMLEY**  
Chiropractor and Combinathic  
Examinations are Free  
Located over Sadler Drug Store  
LITTLEFIELD, TEXAS

**Rowe Abstract Co.**  
Complete Abstracts of  
all Lands in  
Lamb County  
Let us make that trip to Olton  
for you!  
Located in old Bank Building.  
LITTLEFIELD, TEXAS

**BURLESON-MASON  
COMPANY, Inc.**  
FUNERAL DIRECTORS AND  
LICENSED EMBALMERS  
Embalmer of 20 years experience,  
insuring very best of embalming  
and demisurgery.  
UP-TO-DATE EQUIPMENT

**AUCTIONEER**  
Sell any thing, any time, any  
where.  
I get you the highest possible  
dolar for your goods.  
**J. W. Horn, Auctioneer**  
See me for dates.  
Littlefield, Texas

**WILLS-FOUST**  
Miss Myrtle Wills and Alfred  
Foust, of Sudan, were married Sun-  
day morning at the home of the  
bride's sister, Mrs. "Shorty" Marsh-  
banks.  
Mrs. Foust is well known in Little-  
field, being formerly employed at the  
Fair store here, but now of Sudan.  
Mr. Foust is employed at the Sudan  
drug store.  
They will make their home in Su-  
dan.

**WHARTON BIRTHDAY PARTY**  
Ansel Wharton entertained a large  
number of his friends Monday after-  
noon with a birthday party honoring  
his ninth birthday.  
A number of games were played  
and all took part in the merriment,  
after which they were asked to the  
dining room, where a beautiful white  
cake, with nine pink candles on it,  
adorned the dining table. Refresh-  
ments of red lemonade and cake were  
then served the following guests:  
Mary Eleanor Wiseman, Carrie Reiser  
Wilda Courtney, Anna Marie Harless,  
Betty Ann Hilliard, Marguerite Bran-  
non, Opal Yearry, Alice Lynn Street,  
Juanita James, Foy Smith, Tina  
Smith, Mildred Wiseman, Jerriene  
Wharton, Sam Ed McCaskell, T. A.  
Henson, Jack Norman, Lemuel Bar-  
ber, Charlie James, Jack James, Har-  
old Latimer, Edward Anderson,  
Mucky McKnight, James Mitchell  
Stokes, Jr., Granville Smith, Gene  
Willis, Roy Smith, Hollis Smith, El-  
mer McKnight, Bartee Haile, and An-  
sel Wharton.  
Ansel received many beautiful  
gifts.

**EPWORTH LEAGUE**  
The Epworth League of the Metho-  
dist church met Sunday evening with  
Rev. George E. Turrentine as leader.  
The study of the Methodist Evangel  
by O. E. Goddard has been taken  
up.  
All are invited to be present at 7:30  
next Sunday evening. Those who  
have books are asked to bring them.

**COLLEGE NEWS**

Quite a number of visitors have  
been here during the past few days.  
Mr. and Mrs. Leonard Clements  
and their little daughter are still here  
and expect to make this their home  
for a time if conditions are favorable.  
Mrs. Mills and her daughter, Miss  
Rachel, came from Deming, N. Mex.,  
here on a business trip, being accom-  
panied by the Clements; but they have  
already returned.  
Mr. and Mrs. T. J. Latham and  
their three youngest children were  
here last week visiting friends and  
relatives. Mr. and Mrs. Latham have  
two boys, J. D. and Hilman, in school  
here this year. They also, have a  
host of old and new friends here who  
were greatly pleased to see them.  
They were accompanied on their trip  
to and from Littlefield by Mr. Skaggs  
of their home community near Wood-  
son.

Robert Williams, his wife and little  
daughter, accompanied by Mrs. Wil-  
liams' sister, Miss Grace Devenport,  
were here from Wellington, Texas,  
last Friday and Saturday. Mr. and  
Mrs. Williams and Miss Devenport  
are all ex-students of Gunter college,  
and their being here greatly rejoiced  
their many friends.

L. W. Hayhurst and J. Frank Cope-  
land, who are giving their time to  
field work in interest of the school,  
made their families a brief visit last  
week.  
Jno. R. Freeman has recently traded  
for a new Chevrolet sedan.  
During the past five weeks school  
has been conducted six days in the  
week in order that it might close on  
the 31st of May rather than on the  
7 of June as it otherwise would have.  
Having made up the needed time, the  
school will run five days each week  
for the remaining five weeks. This  
change was made for the benefit of  
teachers wishing to attend summer  
school.

Quite an interest is now being man-  
ifested in gardening. In addition to  
the regular gardening that the people

of the community are doing, the sev-  
enth grade is taking a hand in the  
work, and each student of that grade  
is becoming interested in a contest  
garden of his own.

R. O. Connor has been here during  
almost all of the past week. He  
states that since the city lots of the  
school have been put on sale, a num-  
ber have sold and that these lots are  
to be staked off soon and the streets  
laid out.

**ANTON CITIZEN DIES**

Albert P. Williams, Anton, age 24  
years, 4 months and 27 days, died last  
Thursday, from pneumonia, and was  
buried Thursday afternoon.

He is survived by a wife and one  
child, besides other relatives.

Rev. Hart of the Methodist church  
Anton, preached the funeral.  
There were beautiful floral offer-  
ings and the largest number of  
friends to mourn his death that has  
ever been at Anton. Burleson-Mason  
company had charge of funeral ar-  
rangements.

**ATTEND DISTRICT MEETING  
W. T. C. OF C. AT TAHOKA**

Wednesday a large motorcade of  
Littlefield Chamber of Commerce  
boosters attended the District con-  
vention of the West Texas Chamber of  
Commerce, held in Tahoka. A. P.  
Duggan, former president of the West  
Texas Chamber of Commerce, pre-  
sided.

The Littlefield Chamber of Com-  
merce threw their hat in the ring for  
the 1930 convention.

The members of the Lamb county  
band, under direction of Prof. Conrad  
Lam, gave a program at the Palace  
theatre, Wednesday night of last week  
which was well attended.

The program consisted of orchestra  
music, by a bunch of picked musicians  
form the consolidated band, together  
with several poplar and old-time plan-  
tation songs, jokes and stories.

Frequent applause and uproars of  
laughter greeted the performers at-  
testing their appreciation of the pro-  
gram rendered.

**YOU TEAR 'EM UP;  
WE REPLACE 'EM!**  
Dunlop Tires and Tubes  
for  
Cars and Trucks

Guaranteed for twelve  
months against everything

Ye Ford owners why worry if you  
tear a tube in two. Dunlop Bonded  
Guarantee replaces it FREE.

**THOMPSON GRAIN  
COMPANY**  
Three Blocks South of Post Office  
Littlefield, Texas

**CHIROPRACTIC CHIROPRACTIC**  
You aren't feeling right, can't enjoy a meal;  
Stomach's all upset, it's rocky how you feel;  
You can't eat this, and you can't eat that;  
Nerves all jumpy, don't know where you're "at."  
Don't need a new stomach, just need nerve relief.  
Chiropractor'll do that beyond belief.  
(Copyright. To be continued.)  
**DR. MAYNARD V. COBB**  
Phones: Office 124; Residence 63. Calls answered day or night.

**CLASSIFIED ADVERTISING**

Want ads., Rentals, Lost and Found, Exchanges, Lands and Stock, Miscel-  
laneous, etc. RATES: Classified, first insertion, 10c per line; minimum  
25c; subsequent insertions, 7 1/2c per line; obituaries, 5c per line; poetry, 10c  
per line. Unless advertiser has an open account, cash must accompany order.

**FOR SALE**

FOR SALE: Three row Oliver Moni-  
tor tractor hitch. Will sell cheap for  
cash. 3 miles north, 8 miles east of  
Littlefield. W. W. Barbarick. 2-4tp

FOR SALE: about 40 Johnson Strain  
White Leghorn Hens, all young and  
laying. Bell-Gillette Chevrolet Com-  
pany. 1-1tc

**GOOD MILCH COWS**  
Good young fresh Jersey Milch Cows  
for sale, priced right. Bell-Gillette  
Chevrolet Company. 1-1tc

FOR SALE or Trade: House, 9 rooms  
2 halls, bath, on lot 60x218 feet, also  
3 lots located close in, for farm suit-  
able for pecan growing. See Dr. J.  
D. Simpson, 51-4tc.

FOR SALE—Typewriting paper, yel-  
low second sheets, carbon paper,  
scratch pads in odd sizes. Leader  
office. dh-tf

FOR SALE: Skid chains for Ford,  
slightly used and good as new. Will  
sell for half price. Leader office. tf

GET my prices on lots in Littlefield,  
both business and residence. J. C.  
Whicker. 32- tfe

**SOME BARGAINS**  
\$387.50 due bill on new Pontiac or  
Oakland car at Jones Bros. Will give  
discount for cash or accept cows,  
calves, hogs or lots on it.  
School land on 40 years time, any  
size farm. Will let you work out  
first payment, breaking, grubbing,  
planting or cultivating.  
Cotton seed, pure Half and Half.  
Will take cows, calves or hogs as pay-  
ment.  
Good 177 acre farm in cultivation,  
no improvements, except fenced. Take  
trade. Price \$35.00 per acre.—JOHN  
W. BLALOCK. 50-4tc

FOR SALE: Dresser, dining table and  
bedstead. Cheap if sold at once. One  
block west and 1 block south of South  
more Grocery. S. E. Whittington, 1tp

**LOST.**  
LOST: Dark brown bill fold contain-  
ing currency, notes and valuable pa-  
pers. Reward for return to First Na-  
tional Bank. Will Williams, Littlefield.  
2-1tp

LOST: Black mare mule, about 15  
hands high, weight 1000 lbs. slight  
grey scar on nose, collar marks. L. C.  
Gregg, 4 mi. N. E. Littlefield. 2-2tp

**MISCELLANEOUS**

**LICE ON CHICKENS**  
Lice makes setting hens sick and leave  
their nests and kills many little chicks  
Pruitts Lice Powder is Guaranteed  
to take Lice off your chicks in less  
than two minutes or your MONEY  
BACK. And don't forget Germget  
to put in the chickens drinking water  
to kill germs. Sold by Stokes-Alex-  
ander Drug Store. 1-2tc.

**\$ TEN DOLLARS REWARD \$**  
For information leading to recovery of  
mule strayed or stolen from our lot  
in Littlefield two weeks ago, described  
as follows: dark brown horse mule  
about 16 hands high, weight about  
1200 pounds, 5 years old, no brands  
that we know of. Phone 56 or 135,  
Bell-Gillette Chevrolet Company, Lit-  
tlefield, Texas. 1-1tc

THE Subscription price to the Dallas  
Semi-Weekly Farm News is \$1.00;  
that of the Lamb County Leader is  
\$1.50. We will mail both to your ad-  
dress for \$2.00. Why not subscribe  
now?—Lamb County Leader. 9-tfdh

HIGHEST prices paid for Eggs,  
Cream and Hides, W. H. Heinen. tfe

**TATE-LAX**  
Sweet or bitter. The nation's great-  
est laxative tonic. For rheumatism,  
neuralgia, colds, stomach, liver and  
kidneys. It's guaranteed to satisfy.  
Ask your druggist. 32-24tp-s3

Now is the time to buy city lots in  
Littlefield. J. C. Whicker. 32- tfe

Carbon Paper and Second Sheets, at  
the Leader office. tf.

IT'S A GOOD IDEA to get the habit  
of reading these little want ads every  
week. Frequently one will find some  
bargain listed here that will save  
them much more than the cost of a  
year's subscription to this paper.

**FOR RENT**

FOR RENT or sale: one car garage  
on back of old Gold Star rooming  
house lot. See Maude Foster. 52-tfe

**WANTED**

WANTED: General housework. Call  
phone 212. 2-1tp

WANTED: Home baking, angel food  
cakes. Ring 160. 2-2tc

**LITTLEFIELD COLLEGE**  
Affiliated Co-Educational  
Primary through Junior College  
ART - VOCAL MUSIC - VOICE  
Mental Development Moral Purity  
Opposition to False Science  
Wholesome Association  
**JOHN R. FREEMAN, President**  
LITTLEFIELD, TEXAS

**MAGNOLIA GASOLINE**  
**MAGNOLENE** Oils and Greases  
"The Dependable Lubricant"  
Real Quality Products  
Demand them from your Dealer  
**MAGNOLIA PETROLEUM COMPANY**  
Luther F. Hargrove, Agent, Littlefield, Texas

**A Safe Conservative Investment**  
**\$6 CUMULATIVE  
PREFERRED STOCK**  
The State Telephone Company of Texas  
offers for sale a limited amount of \$6 Cum-  
ulative Preferred Stock to our subscribers  
and the public.  
The price of this stock is \$100 per share  
plus accrued dividends. Dividends of \$1.50  
per share are payable quarterly on January  
15th, April 15th, July 15th and October 15th  
Information regarding this Preferred  
Stock may be obtained from any employee  
of the Company. They are authorized to  
take your order.  
**State Telephone Company of Texas**  
Littlefield, Texas

## WHY THE COUNTY SEAT OF LAMB COUNTY SHOULD BE LOCATED IN LITTLEFIELD

By DAVID LEFLAR  
Spring Lake High School

Our state capital, located at Austin, is furnished with every modern convenience. If Austin were only a small town without a railroad and lacking dozens of other civic improvements that might be found elsewhere, how long do you suppose the capitol building would remain there? The people of the state would lose no time in moving it.

Why then should our county seat be located in a town of almost no accommodations?

Olton is a town with few civic improvements. It has a road or two, a few wooden business houses and a few residence houses, then place the courthouse there and you have Olton.

People from Amherst, Littlefield and Sudan form the bulk of Lamb County's population. They transact a lot of business at the County Seat and are forced to drive over many miles of rough roads in an automobile to the County Seat located at Olton. If the County Seat were located at Littlefield it would be in their midst and railroad accommodations would be readily available to those unable to own and drive cars.

Littlefield is a much greater industrial center than Olton or any other town in Lamb County. Many people go to Littlefield for trading and commercial purposes, since the business firms of Littlefield can offer better quality for lower prices. The railroad makes import and export profitable, and traveling is benefited by the railroad.

A citizen goes to Littlefield to take

advantage of the modern conveniences and accommodations of Littlefield's industry. If the County Seat were there he could obtain economic convenience while transacting his legal affairs. No other town in Lamb County can offer such benefits to the farmer citizen as Littlefield.

The County Seat should be located in or near the center of the county. Littlefield is probably not the geographical center of Lamb County, but it is unquestionably the industrial center. Since the geographical location has no weight where industrial location is considered, we must let that point rest in favor of Littlefield.

The enterprising citizens of Littlefield are doing everything in their power to make their town a better, more progressive and more suitable town. As a result the civic improvements are better in Littlefield than in any other Lamb County town.

As far as finances are concerned it would be even cheaper to build a new courthouse at Littlefield where the materials are easily obtained by rail than it would be to haul the material from a railroad to Olton. The courthouse now located at Olton is small—it is inadequate. There must be in the course of a short while additions built to it and this will be very expensive, owing to the fact that Olton has no rail facilities. This necessary hauling expense will be eliminated if the new court house is built at Littlefield.

Now is your chance, citizens of Lamb County, to settle the courthouse question definitely and locate it in a thriving town that you will not have to apologize for its inconveniences.

### TINTED ICE

Tinted ice cubes, in almost any color of the rainbow, are being used to cool drinks served in smart homes here.

In kitchens equipped with electrically

operated refrigerators, tinted cubes are easily made by charging the water with vegetable coloring matter before it is poured into the freezing pans.

The total poll tax in Texas for 1928 was \$1,787,616.



### The One-Dish Dinner

By CAROLINE B. KING

Culinary Expert and Lecturer on Domestic Science

**F**ew persons care for an abundance of meat in the warm weather diet—in fact, it is becoming a popular custom in many households to omit this heavy protein food entirely one or two days each week, substituting for it a variety of fresh vegetables, eggs and cheese. Fortunately for the housewife, who must select the foods and prepare the meals—vegetables, eggs and cheese combine in many dishes perfectly, and make it easy to provide one-piece dinners with all of the essentials of a well-balanced meal.

Switzerland cheese is not only so delightfully piquant that it lends a charming zest to the other foods, but it is digestible and almost perfect food in itself, being rich in Vitamins A and containing a generous content of protein.

The following oven dishes are all easily prepared:

**One Dish Switzerland Dinner:** Drop into boiling salted water two cupfuls of spaghetti broken into inch pieces. In ten minutes add five medium sized onions sliced 1/4 inch thick. Cook for ten minutes, then drain, not too dry, and place in a buttered baking dish. Scatter a layer of finely chopped green pepper over the spaghetti, also one canned pimiento cut in bits. Sprinkle with salt and paprika, and pour over all a cupful of milk. Bake twenty minutes, then cover the sur-

face with thin slices of Switzerland cheese, spread very lightly with mustard. Return to oven until the cheese begins to brown delicately.

**Switzerland Tomatoes:** This dish calls for 1 cupful of cold, cooked rice, 1/2 cupful of bread crumbs, 1 cupful canned or cooked tomatoes, 1 green pepper, 1 tablespoonful of melted butter, salt, pepper and six to eight thin strips of Switzerland cheese. Butter a baking dish and arrange a thin layer of rice in it. Remove the seeds from the pepper and chop it fine. Mix it with the tomatoes and spread a layer over the rice, season and repeat the layers. When the dish is full, scatter the bread crumbs over it and pour over the melted butter. Bake thirty minutes, then arrange the cheese slices over the top of the dish, sprinkle with paprika and return to the oven for five minutes.

**Switzerland Omelet:** Cut enough cooked corn from the cob to make one cupful. Cut a canned pimiento into strips and add to the corn. Beat two eggs well, adding a tablespoonful of flour, 1 cupful of milk, 1 teaspoonful of sugar 1 teaspoonful of salt, 1/4 teaspoonful of pepper and a dash of paprika. Add to the corn and pimiento with one small onion chopped very fine. Pour into greased baking dish and bake half an hour in a moderate oven. Then arrange long, thin strips of Switzerland cheese over the surface and brown lightly.

### Noted Physician Discusses America's Greatest Problem

Henry Black Burns Treats Crime Situation



President Herbert Hoover in his inauguration address devoted particular attention and laid great stress on what he considers America's greatest problem, that of correcting the crime situation. Engineer that he is, he particularly recommends the importance of the human element in the prosperity and happiness of the United States. Gang warfare in Chicago, atrocious crimes throughout the country, corruption in many city governments, bootlegging everywhere and other disregard for law has brought about an acute situation in the country.

Chautauqua has always stood in the forefront of the movement for better citizenship.

Dr. Henry Black Burns is the Chautauqua management's answer to the demand for a lecturer who has been trained and had practical and scientific experience in the field of crime prevention.

Dr. Burns, who is scheduled for the third day program, early knew hardship and privation. He grew up on an infertile Pennsylvania farm and hard work was the only lot he knew. His parents saw to it, however, that he had good books to read and a desire for education was early born. He walked seven miles twice a day to his first term of college, and finally secured a degree from the little school among the Neshannock hills. He followed this with his Master's degree and later his M. D.

Having finished his college work he kept up his ambitious program of study, taking a particular interest in criminology and prevention of crime and disease. He was soon recognized as an authority and it was not long before he found himself devoting most of his time to public speaking. He has spoken more than three thousand times to hundreds of thousands of people, who have been benefited by the thrilling address, based on scientific knowledge, that he gives on "Chords and Discords."

It is a study of modern crime, its cause, and its cure, from a physician's point of view. The world is realizing more and more that crime is a disease to be dealt with as other diseases are, rather than in the old-fashioned way. He takes up the modern unrest among the young people, the causes of hereditary crime, and the means of prevention and cure. He tells how to make better homes and better citizens.

### CHAUTAUQUA CIRCUIT COVERS TWELVE STATES

The circuit of which the local Chautauqua is a part, includes approximately 120 towns in twelve states. It starts in Texas in early April, and after spending a month there, swings west through New Mexico, Arizona, then the full length of California, works from Western Oregon through the central part of the state, and up into Washington in early June. After visiting all sections of that state, it moves east through Idaho, Montana and Wyoming into the Central West, where the month of August is taken up in Nebraska, Kansas, Iowa and Missouri, with the finish in Oklahoma about September 1.

Chautauquas have been increasing in popularity during the past few years.

That has been partly due to the increased prosperity of the Western States, and partly, and probably chiefly due to the modernization that has occurred in Chautauqua programs and methods of presenting them.

Chautauqua is now big business. The old Chautauqua ideas have been modernized. The old ideals are still there, but they are presented in an up to the minute 1929 fashion. Modern plays, radio entertainers, Rotary, Kiwanis and Lion luncheon speakers. Clever symphonic bands are of help to make the 1929 Chautauqua more attractive than those of earlier years.

In spite of the increased maturity of the programs, ticket prices have been increased almost not at all. Even while the cost of living and the price of other commodities have advanced.

Most of the improvements have been made by result of the competition of the old competing systems. Eleven different systems have been combined in the Associated Chautauquas of America. This great organization in turn has a working agreement with the Redpath Chautauquas. Both these two organizations supply the programs and service for most of the country Chautauquas, and do it more cheaply than was possible under the old out-throat methods.

### HOME MECHANICS CLUB

The manual training boys organized a club known as "The Home Mechanics Club." The objective or aim of this club is to make some useful projects for the home. Max Stansell was unanimously elected president; Lester Floyd was elected vice-president, and Earl Glover, secretary-treasurer. This club consists of about 25 members.

We have had three very interesting meetings in which various projects have been discussed. Each one of the boys has made some useful project for his home, and discussions have been made about the needs about their

homes. Such problems as building wash-benches, chicken houses, brooders, self-feeders for baby chicks, repairing screen doors and windows, repairing fences for the yard, and lots and numerous problems that boys like to build have been discussed. In our last meeting we discussed the building of work benches or tables for the home work shop. Each boy is going to start a home work shop and try to secure an individual set of tools.

The ideas that the boys get in this club will greatly increase the usefulness of the manual training shop. We wish to have the boys to think about home needs and ways to make these

projects needed around their homes. After the boys realize the needs about the home, discussions and plans made in the club.

—From the Wildcat

In addition to the public and state supported higher institutions of learning, there are in Texas more than 100 educational institutions of university, college and college rank supported by church and private individuals and endowments.

Two Texas counties—Brazoria and Matagorda—furnish most of the world's sulphur.



# As new and different now as it was when introduced . . .



Recall the scene. A New Oakland All-American Six. Making its bow to the public. Setting everyone talking. About its distinctive beauty . . . about its original design . . . And now you see it here . . . there . . . everywhere you go. Other cars have appeared in bewildering succession. But the distinction of the All-American continues . . . unaffected. [It's as new and refreshingly different today as it was when introduced . . . Like a good friend . . . it grows on you . . . impressing you more favorably with every passing week. The better you know it the more you will respect the New Oakland All-American Six.

Prices \$1145 to \$1375, f. o. b. Pontiac, Michigan, plus delivery charges. Spring covers and Lovjoy Hydraulic Shock Absorbers included in list prices. Bumpers and rear fender guards extra. General Motors Time Payment Plan available at minimum rate.

Consider the delivered price as well as the list price when comparing automobile values. Oakland-Pontiac delivered prices include only reasonable charges for delivery and financing.

JONES BROS. MOTOR CO.  
LITTLEFIELD, TEXAS

## The New OAKLAND ALL-AMERICAN SIX

PRODUCT OF GENERAL MOTORS



**NOW**  
as never before  
you should be careful  
about lubrication

**T**HE lubrication requirements of the present high speed motors are most exacting. With their fine adjustments, these motors will not operate efficiently with every oil. They require a lubricant which is made especially to meet the particular conditions which they have created.

That's why it's most important to always specify the oil you want—and it will pay you well to insist always on a brand which has back of it the resources and experience of the Continental Oil Company. Then you will always be sure to get the right oil—in the grade made especially for your motor.

Ask for these brands at the better service stations and garages.

### CONTINENTAL OIL COMPANY

Producers, Refiners and Marketers of high grade petroleum products in Arizona, Arkansas, Colorado, Idaho, Kansas, Missouri, Montana, Nebraska, New Mexico, Oklahoma, Oregon, South Dakota, Texas, Utah, Washington, Wyoming

Conoco Motor Oil insures protection. It seals compression—saves gas oil—lights friction. Flows freely at low temperatures. Stands up under most intense cylinder heat. In short, does a complete lubricating job in all kinds of weather. Ask for the grade made especially for your car.



**EXTRA LIFE**  
for your car



Conoco Amalie is 100% Pennsylvania Oil—refined from premium crudes by a special process. Universally recommended by automotive engineers and lubrication experts. Through exhaustive laboratory and road tests it has demonstrated its ability to lubricate properly under the most trying conditions of motor operation.

**HAWK BRAND WORK CLOTHES**



THEY WEAR LONGER

Sold By: ELLIS & WARE, Littlefield, Texas



## THE COUNTY SEAT OF LAMB COUNTY SHOULD BE LOCATED IN LITTLEFIELD

Lois Kirkpatrick, Littlefield High School

Many years Olton has been the population in Lamb County the formation of new towns influx of settlers, came an unrest and dissatisfaction the location of the court. Since the country around as settled first, it was, of the first portion of the county out. It was soon discovered that success in farming could in new districts. For this the land south of the Sand came very prosperous. It that Littlefield arose to her power and became a great

trade center for the great new agricultural center. Her prosperity caused a desire to be the county seat. After years of patient waiting, we feel that this is a very opportune time for a decision in Littlefield's favor. After the census of 1930 is taken the state will demand that Lamb county come to its requirements concerning office space in the court house, crowded conditions in the court room, and undesirable jail conditions. It will take approximately \$50,000 to meet the state's demands; why then, should we put our money

on the old court house when it is undeniably located?

One of the greatest reasons for the county seat being located in Littlefield is that the population practically demands it. Eighty-one per cent of the people of Lamb county live south of the Sand Hills. When it is necessary to attend to business in Olton, the ones concerned must pack up and move over for a few days, since it is entirely too far to go back and forth. Many may say that neither Olton nor Littlefield is in the center of the county. The county seat should not necessarily be in the center of the county, but in the center of the most thickly populated district. Littlefield answers this statement perfectly.

A county seat should have a good bank to take care of the county's money. As conditions now exist all county funds are taken care of by banks of Hale county. Why can't Lamb county take care of her own money? Littlefield also meets this need.

Littlefield is located on a railroad, while Olton is not and more than likely never will be. Because Olton has no railroad, mail deliveries are slow and the merchants have to pay high freight rates for their goods. This fact makes expenses of every kind high priced.

Olton's only means of communication with the outside world is by telephone, while Littlefield has telegraph connections.

Littlefield has a junior college which is of great benefit to the town and surrounding country. This college meets the requirements of the state for Junior colleges.

Littlefield is very proud of its many conveniences. Some of the outstanding features are the many blocks of pavement, a large steam laundry, a cotton compress, a fine bakery, the splendid schools, its hospital with good surgeons and competent nurses. Littlefield seems to be a fine town to live in for nearly all of the county officers live here while only one official lives in Olton.

There has been much argument as to the increase of taxes. Taxes cannot be raised more than a few cents, and a man who is able to pay a big land owner can pay a few cents more taxes. We often forget that by moving the court house to Littlefield, we are greatly increasing the value of our property.

Therefore since Littlefield has those things which Olton lacks and many other additional advantages, one could not find a more perfect location for the county court house.

There are several reasons that demands our attention in considering a question such as this: Accessibility, education, financial and commercial, telephone and telegraph communication and hotel and housing accommodation.

Littlefield has all the above advantages in addition to its junior college where two years of college training may be had.

Littlefield has ample hotel facilities has dining rooms and cafes so that court attendants may be cared for day and night. Most of our county officers are poor men and our short office tenures, only two years, makes it unwise to buy or build homes. Littlefield with its one thousand homes makes it possible to rent a home while in office.

Littlefield's position on the Bankhead highway and the Grand Canyon line of the Santa Fe railroad renders it accessible for automobile, motor bus, and railway. Its telegraph and telephone systems give it instant communication with all portions of the world.

When possible the county depository should be at the county seat, and the Littlefield bank is already the depository.

The paved streets, electric lights, water, sewage and sanitary service makes Littlefield a desirable place to live. The character of roads and distance makes each trip to Littlefield one to five dollars cheaper to the voter and taxpayer in contrast with the present location.

The sand hills cut off three-fourths of the county from the present location. There are only two roads through this stretch of sandhills. It would cost less to build a court house and jail than to build a road to the present county seat.

Littlefield is one of the best market centers on the Plains for grain, cotton, hogs and cattle, also the country produce is shipped from here. Much of the voter's and taxpayer's court-house business could be attended to at Littlefield while they market their products.

The reasons I have already given should be sufficient to make the tax-paying voter consider seriously the claims for Littlefield for the court-house.

In considering a question such as is brought out by this subject there are various features that demand our attention. Among them the following are worthy of mention.

The county seat should be located

as near as possible to the geographical, financial, and population center of the county.

The county seat should have railway highway, telegraph and telephone facilities.

It should be a banking center. It should have ample hotel and dining facilities.

It should be a residence center. The county seat should be located in an incorporated town of commercial importance. In succeeding paragraphs I shall undertake a discussion of the foregoing six points and show by comparison with the present county seat that Littlefield excels in all of them.

Olton, the present county seat, is near the extreme north boundary, be-

ing less than three miles from the Hale County line, while Littlefield is within five miles of the geographical center of the county. Entering Texas from the West and running across Lamb County in an almost easterly direction is a chain of shifting sand hills. North of the sand hills there live less than one-fourth of the county's population, the other three-fourths lying south and east of these hills. Littlefield is in almost the exact geographic center of the latter region. In like manner the financial strength lies south and east of these same sand hills. Again Littlefield is almost exactly in the center of the financial strength.

The only railroad of the county and the only telegraph system, as well as the best highways, cross the county south of the sand hills. No telegraph line penetrates Olton and the best telephone systems are situated south of the sand hills reaching Olton by single lines, but Littlefield has immediate connections with all of these.

There is no banking facilities within twenty miles of Olton. This becomes a great inconvenience in dispensation of county funds. Littlefield is the home of a strong banking institution. This, of itself might be a deciding factor in favor of Littlefield.

Littlefield contains hotels, boarding houses, and cafes in sufficient number to take care of the largest court attendance, while these conveniences are almost entirely lacking in our present county seat.

Since our officers are elected for short terms and are usually poor men they seldom buy or build homes in the county seat. This being true, tenancy is usually the rule in our families. Littlefield, with its nine hundred or more residences, provides living facilities for our county officials and their families.

Last, but not least, Littlefield, with its commercial center, paved and lighted streets, and its square ready for paving, offers advantages found nowhere else in Lamb county for establishment of a county seat. Also Littlefield, being an incorporated

town, furnishes fire, insurance, and police protection not found in our present county seat.

Many other reasons might be given for the establishment of the county seat in Littlefield, but the foregoing six should be enough to convince the Lamb county voters.

### LUTHERAN Y. P. MEET

The young people of the Littlefield Lutheran church will drive to Wilson next Sunday to attend the young people district rally of this denomination.

No regular services will be held in the Lutheran church here next Sunday, as the pastor, Rev. Walter J. Luecke, has been asked to preach at the Wilson rally.

### O. R. C. POULTRY TONIC

Guaranteed to rid your poultry of all insects. A preventive of sore head, roup and white diarrhoea. Also, a cure for running fits in dogs. Sold by WALTER'S DRUG STORE

### OLD DOC BIRD SAYS

Still it must be confessed that the cotton in some wool suits looks sheepish.



No. 16

### DIRTY OIL CANNOT PREVENT FRICTION

With reasonable care modern Motors give thousands of miles of service.

The secret of this is very simple. Don't run your motor on dirty or unsuitable oil. It wears down the hardest steel.

Make it a rule to have the Oil changed every 500 miles and then use one of the grades of CONOCO OIL best suited to your car.

### TEXAS SERVICE STATION

For Sale!  
Alfalfa Hay  
90c. per bale

W. H. HEINEN  
Littlefield, Texas

### HATCHERY NOW OPEN!

—Doing custom hatching and baby chicks. Your patronage is solicited—all old customers as well as new ones.

BABY CHIX FOR SALE:	
White Leghorn chix, per hundred	\$10.00
White Leghorn chix, fancy, per hundred	\$12.00
Rhode Island Reds, per hundred	\$14.00
Rhode Island Reds, fancy	\$16.00
Barred Rocks	\$14.00
Barred Rocks, fancy	\$16.00
Buff Orpingtons	\$16.00

### PLAINS ELECTRIC HATCHERY

Located Opposite Palace Theatre, Littlefield

### FOR MOTHERS DAY

Give her an  
AMITY  
HANDBAG



THE GIFT OF ALL GIFTS

If you are looking for something NEW or DIFFERENT to give Mother this year, come in and see our selection of imported steer hide bags, hand colored, hand laced and hand tooled embossed.

It will bring her more happiness than a dozen ordinary gifts.

### WALTERS DRUG COMPANY

"The Store of Better Service"

LITTLEFIELD, TEXAS

### An Oklahoma Mother Says:



"BLACK-DRAUGHT is a fine medicine to give to children. I use it for mine whenever I need to give them a laxative. They don't mind taking it when I make it into a tea, and it quickly relieves constipation and the bad symptoms which come from it. I can recommend it to other mothers, for I have found it useful in my home."

"When I was a child my mother gave it to me whenever I complained of not feeling well. I have always taken it for upset stomach and constipation. It is about the only medicine I have to take. A few doses of Black-Draught, now and then, keep my system in order. My husband takes it, too. I hardly see how I could keep house without Black-Draught. It has become a standby with us, in keeping the children and ourselves well."—Mrs. Luther Brassfield, Claremore, Okla.

Black-Draught for Constipation, Indigestion, Biliousness

Women who need a tonic should take CARDUI. In use over 50 years.

### GRAIN BRAN SHORTS COTTON SEED MEAL

HIGH GRADE  
COLORADO COAL  
WALKER  
GRAIN & SEED CO.  
LITTLEFIELD, TEXAS

### JOHN S. KERR Nursery Co.

Oldest and Largest Nursery in the State Since 1874

By running the entire nursery stock through test stations on the Plains, we have found the best for the Plains.

For Nursery Stock we have the best for prices we are the cheapest.

C. A. Baird  
General Agent  
LITTLEFIELD, TEXAS

### BATTERY STATION RECHARGING REPAIRING

Full Satisfaction is Guaranteed  
Two months guarantee on new Batteries sold

CARL SMITH  
At Bell-Gillette Chev. Co.

### COZY BARBER SHOP

Shave 25 cents  
Hair Cut 35 cents  
SOUTH END OF MAIN STREET  
On West Side

In Walter's Drug Store Building, just south of Littlefield Hotel

C. A. McDONALD, First Chair  
IRA GORDON, Proprietor  
We will appreciate your business

### Will Der Says

Confidence: A human being lessons on the harp.



### GREAT FOR YOUR GRAIN

will just take time to call on particulars, we believe we a good bunch for you.

would like to build a REAL BARY to handle your crops as some along. It will add greatly value of your property, too.

we established a considerable ation as builders of Granaries, are proud of it.

CAMERON & CO.  
LUMBER  
field, Texas

### FOR REAL COMFORT AND GOOD FOOD Patronize Lon's Cafe

Prompt service, pleasant surroundings, pure food, tastefully prepared—we never lose a customer.

Everything well prepared—there's no better place to eat in town.

LON'S CAFE  
Lon Campbell, Prop.

There's a better way for the good wife on Wash-day, the—

### MAYTAG WAY

T. W. MOSS  
P. O. Box 182, Littlefield  
Sales Manager for Lamb, Hockley and Cochran counties

A postcard will bring a demonstration to your home.

## 200 ACRES

Adjoining the Littlefield College  
Cut into 40 five acre tracts for sale as home plots or for investment.

BEST LOCATED SMALL ACREAGE TRACTS IN LITTLEFIELD

PRICED: \$1,000 or \$750 per tract, according to location. TERMS: One-third cash, balance one and two years.

City Lots—Farms—Offices for Rent  
LITTLEFIELD TOWNSITE OFFICE  
WHICKER LAND COMPANY  
DUGGAN BLDG., LITTLEFIELD

## MONEY TO LOAN!!

LOANS MAY BE SECURED NOW AT AN ADVANTAGE

At this time of the year when money is plentiful, interest rates being 10 per cent in New York City, it might pay you to place your loan with me now while you can get it through at a reduced rate of interest.

DELAY MAY COST YOU MORE MONEY LATER ON!

A. G. HEMPHILL  
THE LOAN AND INVESTMENT MAN  
First National Bank Bld'g  
LITTLEFIELD, TEXAS

## GIVE A BEDROOM SUITE ON OPENING

More than 1,000 visitors and customers registered during last Saturday at the new location of Burlison-Mason Co., furniture store. It was the occasion of their formal opening, and as an inducement to bring added visitors to their new place tickets were given upon registration and then drawn out late in the afternoon, the lucky one receiving a handsome \$75.00 bedroom suite. Herbert Cantrell, living seven miles southwest of Littlefield held the fortunate number.

### SOUTHWEST NEWS

Mr. and Mrs. J. M. Scheuer and daughter, Margaret, returned Monday evening from Pie Town, New Mexico, where Margaret has just closed her term of teaching. While there they attended Miss Margaret's closing program. They report a very delightful trip. They saw many beautiful sceneries, an dreport that the snow on the mountains was up to their hips. Mrs. and Mrs. Max Kopp and son, Max Joe, accompanied them on the trip.

Grady Simpson made a business

Miss Margaret Womaek had a birthday party Monday evening. Many of her friends attended. They had a fine time playing games. She received many presents. After refreshments of ice cream and cake were served the returned to their homes wishing her many happy returns for her birthday.

Lexie Dunagin took Mrs. Grady Simpson from Littlefield Monday to her home southwest of town.

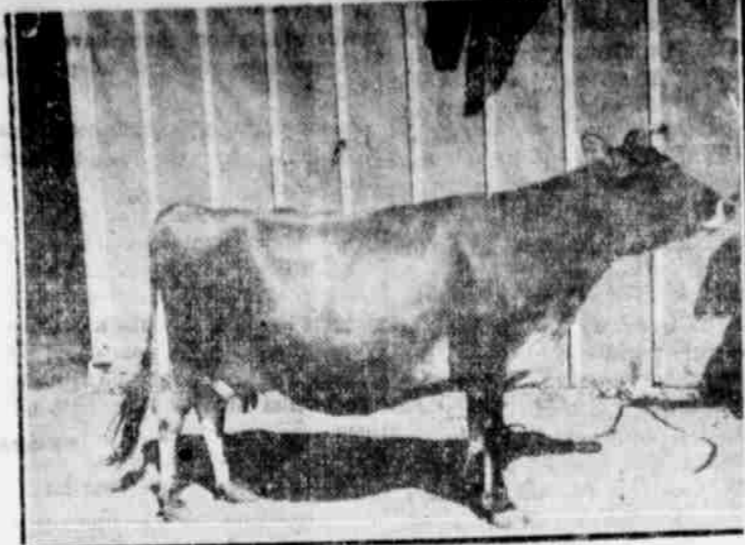
### REV. WALTER J. LUECKE FROM CONFERENCE AT AUSTIN

Rev. Walter J. Luecke, pastor, Lutheran church, this city, returned last week from Austin, where he attended the Texas district conference of the Lutheran church. There were about 200 pastors and teachers present, the meetings being held in the church college, of Austin.

Interesting papers were read by Rev. W. H. Bowie, Waco, on "Patriotism and the Church," and "The Teacher of the Christian Day School and the Divinity of His Call," by Rev. A. Machalk, of Galveston.

Rev. Bahnken, Houston, district president, gave an inspiring address on Dr. Luther's small catechism, the 400th anniversary of which the Lutheran church celebrates this year.

One thing very impressive to all, said Rev. Luecke, was the very friendly greeting and welcome extended the conference members and visitors by Mayor P. W. McFadden, of Austin and W. Long, of the Austin Chamber of Commerce.



PURE BRED JERSEY MOTHER OF JERSEY CALVES TO BE GIVEN AWAY BY P. W. WALKER ON TRADES DAY

One of the features of Littlefield Trades Day, Monday, May 6th, will be the giving away of two registered Jersey bull calves by the P. W. Walker Seed & Grain Co., to customers of that firm.

One of these calves is known as "Speaking Beauty's Majesty," No. 293147, and was born February 3, 1928; the other is "Patsy Fern's

Majesty," No. 301966, born June 27, 1928. Both are grandsons of "Sybils Gumboge," one of the most noted sires in the world, and who was imported to this country, later selling for \$65,000.00.

These are extra fine animals and well worthy the pride and good fortune of the one receiving them on Trades Day.

### FORMER BUICK DEALER IS NOW AIDE TO HOOVER



Arthur M. Hyde of Missouri is new Secretary of Agriculture

President Hoover's recent appointment of former Gov. Arthur M. Hyde of Missouri as Secretary of Agriculture, brings for the first time a man from the automobile industry to the cabinet of the nation's chief executive. Secretary Hyde has long been a Buick dealer in Trenton, Mo.

The appointee has established a remarkable record both in political circles and as a business man. Coming, as he does, from the very heart of the farm belt, Secretary Hyde, through his long association with problems confronting tillers of the soil, is especially qualified to meet the responsibilities connected with this highly important cabinet post.

Being the owner of three large farms in Missouri, Mr. Hyde has a first hand knowledge of the farm problem. The work confronting the new secretary will be largely of an administrative nature, and his automobile business experience will be of inestimable value in dealing with the ramifications of the farm question, because it, too, is essentially a business problem.

As a lawyer he administered to the farmers' legal needs; as a merchant he dealt with his dealings with them brought him into even closer touch with their financial and domestic problems; as governor of Missouri he became the champion of their cause—and now as a member of President Hoover's cabinet he is to become instrumental in solving one of the most difficult situations confronting the American nation.

Secretary Hyde is an intensely active man. When he practiced law he was eminently successful. Law has always been his central activity, but as time went by he became increasingly interested in the automotive world as a dealer in Buick Motor cars. He has made a remarkable success of his automobile business, which he retained during his tenure of office as governor and in which he still has an interest.

### LITTLEFIELD HAS NEW WATER TANK AND TOWER—PAINTING JOB FINISHED

The Littlefield city water tank and tower has just undergone a complete overhauling the past ten days. This work was done by Pyle Bros. Iron Preserving Co., of Council Bluffs, Iowa and Dallas, Texas, the largest firm of its kind in America. Work was started on the tank about ten days ago and was finished last Saturday.

The crew of men worked night and day cleaning the tank, using electric motor driven chipping hammers and steel wire brushes to remove the scale on the inside of the tank, caused by the mineral reaction in the water. A compressed air spray was used on all crevices and joints and the entire tank and tower was painted inside and out, with three coats of praphite paint as a preservative on the interior of the tank and two coats on the outside. A sanitary flush valve was installed in

the bottom of the tank, a device which has the approval of the state board of health and which is being made a compulsory feature on tanks in a number of states. This device will make possible the cleaning of the tank completely at any time without emptying the tank.

With the completion of this repair work, the tower and tank is in excellent condition, in fact, better than it was when erected, and means a saving to the city of thousands of dollars by having the work done before it was too late. Pyle Bros. just recently completed a job on the tank at Crosbyton, where it was found that rust had eaten through the tank, caused by neglecting to paint this tank a few years ago. Also, recently this firm put an entirely new bottom in the water tank at Haskell, which had rusted out after 15 years service. With this job of painting, Littlefield has prevented an occurrence of this kind.

The City Council is to be commended for this timely action of securing a reliable firm to do this work of putting the water system in a sanitary condition as well as preserving the tank. This company will service this tank for a period of six years.

Clarence Rosenburg, of Mancada, Minn., is superintendent of work and his assistant Walter Long, of Fort Smith, Ark., Dick Barber, of Council Bluffs, Iowa; Mike Tate, of Stewart, Iowa, Ed Talpert, of Comoco, Ind. and Edgar Rosenburg, are this week treating the tank and tower at Littlefield to a coat of paint.

All of these men have been with the Pyle Bros. Company from five to twenty years.

### AT THE CHURCHES

**METHODIST CHURCH**  
Sunday School, 9:45 a. m.  
Preaching Service, 11:00 a. m.  
Senior and Intermediate Epworth League, 6:45 p. m.  
Bible Study, Wednesday evening.  
—Geo. E. TURRENTINE, Pastor.

**LUTHERAN CHURCH**  
Regular Sunday morning services held in the German language begin at 10:30 a. m.  
Sunday night at 8 o'clock, English services.  
—WALTER J. LUCKE, Pastor.

**BAPTIST CHURCH**  
Sunday School, 9:45 a. m.  
Morning worship, 11:00 a. m.  
Senior and Intermediate B. Y. P. U., 7:30 p. m.  
Evening worship, 8:30 p. m.  
Prayer meeting, Wednesday, 8:30 p. m.  
—ROY A. KEMP, Pastor.

**SACRED HEART CHURCH**  
Divine services every Sunday.  
All preaching in the English language only.  
One Sunday at 10:00 o'clock morning, and the Sunday following at 8:00 o'clock morning, namely April 28 is the ten o'clock service and May 5 the eight o'clock service.  
The eight o'clock services are followed by ten o'clock services, at Pep and vice versa.  
Everyone interested has a free access to our church, and is cordially invited by—  
REV. CHARLES J. DVORAK, Pastor

**PRESBYTERIAN CHURCH**  
Sunday School, 10:00 A. M.  
Morning Service, 11:00 A. M.  
Junior Endeavor, 4:00 P. M.  
—WILLIAM F. FULTON, Minister

**CHURCH OF CHRIST**  
Bible Study, 10:00 A. M.  
Preaching, 11:00 A. M.  
Preaching, 8:15 P. M.  
—T. L. KIMMEL, Minister.

### AUXILIARY MEETING

The ladies of the Auxiliary met Tuesday afternoon, at the home of Mrs. Wilbur Stockton.

The business meeting was called to order by the President, opened by song and prayer. Minutes of the last meeting were read and approved, and other regular business attended to.

The devotional was led by Mrs. J. S. Hilliard, the lesson was given by Mrs. Barber on the subject of "The Negro in America."

A lovely salad course was served by

the hostess to the following: Mesdames Chas. Barber, E. C. C. Clements, A. C. Chubb, Cobb, T. P. Wright, Sid Hoover, Smith, J. S. Hilliard, Warren N. A. Douglas, Ray Jones, F. J. ler, J. W. Porecher, Joe Rastalderwood, Touchon, Joe Chubb, Jimmie White, Miss Lulu Hilliard and one guest, Mrs. S. L. Hilliard.

Texas leads the United States in the number of domestic livestock on farms and ranches.



### Remember?

"... those dear fingers so care worn for me ..."



FREE MAILING AND DELIVERY SERVICE

Stokes-Alexander Drug Store

## Week End SPECIALS

Buy while the Buying is especially good.

These prices represent savings on staple articles.

- One group of Ladies Hats ..... \$1.00
- One group of Ladies Hats ..... \$2.49
- One group of Ladies Hats ..... \$3.95
- Ladies Silk Princess Slips ..... \$1.69
- Ladies Bloomers, lace trimmed ..... \$1.00
- Colored Table Linen, per yard ..... .69
- Little Hat Boxes, black, red, blue, each ..... .96
- Figured Batiste, 40 in. fast colors, yd. .... .39

### LADIES DRESS SHOES

- Special ..... \$5.98, \$4.49 and \$2.98
- Boys' Overalls, "Buck" brand, pair ..... .95
- Heavy Silk Pongee, natural color, yd. .... .49
- Men's and Boys' Summer Unions, pair ..... .49
- Bungalow Cretonnes and Prints, 36 in. wide, yd. .19
- Peter Pan Gingham and Prints, yard ..... .42
- Bedroom Draperies, per pair ..... \$1.39
- Dress Linens, 36 inch wide, yard ..... .53
- Printed Percales, narrow, 15 yards for ..... \$1.00
- Big Buck Overalls, high and low back, ..... \$1.58
- Men's 5 cent Handkerchiefs, 6 for ..... .25
- Men's every day Socks, 8 pair for ..... \$1.00

## CUENOD'S DRY GOODS COMPANY

T. S. SALES, Manager  
LITTLEFIELD, TEXAS  
We close at 6:30 P. M.

### A NEW PRODUCE HOUSE

Located in rear of M System building, opposite Cicero Smith Lumber Yard.

Bring us your Cream, Eggs, and Poultry, we pay highest prices for your cackle-berries and jersey-juice

### TITMAN EGG CORPORATION

W. C. BARNES, Buyer Littlefield, Texas

## 20 Per Cent DISCOUNT

On Ladies Silk Dresses, Hats and Coats

Just as the Spring Season is opening, we are making drastic reductions in all Ladies Silk Dresses, Hats and Coats. Buy now at considerable saving, and enjoy the difference during the coming spring and summer months.

- \$18.75 Ladies Silk Dresses, for ..... \$15.00
- \$12.50 Ladies Silk Dresses, for ..... \$ 9.00
- \$ 9.95 Ladies Silk Dresses, for ..... \$ 7.96
- \$ 6.50 Ladies Silk Dresses, for ..... \$ 5.20
- \$ 6.00 Ladies Hats, for ..... \$ 4.80
- \$ 3.95 Ladies Hats, for ..... \$ 3.16
- \$22.50 Ladies Coats, for ..... \$18.00
- \$16.50 Ladies Coats, for ..... \$13.20

These Prices Good for FRIDAY AND SATURDAY, APRIL 26, 27

## The Fair Store

Littlefield, Texas

## NEWS FROM OTHER WEST TEXAS TOWNS NEAR HERE

CARBON saw the installation of a stream route on April 22, the result of cooperation of the community club and farmers. O. Stone and County Agent Patterson made a canvass of territory south and west of Carbon and reported at a meeting of the club presided over by S. P. Rumph that conditions were favorable.

ROCHESTER is laying claim to be the smallest town in the world with talking pictures. Greenwade,

owner of the Rochester theatre says that the newly installed machinery will make it possible to feature all the latest vitaphone pictures. All talking pictures will be shown the first three nights of the week.

WINTERS will hold an annual "Living at Home Fair" beginning with June 20, 21, and 22, of this year. Exhibits by communities and individuals, 4-H Clubs, vocational agricultural judging contests, short courses and field day, a "Live at Home" banquet and the opening of the airport will be featured.

STEPHANVILLE will start work on the paving of 70,000 square yards of brick pavement to begin soon. The contract went to the Thurber Brick Company whose price on concrete was \$2.01 for six inch thickness reinforced with 40 pound steel. The paving will amount to between six and ten miles.

JUNCTION'S beautiful lawns this summer will be inspired partly by the contest being sponsored by the Parent Teachers Association and other civic organizations. Kimbe Courts is one of the models, and the work there is

attracting the attention of all interested in landscape work.

Turkey is elated over the announcement of a \$30,000.00 sanitarium to be built at once. An unlimited supply of water has recently been piped into the town, railroad surveyors have laid out a north and south railroad route, two buildings of brick are under construction and plans for others are being made.

### LUTHERAN Y. P. MEET

The young peoples society will meet in the home of H. M. Timian on Friday night, April 26.

The entertainment committee has prepared an interesting program as follows:

Welcome Address, Ellen Lichte. Short sketch of my college days, W. J. Luecke. Whistling Duet, Paul Manthay and Adolph Lueck. Reading, Annie Manthay. Luthers Reformation, Johnny Stockigner. Race in finding Bible verses in which the whole society will take part. Bring your Bibles.

### COURT OF HONOR MEET

A Boy Scout Court of Honor meeting is to be held at the high school tonight, the 25th, a part of the program being as follows:

After invocation there will be a sing-song led by Rev. L. G. H. Williams, of Lubbock. Tenderfoot awards will be made by Scout-Master Clapp. There will be a five minute inspirational talk by R. E. McCaskill. "History of American Flag," by a member of Troup 25, and knot tying contest between members of troup 25 and 26. Questions on scouting will be propounded by Commissioner Clapp, after which taps will be sounded.

### PERSONAL ITEMS

in Littlefield, Tuesday attending to business.

Miss Norma Lee aGttis and Clarence were Olton visitors Sunday night.

Tom Singer and Kenneth Houk made a business trip to Lubbock, Sunday afternoon.

Mr. and Mrs. H. J. Gibbs and sons, John and Harvey, were Lubbock visitors, Sunday.

John H. Arnett Motor company received a carload of Fords, Tuesday.

A. R. Hendricks, of Lubbock, was

Mr. and Mrs. Albert Bledsoe are the parents of a baby boy, born April 22nd.

Mr. and Mrs. Leonard Coffee, of Lubbock, were visiting friends in Littlefield, Saturday afternoon.

Mesdames S. J. Farquhar, Charlie Harless, Irvin Miller and John H. Ar-

nett attended a bridge party given by Mrs. A. H. McGavock in Olton, Tuesday.

Misses Lexie and Fleddie Dunagin and Mrs. A. M. Dunagin spent Sunday in Dimmit and Hart.

Miss Margaret Scheurer, who has been teaching school in New Mexico, returned home, Monday.

Miss Edna De Lashaw, of Houston, is here visiting her sister, Mrs. J. R. Coen.

Mr. and Mrs. V. M. Brown and children left Sunday for Vernon, where they will make their home.

Browster—with an area of 3,798,400 acres—is the largest Texas county.

### NOTICE TO POULTRY RAISERS

Did you ever see such high prices for Poultry at this time of the year? I am paying the following prices:

Heavy Hens	24c	Cox	5c
Light Hens	21c	Old Tom Turkeys	10c
Colored Broilers	27c	No. 2 Turkeys	10c
Leghorn Broilers	23c	No. 1 Turkeys	15c

Please don't be misled. Bring your Poultry to the Farmers Produce, when you start this way, where your business will be appreciated. Service is our motto. Thanking you for your past favors and hoping to please you in the future, we are, yours—

### FARMERS PRODUCE

T. J. WATSON, Manager, Phone 154, LITTLEFIELD

## Every Family is Entitled to the Greatest Blessing on Earth— A "HOME"



Our principal business is the dispensing of this blessing.

We feel we have accomplished a real humanitarian task when we are privileged to furnish good sound material to enter into the construction of your home, whether it be a mansion or a cottage.

We have been building homes in and around Littlefield for several years past—we want to build many more. Our entire business is at your service. We will take pleasure in furnishing you with estimates for any buildings you may desire.

We have a large assortment of plans and specifications that are at your service—plus our personal assistance gladly rendered. Let's talk the matter over!

### HIGGINBOTHAM-BARTLETT CO.

LITTLEFIELD,

TEXAS

## Planting Seed Is Here

We have just received a big carload of pedigreed field Planting Seed for distribution among the farmers of this vicinity. The car contains

MAIZE KAFFIR HIGERA MANCO ALGERIA and RED TOP CANE

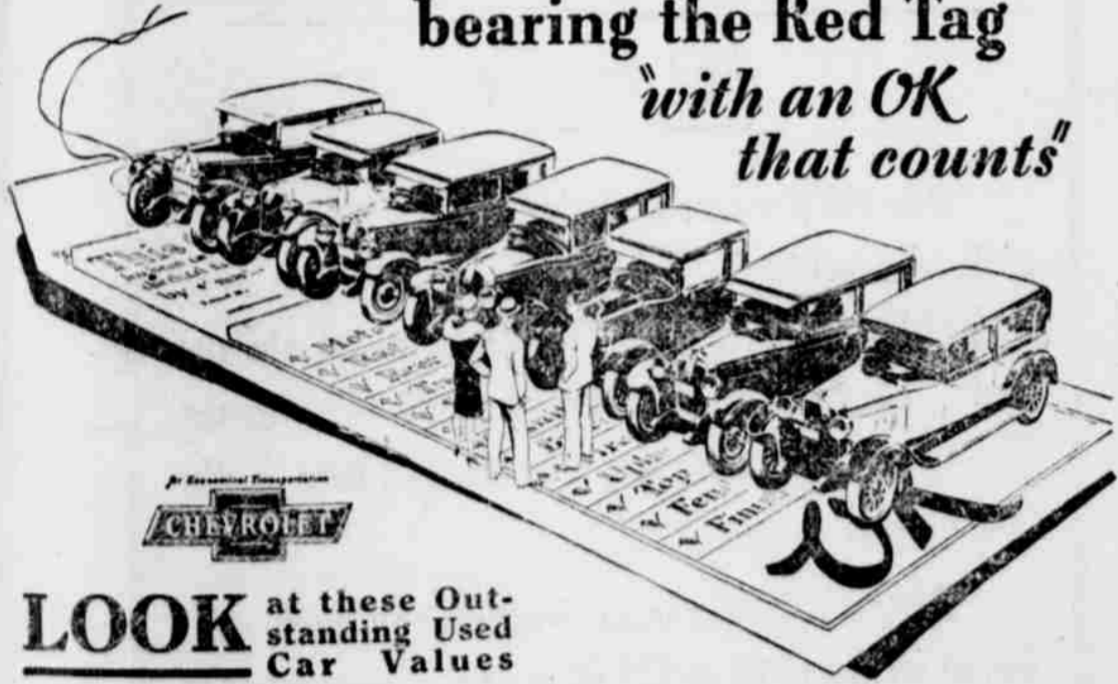
This seed is all guaranteed high quality, pure bred and the prices are very reasonable. Better call and examine it promptly, placing your orders and making your reservations.

### Littlefield Coal & Grain Co.

LITTLEFIELD FEED & SEED STORE  
Checkerboard Store On Main Street

## Buy on a Sound Basis!

We stand behind every Used Car bearing the Red Tag "with an OK that counts"



1928 Chevrolet Coach, almost new. Priced reasonable.

1926 Chevrolet Sedan, a dandy value.

1926 Chevrolet Coach. Motor completely overhauled, looks good.

1926 Chevrolet Touring, good tires, top, motor first class, priced \$150.00.

We have several reconditioned model T Ford tourings, priced so that no one need walk. We have a real value in two 1925 Ford coupes, thoroughly reconditioned, and good tires.

OUR used car department is operated under the famous Chevrolet Red O. K. Tag system. Under this plan, we attach the Chevrolet Red O. K. Tag to the radiator cap of every reconditioned car—showing exactly what vital units of the car have been checked or reconditioned by our expert mechanics.

We believe that no fairer system of used car merchandising has ever been worked out—for it assures the customer honest value.

Due to the great popularity of the new Chevrolet Six, we have on hand at this time a wide selection of "O. K." used cars taken in trade on new cars. Come in and look them over. You are sure to find exactly the car you want at a price that will amaze you. Terms are exceptionally easy.

### BELL-GILLETTE CHEVROLET COMPANY

LITTLEFIELD,

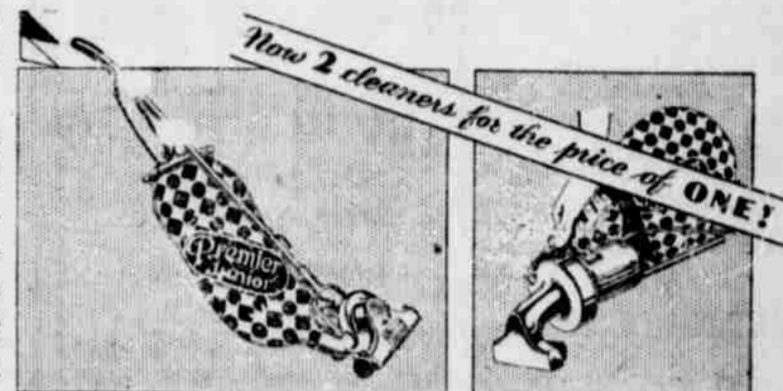
TEXAS

Look for the Red Tag "with an OK that counts"

## SPEED UP Electric Cleaning This New Way!

Premier now offers two electric cleaners for the price of one.

A big cleaner for the rugs and carpets, and the new small cleaner—the Spic-Span—to take the place of attachments. Weighing only four pounds, the Spic-Span can be taken from task to task without wasting time or steps. You simply plug it into any electric socket and clean mattresses, clothes stairways, upholstery, automobiles, nooks and crannies everywhere.

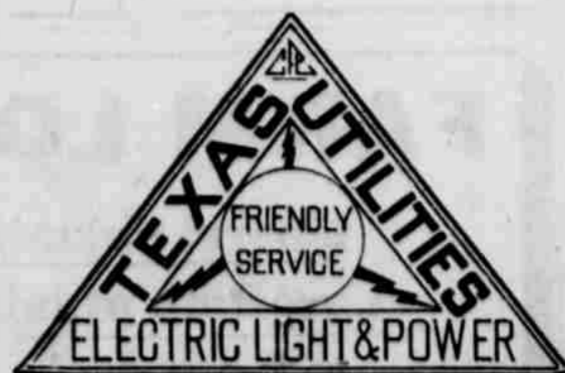


The Spic-Span may be purchased separately for \$14.50 . . . or in one of the following combinations. Easy Payments. Phone or visit us today and arrange for a private demonstration. No obligation.

### Two Cleaners for the Price of One

Premier Duplex and Premier Spic-Span Both \$72.50 for

Premier Junior and Premier Spic-Span Both \$48 for



R. E. McCASKILL, Manager, Ellis Bldg., Littlefield, Texas  
Electricity is Your Lowest Priced Servant

## LOCAL HAPPENINGS

Mrs. Jim Blessing is seriously ill this week.

A. F. Curry, jr., spent the weekend in Tulla with his parents.

Donley Hobbs is spending this week in Dallas, attending to business.

Rev. W. B. Phipps, of Mountainair, New Mexico, is here visiting friends.

Mr. and Mrs. George Long spent Sunday in Lubbock.

Mr. and Mrs. Ed Aryan were Lubbock visitors, Sunday.

W. I. Shockley, of Anton, was in Littlefield, Monday on business.

Ovie Teal, of Lubbock, spent the weekend here with his brother.

Arthur Jones spent Sunday in Grassland.

Mr. and Mrs. T. S. Sales were visitors in Lubbock, Sunday.

Miss Alyne Arnett spent the weekend in Lubbock.

Mrs. Lena McElroy of Lubbock, spent Monday night in Littlefield.

Mrs. J. H. Ware and little son, who have been ill, are both improving.

Miss Mary Louise Thaxton spent the weekend in Ropesville with friends.

Lynnie Connell spent the weekend in Roby with his parents.

Jimmie Brittain was in Olton Monday attending to business.

Rowell Jones made a business trip to Lubbock, Tuesday.

Archie Druen, of Amarillo, was a Littlefield visitor, Tuesday.

Miss Tommie Killough spent Tuesday in Amherst with friends.

Earl Bradley, of Amherst, was in Littlefield, Tuesday on business.

## PALACE THEATRE

Littlefield Texas

### FRIDAY

Wm. Haines in—"Alias Jimmy Valentine" and Serial

### SATURDAY

Sioux Blood and Comedy

### MONDAY

Home James with Vaudeville 20 and 40 cents

### TUESDAY

Butter and Egg Man and News WED. AND THURS. Fleets In, with Clara Bow and Comedy

What has become of the fat woman that used to ride a bicycle?

### FULLER PEP



Fat or slender, young or aged—their clothes all look alike to us when it comes to giving expert improvement service—we satisfy them all

Just crank up your phone on our number, and we'll be there in a jiffy to render you as efficient service in, cleaning, pressing and repairing as you could ask.

### LITTLEFIELD TAILOR SHOP

Phone 101, Littlefield, Texas

Fred Kraushaar and son left Saturday for Winnipeg, Canada.

Mrs. C. R. Singer transacted business in Olton and Earth last Friday.

Mr. and Mrs. John H. Harvey were Lubbock visitors, Sunday.

The Texas Company is building a wholesale supply station in Littlefield.

Jess Elms had his home renovated last week.

Clyde Arnold and Mick Ratliff were Amherst visitors, Sunday.

H. E. Wichey, of Wichita, Kansas, was in Littlefield, Monday on business.

Misses Minnie Ruth Wells and Katherine Cooper were Lubbock visitors, Sunday afternoon.

Mrs. T. A. Henson had her tonsils removed Sunday at a Lubbock sanitarium and is doing nicely.

Mrs. T. M. Keenan returned Friday from Temple, where she underwent a major operation.

Mr. and Mrs. Jack Henry returned Friday night from a week's visit with his parents at Desdemonia.

Mrs. Lena McElroy, of Lubbock, owner of the Palace Beauty Shop, was in Littlefield, Friday.

Misses Aileen Wells and Ruby Lee Brooks, of Lubbock spent the weekend here with Miss Minnie Ruth Wells.

Earl Hobbs, of Tech., spent the weekend here with his parents, Mr. and Mrs. D. G. Hobbs.

Mr. and Mrs. Ed Aryan and little son, spent Thursday in Lubbock with friends.

Miss Dess Key, of Amarillo, is here visiting her parents, Mr. and Mrs. L. E. Key, and Mr. and Mrs. Otha Key.

Miss Agatha Gore, of Lubbock, spent Sunday here with her sister, Mrs. Van Clark.

Paul S. Corbitt and Herman C. Kruse, of Plainview, spent the first part of this week in Littlefield.

Chester Pate returned Monday morning from a week's visit in Healdton, Oklahoma.

Homer Nelson, of Brownfield, visited friends in Littlefield, Sunday afternoon.

J. C. Hilburn spent the weekend in Roby with friends and attending to business interests.

Floyd Hemphill, of Canyon, spent Sunday here with his parents, Mr. and Mrs. A. G. Hemphill.

E. N. Arnn, of Carey, is here visiting his parents, Mr. and Mrs. J. W. Arnn.

Mr. and Mrs. Star Haile and Mrs. Len Irvin were Lubbock visitors, Monday.

Edgar Campbell returned Sunday night from a two month's visit in Austin.

Miss Margaret Teal, of Amarillo, spent the weekend in Littlefield, the guest of Mrs. P. W. Walker.

Mr. and Mrs. R. A. Kelm and family made a business trip to Hobbs, N. Mexico, Monday.

Miss Mercedes Allen, of Anton, spent Sunday in Littlefield with friends.

Mrs. Otto Jones and son, Jodye Elmo, and Mrs. Mable Worley were shopping in Lubbock last Friday.

Misses Gladys Wales and Dahlia Hemphill spent the weekend in Lubbock, the guests of Mr. and Mrs. Jimmie Pruitt.

Misses Doris Williams, Addie Mae Hemphill, Ralph Gillette and Burness Lowmore motored to Slaton, Sunday.

Mr. and Mrs. Payne Wood, of Amherst, spent Sunday in Littlefield with her parents, Mr. and Mrs. F. R. Jones.

Miss Edith Robins and Arnon Ritter, of Austin, spent the weekend in Littlefield the guests of Miss Emma Ruth Jones.

Miss Vesta Henson, of Amarillo, spent the weekend in Littlefield with her parents, Mr. and Mrs. T. A. Henson.

Mr. and Mrs. F. R. Jones and Mr. and Mrs. Payne Wood visited Mr. and Mrs. W. I. Shockley and family Sunday afternoon.

Mr. and Mrs. J. W. Arnn and son, Bill, and daughter, Lora, spent Sunday in Hale Center, the guests of Mr. and Mrs. Tom Johnson.

Max L. McClure left Sunday for New York City, where he was called to the bedside of his mother who is ill. He will be gone about a month.

John H. Arnett left Monday for Dallas, where he will spend a week in interest of John H. Arnett Motor Company.

Mr. and Mrs. George Smith and family, of Morton, spent Saturday in Littlefield with her sister, Mrs. J. M. Tunnell.

E. G. Courtney and son, James, re-

turned Tuesday night from a two week's stay in Tonkawa, Okla., and Nashville, Illinois.

Mrs. W. W. Taylor gave a delightful slumber party Saturday night for Misses Mary Helen Harris and Ruth Busher.

Mrs. J. W. Stewart and son, Hack, and daughter, Annie Mae, went to Lubbock, Monday where Annie Mae is taking treatments for facial paralysis.

Mr. and Mrs. J. E. Chisholm and Misses Lucille Bruce and Tommie Killough accompanied Misses Lucille Lucas and Eva Gertrude Chisholm to Lubbock, Sunday afternoon.

Higginbotham-Bartlett Lumber Co., will soon move the old frame building which they occupy at present and in its place will build a new brick, modern hardware store.

Mrs. Marvin Baker, of Lubbock, spent the weekend here with her parents, and was accompanied home Sunday afternoon by Misses Ara Lou Turner and Maurine Irvin.

Mr. and Mrs. Lige Wilson, of Bowlegs, Oklahoma, Mr. and Mrs. W. H. Young, and children, and Richard Harris, of O'Donnell, are here visiting Mr. and Mrs. L. W. Bruce and family.

Bell-Gillette Chevrolet Company reports the following sale of new Chevrolet sixes: Dr. Anderson, coupe; W. R. Atkinson, Sudan, coupe; Dr. Rochell, Amherst, coach; J. J. Wallace, Morton, truck.

Mr. and Mrs. W. T. Jones, jr., and W. T. Jones, of Lovington, New Mex., spent the weekend in Lovington, going from there to Carlsbad, where they went through the cavern, returning to Littlefield, Sunday afternoon.

Misses Pauline Bell, Blanche Cowan, Vera Feitz, Vilas Emfinger, Raldo Meacham, Rowell Jones, Bart Gilbert and William McAngus were visitors in Anton and Amherst, Sunday afternoon.

Mr. and Mrs. J. R. Manley, who spent a month here with their son, L. L. Manley, were accompanied to their home in Goree, Saturday, by Mr. and Mrs. L. L. Manley and family, who spent the weekend there.

Misses Charlotte Groom and Pearl Strawn, of Olton, spent the weekend here with their parents, and were accompanied to Olton Sunday afternoon by Miss Katie Ratliff and L. C. Strawn.

John H. Arnett Motor Company reports the following sale of Fords: Miss Stella Lloyd, sport coupe; J. W. Arnn, tudor; G. G. Shirley, Tudor; Jesse Seale, Tudor; W. E. Gregory, roadster; A. C. Edwards, Amherst, Tudor.

the only size in stock; And now, just once more, bear in mind that any fool can knock. —From the Wildcat.

**CHILDISH SPECULATIONS ON A SANDY DAY**

By Elizabeth Brewer

While sitting by my window,  
Watching the flying sand,  
I wonder if the sunshine  
Will ever come again.

I sit here by my window,  
And watch all through the day,  
Wondering if this awful sand  
Will ever blow away.

But, when even-tide draws near,  
And it seems that night is here,  
I see a dispersing of this sandy pie,  
And then, behold the sun appear!

It hangs there in all its grandeur,  
Just above that western line,  
Spreading its dusty rays  
All over this world of mine.

So I sit in rapt amazement,  
I gaze in perfect glee,  
At this unsurpassable picture  
Of beauty there for me.

It is such a wonderful picture,  
It was never equaled by man,  
This picture of a rosy sunset  
And a thinning cloud of sand.

It is enough to make any person  
Forget any doleful musings  
However sad or gay,  
He might have had on a sandy day.  
—From the Wildcat.

THE WEST TEXAS Chamber of Commerce is sending an invitation signed by Governor Dan Moody, of Texas, Governor Dillon, of New Mexico and Governor Phillips of Arizona to President Hoover asking that he attend the eleventh annual convention and the commemoration of the Galveston Purchase at El Paso.

## The LITTLEFIELD SECTION

Of The Famous South Plains  
Offers One of the Greatest Opportunities

In the Entire South for Homeseekers

And Investors

Our 100 per cent agricultural lands in the center of development sell at \$30.00 to \$35.00 per acre. One-fifth cash, balance on liberal terms at six per cent. They can't be beat for investments or homes. These lands are increasing in value, and now is the time to buy!

Our combination tracts for farm and stock-raising, at from \$15.00 to \$20.00 per acre, convenient to schools, railroad and good towns, will appeal to any man who wants a real proposition of this kind.

The town of Littlefield is growing rapidly, and we have on the market splendid resident property at the right price, and on liberal terms.

See any of our authorized agents, or address the company at Littlefield, Texas.

## YELLOW HOUSE LAND COMPANY

(OWNERS)

LITTLEFIELD,

TEXAS

## For Sale

### GOOD JERSEY MILK COWS

NOW MILKING

We have some good ones that we will sell well worth the money.

Let us show them to you!

### CARL ARNOLD

At Bell-Gillette Chevrolet Company  
LITTLEFIELD, TEXAS



Just Telephone Your Order

WE DELIVER PROMPTLY!

We have the best of Groceries at the lowest prices—and we deliver all telephone orders with speed and accuracy.

Your business solicited on the basis of value received for Quality Groceries

### B & M CASH GROCERY

Littlefield, Texas

## FARM LOANS

Liberal Valuations

Low Rate of Interest

SEE US!

Your business will be appreciated! **STREET & STREET**

Pioneer Insurance Agents

LITTLEFIELD,

TEXAS