



EXTRA COATHANGERS—Tim Chambers, left, Dickey Montgomery, right, and Robert Bolton, kneeling, will be among the Boy Scouts knocking on Littlefield doors Saturday in search of old or unwanted coathangers. The scouts are members of Explorer Post 41, and coathanger collection is one of their money raising projects to finance their scouting. The scouts request that hangers be left on porches for pickup.

Cats Try Mustangs In Andrews Friday

Injuries Dim Cat Hopes

WHO: Littlefield Wildcats vs. Andrews Mustangs
WHEN: Friday at 8 p. m.
WHERE: Mustang Field in Andrews

ANDREWS—Littlefield's Wildcats, knocked rudely and soundly in their last outing by the Brownfield Cubs, travel here Friday to engage the unbeaten but once tied Mustangs in an effort to gain a little of their lost prestige and put themselves back on the winning path.

While the Cats were losing last weekend, the Mustangs were taking a breather and regrouping their forces for the battle with Littlefield.

Chief among the problems of Andrews coach Glenn Frazier is that of finding a replacement for quarterback Doug Jeffreys. The 160 pound field general was injured in the horses' game with Snyder two weeks ago and advised by doctors to give up the grid ball.

Andrews came on in the second half of the Snyder tilt to cop the game, 26-14, using Tommy Camacho in place of Jeffreys, and the junior came through with flying colors.

Andrews began its season by entertaining Tom S. Lubbock Westerners. With 78 seconds remaining in the game, the Mustangs scored on a keeper by Jeffreys and then converted for two on a Jeffreys pass to tie the heavily favored Lubbockites 14-14.

In their second try against Snyder, the Mustangs proved to be a second half team again by scoring the winning points in the final periods.

The Wildcats came out of the gate with a bang, scoring a touchdown in the first quarter.

THE WEATHER



FORECAST—Clear to partly cloudy today and tomorrow. Mild today and tomorrow.
MOISTURE—For the month 58; for the year 19.31; this time last year 14.43.
TEMPERATURES—Sunday low 50, high 75; Monday low 47, high 73; Tuesday low 55, high 76; Wednesday low 51, high at noon 77.

Olton Council To Act On Phone Rate Boost

Olton city council is expected to act next Tuesday night on a request from General Telephone Co. for an "open-ended" rate increase requested at the September 13 meeting of the council.

The September meeting lasted until 1:30 in the morning when Saunders stated the company's position on Olton service. The council pointed out that service had not been good, and councilman Lynn Fite said "We're not getting our money's worth now at the present rates."

Saunders said Wednesday that the company "does not deny that service has been worse during the past four months."

He said: "We always interrupt service when we expand and enlarge our equipment, and therefore service has been considerably worse during the last four months. We regret this inconvenience, but the final result will be a greatly improved telephone service for Olton."

He said the company has "added a number of extra service men and new equipment to get the 'bugs' out of the Olton system," and he added: "We believe that within a very short time we will have all the bugs eliminated and that Olton, as well as all the other 13 exchanges which are served from the central plant here will have the finest service it is possible to provide in any telephone system in the nation."

He said that in asking for an "open-ended" rate increase no definite figures are being requested. "We simply laid our case before the council, and we are asking that they up the rates sufficiently to provide the company with a reasonable return on its investment."

Olton is one of 14 exchanges in this area "mastered" out of the new and elaborate Littlefield plant. "We are offering to improve all our service at Olton," Saunders said. "In fact, we already have improved service in this area."

"We think we have done a real fine job in Lubbock, and we are proud of them," James Pirkey, high school principal, said Wednesday.

"We are always proud of our organizations at school, and this is indeed an honor to come for the band, one which I believe was justly earned," the principal said.

The prize money was received in the name of the band by Sharon Cummings of Littlefield.

there. For example in 1958 we had many applications for service waiting. Today this number has been whittled greatly and all on the 'pending list who have not yet been connected. This means we will get to them immediately."

Among improvements listed at Olton is a new building which is to be put into use early next year.

Present rates at Olton are as follows: Individual business line, \$9; two-party business service, \$7.50; business extension \$1.75; individual residential service, \$5.50; two-party service, \$4.75; four-party service, \$4; and residential extension, 90 cents.

The council told Saunders at the September meeting that long waits were necessary because the

present rates at Olton are as follows: Individual business line, \$9; two-party business service, \$7.50; business extension \$1.75; individual residential service, \$5.50; two-party service, \$4.75; four-party service, \$4; and residential extension, 90 cents.

The council told Saunders at the September meeting that long waits were necessary because the

present rates at Olton are as follows: Individual business line, \$9; two-party business service, \$7.50; business extension \$1.75; individual residential service, \$5.50; two-party service, \$4.75; four-party service, \$4; and residential extension, 90 cents.

The council told Saunders at the September meeting that long waits were necessary because the

(Continued On Page Five)

Homecoming At Olton Set For Friday

OLTON—Activities for the annual homecoming will kick off Friday at 4 p. m. with a parade through the business district here. Marching in the parade will be the Cadet and Mustang High School Bands.

The local P-TA will sponsor a ham supper from 5:30 to 7:30 p. m. in the high school cafeteria. Ham, potato salad and all the trimmings will be served to exes and guests at \$1 a plate. Student tickets for the supper are 75 cents and children's tickets are 50 cents.

Highlight of the homecoming day will be the Olton Mustang-Herford Whiteface football game at 8 p. m. The Mustangs are undefeated through four games this season and Herford, also undefeated, is one of the grid powers of district 1-AAA.

Halftime activities at the game will include the crowning of the 1960 Homecoming Queen. She will be chosen from five Olton High School candidates—Lonna May, Cecilia Galloway, Gayle Ann Parsons, Nancy Critchfield and Becky Hall—all seniors.

Instead of the general meeting of all classes as has been done in the past, separate class reunions will be held this year. A representative of each class has been appointed to plan the agenda for the individual classes.

Information concerning the supper or other aspects of the homecoming celebration can be obtained by contacting Mrs. Buddy Hedges, phone 5966, Olton.

City's New Year Starts Saturday; Fees Upped

Littlefield's 1960-61 budget goes into effect Saturday and at the same time garbage rates take a slightly upward swirl, an increase which city officials hope will offset an expected \$14,000 operating loss in that department. Total budget for the year starting October 1 is \$118,287.50, slightly higher than during the current year.

October 1 also marks the start of slightly higher pay for employees who have "earned" raises under the city's seniority rule. For residences, the increase in garbage service costs will be 50 cents a month. Present rate is \$1.50.

Business areas, served by 32 Dempsters Dumpsters, will have rates ranging from \$6 per month to \$30. The rate is based on the number of customers served by particular boys, upon the number of pickups necessary and on the flying path.

Andrews came on in the second half of the Snyder tilt to cop the game, 26-14, using Tommy Camacho in place of Jeffreys, and the junior came through with flying colors.

Andrews began its season by entertaining Tom S. Lubbock Westerners. With 78 seconds remaining in the game, the Mustangs scored on a keeper by Jeffreys and then converted for two on a Jeffreys pass to tie the heavily favored Lubbockites 14-14.

In their second try against Snyder, the Mustangs proved to be a second half team again by scoring the winning points in the final periods.

The Wildcats came out of the gate with a bang, scoring a touchdown in the first quarter.

While the Cats were losing last weekend, the Mustangs were taking a breather and regrouping their forces for the battle with Littlefield.

Chief among the problems of Andrews coach Glenn Frazier is that of finding a replacement for quarterback Doug Jeffreys. The 160 pound field general was injured in the horses' game with Snyder two weeks ago and advised by doctors to give up the grid ball.

Andrews came on in the second half of the Snyder tilt to cop the game, 26-14, using Tommy Camacho in place of Jeffreys, and the junior came through with flying colors.

Andrews began its season by entertaining Tom S. Lubbock Westerners. With 78 seconds remaining in the game, the Mustangs scored on a keeper by Jeffreys and then converted for two on a Jeffreys pass to tie the heavily favored Lubbockites 14-14.

In their second try against Snyder, the Mustangs proved to be a second half team again by scoring the winning points in the final periods.

The Wildcats came out of the gate with a bang, scoring a touchdown in the first quarter.

While the Cats were losing last weekend, the Mustangs were taking a breather and regrouping their forces for the battle with Littlefield.

Chief among the problems of Andrews coach Glenn Frazier is that of finding a replacement for quarterback Doug Jeffreys. The 160 pound field general was injured in the horses' game with Snyder two weeks ago and advised by doctors to give up the grid ball.

Andrews came on in the second half of the Snyder tilt to cop the game, 26-14, using Tommy Camacho in place of Jeffreys, and the junior came through with flying colors.

Andrews began its season by entertaining Tom S. Lubbock Westerners. With 78 seconds remaining in the game, the Mustangs scored on a keeper by Jeffreys and then converted for two on a Jeffreys pass to tie the heavily favored Lubbockites 14-14.

In their second try against Snyder, the Mustangs proved to be a second half team again by scoring the winning points in the final periods.

The Wildcats came out of the gate with a bang, scoring a touchdown in the first quarter.

Area Growers Take Share Of Prizes At Two Big Fairs

Lamb county exhibited booths at both the Tri-State Fair in Amarillo and the South Plains Panhandle Fair in Lubbock this month. County Agents said Thursday.

Some 50 different products were shown, representing all phases of agriculture in Lamb county. Lady Clair Phillips, home demonstration agent and J. W. Kimbrough, county agent, said Thursday.

In addition to county winnings, Lamb county individuals walked off with a fair share of the prizes for products shown, the county agents said.

Herb Helbig, assistant county agent said, "the fairs showed some very good examples of Plains agriculture, in an effort to tell the story of how these products and production fit into our economy."

Summing up, the county agents said 35 items were shown in individual competition in Amarillo with 23 placings. Of these, 10 won first, 12 copped second and one

placed third. Top places were primarily in vegetables, corn and grain sorghum.

At Lubbock, 25 items were entered in the county booth and 15 (Continued On Page Two)

placed third. Top places were primarily in vegetables, corn and grain sorghum.

At Lubbock, 25 items were entered in the county booth and 15 (Continued on Page Six)

placed third. Top places were primarily in vegetables, corn and grain sorghum.

At Lubbock, 25 items were entered in the county booth and 15 (Continued on Page Six)

Cotton Farmers' Annual Problem: Defoliation; Expert Says It Must Be Done At Right Time

Lamb county cotton farmers are faced now with their perennial late September problem: Defoliation.

The timing of harvest - aid chemicals can make or lose High Plains farmers money on their 1960 crop, says County Agent W. R. Kimbrough; thus farmers should study the situation carefully before applying chemicals.

Research conducted at the Texas Agricultural Experiment Station at Lubbock, Kimbrough

says has shown that too early applications of both defoliant and desiccants has reduced lint yield as much as 175 pounds per acre. On the other hand, timed properly, defoliants can increase yield.

He places this "too early" period at the time when only 30 percent of the bolls are open.

Kimbrough says that the test was conducted on late-planted cotton - June 8 - and should be expected to give results applicable to late cotton most years on the Plains of West Texas.

"Lint harvested from the early treated cotton graded 'wasty'," Kimbrough says "whereas the non-treated says 'not.'" He added: "The micronaire of samples taken from the early-treated cotton was somewhat lower than the untreated cotton. Results from this test show a somewhat exaggerated reduction in yield, but points out the need for proper timing of harvest - aid chemicals for desirable results."

He said, "particular attention should be given to the maturity of late cotton so yield and grade of lint are not reduced."

He said he, and other farm leaders, have received many inquiries concerning defoliation. As a result he has prepared a release on the subject.

The statement follows: "Research data available shows that lint value was increased (Continued On Page Four)

Band Gets First At Lubbock Fair

Littlefield High School band walked off with top place in marching bands at the South Plains Fair in Lubbock Monday, beating out a score of other organizations to win first place.

The band is directed by Don Hays.

For its first - place winning, the band received \$100 in cash. Also receiving \$100 prizes for the other three divisions were Abernathy, Vets Center and Texaco.

Second prizes of \$50 each went to Seminole, Denver City, Sundown and Whiteface. Divisions are based on total school enrollment.

The parade was watched by thousands who lined the streets of Lubbock along the entire march route.

The band has received many honors during the history of band organizations here. This is the first year the band has been directed by Hays who returned to Littlefield in September this year after living in Austin for nine years.

Hays succeeded Beryl Harris, who became principal of the elementary school here after Jimmy Hines resigned in late August to become city manager at Ruidoso, N. M.

"We think we have done a real fine job in Lubbock, and we are proud of them," James Pirkey, high school principal, said Wednesday.

"We are always proud of our organizations at school, and this is indeed an honor to come for the band, one which I believe was justly earned," the principal said.

The prize money was received in the name of the band by Sharon Cummings of Littlefield.

Return Asked Of Hospital Aids

An appeal was sounded Wednesday to anyone in Lamb county who as a wheel chair, hospital bed or crutches belonging to the Littlefield VFW and not being used to return the items as soon as possible.

Jimmie Chapman, public relations chairman for the VFW, sounded the appeal, saying, the VFW urgently needs its wheel chairs, hospital beds and crutches.

Schools Start Work On Posters

School art classes have started work on posters to be used during fire prevention week Oct. 9 to 15, it was announced Thursday afternoon by the Littlefield Chamber of Commerce which sponsors the poster contest.

The posters will be displayed in downtown Littlefield to call attention to the week, it was explained.

Parents Go 'Back-To-School' Monday Night Under P-TA Guidance For Look At LHS



TOUR—Rex Gilstrap, right, bookkeeping instructor at the high school was on Monday night to show parents some of the subject matter that he teaches their children during the school day. Taking in the lecture are Mr. and Mrs. Byron Douglas, Mr. and Mrs. Ivan Fowler, center.



BACK-TO-SCHOOL—Two of the parents who returned to school Monday night are Mrs. Melvin Ross, left, and Mrs. John Richey, right. The women are inspecting the biology classroom at Littlefield High School under the guidance of Pat Goodwin, biology teacher.



NEW PREXY—Mrs. E. W. Badger, left, outgoing president of the junior and senior high school P-TA, hands the gavel of authority to the new chief executive, Mrs. Ed Blackwell, center. Mrs. Blackwell was elected at Monday night's meeting after Mrs. Badger resigned. Mrs. Arthur Duggan, right, is the new vice-president, replacing Mrs. Blackwell.



YOU DO IT THIS WAY—Mary "Skeet" Anerson, Caprock Council Girl Scout leader from Lubbock, shows a group of Littlefield Scout leaders games and dances which can be taught to their girls. Ten local and area Scout leaders attended the Tuesday training courses. They were Glenda Laughtrey and Betty Hall, Olton; Shirley Ross, Bernita Kalliff, Jimmie Steed, Mary Barton, Eva McMillan, Pauline Grote, Bernice Arnstead and Bernell Walker, all of Littlefield. Rosemary McNeese, Littlefield, assisted in the instructions.

Allotments For Sugar Beets Due

All Lamb County farmers and other persons interested in getting some sugar beet acreage allotment are invited and urged to attend an area sugar beet meeting in Hale Center October 4 at 8 p. m.

The meeting will be in the Hale Center High School cafeteria.

Lee Benefield of Plainview, President of the Texas Sugar Beet Growers Association will be in charge of the program.

Also present to discuss the program will be Jim Witherspoon of Hereford, who has been a strategy and work leader in that area for sugar beets many years.

Area Growers

(Continued from Page One) In individual competition. Up to Thursday the county winners had gathered five first places and four fourth places.

Among individual winners at Lubbock were these:

Red rain sorghum, Royce Turner, Littlefield; Bell pepper, Johnny Gallini, Littlefield; Yellow corn, Alford Allen, Olton; lima beans, Archie Mays, Littlefield. Other items on which the county exhibits won at the Lubbock fair included field peas, sudan grass, peppers, and blackeyed peas.

SERVICES

STORAGE Space for furniture, etc. L. B. Stone, Ph. 385-3665, TF-S

WE BUY, SELL and TRADE S & S Army Store, Phone 385-3944, TF-S

Pickup and delivery, moving box car unloading, general hauling efficient service. Don Berry at 385-5289, 10-6-B

Dubs Refrigeration service. All kinds of Refrigeration Service. Phone 385-3426, 1212 Hall Ave., TF-D

General Home Repairs, Cabinet tops, Inlaid Linoleum installed—Day and Night, Ph. 385-3617, TF-M

Mattress Work—Mattresses renovated, special built, King Size and box springs. For appointment call 385-3781 in Littlefield, Economy Mattress Co., Lubbock, Texas, TF-E

DR. AARON J. WILLIAMS announces the removal of his office from Norris, Tennessee to 108 East 4th Street, Littlefield, Texas to be associated with Dr. Albert Perkins in the General Practice of Dentistry. Office hours: 9:00 - 12:00 and 2:00 - 5:00 Monday through Saturday, Phone Littlefield 385-4434, 9-2-W

Custom plowing at customary rates. New rig. See Charles Cummings at 704 West 1st or Roper Tractor Co., TF-C

Custom sewing for little girls and mothers alike. Mrs. Nita Page phone 385 - 4653 at 1306 Locust Lane, Littlefield, TF-F

LEGAL NOTICE

Statement required by the act of August 24, 1912, as amended by the Acts of March 3, 1933, July 2, 1946 and June 11, 1960 (74 Stat. 298) showing the ownership, management and circulation of Lamb County Leader published each Thursday at Littlefield, Texas as for 1960.

1. The names and addresses of the publisher, editor, managing editor and business managers are: Publisher Wendell M. Tooley, Box 72, Littlefield, Texas; Editor Ramon Martin, Box 72, Littlefield, Texas; Managing editor, Ramon Martin, Box 72, Littlefield, Texas; business manager, Wendell M. Tooley, Box 72, Littlefield, Texas.

2. The owner is (If owned by individual, the name and address of the owner; if owned by a corporation, its name and address must be stated and also immediately thereunder the names and addresses of stockholders owning or holding 1 percent or more of total amount of stock. If not owned by a corporation, its name and address, as well as that of each individual member, must be given.)

3. The known bondholders, mortgagees, and other security holders owning or holding 1 percent or more of total amount of bonds, mortgages, or other securities are: (If there are none, so state.)

4. Paragraphs 2 and 3 include in cases where the stockholder or security holder appears upon the books of the company as trustee or in any other fiduciary relation, the name of the person or corporation for whom such trustee is acting; also the statements in the two paragraphs show the affiant's full knowledge and belief as to the circumstances and conditions under which stockholders and security holders who do not appear upon the books of the company as trustees, hold stock and securities in a capacity other than that of a bona fide owner.

5. The average number of copies of each issue of this publication sold or distributed, through the mails or otherwise, to paid subscribers during the 12 months preceding the date shown above was: (This information is required by the act of June 11, 1960 regardless of frequency of issue.)

W. M. Tooley, Publisher (Signature of editor, publisher, business manager, or owner)

Sworn to and subscribed before me this 26th day of September, 1960. Calvin Price (My commission expires 6-1, 1961) (Sept. 29, Oct. 2)

Mr. and Mrs. William R. Harrell are the parents of a boy, Wesley Roger, born Sept. 24 weighing 6 lbs. 3 ozs.

Mr. and Mrs. John C. Fagan are the parents of a girl, Mary Francis, born Sept. 23 weighing 5 lbs. 13 ozs.

Mr. and Mrs. Raymond Rowan are the parents of a boy, Douglas Wayne, born Sept. 27 weighing 7 lbs. 9 ozs.

Mr. and Mrs. Lesford Enlow are the parents of a girl, Cindy Ledan, born Sept. 27, weighing 7 lbs. 11 ozs.

Mr. and Mrs. Ed Drager are visiting their son and family, the Martin Dragers, Norfolk, Va.

Mr. and Mrs. Ed Blackwell went to Portales, Friday evening to see Portales University and Sul Ross, Alpine, compete in football. Returning home to spend the weekend with them were their son, James Blackwell, Jim Phillips, Vernon, and Jim Phillips, Knox City, who are all members of the Sul Ross football team.

CLASSIC LOOK IS THEME OF 1961 IMPERIAL



IN A MOVE AIMED at further development of a classic car look, stylists have restored free standing head lamps in the 1961 version of the Imperial. The grill is simple in design and centrally placed in the classic car tradition. The car as a whole carries forward traditional Imperial design features. Rear panels are extended to sharpen the impression of length and directed motion. The Imperial is powered by a 350-horsepower V-8 engine.

New 'Free-Standing' Lights Mark Classic Imperial, On Display Now

DETROIT — A newly styled 1961 Imperial featuring twin free-standing headlamps will go on display in Garland Motor Co. showroom, Thursday, September 29, according to C. E. Briggs, corporate vice-president and general manager of the Chrysler and Imperial Division, Chrysler Corporation.

The distinctive chromed lamps are completely removed from fender and coachwork metal, and mark the first time in nearly a quarter of a century that this type of lamp will appear on an American production automobile. "We expect 1961 to be a good year for full size luxury cars," Briggs said. "We find that those who have become accustomed to the roominess and comfort of a full size luxury car are unlikely to settle for anything less."

The 1961 models, although distinctly different in appearance from their 1960 predecessors, retain much of the styling identity established with the introduction of the modern version of the Imperial in 1957 and carried forward in subsequent models.

Imperial's styling policy, he said, is to maintain continuity of design each year in the interest of maintaining the owner's investment.

The 1961 models, he said, will be fully powerful and roomy as previous Imperials. The engine is rated at 350-horsepower;

wheelbase is 129 inches, both unchanged from 1960. As in 1960, the Imperial line will include a LeBaron four-door hardtop with limousine styled rear window and canopy effect in the roof which gives a town car appearance and feeling of privacy for rear seat passengers. Briggs said the LeBaron, the top of the line, scored the biggest sales gains of all Imperials during the 1960 model year.

In the Imperial Crown series there will be a four-door hardtop, a two-door hardtop and a convertible. In the lower priced Custom series there will be a four-door hardtop and two-door hardtop.

Imperial fabrics are more luxurious than ever. In addition, ten new exterior colors are being offered. Rich leather and wool broadcloth are available in Crown and LeBaron models. The LeBaron interiors are highlighted by deep quilting and pull-down buttons, further emphasizing the attractiveness and luxury of the automobile's interior. The new all-leather trim, standard equipment on the Imperial Crown convertible is also available as special equipment for hardtops.

Thirteen exterior colors in all are offered in 1961. The ten newer shades are generally brighter and richer in color, and include such new metallics as Autumn and Malibu tan. Mechanical improvements in

Littlefield Firm To Show New Deere Tractor To

Luce, Rogers, Nelson, Littlefield, John Deere Tractor dealer, is showing an all new tractor today.

The new Deere is the first away from the well known "John Deere" as a name of a new power unit in case of the features.

A new Synchro-Range constant mesh transmission is provided on all, but the smallest series of tractors. The transmission which is controlled by a dual-mounted lever, shifts gears rather than gears which remain in constant mesh.

The completely new design of the tractors, even the radiator and grille have lost their conventional place at the front of the tractor in the two larger power sizes. They have been located in the center of the tractor and fuel tank, which has been traditionally located atop the engine, has been placed in the nose of the tractor.

Deere's new hydraulic system is a major feature of the new line. In the new tractors the transmission and differential case has become a common reservoir.

The release lever is pulled toward the driver and pushed down before the brake is released as an added safety measure.

1961 marks the third year of operation of Imperial's modern assembly facility. More than 700 individual hand-crafting operations are performed in the plant. Production areas are divided into 38 quality monitoring areas, while each Imperial during the production process receives individual intensive water tests in a specially constructed booth located on the assembly line. A comprehensive road-test of each vehicle is undertaken by an experienced quality road-testing inspector.

To maintain Imperial quality workmanship standards, periodic company-paid employee training sessions are held in a variety of differing skills.

Since 1925, it has to wear a fez in Texas.

Funeral services for Stephens, 69, were held Wednesday in the Church, Amherst, Texas, Monday in Littlefield, Lubbock.

The services were by the Rev. Warren H. Dargatzis, pastor of the Methodist Church.

Survivors include three sons, Roy, Littlefield, and Ed, Littlefield, and five daughters, Lillian, Littlefield, and Mary, Littlefield, Mrs. Annabell, Littlefield, and Clever, Littlefield.

Burial was in Littlefield Park under the care of Payne Funeral Home.

Lubbock — Mrs. Mary A. Gutierrez, daughter of Dr. Draughon's Business Lubbock where she is their secretary at Littlefield High School.

Since 1925, it has to wear a fez in Texas.

LET US GET YOUR FALL CLOTHES TO GO

102 EAST 10th PHONE

BARRETT CLEANERS (FORMERLY WRIGHT CLEANERS) The Cleaning And Finishing Process Recommended By Leading Clothing Manufacturers

APPROVED SERVICE

LET US GET YOUR FALL CLOTHES TO GO

102 EAST 10th PHONE

Lately In Littlefield

Phone 385-3102 or 385-4482

Mrs. Emma Mangum, child and daughter, Marilyn Kay, recently returned from a trip to St. Louis where they visited their daughter, Mrs. Cecil Carter. From St. Louis they went to Belmont, Miss., to visit the O. Wheeler family. Mr. Wheeler's sister, Mrs. W. R. Tompkins, Rolling Fork, Miss., left Friday morning to return to her home after several days visit in the B. L. Wheeler home.

Mr. and Mrs. Harold Gouge have been visiting in their home here. Parents, Mr. and Mrs. M. A. Conner, Borger.

Mrs. Edna Brooks was dismissed Friday from Methodist Hospital in Lubbock.

Mrs. and Mrs. B. L. Wheeler

Amherst Garden Show Themes Yearly Seasons

AMHERST — The annual flower show of the Amherst Garden Club, held Saturday was well attended.

The theme was "Arrangements Around the Year."

Class I — "It's Easter Day", Mrs. Victor Reynolds and Mrs. Joe Rane tied for first; Mrs. Jim Nix, second; Mrs. Wallace Gosdin, third.

Class II (1) In The Greens (values and tones of green): Mrs. Victor Reynolds, first; Mrs. E. L. Black and Mrs. George Harmon, third.

Class II (2) Summer Time — Mrs. George Harmon, Mrs. V. Reynolds, first; Mrs. J. W. Chatwell, Mrs. Jim Nix, second; Mrs. Wallace Gosdin, third.

Class III — (1) Autumn Round Up — Mrs. Reynolds, first; Mrs. Nix, second; Mrs. Lee Payne, third.

Class III — (2) We Give Thanks (Thanksgiving arrangements) — Mrs. E. L. Black, first; Mrs. Reynolds, second; Mrs. Wesley Pigg, third.

Class IV (1) Glory OF Our Holidays (Christmas) — Mrs. Harmon, Mrs. Gosdin, first; Mrs. Joe Porter, first; Mrs. Black, second; Mrs. Nix, third.

Class IV (2) Vacation Memories (dried or withered materials) Mrs. Gosdin, first; Mrs. Reynolds, second; Mrs. Black, third.

Mrs. Reynolds was sweepstakes winner in arrangements. In horticulture, Mrs. Alma Roberts, Littlefield, was sweepstakes winner with 16 blue ribbons.

Mrs. Roy Black, Seade, won seven, Mrs. Audrey Jones, six, Mrs. John Cole, five and Mrs. E. L. Black, five.

Three national flower show judges from Plainview did the judging.

Pat Ligon had visiting her Sunday.

Rev. Robert Longshore is holding a revival at the Baptist Church in Electra, this week.

Ellen Webb Massengill, Seminole, spent the weekend with her parents, the L. L. Massengills.

Pat Ligon had visiting her Sunday.

Mr. and Mrs. Ed Drager are visiting their son and family, the Martin Dragers, Norfolk, Va.

Mr. and Mrs. Ed Blackwell went to Portales, Friday evening to see Portales University and Sul Ross, Alpine, compete in football. Returning home to spend the weekend with them were their son, James Blackwell, Jim Phillips, Vernon, and Jim Phillips, Knox City, who are all members of the Sul Ross football team.

Hospital News

LITTLEFIELD HOSPITAL AND CLINIC September 25

ADMITTED — Mrs. Emma Madden, Mrs. Fred Cook, Mrs. Florence West.

DISMISSED — Mrs. Opal Meeks, Raymond Wooten, Ivan Gilson, Tancie Altman, L. S. McCarty, Michael Jones, Debbie Williams, Armenta Armstrong, Tommy Strasser, Bennie Free, Marilyn Ellison, Mrs. Myrtle Wilson.

September 26

ADMITTED — Rosemary Smith, September 27

ADMITTED — Mrs. Wilma Taylor, Alma Tucker, Eugene Demel, Vivian H.H. Mayday, Gene Brunsty, Lovelland.

Mr. and Mrs. Ed Drager are visiting their son and family, the Martin Dragers, Norfolk, Va.

Mr. and Mrs. Ed Blackwell went to Portales, Friday evening to see Portales University and Sul Ross, Alpine, compete in football. Returning home to spend the weekend with them were their son, James Blackwell, Jim Phillips, Vernon, and Jim Phillips, Knox City, who are all members of the Sul Ross football team.



IMPERIAL OF 1961

THIS IS THE BEST CAR WE'VE EVER MADE. It runs quietly and economically, rides more comfortably, steers and stops and handles more precisely. It offers a number of thoughtfully developed evolutions... to bring an already excellent and spacious automobile one step closer to perfection.

Every feature and component has won its right to exist through hundreds of tests and refinements. This careful evolution goes on. And its continuity of excellence adds value to the Imperial now on the road. See this great Imperial of classic look. Drive it this week.



AMERICA'S MOST CAREFULLY BUILT CAR

On View at Imperial Showrooms from September 29

GARLAND MOTOR COMPANY 720 EAST THIRD LITTLEFIELD, TEXAS

Advertisement for Little's hair accessories featuring a woman's face and the text 'Twin attractions to dramatize your personal appearance! Accessories at Little's'.



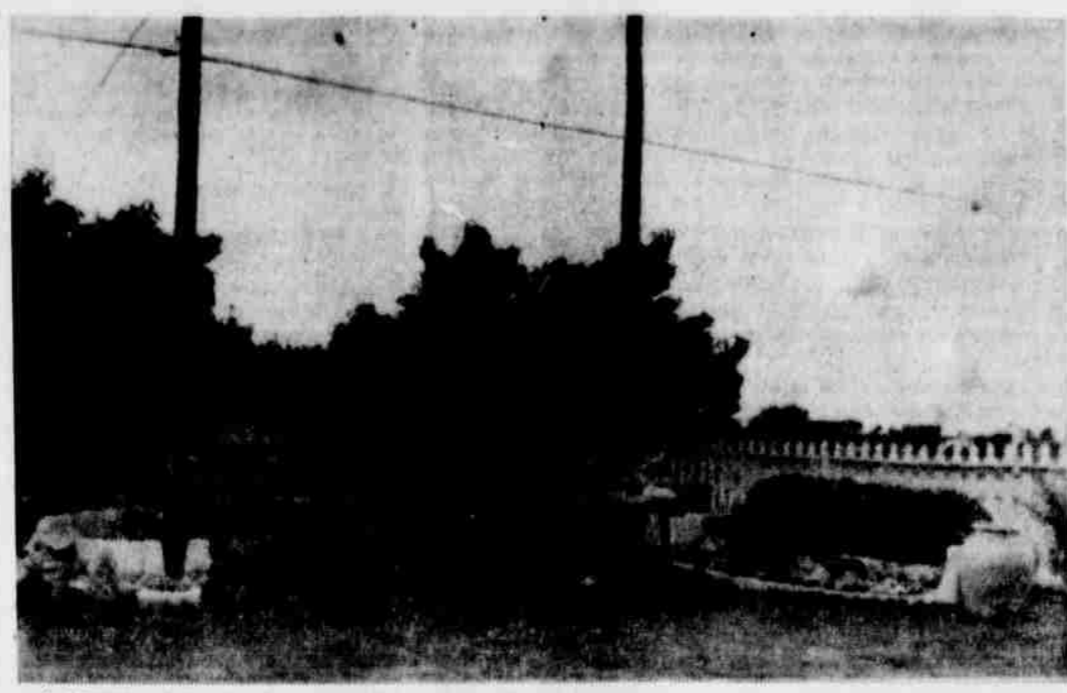
SIEMS, 19-month-old son of Mr. and Mrs. James Siems, 730 E. 16th, enjoys 'bench' made by his father with rocks brought from his home at Hamilton.

Back Yard, A Family Affair

Active and well-nineteen months. The entire family claims the yard because they each have a part and interest in keeping it with its lovely flower beds curbed with cement and cement flower boxes.

In the back yard is an interesting rock collection displayed among plants in an elevated planter box. The rocks were brought primarily from Pao Dura Canyon and California. There is a nice big red brick fireplace, built by Mr. Siems, and a picnic table made also. Adding to the setting are large crock vases at various points in the yard.

In the front yard are many large geraniums and an ornamental paper plant as well as a sweet pepper plant. The Siems have a hothouse attached to their garage in which they keep a variety of plants: ivy, geraniums, azalias, rubber plants, caladiums, and a candle plant.



A VIEW of the backyard of the James Siems, 730 E. 16, shows the picnic table built by Mr. Siems. The fireplace was also built by him. To the right is a rock collection among the plants in an elevated planter.

NEWS FROM ... The Woman's Angle

Whitharral P-TA Honors Faculty
WHITHARRAL — Mrs. Ervin Sadler presided at the first meeting of the Whitharral P-TA Tuesday evening at the luncheon. She read the P-TA prayer, beginning the program. Two dollars went to the fourth grade for having the most parents present. Room mother representatives, P-TA officers, board members, and faculty members were introduced. Supt. J. W. Bowman made a short talk expressing his appreciation for the support given the school by the P-TA. He also urged that the child should be of service to others, that the child should be creative and should be able to solve problems. New families in the community were introduced. Refreshments were served to Mr. and Mrs. Sadler, Mr. and Mrs. Boyd Miller, Mr. and Mrs. E. G. Wade, Jr., Mr. and Mrs. Bill Bryant, Mr. and Mrs. Pervadius Wade, Mr. and Mrs. Victor Ward, Mr. and Mrs. Ronald Reed, Mr. and Mrs. T. D. Northern, Mr. and Mrs. R. F. Avery, Jr., Mr. and Mrs. Ed Johnson, Mr. and Mrs. Bowman, Mr. and Mrs. James Marrow, Jr. Also Mr. and Mrs. Richard Horton, Rev. and Mrs. Elmer Ward, Mr. and Mrs. Robert

Whitharral Man Weds Girl In Home Rites

Ceremony for Miss and Lester Floyd read Saturday at the home of the Mr. and Mrs. 909 E. Rice Street. Smith of the North Church read the ceremony before a white gladioli and the natural green.



MRS. LESTER HOOD

Orrs Announce New Arrival

Captain and Mrs. William Reed Orr of Lake Charles, La., announce the birth of a daughter, Kelly Kaye, weight 6 lbs, 3 1/2 oz., on Saturday, September 24th. They have another daughter, LeAnne. Grandparents are Mr. and Mrs. John Reidy of Houston, and Dr. and Mrs. Wm. N. Orr of Littlefield.

WMU Officers Installed Sunday

Mrs. Troy Blackburn, Sunnyside, vice president of the Llanos WMU leaders installed Sunday at 7:30 p. m. at the First Baptist Church of Earth. A summary of the purposes of the organization based on Jesus' statement, "Take up thy cross and follow me," provided the theme for the impressive ceremony. A large white cross on the altar overshadowed smaller crosses which each candidate took up as a symbol of the duties they were assuming. The crosses were replaced with red hearts. Installed were Mrs. Price Hamilton, president; Mrs. Elton Schaefer, recording secretary; Mrs. Guy Frances Kelley, corresponding secretary and treasurer; Mrs. Lillie Wuerflein, prayer chairwoman; Mrs. Pete O'Hair, stewardship chairman; Mrs. T. S. Alair, community missions chairman; Mrs. R. S. Cole, missions study chairman and Sunbeam director; Mrs. Bobby Angeley, YWA director; Mrs. Bobby D. Green and Mrs. Leon Foster, YWA counselors; Mrs. Gardner Sanderson, GA director; Mrs. Bill Bryant and Mrs. Phil Cannon, A. A. Councilors. Mrs. Cecil Meadows closed the service with a prayer of dedication.

WCS Holds Work Day At Whitharral

WHITHARRAL — Mrs. Russell Coiton presided for a short business meeting at the regular meeting of the Women's Society of Christian Service at the First Methodist Church Monday afternoon. Mrs. Elmer Ward gave the devotional with the group joining in song and the prayer meditation. Then followed a workday at the church. Present were Mrs. Cotton, Mrs. Ward, Mrs. Vera Rodgers, Mrs. G. F. Edgar, Mrs. Hub Spradberry, and Mrs. Robert Strickland.

WCS Holds Work Day At Whitharral

WHITHARRAL — Mrs. Russell Coiton presided for a short business meeting at the regular meeting of the Women's Society of Christian Service at the First Methodist Church Monday afternoon. Mrs. Elmer Ward gave the devotional with the group joining in song and the prayer meditation. Then followed a workday at the church. Present were Mrs. Cotton, Mrs. Ward, Mrs. Vera Rodgers, Mrs. G. F. Edgar, Mrs. Hub Spradberry, and Mrs. Robert Strickland.

WCS Holds Work Day At Whitharral

WHITHARRAL — Mrs. Russell Coiton presided for a short business meeting at the regular meeting of the Women's Society of Christian Service at the First Methodist Church Monday afternoon. Mrs. Elmer Ward gave the devotional with the group joining in song and the prayer meditation. Then followed a workday at the church. Present were Mrs. Cotton, Mrs. Ward, Mrs. Vera Rodgers, Mrs. G. F. Edgar, Mrs. Hub Spradberry, and Mrs. Robert Strickland.

Social Calendar

Newcomer's Club: Thursday 8:45 a. m. in the home of Mrs. Horace Battenfield, Lubbock Hwy.

Mrs. Harvey Hosts Art Club Meeting

The Art Club of Littlefield met Friday, in the home of Mrs. Cal Harvey. The women did work in charcoal, pencil, water colors, and oils. These mediums were used in landscapes, still life, portraits and preliminary sketching. Those attending were: Mrs. Les Hewitt, Mrs. E. J. Bussanmas, Mrs. Wm. N. Orr, Mrs. C. O. Stone, Mrs. James Lee, Mrs. G. B. Stewart, and Mrs. Ray Keelene. The next meeting will be Friday, Oct. 14, in the home of Mrs. E. J. Bussanmas.

Miss Robertson To Wed Friday

Mr. and Mrs. John N. Robertson approaching marriage of their daughter, Barbara Louise to Thurl Ray, son of Rev. and Mrs. H. T. Ray of Rt. 2, Spring Lake.

The wedding will take place September 30 in the home of Mrs. Charles Parrack sister of the bride. The bride's groom is employed by Pioneer Natural Gas. The groom is with the U. S. Navy, stationed in Porto Rico.

The bride's groom is employed by Pioneer Natural Gas. The groom is with the U. S. Navy, stationed in Porto Rico. The bride's groom is employed by Pioneer Natural Gas. The groom is with the U. S. Navy, stationed in Porto Rico.

"An Announcement By HENRY FORD II Of Importance To Every Buyer Of A 1961 Automobile"

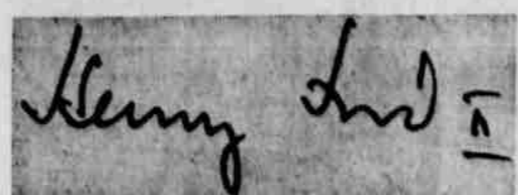
"The Warranty On All 1961 Ford Motor Company Cars Is Being Extended To 12,000 Miles Or One Full Year"

"The 1961 Line Of All Ford Motor Company Passenger Cars Will Bring To The American Market The Finest Automobiles Ever Produced By This Company".
"Every Ford, Falcon, Thunderbird, Mercury, Comet And Lincoln-Continental Has Been Styled, Designed, Engineered And Manufactured With Three Primary Goals In Mind: (1) Finest QUALITY; (2) Greatest DURABILITY; (3) Most RELIABLE Operation."
"So Confident Are We Of The Success Of Our Efforts To Achieve These Goals That

Written Warranty On All 1961 Ford Motor Company Cars Is Being Extended To 12,000 Miles or One Full Year, Whichever Comes First."

"NO OTHER AMERICAN AUTOMOBILE Carries A Warranty Like This. The Previous Ford Warranty, Traditional In The Industry, Was For 4,000 Miles Or Three Months."

"We Urge Every Prospective Purchaser Of A 1961 Car To Visit His Ford Motor Company Dealer And Learn About The Dealer's New 12,000 Mile Or One-Full-Year Warranty."



President Ford Motor Company

- "ARRIVAL DATES:"
- "SEPTEMBER 29: The New Ford Line. Sixteen All-New, Full-Size Models With The Classic Ford Look. Banging From The Value-Leader Fairlanes To Six New Trend-Setting Galaxies."
- "OCTOBER 6: The Falcons And Comets, America's Most Successful Combination From America's Largest Producer Of Compact Cars."
- "OCTOBER 6: The New Mercury Line. With Completely New Styling And A Wider Range Of Models."
- "NOVEMBER 3: Lincoln-Continental For 1961, America's Completely New, Distinctive Luxury Car."
- "NOVEMBER 10: Thunderbird. Unmistakably New For 1961, Yet Unmistakably Thunderbird."

(See Page 2, Sec. 2)

FORD MOTOR COMPANY

"THE AMERICAN ROAD, DEARBORN, MICHIGAN"

PENNEY'S

ALWAYS FIRST QUALITY!

END-OF-MONTH CLEAN-UP! SAVE!

EOM

Sizes Broken, Quantities Limited

ALL FIRST QUALITY

SAVINGS FOR WOMEN

CIRCLE STITCHED—A, B, C CUP
Cotton Bras.... 2 for \$1.

BROKEN SIZES—ODD LOTS
SHOES \$1.

COMBED COTTON—CHOICE OF COLORS
Jamaica Shorts . . 88c

PRINTED COTTON—BROKEN SIZES
DUSTERS \$1.44

SAVINGS FOR GIRLS

ORLON ACRYLIC—BROKEN SIZES 3 TO 6X
SWEATERS . . . \$1.66

NON RUN TRICOT KNIT
PANTIES . . . 5 for \$1.

EVERGLAZED—SIZES 4 TO 14
COTTON SLIPS . . \$1.

BABY'S LONG SLEEVE, WHITE
Undershirts . . . 2 for 50c

PASTEL—BROKEN SIZES
BOBBY SOX . . . 23c

SAVINGS FOR BOYS

SHORT SLEEVE—NEW FALL GINGHAM
SHIRTS 44c

SHORT SLEEVE, FASHION COLLAR
KNIT SHIRTS . . . 66c

BOYS AND MEN'S—ODD LOTS AND SIZES
SHOES . . . \$2.00 - \$5.00

MOST SIZES—COLORFUL COTTON
SOCKS . . . 4 pair \$1.

SAVINGS FOR MEN

SHORT SLEEVE
SPORT SHIRTS . . . 44c

BROKEN SIZE—COLORED
DRESS SHIRTS . . \$1.44

ENTIRE STOCK—SHORT & LONG SLEEVE
KNIT SHIRTS . . \$1.44

POPLIN—SHORT SLEEVE
WORK SHIRTS . . 66c

MOST SIZES WHITE CARPENTER'S
OVERALLS . . . \$2.88

SOLIDS AND PRINTS—4 YARD
DRESS LENGTHS . . \$1.

VALANCES—50c
TIER CURTAINS . . \$1.38

72 X 90 RAYON, NYLON, 6 COLORS
BLANKETS . . . \$3.66

Solid New Beauty in 1961 Plymouth



Plymouth for 1961 has a complete new look of beauty and a new ride of stability. Long an economy leader in the low-priced field, Plymouth in 1961 has made major engineering and styling gains in the areas of economical operation, trouble-free driving, luxury-car appearance and solid riding characteristics. Twenty-six different models, five engines, four different transmissions, and 14 body colors and 30 two-tone body color combinations are offered in the 1961 Plymouth. The proven Unibody construction and Torsion-Aire ride have been retained and there is a long list of new engineering features.

Plymouth Presents '61 Models Offering New Style And Beauty

Plymouth for 1961 has a completely new look of beauty and a new ride of stability. Long an economy leader in the low-priced field, Plymouth in 1961 has made major engineering and styling gains in the areas of economical operation, trouble-free driving, luxury-car appearance and solid riding characteristics. The design of the car is smooth and uncluttered. The new Plymouth will be shown for the first time publicly on September 29 in dealer show rooms. Harry E. Chesebrough, general manager of the Plymouth - DeSoto Valiant Division and vice president of Chrysler Corporation, had this to say about the new Plymouth styling: "The function of a car is to move, and it should be designed with that purpose in mind. These cars will really perform, and they are designed to convey the feeling of performance at first glance. In styling, the new Plymouth has a look of solid beauty that gives it a whole new personality." Viewed from the side in silhouette, the new appearance is most pronounced. Designers have reduced the mass of the rear of the car, added to the length of the hood, and used a minimum of side trim. The new design maintains superior directional stability by keeping the center of gravity and the center of pressure as close together as possible. There are aerodynamic advantages, which reduce wind drag in the clean front end styling and the smooth underbody resulting from Unibody construction. The concave design of the rear quarter panels helps to achieve stability when driving in cross winds, despite the smaller mass of metal at the rear than on previous Plymouths. Plymouth for 1961 offers 26 different models, five engines, four different transmissions, and 14 body colors and 30 two-tone body color combinations. In the Savoy line are two and four-door sedans with either 6 cylinder or V-8 engines; the Belvedere line has two and four-door sedans and a two-door hardtop, all available with either 6 or V-8 engines; in the Fury line are a four-door sedan, a two-door hardtop, a four-door hardtop, all available with either a 6 or V-8 and the convertible, offered only as a V-8.

ing system make steering easier. 5. New quiet - cushioning action built into the shock absorbers makes the ride even quieter. 6. New longer - lasting tires are squeal - resistant and help eliminate noise by lowering the road hum level. Life of the tread has been increased by 15 per cent. 7. The uni - body construction has been further refined through more precise manufacturing methods and is even more solid and quiet. 8. A new magnetic drive in the speedometer operates more quietly by eliminating gear noise resulting from metal - to metal contact. 9. The starting system has a new solenoid shift which is quieter and longer wearing. 10. Brakes are more durable and smoother. They use Chrysler Corporation - built Cyclo Weld linings. 11. The new parking brake is safer, more difficult for children to release accidentally. It requires less pressure to secure holding and is in a location which makes it easier to apply. 12. Inner construction of seats is stronger, and there is extra cushioning to the center section of the rear seat, for added passenger comfort. Plymouth is the recognized economy leader in the automobile industry. For '61 it has improved upon the features which enabled it to win the Mobilgas Economy run for the past four years and a double win last year in the V-8 and 6 - cylinder engine classes for low - price cars. The inclined 30 - D Economy 6 engine has a new anti - precession feature in the carburetor to insure quicker hot starts. There is a new choke and improved carburetor calibration for better low speed performance and economy. There is better carburetion on all V-8 engines, too, saving gas by keeping the air - gas mixture from becoming too rich. Improved engine breathing for better performance has been provided on the 361 cubic inch Golden Commando V - 8 by means of larger diameter intake valves to improve volumetric efficiency. The compression ratio on this engine has been reduced to 9 to 1 for better operation on available premium fuels. The engine and horsepower line up for the 1961 Plymouth is as follows: 30 - D Economy S1x, 145; Standard Fury V - 800, 230; Super Fury V - 800 (Powerpark), Performance, 305; and Sonaratic Commando, 330. To go with the engine economy features, Plymouth is introducing two different manual transmissions, and the Torque Flite 3 speed automatic and the Power Flite 2 - speed automatic transmissions. A new heavy - duty manual transmission is standard equipment on all 361 and 383 cubic inch V - 8's, all 318 cubic inch V-8's with power pack, and all heavy-duty taxis. This new transmission has an exceptionally high torque capacity and uses ratios of 2.55 and 1.43 with a reverse ratio of 3.34. A quiet operation is assured through the use of helical gears. For the 318 cubic inch Fury V-800 engine there is a new lightweight manual transmission which achieves high torque capacity through the use of short-throw gears and a ratio selection of 2.12, 1.43, and 2.73 (reverse). An improvement in the manual transmission for the 30 - D Economy Six engine, features an increase in the low - gear ratio from 2.50 to 2.71 to provide easier starting on steep grades and more lively break - away performance. The new alternator, which replaces the old - fashioned generator, has the advantage of high charge at low engine speeds and of keeping the battery charged even under adverse conditions. A luxury item, formerly reserved for more expensive cars, is the solenoid shift starter, which assures positive gear engagement and quieter operation. New distributors built by Chrysler Corporation are standard equipment on the Fury V-800. They feature cast aluminum housings and lightweight nylon breaker point follower blocks that resist bouncing and last longer. Plymouth continues the Unibody construction in which the body and frame are integrated into a single, unified structure and welded together. The solid construction and quiet operation resulting from this feature are important in the 1961 models. More precise manufacturing methods make the car even more rattle - free and quieter. There is also improved underhood silencing. Cars equipped with factory undercoating have under - hood silencing pads, which are held in place by large - diameter snap - in fasteners. On cars, the hood reinforcing webs are bonded to the outer panel with a plastic material which serves as a sound damper. A new magnetic right - angle drive replaces the gears formerly used in the drum - type speedometers, another Chrysler Corporation engineering development aimed at quieter operation. Shock Absorber action is also quieter. A redesigned valve opens more easily and quietly. The Plymouth Torsion - Aire ride, with its smooth cornering and freedom from pitch and sway, is continued. There are further improvements in both power and manual steering. A fabric reinforced rubber coupling between the steering gear and shaft on manual steering cars acts as a universal joint and provides quieter steering with less effort. On power steering cars equipped with the 361 and 383 cubic inch engine a new mounting arrangement eliminates the need for adjusting drive belt tension. Belt life is lengthened and turning squeal is eliminated. There is an all - new look to Plymouth when seen from the front. Front fender sculpturing sweeps down over the head lamps to the center of the grille, and then reverses to meet the inner portion of the head lamps. The aluminum grille is of a forward thrusting design, and it extends above the head lamp eyebrows. The separate, bomb - type head lamps are slightly canted to complement the fender sculpturing. There is a new bumper, a new hood with a sculptured ridge along its center and the Plymouth name in script along the left side and new parking lamps. From the side, the new proportions of the car are most evident. Both front and rear fenders are sculptured, and the rear quarter panels have a slight downward curve as they flow rearward from the body. Here is new fender and body side molding, featuring clean, straight - line treatment. The interiors of the 1961 Plymouth emphasize softness, color and comfort. Completely new are the instrument panel, steering wheel, seat designs, door panels, and fabrics. The fabrics are more resistant to water and stains, and are easier to keep clean. Carpeted models use a new longer-wearing type carpeting featuring tougher fibers in a tighter mesh. There are two steering wheels available. The standard wheel has textured handgrips and a thumb rest in the rim. The hub is chrome - finished and displays the Plymouth medallion on a bright background. The new deluxe steering wheel has a rim of two - tone plastic in either the conventional full - circle design or more contemporary design with horizontal upper and lower rim sections.

Cotton Farmers

(Continued from Page One) ed \$3 to \$4 per bale or more where defoliant and desiccants were used properly. This increase in lint value was accomplished several ways. "First, tests have shown that proper use of harvest - aid chemicals enables earlier harvesting of mature cotton therefore reducing the exposure of the open cotton to weather. Early harvesting has added advantage in the cotton usually brings better prices than cotton of equivalent quality harvested later. "Secondly better grades have been obtained by proper use of true - defoliants to reduce leaf trash and green leaf stain. Some farmers reporting poor results with defoliant and desiccants were not waiting long enough after application to harvest. Under most conditions the cotton plant will be dry enough and the green bolls open 10 days to two weeks after treatment. This is true for both true defoliant and desiccants. "Farmers should rely upon the cotton plant to tell them to apply harvest - aid chemicals. Research throughout the cotton belt has shown that 50 per cent of the cotton bolls should be open before a true defoliant is applied, and 80 per cent open before a desiccant is applied. The percent of open bolls can be determined by counting 100 bolls, both open and green (larger than 1 inch in diameter) down the row. The number of open bolls reflect the percentage of open bolls. Several counts should be made over the field to get a representative picture of maturity. Harvest - aid chemicals applied according to these recommendations have not been observed to reduce yields or lower fiber quality. "For all practical purposes maturity of cotton fibers is stopped when either a defoliant or a desiccant is applied. The degree to which this true depends on the kill or coverage obtained. Bolls in treated cotton have been observed to open sooner than those from untreated cotton; however, fiber from the treated cotton was not more mature. "Good coverage of the cotton plant is necessary for a good defoliation or desiccant job and can be only obtained under relatively hard to kill and can present a straining problem when harvested with mechanical strippers or pickers. Prompt harvesting of cotton after treatment tends to reduce this problem. Additional applications of a desiccant may be warranted in extreme regrowth conditions. "If a farmer chooses to use ter panels have a slight downward curve as they flow rearward from the body. Here is new fender and body side molding, featuring clean, straight - line treatment. The interiors of the 1961 Plymouth emphasize softness, color and comfort. Completely new are the instrument panel, steering wheel, seat designs, door panels, and fabrics. The fabrics are more resistant to water and stains, and are easier to keep clean. Carpeted models use a new longer-wearing type carpeting featuring tougher fibers in a tighter mesh. There are two steering wheels available. The standard wheel has textured handgrips and a thumb rest in the rim. The hub is chrome - finished and displays the Plymouth medallion on a bright background. The new deluxe steering wheel has a rim of two - tone plastic in either the conventional full - circle design or more contemporary design with horizontal upper and lower rim sections.

City's New

(Continued from Page One) size of the box itself. Each office will have its own rate, city officials explained when the new rates were approved last month. The city's fiscal year 1958 - 59, which the estimated cost this year is \$38,264, and the 1960 - 61 estimated cost will be \$40,913. Increases are expected to overcome the difference between garbage collection income and operating costs. The \$1.50 residential rate for garbage collection is in keeping; here also is much more complete. It was explained, that the provided in many towns of this size. All areas receive at least once a week service and many areas get pickups twice a week. Some cities, too, limit garbage pickups strictly to refuse which can be put in regulation garbage cans, charging extra for other refuse or else refusing to pick up such items at all. Tax rate for the new budget is unchanged from the 1959-60 figure - \$2 per \$100 assessed valuation. J. W. Harrison, city manager, explained. Thirteen general items are listed on the summary of expenditure proposals, nine from the general fund totaling \$208,223.16. Principal items in the summary include Administration, \$6,415; board of city development, \$2,500; fire, \$15,883; Park and recreation, \$8,300; police, \$48,944; refuse collection, \$46,913; streets, \$58,840; tax, \$10,130 and general contingencies, \$10,256.16. This makes a total of \$308,223.16. Interest and sinking funds' total is \$28,264.34. Water - sewer maintenance and construction is estimated at \$132,536.77, and water and sewer utility billing at \$40,555. Water and sewer contingencies is estimated at \$8,308.23. This brings the total cost for all items to \$418,287.50.

FINALIST - As New Mexico's Maid of Cotton, Nancy Sue Gray, 21-year-old brunette from Denning, will compete for the national title in Memphis, Tenn., in late December. The winner will represent the American cotton industry on an international tour. Details of 1961 Maid of Cotton contest may be obtained from the National Cotton Council, Box 8905, Memphis 12, Tenn.



HERE'S PLYMOUTH FOR 1961



NO OTHER LOW-PRICE CAR SO DRAMATICALLY NEW!



Never before a Plymouth so dramatically new and different! See and feel the head start it gives you into 1961, with its startling new looks, its eagerness, its sureness, its tight snug quality. Beneath the all-new lines is the Solid Plymouth Unibody—one-piece, welded, tough and quiet. So get with the newest! Get with '61 Plymouth—at your dealer's now!

'61 PLYMOUTH... SOLID BEAUTY

America's No. 1 low-price economy car... a Chrysler-engineered product

Batson Motor Company
300 West 4th Street Littlefield, Texas

LAMB COUNTY LEADER



Entered as Second Class Matter at the Postoffice at Littlefield, Texas, May 24, 1923 - Under Act of March 3, 1879

WENDELL TOOLEY Publisher
RAMON MARTIN Editor

Any erroneous reflection upon the character, standing or reputation of any person, firm or corporation which may appear in the columns of the Lamb County Leader will be gladly corrected upon being brought to the attention of the publisher.

Published Thursday of each week at 506 Pelps Avenue, Littlefield, Texas.

Lamb County Leader and County Wide News
Littlefield and Trade Territory, per year \$5.00
Elsewhere in United States, per year \$6.00

"An editorial is not a writ from on high"

Westinghouse GIGANTIC GIVEAWAY!

Once a year Loyd Pryor stages a big giveaway and invites everyone register for valuable prizes and to see the new Chevrolets... and the time. No purchase necessary, come in and register for three big see the new Chevrolets October 7 and 8. You do not need to be present, prizes will be awarded October 8.

- **FIRST PRIZE - MAJOR APPLIANCE**
Winner of the first prize gets a choice of an 11 ft. Westinghouse refrigerator, portable dishwasher, portable TV, Laundramat, dryer, or 30" microwave oven.
- **SECOND PRIZE - \$59.95 Westinghouse Vacuum Cleaner**
- **THIRD PRIZE - \$24.95 Westinghouse Electric Can Opener**

THANKS! We take this means of expressing our appreciation for your patronage and acceptance of the fine products we sell and service... we look forward to serving you in the future.

LOYD PRYOR,
JOHNNY TISDALE, Radio and TV
DON WATSON, Sales and Service

NEW! WESTINGHOUSE SPACE-MATE

Wash and dry 18 lbs. of clothes at one time!

PUSH-BUTTON CONTROL
for every fabric made!

- 5 water-temperature selectors—3 wash and 2 rinse.
- Separate cycles for fine and regular fabrics.
- 3 drying temperatures—no more guesswork.
- Wrinkle remover—no heat tumbling saves ironing time.

FITS IN ANYWHERE:

- Stacked as shown
- Built in
- Side by side
- Free standing

CONFECTION COLORS!
Unsurpassed in Westinghouse reputation of excellence.

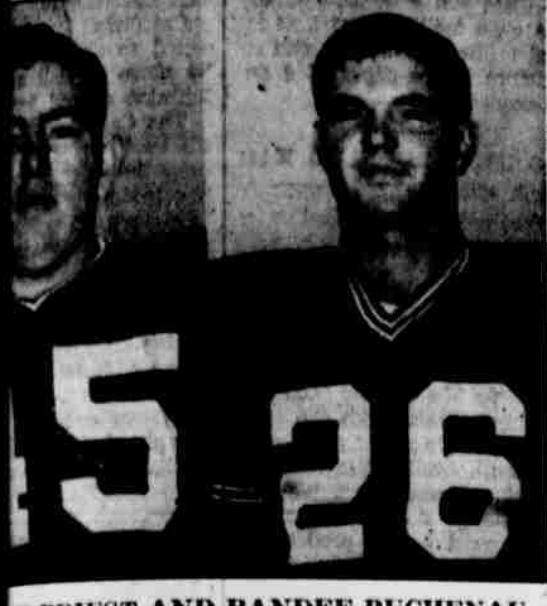
Westinghouse

Loyd Pryor Appliances

AMHERST

Grid Action

Olton Tackles Hereford Battle Of Unbeatens



... high scoring Olton duo

from the sidelines

John Petty

Olton and Hereford, undefeated area grid powers, clash Friday night in the Mustangs' home corral in a contest that should produce some of the most exciting football action seen this season.

The favored Whitefaces have a 2-0 record going into the game — Last week's upset tie by Muleshoe being the only blemish on their slate.

Spearheaded by a strong defense that has relinquished only six points all season, Hereford swept through its first two foes Canyon and Dimmitt, by identical 28-0 scores. Muleshoe, wireless thus far, then rose up to hold the Whiteface attack to six points and gain a 6-6 tie.

Olton's AA Mustangs have eliminated four opponents this season. They pasted Petersburg in the opener, 44 to 28, and came back to down McCamey in their closest game, 12-8.

Springlake and Hale Center proved no trouble for Walter Bryan's horses as they trounced them by 32-12 and 26-6, respectively.

The Mustang offense, behind the solid running of backs Robert Priest and Randee Buchenau, has a 28 points per game average while the Whiteface machine has produced a 20 points average.

Defensively, Hereford holds a big advantage, allowing an average of only two points per contest. Olton opponents have averaged crossing the goal line for 11 points per tilt.

In other area play, the mighty Hornets from Sudan travel to Plains to combat their second state-rated power in as many weeks. Plains has been rated as high as number four in the state this week while the Hornet, undefeated and victors over mighty Sundown, still are unrated in state-wide polls.

Hart travels to Anton in an attempt to keep its win streak alive. In action, Thursday, Littlefield's freshman and "B" squads host their contemporaries from Muleshoe in games at 5:30 p. m. and 7 p. m.

In IAAA action, the powerful Phillips, Black Hawks league favorites, journey to Perryton for a contest with its unbeaten eleven while Dumas takes on the Clovis Wildcats in Demon park.

Levelland's Lobos, licking their wounds after two defeats in as many weeks, takes a week's rest in preparation for Andrews on Oct. 7.

Other than automobile accidents, falls are the principal cause of accidental death in the United States.



... Norman Renfro, Littlefield, caught while fishing off the coast with his brother, Ross, earlier this fall. The fish is 38 inches long and was one of several by the two men. The fish averaged six pounds.

There is **NOTHING** like money in the **BANK**

SECURITY STATE BANK

MEMBER FEDERAL DEPOSIT INSURANCE CORPORATION

"That's The Bank For Your Money"

LITTLEFIELD PRESS SPORTS

Raiders Attack Horns In Austin

LUBBOCK — Texas Tech's Red Raiders, who pulled a mild surprise last week, try for a big one this Saturday night as they invade Austin to play the University of Texas Longhorns.

Ignoring the odds — makers' one-touchdown advantage for A&M, the Red Raiders twice forced the Aggies to come from behind to gain a 14-14 draw at College Station in their Southwest Conference inaugural last week. Although Tech Coach DeWitt Weaver and the Raiders were disappointed with the tie, the half-win recorded in the stands is more than most "experts" had picked for the Raiders' entire conference season.

Cutting down the two-touchdown edge the Longhorns have been given may be a stiffer problem. The defending champion, stung by a 14-13 loss to Nebraska in the opener, regrouped to trounce University of Maryland on the east coast 24-0 last week.

Texas Tech players, praising the Aggies for hard but exceptionally clean play, came out of the bruising contest with no serious injuries. Also encouraging is the fact that Tech's No. 1 halfback, Fort Worth's Dan Gurley, may get to play for the first time this season.

After the Texas game the Red Raiders meet Texas Christian in Fort Worth before entertaining Baylor Oct. 15.

A new device for testing the temperature of baby's bottle is held against the bottle by an elastic cord and a copper band. Heat from milk flows through the copper band to the thermometer.

Bowling League

IVY LEAGUE

Security State	11	1
Lill Chesser	11	1
Batson Mtrs.	11	1
Crescent Motel	10	2
Foust Food	8	4
Meads Bread	7	5
First Nat'l Sudan	6	6
Lowe & Co.	5	7
Amherst Butane	4 1/2	7 1/2
Wingo Real Estate	4	8
Lid. Press	3	9
Salman Ser.	1 1/2	10 1/2
Beall's	1	11
Kirk & Spencer	1	11

High game, Janelle Timian, 232; high series, Julie Brent, 573. High team game, Amherst Butane, 806; high team series, Security State, 2181.

Pleasant Valley Plans 4-H Day

Pleasant Valley will hold its annual 4-H achievement program at the community center starting at 5 o'clock Saturday afternoon. Lady Claire Phillips, home demonstration agent, announced Thursday.

A dinner is to be served by the home demonstration club and this will be followed at 8 p. m. by a program which will include installation of officers for the year.

Mrs. Phillips said, "Members will display their work at the community center, including such items as crops, garden products, canning and garments which the members have made."

Women's League Awards Trophies

The Blue Monday Summer League awarded its trophies Thursday Sept. 22 at the Bowling Lanes.

First place sponsor trophy went to Security State Bank. Individual first place trophies went to Lois Humphries, Wanda Graham, Peggy Starnes, Lovelle Zoth, Sybil Moore and Faye Bussey.

Second place sponsor trophy went to Cheshers. Individual second place trophies went to Alleana Matthews, Eileen Stokes, Sue Dailey, Lill Chesser, Ruth Cape, Nell Timian and Mary Yantis.

Individual high game trophy went to Lois Humphries. Individual high series to Sue Ratliff, and individual high average was awarded to Afena Matthews. The trophy for most improved bowler went to Marilyn Brandstatt.

Bowling News



THE GROUP pictured are Meads Fine Bread team who had high team series for the past two weeks in the Ivy League with a 2299 and 2151. Back row from left to right are Norma Phillips, Wynotte Trotter, Imogene Mitchell, Joyce Norvell and Joan Bowen.

300 Attend Credit Dinner

Over 300 members and guests attended a membership dinner in the high school cafeteria Tuesday night as guests of the Plainview Production Credit Association.

Local manager Dean House served as M. C.

Grady Shepard, farmer-rancher from Hale Center gave the talk on Production Credit and General Manager Olan Alexander of the Plainview office made a short talk.

Entertainment included songs by the Caprockers, a barber shop quartet from Lubbock.

Out-of-town visitors included L. P. Durham, president, Floydada; Henry Hayes, vice-president, Plainview; D. S. Anderson, director, Muleshoe, and Don Garrison, director, Silverton.

Mrs. A. K. Shelby and Mrs. Melton Welch of Earth were in charge of decorations.

House reported that he was well pleased with the attendance and the program in general.

FOLDING FAN

The familiar folding fan was invented in Japan about A. D. 670, introduced into China during the 10th Century and transported to Europe in the 16th century.

Beall's
QUALITY MERCHANDISE

E. O. M.

-- SHOES --

1 GROUP LADIES
Oxfords & Loafers \$2.99
MEN'S DRESS AND SPORT, Values to \$12.95
SHOES \$6.99

MEN'S HIGH TOP
WORK SHOES . . . \$4.77

LADIES—ONLY 7 PAIR—REG. \$12.95
DRESS HEELS . . . \$4.99

-- MENS --

TAN OR GRAY -- TWILL WORK -- REG. \$5.98
PANTS & SHIRT . . \$5.00

LONG SLEEVE, VAL. TO \$5. — While They Last
SPORT SHIRTS . . . \$2.99

MEN'S ALL SIZE SMALL
SWEAT SHIRT 88c

-- LADIES --

REG. \$1.35—NYLON
HOSE 2 pair \$1.

ONLY A FEW LEFT—ALL WOOL
SKIRT LENGTHS . . . 99c

LARGE GROUP
REMNANTS . . . 1/2 Price

--HOME FURNISHING--

BIG EXTRA THICK—REG. \$1.49
BATH TOWELS . . . 99c

24 X 36 — FOAM BACK
RUGS 87c

Twin Or Double -- 2 Yr. Guarantee -- All Colors
Electric Blanket . . \$11.88

USE OUR LAYAWAY

-- CHILDREN --

GIRL'S COTTON
PANTIES 3 pr. 88c

POLISHED COTTON
SLIPS \$1.00

GIRL'S—BEAUTIFUL COLORS
KNIT T-SHIRTS 2 for \$1.

— READY-TO-WEAR —

One Group—Ladies Sleex -- Reg. \$8.95 and \$10.95
GIRDLES . . . 1/2 Price

Ladies New Fall, Reg. and Jr. Sizes, Reg. \$10.95
DRESSES \$8.95

ONE GROUP—ONLY A FEW
LADIES SUITS
Drastically Reduced

ONE GROUP
ODDS & ENDS
VALUES TO \$3.50
SHIRTS, SHOES,
BAGS, SHORTS,
HATS, CAPS
50c

Announcing Chrysler Corporation's low-price compact for 1961!

VALIANT... THE COMPACT THAT COULDN'T BE TOPPED IN '60... TOPS ITSELF FOR '61

This beautiful '61 Valiant 2-door Hardtop has you in mind!

The King of the Compacts has done it again! The one new compact that doesn't beg or borrow from anybody is priced with the lowest for '61. Valiant gives you all of Chrysler Corporation's exclusives. Like Torsion-Aire Ride. Paves the roughest roads around. Plus tight, quiet Unibody construction. And remember, Valiant is a low-priced compact. Come see for yourself how the '61 Valiant's value really stands out from this year's compact car crowd.

Looks and drives like twice the price

61 Valiant!
AT YOUR PLYMOUTH-VALIANT DEALER'S NOW

BATSON MOTOR CO.
300 WEST 4th St. LITTLEFIELD, TEXAS

Enhanced '61 Valiant Adds New Models



Valiant offers a more complete line of body styles for 1961 in the low-price, compact car class, in anticipation of even greater buyer demand for the most economical American-built cars. In addition to the four-door sedan and the suburban in two different series, there is now a two-door sedan in the V-100 series and a two-door hardtop in the V-200 series.

Compact Valiant Adds Two New Body Styles, Improves Ride

Valiant offers a more complete line of body styles for 1961 in the low-price, compact car class, in anticipation of even greater buyer demand for the most economical American-built cars. In addition to the four-door sedan and the suburban in two different series, there is now a two-door sedan in the V-100 series and a two-door hardtop in the V-200 series.

The 1961 Valiant has been improved in many ways for operating economy, durability, performance and smoothness of ride. In external appearance, it continues to accent the beauty of line and proportion which won wide acclaim when the car first appeared last year. Valiant offers air conditioning for the first time as a dealer-installed option.

Robb Funeral Services Set For Thursday

Funeral services were conducted at 10:30 Wednesday morning at Chapel of the Roses Funeral Home in Odessa for Georgia Evelyn Robb, 31, one of two persons killed Monday in what officers at Odessa called a murder and suicide.

Survivors include her parents, Mr. and Mrs. D. F. Eldson, Littlefield; six sisters, Mrs. Stella Walker, Odessa; Mrs. Alta Pratt, San Francisco; Mrs. Fay Fair, Brownfield; Mrs. Lorraine Taylor, Odessa; Mrs. Virginia Woody, Littlefield, and Mrs. Bertha Lee Peck, San Francisco, and one brother, Eddie Eldson, Wharton.

Mrs. Robb was born in Vernon and had lived in Odessa for eight years. She was a member of the Order of the Eastern Star, of the Church of Christ, and the American Legion Auxiliary.

Mrs. Robb, who was 31, was shot once in the left chest and ald Dickerson, 29, died with three of detonation from carbon deposits in the combustion chambers is reduced.

Cars equipped with factory undercoating have a new silencing pad of high quality fiber glass to prevent engine noise from reaching the passenger compartment. Also, road noise is reduced by a heavier, 3/4 inch jute pad on the rear floor pan beneath the floor mat or carpet.

Town & Country

(Continued from Page One) cycle because it had a top speed of around 90. She was anxious to get out in the new automobile and outrun the traffic cop... so she headed out of town at a fast clip and soon the cop was following, siren blaring.

She "idled" along at 90 until he was nearly up with her, then she floor boarded the accelerator and she left the cop in a cloud of dust, 120 mph!

Cursivity got the best of her and she turned around and came back, found the cop picking himself up out of the ditch and his motorcycle was several yards over in a nearby field.

"Well," the cop said, "I thought I had you when you were going off 90, but when you took off and left me, I thought my motor had stopped and I got off to see what was wrong!"

There are many types of automobile buyers: First, there is the "shopper" who likes to mosey around the show room, talk about the new autos, try to find out prices, trading possibilities etc. He actually doesn't trade but once about every five years... but he just loves to shop.

Cats Try-

Continued on Page 7. They have two new air conditioners but no one ever gets them installed... they want a new seat, they would prefer a new location.

They and the other women who are diligent workers to keep our girl scout organizations are to be congratulated, and believing the Littlefield will grow... and the water civic facilities, we look forward to the day that we can run a picture in the paper of a new girl scout house.

COUNTY AGENT Bill Kirtland and SCS head Lamar A'ron received a very attentive reception at the Lin's club Wednesday as they outlined 1960 crop prospects... and even old pessimistic Bill made it sound pretty good.

It looks like another good year production-wise with the same steady trend in prices going down in cotton... mile about the same as last year. Bill says it's time the costs go down on what they must buy to produce the crop... the price squeeze is still on!

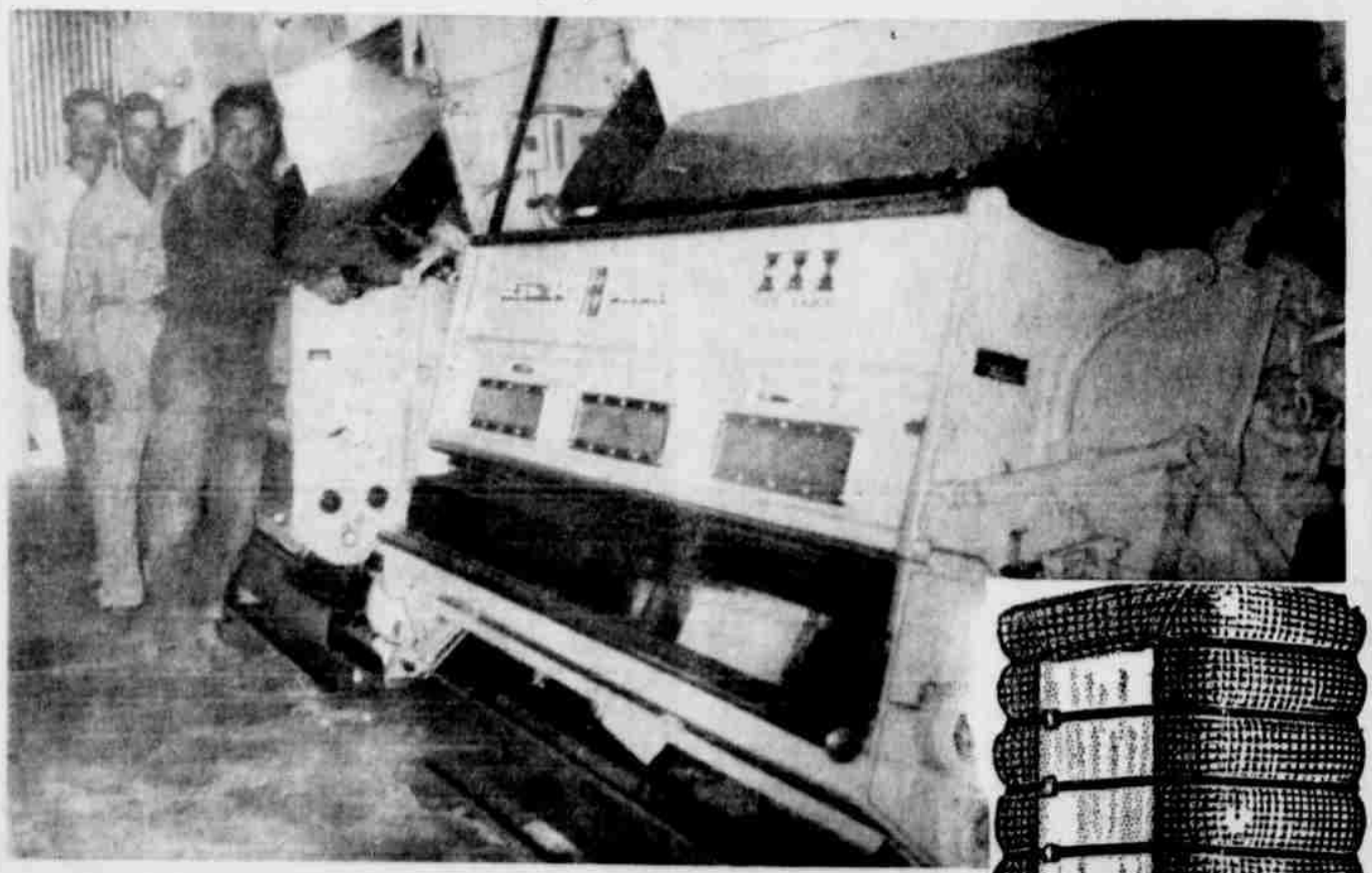
PEOPLE come in our door with all kinds of problems... we wish we had the money and the time to solve each. We can only do our best to get the word out and hope that someone somewhere will answer the call for help... and when possible, we'll pitch in and help.

MRS. L. G. GRIZZLE and Mrs. Toby Walker have plenty of girl scout problems... most of them centered around an old worn out scout hut... that nearly drowned out down in the park.

New U. S. compact cars have cut American demands for British Vauxhall Motors products.

Open House ALL DAY FRIDAY SEPTEMBER 30th

We Want The Farmers In Our Area To Inspect The New Gin Equipment We Have Installed...



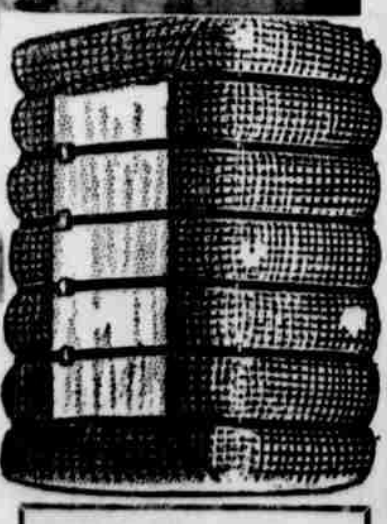
PETTIT CO-OP GIN — PETTIT, TEXAS

OPEN HOUSE - FRIDAY, 9 A.M. to 6 P.M.

With the recent addition of new equipment we offer farmers one of the most modern gin plants in the South Plains area. We cordially invite you to drop by for coffee and while you are here, inspect the plant to your own satisfaction.

Our Recent Installation of modern Equipment includes:

- NEW 120 SAW HARDEWICKE - ETTER BRUSH GINS
- NEW FIVE SAW MITCHELL FEEDER
- NEW MOSS LINT CLEANER
- NEW DRYING EQUIPMENT



FREE Coffee & Donuts FRIDAY

PETTIT CO-OP GIN

PETTIT, TEXAS PHONE CI 5-3133

BEST CAR DEALS

In Town - 1960 Closeout BIGGEST SAVINGS

FINAL CLOSE-OUT ON ALL 1960 FACTORY FRESH OLDSMOBILES AND CADILLACS — CADILLACS —

- 1-62 COUPE DEVILLE ALL POWER AND FACTORY AIR CONDITIONED
 - 2-62 SEDAN DEVILLE (6 Window) ALL POWER AND FACTORY AIR CONDITIONED
 - 1-62 SEDAN (4 Window) FACTORY AIR CONDITIONED
 - 1-62 SEDAN (6 Window) POWER SEATS AND FACTORY AIR CONDITIONED
- OLDSMOBILE —
- 1-98-4 DOOR SEDAN POWER STEERING AND BRAKES—FACTORY AIR CONDITIONED
 - 2-SUPER 88-4 DOOR SEDANS POWER STEERING AND BRAKES—FACTORY AIR CONDITIONED
 - 2-DYNAMIC 88-4 DOOR SEDANS POWER STEERING AND BRAKES—FACTORY AIR CONDITIONED
 - 1-DYNAMIC 88-4 DOOR SEDAN POWER STEERING AND BRAKES

We Have Many Clean New Car Trade Ins On Our Lot

Jones Motor Co.

8th AND LEVELLAND HIGHWAY



1961 LANCER station wagon has four large doors to permit easy entrance for passengers. The second seat folds easily to provide enlarged cargo space. Compact car offers big-car options such as power steering, power brakes, power windows and a power-operated tailgate.

Car Ride Offered In Dodge's Lancer, On Display Here Today

Dodge's spirited compact car — the 1960 models, Dodge marketed one of the first hardtop models to be introduced in the compact car field — is available in both solid colors and 14 two-tone color combinations.

The Lancer features wide use of aluminum to reduce weight. It also offers two highly economical, six-cylinder, front-mounted engines and a host of under-the-hood mechanical refinements. Favorable weight distribution and low center of gravity, combined with famed Torsion-Aire suspension, gives the new small car its big-car ride.

The trim new compact is offered in seven models in two series: taxi model, 2-door sedan, 4-door sedan and 4-door station wagon, in the lowest-price "170" series, and 2-door hardtop, 4-door sedan and 4-door station wagon in the deluxe "770" series. Eight basic colors are offered — medium blue, green and gray in metallic enamel, and red, light blue, light green, black and white in non-metallic enamel.

The stylish 2-door hardtop —

lights. The car has wrap-around front and rear bumpers. Circular parking lights are recessed below the front bumper. The design is functional, clean and classic.

The distinctive front fender capturing flows into the front door, and the Lancer name (plus medallion in the '70 series) is a block letter on the door.

The doors of the Lancer are large and reach into the room. They open wide to provide easy entrance. The windows are large, extending well down the door sides. Interior head and room dimensions exceed many of the larger, standard-size models.

The rear of the car features clean, uncluttered styling. Patterson said. The deck lid, hinged just below the base of the rear window, has a sculptured wind-split in the center. The Dodge name appears at the lower edge. The large, circular tail lights resemble those featured on the 1960 Dodge Dart.

Patterson emphasized that the Lancer's economy was achieved by creative engineering throughout the car — not simply through a reduction in size and weight. He listed the following money-saving economies offered by the compact:

Both of Lancer's spirited 6-cylinder engines deliver top performance on regular grades of gasoline. One has 101 horsepower and a displacement of 170 cubic inches; the other has 145 horsepower and a displacement of 225 cubic inches. Both are advanced design, inclined engines with a compression ratio of 8.2 to 1, special four-barrel carburetor power package for the 170-cubic-inch engine is a dealer-installed option.

The Lancer is equipped with an alternator instead of the conventional direct-current generator. Unlike the standard generator, the alternator charges the battery even when the engine is idling. The alternator, Patterson said, saves money by prolonging the life of the battery and minimizing cold weather starting troubles by keeping it adequately charged.

The Lancer's distributor has improved breaker points and a lightweight moving arm that increases point life and contributes to fuel economy.

The uncomplicated arrangement of every part of the car's running gear provides easy accessibility — reducing the cost of service.

The smaller cooling system — 13 quart capacity — requires less anti-freeze. And the crankcase requires only five quarts (with filter) per oil change — a quart less

than standard-size cars. The light weight of such major components as the transmission, clutch and torque converter also contribute to the Lancer's economy of operation. These parts and others — including the pistons, water and oil pump housings and distributor — make extensive use of aluminum.

Patterson said the economies of the mechanic components comprise only a part of the lower total cost of owning a Lancer. He cited these other factors:

The new all-nylon fabrics and vinyl interior trim provide greater resistance to wear and stains. They wash easily with soap and water.

New tires give much-improved traction, especially in wet weather, and also provide 15 percent more mileage. A new design also reduces curb scuffing, prolonging the life of the tire.

Unibody construction, which integrates the body and the frame, engineering advances in minimizing vibration; the exclusive seven-step rustproofing process; the high quality of the paint enamel — all contribute to not only a better ride and a better-looking car, but also will preserve the trade-in value of the Lancer for many years.

Patterson said Lancer engineers made very effort to maintain "the

feel and comfort of a standard-size car."

Every part had to be specifically designed for a small car, he said, "but our engineers have retained the virtues and values of the larger cars."

He explained that a maximum amount of passenger space was achieved by:

1. Locating the engine well forward and using compact transmissions.
2. Designing thinner doors — made possible by rugged upper frames.
3. Designing the instrument panel so that it does not reduce front seat roominess and knee clearance.
4. Using single-unit, Unibody construction to provide bigger vertical dimensions and wider deep foot wells.
5. Styling the car with a long, wide, flat roof to permit uniform headroom for all passengers.

Patterson said the Lancer was also engineered to be quiet. Its strong, solid structure naturally resists noise and vibration. In addition, it is given one of the most extensive sound insulation treatments ever put in a car — almost 100 pounds of sound-deadening materials are used in the body. An unusual engine mounting system puts the engine to work as a road-vibration dampener.

And every part of the suspension system is isolated from the body by sound- and vibration-resisting rubber bushings.

The Dodge general manager said the engine was located in the front to obtain "the kind of weight distribution required to give a compact car maximum stability and controllability."

Of equal importance in achieving a big-car ride, he said, was the adaptation of the proven principles of Torsion-Aire suspension to the Lancer. The car's suspension parts are smaller and lighter than those used in standard-size automobiles, he explained, but they are just as effective. Torsion-Aire suspension provides an unusually smooth, fast ride — usually eliminating front-end acceleration squat and cornering sway.

Adding to the "big car feel" of the Lancer, Patterson said, are the distinctive interior appointments. The interiors of all models are enriched by all-vinyl paneling in sculptured designs. Upholstering in the sedans is long-lasting nylon with high-quality finishes that are easy to clean, and resist stains. The station wagons have durable all-vinyl interiors.

Models in the '70 series have an unusually luxurious, knitted all-nylon seat fabric which is used for the first time in the automobile industry. The fabric has a remarkably soft feel, a delicate saddle-grain texture embossed on its surface, and outstanding durability. Its very tight double-limit construction — similar to that used in extensive gloves — gives the fabric unusual resiliency and durability.

"The Lancer is a small car only in its exterior dimensions," Patterson said. "Its combination of roominess, comfort and performance have previously been available only in larger cars."

Pete THE PRINTER

HOUSECLEANING-AND WANT TO SELL THOSE UNUSED ITEMS? AN AD IN OUR CLASSIFIED SECTION WILL TURN THE TRICK!

Trucks Feature Proved Design



Introduction of the highly successful suspension introduced last year, moderate front ends, and refinements in chassis and cab in 1961 Chevrolet truck line. Proved by year of customer use, the suspension features independent front springing with torsion bars and rear coil or variable rate springs. Cab improvements include a smaller floor tunnel in some models for increased leg and foot room, and an optional six-inch thick foam rubber seat.

Chassis Design Featured Chevrolet Trucks For '61

In the highly successful suspension design introduced last year, further expansion of styling identification in the Chevrolet truck line is now on display at Chevrolet Co. in Littlefield, Texas.

Acceptance of our redesign, featuring front suspension with springing and significant improvements in rear suspension, are our conviction that approve extensive styling which translate into benefits for them.

Inman, assistant general manager for Chevrolet, said:

"Our successful design in our 1961 trucks, line to enhance the durability, economy and efficiency," he said.

Features for 1961 are narrower and narrower front and rear fenders, improved foot and leg room, 3-speed or PowerShift. New optional includes a wind-

trim design. Eight new exterior colors are offered buyers in addition to the seven previously available.

Higher net engine power, fast warmup, and increased economy result from a new, optional temperature controlled hydraulic fan drive for light-duty models with the V8 engine. The fan is disengaged unless it is actually required by radiator air temperature.

In line with truck industry interest in problems of exhaust emissions in areas of high vehicle concentration or unfavorable climatic conditions, Chevrolet will offer an optional crankcase ventilating system. It will duct unburned hydrocarbons from the crankcase to the inlet manifold where combustion chamber and burned with the fuel mixture.

On all 1961 regular production truck engines, high resistance type spark plug wires and a coil secondary wire suppress radio interference in the vehicle itself as well as in nearby vehicles and television sets in adjacent areas. Longer spark plug gap also results from the new wiring.

Stock up and Save!

VITAMINS SICK ROOM SUPPLIES DRUG NEEDS!

BEFORE THE WINTER COLD SEASON!

PRICES GOOD THROUGH MONDAY, DOLLAR DAY

PREP-H OINTMENT
REG. \$1.00
66¢

BABY MILK SMA PER CAN **19¢**

2 CELL - CORROSION PROOF - REG. \$1.19
FLASHLIGHT 49¢

O. J.'S BEAUTY LOTION
REG. 89c **59¢**

ANACIN TABLETS
100 SIZE—REG. \$1.19
88¢

4-WAY COLD TABLETS
REG. 35c
21¢

PRAK-T-KAL NON-BREAKABLE JUG ALL NIGHT SIZE—REG. \$12.95
VAPORIZER \$888

REG. 25c SIZE—NOTEBOOK
PAPER 13¢

52 PIECE SET PLASTIC DINNER WARE
REG. \$15.00 **\$899**

METRECAL HAIR SPRAY
PER CAN STYLE **99c**
66c

ONE-A-DAY VITAMINS
100 CAPSULES
REG. \$2.98
\$799

Polaroid FILM
TYPE 32 PER ROLL **\$719**

UNTIL GONE 8 MM SUNSCOPE MOVIE CAMERA
SINGLE LENS
Reg. \$33.95 **\$1995**

50 FOOT GARDEN HOSE
99¢

DR. WEST'S TOOTH BRUSHES
REG. 69c
2 for 77¢

DRISTAN
\$1.00 SIZE
50¢

OUR TOYS ARE HERE—LAY-AWAY NOW!

6 X 20 BINOCULARS
REG. \$25.00
\$1595

28 INCH Baby Doll
SPECIAL
REG. \$6.95
\$399

QUART THERMOS JUGS
REG. \$3.00
\$799

LIPSTICKS
CLOSE OUT IN SHADES
REG. \$1.25
77¢

SQUIBBS VIGRAM—50 CAPSULES FREE
VITAMINS PER 100 PLUS 39 FREE
\$298

FREE PROMPT DELIVERY
PHONE 385-3030

FREE PROMPT DELIVERY
PHONE 385-3030

STAGGS DRUG
DIAL 38512080

**In The
Martin
Manner**

By Ramon Martin



THE MISSUS, yours truly and a couple of other couples ease off down to Lubbock this week to see the ice show, and permit me to say at the outset that it's a beautiful show, well worth the money. It's considerably better than it was a year ago, the acts are fresh and new (and so are the costumes) and the music is great. All in all it's a wonderful show.

Of course there's the little matter of getting into the Lubbock fair grounds to attend to first, so if you are planning to make one of the two or three remaining shows to be staged by the aggregation this year, I suggest you take off a couple hours earlier than you had planned to go; it will take that much longer to get inside the gate and get the old buggy parked. By the time you finally ease the gasburner into a parking space you are so weary with that crawling pace you have maintained for the last half hour after you got inside the gates that you are actually overjoyed to get rid of your car — abandon it in fact. While the South Plains fair is good, they've got a pretty bad parking problem.

But once you have managed to find a parking place you're all set for the show, except for the walking back to the place where you left the wife and kids just outside the main entrance, some quarter of a mile away.

BUT IT'S always been like that with fairs. I've been to hundreds of them. There's that same smell of stale butter on stale popcorn and the same young man who has lost his mother and is broad casting the same at the top of his husky young lungs.

And there's the same balloon seller that you saw at the Chicago exposition in the '30's except now he has gone a bit modern and fill the balloon with compressed gas instead of a bicycle pump or oversized lungs. He still has on the same loud shirt that he wore back in the Dallas Exposition in 1934. His voice, though, is considerably huskier.

Daughters of the gals you saw at the fair in New York 30 years ago are now doing the same routines in the sucker - bait free shows in front of the carnival acts. The only difference is that today's girls are underweight whereas their mothers leaned the other direction.

And the same fortune teller is still sitting huddled over a dingy crystal ball in a dingy tent burning people in to find out what the future holds in store for you.

There was that time at the Oklahoma State fair back in 1927 when the clairvoyant sat in front of her tent and was drumming up business when I walked by, gawking at everything and everything and amazed at the wonder of it all. "Look slim," she singled me out, "how about letting me tell your fortune. I see all, know all. I can tell you what your life will be like 30 years from now."

I asked the price and she said "Whatever you think it is worth Slim. That is, anything over a dollar." I accepted her offer and followed her inside her tiny tent.

There was a definite odor of garlic and hamburgers in the place, but that probably came from the hamburger stand next door.

Anyway, she took my hand, turned it over and said "Humm." She stared at for a long time and then said, "Young man, you should have died a long time ago; you practically don't have any lifeline at all."

HAVING jolted me with that information she shrugged her shoulders and continued in a more optimistic vein. "Anyway," she mused, "as long as you are still alive in spite of that short lifeline, I guess you are going to live anyway, because the gods seem to have a lot in store for you otherwise."

"I see for you a very brilliant career in a profession — it looks like medicine to me. Oh yes, you are going to be very successful. VERY, VERY, successful. I predict you will have made a million dollars out of your profession by the time you are 35 years old. You will live in a great city and you will have many automobiles."

She hesitated for a moment and studied my dingy palm a bit more and said: "I see a beautiful woman. She has long blonde hair and she is very fair and has blue eyes. And, oh, yes, I see three or four beautiful children." She looked up at me and added, "They will take after their mother."

MORE palm studying and she said, "You are to own a yacht and you will live on a hill overlooking the ocean — say San Francisco. You will have much land and there will be oil in San

Francisco?) and you will run for office but I don't believe that is your field. You won't be elected." "But my, my. You have a brilliant future." There was a bit more along the same line and then she said, "That will be \$2 sir." Seems she had got so wrapped up in her forecasting she had forgotten all about the financial arrangement we had made at the outset.

Well, she missed it a bit, but it was worth a guess. The medical profession never for an instant appealed to me for myself, although I think it's great for those who like it. By the time I was 35, I didn't even have more than \$35 at one time. I did live in a city for many years, but it was not on the coast. The woman I married does have long hair, but it was as black as a raven's — not blonde. And the only children we have is in the singular. She does look like her mother, fortunately, but she is not a blonde either.

I never owned more than 50 acres at a time in my life, and the nearest oil every came to my land was a dry wildcat a mile and a half away. And the only office I ever ran for was for secretary of the Writer's Club to which I belonged and I was defeated by a public relations man from Sears - Roebuck.

Otherwise, the forecast was pretty accurate.

**Branson Rites
Held At Hereford**

Funeral services were held Tuesday in the Gilliland Funeral home chapel at Hereford for Tom Davis Branson, 73, who died Sunday at 7 p. m. at the home of his sister, Mrs. R. N. Brotherton, Littlefield. He had made his home with her for the last eight years and formerly lived in Hereford. Survivors besides the Littlefield sister, are Mrs. Walter S. Amsler, McGregor, a sister, and two brothers, G. F. Branson, Pampa, and W. L. Branson, Amarillo.

Interment was in the Hereford cemetery under the direction of Hammons Funeral home, Littlefield.

**DE Coordinators
Plan Conference**

Distributive education coordinators from 95 West Texas counties will convene for a third annual In - Service Conference, Saturday, Oct. 1, 1960, in the Student Union Building, Odessa College, Odessa.

Authorized by Commissioner of Education, Dr. J. W. Edgar, arrangements were executed by Dean Nathan Ivey and evening school Dean M. M. Plexico, Odessa College. Program plans were made by distributive education College and Harold E. Nolte, Odessa High School.

A part of the total state - wide education program. Distributive Education relates to the training offered people engaged in retail, wholesale and service occupational fields. Junior and senior high school students may participate in the distributive education program when interested in becoming permanent employees in business establishments, or in using this training in one of many college and university programs now offering advanced training or as additional experience to assist them in other colleges.

Adults, who are employed in one of the three authorized fields in distribution may enroll in classes which are designed to improve their ability and job efficiency, in Amarillo College, Odessa College, San Angelo College and in cooperation with the El Paso public schools. Communities in the 95 West Texas counties not served by these colleges are offered the same courses by distributive education West Texas area supervisor Will Inman, Big Spring, in cooperation with their Retail Merchants Association on a local basis.

Guest speaker to the group will be Texas Representative Olin Ray Petty, Levelland. Director of distributive education, David A. Thompson, Texas Education Agency; research and subject matter specialist, Mrs. Pauline W. Burbrink, University of Texas; Kenneth Hart, Hereford High School; Hilma Joyce, El Paso High School and Tom Rawlins, Childress High School will also be included in the all - day program to assist attending coordinators in the future development and improvement of distributive education programs in local communities they serve. All meetings are open to the public.

Participating in this conference from Littlefield will be Bill Lyman, Littlefield High School.

THRIFTY BUYS FOR HEARTY FALL APPETITES!

EVERYDAY AT
**RENFRO
BROS.**

REMEMBER -- DOUBLE GUNN BROS. STAMPS ON WEDNESDAY

— FALL COSMETIC NEEDS —

MOUTH WASH	VIJON—REG. 49c	39
TOOTH PASTE	REG. 31c 6c OFF LABEL	25
TOOTH PASTE	REG. 53c 10c OFF LABEL	43
SHAVE LOTION	OLD SPICE REG. \$1.10	89

— FALL FROZEN FOODS —

STRAWBERRIES	FOOD KING 10 OZ. FROZEN	19
LEMONADE	LIBBY'S MAKES 2 QUARTS	19
FRIED ONION RINGS		25
BEEF STEAKS	HEREFORD 12 OZ. PKG.	59

U.S.D.A. GRADED MEATS

BACON	ARMOUR STAR, LB.	59
STEAK	U.S.D.A. CHOICE RANCH STYLE, LB.	59
ROAST	U.S.D.A. GOOD LB.	49
NICE LEAN SHOULDER CUTS		
PORK STEAK	LB.	49
HAMS	ARMOUR'S STAR 5 LB. CAN	\$3.95

FRESH PRODUCE

AVOCADOS	LARGE SIZE EACH	12 1/2
ONIONS	SPANISH SWEET, LB.	5
POTATOES	NO. 1 RED LB.	6
BELL PEPPER	NICE SIZE FRESH, LB.	10
SQUASH	YELLOW CROOKED NECK LB.	9 1/2
COFFEE	FOLGER'S REG. OR DRIP LB.	69

GIANT SIZE—10c OFF DEAL

FAB	REGULAR SIZE BARS—PALMOLIVE	69
SOAP	4 bars	33
KOTEX	BOX	39
WASHBOARD	SINK SIZE	69
DRINK	HI-C GRAPE—ORANGE—48 OZ. 3 cans	100
PEACHES	CONTADINA SPICED NO. 2 1/2 CAN	25
HOMINY	CAMPFIRE—300 SIZE 3 for	25
FLOUR	FREE 50c CAKE PAN—WITH GOLD MEDAL 25 LB. BAG	\$2.25
TOMATO JUICE	HUNTS—46 OZ. CAN 3 for	7
COCA-COLA	HANDY 12 BOTTLE CARTON	49
TOILET TISSUE	NORTHERN 3 for	25
LARD	PINKNEY'S—3 LB. CARTON	51

OATS	MOTHER'S—42 OZ.	53
OATS	QUAKERS,— 18 OZ.	21
FLOUR	SHURFINE 10 LB. PAPER BAG	77
DYAN SHINE	INSTANT—BOTTLE	25
DOG FOOD	ROXEY	3 for 25

**WE GIVE GUNN BROS.
STAMPS**





Lamb County Leader

SECTION TWO

10

LITTLEFIELD, LAMB COUNTY, TEXAS, THURSDAY, SEPT. 29, 1960

NUMBER 19



PLANNERS—Baptist Churches in 11 area communities, are staging a Sun-enlargement campaign. Above are three of the workers in the drive, mapping. Shown are Joe Arthur, music and education director of First Baptist Church, Gayle Bowen, who has the same position at Highland Baptist Church, Lubbock, and John McLaughlin, associate secretary, Sunday School Department, Baptist Convention of Texas, Dallas. (STAFF PHOTO)

Area Baptist Churches Staging Membership Classes In 'Outreach'

for the Unreached" in leadership training classes day School superintendent for the West Plains Baptist Association, which will conclude Friday of this week. Believing that a stress on enlarging the organizational structure of the various Sunday schools will pave the way for reaching more people for Bible study, Rev. Cecil Meadows, pastor of the First Baptist church, Earth, and Sun-

of Earth; Rev. Bob Tenery, Maypearl, at the Enoch Baptist church; Rev. Ed Thomas, Rochester, at the Hicks Baptist church; and Gayle Bowen, Lubbock, at the First Baptist church in Littlefield.

Also, Rev. Colyns Moore, San Angelo, at the Longview Baptist church; Rev. Kenneth Jones, Blackwell, at Luns Chapel; Rev. M. D. Rexrode at the First Baptist church of Muleshoe; Rev. S. H. Maples, Ft. Worth, at the Progress Baptist church; Gavin Vaughn, Dallas at Springdale Baptist church; and Rev. Murrell Johns, Knox City, at the Three-Way Baptist church of Maple. Also participating in the campaign is the Circle Back Baptist church where Rev. Jessie Shaver is pastor.

Morning meetings have been held for the pastors and campaign directors under the direction of John R. McLaughlin, Dallas, associate in the Texas Baptist Sunday School department, jointly sponsoring the campaign.

The evening sessions have been held in the churches, including a study of building space use, enlargement needs, strengthening the visitation plans and the worker training programs in the churches.

"It is hoped," McLaughlin said, "that the week will result in a larger number of people enrolled in Sunday School in the churches of this area this year, and that a better quality of Bible study will take place in the days ahead."

EXPLANATION

Heliotropism is the process by which a sunflower moves with the sun. The explanation is that the plant's cells grow faster on the shaded side of the stem, causing the curvature.

EASY TO MAKE

Ever sprinkle baking powder (rolled out) with brown sugar, cinnamon and chopped nuts. Roll up, like a jelly roll, then slice and bake.

Lamb Library Gets Copy Of 1841 Map Of Texas

A copy of an 1841 map of the Republic of Texas is now hanging in the Lamb County Library.

The original of this priceless collector's item was acquired by the late Dr. Robert T. Hill, pioneer geologist of Texas. Its value today is in the hundreds of dollars, for almost any antique map of the New World is costly compared with the more common ones of Europe, and any of Texas are practically unobtainable. There is definite charm about old maps and most good ones have long since been collected at fancy prices for dens, offices, studies, and libraries both public and private.

Upon Dr. Hill's death, a number of his papers and books, including this map, were given to his young friend, R. K. Harris, by his family. In turn, Harris presented this particular original to the Texas Archeological Society. With such backgrounds, they quickly realized the treasure that the map represented and how many persons would want to possess it at almost any cost. It was then that it was decided to reprint the map at limited prices, yet in a closely limited edition that would allow it to retain its rare status.

Texas Heritage was formed to publish the reprinting as a "One of One Thousand" limited edition. Each reprint has its own registered number up to No. 1,000. The plates have been destroyed and no further reprinting will be authorized.

No sales will be made to dealers, institutions, or individuals outside the State of Texas, since such a rarity of authentic Texana should be offered only to those most interested and with a personal background concerned with Texas.

In addition, since so few of the prints exist for so vast a population as the nine and one-half million people of Texas, it is intended to offer the reprints on a geographical-population basis, as long as they last, so that persons in all parts of the State will have equal chance to acquire one. For example, Dallas County has approximately 10 per cent of the total Texas population, hence 10 per cent or 100 reprints will be offered first to dealers and institutions of Dallas. Many counties will thus qualify for only one reprint, but the apportionment will be fairly done.

A fortunate owner can spend many happy hours studying new details to be found on the map. Today's Caddo Lake is called "Lake Soda." The distortion across North Texas is highly interesting, with contrasting compression of features along the eastern border where it was better known and surveyed. Waco is marked as the "Waco Village," where the traditional Tawakona (or sometimes Tehuacane) Indian village existed.

On the middle Brazos is "Nashville" in larger lettering than Houston or Austin, indicating a major city. . . yet there is no town by that name today. One gets a chuckle from the map-maker's notation out on the High Plains of today's Panhandle which quotes the Le Grand expedition as describing this country as being "fertile, well-wooded, and well-watered." Spanish mines are indicated, and the hand-painting of the boundaries contains a basic error in the inset at lower right which shows the Trinity River — rather than the Sabine — as the eastern border.

Framed and on the wall, it is a conversation piece par excellence. It is the Republic of Texas that was officially recognized by Great Britain, France, and other nations. It is the Texas of Sam-

It's the Law in TEXAS



Before our modern ideal of evidence in science, in daily affairs, and in our courtrooms, men did strange things to "test" truth in a court trial. Our notion of evidence in law courts is actually only a few centuries old. It entered court procedure at about the same time that Galileo and Newton used scientific evidence to upset older theories of nature.

Before then, men talked to prophets, fortune tellers and augurs before they acted. These men would look into the sky and find out how many and what kind of birds flew in from what quarter. Sometimes they looked at the charred entrails of sacrificial animals.

Court tests for truth in the Middle Ages were many, but somewhat drastic.

You might dispute with your neighbor over land. If so, the court might order a test by or walk through fire. They might tie and cast into water or you might meet your opponent with sword and shield. You or your neighbor might fight it out with your neighbor would not let the unjust win or, after due rites, the court might toss you both into the water. If you did not drown, you won. Or perhaps you both grasped a red hot iron or walked barefoot through hot coals. If you came out without blisters, they believed your story.

As you can see, few people went to court of their own will. The risks were many, not the kind you'd choose.

Later in England, where we Houston and Davey Crockett, and of all of us who are their direct or spiritual descendants.

It is part of our Texas Heritage.

got most of our law, men had other ways to reach decisions. For example, take the "oath-helpers." Suppose your case was to be tried. You'd not go into court with facts, as today. No, you took with you a fixed number of men called "oath-helpers." Oath-helpers would swear by all that's holy that you were a man of your word. After that, you would swear that your neighbor had wronged you. In turn he would bring his oath helpers and do the same.

(This newfeature, prepared by the State Bar of Texas, is written to inform — not to advise. No person should ever apply or interpret any law without the aid of an attorney who is fully advised concerning the facts involved, because a slight variance in facts may change the application of the law.)

Before our modern ideal of evidence in science, in daily affairs, and in our courtrooms, men did strange things to "test" truth in a court trial. Our notion of evidence in law courts is actually only a few centuries old. It entered court procedure at about the same time that Galileo and Newton used scientific evidence to upset older theories of nature.

State Fair Plans Biggest Layout In The Nation

DALLAS — The 1960 State Fair of Texas will present its grand Diamond Jubilee Exposition in Dallas Oct. 8 - 23 in celebration of the 75th anniversary year of this, the largest Fair in the land.

The Diamond Jubilee will feature great theatrical attractions such as "Flower Drum Song" and "Ice Capades," livestock events like the Pan-American Livestock Exposition and State Fair Horse Shows, exhibit features that include the Texas International Trade Fair and Southwestern Automotive Exposition, and an entertainment "Shower of Stars."

The Rodgers and Hammerstein musical, "Flower Drum Song," will be presented nightly with matinees Saturdays, Sundays and Wednesdays. "Ice Capades" will be seen nightly except Sundays, with a schedule of matinees Saturdays, Sundays and Oct. 12.

Senior citizens will be saluted on Oct. 10, "Jubilee Day," when special honor will be paid those who attended one of the first five State Fairs, 1886 - 1890. "The Shower of Stars" will were Mr. and Mrs. B. V. Maples.

present Nelson Eddy Oct. 10, the Musica Festival honoring composer Richard Rodgers Oct. 11, teen-age idol Fabian and Brenda Lee Oct. 13, circus clown Emmet Kelly Oct. 14, recording star Jimmie Rodgers and Homer & Jethro Oct. 18 and a College Jazz Festival Oct. 19.

In addition, "big-name" stars Arthur Godfrey and Rex Allen will appear at the Horse Shows, Godfrey on Oct. 7, 8, 9, and Allen Oct. 14, 15, 16.

A record premium total of \$120,770 has been offered in the various livestock, horse show and poultry events. The Pan-American runs Oct. 8 - 16, and the Junior Livestock Show is the second week of the Fair, Oct. 17 - 22. The Horse Shows will be staged in three big series.

The Texas International Trade Fair will have exhibits from all over the world. The Agriculture Show features chemistry in agriculture. "Playtime USA" have a trout - fishing pond. The Auto Show will introduce many of the new 1961 model cars. Model kitchens will be shown at the Electric and Natural Gas shows.

The Women's Department offers record premiums of \$10,448 in 739 classes of its ten divisions. Free fashion shows will be presented daily.

Cooley Services Held Saturday

EARTH — Funeral services were held at 2 p. m. Saturday at the Baptist Church in Wellington for Mrs. Ethel Manies Cooley, grandmother of B. V. Maples, Earth, formerly of Littlefield.

Mrs. Cooley died Tuesday, Sept. 20 at a Los Vegas, N. M. rest home. Complications of old age were said to be the cause of her death.

She was survived by a son, N. C. Maples, Weed, Calif.; a brother, Darro Camp, Wellington; three sisters, Mrs. John Puryear, Wellington; Mrs. Eva Duke, Dallas and Mrs. C. X. Woodruff, Corpus Christi. Eight grandchildren and 19 great grandchildren also survived Mrs. Cooley.

Attending services from Earth were Mr. and Mrs. B. V. Maples.



FREE!
Phone Dial Ball Point Pens To The First 200 Ladies To See The Beautiful NEW 1961 FORDS!




Here today — the 1961 FORDS!

Come In--Bring The Entire Family.

See The Complete Line Of The FORDS AND FALCONS.

Register For The Door Prizes.

Gifts For Everyone!

- ★ **FREE DOOR PRIZES**
MOTOROLA RADIO AND MANY FINE ITEMS OF MERCHANDISE FROM PENNEY'S
- ★ **FREE COKES & COFFEE**
- ★ **FREE LOLLIPOPS FOR THE KIDDIES**

HALL MOTOR CO.

"Your Friendly Ford Dealer For 25 Years"

LITTLEFIELD, TEXAS

Ford Offers Engineering Changes And Fresh Appearance In '61 Autos

The 1961 Ford showing today at Hall Motor Co. in Littlefield features crisp new styling, new dimensions for greater maneuverability, and major engineering improvements such as 30,000-mile lubrication, that will result in lower maintenance costs and more carefree operation.

James O. Wright, Ford Motor Company vice president and Ford division general manager, said the new Ford, nearly four inches shorter and two inches narrower than in 1960, will offer "a completely new, fresh appearance in the classic Ford tradition of straight-line design."

Mr. Wright also announced the 1961 Ford styling has been recognized for its "functional expression of classic beauty" by a world-renowned fashion authority. In Rome, Italy, against a backdrop of the new fashion center of the world, the Centro Per l'Alta Moda Italiana recently presented Ford Motor Company with a special medal honoring the 1961 Ford.

Mr. Wright said engineering and design improvements in the 1961 Ford make it "a car that virtually takes care of itself." Improvements include:

- A new grease and lubrication system that extends the normal chassis lubrication interval to 30,000 miles.

- New, heavier brakes that adjust themselves.

- Specially processed underbody parts, including galvanized body panels below the doors, that resist rust and corrosion.

- Aluminized mufflers that are double-wrapped for three times normal life.

- A 250 per cent increase in the thickness of anodizing on aluminum surfaces for brighter, longer-lasting grille, headlamp and tail lamp trim.

"These features," Mr. Wright said, "combined with Ford's Diamond Lustre finishes that never need waxing and the Full-Flow oil filtering system that permits a 4,000 mile oil change interval, will mean fewer inconvenient service stops and more savings with the new Fords."

The new Ford line, to be introduced by Ford dealers on September 29, consists of 16 models in four series - Fairlane, Fairlane 500, Galaxie and station wagons. Added to the line are two new models - a Galaxie Club Victoria (two-door hardtop) and a six-passenger Country Squire station wagon.

All six station wagon models from the two-door Ranch Wagon to the nine-passenger, four-door Country Squire with simulated wood paneling, have a new roll-down rear window in the tailgate. The tailgate itself is seven inches wider than in 1960. The front-facing third seat in nine-passenger station wagons has been improved and when not in use, folds quickly into the floor.

A power-operated rear window is standard on the Country Squire models and the 9-passenger Country Sedan and optional on others.

Ford introduces a new 390-cu. in. Thunderbird Special V-8 engine in 1961 that is designed for effortless performance. The Thunderbird 352 Special and the Thunderbird 292 V-8's, as well as the Mileage Maker Six, all are designed to deliver greater economy on regular grade fuels.

Ford has improved all four transmissions for 1961 - the manual overdrive, two-speed Fordomatic and dual-range Cruise-O-Matic. The Cruise-O-Matic transmission is equipped with a new vacuum control throttle valve linkage which provides smoother, more precise shifting than before, and elimination of periodic adjustment.

The classic Ford look of the high-styled 1961 model features the traditional, crisp, straight-line styling, graceful front fenders, broad above-widely spaced headlights, full-width aluminum grille, and the famous Galaxie roof line. Small, canted blades top the sculptured rear quarter panels that terminate in large round taillights that rearly establish the new Ford's identity.

Among improvements in the Ford optional equipment are a power window master control switch which can be used to "lock out" the operation of any or all windows, and improved circuit breaker protection for power seats and windows.

Adding to the convenience of the new Ford cars are such features as a wider trunk opening for easier loading and relocation of the spare tire on the "shelf" at the front of the trunk compartment to give more usable space; a foot-operated parking brake with the release knob located on



THE 1961 FORD GALAXIE Club Victoria (top), a new model in the Ford line that will be introduced to the public on September 29, features the crisp, fresh appearance that earned a gold medal from an international fashion authority for "functional expression of classic beauty." Ford's station wagon series includes the nine-passenger Country Squire (bottom) and introduces another new model—a six-passenger version of the Country Squire. The new Ford station wagons have a roll-down tailgate window, and the tailgate itself is seven inches wider than in 1960. All 1961 Fords feature new dimensions for greater maneuverability and such major engineering improvements as 30,000-mile lubrication, heavier, self-adjusting brakes, and longer-lasting bright trim and underbody parts.

the instrument panel; two-stage door checks; reduction of steering effort by 50 per cent with power steering shaft which reduces transmission of road shock.

The shorter, narrower dimensions and easier steering of the 1961 Ford result in greater parking ease and maneuverability.

Inside, the passenger seating space offers the same "built for people" comfort present in the 1960 Ford. Comfort and convenience, like quality and durability, were designed into the new car. Front seat passengers will continue to enjoy foam-padded seats and easy entry and exit with the swept-back windshield pillars which eliminate the troublesome "dog-leg."

The extended lubrication interval on the new Fords is possible through use of new, tough plastic seals and liners plus a special grease having a molybdenum disulfide base. Even with this grease purposely wiped off, a tenacious film clings to the surfaces, preventing metal-to-metal contact.

Ford's brakes adjust automatically to compensate for lining wear. The self-adjusting mechanism is actuated when the brakes are applied while backing.

Optional equipment includes push button radio, heater and defroster, two air conditioners, a full range of power accessories, tinted glass, wheel covers, electric windshield washer backup lights, electric clock, Equa-Loc differential, safety padded dash and visors, safety seat belts, four-way manual seat, white sidewall tires and two-tone paint.

Ford interiors feature durable, easy-to-clean vinyl and nylon upholstery, color keyed to the exterior finish, Diamond Lustre paint colors include Raven Black, Corinthian White, Montecarlo Red, Silver Gray, Starlight Blue, Cambridge Blue, Chesapeake Blue, Aquamarine, Mint Green, Laurel Green, Algiers Bronze, Garden Turquoise and Desert Gold.

Anton News by Mrs. Estelle Grace

Mrs. Chester Jones, Anton, Gives 'Voo-Doo' Coffee

ANTON — "Voo Doo" was the theme carried out at a coffee Saturday morning in the home of Mrs. Chester Jones at 511 Maurer Ave.

The walls of the newly decorated den and living room were covered with strange and weird creatures and the theme was continued on the table with the centerpiece featuring miniature heads.

Refreshments were served to the large number who called from 9:30 to 11:30 a. m.

Mr. and Mrs. Durwood Stephenson were Sunday night guests in the home of Mr. and Mrs. A. L. Hargrove.

Mr. and Mrs. Gus Marr went to Wichita Falls during the weekend.

Mr. and Mrs. Lawrence Grace Bearne, visited Mr. and Mrs. J. C. Grace Friday and Saturday.

Among those attending the funeral of Mrs. W. M. Weatherly Saturday at the Spade Baptist Church were Mr. and Mrs. A. L. Zell, Mr. and Mrs. Preston Park, Jr., Mr. and Mrs. J. C. Grace, Mr. and Mrs. Jack Grace, Mr. and Mrs. Roy Grace and Mr. and Mrs. Richard Grace.

Leon Wooten was able to return to his home Saturday from Littlefield hospital where he had been a patient for about ten days.

Rev. and Mrs. John Williams were vacationing last week. They spent a few days fishing at Lake Buchanan before going on to Houston to visit their daughters, and their families there.

Alvin Whitfield and Archie Har-

EARTH NEWS by Frankie Faver

Study Club Hears Speaker At Salad Supper Gathering

EARTH — Earth's Town and Country Study Club and the Altru Junior Study Club hosted several other area clubs at a salad supper Thursday night at 7:30 at the First Methodist Church of Earth. Represented at the gathering were the study clubs from Amherst, Littlefield, Sudan and Olton.

Mrs. A. E. Boyd, Plainview, president of the Caprock District of Federated Women's Clubs spoke on the subject, "Federation." A report on her recent trip to the National Federation Convention in Washington, D. C. was given by Mrs. McQuarters, Spade. Mrs. Homer Hodge, Town and Country president, was in charge of the meeting.

Mr. and Mrs. E. E. Watkins had as their guests Sunday Mr. and Mrs. Charles Pray and Mr. and Mrs. John Craig and Lesa of Lubbock, their daughter, Linda Watkins, student at Draughns in Lubbock, was also home for the weekend.

Mrs. Raby Kellogg visited Mrs. A. M. Timmons in Levelland Wednesday.

Mr. and Mrs. Lewis Faver and girls were supper guests of Mr. and Mrs. Glendon Dyer in Canyon Sunday.

Mr. and Mrs. Tuffy Dent and girls and Mike Dent spent the weekend with Mrs. Mike Dent and children in Mesa, Ariz.

Mr. and Mrs. George Laing and Jim left Friday to visit Mrs. Laing's sister and family. Dr. and Mrs. John Marshall at Lake Jackson. They also visited Mr. Laing's sister and family. Mr. and Mrs. Dan Lakenmacher, Houston.

Visiting Mr. and Mrs. G. S. Armstrong Sunday were Mr. and Mrs. Troy Kirby and children, Dimmitt, and Mr. and Mrs. O. R. Cleavinger and family of Springlake.

Trudy, Judy and Robin Maples visited Mrs. Charles Hiller in Canyon Saturday and Sunday.

Mrs. R. I. Doughty, Martha, Okla. arrived Sunday to visit her daughters, Mrs. Sam Cearley and Mrs. Kenneth Cowley. She accompanied Mr. and Mrs. Jack Angeles to Earth. The Angelesys spent the week-end visiting in Martha.

Springlake's football boys and coaches enjoyed a meal at 3 p.m. Friday in the school cafeteria. Serving the group were Mrs. Rex Jenkins, Mrs. David Johnson, Mrs. Mary Jane Shirey and Mr. and Mrs. Pat Montgomery.

Included on the menu was broiled steak, creamed potatoes, Jello fruit salad, English peas hot tea and toast.

Mrs. O. T. Loftis, Kress, and Hollis Hooton, Lubbock, visited their parents, Mr. and Mrs. R. C. Hooton, Friday.

Mrs. W. C. Maxey left Sunday afternoon for Dallas where she attended the fall merchandise showing. She was accompanied on the trip by Mrs. Lexie Branscum, Farwell, Miss Ruby Mason, Plainview, and Freddy Maxey, Lubbock.

Mr. and Mrs. Pat Montgomery visited Mrs. C. L. Qualls and children in Woolforth Saturday.

Mrs. Ardis Barton entered the Littlefield Hospital Friday night.

Mr. and Mrs. Clyde Hale, Santer, were present for services at the Earth Church of Christ Sunday. They are residing in their

home during the harvest months.

Visiting Mr. and Mrs. Jay Winters this weekend was Mrs. Winder's mother, Mrs. N. J. Whitney, Ozona, and her sister and family, Mr. and Mrs. Paul Campbell, McCamey.

Weekend visitors of Mr. and Mrs. Homer Hodge were Hodge's sister, Mrs. Dovie Williams, Dallas, and his brother and family, Mr. and Mrs. Bernard Wetsel, Henrietta, Okla. The Hodges entertained their guests with a trip to the Ice Capades in Lubbock Sunday.

Mrs. C. W. Terry spent several days last week visiting her grandson and wife, Mr. and Mrs. Terry Green in Lubbock. Other Lubbockites visited by Mrs. Terry were Mrs. L. H. Cupp and Mrs. O. L. Burk.

Mr. and Mrs. Gerlad Inglis visited in Littlefield Sunday with the Darrell Nichols and Mrs. Eugene Griffin. Mrs. Griffin is a patient at Medical Arts Hospital.

Mr. and Mrs. Bill Freeman and children left Saturday to visit Mrs. Freeman's parents, Mr. and Mrs. T. A. Cline at Truth or Consequences, N. M. They were to return home Wednesday.

Mr. and Mrs. Nat Bearden are vacationing in Karnack and Anna, this week.

Mr. and Mrs. Clifford Bills and girls of Denver City spent Tuesday through Saturday of last week visiting the R. S. Coles and Floyd Bills.

Mrs. Elton Vaughn of near West Camp, formerly of Earth,

is a patient in the Methodist Hospital Lubbock.

Mrs. Lillie Wuerlein, Frank and Edward, Mr. and Mrs. Roy Taylor and Mr. and Mrs. Ora Broyles spent Monday through Friday of last week fishing at Lake Texhoma. Visiting with the group at the lake was Mrs. Wuerlein's brother and family, Mr. and Mrs. Roy Taylor Norman, Okla., and her niece, Mrs. Virgil Cummings, Kanawa, Okla.

Mr. J. G. Cole, Olton, father of R. S. Cole of Earth underwent surgery at Methodist Hospital, Lubbock September 16 and 21. He is reported to be improving steadily. Among those visiting him this weekend were Mr. and Mrs. H. Y. Cole, Los Lunas, N. M. and Mr. and Mrs. R. S. Cole and Wayne and Mrs. T. C. Martin.

Mr. and Mrs. Jimmy Eagle and Connie Ray visited the B. Creightons at Elida, N. M. over the past weekend.

Attending the 3 p. m. service at the Springlake Church of Christ Sunday from Earth were Mr. and Mrs. M. R. Phillips, Mr. and Mrs. Chubby Dent, Mr. and Mrs. Fred Clayton, Mr. and Mrs. H. N. Seymour, the C. D. Rogers and Mrs. M. E. Clayton. They heard F. W. Maddox, Lubbock, speak on "Problems of the Church."

Mr. and Mrs. Glenn McClesley left Sunday for Ft. Worth to attend the McClesley family reunion. They were accompanied by their daughter and family, Mr. and Mrs. Sam Barden, Springlake.

Mrs. Bobby Free and new daughter, Hope Melinda, were released Saturday from the Littlefield Hospital and Clinic. They are spending a few days with the Melton Welch.

Linda Wade, Wellington, formerly of Earth, visited Glenda Williamson over the weekend.

Enjoying Sunday dinner at the Marvin Brown home were three of Mrs. Brown's sisters and their children: Mrs. Jannie Wilson and Betty, Big Springs; Mrs. Joe Wilson and Billy Nell, Plains; and Mrs. Lee Wilson, Freta and Nettie, Denver City. The Junior Lewis family was also present for the occasion.

Mr. and Mrs. J. Paul Hill, Johnnie and Bryan of Lubbock visited Mrs. Hill's parents, the V. D. Cokers Sunday. Calling in the afternoon were Mr. and Mrs.

Pat Lewis, Rowena Cleavinger, and Ida Allen.

Henry Craker, Meadow, uncle of Mrs. R. S. Cole, is a patient in the Methodist Hospital Lubbock. Visiting him from Earth this weekend were Mr. and Mrs. R. S. Cole and Wayne and Mrs. T. C. Martin.

Mr. and Mrs. Sam Cealey visited Saturday in Lovington, N. M. with their son and family, the Mervyn Cearleys.

Mr. and Mrs. Lawrence Sison visited the A. E. Newsoms in Lazaville Sunday afternoon.

V. D. Coker left Friday for Illinois Bend, Texas where he attended the community homecoming Saturday.

Sandwiches, baked beans, green salad, potato chips, cookies, punch and coffee were served to a group of Earth and Springlake young people and their parents at an after game party Friday night. The meal was served at the Springlake Community Building.

Present were Dixie and Helen Phillips, Ronnie, Dale and Beth Dent, Bonnie and Don Johnson, Linda Lewis, La Don Messer, Jan Hay, Patti Mann, Jane McCord, Quanta Sue Evans, Bobby Sloan, Dale Montgomery, Carl Sanderson, Leslie Lewis, Boyd Clayton, Peggy Stansell, Judy and Sandy Perkins, Irma and Janet Cooper and Shelby Bozeman.

Adults attending were Mr. and Mrs. Chubby Dent, Mr. and Mrs. Cullen Hay, Mr. and Mrs. Marvin Brown, the Fred Claytons, the Lawrence Sloans, Mr. and Mrs. David Johnson, Mr. and Mrs. M. R. Phillips, Mrs. Ray Stansell and the Frank Bozemans, Springlake.

Mr. and Mrs. Sam Cealey visited Saturday in Lovington, N. M. with their son and family, the Mervyn Cearleys.

Mr. and Mrs. Lawrence Sison visited the A. E. Newsoms in Lazaville Sunday afternoon.

V. D. Coker left Friday for Illinois Bend, Texas where he attended the community homecoming Saturday.

Sandwiches, baked beans, green salad, potato chips, cookies, punch and coffee were served to a group of Earth and Springlake young people and their parents at an after game party Friday night. The meal was served at the Springlake Community Building.

Present were Dixie and Helen Phillips, Ronnie, Dale and Beth Dent, Bonnie and Don Johnson, Linda Lewis, La Don Messer, Jan Hay, Patti Mann, Jane McCord, Quanta Sue Evans, Bobby Sloan, Dale Montgomery, Carl Sanderson, Leslie Lewis, Boyd Clayton, Peggy Stansell, Judy and Sandy Perkins, Irma and Janet Cooper and Shelby Bozeman.

Adults attending were Mr. and Mrs. Chubby Dent, Mr. and Mrs. Cullen Hay, Mr. and Mrs. Marvin Brown, the Fred Claytons, the Lawrence Sloans, Mr. and Mrs. David Johnson, Mr. and Mrs. M. R. Phillips, Mrs. Ray Stansell and the Frank Bozemans, Springlake.

Mr. and Mrs. J. Paul Hill, Johnnie and Bryan of Lubbock visited Mrs. Hill's parents, the V. D. Cokers Sunday. Calling in the afternoon were Mr. and Mrs.

Pat Lewis, Rowena Cleavinger, and Ida Allen.

Henry Craker, Meadow, uncle of Mrs. R. S. Cole, is a patient in the Methodist Hospital Lubbock. Visiting him from Earth this weekend were Mr. and Mrs. R. S. Cole and Wayne and Mrs. T. C. Martin.

Mr. and Mrs. Sam Cealey visited Saturday in Lovington, N. M. with their son and family, the Mervyn Cearleys.

Mr. and Mrs. Lawrence Sison visited the A. E. Newsoms in Lazaville Sunday afternoon.

V. D. Coker left Friday for Illinois Bend, Texas where he attended the community homecoming Saturday.

Sandwiches, baked beans, green salad, potato chips, cookies, punch and coffee were served to a group of Earth and Springlake young people and their parents at an after game party Friday night. The meal was served at the Springlake Community Building.

Mr. and Mrs. Sam Cealey visited Saturday in Lovington, N. M. with their son and family, the Mervyn Cearleys.

Mr. and Mrs. Lawrence Sison visited the A. E. Newsoms in Lazaville Sunday afternoon.

V. D. Coker left Friday for Illinois Bend, Texas where he attended the community homecoming Saturday.

Sandwiches, baked beans, green salad, potato chips, cookies, punch and coffee were served to a group of Earth and Springlake young people and their parents at an after game party Friday night. The meal was served at the Springlake Community Building.

Present were Dixie and Helen Phillips, Ronnie, Dale and Beth Dent, Bonnie and Don Johnson, Linda Lewis, La Don Messer, Jan Hay, Patti Mann, Jane McCord, Quanta Sue Evans, Bobby Sloan, Dale Montgomery, Carl Sanderson, Leslie Lewis, Boyd Clayton, Peggy Stansell, Judy and Sandy Perkins, Irma and Janet Cooper and Shelby Bozeman.

Adults attending were Mr. and Mrs. Chubby Dent, Mr. and Mrs. Cullen Hay, Mr. and Mrs. Marvin Brown, the Fred Claytons, the Lawrence Sloans, Mr. and Mrs. David Johnson, Mr. and Mrs. M. R. Phillips, Mrs. Ray Stansell and the Frank Bozemans, Springlake.

Mr. and Mrs. J. Paul Hill, Johnnie and Bryan of Lubbock visited Mrs. Hill's parents, the V. D. Cokers Sunday. Calling in the afternoon were Mr. and Mrs.

Pat Lewis, Rowena Cleavinger, and Ida Allen.

Henry Craker, Meadow, uncle of Mrs. R. S. Cole, is a patient in the Methodist Hospital Lubbock. Visiting him from Earth this weekend were Mr. and Mrs. R. S. Cole and Wayne and Mrs. T. C. Martin.

Mr. and Mrs. Sam Cealey visited Saturday in Lovington, N. M. with their son and family, the Mervyn Cearleys.

Mr. and Mrs. Lawrence Sison visited the A. E. Newsoms in Lazaville Sunday afternoon.

V. D. Coker left Friday for Illinois Bend, Texas where he attended the community homecoming Saturday.

Sandwiches, baked beans, green salad, potato chips, cookies, punch and coffee were served to a group of Earth and Springlake young people and their parents at an after game party Friday night. The meal was served at the Springlake Community Building.

Present were Dixie and Helen Phillips, Ronnie, Dale and Beth Dent, Bonnie and Don Johnson, Linda Lewis, La Don Messer, Jan Hay, Patti Mann, Jane McCord, Quanta Sue Evans, Bobby Sloan, Dale Montgomery, Carl Sanderson, Leslie Lewis, Boyd Clayton, Peggy Stansell, Judy and Sandy Perkins, Irma and Janet Cooper and Shelby Bozeman.

Adults attending were Mr. and Mrs. Chubby Dent, Mr. and Mrs. Cullen Hay, Mr. and Mrs. Marvin Brown, the Fred Claytons, the Lawrence Sloans, Mr. and Mrs. David Johnson, Mr. and Mrs. M. R. Phillips, Mrs. Ray Stansell and the Frank Bozemans, Springlake.

Mr. and Mrs. J. Paul Hill, Johnnie and Bryan of Lubbock visited Mrs. Hill's parents, the V. D. Cokers Sunday. Calling in the afternoon were Mr. and Mrs.

Pat Lewis, Rowena Cleavinger, and Ida Allen.

Henry Craker, Meadow, uncle of Mrs. R. S. Cole, is a patient in the Methodist Hospital Lubbock. Visiting him from Earth this weekend were Mr. and Mrs. R. S. Cole and Wayne and Mrs. T. C. Martin.

Mr. and Mrs. Sam Cealey visited Saturday in Lovington, N. M. with their son and family, the Mervyn Cearleys.

Mr. and Mrs. Lawrence Sison visited the A. E. Newsoms in Lazaville Sunday afternoon.

V. D. Coker left Friday for Illinois Bend, Texas where he attended the community homecoming Saturday.

Sandwiches, baked beans, green salad, potato chips, cookies, punch and coffee were served to a group of Earth and Springlake young people and their parents at an after game party Friday night. The meal was served at the Springlake Community Building.

Present were Dixie and Helen Phillips, Ronnie, Dale and Beth Dent, Bonnie and Don Johnson, Linda Lewis, La Don Messer, Jan Hay, Patti Mann, Jane McCord, Quanta Sue Evans, Bobby Sloan, Dale Montgomery, Carl Sanderson, Leslie Lewis, Boyd Clayton, Peggy Stansell, Judy and Sandy Perkins, Irma and Janet Cooper and Shelby Bozeman.

Adults attending were Mr. and Mrs. Chubby Dent, Mr. and Mrs. Cullen Hay, Mr. and Mrs. Marvin Brown, the Fred Claytons, the Lawrence Sloans, Mr. and Mrs. David Johnson, Mr. and Mrs. M. R. Phillips, Mrs. Ray Stansell and the Frank Bozemans, Springlake.

Mr. and Mrs. J. Paul Hill, Johnnie and Bryan of Lubbock visited Mrs. Hill's parents, the V. D. Cokers Sunday. Calling in the afternoon were Mr. and Mrs.

Pat Lewis, Rowena Cleavinger, and Ida Allen.

Henry Craker, Meadow, uncle of Mrs. R. S. Cole, is a patient in the Methodist Hospital Lubbock. Visiting him from Earth this weekend were Mr. and Mrs. R. S. Cole and Wayne and Mrs. T. C. Martin.

Mr. and Mrs. Sam Cealey visited Saturday in Lovington, N. M. with their son and family, the Mervyn Cearleys.

Mr. and Mrs. Lawrence Sison visited the A. E. Newsoms in Lazaville Sunday afternoon.

V. D. Coker left Friday for Illinois Bend, Texas where he attended the community homecoming Saturday.

Sandwiches, baked beans, green salad, potato chips, cookies, punch and coffee were served to a group of Earth and Springlake young people and their parents at an after game party Friday night. The meal was served at the Springlake Community Building.

Present were Dixie and Helen Phillips, Ronnie, Dale and Beth Dent, Bonnie and Don Johnson, Linda Lewis, La Don Messer, Jan Hay, Patti Mann, Jane McCord, Quanta Sue Evans, Bobby Sloan, Dale Montgomery, Carl Sanderson, Leslie Lewis, Boyd Clayton, Peggy Stansell, Judy and Sandy Perkins, Irma and Janet Cooper and Shelby Bozeman.

'B' Team, Meet Mules Here Thursday

Littlefield's football team plays its fourth game this season Thursday night at 7 p. m. The "B" team is the gridiron squad in the "B" squad in the game.

The game will be here at 7:30 p. m. The "B" team is the gridiron squad in the "B" squad in the game.

India has a power plant.

HI-KI

SPECIAL KIDNAP MATING SATURDAY

MOORE'S MODERN SATURDAY

THIS SATURDAY 1 TO 6

10c MOST ALL RIDES

COME TO THE GROUNDS - F

SPONSORED LITTLEFIELD LIONS CLUB

Announcing the 1961 Ford... Beautifully proportioned to the CLASSIC FORD LOOK

The 1961 Ford Galaxie Club Victoria—beautifully built to take care of people

BEAUTIFULLY BUILT TO TAKE CARE OF ITS

The 1961 Ford introduces a whole new concept of what a car can do for you... and for itself!

It lubricates itself. New nylon bearings and a newly developed lubricant keep the '61 Ford freshly greased for 30,000 miles. It cleans its own oil. The 1961 Ford's Full-Flow oil filter lets you go 4,000 miles between oil changes.

It adjusts its own brakes. A "mechanical brain" keeps brakes adjusted for the life of the lining.

Rust? Ford's body is specially processed to resist corrosion, even to galvanizing body panels beneath doors.

Ford takes care of itself on the turnpike, too, with a new 390-cu. in. Thunderbird Special V-8 that has all the punch you'll ever need. The 352 Thunderbird Special V-8 and 292 Thunderbird V-8 thrive on regular gas. And, for top economy, you can choose the '61 Mileage Maker Six.

This is the 1961 Ford... beautifully proportioned to the Classic Ford Look... beautifully built to take care of itself.

HERE'S HOW THE '61 FORD TAKES CARE OF ITSELF

LUBRICATES ITSELF. You'll normally go 30,000 miles without a chassis lubrication.

CLEANS ITS OWN OIL. You'll go 4,000 miles between oil changes with Ford's Full-Flow oil filter.

ADJUSTS ITS OWN BRAKES. New Truck Size brakes adjust themselves automatically.

GUARDS ITS OWN MUFFLER. Ford mufflers are double-wrapped in aluminized—normally will last as long as ordinary mufflers.

PROTECTS ITS OWN BODY. vital underbody parts are processed to resist rust and corrosion, even to galvanizing body panels beneath doors.

TAKES CARE OF ITS OWN NEEDS. New Diamond Lustre Finish needs wax.

'61 FORD

HALL MOTOR COMPANY

LITTLEFIELD, TEXAS

AT YOUR SERVICE WITH Ready Mix Concrete ALL NEW FACILITIES AND TRUCKS Davis Concrete Company Phone 385-3023

WROTE INSCRIPTION

The inscription, "Equal Justice Under Law" which appears on the U. S. Supreme Court building in Washington, D. C., was written by Charles Evans Hughes.

A Fijian firm is selling stock in that country's first dried banana project in Suva.

STAGGS DRUG

GROW SLIMMER while you eat! with safe, vitamin-fortified dietmaster REDUCING PLAN

Not a miracle drug—but a sound reducing plan that promises you pleasant results. No rigorous starvation diets... instead, satisfying, tasty, balanced meals plus two small capsules a day. No hunger pains or lost energy as those unwanted pounds slip away!

Order your DIETMASTER REDUCING PLAN today! Watch yourself grow slimmer, feel better—or your money back! Another Fine Dietmaster Product



Furr's Del Monte Round-Up Dollar Sale



CLOSED SUNDAY
IN ORDER THAT OUR EMPLOYEES MAY ATTEND CHURCH WITH THEIR FAMILY



DAILY SAVINGS AND FRONTIER STAMPS -- YOURS AT FURR'S

TOMATO JUICE DEL MONTE 46 OZ. CAN **4 FOR \$1.00**
CATSUP DEL MONTE 20 OZ. BOTTLE **4 FOR \$1.00**
COFFEE FOLGER'S ALL GRINDS LB. **69¢**



Prices EVERYDAY At Furr's -- Compare

- | | |
|--|------------|
| DEL MONTE, ALL GREEN LIMA BEANS NO. 303 CAN | 4 FOR \$1. |
| DEL MONTE SWEET PEAS NO. 303 CAN | 5 FOR \$1. |
| DEL MONTE SOLID PACK TOMATOES NO. 303 CAN | 4 FOR \$1. |
| DEL MONTE CREAM STYLE CORN WHITE, NO. 303 CAN | 5 FOR \$1. |
| DELSEY TISSUE 4 ROLL PKG. | 59c |
| KLEENEX NAPKINS 50 COUNT PKG. | 25c |
| 5c OFF LABEL-ARMOUR'S CHILI WITH BEANS | 34c |
| DEL MONTE SLICED OR HALVES IN HEAVY SYRUP NO. 303 CAN | 5 FOR \$1. |
| DEL MONTE FRUIT JUICE 46 OZ. CAN | 3 FOR \$1. |
| DEL MONTE FREESTONE, IN HEAVY SYRUP NO. 2 1/2 CAN | 3 FOR \$1. |
| DEL MONTE FREESTONE, IN HEAVY SYRUP SLICED, HALVES NO. 303 CAN | 4 FOR \$1. |
| COOKING OIL QUART | 59c |

YELLOW ONIONS MEDIUM SIZE **3 1/2¢**
APPLES **39¢**
CARROTS FRESH CRISP 1 LB. CELLO BAG **10c**
AVOCADOS CALIF. MEDIUM SIZE, EACH **2 FOR 19c**
GREEN ONIONS NICE, FRESH BUNCH **5c**

FRESH FROZEN FOODS -- PRICED LOW!

- | | |
|--|---------------------|
| FRUIT PIES | 3 FOR \$1.00 |
| MORTON, FRESH FROZEN APPLE, CHERRY, COCONUT CUSTARD, FAMILY SIZE | 3 FOR \$1.00 |
| TOP FROST, FRESH FROZEN BABY LIMAS 10 OZ. PKG. | 5 FOR \$1. |
| TOP FROST, FRESH FROZEN OKRA 10 OZ. PKG. | 5 FOR \$1. |
| TOP FROST, FRESH FROZEN, WHOLE POTATOES FRENCH FRIES OR CRINKLE CUT. | 6 FOR \$1. |
| TOP FROST, FRESH FROZEN KEY PEAS 10 OZ. PKG. | 5 FOR \$1. |
| TOP FROST, FRESH FROZEN CHOPPED COLI 10 OZ. PKG. | 6 FOR \$1. |

FURR'S Meats Are U.S. Gov't. Graded -- Table Trimmed And Guaranteed ENJOY FURR'S MEATS AT YOUR HOUSE EVERY DAY!



For downright good eating build your meal around a cut of Furr's beef ... USDA Graded Choice if you please. Furr's offers cuts which are properly aged. You'll find them easy to prepare, juicy and full of flavor. You just can't go wrong with Furr's meats. Every cut is table trimmed of excess fat and bone and guaranteed to please.

CHUCK ROAST USDA GRADED CHOICE BEEF, LB. **49¢**
T-BONE STEAK USDA GRADED CHOICE, LB. **98¢**
 U.S.D.A. GRADED, CHOICE BEEF RIB STEAK LB. **79c**
 U.S.D.A. GRADED, CHOICE BEEF SHORT RIBS LB. **19c**
 U.S.D.A. GRADED, CHOICE BEEF SIRLOIN STEAK LB. **79c**
 TOP FROST HADDOCK **43c**

Special Value! SECTION 2-15 **99¢ EA.**
 King James Authorized Version
Holy Bible
 RED LETTER EDITION. Words of Christ in Red



WE RESERVE THE RIGHT TO LIMIT QUANTITIES!

- | | |
|--------------------------------------|---------------------|
| VELOPES REG. 39c | 3 for \$1.00 |
| Y BOTTLES REG. 25c | 6 for \$1.00 |
| GS REG. 29c | 5 for \$1.00 |
| MPPOO HELENE CURTIS EGG--\$1.00 SIZE | 59¢ |

HAMBURGER FRESH GROUND POUND **3 for \$1.00**
SLICED BACON HICKORY SWEET LB. PKG. **49¢**





NEW DART TRUCK—Featuring a highly economical 140-horsepower, 6-cylinder engine, the 1961 Dodge Dart half-ton pick-up combines passenger car styling and handling ease with traditional truck durability. It is available in wheelbases of 114 and 122 inches.

Dodge Presents New '61 Dart Pick-up With 'Inclined' Engine

DEROIT — A stylish Dart engine in the trucking industry, completely new series of light and models here today, Dodge General Manager M. C. Patterson emphasized that this is the second totally new line of trucks Dodge has introduced in the past year. The new models feature the on-tilt-inclined 6-cylinder gasoline engine.

the extra cost of tilt-cabs. We offer swing-out fenders to ensure the fastest, most convenient engine accessibility in the trucking industry.

"This year Dodge is introducing another entirely new series of trucks, which range from the Dart pick-up to a 2½-ton heavy tractor. Styling, chassis, steering, suspension system — all are new. We have designed and engineered this new series of trucks from the ground up."

Patterson stressed the passenger car styling and handling characteristics of the 1961 trucks and the exceptional fuel economy to be derived from the new 6-cylinder engines.

"Our Dart pick-up has a low wide silhouette with clean lines that flow smoothly from front to rear," he explained. "A new drop-center frame, coupled with balanced design suspension and wide tread, gives the Dart remarkable road stability and makes it as easy as a passenger car to drive."

"Our two inclined overhead valve engines will interest every truck owner who wishes to reduce fuel costs significantly. We believe these engines will enable our light-tonnage models to operate more economically than any comparable trucks on the road."

The larger of the inclined engines develops 140 horsepower in a displacement of 225 cubic inches. Dodge also is offering a smaller 101-horsepower, 170-cubic inch inclined 6-cylinder engine for truck owners who operate light delivery services.

"Inclining the engine has made it possible to lower the hood height and increase accessibility to the engine compartment," Patterson explained. "In our new light-tonnage models, the hood forms the top of the fender housing. As a result, the top surface of the fender housing is lower, exposing more of the engine and making it even easier to service. All routine servicing can be performed on the left side of the engine."

Patterson said 140 basic models will be available in the 1961 line, which includes conventional, cab, cab-forward, 4-wheel drive, forward control, school bus chassis, and tandem units. He said 11 gasoline engines will be offered, ranging in horsepower from 101 to 228. Eight diesel engines, ranging in horsepower from 160 to 250, will also be available. Gross vehicle weight ratings on the new trucks range to 53,000 pounds and gross combination weight ratings to 76,800 pounds.

In addition to the Dart pick-ups, Dodge is introducing a compact three-quarter-ton forward-control unit. Highly maneuverable

on its short 104-inch wheelbase and available with either the 101-horsepower or the 140-horsepower inclined engine, it has a maximum gross vehicle weight rating of 7,500 pounds.

A highlight of the new trucks is a 35-ampere alternator, which replaces the conventional generator. The alternator system reduces maintenance costs by giving trouble-free service two to three times longer than a generator.

Steering effort has been reduced 30 per cent on light-tonnage and 15 per cent on medium-tonnage units, thus providing a responsiveness usually found only in passenger cars.

A new cab has been designed to increase driving comfort and provide maximum ease of operation and maintenance.

The new drop-center frame has enabled Dodge to achieve styling and design advances inside the cab without sacrificing headroom or driver comfort. It has also made possible a lower center of gravity and cab position. The conventional models are up to 7 inches lower and 4 inches wider than previous units. The wider cab permits a full 60-inch seat cushion.

The rear window in the new trucks is smartly styled and tilted forward to minimize glare from vehicle lights.

A new anti-corrosion process makes cabs more resistant to rust. Rocker panel sills are primed and specially treated. Inside door surfaces are carefully primed.

Sweptline pick-up bodies have been redesigned to complement the new styling theme. The box width has been increased 4 inches, boosting cubic volume capacity 10 per cent.

The Dodge Town Wagon, which can carry up to eight passengers or 155 cubic feet of cargo, is used by many businessmen from Monday through Friday in their work and for recreational activities on weekends. It offers a load space more than 50 per cent greater than that of conventional station wagons.

The new Dodge Town Panel, which has an interior height of 53 inches, is available with either of the inclined 6-cylinder engines or a rugged 200-horsepower V-8.

The introduction of four Cummins diesel engines headlines advances in the high-tonnage field. These are the C-160, NHE-180, NHE-185, and the NH-150.

Time-purchase debt in Australia recently reached a record peak of \$927 million.

Cameras To Film 'Alamo' Premiere Show For History

San Antonio's forthcoming Alamo World Premiere Celebration, a four-day international festival based on the most significant period of Texas history, will itself be recorded in the history of South Texas as one of the state's outstanding community events.

Plans are being made to preserve momentos of the Premiere Celebration in historical archives and collections.

The Alamo World Premiere Celebration will be held here October 22 to 25 under sponsorship of the San Antonio Chamber of Commerce in connection with the world premiere of John Wayne's epic motion picture, "The Alamo." A 200-member state-wide celebration, the Alamo World Premiere Committee, is arranging the celebration.

Chamber of Commerce officials said descriptive momentos of the celebration will be saved for the San Antonio Public Library and for Witte Museum.

The Texas-sized invitations and premiere tickets, especially prepared for the premiere celebration, particularly will be preserved in the historical collections of the two institutions.

The ticket is "one of those things which become priceless in a matter of years," Mrs. Marie Berry, head of the history and reference department at the city library said. The library maintains a large collection of Texana.

Col. Charles S. Marsh, director of Witte Museum, said the museum also is desirous of obtaining celebration items for its collection.

The Chamber of Commerce is selling the Texas-sized Texas-priced Gold Patron tickets to the premiere at \$50 each. Proceeds will help defray costs of the celebration. Only 600 premiere tickets will be sold.

Motion picture industry experts have advised the Alamo World Premiere Committee that the industry expects "The Alamo" to rank with "Birth of a Nation" and "Gone With the Wind" as one of the top three productions in Hollywood's history. The premiere similarly will be one of the most spectacular and elaborate in movie history.

The premiere celebration not only will be international in the scope of its interest, but will bring many distinguished and well-known persons to the city to participate in celebration ac-

ing to San Antonio for the four days will provide world-wide coverage of the celebration and premiere. Their coverage will be in addition to that provided by the many local and regional news men and photographers to be on the scene.

John Wayne will head a large delegation of movie stars coming to San Antonio to participate. One of the noteworthy and out of the ordinary figures to join them here will be Carlo Azcárraga, world's best known CALIFORNIA Marine Pvt. Jerry N. Wicker, Littlefield Wing at the El Paso Corps Air Station, Calif.

Some 75 national newsmen, columnists and photographers com-

ing to San Antonio for the four days will provide world-wide coverage of the celebration and premiere. Their coverage will be in addition to that provided by the many local and regional news men and photographers to be on the scene.

Come in and see... the NEW GENERATION of Power



LUCE, ROGERS & NELSON JOHN DEERE IMPLEMENT CO.
LUBBOCK HIGHWAY PHONE 385-4454

TODAY IS THE DATE of our house showing of the NEW GENERATION of Power. On display will be first tractor shipment, representing All-New John Deere Tractor. There's new earning power in 6-cylinder variable-speed engine, new transmission and hydraulic systems... and the most advanced tractor history. Join us Thursday bring your friends and neighbors over the NEW GENERATION of Power.

NOTICE!

WE HAVE NOT MOVED!

WE MOVED THE COLBERT MATTRESS FACTORY EQUIPMENT TO OUR SHOP AT 308 WEST 4th, ACROSS FROM THE R.E.A. OFFICE

FARMERS . . . WE MAKE COT PADS ONE DAY SERVICE

"OLD MATTRESS MADE NEW, NEW MATTRESSES MADE TOO!"
ALSO CUSTOM-MADE DRAPES!

ROBISON UPHOLSTERY & MATTRESS COMPANY

308 W. 4th PHONE 385-3485

FIVE NEW 1961's AT DODGE CITY SHOW TODAY



BEAUTIFUL NEW IMPERIAL



DART PICKUP



THE NEW CHRYSLER NEWPORT



THE NEW LANCER



DODGE'S 1961 DART

Here They Are! Five Sparkling New Cars In Our Showroom, Ready For Your Approval.

Now --- An Auto To Suit Everyone -- From The Economical Lancer To The Luxurious Imperial.

DON'T FORGET TO BRING IN YOUR SWEEP STAKES NUMBER

IMPERIAL - CHRYSLER - DART GARLAND MOTOR CO. LANCER - DART PICKUPS

720 East Third Phone 385-4454



Dart is Dodge's increasingly popular entry in the low-price field. Economy has been used in every component of the 1961 models. The new tires give 15 per cent more battery life. The all-rustproofed Unibody and high-quality enamel assure a longer and brighter finish.

Large Dart Features New Styling, Greater Economy In New '61 Models

The popular Dodge Dart will be the quality car in the low-price field. He said many of the mechanical modifications in the new Dart were made to provide "even greater economy of operation and maintenance."

"Increasing numbers of cost-conscious motorists were attracted to the economical Dodge Dart during the 1960 model year," Patterson asserted. "In 1961, the Dart will establish new standards of low-cost motoring. It will offer top-flight convenience, comfort, performance and styling while matching many of the economy benefits of compact cars."

The Dodge general manager said the '61 Dart, freshly styled on the outside, is also new on the inside. The interior of the car fea-

tures new nylon and rayon fabrics, a distinctive instrument panel, a new door trim design, color-keyed steering wheels, and new contemporary color combinations.

The 118-inch wheelbase Dart will again be available in three series — the lowest-price Seneca, the Pioneer, and the deluxe Phoenix. Twenty-nine sedan, hardtop, station wagon, convertible and fleet models will be offered.

"The Dart will again be competing in size and price, series for series, with the three other standard-size cars in the low-price field," Patterson said.

A choice of six different engines will be offered to Dodge Dart buyers in 1961. All standard six- and eight-cylinder engines perform efficiently and economically on regular grades of gasoline.

The Economy Slant Six, an advanced design six-cylinder engine which was introduced last year, will again be available on all new Dart models. This engine, inclined at an angle of 30 degrees, has 145 horsepower and a displacement of 225 cubic inches. Its compression ratio has been reduced to increase its performance while using even the lowest grades of gasoline.

"The improved Slant Six should give Dart owners even better economy than the 1960 version, which delivered 24.74 miles per gallon in the Mobilgas Economy Run this year," Patterson said.

The standard eight-cylinder engine on the new Dart is a 230-horsepower, 318-cubic-inch V8

which also provides adequate power for every driving need on regular gasoline. This standard engine has a two-barrel carburetor. A 260-horsepower V8, with four-barrel carburetor, is optional on all models.

Three high-performance V8 engines are also offered: the 305-horsepower D-500; a 325-horsepower Police Special; and a 330-horsepower V-8 with special ram-induction manifold.

There is a choice in transmissions, too. The Dart offers a three-speed automatic which was designed to match the output of the V-8 engines, and a Torqueflite six-speed automatic transmission for the Slant Six engine. There is a two-speed automatic Powerflite transmission for use with the standard V-8. A new manual transmission is standard on the 361 and 383-cubic-inch engines.

Patterson said Dodge stylists have given the Dart an all-new styling theme for 1961.

The front end features a wide concave aluminum grille which encircles the dual headlights. Projections at the ends of the wrap-around front bumper provide housings for the parking lights. A newly designed hood has simulated louvers near the base of the windshield.

The front fender sculpturing flows smoothly into the side of the body. The rear fenders rise slightly just behind the door and taper rearward into a dramatic reverse curve that sweeps forward. Horizontally styled tail lights with flush lenses are positioned directly above the massive rear bumper.

Stations wagons, again available in the Seneca and Pioneer series, feature a "torpedo" tail light and rear fender treatment, which distinguishes them from the rest of the Dart line. The wagons have a 122-inch wheelbase.

The high rear window introduced by Dodge last year is standard on all Phoenix hardtops, increasing the rear glass area by 47 per cent.

The new Dodge Dart models are available in 16 different Super Enamel and Super Metallic Enamel colors, 12 of which are completely new. Twenty-one tone color combinations are offered. Interior colors are keyed to the exterior.

Inside the Dart, Dodge stylists have redesigned the driver-centered instrument panel. Rectangular pushbuttons for the automatic transmission and heating system are housed in sculptured upsweps which project from the upper edge of the panel. The new speedometer cluster features a horizontal dial with dark figures against a light background. Three different steering wheel variations are available.

The vinyl door panels feature a new "spear" design and the

stylish new seat fabrics are made of nylon and rayon.

The front seat has custom positioning. In addition to the normal back and forth adjustment, the seats may be placed in a variety of ranges and then tilted, or fro, to meet the drivers specific need. For example, a short bodied person with long legs would prefer a "high back" range, and a long bodied person with short legs would prefer a "Forward low" range.

One of the most significant mechanical advances in the 1961 Dodge Dart — and a real boon to the motorist — is the alternator, which replaces the conventional direct-current generator. The alternator is a three-phase, alternating-current generator which is capable of delivering up to 10 amperes of electricity to the battery while the engine is idling. The conventional DC generator has no idling output.

The alternator's ability to charge the battery at all times gives it a distinct advantage over the conventional generator when the engine must idle for long periods or during slow-speed winter operations, when electrical accessory loads are especially heavy. For the Dart owner, this means longer life for the battery of his car and virtually trouble-free starting during cold weather.

Other Dart engineering advances include:

A redesigned distributor which provides more efficient engine operation and longer point life.

A solenoid-shift starter which gives the Dart V-8 new starting quietness and reliability.

A new heavy-duty manual transmission for the high-performance 361-cubic-inch and 383-cubic-inch V-8 engines.

A new, lightweight manual transmission for the 318-cubic-inch V-8 engine.

A new fabric-reinforced coupling which ensures consistently smooth and easy steering in all cars equipped with manual steering.

Five-leaf rear springs for the six-cylinder Dart which provide longer life without changing the car's excellent riding qualities.

Redesigned shock absorbers which produce a quieter and smoother ride.

The 1961 Dodge Dart again features famed Torsion-Aire suspension, which virtually eliminates front-end dip, acceleration squat, and body sway.

Unibody construction — with integrated body and frame — gives the Dart outstanding strength, roominess and quietness. And again, the industry's most advanced rust-proofing silencing and sealing process is used in manufacturing the Dart. The process helps cars look better longer.

Dart models equipped with factory undercoating have a new under-the-hood silencing pad of high-quality fiber glass. The pad, which soaks up engine sounds, is held to the hood by snap-in fasteners.

Two new steps have been added to the Dart's seven-step rust-proofing process. Before the body is dipped in water-reducible primer, a special spray is applied to

LIPSTICK LOGIC

Neat cooks wouldn't know about recipe hoarders. But some women collect recipes as others do pewter, baskets, or china figurines. They stuff them into files until these are full; slip them inside cookbooks where they are lost unless found accidentally; shove them into drawers, where they may never come to light.

A day of reckoning came at our house last month as we moved things out to renovate the kitchen. And as we sorted, clipped, copied and filed, what a flock of memories fluttered out!

Recipes we had clipped from magazines in the blessed days before calories counted, some used many times over, others forgotten the day after they went into a drawer. Those we collected as a bride — from mother, sister, friends, and the women who thought the spouse might starve to death if they didn't come to the rescue.

Recipes for the war years — eggless-butterless fruit cake; victory garden specials; meatless meals; sugarless cookies; fish and chicken dishes by the dozens. Not to mention home-canning, how to dry vegetables at home and (of all things) an old recipe for Mexican rice, misplaced for years, but we had been ashamed to ask for it again. Instructions for barbecuing chicken, given us once by a doctor's wife who does it so well.

Blackbottom pie, cranberry sa-

lad, chow mein, meringues, chutney sauce, homemade chili, eggplant soufflé. As we canned the lot, we could only think: if reading were doing, what a cookie we'd be!

Wise husbands would encourage their wives to spend an hour a week reading about tempting dishes and gourmet's delights. That ought to shake any cook out of kitchen boredom, and repeating the same old menus day after day.

Huntsville Rodeo Begins Sunday

HUNTSVILLE — Sharing the spotlight for the opening performance of the 29th Annual Texas Prison Rodeo here Sunday, Oct. 2, at 2 p. m. will be Ricky Nelson, sensational singing star and the toughest gathering of inmate contestants ever to grace the prison stadium rodeo arena.

Indications are that along with the "cream of the crop" riders will be equally, if not the toughest rodeo stock in the history of these colorful events.

In addition to Nelson, inmate riders and a host of other specialty attractions, there will be girls' barrel race, trick riding, calf roping and features by several inmate groups.

Inmate musical groups will be under the direction of Lee Norton, well-known Houston singer. He will act as master of ceremonies for western and string bands, singing groups and the Goret Girls, who this year have Candy Barr, a former Dallas entertainer as one of its members.

Net proceeds from ticket sales go for inmate rehabilitative services not furnished by state tax money. This program includes religious, educational, and medical needs.

Reserved seat tickets at \$2.40, \$3.75 and \$4.40 each, tax included, by writing Rodeo Ticket Office, Huntsville, Texas, enclosing check or money order.

Guests stars on succeeding Sun-

Publicity Clinic For Women Set By Theta Sigs

Reservations are being taken for a Publicity Clinic for women's organizations sponsored by the Lubbock Chapter of Theta Sigma Phi, women in journalism. The clinic for representatives of area groups will be Saturday, Oct. 8 at 2 p. m. in the new Garden Arts Center, 43rd Street and College Avenue in Lubbock.

Reservations should be mailed to Mrs. Kenneth Penrod, 2614 46th St., Lubbock. The fee of \$2.50 per person may be paid at the door or mailed with the registrant's name, address and organization.

The clinic will give instruction in publicizing activities by radio, television and newspapers. How to write a news story and how to prepare attractive posters and scrapbooks will be included. Tips on working with community newspapers and daily papers will be given. Time will be given for questions from the audience.

An illustrated handbook, "So Chairman," will be presented each representative. Pencils and

paper will be furnished. There will be a coffee break.

"Well qualified speakers have been selected for this year's publicity clinic and it will benefit both organizations and news media," Mrs. Penrod stated.

The Los Angeles Dodgers are the jinx team for Milwaukee pitcher Warren Spahn. He's beaten them only 14 times in 44 decisions during his long career.

for peace of mind...

Our aim is to always provide funeral services that are beautiful and reverent... truly the perfect tribute. Anytime, day or night, our experienced staff is at your call, to help in your hour of need.

HAMMONS
Funeral Home

CHIROPRACTIC HEALTH SERVICES

W. S. Dickenson, D.C.
PHONE 385-3586 LITTLEFIELD, TEXAS

DON'T MISS THE BIG 75th BIRTHDAY PARTY STATE FAIR OF TEXAS

DIAMOND JUBILEE EXPOSITION

EXHIBITS OF STELLAR ATTRACTIONS

THE BROADWAY HIT THE DRUM SONG THE CAPADES

POWER OF STARS

PARLOUR HEADLINES

GOSWELL, NELSON EDDY, BOB ROGERS, FARRAR, MA LEE, EMMETT KELLY, ELLEN JIMMIE RODGERS, MUR & SMITH, AND GREAT JAZZ FESTIVAL

FASHION FESTIVAL

Inter-American Stock Exposition

STATE FAIR HORSE SHOWS

Texas International Trade Fair

Exciting Cotton Bowl Football

MILLION-DOLLAR MIDWAY

MOBIL SKY REVUE

Wonderful and new exhibits and displays

OCT. 8-23 • DALLAS

The Economy Slant Six, an advanced design six-cylinder engine which was introduced last year, will again be available on all new Dart models. This engine, inclined at an angle of 30 degrees, has 145 horsepower and a displacement of 225 cubic inches. Its compression ratio has been reduced to increase its performance while using even the lowest grades of gasoline.

"The improved Slant Six should give Dart owners even better economy than the 1960 version, which delivered 24.74 miles per gallon in the Mobilgas Economy Run this year," Patterson said.

The standard eight-cylinder engine on the new Dart is a 230-horsepower, 318-cubic-inch V8

The new Dodge Dart models are available in 16 different Super Enamel and Super Metallic Enamel colors, 12 of which are completely new. Twenty-one tone color combinations are offered. Interior colors are keyed to the exterior.

Inside the Dart, Dodge stylists have redesigned the driver-centered instrument panel. Rectangular pushbuttons for the automatic transmission and heating system are housed in sculptured upsweps which project from the upper edge of the panel. The new speedometer cluster features a horizontal dial with dark figures against a light background. Three different steering wheel variations are available.

The vinyl door panels feature a new "spear" design and the

NEW FULL-SIZE DODGE PRICED MODEL FOR MODEL WITH FORD AND CHEVROLET



new automobile you're looking at is a 1961 Dodge called Dart!! It will upset apple carts all over the place. Why? Because Dart is a full-size Dodge priced for model with Ford and Chevrolet. It has Dodge room, comfort and quality throughout. It has a rattle and rust-proofed unitized body. A fine ride called Torsion-Aire. Dart has many other good things. Comes in 23 different models. You'll like Dart!!

DART!!!

GARLAND MOTOR COMPANY
LITTLEFIELD, TEXAS

THIRD STREET

YOU HEAR STRANGE THINGS ABOUT CATHOLICS

Yes, you do hear some strange things about Catholics.

You hear it said that Catholics believe all non-Catholics are headed for hell... that they believe non-Catholic marriages are invalid.

Some think Catholics believe the Pope is God... that he can do no wrong... that they owe him civil allegiance and that he should have the political power to rule America.

It is said that Catholics want religious freedom only for themselves... that they oppose public schools and separation of Church and State as evils which should be destroyed.

The claim is made that Catholics pay the priest for forgiveness of their sins... that they must buy their departed relatives and friends out of Purgatory... that they adore statues... are forbidden to read the Bible... use medals, candles and holy water as sure-fire protection against loss of job, lightning or being hit by an automobile.

But what is worse, some say, Catholics corrupt the true teachings of Jesus Christ with the addition of pagan superstitions and practices that are nothing less than the inventions of the devil.

If all these things or any of them were true, it would be a pity. For at least one out of every four Americans is a Catholic and it would be a national tragedy if one-fourth of all Americans entertained such erroneous ideas.

If you have heard and believed any of these false claims, and want the truth, we will gladly send you a free pamphlet explaining the true teachings of the Catholic Church. This free literature will be sent with the compliments of the Knight of Columbus of this area.

ADDRESS:
HOME STUDY CENTER, BOX 8644, Amarillo, Texas

Without obligation please send free pamphlet:

Name _____

Address or Box No. _____

City _____



NOW! A NEW **LOW PRICE!**



DELUXE G.E. RANGE

WITH AUTOMATIC OVEN

ONLY **\$149⁹⁵**

WITH TRADE

● Automatic Oven Timer
● Big 25" Wide-Opening Oven
● Removable Oven Door
● Pushbutton Controls
● High Speed Calrod Unit
● Focused Heat Broiler

YOUR TRADE MAKES THE DOWN PAYMENT!

Delivery, Hook-Up To Existing Wiring, And One-Year Service At No Extra Cost!

"IF SERVICE WITH THE SALE MEANS ANYTHING TO YOU, GE AND BILL SMITH ARE YOUR BEST SELECTIONS"

BILL SMITH ELECTRIC
613 S. WESTSIDE PHONE 385-6923

WHITHARRAL NEWS by Mrs. Elva T. Crank

Lions Club Organizes New Member Campaign

WHITHARRAL — J. W. Boeders, Jr. presided at the regular meeting of the Whitharral Lions Club at the luncheon here last Thursday evening.

A new member contest was started with a prize of a just to be given to the member bringing in the most new members in October.

Guest speaker was Bill Wadlington who brought a program on "Magic Barrel" or chemicals, how they affect the food, how used on farm products, and the safety of these products.

Prior to the meeting Mrs. Viola Goad and Mrs. Richard Horton served dinner to Wadlington, Johnny Waters, Levelland, a new member, Clifford Williams, Borders, T. D. Northern, H. G. Walden, O. L. Harris, C. G. Landers, T. C. Wade, Coy Grant, C. B. Kenney, Ralph Wade, B. U. Bryant, Pervadius Wade, Ed Johnson, B. E. Hayes, Kate Rodgers, Robert Williams, Jr., A. L. Polk, Billy Williams, Erving Sautler, Earl Lewis, Clifford Buckner, and Brady Helms.

Recent guests of Mr. and Mrs. J. C. Taylor were the latter's aunts, Mrs. Elvie Ellis, and Mrs. Hassie Rodgers, and a cousin, Mrs. Georgia Davis, all from Lubbock.

Mr. and Mrs. O. L. Harris and Troy had as their guests from Wednesday to Monday Mrs. Harris's parents, Mr. and Mrs. C. H. Merik from Seneca, Mo.

Mr. and Mrs. Wendell Meinroe and Connie were here Friday from Morton visiting Mr. and Mrs. J. C. Taylor and other relatives.

Guests of Mr. and Mrs. E. P. Havins Tuesday afternoon were Mrs. Mary Wilbanks, Abilene, her son, W. A. Wilbanks, Ft. Worth, and Mrs. Willie Wardell, Muleshoe.

Mr. and Mrs. O. L. Harp, Sr., Lamesa, spent Thursday with their daughter, Mrs. Curtis Stafford, and family.

Mr. and Mrs. D. C. Thetford, Miss Sandra May, Levelland, and Mr. and Mrs. Norman Thetford were at Portales, N. M., Friday where they met Billy Thetford from Sul Ross College at Alpine. Billy was on the Sul Ross football team that defeated Eastern New Mexico University 20 - 7 there Friday evening. Bill came home for the weekend with parents. The Norman Thetfords spent the night with their grandparents, Mr. and Mrs. C. E. Pendergrass, at Portales.

Rev. and Mrs. D. H. Montgomery have returned to San Simone, Ariz., after a visit here and with relatives at Littlefield and Hereford.

Rev. and Mrs. Roland Burnett, Keith and Paul, Plainview visited Mr. and Mrs. John L. Burnett and family Friday afternoon. Other guests in the evening were Mr. and Mrs. Clyde Mota, Whiteface.

Spending the weekend at Dallas were Mr. and Mrs. Bob Grant, Joli, Mike and Mitch.

Mr. Ben Waters has as his guests Sunday Mr. and Mrs. Henry Baldridge and children Idalou; Mr. and Mrs. Lonnie Waters and children and Mrs. Roy Maddux and Roger, Lubbock; Mr. and Mrs. Granville Hill, Muleshoe; Mr. and Mrs. Ivy Waters, Levelland; Mr. and Mrs. Lester Waters, Lubbock; Mr. and Mrs. John Waters and Mr. and Mrs. Bud Waters.

Miss Sandra Johnson, Lubbock, visited at the home of Mr. and Mrs. Orval Kiny Friday night and was accompanied home by Miss Linda Kirby for the weekend.

Mr. and Mrs. Gerlad Pair, Mrs.

Mrs. De Weese, assistant county agent, Mrs. James Lamar, Mrs. H. G. Walden, Mrs. B. L. Hicks, Sr., Mrs. D. C. Thetford, Mrs. Ralph Wade, Mrs. C. G. Landers, Mrs. Ed Johnson, Mrs. Leon Slape, Mrs. Fred Newsum, Mrs. Richard Horton, Mrs. Henry Jones, Mrs. B. B. Hisaw, Mrs. Carl Reed, and Mrs. L. C. Lewis.

Mr. and Mrs. Howard Buck and children arrived Saturday for a visit with Mr. and Mrs. A. P. Grant, and other relatives. Other guests in the Grant home Sunday were Mr. and Mrs. Buck Grant, Miss Luzora Grant and Mr. and Mrs. Jimmy J. Grant, Levelland, Mrs. George Wade, Jr., Rodgers, Sharon, Randy, and Greg, and Mrs. Danny Grant.

Mr. and Mrs. Gerlad Pair, Mrs.

Mrs. De Weese, assistant county agent, Mrs. James Lamar, Mrs. H. G. Walden, Mrs. B. L. Hicks, Sr., Mrs. D. C. Thetford, Mrs. Ralph Wade, Mrs. C. G. Landers, Mrs. Ed Johnson, Mrs. Leon Slape, Mrs. Fred Newsum, Mrs. Richard Horton, Mrs. Henry Jones, Mrs. B. B. Hisaw, Mrs. Carl Reed, and Mrs. L. C. Lewis.

Mr. and Mrs. Howard Buck and children arrived Saturday for a visit with Mr. and Mrs. A. P. Grant, and other relatives. Other guests in the Grant home Sunday were Mr. and Mrs. Buck Grant, Miss Luzora Grant and Mr. and Mrs. Jimmy J. Grant, Levelland, Mrs. George Wade, Jr., Rodgers, Sharon, Randy, and Greg, and Mrs. Danny Grant.

Mr. and Mrs. Gerlad Pair, Mrs.

Mrs. De Weese, assistant county agent, Mrs. James Lamar, Mrs. H. G. Walden, Mrs. B. L. Hicks, Sr., Mrs. D. C. Thetford, Mrs. Ralph Wade, Mrs. C. G. Landers, Mrs. Ed Johnson, Mrs. Leon Slape, Mrs. Fred Newsum, Mrs. Richard Horton, Mrs. Henry Jones, Mrs. B. B. Hisaw, Mrs. Carl Reed, and Mrs. L. C. Lewis.

Mr. and Mrs. Howard Buck and children arrived Saturday for a visit with Mr. and Mrs. A. P. Grant, and other relatives. Other guests in the Grant home Sunday were Mr. and Mrs. Buck Grant, Miss Luzora Grant and Mr. and Mrs. Jimmy J. Grant, Levelland, Mrs. George Wade, Jr., Rodgers, Sharon, Randy, and Greg, and Mrs. Danny Grant.

Mr. and Mrs. Gerlad Pair, Mrs.

Mrs. De Weese, assistant county agent, Mrs. James Lamar, Mrs. H. G. Walden, Mrs. B. L. Hicks, Sr., Mrs. D. C. Thetford, Mrs. Ralph Wade, Mrs. C. G. Landers, Mrs. Ed Johnson, Mrs. Leon Slape, Mrs. Fred Newsum, Mrs. Richard Horton, Mrs. Henry Jones, Mrs. B. B. Hisaw, Mrs. Carl Reed, and Mrs. L. C. Lewis.

Mr. and Mrs. Gerlad Pair, Mrs.

Bargain Hoe-down!



GOLD MEDAL FLOUR 25 LBS. \$1.99

KRAFT MIRACLE WHIP 49c QTS.

ROSE DALE PEAS 303 CAN 15c

DEER TOMATOES 303 CAN 15c

GLADIOLA BAKING POWDER 10 OZ. 15c

SHURFINE PEANUT BUTTER 18 OZ. 49c

GLADIOLA MEAL 10 LBS. 79c

MOTHER'S OATS 42 OZ. 57c

ALL GIANT SIZE 79c

SHURFINE APPLE BUTTER 28 OZ. 29c

SHURFINE, SLICES OR HALVES PEACHES 303 CAN 17c

SHURFINE, PINEAPPLE-GRAPEFRUIT JUICE 46 OZ. CAN 25c

43c

HAMS

WEINERS 3 L.B. PACKAGE \$1.09

FRESH GROUND HAMBURGER \$1.00

WHOLE, L.B. 59c

RANCH STYLE STEAK L.B. 69c

PINBONE SIRLOIN L.B. 59c

CHOICE CHUCK ROAST L.B. 29c

WHITING FROZEN FISH L.B. 35c

FRESH—3 TO 4 L.B. AVG. HENS L.B. 3 LBS. \$1.00

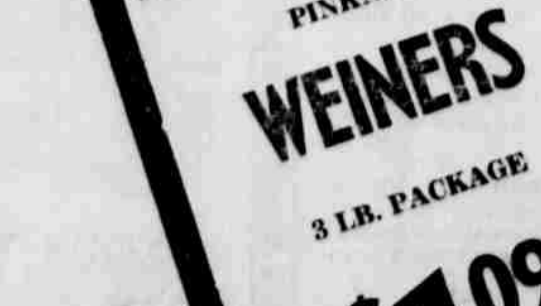
FOLGER'S COFFEE 1 LB. 69c

COLGATE TOOTH PASTE 53c SIZE TUBE 43c

OSCAR MAYER LUNCHEON MEAT 12 OZ. 39c

BANANAS GOLDEN LB. 12c
YAMS GOLDEN LB. 12c
BELL PEPPER LB. 15c
CARROTS CELLO BAG 7c
RUTABAGAS WAXED LB. 7c
GRAPES TOKAY LB. 15c

PIONEER SUPER MARKET 3RD & KIT DRIVE



They're coming! OCT. 6

CLASSIC 98 roomy, elegant!

SUPER 88 more spirited than ever!

DYNAMIC 88 better-than-ever performance!

... plus the **HOT NEW NUMBER** in the Low-Price Field **F-85**

See Oldsmobile!

... AT YOUR LOCAL AUTHORIZED **OLDSMOBILE** QUALITY DEALER'S

Want Ads-Phone 385-4481

1 time	2 times	3 times	other times
.80	1.40	1.90	.45
.90	1.60	2.20	.45
1.00	1.80	2.50	.65
1.10	2.00	2.80	.75
CASH WITH ORDER			
.65	1.15	1.55	.35
.75	1.30	1.75	.45
.85	1.45	2.00	.60
.95	1.60	2.25	.70

ads \$1.00 extra.
CARD OF THANKS, \$1.50 (within 1 col x 3")
ADVERTISING
LINE FOR CLASSIFIED ADVERTISING
5:00 P.M. TUESDAYS AND FRIDAYS
LEGAL ADVERTISING
 word, 1st issue, 3c per word per issue thereafter

For Rent

MODERN Apartments for rent 385-3228. TF-D
 or unfurnished APART suitable for couple. L. B. Stone 385-3665. TF-S

... a similar space in ... worded as you ... carry a selling and ... message to thousands of ... times each week. Call 385-4482.

... bedrooms for Men. ... air-conditioned rooms. ... 204 E. 9th. TF-A

... rent from me you have ... the property is ... SALE. L. B. Stone. TF-S

TWO ROOM OFFICE ... air conditioned, Alvin ... 823 LFD Drive. TF-W

... house. Phone Ophel ... 385-4674. TF-S

... office space in yel ... building. Contact Pey ... Reese Bros. Real TF-R

... Business Building on ... way. Ivan Fowler, Call TF-F

... house across street ... Unfurnished. L. B. ... 385-3665. TF-S

... and bath in Duggan ... L. B. Stone Phone 385- ... TF-S

... brick building for rent ... street from Furr Food ... 4th. Call U. H. M. il ... 3-1697 Amarillo. TF-M

... rent, three rooms and ... 5 B East 6th. TF-C

... Disk and mold ... Free stalk shredding ... on booking for limit ...

... rent by acre and day. ... alk shredding \$1.00 ... acre. ... Graham, Route 2, Lums TF-G

... at 218 East 9th St. ... wall to wall car ... heat, fenced back ... garage with ... bath. Only perma ... employed persons with sat ... references need apply. ... Russell, Phone 385- ... TF-R

... four bedroom house. ... unfurnished. Call 385- ... 9-29-P

... ask spaces, also tele ... covering service. Call ... come by 307 West 4th. TF-L

FARM LOANS

PEYTON REESE REESE BROS.
REAL ESTATE

GOING FISHING?

IDENT INSURANCE
ER WHILE YOU'RE
Y FROM HOME
 ... or longer, up to 6 ... Continuous protection ... on land, sea or in ... rates are low - \$1.00

Country-Hilburn Agency

... Phone 385-5131 ... Littlefield, Texas

J. R. (BILLY) HALL
ATTORNEY-AT-LAW
 385-4630 LITTLEFIELD

TO RENT LOST-FOUND FOR SERVICE TO HIRE TO BUY & SELL TO TRADE
YOU'LL FIND IT IN THE WANT ADS!

For Sale

If you have anything to say to the fine folks in Littlefield and Lamb County a few words here are just like Johnson grass. ... spreading to most every home overnight. Call 385-4481 or 385-4482.

COMPLETE Lines of used furniture, Living room suits, divan will make into bed - Dinnette suits and kitchen furniture. Kirk and Spencer Furniture. Phone 385-3633 TF-k

Two Bedroom home New Carpet and drapes, Large garage, Orchard, Will carry good load, two blocks south of School. Call 385-3363. TF-D

A. C. Combine canvasses both long and short, Contact Luther Gregg at 601 Hall Avenue or call 385-3112. TF-G

Two bedroom trailer house, 33 feet, TV furnished, electric brakes tandem tires, bath, good shape, must go. Phone 385-4033 8 to 6 o'clock weekdays. 10-6-C

15 ft. x 15 ft. slab of 6 inch concrete, not a crack in it. ... You may have same free of charge if you'll come get it. Phone 385-3102. TF-T

If you want a good FARM worth the money - Come to see Peyton Reese Reese Bros. Real Estate. TF-R

1959 blue Chevy Impala, 2 door continental kit, fender skirts, good tires, low mileage, Contact Y.W. Clark, Rt. 1 Anton, Phone PL 7-2370 County Line. TF-C

For sale: Two Pekingese puppies. Two months old. Call Methodist Parsonage, Amherst 4751. TF-W

Two bedroom HOUSE with garage and utility room for sale. Phone 385-3960. TF-P

Clean 1958 Impala Chevrolet, hard top, low mileage and clean. Call 385-4140 or 385-3676. TF-R

1954 Massey-Harris "90" combine. Equipped with custom cab, 16 foot header, good condition. 1 mile east 2 1/2 North on C. C. Solesbee farm. Priced to sell. Phone 385-4813. TF-M

FOR SALE One trombone, Two Clarinets, One Cornet, and one trumpet. Call 385-3818 daytime or 385-3461 at night. 10-16-K

165 -Castro improved 6 inch W. B. Cotton \$200: 161 Castro 10 inch well 39 C. 28 W. U. G. P. \$325: 180 -Farmer 6 inch W. \$275, 29 per cent down: 285 -Farmer the best 2 - 8 inch wells 2 houses, one large brick, good cotton allotment 80 - Lamb 4 B r. house 6 inch W-27 Cotton equipment, goes \$300 Chisholm and Oden, 600 East 4th. TF-C

For Sale

For Sale Cotton Trailers, 1-4 bales, 2-3 bale, 950 Ford tractor and 4 row cultivator. Two bedroom house to be moved. Dial 385-5029 or see Chester Baker at Lamb Bowling Lanes. TF-B

No. 16 for sale John Deere stripper with blower. Good shape pulled about 45 bales. Price \$650 Call 385-3203. TF-L

For sale garden tractor 1 1/2 horsepower with a lawn mower and cultivator. Call 385-3136. 9-29-R

Mahogany Dining room TABLE with six matching upholstered chairs. Call 385-3102. TF-T

Well improved 80 acre farm with six inch irrigation well for sale. \$300 per acre. seven miles east 3 1/2 North of Littlefield. 10-23-B

One like new up right and two good chest freezers. Phone Bill Smith Electric at 385-4922. 9-29-S

WE NEED LISTINGS on farms, ranches, and city property. Reese Bros. Real Estate, Reese Drug. TF-R

Two number 15 John Deere cotton strippers, complete with blower. Phone 385-3323 or 385-3447. TF-M

For Rent or Lease

For Rent or Lease -Office or storage space. 108 - '10 - 112 West 3rd St. Will remodel any or part if suitable lease secured. L. B. Stone. Phone 385-3665. TF-S

For Sale or Trade

For Sale, rent or trade. 1959 30 foot house trailer. Dial 385-3834 after 5:30 p. m. TF-R

FOR SALE

320 acre extra good Hale County farm, with 3 bedroom, 2 bath, brick home, enclosed heated swimming pool, well located on pavement. Cotton and wheat allotment, 2 irrigation wells. Will consider trade on entire farm or will sell house and 20 acres separate and take trade. Bob Finley-PO 2-1565 Haney Emery-SW 9-3932 Lucian Moore-TH 2-2311 (Mgr.-Farm Dept.)

J.W. CHAPMAN AND SONS
 3212 - 34th Street
 Lubbock, Texas
 SW 9-4321

CAGE POULTRY FERTILIZER
 ● HIGHEST IN NITROGEN
 ● NO WEED SEED
 ● DRY
 JANUARY 1 TERMS IF DESIRED
SEE BILL ROPER
ROPER TRACTOR CO.
 DAY 385-4344 NITE AN 2-4231

SALES SINGER SERVICE
 BONDED REPRESENTATIVE
 Sewing Machines New & Used "Rentals" Vacuum Cleaners Upright and Canister Repair All Makes
 CONTACT AUSTIN W. PHILLIPS
 404 1st 5th Phone 237 Littlefield

Wanted

Want to rent a good irrigated Cotton Farm. 1 or 2 labors. Good water and house. Experienced farmer. References Furnished. Contact Clarence Bodling, Rt. 1, Littlefield. 11-2-60

! WANTED !
 Any Ambitious man who wants to make money selling the AMAZING NEW "VAPYR-X" AUTOMATIC FIRE EXTINGUISHERS. A tremendous field selling to Homes, Farms, Stores, Factories, etc. Proved Plans years of experience along with actual field training will get you on the road to making Big money right away. Mr. Lebow will help you and will be in your area in a few days. Write Jesse T. Lebow, Box 862, Hereford, Texas.

WANTED
 Commercial Quantities Of **DRY BLACKEYES**
 TOP MARKET PRICES
DORMAN & COMPANY
 1920 AVE. E - PO 2-0896
 LUBBOCK, TEXAS

Wanted

Man to pull and set pump and run small drilling truck. Good Salary and working conditions for the right man. Contact Brown and White Equipment, Earth. 9-29-B

Soiled carpet and upholstery to clean. C & O Cleaners, 311 West 4th. 10-16-C

Help Wanted

"Do you know a man who is interested in making more money than he is now earning? The demand for American's most - wanted cleaner, the Automatic Electrolux is so great that we can now offer to the right man an opportunity to go into business for himself, without investing a penny, and also the chance to qualify for branch managership, if he's interested. I you know such a man, he'll thank you for recommending him!" Percentage remuneration. Write Box 2866, Amarillo, Texas, J. E. Gravestock. 10-13-E

Wanted

WANTED - Drivers for the most effective method of spreading word about things for rent and sale - the want ad. Is old and well used but still works better than the greatest heat method. Call 385-4481 or 385-4482.

Man to pull and set pump and run small drilling truck. Good Salary and working conditions for the right man. Contact Brown and White Equipment, Earth. 9-29-B

Soiled carpet and upholstery to clean. C & O Cleaners, 311 West 4th. 10-16-C

Help Wanted

"Do you know a man who is interested in making more money than he is now earning? The demand for American's most - wanted cleaner, the Automatic Electrolux is so great that we can now offer to the right man an opportunity to go into business for himself, without investing a penny, and also the chance to qualify for branch managership, if he's interested. I you know such a man, he'll thank you for recommending him!" Percentage remuneration. Write Box 2866, Amarillo, Texas, J. E. Gravestock. 10-13-E

Services

If you are not a natural salesman let the power of a want ad similar to these do you selling job. Phone 385-4481 or 385-4482.

Mattress Work - Mattresses, renovated, spine special built, king size mattresses and box springs. All work guaranteed, fast service. Phone Mrs. Amos Pate at 385-3191, Littlefield, DIRECT MATTRESS CO. TF-D

VAN CLARK Real Estate

FHA AND GI FINANCING
 Office Phone 385-4210
 Home - 385-3138

Services

BEST OF CARE for old folks and invalids. Phone 385-3781 Littlefield. TF-C

GOVERNMENT SURPLUS SALES

NOW anyone can buy DIRECT from U. S. GOVERNMENT SURPLUS DEPOTS, by mail for yourself or for resale. Cameras, binoculars, cars, jeeps, tractors, boats, hardware, office machines and equipment, tents, tools and tens-of-thousands of other items at a fraction of their original cost. Many items brand new. For list of hundreds of U.S. Government Surplus Depots, located in every State and overseas with pamphlet "How Government Can Ship Direct To You," plus procedures. HOW TO BUY and how to get FREE SURPLUS, mail \$2.00 to SURPLUS SALES INFORMATION SERVICES, P.O. Box No. 1818, Washington 5, D.C.

ATTENTION B Cotton Farmers
 For Limited Time Only
 We Are Able to Contract
 Your Crop of 1960-61
At 50 Points
Over "A"- Resale Price Or
300 Points Over "B" Loan
 For Further Details Contact
GLYNNE PASS
 PHONE 385-4706 - LITTLEFIELD, TEXAS
 Geo. Cochran Inc.

Attention Lamb County FARMERS!
D. & D. FERTILIZER
 Box 1008, Levelland, Texas
 is representing LEWTERS FEED LOT OF LUBBOCK on barnyard fertilizer
1. WE SELL FOR CASH.
2. WE TRADE FOR GRAIN AT \$1.55 PER HUNDRED.
3. WE FINANCE FOR THREE YEARS.
 Call J. O. Garrett at TW 4-3130
 Nights or CI 5-3322 days in Levelland
 Or call Mack Hicks at the Lubbock Office of Lewter Feed Lots, SH 4-4587

HERE! '61 CHEVY TRUCKS
 WITH WORK-PROVED INDEPENDENT FRONT SUSPENSION!
 Chevy's '61 fleet swings in with a ready-made reputation as the trucks that are worth more because they work more... the latest editions of the haulers that scrapped the I-beam axle and proved the important advantages of independent front suspension!
 You'll find new models for '61-long-wheelbase 4-wheel drive units-and thoughtful refinements throughout the line. But the big news for '61 is nailed-down proof (based on owner reports) that Chevy's torsion-spring design is the best thing that's happened to trucks in decades!
 With Chevy's independent front suspension and Sturdi-Bilt design, you cruise over trails where other trucks creep. You feel the difference in less wheel lift and vibration. You can see why drivers are happier, why loads are better protected and why the truck itself will stand up to thousands of miles of more work. That goes for any size Chevy, too-pickups, tilt cabs, tandems, all of them.
 Check the latest specs with your Chevrolet dealer: capacity, power teams, options. Then, by all means, drive a '61. Once around the block and you'll never be satisfied with a front axle truck again!
WORTH MORE BECAUSE THEY WORK MORE!
 SEE THE GREATEST SHOW ON WORTH AT YOUR LOCAL AUTHORIZED CHEVROLET DEALER'S
ARMES CHEVROLET CO.
 610 EAST 4th Littlefield, Texas PHONE 238





JOIN THE FUN AND REAP THE SAVINGS!
DURING PIGGLY WIGGLY & Libby's

FALL FOOD FAIR

Piggly Wiggly is taking home all the blue ribbons with Libby's Fall Food Fair! Fairest Prices—finest foods—festive shopping! These things add up to fun and savings. Shop for famous Libby's products at new low prices—and save S&H green stamps with every purchase at Piggly Wiggly.



DOUBLE EVERY WED

With \$2.50 Purchase

- LIBBY HALVES UNPEELED, NO. 303 CAN APRICOTS 29c
- LIBBY SLICED NO. 1 1/2 CAN PINEAPPLE 23c
- LIBBY QUART CAN APRICOT NECTAR 29c
- LIBBY 14 OZ. CAN DEEP BROWN BEANS 15c
- LIBBY NO. 303 CAN BABY LIMAS 29c
- LIBBY CUT, NO. 303 CAN BEETS 15c
- SUNSHINE 16 OZ. BOX HI HO CRACKERS 37c
- LIBBY NO. 303 CAN CARROTS 18c
- LIBBY NO. 303 CAN KRAUT 19c
- LIBBY NO. 303 CAN SPINACH 15c
- LIBBY NO. 303 CAN Whole New Potatoes 19c
- LIBBY 15 OZ. CAN Spaghetti and Meat 29c
- LIBBY 22 OZ. JAR, SOUR OR DILL PICKLES 33c

- SCHOOL SUPPLIES**
- SHEAFFER CARTRIDGE, \$1.00 SIZE 79c
 - STUDENT PENS 79c
 - HYTONE, NO. 8439, 50c VALUE NOTEBOOK FILLER 29c

LIBBY GARDEN SWEET
PEAS
2 37c
NO. 303 CAN FOR

- LIBBY'S NO. 2 1/4 CAN IN HEAVY SYRUP 2
- AZAR HALVES 10 OZ. PKG. 9
- PILLSBURY GOLDEN, ORANGE, WHITE, DEVIL FOOD, SPICE OR CARAMEL 2
- LIBBY GOLDEN CREAM STYLE NO. 303 CAN 2 FOR 3

FRESH PRODUCE

- CANTALOUPE CALIFORNIA, WITH A VINE RIPENED FLAVOR, LB. 7 1/2c
- TOMATOES CALIFORNIA VINE RIPENED LB. 9c
- TURNIPS CLIP TOP, PURPLE TOP LB. 12 1/2c
- GRAPES FLAMING TOKAYS LB. 15c



LIBBY'S, 20 OZ. BOTTLE CATSUP 29c

PINEAPPLE JUICE
LIBBY 46 OZ. CAN 29c

- FROZEN FOODS**
- PEAS SEABROOK 10 OZ. PKG. 2 for 35c
 - CORN SEABROOK 10 OZ. PKG. 2 for 35c
 - ROLLS FROZENRITE 24 COUNT 29c
 - BRUSSEL SPROUTS SEABROOK, 10 OZ. 29c
 - CHEESE DUTCH TREAT, 2 LBS. 59c
 - HORSERADISH KRAFT, 6 OZ. 21c

QUALITY MEATS

- HAMS PINKNEY CURED BUTT END, LB. 43c
- CHEESE SHANK END, LB. 39c
- ROUND STEAK SWIFT'S, BABY BEEF, LB. 79c
- RIB STEAK SWIFT'S, BABY BEEF, LB. 69c
- SLICED BACON SWIFT'S PREMIUM, LB. 59c
- BEEF STEAKS HEREFORD'S EAT MORE, 12 OZ. PKG. 69c
- LUNCHEON MEATS SWIFT'S PREMIUM BOLOGNA, PIMENTO, OLIVE LOAF 6 OZ. PKG. 25c
- PINBONE LOIN STEAK SWIFT'S BABY BEEF, LB. 69c

- GREEN CUT BEANS LIBBY NO. 303 CAN
- BISCUITS DUTCH OVEN 3 for
- BEEF TACOS PATIO, 6 COUNT 3

SAUSAGE VIENNA
LIBBY NO. 1/2 CAN 19c

- BUFFERIN HAND LOTION 100 COUNT BOTTLE 75c
- POWDER & LIPSTICK POND'S, ANGEL FACE BOTH FOR 79c
- WORLD SERIES RAZORS GILLETTE, 89c VALUE 79c

- FRUIT COCKTAIL LIBBY NO. 303 CAN 25c
- OLEO GOLDEN MIST, LB. 15c

VALUES IN THIS AD GOOD IN LITTLEFIELD THURSDAY, FRIDAY AND SATURDAY. WE RESERVE THE RIGHT TO LIMIT QUANTITIES

