

LITTLEFIELD TO BE IN THE COUNTY SEAT RACE UNTIL END OF VOTING

Do Not Be Deceived By Rumor Bearers

Back in the old days the national pastime was telling and listening to ghost stories and believing in spooks.

We have just been wondering whether or not they had county seat elections back in those days.

And whether or not there were Amhersts and Oltons.

But it's a dead cinch, brother, that if the folks hereabouts were strong for ghosts and spooks that the entire population would at this time be taking the air down No. 7 hard on each other's heels.

Amherst is the spookiest town of which we have knowledge.

About every hour for the past two weeks they've been sending the boogy man down to scare the living daylight out of us folks hereabouts. Sometimes it has been one kind of a boogy man and sometimes it has been another, but my, my those awful boogy men.

And the closer to the time of the county seat election—Saturday,

March 19—the worse capors those boogy men do cut up.

The last naughty old spook was that Littlefield had withdrawn from the county seat contest.

That same spook was in circulation throughout Lamb county telling the folks that Littlefield had withdrawn from the contest.

In spite of all the boogy men that Amherst, or any other place can develop, Littlefield will be in the county seat contest until the end.

Littlefield does not scare easily.

Now we'll tell you all about another spook that Amherst turned loose on us poor folks down here!

Amherst says that 90 per cent of the Littlefield people will vote that the county seat be removed to Amherst.

That was sure some spook.

But there's nothing spooky about this fact:

THE SANTA FE DEPOT AT LITTLEFIELD IS JUST ABOUT ONE MILE FURTHER FROM THE GEOGRAPHICAL CENTER OF THE COUNTY THAN THE SANTA FE DEPOT AT AMHERST.

Laugh that off, Amherst.

And here's another one:

A VOTE FOR AMHERST IS A VOTE FOR OLTON.

Read all about how slim Amherst's chances are to win. The facts are published elsewhere in this issue of the Lamb County Leader.

Littlefield has not resorted to spooks in endeavoring to convince the voters of Lamb County that the proper place for the county seat is at Littlefield.

We are conducting a clean campaign, giving the voters all the truth and nothing but the truth at all times.

The voters, we believe appreciate a campaign that is free from spooks.

Second Annual Meat Show To Open Tuesday

Many Special Features; Lamb County Leader To Give Prize

The second annual Lamb County Meat Show will be held next Tuesday in Littlefield.

Indications are that this year's show will be larger than last year's exhibition and that it will attract a larger number of visitors.

The main show, including the exhibit of cured meats and canned goods will be in the Dow building, while special features will be carried out at the high school Tuesday night.

Winning exhibits in the Lamb County show will be entered in the second Annual Panhandle-Plains Fat Calf, Pig and Meat Show which will be held at Lubbock Thursday and Friday, March 24 and 25.

K. F. Warner of the Bureau of Animal Industry, Washington, D. C., will be here to do the judging and conduct the meat cutting demonstration at the high school Tuesday night. Mr. Warner will be assisted in the judging of the meats by Roy Snyder, meat specialist, extension service, Texas A. & M. College.

Miss Zetha McInnis, Home Industry Specialist extension service A. & M. College will judge the canned products, assisted by a home demon-

(Continued on Last Page)

WHO CAN VOTE

All persons who have paid their 1931 poll tax in Lamb county;

All persons who were 60 years of age on or before January 1, 1931, can vote without the payment of poll taxes.

All persons who have become 21 years of age since January 1, 1931, can vote without the payment of a poll tax.

All persons who have been in the state one year, in the county six months, and who paid their 1931 poll tax.

All persons who have resided in the state one year, in the county six months, and who came from a state which does not require the payment of poll tax.

All persons who are exempt by law from the payment of poll tax.

LITTLEFIELD—THE PULSE OF THE PLAINS

WATCH LAMB COUNTY GROW

LAMB

LAMB—COUNTY OF OPPORTUNITY

COUNTY LEADER

Official Newspaper of Lamb County, Texas

VOL. 9

LITTLEFIELD, LAMB COUNTY, TEXAS, THURSDAY, MARCH 17, 1932.

NO. 49

JUDGE HAY ASKING FOR RE-ELECTION AS COUNTY JUDGE

PLATFORM IS GIVEN IN ANNOUNCEMENT

County Judge Simon D. Hay Wednesday authorized the Lamb County Leader to announce his candidacy for re-election.

Judge Hay, in his announcement, said:

"In announcing for re-election as county judge, I beg to state that I not only respect and believe in my country, but endeavor at all times to live, both privately and officially, according to the laws of the land, and I pledge myself to continuously fight for what I think is right. To my mind it is highly important that we all work for the protection of life, especially the lives of our children, of liberty and of property, in local government as well as in national government.

"I believe in economy, not just in the campaign word economy, but in the principle that an honest man lives within his means and that the same applies to any government. "I thank the people of this county for their support in the past. I am at your service for Lamb county and will again appreciate your support."

IS DISTRICT SALESMAN

Bob Badger recently signed a contract with the Texas Certified Seed Growers Association to represent the association in this district.

Mr. Badger, who will be located at the Yellow House Land Company, will be in position to sell any kind of certified cotton seed, either for cash or on fall terms, he states.

LITTLEFIELD TO PROVIDE COMPLETE ELECTION RETURNS SATURDAY NIGHT

Littlefield, as in all county, state and national elections, will furnish the people of Lamb county with complete returns in the county seat election this Saturday.

E. C. Cundiff, who has been in charge of this special service for several years, will be in charge this Saturday night.

Direct telephone and messenger service will be established with every box in Lamb county, and the vote will be posted on a large, illuminated board on the vacant lot opposite the First National Bank.

First returns will arrive very soon after the closing of the poles, and the board will be operated until all returns have been received, even those from the most remote parts of the county.

The entire citizenship of Lamb county is invited to take advantage of this special service, which will be rendered by Littlefield.

Is Wrong Right?

Is wrong right?

When a municipality undertakes to give away the property of the taxpayers—a step which has been adjudged not to be within the rights of the officers of a municipality—can subsequent action, other than the making of new laws, be taken to make such action proper?

But that is what Amherst is seeking to do. The City of Amherst deeded the Amherst Hotel to the County of Lamb for court house purposes.

Then the City of Amherst executed a contract agreeing to recondition and remodel the hotel property for court house purposes.

Now, according to reports from Amherst, and a circular which was distributed in Littlefield Wednesday afternoon, Ewing Halsell of the Halsell Estate, which deeded the hotel property to the City of Amherst, has executed a document underwriting the remodeling contract which the City of Amherst entered into with the

County of Lamb.

Here's the undertaking which the circular represents to have been signed by Mr. Halsell. We do not doubt that Mr. Halsell executed such a document.

Here it is for the voters of Lamb County to read:

The State of Texas, County of Lamb.

Before me, the undersigned authority, on this day personally appeared Ewing Halsell to me well known and who, after being by me duly sworn, did depose and say that the Halsell Farms Company hereby underwrites the proposition of the City of Amherst to remodel the Amherst Hotel, in the event the County Seat is removed by the election of March 19th, 1932, to the City of Amherst, in accordance with the plan and specifications submitted to the Commissioner's Court of Lamb County, Texas, not to exceed the sum of TEN

(Continued on Page 6)

LEGION HUT IS FORMALLY OPENED HERE

MANY LEGIONNAIRES, THEIR FAMILIES AND FRIENDS ATTEND

The opening of the Legion hut was celebrated in a large way Monday night, when approximately two hundred legionnaires, their families and friends, gathered at the newly acquired building in the City Park.

The legion hut was very fittingly decorated for the occasion in red, white and blue, with large U. S. flags predominating.

Delegations attended from Leveland, Sudan, Olton, Amherst, Hart's Camp and Whitharral.

R. E. Riley, Commander of the Local Post, made the welcome address.

(Continued on Last Page)

BIG OPPORTUNITIES IN LAMB COUNTY LEADER CONTEST

With the announcement of the many different weekly prizes, more people are becoming interested in the Lamb County Leader circulation contest, and planning that they, too, might as well get in and share in the rich rewards literally being showered out to all entrants who are willing to work.

It is not too late to enter, it is not too late to be a winner of the Ford or any other prize; the only thing to do is to make up your mind that you can use the EXTRA money and Extra prizes being distributed every

(Continued on Page 6)

Bring Prisoners To Littlefield For Safe Keeping

One Almost Makes Way Out Of Olton Jail, Officer Reports

Two county prisoners were transferred from the Olton jail Monday to the Littlefield jail for safe-keeping.

The transfer was made after the sheriff's department discovered that one of the prisoners, W. T. Thompson, who gives Oklahoma as his state, had made an attempt to escape.

The other prisoner, Tom Huffman, was not connected with the attempted escape.

Thompson was arrested about a week ago and was billed by the grand jury for the alleged burglary of the Littlefield grammar school.

Huffman is facing three charges of hijacking.

Thompson was arrested on the burglary charges by Deputy Sheriff Bob Miller, who found him hiding out in the old swimming pool west of the city on Highway No. 7.

Thompson, following his alleged attempted escape, together with Huffman, was brought to Littlefield De-

(Continued on Last Page)

Location Of Polling Places

For the information of the voters the Lamb County Leader is this week again publishing the voting precincts, together with their locations.

The voting precincts are as follows:

- No. 1—Court House, Olton.
- No. 2—School House.
- No. 3—Community Church.
- No. 4—City Hall, Littlefield.
- No. 5—School House.
- No. 6—School House.
- No. 7—City Hall.
- No. 8—School House.
- No. 9—School House.
- No. 10—Community Building.
- No. 11—A. H. Scivally residence.
- No. 12—Bower store.
- No. 13—N. C. Chisholm residence.
- No. 14—School House.
- No. 15—Community Building.

A VOTE for AMHERST IS A VOTE for OLTON

VOTE FOR LITTLEFIELD IN THE COUNTY SEAT ELECTION

POLLS OPEN 7 A.M.

SATURDAY, MARCH 19th

Polls Close 7 P.M.

LITTLEFIELD VOTERS—VOTE EARLY—BEFORE YOU GO TO WORK WOULD BE A GOOD PLAN

LAMB COUNTY LEADER

Published every Thursday afternoon at Littlefield, Texas.
Subscription: \$1.50 per year; 75 cents for six months.
Advertising rates given upon application.

No. Entered as second class matter May 24, 1923, at the post office at Littlefield, Texas, under the Act of March 3, 1897.

ORLEY B. DRAKE Editor and Publisher
M. DRAKE Business Manager

Subscribers who change their addresses, or fail to get their paper, should immediately notify this office, giving both new and old addresses. Communications of local interest are solicited. They should be briefly written, on only one side of the paper, and must reach this office not later than Wednesday noon of each week. The right of revision or rejection is reserved by the publisher.

Advertising that does not show in its text or typography that it is paid for must be marked as an advertisement. All local advertisements remain in this paper for the time specified or until ordered out. All notices, matters not by whom nor for what purpose, if the object is to raise money by admission fee or otherwise, is an advertisement and when sent in for publication must be paid for at the regular advertising rate per line for each issue printed.

Obituaries, cards of thanks, and resolutions of respect will also be charged for at the same rate.

Any erroneous reflection upon the character, standing or reputation of any person, firm or corporation which may appear in the columns of the Lamb County Leader will be gladly corrected upon its being brought to the attention of the publisher.

In case of errors or omissions in local or other advertisements, the publisher does not hold himself liable for damage further than the amount received by him for such advertisement.

A NEW INDUSTRY FOR TEXAS

Plans for definite development of the Texas potash industry will be set in motion in a few weeks, according to information received at Austin from Odessa. These plans include sinking of a 2,000-foot shaft, construction of a refinery, a railroad spur and a highway, and will give the state its fourth great industrialization and its fourth great natural resource—oil, gas and sulphur being the other three—and will largely increase the commercial activity of Texas.

Such an announcement is very encouraging news, because of the fact that Texas needs more industries, in order that this state may enjoy the degree of prosperity to which it is entitled.

And that is not saying that Texas is not a prosperous state at the present time. Where, in the entire country, could be found better conditions than in Texas?

This state—only partially developed—offers to the entire United States an unlimited opportunity to engage in farming, commercial and industrial activities. What we are most in need of is industries. That is why we rejoice at the development of a new industry.

In connection with the development of the potash industry, Odessa and Ector county officials are planning a highway from the Bankhead at Odessa to the O. P. Jones Ranch, 11 miles from town while the Texas and Pacific is to put in a spur to the mine, the digging of the shaft scheduled to begin May 1, and which involves a cost of \$200,000. Under present plans a \$10,000 refinery will be built at Houston to convert the mineral into fertilizer and other by-

products, such location affording the advantages of the milling-in-transit rate.

The mine will be operated by the Texas Potash Corporation, of which Homer Mitchell, Dallas, is president; Wert Davis, treasurer; Max Agress, general manager, and Dr. E. P. Schosh, chief chemist. The directors are J. L. Lancaster, Tom Leachman, J. B. Adoue, Hugo Schoellkopf, Frank E. Austin, Louis M. Bourne, Aubrey D. Carter and George S. Watson. Odessa citizens own stock in the company. Dr. Schosh is a geologist at Texas University, and it was through his research that a new process was discovered by which potash could be brought to the ground and refined at small cost.

The Ector County potash field is six miles long and three miles wide, estimated to contain 23,000,000 tons of potassium oxide, and 34,000,000 tons of polyhite, sufficient to last the United States for several hundred years, this country now getting most of its potash from Europe.

Showing that potash mining is both a big and unusual undertaking, it is proposed to bore a shaft that will be 36 feet wide, 2,000 feet deep and which will require a year's work. It will be strengthened by a two-foot concrete wall. Laterals or passes will be run off at each strata, and it is expected that several stratas of water will be passed.

Agress, an experienced potash man, has inspected the mines in Germany and has quoted German experts as having said the Texas potash could add 20,000,000 acres of cotton in Texas and Oklahoma, but with cotton prices down and production already high, the fertilizer could be used for the benefit of other products of the

THE WELFARE OF YOUR COMMUNITY

COMMUNITY PROSPERITY

DEPENDS UPON THE DOLLARS YOU SPEND WITH YOUR HOME FOLKS

The Government appropriated \$300,000 for potash exploration, and core tests began in 1924 throughout the Southwest. A survey showed strata at a depth of 1,980 feet carrying potassium, and Dr. E. E. Slosson declared the Ector County products better material for plant food than that found in Europe. Potash soaps are used in soaps, dyes, tanning, explosives, cyanide fertilizer and medicines.

Convenient As Your Telephone

Ship Via Truck

LITTLEFIELD TRUCK LINE

LITTLEFIELD to LUBBOCK

Via Anton, DAILY

Littlefield Phone 169

LUBBOCK Phone 166

MAX E. TOUCHON
Owner and Operator

Subscribe for the Leader!

GRAND DRUG STORE

1 Cent SALE!

Wednesday, Thursday, Friday and Saturday
March 16, 17, 18 and 19

You buy any of the hundreds of items on Sale at Regular price and get another just like it for one cent. This is to advertise Penlar Preparations and to allow you to prove for yourself how good they really are. The Penlar Company co-operates with our store in this One Cent Sale, which will create thousands of new users of Penlar Products and also give present users this benefit.

READ OUR BIG CIRCULAR

Grand Drug Store

—Littlefield—

Your POWER Supply

AS MUCH Electricity as you can use—or as little as you may require; at the place where you want it, at the time when you want it—reliable and continuous, always ready, instantly delivered.

THESE STANDARDS OF ELECTRIC SERVICE HAVE RESULTED FROM YEARS OF BUILDING.

Large, efficient power plants, and widespread net-works of transmission lines to serve groups of towns, have resulted in the ample power supply available every where today.

Texas Utilities Co.

"Your Electric Servant"

We Extend Our Heartiest WELCOME To Meat Show Visitors

May You Especially Enjoy This and Every Other Visit To Our City

Office Supplies at Leader Office

Give Your Home a Beauty Treatment

—New Appearance—New Value—By the Use of Paint. You are assured of best results through the selection of Sherwin-Williams Paints — Valspar Varnishes — and Ripolin Enamels. We have a very complete stock. We invite you to look over our stock of wall paper. The 1932 designs are very pretty.

Model A Ford Truck For Sale

HIGGINBOTHAM-BARTLETT CO.

Littlefield Texas

WELCOME VISITORS! TO THE LAMB COUNTY MEAT SHOW
Littlefield Tuesday, March 22

Jake De' Cake



Advice is Cheap

By M.B.

News of Lamb County Cities - - Communities

SPADE

General assembly Thursday the nation in Tiny Tot stories was e. Mary Evelyn Hale will rep-

resent our school at County Meet in that event. The little tots showed that they were for our school, and that they had spent some good time in training.

Four gold basket balls were pre-

sented to members of the boys' and girls' teams. Paul Hyde and Sue Heibert each received one of the honors for being the ones on their respective team to show the most improvement and to be of most value to their team, in the eyes of their coach. "Gene" Yeager and Pauline Dennis each received one of the honors for being the best players on their team in the eyes of the spectators.

Sarah Smith will represent our school in junior girls declamation. All of our junior girls worked hard on declamation and we appreciate their supporting our school as they did.

Doyle Dyer will represent our school in junior boys declamation. We also appreciate the efforts that our junior boys have put forth.

Mr. Fisher presented the first place trophy of the late Spade Tournament at assembly last week. Our girls have certainly put forth the fight this year, and we are proud of the trophy they won for our school.

Greater than the trophy is the meaning which is "County Championship."

The Junior play, "Mystery of the Third Gable," has been postponed until Wednesday, March 23, at 8:00 p. m. Be sure to see the play, it is full of mystery. There is the mysterious appearance of the "Ace of Clubs" playing card; the mystery of why Jane Morgan wishes to be Judge Sherwood's secretary, and why a light often appears in the Third Gable, the old speaking tube and its mysterious sounds, and the unknown person in the corridor. Admission, 10c and 15c.

Mattie Mae Green is in the Lubbock Sanitarium this week. We miss her very much at school.

Mrs. Starvers has been quite ill for some time.

Edwin Read spent the week end at home in Hall County.

Miss Ruby Mashburn met with the girls of school Wednesday, March 9, and organized a 4-H Club. Officers elected were: Treva Swinney, president; Elizabeth Stone, secretary; Maye Tucker, reporter, and Mrs. Day, sponsor. We have 61 members and Miss Ruby said we should have the best 4-H Club in the county.

Everyone who lives in our community and does not come to church is invited to come. We have Sunday school and B. Y. P. U. every Sunday and preaching three Sundays in the month. Rev. Jayner preaches the first Sunday, Rev. Wilson the second, and Rev. Allen the third.

Next Sunday Mr. Warren from Wayland College will speak at 11:00 o'clock.

BULA NEWS

The Junior class of Bula met Mar. 2, and elected the following officers: Clay Truitt, President; Lula Mae Lee, Vice-president; Mozelle Nordyke, Secretary; A. H. Howell, Jr., Treasurer; Bonnie Dunlap, Reporter; Miss Ruby Ball, Sponsor; Bonnie Dunlap and Durwood Whatley, Entertainment Committee. Class color, blue and gold. Class motto, "Hitch Your Wagon to a Star."

Members of the class: Clay Truitt, Bonnie Dunlap, Vera Nicholson, Lula Mae Lee, Mozelle Nordyke, Fay Waltrip, A. H. Howell, Jr., and Durwood Whatley.

Our regular meeting day is Wednesday of every week.

We plan several entertainments in the near future.

FIELDTON FACTS

By Iven Lee Hill, Correspondent

A. J. Jarman and son, Elvie, were transacting business in Olton Monday.

J. W. Elmore was a Plainview visitor Thursday.

Miss Faral McCurry and Lamar Pickrell were united in marriage, March 12 at Clovis, N. M. Mrs. Pickrell is the popular daughter of Mr. and Mrs. M. V. McCurry of this community. Lamar Pickrell is the prosperous son of Mr. and Mrs. Henry Pickrell. Mr. and Mrs. Pickrell will make their home here. Their many friends wish them many happy years together.

We are glad to hear Mrs. A. J. Jarman is improving this week.

Robert McNeely and Miss Vera Long motored to Clovis, March 12, and were united in marriage. Mrs. McNeely is the daughter of Mr. and Mrs. A. B. Long of this community. Mr. McNeely has made this his home for the past 3 years. Mrs. McNeely was dressed in a beautiful peach dress with accessories to match. They will make their home in Fieldton.

Vernon Qualls left Tuesday for San Antonio, Tex., where he will be employed.

LUM'S CHAPEL

By Inez Nance, Correspondent

The young folks of our church went kodaking Sunday.

Mr. and Mrs. Brady Evans of Littlefield spent the week-end with her parents, Mr. and Mrs. Miller.

Misses Ruby McCarty and Inez Nance spent Sunday with Iris Neu. Mrs. Morris is very sick with the flu. We hope she will soon recover.

The young folks enjoyed a party Saturday night at the home of Mr. and Mrs. George Mealar.

Mr. Carey, the sing-song president, has been sick but we think he will be ready for the big singing Sunday.

We carry Wright's Meat Smeke. Eagle Drug.

Subscribe for the Leader.

SOUTHWEST NEWS

By Lucille Scheuer, Correspondent.

Mr. and Mrs. Herman Miller and family visited last Sunday with Mr. and Mrs. W. R. Geistman and family.

Mr. and Mrs. O. L. Schlottman and boys, Mr. and Mrs. Joseph Foltyn and daughter, Rose Marie, visited last Sunday with Mr. and Mrs. Joseph Macha.

Mr. and Mrs. Ben Dolle, Mr. and Mrs. Otto Green and family went to Pep Sunday afternoon to visit with her son, Irvin Dolle and family.

Mrs. Peter Yohner, and Fronia Yohner visited two months with her mother in Lorane, Texas. They returned home last week.

Jake Rietman left Tuesday for Hale Center to visit a few days with his parents, Mr. and Mrs. B. F. Rietman and family. He will go from there to Dyer, Indiana, to assume his Mrs. Bill Harms visited Wednesday afternoon with Mrs. J. M. Scheuer and daughter, Lucille.

Mr. and Mrs. Melvin Tedford and William Lightsey visited Sunday afternoon with Mr. and Mrs. William Harms and family.

Mr. and Mrs. Joseph Macha, Fronia Yohner and Emil Vackar, visited Sunday afternoon with Mr. and Mrs. Joseph Foltyn and daughter, Rose Marie.

A bunch of young folks visited Sunday evening with Mrs. Joseph Macha of East Littlefield.

CONOCO RADIO PROGRAM

A land rich in history and tradition, where Indian battles, buffalo herds, prospectors and pioneers dotted the hills a few decades ago, will be traversed by the radio touring party of Carveth Wells, noted British explorer, in his NBC network broadcast Sunday, March 20, at 10 a. m. CST. Wells will feature Montana in his series, "Exploring America With Conoco and Carveth Wells," sponsored by Continental Oil Company, on this broadcast.

SOUTHEAST NEWS

By Edna Byers, Correspondent

Jewel Byers spent the week-end with Burnell and Bernice Green.

Mr. and Mrs. W. L. Ross and family of Hale Center visited Mr. and Mrs. Geo. Ross Sunday.

Elma Byers visited Irene and Mildred McKinnon Sunday. They visited in Amherst Sunday afternoon.

Mrs. J. L. Dow and daughter, visited in the L. L. Messangill home Sunday.

J. R. Hodges visited Glen James Sunday.

Gladys James was the guest of Veneta Hodges Sunday.

We Join All Littlefield

In Extending to Each of You a Heartly

WELCOME

To The Lamb County Meat Show

TUESDAY, MARCH 22

Drop in and let us show you the many exclusive features offered in the Willard Battery—a Battery you have known and probably used for years. New low price, with 12 months guarantee, only \$6.95, with your old battery.

Willard Batteries, Crosley Radios

Littlefield Battery & Electric

Carl Smith E. C. (Slim) Salbers

FARMERS PRODUCE

A Convenient Shopping Place

Especially located to serve the farmers with a complete stock of Quality Groceries at a very reasonable price.

Not only will you save a sizeable sum of money by shopping here but you will find it quite convenient to buy such Quality Groceries at the same place you market your products.

We Buy Eggs, Poultry And Cream!

Welcome To The Meat Show

KIDNAPPING PRICES!

For Friday and Saturday

Bread Loaf 5c

Peanut Butter, Quart 23c	El Food, 8 oz. 15c
Catsup, 14 oz.	Coffee, 2 lbs. 25c
Large Bottles, 2 for 25c	Brooms, each 25c
Lye, 3 Cans for 25c	Cookies, 7 boxes 25c

Syrup Pure Ribbon Gal. 53c Cane 1/2 Gal. 29c

Spaghetti or Macaroni, Pkg. 5c	Blackberries, Gal, Best Grd. 39c
BAKING POWDER, Calumet, 10 lbs. \$1.31	Cherries, Gal. 59c
	Pineapple, Del Monte, Gal. . 49c
	Pears, Gal. 39c

Soap Sno-Bel, Cocoa Hard-water, reg. 10c value. 3 for 10c

Black Pepper, 1-4 lb 10c	Fresh Blackeyed Peas, Can. 9c
Pinto Beans, 10 lbs. 26c	Shredded Wheat or Rice Crispies, Pkg. 10c

SNUFF Rooster 6 ounce Regular Size 3 bottles for 79c Devo Red Seal

Steak, Fore Quarter, lb. . . . 10c	Smoked Bacon, lb. 13c
Sliced Bacon, lb. 20c	Dry Salt, lb. 9c
Cheese, Longhorn, lb. 19c	Butter, Country, Cr'm'ry, lb 25c

MANY OTHER SPECIALS TOO NUMEROUS TO MENTION

TREES! — TREES!

CHINESE ELMS — CLIMATIZED TO THIS SECTION

6 to 10 feet 30c	GROVE OR SECONDS
7 to 8 feet 20c	7 to 8 feet 10c
6 to 7 feet 15c	6 to 7 feet 7 1/4c
5 to 6 feet 10c	5 to 6 feet 5c

Ask For Special Price on Quantity Orders

FULL LINE OF BULK GARDEN AND FIELD SEEDS, POTATOES, ONION SETS, PLANTS, ETC.—Everything You Need for Spring Planting.

Renfro Bros. —GROCERY & MARKET—



Easter Candy At the Stokes-Alexander Drug

Easter is another one of those special occasions for the giving of sweets to your wife, mother, sweetheart or sister. A KING'S Gift Box will be especially appreciated. You can give these candies in boxes in any quantity desired.

Stokes-Alexander Drug Co.

Littlefield *The Rexall Store* Texas

"IN BUSINESS FOR YOUR HEALTH"

We extend a cordial welcome to all visitors in Littlefield for the Lamb County Meat Show—March 22.

Welcome Visitors!

To The

LAMB COUNTY MEAT SHOW

In Littlefield—March 22nd

Lamb County Cured Meats rate very high, and we are justly proud of the fact.

Such occasions as the Lamb County Meat Show are important steps forward in the sound and progressive growth of our county.

FIRST NATIONAL BANK

Littlefield, Texas

THE CLASSIFIED SECTION

BUY AND SELL HERE

When
Your Meat Tooth Calls for Meat,
Your Wisdom Tooth Says—
the Royal
ROYAL CAFE
"The Home of Good Eats"

Money to Loan At
5 1/2%
on Farm Loans.
Why Pay More?
See J. S. Hilliard,
Secretary-Treasurer
**Littlefield National
Farm Loan
Association**
Office, City Hall Bldg.

—Eat at Moody's
—Save at Moody's
NOTHING OVER 25c
Try Our Big
JUNIOR ELEPHANT BURGER
MOODY'S CAFE

IN NEW LOCATION
I have moved my barber shop to
302 Phelps Ave., next door south
of Renfro Bros. Grocery & Mar-
ket. I hope to continue to serve my
present patrons and to make many
new customers.
CLAUDE CLARK

BILLS & HAZEL
Lawyers
Office upstairs in First National
Bank Building
LITTLEFIELD, TEXAS

T. WADE POTTER
Attorney at Law
Office in First National Bank
Building.
Littlefield, Texas

C. C. CLEMENTS
Dentist
X-Ray Machine in Connection
Office in First National Bank
Building.

**Lubbock
Sanitarium & Clinic**
Dr. J. T. Krueger
Surgery and Consultation.
Dr. J. T. Hutchinson
Eye, Ear, Nose and Throat
Dr. M. C. Overton
Diseases of Children
Dr. J. P. Lattimore
General Medicine
Dr. F. B. Malone
Eye, Ear, Nose and Throat
Dr. J. H. Stiles
Surgery
Dr. H. C. Maxwell
General Medicine
Dr. R. L. Powers
Obstetrics and General Medicine
Dr. Jerome H. Smith
X-Ray and Laboratory
C. E. Hunt J. H. Felton
Superintendent Business Mgr.
A chartered training school for
nurses is conducted in connec-
tion with the sanitarium.

WHEN IT'S AN

EXIDE
Dependability
for as low as
\$6.95
We Service and Repair
All Makes of Batteries
**Garland-White Auto
Supply**
Littlefield Phone 138

**DAY and NIGHT
SERVICE**
—We Never Close—
Magnolia Gasoline and Oil
**LUCKY TIRE
SERVICE STATION**
W. J. BOYKIN, Prop.

HERBERT C. MARTIN
LAWYER
Office over Sadler's
Drug Store
LITTLEFIELD, TEXAS

 **A. F. & A. M.**
Meets every first Thursday of each
month.
F. O. Boles, W. M.
Dr. C. C. Clements, Secretary

DR. M. V. COBB
CHIROPRACTOR
Offices—Ground floor of the Cooper
Apartments (formerly Seale
Apartments) 506 East Fifth St.,
one block east of Eagle Drug
Store.

J. E. Dryden
LAWYER
Office Court House
OLTON, TEXAS

DR. J. R. COEN
**OBSTETRICS
AND
MEDICINE**
Office 51-J PHONES Res. 51-M
Office over Sadler's Drug Store

Hopping Bros.
Agency
Insurance and Bonds
Automobile Loans
388 Phelps Ave.
Littlefield, Texas

RATES
Want ads, Rentals, Lost and
Found, Exchanges, Lands and
Stock, Miscellaneous, etc.
RATES: Classified, first inser-
tion, 10c per line, minimum 25c;
subsequent insertions, 7 1/2c per
line; obituaries, 5c per line; poetry,
10c per line. Unless advertiser has
open account, cash must accom-
pany order.

FOR SALE
BOTTLING plant and equipment for
sale. Can lease building. Day &
Night Camp, Littlefield. 45-tfc

FOR SALE—Baby chicks. Why take
chances? Buy where you can see the
flock. Many breeds available, prices
reasonable. Littlefield Hatchery.
46-1tc

FOR SALE—Repossessed Farmall
tractors for sale at bargain prices.
Lubbock Implement Co., Lubbock,
Texas. 48-3tc

FOR SALE CHEAP—Thorough bred
German Police pups, will make ex-
cellent watch dogs. Ben Porcher.
49-1t-c

FOR SALE: Fresh milk cows, fat
hogs, brood sows, pigs, part terms to
responsible party. J. L. Manuel, 3
miles east on Lubbock Highway and
3 south. 49-2t-p

WANTED
WE BUY
Furniture, implements, livestock, or
anything of value. See Lynn & Cok-
er, Auctioneers. 45-tfc

WANTED—Custom hatching, very
reasonable prices. Littlefield Hatch-
ery. 46-1tc

WANTED TO BUY—Good used type-
writer. Phone 70. 49-1t-c

FOR RENT
FOR RENT—Front bedroom, furni-
shed, hot and cold water in room.
Phone 117 or 83. 46-tfc

FOR RENT—At very reasonable
rate, a three room cottage a block
south Legion Hall. Also four rooms
of my home. West end. West 7th St.
Wm. J. Wade. 48-2tc

LOST OR STRAYED
LOST—Span of bay mares from farm
one mile north of Yellow House gin
or Bainer Switch. Weights 1400 and
1250 pounds. Smaller one has scar
across breast. Finder notify R. R.
Rosser, Gen. Delivery, Littlefield.
49-1tc

BANKERS TO MEET
The South Plains Bankers associa-
tion will meet at Lubbock April
21. The association includes bank-
ers from Plainview to Midland and
from the New Mexico line to Crosby
county.

**A Few of the Many
Items in Office Sup-
plies We Now Have
In Stock**
—Copy and Drawing Pencils.
—Paper Clips.
—Paper Clamps.
—Invoice Files.
—Letter Files.
—Pencil Sharpeners.
—Inks.
—Stamp Pads.
—Stamp Pad Ink.
—Shipping Tags.
—Shipping Tag Wires and Hooks.
—Typewriter Ribbons.
—Adding Machine Ribbons.
—Debit and Credit Slips.
—Carbon Paper.
—Vertical Folders.
—Second Sheets.
—Pin Tickets.
—Index Filing Cards.
—Scratch Pads.
—Coin Envelopes.
—Scale Books.
—Receipt Books.
—Rubber Bands.
—Promissory Notes.
—Legal Blanks.
—Commercial Pads.
—Adding Machine Paper.
—Cash Books.
—Journals.
—Cardboard.
—Transfer Paper.
—Fidelity Onion Skin.
—Sheerleaf Onion Skin.

**We Now Handle the Royal
Portable Typewriter—the
World's Greatest Portable
Typewriter Value.**
**LAMB COUNTY
LEADER**

LEADERS IN TEXAS AGRICULTURAL AND LIVESTOCK CIRCLES TO ATTEND ANNUAL PLAINS FAT CALF, PIG, MEAT SHOW

A dozen or more outstanding fig-
ures in Texas agricultural and live-
stock circles have notified the Lub-
bock Chamber of Commerce they in-
tend to come to Lubbock for a second
annual Panhandle-South Plains Fat
Calf-Pig-Meat show March 24 and 25.
The exposition will be under aus-
pices of the Panhandle-South Plains
Fair association and the Lubbock
Chamber of Commerce and Board of
City Development. The livestock divi-
sion is for Four-H club members
and vocational agriculture students
and the canned and cured meats divi-
sion chiefly is for farm women.
Many Entries Expected.
From 135 to 150 calves and from
100 to 125 pigs are expected to be
entered. About 500 hams, bacon,
shoulders and other cuts in cured
meats and nearly 1,000 canned en-
tries also are anticipated. The ex-
pected entry totals are double that
in the meats division last year and
represent an increase of about 25
per cent in the calf and pig divi-
sion.

An inter-county team demonstra-
tion contest will be a new fea-
ture of the meat show this year. Each
team will consist of four Four-H
club girls. Counties to be represented
here and dates they will conduct con-
tests to determine which of their
teams will come here for demonstra-
tions of meat canning and allied
work are:

Dawson, March 14; Lynn and
Hockley, March 16; Lamb, March
17; Floyd, March 18; Swisher March
19; Dickens and Wichita, dates not
fixed. Lubbock and Castro counties
were to select their teams Saturday.

Garvin To Auctioneer.
Col. Earl Garvin of Greenburg,
Ind., will conduct a sale of hogs and
calves Friday afternoon, March 25, at
the exposition. He had the same job
here last year.

Persons who have reported inten-
tions of attending include:
J. E. Stanford, of the Southern
Agriculturist, of Bryan; A. E. Con-
ner, director of the Texas agricul-
tural experiment station, of College
Station; J. E. McDonald, commis-
sioner of the Texas Department of agri-
culture, of Austin; W. H. Darrow, ex-
tension editor at Texas A. & M. col-
lege at College Station; Miss Mildred
Horton, state home demonstration
agent attached to A. & M. college; J.
H. Hitchcock, general manager of
western lines of the Atchison, Topeka
and Santa Fe railroad, of Amarillo; O.
B. Martin, director of the Texas ex-
tension service, of College Station.

Officials Announced.
Names of superintendent and
judges for the show were announced
by the chamber of commerce Satur-
day as follows:
Calf superintendent, A. L. Smith,
extension beef specialist at A. & M.
college; Judges, Carl Reppeto, of Ar-
mour and Co., at Fort Worth, and
Roy Weeman, of Swift and Co., at
Fort Worth.

Pig superintendent, E. M. Regen-
brecht, extension swine specialist at
A. & M. college; judge, Ray C. Mow-
ery, of the animal husbandry depart-
ment of the Texas Technological col-
lege school of agriculture.
Cured meats superintendent, Roy
W. Snyder, extension meats special-
ist at A. & M. college; judge, K. V.
Warner, animal husbandman assigned
to meats investigation, of the United
States department of agriculture at
Washington, D. C.

Canned meats superintendent, Miss
Zetha McInnis, extension specialist in
home industry at A. & M. college;

CANDIDATES
Ride Into
Office on
That Good
GASOLINE
Gulf Service Station
Bill Yeary, Manager
Across from City Hall

SEE US!
LYNN & COKER
AUCTIONEERS
It will be to your advantage to
see us if you have Furniture, Im-
plements, Livestock, or anything
of value to sell.

Judge, Mrs. Ola Powell Malcolm,
home industry specialist of the United
States department of agriculture at
Washington.

Representative Says Sales Increased One Third in Past Month

Business conditions have shown a
decided improvement within the last
thirty days is the statement of Jack
Mistrot, representative of the Wes-
sion Oil and Snow Drift Company,
who Thursday last was calling on the
trade in Littlefield and visited the
Leader. Mr. Mistrot, who makes his
headquarters in Amarillo, spends
practically all his time on the road
in the interests of his company.
Mr. Mistrot says that their sales
have increased one-third during the
last thirty days, and that there is
every indication of a further improve-
ment.

Subscribe for the Leader.
**DOING GOOD WORK IS
A PLEASURE TO US**
We specialize in store fronts, cab-
inet work, and other kinds of con-
struction that requires extra good
workmanship.
H. W. TEETERS
General Contractor
Littlefield.

New Blacksmith Shop
Prepared to do all kind of BLACK-
SMITH WORK, ACETYLENE
WELDING, etc.
First Class Work . . . Guaranteed
BURNS & THOMPSON
East 3rd Street
East of Littlefield Laundry

Feed Grinding!
**Balanced and Supplemen-
tary Feeds**
Grind with us and let us,
without charge, help you
**Balance Your Home
Feds!**
PHONE 242
Courtney & Myrick
NIT Drive—One Block South of
City Hall
Littlefield Texas

Dr. T. B. DUKE
Physician and Surgeon
OFFICE OVER SADLER'S
DRUG STORE
Residence Phone, No. 198

AUTO REPAIR WORK AT LOWER
There are hundreds of miles of serviceable use in
if you leave it in the hands of a capable mechanic.
in today . . . of course I guarantee satisfaction and
lower than in years.
IN NEW LOCATION
I have moved my Garage to the building formerly
Jones Brothers Motor company on LFD Drive.
LELAND LOWE

PHILLIPS & FLY WITH
'PHILLIPS 66'
Highest Test at the Price of Ordinary
PHILLIPS PETROLEUM CO.
P. O. Box 66

THE WINSTON INSURANCE
INSURANCE
Bonds Notary

STREET &
Complete In-
Fire, Tornado, Li-
Casualty

**Shoe
Repair**
Extra months of wear
shoes by timely re-
pairs.
We are equipped in
pairing—the kind
your shoes many
wear.

CITY SHOES
J. A. LILLY

**Second-
Hand
Furniture**
J. W. PUL-
Successor to L. W.

WALKER
Attorney
Office Over Sadler's
Littlefield

HOME BAKERY
FRESH BREAD
HOT BREAD
AND PASTRY
WHOLE WHEAT
HAM BREAD
DAISY

HAMMILL
FUNERAL
503 East Fifth St.
Drive. PRYOR HAM
Licensed Embalmer
Day Phone 64

SEVENTH YEARS AGO IN LITTLEFIELD

(Excerpts from Littlefield Leader)

The reception given by members of the seventh grade to the teachers of the Littlefield schools, at the school house last Friday night was of the most enjoyable social events of the school year.

Under the direction of Prof. M. F. Bell the pupils of that grade had made every preparation possible for a delightful evening, and their plans were all carried out with due success. C. Squires who for the past year has been associated with J. E. Linn in the grocery business, this week sold his interest in the store to his brother-in-law, W. A. McCorkle.

B. Nutt, a cowboy on the Littlefield ranch, was seriously injured Sunday when the saddle on the horse he was riding slipped and turned on the rider's back. The horse became frightened and ran into a nearby fence, throwing Mr. Nutt off and striking the ground on his head. He was picked up in an unconscious condition and medical assistance summoned.

Later he was taken to his home in Lubbock by his uncle, Judge R. Hopping, and at last report was recovering nicely.

The Elite Cafe, with A. T. Parker as proprietor, opened for service to the public Wednesday, giving a special turkey dinner which met with the approval of a large number of patrons.

Lady Got Stronger, Pain Disappeared

"I had pains in my back and frequently dull headaches," writes Mrs. Tom Jones, of Hoxie, Ark. "I was nervous and restless. I felt dragging-down feeling, and was tired all the time."

"I read about Cardui and thought I would try it. I felt lots better after I had taken Cardui. I was stronger and the pain disappeared. I certainly think Cardui is a good medicine, and I believe other women who are run-down and weak will find in this medicine a friend."

CARDUI
FOR WOMEN
Cardui is sold at drug stores. 75-82

TREMAIN IMPLEMENT CO.

This is the Time for Planter Parts

See Us For a Full Line

FARMALL

Tractors, Tools and Parts

A BOOSTER FOR—

BETTER MEATS

FOR A—

BETTER COUNTY

What Lamb County Makes Makes Lamb County. Let's all join in one big drive to make Lamb County Meats famous throughout the nation.

ATTEND THE LAMB COUNTY MEAT SHOW

Littlefield, Tuesday, March 22

—And Save At—

RENFRO BROS. GROCERY & MARKET

ANOTHER STEP IN GETTING THE JOB DONE



Scalding hogs at a Meat Demonstration in Lamb County

January, A. D. 1932. T. Wade Potter, Assignee. Mar. 3-10-17.

For Office Supplies and Equipment call the Lamb County Leader. Phone 27.

The new hotel, just south of the Sanitary Barber Shop, being constructed by Contractor F. V. Barber, is being enclosed this week, and will be ready for business in about ten days. The building is of two stories, with 11 rooms above for the accommodation of guests. The ground floor will be devoted to office, dining-room and kitchen.

It was on May 1st of last year that Malcolm H. Reed of the Yellow House Land Co., gathered together in the Littlefield school auditorium about 40 real estate dealers from various parts of the State of Texas and explained to them the merits of Littlefield and Yellowhouse lands. Since that time thousands of acres of this fine land has been sold, hundreds of new settlers have come in to make their homes and Littlefield is four times the size it was then.

R. Snyder of Denison was in Littlefield prospecting this week. Mr. Snyder stated that on all of his trips over the Panhandle he was most favorably impressed with Littlefield. Mr. Snyder is on a deal to buy out one of our local business firms. He returned to Plainview Tuesday, and will be back here the latter part of this week to close this deal.

THE STATE OF TEXAS COUNTY OF LAMB

To the Creditors of Ross L. Mayhew:

You are hereby notified that Ross L. Mayhew, owner and proprietor of the B. & M. Cash Grocery, of the county of Lamb, State of Texas, on the 30th day of January, 1932, executed a deed of assignment, conveying to the undersigned all of his property for the benefit of such of his creditors as will consent to accept their proportional share of his estate and discharge him from their respective claims, and that the undersigned accepted said trust, and has duly qualified as required by law.

All creditors consenting to said assignment must, within four months after the publication of this notice, make known to the assignee their consent in writing, and within six months from the date of this notice file their claims, as prescribed by law, with the undersigned, who resides at Littlefield, Texas, which is also his postoffice address.

Witness my hand this 30th day of

FRIENDSHIP H. D. CLUB MEETS AT CHURCH

The Friendship Home Demonstration club held their regular meeting Thursday, March 3, at the church. Fourteen members were present. Mrs. Ford was a visitor, who after the meeting became a member. The leader of the lesson was absent, but the lesson was well discussed by all. After the meeting Mrs. Workman and Mrs. Ivey collected several hens from

the members, which were sold and the money used for club work.

We invite you to visit or become a member.



Stokes-Alexander Drug Co., Inc.

Welcome Visitors To The Lamb County Meat Show LITTLEFIELD Tuesday—March 22

Street —and— Street Insurance

Famous FAST STARTERS



4 DAYS, 14 Hrs., 30 MIN.

IMAGINE 52,000 TONS STREAKING THROUGH THE WATER—3690 MILES OF IT—AT AN AVERAGE SPEED OF 33.4 MILES AN HOUR! THAT IS THE ALL-TIME RECORD ATLANTIC CROSSING. MADE BY THE BREMEN FROM NEW YORK TO PLYMOUTH, ENGLAND, JULY 27 TO AUGUST 1, 1929. FOR SPEED MEASURED NOT IN DAYS BUT IN SPLIT SECONDS, NOTE HOW PHILLIPS 66 GASOLINE STARTS YOUR MOTOR IN COLDEST WEATHER. HIGH TEST IS WHAT DOES IT, AND PHILLIPS 66 GRAVITY NOW RANGES FROM 65° TO 71.4°.

TO INVESTORS

An interesting history of the oil industry with an estimate of its future are contained in the illustrated Annual Report of the Phillips Petroleum Company. On request, it will be mailed without obligation. Address:

The Secretary, Phillips Petroleum Company, Bartlesville, Oklahoma

PHILL-UP WITH PHILLIPS - THE GASOLINE OF CONTROLLED VOLATILITY



"HIGHEST TEST" at the price of ordinary gasoline

Phillips 66 volatility is 69.6 per cent higher than the average of 28 competitive gasolines. Proved by unbiased laboratory tests based on distillation at 212 degrees.

Improvement in performance that is nothing short of sensational, is reported by motorist after motorist, when the tank is filled with Phillips 66 . . . the greater gasoline.

If the finer results were noted only in one make of car, or in two or three, you might reasonably doubt whether your motor would deliver similar improvement. But owners of four-cylinder Fords, and owners of Cadillacs with four times as many cylinders; all are enthusiastic about the added power, the faster get-away, the snappier pick-up, and longer mileage given by Phillips 66 gasoline.

They are unanimous, too, in praising its split-second starting speed on days of freezing cold. That's why it pays to get high test. And it pays doubly, if you stop at the Orange and Black 66 shield . . . because that's where you get higher test gasoline without higher price.



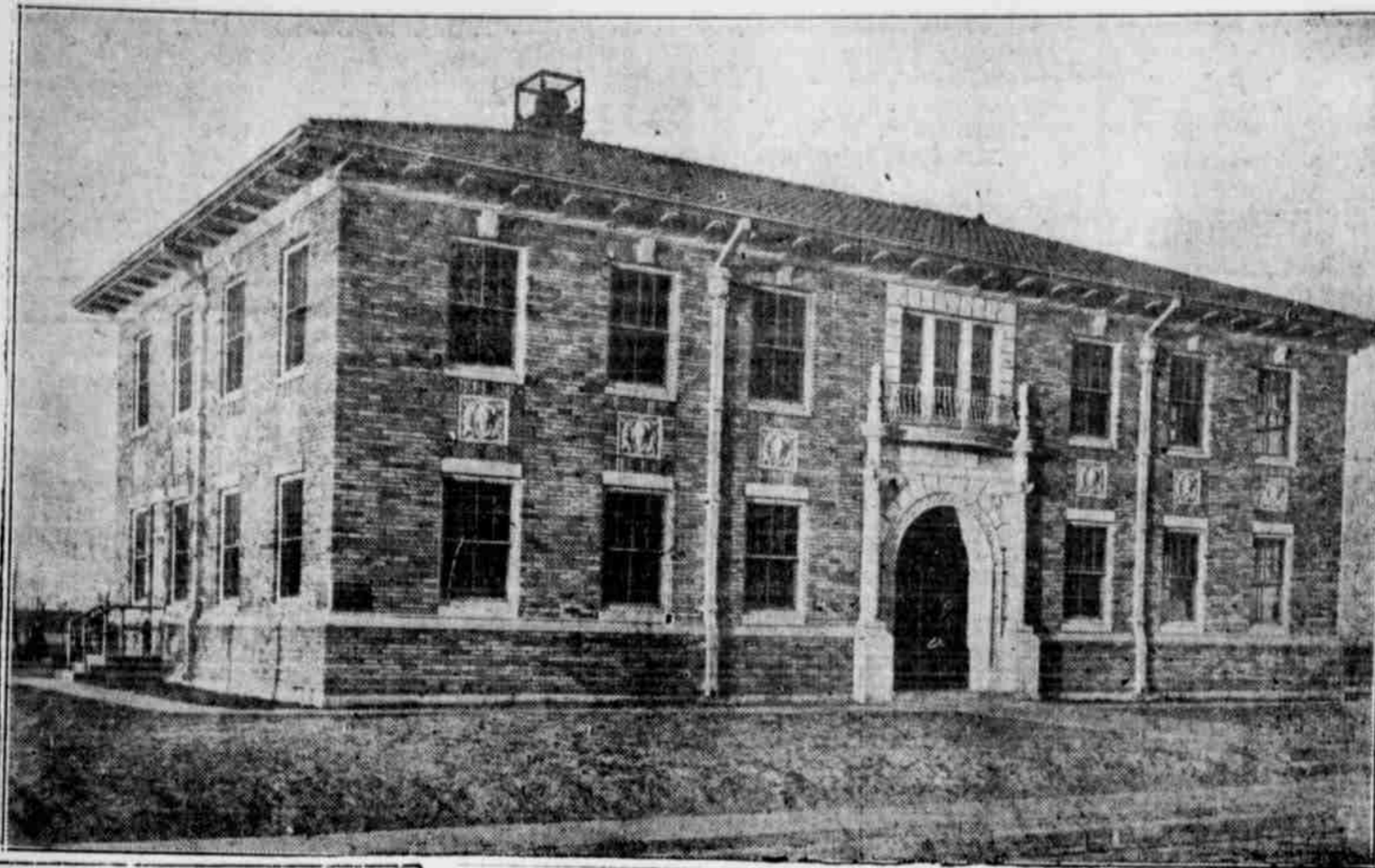
For those who prefer it . . . Phillips 66 Ethyl . . . at the regular price of Ethyl Gasoline

32° below freezing yet THIS OIL is perfectly FLUID

Protects cold cylinders and bearings against winter wear and damage. Insures instant lubrication, because it is completely de-waxed. Minus water and carbon. 100% paraffin base. A grade for every car. Experts say it is the world's finest oil for your motor. 30¢ a quart.



FRONT VIEW OF LITTLEFIELD CITY HALL



A VOTE FOR AMHERST IS A VOTE FOR OLTON

A vote for Amherst in the county seat election Saturday, March 19, is a vote for Olton. That fact is very evident because Amherst, with only 374 poll taxes, cannot possibly win. Amherst, with 617 poll taxes paid in 1929, received only 795 votes in the last county seat election. How many votes will Amherst receive in 1932 with only 374 poll taxes paid? Here we are presenting poll tax payments in Lamb County for 1929 and 1931. The vote then and now is also analyzed.

Voting Precinct	Poll Tax 1929	Poll Tax 1931	Increase	Decrease
Olton	701	823	122	
Spring Lake	192	273	81	
South Olton	29	31	2	
Center	0	41	41	
Y. L.	22	35	13	
Total increase above sand hills			259	
Littlefield	1072	1728	656	
E. Littlefield	234	458	224	
Bainer	100	138	38	
Pep	21	26	5	
Total increase 4 Littlefield boxes			923	
South Sudan	268	294	26	
North Sudan	153	260	107	
Hart's Camp	0	93	93	
			226	
Amherst	617	374		243
Sod House	65	63		2
Fieldton	151	117		34
				279

Voting Precinct	Vote Cast in 1929 Election		
	For Olton	Amherst	Littlefield
South Olton	6	18	13
Olton	740	5	7
Spring Lake	83	66	5
N. and S. Sudan	66	110	143
Y. L.	22	0	0
Amherst	0	447	24
Fieldton	17	46	95
Sod House	0	81	4
Bainer	4	0	175
North Pep	0	0	27
East Littlefield	3	6	218
Littlefield	4	16	1397
Total vote cast	945	795	2108

Now Read These Facts

Granting Littlefield a total of 2350 votes at home—the Littlefield box, the East Littlefield box, the Bainer box and the N. Pep box—Littlefield would lack only 27 votes of a majority.

Olton is expected to vote almost solid for Olton, or cast a total of 823 votes, according to the poll tax total for that

city, to leave the court house at home.

Now, giving Amherst all the rest of the votes in the county, (which they will not get by a long ways) and that city falls away, away short of a majority—and it will take a majority of the votes cast for Amherst to win.

HOW CAN AMHERST WIN?

Is Wrong Wright?—

(Continued from Page One)

THOUSAND DOLLARS. (Signed) EWING HALSELL. Subscribed and sworn to before me this 16th day of March, A. D., 1932. W. F. ROWLAND, Notary Public, Lamb Co., Texas. According to the best information available to the Leader the \$10,000 figure is far from the original figure planned by Amherst to be spent on the building. One item alone promised by Amherst is the building of a jail, as a part of the hotel property, to house 75 prisoners. Ten thousand dollars wouldn't be a drop in the bucket in remodeling the Amherst Hotel for court house purposes and in the building of a modern jail.

We understand that the fixtures alone in the Littlefield jail cost \$6,000.

Supposing \$10,000 was spent in remodeling the Amherst Hotel and in the building of a jail, who would be called upon to pay the balance of money needed to carry out the work. The County of Lamb, of course, and who is the County of Lamb? THE TAXPAYERS.

And, in conclusion, with the deed from the City of Amherst to the County of Lamb and the remodeling contract between the City of Amherst and the County of Lamb, declared to be improper documents for the officers of a municipality to execute, what will happen?

We repeat—
WILL AMHERST'S ACTION HOLD WATER?
And we also repeat—
IS WRONG RIGHT?

Contest—

(Continued from Page One)

Saturday night, that you have just as much ability as anyone else, then see the campaign manager and get your working outfit. You can do it. Club Cafe Gives Prize.

The \$25 in EATS from the popular Club Cafe is the topic of all conversa-

Welcome!

Meat Show Visitors!

A complete hardware store . . . equipped and stocked to serve you . . . invites all Lamb County to attend the Lamb County Meat Show. Visit us while in town.

THAXTON BROS.
HARDWARE
Littlefield, Texas

tion this week. One lady said, "Gee! whiz! that is some offer." And it is all free and above the regular list of prizes, which makes it all the more of an inducement. One lady wanted to know if she could enter and work for any one of the weekly prizes. Yes, you enter without any obligation as to time or any expense, everything is FREE. Isn't that Club Cafe getting RITZIE here of late? Orchestra music every day, new low prices to compare with all other reductions in other kinds of business and COOKING! Say! PIES like mother makes and food seasoned and prepared as you would in your own home. Why not give the folks a treat and take the entire family down some day and enjoy a wonderful hour of dining and music.

Second period closing March 23, means only a step closer to the Ford and other regular prizes, so get in now, make up your mind. Determination, will power, that this is your "financial recuperation time" as Bruce Barton says. We all must have work to get the best out of life, to do the big things, and to finally get back to the GOOD OLD DAYS. Don't be

a slacker! Jump into campaign and earn your money!

GET THE MEAT FOR YOUR

Poultry, Crea

Eggs and Hi

AT Porcher Pro Company

Good Work Clothes

--- for the Men of Littlefield and District and at Low Prices, Too!

You know BIG SMITH WORK CLOTHES - you, no doubt, have worn them to your complete satisfaction.

BIG SMITH --- the Best --- the Most Complete Line on the Market --- is now sold exclusively Littlefield by our store.

We want you to know how good BIG SMITH WORK CLOTHES really are. Give them a trial. Read these prices on BIG SMITH garments ---

- Men's Full Cut Heavy Weight Overalls, Pr.
- Heavy Weight Covert Work Shirts
- Summer Weight Blue and Gray Covert Shirts
- Men's Blue and Gray Work Shirts 49c to 55c
- Boys' Overalls, sizes 1 to 9, Pr. 55c
- Boys' Overalls, sizes 9 to 17, Pr. 65c

SPRING DRESSES

Newest patterns and colors in JUNE FOX Wardrobes, Priced so they will sell \$1.00 to \$1.50

SHOE DEPARTMENT

We carry a complete line of shoes for the entire family --- which we are selling on a closer margin than ever before.

Here's why we recommend Wolverine Shell Horsehides --- They stay soft --- and outwear ordinary work shoes.

WOLVERINE WORK SHOES WORK GLOVES



Our Groceries Are Always Sold Cheaper Watch Our Windows For Prices

JEFFRIES MERCANTILE CO.

Littlefield, Texas

Band Man Is Honored On His 76th Birthday

John Shoffner reached his 76th birthday March 6. His children gave him a surprise birthday dinner and had a fannion in his honor.

Mrs. Shoffner are the mother of fifteen children, fourteen are living. They have eight grandchildren and four great-grandchildren.

Mrs. W. P. Kirk, relatives of Shoffners, and their sons, Walter, B. O., A. Kirk and Geo. Kirk and family all of Littlefield, were present at the birthday party.

A large number of friends of John Shoffner gathered at the home of Mrs. W. P. Kirk for a birthday party. The table was set with a large birthday cake, brightly beamed with 76 candles, (all of which were blown out with one blow) adorned with flowers. Surprise gifts of food brought forth a most enjoyable and varied birthday dinner, which was immensely enjoyed by all relatives and friends.

Badger Leaves Lubbock Sanitarium

W. Badger, manager of the Yellow Land Co., who recently underwent a major operation at the Lubbock Sanitarium, will leave that institution for Wichita Falls, where he will spend some time with his wife and son-in-law, Dr. and Mrs. B. Bailey.

A large number of friends of W. Badger in Littlefield and district throughout the state are very anxious that the speedy recovery he is following his operation.

Badger, in addition to being a business man of Littlefield territory, is one of the best men in the interests of this city and the Lamb County. He is taking this opportunity to the pleasure of the publisher of the Leader's organization of this city at Mr. Badger's speedy recovery. May the time be very short and the interval prior to his return to this city.

NOTICE

Meeting of the stockholders of the State Bank, Littlefield, Texas, called to meet on May 18, for the purpose of voting on the proposition to close the books of the above named bank and surrender its corporate franchise conformably with the provisions of Article 539-540, R. C. S. Texas.

M. C. PARRISH,
M. H. REED,
C. B. SULLIVAN,
HUGH SULLIVAN,
D. K. WOODWARD, JR.,
Directors.
(8-10 to 5-12)

Discovery Reaches Cause of Stomach Gas

Scientists have found that poisons in the small bowel cause stomach gas. His remedy Adlerika washes out the small bowel, bringing out all gas. Adlerika Drug Co., Inc. —adv.

We Pledge Our Service

To the Farmers of This Section

Our concern is operated with one of the chief motives that of being of service to the farmers. We work from day to day to improve our Service, so that we may offer more convenient and economical marketing of farm products at the lowest possible prices.

The farmers' problems and our problems are the same and can only be solved through perfect cooperation.

At all times we offer you the highest possible prices for your products, and, in addition, give you the best services at no cost whatsoever.

ATTEND THE

LAMB COUNTY MEAT SHOW

Tuesday, March 22

Gold Poultry & Egg Company

at Post Office in Bellomy Building

COUNTY AGENTS TRAIN TO AID FARMERS



Modern meat cutting methods are being introduced on Texas farms by county farm and home demonstration agents, who are leading the way in the most determined drive ever staged in the State for bountiful supplies of farm produced meat for farm homes.

In the top picture Roy W. Snyder, meat specialist in the Extension Service of Texas A. and M. College, is coaching a group of Northwest Texas agents in the fine points of meat cutting. Below, county agents are busy practicing cutting meat to give economical and tasty cuts which make farm meat canning and curing easy.

J. L. DOW CORRECTS FALSE RUMOR; FAVORS LITTLEFIELD AS COUNTY SEAT

Carroll Berryman, who was in a train accident recently, having his foot mashed so badly it was necessary to amputate it above the ankle, arrived home Wednesday from the Johnson Sanitarium, Carrizozo, N. M. He is getting along nicely.

FOR SALE: Residence. Close in. See Jim T. Douglass. 49-11-p

Merchants get your pin tickets at the Leader office.

This Woman Lost 64 Pounds of Fat

Mrs. H. Price of Woodside, L. I. writes: "A year ago I weighed 190 lbs. I started to take Kruschen and now I weigh 126 and never felt better in my life and what's more, I look more like 20 yrs. old than the mother of 2 children, one 19 and the other 18. Every one of my friends say it's marvelous the way I reduced."

To lose fat SAFELY and HARMLESSLY, take a half teaspoonful of Kruschen in a glass of hot water in the morning before breakfast—don't miss a morning—a bottle that lasts 4 weeks costs but a trifle—but don't take chances—be sure it's Kruschen—your health comes first—get it at any drugstore in America. If not joyfully satisfied after the first bottle—money back.

J. L. Dow, prominent farmer and business man of this section, was very much annoyed to learn that a rumor was abroad that he was "against Littlefield being chosen as the County Seat and Mr. Dow called at the Leader office and said he wanted everybody to know that this was not true, that he was "for Littlefield first and always, and would certainly use his vote and influence to bring the County Seat to Littlefield. Mr. Dow lives on and operates his farm of 354 acres south east of Littlefield, and owns several business properties here.

CAMPAIGNING

Dear friends: Those whom I have met and those whom I shall meet, and I'll meet all of you, let seeing this ad in the paper be a promise to me of your support in the Lamb County Leader subscription contest. I'll make it easy for every person to have the Lamb County Leader in your home. Of course you want to subscribe where it counts most and best. Sincerely, Mrs. Max Touchon.

Political Announcements

- For Sheriff: ALBERT A. ANDERSON, E. G. COURTNEY, LEN IRVIN, BOB MILLER
- For County Treasurer: MISS BESSIE BELLOMY (Re-election)
- For Commissioner, Precinct No. 4: ELLIS FOUST.
- For Public Weigher, Precinct No. 4: W. H. BELL, JIM ETTER, W. W. MATTHEWS.
- For Commissioner, Precinct No. 3: C. E. STRAWN (Re-election), J. C. (Jim) GRACE
- For Justice of Peace, Precinct No. 4: J. B. SIKES (Re-election), B. L. (JOSH) COGDILL
- For District Clerk: MALLORY ETTER (Re-election)
- For Tax Assessor: ROY GILBERT (Re-election)
- For Constable, Precinct No. 4: FRED HOOVER (Re-election), SAM HUTSON, J. O. CONNELL
- For County Attorney: J. E. (BERT) DRYDEN (Re-election)
- For County Judge: A. H. MCGAVOCK, SIMON D. HAY (Re-election)
- For County Clerk: E. Z. (ZEB) PAYNE, J. W. (Jake) HOPPING, STANLEY A. DOSS.
- For Tax Collector: GASTON PATTERSON (Re-election)
- For State Representative: M. R. AVERY.
- For State Senator: ARTHUR P. DUGGAN, CLYDE E. THOMAS.

Corner Stone Laid Wednesday For New Brick Church

The new brick Catholic church at Pep will be completed this week. The corner stone was laid at noon Wednesday by Rev. Chas. J. Dvorak of Littlefield.

The new church is to be dedicated on Wednesday, April 6, by the Rev. R. A. Girkens, Bishop of Amarillo. After the dedication the Bishop will administer confirmation.

Large Attendance Of Mothers Wins Bird For Mrs. Davis' Room

The Parents-Teachers association met last Wednesday, March 9. A program in charge of Mrs. R. E. McCaskill was put on by the mothers. It was enjoyed by all.

Mrs. J. R. Davis' room of the primary building won the Canary bird.

A nominating committee was appointed to select officers for the following year. Mrs. Jim Etter, Mrs. Ross Mayhew and Mrs. J. M. Stokes were asked to serve on this committee.

A short talk on varied subjects was given by the President, Mrs. Max Touchon, after which the entire body was entertained with a silver tea.

BORN

Born to Mr. and Mrs. O. C. Sharp of west part of town Sunday at 6:30 a. m. a daughter.

REVIVAL MEETING AT METHODIST CHURCH DRAWING LARGE CROWDS

Makes Photograph Of First President Out Of Used Stamps

As reported to the Leader by the McGregor Mirror, McGregor, Texas, Charles Gardner of that city, and a brother of Mrs. T. S. Sales of Littlefield, recently made a photograph of George Washington out of two cent stamps, commemorative of the Washington Bicentennial. The picture is a side view, and a good likeness of our first president. The red stamps on white paper, with a blue background, are very effective. It is quite a novelty, something different from the usual thing. The idea was original as Mr. Gardner had not seen or heard of a picture of this kind.

Auto Laundry

I was down at Jerry's Auto Laundry Tuesday, waiting for Jerry to put the finishing touches on my car, when I overheard a conversation between two gentlemen from—

Amherst

The man speaking was an elderly gentleman, and apparently well educated. He stated Amherst might have gotten enough votes to help Olton keep the court house, but they had lost so many with their mud slinging, it now would be an impossibility to keep the court house from going to LITTLEFIELD.

(To Be Continued)

(Adv.)

The revival meeting, which is being conducted at the Methodist Church here, is drawing large crowds, according to the Pastor, Rev. Joe E. Boyd, who is doing the preaching.

Considerable interest is being shown by the residents of Littlefield and district.

Services are being held each week day at 10 a. m., except Saturday, and every evening at 7:30. The First Baptist Church is giving up its Sunday evening services during the revival, in cooperation with the Methodist Church.

AMHERST

Football practice for the Amherst high school team is starting soon, according to R. H. Anderson, coach, who expects a crop of about 30 boys to work on. "There will be a number of grade school boys in the group and we will be able to have several weeks of good practice," Anderson said. "Owing to conditions last fall we did not have much of a football season. The boys want the spring training."

THANK YOU!

I am taking this opportunity of thanking my many friends in assisting me in winning the prize in the Leader's circulation contest last week.

Mrs. C. Clements.

FOR SALE: Real buy in resident property. See Jim T. Douglass. 491tp

PIGGLY WIGGLY

SPECIALS FOR FRIDAY AND SATURDAY

When Groceries Can Be Sold Cheaper In Littlefield. Piggly-Wiggly Will Sell Them.

BRING IN YOUR COUPONS for LUX Rinso and Lux Toilet Soap

Flour 80c
Gold Crown, 48 Lbs.

Baking Powder 18c
K. C., 25-oz. Can
Tomatoes 7 1/2c
No. 2 Can, Each
Coffee 10c
100 percent Pure, Lb.

CORN, Tendersweet 7 1/2c
No. 2 Can, Each
MILK, Tall Cans 5c
Limit, 3 to Customer
PEAS, Glen Valley 8c
No. 2 Cans, Each

Sugar 10 lbs. 45c

PORK & BEANS 5c
Campbell's, Each

Pineapple, Hillsdale 11c
Large, No. 2 1/2 Can
Soap, Luna 19c
10 Bars
BREAD 5c

Mayonnaise 12 1/2c
8-oz. Jar, Each
RICE 15c
Blue Rose, 5 Lbs.
Grapenuts Flakes 9c

Syrup Koo-Koo 43c
Corn & Cane No 10 Can

Lettuce 5c | Spuds 10 Lbs. 12 1/2c

PINTO BEANS 25c
Mountain Grown, 10 lbs

OATS 18c
Crystal Wedding
POST TOASTIES 10c
Lard 57c
Swift Jewel, 5 lb. Pail

Country Sausage 15c
In Sacks, Lb.
CHEESE 19c
Longhorn Pound
BACON 20c
English Style Sliced, Lb.
ROAST 10c
Baby Beef Pound

Buy Pen-Fed Beef For Same Price You Have Been Paying For Ordinary Meat

We Reserve The Right To Limit Quantity of Any Item To a Customer.

SECOND PERIOD CLOSES WEDNESDAY, MARCH 2

IN THE LAMB COUNTY LEADER

Circulation Contest

THERE WILL BE NO MORE 2 YR AND 5 YR CLUBS

10 5-year. Subs. 150,000 Extra Votes

10 2-year Subs. 75,000 Extra Votes

Now Until WEDNESDAY.



FIRST GRAND PRIZE

1932 Ford Coach

Henry Ford has announced his new car will be entirely changed and a better car—A car anyone will be proud to own. PURCHASED FROM AND WILL BE ON DISPLAY AT — **John H. Arnett Motor Co**

SECOND GRAND PRIZE

A TRIP TO LOS ANGELES, CALIFORNIA, ALL EXPENSES PAID

THIRD PRIZE

\$100

In Merchandise

FOURTH PRIZE

\$50

In Merchandise

FIFTH PRIZE

\$25

In Merchandise

\$25 In Meals From Club Cafe

TO THE CANDIDATE TURNING IN THE MOST CASH IN THE LEADER CIRCULATION DRIVE

Eating Is Cheaper

- Special Sunday Dinner 35c
- Plate Lunch 25c
- Regular Plate Dinner 35c

COFFEE IS STILL FREE

From Monday, March 1

TILL

Saturday, March 19

SUBSCRIBE NOW AND DINE WITH THE WINNER EASTER!

RED NORMAN'S SYNCOPATORS PLAY AT THE CLUB CAFE EVERY NOON—SPECIAL MUSICAL PROGRAM TILL 2:30 SUNDAYS—J. W. (JAKE) HOPPING WILL SING

'Frankenstein' Opens at Palace Saturday Midnight

at Spectacular Picture Offering Scientific Research, Thrills And Chills Will Be Exhibited Here Four Days

...ists, philosophers and medical... have for centuries struggled... the most pertinent fact of life... fact is life itself. The literary... of Frankenstein, who created a... ter, is of course a Jules Verne... although Mrs. Mary Wollstone... Shelley, who wrote the story... half a century before the great... scientific romancer. When

Carl Laemmle, Jr., and James Whale, who produced and directed "Frankenstein," which will be seen at the Palace theater Saturday midnight, Sunday, Monday and Tuesday, were utterly absorbed in the preparation of the story, they discovered to their amazement that there were many men of science living today who thoroughly believed that in the future,

MEAT DEMONSTRATIONS IN LAMB COUNTY



The largest meat demonstrations conducted by County Agent D. A. Adam in the county in 1931 and in 1932, were held at the farm of H. L. Phelps, north of Littlefield. The top picture shows the 1931 demonstration at the Phelps farm, when nine families contributed 10 hogs. The bottom picture shows the 1932 demonstration at the same farm, when 10 families contributed 17 hogs.

life can be created. In fact, the experiments of Dr. Creel and Dr. Aaroya, both brilliant medical men, have gone far to prove that dead organisms can be made to live.

During their researches they called in Dr. Cecil Reynolds, the famous alienist of the notorious Hickman murder trial in Los Angeles. He is an internationally recognized psychiatrist and brain surgeon. He acted as guest advisor to James Whale during the filming of "Frankenstein." Whale asked him if he thought that audiences would regard the central idea of "Frankenstein," the creation of a monster from collected bits of human wreckage, as utterly preposterous.

"Dr. Reynolds told me," said Whale, "that lightning and electric-

Warning

Just a word of friendly warning! If you have a weak heart and cannot stand excitement or gruesomeness, we advise you not to see "Frankenstein." Take our word for it, it will thrill, it will shock, it may even horrify you. But if your nerves can stand electrifying drama, you will find it in "Frankenstein." PALACE THEATER.

ity destiny human life. Since this is so, why cannot lightning and electricity create it? I don't know that it can, and neither does anybody else today, but it is a question that will arouse a lot of thinking. Naturally, "Frankenstein" was made as a vehicle for theatrical entertainment and not to stimulate scientific thought, but we wanted to make absolutely certain that Dr. Frankenstein's methods would conform to medical practice and the methods which have been, are, and will be used for years in the laboratories of the world to produce this one supreme miracle—the creation of life. I don't think that even the medical men could find any fault with Dr. Frankenstein's laboratory methods in this production."

Subscribe for the Leader.

For ACHES and PAINS
BALLARD'S
SNOW LINIMENT
Penetrates! Soothes!
Stokes-Alexander Drug Co., Inc.

Let's All Help in Making
LAMB COUNTY MEATS FAMOUS
Lamb County furnishes the world with the highest type livestock. Finishing, Curing and Canning is the only lacking step in bringing due fame to Lamb County Meats. This work is going forward at a rapid pace, and with a never ceasing effort will be accomplished in a very short time.
Attend The
Lamb County Meat Show
Littlefield, Tuesday, March 22
Cobb's Department Store

Medical Aid Available

Because of the nature of the picture, "Frankenstein," we have arranged to have on hand at all performances two trained nurses, a doctor, and an ambulance. PALACE THEATER.

Telephone Executive Visits Littlefield

G. H. Williams, plant superintendent for the Southwestern Division of the Southwestern Associated Telephone Co., was a visitor in Littlefield Monday. He spent the day with J. G. Singer, the district manager for the telephone company.

Your Palace Theatre Presents

TONIGHT (THURSDAY) AND FRIDAY—

Ramon Navarro and Greta Garbo in "MATA HARI"

(Positively the most dangerous Woman Spy in History.)

SATURDAY—MATINEE AND NIGHT—

Terrible Tom Tyler in a good Western—

"THE MAN FROM DEATH VALLEY"

Stan Laurel, Oliver Hardy Comedy

Paramount News.

Serial—"THE GALLOPING GHOST"

SATURDAY MIDNIGHT—SUNDAY, MONDAY, TUESDAY

The Man Who Made a Monster—

"FRANKENSTEIN"

Can you stand this shocking excitement?

(Note—This picture will be shown exactly as made without any cutting or eliminations of the gruesome scenes.)

Regular Admission of 10c and 35c

ATTEND THE—
LAMB COUNTY MEAT SHOW
Littlefield Tuesday, March 22
And Visit
SADLER'S DRUG STORE
"Prescriptions Our Specialty."

27 MILES ... then another 14

with the CRANKCASE DRY to prove the PENETRATION of Germ Processed Oil and Value of the "Hidden Quart"

"Hooy!" jeered one of the bystanders in a Muskogee, Oklahoma, filling station when F. J. Morgan told how the "Hidden Quart" of Conoco Germ Processed Oil had protected many cars from harm when run with the crankcase empty.

To prove his point, Mr. Morgan had the Germ Processed Oil drained from his crankcase and, accompanied by the doubter, started for Checotah, 27 miles away.

A crowd met the car at Checotah, but Mr. Morgan drove on to Eufaula, 14 miles farther, 41.6 miles

from Muskogee. Chevrolet mechanics tore down the motor and pronounced it undamaged. The doubters became believers!

The oil that protects a motor under such conditions will give you better, safer lubrication in every-day driving! Conoco Germ Processed Oil is the only oil that actually penetrates and combines with metal surfaces. That's why a "Hidden Quart" stays up in your motor and never drains away. It cuts down costly starting wear, saves gas, gives your motor longer life, with fewer repair bills.

Change to Conoco Germ Processed Oil for safer, surer lubrication.

We neither encourage "dry crankcase" experiments nor guarantee success under all conditions. But unsolicited letters from motorists, now in our files, tell of this and hundreds of other runs with empty crankcases but without damage.



... THAT NEVER DRAINS AWAY

CONOCO GERM PROCESSED MOTOR OIL

PARAFFIN BASE

THE MONSTER IS LOOSE!

No man has ever seen its like... no woman's lips has touched its lips...

A wild, weird, wonderful, fantastic picture of a man who made another "man" from the parts of other men long departed... a creature with the strength of a dozen men... who lives... breathes... walks... with a mechanical brain but without a soul... it looks like a man but is it?

No thriller ever made can touch it!



CARL LAEMMLE presents THE UNIVERSAL SUPER ATTRACTION with COLIN CLIVE • MAE CLARKE • JOHN SOLES • BORIS KARLOFF • Darlight Frye • Edward Van Sloan • Frederic Kerr. Directed by JAMES WHALE.

A UNIVERSAL SUPER ATTRACTION Presented by CARL LAEMMLE Directed by JAMES WHALE

FRANKENSTEIN

PALACE THEATRE

SATURDAY MIDNIGHT
SUNDAY, MONDAY and TUESDAY

Admission: 10c and 35c

Clubs - - Women' Interest - - Social Events

Mrs. R. A. Johnson Entertains With Delightful Bridge Luncheon Tuesday Afternoon

One of the most delightful social affairs of this week was the bridge luncheon given by Mrs. R. A. Johnson Tuesday afternoon complimenting the Young Luncheon Club.

St. Patrick's colors were featured in the talleys and other appointments.

After a delicious luncheon was served three tables were artistically arranged for bridge. Mrs. Charles Harless won high score, while Mrs. J. W. Porcher made low.

The members present were Mesdames C. C. Clements, T. Wade Potter, J. W. Porcher, P. W. Walker, John Arnett, Otha Key, Everett Whicker, and Bill Chasher, and guests attending were Mrs. Charles Harless, and her niece, Mrs. Monte Buhl of Fort Worth, Mrs. J. C. Hillbun, and Mrs. C. E. Cooper.

Mrs. Ronnie Blair Hostess To Ace Hi Club Thursday Last

Mrs. Ronnie Blair was the charming hostess Thursday evening when she entertained members and guests of the Ace Hi Bridge Club.

Colors suggestive of Easter were effectively used throughout the party.

Three tables were in play during the evening. High score for ladies was won by Mrs. Payne Wood, and Dwain Kennedy was high for men.

The guest list included: Mr. and Mrs. Dwan Kennedy, Mr. and Mrs. Payne Wood, Misses Lydia Crockett, Gladys Jones, Ellen Crockett, and Messrs. Earl Hopping, Kenneth Houk, and Billie Thomas.

Mrs. Max Brewer Honors Father With Birthday Party

Mrs. Max Brewer was hostess Monday evening at her home on North West Side avenue to a number of friends complimenting her father, J. E. Dawson, on his seventieth birthday, and a family friend, W. H. Roberts, whose birthday also fell on the same day.

The affair was a total surprise to the honorees, and a most enjoyable time had by all. "42" and other games were played.

Cakes containing 70 and 47 candles were placed at each end of the dining room table, which were cut by the honorees and served with other refreshments at the close of the games. Those enjoying the party were Mr. and Mrs. N. V. Wright, Mrs. Dick Watson, Mrs. T. J. Watson, Mr. and Mrs. W. H. Roberts, "Heavy" Stephens, Mrs. W. H. Roberts, Max Brewer and the honorees.

Stanley Parker, Evalena Clark Wed At Clovis

The marriage of Miss Evalena Clark and Stanley Parker was solemnized at Clovis, N. M., at 4 P. M. Saturday, March 12, by Rev. J. L. Nix, Pastor of the First Baptist Church.

The bride is the charming daughter of Mr. and Mrs. Ed. Clark of West Second Street, while the groom is the son of Mrs. M. F. Parker, also of this city.

Mrs. Clason Parker of Muleshoe, sister of the groom, witnessed the ceremony.

The bride wore a black suit with accessories to match.

The happy couple returned to Littlefield immediately, but plan on making their home at Hiway, N. M.

Woman's Study Club To Sponsor Program Of Beautification

The Woman's Study Club met Wednesday afternoon, March 2. The club will sponsor a Yard and Garden Contest again this year. The club voted to transplant flowers from home gardens to this section of the city park. This beautification work will be started at an early date.

Mrs. E. R. Rowe reported Giants in the Earth, by Rolvaag and Mrs. W. H. Gardner reviewed Peder Victorious, by Rolvaag.

Those present were: Mesdames John H. Arnett, Joe Boyd, J. R. Coen, C. E. Cooper, W. H. Garner, Chas. L. Harless, B.M. Harrison, S. T. Hodges, T. Wade Potter, E. S. Rowe, F. G. Sadler, G. M. Shaw, W. G. Street, J. E. Whicker and H. W. Wiseman.

Lamb County Unit Of Plateau Singing Association To Meet

The Lamb County unit of the Plateau Singing Association, which meets twice a year in each county, will gather at the First Baptist Church, Littlefield, Sunday, March 20. A number of good singers from different parts of the State are expected, and an enjoyable time is anticipated for all.

J. E. Brannen, local postmaster, who is an enthusiastic sponsor of the singing, urges that "ever body come and bring a basket well filled and help Littlefield rejoice, as that will be the day after the election, and the County Seat of Lamb County will pass by the vote of the people, have been moved to Littlefield."

Junior Study Club To Sponsor Silver Tea March 26th

The Junior Study Club met Tuesday evening with Dahlia Hemphill as hostess. The president called the meeting to order, and the minutes of the last meeting were read. Reports were made by officers and committees. It was decided that the club sponsor a Silver Tea on Saturday afternoon, March 26.

Mary Lois Greene has been voted a member in the club.

The program of Irish writers was led by Gladys Porter who discussed the Literary Revival in Ireland. Thelma Killough discussed "Plays of Mysticism and Folk History." "Irish Plays of the Peasantry" was told by Roxie Arnn.

Refreshments were served to the following club members: Misses Edith Grantham, Emma Ruth Jones, Thelma Killough, Mrs. Lynn Dobbs, Miss Gladys Porter, Miss Lucille Killough, Miss Gladys Wales, Mrs. W. E. Jeffries, Jr., Misses Corrine Wright, Pauline Courtney, Roxie Arnn, Eva Gertrude Chisholm, and the hostess.

PERSONALS

Lidge Cook, a very progressive farmer of the Fieldton district, was transacting business in Littlefield Monday.

M. T. Garrett of west of Littlefield was trading in Littlefield Monday.

Mr. and Mrs. J. C. Whicker returned to Littlefield Sunday after a five months' visit with their daughter, Mrs. R. S. Thomas, and Mr. Thomas at Philadelphia, Pa. Mr. Whicker reports a splendid time.

J. H. White of Happy Hill Farm is in Lubbock Sanitarium suffering from an attack of appendicitis.

Mr. and Mrs. Willie Parker of Roby are guests in the home of her sister, Mrs. Jim Etter, and Mr. Etter.

Mrs. Dick Watson and baby returned to Abernathy Wednesday after spending a few days visiting Mr. and Mrs. T. J. Watson here. Her husband accompanied her over Thursday, returning immediately to Abernathy, and coming back for Mrs. Watson and baby Wednesday.

T. J. Watson left Littlefield Monday on a business trip to Silverton, Texas.

Mr. and Mrs. Ross White and son, Paul, of Amarillo, left Tuesday after spending a few days with Mr. White's parents, Mr. and Mrs. E. A. White.

Mr. and Mrs. Ross White and Mr. and Mrs. Earl White visited friends in Lubbock Monday afternoon.

Mr. and Mrs. Floyd Hemphill, and Miss Dahlia Hemphill returned home Sunday after spending a few days visiting relatives in Fort Worth. They were accompanied by Miss Addie Mae Hemphill, who did not return but is having a more extended visit with her aunt and grandmother at Fort Worth.

J. A. Lilly has been ill for the past week with lumbago, but is reported as some better.

Miss Georgia Lucas, who underwent a major operation at the Lubbock Sanitarium Tuesday morning, is getting along as well as can be expected.

Mr. and Mrs. J. A. Nichols and son Lawrence of Bula, Texas, left Wednesday for a month's trip to Central and South Texas. They plan on visiting Fort Worth, Dallas, Corsicana, Waco and Galveston. They also plan on attending the Ginners' Convention April 6 and 7 at Dallas.

Mr. and Mrs. W. I. Gilliland moved Wednesday to Lubbock.

R. T. Badger of the Yellow House Land Co., returned early this week from a business trip to Dallas. Mr. Badger left Littlefield Friday and returned Monday.

Mr. and Mrs. Otto Jones and son, Joyde Elmo, were in Fort Worth the latter part of last week. They also visited in the home of E. L. Holman of Graham.

Miss Mildred Jordan of Morton returned Tuesday after spending the week end with Mr. and Mrs. Carl Jordan here.

Patricia Riley, who has been ill, is better again.

On account of ill health of his sister, Mrs. C. A. Watson, of Wolf City, Dr. T. B. Duke plans on leaving Monday to treat and be with her for a few days. Mrs. Duke will accompany the doctor. Mrs. Watson has been in bad health for some time, and is having her teeth removed in an effort to regain her health.

Mr. and Mrs. F. B. Johnson and Mr. and Mrs. H. C. Yeary of Whitharral attended the formal opening of the American Legion hunt in Littlefield Monday night.

Miss Aletha Fay Davis, formerly of Haskell, has come to Littlefield to reside, and has entered the Littlefield High School as a senior. She is the daughter of Mrs. B. F. Davis, who is in charge of the ready-to-wear department at Cobb's Department Store. Mrs. Davis came to Littlefield from Haskell to take the position with the local store.

Mr. and Mrs. W. I. Gilliland moved Wednesday to Lubbock.

R. T. Badger of the Yellow House Land Co., returned early this week from a business trip to Dallas. Mr. Badger left Littlefield Friday and returned Monday.

Mr. and Mrs. Otto Jones and son, Joyde Elmo, were in Fort Worth the latter part of last week. They also visited in the home of E. L. Holman of Graham.

Miss Mildred Jordan of Morton returned Tuesday after spending the week end with Mr. and Mrs. Carl Jordan here.

Patricia Riley, who has been ill, is better again.

On account of ill health of his sister, Mrs. C. A. Watson, of Wolf City, Dr. T. B. Duke plans on leaving Monday to treat and be with her for a few days. Mrs. Duke will accompany the doctor. Mrs. Watson has been in bad health for some time, and is having her teeth removed in an effort to regain her health.

Mr. and Mrs. F. B. Johnson and Mr. and Mrs. H. C. Yeary of Whitharral attended the formal opening of the American Legion hunt in Littlefield Monday night.

Miss Aletha Fay Davis, formerly of Haskell, has come to Littlefield to reside, and has entered the Littlefield High School as a senior. She is the daughter of Mrs. B. F. Davis, who is in charge of the ready-to-wear department at Cobb's Department Store. Mrs. Davis came to Littlefield from Haskell to take the position with the local store.

Mr. and Mrs. F. B. Johnson and Mr. and Mrs. H. C. Yeary of Whitharral attended the formal opening of the American Legion hunt in Littlefield Monday night.

Miss Aletha Fay Davis, formerly of Haskell, has come to Littlefield to reside, and has entered the Littlefield High School as a senior. She is the daughter of Mrs. B. F. Davis, who is in charge of the ready-to-wear department at Cobb's Department Store. Mrs. Davis came to Littlefield from Haskell to take the position with the local store.

Mr. and Mrs. F. B. Johnson and Mr. and Mrs. H. C. Yeary of Whitharral attended the formal opening of the American Legion hunt in Littlefield Monday night.

Miss Aletha Fay Davis, formerly of Haskell, has come to Littlefield to reside, and has entered the Littlefield High School as a senior. She is the daughter of Mrs. B. F. Davis, who is in charge of the ready-to-wear department at Cobb's Department Store. Mrs. Davis came to Littlefield from Haskell to take the position with the local store.

Mr. and Mrs. F. B. Johnson and Mr. and Mrs. H. C. Yeary of Whitharral attended the formal opening of the American Legion hunt in Littlefield Monday night.

Miss Aletha Fay Davis, formerly of Haskell, has come to Littlefield to reside, and has entered the Littlefield High School as a senior. She is the daughter of Mrs. B. F. Davis, who is in charge of the ready-to-wear department at Cobb's Department Store. Mrs. Davis came to Littlefield from Haskell to take the position with the local store.

Mr. and Mrs. F. B. Johnson and Mr. and Mrs. H. C. Yeary of Whitharral attended the formal opening of the American Legion hunt in Littlefield Monday night.

Miss Aletha Fay Davis, formerly of Haskell, has come to Littlefield to reside, and has entered the Littlefield High School as a senior. She is the daughter of Mrs. B. F. Davis, who is in charge of the ready-to-wear department at Cobb's Department Store. Mrs. Davis came to Littlefield from Haskell to take the position with the local store.

Mr. and Mrs. F. B. Johnson and Mr. and Mrs. H. C. Yeary of Whitharral attended the formal opening of the American Legion hunt in Littlefield Monday night.

Miss Aletha Fay Davis, formerly of Haskell, has come to Littlefield to reside, and has entered the Littlefield High School as a senior. She is the daughter of Mrs. B. F. Davis, who is in charge of the ready-to-wear department at Cobb's Department Store. Mrs. Davis came to Littlefield from Haskell to take the position with the local store.

Mr. and Mrs. F. B. Johnson and Mr. and Mrs. H. C. Yeary of Whitharral attended the formal opening of the American Legion hunt in Littlefield Monday night.

Miss Aletha Fay Davis, formerly of Haskell, has come to Littlefield to reside, and has entered the Littlefield High School as a senior. She is the daughter of Mrs. B. F. Davis, who is in charge of the ready-to-wear department at Cobb's Department Store. Mrs. Davis came to Littlefield from Haskell to take the position with the local store.

Mr. and Mrs. F. B. Johnson and Mr. and Mrs. H. C. Yeary of Whitharral attended the formal opening of the American Legion hunt in Littlefield Monday night.

Miss Aletha Fay Davis, formerly of Haskell, has come to Littlefield to reside, and has entered the Littlefield High School as a senior. She is the daughter of Mrs. B. F. Davis, who is in charge of the ready-to-wear department at Cobb's Department Store. Mrs. Davis came to Littlefield from Haskell to take the position with the local store.

Mr. and Mrs. F. B. Johnson and Mr. and Mrs. H. C. Yeary of Whitharral attended the formal opening of the American Legion hunt in Littlefield Monday night.

Miss Aletha Fay Davis, formerly of Haskell, has come to Littlefield to reside, and has entered the Littlefield High School as a senior. She is the daughter of Mrs. B. F. Davis, who is in charge of the ready-to-wear department at Cobb's Department Store. Mrs. Davis came to Littlefield from Haskell to take the position with the local store.

Mr. and Mrs. F. B. Johnson and Mr. and Mrs. H. C. Yeary of Whitharral attended the formal opening of the American Legion hunt in Littlefield Monday night.

Miss Aletha Fay Davis, formerly of Haskell, has come to Littlefield to reside, and has entered the Littlefield High School as a senior. She is the daughter of Mrs. B. F. Davis, who is in charge of the ready-to-wear department at Cobb's Department Store. Mrs. Davis came to Littlefield from Haskell to take the position with the local store.

Mr. and Mrs. F. B. Johnson and Mr. and Mrs. H. C. Yeary of Whitharral attended the formal opening of the American Legion hunt in Littlefield Monday night.

Miss Aletha Fay Davis, formerly of Haskell, has come to Littlefield to reside, and has entered the Littlefield High School as a senior. She is the daughter of Mrs. B. F. Davis, who is in charge of the ready-to-wear department at Cobb's Department Store. Mrs. Davis came to Littlefield from Haskell to take the position with the local store.

Mr. and Mrs. F. B. Johnson and Mr. and Mrs. H. C. Yeary of Whitharral attended the formal opening of the American Legion hunt in Littlefield Monday night.

Miss Aletha Fay Davis, formerly of Haskell, has come to Littlefield to reside, and has entered the Littlefield High School as a senior. She is the daughter of Mrs. B. F. Davis, who is in charge of the ready-to-wear department at Cobb's Department Store. Mrs. Davis came to Littlefield from Haskell to take the position with the local store.

Mr. and Mrs. F. B. Johnson and Mr. and Mrs. H. C. Yeary of Whitharral attended the formal opening of the American Legion hunt in Littlefield Monday night.

Miss Aletha Fay Davis, formerly of Haskell, has come to Littlefield to reside, and has entered the Littlefield High School as a senior. She is the daughter of Mrs. B. F. Davis, who is in charge of the ready-to-wear department at Cobb's Department Store. Mrs. Davis came to Littlefield from Haskell to take the position with the local store.

Mr. and Mrs. F. B. Johnson and Mr. and Mrs. H. C. Yeary of Whitharral attended the formal opening of the American Legion hunt in Littlefield Monday night.

Miss Aletha Fay Davis, formerly of Haskell, has come to Littlefield to reside, and has entered the Littlefield High School as a senior. She is the daughter of Mrs. B. F. Davis, who is in charge of the ready-to-wear department at Cobb's Department Store. Mrs. Davis came to Littlefield from Haskell to take the position with the local store.

Mr. and Mrs. F. B. Johnson and Mr. and Mrs. H. C. Yeary of Whitharral attended the formal opening of the American Legion hunt in Littlefield Monday night.

Miss Aletha Fay Davis, formerly of Haskell, has come to Littlefield to reside, and has entered the Littlefield High School as a senior. She is the daughter of Mrs. B. F. Davis, who is in charge of the ready-to-wear department at Cobb's Department Store. Mrs. Davis came to Littlefield from Haskell to take the position with the local store.

Mr. and Mrs. F. B. Johnson and Mr. and Mrs. H. C. Yeary of Whitharral attended the formal opening of the American Legion hunt in Littlefield Monday night.

Miss Aletha Fay Davis, formerly of Haskell, has come to Littlefield to reside, and has entered the Littlefield High School as a senior. She is the daughter of Mrs. B. F. Davis, who is in charge of the ready-to-wear department at Cobb's Department Store. Mrs. Davis came to Littlefield from Haskell to take the position with the local store.

Mr. and Mrs. F. B. Johnson and Mr. and Mrs. H. C. Yeary of Whitharral attended the formal opening of the American Legion hunt in Littlefield Monday night.

Miss Aletha Fay Davis, formerly of Haskell, has come to Littlefield to reside, and has entered the Littlefield High School as a senior. She is the daughter of Mrs. B. F. Davis, who is in charge of the ready-to-wear department at Cobb's Department Store. Mrs. Davis came to Littlefield from Haskell to take the position with the local store.

Mr. and Mrs. F. B. Johnson and Mr. and Mrs. H. C. Yeary of Whitharral attended the formal opening of the American Legion hunt in Littlefield Monday night.

Mrs. Ray Jones Compliments 1930 Bridge Club For Contract Bridge Is

the President, Mrs. W. W. Gillette. After a short business session the following program from the "Voice" was given:

Theme—"The Triumph of Jesus."

Leader—Mrs. A. G. Hemphill.

Hymn—"All Hail the Power of Jesus' Name."

Scripture—John 12:12-19, by leader.

First Reader—Mrs. Hemphill.

Second Reader—Mrs. Courtney.

Hymn—"Jesus Shall Reign."

Prayer—Mrs. Busey.

Leaflet—"The Citizens Responsibility for Law Enforcement," Mrs. Gillette.

Prayer Session—Mrs. Hemphill.

We will have a prayer service next Monday. Every one is invited to come.

Methodist Ladies Form Friendship Class Recently

The Friendship Class of the Methodist Church held its first business meeting in the home of Mrs. L. C. Hewitt on the evening of March 8, for the purpose of organizing. The following officers were elected:

President, Mrs. Hood, Secretary and Treasurer, Mrs. L. C. Hewitt, Reporter, Mrs. J. Herman Barnett, and Teacher, Mrs. B. L. Cogdill.

It was decided to have a business and social meeting once a month. Mrs. Barnett offered her home for the next meeting which will be the first Tuesday in April.

Dainty refreshments were served. The following were elected chartered members: Mesdames L. C. Hewitt, M. B. Hood, Van Clark, M. M. Perry, J. Herman Barnett, W. C. Thaxton, J. D. Smith, B. L. Cogdill, E. S. Johnson and M. C. Waincott.

Mrs. L. W. Jordan Hostess To First Baptist Ladies

The Women's Missionary Society of the First Baptist Church met Monday at 3 p. m. with Mrs. L. W. Jordan.

CHURCHES

FIRST BAPTIST CHURCH Sunday school, 9:45 a. m. Welcome Plateau Singers. B. T. S. 7 p. m. No evening service on account of Methodist Revival.

METHODIST CHURCH The Sunday School will meet at the regular hour, 9:45, next Sunday and the Epworth Leagues at 6:45 p. m. The Revival Meeting is in progress and we wish to say at this time that the crowds have been good and great interest is shown on the part of those in attendance. Services will be held each week day at 1:00 a. m. except Saturday and the evening service will be held each evening at 7:30. We are anxious that every one who is interested in the spiritual uplift of the community come and join in these services with us.

We are expecting a great revival ere these services come to a close. Let us make Sunday one of the outstanding days of the meeting. The song service is going fine and every one who sings should be in this part of the service. The plain Gospel will be preached. Come, you are welcome. We appreciate the other people from the churches of the town. Joe E. Boyd, Pastor.

METHODIST LADIES MEET AT CHURCH The Methodist Missionary Society met at the church Monday afternoon with twenty-three members present. The meeting was called to order by

Mrs. L. W. Jordan Hostess To First Baptist Ladies

The Women's Missionary Society of the First Baptist Church met Monday at 3 p. m. with Mrs. L. W. Jordan.

Mrs. L. W. Jordan Hostess To First Baptist Ladies

The Women's Missionary Society of the First Baptist Church met Monday at 3 p. m. with Mrs. L. W. Jordan.

Mrs. L. W. Jordan Hostess To First Baptist Ladies

The Women's Missionary Society of the First Baptist Church met Monday at 3 p. m. with Mrs. L. W. Jordan.

Mrs. L. W. Jordan Hostess To First Baptist Ladies

The Women's Missionary Society of the First Baptist Church met Monday at 3 p. m. with Mrs. L. W. Jordan.

Mrs. L. W. Jordan Hostess To First Baptist Ladies

The Women's Missionary Society of the First Baptist Church met Monday at 3 p. m. with Mrs. L. W. Jordan.

Mrs. L. W. Jordan Hostess To First Baptist Ladies

The Women's Missionary Society of the First Baptist Church met Monday at 3 p. m. with Mrs. L. W. Jordan.

Mrs. L. W. Jordan Hostess To First Baptist Ladies

The Women's Missionary Society of the First Baptist Church met Monday at 3 p. m. with Mrs. L. W. Jordan.

Mrs. L. W. Jordan Hostess To First Baptist Ladies

The Women's Missionary Society of the First Baptist Church met Monday at 3 p. m. with Mrs. L. W. Jordan.

Mrs. L. W. Jordan Hostess To First Baptist Ladies

The Women's Missionary Society of the First Baptist Church met Monday at 3 p. m. with Mrs. L. W. Jordan.

Mrs. L. W. Jordan Hostess To First Baptist Ladies

The Women's Missionary Society of the First Baptist Church met Monday at 3 p. m. with Mrs. L. W. Jordan.

Mrs. L. W. Jordan Hostess To First Baptist Ladies

The Women's Missionary Society of the First Baptist Church met Monday at 3 p. m. with Mrs. L. W. Jordan.

Mrs. Ray Jones Compliments 1930 Bridge Club For Contract Bridge Is

the President, Mrs. W. W. Gillette. After a short business session the following program from the "Voice" was given:

Theme—"The Triumph of Jesus."

Leader—Mrs. A. G. Hemphill.

Hymn—"All Hail the Power of Jesus' Name."

Scripture—John 12:12-19, by leader.

First Reader—Mrs. Hemphill.

Second Reader—Mrs. Courtney.

Hymn—"Jesus Shall Reign."

Prayer—Mrs. Busey.

Leaflet—"The Citizens Responsibility for Law Enforcement," Mrs. Gillette.

Prayer Session—Mrs. Hemphill.

We will have a prayer service next Monday. Every one is invited to come.

Methodist Ladies Form Friendship Class Recently

The Friendship Class of the Methodist Church held its first business meeting in the home of Mrs. L. C. Hewitt on the evening of March 8, for the purpose of organizing. The following officers were elected:

President, Mrs. Hood, Secretary and Treasurer, Mrs. L. C. Hewitt, Reporter, Mrs. J. Herman Barnett, and Teacher, Mrs. B. L. Cogdill.

It was decided to have a business and social meeting once a month. Mrs. Barnett offered her home for the next meeting which will be the first Tuesday in April.

Dainty refreshments were served. The following were elected chartered members: Mesdames L. C. Hewitt, M. B. Hood, Van Clark, M. M. Perry, J. Herman Barnett, W. C. Thaxton, J. D. Smith, B. L. Cogdill, E. S. Johnson and M. C. Waincott.

Mrs. L. W. Jordan Hostess To First Baptist Ladies

The Women's Missionary Society of the First Baptist Church met Monday at 3 p. m. with Mrs. L. W. Jordan.

La Freeda Bear

HEAR OF MADLER'S PHONES PERMANENT \$2.50, \$4.00, \$5.00

FINGER WAVES SHAMPOO AND SKI ANTISEPTIC HOT OIL RENNA PACK

DIPLOMA OPEN

DIPL

FRIENDLY

Grocery & Market

Payne Wood

PRICES FOR FRIDAY AND SATURDAY

Flour Primrose, 48 Lbs. 9

LARD 8 Lbs. Limit

SOAP 10 Bars P. & G. or Crystal White

Meal Cream, 20 Lbs. 3

RINSO 3 Pgs.

MELLO 3 Cans

LYE Hooker, 3 Cans

Brooms Each 2

CHILI OR HAMBURGER MEAT LB.

STEAK Choice Cuts, Lb.

SAUSAGE Country Style, Lb.

ING OF LINDBERGH STIRS WHOLE WORLD

in Modern History Has Aroused Universal Indignation—Tops Long List of Abductions.

Recent history so American public of the young son Charles A. Lindbergh, Jr., is the is a national char- since the day he duction was a des- by every red- grown-ups and chil-

grieved with the and mother. They they endured. They rt throbs and the f. They could re- of that empty glori-stricken par- the harshness that and Mrs. Lind- the dirty foot- ditions, and the in- side the window, the fate that had ag son. It is one henti that grieved ricken parents.

held, only twenty been dragged from abrace of his par- der care with which ended, and spirited hands of the most riminals. There was vident of the whole an the pathetic ap- to the kidnapers so properly. It was Lindbergh to the son and broadcast of the nation. In

er of the Lindbergh artbroken appeal di- her of the child you been sick and its re- on the treatment You must be espe- the diet.

issued to the press et she has been fol- by fell ill. She did you might read this ere was some spark s in the heart of a

ESLiet, accompanied by ryer of a grieving ill during the day, ns of cooked cereal it. g daily. state or rice once a ns of stewed fruit orange juice on wak- of prune juice after

drops of medicine uring the day. naper of the Lind- at's what the baby's on to give the boy, est and you may in, redeem yourself in temptuous world."

of the nation in spirit- oned Lindbergh the y large estate, search- or clues that would cov- ery of the stolen t they repeated his cur- s. To the moth- the abduction was a tragedy. Not one of h Anne Morrow Lind- nating bliss that had merican motherhood, but suffered the keen- -four for the safety child she had borne, them but said in her it had been MY

generation to say that ericans immediately as into a searching of not in body, with of restoring the Lind- aty as soon as possi- e's arms. From the lowly, news of kidnapping was the all-

offense if state boundaries are crossed and still a third bill makes use of the mails in kidnaping cases a federal crime punishable by a maximum of 20 years imprisonment. Not only was legislation to curb this crime the chief topic in the national legislative hall, but state legislatures began taking measures to increase the state penalties for abduction.

But more striking than the immediate action taken by the constituted authorities of the law for dealing with the criminals who had stolen away the Lindbergh baby was the instantaneous reaction of private individuals everywhere to the crime. It is doubtful if ever before in the history of America have so many millions of her citizens felt the personal obligation to aid in a gigantic man hunt—in spirit if not in reality.

Aviators, who had been buddies of the famous flying colonel, immediately placed themselves and their planes at his disposal to aid in the search. Thousands of amateur detectives were busily engaged in watching for "clews" which might aid the authorities in catching the malefactors. In New York the clergy of these religious denominations joined in broadcasting a prayer for the safe and speedy return of the Lindbergh baby—a prayer which found an echo in the hearts of millions.

Nor was the excitement over the case confined to the borders of the United States. In far-off China, the kidnaping was told in big headlines alongside the news of the Chinese defeat on the Chapei-Woosung battlefield. The French press, to which Colonel Lindbergh has been a hero since his conquest of the Atlantic in 1926, was filled with the story of the crime. Germany forgot for a moment its heated political atmosphere arising from the presidential election campaign and was swept by a wave of sympathy for the parents of the lost baby. All Berlin newspapers published the kidnaping on their front pages, along with numerous photographs, an extraordinary occurrence in that country, where political issues invariably occupy all available front-page space, even when an election campaign is not in progress.

England's anxiety over the fate of the little boy was nearly as keen as America's. The news of the abduction caused a sensation in Mexico where the baby's grandfather, the late Dwight Morrow, had been ambassador from the United States. A stream of telegrams was sent to the Lindberghs from their many friends in Mexico, President Ortiz Rubio, Foreign Secretary Manuel C. Telloz and J. Ken- ben Clark, who succeeded the late Senator Dwight Morrow as ambassador, asked to be kept closely informed of any developments in the search for the kidnapers.

The abduction was brought home to Mexicans all the more vividly because of the fact that it had occurred on the third anniversary of Colonel Lindbergh's arrival in the Mexican capital on the visit before his last trip to Mexico, the days when he was courting Anne Morrow in the romantic atmosphere of Cuernavaca.

Just as the news of the kidnaping of the Lindbergh baby circled the globe within a few hours after it had occurred, so had the news of the birth of this baby been an item of world-wide interest. Charles Augustus Lindbergh, Jr., was born June 22, 1930, which also was the anniversary of the birth of his mother, the former Anne Morrow, daughter of the late Senator Dwight W. Morrow of New Jersey. She was twenty-four years old the day her son was born. The baby was born in the Morrow home in New Jersey, in which his parents were married May 27, 1929.

In the four days interval between June 22 and the day the birth certificate was filed members of the Morrow and Lindbergh family participated in an amicable discussion as to what the infant would be named.

That question was settled when the birth certificate disclosed he was to be "Junior." And it was understood to have been Mrs. Lindbergh's choice all along. It was reported, too, that Lindbergh had favored calling his son after his father-in-law, but that for the first time since he hopped the Atlantic three years before he was turned back from his goal.

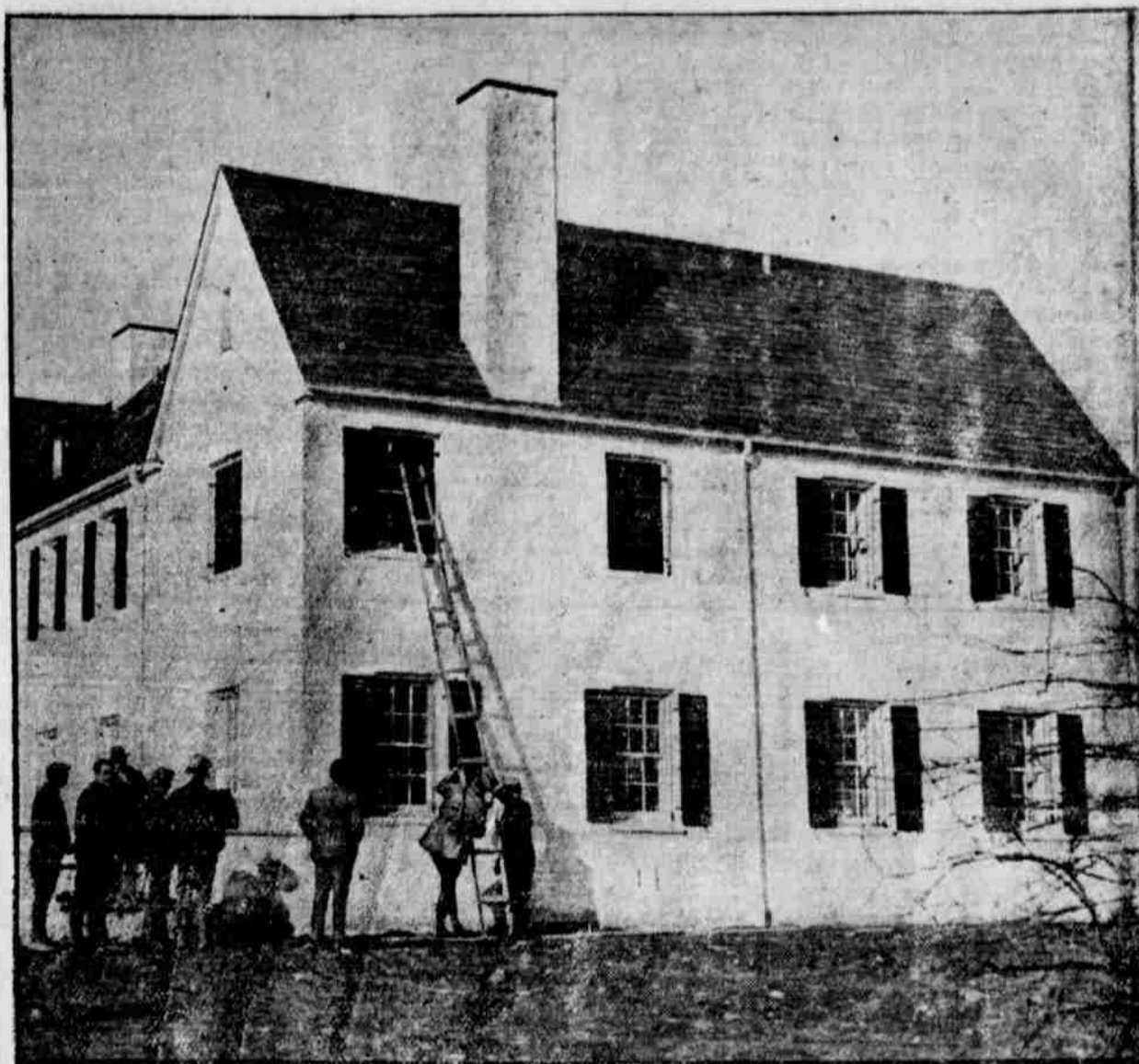
During his first few months of life, when his parents were making occasional short jaunts by airplane it frequently was reported that Charles Jr. was to accompany them. They did not take the infant on any of these trips, however, though the reports were so persistent that they gave rise to the impression that Charles Jr. would be brought up from earliest youth with the idea of making an aviator out of him.

So widely was this conviction held that his reticent father declared in an interview, which was printed in October, 1930, in the Pictorial Review, that Charles Jr.'s future was in his own hands.

"Our son," Colonel Lindbergh was quoted as saying, "has hardly reached the age to have his future determined for him, and, in any case, it is a question that he can decide for himself when the time comes.

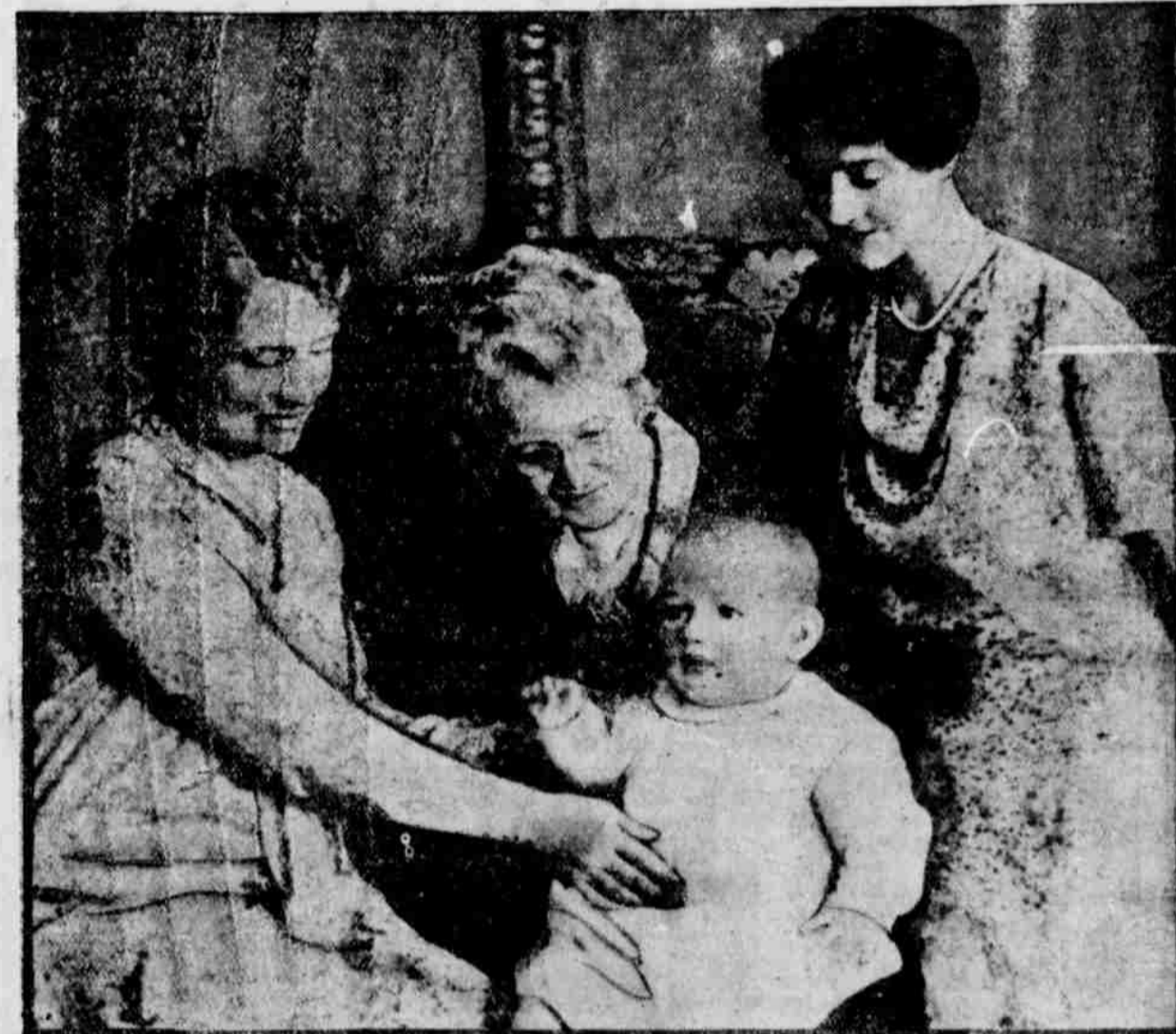
"Personally, I do not want him to be anything or do anything that he himself has no taste or aptitude for. When word of the birth of Charles A. Lindbergh Jr. went around the world and even before it was announced, gifts began to arrive at the Morrow home for him in such profusion that they soon became an embarrassment. His parents were quoted as saying that the boy would have to remain an infant for ten years at least merely to wear out the baby clothes which had been sent to him.

Window Used in Kidnaping Lindbergh Baby



State troopers re-enacting the kidnaping of Baby Lindbergh, showing the window and ladder used by the abductors.

Four Generations of Lindbergh-Morrow Family



Mrs. Charles Long Cutter (second from left), great-grandmother; Mrs. Dwight Morrow, grandmother; Mrs. Lindbergh and the kidnaped baby.

THE PARENTS



Characteristic pose of Colonel and Mrs. Lindbergh taken after one of their long flights.

Latest Photo of Lindbergh Baby



Photograph of Charles Augustus Lindbergh, Jr. made public by the family after the kidnaping to assist in the search for the child.

FAMOUS KIDNAPINGS

- 1874—Charlie Ross, stolen in Germantown, Pa., never recovered and supposed to have been killed.
- 1900—Edward Cudahy was kidnaped by Pat Crowe, who served a prison sentence. Cudahy was returned.
- 1909—Billy Whittle, Sharon, Pa., recovered after \$10,000 ransom was paid. Kidnapers imprisoned.
- 1911—Baby Hencks, Chicago. Believed slain. Abductors in Joliet prison.
- 1911—Lloyd Trezke, Cleveland. Found in California after fifteen years.
- 1913—Catherine Winters, kidnaped in Newcastle, Ind.; never found.
- 1915—Jimmy Glass, Jersey City, still missing and believed slain.
- 1917—Baby Lloyd Keet, Springfield, Mo., slain.
- 1919—Billy Dansey, kidnaped in New Jersey. Body found in swamp months later.
- 1924—Roy Borth, kidnaped by moron in Chicago. Found unharmed after a week.
- 1924—Bobby Franks, kidnaped and slain in Chicago by Richard Loeb and Nathan Leopold, who are serving life sentences in prison.
- 1927—Marian Parker, twelve years old, Los Angeles, kidnaped and slain by William Hickman, who was captured and executed.
- 1927—Billy Gaffney, four years old, Brooklyn, kidnaped for ransom and never found. Believed to have been slain.
- 1928—Billy Ranieri, ten years old, kidnaped but later restored to parents. Two kidnapers sentenced to 25 years in prison.
- 1930—Adolphus Busch Orthwein, thirteen years old, grandson of millionaire brewer, kidnaped from home near St. Louis but released 20 hours later. Kidnapers sentenced to prison.
- 1931—Marian McLean, six years old, Cincinnati, kidnaped and assaulted, and later found dead in basement. Stayer captured and confessed.

STYLE SHOW TO BE CONDUCTED AT PALACE THEATRE THURSDAY, MAR. 24

Living models will display all the new spring fashions at the Palace Theatre Thursday evening, March 24, with the leading stores in Littlefield participating. A number of the most popular young ladies of this city will model for these business establishments, and the show will consist of all new spring wearing apparel in the latest styles and shades.

This style show is being sponsored by the Little Theatre, which was recently organized in this city.

We serve Steffens Ice cream. Eagle Drug.

Prisoners--

(Continued from Page One)

puty Sheriff Miller about 4 p. m. Monday.

Thompson, according to Mr. Miller, made the statement that, "This jail will not hold me."

Locks were placed on Thompson's hands and feet last Sunday but Monday morning he had pried the locks and chains in a corner and seemed very much satisfied with his accomplishment. Deputy Sheriff Miller reported.

ler reported.

According to the officer Thompson, at about 7 a. m. Monday sawed through one bar in a ventilator which gave him one way of escape. But he did not take that route, deciding to make his way under the court house by breaking into a man hole used to carry pipes serving the jail.

Mr. Miller reported that Thompson was under the court house for one hour before he returned to his cell deciding that he did not want to escape by the route he had taken, as it involved making his way through the floor of the court house.

Deputy Sheriff Miller said that six men have escaped in the past year from the Olton jail and that officers

have recaptured only two of that group.

Meat Show--

(Continued from Page One)

stration agent from a neighboring county.

The Lamb County Show is being arranged by a Littlefield committee and County Agent D. A. Adam and Miss Ruby Mashburn, Home Demonstration Agent.

The program at the high school Tuesday night will offer two special features in addition to the meat cutting demonstration.

These special features will be a hog calling contest and a demonstration put on by 4-H Club girls.

Those who will enter the hog calling will include farmers, farmers' wives, sons and daughters of farmers, vocational students of Lamb county and representatives of various organizations including American Legion, Chambers of Commerce and service clubs.

The 4-H demonstration will consist of some phase of meat canning or the use and care of pressure cookers and sealers. Entries in the show will be received on Monday and up until 10 a. m. Tuesday.

In addition to the regular prizes offered at the show, the Lamb County Leader offers a special prize to the winner of the first prize in the cured ham contest. The Leader prize will consist of a meat saw, steel, boning knife, skinning knife, and a sticking and steak knife.

Prize List.

Following are the prizes for winners in the Lamb county show:

Best cured ham, \$5, meat saw and butcher knife; best side bacon, \$5; meat saw and butcher knife; best cured whole shoulder, \$2.50, meat saw and butcher knife; best cured Boston butt, \$2.50, meat saw and butcher knife; best cured picnic ham or shoulder, \$2.50, meat saw and butcher knife; best cured sausage, \$5, meat saw and butcher knife.

Canned Products.

Pork roast, No. 3 can, \$1.50, 50c, and ribbon; pork sausage, No. 3 can, \$1.50, 50c and ribbon; mince meat, No. 2 can, \$1.50, 50c and ribbon; scrapple, No. 2 can, \$1.50, 50c and ribbon; Liver paste, No. 2 can, \$1.50, 50c and ribbon; beef roast, No. 3 can, \$1.50, 50c and ribbon; steak, No. 2 can, \$1.50, 50c and ribbon; best can boned chicken, No. 2 can, \$1.50, 50c and ribbon.

One pound bar homemade soap, \$1.50, 50 cents and ribbon; lard, quart, square glass top jar, \$1.50, 50c and ribbon.

Legion Hut--

(Continued from Page One)

which was responded to by Meade Griffin, District Attorney, Plainview, who made a short talk on legion activities.

The Levelland delegation was led by Jack Thoman, Postmaster of Levelland, and was accompanied by Levelland High School Band, which rendered several selections, also string numbers and a bango solo.

The days of 1918 were vividly recalled by war time numbers led by Arthur Mueller. The program was interspersed by numbers rendered by Red Norman's syncopators. Miss Blanche Crockett favored the audi-

ence with a tap dance, also an aerobic dance number. Jack Norman also entertained with a solo "All of Me." This was followed by a duet rendered by Miss Blanche Crockett and Jack Norman. Mrs. H. F. Moody played the accompaniments throughout the evening for the local program. Mrs. R. E. Riley, who had charge of the program, is to be complimented on the splendid evening's entertainment provided.

Refreshments, consisting of chicken salad, sandwiches, angel food cake and coffee, were served by the American Legion Auxiliary. Those on the serving committee were: Mrs. T. Wade Potter, Mrs. W. H. Rutledge, Mrs. Arbie Joplin, Miss Erna Douglass, Mrs. C. H. Yearly, Mrs. W. D. Storey, Mrs. J. T. Street, Mrs. J. R. Coen, Mrs. Roy Blessing, Mrs. Jim T. Douglass, and Mrs. Van Clark.

Free Flour! Free Flour!

AT THE



Friday and Saturday

FREE! FREE! FREE!

With each \$10 purchase, not including lard or sugar, ABSOLUTELY FREE ONE 48 LB. SACK OF SNOW WHITE FLOUR

With each \$7 purchase, not including lard or sugar, ABSOLUTELY FREE ONE 24 LB. SACK OF SNOW WHITE FLOUR.

With each \$5 purchase, not including lard or sugar, ONE 6 LB. SACK OF ENN'S BEST FLOUR.

Prices for Friday and Saturday

Mustard, Quart 15c K C. Baking Powder, 25 oz. 19c

Sugar 10 Lbs. **47c**

Flour Snowwhite 48 lbs 87c
Enn's Best 48 Lbs 97c

Spuds 10 lbs. Limit **12½c**

Tomatoes 25c
No. 2 can, 3 cans

Soap 25c
Luna, 10 Bars

Hominy 28c
No. 1 can, 4 for

Peanut Butter 25c
Quart.

Jewel 8 Lb. Pail **59c**

Bread Loaf **5c**

Cherries 59c
Gallon

Blackberries 49c
Gallon

Prunes 39c
Gallon

Corn 25c
No. 2 can, 3 cans

Fruits and Vegetables

Oranges, Med. Size, Doz. 25c Lettuce, Nice Heads 7c

Apples, Fancy Delicious, Large Size, Doz. 38c Green Beans, Lb 15c

Bananas, Dozen 19c Celery, Ext. Large Bunch . . . 15c

We expect to have a large variety of fruits and vegetables for Friday and Saturday. Be sure and visit our store.

QUALITY MEATS LOW PRICES QUALITY MEATS

Fresh Catfish lb. 24c

Sausage, Pure Pork, Lb. 10c Smoked Bacon, No. 1, Lb. 12c
Pork Chops, Lb. 15c Dry Salt, Best Grade, Lb. 8½c

STEAK Loin, T-Bone or short Cut, Lb. **10c** **Dressed Hens lb. 23c**

Cheese, Longhorn, Lb. 18c Country Butter, Best Grade, Lb. 24c

Sliced Bacon, The Best, Lb. 18c Beef Roast, Juicy and Tender, Lb. 11c
Pork Roast, Nice and Tender, Lb. 12½c

We Will Buy All the Eggs You Bring in and Pay Top Prices for Them

LAMB COUNTY

Gives The World Better

REPLIN'S----

Gives the World Better

Dry Goods Values

From day to day we strive to give you the best. Lamb County Better Quality Merchandise. Better Service . . . and, Still Lower Prices. We want you to come in and see for yourself. Compare our prices with anybody's and see that "it pays to trade at REPLIN'S."

VISIT US DURING THE

Lamb County Meat Show

Littlefield, Tuesday, March 24

The Lamb County Meat Show is being staged as an educational program in showing the growing, curing and salting of meat products. The show will be a most worthwhile attending.

REPLIN'S

"A Good Store in a Good Town"

LAMB COUNTY MEAT SHOW

May Their Fame Be

Known Through out

The Land . . .

Only a few short years ago Lamb County stepped into Progress Lane. An infant agricultural world.

Rapid progress has been made. Farming held full sway; then Lamb County feed gained publicity throughout the world. Now, an effort is being made to offer finished meat products of unsurpassing quality.

The Lamb County Meat Show is being held in order that we might vision the results of our labor in this work. That we might bring our weaker points—bring our products to the highest degree of perfection. Then, we will offer the world products that will bring praise to the four corners of the earth.

Yellow House Land