

LAMB COUNTY LEADER

LITTLEFIELD, LAMB COUNTY, TEXAS, THURSDAY, SEPTEMBER 28, 1950

NO. 62

Franklin's to Open Ready-to-Wear Store in Littlefield Friday Morning

One of the leading retail concerns of Littlefield has established a ready-to-wear store and will open at nine o'clock Friday morning.

The store is located in the Phelps and Third, formerly owned by Renfro Bros., and has been moved to another location.

Local women, with extensive experience in ready-to-wear, will be employed in the Littlefield store. Mrs. Fowler and her group of sales ladies extend a cordial invitation to the folks of Littlefield and territory to visit the new store.

One of the events of the opening of the new store will be the giving away absolutely free a suit, the winner to have the choice of the store. Receive your free ticket at any time from the opening of the new store at nine o'clock Friday morning, September 29, to the time of the drawing, 4 p. m. Saturday, October 7. Holders of tickets do not have to be present to win.

At the Louise Dress Shop the special feature is corduroy separates to mix and match—Skirts, Slacks, Blouses and Jackets. Also sweaters by Nan Dorsey, 402 Phelps Ave., Littlefield, Texas.

the people of Littlefield and territory. This will be achieved by Franklin's system of having new merchandise arrive daily, fresh and lovely from the manufacturers.

Franklin's will feature quality merchandise at popular prices throughout the store. Devoted exclusively to women's, misses and children's ready-to-wear, Franklin's Littlefield store has numerous departments including coats, suits, dresses, jackets, skirts, blouses, lingerie and accessories.

Local Sales Ladies

Local women, with extensive experience in ready-to-wear, will be employed in the Littlefield store. Mrs. Fowler and her group of sales ladies extend a cordial invitation to the folks of Littlefield and territory to visit the new store.

One of the events of the opening of the new store will be the giving away absolutely free a suit, the winner to have the choice of the store. Receive your free ticket at any time from the opening of the new store at nine o'clock Friday morning, September 29, to the time of the drawing, 4 p. m. Saturday, October 7. Holders of tickets do not have to be present to win.

At the Louise Dress Shop the special feature is corduroy separates to mix and match—Skirts, Slacks, Blouses and Jackets. Also sweaters by Nan Dorsey, 402 Phelps Ave., Littlefield, Texas.



MISS U.S. TELEVISION
Edythe Adams, 23, New York, was picked to reign as Miss U.S. Television from 13 of the nation's most beautiful. The contest took place at Chicago's large fair, at the television exhibit.

ELECTED SECRETARY OF STUDENT COUNCIL

Elizabeth Schovajsa, daughter of Mr. and Mrs. Ed Schovajsa of Amherst, junior student in Texas Technological College, Lubbock, has been elected secretary of the student council.

Elizabeth was graduated from the Littlefield high school with the class of 1948.

Three Men Arrested In Counterfeit Case

Three newspaper printers from as many Texas towns are in jail at Amarillo facing charges of counterfeiting \$1 and \$10 bills.

The three are Vernon Roland, 28, shop foreman at The Hereford Brand; M. L. Roland, 18, his brother who works as type setting machine operator at The Tulla Herald; and Homer Dale Russell 19, printer for The Castro County News in Dimmitt.

They were arrested Friday afternoon by Treasury Agent William Bradshaw of Dallas and Sheriff Hugh White of Tulla. Bond of \$2,500 was set for Vernon Roland and \$1,000 each on the other two. The complaint alleges the bills were made in The Hereford Brand shop.

Bradshaw and White said they found \$615 in \$1 counterfeit bills and 22 ten dollar bills in the home of the elder Roland in Hereford. They said they also found five printing plates and four picture negatives.

The arrests came after a Tulla dry cleaner reported he found several counterfeit bills in a pair of trousers.

For that new fall dress in colorful wool Jersey, corduroy, gabardine or satin. Come to the Louise Dress Shop, 402 Phelps Ave., Littlefield, Texas.

Emmanuel Lutheran Men's Club to Meet Friday Night

Work and play is the schedule for the Men's Club of Emmanuel Lutheran, 417 West 3rd St., this Friday night, September 29, 8 p. m. in the church basement. First part of the evening will be given over to business matters. Latter part of the evening will be spent in trying to improve the looks of the basement of the church. The Club at present is under the guidance of Mr. Vastine Robratsch, president.

Arrested on Liquor Violation Charges

L. T. Thornton, colored, who was arrested some time ago on a charge of violation of the liquor law, appeared before Judge O. F. Dent in County Court Monday morning, and was fined \$500 and costs.

Oliver Leonard, colored, pled not guilty before Judge O. F. Dent Monday morning on a liquor violation charge, and his bond was set at \$500 returnable in the November term of court.

Use Leader Classifieds for quick results! Buy! Sell! Rent! Trade!

Open For Business

In Our New Location—and Our New Building at—
219 XIT Drive—Littlefield

Across the Street from Rear of Piggly-Wiggly Grocery & Market

We carry a full line of Electrical Supplies and Equipment, including a full line of Electric Light Fixtures, including the Fluorescent Fixtures.

We Offer a General Electric Service—including

- HOUSE WIRING
- REA WIRING
- INDUSTRIAL and COMMERCIAL WIRING

At Your Service Are . . .

NED FAIRBAIRN
Owner-Manager
JIMMIE WILLIAMS

ED SEVIER
Sales-Office Manager
PAUL McCALISTER

PHONE

697 DURING WORKING HOURS

OR
693 NIGHTS AND SUNDAYS

City Electric

219 XIT DRIVE

LITTLEFIELD, TEXAS

Dollar Days

SAVE MORE THAN EVER BEFORE!

FALL

New Toni Exclusive!

MIDGET SPIN CURLERS

for perfect neckline curls
far easier,
far faster!

Special Value!

Midget SPIN Curlers in a Handy Toni Refill Kit
which includes gentle-acting Toni
shampooing lotion to give you a soft, natural-looking wave—
perfect for a complete permanent. Regular price \$1.00

Midget SPIN Curlers—set of 6—specially designed to
wind the shortest neckline hair quickly, easily! Only Toni
Regular value 25¢

Crepe Shampoo—to give you
water shampooing even in hardest water. Regular Price 25¢

50 value—now all three only **\$1.33**

**FILMS . . . All Types—Fast
Film Development Service**

CLOSE-OUT—\$3.00 Value—	ONLY
FALCON CAMERAS	1.98
PARKER "21"	5.00
PARKER PARKETTE	3.00
AMITY BILLFOLDS	3.50 to 15.00
VIEW MASTERS	2.00
CLEANSING TISSUE, only	7c
POWDER PUFFS, only	10c
EPSON SALTS, 5 lbs.	39c
HADACOL, 1.25 value	89c
PORTRAIT HOME PERMANENT, reg. 1.45 value, only	89c (Plus Tax)
RUBBER GLOVES, pair, only	29c
CORA EAR SCREWS	1.00
UNIVERSAL COFFEEMATIC	24.95

Colored
**TEA
TUMBLERS**
Set of 8
ONLY
6.95

Fresh Shipment
Large Assortment of
Pangburn's Fine Candy
"The Choice of the West"

AT
**REESE
DRUG**
LITTLEFIELD
Friday, Saturday and Monday
September 29 and 30 and October 2

- K. M. MIXERS—Only 29.95**
- SOAP—Assorted Colors, bags only 53¢**
- Nyal Aspirin Tablets—100's, only 19¢**

SAVE!

Children's
**RECORD
PLAYERS**
Extra Nice
ONLY
9.95

REESE DRUG

LITTLEFIELD



PERILOUS PATROL . . . An extremely dangerous but necessary operation is underway in a village somewhere in South Korea. U.S. troops carefully scout a captured village, searching for Communist stragglers and snipers. This army patrol gets underway whenever U.S. troops take a village, in order to make the areas safe for our advancing troops.

Texas Postal Receipts Stepped Up Nine Per Cent in August

Postal receipts in Texas stepped up 9 per cent in August from July, the University of Texas Bureau of Business Research reported.

After adjustment for seasonal variation, the Bureau's index of postal receipts rose 11 per cent from July to 328 per cent of the 1935-39 base period in August.

Brownfield, with a 64-per-cent gain over July, tallied the largest monthly increase in postal receipts. Austin, Texarkana, and Uvalde presented 32-per-cent increases over the month. Other Texas cities turning in notable increases in postal receipts from July in August were: Nacogdoches, 29 per cent; Luling, 26 per cent; San Angelo and Temple, 17 per cent; Odessa,allas, and Lamesa, 16 per cent; and Houston and Clueburne, 12 per cent.

On the other hand, July-to-August decreases in postal receipts ranged from 1 per cent in Del Rio to 25 per cent in Gladewater.

August postal receipts for 72 Texas cities totaled \$4,005,963, or 12 per cent higher than in the same month of 1949.

Snyder, with a 123-per-cent jump in August 1950 postal receipts, continued to mark up the biggest increase over year-earlier levels. Receipts climbed 82 per cent in Brownfield, 45 per cent in Lufkin, 35 per cent in Lamesa, 33 per cent in Luling, 32 per cent in Clueburne, and 26 per cent in Mid-

James W. Jackson At Lackland Air Force Base

Pvt. James W. Jackson, 21, son of Mrs. Bessie Jackson of Littlefield, has begun a course of indoctrination training at Lackland Air Force Base, "The Gateway to the Air Force," San Antonio, Texas.

In the basic training at Lackland he will receive a well rounded military preparatory schooling for progress in a specialized Air Force career. During this initial course he will be given complete vocational and aptitude testing along personal guidance counseling to determine his entrance into a suitable technical training assignment on leaving The Gateway Base.

Besides constituting the only Air Force station for indoctrination training of all new airmen, Lackland is a reassignment and training center for re-enlistees, home of USAF Officer Candidate School and the Human Resources Research Center.

Declines from August 1949 varied from a fractional dip in Laredo and Pampa to 17 per cent in Gladewater.

Retail Sales Climb Twenty-Two Per Cent

Texas retail sales for August, 1950, climbed 22 per cent from a year earlier, the University of Texas Bureau of Business Research reported.

Preliminary tabulations placed August sales at an estimated \$576 million, or 4 per cent below the all-time peak reached in July, 1950.

August sales of durable goods stores fell 10 per cent from the previous month, while nondurable goods stores registered a 5-per-

cent gain. From the same month a year ago, durable sales were up 32 per cent to outdistance the 11-per-cent increase for nondurable goods stores.

Household and appliance stores presented a 23-per-cent reduction in August sales from the previous month. Sales of motor vehicle dealers were off 16 per cent; farm implement dealers, 12 per cent; and hardware stores, 7 per cent.

Counter to the overall monthly decline for durable goods stores, jewelry sales jumped 21 per cent from July. Lumber and building material dealers and furniture stores turned in smaller increases of 6 and 3 per cent, respectively.

Without exception all durable goods stores recorded higher sales in August 1950 than in the same month a year ago. Sales of lumber and building material dealers jumped 63 per cent; jewelry stores, 35 per cent; farm implement dealers, 32 per cent; furniture and household and appliance stores, 29 per cent; and motor vehicle dealers, 25 per cent.

Women's specialty shops, with a 19-per-cent gain, tallied the biggest July-to-August advance among nondurable goods stores. Florists and office, store, and school supply dealers showed increases of 18 per cent, and shoe stores reported a 16-per-cent upturn in their August sales. Smaller gains ranged from 2 to 12 per cent.

On the other hand, August sales of filling stations decreased 12 per cent from July; men's and boys' clothing stores, 7 per cent; country general stores, 3 per cent; grocery stores without meats, 1 per cent; and combination grocery stores reported a fractional decline.

Increases over August 1949 sales for nondurable goods stores varied from a 3-per-cent gain for women's specialty shops to a 20-per-cent climb for shoe stores.

Sensational free acts by daring aerial performers will thrill visitors at 2 p. m. and 7:15 p. m. daily at the 1950 State Fair of Texas Mid-Century Exposition.

VISIT IN SAN ANTONIO

Mr. and Mrs. R. E. Doss, accompanied by their daughter, Miss Doris Doss of Tulsa, Oklahoma, left Tuesday morning for Carlsbad Caverns and San Antonio. The party will return to Littlefield Monday.

In San Antonio, they will visit Mr. Doss' brother, Dr. J. M. Doss, and his family. Miss Doss will remain with her parents for a week on her return from the San Antonio-Carlsbad trip.

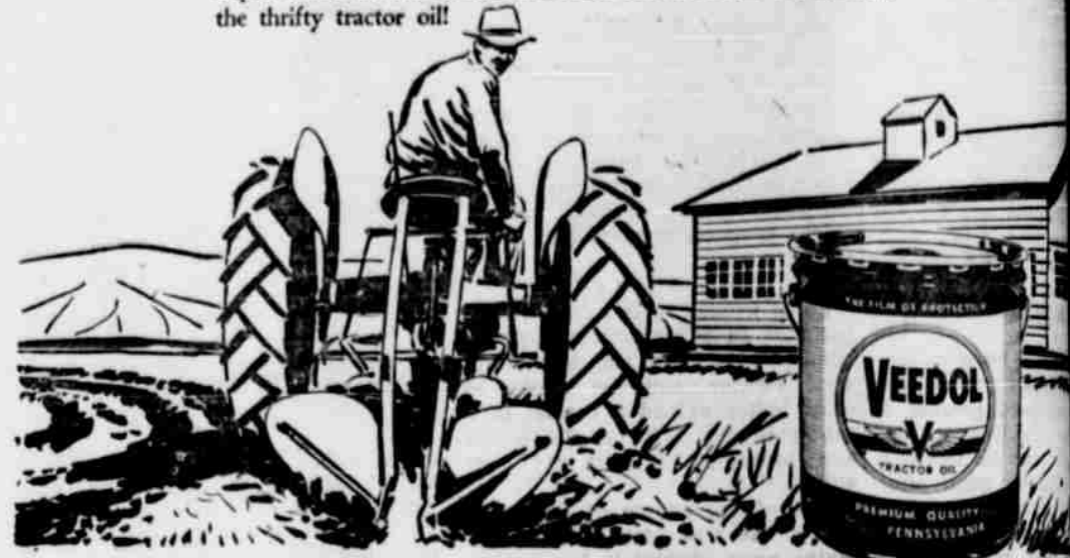
Freshly-ginned cotton should be checked closely for aged seed before it is stored. Seed of less than 12 per cent suitable for storing, unless special facilities are available for drying and cooling the seed.

The Natural Oiliness of 150-Hour Veedol Helps YOU SAVE 5 WAYS

VEEDOL

1. SAVES FUEL—by reducing power blow-by.
2. SAVES TIME—by avoiding break-down delays.
3. SAVES REPAIRS—through greater resistance to heat and wear.
4. SAVES OIL—good for 150 hours between changes in gasoline-fueled tractors; cuts oil consumption in all tractors.
5. SAVES TRACTORS—with oil protection that assures long, economical service.

150-HOUR VEEDOL TRACTOR OIL is refined 100% from BRADFORD PENNSYLVANIA crude oil—the world's finest Pennsylvania crude. Veedol's rich, extra oiliness, super-tough body, amazing resistance to extreme heat and pressure assures dependable, effective lubrication. Ask for 150-Hour Veedol . . . the thrifty tractor oil!



Oscar P. Wilemon

DISTRIBUTOR FOR VEEDOL

Highway 84, Littlefield

Phone

Looking for honest-to-goodness COMFORT?



Better Buy Buick!

You've probably heard a lot of talk about comfort in 1950 cars.

But we'd like to offer one suggestion, which is—let a Buick speak for itself.

We'd like to have you settle yourself (your family too, if you have one) on a Buick's soft, deep, comfort-angled cushions, and see how restful they are.

More than this, we'd like you to sample that comfort in motion. Slip your fingers around that slender steering wheel, touch toe to treadle and take off in the smooth, unbroken surge of power that Dynaflo Drive* delivers.

We'd like to have you hunt out some of the less-smooth streets or back roads that never seem to get fixed—and put Buick's soft coil springing and solid underpinning to tough and practical test.

All the while, be thinking about what such riding and driving ease can mean on long, all-day trips, and compare it with what you've been used to.

This whole experience is bound to make you want a Buick—and when you ask "how much" you'll get a second pleasant

*Standard on ROADMASTER, optional at extra cost on SUPER and SPECIAL models.

surprise in the low delivered prices your dealer is quoting—prices that start at a level that is actually lower than you'd pay for some sixes.

Your Buick dealer is the man to see and this is the best of all times to see him. Drop in, won't you, to see about getting an order signed?



FOUR-WAY FOREFRONT—This rugged front end (1) sets the style note, (2) saves on repair costs—vertical bars are individually replaceable, (3) avoids "locking horns," (4) makes parking and garaging easier.

Tune in HENRY J. TAYLOR, ABC Network, every Monday Evening.

Phone Your Buick Dealer for a demonstration Right Now!

Leo R. Hewitt Motor Company

507 PHELPS AVENUE

LITTLEFIELD, TEXAS

WHEN BETTER AUTOMOBILES ARE BUILT BUICK WILL BUILD THEM

More cups per pound

WHITE SWAN COFFEE

"takes less tastes best"

WHITE SWAN finer coffee

1890 1950

60th Anniversary Year

Are You Steering or Just Drifting?

A desired goal can't be reached by just drifting. You must chart your course and steer toward it.

Woodmen steer toward the goal of financial security by following a planned program of safe, sound life insurance protection. They also make it a happy journey by taking part in Woodcraft's fraternal, civic and patriotic activities program.

Ask your local Woodmen representative to help you chart your course of protection for yourself and your family with the type of life insurance certificate that best meets your needs.

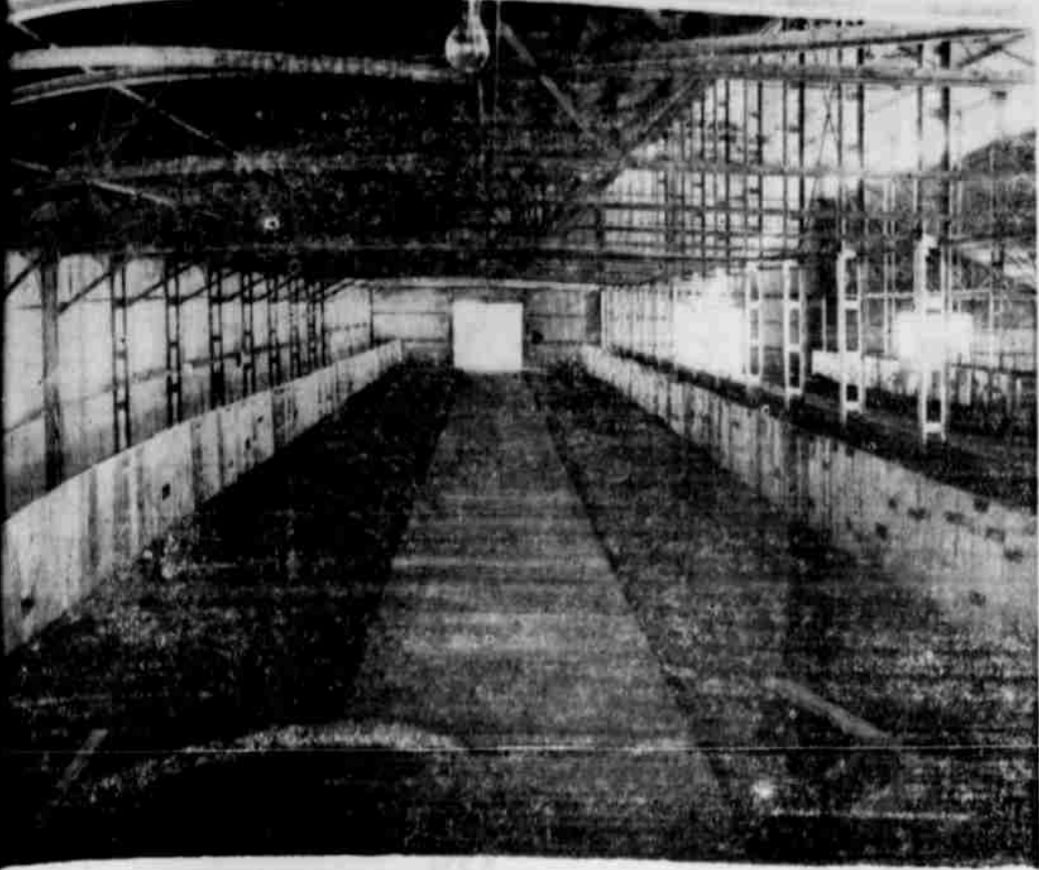
W. D. CHAPMAN

District Manager,

Box 168

Littlefield

WOODMEN of the WORLD
Life Insurance Society
OMAHA, NEBRASKA



The picture above shows of three aisles in the 90x foot Cattle Exhibit Building at the Panhandle South Fair grounds in Lubbock. Three new concrete walks, like the one shown above, and "service aisles" for the convenience of exhibitors have been constructed this year. The concrete walks were designed to "make a spectators' tour of the livestock exhibits

more enjoyable and more comfortable past time. The service aisles, with walls not high enough to obstruct the full view of the building, have been built on each side of all three aisles. Not all of the work was completed when this picture was taken. But everything will be ready when the 33rd annual fair opens Monday, October 2. The litter and dirt between the walk and service aisle will be cleaned up and this will be the stalls for cattle on exhibit. Exhibitors will be interested to know that tie-rings have also been installed.

Health is not only an individual and family responsibility, but also is the concern of every community.

AT YOUR SERVICE

GAS—
OIL—
GREASE—

CONOCO

WASHING AND LUBRICATION

FRITZ DIERSING

210 PHELPS AVE. AND HIGHWAY No 84 — PHONE 200-J

Winter Legumes Should Be Planted By November 15

The time for planting winter legumes for soil improvement and seed production is here again. In most areas, the best time for fall planting is from the middle of September to November 1—not later than November 15.

E. A. Miller, agronomist for the Texas A. & M. College Extension Service, says that the legume to plant depends upon the section of the state in which you live.

He adds that hairy vetch, Singletary peas, Austrian winter peas, Dixie wonder peas and crimson clover are good winter legumes to plant in the East Texas Timber Country. Common and Willamette vetches are also adapted to the southern half of this region.

The annual yellow blossom sweetclover, *Mellilotus indica*, is the most desirable legume to plant in the Gulf Coast Prairie, but the other legumes named above can also be grown. Hubam and Madrid sweetclovers do well in the river valleys.

Miller recommends that Hubam and Madrid sweetclovers be given first choice in the Blackland region because of their ability to increase crop yields, reduce losses from cotton root rot, and open up the soil with their deep root systems. He says that the Evergreen biennial is also an excellent sweet clover for this area, but seed of this variety are still scarce.

Hairy vetch and winter peas are also adapted to the Blackland region, but they are not as effective in controlling cotton root rot as the sweetclovers. Miller recommends planting sweetclovers in the fall in the area south of Waco, but he points out that they will probably do better if planted in the early spring north of that area.

For the West Cross Timbers

Joint Birthday Party Enjoyed By Church Women Sept. 18

The Woman's Society of Christian Science of the Littlefield Methodist Church had a joint birthday celebration Monday at 2 p. m. at the Amherst Methodist Church.

Ladies of Littlefield W. S. C. S. presented birthday cake with ten candles and a large center candle to the Amherst W. S. C. S.

Mrs. Frank Beuchamp had charge of the devotional and made a very interesting talk.

Mrs. Aubrey Jones presided at the meeting of Amherst W. S. C. S. and Mrs. Joe Porter had charge

area, hairy vetch is the most desirable legume; however, winter peas and the sweetclovers are also adapted to this region.

Hairy vetch, winter peas, and sweetclover are good legumes for the Rolling Plains, and alfalfa also does well in this area on the sub-irrigated soils.

Miller says that alfalfa is the principal adapted legume to be grown under irrigation on the High Plains and in the El Paso and Pecos valleys, but the biennial sweetclovers, hairy vetch, and winter peas can also be grown under irrigation in these areas.

of devotional. Their program was Littlefield W. S. C. S. cut the first on "Saving Health Among All Nations."

Other ladies of the society took part in the program. After refreshments were served ladies of the societies had a nice Mrs. W. C. Cannon, president of visit.

SEE—... G&C AUTO SUPPLY

202 LFD Drive
Phone 206-M—Littlefield

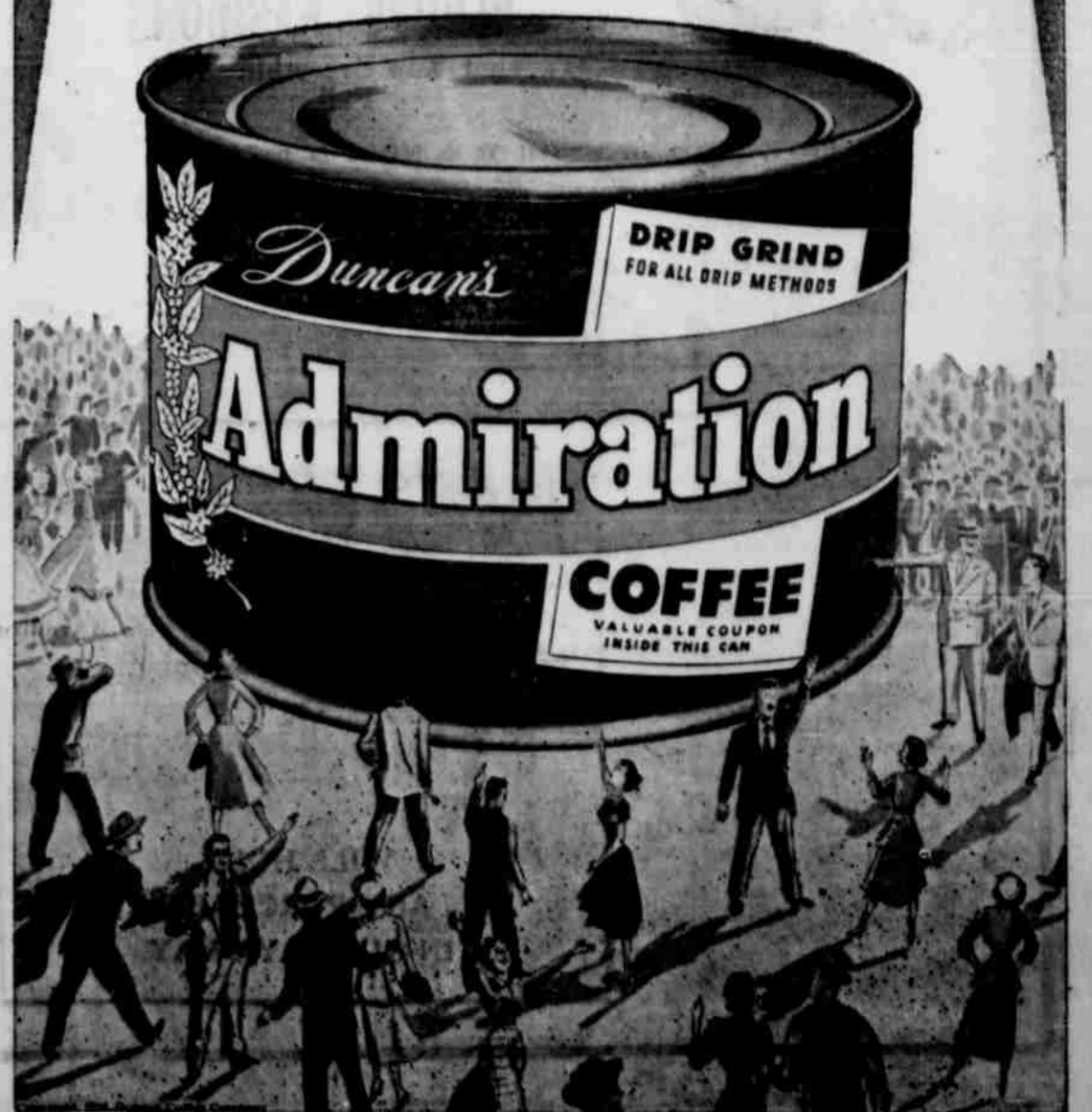
FOR—

- Auto-Lite Batteries
- Perfect Circle Piston Rings
- Bonded Brake Shoes
- A. C. Products
- Wagner Brake Parts
- Gates Rubber Products
- Plomb Tools
- Marvel Mystery Oil

666 GIVES FAST RELIEF when COLD MISERIES STRIKE

LIQUID OR TABLETS

DAY AFTER DAY
MONTH AFTER MONTH
YEAR AFTER YEAR
MILLIONS AND
MILLIONS OF
PEOPLE LOVE AND
ENJOY



Tire Rubber Economy Never Possible Before

Into the national achievement record has gone this phenomenal tire rubber economy—never known or possible before!

Not an ounce of wasted rubber yet each tire can give every owner years, instead of miles, of safety and service—his one tire investment for years to come.

With local communities solidly backed by extensive dealer investments in service and maintenance equipment, all of the original safety mileage of these unique tires is continuously renewed and renewable—when other tires are giving up their lives.

They are tires that work and serve at the very heart and core of the national economy in normal times, and in every possible rubber emergency.

They have set up entirely new standards of safety and mileage by which other tires are now being judged and measured, everywhere in the United States.

Whether with black, or with whitewalls, they provide their exclusive Protective Curbguard, their new Royaltex Tread and Traction, and they deliver up to 60% more safe mileage.

They have resulted from many years of continuous research, experience and U. S. Rubber investment. They are the only such tires in the world, priced as low as life and safety permit.

They are the tires that now roll and serve with the nation, with tire rubber economy never known before, remaining fresh and new in safety when other tires are giving up their lives.

THE GREAT Mid-Century
U.S. ROYAL MASTER
AMERICA'S UTMOST
IN TIRE ECONOMY

UNITED STATES RUBBER COMPANY

Brown Tire Company

LITTLEFIELD, TEXAS



FREE SUIT!

FREE SOUVENIRS
FOR THE LADIES

YOUR CHOICE OF ANY SUIT IN THE STORE
Receive your FREE TICKET at any time from the opening of our store at 9 a. m. Friday, September 29, to the time of the drawing at 4 p. m. Saturday, October 7, at the store. You do not have to be present to win.

Announcing

the Opening of
FRANKLIN'S IN
FRIDAY MORNING Sept. 29 9 o'clock
LITTLEFIELD

You Are Cordially Invited

Exciting SPORTSWEAR



that's *high fashion*

Smart Jackets

From Leading Fashion Centers

Smart fitted and boxed styles in tweeds, corduroy, suedes and velveteens.

4.99
to
7.99

BLOUSE FASHIONS That Top Everything for Fall

It's dress-up season for blouses! These blouses in fine tissue crepes... silky failles... distinctive woven novelty rayons... wool jerseys... cottons... will be nice additions to your wardrobe. Sizes 32 to 48. Low prices...

1.99 to 5.99



NOW

... is the time to buy for everyday use... or Christmas shopping!

\$100 Deposit

WILL HOLD
ANY PURCHASE
IN OUR LAYAWAY



SKIRTS

In corduroys, taffetas, failles, and gabardines.

2.99 to 5.99



Handbags

A Nice Selection

1.00 to 3.99

Gloves

To Match Any Ensemble

1.00 to 2.50

It's An Exciting Season for...

Wool Sweaters

A nice selection in all wool and nylon... cardigans, slipovers, and twin sweater sets. Sizes 32 to 44.

1.59 to 6.99



*Presenting
Fall*

Children's

DRESSES

for Party or Play

1.88 to 7.99



Children's

Sweaters

1.59

Fall Lingerie

Bras
All Nationally
Advertised
79¢ to 350
Girdles

Including Nylon
1.00 to 350

**FASHIONS FOR
LEISURE HOURS**
Gowns . . . zipper or tie . . .
in silk print, quilted satin,
corduroy, or everyday cotton
. . . full length or brunch
style

3.99 to 12.95

**NYLON OR LACE-
TRIMMED CREPE
SLIPS**

Alençon-type laces trim the
smooth lines of our fine ray-
on crepe or nylon slips.
Bodice-hugging, hip-slim-
ming. White, pink, black, 32
to 38.

1.00 to 9.95

**LOVELY NYLON
HOSE . . . Full fash-
ioned, first quality in
all-denier, all-gauge
high twist . . . new
for fall shades . . .**

**8½ to 11, all lengths.
1.00 to 1.49**

**Negligee
Sets**

In beautiful materials
and colorings.

12.95 to 19.95



**NYLON OR LACE-
TRIMMED RAYON
CREPE GOWNS**

Full cut skirts, white, blue,
tearose. Sizes 32 to 38.

1.50 to 10.95



Panties

3 for 1.00

Other panties including nylon,
lacey or plain.

49¢ to 1.50



the New Fall Fashions

Special for Our Opening

4 Piece Suit

In gabardine . . . two skirts . . . can be
worn 10 different ways . . . advertised
in Seventeen and Glamour magazines
at \$24.95.

SPECIAL \$21.50

Now

. . . is the time to
buy for everyday
use or Christmas
shopping.

1.00 DEPOSIT

Will Hold
Any Purchase



**The Season's
Smartest in
COATS**

Fitted or boxy styles with full
or half belts . . . others with
zipin linings . . . all wools, all
wool coverts, gabardines and cor-
duroys.

**16.95 to
99.50**



SUITS

In the Newest Fall and
Winter Colors and Styles

Simulated rayon, gabar-
dines, coverts, flannels
and 100% wool. Sizes 9
to 20 and 18½ to 24½.

**14.95 to
45.00**

**Women's
Finger Tip
TOPPERS**

The season's smartest
styles in corduroys, shags
and gabardines.

6.99 to 24.95

Selections

... of new fashions you'll
be wearing ...!

Here's An Opening
**Special In
HOSE**

Values to \$1.00

2 pr. 1.50

**STORE
OPENING
DRESS
SPECIAL**

Values to
\$6.99

**2
for
\$11.00**



**Dresses You'll Like
at Popular Prices**

We will have a complete selec-
tion in corduroys, gabardines,
crepes and wool Jerseys . . . in
Misses and Juniors, sizes 9 to 20
. . . and youthful slenderizing
large and half sizes from 20 to
52 and 18½ to 24½.

3.99 to 24.95

Franklin's
FASHION CENTER FOR WOMEN

PHELPS and THIRD

FORMER RENFRO LOCATION

DELICIOUS FOOD - GOOD SERVICE - FAIR PRICES STARR DRIVE-IN

East On Highway
LITTLEFIELD
WE SERVE CL
and PARTIES
PHONE 204-J

Latest Addition to Chrysler Line Is Town and Country Station Wagon

A new Chrysler Town and Country station wagon that features an all-steel body has just been put into production. It is announced by Joseph A. O'Malley, general sales manager of the Chrysler Division. Ideal Motors are the local dealers for Chrysler automobiles.

The latest addition to the Chrysler line is a unique combination of luxury and utility. It is a 4-door model, featuring distinctive exterior lines that are characterized by a low sloping all-steel top and long sweeping fenders.

The interior is fashionably tailored in smart Tolex, a heavy and durable leather-like plastic material that can be easily washed with

sop and water. The Airfoam seats are upholstered in brown Tolex with light tan Tolex being used for the door panels and headlining.

Highlight of utility features is the spacious cargo-carrying capacity available in the new model. A unique fold-down arrangement of the rear seat opens up a level cargo space running more than seven feet from behind the front seat to the tailgate. With the tailgate open, the loading space is extended to nearly ten feet.

Even with the rear seat in its normal position, loading space behind it extends four feet with the tailgate closed and nearly six and

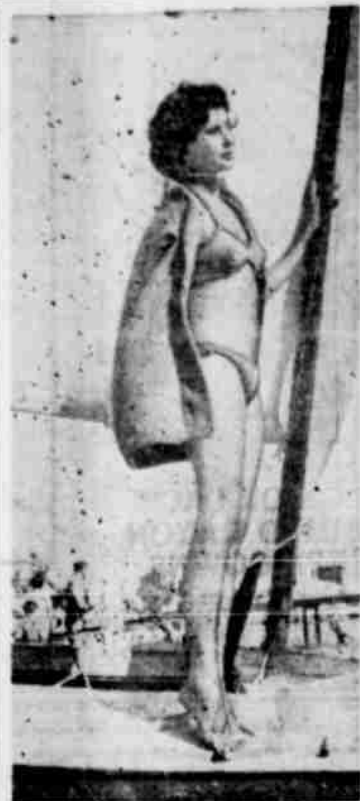
a half feet with the tailgate open. For ease of loading and unloading and to provide a level cargo platform, the tailgate opens flush with the floor of the luggage compartment.

Picture-window rearward vision is provided by a large window extended the entire width of the tailgate. This window can be completely lowered into the tailgate.

To obtain maximum use of floor space, the spare wheel is carried in a covered well in the floor of the luggage compartment where it is easily accessible.

Body paint colors available on the new model are fog green and pearl tan in the light shades and crown maroon in a dark shade.

For all its spacious carrying capacity, exterior dimensions of the Town and Country wagon have been held to the common-sense proportions dictated by modern



FRANCO FIANCEE? . . . Nine Dyer, English beauty, vacationing on the Riviera, is being linked romantically with Nicholas Franco, the Spanish dictator's brother.

Nine Students From Foreign Lands Attend Wayland

Attending Wayland College, Plainview for the first time are nine students from foreign lands. Included in this number are Henry Roskam from Holland; Paule Spurgeon de Paula from Brazil; Hiroshi Tanamachi from Japan; William Chang from China and Abraham Paler from the Philippines.

From Hawaii are Sue Arashiro, Kikue Hiratani and Mr. and Mrs. Paul Gima. Most of these students will return to their native lands to do mission work.

Official Records

Joe Caberera and wife to Wm. Crane, Lot 3, Block 37, City of Amherst, \$1,000.

Earl Machen and wife to Willema Girdon, Lots 14, 15, 16, all in Block 47, original town of Olton, \$6,500.

C. L. Cook, a single man, to Russell Cook and Pauline Cook Noonan (Labor 22, League 657, Abner Taylor, original grantee, containing 177.1 acres, \$10.00, etc.

Bert G. Barker and wife to Mrs. Lula Powell, a widow, Lot 20, Chesher subdivision of east half Block 14, West Side addition to the city of Littlefield, \$550.

Harry Patillo and wife to Ila M. Sewell, Lot 3, Block 30, Dugan annex, Littlefield, \$5,900.

Audie Mae Wood and husband, V. G. Wood, to M. A. Aury, Labor 16, out of League 649, State Capitol Lands, containing 173.8 acres more or less, \$30,415.00.

Homer Wright and wife to George H. Nichols, Lots 9 and 10, Block 27, city of Amherst, \$1,000, etc.

D. C. Thrash and wife to Sam T. Redwine, South half of Lot No. 7, Block 5, original town of Littlefield, \$6,500.

J. M. Yates to Sallie Gallagher Reeves Copeland and husband, Lots 12, 13, and 14, in Block 107, original town of Olton, \$10.00.

James M. Stokes, Jr., to L. B. Stone, Lots 5 and 6, Block 37, Dugan annex, \$1,100.

C. A. Duffy, Jr., and wife to C. A. Duffy, Sr., West half of Tract No. 2, Amherst subdivision farms, Amherst, \$1,000, etc.

L. E. Sinclair and wife to Charley Brown, Lot 3, Block 62, original town of Littlefield, Lamb county, \$700.

Ruby Lee Kelley, a feme sole, Della Street, strip of land, 50 ft. in width along West side of Block B, of T. R. Jones addition to Littlefield, \$10.00.

K. B. Ray and wife to D. Y. Ray, Lots 23 and 24, Block 62, original town of Olton, \$10.00, etal.

J. M. Simmons and wife to L. E. Wilson, Lot 8, Block 2, Bell subdivision of Blocks 10 and 11, West Side addition to the city of Littlefield, \$350.

Congratulations to

The following parents whose babies were born at the Littlefield Hospital:

Mr. and Mrs. James T. Weatherly of Littlefield on the arrival Tuesday, September 19, of a son weighing 8 lbs. 3 ozs. He has been named Jimmie Vaughn.

Mr. and Mrs. Alvin C. Webb of Littlefield on the birth of a son Friday, weighing 6 lbs. 12 ozs. He has been named Stephen Hansen.

Mr. and Mrs. Weldon B. Gilley of Littlefield on the arrival of a daughter Friday, September 22, weighing 6 lbs. 14 ozs. and named Emily Lanet Gilley.

Mr. and Mrs. Bennard E. Gilbreath of Levelland on the arrival of a daughter Friday last weighing 6 lbs. 8 ozs. Mother and daughter are doing nicely.

traffic and parking requirements. It has an overall length of 211-1/4 inches on a wheelbase of 125-1/2 inches. Overall height is 67 1/2 inches unloaded and overall width is 74-3/4 inches. It is powered by the 116 horsepower Chrysler Split-fire engine.

Amherst Oil Co.

WHOLESALE and RETAIL

Featuring COSDEN GASOLINE and OILS and D. X. MOTOR OILS and GREASES

Complete Line of TIRES — BATTERIES and ACCESSORIES

PERMANENT ANTI-FREEZE

E. B. BRADY, Manager

Phone 2171



Only Chevrolet lets you make such a *wide and wonderful choice* . . . and at the lowest prices, too!

Choose between Standard Drive and **POWERGLIDE** Automatic Transmission

Choose between Styleline and Fleetline Styling

Choose between the Bel Air and the Convertible

CHEVROLET

America's Best Seller . . . America's Best Buy!

Hewitt Chevrolet Company

LITTLEFIELD, TEXAS

Divorces Granted

In the case of Gerald Duncan vs. Ruby Duncan, with J. M. Duncan as intervenor, divorce was granted in District Court Saturday before Judge E. A. Bills, and custody of children awarded to J. M. Duncan, father of Gerald Duncan.

Curtis Wilkinson, attorney of Olton, acted for the plaintiff while Wm. E. Combest of Olton was attorney for intervenor, Mr. Duncan.

The divorce of Alice Harrington vs. Richard Harrington was also granted. Wm. B. Combest acted for the plaintiff.

A new theater-restaurant, the Diamond Garter, will feature three-nightly performances of "The Drunkard's Daughter," a comical oldtime melodrama, at the 1950 State Fair of Texas, Oct. 7-22.

Asthma
Hay fever

So easy to use—Just inhale mist-like vapor.

For result use only as directed.

Why suffer when something will help you? After your symptoms have been diagnosed as Asthma or Hay fever you owe it to yourself to investigate.

ASTHMANEFRIN

If you are a user of AsthmaNefrin, please bring in your nebulizer for free inspection and servicing.

REESE DRUG
LITTLEFIELD
Phone 167-J

Poultrymen can increase their fall and winter egg production and thus take advantage of the high prices paid for eggs at these seasons by using lights in the laying house.

The 187-acre, Fair Park at the scene of the 1950 Texas Mid-Century Oct. 7-22.

Toni Twin
Kathlene Crescente, says:

IT'S THE MOST NATURAL LOOKING WAVE I'VE EVER HAD

Toni Refill 89c

Now—for only one dollar you can get the wave with that natural look . . . a wave as softly beautiful, as easy-to-set as the costliest professional permanents.

Toni alone, of all home permanents—looks so natural, feels so soft! For Toni's Creme Waving Lotion contains an exclusive blend of the very same waving ingredients used in most expensive beauty shop lotions. No wonder a Toni is frizz-free, silky-smooth! Today ask for Toni Home Permanent.

SPECIAL! Toni Refill, Toni Shampoo and 6 Miss Curlier. \$1.30 Value—Now Only

P.S.

2 oz. . . . 49¢
4 oz. jar . . . 95¢

A family economy size \$1.49

REESE DRUG
Littlefield, Texas

NOTICE To Subscribe

We cannot tell you the outcome of the War, nor its effects on conditions in the (newsprint is already scarce and hard to get) but we have permission from the

FORT WORTH STAR-TELEGRAM

to accept new subscriptions or renewals next sixty days on the following bargains:

DAILY and SUNDAY 1 year and LAMB COUNTY LEADER 1 year Littlefield and Trade Area only . . . \$15

Star - Telegram, daily without Sunday 1 year and Lamb County Leader 1 year, both for . . . \$14

Don't miss this opportunity, because in advance you are assured of a paper better than the rest.

BRING YOUR SUBSCRIPTION ORDER IN AT ONCE TO THE LAMB COUNTY LEADER.

Flag of the United Nations



Flag of the United Nations, now flying with national colors of the U.N. armed forces in action to restore the peace in this photograph. The background color of the flag is blue associated with U.N. since its early days. The United Nations seal in its center is in white.

PS TO BE AWARDED
SCHOOL BANDS

of Texas will to five outstanding bands attending Band Day Octob-
icians will be the at a South- football game be- and the Uni- as Razorbacks, of activities in- up Congress Ave- in street.
de the bands will marching, musician-
a will be awarded al Stadium half- to the first and ing bands in two with 56 or more ge with 55 or less of coming the far- the occasion.
bands are expect- al day. Associate Director Morton said. Last year attendance record 8 bands attended. high school bands ed for Band Day, ed.

THE LIFE
ATOR

life of a Senator, who has important gment, starts late. As an exam- following detailed, of a typical day Senator Tom Con-

first stop was the Commission, which aring on the ques- or not it should River Conserva- tion District to on the Brazos in Pinto Counties. tains this is none ness, because the navigable. This is News reported arance:

ioners sat dumb- ly hurled charges power, accused legal, or rather ories' about navi- gation to 'purest

ever had any idea ould be navigated ave never wor- g disturbed from the tootling of les,' he snapped. e got a techni- Connally sneered, briefed and ready ht and to raise

Whitney Dam pre- gation above it. to the technical C)—haven't found can climb over a

ged a lot of peo- power companies and hijacked us,' people opposed the quat-public pow-

at, the Texas Sen- er is down there. it up to Washing- are there and need you claim control. ater will flow on and never be uti- ful purpose.'

the room—except p—stood up when and a crowd came as his hand. The remained seated, came forward to The commission- ed, and Commis- L. Buchanan, act- started calling on comment.

Major of Colorado and said: 'Sena- explained the sit-

favor of the new Ambassador, whose wife is the former Sloan Simpson of Dallas, and invited him to attend the Pan American Friendship Festival in San Antonio.

The Committee then voted un- animously to cite for contempt three witnesses who would not answer questions during the Tydings subcommittee's investigation of the charges of disloyalty in the State Department, and recom- mended Senate confirmation of the American delegates to the United Nations General Assembly.

Senator Connally had lunch with Senator Alexander Wiley of Wis- consin, ranking active Republican member of the Foreign Relations

Committee, and with high officials of the State Department in order to discuss current problems of foreign policy, particularly regard- ing the Far East and the United Nations meetings in New York.

After lunch, he went to the Senate where a number of bills affecting Texas were under con- sideration.

As the Senate went into a night session, Senator Connally had din- ner alone in the Senate restaurant and returned to the floor to be on hand for consideration of the bill authorizing federal aid to school districts where enrollment has substantially increased because of federal activities. A number of Texas schools, such as Grand Pra-

irie, Orange, and others, are af- fected.

This bill passed without a rec- ord vote, and Senator Connally went home at 9:30, ending a work-

LAMB COUNTY LEADER, THURSDAY, SEPTEMBER 28, 1950

ing day that had lasted a little more than twelve hours. It had be- gun with the Brazos River, ranged

over current world problems, and ended with overburdened Texas school districts.



From where I sit... by Joe Marsh

New Use
For Old Windmills

I drove past Larson's farm last week and saw him perched on top of his 75-year-old windmill. "Still planning on tearing it down?" I shouted up to him.

"Not on your life," says Curly as he climbs down. "I'm getting myself a television set from Buzz Ellis' and he says this windmill is going to come in mighty handy."

"You see," Curly went on, "I'm going to put my TV antenna right on top of it. Since the windmill is higher than the house, I'll get the best reception around here—but

if it wasn't for Buzz and his ad- vice, I'd have scrapped it."

From where I sit, Curly's success as a farmer and his popularity in town is due, in a large part, to his open-mindedness and his willing- ness to listen to people and their opinions. He'll listen to Buzz Ellis over a malted milk or he and I can talk politics—each with a glass of temperate beer. Yes, Curly's as modern as television itself!

Joe Marsh

Copyright, 1950, United States Brewers Foundation

New Building Plan-

See us . . . Inquire about our new building plan.
Let us furnish your building materials of all kinds . . .
Make estimates on new houses or repair jobs.

WILL ASSIST IN SECURING FHA LOANS

We will help in securing F.H.A. loans on new houses or remodeling loans (10% cash down)—

UP TO 36 MONTHS TO PAY

CICERO-SMITH Lumber Company

LITTLEFIELD


301 XIT DRIVE

TEXAS

Drive all over  the map—

MERCURY makes any road the right road!



 You get the right power!

Cruise down the highway. Back out your driveway. Mercury's big V-type, 8-cyl- inder engine gives you just the perfor- mance you ask for. When it comes to econ- omy, this is it! Mercury is "America's Number 1 Economy Car"!



 You get the right riding comfort!

You don't "hit the road," you float over it gently in this sweet- riding, built-for-six Mercury. "Cushion-coil" springing plus deep-comfort, foam-rubber seats make Mercury the smoothest riding car you ever leaned back and relaxed in.



You get the right roadability!

Yes, Mercury loves the road, all right—hugs it tightly on the curves, up and down the hills, on the straightaway. But you don't talk about roadability—you feel it. Get behind a Mercury wheel and you'll know what we mean.



Go for a ride and you'll go for **MERCURY**
Ed Packwood Motors

610 East Fourth Street

Littlefield, Texas

A Star at Home



Any one who read the recent national magazine profile on this young man would scarcely expect to find him in such a domestic pose. But it's really stage and screen star Marlon Brando, and the photographer caught him cleaning the upholstery in his New York penthouse bachelor quarters with his new vacuum cleaner. He had just returned from Hollywood, where he made the widely hailed picture, "The Men," a moving story about a paraplegic veteran.

"The rush of movie, stage, and television assignments doesn't leave me much time for keeping my apartment in order," says Marlon Brando, "but now that I have my Lewyt, it's no chore at all."

The quiet, efficient vacuum cleaner has six other attachments besides the upholstery nozzle which Mr. Brando is using in the picture. Most important of all, perhaps, to many users, is the fact that it has no dust bag to empty.

SPADE NEWS

Bridal Shower Honors Mrs. Dukatnik

A bridal shower was given Friday night, Sept. 22, at the Hart Camp school house, honoring Mrs. Albert Dukatnik, the former Miss Peggy Ann Timmons.

A large crowd attended the shower and the honoree received a large array of lovely gifts.

Hostesses were Misses Wanda Mae White, Betty Whitfield, Mrs. C. P. Montgomery, Mrs. Edwin Oliver, Mrs. Louis Farr, Mrs. W. T. Jones, Mrs. H. E. Field, Mrs. L. H. Nelast, Mrs. R. N. Nicholas, Mrs. R. H. Lafever, Mrs. F. M. Biddy, Mrs. M. W. Wheeler, Mrs. H. R. Monroe, Mrs. Paul Teal, Mrs. D. R. Leonard, Mrs. C. H. Vanlandingham and Mrs. L. W. Sullivan.

Refreshments of sandwiches, potato chips, punch and coffee were served.

ANNUAL STAFF MEMBERS CHOSEN

Last week the seniors chose their annual staff members.

The editor is Betty Inklebarger. Boys' sports editor is Ernest Trull. Business manager is Raymond Wiley. General manager is Bobby Westbrook, and photographers are Francis Smith and Dolores Tindal.

Mr. and Mrs. W. J. Aldridge.

VISIT AT HOLLIS

Mr. and Mrs. Jim Easter spent the week end at Hollis, Okla., where they attended the 60th wedding anniversary of Mr. Easter's parents, Mr. and Mrs. G. A. Easter.

VISIT IN ALDRIDGE HOME

Mr. and Mrs. Guy Aldridge of San Antonio spent the week end here with his parents, Mr. and Mrs. W. J. Aldridge.

VISIT DAUGHTER

Mrs. Marvin Qualls spent last Friday with her daughter, Mrs. Floyd West at Sudan, who has been ill. Mrs. West and baby returned home with her and spent the week end.

GO TO FT. SUMNER

Mrs. Lois Barrett and Mrs. Virgie Stanfield of Ft. Sumner, N. M. visited here last Friday with Mr. and Mrs. R. W. Stanfield and Mrs. Bernice Swanson, who returned home with them for a visit.

VISIT AT SPADE

Mr. and Mrs. Jerrold Smith and daughter Diane of Lubbock spent the week end with her mother, Mrs. Beulah Robison.

TO CARLSBAD

Mr. and Mrs. Paul Hukill and children left Thursday for a trip to Carlsbad Caverns, and with her sister and family at El Paso.

A community singing school, led by Earl Thompson of Lubbock began Monday night at the Fieldton Baptist Church. Everyone is invited.

FIELDTON PTA TO BUY NEW PLAYGROUND EQUIPMENT

The Fieldton P. T. A. met Monday evening, Sept. 18, at the school. New officers were installed and plans were discussed for the year's work.

It was decided to buy new playground equipment and also a new drinking fountain.

Refreshments of cookies, coffee and cocoa were served in the lunchroom and music was enjoyed, mostly group singing.

Officers chosen for the school term are: President, Mrs. L. H. Pickrel; Vice-President, Mrs. Reuben Brock; Secretary, Mrs. Bernard Nelson; Treasurer, Mrs. Paul Blackwell; Chairman of Finance Committee, Mrs. Willard Owens; Hospitality, Mrs. Arnold Waldo; Membership, Mrs. W. J. Aldridge; Mrs. S. G. Cowan; Program, Mrs. T. M. Moore; Mrs. Willard Owens; Publicity, Mrs. R. A. Reed; Social, Mrs. O. L. Bundick; Chairman of Room Mothers, Mrs. Marvin Qualls; Study Group, Mrs. Cecil Plete; Parliamentarian, T. M. Moore.

Meetings will be held the third Monday night of each month.

VISIT IN LITTLEFIELD

Mrs. Bernice Swanson visited here last week with her parents, Mr. and Mrs. R. W. Stanfield. Mrs. Swanson has only recently returned from Turkey, where her husband, Colonel Swanson of the U. S. Army has been stationed. He will be stationed for a while at Jackson, Miss., and Mrs. Swanson will join him there next week.

HAVE SLATON VISITORS

Mr. and Mrs. E. O. Melver of Slaton visited here last week with

LEAGUERS SPONSOR PICTURE "THE POWER OF GOD"

What Christianity is, what it does to and for the individual, and what the individual should do with his Christianity is a brief summary of the picture, "The Power of God" which will be shown at 417 West Third Street, Sunday night, October 1, beginning at 7:30 p. m.

The picture which is technically of the highest calibre tells a true-to-life story of people living in the little town of Ellendale. It shows in a language universally understood, pictures, the truth that the Gospel of Jesus is the "Power of God!" Running time of the picture is about one hour. The program for the evening of October 1 should be over in plenty of time to get the children to bed at more or less the usual hour.

This picture, "The Power of God" is of the same quality as "The Sickle or the Cross" or "Youth for the Kingdom" pictures which have been shown in Littlefield rather recently.

"The Power of God" was produced under the direction of the Lutheran Church, Littlefield and surrounding parts will have the pleasure of this powerful picture through the courtesy of the Walthers Leaguers of Emmanuel Lutheran who are sponsoring this movie. Expenses will be cared for through a free-will offering.

Use Leader Classifieds for quick results! Buy! Sell! Rent! Trade!

More than 650 different kinds of grasses, obtained from all parts of the world, have been planted by the Texas Agricultural Experiment Station in Texas since 1907.

At the Louise Dresser special feature is certain rates to mix and match Slacks, Blouses and Jackets sweaters by Nan Deane Phelps Ave., Littlefield, Tex.

I DON'T KNOW A GEAR FROM A GENERATOR... SO I RELIED ON

ED PACKWOOD MOTORS FOR MY REPAIR JOB!



Complete Repair Service For Make of Automobile from Tires Top!!

Ed Packwood Motors

Phone 312



An announcement by Henry J. Kaiser

Today, at your Kaiser-Frazer dealer, you will see what we believe to be the most important car that America has produced since the automobile became a necessity of daily living.

It fills the needs, the wants, the purchasing power of all America as no other car has done in the last ten years.

It is rugged. It has outstanding maneuverability, handles and parks easily, and is powered with our new Supersonic Engines which deliver up to 30 to 35 miles to the gallon.

The Henry J is the lowest-priced car in the low-price field. It has the full, generous proportions to which Americans are accustomed. We have given it the best combination of performance, comfort, styling, and economy of operation.

It is the car that you and every American family can afford to buy, to operate, to maintain...and be proud to own.



The Henry J...the lowest-priced car in the low-price field.

The most important new car in America!

Here Friday... The

Henry J

Available in two models: Henry J (as illustrated above), Henry J DeLuxe (six-cylinder at additional cost).

Important because... It's Smart! Smart to look at... smart to own! Notice the extra-wide doors... front seat 58 inches wide... head room and leg room galore! And—look! The back of the rear seat folds forward, giving you 51 cubic feet of storage space, almost double that of the largest sedan trunk compartment!

Important because... It's Tough! Husky, Double-Channel Frame, reinforced like a steel bridge! The rear axle Hypoid geared, as in most expensive cars. Extra-wide windshield and windows give you the largest vision area in any low-priced car...short turning radius permits the easiest parking.

Important because... It's Thrifty! You get 30 to 35 miles per gallon from the quiet, responsive Supersonic Engines. (Henry J—4 cylinders, Henry J DeLuxe—6 cylinders.)

Lower first cost...lower maintenance...lower repair bills...lower insurance...lower operating cost. Your savings, in just two years, can more than total the down payment on the Henry J.

Built to Better the Best on the Road!

Costs less to buy...less to drive...less to maintain

On Display Friday, Sept. 29... at

Batson Motor Company

600 West DeLano Avenue

Littlefield, Tex.

The CHIROPRACTOR and YOU

WHY ARE YOU ILL?



Dr. H. C. Lewis

Chiropractors have found that illness and disease are most often caused by pressure upon the nerves which carry vital nerve force from the brain to various parts of the body. The nervous system radiates from the spinal column, and it is here that even slight pressure from displaced segment of the spine can impede the flow of nerve force from the brain, thus interfering with the functioning of one or more parts of the body. This nerve interference can be located accurately by the Chiropractic technique. The Chiropractor can then remove the pressure by a simple adjustment with his hands only... Drugs and surgery are not employed. Once the cause of the illness is removed, Nature itself restores the affected part to normal.

(Case History Taken from TCS Files)

PARALYSIS:

CASE HISTORY NO. 212: This young man had a bad fall from the top to the bottom of a stairway. Two days later numbness in the left leg was felt and within six months paralysis in both limbs was such that he had to creep up the stairs on hands and knees. Eminent specialists examined him and said nothing could be done. As a last hope, Chiropractic aid was sought. Spino-graphs of the spine were taken and adjustments commenced to restore the flow of nerve energy to the limbs. Response was slow, but within approximately one year the patient could walk without assistance and was ready to return to work.

THIS OFFICE IS EQUIPPED TO GIVE COMPLETE SPINAL AND SPINOGRAPH ANALYSIS

Lewis Chiropractic Office

Hall Bldg. (306 Phelps Ave.)

Littlefield, Texas

"Complete Spino-graph and Spinal Analysis"